

# RUTH COMPLEX

**CA-SRF-000897**

**P5K9AJ**

**3DAY Operational Period**

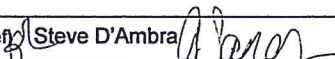
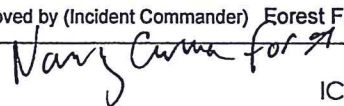
**August 22-24, 2017**

**0700 - 1900**



Ruth Complex Maps for AVENZA



<b>INCIDENT OBJECTIVES</b>		1. Incident Name: <b>Ruth Complex</b>	2. Date: Aug 21, 2017	3. Time: 2100
4. Operational Period: <b>August 22-24, 2017 3DAY 0700 - 1900</b>				
5. General Control Objectives for the Incident (include alternatives)				
<p><b><u>Objectives</u></b></p> <ul style="list-style-type: none"> <li>• Provide for incident responder and public safety through hazard recognition and application of the risk management process.</li> <li>• Keep fire within established containment lines to protect identified Values at Risk.</li> <li>• Respond to Initial Attack as requested.</li> <li>• Complete and approve all Stage 1 Suppression Repair to protect further damage to ecological resources. Identify any outstanding Suppression Repair needs.</li> <li>• Evaluate Stage 2 Suppression Repair opportunities and complete as conditions allow.</li> </ul>				
6. Weather Forecast for Period				
<p><b><u>WEATHER FORECAST FOR TUESDAY:</u></b>  <b>WEATHER:</b> Partly sunny with a slight chance for thunderstorms in the afternoon. Smoke from fires to the north  <b>TEMPERATURES:</b> Max Lower Elevations....86-92F; ridges....82-87F. <b>24 HR Trend</b> 3 Deg cooler  <b>HUMIDITY:</b> Min Lower Elevation....20-30%; ridges....25-40%. <b>24 HR Trend</b> Up 5-10%  <b>SLOPE/VALLEY</b> - Variable less than 3mph in the morning becoming Upcanyon/Upslope 3 to 5mph with gusts to 8 mph .  <b>RIDGETOP-</b> East less than 5 mph in the morning becoming west to southwest 5 to 8 mph in the afternoon. Gusts to 12mph in the afternoon.</p> <p><b><u>WEATHER FORECAST FOR TUESDAY NIGHT:</u></b>  <b>WEATHER:</b> Any thunderstorms diminishing in the evening. Partly cloudy with smoke settling into valleys. <b>TEMPERATURES:</b> Min Lower slopes/valleys 55-60F. Ridges 57-63 F <b>24 HR Trend:</b> Little Change  <b>HUMIDITY:</b> Max Lower slopes...75-95%; Ridges...60-75%. <b>24 HR Trend:</b> Up 10%  <b>SLOPE/VALLEY</b> - Upslope 2-5 with gusts to 7 mph in the evening...becoming downcanyon/downslope to less than 4 mph after 2200.  <b>RIDGETOP</b> - West to northwest winds 5 to 8 mph with gusts up to 12 mph in the evening...becoming northeast to east 3 to 8 mph.</p> <p><b><u>EXTENDED FORECAST:</u></b>  <b>WEDNESDAY and THURSDAY...</b> Mostly sunny with some of smoke. Nearby thunderstorms possible in the afternoon, mainly east on Thursday. Max temps...mid 80s to near 90. Min RH 15-30%. Northwest 5 to 15 mph. Strongest over ridges and upper slopes.</p>				
7. General Safety Message:				
<p><b>Driving</b> – Maintain safe speeds at all times. Slowing down is the best mitigation for most safety issues. Learn to recognize and pay attention to the warning signs of fatigue. Take a break if you experience wandering or disconnected thoughts, yawn repeatedly, have difficulty focusing or keeping your eyes open, or find yourself missing traffic signs or tailgating other drivers.</p>				
8. Attachments (mark if attached)				
<input checked="" type="checkbox"/> Incident Objectives – ICS 202	<input type="checkbox"/> Air Ops Summary – ICS 220	<input type="checkbox"/> Finance Message		
<input checked="" type="checkbox"/> Organization List – ICS 203	<input checked="" type="checkbox"/> Safety Message	<input type="checkbox"/> Training Message		
<input checked="" type="checkbox"/> Weather / Fire Behavior Forecast	<input checked="" type="checkbox"/> Com Plan - ICS 205	<input type="checkbox"/> Camp Map		
<input checked="" type="checkbox"/> Div. Assignments - ICS 204	<input checked="" type="checkbox"/> Medical Plan - ICS 206	<input checked="" type="checkbox"/> Unit Log – ICS 214		
9. Prepared by (Planning Section Chief) Steve D'Ambra 		10. Approved by (Incident Commander) Forest Ford 		









## Ruth Complex Weather Forecast

FORECAST NO: 11

NAME OF FIRE: Ruth Complex

PREDICTION FOR: 0600 Tue – 2000 Thur

UNIT: CA-SRF

SHIFT DATE: 8/22-8/24

SIGNED:

Incident Meteorologist- Matt Mehle

TIME AND DATE

FORECAST ISSUED: 2100 8/21/17

**WEATHER DISCUSSION:** Heads up day as thunderstorms will be possible during the afternoon and evening hours. Developed storms will be capable of producing lightning, brief heavy rain and gusty outflow winds. Increased situational awareness is needed during the afternoon with possible storms, watch for building cumulus clouds in the afternoon. A slight chance for thunderstorms will be possible again on Wednesday, but drier weather for Thursday.

### **WEATHER FORECAST FOR TUESDAY:**

**WEATHER:** Partly sunny with a slight chance for thunderstorms in the afternoon. Smoke from fires to the north

**TEMPERATURES:** Max Lower Elevations....86-92F; ridges....82-87F. **24 HR Trend** 3 Deg cooler

**HUMIDITY:** Min Lower Elevation....20-30%; ridges....25-40%. **24 HR Trend** Up 5-10%

**SLOPE/VALLEY -** Variable less than 3 mph in the morning becoming Upcanyon / Upslope 3 to 5 mph with gusts to 8 mph .

**RIDGETOP-** East less than 5 mph in the morning becoming west to southwest 5 to 8 mph in the afternoon. Gusts to 12 mph in the afternoon.

**INVERSIONS/STABILITY:** Nearby drift smoke through the day. Unstable in the afternoon. **LAL: 2**

### **WEATHER FORECAST FOR TUESDAY NIGHT:**

**WEATHER:** Any thunderstorms diminishing in the evening. Partly cloudy with smoke settling into valleys.

**TEMPERATURES:** Min Lower slopes/valleys 55-60F. Ridges 57-63 F **24 HR Trend:** Little Change

**HUMIDITY:** Max Lower slopes...75-95%; Ridges...60-75%. **24 HR Trend:** Up 10%

#### **20-FOOT WIND:**

**SLOPE/VALLEY -** Upslope 2-5 with gusts to 7 mph in the evening...becoming downcanyon/downslope to less than 4 mph after 2200.

**RIDGETOP -** West to northwest winds 5 to 8 mph with gusts up to 12 mph. mph in the evening...becoming northeast to east 3 to 8 mph.

**INVERSIONS/STABILITY:** Inversions forming 2100-2200.

### **EXTENDED FORECAST:**

**WEDNESDAY and THURSDAY...** Mostly sunny with some of smoke. Nearby thunderstorms possible in the afternoon, mainly east on Thursday. Max temps...mid 80s to near 90. Min RH 15-30%. Northwest 5 to 15 mph. Strongest over ridges and upper slopes.

### **EXTRA INFORMATION:**

### **REALTIME RAWS INFO for RUTH COMPLEX**

You should request at least once daily spot weather forecasts from the National Weather Service office in

Eureka at: <http://www.weather.gov/spot/request/>

Phone number for Eureka NWS: 707-442-2171





# FIRE BEHAVIOR OUTLOOK

<b>FIRE NAME:</b> Ruth Complex	<b>OUTLOOK PERIOD (valid time period):</b> 8/22-8/24/2017
<b>DATE ISSUED:</b> August 21, 2017	<b>TIME ISSUED:</b> 2000
<b>UNIT:</b> CA-SRF-000897	<b>SIGNED:</b> <i>J. Shelton</i> <b>Typed/printed :</b> Jeff Shelton LTAN

**WEATHER/CLIMATOLOGY DISCUSSION:** UPPER LOW PRESSURE WILL MOVE ACROSS CENTRAL CALIFORNIA BRINGING A SOUTHWESTERLY FLOW OVER THE FIRE THROUGH THURSDAY. CHANCE OF CONVECTION BASED PRECIPITATION ON TUESDAY AND WEDNESDAY. WARMER CONDITIONS WILL FOLLOW INTO THE WEEKEND

Tue: Max. Temps. 86-92 degrees, Min. RH 20-30%, Winds SW 5-8 mph, gusts to 12 mph  
 Weds: Max. Temps. 86-92 degrees, Min. RH 20-30%, Winds SW 5-8 mph, gust to 12 mph  
 Thurs: Max. Temps. 83-89 degrees, Min. RH 30-40%, Winds NW 5-8 mph, gusts to 12 mph

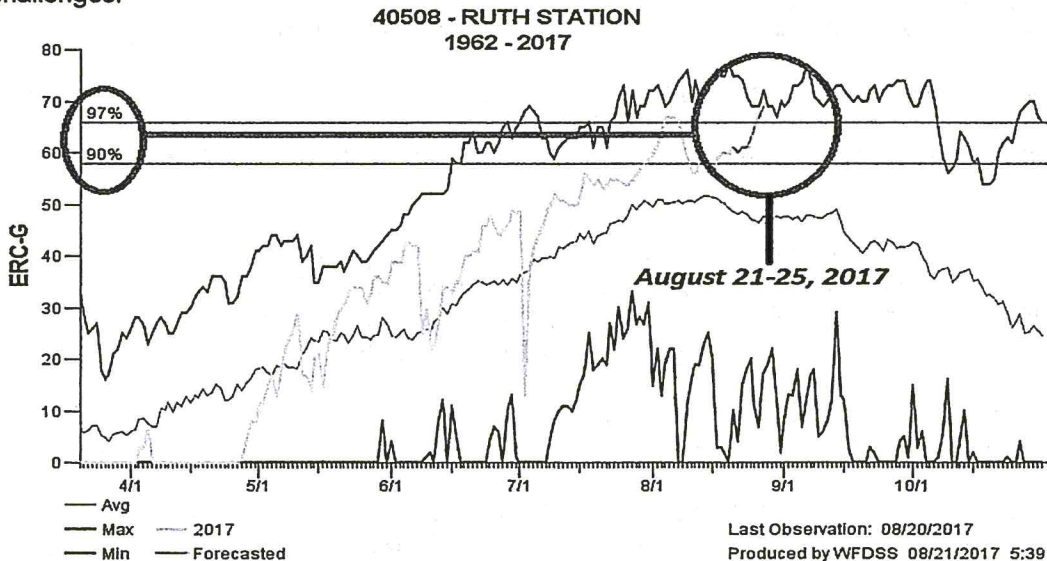
**FIRE BEHAVIOR DISCUSSION (Peak Burn Period Extremes):**

Fuel model	Max. Flame Length	Max. Rate of Spread	Spotting	Probability of Ignition
Dry Climate Grass GR2(122)	< 7'	Up to 105 ft/min	<1/2 mile	Up to 80%
Dry Climate Timber-Shrub TU5(165)	< 12'	Up to 30 ft/min	<1/2 mile	Up to 80%
Conifer Litter TL3(183)	< 2'	Up to 4 ft/min	<1/8 mile	Up to 80%
Long Needle Litter TL8(188)	< 6'	Up to 22 ft/min	<1/8 mile	Up to 80%
Dry Climate Shrub SH7(147)	<20'	Up to 105 ft/min	<1/2 mile	Up to 80%

**Short Range (Today, Tomorrow) and Medium Range (3-5 Days):**

**\*\* Assumes 100% slope to reflect valley potential \*\***

Moderate probability for large fire development. Associated with warm and dry weather, increasing ERCs (>90%) with light to moderate winds and excessively dry large fuels (1000 hour) for this time of season. Fires are predominately fuels and topography dominated. Fire size may exceed initial attack capabilities in the first operational period; especially with wind and slope alignment. Tactical priorities should focus on direct attack at the heel and working the flanks. Holding the fire to the ridgelines may be challenging without sufficient air support. Spotting will be prevalent and may be up to 1/2 mile. Vegetation that has an age class of 15 years or greater should be identified to support larger fire growth and containment challenges.



**Smoke Concerns:** Upper low pressure passage will provide good smoke dispersion. Mixing heights to <5000' AGL with moderate transport winds aloft.

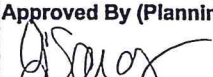
**Reassessment Criteria:** Changing weather and conditions past the August 24 expiration date of this forecast.

## SAFETY

Expect fire activity with high resistance to control!  
 You may need to adjust normal strategy and tactics!!

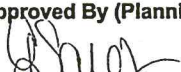


## Division/Group Assignment List (ICS 204 WF)

<b>1. Incident Name:</b> RUTH COMPLEX			<b>3.</b>			
<b>2. Operational Period:</b> DAY			<b>Branch:</b>		<b>Division/Group:</b>  <b>RUTH COMPLEX</b>	
Date/Time From: 08/22/2017 0700 TUE		Date/Time To: 08/24/2017 1900 THU				
<b>4. Operations Personnel</b>						
<b>OPERATIONS CHIEF</b>		MIKE TYRRELL		<b>BRANCH DIRECTOR</b>		
<b>DIVISION/GROUP SUPERVISOR</b>				<b>SAFETY OFFICER</b>		BILL SHUBIN
<b>5. Resources Assigned this Period</b>						
Strike Team / Task Force / Resource Designator		LWD	Leader	Number Persons	Drop Off PT./Time	Pick Up PT./Time
CREW - T2 - FORTUNA 22		08/25	JOSH MCNULTY	20	RUTH GUARD STA/0700	RUTH GUARD STA/1900
ENGINE S/T - T3 - LNF 3615C		08/24	DEBIE MAYER	27	RUTH GUARD STA/0700	RUTH GUARD STA/1900
WT - TACTICAL - T2 - LNF 1		08/28	MARCUS PACHECO	2	RUTH GUARD STA/0700	RUTH GUARD STA/1900
EXCAVATOR - T2 - KEN'S		08/31	STEVE WILSON	2	RUTH GUARD STA/0700	RUTH GUARD STA/1900
SRF CHIPPER					RUTH GUARD STA/0700	RUTH GUARD STA/1900
HEQB		08/30	ADAM MCCULLOUGH	1	RUTH GUARD STA/0700	RUTH GUARD STA/1900
HEQB (T)		08/29	RANDALL WADE BAREFOOT	1	RUTH GUARD STA/0700	RUTH GUARD STA/1900
REAF		08/23	DOREEN HRIVNAK	1	RUTH GUARD STA/0700	RUTH GUARD STA/1900
REAF		08/29	GALEN D ANDERSON	1	RUTH GUARD STA/0700	RUTH GUARD STA/1900
REAF		08/27	FRANCIS M MCCORMICK	1	RUTH GUARD STA/0700	RUTH GUARD STA/1900
<b>8. Division/Group Communication Summary</b>						
Function	Channel	RX Frequency N/W	RX Tone/NAC	TX Frequency N/W	TX Tone/NAC	Mode
COMMAND	1 (FOR ADM T-6)	170.4750		165.7500	156.7	A
COMMAND	2 (FOR ADM T-8)	170.4750		165.7500	103.5	A
COMMAND	3 (FOR ADM T-9)	170.4750		165.7500	100.0	A
COMMAND	4 (FOR ADM T-14)	170.4750		165.7500	151.4	A
RUTH COMPLEX TACTICAL	5 (R5 TAC 6)	168.2375		168.2375		A
AIR TO GROUND	8 (INCIDENT A/G)	172.6750		172.6750		A
MEDEVAC A/G	9 (CALCORD)	156.0750	156.7	156.0750	156.7	A
AIR GUARD	16 (AIRGUARD)	168.6250		168.6250	110.9	A
<b>9. Prepared By (Resource Unit Leader)</b> ALLAN KALPAKOFF		<b>Approved By (Planning Section Chief)</b> 			<b>Date</b> 08/21/2017	<b>Time</b> 1900



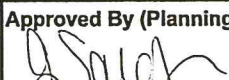
## Division/Group Assignment List (ICS 204 WF)

<b>1. Incident Name:</b>		<b>3.</b>				
RUTH COMPLEX		<b>Branch:</b>		<b>Division/Group:</b>		
<b>2. Operational Period:</b> DAY				<b>RUTH COMPLEX</b>		
Date/Time From: 08/22/2017 0700 TUE	Date/Time To: 08/24/2017 1900 THU					
<b>4. Operations Personnel</b>						
<b>OPERATIONS CHIEF</b> MIKE TYRRELL		<b>BRANCH DIRECTOR</b>				
<b>DIVISION/GROUP SUPERVISOR</b>		<b>SAFETY OFFICER</b> BILL SHUBIN				
<b>5. Resources Assigned this Period</b>						
Strike Team / Task Force / Resource Designator		LWD	Leader	Number Persons	Drop Off PT./Time	Pick Up PT./Time
<b>6. Control Operations/Work Assignments:</b>						
<b>Task:</b> Continue to hold and improve current control lines. Finish suppression repair.						
<b>Purpose:</b> Reduce threats to values at risk.						
<b>End State:</b> Values are not threatened due to fire containment.						
<b>7. Special Instructions:</b>						
FOBS Jameson Collins will cover both Ruth Complex division and IA group						
FEMT Danny Connelly and FEMT Shawn Olson will cover bot Ruth Complex division and IA group						
<b>8. Division/Group Communication Summary</b>						
Function	Channel	RX Frequency N/W	RX Tone/NAC	TX Frequency N/W	TX Tone/NAC	Mode
COMMAND	1 (FOR ADM T-6)	170.4750		165.7500	156.7	A
COMMAND	2 (FOR ADM T-8)	170.4750		165.7500	103.5	A
COMMAND	3 (FOR ADM T-9)	170.4750		165.7500	100.0	A
COMMAND	4 (FOR ADM T-14)	170.4750		165.7500	151.4	A
RUTH COMPLEX TACTICAL	5 (R5 TAC 6)	168.2375		168.2375		A
AIR TO GROUND	8 (INCIDENT A/G)	172.6750		172.6750		A
MEDEVAC A/G	9 (CALCORD)	156.0750	156.7	156.0750	156.7	A
AIR GUARD	16 (AIRGUARD)	168.6250		168.6250	110.9	A
<b>9. Prepared By (Resource Unit Leader)</b>		<b>Approved By (Planning Section Chief)</b>			<b>Date</b>	<b>Time</b>
ALLAN KALPAKOFF					08/21/2017	1900





## Division/Group Assignment List (ICS 204 WF)

<b>1. Incident Name:</b>		<b>3.</b>				
RUTH COMPLEX		<b>Branch:</b>		<b>Division/Group:</b>  <b>IA</b>		
<b>2. Operational Period:</b> DAY						
Date/Time From: 08/22/2017 0700 TUE		Date/Time To: 08/24/2017 1900 THU				
<b>4. Operations Personnel</b>						
<b>OPERATIONS CHIEF</b> MIKE TYRELL		<b>DIVISION/GROUP SUPERVISOR</b>				
<b>BRANCH DIRECTOR</b>		<b>SAFETY OFFICER</b> BILL SHUBIN				
<b>5. Resources Assigned this Period</b>						
Strike Team / Task Force / Resource Designator		LWD	Leader	Number Persons	Drop Off PT./Time	Pick Up PT./Time
<b>6. Control Operations/Work Assignments:</b>						
<p><b>Task:</b> Patrol additional fires in complex. Assist other divisions with suppression repair and identify additional repair needs. Respond to fires as requested.</p> <p><b>Purpose:</b> Reduce threats to values at risk.</p> <p><b>End State:</b> Values are not threatened due to fire containment.</p>						
<b>7. Special Instructions:</b>						
<p>FOBS Jameson Collins will cover both Ruth Complex division and IA group</p> <p>FEMT Danny Connelly and FEMT Shawn Olson will cover bot Ruth Complex division and IA group</p>						
<b>8. Division/Group Communication Summary</b>						
Function	Channel	RX Frequency N/W	RX Tone/NAC	TX Frequency N/W	TX Tone/NAC	Mode
COMMAND	1 (FOR ADM T-6)	170.4750		165.7500	156.7	A
COMMAND	2 (FOR ADM T-8)	170.4750		165.7500	103.5	A
COMMAND	3 (FOR ADM T-9)	170.4750		165.7500	100.0	A
COMMAND	4 (FOR ADM T-14)	170.4750		165.7500	151.4	A
IA TAC	6 (NIFC TAC 2)	168.2000		168.2000		A
IA A/G	7 (IA AG 43)	167.6000		167.6000		A
MEDEVAC A/G	9 (CALCORD)	156.0750	156.7	156.0750	156.7	A
AIR GUARD	16 (AIRGAURD)	168.6250		168.6250	110.9	A
<b>9. Prepared By (Resource Unit Leader)</b>		<b>Approved By (Planning Section Chief)</b>			<b>Date</b>	<b>Time</b>
ALLAN KALPAKOFF					08/21/2017	1900





# SAFETY MESSAGE

Ruth Complex

CA-SNF-0897

Day Shifts 08/22 - 24 /2017

0600-1800

## “IF YOU SEE IT.....SAY IT!”

IF YOU SEE A HAZARD OR A DANGEROUS SITUATION DEVELOPING,  
TELL YOUR SUPERVISOR AND THOSE AROUND YOU!

- **Driving** – Maintain safe speeds at all times. Slowing down is the best mitigation for most safety issues. Learn to recognize and pay attention to the warning signs of fatigue. Take a break if you experience wandering or disconnected thoughts, yawn repeatedly, have difficulty focusing or keeping your eyes open, or find yourself missing traffic signs or tailgating other drivers.
- **Hazardous Terrain** – Steep, rocky terrain is a serious hazard on this incident. Rolling material continues to be a major issue. Rocks and snags can be loosened or dislodged by the fire. Evaluate your work area closely before entering. Spread workers out farther than 10 feet apart. Stagger workers so they are not working or walking directly below each other.
- **Hydration & Fatigue** - Expect heat stress problems to escalate as temperatures heat up and RH drops. Monitor yourself and those you supervise for symptoms. Be alert for signs of fatigue and take breaks as necessary. Maintain 2:1 work/rest ratio. Pace yourselves.
- **Medical Plan**- Review the Medical Plan, and incident-within-an incident protocols.



4. UNFAMILIAR WITH WEATHER AND  
LOCAL FACTORS INFLUENCING FIRE  
BEHAVIOR

## MAKE A SAFETY DIFFERENCE

- As a supervisor, provide constant and relentless oversight. As a crewmember lead up!

## PERSONAL RESPONSIBILITIES

Each Individual MUST Accept Responsibility for his or her own safety! Every person needs to ensure they are:

- Capable of performing the tasks assigned
- An effective member of the team
- Self-disciplined to work within accepted guidelines
- Adaptable to changing circumstances
- Vigilant for his or her own safety, vigilant for the safety of their colleagues and others
- Able to recognize and express his or her own limitations

Team 5 Safety Officers:

Charlotte Jordan SOF1 - Brian Savage SOF1

*Charlotte Jordan*




Ruth Complex CA-SRF-000897 - August 22-24, 2017

Location	Hazard	Control or Abatement Action (Engineering, Administrative, PPE, Avoidance, Education, etc)
All	Air Operations	<ul style="list-style-type: none"> <li>• Follow "Aviation Watch-Out Situations" in IRPG.</li> <li>• Don't plan exclusively on air resources for medical transport or resupply. Visibility may be impaired. Have a backup plan.</li> <li>• Refer to IRPG for directing bucket drops.</li> <li>• Ensure positive communication with all air resources.</li> <li>• Keep personnel out of drop zones.</li> <li>• Use clear concise statements when directing aircraft. Use clock directions from pilot's perspective.</li> </ul>
Branch II	Firing Operations / Aerial Ignition	<ul style="list-style-type: none"> <li>• Only personnel trained in the use of each device will be authorized to use firing equipment</li> <li>• Ensure all personnel are aware of firing operation that may affect them</li> <li>• Wear appropriate PPE</li> <li>• Ensure aerial/ground ignition plans have been adequately developed and personnel are briefed</li> </ul>
All	Hazard trees	<ul style="list-style-type: none"> <li>• Follow "Hazard Tree Safety" guidelines, IRPG (2014)page 22&amp;23</li> <li>• Post lookouts, or use a spotter in mop-up areas with personnel</li> <li>• Don't park vehicles or take breaks in high concentrations of hazard trees</li> <li>• Establish trigger points for disengagement during high wind events</li> <li>• Post road guards when appropriate</li> <li>• Do not fall snags at night</li> <li>• Be Aware of Douglas Fir or other green trees that have root rot and may fall unexpectedly</li> </ul>
All	Heat Related Illness (HRI)& Dehydration	<ul style="list-style-type: none"> <li>• Drink Fluids throughout operational period</li> <li>• Carry extra water on line and cache water at drop points</li> <li>• Take Frequent breaks, minimum of 10 minutes every hour</li> <li>• Recognize symptoms of HEAT RELATED ILLNESS which include               <ul style="list-style-type: none"> <li>o Lack of energy</li> <li>o Headaches, dizziness</li> <li>o Lack of rest</li> <li>o No hunger, poor eating habits</li> <li>o Hot skin, and lack of sweating</li> </ul> </li> </ul>
All	Driving & Traffic	<ul style="list-style-type: none"> <li>• Practice "Defensive Driving" techniques traveling on all roads and city streets, mitigation strategy includes:               <ul style="list-style-type: none"> <li>* Use spotters when backing</li> <li>* Honk horn to alert personnel when backing</li> <li>* Always use headlights</li> <li>* Yield to pedestrians and bicycles</li> <li>* Observe posted speed limits</li> <li>* Follow 3 second rule of following distance when driving</li> <li>* Use chock blocks, turn wheels into hill</li> <li>* Seat Belts are mandatory</li> <li>* No texting while driving</li> </ul> </li> </ul>
All	Severe Weather	<ul style="list-style-type: none"> <li>• Review and follow Thunderstorm Safety guidelines in IRPG (2014) pg. 21</li> <li>• Observe 30/30 Rule for lightning safety, IRPG (2014)pg.21</li> <li>• "Trigger Points" to withdraw should be set by supervisors utilizing the 30/30 criteria mentioned above and ensure all know rally site</li> <li>• Use "Risk Management" process to determine retreat criteria and actions</li> <li>• Carry rain gear and extra food and water if weather limits retreat to ICP</li> </ul>



All	Steep Terrain & Rolling Debris	<ul style="list-style-type: none"> <li>• Maintain 8'-10' spacing when working &amp; walking</li> <li>• Don't work directly above any personnel</li> <li>• Evaluate necessity to send personnel in areas with limited access</li> <li>• Maintain Situation Awareness by identify hazards</li> <li>• Alert all personnel of new hazards and identify</li> </ul>
All	Fatigue & Overexertion	<ul style="list-style-type: none"> <li>• Drink adequate water to maintain hydration during and after work periods</li> <li>• Rotate crews out of smoky areas</li> <li>• Set a reasonable work pace and allow adequate rest breaks during work</li> <li>• Stagger work crews start time to limit fatigue</li> <li>• Use buddy system to monitor personnel of heat related and fatigue issues</li> <li>• Follow work / rest guidelines</li> </ul>
All	Heavy Equipment Operations, Masticator Excavator	<ul style="list-style-type: none"> <li>• Ensure communications are established with operators prior to work</li> <li>• Use hand signals if other communications are unavailable</li> <li>• Maintain a 50'-100' exclusion area around equipment</li> <li>• Use a spotter when backing</li> <li>• Maintain a 300' working zone around Masticator and Excavators</li> </ul>
Branch I, III	Chipper Operations	<ul style="list-style-type: none"> <li>• Block chipper tires when unhooked from towing vehicle and insure full extension of support leg.</li> <li>• When working in roadway use warning systems for traffic.</li> <li>• Check for debris in infeed area and clean.</li> <li>• Check all safety shutdowns to be sure they are working properly.</li> <li>• Check direction of discharge. Make sure discharge is pointed away from work areas, pedestrian walkways, or roadways.</li> <li>• Position down-wind if possible.</li> <li>• Never operate chipper alone.</li> <li>• Do not wear clothing which may become tangled with brush being feed into chipper.</li> <li>• Never reach into the infeed shroud. Feed short material on top of longer material or lay short pieces on the infeed tray and push into chipper with long branches or long piece of wood. Do not use rakes or shovels to push material into feeder. Check material for rocks before feeding into chipper.</li> <li>• Do not use your hand or feet to push material into feeder.</li> <li>• Hard hat, eye protection, gloves, and ear protection will be worn at all times when working near chipper.</li> <li>• Review JHA with workers</li> </ul>
All	Mop-up & Rehab	<ul style="list-style-type: none"> <li>• Do not work above or below personnel during rehab/mop-up operations</li> <li>• Alert crew personnel of rolling debris by yelling to affected individuals</li> <li>• Position debris that could roll vertically on slope</li> <li>• Wear P.P.E</li> <li>• Scout Mop-up areas each shift before beginning work</li> <li>• Identify burning stumps that have roots affected by fire and may cave in</li> <li>• Wear appropriate PPE correctly</li> <li>• Use correct tool for task assigned</li> <li>• Watch for weakened trees that may pose danger or fall</li> </ul>
All	Communications	<ul style="list-style-type: none"> <li>• Maintain communication with aviation resources, and suppression organization.</li> <li>• Ensure all know frequency and protocol for contacting resources</li> <li>• Utilize the ICS 205 – IAP communication plan</li> </ul>
All	Environmental Hazards	<ul style="list-style-type: none"> <li>• Be alert for snakes, watch footing and hand placement around rocks</li> <li>• Check yourself for ticks, watch for bees and other insects that bite</li> <li>• Be alert for bears, cougars, and other wildlife</li> <li>• Poisonous plants , poison oak - identify plants and avoid; Change and wash clothing and shower frequently</li> <li>• Be alert for potential illegal Marijuana grows and the dangers associated with those operations</li> </ul>

INCIDENT RADIO COMMUNICATIONS PLAN I-205		1. INCIDENT NAME		2. DATE/TIME PREPARED		3. OPERATIONAL PERIOD DATE/TIME					
Ruth Complex		8/19/2017 1516 HRS		Monday 8/21/17 - Thursday 8/24/17 24 Hours							
4. BASIC RADIO CHANNEL UTILIZATION											
Ch #	Function	Channel Name	Assignment	RX Freq	NW	RX Tone/NAC	TX Freq	NW	TX Tone/NAC	Mode Analog (A) Digital (D) Mixed (M)	Remarks
1	COMMAND	FOR ADM T-6	ALL DIV	170.4750	N	NONE	165.7500	N	156.7	A	MID FIRE AREA (HORSE RIDGE L.O.)
2	COMMAND	FOR ADM T-8	ALL DIV	170.4750	N	NONE	165.7500	N	103.5	A	SOUTHERN TO MID AREA (8-MILE)
3	COMMAND	FOR ADM T-9	ALL DIV	170.4750	N	NONE	165.7500	N	100.0	A	SOUTHERN TO MIDAREA (KETTENPOM L.O.)
4	COMMAND	FOR ADM T-14	ALL DIV	170.4750	N	NONE	165.7500	N	151.4	A	NORTHERN AREA (PICKETT PEAK L.O.)
5	TAC	R5TAC 6	DIV RUTH COMPLEX	168.2375	N	NONE	168.2375	N	NONE	A	For incident tactical radio traffic
6	IA TAC	NIFC TAC 2	IA TACTICAL	168.2000	N	NONE	168.2000	N	NONE	A	For SRF Initial Attack
7	IA A/G	IA A/G 43	IA A/G	167.6000	N	NONE	167.6000	N	NONE	A	For SRF Initial Attack Air to Ground
8	A/G	INC A/G	INCIDENT A/G	172.6750	N	NONE	172.6750	N	NONE	A	For Incident Air to Ground radio traffic
9	MEDVAC A/G	CALCORD	MEDEVAC	156.0750	N	156.7	156.0750	N	156.7	A	For Incident Medevac Radio Traffic
10											
11											
12											
13											
14											
15											
16	AIRGUARD	AIRGUARD	AIRGUARD	168.6250	N	NONE	168.6250	N	110.9	A	FOR EMERGENCY AIR TRAFFIC
5. Special Instructions:											
6. I-205 Prepared By: Communications Unit Leader				Name: <i>KEN EARLE</i>		Signature: 					





# MEDICAL PLAN

<b>1. Incident/Project Name</b>		<b>2. Operational Period</b>					
<b>Ruth Complex</b>		Date/Time <b>08/22-25/2017 0600-1800</b>					
<b>2. Aid Station</b>							
Name	Complete Address	Phone	Advanced Life Support (ALS) Yes                  No				
Southern Trinity Health Services 0830-1700 M-F	321 Van Duzen Rd. Mad River, CA 95552	707-574-6616	XX				
Ruth Airport is approved for helicopter extraction-N 40 12.68 W 123.17.86 Notify all incoming EMS aircraft of the the TFR and Victor Frequency of 120.025							
<b>3. Ambulance Services</b>							
Name	Complete Address	Phone	Advanced Life Support (ALS) Yes                  No				
Mountain Medics	Ruth ICP	707-951-0125/ Forest Admin Net	XX				
Southern Trinity Area Rescue	153 A Van Duzen Rd. Mad River, CA	707-574-6421 or 911	XX				
Name	Phone	Type of Aircraft & Capability					
KRN H407 Day/Night Hoist (24hr)	707-726 -1266	B205A++ Hoist, NVG, ALS					
Grand Canyon NP H8PA	707-726-1266	A Star B3 Short Haul, ALS					
CAL FIRE H102 Day Hoist	707-726-1266	B205A++ Hoist, BLS					
CHP H14/H16 Day Hoist	530-242-3210	A Star B3 Hoist, ALS					
PHI Med 43/REACH	800-597-9571	EC 135 IFR/NVG B407 NVG, ALS					
<b>4. Hospitals</b>							
Name Complete Address	GPS Datum – NAD 83 Coordinate Standard Degrees Decimal Minutes DD° MM.MMM' N - Lat DD° MM.MMM' W - Long	Travel Time Air                  Gnd		Phone	Helipad Yes    No	Level of Care Facility	
St Joseph Hospital 2700 Dolbeer St Eureka, CA 95501	Lat:                  N 40 47.03	20 Min	2.5 HRS	707-269-4250 ext. 7020 707-442-8646	X	Level II Trauma Center	
	Long:                W 124 08.80						
	VHF:						
Shasta Regional Medical Center 110 Butte St. Redding, CA 9600	Lat:                  N 40 35.10	30 Min	3 HRS	530-244-5353 530-243-4042	X	<input type="checkbox"/>	
	Long:                W 122 23.28						
	VHF:						
Redwood Memorial Hospital 3300 Renner Dr. Fortuna, CA 95540	Lat:		2.5 HRS	707-725-4562	<input type="checkbox"/>	X	
	Long:						
	VHF:						
Mercy Medical Center 2175 Rosaline Redding, CA 96001	Lat:                  N 40 34.33	30 Min	3 HRS	530-225-7201 530-242-4401	X	<input type="checkbox"/>	
	Long:                W 122 23.80						
	VHF:						
UC Davis Medical Center 2315 Stockton Blvd Sacramento, CA 95817	Lat:                  N 38 33.28	1.5 HRS	4.5 HRS	916-734-3790 916-734-5669	X	<input type="checkbox"/>	
	Long:                W 121 27.35						
	VHF:						
<b>5. Prepared By (Medical Unit Leader)</b> Robert Russell		<b>6. Date/Time</b> 08/21/17 2100		<b>7. Reviewed By (Safety Officer)</b> Brian Savage		<b>8. Date/Time</b> 08/21/17 2100	

*Robert Russell*

*Brian Savage*

Initiate care with available resources at scene and notify DIVS when an injury occurs.

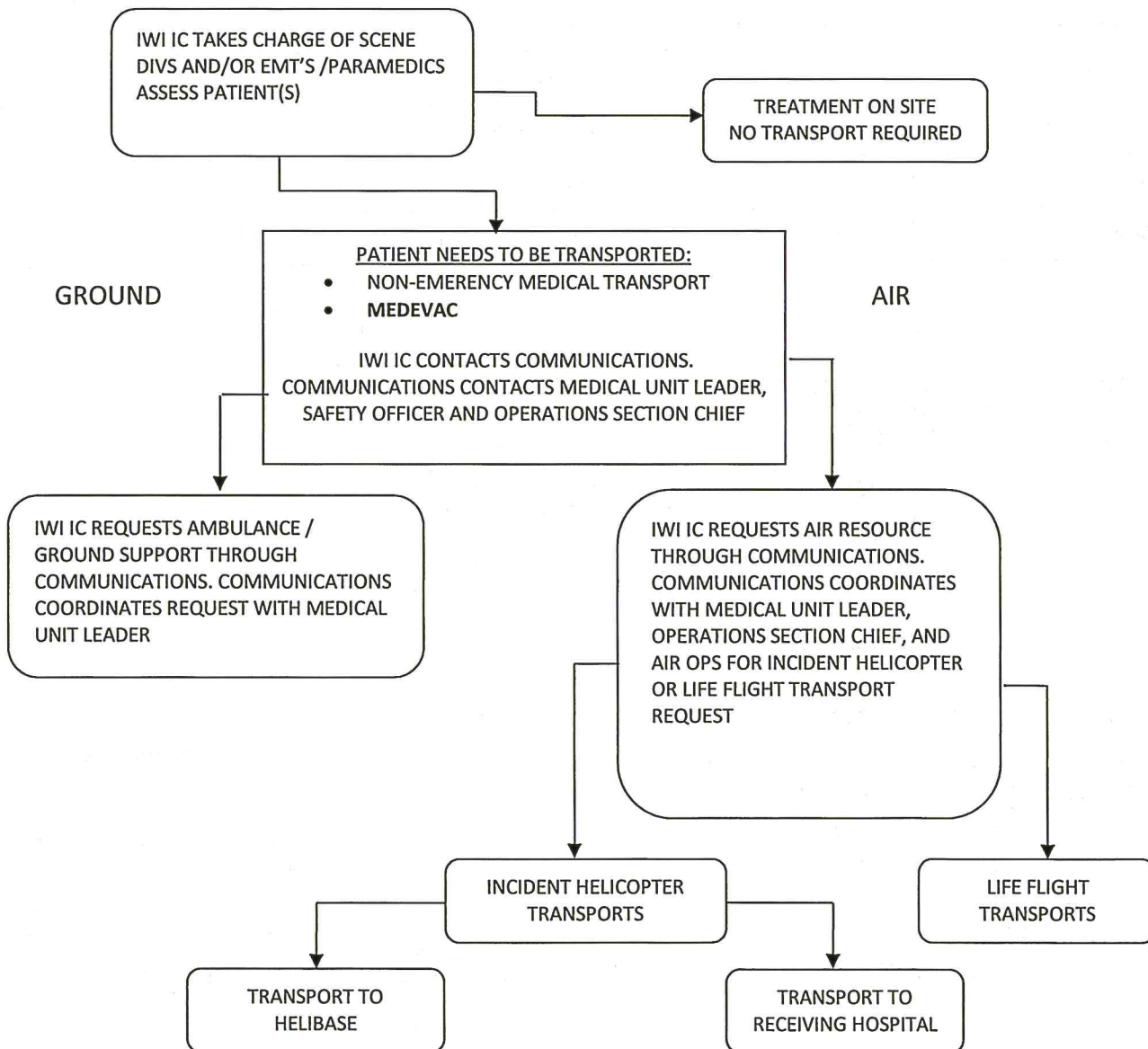
The IWI IC shall coordinate the incident and direct necessary actions. Take the following actions:

1. Determine the nature of the emergency.
2. If the emergency is a medical injury/illness, determine if the injury/illness is life threatening.
3. If the injury is life threatening, then clear designated frequency for emergency traffic.
4. Identify the on-scene point of contact by position.
5. Contact the Medical Unit Leader immediately.
6. Identify number injured, patient assessment(s) and location (geographic and/or GPS coordinates).
7. Identify on-scene medical personnel by position and last name (i.e. EMT Jones).
8. Identify preferred method of patient transport.
9. Determine any additional resources or equipment needed.

Continually evaluate the Evacuation Plan, develop contingencies in the event the first plan is not effective.

## Medical Incident Report

Timely and accurate reporting is the key to getting needed resources to a medical incident. Review the Medical Incident Reporting Procedures on p 107-109 of the 2014 IRPG. In addition, the attached QR links to the 6 Minutes for Safety on the Medical Incident report. Please take a moment to review this important information with your crew.







Medical Incident Report					
<b>FOR ALL MEDICAL EMERGENCIES: IDENTIFY ON SCENE INCIDENT COMMANDER BY NAME AND POSITION AND ANNOUNCE "MEDICAL EMERGENCY" TO INITIATE RESPONSE FROM IMT COMMUNICATIONS/DISPATCH.</b>					
<b>Use items one through nine to communicate situation to communications/dispatch.</b>					
<b>1. CONTACT COMMUNICATIONS/DISPATCH</b>					
<i>Ex: "Communications, Div. Alpha. Stand-by for Priority Medical Incident Report." (If life threatening request designated frequency be cleared for emergency traffic.)</i>					
<b>2. INCIDENT STATUS:</b> <i>Provide incident summary and command structure.</i>					
<b>Nature of Injury/Illness</b>			<i>Describe the injury (Ex: Broken leg with bleeding)</i>		
Incident Name			<i>Geographic Name + "Medical" (Ex: Trout Meadow Medical)</i>		
Incident Commander			<i>Name of IC</i>		
Patient Care			<i>Name of Care Provider (Ex: EMT Smith)</i>		
<b>3. INITIAL PATIENT ASSESSMENT:</b> <i>Complete this section for each patient. This is only a brief, initial assessment. Provide additional patient info after completing this 9 Line Report.</i>					
Number of Patients:	Male / Female	Age:	Weight:		
Conscious? <input type="checkbox"/> YES <input type="checkbox"/> NO = MEDEVAC!					
Breathing? <input type="checkbox"/> YES <input type="checkbox"/> NO = MEDEVAC!					
Mechanism of Injury: <i>What caused the injury?</i>					
Lat/Long (Datum WGS84) <i>Ex: N 40° 42.45' x W 123° 03.24'</i>					
<b>4. SEVERITY OF EMERGENCY, TRANSPORT PRIORITY</b>					
SEVERITY			TRANSPORT PRIORITY		
<input type="checkbox"/> <b>URGENT-RED</b> Life threatening injury or illness. <i>Ex: Unconscious, difficulty breathing, bleeding severely, 2° – 3° burns more than 4 palm sizes, heat stroke, disoriented.</i>			Ambulance or MEDEVAC helicopter. Evacuation need is <b>IMMEDIATE.</b>		
<input type="checkbox"/> <b>PRIORITY-YELLOW</b> Serious Injury or illness. <i>Ex: Significant trauma, not able to walk, 2° – 3° burns not more than 1-2 palm sizes.</i>			Ambulance or consider air transport if at remote location. Evacuation may be <b>DELAYED.</b>		
<input type="checkbox"/> <b>ROUTINE-GREEN</b> Not a life threatening injury or illness. <i>Ex: Sprains, strains, minor heat-related illness.</i>			Non-Emergency. Evacuation considered <b>Routine of Convenience.</b>		
<b>5. TRANSPORT PLAN:</b>					
<b>Air Transport:</b> (Agency Aircraft Preferred)					
<input type="checkbox"/> Helispot		<input type="checkbox"/> Short-haul/Hoist		<input type="checkbox"/> Life Flight	<input type="checkbox"/> Other
<b>Ground Transport:</b> <i>Click here to enter text.</i>					
<input type="checkbox"/> Self-Extract		<input type="checkbox"/> Carry-Out		<input type="checkbox"/> Ambulance	<input type="checkbox"/> Other
<b>6. ADDITIONAL RESOURCE/EQUIPMENT NEEDS:</b>					
<input type="checkbox"/> Paramedic/EMT(s)		<input type="checkbox"/> Crew(s)		<input type="checkbox"/> SKED/Backboard/C-Collar	
<input type="checkbox"/> Burn Sheet(s)		<input type="checkbox"/> Oxygen		<input type="checkbox"/> Trauma Bag	
<input type="checkbox"/> Medication(s)		<input type="checkbox"/> IV/Fluid(s)		<input type="checkbox"/> Cardiac Monitor/AED	
<input type="checkbox"/> Other (i.e. splints, rope rescue, wheeled litter)					
<b>7. COMMUNICATIONS:</b>					
Function	Channel Name/Number	Receive (Rx)	Tone/NAC *	Transmit (Tx)	Tone/NAC *
<i>Ex: Command</i>	<i>Forest Rpt, Ch. 2</i>	<i>168.3250</i>	<i>110.9</i>	<i>171.4325</i>	<i>110.9</i>
COMMAND					
AIR-TO-GRND					
TACTICAL					
*(NAC for digital radio system)					
<b>8. EVACUATION LOCATION:</b>					
Lat/Long (Datum WGS84) <i>EX: N 40 42.45' x W 123 03.24'</i>					
Patient's ETA to Evacuation Location:					
Helispot/Extraction Size and Hazards:					
<b>9. CONTINGENCY:</b>					
<b>Considerations:</b> <i>If primary options fail, what actions can be implemented in conjunction with primary evacuation method? Be thinking ahead...</i>				<b>REMEMBER:</b> Confirm ETA's of resources ordered Act according to your level of training Be Alert. Keep Calm. Think Clearly. Act Decisively.	



