

INCIDENT ACTION PLAN

DELTA FIRE

CA-SHF-001444 / P5L4L8 (0514)

HIRZ FIRE

CA-SHF-001223 / P5L2ZM (0514)



DAY OPERATIONAL PERIOD

SEPTEMBER 22, 2018

0600-1800 HOURS


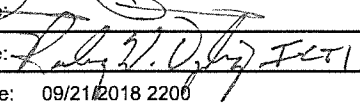


DELTA



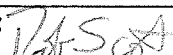
HIRZ

INCIDENT OBJECTIVES (ICS 202)

1. Incident Name:	2. Operational Period: DAY	
HIRZ / DELTA	Date/Time From: 09/22/2018 0600 SAT	Date/Time To: 09/22/2018 1800 SAT
3. Objective(s):		
<p>Leader's Intent A full suppression strategy will be implemented for both the Hirz and Delta fires through a combination of direct and indirect tactics. Efforts will be made to minimize impacts to residences, critical infrastructure and private timberlands through the application of well-planned tactical responses.</p> <p>Management Objectives</p> <ul style="list-style-type: none"> • Ensure that strategies and tactics provide for firefighter and public safety through the application of sound risk management principles. • Minimize the threat to private property, critical infrastructure, and commercial timberlands while working with the READs to reduce impacts to cultural and sensitive sites. • Establish and strengthen cooperator, partner, and stakeholder relationships • All suppression repair work will be conducted in close coordination with assigned READs. <p>Control Objectives DELTA / HIRZ FIRES</p> <ul style="list-style-type: none"> • Continue to mop-up and patrol as needed to ensure the fire stays within existing containment lines. • Continue suppression repair per the approved Suppression Repair Plan. 		
4. Operational Period Command Emphasis:		
STAY THE COURSE		
Priorities		
#1 - Division CC		
General Situational Awareness:		
-Leadership is not about titles, positions, or flowcharts. It is about one life influencing another.		
5. Site Safety Plan Required? Yes <input type="checkbox"/> No <input checked="" type="checkbox"/>		
Approved Site Safety Plan(s) Located at:		
6. Incident Action Plan (the items checked below are included in this Incident Action Plan):		
<input checked="" type="checkbox"/> ICS 202 <input checked="" type="checkbox"/> ICS 203 <input checked="" type="checkbox"/> ICS 204 <input checked="" type="checkbox"/> ICS 205 <input type="checkbox"/> ICS 205A <input checked="" type="checkbox"/> ICS 206	<input type="checkbox"/> ICS 207 <input type="checkbox"/> ICS 208 <input checked="" type="checkbox"/> ICS 220 <input checked="" type="checkbox"/> Map/Chart <input checked="" type="checkbox"/> Weather Forecast/Tides/Currents	Other Attachments: <input checked="" type="checkbox"/> HRSP MSG <input checked="" type="checkbox"/> ICS 214 UNIT LOG <input type="checkbox"/> _____ <input type="checkbox"/> _____
7. Prepared by: DAVID GERBOTH	Position/Title: PLANNING SECTION CHIEF	Signature: 
8. Approved by Incident Commander:	Name: JAY KURTH	Signature: 
ICS 202	IAP Page	Date/Time: 09/21/2018 2200

ORGANIZATION ASSIGNMENT LIST		9. Day Operations Section	
1. Incident Name HIRZ / DELTA		Chief OSC	Jake Cagle / Kyle Jacobson (T)
2. Date : 09/21/18 2200		Planning OSC	Brian Rhodes / Steve Clark (T)
4. Operational Period September 22, 2018 0600 – 1800		a. Hirz	
Position	Name	Division/Group	Suppression Repair
5. Incident Commander and Staff		Will Harris / Josh Hernandez (T)	
Incident Commander	Jay Kurth	b. Delta	
Deputy	Rocky W. Opliger	Division/Group	DD / GG / JJ / MM
Safety Officer	Dan Snow / Mike Alforque (T)	Division/Group	PP / TT / WW / YY
Information Officer	Sean Collins / Frank Mosbacher / Kerry Greene (T)	Division/Group	AA / CC / ZZ
Liaison Officer	Sam Wilbanks	c. Air Operations Branch	
6. Agency Representative		Air Operations Branch Director	Kevin Murray / Ty Miller
Agency	Name	Air Support Group Supervisor	Jim Stratton / Mark Empey
FS Agency Administrator	Scott Russell	Air Tactical Group Supervisor	Derek Wheeler
FS Agency Admin. Rep.	Carolyn Napper	10. Finance Section	
Lead READ	Joe Zustak	Chief	Sherrie Bennett / Vicki Wilson (T)
Shasta Co. Sheriff	Lt. Anthony Bertain	Time Unit	Loni Holt / Sheila Miner
CHP	Lt. Kyle Foster	Compensation/Claims Unit	Scott Parsons
Sierra Pacific Industries	Nick Kroencke	Cost Unit	
CCC Rep.	Chad Harris	Procurement Unit	Don Tinsley
CalTrans	Willie Elder	Prepared by (Resource Unit Leader) Gina Bald	
7a. Planning Section ICP			
Chief	Dave Gerboth		
Deputy Chief	Mitch Diehl		
Resources Unit	Gina Bald / Sergio Arjonilla / Scott Laurie / Hanne Meyers		
Situation Unit	Damian Guillian / Melania Stoeber / D. Janssen (T)		
DMOB Unit	Kerry Brisson / Tom Reaves		
GISS	Chris Clervi / Chris Barrett / Matt Eister / Alex Heeren (T)		
IMET	Jeremy Michael		
FBAN	Rob Scott		
ARA	Ariane Sarzotti / Katy Warner (T)		
Training Specialist	Robert Rivelle / Arturo Gasdik (T)		
ITSS	James Whiteside / JP Lavezzo / Rocky Bond (T)		
Human Resource Specialist	Adam Alvarez (T)		
Documentation Unit	Jerry Sanchez / Maria Knott (T)		
7b. Planning Section Coffee Creek			
Chief	Thomas Marchant (T)		
8a. Logistics Section ICP			
Chief	Ross Peckinpah / Cheryl Raines		
Supply Unit	Jennifer Wells		
Facilities Unit	Rob Griffith / Craig Zimmermann (T)		
Ground Support Unit	Jeff Burch / Ron Brewer		
Communications Unit	Sal Bonilla Jr. / Tim McGuire / Kevin Janes		
Food Unit	Ken Breskin / Whitney Bonada		
Medical Unit	Eric Williams / Jeff Brooks (T)		
Ordering Manager	Robert Griffith		
8b. Logistics Section Coffee Creek			
Facilities Unit	Jan Palecek		
Medical Unit	Doug Stuart		

FIRE BEHAVIOR FORECAST

FORECAST NUMBER: 65	TYPE OF FIRE: Wildfire
FIRE NAME: Hirz/Delta	OPERATIONAL PERIOD: September 22, 2018 Day
DATE ISSUED: September 21, 2018	TIME ISSUED: 2030
UNIT: Shasta-Trinity NF, McCloud RD	SIGNED:  Robert Scott, FBAN 530.990.4048

INPUTS

WEATHER SUMMARY

See Fire Weather Forecast for Discussion

Weather: Partly to mostly cloudy. Inversion breaks 1000.
Day Temps: 70-75 ridgetops and 80-85 lower drainages.
Day RH: 20-25 percent ridges and 14-19 percent lower drainages.
20 FOOT WINDS: **Ridges:** North-Northeast 3 to 8 mph, gusts to 15 mph until 1000, Increasing to Southwest 7 to 12 mph, gusts to 22 mph in the afternoon.
Slope/valley: Downslope/Downvalley 3 to 7 mph until 1000, then upslope/upvalley 3 to 7 mph.

FIRE BEHAVIOR

INPUTS:

- **Fuels:** Dry conditions make all surface fuel available to burn. Interior green islands will continue to consume.
- **Topography:** Return of Southerly winds for higher elevations. Higher elevations will see gusts above 20 mph.

FIRE BEHAVIOR: Moderate fire behavior will continue for interior pockets. During the hottest part of the day, 1430-1730, Expect FL of 12ft and ROS of 42ch/hr in brush and FL of 4-7ft and ROS of 8ch/hr in timber fuels. Areas of brush and hardwood litter outside the containment lines continue to be susceptible to strong upslope runs and spotting.

Probability of Ignition: 85% in clear air. **Spotting Distance:** .2 mile from ridgetop locations.

Day: DIV PP/TT: Interior pockets continue to consume. Winds will not be favorable for holding operations. Monitor interior torching for possible long range spotting with wind direction from black to green (South).

DIV WW/YY: Fuel remains above river near rock quarry. Continued burning can be expected. Smokes will remain visible from the interstate.

DIV ZZ/AA/CC: Burndown continues and rollout remains probable in DIV CC. Burn down of stumps and roots will contribute to increased rollout for the next few days. Greater wind impacts with the return of Southern winds. Elsewhere, only isolated areas of heat remain.

DIV DD/GG: Except for the area near the CC/DD break, few areas of heat remain along the line. Little threat of escape.

DIV JJ/MM: Forecast winds will blow from black to green in Western portions of DIV MM. Monitor for production of embers from torching or remaining heat near line.

Hirz Fire: Little threat of escape.

AIR OPERATIONS

Clear conditions with little smoke impact.

SAFETY

** Lack of fire behavior can lead to complacency. Strong upslope and fuel driven runs are possible outside the fire perimeter. **

Division/Group Assignment List (ICS 204 WF)

Controlled Unclassified Information//Basic

1. Incident Name:				3.			
HIRZ / DELTA				Branch:		Division/Group:	
2. Operational Period:				SUPPRESSION REPAIR			
DAY							
Date/Time From: 09/22/2018 0600		SAT		Date/Time To: 09/22/2018 1800		SAT	
4. Operations Personnel							
OPERATIONS CHIEF		JAKE CAGLE KYLE JACOBSON (T)		DIVISION/GROUP SUPERVISOR		WILLIAM K HARRIS JOSHUA HERNANDEZ (T)	
BRANCH DIRECTOR				AIR ATTACK SUPERVISOR		DEREK WHEELER	
5. Resources Assigned this Period							
Strike Team / Task Force / Resource Designator		LWD	Leader	Number Persons	Drop Off PT./Time	Pick Up PT./Time	
HC2 GRIZZLY FIREFIGHTERS C-107		09/25	FERNANDO PEREZ	20	MC CLOUD ICP/0600	MC CLOUD ICP/1800	
WTS2 DARRAH LOGGING 2 E-38		10/02	WAYNE VIRAS	1	MC CLOUD ICP/0600	MC CLOUD ICP/1800	
WTS2 DARRAH LOGGING 1 E-39		09/30	DAVE ORR	1	MC CLOUD ICP/0600	MC CLOUD ICP/1800	
WTS2 JOHNSON E-41		09/30	MATTHEW JOHNSON	1	MC CLOUD ICP/0600	MC CLOUD ICP/1800	
WTS2 WILLMORE E-419		09/29	MICHELLE ANDERSON	1	MC CLOUD ICP/0600	MC CLOUD ICP/1800	
DOZ2 NORTHWESTERN E-266		09/28	MIKE SALTERS	1	MC CLOUD ICP/0600	MC CLOUD ICP/1800	
DOZ2 DIAMOND RING RANCH-BRITTEN E-365		09/27	CRAIG SENSERY	3	MC CLOUD ICP/0600	MC CLOUD ICP/1800	
EXCA DUDLEYS' E-488		10/01	MIKE LINDAWER	2	MC CLOUD ICP/0600	MC CLOUD ICP/1800	
EXCA STONY CREEK E-486		09/30	LUKE ANDREWS	2	MC CLOUD ICP/0600	MC CLOUD ICP/1800	
GRD NORTH STATE EQUIPMENT E-294		09/30	RANDY SANDERS	2	MC CLOUD ICP/0600	MC CLOUD ICP/1800	
GRD JANC CONSTRUCTION E-490		10/02	RICHARD JANC	2	MC CLOUD ICP/0600	MC CLOUD ICP/1800	
GRD ACE EARTHMOVING E-491		10/05	CHRIS ANDREASEN	2	MC CLOUD ICP/0600	MC CLOUD ICP/1800	
SKD2 J & D LOGGING E-275		09/29	SAWYER LOGAN	2	MC CLOUD ICP/0600	MC CLOUD ICP/1800	
SKD2 HALEY E-276		09/26	TODD HALEY	2	MC CLOUD ICP/0600	MC CLOUD ICP/1800	
CHIP PACIFIC OASIS E-492		10/04	JAMES GARTIN	2	MC CLOUD ICP/0600	MC CLOUD ICP/1800	
CHIP CUT WRIGHT SERVICES E-592		09/30	JAKE SMOTHERMAN	3	MC CLOUD ICP/0600	MC CLOUD ICP/1800	
TFLD O-564		09/30	STEVEN BRAWLEY	1	MC CLOUD ICP/0600	MC CLOUD ICP/1800	
HEQB O-119		09/25	ANDY SHAVER	1	MC CLOUD ICP/0600	MC CLOUD ICP/1800	
FOBS O-283		09/24	JOSEPH PARR	1	MC CLOUD ICP/0600	MC CLOUD ICP/1800	
FOBS O-579		09/23	MATTHEW SNYDER	1	MC CLOUD ICP/0600	MC CLOUD ICP/1800	
6. Division/Group Communication Summary							
Function	Channel	RX Frequency N/W	RX Tone/NAC	TX Frequency N/W	TX Tone/NAC	Mode	
COMMAND	1	171.5375 N	10/107.2	164.0875 N	10/107.2	A	
TACTICAL	11	168.2500 N	10/107.2	168.2500 N	10/107.2	A	
AIR TO GROUND	14	168.3375 N		168.3375 N		A	
AIR TO GROUND	15	167.8125 N		167.8125 N		A	
9. Prepared By (Resource Unit Leader)			Approved By (Planning Section Chief)			Date	Time
HANNE MEYERS			DAVE GERBOTH			09/21/2018	2200

Division/Group Assignment List (ICS 204 WF)
Controlled Unclassified Information//Basic

1. Incident Name:				3.		
HIRZ / DELTA				Branch:	Division/Group: SUPPRESSION REPAIR	
2. Operational Period: DAY						
Date/Time From: 09/22/2018 0600 SAT		Date/Time To: 09/22/2018 1800 SAT				
4. Operations Personnel						
OPERATIONS CHIEF		JAKE CAGLE KYLE JACOBSON (T)		DIVISION/GROUP SUPERVISOR		WILLIAM K HARRIS JOSHUA HERNANDEZ (T)
BRANCH DIRECTOR				AIR ATTACK SUPERVISOR		DEREK WHEELER
5. Resources Assigned this Period						
Strike Team / Task Force / Resource Designator		LWD	Leader	Number Persons	Drop Off PT./Time	Pick Up PT./Time
FOBS O-580		09/22	PHILLIP BLYDENBURGH	1	MC CLOUD ICP/0600	MC CLOUD ICP/1800
EMPF O-435		09/25	KEVIN HINKLE	1	MC CLOUD ICP/0600	MC CLOUD ICP/1800
EMPF O-436		09/26	SCOTT T DRAGOUN	1	MC CLOUD ICP/0600	MC CLOUD ICP/1800
EMPF O-437		09/26	JOHN WARRICK	1	MC CLOUD ICP/0600	MC CLOUD ICP/1800
EMTF O-447		09/26	ISAAC SIEGEL	1	MC CLOUD ICP/0600	MC CLOUD ICP/1800
SOF2 O-160		09/23	THOMAS NASH	1	MC CLOUD ICP/0600	MC CLOUD ICP/1800
SOF3 O-585		09/30	ELIZABETH YOUNGER	1	MC CLOUD ICP/0600	MC CLOUD ICP/1800
REAF O-290		09/28	STEPHEN HODGES	1	MC CLOUD ICP/0600	MC CLOUD ICP/1800
REAF O-549		09/28	GABRIELLE BOHLMAN	1	MC CLOUD ICP/0600	MC CLOUD ICP/1800
REAF O-561		09/30	ALLEN SCHROEDER	1	MC CLOUD ICP/0600	MC CLOUD ICP/1800
REAF O-597		10/02	BRUCE ROBISON	1	MC CLOUD ICP/0600	MC CLOUD ICP/1800
REAF O-607		10/03	THOMAS DEMEO	1	MC CLOUD ICP/0600	MC CLOUD ICP/1800
ARCH O-578		09/24	PAUL FRENCH	1	MC CLOUD ICP/0600	MC CLOUD ICP/1800
FFT2 O-475		10/04	JASON R KLOTZ	1	MC CLOUD ICP/0600	MC CLOUD ICP/1800
8. Division/Group Communication Summary						
Function	Channel	RX Frequency N/W	RX Tone/NAC	TX Frequency N/W	TX Tone/NAC	Mode
COMMAND	1	171.5375 N	10/107.2	164.0875 N	10/107.2	A
TACTICAL	11	168.2500 N	10/107.2	168.2500 N	10/107.2	A
AIR TO GROUND	14	168.3375 N		168.3375 N		A
AIR TO GROUND	15	167.8125 N		167.8125 N		A
9. Prepared By (Resource Unit Leader)			Approved By (Planning Section Chief)		Date	Time
HANNE MEYERS			DAVE GERBOTH		09/21/2018	2200

Division/Group Assignment List (ICS 204 WF)
Controlled Unclassified Information//Basic

1. Incident Name:			3.			
HIRZ / DELTA			Branch:		Division/Group:	
2. Operational Period: DAY					SUPPRESSION REPAIR	
Date/Time From: 09/22/2018 0600 SAT		Date/Time To: 09/22/2018 1800 SAT				
4. Operations Personnel						
OPERATIONS CHIEF		JAKE CAGLE KYLE JACOBSON (T)		DIVISION/GROUP SUPERVISOR		WILLIAM K HARRIS JOSHUA HERNANDEZ (T)
BRANCH DIRECTOR				AIR ATTACK SUPERVISOR		DEREK WHEELER
5. Resources Assigned this Period						
Strike Team / Task Force / Resource Designator		LWD	Leader	Number Persons	Drop Off PT./Time	Pick Up PT./Time
6. Control Operations/Work Assignments:						
<ul style="list-style-type: none"> Conduct suppression repair activities on dozerlines, handlines, and roads. Refer to the Suppression Repair Plan for objectives and specifications. 						
7. Special Instructions:						
<ul style="list-style-type: none"> READ Josiah McElroy is working in Suppression Repair and AA/CC/ZZ. Coordinate with READs to identify suppression repair needs. BAER Roads: Angie Perez Delgado and Jennifer Dean will be working in Suppression Repair. BAER Fish: Dan Teater and Andrew Kennedy will be working in Suppression Repair. 						
8. Division/Group Communication Summary						
Function	Channel	RX Frequency N/W	RX Tone/NAC	TX Frequency N/W	TX Tone/NAC	Mode
COMMAND	1	171.5375 N	10/107.2	164.0875 N	10/107.2	A
TACTICAL	11	168.2500 N	10/107.2	168.2500 N	10/107.2	A
AIR TO GROUND	14	168.3375 N		168.3375 N		A
AIR TO GROUND	15	167.8125 N		167.8125 N		A
9. Prepared By (Resource Unit Leader)			Approved By (Planning Section Chief)		Date	Time
HANNE MEYERS			DAVE GERBOTH		09/21/2018	2200

Division/Group Assignment List (ICS 204 WF)
Controlled Unclassified Information//Basic

1. Incident Name:				3.		
HIRZ / DELTA				Branch:	Division/Group: DD / GG / JJ / MM	
2. Operational Period: DAY						
Date/Time From: 09/22/2018 0600 SAT		Date/Time To: 09/22/2018 1800 SAT				
4. Operations Personnel						
OPERATIONS CHIEF		JAKE CAGLE KYLE JACOBSON (T)		DIVISION/GROUP SUPERVISOR		JAY WALTER
BRANCH DIRECTOR				AIR ATTACK SUPERVISOR		DEREK WHEELER
5. Resources Assigned this Period						
Strike Team / Task Force / Resource Designator		LWD	Leader	Number Persons	Drop Off PT./Time	Pick Up PT./Time
ENG6 BIG STATE WILDFIRE E-459		09/30	GRAHAM MAGEE	3	MC CLOUD ICP/0600	MC CLOUD ICP/1800
ENG6 PIERCE FIRE E-472		10/01	MICHAEL LAWRENCE	3	MC CLOUD ICP/0600	MC CLOUD ICP/1800
ENG6 TRI-STATE FIRE ENG 1 E-473		10/01	ROB PIERCE	3	MC CLOUD ICP/0600	MC CLOUD ICP/1800
STEN O-570		09/30	JESSE W LOEFFLER	1	MC CLOUD ICP/0600	MC CLOUD ICP/1800
REMS 8 O-336		09/24	BEN KRONE	4	MC CLOUD ICP/0600	MC CLOUD ICP/1800
EMPF O-452		09/25	BRYAN OWEN	1	MC CLOUD ICP/0600	MC CLOUD ICP/1800
EMTF O-270		09/23	MATTHEW J HINES	1	MC CLOUD ICP/0600	MC CLOUD ICP/1800
REAF O-559		10/01	ERIK A CORDTZ	1	MC CLOUD ICP/0600	MC CLOUD ICP/1800
REAF O-560		10/01	ERIK RADEMACHER	1	MC CLOUD ICP/0600	MC CLOUD ICP/1800
6. Control Operations/Work Assignments:						
<ul style="list-style-type: none"> Continue to patrol and mop-up to secure fire perimeter. Continue with Stage-1 suppression repair. 						
7. Special Instructions:						
<ul style="list-style-type: none"> BAER Soils Eric Nicita and Anna Courtney will be working in DD/GG/JJ/MM and AA/CC/ZZ. 						
8. Division/Group Communication Summary						
Function	Channel	RX Frequency N/W	RX Tone/NAC	TX Frequency N/W	TX Tone/NAC	Mode
COMMAND	2	172.6500 N	10/107.2	164.7500 N	10/107.2	A
TACTICAL	8	168.6000 N	10/107.2	168.6000 N	10/107.2	A
AIR TO GROUND	14	168.3375 N		168.3375 N		A
AIR TO GROUND	15	167.8125 N		167.8125 N		A
9. Prepared By (Resource Unit Leader)			Approved By (Planning Section Chief)		Date	Time
SERGIO ARJONILLA			DAVE GERBOTH		09/21/2018	2200

Division/Group Assignment List (ICS 204 WF)
Controlled Unclassified Information//Basic

1. Incident Name:			3.			
HIRZ / DELTA			Branch:		Division/Group:	
2. Operational Period: DAY			PP/TT/WW/YY			
Date/Time From: 09/22/2018 0600 SAT		Date/Time To: 09/22/2018 1800 SAT				
4. Operations Personnel						
OPERATIONS CHIEF		JAKE CAGLE KYLE JACOBSON (T)		DIVISION/GROUP SUPERVISOR		MAEVE JUAREZ
BRANCH DIRECTOR				AIR ATTACK SUPERVISOR		DEREK WHEELER
5. Resources Assigned this Period						
Strike Team / Task Force / Resource Designator		LWD	Leader	Number Persons	Drop Off PT./Time	Pick Up PT./Time
HC2 WYEAST FORESTRY LLC C-96		09/25	ANDREW WILLIAMSON	20	MC CLOUD ICP/0600	MC CLOUD ICP/1800
ES3 SHF 3675C E-413		09/29	MIKE J CARTER	27	MC CLOUD ICP/0600	MC CLOUD ICP/1800
ENG6 MAINE FOREST SERVICE 6200 E-1		09/27	WESLEY H HATCH	4	MC CLOUD ICP/0600	MC CLOUD ICP/1800
ENG6 SCA 5862 E-316		09/25	SHAQUAWN DECLAY	4	MC CLOUD ICP/0600	MC CLOUD ICP/1800
ENG6 MAINE FOREST SERVICE 6198 E-330		09/27	ZACHARY D MONROE	4	MC CLOUD ICP/0600	MC CLOUD ICP/1800
ENG6 FAIRVIEW VALLEY BE 575 E-457		09/30	AUGUST CAMPBELL	3	MC CLOUD ICP/0600	MC CLOUD ICP/1800
WTS2 CARLTON CHRISTMAS TREES E-347		09/30	DOUGLAS MACKENZIE	1	MC CLOUD ICP/0600	MC CLOUD ICP/1800
TFLD O-22		09/24	WESTON BURCH	1	MC CLOUD ICP/0600	MC CLOUD ICP/1800
TFLD O-333		09/25	MICHAEL BAGAN (T)	1	MC CLOUD ICP/0600	MC CLOUD ICP/1800
REMS LFD1 O-277		09/24	TYROME BAKER	4	MC CLOUD ICP/0600	MC CLOUD ICP/1800
EMPF O-445		09/26	DAN CHAPMAN	1	MC CLOUD ICP/0600	MC CLOUD ICP/1800
EMTF O-449		09/26	TROY MILANO	1	MC CLOUD ICP/0600	MC CLOUD ICP/1800
EMPF O-451		09/26	EUAN A BULMER	1	MC CLOUD ICP/0600	MC CLOUD ICP/1800
EMTF O-446		09/25	PHIL FAULDING	1	MC CLOUD ICP/0600	MC CLOUD ICP/1800
SOFR O-182		09/23	BOBBY F HUBBY	1	MC CLOUD ICP/0600	MC CLOUD ICP/1800
SOFR O-296		09/24	JASON M RALLS	1	MC CLOUD ICP/0600	MC CLOUD ICP/1800
REAF O-415		10/02	MICHAEL PARENTI	1	MC CLOUD ICP/0600	MC CLOUD ICP/1800
REAF O-416		10/02	MOLLY BREITMUN	1	MC CLOUD ICP/0600	MC CLOUD ICP/1800
READ O-381		10/01	NICK MEYERS	1	MC CLOUD ICP/0600	MC CLOUD ICP/1800
8. Division/Group Communication Summary						
Function	Channel	RX Frequency N/W	RX Tone/NAC	TX Frequency N/W	TX Tone/NAC	Mode
COMMAND	6	169.5375 N	10/107.2	164.7125	10/107.2	A
TACTICAL	7	168.0500 N	10/107.2	168.0500 N	10/107.2	A
AIR TO GROUND	14	168.3375 N		168.3375 N		A
AIR TO GROUND	15	167.8125 N		167.8125 N		A
9. Prepared By (Resource Unit Leader)		Approved By (Planning Section Chief)			Date	Time
SERGIO ARJONILLA		DAVE GERBOTH			09/21/2018	2200

Division/Group Assignment List (ICS 204 WF)
Controlled Unclassified Information//Basic

1. Incident Name:				3.			
HIRZ / DELTA				Branch:		Division/Group:	
2. Operational Period: DAY						PP/TT/WW/YY	
Date/Time From: 09/22/2018 0600 SAT		Date/Time To: 09/22/2018 1800 SAT					
4. Operations Personnel							
OPERATIONS CHIEF		JAKE CAGLE KYLE JACOBSON (T)		DIVISION/GROUP SUPERVISOR		MAEVE JUAREZ	
BRANCH DIRECTOR				AIR ATTACK SUPERVISOR		DEREK WHEELER	
5. Resources Assigned this Period							
Strike Team / Task Force / Resource Designator		LWD	Leader	Number Persons	Drop Off PT./Time	Pick Up PT./Time	
6. Control Operations/Work Assignments:							
<ul style="list-style-type: none"> • Continue to patrol and mop-up to secure fire perimeter. • Continue with Stage-1 suppression repair. 							
7. Special Instructions:							
If Interstate 5 needs to be closed:							
<ul style="list-style-type: none"> • 1. Operations is notified. • 2. Operations notifies communications. • 3. Communications notifies CHP dispatch. 							
8. Division/Group Communication Summary							
Function	Channel	RX Frequency N/W	RX Tone/NAC	TX Frequency N/W	TX Tone/NAC	Mode	
COMMAND	6	169.5375 N	10/107.2	164.7125	10/107.2	A	
TACTICAL	7	168.0500 N	10/107.2	168.0500 N	10/107.2	A	
AIR TO GROUND	14	168.3375 N		168.3375 N		A	
AIR TO GROUND	15	167.8125 N		167.8125 N		A	
9. Prepared By (Resource Unit Leader)			Approved By (Planning Section Chief)			Date	Time
SERGIO ARJONILLA			DAVE GERBOTH			09/21/2018	2200

Division/Group Assignment List (ICS 204 WF)
Controlled Unclassified Information//Basic

1. Incident Name:			3.			
HIRZ / DELTA			Branch:		Division/Group:	
2. Operational Period: DAY			AA / CC / ZZ			
Date/Time From: 09/22/2018 0600 SAT		Date/Time To: 09/22/2018 1800 SAT				
4. Operations Personnel						
OPERATIONS CHIEF		JAKE CAGLE KYLE JACOBSON (T)		DIVISION/GROUP SUPERVISOR		MARK W MOTT
BRANCH DIRECTOR				AIR ATTACK SUPERVISOR		DEREK WHEELER
5. Resources Assigned this Period						
Strike Team / Task Force / Resource Designator		LWD	Leader	Number Persons	Drop Off PT./Time	Pick Up PT./Time
HC2I SHASTA LAKE C-99		09/26	ISAC FLATLEY	20	MC CLOUD ICP/0600	MC CLOUD ICP /1800
ENG3 SRF E-11 E-432		09/28	CHRIS SAMPLEY	5	MC CLOUD ICP/0600	MC CLOUD ICP /1800
ENG6 RED ROCK FIRE 261 E-262		09/25	ROSCOE BENOY	3	MC CLOUD ICP/0600	MC CLOUD ICP /1800
ENG6 HART VENTURES, INC. E-263		09/27	SKIP KOLTZ	3	MC CLOUD ICP/0600	MC CLOUD ICP /1800
WTS2 YREKA OUTLANDS (24 HR) E-270		09/28	ALLEN WILLIAMS	2	MC CLOUD ICP/0600	MC CLOUD ICP /1800
SOFR O-422		09/27	BRIAN R RICHEY	1	MC CLOUD ICP/0600	MC CLOUD ICP /1800
EMPF O-443		09/27	DAN J MOORE	1	MC CLOUD ICP/0600	MC CLOUD ICP /1800
EMPF O-211		09/29	MATT HECKMANN	1	MC CLOUD ICP/0600	MC CLOUD ICP /1800
6. Control Operations/Work Assignments:						
<ul style="list-style-type: none"> Continue to patrol and mop-up to secure fire perimeter. Continue with Stage-1 suppression repair. 						
7. Special Instructions:						
<ul style="list-style-type: none"> READ Josiah McElroy is working in Suppression Repair and AA/CC/ZZ. 						
8. Division/Group Communication Summary						
Function	Channel	RX Frequency N/W	RX Tone/NAC	TX Frequency N/W	TX Tone/NAC	Mode
COMMAND	2	172.6500 N	10/107.2	164.7500 N	10/107.2	A
TACTICAL	10	166.7750 N	10/107.2	166.7750 N	10/107.2	A
AIR TO GROUND	14	168.3375 N		168.3375 N		A
AIR TO GROUND	15	167.8125 N		167.8125 N		A
9. Prepared By (Resource Unit Leader)			Approved By (Planning Section Chief)		Date	Time
SERGIO ARJONILLA			DAVE GERBOTH		09/21/2018	2200

AIR OPERATIONS SUMMARY

Prepared By: *Ty Miller*, AOB

Prepared Date: 22 Sept 2018

Prepared Time: 1900

INCIDENT NAME: DELTA	OPS PERIOD DATE: 23 September-2018	START TIME: 0800	END TIME: 1930	SUNRISE: 0657	SUNSET: 1904
REMARKS: Safety Notes, Hazards, Air Operations Special Equipment, etc. MONITOR AIR TO GROUND FREQ FOR AIR ACTIVITY. Comms on CALCORD channel 13 for all aviation medicals					
READY ALERT AIRCRAFT: MEDEVAC – 838PA Short Haul @ Mott HB, Day Only		TFR #: 8/5209 A-136 FREQ: 124.5750 4 point box 10,000 MSL			

PERSONNEL	NAME	PHONE #	FREQUENCIES	AM	FM	Fixed Wing Aircraft:
AOBD AOBD	Kevin Murray Ty Miller	805-878-1484 907-460-7530	AIR/ AIR – TFR Rotor East of I-5 Rotor West of I-5	124.5750 HA-8 118.7750 HA-30 128.4250 HA-133		ATGS AIRCRAFT:
ASGS	Jim Stratton	760-207-4325	AIR Tactics FW		166.9500 HA-9	OTHER FW AIRCRAFT: 8428821
MOTT HB	Tyler Detrick	530-925-9668	AIR/GD Tactics AIR/GD Command		167.8125 HA-10 168.3375 HA-31	Medical helispot at ICP in McCloud 41° 15.8783 X 122° 07.5961 EI. 3388
			Command 1		171.5375 RX 164.0875 TX Tone 10	Mott HB - Located along I-5 near McCloud 41° 15.744 X 122° 16.281
ATGS	Gus Johnson	559-708-3570	Command 2		172.6500 RX 164.7500 TX Tone 10	
			Command 3		170.4250 RX 168.0750 TX Tone 10	
			Deck – Mott HB		163.100	
Aviation Conf. Call	0730	888-844-9904 2503071#	Air Guard		168.6250 (110.9)tx/rx	

FAA N#	TY MAKE/MOD	BASE	AVAIL	START	REMARKS	FAA N#	TY	MAKE/MOD	BASE	AVAIL	START	REMARKS
N239CH 1	BV234	Mott HB	0830	0800	EU Bucket A-135							
N205BT 2	B205A1+	Mott HB	0830	0800	EU (H506) A-123	N107Z	3	Cobra	Mott HB	0830	0800	EU (H507) HILCO A-117
N707AH 3	B-407	Mott HB	0830	0800	CWN Mapping A-64							
N838PA 3	AS350B3	Mott HB	0830	0800	EU Short Haul A-16							

Delta Fire – Safety Message

INCIDENT: #CA-SHF-001444 **DATE:** 09.22.2018 **TIME:** 0600 - 1800

Keep your head in the game

- Stay focused on today's work assignment.
- Continue planning to provide for safety then accomplish the mission.
- Watch for complacency or distraction in others, and help them stay sharp.
- Brief your firefighters thoroughly and be methodical and meticulous in your tactics to get the job done safely!

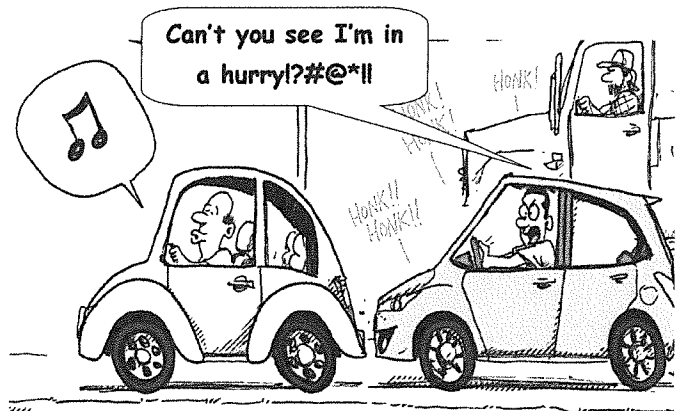
Beware of Rolling Material

- Rolling logs, rocks and other debris from above can cause serious impact injury to Firefighters.
- Maintain lookouts for rolling material.
- Minimize exposure in creek bottoms beneath the fire.
- Rollout can ignite fuel across the line cutting off your escape route.
- Avoid underslung line when possible.
- Patrol as necessary to ensure integrity of the line, and your escape route.

L.C.E.S

- **Lookouts-** Use experienced people, know your trigger points, don't depend on air resources, check your surroundings!
- **Communications-** Know your radio frequencies, check batteries, and be cognizant of any problems with direct communications.
- **Escape Routes-** Know them, time them, discuss them, and reassess them!
- **Safety Zones-** Evaluate the "black" as your safety zone. Reassess for problems.

Watch your Speed, But Don't Impede!



Pull over at the first safe opportunity and let other drivers pass.

Team 4 Safety Cadre



INCIDENT RISK ANALYSIS

(ICS 215a)

Day Shift

BR/ DIV	HAZARDOUS ACTIONS / CONDITIONS	MITIGATIONS / WARNINGS / REMEDIES
ALL	<p>FATIGUE & COMPLACENCY</p>	<ul style="list-style-type: none"> • Be alert for signs of fatigue and take breaks as necessary. • Maintain 2:1 work/rest ratio. • Monitor ALL resources for level of fatigue. • Recognize the symptoms of fatigue and take action as necessary to provide rest and recovery. • Repeated assignments in the same area can lead to complacency making personnel more vulnerable to accidents. • Take steps (switching of assignments, training opportunities during slow periods, etc.) to maintain situational awareness for the duration of the incident
ALL	<p>TRAFFIC HAZARDS AND DRIVING</p>	<ul style="list-style-type: none"> • Practice "Defensive Driving" techniques. Traffic volume is high. I-5 is open • Use spotters when backing. • Always use headlights. • Use warning lights when working on roads or traveling in smoke. • Observe posted speed limits. • Use chock blocks, turn wheels into hill. • Many roads are narrow and mid slope, use caution.
ALL	<p>HAZARD / DANGER TREES</p>	<ul style="list-style-type: none"> • Follow Hazard Tree Safety Guidelines (IRPG p.22-23). • Limit number of personnel around snags and their exposure time; fallers must be qualified for the trees being felled. • Be especially alert around snags during wind events. Large green trees can also be dangerous.
ALL	<p>STEEP TERRAIN & ROLLING MATERIAL</p>	<ul style="list-style-type: none"> • Avoid working below crews and equipment. • Concentrate on your footing placement; take your time. • Ensure adequate spacing between crewmembers so they can react to dislodged debris. • Post lookouts to warn of rolling debris. SHOUT out to warn others. • Look Up, Down and Around Frequently.
ALL	<p>HEAVY EQUIPMENT OPERATIONS</p>	<ul style="list-style-type: none"> • Ensure communications are established with operators. • Ensure ground personnel have safety illumination, with light-sticks being the minimum. • Maintain a 50'-100' exclusion area around equipment. • In timber increase safety distance to 2 ½ times canopy height. • Only approach after making visual contact with operator. • Never hitch a ride. • Most pieces of equipment are designed for only one person.
ALL	<p>COMMUNICATIONS</p>	<ul style="list-style-type: none"> • Share your Situational Awareness (hazards, changes, etc.) to those who also have a need. • Radio Communications may be poor in some areas: use human repeaters as needed. • Ensure all personnel are familiar with the incident and IA communications plans. • Make sure all resources have radios cloned appropriately. • Ensure that non-agency resources understand radio use and procedures.
ALL	<p>AVIATION OPERATIONS</p>	<ul style="list-style-type: none"> • Conduct thorough mission assessments before starting work. Follow the guidelines in the IHOG and other aviation guidelines and reference materials. • Ensure coordination and communication are in place and understood by all involved resources in a mission. • Ensure close coordination between Air Attack, air tankers, helicopters, and ground resources.
ALL	<p>POWERLINES / UTILITIES</p>	<ul style="list-style-type: none"> • Notify all personnel of down electrical lines. • IRPG Page 24 – Take time to do a Tailgate Safety Briefing • Always treat downed wires as energized. • Avoid parking under any type of overhead lines. • Identify all gas lines in and around structures. • Report damaged service lines.
ALL	<p>FIRE BEHAVIOR</p>	<ul style="list-style-type: none"> • Are you seeing what we have predicted? • Conduct thorough assessments before starting work. • Ensure LCES is in place. • Plan & Communicate your exit strategy, with your crew and adjacent resources. • Provide additional briefing for new resources and maintain communications.
ALL	<p>END OF ASSIGNMENT WATCH - OUTS</p>	<ul style="list-style-type: none"> • Not mentally engaged in the task at hand. • You or your driver are driving faster than when you arrived. • Not giving good, thorough briefings. • Your hardhat and web gear are still on the truck. • Assuming all is good because you worked this piece of ground yesterday. • All conversations are around what you're going to do when you get home. • You and your folks are tripping and stumbling more than usual. • It's taking longer to get out of camp.

Incident Name:

Delta Fire

Operational Period: 0600 - 1800

September 22, 2018



Hirz / Delta Incident – 206 (Medical Plan)

Date / Time: 9/22/2018 0600 - 1800

1. Ambulance / Medical Services

NAME	LOCATION	PHONE	ALS Level Care	
			Yes	No
Ambulance 5	Inc Ambulance Suppression Repair	Command to Communications	Yes	
Ambulance 103	Incident Ambulance DP 54	Command to Communications	Yes	
Ambulance 104	Incident Ambulance DP 73	Command to Communications	Yes	
Trinity County Life Support	Weaverville	911 / Command to Communications	Yes	

2. Air Ambulance Services (COORDINATE with AIR AMBULANCES on CALCORD)

Name	Phone	PHONE
Grand Canyon 8PA Trinity Center HB	(214) 998-4501 (541) 870-1510	BLS, Short Haul 150' - 350', <u>Incident Assigned</u> , Day time only
REACH / PHI Redding CA	(530) 226-2499	ALS, Night Vision, No Hoist Capability, Non-Incident Assigned
CHP H-16 Redding, CA	(530) 226-2499	ALS, <u>Non-incident assigned</u> , Day time hoist only
Cal Fire H-202 Bieber, CA	(530) 226-2499	BLS, <u>Non-incident assigned</u> , Day time hoist only

3. Hospitals

Name	Address	Air	Ground	Phone	Helipad Yes	No
Pulse Urgent Care Level 4	100 E. Cypress Ave. Redding CA	N/A	45 Min	(530) 722-1111 10AM-7:30PM		X
Mercy Medical Center Level 2 Trauma	2175 Roseline Ave. Redding CA	20 Min	80 Min	(530) 225-7201	X	
Shasta Regional Medical Level 3 Trauma	1100 Butte Ave Redding CA	20 Min	80 Min	(530) 244-5353	X	
Mercy Mt. Shasta Medical Level 3 Trauma	914 Pine St. Mt. Shasta CA	10 Min	20 Min	(530) 926-1108	X	
UC Davis Medical Center Level 1 Trauma / Burn Center	2315 Stockton Blvd. Sacramento CA	1.25 Hrs	3.75 Hours	(916) 734-3636 (916) 734-3790	X	

4. Division / Crew Pre-plan. Update and discuss with assigned resources daily.

Crew EMT's & Equipment	
FEMP/ FEMT & Location Advanced Life Support?	
Air Hoist Site / Unimproved Landing Site: Lat: Long:	
Helispot: Elevation: Lat: Long:	
Med LZ:	

5. Remote Aid Stations

Medical Unit Leader Contacts	Eric Williams (661) 805-4403	Jeff Brooks (818) 903-6295
EMS Responders & Capability:		
Equipment Available on Site:	Medical supplies	
Ambulance ETA:	Air –	Ground –

6. Prepared By (Medical Unit Leader)

7. Date/Time

8. Reviewed By (Safety Officer)

9. Date / Time

Eric Williams – MEDL 	9/21/2018	 Team Safety	9/21/2018
Jeff Brooks – MEDL (T) 	1900		1900



Medical Incident Report

FOR A **NON-EMERGENCY INCIDENT**: WORK THROUGH CHAIN OF COMMAND TO REPORT AND TRANSPORT INJURED PERSONNEL AS NECESSARY.

FOR A **MEDICAL EMERGENCY**: IDENTIFY ON SCENE INCIDENT COMMANDER BY NAME AND POSITION AND ANNOUNCE "MEDICAL EMERGENCY" TO INITIATE RESPONSE FROM COMMUNICATIONS

Use the following items to communicate situation to communications/dispatch.

- 1. CONTACT COMMUNICATIONS / DISPATCH** (Verify correct frequency prior to starting report)
Ex: "Communications, Div. Alpha. Stand-by for Emergency Traffic."
- 2. INCIDENT STATUS:** Provide incident summary (including number of patients) and command structure.
Ex: "Communications, I have a Red priority patient, unconscious, struck by a falling tree. Requesting air ambulance to Forest Road 1 at (Lat./Long.)
"This will be the Trout Meadow Medical Incident, IC is TFLD Jones. EMT Smith is providing medical care."

Severity of Emergency AND Transport Priority (priority 1, 2, 3)	<input type="checkbox"/> RED / PRIORITY 1 Life or limb threatening injury or illness. Evacuation need is IMMEDIATE Ex: Unconscious, difficulty breathing, bleeding severely, 2 ^o – 3 ^o burns more than 4 palm sizes, heat stroke, disoriented. <input type="checkbox"/> YELLOW / PRIORITY 2 Serious Injury or illness. Evacuation may be DELAYED if necessary. Ex: Significant trauma, unable to walk, 2 ^o – 3 ^o burns not more than 1-3 palm sizes. <input type="checkbox"/> GREEN / PRIORITY 3 Minor Injury or illness. Non-Emergency transport Ex: Sprains, strains, minor heat-related illness.	
Nature of Injury or Illness & Mechanism of Injury		Brief Summary of Injury or Illness (Ex: Unconscious, Struck by Falling Tree)
Transport Request		Air Ambulance / Short Haul/Hoist Ground Ambulance / Other
Patient Location		Descriptive Location & Lat. / Long. (WGS84)
Incident Name		Geographic Name + "Medical" (Ex: Trout Meadow Medical)
On-Scene Incident Commander		Name of on-scene IC of Incident within an Incident (Ex: TFLD Jones)
Crew Patient Care		Name of Care Provider (Ex: EMT Smith)

3. INITIAL PATIENT ASSESSMENT: Complete this section for each patient as applicable (start with the most severe patient)

Agency Affiliation: (NO PATIENT NAMES) Federal Contractor Local Government

Patient Assessment: Age: Weight: Chief Complaint:

(If pertinent to Injury) Skin Signs: (color/moisture/temp) Level of Consciousness: BP: HR: Respirations:

Treatment:

4. TRANSPORT PLAN:

Evacuation Location (drop point, intersection, helispot, Lat. / Long, hazards) Patient's ETA to Location:

5. ADDITIONAL RESOURCES / EQUIPMENT NEEDS:

Paramedic / EMT - Crews - Immobilization Devices - AED - Oxygen - Trauma Bag - IV/Fluid(s) - Splints - Rope rescue - Wheeled litter - HAZMAT - Extrication

6. COMMUNICATIONS: Identify State Air/Ground EMS Frequencies and Hospital Contacts as applicable

Function	Channel Name/Number	Receive (RX)	Tone/NAC *	Transmit (TX)	Tone/NAC *
COMMAND					
AIR-TO-GRND	Contact on CALCORD When aircraft in line of site	156.0750 N	156.7	156.0750	156.7
TACTICAL					

7. CONTINGENCY: Considerations: If primary options fail, what actions can be implemented in conjunction with primary evacuation method?
Be thinking ahead.

8. ADDITIONAL INFORMATION: Updates/Changes, etc.

REMEMBER: Confirm ETA's of resources ordered. Act according to your level of training
Be Alert - Keep Calm - Think Clearly - Act Decisively

*** Follow up with MEDL upon return to ICP ***



**INCIDENT RADIO COMMUNICATIONS PLAN
COMMAND**

Incident Name

**HIRZ CA-SHF-001223
DELTA CA-SHF-001444**

Date/Time Prepared

09/21 / 2018 1830

Operational Period Date/Time

9/22/18 0600-1800

Only frequencies listed on this 205 are authorized for use on this incident.

Hand programmers accept all responsibility for the use of unauthorized frequencies.

Ch #	Function	Channel Name	Assignment	RX Freq N or W	RX Tone	TX Freq N or W	TX Tone	Mode	Remarks
1	COMMAND	CMD 1	COMMAND 1	171.5375 N	107.2	164.0875 N	107.2	A	COMMAND ON H-79 LINKED W/ 2,3,4,5,6 C31
2	COMMAND	CMD 2	COMMAND 2	172.6500 N	107.2	164.7500 N	107.2	A	COMMAND ON SUGARLOAF LINKED W/ 1,3,4,5,6 C48
3	COMMAND	CMD 3	COMMAND 3	170.4250 N	107.2	168.0750 N	107.2	A	COMMAND ON LEHIGH LINKED W/ 1,2,4,5,6 C3
4	COMMAND	CMD 4	COMMAND 4	170.4125 N	107.2	165.9625 N	107.2	A	COMMAND ON BONANZA KING LINKED W/ 1,2,3,5,6 C10
5	COMMAND	CMD 5	COMMAND 5	170.0875 N	107.2	162.8125 N	107.2	A	COMMAND ON TOMBSTONE MTN LINKED W/ 1,2,3,4,6, C51
6	COMMAND	CMD 6	COMMAND 6	169.5375 N	107.2	164.7125 N	107.2	A	COMMAND ON GREY BUTTE LINKED W/ 1,2,3,4,5 C8
7	TAC	NIFC T1	DIV, PP/TTWWYY	168.0500 N	107.2	168.0500 N	107.2	A	
8	TAC	NIFC T3	DIVISION DD/GG/JJ/MM,	168.6000 N	107.2	168.6000 N	107.2	A	
9	TAC	NIFC T5		166.7250 N	107.2	166.7250 N	107.2	A	
10	TAC	NIFC T6	DIVISIONS, AA/CC/ZZ	166.7750 N	107.2	166.7750 N	107.2	A	
11	TAC	NIFC T7	SUPP REPAIR	168.2500 N	107.2	168.2500 N	107.2	A	
12	TAC	TAC 12		162.1625 N	107.2	162.1625 N	107.2	A	SPECIAL TAC
13	CALCORD	CALCORD	ALL DIVISIONS	156.0750 N	156.7	156.0750	156.7	A	MEDICAL EMERGENCY TACTICAL
14	A/G COMMAND	A/G CMD	ALL DIVISIONS	168.3375 N		168.3375 N		A	AIR TO GROUND COMMAND
15	A/G TACTICAL	A/G TAC	ALL DIVISIONS	167.8125 N		167.8125 N		A	AIR TO GROUND TACTICAL
16	AIR GUARD	AIR GUARD	ALL DIVISIONS	168.6250 N		168.6250 N	110.9	A	EMERGENCY ONLY

Prepared by

SAL BONILLA JR. COMMUNICATIONS SECTION
KEVIN JAMES, TIM MAQUIRE,
BRIEFING SIMULCAST ON NIFC T1

Incident Location

ICP MCCLOUD, CA



PHONE LIST

NAME		PHONE NUMBER
COMMUNICATIONS	COML/INCM - TRAILER	530-964-2710
COMMUNICATIONS	RADIO ROOM - TRAILER	530-964-2541
MEDICAL UNIT	TRAILER	530-964-2720
PIO	TRAILER	530-964-2897
OPERATIONS	YURT	530-964-3273
DEMOB	TRAILER	530-964-2667
DOCUMENTATION	TRAILER	530-964-2904
SUPPLY / R & D	YURT	530-964-3277
MERT	YURT	530-964-2419
ORDERING	TRAILER	530-964-3116
GSUL	RON	619-916-1763
GSUL	JEFF	916-599-0481
GSUL - COFFEE CREEK	JOHN	805-833-1106
HRSP	ADAM	707-373-8715

FOR ANY CHANGES OR ADDITIONS PLEASE

SEE THE COMMUNICATIONS UNIT

INCIDENT REPLACEMENT POLICY & PROCESS

Prior to release from the incident, personnel may request replacement of equipment and supplies that were damaged, lost, or consumed during the incident. There is a distinct difference in the process to replace cache equipment and supplies and non-cache or specialized equipment. Damaged property **will be turned into the Supply Unit** prior to an Incident Replacement Requisition being approved.

Replacement of cache equipment is documented on a 213 General Message form and filled at the Supply Unit or approved for replacement at the home unit. Approval for replacement of non-standard cache items has been delegated to the IC, Finance Section Chief and IBA. You should initiate this process at least two days prior to demob.

Personnel who need to replace/repair damaged property will document the request and circumstances on a 213 General Message signed by your Incident Supervisor. The lost or damaged item(s) will then be taken to either, Supply, Communications or Ground Support for inspection and recommendation for replacement or repair. Bring the completed form to COMP/CLAIMS who will review the request and forward it to the FSC. The IC/FSC will make a decision as to whether or not the items can be replaced or repaired with incident funds.

Items originally purchased through use of preparedness funds which need to be replaced due to normal wear and tear should be accomplished using home unit funds, not incident funds. If government property was damaged on the incident due to a specific event, e.g. wind event destroys tent, items are burned over or caused by actions where there is no negligence, the incident could, upon receipt of required documentation and proof of damage, authorize replacement using the Incident Replacement Requisition.

In some cases, the cache replacement is not acceptable on some specialty items (e.g. sleeping bag or specialty packs). These items may be replaced with no more than "cache" quality and cost. The IBA or FSC must approve these requests.

If your request is approved, provide the approval and support documentation to Ordering or Supply for issuing an "S" number.

Please feel free to visit Comp/Claims Unit Leader Scott Parsons or myself if you have any questions.

Sherri Bennett, CIIMT 4, Finance Section Chief

Delta-Hirz Fire Suppression Repair

Repair Objectives

- **Minimize Surface and Gully Erosion**
- **Minimize Loss of Soil Productivity due to Erosion In Cleared Areas**
- **Repair Meadows and Wetlands Damaged By Suppression Activities**
- **Minimize Spread of Noxious Weed Infestations**
- **Minimize Excessive Side-Cast Fuels Along Roads**
- **Minimize Impacts to Inventoried Roadless Areas and Wild & Scenic River Corridors**
- **Repair Impacts to Cultural and Historic Resources**
- **Repair Damage to National Forest Roads and Trails Caused by Fire Suppression Activities**
- **Review by Agency READ/REAFs for On-Site Verification of Objectives Completed**

Suppression Repair Focus

- **Dozer Lines**
- **Hand Lines**
- **Roads and Trails**
- **Safety Zones and Staging Areas**
- **Drop Points**
- **Helispots**
- **Water Sources**

Effective Waterbars

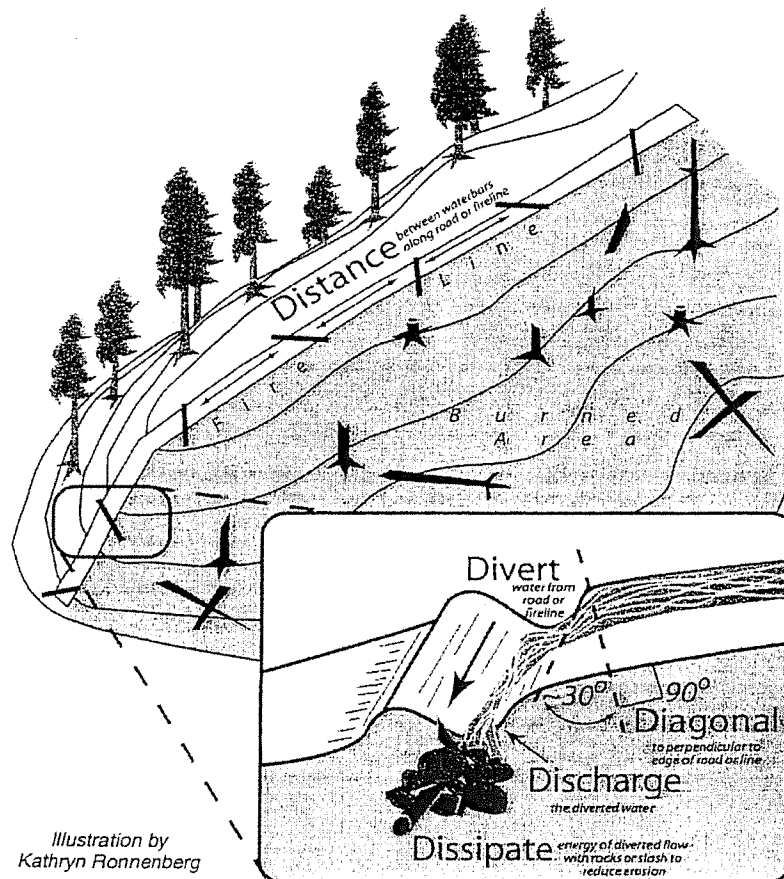
When locating and building water bars, place them the right **distance** apart, at a **diagonal** to the fireline, so that they **divert**, then **discharge**, then **dissipate** the energy of the flowing water. Be sure to make them deep enough so they'll be durable, and that soil does **not block** the water bar outlet.

Recommended spacing for waterbars on firelines.

Fireline slope %		Maximum Distance Apart (feet)
1 – 5	200
6 – 20	125
21 – 40	60
41 – 60	40
>60	25

Waterbars should be at least 2 pulaski (4-6 inches) widths wide and 12-24 inches high for handlines.

Waterbars should be no more 2-3 feet tall on dozer lines to enable future access.



Stage 2 Suppression Repair Guidelines

(Apply to National Forest System Lands only on dozer lines with moderate to heavy suppression generated debris)

Applicable Suppression Repair Plan Objectives

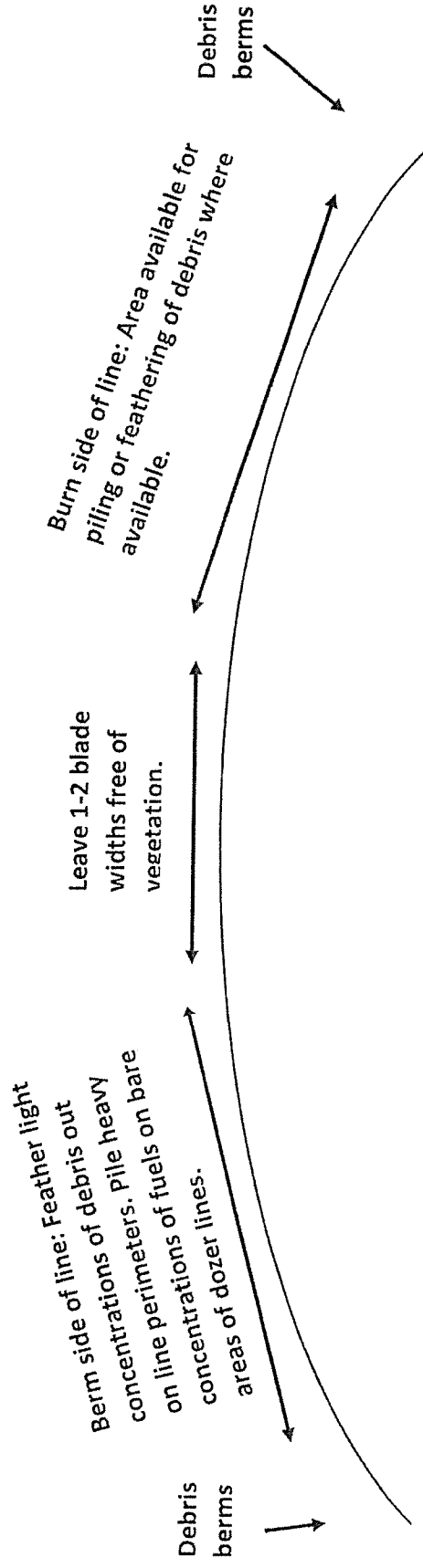
- Minimize loss of soil productivity due to potential erosion in cleared areas.
- Minimize surface erosion.
- Minimize excessive side-cast fuels.

General Instructions

- Pile excessive amounts of suppression generated debris.
- Smaller concentrations of suppression generated debris can be feathered back into scraped side slope areas in order to breakdown fuel concentrations and reduce erosion.

Piling Specifications

- Piles should be located at least 10 feet away from tree boles and preferably out of the drip line of the canopy where possible.
- If working in close or closed canopy piles should be built in a configuration that prevents excessive tree scorch (e.g. small piles, windrowed piles).
- If working in large openings on large dozer lines piles can be larger (e.g. 25x25 feet).
- Compress piles as much as possible to improve burn consumption.
- Piles should be clean (free of soil) to ensure adequate consumption during burning and reduced risk of escape in spring.



DMOB LIST FOR 9-22-18

REQ #	RESOURCE NAME	ITEM	REPORT TO DMOB	14th DAY
C-86	SPRINGVILLE IHC	HC1	0700	26-Sep
C-103	PLACER 6	CC	0730	22-Sep
C-131	CREW - CAMP - PLACER 6	CC	0730	22-Sep
C-90	FULTON IHC	HC1	0730	26-Sep
C-39	ARROYO GRANDE IHC	HC1	0800	22-Sep
C-24	FIRESTORM WILDLAND	HC2	0830	21-Sep
C-98	GANNETT GLACIER	HC2I	0900	26-Sep
C-82	FIRESTORM 3	HC2I	0930	25-Sep
C-49	IRON MOUNTAIN	HC2I	1000	22-Sep
E-104	WILDERNESS MEDICS	AMBU	0700	
E-426	AMERICAN FIRE SERVICES, LLC	AMBU	0700	10-Sep
E-148	SHF 79	DOZ2	0700	17-Sep
E-91	RHOADES CONSTRUCTION	DOZ1	0700	21-Sep
E-95	INGRAM, BRAD	DOZ2	0700	21-Sep
E-427	PNF E311	ENG3	0715	28-Sep
E-431	SRF E311	ENG3	0715	28-Sep
E-386	EXPEDITORS	BUS	0730	28-Sep
E-119	ASF E624	ENG6	0730	23-Sep
E-428	PNF E312	ENG3	0730	28-Sep
E-429	PNF E31	ENG3	0730	26-Sep
E-477	LET-ER-BUCK TRUCKING	DOZ2	0800	29-Sep
E-296	GLADWIN (MI DEPT. OF NR) 57B	ENG4	0800	24-Sep
E-415	CA-CNF - 6631C	ES3	0815	29-Sep
E-272	DARRAH LOGGING INC - 362	WTS2	0830	24-Sep
E-271	WATERDOGG, LLC (24 HR)	WTS2	0830	30-Sep
E-269	BUNN ENTERPRISES	WTS2	0830	4-Oct
E-221	ADKINS, RONALD	CHIP	0900	25-Sep
E-422	ANGELO CATTANEO	WTS2	0900	28-Sep
E-340	ALLIED WATER SERVICE	WTS2	0900	30-Sep
E-416	ANF 1614 C	ES3	0930	29-Sep
E-417	CA BDF 6604C	ES3	0930	29-Sep
E-430	MDF E56	ENG3	0945	28-Sep
E-434	LPF E15	ENG3	0945	29-Sep
E-484	WILDFIRE SUPPORT E516	ENG3	0945	24-Sep
E-94	TOUGH COMPANY FIRE	DOZ2	1000	22-Sep
E-394	CARE FLIGHT OPS	AMBU	1000	22-Sep
E-411	INF WT 21	WTT2	1000	22-Sep
E-374	SHUMAS FIRE & EQUIPMENT	WTS2	1000	24-Sep
E-137	SHASTA-SISKIYOU TRANSPORT	FT2	1000	
E-366	PRO- DUMP AND EXCAVATING	DOZ2	1015	3-Oct
E-222	BROWN, DUSTIN R	CHIP	1015	24-Sep
E-95	BRAD INGRAM CONT.	DOZ2	1015	3-Oct
E-93	DUDLEY'S EXCAVATING	DOZ2	1030	2-Oct
E-342	NORTHWESTERN	DOZ2	1030	27-Sep
E-341	T & S DVBE	DOZ2	1030	23-Sep
E-220	JW MORRISON	EXCA	1045	25-Sep
E-219	JOHN BRITTEN	EXCA	1045	25-Sep
E-349	TRINITY RIVIER	EXCA	1045	29-Sep
E-590	KEN'S WATER TENDER	EXCA	1100	27-Sep
E-617	DUDLEY'S EXCAVATING	GRD1	1100	30-Sep
E-602	PETER'S INC.	GRD	1100	25-Sep
E-167	JB CONTRACTORS	GRD	1115	25-Sep
E-264	INTERMOUNTAIN FOREST	MAST	1115	30-Sep
E-110	PATRICK OILAR	DOZ2	1115	30-Sep

DMOB LIST FOR 9-22-18

REQ #	RESOURCE NAME	ITEM	REPORT TO DMOB	14th DAY
E-183	WARNER ENTERPRISE	DOZ2	1130	3-Oct
E-300	ZABEL TRUCKING	DOZ2	1130	26-Sep
E-477	LASSEN LETTERBUCK	DOZ2	1130	5-Oct
E-350	TRINITY RIVER CONT.	EXCA	1145	4-Oct
E-487	PRO- DUMP AND EXCAVATING	DOZ2	1145	2-Oct
E-351	JOHNSON	EXCA	1145	3-Oct
E-74	BEN'S TRUCK EQUIP.	WTS1	1145	4-Oct
E-75	BEN'S TRUCK EQUIP.	WTS1	1200	2-Oct
E-405	HARRIS EQUIP	WT2	1200	30-Sep
E-420	WILLMORE SERVICES	WTS2	1200	29-Sep
E-345	JUNGWIRTH	WT2	1215	4-Oct
E-423	CATTANEO, ANGELO	WTS2	1215	29-Sep
E-424	CATTANEO, ANGELO	WTS2	1215	29-Sep
E-426	CATTANEO, ANGELO	WTS2	1230	29-Sep
E-444	BDF E-336	ENG3	1230	30-Sep
E-454	DEER MOUNTAIN E12	ENG3	1230	25-Sep
E-514	SANTANAS PUMPING	GRAY	2000	23-Sep

O-205	SJOGREN, JORDAN	SEC1	0700	21-Sep
O-208	PARKER, LIA	PIO2	0700	21-Sep
O-162	BURNETT, MARC	HEQB	0700	21-Sep
O-188	SIMS, JOHN	SEC1	0700	21-Sep
O-51	CANAVAN, JON	DIVS	0700	21-Sep
O-528	BEWLEY, THOMAS JAMES	RCDM	0700	21-Sep
O-540	KRUKOSKI, BRIAN	SEC1	0700	21-Sep
O-106	RAPOZA, ANTHONY WAYNE	EMPF	0700	22-Sep
O-154	OKEEFE, DAN	DIVS	0700	22-Sep
O-165	KNIGHTON, DUANE B	DIVS	0700	22-Sep
O-495	VESTAL, JASON	TFLD	0715	22-Sep
O-580	BLYDENBURGH, PHILLIP MICHAEL	FOBS	0715	22-Sep
O-166	HOON, MICHAEL	TFLD	0715	23-Sep
O-201	STARK, DANIEL L	HEQB	0715	23-Sep
O-271	DAWSON, PATRICK M	EMTF	0715	24-Sep
O-276	MODULE - REMS - XTB REMS 1	THSP	0715	24-Sep
O-370	SGRO, MICHAEL A	COMT	0730	21-Sep
O-419	BOWEN, DONALD KEVIN	BCMG	0730	21-Sep
O-643	MERRILL, KEVIN LLOYD	ASGS	0730	21-Sep
O-797	BEWLEY, THOMAS J	RCDM	0730	21-Sep
O-833	VONADA, WHITNEY	FDUL	0730	21-Sep
O-851	MATLOCK, JASEN C	RADO	0730	21-Sep
O-853	SGRO, MICHAEL A	COMT	0745	21-Sep
O-348	MATLOCK, JASEN C	RADO	0745	27-Sep
O-590	STUBBENDICK, JOSEPH	READ	0745	21-Sep
O-151	ST MARTIN, MICHAEL	DIVS	0745	22-Sep
O-153	ANDERSON, JERRY	DIVS	0745	23-Sep
O-219	KING, JON	DIVS	0745	23-Sep
O-155	WRIGHT, TRAVIS	DIVS	0745	24-Sep
O-346	MORRIS, BILL	DIVS	0745	23-Sep
O-200	TRAUB, CHANCE	HEQB	0800	23-Sep
O-29	NORTH ZONE FALLERS, INC.	FMOD	0800	21-Sep
O-156	SWEENEY, AMANDA	PIO2	0800	21-Sep
O-559	CORDTZ, ERIK A	FFT2	0800	1-Oct
O-426	BIHUN, BRAD	PIOF	0900	26-Sep
O-282	HUNTER, ISAAC	FOBS	0900	24-Sep
O-286	MALONEY, JAMES	FOBS	0900	25-Sep

DMOB LIST FOR 9-22-18

REQ #	RESOURCE NAME	ITEM	REPORT TO DMOB	14th DAY
O-168	DIAZ, RUDY	SOFR	0900	22-Sep
O-237	MORA, SERGIO	SOFR	0900	24-Sep
O-235	LORANZO, ART	HEQB	0900	22-Sep
O-198	HARRIS, TYLER	HEQB	0900	22-Sep
O-220	PANEBAKER, ERIC	DIVS (T)	0900	22-Sep
O-173	SPIESS, JEREMY	TFLD (T)	0900	22-Sep
O-172	TADLOCK, PAUL	TFLD	0900	23-Sep
O-588	CARMAN, BRIAN	STEN (T)	0915	30-Sep
O-213	MARSHALL, DAN	HEQB	0915	22-Sep
O-147	LUETH, CINDY	HEQB	0915	23-Sep
O-197	KILGRIFF, MATTHEW	HEQB	1300	21-Sep
O-85	CHIEVES CHICKS, TESSA LYNN	HMGB	1500	21-Sep
O-84	RUDACILLE, CHARLES	HMGB	1500	
O-80	COUGHLIN, TRAVIS	GISS	1500	21-Sep
O-35	KUIKEN, TYLER	HEQB	1700	21-Sep
O-405/811	HARPER, CALLUM	FOBS	1700	22-Sep
O-459	MADDOX, CAROL J	BCMG	1700	22-Sep
O-100	COWART, HANNAH MARIE	PIOF	1700	23-Sep
O-220	PANEBAKER, ERIC LLOYD	DIVS	1900	22-Sep

Main Gate Entrance

Delta Fire McCloud ICP
CA-SHF-001223/P5L2ZM)0514)

Hand Wash

Portable Toilets

Information

Documentation

IC / Liaison

Comms Tech

IT Specialist

Medical
Comp/Claim

Comms

Ordering/Plan

Medical
Rehab

Infrared Map

READ

Resources

Medical Rehab

Training Unit

GIS

Situation

Finance

Air Ops

Check In / Demob

Print Shop

Portable Toilets

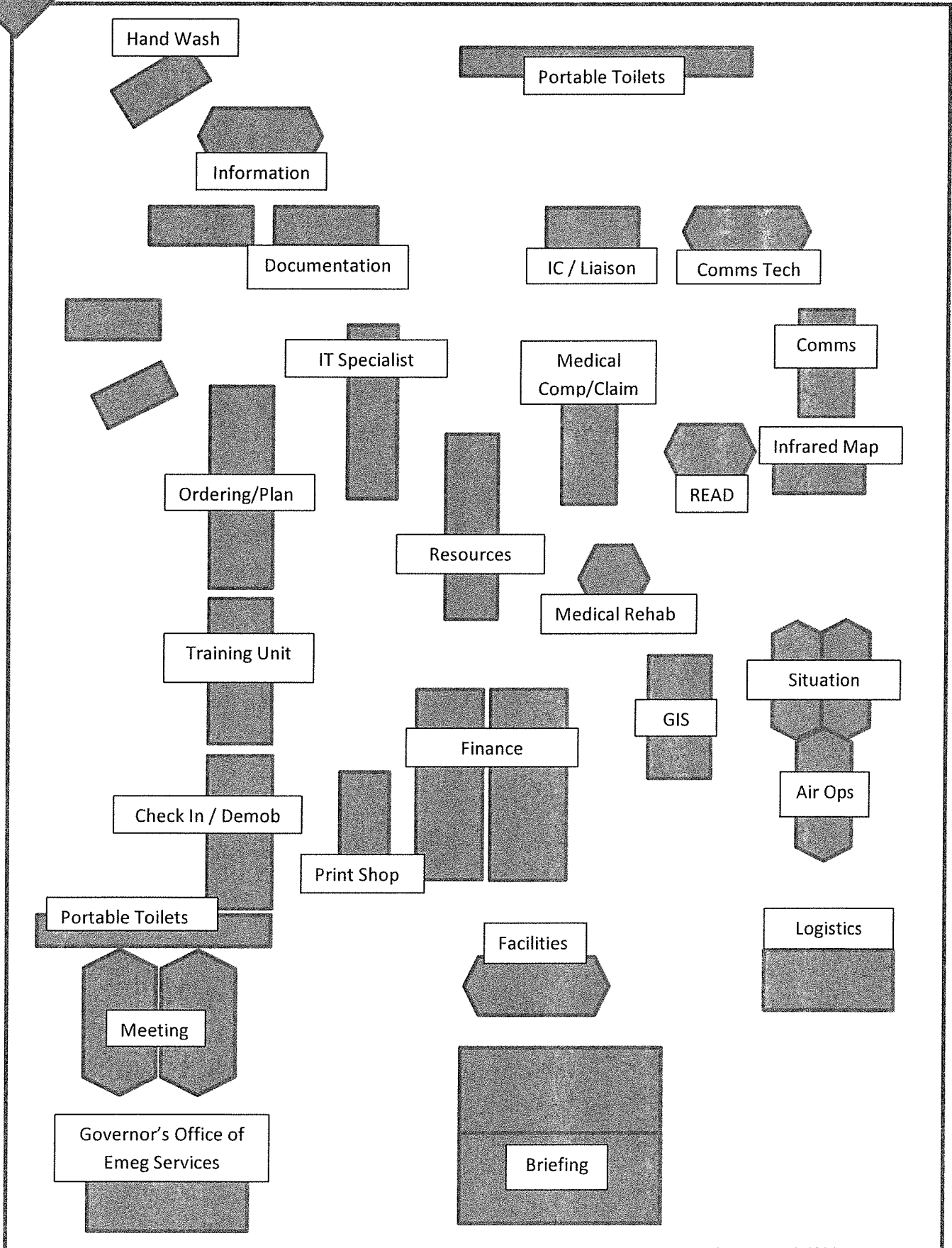
Facilities

Logistics

Meeting

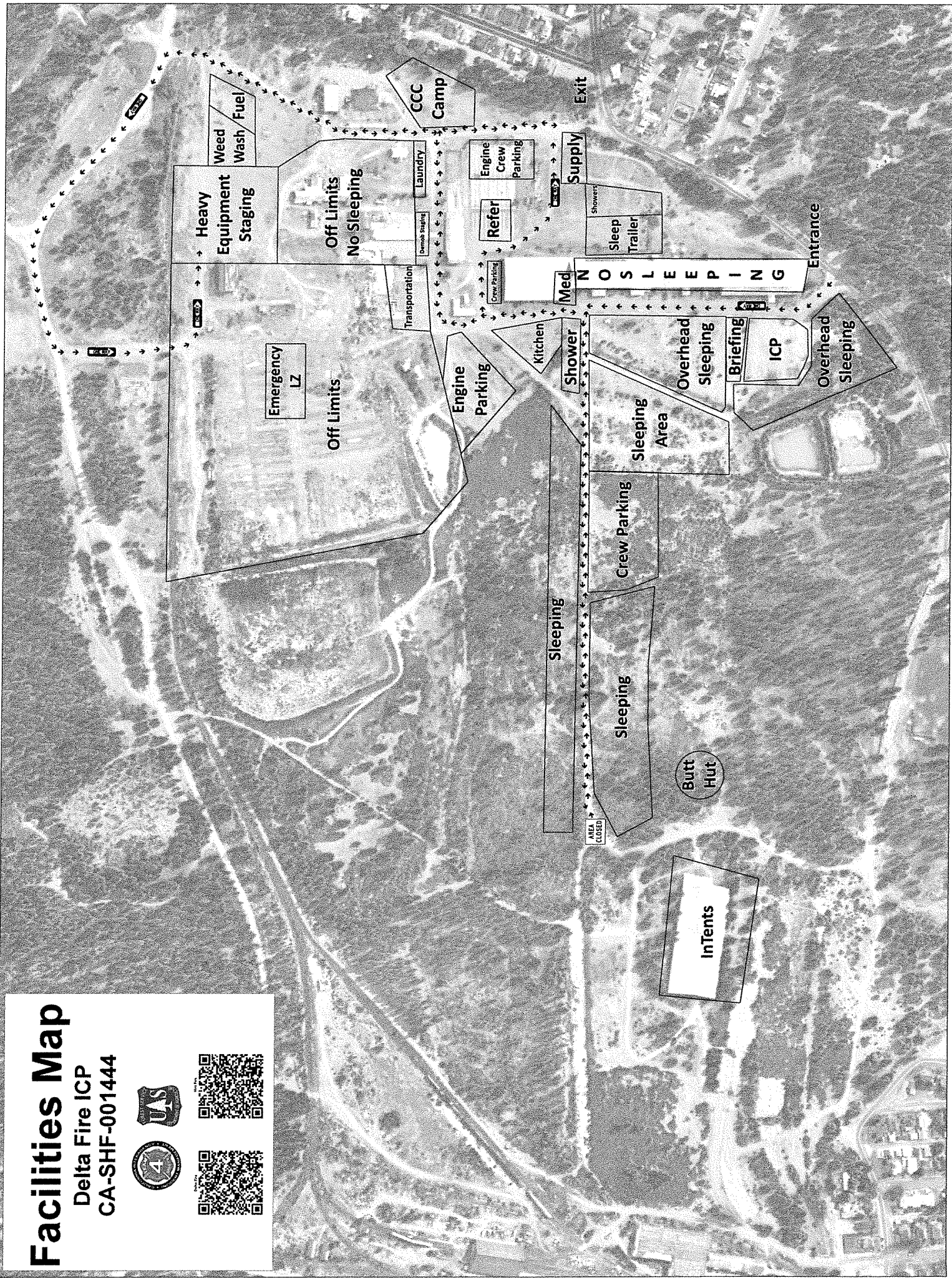
Governor's Office of
Emeg Services

Briefing



Facilities Map

Delta Fire ICP
CA-SHF-001444





Local Government Resources on CFAA

If you are demobing from this incident and there is no OES AREP on site

F-42 thru the Incident Finance Section Chief

The Incident keeps the Pink copy and you keep the Golden.
The Original and Green you mail to OES Headquarters as per the
instructions on the front of your F-42

**OES JOB AIDS, FORMS, F-42 SAMPLES AND
CFAA AGREEMENT**



Questions?

Your OES Fire & Rescue Region III AREP is

Patrick Titus

916-634-9225

