

~~\*\*\*~~ Corrected ~~\*\*\*~~

# INCIDENT ACTION PLAN

## DELTA FIRE

CA-SHF-001444 / P5L4L8 (0514)

## HIRZ FIRE

CA-SHF-001223 / P5L2ZM (0514)



## DAY OPERATIONAL PERIOD

TUESDAY, SEPTEMBER 11, 2018

0600-1800 HOURS



DELTA



HIRZ

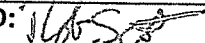


## INCIDENT OBJECTIVES (ICS 202)

<b>1. Incident Name:</b>		<b>2. Operational Period:</b> DAY	
HIRZ / DELTA	Date/Time From: 09/11/2018 0600 TUE	Date/Time To: 09/11/2018 1800 TUE	
<b>3. Objective(s):</b>  <b>Leader's Intent</b> A full suppression strategy will be implemented for both the Hirz and Delta fires through a combination of direct and indirect tactics. Efforts will be made to minimize impacts to residences, critical infrastructure and private timberlands through the application of well-planned tactical responses.			
<b>Management Objectives</b> <ul style="list-style-type: none"> <li>• Ensure that strategies and tactics provide for firefighter and public safety through the application of sound risk management principles.</li> <li>• Minimize the threat to private property, critical infrastructure, and commercial timberlands while working with the READs to reduce impacts to cultural and sensitive sites.</li> <li>• Establish and strengthen cooperator, partner, and stakeholder relationships.</li> <li>• All suppression repair work will be conducted in close coordination with assigned READs.</li> </ul>			
<b>Control Objectives</b> DELTA FIRE  KEEP FIRE: <ul style="list-style-type: none"> <li>• North of Dog Creek Road / Forest Road 21 (west side of I-5) to minimize impacts to I-5 and protect the communities of Pollock, Lakehead, and Lakeshore.</li> <li>• South of Middle Ridge (west side of I-5) to protect private timberlands.</li> <li>• South of Hazel Creek Road (east side of I-5) to minimize threat to communities and residences along I-5 corridor.</li> <li>• East of the Trinity River to minimize impacts to Highway 3 and protect recreational sites.</li> <li>• West of Crane Mountain to halt eastern spread.</li> </ul> HIRZ FIRE <ul style="list-style-type: none"> <li>• Continue to mop-up and patrol as needed to ensure the fire stays within existing containment lines.</li> <li>• Continue suppression repair per the approved Suppression Repair Plan.</li> </ul>			
<b>4. Operational Period Command Emphasis:</b>  Unity of Effort  <u>Priorities:</u> <ul style="list-style-type: none"> <li>- Divisions TT, WW, Shotgun Ridge</li> <li>- Division YY, Hazel Creek</li> <li>- Divisions ZZ, AA, Fender's Ferry Road</li> <li>- Divisions GG, Fool's Gulch</li> </ul>			
<b>General Situational Awareness:</b>  -Maintain focus on the task at hand. -Give clear briefings and conduct daily After Action Reviews to continually improve your Situational Awareness.			
<b>5. Site Safety Plan Required?</b> Yes <input type="checkbox"/> No <input checked="" type="checkbox"/>			
<b>Approved Site Safety Plan(s) Located at:</b>			
<b>6. Incident Action Plan</b> (the items checked below are included in this Incident Action Plan):			
<input checked="" type="checkbox"/> ICS 202	<input type="checkbox"/> ICS 207	Other Attachments:	
<input checked="" type="checkbox"/> ICS 203	<input type="checkbox"/> ICS 208	<input type="checkbox"/> _____	
<input checked="" type="checkbox"/> ICS 204	<input checked="" type="checkbox"/> ICS 220	<input type="checkbox"/> _____	
<input checked="" type="checkbox"/> ICS 205	<input type="checkbox"/> Map/Chart	<input type="checkbox"/> _____	
<input type="checkbox"/> ICS 205A	<input checked="" type="checkbox"/> Weather Forecast/Tides/Currents	<input checked="" type="checkbox"/> ICS 214 UNIT LOG	
<input checked="" type="checkbox"/> ICS 206			
<b>7. Prepared by:</b> DAVID GERBOTH	<b>Position/Title:</b> PLANNING SECTION CHIEF	<b>Signature:</b>	
<b>8. Approved by Incident Commander:</b>		<b>Signature:</b>	
<b>ICS 202</b>		<b>Date/Time:</b> 09/10/2018 2200	

ORGANIZATION ASSIGNMENT LIST		9. Day Operations Section	
1. Incident Name <b>HIRZ / DELTA</b>		Chief OSC, West	Bill Bryant / Scott Lucas (T)
2. Date : <b>09/10/18</b> 2200		Chief, OSC, East	Jake Cagle
4. Operational Period <b>September 11, 2018</b>		Planning OSC	Brian Rhodes / Felix Berbena
<b>DAY SHIFT 0600 - 1800</b>		a. <b>Hirz Day</b>	
Position	Name	Division/Group <b>Suppression Repair</b>	John Canavan
5. <b>Incident Commander and Staff</b>		Division/Group <b>Staging</b>	Ruth Bailey
Incident Commander	Jay Kurth / Van Arroyo (T) / Nick Truax / Luke Kendall (T)	b. <b>Delta Day Branch IV</b>	
Deputy		Branch Director	Scott Beacham
Safety Officer	Dan Snow / Dave Welch / Mike Alforque (T)	Division/Group <b>DD</b>	Pat Bell
Information Officer	Frank Mosbacher / Kerry Greene (T)	c. <b>Delta Day Branch VII</b>	
Liaison Officer	Sam Wilbanks / Steve Anderson	Branch Director	Jay Walter
		Division/Group <b>GG</b>	Clint Swensen
6. <b>Agency Representative</b>		Division/Group <b>JJ</b>	Jeff Goyings / Raymond Self (T)
Agency	Name	Division/Group <b>MM</b>	Mark Mott
FS Agency Administrator	Scott Russell	d. <b>Delta Day Branch VIII</b>	
FS Agency Admin. Rep.	Carolyn Napper / Lesley Yen	Branch Director	Steve Ward <i>Spencer Andrews Ct.</i>
Lead Read	Steve Bachmann	Division/Group <b>PP</b>	Chris Martinelli
OES AREP	Pat Titus / Kit Bailey	Division/Group <b>TT</b>	Keith Cummings / Chris Cohen
Trinity Co. OES	Ed Prestley	Division/Group <b>WW</b>	Maeve Juarez
Red Cross	Richard Yoder	e. <b>Delta Day Branch IX</b>	
Trinity Co. Sheriff	Chris Compton	Branch Director	Kyle Jacobson / Billy See, Deputy
PG&E	Mike Weaver	Division/Group <b>AA</b>	Dan Varney / Kevin Smith (T)
Sierra Pacific Industries	Herb Baldwin / Nick Kroencke	Division/Group <b>CC</b>	Heather Grove
CCC Rep.	Shawn Fry	Division/Group <b>YY</b>	Keith Swope
Union Pacific Railroad	Michael Holland / Jeff Collins	Division/Group <b>ZZ</b>	Belinda Plummer / Duane Knighton (T)
Amtrak	Stacy Weller	f. <b>Air Operations Branch</b>	
READ	Steve Bachmann	Air Operations Branch Director	Kevin Murray / Ty Miller
		Air Support Group Supervisor	Jim Stratton / Kevin Merrill (T)
7. <b>Planning Section</b>		Air Tactical Group Supervisor	Tony Duprey / Derek Wheeler
Chief	Dave Gerboth / Thomas Marchant (T)	10. <b>Night Operations Section</b>	
Deputy Chief	Mitch Diehl	Chief OSC	Rob Laeng
Resources Unit	Gina Bald / Mike Vetti / Matt Haskins / Scott Laurie / Scott Sousa (T)	a. <b>Hirz Night Branch</b>	
Situation Unit	Damian Guilliani / Melania Stoeber Jennifer Erickson (T)	Branch Director	Unstaffed
DMOB Unit	Tom Reaves	Division/Group <b>A/B/F/I/U/W/X/Y/Z</b>	Unstaffed
GISS	Chris Clervi, Matt Eister / Chris Barrett / Alex Heeren (T)	b. <b>Delta Night Branch VII</b>	
IMET	Gary Zell	Branch Director	Chris Stevens
FBAN	Rob Scott / Kelly Allen	Division/Group <b>DD</b>	Antonio Moreno
ARA	Arlane Zarzotti	Division/Group <b>GG</b>	Scott Grendahl
Training Specialist	Jesse Roach	c. <b>Delta Night Branch VIII</b>	
ITSS	James Whiteside	Branch Director	Josh Campbell
Human Resource Specialist	Michelle Hale (T)	Division/Group <b>PP</b>	Nathan Gorham
Documentation Unit		Division/Group <b>TT</b>	Brandon Lanning
8. <b>Logistics Section</b>		Division/Group <b>WW</b>	Michael St. Martin / Bill Morris (T)
Chief	Ross Peckinpah	Division/Group <b>MM</b>	Jacob Botts
Supply Unit	Jennifer Wells	d. <b>Delta Night Branch IX</b>	
Facilities Unit	Jan Palecek / Rob Griffith	Branch Director	Chris Waters / Dave Crouser, Deputy
Ground Support Unit	Jeff Burch / Ron Brewer	Division/Group <b>AA</b>	Mike Anderson
Communications Unit	Sal Bonilla Jr. / Tim McGulre / Kevin Janes	Division/Group <b>YY</b>	Gerry Magana
Medical Unit	Eric Williams / Jeff Brooks	Division/Group <b>ZZ</b>	Gene Neely
Food Unit	Ken Breskin	11. <b>Finance Section</b>	
Ordering Manager	Robert Griffith	Chief	Sherrie Bennett / Vicki Wilson (T)
		Time Unit	Loni Holt / Sheila Miner
		Compensation/Claims Unit	Scott Parsons
		Cost Unit	
		Procurement Unit	Don Tinsley
		Prepared by (Resource Unit Leader) Gina Bald	

# FIRE BEHAVIOR FORECAST

FORECAST NUMBER: 48	TYPE OF FIRE: Wildfire
FIRE NAME: Hirz/Delta	OPERATIONAL PERIOD: September 11, 2018 Day
DATE ISSUED: September 10, 2018	TIME ISSUED: 2030
UNIT: Shasta-Trinity NF, McCloud RD	SIGNED:  Robert Scott, FBAN 530.990.4048

## INPUTS

### WEATHER SUMMARY

\*\* See Fire Weather Forecast \*\*

\*\*\* RED FLAG WARNING AFTER 1300 for STRONG WINDS AND LOW RELATIVE HUMIDITY \*\*\*

**Weather:** Partly cloudy. Areas of smoke. Inversion breaks around 1000.  
**Max Temps:** 72-77 ridgetops and 85-90 lower drainages.  
**Min RH:** 17-22 percent ridges and **12-17 percent lower drainages.**  
**20 FOOT WINDS:** Ridges: North-Northeast 4-9 mph with gusts 15 mph until 1000, becoming South-Southwest 7-12 mph during the late morning and then **Southwest-West 10-15 mph with gusts to 25 mph in the afternoon.**  
 Slope/valley: Downslope/Downvalley 2-6 mph until 1000, then upslope/upvalley 3-8 mph.

## FIRE BEHAVIOR

### INPUTS:

- **Fuels:** Lack of inversion on North and East sides of fire will increase fine fuel availability.
- **Topography:** Ridge locations will experience the highest winds since the initial slope runs of September 5<sup>th</sup>. Winds will be strongest on ridge tops with reduced speeds in drainages. Drainages aligned with wind, East/West and Northeast/Southwest will experience enhanced wind speeds, especially on the West and South sides of the fire.

**FIRE BEHAVIOR:** Increased winds will push the fire along aligned ridges and drainages. On ridgetop locations after 1500, expect FL of 14ft and ROS of 60ch/hr in brush and FL of 5-8ft and ROS of 10-12ch/hr in timber fuels. Crown fire potential is also elevated as ladder fuel is present in most timber stands.

**Probability of Ignition:** 90% in clear air.      **Spotting Distance:** .4 mile from ridgetop locations.

**BRANCH 9 - DIV YY:** Burn and holding operations will be tested today as winds shift to the North. Long range spotting is possible from torching trees near the ridge tops. Fire perimeter will catch any fire driven to the East or South.

**DIV ZZ:** Forecast winds will not be a factor for holding as fire perimeters are present in the area. Slope runs out of Campbell Creek are toward DP-30 are possible.

**DIV AA:** Continued backing and flanking into Dog Creek today. Winds will be favorable for holding along Dog Creek Rd until late afternoon. Some West wind influence is possible as wind direction swings from Southwest to more Northerly.

**BRANCH 7 - DIV DD:** Condition for containment and holding will be favorable until late in the evening. The threat of fire moving onto the DIV from the North exists.

**DIV GG:** Fools Gulch, Watson Creek and Wildcat Peak are places fire can make slope runs to the South as wind rotates to the North. Spotting from ridgetop locations is possible. Fire moving South has several drainages to follow with fuels capable of group torching.

**DIV JJ:** After inversion lifts, fire will continue to move North through patchy fuels. Conditions will be favorable for containment and holding as wind rotates North.

**BRANCH 8 - DIV MM:** After inversion lifts, fire will continue to move North through patchy fuels. Conditions will be favorable for containment and holding as wind rotates North.

**DIV PP/TT:** Firing and holding operations will be challenged during the afternoon hours. Conditions will be more favorable as wind moves past the Northwest direction. Low humidity well after dark will expand the burn period.

**DIV WW:** Burn window will be difficult to forecast as the interaction of upper level dry air and moist air of the Sacramento River drainage interact. Lower portions of the DIV will be mostly protected from general winds but dry air will be present.

**Hirz Fire:** Threat of spread from the fire's edge remains low. Winds will affect areas of the fire that are in rehab mode. Monitor conditions and have an escape plan in place.

## AIR OPERATIONS

Air operations will be hampered by inversion in the morning. Most areas will experience clearing by late afternoon.

## SAFETY

\* Dry and windy conditions will lengthen burn periods. Expect to transition to more aggressive fire behavior sooner in the burn period and persist longer into the evening. \*\*

# FIRE WEATHER FORECAST

FORECAST NO. 35

NAME OF FIRE: Hirz & Delta Fires

UNIT: Shasta Trinity National Forest

TIME AND DATE

FORECAST ISSUED: 1930 Monday 09/10/18

PREDICTION FOR: Tuesday September 11th, 2018

SIGNED: Gary Z Zell  
Gary Zell / Incident Meteorologist

---

**\*\*\*RED FLAG WARNING IN EFFECT FROM 1300 TODAY THROUGH 0800 WEDNESDAY FOR STRONG AND GUSTY WINDS AND LOW RELATIVE HUMIDITY LEVELS\*\*\***

**WEATHER DISCUSSION:** A storm system entering the Pacific Northwest will result in stronger winds through Wednesday morning, especially between mid-slope and ridgetop levels. Terrain driven winds are expected below mid-slope locations except where the drainages align with the general wind flow direction. Temperatures will be a couple of degrees cooler today, but humidity levels will be similar to the last couple of days. The storm system will then drop south along the Pacific Coast Wednesday, with moderating relative humidity levels and cooler temperatures. Wind speeds will remain elevated on Wednesday, but will stay below critical thresholds.

---

## TODAY... RED FLAG WARNING IN EFFECT AFTER 1300

Sky/weather.....Partly cloudy. Areas of smoke. Inversion breaks around 1000.

Max temperature.....72-77 ridgetops and 85-90 lower drainages.

Min humidity.....17-22 percent ridges and 12-17 percent lower drainages.

Wind (20 ft).....

Slope/valley.....Downslope/Downvalley 2-6 mph until 1000, then upslope/upvalley 3-8 mph.

Ridgetop.....North-Northeast 4-9 mph with gusts 15 mph until 1000, becoming South-Southwest 7-12 mph during the late morning and then Southwest-West 10-15 mph with gusts to 25 mph in the afternoon.

Mixing height.....8,000 to 10,000 ft AGL.

Transport winds.....Northeast 7 mph until 1000, then Southwest 15 mph.

CWR.....0 percent.

LAL.....1.

---

## TONIGHT... RED FLAG WARNING IN EFFECT

Sky/weather.....Partly cloudy. Areas of smoke. Inversion develops after 2200.

Min temperature.....54-59 ridgetops, 51-56 lower drainages.

Max humidity.....40-45 percent ridges and 51-56 percent lower drainages.

Wind (20 ft).....

Slope/valley.....Upslope 3-7 mph becoming downslope 2-6 mph after 2100.

Ridgetop.....West-Northwest 10 to 15 mph with gusts to 25 mph until 2100, then North-Northeast 7 to 12 mph with gusts to 20 mph.

Mixing height.....Lowering to around 2000 ft AGL.

Transport winds.....West 15 mph until 2100, then North-Northeast 10 mph.

CWR.....0 percent.

LAL.....1.

---

## WEDNESDAY... RED FLAG WARNING IN EFFECT THROUGH 0800

Sky/weather.....Partly cloudy. A 10 percent chance of showers in the afternoon. Areas of smoke. Inversion breaks around 1000.

Max temperature.....67-72 ridgetops and 80-85 lower drainages.

Min humidity.....22-27 percent ridges and 17-22 percent lower drainages.

Wind (20 ft).....

Slope/valley.....Downslope/Downvalley 3-6 mph until 1000, then upslope/upvalley 3-7 mph.

Ridgetop.....North-Northeast 7-12 mph with gusts to 20 mph, diminishing and becoming South-Southwest 7-12 mph with gusts to 18 mph.

Mixing height.....6,000 to 8,000 ft AGL.

Transport winds.....Northeast 10 mph until 1000, then Southwest 10 mph.

CWR.....0 percent.

LAL.....1.

---

**Division/Group Assignment List (ICS 204 WF)**  
Controlled Unclassified Information//Basic

<b>1. Incident Name:</b> HIRZ		<b>3.</b>	
<b>2. Operational Period:</b> DAY		<b>Branch:</b>	<b>Division/Group:</b> <b>SUPPRESSION REPAIR</b>
Date/Time From: 09/11/2018 0600	TUE	Date/Time To: 09/11/2018 1800	TUE

<b>4. Operations Personnel</b>			
<b>EAST OPERATIONS CHIEF</b>	JAKE CAGLE	<b>DIVISION/GROUP SUPERVISOR</b>	JOHN CANAVAN
<b>BRANCH DIRECTOR</b>		<b>AIR ATTACK SUPERVISOR</b>	DEREK WHEELER

<b>5. Resources Assigned this Period</b>					
Strike Team / Task Force / Resource Designator	LWD	Leader	Number Persons	Drop Off PT./Time	Pick Up PT./Time
WTS2 DARRAH LOGGING 2 E-38	09/22	TARA ELAM	1	MC CLOUD ICP/0600	MC CLOUD ICP/1800
WTS2 HARRIS EMERGENCY SERVICES E-405	09/21	ANELLO ARNE	1	MC CLOUD ICP/0600	MC CLOUD ICP/1800
WTS3 DIETZ EQUIPMENT E-388	09/19	MATI RICKS	1	MC CLOUD ICP/0600	MC CLOUD ICP/1800
EXCA KEN'S E-590	09/13	MATTHEW SMITH	1	MC CLOUD ICP/0600	MC CLOUD ICP/1800
GRD M. PETERS INC. E-602	09/18	JAY SANDAHL	2	MC CLOUD ICP/0600	MC CLOUD ICP/1800
GRD DUDLEYS' EXCAVATING E-617	09/18	JOHN STUGELMEYER	2	MC CLOUD ICP/0600	MC CLOUD ICP/1800
MAST INTERMOUNTAIN FOREST E-264	09/18	KEVIN SMITH	2	MC CLOUD ICP/0600	MC CLOUD ICP/1800
CHIP CUT WRIGHT SERVICES E-592	09/14	TIM WRIGHT	3	MC CLOUD ICP/0600	MC CLOUD ICP/1800
FMOD PACIFIC RIDGELINE FORESTRY O-665	09/13	GABRIEL SOTELA	2	MC CLOUD ICP/0600	MC CLOUD ICP/1800
TFLD O-786	09/18	BERNIE QUINONEZ	1	MC CLOUD ICP/0600	MC CLOUD ICP/1800
HEQB O-701	09/14	NEAL YOUNGBLOOD	1	MC CLOUD ICP/0600	MC CLOUD ICP/1800
EMTF O-270	09/23	MATTHEW HINES	1	MC CLOUD ICP/0600	MC CLOUD ICP/1800
EMTF O-577	09/11	JOHN CORONA	1	MC CLOUD ICP/0600	MC CLOUD ICP/1800
REAF O-600	09/11	ALEX RANDOPH-LOWE	1	MC CLOUD ICP/0600	MC CLOUD ICP/1800
REAF O-626	09/11	ASHLEY KNIGHT	1	MC CLOUD ICP/0600	MC CLOUD ICP/1800
FFT2 O-799	09/18	JASON R KLOTZ	1	MC CLOUD ICP/0600	MC CLOUD ICP/1800
ARCH O-861	09/24	PAUL FRENCH	1	MC CLOUD ICP/0600	MC CLOUD ICP/1800
ERD JB Contracting E-167		Joe Postwick			

<b>8. Division/Group Communication Summary</b>						
Function	Channel	RX Frequency N/W	RX Tone/NAC	TX Frequency N/W	TX Tone/NAC	Mode
COMMAND	1	171.5375 N	10/107.2	164.0875 N	10/107.2	A
TACTICAL	7	168.0500 N	10/107.2	168.0500 N	10/107.2	A
AIR TO GROUND	14	168.3375 N		168.3375 N		A
AIR TO GROUND	15	167.8125 N		167.8125 N		A

<b>9. Prepared By (Resource Unit Leader)</b> SCOTT SOUSA	<b>Approved By (Planning Section Chief)</b> DAVE GERBOTH	<b>Date</b> 09/10/2018	<b>Time</b> 2200
---	---	---------------------------	---------------------

**Division/Group Assignment List (ICS 204 WF)**  
**Controlled Unclassified Information//Basic**

<b>1. Incident Name:</b>	<b>3.</b>
--------------------------	-----------

<b>HIRZ</b>	<b>Branch:</b>	<b>Division/Group:</b>
<b>2. Operational Period:</b> DAY		<b>SUPPRESSION REPAIR</b>
Date/Time From: 09/11/2018 0600 TUE	Date/Time To: 09/11/2018 1800 TUE	

**4. Operations Personnel**

EAST OPERATIONS CHIEF	JAKE CAGLE	DIVISION/GROUP SUPERVISOR	JOHN CANAVAN
BRANCH DIRECTOR		AIR ATTACK SUPERVISOR	DEREK WHEELER

**5. Resources Assigned this Period**

Strike Team / Task Force / Resource Designator	LWD	Leader	Number Persons	Drop Off PT./Time	Pick Up PT./Time

**6. Control Operations/Work Assignments:**

- Conduct suppression repair activities on dozerlines, handlines and roads.
- Refer to the Suppression Repair Plan for objectives and specifications.

**7. Special Instructions:**

- Coordinate with READs to identify suppression repair needs.

**8. Division/Group Communication Summary**

Function	Channel	RX Frequency N/W	RX Tone/NAC	TX Frequency N/W	TX Tone/NAC	Mode
COMMAND	1	171.5375 N	10/107.2	164.0875 N	10/107.2	A
TACTICAL	7	168.0500 N	10/107.2	168.0500 N	10/107.2	A
AIR TO GROUND	14	168.3375 N		168.3375 N		A
AIR TO GROUND	15	167.8125 N		167.8125 N		A

<b>9. Prepared By (Resource Unit Leader)</b>	<b>Approved By (Planning Section Chief)</b>	<b>Date</b>	<b>Time</b>
SCOTT SOUSA	DAVE GERBOTH	09/10/2018	2200



**Division/Group Assignment List (ICS 204 WF)**  
Controlled Unclassified Information//Basic

1. Incident Name: 3.

HIRZ		Branch:	Division/Group:  <b>STAGING</b>
2. Operational Period: DAY			
Date/Time From: 09/11/2018 0600	TUE	Date/Time To: 09/11/2018 1800	TUE

4. **Operations Personnel**

OPERATIONS CHIEF	JAKE CAGLE	STAM	RUTH BAILEY <i>530-255-5306</i>
BRANCH DIRECTOR		AIR ATTACK SUPERVISOR	DEREK WHEELER

5. **Resources Assigned this Period**

Strike Team / Task Force / Resource Designator	LWD	Leader	Number Persons	Drop Off PT./Time	Pick Up PT./Time

6. Control Operations/Work Assignments:

- Stage at ICP
- Be ready to respond as requested by Operations Sections Chief.

7. Special Instructions:

*DOZ 1 E-107 LePage 9/22 Dillon Milton  
DOZ 2 E-161 Bushey Jon Loper*

8. **Division/Group Communication Summary**

Function	Channel	RX Frequency N/W	RX Tone/NAC	TX Frequency N/W	TX Tone/NAC	Mode
COMMAND	1	171.5375 N	10/107.2	164.0875 N	10/107.2	A
TACTICAL	7	168.0500 N	10/107.2	168.0500 N	10/107.2	A
AIR TO GROUND	14	168.3375 N		168.3375 N		A
AIR TO GROUND	15	167.8125 N		167.8125 N		A

9. Prepared By (Resource Unit Leader) MATTHEW HASKINS	Approved By (Planning Section Chief) DAVE GERBOTH	Date 09/10/2018	Time 2200
--	--	--------------------	--------------

**Division/Group Assignment List (ICS 204 WF)**  
Controlled Unclassified Information//Basic

<b>1. Incident Name:</b>			<b>3.</b>			
DELTA			<b>Branch:</b>  IV	<b>Division/Group:</b>  DD		
<b>2. Operational Period:</b> DAY						
Date/Time From: 09/11/2018 0600	TUE	Date/Time To: 09/11/2018 1800	TUE			
<b>4. Operations Personnel</b>						
<b>WEST OPERATIONS CHIEF</b>		BILL BRYANT SCOTT LUCAS (T)		<b>DIVISION/GROUP SUPERVISOR</b>		PAT BELL ERIC PANEBAKER (T)
<b>BRANCH DIRECTOR</b>		SCOTT BEACHAM		<b>AIR ATTACK SUPERVISOR</b>		DEREK WHEELER
<b>5. Resources Assigned this Period</b>						
Strike Team / Task Force / Resource Designator		LWD	Leader	Number Persons	Drop Off PT./Time	Pick Up PT./Time
HC1 SALMON RIVER IHC C-32		09/21	WILLIAM ROBINSON	19	COFFEE CREEK/0600	COFFEE CREEK/1800
HC1 MILLCREEK IHC C-38		09/22	JOHN ELLISON	20	COFFEE CREEK/0600	COFFEE CREEK/1800
HC2 DUST BUSTERS C-18		09/20	BRATON JURASEVICH	20	COFFEE CREEK/0600	COFFEE CREEK/1800
HC2 FIRESTORM WILDLAND C-24		09/21	MAC NORLIE	20	COFFEE CREEK/0600	COFFEE CREEK/1800
HC2 WOODPECKER C-91		09/16	ELADIO HERNANDEZ	20	COFFEE CREEK/0600	COFFEE CREEK/1800
ES3 4154C (24HR) E-117		09/18	JAMES P EDMISTON	22	COFFEE CREEK/0600	COFFEE CREEK/0600
DELTA - TF 1					COFFEE CREEK/0600	COFFEE CREEK/1800
TFLD O-26		09/21	PERRY PEAKE	1	COFFEE CREEK/0600	COFFEE CREEK/1800
ENG6 T6 - 696 E-19		09/18	WILLIAM MCDARMENT JR	4	COFFEE CREEK/0600	COFFEE CREEK/1800
ENG6 TMI 814 E-122		09/18	ANDREW P COLLIER	4	COFFEE CREEK/0600	COFFEE CREEK/1800
ENG6 EARTH INDUSTRIES E-123		09/22	ANDREW COLLIER	3	COFFEE CREEK/0600	COFFEE CREEK/1800
ENG6 CNF 473 E-452		09/11	DAVID KEMPTON	7	COFFEE CREEK/0600	COFFEE CREEK/1800
ENG6 ASF - E624 E-119		09/23	GEORGE HRUBY	4	COFFEE CREEK/0600	COFFEE CREEK/1800
ENG6 RED ROCK FIRE 612 E-346		09/21	JEFF O'FLANAGAN	3	COFFEE CREEK/0600	COFFEE CREEK/1800
ENG6 TGF FORESTRY AND FIRE E-374		09/14	TONY LONGBUCCO	3	COFFEE CREEK/0600	COFFEE CREEK/1800
WTS1 <del>41 E-3</del> Demob 9/9		09/20	RAMSEY SIMS	2	COFFEE CREEK/0600	COFFEE CREEK/1800
WTS2 H & H FEEDERS (24 HR) E-406		09/15	JACK HURLIMANN	2	COFFEE CREEK/0600	COFFEE CREEK/1800
WTS2 DARRAH LOGGING INC E-581		09/13	STAN CARGO	1	COFFEE CREEK/0600	COFFEE CREEK/1800
DZS2 MEU 9118L (24HR) E-54		09/19	DAVID DIGGS	8	COFFEE CREEK/0600	COFFEE CREEK/0600
DZS2 AEU 9278L (24 HR) E-166		09/29	MIKE PINOCHI	6	COFFEE CREEK/0600	COFFEE CREEK/0600
<b>8. Division/Group Communication Summary</b>						
Function	Channel	RX Frequency N/W	RX Tone/NAC	TX Frequency N/W	TX Tone/NAC	Mode
COMMAND	2	172.6500 N	10/107.2	164.7500 N	10/107.2	A
TACTICAL	8	168.6000 N	10/107.2	168.6000 N	10/107.2	A
AIR TO GROUND	14	168.3375 N		168.3375 N		A
AIR TO GROUND	15	167.8125 N		167.8125 N		A
<b>9. Prepared By (Resource Unit Leader)</b>			<b>Approved By (Planning Section Chief)</b>		<b>Date</b>	<b>Time</b>
MIKE VETTI			DAVE GERBOTH		09/10/2018	2200

**Division/Group Assignment List (ICS 204 WF)**  
Controlled Unclassified Information//Basic

1. Incident Name:		3	
DELTA		<b>IV</b>	<b>DD</b>
2. Operational Period: DAY			
Date/Time From: 09/11/2018 0600	TUE	Date/Time To: 09/11/2018 1800	TUE

4. Operations Personnel			
WEST OPERATIONS CHIEF	BILL BRYANT SCOTT LUCAS (T)	DIVISION/GROUP SUPERVISOR	PAT BELL ERIC PANEBAKER (T)
BRANCH DIRECTOR	SCOTT BEACHAM	AIR ATTACK SUPERVISOR	DEREK WHEELER

5. Resources Assigned this Period					
Strike Team / Task Force / Resource Designator	LWD	Leader	Number Persons	Drop Off PT./Time	Pick Up PT./Time
DOZ2 SHU 2440 (24HR) E-16	09/24	CECIL REA	3	COFFEE CREEK/0600	COFFEE CREEK/0600
DOZ2 LNF DOZ 6 E-109	09/21	BRIAN WATTENBURG	2	COFFEE CREEK/0600	COFFEE CREEK/1800
DOZ2 MATANDY LAND & CATTLE E-111	09/21	MATT HARKNESS	2	COFFEE CREEK/0600	COFFEE CREEK/1800
DOZ2 WALTER MOODY E-115	09/21	SHELDON CRISS	2	COFFEE CREEK/0600	COFFEE CREEK/1800
GRD NORTH STATE EQUIPMENT E-616	09/19	JIM MOAK	1	COFFEE CREEK/0600	COFFEE CREEK/1800
SKG3 J & D LOGGING E-249	09/18	TYLER SWAN	2	COFFEE CREEK/0600	COFFEE CREEK/1800
SKG3 HALEY, TODD B. E-551	09/13	REESE CEMARA	2	COFFEE CREEK/0600	COFFEE CREEK/1800
TFLD O-24	09/22	MICHAEL MONDINO	1	COFFEE CREEK/0600	COFFEE CREEK/1800
HEQB O-200	09/23	CHANCE TRAUB	1	COFFEE CREEK/0600	COFFEE CREEK/1800
HEQB O-235	09/22	ARTURO LOZANO	1	COFFEE CREEK/0600	COFFEE CREEK/1800
HEQB (T) O-159	09/21	JASON O'BANNON	1	COFFEE CREEK/0600	COFFEE CREEK/1800
FMOD MORGAN TREE SERVICE O-379	09/22	THOMAS MATNEY	2	COFFEE CREEK/0600	COFFEE CREEK/1800
FMOD NORTH ZONE FALLERS, INC. O-29	09/21	BILL SMITH	2	COFFEE CREEK/0600	COFFEE CREEK/1800
EMPF O-105	09/21	MATTHEW STODDARD	1	COFFEE CREEK/0600	COFFEE CREEK/1800
EMTF O-528	09/11	ZACHARIAH SUMMERS	1	COFFEE CREEK/0600	COFFEE CREEK/1800
SOF2 O-160	09/23	THOMAS NASH	1	COFFEE CREEK/0600	COFFEE CREEK/1800
<i>MAST Paul Roen E-225</i>	<i>9/24</i>	<i>Paul Roen</i>	<i>2</i>		

8. Division/Group Communication Summary						
Function	Channel	RX Frequency N/W	RX Tone/NAC	TX Frequency N/W	TX Tone/NAC	Mode
COMMAND	2	172.6500 N	10/107.2	164.7500 N	10/107.2	A
TACTICAL	8	168.6000 N	10/107.2	168.6000 N	10/107.2	A
AIR TO GROUND	14	168.3375 N		168.3375 N		A
AIR TO GROUND	15	167.8125 N		167.8125 N		A
Prepared By (Resource Unit Leader)		Approved By (Planning Section Chief)		Date	Time	
MIKE VETTI		DAVE GERBOTH		09/10/2018	2200	



**Division/Group Assignment List (ICS 204 WF)**  
**Controlled Unclassified Information//Basic**

<b>1. Incident Name:</b> DELTA		<b>3:</b>	
<b>2. Operational Period:</b> DAY		<b>Branch:</b>  <b>VII</b>	<b>Division/Group:</b>  <b>GG</b>
Date/Time From: 09/11/2018 0600 TUE	Date/Time To: 09/11/2018 1800 TUE		

<b>4. Operations Personnel</b>			
<b>WEST OPERATIONS CHIEF</b>	BILL BRYANT SCOTT LUCAS (T) (T)	<b>DIVISION/GROUP SUPERVISOR</b>	CLINT SWENSEN
<b>BRANCH DIRECTOR</b>	JAY WALTER	<b>AIR ATTACK SUPERVISOR</b>	DEREK WHEELER

<b>5. Resources Assigned this Period</b>						
Strike Team / Task Force / Resource Designator	LWD	Leader	Number Persons	Drop Off PT./Time	Pick Up PT./Time	
HCS1 SHU 9241G (24HR) C-7	09/18	JAN SMUTZ	31	COFFEE CREEK/0600	COFFEE CREEK/0600	
HCS1 TUU 9413G (24HR) C-41	09/21	TYLER ATTEBURY	34	COFFEE CREEK/0600	COFFEE CREEK/0600	
HC2I KERN VALLEY C-34	09/18	NATHAN NELMS	19	COFFEE CREEK/0600	COFFEE CREEK/1800	
HC2I DEL ROSA C-64	09/18	DAVID BORERO	19	COFFEE CREEK/0600	COFFEE CREEK/1800	
HC2 GH RANCH 17183 C-25	09/20	JAMES GRAHAM	20	COFFEE CREEK/0600	COFFEE CREEK/1800	
ES3 SKU 9260C (24HR) E-13	09/18	ROSS MILLER	20	COFFEE CREEK/0600	COFFEE CREEK/0600	
ES3 SCU 9161C (24HR) E-61	09/18	KEN MYERS	16	COFFEE CREEK/0600	COFFEE CREEK/0600	
ES3 9460C (24HR) E-64	09/20	CHRIS JAUREGUI	16	COFFEE CREEK/0600	COFFEE CREEK/1800	
ES3 XLS 3075C (24HR) E-66	09/20	STEVE HITCHCOCK	16	COFFEE CREEK/0600	COFFEE CREEK/0600	
ES3 5810C (24HR) E-153	09/22	SHAWN WHITTINGTON	22	COFFEE CREEK/0600	COFFEE CREEK/0600	
ENG3 ENF 314 E-60	09/22	LEE BLISS	5	COFFEE CREEK/0600	COFFEE CREEK/1800	
ENG3 344 E-101	09/21	ANDREW AULD	1	COFFEE CREEK/0600	COFFEE CREEK/1800	
WTT1 OES WT32 (24 HR) E-105	09/21	MATT GEORGE TURNER	2	COFFEE CREEK/0600	COFFEE CREEK/0600	
WTS2 E-33	09/20	DANIEL OILAR	1	COFFEE CREEK/0600	COFFEE CREEK/1800	
WTS2 WT257 E-34	09/20	HOWARD VENUTO	1	COFFEE CREEK/0600	COFFEE CREEK/1800	
WTS2 KDH ENTERPRISE E-38	09/20	KEVIN HORN	1	COFFEE CREEK/0600	COFFEE CREEK/1800	
WTS2 LET-ER-BUCK (24 HR) E-40	09/20	DARREN WARD	1	COFFEE CREEK/0600	COFFEE CREEK/0600	
WTT2 SHF 66 E-554	09/12	THADDEUS EASON	2	COFFEE CREEK/0600	COFFEE CREEK/1800	
WTS2 TOBIASSON WATER E-586	09/20	MICAH NICHOLS	2	COFFEE CREEK/0600	COFFEE CREEK/1800	
DZS2 SCU 9160L (24HR) E-165	09/22	THOMAS CHEOWETH	5	COFFEE CREEK/0600	COFFEE CREEK/0600	

<b>8. Division/Group Communication Summary</b>						
Function	Channel	RX Frequency N/W	RX Tone/NAC	TX Frequency N/W	TX Tone/NAC	Mode
COMMAND	4	170.4125 N	10/107.2	165.9625 N	10/107.2	A
TACTICAL	9	166.7250 N	10/107.2	166.7250 N	10/107.2	A
AIR TO GROUND	14	168.3375 N		168.3375 N		A
AIR TO GROUND	15	167.8125 N		167.8125 N		A

<b>9. Prepared By (Resource Unit Leader)</b> MATTHEW HASKINS	<b>Approved By (Planning Section Chief)</b> DAVE GERBOTH	<b>Date</b> 09/10/2018	<b>Time</b> 2200
---	---	---------------------------	---------------------

**Division/Group Assignment List (ICS 204 WF)**  
Controlled Unclassified Information//Basic

<b>1. Incident Name:</b>			<b>3.</b>			
DELTA			<b>Branch:</b>		<b>Division/Group:</b>	
<b>2. Operational Period:</b> DAY			VII		GG	
Date/Time From: 09/11/2018 0600 TUE	Date/Time To: 09/11/2018 1800 TUE					
<b>4. Operations Personnel</b>						
<b>WEST OPERATIONS CHIEF</b>		BILL BRYANT SCOTT LUCAS (T) (T)		<b>DIVISION/GROUP SUPERVISOR</b>		CLINT SWENSEN
<b>BRANCH DIRECTOR</b>		JAY WALTER		<b>AIR ATTACK SUPERVISOR</b>		DEREK WHEELER
<b>5. Resources Assigned this Period:</b>						
Strike Team / Task Force / Resource Designator		LWD	Leader	Number Persons	Drop Off PT./Time	Pick Up PT./Time
DO22 TOUGH COMPANY (24HR) E-94		09/22	KEVIN NICHOLS	2	COFFEE CREEK/0600	COFFEE CREEK/0600
DO22 TOM'S E-106		09/22	ANTHONY FUNES	2	COFFEE CREEK/0600	COFFEE CREEK/1800
DO22 E-110		09/21	DUNLOP DON	2	COFFEE CREEK/0600	COFFEE CREEK/1800
DO22 E-162		09/24	JIM SHEER	2	COFFEE CREEK/0600	COFFEE CREEK/1800
DO22 E-185		09/23	ROBERT JOHNSON	2	COFFEE CREEK/0600	COFFEE CREEK/1800
HEQB O-197		09/21	MATTHEW KILGRIFF	1	COFFEE CREEK/0600	COFFEE CREEK/1800
HEQB O-147		09/23	CINDY LUETH	1	COFFEE CREEK/0600	COFFEE CREEK/1800
HEQB O-198		09/22	TYLER HARRIS	1	COFFEE CREEK/0600	COFFEE CREEK/1800
TFLD O-21		09/20	CHRIS LANDRY	1	COFFEE CREEK/0600	COFFEE CREEK/1800
EMPF O-430		09/14	CONNOR DRAKE	1	COFFEE CREEK/0600	COFFEE CREEK/1800
EMTF O-109		09/22	ADAM WALKER	1	COFFEE CREEK/0600	COFFEE CREEK/1800
EMPF O-263		09/23	CASEY ZENGER	1	COFFEE CREEK/0600	COFFEE CREEK/1800
EMTF O-269		09/23	NATE BENNER	1	COFFEE CREEK/0600	COFFEE CREEK/1800
SOF2 O-240		09/15	JONATHAN LEE	1	COFFEE CREEK/0600	COFFEE CREEK/1800
REAF O-502		09/09	MICHAEL PARENTI	1	COFFEE CREEK/0600	COFFEE CREEK/1800
DIVS O-153		09/23	JERRY ANDERSON	1	COFFEE CREEK/0600	COFFEE CREEK/1800
DIVS O-219		09/23	JON KING	1	COFFEE CREEK/0600	COFFEE CREEK/1800
<b>8. Division/Group Communication Summary</b>						
Function	Channel	RX Frequency N/W	RX Tone/NAC	TX Frequency N/W	TX Tone/NAC	Mode
COMMAND	4	170.4125 N	10/107.2	165.9625 N	10/107.2	A
TACTICAL	9	166.7250 N	10/107.2	166.7250 N	10/107.2	A
AIR TO GROUND	14	168.3375 N		168.3375 N		A
AIR TO GROUND	15	167.8125 N		167.8125 N		A
<b>9. Prepared By (Resource Unit Leader)</b>			<b>Approved By (Planning Section Chief)</b>		<b>Date</b>	<b>Time</b>
MATTHEW HASKINS			DAVE GERBOTH		09/10/2018	2200

**Division/Group Assignment List (ICS 204 WF)**  
**Controlled Unclassified Information//Basic**

<b>1. Incident Name:</b> DELTA		<b>3.</b>	
<b>2. Operational Period:</b> Date/Time From: 09/11/2018 0600 TUE Date/Time To: 09/11/2018 1800 TUE		<b>Branch:</b>  <b>VII</b>	<b>Division/Group:</b>  <b>GG</b>

<b>4. Operations Personnel</b>			
<b>WEST OPERATIONS CHIEF</b>	BILL BRYANT SCOTT LUCAS (T) (T)	<b>DIVISION/GROUP SUPERVISOR</b>	CLINT SWENSEN
<b>BRANCH DIRECTOR</b>	JAY WALTER	<b>AIR ATTACK SUPERVISOR</b>	DEREK WHEELER

<b>5. Resources Assigned this Period</b>					
Strike Team / Task Force / Resource Designator	LWD	Leader	Number Persons	Drop Off PT./Time	Pick Up PT./Time

**6. Control Operations/Work Assignments:**

- Continue to construct direct line from Fools Gulch north to Watson Creek.
- Provide point protection for values at risk.

**7. Special Instructions:**

- FOBS J. Butcher, G. Hunt, J. McGaffee and R. Wimmer will be assigned to all divisions in Branch VII.

<b>8. Division/Group Communication Summary</b>						
Function	Channel	RX Frequency N/W	RX Tone/NAC	TX Frequency N/W	TX Tone/NAC	Mode
GOMMAND	4	170.4125 N	10/107.2	165.9625 N	10/107.2	A
TACTICAL	9	166.7250 N	10/107.2	166.7250 N	10/107.2	A
AIR TO GROUND	14	168.3375 N		168.3375 N		A
AIR TO GROUND	15	167.8125 N		167.8125 N		A

<b>9. Prepared By (Resource Unit Leader)</b> MATTHEW HASKINS	<b>Approved By (Planning Section Chief)</b> DAVE GERBOTH	<b>Date</b> 09/10/2018	<b>Time</b> 2200
---	---	---------------------------	---------------------

**Division/Group Assignment List (ICS 204 WF)**  
Controlled Unclassified Information//Basic

<b>1. Incident Name:</b>			<b>3.</b>			
DELTA			<b>VII</b>		<b>JJ</b>	
<b>2. Operational Period:</b> DAY						
Date/Time From: 09/11/2018 0600 TUE		Date/Time To: 09/11/2018 1800 TUE				
<b>4. Operations Personnel</b>						
WEST OPERATIONS CHIEF		BILL BRYANT SCOTT LUCAS (T)		DIVISION/GROUP SUPERVISOR		
BRANCH DIRECTOR		JAY WALTER		AIR ATTACK SUPERVISOR		DEREK WHEELER
<b>5. Resources Assigned this Period</b>						
Strike Team / Task Force / Resource Designator		LWD	Leader	Number Persons	Drop Off PT./Time	Pick Up PT./Time
SOFR O-296		09/24	JASON RALLS	1	COFFEE CREEK/0600	COFFEE CREEK/1800
REAF O-290		09/21	STEPHEN R HODGES	1	COFFEE CREEK/0600	COFFEE CREEK/1800
REAF O-348		09/15	BRENNA MONTAGNE	1	COFFEE CREEK/0600	COFFEE CREEK/1800
<b>6. Control Operations/Work Assignments:</b> UNSTAFFED						
<b>7. Special Instructions:</b>  <ul style="list-style-type: none"> <li>FOBS J. Butcher, G. Hunt, J. McGaffee and R. Wimmer will be assigned to all divisions in Branch VII.</li> </ul>						
<b>8. Division/Group Communication Summary</b>						
Function	Channel	RX Frequency N/W	RX Tone/NAC	TX Frequency N/W	TX Tone/NAC	Mode
COMMAND	4	170.4125 N	10/107.2	165.9625 N	10/107.2	A
TACTICAL	12	162.1625 N	10/107.2	162.1625 N	10/107.2	A
AIR TO GROUND	14	168.3375 N		168.3375 N		A
AIR TO GROUND	15	167.8125 N		167.8125 N		A
<b>9. Prepared By (Resource Unit Leader)</b> MIKE VETTI			<b>Approved By (Planning Section Chief)</b> DAVE GERBOTH		<b>Date</b> 09/10/2018	<b>Time</b> 2200



**Division/Group Assignment List (ICS 204 WF)**  
Controlled Unclassified Information//Basic

<b>1. Incident Name:</b>		<b>3.</b>	
DELTA		<b>Branch:</b>  <b>VII</b>	<b>Division/Group:</b>  <b>MM</b>
<b>2. Operational Period:</b> DAY			
Date/Time From: 09/11/2018 0600	TUE	Date/Time To: 09/11/2018 1800	TUE

4. Operations Personnel			
WEST OPERATIONS CHIEF	BILL BRYANT SCOTT LUCAS (T)	DIVISION/GROUP SUPERVISOR	
BRANCH DIRECTOR	JAY WALTER	AIR ATTACK SUPERVISOR	DEREK WHEELER

5. Resources Assigned this Period					
Strike Team / Task Force / Resource Designator	LWD	Leader	Number Persons	Drop Off PT./Time	Pick Up PT./Time

**6. Control Operations/Work Assignments:**  
UNSTAFFED

**7. Special Instructions:**

- FOBS J. Butcher, G. Hunt, J. McGaffee and R. Wimmer will be assigned to all divisions in Branch VII.

8. Division/Group Communication Summary						
Function	Channel	RX Frequency N/W	RX Tone/NAC	TX Frequency N/W	TX Tone/NAC	Mode
COMMAND	4	170.4125 N	10/107.2	165.9625 N	10/107.2	A
TACTICAL	9	166.7250 N	10/107.2	166.7250 N	10/107.2	A
AIR TO GROUND	14	168.3375 N		168.3375 N		A
AIR TO GROUND	15	167.8125 N		167.8125 N		A

<b>9. Prepared By (Resource Unit Leader)</b>		<b>Approved By (Planning Section Chief)</b>		<b>Date</b>	<b>Time</b>
MIKEVETTI		DAVE GERBOTH		09/10/2018	2200

## Division/Group Assignment List (ICS 204 WF)

Controlled Unclassified Information//Basic

<b>1. Incident Name:</b>		<b>3.</b>				
DELTA		<b>Branch:</b>		<b>Division/Group:</b>		
<b>2. Operational Period:</b>		<b>DAY</b>				
Date/Time From: 09/11/2018 0600 TUE		Date/Time To: 09/11/2018 1800 TUE		<b>VIII</b>		<b>PP</b>
<b>4. Operations Personnel</b>						
EAST OPERATIONS CHIEF		JAKE CAGLE		DIVISION/GROUP SUPERVISOR		CHRIS MARTINELLI
BRANCH DIRECTOR		STEVE WARD <i>Spencer Andrews (P)</i>		AIR ATTACK SUPERVISOR		DEREK WHEELER
<b>5. Resources Assigned this Period</b>						
Strike Team / Task Force / Resource Designator		LWD	Leader	Number Persons	Drop Off PT./Time	Pick Up PT./Time
HCS1 SKU 9261G (24HR) C-46 <i>TT</i>		09/28	JASON GUNN	35	MC CLOUD ICP /0600	MC CLOUD ICP /0600
HC2 BLACK EAGLES 5 C-127		09/12	DYLAN BROOKS	22	MC CLOUD ICP /0600	MC CLOUD ICP /1800
HC2 BLACK EAGLES 6 C-128		09/11	CODY HUNTER	20	MC CLOUD ICP /0600	MC CLOUD ICP /1800
ES3 TGU 9250C (24HR) E-21		09/18	MATT SISNEROS	17	MC CLOUD ICP /0600	MC CLOUD ICP /1800
WTS2 WILLMORE AG (24 HR) E-32		09/20	JESSE HOLDEN	2	MC CLOUD ICP /0600	MC CLOUD ICP /1800
WTS2 LET-ER-BUCK TRUCKING E-333		09/20	CLIFF RWEN	1	MC CLOUD ICP /0600	MC CLOUD ICP /1800
DOZ1 LEPAGE CO. INC E-107		09/22	DILLON MILTON	2	MC CLOUD ICP /0600	MC CLOUD ICP /1800
DZS2 9212L E-163		09/22	KEVIN FINKENKELLER	5	MC CLOUD ICP /0600	MC CLOUD ICP /1800
DZS2 9244L E-164		09/30	JOHN CAPEN	5	MC CLOUD ICP /0600	MC CLOUD ICP /1800
DOZ2 SKU 2640 (24 HR) E-56		09/25	KEN RUSH	3	MC CLOUD ICP /0600	MC CLOUD ICP /0600
DOZ2 HUU 1240 (24 HR) E-57		09/19	KRIS WOHLERS	2	MC CLOUD ICP /0600	MC CLOUD ICP /0600
DOZ2 DUDLEY'S E-93 <i>TT</i>		09/20	HOWIE LINDAUER	2	MC CLOUD ICP /0600	MC CLOUD ICP /1800
DOZ2 E-96		09/21	CARL STEINMAN	2	MC CLOUD ICP /0600	MC CLOUD ICP /1800
DOZ2 SHF DOZER 29 E-543		09/12	DAVID BROWN	2	MC CLOUD ICP /0600	MC CLOUD ICP /1800
MAST NORTHSTATE E-99		09/22	TREVOR TUPMAN	2	MC CLOUD ICP /0600	MC CLOUD ICP /1800
HEQB O-35		09/21	TYLER KUIKEN	1	MC CLOUD ICP /0600	MC CLOUD ICP /1800
HEQB O-702		09/14	KEVIN CASE	1	MC CLOUD ICP /0600	MC CLOUD ICP /1800
FMOD CHARLIE FALLERS O-30		09/20	TACOMA MANUEL	2	MC CLOUD ICP /0600	MC CLOUD ICP /1800
FMOD AMERICAN TIMBER O-59		09/17	DAN TOMILLA	2	MC CLOUD ICP /0600	MC CLOUD ICP /1800
FMOD NORTH ZONE FALLERS O-539		09/27	LUKE HELFINSTINE	2	MC CLOUD ICP /0600	MC CLOUD ICP /1800
<b>8. Division/Group Communication Summary</b>						
Function	Channel	RX Frequency N/W	RX Tone/NAC	TX Frequency N/W	TX Tone/NAC	Mode
COMMAND	6	169.5375 N	10/107.2	164.7125	10/107.2	A
TACTICAL	8	168.6000 N	10/107.2	168.6000 N	10/107.2	A
AIR TO GROUND	14	168.3375 N		168.3375 N		A
AIR TO GROUND	15	167.8125 N		167.8125 N		A
<b>9. Prepared By (Resource Unit Leader)</b>			<b>Approved By (Planning Section Chief)</b>		<b>Date</b>	<b>Time</b>
MIKE VETTI			DAVE GERBOTH		09/10/2018	2200

**Division/Group Assignment List (ICS 204 WF)**  
Controlled Unclassified Information//Basic

<b>1. Incident Name:</b> DELTA		<b>3.</b>	
<b>2. Operational Period:</b> Date/Time From: 09/11/2018 0600 TUE Date/Time To: 09/11/2018 1800 TUE		<b>Branch:</b> VIII	<b>Division/Group:</b> PP

4. Operations Personnel			
EAST OPERATIONS CHIEF	JAKE CAGLE	DIVISION/GROUP SUPERVISOR	CHRIS MARTINELLI
BRANCH DIRECTOR	STEVE WARD <i>(Spencer Andrews (T))</i>	AIR ATTACK SUPERVISOR	DEREK WHEELER

5. Resources Assigned this Period					
Strike Team / Task Force / Resource Designator	LWD	Leader	Number Persons	Drop Off PT./Time	Pick Up PT./Time
EMPF O-265	09/23	MATT PETERS	1	MC CLOUD ICP /0600	MC CLOUD ICP /1800
EMTF O-108	09/21	SHANE BROWN	1	MC CLOUD ICP /0600	MC CLOUD ICP /1800
SOFR O-755	09/17	RHETT WHISENHUNT	1	MC CLOUD ICP /0600	MC CLOUD ICP /1800
REAF (T) O-784	09/17	MOLLY BREITMUN	1	MC CLOUD ICP /0600	MC CLOUD ICP /1800
ARCH O-291	09/20	SARA KERFOOT	1	MC CLOUD ICP /0600	MC CLOUD ICP /1800
<i>AC61 9446 G C-48</i>	<i>9/22</i>	<i>Erik Blakoway</i>	<i>37</i>		
<i>0022 SHE 79 E-148</i>	<i>9/13</i>	<i>Victor Rivers</i>	<i>3</i>		
<i>FALB 6-340</i>	<i>9/24</i>	<i>Roy Chavez</i>	<i>1</i>		

- 6. Control Operations/Work Assignments:**
- Construct direct line from Middle Ridge west to Wildcat Peak along the county line.
  - Construct indirect line from Middle Ridge north to Ramshom Rd and west to Mumbo Creek.
  - Construct indirect line from Grozem Peak north to Blue Ridge.
  - Continue north from Blue Ridge towards Bear Flat and down to the Trinity River.

- 7. Special Instructions:**
- FOBS C. Brickey, C. Brown, C. Harper, J. Healy, J. Ficher and B. Grabowski (T) will be assigned to all divisions in Branch VIII.

8. Division/Group Communication Summary						
Function	Channel	RX Frequency N/W	RX Tone/NAC	TX Frequency N/W	TX Tone/NAC	Mode
COMMAND	6	169.5375 N	10/107.2	164.7125	10/107.2	A
TACTICAL	8	168.6000 N	10/107.2	168.6000 N	10/107.2	A
AIR TO GROUND	14	168.3375 N		168.3375 N		A
AIR TO GROUND	15	167.8125 N		167.8125 N		A

<b>9. Prepared By (Resource Unit Leader)</b> MIKE VETTI	<b>Approved By (Planning Section Chief)</b> DAVE GERBOTH	<b>Date</b> 09/10/2018	<b>Time</b> 2200
--	---	---------------------------	---------------------

**Division/Group Assignment List (ICS 204 WF)**  
Controlled Unclassified Information//Basic

<b>1. Incident Name:</b>			<b>3.</b>			
DELTA			Branch:		Division/Group:	
<b>2. Operational Period:</b> DAY			VIII		TT	
Date/Time From: 09/11/2018 0600 TUE	Date/Time To: 09/11/2018 1800 TUE					
<b>4. Operations Personnel</b>						
WEST OPERATIONS CHIEF		BILL BRYANT SCOTT LUCAS (T)		DIVISION/GROUP SUPERVISOR		KEITH CUMMINGS CASEY COHEN (T)
BRANCH DIRECTOR		STEVE WARD <i>Spencer Andrews (T)</i>		AIR ATTACK SUPERVISOR		DEREK WHEELER
<b>5. Resources Assigned this Period</b>						
Strike Team / Task Force / Resource Designator	LWD	Leader	Number Persons	Drop Off PT./Time	Pick Up PT./Time	
HC1 ELDORADO IHC C-35 → WW	09/16	AARON HUMPHREY	20	MCCLLOUD ICP /0600	MCCLLOUD ICP /1800	
HCS1 LMU 9222G (24HR) C-6	09/20	STEVE DIAZ	36	MCCLLOUD ICP /0600	MCCLLOUD ICP /0600	
HCS1 HUU 9124G (24HR) C-28	09/17	DERIK RICKSON	35	MCCLLOUD ICP /0600	MCCLLOUD ICP /0600	
HCS1 HUU 9126G (24 HR) C-29	09/16	JAKE BURGESS	34	MCCLLOUD ICP /0600	MCCLLOUD ICP /0600	
HCS1 9446G C-48 → PP	09/22	ERIK BLAKEWAY	37	MCCLLOUD ICP /0600	MCCLLOUD ICP /0600	
HC21 ELK MOUNTAIN C-36 Mountain		KEVIN M KNOLES	20	MCCLLOUD ICP /0600	MCCLLOUD ICP /1800	
HC2 R&R C-19	09/20	ASCUCENA AGUILERA (T)	20	MCCLLOUD ICP /0600	MCCLLOUD ICP /1800	
HC2 FRANCO C-23	09/20	JAIME DAVILA	20	MCCLLOUD ICP /0600	MCCLLOUD ICP /1800	
HC2 FORTUNA 22 C-125	09/13	DAN REESE	17	MCCLLOUD ICP /0600	MCCLLOUD ICP /1800	
ES3 SKU 9262C(24HR) E-20		MONTE WHIPPLE		MCCLLOUD ICP /0600	MCCLLOUD ICP /0600	
ES3 OES 3800C (24HR) E-22	09/18	RIK VALLES	18	MCCLLOUD ICP /0600	MCCLLOUD ICP /0600	
ES3 TNF 4660C E-686 → WW	09/17	ERIC HUSMANN	27	MCCLLOUD ICP /0600	MCCLLOUD ICP /1800	
ES3 OES 2870C (24HR) E-71	09/20	JEFF YOUNGSMAN	22	MCCLLOUD ICP /0600	MCCLLOUD ICP /0600	
ES3 9171C (24HR) E-489 → YY	09/29	BRIAN HAM	19	MCCLLOUD ICP /0600	MCCLLOUD ICP /0600	
ENG3 MODOC 44 E-59	09/21	WESLEY BRAKFIELD	5	MCCLLOUD ICP /0600	MCCLLOUD ICP /1800	
ENG3 BERTHOUD FPD E-384	09/10	LYLE FENDERSON	4	MCCLLOUD ICP /0600	MCCLLOUD ICP /1800	
ENG6 WOOD'S FIRE E-2	09/22	KURT FLEWELL	3	MCCLLOUD ICP /0600	MCCLLOUD ICP /1800	
ENG6 WOOD'S FIRE 27 E-118	09/22	STEVE FELIX	3	MCCLLOUD ICP /0600	MCCLLOUD ICP /1800	
ENG6 FIRESTORM WILDLAND E-174	09/22	RICK SANDIDGE	3	MCCLLOUD ICP /0600	MCCLLOUD ICP /1800	
ENG6 MES 6198 E-343	09/13	SHANE NICHOLS	4	MCCLLOUD ICP /0600	MCCLLOUD ICP /1800	
<b>8. Division/Group Communication Summary:</b>						
Function	Channel	RX Frequency N/W	RX Tone/NAC	TX Frequency N/W	TX Tone/NAC	Mode
COMMAND	6	169.5375 N	10/107.2	164.7125	10/107.2	A
TACTICAL	12	162.1625 N	10/107.2	162.1625 N	10/107.2	A
AIR TO GROUND	14	168.3375 N		168.3375 N		A
AIR TO GROUND	15	167.8125 N		167.8125 N		A
<b>9. Prepared By (Resource Unit Leader)</b>			<b>Approved By (Planning Section Chief)</b>		<b>Date</b>	<b>Time</b>
MATTHEW HASKINS			DAVE GERBOTH		09/10/2018	2200

## Division/Group Assignment List (ICS 204 WF)

Controlled Unclassified Information//Basic

<b>1. Incident Name:</b>			<b>3.</b>			
DELTA			Branch:		Division/Group:	
<b>2. Operational Period:</b> DAY			<b>VIII</b>		<b>TT</b>	
Date/Time From: 09/11/2018 0600 TUE	Date/Time To: 09/11/2018 1800 TUE					
<b>4. Operations Personnel</b>						
WEST OPERATIONS CHIEF		BILL BRYANT SCOTT LUCAS (T)		DIVISION/GROUP SUPERVISOR		KEITH CUMMINGS CASEY COHEN (T)
BRANCH DIRECTOR		STEVE WARD <i>Spencer Andrews (CT)</i>		AIR ATTACK SUPERVISOR		DEREK WHEELER
<b>5. Resources Assigned this Period</b>						
Strike Team / Task Force / Resource Designator		LWD	Leader	Number Persons	Drop Off PT./Time	Pick Up PT./Time
WTS2 FIRELINE SUPPORT E-37		09/21	REED HANELT	1	MC CLOUD ICP /0600	MC CLOUD ICP /1800
WTS2 MATTHEW J JOHNSON E-41		09/20	MATHEW JOHNSON	1	MC CLOUD ICP /0600	MC CLOUD ICP /1800
WTS2 JUNGWIRTH E-332		09/15	JERRY JUNGWIRTH, JR	1	MC CLOUD ICP /0600	MC CLOUD ICP /1800
WTS2 CARLTON (24HR) E-386		09/19	ROSS ROGERS	1	MC CLOUD ICP /0600	MC CLOUD ICP /0600
WTS2 WILLMORE AG E-583		09/13	BILL TORRE	2	MC CLOUD ICP /0600	MC CLOUD ICP /1800
DOZ2 ZABEL TRUCKING E-41		09/22	WADE ZABEL	2	MC CLOUD ICP /0600	MC CLOUD ICP /1800
DOZ2 LET-ER-BUCK- STEVE LASSEN E-136		09/21	TIM COOK	2	MC CLOUD ICP /0600	MC CLOUD ICP /1800
DOZ2 BRITTEN E-140		09/14	JOHN BRITTEN	3	MC CLOUD ICP /0600	MC CLOUD ICP /1800
<del>DOZ2 SHF-79 E-148</del> → PP		09/13	VICTOR RIVERS	3	MC CLOUD ICP /0600	MC CLOUD ICP /1800
DOZ2 PRO- DUMP AND EXCAVATING E-561		09/21	JERRY SEABORN	2	MC CLOUD ICP /0600	MC CLOUD ICP /1800
DOZ2 PRO- DUMP AND EXCAVATING E-562		09/21	TRACY NORTON	2	MC CLOUD ICP /0600	MC CLOUD ICP /1800
DOZ2 STONY CREEK E-146		09/15	DON ANDREWS	2	MC CLOUD ICP /0600	MC CLOUD ICP /1800
SKG1 SOFT TRACK ATTACK (24HR) E-548		09/15	STEVE BONNER	3	MC CLOUD ICP /0600	MC CLOUD ICP /1800
<del>TFLD O-166</del> (T) → WW		09/23	MICHAEL HOON (T)	1	MC CLOUD ICP /0600	MC CLOUD ICP /1800
TFLD O-172		09/23	PAUL TADLOCK	1	MC CLOUD ICP /0600	MC CLOUD ICP /1800
TFLD O-173 (T)		09/23	JEREMY SPIESS (T)	1	MC CLOUD ICP /0600	MC CLOUD ICP /1800
<del>TFLD O-224</del> (T) → WW		09/18	MATTHEW FLYING (T)	1	MC CLOUD ICP /0600	MC CLOUD ICP /1800
FMOD NORTH ZONE O-27		09/20	CRAIG DAVIS	2	MC CLOUD ICP /0600	MC CLOUD ICP /1800
HEQB O-200017		09/13	MIKE WATNER	1	MC CLOUD ICP /0600	MC CLOUD ICP /1800
HEQB (T) O-162		09/21	MARC BURNETT	1	MC CLOUD ICP /0600	MC CLOUD ICP /1800
<b>8. Division/Group Communication Summary</b>						
Function	Channel	RX Frequency N/W	RX Tone/NAC	TX Frequency N/W	TX Tone/NAC	Mode
COMMAND	6	169.5375 N	10/107.2	164.7125	10/107.2	A
TACTICAL	12	162.1625 N	10/107.2	162.1625 N	10/107.2	A
AIR TO GROUND	14	168.3375 N		168.3375 N		A
AIR TO GROUND	15	167.8125 N		167.8125 N		A
<b>9. Prepared By (Resource Unit Leader)</b>			<b>Approved By (Planning Section Chief)</b>		<b>Date</b>	<b>Time</b>
MATTHEW HASKINS			DAVE GERBOTH		09/10/2018	2200

**Division/Group Assignment List (ICS 204 WF)**  
Controlled Unclassified Information//Basic

1. Incident Name:		3.	
DELTA		Branch:	Division/Group:
2. Operational Period: DAY		VIII	TT
Date/Time From: 09/11/2018 0600 TUE	Date/Time To: 09/11/2018 1800 TUE		

4. Operations Personnel			
WEST OPERATIONS CHIEF	BILL BRYANT SCOTT LUCAS (T)	DIVISION/GROUP SUPERVISOR	KEITH CUMMINGS CASEY COHEN (T)
BRANCH DIRECTOR	STEVE WARD / Spencer Andrews (T)	AIR ATTACK SUPERVISOR	DEREK WHEELER

5. Resources Assigned this Period						
Strike Team / Task Force / Resource Designator	LWD	Leader	Number Persons	Drop Off PT./Time	Pick Up PT./Time	
HEQB O-201	09/23	DANIEL L STARK	1	MC CLOUD ICP /0600	MC CLOUD ICP /1800	
REMS 2 O-534	09/10 9/11	Jay Stiles	4	MC CLOUD ICP /0600	MC CLOUD ICP /1800	
REMS 6 O-277	9/24	TOMMY KITAHATA	4	MC CLOUD ICP /0600	MC CLOUD ICP /1800	
EMTP O-569	09/13	PABLO ORNELAS	1	MC CLOUD ICP /0600	MC CLOUD ICP /1800	
EMTF O-433	09/16	JASON MONAHAN	1	MC CLOUD ICP /0600	MC CLOUD ICP /1800	
EMTF O-530	09/11	HENRY MARTINEZ	1	MC CLOUD ICP /0600	MC CLOUD ICP /1800	
SOFR O-167	09/22	MATTHEW LUCAS	1	MC CLOUD ICP /0600	MC CLOUD ICP /1800	
HCS1 SKU 9261G (24 HR) C-46	9/28	Jason Gunn	35			
DSZ2 Dudley's E-93	9/20	Howie Lindauer	2			
			27			
WT53 Cottonwood Equip E-407		Nile Hanscom	1			
ES3 9211C (24 HR) E-88		Curtis Lawrie				
WT52 Shumas E-37	9/21	Justin Shultz				

8. Division/Group Communication Summary						
Function	Channel	RX Frequency N/W	RX Tone/NAC	TX Frequency N/W	TX Tone/NAC	Mode
COMMAND	6	169.5375 N	10/107.2	164.7125	10/107.2	A
TACTICAL	12	162.1625 N	10/107.2	162.1625 N	10/107.2	A
AIR TO GROUND	14	168.3375 N		168.3375 N		A
AIR TO GROUND	15	167.8125 N		167.8125 N		A

9. Prepared By (Resource Unit Leader)	Approved By (Planning Section Chief)	Date	Time
MATTHEW HASKINS	DAVE GERBOTH	09/10/2018	2200

**Division/Group Assignment List (ICS 204 WF)**  
Controlled Unclassified Information//Basic

1. Incident Name:		3.	
DELTA		<b>VIII</b>	<b>TT</b>
2. Operational Period: DAY			
Date/Time From: 09/11/2018 0600 TUE	Date/Time To: 09/11/2018 1800 TUE		

4. Operations Personnel			
WEST OPERATIONS CHIEF	BILL BRYANT SCOTT LUCAS (T)	DIVISION/GROUP SUPERVISOR	KEITH CUMMINGS CASEY COHEN (T)
BRANCH DIRECTOR	STEVE WARD / <i>SPENCER ANDREIS (T)</i>	AIR ATTACK SUPERVISOR	DEREK WHEELER

5. Resources Assigned this Period					
Strike Team / Task Force / Resource Designator	LWD	Leader	Number Persons	Drop Off PT./Time	Pick Up PT./Time

6. Control Operations/Work Assignments:
- Construct direct control lines if possible, from I-5 to Middle Ridge.
  - Prepare indirect control lines for possible firing operations.
  - Initiate mop-up to secure fire perimeter.

7. Special Instructions:
- Backhaul any excess equipment.

8. Division/Group Communication Summary						
Function	Channel	RX Frequency N/W	RX Tone/NAC	TX Frequency N/W	TX Tone/NAC	Mode
COMMAND	6	169.5375 N	10/107.2	164.7125	10/107.2	A
TACTICAL	12	162.1625 N	10/107.2	162.1625 N	10/107.2	A
AIR TO GROUND	14	168.3375 N		168.3375 N		A
AIR TO GROUND	15	167.8125 N		167.8125 N		A

9. Prepared By (Resource Unit Leader) MATTHEW HASKINS	Approved By (Planning Section Chief) DAVE GERBOTH	Date 09/10/2018	Time 2200
--	--	--------------------	--------------

**Division/Group Assignment List (ICS 204 WF)**  
**Controlled Unclassified Information//Basic**

1. Incident Name:			3.			
DELTA			Branch:		Division/Group:	
2. Operational Period: DAY			VIII		WW	
Date/Time From: 09/11/2018 0600 TUE	Date/Time To: 09/11/2018 1800 TUE					
4. Operations Personnel						
WEST OPERATIONS CHIEF		BILL BRYANT SCOTT LUCAS (T)		DIVISION/GROUP SUPERVISOR	MAEVE JAUREZ	
BRANCH DIRECTOR		STEVE WARD / <i>Spencer Andrews</i>		AIR ATTACK SUPERVISOR	DEREK WHEELER	
5. Resources Assigned this Period						
Strike Team / Task Force / Resource Designator		LWD	Leader	Number Persons	Drop Off PT./Time	Pick Up PT./Time
HC1 REDDING IHC C-60		09/22	DANIEL MALLIA	19	MC CLOUD ICP/0600	MC CLOUD ICP/1800
HC2I IRON MOUNTAIN C-49		09/23	MATTHEW A MCKURTIS	20	MC CLOUD ICP/0600	MC CLOUD ICP/1800
ES3 XYO 4280C (24HR) E-72		09/20	ERIC ZANE	21	MC CLOUD ICP/0600	MC CLOUD ICP/0600
ENG6 E-176		09/23	NATHAN MINE	3	MC CLOUD ICP/0600	MC CLOUD ICP/1800
ENG6 RED ROCK FIRE E-346		09/21	JEFF O' FLANAGAN	3	MC CLOUD ICP/0600	MC CLOUD ICP/1800
WTS2 BEN'S TRUCK & EQUIPMENT E-36		09/20	TRAVIS MILES	1	MC CLOUD ICP/0600	MC CLOUD ICP/1800
DO22 BD3 E-95		09/21	TIM WATERMAN	2	MC CLOUD ICP/0600	MC CLOUD ICP/1800
SKD2 E-126		09/23	ERIC ELLIOTT	2	MC CLOUD ICP/0600	MC CLOUD ICP/1800
TFLD O-154		09/22	DAN OKEEFE	1	MC CLOUD ICP/0600	MC CLOUD ICP/1800
EMPF O-106		09/22	ANTHONY RAPOZA	1	MC CLOUD ICP/0600	MC CLOUD ICP/1800
EMTF O-111		09/22	MARCUS BLACK	1	MC CLOUD ICP/0600	MC CLOUD ICP/1800
SOFR O-182		09/23	BOBBY HUBBY	1	MC CLOUD ICP/0600	MC CLOUD ICP/1800
6. Control Operations/Work Assignments:						
<p><i>HC1 Eldorado IHC C-35 9/16 Aaron Humphrey 20</i></p> <ul style="list-style-type: none"> <li>Construct direct control lines if possible. <i>TFLD (T) O-166 9/23 Michael Hoon</i></li> <li>Construct indirect control lines if necessary. <i>TFLD (T) O-221 9/18 Matthew Flying</i></li> <li>Prepare indirect control lines for possible firing operations. <i>ENG3 TNF 4660 E-605</i></li> </ul>						
7. Special Instructions:						
<ul style="list-style-type: none"> <li>FOBS C. Brickey, C. Brown, C. Harper, J. Healy, J. Ficher and B. Grabowski (T) will be assigned to all divisions in Branch VIII.</li> </ul>						
8. Division/Group Communication Summary						
Function	Channel	RX Frequency N/W	RX Tone/NAC	TX Frequency N/W	TX Tone/NAC	Mode
COMMAND	6	169.5375 N	10/107.2	164.7125	10/107.2	A
TACTICAL	10	166.7750 N	10/107.2	166.7750 N	10/107.2	A
AIR TO GROUND	14	168.3375 N		168.3375 N		A
AIR TO GROUND	15	167.8125 N		167.8125 N		A
9. Prepared By (Resource Unit Leader)			Approved By (Planning Section Chief)		Date	Time
MATTHEW HASKINS			DAVE GERBOTH		09/10/2018	2200



## Division/Group Assignment List (ICS 204 WF)

Controlled Unclassified Information//Basic

<b>1. Incident Name:</b>		<b>3.</b>	
DELTA		<b>IX</b>	<b>AA</b>
<b>2. Operational Period:</b>		<b>DAY</b>	
Date/Time From: 09/11/2018 0600	TUE	Date/Time To: 09/11/2018 1800	TUE

4. Operations Personnel			
<b>WEST OPERATIONS CHIEF</b>	BILL BRYANT SCOTT LUCAS (T)	<b>DIVISION/GROUP SUPERVISOR</b>	DAN VARNEY KEVIN SMITH (T)
<b>BRANCH DIRECTOR</b>	KYLE JACOBSON BILLY SEE (DEPUTY)	<b>AIR ATTACK SUPERVISOR</b>	DEREK WHEELER

5. Resources Assigned this Period						
Strike Team / Task Force / Resource Designator	LWD	Leader	Number Persons	Drop Off PT./Time	Pick Up PT./Time	
HC1 AMERICAN RIVER IHC C-12	09/15	MATTHEW RADTKE	20	MC CLOUD ICP/0600	MC CLOUD ICP/1800	
HC1 SIERRA HOTSHOTS IHC C-40	09/22	ROBY ALAN	21	MC CLOUD ICP/0600	MC CLOUD ICP/1800	
HC2I BLACK EAGLES C-14	09/20	GUSTAVO SANTOYO-GALLEGOS	22	MC CLOUD ICP/0600	MC CLOUD ICP/1800	
HC2 SHASTA C-130	09/16	LLOYD CRUZ	19	MC CLOUD ICP/0600	MC CLOUD ICP/1800	
ENG3 PNF330 E-237	09/16	TRAVIS LOPES	5	MC CLOUD ICP/0600	MC CLOUD ICP/1800	
ENG3 MNF 353 E-241	09/19	MARCUS SPIVEY (T)	5	MC CLOUD ICP/0600	MC CLOUD ICP/1800	
ENG3 MNF 336 E-242	09/18	BRAD FOVAR	5	MC CLOUD ICP/0600	MC CLOUD ICP/1800	
ENG3 NOD 3230 E-524	09/14	CHRIS BOURGOINE	4	MC CLOUD ICP/0600	MC CLOUD ICP/1800	
ENG6 RED ROCK FIRE 261 E-347	09/13	BUTCH MURPHY	3	MC CLOUD ICP/0600	MC CLOUD ICP/1800	
ENG6 HART VENTURES E-380	09/11	SKIP KOLTZ	3	MC CLOUD ICP/0600	MC CLOUD ICP/1800	
WTT1 MAYER FIRE E-188	08/11	JAKE MCDANIEL	2	MC CLOUD ICP/0600	MC CLOUD ICP/1800	
WTT1 SCOTT VALLEY E-571	09/13	ALBERT BUCHTER	2	MC CLOUD ICP/0600	MC CLOUD ICP/1800	
WTS2 BUNN ENTERPRISES E-336	09/15	WADE BUNN	1	MC CLOUD ICP/0600	MC CLOUD ICP/1800	
WTS2 YREKA OUTLANDS (24HR) E-387	09/17	ALLEN WILLIAMS	2	MC CLOUD ICP/0600	MC CLOUD ICP/1800	
WTS2 WATERDOGG, LLC (24HR) E-580	09/13	ANTHONY PALAZZO	2	MC CLOUD ICP/0600	MC CLOUD ICP/1800	
WTS2 DARRAH LOGGING INC E-582	09/13	RICK RESH	1	MC CLOUD ICP/0600	MC CLOUD ICP/1800	
WTS2 JOHN SAMPLE (24HR) E-589	09/13	JAMES GOLDIE	1	MC CLOUD ICP/0600	MC CLOUD ICP/1800	
WTS3 GRANT HANNA (24HR) E-556	09/12	SHAWN BULTENA	2	MC CLOUD ICP/0600	MC CLOUD ICP/1800	
WTS3 DAVE DUERR E-569	09/12	SCOTT VALLEY	1	MC CLOUD ICP/0600	MC CLOUD ICP/1800	
DOZ2 DUNLAP (24HR) E-135	09/12	WILLIAM DUNLAP	2	MC CLOUD ICP/0600	MC CLOUD ICP/1800	

8. Division/Group Communication Summary						
Function	Channel	RX Frequency N/W	RX Tone/NAC	TX Frequency N/W	TX Tone/NAC	Mode
COMMAND	2	172.6500 N	10/107.2	164.7500 N	10/107.2	A
TACTICAL	7	168.0500 N	10/107.2	168.0500 N	10/107.2	A
AIR TO GROUND	14	168.3375 N		168.3375 N		A
AIR TO GROUND	15	167.8125 N		167.8125 N		A

<b>9. Prepared By (Resource Unit Leader)</b>	<b>Approved By (Planning Section Chief)</b>	<b>Date</b>	<b>Time</b>
SCOTT SOUSA	DAVE GERBOTH	09/10/2018	2200

**Division/Group Assignment List (ICS 204 WF)**  
**Controlled Unclassified Information//Basic**

1. Incident Name:			3.			
DELTA			Branch:		Division/Group:	
2. Operational Period: DAY			IX		AA	
Date/Time From: 09/11/2018 0600 TUE	Date/Time To: 09/11/2018 1800 TUE					
4. Operations Personnel						
WEST OPERATIONS CHIEF		BILL BRYANT SCOTT LUCAS (T)		DIVISION/GROUP SUPERVISOR		DAN VARNEY KEVIN SMITH (T)
BRANCH DIRECTOR		KYLE JACOBSON BILLY SEE (DEPUTY)		AIR ATTACK SUPERVISOR		DEREK WHEELER
5. Resources Assigned this Period						
Strike Team / Task Force / Resource Designator	LWD	Leader	Number Persons	Drop Off PT./Time	Pick Up PT./Time	
DO22 LE BRITTEN E-139	09/10	GARY WHITNEY	2	MC CLOUD ICP/0600	MC CLOUD ICP/1800	
DO22 NORTHWESTERN FIRE E-292	09/15	MIKE SALTERS	3	MC CLOUD ICP/0600	MC CLOUD ICP/1800	
PUMP TRINITY QUICK LUBE (25HR) E-7 24 HR	09/18	JOSEPH PINI	1	MC CLOUD ICP/0600	MC CLOUD ICP/1800	
TFLD O-20	09/19	CHRISTOPHER E ALLEN	1	MC CLOUD ICP/0600	MC CLOUD ICP/1800	
TFLD O-773	09/14	JOSEPH WEBB	1	MC CLOUD ICP/0600	MC CLOUD ICP/1800	
TFLD (T) O-774	09/14	ROBERT ALONSO	1	MC CLOUD ICP/0600	MC CLOUD ICP/1800	
HEQB O-463	09/14	BRUCE ROBISON	1	MC CLOUD ICP/0600	MC CLOUD ICP/1800	
HEQB O-662	09/14	DANIEL PATTERSON	1	MC CLOUD ICP/0600	MC CLOUD ICP/1800	
REM-7 (4 MEMBER) O-276 REMB7	9/24	DAVID FICHTER	4	MC CLOUD ICP/0600	MC CLOUD ICP/1800	
REM-11 (4 MEMBER) O-517 REMB1	09/11	BRANDAN BARAHURA	4	MC CLOUD ICP/0600	MC CLOUD ICP/1800	
EMPF O-164	09/23	TOM KAVANAUGH	1	MC CLOUD ICP/0600	MC CLOUD ICP/1800	
EMTF O-113	09/22	JOSHUA MASSIE	1	MC CLOUD ICP/0600	MC CLOUD ICP/1800	
SOFR O-592	09/18	JACK THOMAS	1	MC CLOUD ICP/0600	MC CLOUD ICP/1800	
8. Division/Group Communication Summary						
Function	Channel	RX Frequency N/W	RX Tone/NAC	TX Frequency N/W	TX Tone/NAC	Mode
COMMAND	2	172.6500 N	10/107.2	164.7500 N	10/107.2	A
TACTICAL	7	168.0500 N	10/107.2	168.0500 N	10/107.2	A
AIR TO GROUND	14	168.3375 N		168.3375 N		A
AIR TO GROUND	15	167.8125 N		167.8125 N		A
9. Prepared By (Resource Unit Leader)			Approved By (Planning Section Chief)		Date	Time
SCOTT SOUSA			DAVE GERBOTH		09/10/2018	2200

## Division/Group Assignment List (ICS 204 WF)

Controlled Unclassified Information//Basic

<b>1. Incident Name:</b>		<b>3:</b>	
DELTA		Branch:	Division/Group:
<b>2. Operational Period:</b>		<b>IX</b>	<b>AA</b>
Date/Time From: 09/11/2018 0600	Date/Time To: 09/11/2018 1800	TUE	TUE

4. Operations Personnel			
<b>WEST OPERATIONS CHIEF</b>	BILL BRYANT SCOTT LUCAS (T)	<b>DIVISION/GROUP SUPERVISOR</b>	DAN VARNEY KEVIN SMITH (T)
<b>BRANCH DIRECTOR</b>	KYLE JACOBSON BILLY SEE (DEPUTY)	<b>AIR ATTACK SUPERVISOR</b>	DEREK WHEELER

5. Resources Assigned this Period					
Strike Team / Task Force / Resource Designator	LWD	Leader	Number Persons	Drop Off PT./Time	Pick Up PT./Time

- 6. Control Operations/Work Assignments:**
- Continue firing the dozerline along Mosquito Creek Ridge from Dog Creek to Lookout point.
  - Continue firing along Dog Creek from McCall Gulch to McKinsey Ridge.
  - Hold and improve all control lines.

**7. Special Instructions:**

8. Division/Group Communication Summary						
Function	Channel	RX Frequency N/W	RX Tone/NAC	TX Frequency N/W	TX Tone/NAC	Mode
COMMAND	2	172.6500 N	10/107.2	164.7500 N	10/107.2	A
TACTICAL	7	168.0500 N	10/107.2	168.0500 N	10/107.2	A
AIR TO GROUND	14	168.3375 N		168.3375 N		A
AIR TO GROUND	15	167.8125 N		167.8125 N		A

<b>9. Prepared By (Resource Unit Leader)</b> SCOTT SOUSA	<b>Approved By (Planning Section Chief)</b> DAVE GERBOTH	<b>Date</b> 09/10/2018	<b>Time</b> 2200
---	---	---------------------------	---------------------

**Division/Group Assignment List (ICS 204 WF)**  
Controlled Unclassified Information//Basic

1. Incident Name:			3.			
DELTA			Branch:		Division/Group:	
2. Operational Period: DAY			IX		CC	
Date/Time From: 09/11/2018 0600 TUE		Date/Time To: 09/11/2018 1800 TUE				
4. Operations Personnel						
WEST OPERATIONS CHIEF		BILL BRYANT SCOTT LUCAS (T)		DIVISION/GROUP SUPERVISOR		HEATHER GROVE
BRANCH DIRECTOR		KYLE JACOBSON BILLY SEE (DEPUTY)		AIR ATTACK SUPERVISOR		DEREK WHEELER
5. Resources Assigned this Period						
Strike Team / Task Force / Resource Designator		LWD	Leader	Number Persons	Drop Off PT./Time	Pick Up PT./Time
HC1 TALLAC IHC C-61		09/15	KYLE BETTY	19	MC CLOUD ICP/0600	MC CLOUD ICP/1800
ENG6 ASF E611 E-120		09/24	BERKELY KRUEGER	6	MC CLOUD ICP/0600	MC CLOUD ICP/1800
DOZ1 OILAR, PATRICK E-159		09/24	PATRICK OILAR	2	MC CLOUD ICP/0600	MC CLOUD ICP/1800
DOZ2 WARNER ENTERPRISES, INC E-183		09/23	TOM HELSLEY	2	MC CLOUD ICP/0600	MC CLOUD ICP/1800
DOZ2 BOB W BUSHEY E-161		09/24	TOM MINTO	2	MC CLOUD ICP/0600	MC CLOUD ICP/1800
HEQB O-163		09/22	TIMOTHY J HOLLIDAY	1	MC CLOUD ICP/0600	MC CLOUD ICP/1800
EMPF O-211		09/23	MATT HECKMANN	1	MC CLOUD ICP/0600	MC CLOUD ICP/1800
EMTF O-273		09/24	EDWARD LEE NOBLE	1	MC CLOUD ICP/0600	MC CLOUD ICP/1800
SOFR O-592		09/18	JACK THOMAS	1	MC CLOUD ICP/0600	MC CLOUD ICP/1800
6. Control Operations/Work Assignments:						
<p><i>HC2IA Golden Empire C-63 Paddy Young 21</i></p> <ul style="list-style-type: none"> <li>• Construct and improve indirect control line from DP 38 northwest towards Damnation Peak.</li> <li>• Prepare indirect line for possible firing operations.</li> </ul>						
7. Special Instructions:						
8. Division/Group Communication Summary:						
Function	Channel	RX Frequency N/W	RX Tone/NAC	TX Frequency N/W	TX Tone/NAC	Mode
COMMAND	2	172.6500 N	10/107.2	164.7500 N	10/107.2	A
TACTICAL	11	168.2500 N	10/107.2	168.2500 N	10/107.2	A
AIR TO GROUND	14	168.3375 N		168.3375 N		A
AIR TO GROUND	15	167.8125 N		167.8125 N		A
9. Prepared By (Resource Unit Leader)			Approved By (Planning Section Chief)		Date	Time
SCOTT SOUSA			DAVE GERBOTH		09/10/2018	2200

## Division/Group Assignment List (ICS 204 WF)

Controlled Unclassified Information//Basic

<b>1. Incident Name:</b>			<b>3.</b>			
DELTA			<b>IX</b>		<b>YY</b>	
<b>2. Operational Period:</b> DAY						
Date/Time From: 09/11/2018 0600 TUE		Date/Time To: 09/11/2018 1800 TUE				
<b>4. Operations Personnel</b>						
EAST OPERATIONS CHIEF		JAKE CAGLE		DIVISION/GROUP SUPERVISOR		KEITH SWOPE
BRANCH DIRECTOR		KYLE JACOBSON BILLY SEE (DEPUTY)		AIR ATTACK SUPERVISOR		DEREK WHEELER
<b>5. Resources Assigned this Period</b>						
Strike Team / Task Force / Resource Designator		LWD	Leader	Number Persons	Drop Off PT./Time	Pick Up PT./Time
HC1 TEXAS CANYON HOTSHOTS IHC C-3		09/20 9/19	DAN BREUKLANDER	20	MC CLOUD ICP/0600	MC CLOUD /1800
HC2IA TRUCKEE IHC C-65		09/24	SCOTT BURGHARDT	20	MC CLOUD ICP/0600	MC CLOUD /1800
HC2IA KLAMATH CREW 14 C-58		09/19	ANDREW S ZINK	18	MC CLOUD ICP/0600	MC CLOUD /1800
ES3 SHU 9242C (24HR) E-65		09/20	TIMOTHY R WHITEHURST	17	MC CLOUD ICP/0600	MC CLOUD /0600
ENG3 SQF 322 E-607		09/17	CHRISTOPHER MORALES	5	MC CLOUD ICP/0600	MC CLOUD /1800
ENG3 SQF 341 E-608		09/17	RICHARD BAKER	5	MC CLOUD ICP/0600	MC CLOUD /1800
ENG3 LONGMONT 2131 E-462		09/11	DAVID CROPP	4	MC CLOUD ICP/0600	MC CLOUD /1800
ENG3 SQF 47 E-609		09/17	MATTHEW CHAMBERS	5	MC CLOUD ICP/0600	MC CLOUD /1800
ENG3 SQF 43 E-610		09/17	JEREMIAS OLSON	5	MC CLOUD ICP/0600	MC CLOUD /1800
ENG3 CND 3133 E-611		09/17	JAMES ROOFFENER	5	MC CLOUD ICP/0600	MC CLOUD /1800
ENG6 AR OUF 692 E-476		09/11	BRADY JOHNSON	3	MC CLOUD ICP/0600	MC CLOUD /1800
ENG6 MES 6200 E-344		09/13	DUSTIN PICKERING	4	MC CLOUD ICP/0600	MC CLOUD /1800
ENG6 GRIFFITH AUTO SHOP E-349		09/12	WILLIAM GRIFFITH	3	MC CLOUD ICP/0600	MC CLOUD /1800
WTS2 ALLIED WATER SERVICE E-65		09/12	RICHARD BENSON	1	MC CLOUD ICP/0600	MC CLOUD /1800
WTS2 VALLEY TIMBER E-335		09/17	DAVID BAKER	2	MC CLOUD ICP/0600	MC CLOUD /1800
WTS2 BAR 1 TENDER (24 HR) E-519		09/22	ERIC CHOATE	1	MC CLOUD ICP/0600	MC CLOUD /0600
WTT2 SHF 46 E-570		09/13	BRENDAN LUKAS	1	MC CLOUD ICP/0600	MC CLOUD /1800
WTS3 RUSSELL HODGSON E-557		09/12	RUSSEL HODGSON	1	MC CLOUD ICP/0600	MC CLOUD /1800
DOZ1 BROWN E-270		09/11	MIKE MAURER	2	MC CLOUD ICP/0600	MC CLOUD /1800
DZS2 LMU 9220L (24 HR) E-53		09/20	TIM WILLIAMS	8	MC CLOUD ICP/0600	MC CLOUD /0600
<b>8. Division/Group Communication Summary</b>						
Function	Channel	RX Frequency N/W	RX Tone/NAC	TX Frequency N/W	TX Tone/NAC	Mode
COMMAND	6	169.5375 N	10/107.2	164.7125	10/107.2	A
TACTICAL	11	168.2500 N	10/107.2	168.2500 N	10/107.2	A
AIR TO GROUND	14	168.3375 N		168.3375 N		A
AIR TO GROUND	15	167.8125 N		167.8125 N		A
<b>9. Prepared By (Resource Unit Leader)</b>			<b>Approved By (Planning Section Chief)</b>		<b>Date</b>	<b>Time</b>
MIKE VETTI			DAVE GERBOTH		09/10/2018	2200

**Division/Group Assignment List (ICS 204 WF)**  
**Controlled Unclassified Information//Basic**

<b>1. Incident Name:</b>		3				
DELTA		Branch:  <b>IX</b>	Division/Group:  <b>YY</b>			
<b>2. Operational Period:</b> DAY						
Date/Time From: 09/11/2018 0600	TUE	Date/Time To: 09/11/2018 1800	TUE			
<b>4. Operations Personnel</b>						
EAST OPERATIONS CHIEF	JAKE CAGLE	DIVISION/GROUP SUPERVISOR	KEITH SWOPE			
BRANCH DIRECTOR	KYLE JACOBSON BILLY SEE (DEPUTY)	AIR ATTACK SUPERVISOR	DEREK WHEELER			
<b>5. Resources Assigned this Period</b>						
Strike Team / Task Force / Resource Designator	LWD	Leader	Number Persons	Drop Off PT./Time	Pick Up PT./Time	
DO22 NEU 2346 (24 HR) E-58	09/18	DEVERY MINOR	3	MC CLOUD ICP/0600	MC CLOUD /0600	
DO22 T AND S DVBE E-144	09/17	ROERT JONES	2	MC CLOUD ICP/0600	MC CLOUD /1800	
DOZ1 DARRAH LOGGING E-284	09/21	KEITH DARRAH SR	2	MC CLOUD ICP/0600	MC CLOUD /1800	
DO22 NORTHWESTERN FIRE E-293	09/15	RON STEVENSON	2	MC CLOUD ICP/0600	MC CLOUD /1800	
EXCA TRINITY RIVER. E-619	09/20	ED SWANSON	2	MC CLOUD ICP/0600	MC CLOUD /1800	
EXCA TRINITY RIVER E-591	09/16	TYLER BROWN	2	MC CLOUD ICP/0600	MC CLOUD /1800	
EXCA BOB JOHNSON E-243	09/16	LANE WILSON	2	MC CLOUD ICP/0600	MC CLOUD /1800	
CHIP MORBARK E-222				MC CLOUD ICP/0600	MC CLOUD /1800	
UTV WILDERNESS MEDICS INC E-566	09/17	KEVIN MCMAHON	2	MC CLOUD ICP/0600	MC CLOUD /1800	
PUMP TRINITY QUICK LUBE (24 HR) E-14	08/22	ABEL PINI	2	MC CLOUD ICP/0600	MC CLOUD /0600	
TFLD O-714	09/17	COLLIN BONDS	1	MC CLOUD ICP/0600	MC CLOUD /1800	
HEQB (T) O-531	09/11	CHRISTOPHER FOURTNER	1	MC CLOUD ICP/0600	MC CLOUD /1800	
HEQB O-676		NATHAN GOLDIE	1	MC CLOUD ICP/0600	MC CLOUD /1800	
FMOD O-28	09/20	NORTH ZONE FALLERS	2	MC CLOUD ICP/0600	MC CLOUD /1800	
FMOD O-538	<del>09/27</del> 9/11	STEVE DAVIS	1	MC CLOUD ICP/0600	MC CLOUD /1800	
FMOD O-664	09/17	ALEN INGERSOLL	2	MC CLOUD ICP/0600	MC CLOUD /1800	
EMPF O-568	09/19	MATTHEW CAFFEY	1	MC CLOUD ICP/0600	MC CLOUD /1800	
EMTF O-579	09/11	CHRIS GROGAN	1	MC CLOUD ICP/0600	MC CLOUD /1800	
EMTF O-271	09/24	PATRICK M DAWSON	1	MC CLOUD ICP/0600	MC CLOUD /1800	
SOF2 O-835	09/20	DAVID PROVENCIO	1	MC CLOUD ICP/0600	MC CLOUD /1800	
<b>8. Division/Group Communication Summary</b>						
Function	Channel	RX Frequency N/W	RX Tone/NAC	TX Frequency N/W	TX Tone/NAC	Mode
COMMAND	6	169.5375 N	10/107.2	164.7125	10/107.2	A
TACTICAL	11	168.2500 N	10/107.2	168.2500 N	10/107.2	A
AIR TO GROUND	14	168.3375 N		168.3375 N		A
AIR TO GROUND	15	167.8125 N		167.8125 N		A
<b>9. Prepared By (Resource Unit Leader)</b>		<b>Approved By (Planning Section Chief)</b>		<b>Date</b>	<b>Time</b>	
MIKE VETTI		DAVE GERBOTH		09/10/2018	2200	

**Division/Group Assignment List (ICS 204 WF)**  
Controlled Unclassified Information//Basic

1. Incident Name:		3.	
DELTA		Branch:	Division/Group:
2. Operational Period: DAY		IX	YY
Date/Time From: 09/11/2018 0600 TUE	Date/Time To: 09/11/2018 1800 TUE		

4. Operations Personnel			
EAST OPERATIONS CHIEF	JAKE CAGLE	DIVISION/GROUP SUPERVISOR	KEITH SWOPE
BRANCH DIRECTOR	KYLE JACOBSON BILLY SEE (DEPUTY)	AIR ATTACK SUPERVISOR	DEREK WHEELER

5. Resources Assigned this Period					
Strike Team / Task Force / Resource Designator	LWD	Leader	Number Persons	Drop Off PT./Time	Pick Up PT./Time
TFLD 0-23	9/24	Tye Erwin	1		
TFLD (T) 0-25	9/24	Bryan Agbalog	1		
TFLD 0-22	9/24	Weston Burch	1		
E63 2010C E-70	9/20	Wally Finck	22		
ES3 9171C E-189	9/29	BRIAN Ham	19		

6. Control Operations/Work Assignments:

- Look for opportunities to construct direct line.
- Initiate firing operations if necessary from DP 65 north to DP 64 then continue to DP 63 at Sims Campground.

7. Special Instructions:

8. Division/Group Communication Summary						
Function	Channel	RX Frequency N/W	RX Tone/NAC	TX Frequency N/W	TX Tone/NAC	Mode
COMMAND	6	169.5375 N	10/107.2	164.7125	10/107.2	A
TACTICAL	11	168.2500 N	10/107.2	168.2500 N	10/107.2	A
AIR TO GROUND	14	168.3375 N		168.3375 N		A
AIR TO GROUND	15	167.8125 N		167.8125 N		A

9. Prepared By (Resource Unit Leader)	Approved By (Planning Section Chief)	Date	Time
MIKE VETTI	DAVE GERBOTH	09/10/2018	2200

**Division/Group Assignment List (ICS 204 WF)**  
**Controlled Unclassified Information//Basic**

1. Incident Name:			3.			
DELTA			Branch:		Division/Group:	
2. Operational Period: DAY			IX		ZZ	
Date/Time From: 09/11/2018 0600 TUE	Date/Time To: 09/11/2018 1800 TUE					
4. Operations Personnel						
WEST OPERATIONS CHIEF		BILL BRYANT SCOTT LUCAS (T)		DIVISION/GROUP SUPERVISOR		BELINDA PLUMMER DUANE KNIGHTON (T)
BRANCH DIRECTOR		KYLE JACOBSON BILLY SEE (DEPUTY)		AIR ATTACK SUPERVISOR		DEREK WHEELER
5. Resources Assigned this Period						
Strike Team / Task Force / Resource Designator	LWD	Leader	Number Persons	Drop Off PT./Time	Pick Up PT./Time	
HC2I VENTANA C-15	09/20	STEVE REYES	20	MC CLOUD ICP/0600	MC CLOUD ICP/1800	
HC2I DIAMOND FIRE 16 C-123	09/17	NICK KING	20	MC CLOUD ICP/0600	MC CLOUD ICP/1800	
HC2I GFP 15D C-129	09/17	BRANDON CAMPBELL	20	MC CLOUD ICP/0600	MC CLOUD ICP/1800	
ES3 YNP 5780C E-116	09/19	ROBERT GIOVANNETTI	25	MC CLOUD ICP/0600	MC CLOUD ICP/1800	
ES3 LNF 3615C E-603	09/17	RICHARD NOGGLES	27	MC CLOUD ICP/0600	MC CLOUD ICP/1800	
ENG4 ROC-N-R E-482	09/11	JIM LASALLE	3	MC CLOUD ICP/0600	MC CLOUD ICP/1800	
ENG6 5265 E-121	09/23	RICARDO KINDELAY	3	MC CLOUD ICP/0600	MC CLOUD ICP/1800	
WTS2 CATTELACK RANCH (24 HR) E-587	09/13	JIM GOLDIE	3	MC CLOUD ICP/0600	MC CLOUD ICP/0600	
TFLD O-805	09/19	JESSE ALEXANDER	1	MC CLOUD ICP/0600	MC CLOUD ICP/1800	
TFLD (T) O-791	09/19	TRAVIS KUNKLE	1	MC CLOUD ICP/0600	MC CLOUD ICP/1800	
REMS O-94 <i>REMS 5</i>	09/22	TIM MEHRER	4	MC CLOUD ICP/0600	MC CLOUD ICP/1800	
EMTP O-571	09/11	KYLE YOUNG	1	MC CLOUD ICP/0600	MC CLOUD ICP/1800	
EMTF O-526	09/11	CHARLES KUNIYOSHI	1	MC CLOUD ICP/0600	MC CLOUD ICP/1800	
SOFR O-168	09/23	RUDY DIAZ	1	MC CLOUD ICP/0600	MC CLOUD ICP/1800	
SOF2 O-553	09/18	MICHAEL FREDERICK	1	MC CLOUD ICP/0600	MC CLOUD ICP/1800	
<i>ENG 6 Black Timber 52 E-177</i>		<i>Ted Hebrard</i>	<i>2</i>			
8. Division/Group Communication Summary						
Function	Channel	RX Frequency N/W	RX Tone/NAC	TX Frequency N/W	TX Tone/NAC	Mode
COMMAND	2	172.6500 N	10/107.2	164.7500 N	10/107.2	A
TACTICAL	10	166.7750 N	10/107.2	166.7750 N	10/107.2	A
AIR TO GROUND	14	168.3375 N		168.3375 N		A
AIR TO GROUND	15	167.8125 N		167.8125 N		A
9. Prepared By (Resource Unit Leader)			Approved By (Planning Section Chief)		Date	Time
MIKE VETTI			DAVE GERBOTH		09/10/2018	2200



**Division/Group Assignment List (ICS 204 WF)**  
Controlled Unclassified Information//Basic

<b>1. Incident Name:</b> DELTA		<b>3.</b>	
<b>2. Operational Period:</b> DAY		<b>Branch:</b>  IX	<b>Division/Group:</b>  ZZ
Date/Time From: 09/11/2018 0600 TUE	Date/Time To: 09/11/2018 1800 TUE		

4. Operations Personnel			
WEST OPERATIONS CHIEF	BILL BRYANT SCOTT LUCAS (T)	DIVISION/GROUP SUPERVISOR	BELINDA PLUMMER DUANE KNIGHTON (T)
BRANCH DIRECTOR	KYLE JACOBSON BILLY SEE (DEPUTY)	AIR ATTACK SUPERVISOR	DEREK WHEELER

5. Resources Assigned this Period					
Strike Team / Task Force / Resource Designator	LWD	Leader	Number Persons	Drop Off PT./Time	Pick Up PT./Time

**6. Control Operations/Work Assignments:**

- Continue firing to DP30.
- Provide point protection for structures north of Fender's Ferry Road.

**7. Special Instructions:**

- Initiate low intensity firing operations.
- 

8. Division/Group Communication Summary						
Function	Channel	RX Frequency N/W	RX Tone/NAC	TX Frequency N/W	TX Tone/NAC	Mode
COMMAND	2	172.6500 N	10/107.2	164.7500 N	10/107.2	A
TACTICAL	10	166.7750 N	10/107.2	166.7750 N	10/107.2	A
AIR TO GROUND	14	168.3375 N		168.3375 N		A
AIR TO GROUND	15	167.8125 N		167.8125 N		A

<b>9. Prepared By (Resource Unit Leader)</b> MIKE VETTI	<b>Approved By (Planning Section Chief)</b> DAVE GERBOTH	<b>Date</b> 09/10/2018	<b>Time</b> 2200
--	---	---------------------------	---------------------



OPERATIONS SUMMARY

IDENT NAME: HIRZ and DELTA      OPS PERIOD DATE: 11 September-2018      Prepared By: Dale Douglas, AOB      Prepared Date: 10 Sept 2018      Prepared Time: 1900

MARKS (Safety Notes, Hazards, Air Operations Special Equipment, etc.):  
 NITOR AIR TO GROUND FREQ FOR AIR ACTIVITY.

PERSONNEL	NAME	PHONE #	FREQUENCIES	AM	START TIME:	END TIME:	SUNRISE:	SUNSET:
3D	Kevin Murray Ty Miller	805-878-1484 907-460-7530	AIR/ AIR - TFR	124.5750 HA-8	0800	1930	0644	1926
3S	Dale Douglas	541-910-7412	Rotor East of I-5 Rotor West of I-5	118.7750 HA-30 128.4250 HA-133	READY ALERT AIRCRAFT MEDEVAC - 838PA Short Haul @ Gate HB, Day Only 407KC Kern Co. Hoist 24 Hour @ 657-464-7830 Comms on CALCORD channel 13			
3S(T)	Jim Stratton Kevin Merrill	760-207-4325 605-222-3883	AIR Tactics F/W	166.9500 HA-9	Fixed Wing Aircraft: AIRTANKERS: ATGS order through SHF			
31	Brad Nelson	559-349-6793	AIR/GD Tactics AIR/GD Command AIR/GD	167.8125 HA-10 168.3375 HA-31	ATGS AIRCRAFT: 32WS / Commander 690 / AA05 / HA-124 6DV / Commander 690 OTHER FW AIRCRAFT: Scoopers 260, 261, 262, 263 CL 415's @ (CIC)			
2	Mike Peltier	612-390-9827	Command 1	171.5375 RX 164.0875 TX Tone 10	Medical helispot at ICP in McCloud 41° 15.922 X 122° 07.404 EI. 3388 Trinity Dip / MRB 40° 58.742 X 122° 41.580			
3	Curt Warner	805-478-1231	Command 2	172.6500 RX 164.7500 TX Tone 10	Center HB - Located at Trinity Center 40° 59.213 X 122° 41.743			
S	Tony Duprey	805-450-2676	Command 3	170.4250 RX 168.0750 TX Tone 10	Gate HB - Located at Mountain Gate 40° 42.257 X 122° 20.973			
S (T)	Derek Wheeler Justin Juede	530-355-3274 530-227-2455	Deck - Gate / Willow	163.100	Willow Creek HB - Located in McCloud 41° 09.822 X 122° 09.058			
ion Conference	0730	888-844-9904 2503071#	Deck - Center Air Guard	164.7750 DA-28 168.6250 (110.9)tx/rx				

#	TY/MAKE/ MODEL	BASE	AVAIL	START	REMARKS	FAA #	TY/MAKE/ MODEL	BASE	AVAIL	START	REMARKS
H	1 BV234	Willow Crk	0830	0800	EU	205BT	2 B205A1+	Center HB	0830	0800	EU (H506)
S	1 S-64	Gate HB	0900	0830	State contract	123KA	2 B212HP	Gate HB	0830	0800	EU (H522)
1	1 K-MAX	Gate HB	0830	0800	EU	658HA	2 UH1H	Gate HB	0830	0800	Limited
1	1 K-MAX	Center HB	0830	0800	EU	109Z	3 Cobra	Gate HB	0830	0800	HLCO
1	1 S-61	Center HB	0830	0800	EU	707AH	3 B-407	Willow Crk	0830	0800	Mapping
2	2 B212HP	Gate HB	0830	0800	EU (H516)	N6HE	3 B-407	Willow Crk	0830	0800	EU (H553)
						N107Z	3 Cobra	Redding	0830	0800	EU (H509)

# Hirz/Delta - Safety Message

INCIDENT # CA-SHF-001444

DATE: 9/11/18 TIME: 0600-1800 DAY SHIFT

## See Something Say Something, Communicate Safety!

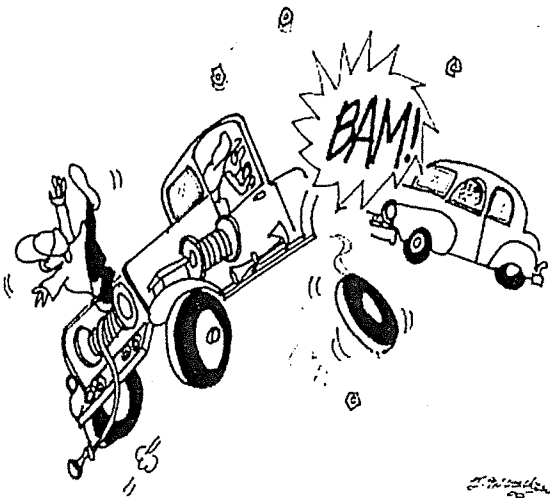
- **Take Charge** of assigned resources.
- **Motivate** firefighters with a "can do safely" attitude.
- **Demonstrate Initiative** by taking action in the absence of orders.
- **Communicate** by giving specific instructions and asking for feedback!
- **Supervise** at the scene of the action.

## Recognize the signs of Fatigue

The effects of fatigue can directly hinder our abilities to:

- Perform various tasks
- Maintain situational awareness and a high degree of alertness
- React appropriately in a timely manner and fashion
- Retain a sharp memory and recollection of information
- Efficiently process information and make sound decisions
- Maintain a positive and supportive attitude

## Driving



FIRE FIGHTING WILL ALWAYS BE DANGEROUS  
AS LONG AS YOU HAVE TO DRIVE TO FIRES.

## Individual Accountability

- Know where ALL of your resources are at ALL times.
- When sharing resources, ensure accountability is maintained.
- Review radio procedures with resources, and ensure all radios are properly cloned.
- Check in all assigned resources as they arrive under your supervision.
- Ensure ALL personnel check out at the end of each shift.



INCIDENT RISK ANALYSIS

(ICS 215a) Day Shift

BR/ DIV	HAZARDOUS ACTIONS / CONDITIONS	MITIGATIONS / WARNINGS / REMEDIES
ALL	TRAFFIC HAZARDS AND DRIVING	<ul style="list-style-type: none"> <li>Practice "Defensive Driving" techniques. Traffic volume is high. I-5 is open</li> <li>Use spotters when backing.</li> <li>Always use headlights.</li> <li>Use warning lights when working on roads or traveling in smoke.</li> <li>Observe posted speed limits.</li> <li>Use chock blocks, turn wheels into hill.</li> <li>Many roads are narrow and mid slope, use caution.</li> </ul>
ALL	FIRE BEHAVIOR	<ul style="list-style-type: none"> <li>Conduct thorough assessments before starting work.</li> <li>Ensure LCES is in place.</li> <li>Provide additional briefing on drought related fire behavior and areas of high concentration of hazard trees.</li> <li>Increase the level of SA.</li> <li>Provide additional briefing for new resources and maintain communications.</li> </ul>
ALL	FIRING OPERATIONS	<ul style="list-style-type: none"> <li>Only personnel trained in the use of each device will be authorized to use firing equipment.</li> <li>Ensure all personnel are aware of firing operation that may affect them.</li> <li>Wear appropriate PPE.</li> <li>Ensure aerial/ground ignition plans have been adequately developed and personnel are briefed.</li> </ul>
ALL	AVIATION OPERATIONS	<ul style="list-style-type: none"> <li>Conduct thorough mission assessments before starting work. Follow the guidelines in the IHOG and other aviation guidelines and reference materials.</li> <li>Ensure coordination and communication are in place and understood by all involved resources in a mission.</li> <li>Ensure close coordination between Air Attack, air tankers, helicopters, and ground resources.</li> </ul>
ALL	HAZARD / DANGER TREES	<ul style="list-style-type: none"> <li>Follow Hazard Tree Safety Guidelines (IRPG p.22-23).</li> <li>Limit number of personnel around snags and their exposure time; fallers must be qualified for the trees being felled.</li> <li>Be especially alert around snags during wind events. Large green trees can also be dangerous.</li> </ul>
ALL	FATIGUE / COMPLACENCY	<ul style="list-style-type: none"> <li>Be alert for signs of fatigue and take breaks as necessary.</li> <li>Maintain 2:1 work/rest ratio.</li> <li>Monitor ALL resources for level of fatigue.</li> <li>Recognize the symptoms of fatigue and take action as necessary to provide rest and recovery.</li> <li>Repeated assignments in the same area can lead to complacency making personnel more vulnerable to accidents.</li> <li>Take steps (switching of assignments, training opportunities during slow periods, etc.) to maintain situational awareness for the duration of the incident</li> </ul>
LL	POWERLINES / UTILITIES	<ul style="list-style-type: none"> <li>Notify all personnel of down electrical lines.</li> <li>IRPG Page 24 – Take time to do a Tailgate Safety Briefing</li> <li>Always treat downed wires as energized.</li> <li>Avoid parking under any type of overhead lines.</li> <li>Identify all gas lines in and around structures.</li> <li>Report damaged service lines.</li> </ul>
L	COMMUNICATIONS	<ul style="list-style-type: none"> <li>Share your Situational Awareness (hazards, changes, etc.) to those who also have a need.</li> <li>Radio Communications may be poor in some areas: use human repeaters as needed.</li> <li>Ensure all personnel are familiar with the incident and IA communications plans.</li> <li>Make sure all resources have radios cloned appropriately.</li> <li>Ensure that non-agency resources understand radio use and procedures.</li> </ul>
L	HEAVY EQUIPMENT OPERATIONS	<ul style="list-style-type: none"> <li>Ensure communications are established with operators.</li> <li>Ensure ground personnel have safety illumination, with light-sticks being the minimum.</li> <li>Maintain a 50'-100' exclusion area around equipment.</li> <li>In timber increase safety distance to 2 ½ times canopy height.</li> </ul>
L	STEEP TERRAIN & ROLLING MATERIAL	<ul style="list-style-type: none"> <li>Avoid working below crews and equipment.</li> <li>Concentrate on your footing placement; take your time.</li> <li>Ensure adequate spacing between crewmembers so they can react to dislodged debris.</li> <li>Post lookouts to warn of rolling debris. SHOUT out to warn others.</li> <li>Look Up, Down and Around Frequently.</li> </ul>
L	SMOKE	<ul style="list-style-type: none"> <li>Periodically rotate crews out of smoky conditions on line when possible.</li> <li>Locate spike camps above inversion if possible.</li> <li>Monitor crew's health. Get medical care for early signs of respiratory illness.</li> <li>Provide rest breaks; have crews get as much sleep as possible; hydrate!</li> </ul>
IP	BEARS	<ul style="list-style-type: none"> <li>Pick up and remove all trash from fire line, return to camp &amp; place in dumpsters.</li> <li>Do not store any food in tents, back of trucks or inside you vehicle.</li> <li>Do not feed bears!</li> </ul>

INCIDENT NAME:

Hirz/Delta Fire

Operational Period: 0600-1800

September 11, 2018



# Hirz / Delta Incident – 206 (Medical Plan)

Date / Time: 9/11/2018 DAY 0600 - 1800

## 1. Ambulance / Medical Services

NAME	LOCATION	PHONE	ALS Level Care	
			Yes	No
Mt. Shasta Ambulance	HIRZ ICP McCloud	911	Yes	
Ambulance 2	Incident Ambulance in DP 51 (24 hour)	Command to Communications	Yes	
Ambulance 78	Incident Ambulance at DP 73 (24 hour)	Command to Communications	Yes	
Ambulance 5	Incident Ambulance Suppression/Repair	Command to Communications	Yes	
UTV 1	Incident UTV ALS Transport at DP 73	Command to Communications	Yes	
Ambulance 104	Incident Ambulance DP55 (Coffee Crk)	Command to Communications	Yes	

## 2. Air Ambulance Services (COORDINATE with AIR AMBULANCES on CALCORD)

Name	Phone	PHONE
Kern County 407 Mountain Gate, CA	657-464-7830	ALS, Night Vision, Hoist Capable, <u>Incident Assigned</u> , 24 hrs.
Grand Canyon H-838 Mountain Gate, CA	214-998-4501 541-870-1510	BLS, Short Haul 150' - 350', <u>Incident Assigned</u> , Day time hoist only
REACH / PHI Redding CA	530-226-2499	ALS, Night Vision, No Hoist Capability, Non-Incident Assigned
CHP H-16 Redding, CA	530-226-2499	ALS, <u>Non-incident assigned</u> , Day time hoist only
Cal Fire H-202 Bieber, CA	530-226-2499	BLS, <u>Non-incident assigned</u> , Day time hoist only

## 3. Hospitals

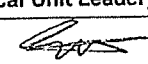

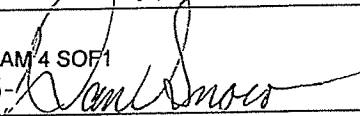
Name	Address	Air	Ground	Phone	Helipad Yes	No
Pulse Urgent Care Level 4	100 E. Cypress Ave. Redding CA	N/A	45 Min	(530)-722-1111 10AM-7:30PM		X
Mercy Medical Center Level 2 Trauma	2175 Roseline Ave. Redding CA	20 Min	80 Min	(530)-225-7201	X	
Shasta Regional Medical Level 3 Trauma	1100 Butte Ave Redding CA	20 Min	80 Min	(530)-244-5353	X	
Mercy Mt. Shasta Medical Level 3 Trauma	914 Pine St. Mt. Shasta CA	10 Min	20 Min	(530)-926-1108	X	
UC Davis Medical Center Level 1 Trauma / Burn Center	2315 Stockton Blvd. Sacramento CA	1.25 Hrs	3.75 Hours	(916)-734-3636 (916)-734-3790	X	

## 4. Division / Crew Pre-plan. Update and discuss with assigned resources daily.

<b>Crew EMT's &amp; Equipment</b>	
<b>FEMP/ FEMT &amp; Location Advanced Life Support?</b>	
<b>Air Hoist Site / Unimproved Landing Site:</b>	
Lat: Long:	
Helispot: Elevation:	
Lat: Long:	
<b>Med LZ:</b>	

## 5. Remote Aid Stations

Medical Unit Leader Contacts	Eric Williams (661) 805-4403 / Jeff Brooks (818) 903-6295
EMS Responders & Capability:	
Equipment Available on Site:	Medical supplies
Ambulance ETA:	Air – Ground –

6. Prepared By (Medical Unit Leader)	7. Date/Time	8. Reviewed By (Safety Officer)	9. Date / Time
Eric Williams – MEDL 	9/10/2018	TEAM 4 SOF1	9/10/2018
Jeff Brooks – MEDL (T) 	1900	-36- 	1900



**Medical Incident Report**

FOR A **NON-EMERGENCY INCIDENT**: WORK THROUGH CHAIN OF COMMAND TO REPORT AND TRANSPORT INJURED PERSONNEL AS NECESSARY.

FOR A **MEDICAL EMERGENCY**: IDENTIFY ON SCENE INCIDENT COMMANDER BY NAME AND POSITION AND ANNOUNCE "MEDICAL EMERGENCY" TO INITIATE RESPONSE FROM COMMUNICATIONS

**Use the following items to communicate situation to communications/dispatch.**

**1. CONTACT COMMUNICATIONS / DISPATCH** (Verify correct frequency prior to starting report)

*Ex: "Communications, Div. Alpha. Stand-by for Emergency Traffic."*

**2. INCIDENT STATUS:** Provide incident summary (including number of patients) and command structure.

*Ex: "Communications, I have a Red priority patient, unconscious, struck by a falling tree.*

*Requesting air ambulance to Forest Road 1 at (Lat./Long.)*

*"This will be the Trout Meadow Medical Incident, IC is TFLD Jones. EMT Smith is providing medical care."*

Severity of Emergency AND Transport Priority (priority 1, 2, 3)	<input type="checkbox"/> <b>RED / PRIORITY 1 Life or limb threatening injury or illness. Evacuation need is IMMEDIATE</b> <i>Ex: Unconscious, difficulty breathing, bleeding severely, 2° - 3° burns more than 4 palm sizes, heat stroke, disoriented.</i>	
	<input type="checkbox"/> <b>YELLOW / PRIORITY 2 Serious Injury or illness. Evacuation may be DELAYED if necessary.</b> <i>Ex: Significant trauma, unable to walk, 2° - 3° burns not more than 1-3 palm sizes.</i>	
	<input type="checkbox"/> <b>GREEN / PRIORITY 3 Minor Injury or illness. Non-Emergency transport</b> <i>Ex: Sprains, strains, minor heat-related illness.</i>	
Nature of Injury or Illness & Mechanism of Injury		Brief Summary of Injury or Illness <i>(Ex: Unconscious, Struck by Falling Tree)</i>
Transport Request		Air Ambulance / Short Haul/Hoist Ground Ambulance / Other
Patient Location		Descriptive Location & Lat. / Long. (WGS84)
Incident Name		Geographic Name + "Medical" <i>(Ex: Trout Meadow Medical)</i>
On-Scene Incident Commander		Name of on-scene IC of Incident within an Incident <i>(Ex: TFLD Jones)</i>
Crew Patient Care		Name of Care Provider <i>(Ex: EMT Smith)</i>

**3. INITIAL PATIENT ASSESSMENT:** Complete this section for each patient as applicable (start with the most severe patient)

Patient Assessment: (IRPG PAGE 106)      Age:      Weight:      Chief Complaint:

Skin Signs: (color/moisture/temp)      Level of Consciousness:      BP:      HR:      Respirations:

Treatment:

**4. TRANSPORT PLAN:**

Evacuation Location (drop point, intersection, helispot, Lat. / Long, hazards)      Patient's ETA to Location:

**5. ADDITIONAL RESOURCES / EQUIPMENT NEEDS:**

*Paramedic / EMT - Crews - Immobilization Devices - AED - Oxygen - Trauma Bag - IV/Fluid(s) - Splints - Rope rescue - Wheeled litter - HAZMAT - Extrication*

**6. COMMUNICATIONS: Identify State Air/Ground EMS Frequencies and Hospital Contacts as applicable**

Function	Channel Name/Number	Receive (RX)	Tone/NAC *	Transmit (TX)	Tone/NAC *
COMMAND					
AIR-TO-GRND					
FACTICAL					

**7. CONTINGENCY: Considerations:** If primary options fail, what actions can be implemented in conjunction with primary evacuation method?  
*Be thinking ahead.*

**8. ADDITIONAL INFORMATION:** Updates/Changes, etc.

**REMEMBER:** Confirm ETA's of resources ordered. Act according to your level of training  
Be Alert - Keep Calm - Think Clearly - Act Decisively

\*\*\* Follow up with MEDL upon return to ICP \*\*\*



<b>CIDENT RADIO COMMUNICATIONS PLAN COMMAND</b>		Incident Name <b>HIRZ CA-SHF-001223 DELTA CA-SHF-001444</b>	Date/Time Prepared 09/10/2018 1940 hrs	Operational Period Date/Time 9/11/18 0600 TO 1800
---	--	--	--	--

Only frequencies listed on this 205 are authorized for use on this incident.					Hand programmers accept all responsibility for the use of unauthorized frequencies.				
Ch #	Function	Channel Name	Assignment	RX Freq N or W	RX Tone	TX Freq N or W	TX Tone	Mode	Remarks
1	COMMAND	CMD 1	COMMAND 1	171.5375 N	107.2	164.0875 N	107.2	A	COMMAND ON H-79 LINKED W/ 2,3,4,5,6
2	COMMAND	CMD 2	COMMAND 2	172.6500 N	107.2	164.7500 N	107.2	A	COMMAND ON SUGARLOAF LINKED W/1,3,4,5,6
3	COMMAND	CMD 3	COMMAND 3	170.4250 N	107.2	168.0750 N	107.2	A	COMMAND ON LEHIGH LINKED W/1,2,4,5,6
4	COMMAND	CMD 4	COMMAND 4	170.4125 N	107.2	165.9625 N	107.2	A	COMMAND ON BONANZA KING LINKED W/ 1,2,3,5,6
5	COMMAND	CMD 5	COMMAND 5	170.0875 N	107.2	162.8125 N	107.2	A	COMMAND ON TOMBSTONE MTN LINKED W/1,2,3,4,6,
6	COMMAND	CMD 6	COMMAND 6	169.5375 N	107.2	164.7125 N	107.2	A	COMMAND ON GREY BUTTE LINKED W/1,2,3,4,5
7	TAC	NIFC T1	DIV Y, DIV AA, SUPP REPAIR, STAGING	168.0500 N	107.2	168.0500 N	107.2	A	
8	TAC	NIFC T3	DIVISIONS DD, PP	168.6000 N	107.2	168.6000 N	107.2	A	
9	TAC	NIFC T5	DIVISION GG, MM	166.7250 N	107.2	166.7250 N	107.2	A	
10	TAC	NIFC T6	DIVISION WW, ZZ	166.7750 N	107.2	166.7750 N	107.2	A	
11	TAC	NIFC T7	DIVISION CC, YY	168.2500 N	107.2	168.2500 N	107.2	A	
12	TAC	TAC 12	DIVISION JJ, TT	162.1625 N	107.2	162.1625 N	107.2	A	SPECIAL TAC
13	CALCORD	CALCORD	ALL DIVISIONS	156.0750 N	156.7	156.0750	156.7	A	MEDICAL EMERGENCY TACTICAL
14	A/G COMMAND	A/G CMD	ALL DIVISIONS	168.3375 N		168.3375 N		A	AIR TO GROUND COMMAND
15	A/G TACTICAL	A/G TAC	ALL DIVISIONS	167.8125 N		167.8125 N		A	AIR TO GROUND TACTICAL
16	AIR GUARD	AIR GUARD	ALL DIVISIONS	168.6250 N		168.6250 N	110.9	A	EMERGENCY ONLY

prepared by J. BONILLA JR. COM... A MAGUIRE, KEVIN JAMES, KEVIN THROOP COM(L)(T)	Incident Location ICP MCCLOUD, CA
--	--------------------------------------



# STANDARD OPERATING PROCEDURES—FINANCE SECTION

## “How to Earn an Honest Day’s Pay for an Honest Day’s Work”

### YOU ARE ENTITLED TO ACTUAL HOURS WORKED!!

#### **WORK REST CYCLE**

IT IS NATIONAL DIRECTION TO MEET A 2 TO 1 WORK/REST RATIO (1 hour of sleep/rest for every 2 hours of work.. Every effort shall be made to manage work hours so you don’t exceed the maximum of 16 hrs. Work hours exceeding 16 hrs shall be approved by your supervisor in advance, and a justification/mitigation form completed for review by Section Chief & approved by IC. It is each person’s responsibility to comply with this direction to manage for fatigue and safety.

#### **OPERATIONAL SHIFTS**

Pay status for assigned overhead and crews on the fireline will not start prior to the posted briefing time and will terminate on arrival back in camp (except for debriefing—additional hours may be accrued by those required to attend debriefing). Supervisors will be allowed ½ hour prior to briefing and after return to camp to ready crew and equipment.

#### **DUTY STATUS**

Division/Group supervisors and Unit Leaders are responsible for establishing on and off duty status. The objective is a 2 to 1 work/rest ratio. Personnel will normally work, travel, and/or be placed on ORDERED standby 8 to 16 hours per day and be off duty 8 hours or more (breaks count towards 8 hrs). Off duty time will be in a non-pay status. Each federal employee is guaranteed **at least 8 hours** of pay status each 24-hour period (midnight to midnight) unless it is the first or last day of an assignment or stated otherwise in a contract or agreement.

#### **PERSONNEL/EQUIPMENT TIME REPORTING**

Personnel time will be reported to the Time Unit and daily once they are signed by the next level supervisor. OES resources will be monitored by OES Agency Rep (if assigned) for 2/1 Work Rest compliance. Situations entitling you to HAZARD PAY are to be noted in remarks (i.e HP=Uncontrolled Fireline, hovering hookups, low level flights, etc.)

Private Contracted Equipment time must be tracked on a Shift Ticket daily and hours on shift noted even if it is a daily rate. When swapping out operators you need to notify Finance as well as changing from single to double shift and vice versa.

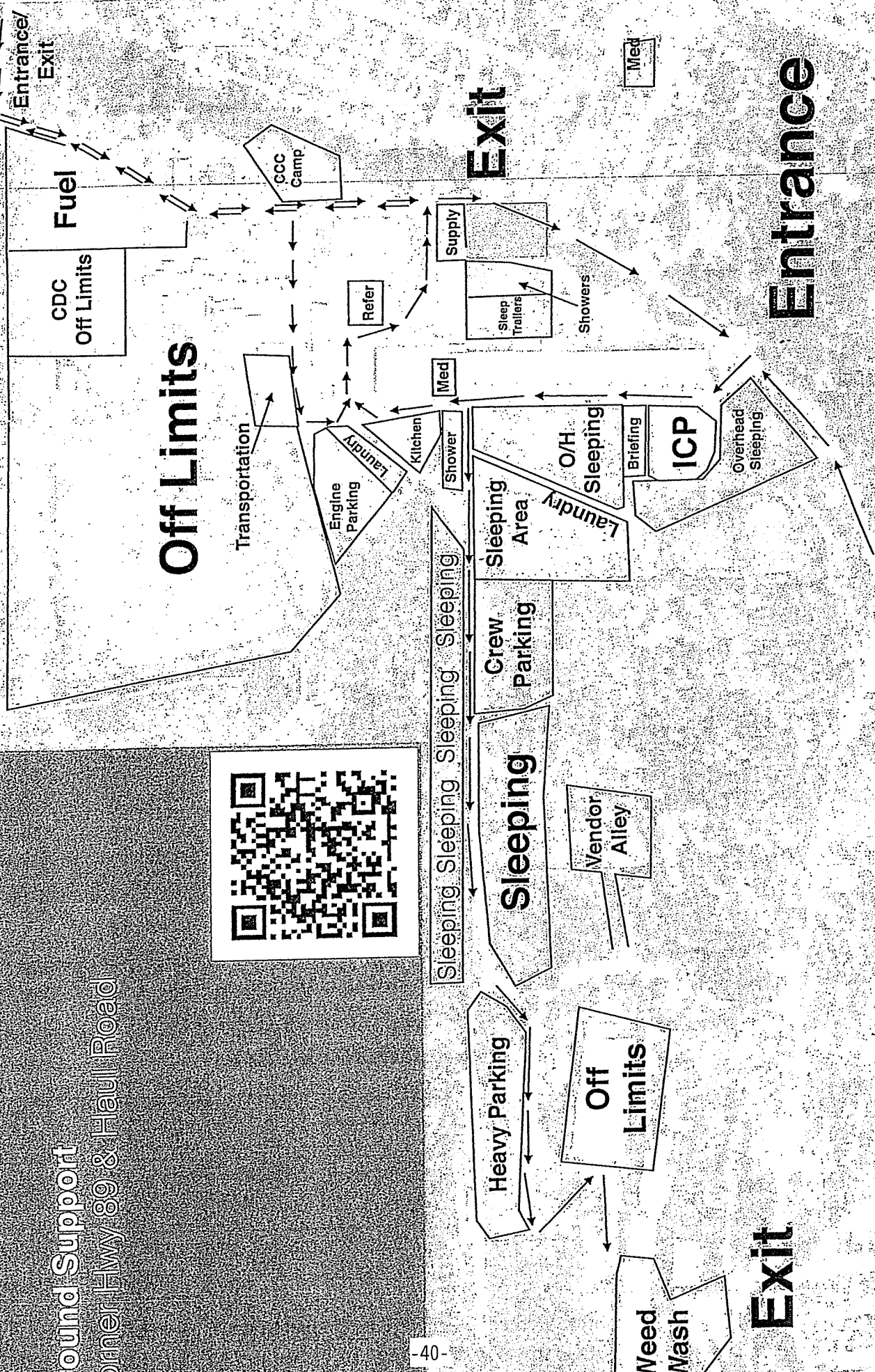
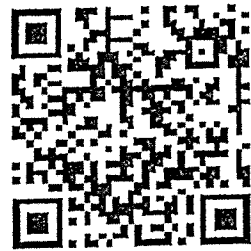
Supervisor’s - If you are responsible for daily tracking of equipment or personnel, please ensure you understand the agreement, and follow the rules provided in this document. Do not sign documents for resources you did not manage unless you have knowledge of their assignment hours.

#### **MEAL AND OTHER WORK BREAKS**

Compensable meal periods are the exception, not the rule (5 CFR 551.411 © and 29 CFR 785.19(a)). **Until the fire is controlled**, personnel on the fireline MAY BE compensated for meal periods if all of the following conditions are met: 1) The fire is not controlled and 2) The Operations Section Chief makes a decision that it is critical to the effort of controlling the fire that personnel remain at their post of duty and continue to work as they eat, and 3) The compensable meal break is approved by the supervisor at the next level and documented on CTR. For **personnel in support positions**, and fireline personnel **after control** of a fire, a meal period of at least 30 minutes must be ordered and taken for each work shift of eight hours or more. This statement does not mean you don’t show all meal breaks if taken. In those situations where personnel cannot be relieved from work and must remain at a post of duty, a meal period may be counted as time worked, which will be compensable. **If meal breaks are NOT able to be taken, CTR should have a sta<sup>39</sup>ment in remarks explaining the situation**

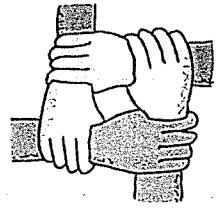
McCloud Basecamp  
9 Mill Road, McCloud

Ground Support  
Corner Hwy 89 & Haul Road





## *Human Resource Message*



**Camp is getting very crowded.  
Please be considerate and  
respectful of others. Follow  
camp rules and signage.**

“When everything seems to be going against you,  
remember that the airplane takes off against the  
wind, not with it.”

Henry Ford

“When you have exhausted all possibilities,  
remember this: you haven’t.”

Thomas Edison

Michelle Hale HRSP(T) 619-813-4202

## DMOB LIST FOR 9-11-2018

REQ #	RESOURCE NAME	ITEM CODE	DATE	REPORT TO DMOB
C-101	FRANCO REFORESTATION	HC2	09/11/2018	0715
C-102	CREW - CAMP - SISKIYOU 70	CC	09/11/2018	0700
C-126	SCORPIONS 5	HC2	09/11/2018	0730
C-104	CREW - CAMP - FORTUNA 1	CC	09/11/2018	0800
C-105	CREW - CAMP - FORTUNA 3	CC	09/11/2018	0800

E-167	JB CONTRACTORS	GRD	09/11/2018	0715
E-225	PAUL ROEN	MAST	09/11/2018	0730
E-431	MNF 34	ENG3	09/11/2018	0745
E-432	INF 11	ENG3	09/11/2018	0800

O-464	ERIACHO, DUWAYNE	HEQB	09/11/2018	0700
O-521	BELKNAP, SCOTT ALEXANDER	SOF2	09/11/2018	0800
O-518	VON GUENTHNER, TYSON	THSP	09/11/2018	0830
O-520	COLLINS, MATT JACOB	THSP	09/11/2018	0830
O-564	KNOX, DEDRICK J	BCMG	09/11/2018	0845
O-602	SCMICT, PETER	ARCH	09/11/2018	0845
O-524	BARRICKMAN, NOLAN	EMTF	09/11/2018	1300
O-532	PRIETTO, DAVE	EMTF	09/11/2018	1300
O-533	BALDUS, RYAN W	EMPF	09/11/2018	1300
O-477	THOMAS, MARIANNE	PIOF	09/11/2018	1600

# CALIFORNIA INTERAGENCY INCIDENT MANAGEMENT TEAM 4

## EXPECTATIONS

Welcome to this Incident.  
Thank You for your Cooperation & Support!



2018

## **CONDUCT AND BEHAVIOR**

This team is committed to “**ZERO TOLERANCE**” of careless, illegal, inappropriate and unsafe actions.

**Alcohol and/or illegal drugs** are **NOT allowed** within the incident environment or while actively assigned to the incident. Local Law Enforcement Officials will be called to deal with any suspected illegal activities. Each employee has the responsibility to be ready, willing, and able to perform the duties for which they are qualified.

### **Sexual Harassment**

Inappropriate actions or comments will not be tolerated. Everyone is expected to act in a professional manner. It is your responsibility to stop inappropriate actions or comments immediately upon becoming aware of such. Sexual Harassment must be reported to the Human Resource Specialist or Incident Commander. When outside of your designated sleeping area, you are required to wear at least a shirt, appropriate shorts, and shoes or sandals. If you need clarification of these expectations contact the Human Resource Specialist or IC. What we PERMIT we PROMOTE!!!!

## **SAFETY**

The commitment to and accountability for safety is a joint responsibility of firefighters, managers and administrators. Individuals must personally be committed and responsible for their own performance and accountability. Everyone assigned to this incident can expect an assignment that follows all safety rules & regulations. Every person is expected to perform his or her duties in compliance with all known safety practices at all times. Anything less is unacceptable.

## **EMPHASIS AREAS**

### **Training**

All trainees and trainers are expected to follow the procedures outlined in the California Interagency Incident Management Team 4 **Training Expectations – See back page.**

### **Evaluations**

All supervisory personnel assigned will complete an ICS 225 Incident Personnel Performance Rating form for their assigned resources according to agency policy or contractual agreement.

### **Injuries/Claims**

Ensure all injuries and potential claims are reported to the Comp/Claims Unit for completion of appropriate paperwork. Contract claims will be reported to the Procurement Unit Leader.

### **Work Rest Cycles**

The 2: 1 work/rest ratio is mandatory. For every two hours on shift you will be required to rest for one hour. Every effort shall be used to limit work hours to a maximum of 16. If circumstances require you to exceed 16 hours, this needs to be coordinated in advance with your supervisor and the Justification/Mitigation form completed to support the excessive hours prior to submitting for approval by the IC. It is your responsibility to comply with this direction and provide the appropriate documentation to your Supervisor and Finance. -44-

### **Position Qualifications**

Personnel shall only be assigned to positions for which they are qualified. Proof of qualifications shall be approved prior to being assigned to any fire line position. Non-fireline positions may be filled based on the word of the employee pending home unit confirmation, which must be requested immediately. Contract dozer operators, tactical water tender operators and contract fallers must provide proof that they have received the annual fire refresher training.

### **Engagement/Disengagement**

The 10 Standard Orders & 18 Watchout Situations will be followed at all times and mitigated as needed. Staying aware of your situation is critical. This includes Geographic Area and incident briefings. Follow the Risk Management Process outlined in the Incident Response Pocket Guide.

### **Debriefing**

All Branch Directors/Division/Group Supervisors will report to their Supervisor and Situation Unit at the end of the operational period for debriefing with emphasis on the accomplishment of objectives. All unit logs (ICS 214) will be turned in after the debriefing to Documentation reflecting accomplishment and/or special incidents that occurred during the operational period.

### **Crew Time Reports/Shift Tickets**

It is your responsibility to ensure all time is properly accounted for and recorded each shift. The records are to be reviewed and signed by the next level supervisor. A finance "Rules of Engagement" document will be provided in the IAP explaining further requirements.

### **Social Media**

It is your responsibility to know and understand guidelines for firefighter photography, video and social media use. California Interagency Incident Management Team 4 goal is simple: to participate online in a respectful, relevant way that protects our incident's professional reputation, does not confuse the public about the incident and follows the letter and spirit of the law. Be mindful that social media postings can be viewed as unprofessional, damage careers and lead to disciplinary actions. For further information, contact the Public Information Officer.

**We look forward to working with you as a valuable member of this effort. If you have any questions or feedback, please feel free to contact any Command and General Staff Member.**

**RAY KURTH**  
Incident Commander

**ROCKY W. OPLIGER**  
Deputy Incident Commander

**THANK YOU FOR YOUR COOPERATION AND GOOD WORK!!**



# CALIFORNIA INTERAGENCY INCIDENT MANAGEMENT TEAM 4 TRAINING EXPECTATIONS

1. Upon arrival at the incident and after check-in, the trainee will bring the following documents to the initial meeting with the training specialist:
  - a. A properly initiated Position Task Book.
  - b. Your Request Number and your Agency (3) letter identifier.
  - c. Your agencies Fire Chief or Training Officers name, address, and phone number to insure that a copy of the training documents will be mailed back to your home unit.
  - d. Your current Incident Qualification Card (red card) that identifies you as a Trainee in the position you are seeking to be trained.
2. Have you identified or has a Trainer been assigned to you and if so, have the Trainer present when you meet with the training specialist.
3. At closeout and prior to entering the demobilization process, you should complete, sign, and review with the trainer the Final exit interview form. Once the form is complete, bring the following documents to the Training Specialist for closeout;
  - a. Position Task Book (Evaluation Record dated and signed by the Trainer).
  - b. Completed ICS 225 (Personal Evaluation Record) dated and signed by both the trainee and trainer.
  - c. Completed Final Exit Interview Form – dated and signed by both the trainee and the trainer.

## **Trainer Expectations**

1. Arrive with the Trainee at the initial meeting with the Training Specialist.
2. Be ready to provide your Contact information and your Incident Request number.
3. Have a Current Incident Qualifications Card (Red Card) in a position of equal or greater qualifications that the Trainee is trying to achieve.
4. Be willing to educate, support, and provide professional and consistent feed back to the trainee during the assignment.
5. Throughout the incident the trainer shall continue to monitor and review with the trainee their tasks and goals within the task book.
6. The trainer, where appropriate is expected to sign off task's that are achieved by the trainee and to complete and sign the following documents.
  - a. ICS 225 (Personal Evaluation Form)
  - b. Evaluation Record at the back of the task book.
7. The trainer shall portray a positive and professional attitude that lets the trainee know that it is desirable to ask for direction and feedback.
8. When accepting the role as a trainer, you are expected to act in a professional manner that represents the California Interagency Incident Management Team 4 and your home agency.



# ACTIVITY LOG (ICS 214)

1. Incident Name: \_\_\_\_\_

2. Operational Period: Date From: \_\_\_\_\_

Date To: \_\_\_\_\_

Time From: \_\_\_\_\_

Time To: \_\_\_\_\_

7. Activity Log (continuation):

Date/Time

Notable Activities

8. Prepared by: Name: \_\_\_\_\_ Position/Title: \_\_\_\_\_ Signature: \_\_\_\_\_

ICS 214, Page 2

Date/Time: \_\_\_\_\_

