

**** Convicted ****

INCIDENT ACTION PLAN

DELTA FIRE

CA-SHF-001444 / P5L4L8 (0514)

HIRZ FIRE

CA-SHF-001223 / P5L2ZM (0514)



DAY OPERATIONAL PERIOD

SATURDAY, SEPTEMBER 15, 2018

0600-1800 HOURS



DELTA



HIRZ

INCIDENT OBJECTIVES (ICS 202)

1. Incident Name:		2. Operational Period: DAY	
HIRZ / DELTA	Date/Time From: 09/15/2018 0600 SAT	Date/Time To: 09/15/2018 1800 SAT	
3. Objective(s): Leader's Intent A full suppression strategy will be implemented for both the Hirz and Delta fires through a combination of direct and indirect tactics. Efforts will be made to minimize impacts to residences, critical infrastructure and private timberlands through the application of well-planned tactical responses.			
Management Objectives <ul style="list-style-type: none"> • Ensure that strategies and tactics provide for firefighter and public safety through the application of sound risk management principles. • Minimize the threat to private property, critical infrastructure, and commercial timberlands while working with the READs to reduce impacts to cultural and sensitive sites. • Establish and strengthen cooperator, partner, and stakeholder relationships. • All suppression repair work will be conducted in close coordination with assigned READs. 			
Control Objectives DELTA FIRE KEEP FIRE: <ul style="list-style-type: none"> • North of Dog Creek Road / Forest Road 21 (west side of I-5) to minimize impacts to I-5 and protect the communities of Pollock, Lakehead, and Lakeshore. • South of Middle Ridge (west side of I-5) to protect private timberlands. • South of Hazel Creek Road (east side of I-5) to minimize threat to communities and residences along I-5 corridor. • East of the Trinity River to minimize impacts to Highway 3 and protect recreational sites. • West of Crane Mountain to halt eastern spread. HIRZ FIRE <ul style="list-style-type: none"> • Continue to mop-up and patrol as needed to ensure the fire stays within existing containment lines. • Continue suppression repair per the approved Suppression Repair Plan. 			
4. Operational Period Command Emphasis: REMAIN VIGILANT Priorities #1 - Division YY #2 - Division CC			
General Situational Awareness: -Plans don't accomplish work. Goal charts on walls don't accomplish work...It is people who get things done.			
5. Site Safety Plan Required? Yes <input type="checkbox"/> No <input checked="" type="checkbox"/>			
Approved Site Safety Plan(s) Located at:			
6. Incident Action Plan (the items checked below are included in this Incident Action Plan):			
<input checked="" type="checkbox"/> ICS 202 <input checked="" type="checkbox"/> ICS 203 <input checked="" type="checkbox"/> ICS 204 <input checked="" type="checkbox"/> ICS 205 <input type="checkbox"/> ICS 205A <input checked="" type="checkbox"/> ICS 206	<input type="checkbox"/> ICS 207 <input type="checkbox"/> ICS 208 <input checked="" type="checkbox"/> ICS 220 <input checked="" type="checkbox"/> Map/Chart <input checked="" type="checkbox"/> Weather Forecast/Tides/Currents	Other Attachments: <input checked="" type="checkbox"/> HRSP MSG <input checked="" type="checkbox"/> ICS 214 UNIT LOG <input type="checkbox"/> _____ <input type="checkbox"/> _____	
7. Prepared by: DAVID GERBOTH	Position/Title: PLANNING SECTION CHIEF	Signature:	
8. Approved by Incident Commander:		Name: JAY KURTH	Signature:
ICS 202	IAP Page	Date/Time: 09/14/2018 2200	

ORGANIZATION ASSIGNMENT LIST		8b. Logistics Section Coffee Creek	
1. Incident Name HIRZ / DELTA		Facilities Unit	Jan Palecek
2. Date : 09/14/18 2200		Food Unit	Ken Breskin
4. Operational Period September 15, 2018		Medical Unit	Doug Stuart
DAY SHIFT 0600 - 1800		9. Day Operations Section	
Position	Name	Chief, OSC, West	Scott Lucas (T)
5. Incident Commander and Staff		Chief, OSC, East	Jake Cagle / Mike Davis (T)
Incident Commander	Jay Kurth / Van Arroyo (T) / Nick Truax / Luke Kendall (T)	Planning OSC	Brian Rhodes / Felix Berbena / Steve Clark (T)
Deputy		a. Hirz Day	
Safety Officer	Dan Snow / Dave Welch / Mike Alforque (T)	Division/Group Suppression Repair	John Canavan
Information Officer	Frank Mosbacher / Kerry Greene (T)	Division/Group Staging	Ruth Bailey
Liaison Officer	Sam Wilbanks / Steve Anderson	Division/Group Accountability	Jeff Bostwick
6. Agency Representative		b. Delta Day Branch IV Coffee Creek	
Agency	Name	Branch Director	Jay Walter
FS Agency Administrator	Scott Russell	Division/Group DD	Jerry Anderson / John King (T)
FS Agency Admin. Rep.	Carolyn Napper	Division/Group GG	Mark Mott / Eric Panebaker (T)
Lead READ	Steve Bachmann	c. Delta Day Branch VII Devil's Spike	
OES AREP	Pat Titus / Kit Bailey	Branch Director	Scott Beacham
Trinity Co. OES	Ed Prestley	Division/Group JJ / MM	Jeff Goyings / Raymond Self (T)
Red Cross	Richard Yoder	d. Delta Day Branch VIII	
Trinity Co. Sheriff	Chris Compton	Branch Director	Steve Ward / Spencer Andreis (T)
PG&E	Mike Weaver	Division/Group PP	Chris Martinelli
Sierra Pacific Industries	Herb Baldwin / Nick Kroencke	Division/Group TT	Keith Cummings / Casey Cohen (T)
CCC Rep.	Shawn Fry	Division/Group WW	Maeve Juarez
Union Pacific Railroad	Michael Holland / Jeff Collins	e. Delta Day Branch IX <i>Billy See</i>	
Amtrak	Stacy Weller	Branch Director	Kyle Jacobson / Chris Waters
Southwest IARR	Manuel Martinez	Division/Group AA / ZZ	Belinda Plummer / Kevin Smyth (T)
7a. Planning Section ICP		Division/Group CC	Heather Grove
Chief	Dave Gerboth / Jaime Tripp (T)	Division/Group YY	Keith Swope
Deputy Chief	Mitch Diehl	f. Air Operations Branch	
Resources Unit	Gina Bald / Matt Haskins / Scott Laurie / Hanne Meyers / Scott Sousa (T)	Air Operations Branch Director	Kevin Murray / Ty Miller
Situation Unit	D. Guillian / T. Tuggle / D. Janssen (T)	Air Support Group Supervisor	Jim Stratton / Kevin Merrill (T)
DMOB Unit	Kerry Brisson	Air Tactical Group Supervisor	Derek Wheeler
GISS	Chris Clervi / Chris Barrett / Alex Heeren (T)	10a. Finance Section ICP	
IMET	Gary Zell	Chief	Sherrie Bennett / Vicki Wilson (T)
FBAN	Rob Scott / Kelly Allen	Time Unit	Loni Holt / Sheila Miner
ARA	Ariane Zarzotti	Compensation/Claims Unit	Scott Parsons
Training Specialist	Robert Rivelle / Arturo Gasdik (T)	Cost Unit	
ITSS	James Whiteside / JP Lavezzo / Justin Lemay / Rocky Bond (T)	Procurement Unit	Don Tinsley
Human Resource Specialist	Adam Alvarez (T)	10b. Finance Section Coffee Creek	
7b. Planning Section Coffee Creek		Time Unit	Tracy Nicholson
Chief	Thomas Marchant (T) / Tom Reaves (T)	Prepared by (Resource Unit Leader) Gina Bald	
GISS	Matt Eister		
Situation Unit	Melania Stoeber		
IMET	Jeremy Michael		
8a. Logistics Section ICP			
Chief	Ross Peckinpah / Cheryl Raines		
Supply Unit	Jennifer Wells		
Facilities Unit	Rob Griffith / Craig Zimmermann (T)		
Ground Support Unit	Jeff Burch / Ron Brewer		
Communications Unit	Sal Bonilla Jr. / Tim McGuire / Kevin Janes		
Food Unit	Mike Chapman / Whitney Bonada		
Medical Unit	Eric Williams / Jeff Brooks (T)		
Ordering Manager	Robert Griffith		

FIRE WEATHER FORECAST

FORECAST NO. 43

NAME OF FIRE: Hirz & Delta Fires

UNIT: Shasta Trinity National Forest

TIME AND DATE

FORECAST ISSUED: 1930 Friday 09/14/18

PREDICTION FOR: Saturday September 15th, 2018

SIGNED: Gary Zell
Gary Zell / Incident Meteorologist

Gusty South to Southwest winds from late this morning into the evening hours tonight

WEATHER DISCUSSION: A storm system moving into the Pacific Northwest will continue the cool daytime temperatures across the Hirz and Delta fires through Sunday, although the airmass will slowly dry out with lowering relative humidity values. This system will also push an upper level trough across the area, resulting in breezy winds today between mid-slope and ridgetop levels. The typical ridgetop wind flow pattern will not occur tonight, with south to southwest winds persisting most of the night. Terrain driven winds will occur below mid-slope locations. Warmer and drier conditions will start on Monday and continue through at least the middle of next week.

TODAY...

Sky/weather.....Mostly sunny. Patchy smoke. Inversion breaks around 1000.
Max temperature.....67-72 ridgetops and 77-82 lower drainages.
Min humidity.....21-26 percent ridges and 17-22 percent lower drainages.
Wind (20 ft).....
Slope/valley.....Downslope/Downvalley 3 to 6 mph until 1000, then
upslope/upvalley 3 to 7 mph.
Ridgetop.....Variable to South 3 to 8 mph with gusts to 15 mph until 1000,
then South-Southwest winds increasing to 11 to 16 mph with
gusts around 25 mph in the afternoon.
Mixing height.....7,000 to 9,000 ft AGL.
Transport winds.....South 7 mph until 1000, increasing to 16 mph in the afternoon.
CWR.....0 percent.
LAL.....1.


TONIGHT...

Sky/weather.....Mostly clear. Patchy smoke. Weak inversion develops after 0100.
Min temperature.....48-53 ridgetops, 42-47 lower drainages.
Max humidity.....50-55 percent ridges and 65-70 percent lower drainages.
Wind (20 ft).....
Slope/valley.....Upslope 3-7 mph becoming downslope 3-6 mph after 2100.
Ridgetop.....South-Southwest 10 to 15 mph with gusts to 25 mph until 2100,
diminishing to 7 to 12 mph by 2400 and 5 to 10 mph overnight.
Mixing height.....Lowering to less than 2000 ft AGL.
Transport winds.....South-Southwest 12 mph until 2100, decreasing to 8 mph.
CWR.....0 percent.
LAL.....1.

SUNDAY...

Sky/weather.....Mostly sunny. Patchy smoke. Inversion breaks around 1000.
Max temperature.....66-71 ridgetops and 76-81 lower drainages.
Min humidity.....24-29 percent ridges and 19-24 percent lower drainages.
Wind (20 ft).....
Slope/valley.....Downslope/Downvalley 3 to 6 mph until 1000, then
upslope/upvalley 3 to 7 mph.
Ridgetop.....South-Southwest 4 to 9 mph, increasing to 6 to 11 mph with
gusts to 19 mph after 1000.
Mixing height.....6,000 to 8,000 ft AGL.
Transport winds.....South-Southwest 6 mph until 1000, increasing to 10 mph.
CWR.....0 percent.
LAL.....1.

FIRE BEHAVIOR FORECAST

FORECAST NUMBER: 56	TYPE OF FIRE: Wildfire
FIRE NAME: Hirz/Delta	OPERATIONAL PERIOD: September 15, 2018 Day
DATE ISSUED: September 14, 2018	TIME ISSUED: 2030
UNIT: Shasta-Trinity NF, McCloud RD	SIGNED:  Robert Scott, FBAN 530.990.4048 Kelly Allen, FBAN

INPUTS

WEATHER SUMMARY **See Fire Weather Forecast for Discussion**

Weather: Mostly sunny. Patchy smoke. Inversion breaks around 1000.

Max Temps: 67-72 ridgetops and 77-82 lower drainages.

Min RH: 21-26 percent ridges and 17-22 percent lower drainages.

20 FOOT WINDS: **Ridges:** Variable to South 3 to 8 mph with gusts to 15 mph until 1000, then South-Southwest winds increasing to 11 to 16 mph with gusts around 25 mph in the afternoon.

Slope/valley: Downslope/Downvalley 3 to 6 mph until 1000, then upslope/upvalley 3 to 7 mph.

FIRE BEHAVIOR

INPUTS:

- **Fuels:** Fuel moistures are near averages for this time of year. The exception is 1000hr fuels that are at the 90th percentile.
- **Topography:** Moderate slope runs will continue to be possible on slopes with Southern exposure. Torching along the Sacramento River will have an above average chance of spotting due to swirling winds and light fuels.

FIRE BEHAVIOR: Slope will drive fire spread when coupled with wind. Fire will move through backing and flanking in timber fuels with some torching in heavier pockets. Short slope runs in brush, transitioning into timber, are possible after 1300. During the hottest part of the day, 1530-1730, Expect FL of 11ft and ROS of 30ch/hr in brush and FL of 5-7ft and ROS of 7ch/hr in timber fuels. Torching is possible in closed stands with moderate surface fuel.

Probability of Ignition: 80% in clear air. **Spotting Distance:** .3 mile from ridgetop locations.

BRANCH 9 - DIV YY: Forecast winds will be in alignment with the Sacramento River. Flanking fire on West slopes could transition to more active fire behavior, especially after 1400. Torching combined with swirling winds will elevate the chance of greater fire spread and spots on the Interstate 5 side of the river. Chances of spots and group torching are greatest in Oak/Pine woodland fuel

DIV ZZ/AA: Continued burn down of heavy fuels. Rollout from areas above the line remains possible.

DIV CC: Winds will impact the DIV today and be parallel to the control line on Sanford Road. Spots above the control line and on McKenzie Ridge will move toward Damnation Peak.

BRANCH 4 - DIV DD: Spots across the line will be pushed back into the black. Threat of rollout from ridge and underslung line locations remains.

DIV GG: Few opportunities remain for aggressive spread. Fire crossing Halls Gulch Creek could make a short run up the South aspect. A spot in the East Fork of the Trinity River would have ample fuel to make a drainage run to the North with the wind alignment.

BRANCH 7 - DIV JJ/MM: Torching in unburned fuel is possible today. Ridgetop containment lines would be susceptible to moderate range spotting. A spot in the East Fork of the Trinity River would have ample fuel to make a drainage run to the North with the wind alignment.

BRANCH 8 - DIV PP/TT: Threat of slope runs to Middle Ridge and the containment line to the Southeast. These high elevation locations will experience increased winds today. Moderate range spotting is possible after 1400.

DIV WW: Threat of spotting in upper Shotgun Creek remains. Monitor activity in DIV YY for possible spots and active fire behavior. Fire across the Sacramento River and Interstate 5 would present significant fuel between your DIV and the fire front.

Hirz Fire: Threat of spread from the fires edge remains low. Remaining hot spots have very little fuel to run.

AIR OPERATIONS

Clear to moderate conditions with little impact.

SAFETY

** Wind increases or changes direction. **

Division/Group Assignment List (ICS 204 WF)
Controlled Unclassified Information//Basic

1. Incident Name:		3.				
HIRZ		Branch:		Division/Group:		
2. Operational Period:		SUPPRESSION REPAIR				
DAY						
Date/Time From:		Date/Time To:				
09/15/2018 0600	SAT	09/15/2018 1800	SAT			
4. Operations Personnel						
EAST OPERATIONS CHIEF		JAKE CAGLE MIKE DAVIS (T)		DIVISION/GROUP SUPERVISOR		JOHN CANAVAN
BRANCH DIRECTOR				AIR ATTACK SUPERVISOR		DEREK WHEELER
5. Resources Assigned this Period						
Strike Team / Task Force / Resource Designator	LWD	Leader	Number Persons	Drop Off PT./Time	Pick Up PT./Time	
HC2I PAS 8 C-97	09/21	FRANCIS V LUKASEVICH	20	MC CLOUD ICP/0600	MC CLOUD ICP/1800	
HC2 FRANCO REFORESTATION C-23	09/20	JAIME DAVILA	20	MC CLOUD ICP/0600	MC CLOUD ICP/1800	
WTS2 DARRAH LOGGING 2 E-38	09/22	TARA ELAM	1	MC CLOUD ICP/0600	MC CLOUD ICP/1800	
WTS2 HARRIS EMERGENCY SERVICES E-405	09/21	ANELLO ARNE	1	MC CLOUD ICP/0600	MC CLOUD ICP/1800	
WTS3 DIETZ EQUIPMENT E-388	09/19	MATT RICKS	1	MC CLOUD ICP/0600	MC CLOUD ICP/1800	
DOZ2 T AND S DVBE E-341	09/23	BRIAN THURMAN	2	MC CLOUD ICP/0600	MC CLOUD ICP/1800	
DOZ2 NORTHWESTERN FIRE E-342	09/27	LARRY GIBSON	2	MC CLOUD ICP/0600	MC CLOUD ICP/1800	
EXCA KEN'S WATER TENDER, INC. E-590	09/27	MATTHEW SMITH	1	MC CLOUD ICP/0600	MC CLOUD ICP/1800	
GRD JB CONTRACTORS E-167	09/24	JOE BOSTWICK	2	MC CLOUD ICP/0600	MC CLOUD ICP/1800	
GRD M. PETERS INC. E-602	09/18	JAY SANDAHL	2	MC CLOUD ICP/0600	MC CLOUD ICP/1800	
GRD DUDLEYS' EXCAVATING E-617	09/18	JOHN STUGELMEYER	2	MC CLOUD ICP/0600	MC CLOUD ICP/1800	
MAST INTERMOUNTAIN FOREST E-264	09/18	KEVIN SMITH	2	MC CLOUD ICP/0600	MC CLOUD ICP/1800	
CHIP CUT WRIGHT SERVICES E-592	09/26	JAKE SMOTHERMAN	3	MC CLOUD ICP/0600	MC CLOUD ICP/1800	
TFLD O-786	09/18	BERNIE QUINONEZ	1	MC CLOUD ICP/0600	MC CLOUD ICP/1800	
HEQB O-213	09/22	DAN MARSHALL	1	MC CLOUD ICP/0600	MC CLOUD ICP/1800	
EMPF O-435	09/25	KEVIN HINKLE	1	MC CLOUD ICP/0600	MC CLOUD ICP/1800	
EMPF O-436	09/26	SCOTT T DRAGOUN	1	MC CLOUD ICP/0600	MC CLOUD ICP/1800	
EMPF O-437	09/26	JOHN WARRICK	1	MC CLOUD ICP/0600	MC CLOUD ICP/1800	
EMTF O-447	09/26	ISAAC SIEGEL	1	MC CLOUD ICP/0600	MC CLOUD ICP/1800	
SOFR O-330	09/23	MICHAEL CAMBA	1	MC CLOUD ICP/0600	MC CLOUD ICP/1800	
8. Division/Group Communication Summary						
Function	Channel	RX Frequency N/W	RX Tone/NAC	TX Frequency N/W	TX Tone/NAC	Mode
COMMAND	1	171.5375 N	10/107.2	164.0875 N	10/107.2	A
TACTICAL	7	168.0500 N	10/107.2	168.0500 N	10/107.2	A
AIR TO GROUND	14	168.3375 N		168.3375 N		A
AIR TO GROUND	15	167.8125 N		167.8125 N		A
9. Prepared By (Resource Unit Leader)		Approved By (Planning Section Chief)		Date	Time	
MATTHEW HASKINS		DAVE GERBOTH		09/14/2018	2200	

Division/Group Assignment List (ICS 204 WF)
Controlled Unclassified Information//Basic

1. Incident Name:		3.				
HIRZ		Branch:		Division/Group:		
2. Operational Period:		Date/Time From: 09/15/2018 0600 SAT		Date/Time To: 09/15/2018 1800 SAT		
DAY						
SUPPRESSION REPAIR						
4. Operations Personnel						
EAST OPERATIONS CHIEF		JAKE CAGLE MIKE DAVIS (T)		DIVISION/GROUP SUPERVISOR JOHN CANAVAN		
BRANCH DIRECTOR				AIR ATTACK SUPERVISOR DEREK WHEELER		
5. Resources Assigned this Period						
Strike Team / Task Force / Resource Designator	LWD	Leader	Number Persons	Drop Off PT./Time	Pick Up PT./Time	
REAF O-290	09/21	STEPHEN HODGES	1	MC CLOUD ICP/0600	MC CLOUD ICP/1800	
FFT2 O-475	09/18	JASON KLOTZ	1	MC CLOUD ICP/0600	MC CLOUD ICP/1800	
6. Control Operations/Work Assignments:						
<ul style="list-style-type: none"> Conduct suppression repair activities on dozerlines, handlines, and roads. Refer to the Suppression Repair Plan for objectives and specifications. 						
7. Special Instructions:						
<ul style="list-style-type: none"> Coordinate with READs to identify suppression repair needs. 						
8. Division/Group Communication Summary						
Function	Channel	RX Frequency N/W	RX Tone/NAC	TX Frequency N/W	TX Tone/NAC	Mode
COMMAND	1	171.5375 N	10/107.2	164.0875 N	10/107.2	A
TACTICAL	7	168.0500 N	10/107.2	168.0500 N	10/107.2	A
AIR TO GROUND	14	168.3375 N		168.3375 N		A
AIR TO GROUND	15	167.8125 N		167.8125 N		A
9. Prepared By (Resource Unit Leader)			Approved By (Planning Section Chief)		Date	Time
MATTHEW HASKINS			DAVE GERBOTH		09/14/2018	2200

Division/Group Assignment List (ICS 204 WF)
Controlled Unclassified Information//Basic

1. Incident Name:		3.				
HIRZ		Branch:	Division/Group:			
2. Operational Period: DAY						
Date/Time From: 09/15/2018 0600 SAT	Date/Time To: 09/15/2018 1800 SAT	ACCOUNTABILITY				
4. Operations Personnel						
EAST OPERATIONS CHIEF	JAKE CAGLE MIKE DAVIS (T)	DIVISION/GROUP SUPERVISOR	JEFF BOSTWICK			
BRANCH DIRECTOR		AIR ATTACK SUPERVISOR	DEREK WHEELER			
5. Resources Assigned this Period						
Strike Team / Task Force / Resource Designator	LWD	Leader	Number Persons	Drop Off PT./Time	Pick Up PT./Time	
HC2 OC FORESTRY INC C-20	09/20	SALVADAR ORDONEZ	20	MCCLLOUD ICP/0600	MCCLLOUD ICP/1800	
6. Control Operations/Work Assignments:						
<ul style="list-style-type: none"> Scout and identify accountable property and equipment to be back-hauled and returned to McCloud ICP. 						
7. Special Instructions:						
8. Division/Group Communication Summary						
Function	Channel	RX Frequency N/W	RX Tone/NAC	TX Frequency N/W	TX Tone/NAC	Mode
COMMAND	5	170.0875 N	10/107.2	162.8125 N	10/107.2	A
TACTICAL	8	168.6000 N	10/107.2	168.6000 N	10/107.2	A
AIR TO GROUND	14	168.3375 N		168.3375 N		A
AIR TO GROUND	15	167.8125 N		167.8125 N		A
9. Prepared By (Resource Unit Leader)		Approved By (Planning Section Chief)		Date	Time	
MATTHEW HASKINS		DAVE GERBOTH		09/14/2018	2200	

Division/Group Assignment List (ICS 204 WF)
Controlled Unclassified Information//Basic

1. Incident Name:		3.	
DELTA		Branch:	Division/Group:
2. Operational Period: DAY		IV	DD
Date/Time From: 09/15/2018 0600 SAT	Date/Time To: 09/15/2018 1800 SAT		

4. Operations Personnel			
WEST OPERATIONS CHIEF	SCOTT LUCAS (T)	DIVISION/GROUP SUPERVISOR	JERRY ANDERSON JON KING (T)
BRANCH DIRECTOR	JAY WALTER	AIR ATTACK SUPERVISOR	DEREK WHEELER

5. Resources Assigned this Period

Strike Team / Task Force / Resource Designator	LWD	Leader	Number Persons	Drop Off PT./Time	Pick Up PT./Time
HC1 SALMON RIVER IHC C-32	09/21	WILLIAM ROBINSON	19	COFFEE CREEK/0600	COFFEE CREEK/1800
HC1 MILLCREEK IHC C-38	09/22	JOHN ELLISON	20	COFFEE CREEK/0600	COFFEE CREEK/1800
HC2I DIAMOND FIRE 16 C-94	09/27	BILLY SMITH	20	COFFEE CREEK/0600	COFFEE CREEK/1800
HC2 DUST BUSTERS C-18	09/20	BRATON JURASEVICH	20	COFFEE CREEK/0600	COFFEE CREEK/1800
HC2 FIRESTORM C-24	09/21	MAC NORLIE	20	COFFEE CREEK/0600	COFFEE CREEK/1800
HC2 WOODPECKER C-76	09/16	ELADIO HERNANDEZ	20	COFFEE CREEK/0600	COFFEE CREEK/1800
ES3 5780C E-116	09/19	ROBERT GIOVANNETTI	25	COFFEE CREEK/0600	COFFEE CREEK/1800
DELTA - TF 1				COFFEE CREEK/0600	COFFEE CREEK/1800
TFLD O-26	09/21	PERRY PEAKE	1	COFFEE CREEK/0600	COFFEE CREEK/1800
ENG6 T6 - 696 E-19	09/18	WILLIAM MCDARMENT JR	4	COFFEE CREEK/0600	COFFEE CREEK/1800
ENG6 ASF - E624 E-119	09/23	GEORGE HRUBY	4	COFFEE CREEK/0600	COFFEE CREEK/1800
ENG6 TMI 814 E-122	09/18	ANDREW P COLLIER	4	COFFEE CREEK/0600	COFFEE CREEK/1800
ENG6 EARTH INDUSTRIES E-123	09/22	RUDY VOSS	3	COFFEE CREEK/0600	COFFEE CREEK/1800
ENG3 BDF13 E-6	09/23	JIMMY BUTLER	5	COFFEE CREEK/0600	COFFEE CREEK/1800
ENG3 KNF 55 E-240	09/18	CORY J LECKNESS	5	COFFEE CREEK/0600	COFFEE CREEK/1800
ENG3 ROCKY MOUNTAIN FIRE E-383	09/24	KENYON SHEPHARD	5	COFFEE CREEK/0600	COFFEE CREEK/1800
WTT1 41 E-3	09/20	RAMSEY SIMS	2	COFFEE CREEK/0600	COFFEE CREEK/1800
WTS2 KDH ENTERPRISE E-38	09/20	KEVIN HORN	1	COFFEE CREEK/0600	COFFEE CREEK/1800
WTS2 H & H FEEDERS E-304	09/27	COLBY GULLY	2	COFFEE CREEK/0600	COFFEE CREEK/1800
WTS2 DARRAH LOGGING INC E-581	09/24	STEVE DARGER	1	COFFEE CREEK/0600	COFFEE CREEK/1800

8. Division/Group Communication Summary

Function	Channel	RX Frequency N/W	RX Tone/NAC	TX Frequency N/W	TX Tone/NAC	Mode
COMMAND	2	172.6500 N	10/107.2	164.7500 N	10/107.2	A
TACTICAL	8	168.6000 N	10/107.2	168.6000 N	10/107.2	A
AIR TO GROUND	14	168.3375 N		168.3375 N		A
AIR TO GROUND	15	167.8125 N		167.8125 N		A

9. Prepared By (Resource Unit Leader)	Approved By (Planning Section Chief)	Date	Time
MATTHEW HASKINS	DAVE GERBOTH	09/14/2018	2200

Division/Group Assignment List (ICS 204 WF)
Controlled Unclassified Information//Basic

1. Incident Name:		3.				
DELTA		Branch:	Division/Group:			
2. Operational Period: DAY		IV	DD			
Date/Time From: 09/15/2018 0600 SAT	Date/Time To: 09/15/2018 1800 SAT					
4. Operations Personnel						
WEST OPERATIONS CHIEF	SCOTT LUCAS (T)	DIVISION/GROUP SUPERVISOR	JERRY ANDERSON JON KING (T)			
BRANCH DIRECTOR	JAY WALTER	AIR ATTACK SUPERVISOR	DEREK WHEELER			
5. Resources Assigned this Period						
Strike Team / Task Force / Resource Designator	LWD	Leader	Number Persons	Drop Off PT./Time	Pick Up PT./Time	
DOZ2 LNF DOZ 6 E-109	09/21	BRIAN WATTENBURG	2	COFFEE CREEK/0600	COFFEE CREEK/1800	
DOZ2 MATANDY E-111	09/21	MATT HARKNESS	2	COFFEE CREEK/0600	COFFEE CREEK/1800	
GRD NORTH STATE EQUIPMENT E-616	09/19	JIM MOAK	2	COFFEE CREEK/0600	COFFEE CREEK/1800	
CHIP ADKINS E-221	09/25	RONALD ADKINS	2	COFFEE CREEK/0600	MC CLOUD ICP/1800 <i>Offsite Creek</i>	
TFLD O-24	09/22	MICHAEL MONDINO	1	COFFEE CREEK/0600	COFFEE CREEK/1800	
HEQB O-200	09/23	CHANCE TRAUB	1	COFFEE CREEK/0600	COFFEE CREEK/1800	
HEQB O-235	09/22	ARTURO LOZANO	1	COFFEE CREEK/0600	COFFEE CREEK/1800	
FMOD NORTH ZONE FALLERS, INC. O-29	09/21	BILL SMITH	2	COFFEE CREEK/0600	COFFEE CREEK/1800	
FMOD MORGAN TREE SERVICE O-379	09/22	THOMAS MATNEY	2	COFFEE CREEK/0600	COFFEE CREEK/1800	
REMS 8 O-336	09/24	BEN KRONE	4	COFFEE CREEK/0600	COFFEE CREEK/1800	
EMPF O-105	09/21	MATTHEW STODDARD	1	COFFEE CREEK/0600	COFFEE CREEK/1800	
EMTF O-270	09/23	MATTHEW J HINES	1	COFFEE CREEK/0600	COFFEE CREEK/1800	
SOF2 O-160	09/23	THOMAS NASH	1	COFFEE CREEK/0600	COFFEE CREEK/1800	
ARCH O-291	09/20	SARA KERFOOT	1	COFFEE CREEK/0600	COFFEE CREEK/1800	
ARCH O-861	09/24	PAUL FRENCH	1	COFFEE CREEK/0600	COFFEE CREEK/1800	
6. Control Operations/Work Assignments:						
<ul style="list-style-type: none"> Hold, patrol, and improve dozer line from Damnation Peak to Fools Gulch. Hold and secure line in Blagett Creek 						
7. Special Instructions:						
8. Division/Group Communication Summary						
Function	Channel	RX Frequency N/W	RX Tone/NAC	TX Frequency N/W	TX Tone/NAC	Mode
COMMAND	2	172.6500 N	10/107.2	164.7500 N	10/107.2	A
TACTICAL	8	168.6000 N	10/107.2	168.6000 N	10/107.2	A
AIR TO GROUND	14	168.3375 N		168.3375 N		A
AIR TO GROUND	15	167.8125 N		167.8125 N		A
9. Prepared By (Resource Unit Leader)		Approved By (Planning Section Chief)		Date	Time	
MATTHEW HASKINS		DAVE GERBOTH		09/14/2018	2200	

Division/Group Assignment List (ICS 204 WF)
 Controlled Unclassified Information//Basic

1. Incident Name:		3.	
DELTA		Branch: IV	Division/Group: DD
2. Operational Period: DAY			
Date/Time From: 09/15/2018 0600 SAT	Date/Time To: 09/15/2018 1800 SAT		
4. Operations Personnel			
WEST OPERATIONS CHIEF	SCOTT LUCAS (T)	DIVISION/GROUP SUPERVISOR	JERRY ANDERSON JON KING (T)
BRANCH DIRECTOR	JAY WALTER	AIR ATTACK SUPERVISOR	DEREK WHEELER

7. Special Instructions:

- Water tenders: use only approved water sources.
- FOBS M. Snyder, P. Blydenburgh (T) are assigned to all divisions in branch IV.

8. Division/Group Communication Summary

Function	Channel	RX Frequency N/W	RX Tone/NAC	TX Frequency N/W	TX Tone/NAC	Mode
COMMAND	2	172.6500 N	10/107.2	164.7500 N	10/107.2	A
TACTICAL	8	168.6000 N	10/107.2	168.6000 N	10/107.2	A
AIR TO GROUND	14	168.3375 N		168.3375 N		A
AIR TO GROUND	15	167.8125 N		167.8125 N		A

9. Prepared By (Resource Unit Leader) MATTHEW HASKINS	Approved By (Planning Section Chief) DAVE GERBOTH	Date 09/14/2018	Time 2200
---	---	---------------------------	---------------------

Division/Group Assignment List (ICS 204 WF)
Controlled Unclassified Information//Basic

1. Incident Name:			3.			
DELTA			Branch:		Division/Group:	
2. Operational Period: DAY			IV		GG	
Date/Time From: 09/15/2018 0600 SAT	Date/Time To: 09/15/2018 1800 SAT					
4. Operations Personnel						
WEST OPERATIONS CHIEF		SCOTT LUCAS (T)		DIVISION/GROUP SUPERVISOR		MARK MOTT ERIC PANEBAKER (T)
BRANCH DIRECTOR		JAY WALTER		AIR ATTACK SUPERVISOR		DEREK WHEELER
5. Resources Assigned this Period						
Strike Team / Task Force / Resource Designator	LWD	Leader	Number Persons	Drop Off PT./Time	Pick Up PT./Time	
HC1 STANISLAUS IHC C-72	09/18	SHAWN W BAKER	20	COFFEE CREEK/0600	COFFEE CREEK/1800	
HC1 HORSESHOE C-87	09/26	DUSTIN HALLAM	19	COFFEE CREEK /0600	COFFEE CREEK /1800	
HC1 FULTON IHC C-90	09/26	JOSH S ACOSTA	24	COFFEE CREEK /0600	COFFEE CREEK /1800	
HC2I KERN VALLEY C-34	09/18	NATHAN NELMS	19	COFFEE CREEK/0600	COFFEE CREEK/1800	
HC2I DEL ROSA C-64	09/18	DAVID BORERO	19	COFFEE CREEK/0600	COFFEE CREEK/1800	
HC2 GH RANCH 17183 C-25	09/20	JAMES GRAHAM	20	COFFEE CREEK/0600	COFFEE CREEK/1800	
ENG3 3231 E-17	09/22	KYLE KRACHE	5	COFFEE CREEK/0600	COFFEE CREEK/1800	
ENG3 LNF E15 E-389	09/20	JOHN S OUTLAND	5	COFFEE CREEK/0600	COFFEE CREEK/1800	
ENG6 WOOD'S FIRE E614 E-2	09/22	KURT FLEWELL	3	COFFEE CREEK/0600	COFFEE CREEK/1800	
ENG6 WOOD'S FIRE 27 E-118	09/22	STEVE FELIX	3	COFFEE CREEK/0600	COFFEE CREEK/1800	
ENG6 GREYBACK E24 E-175	09/23	BILLIE TOWNSEND	3	COFFEE CREEK/0600	COFFEE CREEK /1800	
WTS2 DANIEL OILAR E-33	09/20	DANIEL OILAR	1	COFFEE CREEK/0600	COFFEE CREEK/1800	
WTS2 MDF WT257 E-34	09/20	HOWARD VENUTO	1	COFFEE CREEK/0600	COFFEE CREEK/1800	
WTS2 LET-ER-BUCK E-40	09/20	DARREN WARD	1	COFFEE CREEK/0600	COFFEE CREEK/1800	
WTS2 TOBIASSON WATER E-368	09/20	MICAH NICHOLS	2	COFFEE CREEK/0600	COFFEE CREEK/1800	
DOZ1 OILAR, PATRICK E-159	09/24	PATRICK OILAR	2	COFFEE CREEK/0600	COFFEE CREEK/1800	
DOZ2 TOUGH COMPANY E-94	09/22	KEVIN NICHOLS	2	COFFEE CREEK/0600	COFFEE CREEK/1800	
DOZ2 TOM'S EARTH MOVING E-106	09/22	ANTHONY FUNES	2	COFFEE CREEK/0600	COFFEE CREEK/1800	
DOZ2 DOZER - OILAR, E-110	09/21	DUNLOP DON	2	COFFEE CREEK/0600	COFFEE CREEK/1800	
DOZ2 ROBERT JOHNSON E-185	09/23	ROBERT JOHNSON	2	COFFEE CREEK/0600	COFFEE CREEK/1800	
8. Division/Group Communication Summary						
Function	Channel	RX Frequency N/W	RX Tone/NAC	TX Frequency N/W	TX Tone/NAC	Mode
COMMAND	4	170.4125 N	10/107.2	165.9625 N	10/107.2	A
TACTICAL	9	166.7250 N	10/107.2	166.7250 N	10/107.2	A
AIR TO GROUND	14	168.3375 N		168.3375 N		A
AIR TO GROUND	15	167.8125 N		167.8125 N		A
9. Prepared By (Resource Unit Leader)			Approved By (Planning Section Chief)		Date	Time
SCOTT SOUSA			DAVE GERBOTH		09/14/2018	2200

Division/Group Assignment List (ICS 204 WF)
Controlled Unclassified Information//Basic

1. Incident Name:		3.	
DELTA		Branch: IV	Division/Group: GG
2. Operational Period: DAY			
Date/Time From: 09/15/2018 0600 SAT	Date/Time To: 09/15/2018 1800 SAT		
4. Operations Personnel			
WEST OPERATIONS CHIEF	SCOTT LUCAS (T)	DIVISION/GROUP SUPERVISOR	MARK MOTT ERIC PANEBAKER (T)
BRANCH DIRECTOR	JAY WALTER	AIR ATTACK SUPERVISOR	DEREK WHEELER

5. Resources Assigned this Period					
Strike Team / Task Force / Resource Designator	LWD	Leader	Number Persons	Drop Off PT./Time	Pick Up PT./Time
MAST PAUL ROEN E-259	09/24	BRETT GIBFORD	2	COFFEE CREEK/0600	COFFEE CREEK/1800
TFLD O-21	09/20	CHRIS LANDRY	1	COFFEE CREEK/0600	COFFEE CREEK/1800
HEQB O-147	09/23	CINDY LUETH	1	COFFEE CREEK/0600	COFFEE CREEK/1800
HEQB O-197	09/21	MATTHEW KILGRIFF	1	COFFEE CREEK/0600	COFFEE CREEK/1800
HEQB O-198	09/22	TYLER HARRIS	1	COFFEE CREEK/0600	COFFEE CREEK/1800
EMPF O-263	09/23	CASEY ZENGER	1	COFFEE CREEK/0600	COFFEE CREEK/1800
EMPF O-452	09/25	BRYAN OWEN	1	COFFEE CREEK/0600	COFFEE CREEK/1800
EMTF O-109	09/22	ADAM WALKER	1	COFFEE CREEK/0600	COFFEE CREEK/1800
EMTF O-269	09/23	NATE BENNER	1	COFFEE CREEK/0600	COFFEE CREEK/1800
SOFR O-237	09/24	SERGIO MORA	1	COFFEE CREEK/0600	COFFEE CREEK/1800

- 6. Control Operations/Work Assignments:**
- Continue to patrol and mop-up.
 - Continue to provide point protection for values at risk.

- 7. Special Instructions:**
- Water tenders: use only approved water sources.
 - FOBS M. Snyder, P. Blydenburgh (T) are assigned to all divisions in branch IV.

8. Division/Group Communication Summary						
Function	Channel	RX Frequency N/W	RX Tone/NAC	TX Frequency N/W	TX Tone/NAC	Mode
COMMAND	4	170.4125 N	10/107.2	165.9625 N	10/107.2	A
TACTICAL	9	166.7250 N	10/107.2	166.7250 N	10/107.2	A
AIR TO GROUND	14	168.3375 N		168.3375 N		A
AIR TO GROUND	15	167.8125 N		167.8125 N		A

9. Prepared By (Resource Unit Leader)	Approved By (Planning Section Chief)	Date	Time
SCOTT SOUSA	DAVE GERBOTH	09/14/2018	2200

Division/Group Assignment List (ICS 204 WF)
Controlled Unclassified Information//Basic

1. Incident Name:		3.				
DELTA		Branch:	Division/Group:			
2. Operational Period: DAY		VII	JJ / MM			
Date/Time From: 09/15/2018 0600 SAT	Date/Time To: 09/15/2018 1800 SAT					
4. Operations Personnel						
WEST OPERATIONS CHIEF	SCOTT LUCAS (T)	DIVISION/GROUP SUPERVISOR	JEFF GOYINGS RAYMOND SELF (T)			
BRANCH DIRECTOR	SCOTT BEACHAM	AIR ATTACK SUPERVISOR	DEREK WHEELER			
5. Resources Assigned this Period						
Strike Team / Task Force / Resource Designator	LWD	Leader	Number Persons	Drop Off PT./Time	Pick Up PT./Time	
HC1 BECKWOURTH IHC C-13	09/20	MIKE WINTCH	20	DEVILS SPIKE/0600	DEVILS SPIKE/1800	
HC1 LITTLE TUJUNGA IHC C-92	09/19	JOSEPH BUNTON	20	DEVILS SPIKE/0600	DEVILS SPIKE/1800	
HC2I SHASTA LAKE C-99	09/26	ISAAC FLATTLEY	20	DEVILS SPIKE/0600	DEVILS SPIKE/1800	
ENG3 ENF 314 E-60	09/22	LEE BLISS	5	DEVILS SPIKE/0600	DEVILS SPIKE/1800	
ENG3 TMU 344 E-101	09/21	ANDREW AULD	1	DEVILS SPIKE/0600	DEVILS SPIKE/1800	
FOBS O-248	09/20	JASON BUTCHER	1	DEVILS SPIKE/0600	DEVILS SPIKE/1800	
FOBS (T) O-187	09/20	RYAN WIMMER	1	DEVILS SPIKE/0600	DEVILS SPIKE/1800	
EMTF O-432	09/20	CHRIS JONES	1	DEVILS SPIKE/0600	DEVILS SPIKE/1800	
EMPF O-434	09/26	TRAVISS CRUMPACKER	1	DEVILS SPIKE/0600	DEVILS SPIKE/1800	
SOFR O-296	09/24	JASON RALLS	1	DEVILS SPIKE/0600	DEVILS SPIKE/1800	
6. Control Operations/Work Assignments:						
<ul style="list-style-type: none"> Find and utilize opportunities to go direct to check northern fire spread along the main ridge between Wildcat Peak and County Line. From DP57 west to County Line: Hold, mop-up and patrol the fired dozer line. 						
7. Special Instructions:						
<ul style="list-style-type: none"> Devil's Spike location: Lat 41° 3.607 Long 122° 33.510 <p>ENG3 MOE 335 E-383 9125 Michael Gentry 5 ENG3 MOE 66 E-384 9126 Happy Hoppe 5</p>						
8. Division/Group Communication Summary						
Function	Channel	RX Frequency N/W	RX Tone/NAC	TX Frequency N/W	TX Tone/NAC	Mode
COMMAND	4	170.4125 N	10/107.2	165.9625 N	10/107.2	A
TACTICAL	11	168.2500 N	10/107.2	168.2500 N	10/107.2	A
AIR TO GROUND	14	168.3375 N		168.3375 N		A
AIR TO GROUND	15	167.8125 N		167.8125 N		A
9. Prepared By (Resource Unit Leader)		Approved By (Planning Section Chief)		Date	Time	
MATTHEW HASKINS		DAVE GERBOTH		09/14/2018	2200	

Division/Group Assignment List (ICS 204 WF)
Controlled Unclassified Information//Basic

1. Incident Name:			3.			
DELTA			Branch:		Division/Group:	
2. Operational Period: DAY			VIII		PP	
Date/Time From: 09/15/2018 0600 SAT	Date/Time To: 09/15/2018 1800 SAT					
4. Operations Personnel						
EAST OPERATIONS CHIEF		JAKE CAGLE MIKE DAVIS (T)		DIVISION/GROUP SUPERVISOR		CHRIS MARTINELLI
BRANCH DIRECTOR		STEVE WARD SPENCER ANDREIS (T)		AIR ATTACK SUPERVISOR		DEREK WHEELER
5. Resources Assigned this Period						
Strike Team / Task Force / Resource Designator	LWD	Leader	Number Persons	Drop Off PT./Time	Pick Up PT./Time	
HC1 GOLDEN EAGLES C-89	09/23	ROBERT VILLEGAS	19	MC CLOUD ICP/0600	MC CLOUD ICP/1800	
HCS1 LMU 9222G (24HR) C-6	09/20	STEVE DIAZ	36	MC CLOUD ICP/0600	MC CLOUD ICP/0600	
HC2I ASI ARDEN C-85	09/21	LEO MARTINEZ	20	MC CLOUD ICP/0600	MC CLOUD ICP/1800	
HC2I GROVELAND CREW 4 C-101	09/24	PATRICK LAENG	21	MC CLOUD ICP/0600	MC CLOUD ICP/1800	
HC2 GRAYBACK FORESTRY INC C-1	09/19	SCOTT MCINTYRE	20	MC CLOUD ICP/0600	MC CLOUD ICP/1800	
HC2 R&R CONTRACTING INC C-19	09/20	CRISTOBAL ROCHA	20	MC CLOUD ICP/0600	MC CLOUD ICP/1800	
ES3 SHU 9242C (12HR) E-65	09/20	TIMOTHY R WHITEHURST	17	MC CLOUD ICP/0600	MC CLOUD ICP/1800	
ES3 BTU 9211C (24HR) E-88	09/20	JOE TAPIA	16	MC CLOUD ICP/0600	MC CLOUD ICP/0600	
WTS2 WILLMORE AG (24HR) E-32	09/20	JESSE HOLDEN	2	MC CLOUD ICP/0600	MC CLOUD ICP/0600	
DO22 SHF 79 E-148	09/17	VICTOR RIVERS	3	MC CLOUD ICP/0600	MC CLOUD ICP/1800	
DO22 JACK ROSEVEAR E-96	09/21	CARL STEINMAN	2	MC CLOUD ICP/0600	MC CLOUD ICP/1800	
HEQB O-35	09/21	TYLER KUIKEN	1	MC CLOUD ICP/0600	MC CLOUD ICP/1800	
FMOD CHARLIE FALLERS O-30	09/20	TACOMA MANUEL	2	MC CLOUD ICP/0600	MC CLOUD ICP/1800	
FMOD AMERICAN TIMBER O-59	09/17	DAN TOMILLA	2	MC CLOUD ICP/0600	MC CLOUD ICP/1800	
EMPF O-265	09/23	MATT PETERS	1	MC CLOUD ICP/0600	MC CLOUD ICP/1800	
EMTF O-108	09/21	SHANE BROWN	1	MC CLOUD ICP/0600	MC CLOUD ICP/1800	
SOFR O-407	09/17	RHETT WHISENHUNT	1	MC CLOUD ICP/0600	MC CLOUD ICP/1800	
WTT2 E-411 9/21 Leo Moran 2						
WTS2 Carlton (24 HR) E-347 9/19 Ross Rogers 1						
WTS2 Dorval E-39 9/20 Dave Kaundart 1 9/20						
8. Division/Group Communication Summary						
Function	Channel	RX Frequency N/W	RX Tone/NAC	TX Frequency N/W	TX Tone/NAC	Mode
COMMAND	6	169.5375 N	10/107.2	164.7125	10/107.2	A
TACTICAL	7	168.0500 N	10/107.2	168.0500 N	10/107.2	A
AIR TO GROUND	14	168.3375 N		168.3375 N		A
AIR TO GROUND	15	167.8125 N		167.8125 N		A
9. Prepared By (Resource Unit Leader)			Approved By (Planning Section Chief)		Date	Time
SCOTT SOUSA			DAVE GERBOTH		09/14/2018	2200

Division/Group Assignment List (ICS 204 WF)
Controlled Unclassified Information//Basic

1. Incident Name:			3.			
DELTA			VIII		PP	
2. Operational Period: DAY						
Date/Time From: 09/15/2018 0600 SAT		Date/Time To: 09/15/2018 1800 SAT				
4. Operations Personnel						
EAST OPERATIONS CHIEF		JAKE CAGLE MIKE DAVIS (T)		DIVISION/GROUP SUPERVISOR		CHRIS MARTINELLI
BRANCH DIRECTOR		STEVE WARD SPENCER ANDREIS (T)		AIR ATTACK SUPERVISOR		DEREK WHEELER
5. Resources Assigned this Period						
Strike Team / Task Force / Resource Designator		LWD	Leader	Number Persons	Drop Off PT./Time	Pick Up PT./Time
6. Control Operations/Work Assignments:						
<ul style="list-style-type: none"> • Continue to construct direct line from Middle Ridge west to Wildcat Peak, along county line. • Construct indirect line from Middle Ridge north to Ramshorn Rd and west to Mumbo Creek. • Construct indirect line from Grozem Peak north to Blue Ridge. • Continue north from Blue Ridge towards Bear Flat and down to the Trinity River. • Continue holding and initiate mop-up where appropriate. 						
7. Special Instructions:						
<ul style="list-style-type: none"> • FOBS C. Harper, J. Healy, J. Ficher, J. Maloney, N. Shew, R. Hunter, J. Parr, S. Hunt are assigned to all divisions in Branch VIII. 						
8. Division/Group Communication Summary						
Function	Channel	RX Frequency N/W	RX Tone/NAC	TX Frequency N/W	TX Tone/NAC	Mode
COMMAND	6	169.5375 N	10/107.2	164.7125	10/107.2	A
TACTICAL	7	168.0500 N	10/107.2	168.0500 N	10/107.2	A
AIR TO GROUND	14	168.3375 N		168.3375 N		A
AIR TO GROUND	15	167.8125 N		167.8125 N		A
9. Prepared By (Resource Unit Leader)			Approved By (Planning Section Chief)		Date	Time
SCOTT SOUSA			DAVE GERBOTH		09/14/2018	2200

Division/Group Assignment List (ICS 204 WF)
Controlled Unclassified Information//Basic

1. Incident Name:		3.	
DELTA		Branch:	Division/Group:
2. Operational Period: DAY		VIII	TT
Date/Time From: 09/15/2018 0600 SAT	Date/Time To: 09/15/2018 1800 SAT		

4. Operations Personnel			
EAST OPERATIONS CHIEF	JAKE CAGLE MIKE DAVIS (T)	DIVISION/GROUP SUPERVISOR	KEITH CUMMINGS CASEY COHEN (T) /Antonio Moreno
BRANCH DIRECTOR	STEVE WARD SPENCER ANDREIS (T)	AIR ATTACK SUPERVISOR	DEREK WHEELER

5. Resources Assigned this Period					
Strike Team / Task Force / Resource Designator	LWD	Leader	Number Persons	Drop Off PT./Time	Pick Up PT./Time
HC1 - BIG BEAR IHC C-88	09/26	FRANK ESPOSITO	20	MC CLOUD ICP /0600	MC CLOUD ICP /1800
HCS1 HUU 9126G (24 HR) C-29	09/16	JAKE BURGESS	34	MC CLOUD ICP/0600	MC CLOUD ICP/0600
HC2I GFP 15D C-95	09/17	BRANDON CAMPBELL	20	MC CLOUD ICP /0600	MC CLOUD ICP /1800
HC2 FRANCO REFORESTATION INC C-17	09/20	LEO RASCH	20	MC CLOUD ICP/0600	MC CLOUD ICP/1800
HC2 WYEAST FORESTRY LLC C-96	09/25	ANDREW WILLIAMSON	20	MC CLOUD ICP/0600	MC CLOUD ICP/1800
ES3 SKU 9262C(24HR) E-20	09/18	RYAN THOMAS	17	MC CLOUD ICP/0600	MC CLOUD ICP/0600
ES3 OES 3800C (24HR) E-22 DEMOB	09/18	RIK VALLES	18	MC CLOUD ICP/0600	MC CLOUD ICP/0600
DELTA - TF 2				MC CLOUD ICP /0600	MC CLOUD ICP /1800
TFLD O-19	09/19	SCOTT ARGANBRIGHT	1	MC CLOUD ICP /0600	MC CLOUD ICP /1800
TFLD (T) O-488	09/19	TRAVIS KUNKLE	1	MC CLOUD ICP /0600	MC CLOUD ICP /1800
ENG3 SQF 46 E-319	09/19	CASEY HOWARD	5	MC CLOUD ICP /0600	MC CLOUD ICP /1800
ENG3 MDF - 55 E-337	09/20	ALEX DECKER	5	MC CLOUD ICP /0600	MC CLOUD ICP /1800
ENG6 FTA E5265 E-121	09/23	RICARDO KINDELAY	3	MC CLOUD ICP /0600	MC CLOUD ICP /1800
ENG6 BLACKTIMBER E-177	09/24	TED HEBRARD	2	MC CLOUD ICP /0600	MC CLOUD ICP /1800
WTS2 FIRELINE SUPPORT (24HR) E-37	09/19	BRYAN TROEDEL	2	MC CLOUD ICP /0600	MC CLOUD ICP /0600
WTS2 MATTHEW J JOHNSON E-41	09/20	MATHEW JOHNSON	1	MC CLOUD ICP /0600	MC CLOUD ICP /1800
WTS2 JUNGWIRTH E-345	09/15	JERRY JUNGWIRTH, JR	1	MC CLOUD ICP /0600	MC CLOUD ICP /1800
WTS2 WILLMORE AG E-348	09/23	BILL TORRE	2	MC CLOUD ICP /0600	MC CLOUD ICP /1800
WTS2 SHUMAS (12HR) E-374	09/21	DAVID MASON	1	MC CLOUD ICP /0600	MC CLOUD ICP /1800
DO22 DUDLEYS' EXCAVATING INC E-93	09/20	HOWIE LINDAUER	2	MC CLOUD ICP /0600	MC CLOUD ICP /1800

8. Division/Group Communication Summary						
Function	Channel	RX Frequency N/W	RX Tone/NAC	TX Frequency N/W	TX Tone/NAC	Mode
COMMAND	6	169.5375 N	10/107.2	164.7125	10/107.2	A
TACTICAL	10	166.7750 N	10/107.2	166.7750 N	10/107.2	A
AIR TO GROUND	14	168.3375 N		168.3375 N		A
AIR TO GROUND	15	167.8125 N		167.8125 N		A

9. Prepared By (Resource Unit Leader)	Approved By (Planning Section Chief)	Date	Time
MATTHEW HASKINS	DAVE GERBOTH	09/14/2018	2200

Division/Group Assignment List (ICS 204 WF)
Controlled Unclassified Information//Basic

1. Incident Name:				3.		
DELTA				Branch:		Division/Group:
2. Operational Period: DAY				VIII		TT
Date/Time From: 09/15/2018 0600 SAT		Date/Time To: 09/15/2018 1800 SAT				
4. Operations Personnel						
EAST OPERATIONS CHIEF		JAKE CAGLE MIKE DAVIS (T)		DIVISION/GROUP SUPERVISOR		KEITH CUMMINGS CASEY COHEN (T)
BRANCH DIRECTOR		STEVE WARD SPENCER ANDREIS (T)		AIR ATTACK SUPERVISOR		DEREK WHEELER
5. Resources Assigned this Period						
Strike Team / Task Force / Resource Designator		LWD	Leader	Number Persons	Drop Off PT./Time	Pick Up PT./Time
DOZ2 E-95		09/21	TIM WATERMAN	2	MCCLLOUD ICP /0600	MCCLLOUD ICP /1800
DOZ2 LET-ER-BUCK E-136		09/21	TIM COOK	2	MCCLLOUD ICP /0600	MCCLLOUD ICP /1800
DOZ2 ZABEL TRUCKING E-300		09/22	WADE ZABEL	2	MCCLLOUD ICP /0600	MCCLLOUD ICP /1800
DOZ2 BRITTEN E-365		09/24	JEFF ALEXANDER	3	MCCLLOUD ICP /0600	MCCLLOUD ICP /1800
DOZ2 PRO- DUMP AND EXCAVATING E-561		09/21	JERRY SEABORN	2	MCCLLOUD ICP /0600	MCCLLOUD ICP /1800
DOZ2 PRO- DUMP AND EXCAVATING E-562		09/21	TRACY NORTON	2	MCCLLOUD ICP /0600	MCCLLOUD ICP /1800
SKG1 SOFT TRACK ATTACK (24HR) E-352		09/15	STEVE BONNER	3	MCCLLOUD ICP /0600	MCCLLOUD ICP /1800
TFLD O-172		09/23	PAUL TADLOCK	1	MCCLLOUD ICP /0600	MCCLLOUD ICP /1800
TFLD (T) O-173		09/23	JEREMY SPIESS	1	MCCLLOUD ICP /0600	MCCLLOUD ICP /1800
HEQB O-115		09/24	NOELLE BAHNMILLER	1	MCCLLOUD ICP /0600	MCCLLOUD ICP /1800
HEQB O-201		09/23	DANIEL L STARK	1	MCCLLOUD ICP /0600	MCCLLOUD ICP /1800
HEQB (T) O-118		09/24	WARREN BROWETT	1	MCCLLOUD ICP /0600	MCCLLOUD ICP /1800
HEQB (T) O-162		09/21	MARC BURNETT	1	MCCLLOUD ICP /0600	MCCLLOUD ICP /1800
FMOD NORTH ZONE O-27		09/20	CRAIG DAVIS	2	MCCLLOUD ICP /0600	MCCLLOUD ICP /1800
REMS 6 O-277		09/24	TOMMY KITAHATA	4	MCCLLOUD ICP /0600	MCCLLOUD ICP /1800
EMPF O-431		09/18	JOE PEREZ	1	MCCLLOUD ICP /0600	MCCLLOUD ICP /1800
EMTF O-444		09/18	BRANDON SCULL	1	MCCLLOUD ICP /0600	MCCLLOUD ICP /1800
EMTF O-445		09/26	DAN CHAPMAN	1	MCCLLOUD ICP /0600	MCCLLOUD ICP /1800
EMTF O-449		09/26	TROY MILANO	1	MCCLLOUD ICP /0600	MCCLLOUD ICP /1800
SOFR O-167		09/22	MATTHEW LUCAS	1	MCCLLOUD ICP /0600	MCCLLOUD ICP /1800
8. Division/Group Communication Summary						
Function	Channel	RX Frequency N/W	RX Tone/NAC	TX Frequency N/W	TX Tone/NAC	Mode
COMMAND	6	169.5375 N	10/107.2	164.7125	10/107.2	A
TACTICAL	10	166.7750 N	10/107.2	166.7750 N	10/107.2	A
AIR TO GROUND	14	168.3375 N		168.3375 N		A
AIR TO GROUND	15	167.8125 N		167.8125 N		A
9. Prepared By (Resource Unit Leader)			Approved By (Planning Section Chief)		Date	Time
MATTHEW HASKINS			DAVE GERBOTH		09/14/2018	2200

Division/Group Assignment List (ICS 204 WF)
Controlled Unclassified Information//Basic

1. Incident Name:			3.			
DELTA			VIII		TT	
2. Operational Period: DAY						
Date/Time From: 09/15/2018 0600 SAT		Date/Time To: 09/15/2018 1800 SAT				
4. Operations Personnel						
EAST OPERATIONS CHIEF		JAKE CAGLE MIKE DAVIS (T)		DIVISION/GROUP SUPERVISOR		KEITH CUMMINGS CASEY COHEN (T)
BRANCH DIRECTOR		STEVE WARD SPENCER ANDREIS (T)		AIR ATTACK SUPERVISOR		DEREK WHEELER
5. Resources Assigned this Period						
Strike Team / Task Force / Resource Designator		LWD	Leader	Number Persons	Drop Off PT./Time	Pick Up PT./Time
HC2 JO International		G22	Pat Stenger	20	9/20	
6. Control Operations/Work Assignments:						
<ul style="list-style-type: none"> • Construct contingency line from I-5 to Middle Ridge. • Fall hazard trees that will threaten control lines. • Hold and secure control lines. • Continue to mop-up to secure fireline. • Back haul trash and excess items to ICP. 						
7. Special Instructions:						
<ul style="list-style-type: none"> • FOBS C. Harper, J. Healy, J. Ficher, J. Maloney, N. Shew, R. Hunter, J. Parr, S. Hunt are assigned to all divisions in Branch VIII. 						
8. Division/Group Communication Summary						
Function	Channel	RX Frequency N/W	RX Tone/NAC	TX Frequency N/W	TX Tone/NAC	Mode
COMMAND	6	169.5375 N	10/107.2	164.7125	10/107.2	A
TACTICAL	10	166.7750 N	10/107.2	166.7750 N	10/107.2	A
AIR TO GROUND	14	168.3375 N		168.3375 N		A
AIR TO GROUND	15	167.8125 N		167.8125 N		A
9. Prepared By (Resource Unit Leader)			Approved By (Planning Section Chief)		Date	Time
MATTHEW HASKINS			DAVE GERBOTH		09/14/2018	2200

Division/Group Assignment List (ICS 204 WF)
 Controlled Unclassified Information//Basic

1. Incident Name:		3.				
DELTA		Branch:		Division/Group:		
2. Operational Period: DAY		VIII		WW		
Date/Time From: 09/15/2018 0600 SAT	Date/Time To: 09/15/2018 1800 SAT					
4. Operations Personnel						
EAST OPERATIONS CHIEF	JAKE CAGLE MIKE DAVIS (T)	DIVISION/GROUP SUPERVISOR		MAEVE JAUREZ		
BRANCH DIRECTOR	STEVE WARD SPENCER ANDREIS (T)	AIR ATTACK SUPERVISOR		DEREK WHEELER		
5. Resources Assigned this Period						
Strike Team / Task Force / Resource Designator	LWD	Leader	Number Persons	Drop Off PT./Time	Pick Up PT./Time	
HC1 REDDING IHC C-60	09/20	DANIEL MALLIA	19	MC CLOUD ICP/0600	MC CLOUD ICP/1800	
HC2I ELK MOUNTIAN C-36	09/17	REYMUNDO REYES	20	MC CLOUD ICP/0600	MC CLOUD ICP/1800	
HC2I IRON MOUNTAIN C-49	09/23	MATTHEW A MCKURTIS	20	MC CLOUD ICP/0600	MC CLOUD ICP/1800	
HC2I PHOENIX C-83	09/20	JEFF GALLIVAN	19	MC CLOUD ICP/0600	MC CLOUD ICP/1800	
ES3 XYO 4280C (24HR) E-72	09/20	ERIC ZANE	21	MC CLOUD ICP/0600	MC CLOUD ICP/1800	
ES3 TNF 4660C E-605	09/17	ERIC HUSMANN	27	MC CLOUD ICP/0600	MC CLOUD ICP/1800	
ENG3 MODOC 44 E-59	09/21	WESLEY BREAKFIELD	5	MC CLOUD ICP/0600	MC CLOUD ICP/1800	
ENG3 LNF 84 E-236	09/16	DREW MICKOKEY	5	MC CLOUD ICP/0600	MC CLOUD ICP/1800	
ENG3 HTF - 312 E-238	09/16	LEWIS BROWN	5	MC CLOUD ICP/0600	MC CLOUD ICP/1800	
ENG3 PNF 15 E-239	09/17	BRUCE JACKSON	5	MC CLOUD ICP/0600	MC CLOUD ICP/1800	
ENG3 LKR 8531 E-382	09/26	CORY ALLEN SUTTON	4	MC CLOUD ICP/0600	MC CLOUD ICP/1800	
ENG3 MDF 335 E-383	09/25	MICHAEL L GENTRY	5	MC CLOUD ICP/0600	MC CLOUD ICP/1800	
ENG3 MDF 65 E-384	09/26	HAPPY BROOK HOPPE	5	MC CLOUD ICP/0600	MC CLOUD ICP/1800	
ENG3 BERTHOUD FPD E-384	09/24	NATHAN ALDERSEA	4	MC CLOUD ICP/0600	MC CLOUD ICP/1800	
ENG3 ANF 326 E-387	09/19	ISAAC BAEZA	5	MC CLOUD ICP/0600	MC CLOUD ICP/1800	
ENG3 SRF- 323 E-388	09/19	STEVE VALENTINE	5	MC CLOUD ICP/0600	MC CLOUD ICP/1800	
WTS2 BEN'S E-36	09/20	TRAVIS MILES	1	MC CLOUD ICP/0600	MC CLOUD ICP/1800	
WTS2 CARLTON (24 HR) E-347	09/19	ROSS ROGERS	1	MC CLOUD ICP/0600	MC CLOUD ICP/1800	
WTT2 E-411 → PP	09/21	LEO E MORAN	2	MC CLOUD ICP/0600	MC CLOUD ICP/1800	
EXCA TRINITY RIVER CONSTRUCTION E-349	09/16	TYLER BROWN	1	MC CLOUD ICP/0600	MC CLOUD ICP/1800	
8. Division/Group Communication Summary						
Function	Channel	RX Frequency N/W	RX Tone/NAC	TX Frequency N/W	TX Tone/NAC	Mode
COMMAND	6	169.5375 N	10/107.2	164.7125	10/107.2	A
TACTICAL	9	166.7250 N	10/107.2	166.7250 N	10/107.2	A
AIR TO GROUND	14	168.3375 N		168.3375 N		A
AIR TO GROUND	15	167.8125 N		167.8125 N		A
9. Prepared By (Resource Unit Leader)		Approved By (Planning Section Chief)		Date	Time	
MATTHEW HASKINS		DAVE GERBOTH		09/14/2018	2200	

Division/Group Assignment List (ICS 204 WF)
Controlled Unclassified Information//Basic

1. Incident Name:		3.				
DELTA		Branch:		Division/Group:		
2. Operational Period: DAY		VIII		WW		
Date/Time From: 09/15/2018 0600 SAT	Date/Time To: 09/15/2018 1800 SAT					
4. Operations Personnel						
EAST OPERATIONS CHIEF	JAKE CAGLE MIKE DAVIS (T)	DIVISION/GROUP SUPERVISOR		MAEVE JAUREZ		
BRANCH DIRECTOR	STEVE WARD SPENCER ANDREIS (T)	AIR ATTACK SUPERVISOR		DEREK WHEELER		
5. Resources Assigned this Period						
Strike Team / Task Force / Resource Designator	LWD	Leader	Number Persons	Drop Off PT./Time	Pick Up PT./Time	
EXCA TRINITY RIVER CONSTRUCTION E-350	09/20	ED SWANSON	2	MC CLOUD ICP/0600	MC CLOUD ICP/1800	
CHIP CECIL LOGGING E-224	09/25	MAX ARGUETA	2	MC CLOUD ICP/0600	MC CLOUD ICP/1800	
TFLD O-154	09/22	DAN OKEEFE	1	MC CLOUD ICP/0600	MC CLOUD ICP/1800	
TFLD (T) O-166	09/23	MICHAEL HOON	1	MC CLOUD ICP/0600	MC CLOUD ICP/1800	
TFLD (T) O-221	09/18	MATTHEW FLYING	1	MC CLOUD ICP/0600	MC CLOUD ICP/1800	
EMPF O-106	09/22	ANTHONY RAPOZA	1	MC CLOUD ICP/0600	MC CLOUD ICP/1800	
EMTF O-111	09/22	MARCUS BLACK	1	MC CLOUD ICP/0600	MC CLOUD ICP/1800	
SOFR O-182	09/23	BOBBY HUBBY	1	MC CLOUD ICP/0600	MC CLOUD ICP/1800	
REAF O-414	09/15	BRENNA MONTAGNE	1	MC CLOUD ICP/0600	MC CLOUD ICP/1800	
REAF O-415	09/17	MICHAEL PARENTI	1	MC CLOUD ICP/0600	MC CLOUD ICP/1800	
6. Control Operations/Work Assignments:						
<ul style="list-style-type: none"> Improve and hold control lines. Fall hazard trees that will threaten control lines. Mop up 100 feet in from control line. 						
7. Special Instructions:						
If Interstate 5 needs to be closed:						
<ol style="list-style-type: none"> Operations is notified Operations notifies Communications Communications notifies CHP Dispatch 						
<ul style="list-style-type: none"> FOBS C. Harper, J. Healy, J. Ficher, J. Maloney, N. Shew, R. Hunter, J. Parr, S. Hunt are assigned to all divisions in Branch VIII. 						
8. Division/Group Communication Summary						
Function	Channel	RX Frequency N/W	RX Tone/NAC	TX Frequency N/W	TX Tone/NAC	Mode
COMMAND	6	169.5375 N	10/107.2	164.7125	10/107.2	A
TACTICAL	9	166.7250 N	10/107.2	166.7250 N	10/107.2	A
AIR TO GROUND	14	168.3375 N		168.3375 N		A
AIR TO GROUND	15	167.8125 N		167.8125 N		A
9. Prepared By (Resource Unit Leader)		Approved By (Planning Section Chief)		Date	Time	
MATTHEW HASKINS		DAVE GERBOTH		09/14/2018	2200	

Division/Group Assignment List (ICS 204 WF)
Controlled Unclassified Information//Basic

1. Incident Name:			3.			
DELTA			Branch:		Division/Group:	
2. Operational Period: DAY			IX		AA / ZZ	
Date/Time From: 09/15/2018 0600 SAT	Date/Time To: 09/15/2018 1800 SAT					
4. Operations Personnel						
EAST OPERATIONS CHIEF		JAKE CAGLE MIKE DAVIS (T)		DIVISION/GROUP SUPERVISOR		BELINDA PLUMMER KEVIN SMYTH (T)
BRANCH DIRECTOR		KYLE JACOBSON BILLY SEE		AIR ATTACK SUPERVISOR		DEREK WHEELER
5. Resources Assigned this Period						
Strike Team / Task Force / Resource Designator	LWD	Leader	Number Persons	Drop Off PT./Time	Pick Up PT./Time	
HC1 SIERRA HOTSHOTS IHC C-40	09/22	ROBY ALAN	20	MC CLOUD ICP/0600	MC CLOUD ICP/1800	
HC2I BLACK EAGLES C-14	09/20	GUSTAVO SANTOYO- GALLEGOS	22	MC CLOUD ICP/0600	MC CLOUD ICP/1800	
HC2I VENTANA C-15	09/20	STEVE REYES	20	MC CLOUD ICP/0600	MC CLOUD ICP/1800	
HC2I FORT APACHE 1 C-84	09/21	DANNY TAYLOR JR	20	MC CLOUD ICP/0600	MC CLOUD ICP/1800	
HC2 SHASTA C-71	09/16	LLOYD CRUZ	19	MC CLOUD ICP/0600	MC CLOUD ICP/1800	
ES3 LNF 3615C E-362	09/17	RICHARD NOGGLES	27	MC CLOUD ICP/0600	MC CLOUD ICP/1800	
ENG3 PNF330 E-237	09/16	TRAVIS LOPES	5	MC CLOUD ICP/0600	MC CLOUD ICP/1800	
ENG3 MNF 353 E-241	09/19	MARCUS SPIVEY	5	MC CLOUD ICP/0600	MC CLOUD ICP/1800	
ENG3 MNF 336 E-242	09/18	BRAD FOVAR	5	MC CLOUD ICP/0600	MC CLOUD ICP/1800	
ENG6 RED ROCK FIRE 261 E-262	09/25	BUTCH MURPHY	3	MC CLOUD ICP/0600	MC CLOUD ICP/1800	
ENG6 HART VENTURES E-380	09/27	SKIP KOLTZ	3	MC CLOUD ICP/0600	MC CLOUD ICP/1800	
WTT1 MAYER FIRE E-267	09/18	JAKE MCDANIEL	2	MC CLOUD ICP/0600	MC CLOUD ICP/1800	
WTT1 SCOTT VALLEY E-268	09/27	NICK KRAUS	2	MC CLOUD ICP/0600	MC CLOUD ICP/1800	
WTS2 BUNN ENTERPRISES E-269	09/15	WADE BUNN	1	MC CLOUD ICP/0600	MC CLOUD ICP/1800	
WTS2 YREKA OUTLANDS (24HR) E-270	09/17	ED FRYSTAK	2	MC CLOUD ICP/0600	MC CLOUD ICP/0600	
WTS2 WATERDOGG, LLC (24 HR) E-271	09/27	BOBBY STOCKON	2	MC CLOUD ICP/0600	MC CLOUD ICP/0600	
WTS2 DARRAH E-272	09/24	WAYNE VIRAG	1	MC CLOUD ICP/0600	MC CLOUD ICP/1800	
WTS2 JOHN SAMPLE (24HR) E-273	09/27	ERIK HEAD	1	MC CLOUD ICP/0600	MC CLOUD ICP/0600	
WTS3 GRANT HANNA (24 HR) E-274	10/05	CLAYTON CASH	2	MC CLOUD ICP/0600	MC CLOUD ICP/0600	
PUMP TRINITY QUICK LUBE (24HR) E-7	09/18	JOSEPH PINI	1	MC CLOUD ICP/0600	MC CLOUD ICP/0600	
8. Division/Group Communication Summary						
Function	Channel	RX Frequency N/W	RX Tone/NAC	TX Frequency N/W	TX Tone/NAC	Mode
COMMAND	2	172.6500 N	10/107.2	164.7500 N	10/107.2	A
TACTICAL	10	166.7750 N	10/107.2	166.7750 N	10/107.2	A
AIR TO GROUND	14	168.3375 N		168.3375 N		A
AIR TO GROUND	15	167.8125 N		167.8125 N		A
9. Prepared By (Resource Unit Leader)			Approved By (Planning Section Chief)		Date	Time
HANNE MEYERS			DAVE GERBOTH		09/14/2018	2200

Division/Group Assignment List (ICS 204 WF)
Controlled Unclassified Information//Basic

1. Incident Name:			3.			
DELTA			Branch:		Division/Group:	
2. Operational Period: DAY			IX		AA / ZZ	
Date/Time From: 09/15/2018 0600 SAT	Date/Time To: 09/15/2018 1800 SAT					
4. Operations Personnel						
EAST OPERATIONS CHIEF		JAKE CAGLE MIKE DAVIS (T)		DIVISION/GROUP SUPERVISOR		BELINDA PLUMMER KEVIN SMYTH (T)
BRANCH DIRECTOR		KYLE JACOBSON BILLY SEE		AIR ATTACK SUPERVISOR		DEREK WHEELER
5. Resources Assigned this Period						
Strike Team / Task Force / Resource Designator	LWD	Leader	Number Persons	Drop Off PT./Time	Pick Up PT./Time	
TFLD O-20	09/19	CHRISTOPHER E ALLEN	1	MC CLOUD ICP/0600	MC CLOUD ICP/1800	
REMS 5 O-94	09/22	TIM MEHRER	4	MC CLOUD ICP/0600	MC CLOUD ICP/1800	
REMS 7 O-276	09/23	JERRY FOWLER	4	MC CLOUD ICP/0600	MC CLOUD ICP/1800	
EMPF O-164	09/23	TOM KAVANAUGH	1	MC CLOUD ICP/0600	MC CLOUD ICP/1800	
EMTF O-113	09/22	JOSHUA MASSIE	1	MC CLOUD ICP/0600	MC CLOUD ICP/1800	
SOFR O-388	09/18	MICHAEL FREDERICK	1	MC CLOUD ICP/0600	MC CLOUD ICP/1800	
SOFR O-168	09/23	RUDY DIAZ	1	MC CLOUD ICP/0600	MC CLOUD ICP/1800	
REAF O-382	09/24	JOSIAH MCELROY	1	MC CLOUD ICP/0600	MC CLOUD ICP/1800	
6. Control Operations/Work Assignments:						
<ul style="list-style-type: none"> Mop up fire perimeter where safe to do so in order to secure it. 						
7. Special Instructions:						
<ul style="list-style-type: none"> FOBS D. Johnson, D. Jones are assigned to all divisions in Branch IX. REAFs Nick Meyers and Gabrielle Bohlman will be assigned to divisions AA/ZZ and CC. 						
8. Division/Group Communication Summary						
Function	Channel	RX Frequency N/W	RX Tone/NAC	TX Frequency N/W	TX Tone/NAC	Mode
COMMAND	2	172.6500 N	10/107.2	164.7500 N	10/107.2	A
TACTICAL	10	166.7750 N	10/107.2	166.7750 N	10/107.2	A
AIR TO GROUND	14	168.3375 N		168.3375 N		A
AIR TO GROUND	15	167.8125 N		167.8125 N		A
9. Prepared By (Resource Unit Leader)			Approved By (Planning Section Chief)		Date	Time
HANNE MEYERS			DAVE GERBOTH		09/14/2018	2200

Division/Group Assignment List (ICS 204 WF)
Controlled Unclassified Information//Basic

1. Incident Name:			3.			
DELTA			Branch:		Division/Group:	
2. Operational Period: DAY			IX		CC	
Date/Time From: 09/15/2018 0600 SAT	Date/Time To: 09/15/2018 1800 SAT					
4. Operations Personnel						
EAST OPERATIONS CHIEF		JAKE CAGLE MIKE DAVIS (T)		DIVISION/GROUP SUPERVISOR		HEATHER GROVE
BRANCH DIRECTOR		KYLE JACOBSON BILLY SEE		AIR ATTACK SUPERVISOR		DEREK WHEELER
5. Resources Assigned this Period						
Strike Team / Task Force / Resource Designator		LWD	Leader	Number Persons	Drop Off PT./Time	Pick Up PT./Time
HC1 AMERICAN RIVER IHC C-12		09/15	MATTHEW RADTKE	19	MC CLOUD ICP/0600	MC CLOUD ICP/1800
HC1 TALLAC IHC C-61		09/15	KYLE BETTY	19	MC CLOUD ICP/0600	MC CLOUD ICP/1800
HC1 SMITH RIVER IHC C-75		09/17	DOUGLAS DENLINGER	20	MC CLOUD ICP/0600	MC CLOUD ICP/1800
HC1 SPRINGVILLE IHC C-86		09/26	JOAQUIN MEDINA	18	MC CLOUD ICP/0600	MC CLOUD ICP/1800
HC2I GOLDEN EMPIRE C-63		09/18	PADDY YOUNG	21	MC CLOUD ICP/0600	MC CLOUD ICP/1800
HC2I MODOC T2IA C-93		09/20	WILLIE ALMAND	18	MC CLOUD ICP/0600	MC CLOUD ICP/1800
ENG3 CNF 326 E-301		09/19	MATT MCCLEMENTS	5	MC CLOUD ICP/0600	MC CLOUD ICP/1800
ENG3 J3 CONTRACTING E-314		09/24	JESUS SCHMIDT	3	MC CLOUD ICP/0600	MC CLOUD ICP/1800
ENG6 ASF E611 E-120		09/24	BERKELEY KREGER	6	MC CLOUD ICP/0600	MC CLOUD ICP/1800
ENG6 FIRESTORM E-335		09/20	SAM PEARCE	3	MC CLOUD ICP/0600	MC CLOUD ICP/1800
DO22 WARNER ENTERPRISES, INC E-183		09/23	TOM HELSLEY	2	MC CLOUD ICP/0600	MC CLOUD ICP/1800
DO22 L. E. BRITTEN E-265		09/23	MIKE CONDON	1	MC CLOUD ICP/0600	MC CLOUD ICP/1800
EXCA BRITTEN, JOHN JR E-219		09/25	RORY CONLAN	2	MC CLOUD ICP/0600	MC CLOUD ICP/1800
EXCA J W MORRISON 1 E-220		09/25	DUSTIN WESTFALL	2	MC CLOUD ICP/0600	MC CLOUD ICP/1800
SKG3 J & D LOGGING E-275		09/18	SAWYER LOGAN	2	MC CLOUD ICP/0600	MC CLOUD ICP/1800
SKG3 HALEY, TODD B. E-276		09/26	TODD HALEY	2	MC CLOUD ICP/0600	MC CLOUD ICP/1800
DIVS O-155		09/24	TRAVIS WRIGHT	1	MC CLOUD ICP/0600	MC CLOUD ICP/1800
TFLD O-495		09/25	JASON VESTAL	1	MC CLOUD ICP/0600	MC CLOUD ICP/1800
HEQB O-119		09/25	ANDY SHAVER	1	MC CLOUD ICP/0600	MC CLOUD ICP/1800
HEQB O-163		09/22	TIMOTHY HOLLIDAY	1	MC CLOUD ICP/0600	MC CLOUD ICP/1800
8. Division/Group Communication Summary						
Function	Channel	RX Frequency N/W	RX Tone/NAC	TX Frequency N/W	TX Tone/NAC	Mode
COMMAND	2	172.6500 N	10/107.2	164.7500 N	10/107.2	A
TACTICAL	12	162.1625 N	10/107.2	162.1625 N	10/107.2	A
AIR TO GROUND	14	168.3375 N		168.3375 N		A
AIR TO GROUND	15	167.8125 N		167.8125 N		A
9. Prepared By (Resource Unit Leader)			Approved By (Planning Section Chief)		Date	Time
SCOTT SOUSA			DAVE GERBOTH		09/14/2018	2200

Division/Group Assignment List (ICS 204 WF)
Controlled Unclassified Information//Basic

1. Incident Name:		3.				
DELTA		Branch:		Division/Group:		
2. Operational Period: DAY		IX		CC		
Date/Time From: 09/15/2018 0600 SAT	Date/Time To: 09/15/2018 1800 SAT					
4. Operations Personnel						
EAST OPERATIONS CHIEF	JAKE CAGLE MIKE DAVIS (T)	DIVISION/GROUP SUPERVISOR		HEATHER GROVE		
BRANCH DIRECTOR	KYLE JACOBSON BILLY SEE	AIR ATTACK SUPERVISOR		DEREK WHEELER		
5. Resources Assigned this Period						
Strike Team / Task Force / Resource Designator	LWD	Leader	Number Persons	Drop Off PT./Time	Pick Up PT./Time	
HEQB (T) O-159	09/21	JASON P O'BANNON	1	MC CLOUD ICP/0600	MC CLOUD ICP/1800	
EMPF O-211	09/23	MATT HECKMANN	1	MC CLOUD ICP/0600	MC CLOUD ICP/1800	
EMPF O-442	09/27	SEAN NICOLINI	1	MC CLOUD ICP/0600	MC CLOUD ICP/1800	
EMPF O-443	09/27	DAN J MOORE	1	MC CLOUD ICP/0600	MC CLOUD ICP/1800	
EMTF O-273	09/24	EDWARD LEE NOBLE	1	MC CLOUD ICP/0600	MC CLOUD ICP/1800	
SOFR O-327	09/18	JACK THOMAS	1	MC CLOUD ICP/0600	MC CLOUD ICP/1800	
SOFR O-422	09/27	BRIAN RICHEY	1	MC CLOUD ICP/0600	MC CLOUD ICP/1800	
6. Control Operations/Work Assignments:						
<ul style="list-style-type: none"> Construct and improve indirect control line from DP 38 northwest towards Damnation Peak. Prepare indirect line for possible firing operations. Scout for potential opportunities to go direct. 						
7. Special Instructions:						
<ul style="list-style-type: none"> FOBS D. Johnson, D. Jones are assigned to all divisions in Branch IX. REAFs Nick Meyers and Gabrielle Bohlman will be assigned to divisions AA/ZZ and CC. <p>EMO10 Charlie Fallers 0-30 9/20 Tacoma Manuel WTS2 Yveka Outlands (24 HR) E-270 9/17 Ed Furstak</p>						
8. Division/Group Communication Summary						
Function	Channel	RX Frequency NW	RX Tone/NAC	TX Frequency NW	TX Tone/NAC	Mode
COMMAND	2	172.6500 N	10/107.2	164.7500 N	10/107.2	A
TACTICAL	12	162.1625 N	10/107.2	162.1625 N	10/107.2	A
AIR TO GROUND	14	168.3375 N		168.3375 N		A
AIR TO GROUND	15	167.8125 N		167.8125 N		A
9. Prepared By (Resource Unit Leader)		Approved By (Planning Section Chief)		Date	Time	
SCOTT SOUSA		DAVE GERBOTH		09/14/2018	2200	

Division/Group Assignment List (ICS 204 WF)
Controlled Unclassified Information//Basic

1. Incident Name:			3.			
DELTA			Branch:		Division/Group:	
2. Operational Period: DAY			IX		YY	
Date/Time From: 09/15/2018 0600 SAT	Date/Time To: 09/15/2018 1800 SAT					
4. Operations Personnel						
EAST OPERATIONS CHIEF		JAKE CAGLE MIKE DAVIS (T)		DIVISION/GROUP SUPERVISOR		KEITH SWOPE
BRANCH DIRECTOR		KYLE JACOBSON BILLY SEE		AIR ATTACK SUPERVISOR		DEREK WHEELER
5. Resources Assigned this Period						
Strike Team / Task Force / Resource Designator	LWD	Leader	Number Persons	Drop Off PT./Time	Pick Up PT./Time	
HC1 TEXAS CANYON IHC C-3	09/19	DANNY BREUKLANDER	20	MC CLOUD ICP/0600	MC CLOUD ICP/1800	
HC1 ELDORADO IHC C-35	09/16	AARON HUMPHREY	19	MC CLOUD ICP/0600	MC CLOUD ICP/1800	
HC1 ARROYO GRANDE IHC C-39	09/22	MIKE HICKEY	20	MC CLOUD ICP/0600	MC CLOUD ICP/1800	
HC1 MAD RIVER IHC C-73	09/15	TAD HAIR	19	MC CLOUD ICP/0600	MC CLOUD ICP/1800	
HC1 UKONOM IHC C-74	09/15	JOEL BERG	20	MC CLOUD ICP/0600	MC CLOUD ICP/1800	
HCS1 SKU 9261G (24HR) C-46	09/28	KEVIN KEENE	35	MC CLOUD ICP/0600	MC CLOUD ICP/0600	
HC2IA KLAMATH CREW 14 C-58	09/19	ANDREW S ZINK	18	MC CLOUD ICP/0600	MC CLOUD ICP/1800	
HC2IA TRUCKEE IHC C-65 <i>Swing</i>	09/24	SCOTT BURGHARDT	20	MC CLOUD ICP/0600	MC CLOUD ICP/1800	
ES3 SKU 9260C (24HR) E-13	09/18	ROSS MILLER	20	MC CLOUD ICP/0600	MC CLOUD ICP/0600	
ES3 TGU 9250C (24HR) E-21	09/18	MATT SISNEROS	17	MC CLOUD ICP/0600	MC CLOUD ICP/0600	
ES3 OES 2870C (12HR) E-71	09/20	JEFF YOUNGSMAN	22	MC CLOUD ICP/0600	MC CLOUD ICP/0600	
ES3 TMU 4690C E-414	09/18	PHILLIP HEITZKE	27	MC CLOUD ICP/0600	MC CLOUD ICP/1800	
ENG3 HIA 9533 E-315	09/19	JOHN VINCENT MARTINEZ	4	MC CLOUD ICP/0600	MC CLOUD ICP/1800	
ENG3 LONGMONT 2131 E-353	09/25	MICHAEL CONNOLLY	4	MC CLOUD ICP/0600	MC CLOUD ICP/1800	
ENG3 SQF 322 E-354	09/17	CHRISTOPHER MORALES	5	MC CLOUD ICP/0600	MC CLOUD ICP/1800	
ENG3 SQF 341 E-355	09/17	RICHARD BAKER	5	MC CLOUD ICP/0600	MC CLOUD ICP/1800	
ENG3 SQF 47 E-356	09/17	MATTHEW CHAMBERS	5	MC CLOUD ICP/0600	MC CLOUD ICP/1800	
ENG3 SQF 43 E-357	09/17	JEREMIAS OLSON	5	MC CLOUD ICP/0600	MC CLOUD ICP/1800	
ENG3 CND 3133 E-358	09/17	JAMES ROOFFENER	5	MC CLOUD ICP/0600	MC CLOUD ICP/1800	
ENG3 INF - 41 E-390	09/22	VICTOR GUILLEN	5	MC CLOUD ICP/0600	MC CLOUD ICP/1800	
8. Division/Group Communication Summary						
Function	Channel	RX Frequency N/W	RX Tone/NAC	TX Frequency N/W	TX Tone/NAC	Mode
COMMAND	6	169.5375 N	10/107.2	164.7125	10/107.2	A
TACTICAL	11	168.2500 N	10/107.2	168.2500 N	10/107.2	A
AIR TO GROUND	14	168.3375 N		168.3375 N		A
AIR TO GROUND	15	167.8125 N		167.8125 N		A
9. Prepared By (Resource Unit Leader)			Approved By (Planning Section Chief)		Date	Time
HANNE MEYERS			DAVE GERBOTH		09/14/2018	2200

Division/Group Assignment List (ICS 204 WF)
Controlled Unclassified Information//Basic

1. Incident Name:			3.			
DELTA			Branch:		Division/Group:	
2. Operational Period: DAY			IX		YY	
Date/Time From: 09/15/2018 0600 SAT	Date/Time To: 09/15/2018 1800 SAT					
4. Operations Personnel						
EAST OPERATIONS CHIEF		JAKE CAGLE MIKE DAVIS (T)		DIVISION/GROUP SUPERVISOR		KEITH SWOPE
BRANCH DIRECTOR		KYLE JACOBSON BILLY SEE		AIR ATTACK SUPERVISOR		DEREK WHEELER
5. Resources Assigned this Period						
Strike Team / Task Force / Resource Designator	LWD	Leader	Number Persons	Drop Off PT./Time	Pick Up PT./Time	
ENG6 MES #6200 E-1	09/27	WESLEY H HATCH	4	MC CLOUD ICP/0600	MC CLOUD ICP/1800	
ENG6 FIRESTORM E-174	09/22	RICK SANDIDGE	3	MC CLOUD ICP/0600	MC CLOUD ICP/1800	
ENG6 FAIRVIEW E-176	09/23	NATHAN MINE	3	MC CLOUD ICP/0600	MC CLOUD ICP/1800	
ENG6 MES 6198 E-330	09/27	ZACHARY D MONROE	4	MC CLOUD ICP/0600	MC CLOUD ICP/1800	
ENG6 OUF 692 E-476	09/26	MICHAEL W KOCH	3	MC CLOUD ICP/0600	MC CLOUD ICP/1800	
ENG6 RED ROCK FIRE 612 E-291	09/20	JEFF O' FLANAGAN	3	MC CLOUD ICP/0600	MC CLOUD ICP/1800	
WTS2 BAR I TENDER E-305	09/22	ERIC CHOATE	1	MC CLOUD ICP/0600	MC CLOUD ICP/1800	
WTS2 VALLEY TIMBER E-334	09/17	DAVID BAKER	2	MC CLOUD ICP/0600	MC CLOUD ICP/1800	
WTS2 ALLIED WATER SERVICE E-340	09/26	RICHARD BENSON	1	MC CLOUD ICP/0600	MC CLOUD ICP/1800	
WTT2 SRF WT 245 E-396	09/17	BEN MODLIN	2	MC CLOUD ICP/0600	MC CLOUD ICP/1800	
WTT2 MNF WT- 38 E-397	09/16	KER LEE	2	MC CLOUD ICP/0600	MC CLOUD ICP/1800	
WTS2 CATTELACK RANCH (24 HR) E-587	09/27	KENNY GUIN	3	MC CLOUD ICP/0600	MC CLOUD ICP/0600	
WTS3 COTTONWOOD EQUIPMENT E-376	09/25	RICHIE VARAS	1	MC CLOUD ICP/0600	MC CLOUD ICP/1800	
DOZ1 BROWN E-369	09/23	MIKE MAURER	2	MC CLOUD ICP/0600	MC CLOUD ICP/1800	
DOZ1 BOB JOHNSON E-282 SEE CHECK IN		BOB JOHNSON		MC CLOUD ICP/0600	MC CLOUD ICP/1800	
DZS2 LMU 9220L (24 HR) E-53 Dembs	09/20	TIM WILLIAMS	8	MC CLOUD ICP/0600	MC CLOUD ICP/0600	
DOZ2 BUSHEY FARMING E-161	09/24	BOB BUSHEY	1	MC CLOUD ICP/0600	MC CLOUD ICP/1800	
DOZ2 E-281 SEE CHECK IN		TIM JOHNSON		MC CLOUD ICP/0600	MC CLOUD ICP/1800	
DOZ2 DARRAH LOGGING E-370	09/21	KEITH DARRAH SR	2	MC CLOUD ICP/0600	MC CLOUD ICP/1800	
EXCA BOB JOHNSON E-351	09/23	LANE WILSON	2	MC CLOUD ICP/0600	MC CLOUD ICP/1800	
8. Division/Group Communication Summary						
Function	Channel	RX Frequency N/W	RX Tone/NAC	TX Frequency N/W	TX Tone/NAC	Mode
COMMAND	6	169.5375 N	10/107.2	164.7125	10/107.2	A
TACTICAL	11	168.2500 N	10/107.2	168.2500 N	10/107.2	A
AIR TO GROUND	14	168.3375 N		168.3375 N		A
AIR TO GROUND	15	167.8125 N		167.8125 N		A
9. Prepared By (Resource Unit Leader)			Approved By (Planning Section Chief)		Date	Time
HANNE MEYERS			DAVE GERBOTH		09/14/2018	2200

Division/Group Assignment List (ICS 204 WF)
Controlled Unclassified Information//Basic

1. Incident Name:		3.				
DELTA		Branch:		Division/Group:		
2. Operational Period: DAY		IX		YY		
Date/Time From: 09/15/2018 0600 SAT	Date/Time To: 09/15/2018 1800 SAT					
4. Operations Personnel						
EAST OPERATIONS CHIEF		JAKE CAGLE MIKE DAVIS (T)		DIVISION/GROUP SUPERVISOR		KEITH SWOPE
BRANCH DIRECTOR		KYLE JACOBSON BILLY SEE		AIR ATTACK SUPERVISOR		DEREK WHEELER
5. Resources Assigned this Period						
Strike Team / Task Force / Resource Designator	LWD	Leader	Number Persons	Drop Off PT./Time	Pick Up PT./Time	
CHIP MORBARK E-222	09/24	CORY ARYES	2	MCCLLOUD ICP/0600	MCCLLOUD ICP/1800	
UTV WILDERNESS MEDICS INC E-566	09/17	KEVIN MCMAHON	2	MCCLLOUD ICP/0600	MCCLLOUD ICP/1800	
PUMP TRINITY (24 HR) E-322	09/30	ABEL PINI	2	MCCLLOUD ICP/0600	MCCLLOUD ICP/0600	
TFLD O-22	09/24	WESTON BURCH	1	MCCLLOUD ICP/0600	MCCLLOUD ICP/1800	
TFLD O-23	09/24	TYE ERWIN	1	MCCLLOUD ICP/0600	MCCLLOUD ICP/1800	
TFLD O-480	09/17	COLLIN BONDS	1	MCCLLOUD ICP/0600	MCCLLOUD ICP/1800	
TFLD (T) O-25	09/24	BRYAN AGBALOG	1	MCCLLOUD ICP/0600	MCCLLOUD ICP/1800	
TFLD (T) O-333	09/25	MICHAEL BAGAN	1	MCCLLOUD ICP/0600	MCCLLOUD ICP/1800	
FMOD O-28	09/20	NORTH ZONE FALLERS	2	MCCLLOUD ICP/0600	MCCLLOUD ICP/1800	
FMOD O-478	09/17	ALEN INGERSOLL	2	MCCLLOUD ICP/0600	MCCLLOUD ICP/1800	
EMPF O-484	09/19	MATTHEW CAFFEY	1	MCCLLOUD ICP/0600	MCCLLOUD ICP/1800	
EMTF O-271	09/24	PATRICK M DAWSON	1	MCCLLOUD ICP/0600	MCCLLOUD ICP/1800	
EMTF O-451	09/26	EUAN A BULMER	1	MCCLLOUD ICP/0600	MCCLLOUD ICP/1800	
EMTF O-446	09/25	PHIL FAULDING	1	MCCLLOUD ICP/0600	MCCLLOUD ICP/1800	
SOF2 O-389	09/20	DAVID PROVENCIO	1	MCCLLOUD ICP/0600	MCCLLOUD ICP/1800	
ENG3 MDE 56 E-430 also Pat Preston 5						
8. Division/Group Communication Summary						
Function	Channel	RX Frequency N/W	RX Tone/NAC	TX Frequency N/W	TX Tone/NAC	Mode
COMMAND	6	169.5375 N	10/107.2	164.7125	10/107.2	A
TACTICAL	11	168.2500 N	10/107.2	168.2500 N	10/107.2	A
AIR TO GROUND	14	168.3375 N		168.3375 N		A
AIR TO GROUND	15	167.8125 N		167.8125 N		A
9. Prepared By (Resource Unit Leader)		Approved By (Planning Section Chief)		Date	Time	
HANNE MEYERS		DAVE GERBOTH		09/14/2018	2200	

Division/Group Assignment List (ICS 204 WF)
Controlled Unclassified Information//Basic

1. Incident Name:	3.
--------------------------	-----------

DELTA	Branch:	Division/Group:
--------------	----------------	------------------------

2. Operational Period: DAY	IX	YY
-----------------------------------	-----------	-----------

Date/Time From: 09/15/2018 0600 SAT	Date/Time To: 09/15/2018 1800 SAT
--	--------------------------------------

4. Operations Personnel

EAST OPERATIONS CHIEF	JAKE CAGLE MIKE DAVIS (T)	DIVISION/GROUP SUPERVISOR	KEITH SWOPE
BRANCH DIRECTOR	KYLE JACOBSON BILLY SEE	AIR ATTACK SUPERVISOR	DEREK WHEELER

5. Resources Assigned this Period

Strike Team / Task Force / Resource Designator	LWD	Leader	Number Persons	Drop Off PT./Time	Pick Up PT./Time

6. Control Operations/Work Assignments:

- Utilize a combination of direct and indirect line construction from DP 60 down to Sims Campground.

7. Special Instructions:

- FOBS D. Johnson, D. Jones are assigned to all divisions in Branch IX.

8. Division/Group Communication Summary

Function	Channel	RX Frequency N/W	RX Tone/NAC	TX Frequency N/W	TX Tone/NAC	Mode
COMMAND	6	169.5375 N	10/107.2	164.7125	10/107.2	A
TACTICAL	11	168.2500 N	10/107.2	168.2500 N	10/107.2	A
AIR TO GROUND	14	168.3375 N		168.3375 N		A
AIR TO GROUND	15	167.8125 N		167.8125 N		A

9. Prepared By (Resource Unit Leader) HANNE MEYERS	Approved By (Planning Section Chief) DAVE GERBOTH	Date 09/14/2018	Time 2200
--	---	---------------------------	---------------------

INCIDENT NAME: DELTA
OPS PERIOD DATE: 15 September-2018
REMARKS (Safety Notes, Hazards, Air Operations Special Equipment, etc.):
 MONITOR AIR TO GROUND FREQ FOR AIR ACTIVITY.
 Comms on CALCCORD channel 13 for all aviation medicals

PERSONNEL	NAME	PHONE #	FREQUENCIES	AM	FM	START TIME:	END TIME:	SUNRISE:	SUNSET:
AOBD	Ty Miller Kevin Murray	907-460-7530 805-878-1484	AIR/ AIR - TFR Rotor East of I-5 Rotor West of I-5	124.5750 HA-8 118.7750 HA-30 128.4250 HA-133		0800	1930	0650	1916
ASGS	Jim Straiton	760-207-4325	AIR Tactics F/W		166.9500 HA-9				
ASGS(T)	Mark Empey Kevin Merrill	928-245-1798 605-222-3883							
HEB1 Gate HB	Brad Nelson	925-542-9169 Pri 559-349-6793 Sec	AIR/GD Tactics AIR/GD Command		167.8125 HA-10 168.3375 HA-31				
HEB2 Willow Creek HB	Mike Peltier	612-390-9827	Command 1		171.5375 RX 164.0875 TX Tone 10				
HEB1 Center HB HEB2(t)	Curt Warner Helibase John Meats	805-478-1231 925-588-6745 530-949-0412	Command 2		172.6500 RX 164.7500 TX Tone 10				
ATGS ATGS (T)	Scott Smith Beth Melville Curtis Stanley Jeff Kiezer Justin Juede	530-307-9171 530-412-2939 530-226-2835 530-598-1590 530-227-2455	Command 3 Deck - Gate / Willow Crk Deck - Center		170.4250 RX 168.0750 TX Tone 10 163.100 163.100				
Aviation Conf. Call	0730	888-844-9904 2503071#	Air Guard		168.6250 (110.9)tx/rx				

FAA N#	TY MAKE/MOD	BASE	AVAIL	START	REMARKS	FAA N#	TY MAKE/MOD	BASE	AVAIL	START	REMARKS
239CH	1 BV234	Willow Crk	0830	0800	EU	407KC	2 B205A1+	Gate HB	0830	0800	Kern Co. Hoist A-55
403SS	1 S-64	Gate HB	0830	0800	State contract	123KA	2 B212HP	Gate HB	0830	0800	EU (H522) A-42
675TH	1 K-MAX	Gate HB	0830	0800	EU	911VR	2 B212HP	Gate HB	0830	0800	EU (H516) A-43
3-FXFT	1 K-MAX	Center HB	0830	0800	EU	6HE	3 B-407	Willow Crk	0830	0800	EU (H553) A-116
611CK	1 S-61	Center HB	0830	0800	EU	707AH	3 B-407	Willow Crk	0830	0800	CWN Mapping A-64
4037S	1 S-64	Center HB	0830	0800	EU	107Z	3 Cobra	Redding	0830	0800	EU (H507) HLCO A-117
205BT	2 B205A1+	Center HB	0830	0800	EU (H506)	109Z	3 Cobra	Gate HB	0830	0800	EU (H509) HLCO A-97
						838PA	3 AS350B3	Center HB	0830	0800	EU Short Haul A-16

Delta Fire – Safety Message

INCIDENT # CA-SHF-001444

DATE: 09/15/18

TIME: 0600 – 1800 Day Shift

“SAFETY is a CORE VALUE to be integrated into ALL incident activities”

COMMUNICATION RESPONSIBILITIES

All firefighters have *five* communication responsibilities:

- Brief others as needed.
- Debrief your actions.
- Communicate hazards to others.
- Acknowledge messages.
- Ask if you don't know or are unclear.

Leadership

All leaders of firefighters have the responsibility to provide complete briefings that include a clearly stated “Leader's Intent.”

- **Task** = **What** is to be done
- **Purpose** = **Why** it is to be done
- **End State** = How it should **look** when done

Mop-Up Operations

Balance the risk of exposure to hazards against the mop-up objective potentially achieved.

- Evaluate areas for hazard trees and locate stump holes for avoidance.
- Monitor fatigue; shorten shifts to increase rest where appropriate.
- Provide motivation to workers to maintain situational awareness and avoid complacency.
- Evaluate mop up distances against what is safe and necessary.
- Review and follow “Look Up, Look Down, Look Around” procedures (IRPG p. 3-4).

Driving

- When driving, keep speed at or *below* the posted speed limit.
- Drive defensively! Expect the unexpected around every curve.
- Watch out for debris and wildlife on the roads.
- Don't tail gate, keep a safe distance between vehicles on dirt roads.
- Always fasten your seat belt before the vehicle is set into motion.
- Use a “Backer” when backing your vehicle. Do a walk around if a “Backer” is not available


Prepared by,

Team 4 Safety Group



INCIDENT RISK ANALYSIS

(ICS 215a) Day Shift

BR/ DIV	HAZARDOUS ACTIONS / CONDITIONS	MITIGATIONS / WARNINGS / REMEDIES
ALL	TRAFFIC HAZARDS AND DRIVING	<ul style="list-style-type: none"> • Practice "Defensive Driving" techniques. Traffic volume is high. I-5 is open • Use spotters when backing. • Always use headlights. • Use warning lights when working on roads or traveling in smoke. • Observe posted speed limits. • Use chock blocks, turn wheels into hill. • Many roads are narrow and mid slope, use caution.
ALL	HAZARD / DANGER TREES	<ul style="list-style-type: none"> • Follow Hazard Tree Safety Guidelines (IRPG p.22-23). • Limit number of personnel around snags and their exposure time; fallers must be qualified for the trees being felled. • Be especially alert around snags during wind events. Large green trees can also be dangerous.
ALL	FIRE BEHAVIOR	<ul style="list-style-type: none"> • Are you seeing what we have predicted? • Conduct thorough assessments before starting work. • Ensure LCES is in place. • Plan & Communicate your exit strategy, with your crew and adjacent resources. • Provide additional briefing for new resources and maintain communications.
ALL	FIRING OPERATIONS	<ul style="list-style-type: none"> • Only personnel trained in the use of each device will be authorized to use firing equipment. • Ensure all personnel are aware of firing operation that may affect them. • Wear appropriate PPE. • Ensure aerial/ground ignition plans have been adequately developed and personnel are briefed.
ALL	COMPLEX AVIATION OPERATIONS	<ul style="list-style-type: none"> • Conduct thorough mission assessments before starting work. Follow the guidelines in the IHOG and other aviation guidelines and reference materials. • Ensure coordination and communication are in place and understood by all involved resources in a mission. • Ensure close coordination between Air Attack, air tankers, helicopters, and ground resources.
ALL	HEAVY EQUIPMENT OPERATIONS	<ul style="list-style-type: none"> • Ensure communications are established with operators. • Ensure ground personnel have safety illumination, with light-sticks being the minimum. • Maintain a 50'-100' exclusion area around equipment. • In timber increase safety distance to 2 ½ times canopy height.
ALL	FATIGUE / COMPLACENCY	<ul style="list-style-type: none"> • Be alert for signs of fatigue and take breaks as necessary. • Maintain 2:1 work/rest ratio. • Monitor ALL resources for level of fatigue. • Recognize the symptoms of fatigue and take action as necessary to provide rest and recovery. • Repeated assignments in the same area can lead to complacency making personnel more vulnerable to accidents. • Take steps (switching of assignments, training opportunities during slow periods, etc.) to maintain situational awareness for the duration of the incident
ALL	STEEP TERRAIN & ROLLING MATERIAL	<ul style="list-style-type: none"> • Avoid working below crews and equipment. • Concentrate on your footing placement; take your time. • Ensure adequate spacing between crewmembers so they can react to dislodged debris. • Post lookouts to warn of rolling debris. SHOUT out to warn others. • Look Up, Down and Around Frequently.
ALL	COMMUNICATIONS	<ul style="list-style-type: none"> • Share your Situational Awareness (hazards, changes, etc.) to those who also have a need. • Radio Communications may be poor in some areas: use human repeaters as needed. • Ensure all personnel are familiar with the incident and IA communications plans. • Make sure all resources have radios cloned appropriately. • Ensure that non-agency resources understand radio use and procedures.
ALL	POWERLINES / UTILITIES	<ul style="list-style-type: none"> • Notify all personnel of down electrical lines. • IRPG Page 24 -- Take time to do a Tailgate Safety Briefing • Always treat downed wires as energized. • Avoid parking under any type of overhead lines. • Identify all gas lines in and around structures. • Report damaged service lines.
ALL	SMOKE	<ul style="list-style-type: none"> • Periodically rotate crews out of smoky conditions on line when possible. • Locate spike camps above inversion if possible. • Monitor crew's health. Get medical care for early signs of respiratory illness. • Provide rest breaks; have crews get as much sleep as possible; hydrate!
ALL	ATV / UTV	<p>From the Red Book: FS-UTV Helmet (for fire use) Helmets must have Snell SA certification. Wearing hardhats while driving or riding on a UTV is not allowed. Forest Service Policy provides no exception to the helmet requirement for low speeds, smooth travel surfaces, or administration use (FSH 6709.11. Chapter 10).</p>
INCIDENT NAME:		Operational Period: 0600 – 1800
Delta Fire		September 15, 2018
		

Hirz / Delta Incident – 206 (Medical Plan)

Date / Time: 9/15/2018 DAY 0600 - 1800

1. Ambulance / Medical Services

NAME	LOCATION	PHONE	ALS Level Care	
			Yes	No
Mt. Shasta Ambulance	HIRZ ICP McCloud	911	Yes	
Ambulance 2	Incident Ambulance in DP 51 (24 hour)	Command to Communications	Yes	
Ambulance 78	Incident Ambulance at DP 73 (24 hour)	Command to Communications	Yes	
Ambulance 5	Incident Ambulance Suppression/Repair	Command to Communications	Yes	
UTV 1	Incident UTV ALS Transport at DP 73	Command to Communications	Yes	
Ambulance 104	Incident Ambulance DP55 (Coffee Crk)	Command to Communications	Yes	

2. Air Ambulance Services (COORDINATE with AIR AMBULANCES on CALCORD)

Name	Phone	PHONE
Kern County 407 Mountain Gate, CA	657-464-7830	ALS, Night Vision, Hoist Capable, <u>Incident Assigned</u> , 24 hrs.
Grand Canyon H-838 Trinity Center HB	214-998-4501 541-870-1510	BLS, Short Haul 150' - 350', <u>Incident Assigned</u> , Day time hoist only
REACH / PHI Redding CA	530-226-2499	ALS, Night Vision, No Hoist Capability, Non-Incident Assigned
CHP H-16 Redding, CA	530-226-2499	ALS, <u>Non-incident assigned</u> , Day time hoist only
Cal Fire H-202 Bieber, CA	530-226-2499	BLS, <u>Non-incident assigned</u> , Day time hoist only

3. Hospitals

Name	Address	Air	Ground	Phone	Helipad Yes	No
Pulse Urgent Care Level 4	100 E. Cypress Ave. Redding CA	N/A	45 Min	(530)-722-1111 10AM-7:30PM		X
Mercy Medical Center Level 2 Trauma	2175 Roseline Ave. Redding CA	20 Min	80 Min	(530)-225-7201	X	
Shasta Regional Medical Level 3 Trauma	1100 Butte Ave Redding CA	20 Min	80 Min	(530)-244-5353	X	
Mercy Mt. Shasta Medical Level 3 Trauma	914 Pine St. Mt. Shasta CA	10 Min	20 Min	(530)-926-1108	X	
UC Davis Medical Center Level 1 Trauma / Burn Center	2315 Stockton Blvd. Sacramento CA	1.25 Hrs	3.75 Hours	(916)-734-3636 (916)-734-3790	X	

4. Division / Crew Pre-plan. Update and discuss with assigned resources daily.

Crew EMT's & Equipment	
FEMP/ FEMT & Location Advanced Life Support?	
Air Hoist Site / Unimproved Landing Site:	
Lat: Long:	
Helispot: Elevation:	
Lat: Long:	
Med LZ:	

5. Remote Aid Stations



Medical Unit Leader Contacts	Eric Williams (661) 805-4403 / Jeff Brooks (818) 903-6295
EMS Responders & Capability:	
Equipment Available on Site:	Medical supplies
Ambulance ETA:	Air – Ground –

6. Prepared By (Medical Unit Leader)


7. Date/Time

8. Reviewed By (Safety Officer)

9. Date / Time

Eric Williams – MEDL 
Jeff Brooks – MEDL (T) 

9/14/2018
1900

CIIMT 4 Safety


9/14/2018
1900



Medical Incident Report

FOR A **NON-EMERGENCY INCIDENT**: WORK THROUGH CHAIN OF COMMAND TO REPORT AND TRANSPORT INJURED PERSONNEL AS NECESSARY.

FOR A **MEDICAL EMERGENCY**: IDENTIFY ON SCENE INCIDENT COMMANDER BY NAME AND POSITION AND ANNOUNCE "MEDICAL EMERGENCY" TO INITIATE RESPONSE FROM COMMUNICATIONS

Use the following items to communicate situation to communications/dispatch.

- 1. CONTACT COMMUNICATIONS / DISPATCH** (Verify correct frequency prior to starting report)
Ex: "Communications, Div. Alpha. Stand-by for Emergency Traffic."
- 2. INCIDENT STATUS:** Provide incident summary (including number of patients) and command structure.
Ex: "Communications, I have a Red priority patient, unconscious, struck by a falling tree.
Requesting air ambulance to Forest Road 1 at (Lat./Long.)
"This will be the Trout Meadow Medical Incident, IC is TFLD Jones. EMT Smith is providing medical care."

Severity of Emergency AND Transport Priority (priority 1, 2, 3)	<input type="checkbox"/> RED / PRIORITY 1 Life or limb threatening injury or illness. Evacuation need is IMMEDIATE Ex: Unconscious, difficulty breathing, bleeding severely, 2° - 3° burns more than 4 palm sizes, heat stroke, disoriented.	
	<input type="checkbox"/> YELLOW / PRIORITY 2 Serious Injury or illness. Evacuation may be DELAYED if necessary. Ex: Significant trauma, unable to walk, 2° - 3° burns not more than 1-3 palm sizes.	
	<input type="checkbox"/> GREEN / PRIORITY 3 Minor Injury or illness. Non-Emergency transport Ex: Sprains, strains, minor heat-related illness.	
Nature of Injury or Illness & Mechanism of Injury		Brief Summary of Injury or Illness (Ex: Unconscious, Struck by Falling Tree)
Transport Request		Air Ambulance / Short Haul/Hoist Ground Ambulance / Other
Patient Location		Descriptive Location & Lat. / Long. (WGS84)
Incident Name		Geographic Name + "Medical" (Ex: Trout Meadow Medical)
On-Scene Incident Commander		Name of on-scene IC of Incident within an Incident (Ex: TFLD Jones)
Crew Patient Care		Name of Care Provider (Ex: EMT Smith)

3. INITIAL PATIENT ASSESSMENT: Complete this section for each patient as applicable (start with the most severe patient)

Agency Affiliation: (NO PATIENT NAMES) Federal Contractor Local Government

Patient Assessment: Age: Weight: Chief Complaint:

(If pertinent to Injury) Skin Signs: (color/moisture/temp) Level of Consciousness: BP: HR: Respirations:

Treatment:

4. TRANSPORT PLAN:

Evacuation Location (drop point, intersection, helispot, Lat. / Long, hazards) Patient's ETA to Location:

5. ADDITIONAL RESOURCES / EQUIPMENT NEEDS:

Paramedic / EMT - Crews - Immobilization Devices - AED - Oxygen - Trauma Bag - IV/Fluid(s) - Splints - Rope rescue - Wheeled litter - HAZMAT - Extrication

6. COMMUNICATIONS: Identify State Air/Ground EMS Frequencies and Hospital Contacts as applicable

Function	Channel Name/Number	Receive (RX)	Tone/NAC *	Transmit (TX)	Tone/NAC *
COMMAND					
AIR-TO-GRND	Contact on CALCORD When aircraft in line of site	156.0750 N	156.7	156.0750	156.7
TACTICAL					

7. CONTINGENCY: Considerations: If primary options fail, what actions can be implemented in conjunction with primary evacuation method?
Be thinking ahead.

8. ADDITIONAL INFORMATION: Updates/Changes, etc.

REMEMBER: Confirm ETA's of resources ordered. Act according to your level of training
Be Alert - Keep Calm - Think Clearly - Act Decisively

*** Follow up with MEDL upon return to ICP ***



**INCIDENT RADIO COMMUNICATIONS PLAN
COMMAND**

Incident Name

**HIRZ CA-SHF-001223
DELTA CA-SHF-001444**

Date/Time Prepared

09/14/ 2018 1830

Operational Period Date/Time

9/15/18 0600-1800

Only frequencies listed on this 205 are authorized for use on this incident.

Hand programmers accept all responsibility for the use of unauthorized frequencies.

Ch #	Function	Channel Name	Assignment	RX Freq N or W	RX Tone	TX Freq N or W	TX Tone	Mode	Remarks
1	COMMAND	CMD 1	COMMAND 1	171.5375 N	107.2	164.0875 N	107.2	A	COMMAND ON H-79 LINKED W/ 2,3,4,5,6 C31
2	COMMAND	CMD 2	COMMAND 2	172.6500 N	107.2	164.7500 N	107.2	A	COMMAND ON SUGARLOAF LINKED W/ 1,3,4,5,6 C48
3	COMMAND	CMD 3	COMMAND 3	170.4250 N	107.2	168.0750 N	107.2	A	COMMAND ON LEHIGH LINKED W/ 1,2,4,5,6 C3
4	COMMAND	CMD 4	COMMAND 4	170.4125 N	107.2	165.9625 N	107.2	A	COMMAND ON BONANZA KING LINKED W/ 1,2,3,5,6 C10
5	COMMAND	CMD 5	COMMAND 5	170.0875 N	107.2	162.8125 N	107.2	A	COMMAND ON TOMBSTONE MTN LINKED W/ 1,2,3,4,6, C51
6	COMMAND	CMD 6	COMMAND 6	169.5375 N	107.2	164.7125 N	107.2	A	COMMAND ON GREY BUTTE LINKED W/ 1,2,3,4,5 C8
7	TAC	NIFC T1	DIV, PP SUPP REPAIR, STAGING	168.0500 N	107.2	168.0500 N	107.2	A	
8	TAC	NIFC T3	DIVISION DD, ACCOUNTABILITY	168.6000 N	107.2	168.6000 N	107.2	A	
9	TAC	NIFC T5	DIVISION GG, WW	166.7250 N	107.2	166.7250 N	107.2	A	
10	TAC	NIFC T6	DIVISION, TT, AAIZZ	166.7750 N	107.2	166.7750 N	107.2	A	
11	TAC	NIFC T7	DIVISION JJ/MM, YY	168.2500 N	107.2	168.2500 N	107.2	A	
12	TAC	TAC 12	DIVISION CC,	162.1625 N	107.2	162.1625 N	107.2	A	SPECIAL TAC
13	CALCORD	CALCORD	ALL DIVISIONS	156.0750 N	156.7	156.0750	156.7	A	MEDICAL EMERGENCY TACTICAL
14	A/G COMMAND	A/G CMD	ALL DIVISIONS	168.3375 N		168.3375 N		A	AIR TO GROUND COMMAND
15	A/G TACTICAL	A/G TAC	ALL DIVISIONS	167.8125 N		167.8125 N		A	AIR TO GROUND TACTICAL
16	AIR GUARD	AIR GUARD	ALL DIVISIONS	168.6250 N		168.6250 N	110.9	A	EMERGENCY ONLY

Prepared by

SAL BONILLA JR. COMMUNICATIONS SECTION PH FOR COMMUNICATION 530-964-2541

TIM MAGUIRE, KEVIN JANES

Incident Location

ICP MCCLOUD, CA

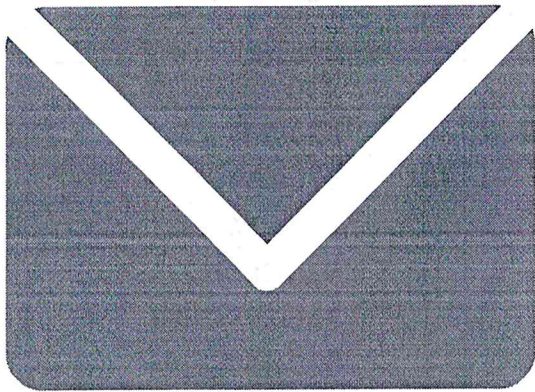


PHONE LIST

NAME		PHONE NUMBER
COMMUNICATIONS	COML/INCM - TRAILER	530-964-2710
COMMUNICATIONS	RADIO ROOM - TRAILER	530-964-2541
MEDICAL UNIT	TRAILER	530-964-2720
PIO	TRAILER	530-964-2897
OPERATIONS	YURT	530-964-3273
DEMOB	TRAILER	530-964-2667
DOCUMENTATION	TRAILER	530-964-2904
SUPPLY / R & D	YURT	530-964-3277
MERT	YURT	530-964-2419
ORDERING	TRAILER	530-964-3116
GSUL	RON	619-916-1763
GSUL	JEFF	916-599-0481
GSUL - COFFEE CREEK	JOHN	805-833-1106
HRSP	ADAM	707-373-8715

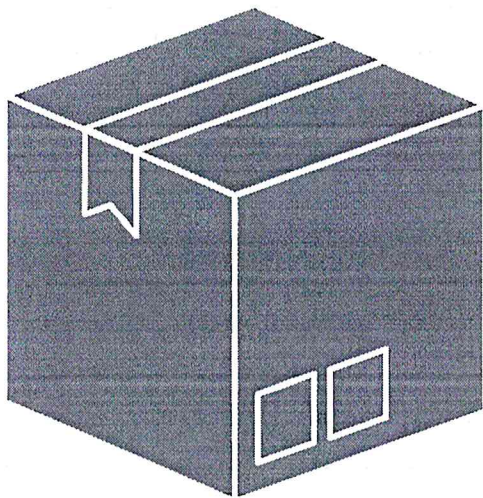
**FOR ANY CHANGES OR ADDITIONS PLEASE
SEE THE COMMUNICATIONS UNIT**

Got Mail?



For USPS Mail

Attention: Delta Fire Camp
(Your Name)
(Resource #)
General Delivery
McCloud, CA 96057



For UPS / FEDEX Mail

Attention: Delta Fire Camp
(Your Name)
(Resource #)
909 Mill Road
McCloud, CA 96057

Mail and packages can be picked up in
the information trailer

DELTA FIRE
Human Resource Message
September 15, 2018

C E R T A I N S T A N D A R D S O F C O N D U C T

The first day Team 4 assumed command of this incident there was notice in the IAP that spelled out the expectations of everyone on this incident.

The expectations given were that there would be “**ZERO TOLERANCE**” of careless, illegal, inappropriate and unsafe actions.

These are certain standards of conduct we as professional adults know are not acceptable in the workplace. It is conduct that really doesn't have to be written as a specific rule or specifically prohibited by signage or otherwise. You all should know what is not acceptable conduct.

I just wanted to give you a reminder of the camp expectations to give you every opportunity to **do the right thing**.

Adam Alvarez, HRSP - 707-373-8715

LINE ORDER FORM – 2018

DELTA COMMUNICATIONS (530) 964-2541

ORDER #	DATE & TIME ORDERED Received from the Line	WHO PLACED ORDER DIVS, OPS, etc....	DELIVER to (DIV, Helispot, DP, etc.) Division, Heli-Spot, Drop Point, etc.	MODE of DEVIVERY Drive, Helo, pick-up			
Order Received in Communications By:				TIME:			
Communications Relayed/Placed the Order To:				TIME:			
Order Shipped to the Line By (Name):				TIME:			
ITEM#	DESCRIPTION			AMOUNT			
1	1,000 Foot Hose Lay: Includes the following 10 lengths, 1 ½" x 100' Hose. 10 lengths, 1" x 100' Hose. 10ea. 1 ½" Gated Wyes. 10ea. 1 ½" to 1" Reducers. 10ea. 1" Nozzles.						
2	2,000 Foot Hose Lay: Includes the following 20 lengths, 1 ½" x 100' Hose. 20 lengths, 1" x 100' Hose. 20ea. 1 ½" Gated Wyes. 20ea. 1 ½" to 1" Reducers. 20ea. 1" Nozzles.						
3	3,000 Foot Hose Lay: Includes the following 30 lengths, 1 ½" x 100' Hose. 30 lengths, 1" x 100' Hose. 30ea. 1 ½" Gated Wyes. 30ea. 1 ½" to 1" Reducers. 30ea. 1" Nozzles.						
ITEM#	REQUESTED ITEM	NFES#	AMOUNT	ITEM#	REQUESTED ITEM	NFES#	AMOUNT
4	Backpack Pump, 5 gallon	1149		26	Batteries, "AA", (package)	0030	
5	Foam, 5 gallon	1145		27	Gasoline, Unleaded (gallon)		
6	Hose, ¾ inch, 50 ft. length	1016		28	Oil, 2 Cycle Mix (quart)	0341	
7	Hose, 1 inch, 100 ft. length	0966		29	Diesel, straight (gallon)		
8	Hose, 1 ½ inch, 100 ft. length	0967		30	Oil, Bar & Chain (gallon)	1880	
9	Increaser, ¾" to 1"	2235		31	Fusees (box)	0105	
10	Increaser, 1" to 1 ½"	0416		32	Torch, Drip Torch ea.	0241	
11	Nozzle, Garden ¾ inch	0136		33	Mix, Drip Torch 3-1, 5 gal.		
12	Nozzle, Forester, 1"	0024		34	Flagging, Ribbon, Color/Roll		
13	Nozzle, KK Type, 1"	1081		35	Washcloth, Waterless	0206	
14	Nozzle, KK Type, 1 ½"	1082		36	Water, Cubi, 5 gallon ea.	0048	
15	Reducer, 1" to ¾"	0733		37	Water, Bottled, (case)		
16	Reducer, 1 ½" to 1"	0010		38	Sports Drink, Gatorade (case)		
17	Tee, Hoseline, 1"x1"x ¾"	1809		39	Food, MRE's (12 per Box)	1842	
18	Tee, Hoseline, 1"x1"x 1"	2240		40	Pump Kit, High Pressure	0870	
19	Tee, Hoseline, 1 ½" x 1 ½" x 1"	0230		41	Pump, High Pressure	0148	
20	Wye, Gated, ¾" inch	0904		42	Pump Kit, Light Weight	0670	
21	Wye, Gated, 1"	0259		43	Sprinkler Kit	1048	
22	Wye, Gated, 1 ½"	0231		44	Pump Kit, Volume	6041	
23	Tank, Collapsible. Capacity Gallons?			45	Mop-Up Kit	0772	
24	Tank, Folding/Frame. Capacity??						
25	Wrap, Structure (roll)	0881					

Date and Time Needed: _____ Point of Contact at Delivery Location: _____

OTHER / NOTES:

DMOB LIST FOR 9-15-2018

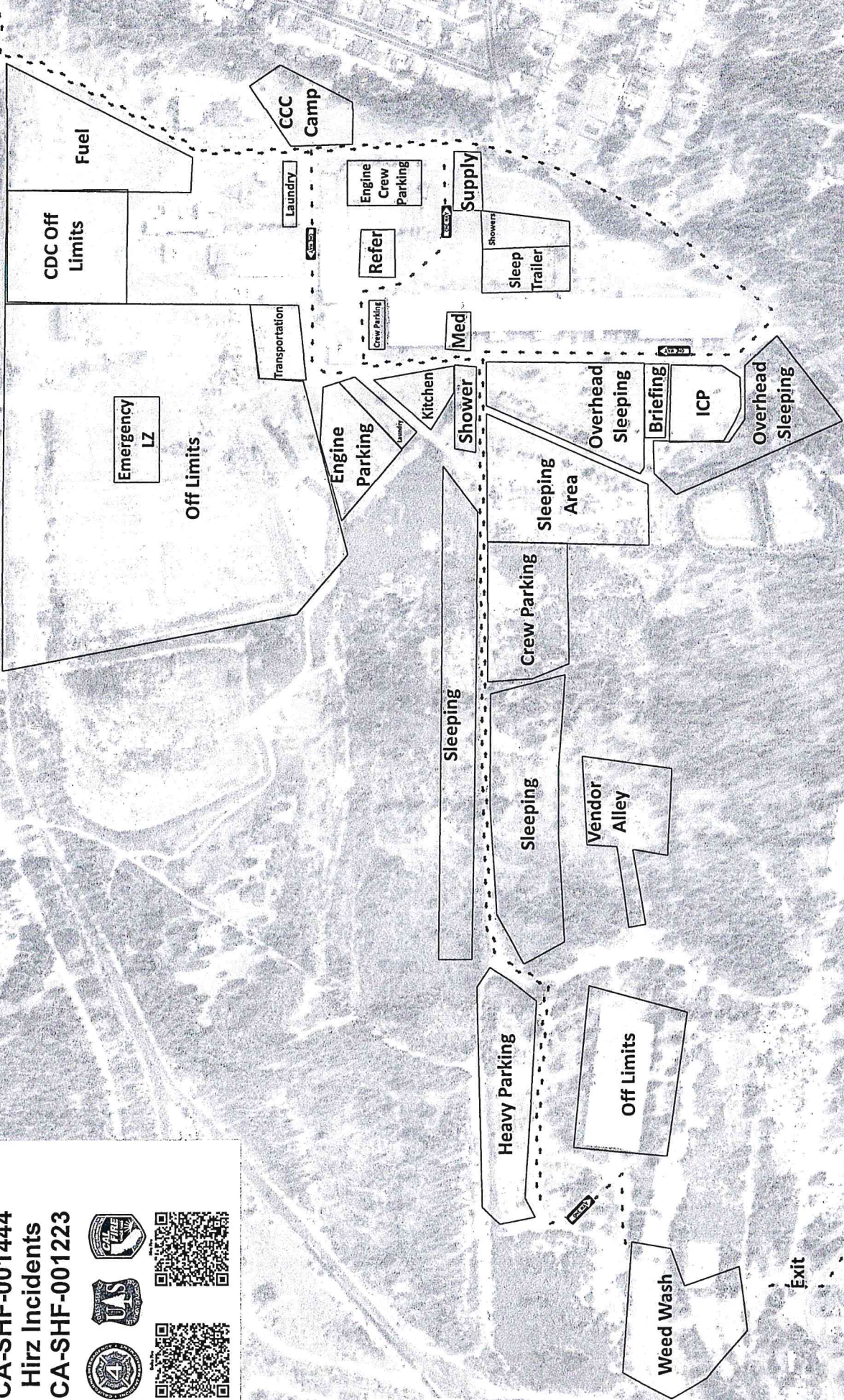
REQ #	RESOURCE NAME	ITEM CODE	REPORT TO DMOB
E-128	BOB MURRAY LOGGING		1500
E-162	JIM SHERER TRUCKING		1430
E-107	LEPAGE CO.		1400
E-261	NOD 3230	ENG3	1200
E-524	NOD 3230	ENG3	1200
O-102	MICHAEL ROY	EMPF	0730
O-110	BRENNAN PARKER	EMPF	0700
O-240	JONATHAN LEE	SOF2	0800
O-262	SUZANNE FLORY		0800
O-272	DAVID MAZAIKA	EMPF	0700
O-297	M. ANDERSON		0800
O-324	ROBISON, BRUCE	HEQB	0830
O-326	PATTERSON, DANIEL	HEQB	0830
O-331	MATT McCARTHY	EMPF	0700
O-337	BROWN, CHARLES	EMPF	0800
O-341	OCTAVIO VANZZINI		0900
O-394	COOR, GRANT DONAVON	PIOF	0830
O-430	CONNOR DRAKE	EMPF	0600
O-433	JASON MONAHAN	EMPF	0800
O-454	ERICA FENNELL		0800
O-462	ANDREW FONDACARO	EMPF	0700
O-493	TONY BALBIANI	EMPF	0730
O-494	JANET BRANDI-ROUTT	EMPF	0730
O-526	CHARLES KUNIYOSHI	EMPF	0730
O-571	KYLE YOUNG	EMPF	0730
O-576	DOMINIC ANTES	EMPF	0700
O-638	LOPEZ, BRIAN ANTHONY	BCMG	0900
O-662	PATTERSON, DANIEL	HEQB	0900
O-675	WOODCOCK, CONNIE F	SCKN	0800
O-689	ALLEN, KELLY J	FBAN	0900
O-698	GRANT COOR	PIO	1600
O-79	C.SWENSEN	DIVS	0700
O-546	CHARLES BROWN	FOBS	0800
O-403	CHARLES BRINKEY	FOBS	0800
	CAL FIRE RESOURCES		
C-7	ST 9241G		0700
C-28	ST 9124G		1000
C-41	ST 9413G		0745
C-48	ST 9446G		1045
E-157	ST 4181C		1330
E-163	ST 9212L		0915
E-189	ST 9171C		1215
E-53	ST 9220L		0730
E-54	ST 9118L		1130
E-61	ST 9161C		1300
E-64	ST 9460C		0830
E-156	ST 4812C		1400

Facilities Map

Delta Fire
CA-SHF-001444
Hirz Incidents
CA-SHF-001223



To Ground Support



FC-33 DAILY UPDATE

DATE:		24 Hrs	12 Hrs
REQ #	S/T #		
WORK LOCATION:			
RADIO IDS: ST LEADER:	DOZER BLADE HRS	PORTABLE PUMP HRS	# OF SAWS
ENGINE/CREW:			
COMMENTS (ANY CHANGES?):			
CELL PHONE #:			

FC-33 DAILY UPDATE

DATE:		24 Hrs	12 Hrs
REQ #	S/T #		
WORK LOCATION:			
RADIO IDS: ST LEADER:	DOZER BLADE HRS	PORTABLE PUMP HRS	# OF SAWS
ENGINE/CREW:			
COMMENTS (ANY CHANGES?):			
CELL PHONE #:			

Overhead: complete one form per person.
All Others: complete one form per vehicle.

State	Agency	Incident Number	Incident Name	Incident Index Code	Incident PCA Code
CA					
Strike Team	Resource ID - Fire Assignment	Home Station / Office Location			
S T		PASO ROBLES			
9	3	2	5	C	E-3499

YOUR NORMAL DUTY SCHEDULE	24 Hr 8-8	24 Hr 7-7	Other	Portal to Portal?	YOUR AGENCY	HOME UNIT	COMMIT RELEASE	YOUR CELL PHONE #
	<input checked="" type="checkbox"/>			<input checked="" type="checkbox"/>	CAL FIRE	S L U		

PERSONNEL	Schedule		First Name	Rank or Classification	# of Regular Duty Scheduled Hours per Day													
	A	B			Mon	Tue	Wed	Thu	Fri	Sat	Sun							
EMPLOYEE 1																		
EMPLOYEE 2																		
EMPLOYEE 3																		
EMPLOYEE 4																		
EMPLOYEE 5																		
EMPLOYEE 6																		
	<input checked="" type="checkbox"/> One Box		Johnson	FC														

VEHICLE	Schedule		Radio ID	Kind of Vehicle	ID No/X No
	A	B			
VEHICLE 1					
VEHICLE 2					
	<input checked="" type="checkbox"/> One Box		E-3499	IFTH	
					0 2 X 1 2 3

Put a Dozer and It's Transport on a single form. All others, use one form per individual vehicle.

ADDITIONAL INFO



