

INCIDENT ACTION PLAN

DELTA FIRE

CA-SHF-001444 / P5L4L8 (0514)

HIRZ FIRE

CA-SHF-001223 / P5L2ZM (0514)



DAY OPERATIONAL PERIOD

SEPTEMBER 19-20, 2018

DAY 0600-1800 HOURS

NIGHT 1800-0600 HOURS

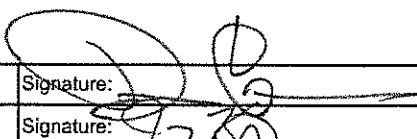



DELTA



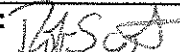
HIRZ

INCIDENT OBJECTIVES (ICS 202)

| | | | |
|---|---|---|--------------------------------------|
| 1. Incident Name: | 2. Operational Period: DAY/NIGHT | | |
| HIRZ / DELTA | Date/Time From: 09/19/2018 0600 | WED | Date/Time To: 09/20/2018 0600 THU |
| 3. Objective(s): | | | |
| <p>Leader's Intent A full suppression strategy will be implemented for both the Hirz and Delta fires through a combination of direct and indirect tactics. Efforts will be made to minimize impacts to residences, critical infrastructure and private timberlands through the application of well-planned tactical responses.</p> <p>Management Objectives</p> <ul style="list-style-type: none"> • Ensure that strategies and tactics provide for firefighter and public safety through the application of sound risk management principles. • Minimize the threat to private property, critical infrastructure, and commercial timberlands while working with the READs to reduce impacts to cultural and sensitive sites. • Establish and strengthen cooperator, partner, and stakeholder relationships. • All suppression repair work will be conducted in close coordination with assigned READs. <p>Control Objectives</p> <p>DELTA FIRE</p> <p>KEEP FIRE:</p> <ul style="list-style-type: none"> • North of Dog Creek Road / Forest Road 21 (west side of I-5) to minimize impacts to I-5 and protect the communities of Pollock, Lakehead, and Lakeshore. • South of Middle Ridge (west side of I-5) to protect private timberlands. • South of Hazel Creek Road (east side of I-5) to minimize threat to communities and residences along I-5 corridor. • East of the Trinity River to minimize impacts to Highway 3 and protect recreational sites. • West of Crane Mountain to halt eastern spread. <p>HIRZ FIRE</p> <ul style="list-style-type: none"> • Continue to mop-up and patrol as needed to ensure the fire stays within existing containment lines. • Continue suppression repair per the approved Suppression Repair Plan. | | | |
| 4. Operational Period Command Emphasis: | | | |
| ATTENTION TO DETAIL | | | |
| Priorities | | | |
| #1 - Division CC | | | |
| #2 - Division YY | | | |
| General Situational Awareness: | | | |
| -Leadership is absolutely about inspiring action, but it is also about guarding against mis-action. | | | |
| 5. Site Safety Plan Required? Yes <input type="checkbox"/> No <input checked="" type="checkbox"/> | | | |
| Approved Site Safety Plan(s) Located at: | | | |
| 6. Incident Action Plan (the items checked below are included in this Incident Action Plan): | | | |
| <input checked="" type="checkbox"/> ICS 202 | <input type="checkbox"/> ICS 207 | Other Attachments: | |
| <input checked="" type="checkbox"/> ICS 203 | <input type="checkbox"/> ICS 208 | <input checked="" type="checkbox"/> HRSP MSG | |
| <input checked="" type="checkbox"/> ICS 204 | <input checked="" type="checkbox"/> ICS 220 | <input checked="" type="checkbox"/> ICS 214 UNIT LOG | |
| <input checked="" type="checkbox"/> ICS 205 | <input checked="" type="checkbox"/> Map/Chart | <input type="checkbox"/> _____ | |
| <input type="checkbox"/> ICS 205A | <input checked="" type="checkbox"/> Weather Forecast/Tides/Currents | <input type="checkbox"/> _____ | |
| <input checked="" type="checkbox"/> ICS 206 | | <input type="checkbox"/> _____ | |
| 7. Prepared by: DAVID GERBOTH | Position/Title: PLANNING SECTION CHIEF | Signature:  | |
| 8. Approved by Incident Commander: | Name: JAY KURTH | Signature:  | |
| ICS 202 | IAP Page | Date/Time: 09/18/2018 2200 | |

| ORGANIZATION ASSIGNMENT LIST | | 8b. Logistics Section Coffee Creek | |
|-----------------------------------|---|--|--|
| 1. Incident Name | HIRZ / DELTA | Facilities Unit | Jan Palecek |
| 2. Date : 09/18/18 | 2200 | Food Unit | Ken Breskin |
| | | Medical Unit | Doug Stuart |
| 4. Operational Period | September 19 - 20, 2018 | 9. Day Operations Section | |
| | DAY SHIFT 0600 – 1800 | Chief OSC | Jake Cagle / Mike Davis (T) / Scott Lucas (T) |
| | NIGHT SHIFT 1800 - 0600 | Planning OSC | Brian Rhodes / Steve Clark (T) |
| Position | Name | a. Hirz Day | |
| 5. Incident Commander and Staff | | Division/Group | Suppression Repair John Canavan / Steven Brawley (T) |
| Incident Commander | Jay Kurth / Van Arroyo (T) | Division/Group | Staging Robin Ace |
| Deputy | Rocky W. Opliger | Division/Group | Accountability Jeff Bostwick |
| Safety Officer | Dan Snow / Dave Welch / Mike Alforque (T) | b. Delta Day Branch IV Coffee Creek | |
| Information Officer | Sean Collins / Frank Mosbacher / Kerry Greene (T) | Division/Group | DD / GG / JJ / MM Jay Walter / Jon King (T) |
| Liaison Officer | Sam Wilbanks / Steve Anderson | c. Delta Day Branch IX | |
| 6. Agency Representative | | Branch Director | Kyle Jacobson |
| Agency | Name | Division/Group | PP / TT Antonio Moreno |
| FS Agency Administrator | Scott Russell | Division/Group | WW / YY Maeve Juarez |
| FS Agency Admin. Rep. | Carolyn Napper | Division/Group | AA / CC / ZZ Jeremy Bush / Daniel Hammond (T) |
| Lead READ | Joe Stubbendick | d. Air Operations Branch | |
| OES AREP | Pat Titus | Air Operations Branch Director | Kevin Murray / Ty Miller |
| Shasta Co. Sheriff | Lt. Anthony Bertain | Air Support Group Supervisor | Jim Stratton / Mark Empey |
| CHP | Lt. Kyle Foster | Air Tactical Group Supervisor | Derek Wheeler |
| Trinity Co. Sheriff | Chris Compton | 10. Night Operations Section | |
| PG&E | Mike Weaver | Chief OSC | Dave Crouser |
| Sierra Pacific Industries | Herb Baldwin / Nick Kroencke | a. Delta Night Branch IV | |
| CCC Rep. | Chad Harris | Division/Group | DD / GG / JJ / MM Unstaffed |
| Union Pacific Railroad | Michael Holland / Jeff Collins | b. Delta Night | |
| CalTrans | Willie Elder | Division/Group | PP / TT / WW / YY Michael St. Martin / Bill Morris (T) |
| Southwest IARR | Manuel Martinez | Division/Group | AA / CC / ZZ Travis Wright |
| 7a. Planning Section ICP | | 11a. Finance Section ICP | |
| Chief | Dave Gerboth / Jaime Tripp (T) | Chief | Sherrie Bennett / Vicki Wilson (T) |
| Deputy Chief | Mitch Diehl | Time Unit | Loni Holt / Sheila Miner |
| Resources Unit | Gina Bald / Sergio Arjonilla / Matt Haskins / Scott Laurie / Hanne Meyers | Compensation/Claims Unit | Scott Parsons |
| Situation Unit | D. Guillian / T. Tuggle / D. Janssen (T) | Cost Unit | |
| DMOB Unit | Kerry Brisson | Procurement Unit | Don Tinsley |
| GISS | Chris Clervi / Chris Barrett / Alex Heeren (T) | 11b. Finance Section Coffee Creek | |
| IMET | Jeremy Michael | Time Unit | Tracy Nicholson |
| FBAN | Rob Scott | | |
| ARA | Ariane Zarzotti | Prepared by (Resource Unit Leader) Gina Bald | |
| Training Specialist | Robert Rivelle / Arturo Gasdik (T) | | |
| ITSS | James Whiteside / JP Lavezzo / Rocky Bond (T) | | |
| Human Resource Specialist | Adam Alvarez (T) | | |
| Documentation Unit | Jerry Sanchez / Maria Knott (T) | | |
| 7b. Planning Section Coffee Creek | | | |
| Chief | Thomas Marchant (T) / Tom Reaves (T) | | |
| GISS | Matt Eister | | |
| Situation Unit | Melania Stoeber | | |
| 8a. Logistics Section ICP | | | |
| Chief | Ross Peckinpah / Cheryl Raines | | |
| Supply Unit | Jennifer Wells | | |
| Facilities Unit | Rob Griffith / Craig Zimmermann (T) | | |
| Ground Support Unit | Jeff Burch / Ron Brewer | | |
| Communications Unit | Sal Bonilla Jr. / Tim McGuire / Kevin Janes | | |
| Food Unit | Whitney Bonada | | |
| Medical Unit | Eric Williams / Jeff Brooks (T) | | |
| Ordering Manager | Robert Griffith | | |

FIRE BEHAVIOR FORECAST

| | |
|-------------------------------------|--|
| FORECAST NUMBER: 62 | TYPE OF FIRE: Wildfire |
| FIRE NAME: Hirz/Delta | OPERATIONAL PERIOD: September 19, 2018 Day/Night |
| DATE ISSUED: September 18, 2018 | TIME ISSUED: 2030 |
| UNIT: Shasta-Trinity NF, McCloud RD | SIGNED:  Robert Scott, FBAN 530.990.4048 |

INPUTS

WEATHER SUMMARY

**** See Fire Weather Forecast for Discussion ****

Weather: Day: Mostly sunny in the afternoon. Inversion breaks around 1000. Night: Partly cloudy skies. Inversion develops after 2100.

Day/Night Temps: 74-79 ridgetops and 81-86 lower drainages *then* 53-58 ridgetops, 49-54 lower drainages.

Day/Night RH: 15-20 percent ridges and 11-16 percent lower drainages *then* 36-41 percent ridges and 48-53 percent lower drainages.

20 FOOT WINDS: **Day/Night Ridges:** North 7 to 12 mph, gusts to 18 mph until 1000, increasing 9 to 14 mph with gusts to 25 mph during the afternoon *then* North 9 to 14 mph with gusts to 25 mph until 2000, then increasing North 13 to 18 mph with gusts to 30 mph.

Day/Night Slope/valley: Downslope/Downvalley 3 to 6 mph until 1000, then upslope/upvalley 3 to 7 mph *then* Upslope 3-7 mph becoming downslope/downvalley 4-9 mph after 2200. Aligned drainages could see gusts to 20 mph.

FIRE BEHAVIOR

INPUTS:

- **Fuels:** Previously underburned aerial fuels are more susceptible to torching. Fuel moistures are slightly below averages for this time of year. The exception is 1000hr fuels that are at the 90th percentile.
- **Topography:** Areas with Northern exposures will see the greatest impacts from forecast winds. DIV CC will see shear (swirling winds) as upslopes from Dog Creek interact with the general winds coming over Damnation Peak.

FIRE BEHAVIOR: In timber fuels, fire is re-burning areas that have previously seen fire during this incident. Some areas have had over story impacted by fire and are abnormally dry. During the hottest part of the day, 1530-1730, Expect FL of 13ft and ROS of 52ch/hr in brush and FL of 4-8ft and ROS of 10ch/hr in timber fuels.

Probability of Ignition: 90% in clear air. **Spotting Distance:** .3 mile from ridgetop locations.

Day: BRANCH 9 - DIV PP/TT: Interior pockets continue to consume. Winds will push from the green to the black.

DIV WW/YY: Winds will be variable with up canyon winning out in the early morning. North winds will return near the end of shift. Torching remains possible on windward slopes. Pockets of unburned fuels could produce active fire behavior.

DIV ZZ/AA/CC: Higher locations of DIV CC will see North winds today. Lunch Gulch can expect variable winds as upslope and general winds interact near Damnation Peak. Elsewhere, only isolated areas of heat remain.

BRANCH 4 - DIV DD/GG: Except for the area near the CC/DD break, few areas of heat remain along the line. Torching just below windward ridges is possible.

DIV JJ/MM: Some small areas of fire as remaining fuel burns down.

Hirz Fire: Threat of spread from the fires edge remains low. Isolated burning of heavy fuel and stump holes is possible with increased wind.

Night: North - DIV PP/TT/WW/YY: Drier conditions will be offset by forecast north winds blowing from the green to the black. Little threat of escape or spots. Pockets of unburned fuel remain well within containment lines and will continue to consume.

South - DIV ZZ/AA/CC: Higher locations of DIV CC will see North winds tonight including Damnation Pass. Lower elevations will be protected. Modest humidity recover will reducing intensities but fire will continue to burn remaining fuel.

AIR OPERATIONS

Clear to moderate conditions with little smoke impact.

SAFETY

**** Complex terrain and differing winds will produce novel wind directions ****

Division/Group Assignment List (ICS 204 WF)
Controlled Unclassified Information//Basic

| | | | | | | |
|--|---------|---|----------------------------------|------------------------|------------------------------------|------|
| 1. Incident Name: | | 3. | | | | |
| HIRZ | | Branch: | | Division/Group: | | |
| 2. Operational Period: | | SUPPRESSION REPAIR | | | | |
| DAY | | | | | | |
| Date/Time From: 09/19/2018 0600 | WED | Date/Time To: 09/19/2018 1800 | WED | | | |
| 4. Operations Personnel | | | | | | |
| OPERATIONS CHIEF | | JAKE CAGLE SCOTT LUCAS (T), MIKE DAVIS (T) | DIVISION/GROUP SUPERVISOR | | JOHN CANAVAN STEVEN BRAWLEY (T) | |
| BRANCH DIRECTOR | | | AIR ATTACK SUPERVISOR | | DEREK WHEELER | |
| 5. Resources Assigned this Period | | | | | | |
| Strike Team / Task Force / Resource Designator | LWD | Leader | Number Persons | Drop Off PT./Time | Pick Up PT./Time | |
| HC2I PAS 8 C-97 | 09/21 | FRANCIS V LUKASEVICH | 20 | MC CLOUD ICP/0600 | MC CLOUD ICP/1800 | |
| HC2 FRANCO REFORESTATION C-23 | 09/20 | JAIME DAVILA | 20 | MC CLOUD ICP/0600 | MC CLOUD ICP/1800 | |
| ENG3 BDF 336 E-444 | 09/30 | MARK MUNOZ | 5 | MC CLOUD ICP/0600 | MC CLOUD ICP/1800 | |
| ENG3 DEER MOUNTAIN E-454 | 09/25 | GLEN WYATT | 3 | MC CLOUD ICP/0600 | MC CLOUD ICP/1800 | |
| WTT1 SCOTT VALLEY E-268 | 09/27 | NICK KRAUS | 2 | MC CLOUD ICP/0600 | MC CLOUD ICP/1800 | |
| WTS2 DARRAH LOGGING 2 E-38 | 09/22 | TARA ELAM | 1 | MC CLOUD ICP/0600 | MC CLOUD ICP/1800 | |
| WTS2 HARRIS E-405 | 09/21 | ANELLO ARNE | 1 | MC CLOUD ICP/0600 | MC CLOUD ICP/1800 | |
| WTS2 WILLMORE E-419 | 09/29 | MICHELLE ANDERSON | 1 | MC CLOUD ICP/0600 | MC CLOUD ICP/1800 | |
| WTS2 WILLMORE E-420 | 09/29 | DOUG OILAR | 1 | MC CLOUD ICP/0600 | MC CLOUD ICP/1800 | |
| WTS3 DIETZ E-388 | 09/19 | MATT RICKS | 1 | MC CLOUD ICP/0600 | MC CLOUD ICP/1800 | |
| DOZ2 DUDLEYS E-93 | 09/20 | JEREMY HATHAWAY | 2 | MC CLOUD ICP/0600 | MC CLOUD ICP/1800 | |
| DOZ2 INGRAM E-95 | 09/30 | TIM WATERMAN | 2 | MC CLOUD ICP/0600 | MC CLOUD ICP/1800 | |
| DOZ2 T AND S E-341 | 09/23 | BRIAN THURMAN | 2 | MC CLOUD ICP/0600 | MC CLOUD ICP/1800 | |
| DOZ2 NORTHWESTERN FIRE E-342 | 09/27 | LARRY GIBSON | 2 | MC CLOUD ICP/0600 | MC CLOUD ICP/1800 | |
| EXCA DIAMOND RING RANCH E-219 | 09/25 | RORY CONLAN | 2 | MC CLOUD ICP/0600 | MC CLOUD ICP/1800 | |
| EXCA J W MORRISON INC E-220 | 09/25 | DUSTIN WESTFALL | 2 | MC CLOUD ICP/0600 | MC CLOUD ICP/1800 | |
| EXCA TRINITY RIVER CONSTRUCTION E-349 | 09/29 | SHILO BERRY | 2 | MC CLOUD ICP/0600 | MC CLOUD ICP/1800 | |
| EXCA KEN'S WATER TENDER, INC. E-590 | 09/27 | MATTHEW SMITH | 1 | MC CLOUD ICP/0600 | MC CLOUD ICP/1800 | |
| GRD JB CONTRACTORS E-167 | 09/24 | JOE BOSTWICK | 2 | MC CLOUD ICP/0600 | MC CLOUD ICP/1800 | |
| GRD M. PETERS E-602 | 09/25 | JAY SANDAHL | 2 | MC CLOUD ICP/0600 | MC CLOUD ICP/1800 | |
| 8. Division/Group Communication Summary | | | | | | |
| Function | Channel | RX Frequency N/W | RX Tone/NAC | TX Frequency N/W | TX Tone/NAC | Mode |
| COMMAND | 1 | 171.5375 N | 10/107.2 | 164.0875 N | 10/107.2 | A |
| TACTICAL | 7 | 168.0500 N | 10/107.2 | 168.0500 N | 10/107.2 | A |
| AIR TO GROUND | 14 | 168.3375 N | | 168.3375 N | | A |
| AIR TO GROUND | 15 | 167.8125 N | | 167.8125 N | | A |
| 9. Prepared By (Resource Unit Leader) | | Approved By (Planning Section Chief) | | Date | Time | |
| MATTHEW HASKINS | | DAVE GERBOTH | | 09/18/2018 | 2200 | |

Division/Group Assignment List (ICS 204 WF)

Controlled Unclassified Information//Basic

| | | | | | | |
|---|---------|---|---|----------------------------------|-------------------|------------------------------------|
| 1. Incident Name: | | | 3. | | | |
| HIRZ | | | Branch: | | Division/Group: | |
| 2. Operational Period: | | | SUPPRESSION REPAIR | | | |
| DAY | | | | | | |
| Date/Time From: 09/19/2018 0600 WED | | Date/Time To: 09/19/2018 1800 WED | | | | |
| 4. Operations Personnel | | | | | | |
| OPERATIONS CHIEF | | JAKE CAGLE SCOTT LUCAS (T), MIKE DAVIS (T) | | DIVISION/GROUP SUPERVISOR | | JOHN CANAVAN STEVEN BRAWLEY (T) |
| BRANCH DIRECTOR | | | | AIR ATTACK SUPERVISOR | | DEREK WHEELER |
| 5. Resources Assigned this Period | | | | | | |
| Strike Team / Task Force / Resource Designator | | LWD | Leader | Number Persons | Drop Off PT./Time | Pick Up PT./Time |
| GRD DUDLEYS' EXCAVATING E-617 | | 09/30 | JOHN STUGELMEYER | 2 | MC CLOUD ICP/0600 | MC CLOUD ICP/1800 |
| MAST INTERMOUNTAIN FOREST E-264 | | 09/30 | KEVIN SMITH | 2 | MC CLOUD ICP/0600 | MC CLOUD ICP/1800 |
| CHIP CUT WRIGHT SERVICES E-592 | | 09/30 | JAKE SMOTHERMAN | 3 | MC CLOUD ICP/0600 | MC CLOUD ICP/1800 |
| STEN O-570 | | 09/30 | JESSE W LOEFFLER | 1 | MC CLOUD ICP/0600 | MC CLOUD ICP/1800 |
| STEN O-588 | | 09/30 | BRIAN CARMAN | 1 | MC CLOUD ICP/0600 | MC CLOUD ICP/1800 |
| TFLD O-172 | | 09/23 | PAUL TADLOCK | 1 | MC CLOUD ICP/0600 | MC CLOUD ICP/1800 |
| TFLD (T) O-173 | | 09/23 | JEREMY SPIESS | 1 | MC CLOUD ICP/0600 | MC CLOUD ICP/1800 |
| HEQB O-119 | | 09/25 | ANDY SHAVER | 1 | MC CLOUD ICP/0600 | MC CLOUD ICP/1800 |
| HEQB O-147 | | 09/23 | CINDY ANN LUETH | 1 | MC CLOUD ICP/0600 | MC CLOUD ICP/1800 |
| HEQB O-213 | | 09/22 | DAN MARSHALL | 1 | MC CLOUD ICP/0600 | MC CLOUD ICP/1800 |
| FOBS O-282 | | 09/25 | ISAAC R HUNTER | 1 | MC CLOUD ICP/0600 | MC CLOUD ICP/1800 |
| FOBS O-283 | | 09/24 | JOSEPH PARR | 1 | MC CLOUD ICP/0600 | MC CLOUD ICP/1800 |
| FOBS O-286 | | 09/24 | JAMES F MALONEY | 1 | MC CLOUD ICP/0600 | MC CLOUD ICP/1800 |
| FOBS O-405 | | 09/22 | CALLUM HARPER | 1 | MC CLOUD ICP/0600 | MC CLOUD ICP/1800 |
| EMPF O-435 | | 09/25 | KEVIN HINKLE | 1 | MC CLOUD ICP/0600 | MC CLOUD ICP/1800 |
| EMPF O-436 | | 09/26 | SCOTT T DRAGOJUN | 1 | MC CLOUD ICP/0600 | MC CLOUD ICP/1800 |
| EMPF O-437 | | 09/26 | JOHN WARRICK | 1 | MC CLOUD ICP/0600 | MC CLOUD ICP/1800 |
| EMTF O-447 | | 09/26 | ISAAC SIEGEL | 1 | MC CLOUD ICP/0600 | MC CLOUD ICP/1800 |
| SOF2 O-160 | | 09/23 | THOMAS NASH | 1 | MC CLOUD ICP/0600 | MC CLOUD ICP/1800 |
| SOFR O-168 | | 09/23 | RUDY DIAZ | 1 | MC CLOUD ICP/0600 | MC CLOUD ICP/1800 |
| 8. Division/Group Communication Summary | | | | | | |
| Function | Channel | RX Frequency N/W | RX Tone/NAC | TX Frequency N/W | TX Tone/NAC | Mode |
| COMMAND | 1 | 171.5375 N | 10/107.2 | 164.0875 N | 10/107.2 | A |
| TACTICAL | 7 | 168.0500 N | 10/107.2 | 168.0500 N | 10/107.2 | A |
| AIR TO GROUND | 14 | 168.3375 N | | 168.3375 N | | A |
| AIR TO GROUND | 15 | 167.8125 N | | 167.8125 N | | A |
| 9. Prepared By (Resource Unit Leader) | | | Approved By (Planning Section Chief) | | Date | Time |
| MATTHEW HASKINS | | | DAVE GERBOTH | | 09/18/2018 | 2200 |

Division/Group Assignment List (ICS 204 WF)

Controlled Unclassified Information//Basic

| | | | | | | |
|---|---------|---|---|----------------------------------|-------------------|------------------------------------|
| 1. Incident Name: | | | 3. | | | |
| HIRZ | | | Branch: | | Division/Group: | |
| 2. Operational Period: | | | SUPPRESSION REPAIR | | | |
| DAY | | | | | | |
| Date/Time From: 09/19/2018 0600 WED | | Date/Time To: 09/19/2018 1800 WED | | | | |
| 4. Operations Personnel | | | | | | |
| OPERATIONS CHIEF | | JAKE CAGLE SCOTT LUCAS (T), MIKE DAVIS (T) | | DIVISION/GROUP SUPERVISOR | | JOHN CANAVAN STEVEN BRAWLEY (T) |
| BRANCH DIRECTOR | | | | AIR ATTACK SUPERVISOR | | DEREK WHEELER |
| 5. Resources Assigned this Period | | | | | | |
| Strike Team / Task Force / Resource Designator | | LWD | Leader | Number Persons | Drop Off PT./Time | Pick Up PT./Time |
| SOFR O-330 | | 09/23 | MICHAEL CAMBA | 1 | MC CLOUD ICP/0600 | MC CLOUD ICP/1800 |
| REAF O-290 | | 09/21 | STEPHEN HODGES | 1 | MC CLOUD ICP/0600 | MC CLOUD ICP/1800 |
| REAF O-382 | | 09/24 | JOSIAH MCELROY | 1 | MC CLOUD ICP/0600 | MC CLOUD ICP/1800 |
| REAF O-561 | | 09/30 | ALLEN SCHROEDER | 1 | MC CLOUD ICP/0600 | MC CLOUD ICP/1800 |
| | | | | | | |
| | | | | | | |
| | | | | | | |
| | | | | | | |
| | | | | | | |
| | | | | | | |
| 6. Control Operations/Work Assignments: | | | | | | |
| <ul style="list-style-type: none"> • Conduct suppression repair activities on dozerlines, handlines, and roads. • Refer to the Suppression Repair Plan for objectives and specifications. | | | | | | |
| 7. Special Instructions: | | | | | | |
| <ul style="list-style-type: none"> • Coordinate with READs to identify suppression repair needs. | | | | | | |
| 8. Division/Group Communication Summary | | | | | | |
| Function | Channel | RX Frequency N/W | RX Tone/NAC | TX Frequency N/W | TX Tone/NAC | Mode |
| COMMAND | 1 | 171.5375 N | 10/107.2 | 164.0875 N | 10/107.2 | A |
| TACTICAL | 7 | 168.0500 N | 10/107.2 | 168.0500 N | 10/107.2 | A |
| AIR TO GROUND | 14 | 168.3375 N | | 168.3375 N | | A |
| AIR TO GROUND | 15 | 167.8125 N | | 167.8125 N | | A |
| 9. Prepared By (Resource Unit Leader) | | | Approved By (Planning Section Chief) | | Date | Time |
| MATTHEW HASKINS | | | DAVE GERBOTH | | 09/18/2018 | 2200 |

Division/Group Assignment List (ICS 204 WF)
Controlled Unclassified Information//Basic

| | | | | | | |
|---|----------------|---|--------------------|---|--------------------------|-------------------------|
| 1. Incident Name: | | 3. | | | | |
| HIRZ | | Branch: | | Division/Group: | | |
| 2. Operational Period: | | STAGING | | | | |
| DAY | | | | | | |
| Date/Time From: 09/19/2018 0600 | WED | Date/Time To: 09/19/2018 1800 | WED | | | |
| 4. Operations Personnel | | | | | | |
| OPERATIONS CHIEF | | JAKE CAGLE SCOTT LUCAS (T), MIKE DAVIS (T) | | STAM ROBIN ACE 907-841-6266 | | |
| BRANCH DIRECTOR | | | | AIR ATTACK SUPERVISOR DEREK WHEELER | | |
| 5. Resources Assigned this Period | | | | | | |
| Strike Team / Task Force / Resource Designator | | LWD | Leader | Number Persons | Drop Off PT./Time | Pick Up PT./Time |
| HC2 GRIZZLY FIREFIGHTERS 107 C-107 | | 09/25 | FERNANDO PEREZ | 20 | MC CLOUD ICP/0600 | MC CLOUD ICP/1800 |
| ENG6 FAIRVIEW VALLEY 575 E-457 | | 09/30 | AUGUST CAMPBELL | 3 | MC CLOUD ICP/0600 | MC CLOUD ICP/1800 |
| ENG6 PIERCE FIRE E-472 | | 10/01 | MICHAEL LAWRENCE | 3 | MC CLOUD ICP/0600 | MC CLOUD ICP/1800 |
| ENG6 TRI-STATE FIRE ENG 1 E-473 | | 10/01 | ROB PIERCE | 3 | MC CLOUD ICP/0600 | MC CLOUD ICP/1800 |
| WTS2 DARRAH LOGGING E-39 | | 09/30 | DAVE ORR | 1 | MC CLOUD ICP/0600 | MC CLOUD ICP/1800 |
| WTS2 JOHNSON E-41 | | 09/30 | MATTHEW JOHNSON | 1 | MC CLOUD ICP/0600 | MC CLOUD ICP/1800 |
| WTS2 LET-ER-BUCK E-303 | | 09/20 | TIM LANG | 1 | MC CLOUD ICP/0600 | MC CLOUD ICP/1800 |
| WTS2 JUNGWIRTH, JERRY E-345 | | 09/28 | JERRY JUNGWIRTH | 1 | MC CLOUD ICP/0600 | MC CLOUD ICP/1800 |
| WTS2 ANGELO CATTANEO E-422 E-422 | | 09/28 | JASON DOUGLES | 1 | MC CLOUD ICP/0600 | MC CLOUD ICP/1800 |
| WTS2 CATTANEO E-423 | | 09/29 | EDWARD WELCH | 1 | MC CLOUD ICP/0600 | MC CLOUD ICP/1800 |
| WTS2 CATTANEO, ANGELO - 43778 E-424 | | 09/29 | CURTIS FLEMMING | 1 | MC CLOUD ICP/0600 | MC CLOUD ICP/1800 |
| WTS2 CATTANEO WT11 E-426 | | 09/29 | TAMMY ANDERWS | 1 | MC CLOUD ICP/0600 | MC CLOUD ICP/1800 |
| DO22 TOM'S EARTHMOVING E-106 | | 09/22 | ANTHONY FUNES | 2 | MC CLOUD ICP/0600 | MC CLOUD ICP/1800 |
| DO22 OILAR DOZER E-110 | | 09/21 | DUNLOP DON | 2 | MC CLOUD ICP/0600 | MC CLOUD ICP/1800 |
| DO22 PRO- DUMP AND EXCAVATING E-366 | | 09/21 | SAM DOTTON | 2 | MC CLOUD ICP/0600 | MC CLOUD ICP/1800 |
| DO22 PRO- DUMP AND EXCAVATING E-562 | | 09/21 | TRACY NORTON | 2 | MC CLOUD ICP/0600 | MC CLOUD ICP/1800 |
| GRD NORTH STATE EQUIPMENT E-294 | | 09/30 | RANDY SANDERS | 2 | MC CLOUD ICP/0600 | MC CLOUD ICP/1800 |
| DIVS O-68.31 | | 09/22 | MARK W MOTT | 1 | MC CLOUD ICP/0600 | MC CLOUD ICP/1800 |
| DIVS O-153 | | 09/23 | JERRY ANDERSON | 1 | MC CLOUD ICP/0600 | MC CLOUD ICP/1800 |
| DIVS(T) O-165 | | 09/22 | DUANE B KNIGHTON | 1 | MC CLOUD ICP/0600 | MC CLOUD ICP/1800 |
| 6. Division/Group Communication Summary | | | | | | |
| Function | Channel | RX Frequency N/W | RX Tone/NAC | TX Frequency N/W | TX Tone/NAC | Mode |
| COMMAND | 1 | 171.5375 N | 10/107.2 | 164.0875 N | 10/107.2 | A |
| TACTICAL | 7 | 168.0500 N | 10/107.2 | 168.0500 N | 10/107.2 | A |
| AIR TO GROUND | 14 | 168.3375 N | | 168.3375 N | | A |
| AIR TO GROUND | 15 | 167.8125 N | | 167.8125 N | | A |
| 9. Prepared By (Resource Unit Leader) | | Approved By (Planning Section Chief) | | Date | Time | |
| MATTHEW HASKINS | | DAVE GERBOTH | | 09/18/2018 | 2200 | |

Division/Group Assignment List (ICS 204 WF)
 Controlled Unclassified Information//Basic

| | | | | | | |
|--|--------------------------------------|---|---|------------------------------|-------------------|------------------------|
| 1. Incident Name: | | | 3. | | | |
| HIRZ | | | Branch: | | Division/Group: | |
| 2. Operational Period: DAY | | | | | STAGING | |
| Date/Time From: 09/19/2018 0600 WED | Date/Time To: 09/19/2018 1800 WED | | | | | |
| 4. Operations Personnel | | | | | | |
| OPERATIONS CHIEF | | JAKE CAGLE SCOTT LUCAS (T), MIKE DAVIS (T) | | STAM | | ROBIN ACE 907-841-6266 |
| BRANCH DIRECTOR | | | | AIR ATTACK SUPERVISOR | | DEREK WHEELER |
| 5. Resources Assigned this Period | | | | | | |
| Strike Team / Task Force / Resource Designator | | LWD | Leader | Number Persons | Drop Off PT./Time | Pick Up PT./Time |
| DIVS(T) O-220 | | 09/22 | ERIC LLOYD PANEBAKER | 1 | MCCLLOUD ICP/0600 | MCCLLOUD ICP/1800 |
| HEQB O-197 | | 09/21 | MATTHEW KILGRIFF | 1 | MCCLLOUD ICP/0600 | MCCLLOUD ICP/1800 |
| HEQB O-198 | | 09/22 | TYLER W HARRIS | 1 | MCCLLOUD ICP/0600 | MCCLLOUD ICP/1800 |
| HEQB O-235 | | 09/22 | ARTURO LOZANO | 1 | MCCLLOUD ICP/0600 | MCCLLOUD ICP/1800 |
| 6. Control Operations/Work Assignments: | | | | | | |
| <ul style="list-style-type: none"> • Stage at ICP. • Be ready to respond as requested by Operations Section Chief. | | | | | | |
| 7. Special Instructions: | | | | | | |
| | | | | | | |
| 8. Division/Group Communication Summary | | | | | | |
| Function | Channel | RX Frequency N/W | RX Tone/NAC | TX Frequency N/W | TX Tone/NAC | Mode |
| COMMAND | 1 | 171.5375 N | 10/107.2 | 164.0875 N | 10/107.2 | A |
| TACTICAL | 7 | 168.0500 N | 10/107.2 | 168.0500 N | 10/107.2 | A |
| AIR TO GROUND | 14 | 168.3375 N | | 168.3375 N | | A |
| AIR TO GROUND | 15 | 167.8125 N | | 167.8125 N | | A |
| 9. Prepared By (Resource Unit Leader) | | | Approved By (Planning Section Chief) | | Date | Time |
| MATTHEW HASKINS | | | DAVE GERBOTH | | 09/18/2018 | 2200 |

Division/Group Assignment List (ICS 204 WF)
Controlled Unclassified Information//Basic

| | | | | | | |
|--|---------|---|---|----------------------------------|--------------------------|----------------------------|
| 1. Incident Name: | | | 3. | | | |
| DELTA | | | Branch: | | Division/Group: | |
| 2. Operational Period: | | | IV | | DD / GG / JJ / MM | |
| DAY | | | | | | |
| Date/Time From: 09/19/2018 0600 | | WED | Date/Time To: 09/19/2018 1800 | | WED | |
| 4. Operations Personnel | | | | | | |
| OPERATIONS CHIEF | | JAKE CAGLE SCOTT LUCAS (T), MIKE DAVIS (T) | | DIVISION/GROUP SUPERVISOR | | JAY WALTER JON KING (T) |
| BRANCH DIRECTOR | | | | AIR ATTACK SUPERVISOR | | DEREK WHEELER |
| 5. Resources Assigned this Period | | | | | | |
| Strike Team / Task Force / Resource Designator | | LWD | Leader | Number Persons | Drop Off PT./Time | Pick Up PT./Time |
| HC2I SHASTA LAKE C-99 | | 09/26 | ISAC FLATLEY | 20 | COFFEE CREEK/0600 | COFFEE CREEK/1800 |
| HC2 FIRESTORM C-24 | | 09/21 | MAC NORLIE | 20 | COFFEE CREEK/0600 | COFFEE CREEK/1800 |
| ES3 SHF 3675C E-413 | | 09/29 | MIKE J CARTER | 27 | COFFEE CREEK/0600 | COFFEE CREEK/1800 |
| ENG6 WOOD'S FIRE E-2 | | 09/22 | KURT FLEWELL | 3 | COFFEE CREEK/0600 | COFFEE CREEK/1800 |
| ENG6 WOOD'S FIRE E-118 | | 09/22 | STEVE FELIX | 3 | COFFEE CREEK/0600 | COFFEE CREEK/1800 |
| ENG6 ASF - E624 E-119 | | 09/23 | GEORGE HRUBY | 4 | COFFEE CREEK/0600 | COFFEE CREEK/1800 |
| ENG6 EARTH INDUSTRIES E-123 | | 09/22 | RUDY VOSS | 3 | COFFEE CREEK/0600 | COFFEE CREEK/1800 |
| WTS2 MDF WT257 E-34 | | 09/20 | HOWARD VENUTO | 1 | COFFEE CREEK/0600 | COFFEE CREEK/1800 |
| WTS2 CATTANEO E-425 | | 09/29 | TONY MILLE | 1 | COFFEE CREEK/0600 | COFFEE CREEK/1800 |
| DOZ2 MATANDY E-111 | | 09/21 | MATT HARKNESS | 2 | COFFEE CREEK/0600 | COFFEE CREEK/1800 |
| EXCA HENTHORN E-485 | | 09/30 | JEFFERY HENTHORN | 2 | COFFEE CREEK/0600 | COFFEE CREEK/1800 |
| EXCA ANDREWS E-486 | | 09/30 | LUKE ANDREWS | 2 | COFFEE CREEK/0600 | COFFEE CREEK/1800 |
| EXCA DUDLEYS E-488 | | 10/01 | MIKE LINDAWER | 2 | COFFEE CREEK/0600 | COFFEE CREEK/1800 |
| CHIP ADKINS E-221 | | 09/25 | RONALD ADKINS | 2 | COFFEE CREEK/0600 | COFFEE CREEK/1800 |
| CHIP CECIL LOGGING E-224 | | 09/25 | MAX ARGUETA | 1 | COFFEE CREEK/0600 | COFFEE CREEK/1800 |
| HEQB O-200 | | 09/23 | CHANCE TRAUB | 1 | COFFEE CREEK/0600 | COFFEE CREEK/1800 |
| REMS 8 O-336 | | 09/24 | BEN KRONE | 4 | COFFEE CREEK/0600 | COFFEE CREEK/1800 |
| EMPF O-452 | | 09/25 | BRYAN OWEN | 1 | COFFEE CREEK/0600 | COFFEE CREEK/1800 |
| EMTF O-270 | | 09/23 | MATTHEW J HINES | 1 | COFFEE CREEK/0600 | COFFEE CREEK/1800 |
| EMPF O-263 | | 09/23 | CASEY ZENGER | 1 | COFFEE CREEK/0600 | COFFEE CREEK/1800 |
| 8. Division/Group Communication Summary | | | | | | |
| Function | Channel | RX Frequency N/W | RX Tone/NAC | TX Frequency N/W | TX Tone/NAC | Mode |
| COMMAND | 2 | 172.6500 N | 10/107.2 | 164.7500 N | 10/107.2 | A |
| TACTICAL | 8 | 168.6000 N | 10/107.2 | 168.6000 N | 10/107.2 | A |
| AIR TO GROUND | 14 | 168.3375 N | | 168.3375 N | | A |
| AIR TO GROUND | 15 | 167.8125 N | | 167.8125 N | | A |
| 9. Prepared By (Resource Unit Leader) | | | Approved By (Planning Section Chief) | | Date | Time |
| MATTHEW HASKINS | | | DAVE GERBOTH | | 09/18/2018 | 2200 |

Division/Group Assignment List (ICS 204 WF)

Controlled Unclassified Information//Basic

| | | | | | | |
|---|---------|---|----------------------------------|------------------------|----------------------------|------|
| 1. Incident Name: | | 3. | | | | |
| DELTA | | Branch: | | Division/Group: | | |
| 2. Operational Period: | | IV | | | | |
| DAY | | DD / GG / JJ / MM | | | | |
| Date/Time From: 09/19/2018 0600 | WED | Date/Time To: 09/19/2018 1800 | WED | | | |
| 4. Operations Personnel | | | | | | |
| OPERATIONS CHIEF | | JAKE CAGLE SCOTT LUCAS (T), MIKE DAVIS (T) | DIVISION/GROUP SUPERVISOR | | JAY WALTER JON KING (T) | |
| BRANCH DIRECTOR | | | AIR ATTACK SUPERVISOR | | DEREK WHEELER | |
| 5. Resources Assigned this Period | | | | | | |
| Strike Team / Task Force / Resource Designator | LWD | Leader | Number Persons | Drop Off PT./Time | Pick Up PT./Time | |
| EMTF O-269 | 09/23 | NATHAN BENNER | 1 | COFFEE CREEK/0600 | COFFEE CREEK/1800 | |
| SOFR O-237 | 09/24 | SERGIO MORA | 1 | COFFEE CREEK/0600 | COFFEE CREEK/1800 | |
| READ O-381 | 09/24 | NICK MEYERS | 1 | COFFEE CREEK/0600 | COFFEE CREEK/1800 | |
| REAF O-549 | 09/28 | GABRIELLE BOHLMAN | 1 | COFFEE CREEK/0600 | COFFEE CREEK/1800 | |
| REAF O-559 | 10/01 | ERIK A CORDTZ | 1 | COFFEE CREEK/0600 | COFFEE CREEK/1800 | |
| REAF O-560 | 10/01 | ERIK RADEMACHER | 1 | COFFEE CREEK/0600 | COFFEE CREEK/1800 | |
| ARCH O-291 | 09/20 | SARA KERFOOT | 1 | COFFEE CREEK/0600 | COFFEE CREEK/1800 | |
| ARCH O-578 | 09/24 | PAUL FRENCH | 1 | COFFEE CREEK/0600 | COFFEE CREEK/1800 | |
| | | | | | | |
| | | | | | | |
| 6. Control Operations/Work Assignments: | | | | | | |
| <ul style="list-style-type: none"> • Hold and secure fireline. • Continue mop-up to secure fire perimeter. • Continue with Stage-1 suppression repair. | | | | | | |
| 7. Special Instructions: | | | | | | |
| <ul style="list-style-type: none"> • Water tenders: use only approved water sources. | | | | | | |
| 8. Division/Group Communication Summary | | | | | | |
| Function | Channel | RX Frequency N/W | RX Tone/NAC | TX Frequency N/W | TX Tone/NAC | Mode |
| COMMAND | 2 | 172.6500 N | 10/107.2 | 164.7500 N | 10/107.2 | A |
| TACTICAL | 8 | 168.6000 N | 10/107.2 | 168.6000 N | 10/107.2 | A |
| AIR TO GROUND | 14 | 168.3375 N | | 168.3375 N | | A |
| AIR TO GROUND | 15 | 167.8125 N | | 167.8125 N | | A |
| 9. Prepared By (Resource Unit Leader) | | Approved By (Planning Section Chief) | | Date | Time | |
| MATTHEW HASKINS | | DAVE GERBOTH | | 09/18/2018 | 2200 | |

Division/Group Assignment List (ICS 204 WF)
Controlled Unclassified Information//Basic

| | | | | | | |
|--|---------|---|---|----------------------------------|------------------------|-------------------|
| 1. Incident Name: | | | 3. | | | |
| DELTA | | | Branch: | | Division/Group: | |
| 2. Operational Period: DAY | | | IX | | PP / TT | |
| Date/Time From: 09/19/2018 0600 | WED | Date/Time To: 09/19/2018 1800 | | | | |
| 4. Operations Personnel | | | | | | |
| OPERATIONS CHIEF | | JAKE CAGLE SCOTT LUCAS (T), MIKE DAVIS (T) | | DIVISION/GROUP SUPERVISOR | | ANTONIO MORENO |
| BRANCH DIRECTOR | | KYLE JACOBSON | | AIR ATTACK SUPERVISOR | | DEREK WHEELER |
| 5. Resources Assigned this Period | | | | | | |
| Strike Team / Task Force / Resource Designator | | LWD | Leader | Number Persons | Drop Off PT./Time | Pick Up PT./Time |
| HC21 GROVELAND CREW 4 C-101 | | 09/24 | PATRICK LAENG | 21 | MC CLOUD ICP/0600 | MC CLOUD ICP/1800 |
| HC2 WYEAST FORESTRY LLC C-96 | | 09/25 | ANDREW WILLIAMSON | 20 | MC CLOUD ICP/0600 | MC CLOUD ICP/1800 |
| HC2 GRAYBACK 17009 C-106 | | 09/25 | JUSTIN MAY | 20 | MC CLOUD ICP/0600 | MC CLOUD ICP/1800 |
| ES3 CA BDF 6604C E-417 | | 09/29 | JUSTIN CORRELL | 27 | MC CLOUD ICP/0600 | MC CLOUD ICP/1800 |
| WTS2 CARLTON E-347 | | 09/30 | ROSS ROGERS | 1 | MC CLOUD ICP/0600 | MC CLOUD ICP/1800 |
| WTS2 SHUMAS E-374 | | 09/24 | JUSTIN SHULTS | 2 | MC CLOUD ICP/0600 | MC CLOUD ICP/1800 |
| WTT2 INF WT 21 E-411 | | 09/21 | LEO E MORAN | 2 | MC CLOUD ICP/0600 | MC CLOUD ICP/1800 |
| DOZ2 ZABEL E-300 | | 09/22 | WADE ZABEL | 2 | MC CLOUD ICP/0600 | MC CLOUD ICP/1800 |
| DOZ2 DIAMOND E-365 | | 09/24 | JOHN BRITTEN | 3 | MC CLOUD ICP/0600 | MC CLOUD ICP/1800 |
| DOZ2 LET-ER-BUCK E-477 | | 09/21 | TIM COOK | 2 | MC CLOUD ICP/0600 | MC CLOUD ICP/1800 |
| HEQB O-35 | | 09/21 | TYLER KUIKEN | 1 | MC CLOUD ICP/0600 | MC CLOUD ICP/1800 |
| HEQB O-201 | | 09/23 | DANIEL L STARK | 1 | MC CLOUD ICP/0600 | MC CLOUD ICP/1800 |
| HEQB (T) O-162 | | 09/21 | MARC BURNETT | 1 | MC CLOUD ICP/0600 | MC CLOUD ICP/1800 |
| FMOD NORTH ZONE FALLERS O-27 | | 09/20 | CRAIG DAVIS | 2 | MC CLOUD ICP/0600 | MC CLOUD ICP/1800 |
| REMS 6 O-277 | | 09/24 | TYROME BAKER | 4 | MC CLOUD ICP/0600 | MC CLOUD ICP/1800 |
| EMPF O-265 | | 09/23 | MATT PETERS | 1 | MC CLOUD ICP/0600 | MC CLOUD ICP/1800 |
| EMTF O-108 | | 09/21 | SHANE BROWN | 1 | MC CLOUD ICP/0600 | MC CLOUD ICP/1800 |
| EMPF O-445 | | 09/26 | DAN CHAPMAN | 1 | MC CLOUD ICP/0600 | MC CLOUD ICP/1800 |
| EMTF O-449 | | 09/26 | TROY MILANO | 1 | MC CLOUD ICP/0600 | MC CLOUD ICP/1800 |
| SOFR O-167 | | 09/22 | MATTHEW LUCAS | 1 | MC CLOUD ICP/0600 | MC CLOUD ICP/1800 |
| 8. Division/Group Communication Summary | | | | | | |
| Function | Channel | RX Frequency N/W | RX Tone/NAC | TX Frequency N/W | TX Tone/NAC | Mode |
| COMMAND | 6 | 169.5375 N | 10/107.2 | 164.7125 | 10/107.2 | A |
| TACTICAL | 7 | 168.0500 N | 10/107.2 | 168.0500 N | 10/107.2 | A |
| AIR TO GROUND | 14 | 168.3375 N | | 168.3375 N | | A |
| AIR TO GROUND | 15 | 167.8125 N | | 167.8125 N | | A |
| 9. Prepared By (Resource Unit Leader) | | | Approved By (Planning Section Chief) | | Date | Time |
| SERGIO ARJONILLA | | | DAVE GERBOTH | | 09/18/2018 | 2200 |

Division/Group Assignment List (ICS 204 WF)
Controlled Unclassified Information//Basic

| | | | | | | |
|--|---------|---|---|----------------------------------|------------------------|------------------|
| 1. Incident Name: | | | 3. | | | |
| DELTA | | | Branch: | | Division/Group: | |
| 2. Operational Period: DAY | | | IX | | PP / TT | |
| Date/Time From: 09/19/2018 0600 | WED | Date/Time To: 09/19/2018 1800 | | | | |
| 4. Operations Personnel | | | | | | |
| OPERATIONS CHIEF | | JAKE CAGLE SCOTT LUCAS (T), MIKE DAVIS (T) | | DIVISION/GROUP SUPERVISOR | | ANTONIO MORENO |
| BRANCH DIRECTOR | | KYLE JACOBSON | | AIR ATTACK SUPERVISOR | | DEREK WHEELER |
| 5. Resources Assigned this Period | | | | | | |
| Strike Team / Task Force / Resource Designator | | LWD | Leader | Number Persons | Drop Off PT./Time | Pick Up PT./Time |
| | | | | | | |
| | | | | | | |
| | | | | | | |
| | | | | | | |
| 6. Control Operations/Work Assignments: | | | | | | |
| <ul style="list-style-type: none"> • Hold and secure fireline. • Continue mop-up to secure fire perimeter. • Initiate Stage-1 suppression repair. | | | | | | |
| 7. Special Instructions: | | | | | | |
| | | | | | | |
| 8. Division/Group Communication Summary | | | | | | |
| Function | Channel | RX Frequency N/W | RX Tone/NAC | TX Frequency N/W | TX Tone/NAC | Mode |
| COMMAND | 6 | 169.5375 N | 10/107.2 | 164.7125 | 10/107.2 | A |
| TACTICAL | 7 | 168.0500 N | 10/107.2 | 168.0500 N | 10/107.2 | A |
| AIR TO GROUND | 14 | 168.3375 N | | 168.3375 N | | A |
| AIR TO GROUND | 15 | 167.8125 N | | 167.8125 N | | A |
| 9. Prepared By (Resource Unit Leader) | | | Approved By (Planning Section Chief) | | Date | Time |
| SERGIO ARJONILLA | | | DAVE GERBOTH | | 09/18/2018 | 2200 |

Division/Group Assignment List (ICS 204 WF)

Controlled Unclassified Information//Basic

| | | | | | | | |
|---|---------|---|---|----------------------------------|-------------------|-------------------|-------------|
| 1. Incident Name: | | | | 3. | | | |
| DELTA | | | | Branch: | | Division/Group: | |
| 2. Operational Period: | | | | IX | | WW / YY | |
| Date/Time From: 09/19/2018 0600 | | DAY WED | | Date/Time To: 09/19/2018 1800 | | WED | |
| 4. Operations Personnel | | | | | | | |
| OPERATIONS CHIEF | | JAKE CAGLE SCOTT LUCAS(T), MIKE DAVIS(T) | | DIVISION/GROUP SUPERVISOR | | MAEVE JUAREZ | |
| BRANCH DIRECTOR | | KYLE JACOBSON | | AIR ATTACK SUPERVISOR | | DEREK WHEELER | |
| 5. Resources Assigned this Period | | | | | | | |
| Strike Team / Task Force / Resource Designator | | LWD | Leader | Number Persons | Drop Off PT./Time | Pick Up PT./Time | |
| HC1 TEXAS CANYON IHC C-3 | | 09/19 | DANNY BREUKLANDER | 20 | MC CLOUD ICP/0600 | MC CLOUD ICP/1800 | |
| HC1 ARROYO GRANDE IHC C-39 | | 09/22 | MIKE HICKEY | 20 | MC CLOUD ICP/0600 | MC CLOUD ICP/1800 | |
| HC1 REDDING IHC C-60 | | 09/21 | DANIEL MALLIA | 19 | MC CLOUD ICP/0600 | MC CLOUD ICP/1800 | |
| HC2I IRON MOUNTAIN C-49 | | 09/23 | MATTHEW A MCKURTIS | 20 | MC CLOUD ICP/0600 | MC CLOUD ICP/1800 | |
| HC2IA KLAMATH CREW 14 C-58 | | 09/19 | ANDREW S ZINK | 18 | MC CLOUD ICP/0600 | MC CLOUD ICP/1800 | |
| ES3 ANF 1614C E-416 | | 09/29 | MICHAEL MORENO | 27 | MC CLOUD ICP/0600 | MC CLOUD ICP/1800 | |
| DELTA -TASK FORCE 3 | | | | | MC CLOUD ICP/0600 | MC CLOUD ICP/1800 | |
| TFLD O-22 | | 09/24 | WESTON BURCH | 1 | MC CLOUD ICP/0600 | MC CLOUD ICP/1800 | |
| TFLD (T) O-333 | | 09/25 | MICHAEL BAGAN | 1 | MC CLOUD ICP/0600 | MC CLOUD ICP/1800 | |
| ENG3 MDF 56 E-430 | | 09/28 | PATRICK H PRESTON | 5 | MC CLOUD ICP/0600 | MC CLOUD ICP/1800 | |
| ENG3 CA LPF E15 E-434 | | 09/29 | NICHOLAS VALENTIN | 5 | MC CLOUD ICP/0600 | MC CLOUD ICP/1800 | |
| ENG3 WILDFIRE SUPPORT 516 E-484 | | 09/21 | RYAN VIGIL | 3 | MC CLOUD ICP/0600 | MC CLOUD ICP/1800 | |
| ENG6 MES 6200 E-1 | | 09/27 | WESLEY H HATCH | 4 | MC CLOUD ICP/0600 | MC CLOUD ICP/1800 | |
| ENG6 MES 6198 E-330 | | 09/27 | ZACHARY D MONROE | 4 | MC CLOUD ICP/0600 | MC CLOUD ICP/1800 | |
| DELTA -TASK FORCE 4 | | | | | MC CLOUD ICP/0600 | MC CLOUD ICP/1800 | |
| TFLD O-23 | | 09/24 | TYE ERWIN | 1 | MC CLOUD ICP/0600 | MC CLOUD ICP/1800 | |
| TFLD (T) O-25 | | 09/24 | BRYAN AGBALOG | 1 | MC CLOUD ICP/0600 | MC CLOUD ICP/1800 | |
| ENG3 HIA 9533 E-315 | | 09/19 | JOHN VINCENT MARTINEZ | 4 | MC CLOUD ICP/0600 | MC CLOUD ICP/1800 | |
| ENG3 LONGMONT 2131 E-353 | | 09/25 | MICHAEL CONNOLLY | 4 | MC CLOUD ICP/0600 | MC CLOUD ICP/1800 | |
| ENG3 INF - 41 E-390 | | 09/22 | VICTOR GUILLEN | 5 | MC CLOUD ICP/0600 | MC CLOUD ICP/1800 | |
| 8. Division/Group Communication Summary | | | | | | | |
| Function | Channel | RX Frequency N/W | RX Tone/NAC | TX Frequency N/W | TX Tone/NAC | Mode | |
| COMMAND | 6 | 169.5375 N | 10/107.2 | 164.7125 | 10/107.2 | A | |
| TACTICAL | 9 | 166.7250 N | 10/107.2 | 166.7250 N | 10/107.2 | A | |
| AIR TO GROUND | 14 | 168.3375 N | | 168.3375 N | | A | |
| AIR TO GROUND | 15 | 167.8125 N | | 167.8125 N | | A | |
| 9. Prepared By (Resource Unit Leader) | | | Approved By (Planning Section Chief) | | | Date | Time |
| HANNE MEYERS | | | DAVE GERBOTH | | | 09/18/2018 | 2200 |

Division/Group Assignment List (ICS 204 WF)
Controlled Unclassified Information//Basic

| | | | | | | |
|--|---------|---|----------------------------------|------------------------|-------------------|------|
| 1. Incident Name: | | 3. | | | | |
| DELTA | | Branch: | | Division/Group: | | |
| 2. Operational Period: | | IX | | WW / YY | | |
| DAY | | | | | | |
| Date/Time From: 09/19/2018 0600 | WED | Date/Time To: 09/19/2018 1800 | WED | | | |
| 4. Operations Personnel | | | | | | |
| OPERATIONS CHIEF | | JAKE CAGLE SCOTT LUCAS(T), MIKE DAVIS(T) | DIVISION/GROUP SUPERVISOR | | MAEVE JUAREZ | |
| BRANCH DIRECTOR | | KYLE JACOBSON | AIR ATTACK SUPERVISOR | | DEREK WHEELER | |
| 5. Resources Assigned this Period | | | | | | |
| Strike Team / Task Force / Resource Designator | LWD | Leader | Number Persons | Drop Off PT./Time | Pick Up PT./Time | |
| WTS2 BAR I TENDER E-305 | 09/22 | ERIC CHOATE | 1 | MC CLOUD ICP/0600 | MC CLOUD ICP/1800 | |
| WTS2 ALLIED WATER SERVICE E-340 | 09/30 | RICHARD BENSON | 1 | MC CLOUD ICP/0600 | MC CLOUD ICP/1800 | |
| ENG3 ANF 326 E-387 | 09/19 | ISAAC BAEZA | 5 | MC CLOUD ICP/0600 | MC CLOUD ICP/1800 | |
| ENG3 SRF- 323 E-388 | 09/19 | STEVE VALENTINE | 5 | MC CLOUD ICP/0600 | MC CLOUD ICP/1800 | |
| WTS2 BEN'S E-36 | 09/20 | TRAVIS MILES | 1 | MC CLOUD ICP/0600 | MC CLOUD ICP/1800 | |
| DOZ2 TOUGH COMPANY FIRE E-94 | 09/22 | KEVIN NICHOLS | 2 | MC CLOUD ICP/0600 | MC CLOUD ICP/1800 | |
| EXCA TRINITY RIVER E-350 | 09/20 | ED SWANSON | 2 | MC CLOUD ICP/0600 | MC CLOUD ICP/1800 | |
| EXCA BOB JOHNSON E-351 | 09/23 | LANE WILSON | 2 | MC CLOUD ICP/0600 | MC CLOUD ICP/1800 | |
| CHIP MORBARK E-222 | 09/24 | CORY ARYES | 2 | MC CLOUD ICP/0600 | MC CLOUD ICP/1800 | |
| TFLD O-154 | 09/22 | DAN OKEEFE | 1 | MC CLOUD ICP/0600 | MC CLOUD ICP/1800 | |
| TFLD (T) O-166 | 09/23 | MICHAEL HOON | 1 | MC CLOUD ICP/0600 | MC CLOUD ICP/1800 | |
| FMOD O-28 | 09/20 | NORTH ZONE FALLERS | 2 | MC CLOUD ICP/0600 | MC CLOUD ICP/1800 | |
| EMPF O-106 | 09/22 | ANTHONY RAPOZA | 1 | MC CLOUD ICP/0600 | MC CLOUD ICP/1800 | |
| EMTF O-111 | 09/22 | MARCUS BLACK | 1 | MC CLOUD ICP/0600 | MC CLOUD ICP/1800 | |
| EMPF O-434 | 09/26 | TRAVISS CRUMPACKER | 1 | MC CLOUD ICP/0600 | MC CLOUD ICP/1800 | |
| EMTF O-271 | 09/24 | PATRICK M DAWSON | 1 | MC CLOUD ICP/0600 | MC CLOUD ICP/1800 | |
| SOFR O-182 | 09/23 | BOBBY F HUBBY | 1 | MC CLOUD ICP/0600 | MC CLOUD ICP/1800 | |
| SOF2 O-389 | 09/20 | DAVID PROVENCIO | 1 | MC CLOUD ICP/0600 | MC CLOUD ICP/1800 | |
| READ O-590 | 09/21 | JOSEPH STUBBENDICK | 1 | MC CLOUD ICP/0600 | MC CLOUD ICP/1800 | |
| REAF O-597 | 10/02 | BRUCE ROBISON | 1 | MC CLOUD ICP/0600 | MC CLOUD ICP/1800 | |
| 8. Division/Group Communication Summary | | | | | | |
| Function | Channel | RX Frequency N/W | RX Tone/NAC | TX Frequency N/W | TX Tone/NAC | Mode |
| COMMAND | 6 | 169.5375 N | 10/107.2 | 164.7125 | 10/107.2 | A |
| TACTICAL | 9 | 166.7250 N | 10/107.2 | 166.7250 N | 10/107.2 | A |
| AIR TO GROUND | 14 | 168.3375 N | | 168.3375 N | | A |
| AIR TO GROUND | 15 | 167.8125 N | | 167.8125 N | | A |
| 9. Prepared By (Resource Unit Leader) | | Approved By (Planning Section Chief) | | Date | Time | |
| HANNE MEYERS | | DAVE GERBOTH | | 09/18/2018 | 2200 | |

Division/Group Assignment List (ICS 204 WF)
Controlled Unclassified Information//Basic

| | | | | | | |
|---|---|---|-------------------|------------------------|------------------|------|
| 1. Incident Name: | | 3. | | | | |
| DELTA | | Branch: | | Division/Group: | | |
| 2. Operational Period: | | IX | | WW / YY | | |
| DAY | | | | | | |
| Date/Time From: 09/19/2018 0600 | WED | Date/Time To: 09/19/2018 1800 | WED | | | |
| 4. Operations Personnel | | | | | | |
| OPERATIONS CHIEF | JAKE CAGLE SCOTT LUCAS(T), MIKE DAVIS(T) | DIVISION/GROUP SUPERVISOR | MAEVE JUAREZ | | | |
| BRANCH DIRECTOR | KYLE JACOBSON | AIR ATTACK SUPERVISOR | DEREK WHEELER | | | |
| 5. Resources Assigned this Period | | | | | | |
| Strike Team / Task Force / Resource Designator | LWD | Leader | Number Persons | Drop Off PT./Time | Pick Up PT./Time | |
| | | | | | | |
| 6. Control Operations/Work Assignments: | | | | | | |
| <ul style="list-style-type: none"> • Hold and secure fireline. • Continue mop-up to secure fire perimeter. • Continue with Stage-1 suppression repair. | | | | | | |
| 7. Special Instructions: | | | | | | |
| If Interstate 5 needs to be closed: | | | | | | |
| <ul style="list-style-type: none"> • 1. Operations is notified. • 2. Operations notifies communications. • 3. Communications notifies CHP dispatch. | | | | | | |
| 8. Division/Group Communication Summary | | | | | | |
| Function | Channel | RX Frequency N/W | RX Tone/NAC | TX Frequency N/W | TX Tone/NAC | Mode |
| COMMAND | 6 | 169.5375 N | 10/107.2 | 164.7125 | 10/107.2 | A |
| TACTICAL | 9 | 166.7250 N | 10/107.2 | 166.7250 N | 10/107.2 | A |
| AIR TO GROUND | 14 | 168.3375 N | | 168.3375 N | | A |
| AIR TO GROUND | 15 | 167.8125 N | | 167.8125 N | | A |
| 9. Prepared By (Resource Unit Leader) | | Approved By (Planning Section Chief) | | Date | Time | |
| HANNE MEYERS | | DAVE GERBOTH | | 09/18/2018 | 2200 | |

Division/Group Assignment List (ICS 204 WF)
Controlled Unclassified Information//Basic

| | | | | | | |
|--|---------------|---|--------------------------|-----------------------------------|-------------------|-------------------|
| 1. Incident Name: | | 3. | | | | |
| DELTA | | Branch: | | Division/Group: | | |
| 2. Operational Period: | | DAY | | IX | | |
| Date/Time From: | Date/Time To: | | | AA / CC / ZZ | | |
| 09/19/2018 0600 | WED | 09/19/2018 1800 | WED | | | |
| 4. Operations Personnel | | | | | | |
| OPERATIONS CHIEF | | JAKE CAGLE SCOTT LUCAS (T), MIKE DAVIS (T) | | DIVISION/GROUP SUPERVISOR | | |
| BRANCH DIRECTOR | | KYLE JACOBSON | | AIR ATTACK SUPERVISOR | | |
| | | | | JEREMY BUSH DANIEL HAMMOND (T) | | |
| | | | | DEREK WHEELER | | |
| 5. Resources Assigned this Period | | | | | | |
| Strike Team / Task Force / Resource Designator | | LWD | Leader | Number Persons | Drop Off PT./Time | Pick Up PT./Time |
| HC1 SPRINGVILLE IHC C-86 | | 09/26 | JOAQUIN MEDINA | 18 | MC CLOUD ICP/0600 | MC CLOUD ICP/1800 |
| HC1 FULTON IHC C-90 | | 09/26 | JOSH S ACOSTA | 24 | MC CLOUD ICP/0600 | MC CLOUD ICP/1800 |
| HC2I BLACK EAGLES C-14 | | 09/20 | GUSTAVO SANTOYO-GALLEGOS | 22 | MC CLOUD ICP/0600 | MC CLOUD ICP/1800 |
| HC2I VENTANA C-15 | | 09/20 | STEVE REYES | 20 | MC CLOUD ICP/0600 | MC CLOUD ICP/1800 |
| HC2I TRUCKEE IHC C-65 | | 09/24 | SCOTT BURGHARDT | 20 | MC CLOUD ICP/0600 | MC CLOUD ICP/1800 |
| HC2I FORT APACHE 1 C-84 | | 09/21 | DANNY TAYLOR JR | 20 | MC CLOUD ICP/0600 | MC CLOUD ICP/1800 |
| HC2I MODOC C-93 | | 09/20 | WILLIE ALMAND | 18 | MC CLOUD ICP/0600 | MC CLOUD ICP/1800 |
| ES3 CNF 6631C E-415 | | 09/29 | JASON L LAMBIRTH | 27 | MC CLOUD ICP/0600 | MC CLOUD ICP/1800 |
| ENG3 MNF 353 E-241 | | 09/19 | MARCUS SPIVEY (T) | 5 | MC CLOUD ICP/0600 | MC CLOUD ICP/1800 |
| ENG3 CNF 326 E-301 | | 09/19 | MATT MCCLEMENTS | 5 | MC CLOUD ICP/0600 | MC CLOUD ICP/1800 |
| ENG3 J3 E-314 | | 09/24 | JESUS SCHMIDT | 3 | MC CLOUD ICP/0600 | MC CLOUD ICP/1800 |
| ENG3 SNF E-433 | | 09/29 | RICHARD J MORRIS | 5 | MC CLOUD ICP/0600 | MC CLOUD ICP/1800 |
| ENG3 TNF E-437 | | 09/30 | TYLER LIVEZEY | 5 | MC CLOUD ICP/0600 | MC CLOUD ICP/1800 |
| ENG3 322 E-452 | | 09/30 | JAYSON W SMITH | 5 | MC CLOUD ICP/0600 | MC CLOUD ICP/1800 |
| ENG3 INF E-453 | | 09/30 | ASHLEY LETSCHER | 5 | MC CLOUD ICP/0600 | MC CLOUD ICP/1800 |
| ENG6 RED ROCK FIRE 261 E-262 | | 09/25 | BUTCH MURPHY | 3 | MC CLOUD ICP/0600 | MC CLOUD ICP/1800 |
| ENG6 HART VENTURES E-263 | | 09/27 | SKIP KOLTZ | 3 | MC CLOUD ICP/0600 | MC CLOUD ICP/1800 |
| ENG6 FIRESTORM E-335 | | 09/20 | SAM PEARCE | 3 | MC CLOUD ICP/0600 | MC CLOUD ICP/1800 |
| WTS1 BEN'S E-74 | | 09/21 | MARTIAN BRAUN | 1 | MC CLOUD ICP/0600 | MC CLOUD ICP/1800 |
| WTS1 BEN'S E-75 | | 09/21 | ERIC SPRATT | 1 | MC CLOUD ICP/0600 | MC CLOUD ICP/1800 |
| 8. Division/Group Communication Summary | | | | | | |
| Function | Channel | RX Frequency N/W | RX Tone/NAC | TX Frequency N/W | TX Tone/NAC | Mode |
| COMMAND | 2 | 172.6500 N | 10/107.2 | 164.7500 N | 10/107.2 | A |
| TACTICAL | 10 | 166.7750 N | 10/107.2 | 166.7750 N | 10/107.2 | A |
| AIR TO GROUND | 14 | 168.3375 N | | 168.3375 N | | A |
| AIR TO GROUND | 15 | 167.8125 N | | 167.8125 N | | A |
| 9. Prepared By (Resource Unit Leader) | | Approved By (Planning Section Chief) | | Date | Time | |
| HANNE MEYERS | | DAVE GERBOTH | | 09/18/2018 | 2200 | |

Division/Group Assignment List (ICS 204 WF)
 Controlled Unclassified Information//Basic

| | | | | | | | |
|--|---------|---|----------------|----------------------------------|-------------------|-----------------------------------|--|
| 1. Incident Name: | | 3. | | | | | |
| DELTA | | Branch: | | Division/Group: | | | |
| 2. Operational Period: | | DAY | | | | | |
| Date/Time From: | | Date/Time To: | | IX | | AA / CC / ZZ | |
| 09/19/2018 0600 | WED | 09/19/2018 1800 | WED | | | | |
| 4. Operations Personnel | | | | | | | |
| OPERATIONS CHIEF | | JAKE CAGLE SCOTT LUCAS (T), MIKE DAVIS (T) | | DIVISION/GROUP SUPERVISOR | | JEREMY BUSH DANIEL HAMMOND (T) | |
| BRANCH DIRECTOR | | KYLE JACOBSON | | AIR ATTACK SUPERVISOR | | DEREK WHEELER | |
| 5. Resources Assigned this Period | | | | | | | |
| Strike Team / Task Force / Resource Designator | LWD | Leader | Number Persons | Drop Off PT./Time | Pick Up PT./Time | | |
| WTS2 BUNN ENTERPRISES E-269 | 09/27 | WADE BUNN | 1 | MC CLOUD ICP/0600 | MC CLOUD ICP/1800 | | |
| WTS2 YREKA OUTLANDS E-270 | 09/28 | ALLEN WILLIAMS | 2 | MC CLOUD ICP/0600 | MC CLOUD ICP/1800 | | |
| WTS2 DARRAH E-272 | 09/24 | WAYNE VIRAG | 1 | MC CLOUD ICP/0600 | MC CLOUD ICP/1800 | | |
| DOZ2 WARNER E-183 | 09/23 | JOE RYSTE | 1 | MC CLOUD ICP/0600 | MC CLOUD ICP/1800 | | |
| DOZ2 NORTHWESTERN E-266 | 09/28 | RYAN PACKWOOD | 1 | MC CLOUD ICP/0600 | MC CLOUD ICP/1800 | | |
| SKD2 J & D LOGGING E-275 | 09/29 | LOGAN SAWYER | 2 | MC CLOUD ICP/0600 | MC CLOUD ICP/1800 | | |
| SKD2 HALEY, TODD B. E-276 | 09/26 | TODD HALEY | 2 | MC CLOUD ICP/0600 | MC CLOUD ICP/1800 | | |
| PUMP TRINITY QUICK LUBE (24HR) E-322 | 09/21 | JOSEPH PINI | | MC CLOUD ICP/0600 | MC CLOUD ICP/0600 | | |
| TFLD O-20 | 09/19 | CHRISTOPHER E ALLEN | 1 | MC CLOUD ICP/0600 | MC CLOUD ICP/1800 | | |
| TFLD O-495 | 09/25 | JASON VESTAL | 1 | MC CLOUD ICP/0600 | MC CLOUD ICP/1800 | | |
| HEQB (T) O-159 | 09/21 | JASON P O'BANNON | 1 | MC CLOUD ICP/0600 | MC CLOUD ICP/1800 | | |
| FMOD CHARLIE FALLERS O-30 | 09/20 | TACOMA MANUEL | 2 | MC CLOUD ICP/0600 | MC CLOUD ICP/1800 | | |
| REMS 5 O-94 | 09/22 | TIM MEHRER | 4 | MC CLOUD ICP/0600 | MC CLOUD ICP/1800 | | |
| REMS 7 O-276 | 09/23 | JERRY FOWLER | 4 | MC CLOUD ICP/0600 | MC CLOUD ICP/1800 | | |
| EMPF O-164 | 09/23 | TOM KAVANAUGH | 1 | MC CLOUD ICP/0600 | MC CLOUD ICP/1800 | | |
| EMTF O-113 | 09/22 | JOSHUA MASSIE | 1 | MC CLOUD ICP/0600 | MC CLOUD ICP/1800 | | |
| EMPF O-211 | 09/23 | MATT HECKMANN | 1 | MC CLOUD ICP/0600 | MC CLOUD ICP/1800 | | |
| EMTF O-273 | 09/24 | EDWARD NOBLE | 1 | MC CLOUD ICP/0600 | MC CLOUD ICP/1800 | | |
| EMPF O-442 | 09/27 | SEAN NICOLINI | 1 | MC CLOUD ICP/0600 | MC CLOUD ICP/1800 | | |
| EMPF O-443 | 09/27 | DAN J MOORE | 1 | MC CLOUD ICP/0600 | MC CLOUD ICP/1800 | | |
| 8. Division/Group Communication Summary | | | | | | | |
| Function | Channel | RX Frequency N/W | RX Tone/NAC | TX Frequency N/W | TX Tone/NAC | Mode | |
| COMMAND | 2 | 172.6500 N | 10/107.2 | 164.7500 N | 10/107.2 | A | |
| TACTICAL | 10 | 166.7750 N | 10/107.2 | 166.7750 N | 10/107.2 | A | |
| AIR TO GROUND | 14 | 168.3375 N | | 168.3375 N | | A | |
| AIR TO GROUND | 15 | 167.8125 N | | 167.8125 N | | A | |
| 9. Prepared By (Resource Unit Leader) | | Approved By (Planning Section Chief) | | Date | Time | | |
| HANNE MEYERS | | DAVE GERBOTH | | 09/18/2018 | 2200 | | |

Division/Group Assignment List (ICS 204 WF)
Controlled Unclassified Information//Basic

| | | | | | | |
|---|---------|---|---|----------------------------------|-------------------|-----------------------------------|
| 1. Incident Name: | | 3. | | | | |
| DELTA | | Branch: | | Division/Group: | | |
| 2. Operational Period: | | DAY | | | | |
| Date/Time From: 09/19/2018 0600 WED | | Date/Time To: 09/19/2018 1800 WED | | | | |
| | | IX | | AA / CC / ZZ | | |
| 4. Operations Personnel | | | | | | |
| OPERATIONS CHIEF | | JAKE CAGLE SCOTT LUCAS (T), MIKE DAVIS (T) | | DIVISION/GROUP SUPERVISOR | | JEREMY BUSH DANIEL HAMMOND (T) |
| BRANCH DIRECTOR | | KYLE JACOBSON | | AIR ATTACK SUPERVISOR | | DEREK WHEELER |
| 5. Resources Assigned this Period | | | | | | |
| Strike Team / Task Force / Resource Designator | | LWD | Leader | Number Persons | Drop Off PT./Time | Pick Up PT./Time |
| SOFR O-296 | | 09/24 | JASON M RALLS | 1 | MC CLOUD ICP/0600 | MC CLOUD ICP/1800 |
| SOFR O-422 | | 09/27 | BRIAN R RICHEY | 1 | MC CLOUD ICP/0600 | MC CLOUD ICP/1800 |
| 6. Control Operations/Work Assignments: | | | | | | |
| <ul style="list-style-type: none"> • Hold and secure fireline. • Continue mop-up to secure fire perimeter. • Continue with Stage-1 suppression repair. | | | | | | |
| 7. Special Instructions: | | | | | | |
| | | | | | | |
| 8. Division/Group Communication Summary | | | | | | |
| Function | Channel | RX Frequency N/W | RX Tone/NAC | TX Frequency N/W | TX Tone/NAC | Mode |
| COMMAND | 2 | 172.6500 N | 10/107.2 | 164.7500 N | 10/107.2 | A |
| TACTICAL | 10 | 166.7750 N | 10/107.2 | 166.7750 N | 10/107.2 | A |
| AIR TO GROUND | 14 | 168.3375 N | | 168.3375 N | | A |
| AIR TO GROUND | 15 | 167.8125 N | | 167.8125 N | | A |
| 9. Prepared By (Resource Unit Leader) | | | Approved By (Planning Section Chief) | | Date | Time |
| HANNE MEYERS | | | DAVE GERBOTH | | 09/18/2018 | 2200 |

Night Shift
1800-0600

Division/Group Assignment List (ICS 204 WF)
 Controlled Unclassified Information//Basic

| | | | | | | |
|--|--------------------------------------|------------------|---|---------------------------|-------------------|---------------|
| 1. Incident Name: | | | 3. | | | |
| DELTA | | | Branch: | | Division/Group: | |
| 2. Operational Period: NIGHT | | | IV NIGHT | | DD / GG / JJ / MM | |
| Date/Time From: 09/19/2018 1800 WED | Date/Time To: 09/20/2018 0600 THU | | | | | |
| 4. Operations Personnel | | | | | | |
| OPERATIONS CHIEF | | DAVE CROUSSER | | DIVISION/GROUP SUPERVISOR | | |
| BRANCH DIRECTOR | | | | AIR ATTACK SUPERVISOR | | DEREK WHEELER |
| 5. Resources Assigned this Period | | | | | | |
| Strike Team / Task Force / Resource Designator | LWD | Leader | Number Persons | Drop Off PT./Time | Pick Up PT./Time | |
| | | | | | | |
| 6. Control Operations/Work Assignments: | | | | | | |
| • Unstaffed. | | | | | | |
| 7. Special Instructions: | | | | | | |
| | | | | | | |
| 8. Division/Group Communication Summary | | | | | | |
| Function | Channel | RX Frequency N/W | RX Tone/NAC | TX Frequency N/W | TX Tone/NAC | Mode |
| COMMAND | 2 | 172.65000 N | 10/107.2 | 164.7500 N | 10/107.2 | A |
| TACTICAL | 8 | 168.6000 N | 10/107.2 | 168.6000 N | 10/107.2 | A |
| AIR TO GROUND | 14 | 168.3375 N | | 168.3375 N | | A |
| AIR TO GROUND | 15 | 167.8125 N | | 167.8125 N | | A |
| 9. Prepared By (Resource Unit Leader) | | | Approved By (Planning Section Chief) | | Date | Time |
| MATTHEW HASKINS | | | DAVE GERBOTH | | 09/18/2018 | 2200 |

Division/Group Assignment List (ICS 204 WF)

Controlled Unclassified Information//Basic

| | | | | | | |
|--|---------|---|--------------------|--------------------------------------|-------------------|-------------------|
| 1. Incident Name: | | 3. | | | | |
| DELTA | | Branch: | | Division/Group: | | |
| 2. Operational Period: | | NIGHT | | IX NIGHT | | |
| Date/Time From: 09/19/2018 1800 WED | | Date/Time To: 09/20/2018 0600 THU | | PP/TT/WW/YY | | |
| 4. Operations Personnel | | | | | | |
| OPERATIONS CHIEF | | DAVE CROUSSER | | DIVISION/GROUP SUPERVISOR | | |
| | | | | MICHAEL ST MARTIN BILL MORRIS (T) | | |
| BRANCH DIRECTOR | | | | AIR ATTACK SUPERVISOR | | |
| | | | | DEREK WHEELER | | |
| 5. Resources Assigned this Period | | | | | | |
| Strike Team / Task Force / Resource Designator | | LWD | Leader | Number Persons | Drop Off PT./Time | Pick Up PT./Time |
| HC2I GANNETT GLACIER C-98 | | 09/26 | BRYAN W QUIMBY | 20 | MCCLLOUD ICP/1800 | MCCLLOUD ICP/0600 |
| HC2 DUST BUSTERS C-2 | | 09/20 | KACY MORSE | 20 | MCCLLOUD ICP/1800 | MCCLLOUD ICP/0600 |
| ENG3 SRF E311 E-431 | | 09/28 | NICHOLAS P BALENT | 5 | MCCLLOUD ICP/1800 | MCCLLOUD ICP/0600 |
| ENG3 SRF E-11 E-432 | | 09/28 | CHRIS SAMPLEY | 5 | MCCLLOUD ICP/1800 | MCCLLOUD ICP/0600 |
| ENG6 SCA 5862 E-316 | | 09/25 | SHAQUAWN DECLAY | 4 | MCCLLOUD ICP/1800 | MCCLLOUD ICP/0600 |
| REMS 3 O-223 | | 09/20 | COLEMAN SOUERS | 4 | MCCLLOUD ICP/1800 | MCCLLOUD ICP/0600 |
| EMPF O-267 | | 09/24 | JESSE GALLARDO | 1 | MCCLLOUD ICP/1800 | MCCLLOUD ICP/0600 |
| EMTF O-274 | | 09/24 | MICHAEL F BOARDMAN | 1 | MCCLLOUD ICP/1800 | MCCLLOUD ICP/0600 |
| EMPF O-268 | | 09/24 | ROB GUARCELLO | 1 | MCCLLOUD ICP/1800 | MCCLLOUD ICP/0600 |
| EMPF O-448 | | 09/26 | MICHAEL J COLEY | 1 | MCCLLOUD ICP/1800 | MCCLLOUD ICP/0600 |
| SOFR O-392 | | 09/21 | STEVE FORMAN | 1 | MCCLLOUD ICP/1800 | MCCLLOUD ICP/0600 |
| 6. Control Operations/Work Assignments: | | | | | | |
| <ul style="list-style-type: none"> • Hold and patrol fireline. • Continue mop-up to secure fire perimeter. | | | | | | |
| 7. Special Instructions: | | | | | | |
| <p>If Interstate 5 needs to be closed:</p> <ol style="list-style-type: none"> 1. Operations is notified. 2. Operations notifies communications. 3. Communications notifies CHP dispatch. | | | | | | |
| 8. Division/Group Communication Summary | | | | | | |
| Function | Channel | RX Frequency N/W | RX Tone/NAC | TX Frequency N/W | TX Tone/NAC | Mode |
| COMMAND | 6 | 169.5375 N | 10/107.2 | 164.7125 | 10/107.2 | A |
| TACTICAL | 7 | 168.0500 N | 10/107.2 | 168.0500 N | 10/107.2 | A |
| AIR TO GROUND | 14 | 168.3375 N | | 168.3375 N | | A |
| AIR TO GROUND | 15 | 167.8125 N | | 167.8125 N | | A |
| 9. Prepared By (Resource Unit Leader) | | Approved By (Planning Section Chief) | | Date | Time | |
| HANNE MEYERS | | DAVE GERBOTH | | 09/18/2018 | 2200 | |

Division/Group Assignment List (ICS 204 WF)
Controlled Unclassified Information//Basic

| | | | | | | |
|--|---------|--|-------------------|------------------------|-------------------|-------------------|
| 1. Incident Name: | | 3. | | | | |
| DELTA | | Branch: | | Division/Group: | | |
| 2. Operational Period: | | IX NIGHT | | AA/CC/ZZ | | |
| Date/Time From: 09/19/2018 1800 WED | | Date/Time To: 09/20/2018 0600 THU | | | | |
| 4. Operations Personnel | | | | | | |
| OPERATIONS CHIEF DAVE CROUSSER | | DIVISION/GROUP SUPERVISOR TRAVIS WRIGHT | | | | |
| BRANCH DIRECTOR | | AIR ATTACK SUPERVISOR DEREK WHEELER | | | | |
| 5. Resources Assigned this Period | | | | | | |
| Strike Team / Task Force / Resource Designator | | LWD | Leader | Number Persons | Drop Off PT./Time | Pick Up PT./Time |
| HC1 VALYERMO IHC C-37 | | 09/21 | MATT RAMSTEAD | 19 | MC CLOUD ICP/1800 | MC CLOUD ICP/0600 |
| HC2I FIRESTORM WILDLAND 2 C-33 | | 09/21 | JIMMY RAMIREZ | 20 | MC CLOUD ICP/1800 | MC CLOUD ICP/0600 |
| HC2I FIRESTORM 3 C-82 | | 09/25 | SHANE BRENDLINGER | 20 | MC CLOUD ICP/1800 | MC CLOUD ICP/0600 |
| ENG3 ENGINE 76 E-320 | | 09/19 | BRYAN HENDRICKS | 5 | MC CLOUD ICP/1800 | MC CLOUD ICP/0600 |
| ENG3 ENGINE 45 E-338 | | 09/20 | HEATHER WOODMAN | 5 | MC CLOUD ICP/1800 | MC CLOUD ICP/0600 |
| ENG3 PNF E311 E-427 | | 09/28 | DUSTIN LANGSTON | 5 | MC CLOUD ICP/1800 | MC CLOUD ICP/0600 |
| ENG3 PNF E312 E-428 | | 09/28 | ROBERT WARD | 5 | MC CLOUD ICP/1800 | MC CLOUD ICP/0600 |
| ENG3 PNF E31 E-429 | | 09/29 | STEVE M GONZALEZ | 5 | MC CLOUD ICP/1800 | MC CLOUD ICP/0600 |
| ENG3 AZ-TNF 1237 E-481 | | 09/21 | RIGOBERTO FLORES | 5 | MC CLOUD ICP/1800 | MC CLOUD ICP/0600 |
| ENG4 GLADWIN 57B E-296 | | 09/24 | CHRISTOPHER COX | 3 | MC CLOUD ICP/1800 | MC CLOUD ICP/0600 |
| ENG6 FIRESTORM E-18 | | 09/19 | JOSHUA BRADLEY | 3 | MC CLOUD ICP/1800 | MC CLOUD ICP/0600 |
| ENG6 PACIFIC OASIS E-476 | | 09/19 | PETE HAWLEY | 3 | MC CLOUD ICP/1800 | MC CLOUD ICP/0600 |
| WTS1 BEN'S TRUCK & EQUIPMENT E-378 | | 09/25 | DONAVAN HILLAN | 1 | MC CLOUD ICP/1800 | MC CLOUD ICP/0600 |
| WTS2 KEN'S WATER TENDER E-306 | | 09/26 | RICHARD MCLERAN | 1 | MC CLOUD ICP/1800 | MC CLOUD ICP/0600 |
| PUMP TRINITY QUICK LUBE (24HR) E-322 | | 09/21 | JOSEPH PINI | 1 | MC CLOUD ICP/1800 | MC CLOUD ICP/0600 |
| REMS 4 O-93 | | 09/22 | STEVE HESS | 4 | MC CLOUD ICP/1800 | MC CLOUD ICP/0600 |
| EMPF O-103 | | 09/22 | THOMAS BISSELL | 1 | MC CLOUD ICP/1800 | MC CLOUD ICP/0600 |
| EMTF O-112 | | 09/21 | MATT COOMES | 1 | MC CLOUD ICP/1800 | MC CLOUD ICP/0600 |
| EMPF O-264 | | 09/23 | BRENT JENSEN | 1 | MC CLOUD ICP/1800 | MC CLOUD ICP/0600 |
| EMPF O-266 | | 09/24 | DANIEL ZUNIGA | 1 | MC CLOUD ICP/1800 | MC CLOUD ICP/0600 |
| 8. Division/Group Communication Summary | | | | | | |
| Function | Channel | RX Frequency N/W | RX Tone/NAC | TX Frequency N/W | TX Tone/NAC | Mode |
| COMMAND | 2 | 172.65000 N | 10/107.2 | 164.7500 N | 10/107.2 | A |
| TACTICAL | 10 | 166.7750 N | 10/107.2 | 166.7750 N | 10/107.2 | A |
| AIR TO GROUND | 14 | 168.3375 N | | 168.3375 N | | A |
| AIR TO GROUND | 15 | 167.8125 N | | 167.8125 N | | A |
| 9. Prepared By (Resource Unit Leader) | | Approved By (Planning Section Chief) | | Date | Time | |
| HANNE MEYERS | | DAVE GERBOTH | | 09/18/2018 | 2200 | |

Division/Group Assignment List (ICS 204 WF)

Controlled Unclassified Information//Basic

| | | | | | | |
|--|---------|---|---|----------------------------------|--|------------------|
| 1. Incident Name: | | | 3. | | | |
| DELTA | | | Branch: IX NIGHT | | Division/Group: AA/CC/ZZ | |
| 2. Operational Period: | | | NIGHT | | | |
| Date/Time From: 09/19/2018 1800 WED | | Date/Time To: 09/20/2018 0600 THU | | | | |
| 4. Operations Personnel | | | | | | |
| OPERATIONS CHIEF | | DAVE CROUSSER | | DIVISION/GROUP SUPERVISOR | | TRAVIS WRIGHT |
| BRANCH DIRECTOR | | | | AIR ATTACK SUPERVISOR | | DEREK WHEELER |
| 5. Resources Assigned this Period | | | | | | |
| Strike Team / Task Force / Resource Designator | | LWD | Leader | Number Persons | Drop Off PT./Time | Pick Up PT./Time |
| EMPF O-438 | | 09/26 | BRANDON BENNEWATE | 1 | MCLOUD ICP/1800 | MCLOUD ICP/0600 |
| EMTF O-453 | | 09/25 | KEVIN CULBERTSON | 1 | MCLOUD ICP/1800 | MCLOUD ICP/0600 |
| SOFR O-169 | | 09/23 | MARK COOK | 1 | MCLOUD ICP/1800 | MCLOUD ICP/0600 |
| 6. Control Operations/Work Assignments: | | | | | | |
| <ul style="list-style-type: none"> • Hold and patrol fireline. • Continue mop-up to secure fire perimeter. | | | | | | |
| 7. Special Instructions: | | | | | | |
| | | | | | | |
| 8. Division/Group Communication Summary | | | | | | |
| Function | Channel | RX Frequency N/W | RX Tone/NAC | TX Frequency N/W | TX Tone/NAC | Mode |
| COMMAND | 2 | 172.65000 N | 10/107.2 | 164.7500 N | 10/107.2 | A |
| TACTICAL | 10 | 166.7750 N | 10/107.2 | 166.7750 N | 10/107.2 | A |
| AIR TO GROUND | 14 | 168.3375 N | | 168.3375 N | | A |
| AIR TO GROUND | 15 | 167.8125 N | | 167.8125 N | | A |
| 9. Prepared By (Resource Unit Leader) | | | Approved By (Planning Section Chief) | | Date | Time |
| HANNE MEYERS | | | DAVE GERBOTH | | 09/18/2018 | 2200 |

Delta Fire – Safety Message

INCIDENT: # CA-SHF-001444

DATE: 09/19 – 09/20 TIME: 0600 – 0600 Day / Night Shift

Keep Your Guard Up!

- *Maintaining situational awareness takes effort!*
- *Continue planning to provide for safety then engage in your mission!*
- *Watch for complacency in others, and help them stay sharp.*
- *Traffic is increasing, drive defensively!*
- *Be methodical and meticulous in your tactics to get the job done safely!*

Keep Your Head in the Game!

Driving

- When driving keep speed at or below the posted speed limit and your headlights on.
- **Stay as far to the right of the road as is safely possible.**
- Stay alert for oncoming traffic that may “cheat” into your lane.
- **Schools back in session, watch for school busses and children at bus stops.**
- Always fasten your seat belt before the vehicle is set into motion.
- Slow down, slow down, slow down.

There are three main types of distracted driving: **Visual**-taking your eyes off the road; **Manual**-taking your hands off the wheel; **Cognitive**-taking your mind away from the task at hand. Don't drive distracted!

CIRCLE OF SAFETY:

- Walk around the vehicle.
- Check the windshield, wipers, and wiper fluid level.
- Keep windows, mirrors, and lights clean to better see and be seen.
- Check headlights, turn signals, tail lights, reflectors and running lights.
- Adjust mirrors.
- Check front and back tires (including wheels and lug nuts).
- Under the hood, check all fluid levels and especially the Air Filter.

Team 4 Safety



INCIDENT RISK ANALYSIS

(ICS 215a) Day - Night Shift

| BR/ DIV | HAZARDOUS ACTIONS / CONDITIONS | MITIGATIONS / WARNINGS / REMEDIES |
|---------|--|---|
| ALL | TRAFFIC HAZARDS AND DRIVING | <ul style="list-style-type: none"> Practice "Defensive Driving" techniques. Traffic volume is high. I-5 is open Use spotters when backing. Always use headlights. Use warning lights when working on roads or traveling in smoke. Observe posted speed limits. Use chock blocks, turn wheels into hill. Many roads are narrow and mid slope, use caution. |
| ALL | HAZARD / DANGER TREES | <ul style="list-style-type: none"> Follow Hazard Tree Safety Guidelines (IRPG p.22-23). Limit number of personnel around snags and their exposure time; fallers must be qualified for the trees being felled. Be especially alert around snags during wind events. Large green trees can also be dangerous. |
| ALL | FIRE BEHAVIOR | <ul style="list-style-type: none"> Are you seeing what we have predicted? Conduct thorough assessments before starting work. Ensure LCES is in place. Plan & Communicate your exit strategy, with your crew and adjacent resources. Provide additional briefing for new resources and maintain communications. |
| ALL | FIRING OPERATIONS | <ul style="list-style-type: none"> Only personnel trained in the use of each device will be authorized to use firing equipment. Ensure all personnel are aware of firing operation that may affect them. Ensure aerial/ground ignition plans have been adequately developed and personnel are briefed. |
| ALL | HEAVY EQUIPMENT OPERATIONS | <ul style="list-style-type: none"> Ensure communications are established with operators. Ensure ground personnel have safety illumination, with light-sticks being the minimum. Maintain a 50'-100' exclusion area around equipment. In timber increase safety distance to 2 ½ times canopy height. |
| ALL | STEEP TERRAIN & ROLLING MATERIAL | <ul style="list-style-type: none"> Avoid working below crews and equipment. Concentrate on your footing placement; take your time. Ensure adequate spacing between crewmembers so they can react to dislodged debris. Post lookouts to warn of rolling debris. SHOUT out to warn others. Look Up, Down and Around Frequently. |
| ALL | FATIGUE / COMPLACENCY | <ul style="list-style-type: none"> Be alert for signs of fatigue and take breaks as necessary. Maintain 2:1 work/rest ratio. Monitor ALL resources for level of fatigue. Recognize the symptoms of fatigue and take action as necessary to provide rest and recovery. Repeated assignments in the same area can lead to complacency making personnel more vulnerable to accidents. Take steps (switching of assignments, training opportunities during slow periods, etc.) to maintain situational awareness for the duration of the incident |
| ALL | AVIATION OPERATIONS | <ul style="list-style-type: none"> Conduct thorough mission assessments before starting work. Follow the guidelines in the IHOG and other aviation guidelines and reference materials. Ensure coordination and communication are in place and understood by all involved resources in a mission. Ensure close coordination between Air Attack, air tankers, helicopters, and ground resources. |
| ALL | COMMUNICATIONS | <ul style="list-style-type: none"> Share your Situational Awareness (hazards, changes, etc.) to those who also have a need. Radio Communications may be poor in some areas: use human repeaters as needed. Ensure all personnel are familiar with the incident and IA communications plans. Make sure all resources have radios cloned appropriately. Ensure that non-agency resources understand radio use and procedures. |
| ALL | POWERLINES / UTILITIES | <ul style="list-style-type: none"> Notify all personnel of down electrical lines. IRPG Page 24 -- Take time to do a Tailgate Safety Briefing Always treat downed wires as energized. Avoid parking under any type of overhead lines. Identify all gas lines in and around structures. Report damaged service lines. |
| ALL | END OF ASSIGNMENT WATCH - OUTS | <ul style="list-style-type: none"> Not mentally engaged in the task at hand. You or your driver are driving faster than when you arrived. Not giving good, thorough briefings. Your hardhat and web gear are still on the truck. Assuming all is good because you worked this piece of ground yesterday. All conversations are around what you're going to do when you get home. You and your folks are tripping and stumbling more than usual. It's taking longer to get out of camp. |

Incident Name:

Delta Fire

Operational Period: 0600 - 0600

September 19-20, 2018



Hirz / Delta Incident – 206 (Medical Plan)

Date / Time: 9/19-20/2018 0600 - 0600

1. Ambulance / Medical Services

| NAME | LOCATION | PHONE | ALS Level Care | |
|---------------|---------------------------------------|---------------------------|----------------|----|
| | | | Yes | No |
| Ambulance 2 | Incident Ambulance at DP 51 (24 hour) | Command to Communications | Yes | |
| Ambulance 5 | Incident Ambulance at DP 73 (Day) | Command to Communications | Yes | |
| Ambulance 103 | Incident Ambulance DP 54 (Coffee Crk) | Command to Communications | Yes | |
| Ambulance 104 | Incident Ambulance DP 55 (Coffee Crk) | Command to Communications | Yes | |

2. Air Ambulance Services (COORDINATE with AIR AMBULANCES on CALCORD)

| Name | Phone | PHONE |
|---------------------------------------|----------------------------------|---|
| Kern County 407 Mountain Gate, CA | (657) 464-7830 | ALS, Night Vision, Hoist Capable, <u>Incident Assigned</u> , 24 hrs. |
| Grand Canyon 8PA Trinity Center HB | (214) 998-4501 (541) 870-1510 | BLS, Short Haul 150' - 350', <u>Incident Assigned</u> , Day time only |
| REACH / PHI Redding CA | (530) 226-2499 | ALS, Night Vision, No Hoist Capability, Non-Incident Assigned |
| CHP H-16 Redding, CA | (530) 226-2499 | ALS, <u>Non-incident assigned</u> , Day time hoist only |
| Cal Fire H-202 Bieber, CA | (530) 226-2499 | BLS, <u>Non-incident assigned</u> , Day time hoist only |

3. Hospitals

| Name | Address | Air | Ground | Phone | Helipad Yes | No |
|---|--------------------------------------|-------------|---------------|----------------------------------|-------------|----|
| Pulse Urgent Care Level 4 | 100 E. Cypress Ave. Redding CA | N/A | 45 Min | (530) 722-1111 10AM-7:30PM | | X |
| Mercy Medical Center Level 2 Trauma | 2175 Roseline Ave. Redding CA | 20 Min | 80 Min | (530) 225-7201 | X | |
| Shasta Regional Medical Level 3 Trauma | 1100 Butte Ave Redding CA | 20 Min | 80 Min | (530) 244-5353 | X | |
| Mercy Mt. Shasta Medical Level 3 Trauma | 914 Pine St. Mt. Shasta CA | 10 Min | 20 Min | (530) 926-1108 | X | |
| UC Davis Medical Center Level 1 Trauma / Burn Center | 2315 Stockton Blvd. Sacramento CA | 1.25 Hrs | 3.75 Hours | (916) 734-3636 (916) 734-3790 | X | |

4. Division / Crew Pre-plan. Update and discuss with assigned resources daily.

| | |
|---|--|
| Crew EMT's & Equipment | |
| FEMP/ FEMT & Location Advanced Life Support? | |
| Air Hoist Site / Unimproved Landing Site: | |
| Lat: Long: | |
| Helispot: Elevation: Lat: Long: | |
| Med LZ: | |

5. Remote Aid Stations

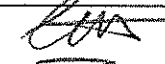
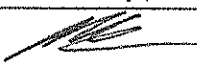

| | | |
|------------------------------|------------------------------|----------------------------|
| Medical Unit Leader Contacts | Eric Williams (661) 805-4403 | Jeff Brooks (818) 903-6295 |
| EMS Responders & Capability: | | |
| Equipment Available on Site: | Medical supplies | |
| Ambulance ETA: | Air – | Ground – |

6. Prepared By (Medical Unit Leader)

7. Date/Time

8. Reviewed By (Safety Officer)

9. Date / Time

| | | | |
|--|-----------|---|-----------|
| Eric Williams – MEDL  | 9/18/2018 |  Team 4 Safety | 9/18/2018 |
| Jeff Brooks – MEDL (T)  | 1900 | | 1900 |



Medical Incident Report

FOR A **NON-EMERGENCY INCIDENT**: WORK THROUGH CHAIN OF COMMAND TO REPORT AND TRANSPORT INJURED PERSONNEL AS NECESSARY.

FOR A **MEDICAL EMERGENCY**: IDENTIFY ON SCENE INCIDENT COMMANDER BY NAME AND POSITION AND ANNOUNCE "MEDICAL EMERGENCY" TO INITIATE RESPONSE FROM COMMUNICATIONS

Use the following items to communicate situation to communications/dispatch.

1. CONTACT COMMUNICATIONS / DISPATCH (Verify correct frequency prior to starting report)

Ex: "Communications, Div. Alpha. Stand-by for Emergency Traffic."

2. INCIDENT STATUS: Provide incident summary (including number of patients) and command structure.

Ex: "Communications, I have a Red priority patient, unconscious, struck by a falling tree.

Requesting air ambulance to Forest Road 1 at (Lat./Long.)

"This will be the Trout Meadow Medical Incident, IC is TFLD Jones. EMT Smith is providing medical care."

| | | |
|--|--|---|
| Severity of Emergency AND Transport Priority (priority 1, 2, 3) | <input type="checkbox"/> RED / PRIORITY 1 Life or limb threatening injury or illness. Evacuation need is IMMEDIATE <i>Ex: Unconscious, difficulty breathing, bleeding severely, 2° - 3° burns more than 4 palm sizes, heat stroke, disoriented.</i> | |
| | <input type="checkbox"/> YELLOW / PRIORITY 2 Serious injury or illness. Evacuation may be DELAYED if necessary. <i>Ex: Significant trauma, unable to walk, 2° - 3° burns not more than 1-3 palm sizes.</i> | |
| <input type="checkbox"/> GREEN / PRIORITY 3 Minor injury or illness. Non-Emergency transport <i>Ex: Sprains, strains, minor heat-related illness.</i> | | |
| Nature of Injury or Illness & Mechanism of Injury | | Brief Summary of Injury or Illness (Ex: Unconscious, Struck by Falling Tree) |
| Transport Request | | Air Ambulance / Short Haul/Hoist Ground Ambulance / Other |
| Patient Location | | Descriptive Location & Lat. / Long. (WGS84) |
| Incident Name | | Geographic Name + "Medical" (Ex: Trout Meadow Medical) |
| On-Scene Incident Commander | | Name of on-scene IC of Incident within an Incident (Ex: TFLD Jones) |
| Crew Patient Care | | Name of Care Provider (Ex: EMT Smith) |

3. INITIAL PATIENT ASSESSMENT: Complete this section for each patient as applicable (start with the most severe patient)

Agency Affiliation: (NO PATIENT NAMES) Federal Contractor Local Government

Patient Assessment: Age: Weight: Chief Complaint:

(If pertinent to Injury) Skin Signs: (color/moisture/temp) Level of Consciousness: BP: HR: Respirations:

Treatment:

4. TRANSPORT PLAN:

Evacuation Location (drop point, intersection, helispot, Lat. / Long, hazards) Patient's ETA to Location:

5. ADDITIONAL RESOURCES / EQUIPMENT NEEDS:

Paramedic / EMT - Crews - Immobilization Devices - AED - Oxygen - Trauma Bag - IV/Fluid(s) - Splints - Rope rescue - Wheeled litter - HAZMAT - Extrication

6. COMMUNICATIONS: Identify State Air/Ground EMS Frequencies and Hospital Contacts as applicable

| Function | Channel Name/Number | Receive (RX) | Tone/NAC * | Transmit (TX) | Tone/NAC * |
|-------------|---|--------------|------------|---------------|------------|
| COMMAND | | | | | |
| AIR-TO-GRND | Contact on CALCORD When aircraft in line of site | 156.0750 N | 156.7 | 156.0750 | 156.7 |
| TACTICAL | | | | | |

7. CONTINGENCY: Considerations: If primary options fail, what actions can be implemented in conjunction with primary evacuation method?
Be thinking ahead.

8. ADDITIONAL INFORMATION: Updates/Changes, etc.

REMEMBER: Confirm ETA's of resources ordered. Act according to your level of training
Be Alert - Keep Calm - Think Clearly - Act Decisively

*** Follow up with MEDL upon return to ICP ***



| | | | | | |
|---|--|---|--|---------------------------------------|--|
| INCIDENT RADIO COMMUNICATIONS PLAN COMMAND | | HIRZ CA-SHF-001223 DELTA CA-SHF-001444 | | Date/Time Prepared 09/18/2018 1830 | Operational Period Date/Time 9/19-20/18 0600-0600 |
| Incident Name | | Hand programmers accept all responsibility for the use of unauthorized frequencies. | | | |

| Ch # | Function | Channel Name | Assignment | RX Freq N or W | RX Tone | TX Freq N or W | TX Tone | Mode | Remarks |
|------|--------------|--------------|---|----------------|---------|----------------|---------|------|--|
| 1 | COMMAND | CMD 1 | COMMAND 1 | 171.5375 N | 107.2 | 164.0875 N | 107.2 | A | COMMAND ON H-79 LINKED W/ 2,3,4,5,6 C31 |
| 2 | COMMAND | CMD 2 | COMMAND 2 | 172.6500 N | 107.2 | 164.7500 N | 107.2 | A | COMMAND ON SUGARLOAF LINKED W/ 1,3,4,5,6 C48 |
| 3 | COMMAND | CMD 3 | COMMAND 3 | 170.4250 N | 107.2 | 168.0750 N | 107.2 | A | COMMAND ON LEHIGH LINKED W/ 1,2,4,5,6 C3 |
| 4 | COMMAND | CMD 4 | COMMAND 4 | 170.4125 N | 107.2 | 165.9625 N | 107.2 | A | COMMAND ON BONANZA KING LINKED W/ 1,2,3,5,6 C10 |
| 5 | COMMAND | CMD 5 | COMMAND 5 | 170.0875 N | 107.2 | 162.8125 N | 107.2 | A | COMMAND ON TOMBSTONE MTN LINKED W/ 1,2,3,4,6, C51 |
| 6 | COMMAND | CMD 6 | COMMAND 6 | 169.5375 N | 107.2 | 164.7125 N | 107.2 | A | COMMAND ON GREY BUTTE LINKED W/ 1,2,3,4,5 C8 |
| 7 | TAC | NIFC T1 | DIV, PP/TT SUPP REPAIR, STAGING | 168.0500 N | 107.2 | 168.0500 N | 107.2 | A | NIGHT SHIFT PP/TT/W/W/Y/Y |
| 8 | TAC | NIFC T3 | DIVISION DD/GG/JJ/MM, ACCOUNTABILITY | 168.6000 N | 107.2 | 168.6000 N | 107.2 | A | |
| 9 | TAC | NIFC T5 | DIVISIONS, VV/W/Y | 166.7250 N | 107.2 | 166.7250 N | 107.2 | A | |
| 10 | TAC | NIFC T6 | DIVISIONS, AA/CC/ZZ | 166.7750 N | 107.2 | 166.7750 N | 107.2 | A | NIGHT SHIFT AA/CC/ZZ |
| 11 | TAC | NIFC T7 | | 168.2500 N | 107.2 | 168.2500 N | 107.2 | A | |
| 12 | TAC | TAC 12 | | 162.1625 N | 107.2 | 162.1625 N | 107.2 | A | SPECIAL TAC |
| 13 | CALCORD | CALCORD | ALL DIVISIONS | 156.0750 N | 156.7 | 156.0750 | 156.7 | A | MEDICAL EMERGENCY TACTICAL |
| 14 | A/G COMMAND | A/G CMD | ALL DIVISIONS | 168.3375 N | | 168.3375 N | | A | AIR TO GROUND COMMAND |
| 15 | A/G TACTICAL | A/G TAC | ALL DIVISIONS | 167.8125 N | | 167.8125 N | | A | AIR TO GROUND TACTICAL |
| 16 | AIR GUARD | AIR GUARD | ALL DIVISIONS | 168.6250 N | | 168.6250 N | 110.9 | A | EMERGENCY ONLY |

| | |
|--|-------------------|
| Prepared by | Incident Location |
| SAL BONILLA JR. COMMUNICATIONS SECTION 530-964-2541 KEVIN JAMES, TIM MAGUIRE, BRIEFING SIMULCAST ON NIFC T1 | ICP MCCLOUD, CA |



PHONE LIST

| NAME | | PHONE NUMBER |
|---------------------|----------------------|--------------|
| COMMUNICATIONS | COML/INCM - TRAILER | 530-964-2710 |
| COMMUNICATIONS | RADIO ROOM - TRAILER | 530-964-2541 |
| MEDICAL UNIT | TRAILER | 530-964-2720 |
| PIO | TRAILER | 530-964-2897 |
| OPERATIONS | YURT | 530-964-3273 |
| DEMOB | TRAILER | 530-964-2667 |
| DOCUMENTATION | TRAILER | 530-964-2904 |
| SUPPLY / R & D | YURT | 530-964-3277 |
| MERT | YURT | 530-964-2419 |
| ORDERING | TRAILER | 530-964-3116 |
| GSUL | RON | 619-916-1763 |
| GSUL | JEFF | 916-599-0481 |
| GSUL - COFFEE CREEK | JOHN | 805-833-1106 |
| HRSP | ADAM | 707-373-8715 |
| | | |
| | | |
| | | |
| | | |
| | | |

**FOR ANY CHANGES OR ADDITIONS PLEASE
SEE THE COMMUNICATIONS UNIT**

| | | |
|--|--|--|
| | | |
| | | |
| | | |
| | | |
| | | |
| | | |
| | | |
| | | |

INCIDENT REPLACEMENT POLICY & PROCESS

Prior to release from the incident, personnel may request replacement of equipment and supplies that were damaged, lost, or consumed during the incident. There is a distinct difference in the process to replace cache equipment and supplies and non-cache or specialized equipment. Damaged property **will be turned into the Supply Unit** prior to an Incident Replacement Requisition being approved.

Replacement of cache equipment is documented on a 213 General Message form and filled at the Supply Unit or approved for replacement at the home unit. Approval for replacement of non-standard cache items has been delegated to the IC, Finance Section Chief and IBA. You should initiate this process at least two days prior to demob.

Personnel who need to replace/repair damaged property will document the request and circumstances on a 213 General Message signed by your Incident Supervisor. The lost or damaged item(s) will then be taken to either, Supply, Communications or Ground Support for inspection and recommendation for replacement or repair. Bring the completed form to COMP/CLAIMS who will review the request and forward it to the FSC. The IC/FSC will make a decision as to whether or not the items can be replaced or repaired with incident funds.

Items originally purchased through use of preparedness funds which need to be replaced due to normal wear and tear should be accomplished using home unit funds, not incident funds. If government property was damaged on the incident due to a specific event, e.g. wind event destroys tent, items are burned over or caused by actions where there is no negligence, the incident could, upon receipt of required documentation and proof of damage, authorize replacement using the Incident Replacement Requisition.

In some cases, the cache replacement is not acceptable on some specialty items (e.g. sleeping bag or specialty packs). These items may be replaced with no more than "cache" quality and cost. The IBA or FSC must approve these requests.

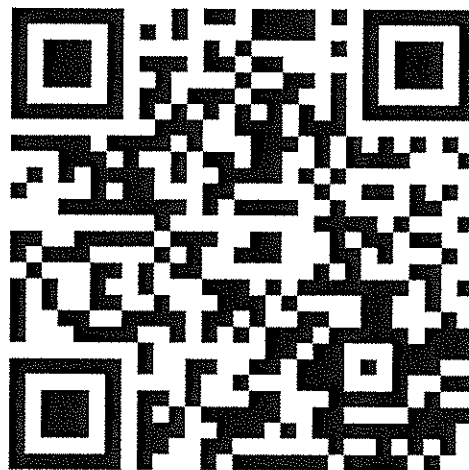
If your request is approved, provide the approval and support documentation to Ordering or Supply for issuing an "S" number.

Please feel free to visit Comp/Claims Unit Leader Scott Parsons or myself if you have any questions.

Sherri Bennett, CIIMT 4, Finance Section Chief

What news or entertainment information would you like to see on fire camp bulletin boards?

We would love to hear your thoughts or feedback on how we can improve your experience!



Fill out our survey and return to PIO shop or reply from your phone at this link:

<https://goo.gl/forms/DKNquF8W25xm3U3I3>

1. Camp boards are typically posted with things like, sports scores, the National Sit Report, puzzles, pictures, sections from newspapers, the shower or laundry hours...

Mark only one

- I look at the camp boards and find the information on them useful.
- I'd like to see different types of information on the camp board.
- I don't have time to read a board, QR codes or links to helpful websites I can look at on my phone would be more useful.
- Other:

2. Would you like to see any of the following on a camp board?

Check all that apply.

- local history
- shower and laundry hours
- sports scores
- coffee/muffin shops in town
- local restaurant names and locations
- thank you cards from the community

international news
local news
comics
puzzles
Human Resource message
local geology, geography, wildlife, points of interest
current incident maps and stats
current incident news release
regional fire situation
national fire situation/ SIT report
Safety Information
transportation map/ camp map
links to official fire information such as inciweb
Other:

3. If you look at camp boards, how long do you typically spend looking at them?

Mark only one.

- I don't
- one minute or less
- one minute or more

4. How do you charge your mobile devices on assignment?

Check all that apply.

in my vehicle
solar charger
battery pack
local coffee shop
Other:

5. Would a charging station in camp be helpful?

Circle One.

Yes

No

6. Please add any other feedback or comments below...

DELTA FIRE
Human Resource Message
September 19, 2018

ZERO TOLERANCE

**FOR ALCOHOL
AND/OR
ILLEGAL DRUGS
ON THIS INCIDENT**



The quickest way to get demob'd is engage in activities involving alcohol or drugs on this incident. Also Law Enforcement will be called to deal with any suspected illegal activities.

If you have issues with substances, I can assist putting you in touch with professionals that will help you.

Adam Alvarez, HRSP - 707-373-8715

Delta-Hirz Fire Suppression Repair

Repair Objectives

- **Minimize Surface and Gully Erosion**
- **Minimize Loss of Soil Productivity due to Erosion In Cleared Areas**
- **Repair Meadows and Wetlands Damaged By Suppression Activities**
- **Minimize Spread of Noxious Weed Infestations**
- **Minimize Excessive Side-Cast Fuels Along Roads**
- **Minimize Impacts to Inventoried Roadless Areas and Wild & Scenic River Corridors**
- **Repair Impacts to Cultural and Historic Resources**
- **Repair Damage to National Forest Roads and Trails Caused by Fire Suppression Activities**
- **Review by Agency READ/REAFs for On-Site Verification of Objectives Completed**

Suppression Repair Focus

- **Dozer Lines**
- **Hand Lines**
- **Roads and Trails**
- **Safety Zones and Staging Areas**
- **Drop Points**
- **Helispots**
- **Water Sources**

Effective Waterbars

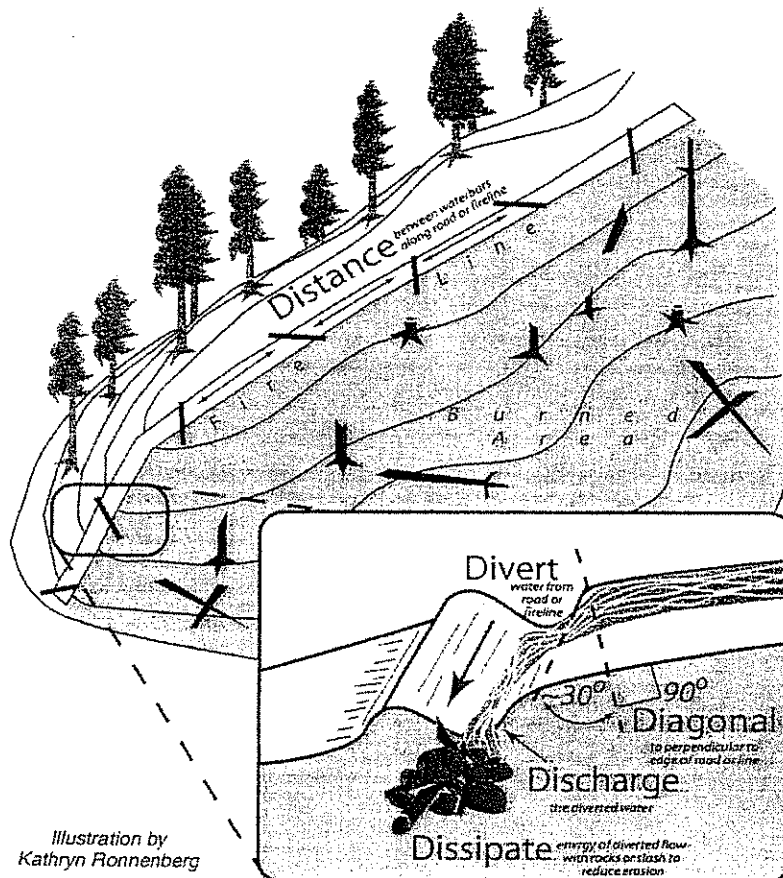
When locating and building water bars, place them the right **distance** apart, at a **diagonal** to the fireline, so that they **divert**, then **discharge**, then **dissipate** the energy of the flowing water. Be sure to make them deep enough so they'll be durable, and that soil does **not block** the water bar outlet.

Recommended spacing for waterbars on firelines.

| Fireline slope % | Maximum Distance Apart (feet) |
|---------------------|-------------------------------------|
| 1 – 5 | 200 |
| 6 – 20 | 125 |
| 21 – 40 | 60 |
| 41 – 60 | 40 |
| >60 | 25 |

Waterbars should be at least 2 pulaski (4-6 inches) widths wide and 12-24 inches high for handlines.

Waterbars should be no more 2-3 feet tall on dozer lines to enable future access.



*Illustration by
Kathryn Ronnenberg*

Stage 2 Suppression Repair Guidelines

(Apply to National Forest System Lands only on dozer lines with moderate to heavy suppression generated debris)

Applicable Suppression Repair Plan Objectives

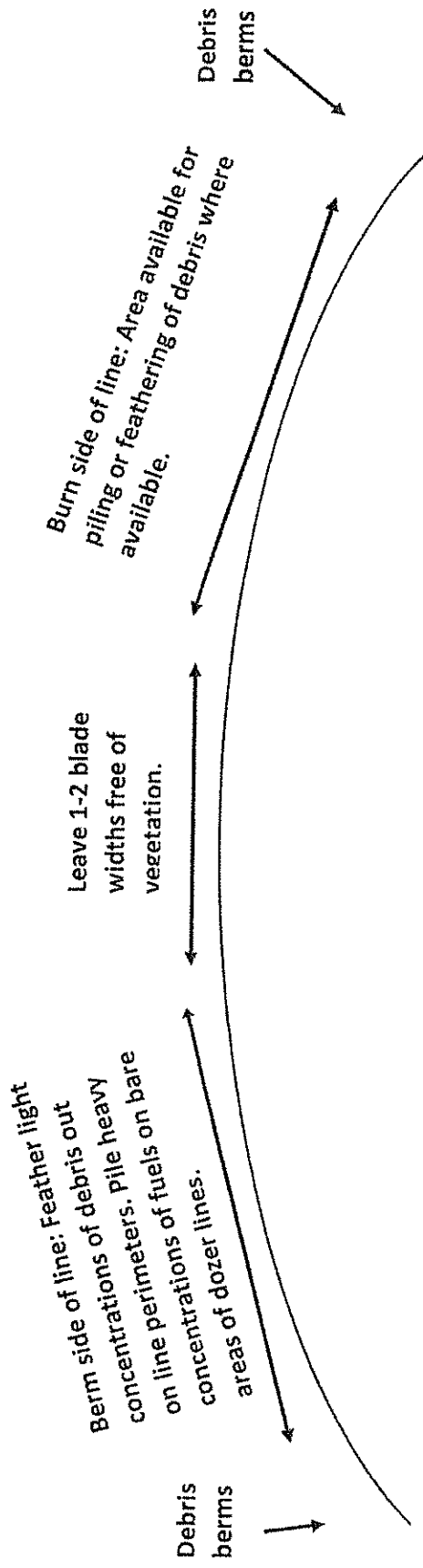
- Minimize loss of soil productivity due to potential erosion in cleared areas.
- Minimize surface erosion.
- Minimize excessive side-cast fuels.

General Instructions

- Pile excessive amounts of suppression generated debris.
- Smaller concentrations of suppression generated debris can be feathered back into scraped side slope areas in order to breakdown fuel concentrations and reduce erosion.

Piling Specifications

- Piles should be located at least 10 feet away from tree boles and preferably out of the drip line of the canopy where possible.
- If working in close or closed canopy piles should be built in a configuration that prevents excessive tree scorch (e.g. small piles, windrowed piles).
- If working in large openings on large dozer lines piles can be larger (e.g. 25x25 feet).
- Compress piles as much as possible to improve burn consumption.
- Piles should be clean (free of soil) to ensure adequate consumption during burning and reduced risk of escape in spring.



DMOB LIST FOR 9-19-2018

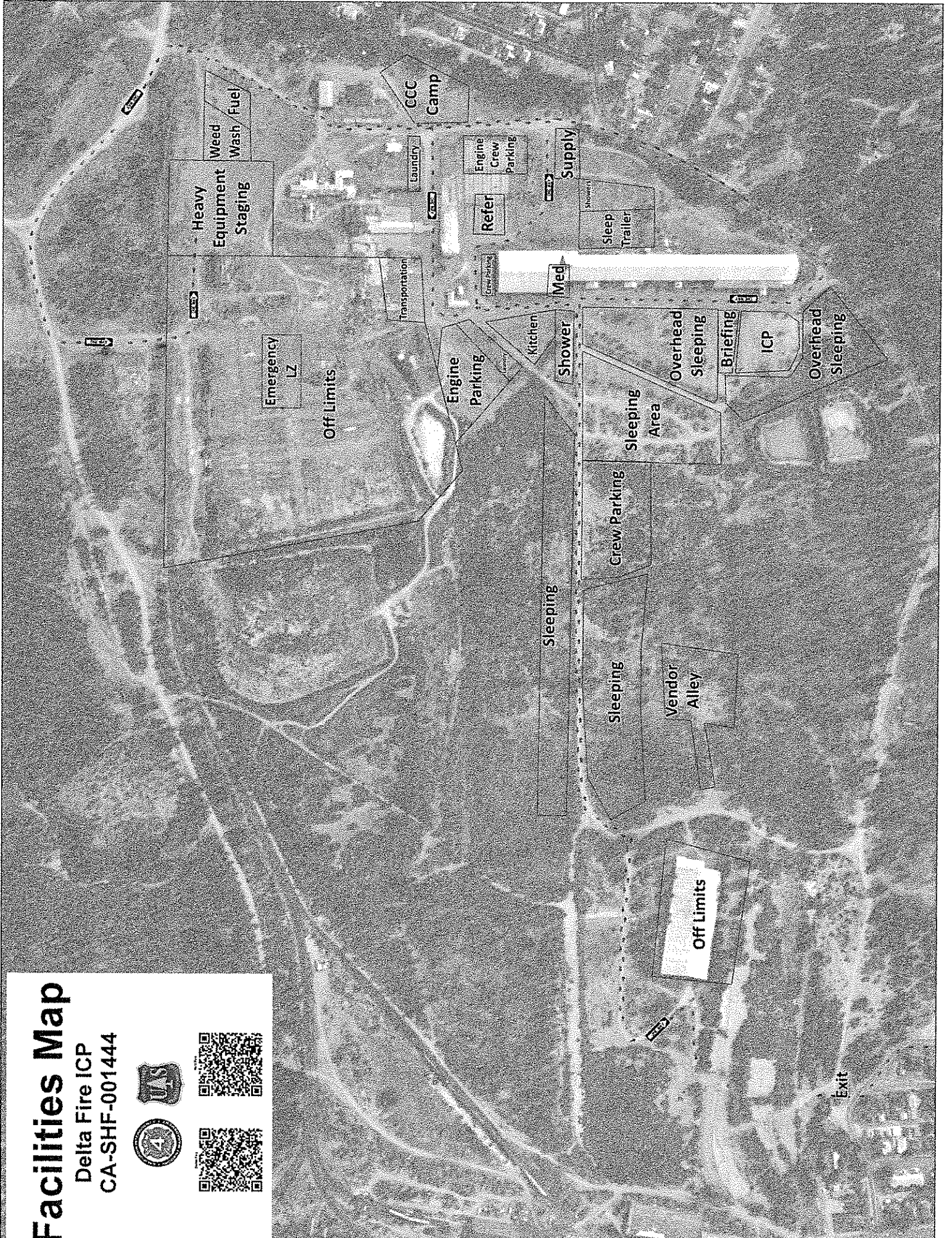
| REQ # | RESOURCE NAME | ITEM CODE | REPORT TO DMOB |
|-------|-----------------------------|-----------|----------------|
| C-83 | PHOENIX CREW | 2IA | 0645 |
| C-92 | LITTLE T IHC | HCI | 0700 |
| C-34 | KERN VALLEY | 2IA | 0730 |
| C-63 | GOLDEN EMPIRE | 2IA | 0800 |
| C-87 | SQF HORSESHOE | HCI | 0830 |
| C-72 | STANISLAUS IHC | HCI | 0900 |
| C-4 | KING RIVER IHC | HCI | 0930 |
| C-89 | GOLDEN EAGLES | HCI | 1000 |
| C-64 | DEL ROSA | 2IA | 1030 |
| C-16 | CNMI 36 | 2 | 1100 |
| C-13 | BECKWORTH IHC | HCI | 1130 |
| C-85 | ASI ARDEN SOLUTIONS | 2IA | 1200 |
| C-25 | GH RANCH | 2 | 1230 |
| C-18 | DUST BUSTERS | 2 | 1300 |
| C-22 | J.O. INTERNATIONAL REFOREST | 2 | 1330 |
| C-19 | RNR CONTRACTING | 2 | 1400 |
| C-17 | FRANCO REFOREST | 2 | 1430 |
| C-1 | GRAYBACK FORESTRY | 2 | 1500 |
| C-21 | PACIFIC CREST | 2 | 1530 |
| | | | |
| E-176 | FAIRVIEW | T6 | 0700 |
| E-467 | SMOKIN RIGGE | T6 | 0700 |
| E-468 | DB JET2 | T6 | 0730 |
| E-458 | RED TRUCK WILDFIRE | T6 | 0730 |
| E-121 | 5265 | T6 | 0800 |
| E-177 | BLACK TIMBER52 | T6 | 0800 |
| E-414 | TMU 4690C | T3 | 0900 |
| E-441 | THP 6958 | T3 | 0930 |
| E-435 | ASF 321 | T3 | 0930 |
| E-460 | RIDGLINE FIRE | T6 | 1000 |
| E-271 | WATTERDOG | T2 | 1015 |
| E-298 | KNF ENG 326 | T3 | 1000 |
| E-101 | 344 | T3 | 1030 |
| E-383 | MDF 335 | T3 | 1030 |
| E-483 | ENG 331 | T3 | 1100 |
| E-337 | MDF ENG55 | T3 | 1100 |
| E-59 | MODOC 44 | T3 | 1200 |
| E-384 | MODOC 65 | T3 | 1200 |
| E-32 | WILMORE AG SERVICES | T2 | 1215 |
| E-242 | MNF 336 | T3 | 1230 |
| E-361 | OUF 692 | T6 | 1230 |
| E-480 | MDF ENG 343 | T3 | 1300 |
| E-185 | ROBERT JOHNSON | T2 | 1315 |
| E-319 | SQF 46 | T3 | 1330 |
| E-339 | STF 342 | T3 | 1400 |
| E-450 | STF 314 | T3 | 1400 |
| E-267 | MAYER 22 | T1 | 1415 |
| E-60 | ENF 342 | T3 | 1430 |
| E-6 | BDF 13 | T3 | 1430 |
| E-446 | BDF 54 | T3 | 1500 |
| E-348 | WILMORE AG SERVICES | T2 | 1515 |
| E-447 | BDF 35 | T3 | 1530 |
| E-445 | BDF 16 | T3 | 1600 |
| E-482 | WFI 353 | T3 | 1600 |
| E-448 | TVF 3490 | T3 | 1600 |

| REQ # | RESOURCE NAME | ITEM CODE | REPORT TO DMOB |
|---------|---------------------------|-----------|----------------|
| E-449 | TREASURE VALLEY FIRE | T3 | 1600 |
| E-466 | GH RANCH | T6 | 1600 |
| E-334 | CATTLEACK RANCH | T2 | 1615 |
| E-469 | GH RANCH | T6 | 1630 |
| E-463 | BNB FIRE SUPPRESSION | T6 | 1630 |
| E-471 | JB CONTRACTING | T6 | 1630 |
| E-470 | INBOUND E6 | T6 | 1630 |
| E-474 | GREYWOLF 6 | T6 | 1630 |
| E-465 | GH RANCH | T6 | 1700 |
| E-464 | HB FORESTRY | T6 | 1700 |
| E-443 | STEWART JOHNSON | T6 | 1700 |
| E-451 | BERTHHOUND FD | T3 | 1700 |
| E-462 | HOLTER ENG 622 | T6 | 1700 |
| E-259 | PAUL ROEN | MAST | 1715 |
| E-461 | HOLTER ENG 624 | T6 | 1730 |
| E-456 | FIRESTORM ENG 9902 | T6 | 1730 |
| E-455 | FIRESTORM ENG 9903 | T6 | 1730 |
| E-174 | FIRESTORM ENG | T6 | 1730 |
| E-439 | MAD ADAMS | T3 | 1730 |
| E-291 | RED ROCK 612 | T6 | 1800 |
| E-336 | FIRESTORM | T3 | 1800 |
| E-438 | MAD ADAMS 301 | T3 | 1800 |
| E-382 | LKR 8531 | T3 | 1800 |
| E-17 | ENG 3231 | T3 | 1800 |
| E-318 | LUR 3150 | T3 | 1830 |
| E-379 | KNF ENG 77 | T3 | 1830 |
| E-389 | LNK ENG 315 | T3 | 1830 |
| E-410 | KNF WT 21 | T2 | 1830 |
| E-4 | ENF 21 | T2 | 1830 |
| E-37 | FIRELINE SUPPORT SERVICES | T2 | 1830 |
| E-43 | HANDWASHING STATION | TRAILER | 0800 |
| E-91 | HANDWASHING STATION | TRAILER | 0800 |
| E-225 | VALERIE STANSBERRY | | 0800 |
| E-215 | ESRY'S | | 1000 |
| E-226 | PAUL SCALES | | 1200 |
| E-227 | DAVID INGRAM | | 1200 |
| E-228 | DAN PETIT | | 1200 |
| E-230 | JESSE'S EQUIPMENT REPAIR | | 1200 |
| E-232 | TONYS EQUIPMENT | | 1200 |
| E-234 | MOBILE DIESEL REPAIR | | 1200 |
| | | | |
| O-68.28 | SCOTT LUCAS | OSC 1 | 0700 |
| O-19 | SCOTT ARGANBRIGHT | TFLD | 0700 |
| O-21 | CHRIS LANDRY | TFLD | 0700 |
| O-24 | MICHAEL MONDINO | TFLD | 0700 |
| O-26 | PERRY PEAKE | TFLD | 0700 |
| O-29 | BILL SMITH | FMOD | 0700 |
| O-488 | TRAVIS KUNKLE | TFLD(t) | 0700 |
| O-221 | MATT FLYING | TFLD(t) | 0700 |
| O-553 | KEVIN SMYTH | DIVS | 0700 |
| O-259 | CHRIS TRUNKEY | EQPM | 0700 |
| O-431 | JOE PEREZ | EMTF | 0800 |
| O-444 | BRANDON SCULL | EMTF | 0800 |
| O-310 | DARON WYATT | PIO | 1000 |
| O-287 | KURT NOEL VELOFF | EQPM | 1200 |
| O-332 | JAMES KLYN | EMTF | 1300 |

| REQ # | RESOURCE NAME | ITEM CODE | REPORT TO DMOB |
|-------|-------------------|-----------|----------------|
| O-468 | STEVEN | EMTF | 1300 |
| O-707 | REMS 3 (4-MEMBER) | REMS | 1500 |
| O-105 | MATTHEW STODDARD | EMTF | 0800 |
| O-109 | ADAM WALKER | EMTF | 0800 |
| O-432 | CHRIS JONES | EMTF | 0800 |
| O-568 | MATT CAFFEY | EMTF | 0800 |
| O-104 | MATT LARKIN | EMTF | 0800 |

Facilities Map

Delta Fire ICP
CA-SHF-001444



Main Gate Entrance

Delta Fire McCloud ICP
CA-SHF-001223/P5L2ZM)0514)

Hand Wash

Portable Toilets

Information

Documentation

IC / Liaison

Comms Tech

IT Specialist

Medical
Comp/Claim

Comms

Infrared Map

Ordering/Plan

READ

Resources

Medical Rehab

Training Unit

Situation

GIS

Finance

Air Ops

Check In / Demob

Print Shop

Portable Toilets

Logistics

Meeting

Facilities

Governor's Office of
Emerg Services

Briefing

CALIFORNIA INTERAGENCY INCIDENT MANAGEMENT TEAM 4

EXPECTATIONS

Welcome to this Incident.
Thank You for your Cooperation & Support!



2018

CONDUCT AND BEHAVIOR

This team is committed to “**ZERO TOLERANCE**” of careless, illegal, inappropriate and unsafe actions.

Alcohol and/or illegal drugs are **NOT allowed** within the incident environment or while actively assigned to the incident. Local Law Enforcement Officials will be called to deal with any suspected illegal activities. Each employee has the responsibility to be ready, willing, and able to perform the duties for which they are qualified.

Sexual Harassment

Inappropriate actions or comments will not be tolerated. Everyone is expected to act in a professional manner. It is your responsibility to stop inappropriate actions or comments immediately upon becoming aware of such. Sexual Harassment must be reported to the Human Resource Specialist or Incident Commander. When outside of your designated sleeping area, you are required to wear at least a shirt, appropriate shorts, and shoes or sandals. If you need clarification of these expectations contact the Human Resource Specialist or IC. What we PERMIT we PROMOTE!!!!

SAFETY

The commitment to and accountability for safety is a joint responsibility of firefighters, managers and administrators. Individuals must personally be committed and responsible for their own performance and accountability. Everyone assigned to this incident can expect an assignment that follows all safety rules & regulations. Every person is expected to perform his or her duties in compliance with all known safety practices at all times. Anything less is unacceptable.

EMPHASIS AREAS

Training

All trainees and trainers are expected to follow the procedures outlined in the California Interagency Incident Management Team 4 **Training Expectations – See back page.**

Evaluations

All supervisory personnel assigned will complete an ICS 225 Incident Personnel Performance Rating form for their assigned resources according to agency policy or contractual agreement.

Injuries/Claims

Ensure all injuries and potential claims are reported to the Comp/Claims Unit for completion of appropriate paperwork. Contract claims will be reported to the Procurement Unit Leader.

Work Rest Cycles

The 2: 1 work/rest ratio is mandatory. For every two hours on shift you will be required to rest for one hour. Every effort shall be used to limit work hours to a maximum of 16. If circumstances require you to exceed 16 hours, this needs to be coordinated in advance with your supervisor and the Justification/Mitigation form completed to support the excessive hours prior to submitting for approval by the IC. It is your responsibility to comply with this direction and provide the appropriate documentation to your Supervisor and Finance.

Position Qualifications

Personnel shall only be assigned to positions for which they are qualified. Proof of qualifications shall be approved prior to being assigned to any fire line position. Non-fireline positions may be filled based on the word of the employee pending home unit confirmation, which must be requested immediately. Contract dozer operators, tactical water tender operators and contract fallers must provide proof that they have received the annual fire refresher training.

Engagement/Disengagement

The 10 Standard Orders & 18 Watchout Situations will be followed at all times and mitigated as needed. Staying aware of your situation is critical. This includes Geographic Area and incident briefings. Follow the Risk Management Process outlined in the Incident Response Pocket Guide.

Debriefing

All Branch Directors/Division/Group Supervisors will report to their Supervisor and Situation Unit at the end of the operational period for debriefing with emphasis on the accomplishment of objectives. All unit logs (ICS 214) will be turned in after the debriefing to Documentation reflecting accomplishment and/or special incidents that occurred during the operational period.

Crew Time Reports/Shift Tickets

It is your responsibility to ensure all time is properly accounted for and recorded each shift. The records are to be reviewed and signed by the next level supervisor. A finance "Rules of Engagement" document will be provided in the IAP explaining further requirements.

Social Media

It is your responsibility to know and understand guidelines for firefighter photography, video and social media use. California Interagency Incident Management Team 4 goal is simple: to participate online in a respectful, relevant way that protects our incident's professional reputation, does not confuse the public about the incident and follows the letter and spirit of the law. Be mindful that social media postings can be viewed as unprofessional, damage careers and lead to disciplinary actions. For further information, contact the Public Information Officer.

We look forward to working with you as a valuable member of this effort. If you have any questions or feedback, please feel free to contact any Command and General Staff Member.

JAY KURTH
Incident Commander

ROCKY W. OPLIGER
Deputy Incident Commander

THANK YOU FOR YOUR COOPERATION AND GOOD WORK!!



CALIFORNIA INTERAGENCY INCIDENT MANAGEMENT TEAM 4 TRAINING EXPECTATIONS

1. Upon arrival at the incident and after check-in, the trainee will bring the following documents to the initial meeting with the training specialist:
 - a. A properly initiated Position Task Book.
 - b. Your Request Number and your Agency (3) letter identifier.
 - c. Your agencies Fire Chief or Training Officers name, address, and phone number to insure that a copy of the training documents will be mailed back to your home unit.
 - d. Your current Incident Qualification Card (red card) that identifies you as a Trainee in the position you are seeking to be trained.
2. Have you identified or has a Trainer been assigned to you and if so, have the Trainer present when you meet with the training specialist.
3. At closeout and prior to entering the demobilization process, you should complete, sign, and review with the trainer the Final exit interview form. Once the form is complete, bring the following documents to the Training Specialist for closeout;
 - a. Position Task Book (Evaluation Record dated and signed by the Trainer).
 - b. Completed ICS 225 (Personal Evaluation Record) dated and signed by both the trainee and trainer.
 - c. Completed Final Exit Interview Form – dated and signed by both the trainee and the trainer.

Trainer Expectations

1. Arrive with the Trainee at the initial meeting with the Training Specialist.
2. Be ready to provide your Contact information and your Incident Request number.
3. Have a Current Incident Qualifications Card (Red Card) in a position of equal or greater qualifications that the Trainee is trying to achieve.
4. Be willing to educate, support, and provide professional and consistent feed back to the trainee during the assignment.
5. Throughout the incident the trainer shall continue to monitor and review with the trainee their tasks and goals within the task book.
6. The trainer, where appropriate is expected to sign off task's that are achieved by the trainee and to complete and sign the following documents.
 - a. ICS 225 (Personal Evaluation Form)
 - b. Evaluation Record at the back of the task book.
7. The trainer shall portray a positive and professional attitude that lets the trainee know that it is desirable to ask for direction and feedback.
8. When accepting the role as a trainer, you are expected to act in a professional manner that represents the California Interagency Incident Management Team 4 and your home agency.

