

INCIDENT ACTION PLAN

DELTA FIRE

CA-SHF-001444 / P5L4L8 (0514)

HIRZ FIRE

CA-SHF-001223 / P5L2ZM (0514)



OPERATIONAL PERIOD

SEPTEMBER 21-22, 2018

DAY 0600-1800 HOURS

NIGHT 1800-0600 HOURS

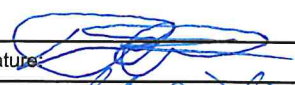
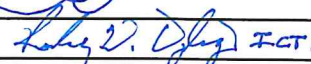


DELTA




HIRZ

INCIDENT OBJECTIVES (ICS 202)

1. Incident Name:	2. Operational Period: DAY/NIGHT	
HIRZ / DELTA	Date/Time From: 09/21/2018 0600 FRI	Date/Time To: 09/22/2018 0600 SAT
3. Objective(s):		
<p>Leader's Intent A full suppression strategy will be implemented for both the Hirz and Delta fires through a combination of direct and indirect tactics. Efforts will be made to minimize impacts to residences, critical infrastructure and private timberlands through the application of well-planned tactical responses.</p> <p>Management Objectives</p> <ul style="list-style-type: none"> • Ensure that strategies and tactics provide for firefighter and public safety through the application of sound risk management principles. • Minimize the threat to private property, critical infrastructure, and commercial timberlands while working with the READs to reduce impacts to cultural and sensitive sites. • Establish and strengthen cooperator, partner, and stakeholder relationships • All suppression repair work will be conducted in close coordination with assigned READs. <p>Control Objectives DELTA / HIRZ FIRES</p> <ul style="list-style-type: none"> • Continue to mop-up and patrol as needed to ensure the fire stays within existing containment lines. • Continue suppression repair per the approved Suppression Repair Plan. 		
4. Operational Period Command Emphasis:		
EXERCISE OPPORTUNITIES FOR SUCCESSION TRAINING		
Priorities		
#1 - Division CC		
General Situational Awareness:		
-A leader isn't someone who forces others to make him stronger; a leader is someone willing to give his strength to others so that they may have the strength to stand on their own.		
5. Site Safety Plan Required? Yes <input type="checkbox"/> No <input checked="" type="checkbox"/>		
Approved Site Safety Plan(s) Located at:		
6. Incident Action Plan (the items checked below are included in this Incident Action Plan):		
<input checked="" type="checkbox"/> ICS 202 <input checked="" type="checkbox"/> ICS 203 <input checked="" type="checkbox"/> ICS 204 <input checked="" type="checkbox"/> ICS 205 <input type="checkbox"/> ICS 205A <input checked="" type="checkbox"/> ICS 206	<input type="checkbox"/> ICS 207 <input type="checkbox"/> ICS 208 <input checked="" type="checkbox"/> ICS 220 <input checked="" type="checkbox"/> Map/Chart <input checked="" type="checkbox"/> Weather Forecast/Tides/Currents	Other Attachments: <input checked="" type="checkbox"/> HRSP MSG <input checked="" type="checkbox"/> ICS 214 UNIT LOG <input type="checkbox"/> _____ <input type="checkbox"/> _____
7. Prepared by: MITCH DIEHL	Position/Title: PLANNING SECTION CHIEF	Signature: 
8. Approved by Incident Commander:	Name: JAY KURTH	Signature:  ICS 1
ICS 202	IAP Page	Date/Time: 09/20/2018 2200

ORGANIZATION ASSIGNMENT LIST		9. Day Operations Section	
1. Incident Name	HIRZ / DELTA	Chief OSC	Jake Cagle / Kyle Jacobson (T) / Mike Davis (T)
2. Date :	09/20/18	Planning OSC	Brian Rhodes / Steve Clark (T)
4. Operational Period	September 21 - 22, 2018	a. Hirz	
	DAY SHIFT 0600 – 1800	Division/Group	Suppression Repair 1
	NIGHT SHIFT 1800 - 0600	Division/Group	Suppression Repair 2
Position	Name	Division/Group	Staging
5. Incident Commander and Staff		Division/Group	Accountability
Incident Commander	Jay Kurth	b. Delta Day	
Deputy	Rocky W. Opliger	Division/Group	DD / GG / JJ / MM
Safety Officer	Dan Snow / Mike Alforque (T)	Division/Group	PP / TT / WW / YY
Information Officer	Sean Collins / Frank Mosbacher / Kerry Greene (T)	Division/Group	AA / CC / ZZ
Liaison Officer	Sam Wilbanks	Division/Group	AA / CC / ZZ
6. Agency Representative		c. Air Operations Branch	
Agency	Name	Air Operations Branch Director	Kevin Murray / Ty Miller
FS Agency Administrator	Scott Russell	Air Support Group Supervisor	Jim Stratton / Mark Empey
FS Agency Admin. Rep.	Carolyn Napper	Air Tactical Group Supervisor	Derek Wheeler
Lead READ	Joe Stubbendick	d. Delta Night Operations	
OES AREP	Pat Titus	Chief OSC	Dave Crouser
Shasta Co. Sheriff	Lt. Anthony Bertain	Division/Group	DD / GG / JJ / MM
CHP	Lt. Kyle Foster	Division/Group	PP / TT / WW / YY
Sierra Pacific Industries	Nick Kroencke	Division/Group	AA / CC / ZZ
CCC Rep.	Chad Harris	11. Finance Section	
CalTrans	Willie Elder	Chief	Sherrie Bennett / Vicki Wilson (T)
7a. Planning Section ICP		Time Unit	Loni Holt / Sheila Miner
Chief	Dave Gerboth	Compensation/Claims Unit	Scott Parsons
Deputy Chief	Mitch Diehl	Cost Unit	
Resources Unit	Gina Bald / Sergio Arjonilla / Scott Laurie / Hanne Meyers	Procurement Unit	Don Tinsley
Situation Unit	Damian Guilliani / Melania Stoeber / T. Tuggle / D. Janssen (T)		
DMOB Unit	Kerry Brisson / Tom Reaves	Prepared by (Resource Unit Leader) Gina Bald	
GISS	Chris Clervi / Chris Barrett / Matt Eister / Alex Heeren (T)		
IMET	Jeremy Michael		
FBAN	Rob Scott		
ARA	Ariane Sarzotti/Katy Warner(T)		
Training Specialist	Robert Rivelle / Arturo Gasdik (T)		
ITSS	James Whiteside / JP Lavezzo / Rocky Bond (T)		
Human Resource Specialist	Adam Alvarez (T)		
Documentation Unit	Jerry Sanchez / Maria Knott (T)		
7b. Planning Section Coffee Creek			
Chief	Thomas Marchant (T)		
8a. Logistics Section ICP			
Chief	Ross Peckinpah / Cheryl Raines		
Supply Unit	Jennifer Wells		
Facilities Unit	Rob Griffith / Craig Zimmermann (T)		
Ground Support Unit	Jeff Burch / Ron Brewer		
Communications Unit	Sal Bonilla Jr. / Tim McGuire / Kevin Janes		
Food Unit	Ken Breskin / Whitney Bonada		
Medical Unit	Eric Williams / Jeff Brooks (T)		
Ordering Manager	Robert Griffith		
8b. Logistics Section Coffee Creek			
Facilities Unit	Jan Palecek		
Medical Unit	Doug Stuart		

FIRE BEHAVIOR FORECAST

FORECAST NUMBER: 64	TYPE OF FIRE: Wildfire
FIRE NAME: Hirz/Delta	OPERATIONAL PERIOD: September 21, 2018 Day/Night
DATE ISSUED: September 20, 2018	TIME ISSUED: 2030
UNIT: Shasta-Trinity NF, McCloud RD	SIGNED:  Robert Scott, FBAN 530.990.4048

INPUTS

WEATHER SUMMARY

See Fire Weather Forecast for Discussion

Weather: **Day:** Increasing high clouds through the day. Inversion breaks 1000. **Night:** A few high clouds. Shallow inversion develops after 2100.

Day/Night Temps: 79-84 ridgetops and 89-94 lower drainages *then* 57-62 ridgetops, 53-58 lower drainages.

Day/Night RH: 12-17 percent ridges and 10-15 percent lower drainages *then* 35-40 percent ridges and 42-47 percent lower drainages

20 FOOT WINDS: **Day/Night Ridges:** North-Northeast 4 to 9 mph, gusts to 15 mph until 1100, Increasing to South-Southwest 7 to 12 mph, gusts to 22 mph in the afternoon *then* South-Southwest 5 to 10 mph with gusts to 20 mph until 2000, then decreasing, favoring northerly to 4 to 9 mph, gusts to 15 mph.

Day/Night Slope/valley: Downslope/Downvalley 3 to 8 mph until 1000, then upslope/upvalley 3 to 7 mph *then* Upslope/Upvalley 3-7 mph becoming downslope/downvalley 4-9 mph after 2100.

FIRE BEHAVIOR

INPUTS:

- **Fuels:** Dry conditions will make all fuel available to burn. Night time humidity recovery has not been high enough to extinguish areas of heat inside containment lines.
- **Topography:** Return of Southerly winds for higher elevations.

FIRE BEHAVIOR: Moderate fire behavior will continue for interior pockets. During the hottest part of the day, 1430-1730, Expect FL of 12ft and ROS of 39ch/hr in brush and FL of 4-7ft and ROS of 8ch/hr in timber fuels. Areas of brush and hardwood litter outside the containment lines continue to be susceptible to strong upslope runs and spotting.

Probability of Ignition: 85% in clear air. **Spotting Distance:** .2 mile from ridgetop locations.

Day: DIV PP/TT: Interior pockets continue to consume. Monitor interior torching for possible long range spotting as wind direction switch to a black to green orientation (South).

DIV WW/YY: Pockets of fuel are becoming less numerous. Smokes will remain visible from the interstate.

DIV ZZ/AA/CC: Burndown continues and rollout remains probable in DIV CC. Greater wind impacts with the return of Southern winds. Elsewhere, only isolated areas of heat remain.

DIV DD/GG: Except for the area near the CC/DD break, few areas of heat remain along the line. Little threat of escape.

DIV JJ/MM: Forecast winds will blow from black to green in Western portions of DIV MM. Monitor for production of embers from torching or remaining heat near line.

Hirz Fire: Little threat of escape.

Night: North – DIV PP/TT/WW/YY: Little threat of escape during overnight hours.

South – DIV ZZ/AA/CC: Threat of escape greatest from rollout. Winds on DIV CC will be a game day call. Southerly winds may or may not over power the Northerly winds in the Lunch Gulch area...

AIR OPERATIONS

Clear conditions with little smoke impact.

SAFETY

** Initial attack fire behavior will be greater than the Delta has exhibited over the past several days. **

Division/Group Assignment List (ICS 204 WF)
Controlled Unclassified Information//Basic

1. Incident Name:				3.		
HIRZ				Branch:		Division/Group:
2. Operational Period: DAY				SUPPRESSION REPAIR 1		
Date/Time From: 09/21/2018 0600 FRI		Date/Time To: 09/21/2018 1800 FRI				
4. Operations Personnel						
OPERATIONS CHIEF		JAKE CAGLE KYLE JACOBSON (T), MIKE DAVIS (T)		DIVISION/GROUP SUPERVISOR		JOHN CANAVAN STEVEN BRAWLEY (T)
BRANCH DIRECTOR				AIR ATTACK SUPERVISOR		DEREK WHEELER
5. Resources Assigned this Period						
Strike Team / Task Force / Resource Designator		LWD	Leader	Number Persons	Drop Off PT./Time	Pick Up PT./Time
HC2I PAS 8 C-97		09/21	FRANCIS V LUKASEVICH	20	MC CLOUD ICP/0600	MC CLOUD ICP/1800
ENG3 BDF 336 E-444		09/30	MARK MUNOZ	5	MC CLOUD ICP/0600	MC CLOUD ICP/1800
ENG3 DEER MOUNTAIN E-454		09/25	GLEN WYATT	3	MC CLOUD ICP/0600	MC CLOUD ICP/1800
WTS1 BEN'S TRUCK & EQUIPMENT E-74		09/21	MARTIAN BRAUN	1	MC CLOUD ICP/0600	MC CLOUD ICP/1800
WTS1 BEN'S TRUCK & EQUIPMENT E-75		09/21	ERIC SPRATT	1	MC CLOUD ICP/0600	MC CLOUD ICP/1800
WTS2 DARRAH LOGGING 2 E-38		10/02	WAYNE VIRAS	1	MC CLOUD ICP/0600	MC CLOUD ICP/1800
WTS2 HARRIS E-405		09/21	ANELLO ARNE	1	MC CLOUD ICP/0600	MC CLOUD ICP/1800
WTS2 WILLMORE E-419		09/29	MICHELLE ANDERSON	1	MC CLOUD ICP/0600	MC CLOUD ICP/1800
WTS2 WILLMORE E-420		09/29	DOUG OILAR	1	MC CLOUD ICP/0600	MC CLOUD ICP/1800
DOZ2 DUDLEYS E-93		10/02	HOWIE LINDAWER	2	MC CLOUD ICP/0600	MC CLOUD ICP/1800
DOZ2 INGRAM E-95		10/03	TIM WATERMAN	2	MC CLOUD ICP/0600	MC CLOUD ICP/1800
DOZ2 T AND S E-341		09/23	BRIAN THURMAN	2	MC CLOUD ICP/0600	MC CLOUD ICP/1800
DOZ2 NORTHWESTERN FIRE E-342		09/27	LARRY GIBSON	2	MC CLOUD ICP/0600	MC CLOUD ICP/1800
EXCA DIAMOND RING RANCH E-219		09/25	RORY CONLAN	2	MC CLOUD ICP/0600	MC CLOUD ICP/1800
EXCA J W MORRISON INC E-220		09/25	DUSTIN WESTFALL	2	MC CLOUD ICP/0600	MC CLOUD ICP/1800
EXCA TRINITY RIVER CONSTRUCTION E-349		09/29	SHILO BERRY	2	MC CLOUD ICP/0600	MC CLOUD ICP/1800
EXCA KEN'S WATER TENDER, INC. E-590		09/27	MATTHEW SMITH	1	MC CLOUD ICP/0600	MC CLOUD ICP/1800
GRD JB CONTRACTORS E-167		09/24	JOE BOSTWICK	2	MC CLOUD ICP/0600	MC CLOUD ICP/1800
GRD M. PETERS E-602		09/25	JAY SANDAHL	2	MC CLOUD ICP/0600	MC CLOUD ICP/1800
GRD DUDLEYS' EXCAVATING E-617		09/30	JOHN STUGELMEYER	2	MC CLOUD ICP/0600	MC CLOUD ICP/1800
8. Division/Group Communication Summary						
Function	Channel	RX Frequency N/W	RX Tone/NAC	TX Frequency N/W	TX Tone/NAC	Mode
COMMAND	1	171.5375 N	10/107.2	164.0875 N	10/107.2	A
TACTICAL	7	168.0500 N	10/107.2	168.0500 N	10/107.2	A
AIR TO GROUND	14	168.3375 N		168.3375 N		A
AIR TO GROUND	15	167.8125 N		167.8125 N		A
9. Prepared By (Resource Unit Leader)			Approved By (Planning Section Chief)		Date	Time
MATTHEW HASKINS			MITCH DIEHL		09/20/2018	2200

Division/Group Assignment List (ICS 204 WF)
Controlled Unclassified Information//Basic

1. Incident Name:				3.		
HIRZ				Branch:		Division/Group:
2. Operational Period: DAY				SUPPRESSION REPAIR 1		
Date/Time From: 09/21/2018 0600 FRI		Date/Time To: 09/21/2018 1800 FRI				
4. Operations Personnel						
OPERATIONS CHIEF		JAKE CAGLE KYLE JACOBSON (T), MIKE DAVIS (T)		DIVISION/GROUP SUPERVISOR		JOHN CANAVAN STEVEN BRAWLEY (T)
BRANCH DIRECTOR				AIR ATTACK SUPERVISOR		DEREK WHEELER
5. Resources Assigned this Period						
Strike Team / Task Force / Resource Designator		LWD	Leader	Number Persons	Drop Off PT./Time	Pick Up PT./Time
MAST INTERMOUNTAIN FOREST E-264		09/30	KEVIN SMITH	2	MC CLOUD ICP/0600	MC CLOUD ICP/1800
CHIP CUT WRIGHT SERVICES E-592		09/30	JAKE SMOTHERMAN	3	MC CLOUD ICP/0600	MC CLOUD ICP/1800
DIVS O-68.31		09/22	MARK W MOTT	1	MC CLOUD ICP/0600	MC CLOUD ICP/1800
DIVS (T) O-220		09/22	ERIC PANEBAKER	1	MC CLOUD ICP/0600	MC CLOUD ICP/1800
STEN O-570		09/30	JESSE W LOEFFLER	1	MC CLOUD ICP/0600	MC CLOUD ICP/1800
STEN (T) O-588		09/30	BRIAN CARMAN	1	MC CLOUD ICP/0600	MC CLOUD ICP/1800
TFLD O-172		09/23	PAUL TADLOCK	1	MC CLOUD ICP/0600	MC CLOUD ICP/1800
TFLD (T) O-173		09/23	JEREMY SPIESS	1	MC CLOUD ICP/0600	MC CLOUD ICP/1800
HEQB O-119		09/25	ANDY SHAVER	1	MC CLOUD ICP/0600	MC CLOUD ICP/1800
HEQB O-147		09/23	CINDY ANN LUETH	1	MC CLOUD ICP/0600	MC CLOUD ICP/1800
HEQB O-213		09/22	DAN MARSHALL	1	MC CLOUD ICP/0600	MC CLOUD ICP/1800
FOBS O-405		09/22	CALLUM HARPER	1	MC CLOUD ICP/0600	MC CLOUD ICP/1800
FOBS (T) O-109		09/22	ADAM WALKER	1	MC CLOUD ICP/0600	MC CLOUD ICP/1800
EMPF O-435		09/25	KEVIN HINKLE	1	MC CLOUD ICP/0600	MC CLOUD ICP/1800
EMPF O-436		09/26	SCOTT T DRAGOUN	1	MC CLOUD ICP/0600	MC CLOUD ICP/1800
SOF2 O-160		09/23	THOMAS NASH	1	MC CLOUD ICP/0600	MC CLOUD ICP/1800
REAF O-290		09/21	STEPHEN HODGES	1	MC CLOUD ICP/0600	MC CLOUD ICP/1800
REAF O-549		09/28	GABRIELLE BOHLMAN	1	MC CLOUD ICP/0600	MC CLOUD ICP/1800
REAF O-561		09/30	ALLEN SCHROEDER	1	MC CLOUD ICP/0600	MC CLOUD ICP/1800
ARCH O-578		09/24	PAUL FRENCH	1	MC CLOUD ICP/0600	MC CLOUD ICP/1800
8. Division/Group Communication Summary						
Function	Channel	RX Frequency N/W	RX Tone/NAC	TX Frequency N/W	TX Tone/NAC	Mode
COMMAND	1	171.5375 N	10/107.2	164.0875 N	10/107.2	A
TACTICAL	7	168.0500 N	10/107.2	168.0500 N	10/107.2	A
AIR TO GROUND	14	168.3375 N		168.3375 N		A
AIR TO GROUND	15	167.8125 N		167.8125 N		A
9. Prepared By (Resource Unit Leader)			Approved By (Planning Section Chief)		Date	Time
MATTHEW HASKINS			MITCH DIEHL		09/20/2018	2200

Division/Group Assignment List (ICS 204 WF)
Controlled Unclassified Information//Basic

1. Incident Name:			3.			
HIRZ			Branch:		Division/Group:	
2. Operational Period: DAY					SUPPRESSION REPAIR 1	
Date/Time From: 09/21/2018 0600 FRI		Date/Time To: 09/21/2018 1800 FRI				
4. Operations Personnel						
OPERATIONS CHIEF		JAKE CAGLE KYLE JACOBSON (T), MIKE DAVIS (T)		DIVISION/GROUP SUPERVISOR		JOHN CANAVAN STEVEN BRAWLEY (T)
BRANCH DIRECTOR				AIR ATTACK SUPERVISOR		DEREK WHEELER
5. Resources Assigned this Period						
Strike Team / Task Force / Resource Designator		LWD	Leader	Number Persons	Drop Off PT./Time	Pick Up PT./Time
6. Control Operations/Work Assignments:						
<ul style="list-style-type: none"> Conduct suppression repair activities on dozerlines, handlines, and roads. Refer to the Suppression Repair Plan for objectives and specifications. 						
7. Special Instructions:						
<ul style="list-style-type: none"> READ Josiah McElroy is working in Repair 1 and AA/CC/ZZ. Coordinate with READs to identify suppression repair needs. 						
8. Division/Group Communication Summary						
Function	Channel	RX Frequency N/W	RX Tone/NAC	TX Frequency N/W	TX Tone/NAC	Mode
COMMAND	1	171.5375 N	10/107.2	164.0875 N	10/107.2	A
TACTICAL	7	168.0500 N	10/107.2	168.0500 N	10/107.2	A
AIR TO GROUND	14	168.3375 N		168.3375 N		A
AIR TO GROUND	15	167.8125 N		167.8125 N		A
9. Prepared By (Resource Unit Leader)			Approved By (Planning Section Chief)		Date	Time
MATTHEW HASKINS			MITCH DIEHL		09/20/2018	2200

Division/Group Assignment List (ICS 204 WF)

Controlled Unclassified Information//Basic

1. Incident Name:				3.			
HIRZ				Branch:		Division/Group:	
2. Operational Period: DAY				SUPPRESSION REPAIR 2			
Date/Time From: 09/21/2018 0600 FRI		Date/Time To: 09/21/2018 1800 FRI					
4. Operations Personnel							
OPERATIONS CHIEF		JAKE CAGLE KYLE JACOBSON (T), MIKE DAVIS (T)		DIVISION/GROUP SUPERVISOR		WILLIAM HARRIS JOSHUA HERNANDEZ (T)	
BRANCH DIRECTOR				AIR ATTACK SUPERVISOR		DEREK WHEELER	
5. Resources Assigned this Period							
Strike Team / Task Force / Resource Designator		LWD	Leader	Number Persons	Drop Off PT./Time	Pick Up PT./Time	
HC2 GRIZZLY FIREFIGHTERS C-107		09/25	FERNANDO PEREZ	20	MC CLOUD ICP/0600	MC CLOUD ICP/1800	
WTS2 DARRAH LOGGING E-39		09/30	DAVE ORR	1	MC CLOUD ICP/0600	MC CLOUD ICP/1800	
WTS2 JOHNSON E-41		09/30	MATTHEW JOHNSON	1	MC CLOUD ICP/0600	MC CLOUD ICP/1800	
DOZ2 OILAR DOZER E-110		09/25	JAMES WHITE	2	MC CLOUD ICP/0600	MC CLOUD ICP/1800	
DOZ2 WARNER ENTERPRISES, INC E-183		09/23	TOM HELSLEY	3	MC CLOUD ICP/0600	MC CLOUD ICP/1800	
DOZ2 ZABEL TRUCKING E-300		09/25	WADE ZABEL	2	MC CLOUD ICP/0600	MC CLOUD ICP/1800	
DOZ2 LET-ER-BUCK TRUCKING E-477		09/21	TIM COOK	2	MC CLOUD ICP/0600	MC CLOUD ICP/1800	
DOZ2 PRO- DUMP AND EXCAVATING E-487		10/03	PETE MINERS	2	MC CLOUD ICP/0600	MC CLOUD ICP/1800	
EXCA1 TRINITY CONST E-350		10/04	WAYNE CALLAGAN	2	MC CLOUD ICP/0600	MC CLOUD ICP/1800	
EXCA2 ANDREWS E-486		09/30	LUKE ANDREWS	2	MC CLOUD ICP/0600	MC CLOUD ICP/1800	
EXCA2 DUDLEYS' E-488		10/01	MIKE LINDAWER	2	MC CLOUD ICP/0600	MC CLOUD ICP/1800	
EXCA3 JOHNSON E-351		10/05	JIMMY CRAMER	1	MC CLOUD ICP/0600	MC CLOUD ICP/1800	
GRD NORTH STATE EQUIPMENT E-294		09/30	RANDY SANDERS	2	MC CLOUD ICP/0600	MC CLOUD ICP/1800	
SKD2 J & D LOGGING E-275		09/29	SAWYER LOGAN	2	MC CLOUD ICP/0600	MC CLOUD ICP/1800	
SKD2 TODD HALEY E-276		09/26	TODD HALEY	2	MC CLOUD ICP/0600	MC CLOUD ICP/1800	
CHIP2 PACIFIC OASIS E-492		10/04	JAMES GARTIN	2	MC CLOUD ICP/0600	MC CLOUD ICP/1800	
HEQB O-35		09/21	TYLER KUIKEN	1	MC CLOUD ICP/0600	MC CLOUD ICP/1800	
HEQB O-197		09/21	MATTHEW KILGRIFF	1	MC CLOUD ICP/0600	MC CLOUD ICP/1800	
HEQB O-198		09/22	TYLER W HARRIS	1	MC CLOUD ICP/0600	MC CLOUD ICP/1800	
HEQB O-235		09/22	ARTURO LOZANO	1	MC CLOUD ICP/0600	MC CLOUD ICP/1800	
8. Division/Group Communication Summary							
Function	Channel	RX Frequency N/W	RX Tone/NAC	TX Frequency N/W	TX Tone/NAC	Mode	
COMMAND	1	171.5375 N	10/107.2	164.0875 N	10/107.2	A	
TACTICAL	11	168.2500 N	10/107.2	168.2500 N	10/107.2	A	
AIR TO GROUND	14	168.3375 N		168.3375 N		A	
AIR TO GROUND	15	167.8125 N		167.8125 N		A	
9. Prepared By (Resource Unit Leader)			Approved By (Planning Section Chief)			Date	Time
MATTHEW HASKINS			MITCH DIEHL			09/20/2018	2200

Division/Group Assignment List (ICS 204 WF)

Controlled Unclassified Information//Basic

1. Incident Name:				3.			
HIRZ				Branch:		Division/Group:	
2. Operational Period: DAY						SUPPRESSION REPAIR 2	
Date/Time From: 09/21/2018 0600 FRI		Date/Time To: 09/21/2018 1800 FRI					
4. Operations Personnel							
OPERATIONS CHIEF		JAKE CAGLE KYLE JACOBSON (T), MIKE DAVIS (T)		DIVISION/GROUP SUPERVISOR		WILLIAM HARRIS JOSHUA HERNANDEZ (T)	
BRANCH DIRECTOR				AIR ATTACK SUPERVISOR		DEREK WHEELER	
5. Resources Assigned this Period							
Strike Team / Task Force / Resource Designator		LWD	Leader	Number Persons	Drop Off PT./Time	Pick Up PT./Time	
FOBS O-282		09/25	ISAAC R HUNTER	1	MCLOUD ICP/0600	MCLOUD ICP/1800	
FOBS O-283		09/24	JOSEPH PARR	1	MCLOUD ICP/0600	MCLOUD ICP/1800	
FOBS O-286		09/24	JAMES MALONEY	1	MCLOUD ICP/0600	MCLOUD ICP/1800	
EMPF O-437		09/26	JOHN WARRICK	1	MCLOUD ICP/0600	MCLOUD ICP/1800	
EMTF O-447		09/26	ISAAC EMANUEL SIEGEL	1	MCLOUD ICP/0600	MCLOUD ICP/1800	
SOFR O-168		09/23	RUDY DIAZ	1	MCLOUD ICP/0600	MCLOUD ICP/1800	
REAF O-597		10/02	BRUCE ROBISON	1	MCLOUD ICP/0600	MCLOUD ICP/1800	
REAF O-607		10/03	THOMAS DEMEO	1	MCLOUD ICP/0600	MCLOUD ICP/1800	
READ O-475		10/04	JASON R KLOTZ	1	MCLOUD ICP/0600	MCLOUD ICP/1800	
6. Control Operations/Work Assignments:							
<ul style="list-style-type: none"> • Conduct suppression repair activities on dozerlines, handlines, and roads. • Refer to the Suppression Repair Plan for objectives and specifications. 							
7. Special Instructions:							
<ul style="list-style-type: none"> • Coordinate with READs to identify suppression repair needs. 							
8. Division/Group Communication Summary							
Function	Channel	RX Frequency N/W	RX Tone/NAC	TX Frequency N/W	TX Tone/NAC	Mode	
COMMAND	1	171.5375 N	10/107.2	164.0875 N	10/107.2	A	
TACTICAL	11	168.2500 N	10/107.2	168.2500 N	10/107.2	A	
AIR TO GROUND	14	168.3375 N		168.3375 N		A	
AIR TO GROUND	15	167.8125 N		167.8125 N		A	
9. Prepared By (Resource Unit Leader)			Approved By (Planning Section Chief)			Date	Time
MATTHEW HASKINS			MITCH DIEHL			09/20/2018	2200

Division/Group Assignment List (ICS 204 WF)
Controlled Unclassified Information//Basic

1. Incident Name:			3.			
HIRZ			Branch:		Division/Group:	
2. Operational Period: DAY					STAGING	
Date/Time From: 09/21/2018 0600 FRI		Date/Time To: 09/21/2018 1800 FRI				
4. Operations Personnel						
OPERATIONS CHIEF		JAKE CAGLE KYLE JACOBSON (T), MIKE DAVIS (T)		STAM		ROBIN ACE 907-841-6266
BRANCH DIRECTOR				AIR ATTACK SUPERVISOR		DEREK WHEELER
5. Resources Assigned this Period						
Strike Team / Task Force / Resource Designator		LWD	Leader	Number Persons	Drop Off PT./Time	Pick Up PT./Time
ENG3 TNF 371 E-437		09/30	TYLER LIVEZEY	5	MCCLLOUD ICP/0600	MCCLLOUD ICP/1800
ENG3 322 E-452		09/30	JAYSON W SMITH	5	MCCLLOUD ICP/0600	MCCLLOUD ICP/1800
ENG6 FAIRVIEW VALLEY 575 E-457		09/30	AUGUST CAMPBELL	3	MCCLLOUD ICP/0600	MCCLLOUD ICP/1800
ENG6 BIG STATE WILDFIRE E-459		09/30	GRAHAM MAGEE	3	MCCLLOUD ICP/0600	MCCLLOUD ICP/1800
ENG6 PIERCE FIRE E-472		10/01	MICHAEL LAWRENCE	3	MCCLLOUD ICP/0600	MCCLLOUD ICP/1800
ENG6 TRI-STATE FIRE ENG 1 E-473		10/01	ROB PIERCE	3	MCCLLOUD ICP/0600	MCCLLOUD ICP/1800
WTS2 JUNGWIRTH, JERRY E-345		09/28	JERRY JUNGWIRTH	1	MCCLLOUD ICP/0600	MCCLLOUD ICP/1800
WTS2 CATTANEO, ANGELO - 43778 E-424		09/29	CURTIS FLEMMING	1	MCCLLOUD ICP/0600	MCCLLOUD ICP/1800
WTS2 CATTANEO, ANGELO WT11 E-426		09/29	TAMMY ANDREWS	1	MCCLLOUD ICP/0600	MCCLLOUD ICP/1800
6. Control Operations/Work Assignments:						
<ul style="list-style-type: none"> • Stage at ICP. • Be ready to respond as requested by Operations Section Chief. 						
7. Special Instructions:						
8. Division/Group Communication Summary						
Function	Channel	RX Frequency N/W	RX Tone/NAC	TX Frequency N/W	TX Tone/NAC	Mode
COMMAND	1	171.5375 N	10/107.2	164.0875 N	10/107.2	A
TACTICAL	7	168.0500 N	10/107.2	168.0500 N	10/107.2	A
AIR TO GROUND	14	168.3375 N		168.3375 N		A
AIR TO GROUND	15	167.8125 N		167.8125 N		A
9. Prepared By (Resource Unit Leader)			Approved By (Planning Section Chief)		Date	Time
MATTHEW HASKINS			MITCH DIEHL		09/20/2018	2200

Division/Group Assignment List (ICS 204 WF)
Controlled Unclassified Information//Basic

1. Incident Name:			3.			
HIRZ			Branch:		Division/Group:	
2. Operational Period: DAY			ACCOUNTABILITY			
Date/Time From: 09/21/2018 0600 FRI		Date/Time To: 09/21/2018 1800 FRI				
4. Operations Personnel						
OPERATIONS CHIEF		JAKE CAGLE KYLE JACOBSON (T), MIKE DAVIS (T)		DIVISION/GROUP SUPERVISOR		JEFF BOSTWICK
BRANCH DIRECTOR				AIR ATTACK SUPERVISOR		DEREK WHEELER
5. Resources Assigned this Period						
Strike Team / Task Force / Resource Designator		LWD	Leader	Number Persons	Drop Off PT./Time	Pick Up PT./Time
ENG3 OR-WIF E-442		09/30	KEITH L SWETLAND	6	MCCLLOUD ICP/0600	MCCLLOUD ICP/1800
ENG6 ASF E611 E-120		09/24	BERKELEY KRUEGER	6	MCCLLOUD ICP/0600	MCCLLOUD ICP/1800
TFLD O-585		09/30	ELIZABETH YOUNGER	1	MCCLLOUD ICP/0600	MCCLLOUD ICP/1800
EMPF O-451		09/26	EUAN A BULMER	1	MCCLLOUD ICP/0600	MCCLLOUD ICP/1800
EMTF O-446		09/25	PHIL FAULDING	1	MCCLLOUD ICP/0600	MCCLLOUD ICP/1800
6. Control Operations/Work Assignments:						
<ul style="list-style-type: none"> Scout and identify accountable property and equipment to be back-hauled and returned to McCloud ICP. 						
7. Special Instructions:						
8. Division/Group Communication Summary						
Function	Channel	RX Frequency N/W	RX Tone/NAC	TX Frequency N/W	TX Tone/NAC	Mode
COMMAND	5	170.0875 N	10/107.2	162.8125 N	10/107.2	A
TACTICAL	8	168.6000 N	10/107.2	168.6000 N	10/107.2	A
AIR TO GROUND	14	168.3375 N		168.3375 N		A
AIR TO GROUND	15	167.8125 N		167.8125 N		A
9. Prepared By (Resource Unit Leader)			Approved By (Planning Section Chief)		Date	Time
MATTHEW HASKINS			MITCH DIEHL		09/20/2018	2200

Division/Group Assignment List (ICS 204 WF)
Controlled Unclassified Information//Basic

1. Incident Name:				3.		
DELTA				Branch:		Division/Group:
2. Operational Period: DAY				DD / GG / JJ / MM		
Date/Time From: 09/21/2018 0600 FRI		Date/Time To: 09/21/2018 1800 FRI				
4. Operations Personnel						
OPERATIONS CHIEF		JAKE CAGLE KYLE JACOBSON (T), MIKE DAVIS (T)		DIVISION/GROUP SUPERVISOR		JAY WALTER JON KING (T)
BRANCH DIRECTOR				AIR ATTACK SUPERVISOR		DEREK WHEELER
5. Resources Assigned this Period						
Strike Team / Task Force / Resource Designator		LWD	Leader	Number Persons	Drop Off PT./Time	Pick Up PT./Time
HC2I SHASTA LAKE C-99		09/26	ISAC FLATLEY	20	COFFEE CREEK/0600	COFFEE CREEK/1800
HC2 FIRESTORM C-24		09/21	MAC NORLIE	20	COFFEE CREEK/0600	COFFEE CREEK/1800
ES3 SHF 3675C E-413		09/29	MIKE J CARTER	27	COFFEE CREEK/0600	COFFEE CREEK/1800
CHIP ADKINS E-221		09/25	RONALD ADKINS	2	COFFEE CREEK/0600	COFFEE CREEK/1800
DIVS O-153		09/23	JERRY ANDERSON	1	COFFEE CREEK/0600	COFFEE CREEK/1800
HEQB O-200		09/23	CHANCE TRAUB	1	COFFEE CREEK/0600	COFFEE CREEK/1800
FMOD NORTH ZONE FALLERS. O-29		09/21	BILL SMITH	2	COFFEE CREEK/0600	COFFEE CREEK/1800
REMS 8 O-336		09/24	BEN KRONE	4	COFFEE CREEK/0600	COFFEE CREEK/1800
EMPF O-452		09/25	BRYAN OWEN	1	COFFEE CREEK/0600	COFFEE CREEK/1800
EMTF O-270		09/23	MATTHEW J HINES	1	COFFEE CREEK/0600	COFFEE CREEK/1800
SOFR O-237		09/24	SERGIO MORA	1	COFFEE CREEK/0600	COFFEE CREEK/1800
REAF O-559		10/01	ERIK A CORDTZ	1	COFFEE CREEK/0600	COFFEE CREEK/1800
REAF O-560		10/01	ERIK RADEMACHER	1	COFFEE CREEK/0600	COFFEE CREEK/1800
6. Control Operations/Work Assignments:						
<ul style="list-style-type: none"> Continue to patrol and mop-up. Backhaul accountable property, equipment and trash to Coffee Creek Station. Stage-1 suppression repair has been completed. 						
7. Special Instructions:						
<ul style="list-style-type: none"> Water tenders: use only approved water sources. 						
8. Division/Group Communication Summary						
Function	Channel	RX Frequency N/W	RX Tone/NAC	TX Frequency N/W	TX Tone/NAC	Mode
COMMAND	2	172.6500 N	10/107.2	164.7500 N	10/107.2	A
TACTICAL	8	168.6000 N	10/107.2	168.6000 N	10/107.2	A
AIR TO GROUND	14	168.3375 N		168.3375 N		A
AIR TO GROUND	15	167.8125 N		167.8125 N		A
9. Prepared By (Resource Unit Leader)			Approved By (Planning Section Chief)		Date	Time
MATTHEW HASKINS			MITCH DIEHL		09/20/2018	2200

Division/Group Assignment List (ICS 204 WF)

Controlled Unclassified Information//Basic

1. Incident Name:			3.			
DELTA			Branch:		Division/Group:	
2. Operational Period:			PP/TT/WW/YY			
DAY						
Date/Time From: 09/21/2018 0600 FRI		Date/Time To: 09/21/2018 1800 FRI				
4. Operations Personnel						
OPERATIONS CHIEF		JAKE CAGLE KYLE JACOBSON (T), MIKE DAVIS (T)		DIVISION/GROUP SUPERVISOR		MAEVE JUAREZ
BRANCH DIRECTOR				AIR ATTACK SUPERVISOR		DEREK WHEELER
5. Resources Assigned this Period						
Strike Team / Task Force / Resource Designator		LWD	Leader	Number Persons	Drop Off PT./Time	Pick Up PT./Time
HC1 ARROYO GRANDE IHC C-39		09/22	MIKE HICKEY	20	MC CLOUD ICP/0600	MC CLOUD ICP/1800
HC2I IRON MOUNTAIN C-49		09/23	MATTHEW A MCKURTIS	20	MC CLOUD ICP/0600	MC CLOUD ICP/1800
HC2I GROVELAND CREW 4 C-101		09/24	PATRICK LAENG	21	MC CLOUD ICP/0600	MC CLOUD ICP/1800
HC2 WYEAST FORESTRY LLC C-96		09/25	ANDREW WILLIAMSON	20	MC CLOUD ICP/0600	MC CLOUD ICP/1800
HC2 GRAYBACK 17009 C-106		09/25	JUSTIN MAY	20	MC CLOUD ICP/0600	MC CLOUD ICP/1800
ES3 ANF 1614C E-416		09/29	MICHAEL MORENO	27	MC CLOUD ICP/0600	MC CLOUD ICP/1800
ES3 CA BDF 6604C E-417		09/29	JUSTIN CORRELL	27	MC CLOUD ICP/0600	MC CLOUD ICP/1800
DELTA -TASK FORCE 3					MC CLOUD ICP/0600	MC CLOUD ICP/1800
TFLD O-22		09/24	WESTON BURCH	1	MC CLOUD ICP/0600	MC CLOUD ICP/1800
TFLD (T) O-333		09/25	MICHAEL BAGAN	1	MC CLOUD ICP/0600	MC CLOUD ICP/1800
ENG3 MDF 56 E-430		09/28	PATRICK H PRESTON	5	MC CLOUD ICP/0600	MC CLOUD ICP/1800
ENG3 CA LPF E15 E-434		09/29	NICHOLAS VALENTIN	5	MC CLOUD ICP/0600	MC CLOUD ICP/1800
ENG3 WILDFIRE SUPPORT 516 E-484		09/21	RYAN VIGIL	3	MC CLOUD ICP/0600	MC CLOUD ICP/1800
ENG6 MES 6200 E-1		09/27	WESLEY H HATCH	4	MC CLOUD ICP/0600	MC CLOUD ICP/1800
ENG6 MES 6198 E-330		09/27	ZACHARY D MONROE	4	MC CLOUD ICP/0600	MC CLOUD ICP/1800
DELTA -TASK FORCE 4					MC CLOUD ICP/0600	MC CLOUD ICP/1800
TFLD O-23		09/24	TYE ERWIN	1	MC CLOUD ICP/0600	MC CLOUD ICP/1800
TFLD (T) O-25		09/24	BRYAN AGBALOG	1	MC CLOUD ICP/0600	MC CLOUD ICP/1800
ENG3 LONGMONT 2131 E-353		09/25	MICHAEL CONNOLLY	4	MC CLOUD ICP/0600	MC CLOUD ICP/1800
ENG3 INF - 41 E-390		09/22	VICTOR GUILLEN	5	MC CLOUD ICP/0600	MC CLOUD ICP/1800
8. Division/Group Communication Summary						
Function	Channel	RX Frequency N/W	RX Tone/NAC	TX Frequency N/W	TX Tone/NAC	Mode
COMMAND	6	169.5375 N	10/107.2	164.7125	10/107.2	A
TACTICAL	7	168.0500 N	10/107.2	168.0500 N	10/107.2	A
AIR TO GROUND	14	168.3375 N		168.3375 N		A
AIR TO GROUND	15	167.8125 N		167.8125 N		A
9. Prepared By (Resource Unit Leader)		Approved By (Planning Section Chief)			Date	Time
HANNE MEYERS		MITCH DIEHL			09/20/2018	2200

Division/Group Assignment List (ICS 204 WF)

Controlled Unclassified Information//Basic

1. Incident Name:				3.		
DELTA				Branch:		Division/Group:
2. Operational Period: DAY				PP/TT/WW/YY		
Date/Time From: 09/21/2018 0600 FRI		Date/Time To: 09/21/2018 1800 FRI				
4. Operations Personnel						
OPERATIONS CHIEF		JAKE CAGLE KYLE JACOBSON (T), MIKE DAVIS (T)		DIVISION/GROUP SUPERVISOR		MAEVE JUAREZ
BRANCH DIRECTOR				AIR ATTACK SUPERVISOR		DEREK WHEELER
5. Resources Assigned this Period						
Strike Team / Task Force / Resource Designator		LWD	Leader	Number Persons	Drop Off PT./Time	Pick Up PT./Time
WTS2 BAR I TENDER E-305		09/22	ERIC CHOATE	1	MC CLOUD ICP/0600	MC CLOUD ICP/1800
WTS2 BEN'S E-36		10/03	TRAVIS MILES	1	MC CLOUD ICP/0600	MC CLOUD ICP/1800
WTS2 CARLTON CHRISTMAS TREES E-347		09/30	DOUGLAS MACKENZIE	1	MC CLOUD ICP/0600	MC CLOUD ICP/1800
WTS2 SHUMAS FIRE & EQUIPMENT E-374		09/24	JUSTIN SHULTS	2	MC CLOUD ICP/0600	MC CLOUD ICP/1800
WTT2 INF WT 21 E-411		09/22	LEO E MORAN	2	MC CLOUD ICP/0600	MC CLOUD ICP/1800
DOZ2 TOUGH COMPANY FIRE E-94		09/22	KEVIN NICHOLS	2	MC CLOUD ICP/0600	MC CLOUD ICP/1800
DOZ2 DIAMOND RING RANCH-BRITTEN E-365		09/24	CRAIG SENSERY	3	MC CLOUD ICP/0600	MC CLOUD ICP/1800
DOZ2 PRO- DUMP AND EXCAVATING E-366		09/21	TRACY NORTON	2	MC CLOUD ICP/0600	MC CLOUD ICP/1800
CHIP MORBARK E-222		09/24	CORY ARYES	2	MC CLOUD ICP/0600	MC CLOUD ICP/1800
TFLD O-154		09/22	DAN OKEEFE	1	MC CLOUD ICP/0600	MC CLOUD ICP/1800
TFLD (T) O-166		09/23	MICHAEL HOON	1	MC CLOUD ICP/0600	MC CLOUD ICP/1800
HEQB O-201		09/23	DANIEL L STARK	1	MC CLOUD ICP/0600	MC CLOUD ICP/1800
HEQB (T) O-162		09/21	MARC BURNETT	1	MC CLOUD ICP/0600	MC CLOUD ICP/1800
FOBS O-579		09/23	MATTHEW SNYDER	1	MC CLOUD ICP/0600	MC CLOUD ICP/1800
FOBS O-580		09/22	PHILLIP BLYDENBURGH	1	MC CLOUD ICP/0600	MC CLOUD ICP/1800
REMS 6 O-277		09/24	TYROME BAKER	4	MC CLOUD ICP/0600	MC CLOUD ICP/1800
EMPF O-106		09/22	ANTHONY RAPOZA	1	MC CLOUD ICP/0600	MC CLOUD ICP/1800
EMTF O-271		09/24	PATRICK M DAWSON	1	MC CLOUD ICP/0600	MC CLOUD ICP/1800
EMPF O-445		09/26	DAN CHAPMAN	1	MC CLOUD ICP/0600	MC CLOUD ICP/1800
EMTF O-449		09/26	TROY MILANO	1	MC CLOUD ICP/0600	MC CLOUD ICP/1800
8. Division/Group Communication Summary						
Function	Channel	RX Frequency N/W	RX Tone/NAC	TX Frequency N/W	TX Tone/NAC	Mode
COMMAND	6	169.5375 N	10/107.2	164.7125	10/107.2	A
TACTICAL	7	168.0500 N	10/107.2	168.0500 N	10/107.2	A
AIR TO GROUND	14	168.3375 N		168.3375 N		A
AIR TO GROUND	15	167.8125 N		167.8125 N		A
9. Prepared By (Resource Unit Leader)			Approved By (Planning Section Chief)		Date	Time
HANNE MEYERS			MITCH DIEHL		09/20/2018	2200

Division/Group Assignment List (ICS 204 WF)
Controlled Unclassified Information//Basic

1. Incident Name:		3.				
DELTA		Branch:		Division/Group:		
2. Operational Period: DAY		PP/TT/WW/YY				
Date/Time From: 09/21/2018 0600 FRI	Date/Time To: 09/21/2018 1800 FRI					
4. Operations Personnel						
OPERATIONS CHIEF	JAKE CAGLE KYLE JACOBSON (T), MIKE DAVIS (T)	DIVISION/GROUP SUPERVISOR		MAEVE JUAREZ		
BRANCH DIRECTOR		AIR ATTACK SUPERVISOR		DEREK WHEELER		
5. Resources Assigned this Period						
Strike Team / Task Force / Resource Designator	LWD	Leader	Number Persons	Drop Off PT./Time	Pick Up PT./Time	
SOFR O-182	09/23	BOBBY F HUBBY	1	MCCLLOUD ICP/0600	MCCLLOUD ICP/1800	
SOFR O-296	09/24	JASON RALLS	1	MCCLLOUD ICP/0600	MCCLLOUD ICP/1800	
REAF O-415	10/03	MICHAEL PARENTI	1	MCCLLOUD ICP/0600	MCCLLOUD ICP/1800	
REAF O-416	10/02	MOLLY BREITMUN	1	MCCLLOUD ICP/0600	MCCLLOUD ICP/1800	
READ O-381	10/01	NICK MEYERS	1	MCCLLOUD ICP/0600	MCCLLOUD ICP/1800	
6. Control Operations/Work Assignments:						
<ul style="list-style-type: none"> Continue to patrol and mop-up. Continue with Stage-1 suppression repair. 						
7. Special Instructions:						
If Interstate 5 needs to be closed:						
<ul style="list-style-type: none"> 1. Operations is notified. 2. Operations notifies communications. 3. Communications notifies CHP dispatch. 						
8. Division/Group Communication Summary						
Function	Channel	RX Frequency N/W	RX Tone/NAC	TX Frequency N/W	TX Tone/NAC	Mode
COMMAND	6	169.5375 N	10/107.2	164.7125	10/107.2	A
TACTICAL	7	168.0500 N	10/107.2	168.0500 N	10/107.2	A
AIR TO GROUND	14	168.3375 N		168.3375 N		A
AIR TO GROUND	15	167.8125 N		167.8125 N		A
9. Prepared By (Resource Unit Leader)		Approved By (Planning Section Chief)		Date	Time	
HANNE MEYERS		MITCH DIEHL		09/20/2018	2200	

Division/Group Assignment List (ICS 204 WF)
Controlled Unclassified Information//Basic

1. Incident Name:				3.		
DELTA				Branch:		Division/Group:
2. Operational Period: DAY				AA / CC / ZZ		
Date/Time From: 09/21/2018 0600 FRI		Date/Time To: 09/21/2018 1800 FRI				
4. Operations Personnel						
OPERATIONS CHIEF		JAKE CAGLE KYLE JACOBSON (T), MIKE DAVIS (T)		DIVISION/GROUP SUPERVISOR		JEREMY BUSH DANIEL HAMMOND; DUANE KNIGHTON
BRANCH DIRECTOR				AIR ATTACK SUPERVISOR		DEREK WHEELER
5. Resources Assigned this Period						
Strike Team / Task Force / Resource Designator		LWD	Leader	Number Persons	Drop Off PT./Time	Pick Up PT./Time
HC1 SPRINGVILLE IHC C-86		09/26	JOAQUIN MEDINA	18	MC CLOUD ICP/0600	MC CLOUD ICP/1800
HC1 FULTON IHC C-90		09/26	JOSH S ACOSTA	24	MC CLOUD ICP/0600	MC CLOUD ICP/1800
HC2I TRUCKEE IHC C-65		09/24	SCOTT BURGHARDT	20	MC CLOUD ICP/0600	MC CLOUD ICP/1800
ES3 CNF 6631C E-415		09/29	JASON L LAMBIRTH	27	MC CLOUD ICP/0600	MC CLOUD ICP/1800
ENG6 RED ROCK FIRE 261 E-262		09/25	BUTCH MURPHY	3	MC CLOUD ICP/0600	MC CLOUD ICP/1800
ENG6 HART VENTURES E-263		09/27	SKIP KOLTZ	3	MC CLOUD ICP/0600	MC CLOUD ICP/1800
WTS2 BUNN ENTERPRISES E-269		09/27	WADE BUNN	1	MC CLOUD ICP/0600	MC CLOUD ICP/1800
WTS2 YREKA OUTLANDS E-270		10/01	ALLEN WILLIAMS	2	MC CLOUD ICP/0600	MC CLOUD ICP/1800
WTS2 WATERDOGG E-271		09/29	PAM MALIN	2	MC CLOUD ICP/0600	MC CLOUD ICP/1800
WTS2 DARRAH E-272		09/24	WAYNE VIRAG	1	MC CLOUD ICP/0600	MC CLOUD ICP/1800
WTS2 ALLIED WATER SERVICE E-340		09/30	RICHARD BENSON	1	MC CLOUD ICP/0600	MC CLOUD ICP/1800
WTS2 ANGELO CATTANEO E-422		09/28	JASON DOUGLES	1	MC CLOUD ICP/0600	MC CLOUD ICP/1800
WTS2 ANGELO CATTANEO E-423		09/29	EDWARD WELCH	1	MC CLOUD ICP/0600	MC CLOUD ICP/1800
DOZ2 NORTHWESTERN E-266		09/28	RYAN PACKWOOD	1	MC CLOUD ICP/0600	MC CLOUD ICP/1800
GRD JANC CONSTRUCTION E-490		10/02	RICHARD JANC	2	MC CLOUD ICP/0600	MC CLOUD ICP/1800
TFLD O-495		09/22	JASON VESTAL	1	MC CLOUD ICP/0600	MC CLOUD ICP/1800
REMS 7 O-276		09/23	JERRY FOWLER	4	MC CLOUD ICP/0600	MC CLOUD ICP/1800
EMPF O-211		09/23	MATT HECKMANN	1	MC CLOUD ICP/0600	MC CLOUD ICP/1800
EMPF O-443		09/27	DAN J MOORE	1	MC CLOUD ICP/0600	MC CLOUD ICP/1800
SOFR O-422		09/27	BRIAN R RICHEY	1	MC CLOUD ICP/0600	MC CLOUD ICP/1800
8. Division/Group Communication Summary						
Function	Channel	RX Frequency N/W	RX Tone/NAC	TX Frequency N/W	TX Tone/NAC	Mode
COMMAND	2	172.6500 N	10/107.2	164.7500 N	10/107.2	A
TACTICAL	10	166.7750 N	10/107.2	166.7750 N	10/107.2	A
AIR TO GROUND	14	168.3375 N		168.3375 N		A
AIR TO GROUND	15	167.8125 N		167.8125 N		A
9. Prepared By (Resource Unit Leader)			Approved By (Planning Section Chief)		Date	Time
HANNE MEYERS			MITCH DIEHL		09/20/2018	2200

Division/Group Assignment List (ICS 204 WF)

Controlled Unclassified Information//Basic

1. Incident Name:		3.				
DELTA		Branch:		Division/Group:		
2. Operational Period:		DAY				
Date/Time From: 09/21/2018 0600	FRI	Date/Time To: 09/21/2018 1800	FRI			
		AA / CC / ZZ				
4. Operations Personnel						
OPERATIONS CHIEF	JAKE CAGLE KYLE JACOBSON (T), MIKE DAVIS (T)		DIVISION/GROUP SUPERVISOR	JEREMY BUSH DANIEL HAMMOND; DUANE KNIGHTON		
BRANCH DIRECTOR			AIR ATTACK SUPERVISOR	DEREK WHEELER		
5. Resources Assigned this Period						
Strike Team / Task Force / Resource Designator	LWD	Leader	Number Persons	Drop Off PT./Time	Pick Up PT./Time	
6. Control Operations/Work Assignments:						
<ul style="list-style-type: none"> ▪ Continue to patrol and mop-up. ▪ Continue with Stage-1 suppression repair. 						
7. Special Instructions:						
<ul style="list-style-type: none"> ▪ READ Josiah McElroy is working in Repair 1 and AA/CC/ZZ. 						
8. Division/Group Communication Summary						
Function	Channel	RX Frequency N/W	RX Tone/NAC	TX Frequency N/W	TX Tone/NAC	Mode
COMMAND	2	172.6500 N	10/107.2	164.7500 N	10/107.2	A
TACTICAL	10	166.7750 N	10/107.2	166.7750 N	10/107.2	A
AIR TO GROUND	14	168.3375 N		168.3375 N		A
AIR TO GROUND	15	167.8125 N		167.8125 N		A
9. Prepared By (Resource Unit Leader)		Approved By (Planning Section Chief)		Date	Time	
HANNE MEYERS		MITCH DIEHL		09/20/2018	2200	

Night Shift
1800-0600

Division/Group Assignment List (ICS 204 WF)
Controlled Unclassified Information//Basic

1. Incident Name:		3.				
DELTA		Branch:		Division/Group:		
2. Operational Period:		NIGHT		NIGHT		DD / GG / JJ / MM
Date/Time From: 09/21/2018 1800 FRI		Date/Time To: 09/22/2018 0600 SAT				
4. Operations Personnel						
NIGHT OPERATIONS CHIEF		DAVE CROUSSER		DIVISION/GROUP SUPERVISOR		
BRANCH DIRECTOR				AIR ATTACK SUPERVISOR		DEREK WHEELER
5. Resources Assigned this Period						
Strike Team / Task Force / Resource Designator		LWD	Leader	Number Persons	Drop Off PT./Time	Pick Up PT./Time
6. Control Operations/Work Assignments:						
<ul style="list-style-type: none"> Unstaffed. 						
7. Special Instructions:						
8. Division/Group Communication Summary						
Function	Channel	RX Frequency N/W	RX Tone/NAC	TX Frequency N/W	TX Tone/NAC	Mode
COMMAND	2	172.65000 N	10/107.2	164.7500 N	10/107.2	A
TACTICAL	8	168.6000 N	10/107.2	168.6000 N	10/107.2	A
AIR TO GROUND	14	168.3375 N		168.3375 N		A
AIR TO GROUND	15	167.8125 N		167.8125 N		A
9. Prepared By (Resource Unit Leader)			Approved By (Planning Section Chief)		Date	Time
MATTHEW HASKINS			MITCH DIEHL		09/20/2018	2200

Division/Group Assignment List (ICS 204 WF)
Controlled Unclassified Information//Basic

1. Incident Name:			3.			
DELTA			Branch:		Division/Group:	
2. Operational Period: NIGHT			NIGHT		PP/TT/WW/YY	
Date/Time From: 09/21/2018 1800 FRI		Date/Time To: 09/22/2018 0600 SAT				
4. Operations Personnel						
NIGHT OPERATIONS CHIEF		DAVE CROUSSER		DIVISION/GROUP SUPERVISOR		MICHAEL ST MARTIN BILL MORRIS (T)
BRANCH DIRECTOR				AIR ATTACK SUPERVISOR		DEREK WHEELER
5. Resources Assigned this Period						
Strike Team / Task Force / Resource Designator		LWD	Leader	Number Persons	Drop Off PT./Time	Pick Up PT./Time
HC2I GANNETT GLACIER C-98		09/26	BRYAN W QUIMBY	20	MCCLLOUD ICP/1800	MCCLLOUD ICP/2400
ENG3 SRF E311 E-431		09/28	NICHOLAS P BALENT	5	MCCLLOUD ICP/1800	MCCLLOUD ICP/2400
ENG3 SRF E-11 E-432		09/28	CHRIS SAMPLEY	5	MCCLLOUD ICP/1800	MCCLLOUD ICP/2400
ENG6 SCA 5862 E-316		09/25	SHAQUAWN DECLAY	4	MCCLLOUD ICP/1800	MCCLLOUD ICP/2400
6. Control Operations/Work Assignments:						
<ul style="list-style-type: none"> Hold and patrol fireline. 						
7. Special Instructions:						
All resources with half shift return to McCloud ICP by midnight						
If Interstate 5 needs to be closed:						
1. Operations is notified.						
2. Operations notifies communications.						
3. Communications notifies CHP dispatch.						
8. Division/Group Communication Summary						
Function	Channel	RX Frequency N/W	RX Tone/NAC	TX Frequency N/W	TX Tone/NAC	Mode
COMMAND	6	169.5375 N	10/107.2	164.7125	10/107.2	A
TACTICAL	7	168.0500 N	10/107.2	168.0500 N	10/107.2	A
AIR TO GROUND	14	168.3375 N		168.3375 N		A
AIR TO GROUND	15	167.8125 N		167.8125 N		A
9. Prepared By (Resource Unit Leader)			Approved By (Planning Section Chief)		Date	Time
SERGIO ARJONILLA			MITCH DIEHL		09/20/2018	2200

Division/Group Assignment List (ICS 204 WF)

Controlled Unclassified Information//Basic

1. Incident Name:			3.			
DELTA			NIGHT		AA/CC/ZZ	
2. Operational Period: NIGHT						
Date/Time From: 09/21/2018 1800 FRI		Date/Time To: 09/22/2018 0600 SAT				
4. Operations Personnel						
NIGHT OPERATIONS CHIEF		DAVE CROUSSER		DIVISION/GROUP SUPERVISOR		TRAVIS WRIGHT
BRANCH DIRECTOR				AIR ATTACK SUPERVISOR		DEREK WHEELER
5. Resources Assigned this Period						
Strike Team / Task Force / Resource Designator		LWD	Leader	Number Persons	Drop Off PT./Time	Pick Up PT./Time
HC2I FIRESTORM 3 C-82		09/25	SHANE BRENDLINGER	20	MC CLOUD ICP/1800	MC CLOUD ICP/0600
ENG3 PNF E311 E-427		09/28	DUSTIN LANGSTON	5	MC CLOUD ICP/1800	MC CLOUD ICP/0600
ENG3 PNF E312 E-428		09/28	ROBERT WARD	5	MC CLOUD ICP/1800	MC CLOUD ICP/0600
ENG3 PNF E31 E-429		09/29	STEVE M GONZALEZ	5	MC CLOUD ICP/1800	MC CLOUD ICP/0600
ENG3 AZ-TNF 1237 E-481		09/21	RIGOBERTO FLORES	5	MC CLOUD ICP/1800	MC CLOUD ICP/0600
ENG4 GLADWIN 57B E-296		09/24	CHRISTOPHER COX	3	MC CLOUD ICP/1800	MC CLOUD ICP/0600
6. Control Operations/Work Assignments:						
<ul style="list-style-type: none"> • Hold and patrol fireline. 						
7. Special Instructions:						
8. Division/Group Communication Summary						
Function	Channel	RX Frequency N/W	RX Tone/NAC	TX Frequency N/W	TX Tone/NAC	Mode
COMMAND	2	172.65000 N	10/107.2	164.7500 N	10/107.2	A
TACTICAL	10	166.7750 N	10/107.2	166.7750 N	10/107.2	A
AIR TO GROUND	14	168.3375 N		168.3375 N		A
AIR TO GROUND	15	167.8125 N		167.8125 N		A
9. Prepared By (Resource Unit Leader)			Approved By (Planning Section Chief)		Date	Time
SERGIO ARJONILLA			MITCH DIEHL		09/20/2018	2200

AIR OPERATIONS SUMMARY

Prepared By: Ty Miller, AOB

Prepared Date: 20 Sept 2018

Prepared Time: 1900

INCIDENT NAME: DELTA	OPS PERIOD DATE: 21 September-2018	START TIME: 0800	END TIME: 1930	SUNRISE: 0656	SUNSET: 1906
REMARKS: Safety Notes, Hazards, Air Operations Special Equipment, etc. MONITOR AIR TO GROUND FREQ FOR AIR ACTIVITY. Comms on CALCCORD channel 13 for all aviation medicals					
READY ALERT AIRCRAFT: MEDEVAC - 838PA Short Haul @ Center HB, Day Only					
TFR #: 8/5209 A-136 FREQ: 124.5750 4 point box 10,000 MSL					

PERSONNEL	NAME	PHONE #	FREQUENCIES	AM	FM	Fixed Wing Aircraft:
AOBD AOBD	Kevin Murray Ty Miller	805-878-1484 907-460-7530	AIR/ AIR - TFR Rotor East of I-5 Rotor West of I-5	124.5750 HA-8 118.7750 HA-30 128.4250 HA-133		ATGS AIRCRAFT: N32WS / Commander 690 / AA05 / A-41 N90HB / Commander 690 / AA06 OTHER FW AIRCRAFT: 8428821
ASGS	Jim Stratton	760-207-4325	AIR Tactics FW		166.9500 HA-9	
HEB1 MOTT HB	Brad Nelson Primary Number	559-349-6793 925-542-9169	AIR/GD Tactics AIR/GD Command		167.8125 HA-10 168.3375 HA-31	Medical helispot at ICP in McCloud 41° 15.8783 X 122° 07.5961 El. 3388
			Command 1		171.5375 RX 164.0875 TX Tone 10	Mott HB - Located along I-5 near McCloud 41° 15.744 X 122° 16.281
ATGS	Rico Gonzalez	530-605-6376	Command 2		172.6500 RX 164.7500 TX Tone 10	
ATGS	Curtis Stanley	530-226-2835	Command 3		170.4250 RX 168.0750 TX Tone 10	
ATGS ATGS (T)	Derek Wheeler Justin Juede	530-355-3274 530-227-2455	Deck - Gate HB		163.100	
Aviation Conf. Call	0730	888-844-9904 2503071#	Air Guard		168.6250 (110.9)tx/rx	

FAA N#	TY	MAKE/MOD	BASE	AVAIL	START	REMARKS	FAA N#	TY	MAKE/MOD	BASE	AVAIL	START	REMARKS
N239CH	1	BV234	Mott HB	0830	0800	EU Bucket				A-135			
							N107Z	3	Cobra	Mott HB	0830	0800	EU (H507) HLCO A-117
N205BT	2	B205A1+	Mott HB	0830	0800	EU (H506)							
N707AH	3	B-407	Mott HB	0830	0800	CWN Mapping							
N838PA	3	AS350B3	Mott HB	0830	0800	EU Short Haul							
N6HE	3	B-407	Mott HB	0830	0800	EU (H553)							

Delta Fire - Safety Message

INCIDENT # CA-SHF-001444

DATE: 9/21-22/18 TIME: 0600-0600 Day- Nite

See Something Say Something, Communicate Safety!

- **Take Charge** of assigned resources.
- **Motivate** firefighters with a “can do safely” attitude.
- **Demonstrate Initiative** by taking action in the absence of orders.
- **Communicate** by giving specific instructions and asking for feedback!
- **Supervise** at the scene of the action.

(From “Operational Leadership” page vi of the IRPG)

General Safety Concerns

- **Driving-** Predictable is preventable. Speeding=Accident. Slow down and keep an eye out for wildlife and civilians.
- **Wildlife-** Bees are becoming an issue. Avoid when possible and know the Medical Plan (ICS 206) in the event of an incident. Know your people, are any of them allergic?
- **Stump Holes-** Lots of stump holes are out there. Use your tools to probe in front as you walk.
- **Dehydration** - It can take it’s toll. So drink lots of **WATER**. Strive to drink 2 quarts per hour during heavy exertion.
- **Footing-** Lots of steep and unstable terrain. Please take extra time and care out there.

Make a Safety Difference

- As a supervisor, provide constant and relentless oversight.
- ***Stay focused on the task at hand, all the time!***
- Come up with a safer way to perform a risky assignment.
- Discuss the near miss.
- Never tolerate “Hey, watch this!”
- Discuss the effects of fatigue, and mitigate the effects of fatigue.
- While in the fire zone, wear your hardhat when you leave the vehicle.
- Have a purpose in what you do.

Don’t trust other drivers!

Common Denominators of Fire Behavior On Tragedy Fires

- Most incidents happen on the smaller fires or on isolated portions of larger fires.
- Most fires are innocent in appearance before the “flare-ups” or “blow-ups”. In some cases, **tragedies occur in the mop-up stage.**
- Flare-ups generally occur in deceptively light fuels.
- Fires run uphill surprisingly fast in chimneys, gullies, chutes and on steep slopes.
- Some suppression tools, such as helicopters or air tankers, can adversely affect fire behavior. The blasts of air from low flying helicopters and air tankers have been known to cause flare-ups.

Prepared by,

Team 4 Safety Group



INCIDENT RISK ANALYSIS

(ICS 215a) Day - Night Shift

BR/ DIV	HAZARDOUS ACTIONS / CONDITIONS	MITIGATIONS / WARNINGS / REMEDIES
ALL	<p style="text-align: center;">FATIGUE & COMPLACENCY</p>	<ul style="list-style-type: none"> • Be alert for signs of fatigue and take breaks as necessary. • Maintain 2:1 work/rest ratio. • Monitor ALL resources for level of fatigue. • Recognize the symptoms of fatigue and take action as necessary to provide rest and recovery. • Repeated assignments in the same area can lead to complacency making personnel more vulnerable to accidents. • Take steps (switching of assignments, training opportunities during slow periods, etc.) to maintain situational awareness for the duration of the incident
ALL	<p style="text-align: center;">TRAFFIC HAZARDS AND DRIVING</p>	<ul style="list-style-type: none"> • Practice "Defensive Driving" techniques. Traffic volume is high. I-5 is open • Use spotters when backing. • Always use headlights. • Use warning lights when working on roads or traveling in smoke. • Observe posted speed limits. • Use chock blocks, turn wheels into hill. • Many roads are narrow and mid slope, use caution.
ALL	<p style="text-align: center;">HAZARD / DANGER TREES</p>	<ul style="list-style-type: none"> • Follow Hazard Tree Safety Guidelines (IRPG p.22-23). • Limit number of personnel around snags and their exposure time; fallers must be qualified for the trees being felled. • Be especially alert around snags during wind events. Large green trees can also be dangerous.
ALL	<p style="text-align: center;">STEEP TERRAIN & ROLLING MATERIAL</p>	<ul style="list-style-type: none"> • Avoid working below crews and equipment. • Concentrate on your footing placement; take your time. • Ensure adequate spacing between crewmembers so they can react to dislodged debris. • Post lookouts to warn of rolling debris. SHOUT out to warn others. • Look Up, Down and Around Frequently.
ALL	<p style="text-align: center;">HEAVY EQUIPMENT OPERATIONS</p>	<ul style="list-style-type: none"> • Ensure communications are established with operators. • Ensure ground personnel have safety illumination, with light-sticks being the minimum. • Maintain a 50'-100' exclusion area around equipment. • In timber increase safety distance to 2 ½ times canopy height. • Only approach after making visual contact with operator. • Never hitch a ride. • Most pieces of equipment are designed for only one person.
ALL	<p style="text-align: center;">COMMUNICATIONS</p>	<ul style="list-style-type: none"> • Share your Situational Awareness (hazards, changes, etc.) to those who also have a need. • Radio Communications may be poor in some areas: use human repeaters as needed. • Ensure all personnel are familiar with the incident and IA communications plans. • Make sure all resources have radios cloned appropriately. • Ensure that non-agency resources understand radio use and procedures.
ALL	<p style="text-align: center;">AVIATION OPERATIONS</p>	<ul style="list-style-type: none"> • Conduct thorough mission assessments before starting work. Follow the guidelines in the IHOG and other aviation guidelines and reference materials. • Ensure coordination and communication are in place and understood by all involved resources in a mission. • Ensure close coordination between Air Attack, air tankers, helicopters, and ground resources.
ALL	<p style="text-align: center;">POWERLINES / UTILITIES</p>	<ul style="list-style-type: none"> • Notify all personnel of down electrical lines. • IRPG Page 24 -- Take time to do a Tailgate Safety Briefing • Always treat downed wires as energized. • Avoid parking under any type of overhead lines. • Identify all gas lines in and around structures. • Report damaged service lines.
ALL	<p style="text-align: center;">FIRE BEHAVIOR</p>	<ul style="list-style-type: none"> • Are you seeing what we have predicted? • Conduct thorough assessments before starting work. • Ensure LCES is in place. • Plan & Communicate your exit strategy, with your crew and adjacent resources. • Provide additional briefing for new resources and maintain communications.
ALL	<p style="text-align: center;">END OF ASSIGNMENT WATCH - OUTS</p>	<ul style="list-style-type: none"> • Not mentally engaged in the task at hand. • You or your driver are driving faster than when you arrived. • Not giving good, thorough briefings. • Your hardhat and web gear are still on the truck. • Assuming all is good because you worked this piece of ground yesterday. • All conversations are around what you're going to do when you get home. • You and your folks are tripping and stumbling more than usual. • It's taking longer to get out of camp.
<p>Incident Name: Delta Fire</p>		<p>Operational Period: 0600 - 0600 September 21- 22, 2018</p>



Hirz / Delta Incident – 206 (Medical Plan)

Date / Time: 9/21-22/2018 0600 - 0600

1. Ambulance / Medical Services

NAME	LOCATION	PHONE	ALS Level Care	
			Yes	No
Ambulance 5	Inc Ambulance Suppression Repair	Command to Communications	Yes	
Ambulance 103	Incident Ambulance DP 54	Command to Communications	Yes	
Ambulance 104	Incident Ambulance DP 73	Command to Communications	Yes	

2. Air Ambulance Services (COORDINATE with AIR AMBULANCES on CALCORD)

Name	Phone	PHONE
Grand Canyon 8PA Trinity Center HB	(214) 998-4501 (541) 870-1510	BLS, Short Haul 150' - 350', <u>Incident Assigned</u> , Day time only
REACH / PHI Redding CA	(530) 226-2499	ALS, Night Vision, No Hoist Capability, Non-Incident Assigned
CHP H-16 Redding, CA	(530) 226-2499	ALS, <u>Non-incident assigned</u> , Day time hoist only
Cal Fire H-202 Bieber, CA	(530) 226-2499	BLS, <u>Non-incident assigned</u> , Day time hoist only

3. Hospitals

Name	Address	Air	Ground	Phone	Helipad	
					Yes	No
Pulse Urgent Care Level 4	100 E. Cypress Ave. Redding CA	N/A	45 Min	(530) 722-1111 10AM-7:30PM		X
Mercy Medical Center Level 2 Trauma	2175 Roseline Ave. Redding CA	20 Min	80 Min	(530) 225-7201	X	
Shasta Regional Medical Level 3 Trauma	1100 Butte Ave Redding CA	20 Min	80 Min	(530) 244-5353	X	
Mercy Mt. Shasta Medical Level 3 Trauma	914 Pine St. Mt. Shasta CA	10 Min	20 Min	(530) 926-1108	X	
UC Davis Medical Center Level 1 Trauma / Burn Center	2315 Stockton Blvd. Sacramento CA	1.25 Hrs	3.75 Hours	(916) 734-3636 (916) 734-3790	X	



4. Division / Crew Pre-plan. Update and discuss with assigned resources daily.

Crew EMT's & Equipment	
FEMP/ FEMT & Location Advanced Life Support?	
Air Hoist Site / Unimproved Landing Site:	
Lat: Long:	
Helispot: Elevation:	
Lat: Long:	
Med LZ:	

5. Remote Aid Stations

Medical Unit Leader Contacts	Eric Williams (661) 805-4403	Jeff Brooks (818) 903-6295
EMS Responders & Capability:		
Equipment Available on Site:	Medical supplies	
Ambulance ETA:	Air –	Ground –

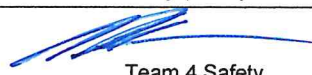
6. Prepared By (Medical Unit Leader)

Eric Williams – MEDL 
 Jeff Brooks – MEDL (T) 

7. Date/Time

9/20/2018
1900

8. Reviewed By (Safety Officer)


Team 4 Safety

9. Date / Time

9/20/2018
1900



Medical Incident Report

FOR A **NON-EMERGENCY INCIDENT**: WORK THROUGH CHAIN OF COMMAND TO REPORT AND TRANSPORT INJURED PERSONNEL AS NECESSARY.

FOR A **MEDICAL EMERGENCY**: IDENTIFY ON SCENE INCIDENT COMMANDER BY NAME AND POSITION AND ANNOUNCE **"MEDICAL EMERGENCY"** TO INITIATE RESPONSE FROM COMMUNICATIONS

Use the following items to communicate situation to communications/dispatch.

- 1. CONTACT COMMUNICATIONS / DISPATCH** (Verify correct frequency prior to starting report)
Ex: "Communications, Div. Alpha. Stand-by for Emergency Traffic."
- 2. INCIDENT STATUS:** Provide incident summary (including number of patients) and command structure.
Ex: "Communications, I have a Red priority patient, unconscious, struck by a falling tree. Requesting air ambulance to Forest Road 1 at (Lat./Long.)
"This will be the Trout Meadow Medical Incident, IC is TFLD Jones. EMT Smith is providing medical care."

Severity of Emergency AND Transport Priority (priority 1, 2, 3)	<input type="checkbox"/> RED / PRIORITY 1 Life or limb threatening injury or illness. Evacuation need is IMMEDIATE Ex: Unconscious, difficulty breathing, bleeding severely, 2° – 3° burns more than 4 palm sizes, heat stroke, disoriented. <input type="checkbox"/> YELLOW / PRIORITY 2 Serious Injury or illness. Evacuation may be DELAYED if necessary. Ex: Significant trauma, unable to walk, 2° – 3° burns not more than 1-3 palm sizes. <input type="checkbox"/> GREEN / PRIORITY 3 Minor Injury or illness. Non-Emergency transport Ex: Sprains, strains, minor heat-related illness.
Nature of Injury or Illness & Mechanism of Injury	Brief Summary of Injury or Illness (Ex: Unconscious, Struck by Falling Tree)
Transport Request	Air Ambulance / Short Haul/Hoist Ground Ambulance / Other
Patient Location	Descriptive Location & Lat. / Long. (WGS84)
Incident Name	Geographic Name + "Medical" (Ex: Trout Meadow Medical)
On-Scene Incident Commander	Name of on-scene IC of Incident within an Incident (Ex: TFLD Jones)
Crew Patient Care	Name of Care Provider (Ex: EMT Smith)

3. INITIAL PATIENT ASSESSMENT: Complete this section for each patient as applicable (start with the most severe patient)

Agency Affiliation: (NO PATIENT NAMES) Federal Contractor Local Government

Patient Assessment: Age: Weight: Chief Complaint:

(If pertinent to Injury) Skin Signs: (color/moisture/temp) Level of Consciousness: BP: HR: Respirations:

Treatment:

4. TRANSPORT PLAN:

Evacuation Location (drop point, intersection, helispot, Lat. / Long, hazards) Patient's ETA to Location:

5. ADDITIONAL RESOURCES / EQUIPMENT NEEDS:

Paramedic / EMT - Crews - Immobilization Devices - AED - Oxygen - Trauma Bag - IV/Fluid(s) - Splints - Rope rescue - Wheeled litter - HAZMAT - Extrication

6. COMMUNICATIONS: Identify State Air/Ground EMS Frequencies and Hospital Contacts as applicable

Function	Channel Name/Number	Receive (RX)	Tone/NAC *	Transmit (TX)	Tone/NAC *
COMMAND					
AIR-TO-GRND	Contact on CALCORD When aircraft in line of site	156.0750 N	156.7	156.0750	156.7
TACTICAL					

7. CONTINGENCY: Considerations: If primary options fail, what actions can be implemented in conjunction with primary evacuation method?
Be thinking ahead.

8. ADDITIONAL INFORMATION: Updates/Changes, etc.

REMEMBER: Confirm ETA's of resources ordered. Act according to your level of training
Be Alert - Keep Calm - Think Clearly - Act Decisively

*** Follow up with MEDL upon return to ICP ***



**INCIDENT RADIO COMMUNICATIONS PLAN
COMMAND**

Incident Name

**HIRZ CA-SHF-001223
DELTA CA-SHF-001444**

Date/Time Prepared

09/20/ 2018 1830

Operational Period Date/Time

9/21-22 / 18 0600-0600

Only frequencies listed on this 205 are authorized for use on this incident.

Hand programmers accept all responsibility for the use of unauthorized frequencies.

Ch #	Function	Channel Name	Assignment	RX Freq N or W	RX Tone	TX Freq N or W	TX Tone	Mode	Remarks
1	COMMAND	CMD 1	COMMAND 1	171.5375 N	107.2	164.0875 N	107.2	A	COMMAND ON H-79 LINKED W/ 2,3,4,5,6 C31
2	COMMAND	CMD 2	COMMAND 2	172.6500 N	107.2	164.7500 N	107.2	A	COMMAND ON SUGARLOAF LINKED W/ 1,3,4,5,6 C48
3	COMMAND	CMD 3	COMMAND 3	170.4250 N	107.2	168.0750 N	107.2	A	COMMAND ON LEHIGH LINKED W/ 1,2,4,5,6 C3
4	COMMAND	CMD 4	COMMAND 4	170.4125 N	107.2	165.9625 N	107.2	A	COMMAND ON BONANZA KING LINKED W/ 1,2,3,5,6 C10
5	COMMAND	CMD 5	COMMAND 5	170.0875 N	107.2	162.8125 N	107.2	A	COMMAND ON TOMBSTONE MTN LINKED W/ 1,2,3,4,6, C51
6	COMMAND	CMD 6	COMMAND 6	169.5375 N	107.2	164.7125 N	107.2	A	COMMAND ON GREY BUTTE LINKED W/ 1,2,3,4,5 C8
7	TAC	NIFC T1	DIV, PP/TT/WW/YY SUPP REPAIR 1, STAGING	168.0500 N	107.2	168.0500 N	107.2	A	NIGHT SHIFT PP/TT/WW/YY
8	TAC	NIFC T3	DIVISION DD/GG/JJ/MM, ACCOUNTABILITY	168.6000 N	107.2	168.6000 N	107.2	A	
9	TAC	NIFC T5	DIVISIONS, WW/YY	166.7250 N	107.2	166.7250 N	107.2	A	
10	TAC	NIFC T6	DIVISIONS, AA/CC/ZZ	166.7750 N	107.2	166.7750 N	107.2	A	NIGHT SHIFT AA/CC/ZZ
11	TAC	NIFC T7	SUPP REPAIR 2	168.2500 N	107.2	168.2500 N	107.2	A	
12	TAC	TAC 12		162.1625 N	107.2	162.1625 N	107.2	A	SPECIAL TAC
13	CALCORD	CALCORD	ALL DIVISIONS	156.0750 N	156.7	156.0750	156.7	A	MEDICAL EMERGENCY TACTICAL
14	A/G COMMAND	A/G CMD	ALL DIVISIONS	168.3375 N		168.3375 N		A	AIR TO GROUND COMMAND
15	A/G TACTICAL	A/G TAC	ALL DIVISIONS	167.8125 N		167.8125 N		A	AIR TO GROUND TACTICAL
16	AIR GUARD	AIR GUARD	ALL DIVISIONS	168.6250 N		168.6250 N	110.9	A	EMERGENCY ONLY

Prepared by

SAL BONILLA JR.  PH FOR COMMUNICATION 530-964-2541

Incident Location

ICP MCCLOUD, CA

KEVIN JANES, TIM MAGUIRE, BRIEFING SIMULCAST ON NIFC T1

INCIDENT REPLACEMENT POLICY & PROCESS

Prior to release from the incident, personnel may request replacement of equipment and supplies that were damaged, lost, or consumed during the incident. There is a distinct difference in the process to replace cache equipment and supplies and non-cache or specialized equipment. Damaged property **will be turned into the Supply Unit** prior to an Incident Replacement Requisition being approved.

Replacement of cache equipment is documented on a 213 General Message form and filled at the Supply Unit or approved for replacement at the home unit. Approval for replacement of non-standard cache items has been delegated to the IC, Finance Section Chief and IBA. You should initiate this process at least two days prior to demob.

Personnel who need to replace/repair damaged property will document the request and circumstances on a 213 General Message signed by your Incident Supervisor. The lost or damaged item(s) will then be taken to either, Supply, Communications or Ground Support for inspection and recommendation for replacement or repair. Bring the completed form to COMP/CLAIMS who will review the request and forward it to the FSC. The IC/FSC will make a decision as to whether or not the items can be replaced or repaired with incident funds.

Items originally purchased through use of preparedness funds which need to be replaced due to normal wear and tear should be accomplished using home unit funds, not incident funds. If government property was damaged on the incident due to a specific event, e.g. wind event destroys tent, items are burned over or caused by actions where there is no negligence, the incident could, upon receipt of required documentation and proof of damage, authorize replacement using the Incident Replacement Requisition.

In some cases, the cache replacement is not acceptable on some specialty items (e.g. sleeping bag or specialty packs). These items may be replaced with no more than "cache" quality and cost. The IBA or FSC must approve these requests.

If your request is approved, provide the approval and support documentation to Ordering or Supply for issuing an "S" number.

Please feel free to visit Comp/Claims Unit Leader Scott Parsons or myself if you have any questions.

Sherri Bennett, CIIMT 4, Finance Section Chief

DELTA FIRE
Human Resource Message
September 21, 2018

Sexual harassment is **unwelcome sexual behavior**, which could be expected to make a person feel offended, humiliated or intimidated. **It is also illegal.** It can be physical, verbal or written. Sexual harassment is covered in the workplace when it happens:

- At work.
- At work-related events.
- Between people sharing the same workplace.
- Between colleagues outside of work.

I want to focus on that last point. Maybe at one time you were in a consensual workplace relationship, or everyone participated in inappropriate joking around. However when the relationship ends and you are told NO, or if someone is no longer comfortable joking in that manner and says to stop!

NO MEANS NO! AND STOP MEANS STOP!

I am just trying to help you keep your job

Adam Alvarez, HRSP - 707-373-8715

Delta-Hirz Fire Suppression Repair

Repair Objectives

- **Minimize Surface and Gully Erosion**
- **Minimize Loss of Soil Productivity due to Erosion In Cleared Areas**
- **Repair Meadows and Wetlands Damaged By Suppression Activities**
- **Minimize Spread of Noxious Weed Infestations**
- **Minimize Excessive Side-Cast Fuels Along Roads**
- **Minimize Impacts to Inventoried Roadless Areas and Wild & Scenic River Corridors**
- **Repair Impacts to Cultural and Historic Resources**
- **Repair Damage to National Forest Roads and Trails Caused by Fire Suppression Activities**
- **Review by Agency READ/REAFs for On-Site Verification of Objectives Completed**

Suppression Repair Focus

- **Dozer Lines**
- **Hand Lines**
- **Roads and Trails**
- **Safety Zones and Staging Areas**
- **Drop Points**
- **Helispots**
- **Water Sources**

Effective Waterbars

When locating and building water bars, place them the right **distance** apart, at a **diagonal** to the fireline, so that they **divert**, then **discharge**, then **dissipate** the energy of the flowing water. Be sure to make them deep enough so they'll be durable, and that soil does **not block** the water bar outlet.

Recommended spacing for waterbars on firelines.

Fireline slope %	Maximum Distance Apart (feet)
1 – 5	200
6 – 20	125
21 – 40	60
41 – 60	40
>60	25

Waterbars should be at least 2 pulaski (4-6 inches) widths wide and 12-24 inches high for handlines.

Waterbars should be no more 2-3 feet tall on dozer lines to enable future access.

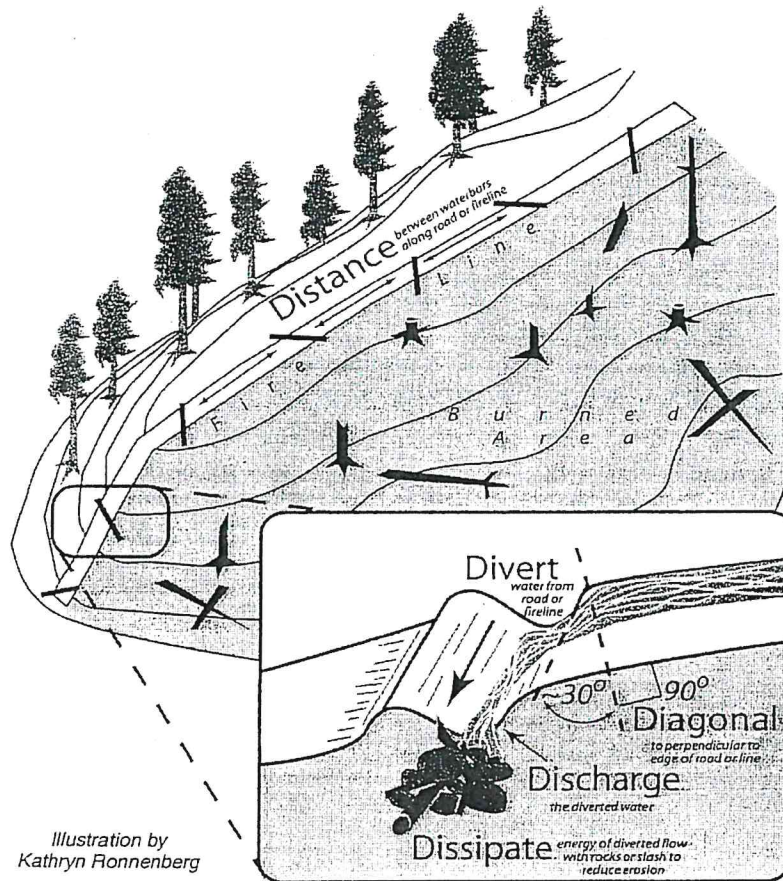


Illustration by
Kathryn Ronnenberg

Stage 2 Suppression Repair Guidelines

(Apply to National Forest System Lands only on dozer lines with moderate to heavy suppression generated debris)

Applicable Suppression Repair Plan Objectives

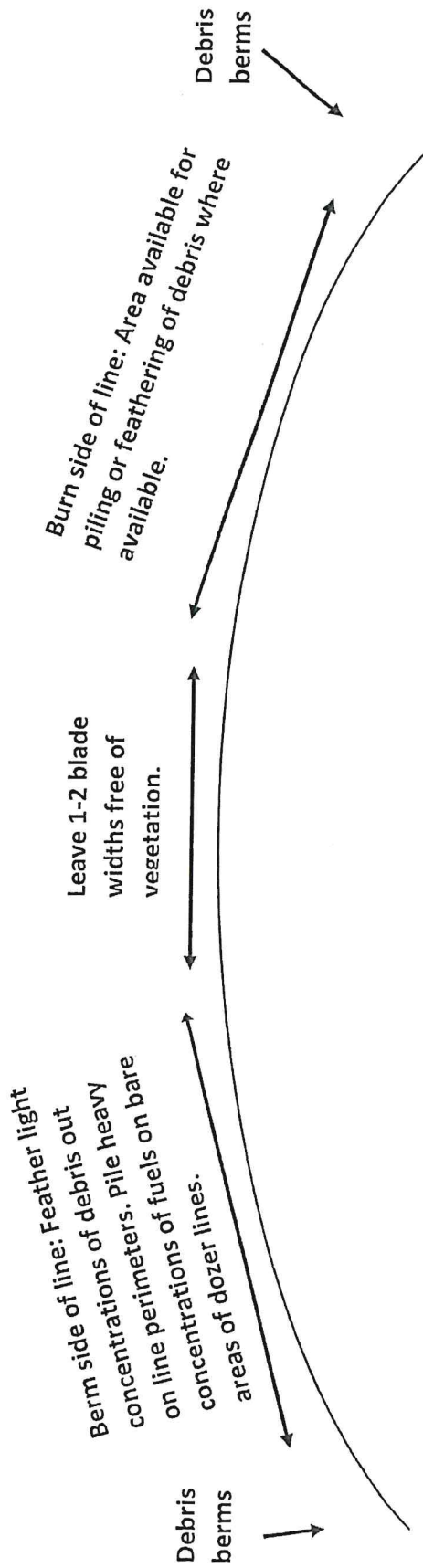
- Minimize loss of soil productivity due to potential erosion in cleared areas.
- Minimize surface erosion.
- Minimize excessive side-cast fuels.

General Instructions

- Pile excessive amounts of suppression generated debris.
- Smaller concentrations of suppression generated debris can be feathered back into scraped side slope areas in order to breakdown fuel concentrations and reduce erosion.

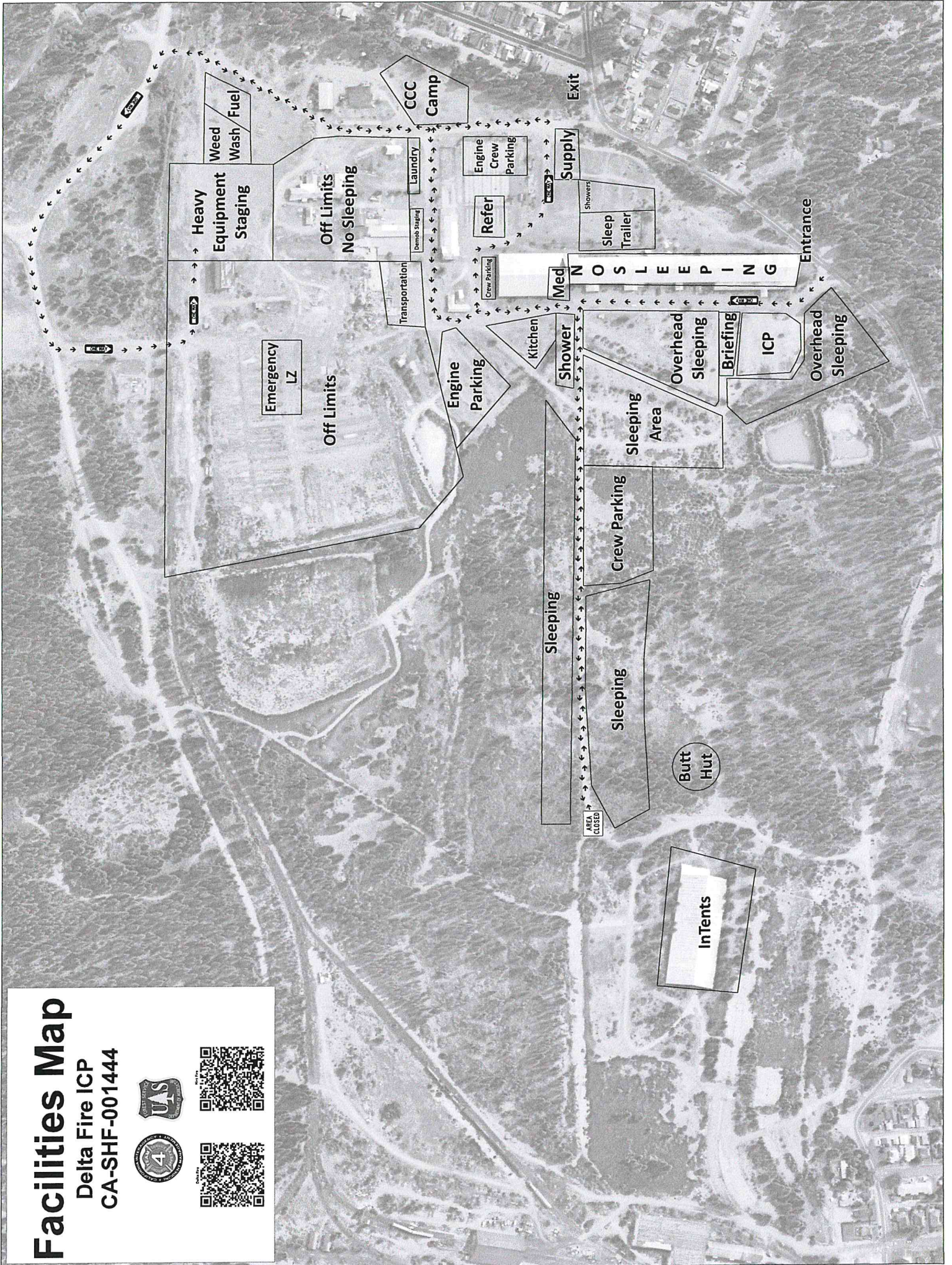
Piling Specifications

- Piles should be located at least 10 feet away from tree boles and preferably out of the drip line of the canopy where possible.
- If working in close or closed canopy piles should be built in a configuration that prevents excessive tree scorch (e.g. small piles, windrowed piles).
- If working in large openings on large dozer lines piles can be larger (e.g. 25x25 feet).
- Compress piles as much as possible to improve burn consumption.
- Piles should be clean (free of soil) to ensure adequate consumption during burning and reduced risk of escape in spring.



Facilities Map

Delta Fire ICP
CA-SHF-001444



Main Gate Entrance

Delta Fire McCloud ICP
CA-SHF-001223/P5L2ZM)0514)

Hand Wash

Portable Toilets

Information

Documentation

IC / Liaison

Comms Tech

IT Specialist

Medical
Comp/Claim

Comms

Infrared Map

Ordering/Plan

READ

Resources

Medical Rehab

Training Unit

Situation

GIS

Finance

Air Ops

Check In / Demob

Print Shop

Portable Toilets

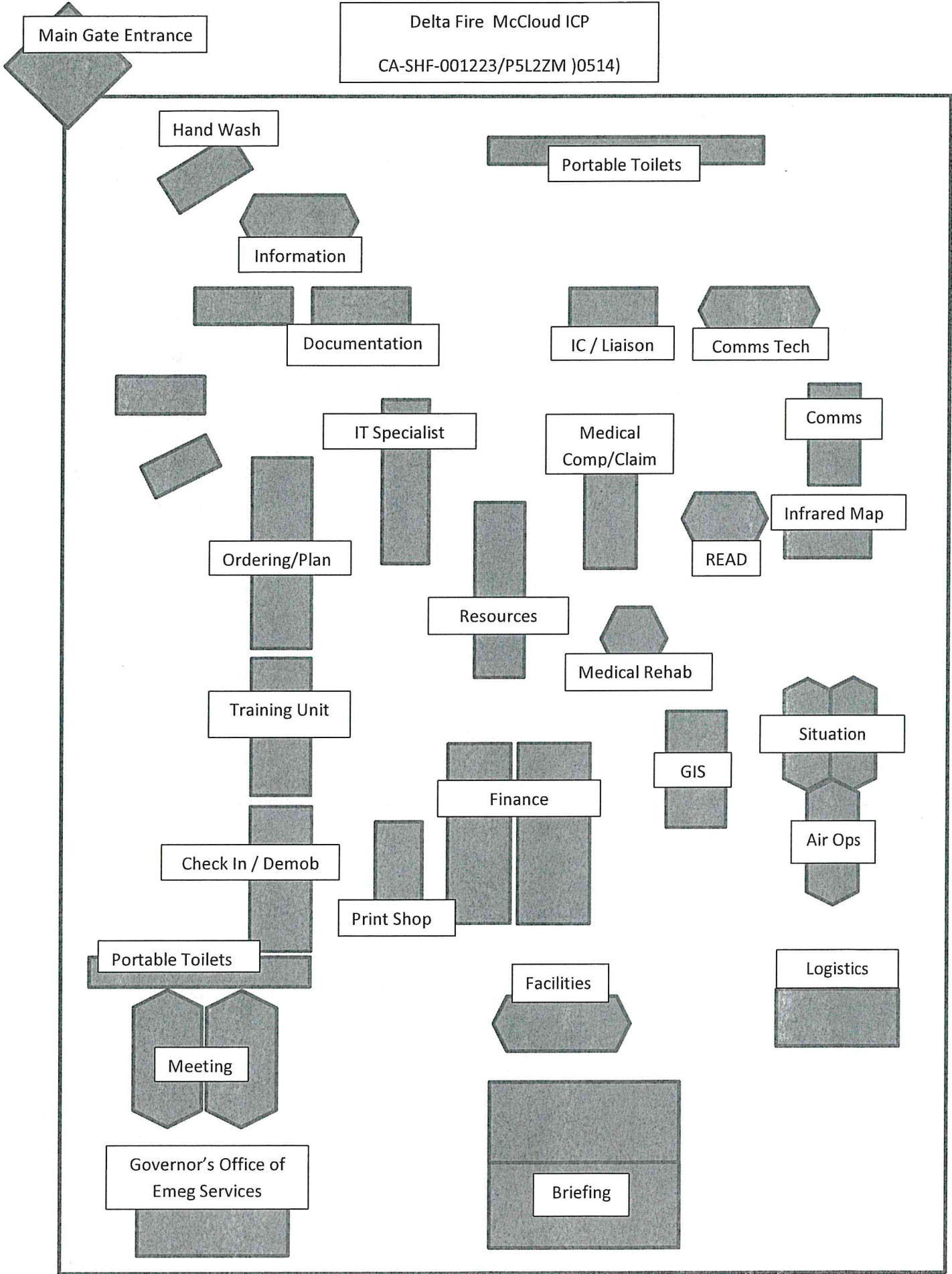
Facilities

Logistics

Meeting

Governor's Office of
Emerg Services

Briefing





Local Government Resources on CFAA

If you are demobing from this incident and there is no OES AREP on site

F-42 thru the Incident Finance Section Chief

The Incident keeps the Pink copy and you keep the Golden.
The Original and Green you mail to OES Headquarters as per the
instructions on the front of your F-42

OES JOB AIDS, FORMS, F-42 SAMPLES AND CFAA AGREEMENT



Questions?

Your OES Fire & Rescue Region III AREP is

Patrick Titus

916-634-9225

