

# Delta Fire/Hirz Fire

## Incident Action Plan

Day Shift October 6<sup>th</sup>, 2018 (0700 – 1900)



### LOOKOUTS

- Lookouts are not just for fire suppression
- Situational Awareness examine your work area before engaging

### LOOK UP, LOOK DOWN, LOOK AROUND

- Be aware of steep slopes and loose material
- Changing weather conditions including high winds and cold temperatures
- Consider use of scouting vehicles to verify conditions prior to deploying heavy equipment

**Maintain a High Level of  
Situational Awareness**  
**DELTA CA-SHF-001444, P5L4L8 (0514)**  
**HIRZ CA-SHF-001223 P5L2ZM (0514)**  
**Shasta Trinity National Forest**  
Northern California Incident Management Team 1



## INCIDENT OBJECTIVES (ICS 202)

<b>1. Incident Name:</b>		<b>2. Operational Period: DAY</b>	
DELTA / HIRZ		Date/Time From: 10/06/2018 0700      SAT	Date/Time To: 10/06/2018 1900      SAT
<b>3. Objective(s):</b>			
<p><b>LEADER'S INTENT</b> A full suppression strategy will be implemented for the Delta fire through a combination of direct and indirect tactics. Minimize impacts to residences, critical infrastructure and private timberlands through the application of well-planned tactical responses.</p> <p><b>CONTROL OBJECTIVES</b> Keep fire inside current Delta footprint.</p> <p><b>MANAGEMENT OBJECTIVES</b></p> <ul style="list-style-type: none"> <li>• Ensure that strategies and tactics provide for firefighter and public safety through the application of sound risk management principles.</li> <li>• Manage incident costs effectively considering values at risk.</li> <li>• Maintain and strengthen cooperator, partner, and stakeholder relationships through clear communications and cooperation.</li> <li>• Conduct all suppression repair work in close coordination with incident READs to minimize further damage to the extent possible, when safe to do so.</li> </ul>			
<b>4. Operational Period Command Emphasis:</b>			
<b>General Situational Awareness:</b>			
<b>5. Site Safety Plan Required?</b> Yes <input type="checkbox"/> No <input checked="" type="checkbox"/>			
<b>Approved Site Safety Plan(s) Located at:</b>			
<b>6. Incident Action Plan</b> (the items checked below are included in this Incident Action Plan):			
<input checked="" type="checkbox"/> ICS 202 <input checked="" type="checkbox"/> ICS 203 <input checked="" type="checkbox"/> ICS 204 <input checked="" type="checkbox"/> ICS 205 <input type="checkbox"/> ICS 205A <input checked="" type="checkbox"/> ICS 206	<input type="checkbox"/> ICS 207 <input type="checkbox"/> ICS 208 <input checked="" type="checkbox"/> ICS 220 <input checked="" type="checkbox"/> Map/Chart <input checked="" type="checkbox"/> Weather Forecast/Tides/Currents	<b>Other Attachments:</b> <input checked="" type="checkbox"/> ICS 214 UNIT LOG _____ <input type="checkbox"/> _____ <input type="checkbox"/> _____ <input type="checkbox"/> _____	
<b>7. Prepared by:</b> ERIC BLACK	<b>Position/Title:</b> PLANNING SECTION CHIEF	<b>Signature:</b>	
<b>8. Approved by Incident Commander:</b>		<b>Signature:</b>	
<b>ICS 202</b>		<b>Date/Time:</b> 10/05/2018 2000	

ICS Form 203 ORGANIZATION ASSIGNMENT LIST		1. INCIDENT NAME DELTA / HIRZ	2. DATE PREPARED 10/05/2018	3. TIME PREPARED 2000
5. INCIDENT COMMANDER AND GENERAL STAFF		4. OPERATIONAL PERIOD (DATE/TIME) 10/6/2018 0700-1900		
POSITION	NAME	9. OPERATIONS SECTION		
INCIDENT COMMANDER	CURTIS COOTS / JOSHUA BOEHM(t)*	CHIEF	DON FREGULIA / DANIEL DIAZ(t)	
DEPUTY	JAIME GAMBOA*	PLANNING OPS	ALEC LANE	
SAFETY OFFICER	JAMES COURTRIGHT JEFF BARNHART*			
INFORMATION OFFICER	JIM MACKENSEN / REBECA FRANCO*			
LIAISON OFFICER	KENT SWARTZLANDER			
		BRANCH		
		DIVISION/GROUP	HIRZ REPAIR SOUTH	ARLANDO LEYVA STEVEN BRAWLEY(t)
6. AGENCY REPRESENTATIVES		DIVISION/GROUP	HIRZ REPAIR NORTH	BEN HENDRICKS
AGENCY	NAME	DIVISION/GROUP	DELTA REPAIR SOUTH	BRYAN ROSENOW BERT SMITH (T)
FS AGENCY ADMIN.	SCOTT RUSSELL	DIVISION/GROUP	DELTA REPAIR NORTH	ADAM LEYBA / MARVIN VOLRIE(t)
FS AGENCY ADMIN, REP.	CAROLYN NAPPER LOIS SHOEMAKER	DIVISION/GROUP	B	TIM RICHEY*
OES AREP	PAT TITUS	DIVISION/GROUP	P	BILLY COVERT* BRIAN JANES(t)*
CHP	LT. KYLE FOSTER	DIVISION/GROUP	TASK FORCE PATROL	(TFLD) LONNIE HAGEDON
SIERRA PACIFIC INDUST.	NICK KROENCKE			
CCC REP.	KENNETH MCDONALD			
CAL TRANS	WILLIE ELDER			
7. PLANNING SECTION				
CHIEF	ALAN TAYLOR			
DEPUTY	ERIC BLACK			
RESOURCES UNIT	JAY SHAFFER(t)			
SITUATION UNIT	MATTHEW SNYDER(t)			
DEMOBILIZATION UNIT	GARY DEBOI			
GISS	KIM DENIZ / CHRIS MUHL			
IMET	ALEX HOON			
FBAN	STEVE ZIEL			
TRAINING SPECIALIST	GREG KURTZ			
ITSS	CALVIN MOSES / DARREN LEEKS(t) ROCKY BOND(t)	10. AIR OPERATIONS BRANCH		
DOCUMENTATION UNIT	SABRINA McCOMB / DAVE ADLER(t)	AIR OPS BRANCH DIRECTOR	DOUG LEDGERWOOD	
		AIR SUPPORT GROUP SUP.		
		AIR TACTICAL SUPERVISOR		
8. LOGISTICS SECTION				
CHIEF	RICKIE CROWTHER / MIKE JELLISON			
SUPPLY UNIT	RON PIERCE / JOHN HARKLEROAD			
FACILITIES UNIT	FRANK DELCARLO / KEN KUMPE* DION NUGENT(t)	11. FINANCE		
GROUND SUPPORT UNIT	TOBY RINGUETTE / JACOB BAILEY (t)	CHIEF	PAM MEYER / MIKE TAYLOR	
COMMS UNIT	ARNIE IRVINE	TIME UNIT	MAGGIE PROCHAZKA	
FOOD UNIT	JAY WESTLAKE / MARK McGUINNESS	PROCUREMENT UNIT	PJ VILHAUER	
MEDICAL UNIT	FRANK ABEL / PETE NELSON(t)	COMPENSATION / CLAIMS UNIT	TRACY NICHOLSON	
ORDERING MANAGER	FRONNIE SHACKLEFORD	COST UNIT		
		EQUIPMENT TIME		
Prepared By (Resources Unit) JAY SHAFFER RESL (t)				

\* = PERSONNEL IN COFFEE CREEK



**Fire Weather Forecast**



**FORECAST NO:** 9  
**PREDICTION FOR:** DAY SHIFT  
**SHIFT DATE:** Oct 6-7, 2018  
**TIME/DATE ISSUED:** Oct 5, 2018 1900 PDT

**NAME OF FIRE:** Delta/Hirz  
**UNIT:** CA-SHF  
**SIGNED:** Alex Hoon  
**Incident Meteorologist**

**WEATHER DISCUSSION: ...GUSTY NORTH WINDS TODAY...**

North winds will increase today as pressure gradients tighten up across the region. Be aware of fire weakened trees that could be brought down by gusty north winds, especially on ridges and upper slopes exposed to the winds. Drier conditions are expected through the weekend. Temperatures will drop tonight to near freezing at the McCloud ICP. North winds will continue through tonight and Sunday, also bringing drier conditions. Dry conditions are likely to continue into next week.

**WEATHER FORECAST FOR SATURDAY: ...WINDS INCREASING THROUGH THE DAY...**

**WEATHER:** Partly cloudy in the morning, then becoming mostly sunny in the afternoon.

**CHANCE OF WETTING RAIN (>0.10"): 0%**

**MAX TEMPERATURES:** 56-66°F. **LITTLE CHANGE**

**MIN HUMIDITY:** 35-45%. **DOWN 5%**

**20-FOOT WIND:**

**SLOPE/VALLEY -** North 5-10 mph. Gusts up to 20 mph in N-S drainages.

**RIDGETOP- NORTH** 12-18 mph with gusts to 30 mph.

**HAINES INDEX: 2**

**SATURDAY NIGHT: ...GUSTY NORTH WINDS OVERNIGHT...**

**WEATHER:** Clear. Frost likely around McCloud ICP.

**CHANCE OF WETTING RAIN (>0.10"): 0%**

**MIN TEMPERATURES:** 39-49°F....except near 32°F at McCloud ICP. **5°F COLDER**

**MAX HUMIDITY:** 65-80% **DOWN 15%**

**20-FOOT WIND:**

**SLOPE/VALLEY -** North 5-10 mph. Downdrainage 2-4 mph after midnight.

**RIDGETOP -** North 12-20 mph. Gusts to 35 mph.


**EXTENDED FORECAST: ...GUSTY NORTH WINDS THRU SUNDAY...DRY INTO NEXT WEEK...**

**SUNDAY:** Sunny. Max temps...58-70°F. Min RH 25-35%. North 12-18 mph. Gusts to 30 mph.

**MONDAY AND TUESDAY:** Mostly sunny. Max temps...60-72°F. Min RH 30-40%. Monday...North 9-12 mph. Gusts to 20 mph. Tuesday...South 5-10 mph.

**WEDNESDAY AND THURSDAY:** Mostly sunny. Max temps...58-68°F. Min RH 30-40%. North 9-12 mph. Gusts to 20 mph.

### Fire Behavior Forecast # 09

<b>Name of Incident:</b> Delta Fire/Hirz Fire	<b>Unit:</b> Shasta-Trinity NF, McCloud RD
<b>Date &amp; Time Issued:</b> October 5, 2018 @ 1900	<b>Operational Period:</b> DAY October 06, 2018
<b>FBAN:</b> Steve Ziel	<b>Signed:</b> 

**Assumptions:** *Additional moisture has produced continued damp/wet surface fuels which will put a damper on any fire behavior potential today. Heavy fuels are still dry, live fuels are "end of season" drought stressed – BUT the fuels that drive rate of spread and intensity remain out of play temporarily (until sufficient warming and drying occurs).*  
 Expect clearing skies with full sunshine today. Varying low level fire behavior characteristics (*smoldering*) will be present again today across the fire area – highest concentration of heat is in the Delta spot fire area in the SW corner of the fire.

#### Weather Summary

**\*\*See attached Fire Weather Forecast \*\***

#### Fire Behavior Summary

Fuels in the fire area are primarily composed of:

- Timber Litter:** Timber stands lacking significant understory or heavy concentrations. Will generally produce surface fire effect (underburn) with moderate rates of spread and flame length.
- Timber with Understory:** Timber stands with abundant brush or small trees and fuel concentrations; will burn with higher intensity with frequent torching (with little wind). Heavy fuels and snags contribute to rollout.
- Grass/Shrubs:** Mixed grass/brush patches in open timber stands and on harsh slopes. Fire will spread through brush without significant slope or wind contribution. Grass component spreads rapidly.

**Today's fire behavior:** *All areas will show minimal fire behavior today – "expect yet another non-spread fire day". Primary fire behavior characteristics will likely include pockets of mundane smoldering. Limited surface fire spread may not be expected even in the driest exposed areas. Heavy fuels (logs, buried wood, stump holes, snags) and concentrations will continue sustain heat, consume, and produce smoke. Sheltered fuels within tree drip lines will continue to smolder. Some open flame likely in pre-heated fuels near burning heavy fuels.*

**\*\*\*Rate of spread (ROS) and Flame length (FL) shown below are based on dry (non-wetted) surface conditions\*\*\***

Fine fuel moisture= 8 - 11+%, 1000hr TLFM = 12%, Live woody fuels 70%, POI = 20-30%.

Fuel Type/Model	Maximum Head Fire		Spotting Distance	Wet Surface Fuels
	ROS	Flame		ROS/FL
Timber litter (TL8)	2 – 3 ft/min	2 feet	0.2 mile	0 - 0
Timber with Understory (TU5)	5 - 6 ft/min	5 feet	0.2 mile	0 - 0
Grass/Shrub (GS2)	1 – 2 ft/min	1 feet	0.1 mile	0 - 0

#### **Specific Assignments:**

**Patrol and Repair Groups:** Expect widely scattered areas of isolated smoldering, and consumption of heavy fuels. Stump holes, log ends, buried woody materials, and snags will hold heat (due to low fuel moisture) until extinguished.

**Div. P:** Expect minimal fire spread (see graph above) under forecast moist/wet conditions. Expect non-fire behavior due to moist conditions ( recent rain showers), cloudy sky in morning, and cool temperatures. Heavy fuels will continue to hold heat – monitor surface fuel drying with clearing sky and strong northerly ridge winds.

**Air Operations:** Monitor cloud ceiling for early day mountain obscuration. Partly cloudy early– clear sky in afternoon.

#### Safety

**\*Heads up for strong winds today – coming from NW with gusts to 30 mph at ridge top level.**

Changing [wind] conditions require re-evaluation of actions. If the conditions are changing ask "how fast, how much, when, where". Consider the effects of change on your planned action – may require adjusting your actions to mitigate changing conditions. Verify forecast values....consider "will our situation get better or worse, will it get worse before it gets better?" **\*ALWAYS EXPECT CHANGE – EXCEPT FROM A VENDING MACHINE.** (Recycled from September 29<sup>th</sup> Fire Behavior Forecast).

**Division/Group Assignment List (ICS 204 WF)**  
**Controlled Unclassified Information//Basic**

<b>1. Incident Name:</b>		<b>3.</b>	
DELTA / HIRZ		<b>Branch:</b>	<b>Division/Group:</b>
<b>2. Operational Period:</b>		<b>HIRZ REPAIR SOUTH</b>	
<b>DAY</b>			
Date/Time From: 10/06/2018 0700	SAT	Date/Time To: 10/06/2018 1900	SAT

<b>4. Operations Personnel</b>			
<b>OPERATIONS CHIEF</b>	DONALD FREGULIA DANIEL R DIAZ	<b>DIVISION/GROUP SUPERVISOR</b>	ARLANDO LEYVA

<b>5. Resources Assigned this Period</b>					
Strike Team / Task Force / Resource Designator	LWD	Leader	Number Persons	Drop Off PT./Time	Pick Up PT./Time
HC2 BLACK EAGLES 6 C-110	10/07	CURTIS GIBSON	20	MC CLOUD ICP/0700	MC CLOUD ICP/1900
WTS2 FLOODGATE H2O E-533	10/17	RIC PIFFERO	1	MC CLOUD ICP/0700	MC CLOUD ICP/1900
WTS2 WILLMORE AG E-669	10/11	TORRES BILL	1	MC CLOUD ICP/0700	MC CLOUD ICP/1900
DOZ2 NORTHSTATE E-544	10/10	TANNER PARKS	2	MC CLOUD ICP/0700	MC CLOUD ICP/1900
EXCA DUDLEYS' E-488	10/14	BYRON WILKES	2	MC CLOUD ICP/0700	MC CLOUD ICP/1900
EXCA BRITTEN E-522	10/10	JOHN BRITTEN	2	MC CLOUD ICP/0700	MC CLOUD ICP/1900
EXCA KIRACK CONST. E-523	10/11	ERIC GOLD	2	MC CLOUD ICP/0700	MC CLOUD ICP/1900
EXCA MORRISON E-526	10/11	DUSTIN WESTFALL	2	MC CLOUD ICP/0700	MC CLOUD ICP/1900
EXCA KEN'S E-654	10/07	MATTHEW SMITH	2	MC CLOUD ICP/0700	MC CLOUD ICP/1900
EXCA PETERS E-658	10/07	LANDON ROSECRANZ	2	MC CLOUD ICP/0700	MC CLOUD ICP/1900
GRD JANC CONSTRUCTION E-490	10/14	RICHARD JANC	2	MC CLOUD ICP/0700	MC CLOUD ICP/1900
GRD TRINITY RIVER E-685	10/15	MATT HANES	1	MC CLOUD ICP/0700	MC CLOUD ICP/1900
GRD CORWIN COMPANY E-690	10/12	LENNY WEBER	2	MC CLOUD ICP/0700	MC CLOUD ICP/1900
TFLD O-728	10/11	CHRISTOPHER J GRAVES	1	MC CLOUD ICP/0700	MC CLOUD ICP/1900
HEQB O-848	10/17	OPAL L FULTON	1	MC CLOUD ICP/0700	MC CLOUD ICP/1900
HEQB O-852	10/16	RALPH RANDALL LAMB	1	MC CLOUD ICP/0700	MC CLOUD ICP/1900
HEQB O-658	10/07	DENNIS CARPENTER (T)	1	MC CLOUD ICP/0700	MC CLOUD ICP/1900
FMOD QUINNS O-821	10/13	ALLEN INGERSOLL	2	MC CLOUD ICP/0700	MC CLOUD ICP/1900
REMS 5 O-669	10/09	MANUEL MADRIGAL	1	MC CLOUD ICP/0700	MC CLOUD ICP/1900
EMTP O-770	10/13	JULIAN CHRISTY	1	MC CLOUD ICP/0700	MC CLOUD ICP/1900
EMTP O-835	10/16	ERIC SCHROTH	1	MC CLOUD ICP/0700	MC CLOUD ICP/1900

<b>8. Division/Group Communication Summary</b>						
Function	Channel	RX Frequency N/W	RX Tone/NAC	TX Frequency N/W	TX Tone/NAC	Mode
COMMAND	2	172.6500 N	10/107.2	164.7500 N	10/107.2	A
TACTICAL	10	166.7750 N	10/107.2	166.7750 N	10/107.2	A
AIR TO GROUND	14	168.3375 N		168.3375 N		A

<b>9. Prepared By (Resource Unit Leader)</b>	<b>Approved By (Planning Section Chief)</b>	<b>Date</b>	<b>Time</b>
JAY SHAFFER	ERIC BLACK	10/05/2018	2000

**Division/Group Assignment List (ICS 204 WF)**  
**Controlled Unclassified Information//Basic**

<b>1. Incident Name:</b>		<b>3.</b>	
DELTA / HIRZ		Branch:	Division/Group:
<b>2. Operational Period:</b> DAY		<b>HIRZ REPAIR SOUTH</b>	
Date/Time From: 10/06/2018 0700 SAT	Date/Time To: 10/06/2018 1900 SAT		

<b>4. Operations Personnel</b>			
<b>OPERATIONS CHIEF</b>	DONALD FREGULIA DANIEL R DIAZ	<b>DIVISION/GROUP SUPERVISOR</b>	ARLANDO LEYVA

<b>5. Resources Assigned this Period</b>					
Strike Team / Task Force / Resource Designator	LWD	Leader	Number Persons	Drop Off PT./Time	Pick Up PT./Time
SOFR O-713	10/13	JOHN STRICKLAND	1	MC CLOUD ICP/0700	MC CLOUD ICP/1900
SOFR O-794	10/13	KEITH A SMYTH (T)	1	MC CLOUD ICP/0700	MC CLOUD ICP/1900
REAF O-799	10/13	JAMES PETTETT	1	MC CLOUD ICP/0700	MC CLOUD ICP/1900

**6. Control Operations/Work Assignments:**

- Continue fire suppression repair in conjunction with Resource Advisers.
- Backhaul hose and excess equipment.

**7. Special Instructions:**

- SOFR John Strickland and Keith Smyth (T) will cover both HIRZ Repair Groups North and South..

<b>8. Division/Group Communication Summary</b>						
Function	Channel	RX Frequency N/W	RX Tone/NAC	TX Frequency N/W	TX Tone/NAC	Mode
COMMAND	2	172.6500 N	10/107.2	164.7500 N	10/107.2	A
TACTICAL	10	166.7750 N	10/107.2	166.7750 N	10/107.2	A
AIR TO GROUND	14	168.3375 N		168.3375 N		A

<b>9. Prepared By (Resource Unit Leader)</b>	<b>Approved By (Planning Section Chief)</b>	<b>Date</b>	<b>Time</b>
JAY SHAFFER	ERIC BLACK	10/05/2018	2000



**Division/Group Assignment List (ICS 204 WF)**  
Controlled Unclassified Information//Basic

<b>1. Incident Name:</b>			<b>3.</b>			
DELTA / HIRZ			Branch:		Division/Group:	
<b>2. Operational Period:</b> DAY					<b>HIRZ REPAIR NORTH</b>	
Date/Time From: 10/06/2018 0700 SAT	Date/Time To: 10/06/2018 1900 SAT					
<b>4. Operations Personnel</b>						
<b>OPERATIONS CHIEF</b>		DONALD FREGULIA DANIEL R DIAZ		<b>DIVISION/GROUP SUPERVISOR</b>		BENJAMIN A HENDRICKS
<b>5. Resources Assigned this Period</b>						
Strike Team / Task Force / Resource Designator		LWD	Leader	Number Persons	Drop Off PT./Time	Pick Up PT./Time
HC2 OC 20 C-111		10/09	COLTON BUEHLER	19	MCCLLOUD ICP/0700	MCCLLOUD ICP/1900
ENG3 GREY WOLF E-541		10/09	KEITH GRISHEM	5	MCCLLOUD ICP/0700	MCCLLOUD ICP/1900
ENG3 IAR - 05 E-542		10/09	DENNIS ADAMS	5	MCCLLOUD ICP/0700	MCCLLOUD ICP/1900
ENG3 MT. ADAMS E - 300 E-595		10/13	DON HOLTER	3	MCCLLOUD ICP/0700	MCCLLOUD ICP/1900
ENG6 ALASKA WILDLAND E-609		10/13	ESAI JASSO	3	MCCLLOUD ICP/0700	MCCLLOUD ICP/1900
ENG6 GRAYBACK FORESTRY E-610		10/14	BRIAN LEWMAN	3	MCCLLOUD ICP/0700	MCCLLOUD ICP/1900
ENG6 CMS - 43F52 E-611		10/14	GUY NEILSEN	4	MCCLLOUD ICP/0700	MCCLLOUD ICP/1900
ENG6 FIRESTORM 9905 E-653		10/07	SAM PEARCE	3	MCCLLOUD ICP/0700	MCCLLOUD ICP/1900
WTS2 DARRAH LOGGING E-39		10/14	STEVE DARGER	1	MCCLLOUD ICP/0700	MCCLLOUD ICP/1900
WTS2 MATTHEW J JOHNSON E-41		10/15	MATHEW JOHNSON	1	MCCLLOUD ICP/0700	MCCLLOUD ICP/1900
WTS2 YREKA OUTLANDS (24 HR) E-270		10/17	ALLEN WILLIAMS	1	MCCLLOUD ICP/0700	MCCLLOUD ICP/1900
WTS2 CARLTON CHRISTMAS TREES E-347		10/15	ROSS ROGERS	1	MCCLLOUD ICP/0700	MCCLLOUD ICP/1900
DOZ2 NORTHWESTERN E-545		10/10	DONALD GEORGE	2	MCCLLOUD ICP/0700	MCCLLOUD ICP/1900
DOZ2 DARRAH LOGGING E-663		10/17	WAYNE VIRAG	2	MCCLLOUD ICP/0700	MCCLLOUD ICP/1900
DOZ2 CATTANEO #9 E-666		10/18	MIKE GOODEN	2	MCCLLOUD ICP/0700	MCCLLOUD ICP/1900
EXCA STONEY CREEK E-486		10/15	LUKE ANDREWS	2	MCCLLOUD ICP/0700	MCCLLOUD ICP/1900
EXCA INGRAM E-520		10/10	TIM WATERMAN	2	MCCLLOUD ICP/0700	MCCLLOUD ICP/1900
EXCA TOM'S E-525		10/11	TOM FUNES	2	MCCLLOUD ICP/0700	MCCLLOUD ICP/1900
EXCA TRINITY RIVER E-656		10/09	SHILOH BERRY	2	MCCLLOUD ICP/0700	MCCLLOUD ICP/1900
EXCA TRINITY RIVER E-657		10/08	ED SWANSON	2	MCCLLOUD ICP/0700	MCCLLOUD ICP/1900
EXCA DARRAH LOGGING E-659		10/07	KEITH DARRAH	2	MCCLLOUD ICP/0700	MCCLLOUD ICP/1900
<b>8. Division/Group Communication Summary</b>						
Function	Channel	RX Frequency N/W	RX Tone/NAC	TX Frequency N/W	TX Tone/NAC	Mode
COMMAND	4	170.4125 N	10/107.2	165.9625 N	10/107.2	A
TACTICAL	11	168.2500 N	10/107.2	168.2500 N	10/107.2	A
AIR TO GROUND	14	168.3375 N		168.3375 N		A
<b>9. Prepared By (Resource Unit Leader)</b>			<b>Approved By (Planning Section Chief)</b>		<b>Date</b>	<b>Time</b>
JAY SHAFFER			ERIC BLACK		10/05/2018	2000

## Division/Group Assignment List (ICS 204 WF)

Controlled Unclassified Information//Basic

<b>1. Incident Name:</b>				<b>3.</b>			
DELTA / HIRZ				<b>Branch:</b>		<b>Division/Group:</b>	
<b>2. Operational Period: DAY</b>							
Date/Time From: 10/06/2018 0700 SAT		Date/Time To: 10/06/2018 1900 SAT		<b>HIRZ REPAIR NORTH</b>			
<b>4. Operations Personnel</b>							
<b>OPERATIONS CHIEF</b>		DONALD FREGULIA DANIEL R DIAZ		<b>DIVISION/GROUP SUPERVISOR</b>		BENJAMIN A HENDRICKS	
<b>5. Resources Assigned this Period</b>							
Strike Team / Task Force / Resource Designator		LWD	Leader	Number Persons	Drop Off PT./Time	Pick Up PT./Time	
GRD NORTH STATE EQUIPMENT E-294		10/12	STEVE SANDERS	2	MCCLLOUD ICP/0700	MCCLLOUD ICP/1900	
GRD WYEAST FORESTRY E-691		10/14	MARK MILNE	2	MCCLLOUD ICP/0700	MCCLLOUD ICP/1900	
SKG3 J & D LOGGING E-275		10/12	SAWYER LOGAN	2	MCCLLOUD ICP/0700	MCCLLOUD ICP/1900	
SKD2 HALEY, TODD B. E-276		10/07	TODD HALEY	2	MCCLLOUD ICP/0700	MCCLLOUD ICP/1900	
SKD2 CECIL LOGGING, INC. E-575		10/16	AARON HERNDON	2	MCCLLOUD ICP/0700	MCCLLOUD ICP/1900	
LDFR SIERRA LAND MANAG. E-495		10/08	WESS TAYLOR	2	MCCLLOUD ICP/0700	MCCLLOUD ICP/1900	
CHIP ADKINS E-515		10/10	RONALD ATKINS	1	MCCLLOUD ICP/0700	MCCLLOUD ICP/1900	
TFLD O-643		10/07	KEVIN J OSBORNE	1	MCCLLOUD ICP/0700	MCCLLOUD ICP/1900	
TFLD O-846		10/16	LUIS DOZAL	1	MCCLLOUD ICP/0700	MCCLLOUD ICP/1900	
TFLD O-692		10/10	ERIC L POTTER	1	MCCLLOUD ICP/0700	MCCLLOUD ICP/1900	
TFLD O-868		10/16	TREVOR M DRAKE (T)	1	MCCLLOUD ICP/0700	MCCLLOUD ICP/1900	
HEQB O-697		10/13	JACK C TURNER	1	MCCLLOUD ICP/0700	MCCLLOUD ICP/1900	
HEQB O-850		10/16	TRAVIS REED	1	MCCLLOUD ICP/0700	MCCLLOUD ICP/1900	
HEQB O-853		10/16	DANIEL J QUINN	1	MCCLLOUD ICP/0700	MCCLLOUD ICP/1900	
HEQB O-863		10/16	GILBERT ROSALES (T)	1	MCCLLOUD ICP/0700	MCCLLOUD ICP/1900	
FELB O-823		10/13	JOHN WALKER	1	MCCLLOUD ICP/0700	MCCLLOUD ICP/1900	
FMOD NORTH ZONE O-819		10/13	LARRY CASTRO	2	MCCLLOUD ICP/0700	MCCLLOUD ICP/1900	
FMOD VOLCANO CREEK O-822		10/13	JEFF TURNER	2	MCCLLOUD ICP/0700	MCCLLOUD ICP/1900	
FMOD PACIFIC RIDGELINE O-638		10/06	MIKE FREDERICKS	2	MCCLLOUD ICP/0700	MCCLLOUD ICP/1900	
EMPF O-762		10/08	BRANDON WHITNEY	1	MCCLLOUD ICP/0700	MCCLLOUD ICP/1900	
EMPF O-664		10/08	DRAKE MARTIN	1	MCCLLOUD ICP/0700	MCCLLOUD ICP/1900	
<b>8. Division/Group Communication Summary</b>							
Function	Channel	RX Frequency N/W	RX Tone/NAC	TX Frequency N/W	TX Tone/NAC	Mode	
COMMAND	4	170.4125 N	10/107.2	165.9625 N	10/107.2	A	
TACTICAL	11	168.2500 N	10/107.2	168.2500 N	10/107.2	A	
AIR TO GROUND	14	168.3375 N		168.3375 N		A	
<b>9. Prepared By (Resource Unit Leader)</b>			<b>Approved By (Planning Section Chief)</b>			<b>Date</b>	<b>Time</b>
JAY SHAFFER			ERIC BLACK			10/05/2018	2000

**Division/Group Assignment List (ICS 204 WF)**  
**Controlled Unclassified Information//Basic**

<b>1. Incident Name:</b>			<b>3.</b>			
DELTA / HIRZ			Branch:		Division/Group:	
<b>2. Operational Period:</b>			<b>HIRZ REPAIR NORTH</b>			
DAY						
Date/Time From: 10/06/2018 0700 SAT		Date/Time To: 10/06/2018 1900 SAT				
<b>4. Operations Personnel</b>						
<b>OPERATIONS CHIEF</b>		DONALD FREGULIA DANIEL R DIAZ		<b>DIVISION/GROUP SUPERVISOR</b>		BENJAMIN A HENDRICKS
<b>5. Resources Assigned this Period</b>						
Strike Team / Task Force / Resource Designator		LWD	Leader	Number Persons	Drop Off PT./Time	Pick Up PT./Time
SOFR O-713		10/13	JOHN STRICKLAND	1	MCCLLOUD ICP/0700	MCCLLOUD ICP/1900
SOFR (T) O-748		10/11	SAGE HOWELL	1	MCCLLOUD ICP/0700	MCCLLOUD ICP/1900
REAF O-512		10/09	ASHLEY KNIGHT	1	MCCLLOUD ICP/0700	MCCLLOUD ICP/1900
REAF O-632		10/04	JOE ZUSTAK	1	MCCLLOUD ICP/0700	MCCLLOUD ICP/1900
REAF O-792		10/10	MICHAEL C MCFADIN	1	MCCLLOUD ICP/0700	MCCLLOUD ICP/1900
<b>6. Control Operations/Work Assignments:</b>						
<ul style="list-style-type: none"> <li>Continue fire suppression repair in conjunction with Resource Advisers.</li> <li>Backhaul hose and excess equipment.</li> </ul>						
<b>7. Special Instructions:</b>						
<ul style="list-style-type: none"> <li>SOFR John Strickland and Keith Smyth (T) will cover both HIRZ Repair Groups North and South.</li> </ul>						
<b>8. Division/Group Communication Summary</b>						
Function	Channel	RX Frequency N/W	RX Tone/NAC	TX Frequency N/W	TX Tone/NAC	Mode
COMMAND	4	170.4125 N	10/107.2	165.9625 N	10/107.2	A
TACTICAL	11	168.2500 N	10/107.2	168.2500 N	10/107.2	A
AIR TO GROUND	14	168.3375 N		168.3375 N		A
<b>9. Prepared By (Resource Unit Leader)</b>			<b>Approved By (Planning Section Chief)</b>		<b>Date</b>	<b>Time</b>
JAY SHAFFER			ERIC BLACK		10/05/2018	2000

**Division/Group Assignment List (ICS 204 WF)**  
**Controlled Unclassified Information//Basic**

<b>1. Incident Name:</b>				<b>3.</b>		
DELTA / HIRZ				Branch:	Division/Group:  <b>DELTA REPAIR SOUTH</b>	
<b>2. Operational Period: DAY</b>						
Date/Time From: 10/06/2018 0700 SAT		Date/Time To: 10/06/2018 1900 SAT				
<b>4. Operations Personnel</b>						
<b>OPERATIONS CHIEF</b>		DONALD FREGULIA DANIEL R DIAZ (T)		<b>DIVISION/GROUP SUPERVISOR</b>		BRYAN ROSENOW BERT SMITH (T)
<b>5. Resources Assigned this Period</b>						
Strike Team / Task Force / Resource Designator		LWD	Leader	Number Persons	Drop Off PT./Time	Pick Up PT./Time
ES3 S/T - SQF - 5650 C E-597		10/13	DAN JONES	26	COFFEE CREEK/0700	COFFEE CREEK/1900
DOZ2 NORTHWESTERN (24HR) E-266		10/13	MIKE SALTERS	1	COFFEE CREEK/0700	COFFEE CREEK/1900
DOZ2 SHF DOZ - 29 E-518		10/08	DAVID BROWN	2	COFFEE CREEK/0700	COFFEE CREEK/1900
EXCA NORTH RIVERS E-521		10/12	CODY CARLSON	2	COFFEE CREEK/0700	COFFEE CREEK/1900
EXCA LEPAGE CO E-524		10/10	BRETT SHULTZ	1	COFFEE CREEK/0700	COFFEE CREEK/1900
EXCA STONY CREEK E-527		10/17	MIKE MURDOCK	2	COFFEE CREEK/0700	COFFEE CREEK/1900
EXCA RESOURCE UTILIZATION CO E-528		10/11	THOMAS HORN	1	COFFEE CREEK/0700	COFFEE CREEK/1900
EXCA WARNER ENTERPRISES E-635		10/14	JOE RUSTE	2	COFFEE CREEK/0700	COFFEE CREEK/1900
CHIP CUT WRIGHT SERVICES E-592		10/14	TODD WRIGHT	3	COFFEE CREEK/0700	COFFEE CREEK/1900
TFLD O-655		10/07	CURTIS MATTHEWS	1	COFFEE CREEK/0700	COFFEE CREEK/1900
TFLD O-875		10/18	SHAUN CRAIG	1	COFFEE CREEK/0700	COFFEE CREEK/1900
HEQB O-639		10/06	ADAM STEVENS	1	COFFEE CREEK/0700	COFFEE CREEK/1900
HEQB O-656		10/07	RYAN MECHAM	1	COFFEE CREEK/0700	COFFEE CREEK/1900
HEQB O-645		10/06	MATTHEW WESTON (T)	1	COFFEE CREEK/0700	COFFEE CREEK/1900
HEQB (T) O-662		10/08	BRIAN P GOOD (T)	1	COFFEE CREEK/0700	COFFEE CREEK/1900
EMPF E-677.1		10/17	CHAD POULSEN	1	COFFEE CREEK/0700	COFFEE CREEK/1900
READ O-709		10/09	BRENDAN LUKAS	1	COFFEE CREEK/0700	COFFEE CREEK/1900
REAF O-828		10/15	CAROL A FIELDS	1	COFFEE CREEK/0700	COFFEE CREEK/1900
REAF O-829		10/08	ZANARD CHOICE (T)	1	COFFEE CREEK/0700	COFFEE CREEK/1900
SOFR O-794		10/13	KEITH A SMYTH (T)	1	COFFEE CREEK/0700	COFFEE CREEK/1900
<b>8. Division/Group Communication Summary</b>						
Function	Channel	RX Frequency N/W	RX Tone/NAC	TX Frequency N/W	TX Tone/NAC	Mode
COMMAND	2	172.6500 N	10/107.2	164.7500 N	10/107.2	A
TACTICAL	11	168.2500 N	10/107.2	168.2500 N	10/107.2	A
AIR TO GROUND	14	168.3375 N		168.3375 N		A
<b>9. Prepared By (Resource Unit Leader)</b>						
JAY SHAFFER			<b>Approved By (Planning Section Chief)</b>		<b>Date</b>	<b>Time</b>
			ERIC BLACK		10/05/2018	2000

**Division/Group Assignment List (ICS 204 WF)**  
Controlled Unclassified Information//Basic

<b>1. Incident Name:</b>			<b>3.</b>			
DELTA / HIRZ			Branch:		Division/Group:	
<b>2. Operational Period:</b>			<b>DELTA REPAIR SOUTH</b>			
DAY						
Date/Time From: 10/06/2018 0700 SAT		Date/Time To: 10/06/2018 1900 SAT				
<b>4. Operations Personnel</b>						
<b>OPERATIONS CHIEF</b>		DONALD FREGULIA DANIEL R DIAZ (T)		<b>DIVISION/GROUP SUPERVISOR</b>		BRYAN ROSENOW BERT SMITH (T)
<b>5. Resources Assigned this Period</b>						
Strike Team / Task Force / Resource Designator		LWD	Leader	Number Persons	Drop Off PT./Time	Pick Up PT./Time
SOFR O-713		10/13	JOHN STRICKLAND	1	COFFEE CREEK/0700	COFFEE CREEK/1900
<b>6. Control Operations/Work Assignments:</b>						
<ul style="list-style-type: none"> <li>Continue fire suppression repair in conjunction with Resource Advisers.</li> <li>Backhaul hose and excess equipment.</li> </ul>						
<b>7. Special Instructions:</b>						
<b>8. Division/Group Communication Summary</b>						
Function	Channel	RX Frequency N/W	RX Tone/NAC	TX Frequency N/W	TX Tone/NAC	Mode
COMMAND	2	172.6500 N	10/107.2	164.7500 N	10/107.2	A
TACTICAL	11	168.2500 N	10/107.2	168.2500 N	10/107.2	A
AIR TO GROUND	14	168.3375 N		168.3375 N		A
<b>9. Prepared By (Resource Unit Leader)</b>			<b>Approved By (Planning Section Chief)</b>		<b>Date</b>	<b>Time</b>
JAY SHAFFER			ERIC BLACK		10/05/2018	2000

**Division/Group Assignment List (ICS 204 WF)**  
**Controlled Unclassified Information//Basic**

<b>1. Incident Name:</b>			<b>3.</b>			
DELTA / HIRZ			Branch:		Division/Group:	
<b>2. Operational Period:</b>			<b>DELTA REPAIR NORTH</b>			
DAY						
Date/Time From: 10/06/2018 0700 SAT		Date/Time To: 10/06/2018 1900 SAT				
<b>4. Operations Personnel</b>						
<b>OPERATIONS CHIEF</b>		DONALD FREGULIA DANIEL R DIAZ (T)		<b>DIVISION/GROUP SUPERVISOR</b>		ADAM LEYBA MARVIN VOLRIE (T)
<b>5. Resources Assigned this Period</b>						
Strike Team / Task Force / Resource Designator		LWD	Leader	Number Persons	Drop Off PT./Time	Pick Up PT./Time
HC2 BLACK EAGLES 5 C-112		10/07	FUENTES JOHNATHON	22	COFFEE CREEK/0700	COFFEE CREEK/1900
DOZ2 PRO- DUMP AND EXCAVATING E-546		10/10	CORY HALL	2	COFFEE CREEK/0700	COFFEE CREEK/1900
DOZ2 PRO- DUMP AND EXCAVATING E-547		10/10	SAM DATSON	2	COFFEE CREEK/0700	COFFEE CREEK/1900
DOZ2 ANGICO E-564		10/10	STEVE BOGGS	3	COFFEE CREEK/0700	COFFEE CREEK/1900
DOZ2 BEN'S TRUCK & EQUIPMENT E-565		10/10	JAMES SCARBROUGH	3	COFFEE CREEK/0700	COFFEE CREEK/1900
DOZ2 BEN'S TRUCK & EQUIP E-566		10/10	LARRY MADISON	9	COFFEE CREEK/0700	COFFEE CREEK/1900
EXCA TRINITY RIVER E-589		10/13	KEVIN SKELTON	1	COFFEE CREEK/0700	COFFEE CREEK/1900
EXCA HENTHORN E-655		10/07	JEFFERY HENTHORN	2	COFFEE CREEK/0700	COFFEE CREEK/1900
TFLD O-845		10/16	ALEXANDER E PFOUTZ	1	COFFEE CREEK/0700	COFFEE CREEK/1900
TFLD O-877		10/18	RAMON UCHA	1	COFFEE CREEK/0700	COFFEE CREEK/1900
TFLD O-864		10/16	TADD A FAGERUD (T)	1	COFFEE CREEK/0700	COFFEE CREEK/1900
HEQB O-854		10/15	MICHAEL FUERCH	1	COFFEE CREEK/0700	COFFEE CREEK/1900
HEQB O-855		10/17	MICHAEL BALIZAN	1	COFFEE CREEK/0700	COFFEE CREEK/1900
HEQB O-879		10/17	KEVIN A MOGLIA	1	COFFEE CREEK/0700	COFFEE CREEK/1900
HEQB O-881		10/18	MICHAEL CORREIA (T)	1	COFFEE CREEK/0700	COFFEE CREEK/1900
SOFR O-713		10/13	JOHN STRICKLAND	1	COFFEE CREEK/0700	COFFEE CREEK/1900
SOFR (T) O-748		10/11	SAGE HOWELL	1	COFFEE CREEK/0700	COFFEE CREEK/1900
REAF O-830		10/17	SCOTT HAGERTY	1	COFFEE CREEK/0700	COFFEE CREEK/1900
REAF O-880		10/17	LIZ WINTERS	1	COFFEE CREEK/0700	COFFEE CREEK/1900
REAF O-885		10/09	BRENNA MONTAGNE	1	COFFEE CREEK/0700	COFFEE CREEK/1900
<b>8. Division/Group Communication Summary</b>						
Function	Channel	RX Frequency N/W	RX Tone/NAC	TX Frequency N/W	TX Tone/NAC	Mode
COMMAND	4	170.4125 N	10/107.2	165.9625 N	10/107.2	A
TACTICAL	10	166.7750 N	10/107.2	166.7750 N	10/107.2	A
AIR TO GROUND	14	168.3375 N		168.3375 N		A
<b>9. Prepared By (Resource Unit Leader)</b>			<b>Approved By (Planning Section Chief)</b>		<b>Date</b>	<b>Time</b>
JAY SHAFFER			ERIC BLACK		10/05/2018	2000

**Division/Group Assignment List (ICS 204 WF)**  
 Controlled Unclassified Information//Basic

<b>1. Incident Name:</b>			<b>3.</b>			
DELTA / HIRZ			Branch:		Division/Group:	
<b>2. Operational Period:</b>					<b>DELTA REPAIR NORTH</b>	
DAY						
Date/Time From: 10/06/2018 0700 SAT		Date/Time To: 10/06/2018 1900 SAT				
<b>4. Operations Personnel</b>						
<b>OPERATIONS CHIEF</b>		DONALD FREGULIA DANIEL R DIAZ (T)		<b>DIVISION/GROUP SUPERVISOR</b>		ADAM LEYBA MARVIN VOLRIE (T)
<b>5. Resources Assigned this Period</b>						
Strike Team / Task Force / Resource Designator		LWD	Leader	Number Persons	Drop Off PT./Time	Pick Up PT./Time
<b>6. Control Operations/Work Assignments:</b>						
<ul style="list-style-type: none"> <li>Continue fire suppression repair in conjunction with Resource Advisers.</li> <li>Backhaul hose and excess equipment.</li> </ul>						
<b>7. Special Instructions:</b>						
<b>8. Division/Group Communication Summary</b>						
Function	Channel	RX Frequency N/W	RX Tone/NAC	TX Frequency N/W	TX Tone/NAC	Mode
COMMAND	4	170.4125 N	10/107.2	165.9625 N	10/107.2	A
TACTICAL	10	166.7750 N	10/107.2	166.7750 N	10/107.2	A
AIR TO GROUND	14	168.3375 N		168.3375 N		A
<b>9. Prepared By (Resource Unit Leader)</b>			<b>Approved By (Planning Section Chief)</b>		<b>Date</b>	<b>Time</b>
JAY SHAFFER			ERIC BLACK		10/05/2018	2000

**Division/Group Assignment List (ICS 204 WF)**  
**Controlled Unclassified Information//Basic**

<b>1. Incident Name:</b>				<b>3.</b>			
DELTA / HIRZ				<b>Branch:</b>		<b>Division/Group:</b>	
<b>2. Operational Period: DAY</b>						<b>B</b>	
Date/Time From: 10/06/2018 0700 SAT		Date/Time To: 10/06/2018 1900 SAT					
<b>4. Operations Personnel</b>							
<b>OPERATIONS CHIEF</b>		DONALD FREGULIA DANIEL R DIAZ (T)		<b>DIVISION/GROUP SUPERVISOR</b>		TIM RITCHEY	
<b>5. Resources Assigned this Period</b>							
Strike Team / Task Force / Resource Designator		LWD	Leader	Number Persons	Drop Off PT./Time	Pick Up PT./Time	
HC2IA GFP 15D C-118		10/09	BRANDON CAMPBELL	19	COFFEE CREEK/0700	COFFEE CREEK/1900	
HC2IA FIRESTORM 15B C-120		10/09	SHANE BRENDLINGER	20	COFFEE CREEK/0700	COFFEE CREEK/1900	
ENG3 STF 322 E-594		10/13	CHARLES DANIEL	5	COFFEE CREEK/0700	COFFEE CREEK/1900	
ENG6 FIRESTORM -9902 E-553		10/10	JAMES BARBARIA	3	COFFEE CREEK/0700	COFFEE CREEK/1900	
ENG6 LNP 76 E-554		10/10	CHAD DUNEHEW	3	COFFEE CREEK/0700	COFFEE CREEK/1900	
CHIP DIAMOND ROAD E-516		10/10	ROBERT PRATTE	1	COFFEE CREEK/0700	COFFEE CREEK/1900	
TFLD O-730		10/10	MARSHALL THOMPSON	1	COFFEE CREEK/0700	COFFEE CREEK/1900	
TFLD O-763		10/10	BERNIE BORNONG	1	COFFEE CREEK/0700	COFFEE CREEK/1900	
TFLD O-721		10/08	NATHANIEL ZALEWSKI	1	COFFEE CREEK/0700	COFFEE CREEK/1900	
TFLD(T) O-785		10/12	CHRIS OGILVIE	1	COFFEE CREEK/0700	COFFEE CREEK/1900	
EMPF O-663		10/09	DANIEL M NUNEZ	1	COFFEE CREEK/0700	COFFEE CREEK/1900	
EMPF O-668		10/09	PIERCE ACKERMAN	1	COFFEE CREEK/0700	COFFEE CREEK/1900	
EMTF O-771		10/13	ROBERT WILLIAM WESS	1	COFFEE CREEK/0700	COFFEE CREEK/1900	
EMTF O-772		10/13	KURT JOHNSON	1	COFFEE CREEK/0700	COFFEE CREEK/1900	
SOFR O-716		10/13	ADAM KOHLEY	1	COFFEE CREEK/0700	COFFEE CREEK/1900	
SOFR O-795		10/14	GARY WRIGHT	1	COFFEE CREEK/0700	COFFEE CREEK/1900	
FOBS O-282		10/10	ISAAC R HUNTER	1	COFFEE CREEK/0700	COFFEE CREEK/1900	
FOBS O-768		10/13	HENRY J FALCON	1	COFFEE CREEK/0700	COFFEE CREEK/1900	
<b>8. Division/Group Communication Summary</b>							
Function	Channel	RX Frequency N/W	RX Tone/NAC	TX Frequency N/W	TX Tone/NAC	Mode	
COMMAND	4	170.4125 N	10/107.2	165.9625 N	10/107.2	A	
TACTICAL	9	166.7250 N	10/107.2	166.7250 N	10/107.2	A	
AIR TO GROUND	14	168.3375 N		168.3375 N		A	
<b>9. Prepared By (Resource Unit Leader)</b>			<b>Approved By (Planning Section Chief)</b>			<b>Date</b>	<b>Time</b>
JAY SHAFFER			ERIC BLACK			10/05/2018	2000



**Division/Group Assignment List (ICS 204 WF)**  
 Controlled Unclassified Information//Basic

<b>1. Incident Name:</b>			<b>3.</b>			
DELTA / HIRZ			Branch:		Division/Group:	
<b>2. Operational Period:</b>			B			
DAY						
Date/Time From: 10/06/2018 0700 SAT		Date/Time To: 10/06/2018 1900 SAT				
<b>4. Operations Personnel</b>						
<b>OPERATIONS CHIEF</b>		DONALD FREGULIA DANIEL R DIAZ (T)		<b>DIVISION/GROUP SUPERVISOR</b>		TIM RITCHEY
<b>5. Resources Assigned this Period</b>						
Strike Team / Task Force / Resource Designator		LWD	Leader	Number Persons	Drop Off PT./Time	Pick Up PT./Time
<b>6. Control Operations/Work Assignments:</b>						
<ul style="list-style-type: none"> <li>• Mop up to the extent necessary to maintain containment.</li> <li>• Backhaul hose and excess equipment.</li> </ul>						
<b>7. Special Instructions:</b>						
<b>8. Division/Group Communication Summary</b>						
Function	Channel	RX Frequency N/W	RX Tone/NAC	TX Frequency N/W	TX Tone/NAC	Mode
COMMAND	4	170.4125 N	10/107.2	165.9625 N	10/107.2	A
TACTICAL	9	166.7250 N	10/107.2	166.7250 N	10/107.2	A
AIR TO GROUND	14	168.3375 N		168.3375 N		A
<b>9. Prepared By (Resource Unit Leader)</b>			<b>Approved By (Planning Section Chief)</b>		<b>Date</b>	<b>Time</b>
JAY SHAFFER			ERIC BLACK		10/05/2018	2000

**Division/Group Assignment List (ICS 204 WF)**  
Controlled Unclassified Information//Basic

<b>1. Incident Name:</b>			<b>3.</b>			
DELTA / HIRZ			Branch:		Division/Group:	
<b>2. Operational Period:</b> DAY					P	
Date/Time From: 10/06/2018 0700 SAT		Date/Time To: 10/06/2018 1900 SAT				
<b>4. Operations Personnel</b>						
<b>OPERATIONS CHIEF</b>		DONALD FREGULIA DANIEL R DIAZ		<b>DIVISION/GROUP SUPERVISOR</b>		BILLY C COVERT BRIAN JANES (T)
<b>5. Resources Assigned this Period</b>						
Strike Team / Task Force / Resource Designator		LWD	Leader	Number Persons	Drop Off PT./Time	Pick Up PT./Time
HC1 TRINITY IHC C-116		10/08	RONALD GRAVES	19	COFFEE CREEK/0700	COFFEE CREEK/1900
HC2IA GFP ENTERPRISES 15C C-117		10/09	JASON CAMPBELL	20	COFFEE CREEK/0700	COFFEE CREEK/1900
HC2IA LASSEN CREW 9 C-121		10/06	ALLEN SCHULTZE	18	COFFEE CREEK/0700	COFFEE CREEK/1900
HC2IA FIRESTORM C-124		10/10	ALEX RHEA	19	COFFEE CREEK/0700	COFFEE CREEK/1900
HC2I FIRESTORM 19 C-135		10/13	DAVE WELLS	20	COFFEE CREEK/0700	COFFEE CREEK/1900
ES3 STEN - 3680C (CA-PNF) E-543		10/10	CHRIS KING	27	COFFEE CREEK/0700	COFFEE CREEK/1900
ENG3 PNF 330 E-558		10/10	TRAVIS LOPES	5	COFFEE CREEK/0700	COFFEE CREEK/1900
ENG3 MT ADAMS E-596		10/13	MIKE STUTTS	3	COFFEE CREEK/0700	COFFEE CREEK/1900
ENG6 FIRESTORM E-692		10/10	SEE CHECK IN	3	COFFEE CREEK/0700	COFFEE CREEK/1900
WTS2 LET-ER-BUCK E-666		10/17	BOB STENT	1	COFFEE CREEK/0700	COFFEE CREEK/1900
WTS2 WATERDOGG E-676		10/09	ANTHONT PALAZZO	1	COFFEE CREEK/0700	COFFEE CREEK/1900
TFLD O-729		10/12	CRAIG BUNCE	1	COFFEE CREEK/0700	COFFEE CREEK/1900
TFLD O-780		10/12	ANGEL D AVILA (T)	1	COFFEE CREEK/0700	COFFEE CREEK/1900
FMOD MILLER WOOD PRODUCTS O-703		10/09	EUGENE GRIFFIN	2	COFFEE CREEK/0700	COFFEE CREEK/1900
EMPF O-665		10/10	MATTHEW MCCARTHY	1	COFFEE CREEK/0700	COFFEE CREEK/1900
EMPF O-666		10/09	MICHAEL BRAZIEL	1	COFFEE CREEK/0700	COFFEE CREEK/1900
EMPF O-667		10/09	TED SOLOSKI	1	COFFEE CREEK/0700	COFFEE CREEK/1900
EMTF O-773		10/13	BRIAN MACIAS	1	COFFEE CREEK/0700	COFFEE CREEK/1900
UTV MOUNTAIN MEDICS E-659		10/14	ADAM BURNS	1	COFFEE CREEK/0700	COFFEE CREEK/1900
SOFR O-747		10/10	BILL SANDBORG	1	COFFEE CREEK/0700	COFFEE CREEK/1900
SOFR (T) O-786		10/12	TROY AL MAGUIRE	1	COFFEE CREEK/0700	COFFEE CREEK/1900
<b>8. Division/Group Communication Summary</b>						
Function	Channel	RX Frequency N/W	RX Tone/NAC	TX Frequency N/W	TX Tone/NAC	Mode
COMMAND	4	170.4125 N	10/107.2	165.9625 N	10/107.2	A
TACTICAL	12	162.1625 N	10/107.2	162.1625 N	10/107.2	A
AIR TO GROUND	14	168.3375 N		168.3375 N		A
<b>9. Prepared By (Resource Unit Leader)</b>		<b>Approved By (Planning Section Chief)</b>		<b>Date</b>	<b>Time</b>	
JAY SHAFFER		ERIC BLACK		10/05/2018	2000	

## Division/Group Assignment List (ICS 204 WF)

Controlled Unclassified Information//Basic

<b>1. Incident Name:</b>				<b>3.</b>			
DELTA / HIRZ				Branch:		Division/Group:  <b>P</b>	
<b>2. Operational Period:</b> <b>DAY</b>							
Date/Time From: 10/06/2018 0700                      SAT		Date/Time To: 10/06/2018 1900                      SAT					
<b>4. Operations Personnel</b>							
<b>OPERATIONS CHIEF</b>		DONALD FREGULIA DANIEL R DIAZ		<b>DIVISION/GROUP SUPERVISOR</b>		BILLY C COVERT BRIAN JANES (T)	
<b>5. Resources Assigned this Period</b>							
Strike Team / Task Force / Resource Designator		LWD	Leader		Number Persons	Drop Off PT./Time	Pick Up PT./Time
REMS 4 O-710		10/10	ROBERT BROWER		4	COFFEE CREEK/0700	COFFEE CREEK/1900
<b>6. Control Operations/Work Assignments:</b>							
<ul style="list-style-type: none"> <li>• Backhaul hose and excess equipment.</li> <li>• Mop up to the extent necessary to maintain containment.</li> </ul>							
<b>7. Special Instructions:</b>							
<b>8. Division/Group Communication Summary</b>							
Function	Channel	RX Frequency N/W	RX Tone/NAC	TX Frequency N/W	TX Tone/NAC	Mode	
COMMAND	4	170.4125 N	10/107.2	165.9625 N	10/107.2	A	
TACTICAL	12	162.1625 N	10/107.2	162.1625 N	10/107.2	A	
AIR TO GROUND	14	168.3375 N		168.3375 N		A	
<b>9. Prepared By (Resource Unit Leader)</b>			<b>Approved By (Planning Section Chief)</b>			<b>Date</b>	<b>Time</b>
JAY SHAFFER			ERIC BLACK			10/05/2018	2000

**Division/Group Assignment List (ICS 204 WF)**  
Controlled Unclassified Information//Basic

<b>1. Incident Name:</b>			<b>3.</b>			
DELTA / HIRZ			Branch:		Division/Group:	
<b>2. Operational Period:</b> DAY					<b>TASK FORCE PATROL</b>	
Date/Time From: 10/06/2018 0700 SAT	Date/Time To: 10/06/2018 1900 SAT					
<b>4. Operations Personnel</b>						
<b>OPERATIONS CHIEF</b>		DONALD FREGULIA DANIEL R DIAZ		<b>TASK FORCE LEADER</b>		LONNY HAGEDON
<b>5. Resources Assigned this Period</b>						
Strike Team / Task Force / Resource Designator	LWD	Leader	Number Persons	Drop Off PT./Time	Pick Up PT./Time	
ENG6 FIRESTORM E-555	10/10	RONALD SARTAIN JR	3	MCCLLOUD ICP/0700	MCCLLOUD ICP/1900	
ENG6 3141 E-556	10/11	PHILLIP LEWIS	3	MCCLLOUD ICP/0700	MCCLLOUD ICP/1900	
ENG6 FAIRVIEW VALLEY E-557	10/11	RYAN COLEMAN	3	MCCLLOUD ICP/0700	MCCLLOUD ICP/1900	
ENG6 MT. ADAMS E-606	10/13	PAULA HOLTER	3	MCCLLOUD ICP/0700	MCCLLOUD ICP/1900	
ENG6 LITE EM UP E-607	10/15	BOB VIGER	3	MCCLLOUD ICP/0700	MCCLLOUD ICP/1900	
SOFR O-713	10/13	JOHN STRICKLAND	1	MCCLLOUD ICP/0700	MCCLLOUD ICP/1900	
SOFR(T) O-748	10/11	SAGE HOWELL	1	MCCLLOUD ICP/0700	MCCLLOUD ICP/1900	
<b>6. Control Operations/Work Assignments:</b>						
<ul style="list-style-type: none"> <li>Patrol I 5 corridor and adjacent control lines.</li> <li>Backhaul hose and excess equipment.</li> </ul>						
<b>7. Special Instructions:</b>						
<ul style="list-style-type: none"> <li>Be prepared to support Forest requests for I.A.</li> <li>Backhaul all unneeded equipment.</li> </ul> <p><b>If Interstate 5 needs to be closed:</b></p> <ul style="list-style-type: none"> <li>1. Operations is notified.</li> <li>2. Operations notifies communications.</li> <li>3. Communications notifies CHP dispatch.</li> </ul>						
<b>8. Division/Group Communication Summary</b>						
Function	Channel	RX Frequency N/W	RX Tone/NAC	TX Frequency N/W	TX Tone/NAC	Mode
COMMAND	6	169.5375 N	10/107.2	164.7125	10/107.2	A
TACTICAL	7	168.0500 N	10/107.2	168.0500 N	10/107.2	A
AIR TO GROUND	14	168.3375 N		168.3375 N		A
<b>9. Prepared By (Resource Unit Leader)</b>			<b>Approved By (Planning Section Chief)</b>		<b>Date</b>	<b>Time</b>
JAY SHAFFER			ERIC BLACK		10/05/2018	2000

**AIR OPERATIONS SUMMARY**

Prepared By: Doug Ledgerwood *DL* Prepared Date: 05 Oct, 2018 Prepared Time: 1830

<b>1. INCIDENT NAME:</b> Delta Fire	<b>2. OPS PERIOD DATE:</b> 6 Oct, 2018	<b>START TIME:</b> 0830	<b>END TIME:</b> 1900	<b>SUNRISE:</b> 0711	<b>SUNSET:</b> 1843
<b>3. REMARKS (Safety Notes, Hazards, Air Operations Special Equipment, etc.):</b> Helicopter module to remain ready for 10 minute response. High tension power lines in fire area, review hazard map for locations prior to flight.  <b>SEE AND AVOID – there is no TFR on the fire.</b>			<b>4. READY ALERT AIRCRAFT MEDEVAC - See Medical Plan</b>  <b>ICP Medical Helispot:</b> 41° 15.878' X 122° 07.596'		
			<b>5. TFR #:</b> None		

6. PERSONNEL	NAME	PHONE #	7. FREQUENCIES	AM	FM	8. FIXED-WING- Type/ Make-Model/ N#/ Base
AOBD	Doug Ledgerwood	541-852-0633	Air to Air	124.5750		AIRTANKERS- TBA
ASGS			Air to Ground		168.3375	LEAD PLANES- TBA
ATGS						ATGS AIRCRAFT- TBA
HLCO/ATGS						
H-506 Contact	Josh Wilson	530-356-9892	Command See Communications Plan			
			DECK		163.1000	
			CALCORD tone guarded both sides		156.0750 Tone 6 (156.7) Tx & Rx	
			Air Guard		168.6250 Tone 1 (110.9) Tx & Rx	

**9. HELICOPTERS (Use Additional Sheets as Necessary)**

Call Sign	TY	MAKE/ MODEL	BASE	AVAIL	START	REMARKS	Call Sign	TY	MAKE/ MODEL	BASE	AVAIL	START	REMARKS
H-506	2	Bell 205A1+	Redding	0830	0800	EU N205BT							

**10. MISSIONS**

Water drops as needed.



## Proper Use of Trigger Points

Accurate situational awareness (SA) requires constant reassessment of conditions (existing or potential) that may impact the safety and effectiveness of tactics. Monitoring for the 18 Watchout Situations and establishing operational / environmental limits ("trigger points") ahead of time can help to focus SA, prompt reassessment, and help you re-evaluate the risk of current actions. The following items are things to consider in your planning and discussion. Remember, trigger points are NOT decision makers, but serve as predetermined cues to prompt you to re-evaluate the current and potential situation and associated risks and help you to determine and implement the proper course of action.

- Preplan! Don't wait until you're in the wrong place at the wrong time – with no time.
- Trigger points should be based on measurable factors such as:
  - RH
  - Winds
  - Fire Behavior
  - Topographical boundaries
  - Time constraints/Time of day
  - Time/distance to safety zones
  - Loss of suppression resources
  - Other operational considerations (e.g., firefighter fatigue, loss of lookouts or communication, weather change)

As you approach predetermined trigger points, go through the Risk Management Process to help you decide if a change in tactics is required. (See the [Incident Response Pocket Guide \[1\]](#))

- Gather information to assure good Situational Awareness
- Assess hazards to anticipate serious risks
- Establish hazard controls to mitigate serious risks
- Make decisions based on your ability to mitigate those serious risks
- Evaluate effectiveness of current actions

Command/Leadership responsibilities when changing tactics

- Communicate the changes to your subordinates, as well as to adjacent forces and up the chain of command
- Account for all your people
- Make sure everyone knows and follows the new plan

## INCIDENT SAFETY ANALYSIS 215a

Delta/Hirz Fire CA-SHF-001444 - Saturday, October 06, 2018

8. Location	9. Hazard	6. Control or Abatement Action (Engineering, Administrative, PPE, Avoidance, Education, etc)
All Divisions	Hazard Trees	<ul style="list-style-type: none"> <li>~ Follow "Hazard Tree Safety" guidelines, IRPG page 22.</li> <li>~ Post lookouts, or use a spotter in mop-up areas with personnel.</li> <li>~ Don't park vehicles or take breaks in high concentrations of hazard trees.</li> <li>~ Establish trigger points for disengagement during high wind events.</li> <li>~ Remember that the hazard zone extends a minimum of 2 1/2 tree heights.</li> </ul>
All Divisions	Chain Saw Operations	<ul style="list-style-type: none"> <li>~ Follow "Hazard Tree Safety" guidelines, IRPG Pg 22</li> <li>~ Follow "Procedural Felling Operations" IRPG Pg 85.</li> <li>~ Look up, Look down, Look around for hazard tree indicators.</li> <li>~ Only fell and buck trees within your expertise, and training.</li> <li>~ Do not fall trees during high wind events.</li> <li>~ Ensure proper use of all required PPE.</li> </ul>
All Divisions	Heavy Equipment Operations	<ul style="list-style-type: none"> <li>~ Refer to "Working with Heavy Equipment" IRPG Pg 86</li> <li>~ Ensure communications are established with operators.</li> <li>~ Use hand signals if other communications are unavailable.</li> <li>~ Maintain a 50'-100' exclusion area around equipment and increase it to 1 1/2 times tree height when in timber.</li> <li>~ Use a spotter when backing.</li> <li>~ Avoid working below heavy equipment.</li> </ul>
All Divisions	Driving & Traffic	<ul style="list-style-type: none"> <li>~ Practice "Defensive Driving" techniques traveling on all roads and city streets.</li> <li>~ Use spotters &amp; Honk horn to alert personnel when backing.</li> <li>~ Follow Driving LCES (Lights, Chock blocks, Emergency brake, Seat belts).</li> <li>~ Always use headlights.</li> <li>~ Yield to pedestrians and bicycles.</li> <li>~ Observe posted speed limits.</li> <li>~ Use the 3 second rule for following distance when driving.</li> <li>~ Use chock blocks, turn wheels into hill.</li> <li>~ Avoid distractions (eating, cell phones, radio).</li> <li>~ Ensure that windshields are kept clean of dust and bugs.</li> <li>~ Refer to "Smoke and Transportation Safety" IRPG Pg 31</li> <li>~ Refer to "Roadside Response Safety" IRPG Pg 26</li> <li>~ Scout roads that are wet or muddy prior to committing</li> <li>~ Drive slower in wet conditions on paved roads.</li> </ul>
All Divisions	Helicopter Operations	<ul style="list-style-type: none"> <li>~ Ensure positive communication with all air resources.</li> <li>~ Don't plan on air resources for medical transport or resupply.</li> <li>~ Follow "Aviation Watch-Out Situations" IRPG Pg 46.</li> <li>~ Refer to "Directing Bucket or Retardant Drops" IRPG Pg 58 .</li> <li>~ Refer to "Aircraft Mishap Response Procedure" IRPG Pg 62.</li> <li>~ Stay clear of all bucket drops when suppression actions are in place and allow 1 minute prior to re-entry.</li> <li>~ Monitor A-G communications.</li> </ul>
All Divisions	Power Utilities	<ul style="list-style-type: none"> <li>~ Refer to the IRPG page 24 for Power Line Safety.</li> <li>~ Notify all personnel of down electrical lines.</li> <li>~ Always treat downed wires as energized.</li> <li>~ Identify and avoid high tension transmission lines.</li> <li>~ Identify and avoid high pressure natural gas lines.</li> <li>~ Identify and avoid damaged gas service near structures.</li> <li>~ Be aware of utility restoration in your work area.</li> </ul>

## INCIDENT SAFETY ANALYSIS 215a

All Divisions	Steep Terrain & Rolling Debris	<ul style="list-style-type: none"> <li>~ Maintain 8'-10' spacing when working &amp; walking.</li> <li>~ Don't work above any personnel.</li> <li>~ Be on the lookout for rolling rocks, debris, or burning material.</li> <li>~ Evaluate necessity to send personnel in areas with limited access.</li> <li>~ Post lookouts IRPG Pg 7</li> </ul>
All Divisions	Fatigue & Over Exertion	<ul style="list-style-type: none"> <li>~ Drink 1 quart of water each hour during and after work.</li> <li>~ Rotate crews out of smoky areas.</li> <li>~ Set a reasonable work pace and allow adequate rest breaks while on the project.</li> <li>~ Stagger work crews start time to limit fatigue.</li> <li>~ Use buddy system to monitor personnel of heat related and fatigue issues.</li> <li>~ Follow work / rest guidelines.</li> </ul>
All Divisions	Fireline Hazards	<ul style="list-style-type: none"> <li>~ Refer to "Fireline Location" considerations, IRPG Pg 84</li> <li>~ Do not work directly above or below personnel during firing and mop-up operations.</li> <li>~ Watch for falling and rolling debris on steep slopes.</li> <li>~ Alert crew personnel of rolling debris by yelling to affected individuals.</li> <li>~ Position debris that could roll vertically on slope.</li> <li>~ Avoid stepping over debris that could roll by walking around object.</li> <li>~ Use caution when working around stump holes/ash pits.</li> <li>~ Avoid radiant heat by wearing appropriate PPE correctly.</li> <li>~ Use correct tool for task assigned.</li> <li>~ Flag and isolate all HAZMAT and alert all personnel working in Division.</li> <li>~ Follow WUI recommendations, IRPG Pg 12.</li> </ul>
All Divisions	Mop-up & Repair	<ul style="list-style-type: none"> <li>~ Do not work above or below personnel during rehab/mop-up operations.</li> <li>~ Alert crew personnel of rolling debris by yelling to affected individuals.</li> <li>~ Position debris that could roll vertically on slope.</li> <li>~ Wear eye protection.</li> </ul>
All Divisions	Communications	<ul style="list-style-type: none"> <li>~ Maintain communication with aviation resources, and suppression organization.</li> <li>~ Ensure all know frequency and protocol for contacting resources.</li> <li>~ Utilize the ICS 205.</li> <li>~ Utilize human repeaters when working in dead spots.</li> </ul>





**Medical Incident Report- Controlled Unclassified Information//Basic**

FOR A **NON-EMERGENCY INCIDENT**: WORK THROUGH CHAIN OF COMMAND TO REPORT AND TRANSPORT INJURED PERSONNEL AS NECESSARY.

FOR A **MEDICAL EMERGENCY**: IDENTIFY ON SCENE INCIDENT COMMANDER BY NAME AND POSITION AND ANNOUNCE "MEDICAL EMERGENCY" TO INITIATE RESPONSE FROM COMMUNICATIONS

**Use the following items to communicate situation to communications/dispatch.**

**1. CONTACT COMMUNICATIONS / DISPATCH** (Verify correct frequency prior to starting report)

*Ex: "Communications, Div. Alpha. Stand-by for Emergency Traffic."*

**2. INCIDENT STATUS:** Provide incident summary (including number of patients) and command structure.

*Ex: "Communications, I have a Red priority patient, unconscious, struck by a falling tree.*

*Requesting air ambulance to Forest Road 1 at (Lat./Long.)*

*"This will be the Trout Meadow Medical Incident, IC is TFLD Jones. EMT Smith is providing medical care."*

Severity of Emergency AND Transport Priority (priority 1, 2, 3)	<input type="checkbox"/> <b>RED / PRIORITY 1 Life or limb threatening injury or illness. Evacuation need is IMMEDIATE</b> <i>Ex: Unconscious, difficulty breathing, bleeding severely, 2° - 3° burns more than 4 palm sizes, heat stroke, disoriented.</i>	
	<input type="checkbox"/> <b>YELLOW / PRIORITY 2 Serious Injury or illness. Evacuation may be DELAYED if necessary.</b> <i>Ex: Significant trauma, unable to walk, 2° - 3° burns not more than 1-3 palm sizes.</i>	
	<input type="checkbox"/> <b>GREEN / PRIORITY 3 Minor Injury or illness. Non-Emergency transport</b> <i>Ex: Sprains, strains, minor heat-related illness.</i>	
Nature of Injury or Illness & Mechanism of Injury		<i>Brief Summary of Injury or Illness (Ex: Unconscious, Struck by Falling Tree)</i>
Transport Request		<i>Air Ambulance / Short Haul/Hoist Ground Ambulance / Other</i>
Patient Location		<i>Descriptive Location &amp; Lat. / Long. (WGS84)</i>
Incident Name		<i>Geographic Name + "Medical" (Ex: Trout Meadow Medical)</i>
On-Scene Incident Commander		<i>Name of on-scene IC of Incident within an Incident (Ex: TFLD Jones)</i>
Crew Patient Care		<i>Name of Care Provider (Ex: EMT Smith)</i>

**3. INITIAL PATIENT ASSESSMENT:** Complete this section for each patient as applicable (start with the most severe patient)

Agency Affiliation: (NO PATIENT NAMES)	Federal	Contractor	Local Government
--	---------	------------	------------------

Patient Assessment:	Age:	Weight:	Chief Complaint:
---------------------	------	---------	------------------

(If pertinent to Injury)	Skin Signs: (color/moisture/temp)	Level of Consciousness:	BP:	HR:	Respirations:
--------------------------	-----------------------------------	-------------------------	-----	-----	---------------

Treatment:

**4. TRANSPORT PLAN:**

Evacuation Location (drop point, intersection, helispot, Lat. / Long, hazards)	Patient's ETA to Location:
--	----------------------------

**5. ADDITIONAL RESOURCES / EQUIPMENT NEEDS:**

*Paramedic / EMT - Crews - Immobilization Devices - AED - Oxygen - Trauma Bag - IV/Fluid(s) - Splints - Rope rescue - Wheeled litter - HAZMAT - Extrication*

**6. COMMUNICATIONS: Identify State Air/Ground EMS Frequencies and Hospital Contacts as applicable**

Function	Channel Name/Number	Receive (RX)	Tone/NAC *	Transmit (TX)	Tone/NAC *
COMMAND					
AIR-TO-GRND	Contact on CALCORD When aircraft in line of site	156.0750 N	156.7	156.0750	156.7
TACTICAL					

**7. CONTINGENCY: Considerations:** If primary options fail, what actions can be implemented in conjunction with primary evacuation method? Be thinking ahead.

**8. ADDITIONAL INFORMATION:** Updates/Changes, etc.

**REMEMBER:** Confirm ETA's of resources ordered. Act according to your level of training  
Be Alert - Keep Calm - Think Clearly - Act Decisively

\*\*\* Follow up with MEDL upon return to ICP \*\*\*

<b>INCIDENT RADIO COMMUNICATIONS PLAN COMMAND</b>	<b>HIRZ CA-SHF-001223 DELTA CA-SHF-001444</b>	Date/Time Prepared 10/5/2018 1800
Incident Name		Operational Period Date/Time 10/6/2018 0700-2000

Only frequencies listed on this 205 are authorized for use on this incident.				Hand programmers accept all responsibility for the use of unauthorized frequencies.					
Ch #	Function	Channel Name	Assignment	RX Freq N or M	RX Tone	TX Freq N or M	TX Tone	Mod	Remarks
1	COMMAND	CMD 1	COMMAND 1	171.5375 N	107.2	164.0875 N	107.2	A	COMMAND ON H-79 LINKED W/ 2,3,4,5,6 C31
2	COMMAND	CMD 2	COMMAND 2	172.6500 N	107.2	164.7500 N	107.2	A	COMMAND ON SUGARLOAF LINKED W/ 1,3,4,5,6 C48
3	COMMAND	CMD 3	COMMAND 3	170.4250 N	107.2	168.0750 N	107.2	A	COMMAND ON LEHIGH LINKED W/ 1,2,4,5,6 C3
4	COMMAND	CMD 4	COMMAND 4	170.4125 N	107.2	165.9625 N	107.2	A	COMMAND ON BONANZA KING LINKED W/ 1,2,3,5,6 C10
5	COMMAND	CMD 5	COMMAND 5	170.0875 N	107.2	162.8125 N	107.2	A	COMMAND ON TOMBSTONE MTN LINKED W/ 1,2,3,4,6, C51
6	COMMAND	CMD 6	COMMAND 6	169.5375 N	107.2	164.7125 N	107.2	A	COMMAND ON GREY BUTTE LINKED W/ 1,2,3,4,5 C8
7	TAC	NIFC T1	Patrol task force North Patrol task force South	168.0500 N	107.2	168.0500 N	107.2	A	
8	TAC	NIFC T3		168.6000 N	107.2	168.6000 N	107.2	A	Not assigned
9	TAC	NIFC T5	DIVISION B	166.7250 N	107.2	166.7250 N	107.2	A	
10	TAC	NIFC T6	Hirz Repair South Delta Repair North	166.7750 N	107.2	166.7750 N	107.2	A	
11	TAC	NIFC T7	Hirz Repair North Delta Repair South	168.2500 N	107.2	168.2500 N	107.2	A	
12	TAC	TAC 12	Division P	162.1625 N	107.2	162.1625 N	107.2	A	
13	CALCORD	CALCORD	ALL DIVISIONS	156.0750 N	156.7	156.0750	156.7	A	MEDICAL EMERGENCY TACTICAL
14	A/G	A/G	ALL DIVISIONS	168.3375 N		168.3375 N		A	AIR TO GROUND
15									
16	AIR GUARD	AIR GUARD	ALL DIVISIONS	168.6250 N		168.6250 N	110.9	A	EMERGENCY ONLY

Prepared by  
Arnie Irvine, COML *AB Irvine*

Incident Location  
ICP MCCLOUD, CA

Incident Name		Date/Time Prepared		Operational Period Date/Time				
HIRZ CA-SHF-001223 DELTA I/A CA-SHF-001444		10/5/2018 1800		10/6/18, 0700-2000				
Channel Name		Assignment		Hand programmers accept all responsibility for the use of unauthorized frequencies.				
Function	Channel Name	Assignment	RX Freq N or W	RX Tone	TX Freq N or W	TX Tone	Mode	Remarks
1	COMMAND	SMMU	I/A	166.9875	CSQ	167.9	A	SHASTA MCCLOUD MANAGEMENT UNIT
2	COMMAND	SHF-R	I/A	171.5750	CSQ	OST	A	USFS ECC"REDDING" USE TONE 6 GREY BUTTE MT.
3	TACTICAL	NIFC T2	I/A	168.2000	CSQ		A	
4	TACTICAL	R5 TAC 4	I/A	166.5500	CSQ		A	
5	TACTICAL	R5 TAC 5	I/A	167.1125	CSQ		A	
6	COMMAND	SERV-R	I/A	171.5000	CSQ	OST	A	USE TONE 6 GRAY BUTTE MT.
7	COMMAND	SKU	I/A	151.3200	156.7	OST	A	CDF ECC "REDDING" USE TONE 6 BIG VALLEY
8	COMMAND	CDF C2	I/A	166.5500	103.5	OST	A	USE TONE 8 SOUTH FORK MT.
9	TACTICAL	CDF T7	I/A	151.3400	192.8	192.8	A	
10	TACTICAL	CDF T8	I/A	151.3700	192.8	192.8	A	
11	TACTICAL	CDF T9	I/A	151.3850	192.8	192.8	A	
12	COMMAND	CDF C10	I/A	151.1900	103.5	OST	A	USE TONE 5 BIG VALLEY MT.
13	COMMAND	SIS CMD	I/A	154.2500	CSQ	OST	A	USE TONE 3
14	TACTICAL	CALCORD	MEDICAL COORDINATION	156.0750	156.7	156.7	A	
15	TACTICAL	R5 AG08	AIR TO GROUND	166.8750	CSQ		A	I/A AIR TO GROUND
16	TACTICAL	R5 AG43	AIR TO GROUND	167.6000	CSQ		A	I/A AIR TO GROUND
Prepared by		Incident Location						
Arnie Irvine, COM1		ICP MCCLOUD, CA						



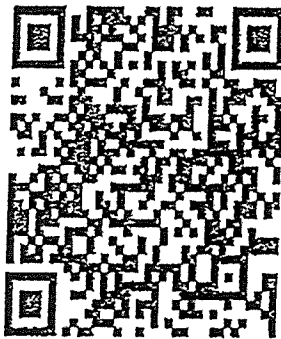
### Local Government Resources on CFAA

If you are demobing from this incident and there is no OES AREP on site

F-42 thru the Incident Finance Section Chief

The Incident keeps the Pink copy and you keep the Golden.  
The Original and Green you mail to OES Headquarters as per the  
instructions on the front of your F-42

### OES JOB AIDS, FORMS, F-42 SAMPLES AND CFAA AGREEMENT



**Questions?**

**Your OES Fire & Rescue Region III AREP is**

**Patrick Titus**

**916-634-9225**

# **Delta-Hirz Fire Suppression Repair**

## **Repair Objectives**

- **Minimize Surface and Gully Erosion**
- **Minimize Loss of Soil Productivity due to Erosion In Cleared Areas**
- **Repair Meadows and Wetlands Damaged By Suppression Activities**
- **Minimize Spread of Noxious Weed Infestations**
- **Minimize Excessive Side-Cast Fuels Along Roads**
- **Minimize Impacts to Inventoried Roadless Areas and Wild & Scenic River Corridors**
- **Repair Impacts to Cultural and Historic Resources**
- **Repair Damage to National Forest Roads and Trails Caused by Fire Suppression Activities**
- **Review by Agency READ/REAFs for On-Site Verification of Objectives Completed**

## **Suppression Repair Focus**

- **Dozer Lines**
- **Hand Lines**
- **Roads and Trails**
- **Safety Zones and Staging Areas**
- **Drop Points**
- **Helispots**
- **Water Sources**

## Effective Waterbars

When locating and building water bars, place them the right **distance** apart, at a **diagonal** to the fireline, so that they **divert**, then **discharge**, then **dissipate** the energy of the flowing water. Be sure to make them deep enough so they'll be durable, and that soil does **not block** the water bar outlet.

### Recommended spacing for waterbars on firelines.

Fireline slope %	Maximum Distance Apart (feet)
1 – 5	200
6 – 20	125
21 – 40	60
41 – 60	40
>60	25

*Waterbars should be at least 2 pulaski (4-6 inches) widths wide and 12-24 inches high for handlines.*

*Waterbars should be no more 2-3 feet tall on dozer lines to enable future access.*

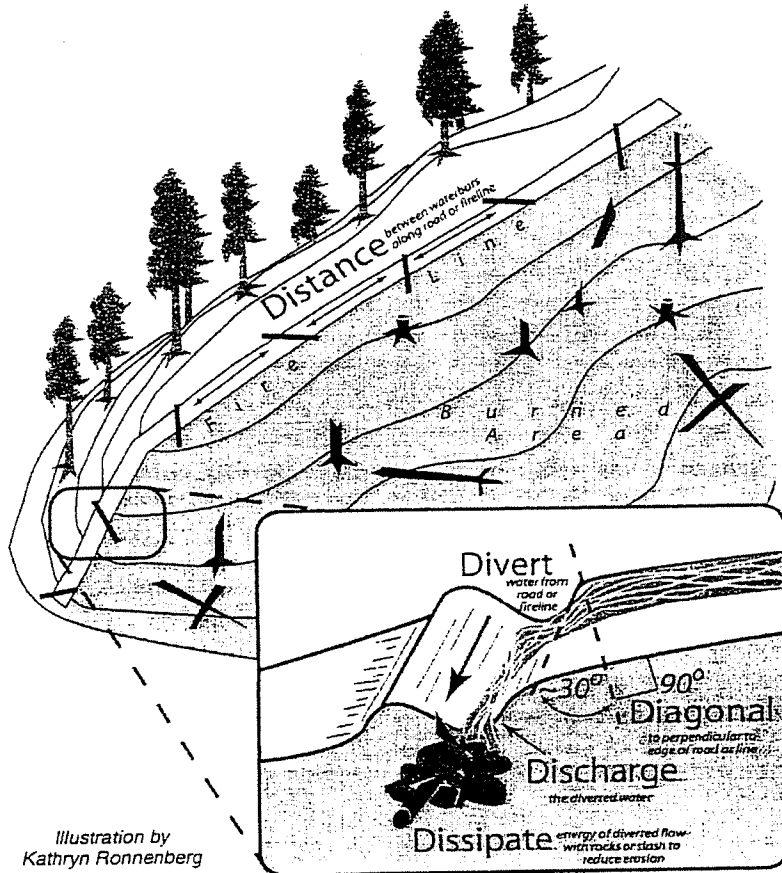


Illustration by  
Kathryn Ronnenberg

## Stage 2 Suppression Repair Guidelines

(Apply to National Forest System Lands only on dozer lines with moderate to heavy suppression generated debris)

### Applicable Suppression Repair Plan Objectives

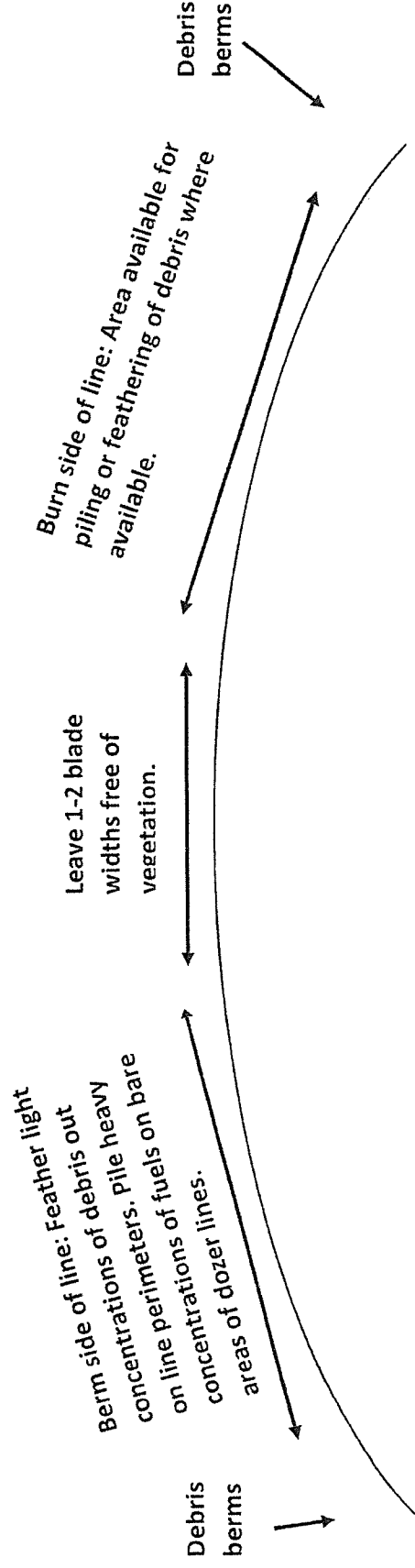
- Minimize loss of soil productivity due to potential erosion in cleared areas.
- Minimize surface erosion.
- Minimize excessive side-cast fuels.

### General Instructions

- Pile excessive amounts of suppression generated debris.
- Smaller concentrations of suppression generated debris can be feathered back into scraped side slope areas in order to breakdown fuel concentrations and reduce erosion.

### Piling Specifications

- Piles should be located at least 10 feet away from tree boles and preferably out of the drip line of the canopy where possible.
- If working in close or closed canopy piles should be built in a configuration that prevents excessive tree scorch (e.g. small piles, windrowed piles).
- If working in large openings on large dozer lines piles can be larger (e.g. 25x25 feet).
- Compress piles as much as possible to improve burn consumption.
- Piles should be clean (free of soil) to ensure adequate consumption during burning and reduced risk of escape in spring.





10/06/2018

TENTATIVE RELEASE

DELTA US-CA-SHF-001444

**CREWS**

C-127	0800	(HC1)	KINGS RIVER HOTSHOTS IHC
C-128	0800	(HC1)	LOS PADRES IHC

**EQUIPMENT**

E-559	0800	(ENG3)	FIRESTORM 9908
E-560	0800	(ENG3)	TNF E-73
E-561	0800	(ENG3)	TNF E-62
E-562	0800	(ENG3)	ENF E- 313
E-563	0800	(ENG3)	TMU 341
E-592	0800	(ENG3)	MNF E-332
E-588	1000	(ENG6)	BNP E-675
E-602	1000	(ENG3)	ATIRA GST - E3139
E-603	1000	(ENG3)	ATIRA GST E3140
E-604	1000	(ENG3)	DEER MOUNTAIN - E 12
E-605	1000	(ENG3)	J3 CONTRACTING

**OVERHEAD**

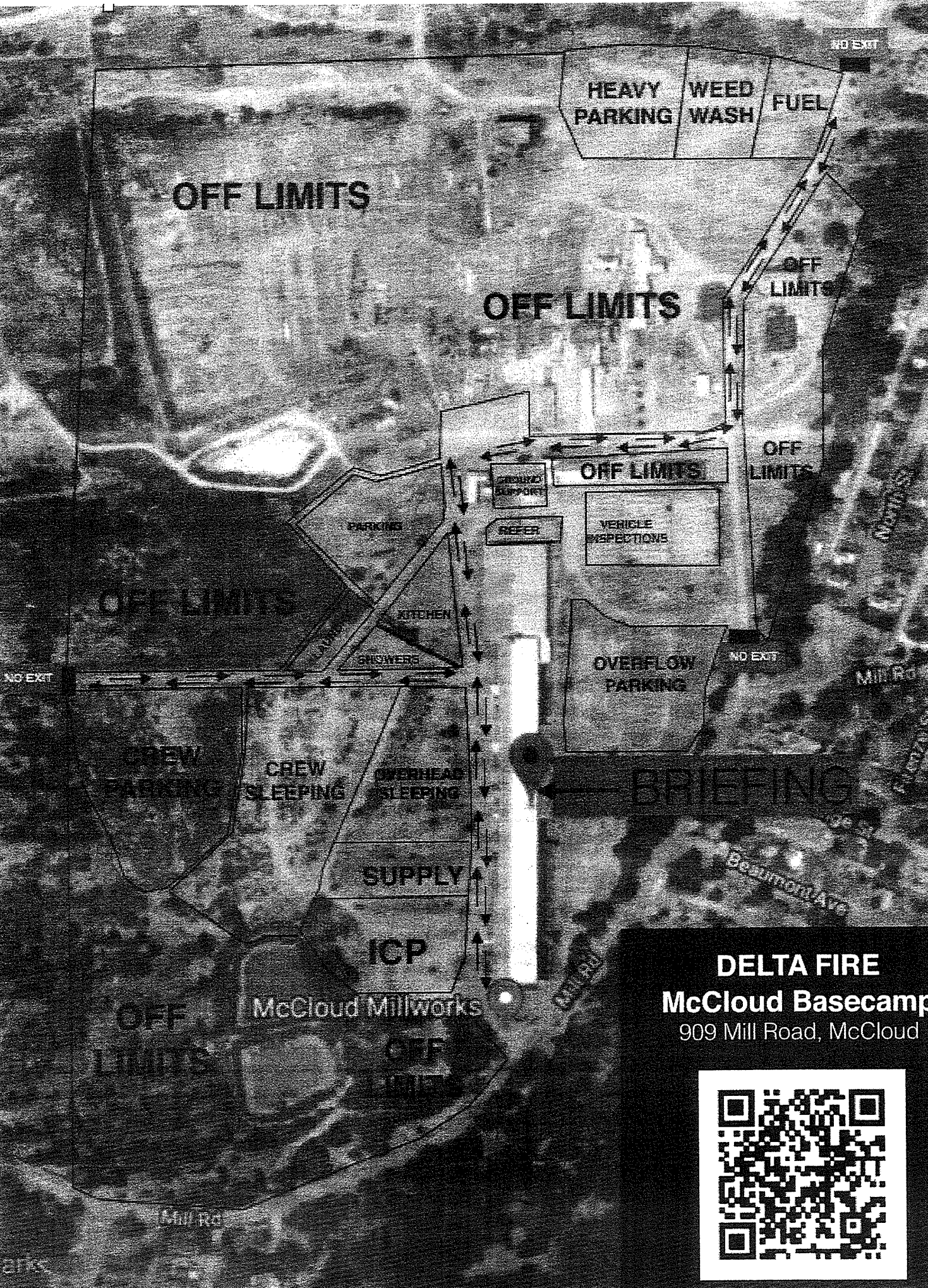
O-458	0800	(EQTR)	AMES, LAWRENCE ALAN
O-647	0800	(GSUL)	BAILEY, JACOB S
O-673	0800	(DIVS)	BIRCH, LUCAS D
O-564	0800	(TFLD)	BRAWLEY, STEVEN
O-641	0800	(PIO2)	THIBIDEAU, MARK
O-554	0800	(EQTR)	ZEHNDER, SCOTT
O-710	1800	(THSP)	REMS -4-- XSA REMS 1
O-669	1800	(RES)	REMS 5 - XMY REMS
O-710.5	1800	(PU)	4X4 PICKUP

10/06/2018

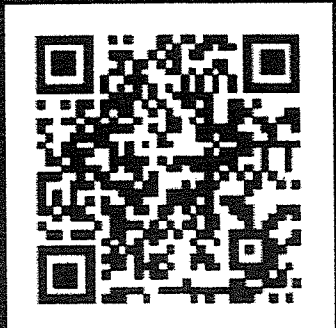
TENTATIVE RELEASE

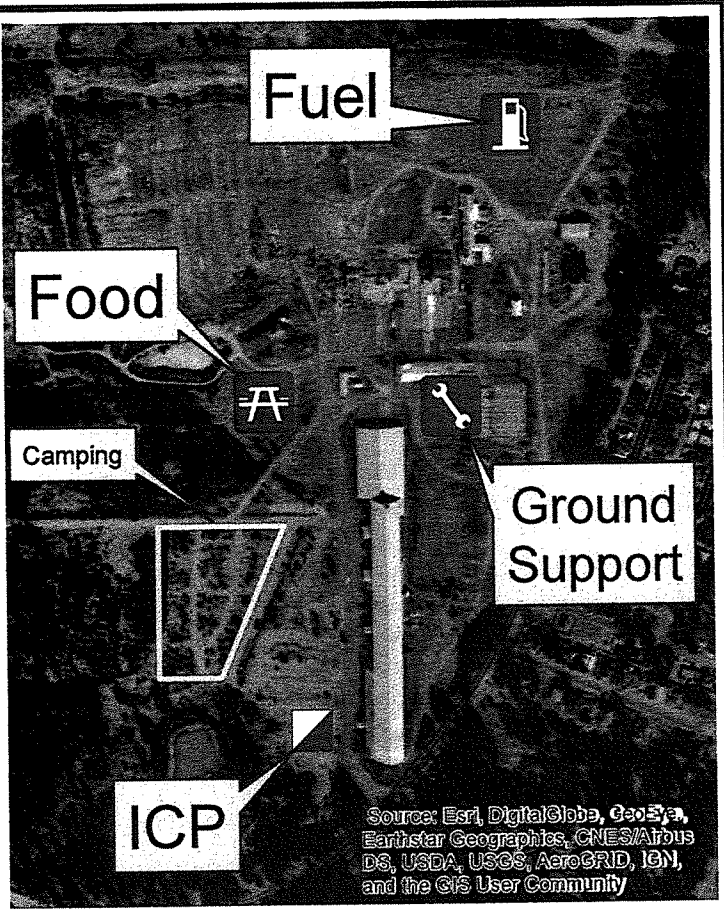
DELTA US-CA-SHF-001444

O-710.6	1800	(PU)	4X4 PICKUP
O-710.3	1800	(THSP)	BROUWER, ROBERT
O-710.1	1800	(THSP)	FITCH, WILLIAM
O-710.4	1800	(THSP)	LUCERO, BRIAN
O-710.2	1800	(THSP)	WELCH, CHRISTOPHER B



**DELTA FIRE**  
**McCloud Basecamp**  
909 Mill Road, McCloud





**Morning Briefing**

**Facilities**

**Supply**

**IC**

**Document**

**Meeting**

**GISS**

**OPS  
MEDL  
Safety  
FBAN  
IMET**

**STCN  
DMOB  
RESL  
SITL**

**COPY**

**Finance**

**Logistics  
Ordering**

**Public  
Info**

**IT  
Training**

**PLANS**

**Comms**

**READ  
REAF**



