

- CORRECTED -

HIRZ FIRE

CA-SHF-001223

P5L2ZM (0514)



INCIDENT ACTION PLAN

DAY SHIFT

SEPTEMBER 03, 2018 / 0600 - 1800

NIGHT SHIFT

SEPTEMBER 03 - 04, 2018 / 1800 - 0600



**FIRE
INFORMATION #
(530) 628-0039**



INCIDENT MAPS

INCIDENT OBJECTIVES1. Incident Name
HIRZ FIRE2. Date
09/02/183. Time
21004. Operational Period: **September 03 – 04, 2018** Day / Night Shifts **0600 - 0600**

5. General Control Objectives for the Incident (include alternatives)

Leader's Intent

A full suppression strategy will be implemented for the Hirz Fire through a combination of direct and indirect tactics. Efforts will be made to minimize fire spread and severity across private timberlands and structures through the application of well-planned tactical responses.

Management Objectives

- Ensure that strategies and tactics provide for firefighter and public safety through the application of sound risk management principles.
- Minimize the threat to private property, critical infrastructure, and commercial timberlands while working with READs to reduce negative impacts to cultural/sensitive sites.
- Establish and strengthen cooperator, partner, and stakeholder relationships
- All suppression repair work will be conducted in close coordination with assigned READs.

Control Objectives**Keep the Hirz Fire:**

- **North of Gilman Road** to protect private residences and property to the south.
- **South of Tom Neal Creek Road** to protect private and federal timberlands and natural resource values, including Northern Spotted Owl habitat and Inventoried Roadless Area.
- **East of Middle Salt Creek to Green Mountain to North Fork Salt Creek** to protect private property and infrastructure values in and around the Interstate 5 corridor.
- **West of Squaw Valley Creek, McCloud River and McCloud River arm of Shasta Lake** to protect private timberlands, natural resource values, including northern spotted owl habitat and recreation infrastructure.

6. Weather Forecast for Period:

WEATHER DISCUSSION... Poor humidity recoveries will start today's operational period, and with very warm temperatures similar to Sunday, afternoon relative humidities will once again lower into the ten percent range. Gusty northeast ridgetop winds will exist through the morning hours before turning southwest in the afternoon, much like Sunday. Elsewhere over the fire morning downslope/downvalley winds will turn upslope/upvalley around 1100. A shallow inversion will exist once again this morning, generally around 2000 feet, and should break around 1100. However, smoke may linger over the area, which could have an impact on air operations. As the atmosphere gets more unstable by early afternoon, smoke will become more vertical with mixing heights as high as 12,000 feet. Expect poor humidity recoveries tonight, which will allow for a longer operational burn period, and ridgetop winds will turn north-northeast after 2400. Conditions on Tuesday will be very similar to today.

7. General Safety Message:

Fireline Hazards and Mop Up:

* Do not work directly above or below personnel during mop-up operations* Identify and make known burning stumps or roots that may cave In * Wear appropriate PPE* Watch for falling, rolling debris on steep slopes* Call out to crew personnel that may be affected by sudden rolling debris or rocks* For logs that may roll re-position perpendicular to the slope * Watch for weakened trees that may pose danger or fall* Scout areas for mop up prior to work * Maintain 8'-10' spacing when working & walking.

8. Attachments (mark if attached)

- | | | |
|---|--|---|
| <input checked="" type="checkbox"/> Organization List - ICS 203 | <input checked="" type="checkbox"/> Communications - ICS 205 | <input checked="" type="checkbox"/> Finance Message |
| <input checked="" type="checkbox"/> Div. Assignment Lists - ICS 204 | <input checked="" type="checkbox"/> Medical Plan- ICS 206 | <input checked="" type="checkbox"/> Base Camp Map |
| <input checked="" type="checkbox"/> Air Operations - ICS 220 | <input type="checkbox"/> Suppression Repair Plan | <input checked="" type="checkbox"/> Line Order Form |
| <input checked="" type="checkbox"/> Safety Message / 215A | <input type="checkbox"/> Training Message | <input checked="" type="checkbox"/> Unit Log- ICS 214 |

9. Prepared by (Planning Section Chief) Robert Ashby (T)

10. Approved by (Incident Commander) Rick Young

FIRE BEHAVIOR FORECAST

FORECAST NUMBER: 35

TYPE OF FIRE: Wildfire

FIRE NAME: Hirz Fire

OPERATIONAL PERIOD: 09/03/18 0600-0600

DATE ISSUED: September 2, 2018

TIME ISSUED: 20:00

UNIT: CA-SHF-0001223

SIGNED:

Typed/printed: Jeff Shelton (LTAN)

INPUTS

WEATHER SUMMARY:

***** Continued Warm and Dry*****

Static high pressure north of the region will maintain consistence to the general airflow over the fire area. Expect persistently low RH recoveries to continue for the next several burn periods. By mid-week, stable conditions will promote Southwest flow aloft and mostly terrain driven surface winds.

Max. Daytime Temperatures- 85 to 95 degrees

Min. Daytime Humidity- 10 to 18%

Min. Nighttime Temperatures- 59 to 66 degrees

Max. Overnight Humidity- 35 to 45%

Winds- Day: Northeast early, turning Southwest 4-8 mph, **GUSTS** to 15 mph along ridgetops until 1100

Night: Northeast flow overnight; reinforcing diurnal Downslope/Downcanyon winds

INVERSION BREAKING AROUND 1100...AIR FLOW WILL CHANGE BURNING CONDITIONS!

OUTPUTS

FIRE BEHAVIOR

GENERAL:

- **DFM 3%**...Anticipate fuels of all sizes to release their energy completely and quickly!
- Firing operations have created multiple areas of underslung line...Plan accordingly!
- Any new tree torching is significant. Take a tactical pause to re-evaluate your environment!
- With P(IG)s up to 90%, your work can be an ignition source! Plan for fire outside the lines!
- Very steep topography will amplify speed and intensity. Respect your trigger points!.....
- Any spot fire has the ability to establish and grow quickly...Watch your smoke column!
- Identify rollout potential in newly burned areas....The "rollout clock" has now been reset!

SPECIFIC:

All Divisions: Poor RH recovery will support fire movement throughout the entire shift!

Flame Lengths- 3 to 6 ft. in Grass/Litter/Understory, Up to 25 ft. in Brush...

Rate of Spread- Up to (6 ft./min. Litter/Understory)....(80 ft./min. in Grass)....(60 ft./min in Brush).....

Spotting Distances- Downwind; Up to .2 miles in Grass/Brush, Up to .3 miles in Timber (Torching)

Probability of Ignition- Increasing to **90%** at the peak of the burn period, down to <30% overnight

AIR OPERATIONS:

Sunrise: 06:36

Sunset: 19:38

Expect only fair smoke dispersion during the morning hours with the inversion breaking up before noon. Mixing heights will then rapid rise to 12,000'. Anticipate terrain induced turbulence in areas with complex terrain; especially where drainages intersect.

SAFETY

Common Denominators of Fire Behavior on Tragedy Fires

1. **Deceptively Quiet Areas of Large Fires...**
2. **When Fire Responds to Topographic Conditions and Runs Uphill...**
3. **Critical Burn Period Between 1400 and 1700...**

Division/Group Assignment List (ICS 204 WF)
Controlled Unclassified Information//Basic

1. Incident Name:		3.	
HIRZ		Branch:	Division/Group:
2. Operational Period:		I	A/B/F/Z
DAY			
Date/Time From:	Date/Time To:		
09/03/2018 0600 MON	09/03/2018 1800 MON		

4. Operations Personnel			
OPERATIONS CHIEF	ROBIN WILLS MIKE OLIVARRIA	BRANCH DIRECTOR	JOSH CAMPBELL
DIVISION/GROUP SUPERVISOR	JAMES ALLEN	AIR ATTACK SUPERVISOR	FRED BURRIS

5. Resources Assigned this Period					
Strike Team / Task Force / Resource Designator	LWD	Leader	Number Persons	Drop Off PT./Time	Pick Up PT./Time
HC2 ROAD RUNNERS C-89 Group 1	09/07	PABLO ARRIBA	20	SHASTA CAMP/0600	SHASTA CAMP/1800
ENG3 MNF 34 E-431	09/10	BRIAN COMBS	5	SHASTA CAMP /0600	SHASTA CAMP /1800
ENG6 RED ROCK FIRE 612 E-346	09/09	BUTCH MURPHY	3	SHASTA CAMP/0600	SHASTA CAMP/1800
ENG6 TGF FORESTRY AND FIRE E-374	09/14	TONY LONGBUCCO	3	SHASTA CAMP/0600	SHASTA CAMP/1800
CHIP AMERICAN TREE & SHRUB E-277 UTL	09/04	JOHN LEVINSKI	2	SHASTA CAMP/0600	SHASTA CAMP/1800
CHIP MCKELLAR TREE SERVICE E-453	09/12	ANDREW BUCKLY	1	SHASTA CAMP/0600	SHASTA CAMP/1800
CHIP CUT WRIGHT SERVICES E-592	09/14	TIM WRIGHT	3	SHASTA CAMP/0600	SHASTA CAMP/1800
SOF2 SCOTT BELKNAP O-521	09/11		1	SHASTA CAMP/0600	SHASTA CAMP/1800
EMTF JASON MONAHAN O-433	09/09		1	SHASTA CAMP /0600	SHASTA CAMP /1800
EMTF DOMINIC ANTES O-576	09/11		1	SHASTA CAMP /0600	SHASTA CAMP /1800

6. Control Operations/Work Assignments: **TFLD ANTHONY DUFFY 0-339 (LDW 9/3/18)**
 Patrol and mop-up to the extent necessary to ensure containment and where safe to do so.
 Continue chipping operation. **TFLD ALEX WALKER 0-343 (LDW 9/3)**
 Coordinate with READS to identify suppression repair needs.
 Back haul trash and excess equipment, coordinate with Ground Support to remove.

7. Special Instructions:
RESOURCES IN BRANCH I AND DIV Z REPORT TO SHASTA CAMP AT THE END OF SHIFT
 Backhaul trash and excess equipment, i.e. pumps, tanks, and any other unused logistical items.
 Be prepared to support IA as directed by Operations Section Chief.
 Coordinate with READS to identify areas of concern.
REMS 1 WILL BE AVAILABLE TO ALL DIVISIONS DURING DAY SHIFT OPERATIONS.

8. Division/Group Communication Summary						
Function	Channel	RX Frequency N/W	RX Tone/NAC	TX Frequency N/W	TX Tone/NAC	Mode
COMMAND	4 - NIFC CMD 4	170.4125 N	10/107.2	165.9625 N	10/107.2	A
AIR TO GROUND	14 - A/G CMD	168.3375 N		168.3375 N		A
AIR TO GRD TAC	15 - A/G TAC	167.8125 N		167.8125 N		A
TACTICAL	11 - NIFC T7	168.2500 N	10/107.2	168.2500 N	10/107.2	A

9. Prepared By (Resource Unit Leader)	Approved By (Planning Section Chief)	Date	Time
J SWITZLER/D WOOD/I GATES (T)/K BONEBRAKE (T)	ROBERT ASHBY (T) <i>Robert Ashby</i>	09/02/2018	1709

Division/Group Assignment List (ICS 204 WF)
Controlled Unclassified Information//Basic

1. Incident Name:			3.			
HIRZ			Branch:		Division/Group:	
2. Operational Period: DAY			I		T	
Date/Time From: 09/03/2018 0600	MON	Date/Time To: 09/03/2018 1800				
4. Operations Personnel						
OPERATIONS CHIEF		ROBIN WILLS MIKE OLIVARRIA		BRANCH DIRECTOR		JOSH CAMPBELL
DIVISION/GROUP SUPERVISOR		BRANDON LANNING		AIR ATTACK SUPERVISOR		FRED BURRIS
5. Resources Assigned this Period						
Strike Team / Task Force / Resource Designator	LWD	Leader	Number Persons	Drop Off PT./Time	Pick Up PT./Time	
HCS1 SHU 9240G (24HR) C-200011	09/18	DENNIS LANGE	36	DP 67/0600	24HR/	
HCS1 LMU 9221G (24HR) C-200012	09/10	ROBERT VEVERKA	41	DP 67/0600	24HR/	
HC2 OC 50 C-72	09/04 09/03	GRANT THOMAS	16	DP 67/0600	DP 67/1800	
ES3 BTU 9213C (24HR) E-200003	09/07	JASON MORRIS	16	DP 67/0600	24HR/	
ES3 LNU 9148C E-200005	09/07	SCOTT WEESE	19	DP 67/0600	DP 67/1800	
ES3 AEU 9270C (24HR) E-200021	09/17	MARK BRUNTON	18	DP 67/0600	24HR/	
ENG6 WOOD'S FIRE 614 E-162	09/03	STEVE FELIX	3	DP 67/0600	DP 67/1800	
DO22 DUNLAP E-135	09/05	WILLIAM DUNLAP	2	DP 67/0600	DP 67/1800	
WTS2 CARLTON CHRISTMAS TREES E-386	09/07	ROSS ROGERS	1	DP 67/0600	DP 67/1800	
WTS2 YREKA OUTLANDS (24HR) E-387	09/05	ED FRYSTAK	2	DP 67/0600	24HR/	
WTS2 BAR 1 WATER TENDER T2 E-519	09/14	KEN SMITH	1	DP 67/0600	DP 67/1800	
WT2 WATERDOG (24HR) E-580	09/13	ANTHONY PALAZZO	2	DP 67/0600	24HR/	
WTS2 CATTELACK RANCH E-587 (24HR)	09/13	JIM GOLDIE	3	DP 67/0600	24HR/	
WTS2 CATTELACK RANCH E-589 (24HR)	09/13	AL CROSS	1	DP 67/0600	24HR/	
MAST PAUL ROEN E-225	09/10	BRETT GIBFORD	2	DP 67/0600	DP 67/1800	
PUMP TRINITY QUICK LUBE PUMP E-14		JOE PINI	1	DP 67/0600	24HR/	
FMOD HEARTWOOD WILDFIRE O-288	09/03	TIM BELL	2	DP 67/0600	DP 67/1800	
FMOD MORGAN TREE SERVICE O-379	09/06	THOMAS MATNEY	2	DP 67/0600	DP 67/1800	
HEQB DANIEL J PATTERSON O-662	09/14		1	DP 67/0600	DP 67/1800	
SOFR DANIEL GILES O-443.55	09/09		1	DP 67/0600	DP 67/1800	
8. Division/Group Communication Summary						
Function:	Channel	RX Frequency N/W	RX Tone/NAC	TX Frequency N/W	TX Tone/NAC	Mode
COMMAND	4 - NIFC CMD 4	170.4125 N	10/107.2	165.9625 N	10/107.2	A
AIR TO GROUND	14 - A/G CMD	168.3375 N		168.3375 N		A
AIR TO GRD TAC	15 - A/G TAC	167.8125 N		167.8125 N		A
TACTICAL	8 - NIFC T3	168.6000 N	10/107.2	168.6000 N	10/107.2	A
9. Prepared By (Resource Unit Leader)			Approved By (Planning Section Chief)		Date	Time
J SWITZLER/D WOOD/I GATES (T)/K BONEBRAKE (T)			ROBERT ASHBY (T) <i>Robert Ashby</i>		09/02/2018	1243

Division/Group Assignment List (ICS 204 WF)
Controlled Unclassified Information//Basic

1. Incident Name:		3.	
HIRZ		Branch:	Division/Group:
2. Operational Period: DAY		I	T
Date/Time From: 09/03/2018 0600 MON	Date/Time To: 09/03/2018 1800 MON		

4. Operations Personnel			
OPERATIONS CHIEF	ROBIN WILLS MIKE OLIVARRIA	BRANCH DIRECTOR	JOSH CAMPBELL
DIVISION/GROUP SUPERVISOR	BRANDON LANNING	AIR ATTACK SUPERVISOR	FRED BURRIS

5. Resources Assigned this Period						
Strike Team / Task Force / Resource Designator	LWD	Leader	Number Persons	Drop Off PT./Time	Pick Up PT./Time	
EMPF JAMES STRATTON O-374	09/05		1	DP 67/0600	DP 67/1800	
EMTF GREGORY LOWDERMILK O-387	09/04		1	DP 67/0600	DP 67/1800	
AMBU CARE FLIGHT OPS E-394	09/08	TOM HIGGINS	2	DP 67/0600	24HR/	

6. Control Operations/Work Assignments:
Continue to hold burnout operations.
Patrol and mop-up to the extent necessary to ensure containment and where safe to do so.

7. Special Instructions:
RESOURCES IN BRANCH I AND DIV Z REPORT TO SHASTA CAMP AT THE END OF SHIFT
Backhaul trash and excess equipment, i.e. pumps, tanks, and any other unused logistical items .
GPS existing and proposed lines and turn into Situation Unit.
Be prepared to support IA as directed by Operations Section Chief.
Coordinate with READS to identify areas of concern.
Follow traffic plan and travel times for travel between DP 62 and DP 67 to avoid log trucks.
REMS 1 WILL BE AVAILABLE TO ALL DIVISIONS DURING DAY SHIFT OPERATIONS.

TFLD MARK SHEARS 9/3-LDW O-340

8. Division/Group Communication Summary						
Function	Channel	RX Frequency N/W	RX Tone/NAC	TX Frequency N/W	TX Tone/NAC	Mode
COMMAND	4 - NIFC CMD 4	170.4125 N	10/107.2	165.9625 N	10/107.2	A
AIR TO GROUND	14 - A/G CMD	168.3375 N		168.3375 N		A
AIR TO GRD TAC	15 - A/G TAC	167.8125 N		167.8125 N		A
TACTICAL	8 - NIFC T3	168.6000 N	10/107.2	168.6000 N	10/107.2	A

9. Prepared By (Resource Unit Leader) J SWITZLER/D WOOD/I GATES (T)/K BONEBRAKE (T)	Approved By (Planning Section Chief) ROBERT ASHBY (T)	Date 09/02/2018	Time 1243
---	---	---------------------------	---------------------

Division/Group Assignment List (ICS 204 WF)
Controlled Unclassified Information//Basic

1. Incident Name:			3.			
HIRZ			Branch: III		Division/Group: U	
2. Operational Period: DAY						
Date/Time From: 09/03/2018 0600 MON		Date/Time To: 09/03/2018 1800 MON				
4. Operations Personnel						
OPERATIONS CHIEF		ROBIN WILLS MIKE OLIVARRIA		BRANCH DIRECTOR	SHANNON PRATHER ERNIE VILLA (T)	
DIVISION/GROUP SUPERVISOR		CHAD COSTA		AIR ATTACK SUPERVISOR	FRED BURRIS	
5. Resources Assigned this Period						
Strike Team / Task Force / Resource Designator	LWD	Leader	Number Persons	Drop Off PT./Time	Pick Up PT./Time	
HC1 TBA			20	MC CLOUD ICP /0600	MC CLOUD ICP /1800	
HC1 MENDOCINO IHC C-85 TO NIGHT DIV U			20	MC CLOUD ICP /0600	MC CLOUD ICP /1800	
HC1 TAHOE IHC C-85	09/09	DANIEL GUERRERO	20	MC CLOUD ICP /0600	MC CLOUD ICP /1800	
HC1 SIERRA HOTSHOTS IHC C-95 DEMOS	09/02	ALAN ROBY	20	MC CLOUD ICP /0600	MC CLOUD ICP /1800	
HC1 UKONOM C-114	09/15	JOEL BERG	20	MC CLOUD ICP /0600	MC CLOUD ICP /1800	
HC2 WOODPECKER C-91	09/09	ELADIO HERNANDEZ	20	MC CLOUD ICP /0600	MC CLOUD ICP /1800	
HC2 MILLER TIMBER 17045 C-93	09/09	RODOLFO CASTILLO	20	MC CLOUD ICP /0600	MC CLOUD ICP /1800	
HC2 MILLER TIMBER 17042 C-94	09/09	RUBEN VARGAS	20	MC CLOUD ICP /0600	MC CLOUD ICP /1800	
ES3 ANF 1612C E-593	09/07	STEFFEN FULLER	25	MC CLOUD ICP /0600	MC CLOUD ICP /1800	
ES3 ES3 9250C (24 HR) E-200019	09/12	DON GRAHAM	22	MC CLOUD ICP /0600	24HR/	
DOZ1 BROWN E-270 TO STAGING	09/11	MIKE MAURER	2	MC CLOUD ICP /0600	MC CLOUD ICP /1800	
WTT1 OES 31 (24 HR) E-577	09/13	JERRY WINTERS	2	MC CLOUD ICP /0600	24HR/	
WTS2 COLD SPRINGS (24HR) E-585	09/13	JERRY GRZYBOWSKI	2	MC CLOUD ICP /0600	24HR/	
WTS3 GRANT HANNA E-556 (24HR)	09/12	SHAWN BULTENA	2	MC CLOUD ICP /0600	24HR/	
FELB JAIME HIDALGO O-314	09/05		1	MC CLOUD ICP /0600	MC CLOUD ICP /1800	
FELB EDWARD LUPARELLO O-457	09/07		1	MC CLOUD ICP /0600	MC CLOUD ICP /1800	
HEQB GOLDIE O-676 (T)				MC CLOUD ICP /0600	MC CLOUD ICP /1800	
HEQB CRIS MACHADO C-63.3	09/07		1	MC CLOUD ICP /0600	MC CLOUD ICP /1800	
FMOD NORTH ZONE FALLERS O-377	09/04	BILL SMITH	2	MC CLOUD ICP /0600	MC CLOUD ICP /1800	
EMTP KYLE YOUNG O-571	09/11		1	MC CLOUD ICP /0600	MC CLOUD ICP /1800	
8. Division/Group Communication Summary						
Function	Channel	RX Frequency N/W	RX Tone/NAC	TX Frequency N/W	TX Tone/NAC	Mode
COMMAND	4 - NIFC CMD 4	170.4125 N	10/107.2	165.9625 N	10/107.2	A
AIR TO GROUND	14 - A/G CMD	168.3375 N		168.3375 N		A
AIR TO GRD TAC	15 - A/G TAC	167.8125 N		167.8125 N		A
TACTICAL	9 - NIFC T5	166.7250 N	10/107.2	166.7250 N	10/107.2	A
9. Prepared By (Resource Unit Leader)		Approved By (Planning Section Chief)		Date	Time	
J SWITZLER/D WOOD/I GATES (T)/K BONEBRAKE (T)		ROBERT ASHBY (T) <i>Robert Ashby</i>		09/02/2018	1243	

Division/Group Assignment List (ICS 204 WF)
Controlled Unclassified Information//Basic

1. Incident Name:		3.				
HIRZ		Branch:		Division/Group:		
2. Operational Period: DAY		III		U		
Date/Time From: 09/03/2018 0600 MON	Date/Time To: 09/03/2018 1800 MON					
4. Operations Personnel						
OPERATIONS CHIEF	ROBIN WILLS MIKE OLIVARRIA	BRANCH DIRECTOR		SHANNON PRATHER ERNIE VILLA (T)		
DIVISION/GROUP SUPERVISOR	CHAD COSTA	AIR ATTACK SUPERVISOR		FRED BURRIS		
5. Resources Assigned this Period						
Strike Team / Task Force / Resource Designator	LWD	Leader	Number Persons	Drop Off PT./Time	Pick Up PT./Time	
EMPF RICHARD TALIAFERRO O-621	09/03		1	MC CLOUD ICP /0600	MC CLOUD ICP /1800	
EMTF CHARLES KUNIYOSHI O-526	09/11		1	MC CLOUD ICP /0600	MC CLOUD ICP /1800	
EMTF CHRIS GROGAN O-579	09/11		1	MC CLOUD ICP /0600	MC CLOUD ICP /1800	
AMBU MT SHASTA AMBULANCE E-73	09/14	JOLENE PATRICK	2	MC CLOUD ICP /0600	24HR/	
6. Control Operations/Work Assignments: ENG3 ANF 531 ES25						
Continue to hold burnout operations. Patrol and mop-up to the extent necessary to ensure containment and where safe to do so. Work with adjoining divisions to ensure staffing is adequate. SOFR KEVIN WHITE 0.448						
7. Special Instructions:						
RESOURCES IN BRANCH III AND BRANCH V (EXCLUDING DIV Z) REPORT TO MC CLOUD ICP AT THE END OF SHIFT						
**Big Bear and Dalton IHC coyote out of DP 64. Backhaul trash and excess equipment, i.e. pumps, tanks, and any other unused logistical items. GPS existing and proposed lines and turn into Situation Unit. Be prepared to support IA as directed by OSC. Coordinate with READs to identify areas of concern. REMS 1 WILL BE AVAILABLE TO ALL DIVISIONS DURING DAY SHIFT OPERATIONS.						
8. Division/Group Communication Summary						
Function	Channel	RX Frequency N/W	RX Tone/NAC	TX Frequency N/W	TX Tone/NAC	Mode
COMMAND	4 - NIFC CMD 4	170.4125 N	10/107.2	165.9625 N	10/107.2	A
AIR TO GROUND	14 - A/G CMD	168.3375 N		168.3375 N		A
AIR TO GRD TAC	15 - A/G TAC	167.8125 N		167.8125 N		A
TACTICAL	9 - NIFC T5	166.7250 N	10/107.2	166.7250 N	10/107.2	A
9. Prepared By (Resource Unit Leader)		Approved By (Planning Section Chief)		Date	Time	
J SWITZLER/D WOOD// GATES (T) K BONEBRAKE (T)		ROBERT ASHBY (T)		09/02/2018	1243	

Division/Group Assignment List (ICS 204 WF)

Controlled Unclassified Information//Basic

1. Incident Name:		3.				
HIRZ		Branch: III		Division/Group: W		
2. Operational Period: DAY						
Date/Time From: 09/03/2018 0600 MON		Date/Time To: 09/03/2018 1800 MON				
4. Operations Personnel						
OPERATIONS CHIEF		ROBIN WILLS MIKE OLIVARRIA		BRANCH DIRECTOR		SHANNON PRATHER ERNIE VILLA (T)
DIVISION/GROUP SUPERVISOR		JEB PRONTO		AIR ATTACK SUPERVISOR		FRED BURRIS
5. Resources Assigned this Period						
Strike Team / Task Force / Resource Designator	LWD	Leader	Number Persons	Drop Off PT./Time	Pick Up PT./Time	
HC1 TBD				DP 73/0600	DP 73/1800	
HC1 ELDORADO IHC C-118	09/16	AARON HUMPHREY	20	DP 73/0600	DP 73/1800	
HC1 DALTON IHC C-62	09/07	SCOTT GORMAN	19	DP 73/0600	DP 73/1800	
HC1 TATANKA IHC C-73	09/07	DAVID ZORTMAN	19	DP 73/0600	DP 73/1800	
HC1 BEAR DIVIDE IHC C-74	09/06	BRIAN ANDERSON	20	DP 73/0600	DP 73/1800	
HC1 BIG BEAR IHC C-98	09/04	CODY ZETLMAIER	19	DP 73/0600	DP 73/1800	
HCS1 LMU 9224G (24HR) C-200016	09/17	MARK STEELE	37	DP 73/0600	24HR/	
HC2 WYEAST FORESTRY LLC C-92	09/09	ANDREW WILLIAMSON	20	DP 73/0600	DP 73/1800	
HC2 FRANCO REFORESTATION C-101	09/10	ARTURO QUEVEDO	20	DP 73/0600	DP 73/1800	
ES3 MEU 9112C (24HR) E-200004	09/15	ALEX LEONARD	18	DP 73/0600	24HR/	
ENG3 BERTHOUD FPD E-384	09/10	LYLE G FENDERSON	4	DP 73/0600	DP 73/1800	
ENG3 ANF 21 E-536	09/07	ROY ADAMS	5	DP 73/0600	DP 73/1800	
ENG6 HART VENTURES E-380	09/11	SKIP KOLTZ	3	DP 73/0600	DP 73/1800	
ENG6 CNF 473 E-452	09/11	DAVID KEMPTON	7	DP 73/0600	DP 73/1800	
ENG6 AR OUF 692 E-476	09/11	BRADY JOHNSON	3	DP 73/0600	DP 73/1800	
DOZ2 SHU 2440 (24HR) E-200015	09/17	AARON FLOURNOY	3	DP 73/0600	24HR/	
DOZ2 STONY CREEK E-146	09/14	DON ANDREWS	2	DP 73/0600	DP 73/1800	
DOZ2 NORTHWESTERN FIRE E-292 TU STAGING	09/15	MIKE SALTERS	3	DP 73/0600	DP 73/1800	
WTS2 DARRAH LOGGING INC E-581	09/13	STAN CARGO	1	DP 73/0600	DP 73/1800	
WTS2 SHUMAS FIRE & EQUIPMENT E-37	09/07	JUSTIN SHULTS	1	DP 73/0600	DP 73/1800	
8. Division/Group Communication Summary						
Function	Channel	RX Frequency N/W	RX Tone/NAC	TX Frequency N/W	TX Tone/NAC	Mode
COMMAND	4 - NIFC CMD 4	170.4125 N	10/107.2	165.9625 N	10/107.2	A
AIR TO GROUND	14 - A/G CMD	168.3375 N		168.3375 N		A
AIR TO GROUND	15 - A/G TAC	167.8125 N		167.8125 N		A
TACTICAL	12 - NIFC T12	162.1625 N	10/107.2	162.1625 N	10/107.2	A
9. Prepared By (Resource Unit Leader)		Approved By (Planning Section Chief)		Date		Time
J SWITZLER/D WOOD/I GATES (T)/K BONEBRAKE (T) <i>JMS</i>		ROBERT ASHBY (T) <i>Robert Ashby</i>		09/02/2018		1243

Division/Group Assignment List (ICS 204 WF)
Controlled Unclassified Information//Basic

1. Incident Name:		3.				
HIRZ		III		W		
2. Operational Period: DAY						
Date/Time From: 09/03/2018 0600	MON	Date/Time To: 09/03/2018 1800	MON			
4. Operations Personnel						
OPERATIONS CHIEF		ROBIN WILLS MIKE OLIVARRIA		BRANCH DIRECTOR		SHANNON PRATHER ERNIE VILLA (T)
DIVISION/GROUP SUPERVISOR		JEB PRONTO		AIR ATTACK SUPERVISOR		FRED BURRIS
5. Resources Assigned this Period						
Strike Team / Task Force / Resource Designator	LWD	Leader	Number Persons	Drop Off PT./Time	Pick Up PT./Time	
6. Control Operations/Work Assignments:						
Continue to hold burnout operations. Patrol and mop-up to the extent necessary to ensure containment and where safe to do so. Work with adjoining divisions to ensure staffing is adequate.						
7. Special Instructions:						
<u>RESOURCES IN BRANCH III AND BRANCH V (EXCLUDING DIV Z) REPORT TO McCLOUD ICP AT THE END OF SHIFT</u>						
Backhaul trash and excess equipment, i.e. pumps, tanks, and any other unused logistical items. GPS existing and proposed lines and turn into Situation Unit. Be prepared to support IA as directed by OSC. Coordinate with READs to identify areas of concern. areas of concern. REMS 1 WILL BE AVAILABLE TO ALL DIVISIONS DURING DAY SHIFT OPERATIONS.						
DIVS WILL ASSESS THE NEED FOR IHC TO SWING THEIR SHIFTS TO MEET OPERATIONAL NEEDS AND ADVISE PLANNING OPS						
8. Division/Group Communication Summary						
Function	Channel	RX Frequency N/W	RX Tone/NAC	TX Frequency N/W	TX Tone/NAC	Mode
COMMAND	4 - NIFC CMD 4	170.4125 N	10/107.2	165.9625 N	10/107.2	A
AIR TO GROUND	14 - A/G CMD	168.3375 N		168.3375 N		A
AIR TO GROUND	15 - A/G TAC	167.8125 N		167.8125 N		A
TACTICAL	12 - NIFC T12	162.1625 N	10/107.2	162.1625 N	10/107.2	A
9. Prepared By (Resource Unit Leader)		Approved By (Planning Section Chief)		Date	Time	
J SWITZLER/D WOOD/I GATES (T)/K BONEBRAKE (T)		ROBERT ASHBY (T)		09/02/2018	1243	

Division/Group Assignment List (ICS 204 WF)
Controlled Unclassified Information//Basic

1. Incident Name: HIRZ		3.	
2. Operational Period: DAY		Branch: III	Division/Group: X
Date/Time From: 09/03/2018 0600 MON	Date/Time To: 09/03/2018 1800 MON		
4. Operations Personnel			
OPERATIONS CHIEF ROBIN WILLS MIKE OLIVARRIA		BRANCH DIRECTOR SHANNON PRATHER ERNE VILLA (T)	
DIVISION/GROUP SUPERVISOR JOSH EICHAMER SHAWN BUTTERBACH (T)		AIR ATTACK SUPERVISOR FRED BURRIS	

5. Resources Assigned this Period					
Strike Team / Task Force / Resource Designator	LWD	Leader	Number Persons	Drop Off PT./Time	Pick Up PT./Time
HC1 FULTON IHC C-75	09/06	JOSH ACOSTA	24	MC CLOUD ICP/0600	MC CLOUD ICP/1800
HC1 GOLDEN EAGLES IHC C-83	09/03	ROBERT VILLEGAS	20	MC CLOUD ICP/0600	MC CLOUD ICP/1800
HC1 REDDING IHC C-97	09/04	DANIEL MALLIA	20	MC CLOUD ICP/0600	MC CLOUD ICP/1800
HC1 MAD RIVER IHC C-115	09/15	CHARLES HAIR	21	MC CLOUD ICP/0600	MC CLOUD ICP/1800
HC2I FIRESTORM C-55	09/07	DUANE FIELDS	19	MC CLOUD ICP/0600	MC CLOUD ICP/1800
HC2I HOPI C-76	09/07	DARRYL DAW	18	MC CLOUD ICP/0600	MC CLOUD ICP/1800
HCM MODULE WILDLAND WHISKEYTOWN O-631	09/11	ROB WINKLER	7	MC CLOUD ICP/0600	MC CLOUD ICP/1800
ES3 SCU 9161C (24HR) E-200022	09/16	KEN MYERS	16	MC CLOUD ICP/0600	24HR/
ENG3 ANF 531 E-525 → TO DIVISION U	09/11	JAMES ROBLEDO	5	MC CLOUD ICP/0600	MC CLOUD ICP/1800
ENG6 FIRESTORM 9902 E-53	09/06	JAMES BARBARIA	4	MC CLOUD ICP/0600	MC CLOUD ICP/1800
ENG6 PACIFIC OASIS E-348	09/06	DONOVAN CULP	3	MC CLOUD ICP/0600	MC CLOUD ICP/1800
DOZ1 LEPAGE COMPANY E-288	09/13	SCOTT BURNUM	4	MC CLOUD ICP/0600	MC CLOUD ICP/1800
WTS2 KEN'S WATER TENDER, INC. E-520	09/10	BILL ATKISSON	1	MC CLOUD ICP/0600	MC CLOUD ICP/1800
WTT2 SHF 66 E-554	09/12	THADEUS EASON	2	MC CLOUD ICP/0600	MC CLOUD ICP/1800
WTT2 SHF 16 E-555	09/12	SHAWN ZICKEFOOSE	1	MC CLOUD ICP/0600	MC CLOUD ICP/1800
WTS2 WILLMORE AG SERVICES (24HR) E-583	09/13	BILL TORRE	2	MC CLOUD ICP/0600	24HR/
WTS2 TOBIASSON WATER (24HR) E-586	09/13	RAYNOLD TOBIASSON	2	MC CLOUD ICP/0600	24HR/
SKG1 SOFT TRACK ATTACK (24HR) E-250	09/13	HUNTER GUTHRIE	2	MC CLOUD ICP/0600	24HR/
SKG1 SOFT TRACK ATTACK E-548	09/12	ELIJAH PURDAY	3	MC CLOUD ICP/0600	MC CLOUD ICP/1800
SKG2 QUICK RESPONSE FIRE E-253	09/10	DJ COOPER	2	MC CLOUD ICP/0600	MC CLOUD ICP/1800

8. Division/Group Communication Summary						
Function	Channel	RX Frequency N/W	RX Tone/NAC	TX Frequency N/W	TX Tone/NAC	Mode
COMMAND	4 - NIFC CMD 4	170.4125 N	10/107.2	165.9625 N	10/107.2	A
AIR TO GROUND	14 - A/G CMD	168.3375 N		168.3375 N		A
AIR TO GRD TAC	15 - A/G TAC	167.8125 N		167.8125 N		A
TACTICAL	10 - NIFC T6	166.7750 N	10/107.2	166.7750 N	10/107.2	A

9. Prepared By (Resource Unit Leader) J SWITZLER/D WOOD/I GATES (T)/K BONEBRAKE (T)	Approved By (Planning Section Chief) ROBERT ASHBY (T)	Date 09/02/2018	Time 1243
---	---	---------------------------	---------------------

Division/Group Assignment List (ICS 204 WF)
Controlled Unclassified Information//Basic

1. Incident Name:		3.				
HIRZ		Branch:		Division/Group:		
2. Operational Period: DAY		III		X		
Date/Time From: 09/03/2018 0600	MON	Date/Time To: 09/03/2018 1800	MON			
4. Operations Personnel						
OPERATIONS CHIEF		ROBIN WILLS MIKE OLIVARRIA		BRANCH DIRECTOR		SHANNON PRATHER ERNIE VILLA (T)
DIVISION/GROUP SUPERVISOR		JOSH EICHAMER SHAWN BUTTERBACH (T)		AIR ATTACK SUPERVISOR		FRED BURRIS
5. Resources Assigned this Period						
Strike Team / Task Force / Resource Designator	LWD	Leader	Number Persons	Drop Off PT./Time	Pick Up PT./Time	
SKG3 J & D LOGGING E-249	09/09	SAWYER LOGAN	2	MC CLOUD ICP/0600	MC CLOUD ICP/1800	
SKG3 HALEY, TODD B. E-551	09/13	REESE CEMARA	2	MC CLOUD ICP/0600	MC CLOUD ICP/1800	
TFLD RYAN MEANS (T) O-394	09/04		1	MC CLOUD ICP/0600	MC CLOUD ICP/1800	
HEQB CHRISTOPHER FORTNER (T) O-531	09/11		1	MC CLOUD ICP/0600	MC CLOUD ICP/1800	
HEQB CHRIS FUSI (T) O-607	09/05		1	MC CLOUD ICP/0600	MC CLOUD ICP/1800	
SOFR ROBERT HILL O-446	09/08		1	MC CLOUD ICP/0600	MC CLOUD ICP/1800	
EMPF DANIEL SALAZAR O-354	09/06		1	MC CLOUD ICP /0600	MC CLOUD ICP /1800	
EMPF MATTHEW CAFFEY O-568	09/12		1	MC CLOUD ICP /0600	MC CLOUD ICP /1800	
EMTF SEAN TORRES O-525	09/09		1	MC CLOUD ICP /0600	MC CLOUD ICP /1800	
REMS 1 O-517	09/10		1	MC CLOUD ICP /0600	MC CLOUD ICP /1800	
HCZIA LASSEN CREW 9 C-122 9/16			20	MC CLOUD ICP	MC CLOUD ICP	
6. Control Operations/Work Assignments:						
Continue to hold burnout operations. Patrol and mop-up to the extent necessary to ensure containment and where safe to do so. Work with adjoining divisions to ensure staffing is adequate.						
7. Special Instructions:						
<u>RESOURCES IN BRANCH III AND BRANCH V (EXCLUDING DIV Z) REPORT TO MC CLOUD ICP AT THE END OF SHIFT</u> Backhaul trash and excess equipment, i.e. pumps, tanks, and any other unused logistical items. GPS existing and proposed lines and turn into Situation Unit. Be prepared to support IA as directed by OSC. Coordinate with READs to identify areas of concern. REMS 1 WILL BE AVAILABLE TO ALL DIVISIONS DURING DAY SHIFT OPERATIONS.						
8. Division/Group Communication Summary						
Function	Channel	RX Frequency N/W	RX Tone/NAC	TX Frequency N/W	TX Tone/NAC	Mode
COMMAND	4 - NIFC CMD 4	170.4125 N	10/107.2	165.9625 N	10/107.2	A
AIR TO GROUND	14 - A/G CMD	168.3375 N		168.3375 N		A
AIR TO GRD TAC	15 - A/G TAC	167.8125 N		167.8125 N		A
TACTICAL	10 - NIFC T6	166.7750 N	10/107.2	166.7750 N	10/107.2	A
9. Prepared By (Resource Unit Leader)		Approved By (Planning Section Chief)		Date	Time	
J SWITZLER/D WOOD/I GATES (T)/K BONEBRAKE (T)		ROBERT ASHBY (T)		09/02/2018	1243	

Division/Group Assignment List (ICS 204 WF)
Controlled Unclassified Information//Basic

1. Incident Name:			3.			
HIRZ			Branch:		Division/Group:	
2. Operational Period: DAY			V		Y	
Date/Time From: 09/03/2018 0600 MON	Date/Time To: 09/03/2018 1800 MON					
4. Operations Personnel						
OPERATIONS CHIEF		ROBIN WILLS MIKE OLIVARRIA		BRANCH DIRECTOR CHRIS LUNDGREN AARON GROVE (T)		
DIVISION/GROUP SUPERVISOR		JESSE KNOX KEOKI CORREATT DEREK KAAMER (T)		AIR ATTACK SUPERVISOR FRED BURRIS		
5. Resources Assigned this Period						
Strike Team / Task Force / Resource Designator	LWD	Leader	Number Persons	Drop Off PT./Time	Pick Up PT./Time	
HC1 SPRINGVILLE IHC C-53	09/03	JOAQUIN MEDINA	20	CABIN STAGING/0600	CABIN STAGING/1800	
HC1 ROOSEVELT IHC C-77	09/04	LARRY MONEY	20	CABIN STAGING/0600	CABIN STAGING/1800	
HC1 AMERICAN RIVER IHC C-117	09/15	MATTHEW RADTKE	20	CABIN STAGING/0600	CABIN STAGING/1800	
HCS1 AEU 9275G (24 HR) C-110		HOWARD DRUMMOND	30	CABIN STAGING/0600	24HR/	
HC2I TRUCKEE IHC C-70	09/05	SCOTT BURGHARDT	22	CABIN STAGING/0600	CABIN STAGING/1800	
HC2I HAPPY CAMP CREW 2 C-112	09/16	JESSE PARRY	18	CABIN STAGING/0600	CABIN STAGING/1800	
HCM SLATE MOUNTAIN O-461	09/08	GERARDO VELA	10	CABIN STAGING/0600	CABIN STAGING/1800	
ES3 PNF 3660C E-393	09/06	STEVE TOLEN	26	CABIN STAGING/0600	CABIN STAGING/1800	
HIRZ TF 1		COLIN EGGERS O-338	19	CABIN STAGING/0600	CABIN STAGING/1800	
ENG3 BOHICA 31 E-430	09/10	ANTHONY CABELES	3	CABIN STAGING/0600	CABIN STAGING/1800	
ENG3 LNF 81 E-433	09/09	DAN SCOTT	5	CABIN STAGING/0600	CABIN STAGING/1800	
ENG3 KNF 16 E-434	09/09	THA ENG	5	CABIN STAGING/0600	CABIN STAGING/1800	
ENG6 MES 6198 E-343	09/13	KEVIN SOMERS	4	CABIN STAGING/0600	CABIN STAGING/1800	
ENG6 MES 6200 E-344	09/13	DUSTIN PICKERING	4	CABIN STAGING/0600	CABIN STAGING/1800	
ENG6 PSF 661 E-351	09/06	BRIAN STRIFFLER	3	CABIN STAGING/0600	CABIN STAGING/1800	
DO22 SHF 79 E-148	09/13	THOMAS GRAHAM	3	CABIN STAGING/0600	CABIN STAGING/1800	
DO22 SHR 29 E-543	09/12	DAVID BROWN	2	CABIN STAGING/0600	CABIN STAGING/1800	
WTT1 MAYER FIRE E-188	09/11	JAKE MCDANIEL	2	CABIN STAGING/0600	CABIN STAGING/1800	
WTS2 DARRAH E-582	09/13	RICK RESH	1	CABIN STAGING/0600	CABIN STAGING/1800	
FMOD NORTH ZONE FALLERS O-538	09/11	STEVE DAVIS	1	CABIN STAGING/0600	CABIN STAGING/1800	
8. Division/Group Communication Summary						
Function	Channel	RX Frequency N/W	RX Tone/NAC	TX Frequency N/W	TX Tone/NAC	Mode
COMMAND	4 - NIFC CMD 4	170.4125 N	10/107.2	165.9625 N	10/107.2	A
AIR TO GROUND	14 - A/G CMD	168.3375 N		168.3375 N		A
AIR TO GRD TAC	15 - A/G TAC	167.8125 N		167.8125 N		A
TACTICAL	7 - NIFC T1	168.0500 N	10/107.2	168.0500 N	10/107.2	A
9. Prepared By (Resource Unit Leader)		Approved By (Planning Section Chief)		Date	Time	
J SWITZLER/D WOOD/I GATES (T)/K BONEBRAKE (T)		ROBERT ASHBY (T)		09/02/2018	1243	

Division/Group Assignment List (ICS 204 WF)
Controlled Unclassified Information//Basic

1. Incident Name:		3.				
HIRZ		Branch:		Division/Group:		
2. Operational Period: DAY		V		Y		
Date/Time From:	Date/Time To:					
09/03/2018 0600 MON	09/03/2018 1800 MON					
4. Operations Personnel						
OPERATIONS CHIEF	ROBIN WILLS MIKE OLIVARRIA	BRANCH DIRECTOR		CHRIS LUNDGREN AARON GROVE (T)		
DIVISION/GROUP SUPERVISOR	JESSE KNOX KEOKI CORREA (T) DEREK KRAMER (T)	AIR ATTACK SUPERVISOR		FRED BURRIS		
5. Resources Assigned this Period						
Strike Team / Task Force / Resource Designator	LWD	Leader	Number Persons	Drop Off PT./Time	Pick Up PT./Time	
FMOD NORTH ZONE FALLERS O-539	09/11	LUKE HELFINSTINE	2	CABIN STAGING/0600	CABIN STAGING/1800	
SOF2 JAMES GREGORY O-445	09/09		1	CABIN STAGING/0600	CABIN STAGING/1800	
EMPF RONALD SANDLER O-277	09/07		1	CABIN STAGING /0600	CABIN STAGING /1800	
EMPF ALEX KARP O-420	09/07		1	CABIN STAGING /0600	CABIN STAGING /1800	
EMTF HENRY MARTINEZ O-530	09/11		1	CABIN STAGING /0600	CABIN STAGING /1800	
EMTF JOHN CORONA O-577	09/11		1	CABIN STAGING /0600	CABIN STAGING /1200	
REMS 3 O-707	09/15		1	CABIN STAGING /0600	CABIN STAGING /1800	
AMBU AMERICAN FIRE SERVICES, LLC E-426	09/09		2	CABIN STAGING /0600	24HR/	
REAF MICHAEL PARENTI O-502	09/09		1	CABIN STAGING/0600	CABIN STAGING/1800	
ARCH PETER SCMICT O-602	09/10		1	CABIN STAGING/0600	CABIN STAGING/1800	
6. Control Operations/Work Assignments:						
Continue burnout operations to Squaw Creek and down to McCloud River and hold as necessary to ensure the fire remains within containment lines. Provide for structure protection at the McCloud River Club.						
7. Special Instructions:						
<u>RESOURCES IN BRANCH III AND BRANCH V (EXCLUDING DIV Z) REPORT TO McCLOUD ICP AT THE END OF SHIFT</u>						
When traveling to DP 96 utilize tac at DP 98 and advise north or south with mile marker.						
Backhaul trash and excess equipment, i.e. pumps, tanks, and any other unused logistical items. GPS existing and proposed lines and turn into Situation Unit.						
Be prepared to support IA as directed by OSC. Coordinate with READs to identify areas of concern. areas of concern.						
REMS 1 WILL BE AVAILABLE TO ALL DIVISIONS DURING DAY SHIFT OPERATIONS.						
8. Division/Group Communication Summary						
Function	Channel	RX Frequency N/W	RX Tone/NAC	TX Frequency N/W	TX Tone/NAC	Mode
COMMAND	4 - NIFC CMD 4	170.4125 N	10/107.2	165.9625 N	10/107.2	A
AIR TO GROUND	14 - A/G CMD	168.3375 N		168.3375 N		A
AIR TO GRD TAC	15 - A/G TAC	167.8125 N		167.8125 N		A
TACTICAL	7 - NIFC T1	168.0500 N	10/107.2	168.0500 N	10/107.2	A
9. Prepared By (Resource Unit Leader)		Approved By (Planning Section Chief)		Date	Time	
J SWITZLER/D WOOD/I GATES (T)/K BONEBRAKE (T)		ROBERT ASHBY (T)		09/02/2018	1243	

Division/Group Assignment List (ICS 204 WF)
Controlled Unclassified Information//Basic

1. Incident Name:			3.			
HIRZ			Branch:		Division/Group:	
2. Operational Period: DAY			SUPP. REPAIR		GROUP 1	
Date/Time From: 09/03/2018 0600 MON		Date/Time To: 09/03/2018 1800 MON				
4. Operations Personnel						
OPERATIONS CHIEF		ROBIN WILLS MIKE OLIVARRIA		BRANCH DIRECTOR		JARROD CLINKENBEARD
DIVISION/GROUP SUPERVISOR		DAN VARNEY		AIR ATTACK SUPERVISOR		FRED BURRIS
5. Resources Assigned this Period						
Strike Team / Task Force / Resource Designator		LWD	Leader	Number Persons	Drop Off PT./Time	Pick Up PT./Time
DOZ1 DARRAH LOGGING E-284		09/09	KEITH DARRAH	2	SHAST CAMP/0600	SHASTA CAMP/1800
DOZ2 ZABEL TRUCKING E-41		09/06	FRANK ZABEL	2	SHAST CAMP/0600	SHASTA CAMP/1800
WTT1 SCOTT VALLEY (24HR) E-571		09/13	ALBERT BUCHTER	2	SHAST CAMP/0600	SHASTA CAMP/1800
WTS2 VALLEY TIMBER E-335		09/17	CHRIS CONARD	2	SHAST CAMP/0600	SHASTA CAMP/1800
WTT2 LNF - 3 E-408		09/08	SCOTT LELAND CONWAY	2	SHAST CAMP/0600	SHASTA CAMP/1800
HEQB NEAL YOUNGBLOOD O-701		09/14		1	SHAST CAMP/0600	SHASTA CAMP/1800
HEQB SCOTT POWELL (T) O-706		09/05		1	SHAST CAMP/0600	SHASTA CAMP/1800
EMPF CONNOR DRAKE O-430		09/07		1	SHAST CAMP/0600	SHASTA CAMP/1800
EMTF COLBY HUTCHENS O-432		09/09		1	SHAST CAMP/0600	SHASTA CAMP/1800
REAF ERIN TUDOR O-27		09/09		1	SHAST CAMP/0600	SHASTA CAMP/1800
REAF BRENNIA MONTAGNE O-348		09/14		1	SHAST CAMP/0600	SHASTA CAMP/1800
REAF TODD JOHNSON O-511		09/09		1	SHAST CAMP/0600	SHASTA CAMP/1800
REAF ASHLEY KNIGHT O-626		09/11		1	SHAST CAMP/0600	SHASTA CAMP/1800
6. Control Operations/Work Assignments: <i>HC2 Road Runners 9/7 Pablo Arriaga 20</i> Coordinate with READS to identify suppression repair needs. Follow suppression repair instructions and directions per READS.						
7. Special Instructions: <u>Resources report to Shasta Camp for briefing.</u> Backhaul trash and excess equipment, i.e. pumps, tanks, and any other unused logistical items. GPS existing and proposed lines and turn into Situation Unit. Be prepared to support IA as directed by OSC. Coordinate with READs to identify areas of concern. ** FOBS Joel McGaffee O-604 and Chuck Brickey O-699 will be assigned to the Suppression Repair Branch. REMS 1 WILL BE AVAILABLE TO ALL DIVISIONS DURING DAY SHIFT OPERATIONS.						
8. Division/Group Communication Summary						
Function	Channel	RX Frequency N/W	RX Tone/NAC	TX Frequency N/W	TX Tone/NAC	Mode
COMMAND	4 - NIFC CMD 4	170.4125 N	10/107.2	165.9625 N	10/107.2	A
AIR TO GROUND	14 - A/G CMD	168.3375 N		168.3375 N		A
AIR TO GROUND	15 - A/G TAC	167.8125 N		167.8125 N		A
TACTICAL	11 - NIFC T7	168.2500 N	10/107.2	168.2500 N	10/107.2	A
9. Prepared By (Resource Unit Leader) <i>JM</i>			Approved By (Planning Section Chief)		Date	Time
J SWITZLER/D WOOD/I GATES (T)/K BONEBRAKE (T)			ROBERT ASHBY (T) <i>Robert Ashby</i>		09/02/2018	1417

Division/Group Assignment List (ICS 204 WF)
Controlled Unclassified Information//Basic

1. Incident Name:			3.			
HIRZ			Branch:		Division/Group:	
2. Operational Period: DAY			SUPP. REPAIR		GROUP 2	
Date/Time From: 09/03/2018 0600 MON	Date/Time To: 09/03/2018 1800 MON					
4. Operations Personnel						
OPERATIONS CHIEF		ROBIN WILLS MIKE OLIVARRIA		BRANCH DIRECTOR		JARROD CLINKENBEARD
DIVISION/GROUP SUPERVISOR		DOUG LACOUNT		AIR ATTACK SUPERVISOR		FRED BURRIS
5. Resources Assigned this Period						
Strike Team / Task Force / Resource Designator	LWD	Leader	Number Persons	Drop Off PT./Time	Pick Up PT./Time	
HC2 MNF OC 27 C-71	09/04	TYLER HALL	13	MC CLOUD ICP /0600	MC CLOUD ICP /1800	
ENG4 ROC-N-R E-482	09/11	JIM LASALLE	3	MC CLOUD ICP /0600	MC CLOUD ICP /1800	
DO22 LET-ER-BUCK- STEVE LASSEN E-136	09/09	TIM COOK	2	MC CLOUD ICP /0600	MC CLOUD ICP /1800	
DO22 BRITTEN E-140	09/14	RORY CONLAN	3	MC CLOUD ICP /0600	MC CLOUD ICP /1800	
DO22 PRO- DUMP AND EXCAVATING E-561	09/11	SAM DOTSON	2	MC CLOUD ICP /0600	MC CLOUD ICP /1800	
DO22 PRO- DUMP AND EXCAVATING E-562	09/12	TRACY NORTON	2	MC CLOUD ICP /0600	MC CLOUD ICP /1800	
WTS2 DARRAH LOGGING 2 E-38	09/08	DAVE ORR	1	MC CLOUD ICP /0600	MC CLOUD ICP /1800	
WTS2 ALLIED WATER SERVICE E-65	09/11	IAN SAVAGE	1	MC CLOUD ICP /0600	MC CLOUD ICP /1800	
WTT2 KNF 279 E-390	09/05	BEN GROTTING	2	MC CLOUD ICP /0600	MC CLOUD ICP /1800	
WTS2 H & H FEEDERS 149635 E-406	09/08	JACK HURLIMANN	2	MC CLOUD ICP /0600	MC CLOUD ICP /1800	
WTS3 DIETZ EQUIPMENT E-388	09/06	SYDNEY HALBERTSMAL	1	MC CLOUD ICP /0600	MC CLOUD ICP /1800	
WTS3 DAVE DUERR E-569	09/12	SCOTT VALLEY	1	MC CLOUD ICP /0600	MC CLOUD ICP /1800	
GRD JB CONTRACTORS E-167	09/10	TOM BOSTWICK	2	MC CLOUD ICP /0600	MC CLOUD ICP /1800	
MAST LEPAGE COMPANY E-262	09/16	MIKE GIREAR	3	MC CLOUD ICP /0600	MC CLOUD ICP /1800	
MAST NORTH STATE EQUIP E-428	09/11	TREVOR TUPMAN	1	MC CLOUD ICP /0600	MC CLOUD ICP /1800	
MAST NORTHSTATE HEAVY EQUI E-454	09/10	DOUG COWLE	1	MC CLOUD ICP /0600	MC CLOUD ICP /1800	
MAST MAST - LEPAGE COMPANY, INC. E-455	09/11	TYJAL FOLSOM	2	MC CLOUD ICP /0600	MC CLOUD ICP /1800	
HEQB JOEL HANSON O-325	09/03		1	MC CLOUD ICP /0600	MC CLOUD ICP /1800	
HEQB KEVIN CASE O-702	09/14		1	MC CLOUD ICP /0600	MC CLOUD ICP /1800	
SOFR JACK THOMAS O-592	09/11		1	MC CLOUD ICP /0600	MC CLOUD ICP /1800	
8. Division/Group Communication Summary						
Function	Channel	RX Frequency N/W	RX Tone/NAC	TX Frequency N/W	TX Tone/NAC	Mode
COMMAND	4 - NIFC CMD 4	170.4125 N	10/107.2	165.9625 N	10/107.2	A
AIR TO GROUND	14 - A/G CMD	168.3375 N		168.3375 N		A
AIR TO GROUND	15 - A/G TAC	167.8125 N		167.8125 N		A
TACTICAL	11 - NIFC T7	168.2500 N	10/107.2	168.2500 N	10/107.2	A
9. Prepared By (Resource Unit Leader)		Approved By (Planning Section Chief)			Date	Time
J SWITZLER/D WOOD/I GATES (T)/K BONEBRAKE (T)		ROBERT ASHBY (T)			09/02/2018	1243

Division/Group Assignment List (ICS 204 WF)
Controlled Unclassified Information//Basic

1. Incident Name:		3.				
HIRZ		Branch:	Division/Group:			
2. Operational Period: DAY		SUPP. REPAIR	GROUP 2			
Date/Time From: 09/03/2018 0600 MON	Date/Time To: 09/03/2018 1800 MON					
4. Operations Personnel						
OPERATIONS CHIEF	ROBIN WILLS MIKE OLIVARRIA	BRANCH DIRECTOR	JARROD CLINKENBEARD			
DIVISION/GROUP SUPERVISOR	DOUG LACOUNT	AIR ATTACK SUPERVISOR	FRED BURRIS			
5. Resources Assigned this Period						
Strike Team / Task Force / Resource Designator	LWD	Leader	Number Persons	Drop Off PT./Time	Pick Up PT./Time	
EMPF RICHARD BATTAD O-421 TO DIV Y NIGHT	09/07		1	MC CLOUD ICP /0600	MC CLOUD ICP /1800	
EMPF RYAN W BALDUS O-533	09/11		1	MC CLOUD ICP /0600	MC CLOUD ICP /1800	
EMTF STEVEN DEVINGENZI O-529 TO DIV Y NIGHT	09/11		1	MC CLOUD ICP /0600	MC CLOUD ICP /1800	
EMTP PABLO ORNELAS O-569	09/13		1	MC CLOUD ICP /0600	MC CLOUD ICP /1800	
ARCH JASON NEZ O-399	09/05		1	MC CLOUD ICP /0600	MC CLOUD ICP /1800	
REAF ZANARD CHOICE O-423	09/06		1	MC CLOUD ICP /0600	MC CLOUD ICP /1800	
REAF ALEX RANDOPH-LOWE O-600	09/11		1	MC CLOUD ICP /0600	MC CLOUD ICP /1800	
REAF MICHAEL MCFADIN O-601	09/12		1	MC CLOUD ICP /0600	MC CLOUD ICP /1800	
6. Control Operations/Work Assignments:						
Coordinate with READS to identify suppression repair needs. Follow suppression repair instruction and direction per READS.						
EXCA MOBLEY CONSTRUCTION E-291 EXCA TRINITY RIVER E-591						
7. Special Instructions:						
<u>Resources report to McCLOUD ICP for briefing.</u> Backhaul trash and excess equipment, i.e. pumps, tanks, and any other unused logistical items. GPS existing and proposed lines and turn into Situation Unit. Be prepared to support IA as directed by OSC. Coordinate with READS to identify areas of concern. ** FOBS Joel McGaffee O-604 and Chuck Brickey O-699 will be assigned to the Suppression Repair Branch. REMS 1 WILL BE AVAILABLE TO ALL DIVISIONS DURING DAY SHIFT OPERATIONS.						
8. Division/Group Communication Summary						
Function	Channel	RX Frequency N/W	RX Tone/NAC	TX Frequency N/W	TX Tone/NAC	Mode
COMMAND	4 - NIFC CMD 4	170.4125 N	10/107.2	165.9625 N	10/107.2	A
AIR TO GROUND	14 - A/G CMD	168.3375 N		168.3375 N		A
AIR TO GROUND	15 - A/G TAC	167.8125 N		167.8125 N		A
TACTICAL	11 - NIFC T7	168.2500 N	10/107.2	168.2500 N	10/107.2	A
9. Prepared By (Resource Unit Leader)		Approved By (Planning Section Chief)		Date	Time	
J SWITZLER/D WOOD/I GATES (T)/K BONEBRAKE (T)		ROBERT ASHBY (T)		09/02/2018	1243	

Division/Group Assignment List (ICS 204 WF)
Controlled Unclassified Information//Basic

1. Incident Name:		3.				
HIRZ		Branch:		Division/Group:		
2. Operational Period:		DAY				
Date/Time From: 09/03/2018 0600 MON		Date/Time To: 09/03/2018 1800 MON				
4. Operations Personnel						
OPERATIONS CHIEF		ROBIN WILLS MIKE OLIVARRIA		BRANCH DIRECTOR		
STAGING AREA MANAGER		MADELINE LEVAGGIO		AIR ATTACK SUPERVISOR		FRED BURRIS
5. Resources Assigned this Period						
Strike Team / Task Force / Resource Designator		LWD	Leader	Number Persons	Drop Off PT./Time	Pick Up PT./Time
DOZ1 MOODY E-271		09/12	ROSS CORNWELL	2	MC CLOUD ICP/0600	MC CLOUD ICP/1800
DOZ2 SKU 2642 (24HR) E-200016		09/16	COLTON GRIFFIN	3	MC CLOUD ICP/0600	MC CLOUD ICP/1800
DOZ2 T AND S DVBE E-144		09/03	BRIAN THURMAN	2	MC CLOUD ICP/0600	MC CLOUD ICP/1800
DOZ2 NORTHWESTERN FIRE E-293		09/15	RON STEVENSON	2	MC CLOUD ICP/0600	MC CLOUD ICP/1800
EXCA ROBERT JOHNSON E-243		09/09	TYLER ADAMS	2	MC CLOUD ICP/0600	MC CLOUD ICP/1800
EXCA KEN'S E-590		09/13	MATTHEW SMITH	1	MC CLOUD ICP/0600	MC CLOUD ICP/1800
EXCA TRINITY RIVER CONSTRUCTION E-591		09/15	TYLER BROWN	2	MC CLOUD ICP/0600	MC CLOUD ICP/1800
MAST J & D LOGGING E-54		09/08	TYLER SWAN	2	MC CLOUD ICP/0600	MC CLOUD ICP/1800
MAST WOOD RIVER TIMBER E-174		09/27	DAVIDSON TROY	2	MC CLOUD ICP/0600	MC CLOUD ICP/1800
MAST J3 CONTRACTING E-261		09/15	DAN LANE	2	MC CLOUD ICP/0600	MC CLOUD ICP/1800
MAST INTERMOUNTAIN FOREST E-264		09/04 9/18	KEVIN SMITH	2	MC CLOUD ICP/0600	MC CLOUD ICP/1800
MAST DIVERSIFIED RESOURCES E-385		09/06	SERVANDO MELENDREZ	2	MC CLOUD ICP/0600	MC CLOUD ICP/1800
MAST BEN'S TRUCK & EQUIP E-456		09/12	WILSON PATE	2	MC CLOUD ICP/0600	MC CLOUD ICP/1800
TFLD JAMIE RHODES O-337		09/04		1	MC CLOUD ICP/0600	MC CLOUD ICP/1800
HEQB TIMOTHY CASSONE (24 HR) O-200018		09/18		1	MC CLOUD ICP/0600	MC CLOUD ICP/1800
HEQB BRUCE ROBISON O-463		09/14		1	MC CLOUD ICP/0600	MC CLOUD ICP/1800
HEQB DUWAYNE ERIACHO O-464		09/10		1		
FMOD QUINNS HOME-LAND SERVICES O-664		09/13	LEAF QUINN	2	MC CLOUD ICP/0600	MC CLOUD ICP/1800
FMOD PACIFIC RIDGELINE FORESTRY O-665		09/13	GABRIEL SOTELA	2	MC CLOUD ICP/0600	MC CLOUD ICP/1800
8. Division/Group Communication Summary						
Function	Channel	RX Frequency N/W	RX Tone/NAC	TX Frequency N/W	TX Tone/NAC	Mode
COMMAND	4 - NIFC CMD 4	170.4125 N	10/107.2	165.9625 N	10/107.2	A
AIR TO GROUND	14 - A/G CMD	168.3375 N		168.3375 N		A
AIR TO GRD TAC	15 - A/G TAC	167.8125 N		167.8125 N		A
9. Prepared By (Resource Unit Leader)		Approved By (Planning Section Chief)		Date	Time	
J SWITZLER/D WOOD/I GATES (T)/K BONEBRAKE (T)		ROBERT ASHBY (T)		09/02/2018	1243	

Division/Group Assignment List (ICS 204 WF)
Controlled Unclassified Information//Basic

1. Incident Name: HIRZ		3.	
2. Operational Period: DAY		Branch:	Division/Group: STAGING
Date/Time From: 09/03/2018 0600 MON	Date/Time To: 09/03/2018 1800 MON		

4. Operations Personnel			
OPERATIONS CHIEF	ROBIN WILLS MIKE OLIVARRIA	BRANCH DIRECTOR	
STAGING AREA MANAGER	MADELINE LEVAGGIO	AIR ATTACK SUPERVISOR	FRED BURRIS

5. Resources Assigned this Period						
Strike Team / Task Force / Resource Designator	LWD	Leader	Number Persons	Drop Off PT./Time	Pick Up PT./Time	
DOZ2 NORTHWESTERN E-292	9/15	SALTERS	3	McCloud	McCloud	
SKG2 JB LOGGING DEMOB E-350	9/15	ALBERTSON		McCloud	McCloud	
SKDS UPPER VALLEY DEMOB E-338	9/14	KRUCKEBERY	3	McCloud	McCloud	

6. Control Operations/Work Assignments:
Stage at ICP. Be ready to respond as requested by OSC.

7. Special Instructions:
FALM AMERICAN TIMBER 0.59
DOZ2 LE BRITTEN E.139
FEL1 WARREN ENT. E.457
DOZ1 BROWN E-270

8. Division/Group Communication Summary						
Function	Channel	RX Frequency N/W	RX Tone/NAC	TX Frequency N/W	TX Tone/NAC	Mode
COMMAND	4 - NIFC CMD 4	170.4125 N	10/107.2	165.9625 N	10/107.2	A
AIR TO GROUND	14 - A/G CMD	168.3375 N		168.3375 N		A
AIR TO GRD TAC	15 - A/G TAC	167.8125 N		167.8125 N		A

9. Prepared By (Resource Unit Leader) J SWITZLER/D WOOD/I GATES (T)/K BONEBRAKE (T)	Approved By (Planning Section Chief) ROBERT ASHBY (T)	Date 09/02/2018	Time 1243
--	--	--------------------	--------------

Division/Group Assignment List (ICS 204 WF)
Controlled Unclassified Information//Basic

1. Incident Name:		3.				
HIRZ		Branch:		Division/Group:		
2. Operational Period: NIGHT		NIGHT BR		A/B/F/Z		
Date/Time From: 09/03/2018 1800 MON	Date/Time To: 09/04/2018 0600 TUE					
4. Operations Personnel						
OPERATIONS CHIEF		STEVE BURNS		BRANCH DIRECTOR		DONOVAN LEE
DIVISION/GROUP SUPERVISOR		UNSTAFFED				
5. Resources Assigned this Period						
Strike Team / Task Force / Resource Designator	LWD	Leader	Number Persons	Drop Off PT./Time	Pick Up PT./Time	
UNSTAFFED						
6. Control Operations/Work Assignments:						
UNSTAFFED						
7. Special Instructions:						
<p>Backhaul trash and excess equipment, i.e. pumps, tanks, and any other unused logistical items. GPS existing and proposed lines and turn in to Situation Unit. Be prepared to support IA as directed by Operations Section Chief. Coordinate with READS to identify areas of concern.</p> <p>REMS 2 WILL BE AVAILABLE TO ALL DIVISIONS DURING NIGHT SHIFT OPERATIONS.</p>						
8. Division/Group Communication Summary						
Function	Channel	RX Frequency N/W	RX Tone/NAC	TX Frequency N/W	TX Tone/NAC	Mode
COMMAND	4 - NIFC CMD 4	170.4125 N	10/107.2	165.9625 N	10/107.2	A
AIR TO GROUND	14 - A/G CMD	168.3375 N		168.3375 N		A
AIR TO GRD TAC	15 - A/G TAC	167.8125 N		167.8125 N		A
TACTICAL	11 - NIFC T7	168.2500 N	10/107.2	168.2500 N	10/107.2	A
9. Prepared By (Resource Unit Leader)		Approved By (Planning Section Chief)		Date	Time	
J SWITZLER/D WOOD/I GATES (T)/K BONEBRAKE (T)		ROBERT ASHBY (T)		09/02/2018	1241	

Division/Group Assignment List (ICS 204 WF)

Controlled Unclassified Information//Basic

1. Incident Name:			3.			
HIRZ			Branch:		Division/Group:	
2. Operational Period:			NIGHT BR		T	
NIGHT						
Date/Time From: 09/03/2018 1800 MON		Date/Time To: 09/04/2018 0600 TUE				
4. Operations Personnel						
OPERATIONS CHIEF		STEVE BURNS		BRANCH DIRECTOR		
				DONOVAN LEE		
DIVISION/GROUP SUPERVISOR		BRANDON LANNING				
5. Resources Assigned this Period						
Strike Team / Task Force / Resource Designator		LWD	Leader	Number Persons	Drop Off PT./Time	Pick Up PT./Time
HCS1 SHU 9240G (24HR) C-200011		09/18	DENNIS LANGE	36	24 HR/	MCCLLOUD ICP/0600
HCS1 LMU 9221G (24HR) C-200012		09/10	ROBERT VEVERKA	41	24 HR/	MCCLLOUD ICP/0600
ES3 BTU 9213C (24HR) E-200003		09/07	JASON MORRIS	16	24 HR/	MCCLLOUD ICP/0600
ES3 AEU 9270C (24HR) E-200021		09/17	MARK BRUNTON	18	24 HR/	MCCLLOUD ICP/0600
DOZ2 DUNLAP E-135 (24 HR)		09/05	WILLIAM DUNLAP	2	24 HR/	DP 67/0600
WTS2 YREKA OUTLANDS (24HR) E-387		09/05	ED FRYSTAK	2	24HR/	DP 67/0600
WTS2 WATERDOGG (24HR) E-580		09/13	ANTHONY PALAZZO	2	24HR/	DP 67/0600
WTS2 CATTELACK RANCH (24HR) E-587		09/13	JIM GOLDIE	3	24HR/	DP 67/0600
WTS2 SEMPLE, JOHN (24HR) E-589		09/13	AL CROSS	1	24HR/	DP 67/0600
WTS3 COTTONWOODEQUIPMENT, INC E-407		09/09	ZACERY MAZZOTTA	1	DP 67/1800	DP 67/0600
EMPF JOEL DAVIS O-375		09/03		1		
EMTF DEAN VERNARECCI O-575		09/12		1		
AMBU CAE FLIGHT OPS E-394		09/08	TOM HIGGINS	2		
6. Control Operations/Work Assignments:						
Continue to hold burnout operations. Patrol and mop-up to the extent necessary to ensure containment and where safe to do so.						
7. Special Instructions:						
Backhaul trash and excess equipment, i.e. pumps, tanks, and any other unused logistical items. GPS existing and proposed lines and turn in to Situation Unit. Be prepared to support IA as directed by Operations Section Chief. Coordinate with READS to identify areas of concern. REMS 2 WILL BE AVAILABLE TO ALL DIVISIONS DURING NIGHT SHIFT OPERATIONS.						
8. Division/Group Communication Summary						
Function	Channel	RX Frequency N/W	RX Tone/NAC	TX Frequency N/W	TX Tone/NAC	Mode
COMMAND	4 - NIFC CMD 4	170.4125 N	10/107.2	165.9625 N	10/107.2	A
AIR TO GROUND	14 - A/G CMD	168.3375 N		168.3375 N		A
AIR TO GRD-TAC	15 - A/G TAC	167.8125 N		167.8125 N		A
TACTICAL	8 - NIFC T3	168.6000 N	10/107.2	168.6000 N	10/107.2	A
9. Prepared By (Resource Unit Leader)			Approved By (Planning Section Chief)		Date	Time
J SWITZLER/D WOOD/I GATES (T)/K BONEBRAKE(T)			ROBERT ASHBY (T)		09/02/2018	1241

Division/Group Assignment List (ICS 204 WF)
Controlled Unclassified Information//Basic

1. Incident Name:				3.			
HIRZ				Branch:		Division/Group:	
2. Operational Period: NIGHT				NIGHT BR		U	
Date/Time From: 09/03/2018 1800 MON		Date/Time To: 09/04/2018 0600 TUE					
4. Operations Personnel							
OPERATIONS CHIEF		STEVE BURNS		BRANCH DIRECTOR		DONOVAN LEE	
DIVISION/GROUP SUPERVISOR		DON GRAHAM (9250C)					
5. Resources Assigned this Period							
Strike Team / Task Force / Resource Designator	LWD	Leader	Number Persons	Drop Off PT./Time	Pick Up PT./Time		
HC1 TBA				SHASTA CAMP/1800	SHASTA CAMP/0600		
HC2 PACIFIC COAST CONTRACTING INC C-90	09/09	UBALDO VARGAS	20	SHASTA CAMP/1800	SHASTA CAMP/0600		
ES3 ES3 9250C (24 HR) E-200019	09/12	DON GRAHAM	22	24 HR/	MC CLOUD ICP/0600		
ENG4 GLADWIN 57B E-459 <i>EXCESS</i>	09/10	SCOTT SEBERO	3	SHASTA CAMP/1800	SHASTA CAMP/0600		
ENG6 RED ROCK FIRE 264 E-347 <i>EXCESS</i>	09/14	REID TROXEL	3	SHASTA CAMP/1800	SHASTA CAMP/0600		
ENG6 GRIFFITH AUTO SHOP E-349 <i>EXCESS</i>	09/05	WILLIAM GRIFFITH	3	SHASTA CAMP/1800	SHASTA CAMP/0600		
ENG6 EAGLE E-337 <i>EXCESS</i>	09/08	DION REYNOLDS	3	SHASTA CAMP/1800	SHASTA CAMP/0600		
WTF1 OES 31 (24 HR) E-577 <i>EXCESS</i>	09/13	JERRY WINTERS	2	24 HR/	MC CLOUD ICP/0600		
WTS2 HARRIS EMERGENCY SERVICES E-405 <i>EXCESS</i>	09/08	BILL SEAGLE	1	SHASTA CAMP/1800	SHASTA CAMP/0600		
WTS2 COLD SPRINGS (24HR) E-585	09/13	JERRY GRZYBOWSKI	2	24HR/	MC CLOUD ICP/0600		
WTS3 GRANT HANNA (24 HR) E-556	09/12	SHAWN BULTENA	2	24 HR/	MC CLOUD ICP/0600		
EMTF GABE AUBERT O-431	09/07		1	SHASTA CAMP/1800	SHASTA CAMP/0600		
EMTF ZACHARIAH SUMMERS O-528	09/11		1	SHASTA CAMP/1800	SHASTA CAMP/0600		
AMBU MT SHASTA AMBULANCE SERVICE E-73	09/14	JOLENE PATRICK	2	SHASTA CAMP/1800	SHASTA CAMP/0600		
<i>HLI MENDOCINO IHC</i>			<i>20</i>	<i>SHASTA /1800</i>	<i>SHASTA /0600</i>		
8. Division/Group Communication Summary							
Function	Channel	RX Frequency N/W	RX Tone/NAC	TX Frequency N/W	TX Tone/NAC	Mode	
COMMAND	4 - NIFC CMD 4	170.4125 N	10/107.2	165.9625 N	10/107.2	A	
AIR TO GROUND	14 - A/G CMD	168.3375 N		168.3375		A	
AIR TO GRD TAC	15 - A/G TAC	167.8125 N		167.8125		A	
TACTICAL	9 - NIFC T5	166.7250 N	10/107.2	166.7250 N	10/107.2	A	
9. Prepared By (Resource Unit Leader) <i>CSW</i>			Approved By (Planning Section Chief) <i>Robert Ashby</i>			Date	
J SWITZLER/D WOOD/I GATES (T)/K BONEBRAKE (T)			ROBERT ASHBY (T)			09/02/2018	
						Time 1241	

Division/Group Assignment List (ICS 204 WF)
Controlled Unclassified Information//Basic

1. Incident Name:				3.			
HIRZ				Branch:		Division/Group:	
2. Operational Period: NIGHT				NIGHT BR		U	
Date/Time From: 09/03/2018 1800 MON		Date/Time To: 09/04/2018 0600 TUE					
4. Operations Personnel							
OPERATIONS CHIEF		STEVE BURNS		BRANCH DIRECTOR		DONOVAN LEE	
DIVISION/GROUP SUPERVISOR		DON GRAHAM (9250C)					
5. Resources Assigned this Period							
Strike Team / Task Force / Resource Designator		LWD	Leader	Number Persons	Drop Off PT./Time	Pick Up PT./Time	
6. Control Operations/Work Assignments:							
<p>Continue to hold burnout operations. Patrol and mop-up to the extent necessary to ensure containment and where safe to do so. Work with adjoining divisions to ensure staffing is adequate.</p>							
7. Special Instructions:							
<p>Backhaul trash and excess equipment, i.e. pumps, tanks, and any other unused logistical items. GPS existing and proposed lines and turn in to Situation Unit. Be prepared to support IA as directed by Operations Section Chief. Coordinate with READS to identify areas of concern. REMS 2 WILL BE AVAILABLE TO ALL DIVISIONS DURING NIGHT SHIFT OPERATIONS.</p>							
8. Division/Group Communication Summary							
Function	Channel	RX Frequency N/W	RX Tone/NAC	TX Frequency N/W	TX Tone/NAC	Mode	
COMMAND	4 - NIFC CMD 4	170.4125 N	10/107.2	165.9625 N	10/107.2	A	
AIR TO GROUND	14 - A/G CMD	168.3375 N		168.3375		A	
AIR TO GRD TAC	15 - A/G TAC	167.8125 N		167.8125		A	
TACTICAL	9 - NIFC T5	166.7250 N	10/107.2	166.7250 N	10/107.2	A	
9. Prepared By (Resource Unit Leader)				Approved By (Planning Section Chief)		Date	Time
J SWITZLER/D WOOD/I GATES (T)/K BONESBRAKE (T)				ROBERT ASHBY (T)		09/02/2018	1241

Division/Group Assignment List (ICS 204 WF)

Controlled Unclassified Information//Basic

1. Incident Name:				3.			
HIRZ				Branch: NIGHT BR		Division/Group: W	
2. Operational Period: NIGHT							
Date/Time From: 09/03/2018 1800 MON		Date/Time To: 09/04/2018 0600 TUE					
4. Operations Personnel							
OPERATIONS CHIEF		STEVE BURNS		BRANCH DIRECTOR		DONOVAN LEE	
DIVISION/GROUP SUPERVISOR		JEREMY PIERCE					
5. Resources Assigned this Period							
Strike Team / Task Force / Resource Designator		LWD	Leader	Number Persons	Drop Off PT./Time	Pick Up PT./Time	
HCS1 LMU 9224G (24HR) C-200016		09/17	MARK STEELE	37	24 HR/	MC CLOUD ICP/0600	
ES3 MEU 9112C (24HR) E-200004		09/07	JAY MCNULTY	18	24 HR/	MC CLOUD ICP/0600	
ENG00 GIBOLA 623 E-480 EXCESS		09/09	BENNY MENDOZA	3	SHASTA CAMP/1800	SHASTA CAMP/0600	
DOZ2 SHU 2440 (24HR) E-200015		09/17	AARON FLOURNOY	3	24 HR/	MC CLOUD ICP/0600	
WTS2 BUNN ENTERPRISES E-336		09/03	WADE BUNN	1	SHASTA CAMP/1800	SHASTA CAMP/0600	
SKG3 CATE LAND INDUSTRIES (24 HR) E-552		09/14	E. C. CATES	2	24 HR/	MC CLOUD ICP/0600	
HEQB MIKE WATNER O-200017 EXCESS		09/06		1	24 HR/	MC CLOUD ICP/0600	
SOFR JON W GARBER O-686		09/08		1	SHASTA CAMP/1800	SHASTA CAMP/0600	
EMTP ANDREW FONDACARO O-570		09/13		1			
REMS 2 O-534		09/10		4			
6. Control Operations/Work Assignments:							
Continue to hold burnout operations. Patrol and mop-up to the extent necessary to ensure containment and where safe to do so. Work with adjoining divisions to ensure staffing is adequate.							
7. Special Instructions:							
Backhaul trash and excess equipment, i.e. pumps, tanks, and any other unused logistical items. GPS existing and proposed lines and turn in to Situation Unit. Be prepared to support IA as directed by Operations Section Chief. Coordinate with READS to identify areas of concern. REMS 2 WILL BE AVAILABLE TO ALL DIVISIONS DURING NIGHT SHIFT OPERATIONS.							
8. Division/Group Communication Summary							
Function	Channel	RX Frequency N/W	RX Tone/NAC	TX Frequency N/W	TX Tone/NAC	Mode	
COMMAND	4 - NIFC CMD 4	170.4125 N	10/107.2	165.9625 N	10/107.2	A	
AIR TO GROUND	14 - A/G CMD	168.3375 N		168.3375 N		A	
AIR TO GROUND	15 - A/G TAC	167.8125 N		167.8125 N		A	
TACTICAL	12 - NIFC T12	162.1625 N	10/107.2	162.1625 N	10/107.2	A	
9. Prepared By (Resource Unit Leader)				Approved By (Planning Section Chief)		Date	Time
J SWITZLER/D WOOD/I GATES (T)/K BONEBRAKE (T)				ROBERT ASHBY (T)		09/02/2018	1241

Division/Group Assignment List (ICS 204 WF)
Controlled Unclassified Information//Basic

1. Incident Name:				3.			
HIRZ				Branch:		Division/Group:	
2. Operational Period: NIGHT				NIGHT BR		X	
Date/Time From: 09/03/2018 1800 MON		Date/Time To: 09/04/2018 0600 TUE					
4. Operations Personnel							
OPERATIONS CHIEF		STEVE BURNS		BRANCH DIRECTOR		DONOVAN LEE	
DIVISION/GROUP SUPERVISOR		KIM OLSON					
5. Resources Assigned this Period							
Strike Team / Task Force / Resource Designator		LWD	Leader	Number Persons	Drop Off PT./Time	Pick Up PT./Time	
HC1 LAGUNA IHC C-63		09/07	JIM HUSTON	18	SHASTA CAMP/1800	SHASTA CAMP/0600	
HC1 FEATHER RIVER IHC (CREW 3) C-99		09/07	ROBERT DANIEL	20	SHASTA CAMP/1800	SHASTA CAMP/0600	
ES3 SHF 3675C E-429		09/08	JIM YACOB	25	SHASTA CAMP/1800	SHASTA CAMP/0600	
ES3 SCU 9161C (24HR) E-200022		09/16	KEN MYERS	16	24 HR/	MCCLOUD ICP/0600	
ENG3 ROCKY MOUNTAIN FIRE E-393		09/10	PAUL OSTROY	4	SHASTA CAMP/1800	SHASTA CAMP/0600	
WTS1 BEN'S TRUCK & EQUIPMENT E-588 <i>EXCESS</i>		09/13	GARL HALE	1	SHASTA CAMP/1800	SHASTA CAMP/0600	
WTS2 LET ER BUCK TRUCKING E-333 <i>EXCESS</i>		09/09	TIM LANG	1	SHASTA CAMP/1800	SHASTA CAMP/0600	
WTT2 ENE 21 E-338 <i>EXCESS</i>		09/09	KYLE MCKEAND	2	SHASTA CAMP/1800	SHASTA CAMP/0600	
WTS2 WILLMORE AG SERVICES (24HR) E-583		09/13	BILL TORRE	2	24HR/	MCCLOUD ICP/0600	
WTS2 TOBIASSON, RAYNOLD (24HR) E-586		09/13	RAYNOLD TOBIASSON	2	24HR/	MCCLOUD ICP/0600	
SKDS SOFT TRACK ATTACK (24HR) E-250 <i>EXCESS</i>		09/09	HUNTER GUTHRIE	2	24HR/	MCCLOUD ICP/0600	
SKG1 SOFT TRACK ATTACK (24HR) E-548 <i>EXCESS</i>		09/12	ELIJAH PURDY	3	24HR/	MCCLOUD ICP/0600	
EMPF BUZZ OLSON O-87		09/04		1			
EMTF NOLAN BARRICKMAN O-524		09/11		1			
8. Division/Group Communication Summary							
Function	Channel	RX Frequency N/W	RX Tone/NAC	TX Frequency N/W	TX Tone/NAC	Mode	
COMMAND	4 - NIFC CMD 4	170.4125 N	10/107.2	165.9625 N	10/107.2	A	
AIR TO GROUND	14 - A/G CMD	168.3375 N		168.3375		A	
AIR TO GROUND	15 - A/G TAC	167.8125 N		167.8125		A	
TACTICAL	10 - NIFC T6	166.7750 N	10/107.2	166.7750 N	10/107.2	A	
9. Prepared By (Resource Unit Leader)				Approved By (Planning Section Chief)		Date	Time
J SWITZLER/D WOOD/I GATES (T)/K BONEBRAKE (T) <i>[Signature]</i>				ROBERT ASHBY (T) <i>[Signature]</i>		09/02/2018	1241

Division/Group Assignment List (ICS 204 WF)

Controlled Unclassified Information//Basic

1. Incident Name:			3.			
HIRZ			Branch:		Division/Group:	
2. Operational Period:			NIGHT BR		Y	
NIGHT						
Date/Time From: 09/03/2018 1800 MON		Date/Time To: 09/04/2018 0600 TUE				
4. Operations Personnel						
OPERATIONS CHIEF		STEVE BURNS		BRANCH DIRECTOR		
				DONOVAN LEE		
DIVISION/GROUP SUPERVISOR		CODY BOGAN				
5. Resources Assigned this Period						
Strike Team / Task Force / Resource Designator		LWD	Leader	Number Persons	Drop Off PT./Time	Pick Up PT./Time
HCS1 AEU 9275G (24 HR) C-110			HOWARD DRUMMOND	32	24 HR/	MCCLLOUD ICP/0600
HC1 SALMON RIVER IHC C-50		09/03	BILL ROBINSON	20	SHASTA CAMP/1800	SHASTA CAMP/0600
HC1 TALLAC IHC C-116		09/15	KYLE BETTY	19	SHASTA CAMP/1800	SHASTA CAMP/0600
ES3 1611 C E-526		09/08	ROBERT RANEY	27	SHASTA CAMP/1800	SHASTA CAMP/0600
ENG3 INF 11 E-432		09/10	MARK FOGG	5	SHASTA CAMP/1800	SHASTA CAMP/0600
ENG3 LONGMONT 2131 E-462		09/11	DAVID CROPP	4	SHASTA CAMP/1800	SHASTA CAMP/0600
ENG3 THP 6959 E-481		09/10	WILLIAM BARBER	4	SHASTA CAMP/1800	SHASTA CAMP/0600
ENG3 NOD 3230 E-524		09/07	CHRIS BOURGOINE	4	SHASTA CAMP/1800	SHASTA CAMP/0600
ENG4 NJS B45 E-460		09/11	MICHAEL ACHEY	3	SHASTA CAMP/1800	SHASTA CAMP/0600
ENG4 NJS T9 E-461		09/11	STEVEN HOLMES	3	SHASTA CAMP/1800	SHASTA CAMP/0600
SOFR JACK D HOLLOWAY O-587		09/10		1	SHASTA CAMP/1800	SHASTA CAMP/0600
AMBU AMERICAN FIRE SERVICES, LLC E-426		09/09		2	SHASTA CAMP/1800	SHASTA CAMP/0600
6. Control Operations/Work Assignments:						
Continue burnout operations to Squaw Creek and to McCloud River Club and hold as necessary to ensure the fire remains within containment lines. Provide for structure protection at the McCloud River Club.						
<i>EMPF RICHARD BATTAD 0-421</i>						
7. Special Instructions:						
<i>EMTF STEVEN DEVINCENZI 0-529</i>						
Backhaul trash and excess equipment, i.e. pumps, tanks, and any other unused logistical items. GPS existing and proposed lines and turn in to Situation Unit. Be prepared to support IA as directed by Operations Section Chief. Coordinate with READS to identify areas of concern.						
REMS 2 WILL BE AVAILABLE TO ALL DIVISIONS DURING NIGHT SHIFT OPERATIONS.						
8. Division/Group Communication Summary						
Function	Channel	RX Frequency N/W	RX Tone/NAC	TX Frequency N/W	TX Tone/NAC	Mode
COMMAND	4 - NIFC CMD 4	170.4125 N	10/107.2	165.9625 N	10/107.2	A
AIR TO GROUND	14 - A/G CMD	168.3375 N		168.3375		A
AIR TO GROUND	15 - A/G TAC	167.8125 N		167.8125		A
TACTICAL	7 - NIFC T1	168.0500 N	10/107.2	168.0500 N	10/107.2	A
9. Prepared By (Resource Unit Leader)			Approved By (Planning Section Chief)		Date	Time
J SWITZLER/D WOOD/I GATES (T)/K BONEBRARE (T)			ROBERT ASHBY (T)		09/02/2018	1241

AIR OPERATIONS SUMMARY

Prepared By: Dale Douglas, AOB

Prepared Date: 2 Sept 2018

Prepared Time: 1900

INCIDENT NAME: Hirz	OPS PERIOD DATE: 3 September-2018	START TIME: 0800	END TIME: 1945	SUNRISE: 0637	SUNSET: 1940
REMARKS (Safety Notes, Hazards, Air Operations Special Equipment, etc.): MONITOR AIR TO GROUND FREQ FOR AIR ACTIVITY.					
READY ALERT AIRCRAFT			TFR #: 8/7217		
MEDEVAC - Guard 841 Dedicated 24 hr Hoist/ALS			8,000 msl, polygon		

PERSONNEL	NAME	PHONE #	FREQUENCIES	AM	FM	Fixed Wing Aircraft:
AOBD AOBD(T)	Dale Douglas Sean O'Hara	541-910-7412 707-339-0195	AIR/ AIR - TFR Air/Air Rotor East Air/Air Rotor West	124.5750 A-8 118.7750 A-30 128.4250 A-133		AIRTANKERS- TBA
ASGS ASGS(T)	Craig Dado Kevin Merrill	530-518-6688 605-222-3883	AIR Tactics F/W PSD ONLY		166.9500 A-9 169.100	LEAD PLANES- TBA
HEB1 HIRZ HB	Tyler Detrick	530-925-9668 925-542-9169	AIR/GD Tactics AIR/GD Command		167.8125 A-10 168.3375 A-31	ATGS AIRCRAFT- 109Z / Cobra
HEB1 Willow Creek HB	Jeremy Stocks	530-249-9932	Command 1		171.5375 rx 164.0875 tx Tone 10	32WS / Aero Commander / AA05 / A-124
CO GS	Beth Melville Derek Wheeler	530-412-2939 530-355-3274	Command 2		172.6500 rx 164.7500 tx Tone 10	OTHER FW AIRCRAFT-
NG Medevac Contact	Nick Sandhal	707-529-3914	Command 3		170.4250 rx 168.0750 tx Tone 10	Hirz HB 40° 34.850' X 122° 13.800'
Hirz Air Conference Call	0730	888-844-9904 2503071#	Deck Air Guard		163.100 168.6250 (110.9)tx/rx	Willow Creek HB 41* 09.822 X 122* 09.058 Mobile Retardant Base located at Willow Creek Helibase

FAA N#	T Y	MAKE/ MODEL	BASE	AVAIL	START	REMARKS	FAA N#	T Y	MAKE/ MODEL	BASE	AVAIL	START	REMARKS		
161KA	1	K-1200	Hirz HB	0830	0800	EXC	A-3	205BT	2	B-205A1	Hirz HB	0830	0800	EXC (H506)	A-4
N1043T	1	S61	Hirz HB	0830	0800	CWN (H43)	A-159	502HQ	2	B-205A1	Hirz HB	0830	0800	EXC (H502)	A-59
804PJ	1	UH-60	Hirz HB	0830	0800	EXC	A-134	658HA	2	UH1H	Willow Crk	0830	0800	CWN Ltd	A-152
611CK	1	S61	Hirz HB	0830	0800	EXC	A-29	838PA	3	AS350B3	Hirz HB	0830	0800	EXC Short Haul	A-211
N239CH	1	BV234	Willow Crk	0830	0800	CWN	A-176	988B	3	B-206 L4	Hirz HB	0830	0800	CWN	A-135
N4037S	1	S64	Willow Crk	0830	0800	CWN	A-175	N6HE	3	B-407	Willow Crk	0830	0800	EXC (H553)	A-177
								109Z	3	Cobra	Hirz HB	0830	0800	HLCO	

SAFETY MESSAGE

INCIDENT: Hirz Fire CA-SHF-001223

DATE: 09/3-4/2018 TIME: 0600-0600

Major Hazards and Risks:

- FIRE WEAKENED TREES; STUMP HOLES; BURNING UNDERGROUND ROOTS.
- HEAT STRESS AND DEHYDRATION.
- HAZARDOUS FOOTING ON STEEP SLOPES.
- ROLLING ROCKS AND OTHER MATERIAL ON STEEP SLOPES.

Fire Order of the Day – Give clear instructions and be sure they are understood

Mop Up

- Thoroughly scout work areas for hazards prior to engagement. Identify and mitigate by safest means possible.
- Identify hazard trees and snags in work area and make them know.
- Only mop up to the extent necessary to ensure containment but most importantly where safe to do so!
- One common reason for firefighter injury during mop up is not thoroughly assessing the work environment prior to mopping up for every shift.
- Ash pits are an inherent and hidden risk to wildland firefighters that can cause severe burns and injuries. Ash pits are created when a ground fire consumes underground fuels creating an empty space that is imperceptible from the surface.
- Common areas for ash pit formation after a wildfire:
 - Extensive root systems of trees and shrubs.
 - Deep duff or peat, the organic layer covering mineral soil. old dozer piles, sawmills, timber sale yards or decking areas.
 - White ash is sometimes an indicator of ash pits as are swarms of hovering insects.
 - Ash pits often give off the smell of incomplete combustion or of creosote burning



13. ON A HILLSIDE WHERE ROLLING MATERIAL CAN IGNITE FUEL BELOW

Human Factor Barriers to Situation Awareness

Low Experience Level with Local Factors

- Unfamiliar with the area or the organizational structure.

Distraction from Primary Task

- Conflict
- Collateral duties
- Incident within an incident

Fatigue

- Carbon monoxide
- Dehydration
- Heat stress

Stress Reactions

- Communication deteriorates or grows tense
- Habitual or repetitive behavior
- Target fixation – Locking into a course of action; whether it makes sense or not, just try harder
- Action tunneling – Focusing on small tasks, but ignoring the big picture
- Escalation of commitment – Accepting increased risk as completion of task gets near

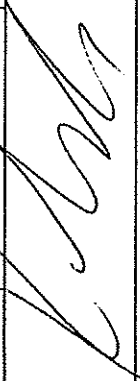
Hazardous Attitudes

- Invulnerable – That can't happen to us
- Anti-authority – Disregard of the team effort
- Impulsive – Do something even if it's wrong
- Macho – Trying to impress or prove something
- Complacent – Just another routine fire
- Resigned – We can't make a difference
- Group Think – Afraid to speak up or disagree

Location	Hazard	Control or Abatement Action
All	Air Operations	<ul style="list-style-type: none"> ~ Follow "Aviation Watch-Out Situations" in IRPG, page 46 ~ Don't plan on air resources for medical transport or resupply. Visibility may be impaired. Have a backup plan. ~ Refer to IRPG, pg 46, for directing bucket drops. ~ Ensure positive communication with all air resources. ~ Keep personnel out of drop zones. ~ Use clear concise statements when directing aircraft. Use clock directions from pilot's perspective.
All	Hazard Trees	<ul style="list-style-type: none"> ~ Follow "Hazard Tree Safety" guidelines, IRPG page 22 ~ Post lookouts, or use a spotter in mop-up areas with personnel ~ Don't park vehicles or take breaks in high concentrations of hazard trees. Establish trigger points for disengagement during high wind events~ Post road guards when appropriate
Branch I and Branch III, Branch V	Power and Utilities	<ul style="list-style-type: none"> ~ Notify all personnel of down electrical lines ~ Refer to the IRPG pages 24-25 for Power Line Safety~ Always treat downed wires as energized~ Identify and avoid high tension transmission lines. ~ Identify and avoid high pressure natural gas lines~ Identify and avoid damaged gas service near structures~ Be aware of utility work under way in your work area
All	Potential for Spotting and Severe Fire Behavior	<ul style="list-style-type: none"> * Share weather observations and IMET updates with all personnel assigned to division* Establish "Decision Points" to withdraw * Ensure LCES is in place (Lookout, Communications, Escape route and Safety Zone)* Use "Risk Management" process prior to taking action, refer to IRPG (2014) pg.1 Maintain adequate escape routes and safety zones; continue to re-evaluate throughout the shift* Factor in drought conditions and local ERC prior to operations*
All	Engagement in a tree mortality area	<ul style="list-style-type: none"> ~ Carefully evaluate values at risk and need for exposure ~ Maintain appropriate clearance distance from hazard trees ~ Be alert for overhead hazards that may fall ~ Disengage operations at dark in areas of tree mortality ~ Conduct thorough briefings on hazards, fire behavior and trees soundness and integrity associated with dead and dying before engagement of suppression activities~ Clear area of all personnel prior to bucket or retardant drops and evaluate work area before re-engaging~ Establish decision points for disengagement
All	Fatigue, overexertion, dehydration and heat related illness	<ul style="list-style-type: none"> ~ Drink fluids throughout operational period (water and Gatorade) not energy drinks ~ Set a reasonable work pace and allow adequate rest breaks * Follow work / rest guidelines ~ Use buddy system to monitor personnel for heat related and fatigue issues~ For Heat Related Injuries refer to IRPG page109
All	Steep Terrain & Rolling Debris	<ul style="list-style-type: none"> ~ Maintain 8'-10' spacing when working & walking ~ Don't work directly above or below any personnel ~ Evaluate necessity to send personnel in areas with limited access
All	Driving & Traffic	<ul style="list-style-type: none"> ~ Use low gears on steep grades, drive slowly and pull over periodically to allow brakes to cool~ Practice "Defensive Driving" techniques traveling on all roads and city streets, ICP, base and spike camps ~ Use spotters when backing~ Honk horn to alert personnel when backing ~ Always use headlights ~ Observe posted speed limits ~ Follow 3 second rule of following distance when driving ~ Use chock blocks, turn wheels into hill ~ Seat Belts are mandatory ~ No texting while driving ~ Watch for opposing traffic that may cross over into your lane on narrow winding roads~ Watch for falling rocks and debris on roadways in steep canyon areas of the fire ~ Use extra precautions when driving in congested areas
All	Communications	<ul style="list-style-type: none"> ~ Utilize the ICS 205 and review daily for any changes to establish and maintain communication with aviation resources, and suppression organization. ~ Ensure all know frequency and protocol for contacting resources~ Utilize Human repeaters where needed
All	Firefighter & Public Smoke Exposure	<ul style="list-style-type: none"> ~ Use warning lights and provide traffic control on roadways during smoky and night operations~ Rotate crews out of smoky areas during fire mop-up operations * Utilize smoke monitoring equipment and resource advisors

Branch I and Branch III, Branch V, Contingency Branch	Heavy Equipment Operations	<ul style="list-style-type: none"> ~ Ensure communications are established with operator prior to work ~ Maintain identified safety exclusion area around equipment , IRPG, pg 86 ~ Before approaching; make eye contact with operator and wait for blade placement on ground ~ Avoid working below equipment where rolling material could jeopardize safety ~ Before transporting equipment identify low hanging wires and ensure there is clearance
All	Night Operations	<ul style="list-style-type: none"> ~ Maintain high visibility in work area near roadways. ~ Use glow sticks to mark hazards. ~ Watch for signs of fatigue ~ Scout and evaluate all areas of work prior to engagement ~ Watchout Situation – In country not seen in daylight
All	Uninformed on Strategy / Tactics / hazards	<ul style="list-style-type: none"> ~ Provide a detailed briefing for all personnel assigned to the incident ~ Document briefings on unit log ~ Use Risk Management Process in evaluating all assignments ~ Explain leadership responsibilities and expectations from all personnel assigned to task ~ Determine hazards, and mitigation protocol to limit exposure. ~ Review 215a ~ Discuss weather, fire behavior, Escape Routes, Safety Zones ~ Discuss communication plan including all tactical, aerial, and command frequencies ~ Discuss Emergency Plan outlined in the ICS-206 WF Medical Plan
Branch I and Branch III, Branch V	Fireline Hazards and Mop Up	<ul style="list-style-type: none"> * Do not work directly above or below personnel during mop-up operations * Identify and make known burning stumps or roots that may cave In * Wear appropriate PPE * Watch for falling, rolling debris on steep slopes * Call out to crew personnel that may be affected by sudden rolling debris or rocks * For logs that may roll re-position perpendicular to the slope * Watch for weakened trees that may pose danger or fall * Scout areas for mop up prior to work * Maintain 8'-10' spacing when working & walking
All	Chain Saw Operations	<ul style="list-style-type: none"> ~ Only fell and buck trees within your expertise, and training ~ Look up, down, & around for hazard tree indicators : trees burning for long periods of time, dead, broken, or burnt out tops and limbs overhead ~ Follow "Procedural Felling Operations" IRPG page 85 ~ Do not fall trees during high wind events ~ Use precautionary measures when re-fueling saws to prevent "fuel geysering "
All	Environmental Hazards	<ul style="list-style-type: none"> ~ Be alert for rattlesnakes, watch footing and hand placement around rocks ~ Check yourself for ticks, watch for bees and other insects that bite ~ Watch out for livestock and wildlife inside fire area and along roadways. ~ Practice Bear Avoidance- Clean up all debris and trash during each operational period * Stay alert for mountain lions in areas of work ~ Be aware of poison oak and avoid or use proper hygiene if exposed.
Branch I and Branch III, Branch V	Firing Operations & Devices	<ul style="list-style-type: none"> ~ Only personnel trained in the use of each device will be authorized to use firing equipment. ~ Ensure all personnel are aware of firing operation that may affect them. ~ Wear appropriate PPE. ~ Ensure aerial and ground ignition plans have been adequately developed and personnel are briefed.
All	Chipper Operations	<ul style="list-style-type: none"> ~ Block chipper tires when unhooked from towing vehicle and insure full extension of support leg. ~ When working in roadway use warning systems for traffic. ~ Check all safety shutdowns to be sure they are working properly. ~ Check direction of discharge. Make sure discharge is pointed away from work areas or roadways. Position down-wind if possible. ~ Never operate chipper alone. ~ Never reach into the infeed shroud. Feed short material on top of longer material or lay short pieces on the infeed tray and push into chipper with long branches or long piece of wood. Do not use rakes or shovels to push material into feeder. Check material for rocks before feeding into chipper. ~ Do not use your hand or feet to push material into feeder. ~ Hard hat, eye protection, gloves, and ear protection will be worn at all times when working near chipper. ~ Review JHA with workers
All	Masticator	<ul style="list-style-type: none"> * Require crewmembers to maintain a safe distance of 300 ft. from the equipment * Have suppression crew nearby with water in case friction or sparks ignite woody debris

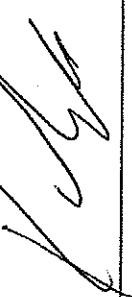
INCIDENT RADIO COMMUNICATIONS PLAN		Incident Name HIRZ CA-SHF-001223		Date/Time Prepared 09/3/2018 1600 hrs		Operational Period Date/Time 9/3/18 0600 To 9/4/18 0600			
Only frequencies listed on this 205 are authorized for use on this incident.				Hand programmers accept all responsibility for the use of unauthorized frequencies.					
Ch #	Function	Channel Name	Assignment	RX Freq N or W	RX Tone	TX Freq N or W	TX Tone	Mode	Remarks
1	COMMAND	CMD 1	COMMAND 1	171.5375 N	107.2	164.0875 N	107.2	A	COMMAND ON H-79
2	COMMAND	CMD 2	COMMAND 2	172.6500 N	107.2	164.7500 N	107.2	A	COMMAND ON SUGARLOAF
3	COMMAND	CMD 3	COMMAND 3	170.4250 N	107.2	168.0750 N	107.2	A	COMMAND FROM ICP TO FIRE
4	COMMAND	CMD 4	COMMAND 4	170.4125 N	107.2	165.9625 N	107.2	A	COMMAND ON HIRZ MTN.
5	COMMAND	CMD 5	COMMAND 5	170.0875 N	107.2	162.8125 N	107.2	A	COMMAND ON TOMBSTONE MTN
6	COMMAND	CMD 6	COMMAND 6	169.5375 N	107.2	164.7125 N	107.2	A	COMMAND ON NORTH FORK MT.
7	TAC	NIFC T1	DIVISION Y	168.0500 N	107.2	168.0500 N	107.2	A	
8	TAC	NIFC T3	DIVISION T	168.6000 N	107.2	168.6000 N	107.2	A	
9	TAC	NIFC T5	DIVISION U	166.7250 N	107.2	166.7250 N	107.2	A	
10	TAC	NIFC T6	DIVISION X	166.7750 N	107.2	166.7750 N	107.2	A	
11	TAC	NIFC T7	GROUPS 1,2 DIV A/B/F/Z	168.2500 N	107.2	168.2500 N	107.2	A	
12	TAC	TAC 12	DIVISION W	162.1625 N	107.2	162.1625 N	107.2	A	SPECIAL TAC
13	CALCORD	CALCORD	ALL DIVISIONS	156.0750 N	156.7	156.0750	156.7	A	MEDICAL EMERGENCY TACTICAL
14	A/G COMMAND	A/G CMD	ALL DIVISIONS	168.3375 N		168.3375 N		A	ORDERING OF AIRCRAFT
15	A/G TACTICAL	A/G TAC	ALL DIVISIONS	167.8125 N		167.8125 N		A	AIR TO GROUND TACTICAL
16	AIR GUARD	AIR GUARD	ALL DIVISIONS	168.6250 N		168.6250 N	110.9	A	EMERGENCY ONLY

Prepared by  Incident Location

Kevin Throop, COML (t) HIRZ ICP, SHASTA-TRINITY NATIONAL FOREST

INCIDENT RADIO COMMUNICATIONS PLAN HIRZ CA-SHF-001223 INITIAL ATTACK		Incident Name HIRZ CA-SHF-001223 INITIAL ATTACK	Date/Time Prepared 09/02/2018 1650	Operational Period Date/Time 9/3/2018 0600 To 9/4/2018 0600
---	--	---	---------------------------------------	---

Only frequencies listed on this 205 are authorized for use on this incident.		Hand programmers accept all responsibility for the use of unauthorized frequencies.							
Ch #	Function	Channel Name	Assignment	RX Freq N or W	RX Tone	TX Freq N or W	TX Tone	Mode	Remarks
1	SHASTA LAKE MGMT. UNIT	SLMU	INITIAL ATTACK	167.7250 N		167.7250 N	110.9	A	USE TONE 7 (167.9)
2	SHAST-TRINITY DISPATCH	SHR-R	INITIAL ATTACK	171.5750 N		165.0125 N	123.0	A	SHF DISPATCH NET
3	NIFC TAC 2	NIFC T2	INITIAL ATTACK	167.7250 N		167.7250 N	131.8	A	
4	R5 TAC 4	R5 TAC 4	INITIAL ATTACK	166.5500 N		166.5500 N	136.5	A	
5	R5 TAC 5	R5 TAC 5	INITIAL ATTACK	167.1125 N		167.1125 N	146.2	A	
6	SHASTA-TRINITY SERV. RPT.	SERV-R	INITIAL ATTACK	171.5000 N		164.8250 N	156.7	A	TONES 1,4,6,12
7	SHASTA COUNTY F1 REPEATER	SHS CMD	INITIAL ATTACK	154.4300 N		159.0150 N	167.9	A	TONES 1-16
8	SHASTA COUNTY F2 - TACTICAL	SHS F2	INITIAL ATTACK	154.0100 N		154.0100 N	103.5	A	
9	CALFIRE TAC 9	CDF T9	INITIAL ATTACK	151.3850 N		151.3850 N	100.0	A	TONES 1-16
10	SHASTA-TRINITY UNIT REPEATER	SHU-R	INITIAL ATTACK	151.1600 N		159.2700 N	107.2	A	TONES 1-16
11	CAL FIRE TAC 11	CDF T11	INITIAL ATTACK	151.4450 N		151.4450 N	114.8	A	TONES 1-16
12	CAL FIRE TAC 12	CDF T12	INITIAL ATTACK	151.4600 N		151.4600 N	127.3	A	TONES 1-16
13	CAL FIRE A/G 2 (PRIMARY)	CDF A/G 2	INITIAL ATTACK	159.2625 N		159.2625 N	141.3	A	TONES 1-16
14	MEDICAL	CALCORD	EMERGENCY USE	156.0750 N	156.7	156.0750 N	151.4	A	ZONE 6
15	AIR TO GROUND, CA. PRIMARY	R5 AG43	INITIAL ATTACK	166.8750 N		166.8750 N	162.2	A	INITIAL ATTACK A/G
16	AIR GUARD	AIR GUARD	ALL DIVISIONS	168.6250 N		168.6250 N	192.8	A	ZONE 1

Prepared by		Incident Location	HIRZ ICP, SHASTA-TRINITY NATIONAL FOREST
-------------	---	-------------------	--

MEDICAL PLAN (ICS 206 WF)

1. Incident/Project Name		2. Operational Period						
Hirz Fire		Date/Time 9/03/18 – 9/04/18 Day/Night 0600-0600						
3. Ground Ambulance Services								
Name	Location	Phone & EMS Frequency	Advanced Life Support (ALS)					
			Yes	No				
Mt. Shasta Ambulance	HIRZ ICP McCloud	911	Yes					
AMR Ambulance	Shasta Lake Camp	911	Yes					
Ambulance 2	Incident Ambulance at DP 62 (24 hour) Div T	Contact Via Command	Yes					
Ambulance 78	Incident Ambulance at DP 73 (24 hour) Div U	Contact Via Command	Yes					
Ambulance 5	Incident ambulance at DP 96 Div Y	Contact Via Command	Yes					
4. Air Ambulance Services								
Name	Phone	Type of Aircraft & Capability						
REACH / PHI Redding, CA	530-226-2499	ALS, Night Vision, No Hoist Capability, <u>Not Incident Assigned</u>						
National Guard 841 Redding, CA	530-226-2499	ALS, Night Vision, Hoist Capable, <u>Incident Assigned</u>						
CHP H-16 Redding, CA	530-226-2499	ALS, <u>Not</u> incident assigned, Day time hoist						
Cal Fire H-202 Bieber, CA	530-226-2499	BLS, <u>Not</u> incident assigned, Day time hoist						
5. Hospitals								
Name Complete Address	GPS Datum – WGS 84 Degrees Decimal Minutes DD° MM.MMM' N - Lat DD° MM.MMM' W - Long		Travel Time from ICP		Phone	Helipad		Level of Care Facility
	Air	Gnd	Yes	No				
Pulse Urgent Care 100 E. Cypress Ave. Redding, CA	Lat: N/A Long: N/A VHF: N/A	N/A	45 min	530-722-1111 10am-7:30 pm	<input type="checkbox"/>	<input checked="" type="checkbox"/>	Level 4 Trauma (1000 – 1930)	
Mercy Medical Center 2175 Roseline Ave. Redding, CA	Lat: 40° 34.33' N Long: 122° 23.80' W VHF: N/A	20 min	80 min	530-225-7201	<input checked="" type="checkbox"/>	<input type="checkbox"/>	Level 2 Trauma STEMI/Stroke/Anti-Venom	
Shasta Regional Med 1100 Butte Ave. Redding, CA	Lat: 40° 35.08' N Long: 122° 23.25' W VHF: N/A	20 min	80 min	530-244-5353	<input checked="" type="checkbox"/>	<input type="checkbox"/>	Level 3 Trauma STEMI/Stroke/Anti-Venom	
Mercy Mt. Shasta Med 914 Pine St. Mt. Shasta, CA	Lat: 41° 31.855' N Long: 122° 32.014' W VHF: N/A	10 min	20 min	530-926-1108	<input checked="" type="checkbox"/>	<input type="checkbox"/>	Level 3 Trauma Anti-Venom	
UC Davis Medical Ctr 2315 Stockton Blvd. Sacramento, CA	Lat: 38° 33.30' N Long: 121° 27.33' W VHF: N/A	1.25 hrs.	3.75 hrs.	916-734-3636 916-734-3790	<input checked="" type="checkbox"/>	<input type="checkbox"/>	Level 1 Trauma / Burn Center	
6. Division Branch Group							Area Location Capability	
ICP Medical Unit 909 Mill Road McCloud, CA 9607		EMS Responders & Capability:		Frontline Medical Support Unit – ALS / Medical Dispensary Medical Emergency Response Team (MERT) – ALS / Registered Nurse				
		Equipment Available on Scene:						
		Medical Emergency Channel:		COMMAND or Logistics Radio Channel 3				
		ETA for Ambulance to Scene:						
		Air:		40 minutes				
		Ground:		15 minutes				
		Approved Helispot:						
		Lat:						
Long:								

MEDICAL PLAN (ICS 206 WF)

Division A/B/F/Z, Branch I James Allen	EMS Responders & Capability:	EMTF Jason Monahan (O-433)/ EMTF Dominic Antes (O-576)	
	Equipment Available on Scene:		
	Medical Emergency Channel:	COMMAND for Ground / CALCORD for Air	
	ETA for Ambulance to Scene:		
	Air:	20 minutes	
	Ground:	45 minutes	
	Approved Helispot:	H-11	H-28
	Lat:	40° 51.733' N	40° 54.470' N
	Long:	122° 15.278' W	122° 19.603' W
Division T, Branch I Brandon Landing	EMS Responders & Capability:	EMPF James Stratton (O-374)/ EMTF Greg Lowdermilk (O-387)	
	Equipment Available on Scene:	Ambulance 2 (24HR)	
	Medical Emergency Channel:	COMMAND for Ground / CALCORD for Air	
	ETA for Ambulance to Scene:		
	Air:	20 minutes	
	Ground:	30 minutes	
	Approved Helispot:	H-59	
	Lat:	41° 00.056' N	
	Long:	122° 24.467' W	
Division U, Branch III Chad Costa	EMS Responders & Capability:	EMPF Rich Taliaferro (O-621) / EMTF Chris Grogan (O-579), EMTF Charles Kuniyoshi (O-526)/ EMPF Kyle Young (O-571)	
	Equipment Available on Scene:	Ambulance 78 (24HR)	
	Medical Emergency Channel:	COMMAND for Ground / CALCORD for Air	
	ETA for Ambulance to Scene:		
	Air:	20 minutes	
	Ground:	40 minutes	
	Approved Helispot:	H-59	
	Lat:	41° 00.056' N	
	Long:	122° 24.467' W	
Division W, Branch III Jeb Pronto	EMS Responders & Capability:	EMTF Dave Prietto (O-532)/ EMPF Charles Brown (O-620)	
	Equipment Available on Scene:		
	Medical Emergency Channel:	COMMAND for Ground / CALCORD for Air	
	ETA for Ambulance to Scene:		
	Air:	20 minutes	
	Ground:	45 minutes	
	Approved Helispot:	H-75	
	Lat:	41° 02.66' N	
	Long:	122° 16.905' W	
Division X, Branch III Josh Eichamer Shawn Butterbach	EMS Responders & Capability:	EMPF Daniel Salazar (O-354) / EMTF Sean Torres (O-525)	
	Equipment Available on Scene:	REMS 1 (O-517) / EMPF Matthew Caffey (O-568)	
	Medical Emergency Channel:	COMMAND for Ground / CALCORD for Air	
	ETA for Ambulance to Scene:		
	Air:	20 minutes	
	Ground:	40 minutes	
	Approved Helispot:	H-70	
	Lat:	41° 02.941' N	
	Long:	122° 15.936' W	
Division Y, Branch V Jesse Knox, Keoki Correa (T)	EMS Responders & Capability:	EMPF Ronald Sadler (O-277)/ EMTF John Corona (O-577) EMPF Alex Karp (O-420) / EMTF Henry Martinez (O-530)	
	Equipment Available on Scene:	REMS 3 (O-707)	
	Medical Emergency Channel:	COMMAND for Ground / CALCORD for Air	
	ETA for Ambulance to Scene:		
	Air:	5 minutes	
	Ground:	15 minutes	
	Approved Helispot:	H-131	
	Lat:	41° 02.972' N	
	Long:	122° 10.489' W	
Suppression Repair Branch, Group 1 Dan Varney	EMS Responders & Capability:	EMPF Conner Drake (O-430) / EMTF Colby Hutchens (O-432)	
	Equipment Available on Scene:		
	Medical Emergency Channel:	COMMAND for Ground / CALCORD for Air	
	ETA for Ambulance to Scene:		
	Air:	15 minutes	
	Ground:	30 minutes	
Approved Helispot:	H-75		
Lat:	41° 02.66' N		

MEDICAL PLAN (ICS 206 WF)

	Long:	122° 16.905' W
Suppression Repair Branch, Group 2 Doug LaCount	EMS Responders & Capability:	EMPF Pablo Ornelas (O-569)/ EMTF Ryan Valdez (O-533)
	Equipment Available on Scene:	
	Medical Emergency Channel:	COMMAND for Ground / CALCORD for Air
	ETA for Ambulance to Scene:	
	Air:	15 minutes
	Ground:	50 minutes
	Approved Helispot:	H-125
	Lat:	41° 00.895'N
	Long:	122° 09.662'W
7. Name & Location	Remote Camp Location(s) and Night Shift	
Shasta Camp Medical Unit Margaret Polf Park 17760 Shasta Dam Blvd. Shasta Lake, CA 96019	EMS Responders & Capability:	Frontline Medical Support Unit - ALS
	Equipment Available on Scene:	
	Medical Emergency Channel:	COMMAND / Logistics Channel 3
	ETA for Ambulance to Scene:	
	Air:	30 minutes
	Ground:	30 minutes
	Approved Helispot:	
	Lat:	
	Long:	
<u>Night</u> Division T Scott Grendah	EMS Responders & Capability:	EMPF Joel Davis (O-375) / EMTF Dean Vernarecci (O-575)
	Equipment Available on Scene:	AMBULANCE 2 (E-394)
	Medical Emergency Channel:	COMMAND for Ground / CALCORD for Air
	ETA for Ambulance to Scene:	
	Air:	30 minutes
	Ground:	35 minutes
	Approved Helispot:	H-59
	Lat:	41° 00.056' N
	Long:	122° 24.467' W
<u>Night</u> Division U Robert Rice	EMS Responders & Capability:	EMPF Gabe Aubert (O-431) / EMTF Zach Summers (O-528)
	Equipment Available on Scene:	AMBULANCE 78 (E-73)
	Medical Emergency Channel:	COMMAND for Ground / CALCORD for Air
	ETA for Ambulance to Scene:	
	Air:	30 minutes
	Ground:	35 minutes
	Approved Helispot:	H-59
	Lat:	41° 00.056' N
	Long:	122° 24.467' W
<u>Night</u> Division W Jeremy Pierce	EMS Responders & Capability:	
	Equipment Available on Scene:	REMS 2 (O-534) / Andrew Fondacaro (O-570)
	Medical Emergency Channel:	COMMAND for Ground / CALCORD for Air
	ETA for Ambulance to Scene:	
	Air:	30 minutes
	Ground:	60 minutes
	Approved Helispot:	H-75
	Lat:	41° 02.66' N
	Long:	122° 16.905' W
<u>Night</u> Division X, Branch III Kim Olson	EMS Responders & Capability:	EMPF Buzz Olson (O-87) Nolan Barickman (O-524)
	Equipment Available on Scene:	
	Medical Emergency Channel:	COMMAND for Ground / CALCORD for Air
	ETA for Ambulance to Scene:	
	Air:	20 minutes
	Ground:	40 minutes
	Approved Helispot:	H-70
	Lat:	41° 02.941'N
	Long:	122° 15.936'W
<u>Night</u> Division Y, Branch V Cody Bogan	EMS Responders & Capability:	EMPF Richard Battad / EMTF Steve DeVincenzi (O-421)
	Equipment Available on Scene:	AMBULANCE 5 (E-426)
	Medical Emergency Channel:	COMMAND for Ground / CALCORD for Air
	ETA for Ambulance to Scene:	
	Air:	5 minutes

MEDICAL PLAN (ICS 206 WF)

	Ground:	15 minutes
	Approved Helispot:	H-131
	Lat:	41° 02.972'N
	Long:	122° 10.489'W

Special Medical Emergency Procedures for remote locations and night shift:

Identify your EMT's for each Division. In the event of a medical emergency, notify your division supervisor (DIVS) and initiate care with available resources on scene. **Follow the MEDICAL INCIDENT REPORT (MIR) procedure on pages 118-119 in the 2018 IRPG or from last page of the IAP.** Using the MIR, notify Hirz Communications of the type of emergency and the location over the command channel. This will initiate the Incident Within Incident (IWI) procedures to get the appropriate resources to assist in the emergency.

The DIVS, or designee, shall coordinate the incident and direct necessary actions. Take the following actions:

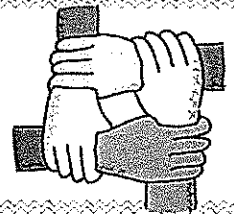
1. Determine the nature of the emergency.
2. If the emergency is a medical injury/illness, determine if the injury/illness is life threatening. **Green (Non-Life Threatening), Yellow (Serious Injury/Illness), Red (Life Threatening Injury/Illness).**
3. If the injury is life threatening, then clear designated frequency for emergency traffic.
4. Identify the on-scene point of contact by position.
5. Hirz Communications will contact the Medical Unit Leader and Safety immediately.
6. Identify number injured, patient assessment(s), location (geographic and/or GPS coordinates), and agency of the patient(s).
7. Identify on-scene medical personnel by division and position (i.e. Tango Medic, Tango EMT)
8. Identify preferred method of patient transport. **Ground or Air.**
9. Determine any additional resources or equipment needed.

Continually evaluate the Evacuation Plan, develop contingencies in the event the first plan is not effective.

8. Prepared By (Medical Unit Leader)	9. Date/Time	10. Reviewed By (Safety Officer)	11. Date/Time
Newton Ong / MEDL 	09/02/18 1900	Charlotte Jordan / SOF1 	9/02/18 1900 SOF1



Human Resource Message



Happy Labor Day!

Labor Day is a creation of the labor movement and is dedicated to the social and economic achievements of American workers. It constitutes a yearly national tribute to the contributions workers have made to the strength, prosperity, and well-being of our country.

The idea first became public in 1882. In September 1882, the unions of New York City decided to have a parade to celebrate their members being in unions, and to show support for all unions. At least 20,000 people were there, and the workers had to give up a day's pay to attend. There was also a lot of beer involved in the event.

Grover Cleveland helped make Labor Day a national holiday. Cleveland signed an act in 1894 establishing the federal holiday; most states had already passed laws establishing a Labor Day holiday by that point. Sen. James Henderson Kyle of South Dakota introduced S. 730 to make Labor Day a federal legal holiday on the first Monday of September. It was approved on June 28, 1894.

Can you wear white after Labor Day? This old tradition goes back to the late Victorian era, where it was a fashion faux pas to wear any white clothing after the summer officially ended on Labor Day. The tradition isn't really followed anymore. EmilyPost.com explains the logic behind the fashion trend – white indicated you were still in vacation mode at your summer cottage.

Still reading? Good ☺ Respect yourself, respect others, be nice, get enough rest, stay hydrated and well nourished. Thank you for all you do and for being professionals!

Andrea Cabida HRSP 707-330-9939

Michelle Hale HRSP(T) 619-813-4202

EMERGENCY EQUIPMENT SHIFT TICKETS

This document is 4 part – forward the appropriate parts to the individuals on the side of the form:

- Pink – Finance
- Gold – Contractor
- Blue – Finance
- White – Stays in Emergency Equipment Shift Ticket Book

All Emergency Equipment Shift Tickets will be submitted at the end of each shift.

Fill out the form completely. Note that there is no reimbursement for documents not received by the Finance Procurement Unit.

Do not fill out shift tickets for equipment without an E #. You are responsible for insuring authorized/ordered equipment is used.

EMERGENCY EQUIPMENT SHIFT TICKET					E #1		
NOTE: The responsible Government Officer will update this form each day or shift, and make initial and final equipment inspections.							
1. AGREEMENT NUMBER FDE-02-0001			2. CONTRACTOR (name) DoRight Construction				
3. INCIDENT OR PROJECT NAME BAD BEAR		4. INCIDENT NUMBER NV-CCD-0102		5. OPERATOR (name) MAX SPEED			
6. EQUIPMENT MAKE DOZER		7. EQUIPMENT MODEL D6C		8. OPERATOR FURNISHED BY <input checked="" type="checkbox"/> CONTRACTOR <input type="checkbox"/> GOVERNMENT			
9. SERIAL NUMBER ATN123		10. LICENSE NUMBER		11. OPERATING SUPPLIES FURNISHED BY <input checked="" type="checkbox"/> CONTRACTOR (wet) <input type="checkbox"/> GOVERNMENT (dry)			
12. DATE MO/DAY/YR	13. EQUIPMENT USE HOURS/DAYS/MILES (circle one)		14. REMARKS (released, down time and cause, problems, etc.) Point of Hire Reno, NV Time of Hire 0600 1430-1630-Mechanical-down				
	START	STOP				WORK	SPECIAL
08/05/01	0600	0800				2	TRAVEL
					15. EQUIPMENT STATUS <input checked="" type="checkbox"/> a. Inspected and under agreement <input type="checkbox"/> b. Released by Government <input type="checkbox"/> c. Withdrawn by Contractor		
08/05/01	0830	1430	6				
					16. INVOICE POSTED BY (Recorder's initials)		
08/05/01	1630	2030	4				
17. CONTRACTOR'S OR AUTHORIZED AGENT'S SIGNATURE Max Speed			18. GOVERNMENT OFFICER'S SIGNATURE Chet Huntley		19. DATE SIGNED 08/05/01		

FINANCE
CONTRACTOR

EQUIPMENT TIME RECORDER

ORDERING OFFICE FILE COPY (RETAIN IN BOOK)

PUBLIC INFORMATION SECTION

Incident Information Line: (530) 628-0039

STATUS	
Incident Start Date: August 9, 2018	Incident Start Time: 1:55 AM
Incident Type: Wildfire	Cause: human, under investigation

MEDIA—California State Penal Code Section 409.5(d) allows the news media to enter scenes of disaster, riot, or civil disturbance. Properly identified members of the news media should not be restricted from entering locations specified within the code. However, this does *not* include crime scenes and private property, and it does *not* imply that the news media may interfere with incident operations while they are in the areas of concern. More information can be found by scanning the QR code (right).



409.5

CAL FIRE SOCIAL MEDIA POLICY—When assigned to a CAL FIRE incident, you will adhere FIRE Social Media Policy, Section 0691. You can find further information about the CAL FIRE Media Policy by scanning the QR code (right).



Social Media

PHOTOGRAPHS AND VIDEOS OF INCIDENT—We are in a new era of media. Media no longer means news/broadcast industry, but now refers to anyone who has the capability to take video and photographs and post them to social media sites in a matter of minutes. Unfortunately, we have seen some instances of photographs or videos that have depicted unsafe, unprofessional, or embarrassing circumstances which are a serious breach of ethics. When this happens, it reflects poorly on all who are attached to this incident. Posting an inappropriate video, photo, or blog comment could expose you to unwanted ramifications. It may be unsafe to shoot photos or video, and firefighters who are concentrating on a camera loses their situational awareness.

The Information Section would like copies of videos and pictures you safely took while not in an emergency situation, fire suppression activity, or in an overhead assignment. Bring your videos and pictures to the Public Information trailer; they will be reviewed and possibly uploaded to our social media sites.

LOST AND FOUND—The Information Section manages lost-and-found items for the incident. If you have lost an item, leave your contact information and item description with an information officer. If you have found an item, bring it to the Information Section with information about where you found it.

MAIL SERVICE—To receive mail, use the following address:

Hirz Fire
Your name, Order #
General Delivery
McCloud, California 96057



Local Government Resources on CFAA

If you are demobing from this incident and there is no OES AREP on site

F-42 thru the Incident Finance Section Chief

The Incident keeps the Pink copy and you keep the Golden.
The Original and Green you mail to OES Headquarters as per the
instructions on the front of your F-42

OES JOB AIDS, FORMS, F-42 SAMPLES AND CFAA AGREEMENT



Questions?

**Your OES Fire & Rescue Region III AREP is
Patrick Titus
916-634-9225**

Hirz Fire Suppression Repair

Repair Objectives

- Minimize Surface and Gully Erosion
- Minimize Loss of Soil Productivity due to Erosion In Cleared Areas
- Minimize Spread of Noxious Weed Infestations
- Minimize Excessive Side-Cast Fuels Along Roads
- Minimize Impacts to Inventoried Roadless Areas and Wild & Scenic River Corridors
- Repair Impacts to Cultural and Historic Resources
- Repair Damage to National Forest Roads and Trails Caused by Fire Suppression Activities
- Review by Agency READ/REAFs for On-Site Verification of Objectives Completed

Suppression Repair Focus

- Dozer Lines
- Hand Lines
- Roads and Trails
- Safety Zones and Staging Areas
- Drop Points
- Helispots
- Water Sources

Effective Waterbars

When locating and building water bars, place them the right **distance** apart, at a **diagonal** to the fireline, so that they **divert**, then **discharge**, then **dissipate** the energy of the flowing water in a herringbone pattern. Be sure to make them deep enough, at 30 degree angle so they'll be durable, and that soil does **not block** the water bar outlet.

Recommended spacing for waterbars on firelines.

Fireline slope %		Maximum Distance Apart (feet)
0 – 20	150-200
21 – 40	100-150
41 – 60	80-100
>60	60-80

Dozer-line depth (3 to 4 feet)

Handline waterbars should be at least 2 pulaski (6-8 inches) widths wide and 12-24 inches high for handlines.

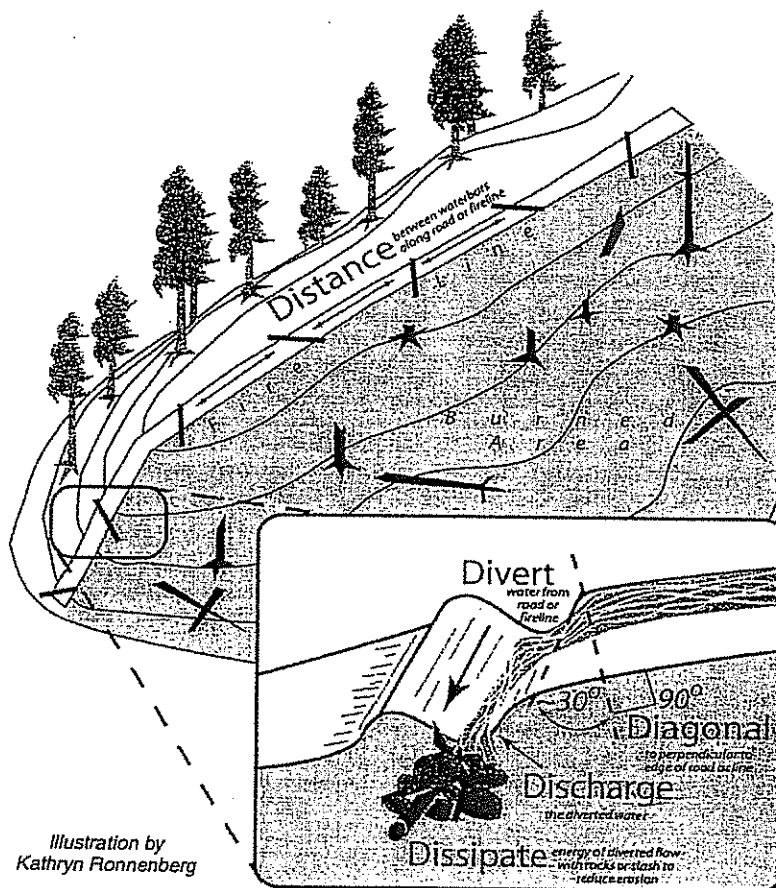


Illustration by
Kathryn Ronnenberg



Demob Hirz Fire



September 3, 2018

Resources Demob at McCloud Camp

Overhead

O-366 0700 DIVS Achter
O-334 0700 HEQB Dvorin
O-459 0700 OSC2 Grove
O-324 0700 HEQB Haus
O-462 0700 HEQB Mattson
O-450 0715 DIVS Norman
O-585 0715 DIVS Pula
O-383 0715 OSC2 Regelin
O-367 0715 SEC1 Rosas

Overhead

O-41 0730 EMTF S'gro
~~O-364 0730 ORDM Shurr~~
O-608 0730 HEQB Stark
O-353 0745 BCMG Walker
O-327 0745 HEQB Wilson
O-120 0745 HMGB Helsley
~~O-443.6 GSUL Simonds~~
O-588 0800 GISS Garrett

Equipment

E-94 0700 MEC Mechanic
E-288 0800 WTT2 Tri State
E-230 0800 WTT2 LNF 1
E-246 0815 ENG3 Brush 574
E-299 0815 WTT2 PNF 2
E-309 0815 ENG3 SHF 331
E-310 0830 STK J & D
E-324 0830 PU Inghram
E-325 0830 PU Matthew
E-326 0830 PU Wilbanks
E-479 0845 ENG6 Williams

Crew

C-95 0845 HC1 Sierra IHC
C-50 0800 IHC1 Salmon River IHC
~~C-95 0845 HC1 SIERRA IHC~~
C-54 0800 IHC VISTA GRANDE IHC



Demob Hirz Fire Cal Fire



September 3, 2018

Resources Demob at McCloud Camp

Overhead

O-200042	0700	DIVS	Norman
----------	------	------	--------

Equipment

E-200011	0700	DOZ2	MRN 9151L
E-200014	0700	DOZ2	AEU 2741
E-200012	0715	DOZ2	MEU 9118L
E-200017	0715	ES3	SCU 9160C
E-200018	0745	ES3	TCU 9441C
E-200005	0815	ES3	LNU 9148C

→ TO DIV T

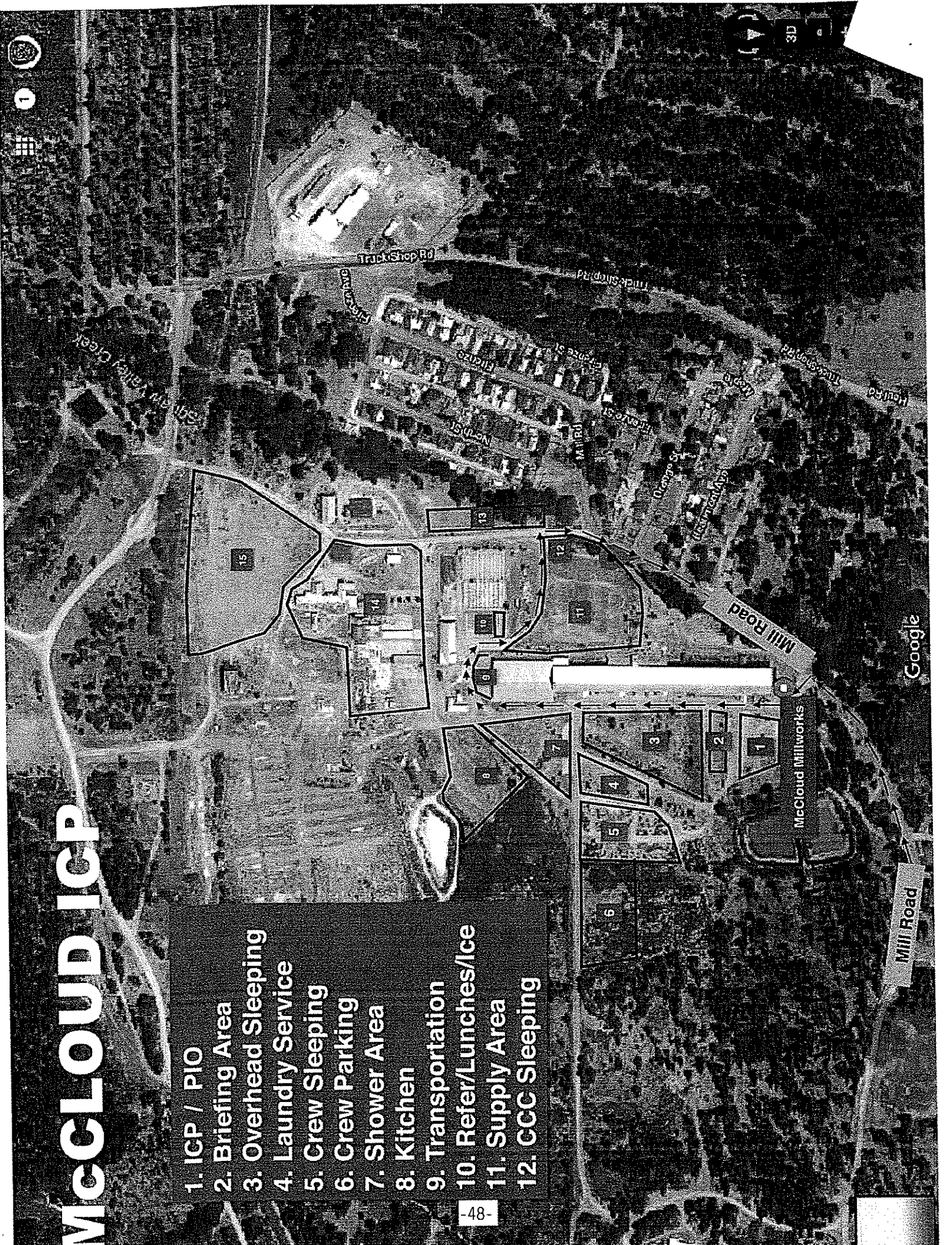
Crew

C-200019	0730	HCS1	CZU 9175G
C-111	0845	HCS1	LMU 9140G
C-200012	0915	HCS1	LMU 9221G
C-200015	1015	HCS1	LMU 9223G
C-20004	1015	HCS1	BTU 9211G

→ TO DIV T

McCLOUD ICP

1. ICP / PIO
2. Briefing Area
3. Overhead Sleeping
4. Laundry Service
5. Crew Sleeping
6. Crew Parking
7. Shower Area
8. Kitchen
9. Transportation
10. Refer/Lunches/Ice
11. Supply Area
12. CCC Sleeping



Google

Mill Road

McCloud Millworks

Mill Road

Track Shop Rd

South Fork Creek

Firestone

Track Shop Rd

Richie

Firestone

Firestone

Firestone

Firestone

Firestone

Firestone

Firestone

Firestone

Firestone

Firestone

Orange St

Ice Warehouse

Mill Rd

51

6

5

4

3

2

1

8

7

6

5

4

3

2

1

8

7

6

5

4

3

2

1

10

9

8

7

6

5

4

3

2

1

10

9

8

7

6

5

4

3

2

1

11

10

9

8

7

6

5

4

3

2

1

12

11

10

9

8

7

6

5

4

3

2

1

13

12

11

10

9

8

7

6

5

4

3

2

1

15

14

13

12

11

10

9

8

7

6

5

4

3

2

1

THIS PAGE INTENTIONALLY LEFT BLANK

Date & Time Order was placed:		Order #	Location & Time for Delivery (DW,LZ,DP,Lat Long)		Mode of delivery
		(DIVS+#)			(Driven/Helo/DIVS to Pick up)
			Lat:		
			Long:		
Order received in Communications by (Name):					Time:
Order shipped to line by (Name): (Send this sheet to the line with the order)					Time:
#	Item				
1	1,000 Foot Hose Lay includes the following: Number Ordered _____				
	10, 100'x1½" Rolls Hose; 10, 100'x1" Rolls Hose; 10, 1½" Gated Wyes; 10, 1½" to 1" reducers; 10, 1" nozzles				
2	2,000 Foot Hose Lay includes the following: Nmber Ordered _____				
	20, 100'x1½" Rolls Hose; 20, 100'x1" Rolls Hose; 20, 1½" Gated Wyes; 20, 1½" to 1" reducers; 20, 1" nozzles				
3	3,000 Foot Hose Lay includes the following: Number ordered _____				
	30, 100'x1½" Rolls Hose; 30, 100'x1" Rolls Hose; 30, 1½" Gated Wyes; 30, 1½" to 1" reducers; 30, 1" nozzles				
#	Item (NFES #)	Amount	#	Item	Amount
4	Hose (50') garden, 3/4"	1016	30	Gas Unleaded (Gallons)	
5	Hose (100'), 1"	0966	31	Oil 2 cycle, (Pints)	0344
6	Hose (100'), 1½"	0967	32	Bar Oil (Qts)	1869
7	Nozzle, Garden, 3/4"	0136	33	Drip Torch ea	0241
8	Nozzle, Forester, 1"	0024	34	Drip torch mix 3.5:1.5 (gallon)	
9	Nozzle, KK Type, 1"	1081	35	Fusees BX	0105
10	Nozzle, KK Type, 1½"	1082	36	Flare Gun Rounds (12/BX)	0687
11	Wye, Gated, 3/4"	0739	37	Cartridge #6 purple (box)	0372
12	Wye, Gated, 1"	0839	38	Batteries "AA" PKGs(24/PKG)/BX	0030
13	Wye, Gated, 1½"	0883	39	Ribbon, Flagging (Specify Color)*	
14	Inline-Tee, 1"x1"x3/4"	1809	40	Water, Cubies	
15	Inline-Tee 1"x1"x1"	2240	41	Water, Bottled, Cases	
16	Inline-Tee 1½" X 1"	0731	42	Gatorade	
17	Reducer 1"X3/4"	0733	43	MRE's (12/BX)	1842
18	Reducer, 1½" X 1"	0009	44	Heavy Mill Plastic	0283
19	Increaser, 3/4" X 1"	2235	45	Washcloth, waterless, cleansing	0206
20	Increaser, 1" X 1½"	0416	46	Wrap, Structure 54"x300'	0881
21	Foam 5 gal	1145	47	Sprinkler Kit	
22	Foam 4 oz (For Backpack Pump)	3400	48	Mark 3 Pump	
23	Backpack Pump	1197	49	Mark 3 Pump Kit- w/10 gal mixed fuel	
24	Pumpkin (How Many Gallons?)		50	Chainsaw Kit	0340
25	Porta-Tank (How Many Gallons?)		51	Mop-Up Kit, 3-Wand	0772
26	Shovel	0170	52	Pump Kit, Lightweight, 2 Cycle	0670
27	Pulaski	0146	53	Gas, Raw and 2 qts 2-cycle oil, ea	
28	Combi Tool	0296	54	Lightweight Pump Kit-Cache w/5gal fuel	
29	McCloud		55	Gas, raw (gal) and 1 qt 2-cycle oil, ea.	
Notes:			Notes:		

Who are you ?

Name of division, position, assignment

Where are you?

Division, Drop Point, Road

What do you have?

Green, Yellow, Red injury or illness

What do you need?

Agency, Ground Ambulance, Air Ambulance, Air Hoist

MEDICAL PLAN (ICS 206 WF)

Controlled Unclassified Information//Basic

Medical Incident Report

FOR A NON-EMERGENCY INCIDENT, WORK THROUGH CHAIN OF COMMAND TO REPORT AND TRANSPORT INJURED PERSONNEL AS NECESSARY.

FOR A MEDICAL EMERGENCY: IDENTIFY ON SCENE INCIDENT COMMANDER BY NAME AND POSITION AND ANNOUNCE "MEDICAL EMERGENCY" TO INITIATE RESPONSE FROM IMT COMMUNICATIONS/DISPATCH.

Use the following items to communicate situation to communications/dispatch.

1. CONTACT COMMUNICATIONS / DISPATCH (Verify correct frequency prior to starting report)

Ex: "Communications, Div. Alpha. Stand-by for Emergency Traffic."

2. INCIDENT STATUS: Provide incident summary (including number of patients) and command structure.

Ex: "Communications, I have a Red priority patient, unconscious, struck by a falling tree. Requesting air ambulance to Forest Road 1 at (Lat./Long.) This will be the Trout Meadow Medical, IC is TFLD Jones. EMT Smith is providing medical care."

Severity of Emergency / Transport Priority	<input type="checkbox"/> RED / PRIORITY 1 Life or limb threatening injury or illness. Evacuation need is IMMEDIATE <i>Ex: Unconscious, difficulty breathing, bleeding severely, 2nd - 3rd burns more than 4 palm sizes, heat stroke, disoriented.</i> <input type="checkbox"/> YELLOW / PRIORITY 2 Serious Injury or illness. Evacuation may be DELAYED if necessary. <i>Ex: Significant trauma, unable to walk, 2nd - 3rd burns not more than 1-3 palm sizes.</i> <input type="checkbox"/> GREEN / PRIORITY 3 Minor Injury or illness. Non-Emergency transport <i>Ex: Sprains, strains, minor heat-related illness.</i>	
Nature of Injury or Illness & Mechanism of Injury		Brief Summary of Injury or Illness <i>(Ex: Unconscious, Struck by Falling Tree)</i>
Transport Request		Air Ambulance / Short Haul/Hoist Ground Ambulance / Other
Patient Location		Descriptive Location & Lat. / Long. (WGS84)
Incident Name		Geographic Name + "Medical" <i>(Ex: Trout Meadow Medical)</i>
On-Scene Incident Commander		Name of on-scene IC of Incident within an Incident <i>(Ex: TFLD Jones)</i>
Patient Care		Name of Care Provider <i>(Ex: EMT Smith)</i>

3. INITIAL PATIENT ASSESSMENT: Complete this section for each patient as applicable (start with the most severe patient)

Patient Assessment: See IRPG page 106

Treatment:

4. TRANSPORT PLAN:

Evacuation Location (if different): (Descriptive Location (drop point, intersection, etc.) or Lat. / Long.) Patient's ETA to Evacuation Location:

Helispot / Extraction Site Size and Hazards:

5. ADDITIONAL RESOURCES / EQUIPMENT NEEDS:

Example: Paramedic/EMT, Crews, Immobilization Devices, AED, Oxygen, Trauma Bag, IV/Fluid(s), Splints, Rope rescue, Wheeled litter, HAZMAT, Extrication

6. COMMUNICATIONS: Identify State Air/Ground EMS Frequencies and Hospital Contacts as applicable

Function	Channel Name/Number	Receive (RX)	Tone/NAC *	Transmit (TX)	Tone/NAC *
COMMAND					
AIR-TO-GRND	CALCORD / Channel 13	156.0750	T-6	156.0750	T-6
TACTICAL					

7. CONTINGENCY: Considerations: If primary options fail, what actions can be implemented in conjunction with primary evacuation method? Be thinking ahead.

8. ADDITIONAL INFORMATION: Updates/Changes, etc.

REMEMBER: Confirm ETA's of resources ordered. Act according to your level of training. Be Alert. Keep Calm. Think Clearly. Act Decisively.