

# INCIDENT ACTION PLAN

## LIME AND KIDDER 2 FIRE

CA-KNF-007074  
P5MRA1/ 0505



Lime Fire



Use Avenza Maps App

### OPERATIONAL PERIOD

9/11/2019 0600

to

9/12/2019 0600

Kidder 2 Fire



Use Avenza Maps App



# INCIDENT OBJECTIVES (ICS 202)

<b>1. Incident Name:</b> Lime and Kidder 2 Fire	<b>2. Operational Period:</b>	Date From: 9/11/2019 Time From: 0600	Date To: 9/12/2019 Time To: 0600
--	-------------------------------	---	-------------------------------------

**3. Objective(s):**  
Management Objectives

- Ensure safety of emergency responders and the public
- Protect residences, private property, and infrastructure
- Limit fire spread to the neighboring private industrial timberlands
- Invest firefighting resources into actions that have a high probability of success
- Minimize undesirable suppression-related fire effects (e.g. high intensity tactical burning)
- Utilize MIST tactics when working in the Wilderness
- Establish and maintain good relationships with local cooperators, stakeholders, and public while providing accurate and timely incident information
- Maintain fiscal accountability

Control Objectives

- Lime Fire:**
- Keep the fire West of Ash Creek
  - Keep the fire South of Cottonwood Peak, Longfellow and Rattlesnake Creeks
  - Keep the fire East of Cayuse Gulch and North of Hwy. 96
- Collier Fire:**
- In patrol status
- Kidder 2:**
- Keep the fire South of Kidder Creek
  - Keep the fire West of Shelly Fork River
  - Keep the fire North and East of the Pacific Crest Trail

**General Situational Awareness:**


Steep and rugged terrain, watch your footing. Be on the lookout for rolling rocks, debris, or burning material.

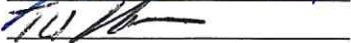
**5. Site Safety Plan Required?** Yes  No

**Approved Site Safety Plan(s) Located at:**

**6. Incident Action Plan**

<input checked="" type="checkbox"/> ICS 203	<input checked="" type="checkbox"/> ICS 215A	<input type="checkbox"/> Phone List	<input type="checkbox"/> Fire Suppression Repair Plan
<input checked="" type="checkbox"/> ICS 204	<input checked="" type="checkbox"/> ICS 220	<input checked="" type="checkbox"/> Training Message	<input checked="" type="checkbox"/> ICP Map
<input checked="" type="checkbox"/> ICS 205	<input checked="" type="checkbox"/> Incident Map	<input type="checkbox"/> Travel Map	<input type="checkbox"/>
<input checked="" type="checkbox"/> ICS 206	<input checked="" type="checkbox"/> Weather Forecast	<input type="checkbox"/> Demob Plan	<input type="checkbox"/>
<input type="checkbox"/> ICS 208	<input checked="" type="checkbox"/> Fire Behavior	<input type="checkbox"/> Finance Message	<input checked="" type="checkbox"/> ICS 214

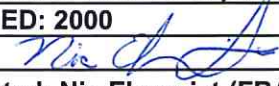
**7. Prepared By:** J. Germanetti /Audrey French ( Position/Title: PSC2      Signature: 

**8. Approved by Incident Commander:** Tom Clemo, DICT2      Signature: 

## ORGANIZATION ASSIGNMENT LIST (ICS 203)

<b>1. Incident Name:</b> Lime and Kidder 2 Fire		<b>2. Operational Period: Date From:</b> 9/11/2019 Time From: 0600		<b>Date To:</b> 9/12/2019 Time To: 0600	
<b>3. Incident Commander(s) and Command Staff:</b>			<b>7. Operation Section:</b>		
IC/UC's Nickie Johnny / Jimmy Harris (T)		Operations		Shawn Craig / Stephen Fillmore (T)	
Deputy Tom Clemo		Planning Operations		Mike Milkovich / John McNeil (T)	
Safety Officer Tom Zeulner / Rick Bertram / Brent Kaiser (T)		Night Ops		Kent Richard Contreras	
Information Officer John Miller / Marc Peebles		Staging Area			
Liaison Officer Bob Neumann / Warner McGrew / Ray Cablayan (T)		<b>Branch</b>			
<b>4. Agency/Organization Representatives:</b>			Division/Group		
Agency/Organization Name		Division/Group		A Corey Stowe / Joel Berg (T)	
Cal Trans Karl Suibbe		Division/Group		D Mitch Silvester / Travis Fenske (T)	
Cal Trans Ryan Gomes		Division/Group		W Scott Grasmick / Jason Shroeder (T)	
Board of Supervisors Ray A Haupt		Division/Group		Z Dave Goldstein / John Dunbar (T)	
Fruit Growers Supply Terry Salvestro		<b>Branch</b>		Contingency Jason Dyer / Larry Thurman (T)	
Michigan Cal Lumber Chris Chase		Division/Group		Structure Protection Brandon Brady	
Siskiyou Sheriff John Lopey / Josh Tygart		Division/Group		Night Group Harold Kibbe / David Carr (T)	
Community Liason Janet Jones		Division/Group		Roads Kevin Moore/ Timothy Ross (T)	
Siskiyou Cnty OES Jason Vella		Division/Group		Extraction Jacob Botts/ Erick Esquivel	
CAL FIRE Darryl Laws		Division/Group			
CAL OES Robert Goyeneche		<b>Branch</b>		<b>Kidder 2</b>	
CAL OES Fire/Rescue Corey Zander		Division/Group		K Ron Garcia / Jesse Bohnsack	
		Division/Group		S Paul Mancuso / Cody Stacher (T)	
		Division/Group			
		Division/Group			
		Division/Group			
		<b>Branch</b>			
<b>5. Planning Section:</b>			Division/Group		
Chief John Germanetti / Audrey French (T)		Division/Group			
Deputy Jeff Jones		Division/Group			
Resource Unit Tim Sandstrom		Division/Group			
Situation Unit Mike Held / Mike Callahan (T) Matt Thau (T)		Division/Group			
Documentation Unit Rex Crabtree		<b>Branch</b>			
Demobilization Unit Greg White		Division/Group			
GISS Kevin Winter / Mark Schnorf		Division/Group			
FBAN Nic Elmquist		Division/Group			
IMET Matthew Mehle		Division/Group			
Air Resources Advisor Julie Hunter		Division/Group			
Training Tech Spec Brandon Fernandez (T)		<b>Air Operations Branch Director</b>		John Crotty	
ITSS Marty Cohn		Air Support Group Supervisor		Steve Beall	
Status Check-in Linda Driver / Marie McLaughlin Lisa Gammell (T)		Air Tactical Group Supervisor			
<b>6. Logistics Section</b>			Helibase Manager		
Chief Mike Beeman / Tom Crakes				Dave Dale / Bill Lampert	
Supply Unit Ron Pierce		<b>8. Finance/Administration Section:</b>			
Facilities Unit Tim Murdoch / Mike Farmer		Chief		Pam Meyer	
Ground Support Unit John Bararacco / John Saunders		Time Unit		Keith O'Loughlin	
Communications Unit Chris Perry		Procurement Unit			
Medical Unit Mike Lencioni / Jim Emerson		Comp/Claims Unit		Larry Lee	
Food Unit Leader Kerry Kellog		Cost Unit		Larry Lee	
Base Camp Manager		Equipment Unit		Louise Casias / Rob Jeter	
Ordering Patricia Dutrey / Floyd Horn III		Personnel Time		Judy Farley / Lisa Dickenson	
Recieving Ryan DiGuillo / Julian Valenzula (T)					
<b>Prepared By: Name:</b> T. Sandstrom		<b>Position/Title:</b> RESL		<b>Signature:</b> _____	
<b>ICS 203</b>		<b>Date/Time:</b> 9/10/2019 2000 hours		<b>NIMS IAP</b>	

## FIRE BEHAVIOR FORECAST

<b>FORECAST NUMBER: #4</b>	<b>TYPE OF FIRE: Wildfire</b>
<b>FIRE NAME: Lime/Kidder 2</b>	<b>OPERATIONAL PERIOD: September 11, 2019</b>
<b>DATE ISSUED: September 10, 2019</b>	<b>TIME ISSUED: 2000</b>
<b>UNIT: CA- Klamath N.F.</b>	<b>SIGNED: </b>
	<b>Typed/printed: Nic Elmquist (FBAN)</b>

### INPUTS

**WEATHER SUMMARY: \*\*Please see attached Fire Weather Forecast\*\***

**Today:** Today is a transition day to warmer and dryer weather as the high pressure builds over the two fires. The winds will be generally light and terrain driven but will be more Northerly in the afternoon. Strongest winds will be over the Kidder 2 Fire and northern areas of the Lime Fire.

### OUTPUTS

#### FIRE BEHAVIOR

##### GENERAL:

Outstanding job by both air and ground resources to take advantage of the favorable weather the last couple of days. The lighter fuel loads on the lower elevations should not retain much heat once the edge is cut out direct. Extra attention should be paid to any underslung line especially in upper elevation to ensure the roll-out potential is mitigated. Any unopen lines may become more active during the next couple of days due to the warming trend.

##### SPECIFIC:

**Div. A-** There should be minimal residual heat in the areas which have been cut direct due to the light fuels and the good overnight weather recovery.

**Div. D-** There is still some heat showing in upper Lime Gulch and along the unnamed ridge just south of Longfellow Creek. It is important to secure any areas in the upper elevations of the division which could potentially pose roll-out issues in the next couple of days.

**Div. W-** The heavier fuel component of dead and down will want to retain heat on the upper portions of your division. Secure any material which could potentially roll across the fire line. The last infrared flight still showed some heat along the edge of the unburned finger northeast of Little Cottonwood Peak.

**Div. Z-** Similarly to Div. A, the cool night air will limit the amount of heat showing along the line which has been cut out direct. Good work turning the corner. Be heads up as the winds may be adverse when they turn from a more northerly direction in the afternoon.

**Div. K & Div. S-** The Kidder 2 fire will continue to slowly back down towards the unnamed creek consuming the dead material on the surface. There shouldn't be any tree torching concerns. The natural features combined with the preparation work gives this fire a high probability of success keeping it within the identified lines.

##### AIR OPERATIONS:

The low morning clouds may make aircraft unavailable on the upper elevations until visibility improves later in the day.

### SAFETY

Don't get complacent after a couple of cool days. There is still potential on any unburned islands or parts of the fire which have open line. Make sure to pay attention of any areas of heat especially during the peak burning period (1400-1800).



# Fire Weather Forecast



**FORECAST NO:** 2

**NAME OF FIRE:** Lime / Kidder 2

**PREDICTION FOR:** 0600 Wed - 0600 Thu

**UNIT:** CA-KNF

**SHIFT DATE:** 09/11

**SIGNED:** *Matt Mehle*

**TIME AND DATE**

**FORECAST ISSUED:** 2000 0910/19

**Incident Meteorologist -** Matt Mehle

**WEATHER DISCUSSION:** Upper level ridge of high pressure will begin to build over the Lime and Kidder 2 Fires today. The ridging will bring a slight warming and drying trend today, but more so on Thursday and Friday. Winds will be generally light and terrain driven in the morning becoming Northerly in the afternoon. Strongest winds will be over the Kidder 2 Fire and northern areas of Lime Fire.

**WEATHER FORECAST FOR WEDNESDAY:**

**WEATHER:** Partly sunny with a few afternoon clouds.

**TEMPERATURES:** Max 75-82 F...above 4000' 64-68F

**24 HR Trend:** Up 3 degrees.

**HUMIDITY:** Min 20-30% ...above 4000' 35-45%

**24 HR Trend:** Down 5%.

**20-FOOT WIND:** Light and variable to northeast less than 5 mph in the morning. Northwest to North 3-6 mph mid-day becoming North 5-10 mph in the afternoon gusts to 15 mph.

**Chance of Wetting Rain (0.10"): 0%**

**LAL:1**

**WEATHER FORECAST FOR WEDNESDAY NIGHT:**

**WEATHER:** Mostly clear.

**TEMPERATURES:** Min 44-50 F.

**24 HR Trend:** Up 3 degrees.

**HUMIDITY:** Max 85-100%...above 4000' 80-90%.

**24 HR Trend:** Down 5%.

**20-FOOT WIND:** North 6-12 mph with gusts to 15 mph in the evening becoming variable to possible northeast less than 5 mph overnight.

**Chance of Wetting Rain (0.10"): 0%**

**LAL:1**

**EXTENDED FORECAST:**

**THURSDAY...** Mostly sunny. Max temps 73-84 F above 4000' 65-70 F. Min RH 20-30%. Northwest 4-8 mph with gusts up to 15 mph in the afternoon.

# ASSIGNMENT LIST (ICS 204 WF)

CONTROLLED UNCLASSIFIED  
INFORMATION//BASIC

<b>1. Incident Name:</b> <b>Lime and Kidder 2 Fire</b>		<b>2. Operational Period:</b> Date From: 09/11/19    Date To: 09/12/19 Time From: 0600            Time To: 0600				<b>3. Branch</b> <b>A</b>		<b>Division</b> <b>Alpha</b>	
<b>4. Operations Personnel:</b>						Page 1 of 2			
Operations Section Chief: <b>Shawn Craig / Stephen Fillmore (T)</b>				Night Ops: <b>Kent Contreras</b>					
Branch Director:				Branch Safety:					
Division/Group Supervisor: <b>Corey Stowe / Joel Berg (T)</b>				Air Attack:					
<b>5. Resources Assigned:</b>		<b>** Resources Below in Bold are 12 Hour **</b>							
Resource Identifier	ALS	LWD	Leader	Personnel	Request #	Hours	Reporting Location		
CRW UKONOM IHC			<b>Matt Manago</b>	<b>20</b>	<b>C-10</b>	<b>0600-1800</b>	<b>DP46</b>		
CRW PLUMAS IHC			<b>Mike Sherman</b>	<b>20</b>	<b>C-20</b>	<b>0600-1800</b>	<b>DP46</b>		
CRW FOLSOM LAKE			<b>Peter Dutchick</b>	<b>20</b>	<b>C-21</b>	<b>0600-1800</b>	<b>DP46</b>		
CRW FIRESTORM #3			<b>Alex Rhea</b>	<b>20</b>		<b>0600-1800</b>	<b>DP46</b>		
CRW PAS#02			<b>Floyd Hartman Jr.</b>	<b>17</b>	<b>C-33</b>	<b>0600-1800</b>	<b>DP46</b>		
CRW MAINE- MES #1			<b>John Cousins</b>	<b>17</b>	<b>C-30</b>	<b>0600-1800</b>	<b>DP46</b>		
ENG CAPSTONE ENGINE 5312			<b>Tim Mullen</b>	<b>3</b>	<b>E-64</b>	<b>0600-1800</b>	<b>DP46</b>		
ENG BIG STATE ENGINE 68			<b>Josh Little</b>	<b>3</b>	<b>E-62</b>	<b>0600-1800</b>	<b>DP46</b>		
ENG GRAYBACK ENGINE 31			<b>Steve Yakel</b>	<b>3</b>	<b>E-63</b>	<b>0600-1800</b>	<b>DP46</b>		
ENG OES LNF ENGINE 81			<b>Cody Ishler</b>	<b>3</b>	<b>E-89</b>	<b>0600-1800</b>	<b>DP46</b>		
ENG IPF - D4 - E-641			<b>Marshall Muhre</b>	<b>3</b>	<b>E-88</b>	<b>0600-1800</b>	<b>DP46</b>		
ENG FNF - 681			<b>Nathan Basefort</b>	<b>3</b>	<b>E-87</b>	<b>0600-1800</b>	<b>DP46</b>		
DOZ KNF 1			<b>Lance Tupman</b>	<b>2</b>		<b>0600-1800</b>	<b>DP46</b>		
DOZ PVT E-4				<b>2</b>	<b>E-4</b>	<b>0600-1800</b>	<b>DP46</b>		
HEQB COBB O-15			<b>Michael Cobb</b>	<b>1</b>	<b>O-15</b>	<b>0600-1800</b>	<b>DP46</b>		
HEQB EASLEY O-21			<b>Robert Easley</b>	<b>1</b>	<b>O-21</b>	<b>0600-1800</b>	<b>DP46</b>		
FEMP HAROUTUNIAN O-64			<b>Todd Haroutunian</b>	<b>1</b>	<b>O-64</b>	<b>0600-1800</b>	<b>DP46</b>		
FEMT DEJONG O-115			<b>Chris Dejong</b>	<b>1</b>	<b>O-115</b>	<b>0600-1800</b>	<b>DP46</b>		
<b>6. Work Assignments:</b> Construct direct control line from the junction of the East and West forks of Lime Gulch towards the Division A/D break to keep the fire north of Highway 96 and east of Cayuse Gulch.									
<b>7. Special Instructions:</b>									
<b>8. Communications</b>									
Name	Ch	Function	Rx Freq	Rx Tone	Tx Freq	Tx Tone	Notes		
NIFC C9	2	COMMAND	170.0125	103.5	165.2500	103.5	Little Cottonwood		
NIFC T1	5	TACTICAL	168.0500	103.5	168.0500	103.5			
Calcord	15	Tactical	156.0750	156.7	156.0750	156.7	T6 - Medical Evac		
GUARD	16/20	Emergency Only	168.6250	0.0	168.6250	110.9	T1 - AIR GUARD - emerg. use only		
<b>9. Prepared by: Name:</b>		T. Sandstrom			RESL		Signature: _____		
<b>ICS 204</b>		Date/Time: 9/10/2019 2200			Personnel Count: 140				

# ASSIGNMENT LIST (ICS 204 WF)

CONTROLLED UNCLASSIFIED  
INFORMATION//BASIC

<b>1. Incident Name:</b> <b>Lime and Kidder 2 Fire</b>	<b>2. Operational Period:</b> Date From: 09/11/19     Date To: 09/12/19 Time From: 0600             Time To: 0600	<b>3. Branch</b> <b>Division</b>  <b>A</b>  <b>Page 2 of 2</b> <b>Alpha</b>
---	---	---

<b>4. Operations Personnel:</b>	
Operations Section Chief: <b>Shawn Craig / Stephen Fillmore (T)</b>	Night Ops: <b>Kent Contreras</b>
Branch Director:	Branch Safety:
Division/Group Supervisor: <b>Corey Stowe / Joel Berg (T)</b>	Air Attack:

<b>5. Resources Assigned:</b>		** Resources Below in Bold are 12 Hour **						
Resource Identifier	ALS	LWD	Leader	Personnel	Request #	Hours	Reporting Location	
<b>FEMT WILLIAMS O-165</b>			<b>David Williams</b>	<b>1</b>	<b>O-165</b>	<b>0600-1800</b>		
<b>FEMT EMMERT O-200</b>			<b>Kyle Emmert</b>	<b>1</b>	<b>O-200</b>	<b>0600-1800</b>		
<b>SOFR LEUSCH</b>			<b>Paul Leusche (T)</b>	<b>1</b>		<b>0600-1800</b>		
<b>WILDERNESS MEDICS</b>				<b>2</b>		<b>0600-1800</b>		

**6. Work Assignments:**  
Construct direct control line from the junction of the East and West forks of Lime Gulch towards the Division A/D break to keep the fire north of Highway 96 and east of Cayuse Gulch.

**7. Special Instructions:**

**8. Communications**

Name	Ch	Function	Rx Freq	Rx Tone	Tx Freq	Tx Tone	Notes
NIFC C9	2	COMMAND	170.0125	103.5	165.2500	103.5	Little Cottonwood
NIFC T1	5	TACTICAL	168.0500	103.5	168.0500	103.5	
Calcord	15	Tactical	156.0750	156.7	156.0750	156.7	T6 - Medical Evac
GUARD	16/20	Emergency Only	168.6250	0.0	168.6250	110.9	T1 - AIR GUARD - emerg. use only

**9. Prepared by: Name:** T. Sandstrom                      RESL                      Signature: \_\_\_\_\_

**ICS 204**                      Date/Time: 9/10/2019 2200                      Personnel Count: 5



# ASSIGNMENT LIST (ICS 204 WF)

CONTROLLED UNCLASSIFIED  
INFORMATION//BASIC

<b>1. Incident Name:</b>	<b>2. Operational Period:</b>	<b>3. Branch</b>	<b>Division</b>
<b>Lime and Kidder 2 Fire</b>	Date From: 09/11/19      Date To: 09/12/19 Time From: 0600              Time To: 0600	<b>D</b>	<b>Delta</b>
<b>4. Operations Personnel:</b>		<b>Page 1 of 1</b>	<b>Delta</b>

Operations Section Chief: <b>Shawn Craig / Stephen Fillmore (T)</b>	Night Ops: <b>Kent Contreras</b>
Branch Director:	Branch Safety:
Division/Group Supervisor: <b>Mitch Silvester / Travis Fenske (T)</b>	Air Attack:

5. Resources Assigned:	** Resources Below in Bold are 12 Hour **						
Resource Identifier	ALS	LWD	Leader	Personnel	Request #	Hours	Reporting Location
<b>CRW MDS #1</b>			<b>Aaron Cook</b>	<b>17</b>	<b>C-32</b>	<b>0600-1800</b>	<b>DP10</b>
<b>DOZ PVT E-5</b>				<b>2</b>	<b>E-5</b>	<b>0600-1800</b>	<b>DP10</b>
<b>DOZ PVT E-7</b>				<b>2</b>	<b>E-7</b>	<b>0600-1800</b>	<b>DP10</b>
<b>TFLD THOMAS O-17</b>			<b>Troy Thomas</b>	<b>1</b>	<b>O-17</b>	<b>0600-1800</b>	<b>DP10</b>
<b>HEQB NOLAN O-13</b>			<b>Eric Nolan</b>	<b>1</b>	<b>O-13</b>	<b>0600-1800</b>	<b>DP10</b>
<b>HEQB HEADLEY O-16</b>			<b>Jason Headley</b>	<b>1</b>	<b>O-16</b>	<b>0600-1800</b>	<b>DP10</b>
<b>HEQB HAYCOCK (T) O-21</b>			<b>Nick Haycock</b>	<b>1</b>	<b>O-31</b>	<b>0600-1800</b>	<b>DP10</b>
<b>FEMP PESTER O-65</b>			<b>Ryan Pester</b>	<b>1</b>	<b>O-65</b>	<b>0600-1800</b>	<b>DP10</b>
<b>FEMT CLARK O-12</b>			<b>David Clark</b>	<b>1</b>	<b>O-12</b>	<b>0600-1800</b>	<b>DP10</b>
<b>SOFR MILLER O-83</b>			<b>Ray Miller</b>	<b>1</b>	<b>O-83</b>	<b>0600-1800</b>	<b>DP10</b>
<b>ARCH PADIAN O-27 **</b>			<b>Michael Padian</b>	<b>1</b>	<b>O-27</b>	<b>0600-1800</b>	<b>DP10</b>

**6. Work Assignments:**  
Construct direct and indirect control lines from Cottonwood Mt. along the section 33 ridgeline towards the Division A/D break to keep the fire east of Cayuse Gulch, Longfellow Canyon, and south of the private land holdings north of Cottonwood Mt.

**7. Special Instructions:**  
\*\* ARCH Padian will be working in DIV D and DIV W.

**8. Communications**

Name	Ch	Function	Rx Freq	Rx Tone	Tx Freq	Tx Tone	Notes
NIFC C9	2	COMMAND	170.0125	103.5	165.2500	103.5	Little Cottonwood
NIFC T3	6	TACTICAL	168.6000	103.5	168.6000	103.5	
Calcord	15	Tactical	156.0750	156.7	156.0750	156.7	T6 - Medical Evac
GUARD	16/20	Emergency Only	168.6250	0.0	168.6250	110.9	T1 - AIR GUARD - emerg. use only

**9. Prepared by: Name:** T. Sandstrom      RESL      Signature: \_\_\_\_\_

ICS 204      Date/Time: 9/10/2019 2200      Personnel Count: 29

# ASSIGNMENT LIST (ICS 204 WF)

CONTROLLED UNCLASSIFIED  
INFORMATION//BASIC

<b>1. Incident Name:</b>	<b>2. Operational Period:</b>	<b>3. Branch</b>	<b>Division</b>
<b>Lime and Kidder 2 Fire</b>	Date From: 09/11/19      Date To: 09/12/19 Time From: 0600              Time To: 0600	<b>W</b>	<b>Whiskey</b>

<b>4. Operations Personnel:</b>		<b>Page 1 of 1</b>
Operations Section Chief: <b>Shawn Craig / Stephen Fillmore (T)</b>	Night Ops: <b>Kent Contreras</b>	
Branch Director:	Branch Safety:	
Division/Group Supervisor: <b>Scott Grasmick / Jason Shroeder (T)</b>	Air Attack:	

<b>5. Resources Assigned:</b>		<b>** Resources Below in Bold are 12 Hour **</b>					
Resource Identifier	ALS	LWD	Leader	Personnel	Request #	Hours	Reporting Location
<b>CRW AMERICAN RIVER IHC</b>			<b>Matthew Radtke</b>	<b>20</b>	<b>C-19</b>	<b>0600-1800</b>	<b>DP10</b>
<b>CRW WEST COAST REF</b>			<b>Josh Dennis</b>	<b>20</b>	<b>C-14</b>	<b>0600-1800</b>	<b>DP10</b>
<b>CRW EASTERN MT CREW</b>			<b>Kelly Jackson</b>	<b>17</b>	<b>C-29</b>	<b>0600-1800</b>	<b>DP10</b>
<b>ENG TDOX - BRUSH 21</b>			<b>Charles Salerno</b>	<b>0</b>	<b>E-57</b>	<b>0600-1800</b>	<b>DP10</b>
<b>ENG ROGUE RIVER - ENG 65</b>			<b>Jim Huttema</b>	<b>6</b>	<b>E-58</b>	<b>0600-1800</b>	<b>DP10</b>
<b>ENG SCOTT VALLEY - 1518</b>			<b>Steve Poling</b>	<b>5</b>	<b>E-84</b>	<b>0600-1800</b>	<b>DP10</b>
<b>TFLD WANDERAAS O-136</b>			<b>David Wanderaas</b>	<b>1</b>	<b>O-136</b>	<b>0600-1800</b>	<b>DP10</b>
<b>FEMP HECK III O-194</b>			<b>Peter Heck Iii</b>	<b>1</b>	<b>O-194</b>	<b>0600-1800</b>	<b>DP10</b>
<b>FEMT LIGHT O-69</b>			<b>Jackson Light</b>	<b>1</b>	<b>O-69</b>	<b>0600-1800</b>	<b>DP10</b>
<b>REM1</b>			<b>Ben Culp</b>	<b>4</b>	<b>O-32</b>	<b>0600-1800</b>	<b>DP10</b>
<b>SOFR BENEDICT O-80</b>			<b>Tim Benedict</b>	<b>1</b>	<b>O-80</b>	<b>0600-1800</b>	<b>DP10</b>
<b>ARCH PADIAN O-27 **</b>			<b>Michael Padian</b>	<b>1</b>	<b>O-27</b>	<b>0600-1800</b>	<b>DP10</b>

**6. Work Assignments:**  
Construct direct handline from Cottonwood Mt. south towards the W/Z Division break to keep the fire south of the private land holdings located north of Cottonwood Mt and west of the Ash Creek drainage.

**7. Special Instructions:**  
\*\* ARCH Padian will be working in DIV D and DIV W.

<b>8. Communications</b>							
Name	Ch	Function	Rx Freq	Rx Tone	Tx Freq	Tx Tone	Notes
NIFC C9	2	COMMAND	170.0125	103.5	165.2500	103.5	Little Cottonwood
NIFC T5	7	TACTICAL	166.7250N	103.5	166.7250N	103.5	
Calcord	15	Tactical	156.0750	156.7	156.0750	156.7	T6 - Medical Evac
GUARD	16/20	Emergency Only	168.6250	0.0	168.6250	110.9	T1 - AIR GUARD - emerg. use only

**9. Prepared by: Name:** T. Sandstrom      RESL      Signature: \_\_\_\_\_

**ICS 204**      Date/Time: 9/10/2019 2200      Personnel Count: 77



# ASSIGNMENT LIST (ICS 204 WF)

CONTROLLED UNCLASSIFIED  
INFORMATION//BASIC

<b>1. Incident Name:</b> <b>Lime and Kidder 2 Fire</b>	<b>2. Operational Period:</b> Date From: 09/11/19    Date To: 09/12/19 Time From: 0600        Time To: 0600	<b>3. Branch</b> <b>Division</b>  <b>Contingency</b>
<b>4. Operations Personnel:</b>		<b>Page 1 of 1</b>

Operations Section Chief: <b>Shawn Craig / Stephen Fillmore (T)</b>	Night Ops: <b>Kent Contreras</b>
Branch Director:	Branch Safety:
Division/Group Supervisor: <b>Jason Dyer / Jorsan Hale (T)</b>	Air Attack:

<b>5. Resources Assigned:</b>		<b>** Resources Below in Bold are 12 Hour **</b>					
Resource Identifier	ALS	LWD	Leader	Personnel	Request #	Hours	Reporting Location
STG SKU 9261G				33	C-15	0600-0600	ICP
DOZ LNU 1442				2	E-13	0600-0600	ICP
DOZ ACF ACF				2	E-14	0600-0600	ICP
DOZ 9620L				2		0600-0600	ICP
<b>DOZ WD</b>				<b>2</b>		<b>0600-1800</b>	<b>ICP</b>
<b>DOZ DARRAH</b>				<b>2</b>		<b>0600-1800</b>	<b>ICP</b>
<b>DOZ 2C</b>				<b>2</b>		<b>0600-1800</b>	<b>ICP</b>
<b>SOF2 GINDER O-218</b>			<b>Matt Ginder</b>	<b>1</b>	<b>O-218</b>	<b>0600-1800</b>	<b>ICP</b>

**6. Work Assignments:**  
Construct indirect control lines along favorable ridgelines and road locations to prevent the fire from impacting private timber lands and infrastructure in the fire area.

**7. Special Instructions:**

<b>8. Communications</b>							
Name	Ch	Function	Rx Freq	Rx Tone	Tx Freq	Tx Tone	Notes
NIFC C9	2	COMMAND	170.0125	103.5	165.2500	103.5	Little Cottonwood
NIFC T7	9	Tactical	168.2500N	103.5	168.2500	103.5	
Calcord	15	Tactical	156.0750	156.7	156.0750	156.7	T6 - Medical Evac
GUARD	16/20	Emergency Only	168.6250	0.0	168.6250	110.9	T1 - AIR GUARD - emerg. use only

**9. Prepared by: Name:**                      T. Sandstrom                      RESL                      Signature: \_\_\_\_\_

**ICS 204**                      Date/Time: 9/10/2019    2200                      Personnel Count: 46

# ASSIGNMENT LIST (ICS 204 WF)

CONTROLLED UNCLASSIFIED  
INFORMATION//BASIC

<b>1. Incident Name:</b> <b>Lime and Kidder 2 Fire</b>	<b>2. Operational Period:</b> Date From: 09/11/19    Date To: 09/12/19 Time From: 0600        Time To: 0600	<b>3. Branch</b> <b>Division</b>  <b>Structure Protection</b>
<b>4. Operations Personnel:</b>		Page 1 of 1

Operations Section Chief: <b>Shawn Craig / Stephen Fillmore (T)</b>	Night Ops: <b>Kent Contreras</b>
Branch Director:	Branch Safety:
Division/Group Supervisor: <b>Brandon Brady</b>	Air Attack:

5. Resources Assigned:	** Resources Below in Bold are 12 Hour **						
Resource Identifier	ALS	LWD	Leader	Personnel	Request #	Hours	Reporting Location
STC OES 1880C			<b>Surgey Tomlinson</b>	<b>22</b>	<b>E-73</b>	<b>0600-1800</b>	<b>ICP</b>
ENG 3201				<b>3</b>		<b>0600-1800</b>	<b>ICP</b>
ENG MAGANA - E34			<b>Ernesto Magano</b>	<b>6</b>	<b>E-59</b>	<b>0600-1800</b>	<b>ICP</b>
ENG AZ-CHK - E-516			<b>Chad St Luka</b>	<b>5</b>	<b>E-60</b>	<b>0600-1800</b>	<b>ICP</b>
ENG AZ- UNIT 241				<b>5</b>	<b>E-61</b>	<b>0600-1800</b>	<b>ICP</b>
ENG DRAPER FD - E324			<b>Rob Schultz</b>	<b>5</b>	<b>E-78</b>	<b>0600-1800</b>	<b>ICP</b>
TFLD CASSELLIUS O-9			<b>Martin Cassellius</b>	<b>1</b>	<b>O-9</b>	<b>0600-1800</b>	<b>ICP</b>
FEMT HENRY O-68			<b>Jake Henry</b>	<b>1</b>	<b>O-68</b>	<b>0600-1800</b>	<b>ICP</b>
FEMT SIMMONS O-72			<b>Justin Simmons</b>	<b>1</b>	<b>O-72</b>	<b>0600-1800</b>	<b>ICP</b>

**6. Work Assignments:**  
Implement measures to protect structures located within the fire area.

**7. Special Instructions:**

8. Communications							
Name	Ch	Function	Rx Freq	Rx Tone	Tx Freq	Tx Tone	Notes
NIFC C9	2	COMMAND	170.0125	103.5	165.2500	103.5	Little Cottonwood
VFIRE 26	10	Tactical	154.3025N	156.7	154.3025N	156.7	
Calcord	15	Tactical	156.0750N	156.7	156.0750N	156.7	T6 - Medical Evac
GUARD	16/20	Emergency Only	168.6250	0.0	168.6250	110.9	T1 - AIR GUARD - emerg. use only

**9. Prepared by: Name:**                      T. Sandstrom                      RESL

Signature: \_\_\_\_\_

**ICS 204**    Date/Time: 9/10/2019    2200    Personnel Count: 49



# ASSIGNMENT LIST (ICS 204 WF)

CONTROLLED UNCLASSIFIED  
INFORMATION//BASIC

<b>1. Incident Name:</b>	<b>2. Operational Period:</b>	<b>3. Branch</b>
<b>Lime and Kidder 2 Fire</b>	Date From: 09/11/19      Date To: 09/12/19 Time From: 0600              Time To: 0600	<b>Roads</b>

Page 1 of 1

<b>4. Operations Personnel:</b>	
Operations Section Chief: <b>Shawn Craig / Stephen Fillmore (T)</b>	Night Ops: <b>Kent Contreras</b>
Branch Director:	Branch Safety:
Division/Group Supervisor: <b>Kevin Moore/ Timothy Ross (T)</b>	Air Attack:

<b>5. Resources Assigned:</b>							
<b>** Resources Below in Bold are 12 Hour **</b>							
Resource Identifier	ALS	LWD	Leader	Personnel	Request #	Hours	Reporting Location
DOZ PVT E-10				<b>2</b>	<b>E-10</b>	<b>0600-1800</b>	<b>ICP</b>
DOZ PVT E-6				<b>2</b>	<b>E-6</b>	<b>0600-1800</b>	<b>ICP</b>
TBD GRDR							<b>ICP</b>
WT2 PVT E-99 LET-ER-BUCK INC				<b>1</b>	<b>E-99</b>	<b>0600-1800</b>	<b>ICP</b>
WT3 BLAIR			<b>Jeff Blair</b>	<b>1</b>	<b>E-71</b>	<b>0600-1800</b>	<b>ICP</b>
TFLD CARPENTER O-138			<b>James Carpenter</b>	<b>1</b>	<b>O-138</b>	<b>0600-1800</b>	<b>ICP</b>
HEQB BARR O-139			<b>Jesse Barr</b>	<b>1</b>	<b>O-139</b>	<b>0600-1800</b>	<b>ICP</b>

**6. Work Assignments:**  
Identify and develop a plan to rehabilitate the off-highway road system used by incident resources and begin repairs to provide for safe movement of incident resources.

**7. Special Instructions:**

<b>8. Communications</b>							
Name	Ch	Function	Rx Freq	Rx Tone	Tx Freq	Tx Tone	Notes
NIFC C9	2	Command	170.0125	103.5	165.2500	103.5	
R5 T5	12	Tactical	167.1125	103.5	167.1125	103.5	Roads
Calcord	15	Tactical	156.0750	156.7	156.0750	156.7	T6 - Medical Evac
GUARD	16/20	Emergency Only	168.6250	0.0	168.6250	110.9	T1 - AIR GUARD - emerg. use only

**9. Prepared by: Name:** T. Sandstrom      RESL      Signature: \_\_\_\_\_

**ICS 204**      Date/Time: 9/10/2019 2200      Personnel Count: 8







## DOZER EXTRACTION INCIDENT RISK ANALYSIS (ICS 215a)

	HAZARDOUS ACTIONS / CONDITIONS	MITIGATIONS / WARNINGS / REMEDIES	
	<b>Rock Rollout</b>	<ul style="list-style-type: none"> <li>• Ensure the area below is clear of personnel and general public.</li> <li>• Close Highway 96 below the dozers during extraction.</li> <li>• Ensure all personnel are wearing proper PPE.</li> <li>• Only necessary personnel involved will be in extraction in the immediate area.</li> </ul>	
	<b>Communication</b>	<ul style="list-style-type: none"> <li>• Ensure good communications between hilltop dozer operators, spotter, division, safety and road guards</li> <li>• Maintain common frequency and ensure all radios operate correctly on assigned frequency.</li> </ul>	
	<b>Operator Safety</b>	<ul style="list-style-type: none"> <li>• Use seatbelts.</li> <li>• Do not let dozer exceed operational limits. If so stop operation immediately.</li> <li>• Use a safety spotter knowledgeable in dozer extraction operations.</li> <li>• Use PPE, nomex, gloves and helmet.</li> <li>• Scout out and assess hazards of the area and terrain.</li> <li>• Consider large rocks and rocky soil a watch out situation.</li> <li>• Ensure dozer operators maintain good situational awareness.</li> <li>• Maintain parallel orientation during extraction.</li> <li>• Driver must be qualified in particular model dozer.</li> <li>• Dozers to be extracted shall not have drivers in them until they are within operational safety guidelines.</li> </ul>	
	<b>Fatigue</b>	<ul style="list-style-type: none"> <li>• Be alert for signs of fatigue and take breaks as necessary.</li> <li>• Maintain 2:1 work/rest ratio.</li> </ul>	
	<b>Winching Operations</b>	<ul style="list-style-type: none"> <li>• Ensure 2:1 safety buffer for winching cable.</li> <li>• Only qualified personnel will rig the dozer to be extracted.</li> <li>• Ensure proper cable\chain rating for the dozers involved.</li> <li>• Ensure cables are in good working condition.</li> <li>• Stop operations if dozers begins to slide.</li> <li>• Ensure pulling dozer is on a hard\stable surface.</li> <li>• Once extraction has begun ensure extracted dozer is on stable ground before disconnecting cables and can move away from the area unassisted.</li> </ul>	
	<b>Weather</b>	<ul style="list-style-type: none"> <li>• Do not work during thunderstorms.</li> <li>• Delay extraction if soil is wet or it is raining.</li> </ul>	
	<b>Dozer Extraction</b>	<ul style="list-style-type: none"> <li>• Conduct thorough briefing for all personnel.</li> <li>• Ensure LCES in place prior to engagement.</li> <li>• Establish adequate safe areas.</li> <li>• Utilize Risk Management Process.</li> <li>• Maintain clear communications with all extraction personnel.</li> <li>• Stop extraction if stresses exceed load capacities of equipment.</li> </ul>	
INCIDENT NAME:		DATE PREPARED:	OPERATIONAL PERIOD
Lime		September 10, 2019	9/11/19 Day Shift
ICS 215a			Prepared by Bertram \ Zeulner







# AIR OPERATIONS SUMMARY

Prepared By: John Crotty/ Steve Beall

Prepared Date: 9/10/19 Prepared Time: 1930

1. INCIDENT NAME: Lime / Kidder 2 2. OPERATIONAL PERIOD DATE: 9/11/19 START TIME: 0730

END TIME: 1957 SUNRISE: 0646 SUNSET: 1927

<p><b>3. REMARKS (Safety Notes, Hazards, Air Operations Special Equipment, etc.):</b>  <i>Visibility - Smoke. (Check with ATGS)</i>                  See map for Avoidance Area                  See map for no dip areas                  Flight Hazards- Wilderness, Powerlines, winds, MTR's (Check Flight Haz Map, MTR's)                  Fly all missions with landing lights on.                  USE 1255                  Keep foam and retardant out of waterways. Do not contaminate dip sites. Clean buckets for Wilderness                  Use see and avoid tactics with external loads over roads and highways.                  Siskiyou Airport Antelope East of runway. Gliders and RC aircraft                  Scott: Towers 200' 2 miles South and Geese in adjacent lands                  Klamath River Dip: Low comm and power lines                  On order:</p>		<p><b>4. MEDIVAC AIRCRAFT</b>                  Incident medevac: Incident ships as available                  Hoist ship: KRN H-407                  Day/Night ALS Weed                  Air Ambulances:                  Mercy 105 MFR                  PHI 43, Reach 5 RDD                  Airlink 3 LMT</p>		<p><b>5. TFR: In Place</b>                  Lime #9/5120                  Center point 41 53'14"N                  122 38'48"W                  5 Mile Radius@10000                  Kid #9/5094                  Center point 41 30'18"N                  123 04'41"W                  5 Mile Radius@10000</p>	
<p><b>6. PERSONNEL</b></p>		<p><b>7. FREQUENCY</b></p>		<p><b>8. FIXED-WING Avail/Type/Make-Model/ FAA N# / Base(s)</b></p>	
AOBD	John Crotty	Command Rptr Lime NIFC C1	AM 170.9750 RX 168.7000 TX Tone 8 103.5 Both Sides	AA-05 Siskiyou	
ASGS ASGS (T)	Steve Beall Ray Wilson	Command Rptr Kidder 2 NIFC C9	170.0125 RX 165.2500 TX Tone 8 103.5 Both Sides	Air Tankers : On request	
ATGS ASM	Jason Withrow	RW A/A Lime FW A/A Lime A/G CMD Lime/Kid 2 A/G Tac Lime RW A/A Kid FW A/A Kid A/G Tac Kid	118.075 168.3375 166.6000 165.0000 119.125 172.5500 162.1875	Lead Planes: On Request	
HEB1: Siskiyou HEB1: Scott	Mike Smith Bill Lampert	DECK Tone 15 for Siskiyou	163.100 Tone 15 162.2	Helibase location: Scott: 41 33.47 X 122 51.30 Siskiyou: 41 46.70 X 123 28.30	
Medevac and Hoist Air to Ground		Cal Coord	156.0750 Tone 6 156.7 TX/RX		
Ground to Air Emergency Only		Air Guard	168.6250 Tone 1 on TX		
KNF Dispatch					

Special Equipment: Helibase support trailer, Crash Rescue, Water tender

**HELICOPTERS (Use Additional Sheets As Necessary)**

FAA N#	TY	MAKE/MODEL	BASE	AVAIL	START	REMARKS	FAA N#	TY	MAKE/MODEL	BASE	AVAIL	START	REMARKS
H-512	II	212 HP	Siskiyou	0730	0800		H-502	II	205++	Scott	0730	0800	Rappel
H-22Z	II	212	Siskiyou	0730	0800	Cal Fire Loan Std	H-69H	II	205++	Scott	0730	0800	Rappel
H-1GH	II	UH1	Siskiyou	0730	0800	Cal Fire Loan Restr	H-33HX	II	205++	Siskiyou	0730	0800	Rappel
H-805PJ	I	S-70	Siskiyou	0730	0800	Limited	H-4TH	I	Kmax	Siskiyou	0730	0800	Limited
H-239CH	I	S-234	Siskiyou	0730	0800	Limited	H-407	II	UH1	Weed	24hr		NVG Hoist Prepo

**9. TASK/MISSION/ASSIGNMENT (Type/Function includes: Air Tactical, Retardant, Recon, Personnel Transport, Water Dropping, S&R, etc.)**

TYPE/FUNCTION	NAME OF PERSONNEL OR CARGO OR INSTRUCTIONS FOR TACTICAL AIRCRAFT	MISSION START	FLY FROM	FLY TO
Air Tactical	Provide continuous coverage over incident by FW ATGS. Coordinate rotor and fixed wing A/C use and flight following over the fire. Monitor all divisions.	0800		Fire
Dropping Retardant: Air Tankers	FW air tankers as ordered by DIVSOPS/AOBD to ATGS. Support operations as necessary. Record drop locations	When requested		Fire
Recon	As requested			
Mapping/Infrared	UAS coordination with ATGS and Air Ops. Nirops order by 1400	Call Sign UR31		
Transport of Personnel	As requested			
Cargo Transport	As requested			
Dip Site Names and Locations	Klamath River, Cliff Lake, Shelly Lake, Kidder Lake, Campbell Lake, Kidder Creek. All others on approval			
I.A.	As requested			
Helispots	As Approved			

# HEALTH AND SAFETY MESSAGE

The person you see in your mirror is responsible for your safety.

INCIDENT: Lime & Kidder 2 Fire

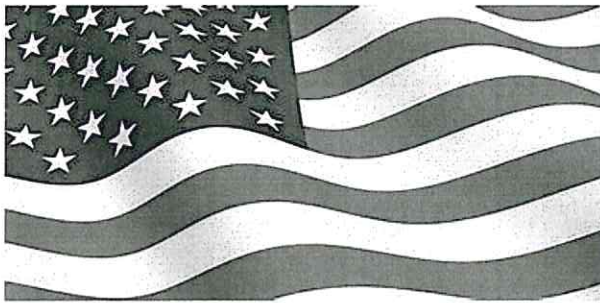
DATE: 9/11 to 9/12/19 Time: 0600-0600

## Major Hazards and Risks:

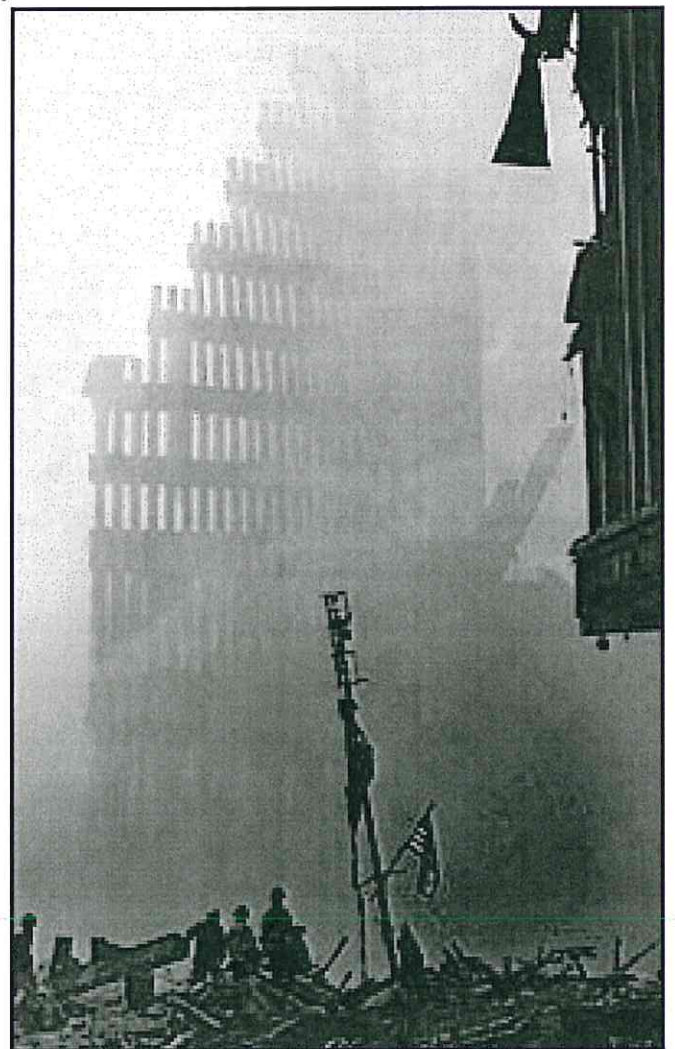
- Driving and vehicle operations on all roads to and from the fire area
- Steep winding roads with soft shoulders
- Rolling material
- Hiking in rough, extremely steep terrain
- Firefighter fatigue and dehydration
- Potential for extreme fire behavior
- Working around heavy equipment

## Narrative:

While driving to and from the incident, keep headlights on, seatbelts on and speeds down. Practice defensive driving. Be patient with civilian drivers. Once you get to your assignment, double check your communications. Use a human repeater in areas where communications are poor.



**Let's remember September 11<sup>th</sup> today and the responders that paid the ultimate price for their heroism.**



Tom Zeulner Team Safety 805-440-5252

Rick Bertram Team Safety 805-471-8076

Brent Kaiser Team Safety(t) 209-985-4271

## INCIDENT SAFETY ANALYSIS 215a

CA-KNF-007074 - Wednesday, September 11, 2019 0600-0600

8. Location	9. Hazard	6. Control or Abatement Action (Engineering, Administrative, PPE, Avoidance, Education, etc)
All	Driving & Traffic	~ Practice "Defensive Driving" techniques traveling on all roads and city streets. ~ Use spotters when backing. ~ <b>Watch for logging trucks.</b> ~ Follow Driving LCES (Lights, Chock blocks, Emergency brake, Seat belts). ~ <b>Stay on Highways 5, 96 and 3 when driving to incidents.</b> ~ Use the 3 second rule for following distance when driving. ~ <b>Use extra caution when turning onto Hwy 96 from Lime Gulch Rd.</b> ~ Ensure that windshields are kept clean of dust and bugs.
All	Hazard Trees	~ Follow "Hazard Tree Safety" guidelines, IRPG page 22. ~ Post lookouts, or use a spotter in mop-up areas with personnel. ~ Establish trigger points for disengagement during high wind events. ~ Remember that the hazard zone extends a minimum of 2 1/2 tree heights.
All	Steep Terrain & Rolling Debris	~ Maintain 8'-10' spacing when working & walking. ~ Don't work above any personnel. ~ Be on the lookout for rolling rocks, debris, or burning material. ~ Post lookouts (IRPG pg 6).
All	Air Operations	~ Follow "Aviation Watch-Out Situations" on page 46, IRPG. ~ Don't plan on air resources for medical transport or resupply. ~ Refer to page 57, IRPG for directing bucket drops. ~ Ensure positive communication with all air resources.
All	Heavy Equipment Operations	~ Ensure communications are established with operators. ~ Use hand signals if other communications are unavailable. ~ Maintain a 50'-100' exclusion area around equipment and increase it to 1 1/2 times tree height when in timber. ~ Avoid working below heavy equipment.
All	Helicopter Operations	~ Stay clear of all bucket drops when suppression actions are in place and allow 1 minute prior to re-entry. ~ Monitor Air to Ground communications. ~ Follow aviation safety guidelines in IRPG 57 and IHOG.
All	Mop up	~ Use extreme caution when working around hot ash pits, wear all PPE. ~ Be aware of all snags that may be in the area you are mopping up. ~ Use a lookout while mopping up on steep slopes for rolling material or rocks.
All	Indirect Fireline	~ Post lookouts, identify escape routes and safety zones (IRPG pg. 7). ~ Review "Strategy/Indirect Attack" (IRPG pg. 83).
All	Injury & Medical Emergency	~ Assist injured employee with appropriate medical care. ~ Use EMT's on Division for initial care. ~ Follow medical protocol as outlined in ICS-206 & IRPG Pgs 105-119
All	Fatigue & Over Exertion	~ Drink 1 quart of water each hour during and after work. ~ Set a reasonable work pace and allow adequate rest breaks while on the project. ~ Use buddy system to monitor personnel of heat related and fatigue issues. ~ Follow work / rest guidelines.
All	Wildlife & Livestock	~ Watch out for wildlife & livestock inside fire area and along roadways. ~ Clean up all debris and trash during each operational period.
All	Communications	~ Maintain communication with aviation resources and suppression organization. ~ Ensure all know frequency and protocol for contacting resources. ~ <b>Know and utilize the ICS 205 and ensure clear communications.</b> ~ Utilize human repeaters when working in dead spots.
All	Poisonous Plants	~ Identify and Avoid hazard areas. ~ Launder clothing. ~ Shower frequently.
All	Abandoned Mines	~ Keep an eye open to the possibility of abandoned mines in the area of the Lime Fire. ~ If you locate one, flag it's location and inform others in your work area.



INCIDENT RADIO COMMUNICATIONS PLAN		Incident Name		Date/Time Prepared			Operational Period Date/Time		
COMMUNICATIONS PLAN		Lime/Kidder 2 Fire		09/10/19 1900			09/11-09/12 0600-0600		
Zn / Ch	Function	Channel Name/Talkgroup	Assignment	RX Freq	RX Tone/NAC	TX Freq	TX Tone/NAC	Mode A, D, M	Remarks
1	Command	NIFC C1	All Divisions Kidder 2	170.9750	103.5	168.7000	103.5	A	Patterson Creek
2	Command	NIFC C9	All Divisions Lime	170.0125	103.5	165.2500	103.5	A	Little Cottonwood
3	Command	NIFC C12	Unassigned	173.0375	103.5	167.3250	103.5	A	
4	Command	KNF Black	All Divisions/Back up	169.6375	0.0	168.7750	110.9	A	Back up Net Lime Fire
5	Tactical	NIFC T1	DIV A / K	168.0500	103.5	168.0500	103.5	A	
6	Tactical	NIFC T3	DIV D / Night	168.6000	103.5	168.6000	103.5	A	Night Group Tac
7	Tactical	NIFC T5	DIV W	166.7250	103.5	166.7250	103.5	A	
8	Tactical	NIFC T6	DIV Z / S	166.7750	103.5	166.7750	103.5	A	
9	Tactical	NIFC T7	Contingency	168.2500	103.5	168.2500	103.5	A	
10	Tactical	VFIRE 26	Structure Group	154.3025	156.7	154.3025	156.7	A	
11	Air - Ground Tac	Air Tac	All Divisions	165.0000	0.0	165.0000	0.0	A	Lime Fire
12	Air - Ground Tac	Air Tac	All Divisions	162.1875	0.0	162.1875	0.0	A	Kidder 2 Fire
13	Air - Ground CMD	Air CMD	All Divisions Lime/Kidder 2	166.6000	0.0	166.6000	0.0	A	Overhead Use Only Kidder/Lime
14	Command	KNF River	All Divisions/Back up	172.2500	0.0	165.0750	167.9	A	Back up Net Kidder 2 Fire
15	Tactical	Calcord	Medical	156.0750	156.7	156.0750	156.7	A	T6 - Medical Evac
16/20	Emergency only	GUARD	All Divisions	168.6250	0.0	168.6250	110.9	A	T1 - AIR GUARD - emerg. use only
Prepared By (Communications Unit Leader)		Chris Perry			Incident Location		Latitude, Longitude		
		Communications (619) 359-3473			County				
Deviation is assumed to be narrow band unless otherwise noted in the remarks. Mode refers to either "A" (analog), "D" (digital) or "M" (mixed mode). 1/14/14 v.5									

INCIDENT RADIO COMMUNICATIONS PLAN		Incident Name		Date/Time Prepared		Operational Period Date/Time			
COMMUNICATIONS PLAN		Roads / Extraction		09/10/19 1900		09/11-09/12 0600-0600			
Zn / Ch	Function	Channel Name/Tunked Talkgroup	Assignment	RX Freq	RX Tone/NAC	TX Freq	TX Tone/NAC	Mode A, D, M	Remarks
1	Command	NIFC C1	All Divisions Kidder 2	170.9750	103.5	168.7000	103.5	A	Patterson Creek
2	Command	NIFC C9	All Divisions Lime	170.0125	103.5	165.2500	103.5	A	Little Cottonwood
3	Command	NIFC C12	Unassigned	173.0375	103.5	167.3250	103.5	A	
4	Command	KNF Black	All Divisions/Back up	169.6375	0.0	168.7750	110.9	A	Back up Net Lime
5	Tactical	NIFC T1	DIV A / K	168.0500	103.5	168.0500	103.5	A	
6	Tactical	NIFC T3	DIV D / Night	168.6000	103.5	168.6000	103.5	A	Night Group Tac
7	Tactical	NIFC T5	DIV W	166.7250	103.5	166.7250	103.5	A	
8	Tactical	NIFC T6	DIV Z / S	166.7750	103.5	166.7750	103.5	A	
9	Tactical	NIFC T7	Contingency	168.2500	103.5	168.2500	103.5	A	
10	Tactical	VFIRE 26	Structure Group	154.3025	156.7	154.3025	156.7	A	
11	Air - Ground Tac	Air Tac	All Divisions	165.0000	0.0	165.0000	0.0	A	
12	Tactical	R5 T5	Roads	167.1125	103.5	167.1125	103.5	A	Roads
13	Air - Ground CMD	Air CMD	All Divisions Lime/Kidder 2	166.6000	0.0	166.6000	0.0	A	Overhead Use Only Kidder/Lime
14	Tactical	R5 T4	Extraction Group	166.5500	103.5	166.5500	103.5	A	
15	Tactical	Calcord	Medical	156.0750	156.7	156.0750	156.7	A	T6 - Medical Evac
16/20	Emergency only	GUARD	All Divisions	168.6250	0.0	168.6250	110.9	A	T1 - AIR GUARD - emerg. use only
Prepared By (Communications Unit Leader)		Chris Perry		Incident Location		Latitude, Longitude			
		<b>Communications (619) 359-3473</b>		County					
Deviation is assumed to be narrow band unless otherwise noted in the remarks. Mode refers to either "A" (analog), "D" (digital) or "M" (mixed mode). 1/14/14 v.5									

<b>MEDICAL PLAN ICS 206</b>	1. INCIDENT NAME Lime & Kidder 2 Fire	2. DATE PREPARED 09/10/2019	3. TIME PREPARED 18:00	4. OPERATIONAL PERIOD 09/11/2019 – 09/12/2019 0600-0600
---------------------------------	--	--------------------------------	---------------------------	---

5. INCIDENT MEDICAL AID STATIONS				
MEDICAL AID STATIONS	LOCATION			PARAMEDICS
				YES NO
ICP (Medical Unit)	1712 Fairlane Road Yreka CA.			X

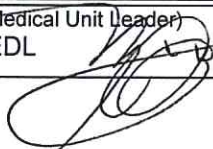
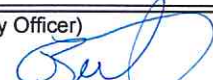
6. TRANSPORTATION				
A. AIR AMBULANCES				
NAME	LOCATION	PHONE	PARAMEDICS	
			YES	NO
Mercy Air 105 (Medford)	2020 Milligan Way, Medford OR.	911 Dispatch 530-842-3515	X	
Reach (Redding)	1524 East Street, Redding CA,	911 Dispatch 530-842-3515	X	
PHI Air Medical (Redding)	5900 Old Oregon Trail, Redding CA	911 Dispatch 530-842-3515	X	
Kern Helicopter 407 (Hoist Night Ops ALS)	5642 Victor Street Bakersfield CA	911 Dispatch 530-842-3515	X	

B. GROUND AMBULANCES & REM TEAMS				
NAME	LOCATION	PARAMEDICS		
		YES	NO	
Mount Shasta Ambulance	Yreka, Weed, Mount Shasta CA	X		
REM Team 1	Lime Div.W		X	
REM Team 2	Kidder 2		X	

7. HOSPITALS								
NAME	ADDRESS	TRAVEL TIME		PHONE	HELIPAD		BURN CTR	
		AIR	GRND		YES	NO	YES	NO
Fairchild Medical Center Level 4 Trauma Center	444 Bruce Street Yreka CA	:15	:45	530-842-4121 Lat: 41 43.20 Long: 122 38.70	X			X
Rogue Medical (Medford) Level 2 Trauma Center	2825 E Barnett Rd Medford OR	:30	1:15	541-789-7132 Lat: 42 19.10 Long: 122 49.50	X			X
Mercy Medical Center Level 2 Trauma Center	2175 Rosaline Ave, Redding CA	:45	2:15	530-225-6000 Lat: 40 34.14 Long: 122 23.97	X			X
UC Davis Medical Center Level 1 Trauma & Burn Center	2315 Stockton Blvd, Sacramento CA	2:15	4:30	916-734-5669 Lat: 38 33.20 Long: 121 27.28	X		X	

**8. MEDICAL EMERGENCY PROCEDURES**

<p><b>LINE "MEDICAL-EMERGENCY" PLAN:</b></p> <ul style="list-style-type: none"> <li>- Crew Supervisor to contact Division Supervisor/Operations with: <ul style="list-style-type: none"> <li>• Patient Complaint, Condition and Location via Tactical or Command frequency. <b>Priority 1/Red &amp; 2/Yellow</b> Patients</li> <li>• Triggers Incident within Incident (IWI)</li> </ul> </li> <li>- Division Supervisor/Operations contacts Communications: <ul style="list-style-type: none"> <li>• Division Supervisor or *POC will run "<b>Medical-Emergency</b>" on the Command frequency.</li> <li>• Division Supervisor or *POC to use "<b>Medical Incident Report</b>" worksheet on back of this page or in IRPG.</li> <li>• Communications contacts Medical Unit Leader on the Command frequency or cell phone (661-487-6323)</li> </ul> </li> </ul> <p>*POC (Point of Contact) and/or Operations</p>	<p><b>LINE "NON-EMERGENCY INCIDENT" PLAN:</b></p> <ul style="list-style-type: none"> <li>- Crew Supervisor to contact Division Supervisor with: <ul style="list-style-type: none"> <li>• Patient Complaint, Condition and Location via Tactical or Command frequency. <b>Priority 3/Green</b> Patients</li> <li>• <b>Does not</b> trigger Incident within Incident (IWI)</li> </ul> </li> <li>- Division Supervisor contacts Communications: <ul style="list-style-type: none"> <li>• Division Supervisor or *POC will run "<b>Non-Emergency Incident</b>" on the Command frequency.</li> <li>• Division Supervisor or *POC to use "<b>Medical Incident Report</b>" worksheet on back of this page or in IRPG.</li> <li>• Communications contacts Medical Unit Leader on the Command frequency or cell phone (list number).</li> </ul> </li> </ul> <p><b>IN-CAMP – 24 HOUR MEDICAL</b></p> <ul style="list-style-type: none"> <li>- Contact incident Communications with: Patient Complaint, condition and Location via LOGS net or Command frequency.</li> </ul>
---	---

ICS 206 6/2017	9. PREPARED BY: (Medical Unit Leader) Mike Lencioni MEDL 	10. REVIEWED BY: (Safety Officer) Rick Bertram SOFR 
-------------------	---	--

# MEDICAL PLAN (ICS 206 WF)

Controlled Unclassified Information//Basic

## Medical Incident Report

**FOR A NON-EMERGENCY INCIDENT, WORK THROUGH CHAIN OF COMMAND TO REPORT AND TRANSPORT INJURED PERSONNEL AS NECESSARY.**

**FOR A MEDICAL EMERGENCY: IDENTIFY ON SCENE INCIDENT COMMANDER BY NAME AND POSITION AND ANNOUNCE "MEDICAL EMERGENCY" TO INITIATE RESPONSE FROM IMT COMMUNICATIONS/DISPATCH.**

**Use the following items to communicate situation to communications/dispatch.**

**1. CONTACT COMMUNICATIONS / DISPATCH** (Verify correct frequency prior to starting report)

*Ex: "Communications, Div. Alpha. Stand-by for Emergency Traffic."*

**2. INCIDENT STATUS:** Provide incident summary (including number of patients) and command structure.

*Ex: "Communications, I have a Red priority patient, unconscious, struck by a falling tree. Requesting air ambulance to Forest Road 1 at (Lat./Long.) This will be the Trout Meadow Medical, IC is TFLD Jones. EMT Smith is providing medical care."*

Severity of Emergency / Transport Priority	<input type="checkbox"/> <b>RED / PRIORITY 1 Life or limb threatening injury or illness. Evacuation need is IMMEDIATE</b> <i>Ex: Unconscious, difficulty breathing, bleeding severely, 2<sup>o</sup> – 3<sup>o</sup> burns more than 4 palm sizes, heat stroke, disoriented.</i> <input type="checkbox"/> <b>YELLOW / PRIORITY 2 Serious Injury or illness. Evacuation may be DELAYED if necessary.</b> <i>Ex: Significant trauma, unable to walk, 2<sup>o</sup> – 3<sup>o</sup> burns not more than 1-3 palm sizes.</i> <input type="checkbox"/> <b>GREEN / PRIORITY 3 Minor Injury or illness. Non-Emergency transport</b> <i>Ex: Sprains, strains, minor heat-related illness.</i>	
Nature of Injury or Illness & Mechanism of Injury		<i>Brief Summary of Injury or Illness (Ex: Unconscious, Struck by Falling Tree)</i>
Transport Request		<i>Air Ambulance / Short Haul/Hoist Ground Ambulance / Other</i>
Patient Location		<i>Descriptive Location &amp; Lat. / Long. (WGS84)</i>
Incident Name		<i>Geographic Name + "Medical" (Ex: Trout Meadow Medical)</i>
On-Scene Incident Commander		<i>Name of on-scene IC of Incident within an Incident (Ex: TFLD Jones)</i>
Patient Care		<i>Name of Care Provider (Ex: EMT Smith)</i>

**3. INITIAL PATIENT ASSESSMENT:** Complete this section for each patient as applicable (start with the most severe patient)

Patient Assessment: See IRPG page 106

Treatment:

**4. TRANSPORT PLAN:**

Evacuation Location (if different): (Descriptive Location (drop point, intersection, etc.) or Lat. / Long.) Patient's ETA to Evacuation Location:

Helispot / Extraction Site Size and Hazards:

**5. ADDITIONAL RESOURCES / EQUIPMENT NEEDS:**

*Example: Paramedic/EMT, Crews, Immobilization Devices, AED, Oxygen, Trauma Bag, IV/Fluid(s), Splints, Rope rescue, Wheeled litter, HAZMAT, Extrication*

**6. COMMUNICATIONS: Identify State Air/Ground EMS Frequencies and Hospital Contacts as applicable**

Function	Channel Name/Number	Receive (RX)	Tone/NAC *	Transmit (TX)	Tone/NAC *
COMMAND					
AIR-TO-GRND					
TACTICAL					

**7. CONTINGENCY: Considerations:** If primary options fail, what actions can be implemented in conjunction with primary evacuation method? Be thinking ahead.

**8. ADDITIONAL INFORMATION:** Updates/Changes, etc.

**REMEMBER:** Confirm ETA's of resources ordered. Act according to your level of training. Be Alert. Keep Calm. Think Clearly. Act Decisively.

Date & Time Order was placed:	Order #	Location & Time for Delivery (DIV, IZ, DP, Lat Long)	Mode of delivery
	(DIVS+#)		(Driven/Helo/DIVS to Pick up)
		Lat:	
		Long:	

Order received in Communications by (Name): \_\_\_\_\_ Time: \_\_\_\_\_

Order shipped to line by (Name): (Send this sheet to the line with the order) \_\_\_\_\_ Time: \_\_\_\_\_

#	Item	Amount
1	1,000 Foot Hose Lay includes the following: Amount _____	
	10, 100'x1½" Rolls Hose; 10, 100'x1" Rolls Hose; 10, 1½" Gated Wyes; 10, 1½" to 1" reducers; 10, 1" nozzles	

2	2,000 Foot Hose Lay includes the following: Amount _____	
	20, 100'x1½" Rolls Hose; 20, 100'x1" Rolls Hose; 20, 1½" Gated Wyes; 20, 1½" to 1" reducers; 20, 1" nozzles	

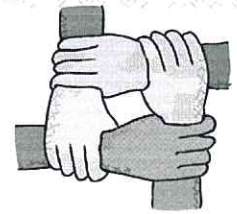
3	3,000 Foot Hose Lay includes the following: Amount _____	
	30, 100'x1½" Rolls Hose; 30, 100'x1" Rolls Hose; 30, 1½" Gated Wyes; 30, 1½" to 1" reducers; 30, 1" nozzles	

#	Item	Amount	#	Item	Amount
4	Hose (50') garden, 3/4"		30	Gas Unleaded (Gallons)	
5	Hose (100'), 1"		31	Oil 2 cycle, (Pints)	
6	Hose (100'), 1½"		32	Bar Oil (Qts)	
7	Nozzle, Garden, 3/4"		33	Drip Torch ea	
8	Nozzle, Forester, 1"		34	Drip torch mix 3.5:1.5 (gallon)	
9	Nozzle, KK Type, 1"		35	Fusees (Boxes or cases)???	
10	Nozzle, KK Type, 1½"		36	Flare Gun Rounds (12/BX)	
11	Wye, Gated, 3/4"		37	Cartridge #6 purple (box)	
12	Wye, Gated, 1"		38	Batteries "AA" PKGs(24/PKG)/BX	
13	Wye, Gated, 1½"		39	Ribbon, Flagging (Specify Color)*	
14	Inline-Tee, 1x1x3/4"		40	Water, Cubies	
15	Inline-Tee, 1x1x1"		41	Water, Bottled, Cases	
16	Inline-Tee (1½" X 1")		42	Gatorade	
17	Reducer, 1" X 3/4"		43	MRE's (12/BX)	
18	Reducer, 1½" X 1"		44	Heavy Mill Plastic	
19	Increaser, 3/4" X 1"		45	Washcloth, waterless, cleansing	
20	Increaser, 1" X 1½"		46	Wrap, Structure 54"x300'	
21	Foam 5 gal		47	Sprinkler Kit	
22	Foam 4 oz (For Backpack Pump)		48	Mark 3 Pump	
23	Backpack Pump		49	Mark 3 Pump Kit- w/10 gal mixed fuel	
24	Pumpkin (Gallons?)		50	Chainsaw Kit	
25	Porta-Tank (Gallons?)		51	Mop-Up Kit, 3-Wand	
26	Shovel		52	Pump Kit, Lightweight, 2 Cycle	
27	Pulaski		53	Gas, Raw and 2 qts 2-cycle oil, ea	
28	Combi Tool		54	Lightweight Pump Kit-Cache w/5gal fuel	
29	McCloud		55	Gas, raw (gal) and 1 qt 2-cycle oil, ea.	

Notes: \_\_\_\_\_



## *Human Resource Message*



Hi, my name is Linda Buck. I am your Human Resource Specialist.

Human Resources are our most important component to successful fire suppression.

Team Work; Cooperation and Mutual Respect are keys to managing this or any incident. This incident needs your efforts in maintaining a harassment free environment.

I am here to help folks work out problems or to give you guidelines for averting negative behavior. Feel free to come talk to me.

Please stop in and introduce yourself to me. It builds rapport prior, to having any potential issues.

---

**Linda Buck, HRSP**

# TRAINING SPECIALIST MESSAGE

A Training Specialist is assigned to the incident.

All federal, state, and local government trainees working on position task books will need to register with the Incident Training Specialist in order to receive proper credit for your assignment.

Please fill out the attached Trainee Registration Form and drop it off at the Training Desk, located inside the building with Check-In and Finance.

*Brandon Fernandez*  
*Training Specialist (T)*

## Incident Trainee/Trainer Data Form

### Trainee Data

Trainee Name: \_\_\_\_\_ Trainee Position: \_\_\_\_\_

Request #: \_\_\_\_\_ Agency Designator (Ex. CA-ANF): \_\_\_\_\_

First Assignment: YES \_\_\_ NO \_\_\_ Priority Trainee: YES \_\_\_ NO \_\_\_

Date Assigned: \_\_\_\_\_ Phone #: \_\_\_\_\_

---

### Training Records Mailed To (Training Officer):

Name: \_\_\_\_\_ Agency/Unit: \_\_\_\_\_

Agency/Unit Address: \_\_\_\_\_

City: \_\_\_\_\_ State: \_\_\_\_\_ Zip Code: \_\_\_\_\_ Phone #: \_\_\_\_\_

---

### Trainer/Evaluator Data

Trainer / Evaluator Name: \_\_\_\_\_ ICS position on fire: \_\_\_\_\_

Home Unit: \_\_\_\_\_ Agency Designator (Ex. CA-ANF): \_\_\_\_\_

Work Address: \_\_\_\_\_

City: \_\_\_\_\_ State: \_\_\_\_\_ Zip Code: \_\_\_\_\_ Phone #: \_\_\_\_\_

09/11/2019

TENTATIVE RELEASE

LIME US-CA-KNF-007074

**CREWS**

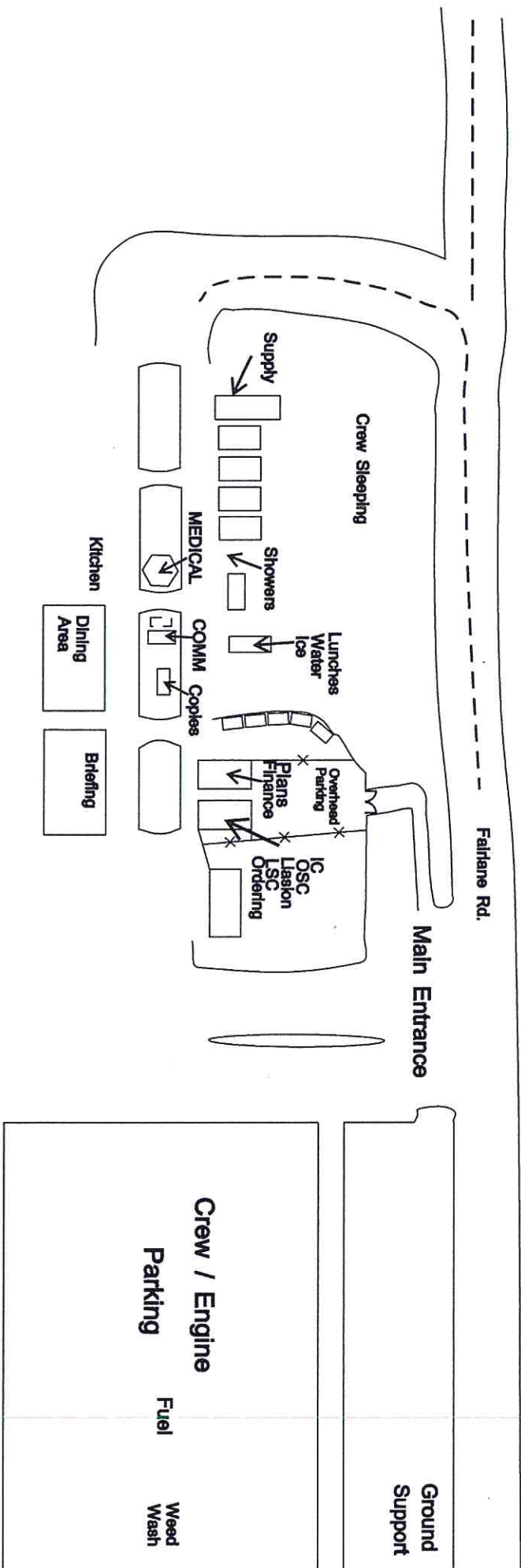
C-25            0800                    (HC1)            CREW - T1 - LAGUNA IHC

**EQUIPMENT**

E-86            0800                    (ENG6)            ENGINE - T6 - BRF - E1-1



# Kidder 2 and Lime Fire Base Map





### UNIT LOG (ICS 214)

<b>1. Incident Name:</b>	<b>2. Operational Period:</b>	Date From:	9/11/19	Date To:	9/12/19
Lime and Kidder 2 Fire		Time From:	0600	Time To:	0600

<b>3. Unit Name/Designators</b>	<b>4. Unit Leader (Name and ICS Position)</b>
---------------------------------	---

5. Personnel Assigned/Designators		
NAME	ICS POSITION	HOME BASE

6. Activity Log (Continue on Reverse)	
TIME	MAJOR EVENTS

7. Prepared By:	Date/Time:
-----------------	------------

