

R-1 RANCH FIRE

Incident Action Plan

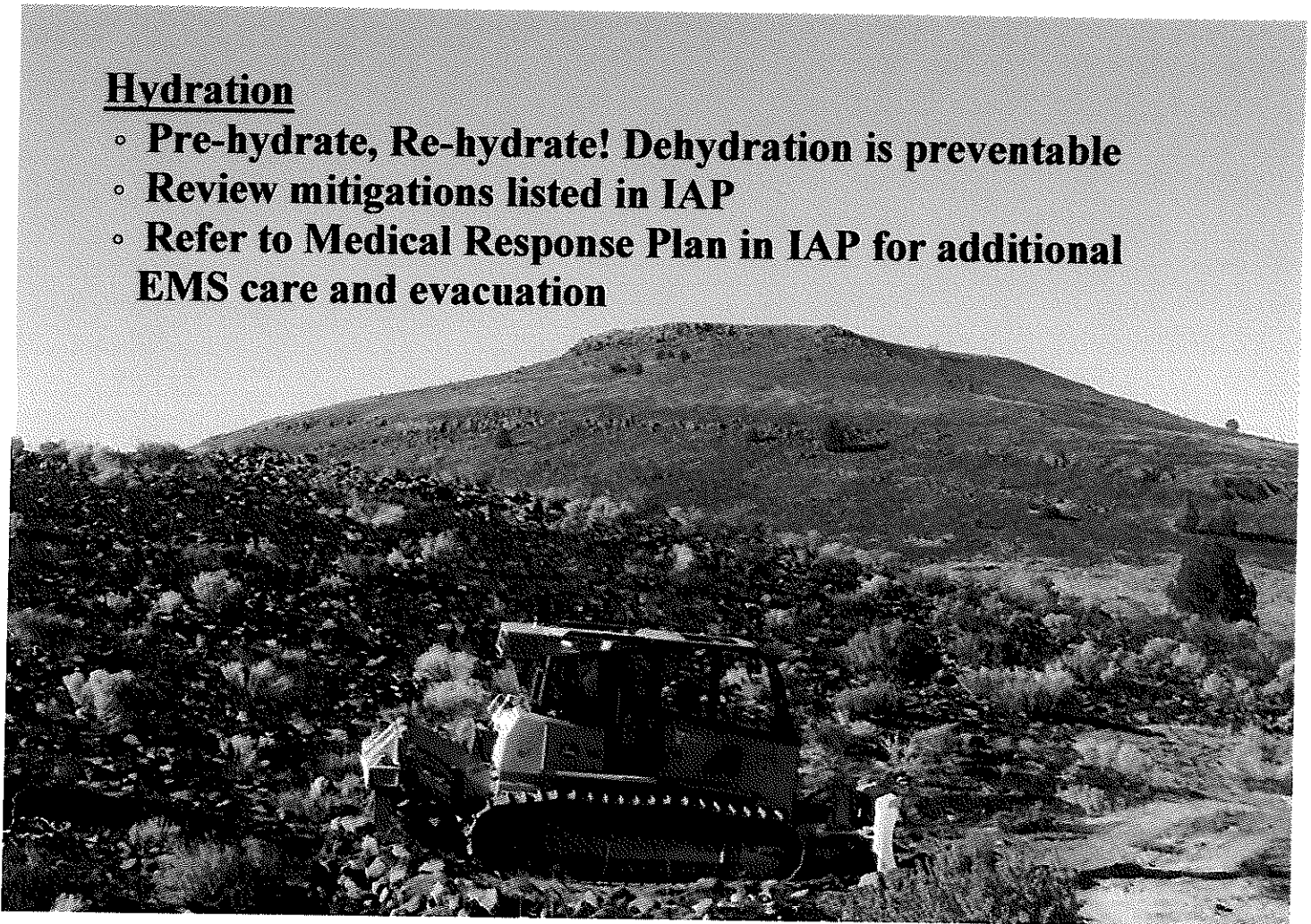
Day Shift September 1, 2019 (0700 – 2000)

Driving

- **Longer travel route increases exposure to driving hazards. Reduce Speed, Drive Defensively!**
- **Washboarded, dusty, native surfaced roads exist. Slow down, let the dust settle for better visibility**
- **Pull Completely Off Road While Working.**
- **Roads in Fire area are NOT closed**

Hydration


- **Pre-hydrate, Re-hydrate! Dehydration is preventable**
- **Review mitigations listed in IAP**
- **Refer to Medical Response Plan in IAP for additional EMS care and evacuation**



**KEEP A HIGH LEVEL OF
SITUATIONAL AWARENESS**

CA-NOD-004869 PDMPY9 (1502)

**Northern California District, Eagle Lake Field Office
California Interagency Incident Management Team 16**

INCIDENT OBJECTIVES	1. Incident Name R-1 Ranch	2. Date 08/31/2019	3. Time 2000
4. Operational Period September 1, 2019 DAY SHIFT			
<p><u>MANAGEMENT OBJECTIVES</u></p> <ol style="list-style-type: none"> 1) Ensure firefighter and public safety at all times utilizing the risk management process. 2) Work with Resource Advisors to minimize adverse impacts to private property and range land, sage grouse habitat, Tunnison Mountain Wilderness Study Area, and cultural / heritage resources. 3) Initiate and complete suppression repair in accordance with repair plan standards. <p><u>CONTROL OBJECTIVES</u></p> <ol style="list-style-type: none"> 1) Keep the fire within existing containment lines. 			
6. Weather Forecast for Period <ul style="list-style-type: none"> • See attached weather forecast. 			
7. General Safety Message <ul style="list-style-type: none"> • See attached safety messages. 			
8. Attachments (mark if attached)			
<input checked="" type="checkbox"/> Organization List - ICS 203	<input checked="" type="checkbox"/> Medical Plan - ICS 206	<input checked="" type="checkbox"/> Weather	
<input checked="" type="checkbox"/> Div. Assignment Lists - ICS 204	<input checked="" type="checkbox"/> Incident Map	<input checked="" type="checkbox"/> ICS215a	
<input checked="" type="checkbox"/> Communications Plan - ICS 205	<input checked="" type="checkbox"/> ICS 220	<input type="checkbox"/> Rehab Considerations	
9. Prepared by (Planning Section Chief) Walter Herzog	10. Approved by (Incident Commander) Dustan Mueller 		

DIVISION ASSIGNMENT LIST		1. Branch	2. Division/Group Division A			
3. Incident Name R-1 Ranch		4. Operational Period Date: September 1, 2019 Time: 0700-2000 (DAY)				
5. Operations Personnel						
Operations Chief	Jeff Dupras Mark Johnson (t)	Division/Group Supervisor		Rick Noggles		
Planning Ops	Mike Klimek Robert Rice (t)	Air Operations Branch Director		Sean Cox		
6. Resources Assigned this Period						
Strike Team/Task Force/ Resource Designator	Leader	Number Persons	LWD	Drop Off PT./Time	Pick Up PT./Time	
HC2IA Klamath IHC (C-20)	Andrew Zink	22	9/7	ICP/0700	ICP/2000	
ENG3 SWR 8430 (E-8)	Frank Alves	5	9/1	ICP/0700	ICP/2000	
ENG3 LNF 383 (E-74)	Bobby Stephens	5	9/4	ICP/0700	ICP/2000	
TFLD (O-42) & (O-74)	Rodriguez/Kronner (t)	2	9/12	ICP/0700	ICP/2000	
EMPF (O-16)	Ryan Bevilacqua	1	9/13	ICP/0700	ICP/2000	
EMPF (O-17)	Chad Walker	1	9/13	ICP/0700	ICP/2000	
				ICP/0700	ICP/2000	
				ICP/0700	ICP/2000	
				ICP/0700	ICP/2000	
				ICP/0700	ICP/2000	

7. Control Operations
- Continue to monitor containment lines and mop up areas of concern.
 - Back haul all excess equipment to Willow Creek staging DP1.

8. Special Instructions.
- Where practical keep fire out of unburned islands to preserve Sage-Grouse habitat.
 - Work with repair group to implement repair plan.
 - Divisions need to track all water use from Willow Creek at Horse Lake Rd. Give to OSC at the end of shift.

Function	Frequency	System	Channel	Function	Frequency	System	Channel
Command	RX 172.8125 TX 166.3125	King NIFC	1 BLM Admin Tone 10 or Tone 3	Tactical Div/Group		King NIFC	
Tactical Div/Group	RX 169.4000 TX 169.4000	King NIFC	2 NOD SOA 2	Air to Ground Command	RX 169.4875 RX 169.4875	King NIFC	14

Prepared by (Resource Unit Leader) Tanya Costello	Approved by (Planning Section Chief) Walter Herzog <i>Walter Herzog</i>	Date 08/31/19	Time 2000
--	--	------------------	--------------

DIVISION ASSIGNMENT LIST		1. Branch	2. Division/Group Division F		
3. Incident Name R-1 Ranch		4. Operational Period Date: September 1, 2019 Time: 0700-2000 (DAY)			
5. Operations Personnel					
Operations Chief	Jeff Dupras Mark Johnson (t)	Division/Group Supervisor	Leland Ratcliff / Brett Matthews (t)		
Planning Ops	Mike Klimek Robert Rice (t)	Air Operations Branch Director	Sean Cox		
6. Resources Assigned this Period					
Strike Team/Task Force/ Resource Designator	Leader	Number Persons	LWD	Drop Off PT./Time	Pick Up PT./Time
HC Eagle Lake Fire MOD (O-3)	Ben Wheeler	11	9/10	ICP/0700	ICP/2000
ENG3 KNF (E-15)	Mike Huff	5		ICP/0700	ICP/2000
EMPF (O-16)	Ryan Bevilacqua	1	9/13	ICP/0700	ICP/2000
EMPF (O-17)	Chad Walker	1	9/13	ICP/0700	ICP/2000

7. Control Operations

- Continue to monitor containment lines and mop up areas of concern.

8. Special Instructions

- Where practical keep fire out of unburned islands to preserve Sage-Grouse habitat.
- Work with repair group to implement repair plan.
- Divisions need to track all water use from Willow Creek at Horse Lake Rd. Give to OSC at the end of shift.

Function	Frequency	System	Channel	Function	Frequency	System	Channel
Command	RX 172.8125 TX 166.3125	King NIFC	1 BLM Admin Tone 10 or Tone 3	Tactical Div/Group		King NIFC	
Tactical Div/Group	RX 166.5500 TX 166.5500	King NIFC	3 R5 Tac 4	Air to Ground Command	RX 169.4875 RX 169.4875	King NIFC	14

Prepared by (Resource Unit Leader) Tanya Costello	Approved by (Planning Section Chief) Walter Herzog <i>Walter J. Herzog</i>	Date 08/31/19	Time 2000
--	---	------------------	--------------

DIVISION ASSIGNMENT LIST	1. Branch	2. Division/Group Division H
---------------------------------	-----------	--

3. Incident Name R-1 Ranch	4. Operational Period Date: September 1, 2019 Time: 0700-2000 (DAY)
--------------------------------------	--

5. Operations Personnel			
Operations Chief	Jeff Dupras Mark Johnson (t)	Division/Group Supervisor	Sean Basso, Chris Voelker (t)
Planning Ops	Mike Klimek Robert Rice (t)	Air Operations Branch Director	Sean Cox

6. Resources Assigned this Period					
Strike Team/Task Force/ Resource Designator	Leader	Number Persons	LWD	Drop Off PT./Time	Pick Up PT./Time
HC2IA Salmon River IHC (C-29)	William Roberson	20	9/7	ICP/0700	ICP/2000
*HC2IA Lassen Crew9 (C-2)	Allen Schultze	19	9/11	ICP/0700	ICP/2000
ENG3 LNF 82 (E-62)	Joe Johnson	5	9/10	ICP/0700	ICP/2000
ENG3 MNF 36 (E-63)				ICP/0700	ICP/2000
EMPF (O-16)	Ryan Bevilacqua	1	9/13	ICP/0700	ICP/2000
EMPF (O-17)	Chad Walker	1	9/13	ICP/0700	ICP/2000

7. Control Operations

- Continue to monitor containment lines and mop up areas of concern.

8. Special Instructions.

- Where practical keep fire out of unburned islands to preserve Sage-Grouse habitat.
- ** Resource should be available for local initial attack. See IA 204
- Work with repair group to implement repair plan.
- Divisions need to track all water use from Willow Creek at Horse Lake Rd. Give to OSC at the end of shift.

Function	Frequency	System	Channel	Function	Frequency	System	Channel
Command	RX 172.8125 TX 166.3125	King NIFC	1 BLM Admin Tone 10 or Tone 3	Tactical Div/Group		King NIFC	
Tactical Div/Group	RX 167.1125 TX 167.1125	King NIFC	4 R5 Tac 5	Air to Ground Command	RX 169.4875 RX 169.4875	King NIFC	14

Prepared by (Resource Unit Leader) Tanya Costello	Approved by (Planning Section Chief) Walter Herzog <i>Walter Herzog</i>	Date 08/31/19	Time 2000
--	--	------------------	--------------

DIVISION ASSIGNMENT LIST		1. Branch	2. Division/Group Division K			
3. Incident Name R-1 Ranch		4. Operational Period Date: September 1, 2019 Time: 0700-2000 (DAY)				
5. Operations Personnel						
Operations Chief	Jeff Dupras Mark Johnson (t)		Division/Group Supervisor		Billy Covert / Rich Davis (t)	
Planning Ops	Mike Klimek Robert Rice (t)		Air Operations Branch Director		Sean Cox	
6. Resources Assigned this Period						
Strike Team/Task Force/ Resource Designator	Leader	Number Persons	LWD	Drop Off PT./Time	Pick Up PT./Time	
*HC2IA NOD Diamond Mtn IHC (C-1)	Dan Dobyns	18	9/10	ICP/0700	ICP/2000	
*S/T ENG3 PNF 3660C (E-10)	John Cottingham	27	9/11	ICP/0700	ICP/2000	
*DO22 LNF D-6	Mueller/Wattenburg	2	9/10	ICP/0700	ICP/2000	
*WT2 LNF 185 (E-3)	James Davidson	1	9/10	ICP/0700	ICP/2000	
EMPF (O-16)	Ryan Bevilacqua	1	9/13	ICP/0700	ICP/2000	
EMPF (O-17)	Chad Walker	1	9/13	ICP/0700	ICP/2000	

7. Control Operations

- Continue to monitor containment lines and mop up areas of concern.

8. Special Instructions.

- Where practical keep fire out of unburned islands to preserve Sage-Grouse habitat.

** Resource should be available for local initial attack. See IA 204

- Work with repair group to implement repair plan.
- Divisions need to track all water use from Willow Creek at Horse Lake Rd. Give to OSC at the end of shift.

Function	Frequency	System	Channel	Function	Frequency	System	Channel
Command	RX 172.8125 TX 166.3125	King NIFC	1 BLM Admin Tone 10 or Tone 3	Tactical Div/Group		King NIFC	
Tactical Div/Group	RX 169.4000 TX 169.4000	King NIFC	2 NOD SOA 2	Air to Ground Command	RX 169.4875 RX 169.4875	King NIFC	14

Prepared by (Resource Unit Leader) Tanya Costello	Approved by (Planning Section Chief) Walter Herzog <i>Walter J. Herzog</i>	Date 08/31/19	Time 2000
--	---	------------------	--------------

DIVISION ASSIGNMENT LIST		1. Branch	2. Division/Group Division P
3. Incident Name R-1 Ranch		4. Operational Period Date: September 1, 2019 Time: 0700-2000 (DAY)	

5. Operations Personnel			
Operations Chief	Jeff Dupras Mark Johnson (t)	Division/Group Supervisor	Rich Ingram
Planning Ops	Mike Klimek Robert Rice (t)	Air Operations Branch Director	Sean Cox

6. Resources Assigned this Period						
Strike Team/Task Force/ Resource Designator	Leader	Number Persons	LWD	Drop Off PT./Time	Pick Up PT./Time	
HC2IA Mendocino IHC (C-9)	Erenst Ceccon	20	9/11	ICP/0700	ICP/2000	
*HC2IA Folsom Lake IHC (C-3)	Jason Schroeder	19	9/10	ICP/0700	ICP/2000	
ENG3 LNF 312 (E-56)	Brian Martin	5	9/10	ICP/0700	ICP/2000	
ENG3 LNF 36 (E-)	Dombroski	5	9/10	ICP/0700	ICP/2000	
WT2 MDF 257 E-7	Howard Venuto	1	9/10	ICP/0700	ICP/2000	
HEQB	Carl Zinn	1		ICP/0700	ICP/2000	
EMPF (O-16)	Ryan Bevilacqua	1	9/13	ICP/0700	ICP/2000	
EMPF (O-17)	Chad Walker	1	9/13	ICP/0700	ICP/2000	

7. Control Operations

- Continue to monitor containment lines and mop up areas of concern.

8. Special Instructions.

- Where practical keep fire out of unburned islands to preserve Sage-Grouse habitat.

** Resource should be available for local initial attack. See IA 204

- Work with repair group to implement repair plan.
- Divisions need to track all water use from Willow Creek at Horse Lake Rd. Give to OSC at the end of shift.

Function	Frequency	System	Channel	Function	Frequency	System	Channel
Command	RX 172.8125 TX 166.3125	King NIFC	1 BLM Admin Tone 10 or Tone 3	Tactical Div/Group		King NIFC	
Tactical Div/Group	RX 169.4000 TX 169.4000	King NIFC	2 NOD SOA 2	Air to Ground Command	RX 169.4875 RX 169.4875	King NIFC	14

Prepared by (Resource Unit Leader) Tanya Costello	Approved by (Planning Section Chief) Walter Herzog <i>Walter J. Herzog</i>	Date 08/31/19	Time 2000
--	---	------------------	--------------

DIVISION ASSIGNMENT LIST		1. Branch	2. Division/Group IA		
3. Incident Name R-1 Ranch		4. Operational Period Date: September 1, 2019 Time: 0700-2000 (DAY)			
5. Operations Personnel					
Operations Chief	Jeff Dupras, Mark Johnson (t)	Division/Group Supervisor	Pete English		
Planning Ops	Mike Klimek, Robert Rice (t)	Air Operations Branch Director	Sean Cox		
6. Resources Assigned this Period					
Strike Team/Task Force/ Resource Designator	Leader	Number Persons	LWD	Drop Off PT./Time	Pick Up PT./Time
HC2IA LNF Lassen (C-2)	Allen Schultze	19	9/11		
HC2IA NOD Diamond Mtn IHC	Dan Dobyns	18	9/10		
HC2IA CND Folsom Lake IHC	Jason Schroeder	19	9/10		
S/T ENG3 3660C	John Cottingham	27	9/11		
DOZ2 LNF D-6	Mueller / Wattenburg	2	9/10		
WT2 185	James Davidson	1	9/10		

7. Control Operations

- These resources should be prepared for initial attack.

8. Special Instructions

South of the Termo Grasshopper Rd
West of 395
North of Center Rd.
East of 139

Function	Frequency	System	Channel	Function	Frequency	System	Channel
Command	RX 171.6250 TX 164.2500	King NIFC	6 IA Command	Tactical Div/Group		King NIFC	
Tactical Div/Group	RX 168.3000 TX 168.3000	King NIFC	7 BLM SOA 1	Air to Ground Command	RX 167.6000 RX 167.6000	King NIFC	8
Prepared by (Resource Unit Leader) Tanya Costello		Approved by (Planning Section Chief) Walter Herzog <i>Walter Herzog</i>		Date 08/31/19		Time 2000	

DIVISION ASSIGNMENT LIST		1. Branch	2. Division/Group Repair Group			
3. Incident Name R-1 Ranch		4. Operational Period Date: September 1, 2019 Time: 0700-2000 (DAY)				
5. Operations Personnel						
Operations Chief	Jeff Dupras, Mark Johnson (t)		Division/Group Supervisor	Jack Sevelson		
Planning Ops	Mike Klimek, Robert Rice (t)		Air Operations Branch Director	Sean Cox		
6. Resources Assigned this Period						
Strike Team/Task Force/ Resource Designator	Leader	Number Persons	LWD	Drop Off PT./Time	Pick Up PT./Time	
DOZ2 North State 160 (E-11)	Kanihan	2	9/10	ICP/0700	ICP/2000	
DOZ2 North State 060 (E-13)	Poe	2	9/10	ICP/0700	ICP/2000	
DOZ2 3183				ICP/0700	ICP/2000	
EXCA	TBD			ICP/0700	ICP/2000	
EXCA	TBD			ICP/0700	ICP/2000	
WT2 Willmore Ag (E-36)	Doug Oilar	2	9/11	ICP/0700	ICP/2000	
WT2 Willmore Ag (E-37)	Bill Torres	2	9/11	ICP/0700	ICP/2000	
GRAD	TBD			ICP/0700	ICP/2000	
TFLD (O-6)	Phil Weston	1	9/13	ICP/0700	ICP/2000	
HEQB (O-35)	Michael Gregory	1	9/13	ICP/0700	ICP/2000	
HEQB (O-34)	Carl Zinn	1	9/10	ICP/0700	ICP/2000	
HEQB (O-75)	John Chester	1	9/12	ICP/0700	ICP/2000	

7. Control Operations

-

8. Special Instructions.

- Work with READ and coordinate with division's to implement repair plan.
- Divisions need to track all water use from Willow Creek at Horse Lake Rd. Give to OSC at the end of shift.

Function	Frequency	System	Channel	Function	Frequency	System	Channel
Command	RX 171.6250 TX 164.2500	King NIFC	6 IA Command	Tactical Div/Group		King NIFC	
Tactical Div/Group	RX169.4000 TX 169.4000	King NIFC	2 NOD SOA 2	Air to Ground Command	RX 169.4875 RX 169.4875	King NIFC	14
Prepared by (Resource Unit Leader) Tanya Costello		Approved by (Planning Section Chief) Walter Herzog <i>Walter Herzog</i>		Date 08/31/19		Time 2000	

AIR OPERATIONS SUMMARY

Prepared by: Sean Cox; Air Operations

PREPARED DATE/TIME: 08/31/2019 1800

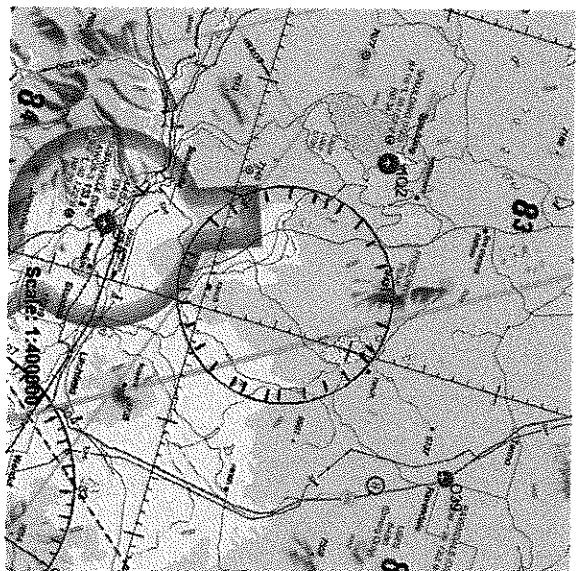
1. INCIDENT NAME: R-1 Ranch
CA-NOD-4869; PDMPY9

2. OPERATIONAL PERIOD DATE: Sunday September 1st 2019
START TIME: 0700 END TIME: 2100 SUNRISE: 0630 SUNSET: 1934

3. REMARKS (Safety Notes, Hazards, Air Operations Special Equipment, etc.):
- Advise Helicopters/Helibase immediately of any unidentified aircraft within the TFR
 - Ensure IA A/C have correct frequencies for Fire Response Area prior to launch
 - Ensure water use/amount/location is recorded and submitted to helibase
 - Be Flight Aware; Labor Day Weekend/ Burning Man GA traffic

4. READY ALERT AIRCRAFT: H-553/ H-510 Medivac – refer to medical plan	5. TFR: 9/1027 40°35'05"N, 120°32'59"W 7 NM/ 10,500'	8. FIXED WING ATGS Aircraft	# Avail / Type / Make-Model / FAA # / Base(s) AA-50 (Chester AAB)
---	---	------------------------------------	---

6. PERSONNEL	Phone	7. FREQUENCIES	AM	FM
AOBD: Sean Cox	530-409-2363	Air / Air (TFR) (AM)	126.0250	
ASGS		Air/Air (AIR-TACTICS)		168.7375
HEBM: Eric Panebaker	530-249-5120	Air/Ground		169.4875
HEBM: (T) Dakota Fulks	530-736-2863			
ATGS: Mark Babieraki	970-946-4800	Deck		163.100
SIFC:		Air Guard		168.625 TX Tone 110.9



TFR 9/1027

9. Helicopters (Use Additional Sheets as Necessary)

FAA #	TY	MAKE/MODEL	BASE	AVAIL	START	REMARKS
N699RH	1	K-MAX	KSVE	0700	0800	EU
N212BT	2	B-212HP	KSVE	0700	0800	EU (CA-LNF Helicopter)
N974H	3	B-407	KSVE	0700	0800	EU
N44HX	3	B-407	Ravendale	0700	0800	EU (CA-NOD Local Helicopter)

MISC. INFORMATION

Dip-Sites: Record Location, and Amount.

Extraction/ Life-flight: Order through Susanville ECC

Approved By: *Sean Cox* Air Operations

INCIDENT RADIO COMMUNICATIONS PLAN

Incident Name

RANCH CA-NOD- 004869

Date/Time Prepared

08/31/19 1700

Operational Period Date/Time

09/01/2019 DAY 0700-2000

Only frequencies listed on this 205 are authorized for use on this incident.

Hand programmers accept all responsibility for the use of unauthorized frequencies.

Ch #	Function	Channel Name	Assignment	RX Freq	RX Tone	TX Freq	TX Tone	Mode	Remarks
1	COMMAND	BLM ADMIN RPT	RANCH COMMAND	172.8125		166.3125	T-3, 7 or 10	A	RANCH COMMAND TONES 3, 7, OR 10
2	TACTICAL	NOD SOA 2	DIV A/K/P	169.4000		169.4000		A	DIV A / K / P REPAIR GROUP
3	TACTICAL	R5 TAC 4	DIV F	166.5500		166.5500		A	DIVISION F
4	TACTICAL	R5 TAC T5	DIV H	167.1125		167.1125		A	DIVISION H
5									
6	COMMAND	BLM RPT	IA COMMAND	171.6250		164.2500		A	INITIAL ATTACK COMMAND
7	TACTICAL	BLM SOA 1	IA TACTICAL	168.3000		168.3000		A	INITIAL ATTACK TACTICAL
8	AIR TO GROUND	R5 AG 43	IA A/G	167.6000		167.6000		A	INITIAL ATTACK AIR TO GROUND
9									
10									
11									
12									
13									
14	AIR TO GROUND	A / G	RANCH AIR TO GROUND	169.4875		169.4875		A	ALL DIVISIONS
15	CALCORD	CALCORD	MEDICAL	156.0750	156.7	156.0750	T-6 156.7	A	MEDICAL EVAC. USE TONE 6 (156.7)
16	AIR GUARD	AIR GUARD	EMERGENCY ONLY	168.6250		168.6250	T-1 110.9	A	EMERGENCY ONLY

Prepared by

RICK STONE COM1

Incident Location

RANCH ICP

S 205 - 2007H

MODE A - ANALOG, D - DIGITAL

MEDICAL PLAN (ICS 206 WF)

1. Incident/Project Name				2. Operational Period											
R-1 RANCH				Date/Time 9/1/19 0700 to 2000											
3. Ambulance Services															
Name		Location		Phone & EMS Frequency		Advanced Life Support (ALS) Yes No									
Plumas 2 Ambulance		Incident ambulance on the fireline		Command		X									
SEMSA		Susanville, CA 30 min. ETA		Command or 911		X									
4. Air Ambulance Services															
Name		Phone		Type of Aircraft & Capability											
PHI Med 45 15 min eta		Command or 911		Air Ambulance – Susanville, CA Day/Night											
Sems Air 1 15 min eta		Command or 911		Air Ambulance – Susanville, CA Day/Night											
Calfire H-202 40 min eta		Command or 911		Hoist Rescue– Bieber, CA Day only											
CHP 50 min eta		Command or 911		Hoist Rescue – Redding, CA Day only											
5. Hospitals															
Name & Level		GPS Datum – WGS 84 Degrees Decimal Minutes		Travel Time Air Gnd		Phone		Helipad Yes No		Address					
Banner-Lassen Medical Center		Lat:	N40°26.28		5 min	30 min	530-252-2096 (ER)	X		1800 Spring Ridge Dr. Susanville, CA					
		Long:	W120°37.68												
		VHF:													
Mercy Medical Center – Level II Trauma		Lat:	N40°34.33		50 min	2:30 hrs	530-225-7201 (ER)	X		2175 Roseline Ave. Redding, CA					
		Long:	W122°32.80												
		VHF:													
Renown Medical Center Level II		Lat:	N39°31.34		50 min	1:30 hrs	775-982-2005	X		1155 Mill St. Reno, NV					
		Long:	W119°47.45												
		VHF:													
UC Davis Level I Trauma/Burn Center		Lat:	N38°33.17		1 hrs	3.5 hrs	916-734-3636 916-734-3790	X		2315 Stockton Blvd. Sacramento, CA					
		Long:	W121°27.05												
		VHF:													
6. Division / Crew Pre-plan. Update and discuss with assigned resources daily															
Crew EMTs & Equipment															
Fireline EMTs & Location															
Adv. Life Support?															
Air Hoist site:															
Lat: / Long:															
Helispot:															
Lat: / Long:															
Alternate no-fly plan:															
7. Remote Aid Stations															
Ranch Medical Unit– ICP N 40°24.95 W 120°38.00		Point of Contact:			MEDL – Josh Ramey (Cell: 530-277-1213)										
		EMS Responders & Capability:			Basic Life Support										
		Equipment Available on Site:			Medical supplies										
		Ambulance ETA :			Air – 5 min. Ground – 5 min.										
8. Prepared By (Medical Unit Leader)				9. Date/Time				10. Reviewed By (Safety Officer)				11. Date/Time			
Josh Ramey – MEDL 530-277-1213 <i>Joshua Ramey</i>				8/31/19 2100				Michele Tanzi <i>Michele Tanzi</i>				8/31/19 2100			

MEDICAL PLAN (ICS 206 WF)

Medical Incident Report

1. CONTACT SIFC on COMMAND DECLARE: "MEDICAL EMERGENCY" OR "NON-EMERGENCY MEDICAL TRANSPORT"

Ex: "Communications, Div. Alpha. Stand-by for a medical emergency on Div. Alpha" (If life threatening request designated frequency be cleared for emergency traffic.)

2. INCIDENT STATUS:

Provide incident summary (including number of patients) and command structure. Ex: "Communications, I have a Red priority patient, unconscious, struck by a falling tree. Requesting air ambulance to Forest Road 1 at (Lat. / Long.) This will be the Trout Meadow Medical, IC is TFLD Jones. EMT Smith is providing medical care."

SEVERITY

TRANSPORT PRIORITY

URGENT-RED Life threatening injury or illness.

Ex: Unconscious, difficulty breathing, bleeding severely, 2° - 3° burns more than 4 palm sizes, heat stroke, disoriented.

Ambulance or MEDEVAC helicopter. Evacuation need is **IMMEDIATE.**

PRIORITY-YELLOW Serious Injury or illness.

Ex: Significant trauma, not able to walk, 2° - 3° burns not more than 1-2 palm sizes.

Ambulance or consider air transport if at remote location. Evacuation may be **DELAYED.**

ROUTINE-GREEN

Not a life threatening injury or illness. Ex: Sprains, strains, minor heat-related illness.

Non-Emergency. Evacuation considered **Routine of Convenience.**

Nature of Injury or Illness & Mechanism of Injury

Brief Summary of Injury or Illness (Ex: Unconscious, Struck by Falling Tree)

Transport Request

Air Ambulance / Short-Haul/Hoist/ Ground Ambulance / Other

Patient Location

Descriptive Location & Lat. / Long. (WGS84)

Incident Name

Geographic Name + "Medical" (Ex: Trout Meadow Medical)

On-Scene Incident Commander

Name of on-scene IC of Incident within an Incident (Ex: TFLD Jones)

Patient Care

Name of Care Provider (Ex: EMT Smith)

3. INITIAL PATIENT ASSESSMENT: Complete this section for each patient. Start with most severe.

Patient Assessment: (See IRPG page 106)

Treatment:

4. TRANSPORT PLAN:

Evacuation Location (if different): (Descriptive Location (drop point, intersection, etc.) or Lat. / Long.)

Patient's ETA to Evacuation Location:

Helispot / Extraction Site Size and Hazards:

5. ADDITIONAL RESOURCE/EQUIPMENT NEEDS:

- | | | | | |
|--|--|--------------------------------------|--|---------------------------------|
| <input type="checkbox"/> Paramedic/EMT(s) | <input type="checkbox"/> SKED/Backboard/C-Collar | <input type="checkbox"/> Crew(s) | <input type="checkbox"/> Burn Supplies | <input type="checkbox"/> Oxygen |
| <input type="checkbox"/> Trauma Bag | <input type="checkbox"/> Medication(s) | <input type="checkbox"/> IV/Fluid(s) | <input type="checkbox"/> Cardiac Monitor/AED | |
| <input type="checkbox"/> Other (i.e. splints, rope rescue, wheeled litter) | | | | |

6. COMMUNICATIONS:

- Run Medical Emergency through SIFC on Command

- Coordinate with air ambulance on CALCORD tone 6

7. CONTINGENCY:

Considerations: If primary options fail, what actions can be implemented in conjunction with primary evacuation method? Be thinking ahead.

8. ADDITIONAL INFORMATION: Updates / Changes, etc.

REMEMBER:

-Confirm ETA's of resources ordered

-Act according to your level of training

- If air or ground ambulance is DELAYED: Package and transport patient to rendezvous with incoming Ambulance. Re-route EMS helicopter to rendezvous point as appropriate.

**R-1 RANCH INCIDENT RISK ANALYSIS (215a)
Day Shift, September 1, 2019 (0700 to 2000)**

DIV	HAZARDOUS ACTIONS / CONDITIONS	MITIGATIONS / WARNINGS / REMEDIES
ALL	Medical Emergencies	<ul style="list-style-type: none"> ~ Contact SIFC or 911 for Medical Emergencies, Notify Division Supervisor immediately ~ Review, understand and discuss with your resources the Medical Plan in the IAP. ~ Refer to the Medical Incident Report on pages 118 – 119 in 2018 IRPG for info into Communications ~ Develop Division/Crew Pre-Plan in block #6 on the Medical Plan and fill in necessary information to assist you with an Incident within an Incident. ~ Base all operational decisions and activities on these 3 questions: <ol style="list-style-type: none"> 1.) What are we going to do if someone gets hurt? 2.) How will we get them out of here? 3.) How long will it take to get them to a hospital? ~ If the answers are insufficient, stop, re-assess and consider alternate strategies and tactics. ~ Have Alternate plan in place when aircraft is grounded due to visibility issues. ~ If air or ground ambulance is delayed: package and transport patient to rendezvous with incoming ambulance. ~ Re-route EMS helicopter to rendezvous point as appropriate ~ Review page 2 in IRPG 2018 for briefing subordinates. ~ If Night extraction by Air Ambulance with Hoist capabilities and NVG (Night Vision Goggles) is required, the following will assist in a smooth extraction. <ul style="list-style-type: none"> * Minimum of a 20' x 20' clearing * 3 GREEN Glow Sticks placed on edges of clearing forming a triangle to assist pilot in visual horizon. * Turn ALL headlamps and vehicle lights OFF * Communicate with Air Ambulance on CALCORD tone 6 ~ Be aware of Rotor Wash & its effect on Fire behavior when the extraction point is next to an active fires edge. <ul style="list-style-type: none"> • If possible, MOVE patient to an area with less fire activity
ALL	Driving & Traffic	<ul style="list-style-type: none"> ~ There is NO need to be in a hurry, nor to drive fast. ~ Practice "Defensive Driving" techniques traveling on all roads in both rural and urban settings ~ Slowdown in limited visibility (smoky/dusty) & congested areas. Increase following distances to allow dust to settle, & to allow for reaction time lag. Use low beam headlights ~ Honk horn to alert personnel when backing. Use spotters when available ~ Pull over to allow oncoming traffic to pass on a narrow road base. If required to back-up at night, have the vehicle in front of you turn their headlights to "running lights" to eliminate night blindness while you back out of the way. Utilize a backer. ~ Expect two way traffic on one lane roads. Stay on your side, and approach corners with caution ~ Headlights ON. Manually turn on Headlights. Most vehicles have "auto" headlights ~ NO riding in the back of pick-ups. It is against the Law.
ALL	Hydration & Heat Illness	<ul style="list-style-type: none"> • Pre-hydrate, Re-hydrate! Dehydration is preventable.....Drink a <u>minimum</u> of 250ml/hour; (¼ of canteen) • Water Intoxication Drinking TOO much water, upsetting electrolyte balances can decrease sodium in the blood to dangerously low levels, causing mild to life-threatening problems • Drink water & Electrolyte drinks before, during, and after shifts. (2 waters to 1 sports drink). • Do NOT mix with water or dilute electrolyte drink. It must be consumed as is for the body to absorb properly. • Pace work to avoid heat injuries • Heat exhaustion is characterized by: Weakness, Extreme Fatigue, Nausea, Dizziness & Headaches, clammy skin, persistent muscle cramps, decreased urine output. <ul style="list-style-type: none"> ○ Cool patient as quickly as possible! ○ Move patient to a cooler location and provide cold water and sports drink. ○ Actively reduce core temperature through evaporation by fanning patient. ○ Remove Patient from fire line and seek medical attention ○ Cover head and neck with wet cloth, increase air movement. ○ Heat exhaustion is characterized by: Weakness, Extreme Fatigue, Nausea, Dizziness, Headaches, clammy skin, persistent muscle cramps, and decreased urine output • Refer to Medical Plan in IAP for additional EMS care and Evacuation
ALL	Rocky, Rugged Terrain	<ul style="list-style-type: none"> ~ Unforgiving terrain. Ensure you remain focused when walking. ~ Maintain 8'-10' spacing when working & walking. ~ Evaluate necessity to send personnel in areas with limited access. ~ High Potential for lower leg injuries. Take your time when hiking in and around your work area
IA Group	IA & Fire Behavior	<ul style="list-style-type: none"> ~ Provide weather forecasts/observations for all personnel assigned during Operational briefings ~ Update field personnel via the Command Channel when significant weather changes are observed that could impact the area ~ Use "Risk Management Process" prior to engaging in suppression actions, referring to pg 1, IRPG, 2108 ~ Ensure LCES is in place before engagement of resources
ALL	Hazard Trees	<ul style="list-style-type: none"> ~ Utilize pg 85 in the IRPG, 2018 for Procedural Felling Operations ~ No "Felling" of any tree during High Wind events. ~ Flag off areas of concern, communicate to Division, adjoining resources, and brief relief resources until hazards have been mitigated ~ Post a "Lookout" if possible to control the area of concern

**R-1 RANCH INCIDENT RISK ANALYSIS (215a)
Day Shift, September 1, 2019 (0700 to 2000)**

ALL	Biting, Stinging Insects, & Critters (Rattle Snakes, Bees, Mosquitoes, Scorpions, Ticks, Wildlife, etc)	<ul style="list-style-type: none"> • If allergic to bee stings, let your DIVS & Medic/EMT's know. • Leave the snakes alone! • Shake out boots and or sleeping bags prior to use • Use bug spray to minimize mosquito bites. • Check yourself daily for tick bites. • Leave wildlife alone. Backhaul ALL Trash please. 	
INCIDENT NAME R-1 RANCH ICS 215a		DATE PREPARED: <p align="center">August 31, 2019</p>	OPERATIONAL PERIOD Day Shift 0700 - 2000 Prepared by: Tanzi – SOF1, Barnhart – SOF2,
		TIME PREPARED: 1900 HOURS	



Today's discussion is from the
LCES (Lookouts, Communication, Escape
Routes, and Safety Zones) Category.



COMMUNICATIONS

Effective communication is a critical backbone of safe and successful operations.

- Discuss the factors that can affect radio communication at the incident.
 - Knowledge of the radio issued to the individuals
 - Net control, frequencies
 - Line-of-sight restrictions
 - Antenna polarization effect (direction of the antenna)
 - Minimizing noise interference
 - Wide band narrow band

- How can you mitigate potential problems?
 - Implement effective communication procedures--be brief, clear, concise, and to-the-point.
 - Give a good comprehensive briefing. (Refer to the Briefing Checklist inside the back cover of the Incident Response Pocket Guide.)
 - Confirm that relayed information is received, acknowledged, and understood.
 - Keep a continuous information flow (e.g., updates on weather, fire behavior, work progress; changes in strategy/tactics; arrival of additional resources; solicit feedback).
 - Establish emergency check-in procedures.
 - Provide a minimum of 4 radios per 20-person firefighter crew.

- The Five Communication Responsibilities for All Firefighters:
 - Brief others
 - Debrief your actions
 - Communicate hazards to others
 - Acknowledge messages
 - Ask if you don't know

References:

Incident Response Pocket Guide

Fireline Handbook

Interagency Standards for Fire and Fire Aviation Operations
"LCES and Other Thoughts" by Paul Gleason

Have an idea? Have feedback? Share it.

ONLINE | MAIL: 6 Minutes For Safety Task Group • 3833 S. Development Ave • Boise, ID 83705 | FAX: 208-387-5250

6 Minutes Home

California Team 16

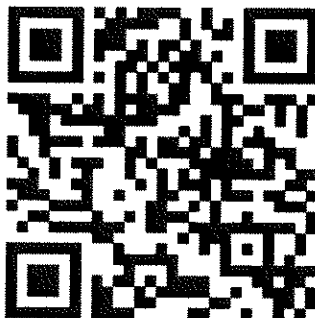
WE NEED YOUR PICTURES!

If you have photos or video from this fire please stop by the PIO Office in the ICP or copy the QR code below and it will take you to our email and you can send your stuff directly to us and we can post them to Inciweb and our Facebook and Twitter pages.

Just remember:

- Be safe when taking pictures
- Make sure Firefighters are wearing all PPE
- Give us the basics of the photo such as time and date, location, crew or person shown, etc.
- Show your Agency in a positive light, be professional.
- Use caution when taking photos of accidents, injuries, near misses, etc.

California Team 16 E-Mail



Date & Time Order was placed:		Order #	Location & Time for Delivery (DIV,LZ,DP,Lat Long)		Mode of delivery
		(DIVS+#)			(Driven/Helo/DIVS to Pick up)
			Lat:		
			Long:		
Order received in Communications by (Name):					Time:
Order shipped to line by (Name): (Send this sheet to the line with the order)					Time:
#	Item				
1	1,000 Foot Hose Lay includes the following: Amount _____				
	10, 100'x1½" Rolls Hose; 10, 100'x1" Rolls Hose; 10, 1½" Gated Wyes; 10, 1½" to 1" reducers; 10, 1" nozzles				
2	2,000 Foot Hose Lay includes the following: Amount _____				
	20, 100'x1½" Rolls Hose; 20, 100'x1" Rolls Hose; 20, 1½" Gated Wyes; 20, 1½" to 1" reducers; 20, 1" nozzles				
3	3,000 Foot Hose Lay includes the following: Amount _____				
	30, 100'x1½" Rolls Hose; 30, 100'x1" Rolls Hose; 30, 1½" Gated Wyes; 30, 1½" to 1" reducers; 30, 1" nozzles				
#	Item	Amount	#	Item	Amount
4	Hose (50') garden, 3/4"		30	Gas Unleaded (Gallons)	
5	Hose (100'), 1"		31	Oil 2 cycle, (Pints)	
6	Hose (100'), 1½"		32	Bar Oil (Qts)	
7	Nozzle, Garden, 3/4"		33	Drip Torch ea	
8	Nozzle, Forester, 1"		34	Drip torch mix 3.5:1.5 (gallon)	
9	Nozzle, KK Type, 1"		35	Fusees (Boxes or cases)???	
10	Nozzle, KK Type, 1½"		36	Flare Gun Rounds (12/BX)	
11	Wye, Gated, 3/4"		37	Cartridge #6 purple (box)	
12	Wye, Gated, 1"		38	Batteries "AA" PKGs(24/PKG)/BX	
13	Wye, Gated, 1½"		39	Ribbon, Flagging (Specify Color)*	
14	Inline-Tee, 1x1x3/4"		40	Water, Cubies	
15	Inline-Tee, 1x1x1"		41	Water, Bottled, Cases	
16	Inline-Tee (1½" X 1")		42	Gatorade	
17	Reducer, 1" X 3/4"		43	MRE's (12/BX)	
18	Reducer, 1½" X 1"		44	Heavy Mill Plastic	
19	Increaser, 3/4" X 1"		45	Washcloth, waterless, cleansing	
20	Increaser, 1" X 1½"		46	Wrap, Structure 54"x300'	
21	Foam 5 gal		47	Sprinkler Kit	
22	Foam 4 oz (For Backpack Pump)		48	Mark 3 Pump	
23	Backpack Pump		49	Mark 3 Pump Kit- w/10 gal mixed fuel	
24	Pumpkin (Gallons?)		50	Chainsaw Kit	
25	Porta-Tank (Gallons?)		51	Mop-Up Kit, 3-Wand	
26	Shovel		52	Pump Kit, Lightweight, 2 Cycle	
27	Pulaski		53	Gas, Raw and 2 qts 2-cycle oil, ea	
28	Combi Tool		54	Lightweight Pump Kit-Cache w/5gal fuel	
29	McCloud		55	Gas, raw (gal) and 1 qt 2-cycle oil, ea.	
Notes:			Notes:		



