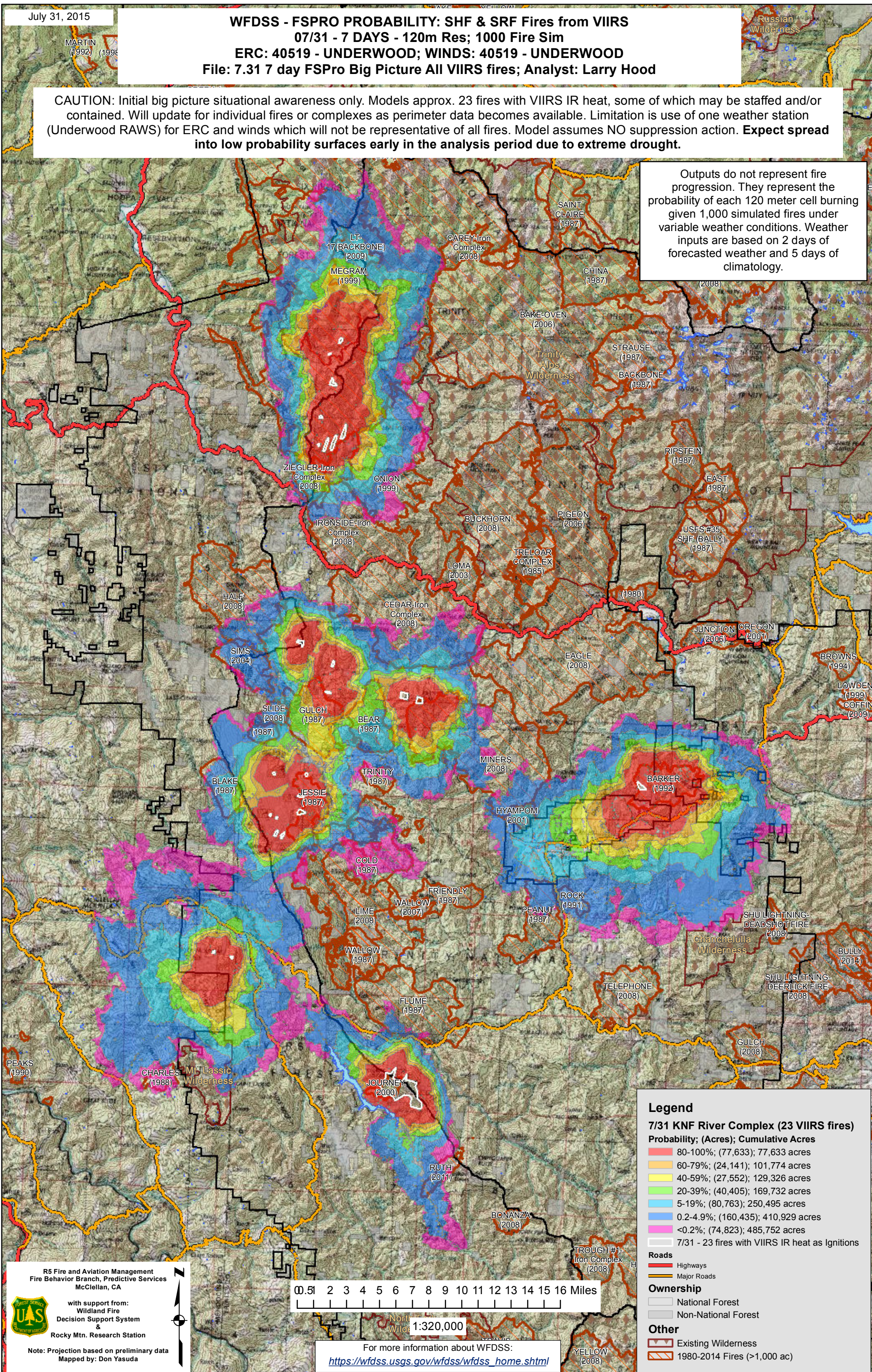


July 31, 2015

WFDSS - FSPRO PROBABILITY: SHF & SRF Fires from VIIRS
07/31 - 7 DAYS - 120m Res; 1000 Fire Sim
ERC: 40519 - UNDERWOOD; WINDS: 40519 - UNDERWOOD
File: 7.31 7 day FSPRO Big Picture All VIIRS fires; Analyst: Larry Hood

CAUTION: Initial big picture situational awareness only. Models approx. 23 fires with VIIRS IR heat, some of which may be staffed and/or contained. Will update for individual fires or complexes as perimeter data becomes available. Limitation is use of one weather station (Underwood RAWs) for ERC and winds which will not be representative of all fires. Model assumes NO suppression action. **Expect spread into low probability surfaces early in the analysis period due to extreme drought.**

Outputs do not represent fire progression. They represent the probability of each 120 meter cell burning given 1,000 simulated fires under variable weather conditions. Weather inputs are based on 2 days of forecasted weather and 5 days of climatology.



Legend

7/31 KNF River Complex (23 VIIRS fires)

Probability; (Acres); Cumulative Acres

- 80-100%; (77,633); 77,633 acres
- 60-79%; (24,141); 101,774 acres
- 40-59%; (27,552); 129,326 acres
- 20-39%; (40,405); 169,732 acres
- 5-19%; (80,763); 250,495 acres
- 0.2-4.9%; (160,435); 410,929 acres
- <0.2%; (74,823); 485,752 acres

7/31 - 23 fires with VIIRS IR heat as Ignitions

Roads

- Highways
- Major Roads

Ownership

- National Forest
- Non-National Forest

Other

- Existing Wilderness
- 1980-2014 Fires (>1,000 ac)

R5 Fire and Aviation Management
 Fire Behavior Branch, Predictive Services
 McClellan, CA

with support from:
 Wildland Fire
 Decision Support System &
 Rocky Mtn. Research Station

Note: Projection based on preliminary data
 Mapped by: Don Yasuda

0.51 2 3 4 5 6 7 8 9 10 11 12 13 14 15 16 Miles

For more information about WFDSS:
https://wfdss.usgs.gov/wfdss/wfdss_home.shtml