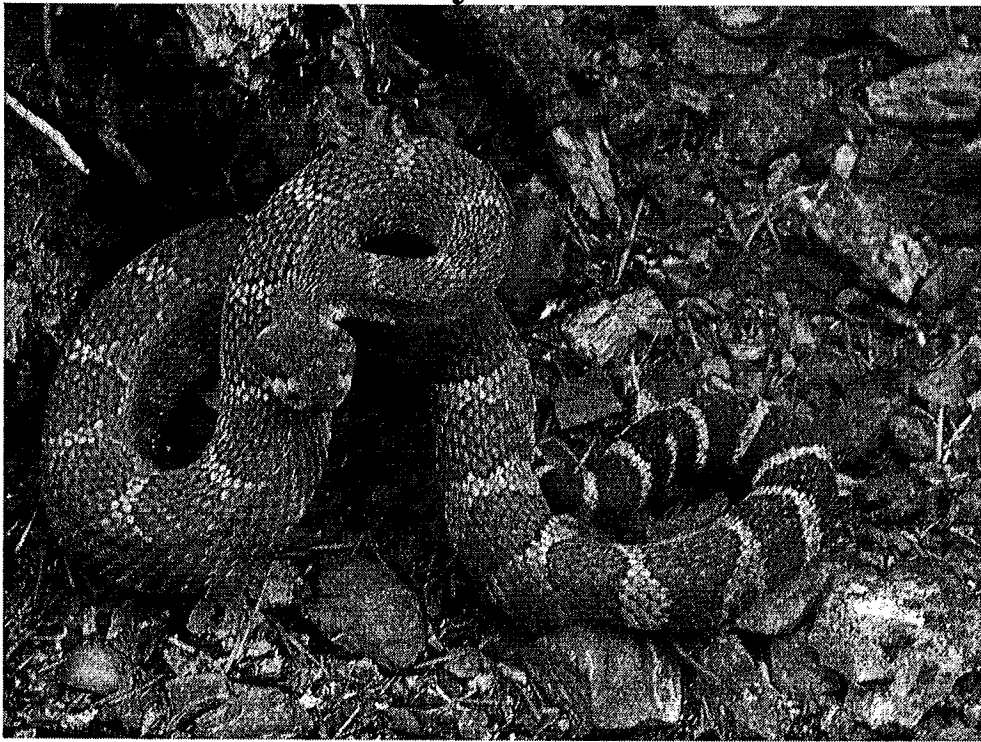


Modoc Lightning Complex

Incident Action Plan

July 28, 2010 0600 - 2100

Day Shift

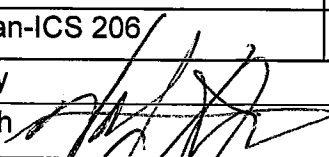
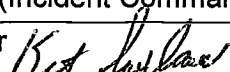


- **Long travel times to and from fires. Roads are open to the public. Observe speed limits.**
- **Perform Risk Mgt. Assessment before engaging in IA.**
- **Drink water before you need it.**
- **Beware of rattlesnakes!**
- **Ensure you have communications before engaging suppression activities.**

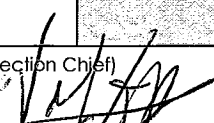
CA-MDF-000343


Modoc National Forest


Northern California Team 1

INCIDENT OBJECTIVES	1. Incident Name		2. Date Prepared	3. Time Prepared	
ICS 202	Modoc Lightning Complex		07/27/2010	1330	
4. Operational Period					
07/28/2010 Day Shift 0600 - 2100					
5. General Control Objectives for the Incident (include alternatives)					
<ol style="list-style-type: none"> 1. Provide for public and firefighter safety through application of the Risk Management Process. 2. Minimize incident costs and potential resource damage by suppressing all fires in the assigned area. 3. Avoid actions which could result in adverse effects to cultural and natural resources. 4. Communicate pertinent information and respond as assigned to all new starts within the complex area. 					
6. Weather Forecast for Period					
See attached spot weather forecast					
7. General Safety Message					
8. Attachments					
x	Organization List-ICS 203	x	Air Ops Plan ICS-220	x	Fire Weather Forecast
x	Division Assignment List-ICS 204	x	Incident Map		Fire Behavior Forecast
x	Communications Plan-ICS 205		Traffic Plan	x	Unit Log ICS-214
x	Medical Plan-ICS 206	x	Safety Message		Vicinity Map
9. Prepared by			10. Approved by (Incident Commander)		
Valery Lambeth 			Kent Swartzlander 		

ORGANIZATION ASSIGNMENT LIST		Security Unit	
1. Incident Name Modoc Lightning Complex		Food Unit	Jay Westlake
2. Date July 27, 2010	3. Time 1630	9. Operations Section	
4. Operational Period Day July 28, 2010, 0600 - 2100		Operations	Pete Duncan / Steve Burns Robin Wills (t)
Position	Name	Planning OPS	Alec Lane
5. Incident Commander and Staff		a. Branch 1 - Division/Groups	
Incident Commander	Kent Swartzlander / Mike Minton (t)	Branch Director	
Deputy	Paul Whitcome	Division/Group A	Randy Jennings / Joe Johnson (t)
Safety Officer	Michele Tanzi / Dave Kirste	Division/Group B	Ed Merrill
Information Officer	Yvonne Jones / Phyllis Swanson / Jim Mackensen (t)	Division/Group C	Paul Johnson / Bob Beebe (t)
Liaison Officer		Division/Group IA	Greg Moon
6. Agency Representative		STAM	John Ward / Josh Ramey (t)
Agency Admin	Robert Trujillo	b. Branch 2 - Division/Groups	
Agency Admin Rep	Ray Torres	Branch Director	
Resource Advisor	Mary Flores	Deputy	
		Division/Group	
		Division/Group	
		Division/Group	
		Division/Group	
		Division/Group	
		Division/Group	
7. Planning Section		c. Branch III - Division/Groups	
Chief	Valery Lambeth / Lance Noxon (t)	Branch Director	
Deputy	Dave Sinclear	Deputy	
Resources Unit	Gary Deboi / Lou Ann Charbonnier / Rita Mustafia	Division/Group	
Situation Unit	Chris Wikeen / Melissa Hennessey (t)	Division/Group	
Documentation Unit		Division/Group	
Demobilization Unit		Division/Group	
Technical Specialists		Division/Group	
Human Resources		d. Air Operations Branch	
Training	Dominic Panno	Air Operations Branch Director	
CTSP	George Steel	Air Attack Supervisor	Dan White / Mike Frederick
GIS	Kyle Felker / Matt Dickinson	Air Support Supervisor	Ken Crawford
FBAN	Bob Patton	Helicopter Coordinator	
IMET	Mark Burger	Air Tanker Coordinator	
8. Logistics Section		10. Finance Section	
Chief	Paul Montgomery	Chief	Lois Charlton
Deputy	Mike Jellison / Brett Shurr (T)	Deputy	
Supply Unit / Ordering	Tom Charlton	Time Unit	Shannon Ammon
Facilities Unit	Frank DelCarlo / Jeff Huhtala	Procurement Unit	
Ground Support Unit	Harry Zabel / John Camacho	Compensation/Claims Unit	Debbie McIntosh
Communications Unit	Rick Cartoscelli / Phil Shafer	Cost Unit	Sissy Hoaglen
Medical Unit	Ken Kumpe	Prepared by (Resource Unit Leader)	
Receiving & Distribution	Ron Pierce / Fred Johnson	Gary R. Deboi	

DIVISION ASSIGNMENT LIST			1. Branch		2. Division/Group A		
3. Incident Name MODOC LIGHTNING COMPLEX			4. Operational Period Date: 7/28/2010 Wednesday Time: Day Shift 0600 - 2100				
5. Operations Personnel							
Operations Chief		Pete Duncan / Steve Burns / Robin Wills (f)		Division/Group Supervisor		Randy Jennings / Joe Johnson (f)	
Planning Ops		Alec Lane		Air Attack Supervisor No.			
6. Resources Assigned this Period							
Strike Team/Task Force/ Resource Designator	Leader		Number Persons	Trans. Needed	Drop Off PT./Time		Pick Up PT./Time
Crew T1 Eldorado	Will Harris			N	Per DIVS		Per DIVS
Crew T2IA Iron Mountain				N	Per DIVS		Per DIVS
Engine S/T 3675C	Josh Wright			N	Per DIVS		Per DIVS
WT Smokechaser 1				N	Per DIVS		Per DIVS
WT Oilars E1				N	Per DIVS		Per DIVS
DIVS	Aaron Schuh		1	N	Per DIVS		Per DIVS
TFLD	John Martinez (f)		1	N	Per DIVS		Per DIVS
TFLD	John Arrigoni		1	N	Per DIVS		Per DIVS
TFLD	Pedro Martinez (f)		1	N	Per DIVS		Per DIVS
EMT	TBA		1		Per DIVS		Per DIVS
EMT	TBA				Per DIVS		Per DIVS
7. Control Operations Mop-up and patrol existing fires.							
Special Instructions: Confirm GPS locations on all fires. GPS perimeters on fires 10 acres or larger. Backhaul all trash and excess equipment. SHF E-73 check the Peak Fire Use screens on all draft lines. Avoid use of retardant within 300 feet of waterways. Use assigned READS with dozers. Water Tenders, track number of loads drafted from stock ponds.							
Function	Frequency		Channel	Function	Frequency		Channel
Command Repeat (Tones 5 & 7)	RX 168.1500 N	TX 171.3875 N	4	Air to Ground	RX 168.6375 N	TX 168.6375N	13
Tactical Div/Group 1	RX 168.0500	TX 168.0500	6				
Prepared by (Resource Unit Leader) Rita Mustafia		Approved by (Planning Section Chief) Valery Lambeth 			Date 7/27/10		Time 2020

DIVISION ASSIGNMENT LIST			1. Branch		2. Division/Group B		
3. Incident Name MODOC LIGHTNING COMPLEX			4. Operational Period Date: July 28, 2010 Time: 0600 - 2100				
5. Operations Personnel							
Operations Chief		Pete Duncan / Steve Burns / Robin Wills (†)		Division Supervisor		Ed Merrill	
Planning Ops		Alec Lane		Air Attack Supervisor No.			
6. Resources Assigned this Period							
Strike Team/Task Force/ Resource Designator	Leader	Number Persons	Trans. Needed	Drop Off PT./Time	Pick Up PT./Time		
TNF Engine 341			N	Per DIVS	Per DIVS		
TNF Engine 33			N	Per DIVS	Per DIVS		
WT Smokechaser #2 (E-15)		1	N	Per DIVS	Per DIVS		
EMT	TBA		N	Per DIVS	Per DIVS		
EMT	TBA		N	Per DIVS	Per DIVS		
7. Control Operations Mop up and patrol existing fires.							
8. Special Instructions Confirm GPS locations on all fires, GPS perimeters on fires ≥ 10 acres. Backhaul all trash and excess equipment. Use screens on all draft lines. Avoid use of retardant within 300 feet of waterways. Use assigned READS with dozers. WT's track number of loads drafted from stock ponds.							
9. Division/Group Communication Summary							
Function	Frequency		Channel	Function	Frequency	Channel	
Command Repeat (Tones 5 & 7)	Rx 168.1500 N	Tx 171.3875 N	4	Air to Ground	Rx 168.6375 N	Tx 168.6375 N	13
Tactical Div/Group FS TAC-3	Rx 168.6000 N	Tx 168.6000 N	8				
Prepared by (Resource Unit Leader) Gary R. Deboi		Approved by (Planning Section Chief) Valery Lambeth 		Date July 27, 2010		Time 2100	

DIVISION ASSIGNMENT LIST		1. Branch		2. Division/Group IA / Staging			
3. Incident Name MODOC LIGHTNING COMPLEX			4. Operational Period Date: 7/28/2010 Wednesday Time: Day Shift 0600 - 2100				
5. Operations Personnel							
Operations Chief		Pete Duncan / Steve Burns / Robin Wills (t)		Division/Group Supervisor Staging Area Manager		Greg Moon John Ward / Josh Ramey (T)	
Planning Ops		Alec Lane		Air Attack Supervisor No.			
6. Resources Assigned this Period							
Strike Team/Task Force/ Resource Designator	Leader		Number Persons	Trans. Needed	Drop Off PT./Time		Pick Up PT./Time
Crew T2 Ukiah 54	Ernie Ceccon/B. Bates (T)		20	N	Ambrose Staging		Ambrose Staging
SHF Engine 53	Jay Fassett		5	N	Ambrose Staging		Ambrose Staging
WT Alturus FD 4330	Joe Duran		2	N	Ambrose Staging		Ambrose Staging
Bushey T2 Dozer (E-25)	Mike Bushey		1	N	Ambrose Staging		Ambrose Staging
Bushey Transport (E-26)	Robert Lovell		1	N	Ambrose Staging		Ambrose Staging
STCR	Rob Alfred		1	N	Ambrose Staging		Ambrose Staging
STCR (T)	Rita Clipperton		1	N	Ambrose Staging		Ambrose Staging
TFLD	Lucas Minton		1	N	Ambrose Staging		Ambrose Staging
TFLD (T)	Sean Cox		1	N	Ambrose Staging		Ambrose Staging
FELB	Ron Lawton		1	N	Ambrose Staging		Ambrose Staging
FELB	John (JJ) Johnston		1	N	Ambrose Staging		Ambrose Staging
7. Control Operations							
Special Instructions: Be prepared for new starts Meet 2 minute get-away standard							
Function	Frequency		Channel	Function	Frequency		Channel
Command Repeat (Tone 7)	RX 164.100 N		TX 164.800 N	Air to Ground	RX 164.0875 N		TX 164.0875 N
Tactical Div/Group 1	RX 168.050		TX 168.050				
Prepared by (Resource Unit Leader) L. Charbonnier		Approved by (Planning Section Chief) Valery Lambeth 			Date 7/27/10		Time 2045

FIRE WEATHER FORECAST NO. 1

NAME OF FIRE: Modoc Cmplx	UNIT: CA-MDF-000343	PREDICTION FOR: Day/Night
FORECAST ISSUED: 2100 PDT 7/27/2010	SIGNED: Mark Burger <i>MB</i> Incident Meteorologist	SHIFT DATE: Wed. 7/28/2010

WEATHER DISCUSSION: A very slight risk of thunderstorms remains across the complex during the afternoon Wednesday, otherwise the weather will remain very similar to that of yesterday with mostly sunny skies and low afternoon humidity.

WEATHER FORECAST FOR TODAY:

SKY/WEATHER: Mostly sunny. A 10% chance of afternoon thunderstorms.

MAXIMUM TEMPERATURES: 85-90.

MINIMUM HUMIDITY: 15-20%

EYE LEVEL WINDS:

LOWER SLOPES/DRAINAGES: Variable/upslope 3 to 6 mph becoming southwest to west 6-12 mph by 1300 PDT. Nearby thunderstorms will produce erratic winds with gusts to 35 mph.

UPPER SLOPES/RIDGETOPS: Variable 3 to 6 mph becoming southwest 8 to 14 mph.

SMOKE/STABILITY INFORMATION: Haines index 4 (low). Smoke/inversions should not obstruct aviation ops.

WEATHER FORECAST FOR TONIGHT:

SKY/WEATHER: Mostly clear.

MINIMUM TEMPERATURES: 50-55.

MAXIMUM HUMIDITY: 45-55%.

EYE LEVEL WINDS:

LOWER SLOPES/DRAINAGES: Southwest to west 5 to 10 mph in the evening becoming downslope/Downvalley 1 to 3 mph.

UPPER SLOPES/RIDGETOPS: Southwest to west 8 to 14 mph becoming variable around 5 mph after midnight.

EXTENDED OUTLOOK: (Thursday through Tuesday) Dry weather is expected. Highs 85-90. Lows 50-55. Minimum humidity 12-17%. Maximum overnight humidity recovery 50-55%. Winds favoring southwest during the afternoon 7-14 mph with a few gusts up to 20 mph.

Fire Behavior Forecast # 1

Name of Incident:
Modoc Lightning Complex

Administrative Unit:
R5 Modoc National Forest

Date & Time Issued: 07/27/2010@2000

Operational Period: DAY Shift 07/27/10

SITL: Chris Wikeen

Signed: BOB PATTON

Assumptions:

Several lightning fires occurred out of the last series of storms. Some were detected and suppressed, and some went out. There is a high probability of holdovers for the next several days. Most of the fire suppressed so far has not exhibited extreme fire behavior and that is not expected for today's shift. There is a slight chance of thunderstorms this afternoon. Strong and gusty winds could be associated with thunderstorm activity.

Weather Summary

See attached Weather Forecast.

Fire Behavior Summary

General

Fuels within the complex range from grass, bitter brush, Manzanita, to sage with a ponderosa overstory. Live fuel moisture. Heavy Precipitation in the late spring has contributed to relatively high live fuel moisture values between 90%-160% in the herbaceous for this time of year depending on location. The grass has cured on southerly aspects below 6000', but remains uncured at higher elevations on most aspects. 10 hour fuel moisture has been running between 5-7%. Heavier fuels are consuming up to 90%.

Specific Assignments:

Maximum ROS in Sage Brush with Ponderosa overstory could be up to 4 ch/hr, 2-3' flame lengths with a maximum spotting distance of .3 mile. Higher near thunderstorms.

Air Operations: Gusty winds around possible thunderstorm activity could hamper aircraft operations.

Safety

The Modoc National Forest is relatively flat and fire can move rapidly in all directions with gusty winds associated with thunderstorms.

INCIDENT RADIO COMMUNICATIONS PLAN		Incident Name Modoc Lightning Complex, CA-MDF-000343		Date/Time Prepared 7/27/2010 1800	Operational Period Date/Time 7/28/10 WEDNESDAY 0600 - 2100
---	--	--	--	--------------------------------------	--

Only frequencies listed on this 205 are authorized for use on this incident.									
Ch #	Function	Channel Name/Trunked Radio System Talkgroup	Assignment	RX Freq N or W	RX Tone	TX Freq N or W	TX Tone	Mode	Remarks
1	MDF-DISPATCH	MDF-Direct 1	Emergency ECC Contact	168.7500 N		168.7500 N		A	
2	MDF-DISPATCH	MDF-RPT	Emergency ECC Contact	168.7500 N		170.1750 N		A	Tone 5 Grouse Mtn, Tone 7 Red Shale Mtn
3	COMPLEX COMMAND	MDF-Admin Direct	All Division	168.1500 N		168.1500 N		A	
4	COMPLEX COMMAND	MDF-Admin Rpt	All Divisions	168.1500 N		171.3875 N		A	Tone 5 Grouse Mtn, Tone 7 Red Shale Mtn
5	MDF CAMP NET	MDF-SERVICE NET	Not assigned	164.1000 N		164.8000 N		A	
6	TACTICAL	FS TAC-1	Division A	168.0500 N		168.0500 N		A	
7	TACTICAL	FS TAC-2	MDF-IA Tactical	168.2000 N		168.2000 N		A	If dispatched outside Complex
8	TACTICAL	FS TAC-3	Division B	168.6000 N		168.6000 N		A	
9	TACTICAL	R5 TAC-4	Division C	166.5500 N		166.5500 N		A	
10	TACTICAL	R5 TAC-5	IA Group	167.1125 N		167.1125 N		A	Within Complex
11	TACTICAL	R5 TAC-6	Unassigned	168.2375 N		168.2375 N		A	If assigned by Ops notify Comm Unit
12	COMMAND	R5 FS A/G	ALL DIVISIONS	170.0000 N		170.0000 N		A	A/G IA outside of complex
13	AIR/GROUND	Incident Specific	ALL DIVISIONS	168.6375 N		168.6375 N		A	A/G inside of complex
14	EMERGENCY	AIR GUARD	ALL DIVISIONS	168.6250 N		168.6250 N	110.9	A	110.9 TONE 1, USE FOR EMERGENCY TO CONTACT AIRCRAFT
15	CAL-CORD		ALL DIVISIONS	156.0750 W		156.0750 W		A	EMERGENCY AMBULANCE CONTACT
16	EMERGENCY	AIR GUARD	ALL DIVISIONS	168.6250 N		168.6250 N	110.9	A	TONE 1 USE ONLY IN EMERGENCY TO CONTACT

5. Prepared by
Rick Cartoscelli Nor Cal Team 1, COM1
Incident Location
County Modoc State: CA Fire Latitude N Longitude W

The convention calls for frequency lists to show four digits after the decimal place, followed by either an "N" or a "W" depending on whether the frequency is narrow or wide band
ICS 205 – 2007H

AIR OPERATIONS SUMMARY

OPERATIONAL PERIOD DATE: 7-28 -22010 START: 06:00 END: 21:00

1. INCIDENT NAME: Lightning Complex	2. PREPARED BY: Ken Crawford ASGS PREPARED DATE/TIME: 7 -27 - 2010 1800	3. Sunrise: 06:00 Sunset: 20:34
4. REMARKS (Safety Notes, Hazards, Air Operations Special Equipment, etc.): Medivac Helo: H522 order thru Forest.		
All aircraft should have strobes and running lights on in smoky conditions. Be aware of hot temperatures and high altitudes. Hazards: Snags, non-incident aircraft, and winds. Watch for military aircraft operating in the area. Review Give clear, concise direction when requesting missions... need a location and a contact.		
5. TFR: No		

6. PERSONNEL	Phone	7. REQUENCIES	AM	FM	8. FIXED-WING # Avail / Type/ Make-Model / FAA # / Base(s)
AOBD:		AIR/AIR FW:	128.250	169.200	By Request
ATGS: Dan White/ Mike Fredricks	530-251-6905	AIR/AIR RW:			
HLCO		AIR/GROUND:		168.6375	By Request
ASGS: Ken Crawford	530-412-2534	AIR/Guard	168.6250N	RX/TX	By Request
HEBM:					Alturas
ATBM:		DECK:			Other
HEBM 1		TOLC:			Retardant Plt.
HEBM2		Monitor Only			

9. AIRCRAFT (Use Additional Sheets As Necessary)

FAA N# or Designator	TY	MAKE/MODEL	BASE	START	REMARKS	FAA N# or Designator	TY	MAKE/MODEL	BASE	START	REMARKS

10. TASK/MISSION/ASSIGNMENT (Use ICS-220a if additional space needed; Type/Function includes: Air Tactical, Retardant, Recon, Personnel Transport, Water Dropping, etc.)

TYPE/FUNCTION	NAME OF PERSONNEL OR CARGO (if applicable) OR INSTRUCTIONS FOR TACTICAL AIRCRAFT	MISSION START	FLY FROM	FLY TO
Troop shuttle				
Water Drops	Ops will make request to Forest for helicopter.			
Recon	Go thru ops for Fixed wing flight. If needed.			
Cargo				
Helitack Crew				

MEDICAL PLAN	1. Incident Name	2. Date Prepared	3. Time Prepared	4. Operational Period							
	Modoc Lightning Complex	07/27/2010	1130 am	07/28/2010 0600							
5. Incident Medical Aid Station											
Medical Aid Stations		Location			Paramedics Yes No						
Frontline Medical		Ambrose Base Camp			X						
6. Transportation											
AIR Ambulance Services											
Name		Address		Phone		Paramedics Yes No					
REACH *NVG		3775 Flight Ave. Redding, CA. 96003		Modoc Interagency Communication Center		RN					
Mercy Air (PHI) *NVG		1524 East St. Redding, CA 96001		MICC		RN					
Mt. Life Flight		650 Ash St., Susanville, CA		MICC		RN					
CHP hoist with 165' line		Benton Airfield, Redding, CA		MICC		X					
Ground Ambulance Services											
Name		Location			Paramedics Yes No						
Modoc Med Center Ambulance		Alturas, CA			X						
Modoc Med Center Ambulance		Adin, CA			X						
7. Hospitals											
Name		Address		Travel Time Air Ground		Phone		Helipad Yes No		Burn Center Yes No	
Mercy Medical Level 2 Trauma		2175 Rosaline Ave, Redding N 40° 34.29 / W 122° 23.67		60 Min. 3 hr		530- 225-6000 530- 225-7201		X		X	
UC Davis Level I Trauma/Burn Center.		2315 Stockton Blvd. Sacramento N38 33.17 / W 121 27.05		2 hrs. 6 hrs.		916- 734-3636 916- 734-3790		X		X	
Modoc Medical Center		228 McDowell, Alturas CA N 41 28.48/ W 120 32.42		5 min. 20 min.		530-233-5131		X		X	
Mayer's Memorial Hospital		Hwy 299, Fall River CA. N 41 01.40 / W 121 25.35				530-336-5511		X		X	
Canby Family Practice Clinic		Canby, CA		5 min.		530-233-4641		X		X	
8. Medical Emergency Procedures											
<input type="checkbox"/> Contact Hager communications and declare a medical emergency on Command, advising your location and situation <input type="checkbox"/> The closest Division Supervisor will respond to the location to take control and direct necessary actions <input type="checkbox"/> The closest Safety Officer and EMTs will respond to the location to assist with patient care <input type="checkbox"/> Use the attached Injury/Incident Communications Worksheet to coordinate appropriate care and transportation <input type="checkbox"/> Secure the scene area and identify witnesses for later investigation – Keep a log <input type="checkbox"/> MICC IS STAFFED 24hr THROUGH THIS INCIDENT Phone # (530) 233-8880											
Prepared by (Medical Unit Leader)						10. Reviewed by (Safety Officer)					
Ken Kumpe MEDL						Dave Kirste SOF2					

Injury or Incident Communications Protocol

Location _____

Situation _____

Any special equipment required _____

Number of injured _____ Type of injuries _____

Immediate transport required: Yes No Best method: Ambulance Helicopter Vehicle

Closest pick up point (DP, Helispot) _____

LOC _____ Resp. _____ Pulse _____ BP _____ Weight _____

Injury _____

Medical History/Allergies _____

Air Transportation Triage

Contact EMS Helicopters on CALCORD

	Air Ambulance	Air Shuttle to Trauma Center
Mechanism	Stuck by tree Fall of 10' or more Snake bite with pain and swelling Insect bite with shortness of breath Signs of heat stroke (hot, dry, disoriented) Burn Injury greater than 1% body area	Most heat exhaustions Cut or laceration & bleeding controlled Minor bites and Stings Minor burns
Area Injured	Significant Blunt or Penetrating Trauma to Head, Neck, Chest, Abdomen or pelvis Any Arm or Leg fracture	Minor blunt trauma Minor penetrating trauma Extremity sprains and strains
Symptoms	Disoriented Chest Pain <u>or</u> Shortness of Breath Weak or absent radial pulse Pale, cold and sweating	Alert and oriented No shortness of breath Good pulses

Approved Helispots & Medivac sites: Need to identify Medivacs on ground and relay lat and long to Com Unit.

If Declaring an "Incident within the Incident"

The closest DIVS will respond to manage the incident. They are responsible for giving an accurate size up, ensuring scene safety, setting priorities and initiating an appropriate response

The closest Safety Officer and Line EMS will respond to the scene to assist the DIVS. Secure site and begin initial investigation when situation is stabilized

Modoc Lightning Complex Risk Analysis (215a) July 28th

Div.	LCES Analysis of Tactical Applications (Hazardous Actions or Conditions)	LCES Mitigations/Warnings/Remedies
All	Driving Hazards	<ul style="list-style-type: none"> • Reduce speed, be watchful of traffic. • Drive defensively! Expect the unexpected around every curve. • Drive with your headlights on. Use chock blocks. Keep windshields clean. Look before backing and use backers. • Don't drive when fatigued • Maintain driving situational awareness. • Observe speed limits. • The roads in the area are open to the public. • Unguarded Railroad Crossings • Open Range Cattle-Crowder Flat Rd and Hwy 139
All	Fire Behavior	<ul style="list-style-type: none"> • Closely monitor weather conditions. Communicate weather changes to ICP. • Maintain adequate escape routes and safety zones. Advise all personnel if these are compromised or changed. Set trigger points when appropriate. • Adhere to the 10 standard orders, mitigate the 18 watch out situations where appropriate and maintain situational awareness. • Be aware of the light, flashy fuels and the winds that affect them. • Be aware of the predictable diurnal wind patterns associated with this area.
All	Communication	<ul style="list-style-type: none"> • Use human repeaters as appropriate. Follow the communications plan.
All	Initial Attack	<ul style="list-style-type: none"> • Perform Risk Mgt Process before engaging. Refer to pg 1 of IRPG
All	Hydration	<ul style="list-style-type: none"> • Drink water before, during, and after shifts. • Be alert for signs of heat stress in yourself and others. • Be sure to eat throughout the shift to better assimilate energy/hydration needs.
All	Foot Travel	<ul style="list-style-type: none"> • Watch footing, both in camp and on the line. • Minimize fatigue by pacing yourself. • Treat "hot spots" on your feet before they become blisters.
All	Fire Area Hazards	<ul style="list-style-type: none"> • Maintain snag awareness. • Maintain situational awareness with respect to illicit agricultural activities. • Natural Gas Lines and Overhead High Voltage Lines.
All	Sanitation	<ul style="list-style-type: none"> • Monitor yourself and others for signs of illness (flu,colds,etc.) • Wash hands regularly and thoroughly.
All	Wildlife	<ul style="list-style-type: none"> • Snakes, Bees, Ticks
All	Fatigue	<ul style="list-style-type: none"> • Affects judgment, decision making, and performance

Date & Time Prepared: July 27, 2010 @ 1500 Operational Period: July 28, 2010 0600 - 2100

Prepared By: Dave Kirste, SOF2

CA-MDF-000343

Modoc National Forest

Northern California Incident Management Team 1



**Today's discussion is from the
Fireline Safety Category.**

Scenarios:

Scenario 1

Six Minutes Home Page

INITIAL ATTACK FIRE SIZEUP/SAFETY

Having a good sizeup is important in order to give both the Incident Commander (IC) and fire management a good idea of what problems exist and what resources may be needed for effective firefighting.

- Use the following reporting factors for sizeup. Discuss others that may be used.
 - Fire name and location
 - Terrain (slope, aspect, elevation) and position of fire on the slope
 - Size of fire
 - Fuel type, anticipated control problems, and spread potential
 - Values threatened
 - Weather conditions (wind speed and direction)
 - Fire behavior
 - Resources on the fire and those needed
 - Estimated containment and control times
 - Cause (known, suspected, under investigation)
- After your initial sizeup of the fire and/or transition from an initial attack IC, answer the following questions. Repeat this analysis whenever there is a change, or predicted change, in conditions on the fire.
 - Have you sized up the fire and relayed the information to dispatch?
 - Is the observed fire weather consistent with the forecast?
 - Can you control the fire with the resources available (on the incident or soon to be on the incident) and under the expected conditions?
 - Have you developed a plan to attack the fire (direct or indirect, anchor points, escape routes, head or flank attack, priority areas); and have you communicated this information to all personnel assigned to the incident, including new arrivals?
 - Are lookouts in place or can you see all of the fire area?
 - Can you communicate with everyone on the fire and with dispatch?
 - Are escape routes and safety zones established? If you are using the black, is it completely burned and without a reburn potential?
 - Are safety and the standard fire orders being followed?
 - Do you have a complete list of what resources have been ordered for the fire?
 - Will you control the fire before the next operational period; and if you won't, or the size of the organization exceeds the IC's capability to manage, have you informed the agency Fire Management Officer?

References:

Fireline Handbook--PMS410-1, NFES0065, NWCG

TRAINING SPECIALIST MESSAGE

A Training Specialist is now on the incident. All federal, state, and local government agency trainees should register with the Incident Training Specialist in order to assure proper documentation for your assignment.

Bring your Task Book and Red Card.

The Training Unit is co located with Check-In at Base Camp.

**Dominic Panno
Training Specialist**

