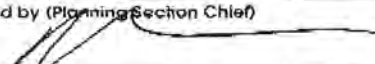
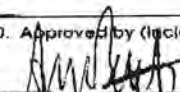


Flat Incident
SHF-2290
P5G1YE (0514)

July 12, 2012
0800-2000

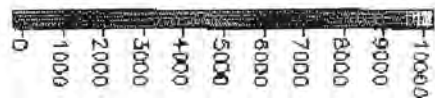
INCIDENT OBJECTIVES	1. Incident Name Flat	2. Date 7/11/12	3. Time 2300
4. Operational Period 7/12/2012 Day 0800-2000			
5. General Control Objectives for the Incident (include alternatives) Management Objectives : Ensure firefighter and public safety Keep cost commensurate with values at risk Protect structures including Del Loma and Hayden Flat area Protect known heritage sites when possible Maintain positive communication with County Officials Minimize impact to Late Successional Reserves and potential critical owl habitat Operational Objectives : Keep the fire: * West of Big French Creek * East of 5N04 road * South of the 5N14 * North of Highway 299			
6. Weather Forecast for Period See attached Spot weather forecast			
7. General Safety Message			
8. Attachments (mark if attached)			
<input checked="" type="checkbox"/> Organization List - ICS 203	<input checked="" type="checkbox"/> Medical Plan - ICS 206	<input type="checkbox"/> (Other)	
<input checked="" type="checkbox"/> Div. Assignment Lists - ICS 204	<input checked="" type="checkbox"/> Incident Map	<input type="checkbox"/>	
<input checked="" type="checkbox"/> Communications Plan - ICS 205	<input type="checkbox"/> Traffic Plan	<input type="checkbox"/>	
9. Prepared by (Planning Section Chief) 	10. Approved by (Incident Commander) 		

ORGANIZATION ASSIGNMENT LIST				
1. Incident Name		Flat	ICS 203 Operations Section	
2. Date		7/11/2012	Op's Chief	
3. Time		2300	Ezra Stiles	
4. Operational Period		7/12/2012 Day 0800-2000		
Position		Name		
5. Incident Commander and Command Staff				
Incident Commander		Alex McBath, Billy Gardunlo (T)		
Deputy				
Safety Officer				
Information Officer		Phyllis Swanson		
Liaison Officer				
6. Agency Representative				
Agency		Name		
USFS District Ranger		Tina Lynsky		
Forest Supervisor		Sharon Heywood		
Forest Fire Officer		Lance Noxon		
Resources Advisor		Mark Arnold		
Resources Advisor		Eric Wiseman		
7. Planning/Intelligence Section				
Plans/Intel Chief		Becky Rogers		
Deputy				
Resources Unit				
Situation Unit				
Documentation Unit				
Demobilization Unit				
Technical Specialists				
Human Resources				
Training				
GIS				
8. Logistics Section				
Logistics Chief		Fay Mok		
Deputy		Jean Cook		
Supply Unit				
Facilities Unit				
Ground Support Unit				
Communications Unit				
Medical Unit				
Food Unit				
a. Branch I				
Branch Director				
Deputy				
Division/Group		A	Jason Jones	
Division/Group		Z	Ron Armstrong	
Division/Group				
Division/Group				
Staging Area		DelLoma	Sandy Faulkner	
b. Branch II				
Branch Director				
Deputy				
Division/Group				
Division/Group				
Division/Group				
Division/Group				
Division/Group				
Staging Area				
c. Branch III				
Branch Director				
Deputy				
Division/Group				
Division/Group				
Division/Group				
Division/Group				
Division/Group				
Division/Group				
d. Air Operations Branch				
Air Operations Branch Director				
Air Tactical Supervisor				
Air Support Supervisor				
Helicopter Coordinator				
Air Tanker Coordinator				
10. Finance/Administration Section				
Finance/Admin. Chief		Anna Arnold, Kathleen Jordan		
Deputy				
Time Unit				
Procurement Unit				
Compensation/Claims Unit				
Cost Unit				

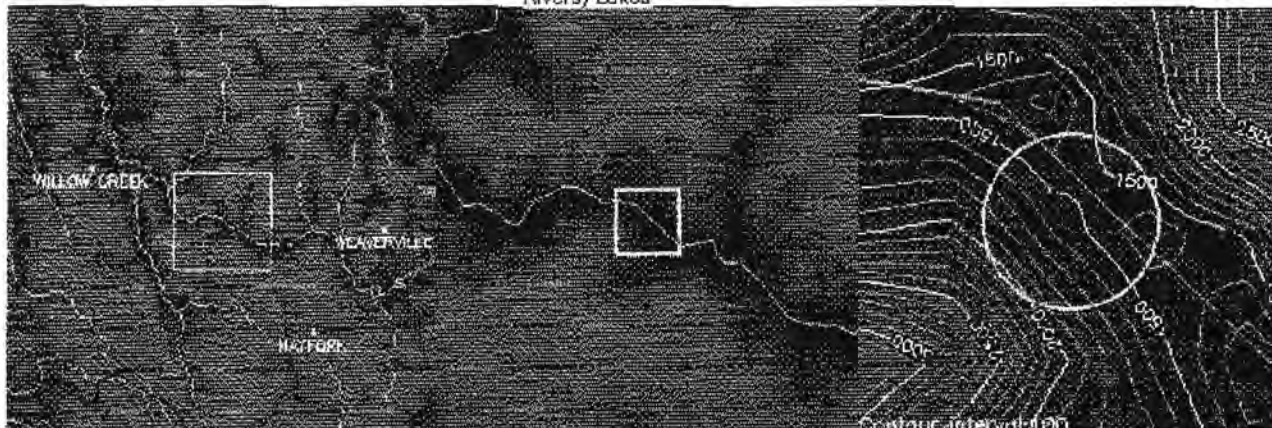
Flat (WILDFIRE) (Requested: 2349 PDT 7/11/12)

Forecast complete at 026 PDT 7/12/12

Requested by: USFS Phone:(530) 226-2499 FAX:(530) 241-4807 Contact:Roxanna Fernandez



- Interstates
- Paved Roads
- Dirt Roads
- Trails
- Rivers/Lakes
- Canals
- Sections



Location: Legal:T5N R7E SEC23(CA) Lat/Lon:40.7839/123.3482 Quad:DEL LOMA CA

Calculated:(40°47'2"N 123°20'53"W) (DEL LOMA CA)

Elevation:500-1500 Drainage:unknown Aspect:se Size:300

Fuel Type:unknown (Fully Sheltered)

Observations:

Place Elev Time Wind Temp Wetbulb RH Dewpt Remarks

320 4 90 30 50

420 1 85 30 50

Requested Parameters

Remarks

.XX Clouds / Weather	mluker@fs.fed.us
.XX Temperature	rgfernandez@fs.fed.us
.XX Relative Humidity	bgardunio@fs.fed.us
.XX Eye Level Wind	amcbath@fs.fed.us
.XX Surrounding Ridge Wind	
.XX Smoke Dispersion	
.X. Swell Height	
.XX Swell Period	
.XX Wind Wave	
.XX 20 foot wind	

FORECAST:

IF CONDITIONS BECOME UNREPRESENTATIVE,
CONTACT THE NATIONAL WEATHER SERVICE.

SPOT FORECAST FOR FLAT...USFS
NATIONAL WEATHER SERVICE EUREKA CA
1226 AM PDT THU JUL 12 2012

FORECAST IS BASED ON REQUEST TIME OF 2349 PDT ON JULY 11.
IF CONDITIONS BECOME UNREPRESENTATIVE...CONTACT THE NATIONAL WEATHER
SERVICE IN EUREKA AT (707) 443-6484.

.DISCUSSION...SUNNY AND HOT TEMPERATURES WILL CONTINUE NEAR THE FIRE
ON THURSDAY. WESTERLY WINDS WILL CAUSE TEMPERATURES TO BE A FEW

DEGREES

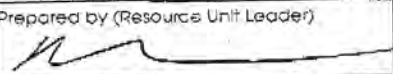
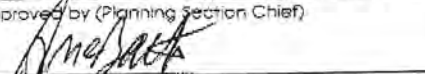
COOLER THAN ON WEDNESDAY...HOWEVER TEMPERATURES OVER 100 DEGREES
ARE STILL EXPECTED FOR NEARBY LOCATIONS SUCH AS BIG BAR. AFTERNOON RH
WILL BE LOW BUT SHOULD RECOVER NICELY IN THE VALLEY.

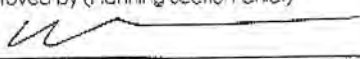
.THURSDAY...

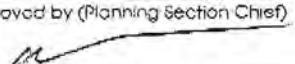
SKY/WEATHER.....MOSTLY SUNNY.
MAX TEMPERATURE.....AROUND 95.
MIN HUMIDITY.....20-25 PERCENT.
EYE LEVEL WINDS.....LIGHT WINDS BECOMING WEST AROUND 5 MPH IN THE
AFTERNOON.
SURROUNDING RIDGE...LIGHT WINDS BECOMING WEST AROUND 8 MPH IN THE
AFTERNOON WITH GUSTS TO 13 MPH.
MIXING HEIGHT.....900 FT AGL INCREASING TO 10000 FT AGL IN THE
AFTERNOON.
MIXING WINDS.....WEST AROUND 5 MPH.
WIND (20 FT).....LIGHT WINDS BECOMING WEST AROUND 6 MPH IN THE
AFTERNOON.


.THURSDAY NIGHT...

SKY/WEATHER.....MOSTLY CLEAR.
MIN TEMPERATURE.....AROUND 60.
MAX HUMIDITY.....75 PERCENT.
EYE LEVEL WINDS.....NORTHWEST WINDS AROUND 5 MPH IN THE EVENING
BECOMING LIGHT.
SURROUNDING RIDGE...NORTHWEST WINDS AROUND 8 MPH IN THE EVENING
BECOMING LIGHT.
MIXING HEIGHT.....10000 FT AGL DECREASING TO 800 FT AGL.
MIXING WINDS.....NORTHWEST AROUND 5 MPH.
WIND (20 FT).....NORTHWEST WINDS AROUND 6 MPH IN THE EVENING
BECOMING LIGHT.

DIVISION ASSIGNMENT LIST		1. Branch		2. Division/Group A			
3. Incident Name Flat		4. Operational Period Date: 7/12/2012 Time: 0800					
5. Operations Personnel							
Operations Chief		Ezra Stiles		Division/Group Supervisor Jason Jones			
Branch Director				Air Attack Supervisor No.			
6. Resources Assigned this Period							
Strike Team/Task Force/ Resource Designator	Leader	Number Persons	Trans. Needed	Drop Off PT./Time	Pick Up PT./Time		
SHF E331		5	N	Del loma/0800	Junction City/2000		
SHF E43		5	N	Del loma/0800	Junction City/2000		
SRF E31		5	N	Del loma/0800	Junction City/2000		
SRF E32		5	N	Del loma/0800	Junction City/2000		
SRF WT35		2	N	Del loma/0800	Junction City/2000		
MDF E65		5	N	Del loma/0800	Junction City/2000		
Trinity Crew 5&6		18	N	Del loma/0800	Junction City/2000		
Happy Camp C2		18	N	Del loma/0800	Junction City/2000		
Firestorm Crew 1&3		20	N	Del loma/0800	Junction City/2000		
Pro Dump Dozer		1	N	Del loma/0800	Junction City/2000		
7. Control Operations Complete handline from Big Mountain road to Big French Creek Road							
8. Special Instructions Conduct burnout operations where needed while maintaining holding resources							
9. Division/Group Communication Summary							
Function	Frequency	System	Channel	Function	Frequency	System	Channel
Command	171.575RX	King NIFC	169.100T Tone 4	Logistics		King NIFC	
Tactical DIV/Group	168.600	King NIFC		Air to Ground	167.600	King NIFC	
Prepared by (Resource Unit Leader)		Approved by (Planning Section Chief)		Date		Time	
				7/12/12		011	

DIVISION ASSIGNMENT LIST			1. Branch		2. Division/Group Z			
3. Incident Name Flat			4. Operational Period Date: 7/12/2012				Time: 0800	
5. Operations Personnel								
Operations Chief		Ezra Stiles		Division/Group Supervisor		Ron Armstrong		
Branch Director				Air Attack Supervisor No.				
6. Resources Assigned this Period								
Strike Team/Task Force/ Resource Designator	Leader	Number Persons	Trans. Needed	Drop Off PT./Time		Pick Up PT./Time		
Trinity Crew 1		18	N	Del loma/0800		Junction City/2000		
SHF DZZ9	Dave Brown	2	N	Del loma/0800		Junction City/2000		
Smith River IHC	Tingley	20	N	Del loma/0800		Junction City/2000		
Trinity Crew 2		18	N	Del loma/0800		Junction City/2000		
Greg Galdwell Dozer		1	N	Del loma/0800		Junction City/2000		
7. Control Operations Complete dozer line and handline back towards DIV A, prepare and hold firing operation								
8. Special Instructions Monitor rollout and provide for safety along road system								
9. Division/Group Communication Summary								
Function	Frequency	System	Channel	Function	Frequency	System	Channel	
Command	171.575RX	King NIFC	169.100T Tone 4	Logistics		King NIFC		
Tactical Div/Group	168.600	King NIFC		Air to Ground	167.700	King NIFC		
Prepared by (Resource Unit Leader)			Approved by (Planning Section Chief)			Date	Time	
						7/12/12	0600	

DIVISION ASSIGNMENT LIST		1. Branch		2. Division/Group Structure Group			
3. Incident Name Flat		4. Operational Period Date: 7/12/2012				Time: 0800	
5. Operations Personnel							
Operations Chief		Ezra Stiles		Division/Group Supervisor			
Branch Director				Air Attack Supervisor No.			
6. Resources Assigned this Period							
Strike Team/Task Force/ Resource Designator	Leader	Number Persons	Trans Needed	Drop Off PT./Time	Pick Up PT./Time		
SRF E 22		5	N	Del loma/0800	Junction City/2000		
SHU E2475		3	N	Del loma/0800	Junction City/2000		
SHU E2466		3	N	Del loma/0800	Junction City/2000		
SHU E2478		3	N	Del loma/0800	Junction City/2000		
SHU E2456		3	N	Del loma/0800	Junction City/2000		
OES WT 32		2	N	Del loma/0800	Junction City/2000		
SHF WT 36		1	N	Del loma/0800	Junction City/2000		
DWR 4511		2	N	Del loma/0800	Junction City/2000		
7. Control Operations Hold Hwy 299 W Keep fire East and North off handlines behind structures							
8. Special Instructions If fire impinges on powerlines contact PG&E to shut down							
9. Division/Group Communication Summary							
Function	Frequency	System	Channel	Function	Frequency	System	Channel
Command	171.575RX	King NIFC	169.100T Tone 4	Logistics		King NIFC	
Tactical Div/Group	168.600	King NIFC		Air to Ground		King NIFC	
Prepared by (Resource Unit Leader)		Approved by (Planning Section Chief)		Date		Time	
				7/12/12		0800	

DIVISION ASSIGNMENT LIST			1. Branch		2. Division/Group Staging		
3. Incident Name Flat			4. Operational Period Date: 7/12/2012 Time: 0800				
5. Operations Personnel							
Operations Chief		Ezra Stiles		Division/Group Supervisor		Sandy Faulkner	
Branch Director				Air Attack Supervisor No.			
6. Resources Assigned this Period							
Strike Team/Task Force/ Resource Designator	Leader		Number Persons	Trans. Needed	Drop Off PT./Time		Pick Up PT./Time
TC AMBULANCE 302			2	N	Del loma/0800		Junction City/2000
DRV 4561			2	N	Del loma/0800		Junction City/2000
DRV 4562			2	N	Del loma/0800		Junction City/2000
7. Control Operations When assigned confirm with Division Group Supervisor on specific control objectives							
8. Special Instructions							
9. Division/Group Communication Summary							
Function	Frequency	System	Channel	Function	Frequency	System	Channel
Command	171.575RX	King NIFC	169.100T Tone 4	Logistics		King NIFC	
Tactical Div/Group	168.600	King NIFC		Air to Ground		King NIFC	
Prepared by (Resource Unit Leader)			Approved by (Planning Section Chief)			Date	Time
						7/12/12	0800

INCIDENT RADIO COMMUNICATIONS PLAN			Incident Name Flat				Date/Time Prepared 7/11/2012 2300			Operational Period Date/Time 7/12/12 0800-2000		
Ch #	Function	Channel Name/Trunked Radio System Talkgroup	Assignment	RX Freq	N or W	RX Tone/NAC	TX Freq	N or W	Tx Tone/NAC	Mode A, D or M	Remarks	
1	Command	SHF Forest Rpt	ALL				171.575		169.100	136.5	N	
2	TAC 2	NIFC TAC 2	DIV A				168.200		168.200		N	
3	TAC 3	NIFC TAC 3	DIV Z				168.600		168.600		N	
4	A/G	CA01 AG (P)	ALL				167.800 167.600		167.8 167.600			
5							167.800		167.8			
6												
7												
8												
9												
10												
11												
12												
13												
14												
15												
16												
17												
18												
19												
20												
Prepared By (Communications Unit) Billy GARDUINO						Incident Location County TRINITY State CA Latitude N Longitude W						

The convention calls for frequency lists to show four digits after the decimal place, followed by either an "N" or a "W", depending on whether the frequency is narrow or wide band. Mode refers to either "A" or "D" indicating analog or digital (e.g. Project 25) or "M" indicating mixed mode. All channels are shown as if programmed in a control station, mobile or portable radio. Repeater and base stations must be programmed with the Rx and Tx reversed.

MEDICAL PLAN

1. INCIDENT NAME: SHF-Junction City
 2. DATE PREPARED: 7/12/12
 3. TIME PREPARED: 2300
 4. OPERATIONAL PERIOD: 800-2000

5. INCIDENT MEDICAL AID STATIONS

MEDICAL AID STATIONS	LOCATION	PARAMEDICS	
		YES	NO

6. TRANSPORTATION

A. Ambulance Services

NAME	LOCATION	PHONE	PARAMEDICS	
			YES	NO
Trinity County Life Support	Weaverville	911 or 530-623-8126 (TCSO) 530-623-2500 (TCLS)	X	
Hoopla Ambulance	Willow Creek	911 or 530-629-1171	X	

B. AIR AMBULANCE

NAME	LOCATION	PHONE	PARAMEDICS	
			YES	NO
CHP (Hoist) - Confined to the valley at night	Redding	911 or 530-225-2040	X	
Coast Guard - Dauphin (Hoist with night vision)	Eureka	911 or 707-839-6100		X
Reach	1100 Butte Street, Redding, CA	911 or 800-338-4045	X	
Mercy / PHI Air Medical	3775 Flight, Redding, CA	911 or 530-225-6290	X	

HOSPITALS

NAME	ADDRESS	TRAVEL TIME		PHONE	TRAUMA		HELIPAD		BURN CENTER	
		AIR	GRND		Yes	No	YES	NO	YES	NO
Trinity Hospital	410 N. Taylor St. Weaverville CA 40 34.34 x 122 23.70		20	530-623-5541		X	X			X
Mercy Medical Center Level II trauma center	2175 Rosaline Ave. Redding CA 40 34.13 x 122 23.86	20	1hr.	530-225-7201	X		X			X
Shasta Regional Level III trauma center	1100 Butte St., Redding, CA 40 35.00 x 122 22.30	20	1hr.	530-244-5353	X		X			X
UC Davis Burn Center Level I trauma center	2315 Stockton, Sacramento CA 38 33.30 x 121 27.30	2hr.	—	916-734-3636	X		X		X	

See Attached for Hospital Helipad Info
Trauma for initial stabilization or better

C. MEDICAL EMERGENCY PROCEDURES

LINE EMERGENCY

Crew Supervisor to contact Division Supervisor with complaint and location.

- Division Supervisor Contacts:
 - Communications
 - Line EMT/Medic (if available)
- Communications will advise:
 - Medical Unit: IC
 - Operations: Comps/Claims
 - Safety: Air Ops (if necessary)
- Division Supervisor will support medical needs.
- Identify emergency: serious or non-serious
- Identify nature of emergency, # of patients, patient assessment
- Identify location, transport/evac possibilities
- Operations to provide input to Medical Unit for transportation concerns.
- Medical Unit will dispatch ground or air ambulance as needed

BASE CAMP EMERGENCY

Contact Medical Unit with patient complaint/ condition and location. Medical Staff will respond to stabilize incident:

- Medical Unit contacts:
 - Communications
 - Safety
 - Comps/Claims
 - Operations
 - IC
 - Crew Supervisor

1ST. PRIORITY - DISPATCH APPROPRIATE RESOURCE

NATURE OF INJURY _____
 LOCATION OF PATIENT _____
 TRANSPORTATION REQUEST BY: AIR _____ GROUND _____

Do not give patients name over radio!

AFTER RESOURCE IS DISPATCHED!

POINT OF PICK UP _____
 LAT _____ LONG _____
 PATIENT UNIT ID _____
 IS EMT WITH PATIENT: YES _____ NO _____
 AGE: _____ SEX: MALE _____ FEMALE _____
 HISTORY: _____
 MEDICATION: _____
 ALLERGIES: _____
 VITALS AND OTHER INFORMATION _____

9. PREPARED BY (MEDICAL UNIT LEADER)

10. REVIEWED BY (SAFETY OFFICER)

Alex McBurn IC