

# **Incident Action Plan**

Daves Fire

CA-MNF-0834

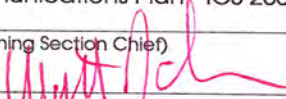
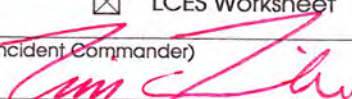
P5HKC8



**NIGHT SHIFT**

June 14<sup>th</sup> to June 15<sup>th</sup>, 2013

1800 - 0600

INCIDENT OBJECTIVES	1. Incident Name <b>DAVES</b>	2. Date 6/14/2013	3. Time 11:28
4. Operational Period 06 /14 to 6/15/2013 1800 - 0600			
5. General Control Objectives for the Incident (include alternatives)  <b>MANAGEMENT OBJECTIVES</b> <ul style="list-style-type: none"> <li>• <b>Ensure firefighter and public safety in all incident activities. Adhere to all safety standards and implement appropriate risk analysis</b></li> <li>• <b>Protect values at risk to include watershed, cultural resources, private timber lands and recreation sites</b></li> <li>• <b>Coordinate with Forest to maintain timely and accurate communications with communities, county officials and Forest visitors.</b></li> <li>• <b>Effectively manage incident costs by planning strategies and tactics toward a high probability of success.</b></li> </ul> <b>OPERATIONAL OBJECTIVES</b> <ul style="list-style-type: none"> <li>• <b>South and West of the M9 Road</b></li> <li>• <b>North and West of Kilgore Ridge</b></li> <li>• <b>North of Bear Canyon</b></li> <li>• <b>East of Dave's Ridge</b></li> <li>• <b>Provide for initial attack under TFR north of Grindstone Creek</b></li> </ul>			
6. Weather Forecast for Period  <b>See attached forecast</b>			
7. General Safety Message  <b>See attached safety message</b>			
8. Attachments (mark if attached)			
<input checked="" type="checkbox"/> Organization List - ICS 203	<input checked="" type="checkbox"/> Medical Plan - ICS 206	<input checked="" type="checkbox"/> Weather	
<input checked="" type="checkbox"/> Div. Assignment Lists - ICS 204	<input type="checkbox"/> Incident Map	<input checked="" type="checkbox"/> Safety Message	
<input checked="" type="checkbox"/> Communications Plan - ICS 205	<input checked="" type="checkbox"/> Traffic Plan	<input checked="" type="checkbox"/> LCES Worksheet	
9. Prepared by (Planning Section Chief) Matt Johnson 	10. Approved by (Incident Commander) Tim Fike 		



ORGANIZATION ASSIGNMENT LIST		9. Operations Section	
1. Incident Name		Day Ops Chief	Frank Davis / Dale Shippelhouse(t)
<b>DAVES</b>		Night Ops Chief	Daren Dalrymple
2. Date	3. Time	Planning Ops	Dan George / Eric Petterson (t)
6/14/2013	11:36	<b>a. Branch I – Division/Groups</b>	
4. Operational Period		Branch	
06/14 to 6/15/2013	1800 - 0600	Division/Group	A / D Bernard Spielman / C. Munk (t)
Position	Name	Division/Group	M / Z Todd Freeman / Kerri Gilliland(t)
5. Incident Commander and Command Staff		Division/Group	
Incident Commander	Tim Fike	Division/Group	
Deputy IC		Division/Group	
Safety Officer	Terry O'Connell / Steve Davis	Division/Group	
Information Officer	Adrienne Freeman / Pamela Bierce		
		<b>b. Branch II – Division/Groups</b>	
		Branch	
6. Agency Representative		Division/Group	
Agency	Name	Division/Group	
Agency Admin	Sherry Tune / Eduardo Olmedo (t)	Division/Group	
Agency Admin Rep		Division/Group	
Agency Admin Rep		Division/Group	
USFS LE	Mike Casey	Division/Group	
Lead Resource Advisor	Chad Atwood	<b>c. Branch III – Division/Groups</b>	
Resource Advisor	Gary Urdahl	Branch	
Cal Fire	Dave Russell	Division/Group	
CDC	Jeff Rickert	Division/Group	
		Division/Group	
		Division/Group	
		Division/Group	
		Division/Group	
7. Planning Section		<b>d. Air Operations Branch</b>	
Chief	Matt Johnson	Air Operations Branch Director	Dennis Kuster
Deputy		Air Support Group Supervisor	Staci Dickson
Resources Unit	John Owen / Duane Miller(t)	Air Tactical Group Supervisor	Jason Withrow
Situation Unit	Charlotte Jordan(t) / Matt Brown(t)	Helitack Base Manager	
Documentation Unit			
Demobilization Unit			
Fire Behavior Unit	Ken Larson	<b>10. Finance Section</b>	
Incident Meteorologist		Chief	Beth Lopez
Technical Specialist	John Miller	Personnel Time Unit	Penny Portlock
Training Specialist	Brad Smith	Equipment Time Unit	Juanita Cortez
GISS	M. Kerr / K. Roehrs / M. Grupe	Cost Unit	Rich Anderson / S. Rapphahn(t)
HRSP	Barbara Leach	Compensation / Claim Unit	
Status Check-In	Duane Miller	IBA	Anna Dillard
8. Logistics Section			
Chief	Jane Arteaga / Mike Heckendorn		
Deputy			
Supply Unit		Prepared By: John Owen - RESL	
Facilities Unit	Ric Crowther		
Ground Support Unit	John Fell		
Communications Unit	Jim Lewis / Don Stoner		
Medical Unit	Aaron Lowe / Patrick Young(t)		
Food Unit	Kevin Browning		





Powerhouse Fire, June 5, 2013  
Angeles N.F., Photo by Jeff Brooks

# Fuels and Fire Behavior Advisory California\*



June 10, 2013

**Subject:** Low live and dead fuel moistures, along with persistent drought have created the potential for active to extreme fire behavior in many parts of the state.

**Discussion:** All of California is experiencing drought conditions. Effects of lower than normal live and dead fuel moistures and observed fire behavior for 2013 are the focus of this advisory.

**Difference From Normal Conditions:** Drought conditions ranging from abnormally dry to severe exist across California. The drought is expected to persist or intensify. The entire state is deficient in rainfall and snow pack, resulting in fuels that are 4-8 weeks ahead of normal drying/curing rates.

### **Concerns to Firefighters:**

- Energy Release Component (ERC) at numerous weather stations set record highs already this year and running well above normal in most cases. Expect increased fire intensity and spread rates in these areas. Early season extreme fire behavior has been observed in both light and heavy fuels. **Anticipate increased spread rates, spotting, and active night time burning.**
- The combination of persistent drought and record-low rainfall and snowpack amounts has led to very low live and dead fuel moistures. Low 1000-hour fuel moistures have been evidenced by complete consumption of dead fuels on several recent fires. Live fuel moistures have already reached critical levels in many areas especially in Southern California. **Expect fires to ignite easier and spread faster. Anticipate higher resistance to control in all fuel types.**
- Excessively dry fuels and receptive fuel beds are resulting in fire behavior that is not deterred by what firefighters would consider normal barriers. **Be mindful of what you use as a barrier or safety zone.**
- Fires are burning actively even under conditions of high relative humidity. Already this year, California has experienced large fire activity and multiple team deployments. California will likely experience an extended fire season. It is important to be mindful of and manage fatigue for all resources. **Everyone, every day, returns home safely.**

### **Mitigation Measures:**

- Local and inbound fire personnel need to be aware that fire behavior across the state is exceeding normal expectations for this time of the year. **Local briefings need to be thorough and highlight specific fire environment conditions. These include but are not limited to local weather forecasts, Pocket Cards, ERC's, live and dead fuel moistures, and special fuel conditions such as mortality, Sudden Oak Death and frost killed brush, etc.**
- Suppression actions need to be based on good anchor points, escape routes, and safety zones. **Remember LCES. Experienced lookouts are essential under these conditions.**
- **Base all actions on current and expected behavior of the fire.** Augment initial attack resources as incident activity dictates.
- Review the most current Northern and Southern California 7-day Significant Fire Potential along with Daily, Monthly and Seasonal Outlooks at: <http://www.predictiveservices.nifc.gov/outlooks/outlooks.htm>

**\*Area of Concern:** The area of concern is the State of California with the exception of 3 Northern California Predictive Service Areas: North Coast, Northeastern, and Eastside. A map showing the areas of concern described in this advisory can be found at: [National Fuel Advisories](#)

**Issued: June 10, 2013** (Note this advisory will be in effect for 14 days and will be reviewed/updated at that time.)



**Spot Forecast for Dave's Fire**

National Weather Service Sacramento  
947 AM PDT Fri Jun 14 2013

IF CONDITIONS BECOME UNREPRESENTATIVE,  
CONTACT THE NATIONAL WEATHER SERVICE.  
SPOT FORECAST FOR DAVE S...MNF-NORCAL TEAM 2  
NATIONAL WEATHER SERVICE SACRAMENTO CA  
947 AM PDT FRI JUN 14 2013

FORECAST IS BASED ON REQUEST TIME OF 0906 PDT ON JUNE 14.  
IF CONDITIONS BECOME UNREPRESENTATIVE...CONTACT THE NATIONAL WEATHER  
SERVICE.

...RED FLAG WARNING IN EFFECT UNTIL 5 PM PDT THIS AFTERNOON...

.DISCUSSION...

HIGH PRESSURE BUILDING OVER THE PACIFIC NORTHWEST BEHIND THE  
UPPER LEVEL TROUGH MOVING INTO THE ROCKIES IS BRING GUSTY NORTH  
WINDS...WARM TEMPERATURES AND DRY CONDITIONS TO THE FIRE SITE  
TODAY. THE WINDS WILL RELAX DURING THE AFTERNOON BUT HUMIDITY  
RECOVERY WILL STILL BE POOR TONIGHT.

A LOW PRESSURE SYSTEM APPROACHING THE PACIFIC NORTHWEST COAST  
SATURDAY WILL BRING SOME INCREASE IN HUMIDITY. WINDS WILL  
GENERALLY BE LIGHT ON SATURDAY...BUT AN INCREASE IN WEST WINDS  
WILL OCCUR SUNDAY WITH THE LOW.

.TONIGHT...

SKY/WEATHER.....CLEAR.  
MIN TEMPERATURE.....50-55.  
MAX HUMIDITY.....45-50 PERCENT.  
WIND (20 FT).....  
    SLOPE/VALLEY.....NORTHEAST WINDS 4 TO 7 MPH IN THE EVENING  
  BECOMING LIGHT.  
    RIDGETOP.....LIGHT WINDS.  
CWR.....0 PERCENT.  
LAL.....1.  
MIXING HEIGHT.....7700 FT AGL DECREASING TO 400-1200 FT AGL.  
MIXING WINDS.....LIGHT WINDS.

.SATURDAY...

SKY/WEATHER.....MOSTLY SUNNY.  
MAX TEMPERATURE.....73-76.  
MIN HUMIDITY.....15-20 PERCENT.  
WIND (20 FT).....  
    SLOPE/VALLEY.....LIGHT WINDS BECOMING SOUTHEAST 5 TO 8 MPH IN  
  THE AFTERNOON.  
    RIDGETOP.....SOUTHWEST 7 MPH.  
CWR.....0 PERCENT.  
LAL.....1.  
MIXING HEIGHT.....400-2000 FT AGL INCREASING TO 9600-10200 FT  
  AGL.  
MIXING WINDS.....SOUTHWEST 7 MPH.

FORECASTER...

REQUESTED BY...KEN LARSON FBAN  
REASON FOR REQUEST...WILDFIRE

## FIRE BEHAVIOR FORECAST

<b>FORECAST NUMBER:</b> 2	<b>TYPE OF FIRE:</b> Wildland Fire
<b>FIRE NAME:</b> Daves	<b>OPERATIONAL PERIOD:</b> 1800-0600 06/14-15/2013
<b>DATE ISSUED:</b> June 14, 2013	<b>TIME ISSUED:</b> 1200
<b>UNIT:</b> Mendocino NF, Grindstone RD	<b>SIGNED:</b> <i>Is/ Ken Larson FBAN</i>

**WEATHER SUMMARY:** See attached Spot Weather Forecast

Weather: clear  
Min Temp: 50-55°  
Max RH: 45-50%  
Slope Winds (20'): NE 4-7 mph in the evening becoming light  
Ridgetop Winds: light

### FIRE BEHAVIOR

**General Fire Behavior for the Daves Fire:**

Anticipate minimal fire activity tonight.

Worst case potential fire behavior will be a ROS to 2-4 chains/hour with flame lengths up to 3 feet in the knob cone pine fuel type. Probability of ignition during the night will decrease to 30-40 %. Short range spotting is still possible due to poor relative humidity recovery.

In the brush (chamise) fuels on the west side of Browns Canyon a potential rate of spread to 6 chains/hour with flame lengths of 2 feet could occur should the fire cross the drainage.

### AIR OPERATIONS:

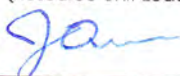
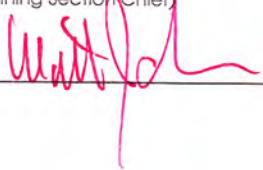
Smoke should not hamper air operations.


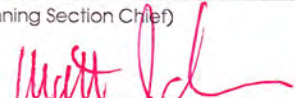
06/14 Sunset: 20:39    06/15 Sunrise: 0541

### SAFETY

Pay attention to your surroundings prior to dark. Many hazards including stump holes, brush stubs, and snags may not be identifiable during night time.



DIVISION ASSIGNMENT LIST			1. Branch		2. Division/Group <b>A / D</b>		
3. Incident Name <b>DAVES</b>			4. Operational Period <b>NIGHT OPERATIONS</b>				
			Date: 06/14 to 6/15/2013		Time: 1800 - 0600		
5. Operations Personnel							
Operations Chief	Frank Davis / D. Shippelhoute(t)		Division/Group Supervisor		Bernard Spielman / Cheveyo Munk(t)		
Branch Director			Air Attack Supervisor		Jason Withrow		
6. Resources Assigned this Period							
Strike Team/Task Force/ Resource Designator	Leader	Last Shift	Number Persons	Trans. Needed	Drop Off PT./Time	Pick Up PT./Time	
SHU 9240G (C-4)	Kevin Mancebo	6/26	33	N	DP1 / 1900	0600	
SHU 9242G (C-11)	Clint Swenson	6/26	35	N	DP1 / 1900	0600	
HC1 Mendocino IHC (C-7)	John Tishner	6/26	20	N	DP1 / 1900	0600	
PNF 3660C (E-18)	James Lico/Jennifer Wells(t)	6/27	27	N	DP1 / 1900	0600	
DZ2 Lenahan (E-5) w/LOWB			1	N	DP1 / 1900	0600	
DZ2 Wycoff (E-4) w/LOWB			1	N	DP1 / 1900	0600	
WT1 Precision (E-27)	M. Dainauskus	6/27	1	N	DP1 / 1900	0600	
HEQB (O-45)	Matt Mullins	6/28	1	N	DP1 / 1900	0600	
7. Control Operations <ul style="list-style-type: none"> <li>• Hold and Improve Direct Line</li> <li>• Initiate mop-up where appropriate</li> </ul>							
8. Special Instructions <ul style="list-style-type: none"> <li>• No water tender or engines are to fill from any hydrants in Paskenta</li> <li>• Cal Fire Gulf Strike Team working 24 hour shifts</li> </ul>							
9. Division/Group Communication Summary							
Function	Frequency	System	Channel	Function	Frequency	System	Channel
Command	168.6000 Rx 168.2500 Tx	Daves Fire CMD	8 Tone 3	Command Alternate	169.1750 Rx 169.9750 Tx	MNF Fire South	2 Tone 9
Tactical Division/Group	166.5500 Rx 166.5500 Tx	Tac 5	3 Tone 3	Air to Ground	169.1500 Rx 169.1500 Tx		6
Prepared by (Resource Unit Leader) J. Owen 			Approved by (Planning Section Chief) M. Johnson 		Date 6/14/2013	Time 13:29	

DIVISION ASSIGNMENT LIST		1. Branch		2. Division/Group <b>M / Z</b>			
3. Incident Name <b>DAVES</b>		4. Operational Period <b>NIGHT OPERATIONS</b> Date: 06/14 to 6/15/2013 Time: 1800 - 0600					
5. Operations Personnel							
Operations Chief	Frank Davis / D. Shippelhoute(t)		Division/Group Supervisor		Todd Freeman / Kerri Gilliland(t)		
Branch Director			Air Attack Supervisor		Jason Withrow		
6. Resources Assigned this Period							
Strike Team/Task Force/ Resource Designator	Leader	Last Shift	Number Persons	Trans. Needed	Drop Off PT./Time	Pick Up PT./Time	
TGU 9257G (C-1)	Jeff Gowan	6/26	35	N	DP1 / 1900	0600	
SHU 9243G (C-12)	Josh Faulkner	6/28	35	N	DP1 / 1900	0600	
TGU 9254G (C-3)	D. Craig	6/26	35	N	DP1 / 1900	0600	
HC1 Tahoe IHC (C-2)	Eric Rice	6/26	20	N	DP1 / 1900	0600	
DZ2 Millsap (E-11)			1	N	DP1 / 1900	0600	
DZ2 Outback (E-6)	Phillip Tudor	6/26	1	N	DP1 / 1900	0600	
7. Control Operations							
<ul style="list-style-type: none"> <li>Hold and Improve Direct Line</li> <li>Initiate mop-up where appropriate</li> </ul>							
8. Special Instructions							
<ul style="list-style-type: none"> <li>No water tender or engines are to fill from any hydrants in Paskenta</li> <li>Cal Fire Gulf Strike Team working 24 hour shifts</li> </ul>							
9. Division/Group Communication Summary							
Function	Frequency	System	Channel	Function	Frequency	System	Channel
Command	168.6000 Rx 168.2500 Tx	Daves Fire CMD	<b>8</b> Tone 3	Command Alternate	169.1750 Rx 169.9750 Tx	MNF Fire South	<b>2</b> Tone 9
Tactical Division/Group	168.2375 Rx 168.2375 Tx	Tac 6	<b>4</b> Tone 3	Air to Ground	169.1500 Rx 169.1500 Tx		<b>6</b>
Prepared by (Resource Unit Leader)		Approved by (Planning Section Chief)			Date	Time	
J. Owen 		M. Johnson 			6/14/2013	13:28	



<b>INCIDENT RADIO COMMUNICATIONS PLAN</b>		1. Incident Name Daves		2. Date/ Time Prepared 6/14/2013 11:30		3. Operational Period Date/Time 06/14/2013 18:00 to 06:00 06/15/2013 NIGHT	
<b>4. Basic Radio Channel Utilization</b>							
Mode: W=Wideband Analog, N=Narrowband Analog, D=Digital, M=Mixed							
Channel	Function	Frequency	Tone	Mode	Assignment	Remarks	
1	MNF Fire Net North	169.1750		N	All Divisions	Tone 3 (131.8) North	
		169.9750	3.0				
2	MNF Fire Net South	169.1750		N	All Divisions	Tone 9 (100.0) South	
		169.9750	9.0				
3	TAC 5	166.5500	3.0	N	Div A/D	Tone 3 (131.8)	
		166.5500	3.0				
4	TAC 6	168.2375	3.0	N	Div M/Z	Tone 3 (131.8)	
		168.2375	3.0				
5	TAC 4	167.1125	3.0	N		Tone 3 (131.8)	
		167.1125	3.0				
6	Air to Ground	169.1500		N	All Divisions		
		169.1500					
7							
8	Daves Fire CMD RPTR	168.6000	3.0	N	All Divisions	Tone 3 (131.8) Primary Command	
		168.2500	3.0				
9	NIFC CMD RPTR 12	173.0375	3.0	N	All Divisions	Tone 3(131.8)	
		167.3250	3.0				
10							
11							
12	TAC 1	168.0500		N	Initial Attack		
		168.0500					
13	TAC 2	168.2000		N			
		168.2000					
14	TAC 3	168.3000		N			
		168.3000					
15	Calcord	156.0750		N	All Divisions	Tone 6 (156.7)	
		156.0750	6.0				
16	Air Guard	168.6250		N	All Divisions	Tone1 (110.9)	
		168.6250	1.0				
5. Prepared by (Communications Unit) Jim Lewis COML							

<b>MEDICAL PLAN</b>	1. INCIDENT NAME: DAVES	2. DATE PREPARED: 06/14/2013	3. TIME PREPARED: 1300	4. OPERATIONAL PERIOD NIGHT 06/14 1800-0600
---------------------	----------------------------	---------------------------------	---------------------------	--

5. INCIDENT MEDICAL AID STATIONS					
MEDICAL AID STATIONS	LOCATION			PARAMEDICS	
Medical Unit	Base Camp	(530) 400-0880		Yes	No
				X	

6. TRANSPORTATION				
A. Ambulance Services				
NAME	LOCATION	PHONE	PARAMEDICS	
			Yes	No

B. AIR AMBULANCE				
NAME	LOCATION	PHONE	PARAMEDICS	
Enloe Flight	Chico	911	Yes	No
CHP (Hoist) – Daytime only	Redding	911	X	
Reach	Lakeport	911	X	

7. HOSPITALS										
NAME	ADDRESS	TRAVEL TIME		PHONE	TRAUMA		HELIPAD		BURN CENTER	
		AIR	GRND		Yes	No	YES	NO	YES	NO
Enloe Medical Center	1530 Esplanade Chico N39 44.5 X W 121 51.1	32 min	2 Hr	530-895-9107	X		T3			X
Glenn Medical Center	1133 W Sycamore St Willow N39 31.2 X W 122 12.4	25 Min	2 Hr	530-934-1800		X	T3			X
UC Davis Burn Center	2315 Stockton, Sacramento CA 38 33.30 x 121 27.40	55 min	3.5 Hr	916-734-3636	X		T2		X	

**8. MEDICAL EMERGENCY PROCEDURES**

**LINE EMERGENCY:**

Crew Supervisor to contact DIVS with patient complaint/condition and location.

- DIVS contacts:
  - Line EMT (If assigned)
  - Communications Unit
  - Operations / Branch
- On scene EMT, DIVS or Medical Unit Leader decide mode of transportation required.
- Communications Unit contacts:
  - Medical Unit
  - Transport Dispatch
  - Safety
- Operations and Medical Unit will manage medical emergency with Communications

If a Medical/Medivac is needed be sure to provide the lat. and long. of the nearest helispot.

**CAMP EMERGENCY:**

Contact Communications with patient complaint/condition and location. Medical Staff will respond to stabilize patient:

- Communications contacts:
  - Safety
  - Logistics
  - Operations
  - Crew Supervisor

**TRIAGE CONSIDERATIONS (S.T.A.R.T)**

Respirations:  
Over 30/ Under 12 = **Immediate**

Capillary Refill  
Over 2 seconds = **Immediate**

Mental Status  
Disoriented = **Immediate**

Immediate = Air Evacuation if possible

**PT. ASSESSMENT:**

- Mental status
- B.P.
- Pulse
- Skin signs
- Respirations
- Crew name and location.

**WARNING SIGNS OF HEAT ILLNESS INCLUDES THE FOLLOWING:**

- An extremely high body temperature (above 103°F).
- Red, hot and dry skin (no sweating).
- Rapid, irregular strong pulse
- Throbbing headache
- Dizziness, nausea and confusion
- Unconsciousness

**HOW TO TREAT HEAT EMERGENCIES IN THE FIELD:**

- Move the patient to the shade or provide shade for them
- Externally cool the patient.
- Fan them after getting them wet.

Drink water constantly through the day. Consider an electrolyte sports drink/powder - 2/1 ratio.

9. PREPARED BY (MEDICAL UNIT LEADER) Aaron Lowe MEDL Patrick Young MEDL-T	10. REVIEWED BY (SAFETY OFFICER) Steve Davis SOF2
--	--



Lookouts  
Communications  
Escape Routes  
Safety Zones

## Daves Incident

Operation Period: 06/14-15/13 Night Shift

# SAFETY MESSAGE

### FOCUS YOUR ATTENTION ON

- **Driving safely:** Getting to and from the work assignment may be one of the more hazardous activities on this incident.
- **Identifying Hazards:** Size up the work area to identify all potential and existing hazards associated with the environment and assignment.
- **Mitigate Hazards:** Remove hazards or avoid them. Utilize hazard control measures to reduce risk.
- **Use of PPE:** Please ensure the appropriate PPE is in use to protect from the hazards found in your work area.

### MAJOR HAZARDS AND RISKS

STEEP TERRAIN SPOT FIRES FATIGUE	ROLLING MATERIAL MARIJUANA GROWS DEHYDRATION	HEAVY EQUIPMENT SNAGS STUMP HOLES
--	--	---

*Be sure all elements of your safety plan are in place prior to engagement*

### Situational Awareness

Help maintain your Situational Awareness by doing the following:

- Constantly observing your environment.
- Interpret and process information received.
- Sharing information by discussing the situation.

### Risk Management

- Keep risks commensurate with the benefit.
- Utilize the Risk Management Process found on page 1 of the IRPG.
- Recognize that no injury is worth the ground you are working.
- Everyone is entitled to a round trip ticket. Bring them home healthy.

Nor Cal Team 2 Safety Officers Terry O'Connell, Steve Davis



# INCIDENT RISK ANALYSIS

**Daves**

**(ICS 215A) Night Shift**

DIV	HAZARDOUS ACTIONS / CONDITIONS	MITIGATIONS / WARNINGS / REMEDIES
ALL	<b>HAZARD TREES/SNAGS</b>	<ul style="list-style-type: none"> <li>• Follow Hazard Tree Safety Guidelines (IRPG p. 20).</li> <li>• Limit number of personnel around snags and their exposure time; fallers must be qualified for trees being fallen.</li> <li>• Be especially alert around snags during wind events or changing wind direction.</li> <li>• Maintain Situational Awareness.</li> </ul>
ALL	<b>DRIVING HAZARDS</b>	<ul style="list-style-type: none"> <li>• Narrow dusty roads exist.</li> <li>• Establish one way traffic or coordinate traffic flow if necessary.</li> <li>• Drive defensively! Expect the unexpected around every curve.</li> <li>• Drive with headlights on; use chock blocks, keep windshields clean; look before backing; and use backers whenever available.</li> <li>• Don't drive when fatigued. Adhere to agency driving regulations and guidelines.</li> <li>• Free ranging cattle (M-4 road).</li> </ul>
ALL	<b>HYDRATION</b>	<ul style="list-style-type: none"> <li>• Drinking water before, during and after shifts, up to 1.5 gal. per shift.</li> <li>• Be alert for signs of heat illness in yourself and others.</li> <li>• Drink 2 to 1 water to sports drinks.</li> </ul>
ALL CAMP	<b>POISONOUS SNAKES, INSECTS</b>	<ul style="list-style-type: none"> <li>• Snakes in base camp/sleeping area.</li> <li>• Securely close tents.</li> <li>• Watch your footing.</li> <li>• Identify, avoid, and get treatment for any bites or stings.</li> <li>• Use caution (for bees, wasps, etc.) when drinking from opened cans.</li> </ul>
ALL	<b>MARIJUANA PLANTATIONS</b>	<ul style="list-style-type: none"> <li>• Maintain situational awareness.</li> <li>• Watch for open areas and sign of improvement or irrigation systems.</li> <li>• Be aware of evidence that cultivation has occurred in the area.</li> <li>• If you stumble upon an area with probable cultivation be extremely cautious, exit on the same route you arrived and notify supervisor immediately.</li> </ul>
ALL	<b>STEEP TERRAIN ROLLING MATERIAL</b>	<ul style="list-style-type: none"> <li>• Watch your footing; take your time.</li> <li>• Ensure adequate spacing between crewmembers.</li> <li>• Post lookouts to warn of rolling debris.</li> </ul>
DIV D, M	<b>HEAVY EQUIPMENT/DOZERS</b>	<ul style="list-style-type: none"> <li>• Utilize appropriate PPE and equipment safety mechanisms.</li> <li>• Maintain safe working distances.</li> <li>• Utilize observer or spotter.</li> <li>• Ensure the use of effective communication (radio, hand signals).</li> <li>• Identify hazards.</li> <li>• Avoid moving parts.</li> </ul>
ALL	<b>MOP UP</b>	<ul style="list-style-type: none"> <li>• Conduct thorough briefing for all personnel (inside rear cover IRPG).</li> <li>• Use all required PPE, including eye protection.</li> <li>• Maintain proper spacing and overhead clearance.</li> <li>• Be alert for stump holes and root cavities.</li> <li>• Minimize exposure to smoke, and rotate personnel into clean air when practical.</li> <li>• Evaluate unburned islands/Increase situational awareness.</li> </ul>
ALL	<b>DRY FUEL CONDITIONS</b>	<ul style="list-style-type: none"> <li>• Establish and maintain LCES.</li> <li>• Anticipate intense burning and rapid rates of spread.</li> <li>• Watch for spot fires.</li> <li>• Allow a for adequate escape times based on burning conditions.</li> </ul>
CAMP	<b>DRINKING WATER</b>	<ul style="list-style-type: none"> <li>• Do not drink from any domestic water source in the community of Paskenta.</li> </ul>
INCIDENT NAME: <b>Daves</b>  ICS 215a		DATE PREPARED: <p style="text-align: center;"><b>June 14, 2013</b></p> TIME PREPARED: <b>0930 HOURS</b>
		OPERATIONAL PERIOD <b>Night Shift 06/14/13</b> <b>1800-0600</b> Prepared by S. Davis T O'Connell



# AIR OPERATIONS SUMMARY

Prepared By: Dennis Kuster

Prepared Date: 6/13/2013

Prepared Time: 21:30

Prepared Time: 21:30

<b>1. INCIDENT NAME:</b> Daves	<b>2. OPS PERIOD DATE:</b> 6/14/2014	<b>START TIME:</b> 0700	<b>END TIME:</b> 2100	<b>SUNRISE:</b> 0509	<b>SUNSET:</b> 2113
<b>3. REMARKS (Safety Notes, Hazards, Air Operations, Special Equipment, etc.):</b>			<b>4. READY ALERT AIRCRAFT</b> MEDEVAC- 506 I.A. - 512	<b>5. TFR #:</b> Radius 7.5 NM Diameter 10,000' MSL Center Point: 39° 45.00 122° 41.20	

6. PERSONNEL	NAME	PHONE #	7. FREQUENCIES	AM	FM	8. FIXED-WING- Type/ Make-Model/ N#/ Base
AOBD	Dennis Kuster	209-352-0855	AIR/ AIR FW	123.1750		AIRTANKERS – Two Heavy on order
ASGS (T)	Staci Dickson	530-277-5153	AIR/ AIR RW- FF		169.200	LEAD PLANES- Order thru MNF
ATGS	Jason Withrow	530-206-6955	AIR/ GROUND		169.150	ATGS AIRCRAFT- Over Fire at 0800 05 & 669J
ATGS (T)						
ATGS			COMMAND	See Comm Plan		
HLCO						
HEB2	Kyle Tolasano	530-605-7334	DECK		163.100	
HEB1			TOLC			
Helibase	Phone					
	FAX					
						OTHER FW AIRCRAFT-

## 9. HELICOPTERS (Use Additional Sheets as Necessary)

FAA N#	T	MAKE/ MODEL	BASE	AVAIL	START	REMARKS	FAA N#	T	MAKE/ MODEL	BASE	AVAIL	START	REMARKS
506	2	Bell 210	Daves	0800									
512	2	Bell 205A++	Daves	0800									
RNR	2	Bell212HP	Daves	0930									
73U	1	S61	Daves	0930									

10. TASK/ MISSION/ ASSIGNMENT (Type/ function includes: Air Tactical, Retardant, Recon, Personnel Transport, Bucket Operations, SAR, etc.)					
TYPE/FUNCTION	NAME OF PERSONNEL OR CARGO (If applicable) or instructions for tactical aircraft		MISSION START	FLY FROM	FLY TO
Water Dropping			As Needed		
Recon			As Needed		





## Be Safe in the National Forests

### *What to do if you encounter a marijuana cultivation site*

Marijuana growers are active in the nation's national forests and it's important for your safety to be aware of your surroundings.

If you encounter a drug operation, back out immediately! Never engage the growers as these are extremely dangerous people. If you can identify a landmark or record a GPS coordinate, that's very helpful. The growers may be present and may or may not know that you have found their operation. Get to a safe place and report the encounter to any uniformed member of the Forest Service or to your local law enforcement agency.

#### Here are some clues that you may have come across a marijuana cultivation site:

- The smell of marijuana, especially on hot days, is like a skunk.
- Hoses or drip lines located in unusual or unexpected places.
- A well-used trail where there shouldn't be one.
- Voices coming from an unusual place.
- People standing along roads without vehicles present, or in areas where loitering appears unusual.
- Grow sites are usually found in isolated locations, in rough steep terrain (typically between 500 to 5,500 feet elevation.)
- Camps containing cooking and sleeping areas with food, fertilizer, weapons, garbage, rat poison, and/or dead animals.
- Small propane bottles (so that the grower avoids detection of wood smoke.)
- Individuals armed with rifles out of hunting season.

**As soon as you become aware that you have come upon a cultivation site, or have encountered any of the above situations, back out immediately! Leave the way you came in, and make as little noise as possible.**

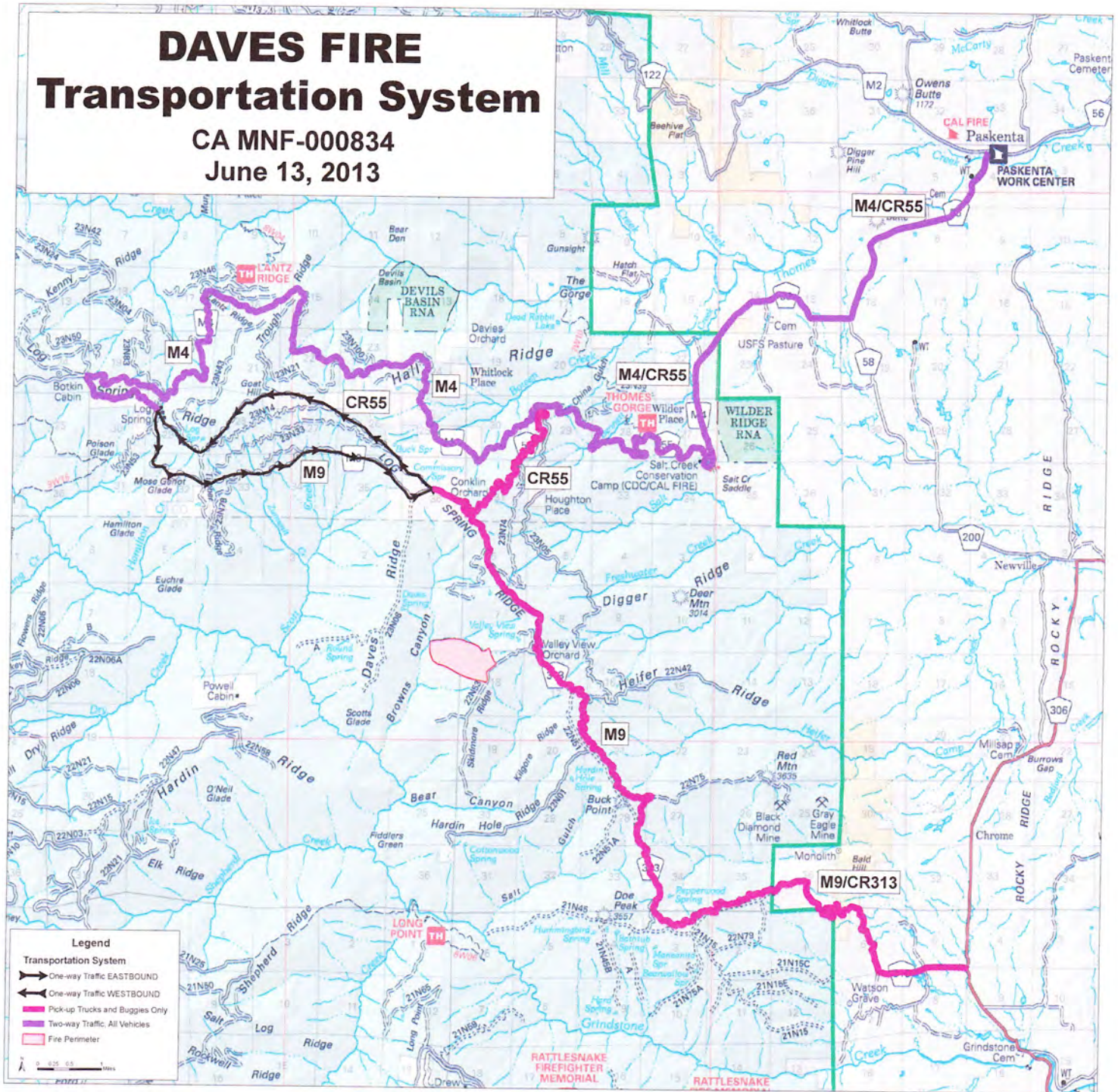
**Get to a safe place and, as soon as possible, report the encounter to any uniformed member of the Forest Service or to your local law enforcement agency. Report as much detail about the location and incident as you can recall.**

The U.S. Department of Agriculture (USDA) prohibits discrimination in all its programs and activities on the basis of race, color, national origin, age, disability, and where applicable, sex, marital status, familial status, parental status, religion, sexual orientation, genetic information, political beliefs, reprisal, or because all or part of an individual's income is derived from any public assistance program. (Not all prohibited bases apply to all programs.) Persons with disabilities who require alternative means for communication of program information (Braille, large print, audiotape, etc.) should contact USDA's TARGET Center at (202) 720-2600 (voice and TDD). To file a complaint of discrimination, write USDA, Director, Office of Civil Rights, 1400 Independence Avenue, S.W., Washington, D.C. 20250-9410, or call (800) 795-3272 (voice) or (202) 720-6382 (TDD). USDA is an equal opportunity provider and employer.



# DAVES FIRE Transportation System

CA MNF-000834  
June 13, 2013



**Legend**

**Transportation System**

- One-way Traffic EASTBOUND
- ← One-way Traffic WESTBOUND
- Pick-up Trucks and Buggies Only
- Two-way Traffic, All Vehicles
- Fire Perimeter

0 0.25 0.5 Miles



## ***TRAINING SPECIALIST MESSAGE***

**Trainees who have not previously started documentation of their assignment with the TNSP should do so ASAP!**

**All open training assignments on the Daves Incident must be “closed out” with the TNSP by 2130 Hrs. on Sunday June 16th**

***In order to receive documented credit for your training assignment – you must close out with the Training Specialist before you Demob!!***

**BEAT THE RUSH!**

**If as much work as possible has been completed in the position task book, Trainees may close their assignment with the TNSP prior to the demob process**

***The TNSP is located in the ICP adjacent to the Information Desk.***

***Brad Smith - TNSP***  
***6/14/13***





