

Coleman Fire

Incident Action Plan

07/05-06/2014 Night Shift 1800-0800

- **Driving-**

- Reduce your speeds! Stay on your side of the road!
Do not cut corners!
- Open Range- Both livestock and wildlife are abundant in the fire area. Dawn & Dusk have a noticeably higher frequency of potential wildlife encounters.
- **SEAT BELTS ON...LIGHTS ON...BEFORE wheels turn!**

- **Ensure LCES is in place** before committing resources to assignment.



CA-NOD-002798 PDH6V5 1502

Northern California District BLM

INCIDENT OBJECTIVES	1. Incident Name Coleman	2. Date 07/05/2014	3. Time 1200 hrs.
----------------------------	--	----------------------------------	---------------------------------

4. Operational Period
July 05-06, 2014 NIGHT SHIFT

INCIDENT OBJECTIVES

- 1) Provide for firefighter and public safety through application of the risk management process.
- 2) Utilize direct attack methods to minimize acres burned when safe to do so.
- 3) Keep the fire within the current containment lines.
- 4) Protect all threatened structures and personal property if it can be done safely.

MANAGEMENT OBJECTIVE

- 1) Avoid negative impacts to sage grouse habitat by minimizing burn out operations and cross country vehicle travel.
- 2) Track and report water usage for suppression purposes.
- 3) Work with incident resource advisors to minimize damage to cultural resources.
- 4) Weed wash incoming vehicles and demobed resources to avoid spread of noxious weeds.

6. Weather Forecast for Period

- See attached weather forecast.

7. General Safety Message

1. Be aware of what the fire is doing at all times.
2. Maintain good communications at all times.
3. Watch footing on steep rocky slopes.
4. Drink plenty of water and watch for dehydration and heat stroke.
5. Maintain a safe operating speed when traveling through the towns of Cedarville, Lake City and Fort Bidwell.
6. Watch for cows and other vehicles along Hyw. 34 (North), Barrel Springs Byway and County Road 1 while driving.

8. Attachments (mark if attached)

- | | | |
|---|--|---|
| <input checked="" type="checkbox"/> Organization List - ICS 203 | <input checked="" type="checkbox"/> Medical Plan - ICS 206 | <input checked="" type="checkbox"/> Weather |
| <input checked="" type="checkbox"/> Div. Assignment Lists - ICS 204 | <input checked="" type="checkbox"/> Incident Map | <input checked="" type="checkbox"/> ICS215a |
| <input checked="" type="checkbox"/> Communications Plan - ICS 205 | <input type="checkbox"/> ICS 220 | <input type="checkbox"/> Rehab Considerations |

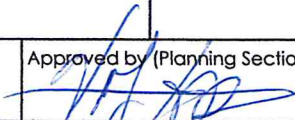
9. Prepared by (Planning Section Chief)

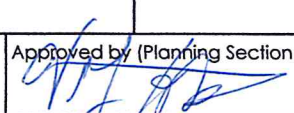
Dave Sinclair 

10. Approved by (Incident Commander)

Mike Minton  (FOR)

ORGANIZATION ASSIGNMENT LIST		Communications Unit	Phil Shafer
1. Incident Name Coleman		Medical Unit	Josh Ramey
2. Date July 5, 2014		Receiving & Distribution	Fred Johnson
3. Time 1100		Security Manager	
4. Operational Period Night Shift July 05-06, 2014		Food Unit	Jay Westlake, Mark McGuinness (t)
Position	Name	9. Operations Section	
5. Incident Commander and Staff		Operations	Dave Pereira (D), Robin Wills(N), Nate Gogna (t)
Incident Commander	Mike Minton, Jay Kurth (t)	Planning Ops	Alec Lane, Kurt Lindstrand (t)
Deputy		a. Division/Groups	
Safety Officer	Mike Frederick , Michele Tanzi, Jeff Barnhart, John Nickey (t)	DAY SHIFT	07/05/14
Information Officer	Kathy Hardy	Division/Group A	Mark Vardanega, Jessica Wade (t)
Liaison Officer	Kent Swartzlander	Division/Group B	Randy Jennings, Dan Varney (t)
6. Agency Representative		Division/Group C	Mike Klimek, Gordon Meyer (t)
Agency Admin Rep	Heather Whitman	Division/Group R	Don Fregulia
Resource Advisor	Steve Surian	Division/Group Staging	David Janssen
District Manager	Nancy Haug	Division/Group	
AREP- Surprise FO	Elias Flores	Division/Group	
NDF Rep	Mike Friend	b. Division/Groups	
FMO - NOD	Walter Herzog	NIGHT SHIFT	07/05-06/14
		Division/Group A / R	Rick Noggles
		Division/Group C / B	Dan Quinones, Jonah Gladney (t)
		Division/Group	
		Division/Group	
		Division/Group	
		c. Air Operations Branch	
7. Planning Section		Air Operations Branch Director	Dustan Mueller
Chief	Valery Lambeth, Bob Patton (t)	Air Attack Supervisor	Walter Bunt, Shawn Walters (t)
Deputy	Dave Sinclear	Air Support Supervisor	Glenn Dietz
Resources / Check-in / Documentation / Demob Units	Gary Deboi, Rita Mustafia, LouAnn Charbonnier	Helicopter Coordinator	
Situation Unit	Alan Taylor, Tim Ritchey (t)	Air Tanker Coordinator	
Training	Dominic Panno	10. Finance Section	
CTSP	George Steel	Chief	Rachel Corkill
GIS	Matt Dickenson	Time Unit	Vicki Wilson
FBAN	John Wood	Cost Unit	
IMET	Alex Hoon	Compensation/Claims Unit	Debbie McIntosh
8. Logistics Section		Equipment Time	Wendy McCartney, Nicole Savage
Chief	Brett Shurr, Patrick Howard (t)	Prepared by (Resource Unit Leader)	
Deputy	Ken Kumpe	Gary R. Deboi	
Supply Unit			
Ordering	Mona Lake, Ron Pierce		
Facilities Unit	Frank DelCarlo		
Ground Support Unit	Harry Zabel		

DIVISION ASSIGNMENT LIST		1. Branch		2. Division/Group A / R			
3. Incident Name Coleman Fire		4. Operational Period Date: July 5-6, 2014 Time: 1800 - 0800					
5. Operations Personnel							
Operations Chief		Robin Wills / Nate Cogna (t)		Division/Group Supervisor		Rick Noggles	
Planning Ops		Alec Lane / Curt Lindstrand(t)		Air Attack Supervisor No.			
6. Resources Assigned this Period							
Strike Team/Task Force/ Resource Designator		Leader		Number Persons	Trans. Needed	Drop Off PT./Time	Pick Up PT./Time
Firestorm 4 (C-22)		Jimmy Ramirez		20	N	1800	Per DIVS
GFP 10A (C-16)		Fleak		20	N	1800	Per DIVS
LNF Engine 35 (E-24)		Wade Jones		5	N	1800	Per DIVS
LPF PT 75 (E-15)		Ricky Aispuro		2	N	1800	Per DIVS
TFLD		Drew Page		1	N	1800	Per DIVS
TFLD (t)		Kyle Krache		1	N	1800	Per DIVS
EMT-P		Matt Hodge		1	N	1800	Per DIVS
7. Control Operations Hold and Patrol. Mop-up 100 feet where safe.							
Special Instructions: Track all water use. Ambulance staged at DP-3 (Modoc Medic 22) Jeff Barnhart SOF2 staged at DP-3.							
Function	Frequency	Name	Channel	Function	Frequency	Name	Channel
Command	RX172.8125N TX166.3125N	NOD Admin RPT	1 T2, 123.0	Air to Ground	RX164.7750N TX164.7750N	A/G	10
Tactical Div/Group	RX168.0500N TX168.0500N	NIFC T-1	4				
Prepared by (Resource Unit Leader) Gary R. Deboi		Approved by (Planning Section Chief) 			Date July 5, 2014		Time 1100

DIVISION ASSIGNMENT LIST		1. Branch		2. Division/Group B / C			
3. Incident Name Coleman Fire		4. Operational Period Date: July 5-6, 2014 Time: 1800 - 0800					
5. Operations Personnel							
Operations Chief		Robin Wills / Nate Cogna (t)		Division/Group Supervisor		Dan Quinones / Jonah Gladney (t)	
Planning Ops		Alec Lane / Curt Lindstrand(t)		Air Attack Supervisor No.			
6. Resources Assigned this Period							
Strike Team/Task Force/ Resource Designator	Leader		Number Persons	Trans. Needed	Drop Off PT./Time		Pick Up PT./Time
Engine 225 (E-16)	Mark Brinneman		3	N	1800		Per DIVS
Engine 323 (E-17)	Paula Holter		3	N	1800		Per DIVS
7. Control Operations Hold and Patrol. Mop-up 100 feet where safe.							
Special Instructions: Track all water use. Ambulance staged at DP-3 (Modoc Medic 22) Jeff Barnhart SOF2 staged at DP-3.							
Function	Frequency	Name	Channel	Function	Frequency	Name	Channel
Command	RX172.8125N TX166.3125N	NOD Admin RPT	1 T2, 123.0	Air to Ground	RX164.7750N TX164.7750N	A/G	10
Tactical Div/Group	RX166.7250N TX166.7250N	NIFC T-5	6				
Prepared by (Resource Unit Leader) Gary R. Deboi		Approved by (Planning Section Chief) 			Date July 5, 2014		Time 1100

FIRE BEHAVIOR FORECAST

FORECAST NUMBER: 4	TYPE OF FIRE: Wildland Fire
FIRE NAME: Colman	OPERATIONAL PERIOD: 7-5 to 7-6, 1800 to 0800
DATE ISSUED: 7/05/14	TIME ISSUED: 1200
UNIT: Northern California District BLM	SIGNED: /s/ John Wood FBAN

INPUTS

WEATHER SUMMARY: Gusty West to Northwest winds will continue through the evening with dry and unstable conditions. Winds will drop off after midnight, becoming light overnight. Similar temperatures and humidity expected for tonight, with poor recovery on the ridges and thermal belts. Warmer temperatures and lighter winds re expected for Sunday, with breezy Northwest winds late in the day and steady North winds on Sunday night. There is a slight chance of thunderstorms returning to the forecast for Tuesday. Expect minimum temperatures Valleys: 45-50, Ridges: 54-57 degrees, minimum humidity Valley: 40-45% Ridges: 20-25%. Winds (20 ft.) Valley: West to Northwest 10-16 Gust to 22, becoming downslope 2-4 after midnight. Ridges: Southwest 12-18 Gust to 25 mph becoming Northwest 5-10 mph after 0300.

OUTPUTS

GENERAL: Warm dry conditions remain over the fire. Although wind speeds are forecast to be slower they are still strong enough to cause moderate rates of spread or loft embers from heat sources. Live fuel moistures are in the mid 80's for the Sagebrush, this is an indicator for potential extreme fire behavior. In the grass rates of spread could reach 8-13 ch/hr and flame lengths 2-3 ft. with. In the shrub expect rates of spread 3-5 ch/hr and flame lengths up to 1-2 ft.

SPECIFIC:

Fine fuel moisture 8% Probability of ignition will lower to 35% this evening Spot distance up to a 1/4 mile.

Division A: Continuous fuels that are drought stressed keep potential for fire spread viable around Calcutta Lake. The fuel bed will be receptive through the early part of the shift. Although wind speeds are forecast to be lower today than previous shifts they still remain strong with potential to move hot embers across the control line. Short steep slopes in the southern part of the division, near Antelope spring, could see accelerated fire spread with active fire.

Division B: No perimeter growth expected on the division. Spotting from concentrated heat sources is possible.

Division C: No perimeter growth expected on the division.

Division R: No perimeter growth expected on the division.

Initial Attack: Conditions have moderated slightly and potential fire behavior has moderated as well. Fine flashy fuels remain dry and receptive early in the shift but conditions will moderate significantly, without wind, by midnight. Probability of ignition drops to 35% limiting spotting potential.

AIR OPERATIONS

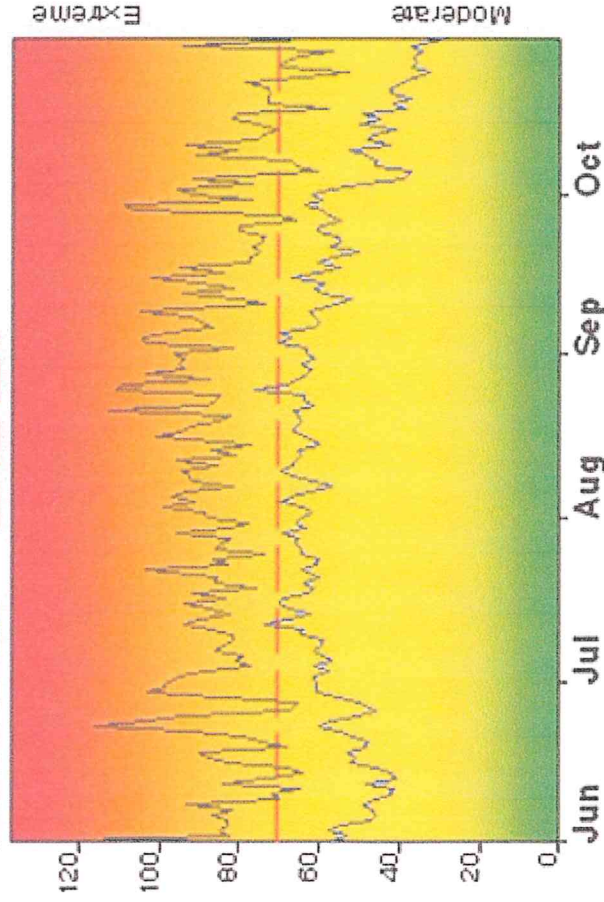
Reduced fire behavior limits potential for smoke to impact air operations.

Safety Message

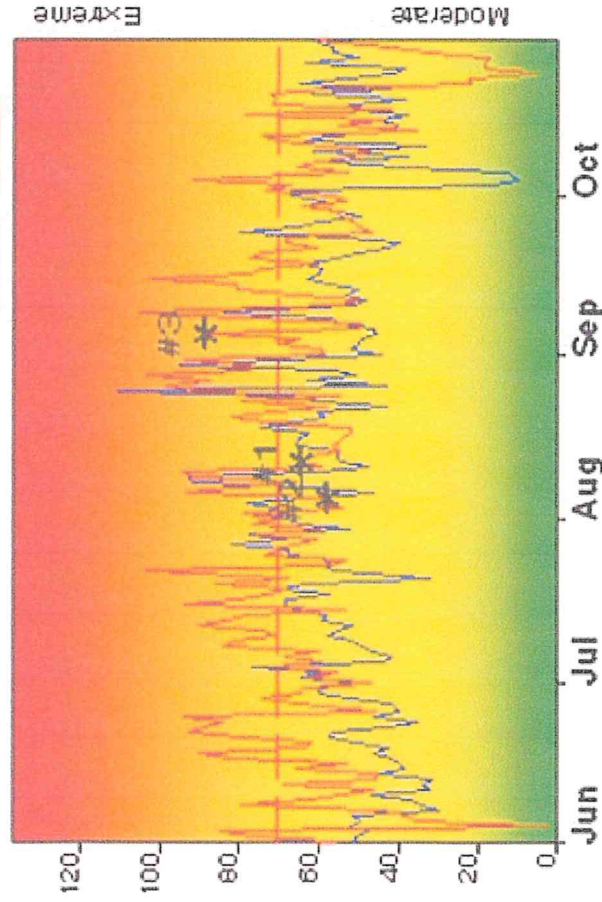
Light flashy fuels react quickly to wind and topography. Review the common denominators on page 5 (green pages) of your IRPG.

FIRE DANGER -- NECA - Extreme NWNV

Maximum, Average, and 80th Percentile, based on 13 years data



Years to Remember: 2008 2012

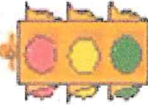


Fuel Model: T - Sagebrush-Grass

Fire Danger Area:

- ◆ FDRAs 258,260,265
- ◆ WX Zones 270,278,285,458
- ◆ SUDR SIG
- * Meets NWCG Wx Station Standards

Fire Danger Interpretation:



- EXTREME** -- Use extreme caution
- (Caution)** -- Watch for change
- Moderate** -- Lower Potential, but always be aware

Maximum -- Highest Burning Index by day for 2000 - 2012

Average -- shows peak fire season over 13 years (1973 observations)
80th Percentile -- Only 20% of the 1973 observations had an Burning Index above 70

Local Thresholds - Watch out: Combinations

of any of these factors can greatly increase fire behavior:
20+ Wind Speed over 10 mph, **RH** less than 19%,
Temperature over 90

Remember what Fire Danger tells you:

- ✓ Burning Index gives day-to-day fluctuations calculated from 2 pm temperature, humidity, wind, daily temperature & rh ranges, and precip duration.
- ✓ Wind is part of BI calculation.
- ✓ Watch local conditions and variations across the landscape -- Fuel, Weather, Topography.
- ✓ Listen to weather forecasts -- especially WIND.

Past Experience:

- #1 Rush Fire was lightning started on 8/12/12 and burned 315,578 acres Eagle Lake Field Office. Fire showed significant growth from thunder downdrafts.
- #2 Lost Fire was lightning started on 8/5/12 and burned 61,298 acres Surprise Field Office. Fire had red flag conditions for hot, dry, and windy conditions with high atmospheric instability.
- #3 Likely Fire was human caused on 8/5/12 and burned 9,838 acres Alturas Field Office. Fire had a 75 acre spot fire due to high temperature humidity, and high winds.

Bull Flat (040728) is the most centrally located RAWS in SIG
 Responsible Agency: BLM Northern California
 FF+4.1 Beta 03/06/2013-12:03 (U:\WOD RAWS)



INCIDENT RADIO COMMUNICATIONS PLAN			Incident Name COLEMAN CA-NOD-002798		Date/Time Prepared 07/05/14 1030		Operational Period Date/Time NIGHT SHIFT 07-05-14		
Only frequencies listed on this 205 are authorized for use on this incident.			Hand programmers accept all responsibility for the use of unauthorized frequencies.						
Ch #	Function	Channel Name	Assignment	RX Freq N or W	RX Tone	TX Freq N or W	TX Tone	Mode	Remarks
1	COMMAND	CMD 5	ALL DIVISIONS	167.1000N		169.7500N	T5,146.2	A	LINE TO CAMP
2	NIFC CMD 12	CMD 12	ALL DIVISIONS	173.0375N		167.3250N	T5,146.2	A	CAMP TO LINE
3	COMMAND	NOD ADMIN RPT	BACKUP COMMAND	172.8125N		166.3125N	T2,123.0	A	IF Coleman CMD FAILS COMPLETELY
4	TACTICAL	NIFC T-1	DIVISION A/R	168.0500N		168.0500N		A	
5	TACTICAL	NIFC T-3	Unassigned for expansion	168.6000N		168.6000N		A	
6	TACTICAL	NIFC T-5	DIVISION B/C	166.7250N		166.7250N		A	
7	TACTICAL	NIFC T-6	Unassigned use as necessary	166.7750N		166.7750N		A	
8	TACTICAL	NIFC T-7	Unassigned for expansion	168.2500N		168.2500N		A	
9	TACTICAL	FS R5 T4	Unassigned for expansion	166.5500N		166.5500N		A	
10	A/G COMMAND	A/G	ALL DIVISIONS	164.7750N		164.7750N		A	
11	Reserved	Reserved	ALL DIVISIONS	-----N		-----N		A	
12	CALCORD	CALCORD	MED HELO CONTACT	156.0750N		156.0750N	T06,156.7	A	
13	FIRE NET	NOD FIRE NET RPT	SUSANVILLE DISPATCH	171.6250N		164.2500N	T04,136.5	A	FOR IA RESPONSE
14	SCENE OF ACTION	BLM SOA	IF DISPATCHED TO IA	168.3000N		168.3000N		A	
15	IA TACTICAL	NIFC TAC 2	IF DISPATCHED TO IA	168.2000N		168.2000N		A	
16	URGENT AIR CONTACT	AIR GUARD	ALL DIVISIONS	168.6250N		168.6250N	T1,110.9	A	USE ONLY FOR URGENT AIRCRAFT CONTACT IF HAND PROGRAMMING USE TONE 1

Prepared by
Patrick Howard, LSC2(T) NorCal IMT 1
Phil Shafer, COML NorCal IMT 1

Phil Shafer

Incident Location NE OF CEDARVILLE, CA
NOTE:
ALL TONES ARE USER SELECTABLE. SIMPLY PRESS THE NUMBER OF THE TONE YOU NEED.

MEDICAL PLAN (ICS 206 WF)

1. Incident/Project Name				2. Operational Period				
Coleman Fire				Date/Time 7/5/14 Night				
3. Ambulance Services								
Name	Location			Phone & EMS Frequency		Advanced Life Support (ALS) Yes No		
Modoc Medic 22	Staged at DP-3			911 or 530-233-4410		X		
Surprise Vly. Hosp. Ambulance	Cedarville, CA			911 or 530-279-6111		X		
4. Air Ambulance Services								
Name	Phone			Type of Aircraft & Capability				
Emergency Air Lift	911 or 800-804-4911			Air Ambulance - rotor Day, fixed Day/Night - Klamath Falls, OR.				
Mountain LifeFlight	911 or 530-251-2844			Air Ambulance - rotary and fixed - Day/Night - Susanville, CA				
CHP	911 or 530-225-2040			Air Hoist - Redding, CA				
Yellowstone 9TA	Contact air ops			Incident medivac / short-haul ship - Helibase, Cedarville, CA				
5. Hospitals								
Name & Level	GPS Datum - WGS 84 Degrees Decimal Minutes			Travel Time Air Gnd		Helipad Yes No		Address
Surprise Valley Hospital	Lat:		10 min	30 min	530-279-6111		X	741 N. Main St. Cedarville, CA
	Long:							
	VHF:							
Modoc Medical Center	Lat:	N41°28.48	1 hr	4 hr	530-233-5131	X		228 McDowell, Alturas, CA
	Long:	W120°32.42						
	VHF:							
Renown Medical Center Level II	Lat:	N39°31.34	1:45 min	7 hrs	775-982-2005	X		1155 Mill St. Reno, NV
	Long:	W119°47.45						
	VHF:							
UC Davis Level I Trauma/Burn Center	Lat:	N38°33.17	1:45 min	7 hrs	916-734-3636 916-734-3790	X		2315 Stockton Blvd. Sacramento, CA
	Long:	W121°27.05						
	VHF:							
6. Division / Crew Pre-plan Update and discuss with assigned resources daily								
Crew EMTs & Equipment								
Fireline EMTs & Location Adv. Life Support?								
Air Hoist site: Lat: / Long:								
Helispot: Lat: / Long:								
Alternate no-fly plan:								
7. Remote Aid Stations								
ICP - Cedarville Fairgrounds N41°31.461 W120°10.550		Point of Contact:		MEDL - Josh Ramey (Cell: 530-277-1213)				
		EMS Responders & Capability:		Basic Life Support				
		Equipment Available on Site:		Medical supplies				
		Ambulance ETA :		Air - 1 hr. Ground - 5 min. BLS, 30 min. ALS				
		Point of Contact:						
		EMS Responders & Capability:						
		Equipment Available on Site:						
		Ambulance ETA :						
8. Prepared By (Medical Unit Leader)			9. Date/Time		10. Reviewed By (Safety Officer)		11. Date/Time	
Josh Ramey (530-277-1213) <i>Joshua Ramey</i>			7/5/14 1100		Michele Tanzi <i>Michele Tanzi</i>		7/5/14 1100	

MEDICAL PLAN (ICS 206 WF)

Medical Incident Report

Use items one through nine to communicate situation to communications/dispatch.

1. CONTACT COMMUNICATIONS, DECLARE: "MEDICAL EMERGENCY" OR "NON-EMERGENCY MEDICAL TRANSPORT"

Ex: "Communications, Div. Alpha. Stand-by for a medical emergency on Div. Alpha" (If life threatening request designated frequency be cleared for emergency traffic.)

2. INCIDENT STATUS: Provide incident summary and command structure.

- **Nature of Injury/Illness** Describe the injury (Ex: Broken leg with bleeding) _____
- **Incident Name** Geographic Name + "Medical" (Ex: Trout Meadow Medical) _____
- **Incident Commander** Name of IC _____
- **Patient Care** Name of Care Provider (Ex: EMT Smith) _____

3. INITIAL PATIENT ASSESSMENT: Complete this section for each pt. This is only a brief, initial assessment. Provide additional pt. info after completing this report.

- **Number of Patients:** _____ - **Male / Female:** _____ - **Age:** _____ - **Weight:** _____
- **Conscious?** YES NO = MEDEVAC! - **Breathing?** YES NO = MEDEVAC!
- **Mechanism of Injury** What caused the injury? _____
- **Location, Lat/Long** (Datum WGS84) Ex: N 40° 42.45' x W 123° 03.24' _____

4. SEVERITY OF EMERGENCY, TRANSPORT PRIORITY

SEVERITY	TRANSPORT PRIORITY
<input type="checkbox"/> URGENT-RED Life threatening injury or illness. <i>Ex: Unconscious, difficulty breathing, bleeding severely, 2° – 3° burns more than 4 palm sizes, heat stroke, disoriented.</i>	Ambulance or MEDEVAC helicopter. Evacuation need is IMMEDIATE.
<input type="checkbox"/> PRIORITY-YELLOW Serious Injury or illness. <i>Ex: Significant trauma, not able to walk, 2° – 3° burns not more than 1-2 palm sizes.</i>	Ambulance or consider air transport if at remote location. Evacuation may be DELAYED.
<input type="checkbox"/> ROUTINE-GREEN Not a life threatening injury or illness. <i>Ex: Sprains, strains, minor heat-related illness.</i>	Non-Emergency. Evacuation considered Routine of Convenience.

5. TRANSPORT PLAN:

Air Transport: (Agency Aircraft Preferred)

- Helispot
- Short-haul/Hoist
- Life Flight
- Other

Ground Transport:

- Self-Extract
- Carry-Out
- Ambulance
- Other

6. ADDITIONAL RESOURCE/EQUIPMENT NEEDS:

- Paramedic/EMT(s)
- SKED/Backboard/C-Collar
- Crew(s)
- Burn Supplies
- Oxygen
- Trauma Bag
- Medication(s)
- IV/Fluid(s)
- Cardiac Monitor/AED
- Other (i.e. splints, rope rescue, wheeled litter)

7. COMMUNICATIONS:

- Run Medical Emergency on COMMAND
- Coordinate with air ambulance on CALCORD

8. EVACUATION LOCATION:

- **Lat/Long** (Datum WGS84) EX: N 40 42.45' x W 123 03.24' _____
- **Patient's ETA to Evacuation Location:** _____
- **Helispot/Extraction Size and Hazards:** _____

9. CONTINGENCY: If primary options fail, what actions can be implemented in conjunction with primary evacuation method? Be thinking ahead...

REMEMBER:

- Confirm ETA's of resources ordered
 - Act according to your level of training
- If air or ground ambulance is DELAYED: Package and transport patient to rendezvous with incoming Ambulance.
Re-route EMS helicopter to rendezvous point as appropriate.

INCIDENT RISK ANALYSIS
Coleman
(ICS 215A) Night Shift

DIV	HAZARDOUS ACTIONS / CONDITIONS	MITIGATIONS / WARNINGS / REMEDIES
ALL	Communications	<ul style="list-style-type: none"> • Ensure you have received the most current communications plan, and your radios have been cloned to it before heading out to your work area. • TEST your radio before you leave camp to ensure you have comms, and then TEST again when you arrive at your work area. • Use human repeaters in areas with sketchy comms. • Refer to the 5 communication responsibilities listed on page ix in the 2014 IRPG
ALL	Driving Hazards	<ul style="list-style-type: none"> • Reduce your speeds! Stay on your side of the road! Do not cut corners! • This is open range. Both livestock and wildlife are abundant in the Fire area. Dawn & Dusk have a noticeably higher frequency of potential wildlife encounters. • Drive defensively! Expect the unexpected around every curve. • Drive with your headlights on. Look before backing and use backers. • Maintain driving situational awareness. • Washboard conditions are common on most of the native surface roads, along with dust...Maintain adequate following distances. • SEAT BELTS ON...LIGHTS ON...BEFORE wheels turn! • Reduce driving speeds to allow for reaction time lag. • On dusty/smoky roads, don't follow too closely behind traffic. Allow time for dust/smoke to clear. • Establish one-way traffic or coordinate traffic flow if necessary. • Don't drive when fatigued. Adhere to agency driving regulations and guidelines. • Pedestrians in town, Keep speeds down • When meeting oncoming traffic at night on narrow native surfaced roads, come to a controlled stop. Turn headlights to running lights; assist other vehicle in backing to a safe place to allow safe passage around vehicle.
ALL	Hydration & Heat Illness	<ul style="list-style-type: none"> • Pre-hydrate, Re-hydrate! Dehydration is preventable.....Drink a minimum of 250ml/hour; (¼ of canteen) • Drink water & Electrolyte drinks before, during, and after shifts. (2 waters to 1 electrolyte drink). • Do NOT mix with water or dilute electrolyte drink. It must be consumed as is for the body to absorb properly. • Low volumes of dark, concentrated urine or painful urination indicate a serious need for rehydration, & medical attention. • Ensure your crews take an adequate water/electrolyte supply out to assignment and order more as needed. Take frequent snack breaks to keep blood sugar levels up. • Pace work to avoid heat injuries • Heat exhaustion is characterized by: Weakness, Extreme Fatigue, Nausea, Dizziness & Headaches, clammy skin, persistent muscle cramps, decreased urine output. <ul style="list-style-type: none"> ○ Cool patient as quickly as possible! ○ Move patient to a cooler location and provide cold water and sports drink. ○ Actively reduce core temperature through evaporation by fanning patient. ○ Cover head and neck with wet cloth, increase air movement. ○ Heat exhaustion is characterized by: Weakness, Extreme Fatigue, Nausea, Dizziness Headaches, clammy skin, persistent muscle cramps, decreased urine output. ○ Remove Patient from fireline and seek medical attention. • Mental confusion may develop This is a serious trigger point for the potential onset of Heat Stroke. • Refer to Medical Plan for additional EMS care and Evacuation
ALL	Biting, Stinging Insects (Rattle Snakes, Scorpions, Bees, Mosquitoes, Ticks, etc)	<ul style="list-style-type: none"> • If allergic to bee stings, let your DIVS & EMT's know. • Leave the snakes alone! • Shake out boots and or sleeping bags prior to use • Use bug spray to minimize mosquito bites. • Check yourself daily for tick bites.
A,B,R	Heavy Equipment/Dozers	<ul style="list-style-type: none"> • Stay 100' in front and 50' behind the equipment. Maintain safe working distances. • If working in Timber, increase these distances to 2.5 times the canopy height. • Make eye contact with operator and ensure all implements have been grounded before approaching equipment. • Only the operator is authorized on the equipment. • Avoid working below equipment • Operators utilize appropriate PPE and equipment safety mechanisms. • Utilize observer or spotter. • Ensure the use of communication with operator (radio, hand signals).
ALL	Mop-Up	<ul style="list-style-type: none"> • Re-evaluate the need to mop-up in steep, rocky terrain • Ensure footing is solid in rocky ground • Wear proper PPE

**INCIDENT RISK ANALYSIS Cont.
Coleman
(ICS 215A) Night Shift**

ALL	Fire Behavior	<ul style="list-style-type: none"> • High rates of spread (ROS) in lighter fuels when aligned with wind & topography. • Ensure a solid anchor point and flank. • Use experienced LOOKOUTS under these conditions. • Monitor weather conditions. Be aware of visual indicators (clouds, WX obs., cold front passage) • Maintain adequate escape routes and safety zones. Set trigger points when appropriate. Communicate any changes. • Spotting Potential still exists....."Eyes to the green" • Be aware of Low RH's affecting all fuels. 	
A	Firing Operations	<ul style="list-style-type: none"> • Identify the Burn Boss, Firing Boss & Holding Boss and make it known to all. • Brief all resources including adjoining Divisions on the approved plan. • Ensure Communications is in place with both ground and air resources. • Assure experienced lookouts are in place before implementing plan. • Use qualified personnel for all assignments & Trainees have qualified trainers. • Utilize Risk Mgmt. Process (IRPG p. 1) for implementing the plan. • Establish LCES prior to implementing burning operations (IRPG p. 7). 	
ALL	Initial Attack	<ul style="list-style-type: none"> • Ensure risk management has been reviewed & LCES is in place before taking action on a new start. • Review Page 1 in 2014 IRPG before committing resources • Know IA frequencies... 	
ALL	Complacency	<ul style="list-style-type: none"> • Don't let your operations fall into the "routine" category. • Maintain situational awareness in all activities. 	
INCIDENT NAME Coleman Fire ICS 215a		DATE PREPARED:	July 05, 2014
		TIME PREPARED: 1200 HOURS	OPERATIONAL PERIOD Night Shift 7/5-6/2014, 1800-0800 Prepared by: Tanzi, Frederick



Today's discussion is from the
First Aid / Health Category.

HYDRATION

Dehydration is the result of the body trying to regulate its temperature naturally through sweating. Studies conducted on wildland firefighters indicate that during fire suppression activities firefighters need to drink a minimum of 1 quart of fluid each hour of work.

- Maintaining body fluids is essential for sweating. You must hydrate before, during, and after work.
- Before work you should take extra fluids to prepare for the heat. Drink 1 or 2 cups of water, juice, or a sport drink before work.
- While working drink at least 1 quart of fluid per hour. Drink as much as you can during the lunch break. Water is your greatest need during work in the heat.
- Hyponatremia (abnormally low concentration of sodium in the blood) as a result of excessive water intake a potentially life-threatening complication. Hyponatremia can be prevented when rehydration is enhanced by fluids containing sodium and potassium, or when foods with these electrolytes are consumed along with the fluid.
- After work it is important to continue drinking to replace fluid losses. Thirst always underestimates fluid needs, so you should drink more than you think you need.
- Unacclimatized workers lose more salt in the heat so they need to pay particular attention to salt replacement. Don't overdo salt intake; too much salt impairs temperature regulation. Excessive salt can cause stomach distress, fatigue, and other problems.
- You can assess your hydration by observing the volume, color, and concentration of your urine. Low volumes of dark, concentrated urine, or painful urination indicate a serious need for rehydration. Other signs of dehydration include a rapid heart rate, weakness, excessive fatigue, and dizziness.
- Rapid loss of several pounds of body weight is a certain sign of dehydration. Rehydrate before returning to work; continuing to work in a dehydrated state can lead to serious consequences, including heat stroke, muscle breakdown, and kidney failure.

References:

-Interagency Standards for Fire and Fire Aviation Operations

-Fitness and Work Capacity--Second Edition

-Wildland Firefighter Health and Safety: Recommendations of the April 1999 Conference, Death from Hyponatremia as a Result of Acute Water Intoxication in an Army Basic Trainee, T. Garigan and D. Ristedt

Have an idea? Have feedback? Share it.

ONLINE | MAIL: 6 Minutes For Safety Task Group • 3833 S. Development Ave • Boise, ID 83705 | FAX: 208-387-5250

6 Minutes Home

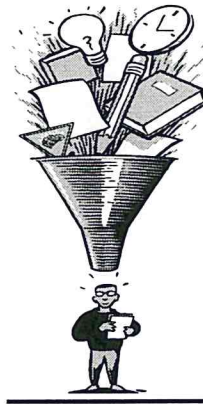
TRAINING SPECIALIST MESSAGE

Calling all trainees!!

If you are here as a trainee and have not checked in with the Training Specialist please do so right away.

I am located at the ICP.

Bring your Task Book and Red Card with you.



"The palest ink is better than the best memory". Chinese Proverb

Dominic Panno
Incident Training Specialist

Date & Time Order was placed:		Order #	Location & Time for Delivery (DIV,LZ,DP,Lat Long)		Mode of delivery
		(DIVS+#)			(Driven/Helo/DIVS to Pick up)
			Lat:		
			Long:		
Order received in Communications by (Name):					Time:
Order shipped to line by (Name): (Send this sheet to the line with the order)					Time:
#	Item				
1	1,000 Foot Hose Lay includes the following: Amount _____				
	10, 100'x1½" Rolls Hose; 10, 100'x1" Rolls Hose; 10, 1½" Gated Wyes; 10, 1½" to 1" reducers; 10, 1" nozzles				
2	2,000 Foot Hose Lay includes the following: Amount _____				
	20, 100'x1½" Rolls Hose; 20, 100'x1" Rolls Hose; 20, 1½" Gated Wyes; 20, 1½" to 1" reducers; 20, 1" nozzles				
3	3,000 Foot Hose Lay includes the following: Amount _____				
	30, 100'x1½" Rolls Hose; 30, 100'x1" Rolls Hose; 30, 1½" Gated Wyes; 30, 1½" to 1" reducers; 30, 1" nozzles				
#	Item	Amount	#	Item	Amount
4	Hose (50') garden, 3/4"		30	Gas Unleaded (Gallons)	
5	Hose (100'), 1"		31	Oil 2 cycle, (Pints)	
6	Hose (100'), 1½"		32	Bar Oil (Qts)	
7	Nozzle, Garden, 3/4"		33	Drip Torch ea	
8	Nozzle, Forester, 1"		34	Drip torch mix 3.5:1.5 (gallon)	
9	Nozzle, KK Type, 1"		35	Fusees (Boxes or cases)???	
10	Nozzle, KK Type, 1½"		36	Flare Gun Rounds (12/BX)	
11	Wye, Gated, 3/4"		37	Cartridge #6 purple (box)	
12	Wye, Gated, 1"		38	Batteries "AA" PKGs(24/PKG)/BX	
13	Wye, Gated, 1½"		39	Ribbon, Flagging (Specify Color)*	
14	Inline-Tee, 1x1x3/4"		40	Water, Cubies	
15	Inline-Tee, 1x1x1"		41	Water, Bottled, Cases	
16	Inline-Tee (1½" X 1")		42	Gatorade	
17	Reducer, 1" X 3/4"		43	MRE's (12/BX)	
18	Reducer, 1½" X 1"		44	Heavy Mill Plastic	
19	Increaser, 3/4" X 1"		45	Washcloth, waterless, cleansing	
20	Increaser, 1" X 1½"		46	Wrap, Structure 54"x300'	
21	Foam 5 gal		47	Sprinkler Kit	
22	Foam 4 oz (For Backpack Pump)		48	Mark 3 Pump	
23	Backpack Pump		49	Mark 3 Pump Kit- w/10 gal mixed fuel	
24	Pumpkin (Gallons?)		50	Chainsaw Kit	
25	Porta-Tank (Gallons?)		51	Mop-Up Kit, 3-Wand	
26	Shovel		52	Pump Kit, Lightweight, 2 Cycle	
27	Pulaski		53	Gas, Raw and 2 qts 2-cycle oil, ea	
28	Combi Tool		54	Lightweight Pump Kit-Cache w/5gal fuel	
29	McCloud		55	Gas, raw (gal) and 1 qt 2-cycle oil, ea.	
Notes:			Notes:		



