

Corral Complex

CA-SRF-001494

PJHU49



Incident Action Plan

8-14-2013 06:00 to 8-15-2013 06:00



Lookouts Communications Escape-Routes Safety Zones

INCIDENT OBJECTIVES ICS 202	1. INCIDENT NAME Corral Complex	2. DATE PREPARED 8/14/2013	3. TIME PREPARED 0:19									
4. OPERATIONAL PERIOD (DATE/TIME) <p style="text-align: center;">8-14-2013 0600 to 8-15-2013 0600</p>												
5. GENERAL CONTROL OBJECTIVES FOR THE INCIDENT (INCLUDE ALTERNATIVES)												
Incident Objectives: <ul style="list-style-type: none"> • Provide for firefighter and public safety in all incident operations. • Protect property and infrastructure. Control fire closest to communities. • Keep stakeholders, the public, and cooperators informed of fire status. • Keep costs commensurate with identified values at risk. • Protect cultural and natural resources. • Protect wilderness values and utilize MIST in the Trinity Alps Wilderness. 												
Operational Objectives: <ul style="list-style-type: none"> • Keep the fire: <ul style="list-style-type: none"> o East and South of the Hoopa Valley Indian Reservation. o North of Lone Pine Ridge. o West of the defensible ridgeline running through Grizzly Camp and Trinity Summit along the county line, which had contingency line built in 2009 during the Backbone Fire. o South of the 2009 Backbone Fire. 												
6. WEATHER FORECAST FOR OPERATIONAL PERIOD See attached												
7. GENERAL / SAFETY MESSAGE See attached												
8. ATTACHMENTS (CHECK IF ATTACHED) <table style="width: 100%; border: none;"> <tr> <td><input checked="" type="checkbox"/> ORGANIZATION LIST (ICS 203)</td> <td><input checked="" type="checkbox"/> MEDICAL PLAN (ICS 206)</td> <td><input checked="" type="checkbox"/> AIR OPERATIONS SUMMARY (ICS 220)</td> </tr> <tr> <td><input checked="" type="checkbox"/> DIVISION ASSIGNMENT LISTS (ICS 204)</td> <td><input type="checkbox"/> INCIDENT MAP - (2 MAPS)</td> <td><input type="checkbox"/></td> </tr> <tr> <td><input checked="" type="checkbox"/> COMMUNICATIONS PLAN (ICS 205)</td> <td><input checked="" type="checkbox"/> TRAFFIC PLAN</td> <td><input type="checkbox"/></td> </tr> </table>				<input checked="" type="checkbox"/> ORGANIZATION LIST (ICS 203)	<input checked="" type="checkbox"/> MEDICAL PLAN (ICS 206)	<input checked="" type="checkbox"/> AIR OPERATIONS SUMMARY (ICS 220)	<input checked="" type="checkbox"/> DIVISION ASSIGNMENT LISTS (ICS 204)	<input type="checkbox"/> INCIDENT MAP - (2 MAPS)	<input type="checkbox"/>	<input checked="" type="checkbox"/> COMMUNICATIONS PLAN (ICS 205)	<input checked="" type="checkbox"/> TRAFFIC PLAN	<input type="checkbox"/>
<input checked="" type="checkbox"/> ORGANIZATION LIST (ICS 203)	<input checked="" type="checkbox"/> MEDICAL PLAN (ICS 206)	<input checked="" type="checkbox"/> AIR OPERATIONS SUMMARY (ICS 220)										
<input checked="" type="checkbox"/> DIVISION ASSIGNMENT LISTS (ICS 204)	<input type="checkbox"/> INCIDENT MAP - (2 MAPS)	<input type="checkbox"/>										
<input checked="" type="checkbox"/> COMMUNICATIONS PLAN (ICS 205)	<input checked="" type="checkbox"/> TRAFFIC PLAN	<input type="checkbox"/>										
ICS 202	9. PREPARED BY (PLANNING SECTION CHIEF) G. Gardner / S. Abbott(t)		10. APPROVED BY (INCIDENT COMMANDER) D. Garwood / D. Kelly(t)									

ORGANIZATION ASSIGNMENT LIST ICS-203		1. INCIDENT NAME	2. DATE PREPARED	3. TIME PREPARED
		Corral Complex	8/14/2013	8/14/2013 0:29
4. OPERATIONAL PERIOD (DATE/TIME)		8-14-2013 0600 to 8-15-2013 0600		
5. INCIDENT COMMANDER AND STAFF		9. OPERATIONS SECTION		
INCIDENT COMMANDER	D. Garwood /D. Kelly(t)	CHIEF	M. Bogens	
DEPUTY	R. Woychak	DEPUTY OSC		
		PLANNING OSC	K. Martin	
SAFETY OFFICER	J. Arragon	10. BRANCH I - DIVISIONS/GROUPS		
INFORMATION OFFICER	J. Wilkins			
LIAISON OFFICER	L. LaVogue			
HUMAN RESOURCES	K. Kreyns			
6. AGENCY REPRESENTATIVES		11. BRANCH II - DIVISIONS/GROUPS		
AGENCY	NAME	BRANCH DIRECTOR		
SRF	M. Minton	M. Conklin		
SRF	R. Young	DEPUTY		
Hoopa	R. Mendez	DIVISION / GROUP		
Cal Fire	H. Scanlon	S. Reyes		
Res. Cultural Adv.	D. Jarnaghan	M. Fowlkes		
		J. Escandel		
7. PLANNING SECTION		12. BRANCH III - DIVISIONS/GROUPS		
CHIEF	G. Gardner / S.Abbott(t)	BRANCH DIRECTOR		
DEPUTY		M. Koontz		
RESOURCES UNIT	T. Knorr /T. McGovern /K. Hauducoeur(t)	DEPUTY		
SITUATION UNIT	J. McClelland / K. Van Wig(t)	DIVISION / GROUP		
DOCUMENTATION UNIT	K.Ellickson	B. Evans		
DEMOBILIZATION UNIT		G. Tamplin		
TECHNICAL SPECIALISTS		R. Marinelli		
FBAN	R. Gonzales / B. Eisele	T. McDivitt		
LTAN	A. Ziegler / M. Beasley			
TNSP	B. Tattersfield			
GISS	S. Leininger / R. Murillo			
8. LOGISTICS SECTION		13. AIR OPERATIONS BRANCH		
CHIEF	E. Sweetman	AIR OPERATIONS BR. DIR.		
DEPUTY LSC	D. Haston	T. Visser		
9. SUPPORT BRANCH		AIR ATTACK SUPERVISOR		
DIRECTOR		J. Gonzalez		
SUPPLY UNIT	E. Tiss	AIR SUPPOPT SUPERVISOR		
FACILITIES UNIT	S. King / A. Curley	G. Young		
GROUND SUPPORT UNIT	C. Haley / R. Noordman	HELICOPTER COORDINATOR		
10. SERVICE BRANCH		AIR TANKER COORDINATOR		
DIRECTOR				
COMMUNICATIONS UNIT	D. Larkin	14. FINANCE SECTION		
MEDICAL UNIT	J. Ahl / B. Puckett(t)	CHIEF		
FOOD UNIT	R. Waite	DEPUTY FSC		
15. PREPARED BY (RESOURCES UNIT)		TIME UNIT		
ICS 203		D. Rutherford / L. Lee		
		PROCUREMENT UNIT		
		K. Bauman		
		COMPENSATION/CLAIMS UNIT		
		COST UNIT		
		T. Knorr /T. McGovern /K. Hauducoeur(t)		

.DISCUSSION...

WARMER TEMPS WITH LOWER AFTERNOON RH AND POOR HUMIDITY RECOVERIES ABOVE 2000 FT WILL CONTINUE THROUGH WEDNESDAY. LIGHT E-NE FLOW WILL DEVELOP OVERNIGHT BEFORE VEERING BACK TO THE W-NW WED AFTERNOON.

.TUESDAY NIGHT...

SKY/WEATHER.....MOSTLY CLEAR. PATCHY SMOKE.
MIN TEMPERATURE.....AROUND 57. MAX HUMIDITY.....56 PERCENT.
EYE LEVEL WINDS.....WSW TO W 4 TO 7 MPH WITH GUSTS UP TO 15 MPH IN EVENING
BECOMING NE 1 TO 3 MPH OVERNIGHT.
SURROUNDING RIDGE...WNW 5 TO 8 MPH BECOMING NE TO E 2 TO 4 MPH OVERNIGHT.
MIXING HEIGHT.....4600 FT AGL DECREASING TO 300-1400 FT AGL EARLY
IN THE EVENING.
MIXING WINDS.....NORTH AROUND 5 MPH BECOMING SE OVERNIGHT.
WIND (20 FT).....NORTHWEST WINDS 5 TO 8 MPH WITH GUSTS UP TO 15 MPH
IN THE EVENING BECOMING NE 1 TO 3 MPH OVERNIGHT.

.WEDNESDAY...

SKY/WEATHER.....SUNNY. AREAS OF SMOKE IN THE MORNING...THEN
PATCHY SMOKE IN THE AFTERNOON.
MAX TEMPERATURE.....AROUND 83. MIN HUMIDITY.....27 PERCENT.
EYE LEVEL WINDS.....E UP TO 3 MPH BECOMING S-SW 1 TO 5 MPH LATE IN THE
MORNING...THEN BECOMING W 4 TO 8 MPH WITH GUSTS TO 18 MPH
IN THE AFTERNOON.
SURROUNDING RIDGE...SW 2 TO 4 MPH BECOMING W 4 TO 8 MPH WITH GUSTS UP TO
18 MPH IN THE AFTERNOON.
MIXING HEIGHT.....300-900 FT AGL INCREASING TO 5200-6700 FT AGL LATE IN THE
MORNING...THEN DECREASING TO 3400 FT AGL LATE IN THE
AFTERNOON.
MIXING WINDS.....SOUTHWEST AROUND 6 MPH.
WIND (20 FT).....LIGHT E WINDS BECOMING W 5 TO 9 MPH IN THE AFTERNOON.

.WEDNESDAY NIGHT...

SKY/WEATHER.....MOSTLY CLEAR. PATCHY SMOKE.
MIN TEMPERATURE.....AROUND 59. MAX HUMIDITY.....51 PERCENT.
EYE LEVEL WINDS.....W 5 TO 8 MPH WITH GUSTS TO 15 MPH IN THE EVENING BECOMING
NE-E UP TO 3 MPH OVERNIGHT.
SURROUNDING RIDGE...W 3 TO 7 WITH GUSTS TO 15 MPH IN THE EVENING BECOMING
LIGHT AND VARIABLE OVERNIGHT.
MIXING HEIGHT.....3400 FT AGL DECREASING TO 300-1300 FT AGL EARLY IN THE
EVENING.
MIXING WINDS.....W AROUND 4 MPH.
WIND (20 FT).....W 5 TO 8 MPH IN THE EVENING BECOMING LIGHT AND VARIABLE.

.THURSDAY THROUGH SATURDAY...AN APPROACHING UPPER LEVEL TROUGH WILL BRING
INCREASING MID AND HIGH CLOUDS TO THE REGION BEGINNING WED AFTERNOON. THIS
WILL RESULT IN SLIGHTLY COOLER TEMPS AND IMPROVING HUMIDITIES BEGINNING THU.
INSTABILITY INCREASES AS THE TROUGH NEARS FRI WITH A SLIGHT CHANCE OF
THUNDERSTORMS DEVELOPING N AND E OF THE BURN AREA. MORE SIGNIFICANT COOLING
AND IMPROVED HUMIDITIES BY SAT AS THE UPPER TROUGH MOVES ACROSS THE REGION.

FIRE BEHAVIOR FORECAST

FORECAST NUMBER: #1	TYPE OF FIRE: Wildfire
FIRE NAME: CORRAL	OPERATIONAL PERIOD: 8/14/2013 24 hour
DATE ISSUED: August 13, 2013	TIME ISSUED: 2000
UNIT: SIX RIVERS NF	SIGNED: <i>Bob Eisele</i> Bob Eisele - FBAN

INPUTS

WEATHER SUMMARY

(Refer to Weather Forecast for details) WARMER TEMPS WITH LOWER AFTERNOON RH AND POOR HUMIDITY RECOVERIES ABOVE 2000 FT WILL CONTINUE THROUGH WEDNESDAY. LIGHT E-NE FLOW WILL DEVELOP OVERNIGHT BEFORE VEERING BACK TO THE W-NW WED AFTERNOON. MAX TEMPERATURE, AROUND 83. EYE LEVEL WINDS.. W 4 TO 8 MPH WITH GUSTS TO 18 MPH IN THE AFTERNOON.

FUELS

The fire is burning in the footprint of the 1999 Megram fire. Fuels are snags, logs, and 13 year old ceanothus (snow brush).

Minimum fine dead fuel moisture: 6-7%, 1000 hour FMC: 9%, 10 hour FMC: 6%, Live fuel moisture: 141%

OUTPUTS - FIRE BEHAVIOR

DAY SHIFT:

Thresholds for Active Fire Behavior in the Corral Fire area:

20ft Winds (over 7 mph), *RH (under 31%), *Temperature (over 82°) and *1000hr FMC (under 13%).

Large fires become more frequent when BI exceeds 50 and ERC exceeds 47

➤ Forecasted Indices (change from yesterday) ERC: 61 (up 2) BI: 60 (up 1)

➤

Maximum Fire Behavior (head fire upslope): Rate of Spread: ~5 chains/hour (5'/min),
Flame Length: 3-4 ft. Probability of Ignition: 70%. Maximum spotting distance of 700-1000 feet.

GENERAL:

The primary carriers of fire are logs and branches killed in Megram Fire of 1999 and embers blown from burning snags. Embers are igniting deal logs and other snags.

FEEDBACK: Collect WX obs hourly and turn in to FBAN or IMET at end of shift. Please Include fire behavior.

AIR OPERATIONS

- Sunrise 06:23 Sunset 20:13

SAFETY

- The gusty winds this afternoon could bring down snags including snags outside of the fire area.
- Don't forget to look up before you look down.
-

1. BRANCH I	2. DIVISION/GROUP	DIVISION ASSIGNMENT LIST ICS 204
-----------------------	-------------------	-----------------------------------------

3. INCIDENT NAME Corral Complex	4. OPERATIONAL PERIOD 8-14-2013 0600 to 8-15-2013 0600
-------------------------------------------	------------------------------------------------------------------

5. OPERATIONS PERSONNEL	
OPERATIONS CHIEF M. Bogens	DIVISION/GROUP SUPERVISOR
BRANCH DIRECTOR M. Conklin	AIR ATTACK SUPERVISOR J. Gonzalez

6. RESOURCES ASSIGNED THIS PERIOD					
STRIKE TEAM/TASK FORCE/ RESOURCE DESIGNATOR	LEADER	NUMBER PERSONS	TRANS NEEDED	DROP OFF POINT / TIME	PICK UP POINT / TIME
	S. Reyes				
	M. Fowlkes				
	J. Escandel				
Springville IHC					
Dalton IHC					

7. CONTROL OPERATIONS
Identify Division breaks and assess work assignments. Assess potential spike camps in Patterson Meadows and Bear Hole.

8. SPECIAL INSTRUCTIONS

9. DIVISION/GROUP COMMUNICATIONS SUMMARY							
FUNCTION	FREQ	SYSTEM	CHAN	FUNCTION	FREQ	SYSTEM	CHAN
COMMAND	LOCAL REPEAT	See ICS205 on back		SUPPORT	LOCAL REPEAT		
DIV./GROUP TACTICAL		See ICS205 on back		GROUND TO AIR	See ICS205 on back		

PREPARED BY (RESOURCE UNIT LDR.) T. Knorr / T. McGovern / K. Hauducoeur(t)	APPROVED BY (PLANNING SECT. CH.) G. Gardner / S. Abbott(t)	DATE 8/14/2013	TIME 8/14/2013 0:36
--------------------------------------------------------------------------------------	----------------------------------------------------------------------	-------------------	------------------------

INCIDENT RADIO COMMUNICATION PLAN		Incident Name Corral Fire	Date/Time Prepared 8-13-13 2200 hrs	Operational Period Date/Time 8-14-13 thru 8-15-13 0600-0600 (24 hrs)	
Radio Channel Utilization					
Ch#	Function	Channel Name	Assignment	Frequency	Remarks
1	COMMAND	NIFC C-1	ALL DIVISIONS	Rx: 168.7000 Tx: 170.9750	Trinity Summit Tone 11 (114.8)
2			Unassigned		
3			Unassigned		
4	BACKUP COMMAND NET	SRF ADM	ALL DIVISIONS	Rx: 168.1250 Tx: 170.4750	Tone 13 (141.3) Tone 3 (131.8)
5	TACTICAL	NIFC T-5	DIVISION A	166.7250	
6	TACTICAL	NIFC T-6	DIVISION F	166.7750	
7	TACTICAL	NIFC T-7	DIVISION N	168.2500	
8	TACTICAL	R5 TAC 4	DIVISION M	166.5500	
9	TACTICAL	R5 TAC 5	DIVISION R	167.1125	
10	TACTICAL	R5 TAC 6	DIVISION Z	168.2375	
11	AIR-TO-GROUND	A/G	ALL DIVISIONS	167.0625	
12	TACTICAL	VFIRE 24	Unassigned	154.2725	Tone 6 (156.7)
13	TACTICAL	VFIRE 25	Unassigned	154.2875	Tone 6 (156.7)
14	TACTICAL	VFIRE 26	Unassigned	154.3025	Tone 6 (156.7)
15	MED A/G TAC	CALCORD	ALL DIVISIONS	156.0750	MEDICAL EMERG Tone 6 (156.7)
16/20	AIR GUARD	GUARD	ALL DIVISIONS	168.6250	EMERGENCY ONLY Tone 1 (110.9)
Notes:					
Prepared by: David Larkin COML					

1. BRANCH V	2. DIVISION/GROUP	DIVISION ASSIGNMENT LIST ICS 204
-----------------------	-------------------	-----------------------------------------

3. INCIDENT NAME Corral Complex	4. OPERATIONAL PERIOD 8-14-2013 0600 to 8-15-2013 0600
-------------------------------------------	------------------------------------------------------------------

5. OPERATIONS PERSONNEL			
OPERATIONS CHIEF	M. Bogens	DIVISION/GROUP SUPERVISOR	
BRANCH DIRECTOR	M. Koontz	AIR ATTACK SUPERVISOR	J. Gonzalez

6. RESOURCES ASSIGNED THIS PERIOD					
STRIKE TEAM/TASK FORCE/ RESOURCE DESIGNATOR	LEADER	NUMBER PERSONS	TRANS. NEEDED	DROP OFF POINT / TIME	PICK UP POINT / TIME
	B. Evans				
	G. Tamplin				
	R. Marinelli				
	T. McDivitt				

7. CONTROL OPERATIONS
 Identify Division breaks and assess work assignments. Coordinate / communicate with resources assigned to the Shasta NF (opening up contingency line from the Meegram Fire).

8. SPECIAL INSTRUCTIONS

9. DIVISION/GROUP COMMUNICATIONS SUMMARY							
FUNCTION	FREQ	SYSTEM	CHAN.	FUNCTION	FREQ	SYSTEM	CHAN.
COMMAND	LOCAL	See ICS205 on back		SUPPORT	LOCAL		
	REPEAT						
DIV./GROUP TACTICAL		See ICS 205 on back		GROUND TO AIR	See ICS205 on back		

PREPARED BY (RESOURCE UNIT LDR.) T. Knorr / T. McGovern / K. Hauducoeur(t)	APPROVED BY (PLANNING SECT. CH.) G. Gardner / S. Abbott(t)	DATE 8/14/2013	TIME 8/14/2013 0:12
--------------------------------------------------------------------------------------	----------------------------------------------------------------------	-------------------	------------------------

INCIDENT RADIO COMMUNICATION PLAN		Incident Name	Date/Time Prepared	Operational Period Date/Time	
		Corral Fire	8-13-13 2200 hrs	8-14-13 thru 8-15-13 0600-0600 (24 hrs)	
Radio Channel Utilization					
Ch#	Function	Channel Name	Assignment	Frequency	Remarks
1	COMMAND	NIFC C-1	ALL DIVISIONS	Rx: 168.7000 Tx: 170.9750	Trinity Summit Tone 11 (114.8)
2			Unassigned		
3			Unassigned		
4	BACKUP COMMAND NET	SRF ADM	ALL DIVISIONS	Rx: 168.1250 Tx: 170.4750	Tone 13 (141.3) Tone 3 (131.8)
5	TACTICAL	NIFC T-5	DIVISION A	166.7250	
6	TACTICAL	NIFC T-6	DIVISION F	166.7750	
7	TACTICAL	NIFC T-7	DIVISION N	168.2500	
8	TACTICAL	R5 TAC 4	DIVISION M	166.5500	
9	TACTICAL	R5 TAC 5	DIVISION R	167.1125	
10	TACTICAL	R5 TAC 6	DIVISION Z	168.2375	
11	AIR-TO-GROUND	A/G	ALL DIVISIONS	167.0625	
12	TACTICAL	VFIRE 24	Unassigned	154.2725	Tone 6 (156.7)
13	TACTICAL	VFIRE 25	Unassigned	154.2875	Tone 6 (156.7)
14	TACTICAL	VFIRE 26	Unassigned	154.3025	Tone 6 (156.7)
15	MED A/G TAC	CALCORD	ALL DIVISIONS	156.0750	MEDICAL EMERG Tone 6 (156.7)
16/20	AIR GUARD	GUARD	ALL DIVISIONS	168.6250	EMERGENCY ONLY Tone 1 (110.9)
Notes:					
Prepared by: David Larkin COML					

GIR OPERATIONS SUMMARY

PREPARED BY: Ted Visser *Ted Visser*

PREPARED DATE/TIME: 8/13/2013 2100hr

1. INCIDENT NAME: Corral Complex 2. OPERATIONAL PERIOD DATE: 8/14/13 START TIME: 0600 END TIME: 2030 SUNRISE:0623 SUNSET:2015

3. REMARKS (Safety Notes, Hazards, Air Operations Special Equipment, etc.): Wire rich environment. Get Thorough Briefing. Study Flight Hazard Map

*All Lat and Long locations are to be in Degrees, Minutes, Decimal Minutes when possible**

Willow Creek Base N 40 57.036 W 123 38.164

6. PERSONNEL		Phone	7. FREQUENCIES		AM	FM	8. FIXED-WING		# Avail / Type/ Make-Model / FAA N# / Base(s)
AOBD: Ted Visser		619-981-2409	AIR/AIR FW:			166.6000	Air tankers		
ATGS: Jim Gonzalez		619-607-8642	AIR/AIR RW:	132.3500			Lead planes		
ASGS: Galen Young		575-574-8720	AIR/GROUND:			167.0625	Base FAX #:		Rohnerville ATB 707-725-4572
HLCO:			COMMAND:				ATGS Aircraft		N848CE Available after 1200 8-14-13
HEBM:			COMMAND RPT						
HEBM: Brian Rogers 530-310-5421			DECK FREQ:			163.100			
			TOLC FREQ:						

9. HELICOPTERS (Use Additional Sheets As Necessary)

FAA N#	TY	MAKE/MODEL	BASE	AVAIL	START	REMARKS	FAA N#	TY	MAKE/MODEL	BASE	AVAIL	START	REMARKS
22EA	3	Bell 206B3 A-13	Willow	0700	0730	Mgr. Kevin Halleran 435-640-5424 O-71							
62HP	3	Bell 206L4 A-7	Willow	0700	0730	Mgr. Brian Rogers 530-310-5421 O-27							
912CK	1	SH3H A-6	Willow	0700	0730	Mgr. Patrick Edwards 208-863-2831 O-24							
CFIRX	1	S-61N A-8	Willow	0700	0730	Mgr. Chris Corrigan T 305-781-8706 O-25							

INCIDENT RADIO COMMUNICATION PLAN		Incident Name	Date/Time Prepared	Operational Period Date/Time	
		Corral Fire	8-13-13 2200 hrs	8-14-13 thru 8-15-13 0600-0600 (24 hrs)	
Radio Channel Utilization					
Ch#	Function	Channel Name	Assignment	Frequency	Remarks
1	COMMAND	NIFC C-1	ALL DIVISIONS	Rx: 168.7000 Tx: 170.9750	Trinity Summit Tone 11 (114.8)
2			Unassigned		
3			Unassigned		
4	BACKUP COMMAND NET	SRF ADM	ALL DIVISIONS	Rx: 168.1250 Tx: 170.4750	Tone 13 (141.3) Tone 3 (131.8)
5	TACTICAL	NIFC T-5	DIVISION A	166.7250	
6	TACTICAL	NIFC T-6	DIVISION F	166.7750	
7	TACTICAL	NIFC T-7	DIVISION N	168.2500	
8	TACTICAL	R5 TAC 4	DIVISION M	166.5500	
9	TACTICAL	R5 TAC 5	DIVISION R	167.1125	
10	TACTICAL	R5 TAC 6	DIVISION Z	168.2375	
11	AIR-TO-GROUND	A/G	ALL DIVISIONS	167.0625	
12	TACTICAL	VFIRE 24	Unassigned	154.2725	Tone 6 (156.7)
13	TACTICAL	VFIRE 25	Unassigned	154.2875	Tone 6 (156.7)
14	TACTICAL	VFIRE 26	Unassigned	154.3025	Tone 6 (156.7)
15	MED A/G TAC	CALCORD	ALL DIVISIONS	156.0750	MEDICAL EMERG Tone 6 (156.7)
16/20	AIR GUARD	GUARD	ALL DIVISIONS	168.6250	EMERGENCY ONLY Tone 1 (110.9)
Notes:					
Prepared by: David Larkin COML					

MEDICAL PLAN	1. INCIDENT NAME CORRAL COMPLEX	2. DATE PREPARED 8/13/13	3. TIME PREPARED 18:48	4. OPERATIONAL PERIOD 8/14/13
---------------------	-------------------------------------------	------------------------------------	----------------------------------	-----------------------------------------

5. INCIDENT MEDICAL AID STATIONS				
MEDICAL AID STATIONS	LOCATION			PARAMEDICS
Medical Unit	ICP: Veterans Park, Willow Creek, CA			YES NO
				X

6. TRANSPORTATION				
A. GROUND AMBULANCES				
NAME	ADDRESS	Contact	PARAMEDICS	
Hoopaa Ambulance	Hoopaa and Willow Creek	Communications	YES	NO
			X	

B. AIR AMBULANCES and RESCUE AIRCRAFT				
NAME	LOCATION	Est. Flighttime to Incident	PARAMEDICS	
CalFire 107 (DAY ONLY HOIST)	Kneeland, CA	25 Minutes	YES	NO
CHP H-13 (HOIST)	Redding, CA	40 Minutes	X	
AFRCC / Coast Guard (HOIST)	Eureka, CA	30 Minutes		X
Reach 5	Redding, CA	40 Minutes	X	
PHI Air Medical	Redding, CA	40 Minutes	X	

7. HOSPITALS								
NAME	ADDRESS	TRAVEL TIME		Trauma Level	HELIPAD		BURN CENTER	
		AIR	GRND		YES	NO	YES	NO
Willow Creek Community Health Center	Willow Creek, CA	X	5min	NO		X		X
Mad River Community Hospital	Willow Creek, CA	X	5min	NO		X		X
St Joseph Hospital	Eureka, CA	25min	1hr	Level 4	X			X
Mercy Medical Center	Redding, CA	40min	2hr	Level 2	X			X
UC Davis	Sacramento, CA	1.5hr	X	Level 1	X		X	

8. MEDICAL EMERGENCY PROCEDURES		
Line/Spike Camp Emergency Crew Supervisor to contact DIVS with patient complaint/condition and location. DIVS Contacts: Line EMT Corral Communications Operations / Branch On Scene EMS, DIVS, or MEDL decides mode of transportation. Communications will contact: Humboldt County EOC Medical Unit Safety Air Ops DIVS will manage the emergency with input from Med Unit. If a MedEvac is needed, be sure to identify the Lat/Long of the closest helispot.	Base Camp Emergency Contact Medical Unit with patient complaint/condition and location. Medical staff will respond to stabilize incident. Medical Unit contacts: Communications Safety Logistics Operations Crew Supervisor	Injury Reporting Procedures Nature of Injury Location of Patient: Transportation Required: Air: Ground: Point of Pickup: Lat: Lon: Crew ID (NO NAMES ON RADIO): Is EMT with Patient? Age: Sex:

For incident medical evacuation plan, see Medical Evacuation of Personnel from Corral Complex attachment.

ICS 206	9. PREPARED BY (MEDICAL UNIT LEADER) B. Puckett	10. REVIEWED BY (SAFETY OFFICER) J. Aragon
----------------	-----------------------------------------------------------	------------------------------------------------------



Medical Evacuation of Personnel from Corral Complex

This fire is burning in very remote, steep and rugged terrain where access is difficult. Southern California Incident Management Team 2 is committed to providing the necessary response should any medical incident occur and to ensure that a rapid and appropriate evacuation is completed. This plan is designed to identify and outline the steps necessary to safely and effectively evacuate an injured firefighter from the Corral Complex and deliver that firefighter to an appropriate medical facility in both daytime and nighttime settings.

Once notification of a medical emergency, and the Division Supervisor and/or EMT's make the decision that a medical evacuation is required, Incident Management Team components will work together to accomplish the evacuation. Medical Unit Leader, Safety Officer, and Air Operations will join the Communications Unit in the communications trailer for a coordinated response. The highest qualified medical personnel on scene shall assume control of patient care. The Division Supervisor shall coordinate the response, and handle communications with incident communication unit and medical unit, and air to ground communications. The Division Supervisor may delegate communications to appropriate resources as needed to facilitate the operation.

Ground Medical Evacuation

- If the injured firefighter is *WITHIN* reasonable hiking distance from a road which can be driven and determined to have a condition which *WILL NOT* be aggravated by driving him/her out, then an incident vehicle shall be utilized to evacuate the injured firefighter from the scene to either the ICP Medical Unit or to a rendezvous point with a ground ambulance. The destination decision shall lie with the DIVS with consultation from the highest level care provider on scene.
- The following ground ambulance providers and locations for ground ambulance coverage for this incident location:

Agency	Base Location	Provider Level	Drive Time to ICP
Hoopa Ambulance	Willow Creek, CA	Paramedic	5 minutes
Hoopa Ambulance	Hoopa, CA	Paramedic	30 minutes

Air Medical Evacuation

- If the injured firefighter is *NOT WITHIN* reasonable hiking distance to a road and/or determined to have a condition which *WILL* be aggravated and worsened by driving him/her out, the following aircraft shall be launched based on the closest available resource needed to meet the injured firefighter at the helispot or hoist site. The Division Supervisor will coordinate a hand carry out of the injured firefighter to the helispot/hoist site. The rescue helicopter will evacuate the firefighter to an appropriate location based on medical necessity to rendezvous with ground ambulance, air ambulance, or hospital. Rescue aircraft and locations for this incident are:

Agency	Hoist Capabilities	Medical Capabilities	Base Location	Estimated Flight Time to Incident
CalFire107	Day Hoist	BLS	Kneeland, CA	25 minutes
CHP H-13	Day/Night Hoist	ALS	Redding, CA	40 minutes
Military Resources	Day/Night Hoist	BLS / Sometimes ALS	Multiple	45+ minutes (+ military call out time)
Assigned incident aviation resources as available	None	Varies	Varies	10 minutes

- If the injured firefighter requires air ambulance transportation to a hospital, the following helicopters shall be utilized:

Agency	Base Location	Flight time to Incident
Reach 5	Redding, CA	40 Minutes
PHI Air Medical	Redding, CA	40 Minutes

Once lifted, the helicopters will experience an estimated flight time to each of the following facilities:

Hospital	Specialty Center	Location	Helipad	Flight time from Incident
Mercy Medical Center	Level 2 Trauma	Redding, CA	Depends on AC	40 minutes
UC Davis Hospital	Level 1 Trauma and Burn Center	Sacramento, CA	Yes	1.5 hours



Prepared By:
Brian Puckett, MEDL



Approved By:
James Aragon, SOF2

HEALTH AND SAFETY MESSAGE

SAFETY starts with *YOU*

We are ALL accountable for SAFE behaviors

INCIDENT: **Corral Complex**

DATE: 8/14/13 TIME:

Major Hazards and Risk: Steep Terrain, Rolling Material, Snags, bees and snakes. Fatigue and dehydration.

Fire Order of the Day – Keep informed on fire weather conditions and forecasts

Narrative:

Maintain your situational awareness Hazard Trees exist in all divisions of this incident, not just dead snags but fire weakened live green trees have been falling as well. Rolling materials are prevalent whenever steep slopes are experienced. Watch out for rattlesnakes and bees as they have been reported throughout the fire area. Poison Oak is also present. Drink plenty of water and conduct your tailgate safety briefings.

Watch Out Situation of the Day



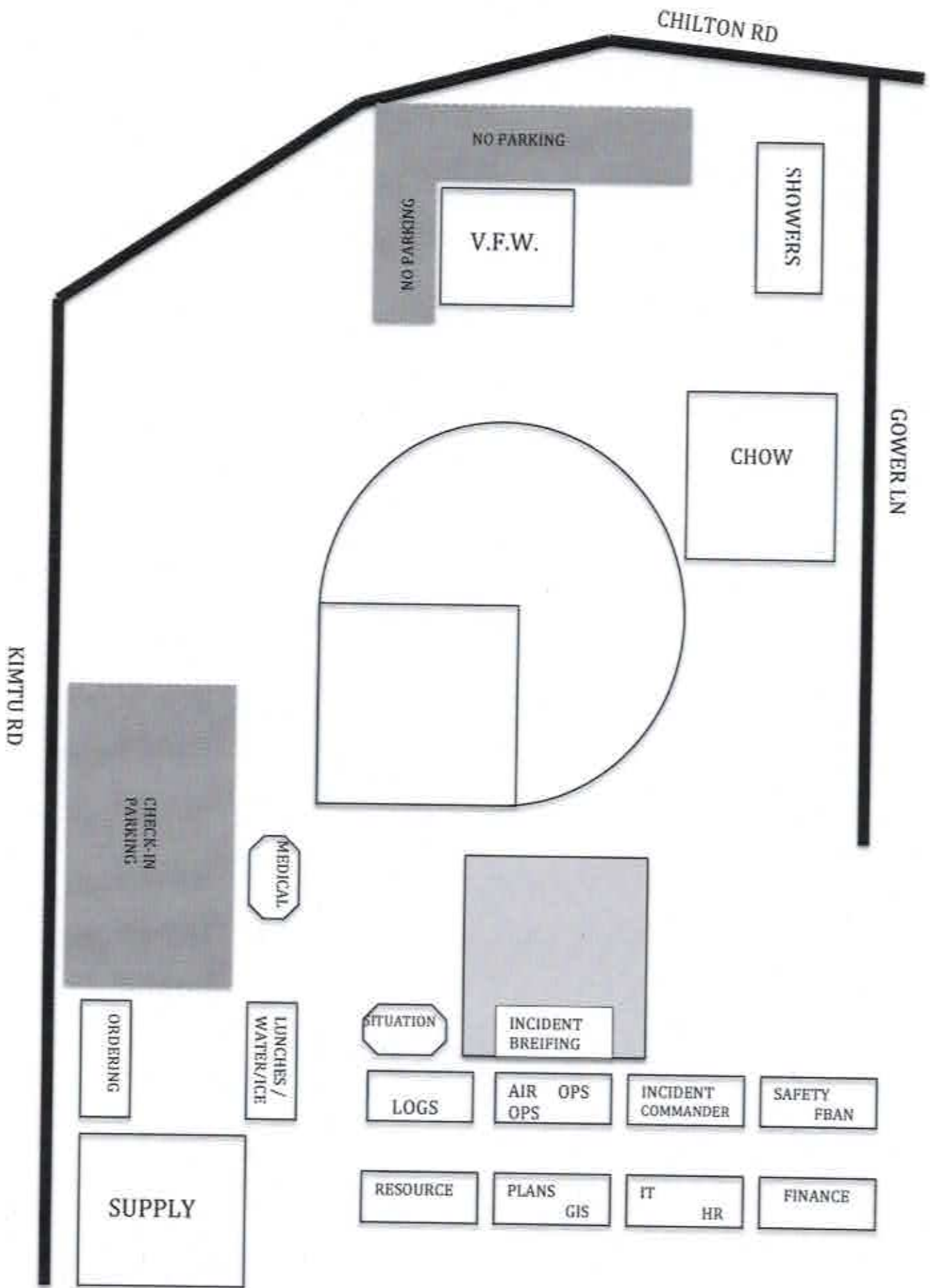
1. FIRE NOT SCOUTED AND SIZED UP

Look Up, Look Down, Look Around

- ***Fire Line Characteristics** – *Assess* prior to beginning Operations.
- ***Fuel Moisture** – *Read* daily shift plan and assess on site.
- ***Wind** – *Measure*, observe, feel and notice changes.
- ***Atmospheric Stability** – *Observe*.
- ***Fire Behavior** – *Monitor* constantly prior to and during operations.
- ***Safety** – *Ask* questions in unfamiliar situations. The only dumb question is the one you did not ask.

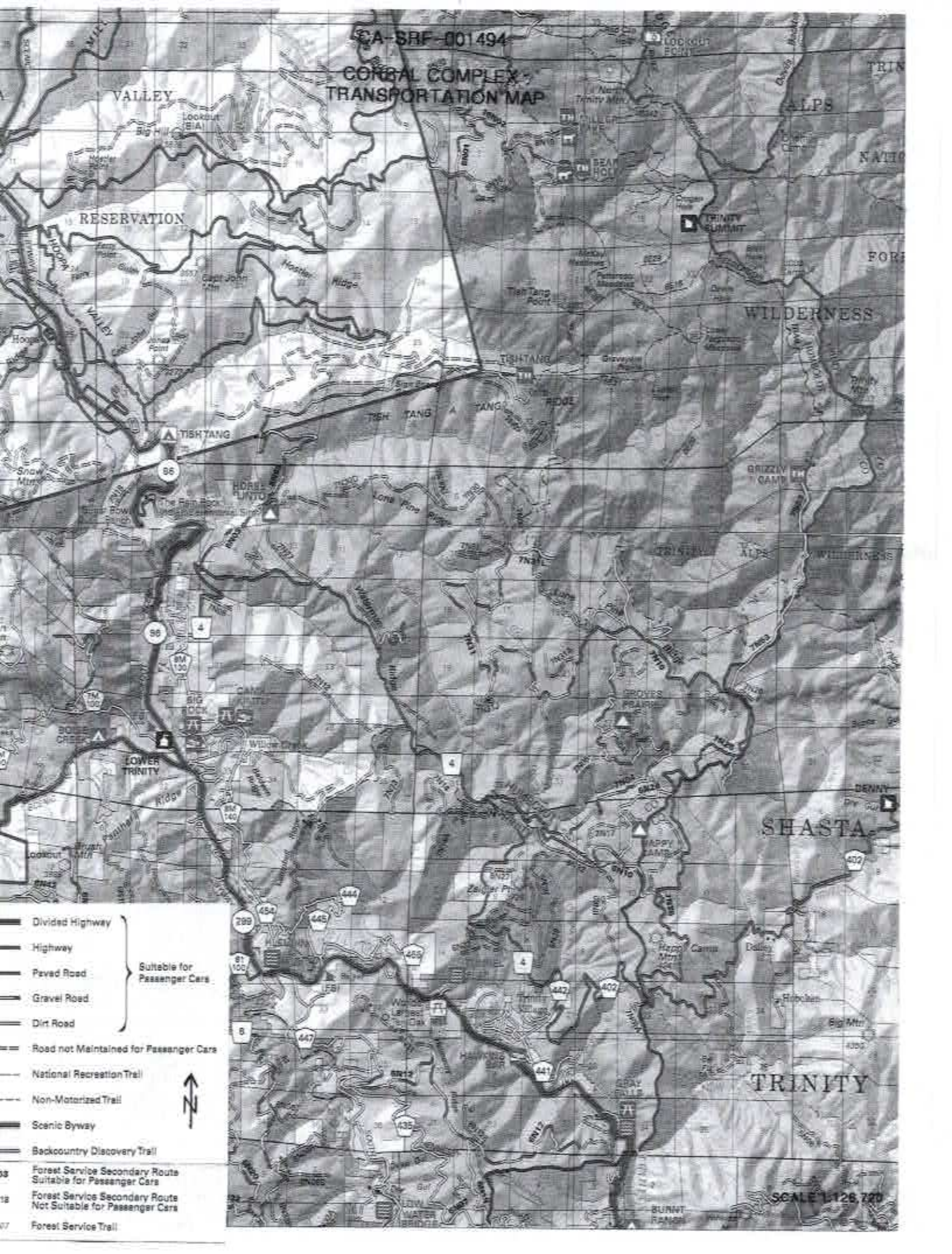
Incident Safety Officer: James Aragon SOF2

Base Camp Map



CA-SRF-001494

CONGAL COMPLEX TRANSPORTATION MAP



- Divided Highway
- Highway
- Paved Road
- Gravel Road
- Dirt Road
- Road not Maintained for Passenger Cars
- National Recreation Trail
- Non-Motorized Trail
- Scenic Byway
- Backcountry Discovery Trail
- Forest Service Secondary Route Suitable for Passenger Cars
- Forest Service Secondary Route Not Suitable for Passenger Cars
- Forest Service Trail

Suitable for
Passenger Cars



SCALE 1:126,720

UNIT LOG		1. Incident Name	2. Date Prepared	3. Time Prepared
4. Unit Name/Designators:		5. Unit Leader (Name and Position)		6. Operational Period:
7. Roster of Assigned Personnel				
Name	ICS Position		Home Base	
8. Activity Log				
Time	Major Events			
9. Prepared by (Name and Position)				

