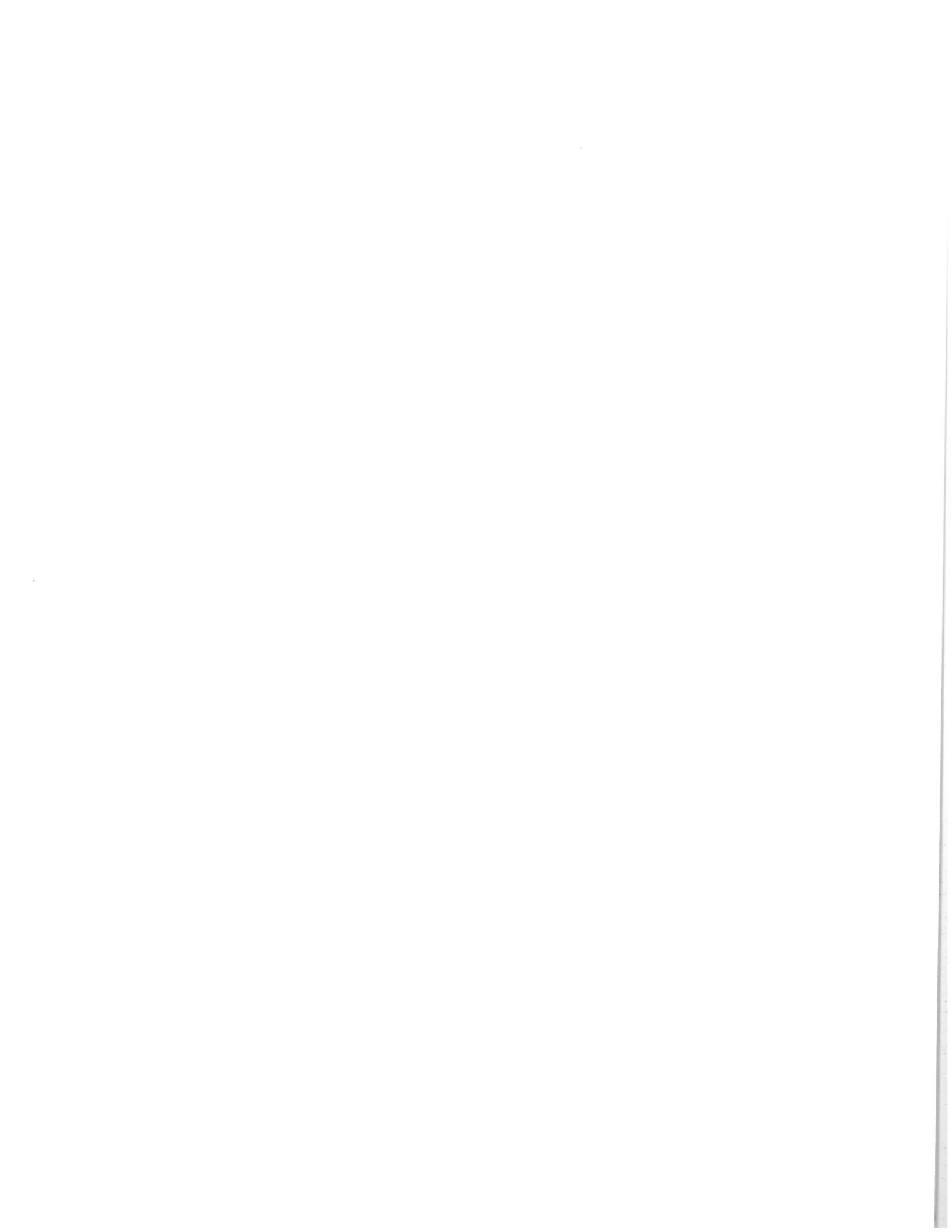


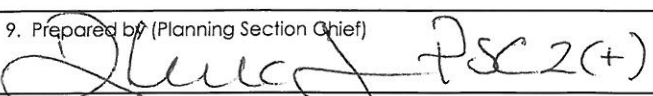
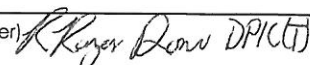
CORRAL COMPLEX

CA-SRF-001494
P5HU49

Aug 22, 2013
Day Shift 0600 - 2000





INCIDENT OBJECTIVES	1. Incident Name Corral Complex	2. Date Prepared 8-21-13	3. Time Prepared 2200
4. Operational Period <p style="text-align: center;">8-22-13 0600 to 2000</p>			
5. General Control Objectives for the Incident (include alternatives) Incident Objectives: <ul style="list-style-type: none"> • Provide for firefighter and public safety in all incident operations. • Protect property and infrastructure. Control fire closest to communities. • Keep stakeholders, the public, and cooperators informed of fire status. • Keep costs commensurate with identifies values at risk. • Protect cultural and natural resources. • Protect wilderness values and utilize MIST in the Trinity Alps Wilderness. • Protect the Hoopa Valley community at risk listed in the Federal Register. • Protect the Donato Trail which is listed in the Federal Register of National Historic Places. Control Objectives: <ul style="list-style-type: none"> • Keep the fire: <ul style="list-style-type: none"> ▪ North of Hwy 299 ▪ East of the Hwy 96 and Hoopa Valley Indian Reservation ▪ South of the Siskiyou / Trinity County Line ▪ West of the New River 			
6. Weather Forecast for Period See Attached Weather Forecast			
7. General Safety Message See Attached Safety Message			
8. Attachments (mark if attached)			
<input checked="" type="checkbox"/> Incident Objectives – ICS 202	<input checked="" type="checkbox"/> Division Assignment List – ICS 204	<input checked="" type="checkbox"/> Medical Plan - ICS 206	
<input checked="" type="checkbox"/> Organization List - ICS 203	<input checked="" type="checkbox"/> Safety Message	<input checked="" type="checkbox"/> Human Resource Message	
<input checked="" type="checkbox"/> Fire Weather Forecast	<input type="checkbox"/> Incident Safety Analysis – ICS 215A	<input checked="" type="checkbox"/> Transportation Map	
<input checked="" type="checkbox"/> Fire Behavior Forecast	<input checked="" type="checkbox"/> Air Ops Summary – ICS 220	<input type="checkbox"/> Incident Map	
<input type="checkbox"/> Pocket Card	<input checked="" type="checkbox"/> Communications Plan - ICS 205	<input checked="" type="checkbox"/> Unit Log – ICS 214	
9. Prepared by (Planning Section Chief) 	10. Approved by (Incident Commander)  FOR CARLTON JOSEPH JCT		

**ICS Form 203
ORGANIZATION ASSIGNMENT LIST**

1. INCIDENT NAME CORRAL FIRE	2. DATE PREPARED 8/21/13	3. TIME PREPARED 1800
--	------------------------------------	---------------------------------

4. OPERATIONAL PERIOD (DATE/TIME)
8-22-13 0600 to 2000

9. OPERATIONS SECTION

CHIEF	K. Gurrola/S. Marouk (t)
PLANNING OPS	D. Smith/N. Washington (t)

DEPUTY OPS	L. Curtis
CONTINGENCY OPS	S. Ryberg

a. BRANCH I

BRANCH DIR	K. Martin
------------	-----------

DIVISION	F	West/Brashears (t)
----------	---	--------------------

DIVISION	H	Rose/Brown (t)
----------	---	----------------

DIVISION	L	Jacobson
----------	---	----------

DIVISION	M	Harris
----------	---	--------

DIVISION	CONT.	Olson/Lucas (t)
----------	-------	-----------------

DIVISION	HEAVY EQUIP	Glover
----------	-------------	--------

b. BRANCH V

BRANCH DIRECTOR	D. Forsyth
-----------------	------------

DEPUTY	
--------	--

DIVISION	A	Boe
----------	---	-----

DIVISION	X	Vollhaber
----------	---	-----------

DIVISION	W	Dugger
----------	---	--------

DIVISION	R	unstaffed
----------	---	-----------

DIVISION	P	unstaffed
----------	---	-----------

DIVISION		
----------	--	--

DIVISION		
----------	--	--

DIVISION		
----------	--	--

DIVISION		
----------	--	--

c. BRANCH

BRANCH DIRECTOR	
-----------------	--

DEPUTY	
--------	--

DIVISION/GROUP		
----------------	--	--

DIVISION/GROUP		
----------------	--	--

DIVISION/GROUP		
----------------	--	--

DIVISION/GROUP		
----------------	--	--

DIVISION/GROUP		
----------------	--	--

DIVISION/GROUP		
----------------	--	--

d. AIR OPERATIONS BRANCH

AIR OPERATIONS BR. DIR.	J. Keesee
-------------------------	-----------

AIR TACTICAL GROUP SUP.	C. Stanley
-------------------------	------------

AIR SUPPORT GROUP SUP.	C. Dado/T. Gilbreth (t)
------------------------	-------------------------

HELICOPTER COORDINATOR	
------------------------	--

AIR TANKER/FIXED WING CRD.	
----------------------------	--

--	--

--	--

--	--

10. FINANCE/ADMINISTRATION SECTION

CHIEF	T. Fork
-------	---------

DEPUTY	
--------	--

TIME UNIT	J. Brown/M. Prochazka
-----------	-----------------------

PROCUREMENT UNIT	
------------------	--

COMPENSATION/CLAIMS UNIT	A. Carlson
--------------------------	------------

COST UNIT	R. Siemers/V. Kobilis (t)
-----------	---------------------------

EQTR	A. Hoyer
------	----------

--	--

--	--

--	--

--	--

--	--

--	--

--	--

--	--

--	--

5. INCIDENT COMMAND STAFF	Position	Name
	INCIDENT COMMANDER	Carlton Joseph/Rod Mendes
	DEPUTY	Jim Giachino/Ranger Dorn (t)
	SAFETY OFFICER	Marty Hamel/Brian Savage
	INFORMATION OFFICER	Mark Savage/Paula Martinez/Steve Kliest
	LIAISON OFFICER	Rick Alpert
	HRSP	Mike Baines

6. AGENCY REPRESENTATIVES	
AGENCY	NAME
SRF	Nolan Colegrove
SRF-Fire	Rick Young
Hoopaa AREP	Darin Jarnaghan
R3 IARR	Orlando Carroll
BIA	Joshua Simmons
Res. Cultural Adv.	Aaron Pole/Antone Aubrey
NFFE	John McRae/Roberta Coragliotti
Shasta Trinity AAREP	Tina Lynsky

7. PLANNING SECTION	
CHIEF	D. Cooper/R. Leuck(t)/J. Schillinger(t)
DEPUTY	
RESOURCES UNIT	J. Switzler/ G. Thompson
SITUATION UNIT	M. McHargue/T. Morelock/ K. Van Wig (t)
DOCUMENTATION UNIT	L. Ellickson
DEMOBILIZATION UNIT	R. Ashby
CTSP	J. Youngblood
TNSP	B. Tattersfield/B. Reynolds/J. Mitchell t)
FBAN	S. Crook
IMET	J. Wallmann/ R. Leach (t)
GISS	B. Weisshaupt/M. Schug
GISS	D. Benitez/ S. Kennedy
READ	R. Butz/ J. Irwin/A. Aubry
READ	E. Wiseman/ Shana Gross (t)
READ	J.Kinoshita/A. Pole/ K.Colegrove

8. LOGISTICS SECTION	
CHIEF	H. Crane
DEPUTY	T. Martinez
a. SUPPORT BRANCH	
SECURITY	H. Naigus
SUPPLY UNIT	J. McMahan
FACILITIES UNIT	W. Grogan/ J. Eckroth
GROUND SUPPORT UNIT	D. Hill

b. SERVICE BRANCH	
COMMUNICATIONS UNIT	R. Gonzales
RECEIVING	A. Krueger
ORDERING	S. Porter
MEDICAL UNIT	R. Russell
FOOD UNIT	B. Ungari

PREPARED BY (RESOURCES UNIT)

Gary Thompson



INCIDENT Weather Forecast



FORECAST NO: 7
PREDICTION FOR: Thursday-Thursday Night
SHIFT DATE: 08/22/2013 0600-2000
TIME AND DATE
FORECAST ISSUED: 08/21/2013 2000

NAME OF FIRE: Corral Complex
SHIFT Day-Night **UNIT:** CA-SRF
SIGNED: Ryan Leach (T)/Jim Wallmann
Incident Meteorologist

*****RED FLAG WARNING FOR LIGHTNING THROUGH THIS EVENING *****

WEATHER DISCUSSION: Thunderstorms continue today. Isolated storms under mostly cloudy skies this morning will become scattered this afternoon. Storms will develop over the terrain to the south and east of the fire again and move northwest at 15 – 20 mph. Friday the pattern changes to southwest onshore flow causing cooler temperatures and weaker thermal belts. This weekend expect light southeast winds and night and moderate daily west winds.

WEATHER FORECAST (TODAY):

WEATHER: Areas of smoke. Mostly cloudy. Scattered thunderstorms through the morning and afternoon.

HAINES INDEX: 5 **LAL:** 3 **CHC RAIN:** 35%

MAX TEMP: Elev. 3500 ft: 78 - 82 F Elev 6000 ft: 68 - 72 F *Trend: 4 - 6 degrees cooler*
MIN RH: Elev. 3500 ft: 32 - 36 % Elev 6000 ft: 36 - 40 % *Trend: 0 - 2 % wetter*

WINDS: Slopes: East to southeast 2-4 mph. Erratic winds 15-20 mph near thunderstorms.
(EYE LEVEL) Ridges: East 3-6 mph with gusts to 8.

TRANSPORT WIND: Southeast 5 – 8 mph **VISIBILITY:** 3 - 5 miles.

STABILITY: Inversion break around noon with mixing height around 9,000 feet MSL.

FORECAST (TONIGHT):

WEATHER: Areas of smoke. Mostly cloudy. Thunderstorms and showers decreasing through the night.

MIN TEMPERATURES: 56 – 60 F

MAX RH: 77-81%.

WIND: Slope: Down slope/Down valley 2-4 mph. Erratic winds 10-15 mph near thunderstorms.
(eye level) Ridges: Variable 2-4 mph.

OUTLOOK FOR FRIDAY:

WEATHER: Areas of smoke. Mostly cloudy becoming partly cloudy.

MAX TEMP: Elev. 3500 ft: 76 – 80 F Elev 6000 ft: 69 – 73 F
MIN RH: Elev. 3500 ft: 37 – 41 % Elev 6000 ft: 50 – 55 %

WINDS: Slope: Upslope / Up valley 3 – 5 mph.
(EYE LEVEL) Ridges: Variable 2 – 4 mph becoming west 5 – 7 mph around noon.

OBSERVATIONS WEDNESDAY: *****

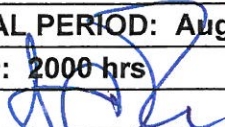
Big Hill RAWs (9 mi WNW – 3570 ft): Temp: MAX: 87. RH: MIN: 32%. Winds (20ft): Variable 2 - 4 gusts 7 mph.
Brush Mtn. RAWs (13 mi SW – 3941 ft): Temp: MAX: 89. RH: MIN: 29%. Winds (20ft): W 5 - 9 gusts 19 mph.
IRAWS 4- Trinity GS (6145 ft): Temp: MAX: 76. RH MIN: 36%. Winds (eye level): W 3-5 gusts 10 mph.

Incident RAWs Data --- SCAN Code with Smart Phone

Big Hill RAWs – Div F/H/L IRAWS 4 (Trinity GS) Div L/M/P/R
Brush Mountain RAWs – Div A/F/X



FIRE BEHAVIOR FORECAST

FORECAST NUMBER: #8	TYPE OF FIRE: Wildfire
FIRE NAME: CORRAL COMPLEX	OPERATIONAL PERIOD: August 22, 2013 0600-2000
DATE ISSUED: August 21, 2013	TIME ISSUED: 2000 hrs
UNIT: Six Rivers NF	SIGNED:  Shelly Crook FBAN

INPUTS

WEATHER SUMMARY

(Refer to Weather Forecast for details) **DAY:** Mostly cloudy and smoky. 35% chance of afternoon thunderstorms. Max Temp: 79-83°. Min RH: 32-36%. Slope/Valley – ESE 2-4 mph, Ridges – Gusts to 15-20 mph in association with T-Storms. **NIGHT:** 10% chance of overnight thunderstorms. Mostly cloudy. Min Temp: 56-60° Max RH: 77-81% Winds: W 2-5 mph becoming light down slope / down valley.

FUELS

Fire is burning within the boundaries of the Megram Fire (1999) and Back Bone Fire (2009). Fuels consist of abundant heavy dead and down, snags and shrubs (Ceanothus/Snow Brush). Mature timber on the west flank. Live FMC lower on S/SE/W aspects. Live and dead fuel moistures noticeably higher in the drainages below 4000ft elevation. Minimum fine fuel moisture: 4%, 1000 hour FMC: 8-10%, Live fuel moisture: 120%. Persistent drought conditions.

OUTPUTS - FIRE BEHAVIOR

➤ **Forecasted Indices (Big Hill RAWs) ERC: 60 (NC) BI: 43 (Down 7)**

Thresholds for Active Fire Behavior in the Corral Complex area:

20ft Winds > 7 mph. RH < 31%. Temperature > 82°. 1000hr FMC < 13%. BI > 50. ERC > 47.

GENERAL: Fire is burning predominately on the dryer ridge tops and southerly/westerly aspects above 3500 feet elevation. Spread will generally be moderate with occasional upslope runs, but rapid spread is possible should the fire experience any outflow winds from passing thunderstorms. The drainages and northerly & easterly aspects are burning, but spread and overall fire activity are much less than on the ridge tops and south aspects. **Nighttime inversion is possible with poor humidity recoveries above 3500 ft, elevation, expect the fire to continue to burn actively at night.**

DIV F & H (W Flank, Tish Tang Ridge area) – Expect fire to continue to spread west and back off the ridge to the north and south of the South Fork Tish Tang Ck. Fire spread will likely slow as fire back further off the slope, into the canyon. Roll out may result in short up slope runs. T-Storms could intensity fire activity.

DIV L (NW Flank, Tish Tang Point area) – Expect continued spread to the NW, up to one mile reaching Tish Tang Point is possible. Pay very close attention to the spot fires in the bottom of Tish Tang Ck, if the inversion breaks, activity will pick up and there is a potential for this fire make a rapid upslope run towards the nob road/DP-2 area, especially under the influence of gusty winds from a passing T-storm.

DIV M (N Flank, Trinity GS area) – Scabby fuels mostly, but potential remains. Expect limited spread mostly, but possible to move up to ½ mile in the Bret Ck/Bret Hole area.

DIV P (NE Flank, north of H2) – Fire could spread up to 1 mile north along the west side of the crest with backing, roll out and occasional short runs on the east side.

DIV R & W (E/SE Flank, Grizzly Camp area) – Expect up to one mile of spread to the south along the ridge between Horse Linto and East Fork Horse Linto Creeks. Moderate fire activity above 4000ft elev, with some short range spotting, roll out and occasional up slope runs as the fire backs down into the creek drainages. Expect the fire to spill over the crest to the east resulting in roll out and occasional upslope runs.

DIV X & A (Horse Linto Ck area) – Fire will continue to back to the south in to Horse Linto Ck with a moderate potential of reaching the drainage bottom. Slight chance of the fire crossing the creek and making an upslope up to the ridge top to the south, especially is T-storms pass over the fire.

Maximum Fire Behavior (head fire upslope): Rate of Spread: 10-15 chains/hour (15 ft/min), Flame Length: 4-10 ft. Probability of Ignition: 65%. Maximum spotting distance of 1/3 mile.

AIR OPERATIONS

Air support may be hindered by possible late clearing of the inversion. Gusty winds if Thunderstorm develop.

SAFETY

- Pay special attention to changing and increasing fire behavior especially in the Tish Tang Creek drainage.
- "In the middle of difficulty lies opportunity." Albert Einstein

Division Assignment List	1. Branch I	2. Division/Group F
---------------------------------	-----------------------	-------------------------------

3. Incident Name CORRAL COMPLEX	4. Operational Period 08/22/13 Thursday DAY Shift 0600 - 2000
---	---

5. Operations Personnel

Operations Chief	KEITH GURROLA; SAM MAROUK (t)	Division/Group Supervisor	JEFF WEST; CHRIS BRASHEARS (t)
Operations Chief		Air Attack Supervisor	
Branch Director	KELLY MARTIN	Safety Officer	MARTIN HAMEL; BRIAN SAVAGE

6. Resources Assigned this Period

Strike Team/Task Force/ Resource Designator	Leader	Num of Pers.	Trans. Y/N	Drop Off PT./Time	Pick Up PT./Time
HC2 OHIO #2 C-14 8/30	CHRISTOPHER A MORRIS	20	N	0600	2000
HC2 OC 25 C-56 9/2	DON BOWEN	20	N	0600	2000
DOZ1 KENS E-82 8/28	TOM FUNES	1	N	0600	2000
WT1 C&J SUPPORT E-178	SEE CHECK IN	1	n	0600	2000
DOZ3 TEHAMA E-80 8/24	BRUCE FIELDS	2	N	0600	2000
SLSH AMMON E-63 8/30	ERICK AMMON	1	N	0600	2000
MASTICATOR E-115 ? see check in	DON WOOD	1	N	0600	2000
EXCA KEN'S INC. #1 E-99 8/31	MATT SKELTON	1	N	0600	2000
HEQB O-164 8/31	JARED HAMMATT	1	N	0600	2000
HEQB O-57 8/26	JAMES RUST	1	N	0600	2000
FELB O-172 9/3	RON BOOKER	1	N	0600	2000
FALLER MODULE 0-99	CURTIS KING	1	N	0600	2000
FOBS O-108 8/31	JOHN MONCURE	1	N	0600	2000
FOBS O-141 8/28	DAVID CONGOS (t)	1	N	0600	2000
SOFR O-192 8/29	KELSO, JOHN	1	N	0600	2000
SOFR O-159 9/2	OBRIEN, CHRISTOPHER	1	N	0600	2000

7. Control Operations
Plumb and prep indirect line from A/F Division break to H/F Division break.

8. Special Instructions
Thanks for noting and using measures to prevent the spread of rock snot, Port Orford Cedar root rot disease, and other aquatic invasive species.
All resources report to the wash station upon arrival and demobilization.

9. Division/Group Communications Summary

Function	Frequency - RX	Frequency - TX	Tone	System	Channel	System	Channel
Command	168.7000	170.9750	11	NIFC	1		
Tactical Div/Group	166.7750	166.7750	11 (114.8)	NIFC	6		
Logistics							
Air to Ground	167.0625	167.0625		NIFC	11		

Prepared by (Resource Unit Leader) <i>Glory Thompson</i>	Approved by (Planning Section Chief) <i>Steve PSC2(t)</i>	Date Prepared 08/21/13	Time Prepared 1345
---	--	---------------------------	-----------------------

Division Assignment List		1. Branch I	2. Division/Group L		
3. Incident Name CORRAL COMPLEX		4. Operational Period 08/22/13 Thursday DAY Shift 0600 - 2000			
5. Operations Personnel					
Operations Chief	KEITH GURROLA; SAM MAROUK (t)		Division/Group	KYLE JACOBSON	
Operations Chief			Air Attack Supervisor		
Branch Director	KELLY MARTIN		Safety Officer	MARTIN HAMEL; BRIAN SAVAGE	
6. Resources Assigned this Period					
Strike Team/Task Force/ Resource Designator	Leader	Num of Pers.	Trans. Y/N	Drop Off PT./Time	Pick Up PT./Time
HC1 DALTON IHC C-1 8/22	STEVE ROBLES	20	N	DIV H/L BREAK/0800	2000
HC1 SMITH RIVER IHC C-9 8/25	TIM MEMMER	21	N	DIV H/L BREAK/0800	2000
HC1 TRINITY IHC C-15 8/26	JUSTIN JEUDE	19	N	DIV H/L BREAK/0800	2000
HC1 PLUMAS IHC C-25 8/30	JACK SEVELSON	20	N	DIV H/L BREAK/0800	2000
HC2 BECKWORTH C-57 9/2	SETH ODELL	20	N	DIV H/L BREAK/0800	2000
TF CORRAL #1	SCOTT BENEDICT		N	DIV H/L BREAK/0800	2000
ENG6 NORTHWEST 036 E-163 9/3	SCOTT BENEDICT	3	N	DIV H/L BREAK/0800	2000
ENG6 NORTHWEST 037 E-164 9/3	KEITH REED	3	N	DIV H/L BREAK/0800	2000
ENG6 NORTHWEST 038 E-165 9/3	CASEY BROWN	3	N	DIV H/L BREAK/0800	2000
ENG6 NORTHWEST 039 E-166 9/3	MATT COX	3	N	DIV H/L BREAK/0800	2000
WTT2 HOOPA TRIBE E-142 9/2	MARTIN SWENSON	1	N	DIV H/L BREAK/0800	2000
TF CORRAL #2	ROBERT BERNEY		N	DIV H/L BREAK/0800	2000
ENG3 ENGINE - 9532 E-162 9/3	LYLE BLAINE MCKINNON	5	N	DIV H/L BREAK/0800	2000
ENG6 CIBOLA E-176 9/4	MICHAEL P WILLIAMS	3	N	DIV H/L BREAK/0800	2000
ENG6 DOUBLE D E-177 9/4	DUANE DEARBORN	3	N	DIV H/L BREAK/0800	2000
ENG6 BLACKDUCK-719 E-178 9/4	CHRISTOPHER A COLLISON	3	N	DIV H/L BREAK/0800	2000
ENG6 RED LAKE E-186 9/4	PATRICK NORQUAY	0	N	DIV H/L BREAK/0800	2000
WTS1 WATER TENDER E-139 9/3	VICTOR KNIGHT	1	N	DIV H/L BREAK/0800	2000

7. Control Operations
Construct mechanical fire line from DP-4 to H/L Div break. Prepare for firing operations as necessary.

8. Special Instructions
Thanks for noting and using measures to prevent the spread of rock snot, Port Orford Cedar root rot disease, and other aquatic invasive species.
All resources report to the wash station upon arrival and demobilization.

9. Division/Group Communications Summary							
Function	Frequency - RX	Frequency - TX	Tone	System	Channel	System	Channel
Command	168.7000	170.9750	11	NIFC	1		
Tactical Div/Group	168.2500	166.2500	11 (114.8)	NIFC	7		
Logistics							
Air to Ground	167.0625	167.0625		NIFC	11		
Prepared by (Resource Unit Leader)	Approved by (Planning Section Chief)			Date Prepared	Time Prepared		
<i>Gary Thompson</i>	<i>Stacy PSC2 (+)</i>			08/21/13	1429		

7

Division Assignment List	1. Branch I	2. Division/Group HEAVY EQUIPMENT GP
3. Incident Name CORRAL COMPLEX	4. Operational Period 08/22/13 Thursday DAY Shift 0600 - 2000	

5. Operations Personnel			
Operations Chief	KEITH GURROLA; SAM MAROUK (t)	Division/Group Supervisor	PETER GLOVER
Operations Chief		Air Attack Supervisor	
Branch Director	KELLY MARTIN	Safety Officer	MARTIN HAMEL; BRIAN SAVAGE

6. Resources Assigned this Period						
Strike Team/Task Force/ Resource Designator	Leader	Num of Pers.	Trans. Y/N	Drop Off PT./Time	Pick Up PT./Time	
HEQB O-194 8/29	SQUIRES, R. "JASON"	1	N	DIV H/L BREAK	0800	
HEQB O-167 9/3	BONENBERGER, BRANDON	1	N	DIV H/L BREAK	0800	
HEQB O-163 8/29	GARRETT, DUNN	1	N	DIV H/L BREAK	0800	
HEQB O-162 8/27	RYMER, REX P	1	N	DIV H/L BREAK	0800	
DOZ1 HOOPA TRIBE E-83 8/31	WHITE, WENDAL	1	N	DIV H/L BREAK	0800	
DOZ1 BROWN E-81 8/30	BROWN, ROGER	1	N	DIV H/L BREAK	0800	
DOZ1 HOOPA E-79 8/30	MORTON, WALLY	1	N	DIV H/L BREAK	0800	
DOZ2 HOOPA TRIBE E-78 8/30	JOHNSON, LARRY	1	N	DIV H/L BREAK	0800	
DOZ2 HOOPA TRIBE E-77 8/30	MARSHALL, JOHN	1	N	DIV H/L BREAK	0800	
EXCA HOOPA TRIBE E-105 8/31	DEMPEWOLF, GARY	1	N	DIV H/L BREAK	0800	
EXCA KENS INC. #2 E-100 8/31	FUNES, CHRIS	1	N	DIV H/L BREAK	0800	
EXCA OILERS E-65 8/30	WHITE, JAMES	1	N	DIV H/L BREAK	0800	
EXCA BEN SALE #1 E-64	SMITH, BUTCH	1	N	DIV H/L BREAK	0800	
FEL1 WOOD RIVER TI E-68 9/2	DRISCOLL, RAY	1	N	DIV H/L BREAK	0800	
FEL2 HOLT LOGGING E-67 9/1	SERVANDRO, MELENDREZ	1	N	DIV H/L BREAK	0800	
FEL1 FELLER NR004 E-73 9/3	SMITH, KEVIN	1	N	DIV H/L BREAK	0800	
FEL1 JOHNSON LOGGING E-66 8/30	JOHNSON, JIM	1	N	DIV H/L BREAK	0800	
SKG1 OUTBACK WILDFIRES E-140 9/4	CHANCLER, DAN	1	N	DIV H/L BREAK	0800	
SLSH MCKELLAR TREE E-62 8/30	MCKELLAR, DOUG	1	N	DIV H/L BREAK	0800	
SLSH G AND O BODY SHOP E-61 8/30	WEAVER, SCOTT	1	N	DIV H/L BREAK	0800	

7. Control Operations
 Coordinate with Divisions H,L and M for mechanized equipment needs.

8. Special Instructions
 Thanks for noting and using measures to prevent the spread of rock snot, Port Orford Cedar root rot disease, and other aquatic invasive species.
 All resources report to the wash station upon arrival and demobilization.

9. Division/Group Communications Summary							
Function	Frequency - RX	Frequency - TX	Tone	System	Channel	System	Channel
Command	168.7000	170.9750	11	NIFC	1		
Tactical Div/Group							
Logistics							
Air to Ground	167.0625	167.0625		NIFC	11		

Prepared by (Resource Unit Leader) <i>Gary Thompson</i>	Approved by (Planning Section Chief) <i>Stacy DSC2(+)</i>	Date Prepared 08/21/13	Time Prepared 1812
--	--	---------------------------	-----------------------

Division Assignment List	1. Branch V	2. Division/Group X
---------------------------------	-----------------------	-------------------------------

3. Incident Name CORRAL COMPLEX	4. Operational Period 08/22/13 Thursday DAY Shift 0600 - 2000
---	---

5. Operations Personnel

Operations Chief	KEITH GURROLA; SAM MAROUK (t)	Division/Group Supervisor	GREG VOLLHABER
Operations Chief		Air Attack Supervisor	
Branch Director	DON FORSYTH	Safety Officer	MARTIN HAMEL; BRIAN SAVAGE

6. Resources Assigned this Period

Strike Team/Task Force/ Resource Designator	Leader	Num of Pers.	Trans. Y/N	Drop Off PT./Time	Pick Up PT./Time
HC2 ZUNI C-24 8/23	CARMEN GOSEYUN	19	N	GROVES SPIKE 0600	GROVES SPIKE 2000
FORTUNE 22 CCC E-75 8/27	LARRY CROFUTT	22	N	GROVES SPIKE 0600	GROVES SPIKE 2000
DOZ2 PETERS ENTERPRISE E-75 8/27	ROB JACKSON	2	N	GROVES SPIKE 0600	GROVES SPIKE 2000
DOZ2 OUTBACK DVBE INC. E-76 8/24	HAROLD MILLER	2	N	GROVES SPIKE 0600	GROVES SPIKE 2000
CHIP RON ADKINS CO. E-107 8/31	RON ADKINS	1	N	GROVES SPIKE 0600	GROVES SPIKE 2000
CHIP ZEB'S TREE 2542 E-108 9/1	SHAW STOCKE	2	N	GROVES SPIKE 0600	GROVES SPIKE 2000
WTS2TELLECHEA E-111 9/1	RUBEN TELLECHEA	1	N	GROVES SPIKE 0600	GROVES SPIKE 2000
WTS1 B & G E-144 9/3	STOOPS, MIKE	1	N	GROVES SPIKE 0600	GROVES SPIKE 2000
FEL1 WARNER E-72 9/4	ZAN CLARE	1	N	GROVES SPIKE 0600	GROVES SPIKE 2000
FEL1 TIMBERED RANGELAND E-71	RAMSEY, RANDY	1	N	GROVES SPIKE 0600	GROVES SPIKE 2000
FEL1 TIMBERED RANGELAND E-70 9/2	WEAVER, CLAY	1	N	GROVES SPIKE 0600	GROVES SPIKE 2000
VOLCANO CREEK FALLERS E-52 8/24	SCOTT OLIVER	2	N	GROVES SPIKE 0600	GROVES SPIKE 2000
FALC O-152 8/18	SCHWARTZ THEODOREE	1	N	GROVES SPIKE 0600	GROVES SPIKE 2000
TFLD O-195 8/23	JOHN ARRIGONI	1	N	GROVES SPIKE 0600	GROVES SPIKE 2000
HEQB O-153 8/26	WILLIAMS, WALTER M	1	N	GROVES SPIKE 0600	GROVES SPIKE 2000
FEMP O-135 8/29	ZBINDEN, JONATHAN S	1	N	GROVES SPIKE 0600	GROVES SPIKE 2000
FEMP O-305 9/3	KIRK, MATT	1	N	GROVES SPIKE 0600	GROVES SPIKE 2000
SOFR O-221 9/1	SARGENTI, DAVE	1	N	GROVES SPIKE 0600	GROVES SPIKE 2000
SOFR O-222 9/1	MORRIS, KEVIN	1	N	GROVES SPIKE 0600	GROVES SPIKE 2000

7. Control Operations
Plumb and prep the 7N10 road from DP-1 to DP-5.

8. Special Instructions
Thanks for noting and using measures to prevent the spread of rock snot, Port Orford Cedar root rot disease, and other aquatic invasive species.
All resources report to the wash station upon arrival and demobilization.

9. Division/Group Communications Summary

Function	Frequency - RX	Frequency - TX	Tone	System	Channel	System	Channel
Command	168.7000	170.9750	11	NIFC	1		
Tactical Div/Group	168.2375	168.2375	11 (114.8)	NIFC	10		
Logistics							
Air to Ground	167.0625	167.0625		NIFC	11		

Prepared by (Resource Unit Leader) <i>Gary Thompson</i>	Approved by (Planning Section Chief) <i>Steve P&Z (t)</i>	Date Prepared 08/21/13	Time Prepared 1855
--	--	---------------------------	-----------------------

AIR OPERATIONS SUMMARY

PREPARED BY: John Keesee

PREPARED DATE/TIME: 8/21/2013 2100hr

1. INCIDENT NAME: Corral Complex
 OPERATIONAL PERIOD DATE: 8/22/13 START TIME: 0600 END TIME: 2030 SUNRISE:0631 SUNSET:2004

3. REMARKS (Safety Notes, Hazards, Air Operations Special Equipment, etc.): Wire rich environment. Get Thorough Briefing. Study Flight Hazard Map

All Lat and Long locations are to be in Degrees Decimal Minutes when possible

Mobile Retardant Base located at Willow Creek Helibase
 Willow Creek Helibase N 40 57.036 W 123 38.164

Discreet A/G for Aerial Ignition only. 166.9125

4. MEDEVAC A/C:
 NG Hoist Ship 820,
 NVGs/ Paramedic

Frequency:
 CALCORD 156.0750
 Tone 6

5. TFR: Radius: 5 NM
 Altitude: 11,000 MSL
 Centerpoint: N 41 02.56 W 123 28.32

TFR# 3/1655
 Contact Freq. 132.3500

6. PERSONNEL	Phone	7. FREQUENCIES	AM	FM	8. FIXED-WING	# Avail / Type/ Make-Model / FAA N# / Base(s)
AOBD: John Keesee	805-551-6422	AIR/AIR FW:		166.6000	Air tankers	Request if needed
ATGS: Curt Stanley	530-598-4191	AIR/AIR RW:	132.3500		Lead planes	Rohnerville ATB 707-725-4572 Redding ATB 530-226-2745
ATGS: Joel Lane	559-310-9430				Base FAX #:	
ATGS: Tyler Dalton(T)	435-590-2235				ATGS Aircraft	N848CE N0FD
ASGS: Craig Dado	530-518-6688	AIR/GROUND:		167.0625		
ASGS(T): Lee Kessler	218-244-1765	Aerial Ignition		166.9125		
ASGS(T): Todd Gilbreth	619-548-3729	COMMAND:				
HLCO:		COMMAND RPT	Rx: 168.7000			
HEB1: Don Nicholas	218-360-1816	Tone 11 (114.8)	TX: 170.9750			
HEB1(T): Matt Lingenfelter	805-705-8621	DECK FREQ:		168.3500		
DECK: Jameson Collins	707-362-7031	TOLG FREQ:				

9. HELICOPTERS (Use Additional Sheets As Necessary)

FAA N#	TY	MAKE/MODEL	BASE	AVAIL	START	REMARKS	FAA N#	TY	MAKE/MODEL	BASE	AVAIL	START	REMARKS
22EA	3	Bell 206B3	Willow	0800	0830	Mapping/ IR							
62HP	3	Bell 206L4 A-13	Willow	0800	0830								
HT 702	1	SH3H A-6	Willow	0800	0830								
CFIRX	1	S-61N A-8	Willow	0800	0830								

CORRAL COMPLEX SAFETY MESSAGE

08/22/2013

MAINTAIN SITUATIONAL AWARENESS THROUGH-OUT SHIFT

- **DRIVING** – Slowing down is the best mitigation for numerous safety issues. Learn to recognize and pay attention to the warning signs of fatigue. Take a break if you experience wandering or disconnected thoughts, yawn repeatedly, have difficulty focusing or keeping your eyes open, or find yourself missing traffic signs or tailgating other drivers. **Be alert for logging trucks, civilian vehicles and wildlife on roads in all areas!**
- Be alert for signs of fatigue in yourself and those you work with. Take periodic breaks, get plenty of sleep, and eat well balanced meals.
- Keep informed on changing fire weather conditions. Be prepared to take thunderstorm precautions. Shelter in vehicles, trailers, or buildings if possible! Review thunderstorm safety, page 19 in IRPG.
- Multiple escape routes to safety zones preplanned & identified.

COMMUNICATIONS TIPS

- Put more emphasis on eye-to-eye communication. Delivering messages or information orally is the best way to ensure a complete understanding of the material.
- What? Speak up! Most people need to speak louder.
- Question whether what you are saying is understandable or if it can be made clearer. Many miscommunications are a result of vagueness or ambiguity.
- Listen to comments or questions co-workers may have. Giving correct answers to these questions often provides a greater sense of understanding and can actually increase productivity and dedication.

Safety Officers: Marty Hamel & Brian Savage

Look Up, Look Down, Look Around

- *Fuel Characteristics – Assess prior to beginning operations.
- *Fuel Moisture – Read daily shift plan and assess on site.
- *Fuel Temperature – Varies with exposure to direct sunlight.
- *Terrain & Fuel Accumulations – Scout prior to beginning operations and continuously during operations.
- *Wind – Measure, observe, feel and notice changes.
- *Atmospheric Stability – Observe.
- *Fire Behavior – Monitor constantly prior to and during operations.
- *Safety – Ask questions in unfamiliar situations. The only dumb question is the one that wasn't asked.

Corral Complex Base Camp Thunderstorm Safety Plan

08/20/13

The following is the Thunderstorm Safety Plan for the Corral Complex base camp in the event of thunderstorm activity in proximity to base camp. This plan will be implemented to ensure precautions are taken and that incident personnel take appropriate shelter while the danger to incident personnel exists.

TRIGGER MECHANISM: This will be based on thunderstorm activity.

The incident IMET will continually monitor thunderstorm activity and keep Safety updated with information regarding thunderstorm activity that could pose a threat to the incident.

Situational Awareness: Observe the 30/30 rule: If you see lightning and hear the thunderclaps follow in less than 30 seconds, take shelter immediately- Do not wait for the initiation of the Thunderstorm Safety Plan.

WHO INITIATES THE THUNDERSTORM SAFETY PLAN? Corral Safety will notify Corral Communications when approaching thunderstorm activity is deemed a threat to the base camp and the Thunderstorm Safety Plan shall be initiated. This notification will be made in person or by radio on the command frequency.

WHAT WILL BE THE METHOD OF NOTIFYING ALL OF THE INCIDENT PERSONNEL AT BASE CAMP AND WHO WILL DO IT? Corral Communication to will announce on the command frequency and also on the logistics frequency that the Base Camp Thunderstorm Safety Plan has been initiated. All personnel at base camp will be instructed to take shelter immediately.

*****An audible notification warning will also be sounded at the base camp to alert all personnel.** This warning will be a siren on an emergency vehicle and will be activated in the following manner:

- siren on for 15 seconds,
- siren off for 15 seconds,
- siren on for 15 seconds,
- siren off for 15 seconds,
- siren on for 15 seconds, then off

***personnel at the base camp will be instructed to "Take Shelter" via a loud speaker or vehicle P.A system if available.**

Corral Complex Base Camp Thunderstorm Safety Plan

08/20/13

**The Incident Safety Officer or his designee will be responsible for activation of the audible warning and P.A. system instructions at the base camp.

HOW SHOULD PERSONNEL LOCATED AT THE BASE CAMP TAKE SHELTER?

All personnel should take immediate shelter in vehicles, buildings or incident trailers.

The personnel who are staffing the weed wash and the fuel stations near the base camp have logistics radios and will also be instructed to take shelter.

Note: The Incident Safety Officer and the IMET will monitor the thunderstorm activity with live Doppler radar and initiate the all clear when it's warranted. All personnel at base camp are expected to remain in shelter until the all clear is given.

Additional information: Approaching thunderstorms may be noted by a sudden reverse in wind direction, a noticeable rise in wind speed, and a sharp drop in temperature. Rain, hail, and lightning occur only in the mature stage of a thunderstorm. (Refer to IRPG pg. 19 for additional information.)

This plan will be initiated anytime, day or night, where thunderstorm activity is deemed a danger to personnel who are located at base camp. If you are in your tent after hours, and you hear the audible warning siren or witness lighting that meets the 30/30 Rule, leave your tent and take appropriate shelter in a vehicle, building or incident trailer. **Do not stay in your tent.**

Carlton M Joseph

Carlton Joseph, IC, CAIIMT 5

8/21/13

Date

INCIDENT RADIO COMMUNICATION PLAN	Incident Name	Date/Time Prepared	Operational Period Date/Time
	Corral Complex	8-21-13 2000 hrs	8/22/13 0600-2000

Radio Channel Utilization

Ch#	Function	Channel Name	Assignment	Frequency	Remarks
1	COMMAND	NIFC C-1	ALL DIVISIONS	Rx: 168.7000 Tx: 170.9750	Trinity Summit Tone 11 (114.8)
2	COMMAND	NIFC C-8	ALL DIVISIONS	Rx: 169.5375 Tx: 164.7125	Ironside Mountain Tone 11 (114.8)
3					
4	BACKUP COMMAND NET	SRF ADM	ALL DIVISIONS	Rx: 168.1250 Tx: 170.4750	Lone Pine Ridge Tone 3 (131.8)
5	TACTICAL	NIFC T-5	DIV "A"	166.7250	Tone 11 (114.8)
6	TACTICAL	NIFC T-6	DIV "F"	166.7750	Tone 11 (114.8)
7	TACTICAL	NIFC T-7	DIV "L"	168.2500	Tone 11 (114.8)
8	TACTICAL	R5 TAC 4	DIV's "M, P"	166.5500	Tone 11 (114.8)
9	TACTICAL	R5 TAC 5	DIV "R" and Contingency Grp	167.1125	Tone 11 (114.8)
10	TACTICAL	R5 TAC 6	DIV "X"	168.2375	Tone 11 (114.8)
11	AIR-TO-GROUND	A/G PRI	ALL DIVISIONS	167.0625	Primary Use
12	AIR-TO-GROUND	A/G SEC	ALL DIVISIONS	166.9125	Aerial Ignition Op's
13	TACTICAL	VFIRE 24	DIV "W"	154.2725	Tone 6 (156.7)
14	TACTICAL	VFIRE 26	DIV "H"	154.3025	Tone 6 (156.7)
15	MED A/G TAC	CALCORD	ALL DIVISIONS	156.0750	Medical Op's Tone 6 (156.7)
16/20	AIR GUARD	GUARD	ALL DIVISIONS	168.6250	EMERGENCY ONLY Tone 1 (110.9)

Notes:
Corral Communications Unit: 530-629-2376

Prepared by:
Richard Gonzales, COML 805-340-4717

MEDICAL PLAN	1. INCIDENT NAME Corral	2. DATE PREPARED 8/21/2013	3. TIME PREPARED 1800	4. OPERATIONAL PERIOD Day 8/22/2013
---------------------	-----------------------------------	-------------------------------	--------------------------	--

5. INCIDENT MEDICAL AID STATIONS			
MEDICAL AID STATIONS	LOCATION		PARAMEDICS
			YES NO
Corral ICP	Medical Unit -Veterans Park Willow Creek, CA		XX

6. TRANSPORTATION					
NAME	ADDRESS	Flight Time to Incident	PHONE	PARAMEDICS	
				YES	NO
CA-Air National Guard (ANG) H-820 (HOIST)	Redding, CA	40 Min	707-726-1266	XX	
Cal Fire H-102 (DAY HOIST ONLY)	Kneeland, CA	25 Min	707-726-1266		XX
CHP H-13 (HOIST)	Redding, CA	40 Min	911 or 707-726-1268	XX	
REACH 5	Redding, CA	40 Min	911 or 707-726-1268	XX	
PHI Air Medical	Redding, CA	40 Min	911 or 707-726-1268	XX	

Ground Ambulance			
Hoopla Ambulance Unit 83	Corral ICP-Willow Creek, CA		XX

7. HOSPITALS								
NAME	ADDRESS	TRAVEL TIME		PHONE	HELIPAD		BURN CENTER	
		AIR	GRND		YES	NO	YES	NO
St Joseph Hospital	2700 Dolbeer St. Eureka, CA 95501	25 Min	1 Hr.	707-269-4250	XX			XX
Mercy Medical Center (Level II Trauma Center)	2175 Rosaline St. Redding, CA 96001	40 Min.	2 Hr.	530-225-7200	XX			XX
UC Davis (Level I T/C Burn Center)	2315 Stockton Bl. Sacramento, CA 95817	1.5 Hr.	3.5 hr.	916-734-3636	XX		XX	
Willow Creek Community Health Center (Clinic)	Willow Creek, CA	N/A	5 min.	530-629-3111	N/A			N/A
Mad River Community Hospital (Clinic)	Willow Creek, CA	N/A	5 Min	530-629-3116	N/A			N/A

8. MEDICAL EMERGENCY PROCEDURES	
<p>When an injury occurs, initiate care with available resources at scene and notify DIVS. The DIVS shall coordinate the incident and direct necessary actions. The following steps shall be taken to mitigate the incident:</p> <ol style="list-style-type: none"> Determine the nature of the emergency. If the emergency is a medical injury/illness, determine if the injury/illness is life threatening. If the injury is life threatening, then clear designated frequency for emergency traffic. Identify the on-scene point of contact by position. Ensure that the Medical Unit Leader is contacted immediately. Identify number injured, patient assessment(s) and location (geographic and/or GPS coordinates). Identify on-scene medical personnel by position and last name (i.e. EMT Jones). Identify preferred method of patient transport. Determine any additional resources or equipment needed. <p>The Evacuation Plan should be continually evaluated, and contingencies developed in the event the first plan is not effective.</p>	<p style="text-align: center;"><u>PATIENT INFORMATION</u></p> <p>√</p> <p><input type="checkbox"/> Patient # _____ of _____ Patients</p> <p><input type="checkbox"/> Medevac-Immediate Evacuation is Critical</p> <p><input type="checkbox"/> Non- Emergency Medical Transport-Non Urgent Need for Ground Based or Helicopter Transport.</p> <p><input type="checkbox"/> Location _____ (Geographic Location Example: Spike Camp, Drop Point, Helispot, 2 Miles North of Forest Rd 030 on the 2N22 Road, etc.)</p> <p>Lat _____ Long _____ (Datum NAD 83) Example N 0°00.000' x W 0° 0.00'</p> <p><input type="checkbox"/> Age _____ Sex _____ Weight _____</p> <p><input type="checkbox"/> Severity: Minor _____ Delayed _____ Immediate _____</p> <p><input type="checkbox"/> Chief Complaint _____</p> <p><input type="checkbox"/> Any additional resources required _____ (Paramedics, Crews, SKEDs, Immobilization Devices, etc.)</p> <p>**See IRPG pages 41-48 for Triage , Treatment, and Transport Guidance</p>

ICS-206	9. PREPARED BY (MEDICAL UNIT LEADER) Robert Russell MEDL-1 <i>[Signature]</i>	10. REVIEWED BY (SAFETY OFFICER) Marty Hamel SOF1 <i>[Signature]</i>
----------------	--	---

MEDICAL TRANSPORTATION CHECKLIST

DATE / / MEDEVAC INCIDENT NUMBER _____

1. COMMAND/CONTROL

INCIDENT NAME (Geographic Name + 'Medical')			
POC/IC NAME:	The individual that is the Primary Point of Contact (POC) or IC for the Incident	MEDIC IN CHARGE :	The individual that is overseeing medical care at the scene.

2. PATIENT ASSESSMENT

PATIENT # __ of __	AGE:	SEX :	WEIGHT:
	INJURIES/ILLNESS:		
	RESPIRATION:	PULSE:	CONSCIOUS: YES/NO

PATIENT SEVERITY: SEVERE MODERATE MILD NONE

FOR MULTY CASUALTY:	IMMEDIATE:	DELAYED:	MINOR:
---------------------	------------	----------	--------

3. PATIENT LOCATION :

Datum NAD 83	Example: N 0° 00.00' x W 0° 00.00'
LAT/LONG:	
GEOGRAPHIC LOCATION (i.e. DP 1, H-2, ICP, Camp, Road, etc.)	

4. MEDICAL TRANSPORT NEEDED

MEDEVAC	IMMEDIATE EVACUATION IS CRITICAL; URGENT NEED FOR ADVANCED LIFE SUPPORT GROUND OR HELICOPTER TRANSPORT (Unstable patient that has a life threatening injury or illness) ** Medevac is an incident within an incident, one on scene point of contact needs to take charge.**
NON-EMERGENCY MEDICAL TRANSPORT	EVACUATION IS NOT CRITICAL; NON-URGENT NEED FOR GROUND OR HELICOPTER TRANSPORT (Typically utilized for stable, non-life threatening emergencies.)

5. ADDITIONAL RESOURCES AND EQUIPMENT (Check as applicable)

<input type="radio"/> TRAUMA KIT	<input type="radio"/> PARAMEDICS
<input type="radio"/> SPINAL IMMOBILIZATION DEVICE(S)	<input type="radio"/> PERSONNEL (Crews/Helitak Modules/etc for Manpower)
<input type="radio"/> OXYGEN	<input type="radio"/> LITTER or <input type="radio"/> WHEELED LITTER
<input type="radio"/> IV/FLUIDS	<input type="radio"/> TECHNICAL RESCUE or <input type="radio"/> EXTRICATION
<input type="radio"/> ALS MEDICATIONS (eg. EPI, Benadryl, etc.)	<input type="radio"/> OTHER:

ETA(s) on Scene:

6. COMMUNICATIONS:

FREQUENCY/NAME/FUNCTION (eg, Air/Grnd)	RECIEVE(Rx)	TRANSMIT (Tx)
AIR/AIR VHF-AM FREQUENCY		
If aerial supervision available, Call Sign:		

MEDICAL TRANSPORTATION CHECKLIST

7. LOGISTICAL TRANSPORT (evacuation method is situational dependent and is based on risk mgmt: terrain, road access, day/night, weather, visibility, distance to helispot or road, etc.)

EXTRACTION	RESOURCE(S) (Check as needed)
<input type="radio"/> SELF EXTRACT WITH DRIVER	<input type="radio"/> GROUND TRANSPORT
<input type="radio"/> CURRENTLY AT ROAD	<input type="radio"/> ADVANCED LIFE SUPPORT GROUND TRANSPORT
<input type="radio"/> CARRY OUT TO ROAD	<input type="radio"/> INCIDENT ASSIGNED HELICOPTER TRNSPORT
<input type="radio"/> CARRY OUT TO HELISPOT <small>(Identified, Constructed, Dust Abated)</small>	<input type="radio"/> ADVANCED LIFE SUPPORT HELICOPTER TRANS. <small>(Life Flight, PHI, Reach, Fire Dept. etc)</small>
<input type="radio"/> HOIST/ SHORT -HAUL	<input type="radio"/> HOIST/SHORT HAUL EQUIPPED HELICOPTER
<input type="radio"/> OTHER:	<input type="radio"/> NIGHT VISION (NVG) EQUIPPED HELICOPTER

ETA(s) on Scene/Notes:

UNIT:	DISPATCH TIME:	ARRIVAL TIME:	AT PATIENT TIME:
ETD: (Scene to Medical Facility)	TRANSPORT TIME:	AT FACILITY:	VIA: <small>(ALS/BLS/Air/ Ground Support)</small>

RECEIVING FACILITY:

8. PATIENT LZ/EVAC LOCATION (Pick-Up Location):

DATUM NAD 83	<i>Example: N 0° 00.00' x W 0° 00.00'</i>
LAT/LONG:	
If applicable, Hazards and Safety Notes at LZ for air evacuation	

9. CONTINGENCY PLANNING (Considerations: If primary options fail, what actions can be implemented in conjunction with primary evacuation method?) Consider PACE Primary , Alternative, Contingency and Emergency plans in the event the current plan is no longer effective.

NOTES:

Medical Evacuation

This plan is designed to identify and outline the steps necessary to safely and effectively evacuate an injured firefighter from the Corral Complex and deliver that firefighter to an appropriate medical facility in both daytime and nighttime settings.

Once notification of a medical emergency, and the Division Supervisor and/or EMT's make the decision that a medical evacuation is required, Incident Management Team components will work together to accomplish the evacuation. The highest qualified medical personnel on scene shall assume control of patient care. The Division Supervisor shall manage the response; coordinate communications with incident communication unit and medical unit, and air to ground communications. The Division Supervisor may delegate communications to appropriate resources as needed to facilitate the operation.

Ground Medical Evacuation

If the injured firefighter is *WITHIN* reasonable hiking distance from a road and is determined to have a condition that *WILL NOT* be aggravated by driving him/her out, then an incident vehicle shall be utilized to evacuate the injured firefighter from the scene either to the ICP Medical Unit or to a rendezvous point. Patient transport/destination decision shall lie with the DIVS in consultation with the highest level (i.e. EMT/Paramedic) medical care provider on scene.

All requests for Air Ambulances will be processed through Corral Medical Unit and Cal Fire Fortuna Dispatch (9-1-1). The following ground ambulance providers and locations for ground ambulance coverage for this incident location:

Agency	Base Location	Provider Level	Drive Time to ICP
Hoopla Ambulance (Incident)	As Assigned	Paramedic	Variable
Hoopla Ambulance	Willow Creek, CA	Paramedic	5 Minutes
Hoopla Ambulance	Hoopla, CA	Paramedic	30 Minutes

Air Medical Evacuation

If the injured firefighter is *NOT WITHIN* reasonable hiking distance to a road and/or determined to have a condition could be worsened by driving him/her out, the following aircraft shall be launched based on the closest available resource to extract the injured party. The Division Supervisor will coordinate a hand carry out of the injured firefighter to the extraction site. The rescue helicopter will evacuate the firefighter to an appropriate location based on medical necessity to rendezvous with ground ambulance, air ambulance, or hospital. All requests for Rescue Aircraft will go through USFS Fortuna Dispatch. Rescue aircraft and locations for this incident are:

Medical Evacuation

Hoist/Extraction Helicopters:

Agency	Hoist Capabilities	Medical Capabilities	Base Location	Estimated Flight Time
CA-ANG (Air Guard)H-820	Hoist	ALS	Redding, CA	40 Minutes
Cal Fire 102	Day Hoist	BLS	Kneeland, CA	25 minutes
CHP H-13	Day/Night Hoist	ALS	Redding, CA	40 minutes
Military Resources	Day/Night Hoist	BLS / ALS	Multiple	45+ minutes
Assigned incident aviation resources as available	None	BLS/ALS	Corral Helibase	5 Minutes

All requests for Air Ambulances will be processed through Fortuna Dispatch. If the injured firefighter requires air ambulance transportation to a hospital, the following helicopters shall be considered:

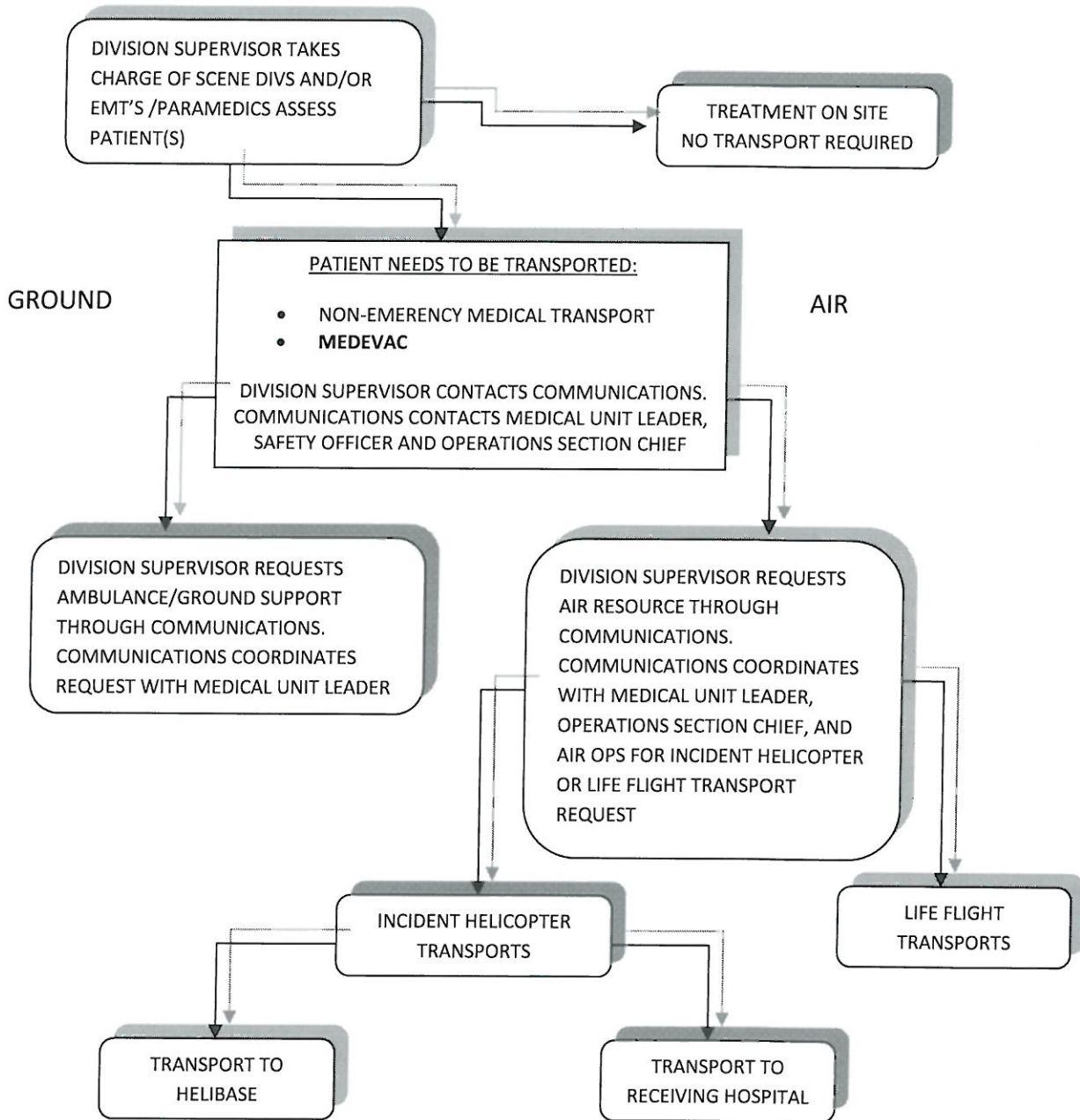
Agency	Base Location	Flight time to Incident
Reach 5	Redding, CA	40 Minutes
PHI Air Medical	Redding, CA	40 Minutes

Once airborne, the helicopters will have an estimated flight time to each of the following facilities:

Facility	Specialty Care				Location	Helipad	Fight Time from Incident
	Trauma	SRC	Stroke	Burn			
Mercy Medical Center	Level II Trauma Center	XX	XX		Redding, CA	XX	40 Minutes
UC Davis Medical Center	Level I Trauma Center	XX	XX	XX	Sacramento, CA	XX	1.5 Hours

- Take charge of the scene and size up the situation.
- Ensure scene safety and identify the incident Point of Contact (POC)
- Identify the nature of the incident and number of persons involved.
- Coordinate the EMT/Paramedic response to the injury/illness.
- Identify Number of people involved and their medical condition (Triage) See IRPG pages 41-48
- Identify Medical treatment and transportation needs (**non emergency medical transport or Emergency Medevac**)
- Identify Location and (Lat/Long coordinates) of site
- Coordinate the request for transportation and/or other resources through Communications
- Identify special needs, i.e. Law Enforcement, Extrication, Heavy Rescue, and Haz-Mat response
- Coordinate with the Safety Officer and/or Law enforcement to preserve the scene for accident investigation
- Contingency planning with alternatives shall continuously take place in the event that the preferred plan becomes ineffective.

Medical Evacuation



Incident Trainee / Trainer Data Worksheet

PLEASE PRINT LEGIBLY!

A: Trainee Data

Trainee Name: _____ Check One: Male Female

Trainee Position: _____ Order Number (E, O, C, A) ____--_____

State Abr. ____ + 3 Letter Designator _____ Agency Type: Federal State Local

USFS BLM BIA FWS DOD NWS NPS Date Assigned: ____--____--_____

Ordered as a trainee for the incident? Yes No

Ordered as a US Forest Service PRIORITY trainee Yes No OFPM IFPM?

Person's name and title that is responsible for tracking your qualifications: (Where do you want the packet mailed to?)

Name: _____ Title: _____ Home Unit: _____

Agency Address: _____ City: _____

State: _____ Zip: _____ Phone Number: () _____--_____

B. Trainee Prerequisites

	YES	NO
1. Possesses valid Red Card or agency certification card?	<input type="radio"/>	<input type="radio"/>
2. Trainee has a proper agency initiated position task book?	<input type="radio"/>	<input type="radio"/>
3. Trainee has an incident issued task book?	<input type="radio"/>	<input type="radio"/>

C. Trainer/Evaluator Data (All fields are required to be filled in)

Trainer/Evaluator Name: _____ Position: _____

Home Unit: _____ Order Number (E, O, C, A) ____--_____

Work Address: _____ City: _____ State: _____

Zip Code: _____ Phone Number: () _____--_____

D. Trainee Goals (items in the position task book to be evaluated on this incident)

1. _____
2. _____
3. _____

Training Paperwork Completion Instructions

Incident Trainee Data Worksheet (TNSP-1)

1. **Block A** Trainee Data, Fill out completely by trainee. Personal Information plus information on the person responsible for one's agency training, training records, or initiates position task books, etc.
2. **Block B** Trainee fills out completely.
3. **Block C** Trainer/Evaluator fills out completely
4. **Block D** Trainee and Trainer/Evaluator reaches an agreement on what specific tasks **(from the position task book)** the trainee will be able to accomplish this incident. There can be any number of tasks listed.

Incident Trainee Exit Review (TNSP-4)

1. Completed by trainee to express the quality of training experience obtained on the incident.

Incident Personnel Performance Rating (ICS-225)

1. **Personal Information (Top Area)**
 - a. Filled out by trainee
2. **Rating Factors (Check Boxes)**
 - a. Filled out by trainers/evaluators
 - b. Be sure us use guidelines listed above boxes
3. **Remarks (Narrative)**
 - a. Most important area of the form
 - b. Should refer to goals agreed upon on the worksheet (how well or if improvement or experience is needed). Our training is performance based.
 - c. Should include a closing statement indicating that 1) the trainee should be considered for qualification or 2) the trainee needs additional assignments to develop knowledge or complete missing tasks.
4. **Signatures (Bottom)**
 - a. Evaluation is finalized by signatures of both the trainee and trainer/evaluator.

CORRAL COMPLEX

Human Resource Message

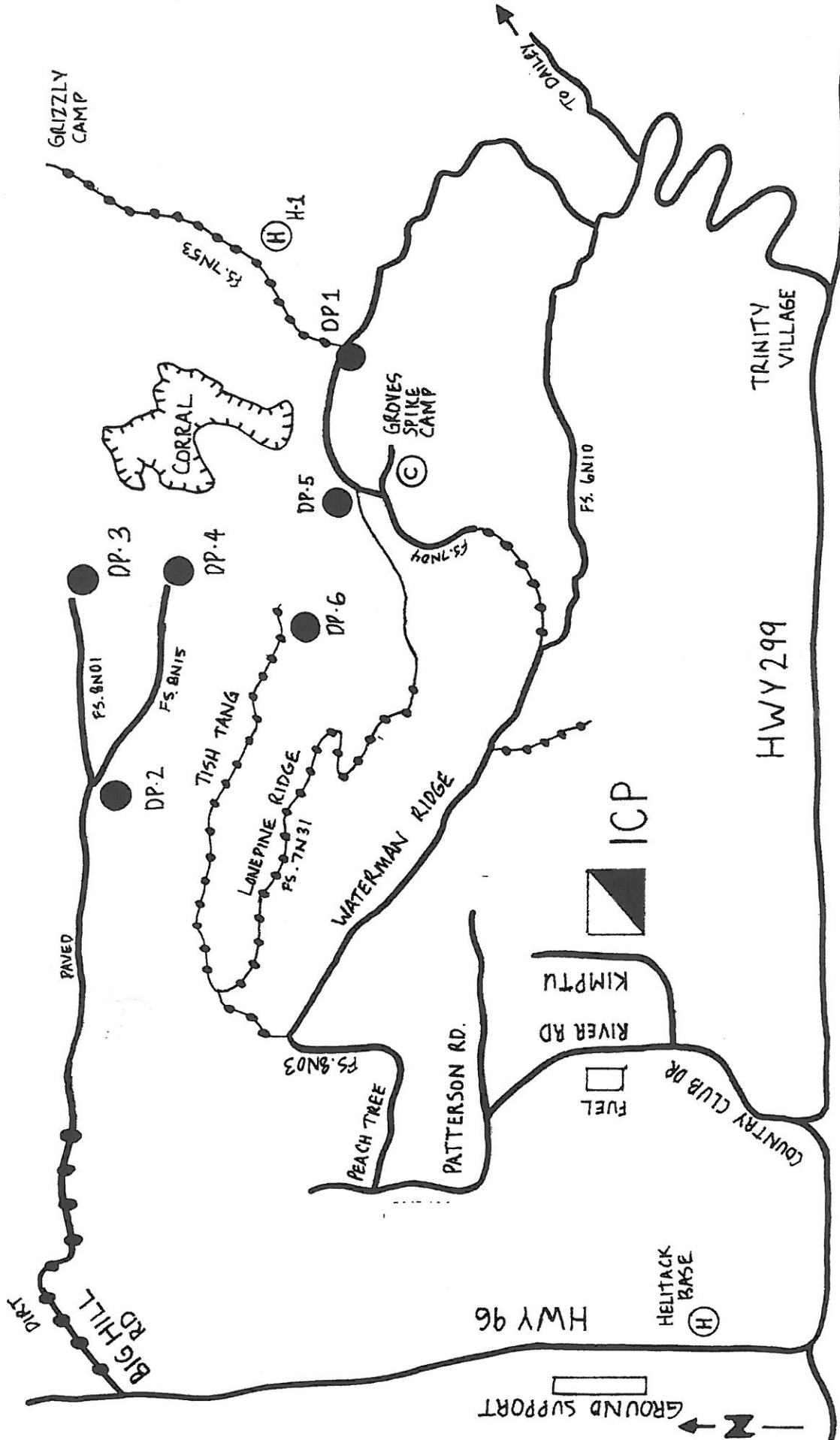
Your Rights

To Work in a Harassment-Free Work Environment

- All employees have the right to work in a harassment-free environment where people treat one another with dignity and respect.
- A harassment-free work environment assists in providing a safe and productive work environment.



Human Resource Specialist – Mike Baines
724-678-6147



Transportation Map
 Not to Scale
 Created August 18, 2013
 DPRO (T) deAvila

