

CORRAL COMPLEX

CA-SRF-001494
P5HU49

Aug 29, 2013
Day Shift 0600 - 2000



INCIDENT OBJECTIVES	1. Incident Name Corral Complex	2. Date Prepared 8-28-13	3. Time Prepared 1600
----------------------------	---	------------------------------------	---------------------------------

4. Operational Period
8-29-13 0600 to 2000

5. General Control Objectives for the Incident (include alternatives)

Incident Objectives:

- Provide for firefighter and public safety in all incident operations.
- Protect property and infrastructure. Control fire closest to communities.
- Keep stakeholders, the public, and cooperators informed of fire status.
- Keep costs commensurate with identified values at risk.
- Protect cultural and natural resources.
- Protect wilderness values and utilize MIST in the Trinity Alps Wilderness.
- Protect the Hoopa Valley Indian Reservation Community at Risk as listed in the Federal Register.
- Protect Communities at Risk including Denny, Trinity Village, Burnt Ranch, Hawkins Bar, Salyer, and Willow Creek.
- Protect the De-No-To Trail as listed in the Federal Register of National Historic Places.

Control Objectives:

- Keep the fire:
 - North of Hwy 299
 - East of the Hwy 96
 - South of the Siskiyou / Trinity County Line
 - West of the New River

6. Weather Forecast for Period
See Attached Weather Forecast

7. General Safety Message
See Attached Safety Message

8. Attachments (mark if attached)		
<input checked="" type="checkbox"/> Incident Objectives – ICS 202	<input checked="" type="checkbox"/> Division Assignment List – ICS 204	<input checked="" type="checkbox"/> Medical Plan - ICS 206
<input checked="" type="checkbox"/> Organization List - ICS 203	<input checked="" type="checkbox"/> Safety Message	<input checked="" type="checkbox"/> Human Resource Message
<input checked="" type="checkbox"/> Fire Weather Forecast	<input type="checkbox"/> Incident Safety Analysis – ICS 215A	<input checked="" type="checkbox"/> Transportation Map
<input checked="" type="checkbox"/> Fire Behavior Forecast	<input checked="" type="checkbox"/> Air Ops Summary – ICS 220	<input type="checkbox"/> Incident Map
<input type="checkbox"/> Pocket Card	<input checked="" type="checkbox"/> Communications Plan - ICS 205	<input checked="" type="checkbox"/> Unit Log – ICS 214

9. Prepared by (Planning Section Chief) <i>[Signature]</i>	10. Approved by (Incident Commander) <i>[Signature]</i> DPIC
---	---

**ICS Form 203
ORGANIZATION ASSIGNMENT LIST**

1. INCIDENT NAME CORRAL FIRE	2. DATE PREPARED 8/28/13	3. TIME PREPARED 1800
--	------------------------------------	---------------------------------

5. INCIDENT COMMAND STAFF

Position	Name
INCIDENT COMMANDER	Carlton Joseph / Ryan Jackson
DEPUTY	Jim Giachino / Ranger Dorn (t)
SAFETY OFFICER	Marty Hamel / Brian Savage
INFORMATION OFFICER	Steve Kliest / Allie Hostler
LIAISON OFFICER	Rick Alpert
HRSP	Mike Baines

6. AGENCY REPRESENTATIVES

AGENCY	NAME
SRF AARP	Nolan Colegrove
SRF-Fire	Rick Young
Hoopa AARP	Kevin Lane
BIA	Joshua Simmons
Res. Cultural Adv.	Aaron Pole / Antone Aubrey
NFFE	John McRae / Roberta Coragliotti
Shasta Trinity AARP	Tina Lynsky
Shasta Trinity AREP	Brian Ramsey
CCC	John Button

7. PLANNING SECTION

CHIEF	Tim Baal
DEPUTY	D. Cooper / R. Leuck(t) / J. Schillinger (t)
RESOURCES UNIT	J. Switzler / G. Thompson
SITUATION UNIT	M. McHargue / T. Morelock / Jon Meier (t)
DOCUMENTATION UNIT	Lorne Ellickson / Ursula VeLarde
DEMOBILIZATION UNIT	Robert Ashby
CTSP	Jim Youngblood, Chris Crowder (t)
TNSP	Bill Reynolds / James Mitchell (t)
FBAN	Mike Beasley
IMET	Jim Wallmann / Ryan Leach (t)
GISS	Brad Weissaupt / Mark Schug
GISS	David Benitez / Steve Kennedy

8. LOGISTICS SECTION

CHIEF	Hern Crane
DEPUTY	
a. SUPPORT BRANCH	
SECURITY	Heather Naigus
SUPPLY UNIT	Joe McMahon
FACILITIES UNIT	Wally Grogan / Jim Eckroth
GROUND SUPPORT UNIT	Don Hill

b. SERVICE BRANCH

COMMUNICATIONS UNIT	Matthew Nilsen
RECEIVING	Michael Bradford
ORDERING	Sharon Porter
MEDICAL UNIT	Robert Russell
FOOD UNIT	Bruce Ungari

4. OPERATIONAL PERIOD (DATE/TIME)

8-29-13 0600 to 2000

9. OPERATIONS SECTION

CHIEF	Keith Gurrola / Sam Marouk (t)
PLANNING OPS	Don Smith / Fred Burris (t)
CONTINGENCY OPS	Steve Ryberg
a. BRANCH I	Scott Hall / Michael Milkovich(t)
DIVISION F	Jeff West / Jim Snow
DIVISION H	Corey Rose / Raldon Brown (t) / Pete Davis (t)
DIVISION L	Kyle Jacobson
DIVISION M	Peter Harris
DIVISION Lone Pine Cont	Doug McCoun / Josh Eichamer
GROUP 10N02	Mike Demello / Kris Schroeder (t)
b. BRANCH V	Don Forsyth
DIVISION A	Jonathan Boe
DIVISION X	Peter Glover
DIVISION W/P	unstaffed
DIVISION R	John Toomey
DIVISION Z	Richard Neal
c. BRANCH VII	Larry Wright
DIVISION SS	Daniel Morford / Wilson Branch (t)
DIVISION VV	James Crabtree / Michael Alexander (t)
DIVISION OO	Shannon Prather / Kenneth Boucher (t)
DIVISION Y	Steven Swaney
NIGHT	Debbie Walls

c. BRANCH

DIVISION/GROUP	Contingency	Kim Olson / Jeff Lucas (t)
DIVISION/GROUP	READ	Andrew Spain
DIVISION/GROUP	Corral Rescue Group	James Johnson
DIVISION/GROUP	Corral Staging	Nathan Armstrong

d. AIR OPERATIONS BRANCH

AIR OPERATIONS BR. DIR.	John Keesee
AIR TACTICAL GROUP SUP.	Curtis Stanley
AIR SUPPORT GROUP SUP.	Craig Dado / Todd Gilbreth (t)
HELICOPTER COORDINATOR	
AIR TANKER/FIXED WING CRD.	

10. FINANCE/ADMINISTRATION SECTION

CHIEF	Theresa Fork
DEPUTY	
TIME UNIT	Janice Brown / Maggie Prochazka
PROCUREMENT UNIT	Katie Pasini
COMPENSATION/CLAIMS UNIT	
COST UNIT	Roger Siemers / Vanessa Kobilis (t)
EQTR	Annette Hoyer

PREPARED BY (RESOURCES UNIT)

J. Switzler



INCIDENT Weather Forecast



FORECAST NO: 14
PREDICTION FOR: Thursday
SHIFT DATE: 08/29/2013 0600-2000
TIME AND DATE
FORECAST ISSUED: 08/28/2013 1900

NAME OF FIRE: Corral Complex
SHIFT Day **UNIT:** CA-SRF
SIGNED: Ryan Leach (T)/Jeff Tonkin
Incident Meteorologist

WEATHER DISCUSSION: The air mass over the fire will remain stable as a weather system moving north of the area pushes more maritime air into the area this afternoon and evening. Dew points will rise quickly this afternoon and evening across the fire, causing a rapid increase in humidity. Winds continue from the northwest but stronger due to the system passing to the north of the fire.

WEATHER FORECAST (TODAY):

WEATHER: Areas of smoke. Partly Cloudy.

HAINES INDEX: 3 **LAL:** 1 **CHC RAIN:** 0 %

MAX TEMP:	Elev. 3500 ft: 78 – 82 F	Elev 6000 ft: 66 - 70 F	New River Area: 86 – 90 F
MIN RH:	Elev. 3500 ft: 36 – 40 %	Elev 6000 ft: 36 – 40 %	New River Area: 27 – 32 %

WINDS: *Slope:* Upslope / up-valley 3 – 4 mph. New River valley, up-valley 5-7 gust 14 mph. Early downslope winds 2-4 mph in Quinby Creek drainage after 1600.
(EYE LEVEL) *Ridges:* West to northwest 5 – 7 gust 12 mph.

TRANSPORT WIND: West 8 – 10 mph **VISIBILITY:** 1 – 2 mi becoming 3 – 5 mi after 1100 in the valleys, 3 -5 mi on ridges.

STABILITY: Inversion break between 1100 and noon, mixing height 8,000 feet.

FORECAST (TONIGHT):

WEATHER: Areas of smoke. Partly cloudy.
MIN TEMPERATURES: 51 – 55 F
RH: 80 – 85% below 4,000 feet, maximum above 4,000 feet around 2200 at 85% decreasing to around 45% at 0600.
WIND: *Slope: Down slope/down valley* 1 – 3 mph.
(eye level) *Ridges: North to northeast* 6 – 8 gust 14 mph.

OUTLOOK FOR FRIDAY:

WEATHER: Areas of smoke. Mostly clear.

MAX TEMP:	Elev. 3500 ft: 81 – 85 F	Elev 6000 ft: 70 - 74 F	New River Area: 91 – 95 F
MIN RH:	Elev. 3500 ft: 30 – 34 %	Elev 6000 ft: 30 – 34 %	New River Area: 24 – 29 %

WINDS: *Slope:* Upslope / up-valley 3 – 4 mph. New River valley, up-valley 5-7 gust 14 mph. Early downslope winds 2-4 mph in Quinby Creek drainage after 1600.

(EYE LEVEL) *Ridges:* West to northwest 5 – 7 gust 14 mph.

OBSERVATIONS WEDNESDAY:


Big Hill RAWS (9 mi WNW – 3570 ft): Temp: MAX: 78. RH: MIN: 43%. Winds (20ft): W 6 gusts 13 mph.
Brush Mtn. RAWS (13 mi SW – 3941 ft): Temp: MAX: 77. RH: MIN: 39%. Winds (20ft): WSW 5 - 6 gusts 14 mph.
IRAWS 4- Trinity GS (6145 ft): Temp: MAX: 68. RH MIN: 51%. Winds (eye level): WNW 3-5 gusts 9 mph.
IRAWS 16 – Grand Slam (2428 ft): Temp: MAX: 88. RH MIN: 26%. Winds (eye): SW 4-6 gusts 14 mph.

Incident RAWS Data --- SCAN Code with Smart Phone

Big Hill RAWS – Div F/H/L	IRAWS 4 (Trinity GS) Div L/M/P/R
Brush Mountain RAWS – Div A/F/X	IRAWS 16 (Grand Slam) – Div W/X



FIRE BEHAVIOR FORECAST

FORECAST NUMBER: #15	TYPE OF FIRE: Wildfire
FIRE NAME: CORRAL COMPLEX	OPERATIONAL PERIOD: August 29, 2013 0600-0600
DATE ISSUED: August 28, 2013	TIME ISSUED: 2000 hrs
UNIT: Six Rivers NF	SIGNED:  Mike Beasley FBAN

INPUTS

WEATHER SUMMARY

(Refer to Weather Forecast for details) **DAY:** Partly cloudy. Max Temp: 70-85°. Min RH: 32-38%.
Slope/Valley – Upslope 3-4 mph, Ridges – West/Northwest 5-7 mph with gusts to 12 mph.
NIGHT: Partly cloudy. Min Temp: 51-55° Max RH: 45-85% Winds: N to NE 6-8 mph ridges, gusts to 14 mph.

FUELS

Fire is burning within the boundaries of the Megram Fire (1999) and Back Bone Fire (2009). Fuels consist of abundant heavy dead and down, snags and shrubs (Ceanothus/Snow Brush). Mature timber on the west flank. Live FMC lower on S/SE/W aspects. Live and dead fuel moistures noticeably higher in the drainages below 4000ft elevation. Minimum fine fuel moisture: 6-10%, 1000 hour FMC: 10-14%, Live fuel moisture: 80-100%.

OUTPUTS - FIRE BEHAVIOR

➤ **Forecasted Indices (Big Hill RAWs) ERC: 47 (Down 4) BI: 52 (Unchanged)**

Thresholds for Active Fire Behavior in the Corral Complex area:

20ft Winds > 7 mph. RH < 31%. Temperature > 82°. 1000hr FMC < 13%. BI > 50. ERC > 47.

GENERAL: Yesterdays fire spread was minimal with the minimum RH remaining above 40% across most of the fire area. Today's fire behavior potential will be slightly less as a result of the slightly higher relative humidity and cloud cover. There is a potential for low to moderate spread rates and fire behavior across the higher elevations and east of the crest. Fire behavior at the lower elevations and west of the crest will be generally low. Most fire behavior will be backing and flanking at ½ ch/hr. or less.

DIV F & H (W Flank, Tish Tang Ridge area) – Expect the fire to spread very slowly to the west and back off the ridge to the north and south of the South Fork Tish Tang Ck. Rollout will not likely result in any rapid upslope runs. Heavy fuels continue to smolder and consume.

DIV L (NW Flank, Tish Tang Point area) – Expect low spread to the NW towards and around Tish Tang Point. Suppression efforts on the spot fire in the bottom of Tish Tang Ck should keep that fire in check. Rollout will not likely result in any rapid upslope runs. Heavy fuels continue to smolder.

DIV M & P (NE Flank, Trinity GS/H-2 area) – This edge is largely cold, especially inside the Backbone Fire footprint from 2009. Spot fire east of the crest is not showing IR heat, but don't bet on that, keep a close eye for this area for signs of heat in the heavies.

DIV R & W (E/SE Flank, South of Grizzly Camp) – This is a problematic area with heat and a high potential for rollout. Fire spread potential is fairly low but until the heavy fuels finish burning, it remains. The greatest fire activity will likely occur in the early morning hours if the RH drop below 40% and the winds get gusty.

DIV X & A (Horse Linto Ck area) – Fire is established in Horse Linto Ck. There is a slight potential of the fire making a slope reversal and heading upslope to the ridge top to the south, but rates of spread will stay low, unless torching brush provides a source of spotting. Pay very close attention to the fire south of Horse Linto Creek, due to the heavy dead & down fuel loading.

**Maximum Fire Behavior (head fire upslope): Rate of Spread: 10-12 chains/hour (12 ft/min),
Flame Length: 4-6 ft. Probability of Ignition: 50-60%. Maximum spotting distance of 2000 feet.**

AIR OPERATIONS

Potential for a mild inversion in the morning breaking between 1100 and noon. Plan accordingly.

SAFETY

- Don't get complacent after multiple days with low fire behavior. Other dangers exist, besides fire behavior.
- *Small opportunities are often the beginning of great enterprises. -Demosthenes (384 BC - 322 BC)*

Division Assignment List	1. Branch I	2. Division/Group H
---------------------------------	-----------------------	-------------------------------

3. Incident Name CORRAL COMPLEX	4. Operational Period 08/29/13 Thursday DAY Shift 0600 - 2000
---	---

5. Operations Personnel			
Operations Chief	KEITH GURROLA; SAM MAROUK (t)	Division/Group Supervisor	C.ROSE; R. BROWN (t) P.DAVIS (t)
Operations Chief		Air Attack Supervisor	
Branch Director	SCOTT HALL; M. MILKOVICH (t)	Safety Officer	MARTIN HAMEL; BRIAN SAVAGE

6. Resources Assigned this Period						
Strike Team/Task Force/ Resource Designator	Leader	Num of Pers.	Trans. Y/N	Drop Off PT./Time	Pick Up PT./Time	
HC2 MOSQUEDA C-70 9/7	JOSE MOSQUEDA	20	N	DIV H/L BREAK 0600	DIV H/L BREAK 2000	
CORRAL S/T #4 E-275 9/8	MARK SACHARA	1	N	DIV H/L BREAK 0600	DIV H/L BREAK 2000	
ENG3 HEBER 1104 E-274 9/8	TONY CANTARELLA	4	N	DIV H/L BREAK 0600	DIV H/L BREAK 2000	
ENG3 PONDEROSA 813 E-275 9/8	DON G WEAVER	4	N	DIV H/L BREAK 0600	DIV H/L BREAK 2000	
ENG3 ENGINE 814 E-276 9/8	CARLOS VALADEZ	3	N	DIV H/L BREAK 0600	DIV H/L BREAK 2000	
ENG3 SUMMITT 332 E-277 9/8	RICHARD JAMISON	3	N	DIV H/L BREAK 0600	DIV H/L BREAK 2000	
ENG3 GOLDEN VAL 116 E-278 9/8	KEVIN GIFFORD	3	N	DIV H/L BREAK 0600	DIV H/L BREAK 2000	
ENG3 ENGINE 1543 E-279 9/8	ROBERT PENA	3	N	DIV H/L BREAK 0600	DIV H/L BREAK 2000	
SKG4 WATERWAGONS E-141 9/4	LANCE LEEK	2	N	DIV H/L BREAK 0600	DIV H/L BREAK 2000	
SLSH MCKELLAR TREE E-62 8/30	DOUG MCKELLAR	1	N	DIV H/L BREAK 0600	DIV H/L BREAK 2000	
SLSH DIVERSIFIED E-60 8/30	KELLY HOLT	1	N	DIV H/L BREAK 0600	DIV H/L BREAK 2000	
WTT2 5193 E-246 9/7	PATRICK MILLS	1	N	DIV H/L BREAK 0600	DIV H/L BREAK 2000	
TFLD O-72 8/29	JEFFREY DAVIDS	1	N	DIV H/L BREAK 0600	DIV H/L BREAK 2000	
TFLD O-391 9/4	BRYAN ROSENOW	1	N	DIV H/L BREAK 0600	DIV H/L BREAK 2000	
TFLD O-538 9/10	CHARLES HARDEN	1	N	DIV H/L BREAK 0600	DIV H/L BREAK 2000	
FALC MODULE O-299 9/4	JAMES GOODMAN	1	N	DIV H/L BREAK 0600	DIV H/L BREAK 2000	
FALC SPARR TREE O-91 8/30	JIM MILLER	1	N	DIV H/L BREAK 0600	DIV H/L BREAK 2000	
FALC MODULE O-255 8/31	MATT MILLER	1	N	DIV H/L BREAK 0600	DIV H/L BREAK 2000	
FALA O-369 9/4	RICHARD LOERZEL	1	N	DIV H/L BREAK 0600	DIV H/L BREAK 2000	
FELB O-457 9/9	DAVID GRETTEMBERG	1	N	DIV H/L BREAK 0600	DIV H/L BREAK 2000	

7. Control Operations

Snag, complete plumbing line from Division H/L break to Division H/F break.

8. Special Instructions

All resources report to the wash station upon arrival and demobilization.
 BEARS- Don't leave your food unattended at any time of day to reduce availability to bears. Store your food at least 100 feet away from your sleeping area. The food stash should be downwind of your site, where possible. Keep vehicle windows closed when storing food inside.

9. Division/Group Communications Summary							
Function	Frequency - RX	Frequency - TX	Tone	System	Channel	System	Channel
Command	168.7000	170.9750	11 (114.8) Tx/Rx	NIFC	1		
Tactical Div/Group	154.3025	154.3025	6 (156.7) Tx/Rx	VFIRE 26	14		
Logistics							
Air to Ground	167.0625	167.0625		A/G PRI	11		

Prepared by (Resource Unit Leader) Gary Thompson	Approved by (Planning Section Chief) <i>[Signature]</i>	Date Prepared 08/28/13	Time Prepared 1719
---	--	---------------------------	-----------------------

Division Assignment List	1. Branch I	2. Division/Group H
---------------------------------	-----------------------	-------------------------------

3. Incident Name CORRAL COMPLEX	4. Operational Period 08/29/13 Thursday DAY Shift 0600 - 2000
---	---

5. Operations Personnel			
Operations Chief	KEITH GURROLA; SAM MAROUK (t)	Division/Group Supervisor	C. ROSE; R. BROWN (t); P. DAVIS (t)
Operations Chief		Air Attack Supervisor	
Branch Director	SCOTT HALL; M. MILKOVICH (t)	Safety Officer	MARTIN HAMEL; BRIAN SAVAGE

6. Resources Assigned this Period						
Strike Team/Task Force/ Resource Designator	Leader	Num of Pers.	Trans. Y/N	Drop Off PT./Time	Pick Up PT./Time	
HEQB O-162 8/27	REX P RYMER	1	N	DIV H/L BREAK 0600	DIV H/L BREAK 2000	
HEQB O-163 8/29	DUNN GARRETT	1	N	DIV H/L BREAK 0600	DIV H/L BREAK 2000	
HEQB O-587	ROBERT BERNEY	1	N	DIV H/L BREAK 0600	DIV H/L BREAK 2000	
HEQB O-404 9/6	SHAWN KINGHORN	1	N	DIV H/L BREAK 0600	DIV H/L BREAK 2000	
FEMT O-312 9/3	JEREMY A WRIGHT	1	N	DIV H/L BREAK 0600	DIV H/L BREAK 2000	
FEMT O-309 9/3	DEAN BONFIGLI	1	N	DIV H/L BREAK 0600	DIV H/L BREAK 2000	
SOFR O-156 9/2	DOUGLAS T MIEDTKE	1	N	DIV H/L BREAK 0600	DIV H/L BREAK 2000	
SOFR O-223 9/2	NICK NAVA	1	N	DIV H/L BREAK 0600	DIV H/L BREAK 2000	

7. Control Operations

Snag, complete plumbing line from Division H/L break to Division H/F break.

8. Special Instructions

All resources report to the wash station upon arrival and demobilization.
 BEARS- Don't leave your food unattended at any time of day to reduce availability to bears. Store your food at least 100 feet away from your sleeping area. The food stash should be downwind of your site, where possible. Keep vehicle windows closed when storing food inside.

9. Division/Group Communications Summary							
Function	Frequency - RX	Frequency - TX	Tone	System	Channel	System	Channel
Command	168.7000	170.9750	11 (114.8) Tx/Rx	NIFC	1		
Tactical Div/Group	154.3025	154.3025	6 (156.7) Tx/Rx	VFIRE 26	14		
Logistics							
Air to Ground	167.0625	167.0625		A/G PRI	11		
Prepared by (Resource Unit Leader) Gary Thompson		Approved by (Planning Section Chief) 			Date Prepared 08/28/13	Time Prepared 1719	

Division Assignment List	1. Branch I	2. Division/Group L
---------------------------------	-----------------------	-------------------------------

3. Incident Name CORRAL COMPLEX	4. Operational Period 08/29/13 Thursday DAY Shift 0600 - 2000
---	---

5. Operations Personnel			
Operations Chief	KEITH GURROLA; SAM MAROUK (t)	Division/Group Supervisor	KYLE JACOBSON
Operations Chief		Air Attack Supervisor	
Branch Director	SCOTT HALL; M. MILKOVICH (t)	Safety Officer	MARTIN HAMEL; BRIAN SAVAGE

6. Resources Assigned this Period						
Strike Team/Task Force/ Resource Designator	Leader	Num of Pers.	Trans. Y/N	Drop Off PT./Time	Pick Up PT./Time	
HC2 BECKWORTH C-57 9/2	SETH ODELL	20	N	DIV H/L BREAK 0600	2000	
HC2 ASI ARDEN C-10 8/21	REMINGTON KATON	20	N	DIV H/L BREAK 0600	2000	
HC2 FOLSOME LAKE C-60 9/5	JASON SCHROEDER	20	N	DIV H/L BREAK 0600	2000	
ES3 ENGINE S/T 2140C E-167 9/5	ED LYNCH	20	N	DIV H/L BREAK 0600	2000	
TF CORRAL #1	SCOTT BENEDICT	1	N	DIV H/L BREAK 0600	2000	
ENG6 NORTHWEST 036 E-163 9/3	SCOTT BENEDICT	3	N	DIV H/L BREAK 0600	2000	
ENG6 NORTHWEST 038 E-165 9/3	CASEY BROWN	3	N	DIV H/L BREAK 0600	2000	
ENG6 NORTHWEST 039 E-166 9/3	MATT COX	3	N	DIV H/L BREAK 0600	2000	
ENG6 MARK TWAIN 671 E-185 9/4	AMY DUFF	3	N	DIV H/L BREAK 0600	2000	
WTS1 WT #3 VIN#11776 E-136 9/3	GARRY HARRIS	1	N	DIV H/L BREAK 0600	2000	
SKG1 OUTBACK WILDFIRE E-140 9/4	DAN CHANCLER	1	N	DIV H/L BREAK 0600	2000	
FALC FALLING MODULE O-97 8/30	RICHARD BROWN	2	N	DIV H/L BREAK 0600	2000	
FALC FALLING MODULE O-98 8/30	JAMES GIBSON	2	N	DIV H/L BREAK 0600	2000	
FALC O-149 8/30	RUSSELL A NEWMAN	1	N	DIV H/L BREAK 0600	2000	
FELB O-505 9/3	ROBERT KRAMER	1	N	DIV H/L BREAK 0600	2000	
FELB O-375 9/4	MICHAEL BILDEAUX (t)	1	N	DIV H/L BREAK 0600	2000	
TFLD O-539 9/10	CORY WATERS	1	N	DIV H/L BREAK 0600	2000	
SOFR O-158 9/2	DONALD BERGSTRAND	1	N	DIV H/L BREAK 0600	2000	
FOBS O-206 8/29	MIKE URQUIDES	1	N	DIV H/L BREAK 0600	2000	
FOBS O-207 8/30	GREG DE AVILA	1	N	DIV H/L BREAK 0600	2000	

7. Control Operations

Prep control line for firing operations. Keep water handling supply tanks full.

8. Special Instructions

All resources report to the wash station upon arrival and demobilization.
 BEARS- Don't leave your food unattended at any time of day to reduce availability to bears. Store your food at least 100 feet away from your sleeping area. The food stash should be downwind of your site, where possible. Keep vehicle windows closed when storing food inside.

9. Division/Group Communications Summary							
Function	Frequency - RX	Frequency - TX	Tone	System	Channel	System	Channel
Command	168.7000	170.9750	11 (114.8) Tx/Rx	NIFC	1		
Tactical Div/Group	168.2500	168.2500	11 (114.8) Tx/Rx	NIFC	7		
Logistics							
Air to Ground	167.0625	167.0625		A/G PRI	11		

Prepared by (Resource Unit Leader) Gary Thompson <i>GThompson</i>	Approved by (Planning Section Chief) <i>[Signature]</i>	Date Prepared 08/28/13	Time Prepared 1719
--	--	---------------------------	-----------------------

Division Assignment List	1. Branch I	2. Division/Group M
---------------------------------	-----------------------	-------------------------------

3. Incident Name CORRAL COMPLEX	4. Operational Period 08/29/13 Thursday DAY Shift 0600 - 2000
---	---

5. Operations Personnel

Operations Chief	KEITH GURROLA; SAM MAROUK (t)	Division/Group Supervisor	PETER HARRIS
Operations Chief		Air Attack Supervisor	
Branch Director	SCOTT HALL; M. MILKOVICH (t)	Safety Officer	MARTIN HAMEL; BRIAN SAVAGE

6. Resources Assigned this Period

Strike Team/Task Force/ Resource Designator	Leader	Num of Pers.	Trans. Y/N	Drop Off PT./Time	Pick Up PT./Time
HC1 PLUMAS IHC C-25 8/30	JACK SEVELSON	20	N	COYOTE 0600	COYOTE 2000
HC1 SHASTA LAKE IHC C-103 9/2	LEE DONOVAN	20	N	COYOTE 0600	COYOTE 2000
HC2 SALYER IHC C-116 9/10	JOHN MARTINEZ	20	N	COYOTE 0600	COYOTE 2000
HC1 WYOMING IHC C-105 9/10	MATTHEW M PRENTISS	20	N	COYOTE 0600	COYOTE 2000
SAGUARO FUM O-193 8/29	JOSEPH CROWE	7	N	COYOTE 0600	COYOTE 2000
MODULE - WILDLAND FIRE O-630 9/4	KELLY CORNWALL	10	N	COYOTE 0600	COYOTE 2000
FALC O-295 9/3	RUBEN CHUCKLUCK	1	N	COYOTE 0600	COYOTE 2000
FALC O-180 8/30	RANDALL BELL	1	N	COYOTE 0600	COYOTE 2000
FELB O-151 8/31	RICHARD GAUBATZ	1	N	COYOTE 0600	COYOTE 2000
SOFR O-247 8/31	RAY SILVERMAN	1	N	COYOTE 0600	COYOTE 2000
FOBS O-441 9/7	NORMAN LAVOIE	1	N	COYOTE 0600	COYOTE 2000
FOBS O-440 9/7	STEVE HANDY (t)	1	N	COYOTE 0600	COYOTE 2000
FEMP O-568 8/29	SHANE DONNELLY	1	N	COYOTE 0600	COYOTE 2000
FEMP O-569 8/29	STEVEN MOORE	1	N	COYOTE 0600	COYOTE 2000

7. Control Operations

Cold trail and construct direct line from Trinity Summit south to H-2.

8. Special Instructions

All resources report to the wash station upon arrival and demobilization.
 BEARS- Don't leave your food unattended at any time of day to reduce availability to bears. Store your food at least 100 feet away from your sleeping area. The food stash should be downwind of your site, where possible. Keep vehicle windows closed when storing food inside.

9. Division/Group Communications Summary

Function	Frequency - RX	Frequency - TX	Tone	System	Channel	System	Channel
Command	168.7000	170.9750	11 (114.8) Tx/Rx	NIFC	1		
Tactical Div/Group	166.5500	166.5500	11 (114.8) Tx/Rx	R5	8		
Logistics							
Air to Ground	167.0625	167.0625		A/G PRI	11		

Prepared by (Resource Unit Leader) Gary Thompson <i>[Signature]</i>	Approved by (Planning Section Chief) <i>[Signature]</i>	Date Prepared 08/28/13	Time Prepared 1719
--	--	---------------------------	-----------------------

Division Assignment List	1. Branch I	2. Division/Group Lone Pine Contingency Group
---------------------------------	----------------	---

3. Incident Name CORRAL COMPLEX	4. Operational Period 08/29/13 Thursday DAY Shift 0600 - 2000
------------------------------------	--

5. Operations Personnel			
Operations Chief	KEITH GURROLA; SAM MAROUK (t)	Division/Group Supervisor	DOUG MCCOUN ;J. EICHAMER (t)
Operations Chief		Air Attack Supervisor	
Branch Director	SCOTT HALL; MIKE MILKOVICH	Safety Officer	MARTIN HAMEL; BRIAN SAVAGE

6. Resources Assigned this Period						
Strike Team/Task Force/ Resource Designator	Leader	Num of Pers.	Trans. Y/N	Drop Off PT./Time	Pick Up PT./Time	
ENG6 BRUSH 51 E-179 9/5	DAN SCHINDLER	3	N	H-10 0600	H-10 2000	
ENG6 CIBOLA E-176 9/4	MICHAEL P WILLIAMS	3	N	H-10 0600	H-10 2000	
SLSH G AND O BODY SHOP E-61 8/30	SCOTT WEAVER	1	N	H-10 0600	H-10 2000	
SLSH HOLT LOGGING INC. E-335 9/11	ROBERT GASTELECUTTO	2	N	H-10 0600	H-10 2000	
SLSH ERIC AMMON E-115 8/31	DON WOOD	1	N	H-10 0600	H-10 2000	
SKG1 LET-ER-BUCK E-336 9/10	STEVEN LASSEN JR.	2	N	H-10 0600	H-10 2000	
EXCA BEN SALE #1 E-64 9/2	BUTCH SMITH	1	N	H-10 0600	H-10 2000	
EXCA HOOPA TRIBE E-105 8/31	GARY DEMPEWOLF	1	N	H-10 0600	H-10 2000	
HEQB O-605 9/6	COREY LEE KLAMUT	1	N	H-10 0600	H-10 2000	
HEQB O-402 9/6	JERRY BROWN	1	N	H-10 0600	H-10 2000	
HEQB O-608 9/8	ANDY MURRIN	1	N	H-10 0600	H-10 2000	

7. Control Operations
Construct contingency line from Horse Linto Campground to Div A F/A break.

8. Special Instructions
All resources report to the wash station upon arrival and demobilization.
BEARS- Don't leave your food unattended at any time of day to reduce availability to bears. Store your food at least 100 feet away from your sleeping area. The food stash should be downwind of your site, where possible. Keep vehicle windows closed when storing food inside.

9. Division/Group Communications Summary							
Function	Frequency - RX	Frequency - TX	Tone	System	Channel	System	Channel
Command	168.7000	170.9750	11 (114.8) Tx/Rx	NIFC	1		
Tactical Div/Group	167.1125	167.1125	11 (114.8) Tx/Rx	R5	9		
Logistics							
Air to Ground	167.0625	167.0625		A/G PRI	11		

Prepared by (Resource Unit Leader) Gary Thompson <i>gthompson</i>	Approved by (Planning Section Chief) <i>[Signature]</i> PSC	Date Prepared 08/28/13	Time Prepared 1719
--	--	---------------------------	-----------------------

Division Assignment List	1. Branch I	2. Division/Group 10N02 Group
---------------------------------	-----------------------	---

3. Incident Name CORRAL COMPLEX	4. Operational Period 08/29/13 Thursday DAY Shift 0600 - 2000
---	---

5. Operations Personnel			
Operations Chief	KEITH GURROLA; SAM MAROUK (t)	Division/Group Supervisor	MIKE DEMELLO; K. SCHROEDER (t)
Operations Chief		Air Attack Supervisor	
Branch Director	SCOTT HALL; MIKE MILKOVICH	Safety Officer	MARTIN HAMEL; BRIAN SAVAGE

6. Resources Assigned this Period					
Strike Team/Task Force/ Resource Designator	Leader	Num of Pers.	Trans. Y/N	Drop Off PT./Time	Pick Up PT./Time
HC2 PONDEROSA C-108 9/7	OSWALDO BENCOMO	20	N	BOX CAMP SPIKE 0600	BOX CAMP SPIKE 2000
HC2 LAVA RIVER #1 C-109 9/4	RIGOBERTO TORRES	20	N	BOX CAMP SPIKE 0600	BOX CAMP SPIKE 2000
HC2 LAVA RIVER #2 C-110 9/4	JAIME RAMOS	20	N	BOX CAMP SPIKE 0600	BOX CAMP SPIKE 2000
SLSH CASCADE BRUSH E-334 9/10	RICHARD BROWN	1	N	BOX CAMP SPIKE 0600	BOX CAMP SPIKE 2000

7. Control Operations

Construct contingency line on 10N02 road from EVS-2 north towards Red Cap Campground. Follow SRF specs.

8. Special Instructions

All resources report to the wash station upon arrival and demobilization.
 BEARS- Don't leave your food unattended at any time of day to reduce availability to bears. Store your food at least 100 feet away from your sleeping area. The food stash should be downwind of your site, where possible. Keep vehicle windows closed when storing food inside.

9. Division/Group Communications Summary							
Function	Frequency - RX	Frequency - TX	Tone	System	Channel	System	Channel
Command	168.7000	170.9750	11 (114.8) Tx/Rx	NIFC	1		
Tactical Div/Group	167.1125	167.1125	11 (114.8) Tx/Rx	R5	9		
Logistics							
Air to Ground	167.0625	167.0625		A/G PRI	11		

Prepared by (Resource Unit Leader) Gary Thompson <i>[Signature]</i>	Approved by (Planning Section Chief) <i>[Signature]</i>	Date Prepared 08/28/13	Time Prepared 2050
--	--	---------------------------	-----------------------

Division Assignment List	1. Branch V	2. Division/Group A
---------------------------------	-----------------------	-------------------------------

3. Incident Name CORRAL COMPLEX	4. Operational Period 08/29/13 Thursday DAY Shift 0600 - 2000
---	---

5. Operations Personnel

Operations Chief	KEITH GURROLA; SAM MAROUK (t)	Division/Group Supervisor	JONATHAN BOE
Operations Chief		Air Attack Supervisor	
Branch Director	DON FORSYTH	Safety Officer	MARTIN HAMEL; BRIAN SAVAGE

6. Resources Assigned this Period

Strike Team/Task Force/ Resource Designator	Leader	Num of Pers.	Trans. Y/N	Drop Off PT./Time	Pick Up PT./Time
ENG3 BLUE LAKE 8838 E-188 9/4	GREG PERRY	5	N	DP-5 0600	DP-5 2000
ENG3 CORRAL S/T #3 E-254 9/7	JEFF POLACEK	21	N	DP-5 0600	DP-5 2000
ENG6 GREY WOLF 013 E-261 9/2	DAVID TRESKIN	3	N	DP-5 0600	DP-5 2000
ENG6 BRUSH 150 E-271 9/7	WILLIAM ROWE	4	N	DP-5 0600	DP-5 2000
FEL1 WOOD RIVER TI E-68 9/2	RAY DRISCOLL	1	N	DP-5 0600	DP-5 2000
FEL1 TIM RANGELAND E-70 9/2	CLAY WEAVER	1	N	DP-5 0600	DP-5 2000
FALC FALLER MODULE O-179 8/30	JUSTIN CECIL	2	N	DP-5 0600	DP-5 2000
FEL1 INTERMOUNTAIN E-73 9/3	KEVIN SMITH	1	N	DP-5 0600	DP-5 2000
CHIP ZEB'S TREE 2542 E-108 9/1	SHAW STOCKE	2	N	DP-5 0600	DP-5 2000
CHIP RON ADKINS CO. E-107 8/31	RON ADKINS	1	N	DP-5 0600	DP-5 2000
FEL2 HOLT LOGGING E-67 9/1	S.MLENDREZ	1	N	DP-5 0600	DP-5 2000
WTS1 CONVERSE E-240 9/6	CORY NICKELL	1	N	DP-5 0600	DP-5 2000
HEQB O-167 9/3	B.BONENBERGER	1	N	DP-5 0600	DP-5 2000
FEMT O-3 9/3	ROYCE HUDSON	1	N	DP-5 0600	DP-5 2000
FEMP O-589 9/10	TREVOR WILDING	1	N	DP-5 0600	DP-5 2000

7. Control Operations

Improve indirect line from Division A/X break to Division A/F break. Complete plumbing water handling equipment.

8. Special Instructions

All resources report to the wash station upon arrival and demobilization.
 BEARS- Don't leave your food unattended at any time of day to reduce availability to bears. Store your food at least 100 feet away from your sleeping area. The food stash should be downwind of your site, where possible. Keep vehicle windows closed when storing food inside.

9. Division/Group Communications Summary

Function	Frequency - RX	Frequency - TX	Tone	System	Channel	System	Channel
Command	168.7000	170.9750	11 (114.8) Tx/Rx	NIFC	1		
Tactical Div/Group	166.7250	166.7250	11 (114.8) Tx/Rx	NIFC	5		
Logistics							
Air to Ground	167.0625	167.0625		A/G PRI	11		

Prepared by (Resource Unit Leader) Gary Thompson <i>gthompson</i>	Approved by (Planning Section Chief) <i>[Signature]</i>	Date Prepared 08/28/13	Time Prepared 1719
--	--	---------------------------	-----------------------

Division Assignment List	1. Branch V	2. Division/Group X
---------------------------------	-----------------------	-------------------------------

3. Incident Name CORRAL COMPLEX	4. Operational Period 08/29/13 Thursday DAY Shift 0600 - 2000
---	---

5. Operations Personnel			
Operations Chief	KEITH GURROLA; SAM MAROUK (t)	Division/Group Supervisor	PETER GLOVER
Operations Chief		Air Attack Supervisor	
Branch Director	DON FORSYTH	Safety Officer	MARTIN HAMEL; BRIAN SAVAGE

6. Resources Assigned this Period						
Strike Team/Task Force/ Resource Designator	Leader	Num of Pers.	Trans. Y/N	Drop Off PT./Time	Pick Up PT./Time	
HC2 FORTUNA 22 C-68 9/3	LARRY CROFUTT	17	N	GROVES SPIKE 0600	GROVES SPIKE 2000	
ES3 XAL - 2003C E-168 9/5	GARRETT CONTRERAS	22	N	GROVES SPIKE 0600	GROVES SPIKE 2000	
ENG6 BLY MOUNTIAN FIRE E-318 9/2	MARK GROVES	3	N	GROVES SPIKE 0600	GROVES SPIKE 2000	
ENG6 BERNCO E-317 9/4	DAKOTA POWERS	3	N	GROVES SPIKE 0600	GROVES SPIKE 2000	
WTS2 TELLECHEA E-111 9/1	RUBEN TELLECHEA	1	N	GROVES SPIKE 0600	GROVES SPIKE 2000	
WTS1 B & G E-144 9/3	MIKE STOOPS	1	N	GROVES SPIKE 0600	GROVES SPIKE 2000	
FEL1 TIM RANGELAND E-71 9/2	RANDY RAMSEY	1	N	GROVES SPIKE 0600	GROVES SPIKE 2000	
FALC VOLCANO CREEK E-52 8/24	SCOTT OLIVER	2	N	GROVES SPIKE 0600	GROVES SPIKE 2000	
FALC O-185 9/14	KODY L COX	1	N	GROVES SPIKE 0600	GROVES SPIKE 2000	
FALC O-367 9/4	MICHEAL MOEN	1	N	GROVES SPIKE 0600	GROVES SPIKE 2000	
FALC O-152 9/8	THEODORE SCHWARTZ	1	N	GROVES SPIKE 0600	GROVES SPIKE 2000	
FEMP O-133 8/30	JEFF SHELTON	1	N	GROVES SPIKE 0600	GROVES SPIKE 2000	
FEMP O-134 8/30	ERNEST MIRANDA	1	N	GROVES SPIKE 0600	GROVES SPIKE 2000	
SOFR O-160 9/3	JIMMIE DIXON	1	N	GROVES SPIKE 0600	GROVES SPIKE 2000	

7. Control Operations

Prep 7N10 Road; plumb line, install water handling equipment.

8. Special Instructions

All resources report to the wash station upon arrival and demobilization.
 BEARS- Don't leave your food unattended at any time of day to reduce availability to bears. Store your food at least 100 feet away from your sleeping area. The food stash should be downwind of your site, where possible. Keep vehicle windows closed when storing food inside.

9. Division/Group Communications Summary							
Function	Frequency - RX	Frequency - TX	Tone	System	Channel	System	Channel
Command	168.7000	170.9750	11 (114.8) Tx/Rx	NIFC	1		
Tactical IV/Group	168.2375	168.2375	11 (114.8) Tx/Rx	R5	10		
Logistics							
Air to Ground	167.0625	167.0625		A/G PRI	11		

Prepared by (Resource Unit Leader) Gary Thompson <i>gthompson</i>	Approved by (Planning Section Chief) <i>[Signature]</i>	Date Prepared 08/28/13	Time Prepared 1718
--	--	---------------------------	-----------------------

Division Assignment List	1. Branch V	2. Division/Group W
---------------------------------	-----------------------	-------------------------------

3. Incident Name CORRAL COMPLEX	4. Operational Period 08/29/13 Thursday DAY Shift 0600 - 2000
------------------------------------	--

5. Operations Personnel

Operations Chief	KEITH GURROLA; SAM MAROUK (t)	Division/Group Supervisor	
Operations Chief		Air Attack Supervisor	
Branch Director	DON FORSYTH	Safety Officer	MARTIN HAMEL; BRIAN SAVAGE

6. Resources Assigned this Period

Strike Team/Task Force/ Resource Designator	Leader	Num of Pers.	Trans. Y/N	Drop Off PT./Time	Pick Up PT./Time
UNSTAFFED					

7. Control Operations

8. Special Instructions

All resources report to the wash station upon arrival and demobilization.
 BEARS- Don't leave your food unattended at any time of day to reduce availability to bears. Store your food at least 100 feet away from your sleeping area. The food stash should be downwind of your site, where possible. Keep vehicle windows closed when storing food inside.

9. Division/Group Communications Summary

Function	Frequency - RX	Frequency - TX	Tone	System	Channel	System	Channel
Command	168.7000	170.9750	11 (114.8) Tx/Rx	NIFC	1		
Tactical Div/Group	166.5500	166.5500	11 (114.8) Tx/Rx	R5	8		
Logistics							
Air to Ground	167.0625	167.0625		A/G PRI	11		

Prepared by (Resource Unit Leader) <i>[Signature]</i>	Approved by (Planning Section Chief) <i>[Signature]</i>	Date Prepared 08/28/13	Time Prepared 2128
--	--	---------------------------	-----------------------

Division Assignment List	1. Branch V	2. Division/Group P
---------------------------------	-----------------------	-------------------------------

3. Incident Name CORRAL COMPLEX	4. Operational Period 08/29/13 Thursday DAY Shift 0600 - 2000
------------------------------------	--

5. Operations Personnel			
Operations Chief	KEITH GURROLA; SAM MAROUK (t)	Division/Group Supervisor	
Operations Chief		Air Attack Supervisor	
Branch Director	DON FORSYTH	Safety Officer	MARTIN HAMEL; BRIAN SAVAGE

6. Resources Assigned this Period

Strike Team/Task Force/ Resource Designator	Leader	Num of Pers.	Trans. Y/N	Drop Off PT./Time	Pick Up PT./Time
UNSTAFFED					

7. Control Operations

8. Special Instructions

All resources report to the wash station upon arrival and demobilization.
 BEARS- Don't leave your food unattended at any time of day to reduce availability to bears. Store your food at least 100 feet away from your sleeping area. The food stash should be downwind of your site, where possible. Keep vehicle windows closed when storing food inside.

9. Division/Group Communications Summary							
Function	Frequency - RX	Frequency - TX	Tone	System	Channel	System	Channel
Command	168.7000	170.9750	11 (114.8) Tx/Rx	NIFC	1		
Tactical Div/Group	166.5500	166.5500	11 (114.8) Tx/Rx	R5	8		
Logistics							
Air to Ground	167.0625	167.0625		A/G PRI	11		

Prepared by (Resource Unit Leader) Gary Thompson	Approved by (Planning Section Chief) <i>[Signature]</i>	Date Prepared 08/28/13	Time Prepared 1718
---	--	---------------------------	-----------------------

Division Assignment List	1. Branch V	2. Division/Group R
---------------------------------	-----------------------	-------------------------------

3. Incident Name CORRAL COMPLEX	4. Operational Period 08/29/13 Thursday DAY Shift 0600 - 2000
---	---

5. Operations Personnel			
Operations Chief	KEITH GURROLA; SAM MAROUK (t)	Division/Group Supervisor	JOHN TOOMEY
Operations Chief		Air Attack Supervisor	
Branch Director	DON FORSYTH	Safety Officer	MARTIN HAMEL; BRIAN SAVAGE

6. Resources Assigned this Period						
Strike Team/Task Force/ Resource Designator	Leader	Num of Pers.	Trans. Y/N	Drop Off PT./Time	Pick Up PT./Time	
HC1 ELDORADO IHC C-75 9/4	WILLIAM K HARRIS	20	N	DENNY SPIKE 0600	DENNY SPIKE 2000	
HC1 MAD RIVER IHC C-104 9/5	CHARLES HAIR	20	N	DENNY SPIKE 0600	DENNY SPIKE 2000	
HC2 VEGAS VALLEY IA C-73 9/1	ERIC ELLISON	18	N	DENNY SPIKE 0600	DENNY SPIKE 2000	
HC1 SALMON RIVER IHC - C-89 9/9	WILLIAM M ROBINSON	20	N	DENNY SPIKE 0600	DENNY SPIKE 2000	
HC2 MODOC C-39 9/1	WILLIE ALMAND	20	N	DENNY SPIKE 0600	DENNY SPIKE 2000	
HC1 PLEASANT VALLEY IH C-87 9/10	PAT MOORE	19	N	DENNY SPIKE 0600	DENNY SPIKE 2000	
HC2 ALASKA #1 C-92 9/8	MATTHEW DURFEY	20	N	DENNY SPIKE 0600	DENNY SPIKE 2000	
HELITAK CREW #1		6	N	DENNY SPIKE 0600	DENNY SPIKE 2000	
FEMP O-487 9/9	KEVIN WHITE	1	N	DENNY SPIKE 0600	DENNY SPIKE 2000	
FEMT O-591 9/8	JON FERGUSON	1	N	DENNY SPIKE 0600	DENNY SPIKE 2000	
SOFR O-221 9/8	DAVE SARGENTI	1	N	DENNY SPIKE 0600	DENNY SPIKE 2000	
SOFR O-222 9/1	KEVIN MORRIS	1	N	DENNY SPIKE 0600	DENNY SPIKE 2000	

7. Control Operations

Utilize crews to access and construct direct handline as appropriate.

8. Special Instructions

All resources report to the wash station upon arrival and demobilization.
 BEARS- Don't leave your food unattended at any time of day to reduce availability to bears. Store your food at least 100 feet away from your sleeping area. The food stash should be downwind of your site, where possible. Keep vehicle windows closed when storing food inside.

9. Division/Group Communications Summary							
Function	Frequency - RX	Frequency - TX	Tone	System	Channel	System	Channel
Command	168.7000	170.9750	11 (114.8) Tx/Rx	NIFC	1		
Tactical Div/Group	154.2725	154.2725	6 (156.7) Tx/Rx	VFIRE 24	13		
Logistics							
Air to Ground	167.0625	167.0625		A/G PRI	11		

Prepared by (Resource Unit Leader) Gary Thompson <i>[Signature]</i>	Approved by (Planning Section Chief) <i>[Signature]</i>	Date Prepared 08/28/13	Time Prepared 1718
--	--	---------------------------	-----------------------

Division Assignment List

1. Branch **V** 2. Division/Group **Z**

3. Incident Name **CORRAL COMPLEX** 4. Operational Period **08/29/13 Thursday DAY Shift 0600 - 2000**

5. Operations Personnel

Operations Chief	KEITH GURROLA; SAM MAROUK (t)	Division/Group Supervisor	RICHARD NEAL
Operations Chief		Air Attack Supervisor	
Branch Director	DON FORSYTH	Safety Officer	MARTIN HAMEL; BRIAN SAVAGE

6. Resources Assigned this Period

Strike Team/Task Force/ Resource Designator	Leader	Num of Pers.	Trans. Y/N	Drop Off PT./Time	Pick Up PT./Time
FEL2 HOLT LOGGING E-67 9/4	S. MELENDREZ	1	N	DENNY SPIKE 0600	2000
HEQB O-485 9/6	JOEL HANSON	1	N	DENNY SPIKE 0600	2000
HEQB O-403 9/6	DWAYNE ANDERSON	1	N	DENNY SPIKE 0600	2000
FEL1 E-66 8/30	JIM JOHNSON	1	N	DENNY SPIKE 0600	2000
FOBS O-108 8/31	JOHN MONCURE	1	N	DENNY SPIKE 0600	2000
FOBS O-193.1	JASON THIVENER	1	N	DENNY SPIKE 0600	2000

7. Control Operations
 Construct contingency line from Branch V/VII break north to Div Z/Y break along Trinity/ Humboldt County link.

8. Special Instructions
 All resources report to the wash station upon arrival and demobilization.
 BEARS- Don't leave your food unattended at any time of day to reduce availability to bears. Store your food at least 100 feet away from your sleeping area. The food stash should be downwind of your site, where possible. Keep vehicle windows closed when storing food inside.

9. Division/Group Communications Summary

Function	Frequency - RX	Frequency - TX	Tone	System	Channel	System	Channel
Command	168.7000	170.9750	11 (114.8) Tx/Rx	NIFC	1		
Tactical Div/Group	166.5500	166.5500	11 (114.8) Tx/Rx	R5	8		
Logistics							
Air to Ground	167.0625	167.0625		A/G PRI	11		

Prepared by (Resource Unit Leader) *Joachim* Approved by (Planning Section Chief) *[Signature]* Date Prepared **08/28/13** Time Prepared **1817**

Division Assignment List	1. Branch VII	2. Division/Group SS
---------------------------------	-------------------------	--------------------------------

3. Incident Name CORRAL COMPLEX	4. Operational Period 08/29/13 Thursday DAY Shift 0600 - 2000
---	---

5. Operations Personnel			
Operations Chief	KEITH GURROLA; SAM MAROUK (t)	Division/Group Supervisor	DANIEL MORFORD; W. BRANCH (t)
Operations Chief		Air Attack Supervisor	
Branch Director	LARRY WRIGHT	Safety Officer	MARTIN HAMEL; BRIAN SAVAGE

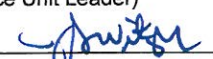
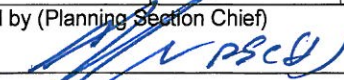
6. Resources Assigned this Period						
Strike Team/Task Force/ Resource Designator	Leader	Num of Pers.	Trans. Y/N	Drop Off PT./Time	Pick Up PT./Time	
HC2 MOSQUEDA #2 C-72 9/2	GONZALO ROSAS	20	N	ICP 0600	DENNY SPIKE 2000	
CORRAL # 9	ELLIOTT PHILLIP	1	N	ICP 0600	DENNY SPIKE 2000	
ENG3 PALOMINAS 1931 E-309 9/9	ALLEN HERSHEY	4	N	ICP 0600	DENNY SPIKE 2000	
ENG3 NORTHWEST 804 E-310 9/9	LARRY BEAR	4	N	ICP 0600	DENNY SPIKE 2000	
ENG3 MARICOPA 575 E-311 9/9	ROBERT V RUSSO	4	N	ICP 0600	DENNY SPIKE 2000	
ENG3 TUBAC 1027 E-312 9/9	JOHN CONGER	5	N	ICP 0600	DENNY SPIKE 2000	
ENG6 RINCON VAL 292 E-313 9/9	BRANDY BAUGUS	4	N	ICP 0600	DENNY SPIKE 2000	
ENG3 ENGINE - 9532 E-162 9/3	LYLE BLAINE MCKINNON	5	N	ICP 0600	DENNY SPIKE 2000	
SPAC SHF PACK STRING #1 E-14 8/26	ERIC CORDTZ	2	N	ICP 0600	DENNY SPIKE 2000	
SKIDGEN E-218	ERIC MASSETT	1	N	ICP 0600	DENNY SPIKE 2000	
SKIDGEN E-220	BRIAN REDDING	1	N	ICP 0600	DENNY SPIKE 2000	
WTS1 E-249 9/7	RON ROCHLITZ	1	N	ICP 0600	DENNY SPIKE 2000	
FALC MODULE, ALPINE O-513 9/9	DENNIS WITHERS	2	N	ICP 0600	DENNY SPIKE 2000	
FALC NORTH ZONE #1 O-510 9/9	GARRY ROSS	2	N	ICP 0600	DENNY SPIKE 2000	
FEMP O-307 9/5	MICHAEL E LIEBEL	1	N	ICP 0600	DENNY SPIKE 2000	
FEMT O-311 9/4	DARRICK ROSSOTTI	1	N	ICP 0600	DENNY SPIKE 2000	

7. Control Operations

Complete handline adjacent to Denny community; identify water handling needs.

8. Special Instructions

All resources report to the wash station upon arrival and demobilization
 BEARS- Don't leave your food unattended at any time of day to reduce availability to bears. Store your food at least 100 feet away from your sleeping area. The food stash should be downwind of your site, where possible. Keep vehicle windows closed when storing food inside.

9. Division/Group Communications Summary							
Function	Frequency - RX	Frequency - TX	Tone	System	Channel	System	Channel
Command	168.7000	170.9750	11 (114.8) Tx/Rx	NIFC	1		
Tactical Div/Group	167.1125	167.1125	11 (114.8) Tx/Rx	R5	9		
Logistics							
Air to Ground	167.0625	167.0625		A/G PRI	11		
Prepared by (Resource Unit Leader)			Approved by (Planning Section Chief)		Date Prepared	Time Prepared	
					08/28/13	1718	

Division Assignment List	1. Branch I	2. Division/Group F
---------------------------------	-----------------------	-------------------------------

3. Incident Name CORRAL COMPLEX	4. Operational Period 08/29/13 Thursday DAY Shift 0600 - 2000
---	---

5. Operations Personnel

Operations Chief	KEITH GURROLA; SAM MAROUK (t)	Division/Group Sup	JEFFREY WEST; JAMES SNOW
Operations Chief		Air Attack Supervisor	
Branch Director	SCOTT HALL; M. MILKOVICH (t)	Safety Officer	MARTIN HAMEL; BRIAN SAVAGE

6. Resources Assigned this Period

Strike Team/Task Force/ Resource Designator	Leader	Num of Pers.	Trans. Y/N	Drop Off PT./Time	Pick Up PT./Time
HC2 OHIO #2 C-14 8/30	CHRISTOPHER A MORRIS	20	N	BOX SPIKE 0600	2000
HC2 HEART LAKE C-100 8/31	TENNYSON, GREG	18	N	BOX SPIKE 0600	2000
HC2 SOLDIER CREEK C-74 9/9	DALYNN B PARKS	22	N	BOX SPIKE 0600	2000
CORRAL S/T #5	JEFF VANCE	1	N	BOX SPIKE 0600	2000
STEN O-560	BRADFORD TOVAR (t)	1	N	BOX SPIKE 0600	2000
ENG6 E-177 9/4	DUANE DEARBORN	3	N	BOX SPIKE 0600	2000
ENG6 RED LAKE E-186 9/4	PATRICK NORQUAY	3	N	BOX SPIKE 0600	2000
ENG6 NORTH PACIFIC E-263 9/1	JOE DAVID	3	N	BOX SPIKE 0600	2000
ENG6 ENGINE 823 E-269 9/8	CHRIS ANTHIS	3	N	BOX SPIKE 0600	2000
DOZ1 BROWN E-81 8/30	ROGER BROWN	1	N	BOX SPIKE 0600	2000
SLSH AMMON E-63 8/30	ERICK AMMON	1	N	BOX SPIKE 0600	2000
DOZ3 TEHAMA E-80 9/6	BRUCE FIELDS	1	N	BOX SPIKE 0600	2000
EXCA KEN'S INC. #1 E-99 8/31	MATT SKELTON	1	N	BOX SPIKE 0600	2000

7. Control Operations

Snag, complete plumbing indirect line from Branch I/V break to Division F/H break.

8. Special Instructions

All resources report to the wash station upon arrival and demobilization.
 BEARS- Don't leave your food unattended at any time of day to reduce availability to bears. Store your food at least 100 feet away from your sleeping area. The food stash should be downwind of your site, where possible. Keep vehicle windows closed when storing food inside.

9. Division/Group Communications Summary

Function	Frequency - RX	Frequency - TX	Tone	System	Channel	System	Channel
Command	168.7000	170.9750	11 (114.8) Tx/Rx	NIFC	1		
Tactical Div/Group	166.7750	166.7750	11 (114.8) Tx/Rx	NIFC	6		
Logistics							
Air to Ground	167.0625	167.0625		A/G PRI	11		

Prepared by (Resource Unit Leader) Gary Thompson	Approved by (Planning Section Chief) <i>[Signature]</i>	Date Prepared 08/28/13	Time Prepared 1719
---	--	---------------------------	-----------------------

Division Assignment List	1. Branch I	2. Division/Group F
3. Incident Name CORRAL COMPLEX	4. Operational Period 08/29/13 Thursday DAY Shift 0600 - 2000	

5. Operations Personnel			
Operations Chief	KEITH GURROLA; SAM MAROUK (t)	Division/Group Sup	JEFFREY WEST; JAMES SNOW
Operations Chief		Air Attack Supervisor	
Branch Director	SCOTT HALL; M. MILKOVICH (t)	Safety Officer	MARTIN HAMEL; BRIAN SAVAGE

6. Resources Assigned this Period						
Strike Team/Task Force/ Resource Designator	Leader	Num of Pers.	Trans. Y/N	Drop Off PT./Time	Pick Up PT./Time	
WTS1 CJS FIRE E-138 9/3	TERRY ANDERSON	1	N	DP6 0600	2000	
WTT1 3392 E-247 9/6	BRIAN CYR	2	N	DP6 0600	2000	
FALLER MODULE 0-99	CURTIS KING	1	N	DP6 0600	2000	
HEQB O-164 8/31	JARED HAMMATT	1	N	DP6 0600	2000	
TFLD O-430 9/7	STEPHEN M FEA (t)	1	N	DP6 0600	2000	
TFLD O-431 9/7	JOSH E COOPER (t)	1	N	DP6 0600	2000	
FELB O-425 9/3	MARK BOOKER	1	N	DP6 0600	2000	
HEQB O-631 9/11	JASON HEADLEY	1	N	DP6 0600	2000	
HEQB O-609 9/11	BRIAN HICKS	1	N	DP6 0600	2000	
FEMP 0-641	DARRELL GALLI	1	N	DP6 0600	2000	
FEMT O-643	MIKE TRIBOLET	1	N	DP6 0600	2000	
SOFR O-192 8/29	JOHN KELSO	1	N	DP6 0600	2000	

7. Control Operations

Snag, complete plumbing indirect line from Branch I/V break to Division F/H break.

8. Special Instructions

All resources report to the wash station upon arrival and demobilization.
 BEARS- Don't leave your food unattended at any time of day to reduce availability to bears. Store your food at least 100 feet away from your sleeping area. The food stash should be downwind of your site, where possible. Keep vehicle windows closed when storing food inside.

9. Division/Group Communications Summary							
Function	Frequency - RX	Frequency - TX	Tone	System	Channel	System	Channel
Command	168.7000	170.9750	11 (114.8) Tx/Rx	NIFC	1		
Tactical Div/Group	166.7750	166.7750	11 (114.8) Tx/Rx	NIFC	6		
Logistics							
Air to Ground	167.0625	167.0625		A/G PRI	11		

Prepared by (Resource Unit Leader) Gary Thompson	Approved by (Planning Section Chief) <i>[Signature]</i>	Date Prepared 08/28/13	Time Prepared 1719
---	--	---------------------------	-----------------------

Division Assignment List	1. Branch VII	2. Division/Group VV
---------------------------------	-------------------------	--------------------------------

3. Incident Name CORRAL COMPLEX	4. Operational Period 08/29/13 Thursday DAY Shift 0600 - 2000
---	---

5. Operations Personnel			
Operations Chief	KEITH GURROLA; SAM MAROUK (t)	Division/Group Supervisor	J. CRABTREE; M. ALEXANDER (t)
Operations Chief		Air Attack Supervisor	
Branch Director	LARRY WRIGHT	Safety Officer	MARTIN HAMEL; BRIAN SAVAGE

6. Resources Assigned this Period					
Strike Team/Task Force/ Resource Designator	Leader	Num of Pers.	Trans. Y/N	Drop Off PT./Time	Pick Up PT./Time
HC2 HVP 60 C-102 9/3	KEOLA MEDEIROS	20	N	DENNY SPIKE 0600	DENNY SPIKE 2000
HC2 OHIO #3 C-93 9/8	JEFFREY G TUCKER	20	N	DENNY SPIKE 0600	DENNY SPIKE 2000
ENG6 JACKSONVILLE 17 E-272 9/1	PHIL CARDINAL	3	N	DENNY SPIKE 0600	DENNY SPIKE 2000
SOFR O-159 9/2	CHRIS OBRIEN	1	N	DENNY SPIKE 0600	DENNY SPIKE 2000

7. Control Operations

Complete hand line around Dailey Ranch.

8. Special Instructions

All resources report to the wash station upon arrival and demobilization.
 BEARS- Don't leave your food unattended at any time of day to reduce availability to bears. Store your food at least 100 feet away from your sleeping area. The food stash should be downwind of your site, where possible. Keep vehicle windows closed when storing food inside.

9. Division/Group Communications Summary							
Function	Frequency - RX	Frequency - TX	Tone	System	Channel	System	Channel
Command	168.7000	170.9750	11 (114.8) Tx/Rx	NIFC	1		
Tactical Div/Group	168.2500	168.2500	11 (114.8) Tx/Rx	NIFC	7		
Logistics							
Air to Ground	167.0625	167.0625		A/G PRI	11		

Prepared by (Resource Unit Leader) <i>[Signature]</i>	Approved by (Planning Section Chief) <i>[Signature]</i>	Date Prepared 08/28/13	Time Prepared 1718
--	--	---------------------------	-----------------------

Division Assignment List	1. Branch VII	2. Division/Group 00
---------------------------------	-------------------------	--------------------------------

3. Incident Name CORRAL COMPLEX	4. Operational Period 08/29/13 Thursday DAY Shift 0600 - 2000
---	---

5. Operations Personnel			
Operations Chief	KEITH GURROLA; SAM MAROUK (t)	Division/Group Supervisor	SHANNON PRATHER; K. BOUCHER
Operations Chief		Air Attack Supervisor	
Branch Director	LARRY WRIGHT	Safety Officer	MARTIN HAMEL; BRIAN SAVAGE

6. Resources Assigned this Period						
Strike Team/Task Force/ Resource Designator	Leader	Num of Pers.	Trans. Y/N	Drop Off PT./Time	Pick Up PT./Time	
CORRAL #8				DENNY SPIKE 0600	DENNY SPKIE 2000	
STEN O-393 8/27	JON HANDRICK	1	N	DENNY SPIKE 0600	DENNY SPKIE 2000	
ENG3 UPPER PINE 62 E-189 9/6	JOSH SCHMIDT	3	N	DENNY SPIKE 0600	DENNY SPKIE 2000	
ENG6 MQ FRANCO E-262 9/1	RONALD CRUME	3	N	DENNY SPIKE 0600	DENNY SPKIE 2000	
ENG6 BEAR MOUNTAIN E-319 9/1	GREG HAMPTON	3	N	DENNY SPIKE 0600	DENNY SPKIE 2000	
ENG6 COOPER 17 E-320	MIKE THOMPSON	3	N	DENNY SPIKE 0600	DENNY SPKIE 2000	
ENG6 FIRST STRIKE 19 E-321 9/7	DENNIS BOORN	3	N	DENNY SPIKE 0600	DENNY SPKIE 2000	
DOZ2 KENS INC #2 E-213 9/4	MATT SKELTON	2	N	DENNY SPIKE 0600	DENNY SPKIE 2000	
HEQB O-607 9/11	JIM KAMINSKI	1	N	DENNY SPIKE 0600	DENNY SPKIE 2000	
FEMP O-603 9/8	ANDREW LUERA	1	N	DENNY SPIKE 0600	DENNY SPKIE 2000	
FEMT O-590 9/10	SCOTT ROBINSON	1	N	DENNY SPIKE 0600	DENNY SPKIE 2000	
FOBS O-107 8/31	KEN MASTEN	1	N	DENNY SPIKE 0600	DENNY SPKIE 2000	
FOBS O-445 9/7	JUSTIN RICK (t)	1	N	DENNY SPIKE 0600	DENNY SPKIE 2000	
SOF2 O-622 9/3	DAVE MORTON	1	N	DENNY SPIKE 0600	DENNY SPKIE 2000	

7. Control Operations

Complete hand line and dozer lines adjacent to Caraway Creek; snag; identify water handling sites

8. Special Instructions

All resources report to the wash station upon arrival and demobilization.
 BEARS- Don't leave your food unattended at any time of day to reduce availability to bears. Store your food at least 100 feet away from your sleeping area. The food stash should be downwind of your site, where possible. Keep vehicle windows closed when storing food inside.

9. Division/Group Communications Summary							
Function	Frequency - RX	Frequency - TX	Tone	System	Channel	System	Channel
Command	168.7000	170.9750	11 (114.8) Tx/Rx	NIFC	1		
Tactical Div/Group	154.3025	154.3025	6 (156.7) Tx/Rx	VFIRE 26	14		
Logistics							
Air to Ground	167.0625	167.0625		A/G PRI	11		
Prepared by (Resource Unit Leader) <i>[Signature]</i>			Approved by (Planning Section Chief) <i>[Signature]</i>		Date Prepared 08/28/13	Time Prepared 1718	

Division Assignment List	1. Branch V	2. Division/Group Y
---------------------------------	-----------------------	-------------------------------

3. Incident Name CORRAL COMPLEX	4. Operational Period 08/29/13 Thursday DAY Shift 0600 - 2000
---	---

5. Operations Personnel

Operations Chief	KEITH GURROLA; SAM MAROUK (t)	Division/Group Supervisor	STEVEN SWANEY
Operations Chief		Air Attack Supervisor	
Branch Director	DON FORSYTH	Safety Officer	MARTIN HAMEL; BRIAN SAVAGE

6. Resources Assigned this Period

Strike Team/Task Force/ Resource Designator	Leader	Num of Pers.	Trans. Y/N	Drop Off PT./Time	Pick Up PT./Time
HC2 SHASTA 21 C-69 9/1	NICK JOHNSON	20	N	GROVES SPIKE 0600	GROVES SPIKE 2000
HC2 OC 25 C-56 9/2	DON BOWEN	20	N	GROVES SPIKE 0600	GROVES SPIKE 2000
CORRAL S/T #6	RONALD PEVNY	1	N	GROVES SPIKE 0600	GROVES SPIKE 2000
STEN	DAVID SOLDAVINI (t)	1	N	GROVES SPIKE 0600	GROVES SPIKE 2000
ENG6 BLACKDUCK 719 E-178 9/4	CHRIS COLLISON	3	N	GROVES SPIKE 0600	GROVES SPIKE 2000
ENG6 SQUAD 751 E-253 9/7	BRUCE HANSEN	2	N	GROVES SPIKE 0600	GROVES SPIKE 2000
ENG6 BRUSH 196 E-268 9/7	DOUG L CORRIE	4	N	GROVES SPIKE 0600	GROVES SPIKE 2000
ENG6 BRUSH 503 E-270 9/7	ANDREW C MILLER	3	N	GROVES SPIKE 0600	GROVES SPIKE 2000
EXCA OILERS E-65 8/30	JAMES WHITE	1	N	GROVES SPIKE 0600	GROVES SPIKE 2000
EXCA KENS INC. #2 E-100 8/31	CHRIS FUNES	1	N	GROVES SPIKE 0600	GROVES SPIKE 2000
SLSH DIVERSIFIED 1568 E-132 9/3	DAVID ZALESNY	1	N	GROVES SPIKE 0600	GROVES SPIKE 2000
SLSH ALL TERRAIN E-133 9/5	RICK BORELLO	2	N	GROVES SPIKE 0600	GROVES SPIKE 2000
DOZ2 PETERS E-75 8/27	ROB JACKSON	1	N	GROVES SPIKE 0600	GROVES SPIKE 2000
DOZ2 OUTBACK DVBE INC. E-76 9/7	HAROLD MILLER	1	N	GROVES SPIKE 0600	GROVES SPIKE 2000
SKG1 TIGER INC 001 E-210 9/7	MICKEY MUMA	2	N	GROVES SPIKE 0600	GROVES SPIKE 2000
CHIP 3 B'S FORESTRY E-323 9/10	RYAN SHERBOURNE	2	N	GROVES SPIKE 0600	GROVES SPIKE 2000
CHIP KENS CHIPPER E-324 9/10	CASTULO ROMERO	2	N	GROVES SPIKE 0600	GROVES SPIKE 2000
FALC O-94 8/30	FRANK MANQUEROS	2	N	GROVES SPIKE 0600	GROVES SPIKE 2000
FALC MODULE O-256 8/31	ADAM MILLER	2	N	GROVES SPIKE 0600	GROVES SPIKE 2000
FALC O-509 8/31	JEREMY MASON	2	N	GROVES SPIKE 0600	GROVES SPIKE 2000

7. Control Operations

Construct contingency line from Div Z/Y break to DP1.

8. Special Instructions

All resources report to the wash station upon arrival and demobilization.
 BEARS- Don't leave your food unattended at any time of day to reduce availability to bears. Store your food at least 100 feet away from your sleeping area. The food stash should be downwind of your site, where possible. Keep vehicle windows closed when storing food inside.

9. Division/Group Communications Summary

Function	Frequency - RX	Frequency - TX	Tone	System	Channel	System	Channel
Command	168.7000	170.9750	11 (114.8) Tx/Rx	NIFC	1		
Tactical Div/Group	166.5500	166.5500	11 (114.8) Tx/Rx	R5	8		
Logistics							
Air to Ground	167.0625	167.0625		A/G PRI	11		

Prepared by (Resource Unit Leader) Gary Thompson <i>gthompson</i>	Approved by (Planning Section Chief) <i>[Signature]</i>	Date Prepared 08/28/13	Time Prepared 1718
--	--	---------------------------	-----------------------

Division Assignment List	1. Branch	2. Division/Group
	V	Y

3. Incident Name CORRAL COMPLEX	4. Operational Period 08/29/13 Thursday DAY Shift 0600 - 2000
------------------------------------	--

5. Operations Personnel

Operations Chief	KEITH GURROLA; SAM MAROUK (t)	Division/Group Supervisor	STEVEN SWANEY
Operations Chief		Air Attack Supervisor	
Branch Director	DON FORSYTH	Safety Officer	MARTIN HAMEL; BRIAN SAVAGE

6. Resources Assigned this Period

Strike Team/Task Force/ Resource Designator	Leader	Num of Pers.	Trans. Y/N	Drop Off PT./Time	Pick Up PT./Time
FALC O-368 9/4	ROBERT FREEMAN	1	N	GROVES SPIKE 0600	GROVES SPIKE 2000
FALC O-92 9/9	ALLAN HOPKINS	2	N	GROVES SPIKE 0600	GROVES SPIKE 2000
FALC O-512 9/9	DAN KECK	1	N	GROVES SPIKE 0600	GROVES SPIKE 2000
FALC MODULE, ALPINE O-513 9/9	DENNIS WITHERS	2	N	GROVES SPIKE 0600	GROVES SPIKE 2000
TFLD O-537 9/10	MIKE D WARD	1	N	GROVES SPIKE 0600	GROVES SPIKE 2000
TFLD O-452 9/6	DAN O'CONNOR (t)	1	N	GROVES SPIKE 0600	GROVES SPIKE 2000
FEMP O-135 8/29	JON ZBINDEN	1	N	GROVES SPIKE 0600	GROVES SPIKE 2000
FEMP O-305 9/3	MATT KIRK	1	N	GROVES SPIKE 0600	GROVES SPIKE 2000
FOBS O-585 9/10	MATTHEW WELDON	1	N	GROVES SPIKE 0600	GROVES SPIKE 2000
FOBS O-586 9/10	ELIZABETH YOUNGER (t)	1	N	GROVES SPIKE 0600	GROVES SPIKE 2000

7. Control Operation

Construct contingency line from Div Z/Y break to DP1.

8. Special Instructions

All resources report to the wash station upon arrival and demobilization.
 BEARS- Don't leave your food unattended at any time of day to reduce availability to bears. Store your food at least 100 feet away from your sleeping area. The food stash should be downwind of your site, where possible. Keep vehicle windows closed when storing food inside.

9. Division/Group Communications Summary

Function	Frequency - RX	Frequency - TX	Tone	System	Channel	System	Channel
Command	168.7000	170.9750	11 (114.8) Tx/Rx	NIFC	1		
Tactical Div/Group	166.5500	166.5500	11 (114.8) Tx/Rx	R5	8		
Logistics							
Air to Ground	167.0625	167.0625		A/G PRI	11		

Prepared by (Resource Unit Leader) Gary Thompson <i>[Signature]</i>	Approved by (Planning Section Chief) <i>[Signature]</i>	Date Prepared 08/28/13	Time Prepared 1718
--	--	---------------------------	-----------------------

Division Assignment List	1. Branch	2. Division/Group Contingency Group
---------------------------------	-----------	---

3. Incident Name CORRAL COMPLEX	4. Operational Period 08/29/13 Thursday DAY Shift 0600 - 2000
------------------------------------	--

5. Operations Personnel			
Operations Chief	KEITH GURROLA; SAM MAROUK (t)	Division/Group Supervisor	KIM OLSON; JEFF LUCAS (t)
Operations Chief		Air Attack Supervisor	
Branch Director		Safety Officer	MARTIN HAMEL; BRIAN SAVAGE

6. Resources Assigned this Period					
Strike Team/Task Force/ Resource Designator	Leader	Num of Pers.	Trans. Y/N	Drop Off PT./Time	Pick Up PT./Time
OPBD O-516 9/4	JACK FROGGATT	1	N	0600 ICP	2000 ICP
FOBS O-464 9/9	ANTHONY RODRIQUEZ	1	N	0600 ICP	2000 ICP
FOBS O-141 9/4	DAVID CONGOS (t)	1	N	0600 ICP	2000 ICP

7. Control Operations
Develop structure defense plans for Willow Creek area.

8. Special Instructions
All resources report to the wash station upon arrival and demobilization.

9. Division/Group Communications Summary							
Function	Frequency - RX	Frequency - TX	Tone	System	Channel	System	Channel
Command	168.7000	170.9750	11 (114.8) Tx/Rx	NIFC	1		
Tactical Div/Group	167.1125	167.1125	11 (114.8) Tx/Rx	R5	9		
Logistics							
Air to Ground	167.0625	167.0625		A/G PRI	11		

Prepared by (Resource Unit Leader) Gary Thompson	Approved by (Planning Section Chief) 	Date Prepared 08/28/13	Time Prepared 1719
---	--	---------------------------	-----------------------

Division Assignment List	1. Branch	2. Division/Group READ Group
---------------------------------	-----------	--

3. Incident Name CORRAL COMPLEX	4. Operational Period 08/29/13 Thursday DAY Shift 0600 - 2000
---	---

5. Operations Personnel			
Operations Chief	KEITH GURROLA; SAM MAROUK (t)	Division/Group Supervisor	ANDREW SPAIN
Operations Chief		Air Attack Supervisor	
Branch Director		Safety Officer	MARTIN HAMEL; BRIAN SAVAGE

6. Resources Assigned this Period						
Strike Team/Task Force/ Resource Designator	Leader	Num of Pers.	Trans. Y/N	Drop Off PT./Time	Pick Up PT./Time	
ARCH O-355 9/5	PHILIP WILSON	1	N	0600	2000	
READ O-358 9/4	SHANA GROSS (t)	1	N	0600	2000	
READ O-359 9/4	JASON JIMENEZ	1	N	0600	2000	
READ O-388 9/4	ERIC WISEMAN	1	N	0600	2000	
READ O-381 9/4	MATT STAUDACHER	1	N	0600	2000	
CULS O-264 8/28	ANTONE AUBREY	1	N	0600	2000	
CULS O-272 9/1	AARON POLE	1	N	0600	2000	
READ O-210 8/30	JUN KINOSHITA	1	N	0600	2000	
CULS O-298 8/28	KEVIN COLEGROVE	1	N	0600	2000	
GISS O-450 9/5	LOIS SHOEMAKER	1	N	0600	2000	

7. Control Operations

Assist incident personnel with forest resource concerns.

8. Special Instructions

Notify DIVS on entry and exit.
 BEARS- Don't leave your food unattended at any time of day to reduce availability to bears. Store your food at least 100 feet away from your sleeping area. The food stash should be downwind of your site, where possible. Keep vehicle windows closed when storing food inside.

9. Division/Group Communications Summary							
Function	Frequency - RX	Frequency - TX	Tone	System	Channel	System	Channel
Command	168.7000	170.9750	11 (114.8) Tx/Rx	NIFC	1		
Tactical Div/Group							
Logistics							
Air to Ground	167.0625	167.0625		A/G PRI	11		
Prepared by (Resource Unit Leader) Gary Thompson		Approved by (Planning Section Chief)		Date Prepared 08/28/13		Time Prepared 1718	

Division Assignment List	1. Branch	2. Division/Group Corral Rescue Group
---------------------------------	-----------	---

3. Incident Name CORRAL COMPLEX	4. Operational Period 08/29/13 Thursday DAY Shift 0600 - 2000
---	---

5. Operations Personnel

Operations Chief	KEITH GURROLA; SAM MAROUK (t)	Division/Group Supervisor	JAMES JOHNSON
Operations Chief		Air Attack Supervisor	
Branch Director		Safety Officer	MARTIN HAMEL; BRIAN SAVAGE

6. Resources Assigned this Period

Strike Team/Task Force/ Resource Designator	Leader	Num of Pers.	Trans. Y/N	Drop Off PT./Time	Pick Up PT./Time
TEAM 1	JAMES JOHNSON	1	N	0600	2000
TRT2 O-352 9/4	DARREN S ANNEAR	1	N	0600	2000
THSP O-567 9/9	JOE GAURINO	1	N	0600	2000
FEMP O-486	MATT MENARD	1	N	0600	2000
FEMT O-310 9/4	BRETT R RUSLING	1	N	0600	2000
TEAM 2	ROB MARSHALL	1	N	0600	2000
FEMP O-304 9/4	DANIEL CLINE	1	N	0600	2000
FEMP O-306 9/4	ADAM MALOUF	1	N	0600	2000
FEMP O-136 8/29	JAMES M LEGA	1	N	0600	2000
THSP O-574 9/9	CRAIG EMORY	1	N	0600	2000

7. Control Operations

Use low angle, high angle, over-the-side, technical rescue, ground based patient rescue and extraction as required.

8. Special Instructions

All resources report to the wash station upon arrival and demobilization.

9. Division/Group Communications Summary

Function	Frequency - RX	Frequency - TX	Tone	System	Channel	System	Channel
Command	168.7000	170.9750	11 (114.8) Tx/Rx	NIFC	1		
Tactical Div/Group							
Logistics							
Air to Ground	167.0625	167.0625		A/G PRI	11		

Prepared by (Resource Unit Leader) Gary Thompson <i>[Signature]</i>	Approved by (Planning Section Chief) <i>[Signature]</i>	Date Prepared 08/28/13	Time Prepared 1719
--	--	---------------------------	-----------------------

Division Assignment List	1. Branch	2. Division/Group Corral Staging
---------------------------------	-----------	--

3. Incident Name CORRAL COMPLEX	4. Operational Period 08/29/13 Thursday DAY Shift 0600 - 2000
---	---

5. Operations Personnel			
Operations Chief	KEITH GURROLA; SAM MAROUK (t)	STAM	NATHAN ARMSTRONG
Operations Chief		Air Attack Supervisor	
Branch Director		Safety Officer	MARTIN HAMEL; BRIAN SAVAGE

6. Resources Assigned this Period						
Strike Team/Task Force/ Resource Designator	Leader	Num of Pers.	Trans. Y/N	Drop Off PT./Time	Pick Up PT./Time	
LOWB LOWBOY #18 E-113 8/31	FRANK SHERMAN	1	N	Ground Support 0600	2000	
LOWB 6 RIVERS CONST E-156 9/3	DARRYL MAYBREE	1	N	Ground Support 0600	2000	
LOWB STAN LEACH E-200 9/4	STAN LEACH	1	N	Ground Support 0600	2000	
LOWB SUSANVILLE #1 E-197 9/4	DUSTIN SHURTLIFF	1	N	Ground Support 0600	2000	
LOWB SUSANVILLE #2 E-198 9/4	JOHN HAY	1	N	Ground Support 0600	2000	
LOWB ACKLEY LOWBOY E-199 9/4	LUCKEY ACKLEY	1	N	Ground Support 0600	2000	

7. Control Operations
Resources stage for incident needs. Monitor Command.

8. Special Instructions
All resources report to the wash station upon arrival and demobilization.

9. Division/Group Communications Summary							
Function	Frequency - RX	Frequency - TX	Tone	System	Channel	System	Channel
Command	168.7000	170.9750	11 (114.8) Tx/Rx	NIFC	1		
Tactical/Div/Group							
Logistics							
Air to Ground							

Prepared by (Resource Unit Leader) <i>[Signature]</i>	Approved by (Planning Section Chief) <i>[Signature]</i>	Date Prepared 08/28/13	Time Prepared 1719
--	--	---------------------------	-----------------------

Division Assignment List	1. Branch	2. Division/Group NIGHT
---------------------------------	-----------	-----------------------------------

3. Incident Name CORRAL COMPLEX	4. Operational Period 08/29/13 Thursday DAY Shift 0600 - 2000
------------------------------------	--

5. Operations Personnel

Operations Chief	LESLIE CURTIS	Division/Group Sup	DEBBIE WALLS
Operations Chief		Air Attack Supervisor	
Branch Director		Safety Officer	MARTIN HAMEL; BRIAN SAVAGE

6. Resources Assigned this Period

Strike Team/Task Force/ Resource Designator	Leader	Num of Pers.	Trans. Y/N	Drop Off PT./Time	Pick Up PT./Time
ENG6 ASP FIRE #1 E-259 9/8	JEFFREY HARRISON	3	N	ICP 1800	ICP 0600
ENG6 ASI # 008 E-260 9/2	JESUS TORRES	3	N	ICP 1800	ICP 0600

7. Control Operations
 Monitor fire spread as directed by Operations.

8. Special Instructions
 All resources report to the wash station upon arrival and demobilization.
 BEARS- Don't leave your food unattended at any time of day to reduce availability to bears. Store your food at least 100 feet away from your sleeping area. The food stash should be downwind of your site, where possible. Keep vehicle windows closed when storing food inside.

9. Division/Group Communications Summary

Function	Frequency - RX	Frequency - TX	Tone	System	Channel	System	Channel
Command	168.7000	170.9750	11 (114.8) Tx/Rx	NIFC	1		
Tactical Div/Group	154.2725	154.2725	6 (156.7) Tx/Rx	VFIRE 24	13		
Logistics							
Air to Ground							

Prepared by (Resource Unit Leader) <i>[Signature]</i>	Approved by (Planning Section Chief) <i>[Signature]</i>	Date Prepared 08/28/13	Time Prepared 1721
--	--	---------------------------	-----------------------

AIR OPERATIONS SUMMARY

PREPARED BY: John Keesee **AK**

PREPARED DATE/TIME: 8/28/2013 2100hr

1. INCIDENT NAME: Corral Complex
 OPERATIONAL PERIOD DATE: 8/29/13 START TIME: 0800 END TIME: 2030 SUNRISE:0638 SUNSET:1953

3. REMARKS (Safety Notes, Hazards, Air Operations Special Equipment, etc.): Wire rich environment.
 Get Thorough Briefing. Study Flight Hazard Map

Mobile Retardant Base located at Willow Creek Helibase
 Willow Creek Helibase N 40 57.036 W 123 38.164

Discreet A/G for Aerial Ignition only. 166.9125

4. MEDEVAC A/C:
 See Medical Plan
 Frequency:
 CALCORD 156.0750
 Tone 6

5. TFR:
 Altitude: 11,000 MSL
 TFR# 3/5070
 Contact Freq. 132.3500

6. PERSONNEL	Phone	7. FREQUENCIES	AM	FM	8. FIXED-WING	# Avail / Type/ Make-Model / FAA N# / Base(s)
AOBD: John Keesee	805-551-6422	AIR/AIR FW:		166.6000	Air tankers	Request if needed
ATGS: Curt Stanley	530-598-4191	AIR/AIR RW:	132.3500		Lead planes	Rohnerville ATB 707-725-4572 Redding ATB 530-226-2745
ATGS: Billy Garduno(T)	530-604-8643	AIR/GROUND:		167.0625	Base FAX #:	
ATGS: George Sheppard	239-398-9772	Aerial Ignition		166.9125	ATGS Aircraft	N848CE N50EB
ASGS: Craig Dado	530-518-6688	COMMAND:				
ASGS(T): Lee Kessler	218-244-1765	COMMAND RPT	Rx: 168.7000			
ASGS(T): Todd Gilbreth	619-548-3729	Tone 11 (114.8)	Tx: 170.9750			
HLCO:		DECK FREQ:		168.3500		
HEB1: Don Nicholas	925-817-9937	TOLG FREQ:				
HEB1(T): Matt Lingenfelter						
DECK: David Molter	530-410-3090					

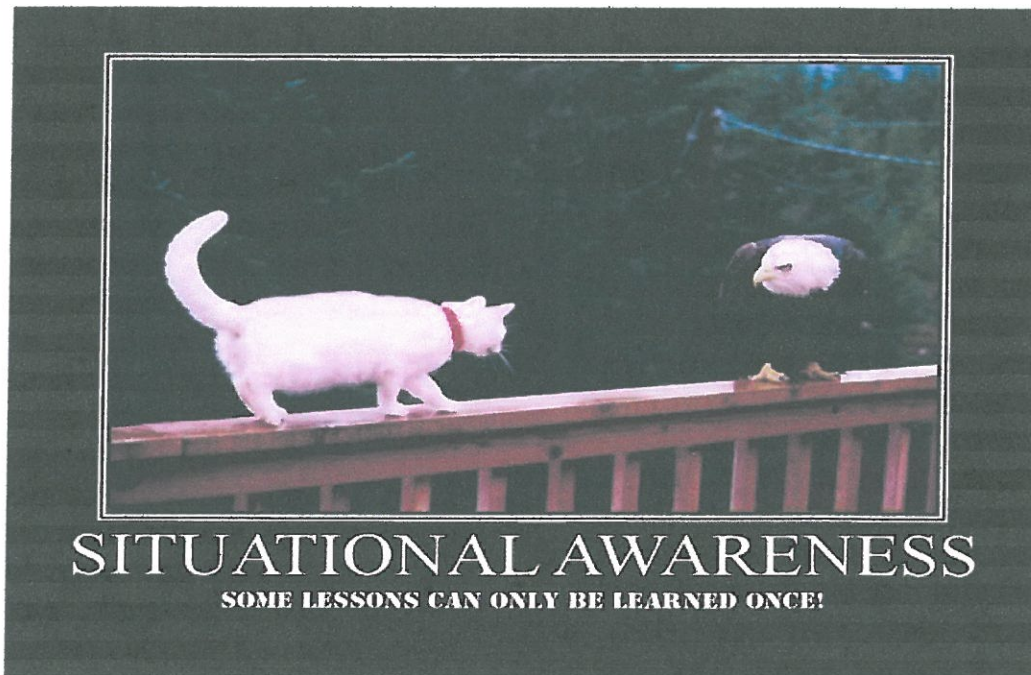
9. HELICOPTERS (Use Additional Sheets As Necessary)

FAA N#	TY	MAKE/MODEL	BASE	AVAIL	START	REMARKS	FAA N#	TY	MAKE/MODEL	BASE	AVAIL	START	REMARKS
22EA	3	Bell 206B3	Willow	0800	0830	Mapping/IR	6MW	1	K-MAX A-88	Willow	0800	0830	
62HP	3	Bell 206L4 A-7	Willow	0800	0830	PSD	HT 746	1	S-64 A-95	Willow	0800	0830	
6BL	2	S-58T A-68	Willow	0800	0830		HT 715	1	S-54 A-96	Willow	0800	0830	
205SJ	2	Bell 205 A-89	Willow	0800	0830								
192CH	1	CH 107	Willow	0800	0830								
HT 702	1	SH3H A-6	Willow	0800	0830								
CFIRX	1	C-61N A-8	Willow	0800	0830								

CORRAL COMPLEX SAFETY MESSAGE

08/29/2013 0600- 1800

- ✓ We are most vulnerable to accidents and errors when the operational tempo is changing, especially when it changes quickly.
- ✓ Maintaining good situation awareness in spite of change in operational tempo represents a considerable challenge.
- ✓ What is "situation awareness", how can you get it and keep it, and what are some of the barriers to achieving it?
 - ✓ Fatigue: Maintain good physical fitness and get adequate rest and nutrition
 - ✓ Complacency: There is no such thing as a "routine fire". Complacency kills.
 - ✓ Poor crew cohesion: Build your team all season long
 - ✓ Lack of communication: 5 Communication responsibilities on page IX of the IRPG



Defined:

The perception of elements in the environment within a volume of time and space, the comprehension of their meaning, and the projection of their status in the near future.

The degree of accuracy by which one's perception of his/her current environment mirrors reality

Situational Awareness = SA = Staying Alive

Safety Officers: Marty Hamel & Brian Savage

1. Incident Name: **CORRAL COMPLEX** 2. Date / Time Prepared: 8/28/13 1900 hrs 3. Operational Period Date / Time: 8/29-30/13 0600-0600 hrs (24 hrs)

Chann	Function	Channel Name	Frequency		Tone	Mode	Assignment	Remarks
			RX:	TX:				
1	COMMAND	NIFC C-1	168.7000	170.9750	T-11 (114.8)	A	ALL DIVISIONS All Commands Linked	Trinity Summit
2	COMMAND	NIFC C-8	169.5375	164.7125	T-11 (114.8)	A	ALL DIVISIONS All Commands Linked	Ironside Mountain
3	COMMAND	NIFC C-35	165.0000	172.5875	T-11 (114.8)	A	ALL DIVISIONS All Commands Linked	Brush Mountain
4	SRF ADMIN NET	SRF ADM	168.1250	170.4750	T-3 (131.8)	A	BACK UP ONLY	Lone Pine Ridge
5	TACTICAL	NIFC T-5	166.7250	166.7250	T-11 (114.8)	A	Div. A	
6	TACTICAL	NIFC T-6	166.7750	166.7750	T-11 (114.8)	A	Div. F	
7	TACTICAL	NIFC T-7	168.2500	168.2500	T-11 (114.8)	A	Div. L & V-V	
8	TACTICAL	R5 TAC 4	166.5500	166.5500	T-11 (114.8)	A	Div. M, Y & Z	
9	TACTICAL	R5 TAC 5	167.1125	167.1125	T-11 (114.8)	A	Div. SS Contingency Grps	
10	TACTICAL	R5 TAC 6	168.2375	168.2375	T-11 (114.8)	A	Div. X	
11	AIR to GROUND	A/G PRI	167.0625	167.0625		A	ALL DIVISIONS	Primary Use
12	AIR to GROUND	A/G SEC	166.9125	166.9125		A	ALL DIVISIONS	Aerial Ignition Op's
13	TACTICAL	VFIRE 24	154.2725	154.2725	T-6 (156.7)	A	Div. R & W Night Operations	
14	TACTICAL	VFIRE 26	154.3025	154.3025	T-6 (156.7)	A	Div. H Div. OO	
15	TACTICAL	CALCORD	156.0750	156.0750		A	ALL DIVISIONS	For Medical Emergency Use Only
16/20	AIRGUARD	GUARD	168.6250	168.6250	T-6 (156.7)	A	ALL DIVISIONS	For Emergencies Only

4. Basic Radio Channel Utilization
 Mode: W = Wideband Analog, N = Narrowband, D = Digital, M = Mixed
 5. Prepared by (Communications Unit): *Matt Nilsen*
 Matt Nilsen, COML 619-301-5471
 Corral Communication Unit: 530-629-2376
 NOTE: All Commands are linked. Last clone is from 8-22-2013
 ICS 205

MEDICAL PLAN	1. INCIDENT NAME Corral	2. DATE PREPARED 8/28/2013	3. TIME PREPARED 1800	4. OPERATIONAL PERIOD Day 8/29/2013
---------------------	-----------------------------------	--------------------------------------	---------------------------------	---

5. INCIDENT MEDICAL AID STATIONS				
MEDICAL AID STATIONS	LOCATION			PARAMEDICS
				YES NO
Corral ICP	Medical Unit -Veterans Park Willow Creek, CA			XX

6. TRANSPORTATION					
NAME	ADDRESS	Flight Time to Incident	PHONE	PARAMEDICS	
				YES	NO
CA-Air National Guard (ANG) H-820 (HOIST)	Mather Field Sacramento, CA	1Hr. 20Min	707-726-1266	XX	
Cal Fire H-102 (DAY HOIST ONLY)	Kneeland, CA	25 Min	707-726-1266		XX
CHP H-13 (HOIST)	Redding, CA	40 Min	911 or 707-726-1268	XX	
REACH 5	Redding, CA	40 Min	911 or 707-726-1268	XX	
PHI Air Medical	Redding, CA	40 Min	911 or 707-726-1268	XX	

Ground Ambulance				
Hoopla Ambulance Unit 83	Corral ICP-Willow Creek, CA			XX
Corral Rescue Group (Technical Rescue-REM)	Corral ICP-Willow Creek, CA			XX

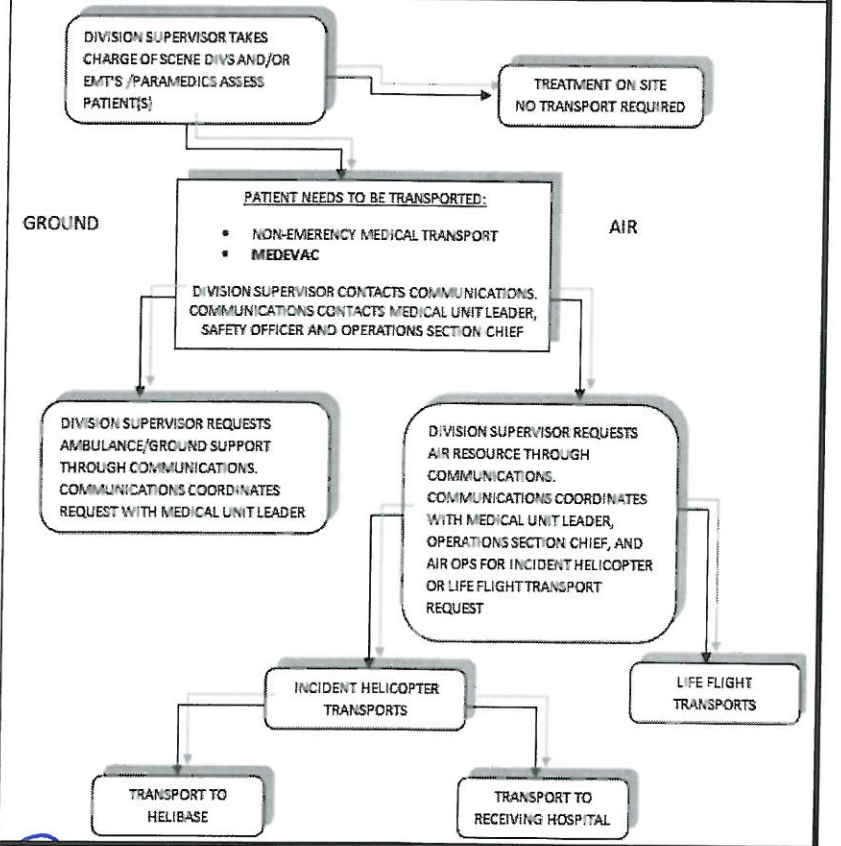
7. HOSPITALS								
NAME	ADDRESS	TRAVEL TIME		PHONE	HELIPAD		BURN CENTER	
		AIR	GRND		YES	NO	YES	NO
St Joseph Hospital	2700 Dolbeer St. Eureka, CA 95501	25 Min	1 Hr.	707-269-4250	XX			XX
Mercy Medical Center (Level II Trauma Center)	2175 Rosaline St. Redding, CA 96001	40 Min.	2 Hr.	530-225-7200	XX			XX
UC Davis (Level I T/C Burn Center)	2315 Stockton Bl. Sacramento, CA 95817	1.5 Hr.	3.5 hr.	916-734-3636	XX		XX	
Willow Creek Community Health Center (Clinic)	Willow Creek, CA	N/A	5 min.	530-629-3111	N/A			N/A
Mad River Community Hospital (Clinic)	Willow Creek, CA	N/A	5 Min	530-629-3116	N/A			N/A

8. MEDICAL EMERGENCY PROCEDURES

When an injury occurs, initiate care with available resources at scene and notify DIVS. The DIVS shall coordinate the incident and direct necessary actions. The following steps shall be taken to mitigate the incident:

- Determine the nature of the emergency.
- If the emergency is a medical injury/illness, determine if the injury/illness is life threatening.
- If the injury is life threatening, then clear designated frequency for emergency traffic.
- Identify the on-scene point of contact by position.
- Ensure that the Medical Unit Leader is contacted immediately.
- Identify number injured, patient assessment(s) and location (geographic and/or GPS coordinates).
- Identify on-scene medical personnel by position and last name (i.e. EMT Jones).
- Identify preferred method of patient transport.
- Determine any additional resources or equipment needed.

The Evacuation Plan should be continually evaluated, and contingencies developed in the event the first plan is not effective.



ICS-206	9. PREPARED BY (MEDICAL UNIT LEADER) Robert Russell MEDL	10. REVIEWED BY (SAFETY OFFICER) Marty Hamel SOF1
---------	---	--

MEDICAL TRANSPORTATION CHECKLIST

DATE / / MEDEVAC INCIDENT NUMBER _____

1. COMMAND/CONTROL

INCIDENT NAME <small>(Geographic Name + 'Medical')</small>			
POC/IC NAME:	The individual that is the Primary Point of Contact (POC) or IC for the Incident	MEDIC IN CHARGE :	The individual that is overseeing medical care at the scene.

2. PATIENT ASSESSMENT

PATIENT #__ of __	AGE:	SEX :	WEIGHT:
	INJURIES/ILLNESS:		
	RESPIRATION:	PULSE:	CONSCIOUS: YES/NO

PATIENT SEVERITY: SEVERE MODERATE MILD NONE

FOR MULTY CASUALTY: **IMMEDIATE:** **DELAYED:** **MINOR:**

3. PATIENT LOCATION :

Datum NAD 83	<i>Example: N 0° 00.00' x W 0° 00.00'</i>
LAT/LONG:	
GEOGRAPHIC LOCATION <small>(i.e. DP 1, H-2, ICP, Camp, Road, etc.)</small>	

4. MEDICAL TRANSPORT NEEDED

MEDEVAC	IMMEDIATE EVACUATION IS CRITICAL; URGENT NEED FOR ADVANCED LIFE SUPPORT GROUND OR HELICOPTER TRANSPORT <small>(Unstable patient that has a life threatening injury or illness) ** Medevac is an incident within an incident, one on scene point of contact needs to take charge.**</small>
NON-EMERGENCY MEDICAL TRANSPORT	EVACUATION IS NOT CRITICAL; NON-URGENT NEED FOR GROUND OR HELICOPTER TRANSPORT <small>(Typically utilized for stable, non-life threatening emergencies.)</small>

5. ADDITIONAL RESOURCES AND EQUIPMENT (Check as applicable)

<input type="radio"/> TRAUMA KIT	<input type="radio"/> PARAMEDICS
<input type="radio"/> SPINAL IMMOBILIZATION DEVICE(S)	<input type="radio"/> PERSONNEL <small>(Crews/Helitak Modules/etc for Manpower)</small>
<input type="radio"/> OXYGEN	<input type="radio"/> LITTER or <input type="radio"/> WHEELED LITTER
<input type="radio"/> IV/FLUIDS	<input type="radio"/> TECHNICAL RESCUE or <input type="radio"/> EXTRICATION
<input type="radio"/> ALS MEDICATIONS <small>(eg. EPI, Benadryl, etc.)</small>	<input type="radio"/> OTHER:

ETA(s) on Scene:

6. COMMUNICATIONS:

FREQUENCY/NAME/FUNCTION <small>(eg, Air/Grnd)</small>	RECIEVE(Rx)	TRANSMIT (Tx)
AIR/AIR VHF-AM FREQUENCY		
If aerial supervision available, Call Sign:		

MEDICAL TRANSPORTATION CHECKLIST

7. LOGISTICAL TRANSPORT (evacuation method is situational dependent and is based on risk mgmt: terrain, road access, day/night, weather, visibility, distance to helispot or road, etc.)

EXTRACTION	RESOURCE(S) (Check as needed)
<input type="radio"/> SELF EXTRACT WITH DRIVER	<input type="radio"/> GROUND TRANSPORT
<input type="radio"/> CURRENTLY AT ROAD	<input type="radio"/> ADVANCED LIFE SUPPORT GROUND TRANSPORT
<input type="radio"/> CARRY OUT TO ROAD	<input type="radio"/> INCIDENT ASSIGNED HELICOPTER TRNSPORT
<input type="radio"/> CARRY OUT TO HELISPOT (Identified, Constructed, Dust Abated)	<input type="radio"/> ADVANCED LIFE SUPPORT HELICOPTER TRANS. (Life Flight, PHI, Reach, Fire Dept. etc)
<input type="radio"/> HOIST/ SHORT -HAUL	<input type="radio"/> HOIST/SHORT HAUL EQUIPPED HELICOPTER
<input type="radio"/> OTHER:	<input type="radio"/> NIGHT VISION (NVG) EQUIPPED HELICOPTER

ETA(s) on Scene/Notes:

UNIT:	DISPATCH TIME:	ARRIVAL TIME:	AT PATIENT TIME:
ETD: (Scene to Medical Facility)	TRANSPORT TIME:	AT FACILITY:	VIA: (ALS/BLS/Air/ Ground Support)

RECEIVING FACILITY:

8. PATIENT LZ/EVAC LOCATION (Pick-Up Location):

DATUM NAD 83	Example: N 0° 00.00' x W 0° 00.00'
LAT/LONG:	
If applicable, Hazards and Safety Notes at LZ for air evacuation	

9. CONTINGENCY PLANNING (Considerations: If primary options fail, what actions can be implemented in conjunction with primary evacuation method?) Consider PACE Primary , Alternative, Contingency and Emergency plans in the event the current plan is no longer effective.

NOTES:

THE FOLLOWING RESOURCES NEED TO SEE FINANCE:

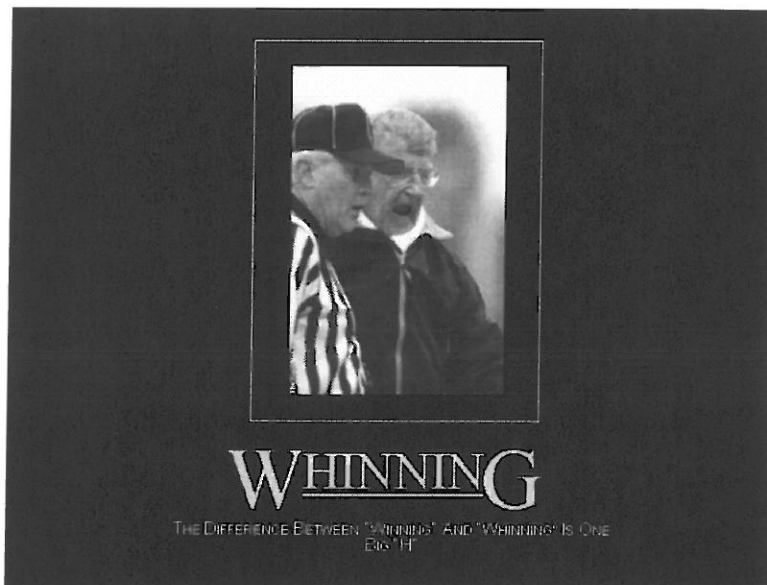
C-56 OC-25	O-345 JOHN BUTTON
C-57 BECKWORTH HOTSHOTS	O-348 DARIN JARNAGHAN
C-73 VEGAS VALLEY	O-350 THEODOREALLIO
C-92 AK Interagency Crew 1	O-355 PHILIP WILSON
O-1.68 ROB HARTER	O-360 JAMES MILLARD
O-JONATHAN BOE	O-361 DREW PATRICK
O-25 ROBERT QUADY	<i>O-363 DALTON ROBINSON</i>
O-38 JOSEPH HALLENBECKER	O-364 TRAVIS FULTON
<i>O-73 BRETT SPARKS</i>	<i>O-386 DAN NORTH</i>
<i>O-101 DON NICHOLAS</i>	<i>O-404 SHAWN KINGHORN</i>
<i>O-115 SCOTT SODEN</i>	<i>O-415 ED GUYER</i>
O-149 RUSSELL NEWMAN	O-602 KRIS SCHROEDER
O-151 RICHARD GAUBATZ	E-62 M & S & L
O-159 STEPHEN O'BRIEN	E-137 T.T. CONSTRUCTION
O-185 KODY COX	E-154 STEPHEN FISHER
O-196 GREG VOLLHABER	S-113 VALLEY TIRE
O-253 JONATHAN BENSON	ANGELLO CATTANEO
O-264 ANTONE AUBREY	G.R. CONSTRUCTION
O-277 JEFF WEST	



Human Resource Message

YOUR RESPONSIBILITIES

- ✦ To behave in a manner that treats people with dignity, equity, courtesy and respect.
- ✦ To abide by agency and incident ethics and conduct regulations.
- ✦ To report any harassment or other inappropriate behavior you observe or Experience.



Mike Baines, Human Resource Specialist
724-678-6147

TRAINING MESSAGE

8/29/2013

!!! CORRAL COMPLEX TRAINEES !!!

If you have not checked in with the Training Specialists, the time is NOW.

There will be an upcoming Incident Management Team transition, trainers and trainees demobbing, and a new Incident Training Specialist assigned.

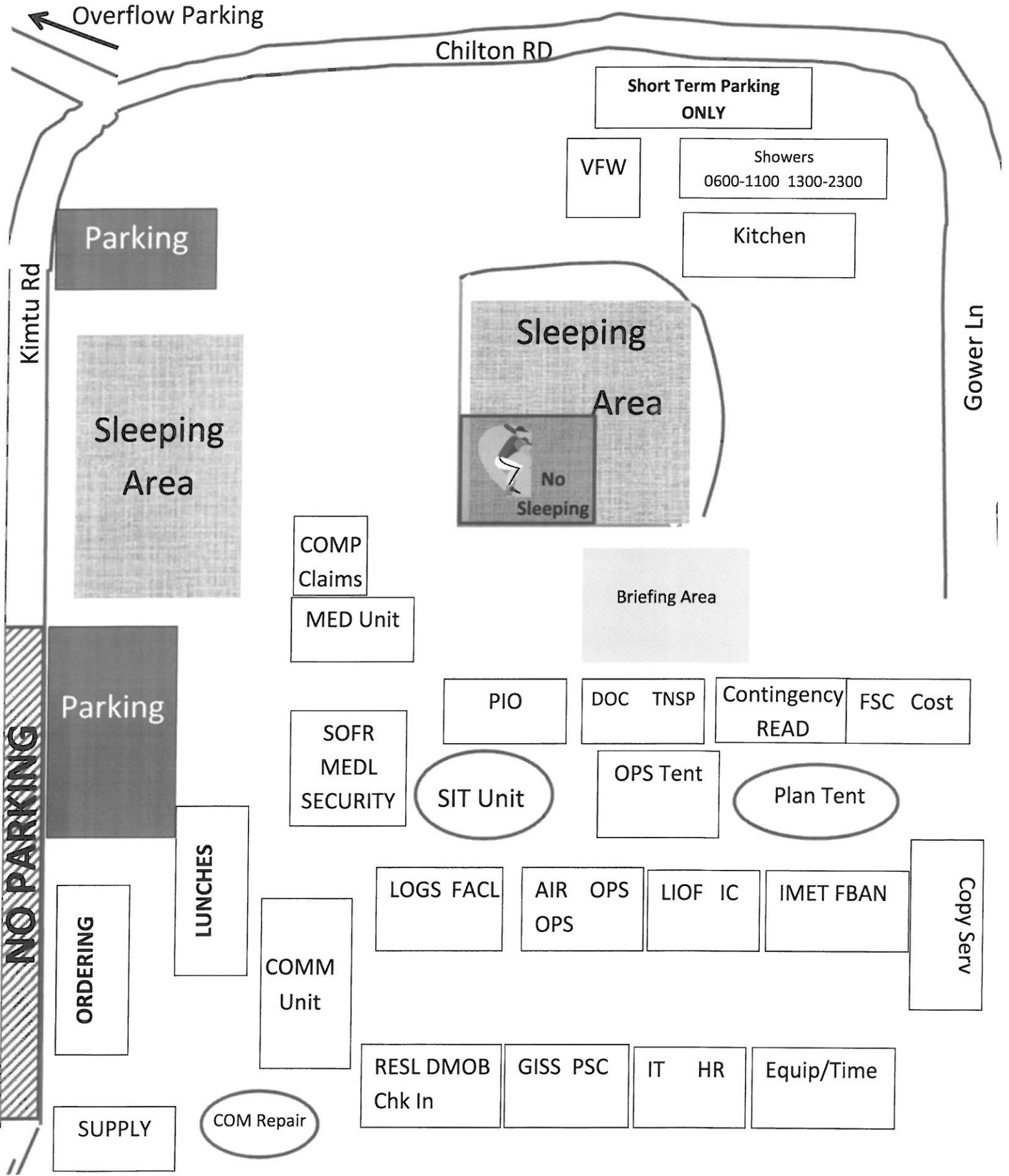
**Make your trainee experience easy,
check in now.**

CORRAL COMPLEX HARDLINE PHONES

I.C. / Liaison	(530) 629-2143
Safety/ Medical	(530) 629-2109
PIO	(530) 629-2149
Operations/Air Ops	(530) 629-2058
Communications	(530) 629-2376
Resources/ Demob	(925) 519-6309
Resources	(530) 629-2156 Fax
Ordering	(925) 407-7004
Ordering	(925) 817-9929
Ordering	(530) 629-3828 Fax
Finance	(530) 629-2307
Finance Fax	(530) 629-2387
Ground Support	(925) 407-6355
Ground Transportation	(925) 817-0826

Corral Incident Base Camp Map

8/26/13 Not to scale



Overflow Parking

Chilton RD

Short Term Parking ONLY

VFW

Showers
0600-1100 1300-2300

Kitchen

Parking

Sleeping Area

Sleeping Area

No Sleeping

COMP Claims

MED Unit

Briefing Area

Parking

PIO

DOC TNSP

Contingency READ

FSC Cost

SOFR MEDL SECURITY

SIT Unit

OPS Tent

Plan Tent

NO PARKING

LUNCHES

ORDERING

COMM Unit

LOGS FACL

AIR OPS OPS

LIOF IC

IMET FBAN

Copy Serv

SUPPLY

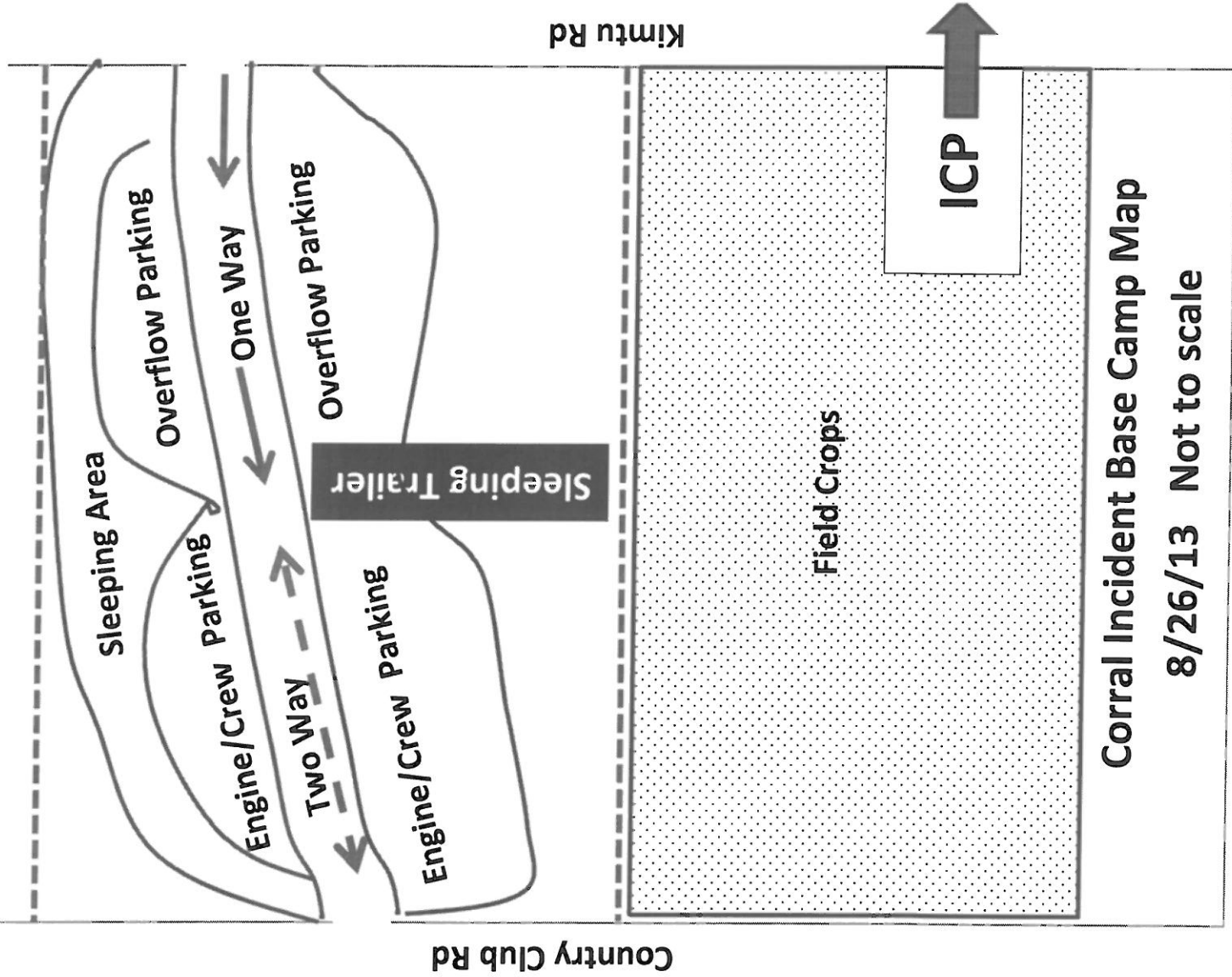
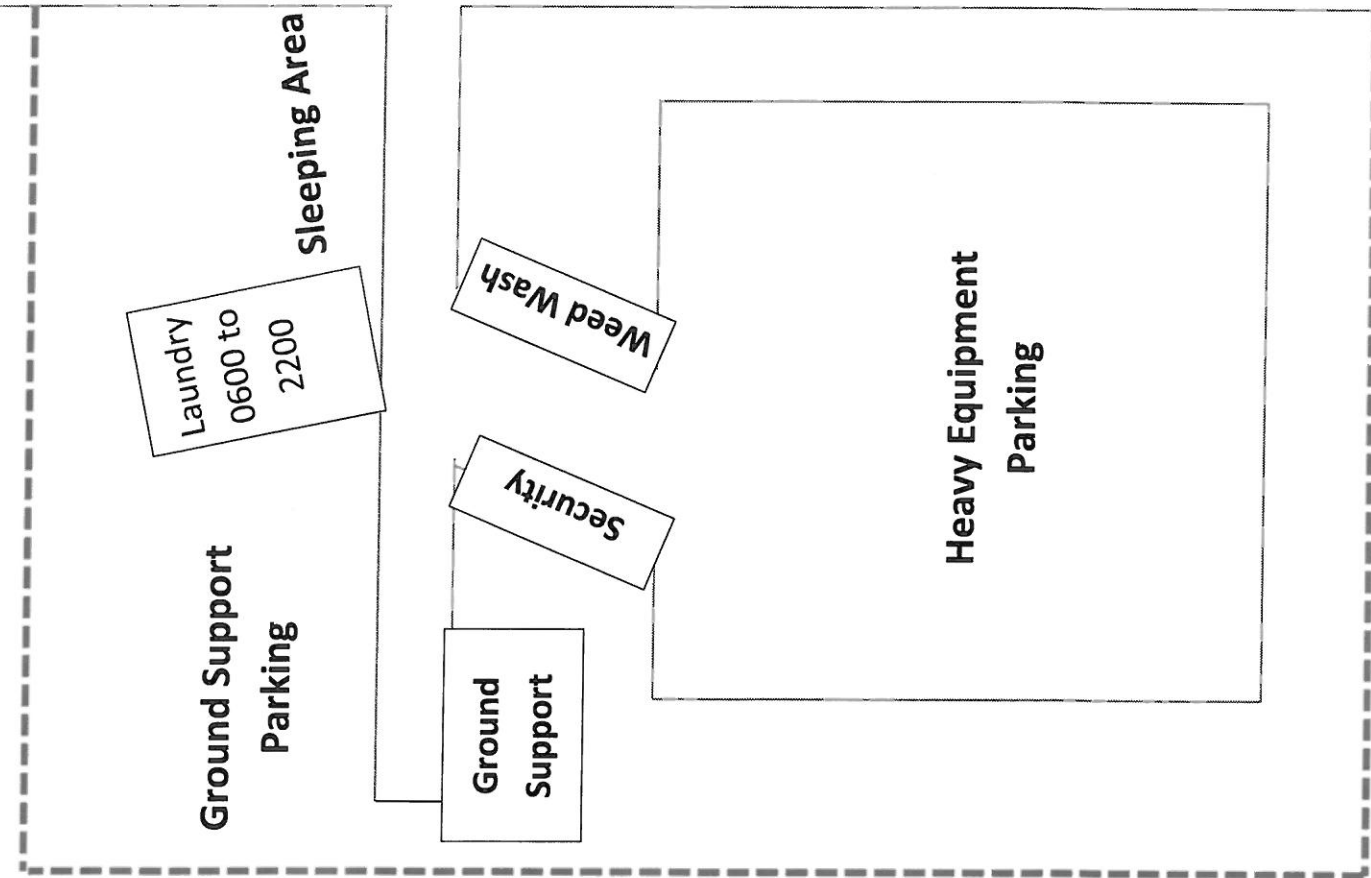
COM Repair

RESL DMOB Chk In

GISS PSC

IT HR

Equip/Time



Corral Incident Base Camp Map

8/26/13 Not to scale

Kimtu Rd

