

Butler Fire

Incident Action Plan
8/25/2013 Day Shift



DEFENSIVE/OFFENSIVE BURNING

- **Defensive=Keeping Up With Fire Activity Before it Pushes Lines Hard-Fires Terms.**
- **Offensive=Tactical Advantage to Putting Fire on Line as Weather and Fuels Conditions are Right-Our Terms.**
- **Safety is A Major Consideration of Both.**
- **Always Maintain L.C.E.S. and Know Weather Predictions.**

CA-SRF-1388

P5HS91



INCIDENT OBJECTIVES	1. Incident Name Butler	2. Date 8/24/2013	3. Time 17:00
4. Operational Period <p style="text-align: center;">8/25/2013 0600-2200</p>			
5. General Control Objectives for the Incident (include alternatives) OPERATIONAL OBJECTIVES <ul style="list-style-type: none"> • Provide for firefighter and public safety through the application of the risk management process. • Utilize tactics which provide for the protection of private property and infrastructure. • Keep the Butler fire: <ul style="list-style-type: none"> ○ South and west of the Salmon River to Hotelling Ridge. ○ East of Somes Mountain down to Orleans Mountain continuing to Salmon Summit. ○ South of the line from Somes Mountain to Butler Flat. ○ North of the Siskiyou / Trinity County line from Salmon Summit to Hotelling Ridge. 			
6. Weather Forecast for Period <p style="text-align: center;">See attached forecast</p>			
7. Resource Protection Guidelines MANAGEMENT OBJECTIVES <ul style="list-style-type: none"> • Ensure fire suppression operations minimize negative fire effects. • Utilize minimum impact suppression tactics (MIST) within wilderness areas and in other land use designations as appropriate. • Prevent transportation of noxious weeds into the incident location. • Utilize Resource Advisors to assess impacts to sensitive historic, cultural, wildlife, and plant resources. • Manage the fire in a cost effective manner commensurate with values at risk. • Keep cooperators, communities, and concerned citizens informed. 			
8. Attachments (mark if attached)			
<input checked="" type="checkbox"/> Organization List - ICS 203	<input checked="" type="checkbox"/> Medical Plan - ICS 206	<input checked="" type="checkbox"/> Weather	
<input checked="" type="checkbox"/> Div. Assignment Lists - ICS 204	<input checked="" type="checkbox"/> Incident Map	<input checked="" type="checkbox"/> Safety Message	
<input checked="" type="checkbox"/> Communications Plan - ICS 205	<input type="checkbox"/> Traffic Plan	<input type="checkbox"/> LCES Worksheet	
9. Prepared by (Planning Section Chief) David Sinclear	10. Approved by (Incident Commander)		

ORGANIZATION ASSIGNMENT LIST		Ground Support Unit	Harry Zabel/Jim Hong (t)	
1. Incident Name: Butler		Security Manager	Jeff Knott/Jason Nolee	
		Communications Unit	Ken Earl	
		Medical Unit	Clayton Thomas / Ryan Reginato (t)	
2. Date	Time	Food Unit	Jay Westlake	
8/24/2013	22:44	9. Operations Section		
4. Operational Period		Day Ops Chief	John Truett/Jim Durrwachter	
08/25/2013	0600-2200	Deputy Day Ops	Robin Wills/Curtis Coots (t)	
Position	Name	Night Ops Chief	Robert Bertolina	
5. Incident Commander and Command Staff		Planning Ops	Jon Teutrine/Chris Stevens (t)	
Incident Commander	Mike Quesinberry/Mike Minton	a. Branch I – Division/Groups		
Deputy IC		Branch	Dave Pereira	
Liaison	Kent Swartzlander	Division/Group	A	Mike Work
Safety Officer	Terri Knauth/Michele Tanzi/Dave Kirste/Mike Frederick	Division/Group	B	Don Fregulia
Information Officer	Judith Downing / Jim Mackensen	Division/Group	C	Ed Merrill / Dale Mendes (t)
6. Agency Representative		Division/Group	D	Unstaffed
Agency	Name	Division/Group	E	Unstaffed
Agency Admin	Patty Grantham	Structure Group		
Agency Admin Rep	Dave Hayes	b. Branch II – Division/Groups		
County Sheriff	Kevin Miller	Branch	Steve Burns	
Cal Fire	Hugh Scanlon	Division/Group	F	Unstaffed
Klamath Community Liaison	Jim Bennett	Division Group	G	Eric Hensel
Hoopla Tribal Chair	Danielle Vigil-Masten	Division/Group	H	Paul Johnson
Karuk Tribal Rep	Bill Tripp	Division/Group	K	Mark Vardanega / J.Reeser (t)
Hoopla Agency Rep	Kevin Lane	Division/Group	W	Randy Jennings
IARR		Staging Area		
CCC Rep	Susan Jones			
California OES	Pat O'Bannon	d. Air Operations Branch		
		Air Operations Branch Director	Dustin Mueller (t)	
		Air Support Group Supervisor	Sean Cox/Steve Beale/Scott Plue	
7. Planning Section		Air Tactical Group Supervisor	Joel Lane / D. Williams (t)	
Chief	Darrel Schwilling /Dave Sinclear Walter Herzog (t)	Air Tactical Group Supervisor	Carl Piper / Rico Gonzalez (t)	
Resources Unit	Lou Ann Charbonnier/Chris Wikeen Rita Mustatia	Helibase Manager	Brad Bernardy	
Situation Unit	Alan Taylor/Bobby Olds (t)	10. Finance Section		
FS Cultural Rep	Eric Brederman	Chief	Judy Palmer/Rachel Corkill	
Lead Resource Advisor	Chris Engelhardt	Deputy Chief		
Demobilization Unit	Gary Deboi	Personnel Time Unit	Shannon Ammon	
Fire Behavior Unit	Jessica Wade/John Wood (t)	Equipment Time Unit	Jo Ann Hereford / Mike Turos	
Long Term Fire Analyst	Cary Newman/Dana Bagnoli (t)	Cost Unit	Sissie Griffith	
Incident Meteorologist	Bob Tobin / Tom Clemmons (t)	Compensation / Claim Unit	Merlinda Valdez	
Technical Specialist	George Steele	Procurement	Ron Schilz / Karie Linn(t)	
Training Specialist	Dave Lattimore / Seneca Smith(t)	IBA-Yreka	Lola Capp / Kathy Griffin	
GISS	Kyle Felker/ Matt House (t)			
Human Resource Advisor	Daniel Gonzalez			
Status Check-In	Monique Dumlao			
8. Logistics Section				
Chief	Sally Browning/Cindy Schiffer (t) Mike Jellison/Ken Kumpe(t)			
Ordering	Mona Lake / Ron Pierce			
Supply Unit	Richard Sheets			
R & D	Frederick Johnson	Prepared By: Chris Wikeen – RESL		ICS 203
Facilities Unit	Jeff Hutala			

ORGANIZATION ASSIGNMENT LIST			
1. Incident Name		Butler / Forks Camp	
2. Date		Time	
8/24/2013		22:44	
4. Operational Period			
08/25/2013		0600 - 2200	
Position	Name		
5. Incident Commander and Command Staff			
Incident Commander			
Deputy IC	Pete Duncan		
Liaison			
Safety Officer	Jeff Barnhart/Bob Kafka		
Information Officer	Jenny Lynn Bruner / Kathy Harding		
6. Agency Representative			
Agency	Name		
Agency Admin			
Agency Admin Rep			
FS Cultural Rep			
Lead Resource Advisor			
County Sheriff			
Cal Fire			
Klamath Community Liaison			
Hoopla Tribal Chair			
Karuk Tribal Rep			
Hoopla Agency Rep			
7. Planning Section			
Chief			
Deputy	Valery Lambeth / Bob Patton (t)		
Resources Unit			
Situation Unit			
Documentation Unit			
Demobilization Unit			
Fire Behavior Unit			
Long Term Fire Analyst			
Incident Meteorologist			
Technical Specialist			
Training Specialist	Bob Rivelle		
GISS			
Status Check-In			
Human Resource Advisor			
8. Logistics Section			
Chief	Brett Shurr / Pat Howard (t)		
Deputy	Michael Burchard		
Supply/Ordering Unit	Teddy Messenger		
Facilities Unit	Frank DelCarlo		
Ground Support	George Price		
Receiving & Distribution	Chris Combs		
Medical Unit	Claudia Kutscher		
Communications Unit	Phil Shafer / Keith Brown		
10. Finance Section			
Chief			
Deputy Chief	Lois Charlton		
Personnel Time Unit			
Equipment Time Unit			
Cost Unit			
Compensation / Claim Unit			
IBA-Yreka	Lola Capp / Kathy Griffin		
Prepared by: Chris Wikeen-RESL			

DIVISION ASSIGNMENT LIST			1. Branch I		2. Division/Group A		
3. Incident Name Butler			4. Operational Period DAY OPERATIONS				
			Date: 08/25/2013		Time: 0600 – 2200		
5. Operations Personnel							
Operations Chief	John Truett/Jim Durrwachter		Division/Group Supervisor		Mike Work		
Deputy Operations	Robin Wills/Curtis Coats(t)						
Branch Director	Dave Pereira		Air Operations		Dustin Mueller (t)		
6. Resources Assigned this Period							
Strike Team/Task Force/ Resource Designator	Leader	Last Shift	Number Persons	Trans. Needed	Drop Off PT./Time	Pick Up PT./Time	
S/T Butler #1 w/(E-333.7) 8/28	Leif Larson (t)	8/25-7	16	N	DP-2 / 0700	2000	
S/T Butler #3 w/(O-321)	James Jones	8/25-6	17	N	DP-2 / 0700	2000	
Eng6 Mt. Adams (E-339)	Ed Chico		3	N	DP-2 / 0700	2000	
Eng6 NM 2062 (E-289)	Jerome Antonio	8/26	3	N	DP-2 / 0700	2000	
Eng6 Roswell E5661 (E-288)	Ken Roberts	8/26	3	N	DP-2 / 0700	2000	
FEMP (O-109)	Davis Doty	9/2	1	N	DP-2 / 0700	2000	
READ (A & K) (O-62)	Chris Engelhardt	8/28	1	N	DP-2 / 0700	2000	
Heritage Consultant (O-292)	Franklin Donahue	9/6	1	N	DP-2 / 0700	2000	
Heritage Consultant (O-254)	Phillip Courts	9/3	1	N	DP-2 / 0700	2000	
7. Control Operations							
<ul style="list-style-type: none"> Patrol and hold the Salmon River Rd between the W/A break and DP 32 							
8. Special Instructions:							
<ul style="list-style-type: none"> Begin fire suppression repair. Pull all water handling equipment. Backhaul all unused equipment and trash Red & white stripe and orange and white stripe flagging denote area of resource concern. Directions of resource concern will be written on the flagging. S/T Butler #1: Woods E27, GWD E2622, WRF E609 with STEN Larson (t) S/T Butler #3 : AZ E570, AZ E1975, AZ E301, MTR Champion, NMR Ronal and STEN Jones 							
9. Division/Group Communication Summary							
Function	Frequency	Channel	Channel	Function	Frequency	System	Channel
Command	RX 162.1875 TX 172.5500	CMD 5	5 Tone 3				
Tactical Division/Group	RX 166.5500 TX 166.5500	TAC 5	10 Tone 3	Air to Ground Command	RX 171.5375 TX 171.5375	A/G CMD	13
Prepared by (Resource Unit Leader)			Approved by (Planning Section Chief)			Date	Time
L. Charbonnier						8/24/13	22:45

DIVISION ASSIGNMENT LIST			1. Branch I		2. Division/Group B			
3. Incident Name Butler			4. Operational Period DAY OPERATIONS Date: 08/25/2013 Time: 0600 – 2200					
5. Operations Personnel								
Operations Chief		John Truett/Jim Durrwachter		Division/Group Supervisor		Don Fregulia		
Deputy Operations		Robin Wills/Curtis Coots(t)						
Branch Director		Dave Pereira		Air Operations		Dustin Mueller (t)		
6. Resources Assigned this Period								
Strike Team/Task Force/ Resource Designator		Leader		Last Shift	Number Persons	Trans. Needed	Drop Off PT./Time	Pick Up PT./Time
HC T2IA Firestorm 1 (C-20)		Richard Sandidge		8/29	18	N	DP-2 / 0700	2000
ENG6 Grayback (E-365)		Telly Martinez		9/2	3	N	DP-2 / 0700	2000
ENG6 Sanders (E-366)		Adham Rowley		9/2	3	N	DP-2 / 0700	2000
ENG6 GH Ranch (E-367)		Antonio Mena		9/2	3	N	DP-2 / 0700	2000
WT2 KDH (E-42)		Kevin Horn		8/29	1	N	DP-2 / 0700	2000
WT TT Constriction (E-41)		Chris Wilson		8/26	1	N	DP-2 / 0700	2000
Chipper Diamond Fire (E-33)		Dwayne Moore/Harley Tyrie		9/3	2	N	DP-2 / 0700	2000
WT Fireline Support 9693 (E-108)		Richard Troedel		9/1	1	N	DP-2 / 0700	2000
TFLD (O-381)		Craig Snider		8/27	1	N	DP-2 / 0700	2000
Rapid Extrication Module #1		Kevin Wegener		8/30	4	N	DP-2 / 0700	2000
FEMP (O-12)		Tony Garcia		8/31	1	N	DP-2 / 0700	2000
FEMP (O-108)		Mike Mallett		9/2	1	N	DP-2 / 0700	2000
SOFR (O-88)		Steve Heine		9/1	1	N	DP-2 / 0700	2000
7. Control Operations								
<ul style="list-style-type: none"> Mop up 100 feet where safe to do so. Be prepared to support operations in Division C. 								
8. Special Instructions:								
<ul style="list-style-type: none"> GPS all pump locations Backhaul all unused equipment and trash Start pumps and hose lays each shift Red & white stripe and orange and white stripe flagging denote area of resource concern. Directions of resource concern will be written on the flagging. 								
9. Division/Group Communication Summary								
Function	Frequency	System	Channel	Function	Frequency	System	Channel	
Command	RX 162.1875 TX 172.5500	CMD 5	5 Tone 3					
Tactical Division/Group	RX 167.1125 TX 167.1125	TAC 6	11 Tone 3	Air to Ground Command	RX 171.5375 TX 171.5375	A/G CMD	13	
Prepared by (Resource Unit Leader)			Approved by (Planning Section Chief)			Date	Time	
L. Charbonnier						8/24/13	12:26	

DIVISION ASSIGNMENT LIST			1. Branch I		2. Division/Group C		
3. Incident Name Butler			4. Operational Period DAY OPERATIONS Date: 08/25/2013 Time: 0600 - 2200				
5. Operations Personnel							
Operations Chief		John Truett/Jim Durrwachter Robin Wills/Curtis Coots(t)		Division/Group Supervisor		Ed Merrill / Dale Mendes (t)	
Branch Director		Dave Pereira		Air Operations		Dustin Mueller (t)	
6. Resources Assigned this Period							
Strike Team/Task Force/ Resource Designator		Leader		Last Shift	Number Persons	Trans. Needed	Pick Up PT./Time
HC1 Ukonom IHC (C-8)		Keith Smith		8/28	20	N	2000
S/T YNP 5780C (E-333)		Jason Wingard/Javier Gonzalez(t)		8/28	24	N	2000
DOZ2 w/LOWB Ken's #1 (E-12)		Mike Kelly / Richard Olson		8/29	2	N	2000
WT2 Angelo Canttaneo (E-324)		Keith Vansickle		8/28	1	N	2000
WT2 CJ's AWD (E-135)		Ron Sanderson		9/3	1	N	2000
Masticator Wylatti (E-219)		Richard Bolton		9/3	1	N	2000
STEN (O-425)		Alan Huskins		8/26	1	N	2200
READ (O-121)		Roberto Beltran		8/28	1	N	2200
SOF2 (O-46)		Matt Weinell		9/3	1	N	2200
FEMP (O-283)		Jason Bezemer		8/25	1	N	2200
FEMP (O-396)		Ron Sandler		8/25	1	N	2200
7. Control Operations							
<ul style="list-style-type: none"> Monitor fire behavior in Nordheimer drainage Continue line prep in support of firing operations Prepare for defensive firing if lines are threatened 							
8. Special Instructions:							
<ul style="list-style-type: none"> GPS all pump locations Backhaul unused equipment and trash Charge pumps and hoses daily Red & white stripe and orange and white stripe flagging denote area of resource concern. Directions of resource concern will be written on the flagging. 							
9. Division/Group Communication Summary							
Function	Frequency	System	Channel	Function	Frequency	System	Channel
Command	RX 162.1875 TX 172.5500	CMD 5	5 Tone 3		RX TX		
Tactical Division/Group	RX 168.0500 TX 168.0500	TAC 2	7	Air to Ground Command	RX 171.5375 TX 171.5375	A/G CMD	13
Prepared by (Resource Unit Leader)			Approved by (Planning Section Chief)			Date	Time
L. Charbonnier						8/24/13	22:45

DIVISION ASSIGNMENT LIST			1. Branch II		2. Division/Group G		
3. Incident Name Butler			4. Operational Period DAY OPERATIONS Date: 08/25/2013 Time: 0600 - 2200				
5. Operations Personnel							
Operations Chief	John Truett/Jim Durrwachter		Division Group Supervisor		Eric Hensel		
Deputy Operations	Robin Wills / Curtis Coats(t)						
Branch Director	Steve Burns		Air Operations		Dustin Mueller (t)		
6. Resources Assigned this Period							
Strike Team/Task Force/ Resource Designator	Leader	Last Shift	Number Persons	Trans. Needed	Drop Off PT./Time	Pick Up PT./Time	
ENG6 Pino One (E-49)	Dennis Barcus	9/4	3	N	DP-45 / 0700	2000	
WT2 Darrah logging (E-7)	Larry Pettes	9/2	1	N	DP-45 / 0700	2000	
STEN (O-269)	Pete Mendoza	8/25	1	N	DP-45 / 0700	2000	
SOFR (O-107)	Ray Miller	9/4	1	N	DP-45 / 0700	2000	
FEMP (O-10)	Nick Gabbard	8/30	1	N	DP-45 / 0700	2000	
FEMP (O-11)	Eric Van Renselaar	8/30	1	N	DP-45 / 0700	2000	
Heritage READ (O-142)	Eric Bredemann	9/4	1	N	DP-45 / 0700	2000	
Heritage Consultant (O-169)	Albert Titus	8/27	1	N	DP-45 / 0700	2000	
7. Control Operations							
<ul style="list-style-type: none"> Prepare for defensive firing if control lines are threatened Coordinate firing operations with Division H 							
8. Special Instructions							
<ul style="list-style-type: none"> Red and white stripe and orange and white stripe flagging denotes area of resource concern. Directions of resource concern will be written on the flagging. Be prepared to move resources in support of other divisions Back-haul all trash and unnecessary equipment Start pumps and charge hoselays each shift GPS all portable pump locations 							
9. Division/Group Communication Summary							
Function	Frequency	System	Channel	Function	Frequency	System	Channel
Command	RX 168.0750 TX 170.4250	CMD 1	1 Tone 3				
Tactical Division/Group	RX 168.6000 TX 168.6000	TAC 4	9	Air to Ground Command	RX 171.5375 TX 171.5375	A/G CMD	13
Prepared by (Resource Unit Leader) Rita Mustatia			Approved by (Planning Section Chief)			Date 8/24/13	Time 22:46

DIVISION ASSIGNMENT LIST			1. Branch II		2. Division/Group H Page 1 of 2		
3. Incident Name Butler			4. Operational Period DAY OPERATIONS Date: 08/25/2013 Time: 0600 - 2200				
5. Operations Personnel							
Operations Chief	John Truett/Jim Durrwachter		Division/Group Supervisor		Paul Johnson		
Deputy Operations	Robin Wills/Curtis Coats(t)						
Branch Director	Steve Burns		Air Operations		Dustin Mueller (t)		
6. Resources Assigned this Period							
Strike Team/Task Force/ Resource Designator	Leader	Last Shift	Number Persons	Trans. Needed	Drop Off PT./Time	Pick Up PT./Time	
HC1 Elk Mountain IHC (C-7)	Cheveyo Munk	8/28	20	N	DP-45 / 0700	2000	
HC2IA Happy Camp (C-16)	Damon McCartney	8/26	20	N	DP-45 / 0700	2000	
HC2 Cobra 5 (C-36)	J.D. Ottman	8/25	21	N	DP-45 / 0700	2000	
ENG3 Workhorse #5 E-342)	John Lawrence	8/27	5	N	DP-45 / 0700	2000	
ENG6 BERN CO 30 (E-47)	Dakota Powers	9/4	3	N	DP-45 / 0700	2000	
ENG6 Oregon Woods (E-48)	Byron Sumpter	9/3	3	N	DP-45 / 0700	2000	
ENG5 Chewack (E-52)	Jarred Hodgson	9/6	3	N	DP-45 / 0700	2000	
DOZ2 w/lowboy J.A. Cook (E-14)	John Cook	8/29	2	N	DP-45 / 0700	2000	
Skidgine Diversified w/lowboy (E-152)	R Gaftelecutto/ Tim Holt		2	N	DP-45 / 0700	2000	
Skidgine Wurlitzer 2 w/lowboy (E-150)	Tom Neverkovec		2	N	DP-45 / 0700	2000	
Skidgine Let-R-Buck w/lowboy (E-153)	Steve Lassen Jr.		2	N	DP-45 / 0700	2000	
7. Control Operations							
<ul style="list-style-type: none"> Continue to mop-up slop-over Continue firing from H-6 to G/H break Coordinate firing operations with Divisions G and K Monitor fire spread east of Orleans Mt and Granite Creek drainage 							
8. Special Instruction							
<ul style="list-style-type: none"> Red & white stripe and orange & white stripe flagging denote area of resource concern. Directions of resource concern will be written on the flagging. Be prepared to move to support other divisions Back-haul all trash and unnecessary equipment Start pumps and charge hoselays each shift GPS all pump locations. 							
9. Division/Group Communication Summary							
Function	Frequency	Channel Name	Channel	Function	Frequency	Channel Name	Channel
Command	RX 168.0750 TX 170.4250	CMD 1	1 Tone 3				
Tactical Division/Group	RX 168.2375 TX 168.2375	TAC 7	12 Tone 3	Air to Ground Command	RX 171.5375 TX 171.5375	A/G CMD	13
Prepared by (Resource Unit Leader)			Approved by (Planning Section Chief)			Date	Time
Rita Mustatia						8/24/13	22:46

DIVISION ASSIGNMENT LIST			1. Branch II		2. Division/Group H Page 2 of 2		
3. Incident Name Butler			4. Operational Period DAY OPERATIONS Date: 08/25/2013 Time: 0600 - 2200				
5. Operations Personnel							
Operations Chief	John Truett/Jim Durrwachter		Division/Group Supervisor		Paul Johnson		
Deputy Operations	Robin Wills /Curtis Coots(t)						
Branch Director	Steve Burns		Air Operations		Dustin Mueller (t)		
6. Resources Assigned this Period							
Strike Team/Task Force/ Resource Designator	Leader	Last Shift	Number Persons	Trans. Needed	Drop Off PT./Time	Pick Up PT./Time	
TFLD (t)/HEQB (O-60)	Benjamin Molitor	8/31	1	N	DP-45 / 0700	2000	
TFLD (O-75)	Matt Lamb	9/3	1	N	DP-45 / 0700	2000	
TFLD (O-276)	Adam Carr	8/26	1	N	DP-45 / 0700	2000	
HEQB (O-383)	George Pelt	8/30	1	N	DP-45 / 0700	2000	
HEQB (O-149)	Keith Beatty	9/6	1	N	DP-45 / 0700	2000	
HEQB (O-384)	Willie Vance/Josh Ramey (t)	9/2	2	N	DP-45 / 0700	2000	
SOFR (O-105)	Ronnie Oatis	9/1	1	N	DP-45 / 0700	2000	
Rapid Extraction Module #2	Ruben Duran	8/25	4	N	DP-45 / 0700	2000	
FEMP (O-111)	Scott Owen	9/2	1	N	DP-45 / 0700	2000	
FEMT (O-123)	Brian Conn	9/2	1	N	DP-45 / 0700	2000	
7. Control Operations							
<ul style="list-style-type: none"> Continue to mop-up slop-over Continue firing from H-6 to G/H break Coordinate firing operations with Divisions G and K Monitor fire spread east of Orleans Mt and Granite Creek drainage 							
8. Special Instruction							
<ul style="list-style-type: none"> Red & white stripe and orange & white stripe flagging denote area of resource concern. Directions of resource concern will be written on the flagging. Be prepared to move to support other divisions Back-haul all trash and unnecessary equipment Start pumps and charge hoses each shift GPS all pump locations. 							
9. Division/Group Communication Summary							
Function	Frequency	Channel Name	Channel	Function	Frequency	Channel Name	Channel
Command	RX 168.0750 TX 170.4250	CMD 1	1 Tone 3				
Tactical Division/Group	RX 168.2375 TX 168.2375	TAC 7	12 Tone 3	Air to Ground Command	RX 171.5375 TX 171.5375	A/G CMD	13
Prepared by (Resource Unit Leader) Rita Mustatia			Approved by (Planning Section Chief)			Date 8/23/13	Time 22:46

DIVISION ASSIGNMENT LIST			1. Branch II		2. Division/Group K			
3. Incident Name Butler			4. Operational Period DAY OPERATIONS Date: 08/25/2013 Time: 0600 – 2200					
5. Operations Personnel								
Operations Chief		John Truett/Jim Durrwachter		Division Group Supervisor		Mark Vardanega Jordan Reeser (t)		
Deputy Operations		Robin Wills/Curtis Coats(t)						
Branch Director		Steve Burns		Air Operations		Justin Mueller (t)		
6. Resources Assigned this Period								
Strike Team/Task Force/ Resource Designator		Leader		Last Shift	Number Persons	Trans. Needed	Drop Off PT./Time	Pick Up PT./Time
IHC Redding (C-64)		Dave Mallia		8/27	21	N	DP-4 / 0700	2000
FUM Grass Lake (O-66)		Will Johnson/ John Bradbeck		9/1	10	N	DP-4 / 0700	2000
FALM North Zone Fallers 3 (O-64)		Robert Freeman/Gary Burg		9/3	2	N	DP-4 / 0700	2000
Skidgine Wurlitzer w/lowboy (E-151)		Neil Anderson /Carl Finley			2	N	DP-4 / 0700	2000
FOBS (O-390)		Bernie Miller		8/30	1	N	DP-4 / 0700	2000
SOFR (O-89)		Rob Verdie		9/01	1	N	DP-4 / 0700	2000
FEMP (O-110)		Scott Wilcox		9/2	1	N	DP-4 / 0700	2000
READ (O-62)		Chris Engelhardt		9/29	1	N	DP-4 / 0700	2000
7. Control Operations								
<ul style="list-style-type: none"> • Prepare for defensive firing if control lines become threatened • Complete mop up North of H-4 where safe to do so • Monitor fire activity in Butler Creek • Coordinate firing operations with Division H 								
8. Special Instructions								
<ul style="list-style-type: none"> • Red & white stripe and orange & white stripe flagging denote area of resource concern. Directions of resource concern will be written on the flagging. • Back-haul all trash and unnecessary equipment • Start pumps and charge hoselays each shift • GPS all pump locations 								
9. Division/Group Communication Summary								
Function	Frequency	Channel Name	Channel	Function	Frequency	Channel Name	Channel	
Command	RX 168.0750 TX 170.4250	CMD 1	1 Tone 3					
Tactical Division/Group	RX 166.7250 TX 166.7250	TAC 1	6 Tone 3	Air to Ground Command	RX 171.5375 TX 171.5375	A/G CMD	13	
Prepared by (Resource Unit Leader) Rita Mustatia			Approved by (Planning Section Chief)			Date 8/24/13	Time 2230	

DIVISION ASSIGNMENT LIST			1. Branch II		2. Division/Group W		
3. Incident Name Butler			4. Operational Period DAY OPERATIONS Date: 08/25/2013 Time: 0600 - 2200				
5. Operations Personnel							
Operations Chief	John Truett/Jim Durrwachter			Division/Group Supervisor		Randy Jennings	
Deputy Operations	Robin Wills / Curtis Coats(t)						
Branch Director	Steve Burns			Air Operations		Dustin Mueller (t)	
6. Resources Assigned this Period							
Strike Team/Task Force/ Resource Designator	Leader	Last Shift	Number Persons	Trans. Needed	Drop Off PT./Time	Pick Up PT./Time	
HC2IA ASI Arden (C-31)	Jason Sare	8/29	20	N	DP-20 / 0700	2200	
ENG3 KIC-001 (E-281)	Richard Tobin	8/26	3	N	DP-20 / 0700	2000	
ENG6 NM 3062 (E-50)	Ray Ruiz	9/4	3	N	DP-20 / 0700	2000	
ENG4 DB JET #9 (E-223)	Mike Porter	9/8	3	N	DP-20 / 0700	2000	
ENG4 WOODS #24 (E-225)	Rock Wood		3	N	DP-20 / 0700	2000	
WT2 AWD CJS WT9 (E-134)	Clay Bennett	8/25	1	N	DP-20 / 0700	2000	
PUMP ECAM (E-161)	Stan Drawyer	8/25	1	N	DP-20 / 0700	2000	
STEN (O-287)	Anthony Manning	8/26	1	N	DP-20 / 0700	2000	
TFLD (O-319)	Lance Robinson	8/27	1	N	DP-20 / 0700	2000	
SOF2 (O-43)	Mark Munns	9/3	1	N	DP-20 / 0700	1800	
FEMP (O-44)	Steve Bristow	8/31	1	N	DP-20 / 0700	1800	
FEMT (O-13)	David Revello	8/31	1	N	DP-20 / 0700	1800	
7. Control Operations							
<ul style="list-style-type: none"> Prepare for defensive firing if control lines become threatened. Complete 200 feet of mop up where safe to do so Monitor fire activity in upper Butler Creek 							
8. Special Instruction							
<ul style="list-style-type: none"> GPS all pump locations Back-haul all trash and unnecessary equipment Start pumps and charge hoselays each shift Red & white stripe and orange and white stripe flagging denote area of resource concern. Directions of resource concern will be written on the flagging. 							
9. Division/Group Communication Summary							
Function	Frequency	System	Channel	Function	Frequency	System	Channel
Command	RX 170.4125 TX 165.9625	CMD 2	2 Tone 3				
Tactical Division/Group	RX 168.2000 TX 168.2000	TAC 3	8	Air to Ground Command	RX 171.5375 TX 171.5375	A/G CMD	13
Prepared by (Resource Unit Leader) Rita Mustatia			Approved by (Planning Section Chief)			Date 8/24/13	Time 2035



Butler Fire Incident Weather Forecast

FORECAST NO: 23 D
 PREDICTION FOR: Sunday Day Shift
 SHIFT DATE: August 25st, 2013
 FORECAST ISSUED: 2100 August 24th, 2013

NAME OF FIRE: Butler Fire
 UNIT: SRF
 Incident Meteorologists: Bob Tobin
 Tom Clemmons (T)

WEATHER DISCUSSION: A Pacific Northwest trough will bring a southwest flow, near to slightly below normal temperatures, and weak weather disturbances possible through the end of the week next week. There will be a chance of showers and isolated thunderstorms on Sunday, along and a head of a weak cold front. A moist marine layer will also affect the region around the fire with higher relative humidity through Monday.

Isolated thunderstorms possible near or to the east of the Butler Wildfire.

WEATHER FORECAST FOR TODAY (SUNDAY DAY SHIFT):

WEATHER: Areas of smoke. Patchy morning fog. Mostly cloudy with a good chance of light rain showers and drizzle. Isolated thunderstorms possible early Sunday morning and again in the afternoon, mainly to the east and north of the fire.
 WIND (EYE-LEVEL): Valleys: Winds becoming Upslope/Upvalley 3 to 6 mph with gusts to 10 mph.
 Ridge Tops: South Southwest 6 to 10 mph gusts to 15 mph.
 MAX TEMPERATURES: 77 - 81F drainages, 59 - 69 ridges.
 MIN RH: 46 – 56% drainages, 57 – 67% ridges.
 LAL: 2 CWR: 30%

FORECAST TONIGHT (SUNDAY NIGHT SHIFT):

WEATHER: Areas of smoke. Fog and low clouds. A slight chance of early evening light rain.
 MIN TEMPERATURES: 46 - 53F...warmest toward ridges
 MAX RH: 75 – 100% drainages, 75 – 100% ridges.
 LAL: 1 CWR: 20%
 WIND (EYE-LEVEL): Valleys: Variable or Downslope/Downvalley 2 to 5 mph with evening gusts to 10 mph. Ridges: South to Southwest 3 to 6 mph with gusts 10 mph.

WEATHER FORECAST FOR MONDAY:

WEATHER: Areas of smoke and morning fog and low clouds. Partly cloudy in the afternoon.
 WIND (EYE-LEVEL): Valleys: Winds becoming Upslope/Upvalley 3 to 6 mph with gusts to 12 mph.
 Ridge Tops: Southwest 4 to 7 mph gusts up to 14 mph.
 MAX TEMPERATURES: 83 - 88F drainages, 66 - 77 ridges.
 MIN RH: 35 - 45% drainages, 42 – 52% ridges.
 LAL: 1 CWR: 0%

EXTENDED OUTLOOK TUESDAY THROUGH THURSDAY:

WEATHER: Areas of smoke. Patchy fog and patchy low clouds in the mornings. Variable cloud cover.
 WIND (EYE-LEVEL): Valleys: Light winds becoming Upslope/Upvalley 2 to 5 mph gusts up to 12 mph.
 Ridge Tops: Southwest 3 to 6 mph gusts up to 14 mph.
 MIN TEMPERATURES: 47 – 53F...warmest toward the ridges
 MAX TEMPERATURES: 86 - 91F drainages, 69 - 79 ridges.
 MIN RH: 28 - 38% drainages, 36 – 49% ridges.
 MAX RH: 75 – 100% drainages, 50 – 60% ridges.
 LAL: 1 CWR: 0%

FIRE BEHAVIOR FORECAST

FORECAST NO. 45

UNIT: CA-SRF

PREDICTION FOR: 8/25/13 Day

NAME OF FIRE: Butler Fire

DATE & TIME ISSUED: 8/24/13 2000

SIGNED: Jessica Wade-FBAN, John Wood-FBAN-(t)

WEATHER AND FUELS SUMMARY: *Patchy morning fog and smoke. Chance of a wetting rain 20%*

>> Max. Temps: 77 – 81 drainages; 59 – 69 Min. RH: 46 to 56% drainages; 57 to 67% ridges

>> Winds (Eye Level): Valleys upslope/up valley 3 to 6 Gusts 10 mph; Ridges South 6 to 10 Gusts 15.

>> Forecasted ERC 56 for West Side Klamath NF, (below average for this time of year).

>> 1000 hr fuels average 8% (Measured in Div. F on 8-7-13)

GENERAL FIRE BEHAVIOR:

Cloud cover and smoke will effectively shade the fire area, some patches of clear skies may be seen. Expect fire in the mixed conifer and knob cone pine to continue to burn, but intensities will be reduced. Fire behavior will moderate significantly through the shift. With rain, rates of spread will drop to under 1 ch/hr with flame lengths below 1 foot. It is possible to see areas of increased fire behavior where gusty winds align with slope.

>> Rates of spread: 1 to 2 ch/hr

>> Flame Lengths: Up to 1 foot.

>> Probability of Ignition: 20% (shaded) to 40% (unshaded)

SPECIFIC FIRE BEHAVIOR:

DIV A- No significant fire behavior expected in the division.

DIV B – No significant fire behavior expected in the division.

DIV C, F & G – Early in the shift may be the most favorable burning conditions experienced during the shift. As the cool moist weather gets in place, expect temperatures to remain low and relative humidity to remain high. Woody debris will continue to burn but spread rates and flame lengths will be reduced.

DIV H & K – Fire from the burn out will be the most active areas of these divisions. Woody fuels will continue to burn down but little spread is expected. Fire behavior in the shrub will likely be smoldering. Expect to see some open flame in heavy fuel as they burn down. Fire behavior will be creeping and smoldering.

DIV W- Minimal growth is expected in Div. W, up to 1 ch/hr. Flame lengths up to 2 ft.

Air Operations: South winds may push smoke from the Corral Complex over the Butler fire. There may only be brief periods when the smoke clear from parts of the Butler fire.

SAFETY: The fire may seem benign under smoke, but activity may increase quickly as smoke clears. Know your escape routes and time them based on current and expected fire behavior.

INCIDENT RADIO COMMUNICATIONS PLAN			Incident Name BUTLER FIRE BRANCH I & II			Date/Time Prepared 08/24/13 1735 HRS.			Operational Period Date/Time DAY SHIFT 08/25/13 0600-2200		
Only frequencies listed on this 205 are authorized for use on this incident.					Hand programmers accept all responsibility for the use of unauthorized frequencies.						
Ch #	Function	Channel Name	Assignment	RX Freq N or W	RX Tone	TX Freq N or W	TX Tone	Mode	Remarks		
1	COMMAND	CMD 1	ORLEANS LO	168.0750 N		170.4250 N	Tone 3 131.8	A	MAIN BODY OF FIRE		
2	COMMAND	CMD 2	96 / 93 TRAVEL	170.4125 N		165.9625 N	Tone 3 131.8	A	NORTH END OF FIRE AND TRAVEL ON 96 AND 93		
3	COMMAND	CMD 3	ICP	163.0375 N		170.0250 N	Tone 3 131.8	A	ICP COMMUNICATIONS		
4	COMMAND	CMD 4	ETNA MT. / HELIBASE	164.7750 N		170.4625 N	Tone 3 131.8	A			
5	COMMAND	CMD 5	SOUTH	162.1875 N		172.5500 N	Tone 3 131.8	A	SOUTH END OF FIRE		
6	TACTICAL	TAC 1	DIV D / K	166.7250 N		166.7250 N	Tone 3 131.8	A	NIFC TAC 5		
7	TACTICAL	TAC 2	DIV C / STAGING	168.0500 N		168.0500 N		A	NIFC TAC 1		
8	TACTICAL	TAC 3	DIV W	168.2000 N		168.2000 N		A	NIFC TAC 2		
9	TACTICAL	TAC 4	DIV E / F / G	168.6000 N		168.6000 N		A	NIFC TAC 3		
10	TACTICAL	TAC 5	DIV A	166.5500 N		166.5500 N	Tone 3 131.8	A	R5 TAC 4		
11	TACTICAL	TAC 6	DIV B	167.1125 N		167.1125 N	Tone 3 131.8	A	R5 TAC 5		
12	TACTICAL	TAC 7	DIV H	168.2375 N		168.2375 N	Tone 3 131.8	A	R5 TAC 6		
13	AIR TO GROUND	A / G CMD	ALL DIVISIONS	171.5375 N		171.5375 N		A	AIR TO GROUND COMMAND		
14	AIR TO GROUND	A / G TAC	ALL DIVISIONS	171.1375 N		171.1375 N		A	AIR TO GROUND TACTICAL		
15	MEDIVAC	CALCORD	MEDICAL TACTICAL	156.0750 N		156.0750 N	Tone 6 156.7	A	MEDIVAC AIR COORDINATION		
16	URGENT AIR CONTACT	AIRGUARD	ALL DIVISIONS	168.6250 N		168.6250 N	Tone 1 110.9	A	USE ONLY FOR URGENT AIRCRAFT CONTACT		
Prepared by KENNETH EARLE / PHIL SHAFER, COML NORCAL TEAM #1					Incident Location ORLEANS, CA LAT: N37 19.23 LONG: W122 02.42						

ICS 205

MODE: A - ANOLOG, D - DIGITAL

INCIDENT RADIO COMMUNICATIONS PLAN			Incident Name Butler IA Group			Date/Time Prepared 08/24/13 1943 HRS.		Operational Period Date/Time DAY SHIFT 08/25/13 0600 - 2200		
Only frequencies listed on this 205 are authorized for use on this incident.					Hand programmers accept all responsibility for the use of unauthorized frequencies.					
Ch #	Function	Channel Name	Assignment	RX Freq N or W	RX Tone	TX Freq N or W	TX Tone	Mode	Remarks	
ALL TONES IN THIS GROUP ARE USER SELECTED										
1	KNF DISPATCH	KNF	FOREST OPS	164.1750N		164.9750N	CG	A	ROUTINE TRAFFIC, T5 ORLEANS PK	
2	KNF IA DISPATCH	KNF SAM	I / A RESOURCES	171.50000N		172.4000N	CG	A	TONES 5,6	
3	KNF DISPATCH	KNF RIVER	FOREST OPS	172.2500 N		171.550 N	CG	A	TONES 2, 7 OR 10	
4	SRF DISPATCH	SRF	FOREST OPS	168.7250N		170.1250N	CG	A	TONES 5,6,7 AND 13	
5	HOOPA FIRE RPT	HIA	AS NEEDED	155.3850N		150.8050N	CG	A	TONE 6	
6	SISKIYOU DISPATCH	SKU-L 1	SKU OPS	151.3250 N	156.7	159.3600 N	CG	A	TONE 6	
7	HUMBOLT	HUU OPS	OPERATIONS	151.2500 N		159.4050 N	CG	A	TONE 11&13	
8	NIFC TAC 1	NIFC TC1	I / A TAC	168.0500 N		168.0500 N		A		
9	NIFC TAC 2	NIFC TC2	I / A TAC	168.2000 N		168.2000 N		A		
10	NIFC TAC 3	NIFC TC3	I / A TAC	168.6000 N		168.6000 N		A		
11	FS AIR / GND PRI	FS A/G PRI	ALL DIVISIONS	167.6000 N		167.6000 N		A		
12	FS AIR / GND SEC	FS A/G SEC	ALL DIVISIONS	166.8750 N		166.8750 N		A		
13	SALMON INCIDENT A/G	SAM A / G	SALMON TFR	166.5625 N		166.5625 N		A		
14	AIR TO GROUND	CDF A / G	AS NEEDED	151.2200 N		151.2200 N		A		
15	MEDICAL	CALCORD	MEDICAL TACTICAL	156.0750 N		156.0750 N	T6 156.7	A		
16	URGENT AIR CONTACT	AIRGUARD	ALL DIVISIONS	168.6250 N		168.6250 N	T1 110.9	A	USE ONLY FOR URGENT AIRCRAFT CONTACT	
Prepared by Ken Earle, Phil Shafer COML NORCAL 1					Incident Location MODE: A – ANOLOG, D - DIGITAL ORLEANS, CA					

BUTLER FIRE PHONE LIST

As of 8/25/2013

Incident Commander & Staff

Position	Name	PHONE #	Cell PHONE # or other	FAX
NIMO Incident Commander	Quesinberry	877-230-9500	Cell 925-549-9420	
Incident Commander	Minton	No #	Cell 925-549-9417	
NIMO Safety	Terri Knauth	877-234-2477	Cell 925-549-9428	
Safety	Tanzi/Kirste	877-234-2477	Cell 925-549-9428	
Information	Downing/Mackensen	877-366-6008 877-365-6423 877-375-2226	Cell 925-549-9427	
Liaison Officer	Swartzlander	877-230-9500	Cell 925-549-9429	
Human Resources	Gonzalez	877-328-4522	Cell 925-549-9423	

Operations

Planning Ops	Wills/Stevens(t)	877-354-2815		
Air Ops.	Mueller	877-353-6938		
Helibase	Bernardy	530-625-4617		

Planning

NIMO Plans Chief	Schwilling	877-231-8599	Cell 925-549-9430	
Plans Chief	Sincleaer	877-354-9003	Cell 925-549-9421	
Planning Ops	Wills	877-231-8599	Cell 925-549-9426	
Situation Unit	Taylor /Olds	877-354-9003		
Check-In / Demob	Dumlao	877-367-1232		800-618-3707
Demob	Deboi	877-367-9503		800-618-3707
IMET	Tobin/Clemmons	877-368-2325		
Fire Behavior Analyst	Wade/Wood	877-368-2325		
Computer Techs / Resources	Steel	877-336-0460		
Training Specialist	Smith	877-342-8962	Medical 877-356-8984	FAX same as MedL phone- call 1st

Logistics

Logistics Chief	Jellison	877-262-1573		
NIMO Logistics Chief	Brown	877-262-1573		
Supply / R & D	Sheets	877-321-2494		
Ordering	Lake	877-321-2494		800-617-4920
Facilities	Huhtala	877-354-6006		No FAX
Ground Support / Repair	Zabel	925-549-9431	925-549-9431	addl cell760-646-5747
Communications	Earle	Disp 877-325-0366	COML 877-321-4510	INCM 877-325-6905
Medical Unit	Thomas	877-356-8984		
Security	Nolde	Call Facilities @ 877-354-6006		
Food Unit	Westlake	877-354-6006		

Finance

Finance Section Chief	Corkill/Palmer	877-253-6892		
Personnel Time	Ammon	877-236-7216		FAX 800-881-2790
Equipment Time/Cost	Griffith	877-235-0564		
Comp & Claims	Valdez	877-234-2477		
GIS	Felker/House	No Phone yet		

Other Important Numbers

Expanded YICC		530-841-4611	530-841-4612	
Fortuna Dispatch (fs)		days 707-726-1266	nights 707-726-1281	
Co. Sheriff 24 hrs			530-625-5014	
Co Roads			707-445-7491	
Yreka Dispatch (fs)			ROUTINE CALLS 530-841-4600	EMERGENCY ONLY 530-842-3515
CHP 24 hrs			707-266-2000	
Hoopa Police			530-625-4211	
Cal - Trans 24 hrs			707-445-6600	
Fire Dawg Clerical-Butler	530-625-4059			
Tosiers Clerical -Salmon Complex	Gail Tosier	530-592-8550		530-467-1536

Forks Camp

Dep IC	Pete Duncan	530-462-1520		
Medical	Claudia Kutscher	530-462-1518		
Logistics	Shurr/Howard(t)	530-462-1523		
Finance	Lois Charlton	530-462-1514		
Facilities / Info	Frank Decarlo	530-462-1519	INFO Kathy Hardy	
Plans Chief	Valery Vambeth	530-462-1520/1		
Plans Chief (t)	Bob Patton	530-462-1516		
Operations	Lane/Coots(t)	530-462-1516		

AIR OPERATIONS SUMMARY

PREPARED BY: Dustan Mueller

PREPARED DATE/TIME: 8/24/13 1900

1. INCIDENT NAME: Forks Complex and Salmon Fire	2. OPERATIONAL PERIOD DATE: 8/25/13	START TIME:0600	END TIME:2200	SUNRISE: 0634 SUNSET: 1959
---	-------------------------------------	-----------------	---------------	----------------------------

<p>3. REMARKS (Safety Notes, Hazards, Air Operations Special Equipment, etc.): Use Butler A/G on any new incidents west of Salmon River and south of the North Fork of the Salmon River within the TFR. Use Salmon A/G on any new incidents east of salmon river and north of North Fork of the Salmon within the TFR. Watch for wires in the Salmon river canyon. Beware of rapidly changing VFR conditions due to smoke. Stay ready for PSD operations. Avoid no-fly zone over Orleans unless unsafe starting 8/20/13.</p>	<p>4. MEDEVAC A/C: H-7PA I.A A/C: H-502</p>	<p>5. TFR: 3/9102 Altitude: 11,000' MSL Center point: 41 20.35 N 123 15.10 W Frequency: 120.0250</p>
--	---	--

6. PERSONNEL	Phone	7. FREQUENCIES	AM	FM	8. FIXED-WING	# Avail / Type/ Make-Model / FAA N# / Base(s)
AOBD Trainee: Dustan Mueller	877-353-6938 530-260-1278	TFR A/A	120.0250		Airtankers Leadplanes Base FAX #: ATGS Aircraft Other	Airtankers available upon request of Air Attack. Lead/ASM's available upon request of Air Attack AA-1176Z AA-507
ATGS: Carl Piper Trainee: Rico Gonzalez ATGS: Stan Kubota	530-295-7273 530-605-6376 530-949-9466	AIR/ AIR RW	132.2750			
ASGS: Sean Cox ASGS: Steve Beall ASGS: Brad Bernardy	530-409-2363 530-598-6755 601-540-6528	AIR/ AIR FW Air Tactics		163.1500		
HEBM: Bill Lampert HEBM T: Joel Torres HLCO: Bill Palmer	530-598-4128 530-598-9323 828-273-9255	AIR/ GROUND Butler Command: Butler Tactical: Salmon A/G		171.5375 171.1375 166.5625		
Scott Valley Helibase: H-503, Jim Gould	530-468-1294 530-468-5495 530-598-4132	COMMAND Rx: Tx:		168.0750 170.4250 t-3		
Helibase Fax:	530-468-2118	DECK		163.100		
Air Ops Desk ICP:	877-353-6938	Aerial Firing		169.4000		

9. HELICOPTERS (Use Additional Sheets as Necessary)

FAA N#	TY	MAKE/MODEL	BASE	AVAIL	START	REMARKS	FAA N#	TY	MAKE/MODEL	BASE	AVAIL	START	REMARKS
HT-715	1	S-64	Scott Vly	0700	0800	Tank/H2O	H-502	2	Bell 205	Scott Vly	0700	0800	Cargo/Bucket/Pax Rappel
HT-746	1	S-64	Scott Vly	0700	0800	Tank/H2O	H-503	3	Bell 407	Happy Camp	0700	0800	PSD.Recon
H-514	2	Bell 212HP	Scott Vly	0700	0800	Cargo/Bucket/Pax PSD	H-407PA	3	Bell 407	Scott Vly	0700	0800	All Missions Short haul with EMT

10. TASK/MISSION/ASSIGNMENT (Type/Function includes: Air Tactical, Retardant, Recon, Personnel Transport, Water Dropping, S&R, etc.)				
TYPE/FUNCTION	NAME OF PERSONNEL OR CARGO (if applic) OR INSTRUCTIONS FOR TACTICAL AIRCRAFT	MISSION START	FLY FROM	FLY TO
(1)Bucket Support (2)PSD	As needed through Air Attack or HLCO As requested through Operations. H-3 will be used as Firing Base once approved by Air Ops.	TBA TBA	Scott Vly H-3	Butler Fire Butler Fire
(3)Reconnaissance	Operations. As visibility allows.	TBA 1600	Scott Vly Wooley H-10	Etna Mtn Butler Fire
(4) Somes Mtn Klump Pump Removal	Remove Klump Pump and install 3000 gal tank	TBA	Wooley H-10 Butler	Somes Sling
(
**KNF Lightning Support	Support the Klamath N.F as aircraft come available using the IA protocol in place. All requests need to be approved by Air Ops.			
	*** For Medevac purposes refer to the IAP***			
	*** There will be one aerial supervisor within the TFR. Please use the Call sign Forks Air Attack or Forks Helco on either Forks Command A/G or Salmon A/G			
	*** H 407PA available for all Missions. For Short Haul within Forks TFR use local helicopter ordering protocol. Robert Dauphinais Manager 928-266-5633			
	****All requests for logistical and tactical support must go through Air Attack if they are over the fire***			

MEDICAL PLAN	1. INCIDENT NAME Butler Fire	2. DATE PREPARED 8/24/2013	3. TIME PREPARED 2000 Hrs	4. OPERATIONAL PERIOD 0600-2200 08/25/2013				
	5. INCIDENT MEDICAL AID STATIONS							
MEDICAL AID STATIONS		LOCATION			PARAMEDICS			
					YES	NO		
Frontline Medical		ICP next to kitchen			X			
Fork Medical Unit		Fork Camp			X			
FEMP Doty		Div A or as directed by Safety and Operations			X			
FEMP Garcia & FEMP Mallett		Div B or as directed by Safety and Operations			X			
REM 1		Div B or as directed by Safety and Operations			X			
FEMP Bezemer & FEMP Sandler		Div C or as directed by Safety and Operations			X			
FEMP Gabbard & FEMP Van Renselaar		Div G or as directed by Safety and Operations			X			
REM 2		Div H or as directed by Safety and Operations			X			
FEMP Owen & FEMT Conn		Div H or as directed by Safety and Operations			X			
FEMP Wilcox		Div K or as directed by Safety and Operations			X			
FEMP Bristow & FEMT Revollo		Div W or as directed by Safety and Operations			X			
6. TRANSPORTATION								
A. AIR RESOURCES								
NAME		ADDRESS		PHONE	PARAMEDICS			
					YES	NO		
NPS H- 7PA - Short Haul Capable 150' to 250'		Scott Valley Helibase, Scott Valley, Ca 96027		Air Ops. (877) 353-6938		X		
CalFire 102- (Hoist) Daylight hrs only		Kneeland, CA		YICC (530) 842-3515		X		
REACH- (Non-Hoist) NVG Capable		3775 Flight Ave. Redding, Ca. 96003		YICC (530) 842-3515	RN/ Medic			
PHI Air Medical -(Non-Hoist) NVG Capable		1524 East St. Redding , Ca 96003		YICC (530) 842-3515	RN/ Medic			
CANG H820-(Hoist, day or night) NVG Capable		Redding Airport		YICC (530) 842-3515	X			
B. INCIDENT AMBULANCES								
NAME		LOCATION			PARAMEDICS			
					YES	NO		
Arcata Ambulance 4		Available on the east side of the fire @ DP2			X			
City Ambulance 4		Available Butler ICP			X			
7. HOSPITALS								
NAME	ADDRESS	TRAVEL TIME		PHONE	HELIPAD		BURN CENTER	
		AIR	GRND		YES	NO	YES	NO
St Joseph Hospital	2700 Dolbeer Eureka, Ca. N 40 47.02 / W 124 8.48	20 M	2.5 H	707-445-8121 #2	X			X
Fairchild Medical Center	444 Bruce St. Yreka, CA N41 43.13 W122 38.69	20M	2.5 H	530-842-4121	X			X
Mercy Medical Center Level 2 Trauma	2175 Rosaline Ave. Redding, Ca N 40 34.13 / W 122 23.67	50M	3 H	530-225-7201	X			X
UC Davis Medical Ctr. Level 1 Trauma	2315 Stockton Blvd. Sacramento, Ca. N 38 33.17 / W 121 27.05	1.5H	6.5 H	916-734-3636	X		X	
8. MEDICAL EMERGENCY PROCEDURES								
IN-CAMP CARE					LINE EMERGENCIES			
<ul style="list-style-type: none"> Minor Injuries or illnesses <ul style="list-style-type: none"> Seek Aid directly at the Frontline Medical Unit, report all injuries or illnesses to supervisor Unit Open 0600 hrs to 2200 hrs Moderate to Severe Injuries or Illnesses <ul style="list-style-type: none"> Contact Communications directly Med Unit staffed after hours for Emergencies 					<ul style="list-style-type: none"> Start of shift: notify your Div Sup of EMT's and equipment you have available for response if needed. Contact Communications and declare a medical emergency on command Closest DIVS or designee responds to incident <ul style="list-style-type: none"> Closest SOFR/EMT's respond to assist w/care Use attached Injury or Incident Comm. Protocol If ambulance (ground or air) delayed designate rendezvous site and move towards it Secure scene for investigation—keep a log 			
9. PREPARED BY (MEDICAL UNIT LEADER)		10. REVIEWED BY (SAFETY OFFICER)						
ICS 206 8-78		R. Reginato MEDL(t)			M. Tanzi SOF1			

Injury or Incident Communications Protocol

Time: _____ Date: _____ On Scene POC: _____

Declare: Medical Emergency _____ or Non-Emergency Medical _____

Number of injured: _____ Type of injury: _____

Patient Location: _____ Lat: _____ Long: _____ Elevation: _____

Best transport method: (see matrix below) Air Ambulance Ambulance Helicopter Vehicle

Any special equipment required: (SKED, Wheeled Stokes, Backboard, etc.) _____

Closest pick up point (DP, Helispot) _____

LOC _____ Resp. _____ Pulse _____ BP _____ Weight _____

Medical History/Allergies _____

On Scene Medic: _____

Air Transportation Triage

Coordinate with Air Ambulance on Cal-Cord (Ch: 15)

	Air Ambulance	Ground Transport
Mechanism	Struck by tree Fall of 10' or more Snake bite with pain and swelling Insect bite with shortness of breath Signs of heat stroke (hot, dry, disoriented) Burn Injury greater than 1% body area	Minor dehydration Cut or laceration with bleeding controlled Minor bites and Stings Minor burns
Area Injured	Significant Blunt or Penetrating Trauma to Head, Neck, Chest, Abdomen or pelvis Any Arm or Leg fracture	Minor blunt trauma Minor penetrating trauma Extremity sprains and strains
Symptoms	Disoriented Chest Pain <u>or</u> Shortness of Breath Weak or absent radial pulse Pale, cold and sweating	Alert and oriented No shortness of breath Good pulses

Medivac Sites (WGS 84 datum) use Degrees, Decimal Minutes (Lat 00° 00.000' – Long 00° 00.000')

Forks Camp - N 41°15.553 / W 123°19.650

DP- 34 Div. C- N 41°12.896 / W 123°16.759

H 11 – N 41°15.182 / W 123°18.963

DP-39 Div. E- N 41°10.847/ W 123°22.445

If air or ground ambulance is DELAYED:

DO NOT DELAY in Packaging and transporting the patient to rendezvous with the Ambulance.
Re-route EMS helicopter to rendezvous point as appropriate.

When declaring an “Incident within the Incident”

The closest DIVS or designee will respond to manage the incident. They are responsible for giving an accurate size up, ensuring scene safety, setting priorities and initiating an appropriate response. The closest Safety Officer and Line EMS will respond to the scene to assist. The Safety Officer will secure the site and begin initial investigation when situation is stabilized.

INCIDENT RISK ANALYSIS - Butler (ICS 215A) Day Shift

DIV	HAZARDOUS ACTIONS / CONDITIONS	MITIGATIONS / WARNINGS / REMEDIES
DIV C,G,H,K	Firing Operations	<ul style="list-style-type: none"> • Know the plan! Know who's in charge! Know the Plan! • Conduct thorough briefing for all personnel (inside rear cover IRPG). • Utilize Risk Mgmt. Process (IRPG p. 1) for implementing the plan. • Establish LCES prior to implementing burning operations (IRPG p. 6). • Assign an over-all Burn Boss, Firing Boss & Holding Boss, to coordinate ignitions when simultaneous burning operations are planned for multiple locations.
All	Hazard Trees, Fire Weakened Trees & Snags	<ul style="list-style-type: none"> • Scout work area for overhead hazards to ensure safe work areas. • Identify and communicate hazard to personnel. Mitigate using qualified personnel only. • If unable to mitigate hazard Flag Off area, keep personnel away.
All	<u>DRIVING HAZARDS</u> Very Narrow, Dusty, Soft Shoulders	<ul style="list-style-type: none"> • SEAT BELTS ON.....BEFORE wheels turn! • Slow down driving speeds to allow for reaction time lag. • Establish one-way traffic or coordinate traffic flow if necessary. • Drive Defensively! Expect the unexpected around every curve. • When meeting oncoming traffic at night, come to a controlled stop. Turn headlights to running lights; assist other vehicle in backing to a safe place to allow safe passage around vehicle.
All	<u>Wildlife</u>	<ul style="list-style-type: none"> • Increased Bear Sightings-Keep food and trash secured. Review Bear Safety Insert in IAP • Do Not approach animals that look sick or injured. • Notify Supervisor of sightings-Flag Hornet nests and other wildlife hazards. • Seek Medical Care for any bites, scratches, or stings producing more than localized reactions. • Watch footing and hand placement around rocks for snakes and scorpions.
All	Hydration	<ul style="list-style-type: none"> • Pre-hydrate, Re-hydrate to keep from DEHYDRATING • Dehydration is PREVENTABLE • Be alert for signs of heat illness in yourself and others. • Drink 2 to 1 water to sports drinks.
All	Poison Oak	<ul style="list-style-type: none"> • Personal hygiene is #1 when it comes to Poison Oak Prevention • Seek medical attention for severe reactions
All	Extremely Steep Terrain & Rolling Materials	<ul style="list-style-type: none"> • Concentrate on your footing placement; take your time. • Ensure adequate spacing between crewmembers so they can react to dislodged debris. • Post lookouts to warn of rolling debris. SHOUT out to warn others • Look Up, Down and Around Frequently.
DIV C, D,E, F, G, K, W	Indirect Line	<ul style="list-style-type: none"> • Insure that communications between lookouts and line resources are maintained. • Escape routes & Safety Zones are identified and re-evaluated as you progress. • Establish Management Action/Trigger points for disengagement and make them known
Salmon River Rd	Debris Flows, Rock Slides, etc.	<ul style="list-style-type: none"> • Any amount of rain will cause loosening of Soils, Rocks, and Trees due to Burn Scar. • Road closure of Salmon River Road Possible due to rain. • NO vehicle traffic between Butler ICP and Forks Base Camp via Salmon River Rd if raining
DIV B, H, K	Spot Fires	<ul style="list-style-type: none"> • Utilize the Risk Mgt Process before initiating any suppression actions (IRPG page 1) • Establish LCES before engagement • Consider Risk vs Gain
DIV A, B, W	Structure Protection	<ul style="list-style-type: none"> • Conduct thorough briefing of all personnel (Inside rear cover IRPG 2010). • Utilize Structure Assessment Checklist (IRPG p.10). • Follow Structure Protection Guidelines (IRPG p.14). • Evacuation Plans have been developed. Ensure understanding by all personnel assigned.
INCIDENT NAME: Butler ICS 215a	DATE PREPARED: August 24, 2013	OPERATIONAL PERIOD Day Shift 08/25/13 0600 - 2200 Prepared by: M. Tanzi, M.S.Frederick
	TIME PREPARED: 1900 HOURS	

Butler Fire

Vehicle Use & Traffic Protocol



Purpose

These protocols have been established in order to address the increasing number of vehicular incidents which have been occurring on the incident. Fatigue, complacency, distractions, and inattention to driving have all contributed to this problem.

The following guidelines will now be in effect.

- You are **REQUIRED by LAW to WEAR** your seatbelts. You've heard the phrase "Click it – or Ticket? Here on this fire it's "Click-it or GO HOME!" **Before your wheels roll.**
- Individuals **SHALL** only drive if they have had **at least 8 consecutive hours off duty before beginning a shift.**
- If you are too tired to operate your assigned vehicle **then don't operate it!** Recognize that fatigue affects you. Be honest with yourself about how tired you are and communicate this to your supervisor.
- If you find yourself dozing off while driving either stop and rest or get a relief operator.
- Keep in mind that when scouting a new area by vehicle, a driver often concentrates more on what they are scouting than how they are driving. If this is the case then drive a short distance, stop, and then evaluate or scout the area.
- Vehicles travelling uphill generally have the right of way. **do not insist on that right of way.**
- Keep in mind that larger vehicles like tenders and transports are more difficult to start on slopes, especially when under load. Do not complicate this problem by not pulling over in time for them to keep rolling.
- **In camp:** The maximum speed will be **under** 5 miles per hour and a backing guide will be required when reversing unless you are backing into an established parking space.
- **On public roads and the fireline:** The maximum speed on the paved public roads adjacent to the fire area will be 20 miles per hour for larger vehicles (water tenders, Type III engines, transports) and 25 miles per hour for smaller pick-ups, SUV's and cars. When passing both non-fire personnel and firefighters on foot the maximum speed will be **under** 5 miles per hour. On the fireline the maximum speed when passing parked vehicles (small or large) or personnel on foot will be **under** 5 miles per hour. Backing guides will be utilized whenever reversing unless backing into an established parking space.

Your Safety Team: Terri Knauth, Michele Tanzi, Dave Kirste, Jeff Barnhart, Mike Frederick, Bob Kafka, Tim S., Steve H., Rob V., Ronnie O., Miles S., Matt W., and Mark M.

Bear Safety (for you, not the bear)

Sloppy firefighters don't just endanger themselves, but also other firefighters. Bears will return to a site repeatedly if they ate there at some point in the past. When in bear country (where you are now) you should:

Maintain a bear safe campsite

- Store food, drinks and scented items securely.
- Dispose of trash
- Always sleep inside your tent
- Never approach or feed a bear
- Report bear sightings to your Division Supervisor

Take precautions while hiking

- Stay alert at dawn and dusk, when bears are more active
- Make noise as you travel through dense cover
- Stay away from animal carcasses
- Store food, trash and scented items (sunscreen, etc.) in airtight plastic bags

Dispose of trash carefully

- Store trash in a secure location
- Clean the trash container regularly

If you encounter a bear

- **Stand your ground.** Never back up, lie down or play dead. Stay calm and give the bear a chance to leave.
- **Don't run away or climb a tree.** Black bears are excellent climbers and can run up to 35 mph – you cannot out climb or outrun them
- **Know bear behavior.** If a bear stands up, grunts, moans or makes other sounds, it is not being aggressive. These are the way a bear gets a better look or smell and expresses its interest.

If a bear attacks

- **Always fight back.** And never give up! People have successfully defended themselves with almost anything: rocks, sticks, pulaskis, water bottles and even their hands and feet.



Fatigue/Stress

First Aid/Health Category

Accumulated (Chronic) Fatigue is defined as fatigue from which normal rest does not produce recovery. Accumulated fatigue is often caused by extended periods of stress with inadequate recovery periods, which results in decreased productivity, compromised immune function, and reduced alertness. Fatigued workers perform poorly, behave carelessly, tolerate greater errors and become inattentive. Chronic fatigue often results in increased stress, which may present itself through certain behavioral and physiological indicators, such as those described below:

- Behavioral indicators
 - Decreased motivation and low morale
 - Increased irritability and depression
- Physiological indicators
 - Confused, poor problem solving
 - Poor abstract thinking
 - poor attention/decisions
 - poor concentration/memory
 - extreme emotional responses
 - social/behavioral changes
- Recommendations for chronic fatigue/stress are:
 - Take longer periods of rest/recovery
 - Ensure that workers are adequately rested before they begin work shifts
 - Provide periodic rest breaks to allow physical and mental recovery
 - Alternate between heavy and light tasks
 - Eat well-balanced meals regularly, with energy supplements during periods of high exertion
 - Maintain hydration
 - Ensure workers maintain good personal hygiene
 - Maintain high standards of physical fitness and work capacity
 - In extreme cases, personnel may need to be relieved of their duties

References:

Wildland Firefighter Health & Safety Report, Missoula Technology & Development Center

1) Spring 2004

2) Fall 2000

3) Fatigue Awareness PowerPoint

CISM Information Pamphlet, International Critical Incident Stress Foundation, www.icisf.org

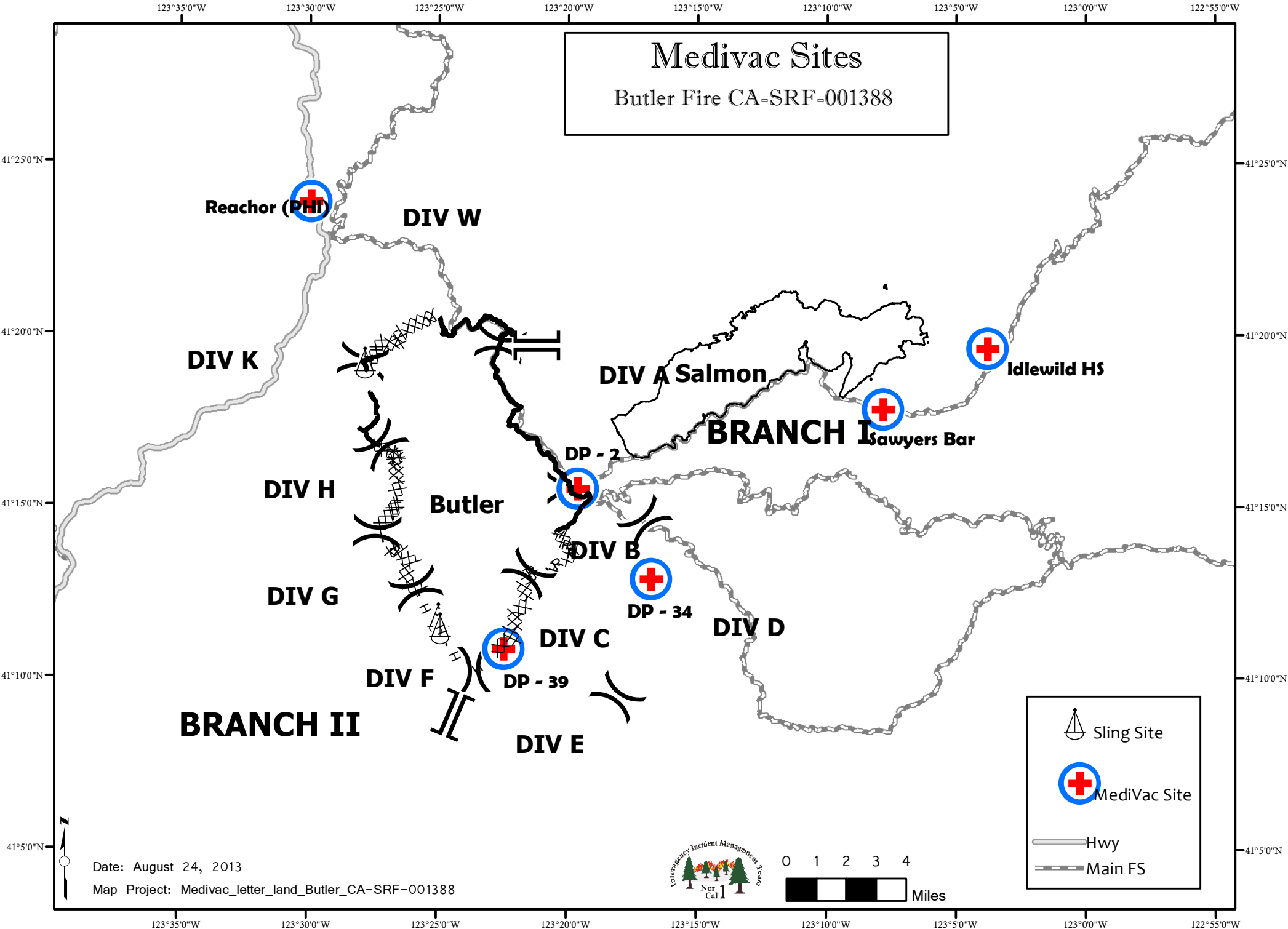
Have an idea? Have feedback? Share it.

ONLINE | MAIL: 6 Minutes For Safety Subcommittee • 3833 S. Development Ave • Boise, ID 83705 | FAX: 208-387-5250

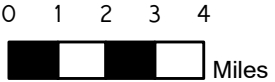
6 Minutes Home

Medivac Sites

Butler Fire CA-SRF-001388



Date: August 24, 2013
Map Project: Medivac_letter_land_Butler_CA-SRF-001388



- Sling Site
- Medivac Site
- Hwy
- Main FS

Medivac Sites

Site	Latitude	Longitude
Reachor PHI	41° 23.857' N	123° 29.919' W
Cecilville	41° 08.45' N	123° 08.14' W
Forks of the Salmon / DP 2	41° 15.490' N	123° 19.490' W
Sawyers Bar	41° 17.84' N	123° 07.82' W
Idlewild	41° 19.61' N	123° 03.78' W
DP - 34	41° 12.896' N	123° 16.759' W
DP - 39	41° 10.847' N	123° 22.445' W

As of 8/24/2013

Incident Trainee/Trainer Data Form

Complete and drop off with the Training Specialist for entry into database before end of assignment.
Remember to close out all training packages with the Training Specialist prior to going through DEMOB.

A. Trainee Data

Trainee Name: _____ ICS Trainee Position: _____

Were you ordered as a Priority Trainee? Y N If yes, specify: IFPM FS-FPM REGIONAL

Request # (A, C, E or O): _____ Agency Designator (Example: CA-KNF): _____

Agency: _____ Crew/Module Name: _____ Cell Phone: _____

Fire Name: _____ Date Assigned: _____

Person and location your training package should be mailed to: (Chief, Training Officer, etc.):

Name: _____ Title: _____ Home Unit: _____

Agency Address: _____

City: _____ State: _____ Zip Code: _____ Phone: _____

B. Trainee Prerequisites

1. Valid Red Card or agency certification card? ___ Yes ___ No

2. Trainee has current position task book issued by home unit? ___ Yes ___ No

C. Trainer/Evaluator Data Trainer / Evaluator Name: _____

ICS position on fire: _____ Home Unit: _____

Address: _____ City: _____

State: _____ Zip Code: _____ Cell / Contact While on Incident: _____

D. Trainee Goals - (3 tasks or objectives you would like to address).

1. _____

2. _____

3. _____

MESSAGE FROM YOUR HUMAN RESOURCE SPECIALIST

The overall message of all Human Resource Specialists, generally centers around a policy of Human Respect, Dignity and treating each others as you would like to be treated.

I found a few words of wisdom that I believe encompasses those qualities.

Leadership:

Fireline leadership is the process of influencing fire fighters to accomplish their mission by providing them with purpose, direction and motivation.

Purpose – You must establish priorities, explain the importance of the mission, and focus the fire fighters to the task so they will function safely and effectively.

Direction – Gives fire fighters an orientation to the tasks to be accomplished based on priorities set by the Leader.

Motivation – Gives the fire fighters the drive and desire to do everything they are capable of doing to accomplish a mission.

Principles of the Fire Line Leader:

1. Know yourself and seek improvement.
2. Be technically responsible and take responsibility.
3. Make sound and timely decisions.
4. Set a good example.
5. Know your fire fighters and take care of them.
6. Develop a sense of responsibility in your subordinates.
7. Ensure the task is understood, supervised and accomplished.
8. Use your fire fighters in accordance with their level of training and experience.
9. Build your team.
10. Seek responsibility and take responsibility for your actions.
11. Keep your fire fighters informed.



M.I.S.T. GUIDELINES (SRF – KNF – SHF)

MINIMUM IMPACT SUPPRESSION TECHNIQUES

Wilderness areas are areas that are protected by law and are managed to preserve their natural conditions for present and future generations. The following Minimum Impact Suppression Techniques (MIST) are guidelines intended to significantly reduce the impacts associated with fire suppression and incident management activities in Wilderness areas.

SAFETY

Safety is of paramount importance. Incident personnel should constantly be aware of their surroundings and the Eight Principles of Safety, the 10 Standard Firefighting Orders and the 18 Watchout Situations when applying MIST techniques.

LINE OPERATIONS

- Use natural barriers, wet line or cold trail techniques, rather than constructing line. Consider burnout from natural barriers to minimize line construction.
- When constructed line is necessary, use the minimum width, depth and canopy clearance necessary to check fire spread, based on fire behavior. Locate line to minimize impacts. Consider use of fireline explosives for line construction.
- Do not put line construction debris in streams.

GREEN TREES, BURNED TREES AND SNAGS

- Scrape around tree bases near fireline if hot and likely to cause fire spread.
- Inside fireline: remove or limb only those fuels that if ignited would have potential to spread fire outside the fireline.
- Identify hazardous trees with an observer or flagging.
- Use Saw Use guidelines.

SAW USE

- Minimize the amount of cutting.
- Live trees will not be cut, unless it is determined they will cause fire spread across the fireline or endanger workers or the public.
- Slope/angle saw cuts away from line of sight to minimize visual impacts. Rub dirt or ash on stumps and log ends to camouflage them. Do not crosshatch/etch.
- If trees must be felled inside the line, do not limb or buck them. Allow the fire to consume them.

INDIRECT ATTACK

- Do not fall snags on the intended unburned side of the constructed fireline, unless they are safety hazard to crews or the public.
- On the unintended burn-out side of the line, fall only those snags that would reach the fireline should they burn and fall over.
- Consider alternative means to falling, i.e., fireline explosives, bucket drops.
- Consider all items in Section B, the Fire Line Phase.

AIR OPERATIONS

- Limit the use of retardant. Use water drops (preferred) or foam instead. When foam or retardant use is appropriate, avoid dropping near surface water.

HELISPOT CONSTRUCTION

- Minimize the number of helispots constructed in Wilderness.
- Evaluate carefully whether it is necessary to construct a helispot or whether an alternative outside Wilderness can be used.
- If a helispot is only needed for logistical support to deliver and retrieve supplies or gear, consider using a long line remote hook in lieu of constructing a helispot. If a helispot is needed for crew shuttle, consider the minimum size helicopter that could do the job and still meet suppression objectives.
- Use natural openings as much as possible. If some tree falling or cribbing is necessary, avoid high visitor use locations unless the modifications can be rehabilitated to be generally unnoticeable. Feather the opening so that it appears more natural looking.
- Whenever possible, the Resource Advisor should provide specific instructions and observe the construction of helispots.
- Naturalize helispots before abandoning

SPIKE CAMPS AND CAMP ACTIVITIES

- Camps and other facilities will be located outside of wilderness whenever possible.
- A Resource Advisor will be consulted prior to establishing spike camps and use will be discontinued if resource damage occurs.

MOP-UP PHASE

- Cold trail rather than scraping or digging whenever possible to detect hot areas.
- Roll or drag fuels into the interior and allow them to burn out, rather than mopping them up and roll logs rather than bucking.
- Pull hot material away from the bases of trees, rather than felling them.
- Remove or limb only those fuels that if ignited, have potential to spread outside the fireline.

PERSONAL CONDUCT

Leave No Trace – Pack it in - Pack it out

Confirmed approval for use of mechanized equipment – Chainsaws / Helicopter Use

Nor Cal #1

Expectations for Operational Periods and Shift Length

- The expectations of the I.C. and the team are that all operational resources will proceed directly to their shift assignments at the conclusion of the operational briefing / division break-out. Individuals attending the briefing should attend dressed fire-ready (nomex pants and boots).
- ICS 204 Division Assignment Lists will display anticipated shift duration. The assigned Division Supervisor has the authority to modify these time frames as the situation dictates.
- A minimum of 1 meal break should be taken each day when the fire situation permits. When meals are not recorded, rationale is needed on the CTR. Non fireline assigned resources should plan for a 30 minute break every 6 hours when the situation permits. Command and General Staff will manage workloads to allow for breaks when appropriate.
- Individuals shall only drive if they have had at least 8 consecutive hours off duty before beginning a shift. *Example: if it becomes essential to work until 2300 hours, the individual should not return to duty before 0700 the following day.* Exceptions to this policy should only be to accomplish immediate and critical suppression objectives or critical firefighter / public safety missions as approved by the I.C.
- The Incident Management Organization is committed to a “zero tolerance” policy against inappropriate behavior during incident operations. We expect an attitude of mutual respect for all incident personnel and the public we serve. Any form of harassment, discriminatory practices, or disrespectful behavior will not be tolerated and will be dealt with appropriately. Illegal drug use or other illegal activities will not be tolerated and will be turned over to local law enforcement authorities. Alcohol is strictly prohibited from the fire camp and all other incident locations. Violation of these standards of conduct can result in prompt dismissal from the incident. Individuals who are aware of any inappropriate behavior of incident personnel should tell their supervisor or contact the Human Resource Specialist.

Date & Time Order was placed:		Order #	Location & Time for Delivery (DIV,LZ,DP,Lat Long)		Mode of delivery
		(DIVS+#)			(Driven/Helo/DIVS to Pick up)
			Lat:		
			Long:		
Order received in Communications by (Name):					Time:
Order shipped to line by (Name): (Send this sheet to the line with the order)					Time:
#	Item				
1	1,000 Foot Hose Lay includes the following: Amount _____				
	10, 100'x1½" Rolls Hose; 10, 100'x1" Rolls Hose; 10, 1½" Gated Wyes; 10, 1½" to 1" reducers; 10, 1" nozzles				
2	2,000 Foot Hose Lay includes the following: Amount _____				
	20, 100'x1½" Rolls Hose; 20, 100'x1" Rolls Hose; 20, 1½" Gated Wyes; 20, 1½" to 1" reducers; 20, 1" nozzles				
3	3,000 Foot Hose Lay includes the following: Amount _____				
	30, 100'x1½" Rolls Hose; 30, 100'x1" Rolls Hose; 30, 1½" Gated Wyes; 30, 1½" to 1" reducers; 30, 1" nozzles				
#	Item	Amount	#	Item	Amount
4	Hose (50') garden, 3/4"		30	Gas Unleaded (Gallons)	
5	Hose (100'), 1"		31	Oil 2 cycle, (Pints)	
6	Hose (100'), 1½"		32	Bar Oil (Qts)	
7	Nozzle, Garden, 3/4"		33	Drip Torch ea	
8	Nozzle, Forester, 1"		34	Drip torch mix 3.5:1.5 (gallon)	
9	Nozzle, KK Type, 1"		35	Fusees (Boxes or cases)???	
10	Nozzle, KK Type, 1½"		36	Flare Gun Rounds (12/BX)	
11	Wye, Gated, 3/4"		37	Cartridge #6 purple (box)	
12	Wye, Gated, 1"		38	Batteries "AA" PKGs(24/PKG)/BX	
13	Wye, Gated, 1½"		39	Ribbon, Flagging (Specify Color)*	
14	Inline-Tee, 1x1x3/4"		40	Water, Cubies	
15	Inline-Tee, 1x1x1"		41	Water, Bottled, Cases	
16	Inline-Tee (1½" X 1")		42	Gatorade	
17	Reducer, 1" X 3/4"		43	MRE's (12/BX)	
18	Reducer, 1½" X 1"		44	Heavy Mill Plastic	
19	Increaser, 3/4" X 1"		45	Washcloth, waterless, cleansing	
20	Increaser, 1" X 1½"		46	Wrap, Structure 54"x300'	
21	Foam 5 gal		47	Sprinkler Kit	
22	Foam 4 oz (For Backpack Pump)		48	Mark 3 Pump	
23	Backpack Pump		49	Mark 3 Pump Kit- w/10 gal mixed fuel	
24	Pumpkin (Gallons?)		50	Chainsaw Kit	
25	Porta-Tank (Gallons?)		51	Mop-Up Kit, 3-Wand	
26	Shovel		52	Pump Kit, Lightweight, 2 Cycle	
27	Pulaski		53	Gas, Raw and 2 qts 2-cycle oil, ea	
28	Combi Tool		54	Lightweight Pump Kit-Cache w/5gal fuel	
29	McCloud		55	Gas, raw (gal) and 1 qt 2-cycle oil, ea.	
Notes:			Notes:		

