

# Forks Complex

Incident Action Plan  
8/26/2013 Day Shift



## Transition Day/Communications

- New Communications Plan = The Need to Clone
- If you don't know the plan, ask questions.
- Understand Leaders Intent.

Butler Fire  
CA-SRF-001388

Salmon Fire  
CA-KNF-005561



<b>INCIDENT OBJECTIVES</b>	1. Incident Name <b>Butler</b>	2. Date <b>8/25/2013</b>	3. Time <b>17:00</b>
4. Operational Period <p style="text-align: center;"><b>8/26/2013 0600-2200</b></p>			
5. General Control Objectives for the Incident (include alternatives) <b>OPERATIONAL OBJECTIVES</b> <ul style="list-style-type: none"> <li>• <b>Provide for firefighter and public safety through the application of the risk management process.</b></li> <li>• <b>Utilize tactics which provide for the protection of private property and infrastructure.</b></li> <li>• <b>Keep the Butler fire within constructed fire lines.</b></li> <li>• <b>Keep the Salmon fire within existing containment lines.</b></li> <li>• <b>Implement fire suppression repair n accordance with developed plans.</b></li> </ul>			
6. Weather Forecast for Period <p style="text-align: center;"><b>See attached forecast</b></p>			
7. Resource Protection Guidelines <b>MANAGEMENT OBJECTIVES</b> <ul style="list-style-type: none"> <li>• <b>Ensure fire suppression operations minimize negative fire effects.</b></li> <li>• <b>Utilize minimum impact suppression tactics (MIST) within wilderness areas and in other land use designations as appropriate.</b></li> <li>• <b>Prevent transportation of noxious weeds into the incident location.</b></li> <li>• <b>Utilize Resource Advisors to assess impacts to sensitive historic, cultural, wildlife, and plant resources.</b></li> <li>• <b>Manage the fire in a cost effective manner commensurate with values at risk.</b></li> <li>• <b>Keep cooperators, communities, and concerned citizens informed.</b></li> </ul>			
<b>8. Attachments (mark if attached)</b>			
<input checked="" type="checkbox"/> Organization List - ICS 203	<input checked="" type="checkbox"/> Medical Plan - ICS 206	<input checked="" type="checkbox"/> Weather	
<input checked="" type="checkbox"/> Div. Assignment Lists - ICS 204	<input checked="" type="checkbox"/> Incident Map	<input checked="" type="checkbox"/> Safety Message	
<input checked="" type="checkbox"/> Communications Plan - ICS 205	<input type="checkbox"/> Traffic Plan	<input type="checkbox"/> LCES Worksheet	
9. Prepared by (Planning Section Chief) <b>David Sinclear</b>	10. Approved by (Incident Commander)		

ORGANIZATION ASSIGNMENT LIST		Ground Support Unit	Harry Zabel / Jim Hong (t)	
<b>1. Incident Name: FORKS COMPLEX</b>		Security Manager	Jeff Knott / Jason Nolee	
		Communications Unit	Ken Earle	
		Medical Unit	Clayton Thomas / Ryan Reginato (t)	
<b>2. Date</b>	Time	Food Unit	Jay Westlake	
8/26/2013	23:27	<b>9. Operations Section</b>		
<b>4. Operational Period</b>		Day Ops Chief	John Truett / Jim Durrwachter	
08/26/2013		Deputy Day Ops	Robin Wills / Curtis Coots (t)	
		Night Ops Chief	Robert Bertolina	
<b>5. Incident Commander and Command Staff</b>		Planning Ops	Jon Teutrine / Chris Stevens (t)	
Incident Commander	Mike Quesinberry / Mike Minton	<b>a. Branch I – Division/Groups</b>		
Deputy IC		<b>Branch</b>	Dave Pereira	
Liaison	Kent Swartzlander	Division/Group	A	Mike Work
Safety Officer	Terri Knauth / Michele Tanzi / Mike Frederick	Division/Group	B/C/D	Ed Merrill / Dale Mendes (t)
Information Officer	Judith Downing / Jim Mackensen	Division/Group	T/Z	Don Fregulia
<b>6. Agency Representative</b>		Repair Group	R	Dan Lindley
<b>Agency</b>	<b>Name</b>			
Agency Admin	Patty Grantham			
Agency Admin Rep	Dave Hayes	<b>b. Branch II – Division/Groups</b>		
County Sheriff	Kevin Miller	<b>Branch</b>	Steve Burns	
Cal Fire	Hugh Scanlon	Division/Group	F	Unstaffed
Klamath Community Liaison	Jim Bennett	Division Group	G	Eric Hensel
Hoopla Tribal Chair	Danielle Vigil-Masten	Division/Group	H	Paul Johnson
Karuk Tribal Rep	Bill Tripp	Division/Group	K	Mark Vardanega / J.Reeser (t)
Hoopla Agency Rep	Kevin Lane	Division/Group	W	Randy Jenning
IARR				
CCC Rep	Susan Jones			
California OES Rep	Pat O'Bannon	<b>d. Air Operations Branch</b>		
		Air Operations Branch Director	Dustin Mueller (t)	
		Air Support Group Supervisor	Sean Cox / Steve Beale / Scott Plue	
<b>7. Planning Section</b>		Air Tactical Group Supervisor	Joel Lane / D. Williams (t)	
Chief	Darrel Schwillling / Dave Sinclear Walter Herzog (t)	Air Tactical Group Supervisor	Carl Piper / Rico Gonzalez (t)	
Resources Unit	Lou Ann Charbonnier / Chris Wikeen Rita Mustatia	Helibase Manager	Brad Bernardy	
Situation Unit	Alan Taylor / Bobby Olds (t)	<b>10. Finance Section</b>		
FS Cultural Rep	Eric Brederman	Chief	Judy Palmer / Rachel Corkill	
Lead Resource Advisor	Chris Engelhardt	Deputy Chief		
Demobilization Unit	Gary Deboi	Personnel Time Unit	Shannon Ammon	
Fire Behavior Unit	Jessica Wade / John Wood (t)	Equipment Time Unit	Jo Ann Hereford / Mike Turos	
Long Term Fire Analyst	Cary Newman / Dana Bagnoli (t)	Cost Unit	Sissie Griffith	
Incident Meteorologist	Bob Tobin / Tom Clemmons (t)	Compensation / Claim Unit	Merlinda Valdez / Wanda Chavez	
Technical Specialist	George Steele	Procurement	Ron Schilz / Karie Linn(t)	
Training Specialist	Dave Lattimore	IBA-Yreka	Lola Capp / Kathy Griffin	
GISS	Kyle Felker / Matt House (t)			
Human Resource Advisor	Daniel Gonzalez			
Status Check-In	Monique Dumlao			
<b>8. Logistics Section</b>				
Chief	Sally Browning / Cindy Schiffer (t) Mike Jellison / Ken Kumpe(t)			
Ordering	Mona Lake / Ron Pierce			
Supply Unit	Richard Sheets			
R & D	Frederick Johnson	Prepared By: Chris Wikeen – RESL		ICS 203
Facilities Unit	Jeff Hotala			

ORGANIZATION ASSIGNMENT LIST			
1. Incident Name <b>Forks Complex / Forks Camp</b>			
2. Date	Time		
8/26/2013	23:28		
4. Operational Period			
08/26/2013	0600 - 2200		
Position	Name		
5. Incident Commander and Command Staff			
Incident Commander			
Deputy IC	Pete Duncan		
Liaison			
Safety Officer	Jeff Barnhart / Dave Kirste		
Information Officer	Jenny Lynn Bruner / Kathy Harding		
6. Agency Representative			
Agency	Name		
Agency Admin			
Agency Admin Rep			
FS Cultural Rep			
Lead Resource Advisor			
County Sheriff			
Cal Fire			
Klamath Community Liaison			
Hoopla Tribal Chair			
Karuk Tribal Rep			
Hoopla Agency Rep			
7. Planning Section			
Chief			
Deputy	Valery Lambeth / Bob Patton (t)		
Resources Unit		9. Finance Section	
Situation Unit		Chief	
Documentation Unit		Deputy Chief	Lois Charlton
Demobilization Unit		Personnel Time Unit	
Fire Behavior Unit		Equipment Time Unit	
Long Term Fire Analyst		Cost Unit	
Incident Meteorologist		Compensation / Claim Unit	
Technical Specialist		IBA-Yreka	Lola Capp / Kathy Griffin
Training Specialist	Bob Rivelle		
GISS			
Status Check-In			
Human Resource Advisor			
8. Logistics Section			
Chief	Brett Shurr / Pat Howard (t)		
Deputy	Michael Burchard		
Supply/Ordering Unit	Teddy Messenger		
Facilities Unit	Frank DelCarlo		
Ground Support	George Price		
Receiving & Distribution	Chris Combs		
Medical Unit	Claudia Kutscher		
Communications Unit	Phil Shafer / Keith Brown		

Prepared by: Chris Wikeen-RESL

<b>DIVISION ASSIGNMENT LIST</b>			1. Branch <b>I</b>		2. Division/Group <b>A</b>		
3. Incident Name <b>Forks Complex</b>			4. Operational Period <b>DAY OPERATIONS</b>				
			Date: 08/26/2013		Time: 0600 – 2200		
5. Operations Personnel							
Operations Chief	John Truett/Jim Durrwachter		Division/Group Supervisor		Mike Work		
Deputy Operations	Robin Wills/Curtis Coats(t)						
Branch Director	Dave Pereira		Air Operations		Dustin Mueller (t)		
6. Resources Assigned this Period							
Strike Team/Task Force/ Resource Designator	Leader	Last Shift	Number Persons	Trans. Needed	Drop Off PT./Time	Pick Up PT./Time	
S/T Butler #3		8/25-6	15	N	DP-2 / 0700	2000	
STEN (O-321)	James Jones	9/2	1	N	DP-2 / 0700	2000	
STEN(t) (E-333.7)	Leif Larson (t)	8/28	1	N	DP-2 / 0700	2000	
Eng6 Woods #27 (E-265)	Booker	8/31	3	N	DP-2 / 0700	2000	
SOFR (O-90)	Charlie Hanley	8/27	1	N	DP-2 / 0700	2000	
FEMP (O-45)	Damen Snow	8/31	1	N	DP-2 / 0700	2000	
FEMT (O-82)	Elliott Rubin	9/1	1	N	DP-2 / 0700	2000	
Heritage Consultant (O-292) BR-I	Franklin Donahue	9/6	1	N	DP-2 / 0700	2000	
Heritage Consultant (O-254) BR-I	Phillip Courts	9/3	1	N	DP-2 / 0700	2000	
7. Control Operations							
<ul style="list-style-type: none"> <li>Patrol and hold the Salmon River Rd between the W/A break and DP 32</li> </ul>							
8. Special Instructions:							
<ul style="list-style-type: none"> <li>Work with READ on fire suppression repair needs.</li> <li>Pull all water handling equipment.</li> <li>Red &amp; white stripe and orange and white stripe flagging denote area of resource concern. Directions of resource concern will be written on the flagging.</li> <li>S/T Butler #3 AZ 570 (E-277), AZ 1975 (E-280), AZ E301 (E-275), Champion/MTR (E-282), NM Shiloh WF (E-279) and STEN Jones/STEN(t)Larson.</li> </ul>							
9. Division/Group Communication Summary							
Function	Frequency	Channel	Channel	Function	Frequency	System	Channel
Command	RX 162.1875 TX 172.5500	CMD 5	<b>5 Tone 3</b>				
Tactical Division/Group	RX 166.7250 TX 166.7250	TAC 1	<b>6 Tone 3</b>	Air to Ground Command	RX 171.5375 TX 171.5375	A/G CMD	<b>13</b>
Prepared by (Resource Unit Leader)			Approved by (Planning Section Chief)			Date	Time
L. Charbonnier						8/25/13	23:28

<b>DIVISION ASSIGNMENT LIST</b>			1. Branch <b>I</b>		2. Division/Group <b>B/C/D</b>		
3. Incident Name <b>Forks Complex</b>			4. Operational Period <b>DAY OPERATIONS</b> Date: 08/26/2013 Time: 0600 – 2200				
5. Operations Personnel							
Operations Chief	John Truett/Jim Durrwachter			Division/Group Supervisor	Ed Merrill / Dale Mendes (t)		
Deputy Operations	Robin Wills/Curtis Coots(t)						
Branch Director	Dave Pereira			Air Operations	Dustin Mueller (t)		
6. Resources Assigned this Period							
Strike Team/Task Force/ Resource Designator	Leader	Last Shift	Number Persons	Trans. Needed	Drop Off PT./Time	Pick Up PT./Time	
HC T2IA Firestorm 1 (C-20)	Richard Sandidge	8/29	18	N	DP-2 / 0700	2000	
HC1 Ukonom IHC (C-8)	Keith Smith	8/28	20	N	DP-2 / 0700	2000	
S/T YNP 5780C (E-333)	Jason Wingard/Javier Gonzalez(t)	8/28	24	N	DP-2 / 0700	2000	
DOZ2 w/LOWB Ken's #1 (E-12)	Mike Kelly / Richard Olson	8/29	2	N	DP-2 / 0700	2000	
Chipper Diamond Fire (E-33)	Dwayne Moore/Harley Tyrie	9/3	2	N	DP-2 / 0700	2000	
READ (O-62)	Chris Engelhardt	8/28	1	N	DP-2 / 0700	2000	
Wildlife READ (O-140)	Terrah Owens	9/4	1	N	DP-2 / 0700	2000	
READ (O-121)	Roberto Beltran	8/28	1	N	DP-2 / 0700	2000	
FEMP (O-44)	Scott Wilcox	8/31	1	N	DP-2 / 0700	2000	
FEMT (O-13)	David Revollo	8/31	1	N	DP-2 / 0700	2000	
SOFR (O-46)	Matt Weinell	9/2	1	N	DP-2 / 0700	2000	
Heritage Consultant (O-292) BR- I	Franklin Donahue	9/6	1	N	DP-2 / 0700	2000	
Heritage Consultant (O-254) BR-I	Phillip Courts	9/3	1	N	DP-2 / 0700	2000	
7. Control Operations							
<ul style="list-style-type: none"> <li>Monitor fire behavior in Nordheimer drainage.</li> <li>Mop up 100 feet where safe to do so.</li> </ul>							
8. Special Instructions:							
<ul style="list-style-type: none"> <li>Water bar hand line as needed.</li> <li>Pull hose from Hotelling Ridge dozer line.</li> <li>Red &amp; white stripe and orange and white stripe flagging denote area of resource concern. Directions of resource concern will be written on the flagging.</li> </ul>							
9. Division/Group Communication Summary							
Function	Frequency	System	Channel	Function	Frequency	System	Channel
Command	RX 162.1875 TX 172.5500	CMD 5	<b>5 Tone 3</b>				
Tactical Division/Group	RX 168.0500 TX 168.0500	TAC 2	<b>7</b>	Air to Ground Command	RX 171.5375 TX 171.5375	A/G CMD	<b>13</b>
Prepared by (Resource Unit Leader)			Approved by (Planning Section Chief)			Date	Time
L. Charbonnier						8/25/13	2100

<b>DIVISION ASSIGNMENT LIST</b>			1. Branch <b>I</b>		2. Division/Group <b>T/Z</b>		
3. Incident Name <b>Forks Complex</b>			4. Operational Period <b>DAY OPERATIONS</b> Date: 08/26/2013 Time: 0600 - 2200				
5. Operations Personnel							
Operations Chief	John Truett/Jim Durrwachter			Division Group Supervisor	Don Fregulia		
Deputy Operations	Robin Wills / Curtis Coats(t)						
Branch Director	Dave Pereira			Air Operations	Dustin Mueller (t)		
6. Resources Assigned this Period							
Strike Team/Task Force/ Resource Designator	Leader	Last Shift	Number Persons	Trans. Needed	Drop Off PT./Time	Pick Up PT./Time	
IHC Feather River (C-66)	Robert Daniels	9/5	20	N	DP7/0700	2000	
IHC Mendocino (C-46)	Jon Tisner		20	N	DP7/0700	2000	
IHC Klamath (C-44)	Johnny Clem		20	N	DP7/0700	2000	
Tallac Crew T2IA (C-68)	Aaron Grove	9/2	20	N	DP7/0700	2000	
ENG3 CO-Wescott 512 (E-194)	Brenden Hoglelund	8/27	5	N	DP7/0700	2000	
ENG6 Eagle Cap (E-217)	Jeff Berry	9/4	3	N	DP7/0700	2000	
ENG6 Eye of the (E-220)	Weston Simmons	9/4	3	N	DP7/0700	2000	
ENG6 Bruce Young (E-218)	Steve Rhea	9/5	3	N	DP7/0700	2000	
ENG6 A-Team #1 (E-219)	Schin Haakenson	9/5	3	N	DP7/0700	2000	
ENG6 E 7601 (E-221)	Jay Flora		3	N	DP7/0700	2000	
WTT2 Cattlelack (E-77)	Bob Buck	9/2	3	N	DP7/0700	2000	
SOFR (O-117)	William Cirone	8/26	1	N	DP7/0700	2000	
SOFR (O-221)	Jim Chard	8/25	1	N	DP7/0700	2000	
FEMT (O-338)	Adam Volmer	8/31	1	N	DP7/0700	2000	
FEMP (O-339)	Kevin Meineke	9/1	1	N	DP7/0700	2000	
FEMT (O-334)	Lorenzo Rocha	8/31	1	N	DP7/0700	2000	
FEMP (O-333)	Chris Harrison	8/31	1	N	DP7/0700	2000	
7. Control Operations							
<ul style="list-style-type: none"> <li>Continue to hold and mop up 100' where safe to do so.</li> <li>Construct line when needed.</li> </ul>							
8. Special Instructions							
<ul style="list-style-type: none"> <li>Back-haul all hose, pumps, other excess equipment, and trash.</li> </ul>							
9. Division/Group Communication Summary							
Function	Frequency	System	Channel	Function	Frequency	System	Channel
Command	RX 168.0750 TX 170.4250	CMD 1	<b>1 Tone 3</b>				
Tactical Division/Group	RX 167.1125 TX 167.1125	TAC 6	<b>11 Tone 3</b>	Air to Ground Command	RX 171.5375 TX 171.5375	A/G CMD	<b>13</b>
Prepared by (Resource Unit Leader) Rita Mustatia			Approved by (Planning Section Chief)			Date 8/25/13	Time 23:31

<b>DIVISION ASSIGNMENT LIST</b>			1. Branch <b>I</b>		2. Division/Group <b>REPAIR</b>		
3. Incident Name <b>Forks Complex</b>			4. Operational Period <b>DAY OPERATIONS</b>				
			Date: 08/26/2013		Time: 0600 - 2200		
5. Operations Personnel							
Operations Chief	John Truett / Jim Durrwachter		Division/Group Supervisor		Daniel Lindley		
Deputy Operations	Robin Wills / Curtis Coots(t)						
Branch Director	Dave Pereria		Air Operations		Dustin Mueller (t)		
6. Resources Assigned this Period							
Strike Team/Task Force/ Resource Designator	Leader	Last Shift	Number Persons	Trans. Needed	Drop Off PT./Time	Pick Up PT./Time	
HC T2 North Pacific (C-69)	William Hughes	9/8	20	N	DP9 / 0700	2000	
HEQB	TBA		1	N	DP9 / 0700	2000	
DOZ2 Berryhill #713 (E-58)	Eric Durden	9/2	2	N	DP9 / 0700	2000	
GRADER Johnson (E-58)	Jack Hottendorf	9/1	2	N	DP9 / 0700	2000	
EXCAVATOR Berryhill (E-224)	Kim Berryhill		2	N	DP9 / 0700	2000	
EXCAVATOR	TBA		2	N	DP9 / 0700	2000	
WTS2 White Logging (E-12)	Tom White		1	N	DP9 / 0700	2000	
WTS2 Johnson (E-13)	Dave Johnson	8/31	1	N	DP9 / 0700	2000	
CHIPPER	TBA		1	N	DP9 / 0700	2000	
SOFR (O-88)	Steve Heine	9/1	1	N	DP9 / 0700	2000	
FOBS (O-235)	Scott Gibbs	9/4	1	N	DP9 / 0700	2000	
FOBS(t) (O-366)	Jason Ramos	9/4	1	N	DP9 / 0700	2000	
READ (O-306)	Kelby Witherspoon	8/28	1	N	DP9 / 0700	2000	
EMTP (O-12)	Tony Garcia	8/31	1	N	DP9 / 0700	2000	
EMTP (O-396)	Ron Sandler	8/25	1	N	DP9 / 0700	2000	
7. Control Operations							
8. Special Instructions							
<ul style="list-style-type: none"> <li>• Salmon divisions A/B/C/E/M/S was renamed Division R, in order to minimize confusion between Salmon River Complex and Butler Incident.</li> <li>• Coordinate with READS and DIVS to implement suppression repair plan in Division R.</li> </ul>							
9. Division/Group Communication Summary							
Function	Frequency	System	Channel	Function	Frequency	System	Channel
Command	RX 168.0750 TX 170.4250	CMD 1	<b>1 Tone 3</b>				
Tactical Division/Group	RX 168.6000 TX 168.6000	TAC 4	<b>9</b>	Air to Ground Command	RX 171.5375 TX 171.5375	A/G CMD	<b>13</b>
Prepared by (Resource Unit Leader)			Approved by (Planning Section Chief)			Date	Time
L. Charbonnier						8/25/13	23:31



<b>DIVISION ASSIGNMENT LIST</b>			1. Branch <b>II</b>		2. Division/Group <b>G</b>		
3. Incident Name <b>Forks Complex</b>			4. Operational Period <b>DAY OPERATIONS</b> Date: 08/26/2013 Time: 0600 - 2200				
5. Operations Personnel							
Operations Chief	John Truett/Jim Durrwachter			Division Group Supervisor	Eric Hensel		
Deputy Operations	Robin Wills / Curtis Coots(t)						
Branch Director	Steve Burns			Air Operations	Dustin Mueller (t)		
6. Resources Assigned this Period							
Strike Team/Task Force/ Resource Designator	Leader	Last Shift	Number Persons	Trans. Needed	Drop Off PT./Time	Pick Up PT./Time	
ENG6 Pino One (E-49)	Dennis Barcus	9/4	3	N	DP-45 / 0700	2000	
WT2 Darrah logging (E-7)	Larry Pettes	9/2	1	N	DP-45 / 0700	2000	
SOFR (O-107)	Ray Miller	9/4	1	N	DP-45 / 0700	2000	
FEMP (O-10)	Nick Gabbard	8/30	1	N	DP-45 / 0700	2000	
FEMP (O-11)	Eric Van Renselaar	8/30	1	N	DP-45 / 0700	2000	
Archeology READ (Branch II) (O-142)	Eric Bredemann	9/4	1	N	DP-45 / 0700	2000	
Heritage Consultant (Branch II) (O-169)	Albert Titus	8/27	1	N	DP-45 / 0700	2000	
7. Control Operations							
8. Special Instructions							
<ul style="list-style-type: none"> <li>Red and white stripe and orange and white stripe flagging denotes area of resource concern. Directions of resource concern will be written on the flagging.</li> <li>Waterbar handline as needed.</li> <li>Back-haul all hose, pumps, other excess equipment, and trash.</li> </ul>							
9. Division/Group Communication Summary							
Function	Frequency	System	Channel	Function	Frequency	System	Channel
Command	RX 168.0750 TX 170.4250	CMD 1	<b>1 Tone 3</b>				
Tactical Division/Group	RX 166.7250 TX 166.7250	TAC 1	<b>6</b>	Air to Ground Command	RX 171.5375 TX 171.5375	A/G CMD	<b>13</b>
Prepared by (Resource Unit Leader) Rita Mustatia			Approved by (Planning Section Chief)			Date 8/25/13	Time 23:29

<b>DIVISION ASSIGNMENT LIST</b>			1. Branch <b>II</b>		2. Division/Group <b>H Page 1 of 2</b>		
3. Incident Name <b>Forks Complex</b>			4. Operational Period <b>DAY OPERATIONS</b> Date: 08/26/2013 Time: 0600 - 2200				
5. Operations Personnel							
Operations Chief	John Truett/Jim Durrwachter		Division/Group Supervisor		Paul Johnson		
Deputy Operations	Robin Wills/Curtis Coats(t)						
Branch Director	Steve Burns		Air Operations		Dustin Mueller (t)		
6. Resources Assigned this Period							
Strike Team/Task Force/ Resource Designator	Leader	Last Shift	Number Persons	Trans. Needed	Drop Off PT./Time	Pick Up PT./Time	
HC1 Elk Mountain IHC (C-7)	Cheveyo Munk	8/28	20	N	DP-45 / 0700	2000	
HC2IA Happy Camp (C-16)	Damon McCartney	8/26	20	N	DP-45 / 0700	2000	
ENG6 Oregon Woods (E-48)	Byron Sumpter	9/3	3	N	DP-45 / 0700	2000	
ENG5 Chewack (E-52)	Jarred Hodgson	9/6	3	N	DP-45 / 0700	2000	
DOZ2 w/lowboy J.A. Cook (E-14)	John Cook	8/29	2	N	DP-45 / 0700	2000	
Skidgine Diversified w/lowboy (E-152)	R Gaftelcutto/ Tim Holt		2	N	DP-45 / 0700	2000	
Skidgine Wurlitzer 2 w/lowboy (E-150)	Tom Neverkovec		2	N	DP-45 / 0700	2000	
Skidgine Let-R-Buck w/lowboy (E-153)	Steve Lassen Jr.		2	N	DP-45 / 0700	2000	
TFLD (t)/HEQB (O-60)	Benjamin Molitor	8/31	1	N	DP-45 / 0700	2000	
TFLD (O-75)	Matt Lamb	9/3	1	N	DP-45 / 0700	2000	
HEQB (O-383)	George Pelt	8/30	1	N	DP-45 / 0700	2000	
HEQB (O-384)	Willie Vance/Josh Ramey ( t)	9/2	2	N	DP-45 / 0700	2000	
7. Control Operations							
<ul style="list-style-type: none"> <li>Continue to mop-up slop-over</li> <li>Monitor fire spread east of Orleans Mt and Granite Creek drainage</li> <li>Look for opportunities and continue to construct direct handline</li> </ul>							
8. Special Instruction							
<ul style="list-style-type: none"> <li>Red &amp; white stripe and orange &amp; white stripe flagging denote area of resource concern. Directions of resource concern will be written on the flagging.</li> <li>Waterbar handline as needed.</li> <li>Back-haul all hose, pumps, other excess equipment and trash.</li> </ul>							
9. Division/Group Communication Summary							
Function	Frequency	Channel Name	Channel	Function	Frequency	Channel Name	Channel
Command	RX 168.0750 TX 170.4250	CMD 1	<b>1 Tone 3</b>				
Tactical Division/Group	RX 167.1125 TX 167.1125	TAC 6	<b>11 Tone 3</b>	Air to Ground Command	RX 171.5375 TX 171.5375	A/G CMD	<b>13</b>
Prepared by (Resource Unit Leader) Rita Mustatia			Approved by (Planning Section Chief)			Date 8/25/13	Time 23:29

<b>DIVISION ASSIGNMENT LIST</b>			1. Branch <b>II</b>		2. Division/Group <b>H Page 2 of 2</b>		
3. Incident Name <b>Forks Complex</b>			4. Operational Period <b>DAY OPERATIONS</b> Date: <b>08/26/2013</b> Time: <b>0600 - 2200</b>				
5. Operations Personnel							
Operations Chief	John Truett/Jim Durrwachter		Division/Group Supervisor		Paul Johnson		
Deputy Operations	Robin Wills /Curtis Coots(t)						
Branch Director	Steve Burns		Air Operations		Dustin Mueller (t)		
6. Resources Assigned this Period							
Strike Team/Task Force/ Resource Designator	Leader	Last Shift	Number Persons	Trans. Needed	Drop Off PT./Time	Pick Up PT./Time	
SOFR (O-105)	Ronnie Oatis	9/1	1	N	DP-45 / 0700	2000	
FEMP (O-111)	Scott Owen	9/2	1	N	DP-45 / 0700	2000	
FEMT (O-123)	Brian Conn	9/2	1	N	DP-45 / 0700	2000	
Archeology READ (Branch II) (O-142)	Eric Bredemann	9/4	1	N	DP-45 / 0700	2000	
Heritage Consultant (Branch II) (O-169)	Albert Titus	8/27	1	N	DP-45 / 0700	2000	
7. Control Operations							
<ul style="list-style-type: none"> <li>Continue to mop-up slop-over</li> <li>Monitor fire spread east of Orleans Mt and Granite Creek drainage</li> <li>Look for opportunities and continue to construct direct handline</li> </ul>							
8. Special Instruction							
<ul style="list-style-type: none"> <li>Red &amp; white stripe and orange &amp; white stripe flagging denote area of resource concern. Directions of resource concern will be written on the flagging.</li> <li>Waterbar handline as needed.</li> <li>Back-haul hoses, pumps, other excess equipment, and trash.</li> </ul>							
9. Division/Group Communication Summary							
Function	Frequency	Channel Name	Channel	Function	Frequency	Channel Name	Channel
Command	RX 168.0750 TX 170.4250	CMD 1	<b>1 Tone 3</b>				
Tactical Division/Group	RX 167.1125 TX 167.1125	TAC 6	<b>11 Tone 3</b>	Air to Ground Command	RX 171.5375 TX 171.5375	A/G CMD	<b>13</b>
Prepared by (Resource Unit Leader) Rita Mustatia			Approved by (Planning Section Chief)			Date 8/25/13	Time 23:30

<b>DIVISION ASSIGNMENT LIST</b>			1. Branch <b>II</b>		2. Division/Group <b>K</b>			
3. Incident Name <b>Forks Complex</b>			4. Operational Period <b>DAY OPERATIONS</b> Date: <b>08/26/2013</b> Time: <b>0600 – 2200</b>					
5. Operations Personnel								
Operations Chief		John Truett/Jim Durrwachter		Division Group Supervisor		Mark Vardanega Jordan Reeser (t)		
Deputy Operations		Robin Wills/Curtis Coats(t)						
Branch Director		Steve Burns		Air Operations		Dustin Mueller (t)		
6. Resources Assigned this Period								
Strike Team/Task Force/ Resource Designator		Leader		Last Shift	Number Persons	Trans. Needed	Drop Off PT./Time	Pick Up PT./Time
IHC Redding (C-64)		Dave Mallia		8/27	21	N	DP-4 / 0700	2000
HC2 Mountaineers (C-21)		Tom Wesley		8/26	2	N	DP-4 / 0700	2000
HC2 Firestorm 6 (C-18)		Jimmy Ramirez		8/27	20	N	DP-4 / 0700	2000
FUM Grass Lake (O-66)		Will Johnson/ John Bradbeck		9/1	10	N	DP-4 / 0700	2000
FALM North Zone Fallers 3 (O-64)		Robert Freeman/Gary Burg		9/3	2	N	DP-4 / 0700	2000
Skidgine Wurlitzer w/lowboy (E-151)		Neil Anderson /Carl Finley			2	N	DP-4 / 0700	2000
FOBS (O-390)		Bernie Miller		8/29	1	N	DP-4 / 0700	2000
SOFR (O-89)		Rob Verdie		9/01	1	N	DP-4 / 0700	2000
FEMP (O-110)		Steve Bristow		9/2	1	N	DP-4 / 0700	2000
Rapid Extraction Module #1 (O-25)		Kevin Wegener		8/30	4	N	DP-4 / 0700	2000
READ (O-62)		Chris Engelhardt		9/29	1	N	DP-4 / 0700	2000
7. Control Operations								
<ul style="list-style-type: none"> <li>Complete mop up North of H-4 where safe to do so</li> <li>Monitor fire activity in Butler Creek</li> </ul>								
8. Special Instructions								
<ul style="list-style-type: none"> <li>Red and white stripe and orange and white stripe flagging denotes area of resource concern. Directions of resource concern will be written on the flagging.</li> <li>Waterbar handline as needed.</li> <li>Back-haul all hose, pumps, other excess equipment, and trash.</li> </ul>								
9. Division/Group Communication Summary								
Function	Frequency	Channel Name	Channel	Function	Frequency	Channel Name	Channel	
Command	RX 168.0750 TX 170.4250	CMD 1	<b>1</b> <b>Tone 3</b>					
Tactical Division/Group	RX 166.5500 TX 166.5500	TAC 5	<b>10</b> <b>Tone 3</b>	Air to Ground Command	RX 171.5375 TX 171.5375	A/G CMD	<b>13</b>	
Prepared by (Resource Unit Leader) Rita Mustatia			Approved by (Planning Section Chief)			Date 8/25/13	Time 2230	

<b>DIVISION ASSIGNMENT LIST</b>			1. Branch <b>II</b>		2. Division/Group <b>W</b>		
3. Incident Name <b>Forks Complex</b>			4. Operational Period <b>DAY OPERATIONS</b> Date: 08/26/2013 Time: 0600 - 2200				
5. Operations Personnel							
Operations Chief	John Truett/Jim Durrwachter			Division/Group Supervisor		Randy Jennings	
Deputy Operations	Robin Wills / Curtis Coats(t)						
Branch Director	Steve Burns			Air Operations		Dustin Mueller (t)	
6. Resources Assigned this Period							
Strike Team/Task Force/ Resource Designator		Leader	Last Shift	Number Persons	Trans. Needed	Drop Off PT./Time	Pick Up PT./Time
HC2IA ASI Arden (C-31)		Jason Sare	8/29	20	N	DP-20 / 0700	2200
ENG3 KIC-001 (E-281)		Richard Tobin	8/26	3	N	DP-20 / 0700	2000
ENG6 NM 3062 (E-50)		Ray Ruiz	9/4	3	N	DP-20 / 0700	2000
ENG4 DB JET #9 (E-223)		Mike Porter	9/7	3	N	DP-20 / 0700	2000
ENG4 WOODS #24 (E-225)		Rock Wood		3	N	DP-20 / 0700	2000
WT2 AWD CJS WT9 (E-134)		Josh Ritchey	9/8	1	N	DP-20 / 0700	2000
PUMP ECAM (E-161)		Mike Davis	9/8	1	N	DP-20 / 0700	2000
STEN (O-287)		Anthony Manning	8/26	1	N	DP-20 / 0700	2000
TFLD (O-319)		Lance Robinson	8/27	1	N	DP-20 / 0700	2000
SOF2 (O-43)		Mark Munns	9/3	1	N	DP-20 / 0700	1800
FEMP (O-109)		Davis Doty	9/2	1	N	DP-20 / 0700	1800
FEMP (O-108)		Mike Mallett	9/2	1	N	DP-20 / 0700	1800
Archeology READ (Branch II) (O-142)		Eric Bredemann	9/4	1	N	DP-20 / 0700	1800
Heritage Consultant (Branch II) (O-169)		Albert Titus	8/27	1	N	DP-20 / 0700	1800
Wildlife READ (O-140)		Terrah Owens	9/4	1	N	DP-20 / 0700	1800
READ (O-121)		Roberto Beltran	8/28	1	N	DP-20 / 0700	1800
7. Control Operations							
<ul style="list-style-type: none"> <li>Complete 200 feet of mop up where safe to do so</li> <li>Monitor fire activity in upper Butler Creek</li> </ul>							
8. Special Instruction							
<ul style="list-style-type: none"> <li>Red and white stripe and orange and white stripe flagging denotes area of resource concern. Directions of resource concern will be written on the flagging.</li> <li>Waterbar handline as needed.</li> <li>Back-haul all hose, pumps, other excess equipment, and trash.</li> </ul>							
9. Division/Group Communication Summary							
Function	Frequency	System	Channel	Function	Frequency	System	Channel
Command	RX 170.4125 TX 165.9625	CMD 2	<b>2 Tone 3</b>				
Tactical Division/Group	RX 168.2000 TX 168.2000	TAC 3	<b>8</b>	Air to Ground Command	RX 171.5375 TX 171.5375	A/G CMD	<b>13</b>
Prepared by (Resource Unit Leader) Rita Mustatia			Approved by (Planning Section Chief)			Date 8/25/13	Time 2035



## Forks Complex Incident Weather Forecast

FORECAST NO: 24 D  
PREDICTION FOR: Monday Day Shift  
SHIFT DATE: August 26<sup>st</sup>, 2013  
FORECAST ISSUED: 2100 August 25<sup>th</sup>, 2013

NAME OF FIRE: Butler / Salmon Fire  
UNIT: SRF  
Incident Meteorologists: Bob Tobin  
Tom Clemmons (T)

---

**WEATHER DISCUSSION:** A Pacific Northwest trough will bring a southwest flow, near normal temperatures, and a weak weather disturbances possible Thursday - Friday. There will be a moist marine layer that will affect the region around the fire with high relative humidity through Monday morning, then less moisture through the remainder of the week.

---

### WEATHER FORECAST FOR TODAY (MONDAY DAY SHIFT):

WEATHER: Areas of morning fog and low clouds. Partly cloudy in the afternoon.  
WIND (EYE-LEVEL): Valleys: Winds becoming Upslope/Upvalley 3 to 6 mph with gusts to 12 mph.  
Ridge Tops: Southwest 4 to 7 mph with gusts to 14 mph.  
MAX TEMPERATURES: 81 - 86F drainages, 62 - 73 ridges.  
MIN RH: 31 - 37% drainages, 39 - 50% ridges.  
LAL: 1 CWR: 0%

---

### FORECAST TONIGHT (MONDAY NIGHT SHIFT):

WEATHER: Patchy smoke and fog overnight otherwise mostly clear.  
MIN TEMPERATURES: 45 - 51F...warmest toward the ridges  
MAX RH: 70 - 95% drainages, 65 - 80% ridges.  
LAL: 1 CWR: 0%  
WIND (EYE-LEVEL): Valleys: Variable or Downslope/Downvalley 2 to 5 mph with evening gusts to 10 mph. Ridges: Southwest 3 to 6 mph with gusts 10 mph.

---

### WEATHER FORECAST FOR TUESDAY:

WEATHER: Patchy smoke and fog otherwise mostly sunny by afternoon.  
WIND (EYE-LEVEL): Valleys: Light winds becoming Upslope/Upvalley 3 to 6 mph gusts to 12mph.  
Ridge Tops: Southwest 4 to 7 mph gusts up to 14mph.  
MAX TEMPERATURES: 85 - 90F drainages, 69 - 81 ridges.  
MIN RH: 24 - 34% drainages, 29 - 39% ridges.  
LAL: 1 CWR: 0%

---

### EXTENDED OUTLOOK WEDNESDAY THROUGH FRIDAY:

WEATHER: Patchy smoke and fog in the mornings. Mostly sunny Wednesday, and partly cloudy Thursday and Friday afternoon.  
WIND (EYE-LEVEL): Valleys: Light winds becoming Upslope/Upvalley 2 to 5 mph gusts up to 12 mph.  
Ridge Tops: Southwest 5 to 9 mph gusts up to 16 mph.  
MIN TEMPERATURES: 48 - 54F...warmest toward the ridges.  
MAX TEMPERATURES: 87 - 92F drainages, 69 - 81 ridges.  
MIN RH: 21 - 31% drainages, 32 - 40% ridges.  
MAX RH: 75 - 95% drainages, 55 - 65% ridges.  
LAL: 1 CWR: 0%

## FIRE BEHAVIOR FORECAST

**FORECAST NO.** 47

**UNIT:** CA-SRF

**PREDICTION FOR:** 8/26/13 Day

**NAME OF FIRE:** Forks Complex

**DATE & TIME ISSUED:** 8/25/13 2000

**SIGNED:** Jessica Wade-FBAN, John Wood-FBAN-(t)

---

**WEATHER AND FUELS SUMMARY:** *The fire area received between ¼ and ¾ inch yesterday.*

>> Max. Temps: Ridges – 81 to 86 drainages 62 to 73 ridges

>> Min. RH: 31 to 37% drainages; 39 to 50% ridges

>> Winds (Eye Level): Valleys upslope/up valley 3 to 7 Gusts 12 mph

>> Probability of Ignition: 20% to 30% in un-shaded areas in afternoon

>> 1000 hr fuels average 8% (Measured in Div. F on 8-7-13)

>> Manzanita measured on 8/23/13 on DIV K was average 108% at 5,000 ft.

---

### **GENERAL FIRE BEHAVIOR:**

The precipitation received over the fire combined with the humid conditions today will prevent the fuels from drying enough to facilitate active burning across the area. However, timbered areas with heavy canopy cover will continue to hold heat, especially in the 1000 hour fuels. These pockets of heat are not likely to move toward the containment lines today.

### **SPECIFIC FIRE BEHAVIOR:**

#### **BRANCH I –**

DIV T & Z - Heavy fuels in Jackass Gulch will continue to burnout and hot rolling material could reach the highway throughout the shift. Given the precipitation received in the past 24 hours, along with cooler temperatures and high relative humidity fire spread through fine fuels will be minimal. Rollout into jackpots of heavier fuels could ignite, but again spread into fine fuels will be minimal as well.

A, B, C - Interior islands will continue to smolder where 1000 hour fuels exist in the conifer stringers. Most areas of this branch have seen several days of mop-up operations which have secured the line in all areas. DIV C continues to have unburned fuel between the line and the main fire, however the hot areas in Nordenheimer drainage are only expected to creep and smolder today. 1000 hour fuels will continue to hold the heat and burn out.

#### **BRANCH II -**

Woody debris will continue to hold heat under the conifer canopies. Areas where the overstory conifer is dense could support creeping and smoldering. But no measurable rates of spread. Shrub vegetation is not likely to have retained heat after the rain yesterday and is not expected to burn unless 100 or 1000 hour fuels are embedded within them.

**Air Operations:** Patchy smoke and low clouds in the morning hours. Less smoke production will allow for clear air today on the mid and upper elevations. After the morning fog burns off, the conditions will be favorable for aerial operations.

---

**SAFETY:** Fire weakened trees will continue to be a hazard as roots burn out. Ensure you are working in areas that have been assessed and determined safe for working.

INCIDENT RADIO COMMUNICATIONS PLAN			Incident Name <b>FORKS COMPLEX BRANCH I &amp; II</b>			Date/Time Prepared 08/25/13 1458 HRS.			Operational Period Date/Time DAY SHIFT 08/26/13 0600-2200		
Only frequencies listed on this 205 are authorized for use on this incident.				Hand programmers accept all responsibility for the use of unauthorized frequencies.							
Ch #	Function	Channel Name	Assignment	RX Freq N or W	RX Tone	TX Freq N or W	TX Tone	Mode	Remarks		
1	COMMAND	CMD 1	ORLEANS LO	168.0750 N		170.4250 N	Tone 3 131.8	A	MAIN BODY OF FIRE		
2	COMMAND	CMD 2	96 / 93 TRAVEL	170.4125 N		165.9625 N	Tone 3 131.8	A	TRAVEL ON 96 AND 93		
3	COMMAND	CMD 3	ICP	163.0375 N		170.0250 N	Tone 3 131.8	A	ICP COMMUNICATIONS		
4	COMMAND	CMD 4	ETNA / HELIBASE	164.7750 N		170.4625 N	Tone 3 131.8	A			
5	COMMAND	CMD 5	SOUTH	162.1875 N		172.5500 N	Tone 3 131.8	A	SOUTH END OF FIRE		
6	TACTICAL	TAC 1	DIV A / G	166.7250 N		166.7250 N	Tone 3 131.8	A	NIFC TAC 5		
7	TACTICAL	TAC 2	DIV B / C / D	168.0500 N		168.0500 N		A	NIFC TAC 1		
8	TACTICAL	TAC 3	DIV E / W	168.2000 N		168.2000 N		A	NIFC TAC 2		
9	TACTICAL	TAC 4	DIV F / R	168.6000 N		168.6000 N		A	NIFC TAC 3		
10	TACTICAL	TAC 5	DIV K / STAGING	166.5500 N		166.5500 N	Tone 3 131.8	A	R5 TAC 4		
11	TACTICAL	TAC 6	H / T / Z	167.1125 N		167.1125 N	Tone 3 131.8	A	R5 TAC 5		
12			INACTIVE					A	INACTIVE		
13	AIR TO GROUND	A / G CMD	BRANCH I & II A /G	171.5375 N		171.5375 N		A	AIR TO GROUND COMMAND		
14			INACTIVE					A	INACTIVE		
15	MEDIVAC	CALCORD	MEDICAL TACTICAL	156.0750 N		156.0750 N	Tone 6 156.7	A	MEDIVAC AIR COORDINATION		
16	URGENT AIR CONTACT	AIRGUARD	ALL DIVISIONS	168.6250 N		168.6250 N	Tone 1 110.9	A	USE ONLY FOR URGENT AIRCRAFT CONTACT		
Prepared by  KENNETH EARLE / PHIL SHAFER, COML NORCAL TEAM #1					Incident Location  ORLEANS, CA  LAT: N37 19.23 LONG: W122 02.42						

ICS 205

MODE: A - ANOLOG, D - DIGITAL



INCIDENT RADIO COMMUNICATIONS PLAN			Incident Name <b>FORKS COMPLEX IA Group</b>			Date/Time Prepared 08/25/13 1457 HRS.			Operational Period Date/Time DAY 08/26/13 0600-2200		
Only frequencies listed on this 205 are authorized for use on this incident.					Hand programmers accept all responsibility for the use of unauthorized frequencies.						
Ch #	Function	Channel Name	Assignment	RX Freq N or W	RX Tone	TX Freq N or W	TX Tone	Mode	Remarks		
<b>ALL TONES IN THIS GROUP ARE USER SELECTED</b>											
1	KNF DISPATCH	KNF	FOREST OPS	164.1750N		164.9750N	CG	A	ROUTINE TRAFFIC, T5 ORLEANS PK		
2	KNF IA DISPATCH	KNF SAM	I / A RESOURCES	171.50000N		172.4000N	CG	A	TONES 5,6		
3	KNF DISPATCH	KNF RIVER	FOREST OPS	172.2500 N		171.550 N	CG	A	TONES 2, 7 OR 10		
4	SRF DISPATCH	SRF	FOREST OPS	168.7250N		170.1250N	CG	A	TONES 5,6,7 AND 13		
5	HOOPA FIRE RPT	HIA	AS NEEDED	155.3850N		150.8050N	CG	A	TONE 6		
6	SISKIYOU DISPATCH	SKU-L 1	SKU OPS	151.3250 N		159.3600 N	CG	A	TONE 6		
7	HUMBOLT	HUU OPS	OPERATIONS	151.2500 N		159.4050 N	CG	A	TONE 11&13		
8	NIFC TAC 1	NIFC TC1	I / A TAC	168.0500 N		168.0500 N		A			
9	NIFC TAC 2	NIFC TC2	I / A TAC	168.2000 N		168.2000 N		A			
10	NIFC TAC 3	NIFC TC3	I / A TAC	168.6000 N		168.6000 N		A			
11	FS AIR / GND PRI	FS A/G PRI	ALL DIVISIONS	167.6000 N		167.6000 N		A			
12	FS AIR / GND SEC	FS A/G SEC	ALL DIVISIONS	166.8750 N		166.8750 N		A			
13	<b>UNASSIGNED</b>								<b>UNASSIGNED</b>		
14	AIR TO GROUND	CDF A / G	AS NEEDED	151.2200 N		151.2200 N		A			
15	MEDICAL	CALCORD	MEDICAL TACTICAL	156.0750 N		156.0750 N	T6 156.7	A			
16	URGENT AIR CONTACT	AIRGUARD	ALL DIVISIONS	168.6250 N		168.6250 N	T1 110.9	A	USE ONLY FOR URGENT AIRCRAFT CONTACT		
Prepared by  Ken Earle, Phil Shafer COML NORCAL 1					Incident Location MODE: A – ANOLOG, D - DIGITAL  ORLEANS, CA						

# BUTLER FIRE PHONE LIST

As of 8/25/2013

## Incident Commander & Staff

Position	Name	PHONE #	Cell PHONE # or other	FAX
NIMO Incident Commander	Quesinberry	877-230-9500	Cell 925-549-9420	
Incident Commander	Minton	No #	Cell 925-549-9417	
NIMO Safety	Terri Knauth	877-234-2477	Cell 925-549-9428	
Safety	Tanzi/Kirste	877-234-2477	Cell 925-549-9428	
Information	Downing/Mackensen	877-366-6008 877-365-6423 877-375-2226	Cell 925-549-9427	
Liaison Officer	Swartzlander	877-230-9500	Cell 925-549-9429	
Human Resources	Gonzalez	877-328-4522	Cell 925-549-9423	

## Operations

Planning Ops	Wills/Stevens(t)	877-354-2815		
Air Ops.	Mueller	877-353-6938		
Helibase	Bernardy	530-625-4617		

## Planning

NIMO Plans Chief	Schwilling	877-231-8599	Cell 925-549-9430	
Plans Chief	Sincleaer	877-354-9003	Cell 925-549-9421	
Planning Ops	Wills	877-231-8599	Cell 925-549-9426	
Situation Unit	Taylor /Olds	877-354-9003		
Check-In / Demob	Dumlao	877-367-1232		800-618-3707
Demob	Deboi	877-367-9503		800-618-3707
IMET	Tobin/Clemmons	877-368-2325		
Fire Behavior Analyst	Wade/Wood	877-368-2325		
Computer Techs / Resources	Steel	877-336-0460		
Training Specialist	Smith	877-342-8962	Medical 877-356-8984	FAX same as MedL phone- call 1st

## Logistics

Logistics Chief	Jellison	877-262-1573		
NIMO Logistics Chief	Brown	877-262-1573		
Supply / R & D	Sheets	877-321-2494		
Ordering	Lake	877-321-2494		800-617-4920
Facilities	Huhtala	877-354-6006		No FAX
Ground Support / Repair	Zabel	925-549-9431	925-549-9431	addl cell760-646-5747
Communications	Earle	Disp 877-325-0366	COML 877-321-4510	INCM 877-325-6905
Medical Unit	Thomas	877-356-8984		
Security	Nolde	Call Facilities @ 877-354-6006		
Food Unit	Westlake	877-354-6006		

## Finance

Finance Section Chief	Corkill/Palmer	877-253-6892		
Personnel Time	Ammon	877-236-7216		FAX 800-881-2790
Equipment Time/Cost	Griffith	877-235-0564		
Comp & Claims	Valdez	877-234-2477		
GIS	Felker/House	No Phone yet		

## Other Important Numbers

Expanded YICC		530-841-4611	530-841-4612	
Fortuna Dispatch (fs)		days 707-726-1266	nights 707-726-1281	
Co. Sheriff 24 hrs			530-625-5014	
Co Roads			707-445-7491	
Yreka Dispatch (fs)			<b>ROUTINE CALLS 530-841-4600</b>	<b>EMERGENCY ONLY 530-842-3515</b>
CHP 24 hrs			707-266-2000	
Hoopa Police			530-625-4211	
Cal - Trans 24 hrs			707-445-6600	
Fire Dawg Clerical-Butler	530-625-4059			
Tosiers Clerical -Salmon Complex	Gail Tosier	530-592-8550		530-467-1536

## Forks Camp

Dep IC	Pete Duncan	530-462-1520		
Medical	Claudia Kutscher	530-462-1518		
Logistics	Shurr/Howard(t)	530-462-1523		
Finance	Lois Charlton	530-462-1514		
Facilities / Info	Frank Decarlo	530-462-1519	INFO Kathy Hardy	
Plans Chief	Valery Vambeth	530-462-1520/1		
Plans Chief (t)	Bob Patton	530-462-1516		
Operations	Lane/Coots(t)	530-462-1516		

# AIR OPERATIONS SUMMARY

PREPARED BY: Dustan Mueller

PREPARED DATE/TIME: 8/25/13 1900

1. INCIDENT NAME: Forks Complex	2. OPERATIONAL PERIOD DATE: 8/26/13	START TIME:0600	END TIME:2200	SUNRISE: 0635	SUNSET: 1958
---------------------------------	-------------------------------------	-----------------	---------------	---------------	--------------

3. REMARKS (Safety Notes, Hazards, Air Operations Special Equipment, etc.): <b>** Name Change/Freq Change. Use Forks A/G for all aerial mission in TFR. 171.5375</b> Watch for wires in the Salmon river canyon. Beware of rapidly changing VFR conditions due to smoke, and Wx Avoid no-fly zone over Orleans unless unsafe starting 8/20/13.	4. MEDEVAC A/C: H-7PA I.A A/C: H-502	5. TFR: 3/9102 Altitude: 11,000' MSL Center point: 41 20.35 N 123 15.10 W Frequency: 120.0250
--	--	---

6. PERSONNEL	Phone	7. FREQUENCIES	AM	FM	8. FIXED-WING	# Avail / Type/ Make-Model / FAA N# / Base(s)
AOBD Trainee: Dustan Mueller	877-353-6938 530-260-1278	TFR A/A	120.0250		Airtankers	Airtankers available upon request of Air Attack.
ATGS: Carl Piper Trainee: Rico Gonzalez	530-295-7273 530-605-6376	AIR/ AIR RW	132.2750			
ASGS: Sean Cox ASGS: Steve Beall	530-409-2363 530-598-6755	AIR/ AIR FW Air Tactics		163.1500	Leadplanes	Lead/ASM's available upon request of Air Attack
HEBM: Bill Lampert HEBM T: Joel Torres HLCO: Bill Palmer	530-598-4128 530-598-9323 828-273-9255	AIR/ GROUND Forks A/G:		171.5375		
Scott Valley Helibase: H-503, Jim Gould	530-468-1294 530-468-5495 530-598-4132	COMMAND Rx: Tx:		168.0750 170.4250 t-3	ATGS Aircraft	AA-1176Z
Helibase Fax:	530-468-2118	DECK		163.100		
Air Ops Desk ICP:	877-353-6938				Other	

## 9. HELICOPTERS (Use Additional Sheets as Necessary)

FAA N#	TY	MAKE/MODEL	BASE	AVAIL	START	REMARKS	FAA N#	TY	MAKE/MODEL	BASE	AVAIL	START	REMARKS
H-503	3	Bell 407	Happy Camp	0700	0800	PSD Recon	H-502	2	Bell 205	Scott Vly	0700	0800	Cargo/Bucket/Pax Rappel
H-407PA	3	Bell 407	Scott Vly	0700	0800	All Missions Short Haul W/EMT							
H-514	2	Bell 212HP	Scott Vly	0700	0800	Cargo/Bucket/Pax PSD							

--

10. TASK/MISSION/ASSIGNMENT (Type/Function includes: Air Tactical, Retardant, Recon, Personnel Transport, Water Dropping, S&R, etc.)				
TYPE/FUNCTION	NAME OF PERSONNEL OR CARGO (if applic) OR INSTRUCTIONS FOR TACTICAL AIRCRAFT	MISSION START	FLY FROM	FLY TO
(1)Bucket Support (2)COMT Repeater	As needed through Air Attack, HLCO, or Air Operations 2 COMT out of Scott Vly to Etna Summit, Repeater Retrieval	TBA 1100	Scott Vly Scott Vly	Butler Fire Etna Mtn.
(3)Reconnaissance	Operations. As visibility allows.	TBA	Scott Vly Wooley H-10	
(4) Somes Mtn Klump Pump Removal	Remove Klump Pump off of Somes Mountain. Branch 2 Initial Contact, drop at H-10 (Wooley H-S)	1200	Scott Vly	Somes Sling/H-
(5) H-4 Backhaul	H-4 Backhaul down to Wooley Helispot (H-10). Ground Support back haul from H-10 to ICP for Disposal. Contact DIVS K / Grass Lake Wildland Fire Module.	1200  (Combine	Scott Valley Missions)	H-4
(6) Klump Pump Removal	Salmon Fire	TBA	H-4 Salmon	H-2
(7) Backhaul	Tanner Peak Removal	TBA		
	*** For Medevac purposes refer to the IAP***			
KNF/SRF IA	Support as requested. All support needs to be approved by air ops.			
	*** H 407PA available for all Missions. For Short Haul within Forks TFR use local helicopter ordering protocol. Robert Dauphinais Manager 928-266-5633			
	****All requests for logistical and tactical support must go through Air Attack if they are over the fire***			

<b>MEDICAL PLAN</b>	1. INCIDENT NAME Forks Complex	2. DATE PREPARED 8/25/2013	3. TIME PREPARED 2000 Hrs	4. OPERATIONAL PERIOD <b>0600-2200</b> <b>08/26/2013</b>				
	5. INCIDENT MEDICAL AID STATIONS							
MEDICAL AID STATIONS		LOCATION			PARAMEDICS			
					YES	NO		
Frontline Medical		ICP next to kitchen			X			
Fork Medical Unit		Forks Camp			X			
FEMP Snow & FEMT Rubin		Div A or as directed by Safety and Operations			X			
FEMP Wilcox & FEMT Revollo		Div B,C,D or as directed by Safety and Operations			X			
FEMP Gabbard & FEMP Van Renselaar		Div G or as directed by Safety and Operations			X			
FEMP Owen & FEMT Conn		Div H or as directed by Safety and Operations			X			
FEMP Bristow & REM 1		Div K or as directed by Safety and Operations			X			
FEMP Mallett & FEMP Doty		Div W or as directed by Safety and Operations			X			
FEMP Volmer, FEMT Mineke		Div T,Z or as directed by Safety and Operations			X			
FEMP Harrison, FEMT Rocha		Diz T,Z or as directed by Safety and Operations			X			
FEMP Garcia & FEMP Sandler		Repair Group, or as directed by Safety and Operations			X			
6. TRANSPORTATION								
A. AIR RESOURCES								
NAME		ADDRESS		PHONE	PARAMEDICS			
					YES	NO		
NPS H- 7PA - Short Haul Capable 150' to 250'		Scott Valley Helibase, Scott Valley, Ca 96027		Air Ops. (877) 353-6938		X		
CalFire 102- (Hoist) Daylight hrs only		Kneeland, CA		YICC (530) 842-3515		X		
REACH- (Non-Hoist) NVG Capable		3775 Flight Ave. Redding, Ca. 96003		YICC (530) 842-3515	RN/ Medic			
PHI Air Medical -(Non-Hoist) NVG Capable		1524 East St. Redding , Ca 96003		YICC (530) 842-3515	RN/ Medic			
CANG H820-(Hoist, day or night) NVG Capable		Redding Airport		YICC (530) 842-3515	X			
B. INCIDENT AMBULANCES								
NAME		LOCATION			PARAMEDICS			
					YES	NO		
Arcata Ambulance 4		Available @ Red Bank Camp Ground Sawyer Bar Road			X			
City Ambulance 4		Available Forks ICP			X			
7. HOSPITALS								
NAME	ADDRESS	TRAVEL TIME		PHONE	HELIPAD		BURN CENTER	
		AIR	GRND		YES	NO	YES	NO
St Joseph Hospital	2700 Dolbeer Eureka, Ca. N 40 47.02 / W 124 8.48	20 M	2.5 H	707-445-8121 #2	X			X
Fairchild Medical Center	444 Bruce St. Yreka, CA N41 43.13 W122 38.69	20M	2.5 H	530-842-4121	X			X
Mercy Medical Center Level 2 Trauma	2175 Rosaline Ave. Redding, Ca N 40 34.13 / W 122 23.67	50M	3 H	530-225-7201	X			X
UC Davis Medical Ctr. Level 1 Trauma	2315 Stockton Blvd. Sacramento, Ca. N 38 33.17 / W 121 27.05	1.5H	6.5 H	916-734-3636	X		X	
8. MEDICAL EMERGENCY PROCEDURES								
IN-CAMP CARE				LINE EMERGENCIES				
<ul style="list-style-type: none"> <li>Minor Injuries or illnesses <ul style="list-style-type: none"> <li>Seek Aid directly at the Frontline Medical Unit, report all injuries or illnesses to supervisor</li> <li>Unit Open 0600 hrs to 2200 hrs</li> </ul> </li> <li>Moderate to Severe Injuries or Illnesses <ul style="list-style-type: none"> <li>Contact Communications directly</li> <li>Med Unit staffed after hours for Emergencies</li> </ul> </li> </ul>				<ul style="list-style-type: none"> <li>Start of shift: notify your Div Sup of EMT's and equipment you have available for response if needed.</li> <li>Contact Communications and declare a medical emergency on command</li> <li>Closest DIVS or designee responds to incident <ul style="list-style-type: none"> <li>Closest SOFR/EMT's respond to assist w/care</li> <li>Use attached Injury or Incident Comm. Protocol</li> <li>If ambulance (ground or air) delayed designate rendezvous site and move towards it</li> </ul> </li> <li>Secure scene for investigation—keep a log</li> </ul>				
9. PREPARED BY (MEDICAL UNIT LEADER)		10. REVIEWED BY (SAFETY OFFICER)						
ICS 206 8-78		R. Reginato MEDL(t)			M. Tanzi SOF1			

# Injury or Incident Communications Protocol

Time: \_\_\_\_\_ Date: \_\_\_\_\_ On Scene POC: \_\_\_\_\_

Declare: Medical Emergency \_\_\_\_\_ or Non-Emergency Medical \_\_\_\_\_

Number of injured: \_\_\_\_\_ Type of injury: \_\_\_\_\_

Patient Location: \_\_\_\_\_ Lat: \_\_\_\_\_ Long: \_\_\_\_\_ Elevation: \_\_\_\_\_

Best transport method: (see matrix below) Air Ambulance Ambulance Helicopter Vehicle

Any special equipment required: (SKED, Wheeled Stokes, Backboard, etc.) \_\_\_\_\_

Closest pick up point (DP, Helispot) \_\_\_\_\_

LOC \_\_\_\_\_ Resp. \_\_\_\_\_ Pulse \_\_\_\_\_ BP \_\_\_\_\_ Weight \_\_\_\_\_

Medical History/Allergies \_\_\_\_\_

On Scene Medic: \_\_\_\_\_

## Air Transportation Triage

## Coordinate with Air Ambulance on Cal-Cord (Ch: 15)

	Air Ambulance	Ground Transport
<b>Mechanism</b>	Struck by tree Fall of 10' or more Snake bite with pain and swelling Insect bite with shortness of breath Signs of heat stroke (hot, dry, disoriented) Burn Injury greater than 1% body area	Minor dehydration Cut or laceration with bleeding controlled Minor bites and Stings Minor burns
<b>Area Injured</b>	Significant Blunt or Penetrating Trauma to Head, Neck, Chest, Abdomen or pelvis Any Arm or Leg fracture	Minor blunt trauma Minor penetrating trauma Extremity sprains and strains
<b>Symptoms</b>	Disoriented Chest Pain <u>or</u> Shortness of Breath Weak or absent radial pulse Pale, cold and sweating	Alert and oriented No shortness of breath Good pulses

Medivac Sites (WGS 84 datum) use Degrees, Decimal Minutes (Lat 00° 00.000' – Long 00° 00.000')

Forks Camp - N 41°15.553 / W 123°19.650

DP- 34 Div. C- N 41°12.896 / W 123°16.759

H 11 – N 41°15.182 / W 123°18.963

DP-39 Div. E- N 41°10.847/ W 123°22.445

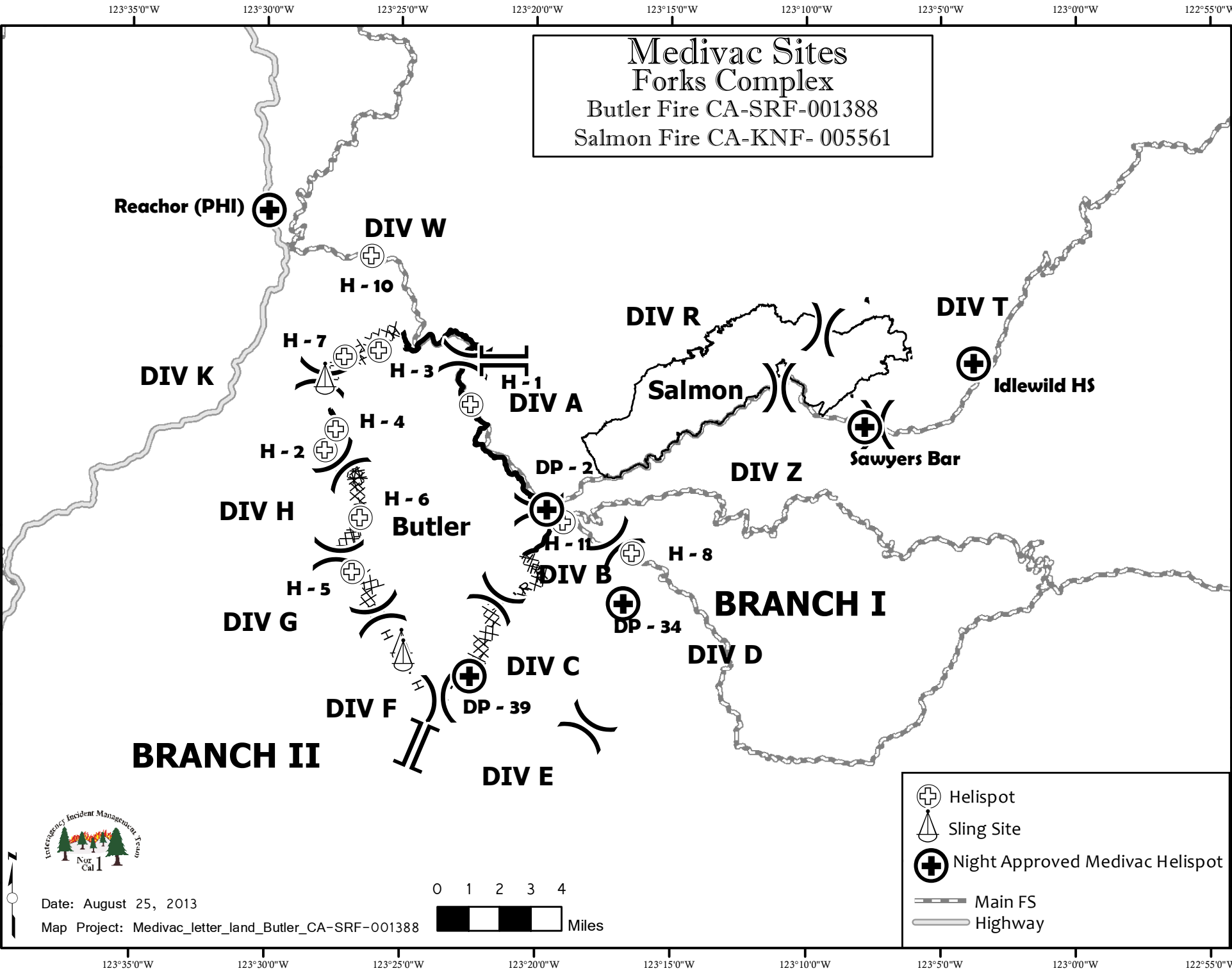
### If air or ground ambulance is DELAYED:

**DO NOT DELAY** in Packaging and transporting the patient to rendezvous with the Ambulance.  
Re-route EMS helicopter to rendezvous point as appropriate.

### When declaring an “Incident within the Incident”

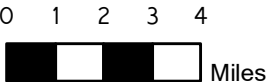
The closest DIVS or designee will respond to manage the incident. They are responsible for giving an accurate size up, ensuring scene safety, setting priorities and initiating an appropriate response. The closest Safety Officer and Line EMS will respond to the scene to assist. The Safety Officer will secure the site and begin initial investigation when situation is stabilized.

**Medivac Sites**  
**Forks Complex**  
 Butler Fire CA-SRF-001388  
 Salmon Fire CA-KNF-005561



Date: August 25, 2013

Map Project: Medivac\_letter\_land\_Butler\_CA-SRF-001388



- Helispot
- Slingsite
- Night Approved Medivac Helispot
- Main FS
- Highway

Medivac Sites

Site	Latitude	Longitude
Reachor PHI	41° 23.857' N	123° 29.919' W
Cecilville	41° 08.45' N	123° 08.14' W
Forks of the Salmon / DP 2	41° 15.490' N	123° 19.490' W
Sawyers Bar	41° 17.84' N	123° 07.82' W
Idlewild	41° 19.61' N	123° 03.78' W
Etna Parkway	41° 27.84' N	122° 53.45' W
DP - 34	41° 12.896' N	123° 16.759' W
DP - 39	41° 10.847' N	123° 22.445' W
H - 1	123° 22.420' W	41° 18.449' N
H - 2	123° 27.803' W	41° 17.159' N
H - 3	41° 19.949' N	123° 25.809' W
H - 4	41° 17.747' N	123° 27.402' W
H - 5	41° 13.759' N	123° 26.776' W
H - 6	41° 15.266' N	123° 26.500' W
H - 7	41° 19.764' N	123° 27.102' W
H - 8	41° 14.299' N	123° 16.410' W
H - 10	41° 22.600' N	123° 26.100' W
H - 11	41° 15.182' N	123° 18.963' W

As of 8/25/2013



## INCIDENT RISK ANALYSIS – Forks Complex (ICS 215A) Day Shift

DIV	HAZARDOUS ACTIONS / CONDITIONS	MITIGATIONS / WARNINGS / REMEDIES	
All	Communications	<ul style="list-style-type: none"> <li>• <b>Ensure you receive the new clone before heading out to your work area</b></li> <li>• <b>TEST your radio before you leave camp to ensure you have comms, then TEST again when you arrive at your work area</b></li> </ul>	
All	Transfer of Command	<ul style="list-style-type: none"> <li>• Ensure you receive a complete briefing and understand the leaders intent</li> <li>• <b>Task</b> = What is to be done. <b>Purpose</b> = Why it is to be done. <b>End State</b> = How it should look when done.</li> </ul>	
All	<b>DRIVING HAZARDS</b> Very Narrow, Steep, Wet or Dry & Soft Shoulders	<ul style="list-style-type: none"> <li>• <b>SEAT BELTS ON.....BEFORE wheels turn!</b></li> <li>• <b>Reduce driving speeds to allow for reaction time lag.</b></li> <li>• Establish one-way traffic or coordinate traffic flow if necessary.</li> <li>• Drive Defensively! <b>Expect the unexpected around every curve.</b></li> <li>• When meeting oncoming traffic at night, come to a controlled stop. Turn headlights to running lights; assist other vehicle in backing to a safe place to allow safe passage around vehicle.</li> </ul>	
All	Fatigue	<ul style="list-style-type: none"> <li>• Monitor crews for signs of fatigue: poor decision making, easily distracted, reduced situational awareness</li> <li>• Proper nutrition &amp; hydration are important components to reducing fatigue</li> </ul>	
All	Hazard Trees, Fire Weakened Trees & Snags	<ul style="list-style-type: none"> <li>• Scout work area for overhead hazards to ensure safe work areas.</li> <li>• Identify and communicate hazard to personnel. Mitigate using qualified personnel only.</li> <li>• Re-assess the need to eliminate the hazard by felling if it is feasible to keep personnel away</li> <li>• If unable to mitigate hazard, <b>Flag Off area, communicate the location &amp; keep personnel away.</b></li> </ul>	
Salmon River Rd & Sawyers Bar Rd	Debris & Rock Slides, etc.	<ul style="list-style-type: none"> <li>• Any amount of rain will cause loosening of Soils, Rocks, and Trees due to Burn Scar.</li> <li>• Expect debris/rocks in roadways as you travel. Expect the unexpected around every curve.</li> <li>• <b>NO vehicle traffic between Butler ICP and Forks Base Camp via Salmon River Rd if raining</b></li> </ul>	
All	Environmental Hazards	<ul style="list-style-type: none"> <li>• Keep alert for wildlife, insects, and plants. Watch footing and hand placement around rocks.</li> <li>• Keep food out of tents and from around sleeping areas to prevent wildlife night visits.</li> <li>• <b>Personal hygiene is #1 when it comes to Poison Oak Prevention</b></li> </ul>	
All	Extremely Steep Terrain & Rolling Materials	<ul style="list-style-type: none"> <li>• Concentrate on your footing placement; take your time.</li> <li>• Ensure adequate spacing between crewmembers so they can react to dislodged debris.</li> <li>• Post lookouts to warn of rolling debris. <b>SHOUT out to warn others</b></li> <li>• Look Up, Down and Around Frequently.</li> </ul>	
Branch 1	Mine Shafts & Adits	<ul style="list-style-type: none"> <li>• Abandoned mine shaft openings and vent holes. Identify, Flag area, Make known to personnel.</li> <li>• Keep heavy equipment clear of area.</li> <li>• Hazardous Materials and explosives can often be found around mine sites.</li> </ul>	
IA	Initial Attack	<ul style="list-style-type: none"> <li>• Ensure risk management has been reviewed &amp; LCES is in place before taking action on a new start. Page 1 in IRPG,</li> <li>• <b>Know IA frequencies...</b></li> </ul>	
DIV K,H,C	Firing Operations	<ul style="list-style-type: none"> <li>• <b>Know the plan! Know who's in charge! Know the Plan!</b></li> <li>• Conduct thorough briefing for all personnel (inside rear cover IRPG).</li> <li>• Utilize Risk Mgmt. Process (IRPG p. 1) for implementing the plan.</li> <li>• Establish LCES prior to implementing burning operations (IRPG p. 6).</li> <li>• Assign an over-all Burn Boss, Firing Boss &amp; Holding Boss, to coordinate ignitions when simultaneous burning operations are planned for multiple locations.</li> </ul>	
All	Hydration	<ul style="list-style-type: none"> <li>• <b>Pre-hydrate, Re-hydrate to keep from DEHYDRATING</b></li> <li>• <b>Dehydration is PREVENTABLE</b></li> <li>• Be alert for signs of heat illness in yourself and others.</li> <li>• Drink 2 to 1 water to sports drinks.</li> </ul>	
INCIDENT NAME: <b>Forks Complex</b>  ICS 215a		DATE PREPARED: <p style="text-align: center;"><b>August 25, 2013</b></p>	OPERATIONAL PERIOD <b>Day Shift 08/26/13</b> <b>0600-2200</b> Prepared by: M. Tanzi, R.Kafka (T)
		TIME PREPARED: <b>2100 HOURS</b>	



## TRANSFER OF COMMAND

*Fireline Safety Category*

Risks to fireline personnel increase significantly during transfer of command periods regardless of the size or complexity of the incident. There is a high potential for fatalities, serious injuries, or incidents with potential during transfer of command periods (some have occurred in the past). Be proactive in mitigating the risks by proper implementation of LCES—Lookout, Communications, Escape Routes, and Safety Zones.

- Factors for increased risks to fireline personnel during transition periods include:
  - No, or poor, briefing of incoming personnel
  - Lack of fire weather and behavior information, both forecast and observed
  - Communications; face-to-face briefings may not be possible and radio frequencies may be overextended and/or changing due to the increased demands on the system.
  - Initial attack resources may not have checked-in and the Incident Commander may not be aware of the number, type and location of all resources.
  - Location of safety zones and escape routes may not be known and communicated to all resources.
  - Not all Resources know who is in command.
  
- Mitigation actions to take:
  - Lookouts: Post and maintain your own lookouts.
  - Communications: Maintain existing communications with your own and adjacent resources, as well as your original supervisor, while you are developing communications with incoming adjacent resources and your new supervisor.
  - Escape routes and safety zones: Identify escape routes and assure incoming resources are aware of their locations; be aware that your original escape routes and safety zones may no longer be accessible due to changing fire behavior or your increased distance from them.
  - Transition at the morning briefing
  - Utilize the Incident Response Pocket Guide transition checklist

**References:**

[Interagency Standards for Fire and Fire Aviation Operations](#)  
[Incident Response Pocket Guide](#)

---

**Have an idea? Have feedback? Share it.**

**ONLINE | MAIL: 6 Minutes For Safety Task Group • 3833 S. Development Ave • Boise, ID 83705 | FAX: 208-387-5250**

**[6 Minutes Home](#)**

## **Bear Safety (for you, not the bear)**

Sloppy firefighters don't just endanger themselves, but also other firefighters. Bears will return to a site repeatedly if they ate there at some point in the past. When in bear country (where you are now) you should:

### **Maintain a bear safe campsite**

- Store food, drinks and scented items securely.
- Dispose of trash
- Always sleep inside your tent
- Never approach or feed a bear
- Report bear sightings to your Division Supervisor

### **Take precautions while hiking**

- Stay alert at dawn and dusk, when bears are more active
- Make noise as you travel through dense cover
- Stay away from animal carcasses
- Store food, trash and scented items (sunscreen, etc.) in airtight plastic bags

### **Dispose of trash carefully**

- Store trash in a secure location
- Clean the trash container regularly

### **If you encounter a bear**

- **Stand your ground.** Never back up, lie down or play dead. Stay calm and give the bear a chance to leave.
- **Don't run away or climb a tree.** Black bears are excellent climbers and can run up to 35 mph – you cannot out climb or outrun them
- **Know bear behavior.** If a bear stands up, grunts, moans or makes other sounds, it is not being aggressive. These are the way a bear gets a better look or smell and expresses its interest.

### **If a bear attacks**

- **Always fight back.** And never give up! People have successfully defended themselves with almost anything: rocks, sticks, pulaskis, water bottles and even their hands and feet.

## Incident Trainee/Trainer Data Form

Complete and drop off with the Training Specialist for entry into database before end of assignment.  
Remember to close out all training packages with the Training Specialist prior to going through DEMOB.

### A. Trainee Data

Trainee Name: \_\_\_\_\_ ICS Trainee Position: \_\_\_\_\_

Were you ordered as a Priority Trainee? Y N If yes, specify: IFPM FS-FPM REGIONAL

Request # (A, C, E or O): \_\_\_\_\_ Agency Designator (Example: CA-KNF): \_\_\_\_\_

Agency: \_\_\_\_\_ Crew/Module Name: \_\_\_\_\_ Cell Phone: \_\_\_\_\_

Fire Name: \_\_\_\_\_ Date Assigned: \_\_\_\_\_

### **Person and location your training package should be mailed to: (Chief, Training Officer, etc.):**

Name: \_\_\_\_\_ Title: \_\_\_\_\_ Home Unit: \_\_\_\_\_

Agency Address: \_\_\_\_\_

City: \_\_\_\_\_ State: \_\_\_\_\_ Zip Code: \_\_\_\_\_ Phone: \_\_\_\_\_

---

### B. Trainee Prerequisites

1. Valid Red Card or agency certification card? \_\_\_ Yes \_\_\_ No

2. Trainee has current position task book issued by home unit? \_\_\_ Yes \_\_\_ No

---

### C. Trainer/Evaluator Data Trainer / Evaluator Name: \_\_\_\_\_

ICS position on fire: \_\_\_\_\_ Home Unit: \_\_\_\_\_

Address: \_\_\_\_\_ City: \_\_\_\_\_

State: \_\_\_\_\_ Zip Code: \_\_\_\_\_ Cell / Contact While on Incident: \_\_\_\_\_

---

### D. Trainee Goals - (3 tasks or objectives you would like to address).

1. \_\_\_\_\_

2. \_\_\_\_\_

3. \_\_\_\_\_



## Human Resource Specialist MESSAGE

### ZERO TOLERANCE

This Incident Management Team supports the laws, regulations and regional policies regarding discrimination, harassment, hazing, and other inappropriate behavior, and will not tolerate misconduct of this kind in any form.

Everyone assigned to this Incident is entitled to a safe work assignment.

If you have questions please come by and visit.

Your Human Resource Specialist,  
Daniel Gonzalez



# M.I.S.T. GUIDELINES ( SRF – KNF – SHF )

## MINIMUM IMPACT SUPPRESSION TECHNIQUES

Wilderness areas are areas that are protected by law and are managed to preserve their natural conditions for present and future generations. The following Minimum Impact Suppression Techniques (MIST) are guidelines intended to significantly reduce the impacts associated with fire suppression and incident management activities in Wilderness areas.

**SAFETY**      **Safety is of paramount importance. Incident personnel should constantly be aware of their surroundings and the Eight Principles of Safety, the 10 Standard Firefighting Orders and the 18 Watchout Situations when applying MIST techniques.**

### **LINE OPERATIONS**

- Use natural barriers, wet line or cold trail techniques, rather than constructing line. Consider burnout from natural barriers to minimize line construction.
- When constructed line is necessary, use the minimum width, depth and canopy clearance necessary to check fire spread, based on fire behavior. Locate line to minimize impacts. Consider use of fireline explosives for line construction.
- Do not put line construction debris in streams.

### **GREEN TREES, BURNED TREES AND SNAGS**

- Scrape around tree bases near fireline if hot and likely to cause fire spread.
- Inside fireline: remove or limb only those fuels that if ignited would have potential to spread fire outside the fireline.
- Identify hazardous trees with an observer or flagging.
- Use Saw Use guidelines.

### **SAW USE**

- Minimize the amount of cutting.
- Live trees will not be cut, unless it is determined they will cause fire spread across the fireline or endanger workers or the public.
- Slope/angle saw cuts away from line of sight to minimize visual impacts. Rub dirt or ash on stumps and log ends to camouflage them. Do not crosshatch/etch.
- If trees must be felled inside the line, do not limb or buck them. Allow the fire to consume them.

### **INDIRECT ATTACK**

- Do not fall snags on the intended unburned side of the constructed fireline, unless they are safety hazard to crews or the public.
- On the unintended burn-out side of the line, fall only those snags that would reach the fireline should they burn and fall over.
- Consider alternative means to falling, i.e., fireline explosives, bucket drops.
- Consider all items in Section B, the Fire Line Phase.

### **AIR OPERATIONS**

- Limit the use of retardant. Use water drops (preferred) or foam instead. When foam or retardant use is appropriate, avoid dropping near surface water.

### **HELISPOT CONSTRUCTION**

- Minimize the number of helispots constructed in Wilderness.
- Evaluate carefully whether it is necessary to construct a helispot or whether an alternative outside Wilderness can be used.
- If a helispot is only needed for logistical support to deliver and retrieve supplies or gear, consider using a long line remote hook in lieu of constructing a helispot. If a helispot is needed for crew shuttle, consider the minimum size helicopter that could do the job and still meet suppression objectives.
- Use natural openings as much as possible. If some tree falling or cribbing is necessary, avoid high visitor use locations unless the modifications can be rehabilitated to be generally unnoticeable. Feather the opening so that it appears more natural looking.
- Whenever possible, the Resource Advisor should provide specific instructions and observe the construction of helispots.
- Naturalize helispots before abandoning

### **SPIKE CAMPS AND CAMP ACTIVITIES**

- Camps and other facilities will be located outside of wilderness whenever possible.
- A Resource Advisor will be consulted prior to establishing spike camps and use will be discontinued if resource damage occurs.

### **MOP-UP PHASE**

- Cold trail rather than scraping or digging whenever possible to detect hot areas.
- Roll or drag fuels into the interior and allow them to burn out, rather than mopping them up and roll logs rather than bucking.
- Pull hot material away from the bases of trees, rather than felling them.
- Remove or limb only those fuels that if ignited, have potential to spread outside the fireline.

## **PERSONAL CONDUCT**

**Leave No Trace – Pack it in - Pack it out**

**Confirmed approval for use of mechanized equipment – Chainsaws / Helicopter Use**

## The 5-D System for Effective Waterbars

When locating and building waterbars, place them the right **distance** apart, at a **diagonal** to the fireline, so that they **divert**, then **discharge**, then **dissipate** the energy of the flowing water. Be sure to make them deep enough so they'll be durable, and that soil does **not block** the water bar outlet.

### Recommended spacing for waterbars on firelines.

Fireline slope %	Maximum Distance Apart (feet)
1 – 5	200
6 – 20	125
21 – 40	60
41 – 60	40
>60	25

*Waterbars should be at least 2 pulaski widths (4-6 inches) wide and 12-24 inches high for handlines.*

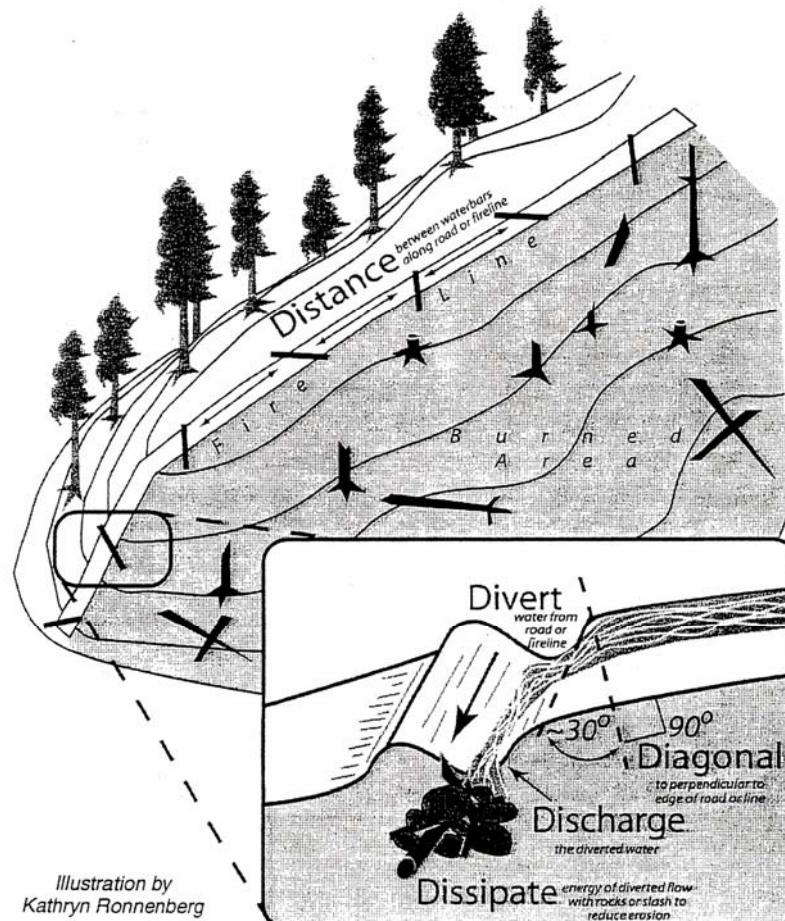


Illustration by  
Kathryn Ronnenberg

## Nor Cal #1

### Expectations for Operational Periods and Shift Length

- The expectations of the I.C. and the team are that all operational resources will proceed directly to their shift assignments at the conclusion of the operational briefing / division break-out. Individuals attending the briefing should attend dressed fire-ready (nomex pants and boots).
- ICS 204 Division Assignment Lists will display anticipated shift duration. The assigned Division Supervisor has the authority to modify these time frames as the situation dictates.
- A minimum of 1 meal break should be taken each day when the fire situation permits. When meals are not recorded, rationale is needed on the CTR. Non fireline assigned resources should plan for a 30 minute break every 6 hours when the situation permits. Command and General Staff will manage workloads to allow for breaks when appropriate.
- Individuals shall only drive if they have had at least 8 consecutive hours off duty before beginning a shift. *Example: if it becomes essential to work until 2300 hours, the individual should not return to duty before 0700 the following day.* Exceptions to this policy should only be to accomplish immediate and critical suppression objectives or critical firefighter / public safety missions as approved by the I.C.
- The Incident Management Organization is committed to a “zero tolerance” policy against inappropriate behavior during incident operations. We expect an attitude of mutual respect for all incident personnel and the public we serve. Any form of harassment, discriminatory practices, or disrespectful behavior will not be tolerated and will be dealt with appropriately. Illegal drug use or other illegal activities will not be tolerated and will be turned over to local law enforcement authorities. Alcohol is strictly prohibited from the fire camp and all other incident locations. Violation of these standards of conduct can result in prompt dismissal from the incident. Individuals who are aware of any inappropriate behavior of incident personnel should tell their supervisor or contact the Human Resource Specialist.



Date & Time Order was placed:		Order #	Location & Time for Delivery (DIV,LZ,DP,Lat Long)		Mode of delivery
		(DIVS+#)			(Driven/Helo/DIVS to Pick up)
			Lat:		
			Long:		
Order received in Communications by (Name):					Time:
Order shipped to line by (Name): (Send this sheet to the line with the order)					Time:
#	Item				
1	<b>1,000 Foot Hose Lay includes the following: Amount _____</b>				
	10, 100'x1½" Rolls Hose; 10, 100'x1" Rolls Hose; 10, 1½" Gated Wyes; 10, 1½" to 1" reducers; 10, 1" nozzles				
2	<b>2,000 Foot Hose Lay includes the following: Amount _____</b>				
	20, 100'x1½" Rolls Hose; 20, 100'x1" Rolls Hose; 20, 1½" Gated Wyes; 20, 1½" to 1" reducers; 20, 1" nozzles				
3	<b>3,000 Foot Hose Lay includes the following: Amount _____</b>				
	30, 100'x1½" Rolls Hose; 30, 100'x1" Rolls Hose; 30, 1½" Gated Wyes; 30, 1½" to 1" reducers; 30, 1" nozzles				
#	Item	Amount	#	Item	Amount
4	Hose (50') garden, 3/4"		30	Gas Unleaded (Gallons)	
5	Hose (100'), 1"		31	Oil 2 cycle, (Pints)	
6	Hose (100'), 1½"		32	Bar Oil (Qts)	
7	Nozzle, Garden, 3/4"		33	Drip Torch ea	
8	Nozzle, Forester, 1"		34	Drip torch mix 3.5:1.5 (gallon)	
9	Nozzle, KK Type, 1"		35	Fusees (Boxes or cases)???	
10	Nozzle, KK Type, 1½"		36	Flare Gun Rounds (12/BX)	
11	Wye, Gated, 3/4"		37	Cartridge #6 purple (box)	
12	Wye, Gated, 1"		38	Batteries "AA" PKGs(24/PKG)/BX	
13	Wye, Gated, 1½"		39	Ribbon, Flagging (Specify Color)*	
14	Inline-Tee, 1x1x3/4"		40	Water, Cubies	
15	Inline-Tee, 1x1x1"		41	Water, Bottled, Cases	
16	Inline-Tee (1½" X 1")		42	Gatorade	
17	Reducer, 1" X 3/4"		43	MRE's (12/BX)	
18	Reducer, 1½" X 1"		44	Heavy Mill Plastic	
19	Increaser, 3/4" X 1"		45	Washcloth, waterless, cleansing	
20	Increaser, 1" X 1½"		46	Wrap, Structure 54"x300'	
21	Foam 5 gal		47	Sprinkler <b>Kit</b>	
22	Foam 4 OZ (For Backpack Pump)		48	Mark 3 Pump	
23	Backpack Pump		49	Mark 3 Pump Kit- w/10 gal mixed fuel	
24	Pumpkin (Gallons?)		50	Chainsaw <b>Kit</b>	
25	Porta-Tank (Gallons?)		51	Mop-Up <b>Kit</b> , 3-Wand	
26	Shovel		52	Pump <b>Kit</b> , Lightweight, 2 Cycle	
27	Pulaski		53	Gas, Raw and 2 qts 2-cycle oil, ea	
28	Combi Tool		54	Lightweight Pump Kit-Cache w/5gal fuel	
29	McCloud		55	Gas, raw (gal) and 1 qt 2-cycle oil, ea.	
Notes:			Notes:		

