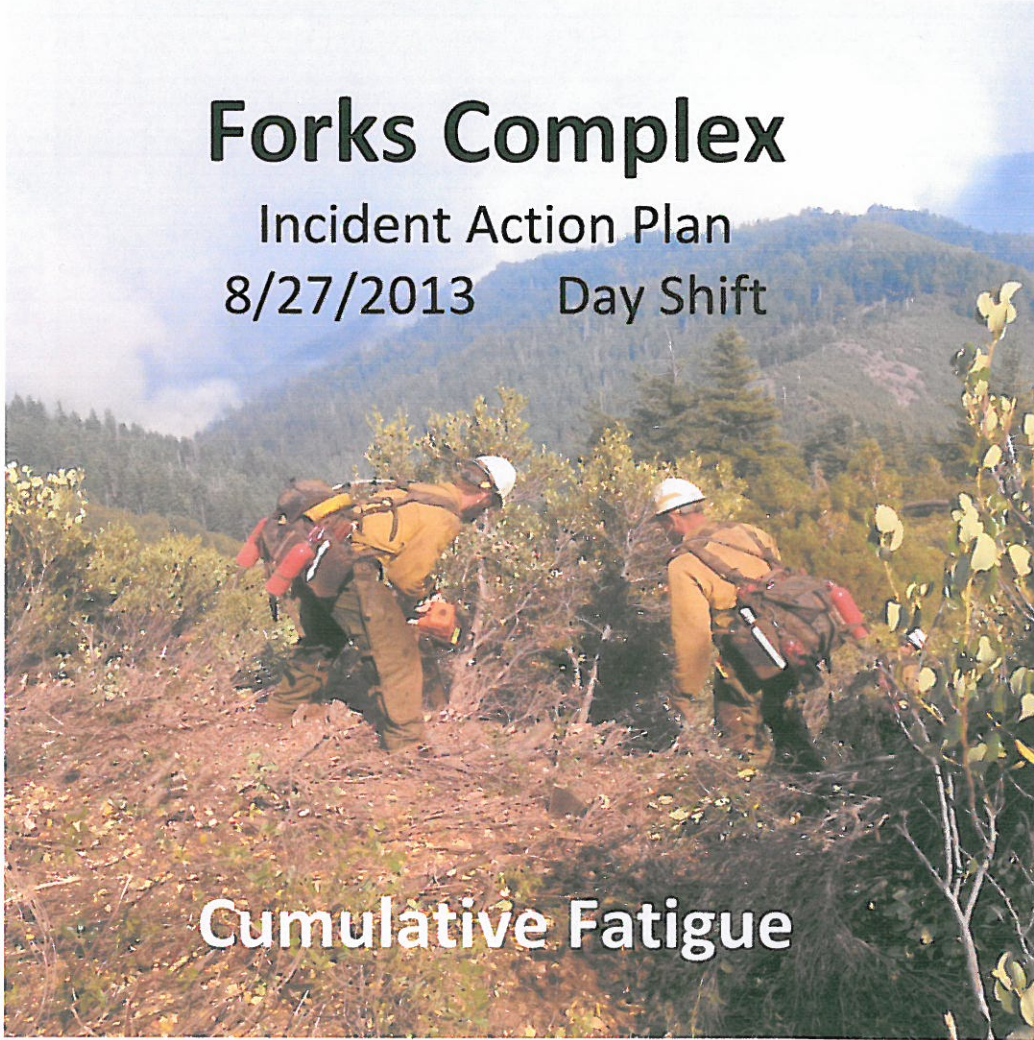


# Forks Complex

Incident Action Plan

8/27/2013 Day Shift



## Cumulative Fatigue

- **Behavioral Indicators:**
  - Decreased motivation & low morale
  - Increased irritability and depression
- **Physiological Indicators:**
  - Poor attention/decisions
  - Poor concentration/memory
- **Ensure you receive adequate rest, nutrition & hydration.**


Butler Fire

CA-SRF-001388

Salmon Fire

CA-KNF-005561



<b>INCIDENT OBJECTIVES</b>	1. Incident Name <b>Butler</b>	2. Date <b>8/26/2013</b>	3. Time <b>17:00</b>
4. Operational Period  <b>8/27/2013 0600-2200</b>			
5. General Control Objectives for the Incident (include alternatives) <b>OPERATIONAL OBJECTIVES</b> <ul style="list-style-type: none"> <li>• Provide for firefighter and public safety through the application of the risk management process.</li> <li>• Utilize tactics which provide for the protection of private property and infrastructure.</li> <li>• Keep the Butler fire within constructed fire lines.</li> <li>• Keep the Salmon fire within existing containment lines.</li> <li>• Implement fire suppression repair in accordance with developed plans.</li> </ul>			
6. Weather Forecast for Period  <b>See attached forecast</b>			
7. Resource Protection Guidelines <b>MANAGEMENT OBJECTIVES</b> <ul style="list-style-type: none"> <li>• Ensure fire suppression operations minimize negative fire effects.</li> <li>• Utilize minimum impact suppression tactics (MIST) within wilderness areas and in other land use designations as appropriate.</li> <li>• Prevent transportation of noxious weeds into the incident location.</li> <li>• Utilize Resource Advisors to assess impacts to sensitive historic, cultural, wildlife, and plant resources.</li> <li>• Manage the fire in a cost effective manner commensurate with values at risk.</li> <li>• Keep cooperators, communities, and concerned citizens informed.</li> </ul>			
8. <b>Attachments (mark if attached)</b>			
<input checked="" type="checkbox"/> Organization List - ICS 203	<input checked="" type="checkbox"/> Medical Plan - ICS 206	<input checked="" type="checkbox"/> Weather	
<input checked="" type="checkbox"/> Div. Assignment Lists - ICS 204	<input checked="" type="checkbox"/> Incident Map	<input checked="" type="checkbox"/> Safety Message	
<input checked="" type="checkbox"/> Communications Plan - ICS 205	<input type="checkbox"/> Traffic Plan	<input type="checkbox"/> LCES Worksheet	
9. Prepared by (Planning Section Chief) David Sinclear	10. Approved by (Incident Commander) 		




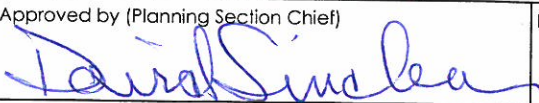
ORGANIZATION ASSIGNMENT LIST		Ground Support Unit	Harry Zabel / Jim Hong (t)		
<b>1. Incident Name: FORKS COMPLEX</b>		Security Manager	Jason Nolde / Jeff Knott (t)		
		Communications Unit	Ken Earle		
		Medical Unit	Clayton Thomas / Ryan Reginato (t)		
		Food Unit	Jay Westlake		
<b>2. Date</b>	Time	<b>9. Operations Section</b>			
8/26/2013	21:04	Day Ops Chief	Robin Willis / Cutis Coots (t)		
<b>4. Operational Period</b>		Deputy Day Ops			
08/27/2013		0600-2200		Night Ops Chief	Robert Bertolina
<b>Position</b>	<b>Name</b>	Planning Ops	Chris Stevens (t)		
<b>5. Incident Commander and Command Staff</b>		<b>a. Branch I – Division/Groups</b>			
Incident Commander	Mike Minton	<b>Branch</b>	Dave Pereira		
Deputy IC	Pete Duncan	Division/Group	A / D	Mike Work	
Liaison	Kent Swartzlander	Division/Group	B / C	Ed Merrill / Dale Mendes (t)	
Safety Officer	Michele Tanzi / Robert Kafka (t)	Division/Group	T / Z	Don Fregulia	
Information Officer	Jim Mackensen	Repair Group	R	Dan Lindley / Terry Eller (t)	
<b>6. Agency Representative</b>		<b>b. Branch II – Division/Groups</b>			
<b>Agency</b>	<b>Name</b>	<b>Branch</b>	Steve Burns		
Agency Admin	Patty Grantham	Division/Group	F	Unstaffed	
Agency Admin Rep	Dave Hayes (KNF) Nolan Colegrove (SRF)	Division Group	G	Eric Hensel	
Siskiyou County S O	Jim Bretts	Division/Group	H	Paul Johnson	
Siskiyou CO OES	Ron Quigley	Division/Group	K	Mark Vardanega / J.Reeser (t)	
Forks Community Liaison	Jim Bennett	Division/Group	W	Randy Jenning	
Hoopa Tribal Chair	Danielle Vigil-Masten				
Karuk Tribal Rep	Bill Tripp				
CCC Rep	Susan Jones				
California OES	Pat O'Bannon				
		<b>d. Air Operations Branch</b>			
		Air Operations Branch Director	Dustan Mueller (t)		
		Air Support Group Supervisor	Sean Cox / Steve Beale / Scott Plue		
		Air Tactical Group Supervisor	Joel Lane / D. Williams (t)		
<b>7. Planning Section</b>		Air Tactical Group Supervisor	Carl Piper / Rico Gonzalez (t)		
Chief	Dave Sinclear / Walter Herzog (t)	Helibase Manager	Brad Bernardy		
Resources Unit	Lou Ann Charbonnier / Chris Wikeen	<b>10. Finance Section</b>			
Situation Unit	Alan Taylor / Bobby Olds (t)	Chief	Judy Palmer / Rachel Corkill		
FS Cultural Rep	Eric Brederman	Deputy Chief			
Lead Resource Advisor	Chris Engelhardt (Butler Fire)	Personnel Time Unit	Shannon Ammon		
Demobilization Unit	Gary Deboi	Equipment Time Unit	Jo Ann Hereford / Mike Turos		
Fire Behavior Unit	Jessica Wade / John Wood (t)	Cost Unit	Sissie Griffith		
Documentation Unit	Rex Crabtree	Compensation / Claim Unit	Merlinda Valdez / Wanda Chavez		
Incident Meteorologist	Bob Tobin / Tom Clemmons (t)	Procurement	Ron Schilz / Karie Linn(t)		
Technical Specialist	George Steele	IBA-Yreka	Lola Capp / Kathy Griffin		
Training Specialist	Dave Lattimore				
GISS	Kyle Felker / Matt House (t)				
Human Resource Advisor					
Status Check-In	Monique Dumlao				
<b>8. Logistics Section</b>					
Chief	Mike Jellison / Ken Kumpe(t)				
Ordering	Mona Lake / Ron Pierce				
Supply Unit	Richard Sheets				
R & D	Frederick Johnson				
Facilities Unit	Jeff Hutala				
		Prepared By: Chris Wikeen – RESL		ICS 203	

ORGANIZATION ASSIGNMENT LIST			
1. Incident Name		<b>Forks Complex / Salmon Camp</b>	
2. Date		Time	
8/26/2013		18:28	
4. Operational Period			
08/27/2013		0600 - 2200	
Position		Name	
5. Incident Commander and Command Staff			
Incident Commander			
Deputy IC		Pete Duncan	
Liaison			
Safety Officer		Jeff Barnhart / Dave Kirste	
Information Officer		Jenny Lynn Bruner / Kathy Harding	
6. Agency Representative			
Agency		Name	
Agency Admin			
Agency Admin Rep			
FS Cultural Rep			
Lead Resource Advisor			
County Sheriff			
Cal Fire			
Klamath Community Liaison			
Hoopa Tribal Chair			
Karuk Tribal Rep			
Hoopa Agency Rep			
7. Planning Section			
Chief			
Deputy		Valery Lambeth / Bob Patton (t)	
Resources Unit			
Situation Unit			
Documentation Unit			
Demobilization Unit			
Fire Behavior Unit			
Long Term Fire Analyst			
Incident Meteorologist			
Technical Specialist			
Training Specialist			
Lead Resource Advisor		Kelby Witherspoon (Salmon Fire)	
Status Check-In			
Human Resource Advisor			
9. Finance Section			
Chief			
Deputy Chief		Lois Charlton	
Personnel Time Unit			
Equipment Time Unit			
Cost Unit			
Compensation / Claim Unit			
IBA-Yreka		Lola Capp / Kathy Griffin	
8. Logistics Section			
Chief		Brett Shurr / Pat Howard (t)	
Deputy		Michael Burchard	
Supply/Ordering Unit		Cory Hoogendam	
Facilities Unit		Frank DelCarlo / Keith Harrington	
Ground Support		George Price	
Receiving & Distribution		Chris Combs / Alex Jimenez(t)	
Medical Unit		Claudia Kutscher	
Communications Unit		Phil Shafer / Keith Brown	

Prepared by: Chris Wikeen-RESL



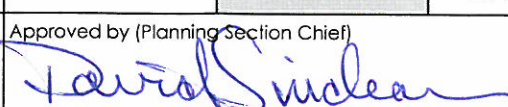
<b>DIVISION ASSIGNMENT LIST</b>			1. Branch <b>I</b>		2. Division/Group <b>A/D</b>		
3. Incident Name <b>Forks Complex</b>			4. Operational Period <b>DAY OPERATIONS</b>				
			Date: 08/27/2013		Time: 0600 – 2200		
5. Operations Personnel							
Operations Chief	Robin Wills/Curtis Coots(t)			Division/Group Supervisor		Mike Work	
Deputy Operations							
Branch Director	Dave Pereira			Air Operations		Dustan Mueller (t)	
6. Resources Assigned this Period							
Strike Team/Task Force/ Resource Designator	Leader	Last Shift	Number Persons	Trans. Needed	Drop Off PT./Time	Pick Up PT./Time	
S/T Butler #3		8/25-9/2	15	N	DP-2 / 0700	2000	
STEN (O-321)	James Jones	9/2	1	N	DP-2 / 0700	2000	
ENG6 Woods #27 (E-265)	Booker	8/31	3	N	DP-2 / 0700	2000	
DOZ2 w/LOWB Ken's #1 (E-12)	Mike Kelly/Richard Olson	8/29	2	N	DP-2 / 0700	2000	
FEMP (O-45)	Damen Snow	8/31	1	N	DP-2 / 0700	2000	
FEMT (O-82)	Elliott Rubin	9/1	1	N	DP-2 / 0700	2000	
READ (O-121)	Roberto Beltran	8/28	1	N	DP-2 / 0700	2000	
ARCHAEOLOGY READ (O-142)	Eric Bredemann	9/14	1	N	DP-2 / 0700	2000	
7. Control Operations							
<ul style="list-style-type: none"> <li>Patrol and hold the Salmon River Rd between the W/A break and DP 32.</li> </ul>							
8. Special Instructions:							
<ul style="list-style-type: none"> <li>Complete suppression repair.</li> <li>Red &amp; white stripe and orange and white stripe flagging denote area of resource concern. Directions of resource concern will be written on the flagging.</li> <li>Backhaul all hose, pumps, other excess equipment and trash.</li> <li>S/T Butler #3 AZ 570 (E-277), AZ 1975 (E-280), AZ E301 (E-275), Champion/MTR (E-282), NM Shiloh WF (E-279) and STEN Jones/STEN(t)Larson.</li> </ul>							
9. Division/Group Communication Summary							
Function	Frequency	Channel	Channel	Function	Frequency	System	Channel
Command	RX 162.1875 TX 172.5500	CMD 5	<b>5 Tone 3</b>	Tactical Division/Group D	RX 168.0500 TX 168.0500	TAC 2	<b>7</b>
Tactical Division/Group A	RX 166.7250 TX 166.7250	TAC 1	<b>6 Tone 3</b>	Air to Ground Command	RX 171.5375 TX 171.5375	A/G CMD	<b>13</b>
Prepared by (Resource Unit Leader)			Approved by (Planning Section Chief)			Date	Time
L. Charbonnier						8/26/13	2030

<b>DIVISION ASSIGNMENT LIST</b>		1. Branch <b>I</b>		2. Division/Group <b>B/C</b>			
3. Incident Name <b>Forks Complex</b>		4. Operational Period <b>DAY OPERATIONS</b> Date: <b>08/27/2013</b> Time: <b>0600 – 2200</b>					
5. Operations Personnel							
Operations Chief	Robin Wills/Curtis Coots(t)		Division/Group Supervisor		Ed Merrill / Dale Mendes (t)		
Deputy Operations							
Branch Director	Dave Pereira		Air Operations		Dustan Mueller (t)		
6. Resources Assigned this Period							
Strike Team/Task Force/ Resource Designator		Leader	Last Shift	Number Persons	Trans. Needed	Drop Off PT./Time	Pick Up PT./Time
HC T2IA Firestorm 1	(C-20)	Richard Sandidge	8/29	18	N	DP-2 / 0700	2000
HC1 Ukonom IHC	(C-8)	Keith Smith	8/28	20	N	DP-2 / 0700	2000
S/T YNP 5780C	(E-333)	Jason Wingard/Javier Gonzalez(t)	8/28	24	N	DP-2 / 0700	2000
ENG6 Grayback	(E-365)	Telly Martinez	9/2	3	N	DP-2 / 0700	2000
ENG6 Inbound	(E-366)	Adham Rowley	9/2	3	N	DP-2 / 0700	2000
DO22 w/lowboy J.A. Cook	(E-14)	John Cook	8/29	2	N	DP-2 / 0700	2000
HEQB	(O-384/O-5.35)	Willie Vance/Josh Ramey(t)	9/2	2	N	DP-2 / 0700	2000
TFLD	(O-381)	Craig Snider	8/27	1	N	DP-2 / 0700	2000
CHIPPER		TBA					
CHIPPER Diamond Fire	(E-33)	Dwayne Moore/Harley Tyrie	9/3	2	N	DP-2 / 0700	2000
READ	(O-140)	Terrah Owens	9/4	1	N	DP-2 / 0700	2000
LEAD READ	(O-62)	Chris Engelhardt	8/28	1	N	DP-2 / 0700	2000
ARCHAEOLOGY READ	(O-142)	Eric Bredemann	9/4				
FEMP	(O-44)	Scott Wilcox	8/31	1	N	DP-2 / 0700	2000
FEMT	(O-13)	David Revollo	8/31	1	N	DP-2 / 0700	2000
SOFR	(O-46)	Matt Weinell	9/2	1	N	DP-2 / 0700	2000
7. Control Operations							
<ul style="list-style-type: none"> <li>Monitor fire activity in Nordheimer drainage.</li> <li>Mop up 100 feet where safe to do so.</li> </ul>							
8. Special Instructions:							
<ul style="list-style-type: none"> <li>Complete waterbarring hand line and dozer line.</li> <li>Bakhaul all hose, pumps, other excess equipment and trash.</li> <li>Red &amp; white stripe and orange and white stripe flagging denote area of resource concern. Directions of resource concern will be written on the flagging.</li> </ul>							
9. Division/Group Communication Summary							
Function	Frequency	System	Channel	Function	Frequency	System	Channel
Command	RX 162.1875 TX 172.5500	CMD 5	<b>5 Tone 3</b>				
Tactical Division/Group	RX 168.0500 TX 168.0500	TAC 2	<b>7</b>	Air to Ground Command	RX 171.5375 TX 171.5375	A/G CMD	<b>13</b>
Prepared by (Resource Unit Leader)		Approved by (Planning Section Chief)			Date		Time
L. Charbonnier					8/26/13		



<b>DIVISION ASSIGNMENT LIST</b>			1. Branch <b>I</b>		2. Division/Group <b>T/Z</b>		
3. Incident Name <b>Forks Complex</b>			4. Operational Period <b>DAY OPERATIONS</b> Date: <b>08/27/2013</b> Time: <b>0600 - 2200</b>				
5. Operations Personnel							
Operations Chief		Robin Wills / Curtis Coats(t)		Division Group Supervisor		Don Fregulia	
Deputy Operations				Air Operations		Dustan Mueller (t)	
Branch Director		Dave Pereira					
6. Resources Assigned this Period							
Strike Team/Task Force/ Resource Designator	Leader	Last Shift	Number Persons	Trans. Needed	Drop Off PT./Time	Pick Up PT./Time	
IHC Feather River (C-66)	Robert Daniels	9/5	20	N	DP7 / 0700	2000	
IHC Mendocino (C-46)	Jon Tishner	8/28	20	N	DP7 / 0700	2000	
Tallac Crew T2IA (C-68)	Aaron Grove	9/2	20	N	DP7 / 0700	2000	
ENG3 CO-Wescott 512 (E-194)	Brenden Hoglund	8/27	3	N	DP7 / 0700	2000	
ENG6 Eagle Cap (E-217)	Jeff Bery	9/4	3	N	DP7 / 0700	2000	
ENG6 Eye of the Eagle (E-220)	Weston Simmons	9/4	3	N	DP7 / 0700	2000	
ENG6 Young Logging (E-218)	Steve Rhea	9/5	3	N	DP7 / 0700	2000	
ENG6 A-Team #1 (E-219)	Schin Haakenson	9/5	3	N	DP7 / 0700	2000	
ENG6 CBD E 7601 (E-221)	Jay Flora	9/4	2	N	DP7 / 0700	2000	
WTT2 Cattlelack (E-77)	James Goldie	9/2	1	N	DP7 / 0700	2000	
TFLD (O-178)	Melanie Fullman	9/8	1	N	DP7 / 0700	2000	
SOFR (O-43)	Mark Munns	9/3	1	N	DP7 / 0700	2000	
Archeology READ (O-142)	Eric Bredemann	9/4	1	N	DP7 / 0700	2000	
REM#1	Kevin Wegener	8/30	4	N	DP-7 / 0700	2000	
FEMP (O-339)	Kevin Meineke	9/1	1	N	DP7 / 0700	2000	
FEMP (O-333)	Chris Harrison	8/31	1	N	DP7 / 0700	2000	
FEMT (O-338)	Adam Volmer	8/31	1	N	DP7 / 0700	2000	
FEMT (O-334)	Lorenzo Rocha	8/31	1	N	DP7 / 0700	2000	
7. Control Operations							
<ul style="list-style-type: none"> <li>Continue firing to Salmon River Road</li> <li>Continue to hold and mop up 100' where safe to do so.</li> <li>Construct direct handline and cold trail as needed.</li> </ul>							
8. Special Instructions							
<ul style="list-style-type: none"> <li>Back-haul all hose, pumps, other excess equipment, and trash.</li> </ul>							
9. Division/Group Communication Summary							
Function	Frequency	System	Channel	Function	Frequency	System	Channel
Command	RX 168.0750 TX 170.4250	CMD 1	<b>1 Tone 3</b>				
Tactical Division/Group	RX 167.1125 TX 167.1125	TAC 6	<b>11 Tone 3</b>	Air to Ground Command	RX 171.5375 TX 171.5375	A/G CMD	<b>13</b>
Prepared by (Resource Unit Leader) L. Charbonnier			Approved by (Planning Section Chief) <i>David Sinclair</i>			Date 8/26/13	Time 22:10



<b>DIVISION ASSIGNMENT LIST</b>		1. Branch <b>I</b>		2. Division/Group <b>REPAIR</b>			
3. Incident Name <b>Forks Complex</b>		4. Operational Period <b>DAY OPERATIONS</b>					
		Date: 08/27/2013			Time: 0600 - 2200		
5. Operations Personnel							
Operations Chief	Robin Wills / Curtis Coots(t)		Division/Group Supervisor		Daniel Lindley/Terry Eller(t)		
Deputy Operations							
Branch Director	Dave Pereria		Air Operations		Dustan Mueller (t)		
6. Resources Assigned this Period							
Strike Team/Task Force/ Resource Designator	Leader	Last Shift	Number Persons	Trans. Needed	Drop Off PT./Time	Pick Up PT./Time	
HC T2 North Pacific (C-69)	William Hughes	9/8	20	N	DP9 / 0700	2000	
DOZ2 Berryhill #713 (E-58)	Eric Durden	9/2	2	N	DP9 / 0700	2000	
GRADER Johnson (E-58)	Jack Hottendorf	9/1	2	N	DP9 / 0700	2000	
EXCAVATOR Berryhill (E-224)	Kim Berryhill		2	N	DP9 / 0700	2000	
EXCAVATOR	Billy Pery		2	N	DP9 / 0700	2000	
WTS2 White Logging (E-12)	Tom White		1	N	DP9 / 0700	2000	
WTS2 Johnson (E-13)	Dave Johnson	8/31	1	N	DP9 / 0700	2000	
CHIPPER - Firestorm	TBA		1	N	DP9 / 0700	2000	
HEQB	Walt Carter		1	N	DP9 / 0700	2000	
HEQB (E-333.7)	Leif Larson	8/28	1	N	DP9 / 0700	2000	
SOFR (O-88)	Steve Heine	9/1	1	N	DP9 / 0700	2000	
READ (O-306)	Kelby Witherspoon	8/28	1	N	DP9 / 0700	2000	
EMTP (O-10)	Nick Gabbard	8/30	1	N	DP9 / 0700	2000	
EMTP (O-11)	Eric Van Renselaar	8/30	1	N	DP9 / 0700	2000	
Heritage Consultants (O-169)	Albert Titus	8/28	1	N	DP9 / 0700	2000	
Heritage Consultants (O-292)	Franklin Donahue	9/6	1	N	DP9 / 0700	2000	
Heritage Consultants (O-254)	Phillip Courts	9/3	1	N	DP9 / 0700	2000	
7. Control Operations							
8. Special Instructions							
<ul style="list-style-type: none"> <li>Salmon divisions A/B/C/E/M/S was renamed Division R, in order to minimize confusion between Salmon River Complex and Butler Incident.</li> <li>Coordinate with READS and DIVS to implement suppression repair plan in Division R.</li> <li>Backhaul all hose, pumps, other excess equipment and trash.</li> </ul>							
9. Division/Group Communication Summary							
Function	Frequency	System	Channel	Function	Frequency	System	Channel
Command	RX 168.0750 TX 170.4250	CMD 1	<b>1 Tone 3</b>				
Tactical Division/Group	RX 168.6000 TX 168.6000	TAC 4	<b>9</b>	Air to Ground Command	RX 171.5375 TX 171.5375	A/G CMD	<b>13</b>
Prepared by (Resource Unit Leader)		Approved by (Planning Section Chief)			Date		Time
L. Charbonnier					8/26/13		

<b>DIVISION ASSIGNMENT LIST</b>			1. Branch <b>II</b>		2. Division/Group <b>H</b>			
3. Incident Name <b>Forks Complex</b>			4. Operational Period <b>DAY OPERATIONS</b> Date: 08/27/2013 Time: 0600 - 2200					
5. Operations Personnel								
Operations Chief		Robin Wills/Curtis Coots(t)		Division/Group Supervisor		Paul Johnson		
Deputy Operations								
Branch Director		Steve Burns		Air Operations		Dustan Mueller (t)		
6. Resources Assigned this Period								
Strike Team/Task Force/ Resource Designator		Leader		Last Shift	Number Persons	Trans. Needed	Drop Off PT./Time	Pick Up PT./Time
HC1 Redding IHC (C-64)		Dan Mallia		8/27	21	N	DP-45 / 0700	2000
HC1 Elk Mountain IHC (C-7)		Cheveyo Munk		8/28	20	N	DP-45 / 0700	2000
ENG6 Oregon Woods (E-48)		Byron Sumpster		9/3	3	N	DP-45 / 0700	2000
ENG5 Chewack (E-52)		Jarred Hodgson		9/6	3	N	DP-45 / 0700	2000
TFLD (t)/HEQB (O-60)		Benjamin Molitor		8/31	1	N	DP-45 / 0700	2000
TFLD (O-75)		Matt Lamb		9/3	1	N	DP-45 / 0700	2000
Archaeology READ (O-142)		Eric Bredemann		9/4	1	N	DP-45 / 0700	2000
SOFR (O-263)		Tim Stanton		8/28	1	N	DP-45 / 0700	2000
FEMP (O-111)		Scott Owen		9/2	1	N	DP-45 / 0700	2000
FEMT (O-123)		Brian Conn		9/2	1	N	DP-45 / 0700	2000
7. Control Operations								
<ul style="list-style-type: none"> <li>Continue to mop-up slop-over</li> <li>Monitor fire spread east of Orleans Mt and Granite Creek drainage</li> <li>Continue to construct direct handline and cold trail where needed</li> </ul>								
8. Special Instruction								
<ul style="list-style-type: none"> <li>Red &amp; white stripe and orange &amp; white stripe flagging denote area of resource concern. Directions of resource concern will be written on the flagging.</li> <li>Waterbar handline and dozer line as needed.</li> <li>Back-haul all hose, pumps, other excess equipment and trash.</li> </ul>								
9. Division/Group Communication Summary								
Function	Frequency	Channel Name	Channel	Function	Frequency	Channel Name	Channel	
Command	RX 168.0750 TX 170.4250	CMD 1	<b>1 Tone 3</b>					
Tactical Division/Group	RX 167.1125 TX 167.1125	TAC 6	<b>11 Tone 3</b>	Air to Ground Command	RX 171.5375 TX 171.5375	A/G CMD	<b>13</b>	
Prepared by (Resource Unit Leader) Chris Wikeen			Approved by (Planning Section Chief) <i>David Sinclair</i>			Date 8/26/13	Time 1844	







<b>DIVISION ASSIGNMENT LIST</b>			1. Branch <b>II</b>		2. Division/Group <b>W</b>			
3. Incident Name <b>Forks Complex</b>			4. Operational Period <b>DAY OPERATIONS</b> Date: <b>08/27/2013</b> Time: <b>0600 - 2200</b>					
5. Operations Personnel								
Operations Chief		Robin Wills / Curtis Coots(t)		Division/Group Supervisor		Randy Jennings		
Deputy Operations								
Branch Director		Steve Burns		Air Operations		Dustan Mueller (t)		
6. Resources Assigned this Period								
Strike Team/Task Force/ Resource Designator		Leader		Last Shift	Number Persons	Trans. Needed	Drop Off PT./Time	Pick Up PT./Time
HC2IA ASI Arden (C-31)		Jason Sare		8/29	20	N	DP-20 / 0700	2000
ENG6 NM 3062 (E-50)		Ray Ruiz		9/4	3	N	DP-20 / 0700	2000
WT2 AWD CJS WT9 (E-134)		Josh Ritchey		9/8	1	N	DP-20 / 0700	2000
WT2 Darrah logging (E-7)		Larry Pettes		9/2	1	N	DP-20 / 0700	2000
PUMP ECAM (E-161)		Mike Davis		9/8	1	N	DP-20 / 0700	2000
STEN (O-287)		Anthony Manning		9/2	1	N	DP-20 / 0700	2000
WILDLIFE READ (O-140)		Terrah Owens		9/4	1	N	DP-20 / 0700	2000
LEAD READ (O-62)		Chris Engelhardt		8/28	1	N	DP-20 / 0700	2000
ARCHAEOLOGY READ (O-142)		Eric Bredemann		9/4	1	N	DP-20 / 0700	2000
FEMP (O-109)		Davis Doty		9/2	1	N	DP-20 / 0700	2000
FEMP (O-108)		Mike Mallett		9/2	1	N	DP-20 / 0700	2000
SOFR (O-107)		Ray Miller		9/4	1	N	DP-20 / 0700	2000
7. Control Operations								
<ul style="list-style-type: none"> <li>Complete 200 feet of mop up where safe to do so</li> <li>Monitor fire activity in upper Butler Creek</li> </ul>								
8. Special Instruction								
<ul style="list-style-type: none"> <li>Red and white stripe and orange and white stripe flagging denotes area of resource concern. Directions of resource concern will be written on the flagging.</li> <li>Waterbar hand line and dozer line as needed.</li> <li>Back-haul all hose, pumps, other excess equipment, and trash.</li> </ul>								
9. Division/Group Communication Summary								
Function	Frequency	System	Channel	Function	Frequency	System	Channel	
Command	RX 170.4125 TX 165.9625	CMD 2	<b>2 Tone 3</b>					
Tactical Division/Group	RX 168.2000 TX 168.2000	TAC 3	<b>8</b>	Air to Ground Command	RX 171.5375 TX 171.5375	A/G CMD	<b>13</b>	
Prepared by (Resource Unit Leader)			Approved by (Planning Section Chief)			Date		Time
L. Charbonnier			<i>Dustin Mueller</i>			8/26/13		2035



# Forks Complex Incident Weather Forecast

FORECAST NO: 25 D  
PREDICTION FOR: Tuesday Day Shift  
SHIFT DATE: August 27<sup>st</sup>, 2013  
FORECAST ISSUED: 2100 August 26<sup>th</sup>, 2013

NAME OF FIRE: Forks Complex  
UNIT: SRF  
Incident Meteorologist: Bob Tobin  
Tom Clemmons(T)

WEATHER DISCUSSION: A Pacific Northwest trough will bring a southwest flow, near normal temperatures. A disturbance will move through on Thursday increasing the southwest flow. There will be a stronger upper low late in the weekend that will bring much cooler temperatures, an increase in RH, increasing chance of showers, and breezy southwest winds.

WEATHER FORECAST FOR TODAY (TUESDAY DAY SHIFT):

WEATHER: Patchy smoke and fog otherwise mostly sunny by afternoon.  
WIND (EYE-LEVEL): Valleys: Winds becoming Upslope/Upvalley 3 to 6 mph with gusts to 12 mph.  
Ridge Tops: Southwest 5 to 9 mph with gusts to 15 mph.  
MAX TEMPERATURES: 85 - 90F drainages, 67 - 79 ridges.  
MIN RH: 26 - 36% drainages, 37 - 47% ridges.  
LAL: 1 CWR: 0%

FORECAST TONIGHT (TUESDAY NIGHT SHIFT):

WEATHER: Patchy smoke and fog overnight otherwise mostly clear.  
MIN TEMPERATURES: 47 - 57F... warmest toward the ridges  
MAX RH: 70 - 95% drainages, 50 - 65% ridges.  
LAL: 1 CWR: 0%  
WIND (EYE-LEVEL): Valleys: Variable or Downslope/Downvalley 2 to 5 mph with evening gusts to 10 mph. Ridges: Southwest 3 to 6 mph with gusts 10 mph.

WEATHER FORECAST FOR WEDNESDAY:

WEATHER: Patchy smoke and fog otherwise mostly sunny.  
WIND (EYE-LEVEL): Valleys: Light winds becoming Upslope/Upvalley 4 to 7 mph gusts to 12mph.  
Ridge Tops: South - Southwest 7 to 11 mph gusts up to 18mph.  
MAX TEMPERATURES: 84 - 89F drainages, 68 - 80 ridges.  
MIN RH: 26 - 36% drainages, 40 - 50% ridges.  
LAL: 1 CWR: 0%

OUTLOOK FOR WEDNESDAY NIGHT AND THURSDAY:

WEATHER: Patchy smoke and fog. Increasing clouds becoming mostly cloudy in the afternoon.  
WIND (EYE-LEVEL): Valleys: Light drainage winds becoming Southwest 5 to 10 mph gusts to 15mph.  
Ridge Tops: South - Southwest 9 to 12 mph gusts up to 20 mph.  
MIN TEMPERATURES: 47 - 56F... warmest toward the ridges.  
MAX TEMPERATURES: 83 - 88F drainages, 66 - 78 ridges.  
MAX RH: 85 - 95% drainages, 45 - 55% ridges...ridge RH's remain steady through the day.  
MIN RH: 30 - 40% drainages.  
LAL: 1 CWR: 0%

EXTENDED OUTLOOK FRIDAY THROUGH SUNDAY:

WEATHER: Patchy smoke and fog in the mornings. Partly cloudy.  
WIND (EYE-LEVEL): Valleys: Light winds becoming Upslope/Upvalley 3 to 6 mph gusts up to 12 mph.  
Ridge Tops: South - Southwest 5 to 9 mph gusts up to 16 mph.  
MIN TEMPERATURES: 48 - 57F... warmest toward the ridges... 2 to 4 degrees cooler Sunday Morning.  
MAX TEMPERATURES: 81 - 86F drainages, 64 - 76 ridges... 5 degrees cooler Sunday.  
MIN RH: 21 - 31% drainages, 32 - 40% ridges... RH Trend up 10% to 15%.  
MAX RH: 75 - 95% drainages, 45 - 55% ridges... RH Trend up 5%.  
LAL: 1 CWR: 0%.....Sunday CWR: 30%



## FIRE BEHAVIOR FORECAST

**FORECAST NO.** 48

**UNIT:** CA-SRF

**PREDICTION FOR:** 8/27/13 Day

**NAME OF FIRE:** Forks Complex

**DATE & TIME ISSUED:** 8/26/13 2000

**SIGNED:** Jessica Wade-FBAN, John Wood-FBAN-(t)

---

**WEATHER AND FUELS SUMMARY:** *Morning fog.*

>> Max. Temps: Ridges – 85 to 90 drainages 67 to 79 ridges

>> Min. RH: 26 to 34% drainages; 37 to 47% ridges

>> Winds (Eye Level): Valleys upslope/up valley 3 to 6 Gusts 12 mph. Ridges Southwest 5 to 9 mph gusts up to 15 mph.

>> Probability of Ignition: Up to 70% in un-shaded areas.

>> 1000 hr fuels Avg. 8% (Measured in Div. F on 8-7-13). Manzanita, Avg. 108%. (measured in DIV K on 8/23/13).

>> Forecasted ERC 57 for Westside Klamath NF, (below Avg.)

---

**GENERAL FIRE BEHAVIOR:**

Conditions continue to be affected by the precipitation the fire received. High relative humidity will prevent fuels from drying out. Expect smoldering and creeping in sheltered areas. Under the canopy some creeping with open flame in the duff will be possible. Conditions will be good for mop up; it is likely that heavy fuels will need to be put out but they will not burn persistently. Fire spread will be best described as smoldering and some creeping may occur.

**SPECIFIC FIRE BEHAVIOR:**

**BRANCH I –**

Division A/B: Minimal fire behavior expected.

Division C: Very few smokes were visible in China Ck, or Nordheimer Ck. Visible smokes were burning heavy fuels. As the atmosphere warms and the fuels dry out towards the end of the week, the fire should become more active.

Division Z: Fine fuels in Jackass gulch were too moist to support burnout operations. By Wednesday the fuels might be dry enough to carry fire.

Division T: Very few smokes were visible on the division, mostly West and South of Tanner Peak

**BRANCH II -**

Divisions F, G, H, K & W: There were a few areas of concentrated heat, mostly in the areas burned two days ago. Other areas showed isolated heavy fuels burning on these divisions. Expect to see an increase in visible smokes as the fuels dry.

**Air Operations:** Fog and low clouds in the morning hours may impede flights early in the shift. Smoke from the Butler should not be a concern. After the morning fog burns off, the conditions will be favorable for aerial operations.

---

**SAFETY:** Fire weakened trees will continue to be a hazard as roots burn out. Ensure you are working in areas that have been assessed and determined safe for working.



INCIDENT RADIO COMMUNICATIONS PLAN			Incident Name <b>FORKS COMPLEX BRANCH I &amp; II</b>			Date/Time Prepared 08/26/13 1545 HRS.		Operational Period Date/Time DAY SHIFT 08/27/13 0600-2200	
Only frequencies listed on this 205 are authorized for use on this incident.					Hand programmers accept all responsibility for the use of unauthorized frequencies.				
Ch #	Function	Channel Name	Assignment	RX Freq N or W	RX Tone	TX Freq N or W	TX Tone	Mode	Remarks
1	COMMAND	CMD 1	ORLEANS LO	168.0750 N		170.4250 N	Tone 3 131.8	A	MAIN BODY OF FIRE
2	COMMAND	CMD 2	96 / 93 TRAVEL	170.4125 N		165.9625 N	Tone 3 131.8	A	TRAVEL ON 96 AND 93
3	COMMAND	CMD 3	ICP	163.0375 N		170.0250 N	Tone 3 131.8	A	ICP COMMUNICATIONS
4	COMMAND	CMD 4	ETNA / HELIBASE	164.7750 N		170.4625 N	Tone 3 131.8	A	ETNA SUMMIT
5	COMMAND	CMD 5	SOUTH	162.1875 N		172.5500 N	Tone 3 131.8	A	SOUTH END OF FIRE
6	TACTICAL	TAC 1	DIV A / G	166.7250 N		166.7250 N	Tone 3 131.8	A	NIFC TAC 5
7	TACTICAL	TAC 2	DIV B / C / D	168.0500 N		168.0500 N		A	NIFC TAC 1
8	TACTICAL	TAC 3	DIV E / W	168.2000 N		168.2000 N		A	NIFC TAC 2
9	TACTICAL	TAC 4	DIV F / R	168.6000 N		168.6000 N		A	NIFC TAC 3
10	TACTICAL	TAC 5	DIV K / STAGING	166.5500 N		166.5500 N	Tone 3 131.8	A	R5 TAC 4
11	TACTICAL	TAC 6	H / T / Z	167.1125 N		167.1125 N	Tone 3 131.8	A	R5 TAC 5
12			INACTIVE					A	INACTIVE
13	AIR TO GROUND	A / G CMD	BRANCH I & II A / G	171.5375 N		171.5375 N		A	AIR TO GROUND COMMAND
14			INACTIVE					A	INACTIVE
15	MEDIVAC	CALCORD	MEDICAL TACTICAL	156.0750 N		156.0750 N	Tone 6 156.7	A	MEDIVAC AIR COORDINATION
16	URGENT AIR CONTACT	AIRGUARD	ALL DIVISIONS	168.6250 N		168.6250 N	Tone 1 110.9	A	USE ONLY FOR URGENT AIRCRAFT CONTACT
Prepared by				Incident Location					
KENNETH EARLE / PHIL SHAFER, COM1 NORCAL TEAM #1				ORLEANS, CA					
ICS 205				LAT: N37 19.23 LONG: W122 02.42					
MODE: A - ANOLOG, D - DIGITAL									

**INCIDENT RADIO COMMUNICATIONS PLAN**

Incident Name  
**FORKS COMPLEX IA Group**

Date/Time Prepared  
08/26/13 1457 HRS.

Operational Period Date/Time  
DAY 08/27/13 0600-2200

Only frequencies listed on this 205 are authorized for use on this incident.

Hand programmers accept all responsibility for the use of unauthorized frequencies.

**ALL TONES IN THIS GROUP ARE USER SELECTED**

Ch #	Function	Channel Name	Assignment	RX Freq N or W	RX Tone	TX Freq N or W	TX Tone	Mode	Remarks
1	KNF DISPATCH	KNF	FOREST OPS	164.1750N		164.9750N	CG	A	ROUTINE TRAFFIC, T5 ORLEANS PK
2	KNF IA DISPATCH	KNF SAM	I/A RESOURCES	171.50000N		172.4000N	CG	A	TONES 5,6
3	KNF DISPATCH	KNF RIVER	FOREST OPS	172.2500 N		171.550 N	CG	A	TONES 2, 7 OR 10
4	SRF DISPATCH	SRF	FOREST OPS	168.7250N		170.1250N	CG	A	TONES 5,6,7 AND 13
5	HOOPA FIRE RPT	HIA	AS NEEDED	155.3850N		150.8050N	CG	A	ZONE 6
6	SISKIYOU DISPATCH	SKU-L 1	SKU OPS	151.3250 N		159.3600 N	CG	A	ZONE 6
7	HUMBOLT	HUU OPS	OPERATIONS	151.2500 N		159.4050 N	CG	A	ZONE 11&13
8	NIFC TAC 1	NIFC TC1	I/A TAC	168.0500 N		168.0500 N		A	
9	NIFC TAC 2	NIFC TC2	I/A TAC	168.2000 N		168.2000 N		A	
10	NIFC TAC 3	NIFC TC3	I/A TAC	168.6000 N		168.6000 N		A	
11	FS AIR / GND PRI	FS A/G PRI	ALL DIVISIONS	167.6000 N		167.6000 N		A	
12	FS AIR / GND SEC	FS A/G SEC	ALL DIVISIONS	166.8750 N		166.8750 N		A	
13	UNASSIGNED								UNASSIGNED
14	AIR TO GROUND	CDF A / G	AS NEEDED	151.2200 N		151.2200 N		A	
15	MEDICAL	CALCORD	MEDICAL TACTICAL	156.0750 N		156.0750 N	T6 156.7	A	
16	URGENT AIR CONTACT	AIRGUARD	ALL DIVISIONS	168.6250 N		168.6250 N	T1 110.9	A	USE ONLY FOR URGENT AIRCRAFT CONTACT

Prepared by

Ken Earle, Phil Shaffer COM1 NORCAL 1

Incident Location

MODE: A - ANOLOG, D - DIGITAL  
ORLEANS, CA

# BUTLER FIRE PHONE LIST

As of 8/25/2013

## Incident Commander & Staff

Position	Name	PHONE #	Cell/PHONE # or other	FAX
NIMO Incident Commander	Quesinberry	877-230-9500	Cell 925-549-9420	
Incident Commander	Minton	No #	Cell 925-549-9417	
NIMO Safety	Terri Knauth	877-234-2477	Cell 925-549-9428	
Safety	Tanzi/Kirste	877-234-2477	Cell 925-549-9428	
Information	Downing/Mackensen	877-366-6008 877-365-6423 877-375-2226	Cell 925-549-9427	
Liaison Officer	Swartzlander	877-230-9500	Cell 925-549-9429	
Human Resources	Gonzalez	877-328-4522	Cell 925-549-9423	

## Operations

Planning Ops	Wills/Stevens(t)	877-354-2815		
Air Ops.	Mueller	877-353-6938		
Helibase	Bernardy	530-625-4617		

## Planning

NIMO Plans Chief	Schwillig	877-231-8599	Cell 925-549-9430	
Plans Chief	Sinclear	877-354-9003	Cell 925-549-9421	
Planning Ops	Wills	877-231-8599	Cell 925-549-9426	
Situation Unit	Taylor /Olds	877-354-9003		
Check-In / Demob	Dumlao	877-367-1232		800-618-3707
Demob	Deboi	877-367-9503		800-618-3707
IMET	Tobin/Clemmons	877-368-2325		
Fire Behavior Analyst	Wade/Wood	877-368-2325		
Computer Techs / Resources	Steel	877-336-0460		
Training Specialist	Smith	877-342-8962	Medical 877-356-8984	FAX same as MedL phone- call 1st

## Logistics

Logistics Chief	Jellison	877-262-1573		
NIMO Logistics Chief	Brown	877-262-1573		
Supply / R & D	Sheets	877-321-2494		
Ordering	Lake	877-321-2494		800-617-4920
Facilities	Huhtala	877-354-6006		No FAX
Ground Support / Repair	Zabel	925-549-9431	925-549-9431	addl cell760-646-5747
Communications	Earle	Disp 877-325-0366	COML 877-321-4510	INCM 877-325-6905
Medical Unit	Thomas	877-356-8984		
Security	Nolde	Call Facilities @ 877-354-6006		
Food Unit	Westlake	877-354-6006		

## Finance

Finance Section Chief	Corkill/Palmer	877-253-6892		
Personnel Time	Ammon	877-236-7216		FAX 800-881-2790
Equipment Time/Cost	Griffith	877-235-0564		
Comp & Claims	Valdez	877-234-2477		
GIS	Felker/House	No Phone yet		

## Other Important Numbers

Expanded YICC		530-841-4611	530-841-4612	
Fortuna Dispatch (fs)		days 707-726-1266	nights 707-726-1281	
Co. Sheriff 24 hrs			530-625-5014	
Co Roads			707-445-7491	
Yreka Dispatch (fs)			ROUTINE CALLS 530-841-4600	EMERGENCY ONLY 530-842-3515
CHP 24 hrs			707-266-2000	
Hoopla Police			530-625-4211	
Cal - Trans 24 hrs			707-445-6600	
Fire Dawg Clerical-Butler	530-625-4059			
Tosiers Clerical -Salmon Complex	Gail Tosier	530-592-8550		530-467-1536

## Forks Camp

Dep IC	Pete Duncan	530-462-1520		
Medical	Claudia Kutscher	530-462-1518		
Logistics	Shurr/Howard(t)	530-462-1523		
Finance	Lois Charlton	530-462-1514		
Facilities / Info	Frank Decarlo	530-462-1519	INFO Kathy Hardy	
Plans Chief	Valery Vambeth	530-462-1520/1		
Plans Chief (t)	Bob Patton	530-462-1516		
Operations	Lane/Coots(t)	530-462-1516		



# AIR OPERATIONS SUMMARY PREPARED BY: Dustan Mueller

PREPARED DATE/TIME: 8/26/13 1900

1. INCIDENT NAME: Forks Complex

2. OPERATIONAL PERIOD DATE: 8/27/13

START TIME: 0600

END TIME: 2200

SUNRISE: 0636 SUNSET: 1956

3. REMARKS (Safety Notes, Hazards, Air Operations Special Equipment, etc.):  
 \*\* Name Change/Freq Change. Use Forks A/G for all aerial mission in TFR. 171.5375  
 Watch for wires in the Salmon river canyon.  
 Beware of rapidly changing VFR conditions due to smoke, and Wx  
 Avoid no-fly zone over Orleans unless unsafe starting 8/20/13.

4. MEDEVAC A/C:  
 H-7PA  
 I.A A/C: H-502

5. TFR: 3/9102  
 Altitude: 11,000' MSL  
 Center point: 41 20.35 N  
 123 15.10 W  
 Frequency: 120.0250


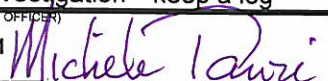
6. PERSONNEL	Phone	7. FREQUENCIES	AM	FM	8. FIXED-WING	# Avail / Type/ Make-Model / FAA N# / Base(s)
AOBD Trainee: Dustan Mueller	877-353-6938 530-260-1278	TFR A/A	120.0250		Airtankers	Airtankers available upon request of Air Attack.
ATGS: Carl Piper Trainee: Rico Gonzalez	530-295-7273 530-605-6376	AIR/ AIR RW	132.2750		Leadplanes Base FAX #:	Lead/ASM's available upon request of Air Attack
ASGS: Sean Cox ASGS: Steve Beall	530-409-2363 530-598-6755	AIR/ AIR FW Air Tactics		163.1500		
HEBM: Bill Lampert HEBM T: Joel Torres HLCO: Bill Palmer	530-598-4128 530-598-9323 828-273-9255	AIR/ GROUND Forks A/G:		171.5375		
Scott Valley Helibase:	530-468-1294 530-468-5495 530-598-4132	COMMAND Rx: Tx:		168.0750 170.4250 t-3	ATGS Aircraft	AA-1176Z
H-503, Jim Gould Helibase Fax:	530-468-2118	DECK		163.100		
Air Ops Desk ICP:	877-353-6938				Other	

## 9. HELICOPTERS (Use Additional Sheets as Necessary)

FAA N#	TY	MAKE/MODEL	BASE	AVAIL	START	REMARKS	FAA N#	TY	MAKE/MODEL	BASE	AVAIL	START	REMARKS
H-503	3	Bell 407	Happy Camp	0700	0800	PSD Recon	H-502	2	Bell 205	Scott Vly	0700	0800	Cargo/Bucket/Pax Rappel
H-407PA	3	Bell 407	Scott Vly	0700	0800	All Missions Short Haul W/EMT							
H-514	2	Bell 212HP	Scott Vly	0700	0800	Cargo/Bucket/Pax PSD							

10. TASK/MISSION/ASSIGNMENT (Type/Function includes: Air Tactical, Retardant, Recon, Personnel Transport, Water Dropping, S&R, etc.)

TYPE/FUNCTION	NAME OF PERSONNEL OR CARGO (if applic) OR INSTRUCTIONS FOR TACTICAL AIRCRAFT	MISSION START	FLY FROM	FLY TO
(1) Bucket Support	As needed through Air Attack, HLCO, or Air Operations	TBA	Scott Vly	Butler Fire
(2) Backhaul	Salmon fire backhaul	1100	H-4 Salmon	Blue Sling
(3) Reconnaissance	Operations. As visibility allows.	TBA	Scott Vly Woolley H-10	
(4) Klump Pump Removal	Salmon Fire	TBA	H-4 Salmon	Blue Sling
	*** For Medevac purposes refer to the IAP***			
KNF/SRF IA	Support as requested. All support needs to be approved by air ops.			
	*** H 407PA available for all Missions. For Short Haul within Forks TFR use local helicopter ordering protocol. Robert Dauphinais Manager 928-266-5633			
	***** All requests for logistical and tactical support must go through Air Attack if they are over the fire*****			

<b>MEDICAL PLAN</b>	1. INCIDENT NAME Forks Complex	2. DATE PREPARED 8/26/2013	3. TIME PREPARED 2000 Hrs	4. OPERATIONAL PERIOD <b>0600-2200</b> <b>08/27/2013</b>							
	5. INCIDENT MEDICAL AID STATIONS										
MEDICAL AID STATIONS		LOCATION		PARAMEDICS							
				YES	NO						
Frontline Medical		ICP next to kitchen		X							
Fork Medical Unit		Salmon Medical Unit at Salmon Camp		X							
FEMP Snow & FEMT Rubin		Div A,D or as directed by Safety and Operations		X							
FEMP Wilcox & FEMT Revollo		Div B,C or as directed by Safety and Operations		X							
FEMP Owen & FEMT Conn		Div H or as directed by Safety and Operations		X							
FEMP Bristow		Div K or as directed by Safety and Operations		X							
FEMP Mallett & FEMP Doty		Div W or as directed by Safety and Operations		X							
FEMP Volmer & FEMT Mineke		Div T,Z or as directed by Safety and Operations		X							
FEMP Harrison & FEMT Rocha & REM 1		Diz T,Z or as directed by Safety and Operations		X							
FEMP Gabbard & FEMP Van Renselaar		Repair Group, or as directed by Safety and Operations		X							
6. TRANSPORTATION											
A. AIR RESOURCES											
NAME		ADDRESS		PHONE							
				PARAMEDICS							
				YES	NO						
NPS H- 7PA - Short Haul Capable 150' to 250'		Scott Valley Helibase, Scott Valley, Ca 96027		Air Ops. (877) 353-6938							
					X						
CalFire 102- (Hoist) Daylight hrs only		Kneeland, CA		YICC (530) 842-3515							
					X						
REACH- (Non-Hoist) NVG Capable		3775 Flight Ave. Redding, Ca. 96003		YICC (530) 842-3515							
				RN/ Medic							
PHI Air Medical -(Non-Hoist) NVG Capable		1524 East St. Redding , Ca 96003		YICC (530) 842-3515							
				RN/ Medic							
CANG H820-(Hoist, day or night) NVG Capable		Redding Airport		YICC (530) 842-3515							
				X							
B. INCIDENT AMBULANCES											
NAME		LOCATION		PARAMEDICS							
				YES	NO						
Arcata Ambulance 4		Available @ Red Bank Camp Ground Sawyer Bar Road		X							
City Ambulance 4		Available Forks ICP		X							
7. HOSPITALS											
NAME		ADDRESS		TRAVEL TIME		PHONE		HELIPAD		BURN CENTER	
				AIR		GRND					
								YES		NO	
St Joseph Hospital		2700 Dolbeer Eureka, Ca. N 40 47.02 / W 124 8.48		20 M		2.5 H		707-445-8121 #2		X	
										X	
Fairchild Medical Center		444 Bruce St. Yreka, CA N41 43.13 W122 38.69		20M		2.5 H		530-842-4121		X	
										X	
Mercy Medical Center Level 2 Trauma		2175 Rosaline Ave. Redding, Ca N 40 34.13 / W 122 23.67		50M		3 H		530-225-7201		X	
										X	
UC Davis Medical Ctr. Level 1 Trauma		2315 Stockton Blvd. Sacramento, Ca. N 38 33.17 / W 121 27.05		1.5H		6.5 H		916-734-3636		X	
										X	
8. MEDICAL EMERGENCY PROCEDURES											
IN-CAMP CARE						LINE EMERGENCIES					
<ul style="list-style-type: none"> <li>Minor Injuries or illnesses <ul style="list-style-type: none"> <li>Seek Aid directly at the Frontline Medical Unit, report all injuries or illnesses to supervisor</li> <li>Unit Open 0600 hrs to 2200 hrs</li> </ul> </li> <li>Moderate to Severe Injuries or Illnesses <ul style="list-style-type: none"> <li>Contact Communications directly</li> <li>Med Unit staffed after hours for Emergencies</li> </ul> </li> </ul>						<ul style="list-style-type: none"> <li>Start of shift: notify your Div Sup of EMT's and equipment you have available for response if needed.</li> <li>Contact Communications and declare a medical emergency on command</li> <li>Closest DIVS or designee responds to incident <ul style="list-style-type: none"> <li>Closest SOFR/EMT's respond to assist w/care</li> <li>Use attached Injury or Incident Comm. Protocol</li> <li>If ambulance (ground or air) delayed designate rendezvous site and move towards it</li> <li>Secure scene for investigation—keep a log</li> </ul> </li> </ul>					
ICS 206 8-78		9 PREPARED BY (MEDICAL UNIT LEADER) R. Reginato MEDL(t) 				10 REVIEWED BY (SAFETY OFFICER) M. Tanzi SOF1 					



# Injury or Incident Communications Protocol

Time: \_\_\_\_\_ Date: \_\_\_\_\_ On Scene POC: \_\_\_\_\_

Declare: Medical Emergency \_\_\_\_\_ or Non-Emergency Medical \_\_\_\_\_

Number of injured: \_\_\_\_\_ Type of injury: \_\_\_\_\_

Patient Location: \_\_\_\_\_ Lat: \_\_\_\_\_ Long: \_\_\_\_\_ Elevation: \_\_\_\_\_

Best transport method: (see matrix below) Air Ambulance Ambulance Helicopter Vehicle

Any special equipment required: (SKED, Wheeled Stokes, Backboard, etc.) \_\_\_\_\_

Closest pick up point (DP, Helispot) \_\_\_\_\_

LOC \_\_\_\_\_ Resp. \_\_\_\_\_ Pulse \_\_\_\_\_ BP \_\_\_\_\_ Weight \_\_\_\_\_

Medical History/Allergies \_\_\_\_\_

On Scene Medic: \_\_\_\_\_

## Air Transportation Triage

## Coordinate with Air Ambulance on Cal-Cord (Ch: 15)

	Air Ambulance	Ground Transport
<b>Mechanism</b>	Struck by tree Fall of 10' or more Snake bite with pain and swelling Insect bite with shortness of breath Signs of heat stroke (hot, dry, disoriented) Burn Injury greater than 1% body area	Minor dehydration Cut or laceration with bleeding controlled Minor bites and Stings Minor burns
<b>Area Injured</b>	Significant Blunt or Penetrating Trauma to Head, Neck, Chest, Abdomen or pelvis Any Arm or Leg fracture	Minor blunt trauma Minor penetrating trauma Extremity sprains and strains
<b>Symptoms</b>	Disoriented Chest Pain <u>or</u> Shortness of Breath Weak or absent radial pulse Pale, cold and sweating	Alert and oriented No shortness of breath Good pulses

Medivac Sites (WGS 84 datum) use Degrees, Decimal Minutes (Lat 00° 00.000' – Long 00° 00.000')

Forks Camp - N 41°15.553 / W 123°19.650

DP- 34 Div. C- N 41°12.896 / W 123°16.759

H 11 – N 41°15.182 / W 123°18.963

DP-39 Div. E- N 41°10.847/ W 123°22.445

### If air or ground ambulance is DELAYED:

**DO NOT DELAY** in Packaging and transporting the patient to rendezvous with the Ambulance.

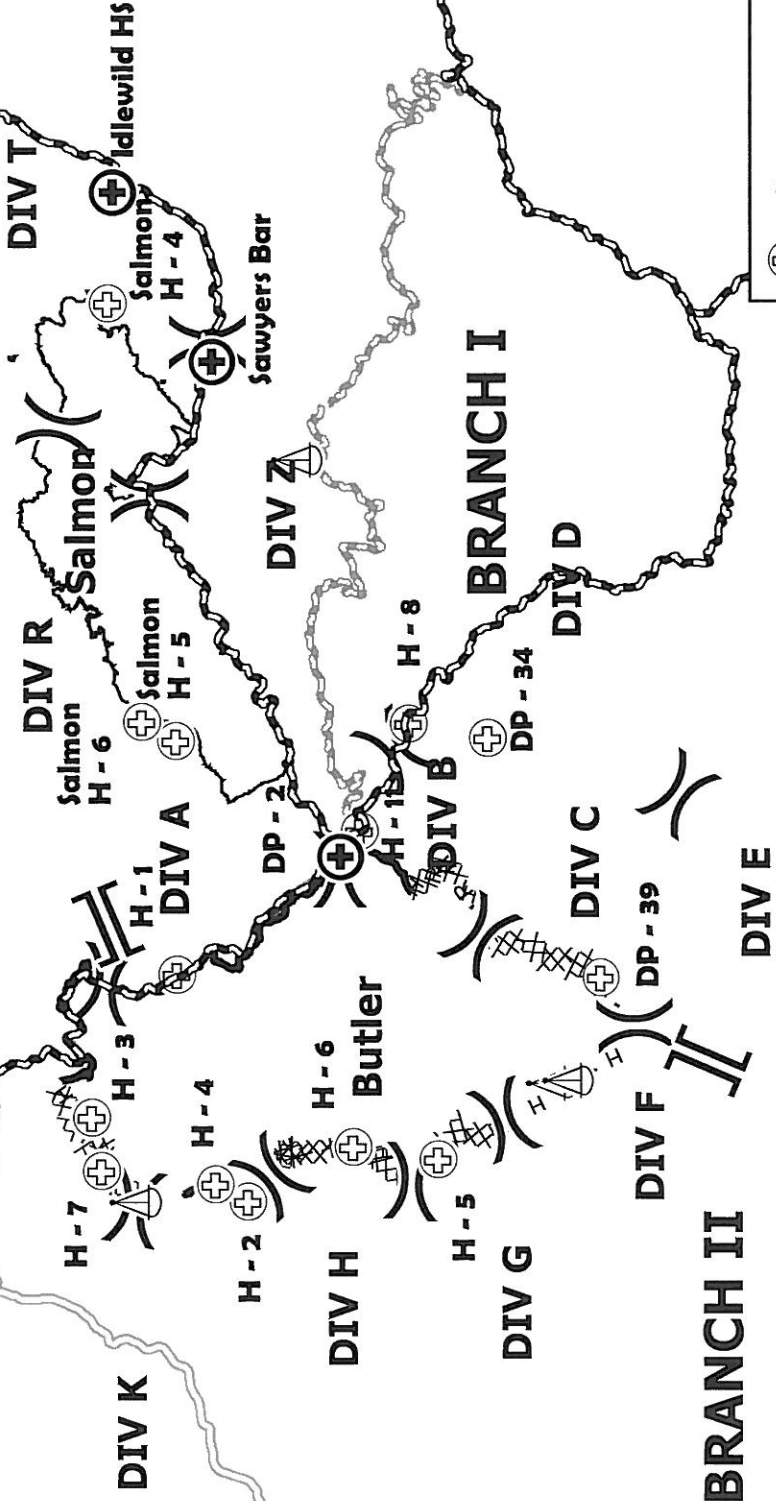
Re-route EMS helicopter to rendezvous point as appropriate.

### When declaring an “Incident within the Incident”

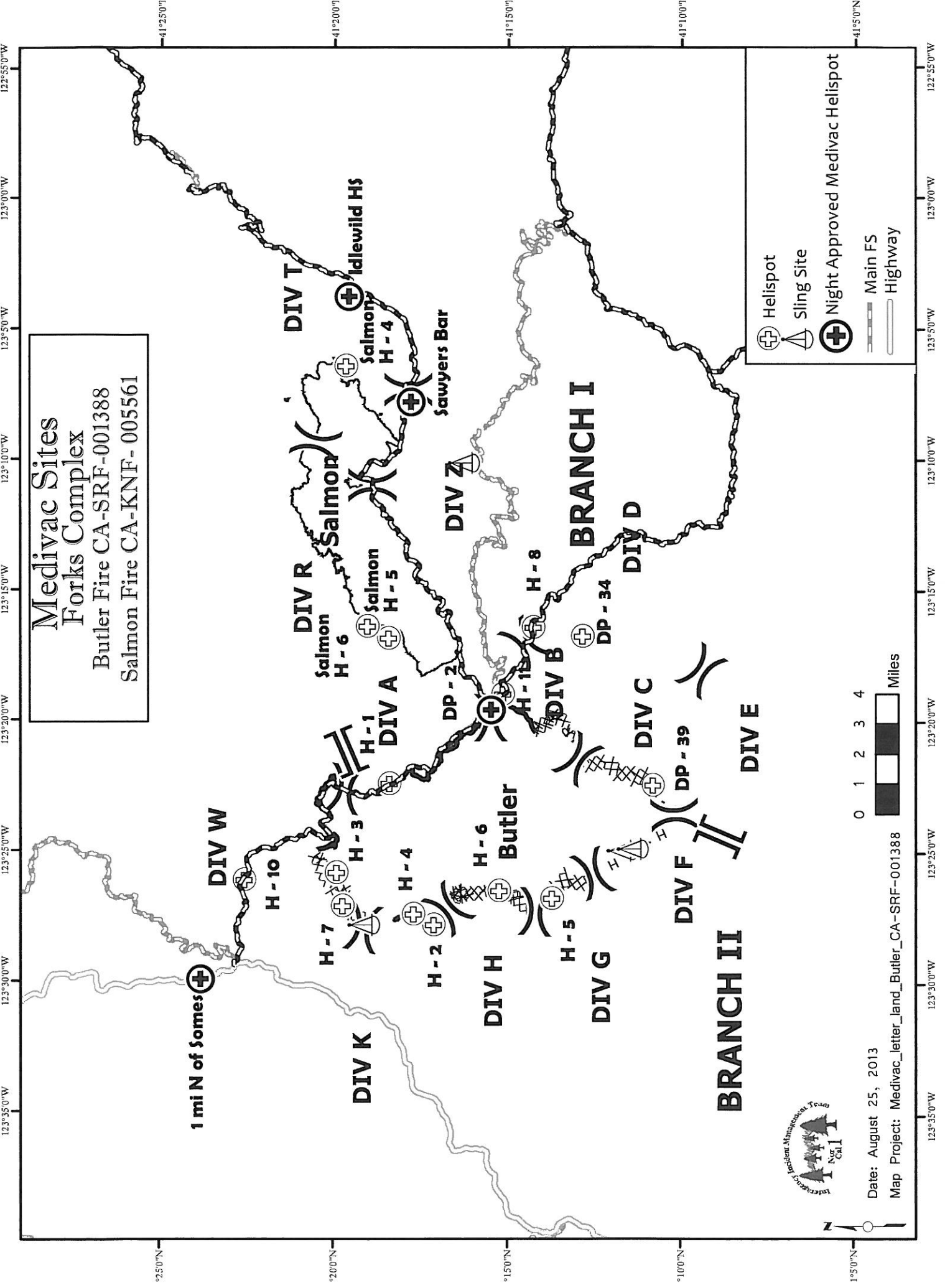
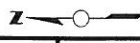
The closest DIVS or designee will respond to manage the incident. They are responsible for giving an accurate size up, ensuring scene safety, setting priorities and initiating an appropriate response. The closest Safety Officer and Line EMS will respond to the scene to assist. The Safety Officer will secure the site and begin initial investigation when situation is stabilized.

**Medivac Sites**  
**Forks Complex**  
 Butler Fire CA-SRF-001388  
 Salmon Fire CA-KNF-005561

1 mi N of **Somes** ⊕



Date: August 25, 2013  
 Map Project: Medivac\_letter\_land\_Butler\_CA-SRF-001388



Medivac Sites

Site	Latitude	Longitude
1 Mi N of somes	41° 23.857' N	123° 29.919' W
Cecilville	41° 08.45' N	123° 08.14' W
Forks of the Salmon / DP 2	41° 15.490' N	123° 19.490' W
Sawyers Bar	41° 17.84' N	123° 07.82' W
Idlewild	41° 19.61' N	123° 03.78' W
Etna Parkway	41° 27.84' N	122° 53.45' W
DP - 34	41° 12.896' N	123° 16.759' W
DP - 39	41° 10.847' N	123° 22.445' W
H - 1	123° 22.420' W	41° 18.449' N
H - 2	123° 27.803' W	41° 17.159' N
H - 3	41° 19.949' N	123° 25.809' W
H - 4	41° 17.747' N	123° 27.402' W
H - 5	41° 13.759' N	123° 26.776' W
H - 6	41° 15.266' N	123° 26.500' W
H - 7	41° 19.764' N	123° 27.102' W
H - 8	41° 14.299' N	123° 16.410' W
H - 10	41° 22.600' N	123° 26.100' W
H - 11	41° 15.182' N	123° 18.963' W
Salmon H - 4	41° 19.71' N	123° 6.44' W
Salmon H - 5	41° 18.482' N	123° 16.843' W
Salmon H - 6	41° 19.09' N	123° 16.382' W

As of 8/26/2013



**INCIDENT RISK ANALYSIS – Forks Complex  
(ICS 215A) Day Shift**

DIV	HAZARDOUS ACTIONS / CONDITIONS	MITIGATIONS / WARNINGS / REMEDIES	
All	Communications	<ul style="list-style-type: none"> <li>• <b>Ensure you have the current clone before heading out to your work area.</b></li> <li>• TEST your radio before you leave camp to ensure you have comms, then TEST again when you arrive at your work area.</li> </ul>	
R	Heavy Equipment	<ul style="list-style-type: none"> <li>• Stay at least 100' in front or 50' behind the equipment</li> <li>• <b>Have eye to eye contact with operator</b>, all implements have been lowered to the ground, and equipment is idled down <b>before approaching</b>.</li> <li>• Avoid working below equipment where rolling material could jeopardize your safety.</li> <li>• Equipment operators have a difficult time seeing ground personnel; take responsibility for your safety and all those around you</li> </ul>	
All	<u>DRIVING HAZARDS</u> Very Narrow, Steep, Wet or Dry, Dusty & Soft Shoulders	<ul style="list-style-type: none"> <li>• <b>SEAT BELTS ON.....BEFORE wheels turn!</b></li> <li>• <b>Use a backer when backing in an area that is congested with vehicles, personnel or hidden objects.</b></li> <li>• Reduce driving speeds to allow for reaction time lag.</li> <li>• Establish one-way traffic or coordinate traffic flow if necessary.</li> <li>• Drive Defensively! <b>Expect the unexpected around every curve.</b></li> <li>• When meeting oncoming traffic at night, come to a controlled stop. Turn headlights to running lights; assist other vehicle in backing to a safe place to allow safe passage around vehicle.</li> </ul>	
All	Cumulative Fatigue	<ul style="list-style-type: none"> <li>• Monitor crews for signs of cumulative fatigue: poor decision making, easily distracted, reduced situational awareness, short tempered</li> <li>• Ensure you &amp; your crews receive adequate rest, nutrition &amp; hydration. Take frequent breaks, drink plenty of fluids and snack often throughout your shift to keep your body re-fueled.</li> </ul>	
All	Hazard Trees, Fire Weakened Trees & Snags	<ul style="list-style-type: none"> <li>• Scout work area for overhead hazards to ensure safe work areas.</li> <li>• Identify and communicate hazard to personnel. Mitigate using qualified personnel only.</li> <li>• Re-assess the need to eliminate the hazard by felling if it is feasible to keep personnel away</li> <li>• <b>If unable to mitigate hazard, Flag Off area, communicate the location &amp; keep personnel away.</b></li> </ul>	
Z	Firing Operations	<ul style="list-style-type: none"> <li>• <b>Know the plan! Know who's in charge! Know the Plan!</b></li> <li>• Conduct thorough briefing for all personnel (inside rear cover IRPG).</li> </ul>	
Salmon River Rd & Sawyers Bar Rd	Debris & Rock Slides	<ul style="list-style-type: none"> <li>• Burn scars will cause loosening of soils, rocks, and trees causing debris/rocks in roadways. As you travel, expect the unexpected around every curve.</li> <li>• NO vehicle traffic between Forks ICP and Salmon Base Camp on Salmon River Rd, and Salmon Base Camp and Sawyers Bar if raining without a safety assessment.</li> </ul>	
All	Environmental Hazards	<ul style="list-style-type: none"> <li>• Keep alert for wildlife, insects, and plants. Watch footing and hand placement around rocks.</li> <li>• Keep food out of tents and from around sleeping areas to prevent wildlife night visits.</li> <li>• <b>Personal hygiene is #1 when it comes to Camp Crud &amp; Poison Oak Prevention</b></li> <li>• Wash your hands often. Use a hand sanitizer if water is un-available.</li> </ul>	
All	Extremely Steep Terrain & Rolling Materials	<ul style="list-style-type: none"> <li>• Concentrate on your footing placement; take your time.</li> <li>• Ensure adequate spacing between crewmembers so they can react to dislodged debris.</li> <li>• Post lookouts to warn of rolling debris. <b>SHOUT out to warn others</b></li> <li>• Look Up, Down and Around Frequently.</li> </ul>	
Branch 1	Mine Shafts & Adits	<ul style="list-style-type: none"> <li>• Abandoned mine shaft openings and vent holes. Identify, Flag area, Make known to personnel.</li> <li>• Keep heavy equipment clear of area.</li> <li>• Hazardous Materials and explosives can often be found around mine sites.</li> </ul>	
IA	Initial Attack	<ul style="list-style-type: none"> <li>• Ensure risk management has been reviewed &amp; LCES is in place before taking action on a new start. Page 1 in IRPG,</li> <li>• <b>Know IA frequencies...</b></li> </ul>	
All	Hydration	<ul style="list-style-type: none"> <li>• <b>Pre-hydrate, Re-hydrate to keep from DEHYDRATING</b></li> <li>• <b>Dehydration is PREVENTABLE</b></li> <li>• Be alert for signs of heat illness in yourself and others.</li> <li>• Drink 2 to 1 water to sports drinks.</li> </ul>	
INCIDENT NAME: <b>Forks Complex</b>  ICS 215a	DATE PREPARED: <p align="center"><b>August 26, 2013</b></p>	OPERATIONAL PERIOD <b>Day Shift 08/27/13</b> <b>0600-2200</b> Prepared by: R.Kafka SOF2(T), M. Tanzi SOF1	
	TIME PREPARED: <b>2000 HOURS</b>		



Today's discussion is from the  
First Aid/Health Category.

### Fatigue/Stress

Accumulated (Chronic) Fatigue is defined as fatigue from which normal rest does not produce recovery. Accumulated fatigue is often caused by extended periods of stress with inadequate recovery periods, which results in decreased productivity, compromised immune function, and reduced alertness. Fatigued workers perform poorly, behave carelessly, tolerate greater errors and become inattentive. Chronic fatigue often results in increased stress, which may present itself through certain behavioral and physiological indicators, such as those described below:

- Behavioral indicators
  - Decreased motivation and low morale
  - Increased irritability and depression
  
- Physiological indicators
  - Confused, poor problem solving
  - Poor abstract thinking
  - poor attention/decisions
  - poor concentration/memory
  - extreme emotional responses
  - social/behavioral changes
  
- Recommendations for chronic fatigue/stress are:
  - Take longer periods of rest/recovery
  - Ensure that workers are adequately rested before they begin work shifts
  - Provide periodic rest breaks to allow physical and mental recovery
  - Alternate between heavy and light tasks
  - Eat well-balanced meals regularly, with energy supplements during periods of high exertion
  - Maintain hydration
  - Ensure workers maintain good personal hygiene
  - Maintain high standards of physical fitness and work capacity
  - In extreme cases, personnel may need to be relieved of their duties

References:

Wildland Firefighter Health & Safety Report, Missoula Technology & Development Center

1)Spring 2004

2)Fall 2000

3)Fatigue Awareness PowerPoint

CISM Information Pamphlet, International Critical Incident Stress Foundation, [www.icisf.org](http://www.icisf.org)

---

**Have an idea? Have feedback? Share it.**

**ONLINE** | MAIL: 6 Minutes For Safety Task Group • 3833 S. Development Ave • Boise, ID 83705 | FAX: 208-387-5250

**6 Minutes Home**

## Bear Safety (for you, not the bear)

Sloppy firefighters don't just endanger themselves, but also other firefighters. Bears will return to a site repeatedly if they ate there at some point in the past. When in bear country (where you are now) you should:

### Maintain a bear safe campsite

- Store food, drinks and scented items securely.
- Dispose of trash
- Always sleep inside your tent
- Never approach or feed a bear
- Report bear sightings to your Division Supervisor

### Take precautions while hiking

- Stay alert at dawn and dusk, when bears are more active
- Make noise as you travel through dense cover
- Stay away from animal carcasses
- Store food, trash and scented items (sunscreen, etc.) in airtight plastic bags

### Dispose of trash carefully

- Store trash in a secure location
- Clean the trash container regularly

### If you encounter a bear

- **Stand your ground.** Never back up, lie down or play dead. Stay calm and give the bear a chance to leave.
- **Don't run away or climb a tree.** Black bears are excellent climbers and can run up to 35 mph – you cannot out climb or outrun them
- **Know bear behavior.** If a bear stands up, grunts, moans or makes other sounds, it is not being aggressive. These are the way a bear gets a better look or smell and expresses its interest.

### If a bear attacks

- **Always fight back.** And never give up! People have successfully defended themselves with almost anything: rocks, sticks, pulaskis, water bottles and even their hands and feet.



# **TRAINEES AND TRAINER/EVALUATORS**

**As your demob date approaches, you should start closing out the training assignment. You do not have to wait until your demob day to do this. The Trainer/Evaluator needs to finish initialing completed tasks in the PTB and complete the Evaluation Record at the back of the PTB. Also a Performance Rating should be prepared by the Trainer/Evaluator, discussed with the Trainee and signed. The Trainee should complete the Trainee Interview form on the reverse page of this message.**

**To expedite the closeout with the Training Specialist, bring your up-to-date PTB, Performance Rating and the Trainee Interview Form to the Training Specialist located in the east end of the Medical Unit trailer.**

**If the TNSP is not in the office, leave a copy of the Performance Rating, a copy of the Evaluation Record from the PTB and the Trainee Interview form. A training documentation packet will be mailed to the office the Trainee indicated on the initial training assignment check-in.**

**Any questions, check with me at the Training desk.**

**Dave Lattimore**

**FINAL INCIDENT TRAINEE INTERVIEW**

Trainee: \_\_\_\_\_ Trainee Position: \_\_\_\_\_

Trainer/Evaluator: \_\_\_\_\_ Training Specialist: Dave Lattimore

Incident Name/Number: Forks Complex CA-SRF-1388/CA-KNF-5561

1. Is this your first assignment in this position?  
\_\_\_\_\_  
\_\_\_\_\_  
\_\_\_\_\_
2. Do you feel you benefited from this assignment? (Explain)  
\_\_\_\_\_  
\_\_\_\_\_  
\_\_\_\_\_  
\_\_\_\_\_
3. Would you prefer another trainee assignment at this level?  
\_\_\_\_\_  
\_\_\_\_\_  
\_\_\_\_\_
4. Comments regarding your incident supervisor/trainer. (Assistance, Ability, Knowledge of position, and so forth)  
\_\_\_\_\_  
\_\_\_\_\_  
\_\_\_\_\_  
\_\_\_\_\_  
\_\_\_\_\_  
\_\_\_\_\_  
\_\_\_\_\_

5. Did you receive a final performance evaluation?	[ ] Yes	[ ] No
--	---------	--------

Employee/Trainee Signature: \_\_\_\_\_



## Human Resource Message

### Getting back into the stream of life after a fire

Once you get home, there are things you can do to get back to a normal lifestyle, without having fire withdrawal.

- \*Turn on all the lights before trying to sleep!
- \* Have people sneeze in your face before each meal
- \*Put dirty socks near your pillow
- \*Sprinkle dirt and pine needles on your sheets!
- \*Make a sandwich, sit on it, drop it in a flowerbed, and stand beside a full garbage can while you eat it!
- \*In the evening, start a fire in the fireplace, close the damper and spit with lethal intent
- \*For breakfast, cook an omelet, pour a cup of coffee, refrigerate them for 15 minutes, and then enjoy!

Thought for the day - Home is the place where we grumble the most, but are often treated the best! Take good care of yourself and have a good shift.

**Your Human Resource Specialist,  
Daniel Gonzalez**



# Finance Needs

RO #	CONTRACTOR	EQUIPMENT TYPE	COMMENTS
E-22	CJ's Fire	Mechanic	Missing Resource Order
E-205	North Zone	Fallers	See Finance - Mike Taylor
E-275	Sunsites	Engine	Did you have an Employee Change?
E-60	John Eller	Pick-up	Please put your E# on shift tickets.
E-350	North Logan	Engine	Missing Shift Tickets.
E-41	H 2 O Oregon LLC.	Weed Wash	Check in with finance.

Forks Complex Finance contact phone number 877-235-0564



# M.I.S.T. GUIDELINES ( SRF – KNF – SHF )

## MINIMUM IMPACT SUPPRESSION TECHNIQUES

Wilderness areas are areas that are protected by law and are managed to preserve their natural conditions for present and future generations. The following Minimum Impact Suppression Techniques (MIST) are guidelines intended to significantly reduce the impacts associated with fire suppression and incident management activities in Wilderness areas.

**SAFETY**      **Safety is of paramount importance. Incident personnel should constantly be aware of their surroundings and the Eight Principles of Safety, the 10 Standard Firefighting Orders and the 18 Watchout Situations when applying MIST techniques.**

### **LINE OPERATIONS**

- Use natural barriers, wet line or cold trail techniques, rather than constructing line. Consider burnout from natural barriers to minimize line construction.
- When constructed line is necessary, use the minimum width, depth and canopy clearance necessary to check fire spread, based on fire behavior. Locate line to minimize impacts. Consider use of fireline explosives for line construction.
- Do not put line construction debris in streams.

### **GREEN TREES, BURNED TREES AND SNAGS**

- Scrape around tree bases near fireline if hot and likely to cause fire spread.
- Inside fireline: remove or limb only those fuels that if ignited would have potential to spread fire outside the fireline.
- Identify hazardous trees with an observer or flagging.
- Use Saw Use guidelines.

### **SAW USE**

- Minimize the amount of cutting.
- Live trees will not be cut, unless it is determined they will cause fire spread across the fireline or endanger workers or the public.
- Slope/angle saw cuts away from line of sight to minimize visual impacts. Rub dirt or ash on stumps and log ends to camouflage them. Do not crosshatch/etch.
- If trees must be felled inside the line, do not limb or buck them. Allow the fire to consume them.

### **INDIRECT ATTACK**

- Do not fall snags on the intended unburned side of the constructed fireline, unless they are safety hazard to crews or the public.
- On the unintended burn-out side of the line, fall only those snags that would reach the fireline should they burn and fall over.
- Consider alternative means to falling, i.e., fireline explosives, bucket drops.
- Consider all items in Section B, the Fire Line Phase.

### **AIR OPERATIONS**

- Limit the use of retardant. Use water drops (preferred) or foam instead. When foam or retardant use is appropriate, avoid dropping near surface water.

### **HELISPOT CONSTRUCTION**

- Minimize the number of helispots constructed in Wilderness.
- Evaluate carefully whether it is necessary to construct a helispot or whether an alternative outside Wilderness can be used.
- If a helispot is only needed for logistical support to deliver and retrieve supplies or gear, consider using a long line remote hook in lieu of constructing a helispot. If a helispot is needed for crew shuttle, consider the minimum size helicopter that could do the job and still meet suppression objectives.
- Use natural openings as much as possible. If some tree falling or cribbing is necessary, avoid high visitor use locations unless the modifications can be rehabilitated to be generally unnoticeable. Feather the opening so that it appears more natural looking.
- Whenever possible, the Resource Advisor should provide specific instructions and observe the construction of helispots.
- Naturalize helispots before abandoning

### **SPIKE CAMPS AND CAMP ACTIVITIES**

- Camps and other facilities will be located outside of wilderness whenever possible.
- A Resource Advisor will be consulted prior to establishing spike camps and use will be discontinued if resource damage occurs.

### **MOP-UP PHASE**

- Cold trail rather than scraping or digging whenever possible to detect hot areas.
- Roll or drag fuels into the interior and allow them to burn out, rather than mopping them up and roll logs rather than bucking.
- Pull hot material away from the bases of trees, rather than felling them.
- Remove or limb only those fuels that if ignited, have potential to spread outside the fireline.

## **PERSONAL CONDUCT**

**Leave No Trace – Pack it in - Pack it out**

**Confirmed approval for use of mechanized equipment – Chainsaws / Helicopter Use**

## The 5-D System for Effective Waterbars

When locating and building waterbars, place them the right **distance** apart, at a **diagonal** to the fireline, so that they **divert**, then **discharge**, then **dissipate** the energy of the flowing water. Be sure to make them deep enough so they'll be durable, and that soil does **not block** the water bar outlet.

### Recommended spacing for waterbars on firelines.

Fireline slope %	Maximum Distance Apart (feet)
1-5	200
6-20	125
21-40	60
41-60	40
>60	25

*Waterbars should be at least 2 pulaski widths (4-6 inches) wide and 12-24 inches high for handlines.*

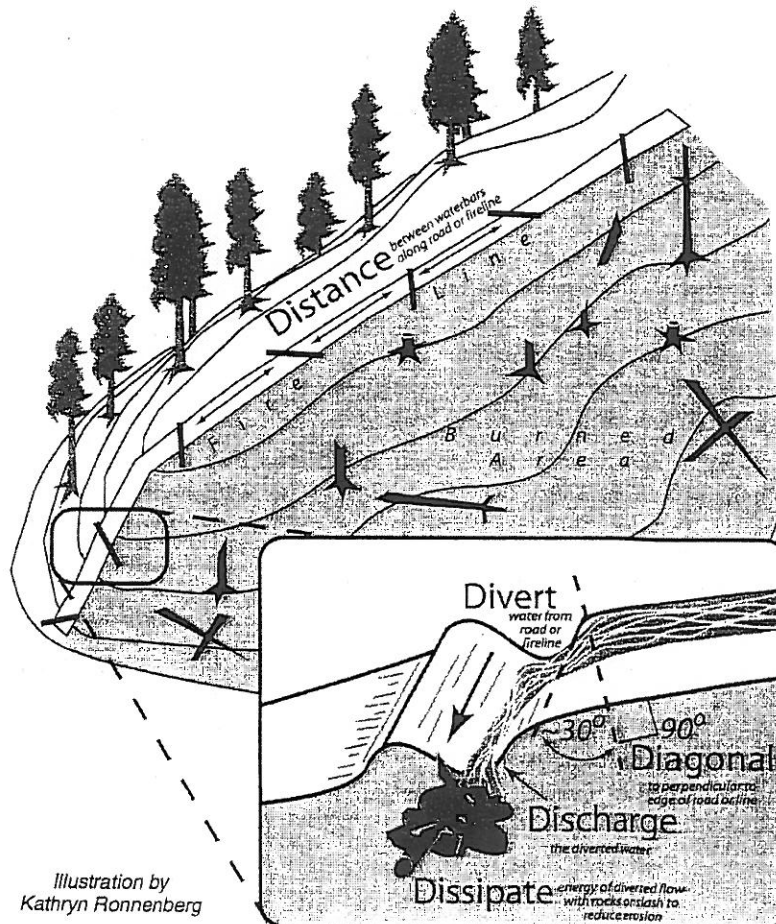


Illustration by  
Kathryn Ronnenberg



## Nor Cal #1

### Expectations for Operational Periods and Shift Length

- The expectations of the I.C. and the team are that all operational resources will proceed directly to their shift assignments at the conclusion of the operational briefing / division break-out. Individuals attending the briefing should attend dressed fire-ready (nomex pants and boots).
- ICS 204 Division Assignment Lists will display anticipated shift duration. The assigned Division Supervisor has the authority to modify these time frames as the situation dictates.
- A minimum of 1 meal break should be taken each day when the fire situation permits. When meals are not recorded, rationale is needed on the CTR. Non fireline assigned resources should plan for a 30 minute break every 6 hours when the situation permits. Command and General Staff will manage workloads to allow for breaks when appropriate.
- Individuals shall only drive if they have had at least 8 consecutive hours off duty before beginning a shift. *Example: if it becomes essential to work until 2300 hours, the individual should not return to duty before 0700 the following day.* Exceptions to this policy should only be to accomplish immediate and critical suppression objectives or critical firefighter / public safety missions as approved by the I.C.
- The Incident Management Organization is committed to a “zero tolerance” policy against inappropriate behavior during incident operations. We expect an attitude of mutual respect for all incident personnel and the public we serve. Any form of harassment, discriminatory practices, or disrespectful behavior will not be tolerated and will be dealt with appropriately. Illegal drug use or other illegal activities will not be tolerated and will be turned over to local law enforcement authorities. Alcohol is strictly prohibited from the fire camp and all other incident locations. Violation of these standards of conduct can result in prompt dismissal from the incident. Individuals who are aware of any inappropriate behavior of incident personnel should tell their supervisor or contact the Human Resource Specialist.

Date & Time Order was placed:		Order #	Location & Time for Delivery (DIV,LZ,DP,Lat Long)		Mode of delivery
		(DIVS+#)			(Driven/Helo/DIVS to Pick up)
			Lat:		
			Long:		
Order received in Communications by (Name):					Time:
Order shipped to line by (Name): (Send this sheet to the line with the order)					Time:
#	Item				
1	<b>1,000 Foot Hose Lay includes the following: Amount _____</b>				
	10, 100'x1½" Rolls Hose; 10, 100'x1" Rolls Hose; 10, 1½" Gated Wyes; 10, 1½" to 1" reducers; 10, 1" nozzles				
2	<b>2,000 Foot Hose Lay includes the following: Amount _____</b>				
	20, 100'x1½" Rolls Hose; 20, 100'x1" Rolls Hose; 20, 1½" Gated Wyes; 20, 1½" to 1" reducers; 20, 1" nozzles				
3	<b>3,000 Foot Hose Lay includes the following: Amount _____</b>				
	30, 100'x1½" Rolls Hose; 30, 100'x1" Rolls Hose; 30, 1½" Gated Wyes; 30, 1½" to 1" reducers; 30, 1" nozzles				
#	Item	Amount	#	Item	Amount
4	Hose (50') garden, 3/4"		30	Gas Unleaded (Gallons)	
5	Hose (100'), 1"		31	Oil 2 cycle, (Pints)	
6	Hose (100'), 1½"		32	Bar Oil (Qts)	
7	Nozzle, Garden, 3/4"		33	Drip Torch ea	
8	Nozzle, Forester, 1"		34	Drip torch mix 3.5:1.5 (gallon)	
9	Nozzle, KK Type, 1"		35	Fusees (Boxes or cases)???	
10	Nozzle, KK Type, 1½"		36	Flare Gun Rounds (12/BX)	
11	Wye, Gated, 3/4"		37	Cartridge #6 purple (box)	
12	Wye, Gated, 1"		38	Batteries "AA" PKGs(24/PKG)/BX	
13	Wye, Gated, 1½"		39	Ribbon, Flagging (Specify Color)*	
14	Inline-Tee, 1x1x3/4"		40	Water, Cubies	
15	Inline-Tee, 1x1x1"		41	Water, Bottled, Cases	
16	Inline-Tee (1½" X 1")		42	Gatorade	
17	Reducer, 1" X 3/4"		43	MRE's (12/BX)	
18	Reducer, 1½" X 1"		44	Heavy Mill Plastic	
19	Increaser, 3/4" X 1"		45	Washcloth, waterless, cleansing	
20	Increaser, 1" X 1½"		46	Wrap, Structure 54"x300'	
21	Foam 5 gal		47	Sprinkler Kit	
22	Foam 4 oz (For Backpack Pump)		48	Mark 3 Pump	
23	Backpack Pump		49	Mark 3 Pump Kit- w/10 gal mixed fuel	
24	Pumpkin (Gallons?)		50	Chainsaw Kit	
25	Porta-Tank (Gallons?)		51	Mop-Up Kit, 3-Wand	
26	Shovel		52	Pump Kit, Lightweight, 2 Cycle	
27	Pulaski		53	Gas, Raw and 2 qts 2-cycle oil, ea	
28	Combi Tool		54	Lightweight Pump Kit-Cache w/5gal fuel	
29	McCloud		55	Gas, raw (gal) and 1 qt 2-cycle oil, ea.	
Notes:			Notes:		

