



**Forks Complex
Incident Action Plan
8/28/13 Day Shift 0600 - 2200**

EXPECT THE UNEXPECTED

DRIVING

- Expect common traffic where there has been none
- While working on roadways, presume oncoming vehicles don't see you
- Anticipate a hazard or obstacle around every curve while driving

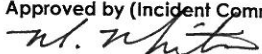
FIRE BEHAVIOR (INDICATORS OF CHANGE)

- Expect some fuels to continue to burn when others have previously gone out
- Don't be surprised to observe isolated torching as fuels dry out
- Expect to see smoke where there was none in prior days



**Butler Fire
CA-SRF-1388**


**Salmon Fire
CA-KNF-5561**

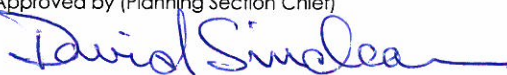
INCIDENT OBJECTIVES	1. Incident Name FORKS COMPLEX	2. Date 8/27/2013	3. Time 17:00
4. Operational Period 8/28/2013 0600-2200			
5. General Control Objectives for the Incident (include alternatives) OPERATIONAL OBJECTIVES <ul style="list-style-type: none"> • Provide for firefighter and public safety through the application of the risk management process. • Utilize tactics which provide for the protection of private property and infrastructure. • Keep the Butler fire within constructed fire lines. • Keep the Salmon fire within existing containment lines. • Implement fire suppression repair in accordance with developed plans. 			
6. Weather Forecast for Period See attached forecast			
7. Resource Protection Guidelines MANAGEMENT OBJECTIVES <ul style="list-style-type: none"> • Ensure fire suppression operations minimize negative fire effects. • Utilize minimum impact suppression tactics (MIST) within wilderness areas and in other land use designations as appropriate. • Prevent transportation of noxious weeds into the incident location. • Utilize Resource Advisors to assess impacts to sensitive historic, cultural, wildlife, and plant resources. • Manage the fire in a cost effective manner commensurate with values at risk. • Keep cooperators, communities, and concerned citizens informed. 			
8. Attachments (mark if attached)			
<input checked="" type="checkbox"/> Organization List - ICS 203	<input checked="" type="checkbox"/> Medical Plan - ICS 206	<input checked="" type="checkbox"/> Weather	
<input checked="" type="checkbox"/> Div. Assignment Lists - ICS 204	<input checked="" type="checkbox"/> Incident Map	<input checked="" type="checkbox"/> Safety Message	
<input checked="" type="checkbox"/> Communications Plan - ICS 205	<input type="checkbox"/> Traffic Plan	<input type="checkbox"/> LCES Worksheet	
9. Prepared by (Planning Section Chief) David Sinclear	10. Approved by (Incident Commander) 		


ORGANIZATION ASSIGNMENT LIST		Ground Support Unit	Harry Zabel / Jim Hong (t)	
1. Incident Name: FORKS COMPLEX		Security Manager	Jason Nolde / Jeff Knott (t)	
		Communications Unit	Ken Earle	
		Medical Unit	Clayton Thomas / Ryan Reginato (t)	
		Food Unit	Jay Westlake	
2. Date	Time	9. Operations Section		
8/27/2013	19:46	Day Ops Chief	Robin Willis / Cutis Coots (t)	
4. Operational Period		Deputy Day Ops		
08/28/2013		Night Ops Chief		
0600-2200		Planning Ops	Chris Stevens (t)	
5. Incident Commander and Command Staff	Position	Name	a. Branch I – Division/Groups	
Incident Commander	Mike Minton		Branch	
Deputy IC	Pete Duncan		Dave Pereira	
Liaison	Kent Swartzlander	Division/Group	A / D	Mike Work
Safety Officer	Michele Tanzi / Robert Kafka (t)	Division/Group	B / C	Ed Merrill / Dale Mendes (t)
Information Officer	Jim Mackensen	Division/Group	T / Z	Don Fregulia
6. Agency Representative		Repair Group	R	Dan Lindley / Terry Eller (t)
Agency	Name	Division/Group	E	Unstaffed
Agency Admin	Patty Grantham	b. Branch II – Division/Groups		
Agency Admin Rep	Dave Hayes (KNF) Nolan Colegrove (SRF)	Branch	Steve Burns	
Siskiyou County S O	Jim Bretts	Division/Group		
Siskiyou CO OES	Ron Quigley	Division Group	F/G	Unstaffed
Forks Community Liaison	Jim Bennett	Division/Group	H	Paul Johnson
Hoopa Tribal Chair	Danielle Vigil-Masten	Division/Group	K	Mark Vardanega
Karuk Tribal Rep	Bill Tripp	Division/Group	W	Randy Jenning
CCC Rep	Susan Jones	Division/Group		
California OES	Pat O'Bannon			
Heritage Coordinator	Harold Tripp			
		d. Air Operations Branch		
		Air Operations Branch Director	Dustan Mueller (t)	
		Air Support Group Supervisor	Sean Cox / Steve Beale	
		Air Tactical Group Supervisor		
7. Planning Section	Chief	Dave Sinclear / Walter Herzog (t)	Air Tactical Group Supervisor	Carl Piper / Rico Gonzalez (t)
Resources Unit	Lou Ann Charbonnier / Chris Wikeen	Helibase Manager	Bill Lambert	
Situation Unit	Alan Taylor / Bobby Olds (t)	10. Finance Section		
FS Cultural Rep	Eric Brederman	Chief	Rachel Corkill	
Lead Resource Advisor	Chris Engelhardt (Butler Fire)	Deputy Chief		
Demobilization Unit	Gary Deboi	Personnel Time Unit	Shannon Ammon	
Fire Behavior Unit	Jessica Wade / John Wood (t)	Equipment Time Unit	Jo Ann Hereford / Mike Turos	
Documentation Unit	Rex Crabtree	Cost Unit	Sissie Griffith	
Incident Meteorologist	Bob Tobin / Tom Clemmons (t)	Compensation / Claim Unit	Merlinda Valdez / Wanda Chavez	
Technical Specialist	George Steele	Procurement	Ron Schilz / Karie Linn(t)	
Training Specialist	Dave Lattimore	IBA-Yreka	Lola Capp / Kathy Griffin	
GISS	Kyle Felker / Matt House (t)			
Human Resource Advisor				
Status Check-In	Monique Dumlao			
8. Logistics Section				
Chief	Mike Jellison / Ken Kumpe(t)			
Ordering	Mona Lake / Ron Pierce			
Supply Unit	Richard Sheets			
R & D	Frederick Johnson			
Facilities Unit	Jeff Hutala			
		Prepared By: Chris Wikeen – RESL		ICS 203

ORGANIZATION ASSIGNMENT LIST			
1. Incident Name Forks Complex / Salmon Camp			
2. Date		Time	
8/27/2013		10:06	
4. Operational Period			
08/28/2013		0600 - 2200	
Position	Name		
5. Incident Commander and Command Staff			
Incident Commander			
Deputy IC	Pete Duncan		
Liaison			
Safety Officer	Jeff Barnhart / Dave Kirste		
Information Officer	Jenny Lynn Bruner / Kathy Hardy		
6. Agency Representative			
Agency	Name		
Agency Admin			
Agency Admin Rep			
FS Cultural Rep			
Lead Resource Advisor			
County Sheriff			
Cal Fire			
Klamath Community Liaison			
Hoopa Tribal Chair			
Karuk Tribal Rep			
Hoopa Agency Rep			
7. Planning Section			
Chief			
Deputy	Valery Lambeth / Bob Patton (t)		
Resources Unit			
Situation Unit			
Documentation Unit			
Demobilization Unit			
Fire Behavior Unit			
Long Term Fire Analyst			
Incident Meteorologist			
Technical Specialist			
Training Specialist			
Lead Resource Advisor	Kelby Witherspoon (Salmon Fire)		
Status Check-In			
Human Resource Advisor			
9. Finance Section			
Chief			
Deputy Chief	Lois Charlton		
Personnel Time Unit			
Equipment Time Unit			
Cost Unit			
Compensation / Claim Unit			
IBA-Yreka	Lola Capp / Kathy Griffin		
8. Logistics Section			
Chief	Brett Shurr / Pat Howard (t)		
Deputy	Michael Burchard		
Supply/Ordering Unit	Cory Hoogendam		
Facilities Unit	Frank DelCarlo / Keith Harrington		
Ground Support	George Price		
Receiving & Distribution	Chris Combs / Alex Jimenez(t)		
Medical Unit	Claudia Kutscher		
Communications Unit	Phil Shafer / Keith Brown		

Prepared by: Chris Wikeen-RESL

DIVISION ASSIGNMENT LIST			1. Branch I		2. Division/Group A/D (Butler)			
3. Incident Name Forks Complex			4. Operational Period DAY OPERATIONS					
			Date: 08/28/2013		Time: 0600 – 2200			
5. Operations Personnel								
Operations Chief		Robin Wills		Division/Group Supervisor		Mike Work (8/29)		
Deputy Operations								
Branch Director		Dave Pereira		Air Operations		Dustan Mueller (t)		
6. Resources Assigned this Period								
Strike Team/Task Force/ Resource Designator		Leader		Last Shift	Number Persons	Trans. Needed	Drop Off PT./Time	Pick Up PT./Time
S/T Butler #3				8/25-9/2	15	N	DP-2 / 0700	2000
STEN (O-321)		James Jones		9/2	1	N	DP-2 / 0700	2000
STEN (t) (E-333.7)		Leif Larson		8/28	1	N	DP-2 / 0700	2000
ENG6 Woods #27 (E-265)		Booker		8/31	3	N	DP-2 / 0700	2000
ENG6 Mt. Adams (E-339)		Paula Holter		9/7	3	N	DP-2 / 0700	2000
DOZ2 w/LOWB Ken's #1 (E-12)		Mike Kelly/Richard Olson		8/29	2	N	DP-2 / 0700	2000
EXCAVATOR T2 Wylatti (E-219)				9/3	2	N	DP-2 / 0700	2000
HEQB (C-8.3)		Robert McConnell		8/28	1	N	DP-2 / 0700	2000
FEMP (O-45)		Damen Snow		8/31	1	N	DP-2 / 0700	2000
FEMT (O-82)		Elliott Rubin		9/1	1	N	DP-2 / 0700	2000
7. Control Operations								
<ul style="list-style-type: none"> Patrol and hold the Salmon River Rd between the W/A break and DP 32. 								
8. Special Instructions:								
<ul style="list-style-type: none"> Complete suppression repair. Red & white stripe and orange and white stripe flagging denote area of resource concern. Directions of resource concern will be written on the flagging. Backhaul all hose, pumps, other excess equipment and trash. S/T Butler #3 AZ 570 (E-277), AZ 1975 (E-280), AZ E301 (E-275), Champion/MTR (E-282), NM Shiloh WF (E-279) and STEN Jones/STEN(t)Larson. 								
9. Division/Group Communication Summary								
Function	Frequency	Channel	Channel	Function	Frequency	System	Channel	
Command	RX 162.1875 TX 172.5500	CMD 5	5 Tone 3	Tactical Division/Group				
Tactical Division/Group	RX 166.7250 TX 166.7250	TAC 1	6 Tone 3	Air to Ground Command	RX 171.5375 TX 171.5375	A/G CMD	13	
Prepared by (Resource Unit Leader)			Approved by (Planning Section Chief)			Date	Time	
L. Charbonnier						8/27/13	1700	

DIVISION ASSIGNMENT LIST		1. Branch I		2. Division/Group B/C (Butler)			
3. Incident Name Forks Complex		4. Operational Period DAY OPERATIONS Date: 08/28/2013 Time: 0600 – 2200					
5. Operations Personnel							
Operations Chief	Robin Wills		Division/Group Supervisor		Ed Merrill / Dale Mendes (t)		
Deputy Operations			Air Operations		Dustan Mueller (t)		
Branch Director	Dave Pereira						
6. Resources Assigned this Period							
Strike Team/Task Force/ Resource Designator	Leader	Last Shift	Number Persons	Trans. Needed	Drop Off PT./Time	Pick Up PT./Time	
HC T2IA Firestorm 1 (C-20)	Richard Sandidge	8/29	18	N	DP-2 / 0700	2000	
HC1 Ukonom IHC (C-8)	Keith Smith	8/28	20	N	DP-2 / 0700	2000	
S/T YNP 5780C (E-333)	Jason Wingard/Javier Gonzalez(t)	8/28	24	N	DP-2 / 0700	2000	
ENG6 Grayback (E-365)	Telly Martinez	9/2	3	N	DP-2 / 0700	2000	
ENG6 Inbound (E-366)	Adham Rowley	9/2	3	N	DP-2 / 0700	2000	
DO22 w/lowboy J.A. Cook (E-14)	John Cook	8/29	2	N	DP-2 / 0700	2000	
HEQB (O-384/O-5.35)	Willie Vance/Josh Ramey(t)	9/2	2	N	DP-2 / 0700	2000	
CHIPPER	TBA						
CHIPPER Diamond Fire (E-33)	Dwayne Moore/Harley Tyrie	9/3	2	N	DP-2 / 0700	2000	
Heritage Consultant (Div B)(O-169)	Albert Titus	8/28	1	N	DP-2 / 0700	2000	
Heritage Consultant (Div B) (O-255)	Phil Tripp	9/31	1	N	DP-2 / 0700	2000	
FEMP (O-44)	Scott Wilcox	8/31	1	N	DP-2 / 0700	2000	
FEMT (O-13)	David Revollo	8/31	1	N	DP-2 / 0700	2000	
SOFR (O-46)	Matt Weinell	9/2	1	N	DP-2 / 0700	2000	
7. Control Operations							
<ul style="list-style-type: none"> Monitor fire activity in Nordheimer drainage. Mop up 100 feet where safe to do so. 							
8. Special Instructions:							
<ul style="list-style-type: none"> Complete waterbaring hand line and dozer line. Bakhaul all hose, pumps, other excess equipment and trash. Red & white stripe and orange and white stripe flagging denote area of resource concern. Directions of resource concern will be written on the flagging. 							
9. Division/Group Communication Summary							
Function	Frequency	System	Channel	Function	Frequency	System	Channel
Command	RX 162.1875 TX 172.5500	CMD 5	5 Tone 3				
Tactical Division/Group	RX 168.0500 TX 168.0500	TAC 2	7	Air to Ground Command	RX 171.5375 TX 171.5375	A/G CMD	13
Prepared by (Resource Unit Leader)		Approved by (Planning Section Chief)			Date	Time	
L. Charbonnier					8/27/13	1700	

DIVISION ASSIGNMENT LIST		1. Branch I		2. Division/Group REPAIR (Salmon)			
3. Incident Name Forks Complex		4. Operational Period DAY OPERATIONS					
		Date: 08/28/2013			Time: 0600 - 2200		
5. Operations Personnel							
Operations Chief	Robin Wills		Division/Group Supervisor		Daniel Lindley/Terry Eller(t)		
Deputy Operations							
Branch Director	Dave Pereria		Air Operations		Dustan Mueller (t)		
6. Resources Assigned this Period							
Strike Team/Task Force/ Resource Designator	Leader	Last Shift	Number Persons	Trans. Needed	Drop Off PT./Time	Pick Up PT./Time	
HC T2 North Pacific (C-69)	William Hughes	9/8	20	N	DP9 / 0700	2000	
DOZ2 Berryhill #713(E-58) Trans(E-73)	Eric Durden	9/2	2	N	DP9 / 0700	2000	
GRADER Johnson (E-58)	Jack Hottendorf	9/1	2	N	DP9 / 0700	2000	
EXCAVATOR w/Trans Berryhill (E-224)	Kim Berryhill	9/3	2	N	DP9 / 0700	2000	
EXCAVATOR North River w/Trans (E-225)	Billy Perry	9/7	2	N	DP9 / 0700	2000	
WTS2 White Logging (E-12)	Tom White		1	N	DP9 / 0700	2000	
WTS2 Johnson (E-13)	Dave Johnson	8/31	1	N	DP9 / 0700	2000	
CHIPPER – Firestorm (E-223)	John Chase	9/7	1	N	DP9 / 0700	2000	
HEQB (O-322)	Walt Carter	9/2	1	N	DP9 / 0700	2000	
SOFR (O-88)	Steve Heine	9/1	1	N	DP9 / 0700	2000	
READ (O-306)	Kelby Witherspoon	8/28	1	N	DP9 / 0700	2000	
EMTP (O-10)	Nick Gabbard	8/30	1	N	DP9 / 0700	2000	
EMTP (O-11)	Eric Van Renselaar	8/30	1	N	DP9 / 0700	2000	
Heritage Consultants (O-292)	Franklin Donahue	9/6	1	N	DP9 / 0700	2000	
Heritage Consultants (O-254)	Phillip Courts	9/3	1	N	DP9 / 0700	2000	
7. Control Operations							
8. Special Instructions							
<ul style="list-style-type: none"> Salmon divisions A/B/C/E/M/S was renamed Division R, in order to minimize confusion between Salmon River Complex and Butler Incident. Coordinate with READS and DIVS to implement suppression repair plan in Division R. Backhaul all hose, pumps, other excess equipment and trash. 							
9. Division/Group Communication Summary							
Function	Frequency	System	Channel	Function	Frequency	System	Channel
Command	RX 168.0750 TX 170.4250	CMD 1	1 Tone 3				
Tactical Division/Group	RX 168.6000 TX 168.6000	TAC 4	9	Air to Ground Command	RX 171.5375 TX 171.5375	A/G CMD	13
Prepared by (Resource Unit Leader)		Approved by (Planning Section Chief)			Date	Time	
L. Charbonnier					8/27/13		

DIVISION ASSIGNMENT LIST			1. Branch I		2. Division/Group T/Z (Salmon)		
3. Incident Name Forks Complex			4. Operational Period DAY OPERATIONS Date: 08/28/2013 Time: 0600 - 2200				
5. Operations Personnel							
Operations Chief		Robin Wills		Division Group Supervisor		Don Fregulia	
Deputy Operations							
Branch Director		Dave Pereira		Air Operations		Dustan Mueller (t)	
6. Resources Assigned this Period							
Strike Team/Task Force/ Resource Designator	Leader	Last Shift	Number Persons	Trans. Needed	Drop Off PT./Time	Pick Up PT./Time	
IHC Feather River (C-66)	Robert Daniels	9/5	20	N	DP7 / 0700	2000	
IHC Mendocino (C-46)	Jon Tishner	8/28	20	N	DP7 / 0700	2000	
ENG6 Young Logging (E-218)	Steve Rhea	9/5	3	N	DP7 / 0700	2000	
ENG6 A-Team #1 (E-219)	Schin Haakenson	9/5	3	N	DP7 / 0700	2000	
ENG6 CBD E 7601 (E-221)	Jay Flora	9/4	2	N	DP7 / 0700	2000	
WTT2 Cattlelack (E-77)	James Goldie	9/2	1	N	DP7 / 0700	2000	
TFLD (O-178)	Melanie Fullman	9/8	1	N	DP7 / 0700	2000	
SOFR (O-43)	Mark Munns	9/3	1	N	DP7 / 0700	2000	
REM#1	Kevin Wegener	8/30	4	N	DP-7 / 0700	2000	
FEMP (O-339)	Kevin Meineke	9/1	1	N	DP7 / 0700	2000	
FEMP (O-333)	Chris Harrison	8/31	1	N	DP7 / 0700	2000	
FEMT (O-338)	Adam Volmer	8/31	1	N	DP7 / 0700	2000	
FEMT (O-334)	Lorenzo Rocha	8/31	1	N	DP7 / 0700	2000	
7. Control Operations <ul style="list-style-type: none"> Continue firing to Salmon River Road Continue to hold and mop up 100' where safe to do so. Construct direct handline and cold trail as needed. 							
8. Special Instructions <ul style="list-style-type: none"> Back-haul all hose, pumps, other excess equipment, and trash. 							
9. Division/Group Communication Summary							
Function	Frequency	System	Channel	Function	Frequency	System	Channel
Command	RX 168.0750 TX 170.4250	CMD 1	1 Tone 3				
Tactical Division/Group	RX 167.1125 TX 167.1125	TAC 6	11 Tone 3	Air to Ground Command	RX 171.5375 TX 171.5375	A/G CMD	13
Prepared by (Resource Unit Leader) L. Charbonnier			Approved by (Planning Section Chief) <i>David Simola</i>			Date 8/27/13	Time 20:42

DIVISION ASSIGNMENT LIST			1. Branch II		2. Division/Group H (Butler)		
3. Incident Name Forks Complex			4. Operational Period DAY OPERATIONS Date: 08/28/2013 Time: 0600 - 2200				
5. Operations Personnel							
Operations Chief		Robin Wills		Division/Group Supervisor		Paul Johnson	
Deputy Operations							
Branch Director		Steve Burns		Air Operations		Dustan Mueller (t)	
6. Resources Assigned this Period							
Strike Team/Task Force/ Resource Designator		Leader		Last Shift	Number Persons	Trans. Needed	Pick Up PT./Time
HC1 Elk Mountain IHC (C-7)		Cheveyo Munk		8/28	20	N	2000
Tallac Crew T2IA (C-68)		Aaron Grove		9/2	20	N	2000
ENG6 Oregon Woods (E-48)		Byron Sumpter		9/3	3	N	2000
ENG5 Chewack (E-52)		Jarred Hodgson		9/6	3	N	2000
TFLD (t)/HEQB (O-60)		Benjamin Molitor		8/31	1	N	2000
TFLD (O-75)		Matt Lamb		9/3	1	N	2000
READ (O-121)		Roberto Beltran		8/28	1	N	2000
Wildlife READ (Div K also) (O-140)		Terrah Owens		9/4	1	N	2000
SOFR (O-263)		Tim Stanton		8/28	1	N	2000
FEMP (O-111)		Scott Owen		9/2	1	N	2000
FEMT (O-123)		Brian Conn		9/2	1	N	2000
7. Control Operations							
<ul style="list-style-type: none"> Continue mop-up. Monitor fire spread east of Orleans Mt and Granite Creek drainage 							
8. Special Instruction							
<ul style="list-style-type: none"> Red & white stripe and orange & white stripe flagging denote area of resource concern. Directions of resource concern will be written on the flagging. Waterbar handline and dozer line as needed. Leave 2 pumpkins at DP50 and 1 pumpkin at H6. Leave hose lay and pumps from G/H break north for 1 mile. Back-haul all other excess equipment and trash. 							
9. Division/Group Communication Summary							
Function	Frequency	Channel Name	Channel	Function	Frequency	Channel Name	Channel
Command	RX 168.0750 TX 170.4250	CMD 1	1 Tone 3				
Tactical Division/Group	RX 166.5500 TX 166.5500	TAC 5	10 Tone 3	Air to Ground Command	RX 171.5375 TX 171.5375	A/G CMD	13
Prepared by (Resource Unit Leader) L. Charbonnier			Approved by (Planning Section Chief) <i>David Sinclear</i>			Date 8/27/13	Time 1700



Forks Complex Incident Weather Forecast



FORECAST NO: 26 D
 PREDICTION FOR: Wednesday Day Shift
 SHIFT DATE: August 28th, 2013
 FORECAST ISSUED: 2100 August 27th, 2013

NAME OF FIRE: Forks Complex
 UNIT: SRF
 Incident Meteorologist: Bob Tobin
 Tom Clemmons(T)

WEATHER DISCUSSION: A Pacific Northwest trough will bring a southwest flow, near normal temperatures. A disturbance will move through on Thursday increasing the southwest flow. There will be a stronger upper low late in the weekend early next week that will bring cooler temperatures, an increase in RH, breezy southwest winds, and a slight chance of showers.

WEATHER FORECAST FOR TODAY (WEDNESDAY DAY SHIFT):

WEATHER: Patchy smoke, otherwise mostly sunny.
 WIND (EYE-LEVEL): Valleys: Light winds becoming Upslope/Upvalley 6 to 10 mph gusts to 13mph.
 Ridge Tops: South - Southwest 7 to 11 mph gusts up to 18mph.
 MAX TEMPERATURES: 84 - 89F drainages, 68 - 80 ridges.
 MIN RH: 25 - 35% drainages, 35 - 45% ridges.
 LAL: 1 CWR: 0%

FORECAST TONIGHT (WEDNESDAY NIGHT SHIFT):

WEATHER: Patchy fog overnight otherwise increasing clouds.
 MIN TEMPERATURES: 47 - 56F... warmest toward the ridges
 MAX RH: 85 - 95% drainages, 45 - 55% ridges.
 LAL: 1 CWR: 0%
 WIND (EYE-LEVEL): Valleys: Variable or Downslope/Downvalley 2 to 5 mph with evening gusts to 10 mph. Ridges: Southwest 3 to 6 mph with gusts 10 mph.

WEATHER FORECAST FOR THURSDAY:

WEATHER: Patchy fog and smoke in the morning otherwise mostly cloudy.
 WIND (EYE-LEVEL): Valleys: Drainage winds 3 to 6 mph in the morning becoming Southwest 5 to 10 mph gusts to 15mph.
 Ridge Tops: South - Southwest 9 to 12 mph gusts up to 20 mph.
 MAX TEMPERATURES: 80 - 85F drainages, 63 - 73 ridges.
 MIN RH: 35 - 45% drainages, 50 - 65% ridges.
 LAL: 1 CWR: 0%

EXTENDED OUTLOOK FRIDAY THROUGH SUNDAY:

WEATHER: Patchy smoke and fog in the mornings. Partly cloudy.
 WIND (EYE-LEVEL): Valleys: Light winds becoming Upslope/Upvalley 3 to 6 mph gusts up to 11 mph.
 Ridge Tops: South - Southwest 4 to 7 mph gusts up to 13 mph
 7 to 11 mph gusts up to 16 mph Sunday.
 MIN TEMPERATURES: 48 - 57F... warmest toward the ridges... 2 to 4 degrees cooler Sunday Morning.
 MAX TEMPERATURES: 84 - 89F drainages, 69 - 79 ridges... 5 degrees cooler Sunday.
 MIN RH: 21 - 31% drainages, 32 - 40% ridges... RH Trend up 10% Sunday.
 MAX RH: 75 - 95% drainages, 45 - 55% ridges... RH Trend up 5% Sunday.
 LAL: 1 CWR: 0%.....Sunday CWR: 20%

FIRE BEHAVIOR FORECAST

FORECAST NO. 51

UNIT: CA-SRF

PREDICTION FOR: 8/28/13 Day

NAME OF FIRE: Forks Complex

DATE & TIME ISSUED: 8/27/13 2000

SIGNED: Jessica Wade-FBAN, John Wood-FBAN-(t)

WEATHER AND FUELS SUMMARY:

>> Max. Temps: Ridges – 84 to 89 drainages 68 to 80 ridges

>> Min. RH: 25 to 35% drainages; 35 to 45% ridges

>> Winds (Eye Level): Valleys upslope/up valley 6 to 10 Gusts 13 mph; Ridges SW 7 to 11 Gust 18

>> Energy Release Component = 58 (well below average)

>> Manzanita measured on 8/23/13 on DIV K was average 108% at 5,000 ft.

GENERAL FIRE BEHAVIOR:

Fuels continue to dry across both fires. It has been three days since the precipitation event and we are already seeing more areas of smoke compared to yesterday. The high elevations will continue to need at least four more days of drying in order to sustain active surface fire again. However, the low elevations have dried out adequately to sustain a low spreading surface fire, specifically in Jackass Gulch along the road. Each day that passes increases the drying and possibility of active fire. Don't get complacent since the fire will be acting very differently as the drying continues.

SPECIFIC FIRE BEHAVIOR:

BRANCH I –

DIV T & Z - Heavy fuels in Jackass Gulch will continue to burnout today. There continues to be high risk from hot rollout igniting jackpots and possibly compromising the line here. Other areas of this branch are secure and are showing little to no heat within the vicinity of the line. This area should have a good burn window around mid-day.

The rate of spread in the low elevations of this branch could be 2 to 3 ch/hr upslope and ½ ch/hr backing. Probability of Ignition in unshaded fuels will be about 70% in the lower elevations, closer to 30% at the peaks.

BRANCH II -

There are several areas of heat in Granite Creek and China Creek. These are visible from the air and from lookouts. The heat in Granite Creek is in alignment to make an upslope run toward DP44 and also H5. However, the fuels and duff continue to be damp at this time. After several days of drying, possibly by Sunday, the hot areas are likely to pose a risk to the line. The heat in Butler Creek mid-slope is similarly moist and also not likely to make a run since the live fuel moisture in the tan oak continues to be too high.

No fire growth is expected in these divisions, only creeping and smoldering. Probability of Ignition on these divisions is expected to be about 20% to 30%.

Air Operations: Expect a very clear day today, no visibility issues are expected.

SAFETY: Rolling debris will continue to burn out and/or break loose and cause hazards and possible spotting. Proper risk management needs to be exercised in these areas.

INCIDENT RADIO COMMUNICATIONS PLAN			Incident Name FORKS COMPLEX BRANCH I & II			Date/Time Prepared 08/27/13 1545 HRS.		Operational Period Date/Time DAY SHIFT 08/28/13 0600-2200	
Only frequencies listed on this 205 are authorized for use on this incident.					Hand programmers accept all responsibility for the use of unauthorized frequencies.				
Ch #	Function	Channel Name	Assignment	RX Freq N or W	RX Tone	TX Freq N or W	TX Tone	Mode	Remarks
1	COMMAND	CMD 1	ORLEANS LO	168.0750 N		170.4250 N	Tone 3 131.8	A	MAIN BODY OF FIRE
2	COMMAND	CMD 2	96 / 93 TRAVEL	170.4125 N		165.9625 N	Tone 3 131.8	A	TRAVEL ON 96 AND 93
3	COMMAND	CMD 3	ICP	163.0375 N		170.0250 N	Tone 3 131.8	A	ICP COMMUNICATIONS
4	COMMAND	CMD 4	ETNA / HELIBASE	164.7750 N		170.4625 N	Tone 3 131.8	A	ETNA SUMMIT
5	COMMAND	CMD 5	SOUTH	162.1875 N		172.5500 N	Tone 3 131.8	A	SOUTH END OF FIRE
6	TACTICAL	TAC 1	DIV A / D / G	166.7250 N		166.7250 N	Tone 3 131.8	A	NIFC TAC 5
7	TACTICAL	TAC 2	DIV B / C	168.0500 N		168.0500 N		A	NIFC TAC 1
8	TACTICAL	TAC 3	DIV E / W	168.2000 N		168.2000 N		A	NIFC TAC 2
9	TACTICAL	TAC 4	DIV F / R	168.6000 N		168.6000 N		A	NIFC TAC 3
10	TACTICAL	TAC 5	DIV K / H / STAGING	166.5500 N		166.5500 N	Tone 3 131.8	A	R5 TAC 4
11	TACTICAL	TAC 6	T / Z	167.1125 N		167.1125 N	Tone 3 131.8	A	R5 TAC 5
12			INACTIVE					A	INACTIVE
13	AIR TO GROUND	A / G CMD	BRANCH I & II A / G	171.5375 N		171.5375 N		A	AIR TO GROUND COMMAND
14			INACTIVE					A	INACTIVE
15	MEDIVAC	CALCORD	MEDICAL TACTICAL	156.0750 N		156.0750 N	Tone 6 156.7	A	MEDIVAC AIR COORDINATION
16	URGENT AIR CONTACT	AIRGUARD	ALL DIVISIONS	168.6250 N		168.6250 N	Tone 1 110.9	A	USE ONLY FOR URGENT AIRCRAFT CONTACT
Prepared by				Incident Location					
KENNETH EARLE / PHIL SHAFER, COM1 NORCAL TEAM #1				ORLEANS, CA					
				LAT: N37 19.23 LONG: W122 02.42					

INCIDENT RADIO COMMUNICATIONS PLAN

Incident Name

FORKS COMPLEX IA Group

Date/Time Prepared

08/27/13 1457 HRS.

Operational Period Date/Time

DAY 08/28/13 0600-2200

Only frequencies listed on this 205 are authorized for use on this incident.

Hand programmers accept all responsibility for the use of unauthorized frequencies.

Ch #	Function	Channel Name	Assignment	RX Freq N or W	RX Tone	TX Freq N or W	TX Tone	Mode	Remarks
ALL TONES IN THIS GROUP ARE USER SELECTED									
1	KNF DISPATCH	KNF	FOREST OPS	164.1750N		164.9750N	CG	A	ROUTINE TRAFFIC, T5 ORLEANS PK
2	KNF IA DISPATCH	KNF SAM	I / A RESOURCES	171.5000N		172.4000N	CG	A	TONES 5,6
3	KNF DISPATCH	KNF RIVER	FOREST OPS	172.2500 N		171.550 N	CG	A	TONES 2, 7 OR 10
4	SRF DISPATCH	SRF	FOREST OPS	168.7250N		170.1250N	CG	A	TONES 5,6,7 AND 13
5	HOOPA FIRE RPT	HIA	AS NEEDED	155.3850N		150.8050N	CG	A	STONE 6
6	SISKIYOU DISPATCH	SKU-L 1	SKU OPS	151.3250 N		159.3600 N	CG	A	STONE 6
7	HUMBOLT	HUU OPS	OPERATIONS	151.2500 N		159.4050 N	CG	A	STONE 11&13
8	NIFC TAC 1	NIFC TC1	I / A TAC	168.0500 N		168.0500 N		A	
9	NIFC TAC 2	NIFC TC2	I / A TAC	168.2000 N		168.2000 N		A	
10	NIFC TAC 3	NIFC TC3	I / A TAC	168.6000 N		168.6000 N		A	
11	FS AIR / GND PRI	FS A/G PRI	ALL DIVISIONS	167.6000 N		167.6000 N		A	
12	FS AIR / GND SEC	FS A/G SEC	ALL DIVISIONS	166.8750 N		166.8750 N		A	
13	UNASSIGNED								UNASSIGNED
14	AIR TO GROUND	CDF A / G	AS NEEDED	151.2200 N		151.2200 N		A	
15	MEDICAL	CALCORD	MEDICAL TACTICAL	156.0750 N		156.0750 N	T6 156.7	A	
16	URGENT AIR CONTACT	AIRGUARD	ALL DIVISIONS	168.6250 N		168.6250 N	T1 110.9	A	USE ONLY FOR URGENT AIRCRAFT CONTACT

Prepared by

Ken Earle, Phil Shafer COM1 NORCAL 1

Incident Location

MODE: A - ANALOG, D - DIGITAL

ORLEANS, CA

BUTLER FIRE PHONE LIST

As of 8/27/2013

Incident Commander & Staff				
Position	Name	PHONE #	Cell PHONE # or other	FAX
NIMO Incident Commander	Quesinberry	877-230-9500	Cell 925-549-9420	
Incident Commander	Minton	No #	Cell 925-549-9417	
NIMO Safety	Terri Knauth	877-234-2477	Cell 925-549-9428	
Safety	Tanzi/Kirste	877-234-2477	Cell 925-549-9428	
Information	Downing/Mackensen	877-366-6008 877-365-6423 877-375-2226	Cell 925-549-9427	
Liaison Officer	Swartzlander	877-230-9500	Cell 925-549-9429	
Human Resources	Gonzalez	877-328-4522	Cell 925-549-9423	
Operations				
Planning Ops	Wills/Stevens(t)	877-354-2815		
Air Ops.	Mueller	877-353-6938		
Scott Vally Helibase	Bill Lambert	530-468-5495		
Planning				
NIMO Plans Chief	Schwilling	877-231-8599	Cell 925-549-9430	
Plans Chief	Sinclear	877-354-9003	Cell 925-549-9421	
Planning Ops	Wills	877-231-8599	Cell 925-549-9426	
Situation Unit	Taylor /Olds	877-354-9003		
Check-In / Demob	Dumlao	877-367-1232		800-618-3707
Demob	Deboi	877-367-9503		800-618-3707
IMET	Tobin/Clemmons	877-368-2325		
Fire Behavior Analyst	Wade/Wood	877-368-2325		
Computer Techs / Resources	Steel	877-336-0460		
Training Specialist	Smith	877-342-8962	Medical 877-356-8984	FAX same as MedL phone- call 1st
Logistics				
Logistics Chief	Jellison	877-262-1573		
NIMO Logistics Chief	Brown	877-262-1573		
Supply / R & D	Sheets	877-321-2494		
Ordering	Lake	877-321-2494		800-617-4920
Facilities	Huhtala	877-354-6006		No FAX
Ground Support / Repair	Zabel	925-549-9431	925-549-9431	addl cell760-646-5747
Communications	Earle	Disp 877-325-0366	COML 877-321-4510	INCM 877-325-6905
Medical Unit	Thomas	877-356-8984		
Security	Nolde	Call Facilities @ 877-354-6006		
Food Unit	Westlake	877-354-6006		
Finance				
Finance Section Chief	Corkill/Palmer	877-253-6892		
Personnel Time	Ammon	877-236-7216		FAX 800-881-2790
Equipment Time/Cost	Griffith	877-235-0564		
Comp & Claims	Valdez	877-234-2477		
GIS	Felker/House	No Phone yet		
Other Important Numbers				
Expanded YICC		530-841-4611	530-841-4612	
Fortuna Dispatch (fs)		days 707-726-1266	nights 707-726-1281	
Co. Sheriff 24 hrs			530-625-5014	
Co Roads			707-445-7491	
Yreka Dispatch (fs)			ROUTINE CALLS 530-841-4600	EMERGENCY ONLY 530-842-3515
CHP 24 hrs			707-266-2000	
Hoopa Police			530-625-4211	
Cal - Trans 24 hrs			707-445-6600	
Fire Dawg Clerical-Butler	530-625-4059			
Tosiers Clerical -Salmon Complex	Gail Tosier	530-592-8550		530-467-1536
Forks Camp				
Dep IC	Pete Duncan	530-462-1520		
Medical	Claudia Kutscher	530-462-1518		
Logistics	Shurr/Howard(t)	530-462-1523		
Finance	Lois Charlton	530-462-1514		
Facilities / Info	Frank Decarlo	530-462-1519	INFO Kathy Hardy	
Plans Chief	Valery Vambeth	530-462-1520/1		
Plans Chief (t)	Bob Patton	530-462-1516		
Operations	Lane/Coots(t)	530-462-1516		

AIR OPERATIONS SUMMARY PREPARED BY: Dustan Mueller

PREPARED DATE/TIME: 8/27/13 1900

1. INCIDENT NAME: Forks Complex 2. OPERATIONAL PERIOD DATE: 8/28/13 START TIME: 0600 END TIME: 2200 SUNRISE: 0636 SUNSET: 1956

3. REMARKS (Safety Notes, Hazards, Air Operations Special Equipment, etc.):
 ** Name Change/Freq Change. Use Forks A/G for all aerial mission in TFR. 171.5375
 Watch for wires in the Salmon river canyon.
 Beware of rapidly changing VFR conditions due to smoke, and Wx
 Avoid no-fly zone over Orleans unless unsafe starting 8/20/13.

4. MEDEVAC A/C:
 H-7PA
 I.A. A/C: H-502


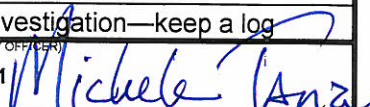
5. TFR: 3/9102
 Altitude: 11,000' MSL
 Center point: 41 20.35 N
 123 15.10 W
 Frequency: 120.0250

6. PERSONNEL	Phone	7. FREQUENCIES	AM	FM	8. FIXED-WING	# Avail / Type/ Make-Model / FAA N# / Base(s)
AOBD Trainee: Dustan Mueller	877-353-6938 530-260-1278	TFR A/A	120.0250		Airtankers	Airtankers available upon request of Air Attack.
ATGS: Carl Piper Trainee: Rico Gonzalez	530-295-7273 530-605-6376	AIR/ AIR RW	132.2750		Leadplanes	Lead/ASM's available upon request of Air Attack
ASGS: Sean Cox ASGS: Steve Beall	530-409-2363 530-598-6755	AIR/ AIR FW Air Tactics		163.1500	Base FAX #:	
HEBM: Bill Lampert HEBM T: Joel Torres HLCO: Bill Palmer	530-598-4128 530-598-9323 828-273-9255	AIR/ GROUND Forks A/G:		171.5375	ATGS Aircraft	AA-1176Z
Scott Valley Helibase:	530-468-1294 530-468-5495 530-598-4132	COMMAND Rx: Tx:		168.0750 170.4250 t-3		
H-503, Jim Gould Helibase Fax:	530-468-2118	DECK		163.100		
Air Ops Desk ICP:	877-353-6938				Other	

9. HELICOPTERS (Use Additional Sheets as Necessary)

FAA N#	TY	MAKE/MODEL	BASE	AVAIL	START	REMARKS	FAA N#	TY	MAKE/MODEL	BASE	AVAIL	START	REMARKS
H-503	3	Bell 407	Scott Vly	0700	0800	PSD Recon	H-502	2	Bell 205	Scott Vly	0700	0800	Cargo/Bucket/Pax Rappel
H-407PA	3	Bell 407	Scott Vly	0700	0800	All Missions Short Haul W/EMT							
H-514	2	Bell 212HP	Scott Vly	0700	0800	Cargo/Bucket/Pax PSD							

10. TASK/MISSION/ASSIGNMENT (Type/Function includes: Air Tactical, Retardant, Recon, Personnel Transport, Water Dropping, S&R, etc.)				
TYPE/FUNCTION	NAME OF PERSONNEL OR CARGO (if applic) OR INSTRUCTIONS FOR TACTICAL AIRCRAFT	MISSION START	FLY FROM	FLY TO
(1) Bucket Support	As needed through Air Attack, HILCO, or Air Operations	TBA	Scott Vly	Butler Fire
(2) Backhaul	Salmon fire backhaul	TBD		
(3) Reconnaissance	Operations. As visibility allows. Roughly 3 people around 1400.	TBA	H-11	Fire
	*** For Medevac purposes refer to the IAP***			
KNF/SRF IA	Support as requested. All support needs to be approved by air ops.			
	*** H 407PA available for all Missions. For Short Haul within Forks TFR use local helicopter ordering protocol. Robert Dauphinals Manager 928-266-5633			
	***** All requests for logistical and tactical support must go through Air Attack if they are over the fire***			

MEDICAL PLAN		1. INCIDENT NAME Forks Complex	2. DATE PREPARED 8/27/2013	3. TIME PREPARED 2000 Hrs	4. OPERATIONAL PERIOD 0600-2200 08/28/2013			
5. INCIDENT MEDICAL AID STATIONS								
MEDICAL AID STATIONS		LOCATION			PARAMEDICS			
					YES	NO		
Frontline Medical		ICP next to kitchen			X			
Fork Medical Unit		Salmon Medical Unit at Salmon Camp			X			
FEMP Snow & FEMT Rubin		Div A,D or as directed by Safety and Operations			X			
FEMP Wilcox & FEMT Revollo		Div B,C or as directed by Safety and Operations			X			
FEMP Owen & FEMT Conn		Div H or as directed by Safety and Operations			X			
FEMP Bristow		Div K or as directed by Safety and Operations			X			
FEMP Mallett & FEMP Doty		Div W or as directed by Safety and Operations			X			
FEMP Volmer & FEMT Mineke		Div T,Z or as directed by Safety and Operations			X			
FEMP Harrison & FEMT Rocha & REM 1		Diz T,Z or as directed by Safety and Operations			X			
FEMP Gabbard & FEMP Van Renselaar		Repair Group, or as directed by Safety and Operations			X			
6. TRANSPORTATION								
A. AIR RESOURCES								
NAME		ADDRESS		PHONE	PARAMEDICS			
					YES	NO		
NPS H- 7PA - Short Haul Capable 150' to 250'		Scott Valley Helibase, Scott Valley, Ca 96027		Air Ops. (877) 353-6938		X		
CalFire 102- (Hoist) Daylight hrs only		Kneeland, CA		YICC (530) 842-3515		X		
REACH- (Non-Hoist) NVG Capable		3775 Flight Ave. Redding, Ca. 96003		YICC (530) 842-3515		RN/ Medic		
PHI Air Medical -(Non-Hoist) NVG Capable		1524 East St. Redding , Ca 96003		YICC (530) 842-3515		RN/ Medic		
CANG H820-(Hoist, day or night) NVG Capable		Redding Airport		YICC (530) 842-3515	X			
B. INCIDENT AMBULANCES								
NAME		LOCATION			PARAMEDICS			
					YES	NO		
Arcata Ambulance 4		Available @ Red Bank Camp Ground Sawyer Bar Road			X			
City Ambulance 4		Available Forks ICP			X			
7. HOSPITALS								
NAME	ADDRESS	TRAVEL TIME		PHONE	HELIPAD		BURN CENTER	
		AIR	GRND		YES	NO	YES	NO
St Joseph Hospital	2700 Dolbeer Eureka, Ca. N 40 47.02 / W 124 8.48	20 M	2.5 H	707-445-8121 #2	X			X
Fairchild Medical Center	444 Bruce St. Yreka, CA N41 43.13 W122 38.69	20M	2.5 H	530-842-4121	X			X
Mercy Medical Center Level 2 Trauma	2175 Rosaline Ave. Redding, Ca N 40 34.13 / W 122 23.67	50M	3 H	530-225-7201	X			X
UC Davis Medical Ctr. Level 1 Trauma	2315 Stockton Blvd. Sacramento, Ca. N 38 33.17 / W 121 27.05	1.5H	6.5 H	916-734-3636	X		X	
8. MEDICAL EMERGENCY PROCEDURES								
IN-CAMP CARE				LINE EMERGENCIES				
<ul style="list-style-type: none"> Minor Injuries or illnesses <ul style="list-style-type: none"> Seek Aid directly at the Frontline Medical Unit, report all injuries or illnesses to supervisor Unit Open 0600 hrs to 2200 hrs Moderate to Severe Injuries or Illnesses <ul style="list-style-type: none"> Contact Communications directly Med Unit staffed after hours for Emergencies 				<ul style="list-style-type: none"> <u>Start of shift:</u> notify your Div Sup of EMT's and equipment you have available for response if needed. Contact Communications and declare a medical emergency on command Closest DIVS or designee responds to incident <ul style="list-style-type: none"> Closest SOFR/EMT's respond to assist w/care Use attached Injury or Incident Comm. Protocol If ambulance (ground or air) delayed designate rendezvous site and move towards it Secure scene for investigation—keep a log 				
ICS 206 8-78 <small>9 PREPARED BY (MEDICAL UNIT LEADER)</small> R. Reginato MEDL(t) 				<small>10 REVIEWED BY (SAFETY OFFICER)</small> M. Tanzi SOF1 				

Injury or Incident Communications Protocol

Time: _____ Date: _____ On Scene POC: _____

Declare: Medical Emergency _____ or Non-Emergency Medical _____

Number of injured: _____ Type of injury: _____

Patient Location: _____ Lat: _____ Long: _____ Elevation: _____

Best transport method: (see matrix below) Air Ambulance Ambulance Helicopter Vehicle

Any special equipment required: (SKED, Wheeled Stokes, Backboard, etc.) _____

Closest pick up point (DP, Helispot) _____

LOC _____ Resp. _____ Pulse _____ BP _____ Weight _____

Medical History/Allergies _____

On Scene Medic: _____

Air Transportation Triage

Coordinate with Air Ambulance on Cal-Cord (Ch: 15)

	Air Ambulance	Ground Transport
Mechanism	Struck by tree Fall of 10' or more Snake bite with pain and swelling Insect bite with shortness of breath Signs of heat stroke (hot, dry, disoriented) Burn Injury greater than 1% body area	Minor dehydration Cut or laceration with bleeding controlled Minor bites and Stings Minor burns
Area Injured	Significant Blunt or Penetrating Trauma to Head, Neck, Chest, Abdomen or pelvis Any Arm or Leg fracture	Minor blunt trauma Minor penetrating trauma Extremity sprains and strains
Symptoms	Disoriented Chest Pain or Shortness of Breath Weak or absent radial pulse Pale, cold and sweating	Alert and oriented No shortness of breath Good pulses

Medivac Sites (WGS 84 datum) use Degrees, Decimal Minutes (Lat 00° 00.000' – Long 00° 00.000')

Forks Camp - N 41°15.553 / W 123°19.650

DP- 34 Div. C- N 41°12.896 / W 123°16.759

H 11 – N 41°15.182 / W 123°18.963

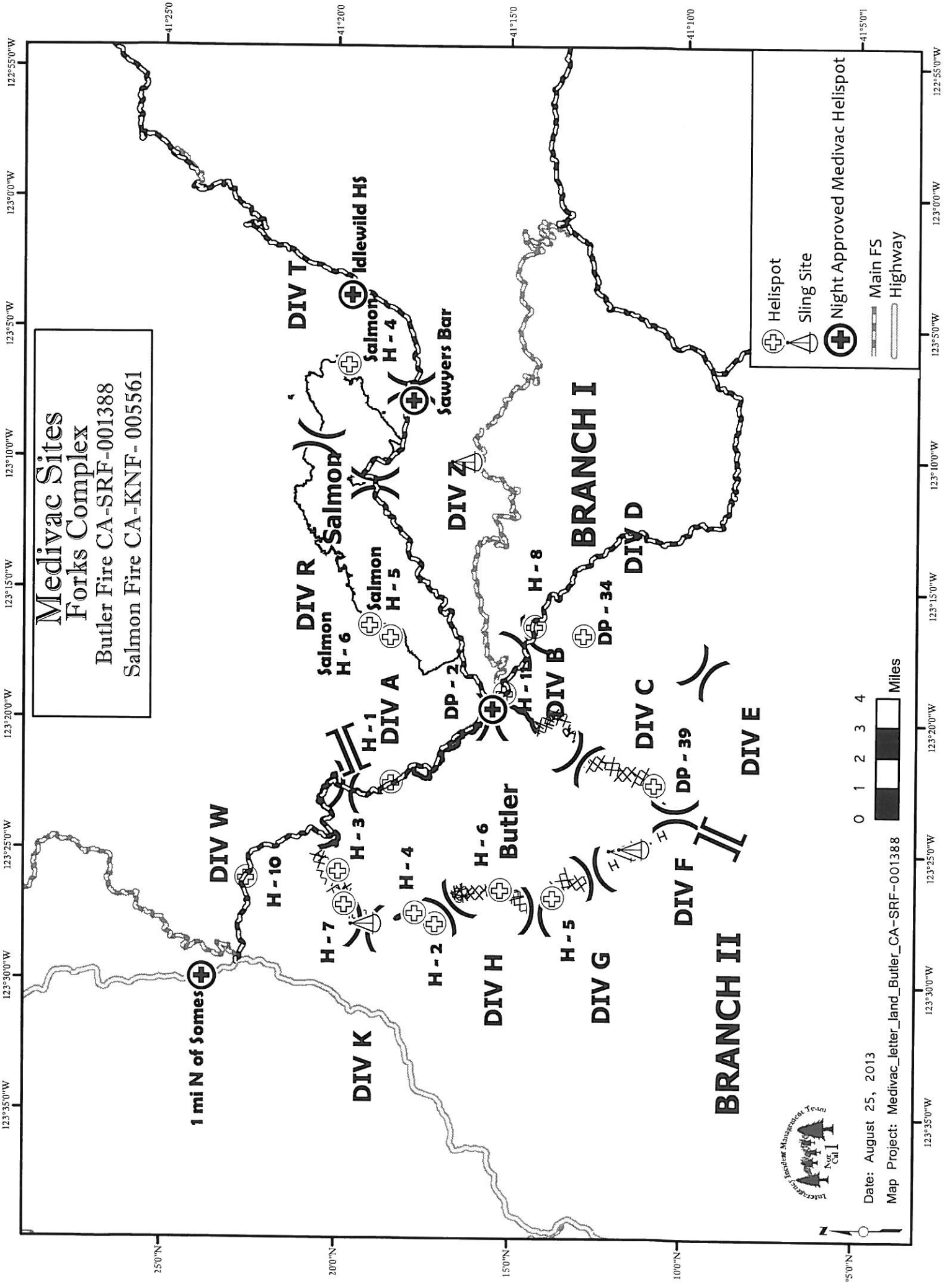
DP-39 Div. E- N 41°10.847/ W 123°22.445

If air or ground ambulance is DELAYED:

DO NOT DELAY in Packaging and transporting the patient to rendezvous with the Ambulance.
Re-route EMS helicopter to rendezvous point as appropriate.

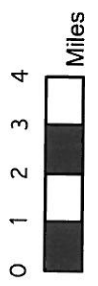
When declaring an "Incident within the Incident"

The closest DIVS or designee will respond to manage the incident. They are responsible for giving an accurate size up, ensuring scene safety, setting priorities and initiating an appropriate response. The closest Safety Officer and Line EMS will respond to the scene to assist. The Safety Officer will secure the site and begin initial investigation when situation is stabilized.



Medivac Sites
Forks Complex
 Butler Fire CA-SRF-001388
 Salmon Fire CA-KNF-005561

Helispot
 Sling Site
 Night Approved Medivac Helispot
 Main FS
 Highway



Date: August 25, 2013

Map Project: Medivac_letter_land_Butler_CA-SRF-001388



Medivac Sites

Site	Latitude	Longitude
1 Mi N of somes	41° 23.857' N	123° 29.919' W
Cecilville	41° 08.45' N	123° 08.14' W
Forks of the Salmon / DP 2	41° 15.490' N	123° 19.490' W
Sawyers Bar	41° 17.84' N	123° 07.82' W
Idlewild	41° 19.61' N	123° 03.78' W
Etna Parkway	41° 27.84' N	122° 53.45' W
DP - 34	41° 12.896' N	123° 16.759' W
DP - 39	41° 10.847' N	123° 22.445' W
H - 1	123° 22.420' W	41° 18.449' N
H - 2	123° 27.803' W	41° 17.159' N
H - 3	41° 19.949' N	123° 25.809' W
H - 4	41° 17.747' N	123° 27.402' W
H - 5	41° 13.759' N	123° 26.776' W
H - 6	41° 15.266' N	123° 26.500' W
H - 7	41° 19.764' N	123° 27.102' W
H - 8	41° 14.299' N	123° 16.410' W
H - 10	41° 22.600' N	123° 26.100' W
H - 11	41° 15.182' N	123° 18.963' W
Salmon H - 4	41° 19.71' N	123° 6.44' W
Salmon H - 5	41° 18.482' N	123° 16.843' W
Salmon H - 6	41° 19.09' N	123° 16.382' W

As of 8/26/2013

INCIDENT RISK ANALYSIS – Forks Complex (ICS 215A) Day Shift

DIV	HAZARDOUS ACTIONS / CONDITIONS	MITIGATIONS / WARNINGS / REMEDIES	
All	Parking on Roadways	<ul style="list-style-type: none"> • ALL ROADS ARE OPEN NOW. Expect more common traffic • While parked on roads during operations, evaluate when it's clear to open vehicle doors prior to exiting. • Park your vehicle as far off the road as possible to reduce exposure on narrow roads. • Make your vehicle visible to others by turning on emergency lights before you engage. • Brief personnel to be alert for opposing traffic when walking in and around parked vehicles on roadways. 	
All	Cumulative Fatigue	<ul style="list-style-type: none"> • Monitor crews for signs of fatigue: poor decision making, easily distracted, reduced situational awareness • Ensure you & your crews receive adequate rest, nutrition & hydration. Take frequent breaks, drink plenty of fluids and snack often throughout your shift to keep your body re-fueled 	
All	DRIVING HAZARDS Very Narrow, Steep, Wet or Dry & Soft Shoulders	<ul style="list-style-type: none"> • SEAT BELTS ON.....BEFORE wheels turn! • Reduce driving speeds to allow for reaction time lag. • Establish one-way traffic or coordinate traffic flow if necessary. • Drive Defensively! Expect the unexpected around every curve. • When meeting oncoming traffic at night, come to a controlled stop. Turn headlights to running lights; assist other vehicle in backing to a safe place to allow safe passage around vehicle. 	
All	Communications	<ul style="list-style-type: none"> • Share your Situational Awareness (hazards, changes, etc.) to those who also have a need. Answer questions when asked by others. Ask for intel if and when you don't know the plan. 	
DIV Z	Firing Operations	<ul style="list-style-type: none"> • Know the plan! Know who's in charge! Know the Plan! • Conduct thorough briefing for all personnel (inside rear cover IRPG). • Utilize Risk Mgmt. Process (IRPG p. 1) for implementing the plan. • Establish LCES prior to implementing burning operations (IRPG p. 6). • Assign an over-all Burn Boss, Firing Boss & Holding Boss, to coordinate ignitions when simultaneous burning operations are planned for multiple locations. 	
All	Hazard Trees, Fire Weakened Trees & Snags	<ul style="list-style-type: none"> • Scout work area for overhead hazards to ensure safe work areas. • Identify and communicate hazard to personnel. Mitigate using qualified personnel only. • Re-assess the need to eliminate the hazard by felling if it is feasible to keep personnel away • If unable to mitigate hazard, Flag Off area, communicate the location & keep personnel away. 	
Salmon River Rd & Sawyers Bar Rd	Debris & Rock Slides, etc.	<ul style="list-style-type: none"> • Any amount of rain will cause loosening of Soils, Rocks, and Trees due to Burn Scar. • Expect debris/rocks in roadways as you travel. Expect the unexpected around every curve. • NO vehicle traffic between Butler ICP and Forks Base Camp via Salmon River Rd if raining 	
All	Environmental Hazards	<ul style="list-style-type: none"> • Keep alert for wildlife, insects, and plants. Watch footing and hand placement around rocks. • Keep food out of tents and from around sleeping areas to prevent wildlife night visits. • Personal hygiene is #1 when it comes to Poison Oak Prevention 	
All	Extremely Steep Terrain & Rolling Materials	<ul style="list-style-type: none"> • Concentrate on your footing placement; take your time. • Ensure adequate spacing between crewmembers so they can react to dislodged debris. • Post lookouts to warn of rolling debris. SHOUT out to warn others • Look Up, Down and Around Frequently. 	
Branch 1	Mine Shafts & Adits	<ul style="list-style-type: none"> • Abandoned mine shaft openings and vent holes. Identify, Flag area, Make known to personnel. • Keep heavy equipment clear of area. • Hazardous Materials and explosives can often be found around mine sites. 	
IA	Initial Attack	<ul style="list-style-type: none"> • Ensure risk management has been reviewed & LCES is in place before taking action on a new start. Page 1 in IRPG, • Know IA frequencies... 	
All	Hydration	<ul style="list-style-type: none"> • Pre-hydrate, Re-hydrate to keep from DEHYDRATING • Dehydration is PREVENTABLE • Be alert for signs of heat illness in yourself and others. • Drink 2 to 1 water to sports drinks. 	
INCIDENT NAME: Forks Complex ICS 215a		DATE PREPARED: <p style="text-align: center;">August 27, 2013</p>	OPERATIONAL PERIOD Day Shift 08/28/13 0600-2200 Prepared by: R.Kafka SOF2 (T) M. Tanzi SOF2,
		TIME PREPARED: 2100 HOURS	



COMMUNICATIONS

*LCES (Lookouts, Communication, Escape Routes, and Safety Zones)
Category*



Effective communication is a critical backbone of safe and successful operations.

- Discuss the factors that can affect radio communication at the incident.
 - Knowledge of the radio issued to the individuals
 - Net control, frequencies
 - Line-of-sight restrictions
 - Antenna polarization effect (direction of the antenna)
 - Minimizing noise interference
 - Wide band narrow band
- How can you mitigate potential problems?
 - Implement effective communication procedures--be brief, clear, concise, and to-the-point.
 - Give a good comprehensive briefing. (Refer to the Briefing Checklist inside the back cover of the Incident Response Pocket Guide.)
 - Confirm that relayed information is received, acknowledged, and understood.
 - Keep a continuous information flow (e.g., updates on weather, fire behavior, work progress; changes in strategy/tactics; arrival of additional resources; solicit feedback).
 - Establish emergency check-in procedures.
 - Provide a minimum of 4 radios per 20-person firefighter crew.
- The Five Communication Responsibilities for All Firefighters:
 - Brief others
 - Debrief your actions
 - Communicate hazards to others
 - Acknowledge messages
 - Ask if you don't know

References:
[Incident Response Pocket Guide](#)
[Fireline Handbook](#)
[Interagency Standards for Fire and Fire Aviation Operations](#)
"LCES and Other Thoughts" by Paul Gleason

Have an idea? Have feedback? Share it.

ONLINE | MAIL: 6 Minutes For Safety Subcommittee • 3833 S. Development Ave • Boise, ID 83705 | FAX: 208-387-5250

[6 Minutes Home](#)

Bear Safety (for you, not the bear)

Sloppy firefighters don't just endanger themselves, but also other firefighters. Bears will return to a site repeatedly if they ate there at some point in the past. When in bear country (where you are now) you should:

Maintain a bear safe campsite

- Store food, drinks and scented items securely.
- Dispose of trash
- Always sleep inside your tent
- Never approach or feed a bear
- Report bear sightings to your Division Supervisor

Take precautions while hiking

- Stay alert at dawn and dusk, when bears are more active
- Make noise as you travel through dense cover
- Stay away from animal carcasses
- Store food, trash and scented items (sunscreen, etc.) in airtight plastic bags

Dispose of trash carefully

- Store trash in a secure location
- Clean the trash container regularly

If you encounter a bear

- **Stand your ground.** Never back up, lie down or play dead. Stay calm and give the bear a chance to leave.
- **Don't run away or climb a tree.** Black bears are excellent climbers and can run up to 35 mph – you cannot out climb or outrun them
- **Know bear behavior.** If a bear stands up, grunts, moans or makes other sounds, it is not being aggressive. These are the way a bear gets a better look or smell and expresses its interest.

If a bear attacks

- **Always fight back.** And never give up! People have successfully defended themselves with almost anything: rocks, sticks, pulaskis, water bottles and even their hands and feet.

TRAINEES AND TRAINER/EVALUATORS

As your demob date approaches, you should start closing out the training assignment. You do not have to wait until your demob day to do this. The Trainer/Evaluator needs to finish initialing completed tasks in the PTB and complete the Evaluation Record at the back of the PTB. Also a Performance Rating should be prepared by the Trainer/Evaluator, discussed with the Trainee and signed. The Trainee should complete the Trainee Interview form on the reverse page of this message.

To expedite the closeout with the Training Specialist, bring your up-to-date PTB, Performance Rating and the Trainee Interview Form to the Training Specialist located in the east end of the Medical Unit trailer.

If the TNSP is not in the office, leave a copy of the Performance Rating, a copy of the Evaluation Record from the PTB and the Trainee Interview form. A training documentation packet will be mailed to the office the Trainee indicated on the initial training assignment check-in.

Any questions, check with me at the Training desk.

Dave Lattimore

FINAL INCIDENT TRAINEE INTERVIEW

Trainee: _____ Trainee Position: _____

Trainer/Evaluator: _____ Training Specialist: Dave Lattimore

Incident Name/Number: Forks Complex CA-SRF-1388/CA-KNF-5561

1. Is this your first assignment in this position?

2. Do you feel you benefited from this assignment? (Explain)

3. Would you prefer another trainee assignment at this level?

4. Comments regarding your incident supervisor/trainer. (Assistance, Ability, Knowledge of position, and so forth)

5. Did you receive a final performance evaluation?	[] Yes	[] No
--	---------	--------

Employee/Trainee Signature: _____



M.I.S.T. GUIDELINES (SRF – KNF – SHF)

MINIMUM IMPACT SUPPRESSION TECHNIQUES

Wilderness areas are areas that are protected by law and are managed to preserve their natural conditions for present and future generations. The following Minimum Impact Suppression Techniques (MIST) are guidelines intended to significantly reduce the impacts associated with fire suppression and incident management activities in Wilderness areas.

SAFETY Safety is of paramount importance. Incident personnel should constantly be aware of their surroundings and the Eight Principles of Safety, the 10 Standard Firefighting Orders and the 18 Watchout Situations when applying MIST techniques.

LINE OPERATIONS

- Use natural barriers, wet line or cold trail techniques, rather than constructing line. Consider burnout from natural barriers to minimize line construction.
- When constructed line is necessary, use the minimum width, depth and canopy clearance necessary to check fire spread, based on fire behavior. Locate line to minimize impacts. Consider use of fireline explosives for line construction.
- Do not put line construction debris in streams.

GREEN TREES, BURNED TREES AND SNAGS

- Scrape around tree bases near fireline if hot and likely to cause fire spread.
- Inside fireline: remove or limb only those fuels that if ignited would have potential to spread fire outside the fireline.
- Identify hazardous trees with an observer or flagging.
- Use Saw Use guidelines.

SAW USE

- Minimize the amount of cutting.
- Live trees will not be cut, unless it is determined they will cause fire spread across the fireline or endanger workers or the public.
- Slope/angle saw cuts away from line of sight to minimize visual impacts. Rub dirt or ash on stumps and log ends to camouflage them. Do not crosshatch/etch.
- If trees must be felled inside the line, do not limb or buck them. Allow the fire to consume them.

INDIRECT ATTACK

- Do not fall snags on the intended unburned side of the constructed fireline, unless they are safety hazard to crews or the public.
- On the unintended burn-out side of the line, fall only those snags that would reach the fireline should they burn and fall over.
- Consider alternative means to falling, i.e., fireline explosives, bucket drops.
- Consider all items in Section B, the Fire Line Phase.

AIR OPERATIONS

- Limit the use of retardant. Use water drops (preferred) or foam instead. When foam or retardant use is appropriate, avoid dropping near surface water.

HELISPOT CONSTRUCTION

- Minimize the number of helispots constructed in Wilderness.
- Evaluate carefully whether it is necessary to construct a helispot or whether an alternative outside Wilderness can be used.
- If a helispot is only needed for logistical support to deliver and retrieve supplies or gear, consider using a long line remote hook in lieu of constructing a helispot. If a helispot is needed for crew shuttle, consider the minimum size helicopter that could do the job and still meet suppression objectives.
- Use natural openings as much as possible. If some tree falling or cribbing is necessary, avoid high visitor use locations unless the modifications can be rehabilitated to be generally unnoticeable. Feather the opening so that it appears more natural looking.
- Whenever possible, the Resource Advisor should provide specific instructions and observe the construction of helispots.
- Naturalize helispots before abandoning

SPIKE CAMPS AND CAMP ACTIVITIES

- Camps and other facilities will be located outside of wilderness whenever possible.
- A Resource Advisor will be consulted prior to establishing spike camps and use will be discontinued if resource damage occurs.

MOP-UP PHASE

- Cold trail rather than scraping or digging whenever possible to detect hot areas.
- Roll or drag fuels into the interior and allow them to burn out, rather than mopping them up and roll logs rather than bucking.
- Pull hot material away from the bases of trees, rather than felling them.
- Remove or limb only those fuels that if ignited, have potential to spread outside the fireline.

PERSONAL CONDUCT

Leave No Trace – Pack it in - Pack it out

Confirmed approval for use of mechanized equipment – Chainsaws / Helicopter Use

The 5-D System for Effective Waterbars

When locating and building waterbars, place them the right **distance** apart, at a **diagonal** to the fireline, so that they **divert**, then **discharge**, then **dissipate** the energy of the flowing water. Be sure to make them deep enough so they'll be durable, and that soil does **not block** the water bar outlet.

Recommended spacing for waterbars on firelines.

Fireline slope %	Maximum Distance Apart (feet)
1-5	200
6-20	125
21-40	60
41-60	40
>60	25

Waterbars should be at least 2 pulaski widths (4-6 inches) wide and 12-24 inches high for handlines.

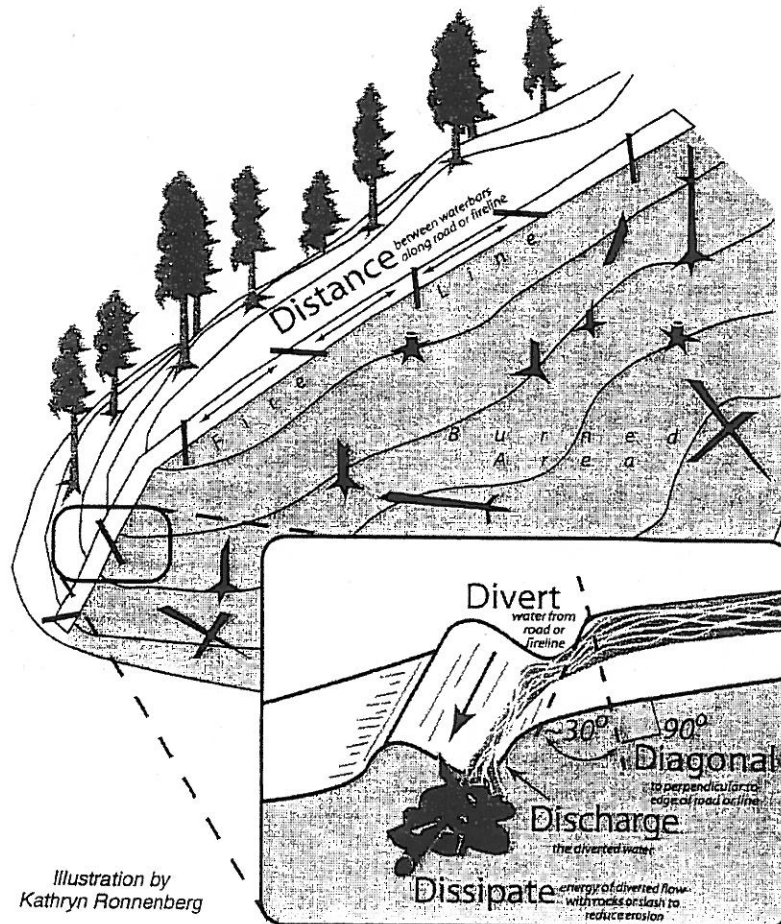


Illustration by
Kathryn Ronnenberg

Nor Cal #1

Expectations for Operational Periods and Shift Length

- The expectations of the I.C. and the team are that all operational resources will proceed directly to their shift assignments at the conclusion of the operational briefing / division break-out. Individuals attending the briefing should attend dressed fire-ready (nomex pants and boots).
- ICS 204 Division Assignment Lists will display anticipated shift duration. The assigned Division Supervisor has the authority to modify these time frames as the situation dictates.
- A minimum of 1 meal break should be taken each day when the fire situation permits. When meals are not recorded, rationale is needed on the CTR. Non fireline assigned resources should plan for a 30 minute break every 6 hours when the situation permits. Command and General Staff will manage workloads to allow for breaks when appropriate.
- Individuals shall only drive if they have had at least 8 consecutive hours off duty before beginning a shift. *Example: if it becomes essential to work until 2300 hours, the individual should not return to duty before 0700 the following day.* Exceptions to this policy should only be to accomplish immediate and critical suppression objectives or critical firefighter / public safety missions as approved by the I.C.
- The Incident Management Organization is committed to a “zero tolerance” policy against inappropriate behavior during incident operations. We expect an attitude of mutual respect for all incident personnel and the public we serve. Any form of harassment, discriminatory practices, or disrespectful behavior will not be tolerated and will be dealt with appropriately. Illegal drug use or other illegal activities will not be tolerated and will be turned over to local law enforcement authorities. Alcohol is strictly prohibited from the fire camp and all other incident locations. Violation of these standards of conduct can result in prompt dismissal from the incident. Individuals who are aware of any inappropriate behavior of incident personnel should tell their supervisor or contact the Human Resource Specialist.

Date & Time Order was placed:		Order #	Location & Time for Delivery (DIV,LZ,DP,Lat Long)		Mode of delivery
		(DIVS+#)			(Driven/Helo/DIVS to Pick up)
			Lat:		
			Long:		
Order received in Communications by (Name):					Time:
Order shipped to line by (Name): (Send this sheet to the line with the order)					Time:
#	Item				
1	1,000 Foot Hose Lay includes the following: Amount _____				
	10, 100'x1½" Rolls Hose; 10, 100'x1" Rolls Hose; 10, 1½" Gated Wyes; 10, 1½" to 1" reducers; 10, 1" nozzles				
2	2,000 Foot Hose Lay includes the following: Amount _____				
	20, 100'x1½" Rolls Hose; 20, 100'x1" Rolls Hose; 20, 1½" Gated Wyes; 20, 1½" to 1" reducers; 20, 1" nozzles				
3	3,000 Foot Hose Lay includes the following: Amount _____				
	30, 100'x1½" Rolls Hose; 30, 100'x1" Rolls Hose; 30, 1½" Gated Wyes; 30, 1½" to 1" reducers; 30, 1" nozzles				
#	Item	Amount	#	Item	Amount
4	Hose (50') garden, 3/4"		30	Gas Unleaded (Gallons)	
5	Hose (100'), 1"		31	Oil 2 cycle, (Pints)	
6	Hose (100'), 1½"		32	Bar Oil (Qts)	
7	Nozzle, Garden, 3/4"		33	Drip Torch ea	
8	Nozzle, Forester, 1"		34	Drip torch mix 3.5:1.5 (gallon)	
9	Nozzle, KK Type, 1"		35	Fusees (Boxes or cases)???	
10	Nozzle, KK Type, 1½"		36	Flare Gun Rounds (12/BX)	
11	Wye, Gated, 3/4"		37	Cartridge #6 purple (box)	
12	Wye, Gated, 1"		38	Batteries "AA" PKGs(24/PKG)/BX	
13	Wye, Gated, 1½"		39	Ribbon, Flagging (Specify Color)*	
14	Inline-Tee, 1x1x3/4"		40	Water, Cubies	
15	Inline-Tee, 1x1x1"		41	Water, Bottled, Cases	
16	Inline-Tee (1½" X 1")		42	Gatorade	
17	Reducer, 1" X 3/4"		43	MRE's (12/BX)	
18	Reducer, 1½" X 1"		44	Heavy Mill Plastic	
19	Increaser, 3/4" X 1"		45	Washcloth, waterless, cleansing	
20	Increaser, 1" X 1½"		46	Wrap, Structure 54"x300'	
21	Foam 5 gal		47	Sprinkler Kit	
22	Foam 4 oz (For Backpack Pump)		48	Mark 3 Pump	
23	Backpack Pump		49	Mark 3 Pump Kit- w/10 gal mixed fuel	
24	Pumpkin (Gallons?)		50	Chainsaw Kit	
25	Porta-Tank (Gallons?)		51	Mop-Up Kit, 3-Wand	
26	Shovel		52	Pump Kit, Lightweight, 2 Cycle	
27	Pulaski		53	Gas, Raw and 2 qts 2-cycle oil, ea	
28	Combi Tool		54	Lightweight Pump Kit-Cache w/5gal fuel	
29	McCloud		55	Gas, raw (gal) and 1 qt 2-cycle oil, ea.	
Notes:			Notes:		

