

KING INCIDENT



Incident Action Plan



Friday

October 10, 2014 0700-1900

CA-ENF-023461 P5JEE9 (0503)

0700 Briefing at King ICP now located at Sunset Campground

1700 Planning Meeting at King ICP

INCIDENT OBJECTIVES		1. Incident Name		2. Date Prepared		3. Time Prepared	
ICS 202		King Fire		10/09/2014		1600	
4. Operational Period							
Thursday, October 10, 2014 – 0700 - 1900							
5. General Control Objectives for the Incident (include alternatives)							
<p>MANAGEMENT OBJECTIVES:</p> <ul style="list-style-type: none"> • Provide for safety of responders and public. • Assess and implement fire suppression repair. • Establish and maintain positive relationships with cooperating agencies and the public. • Keep costs commensurate with values at risk. <p>CONTROL OBJECTIVES:</p> <ul style="list-style-type: none"> • Repair priorities: <ol style="list-style-type: none"> 1. pull hose & backhaul fire equipment (pumps, tanks) 2. water bar dozer and hand lines utilizing the repair plan 3. open priority roads (hazard tree removal & chipping) • Keep fire within current perimeter and containment lines. 							
6. General Weather							
Mostly Sunny as a weak upper level trough moves out of the region bringing a gradual return to hotter and drier conditions.							
7. Resource Protection Guidelines							
Minimize or avoid ground disturbing activities in flagged sensitive areas Utilize screens on all drafting operations							
8. Attachments							
X	Organization List-ICS 203	x	Air Ops Plan ICS-220	x	Fire Weather/Behavior Forecast		
X	Division Assignment List-ICS 204	x	Incident Map	x	Training/HR/Demob/ Messages		
X	Communications Plan-ICS 205	x	Trans & Camp Map	x	Water Use Report / Equip. Log		
X	Medical Plan-ICS 206	x	Safety Message	x	ICP Phone List		
9. Prepared by (Planning Section Chief)				10. Approved by (Incident Commander)			
							

ORGANIZATION ASSIGNMENT LIST	
1. Incident Name KING	
2. Date October 8, 2014	3. Time 2000
4. Operational Period October 9, 2014 Day 0700 - 1900	
Position	Name
5. Incident Commander and Staff	
Incident Commander	Troy Nelsen / Will Harris (t) / Mark Johnson (t)
Deputy	
Safety Officer	Justin Kerwick
Information Officer	
Liaison Officer	
6. Agency Representative	
Agency	Name
USFS ENF Agency Admin Rep	Richard Thornburgh
Cal-OES	Gary Humphrey
SMUD	Jack Belnap / Jim Wilhelm
CHP	Chris Sahagun
SPI	Rich Wade
CCC	John Buffon
AEU CAL FIRE	Joe Tyler
CDCR	Mike Hill
EID	Dana Strahan
El Dorado Cty EMSA	Ken Earle
7. Planning Section	
Chief	Dave Lattimore
Situation Unit	Tony Piscopo, Dave Stephens (t)
GISS	Mike Haskell (t)
FBAN	
IMET	
Resource Unit	
Documentation Unit	
Demobilization Unit	Cheryl Dorosh SCKN
Training Specialist	Allison Jackson
Computer Tech Spec	Jonathan Wilson
Human Resources	Allen Seago
READ	Micki Smith
8. Logistics Section	
Chief	Ken Kumpe
Deputy	
Supply Unit	Dave Aliciea
Facilities Unit	Steve King
Ground Support Unit	Larry Stein
Communications Unit	Phil Shafer
Medical Unit	Antony Gasporra (t)
Food Unit	Richard Waite
Ordering Manager	

9. Operations Section		
Chief	Mark Johnson (ICT3t)	
Deputy/Planning		
a. Branch - Division/Groups		
Branch Director		
Division	A	Steve DeBenedet
	E	Gary Helming / Scott Kizzear (t)
	F	Frank Pingiczer
Division	W	Paul Johnson
Division	T	Robert Hickok / John Cottingham (t)
Division	Y	Gerald Martinez / Nathan Nelms
Division	Tahoe Spot	TBD
Group	Repair Group 1	Charles Alluisi
b. Burned Area Emergency Response		
Group	BAER	Randy Westmoreland
Division		
Division		
c. Branch - Division/Groups		
Branch Director		
Group		
Group		
Group		
d.		
Group		
e. Air Operations Branch		
Air Operations Branch Director		
Air Attack Supervisor		
Air Support Supervisor		
Helicopter Coordinator		
10. Finance Section		
Chief	Byron Brown	
Time Unit	Debbie Parlin	
Time Recorder	Ben Cazier	
Compensation/Claims Unit		
Cost Unit	Debbie Parlin	
Eqpt Time	Trina Randles	
Prepared by (PSC) Dave Lattimore		



INCIDENT Weather Forecast

FORECAST NO: 18

NAME OF FIRE: King Fire

PREDICTION FOR: 5 Day IAP

UNIT: CA-ENF

SHIFT DATE: October 8-12, 2014 0700-1800

SIGNED:

Matt Mehle
Incident Meteorologist

TIME AND DATE

FORECAST ISSUED: Tuesday October 7th @1830

WEATHER DISCUSSION: A weak upper level trough will swing through the region midweek ending the hot and dry conditions. Near normal temperatures return midweek with moderate to locally poor humidity recoveries. High pressure re-builds next weekend returning much of the King Fire to critical fire weather conditions. As of this forecast, no major wind event looks to impact the King Fire the next seven days. Next chance for precipitation appears to be early next week, but confidence is low.

WEATHER FORECAST FOR WEDNESDAY:

WEATHER: Mostly Sunny.

MAX TEMPERATURES: Ridges: 70-75...Slopes/Valleys 77-86 **24 HR Trend:** 3-5 degs cooler

RELATIVE HUMIDITY: 15-30% **24 HR Trend:** up to 5% wetter

20 FT WINDS:

Slope/Valley: Downslope/Downcanyon 3-6 mph until 1000...then upslope/upcanyon 6 mph G13.

Ridgetop: East to northeast 6 mph G14 until 1000...then west to northwest 8 mph G17.

LAL: 1. **STABILITY/INVERSION:** Inversion to 1300 FT AGL, breaking by 1000.

WEATHER FORECAST FOR WEDNESDAY NIGHT: A few high clouds...otherwise clear. Lows in the upper 40s to upper 50s. Humidities 25-45%. Winds becoming downslope/down canyon 3 to 5 mph

WEATHER FOR THURSDAY AND FRIDAY: Seasonable weather continues as a weak upper level disturbance moves through the region. Daytime highs in the mid 70s to mid 80s and lows in the 50s to lower 60s. Humidities will be in the 20s and 30s during the day and mid 30 to mid 50s at night. Much of the King fire will see terrain driven wind flow (upslope/downslope) less than 10 mph. Upper slopes/Ridge will be easterly in the morning 4 to 8 mph G 13 mph becoming westerly to northwesterly winds 6 to 12 mph G 16 mph.

EXTENDED OUTLOOK FOR SATURDAY AND SUNDAY: High pressure re-builds over the region bringing a return to above normal temperatures. Daytime highs in the upper 70s to upper 80s. Lows in the 50s to lower 60s. Humidities will lower a little...mid teens to 30 pct. Moderate to poor overnight humidity recovery will be possible again. The general wind over the King fire will be easterly in the morning 4 to 8 mph G 13 mph becoming westerly winds 6 to 12 mph G 16 mph.

EXTRA INFORMATION: You should request at least once daily spot weather forecasts from the National Weather Service office in Sacramento at:

<http://spot.nws.noaa.gov/cgi-bin/spot/spotmon?site=sto>

Phone number for Sacramento NWS: (916) 979-3047

Division Assignment List		1. Branch		2. Division/Group E			
3. IncidentName ENF KING		4. Operational Period 10/10/14 FRIDAY		Day Shift 0700-1900			
5. Operations Personnel							
Operations Chief	MARK JOHNSON		Division/Group	GARY HELMING / SCOTT KIZZIAR (t)			
Planning Operations			Air Attack Supervisor				
Branch Director			Safety Officer	JUSTIN KERWICK			
6. Resources Assigned this Period							
StrikeTeam/TaskForce/ResourceDesignator	Leader	Numof Pers.	Trans. Y/N	DropOffPT./Time	PickUpPT./Time		
CRW1 BEAR DIVIDE IHC C-278 10/17	BRIAN ANDERSON	19	N	SUNSET ICP / 0700	SUNSET ICP / 1900		
CRW2IA EAGLE LAKE C-266 10/12	ANTONIO JIMENEZ	17	N	SUNSET ICP / 0700	SUNSET ICP / 1900		
WT2 ENF E-22 10/12	KIMBER BAKER	2	N	SUNSET ICP / 0700	SUNSET ICP / 1900		
WT1 INDUSTRIAL DEF E-23 10/7	SCOTT HARVEY	1	N	SUNSET ICP / 0700	SUNSET ICP / 1900		
WT NORTH STATE E-526	L. ROSECRANS	1	N	SUNSET ICP / 0700	SUNSET ICP / 1900		
DOZ2 DUDLEYS E-558 10/7	TIM LAMKIN	2	N	SUNSET ICP / 0700	SUNSET ICP / 1900		
DOZ2 MOORE EX. E-572 10/11	TIM MARTINEZ	3	N	SUNSET ICP / 0700	SUNSET ICP / 1900		
DOZ2 FISK E-576 10/11	FISK	2	N	SUNSET ICP / 0700	SUNSET ICP / 1900		
DOZ2 E-1023 10/12	DANIEL LANGERDERTER	3	N	SUNSET ICP / 0700	SUNSET ICP / 1900		
DOZ2 MDF 4 E-114 10/13	PERRY ST JOHN	2	N	SUNSET ICP / 0700	SUNSET ICP / 1900		
EXCA2 TEHAMA ROCK E-981 10/12	BYRON MCBROOM	2	N	SUNSET ICP / 0700	SUNSET ICP / 1900		
EXCA2 VOLCANO E-1032 10/17	KENDEL GROVE	1	N	SUNSET ICP / 0700	SUNSET ICP / 1900		
EXCA PACKWAY E-1034 10/16		2	N	SUNSET ICP / 0700	SUNSET ICP / 1900		
EXCA2 TRINITY RIVER E-1035 10/16	ZACK BALDWIN	1	N	SUNSET ICP / 0700	SUNSET ICP / 1900		
SKIDDER E-910	W. YEAST	1	N	SUNSET ICP / 0700	SUNSET ICP / 1900		
TFLD 0-1202 10/14	KYLE TOLOSANO	1	N	SUNSET ICP / 0700	SUNSET ICP / 1900		
TFLD (t) 0-3382 10/14	JOSHUA DERKSEN	1	N	SUNSET ICP / 0700	SUNSET ICP / 1900		
HEQB 0-1224 10/16	BRUCE ROBISON	1	N	SUNSET ICP / 0700	SUNSET ICP / 1900		
HEQB (t) 0-1263 10/16	LISSEY LEE	1	N	SUNSET ICP / 0700	SUNSET ICP / 1900		
7. Control Operations Patrol line and complete mop up where needed to meet 200' mop up standards. Evaluate and repair contingency handlines. Install water bars and pull vegetation back onto dozer lines per repair plan on Mosquito Rd and Peavine Ridge. Continue repair of cold direct fire line. Continue coordinating repair efforts with READ. Remove and backhaul all unnecessary hoselays, pumps, and portable tanks..							
8. Special Instructions Divisions must debrief daily with cost apportionment at King ICP and Sunset Base Camp. Noxious weeds are marked by orange "noxious weed" flagging. Minimize or avoid activities in the area. Sensitive areas are marked with pink/black checkerboard flagging. Minimize ground disturbing activities in the area. Field weed wash heavy equipment used off roads before leaving to assignment on another section of fire. READ JarvisFOBS Cox and Reed will be working in Division E. READs and FOBS will be working across Divisions; notify DIVS when entering/exiting Division boundary.							
9. Division/Group Communications Summary							
Function	Frequency-RX	Frequency-TX	Tone	System	Channel	System	Channel
Command	164.1250	164.8250		ENF SERV	3		
Tactical	168.2375	168.2375		R5 TAC 6	12		
Logistics							
AirtoGround	169.1500	169.1500		A/G	13		
Prepared by (PSC) D. Lattimore		Approved by (Planning Section Chief)			Date Prepared 10/9/14	Time Prepared 2000	

Division Assignment List		1.Branch		2. Division/Group E			
3. Incident Name ENF KING		4.Operational Period 10/10/14 FRIDAY Day Shift 0700-1900					
5. Operations Personnel							
Operations Chief	MARK JOHNSON		Division/Group		HELMING / KIZZIAR (t)		
Planning Operations			Air Attack Supervisor				
Branch Director			Safety Officer		JUSTIN KERWICK		
6. Resources Assigned this Period							
StrikeTeam/TaskForce/ResourceDesignator		Leader		Num of Pers.	Tran Y/N	DropOffPT./Time	PickUpPT./Time
HEQB 0-1222 10/15		JACOB BOTTS		1	N	SUNSET ICP / 0700	SUNSET ICP / 1900
HEQB (t) 0-1243 10/16		SAUL ESQUIBEL		1	N	SUNSET ICP / 0700	SUNSET ICP / 1900
HEQB 0-1305		JESSE BUNCH		1	N	SUNSET ICP / 0700	SUNSET ICP / 1900
HEQB 0-1256 10/16		BRAD MOSCHETTI		1	N	SUNSET ICP / 0700	SUNSET ICP / 1900
FEMP 0-1278 10/17		N. BROWN		2	N	SUNSET ICP / 0700	SUNSET ICP / 1900
FEMT 0-1336		SEAN MOLINE		1	N	SUNSET ICP / 0700	SUNSET ICP / 1900
SOFR		BERNIE QUINONEZ		1	N	SUNSET ICP / 0700	SUNSET ICP / 1900
7.Control Operations Patrol line and complete mop up where needed to meet 200' mop up standards. Evaluate and repair contingency handlines. Install water bars and pull vegetation back onto dozer lines per repair plan on Mosquito Rd and Peavine Ridge. Continue repair of cold direct fire line. Continue coordinating repair efforts with READ. Remove and backhaul all unnecessary hoselays, pumps, and portable tanks.							
8.Special Instructions Divisions must debrief daily with cost apportionment at King ICP and Sunset Base Camp. Noxious weeds are marked by orange "noxious weed" flagging. Minimize or avoid activities in the area. Sensitive areas are marked with pink/black checkerboard flagging. Minimize ground disturbing activities in the area. Field weed wash heavy equipment used off roads before leaving to assignment on another section of fire. READ Jarvis and FOBS Cox and Reed will be working in Division E. READs and FOBS will be working across Divisions; notify DIVS when entering/exiting Division boundary.							
9. Division/Group Communications Summary							
Function	Frequency-RX	Frequency-TX	Tone	System	Channel	System	Channel
Command	164.1250	164.8250		ENF SERV	3		
Tactical	168.2375	168.2375		R5 TAC6	12		
Logistics							
Air to Ground	169.1500	169.1500		AIG	13		
Prepared by (PSC) Dave Lattimore		Approved by (Planning Section Chief)			Date Prepared 10/9/14	Time Prepared 2000	

Division Assignment List		1. Branch		2. Division/Group			
3. IncidentName ENF KING		4. OperationalPeriod 10/10/14 FRIDAY Day Shift 0700-1900					
5. OperationsPersonnel							
Operations Chief	MARK JOHNSON		Division/Group	FRANK PINGICZER			
Planning Operations			Air Attack Supervisor				
Branch Director			Safety Officer	JUSTIN KERWICK			
6. Resources Assigned this Period							
StrikeTeam/TaskForce/Resource Designator	Leader	Num of Pers.	Trans. Y/N	Drop Off PT./Time	PickUp PT./Time		
CRW1 ELDORADO IHC C-289	AARON HUMPHREY	21	N	SUNSET ICP / 0700	SUNSET ICP / 1900		
ENG3 S/T 4660C E-1041	JOE GRIFFIN	27	N	SUNSET ICP / 0700	SUNSET ICP / 1900		
TFLD 0-1258 10/17	DAVID ZUARES	1	N	SUNSET ICP / 0700	SUNSET ICP / 1900		
FEMP 0-1279 10/17	ROBERT TELLAM	1	N	SUNSET ICP / 0700	SUNSET ICP / 1900		
FEMT 0-1283 10/17	ROBIN SERNA	1	N	SUNSET ICP / 0700	SUNSET ICP / 1900		
SOFR 0-1210 10/16	KEVIN MORRIS	1	N	SUNSET ICP / 0700	SUNSET ICP / 1900		
7. Control Operations							
Complete mop up where needed to meet 200' mop up standards. Remove all unnecessary hose and appliances. Complete suppression repair per the Suppression Repair Guidelines.							
3 engines from S/T 4660C will be working on Division E.							
8. Special Instructions							
Divisions must debrief daily with cost apportionment at King ICP and Sunset Base Camp.							
Noxious weeds are marked by orange "noxious weed" flagging. Minimize or avoid activities in the area.							
Sensitive areas are marked with pink/black checkerboard flagging. Minimize ground disturbing activities in the area.							
READs and FOBS will be working across Divisions; notify DIVS when entering/exiting Division boundary.							
9. Division / Group Communications Summary							
Function	Frequency-RX	Frequency-TX	Tone	System	Channel	System	Channel
Command	164.1250	164.8250		ENF SERV	3		
Tactical	168.6000	168.6000		NIFC T3	9		
Logistics							
Air to Ground	169.1500	169.1500		A/G	13		
Prepared by(PSC) D. Lattimore		Approved by (Planning Section Chief)			Date Prepared 10/9/14	Time Prepared 2200	

Division Assignment List		1. Branch		2. Division/Group			
3. Incident Name ENF KING		4. Operational Period 10/10/14 FRIDAY Day Shift 0700-1900					
5. Operations Personnel							
Operations Chief	MARK JOHNSON		Division/Group	R. HICKOK / COTTINGHAM (t)			
Planning Operations			Air Attack Supervisor				
Branch Director			Safety Officer	JUSTIN KERWICK			
6. Resources Assigned this Period							
StrikeTeam / TaskForce / Resource Designator	Leader	Num of Pers.	Trans Y/N	Drop Off PT./Time	Pick Up PT./Time		
CRW2IA HEARTLAKE C-280 10/17	GREG TENNYSON	18	N	SUNSET ICP / 0700	SUNSET ICP / 1900		
ENG3 S/T 3616C E-1040 10/20	MATHEW PRENTISS	5	N	SUNSET ICP / 0700	SUNSET ICP / 1900		
ENG6 FIRESTORM E-336 10/12	ANDREW WINIES	3	N	SUNSET ICP / 0700	SUNSET ICP / 1900		
ENG6 FAIRVIEW VAL. E576 E-337	TROY SANDERS	3	N	SUNSET ICP / 0700	SUNSET ICP / 1900		
ENG6 FIRESTORM E-341 10/12	JIM DERRA	3	N	SUNSET ICP / 0700	SUNSET ICP / 1900		
DO22 BORDGES E-98 10/12	TIM BORDGES	2	N	SUNSET ICP / 0700	SUNSET ICP / 1900		
DO22 MNF3 E-113 10/13	SEAN LYNCH	2	N	SUNSET ICP / 0700	SUNSET ICP / 1900		
DO22 HAASE E-559 10/11	MARK HAASE	2	N	SUNSET ICP / 0700	SUNSET ICP / 1900		
DZR 2 ROEN E-567	DAVID ZWALD	1	N	SUNSET ICP / 0700	SUNSET ICP / 1900		
DZR 2 SILLER BROS E-45	RON DOW	2	N	SUNSET ICP / 0700	SUNSET ICP / 1900		
DZR LA PAGE E-556		2	N	SUNSET ICP / 0700	SUNSET ICP / 1900		
EXCA2 BEN TRUCK E-859	KEITH FLASH	1	N	SUNSET ICP / 0700	SUNSET ICP / 1900		
EXCA2 BEN'S TRUCK E-979 10/12	JEREMY WOOD	1	N	SUNSET ICP / 0700	SUNSET ICP / 1900		
EXCA2 DIAMOND E-982 10/13	JOHN BRITTEN	2	N	SUNSET ICP / 0700	SUNSET ICP / 1900		
EXCA DUDLEY'S E-1002 10/13	MIKE TAYLOR	1	N	SUNSET ICP / 0700	SUNSET ICP / 1900		
EXCA GREENOUS E-1030 10/16	GREENOUS	2	N	SUNSET ICP / 0700	SUNSET ICP / 1900		
EXCA ROEN E-1033 10/16	PAUL ROEN	2	N	SUNSET ICP / 0700	SUNSET ICP / 1900		
EXCA HENTHORN E-980		1	N	SUNSET ICP / 0700	SUNSET ICP / 1900		
7. Control Operations							
Complete mop up where needed to meet 200' mop up standards. Continue coordinating repair efforts with READ. Remove and backhaul all unnecessary hoselays, pumps, and portable tanks							
Provide engine support to Division W.							
8. Special Instructions							
Divisions must debrief daily with cost apportionment at King ICP and Sunset Base Camp.							
Noxious weeds are marked by orange "noxious weed" flagging. Minimize or avoid activities in the area.							
Sensitive areas are marked with pink/black checkerboard flagging. Minimize ground disturbing activities in the area.							
READ Lim will be working in Division T. READs and FOBS will be working across Divisions; notify DIVS when entering/exiting Division boundary.							
9. Division/Group Communications Summary							
Function	Frequency-RX	Frequency-TX	Tone	System	Channel	System	Channel
Command	164.1250	164.8250		ENF SERV	3		
Tactical	167.1125	167.1125		R5 TAC5	11		
Logistics							
Air to Ground	169.1500	169.1500		A/G	13		
Prepared by (PSC) D. Lattimore		Approved by (Planning Section Chief)			Date Prepared 10/9/14	Time Prepared 2200	

Division Assignment List		1. Branch		2. Division/Group T	
3. Incident Name ENF KING		4. Operational Period 10/10/14 FRIDAY Day Shift 0700-1900			
5. Operations Personnel					
Operations Chief	MARK JOHNSON		Division / Group	R.HICKOK / COTTINGHAM (t)	
Planning Operations			Air Attack Supervisor		
Branch Director			Safety Officer	JUSTIN KERWICK	
6. Resources Assigned this Period					
Strike Team/Task Force/Resource Designator	Leader	Num of Pers.	Tran Y/N	Drop Off PT./Time	Pick Up PT./Time
WT3 LET UR BUCK TRUCKING E-19	BILLY ROCHA	2	N	SUNSET ICP / 0700	SUNSET ICP / 1900
WT2 LNF E-3044 10/18	STEPHEN PARKER	2	N	SUNSET ICP / 0700	SUNSET ICP / 1900
TFLD 0-1198 10/14	KEN COOPER	1	N	SUNSET ICP / 0700	SUNSET ICP / 1900
HEQB 0-1221 10/16	RITTER BETHEL	1	N	SUNSET ICP / 0700	SUNSET ICP / 1900
HEQB (t) 0-3395 10/16	KELLY HAINES	1	N	SUNSET ICP / 0700	SUNSET ICP / 1900
HEQB 0-1223 10/16	KEVIN REESE	1	N	SUNSET ICP / 0700	SUNSET ICP / 1900
HEQB 0-1227 10/15	ANGELO NAVA	1	N	SUNSET ICP / 0700	SUNSET ICP / 1900
HEQB (t) 0-1248	BABB	1	N	SUNSET ICP / 0700	SUNSET ICP / 1900
HEQB 0-1225	ANTHONY ZAVALLA	1	N	SUNSET ICP / 0700	SUNSET ICP / 1900
HEQB (T) 0-3394	DANIEL MCGUIRE	1	N	SUNSET ICP / 0700	SUNSET ICP / 1900
FEMP 0-1284 10/17	TYLER SMITH	1	N	SUNSET ICP / 0700	SUNSET ICP / 1900
FEMT 0-1282 10/17	TOM HANSEN	1	N	SUNSET ICP / 0700	SUNSET ICP / 1900
SOFR 0-1209 10/12	MICHAEL JAMESON	1	N	SUNSET ICP / 0700	SUNSET ICP / 1900

7. Control Operations

Complete mop up where needed to meet 200' mop up standards. Continue coordinating repair efforts with READ. Remove and backhaul all unnecessary hose lays, pumps, and portable tanks.

8. Special Instructions

Divisions must debrief daily with cost apportionment at King ICP and Sunset Base Camp.
 Noxious weeds are marked by orange "noxious weed" flagging. Minimize or avoid activities in the area.
 Sensitive areas are marked with pink/black checkerboard flagging. Minimize ground disturbing activities in the area.
 READ Lim will be working in Division T. READs and FOBS will be working across Divisions; notify DIVS when entering/exiting Division boundary.

9. Division/Group Communications Summary							
Function	Frequency-RX	Frequency-TX	Tone	System	Channel	System	Channel
Command	164.1250	164.8250		ENF SERV	3		
Tactical	167.1125	167.1125		R5 TAC5	11		
Logistics							
AirtoGround	169.1500	169.1500		A!G	13		
Prepared by (PSC) D. Lattimore			Approved by (Planning Section Chief)		Date Prepared 10/9/14	Time Prepared 2200	

Division Assignment List		1. Branch		2. Division/Group			
3. Incident Name ENF KING		4.Operational Period 10/10/14 FRIDAY		Day Shift 0700-1900			
5. Operations Personnel							
Operations Chief	MARK JOHNSON		Division/Group Supervisor	PAUL JOHNSON / JEFF GOYINGS(t)			
Planning Operations			Air Attack Supervisor				
Branch Director			Safety Officer	JUSTIN KERWICK			
6. Resources Assigned this Period							
StrikeTeam / TaskForce / Resource Designator	Leader	Num of Pers.	Trans. Y/N	Drop Off PT./Time	Pick Up PT./Time		
CRW1 FEATHER RIV IHC C-279 10/17	JASON MILLER	18	N	SUNSET ICP / 0700	SUNSET ICP / 1900		
CRWT2IA IRON MOUNTAIN C-263	GLEN HAYDON	21	N	SUNSET ICP / 0700	SUNSET ICP / 1900		
ENG3 ENG 353 E-971 10/11	LUCAS BIRCH	5	N	SUNSET ICP / 0700	SUNSET ICP / 1900		
DOZT2 AAA EQUIP E-207 10/15	CHRIS CUNEO	2	N	SUNSET ICP / 0700	SUNSET ICP / 1900		
DOZT2 NEESE E-575 10/18	DAVID NEESE	2	N	SUNSET ICP / 0700	SUNSET ICP / 1900		
EXCA1 ROEN E-972 10/13	MIKE RYAN	2	N	SUNSET ICP / 0700	SUNSET ICP / 1900		
EXCA G&O BODY E-3011 10/18	JAMES YOUNG	1	N	SUNSET ICP / 0700	SUNSET ICP / 1900		
EXCA HERTZ E-973		1	N	SUNSET ICP / 0700	SUNSET ICP / 1900		
WT3 WBINC E-13 10/14	DAN BRADY	1	N	SUNSET ICP / 0700	SUNSET ICP / 1900		
TFLD 0-1252 10/18	CHRIS HENRIE	1	N	SUNSET ICP / 0700	SUNSET ICP / 1900		
TFLD (t) 0-1264 10/15	ANDRES JUAREZ	1	N	SUNSET ICP / 0700	SUNSET ICP / 1900		
HEQB 0-830 10/12	FRED MANGLONA	1	N	SUNSET ICP / 0700	SUNSET ICP / 1900		
HEQB 0-1226 10/16	MATT HAYES	1	N	SUNSET ICP / 0700	SUNSET ICP / 1900		
FELB 0-1251 10/17	BRIAN BURBRIDGE	1	N	SUNSET ICP / 0700	SUNSET ICP / 1900		
FELB(t) 0-127210/1	SKEET HOUSTON	1	N	SUNSET ICP / 0700	SUNSET ICP / 1900		
FALM UNDERDOG 0-865 10/11	RICHARD BROWN	2	N	SUNSET ICP / 0700	SUNSET ICP / 1900		
FEMP 0-1281	M. MCGEE	1	N	SUNSET ICP / 0700	SUNSET ICP / 1900		
FEMT 0-1285	B.SIGNOR	1	N	SUNSET ICP / 0700	SUNSET ICP / 1900		
SOFR	MARIO MARQUEZ	1	N	SUNSET ICP / 0700	SUNSET ICP / 1900		
7. Control Operations							
Complete mop up where needed to meet 200' mop up standards. Remove all hose and appliances from Bunker Hill Lookout along Wentworth Springs Rd. south to the 28 Rd.							
Use additional engines from Division T as needed.							
8. Special Instructions							
Divisions must debrief daily with cost apportionment at King ICP and Sunset Base Camp.							
Noxious weeds are marked by orange "noxious weed" flagging. Minimize or avoid activities in the area.							
Sensitive areas are marked with pink/black checkerboard flagging. Minimize ground disturbing activities in the area.							
FOBS Ross and Rataj will be working in Division W. READs and FOBS will be working across Divisions; notify DIVS when entering/exiting Division boundary.							
9. Division/Group Communications Summary							
Function	Frequency-RX	Frequency-TX	Tone	System	Channel	System	Channel
Command	164.1250	164.8250		ENF SERV	3		
Tactical Div/Group	168.2375	168.2375		R5T6	12		
Logistics							
Air to Ground	169.1500	169.1500		AIG	13		
Prepared by (PSC) D. Lattimore		Approved by (Planning Section Chief)			Date Prepared 10/9/14		Time Prepared 2200

Division Assignment List			1. Branch		2. Division/Group Y		
3. Incident Name ENFKING			4. Operational Period 10/10/14 FRIDAY Day Shift 0700-1900				
5. Operations Personnel							
Operations Chief		MARK JOHNSON		Division/Group		G. MARTINEZ / N. NELMS (t)	
Planning Operations				Air Attack Supervisor			
Branch Director				Safety Officer		JUSTIN KERWICK	
6. Resources Assigned this Period							
StrikeTeam / TaskForce / Resource Designator		Leader		Num of Pers.	Tran Y/N	Drop Off PT./Time	Pick Up PT./Time
CRW2IA . C-265 10/13		DAVID DELANEY		20	N	Sunset ICP / 0700	Sunset ICP / 1900
ENG3 LNF ENG.12 E-315010/12		JOHN OUTLAND		5	N	Sunset ICP / 0700	Sunset ICP / 1900
EXCA2 STONY CREEK E-978 10/12		DON ANDREWS		2	N	Sunset ICP / 0700	Sunset ICP / 1900
HEQB 0-1220 10/15		DANIEL GALLANT		1	N	Sunset ICP / 0700	Sunset ICP / 1900
HEQB (t) 0-1245 10/15		WILLIE REAUX		1	N	Sunset ICP / 0700	Sunset ICP / 1900
SOFR 0-1208 10/19		RONNIE OATIS		1	N	Sunset ICP / 0700	Sunset ICP / 1900
7. Control Operations							
Complete mop up where needed to meet 200' mop up standards. Continue coordinating repair efforts with READ. Remove and backhaul all unnecessary hoselays, pumps, and portable tanks.							
8. Special Instructions							
Divisions must debrief daily with cost apportionment at King ICP and Sunset Base Camp. Noxious weeds are marked by orange "noxious weed" flagging. Minimize or avoid activities in the area. Sensitive areas are marked with pink/black checkerboard flagging. Minimize ground disturbing activities in the area. READs Kellison and Ashcraft will be working in Division Y. READs and FOBS will be working across Divisions; notify DIVS when entering/exiting Division boundary.							
9. Division / Group Communications Summary							
Function	Frequency-RX	Frequency-TX	Tone	System	Channel	System	Channel
Command	164.1250	164.8250		ENF SERV	3		
Tactical	166.5500	166.5500		R5T4	10		
Logistics							
Air to Ground	169.1500	169.1500		A/G	13		
Prepared by (PSC) D. Lattimore		Approved by (Planning Section Chief)			Date Prepared 10/09/14		Time Prepared 2200

Division Assignment List		1. Branch		2. Division/Group REPAIR GROUP 1	
3. Incident Name ENF KING		4. Operational Period 10/10/14 FRIDAY Day Shift 0700-1900			
5. Operations Personnel					
Operations Chief	MARK JOHNSON		Division/Group Supervisor	CHARLES ALLUISI	
Planning Operations			Air Attack Supervisor		
Branch Director			Safety Officer	JUSTIN KERWICK	
6. Resources Assigned this Period					
Strike Team/Task Force/Resource Designator	Leader	Num of Pers.	Trans. Y/N	Drop Off PT./Time	Pick Up PT./Time
EXCA1 KEN'S E-1006 10/13	FRAZIER MCINTOSH	1	N	SUNSET ICP 0700	SUNSET ICP 1900
EXCA2 KALKOWSKIS E-1005 10/13	DENNIS MCGOUGH	2	N	SUNSET ICP 0700	SUNSET ICP 1900
WT2 SIERRA E-27 10/12	BRANDON HADER	2	N	SUNSET ICP 0700	SUNSET ICP 1900
FELB 0-1254	COREY ROBINSON	1	N	SUNSET ICP 0700	SUNSET ICP 1900
HEQB 0-1314	PATRICK PRESTON	1	N	SUNSET ICP 0700	SUNSET ICP 1900
HEQB 0-8385	TERRON GEE	1	N	SUNSET ICP 0700	SUNSET ICP 1900
SOFR	JACOBIE WATERS	1	N	SUNSET ICP 0700	SUNSET ICP 1900

7. Control Operations

Continue repair work along the 26 road. Continue dozer line repair from junction of 26 Road and 11 Pines Road south to the bottom of section 25. Pull berms, break up piles, and pull back vegetation according to Suppression Repair Plan.

8. Special Instructions

Divisions must debrief daily with cost apportionment at King ICP and Sunset Base Camp.
All repair will utilize criteria in approved Fire Suppression Repair Plan.
Noxious weeds are marked by orange "noxious weed" flagging. Minimize or avoid activities in the area.
Sensitive areas are marked with pink/black checkerboard flagging. Minimize ground disturbing activities in the area.
FOBS Smith will be working with the Repair Group. READS and FOBS will be working across Divisions; notify DIVS when entering/exiting Division boundary.

9. Division/Group Communications Summary							
Function	Frequency-RX	Frequency-TX	Tone	System	Channel	System	Channel
Command	164.1250	164.8250		ENF SERV	3		
Tactical Div/Group	168.0500	168.0500		NIFC T1	7		
Logistics							
Air toGround	169.1500	169.1500		A/G	13		

Prepared by (PSC) D. Lattimore	Approved by (Planning Section Chief)	Date Prepared 10/9/14	Time Prepared 2300
-----------------------------------	--------------------------------------	--------------------------	-----------------------

Division Assignment List	1. Branch	2. Division/Group
		Tahoe Spot (L)

3. Incident Name ENF KING	4. Operational Period 10/10/14 Thursday Day Shift 0700-1900
------------------------------	--

5. Operations Personnel

Operations Chief	MARK JOHNSON	Division/Group Supervisor	
Operations Chief		Air Attack Supervisor	
Branch Director		Safety Officer	JUSTIN KERWICK

6. Resources Assigned this Period

StrikeTeam/TaskForce/ResourceDesignator	Leader	Num of Pers.	Trans. Y/N	Drop Off PT./Time	Pick Up PT./Time

7. Control Operations
Div F will patrol spot fire near French Meadows on a regular basis.

8. Special Instructions

9. Division/Group Communications Summary

Function	Frequency-RX	Frequency-TX	Tone	System	Channel	System	Channel
Command	164.1250	164.8250		ENF SERV	3		
Tactical Div/Group	168.6000	168.6000		NIFC T3	9		
Logistics							
Air to Ground	169.1500	169.1500		KING AG	13		

Prepared by (PSC) D. Lattimore	Approved by (Planning Section Chief)	Date Prepared 10/9/14	Time Prepared 2300
-----------------------------------	--------------------------------------	--------------------------	-----------------------

Division Assignment List			1. Branch		2. Division/Group BAER GROUP		
3. Incident Name ENF KING			4. Operational Period 10/10/14 Thursday Day Shift 0700-1900				
5. Operations Personnel							
Operations Chief		TROY NELSEN		Team Leader		RANDY WESTMORELAND	
Planning Operations				Air Attack Supervisor			
Branch Director				Safety Officer		JUSTIN KERWICK	
6. Resources Assigned this Period							
Strike Team / Task Force / Resource Designator		Leader		Num of Pers.	Tran Y/N	Drop Off PT./Time	Pick Up PT./Time
TEAM LEADER(t)		M. MOORE / E. NICITA		2	N	ENF SO / 0800	ENF SO / 1900
BAER GEOLOGIST		KING / SCHWARTZ		2	N	ENF SO / 0800	ENF SO / 1900
BAER SOIL		A. JANICKI / K. TAKENAKA		2	N	ENF SO / 0800	ENF SO / 1900
BAER SOIL		DAVE YOUNG		1	N	ENFSO / 0800	ENF SO / 1900
BAER ENGINEER		A. CABRERA / R. LEBLANC		2	N	ENF SO / 0800	ENF SO / 1900
BAER ENGINEER		S. EDMUNDS/C. KUSENER		1	N	ENF SO / 0800	ENF SO / 1900
BAER ARCH		D. BUCKLEY / K. PARR		2	N	ENF SO / 0800	ENF SO / 1900
BAER ARCH		J. SERIN		1	N	ENF SO / 0800	ENF SO / 1900
BAER HYDRO		E. FUDGE / D. McCOMB		2	N	ENF SO / 0800	ENF SO / 1900
BAER HYDRO		L. RUTTEN IV. PACIFIC		2	N	ENF SO / 0800	ENF SO / 1900
BAER REC		A. GASS / J. QUINN		2	N	ENF SO / 0800	ENF SO / 1900
BAER REC		J. SJOSTROM		1	N	ENF SO / 0800	ENF SO / 1900
BAER BOTANY		B. ENGLEHARDT/ F.LINTON		2	N	ENF SO / 0800	ENF SO / 1900
BAER FISH		D. TEATER		1	N	ENF SO / 0800	ENF SO / 1900
BAER HAZARD TREE		B. MOORE		1	N	ENF SO / 0800	ENF SO / 1900
NRCS DAMAGE ASSESSMENT TEAM				3	N	ENF SO / 0800	ENF SO / 1900
7. Control Operations							
Continue BAER assessment work, focusing on potential impact to values at risk from flooding, sedimentation, and debris in Divisions A, D/F, W, U, Y and Z. . Will be looking at structures in the White Meadow area, Big Meadow Campground, and fisheries in the streams.							
Interdisciplinary group will be working on a prescription for 11 Pines Road.							
8. Special Instructions							
Be aware of Suppression repair operations.							
Check in and out with Divisions and use the communications plan for frequencies.							
9. Division/Group Communications Summary							
Function	Frequency-RX	Frequency-TX	Tone	System	Channel	System	Channel
Command	164.1250	164.8250		ENF SERV	3		
Tactical							
Logistics							
AirtoGround	169.1500	169.1500		AIG	13		
Prepared by(PSC) D. Lattimore			Approved by (Planning Section Chief)			Date Prepared 10/9/2014	Time Prepared 2300

SAFETY MESSAGE

King Fire

October 10, 2014

Timeless tactical truth for the day:
Something is wrong if you keep inheriting bad situations

- **Driving** *is one of the most dangerous parts of your job. Your vehicle is a dangerous weapon. Drive smart on narrow mountain roads; be prepared for the bad driver or that heavy equipment on a low boy that needs more of the road.*
- **PPE** *Wear your nomex and personal protective equipment during all work assignments within the fire (the fire is not controlled so wear it)*
- **Heavy Equipment** *Continue to be very careful around heavy equipment, insure operators see you and signal to you before you approach insure seat belts are worn when operating.*
- **Dehydration**—Did you know...
 - Caffeine speeds up loss of fluids in your body (limit coffee and cola intake)
 - Thirst always underestimates fluid needs (drink before you feel thirsty)
 - Potassium-rich foods help greatly (add bananas, citrus, tomato juice to your diet)
 - Signs of possible dehydration include rapid heart rate, weakness, excessive fatigue, dizziness, painful urination and dark colored urine
- **Hazard Trees and snags** continue to be your enemy. Insure that you check your work area and identify any snags and fire weakened trees, notify Division Supervisor and have bad trees removed prior to working in the area. Use certified fallers only for the task.

INCIDENT RADIO COMMUNICATIONS PLAN			Incident Name King CA-ENF-023461		Date/Time Prepared 10/09/14 1830		Operational Period Date/Time ALL SHIFTS 10-10-2014										
Only frequencies listed on this 205 are authorized for use on this incident.									Hand programmers accept all responsibility for the use of unauthorized frequencies.								
Ch #	Function	Channel Name	Assignment	RX Freq N or W	RX Tone	TX Freq N or W	TX Tone	Mode	Remarks								
1	DISPATCH	ENF FOR	ALL DIVISIONS	171.5250 N		169.9500 N	UST	A	"Camino"								
2	DISPATCH	ENF ADM	ALL DIVISIONS	172.3250 N		173.7625 N	UST	A	"Camino"								
3	KING COMMAND	ENF SERV	ALL DIVISIONS	164.1250 N		164.8250 N	UST	A	Tone 3-Bald LO, Tone 4-Big Hill, Tone 8-Bunker Hill								
4	DISPATCH	TNF FOR	ALL DIVISIONS	168.7750 N		170.5750 N	UST	A	"Grass Valley"								
5	DISPATCH	AEU L	ALL DIVISIONS	151.1900 N	T5 146.2	159.2250 N	UST	A	"Camino" used to dispatch								
6	IA COMMAND	XED CMD	ALL DIVISIONS	155.9025 N	186.2	159.2775 N	UST	A	"Camino" used for check back and IA CMD								
7	TACTICAL	NIFC T1	REPAIR GROUP 1	168.0500 N		168.0500 N		A									
8	IA TACTICAL	NIFC T2	USE FOR LOCAL IA	168.2000 N		168.2000 N		A									
9	TACTICAL	NIFC T3	DIV A & F & TAHOE SPOT (previously DIV L)	168.6000 N		168.6000 N		A									
10	TACTICAL	R5 TAC4	DIV Y	166.5500 N		166.5500 N		A									
11	TACTICAL	R5 TAC5	DIV T	167.1125 N		167.1125 N		A									
12	TACTICAL	R5 TAC6	DIV E & W	168.2375 N		168.2375 N		A									
13	AIR TO GROUND	KING AG	ALL DIVISIONS	169.1500 N		169.1500 N		A									
14	ENF AG P	R5 AG 14	INITIAL ATTACK	167.5000 N		167.5000 N		A									
15	MEDICAL	CALCORD	AS REQUIRED	156.0750 N	T6 156.7	156.0750 N	T6 156.7	A	MEDICAL COORDINATION								
16	URGENT CONTACT ONLY	AIR GUARD	ALL DIVISIONS	168.6250 N		168.6250 N	T1 110.9	A	AIR GUARD – URGENT AIRCRAFT CONTACT								
Prepared by				Incident Location: Placerville, CA													
Phil Shafer, COML				Latitude: N 39°1.17', Longitude: W120° 49.77'													

S 205 – 2007H

MODE A – ANOLOG; D – DIGITAL

UST – USER SELECTABLE TONE

MEDICAL PLAN 206 ICS		1. INCIDENT NAME KING INCIDENT		2. Date Prepared October 8, 2014		3. TIME PREPARED 1600hrs		4. OPERATIONAL PERIOD October 09-11, 2014 (48hr Plan)			
5. INCIDENT MEDICAL AID STATIONS											
MEDICAL AID STATIONS				LOCATION				PARAMEDICS			
								YES	NO		
King ICP (Sunset Camp) – Frontline Medical				Union Valley Reservoir (east side) 14 mi n/of Hwy 50 on Ice House Road				X			
6. TRANSPORTATION											
A. AIR AMBULANCES / RESCUE											
NAME			LOCATION			PHONE		PARAMEDICS			
								YES	NO		
All Medivac Requests through Camino ECC			Camino, CA			(530) 647-5250 (Camino ECC)		X			
B. GROUND AMBULANCES / RAPID EXTRACTION MODULES (REM)											
NAME				LOCATION				PARAMEDICS			
								YES	NO		
El Dorado County Medic 248 (24hr)				Incident Resource - Sunset Camp				X			
7. HOSPITALS											
NAME		ADDRESS		TRAVEL TIME		PHONE		HELIPAD		BURN CTR	
				AIR	GRND			YES	NO	YES	NO
Marshall Medical Center (Trauma III/Stroke/Cardiac)		1100 Marshall Way, Placerville			50Min	(530) 626-2717			X		X
Sutter Auburn Faith Hosp (Basic ER/Stroke)		11815 Education Street, Auburn			1.5Hrs	(530) 888-4562			X		X
Sutter Roseville Medical (Trauma II/Stroke/Cardiac)		1 Medical Plaza Drive, Roseville N 38 45.58 x W 121 14.52		25Min	1.5Hrs	(916) 781-1811		X			X
UC Davis Medical Center (Trauma I/Burn/Stroke/Cardiac)		2015 Stockton Ave, Sacramento N 38 33.3 x W 121 27.3		35Min	1.5Hrs	(916)734-6579 ER (916)-734-3636 Burn		X		X	
8. MEDICAL EMERGENCY PROCEDURES											
<u>LINE MEDICAL EMERGENCY:</u>											
Crew Supervisor contact Division Supervisor/Operations with patient complaint, condition and location. Division Supervisor/Operations contacts Communication:											
<ul style="list-style-type: none"> • Division Supervisor/Operations to use “injury or incident communication protocol” on next page • Division Supervisor/Operations will run medical emergency on command channel • Division Supervisor/Operations will: <ul style="list-style-type: none"> 1. Have communications dispatch ground/air transport resources 2. Develop primary and contingency transport plan 3. Notify Safety, Logistics 											
<u>CAMP MEDICAL EMERGENCY:</u>											
Contact Communications on Command channel, with patient complaint, condition and location.											
<ul style="list-style-type: none"> • Communications Contacts: <ul style="list-style-type: none"> • Safety • Logistics • Operations • Logistics Chief/Operations will: <ul style="list-style-type: none"> 1. Contact Communications to dispatch ground / air transport resources 2. Develop primary and contingency transport plan 											
206 ICS		9. PREPARED BY: (Medical Unit Leader) Rodd Mascis, MEDL (T) (909) 630-3969				10. REVIEWED BY: (Safety Officer) Justin Kerwick SOF (530) 739-9900					

Injury or Incident Communications Protocol

DECLARE: Medical Emergency or Non-emergency Medical transport

Best transport method: Ambulance Helicopter Vehicle

Location _____

Situation _____

Any special equipment required _____

Number of injured _____ Type of injuries _____

Closest pick up point (DP, Helispot) _____

LOC _____ Resp. _____ Pulse _____ BP _____ Weight _____

Injury _____ Agency (No Names) _____

Medical History/Allergies _____

Air Transportation Triage

	Ground or Air Ambulance to Hosp	Transport to Med Unit
Mechanism	Hit by a falling tree or large branch Fall of 10' or more Insect bite with shortness of breath Signs of heat stroke (hot, dry, disoriented) Burn Injury greater than 1% body area	Minor dehydration Cut or laceration with bleeding controlled Minor bites and Stings Minor burns
Area Injured	Significant Blunt or Penetrating Trauma to Head, Neck, Chest, Abdomen or pelvis Any Arm or Leg fracture above the Joint	Minor blunt trauma Minor penetrating trauma Extremity sprains and strains Simple fracture below elbow or knee
Symptoms	Disoriented Chest Pain <u>or</u> Shortness of Breath Weak or absent radial pulse Pale, cold and sweating	Alert and oriented No shortness of breath Good pulses

Medivac Sites

If air or ground ambulance is DELAYED:

Package and transport patient to rendezvous with ambulance. Re-route EMS helicopter to rendezvous point as appropriate.

If Declaring an "Incident within the Incident"

The closest DIVS will respond to manage the incident. They are responsible for giving an accurate size up, ensuring scene safety, setting priorities and initiating an appropriate response.

The closest Safety Officer and Line EMS will respond to the scene to assist the Branch Director or DIVS. Secure site and begin initial investigation when situation is stabilized.

Messages

Demob

See the Planning Section for Demob Needs.

If you are flying home, contact Plans at least 48 hours before your demob date.

Check the posted Demob Schedule.



“Everyone goes home!”

\$\$\$ Finance \$\$\$

Please keep your CTR's and Shift tickets up to date!

Please put your name and order number on all documents. If needed document which division(s) you worked on.

If you have a comp/claim need, get started early!



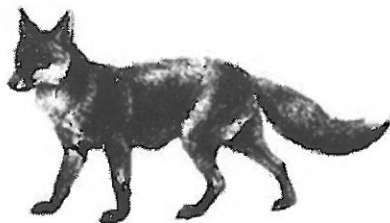
Training! Training! Training!

Be sure to visit the Training Specialist to get all the paperwork set up and/or completed.

A quick meeting with trainees and their trainer is all we need to get the documentation done.

At Sunset ICP contact

Allison Jackson 530-310-5266



Human Resources Message

PREVENT SEXUAL HARASSMENT

STRESS REMINDERS

- Don't ignore your stress. Take action.
- Stay in touch with team members and communicate
- Talk and share feelings

Stress is normal and everyone has it. Dangerous occupations like firefighting have additional stress. Learn to deal with it.

Incident Human Resource Specialist
Alan Seago, (707) 315-6537



INCIDENT MANAGEMENT TEAM.

WATER USAGE REPORT

DATE: _____

Division / Group: _____

RESOURCE / VENDOR ID: _____

REQUEST # _____

I.e., Strike Team 1110C, Acme Water Tenders

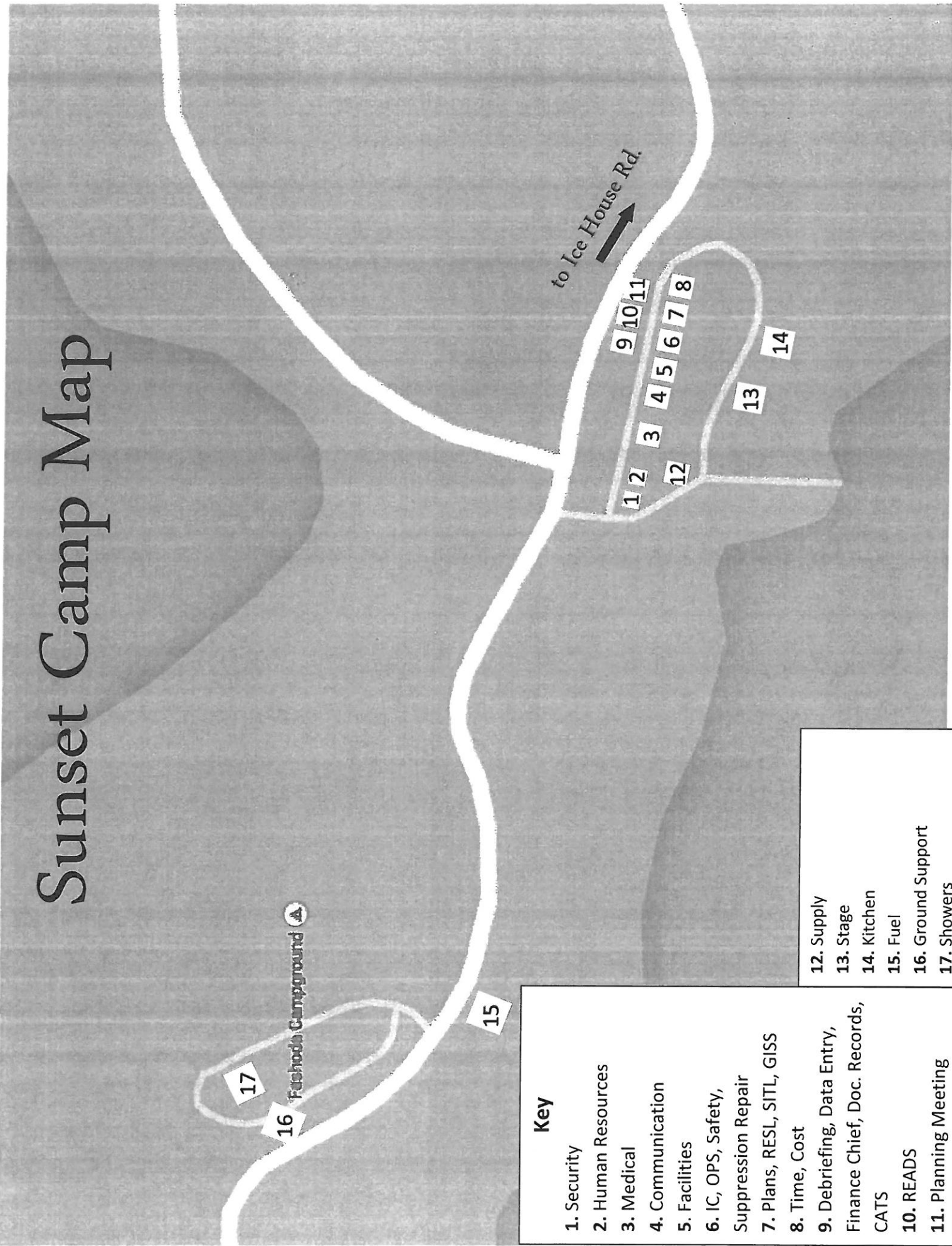
WATER SOURCE LOCATION	Source (Hydrant, Pond, Tank, Other)	Gallons Used	Property Owner / Contact Number **

TURN INTO FINANCE DAILY

****Please note PROPERTY OWNER AND CONTACT NUMBER! (Use reverse side if needed.)**

The intent of this document is to track, record and validate the amount of water used on an incident. It's not intended to review the performance of equipment using the water on an incident.

Sunset Camp Map



Key	
1. Security	12. Supply
2. Human Resources	13. Stage
3. Medical	14. Kitchen
4. Communication	15. Fuel
5. Facilities	16. Ground Support
6. IC, OPS, Safety, Suppression Repair	17. Showers
7. Plans, RESL, SITL, GISS	
8. Time, Cost	
9. Debriefing, Data Entry, Finance Chief, Doc. Records, CATS	
10. READS	
11. Planning Meeting	

