

KING INCIDENT



Incident Action Plan


Sunday

October 12, 2014 0700-1900

CA-ENF-023461 P5JEE9 (0503)

0700 Briefing at King ICP now located at Sunset Campground

1700 Planning Meeting at King ICP

INCIDENT OBJECTIVES		1. Incident Name		2. Date Prepared		3. Time Prepared	
ICS 202		King Fire		10/11/2014		1600	
4. Operational Period							
Sunday, October 12, 2014 – 0700 - 1900							
5. General Control Objectives for the Incident (include alternatives)							
MANAGEMENT OBJECTIVES: <ul style="list-style-type: none"> • Provide for safety of responders and public. • Assess and implement fire suppression repair. • Establish and maintain positive relationships with cooperating agencies and the public. • Keep costs commensurate with values at risk. 							
CONTROL OBJECTIVES: <ul style="list-style-type: none"> • Repair priorities: <ol style="list-style-type: none"> 1. pull hose & backhaul fire equipment (pumps, tanks) 2. water bar dozer and hand lines utilizing the repair plan 3. open priority roads (hazard tree removal & chipping) • Keep fire within current perimeter and containment lines. 							
6. General Weather							
Mostly Sunny as a weak upper level trough moves out of the region bringing a gradual return to hotter and drier conditions.							
7. Resource Protection Guidelines							
Minimize or avoid ground disturbing activities in flagged sensitive areas Utilize screens on all drafting operations							
8. Attachments							
X	Organization List-ICS 203	x	Air Ops Plan ICS-220	x	Fire Weather/Behavior Forecast		
X	Division Assignment List-ICS 204	x	Incident Map	x	Training/HR/Demob/ Messages		
X	Communications Plan-ICS 205	x	Trans & Camp Map	x	Water Use Report / Equip. Log		
X	Medical Plan-ICS 206	x	Safety Message	x	ICP Phone List		
9. Prepared by (Planning Section Chief)				10. Approved by (Incident Commander)			
							

ORGANIZATION ASSIGNMENT LIST		9. Operations Section	
1. Incident Name KING		Chief	Mark Johnson (ICT3t)
2. Date October 11, 2014		Deputy/Planning	
3. Time 2000			
4. Operational Period October 12, 2014 Day 0700 - 1900		a. Branch - Division/Groups	
Position	Name	Branch Director	
5. Incident Commander and Staff		Division	A Unstaffed
Incident Commander	Troy Nelsen / Will Harris (t) / Mark Johnson (t)		E Gary Helming / Scott Kizzear (t)
Deputy			F Aaron Humphrey
Safety Officer	Justin Kerwick	Division	W Paul Johnson
Information Officer		Division	T Robert Hickok / John Cottingham (t)
Liaison Officer		Division	Y Gerald Martinez / Nathan Nelms
6. Agency Representative		Division	Tahoe Spot TBD
Agency	Name	Group	
USFS ENF Agency Admin Rep	Richard Thornburgh	b. Burned Area Emergency Response	
Cal-OES	Gary Humphrey	Group	BAER Randy Westmoreland
SMUD	Jack Belnap / Jim Wilhelm	Division	
CHP	Chris Sahagun	Division	
SPI	Rich Wade	c. Branch - Division/Groups	
CCC	John Button	Branch Director	
AEU CAL FIRE	Joe Tyler	Group	
CDCR	Mike Hill	Group	
EID	Dana Strahan	Group	
El Dorado Cty EMSA	Ken Earle	d.	
7. Planning Section		Group	
Chief	Dave Lattimore	e. Air Operations Branch	
Situation Unit	Tony Piscopo, Dave Stephens (t)	Air Operations Branch Director	
GISS	Mike Haskell (t)	Air Attack Supervisor	
FBAN		Air Support Supervisor	
IMET		Helicopter Coordinator	
Resource Unit		10. Finance Section	
Documentation Unit		Chief	Byron Brown
Demobilization Unit	Cheryl Dorosh SCKN	Time Unit	Debbie Parlin
Training Specialist	Allison Jackson	Time Recorder	Ben Cazier
Computer Tech Spec	Jonathan Wilson	Compensation/Claims Unit	
Human Resources	Alan Seago	Cost Unit	Debbie Parlin
READ	Micki Smith	Eqpt Time	Trina Randles
8. Logistics Section		Prepared by (PSC) Dave Lattimore	
Chief	Ken Kumpe		
Deputy			
Supply Unit	Dave Aliciea		
Facilities Unit	Jorge Cervantes		
Ground Support Unit	Larry Stein		
Communications Unit	Phil Shafer		
Medical Unit	Ken Earle/Antony Gasporra (t)		
Food Unit	Richard Waite		
Ordering Manager			

Location: Legal: Lat/Lon:38 56/120 32 Quad:Devil Peak
Calculated: (38.93333°N 120.53333°W)(DEVIL PEAK CA)
Elevation:4000-6000 Drainage:unknown Aspect:flat Size:97717
Fuel Type:Timber w/brush understory (Partially Sheltered)

.FIRE WEATHER...

A STORM SYSTEM WILL APPROACH THE FIRE SITE LATE TUESDAY. CURRENT MODELS INDICATE THE RAIN WILL SPREAD OVER THE AREA AFTER MIDNIGHT TUESDAY WITH UP TO A QUARTER INCH POSSIBLE. RAIN WILL CONTINUE ON WEDNESDAY WITH AN ADDITIONAL HALF INCH POSSIBLE. THE CHANCE OF RAIN IS 60 PERCENT. TIMING WITH THE SYSTEM IS STILL NOT CERTAIN AND A 6 TO 12 HOUR CHANGE IN TIMING IS STILL POSSIBLE.

.TONIGHT...

CLEAR, 50-55, RH 54-62%, 20-FT WINDS...SLOPE/VALLEY.....NORTHEAST WINDS 4 TO 9 MPH. RIDGETOP.....NORTHEAST 5 MPH.

.SUNDAY...

SKY/WEATHER.....SUNNY.
MAX TEMPERATURE.....72-78.
MIN HUMIDITY.....11-16 PERCENT.
(20 FT WINDS...SLOPE/VALLEY.....EAST WINDS 8 TO 14 MPH WITH LOCAL GUSTS UP TO 25 MPH. RIDGETOP.....EAST 17 MPH WITH LOCAL GUSTS UP TO 25 MPH.

.EXTENDED FORECAST...

.TUESDAY NIGHT...CLOUDY WITH RAIN LIKELY AFTER MIDNIGHT...UP TO 0.25 INCHES OF RAINFALL. THE CHANCE OF PRECIP IS 60 PERCENT. LOWS 52 TO 57. SOUTH WINDS 9 TO 15 MPH. .WEDNESDAY...CLOUDY WITH RAIN LIKELY. UP TO 0.50 INCHES OF RAINFALL. THE CHANCE OF PRECIP IS 60 PERCENT. LOWS 43 TO 48. HIGHS 52 TO 57. SOUTHWEST WINDS 9 TO 15 MPH.

.FIRE BEHAVIOR...

HIGH PRESSURE CONTINUES TO BUILD OVER THE FIRE AREA INCREASING THE CHANCE FOR GUSTY NORTH WINDS. THESE CHANGES CAN BRING AN INCREASED RISK FOR PROBLEM FIRE BEHAVIOR. DURING THESE PERIODS, LOOK FOR THE FIRE TO CARRY THROUGH POCKETS OF UNBURNED FUEL WITH SHORT RUNS POSSIBLE. SOME SINGLE TREE TORCHING WILL BE POSSIBLE IN AREAS WHERE THE FIRE REMAINS WELL ESTABLISHED.

THRESHOLDS FOR ACTIVE FIRE BEHAVIOR REMAIN AT 20' WINDS OVER 5MPH, RH UNDER 22% AND TEMPS OVER 84F

Division Assignment List		1. Branch		2. Division/Group E			
3. IncidentName ENF KING		4. Operational Period 10/12/14 SUNDAY		Day Shift 0700-1900			
5. Operations Personnel							
Operations Chief	MARK JOHNSON		Division/Group	GARY HELMING / SCOTT KIZZIAR (t)			
Planning Operations			Air Attack Supervisor				
Branch Director			Safety Officer	JUSTIN KERWICK			
6. Resources Assigned this Period							
StrikeTeam/TaskForce/ResourceDesignator	Leader	Numof Pers.	Trans. Y/N	DropOffPT./Time	PickUpPT./Time		
CRW1 BEAR DIVIDE IHC C-278 10/17	BRIAN ANDERSON	19	N	SUNSET ICP / 0700	SUNSET ICP / 1900		
CRW2IA EAGLE LAKE C-266 10/12	ANTONIO JIMENEZ	17	N	SUNSET ICP / 0700	SUNSET ICP / 1900		
ENG T3 S/T 4660C E1041	JOE GRIFFIN	27	N	SUNSET ICP / 0700	SUNSET ICP / 1900		
WT2 IDD E-22 10/12	KIMBER BAKER	2	N	SUNSET ICP / 0700	SUNSET ICP / 1900		
WT1 INDUSTRIAL DEF E-23 10/7	SCOTT HARVEY	1	N	SUNSET ICP / 0700	SUNSET ICP / 1900		
WT NORTH STATE E-526	L. ROSECRANS	1	N	SUNSET ICP / 0700	SUNSET ICP / 1900		
DO22 DUDLEYS E-558 10/7	TIM LAMKIN	2	N	SUNSET ICP / 0700	SUNSET ICP / 1900		
DO22 MOORE EX. E-572 10/11	TIM MARTINEZ	3	N	SUNSET ICP / 0700	SUNSET ICP / 1900		
DO22 E-1023 10/12	DANIEL LANGERDERTER	3	N	SUNSET ICP / 0700	SUNSET ICP / 1900		
DO22 MDF 4 E-114 10/13	PERRY ST JOHN	2	N	SUNSET ICP / 0700	SUNSET ICP / 1900		
EXCA2 TEHAMA ROCK E-981 10/12	BYRON MCBROOM	2	N	SUNSET ICP / 0700	SUNSET ICP / 1900		
EXCA2 VOLCANO E-1032 10/17	KENDEL GROVE	1	N	SUNSET ICP / 0700	SUNSET ICP / 1900		
EXCA PACKWAY E-1034 10/16		2	N	SUNSET ICP / 0700	SUNSET ICP / 1900		
EXCA2 TRINITY RIVER E-1035 10/16	ZACK BALDWIN	1	N	SUNSET ICP / 0700	SUNSET ICP / 1900		
EXCA2 BENS TRUCK E-983	ERIC SPRATT	1	N	SUNSET ICP / 0700	SUNSET ICP / 1900		
EXCA1 ROEN E-972 10/13	MIKE RYAN	2	N	SUNSET ICP / 0700	SUNSET ICP / 1900		
EXCA2 STONY CREEK E-978	DON ANDREWS	2	N	SUNSET ICP / 0700	SUNSET ICP / 1900		
SKIDDER E-910	W. YEAST	1	N	SUNSET ICP / 0700	SUNSET ICP / 1900		
HEQB 0-1224 10/16	BRUCE ROBISON	1	N	SUNSET ICP / 0700	SUNSET ICP / 1900		
HEQB (t) 0-1263 10/16	LISSEY LEE	1	N	SUNSET ICP / 0700	SUNSET ICP / 1900		
7. Control Operations							
Patrol line and complete mop up where needed to meet 200' mop up standards. Evaluate and repair contingency handlines. Install water bars and pull vegetation back onto dozer lines per repair plan on Peavine Ridge. Continue repair of cold direct fire line. Continue coordinating repair efforts with READ. Remove and backhaul all unnecessary hoselays, pumps, and portable tanks..							
8. Special Instructions							
Divisions must debrief daily with cost apportionment at King ICP and Sunset Base Camp. Noxious weeds are marked by orange "noxious weed" flagging. Minimize or avoid activities in the area. Sensitive areas are marked with pink/black checkerboard flagging. Minimize ground disturbing activities in the area. Field weed wash heavy equipment used off roads before leaving to assignment on another section of fire. READs Jarvis and Dale in Div E. FOBS: Cox and Reed. READs and FOBS will be working across Divisions; notify DIVS when entering/exiting Division boundary.							
9. Division/Group Communications Summary							
Function	Frequency-RX	Frequency-TX	Tone	System	Channel	System	Channel
Command	164.1250	164.8250		ENF SERV	3		
Tactical	168.2375	168.2375		R5 TAC 6	12		
Logistics							
AirtoGround	169.1500	169.1500		A/G	13		
Prepared by (PSC) D. Lattimore		Approved by (Planning Section Chief)			Date Prepared 10/11/14	Time Prepared 2000	

Division Assignment List		1. Branch		2. Division/Group F			
3. IncidentName ENF KING		4. OperationalPeriod 10/12/14 SUNDAY Day Shift 0700-1900					
5. OperationsPersonnel							
Operations Chief	MARK JOHNSON			Division/Group	AARON HUMPHREY		
Planning Operations				Air Attack Supervisor			
Branch Director				Safety Officer	JUSTIN KERWICK		
6. Resources Assigned this Period							
StrikeTeam/TaskForce/Resource Designator	Leader	Num of Pers.	Trans. Y/N	Drop Off PT./Time	PickUp PT./Time		
CRW1 ELDORADO IHC C-289	BRAD STEWART	19	N	SUNSET ICP / 0700	SUNSET ICP / 1900		
FEMP 0-1279 10/17	ROBERT TELLAM	1	N	SUNSET ICP / 0700	SUNSET ICP / 1900		
FEMT 0-1283 10/17	ROBIN SERNA	1	N	SUNSET ICP / 0700	SUNSET ICP / 1900		
SOFR 0-1210 10/16	KEVIN MORRIS	1	N	SUNSET ICP / 0700	SUNSET ICP / 1900		
7. Control Operations							
Patrol and mopup.							
8. Special Instructions							
Divisions must debrief daily with cost apportionment at King ICP and Sunset Base Camp.							
Noxious weeds are marked by orange "noxious weed" flagging. Minimize or avoid activities in the area.							
Sensitive areas are marked with pink/black checkerboard flagging. Minimize ground disturbing activities in the area.							
READs and FOBS will be working across Divisions; notify DIVS when entering/exiting Division boundary.							
9. Division / Group Communications Summary							
Function	Frequency-RX	Frequency-TX	Tone	System	Channel	System	Channel
Command	164.1250	164.8250		ENF SERV	3		
Tactical	168.6000	168.6000		NIFC T3	9		
Logistics							
Air to Ground	169.1500	169.1500		A/G	13		
Prepared by(PSC) D. Lattimore		Approved by (Planning Section Chief)			Date Prepared 10/11/14		Time Prepared 2200

Division Assignment List		1. Branch		2. Division/Group			
3. Incident Name ENF KING		4. Operational Period 10/12/14 SUNDAY Day Shift 0700-1900					
5. Operations Personnel							
Operations Chief	MARK JOHNSON	Division/Group	R. HICKOK / COTTINGHAM (t)				
Planning Operations		Air Attack Supervisor					
Branch Director		Safety Officer	JUSTIN KERWICK				
6. Resources Assigned this Period							
StrikeTeam / TaskForce / Resource Designator	Leader	Num of Pers.	Trans Y/N	Drop Off PT./Time	Pick Up PT./Time		
CRW2IA HEARTLAKE C-280 10/17	GREG TENNYSON	18	N	SUNSET ICP / 0700	SUNSET ICP / 1900		
ENG3 S/T 3616C E-1040 10/20	MATHEW PRENTISS	26	N	SUNSET ICP / 0700	SUNSET ICP / 1900		
ENG6 FIRESTORM E-336 10/12	ANDREW WINIES	3	N	SUNSET ICP / 0700	SUNSET ICP / 1900		
ENG6 FAIRVIEW VAL. E576 E-337	TROY SANDERS	3	N	SUNSET ICP / 0700	SUNSET ICP / 1900		
ENG6 FIRESTORM E-341 10/12	JIM DERRA	3	N	SUNSET ICP / 0700	SUNSET ICP / 1900		
DOZ2 BORDGES E-98 10/12	TIM BORDGES	2	N	SUNSET ICP / 0700	SUNSET ICP / 1900		
DOZ2 MNF3 E-113 10/13	SEAN LYNCH	2	N	SUNSET ICP / 0700	SUNSET ICP / 1900		
DOZ2 HAASE E-559 10/11	MARK HAASE	2	N	SUNSET ICP / 0700	SUNSET ICP / 1900		
DZR 2 SILLER BROS E-45	RON DOW	2	N	SUNSET ICP / 0700	SUNSET ICP / 1900		
DZR LA PAGE E-556		2	N	SUNSET ICP / 0700	SUNSET ICP / 1900		
EXCA2 BEN'S TRUCK E-979 10/12	JEREMY WOOD	1	N	SUNSET ICP / 0700	SUNSET ICP / 1900		
EXCA2 DIAMOND E-982 10/13	JOHN BRITTEN	2	N	SUNSET ICP / 0700	SUNSET ICP / 1900		
EXCA DUDLEY'S E-1002 10/13	MIKE TAYLOR	1	N	SUNSET ICP / 0700	SUNSET ICP / 1900		
EXCA GREENOUS E-1030 10/16	GREENOUS	2	N	SUNSET ICP / 0700	SUNSET ICP / 1900		
EXCA ROEN E-1033 10/16	PAUL ROEN	2	N	SUNSET ICP / 0700	SUNSET ICP / 1900		
7. Control Operations							
Complete mop up where needed to meet 200' mop up standards. Continue coordinating repair efforts with READ. Remove and backhaul all unnecessary hoselays, pumps, and portable tanks							
Provide engine support to Division W.							
8. Special Instructions							
Divisions must debrief daily with cost apportionment at King ICP and Sunset Base Camp.							
Noxious weeds are marked by orange "noxious weed" flagging. Minimize or avoid activities in the area.							
Sensitive areas are marked with pink/black checkerboard flagging. Minimize ground disturbing activities in the area.							
READ Ashcraft working in Div T. FOBS: Hurley and Smith. READs and FOBS will be working across Divisions; notify DIVS when entering/exiting Division boundary.							
9. Division/Group Communications Summary							
Function	Frequency-RX	Frequency-TX	Tone	System	Channel	System	Channel
Command	164.1250	164.8250		ENF SERV	3		
Tactical	167.1125	167.1125		R5 TAC5	11		
Logistics							
Air to Ground	169.1500	169.1500		A/G	13		
Prepared by (PSC) D. Lattimore		Approved by (Planning Section Chief)			Date Prepared 10/11/14	Time Prepared 2200	

Division Assignment List		1. Branch		2. Division/Group T	
3. Incident Name ENF KING		4. Operational Period 10/12/14 SUNDAY Day Shift 0700-1900			
5. Operations Personnel					
Operations Chief	MARK JOHNSON		Division / Group	R.HICKOK / COTTINGHAM (t)	
Planning Operations			Air Attack Supervisor		
Branch Director			Safety Officer	JUSTIN KERWICK	
6. Resources Assigned this Period					
Strike Team/Task Force/Resource Designator	Leader	Num of Pers.	Tran Y/N	Drop Off PT./Time	Pick Up PT./Time
WT3 LET UR BUCK TRUCKING E-19	BILLY ROCHA	2	N	SUNSET ICP / 0700	SUNSET ICP / 1900
WT2 LNF E-3044 10/18	STEPHEN PARKER	2	N	SUNSET ICP / 0700	SUNSET ICP / 1900
TFLD 0-1198 10/14	KEN COOPER	1	N	SUNSET ICP / 0700	SUNSET ICP / 1900
HEQB 0-1221 10/16	RITTER BETHEL	1	N	SUNSET ICP / 0700	SUNSET ICP / 1900
HEQB (t) 0-3395 10/16	KELLY HAINES	1	N	SUNSET ICP / 0700	SUNSET ICP / 1900
HEQB 0-1227 10/15	ANGELO NAVA	1	N	SUNSET ICP / 0700	SUNSET ICP / 1900
HEQB (t) 0-1248	BABB	1	N	SUNSET ICP / 0700	SUNSET ICP / 1900
FEMP 0-1284 10/17	TYLER SMITH	1	N	SUNSET ICP / 0700	SUNSET ICP / 1900
FEMT 0-1282 10/17	TOM HANSEN	1	N	SUNSET ICP / 0700	SUNSET ICP / 1900
SOFR 0-1209 10/12	MICHAEL JAMESON	1	N	SUNSET ICP / 0700	SUNSET ICP / 1900

7. Control Operations

Complete mop up where needed to meet 200' mop up standards. Continue coordinating repair efforts with READ. Remove and backhaul all unnecessary hose lays, pumps, and portable tanks.

8. Special Instructions

Divisions must debrief daily with cost apportionment at King ICP and Sunset Base Camp.
 Noxious weeds are marked by orange "noxious weed" flagging. Minimize or avoid activities in the area.
 Sensitive areas are marked with pink/black checkerboard flagging. Minimize ground disturbing activities in the area.
 READ Ashcraft working in Div T.
 FOBS Hurley and Smith. READs and FOBS will be working across Divisions; notify DIVS when entering/exiting Division boundary.

9. Division/Group Communications Summary							
Function	Frequency-RX	Frequency-TX	Tone	System	Channel	System	Channel
Command	164.1250	164.8250		ENF SERV	3		
Tactical	167.1125	167.1125		R5 TAC5	11		
Logistics							
AirtoGround	169.1500	169.1500		AIG	13		
Prepared by (PSC) D. Lattimore			Approved by (Planning Section Chief)		Date Prepared 10/11/14	Time Prepared 2200	

Division Assignment List		1. Branch		2. Division/Group Y			
3. Incident Name ENFKING		4. Operational Period 10/10/14 SATURDAY Day Shift 0700-1900					
5. Operations Personnel							
Operations Chief	MARK JOHNSON		Division/Group	G. MARTINEZ / N. NELMS (t)			
Planning Operations			Air Attack Supervisor				
Branch Director			Safety Officer	JUSTIN KERWICK			
6. Resources Assigned this Period							
StrikeTeam / TaskForce / Resource Designator	Leader	Num of Pers.	Tran Y/N	Drop Off PT./Time	Pick Up PT./Time		
CRW2IA . C-265 10/13	DAVID DELANEY	20	N	Sunset ICP / 0700	Sunset ICP / 1900		
ENG3 LNF ENG.12 E-315010/12	JOHN OUTLAND	5	N	Sunset ICP / 0700	Sunset ICP / 1900		
SOFR 0-1208 10/19	RONNIE OATIS	1	N	Sunset ICP / 0700	Sunset ICP / 1900		
7. Control Operations							
Complete mop up where needed to meet 200' mop up standards. Continue coordinating repair efforts with READ. Remove and backhaul all unnecessary hoselays, pumps, and portable tanks. EXCA2 STONY CREEK E-978 WILL MOVE TO Div E mid-morning.							
8. Special Instructions							
Divisions must debrief daily with cost apportionment at King ICP and Sunset Base Camp. Noxious weeds are marked by orange "noxious weed" flagging. Minimize or avoid activities in the area. Sensitive areas are marked with pink/black checkerboard flagging. Minimize ground disturbing activities in the area. FOBS Hurley and Smith. READs and FOBS will be working across Divisions; notify DIVS when entering/exiting Division boundary.							
9. Division / Group Communications Summary							
Function	Frequency-RX	Frequency-TX	Tone	System	Channel	System	Channel
Command	164.1250	164.8250		ENF SERV	3		
Tactical	166.5500	166.5500		R5T4	10		
Logistics							
Air to Ground	169.1500	169.1500		AIG	13		
Prepared by (PSC) D. Lattimore		Approved by (Planning Section Chief)			Date Prepared 10/09/14	Time Prepared 2200	

Division Assignment List			1. Branch		2. Division/Group BAER GROUP		
3. Incident Name ENF KING			4. Operational Period 10/11/14 Saturday Day Shift 0700-1900				
5. Operations Personnel							
Operations Chief		WILL HARRIS		Team Leader		RANDY WESTMORELAND	
Planning Operations				Air Attack Supervisor			
Branch Director				Safety Officer		JUSTIN KERWICK	
6. Resources Assigned this Period							
Strike Team / Task Force / Resource Designator		Leader		Num of Pers.	Tran Y/N	Drop Off PT./Time	Pick Up PT./Time
TEAM LEADER(t)		M. MOORE / E. NICITA		2	N	ENF SO / 0800	ENF SO / 1900
BAER GEOLOGIST		KING / SCHWARTZ		2	N	ENF SO / 0800	ENF SO / 1900
BAER SOIL		A. JANICKI / K. TAKENAKA		2	N	ENF SO / 0800	ENF SO / 1900
BAER SOIL		DAVE YOUNG		1	N	ENFSO / 0800	ENF SO / 1900
BAER ENGINEER		A. CABRERA / R. LEBLANC		2	N	ENF SO / 0800	ENF SO / 1900
BAER ENGINEER		S. EDMUNDS/C. KUSENER		1	N	ENF SO / 0800	ENF SO / 1900
BAER ARCH		D. BUCKLEY / K. PARR		2	N	ENF SO / 0800	ENF SO / 1900
BAER ARCH		J. SERIN		1	N	ENF SO / 0800	ENF SO / 1900
BAER HYDRO		E. FUDGE / D. McCOMB		2	N	ENF SO / 0800	ENF SO / 1900
BAER HYDRO		L. RUTTEN IV. PACIFIC		2	N	ENF SO / 0800	ENF SO / 1900
BAER REC		A. GASS / J. QUINN		2	N	ENF SO / 0800	ENF SO / 1900
BAER REC		J. SJOSTROM		1	N	ENF SO / 0800	ENF SO / 1900
BAER BOTANY		B. ENGLEHARDT/ F.LINTON		2	N	ENF SO / 0800	ENF SO / 1900
BAER FISH		D. TEATER		1	N	ENF SO / 0800	ENF SO / 1900
BAER HAZARD TREE		B. MOORE		1	N	ENF SO / 0800	ENF SO / 1900
NRCS DAMAGE ASSESSMENT TEAM				3	N	ENF SO / 0800	ENF SO / 1900
7. Control Operations							
Continue BAER assessment work, focusing on potential impact to values at risk from flooding, sedimentation, and debris in Divisions A, D/F, W, U, Y and Z. . Will be looking at structures in the White Meadow area, Big Meadow Campground, and fisheries in the streams.							
Interdisciplinary group will be working on a prescription for 11 Pines Road.							
8. Special Instructions							
Be aware of Suppression repair operations.							
Check in and out with Divisions and use the communications plan for frequencies.							
9. Division/Group Communications Summary							
Function	Frequency-RX	Frequency-TX	Tone	System	Channel	System	Channel
Command	164.1250	164.8250		ENF SERV	3		
Tactical							
Logistics							
AirtoGround	169.1500	169.1500		AIG	13		
Prepared by(PSC) D. Lattimore			Approved by (Planning Section Chief)		Date Prepared 10/10 /2014	Time Prepared 2300	

AIR OPERATIONS SUMMARY

(Expanded Form for Large Operations)

OPERATIONAL PERIOD DATE: DAY SHIFDATE: 10/12/14 START: 0700 END: 2000

1. INCIDENT NAME: King	2. PREPARED BY: Steven Chaffin	3. Prepared 10/11/14 1930 hrs
4. REMARKS (Safety Notes, Hazards, Air Operations Special Equipment, etc.): <i>SUNRISE: 0709 SUNSET: 1830</i> OTHER AIRCRAFT COULD FLY IN OUR AREA, PGE, SMUD, and Water districts will have flight missions in the TFR **Avoid aerial application of retardant or foam within 300' of waterways, bodies of water		
UNICOM: 122.8Medivac Helicopter from Helibase or ALS Incident aircraft will support initial attack within and adjacent to the TFR.		
Camino dispatch		

6. PERSONNEL	Phone	FREQUENCIES	AM	FM	8. FIXED-WING # Avail / Type/ Make-Model / FAA N# / Base(s)
AOBD:		AIR/AIR FW:	118.6250		Air Tactical: H507
ASGS:		AIR/AIR RW:	120.5750		
HLCO:		A/G:		169.1500	Lead planes:
ATGS: Pete Koerber	530-277-9261	DECK:		163.100	Airtankers:
Pacific Helibase HEBM: Matt Lingenfelter	805-705-8621	COMMAND:	TX 170.0500 RX 164.8375		Other: Camino Dispatch 530-647-5220
Cobra: Pete Koerber	530-277-9261	AIR GUARD:	168.625	Tone Tx 110.9	
		TOLC:	163.100		

9. HELICOPTERS (Use Additional Sheets As Necessary)

FAA N#	TY	MAKE/MODEL	BASE	AVAIL	START	REMARKS	Manager	Cell Phone
535	3	AS-350-B3	Pacific	0800	0700	Recon/Helco	Nathen Navarro	208-761-0462
516	2	Bell 212	Pacific	0800	0700	Bucket/Shuttle	M Lingenfelter	805-705-8621
192CH	1	BV 107	Big Hill	0800	0700	Bucket	Mike Stelp	530-306-5711
507	2	Cobra	GV	0800	0700	Air Attack/Helco	Pete Koerber	530-277-9261

INCIDENT RADIO COMMUNICATIONS PLAN			Incident Name King CA-ENF-023461		Date/Time Prepared 10/11/14 1830		Operational Period Date/Time ALL SHIFTS 10-12-2014		
Only frequencies listed on this 205 are authorized for use on this incident.				Hand programmers accept all responsibility for the use of unauthorized frequencies.					
Ch #	Function	Channel Name	Assignment	RX Freq N or W	RX Tone	TX Freq N or W	TX Tone	Mode	Remarks
1	DISPATCH	ENF FOR	ALL DIVISIONS	171.5250 N		169.9500 N	UST	A	"Camino"
2	DISPATCH	ENF ADM	ALL DIVISIONS	172.3250 N		173.7625 N	UST	A	"Camino"
3	KING COMMAND	ENF SERV	ALL DIVISIONS	164.1250 N		164.8250 N	UST	A	Tone 3-Bald LO, Tone 4-Big Hill, Tone 8-Bunker Hill
4	DISPATCH	TNF FOR	ALL DIVISIONS	168.7750 N		170.5750 N	UST	A	"Grass Valley"
5	DISPATCH	AEU L	ALL DIVISIONS	151.1900 N	T5 146.2	159.2250 N	UST	A	"Camino" used to dispatch
6	IA COMMAND	XED CMD	ALL DIVISIONS	155.9025 N	186.2	159.2775 N	UST	A	"Camino" used for check back and IA CMD
7	TACTICAL	NIFC T1	REPAIR GROUP 1	168.0500 N		168.0500 N		A	
8	IA TACTICAL	NIFC T2	USE FOR LOCAL IA	168.2000 N		168.2000 N		A	
9	TACTICAL	NIFC T3	DIV A & F & TAHOE SPOT (previously DIV L)	168.6000 N		168.6000 N		A	
10	TACTICAL	R5 TAC4	DIV Y	166.5500 N		166.5500 N		A	
11	TACTICAL	R5 TAC5	DIV T	167.1125 N		167.1125 N		A	
12	TACTICAL	R5 TAC6	DIV E & W	168.2375 N		168.2375 N		A	
13	AIR TO GROUND	KING AG	ALL DIVISIONS	169.1500 N		169.1500 N		A	
14	ENF AG P	R5 AG 14	INITIAL ATTACK	167.5000 N		167.5000 N		A	
15	MEDICAL	CALCORD	AS REQUIRED	156.0750 N	T6 156.7	156.0750 N	T6 156.7	A	MEDICAL COORDINATION
16	URGENT CONTACT ONLY	AIR GUARD	ALL DIVISIONS	168.6250 N		168.6250 N	T1 110.9	A	AIR GUARD – URGENT AIRCRAFT CONTACT
Prepared by				Incident Location: Placerville, CA					
Phil Shafer, COML				Latitude: N 39°1.17', Longitude: W120° 49.77'					

S 205 – 2007H

MODE A – ANOLOG, D – DIGITAL

UST – USER SELECTABLE TONE

King Fire Sunset Base Phone List

October 8, 2014

Last Name	First Name	Position	Phone 1	Phone 2	E-mail
Ferrell	Eric	BCMG	209-352-3876		
Franklin	Jack	CATS	760-221-6335		
Hickok	Rob	DIV T	775-335-9866		
Waite	Rick	FDUL	949-330-9903		
Irwin	Tim	Frontline Medical Paramedic	928-239-0153		
Haskell	Mike	GISS	916-796-3349		
Seago	Alan	HRSP	707-315-6537		
Nelson	Troy	ICT3	530-409-9210		
Harris	Will	ICT3 (t)	530-306-5767		
Johnson	Mark	ICT3 (t)	530-305-8397		
Kumpe	Ken	LSC	530-217-7305		
Wollesen	K.	M248	530-919-6251		
Peters	Jason	ORDM	530-386-4254		
Alicea	Brandon	RCDM	530-957-8063		
Berry	Darin	RCDM	775-813-8088		
Johnson	Kyle	READ	530-906-2156		
Ashcroft	Scott	READ/ARCH - Lead ARCH	828-777-0513		
Barnes	Jason	SECM	740-503-6307		
Stephens	David	SITL (t)	818-645-5668	213-220-3917	
Kerwick	Justin	SOF2	530-739-9900		
Jackson	Allison	TNSP	530-310-5266		
Williamson	Cristina	CATS	760 685 7037		
Brown	Byron	FSC	228 265 2941		
Parsons	Scott	EQUIP	530 721 1514		
Cazier	Ben	PTRC	801 882 1738		
Parlin	Debbie	PTRC	530 957 2890		
Piscopo	Terry	SITL	720 480 6574		
Dorosh	Cheryl	DEMOB	530 957 6899		
Stein	Larry	GSUL	559 799 5194		
Stanley	Craig	Ground Support	916 747 8531		
Linney	Dave	Mechanic	530 949 1001		
Hayes	Jeff	Mechanic	805 962 5522		

MEDICAL PLAN 206 ICS		1. INCIDENT NAME KING INCIDENT		2. Date Prepared October 9, 2014		3. TIME PREPARED 1600hrs		4. OPERATIONAL PERIOD October 10-12, 2014 (48hr Plan)			
5. INCIDENT MEDICAL AID STATIONS											
MEDICAL AID STATIONS				LOCATION				PARAMEDICS			
King ICP (Sunset Camp) – Frontline Medical				Union Valley Reservoir (east side) 14 mi n/of Hwy 50 on Ice House Road				YES	NO		
6. TRANSPORTATION											
A. AIR AMBULANCES / RESCUE											
NAME			LOCATION			PHONE		PARAMEDICS			
All Medivac Requests through Camino ECC			Camino, CA			(530) 647-5250 (Camino ECC)		YES	NO		
B. GROUND AMBULANCES / RAPID EXTRACTION MODULES (REM)											
NAME				LOCATION				PARAMEDICS			
El Dorado County Medic 248 (24hr)				Incident Resource - Sunset Camp				YES	NO		
7. HOSPITALS											
NAME		ADDRESS		TRAVEL TIME		PHONE		HELIPAD		BURN CTR	
				AIR	GRND			YES	NO	YES	NO
Marshall Medical Center (Trauma III/Stroke/Cardiac)		1100 Marshall Way, Placerville			50Min	(530) 626-2717			X		X
Sutter Auburn Faith Hosp (Basic ER/Stroke)		11815 Education Street, Auburn			1.5Hrs	(530) 888-4562			X		X
Sutter Roseville Medical (Trauma II/Stroke/Cardiac)		1 Medical Plaza Drive, Roseville N 38 45.58 x W 121 14.52		25Min	1.5Hrs	(916) 781-1811		X			X
UC Davis Medical Center (Trauma I/Burn/Stroke/Cardiac)		2015 Stockton Ave, Sacramento N 38 33.3 x W 121 27.3		35Min	1.5Hrs	(916)734-6579 ER (916)-734-3636 Burn		X		X	
8. MEDICAL EMERGENCY PROCEDURES											
<u>LINE MEDICAL EMERGENCY:</u>											
Crew Supervisor contact Division Supervisor/Operations with patient complaint, condition and location.											
Division Supervisor/Operations contacts Communication:											
<ul style="list-style-type: none"> • Division Supervisor/Operations to use “injury or incident communication protocol” on next page • Division Supervisor/Operations will run medical emergency on command channel • Division Supervisor/Operations will: <ul style="list-style-type: none"> 1. Have communications dispatch ground/air transport resources 2. Develop primary and contingency transport plan 3. Notify Safety, Logistics 											
<u>CAMP MEDICAL EMERGENCY:</u>											
Contact Communications on Command channel, with patient complaint, condition and location.											
<ul style="list-style-type: none"> • Communications Contacts: <ul style="list-style-type: none"> • Safety • Logistics • Operations • Logistics Chief/Operations will: <ul style="list-style-type: none"> 1. Contact Communications to dispatch ground / air transport resources 2. Develop primary and contingency transport plan 											
206 ICS		9. PREPARED BY: (Medical Unit Leader) Anthony Gasporra, MEDL (T) (530) 545-0414				10. REVIEWED BY: (Safety Officer) Justin Kerwick SOF (530) 739-9900					

KING FIRE MEDICAL PLAN FLOW CHART

- **Medical emergency or injury declared.**
- **Division supervisor gathers information utilizing protocol guide sheet in IAP.**
- **Division supervisor determines transportation method and response. (Medic, EMT, ambulance, Helicopter, Helicopter hoist, vehicle)**
- **Division supervisor contacts communications relays pertinent information utilizing protocol sheet.**
- **Communications receives protocol information.**
- **Communications calls Camino ECC and places order 530-647-5250**
- **Communications will notify Safety Officer, Operations and Logistics Medical of medical incident. (Radio or phone)**
- **Communications contacts local personal specialist to initiate documents for injury Laura French**
- **Communications contacts Camino ECC at 530-647-5250 to determine where patient is being transported to. Camino ECC contacts division supervisor directly on command (service net) for any further communication.**

Injury or Incident Communications Protocol

DECLARE: Medical Emergency or Non-emergency Medical transport
 Best transport method: Ambulance Helicopter Vehicle
 Location _____
 Situation _____
 Any special equipment required _____
 Number of injured _____ Type of injuries _____
 Closest pick up point (DP, Helispot) _____
 LOC _____ Resp. _____ Pulse _____ BP _____ Weight _____
 Injury _____ Agency (No Names) _____
 Medical History/Allergies _____

Air Transportation Triage

	Ground or Air Ambulance to Hosp	Transport to Med Unit
Mechanism	Hit by a falling tree or large branch Fall of 10' or more Insect bite with shortness of breath Signs of heat stroke (hot, dry, disoriented) Burn Injury greater than 1% body area	Minor dehydration Cut or laceration with bleeding controlled Minor bites and Stings Minor burns
Area Injured	Significant Blunt or Penetrating Trauma to Head, Neck, Chest, Abdomen or pelvis Any Arm or Leg fracture above the Joint	Minor blunt trauma Minor penetrating trauma Extremity sprains and strains Simple fracture below elbow or knee
Symptoms	Disoriented Chest Pain <u>or</u> Shortness of Breath Weak or absent radial pulse Pale, cold and sweating	Alert and oriented No shortness of breath Good pulses

Medivac Sites

If air or ground ambulance is DELAYED:

Package and transport patient to rendezvous with ambulance. Re-route EMS helicopter to rendezvous point as appropriate.

If Declaring an "Incident within the Incident"

The closest DIVS will respond to manage the incident. They are responsible for giving an accurate size up, ensuring scene safety, setting priorities and initiating an appropriate response.
 The closest Safety Officer and Line EMS will respond to the scene to assist the Branch Director or DIVS. Secure site and begin initial investigation when situation is stabilized.

Messages

Demob

See the Planning Section for Demob Needs.

If you are flying home, contact Plans at least 48 hours before your demob date.

Check the posted Demob Schedule.



“Everyone goes home!”

\$\$\$ Finance \$\$\$

Please keep your CTR's and Shift tickets up to date!

Please put your name and order number on all documents. If needed document which division(s) you worked on.

If you have a comp/claim need, get started early!



Training! Training! Training!

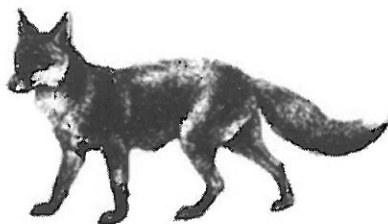
Be sure to visit the Training Specialist to get all the paperwork set up and/or completed.

A quick meeting with trainees and their trainer is all we need to get the documentation done.

The Training Specialist departs Monday morning - close your assignment Sunday.

At Sunset ICP contact

Allison Jackson 530-310-5266



Human Resources Message

PREVENT SEXUAL HARASSMENT

STRESS REMINDERS

- Don't ignore your stress. Take action.
- Stay in touch with team members and communicate
- Talk and share feelings

Stress is normal and everyone has it. Dangerous occupations like firefighting have additional stress. Learn to deal with it.

Incident Human Resource Specialist
Alan Seago, (707) 315-6537

10/12/2014

TENTATIVE RELEASE

ENF KING CA-ENF-023461

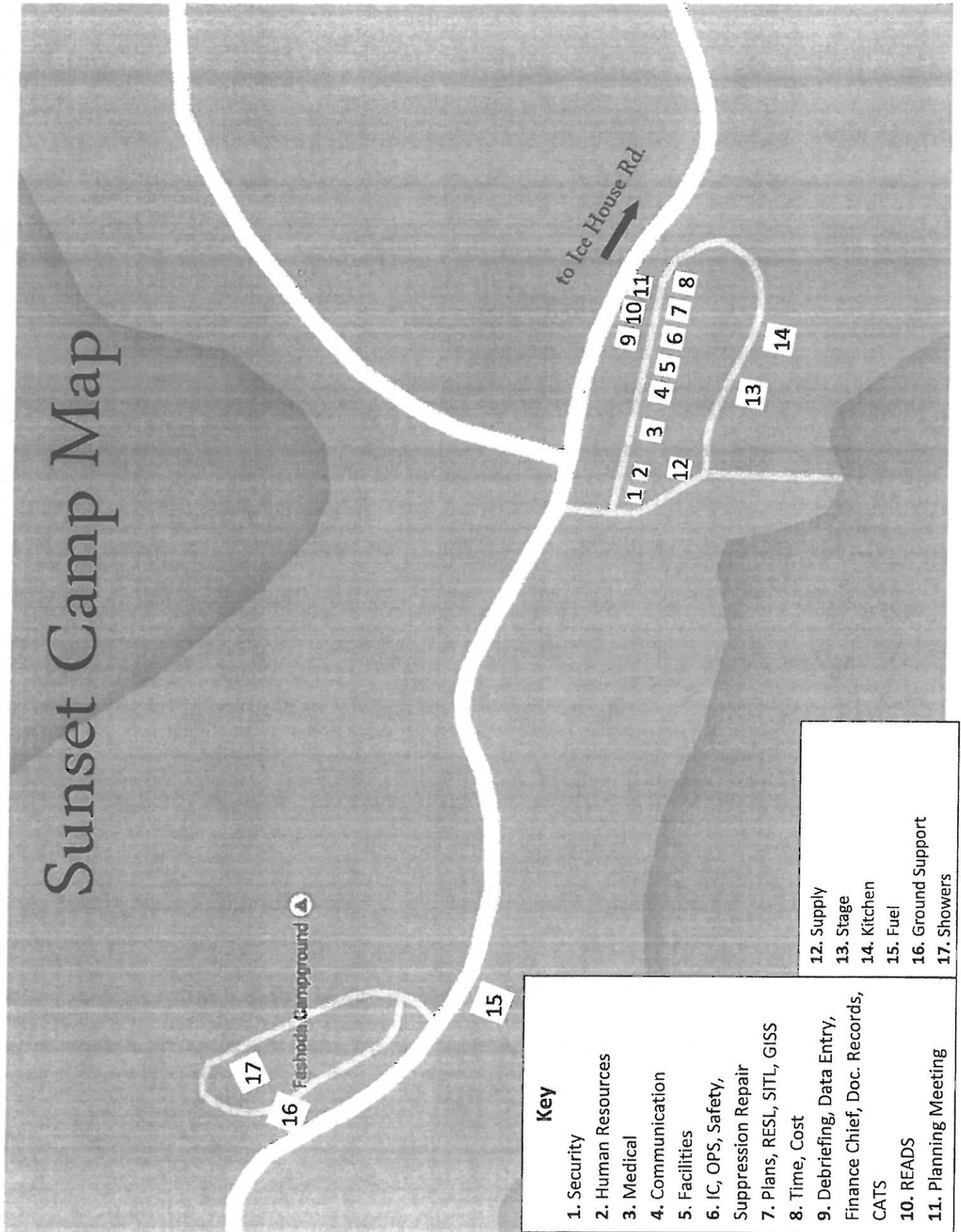
OVERHEAD

O-1144	0730	(FOBS)	ROSS, STEVE
O-1137	0800	(BAES)	KELLISON, TIM
O-1223	0800	(HEQB)	REESE, KEVIN
O-1146	0830	(FOBS)	MAGUIRE, TROY AL
O-1147	0830	(FOBS)	RATAJ, RICHARD
O-3266	0830	(FOBS)	MORA, MICHAEL J

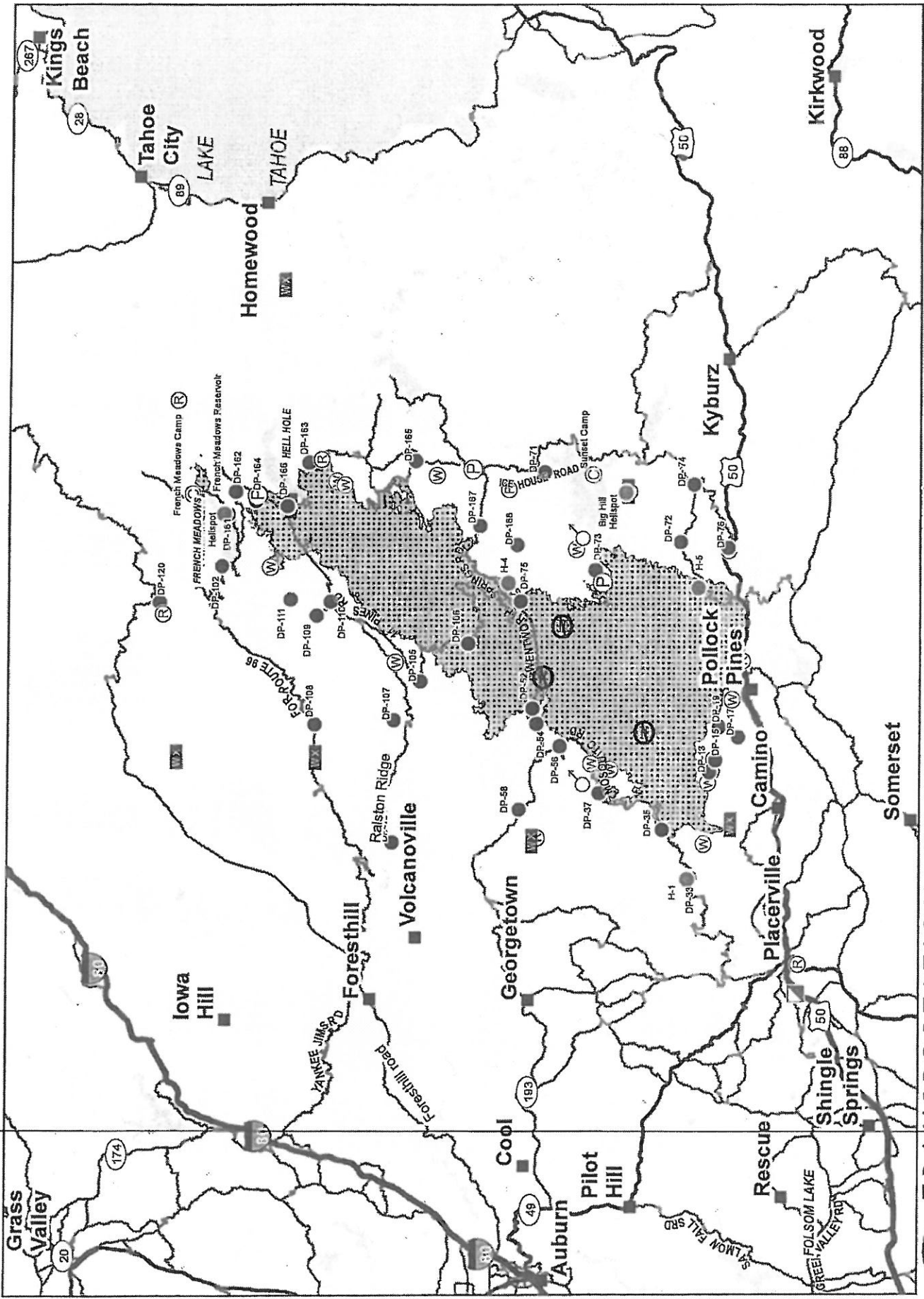
EQUIPMENT

E-971	0800	(ENG3)	ENG3 ENG 353
-------	------	--------	--------------

Sunset Camp Map



Key	
1. Security	12. Supply
2. Human Resources	13. Stage
3. Medical	14. Kitchen
4. Communication	15. Fuel
5. Facilities	16. Ground Support
6. IC, OPS, Safety, Suppression Repair	17. Showers
7. Plans, RESL, SITL, GISS	
8. Time, Cost	
9. Debriefing, Data Entry, Finance Chief, Doc. Records, CATS	
10. READS	
11. Planning Meeting	



- Camp
- Helicopter
- Injured/Command Post
- Squad
- Fire
- Medical
- Police
- Fire Department
- Water Station

TRANSPORTATION MAP
 King Incident CA-ENF-023461
 October 4, 2014



