

KING INCIDENT

Incident Action Plan

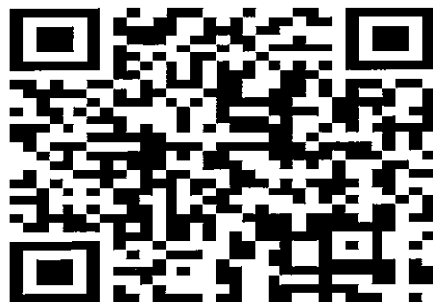
CA-ENF-023461

P5JEE9 (0503)


Operational Period

NIGHT SHIFT 9/22/14 – 9/23/14

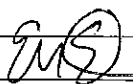
1800 - 0600





INCIDENT OBJECTIVES	1. INCIDENT NAME	2. DATE PREPARED	3. TIME PREPARED
	KING	9/22/14	0900
4. OPERATIONAL PERIOD (DATE/TIME) <p style="text-align: center;">NIGHT SHIFT 9/22/14 – 9/23/14 1800 - 0600</p>			
5. GENERAL CONTROL OBJECTIVES FOR THE INCIDENT Management Objectives: Provide for safety of responders and the public Ensure an appropriate evacuation and repopulation plan is in place and communicated Establish and maintain positive relationships with cooperating agencies and the public Provide timely and accurate incident information Protect economic and watershed values with safe and aggressive firefighting efforts Keep costs commensurate with values at risk Control Objectives: Keep fire North of Forebay Road and Highway 50 east of Pollock Pines Keep fire East of Pino Grande Keep fire West of Ice House Road Keep fire South of the Middle Fork of the American River			
6. WEATHER FORCAST FOR OPERATIONAL PERIOD <p style="text-align: center;">See Attached</p>			
7. GENERAL/SAFETY MESSAGE <p style="text-align: center;">See Attached</p>			
8. ATTACHMENTS (X IF ATTACHED)			
<input checked="" type="checkbox"/> 202	<input checked="" type="checkbox"/> SAFETY MESSAGE / LCES	<input checked="" type="checkbox"/> TRANSPORTATION MAP	
<input checked="" type="checkbox"/> 203	<input checked="" type="checkbox"/> WEATHER	<input checked="" type="checkbox"/> INCIDENT MAP	
<input checked="" type="checkbox"/> 204	<input type="checkbox"/> AIR OPERATIONS SUMMARY	<input checked="" type="checkbox"/> FIRE BEHAVIOR	
<input checked="" type="checkbox"/> 205	<input checked="" type="checkbox"/> HUMAN RESOURCE	<input checked="" type="checkbox"/> TRAINING	
<input checked="" type="checkbox"/> 206	<input checked="" type="checkbox"/> ICP / CAMP MAP	<input type="checkbox"/> FINANCE	
<input checked="" type="checkbox"/> 214	<input checked="" type="checkbox"/> FIRE WEATHER	<input type="checkbox"/> <i>for [Signature]</i>	
ICS 202	9. PREPARED BY (PLANNING SECTION CHIEF)  Dennis Cooper / Jason Schillinger (t)	10. APPROVED BY (INCIDENT COMMANDER) (Zone 1) (Zone 2) Jim Giachino / Kevin Smith	

ORGANIZATION ASSIGNMENT LIST		Ordering Manager	Sharon Porter
1. Incident Name: KING (ZONE 1)		9. Operations Section	
2. Date: 9/22/14	3. Time: 0900	Op. Chief	Keith Gurrola
4. Operational Period Night Shift: September 22-23, 2014 1800-0600		Planning Ops	Don Smith / Mike Sandwick
		Deputy Ops	
		a. Branch X	
Position	Name	Branch Director	Larry Sears
5. Incident Commander and Command Staff			
Incident Commander	Jim Giachino / Steve Millert (t)		
Deputy	Carlton Joseph		
Safety Officer	Marty Hamel / Steve Ryberg / Charlotte Jordan (t)		
Information Officer	Steve Kliest / Mark Savage (t)		
Liaison Officer	R. Alpert / R. Graham / W. McGrew / J. Jones		
6. Agency Representative			
Eldorado NF	Laurence Crabtree		
Eldorado Agency Admin Rep	Duane Nelson		
Tahoe NF	Tom Quinn		
Tahoe Agency Admin Rep	Victor Lyon		
Cal OES	Gary Humphrey		
IARR Eastern Area	Jeffrey Briggs		
IARR Northeastern Area	Robert Heartlove		
PG&E	Pam Purdee		
California Highway Patrol	Chris Sahagun		
Sierra Pacific Industries	Rich Wade		
Placer County Sheriff	Kevin Borden		
7. Planning Section			
Plans Chief	Dennis Cooper / Jason Schillinger (t)		
Resources Unit	R. Ashby / J. Switzler / J. Wilson / E. Matye (t)		
Situation Unit	T. Morelock / M. McHargue / A. Mitchell		
Human Resources	Marilyn Loughrey		
READ	Karin Klemic		
Fire Behavior	Shelly Crook / Denny O'Neil		
Meteorologist	Jason Clapp		
GISS	Brad Weissaupt / Eric Shreve (t)		
CTSP	Jim Youngblood / Chris Crowder (t)		
TNSP	Jim Mitchell / Seneca Smith		
DEMOB	Dan Baggao / Jim Cooley		
8. Logistics Section			
Logistics Chief	H. Crane / D. Haston / K. Kumpe (t)		
Supply Unit	Michael Bradford		
Facilities Unit	Jim Eckroth / Wally Grogan		
Ground Support Unit	John Badaracco		
Medical Unit	Robert Russell / Newton Ong (t)		
Food Unit	Dennis Durham		
Receiving/Distribution	Joe McMahon		
Communications Unit	Greg Ely / Tim Maguire (t)		
		Branch Director	John Flores
		Division	1B Matthew Madariaga
		Division	1D Jeff Bedke
		Division	1F Brooks Baker / Brandon Allen (t)
b. Branch XII			
		Branch Director	John Flores
		Division	1H Brad Sawyer
		Division	1K Alan Clay
		Division	1L Wilson Branch
c. Branch XIV			
		Branch Director	Unstaffed
		Division	1M Unstaffed
		Division	1P Unstaffed
d. Branch XVI			
		Branch Director	Rodney Collins
		Division	1R Unstaffed
		Division	1T David Estey / Ty Van Keuren (t)
		Division	1W Gene Neely / William Marks (t)
		Division	1Y Kevin Wegener
e.			
		Branch Director	
		Division	
		Division	
		Division	
f.			
		Branch Director	
		Division	
		Division	
g. Air Operations			
		Air Operations Branch Director	John Keesee
		Air Support Supervisor	Craig Dado
		Helicopter Coordinator	Lane Caldwell / John Chin
		Hel Base Manager	Dave Ito / Travis Taylor (t)
10. Finance/Administration Section			
		Finance/Admin. Chief	Teresa Fork / Peter Bymers
		Cost Appro.	Kenny Lucien
		Time Unit	Janice Brown
		Procurement Unit	Wendy Whiteman
		Compensation/Claims Unit	Elaine Downing
		Cost Unit	Roger Siemens
		Personnel Time Recorder	Debra Luna (t)
		Prepared by (Resource Unit Leader) Eric Matye (t)	





ZONE 1 FIRE WEATHER FORECAST

FORECAST NO: 13
PREDICTION FOR: Monday Night SHIFT

INCIDENT NAME: King Fire
UNIT: Eldorado National Forest

SHIFT DATE: 22/23 Sep 2014

SIGNED: *Jason Clapp*

TIME AND DATE
FORECAST ISSUED: 1200 / 22 September 2014

Jason Clapp
Incident Meteorologist

WEATHER TONIGHT:

WEATHER: Mostly clear with smoke settling downcanyon after 2200, and RH struggling to recover to 50%.

TEMPERATURES: 61-66 Thermal belts/ridges...55-60 Valleys
RELATIVE HUMIDITY: 40-45% Thermal belts/Ridges ...50-60% Valleys

20 FT WINDS:

RIDGETOP - W 3-8 shifting ESE after 2200 with 5-9 with gusts 15 mph after 0200.
SLOPE/VALLEY - Downslope 3-6 mph. Then downcanyon 4-9 mph after 2400.

LAL: 1.

STABILITY/INVERSION: Inversion setting up after 2200.

WEATHER DISCUSSION: General terrain winds dominate tonight with some enhanced wind through the French Meadow/Hell Hole area. Enhanced Tuesday winds will keep afternoon RH in the 20s. Stronger SW winds expected Wednesday as the frontal system approaches the area. The frontal system may impact the fire with some light rain late Wednesday night and potential more significant precipitation chances Thursday.

WEATHER FOR TUESDAY: Morning ESE breezes transition to stronger SW wind lowering RH. High temps: 75-80. Min RH: 25-35%. Ridge winds: SW 10-15 G25. Valley/Slope winds: Downslope 3-7 mph shifting upslope/upcanyon 5-9 mph by mid morning with afternoons gusts 15 mph.

ZONE 1: KING FIRE NORTH - FIRE BEHAVIOR FORECAST

FORECAST NUMBER: #14

TYPE OF FIRE: Wildfire

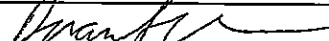
FIRE NAME: King Fire (ZONE 1, NORTH)

OPERATIONAL PERIOD: Sunday 9/22/2014 Night Shift

DATE ISSUED: September 22, 2014

TIME ISSUED: 1200

UNIT: Eldorado National Forest, CA State

SIGNED:  Duane Weis- FBAN

INPUTS

WEATHER SUMMARY

(Refer to Weather Forecast for details)

Mostly clear. Min Temp: 52-65°. Max RH: 75-95%.

Ridgetop winds – WNW 3-8 mph shifting to ESE 5-8 with gusts to 12 mph after 0200.

Slope/Valley Winds – Downslope/down valley 2-5 mph becoming downslope 4-9 mph.

FUELS

Predominantly mature mixed conifer (ponderosa pine, cedar, Douglas fir) with heavy shrub understory. Red fir on upper ridges. Fuel loadings are generally heavy. Representative Fuel Models 9, 10, TU5, TL8, TL9. Large fire history to the north and west includes the Star Fire (2001), Ralston Fire (2007), Government and Westville (2008), American Fire (2013).

OUTPUTS - FIRE BEHAVIOR

Thresholds for Active Fire Behavior in the King Fire area (Eldorado NF PocketCard):

* 20ft Winds (over 5 mph) *RH (under 22%) *Temperature (over 84°) *1000hr FMC (under 9%)

GENERAL: Fire activity has the potential to increase gradually leading into tonight's shift as fine fuel moistures respond to lower relative humidity values. Marginal humidity recovery tonight will likely allow any increased activity to continue into the night, although the potential for significant spread should be limited.

Branch X: General winds will gradually shift to an easterly direction throughout the shift, with strongest winds occurring after 0200.

Branches XII and XIV: Expect the potential for active burning continuing into tonight's shift, particularly along Chipmunk Ridge.

Branch XVI: Greatest potential for active burning continuing into tonight's shift will be north of Bunker Hill and in the areas west and north of Gerle Creek. Marginal RH recovery and a shift to easterly winds after 0200 should result in significantly decreasing fire activity later in the shift.

FEEDBACK: Collect WX observations hourly and turn in to FBAN or IMET at end of shift. Please include fire behavior observations.

AIR OPERATIONS

Smoky conditions may limit operations in the evening. Sunset at 1902 / Sunrise at 0651

SAFETY

- Be aware of the potential for increased fire activity tonight.
- Fuel type and terrain makes it difficult to find natural safety zones.

Division Assignment List		1. Branch X		2. Division/Group 1 B			
3. Incident Name KING - ZONE 1		4. Operational Period 09/22/14 Monday Night Shift 1800 - 0600					
5. Operations Personnel							
Operations Chief	KEITH GURROLA		Division/Group Supervisor	MATHEW MADARIAGA			
Operations Chief			Air Attack Supervisor				
Branch Director	LARRY SEARS		Safety Officer	M. HAMEL; S. RYBERG; C. JORDAN (t)			
6. Resources Assigned this Period							
Strike Team/Task Force/ Resource Designator	Leader	Num of Pers.	Trans. Y/N	Drop Off PT./Time	Pick Up PT./Time		
CRW T2IA TANANA C-21 9/30	JAMES LUDECKER	20	N	1800	0600		
ENG T6 UTASF 631 E-351 10/1	ANTHONY TAYLOR	4	N	1800	0600		
ENG6 MBF 694 E-375 10/2	JOSHUA MCGEE	3	N	1800	0600		
DOZ T2 1540 E-148* 9/29	MICHAEL WATERS	2	N	1800	0600		
DOZ T2 AMADOR MECH E-196* 9/30	MERVIN VICINI	2	N	1800	0600		
DOZ T2 YTS E-197* 9/29	RICHARD JAUQCH	2	N	1800	0600		
WT T1 C&H VETERAN ENT E-252 9/29	JAMES CALDWELL	2	N	1800	0600		
WT T1 PRO DUMP E-278 9/29	CARLOS FURTADO	2	N	1800	0600		
HEQB O-251 9/30	TYLER RAND HALL	1	N	1800	0600		
HEQB O-518 9/30	CHARLES RICH WATERS	1	N	1800	0600		
HEQB O-250	LOGAN LAWSON JR.	1	N	1800	0600		
SOFR O-238	GREG BURCH	1	N	1800	0600		
FEMP O-756	JOHN BICONDOVA	1	N	1800	0600		
FEMT O-757	MATT HECKMANN	1	N	1800	0600		
7. Control Operations							
Widen and improve existing secondary lines from the Ralston Pinic Area to Ramsey Crossing. Start mopping up where snagged.							
8. Special Instructions							
All Division Supervisors need to download information to the Sit Unit for all completed line and proposed line.							
Noxious weeds are marked by orange "noxious weed" flagging. Minimize or avoid activities in these areas.							
Sensitive areas are marked with pink/black checkerboard flagging. Minimize ground disturbing activities in these areas.							
* Indicates a 24 hour resource 0600-0600							
9. Division/Group Communications Summary							
Function	Frequency - RX	Frequency - TX	Tone	System	Channel	System	Channel
Command	166.6125	168.4000	136.5	NIFC C4	1		
Tactical Div/Group	168.0500	168.0500		NIFC T1	5		
Logistics							
Air to Ground	169.1500	169.1500		A/G CMD	13		
Prepared by (Resource Unit Leader) J Switzler; G.Thompson; E. Mayte (t)		Approved by (Planning Section Chief) Dennis Cooper; Jason Schillinger (t)		Date Prepared 09/22/14		Time Prepared 0916	

Division Assignment List			1. Branch XII		2. Division/Group 1 H		
3. Incident Name KING - ZONE 1			4. Operational Period 09/22/14 Monday Night Shift 1800 - 0600				
5. Operations Personnel							
Operations Chief		KEITH GURRROLA			Division/Group Supervisor		BRAD SAWYER
Operations Chief					Air Attack Supervisor		
Branch Director		JOHN FLORES			Safety Officer		M. HAMEL; S. RYBERG; C. JORDAN (t)
6. Resources Assigned this Period							
Strike Team/Task Force/ Resource Designator		Leader		Num of Pers.	Trans. Y/N	Drop Off PT./Time	Pick Up PT./Time
CRW T2IA MESCALERO C-100 9/30		JOHN CENVANTES		20	N	1800	0600
CRW T2IA NMZUA #2 C-99 10/1		CHAD NASTACIO		20	N	1800	0600
DOZ T2 E-107 10/1		BOB MURRAY		4	N	1800	0600
DOZ T2 FORTNER EXCA E-561 10/5		TRAVIS FORTNER		4	N	1800	0600
DOZ T2V ROEN #N01 E-567 10/5		CLAY BOSCI		2	N	1800	0600
DOZ T2 NORTHSTATE E-122 10/1		MIKE BRASK		3	N	1800	0600
HEQB O-841 10/5		LOREN LEE BELL		1	N	1800	0600
HEQB O-835 10/5		RIGOBERTO FLORES		1	N	1800	0600
HEQB(t) O-3185 10/5		GABRIEL L O'KEEFE		1	N	1800	0600
SOF2 O-224		BILL BRYANT		1	N	1800	0600
FEMP O-759		TRAVIS MEDINA		1	N	1800	0600
FEMT O-768		NICK MARTINO		1	N	1800	0600
7. Control Operations							
Complete dozer line from Chipmunk Ridge to spot fire. Improve existing control line from Chipmunk Ridge to Middle Meadow C.G.							
8. Special Instructions							
All Division Supervisors need to download information to the Sit Unit for all completed line and proposed line.							
Noxious weeds are marked by orange "noxious weed" flagging. Minimize or avoid activities in these areas.							
Sensitive areas are marked with pink/black checkerboard flagging. Minimize ground disturbing activities in these areas.							
* Indicates a 24 hour resource 0600-0600							
9. Division/Group Communications Summary							
Function	Frequency - RX	Frequency - TX	Tone	System	Channel	System	Channel
Command	166.6125	168.4000	136.5	NIFC C4	1		
Tactical Div/Group	166.7750	166.7750		NIFC T6	8		
Logistics							
Air to Ground	169.1500	169.1500		A/G CMD	13		
Prepared by (Resource Unit Leader) J Switzler; J Wilson; E Mayte			Approved by (Planning Section Chief) Dennis Cooper; Jason Schillinger (t)			Date Prepared 09/22/14	Time Prepared 0916

Division Assignment List	1. Branch XII	2. Division/Group 1 L
---------------------------------	-------------------------	---------------------------------

3. Incident Name KING - ZONE 1	4. Operational Period 09/22/14 Monday Night Shift 1800 - 0600
--	---

5. **Operations Personnel**

Operations Chief	KEITH GURROLA	Division/Group Supervisor	WILSON BRANCH
Operations Chief		Air Attack Supervisor	
Branch Director	JOHN FLORES	Safety Officer	M. HAMEL; S. RYBERG; C. JORDAN (t)

6. **Resources Assigned this Period**

Strike Team/Task Force/ Resource Designator	Leader	Num of Pers.	Trans. Y/N	Drop Off PT./Time	Pick Up PT./Time
ENG S/T XNE 4104C E-163 9/29	JERRY	18	N	FRENCH MDW CG 1900	0600
S/T ENF KING #8				FRENCH MDW CG 1900	0600
STEN O-900 10/5	JON VEALE	1	N	FRENCH MDW CG 1900	0600
STEN O-3222 10/5	KEN GOODIAN (t)	1	N	FRENCH MDW CG 1900	0600
ENG T3 1667 E-606 10/5	BRAD CHANDLER	5	N	FRENCH MDW CG 1900	0600
ENG T3 1668 E-607 10/5	BRIAN ETHRIDGE	5	N	FRENCH MDW CG 1900	0600
ENG T3 TMU E42 E-266 9/30	EXSTROM WALKER	5	N	FRENCH MDW CG 1900	0600
ENG T3.PARK CITY FD E-605 10/5	ZANE THOMPSON	3	N	FRENCH MDW CG 1900	0600
ENG T3 72 E-624 10/4	CHRISTIAN LOPEZ	5	N	FRENCH MDW CG 1900	0600
S/T ENF KING #9				FRENCH MDW CG 1900	0600
STEN O-888 10/5	NATE HALLAM	1	N	FRENCH MDW CG 1900	0600
ENG T3 15 E-548 10/4	DEAN DEHART	5	N	FRENCH MDW CG 1900	0600
ENG T3 E-603	MALISSA MOORE	5	N	FRENCH MDW CG 1900	0600
ENG T3 35 E-546 10/5	WADE JONES	5	N	FRENCH MDW CG 1900	0600
ENG T3 322 E-621 10/5	OLLE SMITH	5	N	FRENCH MDW CG 1900	0600

7. Control Operations
Continue to construct line around spot fire.

8. Special Instructions
All Division Supervisors need to download information to the Sit Unit for all completed line and proposed line.

Noxious weeds are marked by orange "noxious weed" flagging. Minimize or avoid activities in these areas.
Sensitive areas are marked with pink/black checkerboard flagging. Minimize ground disturbing activities in these areas.

* Indicates a 24 hour resource 0600-0600

9. **Division/Group Communications Summary**

Function	Frequency - RX	Frequency - TX	Tone	System	Channel	System	Channel
Command	166.6125	168.4000	136.5	NIFC C4	1		
Tactical Div/Group	168.0500	168.0500		NIFC T1	5		
Logistics							
Air to Ground	169.1500	169.1500		A/G CMD	13		

Prepared by (Resource Unit Leader) J Switzler; J Wilson; E Mayte	Approved by (Planning Section Chief) Dennis Cooper; Jason Schillinger (t)	Date Prepared 09/22/14	Time Prepared 1208
---	--	---------------------------	-----------------------

Division Assignment List			1. Branch XVI		2. Division/Group 1 W		
3. Incident Name KING - ZONE 1			4. Operational Period 09/22/14 Monday Night Shift 1800 - 0600				
5. Operations Personnel							
Operations Chief		KEITH GURROLA		Division/Group Supervisor		GENE NEELEY / WILLIAM MARKS (t)	
Operations Chief				Air Attack Supervisor			
Branch Director		RODNEY COLLINS		Safety Officer		M. HAMEL; S. RYBERG; C. JORDAN (t)	
6. Resources Assigned this Period							
Strike Team/Task Force/ Resource Designator		Leader		Num of Pers.	Trans. Y/N	Drop Off PT./Time	Pick Up PT./Time
CREW T1 ELK MT IHC C-48 9/28		CHEVEYO MUNK		20	N	1800	0600
CRW T2IA BECKWORTH C-47 9-22		MIKE WINTCH		21	N	1800	0600
CRW T2IA FOLSOM LAKE C-137 10/1		MATT LYNDE		19	N	1800	0600
CRW T2 COBRAS 3 C-197 9/27		PETER HARDY		21	N	1800	0600
CRW T2 DIAMOND FIRE C-209 10/5		JOHN WACHOSKI		20	N	1800	0600
ENG S/T T3 E-497 9/29		TODD BENTLEY		20	N	1800	0600
T/F KING #7						1800	0600
STEN O-663 10/2		MARK NOVAK		1	N	1800	0600
ENG T6 BONDURANT E-350 10/1		JERRY JOHNSON		4	N	1800	0600
ENG T6 OUTBACK FIREFIGHT E-348		DEREK ANDRE		3	N	1800	0600
ENG T6 MADSON BRUSH E-347 10/1		ROBERT RICKS		3	N	1800	0600
ENG T6 MADSON BRUSH E-347 10/1		STAN CRITTENDEN		3	N	1800	0600
ENG T6 CCD 3665 E-357 10/1		MATT CROSWAIT		2	N	1800	0600
ENG T3 12 E-545 10/1		NATHAN SCINTO		5	N	1800	0600
ENG T3 5121 E-625 10/5		JEREMY KIZER		4	N	1800	0600
ENG T3 E-623		KEVIN REESE		5	N	1800	0600
DOZ T2 NORTHSTATE E-110* 10/1		GIFFORD TALMADGE		2	N	1800	0600
DOZ T2 NORTHSTATE E-120* 10/1		GEORGE POE		2	N	1800	0600
DOZ T2 #1 - SPENCER E-111* 10/1		MIKE SPENCER		2	N	1800	0600
DOZ T2V BRAD INGRAM E-554 10/5		FRANK KESTER		2	N	1800	0600
7. Control Operations							
Widen and improve existing secondary line from the Division I T / I W break to the I W / I Y break.							
8. Special Instructions							
All Division Supervisors need to download information to the Sit Unit for all completed line and proposed line.							
Noxious weeds are marked by orange "noxious weed" flagging. Minimize or avoid activities in these areas.							
Sensitive areas are marked with pink/black checkerboard flagging. Minimize ground disturbing activities in these areas.							
* Indicates a 24 hour resource 0600-0600							
9. Division/Group Communications Summary							
Function	Frequency - RX	Frequency - TX	Tone	System	Channel	System	Channel
Command	166.6125	168.4000	136.5	NIFC C4	1		
Tactical Div/Group	168.2375	168.2375		R5 T6	12		
Logistics							
Air to Ground	169.1500	169.1500		A/G CMD	13		
Prepared by (Resource Unit Leader) J.Switzler; G.Thompson; E. Mayte (t)			Approved by (Planning Section Chief) Dennis Cooper; Jason Schillinger (t)			Date Prepared 09/22/14	Time Prepared 0916

Division Assignment List		1. Branch XVI		2. Division/Group 1W			
3. Incident Name ENF KING		4. Operational Period 09/22/14 Monday Night Shift 1800 - 0600					
5. Operations Personnel							
Operations Chief	KEITH GURROLA		Division/Group Supervisor	GENE NEELEY / WILLIAM MARKS (t)			
Operations Chief			Air Attack Supervisor				
Branch Director	RODNEY COLLINS		Safety Officer	HAMEL / RYBERG / JORDAN (t)			
6. Resources Assigned this Period							
Strike Team/Task Force/ Resource Designator		Leader	Num of Pers.	Trans. Y/N	Drop Off PT./Time	Pick Up PT./Time	
DOZ T2 BRAD INGRAM #10 E-555 10/5		RICHARD GRIEVE	2	N	1800	0600	
DOZER T2V BASQO E-569 10/5		RANDY BASQO	3	N	1800	0600	
DOZB O-829 10/5		KEVIN M MOLLOY	1	N	1800	0600	
TFLD O-789 10/5		CHRIS R SCOTT	1	N	1800	0600	
HEQB O-831 10/5		JACOB CHING	1	N	1800	0600	
HEQB O-252		RYAN ANDERSON	1	N	1800	0600	
ESTP O-810 10/5		TOMAS C GONZALEZ	1	N	1800	0600	
SOF2 O-357		DENNIS TERRY	1	N	1800	0600	
FEMP O-762		DONALD CUTTING	1	N	1800	0600	
FEMT O-761		NICK WARREN	1	N	1800	0600	
FEMP O-755		CHAD MEKETARIAN	1	N	1800	0600	
FEMT O-767		SEAN TIERNEY	1	N	1800	0600	
7. Control Operations							
Widen and improve existing secondary line from the Division I T / I W break to the I W / I Y break							
8. Special Instructions							
All Division Supervisors need to download information to the Sit Unit for all completed line and proposed line.							
Noxious weeds are marked by orange "noxious weed" flagging. Minimize or avoid activities in these areas.							
Sensitive areas are marked with pink/black checkerboard flagging. Minimize ground disturbing activities in these areas.							
* Indicates a 24 hour resource 0600-0600							
9. Division/Group Communications Summary							
Function	Frequency - RX	Frequency - TX	Tone	System	Channel	System	Channel
Command	166.6125	168.4000	136.5	NIFC C4	1		
Tactical Div/Group	168.2375	168.2375		R5 T6	12		
Logistics							
Air to Ground	169.1500	169.1500		A/G CMD	13		
Prepared by (Resource Unit Leader) J.Switzler; G.Thompson; E. Mayte (t)		Approved by (Planning Section Chief) Dennis Cooper; Jason Schillinger (t)		Date Prepared 09/22/14		Time Prepared 1245	

Division Assignment List	1. Branch XVI	2. Division/Group 1 Y
---------------------------------	-------------------------	---------------------------------

3. Incident Name KING - ZONE 1	4. Operational Period 09/22/14 Monday Night Shift 1800 - 0600
--	---

5. Operations Personnel

Operations Chief	KEITH GURROLA	Division/Group Supervisor	KEVIN WEGENER
Operations Chief		Air Attack Supervisor	
Branch Director	RODNEY COLLINS	Safety Officer	M. HAMEL; S. RYBERG; C. JORDAN (t)

6. Resources Assigned this Period

Strike Team/Task Force/ Resource Designator	Leader	Num of Pers.	Trans. Y/N	Drop Off PT./Time	Pick Up PT./Time
CRW T2IA MDS #3 C-15 9/30	PAUL SHANNON WOLFE	20	N	1800	0600
CRW T2IA ZEPHYR C-38 9/29	MATT FOGERTY	20	N	1800	0600
ENG T6 UTASF 631 E-351 10/1	ANTHONY SAYLOR	4	N	1800	0600
ENG T6 BLAZE RUNNERS E-345 10/1	DUANE DARBIN	3	N	1800	0600
ENG T6 SWSE665 E-353 10/1	CHARLES PETERSON	3	N	1800	0600
DOZ T2 BIG EDS CRANE E-210* 9/29	RICK ROGER	3	N	1800	0600
WT T1 E-258* 9/29	RICHARD YOST	0	N	1800	0600
WT E-3*	BOB ALVAREZ	2	N	1800	0600
WT T1 ARBOR TREE E-263* 9/29	LU ESTRADA	1	N	1800	0600
WT T1 EMERSON ASSOC. E-51 9/28	MEL EMERSON	2	N	1800	0600
HEQB O-257 9/30	MATTHEW KILGRIFF	1	N	1800	0600
SOFR O-357	DENNIS TERRY	1	N	1800	0600
FEMP O-762	DONALD CUTTING	1	N	1800	0600
FEMT O-761	NICK WARREN	1	N	1800	0600
FEMP O-755	CHAD MEKETARIAN	1	N	1800	0600
FEMT O-767	SEAN TIERNEY	1	N	1800	0600

7. Control Operations
Widen and improve existing secondary line from Loon Lake to South Fork campground.

8. Special Instructions
All Division Supervisors need to download information to the Sit Unit for all completed line and proposed line.

Noxious weeds are marked by orange "noxious weed" flagging. Minimize or avoid activities in these areas.
Sensitive areas are marked with pink/black checkerboard flagging. Minimize ground disturbing activities in these areas.

* Indicates a 24 hour resource 0600-0600

9. Division/Group Communications Summary

Function	Frequency - RX	Frequency - TX	Tone	System	Channel	System	Channel
Command	166.6125	168.4000	136.5	NIFC C4	1		
Tactical Div/Group	166.7250	166.7250		NIFC T5	7		
Logistics							
Air to Ground	169.1500	169.1500		A/G CMD	13		

Prepared by (Resource Unit Leader) J.Switzler;G.Thompson; E. Mayte (t)	Approved by (Planning Section Chief) Dennis Cooper; Jason Schillinger (t)	Date Prepared 09/22/14	Time Prepared 0916
---	--	---------------------------	-----------------------

King Zone 1 – Safety Message

INCIDENT: # CA-ENF-023461

DATE: 09/22-23/14

TIME:1800-0600 Night

FIRELINE QUESTIONS TO EMPHASIZE SAFETY

TEN QUESTIONS EVERY FIREFIGHTER MUST ASK AND ANSWER YES TO BEFORE ENGAGING IN FIRE SUPPRESSION

1. Do you understand the organization for this fire and your place in it?
2. Is there a plan and do you understand it?
3. Do you know it is OK to ask questions and ensure that the instructions you are given provide for your safety and the safety of your fellow fire fighters?
4. Do you know the weather forecast for today?
5. Have you assessed fire behavior and made a prediction?
6. Are you interactive with the **Standard Fire Orders** and **Watch Out Situations**?
7. Do you have the **Lookouts, Communications, Escape Routes, and Safety Zones** system in place?
8. Do you understand that it's both your responsibility and your right to say **No** to orders that cannot be accomplished without compromising one or more of the **Standard Fire Orders** or without mitigating each of the **Watch Out Situations**?
9. Can you describe the fire environment you are going to operate in?
10. Are you prepared to engage; monitor the fire environment, be proactive, and make adjustments?

BACK TO THE BASICS: Size-Up; when does it start and when does it end? On our way to this fire we were sizing-up the weather, fuels, topography and the condition of our crew. Now that we have several shifts under our belts, are we still doing this? If not, we should be! Size-up is a continual and ongoing process that should last us through the incident and safely back home.

CIRCLE OF SAFETY:

- Walk around the vehicle.
- Check the windshield, wipers, and wiper fluid level
- Keep windows, mirrors, and lights clean to better see and be seen
- Check headlights, turn signals, tail lights, reflectors and running lights.
- Adjust mirrors.
- Check front and back tires (including wheels and lug nuts).
- Under the hood, check all fluid levels and especially the Air Filter

Randy Unkovich SOF1 (T)
Marty Hamal SOF1

SNAGS AND HAZARD TREES:

All trees, especially large trees are potentially dangerous.

- Trees don't tell when they are going to fall, they just do. Be heads up!
- Minimize your exposure time and resources around hazard tree.
- How many times do we have a conversation under large trees?

DEHYDRATION:

If you're thirsty, you've waited to long to drink water. You need to drink a minimum of 32 ounces of water per hour during the day shift.

FACT:

- If you loose 3 % of you're hydration, you will loose 20% of your energy.
- If you loose 5% of your hydration, you loose 50% and you will need to visit medical.

HYDRATE! HYDRATE! HYDRATE!

INCIDENT SAFETY ANALYSIS 215a

KING INCIDENT (ZONE 1) CA-ENF-023461 - Tuesday 23, 2014		
8. Location	9. Hazard	6. Control or Abatement Action (Engineering, Administrative, PPE, Avoidance, Education, etc)
ALL	Snag Hazards	<ul style="list-style-type: none"> • Follow Hazard Tree Safety Guidelines (IRPG p. 80). • Limit number of personnel around snags and their exposure time; fallers must be qualified for trees being fallen. • Be especially alert around snags during wind events. • Check overhead for dead branches in sleeping areas. • Maintain Situational Awareness.
ALL	Aircraft Operations	<ul style="list-style-type: none"> • Keep personnel out of drop zones. • Use air-to-ground freq. to communicate with aircraft. • Use clear, concise statements when directing aircraft. Use clock directions from pilot's perspective.
ALL	Direct Attack/Night Operations	<ul style="list-style-type: none"> • Do not engage in direct line tactics in areas where snags are present. • Snag areas in day time before engaging personnel. • Snag roads where nighttime travel is necessary. • Ensure medical protocols are followed. • Have medivac sites pre-identified/established. • Ensure good communications exist and tested.
ALL	Driving Hazards	<ul style="list-style-type: none"> • Practice defensive driving at all times. • Adhere To 30 mph speed limit on forest roads • Drive with headlights on. • Be alert for wildlife and livestock on roads at all times. • Slow down on washboard surfaces. • Avoid gravel berms on the sides of roadways. • Increase following distances on dusty roads. Slow down when you meet opposing traffic. • Maintain Situational Awareness.
ALL	Severe Fire Behavior	<ul style="list-style-type: none"> • Review "Severe Fire Behavior Potential" (IRPG p.68). • Monitor current weather conditions and forecasts. Make sure all personnel receive thorough briefings every shift. • Be observant for formation and passage of pyro-cumulous cells over the fire area and alert all personnel. • Maintain adequate escape routes and safety zones. Advise all personnel if these are compromised or changed. Set trigger points when appropriate. • Adhere to 10 Std Orders, mitigate 18 situations. • Maintain Situational Awareness.
ALL	Mines	<ul style="list-style-type: none"> • Identify and avoid mining areas • Notify others of mining hazards and flag • Be aware of vertical vent shafts, indicators may be slight indentations in terrain • Watch for and keep out of any horizontal adits or shafts that may be located into the side of a ridge or mountain
ALL	Work/Rest and Fatigue	<ul style="list-style-type: none"> • Be alert for signs of fatigue and take breaks as necessary. • Maintain 2:1 work/rest ratio. • Monitor incoming resources for level of fatigue.

INCIDENT SAFETY ANALYSIS 215a

ALL	Hydration	<ul style="list-style-type: none"> • Encourage drinking water before, during and after shifts, up to 1.5 gal. during shifts. • Be alert for signs of heat stress in yourself and others.
ALL	Line Construction	<ul style="list-style-type: none"> • Conduct thorough briefing for all personnel involved (inside rear cover IRPG). • Ensure LCES in place prior to engagement (IRPG p. 9). • Establish adequate safety zones (IRPG p.8). • Use Downhill Line Checklist (IRPG p. 9). • Follow "Look Up, Look Down, Look Around" procedures (IRPG p. 3-4). • Utilize Risk Management Process (IRPG p.1).
ALL	Burning Operations	<ul style="list-style-type: none"> • Conduct thorough briefing for all personnel involved (inside rear cover IRPG). • All personnel to be fully qualified for their assignments. Trainees must have qualified trainers. • Utilize Risk Mgmt. Process (IRPG p. 1) for implementing plan. • Required PPE to be worn by all personnel involved. • LCES must be established prior to implementing burning operations (IRPG p. 7).
ALL	Structure Protection & HazMat Issues	<ul style="list-style-type: none"> • Conduct thorough briefing for all personnel involved (inside rear cover IRPG). • Utilize Structure Assessment Checklist (IRPG p.14). • Follow structure Protection Guidelines (IRPG p. 16).
ALL	Foot Travel	<ul style="list-style-type: none"> • When walking through steep, rocky, and possibly wet terrain, watch footing and maintain proper spacing. • Watch for over-head hazards. • Treat "hot spots" on your feet before they become blisters. • Maintain downhill tool placement. • Refer to F.S. Health and Safety Code sections 18.1, 18.2, 18.3.
ALL	Tree Felling	<ul style="list-style-type: none"> • Refer to F.S. Health and Safety Code sections 22.48G. • Conduct thorough briefing for all personnel involved (inside rear cover IRPG). • Establish traffic control as necessary. • Perform tree evaluation, use IRPG page 80. Use Look-Up, Down, All Around Process. IRPG page 2. • Use all required PPE. • Minimize exposure to personnel.
ALL	Spike Camps	<ul style="list-style-type: none"> • Ensure camps are clean of trash to avoid attracting wildlife • Keep sleeping areas are clear of snags and other tripping hazards • Have hand sanitizers and body cleaning products to prevent illness • Have a GPS spike locations in the incident 204 and with the Situation Unit • Have night contact/communications plans in place

INCIDENT RADIO COMMUNICATIONS PLAN		Incident Name		BK RADIO GROUP		Operational Period Date/Time		
COMMUNICATIONS PLAN		KING, CA-ENF-023461 - ZONE 1		GROUP 14		9/22/14 NIGHT		
Ch #	Channel Name/Trunked Radio System Talkgroup	Assignment	RX Freq N or W	RX Tone/NAC	TX Freq N or W	TX Tone/NAC	Mode A, D or M	Remarks
1	COMMAND NIFC C4	ZONE 1 CMD	166.6125 N	136.5	168.4000 N	136.5	A	Little Bald Mtn. / Duncon L.O.
2	COMMAND NIFC C11	ZONE 1 CMD	170.6875 N	136.5	166.5750 N	136.5	A	Bunker Hill L.O.
3	COMMAND NIFC C12	Unassigned	173.0375 N	146.2	167.3250 N	146.2	A	Unassigned
4	COMMAND NIFC C5	ZONE 2 CMD	167.1000 N	146.2	169.7500 N	146.2	A	ZONE 2 CMD
5	TACTICAL NIFC T1	DIV 1B & 1M & 1L	168.0500 N		168.0500 N		A	
6	TACTICAL NIFC T2	DIV 1D & 1T	168.2000 N		168.2000 N		A	
7	TACTICAL NIFC T5	DIV 1F & 1Y	166.7250 N		166.7250 N		A	
8	TACTICAL NIFC T6	DIV 1H	166.7750 N		166.7750 N		A	
9	TACTICAL NIFC T7	DIV 1K	168.2500 N		168.2500 N		A	East Contingency Branch
10	TACTICAL R5 T4	DIV 1P	166.5500 N		166.5500 N		A	West Contingency Branch
11	TACTICAL R5 T5	DIV 1R	167.1125 N		167.1125 N		A	
12	TACTICAL R5 T6	DIV 1W	168.2375 N		168.2375 N		A	
13	AIR TO GROUND A/G CMD	ALL DIVISIONS	169.1500 N		169.1500 N		A	A/G COMMAND
14	AIR TO GROUND A/G TAC	ALL DIVISIONS	167.9500 N		167.9500 N		A	A/G TACTICAL
15	MEDICAL CALCORD	ALL DIVISIONS	156.0750 N		156.0750 N	156.7	A	MEDICAL COORDINATION
16	EMERGENCY ONLY Air Guard	ALL DIVISIONS	168.6250 N		168.6250 N	110.9	A	AIR GUARD - EMERGENCY
17							A	
18							A	
19							A	
20	EMERGENCY ONLY Air Guard	ALL DIVISIONS	168.6250 N		168.6250 N	110.9	A	AIR GUARD - EMERGENCY

AMJ

Prepared By (Communications Unit)

Incident Location: Foresthill, CA
 County: Placer State: CA Latitude 39°1.17' N Longitude 120° 49.77' W

The convention calls for frequency lists to show four digits after the decimal place, followed by either an "N" or a "W", depending on whether the frequency is narrow or wide band. Mode refers to either "A" or "D" indicating analog or digital (e.g. Project 25) or "M" indicating mixed mode. All channels are shown as if programmed in a control station, mobile or portable radio. Repeater and base stations must be programmed with the Rx and Tx reversed.

INCIDENT RADIO COMMUNICATIONS PLAN		Incident Name KING, CA-ENF-023461 - ZONE 2				BK RADIO GROUP GROUP 15			Operational Period Date/Time 9/22/14 0700 hrs - 9/23/14 0700 hrs	
Ch #	Function	Channel Name/Trunked Radio System Talkgroup	Assignment	RX Freq N or W	RX Tone/NAC	TX Freq N or W	Tx Tone/NAC	Mode A, D or M	Remarks	
1	COMMAND	NIFC C5	ZONE 2 ALL DIV	167.1000 N	146.2	169.7500 N	146.2	A	TONE 5 - BALD MT. - LINKED	
2	COMMAND	NIFC C12	ZONE 2 ALL DIV	173.0375 N	146.2	167.3250 N	146.2	A	TONE 5 - BIG MT. - LINKED	
3	COMMAND	NIFC C37	ZONE 2 ALL DIV	172.5500 N	146.2	162.1875 N	146.2	A	TONE 5 - UNION HILL - LINKED	
4										
5	COMMAND	NIFC C4	ZONE 1 CMD	166.6125 N	136.5	168.4000 N	136.5	A	TONE 4 - ZONE 1 CMD ONLY	
6	TACTICAL	VFIRE 24	AA/BB/CC/DD	154.2725 N	156.7	154.2725 N	156.7	A		
7	TACTICAL	VFIRE 25	DIV A/U	154.2875 N	156.7	154.2875 N	156.7	A		
8	TACTICAL	VFIRE 26	DIV D/T	154.3025 N	156.7	154.3025 N	156.7	A		
9	TACTICAL	VTAC 11	DIV E/W	151.1375 N	156.7	151.1375 N	156.7	A		
10	TACTICAL	VTAC 12	DIV G/Y	154.4525 N	156.7	154.4525 N	156.7	A		
11	TACTICAL	VTAC 13	FIRING GRP	158.7375 N	156.7	158.7375 N	156.7	A		
12	TACTICAL	VTAC 14	ROAD/STAGING	159.4725 N	156.7	159.4725 N	156.7	A	ROAD GRP / STAGING	
13	AIR TO GROUND	A/G CMD	ALL DIVISIONS	169.1500 N		169.1500 N		A	A/G COMMAND	
14	AIR TO GROUND	A/G TAC	ALL DIVISIONS	167.9500 N		167.9500 N		A	A/G TACTICAL	
15	MEDICAL	CALCORD	ALL DIVISIONS	156.0750 N		156.0750 N	156.7	A	MEDICAL COORDINATION	
16	EMERGENCY ONLY	GUARD	ALL DIVISIONS	168.6250 N		168.6250 N	110.9	A	AIR GUARD - EMERGENCY	
17								A		
18								A		
19								A		
20	EMERGENCY ONLY	GUARD	ALL DIVISIONS	168.6250 N		168.6250 N	110.9	A	AIR GUARD - EMERGENCY	

Incident Location: Placerville, CA
 County: El Dorado State: CA
 Latitude Longitude
 N Longitude W

Prepared By (Communications Unit)
 Ken Parker, COMML

The convention calls for frequency lists to show four digits after the decimal place, followed by either an "N" or a "W", depending on whether the frequency is narrow or wide band. Mode refers to either "A" or "D" indicating analog or digital (e.g. Project 25) or "M" indicating mixed mode. All channels are shown as if programmed in a control station, mobile or portable radio. Repeater and base stations must be programmed with the Rx and Tx reversed.

MEDICAL PLAN

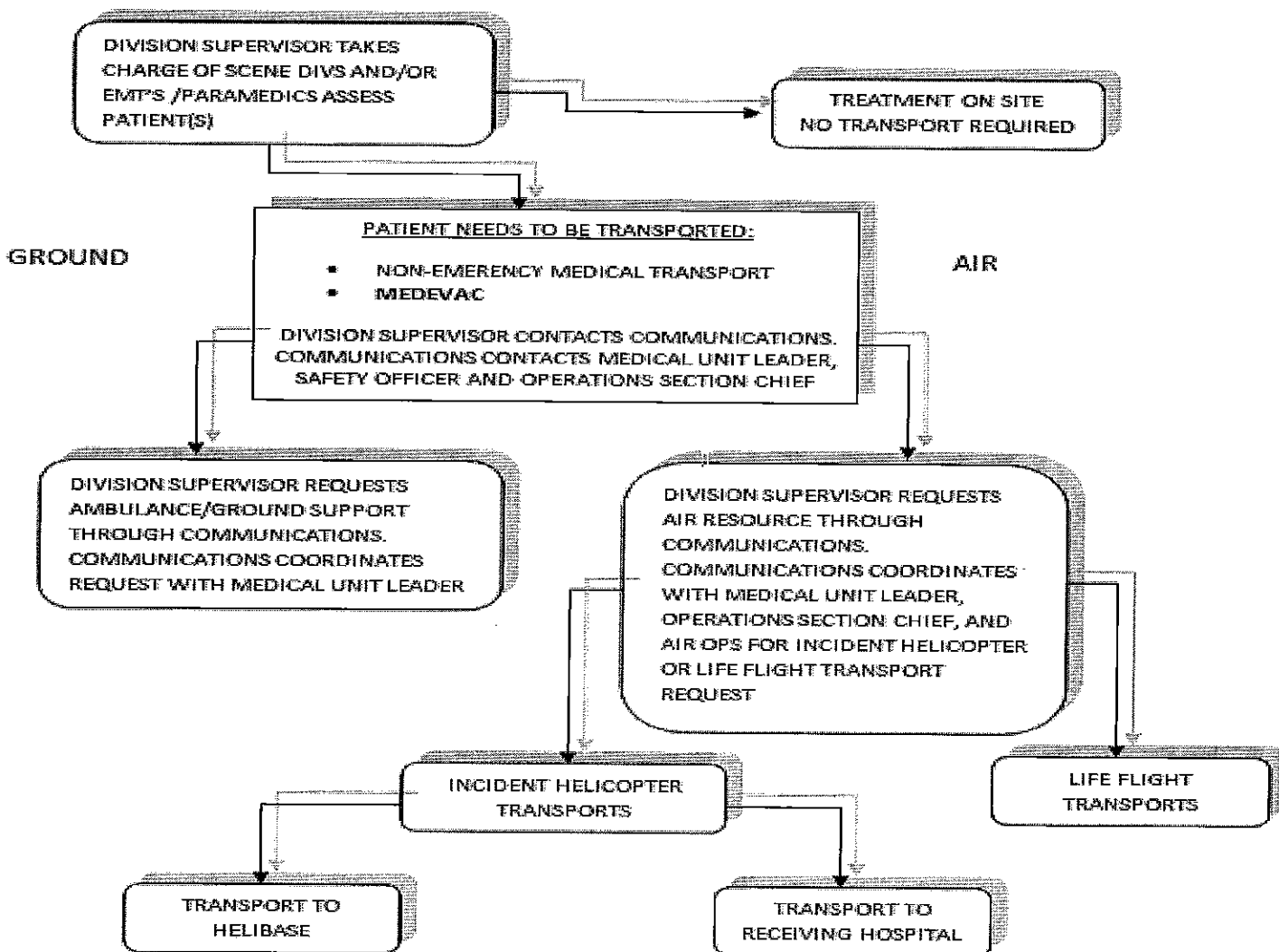
1. Incident/Project Name				2. Operational Period			
King Fire - Zone 1 (North)				Date/Time 9/22/2014 1800-0600			
2. Aid Station							
Name	Complete Address	Phone/EMS Freq.	Advanced Life Support (ALS) Yes No				
King ICP Zone 1 Frontline Medical	Foresthill Old Mill Site 23850 Foresthill Rd., Foresthill, CA 95631		XX				
3. Ambulance Services							
Name	Complete Address	Phone/EMS Freq	Advanced Life Support (ALS) Yes No				
Eldorado County Emergency Medical Services Medic 248	Eldorado County Fire Station 17 6426 Pony Express Trail, Pollock Pines, CA	911 or 530-647-5220	XX				
Foresthill Fire Department Medic 89 (at French Meadows)	Foresthill FPD FS 88 5981 Gold St. Foresthill, CA	911 or 530-886-5375	XX				
Georgetown FPD Medic 61	Georgetown FPD Station 61 6281 Main St, Georgetown, CA 95634	911 or 530-647-5220	XX				
AMR Ambulance Medic 290	Big Tree Campground	AMR or 916 563-0666	XX				
AMR Ambulance Medic 291	Zone 1 ICP	AMR or 916 563-0666	XX				
4. Air Ambulance Services							
Name	Phone	Type of Aircraft & Capability					
CAL FIRE H-104 Placerville, CA (Daytime Only)	911 or 530-647-5220	Bell 205++ Hoist, No NVG, BLS					
Kern County (KRN) H-408 Grass Valley, CA	911 or 530-647-5220	Bell 205++ Hoist, NVG, ALS					
CHP H20 or H24 Auburn, CA	911 or 916-861-1299	Eurocopter B3 Hoist, ALS, No NVG					
CALSTAR 3 Auburn, CA	911 or 530-887-0569	BO 105LS/C-30					
CAL STAR 6 South Lake Tahoe, CA	911 or 530-887-2338	BO 105LS/C-30					
5. Hospitals							
Name Complete Address	GPS Datum - NAD 83 Degrees Decimal Minutes DD° MM.MMM' N - Lat DD° MM.MMM' W - Long	Travel Time Air Gnd	Phone	Helipad Yes No	Level of Care Facility		
Marshal Medical Center 1100 Marshall Way, Placerville, CA 95667	Lat: N/A Long: VHF: N/A	1 Hr	(530) 622-1441	X	Level III Trauma Center		
Sutter Auburn Faith Hosp. 11815 Education St. Auburn, CA, 95602	Lat: N/A Long: VHF: N/A	30 Min	(530) 888-4500	X			
Sutter Roseville Medical Center 1 Medical Plaza Dr, Roseville, CA 95661	Lat: 38 45.58 Long: 121 14.52 VHF:	25 Min 45 Min	(916) 781-1200	X □	Level II Trauma Center		
UC Davis Medical Center 2315 Stockton Ave. Sacramento, CA 95817	Lat: 38 33.17 Long: 121 27.21 VHF:	25 Min 1 Hr	(916) 734-2363	X □	Level I Trauma Center Burn Center		
Barton Memorial Hospital 2170 South Ave. South Lake Tahoe, CA 96158	Lat: 38 54.40 Long: 119 59.48 VHF:	30 Min 2.5 Hr	(530) 541-3420	X □			
Renown Regional Medical Center 1155 Mill St Reno, NV	Lat: 39 31 32 Long: 119 47 44 VHF:	45 Min 2 Hr	(775) 982-4100	X □	Level II Trauma Center Burn Center		
6. Prepared By (Medical Unit Leader)							
Robert Russell MEDL Newton Ong MEDL-T	7. Date/Time 09/22/2014 1200	8. Reviewed By (Safety Officer) Marty Hamel SOF 1 <i>Steve Ryberg</i>	9. Date/Time 09/22/2014 1200				

When an injury occurs, initiate care with available resources at scene and notify DIVS.

The DIVS shall coordinate the incident and direct necessary actions. The following steps shall be taken to mitigate the incident:

1. Determine the nature of the emergency.
2. If the emergency is a medical injury/illness, determine if the injury/illness is life threatening.
3. If the injury is life threatening, then clear designated frequency for emergency traffic.
4. Identify the on-scene point of contact by position.
5. Ensure that the Medical Unit Leader is contacted immediately.
6. Identify number injured, patient assessment(s) and location (geographic and/or GPS coordinates).
7. Identify on-scene medical personnel by position and last name (i.e. EMT Jones).
8. Identify preferred method of patient transport.
9. Determine any additional resources or equipment needed.

The Evacuation Plan should be continually evaluated, and contingencies developed in the event the first plan is not effective.



Medical Incident Report

FOR ALL MEDICAL EMERGENCIES: IDENTIFY ON SCENE INCIDENT COMMANDER BY NAME AND POSITION AND ANNOUNCE "MEDICAL EMERGENCY" TO INITIATE RESPONSE FROM IMT COMMUNICATIONS/DISPATCH.

Use items one through nine to communicate situation to communications/dispatch.

1. CONTACT COMMUNICATIONS/DISPATCH

Ex: "Communications, Div. Alpha. Stand-by for Priority Medical Incident Report." (If life threatening request designated frequency be cleared for emergency traffic.)

2. INCIDENT STATUS: *Provide incident summary and command structure.*

Nature of Injury/Illness		Describe the injury <i>(Ex: Broken leg with bleeding)</i>
Incident Name		Geographic Name + "Medical" <i>(Ex: Trout Meadow Medical)</i>
Incident Commander		Name of IC
Patient Care		Name of Care Provider <i>(Ex: EMT Smith)</i>

3. INITIAL PATIENT ASSESSMENT: *Complete this section for each patient. This is only a brief, initial assessment. Provide additional patient info after completing this 9 Line Report.*

Number of Patients:	Male / Female	Age:	Weight:
Conscious? <input type="checkbox"/> YES <input type="checkbox"/> NO = MEDEVAC!			
Breathing? <input type="checkbox"/> YES <input type="checkbox"/> NO = MEDEVAC!			
Mechanism of Injury: <i>What caused the injury?</i>			
Lat/Long (Datum WGS84) <i>Ex: N 40° 42.45' x W 123° 03.24'</i>			

4. SEVERITY OF EMERGENCY, TRANSPORT PRIORITY

SEVERITY	TRANSPORT PRIORITY
<input type="checkbox"/> URGENT-RED Life threatening injury or illness. <i>Ex: Unconscious, difficulty breathing, bleeding severely, 2° - 3° burns more than 4 palm sizes, heat stroke, disoriented.</i>	Ambulance or MEDEVAC helicopter. Evacuation need is IMMEDIATE.
<input type="checkbox"/> PRIORITY-YELLOW Serious Injury or illness. <i>Ex: Significant trauma, not able to walk, 2° - 3° burns not more than 1-2 palm sizes.</i>	Ambulance or consider air transport if at remote location. Evacuation may be DELAYED.
<input type="checkbox"/> ROUTINE-GREEN Not a life threatening injury or illness. <i>Ex: Sprains, strains, minor heat-related illness.</i>	Non-Emergency. Evacuation considered Routine of Convenience.

5. TRANSPORT PLAN:

Air Transport: (Agency Aircraft Preferred)

<input type="checkbox"/> Helispot	<input type="checkbox"/> Short-haul/Hoist	<input type="checkbox"/> Life Flight	<input type="checkbox"/> Other
Ground Transport: <i>Click here to enter text.</i>			
<input type="checkbox"/> Self-Extract	<input type="checkbox"/> Carry-Out	<input type="checkbox"/> Ambulance	<input type="checkbox"/> Other

6. ADDITIONAL RESOURCE/EQUIPMENT NEEDS:

<input type="checkbox"/> Paramedic/EMT(s)	<input type="checkbox"/> Crew(s)	<input type="checkbox"/> SKED/Backboard/C-Collar
<input type="checkbox"/> Burn Sheet(s)	<input type="checkbox"/> Oxygen	<input type="checkbox"/> Trauma Bag
<input type="checkbox"/> Medication(s)	<input type="checkbox"/> IV/Fluid(s)	<input type="checkbox"/> Cardiac Monitor/AED
<input type="checkbox"/> Other (i.e. splints, rope rescue, wheeled litter)		

7. COMMUNICATIONS:

Function	Channel Name/Number	Receive (Rx)	Tone/NAC *	Transmit (Tx)	Tone/NAC *
<i>Ex: Command</i>	<i>Forest Rpt, Ch. 2</i>	<i>168.3250</i>	<i>110.9</i>	<i>171.4325</i>	<i>110.9</i>
COMMAND					
AIR-TO-GRND					
TACTICAL					

*(NAC for digital radio system)

8. EVACUATION LOCATION:

Lat/Long (Datum WGS84) <i>EX: N 40 42.45' x W 123 03.24'</i>	
Patient's ETA to Evacuation Location:	

Considerations: *If primary options fail, what actions can be implemented in conjunction with primary evacuation method? Be thinking ahead...*

REMEMBER: Confirm ETA's of resources ordered
Act according to your level of training
Be Alert. Keep Calm. Think Clearly. Act Decisively.

MEDICAL PLAN

Division - As Assigned	Area Location Capability	
Branch X, DIV 1B, 1D 12 Hour (night)	EMS Responders & Capability:	FEMP John Bicondova, FEMT Matt Heckmann
	Equipment Available on Scene:	ALS/BLS supplies
	Medical Emergency Channel:	Calcord 156.0750 Tone 6 (156.7) tx/rx
	ETA for Ambulance to Scene:	
	Air:	
	Ground:	45 min
	Approved Helispot:	None identified
	Lat:	
	Long:	
Branch X, DIV 1F 12 Hour (night)	Area Location Capability	
	EMS Responders & Capability:	FEMP Kevin Berkery, FEMT Don McLaughlin
	Equipment Available on Scene:	ALS/BLS supplies
	Medical Emergency Channel:	Calcord 156.0750 Tone 6 (156.7) tx/rx
	ETA for Ambulance to Scene:	
	Air:	
	Ground:	1 hr
	Approved Helispot:	None identified
	Lat:	
Long:		
Branch XII, DIV 1H 12 Hour (night)	Area Location Capability	
	EMS Responders & Capability:	FEMP Travis Medina, FEMT Nick Martino
	Equipment Available on Scene:	ALS/BLS supplies
	Medical Emergency Channel:	Calcord 156.0750 Tone 6 (156.7) tx/rx
	ETA for Ambulance to Scene:	
	Air:	
	Ground:	1.5 Hr
	Approved Helispot:	None identified
	Lat:	
Long:		
Branch XVI, DIV 1W, 1T, 1Y 12 Hour (night)	Area Location Capability	
	EMS Responders & Capability:	FEMP Donald Cutting, FEMP Nick Warren
	Equipment Available on Scene:	ALS/BLS supplies
	Medical Emergency Channel:	Calcord 156.0750 Tone 6 (156.7) tx/rx
	ETA for Ambulance to Scene:	
	Air:	
	Ground:	1 Hr
	Approved Helispot:	None identified
	Lat:	
Long:		
Branch XVI, DIV 1 W, 1T, 1Y 12 Hour (night)	Area Location Capability	
	EMS Responders & Capability:	FEMP Chad Meketarian, FEMT Sean Tierney
	Equipment Available on Scene:	ALS/BLS supplies
	Medical Emergency Channel:	Calcord 156.0750 Tone 6 (156.7) tx/rx
	ETA for Ambulance to Scene:	
	Air:	
	Ground:	1 Hr
	Approved Helispot:	None identified
	Lat:	
Long:		

Human Resource Message

Teamwork

(Becoming "We" instead of "Me")

Teamwork is the glue that unites a variety of people and skills working together towards a common goal. Fire leaders set the stage to build a cohesive, high performing team by creating the environment for them to thrive. Leaders and members demonstrate moral courage by adhering to high ethical standards and choosing the difficult right over the easy wrong.

What are the traits of an effective team?

1. **Commitment**-members support the mission and each other
2. **Goals**-clearly and well defined and accomplished through a common approach
3. **Communication**-open, honest, respectful communication builds trust and allows for healthy discussion or conflict
4. **Trust**-know our people, look out for their well being
5. **Resilient**- adapt and change, able to bounce back
6. **Periodic evaluation**-Seek improvement and accept responsibilities for our actions

-Coming together is a beginning, staying together is progress, and working together is success."

Henry Ford



Marilyn Loughrey, Human Resource Specialist, 925-588-6711

Location: HRSP Office, Main St., Zone 1 ICP

Incident Trainee / Trainer Data Worksheet

PLEASE PRINT LEGIBLY!

A: Trainee Data

Trainee Name: _____ Check One: Male Female
Trainee Position: _____ Order Number (E, O, C, A) ____--_____
State Abr. ____ + 3 Letter Designator _____ Agency Type: Federal State Local
 USFS BLM BIA FWS DOD NWS NPS Date Assigned: ____--____--_____
Ordered as a trainee for the incident? Yes No Trainee Cell Number: _____
Ordered as a US Forest Service PRIORITY trainee Yes No FPM IFPM?

**Person's name and title that is responsible for tracking your qualifications:
(Where do you want the packet mailed to?)**

Name: _____ Title: _____ Home Unit: _____
Agency Address: _____ City: _____
State: _____ Zip: _____ Phone Number: () _____--_____

B. Trainee Prerequisites

YES NO

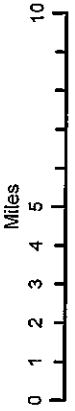
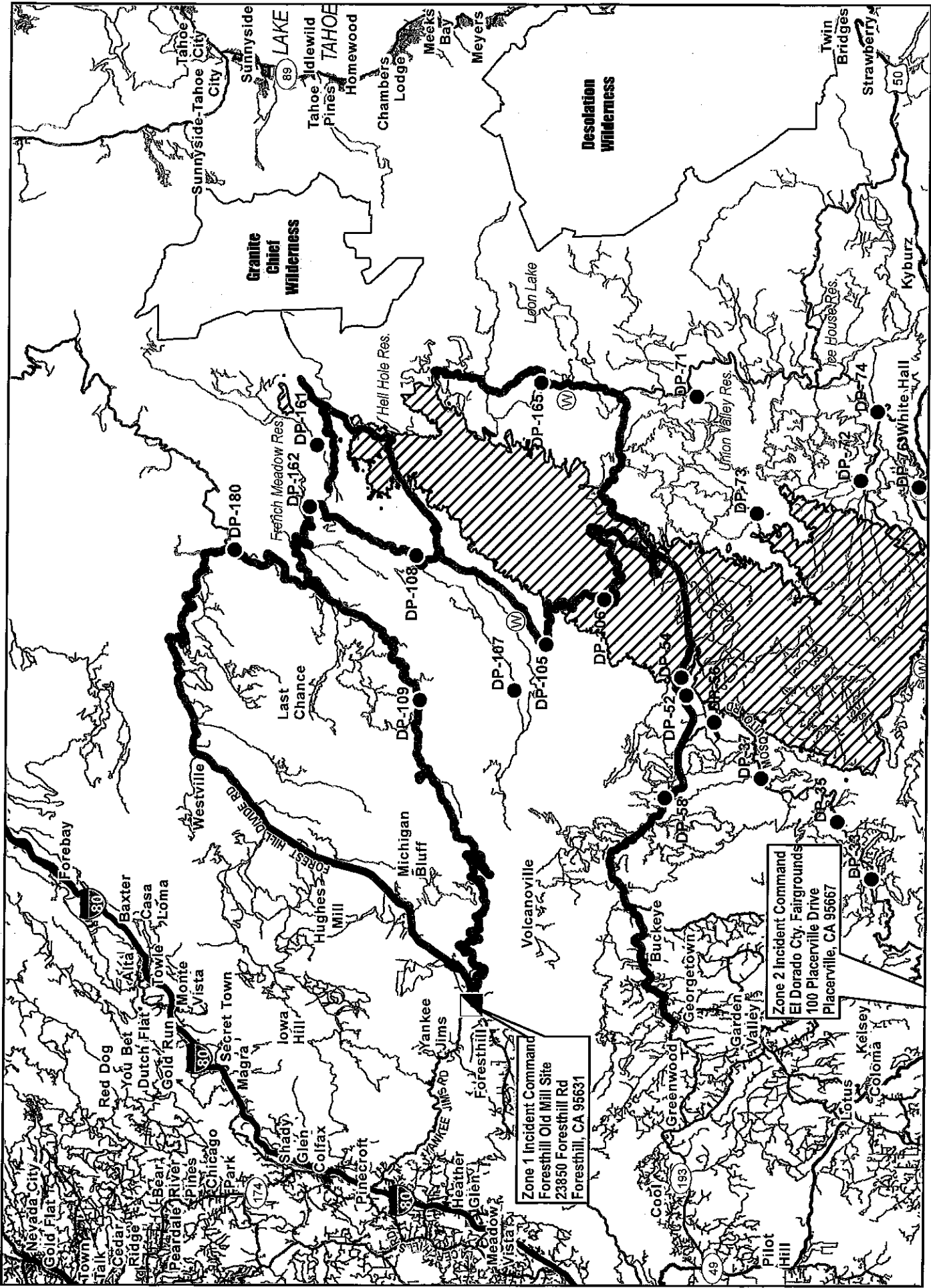
- | | | |
|--|-----------------------|-----------------------|
| 1. Possesses valid Red Card or agency certification card? | <input type="radio"/> | <input type="radio"/> |
| 2. Trainee has a proper agency initiated position task book? | <input type="radio"/> | <input type="radio"/> |
| 3. Trainee has an incident supplied task book? | <input type="radio"/> | <input type="radio"/> |

C. Trainer/Evaluator Data (All fields are required to be filled in)

Trainer/Evaluator Name: _____ Position: _____
Home Unit: _____ Order Number (E, O, C, A) ____--_____
Work Address: _____ City: _____ State: _____
Zip Code: _____ Phone Number: () _____--_____

D. Trainee Goals (items in the position task book to be evaluated on this incident)

1. _____
2. _____
3. _____



TRANSPORTATION MAP

King Incident CA-ENF-023461
September 22, 2014

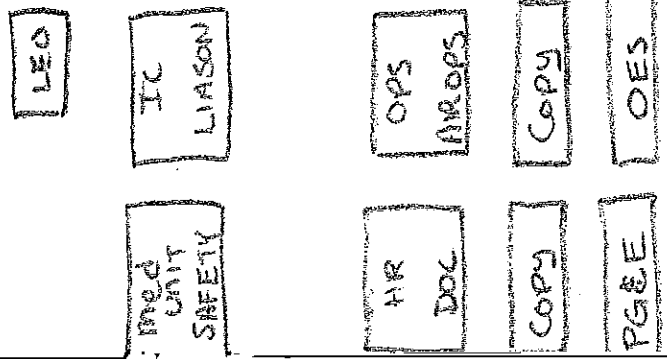
- Zone 1 access routes
- King Fire Polygon
- Major Highways
- Highways
- Major Roads
- Minor Roads

Zone 1 Incident Command
Foresthill Old Mill Site
23850 Foresthill Rd
Foresthill, CA 95631

Zone 2 Incident Command
El Dorado City Fairgrounds
100 Placerville Drive
Placerville, CA 95667

Briefing Area

302



medical
Tent

medical

SHOWER

mm.
ENT

