

*Corrected*

# **KING INCIDENT**

## **Incident Action Plan**

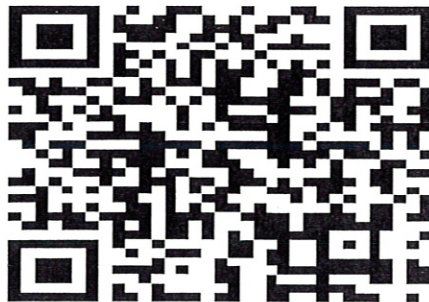
**CA-ENF-023461**

**P5JEE9 (0503)**

### **Operational Period**

**DAY SHIFT 9/24/14**

**0600 - 1800**







# FIRE WEATHER FORECAST



**FORECAST NO:** 16  
**PREDICTION FOR:** Wednesday Day SHIFT

**INCIDENT NAME:** King Fire  
**UNIT:** Eldorado National Forest

**SHIFT DATE:** 24 September 2014

**SIGNED:** *Jason Clapp*

**TIME AND DATE**  
**FORECAST ISSUED:** 2100 / 23 September 2014

Jason Clapp  
**Incident Meteorologist**

**WEATHER TODAY:**      **\*\*\*Red Flag Warning Today for Wind and RH\*\*\***

**WEATHER:** WSW winds increase today with continued warm temperatures and slightly lowered RH. Some high clouds may move in mid afternoon. Smoke that drifted westward overnight, will drift back eastward over the fire. So visibility will be limited into early afternoon, especially on eastern flank.

**TEMPERATURES:**      75-81      **Trend: Little Change**  
**RELATIVE HUMIDITY:**      23-29%      **Trend: Down 3 – 5%**

**20 FT WINDS:**

**RIDGETOP** – Morning winds SE 5-7 with gusts to 15 mph through 0900, shifting WSW 10-20 mph with afternoon gusts to 30 mph.

**SLOPE/VALLEY** – Downcanyon 3-7 mph and shift SW 5-10 with gusts 15 mph around 1400.

**LAL:** 1.      **STABILITY/INVERSION:** Inversions breaking in deep canyons by 1200.

**WEATHER DISCUSSION:** . Breezier WSW winds and lowering RH over the fire. Continued SW winds occur Thursday ahead of the upper level trough. A weakening front system still has some potential for amounts less than 0.20 with a slight chance of thunderstorms. The slow moving upper Low still hangs around through the weekend with a threat of some showers and thunderstorm activity.

**WEATHER FOR WEDNESDAY NIGHT:** Mostly clear with smoke settling downcanyon after 2200.

Low temperatures: Thermal belts/ridges 61-66... Valleys 56-60.

Max RH: Thermal belts/ridges 40-50%... Valleys 50-60%.

**20FT Winds:**

Ridge – W 5-9 with gusts to 15 mph shifting SE 6-10 mph after 2200 with gusts to 15-20 mph upper ridges after 2400.

Slope/valley – Transition to downslope 3-6 mph. Downcanyon wind gusts 5-10 mph after.

**OUTLOOK FOR THURSDAY:** Cloudy becoming mostly cloudy with continued SW ridge winds as the frontal system bears down on the area. High temps: 62-69. Min RH: 40-50%. Ridge winds: SW winds from 12-18 with afternoon gusts 25-30 mph. Valley/Slope winds: Downslope 3-8 mph shifting upslope/upcanyon 6-10 mph late morning with afternoon gusts 15-20 mph in aligned canyons.

## Weather Planning Matrix

## Weather Observations



<b>Division Assignment List</b>	1. Branch <b>X</b>	2. Division/Group <b>1 B</b>
---------------------------------	-----------------------	---------------------------------

3. Incident Name <b>KING - ZONE 1</b>	4. Operational Period 09/24/14 Wednesday Day Shift 0600 - 1800
--	---

**5. Operations Personnel**

Operations Chief	LES CURTIS; STEVE BURNS (t)	Division/Group Supervisor	D. BUCHANAN; T. BROWNING; J. WHITE (t)
Contingency Ops Chief	JOHN TRUETT; KYLE SMITH (t)	Air Attack Supervisor	
Branch Director	DANA D'ANDREA	Safety Officer	M HAMEL; S. RYBERG; C. JORDAN (t)

**6. Resources Assigned this Period**

Strike Team/Task Force/ Resource Designator	Leader	Num of Pers.	Trans. Y/N	Drop Off PT./Time	Pick Up PT./Time
CRW T1 UKONOM IHC C-92 9/28	KEITH SMITH	19	N	DP 102 0800	1800
CRW T1 PIKE IHC C-116 9/25	JOHN ALLBRIGHT	20	N	DP 102 0800	1800
CRW T1 FLATHEAD IHC C-247 10/6	TYLER ANDERSON	21	N	DP 102 0800	1800
CRW T2IA INTERTRIBAL #1 C-12 10/1	JACOB WISEHART	20	N	DP 102 0800	1800
CRW T2IA CAC #4 C-16 9/30	RON E BROWN	20	N	DP 102 0800	1800
CRW T2IA MS MSS#1 C-13 10/1	JOE MILES	20	N	DP 102 0800	1800
CRW T2 MQ FRANCO 13137 C-45 9/30	FRANCIS FRANCO	20	N	DP 102 0800	1800
CRW T2 DIAMOND C-40 9/30	LARRY ECKLEMAN	20	N	DP 102 0800	1800
CRW T2 PACIFIC OA C-46 9/30	WESLEY DODDS	20	N	DP 102 0800	1800
ENG S/T PNF 3660C E-87 9/29	RICH SIMON	27	N	DP 102 0800	1800
TF ENF KING #6				DP 102 0800	1800
TFLD O-501	ZACHARY COGLE	1	N	DP 102 0800	1800
ENG T6 PACIFIC OASIS E-343 9/30	STEVEN MILLER	3	N	DP 102 0800	1800
ENG T6 FAIRVIEW E-337 9/30	DAN MORGAN	3	N	DP 102 0800	1800
ENG T6 FIRESTORM E-341 9/30	KEN NEWITT	3	N	DP 102 0800	1800
ENG T6 FIRESTORM E-336 9/30	JOSHUA BRADLEY	3	N	DP 102 0800	1800
ENG T6 GH RANCH, E-354 9/30	JEFFREY DAVIS	3	N	DP 102 0800	1800
ENG T6 SCHOLL FIRE E-349 10/1	CARLOS GUTIERREZ	3	N	DP 102 0800	1800

**7. Control Operations**

Widen and improve existing secondary line from the 11 Pines Road to the Rubicon River.

**8. Special Instructions**

All Division Supervisors need to download information to the Sit Unit for all completed line and proposed line.

Noxious weeds are marked by orange "noxious weed" flagging. Minimize or avoid activities in these areas.

Sensitive areas are marked with pink/black checkerboard flagging. Minimize ground disturbing activities in these areas.

\* Indicates a 24 hour resource 0600-0600

**9. Division/Group Communications Summary**

Function	Frequency - RX	Frequency - TX	Tone	System	Channel	System	Channel
Command	166.6125	168.4000	136.5	NIFC C4	1		
Tactical Div/Group	168.0500	168.0500		NIFC T1	5		
Logistics							
Air to Ground	169.1500	169.1500		A/G CMD	13		

Prepared by (Resource Unit Leader) G. Thompson / J. Switzler / E. Mayte (t)	Approved by (Planning Section Chief) Dennis Cooper / Jason Schillinger (t)	Date Prepared 09/23/14	Time Prepared 1821
--	---	---------------------------	-----------------------

<b>Division Assignment List</b>	1. Branch <b>X</b>	2. Division/Group <b>1 B</b>
---------------------------------	-----------------------	---------------------------------

3. Incident Name <b>KING - ZONE 1</b>	4. Operational Period 09/24/14 Wednesday Day Shift 0600 - 1800
--	---

**5. Operations Personnel**

Operations Chief	LES CURTIS; STEVE BURNS (t)	Division/Group Supervisor	D. BUCHANAN; T. BROWNING ;J. WHITE (t)
Contingency Ops Chief	JOHN TRUETT; KYLE SMITH (t)	Air Attack Supervisor	
Branch Director	DANA D'ANDREA	Safety Officer	M.HAMEL;S.RYBERG;C.JORDAN (t)

**6. Resources Assigned this Period**

Strike Team/Task Force/ Resource Designator	Leader	Num of Pers.	Trans. Y/N	Drop Off PT./Time	Pick Up PT./Time
WT T1 C&H VETERAN ENT E-252 9/29	JAMES CALDWELL	2	N	DP 102 0800	0800
WT T1 WATER BY C E-259 9/30	JOHN CARMODY	1	N	DP 102 0800	0800
WT T1 PRO DUMP E-278 9/29	CARLOS FURTADO	2	N	DP 102 0800	0800
CHIP - ROBINSON E-434 10/2	STEVE ARROWOOD	2	N	DP 102 0800	0800
FELB T1 003 E-445 10/5	COCTER BLAKESLEE	1	N	DP 102 0800	0800
FELB T1 E-446 10/4		2	N	DP 102 0800	0800
FELB T1 NR004 HD E-447 10/5	KEVIN SMITH	2	N	DP 102 0800	0800
FALM O-602		1	N	DP 102 0800	0800
FALM O-603		1	N	DP 102 0800	0800
FALM O-604		1	N	DP 102 0800	0800
FALM O-605		1	N	DP 102 0800	0800
FALM O-606		1	N	DP 102 0800	0800
FALM O-876		1	N	DP 102 0800	0800
FALM O-883	RICHARD LOPEZ	1	N	DP 102 0800	0800
FELB O-609	ROBERT HENSLEY	1	N	DP 102 0800	0800
FELB O-860	DAMON NELSON	1	N	DP 102 0800	0800
FELB O-844	ROBERT KRAMER	1	N	DP 102 0800	0800
HEQB O-256	GORDON MEYER	1	N	DP 102 0800	0800
HEQB O-826	BRENTWOOD REID	1	N	DP 102 0800	0800
HEQB O-828	NATTHAN BAXTER	1	N	DP 102 0800	0800

**7. Control Operations**

Widen and improve existing secondary line from the 11 Pines Road to the Rubicon River.

**8. Special Instructions**

All Division Supervisors need to download information to the Sit Unit for all completed line and proposed line.

Noxious weeds are marked by orange "noxious weed" flagging. Minimize or avoid activities in these areas.  
Sensitive areas are marked with pink/black checkerboard flagging. Minimize ground disturbing activities in these areas.

\* Indicates a 24 hour resource 0600-0600

**9. Division/Group Communications Summary**

Function	Frequency - RX	Frequency - TX	Tone	System	Channel	System	Channel
Command	166.6125	168.4000	136.5	NIFC C4	1		
Tactical Div/Group	168.0500	168.0500		NIFC T1	5		
Logistics							
Air to Ground	169.1500	169.1500		A/G CMD	13		

Prepared by (Resource Unit Leader) G. Thompson / J. Switzler / E. Mayte (t)	Approved by (Planning Section Chief) Dennis Cooper / Jason Schillinger (t)	Date Prepared 09/23/14	Time Prepared 1515
--	---	---------------------------	-----------------------

<b>Division Assignment List</b>			1. Branch <b>X</b>		2. Division/Group <b>1 D</b>				
3. Incident Name <b>KING - ZONE 1</b>			4. Operational Period 09/24/14 Wednesday Day Shift 0600 - 1800						
5. Operations Personnel									
Operations Chief		LES CURTIS; STEVE BURNS (t)		Division/Group Supervisor		D. EDMISTON; B. BRAZZEAL; C. JOHNSON (t)			
Contingency Ops Chief		JOHN TRUETT; KYLE SMITH (t)		Air Attack Supervisor					
Branch Director		DANA D'ANDREA		Safety Officer		M.HAMEL;S.RYBERG;C JORDAN (t)			
6. Resources Assigned this Period									
Strike Team/Task Force/ Resource Designator			Leader		Num of Pers.	Trans. Y/N	Drop Off PT./Time	Pick Up PT./Time	
CRW T1 AMERICAN RIVER C-87 9/27			ADAM LEYBA		20	N	DP 102 0800	1800	
CRW T2IA PACIFIC OASIS C-26 9/28			KEN WILSON		15	N	DP 102 0800	1800	
CRW T2IA UTAH CNTY #2 C-96 9/27			ANDREW SIEBACH		18	N	DP 102 0800	1800	
CRW T2IA NAVAJO SCTS 1 C-101 9/30			TERRY TSO		20	N	DP 102 0800	1800	
CRW T2 NAVAJO SCOUTS 2 C-4 9/30			ALTON JOHN		20	N	DP 102 0800	1800	
ENG S/T OES 4811A E-93 9/29			SCOTT ARGANBRIGHT		21	N	DP 102 0800	1800	
ENG S/T OES 2813A E-384 9/29			THOMAS SIRAGUSA		21	N	DP 102 0800	1800	
ENG S/T XMR 2142C E-159 9/29			MARK MILLS		22	N	DP 102 0800	1800	
ENG S/T XRIC 6074C E-306 9/30			STEVE KEAN		22	N	DP 102 0800	1800	
ENG S/T XCC 2040C E-158 9/29			SEAN PERKINS		22	N	DP 102 0800	1800	
ENG S/T XSL 1471C E-157 9/29			KEVIN TAYLOR		18	N	DP 102 0800	1800	
DOZ T2 AMADOR MECH E-196*			MERVIN VICINI		2	N	DP 102 0800	1800	
DOZ T2 1540 E-148*			MICHAEL WATERS		2	N	DP 102 0800	1800	
DOZ T2 AAA EQUIP E-207*			BRENDON SIMUNACI		2	N	DP 102 0800	1800	
DOZ T2 BEN'S TRUCK E-100 9/30			GREG MCCART		2	N	DP 102 0800	1800	
DOZ T2 BEN'S TRUCK E-103 9/30			JOHN BRADELY		4	N	DP 102 0800	1800	
HEQB O-262 9/30			TERRY WARLICK		1	N	DP 102 0800	1800	
HEQB O-830 10/5			FRED MANGLONA		1	N	DP 102 0800	1800	
HEQB (t) O-1029 10/2			RACHAEL J HANSEN		1	N	DP 102 0800	1800	
HEQB O-842			JIMMY MORRIS		1	N	DP 102 0800	1800	
7. Control Operations									
Widen and improve existing secondary lines from Ramsey Crossing to French House.									
8. Special Instructions									
All Division Supervisors need to download information to the Sit Unit for all completed line and proposed line.									
Noxious weeds are marked by orange "noxious weed" flagging. Minimize or avoid activities in these areas.									
Sensitive areas are marked with pink/black checkerboard flagging. Minimize ground disturbing activities in these areas.									
* Indicates a 24 hour resource 0600-0600									
9. Division/Group Communications Summary									
Function	Frequency - RX	Frequency - TX	Tone	System	Channel	System	Channel		
Command	166.6125	168.4000	136.5	NIFC C4	1				
Tactical Div/Group	168.5000	168.5000		NIFC T10	6				
Logistics									
Air to Ground	169.1500	169.1500		A/G CMD	13				
Prepared by (Resource Unit Leader)			Approved by (Planning Section Chief)			Date Prepared		Time Prepared	
G. Thompson / J. Switzler / E. Mayte (t)			Dennis Cooper / Jason Schillinger (t)			09/23/14		1515	

<b>Division Assignment List</b>	1. Branch <b>X</b>	2. Division/Group <b>1 F</b>
---------------------------------	-----------------------	---------------------------------

3. Incident Name <b>KING - ZONE 1</b>	4. Operational Period 09/24/14 Wednesday Day Shift 0600 - 1800
--	---

**5. Operations Personnel**

Operations Chief	LES CURTIS; STEVE BURNS (t)	Division/Group Supervisor	JASON LAMBIRTH; MAX TWOMBLY
Contingency Ops Chief	JOHN TRUETT; KYLE SMITH (t)	Air Attack Supervisor	
Branch Director	DANA D'ANDREA	Safety Officer	M.HAMEL;S. RYBERG;C.JORDAN (t)

**6. Resources Assigned this Period**

Strike Team/Task Force/ Resource Designator	Leader	Num of Pers.	Trans. Y/N	Drop Off PT./Time	Pick Up PT./Time
<del>CRW T1 IDAHO CITY IHC C-88 9/25</del>	<del>RALPH RANDALL LAMB</del>	22	N	DP 102 0800	1800
CRW T2IA SAN CARLOS C-5 9/30	THOMAS PATTEN	18	N	DP 102 0800	1800
<del>CRW T2IA R10 #5 C-22 10/1</del> → ID	ROBERT TODD BERNEY	19	N	DP 102 0800	1800
CRW T2 HIGHLANDERS C-199 10/5	MARK FOGG	20	N	DP 102 0800	1800
ENG S/T T3 1662C E-536 10/5	RICHARD MARTIN	27	N	DP 102 0800	1800
ENG S/T 6632C E-535 10/5	ADOLPHO CASTRO	27	N	DP 102 0800	1800
ENG S/T T3 5031C E-669 10/4	KIRK KUSHEN	17	N	DP 102 0800	1800
ENG S/T T3 367 E-533 10/3	SEAN JOHNNY	27	N	DP 102 0800	1800
ENG T/F KING #4				DP 102 0800	1800
TFLD O-662	CORY CALNAN	1	N	DP 102 0800	1800
TFLD O-707	BEAU MACIAG	1	N	DP 102 0800	1800
ENG T6 CPS 62 E-374	RYAN MORGAN	3	N	DP 102 0800	1800
ENG T6 TAHOE SAGE FIRE E-358	KEVIN STUDLEY	3	N	DP 102 0800	1800
ENG T6 HIGH SIERRA E-338	JERRY VICE	3	N	DP 102 0800	1800
ENG T6 HIGH SIERRA E-340	JACOB ROWSEY	3	N	DP 102 0800	1800
ENG T6 333 BLY MT FIRE E-355	MARK GROVES	3	N	DP 102 0800	1800
DOZER T2 E-576 10/5	RICK ANDERSON	2	N	DP 102 0800	1800
<del>DOZER T2 DUDLEYS E-558 10/4</del>	TIM LANKIN	2	N	DP 102 0800	1800
<del>DOZER T2V C0 E-559 10/5</del>	DUANE HAASE	2	N	DP 102 0800	1800
<del>DOZ T2V TEHAMA E-556 10/5</del>	RANDY STRIEFF	4	N	DP 102 0800	1800

**7. Control Operations**  
Widen and improve existing secondary line from French House to Anderson Dam. Construct direct line on Chipmunk Ridge from the 2 Road to the Division 1F break towards Hell Hole Reservoir.

**8. Special Instructions**

All Division Supervisors need to download information to the Sit Unit for all completed line and proposed line.

Noxious weeds are marked by orange "noxious weed" flagging. Minimize or avoid activities in these areas.  
Sensitive areas are marked with pink/black checkerboard flagging. Minimize ground disturbing activities in these areas.

\* Indicates a 24 hour resource 0600-0600

**9. Division/Group Communications Summary**

Function	Frequency - RX	Frequency - TX	Tone	System	Channel	System	Channel
Command	166.6125	168.4000	136.5	NIFC C4	1		
Tactical Div/Group	166.7250	166.7250		NIFC T5	7		
Logistics							
Air to Ground	169.1500	169.1500		A/G CMD	13		

Prepared by (Resource Unit Leader) G. Thompson / J Switzler / E. Matye (t)	Approved by (Planning Section Chief) Dennis Cooper / Jason Schillinger	Date Prepared 09/23/14	Time Prepared 1514
---	---	---------------------------	-----------------------





<b>Division Assignment List</b>	1. Branch <b>XII</b>	2. Division/Group <b>1 H</b>
---------------------------------	-------------------------	---------------------------------

3. Incident Name <b>KING - ZONE 1</b>	4. Operational Period 09/24/14 Wednesday Day Shift 0600 - 1800
--	---

5. Operations Personnel

Operations Chief	LES CURTIS; STEVE BURNS (t)	Division/Group Supervisor	E.STAHLIN; P. WALKER; P. MEDINA (t)
Contingency Ops Chief	JOHN TRUETT; KYLE SMITH (t)	Air Attack Supervisor	
Branch Director	KELLY MARTIN	Safety Officer	M HAMEL; S. RYBERG; C. JORDAN (t)

6. Resources Assigned this Period

Strike Team/Task Force/ Resource Designator	Leader	Num of Pers.	Trans. Y/N	Drop Off PT./Time	Pick Up PT./Time
CRW T1 TRINITY IHC C-7 9/28	JUSTIN JEUDE	21	N	ROBINSON CG 0900	1800
CRW T1 ELDORADO IHC C-85 9/30	WILLIAM K HARRIS	20	N	ROBINSON CG 0900	1800
CRW T1 PLUMAS IHC C-117 9/26	JACK SEVELSON	20	N	ROBINSON CG 0900	1800
<del>CRW T1 AUGUSTA IHC C-6 10/4</del> → <b>DIVIDE</b>	MATT WAY	20	N	ROBINSON CG 0900	1800
CRW T1 TAHOE IHC C-160	ERIC RICE	20	N	ROBINSON CG 0900	1800
CRW T2IA STF 29 C-200 10/5	MICHAEL L LANIER	19	N	ROBINSON CG 0900	1800
CRW T2IA N. ARIZONA C-143 10/1	CHRISTOPHER BROOKS	19	N	ROBINSON CG 0900	1800
CRW T1 KERN C-244 10/5	CASEY L PAYNE	16	N	ROBINSON CG 0900	1800
CREW T2IA HOPI 1 C-172 10/1	FREDDIE PANANA	21	N	ROBINSON CG 0900	1800
CRW T2IA ANGORA PEAK C-173 10/3	JASON LA NIER	19	N	ROBINSON CG 0900	1800
CREW T2IA SALYER C-174 10/5	JOSH EICHAMER	20	N	ROBINSON CG 0900	1800
ENG S/T XSN 2396C E-89 9/29	BOB NORRBOM	19	N	ROBINSON CG 0900	1800
<del>ENG S/T 5780C E-433 10/2</del> to "C"	TODD RUFFNER	24	N	ROBINSON CG 0900	1800
ENG S/T 1618C E-499 10/5	RENE VELASQUEZ	21	N	ROBINSON CG 0900	1800
KING T/F #2 TFLD O-696 9/15	DAVID ZUARES	1	N	ROBINSON CG 0900	1800
ENG T6 ID IFD E-352 10/1	DAVID BRIZEDINE	4	N	ROBINSON CG 0900	1800
ENG T6 LOS PINOS E-362 10/1	JASON RAMEY	3	N	ROBINSON CG 0900	1800
ENG6 PSF 6112 E-379 10/2	CHRISTOPHER JONES	3	N	ROBINSON CG 0900	1800
ENG T6 LONG E2132 E-369 10/2	JUAN SALOMON	3	N	ROBINSON CG 0900	1800
ENG6 661 E-378 10/1	TRACY MILAKOVIC	3	N	ROBINSON CG 0900	1800

7. Control Operations

Construct indirect line in the Star burn area from Anderson Dam to the Robinson Flats campground area.

8. Special Instructions

All Division Supervisors need to download information to the Sit Unit for all completed line and proposed line.

Noxious weeds are marked by orange "noxious weed" flagging. Minimize or avoid activities in these areas.  
Sensitive areas are marked with pink/black checkerboard flagging. Minimize ground disturbing activities in these areas.

\* Indicates a 24 hour resource 0600-0600

9. Division/Group Communications Summary

Function	Frequency - RX	Frequency - TX	Tone	System	Channel	System	Channel
Command	166.6125	168.4000	136.5	NIFC C4	1		
Tactical Div/Group	166.7750	166.7750		NIFC T6	8		
Logistics							
Air to Ground	169.1500	169.1500		A/G CMD	13		

Prepared by (Resource Unit Leader) G. Thompson / J. Switzler / E. Mayte (t)	Approved by (Planning Section Chief) Dennis Cooper / Jason Schillinger (t)	Date Prepared 09/23/14	Time Prepared 1514
--	---	---------------------------	-----------------------

<b>Division Assignment List</b>	1. Branch <b>XII</b>	2. Division/Group <b>1 H</b>
---------------------------------	-------------------------	---------------------------------

3. Incident Name <b>KING - ZONE 1</b>	4. Operational Period <b>09/24/14 Wednesday Day Shift 0600 - 1800</b>
--	--

**5. Operations Personnel**

Operations Chief	LES CURTIS; STEVE BURNS (t)	Division/Group Supervisor	E. STAHLIN; P. WALKER; P. MEDINA (t)
Contingency Ops Chief	JOHN TRUETT; KYLE SMITH (t)	Air Attack Supervisor	
Branch Director	KELLY MARTIN	Safety Officer	M HAMEL; S. RYBERG; C. JORDAN (t)

**6. Resources Assigned this Period**

Strike Team/Task Force/ Resource Designator	Leader	Num of Pers.	Trans. Y/N	Drop Off PT./Time	Pick Up PT./Time
HEQB O-261 9/30	DARIC BURR	1	N	ROBINSON CG 0900	1800
HEQB O-245	LEITHEAD	1	N	ROBINSON CG 0900	1800
FELB O-959	BRIAN DIRKS	1	N	ROBINSON CG 0900	1800
SOFR O-141 9/28	RICK CLARKE	1	N	ROBINSON CG 0900	1800
SOFR (t) O-142 9/28	MANI BOUSLAUGH	1	N	ROBINSON CG 0900	1800
FEMP O-762 10/4	RON CUTTING	1	N	ROBINSON CG 0900	1800
FEMT O-765 10/5	BRYAN ESSER	1	N	ROBINSON CG 0900	1800
FOBS O-118 9/30	TIM BRADLEY	1	N	ROBINSON CG 0900	1800
FOBS O-454 9/30	ROBERT OLDS	1	N	ROBINSON CG 0900	1800
ARCH O-931 10/5	DEVIN SNYDER	1	N	ROBINSON CG 0900	1800
<i>HAEB O-816</i>	<i>Chuck Aluisi</i>	<i>1</i>	<i>N</i>		

**7. Control Operations**  
Construct indirect line in the Star burn area from Anderson Dam to the Robinson Flats campground area.

**8. Special Instructions**  
All Division Supervisors need to download information to the Sit Unit for all completed line and proposed line.  
Noxious weeds are marked by orange "noxious weed" flagging. Minimize or avoid activities in these areas.  
Sensitive areas are marked with pink/black checkerboard flagging. Minimize ground disturbing activities in these areas.  
  
\* Indicates a 24 hour resource 0600-0600

**9. Division/Group Communications Summary**

Function	Frequency - RX	Frequency - TX	Tone	System	Channel	System	Channel
Command	166.6125	168.4000	136.5	NIFC C4	1		
Tactical Div/Group	166.7750	166.7750		NIFC T6	8		
Logistics							
Air to Ground	169.1500	169.1500		A/G CMD	13		

Prepared by (Resource Unit Leader) G. Thompson / J. Switzler / E. Mayte (t)	Approved by (Planning Section Chief) Dennis Cooper / Jason Schillinger (t)	Date Prepared 09/23/14	Time Prepared 1514
--	---	---------------------------	-----------------------

<b>Division Assignment List</b>	1. Branch <b>XII</b>	2. Division/Group <b>1 L</b>
---------------------------------	-------------------------	---------------------------------

3. Incident Name <b>KING - ZONE 1</b>	4. Operational Period 09/24/14 Wednesday Day Shift 0600 - 1800
--	---

**5. Operations Personnel**

Operations Chief	LES CURTIS / STEVE BURNS (t)	Division/Group Supervisor	J. SNOW; C. KLUG; R. BLAIR (t)
Contingency Ops Chief	JOHN TRUETT; KYLE SMITH (t)	Air Attack Supervisor	
Branch Director	KELLY MARTIN	Safety Officer	M HAMEL; S. RYBERG; C. JORDAN (t)

**6. Resources Assigned this Period**

Strike Team/Task Force/ Resource Designator	Leader	Num of Pers.	Trans. Y/N	Drop Off PT./Time	Pick Up PT./Time
CRW T1 TRUCKEE IHC C-145 9/25	BOBBY F HUBBY	20	N	ROBINSON CG 0800	1800
CRW T2IA GLOBE IHC C-136 10/2	ROGERS T BROWN	19	N	ROBINSON CG 0800	1800
CRW T1 BLUE RIDGE IHC C-148 9/24	BRIAN H SALVATORE	21	N	ROBINSON CG 0800	1800
CRW T1 RIO BRAVO IHC C-232 10/5	JAMES J ROCHA	21	N	ROBINSON CG 0800	1800
CREW T1 MENDOCINO IHC C-161 10/4	JASON L POWERS	19	N	ROBINSON CG 0800	1800
CRW T1 PALOMAR IHC C-146 9/23	JOSE ORTEGA	20	N	ROBINSON CG 0800	1800
CRW T2IA GUNNISON RIV. C-177 9/29	NICHOLAS S OSTROM	19	N	ROBINSON CG 0800	1800
CRW T2IA CORONADO C-176 9/26	JORGE AMAYA	23	N	ROBINSON CG 0800	1800
CRW T2IA COBRAS 4 C-202 10/4	VINCE MONTES	22	N	ROBINSON CG 0800	1800
CRW T2IA FIRESTORM 1 C-211 10/2	RICK SANDIDGE	20	N	ROBINSON CG 0800	1800
ENG S/T 1566C E-671 10/5	JERRY VANDERMEULEN	17	N	ROBINSON CG 0800	1800
ENG S/T 6617C E-534 10/5	JOSHUA BOEHM	27	N	ROBINSON CG 0800	1800
ENG S/T 3661C E-741 10/5	GRAHAM RICE	26	N	ROBINSON CG 0800	1800
ENG T6 SO. ARKANSAS E-382 10/2	PAUL OTTMER	3	N	ROBINSON CG 0800	1800
DOZ T2 #1 - SPENCER E-111 10/1	MIKE SPENCER	2	N	ROBINSON CG 0800	1800
DOZ T2 JB LOGGING E-115 10/1	KRISTI WILDER	2	N	ROBINSON CG 0800	1800
WT S2 49R WATER E-520 10/4	BOB MERG	1	N	ROBINSON CG 0800	1800
WT T1 SILVER STATE E-141 9/30		2	N	ROBINSON CG 0800	1800
WT T1 G&G FIRE SUPP E-131 9/30	GREG WHIPPLE	2	N	ROBINSON CG 0800	1800
WT T2 TNF 22 E-34 9/28		2	N	ROBINSON CG 0800	1800

7. Control Operations  
Continue to patrol and mop up 100' in.

8. Special Instructions

All Division Supervisors need to download information to the Sit Unit for all completed line and proposed line.

Identify resources to respond for initial attack. Noxious weeds are marked by orange "noxious weed" flagging. Minimize or avoid activities in these areas.

Sensitive areas are marked with pink/black checkerboard flagging. Minimize ground disturbing activities in these areas.

\* Indicates a 24 hour resource 0600-0600

9. Division/Group Communications Summary

Function	Frequency - RX	Frequency - TX	Tone	System	Channel	System	Channel
Command	166.6125	168.4000	136.5	NIFC C4	1		
Tactical Div/Group	168.2500	168.2500		NIFC T7	9		
Logistics							
Air to Ground	168.1500	169.1500		A/G CMD	13		

Prepared by (Resource Unit Leader) G. Thompson / J. Switzler / Eric Mayte (t)	Approved by (Planning Section Chief) Dennis Cooper / Jason Schillinger (t)	Date Prepared 09/23/14	Time Prepared 1514
--	---	---------------------------	-----------------------

<b>Division Assignment List</b>	1. Branch <b>XIV</b>	2. Division/Group <b>1 M</b>
---------------------------------	-------------------------	---------------------------------

3. Incident Name <b>KING - ZONE 1</b>	4. Operational Period 09/24/14 Wednesday Day Shift 0600 - 1800
--	---

5. **Operations Personnel**

Operations Chief	LES CURTIS; STEVE BURNS (t)	Division/Group Supervisor	UNSTAFFED
Contingency Ops Chief	JOHN TRUETT; KYLE SMITH (t)	Air Attack Supervisor	
Branch Director	UNSTAFFED	Safety Officer	M HAMEL; S. RYBERG; C. JORDAN (t)

6. **Resources Assigned this Period**

Strike Team/Task Force/ Resource Designator	Leader	Num of Pers.	Trans. Y/N	Drop Off PT./Time	Pick Up PT./Time
UNSTAFFED					

7. Control Operations  
UNSTAFFED

8. Special Instructions

All Division Supervisors need to download information to the Sit Unit for all completed line and proposed line.

Noxious weeds are marked by orange "noxious weed" flagging. Minimize or avoid activities in these areas.

Sensitive areas are marked with pink/black checkerboard flagging. Minimize ground disturbing activities in these areas.

\* Indicates a 24 hour resource 0600-0600

9. **Division/Group Communications Summary**

Function	Frequency - RX	Frequency - TX	Tone	System	Channel	System	Channel
Command	166.6125	168.4000	136.5	NIFC C4	1		
Tactical Div/Group	168.0500	168.0500		NIFC T1	5		
Logistics							
Air to Ground	169.1500	169.1500		A/G CMD	13		

Prepared by (Resource Unit Leader) G. Thompson / J. Switzler / Eric Mayte (t)	Approved by (Planning Section Chief) Dennis Cooper / Jason Schillinger (t)	Date Prepared 09/23/14	Time Prepared 1514
--	---	---------------------------	-----------------------

<b>Division Assignment List</b>	1. Branch <b>XVI</b>	2. Division/Group <b>1 R</b>
---------------------------------	-------------------------	---------------------------------

3. Incident Name <b>KING - ZONE 1</b>	4. Operational Period 09/24/14 Wednesday Day Shift 0600 - 1800
--	---

**5. Operations Personnel**

Operations Chief	LES CURTIS / STEVE BURNS (t)	Division/Group Supervisor	UNSTAFFED
Contingency Ops Chief	JOHN TRUETT; KYLE SMITH (t)	Air Attack Supervisor	
Branch Director	SEAN JOHNSON; COREY ROSE (t)	Safety Officer	M HAMEL; S. RYBERG; C. JORDAN (t)

**6. Resources Assigned this Period**

Strike Team/Task Force/ Resource Designator	Leader	Num of Pers.	Trans. Y/N	Drop Off PT./Time	Pick Up PT./Time
UNSTAFFED					

7. Control Operations  
UNSTAFFED

8. Special Instructions  
  
All Division Supervisors need to download information to the Sit Unit for all completed line and proposed line.  
  
Noxious weeds are marked by orange "noxious weed" flagging. Minimize or avoid activities in these areas.  
Sensitive areas are marked with pink/black checkerboard flagging. Minimize ground disturbing activities in these areas.  
  
\* Indicates a 24 hour resource 0600-0600

**9. Division/Group Communications Summary**

Function	Frequency - RX	Frequency - TX	Tone	System	Channel	System	Channel
Command	166.6125	168.4000	136.5	NIFC C4	1		
Tactical Div/Group	168.2500	168.2500		NIFC T7	9		
Logistics							
Air to Ground	169.1500	169.1500		A/G CMD	13		

Prepared by (Resource Unit Leader) G. Thompson / J. Switzler / E. Matye (t)	Approved by (Planning Section Chief) Dennis Cooper / Jason Schillinger (t)	Date Prepared 09/23/14	Time Prepared 1513
--	---	---------------------------	-----------------------

<b>Division Assignment List</b>		1. Branch <b>XVI</b>		2. Division/Group <b>1 W</b>			
3. Incident Name <b>KING - ZONE 1</b>		4. Operational Period 09/24/14 Wednesday Day Shift 0600 - 1800					
5. Operations Personnel							
Operations Chief	LES CURTIS; STEVE BURNS (t)		Division/Group Supervisor	CHRIS VERO; JOHNNY VILLA(t)			
Contingency Ops Chief	JOHN TRUETT; KYLE SMITH (t)		Air Attack Supervisor				
Branch Director	SEAN JOHNSON; COREY ROSE (t)		Safety Officer	M HAMEL; S. RYBERG; C. JORDAN (t)			
6. Resources Assigned this Period							
Strike Team/Task Force/ Resource Designator	Leader	Num of Pers.	Trans. Y/N	Drop Off PT./Time	Pick Up PT./Time		
CRW T1 PAYSON IHC C-147 9/24	MICHAEL SCHINSTOCK	16	N	LOON LK. C.G.0800	1800		
CRW T1 CEDAR CITY IHC C-8 9/26	BRIAN BURBRIDGE	19	N	LOON LK. C.G.0800	1800		
CRW T1 MAD RIVER IHC C-159 10/5	CHARLES HAIR	19	N	LOON LK. C.G.0800	1800		
CRW T1 HELENA IHC C-246 9/24	FRED THOMPSON	20	N	LOON LK. C.G.0800	1800		
CRW T2IA NMCIF ACOMA #1 C-131	ANDREW M HENRY	20	N	LOON LK. C.G.0800	1800		
CRW T2IA RED ROCK C-39 9/28	BRANDON JOHNSON	19	N	LOON LK. C.G.0800	1800		
ENG S/T T1 1800A E-392 9/30	BARRY SPRIGGS	22	N	LOON LK. C.G.0800	1800		
ENG S/T T3 5605 C E-538 10/3	VICTOR LEFOR	27	N	LOON LK. C.G.0800	1800		
T/F ENF KING #3 TFLD O-339	BRIAN MULHOLLEN	1	N	LOON LK. C.G.0800	1800		
ENG T6 E-380 10/1	DREW MAXWELL	2	N	LOON LK. C.G.0800	1800		
ENG6 CO MVP E-360 10/1	DANIEL DYER	3	N	LOON LK. C.G.0800	1800		
ENG T6 #3629 E-376 10/1	TRAVIS MOORE	3	N	LOON LK. C.G.0800	1800		
ENG T6 ARF #671 E-365 10/2	NICHOLAS FETSCH	3	N	LOON LK. C.G.0800	1800		
ENG T6 CO-WRF E-373 10/1	TODD KING	4	N	LOON LK. C.G.0800	1800		
ENG T6 #603 E-371 10/2	MICHAEL OTTOSEN	5	N	LOON LK. C.G.0800	1800		
ENG T6 # 631 E-377 10/1	WILLIAM HALL	3	N	LOON LK. C.G.0800	1800		
DOZ T2 NORTHSTATE E-110 10/1	GIFFORD TALMADGE	2	N	LOON LK. C.G.0800	1800		
DOZ T2 BIG EDS CRANE E-210 9/29	RICK ROGER	3	N	LOON LK. C.G.0800	1800		
DOZ T2 GEORGE WURLITZER E-560 10/4	GEORGE WURLITZER	2	N	LOON LK. C.G.0800	1800		
DOZ T2 KISER CONST. E-562 10/5	KYLE KISER	2	N	LOON LK. C.G.0800	1800		
7. Control Operations							
Widen and improve existing secondary line from Ellis Peak to Falls Fork.							
8. Special Instructions							
All Division Supervisors need to download information to the Sit Unit for all completed line and proposed line.							
Identify resources to respond for initial attack. Noxious weeds are marked by orange "noxious weed" flagging. Minimize or avoid activities in these areas.							
Sensitive areas are marked with pink/black checkerboard flagging. Minimize ground disturbing activities in these areas.							
* Indicates a 24 hour resource 0600-0600							
9. Division/Group Communications Summary							
Function	Frequency - RX	Frequency - TX	Tone	System	Channel	System	Channel
Command	166.6125	168.4000	136.5	NIFC C4	1		
Tactical Div/Group	166.5500	166.5500		R5 T4	10		
Logistics							
Air to Ground	169.1500	169.1500		A/G CMD	13		
Prepared by (Resource Unit Leader) G. Thompson / J. Switzler / E. Mayte (t)		Approved by (Planning Section Chief) Dennis Cooper / Jason Schillinger (t)		Date Prepared 09/23/14		Time Prepared 1513	

<b>Division Assignment List</b>		1. Branch <b>XVI</b>		2. Division/Group <b>1 Y</b>			
3. Incident Name <b>KING - ZONE 1</b>		4. Operational Period 09/24/14 Wednesday Day Shift 0600 - 1800					
5. Operations Personnel							
Operations Chief	LES CURTIS; STEVE BURNS (t)		Division/Group Supervisor	M. CHERRY; D. SOLDAVINI (t)			
Contingency Ops Chief	JOHN TRUETT; KYLE SMITH (t)		Air Attack Supervisor				
Branch Director	SEAN JOHNSON; COREY ROSE(t)		Safety Officer	M HAMEL; S. RYBERG; C. JORDAN (t)			
6. Resources Assigned this Period							
Strike Team/Task Force/ Resource Designator	Leader	Num of Pers.	Trans. Y/N	Drop Off PT./Time	Pick Up PT./Time		
CRW T1 LONE PEAK IHC C-149 9/27	KRIS BRUINGTON	23	N	LOON LK. C.G.0800	1800		
CRW T2IA AOICC INTER C-10 9/30	TIM DEATON	20	N	LOON LK. C.G.0800	1800		
CRW T2 BEAR JAW C-9 9/30	JD OTTMAN	20	N	LOON LK. C.G.0800	1800		
CRW T1 SAWTOOTH IHC C-89 9/27	MICHAEL KRUPSKI	20	N	LOON LK. C.G.0800	1800		
CRW T2 OC 19 C-194 9/30	JAMES BOLLINGER	20	N	LOON LK. C.G.0800	1800		
ENG S/T XTB 4228C E-168 9/29	JON ANDERSON	19	N	LOON LK. C.G.0800	1800		
ENG S/T XCO 3025C E-189 9/29	REX MAYES	17	N	LOON LK. C.G.0800	1800		
DOZ2 T2 (CA-PNF) E-144 9/29	SCOTT SIBBALD	3	N	LOON LK. C.G.0800	1800		
DOZ2 T2 (CA-PNF) E-145 9/29	ANDREW SHEPHERD	2	N	LOON LK. C.G.0800	1800		
DOZ T2 CASHF 29 E-146 9/29	DAVID BROWN	2	N	LOON LK. C.G.0800	1800		
DOZ T2 SHF 79 E-112 9/30	JASON SHURRAH	3	N	LOON LK. C.G.0800	1800		
<del>DOZ T2 NORTHSTATE E-122 10/1</del> <sup>TP</sup> <sub>Releston</sub>	MIKE BRASK	3	N	LOON LK. C.G.0800	1800		
WT T3 AWB INC E-13 9/28	DAB BRADY	1	N	LOON LK. C.G.0800	1800		
WT T1 TACTICAL E-128 9/30	ALAN WEST	2	N	LOON LK. C.G.0800	1800		
WT T1 E-258* 9/29	RICHARD YOST	2	N	LOON LK. C.G.0800	1800		
WT T1 ARBOR TREE E-263* 9/29	LU ESTRADA	2	N	LOON LK. C.G.0800	1800		
WT T2 49ER E-3* 9/28	BOB ALVAREZ	2	N	LOON LK. C.G.0800	1800		
CHIPPER TIMOTHY BURKE E-439 10/2	TIM BURKE	1	N	LOON LK. C.G.0800	1800		
CHIPPER T3 FIRESTORM E-438 10/3	GIDEON MACOMBER	2	N	LOON LK. C.G.0800	1800		
CHIPPER SKYLINE TREE E-471 10/3		2	N	LOON LK. C.G.0800	1800		
7. Control Operations							
Widen and improve existing secondary line from Loon Lake to South Fork campground.							
8. Special Instructions							
All Division Supervisors need to download information to the Sit Unit for all completed line and proposed line.							
Identify resources to respond for initial attack. Noxious weeds are marked by orange "noxious weed" flagging. Minimize or avoid activities in these areas.							
Sensitive areas are marked with pink/black checkerboard flagging. Minimize ground disturbing activities in these areas.							
* Indicates a 24 hour resource 0600-0600							
9. Division/Group Communications Summary							
Function	Frequency - RX	Frequency - TX	Tone	System	Channel	System	Channel
Command	166.6125	168.4000	136.5	NIFC C4	1		
Tactical Div/Group	167.1125	167.1125		R5 T5	11		
Logistics							
Air to Ground	169.1500	169.1500		A/G CMD	13		
Prepared by (Resource Unit Leader) G. Thompson / J. Switzler / Eric Mayte (t)		Approved by (Planning Section Chief) Dennis Cooper / Jason Schillinger (t)		Date Prepared 09/23/14		Time Prepared 1513	

<b>Division Assignment List</b>	1. Branch	2. Division/Group
	<b>XVI</b>	<b>1 Z</b>

3. Incident Name ENF KING	4. Operational Period 09/24/14 Wednesday Day Shift 0600 - 1800
------------------------------	---

**5. Operations Personnel**

Operations Chief	LES CURTIS; STEVE BURNS (t)	Division/Group Supervisor	JUSTIN HANELY; SHANNON MYERS (t)
Contingency Ops Chief	JOHN TRUETT; KYLE SMITH (t)	Air Attack Supervisor	
Branch Director	SEAN JOHNSON; COREY ROSE (t)	Safety Officer	M.HAMEL; S.RYBERG; C.JORDAN (t)

**6. Resources Assigned this Period**

Strike Team/Task Force/ Resource Designator	Leader	Num of Pers.	Trans. Y/N	Drop Off PT./Time	Pick Up PT./Time
CRW T1 C12 C-233 10/5	JOHN GERALD	21	N	LOON LK C.G. 0800	1800
CRW T1 TAMALPAIS C-238 10/5	TIMOTHY WALSH	14	N	LOON LK C.G. 0800	1800
CRW T2IA FIRESTORM 1 C-211 10/2	RICK SANDIDGE	20	N	LOON LK C.G. 0800	1800
CRW T2 DIAMOND FIRE C-209 10/5	JOHN WACHOSKI	20	N	LOON LK C.G. 0800	1800
CRW T2IA MONTEREY C-254 10/6	KEVIN W POYNER	19	N	LOON LK C.G. 0800	1800
CRW T2IA SHOBAN #1 C-243 9/29	WILL EVENING	18	N	LOON LK C.G. 0800	1800
CRW T2IA 61 C-251 10/6	JAMES MONROE	19	N	LOON LK C.G. 0800	1800
DOZER T2 THOMAS TODD E-573 10/5	KEVIN CARTER	2	N	LOON LK C.G. 0800	1800
DOZER T2 THOMAS TODD E-574 10/5	TODD THOMAS	2	N	LOON LK C.G. 0800	1800
DIVS O-813 10/5	AARON RIISE	1	N	LOON LK C.G. 0800	1800
DIVS O-804	HARTMUT BLOEMEKE	1	N	LOON LK C.G. 0800	1800
DIVS O-806 10/5	JOHN WYNN (t)	1	N	LOON LK C.G. 0800	1800
FALM SUNDERLAND O-884 10/5	NICK YEAGER	2	N	LOON LK C.G. 0800	1800
FELB (t) O-907 10/5	DARBY THOMSON	1	N	LOON LK C.G. 0800	1800
FEMT O-970 10/6	TODD ADAMS	1	N	LOON LK C.G. 0800	1800
FEMT O-969	ERIC CONNORS	1	N	LOON LK C.G. 0800	1800

**7. Control Operations**

Construct line from the fire edge along Wentworth Rd. east to the intersection of Ice House Rd.

**8. Special Instructions**

All Division Supervisors need to download information to the Sit Unit for all completed line and proposed line.

Noxious weeds are marked by orange "noxious weed" flagging. Minimize or avoid activities in these areas.

Sensitive areas are marked with pink/black checkerboard flagging. Minimize ground disturbing activities in these areas.

\* Indicates a 24 hour resource 0600-0600

**9. Division/Group Communications Summary**

Function	Frequency - RX	Frequency - TX	Tone	System	Channel	System	Channel
Command	166.6125	168.4000	136.5	NIFC C4	1		
Tactical Div/Group	166.7750	166.7750		NIFC T6	8		
Logistics							
Air to Ground	169.1500	169.1500		A/G CMD	13		

Prepared by (Resource Unit Leader) G. Thompson / J. Switzler / E. Mayte (t)	Approved by (Planning Section Chief) Dennis Cooper / Jason Schillinger (t)	Date Prepared 09/23/14	Time Prepared 1513
--	---	---------------------------	-----------------------



<b>Division Assignment List</b>			1. Branch <b>EAST CONTINGENCY</b>		2. Division/Group <b>DIVIDE</b>		
3. Incident Name <b>KING - ZONE 1</b>			4. Operational Period 09/24/14 Wednesday Day Shift 0600 - 1800				
<b>5. Operations Personnel</b>							
Operations Chief		LES CURTIS; STEVE BURNS (t)		Division/Group Supervisor		CHRISTOPHER ANTHONY	
Contingency Ops Chief		JOHN TRUETT; KYLE SMITH (t)		Air Attack Supervisor			
Branch Director		MATT CONKLIN		Safety Officer		M. HAMEL; S.RYBERG;C.JORDAN (t)	
<b>6. Resources Assigned this Period</b>							
Strike Team/Task Force/ Resource Designator	Leader	Num of Pers.	Trans. Y/N	Drop Off PT./Time	Pick Up PT./Time		
CREW T2IA BIG HORN BASIN 2 C-170 10/1	MICKEY SIRIOS	20	N	FRENCH MEADOW CG 0800	1800		
CREW T2IA GILA C-171 10/5	FELIX VALDEZ	20	N	FRENCH MEADOW CG 0800	1800		
CRW T2 DESCANSO 5 C-203 9/30	CINDY PETRICH	20	N	FRENCH MEADOW CG 0800	1800		
CRW T2 DIAMOND FIRE C-204 10/5	WES WICKMAN	20	N	FRENCH MEADOW CG 0800	1800		
SOFR O-963 10/7	RICHARD LUDKE	1	N	FRENCH MEADOW CG 0800	1800		
FEMP O-758	MATT LUCAS	1	N	FRENCH MEADOW CG 0800	1800		
FEMT O-764	SCOTT HARLAN	1	N	FRENCH MEADOW CG 0800	1800		
READ O-945	MATT BROWNLEE	1	N	FRENCH MEADOW CG 0800	1800		
READ O-921 10/6	MARY SULLIVAN	1	N	FRENCH MEADOW CG 0800	1800		
<i>CRW T1 AUGUSTA C-6</i>	<i>matt way</i>	<i>20</i>					
<b>7. Control Operations</b>							
Construct contingency handline along the Divide Ridge between the American River Road and the Truckee Road.							
<b>8. Special Instructions</b>							
All Division Supervisors need to download information to the Sit Unit for all completed line and proposed line.							
Identify resources to respond for initial attack. Noxious weeds are marked by orange "noxious weed" flagging. Minimize or avoid activities in these areas.							
Sensitive areas are marked with pink/black checkerboard flagging. Minimize ground disturbing activities in these areas.							
* Indicates a 24 hour resource 0600-0600							
<b>9. Division/Group Communications Summary</b>							
Function	Frequency - RX	Frequency - TX	Tone	System	Channel	System	Channel
Command	166.6125	168.4000	136.5	NIFC C4	1		
Tactical Div/Group	168.2375	168.2375		R5 T6	12		
Logistics							
Air to Ground	169.1500	169.1500		A/G CMD	13		
Prepared by (Resource Unit Leader) G. Thompson / J. Switzler / E. Mayte (t)			Approved by (Planning Section Chief) Dennis Cooper / Jason Schillinger (t)			Date Prepared 09/23/14	Time Prepared 1513

<b>Division Assignment List</b>	1. Branch <b>EAST CONTINGENCY</b>	2. Division/Group <b>CEDARS</b>
---------------------------------	--------------------------------------	------------------------------------

3. Incident Name <b>KING - ZONE 1</b>	4. Operational Period 09/24/14 Wednesday Day Shift 0600 - 1800	
--	---	--

**5. Operations Personnel**

Operations Chief	LES CURTIS; STEVE BURNS (t)	Division/Group Supervisor	TAIGA ROHRER; CHRIS HENRIE (t)
Contingency Ops Chief	JOHN TRUETT; KYLE SMITH (t)	Air Attack Supervisor	
Branch Director	MATT CONKLIN	Safety Officer	M HAMEL;S. RYBERG;C. JORDAN (t)

**6. Resources Assigned this Period**

Strike Team/Task Force/ Resource Designator	Leader	Num of Pers.	Trans. Y/N	Drop Off PT./Time	Pick Up PT./Time
ENG S/T OES 2870C E-88 9/29	RON FIGUERA	22	N	FRENCH MDW CG 0800	1800
ENG S/T T1 6820A E-388 9/30	MIKE PELLETIER	22	N	FRENCH MDW CG 0800	1800
ENG T6 ENG 681 E-366 9/30	TODD LIKE	3	N	FRENCH MDW CG 0800	1800
FRANKE, STEVE O-786 10/4	STEVE FRANKE	1	N	FRENCH MDW CG 0800	1800
UNDERDOG TIMBER O-868 10/4	GREG BURNS	2	N	FRENCH MDW CG 0800	1800
UNDERDOG TIMBER O-865 10/4		2	N	FRENCH MDW CG 0800	1800
SOFR O-963 10/7	RICHARD LUDKE	1	N	FRENCH MDW CG 0800	1800
FEMP O-758	MATT LUCAS	1	N	FRENCH MDW CG 0800	1800
FEMT O-764	SCOTT HARLAN	1	N	FRENCH MDW CG 0800	1800

**7. Control Operations**

Develop structure defense plan for Cedars Community. Construct contingency lines south of Cedars Community. Chip materials within Cedars.

**8. Special Instructions**

All Division Supervisors need to download information to the Sit Unit for all completed line and proposed line. Identify resources to respond for initial attack. Noxious weeds are marked by orange "noxious weed" flagging. Minimize or avoid activities in these areas. Sensitive areas are marked with pink/black checkerboard flagging. Minimize ground disturbing activities in these areas.

\* Indicates a 24 hour resource 0600-0600

**9. Division/Group Communications Summary**

Function	Frequency - RX	Frequency - TX	Tone	System	Channel	System	Channel
Command	166.6125	168.4000	136.5	NIFC C4	1		
Tactical Div/Group	168.2375	168.2375		R5 T6	12		
Logistics							
Air to Ground	169.1500	169.1500		A/G CMD	13		

Prepared by (Resource Unit Leader) G. Thompson / J. Switzler / E. Mayte (t)	Approved by (Planning Section Chief) Dennis Cooper / Jason Schillinger (t)	Date Prepared 09/23/14	Time Prepared 1513
--	---	---------------------------	-----------------------

<b>Division Assignment List</b>			1. Branch <b>WEST CONTINGENCY</b>		2. Division/Group <b>AMERICAN</b>		
3. Incident Name <b>KING - ZONE 1</b>			4. Operational Period 09/24/14 Wednesday Day Shift 0600 - 1800				
5. Operations Personnel							
Operations Chief		LES CURTIS; STEVE BURNS (t)		Division/Group Supervisor		DEANO ESADES / JEFF GOYINGS (t)	
Contingency Ops Chief		JOHN TRUETT; KYLE SMITH (t)		Air Attack Supervisor			
Branch Director		DON FORSYTH; KEITH HACKBARTH (t)		Safety Officer		M.HAMEL; S.RYBERG; C.JORDAN (t)	
6. Resources Assigned this Period							
Strike Team/Task Force/ Resource Designator		Leader		Num of Pers.	Trans. Y/N	Drop Off PT./Time	Pick Up PT./Time
<del>CRW T2 OC 52 C-190 10/5</del>		KEVIN BOWEN		22	N	FRENCH MDW C G 0800	1800
CRW T2 PACIFIC OASIS C-195 10/5		SYDNEY KENNEDY		20	N	FRENCH MDW C G 0800	1800
<del>CRW T2 GRAYBACK F C-205 10/5</del>		RYAN WATKINS		20	N	FRENCH MDW C G 0800	1800
CRW T2 GRAYBACK C-206 9/29		ANTONIO MENDOZA		20	N	FRENCH MDW C G 0800	1800
CRW T2 GRAYBACK C-207 9/29		LEVI BELLGRAPH		20	N	FRENCH MDW C G 0800	1800
ENG S/T XMY 2175C E-308 9/28		HUMBERTO ARISTA		20	N	FRENCH MDW C G 0800	1800
ENG S/T XPL 4133C E-164 9/29		PATRICK NELSON		19	N	FRENCH MDW C G 0800	1800
ENG S/T XNAC 2200C E-307 9/28		MIKE DOMBROWSKI		21	N	FRENCH MDW C G 0800	1800
ENG S/T T3 PIDC E-537 9/29		S.PEARSON, J. ASHFORD		21	N	FRENCH MDW C G 0800	1800
ENG S/T 2 T3 E-498 9/27		MARK RHODES		20	N	FRENCH MDW C G 0800	1800
<del>CHIPPER E-579</del>				2	N	FRENCH MDW C G 0800	1800
<del>CHIPPER E-578</del>				2	N	FRENCH MDW C G 0800	1800
<del>FELB O-851 10/5</del>		JASON MURIEEN		1	N	FRENCH MDW C G 0800	1800
TFLD O-889 10/1		JEFF DUPRAS		1	N	FRENCH MDW C G 0800	1800
TFLD O-788		JOE JOHNSTON		1	N	FRENCH MDW C G 0800	1800
SOF2 O-965 10/7		TOM RAW		1	N	FRENCH MDW C G 0800	1800
Chipper E-792							
Chipper E-794							
Chipper E-796							
Chipper E-797							
7. Control Operations <i>Chipper E-795</i>							
Brush roads/trail systems to develop contingency lines in the area of the old Star Fire scar.							
8. Special Instructions							
All Division Supervisors need to download information to the Sit Unit for all completed line and proposed line. Identify resources to respond for initial attack. Noxious weeds are marked by orange "noxious weed" flagging. Minimize or avoid activities in these areas. Sensitive areas are marked with pink/black checkerboard flagging. Minimize ground disturbing activities in these areas.							
* Indicates a 24 hour resource 0600-0600							
9. Division/Group Communications Summary							
Function	Frequency - RX	Frequency - TX	Tone	System	Channel	System	Channel
Command	166.6125	168.4000	136.5	NIFC C4	1		
Tactical Div/Group	168.2375	168.2375		R5 T6	12		
Logistics							
Air to Ground	169.1500	169.1500		A/G CMD	13		
Prepared by (Resource Unit Leader) G. Thompson / J. Switzler / E. Mayte (t)			Approved by (Planning Section Chief) Dennis Cooper / Jason Schillinger (t)		Date Prepared 09/23/14		Time Prepared 1513

<b>Division Assignment List</b>	1. Branch <b>WEST CONTINGENCY</b>	2. Division/Group <b>MOSQUITO</b>
---------------------------------	--------------------------------------	--------------------------------------

3. Incident Name <b>KING - ZONE 1</b>	4. Operational Period 09/24/14 Wednesday Day Shift 0600 - 1800
--	---

**5. Operations Personnel**

Operations Chief	LES CURTIS; STEVE BURNS (t)	Division/Group Supervisor	CHRISTOPHER TATE / THOMAS BROWNING
Contingency Ops Chief	JOHN TRUETT; KYLE SMITH (t)	Air Attack Supervisor	
Branch Director	DON FORSTYH; KEITH HACKBARTH (T)	Safety Officer	M.HAMEL; S. RYBERG; C.JORDAN (t)

**6. Resources Assigned this Period**

Strike Team/Task Force/ Resource Designator	Leader	Num of Pers.	Trans. Y/N	Drop Off PT./Time	Pick Up PT./Time
SOF2 O-965 10/7	TOM RAW	1	N	FRENCH MDW CG 0800	1800
READ	ROY BRIDGEMAN	1	N	FRENCH MDW CG 0800	1800
READ	KELLY HACK	1	N	FRENCH MDW CG 0800	1800
<i>CRW C-217</i>					
<i>CRW T2 C-190</i>					
<i>CHIPPER E-578</i>					
<i>CRW C-228</i>					
<i>CRW C-193</i>					
<i>CRW C-19</i>					
<i>E-579</i>					
<i>E-578</i>					
<i>E-792</i>					
<i>E-794</i>					
<i>E-796</i>					
<i>E-797</i>					
<i>CHIPPER B-583</i>					
<i>CHIPPER E-799</i>					
<i>FALB G-851</i>					
<i>FALB O-983</i>					
<i>O-251</i>					

**7. Control Operations**  
*ENH - E-643*

Construct contingency lines in the Big Trees area and Prepping Trail area infrastructure. Divisions to flag and identify proposed lines in coordination with READS.

**8. Special Instructions**

All Division Supervisors need to download information to the Sit Unit for all completed line and proposed line.

Noxious weeds are marked by orange "noxious weed" flagging. Minimize or avoid activities in these areas. Sensitive areas are marked with pink/black checkerboard flagging. Minimize ground disturbing activities in these areas.

\* Indicates a 24 hour resource 0600-0600

**9. Division/Group Communications Summary**

Function	Frequency - RX	Frequency - TX	Tone	System	Channel	System	Channel
Command	166.6125	168.4000	136.5	NIFC C4	1		
Tactical Div/Group	168.2375	168.2375		R5 T6	12		
Logistics							
Air to Ground	169.1500	169.1500		A/G CMD	13		

Prepared by (Resource Unit Leader) G. Thompson, J. Switzler, E. Mayte (t)	Approved by (Planning Section Chief) Dennis Cooper, Jason Schillinger (t)	Date Prepared 09/23/14	Time Prepared 2236
--	--	---------------------------	-----------------------

<b>Division Assignment List</b>	1. Branch	2. Division/Group <b>CXBOW</b>
---------------------------------	-----------	-----------------------------------

3. Incident Name <b>ENF KING - ZONE 1</b>	4. Operational Period 09/25/14 Thursday Day Shift 0600 - 1800	
--	--	--

5. Operations Personnel
-------------------------

Operations Chief		Division/Group Supervisor	<b>Thomas Browning</b>
Operations Chief		Air Attack Supervisor	
Branch Director		Safety Officer	

6. Resources Assigned this Period
-----------------------------------

Strike Team/Task Force/ Resource Designator	Leader	Num of Pers.	Trans. Y/N	Drop Off PT./Time	Pick Up PT./Time
<b>KLING #13</b>					
<b>WEL C-205 (Air Attack)</b>					
<b>C-229</b>					
<b>Chip E-579</b>					

7. Control Operations

8. Special Instructions

9. Division/Group Communications Summary
--

Function	Frequency - RX	Frequency - TX	Tone	System	Channel	System	Channel
Command							
Tactical Div/Group							
Logistics							
Air to Ground							

Prepared by (Resource Unit Leader)	Approved by (Planning Section Chief)	Date Prepared 09/24/14	Time Prepared 0809
------------------------------------	--------------------------------------	---------------------------	-----------------------

# AIR OPERATIONS SUMMARY

(Expanded Form for Large Operations)

OPERATIONAL PERIOD DATE: DAY SHIFT DATE: 09/24/2014

START: 0700 END: 2000

<b>1. INCIDENT NAME:</b> King	<b>2. PREPARED BY:</b> John Keece <i>AK</i>	<b>3. Prepared</b> 09/23/14 1930 hrs
<b>4. REMARKS (Safety Notes, Hazards, Air Operations Special Equipment, etc.):</b> SUNRISE: 0652 SUNSET : 1859 STEEP SMOKEY CONDITIONS, OTHER FIRES , OTHER AIRCRAFT COULD FLY IN OUR AREA ***Avoid aerial application of retardant or foam within 300' of waterways, bodies of water. If retardant is dropped within these areas, notify AOB/D with Lat & Long, est. of gallons, and a map.		
Placerville Helibase at Placerville airport. FAA Tower in place. Freq. 119.100 Blue Canyon Helibase 39 16.49 120 42.56 Incident aircraft will support initial attack within and adjacent to the TFR.		
<b>TRACK RETARDANT DROP LOCATIONS</b>		
5. TFR: 4/7646 Altitude : 10,500' MSL Freq. 118.6250 See TFR map		

6. PERSONNEL	Phone	FREQUENCIES	AM	FM	8. FIXED-WING # Avail / Type/ Make-Model / FAA N# / Base(s)
AOBD: John Keece (zone 1)	805-551-6422	AIR/AIR FW:	118.6250	166.6750	Air Tactical: AA 17
AOBD: Frank Podesta (zone 2)	209-419-4408	AIR/AIR RW:	120.5750 135.7250		AA 112
ASGS: Craig Dado (zone 1)	530-518-6688	A/G Command:		169.1500	
ASGS: Jon Chin (zone 2)	760-250-6230	A/G Tactical:		167.9500	
HLCO: Lane Caldwell	530-310-2211	DECK:	163.100		Lead planes:
HLCO: Doug Ross	951-663-9740	COMMAND:			Airtankers:
ATGS: Jason Withrow	530-206-6955	AIR GUARD:			On order
ATGS: Todd White	530-263-5621	TOLC: PVF			Other:
HEBM: Travis Taylor (T) PVF	208-241-0399	Blue Canyon			Camino Dispatch 530-647-5220
HEBM: Dave Ito	530-391-6583				
Blue Canyon Helibase	601-540-6528				
HEBM: Brad Bernardy					
Cobra: Gus Johnson	559-708-3570				

**9. HELICOPTERS (Use Additional Sheets As Necessary)**

FAA N#	TY	MAKE/MODEL	BASE	AVAIL	START	REMARKS	FAA N#	TY	MAKE/MODEL	BASE	AVAIL	START	REMARKS
301	3	BELL 206	PVF	0800	0700	Recon/Helco	510	2	Bell 210	Blue Cyn	0800	0700	Bucket/Shuttle
54E	3	AS 350	PVF	0800	0700	Recon/Helco	507	2	Cobra	PVF	0800	0700	Air Attack/Helco
67H	3	Bell 206	PVF	0800	0700	Recon/Helco	2WM	1	K-Max	Blue Cyn	0800	0700	Bucket
7AC	3	Bell 407	Foresthill	0800	0700	IR/Mapping	HT 781	1	Skycrane	PVF	0800	0700	Tanked
104	2	Bell 205	PVF	0800	0700	Bucket/Shuttle/Hoist	HT 783	1	Skycrane	PVF	0800	0700	Tanked
5DY	2	Bell 205	PVF	0800	0700	Bucket/Shuttle	HT 746	1	Skycrane	PVF	0800	0700	Tanked
534	2	Bell 205	PVF	0800	0700	Bucket/Shuttle	HT 734	1	Skycrane	Blue Cyn	0800	0700	Tanked
516	2	Bell 212	PVF	0800	0700	Bucket/Shuttle	3CK	1	S-61	PVF	0800	0700	Bucket
538	2	Bell 205	PVF	0800	0700	Bucket/Shuttle	43T	1	S-61	Blue Cyn	0800	0700	Bucket
2TH	2	Bell 212	PVF	0800	0700	Bucket/Shuttle	HT 715	1	Skycrane	Blue Cyn	0800	0700	Tanked
408	2	Bell 205	GOO	0800	0700	Medevac/Hoist	HT743	1	Skycrane	Blue Cyn	0800	0700	Tanked

## INCIDENT SAFETY ANALYSIS 215a

KING INCIDENT (ZONE 1) CA-ENF-023461 - 9-23/24, 2014

8. Location	9. Hazard	6. Control or Abatement Action (Engineering, Administrative, PPE, Avoidance, Education, etc)
ALL	Snag Hazards	<ul style="list-style-type: none"> <li>• Follow Hazard Tree Safety Guidelines (IRPG p. 22).</li> <li>• Limit number of personnel around snags and their exposure time; fallers must be qualified for trees being fallen.</li> <li>• Be especially alert around snags during wind events.</li> <li>• Check overhead for dead branches in sleeping areas.</li> <li>• Maintain Situational Awareness.</li> </ul>
ALL	Aircraft Operations	<ul style="list-style-type: none"> <li>• Keep personnel out of drop zones.</li> <li>• Use air-to-ground freq. to communicate with aircraft.</li> <li>• Use clear, concise statements when directing aircraft. Use clock directions from pilot's perspective.</li> </ul>
ALL	Direct Attack/Night Operations	<ul style="list-style-type: none"> <li>• Do not engage in direct line tactics in areas where snags have not been mitigated for night operations.</li> <li>• Snag areas in day time before engaging personnel.</li> <li>• Snag roads where nighttime travel is necessary.</li> <li>• Ensure medical protocols are followed.</li> <li>• Have medivac sites pre-identified/established.</li> <li>• Ensure good communications exist and tested.</li> </ul>
ALL	Driving Hazards	<ul style="list-style-type: none"> <li>• Practice defensive driving at all times.</li> <li>• Adhere To 30 mph speed limit on forest roads</li> <li>• Drive with headlights on.</li> <li>• Be alert for wildlife and livestock on roads at all times.</li> <li>• Slow down on washboard surfaces.</li> <li>• Avoid gravel berms on the sides of roadways.</li> <li>• Increase following distance on dusty roads. Slow down when you meet opposing traffic.</li> <li>• Maintain Situational Awareness.</li> </ul>
ALL	Severe Fire Behavior	<ul style="list-style-type: none"> <li>• Review "Severe Fire Behavior Potential" (IRPG p.68).</li> <li>• Monitor current weather conditions and forecasts. Make sure all personnel receive thorough briefings every shift.</li> <li>• Be observant for formation and passage of pyro-cumulous cells over the fire area and alert all personnel.</li> <li>• Maintain adequate escape routes and safety zones. Advise all personnel if these are compromised or changed. Set trigger points when appropriate.</li> <li>• Adhere to 10 Std Orders, mitigate 18 situations.</li> <li>• Maintain Situational Awareness.</li> </ul>
ALL	Working around Dozers	<ul style="list-style-type: none"> <li>• Maintain safe separation distance of personnel from dozers, especially downhill.</li> <li>• Ensure dozers are supervised by qualified DOZB when required or is appropriate for the job.</li> </ul>

INCIDENT RADIO COMMUNICATIONS PLAN		Incident Name				BK RADIO GROUP				Operational Period Date/Time	
COMMUNICATIONS PLAN		KING, CA-ENF-023461 - ZONE 1				GROUP 14				9/24/14 DAY	
Ch #	Function	Channel Name/Trunked Radio System Talkgroup	Assignment	RX Freq	N or W	RX Tone/NAC	TX Freq	N or W	TX Tone/NAC	Mode A, D or M	Remarks
1	COMMAND	NIFC C4	ZONE 1 CMD	166.6125	N	136.5	168.4000	N	136.5	A	Little Bald Mtn. / Duncon L.O.
2	COMMAND	NIFC C11	ZONE 1 CMD	170.6875	N	136.5	166.5750	N	136.5	A	Bunker Hill L.O.
3	COMMAND	NIFC C59	ZONE 1 CMD	164.8375	N	136.5	170.0500	N	136.5	A	Not In Operation
4	COMMAND	NIFC C61	Unassigned	164.8625	N	136.5	170.3875	N	136.5	A	Not Deployed
5	TACTICAL	NIFC T1	DIV 1B & 1K	168.0500	N		168.0500	N		A	
6	TACTICAL	NIFC T10	DIV 1D & 1M	168.5000	N		168.5000	N		A	
7	TACTICAL	NIFC T5	DIV 1F & 1P	166.7250	N		166.7250	N		A	
8	TACTICAL	NIFC T6	DIV 1H & 1Z	166.7750	N		166.7750	N		A	
9	TACTICAL	NIFC T7	DIV 1L & 1R	168.2500	N		168.2500	N		A	
10	TACTICAL	R5 T4	DIV 1W & 1T	166.5500	N		166.5500	N		A	
11	TACTICAL	R5 T5	DIV 1Y	167.1125	N		167.1125	N		A	
12	TACTICAL	R5 T6	Contingency Branch	168.2375	N		168.2375	N		A	E / W Contingency & Roads
13	AIR TO GROUND	A/G CMD	ALL DIVISIONS	169.1500	N		169.1500	N		A	A/G COMMAND
14	AIR TO GROUND	A/G TAC	ALL DIVISIONS	167.9500	N		167.9500	N		A	A/G TACTICAL
15	MEDICAL	CALCORD	ALL DIVISIONS	156.0750	N		156.0750	N	156.7	A	MEDICAL COORDINATION
16	EMERGENCY ONLY	Air Guard	ALL DIVISIONS	168.6250	N		168.6250	N	110.9	A	AIR GUARD - EMERGENCY
17										A	
18										A	
19										A	
20	EMERGENCY ONLY	Air Guard	ALL DIVISIONS	168.6250	N		168.6250	N	110.9	A	AIR GUARD - EMERGENCY

Prepared By (Communications Unit)  
  
 TIM MAGUIRE, COM1 (t)

Incident Location: Foresthill, CA  
 County: Placer State: CA Latitude 39°1.17' N, Longitude 120° 49.77' W

The convention calls for frequency lists to show four digits after the decimal place, followed by either an "N" or a "W", depending on whether the frequency is narrow or wide band. Mode refers to either "A" or "D" indicating analog or digital (e.g. Project 25) or "M" indicating mixed mode. All channels are shown as if programmed in a control station, mobile or portable radio. Repeater and base stations must be programmed with the Rx and Tx reversed.



# MEDICAL PLAN

<b>1. Incident/Project Name</b>		<b>2. Operational Period</b>			
King Fire – Zone 1 (North)		Date/Time 9/24/2014 0600-1800			
<b>2. Aid Station</b>					
Name	Complete Address	Phone/EMS Freq.	Advanced Life Support (ALS) Yes                      No		
King ICP Zone 1 Frontline Medical	Foresthill Old Mill Site 23850 Foresthill Rd., Foresthill, CA 95631		XX		
<b>3. Ambulance Services</b>					
Name	Complete Address	Phone/EMS Freq	Advanced Life Support (ALS) Yes                      No		
Eldorado County Emergency Medical Services Medic 248	Eldorado County Fire Station 17 6426 Pony Express Trail, Pollock Pines, CA	911 or 530-647-5220	XX		
Foresthill Fire Department Medic 89 (at French Meadows)	Foresthill FPD FS 88 5981 Gold St. Foresthill, CA	911 or 530-886-5375	XX		
El Dorado County Emergency Medical Services Medic 289	Georgetown FPD Station 65 10561 Sand Mountain Rd., Georgetown, CA	911 or 530-647-5220	XX		
AMR Ambulance Medic 290	Big Tree Campground Branch X	AMR or 916 563-0666	XX		
AMR Ambulance Medic 291	Zone 1 ICP	AMR or 916 563-0666	XX		
<b>4. Air Ambulance Services</b>					
Name	Phone	Type of Aircraft & Capability			
CAL FIRE H-104 Placerville, CA (Daytime Only)	911 or 530-647-5220	Bell 205++ Hoist, No NVG, BLS			
Kern County (KRN) H-408 Grass Valley, CA	911 or 530-647-5220	Bell 205++ Hoist, NVG, ALS			
CHP H20 or H24 Auburn, CA	911 or 916-861-1299	Eurocopter B3 Hoist, ALS, No NVG			
CALSTAR 3 Auburn, CA	911 or 530-887-0569	BO 105LS/C-30			
CAL STAR 6 South Lake Tahoe, CA	911 or 530-887-2338	BO 105LS/C-30			
<b>5. Hospitals</b>					
Name Complete Address	GPS Datum – NAD 83 Degrees Decimal Minutes DD° MM.MMM' N - Lat DD° MM.MMM' W - Long	Travel Time Air    Gnd	Phone	Helipad Yes    No	Level of Care Facility
Marshal Medical Center 1100 Marshall Way, Placerville, CA 95667	Lat: N/A	1 Hr	(530) 622-1441	X	Level III Trauma Center
	Long:				
	VHF: N/A				
Sutter Auburn Faith Hosp. 11815 Education St. Auburn, CA, 95602	Lat: N/A	30 Min	(530) 888-4500	X	
	Long:				
	VHF: N/A				
Sutter Roseville Medical Center 1 Medical Plaza Dr, Roseville, CA 95661	Lat: 38 45.58	25 Min	(916) 781-1200	X <input type="checkbox"/>	Level II Trauma Center
	Long: 121 14.52				
	VHF:				
UC Davis Medical Center 2315 Stockton Ave. Sacramento, CA 95817	Lat: 38 33.17	25 Min	(916) 734-2363	X <input type="checkbox"/>	Level I Trauma Center Burn Center
	Long: 121 27.21				
	VHF:				
Barton Memorial Hospital 2170 South Ave. South Lake Tahoe, CA 96158	Lat: 38 54.40	30 Min	(530) 541-3420	X <input type="checkbox"/>	
	Long: 119 59.48				
	VHF:				
Renown Regional Medical Center 1155 Mill St Reno, NV	Lat: 39 31 32	45 Min	(775) 982-4100	X <input type="checkbox"/>	Level II Trauma Center Burn Center
	Long: 119 47 44				
	VHF:				
<b>6. Prepared By (Medical Unit Leader)</b>		<b>7. Date/Time</b>	<b>8. Reviewed By (Safety Officer)</b>		<b>9. Date/Time</b>
Kurt Gainer MEDL Newton Ong MEDLT		09/24/2014 2000	Marty Hamel SOF 1 		09/24/2014 2000

Medical Incident Report					
FOR ALL MEDICAL EMERGENCIES: IDENTIFY ON SCENE INCIDENT COMMANDER BY NAME AND POSITION AND ANNOUNCE "MEDICAL EMERGENCY" TO INITIATE RESPONSE FROM IMT COMMUNICATIONS/DISPATCH.					
<b>Use items one through nine to communicate situation to communications/dispatch.</b>					
<b>1. CONTACT COMMUNICATIONS/DISPATCH</b> <i>Ex: "Communications, Div. Alpha. Stand-by for Priority Medical Incident Report." (If life threatening request designated frequency be cleared for emergency traffic.)</i>					
<b>2. INCIDENT STATUS:</b> <i>Provide incident summary and command structure.</i>					
Nature of Injury/Illness			<i>Describe the injury (Ex: Broken leg with bleeding)</i>		
Incident Name			<i>Geographic Name + "Medical" (Ex: Trout Meadow Medical)</i>		
Incident Commander			<i>Name of IC</i>		
Patient Care			<i>Name of Care Provider (Ex: EMT Smith)</i>		
<b>3. INITIAL PATIENT ASSESSMENT:</b> <i>Complete this section for each patient. This is only a brief, initial assessment. Provide additional patient info after completing this 9 Line Report.</i>					
Number of Patients:		Male / Female		Age:	
				Weight:	
Conscious? <input type="checkbox"/> YES		<input type="checkbox"/> <b>NO = MEDEVAC!</b>			
Breathing? <input type="checkbox"/> YES		<input type="checkbox"/> <b>NO = MEDEVAC!</b>			
Mechanism of Injury: <i>What caused the injury?</i>					
Lat/Long (Datum WGS84) <i>Ex: N 40° 42.45' x W 123° 03.24'</i>					
<b>4. SEVERITY OF EMERGENCY, TRANSPORT PRIORITY</b>					
SEVERITY			TRANSPORT PRIORITY		
<input type="checkbox"/> <b>URGENT-RED</b> Life threatening injury or illness. <i>Ex: Unconscious, difficulty breathing, bleeding severely, 2° - 3° burns more than 4 palm sizes, heat stroke, disoriented.</i>			Ambulance or MEDEVAC helicopter. Evacuation need is <b>IMMEDIATE.</b>		
<input type="checkbox"/> <b>PRIORITY-YELLOW</b> Serious Injury or illness. <i>Ex: Significant trauma, not able to walk, 2° - 3° burns not more than 1-2 palm sizes.</i>			Ambulance or consider air transport if at remote location. Evacuation may be <b>DELAYED.</b>		
<input type="checkbox"/> <b>ROUTINE-GREEN</b> Not a life threatening injury or illness. <i>Ex: Sprains, strains, minor heat-related illness.</i>			Non-Emergency. Evacuation considered <b>Routine of Convenience.</b>		
<b>5. TRANSPORT PLAN:</b>					
<b>Air Transport:</b> (Agency Aircraft Preferred)					
<input type="checkbox"/> Helispot		<input type="checkbox"/> Short-haul/Hoist		<input type="checkbox"/> Life Flight	
				<input type="checkbox"/> Other	
<b>Ground Transport:</b> <i>Click here to enter text.</i>					
<input type="checkbox"/> Self-Extract		<input type="checkbox"/> Carry-Out		<input type="checkbox"/> Ambulance	
				<input type="checkbox"/> Other	
<b>6. ADDITIONAL RESOURCE/EQUIPMENT NEEDS:</b>					
<input type="checkbox"/> Paramedic/EMT(s)		<input type="checkbox"/> Crew(s)		<input type="checkbox"/> SKED/Backboard/C-Collar	
<input type="checkbox"/> Burn Sheet(s)		<input type="checkbox"/> Oxygen		<input type="checkbox"/> Trauma Bag	
<input type="checkbox"/> Medication(s)		<input type="checkbox"/> IV/Fluid(s)		<input type="checkbox"/> Cardiac Monitor/AED	
<input type="checkbox"/> Other (i.e. splints, rope rescue, wheeled litter)					
<b>7. COMMUNICATIONS:</b>					
Function	Channel Name/Number	Receive (Rx)	Tone/NAC *	Transmit (Tx)	Tone/NAC *
<i>Ex: Command</i>	<i>Forest Rpt, Ch. 2</i>	<i>168.3250</i>	<i>110.9</i>	<i>171.4325</i>	<i>110.9</i>
COMMAND					
AIR-TO-GRND					
TACTICAL					
*(NAC for digital radio system)					
<b>8. EVACUATION LOCATION:</b>					
Lat/Long (Datum WGS84) <i>EX: N 40 42.45' x W 123 03.24'</i>					
Patient's ETA to Evacuation Location:					
<b>Considerations:</b> <i>If primary options fail, what actions can be implemented in conjunction with primary evacuation method? Be thinking ahead...</i>			<b>REMEMBER:</b> Confirm ETA's of resources ordered Act according to your level of training Be Alert. Keep Calm. Think Clearly. Act Decisively.		

Area Location Capability		
Branch XVI, DIV 1W 12 Hour (day)	EMS Responders & Capability:	FEMP Dan Nunez, FEMT Travis Moore
	Equipment Available on Scene:	ALS/BLS supplies
	Medical Emergency Channel:	Calcord 156.0750 Tone 6 (156.7) tx/rx
	ETA for Ambulance to Scene:	
	Air:	
	Ground:	45 min.
	Approved Helispot:	None identified
	Lat:	
	Long:	
Area Location Capability		
Branch XVI, DIV 1Y	EMS Responders & Capability:	FEMP Steve Wallace, FEMT Cody Haas
	Equipment Available on Scene:	ALS/BLS supplies
	Medical Emergency Channel:	Calcord 156.0750 Tone 6 (156.7) tx/rx
	ETA for Ambulance to Scene:	
	Air:	
	Ground:	45 min.
	Approved Helispot:	None identified
	Lat:	
	Long:	
Area Location Capability		
Branch XVI, DIV 1Z	EMS Responders & Capability:	FEMT Todd Adams, FEMT Eric Connors
	Equipment Available on Scene:	BLS supplies
	Medical Emergency Channel:	Calcord 156.0750 Tone 6 (156.7) tx/rx
	ETA for Ambulance to Scene:	
	Air:	
	Ground:	45 min.
	Approved Helispot:	None identified
	Lat:	
	Long:	
Area Location Capability		
East Contingency  Star Divide Cedar Soda Springs  12 Hour (day)	EMS Responders & Capability:	FEMP Matt Lucas, FEMT Scott Harlan
	Equipment Available on Scene:	ALS/BLS supplies
	Medical Emergency Channel:	Calcord 156.0750 Tone 6 (156.7) tx/rx
	ETA for Ambulance to Scene:	
	Air:	
	Ground:	45 min.
	Approved Helispot:	None identified
	Lat:	
	Long:	
Area Location Capability		
West Contingency  American Mosquito Ralston	EMS Responders & Capability:	
	Equipment Available on Scene:	ALS/BLS supplies
	Medical Emergency Channel:	Calcord 156.0750 Tone 6 (156.7) tx/rx
	ETA for Ambulance to Scene:	
	Air:	
	Ground:	30 min.
	Approved Helispot:	None identified
	Lat:	
	Long:	

The Following Resources Need to See

Finance - Federal Personnel Time

September 24, 2014 Day Shift

C-04	Navajo Scouts #2	O-21	Michael Carr
C-05	San Carlos	O-168	Gary Curcio
C-07	Teresa Riesenhuber	O-252	Ryan Anderson
C-16	CAC#4	O-643	Jerry Westfall
C-12	Intertribal # 1	O-663	Novak, N
C-25	Audry French	O-826	Brentwood Reid
C-30	Northern Utah Regulars	O-844	Robert Kramer
C-39	Red Rock	O-885	Kurt Gainer
C-89	Sawtooth		
C-93	Redding Hot Shots		
C-96	Utah County #2		
C-143	Northern AZ		
C-144	Kaddo Nation		
C-171	Gila Regulars 5		
C-172	Hopi 1 Crew		
C-175	Pima		
C-191	OC25		
E-374	CPS Eng 62		
E-606	Lone Peak – Engine 1667		
E-607	Lone Peak – Engine 1668		

# Incident Trainee / Trainer Data Worksheet

PLEASE PRINT LEGIBLY!

## A: Trainee Data

Trainee Name: \_\_\_\_\_ Check One:  Male  Female  
Trainee Position: \_\_\_\_\_ Order Number (E, O, C, A) \_\_\_\_--\_\_\_\_\_  
State Abr. \_\_\_\_ + 3 Letter Designator \_\_\_\_\_ Agency Type:  Federal  State  Local  
 USFS  BLM  BIA  FWS  DOD  NWS  NPS Date Assigned: \_\_\_\_--\_\_\_\_--\_\_\_\_\_  
Ordered as a trainee for the incident?  Yes  No Trainee Cell Number: \_\_\_\_\_  
Ordered as a US Forest Service PRIORITY trainee  Yes  No  OFPM  IFPM?

**Person's name and title that is responsible for tracking your qualifications:  
(Where do you want the packet mailed to?)**

Name: \_\_\_\_\_ Title: \_\_\_\_\_ Home Unit: \_\_\_\_\_  
Agency Address: \_\_\_\_\_ City: \_\_\_\_\_  
State: \_\_\_\_\_ Zip: \_\_\_\_\_ Phone Number: ( ) \_\_\_\_\_--\_\_\_\_\_

## B. Trainee Prerequisites

YES NO

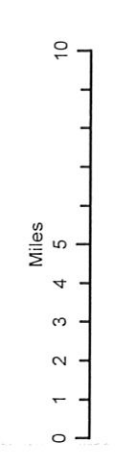
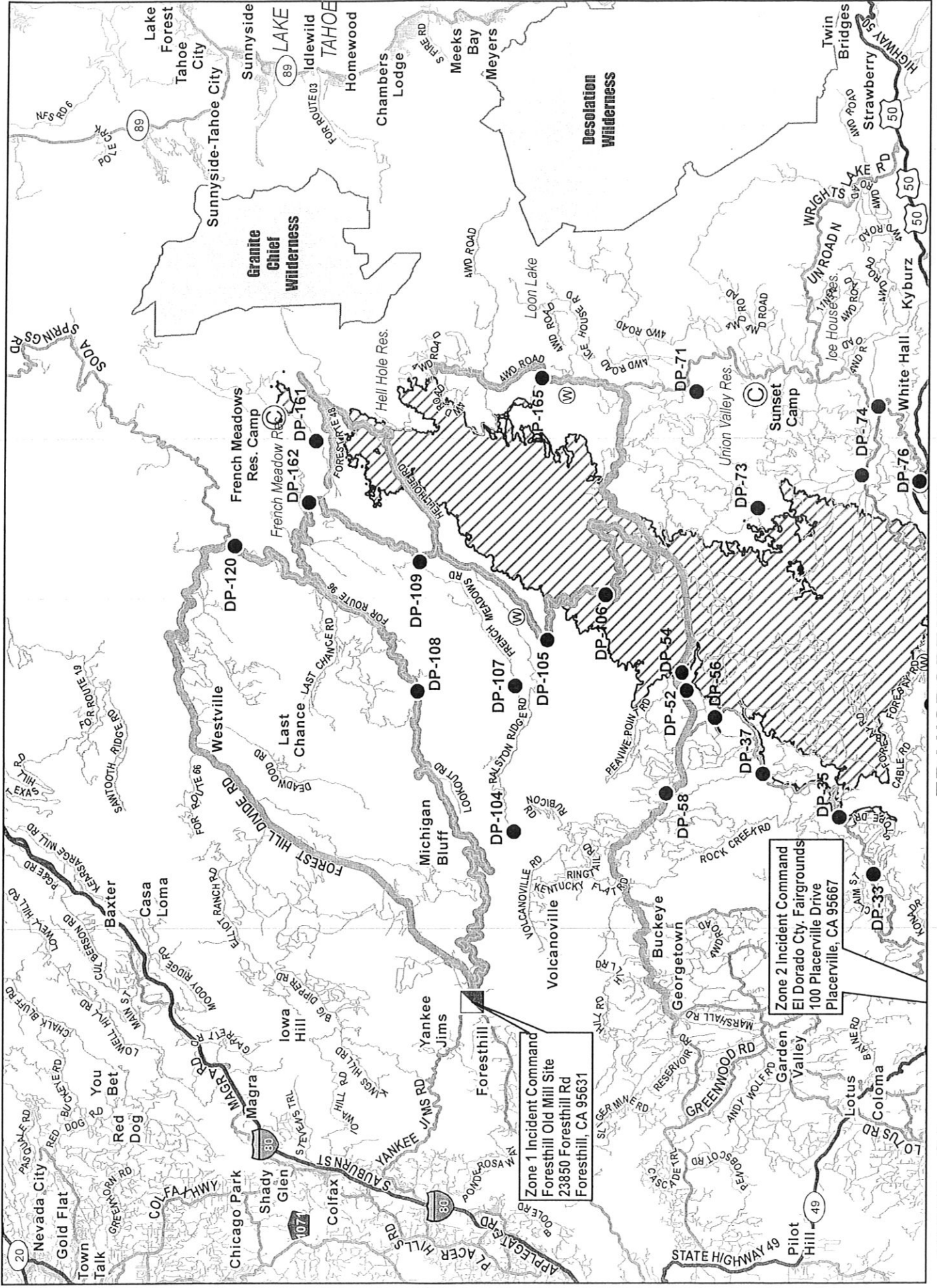
- |  |                       |                       |
|--|-----------------------|-----------------------|
| 1. Possesses valid Red Card or agency certification card?    | <input type="radio"/> | <input type="radio"/> |
| 2. Trainee has a proper agency initiated position task book? | <input type="radio"/> | <input type="radio"/> |
| 3. Trainee has an <b>incident supplied</b> task book?        | <input type="radio"/> | <input type="radio"/> |

## C. Trainer/Evaluator Data (All fields are required to be filled in)

Trainer/Evaluator Name: \_\_\_\_\_ Position: \_\_\_\_\_  
Home Unit: \_\_\_\_\_ Order Number (E, O, C, A) \_\_\_\_--\_\_\_\_\_  
Work Address: \_\_\_\_\_ City: \_\_\_\_\_ State: \_\_\_\_\_  
Zip Code: \_\_\_\_\_ Phone Number: ( ) \_\_\_\_\_--\_\_\_\_\_

## D. Trainee Goals (items in the position task book to be evaluated on this incident)

1. \_\_\_\_\_
2. \_\_\_\_\_
3. \_\_\_\_\_



**TRANSPORTATION MAP**  
 King Incident CA-ENF-023461  
 September 24, 2014

Zone 1 Incident Command  
 Foresthill Old Mill Site  
 23850 Foresthill Rd  
 Foresthill, CA 95631

Zone 2 Incident Command  
 El Dorado City, Fairgrounds  
 100 Placerville Drive  
 Placerville, CA 95667

