

KING INCIDENT

Incident Action Plan

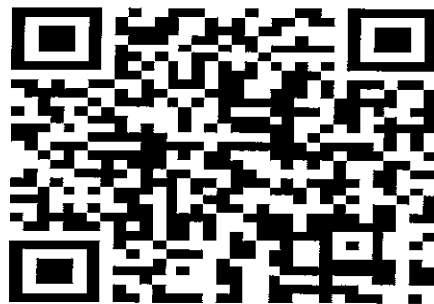
CA-ENF-023461

P5JEE9 (0503)

Operational Period

NIGHT SHIFT 9/24/14 – 9/25/14

1800 - 0600



INCIDENT OBJECTIVES	1. INCIDENT NAME	2. DATE PREPARED	3. TIME PREPARED
	KING	9/24/14	0900
4. OPERATIONAL PERIOD (DATE/TIME) <p style="text-align: center;">NIGHT SHIFT 9/24/14 – 9/25/14 1800 - 0600</p>			
5. GENERAL CONTROL OBJECTIVES FOR THE INCIDENT Management Objectives: Provide for safety of responders and the public Ensure an appropriate evacuation and repopulation plan is in place and communicated Establish and maintain positive relationships with cooperating agencies and the public Provide timely and accurate incident information Protect economic and watershed values with safe and aggressive firefighting efforts Keep costs commensurate with values at risk Control Objectives: Keep fire North of Forebay Road and Highway 50 east of Pollock Pines Keep fire East of Pino Grande Keep fire West of Ice House Road Keep fire South of the Middle Fork of the American River			
6. WEATHER FORCAST FOR OPERATIONAL PERIOD <p style="text-align: center;">See Attached</p>			
7. GENERAL/SAFETY MESSAGE <p style="text-align: center;">See Attached</p>			
8. ATTACHMENTS (X IF ATTACHED)			
<input checked="" type="checkbox"/> 202	<input checked="" type="checkbox"/> SAFETY MESSAGE / LCES	<input type="checkbox"/> TRANSPORTATION MAP	
<input checked="" type="checkbox"/> 203	<input checked="" type="checkbox"/> WEATHER	<input checked="" type="checkbox"/> INCIDENT MAP	
<input checked="" type="checkbox"/> 204	<input type="checkbox"/> AIR OPERATIONS SUMMARY	<input checked="" type="checkbox"/> FIRE BEHAVIOR	
<input checked="" type="checkbox"/> 205	<input checked="" type="checkbox"/> HUMAN RESOURCE	<input checked="" type="checkbox"/> TRAINING	
<input checked="" type="checkbox"/> 206	<input checked="" type="checkbox"/> ICP / CAMP MAP	<input checked="" type="checkbox"/> FINANCE	
<input checked="" type="checkbox"/> 214	<input checked="" type="checkbox"/> FIRE WEATHER	<input type="checkbox"/>	
ICS 202	9. PREPARED BY (PLANNING SECTION CHIEF) Dennis Cooper / Jason Schillinger (t)	10. APPROVED BY (INCIDENT COMMANDER) (Zone 1) (Zone 2) Jim Giachino / Kevin Smith	

ORGANIZATION ASSIGNMENT LIST		
1. Incident Name: KING (ZONE 1)		
2. Date: 9/24/14	3. Time: 1300	
4. Operational Period Night Shift: September 24 - 25, 2014 1800 - 0600		
Position	Name	
5. Incident Commander and Command Staff		
Incident Commander	Jim Giachino / Steve Miller (t)	
Deputy	Carlton Joseph	
Safety Officer	Marty Hamel / Steve Ryberg / Charlotte Jordan (t)	
Information Officer	Steve Kliest / Mark Savage (t)	
Liaison Officer	R. Alpert / R. Graham / W. McGrew / J. Jones	
6. Agency Representative		
Eldorado NF	Laurence Crabtree	
Eldorado Agency Admin Rep	Duane Nelson	
Tahoe NF	Tom Quinn / Pat Trimble	
Tahoe Agency Admin Rep	Victor Lyon	
Cal OES	Bill Bonshu	
CAL FIRE Nevada-Yuba-Placer Unit	Randy Smith	
IARR Eastern Area	Jeffrey Briggs	
IARR Northeastern Area	Robert Heartlove	
IARR Southern Area	Tom Barnes / Ed Bratcher / David Berens	
CAL TRANS	Dave Wood	
PG&E	Pam Purdee	
California Highway Patrol	Chris Sahagun	
Placer County Sheriff	Kevin Borden	
7. Planning Section		
Plans Chief	Dennis Cooper / Jason Schillinger (t)	
Resources Unit	R. Ashby / J. Switzler / J. Wilson / E. Matye (t)	
Situation Unit	T. Morelock / M. McHargue / P. Kaiser	
Human Resources	Marilyn Loughrey / Tom Nichols	
READ	Courtney Rowe	
Fire Behavior	Shelly Crook / Denny O'Neil / Duane Weis	
Meteorologist	Jason Clapp	
GISS	Brad Weisshaupt / Eric Shreve (t)	
CTSP	Jim Youngblood / Chris Crowder (t)	
TNSP	Jim Mitchell / Seneca Smith / Bill Reynolds	
DEMOB	Dan Baggao / Jim Cooley	
8. Logistics Section		
Logistics Chief	H. Crane / D. Haston / K. Kumpe (t)	
Supply Unit	Michael Bradford	
Facilities Unit	Jim Eckroth / Wally Grogan	
Ground Support Unit	John Badaracco	
Medical Unit	Robert Russell / Newton Ong (t)	
Food Unit	Dennis Durham	
Receiving/Distribution	Joe McMahon	
Communications Unit	Greg Ely / Tim Magulre (t)	
Ordering Manager	Sharon Porter	
9. Operations Section		
Ops Chief	Brad Washa	
Planning Ops	Don Smith / Mike Sandwick	
Deputy Ops		
a. Branch X		
Branch Director	Larry Sears	
Division	1B	Matthew Madariaga / Ty Van Keuren (t)
Division	1D	Jeff Bedke
Division	1F	Brooks Baker / Brandon Allen (t)
b. Branch XII		
Branch Director	John Flores	
Division	1H	Brad Sawyer / Allen Clay
Division	1K	Unstaffed
Division	1L	Ben Rupert / Bill Morris (t)
c. Branch XIV		
Branch Director	Unstaffed	
Division	1M	Unstaffed
Division	1P	Unstaffed
d. Branch XVI		
Branch Director	Rod Collins / Quincy Chung (t)	
Division	1R	Unstaffed
Division	1T	Unstaffed
Division	1W	Gene Neely / William Marks (t)
Division	1Y	Kevin Wegener
Division	1Z	Wilson Branch
e.		
Branch Director		
Division		
f.		
Branch Director		
Division		
g. Air Operations		
Air Operations Branch Director	John Keesee	
Air Support Supervisor	Craig Dado	
Helicopter Coordinator	Lane Caldwell / John Chin	
Heli Base Manager	Brady Bernard	
10. Finance/Administration Section		
Finance/Admin. Chief	Teresa Fork / Peter Bymers	
Cost Appro.	Kenny Lucien	
Time Unit	Janice Brown	
Procurement Unit	Wendy Whiteman	
Compensation/Claims Unit	Elaine Downing	
Cost Unit	Roger Siemens	
Personnel Time Recorder	Debra Luna (t)	
Prepared by (Resource Unit Leader)	Eric Matye (t)	



ZONE 1 FIRE WEATHER FORECAST

FORECAST NO: 17
PREDICTION FOR: Wednesday Night SHIFT

INCIDENT NAME: King Fire
UNIT: Eldorado National Forest

SHIFT DATE: 24/25 Sep 2014

SIGNED: *Jason Clapp*

TIME AND DATE
FORECAST ISSUED: 1200 / 24 September 2014

Jason Clapp
Incident Meteorologist

WEATHER TONIGHT:

WEATHER: Becoming cloudy toward midnight with isolated light showers by sunrise.

TEMPERATURES: 56-62 Thermal belts/ridges...53-56 Valleys
RELATIVE HUMIDITY: 50-60% Thermal belts/Ridges ...65-80% Valleys

20 FT WINDS:

RIDGETOP - SW 4-9 with gusts 15 mph shifting SSE after 2200 with 6-12 with gusts 15-20 mph after 0200.

SLOPE/VALLEY - Downslope 3-6 mph. Then downcanyon 4-8 mph after 2400 and gusts to 12 mph down the Rubicon at the DIV G /1B break.

LAL: 1.

STABILITY/INVERSION: Weak inversion setting up after 2200.

WEATHER DISCUSSION: An initial frontal system may impact the fire with some light showers/sprinkles late Wednesday night/Thursday morning. The best chances will be later Thursday with an isolated thunderstorm or two as front moves by area. Initial frontal system will be followed by the passage of the main Low pressure center over the area Friday and Friday night with another chance of showers/thunderstorms. These waves are not very wet, and the area is only expected to receive around a quarter of an inch total.

WEATHER FOR THURSDAY: Morning SE breezes transition to stronger SW wind lowering RH. High temps: 60-65. Min RH: 45-50%. Ridge winds: SW 10-15 G25-30. Valley/Slope winds: Downslope 3-7 mph shifting upslope/upcanyon 5-10 mph by mid morning with afternoons gusts 15-20 mph.

ZONE 1: KING FIRE NORTH - FIRE BEHAVIOR FORECAST

FORECAST NUMBER: #18

TYPE OF FIRE: Wildfire

FIRE NAME: King Fire (ZONE 1, NORTH)

OPERATIONAL PERIOD: Wednesday 9/24/14 Night Shift

DATE ISSUED: September 24, 2014

TIME ISSUED: 1200

UNIT: Eldorado National Forest, CA State

SIGNED:  Duane Weis- FBAN

INPUTS

WEATHER SUMMARY

(Refer to Weather Forecast for details)

Mostly clear becoming cloudy. Min Temp: 50-60°. Max RH: 50-80%.

Ridgetop winds – SW 4-9 mph gusting to 15, shifting to SSE 6-12 with gusts to 15-20 mph after 2200.

Slope/Valley Winds – Down slope/down valley 3-6 mph becoming down canyon 5-12 mph.

FUELS

Predominantly mature mixed conifer (ponderosa pine, cedar, Douglas fir) with heavy shrub understory. Red fir on upper ridges. Fuel loadings are generally heavy. Representative Fuel Models 9, 10, TU5, TL8, TL9. Large fire history to the north and west includes the Star Fire (2001), Ralston Fire (2007), Government and Westville (2008), American Fire (2013). Fuel moistures will be at their lowest point going into tonight's shift before atmospheric moisture begins to rise for the next few days.

OUTPUTS - FIRE BEHAVIOR

Thresholds for Active Fire Behavior in the King Fire area (Eldorado NF PocketCard):

* 20ft Winds (over 5 mph) *RH (under 22%) *Temperature (over 84°) *1000hr FMC (under 9%)

GENERAL: Conditions are in place for very active fire behavior leading into tonight's shift, including moderate rates of spread, torching and spotting. This active burning could continue well into the evening until relative humidity values rise significantly. Down slope and down canyon winds after 2200 will also have the opportunity to influence fire behavior later in the shift.

Branch X: Highest concentrations of intense heat last night were concentrated near the zone break in the Rubicon River drainage and Little Grizzly Canyon. This area continues to have the greatest potential for significant fire activity and could be exposed to strong SSE winds on upper ridges after 2200.

Branches XII and XIV: Fire activity has been minimal over much of this area, but tonight poses the greatest potential for active burning if containment lines get challenged this afternoon.

Branch XVI: Similar to Branch X, highest concentrations of intense heat last night were concentrated near the zone break. This area, including the South Fork of the Rubicon River through Dry Lakes, continues to pose the greatest potential for significant fire activity in Branch XVI.

FEEDBACK: Collect WX observations hourly and turn in to FBAN or IMET at end of shift. Please include fire behavior observations.

AIR OPERATIONS

Smoky conditions may limit operations in the evening. Sunset at 18:59 / Sunrise at 06:53

SAFETY

- Expect down slope and down canyon winds to influence any active burning after 22:00.

Division Assignment List		1. Branch X		2. Division/Group 1 B	
3. Incident Name KING - ZONE 1		4. Operational Period 09/24/14 Wednesday Night Shift 1800 - 0600			
5. Operations Personnel					
Operations Chief	BRAD WASHA	Division/Group Supervisor		MATTHEW MADARIAGA; TY VAN KEUREN (t)	
Operations Chief		Air Attack Supervisor			
Branch Director	LARRY SEARS	Safety Officer		M. HAMEL; S. RYBERG; C. JORDAN (t)	
6. Resources Assigned this Period					
Strike Team/Task Force/ Resource Designator	Leader	Num of Pers.	Trans. Y/N	Drop Off PT./Time	Pick Up PT./Time
CRW T2IA TANANA C-21 9/30	JAMES LUDECKER	20	N	1800	0600
ENG T6 UTASF 631 E-351 10/1	ANTHONY TAYLOR	4	N	1800	0600
ENG6 MBF 694 E-375 10/2	JOSHUA MCGEE	3	N	1800	0600
DOZ T2 YTS E-197* 9/29	RICHARD JAUQCH	2	N	1800	0600
DOZ T2 GREENOUS E-563* 10/5	GREG CALDWELL	2	N	1800	0600
DOZ T2 HAYS EQUIP E-570* 10/4	BOB HAYES	2	N	1800	0600
DOZ T2 HAYS EQUIP E-571* 10/5	BOB CAMERON	2	N	1800	0600
DOZ T2 LENAHN'S WATER E-212 9/29	JOHN MONTZ	2	N	1800	0600
WT T1 C&H VETERAN ENT E-252* 9/29	JAMES CALDWELL	2	N	1800	0600
DOZ T2 TOM'S EARTH MOVIN E-101	JOHN THORNTON	4	N	1800	0600
WT T1 C&H VETERAN ENT E-252 9/29	JAMES CALDWELL	2	N	1800	0600
WT T1 PRO DUMP E-278* 9/29	CARLOS FURTADO	2	N	1800	0600
HEQB O-518 9/30	CHARLES RICH WATERS	1	N	1800	0600
HEQB(t) O-517 9/30	CURTIS D HERREN	1	N	1800	0600
HEQB O-250 9/30	LOGAN LAWSON JR	1	N	1800	0600
HEQB O-264 9/29	LUCAS T MAYFIELD	1	N	1800	0600
SOFR O-238	GREG BURCH	1	N	1800	0600
FEMP O-756 10/4	JOHN P BICONDOVA	1	N	1800	0600
FEMT O-757 10/4	MATT HECKMANN	1	N	1800	0600

7. Control Operations

Widen and improve secondary line along 26 road if necessary. Coordinate with Zone 2 Division G. Secure spot fire located in Little Grizzly Canyon.

8. Special Instructions

All Division Supervisors need to download information to the Sit Unit for all completed line and proposed line.

Noxious weeds are marked by orange "noxious weed" flagging. Minimize or avoid activities in these areas. Sensitive areas are marked with pink/black checkerboard flagging. Minimize ground disturbing activities in these areas.

* Indicates a 24 hour resource 0600-0600

9. Division/Group Communications Summary							
Function	Frequency - RX	Frequency - TX	Tone	System	Channel	System	Channel
Command	166.6125	168.4000	136.5	NIFC C4	1		
Tactical Div/Group	168.0500	168.0500		NIFC T1	5		
Logistics							
Air to Ground	169.1500	169.1500		A/G CMD	13		
Prepared by (Resource Unit Leader) J Switzler; G.Thompson; E. Mayte (t)			Approved by (Planning Section Chief) Dennis Cooper; Jason Schillinger (t)		Date Prepared 09/24/14	Time Prepared 1025	

Division Assignment List	1. Branch X	2. Division/Group 1 D
---------------------------------	-----------------------	---------------------------------

3. Incident Name KING - ZONE 1	4. Operational Period 09/24/14 Wednesday Night Shift 1800 - 0600
--	--

5. Operations Personnel

Operations Chief	BRAD WASHA	Division/Group Supervisor	JEFF BEDKE
Operations Chief		Air Attack Supervisor	
Branch Director	LARRY SEARS	Safety Officer	M.HAMEL; S.RYBERG; C.JORDAN (t)

6. Resources Assigned this Period

Strike Team/Task Force/ Resource Designator	Leader	Num of Pers.	Trans. Y/N	Drop Off PT./Time	Pick Up PT./Time
ENG T3 12 E-545 10/1	NATHAN SCINTO	5	N	1800	0600
ENG T3 5121B E-625 10/5	JEREMY KIZER	4	N	1800	0600
ENG T3 352 E-623 10/1	JON MAXWELL	5	N	1800	0600
ENG T3 PMA 426 E-638 10/5	JESSE ZUNIGA	6	N	1800	0600
DOZ T2 1540 E-148 9/29	MICHAEL WATERS	2	N	1800	0600
DOZ T2 AMADOR MECH E-196* 9/30	MERVIN VICINI	2	N	1800	0600
DOZ T2 AAA EQUIP E-207* 9/29	BRENDON SIMUNACI	2	N	1800	0600
TFLD O-789 10/5	CHRIS R SCOTT	1	N	1800	0600
HEQB O-258 9/30	NATHANIEL ZALEWSKI	1	N	1800	0600
HEQB O-260 9/30	STEPHEN RUTTER	1	N	1800	0600
SOFR O-238	GREG BURCH	1	N	1800	0600

7. Control Operations
Widen and improve existing secondary lines from NF 23 / NF 2 south towards Ramsen Crossing.

8. Special Instructions
All Division Supervisors need to download information to the Sit Unit for all completed line and proposed line.
Noxious weeds are marked by orange "noxious weed" flagging. Minimize or avoid activities in these areas.
Sensitive areas are marked with pink/black checkerboard flagging. Minimize ground disturbing activities in these areas.
* Indicates a 24 hour resource 0600-0600

9. Division/Group Communications Summary

Function	Frequency - RX	Frequency - TX	Tone	System	Channel	System	Channel
Command	166.6125	168.4000	136.5	NIFC C4	1		
Tactical Div/Group	168.5000	168.5000		NIFC T10	6		
Logistics							
Air to Ground	169.1500	169.1500		A/G CMD	13		

Prepared by (Resource Unit Leader) G.Thompson; J Switzler; E. Mayte (t)	Approved by (Planning Section Chief) Dennis Cooper; Jason Schillinger (t)	Date Prepared 09/24/14	Time Prepared 1025
--	--	---------------------------	-----------------------

Division Assignment List			1. Branch X		2. Division/Group 1 F		
3. Incident Name KING - ZONE 1			4. Operational Period 09/24/14 Wednesday Night Shift 1800 - 0600				
5. Operations Personnel							
Operations Chief		BRAD WASHA		Division/Group Supervisor		BROOKS BAKER / BRANDON ALLEN (t)	
Operations Chief				Air Attack Supervisor			
Branch Director		LARRY SEARS		Safety Officer		M.HAMEL; S.RYBERG; C.JORDAN (t)	
6. Resources Assigned this Period							
Strike Team/Task Force/ Resource Designator		Leader		Num of Pers.	Trans. Y/N	Drop Off PT./Time	Pick Up PT./Time
CRW T2IA BIA EASTERN C-11 9/30		CHRIS NATSEWAY		20	N	1800	0600
CRW T2 MQ FRANCO 136 C-44 10/1		FERNANDO CERVANTES		20	N	1800	0600
ENG S/T MNF 3645C E-161 9/29				28	N	1800	0600
ENG T/F #15						1800	0600
TFLD		TBA		1	N	1800	0600
ENG BMD 6411 E-653		JOESPH MALSAM		3	N	1800	0600
ENG IFD 3441 E-656		NICHOLAS MOREAU		5	N	1800	0600
ENG MOD 6618 E-657		NORBERT NORTON		4	N	1800	0600
ENG BOD 1421 E-659		JAMES BRUMMOND		3	N	1800	0600
SOFR O-224 9/30		BILL BRYANT		1	N	1800	0600
SOFR O-964 9/28		DOUGLAS WELBOURN		1	N	1800	0600
FEMP O-760 10/4		KEVIN BERKERY		1	N	1800	0600
FEMT O-763 10/4		DONALD G MCLAUGHLIN		1	N	1800	0600
7. Control Operations							
Establish a hose lay from Hell Hole Road north at the Star Ridge trail.							
8. Special Instructions							
All Division Supervisors need to download information to the Sit Unit for all completed line and proposed line.							
Noxious weeds are marked by orange "noxious weed" flagging. Minimize or avoid activities in these areas.							
Sensitive areas are marked with pink/black checkerboard flagging. Minimize ground disturbing activities in these areas.							
* Indicates a 24 hour resource 0600-0600							
9. Division/Group Communications Summary							
Function	Frequency - RX	Frequency - TX	Tone	System	Channel	System	Channel
Command	166.6125	168.4000	136.5	NIFC C4	1		
Tactical Div/Group	166.7250	166.7250		NIFC T5	7		
Logistics							
Air to Ground	169.1500	169.1500		A/G CMD	13		
Prepared by (Resource Unit Leader) J Switzer; G.Thompson; E. Mayte (t)			Approved by (Planning Section Chief) Dennis Cooper; Jason Schillinger (t)		Date Prepared 09/24/14		Time Prepared 1025

Division Assignment List			1. Branch XII		2. Division/Group 1 H			
3. Incident Name KING - ZONE 1			4. Operational Period 09/24/14 Wednesday Night Shift 1800 - 0600					
5. Operations Personnel								
Operations Chief		BRAD WASHA			Division/Group Supervisor		BRAD SAWYER; ALLEN CLAY	
Operations Chief					Air Attack Supervisor			
Branch Director		JOHN FLORES			Safety Officer		M. HAMEL; S. RYBERG; C. JORDAN (t)	
6. Resources Assigned this Period								
Strike Team/Task Force/ Resource Designator		Leader		Num of Pers.	Trans. Y/N	Drop Off PT./Time		Pick Up PT./Time
CRW T2IA MESCALERO C-100 9/30		JOHN CENVANTES		20	N	FRENCH SPIKE 1900		FRENCH SPIKE 0600
CRW T2IA NMZUA #2 C-99 10/1		CHAD NASTACIO		20	N	FRENCH SPIKE 1900		FRENCH SPIKE 0600
CRW T2IA FOLSOM LAKE C-137 10/1		MATT LYNDE		19	N	FRENCH SPIKE 1900		FRENCH SPIKE 0600
T/F T3 KING #14						FRENCH SPIKE 1900		FRENCH SPIKE 0600
TFLD O-787 10/5		HEATHER FISHER		1	N	FRENCH SPIKE 1900		FRENCH SPIKE 0600
ENG T3 ENF 63 E-393 9/27		MICHAEL LOEFFLER		5	N	FRENCH SPIKE 1900		FRENCH SPIKE 0600
ENG T3 365 E-527 10/3		BERNIE QUINNONEZ		6	N	FRENCH SPIKE 1900		FRENCH SPIKE 0600
ENG T3 MISSOULA E-608 10/5		JEFF GROLL		3	N	FRENCH SPIKE 1900		FRENCH SPIKE 0600
ENG T3 14 E-619 10/5		KEN HUTTEMA		3	N	FRENCH SPIKE 1900		FRENCH SPIKE 0600
ENG T3 1347 E-661 9/25		CHAD HULLBARD		4	N	FRENCH SPIKE 1900		FRENCH SPIKE 0600
DOZ T2 E-107 10/1		BOB MURRAY		4	N	FRENCH SPIKE 1900		FRENCH SPIKE 0600
DOZ T2V ROEN #N01 E-567 10/5		CLAY BOSCI		2	N	FRENCH SPIKE 1900		FRENCH SPIKE 0600
WT T1 SPECE INDUSTRIAL E-126 9/30		STEVE ROOKS		4	N	FRENCH SPIKE 1900		FRENCH SPIKE 0600
W/T SUP T1 E-133 10/2		GEORGE NEILLS		2	N	FRENCH SPIKE 1900		FRENCH SPIKE 0600
WT T1 WASATCH SMOKIES E-137 10/1		DENISE VICKERS		2	N	FRENCH SPIKE 1900		FRENCH SPIKE 0600
HEQB O-835 10/5		RIGOBERTO FLORES		1	N	FRENCH SPIKE 1900		FRENCH SPIKE 0600
HEQB O-841 10/5		LOREN LEE BELL		1	N	FRENCH SPIKE 1900		FRENCH SPIKE 0600
HEQB (t) O-3185 10/5		GABRIEL O'KEEFE (t)		1	N	FRENCH SPIKE 1900		FRENCH SPIKE 0600
SOFR O-224 9/30		BILL BRYANT		1	N	FRENCH SPIKE 1900		FRENCH SPIKE 0600
FEMP O-759 10/4		TRAVIS MEDINA		1	N	FRENCH SPIKE 1900		FRENCH SPIKE 0600
7. Control Operations								
Complete dozer line from Chipmunk Ridge to spot fire. Improve existing control line from Chipmunk Ridge to Middle Meadow C.G.								
8. Special Instructions								
Report to French Meadows Spike at end of shift. Day and Night travel to line via Foresthill Rd. Return via Mosquito Ridge Rd. All Division Supervisors need to download information to the Sit Unit for all completed line and proposed line. Noxious weeds are marked by orange "noxious weed" flagging. Minimize or avoid activities in these areas. Sensitive areas are marked with pink/black checkerboard flagging. Minimize ground disturbing activities in these areas.								
* Indicates a 24 hour resource 0600-0600								
9. Division/Group Communications Summary								
Function	Frequency - RX	Frequency - TX	Tone	System	Channel	System	Channel	
Command	166.6125	168.4000	136.5	NIFC C4	1			
Tactical Div/Group	166.7750	166.7750		NIFC T6	8			
Logistics								
Air to Ground	169.1500	169.1500		A/G CMD	13			
Prepared by (Resource Unit Leader) J Switzler; J Wilson; E Mayte (t)			Approved by (Planning Section Chief) Dennis Cooper; Jason Schillinger (t)		Date Prepared 09/24/14	Time Prepared 1025		

Division Assignment List	1. Branch XII	2. Division/Group 1 K
---------------------------------	-------------------------	---------------------------------

3. Incident Name KING - ZONE 1	4. Operational Period 09/24/14 Wednesday Night Shift 1800 - 0600
--	--

5. Operations Personnel

Operations Chief	BRAD WASHA	Division/Group Supervisor	UNSTAFFED
Operations Chief		Air Attack Supervisor	
Branch Director	JOHN FLORES	Safety Officer	M. HAMEL; S. RYBERG; C. JORDAN (t)

6. Resources Assigned this Period

Strike Team/Task Force/ Resource Designator	Leader	Num of Pers.	Trans. Y/N	Drop Off PT./Time	Pick Up PT./Time
UNSTAFFED					

7. Control Operations
UNSTAFFED

8. Special Instructions
All Division Supervisors need to download information to the Sit Unit for all completed line and proposed line.
Day and Night travel to line via Foresthill Rd. Return via Mosquito Ridge Rd.
Noxious weeds are marked by orange "noxious weed" flagging. Minimize or avoid activities in these areas.
Sensitive areas are marked with pink/black checkerboard flagging. Minimize ground disturbing activities in these areas.

* Indicates a 24 hour resource 0600-0600

9. Division/Group Communications Summary
--

Function	Frequency - RX	Frequency - TX	Tone	System	Channel	System	Channel
Command	166.6125	168.4000	136.5	NIFC C4	1		
Tactical Div/Group	168.0500	168.0500		NIFC T1	5		
Logistics							
Air to Ground	169.1500	169.1500		A/G CMD	13		

Prepared by (Resource Unit Leader) J Switzler; J Wilson; E Mayte (t)	Approved by (Planning Section Chief) Dennis Cooper; Jason Schillinger (t)	Date Prepared 09/24/14	Time Prepared 1025
---	--	---------------------------	-----------------------

Division Assignment List			1. Branch XII		2. Division/Group 1 L		
3. Incident Name KING - ZONE 1			4. Operational Period 09/24/14 Wednesday Night Shift 1800 - 0600				
5. Operations Personnel							
Operations Chief		BRAD WASHA		Division/Group Supervisor		BEN RUPERT; BILL MORRIS (t)	
Operations Chief				Air Attack Supervisor			
Branch Director		JOHN FLORES		Safety Officer		M. HAMEL; S. RYBERG; C. JORDAN (t)	
6. Resources Assigned this Period							
Strike Team/Task Force/ Resource Designator		Leader		Num of Pers.	Trans. Y/N	Drop Off PT./Time	Pick Up PT./Time
ENG S/T XNE 4104C E-163 9/29		JERRY GOOD		18	N	FRENCH MDW CG 1900	FRENCH MDW CG 0600
S/T ENF KING #8						FRENCH MDW CG 1900	FRENCH MDW CG 0600
STEN O-900 10/5		JON VEALE		1	N	FRENCH MDW CG 1900	FRENCH MDW CG 0600
STEN O-3222 10/5		KEN GOODIAN (t)		1	N	FRENCH MDW CG 1900	FRENCH MDW CG 0600
ENG T3 1667 E-606 10/5		BRAD CHANDLER		5	N	FRENCH MDW CG 1900	FRENCH MDW CG 0600
ENG T3 1668 E-607 10/5		BRIAN ETHRIDGE		5	N	FRENCH MDW CG 1900	FRENCH MDW CG 0600
ENG T3 TMU E42 E-266 9/30		EXSTROM WALKER		5	N	FRENCH MDW CG 1900	FRENCH MDW CG 0600
ENG T3.PARK CITY FD E-605 10/5		ZANE THOMPSON		3	N	FRENCH MDW CG 1900	FRENCH MDW CG 0600
ENG T3 72 E-624 10/4		CHRISTIAN LOPEZ		5	N	FRENCH MDW CG 1900	FRENCH MDW CG 0600
S/T ENF KING #9						FRENCH MDW CG 1900	FRENCH MDW CG 0600
STEN O-888 10/5		NATE HALLAM		1	N	FRENCH MDW CG 1900	FRENCH MDW CG 0600
ENG T3 15 E-548 10/4		DEAN DEHART		5	N	FRENCH MDW CG 1900	FRENCH MDW CG 0600
ENG T3 E-603		MALISSA MOORE		5	N	FRENCH MDW CG 1900	FRENCH MDW CG 0600
ENG T3 35 E-546 10/5		WADE JONES		5	N	FRENCH MDW CG 1900	FRENCH MDW CG 0600
ENG T3 322 E-621 10/5		OLLE SMITH		5	N	FRENCH MDW CG 1900	FRENCH MDW CG 0600
ENG T3 321 E-642 10/5		TRAVIS THOMPSON		6	N	FRENCH MDW CG 1900	FRENCH MDW CG 0600
7. Control Operations							
Mop-up perimeter of spot fire where it can be conducted safely at night.							
8. Special Instructions							
Report to French Meadows Spike at end of shift.							
All Division Supervisors need to download information to the Sit Unit for all completed line and proposed line.							
Day and Night travel to line via Foresthill Rd. Return via Mosquito Ridge Rd.							
Noxious weeds are marked by orange "noxious weed" flagging. Minimize or avoid activities in these areas.							
Sensitive areas are marked with pink/black checkerboard flagging. Minimize ground disturbing activities in these areas.							
* Indicates a 24 hour resource 0600-0600							
9. Division/Group Communications Summary							
Function	Frequency - RX	Frequency - TX	Tone	System	Channel	System	Channel
Command	166.6125	168.4000	136.5	NIFC C4	1		
Tactical Div/Group	168.2500	168.2500		NIFC T7	9		
Logistics							
Air to Ground	169.1500	169.1500		A/G CMD	13		
Prepared by (Resource Unit Leader) J Switzler; J Wilson; E Mayte (t)			Approved by (Planning Section Chief) Dennis Cooper; Jason Schillinger (t)		Date Prepared 09/24/14		Time Prepared 1025

Division Assignment List		1. Branch XII		2. Division/Group 1 L			
3. Incident Name KING - ZONE 1		4. Operational Period 09/24/14 Wednesday Night Shift 1800 - 0600					
5. Operations Personnel							
Operations Chief	BRAD WASHA		Division/Group Supervisor BEN RUPERT / BILL MORRIS (t)				
Operations Chief			Air Attack Supervisor				
Branch Director	JOHN FLORES		Safety Officer M. HAMEL; S. RYBERG; C. JORDAN (t)				
6. Resources Assigned this Period							
Strike Team/Task Force/ Resource Designator	Leader	Num of Pers.	Trans. Y/N	Drop Off PT./Time	Pick Up PT./Time		
T/F ENF KING #10				FRENCH MDW CG 1900	FRENCH MDW CG 0600		
TFLD	TRAVIS THOMPSON	1	N	FRENCH MDW CG 1900	FRENCH MDW CG 0600		
ENG T6 E-370 10/2	ERIC WHITE	3	N	FRENCH MDW CG 1900	FRENCH MDW CG 0600		
ENG T3 33 E-549 10/5	BRYAN LANNING	5	N	FRENCH MDW CG 1900	FRENCH MDW CG 0600		
ENG T6 E-654 10/1	JAMES BROWN	3	N	FRENCH MDW CG 1900	FRENCH MDW CG 0600		
ENG T6 21 E-655 10/1	JACE JAMES	3	N	FRENCH MDW CG 1900	FRENCH MDW CG 0600		
ENG T6 E-660 10/1	BRIAN WHITE	3	N	FRENCH MDW CG 1900	FRENCH MDW CG 0600		
DOZ T2 #1 - SPENCER E-111 10/1	MIKE SPENCER	2	N	FRENCH MDW CG 1900	FRENCH MDW CG 0600		
WT T1 G&G FIRE SUPP E-131 9/30	GREG WHIPPLE	4	N	FRENCH MDW CG 1900	FRENCH MDW CG 0600		
WT T1 TACTICAL E-141 9/30		2	N	FRENCH MDW CG 1900	FRENCH MDW CG 0600		
7. Control Operations							
Mop-up perimeter of spot fire where it can be conducted safely at night.							
8. Special Instructions							
Report to French Meadows Spike at end of shift. All Division Supervisors need to download information to the Sit Unit for all completed line and proposed line. Day and Night travel to line via Foresthill Rd. Return via Mosquito Ridge Rd. Noxious weeds are marked by orange "noxious weed" flagging. Minimize or avoid activities in these areas. Sensitive areas are marked with pink/black checkerboard flagging. Minimize ground disturbing activities in these areas.							
* Indicates a 24 hour resource 0600-0600							
9. Division/Group Communications Summary							
Function	Frequency - RX	Frequency - TX	Tone	System	Channel	System	Channel
Command	166.6125	168.4000	136.5	NIFC C4	1		
Tactical Div/Group	168.2500	168.2500		NIFC T7	9		
Logistics							
Air to Ground	169.1500	169.1500		A/G CMD	13		
Prepared by (Resource Unit Leader) J Switzler; J Wilson; E Mayte (t)		Approved by (Planning Section Chief) Dennis Cooper; Jason Schillinger (t)		Date Prepared 09/24/14		Time Prepared 1025	

Division Assignment List	1. Branch XIV	2. Division/Group 1 M
---------------------------------	-------------------------	---------------------------------

3. Incident Name KING - ZONE 1	4. Operational Period 09/24/14 Wednesday Night Shift 1800 - 0600
--	--

5. Operations Personnel					
--------------------------------	--	--	--	--	--

Operations Chief	BRAD WASHA	Division/Group Supervisor	UNSTAFFED		
Deputy Operations Chief		Air Attack Supervisor			
Branch Director	UNSTAFFED	Safety Officer	M.HAMEL;S. RYBERG; C JORDAN (t)		

6. Resources Assigned this Period					
--	--	--	--	--	--

Strike Team/Task Force/ Resource Designator	Leader	Num of Pers.	Trans. Y/N	Drop Off PT./Time	Pick Up PT./Time
UNSTAFFED					

7. Control Operations UNSTAFFED
--

8. Special Instructions All Division Supervisors need to download information to the Sit Unit for all completed line and proposed line. Noxious weeds are marked by orange "noxious weed" flagging. Minimize or avoid activities in these areas. Sensitive areas are marked with pink/black checkerboard flagging. Minimize ground disturbing activities in these areas. * Indicates a 24 hour resource 0600-0600

9. Division/Group Communications Summary							
---	--	--	--	--	--	--	--

Function	Frequency - RX	Frequency - TX	Tone	System	Channel	System	Channel
Command	166.6125	168.4000	136.5	NIFC C4	1		
Tactical Div/Group	168.5000	168.5000		NIFC T10	6		
Logistics							
Air to Ground	169.1500	169.1500		A/G CMD	13		

Prepared by (Resource Unit Leader) J. Switzler;G.Thompson; E. Mayte (t)	Approved by (Planning Section Chief) Dennis Cooper; Jason Schillinger (t)	Date Prepared 09/24/14	Time Prepared 1025
--	--	---------------------------	-----------------------

Division Assignment List		1. Branch XVI		2. Division/Group 1 W			
3. Incident Name KING - ZONE 1		4. Operational Period 09/24/14 Wednesday Night Shift 1800 - 0600					
5. Operations Personnel							
Operations Chief		BRAD WASHA		Division/Group Supervisor		GENE NEELEY / WILLIAM MARKS (t)	
Operations Chief				Air Attack Supervisor			
Branch Director		RODNEY COLLINS; QUINCY CHUNG(t)		Safety Officer		M.HAMEL; S. RYBERG; C.JORDAN (t)	
6. Resources Assigned this Period							
Strike Team/Task Force/ Resource Designator		Leader	Num of Pers.	Trans. Y/N	Drop Off PT./Time	Pick Up PT./Time	
CREW T1 ELK MT IHC C-48 9/28		CHEVEYO MUNK	20	N	1800	0600	
CRW T2 COBRAS 3 C-197 9/27		PETER HARDY	21	N	1800	0600	
CRW T2IA OH OHS #3 C-17 9/30		JEFFREY G TUCKER	20	N	1800	0600	
ENG S/T T3 E-497 9/29		TODD BENTLEY	20	N	1800	0600	
ENGINE T/F - XFR 5019 E-670 10/5		JAVIER LARA	5	N	1800	0600	
T/F KING #7							
STEN O-663 10/2		MARK NOVAK	1	N	1800	0600	
ENG T6 BONDURANT E-350 10/1		JERRY JOHNSON	4	N	1800	0600	
ENG T6 OUTBACK FIREFIGHT E-348		DEREK ANDRE	3	N	1800	0600	
ENG T6 MADSON BRUSH E-346 10/1		ROBERT RICKS	3	N	1800	0600	
ENG T6 MADSON BRUSH E-347 10/1		STAN CRITTENDEN	3	N	1800	0600	
ENG T6 CCD 3665 E-357 10/1		MATT CROSWAIT	2	N	1800	0600	
ENG T4 3442 E-658 10/1		JEROME BUGGER	4	N	1800	0600	
DOZER T2V BASQO E-569 10/5		RANDY GIBBS	3	N	1800	0600	
DOZ T2 NORTHSTATE E-120 10/1		GEORGE POE	2	N	1800	0600	
DOZ T2 GEORGE WURLITZER E-560			2	N	1800	0600	
DOZER T2 NEESE CONST E-575 10/5			2	N	1800	0600	
DOZ T2 NORTHSTATE E-110 10/1		GIFFORD TALMADGE	2	N	1800	0600	
DOZ T2 BIG EDS CRANE E-210 9/29		RICK ROGER	3	N	1800	0600	
WT T1 ALL AGENCY E-253 9/29		DOUG HILL	2	N	1800	0600	
7. Control Operations							
Widen and improve existing secondary line to Hell Hole Reservoir. Construct direct line following the completion of removing snags.							
8. Special Instructions							
All Division Supervisors need to download information to the Sit Unit for all completed line and proposed line.							
Noxious weeds are marked by orange "noxious weed" flagging. Minimize or avoid activities in these areas. Sensitive areas are marked with pink/black checkerboard flagging. Minimize ground disturbing activities in these areas.							
* Indicates a 24 hour resource 0600-0600							
9. Division/Group Communications Summary							
Function	Frequency - RX	Frequency - TX	Tone	System	Channel	System	Channel
Command	166.6125	168.4000	136.5	NIFC C4	1		
Tactical Div/Group	166.5500	166.5500		R5 T4	10		
Logistics							
Air to Ground	169.1500	169.1500		A/G CMD	13		
Prepared by (Resource Unit Leader) J.Switzler; G.Thompson; E. Mayte (t)			Approved by (Planning Section Chief) Dennis Cooper; Jason Schillinger (t)		Date Prepared 09/24/14	Time Prepared 1024	

Division Assignment List		1. Branch XVI		2. Division/Group 1W			
3. Incident Name ENF KING		4. Operational Period 09/24/14 Wednesday Night Shift 1800 - 0600					
5. Operations Personnel							
Operations Chief	BRAD WASHA		Division/Group Supervisor	GENE NEELEY / WILLIAM MARKS (t)			
Operations Chief			Air Attack Supervisor				
Branch Director	RODNEY COLLINS; QUINCY CHUNG(t)		Safety Officer	M. HAMEL; S RYBERG; C.JORDAN (t)			
6. Resources Assigned this Period							
Strike Team/Task Force/ Resource Designator	Leader	Num of Pers.	Trans. Y/N	Drop Off PT./Time	Pick Up PT./Time		
WT T1 E-139 10/2		4	N	1800	0600		
HEQB O-831 10/5	JACOB CHING	1	N	1800	0600		
HEQ O-252	RYAN ANDERSON	1	N	1800	0600		
ESTP O-810 10/5	TOMAS C GONZALEZ	1	N	1800	0600		
HEQB O-247 9/30	JOSH NUTTALL	1	N	1800	0600		
HEQB O-248	RICHARD NOGGLES	1	N	1800	0600		
HEQB O-244 9/30	ANDREW VALDEZ	1	N	1800	0600		
SOF2 O-357 9/30	DENNIS TERRY	1	N	1800	0600		
FEMP O-755 10/4	CHAD MEKETARIAN	1	N	1800	0600		
FEMT O-767 10/3	SEAN TIERNEY	1	N	1800	0600		
7. Control Operations							
Widen and improve existing secondary line to Hell Hole Reservoir. Construct direct line following the completion of removing snags.							
8. Special Instructions							
All Division Supervisors need to download information to the Sit Unit for all completed line and proposed line.							
Noxious weeds are marked by orange "noxious weed" flagging. Minimize or avoid activities in these areas. Sensitive areas are marked with pink/black checkerboard flagging. Minimize ground disturbing activities in these areas.							
* Indicates a 24 hour resource 0600-0600							
9. Division/Group Communications Summary							
Function	Frequency - RX	Frequency - TX	Tone	System	Channel	System	Channel
Command	166.6125	168.4000	136.5	NIFC C4	1		
Tactical Div/Group	166.5500	166.5500		R5 T4	10		
Logistics							
Air to Ground	169.1500	169.1500		A/G CMD	13		
Prepared by (Resource Unit Leader) J.Switzler; G.Thompson; E. Mayte (t)		Approved by (Planning Section Chief) Dennis Cooper; Jason Schillinger (t)		Date Prepared 09/24/14		Time Prepared 1024	

Division Assignment List	1. Branch	2. Division/Group
	XVI	1 Y

3. Incident Name KING - ZONE 1	4. Operational Period 09/24/14 Wednesday Night Shift 1800 - 0600
--	--

5. Operations Personnel

Operations Chief	BRAD WASHA	Division/Group Supervisor	KEVIN WEGENER
Operations Chief		Air Attack Supervisor	
Branch Director	RODNEY COLLINS; QUINCY CHUNG(t)	Safety Officer	M. HAMEL; S. RYBERG; C. JORDAN (t)

6. Resources Assigned this Period

Strike Team/Task Force/ Resource Designator	Leader	Num of Pers.	Trans. Y/N	Drop Off PT./Time	Pick Up PT./Time
CRW T2IA MDS #3 C-15 9/30	PAUL SHANNON WOLFE	20	N	1800	0600
CRW T2IA ZEPHYR C-38 9/29	MATT FOGERTY	20	N	1800	0600
ENG T6 BLAZE RUNNERS E-345 10/1	DUANE DARBIN	3	N	1800	0600
ENG T6 SWSE665 E-353 10/1	CHARLES PETERSON	3	N	1800	0600
WT T1 YTS E-258* 9/29	RICHARD YOST	0	N	1800	0600
WT 49ER E-3*	BOB ALVAREZ	2	N	1800	0600
WT T1 ARBOR TREE E-263* 9/29	LU ESTRADA	1	N	1800	0600
WT T1 HEAT SEEKER E-130 10/1	ROSS POOLE	4	N	1800	0600
HEQB O-257 9/30	MATTHEW KILGRIFF	1	N	1800	0600
SOFR O-966 10/7	RALPH TOVAR	1	N	1800	0600
FEMP O-761 10/4	NICK WARREN	1	N	1800	0600
FEMT O-766 10/4	BRYAN NASSOUR	1	N	1800	0600

7. Control Operations
Widen and improve existing secondary line from Loon Lake to South Fork campground.

8. Special Instructions
All Division Supervisors need to download information to the Sit Unit for all completed line and proposed line.
Noxious weeds are marked by orange "noxious weed" flagging. Minimize or avoid activities in these areas.
Sensitive areas are marked with pink/black checkerboard flagging. Minimize ground disturbing activities in these areas.
* Indicates a 24 hour resource 0600-0600

9. Division/Group Communications Summary

Function	Frequency - RX	Frequency - TX	Tone	System	Channel	System	Channel
Command	166.6125	168.4000	136.5	N/C C4	1		
Tactical Div/Group	167.1125	167.1125		R5 T5	11		
Logistics							
Air to Ground	169.1500	169.1500		A/G CMD	13		

Prepared by (Resource Unit Leader) J.Switzler; G.Thompson; E. Mayte (t)	Approved by (Planning Section Chief) Dennis Cooper; Jason Schillinger (t)	Date Prepared 09/24/14	Time Prepared 1024
---	---	----------------------------------	------------------------------

King – Safety Message

INCIDENT #CA-ENF-023461

DATE: 09.25/26.2014 TIME: 1800 – 0600 Night

Leader's Intent

Leader's intent is a clear, concise statement about what your firefighters must do to succeed in their assignment. It delineates three essential components:

- **Task:** What is the objective or goal of the assignment?
- **Purpose:** Why does the assignment need to be carried out?
- **End State:** How the situation should look when the assignment is successfully completed?

When firefighters understand the leader's intent, they can adapt plans and exercise initiative to accomplish the objective as the situation on the fire ground changes. Be sure and communicate leader's intent in all of your briefings, and instructions.

Communications = Close the Loop Follow Through

BRIEFING CHECKLIST

Situation

- Fire name, location, map orientation, other incidents in area
- Terrain influences
- Fuel type and conditions
- Fire weather (previous, current, and expected)
- Winds, RH, temperature, etc.
- Fire behavior (previous, current, and expected)
- Time of day, alignment of slope and wind, etc.

Mission/Execution

- Command
- Incident Commander/immediate supervisor
- Leader's intent
- Overall objectives/strategy
- Specific tactical assignments
- Contingency plans
- Medevac plan
- Personnel, equipment, transport options, contingency plans

Communications

- Communication plan
- Tactical, command, air-to-ground frequencies
- Cell phone numbers

Service/Support

- Other resources
- Working adjacent and those available to order
- Aviation operations

Logistics

- Transportation
- Supplies and equipment

Risk Management

- Identify known hazards and risks
- Identify control measures to mitigate hazards/reduce risk
- Identify trigger points for reevaluating operations

- Questions or Concerns?.

Understand your mission, ask questions!



6. INSTRUCTIONS AND ASSIGNMENTS NOT CLEAR

Randy Unkovich/Marty Hamel

INCIDENT SAFETY ANALYSIS 215a

KING INCIDENT (ZONE 1) CA-ENF-023461 - Wed/Thur, September 24/25, 2014

8. Location	9. Hazard	6. Control or Abatement Action (Engineering, Administrative, PPE, Avoidance, Education, etc)
ALL	Snag Hazards	<ul style="list-style-type: none"> • Follow Hazard Tree Safety Guidelines (IRPG). • Limit number of personnel around snags and their exposure time; fallers must be qualified for trees being fallen. • Be especially alert around snags during wind events. • Check overhead for dead branches in sleeping areas. • Maintain Situational Awareness.
ALL	Aircraft Operations	<ul style="list-style-type: none"> • Keep personnel out of drop zones. • Use air-to-ground freq. to communicate with aircraft. • Use clear, concise statements when directing aircraft. Use clock directions from pilot's perspective.
ALL	Direct Attack/Night Operations	<ul style="list-style-type: none"> • Do not engage in direct line tactics at night in areas where snags have not been mitigated.. • Snag areas in day time before engaging personnel. • Snag roads where nighttime travel is necessary. • Ensure medical protocols are followed. • Have medivac sites pre-identified/established. • Ensure good communications exist and tested.
ALL	Driving Hazards	<ul style="list-style-type: none"> • Practice defensive driving at all times. • Adhere To 30 mph speed limit on forest roads • Drive with headlights on. • Be alert for wildlife and livestock on roads at all times. • Slow down on washboard surfaces. • Avoid gravel berms on the sides of roadways. • Increase following distances on dusty roads. Slow down when you meet opposing traffic. • Maintain Situational Awareness. • Provide spike opportunites for resources that have long travel distances. • Ensure drivers are rested on long shifts, allow for rest sleep breaks when appropriate. • Provide relief drivers when necessary.
ALL	Severe Fire Behavior	<ul style="list-style-type: none"> • Review "Severe Fire Behavior Potential" (IRPG). • Monitor current weather conditions and forecasts. Make sure all personnel receive thorough briefings every shift. • Be observant for formation and passage of pyro-cumulous cells over the fire area and alert all personnel. • Maintain adequate escape routes and safety zones. Advise all personnel if these are compromised or changed. Set trigger points when appropriate. • Adhere to 10 Std Orders, mitigate 18 situations. • Maintain Situational Awareness.
ALL	Working around Dozers	<ul style="list-style-type: none"> • Maintain safe separation distance of personnel from dozers, • Take extra precautions when working downhill of dozer operations, use lookouts, avoid working downhill at night. • Ensure dozers are supervised by qualified DOZB as per agency specific policy.
ALL	Mines	<ul style="list-style-type: none"> • Identify and avoid mining areas. • Notify others of mining hazards and . • Be aware of vertical vent shafts, indicators may be slight indentations in . • Watch for and keep out of any horizontal adits or shafts that may be located into the side of a ridge or mountain.
ALL	Work/Rest and Fatigue	<ul style="list-style-type: none"> • Be alert for signs of fatigue and take breaks as necessary. • Maintain 2:1 work/rest ratio. • Monitor incoming resources for level of fatigue.

INCIDENT SAFETY ANALYSIS 215a

ALL	Hydration	<ul style="list-style-type: none"> • Encourage drinking water before, during and after shifts, up to 1.5 gal. during shifts. • Be alert for signs of heat stress in yourself and others.
ALL	Line Construction	<ul style="list-style-type: none"> • Conduct thorough briefing for all personnel involved (inside rear cover IRPG). • Ensure LCES in place prior to engagement (IRPG). • Establish adequate safety zones (IRPG). • Use Downhill Line Checklist (IRPG). • Follow "Look Up, Look Down, Look Around" procedures (IRPG). • Utilize Risk Management Process (IRPG).
ALL	Burning Operations	<ul style="list-style-type: none"> • Conduct thorough briefing for all personnel involved (inside rear cover IRPG). • All personnel to be fully qualified for their assignments. Trainees must have qualified trainers. • Utilize Risk Mgmt. Process (IRPG) for implementing plan. • Required PPE to be worn by all personnel involved. • LCES must be established prior to implementing burning operations (IRPG).
ALL	Structure Protection & HazMat Issues	<ul style="list-style-type: none"> • Conduct thorough briefing for all personnel involved (inside rear cover IRPG). • Utilize Structure Assessment Checklist (IRPG). • Follow structure Protection Guidelines (IRPG).
ALL	Foot Travel	<ul style="list-style-type: none"> • When walking through steep, rocky, and possibly wet terrain, watch footing and maintain proper spacing. • Watch for over-head hazards. • Treat "hot spots" on your feet before they become blisters. • Maintain downhill tool placement.
ALL	Tree Felling	<ul style="list-style-type: none"> • Conduct thorough briefing for all personnel involved (IRPG). • Establish traffic control as necessary. • Perform tree evaluation, use IRPG. Use Look-Up, Down, All Around Process. IRPG. • Use all required PPE. • Minimize exposure to personnel.
Zone 1	Spike Camps	<ul style="list-style-type: none"> • Ensure camps are clean of trash to avoid attracting wildlife • Keep sleeping areas are clear of snags and other tripping hazards • Have hand sanitizers and body cleaning products to prevent illness • Have a GPS spike locations in the incident 204 and with the Situation Unit • Have night contact/communications plans in place
ALL	Wildlife & Livestock	<ul style="list-style-type: none"> • Watch out for wildlife & livestock inside fire area and along roadways. • Clean up all debris and trash during each operational period and dispose of in receptacles • Do not throw food from lunches out on the fireline

INCIDENT RADIO COMMUNICATIONS PLAN		Incident Name KING, CA-ENF-023461 - ZONE 1				BK RADIO GROUP GROUP 14				Operational Period Date/Time 9/24/14 NIGHT	
Ch #	Function	Channel Name/Trunked Radio System Talkgroup	Assignment	RX Freq N or W	RX Tone/NAC	TX Freq N or W	TX Tone/NAC	Mode A, D or M	Remarks		
1	COMMAND	NIFC C4	ZONE 1 CMD	166.6125 N	136.5	168.4000 N	136.5	A	Little Bald Mtn. / Duncon L.O.		
2	COMMAND	NIFC C11	ZONE 1 CMD	170.6875 N	136.5	166.5750 N	136.5	A	Bunker Hill L.O.		
3	COMMAND	NIFC C59	ZONE 1 CMD	164.8375 N	136.5	170.0500 N	136.5	A	Not In Operation		
4	COMMAND	NIFC C61	Unassigned	164.8625 N	136.5	170.3875 N	136.5	A	Not Deployed		
5	TACTICAL	NIFC T1	DIV 1B & 1K	168.0500 N		168.0500 N		A			
6	TACTICAL	NIFC T10	DIV 1D & 1M	168.5000 N		168.5000 N		A			
7	TACTICAL	NIFC T5	DIV 1F & 1P	166.7250 N		166.7250 N		A			
8	TACTICAL	NIFC T6	DIV 1H & 1Z	166.7750 N		166.7750 N		A			
9	TACTICAL	NIFC T7	DIV 1L & 1R	168.2500 N		168.2500 N		A			
10	TACTICAL	R5 T4	DIV 1W & 1T	166.5500 N		166.5500 N		A			
11	TACTICAL	R5 T5	DIV 1Y	167.1125 N		167.1125 N		A			
12	TACTICAL	R5 T6	Contingency Branch	168.2375 N		168.2375 N		A	E / W Contingency & Roads		
13	AIR TO GROUND	A/G CMD	ALL DIVISIONS	169.1500 N		169.1500 N		A	AVG COMMAND		
14	AIR TO GROUND	A/G TAC	ALL DIVISIONS	167.9500 N		167.9500 N		A	AVG TACTICAL		
15	MEDICAL	CALCORD	ALL DIVISIONS	156.0750 N		156.0750 N	156.7	A	MEDICAL COORDINATION		
16	EMERGENCY ONLY	Air Guard	ALL DIVISIONS	168.6250 N		168.6250 N	110.9	A	AIR GUARD - EMERGENCY		
17								A			
18								A			
19								A			
20	EMERGENCY ONLY	Air Guard	ALL DIVISIONS	168.6250 N		168.6250 N	110.9	A	AIR GUARD - EMERGENCY		

Prepared By: (Communications Unit) *[Signature]*
 Incident Location: Foresthill, CA
 County: Placer State: CA Latitude 39°1.17' N, Longitude 120° 49.77' W

The convention calls for frequency lists to show four digits after the decimal place, followed by either an "N" or a "W", depending on whether the frequency is narrow or wide band. Mode refers to either "A" or "D" indicating analog or digital (e.g. Project 25) or "M" indicating mixed mode. All channels are shown as if programmed in a control station, mobile or portable radio. Repeater and base stations must be programmed with the Rx and Tx reversed.

INCIDENT RADIO COMMUNICATIONS PLAN		Incident Name			BK RADIO GROUP			Operational Period/Date/Time			
COMMUNICATIONS PLAN		KING, CA-ENF-023461 - ZONE 2			GROUP 15			9/23/14 0700 hrs - 9/24/14 0700 hrs			
Ch #	Function	Channel Name/Frunked Radio System Talkgroup	Assignment	RX Freq	N or W	RX Tone/NAC	TX Freq	N or W	Tx Tone/NAC	Mode A, D or M	Remarks
1	COMMAND	NIFC C5	ZONE 2 ALL DIV	167.1000 N		146.2	169.7500 N		146.2	A	TONE 5 - BALD MT. - LINKED
2	COMMAND	NIFC C12	ZONE 2 ALL DIV	173.0375 N		146.2	167.3250 N		146.2	A	TONE 5 - BIG MT. - LINKED
3	COMMAND	NIFC C37	ZONE 2 ALL DIV	172.5500 N		146.2	162.1875 N		146.2	A	TONE 5 - UNION HILL- LINKED
4											
5	COMMAND	NIFC C4	ZONE 1 CMD	166.6125 N		136.5	168.4000 N		136.5	A	TONE 4 - ZONE 1 CMD ONLY
6	TACTICAL	VFIRE 24	BRANCH I	154.2725 N		156.7	154.2725 N		156.7	A	CONTENGENCY - VTAC 14
7	TACTICAL	VFIRE 25	DIV A/U	154.2875 N		156.7	154.2875 N		156.7	A	
8	TACTICAL	VFIRE 26	DIV D/T	154.3025 N		156.7	154.3025 N		156.7	A	
9	TACTICAL	VTAC 11	DIV EW	151.1375 N		156.7	151.1375 N		156.7	A	
10	TACTICAL	VTAC 12	DIV G/Y	154.4525 N		156.7	154.4525 N		156.7	A	
11	TACTICAL	VTAC 13	FIRING GRP	158.7375 N		156.7	158.7375 N		156.7	A	
12	TACTICAL	VTAC 14	ROAD/DZR GRPS	159.4725 N		156.7	159.4725 N		156.7	A	ROAD GRP / DOZER GRPS
13	AIR TO GROUND	A/G CMD	ALL DIVISIONS	169.1500 N			169.1500 N			A	A/G COMMAND
14	AIR TO GROUND	A/G TAC	ALL DIVISIONS	167.9500 N			167.9500 N			A	A/G TACTICAL
15	MEDICAL	CALCORD	ALL DIVISIONS	156.0750 N			156.0750 N		156.7	A	MEDICAL COORDINATION
16	EMERGENCY ONLY	GUARD	ALL DIVISIONS	168.6250 N			168.6250 N		110.9	A	AIR GUARD - EMERGENCY
17										A	
18										A	
19										A	
20	EMERGENCY ONLY	GUARD	ALL DIVISIONS	168.6250 N			168.6250 N		110.9	A	AIR GUARD - EMERGENCY

Prepared By (Communications Unit)

Ken Parker, COM1 *[Signature]*

Incident Location: Placeville, CA

County: El Dorado State: CA Latitude Longitude N Longitude W

The convention calls for frequency lists to show four digits after the decimal place, followed by either an "N" or a "W", depending on whether the frequency is narrow or wide band. Mode refers to either "A" or "D" indicating analog or digital (e.g. Project 25) or "M" indicating mixed mode. All channels are shown as if programmed in a control station, mobile or portable radio. Repeater and base stations must be programmed with the Rx and Tx reversed.

MEDICAL PLAN

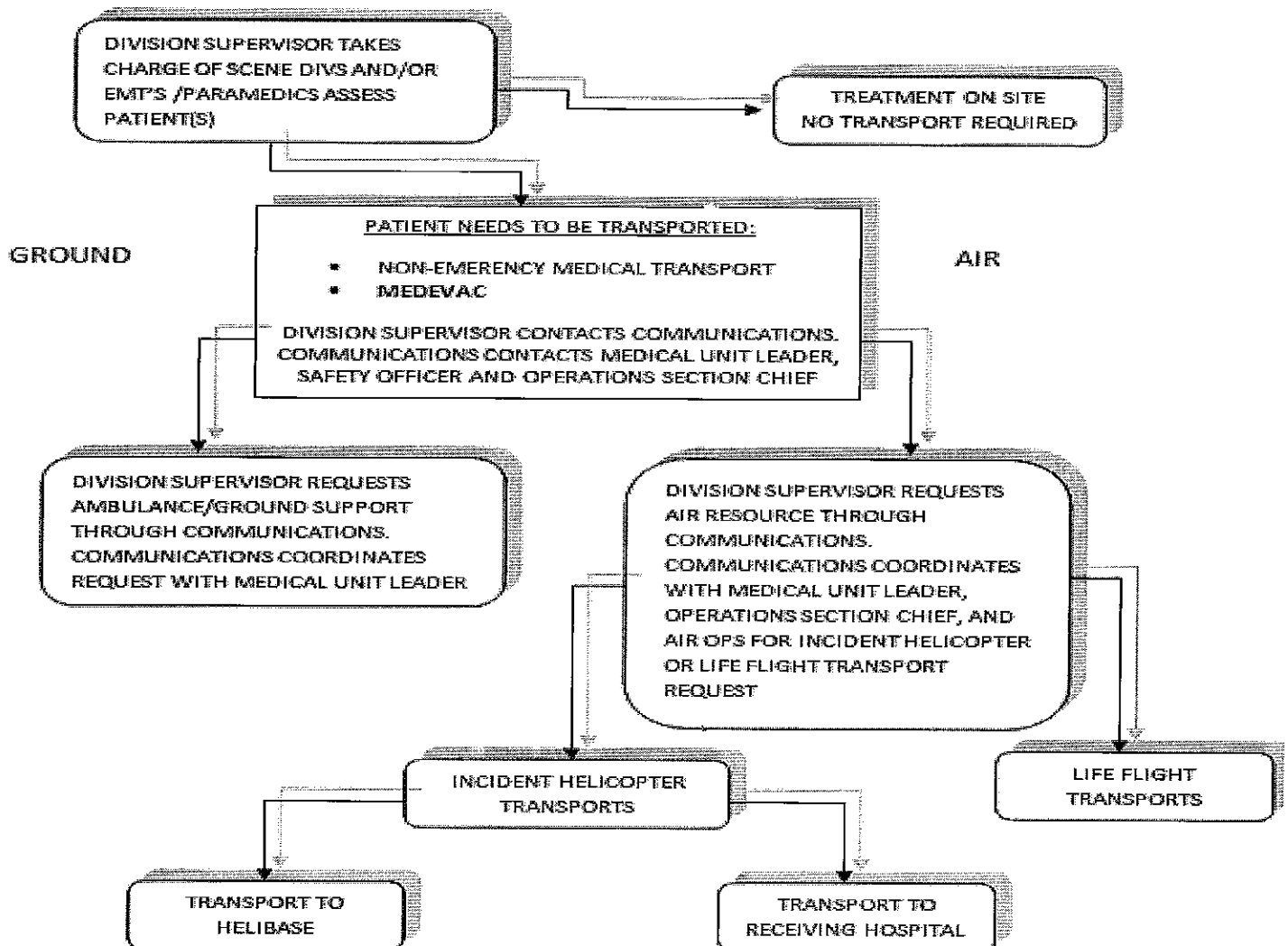
1. Incident/Project Name				2. Operational Period					
King Fire - Zone 1 (North)				Date/Time 9/24/2014 1800-0600					
2. Aid Station									
Name	Complete Address	Phone/EMS Freq.	Advanced Life Support (ALS)						
			Yes		No				
King ICP Zone 1 Frontline Medical	Foresthil Old Mill Site 23850 Foresthil Rd., Foresthil, CA 95631		XX						
Sunset Spike Camp Frontline Medical	Union Valley Reservoir - East side 14 mi. north of Hwy 50 on Ice House Road		XX						
3. Ambulance Services									
Name	Complete Address	Phone/EMS Freq	Advanced Life Support (ALS)						
			Yes		No				
Eldorado County EMS Medic 248	Eldorado County Fire Station 17 6426 Pony Express Trail, Pollock Pines, CA	911 or 530-647-5220	XX						
Foresthil Fire Department Medic 89 (at French Meadows)	Foresthil FPD FS 88 5981 Gold St. Foresthil, CA	911 or 530-886-5375	XX						
Georgetown FPD Medic 61	Georgetown FPD Station 61 6281 Main St, Georgetown, CA 95634	911 or 530-647-5220	XX						
AMR Ambulance Medic 290	DP 109	AMR or 916 563-0666	XX						
AMR Ambulance Medic 291	Zone 1 ICP	AMR or 916 563-0666	XX						
4. Air Ambulance Services									
Name	Phone	Type of Aircraft & Capability							
CAL FIRE H-104 Placerville, CA (Daytime Only)	911 or 530-647-5220	Bell 205++ Hoist, No NVG, BLS							
Kern County (KRN) H-408 Grass Valley, CA	911 or 530-647-5220	Bell 205++ Hoist, NVG, ALS							
CHP H20 or H24 Auburn, CA	911 or 916-861-1299	Eurocopter B3 Hoist, ALS, No NVG							
CALSTAR 3 Auburn, CA	911 or 530-887-0569	BO 105LS/C-30							
CAL STAR 6 South Lake Tahoe, CA	911 or 530-887-2338	BO 105LS/C-30							
5. Hospitals									
Name Complete Address	GPS Datum - NAD 83 Degrees Decimal Minutes DD° MM.MMM' N - Lat DD° MM.MMM' W - Long	Travel Time Air Gnd		Phone	Helipad Yes No		Level of Care Facility		
Marshal Medical Center 1100 Marshall Way, Placerville, CA 95667	Lat: N/A Long: VHF: N/A		1 Hr	(530) 622-1441		X	Level III Trauma Center		
Sutter Auburn Faith Hosp. 11815 Education St. Auburn, CA, 95602	Lat: N/A Long: VHF: N/A		30 Min	(530) 888-4500		X			
Sutter Roseville Medical Center 1 Medical Plaza Dr, Roseville, CA 95661	Lat: 38 45.58 Long: 121 14.52 VHF:	25 Min	45 Min	(916) 781-1200	X	<input type="checkbox"/>	Level II Trauma Center		
UC Davis Medical Center 2315 Stockton Ave. Sacramento, CA 95817	Lat: 38 33.17 Long: 121 27.21 VHF:	25 Min	1 Hr	(916) 734-2363	X	<input type="checkbox"/>	Level I Trauma Center Burn Center		
Barton Memorial Hospital 2170 South Ave. South Lake Tahoe, CA 96158	Lat: 38 54.40 Long: 119 59.48 VHF:	30 Min	2.5 Hr	(530) 541-3420	X	<input type="checkbox"/>			
Renown Regional Medical Center 1155 Mill St Reno, NV	Lat: 39 31 32 Long: 119 47 44 VHF:	45 Min	2 Hr	(775) 982-4100	X	<input type="checkbox"/>	Level II Trauma Center Burn Center		
6. Prepared By (Medical Unit Leader)							7. Date/Time	8. Reviewed By (Safety Officer)	9. Date/Time
Kurt Gainer MEDL Newton Ong MEDL		09/24/2014 1200		Marty Hamel SOF 1 <i>For: Charlotte Jorda</i> SOF 7(+)		09/24/2014 1200			

When an injury occurs, initiate care with available resources at scene and notify DIVS.

The DIVS shall coordinate the incident and direct necessary actions. The following steps shall be taken to mitigate the incident:

1. Determine the nature of the emergency.
2. If the emergency is a medical injury/illness, determine if the injury/illness is life threatening.
3. If the injury is life threatening, then clear designated frequency for emergency traffic.
4. Identify the on-scene point of contact by position.
5. Ensure that the Medical Unit Leader is contacted immediately.
6. Identify number injured, patient assessment(s) and location (geographic and/or GPS coordinates).
7. Identify on-scene medical personnel by position and last name (i.e. EMT Jones).
8. Identify preferred method of patient transport.
9. Determine any additional resources or equipment needed.

The Evacuation Plan should be continually evaluated, and contingencies developed in the event the first plan is not effective.



Medical Incident Report					
FOR ALL MEDICAL EMERGENCIES: IDENTIFY ON SCENE INCIDENT COMMANDER BY NAME AND POSITION AND ANNOUNCE "MEDICAL EMERGENCY" TO INITIATE RESPONSE FROM IMT COMMUNICATIONS/DISPATCH.					
Use items one through nine to communicate situation to communications/dispatch.					
1. CONTACT COMMUNICATIONS/DISPATCH <i>Ex: "Communications, Div. Alpha. Stand-by for Priority Medical Incident Report." (If life threatening request designated frequency be cleared for emergency traffic.)</i>					
2. INCIDENT STATUS: <i>Provide incident summary and command structure.</i>					
Nature of Injury/Illness			<i>Describe the injury (Ex: Broken leg with bleeding)</i>		
Incident Name			<i>Geographic Name + "Medical" (Ex: Trout Meadow Medical)</i>		
Incident Commander			<i>Name of IC</i>		
Patient Care			<i>Name of Care Provider (Ex: EMT Smith)</i>		
3. INITIAL PATIENT ASSESSMENT: <i>Complete this section for each patient. This is only a brief, initial assessment. Provide additional patient info after completing this 9 Line Report.</i>					
Number of Patients:	Male / Female	Age:	Weight:		
Conscious? <input type="checkbox"/> YES <input type="checkbox"/> NO = MEDEVAC!					
Breathing? <input type="checkbox"/> YES <input type="checkbox"/> NO = MEDEVAC!					
Mechanism of Injury: <i>What caused the injury?</i>					
Lat/Long (Datum WGS84) <i>Ex: N 40° 42.45' x W 123° 03.24'</i>					
4. SEVERITY OF EMERGENCY, TRANSPORT PRIORITY					
SEVERITY			TRANSPORT PRIORITY		
<input type="checkbox"/> URGENT-RED Life threatening injury or illness. <i>Ex: Unconscious, difficulty breathing, bleeding severely, 2^o – 3^o burns more than 4 palm sizes, heat stroke, disoriented.</i>			Ambulance or MEDEVAC helicopter. Evacuation need is IMMEDIATE.		
<input type="checkbox"/> PRIORITY-YELLOW Serious Injury or illness. <i>Ex: Significant trauma, not able to walk, 2^o – 3^o burns not more than 1-2 palm sizes.</i>			Ambulance or consider air transport if at remote location. Evacuation may be DELAYED.		
<input type="checkbox"/> ROUTINE-GREEN Not a life threatening injury or illness. <i>Ex: Sprains, strains, minor heat-related illness.</i>			Non-Emergency. Evacuation considered Routine of Convenience.		
5. TRANSPORT PLAN:					
Air Transport: (Agency Aircraft Preferred)					
<input type="checkbox"/> Helispot		<input type="checkbox"/> Short-haul/Hoist		<input type="checkbox"/> Life Flight	<input type="checkbox"/> Other
Ground Transport: <i>Click here to enter text.</i>					
<input type="checkbox"/> Self-Extract		<input type="checkbox"/> Carry-Out		<input type="checkbox"/> Ambulance	<input type="checkbox"/> Other
6. ADDITIONAL RESOURCE/EQUIPMENT NEEDS:					
<input type="checkbox"/> Paramedic/EMT(s)		<input type="checkbox"/> Crew(s)		<input type="checkbox"/> SKED/Backboard/C-Collar	
<input type="checkbox"/> Burn Sheet(s)		<input type="checkbox"/> Oxygen		<input type="checkbox"/> Trauma Bag	
<input type="checkbox"/> Medication(s)		<input type="checkbox"/> IV/Fluid(s)		<input type="checkbox"/> Cardiac Monitor/AED	
<input type="checkbox"/> Other (i.e. splints, rope rescue, wheeled litter)					
7. COMMUNICATIONS:					
Function	Channel Name/Number	Receive (Rx)	Tone/NAC *	Transmit (Tx)	Tone/NAC *
<i>Ex: Command</i>	<i>Forest Rpt, Ch. 2</i>	<i>168.3250</i>	<i>110.9</i>	<i>171.4325</i>	<i>110.9</i>
COMMAND					
AIR-TO-GRND					
TACTICAL					
*(NAC for digital radio system)					
8. EVACUATION LOCATION:					
Lat/Long (Datum WGS84) <i>EX: N 40 42.45' x W 123 03.24'</i>					
Patient's ETA to Evacuation Location:					
Considerations: <i>If primary options fail, what actions can be implemented in conjunction with primary evacuation method? Be thinking ahead...</i>			REMEMBER: Confirm ETA's of resources ordered Act according to your level of training Be Alert. Keep Calm. Think Clearly. Act Decisively.		

Division - As Assigned	Area Location Capability	
Branch X, DIV 1B 12 Hour (night)	EMS Responders & Capability:	FEMP John Bicondova, FEMT Matt Heckmann
	Equipment Available on Scene:	ALS/BLS supplies
	Medical Emergency Channel:	Calcord 156.0750 Tone 6 (156.7) tx/rx
	ETA for Ambulance to Scene:	
	Air:	
	Ground:	45 min
	Approved Helispot:	None identified
	Lat: Long:	
Area Location Capability		
Branch X, DIV 1F 12 Hour (night)	EMS Responders & Capability:	FEMP Kevin Berkery, FEMT Don McLaughlin
	Equipment Available on Scene:	ALS/BLS supplies
	Medical Emergency Channel:	Calcord 156.0750 Tone 6 (156.7) tx/rx
	ETA for Ambulance to Scene:	
	Air:	
	Ground:	30 min.
	Approved Helispot:	None identified
	Lat: Long:	
Area Location Capability		
Branch XII, DIV 1H 12 Hour (night)	EMS Responders & Capability:	FEMP Travis Medina, FEMT Nick Martino
	Equipment Available on Scene:	ALS/BLS supplies
	Medical Emergency Channel:	Calcord 156.0750 Tone 6 (156.7) tx/rx
	ETA for Ambulance to Scene:	
	Air:	
	Ground:	30 min
	Approved Helispot:	None identified
	Lat: Long:	
Area Location Capability		
Branch XVI, DIV 1W 12 Hour (night)	EMS Responders & Capability:	FEMP Chad Meketarian, FEMT Sean Tierney
	Equipment Available on Scene:	ALS/BLS supplies
	Medical Emergency Channel:	Calcord 156.0750 Tone 6 (156.7) tx/rx
	ETA for Ambulance to Scene:	
	Air:	
	Ground:	1 Hr
	Approved Helispot:	None identified
	Lat: Long:	
Area Location Capability		
Branch XVI, DIV 1Y 12 Hour (night)	EMS Responders & Capability:	FEMP Nick Warren, FEMT Bryan Nassour
	Equipment Available on Scene:	ALS/BLS supplies
	Medical Emergency Channel:	Calcord 156.0750 Tone 6 (156.7) tx/rx
	ETA for Ambulance to Scene:	
	Air:	
	Ground:	1 Hr
	Approved Helispot:	None identified
	Lat: Long:	

Incident Trainee / Trainer Data Worksheet

PLEASE PRINT LEGIBLY!

A: Trainee Data

Trainee Name: _____ Check One: Male Female
Trainee Position: _____ Order Number (E, O, C, A) ____--_____
State Abr. ____ + 3 Letter Designator _____ Agency Type: Federal State Local
 USFS BLM BIA FWS DOD NWS NPS Date Assigned: ____--____--_____
Ordered as a trainee for the incident? Yes No Trainee Cell Number: _____
Ordered as a US Forest Service PRIORITY trainee Yes No OFPM IFPM?

**Person's name and title that is responsible for tracking your qualifications:
(Where do you want the packet mailed to?)**

Name: _____ Title: _____ Home Unit: _____
Agency Address: _____ City: _____
State: _____ Zip: _____ Phone Number: () _____--_____

B. Trainee Prerequisites

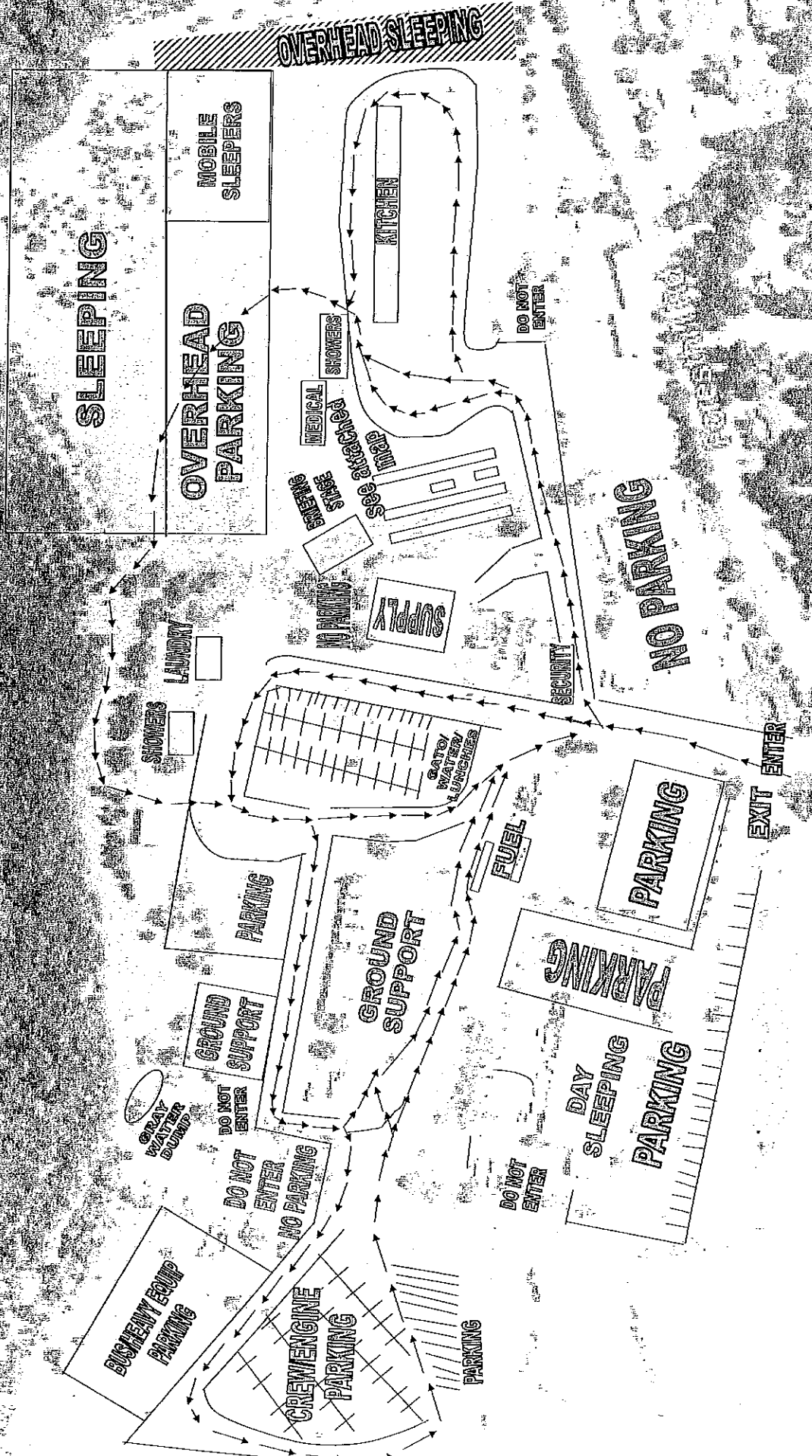
	YES	NO
1. Possesses valid Red Card or agency certification card?	<input type="radio"/>	<input type="radio"/>
2. Trainee has a proper agency initiated position task book?	<input type="radio"/>	<input type="radio"/>
3. Trainee has an incident supplied task book?	<input type="radio"/>	<input type="radio"/>

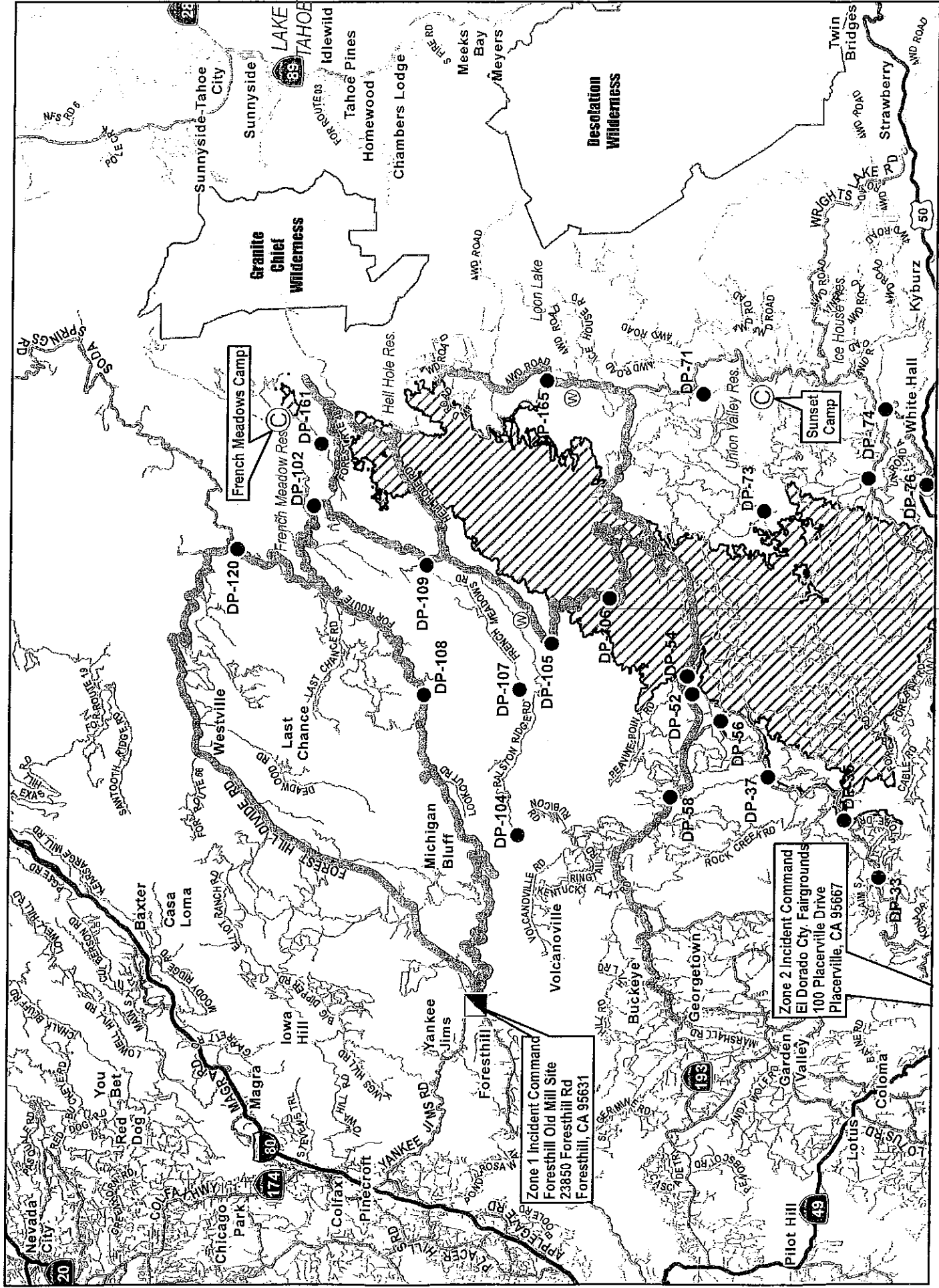
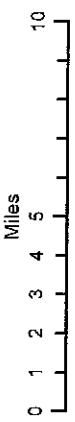
C. Trainer/Evaluator Data (All fields are required to be filled in)

Trainer/Evaluator Name: _____ Position: _____
Home Unit: _____ Order Number (E, O, C, A) ____--_____
Work Address: _____ City: _____ State: _____
Zip Code: _____ Phone Number: () _____--_____

D. Trainee Goals (items in the position task book to be evaluated on this incident)

1. _____
2. _____
3. _____





TRANSPORTATION MAP

King Incident CA-ENF-023461

September 24, 2014

- Major Highways
- Highways
- Major Roads
- Minor Roads
- Camp
- Drop Point
- Water Source
- King Fire Pattern

Zone 1 Incident Command
 Foresthill Old Mill Site
 23850 Foresthill Rd
 Foresthill, CA 95631

Zone 2 Incident Command
 El Dorado City Fairgrounds
 100 Placerville Drive
 Placerville, CA 95667

