

KING INCIDENT

Incident Action Plan

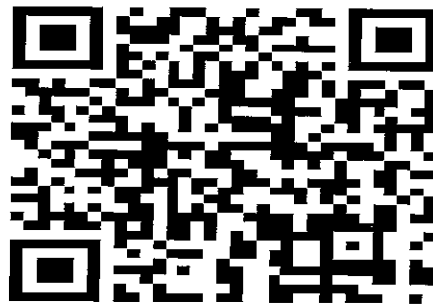
CA-ENF-023461

P5JEE9 (0503)

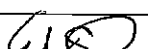
Operational Period

NIGHT SHIFT 9/26/14 – 9/27/14

1800 - 0600



INCIDENT OBJECTIVES	1. INCIDENT NAME	2. DATE PREPARED	3. TIME PREPARED
	KING (Zone 1)	9/26/14	0746
4. OPERATIONAL PERIOD (DATE/TIME) <p style="text-align: center;">NIGHT SHIFT 9/26/14 – 9/27/14 1800 - 0600</p>			
5. GENERAL CONTROL OBJECTIVES FOR THE INCIDENT Management Objectives: Provide for safety of responders and the public Establish and maintain positive relationships with cooperating agencies and the public Provide timely and accurate incident information Protect economic and watershed values with safe and aggressive firefighting efforts Keep costs commensurate with values at risk Control Objectives: Keep fire North of Forebay Road and Highway 50 east of Pollock Pines Keep fire East of Duncan Creek and the Middle Fork of the American River Keep fire West of Ice House Road Keep fire South of the Middle Fork of the American River			
6. WEATHER FORCAST FOR OPERATIONAL PERIOD <p style="text-align: center;">See Attached</p>			
7. GENERAL/SAFETY MESSAGE <p style="text-align: center;">See Attached</p>			
8. ATTACHMENTS (X IF ATTACHED)			
<input checked="" type="checkbox"/> 202	<input checked="" type="checkbox"/> SAFETY MESSAGE / LCES	<input checked="" type="checkbox"/> TRANSPORTATION MAP	
<input checked="" type="checkbox"/> 203	<input checked="" type="checkbox"/> WEATHER	<input checked="" type="checkbox"/> INCIDENT MAP	
<input checked="" type="checkbox"/> 204	<input type="checkbox"/> AIR OPERATIONS SUMMARY	<input checked="" type="checkbox"/> FIRE BEHAVIOR	
<input checked="" type="checkbox"/> 205	<input checked="" type="checkbox"/> HUMAN RESOURCE	<input checked="" type="checkbox"/> TRAINING	
<input checked="" type="checkbox"/> 206	<input checked="" type="checkbox"/> ICP / CAMP MAP	<input type="checkbox"/> FINANCE	
<input checked="" type="checkbox"/> 214	<input checked="" type="checkbox"/> FIRE WEATHER	<input type="checkbox"/> DEMOB	
ICS 202	9. PREPARED BY: (PLANNING SECTION CHIEF) <i>Dennis Cooper / Rick Leuck (t) / Jason Schillinger (t)</i>	10. APPROVED BY (INCIDNET COMMANDER) (Zone 1) (Zone 2) Jim Giachino / Kevin Smith	

ORGANIZATION ASSIGNMENT LIST		Communications Unit	Greg Ely / Tim Maguire (t)
1. Incident Name: KING (ZONE 1)		Ordering Manager	Sharon Porter
2. Date: 9/26/14	3. Time: 0800	9. Operations Section	
4. Operational Period Night Shift: September 26 – 27 , 2014 1800 - 0600		Ops Chief	Brad Washa
		Planning Ops	Don Smith / Mike Sandwick
		a. Branch X	
Position	Name	Branch Director	Larry Sears
5. Incident Commander and Command Staff		Division	1B Mathew Madariaga / Ty Van Keuren (t)
Incident Commander	Jim Giachino / Steve Millert (t)	Division	1D Jeff Bedke
Deputy	Carlton Joseph	Division	1F Brooks Baker / Brandon Allen (t)
Safety Officer	Marty Hamel / Steve Ryberg / Charlotte Jordan (t)	b. Branch XII	
Information Officer	Steve Kliest / Mark Savage (t)	Branch Director	John Flores
Liaison Officer	R. Alpert / R. Graham / W. McGrew / J. Jones	Division	1H Allen Clay
6. Agency Representative		Division	1K Unstaffed
Eldorado NF	Laurence Crabtree	Division	1L Ben Rupert / Bill Morris (t)
Eldorado Agency Admin Rep	Duane Nelson	c. Branch XIV	
Tahoe NF	Tom Quinn / Pat Trimble	Branch Director	Unstaffed
Tahoe Agency Admin Rep	Victor Lyon	Division	1M Unstaffed
Cal OES	Bill Bondshu	Division	1P Unstaffed
CAL FIRE Nevada-Yuba-Placer Unit	Randy Smith	d. Branch XVI	
IARR Eastern Region	Jeffrey Briggs	Branch Director	Rod Collins / Quincy Chung (t)
IARR Northeastern Region	Robert Heartlove	Division	1R Unstaffed
IARR Southern Region	Tom Barnes / Ed Bratcher / David Berens	Division	1T Unstaffed
IARR Southwestern Region	Carlos Nosie / Louie Sandoval	Division	1U Unstaffed
CAL TRANS	Dave Wood	Division	1W Gene Neely
PG&E	Pam Purdee	Division	1Y Kevin Wegener
California Highway Patrol	Chris Sahagun	Division	1Z Wilson Branch
Placer County Sheriff	Kevin Borden	e.	
7. Planning Section		Branch Director	
Plans Chief	Dennis Cooper / Rick Leuk (t) / Jason Schillinger (t)	Group	
Resources Unit	R. Ashby / J. Switzler / J. Wilson / E. Matye (t)	Group	
Situation Unit	T. Morelock / M. McHargue / P. Kaiser	f.	
Human Resources	Marilyn Loughrey / Tom Nichols	Branch Director	
READ	Courtney Rowe	Division	
Fire Behavior	Shelly Crook / Denny O'Neil / Duane Weis	g. Air Operations	
Meteorologist	Jason Clapp	Air Operations Branch Director	John Keesee
GISS	Brad Weisshaupt / Eric Shreve (t)	Air Support Supervisor	Craig Dado
CTSP	Jim Youngblood / Chris Crowder (t)	Helicopter Coordinator	Lane Caldwell / John Chin
TNSP	Jim Mitchell / Seneca Smith / Bill Reynolds	Heli Base Manager	Brady Bernard
DEMOB	Dan Baggao / Jim Cooley	10. Finance/Administration Section	
8. Logistics Section		Finance/Admin. Chief	Teresa Fork / Peter Byrners
Logistics Chief	H. Crane / D. Haston / K. Kumpe (t)	Cost Appro.	Kenny Lucien
Supply Unit	Michael Bradford	Time Unit	Janice Brown (t)
Facilities Unit	Jim Eckroth / Wally Grogan	Procurement Unit	Wendy Whiteman
Ground Support Unit	John Badaracco	Compensation/Claims Unit	Elaine Downing
Medical Unit	Robert Russell / Newton Ong (t)	Cost Unit	Roger Siemens
Food Unit	Dennis Durham	Personnel Time Recorder	Debra Luna (t)
Receiving/Distribution	Joe McMahon	Prepared by (Resource Unit Leader)	Eric Matye (t) 



ZONE 1 FIRE WEATHER FORECAST



FORECAST NO: 21
PREDICTION FOR: Friday Night SHIFT

INCIDENT NAME: King Fire
UNIT: Eldorado National Forest

SHIFT DATE: 26/27 Sep 2014

SIGNED: *Jason Clapp*

TIME AND DATE
FORECAST ISSUED: 1200 / 26 September 2014

Jason Clapp
Incident Meteorologist

WEATHER TONIGHT:

WEATHER: Becoming cloudy with scattered showers and isolated thunderstorms in the area. Zone 1 could receive around 0.20-0.40 inch with greater amounts under a thunderstorm.

TEMPERATURES: 46-50 Thermal belts/ridges...42-46 Valleys
RELATIVE HUMIDITY: 80-100%

20 FT WINDS:

RIDGETOP - SSE 4-9 with gusts 15 mph shifting E after 2200 with 7-10 and gusts to 15-20 mph after 0200.

SLOPE/VALLEY - Downslope 2-5 mph. Then downcanyon 5-9 mph after 2400.

LAL: 1.

STABILITY/INVERSION: Weak inversion setting up after 2200.

WEATHER DISCUSSION: The Low moves to the southeast with scattered showers and isolated thunderstorms developing near the crest and moving west over the fire. The east side will likely receive the most rainfall. Lowering snow levels could put a dusting of snow down to 8000 ft, and a couple of inches at higher peaks. Saturday/Sunday, lingering showers may hang around as the Low pressure still hangs out in NV, bringing wrap-around moisture over area. Warming and drying next week.

WEATHER FOR SATURDAY: The Low pressure moves in NV with morning showers. The wrap-around moisture will keep the threat of afternoon showers with isolated thunderstorms near the fire. High temps: 56-61. Min RH: 45-55%. Ridge winds: NW 5-8 G15mph, shifting more westerly in afternoon. Valley/Slope winds: Downslope 2-5 mph shifting upslope/upcanyon 5-10 mph by late morning


Weather Planning Matrix



Weather Observations



ZONE 1: KING FIRE NORTH - FIRE BEHAVIOR FORECAST

FORECAST NUMBER: #22	TYPE OF FIRE: Wildfire
FIRE NAME: King Fire (ZONE 1, NORTH)	OPERATIONAL PERIOD: Friday 9/26/14 Night Shift
DATE ISSUED: September 26, 2014	TIME ISSUED: 1200
UNIT: Eldorado & Tahoe NF, CA State	SIGNED:  Shelly Crook- FBAN

INPUTS

WEATHER SUMMARY (Refer to Weather Forecast for details)

NIGHT: Mostly cloudy, 70% chance of thunderstorms with measurable precipitation. Max Temp: 50-60°. Min RH: 50-60%. Ridge top winds – South 3-6 mph becoming Easterly 7-10 with gusts to 15 mph. Slope/Valley Winds – Down canyon 5-9 mph after 2400 hours.

FUELS

Predominantly mature mixed conifer with heavy shrub loading. Fuel loadings are generally heavy. Representative Fuel Models 9, 10, TU5, TL8, TL9. Live fuels moistures are dry; however the dead fuels have moistened up as a result of the rain from yesterday. Large fire history: Star Fire 2001, Ralston Fire 2007, Government and Westville 2008, American Fire 2013. **Minimum fine dead fuel moisture: 10-12%, 1000 hr FMC: 10%, 10 hr FMC: 10-12%, Live fuel moisture: 55-65%.**

OUTPUTS - FIRE BEHAVIOR

DAY SHIFT:

Thresholds for Active Fire Behavior in the King Fire area (Eldorado NF PocketCard):

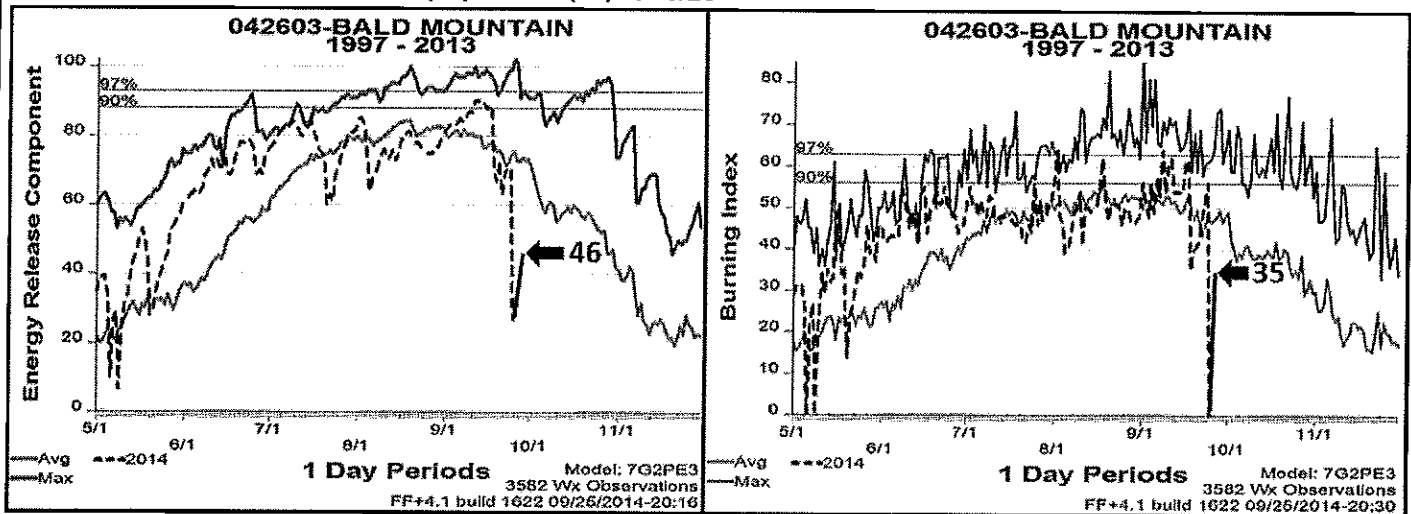
* 20ft Winds (over 5 mph), *RH (under 22%), *Temperature (over 84°) and *1000hr FMC (under 9%).

➤ **Forecasted Indices (Bald Mt RAWs, FM-G) ERC: 46 (up 19) BI: 35 (up 35)**

Maximum Fire Behavior Potential (head fire upslope): Rate of Spread: 0-1 chains/hour (1 foot/minute), Flame Length: 0-2 ft. Probability of Ignition: 10%. Maximum spotting distance of 500-1000 feet.

GENERAL for the Entire Zone 1 Fire Area: Yesterday the entire fire area received ½ to ¾ inch of rain with additional rain expected tonight. As a result, the fire behavior potential has decreased significantly. Expect predominately smoldering fire behavior within the interior with little to no perimeter spread across the entire North Zone. Pay special attention for snags and stump holes as the mopup efforts move further into the interior. The heavy fuels will continue to hold heat for several days to several weeks.

Bald Mountain Forecasted ERC (46) and BI (35) for 9/26



FEEDBACK: Collect WX observations hourly and turn in to FBAN or IMET at end of shift. Please include fire behavior observations

AIR OPERATIONS: No issues anticipated. Sunset at 18:53 / Sunrise at 06:54

SAFETY

- Chance of thunderstorms with precipitation, have a preparedness plan ready before you need it.
- As the mop-up efforts progress to the interior of the fire, the threat of falling snags increases.
- *"When we see people of a contrary character, we should turn inward and examine ourselves" Confucius*

Division Assignment List	1. Branch X	2. Division/Group 1 B
3. Incident Name KING - ZONE 1	4. Operational Period 09/26/14 Friday Night Shift 1800 - 0600	

5. Operations Personnel			
Operations Chief	BRAD WASHA	Division/Group Supervisor	MATTHEW MADARIAGA; TY VAN KEUREN (t)
Operations Chief		Air Attack Supervisor	
Branch Director	LARRY SEARS	Safety Officer	M.HAMEL;S. RYBERG; C.JORDAN (t)

6. Resources Assigned this Period					
Strike Team/Task Force/ Resource Designator	Leader	Num of Pers.	Trans. Y/N	Drop Off PT./Time	Pick Up PT./Time
CRW T2IA TANANA C-21 9/30	JAMES LUDECKER	20	N	SUNSET SPIKE 1800	SUNSET SPIKE 0600
ENG T6 UTASF 631 E-351 10/1	ANTHONY TAYLOR	4	N	SUNSET SPIKE 1800	SUNSET SPIKE 0600
ENG6 MBF 694 E-375 10/2	JOSHUA MCGEE	3	N	SUNSET SPIKE 1800	SUNSET SPIKE 0600
DOZ T2 YTS E-197 9/29	RICHARD JAUQCH	2	N	SUNSET SPIKE 1800	SUNSET SPIKE 0600
DOZ T2 GREENOUS E-563 10/5	GREG CALDWELL	2	N	SUNSET SPIKE 1800	SUNSET SPIKE 0600
DOZ T2 HAYS EQUIP E-570 10/4	BOB HAYES	2	N	SUNSET SPIKE 1800	SUNSET SPIKE 0600
DOZ T2 HAYS EQUIP E-571 10/5	BOB CAMERON	2	N	SUNSET SPIKE 1800	SUNSET SPIKE 0600
DOZ T2 LENAHN'S WATER E-212 9/29	JOHN MONTZ	2	N	SUNSET SPIKE 1800	SUNSET SPIKE 0600
WT T1 C&H VETERAN ENT E-252 9/29	JAMES CALDWELL	2	N	SUNSET SPIKE 1800	SUNSET SPIKE 0600
DOZ T2 TOM'S EARTH MOVIN E-101	JOHN THORNTON	4	N	SUNSET SPIKE 1800	SUNSET SPIKE 0600
WT T1 PRO DUMP E-278 9/29	CARLOS FURTADO	2	N	SUNSET SPIKE 1800	SUNSET SPIKE 0600
HEQB O-518 9/30	CHARLES RICH WATERS	1	N	SUNSET SPIKE 1800	SUNSET SPIKE 0600
HEQB(t) O-517 9/30	CURTIS D HERREN	1	N	SUNSET SPIKE 1800	SUNSET SPIKE 0600
HEQB O-250 9/30	LOGAN LAWSON JR	1	N	SUNSET SPIKE 1800	SUNSET SPIKE 0600
SOFR O-238	GREG BURCH	1	N	SUNSET SPIKE 1800	SUNSET SPIKE 0600
FEMP O-756 10/4	JOHN P BICONDOVA	1	N	SUNSET SPIKE 1800	SUNSET SPIKE 0600
FEMT O-757 10/4	MATT HECKMANN	1	N	SUNSET SPIKE 1800	SUNSET SPIKE 0600

7. Control Operations
 Improve secondary line along 26 Road if necessary. Coordinate with Zone 2 Division G. Prepare for future burnout operations within the division.

*Operations approves all burn out operations.

8. Special Instructions
Mop up to the degree necessary to make the likelihood of fire escape very low; based on experience, terrain, fuel types, and fuel conditions.

- Day and Night travel to line via Foresthill Rd. Return via Mosquito Ridge Rd.
- All Division Supervisors need to download information to the Sit Unit for all completed line and proposed line.
- Noxious weeds are marked by orange "noxious weed" flagging. Minimize or avoid activities in these areas.
- Sensitive areas are marked with pink/black checkerboard flagging. Minimize ground disturbing activities in these areas.

9. Division/Group Communications Summary							
Function	Frequency - RX	Frequency - TX	Tone	System	Channel	System	Channel
Command	166.6125	168.4000	136.5	NIFC C4	1		
Tactical Div/Group	168.0500	168.0500		NIFC T1	5		
Logistics							
Air to Ground	169.1500	169.1500		A/G CMD	13		

Prepared by (Resource Unit Leader) J. Switzler; E. Mayte (t); A. Uehara (t)	Approved by (Planning Section Chief) D. Cooper; R. Leuck (t); J. Schillinger (t)	Date Prepared 09/26/14	Time Prepared 1020
--	---	---------------------------	-----------------------

Division Assignment List	1. Branch XII	2. Division/Group 1 H
---------------------------------	-------------------------	---------------------------------

3. Incident Name KING - ZONE 1	4. Operational Period 09/26/14 Friday Night Shift 1800 - 0600
--	---

5. Operations Personnel

Operations Chief	BRAD WASHA	Division/Group Supervisor	ALLEN CLAY
Operations Chief		Air Attack Supervisor	
Branch Director	JOHN FLORES	Safety Officer	M. HAMEL; S. RYBERG; C. JORDAN (t)

6. Resources Assigned this Period

Strike Team/Task Force/ Resource Designator	Leader	Num of Pers.	Trans. Y/N	Drop Off PT./Time	Pick Up PT./Time
*CRW T2IA MESCALERO C-100 9/30	JOHN CERVANTES	20	N	FRENCH SPIKE 1800	FRENCH SPIKE 0600
*CRW T2IA NMZUA #2 C-99 10/1	CHAD NASTACIO	20	N	FRENCH SPIKE 1800	FRENCH SPIKE 0600
*CRW T2IA FOLSOM LK C-137 10/1	MATT LYNDE	19	N	FRENCH SPIKE 1800	FRENCH SPIKE 0600
T/F T3 KING #14				ICP 1800	ICP 0600
TFLD O-787 10/5	HEATHER FISHER	1	N	ICP 1800	ICP 0600
ENG T3 MISSOULA E-608 10/5	JEFF GROLL	3	N	ICP 1800	ICP 0600
ENG T3 14 E-619 10/5	KEN HUTTEMLIA	3	N	ICP 1800	ICP 0600
ENG T3 1347 E-661 9/25	CHAD HULLBARD	4	N	ICP 1800	ICP 0600
ENG T3 365 E-527 10/3	BERNIE QUINNONEZ	6	N	ICP 1800	ICP 0600
ENG T3 ENF 63 E-393 9/27	MICHAEL LOEFFLER	5	N	ICP 1800	ICP 0600
DOZ T2V ROEN #N01 E-567* 10/5	CLAY BOSCI	2	N	ICP 1800	ICP 0600
WT T1 SPECE INDUSTRIAL E-126* 9/30	STEVE ROOKS	4	N	ICP 1800	ICP 0600
W/T SUP T1 E-133* 10/2	GEORGE NEILLS	2	N	ICP 1800	ICP 0600
SOFR O-964 9/28	DOUGLAS WELBOURN	1	N	ICP 1800	ICP 0600
FEMP O-759 10/4	TRAVIS MEDINA	1	N	ICP 1800	ICP 0600
FEMT O-768 10/4	NICHOLAS MARTINO	1	N	ICP 1800	ICP 0600

7. Control Operations

Improve existing line from Chipmunk Ridge to Drop Point 102. Mop up where it can be done safely at night.

8. Special Instructions

- *Report to French Meadows Spike at end of shift.
- Mop up to the degree necessary to make the likelihood of fire escape very low; based on experience, terrain, fuel types, and fuel conditions.
- a. Day and Night travel to line via Foresthill Rd. Return via Mosquito Ridge Rd.
- b. All Division Supervisors need to download information to the Sit Unit for all completed line and proposed line.
- c. Noxious weeds are marked by orange "noxious weed" flagging. Minimize or avoid activities in these areas.
- d. Sensitive areas are marked with pink/black checkerboard flagging. Minimize ground disturbing activities in these areas.

9. Division/Group Communications Summary

Function	Frequency - RX	Frequency - TX	Tone	System	Channel	System	Channel
Command	166.6125	168.4000	136.5	NIFC C4	1		
Tactical Div/Group	166.7750	166.7750		NIFC T6	8		
Logistics							
Air to Ground	169.1500	169.1500		A/G CMD	13		

Prepared by (Resource Unit Leader) J. Wilson; E Mayte (t); A. Uehara (t)	Approved by (Planning Section Chief) D. Cooper, R. Leuck (t); J. Schillinger (t)	Date Prepared 09/26/14	Time Prepared 1020
---	---	---------------------------	-----------------------

Division Assignment List		1. Branch XII		2. Division/Group 1 L			
3. Incident Name KING - ZONE 1		4. Operational Period 09/26/14 Friday Night Shift 1800 - 0600					
5. Operations Personnel							
Operations Chief	BRAD WASHA		Division/Group Supervisor	BEN RUPERT; BILL MORRIS (t)			
Operations Chief			Air Attack Supervisor				
Branch Director	JOHN FLORES		Safety Officer	M. HAMEL; S. RYBERG; C. JORDAN (t)			
6. Resources Assigned this Period							
Strike Team/Task Force/ Resource Designator	Leader	Num of Pers.	Trans. Y/N	Drop Off PT./Time	Pick Up PT./Time		
S/T ENF KING #8				ICP 1800	ICP 0600		
STEN O-900 10/5	JON VEALE	1	N	ICP 1800	ICP 0600		
STEN O-3222 10/5	KEN GOODIAN (t)	1	N	ICP 1800	ICP 0600		
ENG T3 1667 E-606 10/5	KYLE THATCHER	5	N	ICP 1800	ICP 0600		
ENG T3 1668 E-607 10/5	TAYLOR NELSON	5	N	ICP 1800	ICP 0600		
ENG T3.PARK CITY FD E-605 10/5	ZANE THOMPSON	3	N	ICP 1800	ICP 0600		
ENG T3 72 E-624 10/4	CHRISTIAN LOPEZ	5	N	ICP 1800	ICP 0600		
S/T ENF KING #9				ICP 1800	ICP 0600		
TFLD O-888 10/5	NATE HALLAM	1	N	ICP 1800	ICP 0600		
ENG T3 15 E-548 10/4	DEAN DEHART	5	N	ICP 1800	ICP 0600		
ENG T3 E-603	MALISSA MOORE	5	N	ICP 1800	ICP 0600		
ENG T3 35 E-546 10/5	WADE JONES	5	N	ICP 1800	ICP 0600		
ENG T3 322 E-621 10/5	OLLE SMITH	5	N	ICP 1800	ICP 0600		
ENG T3 TMU E42 E-266 9/30	BRIAN ETHRIDGE	5	N	ICP 1800	ICP 0600		
7. Control Operations							
Mop up to the degree necessary to make the likelihood of fire escape very low.							
8. Special Instructions							
Mop up to the degree necessary to make the likelihood of fire escape very low; based on experience, terrain, fuel types, and fuel conditions.							
a. Day and Night travel to line via Foresthill Rd. Return via Mosquito Ridge Rd.							
b. All Division Supervisors need to download information to the Sit Unit for all completed line and proposed line.							
c. Noxious weeds are marked by orange "noxious weed" flagging. Minimize or avoid activities in these areas.							
d. Sensitive areas are marked with pink/black checkerboard flagging. Minimize ground disturbing activities in these areas.							
9. Division/Group Communications Summary							
Function	Frequency - RX	Frequency - TX	Tone	System	Channel	System	Channel
Command	166.6125	168.4000	136.5	NIFC C4	1		
Tactical Div/Group	168.2500	168.2500		NIFC T7	9		
Logistics							
Air-to-Ground	169.1500	169.1500		A/G CMD	13		
Prepared by (Resource Unit Leader) J. Switzler; J. Wilson; E. Mayte (t); A. Uehara		Approved by (Planning Section Chief) D. Cooper; J. Schillinger (t); R. Decker (t)		Date Prepared 09/26/14		Time Prepared 1020	

Division Assignment List	1. Branch XII	2. Division/Group 1 L
---------------------------------	-------------------------	---------------------------------

3. Incident Name KING - ZONE 1	4. Operational Period 09/26/14 Friday Night Shift 1800 - 0600
--	---

5. Operations Personnel

Operations Chief	BRAD WASHA	Division/Group Supervisor	BEN RUPERT; BILL MORRIS (t)
Operations Chief		Air Attack Supervisor	
Branch Director	JOHN FLORES	Safety Officer	M. HAMEL; S. RYBERG; C. JORDAN (t)

6. Resources Assigned this Period

Strike Team/Task Force/ Resource Designator	Leader	Num of Pers.	Trans. Y/N	Drop Off PT./Time	Pick Up PT./Time
S/T ENF KING #10				ICP 1800	ICP 0600
STEN E-370	TRAVIS THOMPSON	1	N	ICP 1800	ICP 0600
ENG T6 E607 E-370 10/1	ERIC WHITE	3	N	ICP 1800	ICP 0600
ENG T3 321 E-642 10/5	TRAVIS THOMPSON	6	N	ICP 1800	ICP 0600
ENG T6 21 E-655 10/1	JACE JAMES	3	N	ICP 1800	ICP 0600
ENG T6 641 E-654 10/1	JAMES BROWN	4	N	ICP 1800	ICP 0600
ENG T6 641 E-660 9/30	JAKOB T RENZ	3	N	ICP 1800	ICP 0600
DOZ T2 BOB MURRAY E-107 10/1	BOB MURRAY	2	N	ICP 1800	ICP 0600
WT T1 G&G FIRE SUPP E-131 9/30	GREG WHIPPLE	2	N	ICP 1800	ICP 0600
WT T1 TACTICAL E-141 9/30		2	N	ICP 1800	ICP 0600

7. Control Operations
Mop up to the degree necessary to make the likelihood of fire escape very low.

8. Special Instructions
Mop up to the degree necessary to make the likelihood of fire escape very low; based on experience, terrain, fuel types, and fuel conditions.

- a. Day and Night travel to line via Foresthill Rd. Return via Mosquito Ridge Rd.
- b. All Division Supervisors need to download information to the Sit Unit for all completed line and proposed line.
- c. Noxious weeds are marked by orange "noxious weed" flagging. Minimize or avoid activities in these areas.
- d. Sensitive areas are marked with pink/black checkerboard flagging. Minimize ground disturbing activities in these areas.

9. Division/Group Communications Summary

Function	Frequency - RX	Frequency - TX	Tone	System	Channel	System	Channel
Command	166.6125	168.4000	136.5	NIFC C4	1		
Tactical Div/Group	168.2500	168.2500		NIFC T7	9		
Logistics							
Air to Ground	169.1500	169.1500		A/G CMD	13		

Prepared by (Resource Unit Leader) D. Switzler; E. Mayte (t); A. Uehara (t)	Approved by (Planning Section Chief) D. Cooper; J. Schillinger (t); R. Lusick (t)	Date Prepared 09/26/14	Time Prepared 1020
--	--	---------------------------	-----------------------

Division Assignment List	1. Branch XVI	2. Division/Group 1 W
---------------------------------	-------------------------	---------------------------------

3. Incident Name KING - ZONE 1	4. Operational Period 09/26/14 Friday Night Shift 1800 - 0600
--	---

5. Operations Personnel

Operations Chief	BRAD WASHA	Division/Group Supervisor	GENE NEELEY
Operations Chief		Air Attack Supervisor	
Branch Director	RODNEY COLLINS; QUINCY CHUNG(t)	Safety Officer	M.HAMEL; S. RYBERG; C.JORDAN (t)

6. Resources Assigned this Period

Strike Team/Task Force/ Resource Designator	Leader	Num of Pers.	Trans. Y/N	Drop Off PT./Time	Pick Up PT./Time
CREW T1 ELK MT IHC C-48 9/28	CHEVEYO MUNK	20	N	SUNSET SPIKE 1800	SUNSET SPIKE 2400
CRW T2 COBRAS 3 C-197 9/27	PETER HARDY	21	N	SUNSET SPIKE 1800	SUNSET SPIKE 0600
CRW T2IA OH OHS #3 C-17 9/30	JEFFREY G TUCKER	20	N	SUNSET SPIKE 1800	SUNSET SPIKE 0600
ENG S/T T3 E-497 9/29	TODD BENTLEY	20	N	SUNSET SPIKE 1800	SUNSET SPIKE 0600
T/F KING #7				SUNSET SPIKE 1800	SUNSET SPIKE 0600
STEN O-663 10/2	MARK NOVAK	1	N	SUNSET SPIKE 1800	SUNSET SPIKE 0600
ENG T6 BONDURANT E-350 10/1	JERRY JOHNSON	4	N	SUNSET SPIKE 1800	SUNSET SPIKE 0600
ENG T6 OUTBACK FIREFIGHT E-348	DEREK ANDRE	3	N	SUNSET SPIKE 1800	SUNSET SPIKE 0600
ENG T6 MADSON BRUSH E-346 10/1	ROBERT RICKS	3	N	SUNSET SPIKE 1800	SUNSET SPIKE 0600
ENG T6 MADSON BRUSH E-347 10/1	STAN CRITTENDEN	3	N	SUNSET SPIKE 1800	SUNSET SPIKE 0600
ENG T6 CCD 3665 E-357 10/1	MATT CROSWAIT	2	N	SUNSET SPIKE 1800	SUNSET SPIKE 0600
DOZER T2V BASQO E-569* 10/5	GIBBS , RANDY	3	N	SUNSET SPIKE 1800	SUNSET SPIKE 0600
DOZER T2 NEESE CONST E-575* 10/5	DAVID NEESE	2	N	SUNSET SPIKE 1800	SUNSET SPIKE 0600
WT T1 E-139* 10/2	ROBERT THORPE	4	N	SUNSET SPIKE 1800	SUNSET SPIKE 0600
WT T1 ALL AGENCY E-253* 9/29	DOUG HILL	2	N	SUNSET SPIKE 1800	SUNSET SPIKE 0600
WT T1 WASATCH SMOKIES E-137 10/1	DENNIS VICKERS	2	N	SUNSET SPIKE 1800	SUNSET SPIKE 0600
HEQB O-831 10/5	JACOB CHING	1	N	SUNSET SPIKE 1800	SUNSET SPIKE 0600
HEQB O-251 9/30	TYLER HALL	1	N	SUNSET SPIKE 1800	SUNSET SPIKE 0600
HEQB O-829 10/5	KEVIN MOLLOY	1	N	SUNSET SPIKE 1800	SUNSET SPIKE 0600
SOF2 O-357 10/5	DENNIS TERRY	1	N	SUNSET SPIKE 1800	SUNSET SPIKE 0600

7. Control Operations

Continue to eliminate all threats to the line working towards the Bunker Hill Look Out.

8. Special Instructions

Mop up to the degree necessary to make the likelihood of fire escape very low; based on experience, terrain, fuel types, and fuel conditions.

- Day and Night travel to line via Foresthill Rd. Return via Mosquito Ridge Rd.
- All Division Supervisors need to download information to the Sit Unit for all completed line and proposed line.
- Noxious weeds are marked by orange "noxious weed" flagging. Minimize or avoid activities in these areas.
- Sensitive areas are marked with pink/black checkerboard flagging. Minimize ground disturbing activities in these areas.

9. Division/Group Communications Summary

Function	Frequency - RX	Frequency - TX	Tone	System	Channel	System	Channel
Command	166.6125	168.4000	136.5	NIFC C4	1		
Tactical Div/Group	166.5500	166.5500		R5 T4	10		
Logistics							
Air to Ground	169.1500	169.1500		A/G CMD	13		

Prepared by (Resource Unit Leader) J.Switzler; A. Uehara (t); E. Mayte (t)	Approved by (Planning Section Chief) D. Cooper; R. Leuck (t); J. Schillinger (t)	Date Prepared 09/26/14	Time Prepared 1020
---	---	---------------------------	-----------------------

KING SAFETY MESSAGE

Night Shift 09-26/27-2014

RHABDOMYOLYSIS

Rhabdomyolysis (often called rabdo) is a medical condition resulting from the breakdown of damaged muscle tissue. Due to prolonged physical exertion, wildland firefighters are at increased risk for Rhabdomyolysis. If not recognized and treated early, Rhabdomyolysis can cause permanent disability and may be fatal.

- **Muscle aches or pains out of proportion for the amount of exercise done**
- **Muscle cramping**
- **Tea-colored or cola-colored urine**

**DISCUSS WITH YOUR FIREFIGHTERS THE SIGNS AND SYMPTOMS OF
RHABDOMYOLYSIS IN YOUR DAILY BRIEFING!**



18. TAKING A NAP NEAR THE FIRELINE

Driving Tips!

Provide for extra time to allow for slower speeds

Actively watch for wildlife and domestic livestock

Have two qualified drivers per vehicle to provide for relief

Use spotters when backing

Honk horn to alert personnel when backing

Always use headlights

When should you wash your hands?

- **BEFORE, DURING, AND AFTER PREPARING FOOD**
 - **BEFORE EATING FOOD**
- **BEFORE AND AFTER CARING FOR SOMEONE WHO IS SICK**
 - **BEFORE AND AFTER TREATING A CUT OR WOUND**
 - **AFTER USING THE TOILET**
- **AFTER BLOWING YOUR NOSE, COUGHING, OR SNEEZING**
 - **AFTER TOUCHING GARBAGE**

King Incident- CA-ENF-023461 INCIDENT SAFETY ANALYSIS 215a

8. Location	9. Hazard	6. Control or Abatement Action (Engineering, Administrative, PPE, Avoidance, Education, etc)
ALL	Snag Hazards	<ul style="list-style-type: none"> • Follow Hazard Tree Safety Guidelines (IRPG). • Limit number of personnel around snags and their exposure time; fallers must be qualified for trees being fallen. • Be especially alert around snags during wind events. • Check overhead for dead branches in sleeping areas. • <u>Maintain Situational Awareness.</u>
ALL	Aircraft Operations	<ul style="list-style-type: none"> • Keep personnel out of drop zones. • Use air-to-ground freq. to communicate with aircraft. • Use clear, concise statements when directing aircraft. Use clock directions from pilot's perspective.
ALL	Direct Attack/Night Operations	<ul style="list-style-type: none"> • Do not engage in direct line tactics in areas where snags have not been mitigated for night operations. • Snag areas in day time before engaging personnel. • Snag roads where nighttime travel is necessary. • Ensure medical protocols are followed. • Have medivac sites pre-identified/established. • Ensure good communications exist and tested.
ALL	Driving Hazards	<ul style="list-style-type: none"> • Practice defensive driving at all times. • Adhere To 30 mph speed limit on forest roads • Drive with headlights on. • Be alert for wildlife and livestock on roads at all times. • Slow down on washboard surfaces. • Avoid gravel berms on the sides of roadways. • Increase following distances on dusty roads. Slow down when you meet opposing traffic. • Maintain Situational Awareness.
ALL	Severe Fire Behavior	<ul style="list-style-type: none"> • Review "Severe Fire Behavior Potential" (IRPG). • Monitor current weather conditions and forecasts. Make sure all personnel receive thorough briefings every shift. • Be observant for formation and passage of pyro-cumuluous cells over the fire area and alert all personnel. • Maintain adequate escape routes and safety zones. Advise all personnel if these are compromised or changed. Set trigger points when appropriate. • Adhere to 10 Std Orders, mitigate 18 situations. • Maintain Situational Awareness.
ALL	Working around Dozers	<ul style="list-style-type: none"> • Maintain safe separation distance of personnel from dozers, especially downhill. • Ensure dozers are supervised by qualified DOZB when required or is appropriate for the job.
ALL	Mines	<ul style="list-style-type: none"> • Identify and avoid mining areas • Notify others of mining hazards and flag • Be aware of vertical vent shafts, indicators may be slight indentations in terrain • Watch for and keep out of any horizontal adits or shafts that may be located into the side of a ridge or mountain
ALL	Work/Rest and Fatigue	<ul style="list-style-type: none"> • Be alert for signs of fatigue and take breaks as necessary. • Maintain 2:1 work/rest ratio. • Monitor incoming resources for level of fatigue.
ALL	Hydration	<ul style="list-style-type: none"> • Encourage drinking water before, during and after shifts, up to 1.5 gal. during shifts. • Be alert for signs of heat stress in yourself and others.

King Incident- CA-ENF-023461 INCIDENT SAFETY ANALYSIS 215a

ALL	Line Construction	<ul style="list-style-type: none"> • Conduct thorough briefing for all personnel involved (inside rear cover IRPG). • Ensure LCES in place prior to engagement (IRPG). • Establish adequate safety zones (IRPG). • Use Downhill Line Checklist (IRPG). • Follow "Look Up, Look Down, Look Around" procedures (IRPG). • Utilize Risk Management Process (IRPG).
ALL	Burning Operations	<ul style="list-style-type: none"> • Conduct thorough briefing for all personnel involved (inside rear cover IRPG). • All personnel to be fully qualified for their assignments. Trainees must have qualified trainers. • Utilize Risk Mgmt. Process (IRPG) for implementing plan. • Required PPE to be worn by all personnel involved. • LCES must be established prior to implementing burning operations (IRPG).
ALL	Structure Protection & HazMat Issues	<ul style="list-style-type: none"> • Conduct thorough briefing for all personnel involved (inside rear cover IRPG). • Utilize Structure Assessment Checklist (IRPG p.14). • Follow structure Protection Guidelines (IRPG p. 16).
ALL	Foot Travel	<ul style="list-style-type: none"> • When walking through steep, rocky, and possibly wet terrain, watch footing and maintain proper spacing. • Watch for over-head hazards. • Treat "hot spots" on your feet before they become blisters. • Maintain downhill tool placement. • Refer to F.S. Health and Safety Code sections 18.1, 18.2, 18.3.
ALL	Tree Felling	<ul style="list-style-type: none"> • Conduct thorough briefing for all personnel involved (inside rear cover IRPG). • Establish traffic control as necessary. • Perform tree evaluation, use IRPG page 22. Use Look-Up, Down, All Around Process. IRPG page 3. • Use all required PPE. • Minimize exposure to personnel.
Zone 1	Spike Camps	<ul style="list-style-type: none"> • Ensure camps are clean of trash to avoid attracting wildlife • Keep sleeping areas are clear of snags and other tripping hazards • Have hand sanitizers and body cleaning products to prevent illness • Have a GPS spike locations in the incident 204 and with the Situation Unit • Have night contact/communications plans in place
ALL	Wildlife & Livestock	<ul style="list-style-type: none"> • Watch out for wildlife & livestock inside fire area and along roadways. • Clean up all debris and trash during each operational period and dispose of in receptacles • Do not throw food from lunches out on the fireline
ALL	Vehicle Operations in Inclement Weather	<ul style="list-style-type: none"> • Be alert for potential muddy and slick road surfaces • Avoid parking on soft shoulders along roads • Stay off secondary roads in wet conditions • Increase following distance on slick road surfaces • Send a scout to evaluate roads and work area prior to personnel engagement • Reduce your speed, in camp and on roads, to maintain control of your vehicle
Zone 1	Marijuana Grow Sites	<ul style="list-style-type: none"> • Be alert for signs such as, irrigation drip lines, chemicals, herbicides and fertilizers, trip lines or booby traps • Leave the route you entered • Once clear of the area, notify Law Enforcement, Division and Operations • Do not approach individuals in sites

INCIDENT RADIO COMMUNICATIONS PLAN		Incident Name				BK RADIO GROUP				Operational Period Date/Time	
KING, CA-ENF-023461 - ZONE 1		GROUP 14				9/26/14 NIGHT					
Ch #	Function	Channel Name/Trunked Radio System Talkgroup	Assignment	RX Freq N or W	RX Tone/NAC	TX Freq N or W	TX Tone/NAC	Mode A, D or M	Remarks		
1	COMMAND	NIFC C4	ZONE 1 CMD	166.6125 N	136.5	168.4000 N	136.5	A	Little Bald Mtn. / Duncon L.O.		
2	COMMAND	NIFC C11	ZONE 1 CMD	170.6875 N	136.5	166.5750 N	136.5	A	Bunker Hill L.O.		
3	COMMAND	NIFC C59	ZONE 1 CMD	164.8375 N	136.5	170.0500 N	136.5	A	Mt. Mildred		
4	COMMAND	NIFC C61	ZONE 1 CMD	164.8625 N	136.5	170.3875 N	136.5	A	Robbs Peak		
5	TACTICAL	NIFC T1	DIV 1B & 1U	168.0500 N		168.0500 N		A			
6	TACTICAL	NIFC T10	DIV 1D & 1M	168.5000 N		168.5000 N		A			
7	TACTICAL	NIFC T5	DIV 1F & 1P	166.7250 N		166.7250 N		A			
8	TACTICAL	NIFC T6	DIV 1H & 1Z	166.7750 N		166.7750 N		A			
9	TACTICAL	NIFC T7	DIV 1L & 1R	168.2500 N		168.2500 N		A			
10	TACTICAL	R5 T4	DIV 1W & 1T	166.5500 N		166.5500 N		A			
11	TACTICAL	R5 T5	DIV 1Y & 1K	167.1125 N		167.1125 N		A	Rehab / Repair / Tact. Res. Cord.		
12	TACTICAL	R5 T6	Contingency Branch	168.2375 N		168.2375 N		A	West Contingency & Roads		
13	AIR TO GROUND	A/G CMD	ALL DIVISIONS	169.1500 N		169.1500 N		A	A/G COMMAND		
14	AIR TO GROUND	A/G TAC	ALL DIVISIONS	167.9500 N		167.9500 N		A	A/G TACTICAL		
15	MEDICAL	CALCORD	ALL DIVISIONS	156.0750 N		156.0750 N	156.7	A	MEDICAL COORDINATION		
16	EMERGENCY ONLY	Air Guard	ALL DIVISIONS	168.6250 N		168.6250 N	110.9	A	AIR GUARD - EMERGENCY		
17								A			
18								A			
19								A			
20	EMERGENCY ONLY	Air Guard	ALL DIVISIONS	168.6250 N		168.6250 N	110.9	A	AIR GUARD - EMERGENCY		

Prepared By (Communications Unit)
TIM MAGUIRE, COM1 (t)

Incident Location: Foresthill, CA
County: Placer State: CA Latitude 39°1.17' N, Longitude 120° 49.77' W

The convention calls for frequency lists to show four digits after the decimal place, followed by either an "N" or a "W", depending on whether the frequency is narrow or wide band. Mode refers to either "A" or "D" indicating analog or digital (e.g. Project 25) or "M" indicating mixed mode. All channels are shown as if programmed in a control station, mobile or portable radio. Repeater and base stations must be programmed with the Rx and Tx reversed.

INCIDENT RADIO COMMUNICATIONS PLAN		Incident Name KING, CA-ENF-023461 - ZONE 2				BK RADIO GROUP GROUP 15				Operational Period Date/Time 9/28/14 0700 hrs - 9/27/14 0700 hrs	
Ch #	Function	Channel Name/Trunked Radio System Talkgroup	Assignment	RX Freq N or W	RX Tones/NAC	TX Freq N or W	Tx Tones/NAC	Mode A, D or M	Remarks		
1	COMMAND	NIFC C5	ZONE 2 ALL DIV	167.1000 N	146.2	169.7500 N	146.2	A	TONE 5 - BALD MT. - LINKED		
2	COMMAND	NIFC C12	ZONE 2 ALL DIV	173.0375 N	146.2	167.3250 N	146.2	A	TONE 5 - BIG MT. - LINKED		
3	COMMAND	NIFC C37	ZONE 2 ALL DIV	172.5500 N	146.2	162.1875 N	146.2	A	TONE 5 - UNION HILL- LINKED		
4	COMMAND	NIFC C60	ZONE 2 ALL DIV	167.0825 N	146.2	173.0250 N	146.2	A	TONE 5 - ROBBS PK - LINKED		
5	COMMAND	NIFC C58	ZONE 2 ICP	164.1375 N	146.2	169.6500 N	146.2	A	TONE 5 - ICP USED ONLY		
6	TACTICAL	VFIRE 24	DIV BB/T	154.2725 N	156.7	154.2725 N	156.7	A			
7	TACTICAL	VFIRE 25	DIV A/U	154.2875 N	156.7	154.2875 N	156.7	A			
8	TACTICAL	VFIRE 26	DIV D/E	154.3025 N	156.7	154.3025 N	156.7	A			
9	TACTICAL	VTAC 11	DIV W	151.1375 N	156.7	151.1375 N	156.7	A			
10	TACTICAL	VTAC 12	DIV G/Y	154.4525 N	156.7	154.4525 N	156.7	A			
11	TACTICAL	VTAC 13	DOZER GRPS	158.7375 N	156.7	158.7375 N	156.7	A			
12	TACTICAL	VTAC 14	SUPPRESSION / ROAD	159.4725 N	156.7	159.4725 N	156.7	A	SUPPRESSION REPAIR / ROAD GRP		
13	AIR TO GROUND	A/G CMD	ALL DIVISIONS	169.1500 N		169.1500 N		A	A/G COMMAND		
14	AIR TO GROUND	A/G TAC	ALL DIVISIONS	167.9500 N		167.9500 N		A	A/G TACTICAL		
15	MEDICAL	CALCORD	ALL DIVISIONS	156.0750 N		156.0750 N	156.7	A	MEDICAL COORDINATION		
16	EMERGENCY ONLY	GUARD	ALL DIVISIONS	168.6250 N		168.6250 N	110.9	A	AIR GUARD - EMERGENCY		
17								A			
18								A			
19								A			
20	EMERGENCY ONLY	GUARD	ALL DIVISIONS	168.6250 N		168.6250 N	110.9	A	AIR GUARD - EMERGENCY		

Prepared By (Communications Unit)
Ken Parker, COM1

Incident Location: Placerville, CA
County: El Dorado State: CA

Latitude Longitude N Longitude W

The convention calls for frequency lists to show four digits after the decimal place, followed by either an "N" or a "W", depending on whether the frequency is narrow or wide band. Mode refers to either "A" or "D" indicating analog or digital (e.g. Project 25) or "M" indicating mixed mode. All channels are shown as if programmed in a control station, mobile or portable radio. Repeater and base stations must be programmed with the Rx and Tx reversed.

MEDICAL PLAN

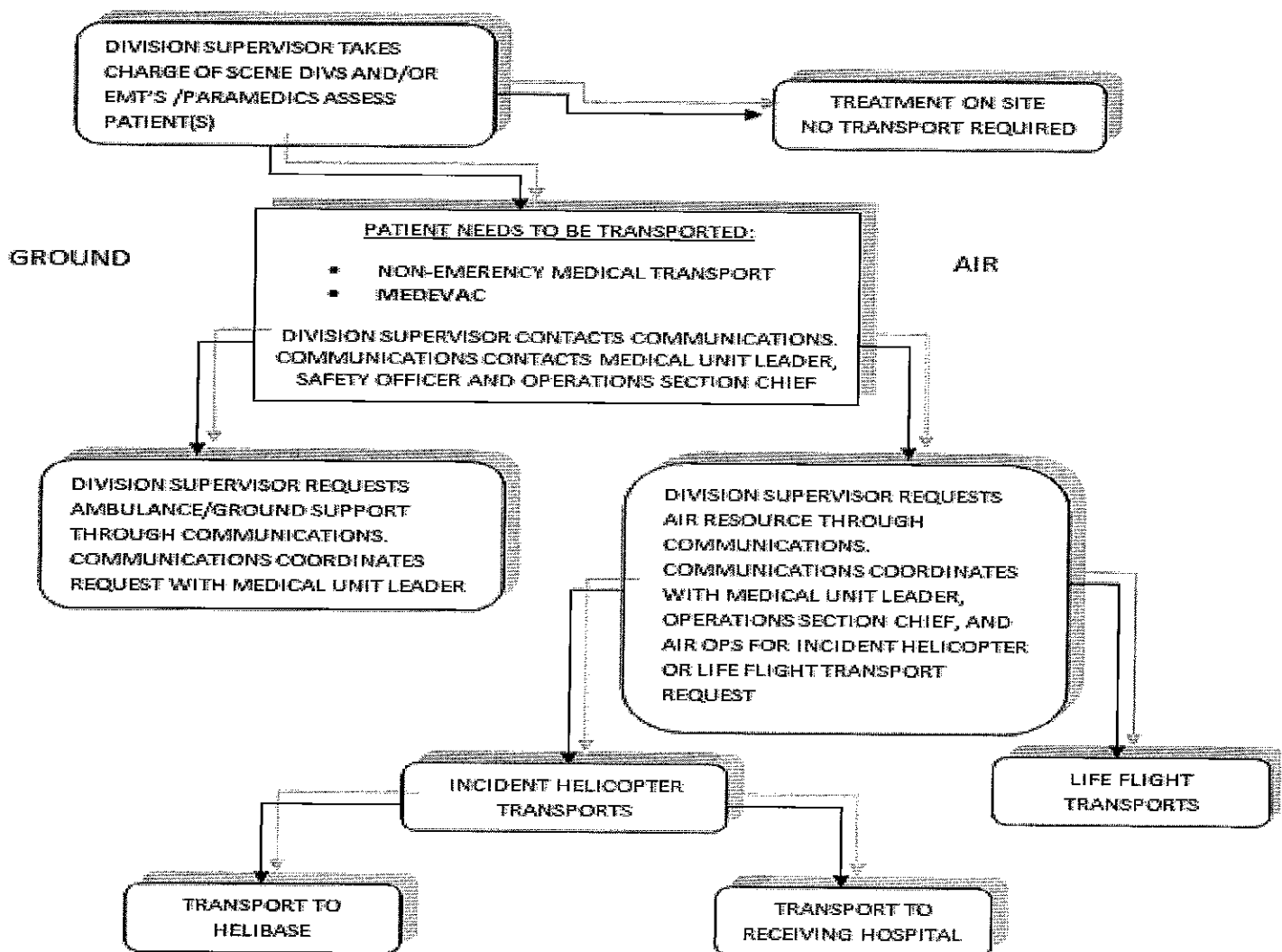
1. Incident/Project Name		2. Operational Period			
King Fire - Zone 1 (North)		Date/Time 9/26/2014 1800-0600			
2. Aid Station					
Name	Complete Address	Phone/EMS Freq.	Advanced Life Support (ALS) Yes No		
King ICP Zone 1 Frontline Medical	Foresthill Old Mill Site 23850 Foresthill Rd., Foresthill, CA 95631		XX		
Sunset Spike Camp Frontline Medical	Union Valley Reservoir - East side 14 ml. north of Hwy 50 on Ice House Road		XX		
3. Ambulance Services					
Name	Complete Address	Phone/EMS Freq	Advanced Life Support (ALS) Yes No		
Eldorado County EMS Medic 248	Eldorado County Fire Station 17 6426 Pony Express Trail, Pollock Pines, CA	911 or 530-647-5220	XX		
Foresthill Fire Department Medic 89 (at French Meadows)	Foresthill FPD FS 88 5981 Gold St. Foresthill, CA	911 or 530-886-5375	XX		
Georgetown FPD Medic 61	Georgetown FPD Station 61 6281 Main St, Georgetown, CA 95634	911 or 530-647-5220	XX		
AMR Ambulance Medic 290	DP 109	AMR or 916 563-0666	XX		
AMR Ambulance Medic 291	Zone 1 ICP	AMR or 916 563-0666	XX		
4. Air Ambulance Services					
Name	Phone	Type of Aircraft & Capability			
CAL FIRE H-104 Placerville, CA (Daytime Only)	911 or 530-647-5220	Bell 205++ Hoist, No NVG, BLS			
Kern County (KRN) H-408 Grass Valley, CA	911 or 530-647-5220	Bell 205++ Hoist, NVG, ALS			
CHP H20 or H24 Auburn, CA	911 or 916-861-1299	Eurocopter B3 Hoist, ALS, No NVG			
CALSTAR 3 Auburn, CA	911 or 530-887-0569	BO 105LS/C-30			
CAL STAR 6 South Lake Tahoe, CA	911 or 530-887-2338	BO 105LS/C-30			
5. Hospitals					
Name Complete Address	GPS Datum - NAD 83 Degrees Decimal Minutes DD° MM.MMM' N - Lat DD° MM.MMM' W - Long	Travel Time Air Gnd	Phone	Helipad Yes No	Level of Care Facility
Marshal Medical Center 1100 Marshall Way, Placerville, CA 95667	Lat: N/A	1 Hr	(530) 622-1441	X	Level III Trauma Center
	Long:				
	VHF: N/A				
Sutter Auburn Faith Hosp. 11815 Education St. Auburn, CA, 95602	Lat: N/A	30 Min	(530) 888-4500	X	
	Long:				
	VHF: N/A				
Sutter Roseville Medical Ctr 1 Medical Plaza Dr, Roseville, CA 95661	Lat: 38 45.58	25 Min	(916) 781-1800	X <input type="checkbox"/>	Level II Trauma Center
	Long: 121 14.52				
	VHF:				
UC Davis Medical Center 2315 Stockton Ave. Sacramento, CA 95817	Lat: 38 33.17	25 Min	(916) 703-6576	X <input type="checkbox"/>	Level I Trauma Center Burn Center
	Long: 121 27.21				
	VHF:				
Barton Memorial Hospital 2170 South Ave. South Lake Tahoe, CA 96158	Lat: 38 54.40	30 Min	(530) 541-3420	X <input type="checkbox"/>	
	Long: 119 59.48				
	VHF:				
Renown Regional Medical Center 1155 Mill St Reno, NV	Lat: 39 31 32	45 Min	(775) 982-4100	X <input type="checkbox"/>	Level II Trauma Center Burn Center
	Long: 119 47 44				
	VHF:				
6. Prepared By					
(Medical Unit Leader)	7. Date/Time	8. Reviewed By (Safety Officer)	9. Date/Time		
Robert Russel MEDL Newton Ong MEDL-T	09/26/2014 1200	Steve Ryberg SQE 1 	09/26/2014 1200		

When an injury occurs, initiate care with available resources at scene and notify DIVS.

The DIVS shall coordinate the incident and direct necessary actions. The following steps shall be taken to mitigate the incident:

1. Determine the nature of the emergency.
2. If the emergency is a medical injury/illness, determine if the injury/illness is life threatening.
3. If the injury is life threatening, then clear designated frequency for emergency traffic.
4. Identify the on-scene point of contact by position.
5. Ensure that the Medical Unit Leader is contacted immediately.
6. Identify number injured, patient assessment(s) and location (geographic and/or GPS coordinates).
7. Identify on-scene medical personnel by position and last name (i.e. EMT Jones).
8. Identify preferred method of patient transport.
9. Determine any additional resources or equipment needed.

The Evacuation Plan should be continually evaluated, and contingencies developed in the event the first plan is not effective.



Medical Incident Report

FOR ALL MEDICAL EMERGENCIES: IDENTIFY ON SCENE INCIDENT COMMANDER BY NAME AND POSITION AND ANNOUNCE "MEDICAL EMERGENCY" TO INITIATE RESPONSE FROM IMT COMMUNICATIONS/DISPATCH.

Use items one through nine to communicate situation to communications/dispatch.

1. CONTACT COMMUNICATIONS/DISPATCH

Ex: "Communications, Div. Alpha. Stand-by for Priority Medical Incident Report." (If life threatening request designated frequency be cleared for emergency traffic.)

2. INCIDENT STATUS: Provide incident summary and command structure.

Nature of Injury/Illness		<i>Describe the injury (Ex: Broken leg with bleeding)</i>
Incident Name		<i>Geographic Name + "Medical" (Ex: Trout Meadow Medical)</i>
Incident Commander		<i>Name of IC</i>
Patient Care		<i>Name of Care Provider (Ex: EMT Smith)</i>

3. INITIAL PATIENT ASSESSMENT: Complete this section for each patient. This is only a brief, initial assessment. Provide additional patient info after completing this 9 Line Report.

Number of Patients:	Male / Female	Age:	Weight:
Conscious? <input type="checkbox"/> YES <input type="checkbox"/> NO = MEDEVAC!			
Breathing? <input type="checkbox"/> YES <input type="checkbox"/> NO = MEDEVAC!			
Mechanism of Injury: <i>What caused the injury?</i>			
Lat/Long (Datum WGS84) <i>Ex: N 40° 42.45' x W 123° 03.24'</i>			

4. SEVERITY OF EMERGENCY, TRANSPORT PRIORITY

SEVERITY	TRANSPORT PRIORITY
<input type="checkbox"/> URGENT-RED Life threatening injury or illness. <i>Ex: Unconscious, difficulty breathing, bleeding severely, 2^o - 3^o burns more than 4 palm sizes, heat stroke, disoriented.</i>	Ambulance or MEDEVAC helicopter. Evacuation need is IMMEDIATE.
<input type="checkbox"/> PRIORITY-YELLOW Serious Injury or illness. <i>Ex: Significant trauma, not able to walk, 2^o - 3^o burns not more than 1-2 palm sizes.</i>	Ambulance or consider air transport if at remote location. Evacuation may be DELAYED.
<input type="checkbox"/> ROUTINE-GREEN Not a life threatening injury or illness. <i>Ex: Sprains, strains, minor heat-related illness.</i>	Non-Emergency. Evacuation considered Routine of Convenience.

5. TRANSPORT PLAN:

Air Transport: (Agency Aircraft Preferred)

<input type="checkbox"/> Helispot	<input type="checkbox"/> Short-haul/Hoist	<input type="checkbox"/> Life Flight	<input type="checkbox"/> Other
-----------------------------------	---	--------------------------------------	--------------------------------

Ground Transport: Click here to enter text.

<input type="checkbox"/> Self-Extract	<input type="checkbox"/> Carry-Out	<input type="checkbox"/> Ambulance	<input type="checkbox"/> Other
---------------------------------------	------------------------------------	------------------------------------	--------------------------------

6. ADDITIONAL RESOURCE/EQUIPMENT NEEDS:

<input type="checkbox"/> Paramedic/EMT(s)	<input type="checkbox"/> Crew(s)	<input type="checkbox"/> SKED/Backboard/C-Collar
<input type="checkbox"/> Burn Sheet(s)	<input type="checkbox"/> Oxygen	<input type="checkbox"/> Trauma Bag
<input type="checkbox"/> Medication(s)	<input type="checkbox"/> IV/Fluid(s)	<input type="checkbox"/> Cardiac Monitor/AED
<input type="checkbox"/> Other (i.e. splints, rope rescue, wheeled litter)		

7. COMMUNICATIONS:

Function	Channel Name/Number	Receive (Rx)	Tone/NAC *	Transmit (Tx)	Tone/NAC *
<i>Ex: Command</i>	<i>Forest Rpt, Ch. 2</i>	<i>168.3250</i>	<i>110.9</i>	<i>171.4325</i>	<i>110.9</i>
COMMAND					
AIR-TO-GRND					
TACTICAL					

*(NAC for digital radio system)

8. EVACUATION LOCATION:

Lat/Long (Datum WGS84) <i>EX: N 40 42.45' x W 123 03.24'</i>	
Patient's ETA to Evacuation Location:	

Considerations: If primary options fail, what actions can be implemented in conjunction with primary evacuation method? Be thinking ahead...

REMEMBER: Confirm ETA's of resources ordered
Act according to your level of training
Be Alert. Keep Calm. Think Clearly. Act Decisively.

Division - As Assigned	Area Location Capability	
Branch X, DIV 1B 12 Hour (night)	EMS Responders & Capability:	FEMP John Bicondova, FEMT Matt Heckmann
	Equipment Available on Scene:	ALS/BLS supplies
	Medical Emergency Channel:	Calcord 156.0750 Tone 6 (156.7) tx/rx
	ETA for Ambulance to Scene:	
	Air:	
	Ground:	45 min
	Approved Helispot:	None identified
	Lat: Long:	
Branch X, DIV 1F 12 Hour (night)	Area Location Capability	
	EMS Responders & Capability:	FEMP Kevin Berkery, FEMT Don McLaughlin
	Equipment Available on Scene:	ALS/BLS supplies
	Medical Emergency Channel:	Calcord 156.0750 Tone 6 (156.7) tx/rx
	ETA for Ambulance to Scene:	
	Air:	
	Ground:	30 min.
	Approved Helispot: Lat: Long:	None identified
Branch XII, DIV 1H 12 Hour (night)	Area Location Capability	
	EMS Responders & Capability:	FEMP Travis Medina, FEMT Nick Martino
	Equipment Available on Scene:	ALS/BLS supplies
	Medical Emergency Channel:	Calcord 156.0750 Tone 6 (156.7) tx/rx
	ETA for Ambulance to Scene:	
	Air:	
	Ground:	30 min
	Approved Helispot: Lat: Long:	None identified
Branch XVI, DIV 1W 12 Hour (night)	Area Location Capability	
	EMS Responders & Capability:	FEMP Chad Meketarian, FEMT Sean Tierney
	Equipment Available on Scene:	ALS/BLS supplies
	Medical Emergency Channel:	Calcord 156.0750 Tone 6 (156.7) tx/rx
	ETA for Ambulance to Scene:	
	Air:	
	Ground:	1 Hr
	Approved Helispot: Lat: Long:	None identified
Branch XVI, DIV 1Y, 1Z 12 Hour (night)	Area Location Capability	
	EMS Responders & Capability:	FEMP Nick Warren, FEMT Bryan Nassour
	Equipment Available on Scene:	ALS/BLS supplies
	Medical Emergency Channel:	Calcord 156.0750 Tone 6 (156.7) tx/rx
	ETA for Ambulance to Scene:	
	Air:	
	Ground:	1 Hr
	Approved Helispot: Lat: Long:	None identified



Human Resource Message King Fire

The thought for the day is **communication**. Effective communication helps us better understand a person or situation and enables us to resolve differences, build trust and respect, and create environments where ideas and problem solving can flourish. As simple as communication may seem, much of what we try to communicate to others—and what others try to communicate to us—can be misunderstood, which can lead to conflict and frustration between the parties. Effective communication is not lecturing, the key component is listening to each other.



"It sounds so trite but in relationships, you have to communicate"—Peter Krause

If you have issues, report them to your supervisor. If you need additional help, contact the Human Resources Specialist Office located on Main Street (next to Documentation).

Office Number (530) 367-8899
Marilyn Loughrey (925) 588-6711
Tom Nichols (916) 878-8165

25 September 2014

Incident Trainee / Trainer Data Worksheet

PLEASE PRINT LEGIBLY!

A: Trainee Data

Trainee Name: _____ Check One: Male Female
Trainee Position: _____ Order Number (E, O, C, A) ____--_____
State Abr. ____ + 3 Letter Designator _____ Agency Type: Federal State Local
 USFS BLM BIA FWS DOD NWS NPS Date Assigned: ____--____--_____
Ordered as a trainee for the incident? Yes No Trainee Cell Number: _____
Ordered as a US Forest Service PRIORITY trainee Yes No OFPM IFPM?

**Person's name and title that is responsible for tracking your qualifications:
(Where do you want the packet mailed to?)**

Name: _____ Title: _____ Home Unit: _____
Agency Address: _____ City: _____
State: _____ Zip: _____ Phone Number: () _____--_____

B. Trainee Prerequisites

YES NO

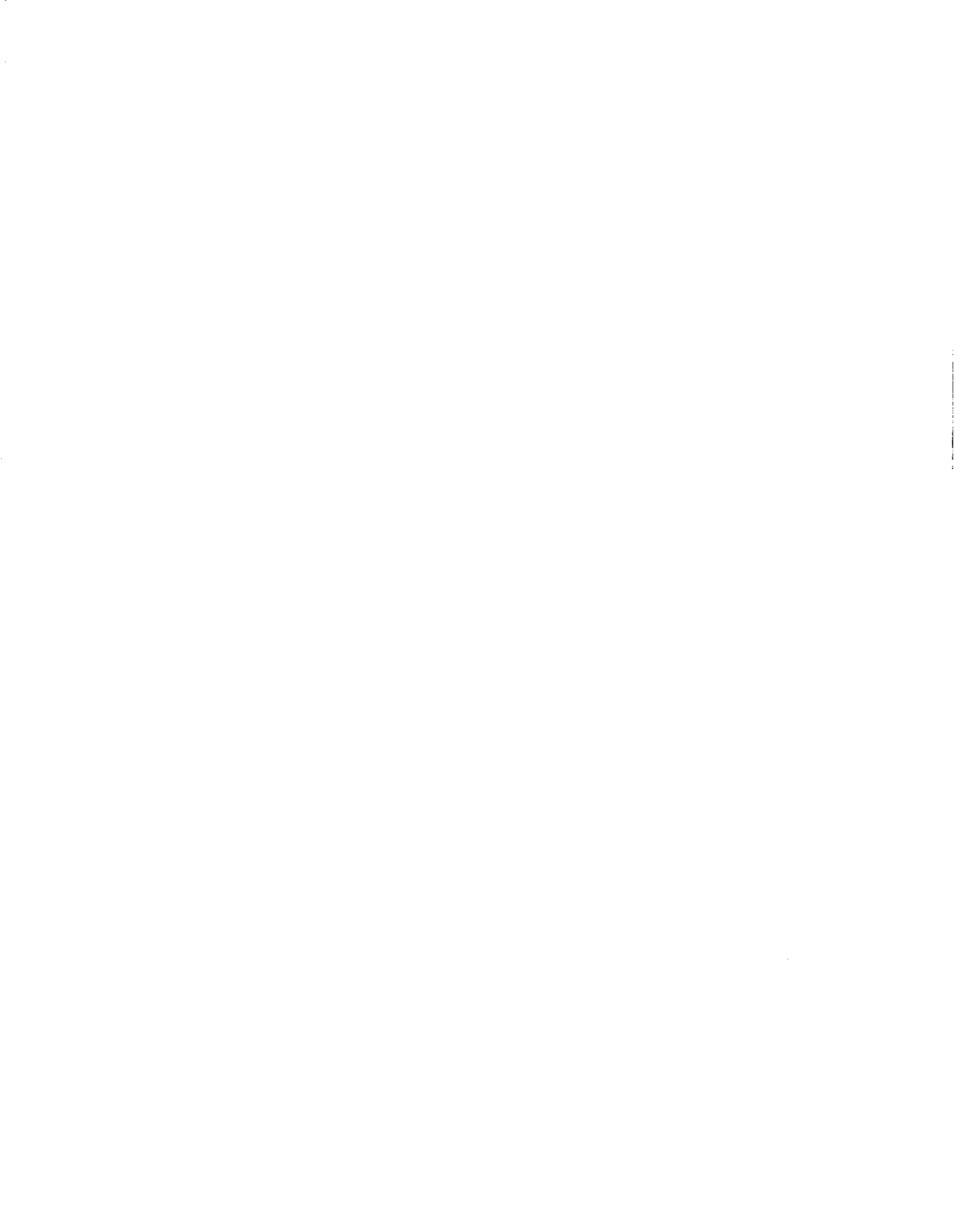
- | | | |
|--|-----------------------|-----------------------|
| 1. Possesses valid Red Card or agency certification card? | <input type="radio"/> | <input type="radio"/> |
| 2. Trainee has a proper agency initiated position task book? | <input type="radio"/> | <input type="radio"/> |
| 3. Trainee has an incident supplied task book? | <input type="radio"/> | <input type="radio"/> |

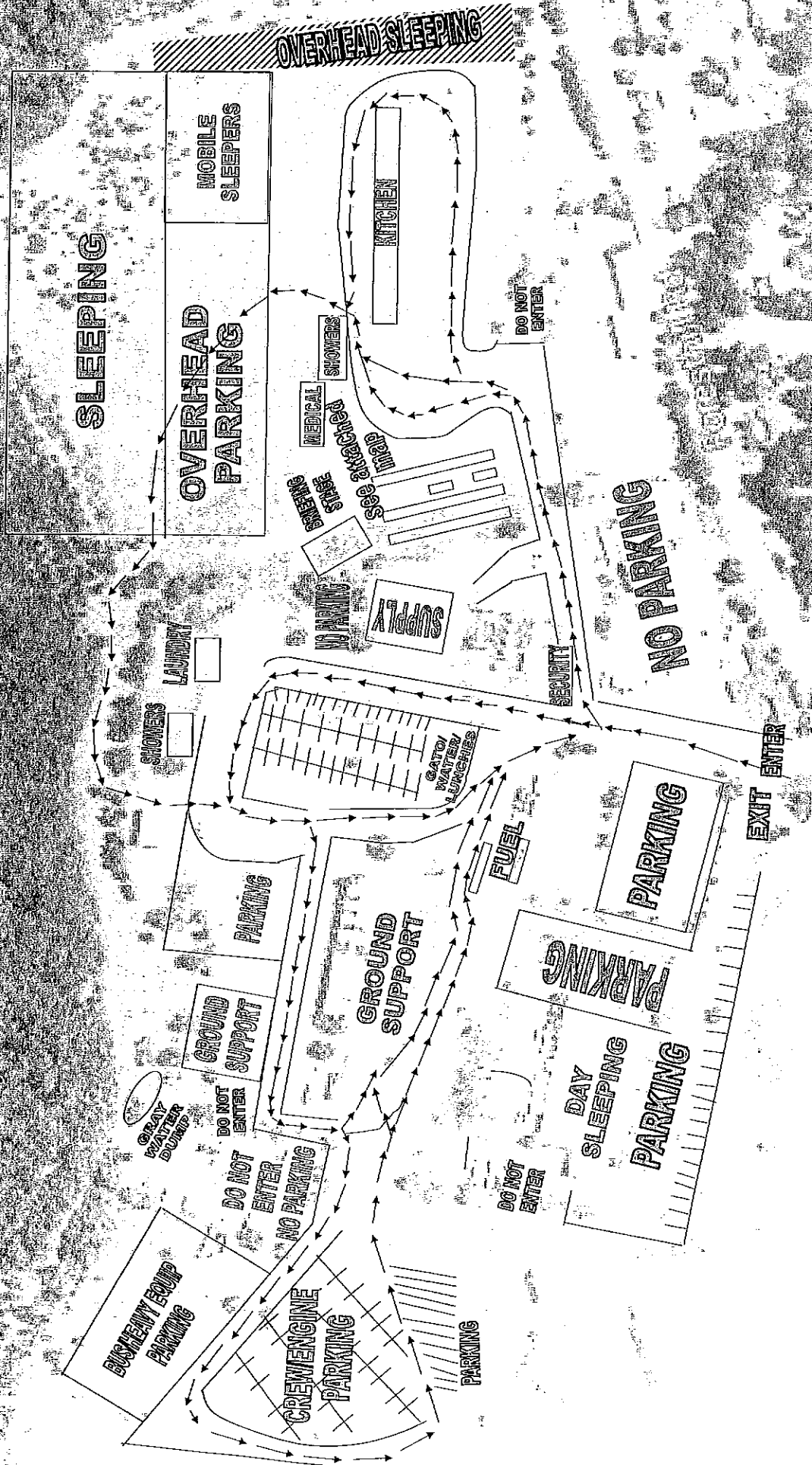
C. Trainer/Evaluator Data (All fields are required to be filled in)

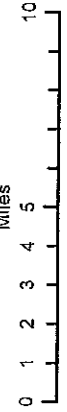
Trainer/Evaluator Name: _____ Position: _____
Home Unit: _____ Order Number (E, O, C, A) ____--_____
Work Address: _____ City: _____ State: _____
Zip Code: _____ Phone Number: () _____--_____

D. Trainee Goals (items in the position task book to be evaluated on this incident)

1. _____
2. _____
3. _____

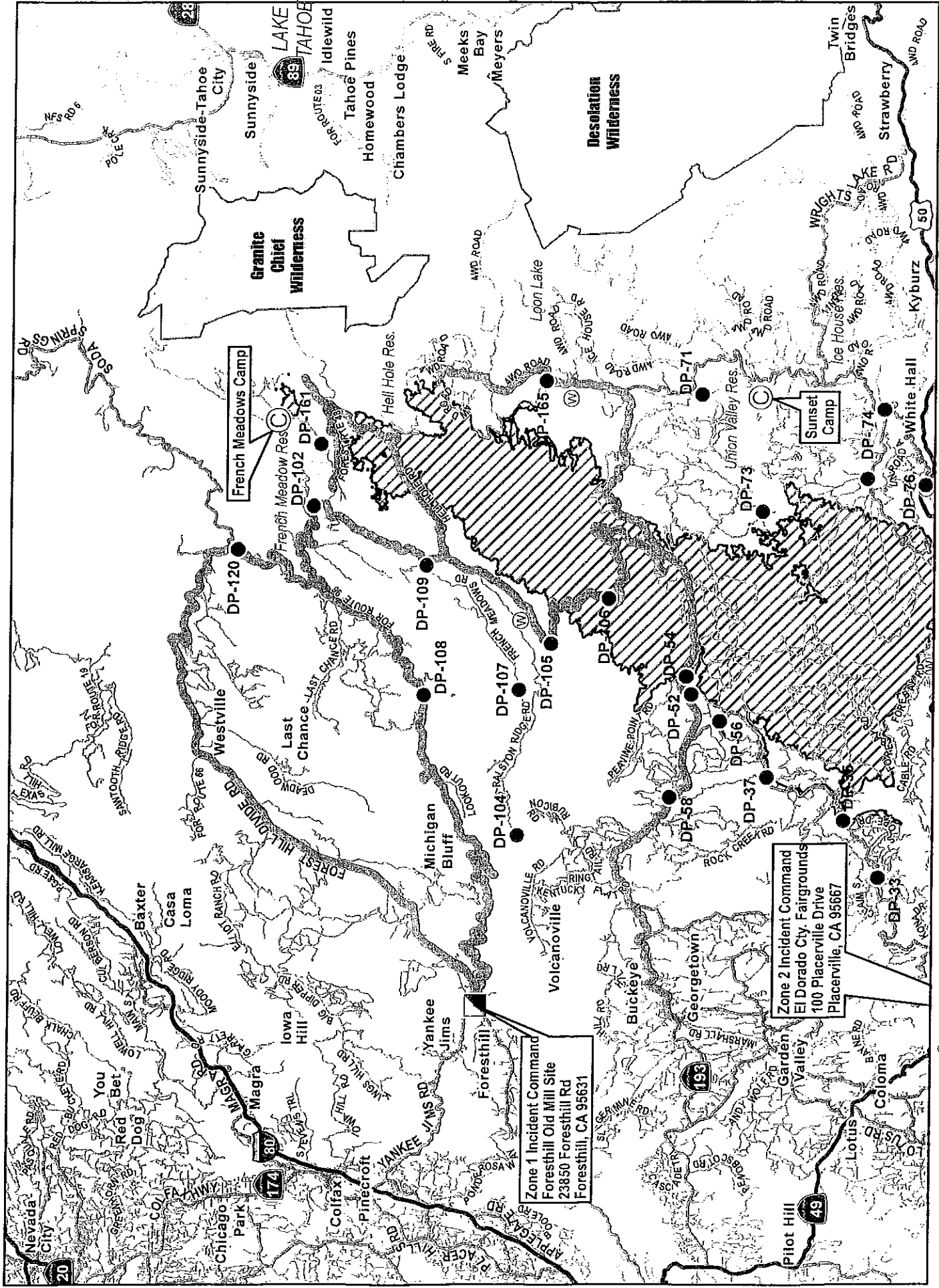






TRANSPORTATION MAP

King Incident CA-ENF-023461
September 24, 2014



- Major Highways
- Highways
- Major Roads
- Minor Roads
- Zone 1 access routes
- Zone 2 access routes
- Camp
- Drop Point
- Water Source
- King Fire Patch

