

*Corrected*

# **KING INCIDENT**

## **Incident Action Plan**

**CA-ENF-023461**

**P5JEE9 (0503)**

### **Operational Period**

**DAY SHIFT      9/26/14**

**0600 - 1800**





INCIDENT OBJECTIVES	1. INCIDENT NAME	2. DATE PREPARED	3. TIME PREPARED
	KING (Zone 1)	9/25/14	2000
<b>4. OPERATIONAL PERIOD (DATE/TIME)</b> <p style="text-align: center;"><b>DAY SHIFT                      9/26/14                      0600 - 1800</b></p>			
<b>5. GENERAL CONTROL OBJECTIVES FOR THE INCIDENT</b>  <b>Management Objectives:</b>  Provide for safety of responders and the public Ensure an appropriate evacuation and repopulation plan is in place and communicated Establish and maintain positive relationships with cooperating agencies and the public Provide timely and accurate incident information Protect economic and watershed values with safe and aggressive firefighting efforts Keep costs commensurate with values at risk  <b>Control Objectives:</b>  Keep fire North of Forebay Road and Highway 50 east of Pollock Pines Keep fire East of Duncan Creek and the Middle Fork of the American River Keep fire West of Ice House Road Keep fire South of the Middle Fork of the American River			
<b>6. WEATHER FORCAST FOR OPERATIONAL PERIOD</b> <p style="text-align: center;"><b>See Attached</b></p>			
<b>7. GENERAL/SAFETY MESSAGE</b> <p style="text-align: center;"><b>See Attached</b></p>			
<b>8. ATTACHMENTS ( X IF ATTACHED)</b>			
<input checked="" type="checkbox"/> 202	<input checked="" type="checkbox"/> SAFETY MESSAGE / LCES	<input checked="" type="checkbox"/> TRANSPORTATION MAP	
<input checked="" type="checkbox"/> 203	<input checked="" type="checkbox"/> WEATHER	<input checked="" type="checkbox"/> INCIDENT MAP	
<input checked="" type="checkbox"/> 204	<input checked="" type="checkbox"/> AIR OPERATIONS SUMMARY	<input checked="" type="checkbox"/> FIRE BEHAVIOR	
<input checked="" type="checkbox"/> 205	<input checked="" type="checkbox"/> HUMAN RESOURCE	<input checked="" type="checkbox"/> TRAINING	
<input checked="" type="checkbox"/> 206	<input checked="" type="checkbox"/> ICP / CAMP MAP	<input checked="" type="checkbox"/> FINANCE	
<input checked="" type="checkbox"/> 214	<input checked="" type="checkbox"/> FIRE WEATHER	<input checked="" type="checkbox"/> DEMOB	
ICS 202	<b>9. PREPARED BY (PLANNING SECTION CHIEF)</b> Dennis Cooper / Rick Leuck (t) / Jason Schillinger (t)	<b>10. APPROVED BY (INCIDENT COMMANDER)</b> Zone 1 Zone 2 Jim Giachino / Kevin Smith	

ORGANIZATION ASSIGNMENT LIST	
<b>1. Incident Name: KING (ZONE 1)</b>	
2. Date: 9/25/14	3. Time: 2100
4. Operational Period: <b>DAY SHIFT September 26, 2014 0600 - 1800</b>	
Position	Name
<b>5. Incident Commander and Command Staff</b>	
Incident Commander	Jim Giachino / Steve Millert (t)
Deputy	Carlton Joseph
Safety Officer	Marty Hamel / Steve Ryberg / Charlotte Jordan (t)
Information Officer	Steve Kliest / Mark Savage (t)
Liaison Officer	R. Alpert / R. Graham / W. McGrew / J. Jones
<b>6. Agency Representative</b>	
Eldorado NF	Laurence Crabtree
Eldorado NF Agency Admin Rep	Duane Nelson / Pat Trimble
Tahoe NF	Tom Quinn
Tahoe NF Agency Admin Rep	Victor Lyon
Cal OES	Bill Bondshu
CAL FIRE Nevada-Yuba-Placer Unit	Randy Smith
IARR Eastern Area	Jeffery Briggs
IARR Northeastern Region	Robert Heartlove
IARR Southern Region	Tom Barnes / Ed Bratcher / David Berens
IARR Southwestern Region	Carlos Nosie / Louie Sandoval
CAL TRANS	Dave Wood
PG&E	Pam Purdee
California Highway Patrol	Chris Sahagun
Placer County Sheriff	Kevin Borden
<b>7. Planning Section</b>	
Plans Chief	Dennis Cooper / Rick Leuck (t) / Jason Schillinger (t)
Resources Unit	R. Ashby / J. Switzler / J. Wilson / E. Matye (t)
Situation Unit	T. Morelock / M. McHargue / P. Kaiser
Human Resources	Marilyn Loughrey / Tom Nichols
READ	Courtney Rowe
Fire Behavior	Shelly Crook / Denny O'Neil / Duane Weis
Meteorologist	Jason Clapp
GISS	Brad Weissaupt / Eric Shreve (t)
CTSP	Jim Youngblood / Chris Crowder (t)
TNSP	Jim Mitchell / Seneca Smith / Bill Reynolds
DEMOB	Dan Baggao / Jim Cooley
<b>8. Logistics Section</b>	
Logistics Chief	H. Crane / D. Haston / K. Kumpe (t)
Supply Unit	Michael Bradford
Facilities Unit	Jim Eckroth / Wally Grogan
Ground Support Unit	John Badaracco
Medical Unit	Robert Russell / Newton Ong (t)
Food Unit	Dennis Durham
Receiving/Distribution	Joe McMahan
Communications Unit	Greg Ely / Tim Maguire (t)
Ordering Manager	Sharon Porter

9. Operations Section		
Ops Chief	Les Curtis / Steve Burns (t)	
Deputy Ops	Joe Reyes	
Planning Ops	Don Smith / Mike Sandwick	
Contingency Ops	John Truett / Kyle Smith (t)	
a. Branch X		
Branch Director	Dana D'Andrea / Jeb Pronto	
Division	1B	David Buchanan / James White (t)
Division	1D	Bryan Brazzeal / Cory Johnson (t)
Division	1F	Jason Lambirth / Max Twombly
b. Branch XII		
Branch Director	Kelly Martin	
Division	1H	Erick Stahlin / Patrick Medina (t)
Division	1K	Unstaffed
Division	1L	Carl Klug / Ron Gregor (t)
c. Branch XIV		
Branch Director	Unstaffed	
Division	1M	Unstaffed
Division	1P	Unstaffed
d. Branch XVI		
Branch Director	Sean Johnson / Corey Rose (t)	
Division	1R	Unstaffed
Division	1T	Unstaffed
Division	1U	Aaron Riise
Division	1W	Chris Vero / Johnny Villa (t)
Division	1Y	Michael Cherry / David Soldavini (t)
Division	1Z	Justin Hanely / Shannon Myers (t)
f. West Contingency Group		
Branch Director	Don Forsyth	
Group	American	Deano Esades / Jeff Goyings (t)
Group	Mosquito	Christopher Tate
Group	Ralston	David Carney
Group	Oxbow	Thomas Browning
g. Rehab / Repair Branch		
Branch	Russell Copp	<i>Dan Bryant</i>
Group	Michael Sweany / Thomas Gonzales / Joel Kerley	<i>Chuck Alluisi</i> <i>Mark Darragh</i>
h. Tactical Resource Coordinator		
Group	Unstaffed	
i. Air Operations		
Air Operations Branch Director	John Keesee	
Air Support Supervisor	Craig Dado	
Helicopter Coordinator	Lane Caldwell / John Chin	
Heli Base Manager	Brad Bernardy	
10. Finance/Administration Section		
Finance/Admin. Chief	Teresa Fork / Peter Bymers	
Cost Appr.	Kenny Lucien	
Time Unit	Janice Brown	
Procurement Unit	Wendy Whiteman	
Compensation/Claims Unit	Elaine Downing	
Cost Unit	Roger Siemens	
Personnel Time Recorder	Debra Luna (t)	
Prepared by (Resource Unit Leader)	Eric Matye (t)	

*Rehab = Russell Copp / Dan Bryant*

*c. Alluisi*

*WR*



# ZONE 1 FIRE WEATHER FORECAST



**FORECAST NO:** 20  
**PREDICTION FOR:** Friday Day SHIFT

**INCIDENT NAME:** King Fire  
**UNIT:** Eldorado National Forest

**SHIFT DATE:** 26 September 2014

**SIGNED:** *Jason Clapp*

**TIME AND DATE**  
**FORECAST ISSUED:** 2100 / 25 September 2014

Jason Clapp  
**Incident Meteorologist**

**WEATHER TODAY:** *\*\*\*Isolated Thunderstorms\*\*\**

**WEATHER:** Westerly winds today with a partly to mostly cloudy sky, cool temperatures, scattered showers with isolated afternoon thunderstorms.

**TEMPERATURES:** 52-58 *Trend: Little Change*  
**RELATIVE HUMIDITY:** 50-60% *Trend: Down 30 – 40%*

**20 FT WINDS:**

**RIDGETOP** – Morning winds SE 3-7 mph through 1000, shifting SW to NW throughout day of 5-7 mph with afternoon gusts 15 mph.

**SLOPE/VALLEY** – Downcanyon 3-7 mph and shift WSW 4-6 with gusts 10 mph around 1100.

**LAL:** 1. **STABILITY/INVERSION:** Weak inversions breaking in deep canyons by 1000.

**WEATHER DISCUSSION:** The main low pressure area moves over today with another chance of showers/t-storms. However, only expect a total amount less than 0.25 inch, with increased amounts under stronger storms. The slow moving Low still hangs around to the south and then southeast of the fire through the weekend with a threat of more showers and some thunderstorm activity.

**WEATHER FOR FRIDAY NIGHT:** Mostly cloudy with showers and few thunderstorms.

Low temperatures: Ridges 41-46...Valleys 44-50.

Max RH: Ridges 70-90%... Valleys 90-100%.

**20FT Winds:**

Ridge – N-NE 5-9 with gusts to 15 mph after 0200.

Slope/valley – Transition to downslope 3-6 mph. Downcanyon wind gusts 5-10 mph after 0200.

**OUTLOOK FOR SATURDAY:** Partly to mostly cloudy with a chance of showers and afternoon thunderstorms. High temps: 56-63. Min RH: 45-50%. Ridge winds: WNW winds from 5-7 with afternoon gusts 15 mph. Valley/Slope winds: Downslope 4-7 mph shifting upslope/upcanyon 6-10 mph late morning.

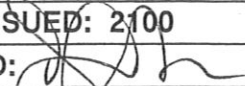
## Weather Planning Matrix



## Weather Observations



# FIRE BEHAVIOR FORECAST

FORECAST NUMBER: #21	TYPE OF FIRE: Wildfire
FIRE NAME: King Fire	OPERATIONAL PERIOD: Friday 9/26/2013 Day Shift
DATE ISSUED: September 25, 2014	TIME ISSUED: 2100
UNIT: Eldorado & Tahoe National Forests	SIGNED:  Shelly Crook - FBAN

## INPUTS

### WEATHER SUMMARY

(Refer to Weather Forecast for details) DAY: Partly to mostly cloudy. 30% chance of thunderstorms in the afternoon. Max Temp: 50-60°. Min RH: 50-60%. Ridgetop winds – SE/E 3-6 mph in the AM to mid-day becoming SW/NW 5-7 with gusts to 15 mph in the afternoon. Slope/Valley Winds – Upslope 2-4 mph becoming W/SW 4-6 mph with gusts to 10 mph in the afternoon.

### FUELS

Predominantly mature second growth mixed conifer (ponderosa pine, cedar, Douglas fir) with heavy shrub loading. Oaks common in the drainages. Fuel loadings are generally heavy. Representative Fuel Models 9, 10, TU5, TL8, TL9. The live fuels moistures are extremely dry and are currently under a Fuels and Fire Behavior Advisory due to the sustained drought conditions. However the dead fuels have moistened up as a result of the rain from yesterday. Minimum fine dead fuel moisture: 10-12%, 1000 hr FMC: 11%, 10 hr FMC: 10-12%, Live fuel moisture: 55-65%.

## OUTPUTS - FIRE BEHAVIOR

### DAY SHIFT:

Thresholds for Active Fire Behavior in the King Fire area (Eldorado NF PocketCard):

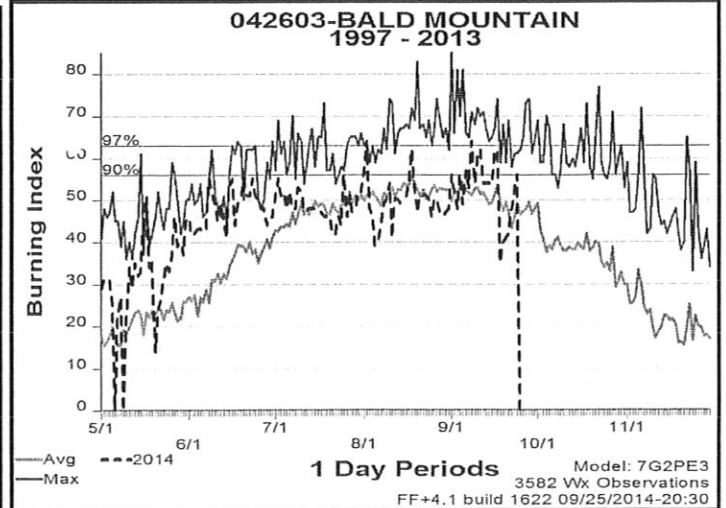
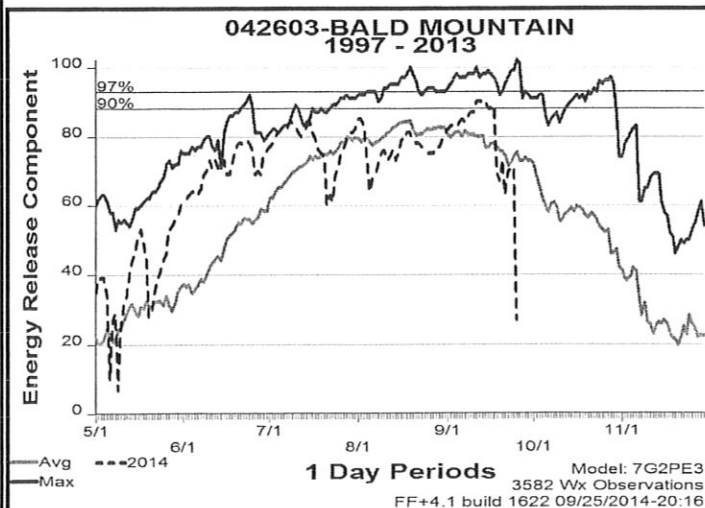
\* 20ft Winds (over 5 mph), \*RH (under 22%), \*Temperature (over 84°) and \*1000hr FMC (under 9%).

➤ Forecasted Indices (Bald Mt RAWs, FM-G) ERC: 46 (up 19) BI: 35 (up 35)

Maximum Fire Behavior Potential (head fire upslope): Rate of Spread: 1-3 chains/hour (1-3 feet/minute), Flame Length: 0-2 ft. Probability of Ignition: 30%. Maximum spotting distance of 500-1000 feet.

**GENERAL for the Entire Zone 1 Fire Area:** Yesterday the entire fire area received ½ to ¾ inch of rain. As a result, today's fire behavior potential has decreased significantly. Expect predominately smoldering and creeping fire behavior within the interior with little to no perimeter spread across the entire North Zone. Pay special attention for snags and stump holes and snags as the mopup efforts move further into the interior. The heavy fuels will continue to hold heat for several days.

Bald Mountain ERC (27) and BI (0) as of 9/25 1400 hours



**FEEDBACK:** Collect WX obs hourly and turn in to FBAN or IMET at end of shift. Please include fire behavior observations.

### AIR OPERATIONS

Cloudy conditions may limit operations. Plan accordingly. Sunrise at 0653. Sunset at 1854.

### SAFETY

- As the fire behavior wanes, don't let your guard down, focus on the mission and your crews attitude.
- As the mop-up efforts progress to the interior of the fire, the threat of falling snags increases.
- "In order to keep a true perspective of one's importance, everyone should have a dog that will worship him and a cat that will ignore him." - Dereke Bruce

<b>Division Assignment List</b>		1. Branch <b>X</b>		2. Division/Group <b>1 B</b>	
3. Incident Name <b>KING - ZONE 1</b>		4. Operational Period 09/26/14 Friday Day Shift 0600 - 1800			
5. Operations Personnel					
Operations Chief	LES CURTIS; STEVE BURNS (t)		Division/Group Supervisor	D. BUCHANAN; J. WHITE (t)	
Contingency Ops Chief	JOHN TRUETT; KYLE SMITH (t)		Air Attack Supervisor		
Branch Director	DANA D'ANDREA; JEB PRONTO		Safety Officer	M HAMEL; S. RYBERG; C. JORDAN (t)	
6. Resources Assigned this Period					
Strike Team/Task Force/ Resource Designator	Leader	Num of Pers.	Trans. Y/N	Drop Off PT./Time	Pick Up PT./Time
CRW T1 UKONOM IHC C-92 9/28	KEITH SMITH	19	N	SUNSET SPIKE 0600	SUNSET SPIKE 1800
CRW T1 FLATHEAD IHC C-247 10/6	TYLER ANDERSON	21	N	SUNSET SPIKE 0600	SUNSET SPIKE 1800
CRW T1 RIO BRAVO IHC C-232 10/5	JAMES J ROCHA	21	N	SUNSET SPIKE 0600	SUNSET SPIKE 1800
CRW T2IA INTERTRIBAL #1 C-12 10/1	JACOB WISEHART	20	N	SUNSET SPIKE 0600	SUNSET SPIKE 1800
CRW T2IA CAC #4 C-16 9/30	RON E BROWN	20	N	SUNSET SPIKE 0600	SUNSET SPIKE 1800
CRW T2IA MS MSS#1 C-13 10/1	JOE MILES	20	N	SUNSET SPIKE 0600	SUNSET SPIKE 1800
CRW T2 MQ FRANCO 13137 C-45 9/30	FRANCIS FRANCO	20	N	SUNSET SPIKE 0600	SUNSET SPIKE 1800
CRW T2 DIAMOND C-40 10/1	LARRY ECKLEMAN	20	N	SUNSET SPIKE 0600	SUNSET SPIKE 1800
CRW T2 DIAMOND FIRE C-208 10/5	BILLY SMITH	20	N	SUNSET SPIKE 0600	SUNSET SPIKE 1800
CRW T2 PACIFIC OA C-46 9/30	WESLEY DODDS	20	N	SUNSET SPIKE 0600	SUNSET SPIKE 1800
ENG S/T PNF 3660C E-87 9/29	RICH SIMON	27	N	SUNSET SPIKE 0600	SUNSET SPIKE 1800
TF ENF KING #6				SUNSET SPIKE 0600	SUNSET SPIKE 1800
TFLD O-794 10/4	CLAY STEPHENS	1	N	SUNSET SPIKE 0600	SUNSET SPIKE 1800
ENG T6 PACIFIC OASIS E-343 9/30	STEVEN MILLER	3	N	SUNSET SPIKE 0600	SUNSET SPIKE 1800
ENG T6 FAIRVIEW E-337 9/30	DAN MORGAN	3	N	SUNSET SPIKE 0600	SUNSET SPIKE 1800
ENG T6 FIRESTORM E-341 9/30	KEN NEWITT	3	N	SUNSET SPIKE 0600	SUNSET SPIKE 1800
ENG T6 FIRESTORM E-336 9/30	JOSHUA BRADLEY	3	N	SUNSET SPIKE 0600	SUNSET SPIKE 1800
ENG T6 GH RANCH, E-354 9/30	JEFFREY DAVIS	3	N	SUNSET SPIKE 0600	SUNSET SPIKE 1800
<b>ENG E-349</b>	<b>Carlos</b>				

7. Control Operations

Widen and improve existing secondary line from the 11 Pines Road to the Rubicon River.

8. Special Instructions

All Division Supervisors need to download information to the Sit Unit for all completed line and proposed line.

Noxious weeds are marked by orange "noxious weed" flagging. Minimize or avoid activities in these areas.

Sensitive areas are marked with pink/black checkerboard flagging. Minimize ground disturbing activities in these areas.

\* Indicates a 24 hour resource 0600-0600

9. Division/Group Communications Summary							
Function	Frequency - RX	Frequency - TX	Tone	System	Channel	System	Channel
Command	166.6125	168.4000	136.5	NIFC C4	1		
Tactical Div/Group	168.0500	168.0500		NIFC T1	5		
Logistics							
Air to Ground	169.1500	169.1500		A/G CMD	13		
Prepared by (Resource Unit Leader) G. Thompson / J. Switzler / E. Mayte (t)			Approved by (Planning Section Chief) D. Cooper / R. Leuck (t) / J. Schillinger (t)		Date Prepared 09/25/14		Time Prepared 1943

<b>Division Assignment List</b>		1. Branch <b>X</b>		2. Division/Group <b>1 B</b>			
3. Incident Name <b>KING - ZONE 1</b>		4. Operational Period 09/26/14 Friday Day Shift 0600 - 1800					
5. Operations Personnel							
Operations Chief	LES CURTIS; STEVE BURNS (t)		Division/Group Supervisor		D. BUCHANAN; J. WHITE (t)		
Contingency Ops Chief	JOHN TRUETT; KYLE SMITH (t)		Air Attack Supervisor				
Branch Director	DANA D'ANDREA; JEB PRONTO		Safety Officer		M HAMEL; S. RYBERG; C. JORDAN (t)		
6. Resources Assigned this Period							
Strike Team/Task Force/ Resource Designator	Leader	Num of Pers.	Trans. Y/N	Drop Off PT./Time	Pick Up PT./Time		
T/F ENF KING #5				SUNSET SPIKE 0600	SUNSET SPIKE 1800		
STEN O-661 10/2	JILL VUGTEVEEN	1	N	SUNSET SPIKE 0600	SUNSET SPIKE 1800		
TFLD O-660 10/3	RYAN SANCHEY	1	N	SUNSET SPIKE 0600	SUNSET SPIKE 1800		
TFLD O-711 10/3	CHET JENSEN (t)	1	N	SUNSET SPIKE 0600	SUNSET SPIKE 1800		
ENG T6 UWF E-486 9/29	RYAN TAYLOR	3	N	SUNSET SPIKE 0600	SUNSET SPIKE 1800		
ENG T6 E-344 10/1	COLTON MCCARTHY	3	N	SUNSET SPIKE 0600	SUNSET SPIKE 1800		
ENG T6 PACIFIC OASIS E-342 9/30	KENT SMITH	3	N	SUNSET SPIKE 0600	SUNSET SPIKE 1800		
ENG T6 E-356 9/30	BILL MACAULEY	3	N	SUNSET SPIKE 0600	SUNSET SPIKE 1800		
ENG T6 FIRESTORM E-339 9/30	RON SARTAIN	3	N	SUNSET SPIKE 0600	SUNSET SPIKE 1800		
DOZ T2 EARTH MOVIN E-101* 10/1	THORNTON, JOHN	4	N	SUNSET SPIKE 0600	SUNSET SPIKE 1800		
DOZ T2 YTS E-197* 9/29	RICHARD JAUGCH	2	N	SUNSET SPIKE 0600	SUNSET SPIKE 1800		
DOZ T2 LENAHN'S WTER E-212* 9/29	JOHN MONTZ	2	N	SUNSET SPIKE 0600	SUNSET SPIKE 1800		
DOZ T2 TEHAMA TRANS E-208 9/27	TOBY ADAMS	1	N	SUNSET SPIKE 0600	SUNSET SPIKE 1800		
DOZ T2 B. INGRAM CON E-554 10/5	BRUCE INGRAM	3	N	SUNSET SPIKE 0600	SUNSET SPIKE 1800		
DOZ T2 BRAD INGRAM #10 E-555 10/5	JESSE GRIEVE	3	N	SUNSET SPIKE 0600	SUNSET SPIKE 1800		
DOZ T2 GREENOUS R004 E-563* 10/5	GREG CALDWELL	2	N	SUNSET SPIKE 0600	SUNSET SPIKE 1800		
DOZ T2 GREENOUS E-565 10/5	NICK DROGOSKY	3	N	SUNSET SPIKE 0600	SUNSET SPIKE 1800		
DOZ T2 DADCO CONST E-568 10/5	DOUGLAS MAGALIA	3	N	SUNSET SPIKE 0600	SUNSET SPIKE 1800		
DOZ T2 HAYS EQUIP E-570 10/4	BOB HAYES	2	N	SUNSET SPIKE 0600	SUNSET SPIKE 1800		
DOZ T2 HAYS EQUIP E-571 10/5	BOB CAMERON	2	N	SUNSET SPIKE 0600	SUNSET SPIKE 1800		
7. Control Operations							
Widen and improve existing secondary line from the 11 Pines Road to the Rubicon River.							
8. Special Instructions							
All Division Supervisors need to download information to the Sit Unit for all completed line and proposed line.							
Noxious weeds are marked by orange "noxious weed" flagging. Minimize or avoid activities in these areas.							
Sensitive areas are marked with pink/black checkerboard flagging. Minimize ground disturbing activities in these areas.							
* Indicates a 24 hour resource 0600-0600							
9. Division/Group Communications Summary							
Function	Frequency - RX	Frequency - TX	Tone	System	Channel	System	Channel
Command	166.6125	168.4000	136.5	NIFC C4	1		
Tactical Div/Group	168.0500	168.0500		NIFC T1	5		
Logistics							
Air to Ground	169.1500	169.1500		A/G CMD	13		
Prepared by (Resource Unit Leader) G. Thompson / J. Switzler / E. Mayte (t)		Approved by (Planning Section Chief) D. Cooper / R. Leuck (t) / J. Schillinger (t)		Date Prepared 09/25/14		Time Prepared 1944	



<b>Division Assignment List</b>			1. Branch <b>X</b>		2. Division/Group <b>1 B</b>		
3. Incident Name <b>KING - ZONE 1</b>			4. Operational Period 09/26/14 Friday Day Shift 0600 - 1800				
5. Operations Personnel							
Operations Chief		LES CURTIS; STEVE BURNS (t)		Division/Group Supervisor		D. BUCHANAN ; J. WHITE (t)	
Contingency Ops Chief		JOHN TRUETT; KYLE SMITH (t)		Air Attack Supervisor			
Branch Director		DANA D'ANDREA; JEB PRONTO		Safety Officer		M.HAMEL;S.RYBERG;C.JORDAN (t)	
6. Resources Assigned this Period							
Strike Team/Task Force/ Resource Designator		Leader		Num of Pers.	Trans. Y/N	Drop Off PT./Time	Pick Up PT./Time
WT T1 C&H VETERAN E-252* 9/29		JAMES CALDWELL		2	N	SUNSET SPIKE 0600	SUNSET SPIKE 1800
WT T1 WATER BY CAR E-259 9/30		JOHN CARMODY		1	N	SUNSET SPIKE 0600	SUNSET SPIKE 1800
WT T1 PRO DUMP E-278 9/29		CARLOS FURTADO		2	N	SUNSET SPIKE 0600	SUNSET SPIKE 1800
<del>CHIP - ROBINSON E-434 10/2</del> <i>no show</i>		STEVE ARWOOD		2	N	SUNSET SPIKE 0600	SUNSET SPIKE 1800
FELB T1 003 E-445 10/5		COCTER BLAKESLEE		1	N	SUNSET SPIKE 0600	SUNSET SPIKE 1800
FELB T1 E-446 10/4				2	N	SUNSET SPIKE 0600	SUNSET SPIKE 1800
FELB T1 NR004 HD E-447 10/5		KEVIN SMITH		2	N	SUNSET SPIKE 0600	SUNSET SPIKE 1800
SKID A & F ENTERPRISES E-912 10/8		MICHAEL TEONEY		1	N	SUNSET SPIKE 0600	SUNSET SPIKE 1800
FALM O-602 A&F ENT 10/1				2	N	SUNSET SPIKE 0600	SUNSET SPIKE 1800
FALM O-603 TREE MASTER 10/1				2	N	SUNSET SPIKE 0600	SUNSET SPIKE 1800
FALM O-604 PRO PLUS 10/2				2	N	SUNSET SPIKE 0600	SUNSET SPIKE 1800
FALM O-605 PRO PLUS 10/1				2	N	SUNSET SPIKE 0600	SUNSET SPIKE 1800
FALM O-606 INC -NZF- 10/1		GREG LORENZO		2	N	SUNSET SPIKE 0600	SUNSET SPIKE 1800
FALM O-883 10/5		RICHARD LOERZ		2	N	SUNSET SPIKE 0600	SUNSET SPIKE 1800
FALM O-876 LONE PINE CUTG 10/2				1	N	SUNSET SPIKE 0600	SUNSET SPIKE 1800
FELB O-609 10/02		ROBERT HENSLEY		1	N	SUNSET SPIKE 0600	SUNSET SPIKE 1800
FELB O-860 9/27		DAMON NELSON		1	N	SUNSET SPIKE 0600	SUNSET SPIKE 1800
FELB O-844 10/4		ROBERT KRAMER		1	N	SUNSET SPIKE 0600	SUNSET SPIKE 1800
FELB O-859 10/1		TERRY MCSHANE		1	N	SUNSET SPIKE 0600	SUNSET SPIKE 1800
HEQB O-256 9/28		GORDON MEYER		1	N	SUNSET SPIKE 0600	SUNSET SPIKE 1800
7. Control Operations							
Widen and improve existing secondary line from the 11 Pines Road to the Rubicon River.							
8. Special Instructions							
All Division Supervisors need to download information to the Sit Unit for all completed line and proposed line.							
Noxious weeds are marked by orange "noxious weed" flagging. Minimize or avoid activities in these areas.							
Sensitive areas are marked with pink/black checkerboard flagging. Minimize ground disturbing activities in these areas.							
* Indicates a 24 hour resource 0600-0600							
9. Division/Group Communications Summary							
Function	Frequency - RX	Frequency - TX	Tone	System	Channel	System	Channel
Command	166.6125	168.4000	136.5	NIFC C4	1		
Tactical Div/Group	168.0500	168.0500		NIFC T1	5		
Logistics							
Air to Ground	169.1500	169.1500		A/G CMD	13		
Prepared by (Resource Unit Leader) G. Thompson / J. Switzler / E. Mayte (t)			Approved by (Planning Section Chief) D. Cooper / R. Leuck (t) / J. Schillinger (t)			Date Prepared 09/25/14	Time Prepared 1944

<b>Division Assignment List</b>	1. Branch <b>X</b>	2. Division/Group <b>1 B</b>
---------------------------------	-----------------------	---------------------------------

3. Incident Name <b>KING - ZONE 1</b>	4. Operational Period <b>09/26/14 Friday Day Shift 0600 - 1800</b>
--	---

**5. Operations Personnel**

Operations Chief	LES CURTIS; STEVE BURNS (t)	Division/Group Supervisor	D. BUCHANAN; J. WHITE (t)
Contingency Ops Chief	JOHN TRUETT; KYLE SMITH (t)	Air Attack Supervisor	
Branch Director	DANA D'ANDREA; JEB PRONTO	Safety Officer	M HAMEL; S. RYBERG; C. JORDAN (t)

**6. Resources Assigned this Period**

Strike Team/Task Force/ Resource Designator	Leader	Num of Pers.	Trans. Y/N	Drop Off PT./Time	Pick Up PT./Time
HEQB O-826 10/5	BRENTWOOD REID	1	N	SUNSET SPIKE 0600	SUNSET SPIKE 0600
HEQB O-828 10/4	NATTHAN D BAXTER	1	N	SUNSET SPIKE 0600	SUNSET SPIKE 0600
HEQB O-833 10/5	JOSHUA WILLIAMS	1	N	SUNSET SPIKE 0600	SUNSET SPIKE 0600
HEQB O-834 10/6	DANIEL WILLIAMS	1	N	SUNSET SPIKE 0600	SUNSET SPIKE 0600
HEQB O-837 10/5	JAMES DICKINSON	1	N	SUNSET SPIKE 0600	SUNSET SPIKE 0600
HEQB O-838 10/7	TERRON GEE	1	N	SUNSET SPIKE 0600	SUNSET SPIKE 0600
HEQB O-839 10/6	MIKE KOHNERT	1	N	SUNSET SPIKE 0600	SUNSET SPIKE 0600
TFLD O-793 10/5	BENNETT CHILDS	1	N	SUNSET SPIKE 0600	SUNSET SPIKE 0600
SOF2 O-699 10/2	PEDRO VILLA	1	N	SUNSET SPIKE 0600	SUNSET SPIKE 0600
SOFR (t) O-40 9/29	JOHN MARTINEZ	1	N	SUNSET SPIKE 0600	SUNSET SPIKE 0600
FEMP O-428 10/1	NICK BRANDOW	1	N	SUNSET SPIKE 0600	SUNSET SPIKE 0600
FEMT O-432 10/1	RYAN SOUDER	1	N	SUNSET SPIKE 0600	SUNSET SPIKE 0600
<i>MAST E-860</i>					
<i>MAST E-861</i>					
<i>SKID E-911</i>					

**7. Control Operations**

Widen and improve existing secondary line from the 11 Pines Road to the Rubicon River.

**8. Special Instructions**

All Division Supervisors need to download information to the Sit Unit for all completed line and proposed line.

Noxious weeds are marked by orange "noxious weed" flagging. Minimize or avoid activities in these areas.  
Sensitive areas are marked with pink/black checkerboard flagging. Minimize ground disturbing activities in these areas.

\* Indicates a 24 hour resource 0600-0600

**9. Division/Group Communications Summary**

Function	Frequency - RX	Frequency - TX	Tone	System	Channel	System	Channel		
Command	166.6125	168.4000	136.5	NIFC C4	1				
Tactical Div/Group	168.0500	168.0500		NIFC T1	5				
Logistics									
Air to Ground	169.1500	169.1500		A/G CMD	13				
Prepared by (Resource Unit Leader) G. Thompson / J. Switzler / E. Mayte (t)			Approved by (Planning Section Chief) D. Cooper / R. Leuck (t) / J. Schillinger (t)			Date Prepared 09/25/14		Time Prepared 1944	

<b>Division Assignment List</b>			1. Branch <b>X</b>		2. Division/Group <b>1 D</b>		
3. Incident Name <b>KING - ZONE 1</b>			4. Operational Period 09/26/14 Friday Day Shift 0600 - 1800				
5. Operations Personnel							
Operations Chief		LES CURTIS; STEVE BURNS (t)		Division/Group Supervisor		BRYAN BRAZZEAL; CORY JOHNSON (t)	
Contingency Ops Chief		JOHN TRUETT; KYLE SMITH (t)		Air Attack Supervisor			
Branch Director		DANA D'ANDREA; JEB PRONTO		Safety Officer		M.HAMEL;S.RYBERG;C JORDAN (t)	
6. Resources Assigned this Period							
Strike Team/Task Force/ Resource Designator		Leader		Num of Pers.	Trans. Y/N	Drop Off PT./Time	Pick Up PT./Time
CRW T1 AMERICAN RIVER IHC C-87 9/27		ADAM LEYBA		20	N	SUNSET SPIKE 0600	SUNSET SPIKE 1800
CRW T2IA PACIFIC OASIS C-26 9/28		KEN WILSON		16	N	SUNSET SPIKE 0600	SUNSET SPIKE 1800
CRW T2IA UTAH CNTY #2 C-96 9/27		ANDREW SIEBACH		18	N	SUNSET SPIKE 0600	SUNSET SPIKE 1800
CRW T2IA NAVAJO SCTS 1 C-101 9/30		TERRY TSO		20	N	SUNSET SPIKE 0600	SUNSET SPIKE 1800
CRW T2IA NAVAJO SCTS 2 C-4 9/30		ALTON JOHN		20	N	SUNSET SPIKE 0600	SUNSET SPIKE 1800
CRW T2IA NORTHERN UTAH RE C-130		JOSH HAEN		20	N	SUNSET SPIKE 0600	SUNSET SPIKE 1800
SOF2 O-699 10/2		PEDRO VILLA		1	N	SUNSET SPIKE 0600	SUNSET SPIKE 1800
SOFR O-40 9/29		JOHN MARTINEZ		1	N	SUNSET SPIKE 0600	SUNSET SPIKE 1800
FEMP O-1089 9/29		JACOB SNOW		1	N	SUNSET SPIKE 0600	SUNSET SPIKE 1800
FEMT O-971 10/6		WILLIAM KRON		1	N	SUNSET SPIKE 0600	SUNSET SPIKE 1800
FOBS O-451 10/2		RICHARD RATCLIFF		1	N	SUNSET SPIKE 0600	SUNSET SPIKE 1800
FOBS O-453 10/2		JEFFREY BOSTWICK		1	N	SUNSET SPIKE 0600	SUNSET SPIKE 1800
7. Control Operations							
Widen and improve existing secondary lines from Ramsey Crossing to French House.							
8. Special Instructions							
All Division Supervisors need to download information to the Sit Unit for all completed line and proposed line.							
Noxious weeds are marked by orange "noxious weed" flagging. Minimize or avoid activities in these areas.							
Sensitive areas are marked with pink/black checkerboard flagging. Minimize ground disturbing activities in these areas.							
* Indicates a 24 hour resource 0600-0600							
9. Division/Group Communications Summary							
Function	Frequency - RX	Frequency - TX	Tone	System	Channel	System	Channel
Command	166.6125	168.4000	136.5	NIFC C4	1		
Tactical Div/Group	168.5000	168.5000		NIFC T10	6		
Logistics							
Air to Ground	169.1500	169.1500		A/G CMD	13		
Prepared by (Resource Unit Leader) G. Thompson / J. Switzler / E. Mayte (t)			Approved by (Planning Section Chief) D. Cooper / R. Leuck (t) / J. Schillinger (t)			Date Prepared 09/25/14	Time Prepared 1447

<b>Division Assignment List</b>		1. Branch <b>X</b>		2. Division/Group <b>1 F</b>			
3. Incident Name <b>KING - ZONE 1</b>		4. Operational Period 09/26/14 Friday Day Shift 0600 - 1800					
5. Operations Personnel							
Operations Chief	LES CURTIS; STEVE BURNS (t)		Division/Group Supervisor	JASON LAMBIRTH; MAX TWOMBLY			
Contingency Ops Chief	JOHN TRUETT; KYLE SMITH (t)		Air Attack Supervisor				
Branch Director	DANA D'ANDREA; JEB PRONTO		Safety Officer	M.HAMEL;S. RYBERG;C.JORDAN (t)			
6. Resources Assigned this Period							
Strike Team/Task Force/ Resource Designator	Leader	Num of Pers.	Trans. Y/N	Drop Off PT./Time	Pick Up PT./Time		
CRW T2IA SAN CARLOS C-5 9/30	THOMAS PATTEN	18	N	SUNSET SPIKE 0600	SUNSET SPIKE 1800		
CRW T2IA R10 #5 C-22 10/1	ROBERT TODD BERNEY	19	N	SUNSET SPIKE 0600	SUNSET SPIKE 1800		
CRW T2 GH RANCH C-42 9/30	LEONARD TOWNSEND	20	N	SUNSET SPIKE 0600	SUNSET SPIKE 1800		
CRW T2 GH RANCH C-41 9/30	ALLEN BACON	20	N	SUNSET SPIKE 0600	SUNSET SPIKE 1800		
CRW T2IA ALAMO RGLRS C-14 10/1	DARRELL EAVES	21	N	SUNSET SPIKE 0600	SUNSET SPIKE 1800		
CRW T2IA GILA REGULAR 5 C-171 10/4	FELIX VALDEZ	0	N	SUNSET SPIKE 0600	SUNSET SPIKE 1800		
ENG S/T T3 1662C E-536 10/5	RICHARD MARTIN	27	N	SUNSET SPIKE 0600	SUNSET SPIKE 1800		
ENG S/T 6632C E-535 10/5	ADOLPHO CASTRO	27	N	SUNSET SPIKE 0600	SUNSET SPIKE 1800		
ENG S/T T3 5031C E-669 10/4	KIRK KUSHEN	17	N	SUNSET SPIKE 0600	SUNSET SPIKE 1800		
ENG S/T T3 3675C E-533 10/3	SEAN JOHNNY	27	N	SUNSET SPIKE 0600	SUNSET SPIKE 1800		
ENG T/F KING #4							
TFLD O-662	CORY CALNAN	1	N	SUNSET SPIKE 0600	SUNSET SPIKE 1800		
STEN O-707 10/3	BEAU MACIAG (t)	1	N	SUNSET SPIKE 0600	SUNSET SPIKE 1800		
ENG T6 CPS 62 E-374	RYAN MORGAN	3	N	SUNSET SPIKE 0600	SUNSET SPIKE 1800		
ENG T6 TAHOE SAGE FIRE E-358	KEVIN STUDLEY	3	N	SUNSET SPIKE 0600	SUNSET SPIKE 1800		
ENG T6 HIGH SIERRA E-338	JERRY VICE	3	N	SUNSET SPIKE 0600	SUNSET SPIKE 1800		
ENG T6 HIGH SIERRA E-340	JACOB ROWSEY	3	N	SUNSET SPIKE 0600	SUNSET SPIKE 1800		
ENG T6 333 BLY MT FIRE E-355	MARK GROVES	3	N	SUNSET SPIKE 0600	SUNSET SPIKE 1800		
DOZER - T2 - FISK E-576 10/5	RICK ANDERSON	2	N	SUNSET SPIKE 0600	SUNSET SPIKE 1800		
DOZER T2 E-573 10/5	KEVIN CARTER	2	N	SUNSET SPIKE 0600	SUNSET SPIKE 1800		
7. Control Operations Widen and improve existing secondary line from French House to Anderson Dam. Construct direct line on Chipmunk Ridge from the Z Road to the Division break toward Hell Hole Reservoir.							
8. Special Instructions  All Division Supervisors need to download information to the Sit Unit for all completed line and proposed line.  Noxious weeds are marked by orange "noxious weed" flagging. Minimize or avoid activities in these areas. Sensitive areas are marked with pink/black checkerboard flagging. Minimize ground disturbing activities in these areas.  * Indicates a 24 hour resource 0600-0600							
9. Division/Group Communications Summary							
Function	Frequency - RX	Frequency - TX	Tone	System	Channel	System	Channel
Command	166.6125	168.4000	136.5	NIFC C4	1		
Tactical Div/Group	166.7250	166.7250		NIFC T5	7		
Logistics							
Air to Ground	169.1500	169.1500		A/G CMD	13		
Prepared by (Resource Unit Leader) G. Thompson / J. Switzler / E. Matye (t)		Approved by (Planning Section Chief) D. Cooper / R. Leuck (t) / J. Schillinger (t)		Date Prepared 09/25/14		Time Prepared 1447	

<b>Division Assignment List</b>	1. Branch <b>X</b>	2. Division/Group <b>1 F</b>
---------------------------------	-----------------------	---------------------------------

3. Incident Name <b>KING - ZONE 1</b>	4. Operational Period <b>09/26/14 Friday Day Shift 0600 - 1800</b>
--	---

**5. Operations Personnel**

Operations Chief	LES CURTIS; STEVE BURNS (t)	Division/Group Supervisor	JASON LAMBIRTH; MAX TWOMBLY
Contingency Ops Chief	JOHN TRUETT; KYLE SMITH (t)	Air Attack Supervisor	
Branch Director	DANA D'ANDREA; JEB PRONTO	Safety Officer	M.HAMEL;S. RYBERG;C.JORDAN (t)

**6. Resources Assigned this Period**

Strike Team/Task Force/ Resource Designator	Leader	Num of Pers.	Trans. Y/N	Drop Off PT./Time	Pick Up PT./Time
DOZER T2 E-574 10/5	TODD THOMAS	2	N	SUNSET SPIKE 0600	SUNSET SPIKE 1800
WT T2 TNF 22 E-34 9/28	CHRISTOPHER LOW	4	N	SUNSET SPIKE 0600	SUNSET SPIKE 1800
WT E-913 10/8	WILLIAM ERICKSON	1	N	SUNSET SPIKE 0600	SUNSET SPIKE 1800
CHIP T2 E-580 10/5	TOM THOMAS	1	N	SUNSET SPIKE 0600	SUNSET SPIKE 1800
FALM O-869 10/5	JAMES MORGAN	1	N	SUNSET SPIKE 0600	SUNSET SPIKE 1800
FALM O-881 10/5		2	N	SUNSET SPIKE 0600	SUNSET SPIKE 1800
HEQB O-821 10/5	ANDREW CARR	1	N	SUNSET SPIKE 0600	SUNSET SPIKE 1800
HEQB O-841 10/5	LOREN BELL	1	N	SUNSET SPIKE 0600	SUNSET SPIKE 1800
HEQB O-843 10/5	WILLIAM SHANE	1	N	SUNSET SPIKE 0600	SUNSET SPIKE 1800
HEQB O-832 10/6	JEFFERY PILOTTO	1	N	SUNSET SPIKE 0600	SUNSET SPIKE 1800
SOF2 O-700 10/2	DONALD FOCO	1	N	SUNSET SPIKE 0600	SUNSET SPIKE 1800
FEMP O-677 9/29	NICK GABBARD	1	N	SUNSET SPIKE 0600	SUNSET SPIKE 1800
FEMT O-429 10/1	MITCH CARNEY	1	N	SUNSET SPIKE 0600	SUNSET SPIKE 1800
FOBS O-303 9/29	AMANDA SHOAF	1	N	SUNSET SPIKE 0600	SUNSET SPIKE 1800
FOBS(t) O-516 9/27	GABRIEL GAMINO	1	N	SUNSET SPIKE 0600	SUNSET SPIKE 1800
<i>DOZ E-577</i>					
<i>W/T E-924</i>					
<i>W/T E-926</i>					
<i>FALB O-902</i>					
<i>FALB O-847</i>					

**7. Control Operations**  
Widen and improve existing secondary line from French House to Anderson Dam. Construct direct line on Chipmunk Ridge from the Z Road to the Division break toward Hell Hole Reservoir.

**8. Special Instructions**

All Division Supervisors need to download information to the Sit Unit for all completed line and proposed line.

Noxious weeds are marked by orange "noxious weed" flagging. Minimize or avoid activities in these areas.  
Sensitive areas are marked with pink/black checkerboard flagging. Minimize ground disturbing activities in these areas.

\* Indicates a 24 hour resource 0600-0600

**9. Division/Group Communications Summary**

Function	Frequency - RX	Frequency - TX	Tone	System	Channel	System	Channel
Command	166.6125	168.4000	136.5	NIFC C4	1		
Tactical Div/Group	166.7250	166.7250		NIFC T5	7		
Logistics							
Air to Ground	169.1500	169.1500		A/G CMD	13		

Prepared by (Resource Unit Leader) G. Thompson / J Switzler / E. Matye (t)	Approved by (Planning Section Chief) D. Cooper / R. Leuck (t) / J. Schillinger (t)	Date Prepared 09/25/14	Time Prepared 1447
---	---	---------------------------	-----------------------

<b>Division Assignment List</b>		1. Branch <b>XII</b>		2. Division/Group <b>1 H</b>			
3. Incident Name <b>KING - ZONE 1</b>		4. Operational Period 09/26/14 Friday Day Shift 0600 - 1800					
5. Operations Personnel							
Operations Chief	LES CURTIS; STEVE BURNS (t)		Division/Group Supervisor E. STAHLIN; P. MEDINA (t)				
Contingency Ops Chief	JOHN TRUETT; KYLE SMITH (t)		Air Attack Supervisor				
Branch Director	KELLY MARTIN		Safety Officer		M HAMEL; S. RYBERG; C. JORDAN (t)		
6. Resources Assigned this Period							
Strike Team/Task Force/ Resource Designator	Leader	Num of Pers.	Trans. Y/N	Drop Off PT./Time	Pick Up PT./Time		
CRW T1 TRINITY IHC C-7 9/28	JUSTIN JEUDE	21	N	FRENCH SPIKE 0600	FRENCH SPIKE 1800		
CRW T1 ELDORADO IHC C-85 9/30	WILLIAM K HARRIS	20	N	FRENCH SPIKE 0600	FRENCH SPIKE 1800		
CRW T1 PLUMAS IHC C-117 9/26	JACK SEVELSON	20	N	FRENCH SPIKE 0600	FRENCH SPIKE 1800		
CRW T2IA HOPI 1 C-172 10/1	FREDDIE PANANA	21	N	FRENCH SPIKE 0600	FRENCH SPIKE 1800		
CRW T2IA ANGORA PEAK C-173 10/3	JASON LA NIER	19	N	FRENCH SPIKE 0600	FRENCH SPIKE 1800		
CREW T2IA SALYER C-174 10/5	JOSH EICHAMER	20	N	FRENCH SPIKE 0600	FRENCH SPIKE 1800		
CRW T2IA CORONADO C-176 9/26	JORGE AMAYA	23	N	FRENCH SPIKE 0600	FRENCH SPIKE 1800		
CRW T2IA GUNNISON C-177 9/29	NICHOLAS S OSTROM	19	N	FRENCH SPIKE 0600	FRENCH SPIKE 1800		
CRW T2IA STF 29 C-200 10/5	MICHAEL L LANIER	19	N	FRENCH SPIKE 0600	FRENCH SPIKE 1800		
CRW T2 COBRAS 5 C-201 10/5	GERARDO VELA	22	N	FRENCH SPIKE 0600	FRENCH SPIKE 1800		
CRW T2IA MS INT #1 C-231 10/7	WADE IRISH	20	N	FRENCH SPIKE 0600	FRENCH SPIKE 1800		
ENG S/T 1618C E-499 10/5	RENE VELASQUEZ	21	N	FRENCH SPIKE 0600	FRENCH SPIKE 1800		
CRW C-170							
CRW C-130							
CRW C-144							
CRW C-244							
FALM 0-871							
FELB 0-959							
ENG ST 3661C E-741							
7. Control Operations							
Improve existing control line from Chipmunk ridge to Middle Meadow Campground.							
8. Special Instructions							
All Division Supervisors need to download information to the Sit Unit for all completed line and proposed line.							
Noxious weeds are marked by orange "noxious weed" flagging. Minimize or avoid activities in these areas.							
Sensitive areas are marked with pink/black checkerboard flagging. Minimize ground disturbing activities in these areas.							
* Indicates a 24 hour resource 0600-0600							
9. Division/Group Communications Summary							
Function	Frequency - RX	Frequency - TX	Tone	System	Channel	System	Channel
Command	166.6125	168.4000	136.5	NIFC C4	1		
Tactical Div/Group	166.7750	166.7750		NIFC T6	8		
Logistics							
Air to Ground	169.1500	169.1500		A/G CMD	13		
Prepared by (Resource Unit Leader) G. Thompson / J. Switzler / E. Mayte (t)		Approved by (Planning Section Chief) D. Cooper / R. Leuck (t) / J. Schillinger (t)		Date Prepared 09/25/14		Time Prepared 1447	

<b>Division Assignment List</b>		1. Branch <b>XII</b>		2. Division/Group <b>1 H</b>			
3. Incident Name <b>KING - ZONE 1</b>		4. Operational Period 09/26/14 Friday Day Shift 0600 - 1800					
5. Operations Personnel							
Operations Chief	LES CURTIS; STEVE BURNS (t)		Division/Group Supervisor	E. STAHLIN; P. MEDINA (t)			
Contingency Ops Chief	JOHN TRUETT; KYLE SMITH (t)		Air Attack Supervisor				
Branch Director	KELLY MARTIN		Safety Officer	M HAMEL; S. RYBERG; C. JORDAN (t)			
6. Resources Assigned this Period							
Strike Team/Task Force/ Resource Designator	Leader	Num of Pers.	Trans. Y/N	Drop Off PT./Time	Pick Up PT./Time		
KING T/F #16 TLF D O-792 10/5				FRENCH SPIKE 0600	FRENCH SPIKE 1800		
TFLD O-792 10/4	KIRK HARRIS	1	N	FRENCH SPIKE 0600	FRENCH SPIKE 1800		
TFLD(t) O-951 10/5	JAMIE JALVING	1	N	FRENCH SPIKE 0600	FRENCH SPIKE 1800		
ENG T6 PAULA HOLTER E-333 9/30	PAULA HOLTER	3	N	FRENCH SPIKE 0600	FRENCH SPIKE 1800		
ENG T6 PAULA HOLTER E-334 9/30	CHUCK NEWBERRY	3	N	FRENCH SPIKE 0600	FRENCH SPIKE 1800		
ENG T6 PAULA HOLTER E-335 9/30	DON HOLTER	3	N	FRENCH SPIKE 0600	FRENCH SPIKE 1800		
ENG T6 PLATTE CANYON E-381 10/2	CODY COX	3	N	FRENCH SPIKE 0600	FRENCH SPIKE 1800		
ENG T4 HTF 413 E-484 9/30	JOHN STONELAKE	4	N	FRENCH SPIKE 0600	FRENCH SPIKE 1800		
ENG T4 E2411 E-485 9/28	NICKOLAUS MINK	4	N	FRENCH SPIKE 0600	FRENCH SPIKE 1800		
WT T2V NO STATE E-526 10/3	ALBERT EUCHTER	1	N	FRENCH SPIKE 0600	FRENCH SPIKE 1800		
DOZ T2V PAUL ROEN #N01 E-567 10/5	CLAY BOSCHI	2	N	FRENCH SPIKE 0600	FRENCH SPIKE 1800		
WT T1 SPECE INDUSTRIAL E-126 9/30	STEVE ROOKS	4	N	FRENCH SPIKE 0600	FRENCH SPIKE 1800		
WT T1 CAFHF E-3041		4	N	FRENCH SPIKE 0600	FRENCH SPIKE 1800		
FALM AJ ROSENBUSH O-877 10/6		1	N	FRENCH SPIKE 0600	FRENCH SPIKE 1800		
FELM MNSUF O-857 10/1	HANS CASPERSON	1	N	FRENCH SPIKE 0600	FRENCH SPIKE 1800		
HEQB COMVP O-836 10/6	ROB WILLIAMS	1	N	FRENCH SPIKE 0600	FRENCH SPIKE 1800		
HEQB COMVP O-261 9/30	DARIC BURR	1	N	FRENCH SPIKE 0600	FRENCH SPIKE 1800		
FALM SUNDERLAND O-884 10/5	NICK YEAGER	2	N	FRENCH SPIKE 0600	FRENCH SPIKE 1800		
FALC RIDGE LOGGING O-872 10/5		2	N	FRENCH SPIKE 0600	FRENCH SPIKE 1800		
FALC RIDGE LOGGING O-873 10/5		4	N	FRENCH SPIKE 0600	FRENCH SPIKE 1800		
7. Control Operations							
Improve existing control line from Chipmunk ridge to Middle Meadow Campground.							
8. Special Instructions							
All Division Supervisors need to download information to the Sit Unit for all completed line and proposed line.							
Noxious weeds are marked by orange "noxious weed" flagging. Minimize or avoid activities in these areas.							
Sensitive areas are marked with pink/black checkerboard flagging. Minimize ground disturbing activities in these areas.							
* Indicates a 24 hour resource 0600-0600							
9. Division/Group Communications Summary							
Function	Frequency - RX	Frequency - TX	Tone	System	Channel	System	Channel
Command	166.6125	168.4000	136.5	NIFC C4	1		
Tactical Div/Group	166.7750	166.7750		NIFC T6	8		
Logistics							
Air to Ground	169.1500	169.1500		A/G CMD	13		
Prepared by (Resource Unit Leader)		Approved by (Planning Section Chief)		Date Prepared		Time Prepared	
G. Thompson / J. Switzler / E. Mayte (t)		D. Cooper / R. Leuck (t) / J. Schillinger (t)		09/25/14		2300	







<b>Division Assignment List</b>		1. Branch <b>XII</b>		2. Division/Group <b>1 L</b>			
3. Incident Name <b>KING - ZONE 1</b>		4. Operational Period 09/26/14 Friday Day Shift 0600 - 1800					
5. Operations Personnel							
Operations Chief	LES CURTIS / STEVE BURNS (t)		Division/Group Supervisor		CARL KLUG; RON GREGOR (t)		
Contingency Ops Chief	JOHN TRUETT; KYLE SMITH (t)		Air Attack Supervisor				
Branch Director	KELLY MARTIN		Safety Officer		M HAMEL; S. RYBERG; C. JORDAN (t)		
6. Resources Assigned this Period							
Strike Team/Task Force/ Resource Designator	Leader	Num of Pers.	Trans. Y/N	Drop Off PT./Time	Pick Up PT./Time		
CRW T1 SMITH RIVER IHC C-258 10/9	TIM MEMMER	21	N	FRENCH SPIKE 0600	FRENCH SPIKE 1800		
CRW T2IA COBRAS 4 C-202 10/4	VINCE MONTES	22	N	FRENCH SPIKE 0600	FRENCH SPIKE 1800		
CRW T2IA FIRESTORM 1 C-211 10/2	RICK SANDIDGE	20	N	FRENCH SPIKE 0600	FRENCH SPIKE 1800		
ENG S/T 5780C E-433 9/27	TODD RUFFNER	24	N	FRENCH SPIKE 0600	FRENCH SPIKE 1800		
<del>ENG S/T 3661C E-741 10/5</del> → EN 1H	GRAHM RICE	26	N	FRENCH SPIKE 0600	FRENCH SPIKE 1800		
ENG T/F ENF KING #2 E-9012	DAVID ZUARES	17	N	FRENCH SPIKE 0600	FRENCH SPIKE 1800		
WT T1 SILVER STATE E-141* 9/30		2	N	FRENCH SPIKE 0600	FRENCH SPIKE 1800		
WT T1 G&G FIRE SUPP E-131* 9/30	GREG WHIPPLE	4	N	FRENCH SPIKE 0600	FRENCH SPIKE 1800		
W/T SUP T1 E-133* 10/2	GEORGE NEILLS	2	N	FRENCH SPIKE 0600	FRENCH SPIKE 1800		
W/T PVT 49'ER E-520 10/4	BOB MERG	1	N	FRENCH SPIKE 0600	FRENCH SPIKE 1800		
WT T2 TMU 4 E-255 9/29	SPENCER GRISCOM	2	N	FRENCH SPIKE 0600	FRENCH SPIKE 1800		
STEN O-893 10/5	GILBERT BARRIER	1	N	FRENCH SPIKE 0600	FRENCH SPIKE 1800		
CRW T2 PALOMAR C-252 10/7	RUSTY SEXTON	19	N	FRENCH SPIKE 0600	FRENCH SPIKE 1800		
SOFR O-141 9/28	RICK CLARKE	1	N	FRENCH SPIKE 0600	FRENCH SPIKE 1800		
SOFR (t) O-142 9/28	MANI BOUSLAUGH	1	N	FRENCH SPIKE 0600	FRENCH SPIKE 1800		
FEMP O-975 9/30	EDUARDO STARY	1	N	FRENCH SPIKE 0600	FRENCH SPIKE 1800		
FEMP O-973 9/30	SERGIO ZAVALA	1	N	FRENCH SPIKE 0600	FRENCH SPIKE 1800		
ENG S/T 1617C E-534							
7. Control Operations Mop-up 100' in from fires edge.							
8. Special Instructions  All Division Supervisors need to download information to the Sit Unit for all completed line and proposed line.  Identify resources to respond for initial attack. Noxious weeds are marked by orange "noxious weed" flagging. Minimize or avoid activities in these areas. Sensitive areas are marked with pink/black checkerboard flagging. Minimize ground disturbing activities in these areas.  * Indicates a 24 hour resource 0600-0600							
9. Division/Group Communications Summary							
Function	Frequency - RX	Frequency - TX	Tone	System	Channel	System	Channel
Command	166.6125	168.4000	136.5	NIFC C4	1		
Tactical Div/Group	168.2500	168.2500		NIFC T7	9		
Logistics							
Air to Ground	168.1500	169.1500		A/G CMD	13		
Prepared by (Resource Unit Leader) G. Thompson / J. Switzler / Eric Mayte (t)		Approved by (Planning Section Chief) D. Cooper / R. Leuck (t) / J. Schillinger (t)		Date Prepared 09/25/14		Time Prepared 1446	









<b>Division Assignment List</b>	1. Branch <b>XVI</b>	2. Division/Group <b>1 U</b>
---------------------------------	-------------------------	---------------------------------

3. Incident Name <b>KING - ZONE 1</b>	4. Operational Period <b>09/26/14 Friday Day Shift 0600 - 1800</b>
--	---

**5. Operations Personnel**

Operations Chief	LES CURTIS; STEVE BURNS (t)	Division/Group Supervisor	AARON RIISE / <b>JOSH EICHMERT</b>
Contingency Ops Chief	JOHN TRUETT; KYLE SMITH (t)	Air Attack Supervisor	
Branch Director	SEAN JOHNSON; COREY ROSE (t)	Safety Officer	M.HAMEL; S. RYBERG; C.JORDAN (t)

**6. Resources Assigned this Period**

Strike Team/Task Force/ Resource Designator	Leader	Num of Pers.	Trans. Y/N	Drop Off PT./Time	Pick Up PT./Time
CRW T1 CEDAR CITY IHC C-8 9/26	BRIAN BURBRIDGE	19	N	SUNSET SPIKE 0600	SUNSET SPIKE 1800
CRW T1 MAD RIVER IHC C-159 10/5	CHARLES HAIR	19	N	SUNSET SPIKE 0600	SUNSET SPIKE 1800
CRW T1 HELENA IHC C-246 9/30	FRED THOMPSON	20	N	SUNSET SPIKE 0600	SUNSET SPIKE 1800
CRW T2IA ACOMA #1 C-131 9/30	ANDREW HENRY	20	N	SUNSET SPIKE 0600	SUNSET SPIKE 1800
<del>CRW T2IA CADDONATION C-144 10/4</del>	<del>GERALD MASON</del> → <b>DIV 14</b>	20	N	SUNSET SPIKE 0600	SUNSET SPIKE 1800
ENG T6 681 E-366 10/1	TODD LIKE	3	N	SUNSET SPIKE 0600	SUNSET SPIKE 1800
<del>ENG T3 462 E-639 10/5</del>	<del>MARK GOSHORN</del>	5	N	SUNSET SPIKE 0600	SUNSET SPIKE 1800
<del>DOZ T2 GEORGE WURLITZER E-560</del>	<del>GEORGE WURLITZER</del> <b>DN 1W</b>	2	N	SUNSET SPIKE 0600	SUNSET SPIKE 1800
<del>DOZ T2 KISER CONSTRUCTION E-562</del>	<del>KYLE KISER</del> <b>DIV 12</b>	2	N	SUNSET SPIKE 0600	SUNSET SPIKE 1800
DOZ T2V 88570 E-566 9/29	MARK BASHAM	2	N	SUNSET SPIKE 0600	SUNSET SPIKE 1800
DOZER T2 NEESE CONST E-575 10/5	DAVID NEESE	2	N	SUNSET SPIKE 0600	SUNSET SPIKE 1800
<del>DOZ T2 WARNER E-564 10/6</del>	<del>DAN WARNER</del> → <b>DIV 12</b>	2	N	SUNSET SPIKE 0600	SUNSET SPIKE 1800
FALM COLD CREEK SVC O-874 10/3		3	N	SUNSET SPIKE 0600	SUNSET SPIKE 1800
<del>HEQB O-824 10/6</del>	<del>SAMUEL PFAHLER</del> <b>TFLD O-824</b>	1	N	SUNSET SPIKE 0600	SUNSET SPIKE 1800
<del>HEQB O-823 10/6</del>	<del>MICHAEL WORK</del> → <b>DIV 1W</b>	1	N	SUNSET SPIKE 0600	SUNSET SPIKE 1800
<del>HEQB O-3236 10/6</del>	<del>ANGELA BANFILL (t)</del> <b>TFLD</b>	1	N	SUNSET SPIKE 0600	SUNSET SPIKE 1800
SOFR O-3234 10/8	GALE GIRE	1	N	SUNSET SPIKE 0600	SUNSET SPIKE 1800
FEMP O-976 9/29	TIM PRATT	1	N	SUNSET SPIKE 0600	SUNSET SPIKE 1800
FEMT O-972 10/6	CHARLES MCGARY	1	N	SUNSET SPIKE 0600	SUNSET SPIKE 1800
FOBS O-452 10/1	ROB BOZEMAN	1	N	SUNSET SPIKE 0600	SUNSET SPIKE 1800

**7. Control Operations**

Construct line, improve indirect line, and complete hose lays for the entire division.

**8. Special Instructions**

All Division Supervisors need to download information to the Sit Unit for all completed line and proposed line.

Noxious weeds are marked by orange "noxious weed" flagging. Minimize or avoid activities in these areas.

Sensitive areas are marked with pink/black checkerboard flagging. Minimize ground disturbing activities in these areas.

\* Indicates a 24 hour resource 0600-0600

**9. Division/Group Communications Summary**

Function	Frequency - RX	Frequency - TX	Tone	System	Channel	System	Channel
Command	166.6125	168.4000	136.5	NIFC C4	1		
Tactical Div/Group	168.0500	168.0500		NIFC T1	5		
Logistics							
Air to Ground	169.1500	169.1500		A/G CMD	13		

Prepared by (Resource Unit Leader) G. Thompson / J. Switzler / Eric Mayte (t)	Approved by (Planning Section Chief) D. Cooper / R. Leuck (t) / J. Schillinger (t)	Date Prepared 09/25/14	Time Prepared 1445
--	---	---------------------------	-----------------------





<b>Division Assignment List</b>	1. Branch <b>XVI</b>	2. Division/Group <b>1 W</b>
---------------------------------	-------------------------	---------------------------------

3. Incident Name <b>KING - ZONE 1</b>	4. Operational Period 09/26/14 Friday Day Shift 0600 - 1800
--	--

**5. Operations Personnel**

Operations Chief	LES CURTIS; STEVE BURNS (t)	Division/Group Supervisor	CHRIS VERO; JOHNNY VILLA(t)
Contingency Ops Chief	JOHN TRUETT; KYLE SMITH (t)	Air Attack Supervisor	
Branch Director	SEAN JOHNSON; COREY ROSE (t)	Safety Officer	M HAMEL; S. RYBERG; C. JORDAN (t)

**6. Resources Assigned this Period**

Strike Team/Task Force/ Resource Designator	Leader	Num of Pers.	Trans. Y/N	Drop Off PT./Time	Pick Up PT./Time
CRW T2IA RED ROCK C-39 9/28	BRANDON JOHNSON	19	N	SUNSET SPIKE 0600	SUNSET SPIKE 1800
<del>CRW T2IA N. ARIZONA C-143 9/28</del>	<del>CHRISTOPHER J</del> <i>DN 14</i>	19	N	SUNSET SPIKE 0600	SUNSET SPIKE 1800
CRW T2IA PIMA #1 C-175 9/29	MARIO DIA	17	N	SUNSET SPIKE 0600	SUNSET SPIKE 1800
<del>ENG S/T 1663 C E-819 10/7</del> <i>→ DN 14</i>	PETER D STEPHENSON	27	N	SUNSET SPIKE 0600	SUNSET SPIKE 1800
T/F ENF KING #3 TFLD O-339	BRIAN MULHOLLEN	1	N	SUNSET SPIKE 0600	SUNSET SPIKE 1800
ENG T6 E-380 10/1	DREW MAXWELL	2	N	SUNSET SPIKE 0600	SUNSET SPIKE 1800
ENG6 CO MVP E-360 10/1	DANIEL DYER	3	N	SUNSET SPIKE 0600	SUNSET SPIKE 1800
ENG T6 #3629 E-376 10/1	TRAVIS MOORE	3	N	SUNSET SPIKE 0600	SUNSET SPIKE 1800
ENG T6 ARF #671 E-365 10/2	NICHOLAS FETSCH	3	N	SUNSET SPIKE 0600	SUNSET SPIKE 1800
ENG T6 CO-WRF E-373 10/1	TODD KING	4	N	SUNSET SPIKE 0600	SUNSET SPIKE 1800
ENG T6 #603 E-371 10/2	MICHAEL OTTOSEN	5	N	SUNSET SPIKE 0600	SUNSET SPIKE 1800
ENG T6 # 631 E-377 10/1	WILLIAM HALL	3	N	SUNSET SPIKE 0600	SUNSET SPIKE 1800
ENG T6 ARCHULETA CNTY E-361	CHRISTINA MARQUART	3	N	SUNSET SPIKE 0600	SUNSET SPIKE 1800
<del>WT T1 ALL AGENCY E-253 9/29</del>	<del>DOUG HILL</del> <i>DN 14</i>	2	N	SUNSET SPIKE 0600	SUNSET SPIKE 1800
WT T1 TACTICAL E-142 10/2	DOUG ROGERS	2	N	SUNSET SPIKE 0600	SUNSET SPIKE 1800
<del>WT T1 TACTICAL E-138 10/2</del>	<del>ZACHARY WITTERS</del> <i>DN 14</i>	2	N	SUNSET SPIKE 0600	SUNSET SPIKE 1800
WT T1 E-139 10/2	THORP ROBERT	4	N	SUNSET SPIKE 0600	SUNSET SPIKE 1800
TFLD O-791 10/5	ROB THIBAUT	1	N	SUNSET SPIKE 0600	SUNSET SPIKE 1800
<del>FALB O-881 10/5</del> <i>DN 14</i>	RICHARD MAY	2	N	SUNSET SPIKE 0600	SUNSET SPIKE 1800
FALB O-870 10/4	JAMES MORGAN	2	N	SUNSET SPIKE 0600	SUNSET SPIKE 1800

**7. Control Operation**

Complete hose line placement and mop-up 100' in.

**8. Special Instructions**

All Division Supervisors need to download information to the Sit Unit for all completed line and proposed line.

Identify resources to respond for initial attack. Noxious weeds are marked by orange "noxious weed" flagging. Minimize or avoid activities in these areas.

Sensitive areas are marked with pink/black checkerboard flagging. Minimize ground disturbing activities in these areas.

\* Indicates a 24 hour resource 0600-0600

**9. Division/Group Communications Summary**

Function	Frequency - RX	Frequency - TX	Tone	System	Channel	System	Channel
Command	166.6125	168.4000	136.5	NIFC C4	1		
Tactical Div/Group	166.5500	166.5500		R5 T4	10		
Logistics							
Air to Ground	169.1500	169.1500		A/G CMD	13		

Prepared by (Resource Unit Leader) G. Thompson / J. Switzler / E. Mayte (t)	Approved by (Planning Section Chief) D. Cooper / R. Leuck (t) / J. Schillinger (t)	Date Prepared 09/25/14	Time Prepared 1445
--	---	---------------------------	-----------------------



<b>Division Assignment List</b>		1. Branch <b>XVI</b>		2. Division/Group <b>1 Y</b>			
3. Incident Name <b>KING - ZONE 1</b>		4. Operational Period 09/26/14 Friday Day Shift 0600 - 1800					
5. Operations Personnel							
Operations Chief	LES CURTIS; STEVE BURNS (t)		Division/Group Supervisor		M. CHERRY; D. SOLDAVINI (t)		
Contingency Ops Chief	JOHN TRUETT; KYLE SMITH (t)		Air Attack Supervisor				
Branch Director	SEAN JOHNSON; COREY ROSE(t)		Safety Officer		M HAMEL; S. RYBERG; C. JORDAN (t)		
6. Resources Assigned this Period							
Strike Team/Task Force/ Resource Designator	Leader	Num of Pers.	Trans. Y/N	Drop Off PT./Time	Pick Up PT./Time		
CRW T2 BEAR JAW C-9 9/30	JD OTTMAN	20	N	SUNSET SPIKE 0600	SUNSET SPIKE 1800		
CRW T2IA AOICC INTER C-10 9/30	TIM DEATON	20	N	SUNSET SPIKE 0600	SUNSET SPIKE 1800		
CRW T1 SAWTOOTH IHC C-89 9/27	MICHAEL KRUPSKI	20	N	SUNSET SPIKE 0600	SUNSET SPIKE 1800		
CRW T2 OC 19 C-194 9/30	JAMES BOLLINGER	20	N	SUNSET SPIKE 0600	SUNSET SPIKE 1800		
ENG T3 E11 E-618 9/30	RYDER JONES	5	N	SUNSET SPIKE 0600	SUNSET SPIKE 1800		
ENG S/T 6617C E-534 10/5	JOSHUA BOEHM	27	N	SUNSET SPIKE 0600	SUNSET SPIKE 1800		
ENG S/T T3 5605 C E-538 10/3	VICTOR LEFOR	27	N	SUNSET SPIKE 0600	SUNSET SPIKE 1800		
ENG T3 44 E-634 10/4	DYLAN PREWITT	5	N	SUNSET SPIKE 0600	SUNSET SPIKE 1800		
DOZ T2 SHF 79 E-112 9/30	JASON SHURRAH	3	N	SUNSET SPIKE 0600	SUNSET SPIKE 1800		
DOZ2 T2 (CA-PNF) E-144 9/29	SCOTT SIBBALD	3	N	SUNSET SPIKE 0600	SUNSET SPIKE 1800		
DOZ2 T2 (CA-PNF) E-145 9/29	ANDREW SHEPHERD	2	N	SUNSET SPIKE 0600	SUNSET SPIKE 1800		
DOZ T2 CASHF 29 E-146 9/29	DAVID BROWN	2	N	SUNSET SPIKE 0600	SUNSET SPIKE 1800		
WT T2 49ER E-3 9/28	BOB ALVAREZ	2	N	SUNSET SPIKE 0600	SUNSET SPIKE 1800		
WT T3 AWB INC E-13 9/28	DAB BRADY	1	N	SUNSET SPIKE 0600	SUNSET SPIKE 1800		
WT T1 TACTICAL E-128 9/30	ALAN WEST	2	N	SUNSET SPIKE 0600	SUNSET SPIKE 1800		
WT T1 E-258* 9/29	RICHARD YOST	2	N	SUNSET SPIKE 0600	SUNSET SPIKE 1800		
WT T1 ARBOR TREE E-263* 9/29	LU ESTRADA	2	N	SUNSET SPIKE 0600	SUNSET SPIKE 1800		
CHIPPER T3 FIRESTORM E-438 10/3	GIDEON MACOMBER	2	N	SUNSET SPIKE 0600	SUNSET SPIKE 1800		
CHIPPER TIMOTHY BURKE E-439 10/2	TIM BURKE	1	N	SUNSET SPIKE 0600	SUNSET SPIKE 1800		
CHIPPER T3 SKYLINE TREE E-471 10/3		2	N	SUNSET SPIKE 0600	SUNSET SPIKE 1800		
7. Control Operations							
Widen and improve existing secondary lines.							
8. Special Instructions							
All Division Supervisors need to download information to the Sit Unit for all completed line and proposed line.							
Identify resources to respond for initial attack. Noxious weeds are marked by orange "noxious weed" flagging. Minimize or avoid activities in these areas.							
Sensitive areas are marked with pink/black checkerboard flagging. Minimize ground disturbing activities in these areas.							
* Indicates a 24 hour resource 0600-0600							
9. Division/Group Communications Summary							
Function	Frequency - RX	Frequency - TX	Tone	System	Channel	System	Channel
Command	166.6125	168.4000	136.5	NIFC C4	1		
Tactical Div/Group	167.1125	167.1125		R5 T5	11		
Logistics							
Air to Ground	169.1500	169.1500		A/G CMD	13		
Prepared by (Resource Unit Leader)		Approved by (Planning Section Chief)			Date Prepared		Time Prepared
G. Thompson / J. Switzler / E. Mayte (t)		D. Cooper / R. Leuck (t) / J. Schillinger (t)			09/25/14		1445



<b>Division Assignment List</b>	1. Branch <b>XVI</b>	2. Division/Group <b>1Z</b>
---------------------------------	-------------------------	--------------------------------

3. Incident Name <b>KING - ZONE 1</b>	4. Operational Period 09/26/14 Friday Day Shift 0600 - 1800
--	--

**5. Operations Personnel**

Operations Chief	LES CURTIS; STEVE BURNS (t)	Division/Group Supervisor	JUSTIN HANELY; SHANNON MYERS (t)
Contingency Ops Chief	JOHN TRUETT; KYLE SMITH (t)	Air Attack Supervisor	
Branch Director	SEAN JOHNSON; COREY ROSE (t)	Safety Officer	M.HAMEL; S.RYBERG; C.JORDAN (t)

**6. Resources Assigned this Period**

Strike Team/Task Force/ Resource Designator	Leader	Num of Pers.	Trans. Y/N	Drop Off PT./Time	Pick Up PT./Time
CRW T2IA PINE RIDGE C-245 10/1	EDWARD ONE STAR	21	N	SUNSET SPIKE 0600	SUNSET SPIKE 1800
<del>CRW T1 TAMALPAIS C-238 10/5</del>	<del>TIMOTHY WALSH</del> <i>Div 1Y</i>	14	N	SUNSET SPIKE 0600	SUNSET SPIKE 1800
CRW T2 DIAMOND FIRE C-209 10/5	JOHN WACHOSKI	16	N	SUNSET SPIKE 0600	SUNSET SPIKE 1800
CRW T2IA MONTEREY C-254 10/6	KEVIN POYNER	19	N	SUNSET SPIKE 0600	SUNSET SPIKE 1800
<del>CRW T2IA BIG HORN BASIN C-170 9/30</del>	<del>MICKEY SIROIS</del> <i>Div 1H</i>	20	N	SUNSET SPIKE 0600	SUNSET SPIKE 1800
ENG T3 ENF 63 E-393 9/27	MICHAEL LOEFFLER	5	N	SUNSET SPIKE 0600	SUNSET SPIKE 1800
ENG T3 72 E-550 10/5	DAVID MOLTER	5	N	SUNSET SPIKE 0600	SUNSET SPIKE 1800
<del>ENG T3 369 E-622 10/5</del> <i>NO Show</i>	PAUL MINTIER	4	N	SUNSET SPIKE 0600	SUNSET SPIKE 1800
DOZ T2 NORTHSTATE E-110* 10/1	GIFFORD TALMADGE	2	N	SUNSET SPIKE 0600	SUNSET SPIKE 1800
DOZ T2 NORTHSTATE E-120* 10/1	GEORGE POE	2	N	SUNSET SPIKE 0600	SUNSET SPIKE 1800
<del>FALM SUNDERLAND O-884 10/5</del> <i>NO Show</i>	NICK YEAGER	2	N	SUNSET SPIKE 0600	SUNSET SPIKE 1800
<del>CRW T2 FORTUNA 22 C-241 10/6</del>	<del>JAMES SCOTT</del> <i>Div 1W</i>	21	N	SUNSET SPIKE 0600	SUNSET SPIKE 1800
HEQB O-820 10/6	MICHAEL KING	1	N	SUNSET SPIKE 0600	SUNSET SPIKE 1800
<del>HEQB O-259 10/4</del>	CHRIS COLT	1	N	SUNSET SPIKE 0600	SUNSET SPIKE 1800
<del>HEQB(t) O-806 10/5</del> <i>Div 1U</i>	JOHN WYNN	1	N	SUNSET SPIKE 0600	SUNSET SPIKE 1800
<del>FELB(t) O-907 10/5</del> <i>Remove</i>	DARBY THOMSON	1	N	SUNSET SPIKE 0600	SUNSET SPIKE 1800
SOFR O-785 10/5 <i>Div 1W</i>	STEVEN COUNTS	1	N	SUNSET SPIKE 0600	SUNSET SPIKE 1800
FEMP O-974 9/30	LEO GRANADOS	1	N	SUNSET SPIKE 0600	SUNSET SPIKE 1800
FEMT O-969	ERIC CONNORS	1	N	SUNSET SPIKE 0600	SUNSET SPIKE 1800

7. Control Operations  
 Complete indirect line off of Heartless Mountain.

*DOZ E-562      chip E-471*  
*DOZ E-564      chip E-472*  
*W/T E-922      chip E-458*  
*W/T E-923      chip E-439*  
*HEQB O-287*

8. Special Instructions

All Division Supervisors need to download information to the Sit Unit for all completed line and proposed line.

Noxious weeds are marked by orange "noxious weed" flagging. Minimize or avoid activities in these areas.  
 Sensitive areas are marked with pink/black checkerboard flagging. Minimize ground disturbing activities in these areas.

\* Indicates a 24 hour resource 0600-0600

**9. Division/Group Communications Summary**

Function	Frequency - RX	Frequency - TX	Tone	System	Channel	System	Channel
Command	166.6125	168.4000	136.5	NIFC C4	1		
Tactical Div/Group	166.7750	166.7750		NIFC T6	8		
Logistics							
Air to Ground	169.1500	169.1500		A/G CMD	13		

Prepared by (Resource Unit Leader) G. Thompson / J. Switzler / E. Mayte (t)	Approved by (Planning Section Chief) D. Cooper / R. Leuck (t) / J. Schillinger (t)	Date Prepared 09/25/14	Time Prepared 1444
--	---	---------------------------	-----------------------

<b>Division Assignment List</b>	1. Branch <b>WEST CONTINGENCY</b>	2. Division/Group <b>AMERICAN</b>
	3. Incident Name <b>KING - ZONE 1</b>	

4. Operational Period 09/26/14 Friday Day Shift 0600 - 1800	
--	--

5. Operations Personnel

Operations Chief	LES CURTIS; STEVE BURNS (t)	Division/Group Supervisor	DEANO ESADES / JEFF GOYINGS (t)
Contingency Ops Chief	JOHN TRUETT; KYLE SMITH (t)	Air Attack Supervisor	
Branch Director	DON FORSYTH	Safety Officer	M.HAMEL; S.RYBERG; C.JORDAN (t)

6. Resources Assigned this Period

Strike Team/Task Force/ Resource Designator	Leader	Num of Pers.	Trans. Y/N	Drop Off PT./Time	Pick Up PT./Time
CRW T2 PACIFIC OASIS C-195 10/5	SYDNEY KENNEDY	20	N	FRENCH SPIKE 0600	FRENCH SPIKE 1800
CRW T2 GRAYBACK C-206 9/29	ANTONIO MENDOZA	20	N	FRENCH SPIKE 0600	FRENCH SPIKE 1800
CRW T2 GRAYBACK C-207 9/29	LEVI BELLGRAPH	20	N	FRENCH SPIKE 0600	FRENCH SPIKE 1800
CRW T2 BLACK EAGLES 5 C-198 10/5	DANIEL AREGUIN	22	N	FRENCH SPIKE 0600	FRENCH SPIKE 1800
ENG S\T 2 T3 E-498 9/27	MARK RHODES	20	N	FRENCH SPIKE 0600	FRENCH SPIKE 1800
CHIP T2 PACIFIC OASIS E-792 10/7		2	N	FRENCH SPIKE 0600	FRENCH SPIKE 1800
CHIP T1 3B'S FORESTRY E-794 9/28		2	N	FRENCH SPIKE 0600	FRENCH SPIKE 1800
CHIP T1 JO INTER #1 E-796 10/6		2	N	FRENCH SPIKE 0600	FRENCH SPIKE 1800
CHIP T3 JO INTER DPL2 E-797 10/6		2	N	FRENCH SPIKE 0600	FRENCH SPIKE 1800
CHIPPER T1 JO INTER #2 E-795 9/29		2	N	FRENCH SPIKE 0600	FRENCH SPIKE 1800
TFLD O-889 10/1	JEFF DUPRAS	1	N	FRENCH SPIKE 0600	FRENCH SPIKE 1800
TFLD O-788 10/1	JOE JOHNSTON	1	N	FRENCH SPIKE 0600	FRENCH SPIKE 1800
SOF2 O-965 10/7	TOM RAW	1	N	FRENCH SPIKE 0600	FRENCH SPIKE 1800
FEMP O-1088 9/30	MATTHEW MENARD	1	N	FRENCH SPIKE 0600	FRENCH SPIKE 1800
FEMT O-970 10/6	TODD ADAMS	1	N	FRENCH SPIKE 0600	FRENCH SPIKE 1800
FEMP O-758 10/4	MATTHEW LUCAS	1	N	FRENCH SPIKE 0600	FRENCH SPIKE 1800
FEMT O-764 10/5	SCOTT HARLAN	1	N	FRENCH SPIKE 0600	FRENCH SPIKE 1800

7. Control Operations

Brush and improve roads and trail systems for contingency lines along Ralston Ridge from DP 109 to DP 161.

8. Special Instructions

All Division Supervisors need to download information to the Sit Unit for all completed line and proposed line. Identify resources to respond for initial attack. Noxious weeds are marked by orange "noxious weed" flagging. Minimize or avoid activities in these areas. Sensitive areas are marked with pink/black checkerboard flagging. Minimize ground disturbing activities in these areas.

\* Indicates a 24 hour resource 0600-0600

9. Division/Group Communications Summary

Function	Frequency - RX	Frequency - TX	Tone	System	Channel	System	Channel
Command	166.6125	168.4000	136.5	NIFC C4	1		
Tactical Div/Group	168.2375	168.2375		H5 T6	12		
Logistics							
Air to Ground	169.1500	169.1500		A/G CMD	13		

Prepared by (Resource Unit Leader) G. Thompson / J. Switzler / E. Mayte (t)	Approved by (Planning Section Chief) D. Cooper / R. Leuck (t) / J. Schillinger (t)	Date Prepared 09/25/14	Time Prepared 1444
--	---	---------------------------	-----------------------

<b>Division Assignment List</b>			1. Branch <b>WEST CONTINGENCY</b>		2. Division/Group <b>MOSQUITO</b>		
3. Incident Name <b>KING - ZONE 1</b>			4. Operational Period 09/26/14 Friday Day Shift 0600 - 1800				
5. Operations Personnel							
Operations Chief		LES CURTIS; STEVE BURNS (t)		Division/Group Supervisor		CHRISTOPHER L TATE	
Contingency Ops Chief		JOHN TRUETT; KYLE SMITH (t)		Air Attack Supervisor			
Branch Director		DON FORSTYH		Safety Officer		M.HAMEL; S. RYBERG; C.JORDAN (t)	
6. Resources Assigned this Period							
Strike Team/Task Force/ Resource Designator		Leader		Num of Pers.	Trans. Y/N	Drop Off PT./Time	Pick Up PT./Time
CRW T2IA MNICS #7 C-19 9/30		PHILIP J MILLETTE		20	N	FRENCH SPIKE 0600	FRENCH SPIKE 1800
CRW T2IA FL ST #1 C-227 10/7		CHARLES KOON		20	N	FRENCH SPIKE 0600	FRENCH SPIKE 1800
CRW T2IA FL ST #3 C-228 10/7		DAVID CARTER		20	N	FRENCH SPIKE 0600	FRENCH SPIKE 1800
CRW T2 OC 52 C-190 10/5		DONALD BOWEN		22	N	FRENCH SPIKE 0600	FRENCH SPIKE 1800
CRW T2 OC 21 C-193 10/7		BRIAN HICKS		21	N	FRENCH SPIKE 0600	FRENCH SPIKE 1800
CRW T2 BIG HORN C-239 10/6		CHRISTOPHER DEANDA		22	N	FRENCH SPIKE 0600	FRENCH SPIKE 1800
CRW T2 BLACK EAGLES 3 C-196 9/27		NIGEL ALLEN		18	N	FRENCH SPIKE 0600	FRENCH SPIKE 1800
CRW T2 MQ FRANCO C-43 9/30		ANDREW HENRY		20	N	FRENCH SPIKE 0600	FRENCH SPIKE 1800
TF ENF KING #1						FRENCH SPIKE 0600	FRENCH SPIKE 1800
TFLD O-659 10/2		JIM GRAY		1	N	FRENCH SPIKE 0600	FRENCH SPIKE 1800
ENG T6 PAGOSA FPD E-363		JOHN GILBERT		0	N	FRENCH SPIKE 0600	FRENCH SPIKE 1800
ENG T6 ARF 654 E-364 10/1		LANDON SMITH		3	N	FRENCH SPIKE 0600	FRENCH SPIKE 1800
ENG T6 36 E-367 10/1		WILLIAM EASTMAN		3	N	FRENCH SPIKE 0600	FRENCH SPIKE 1800
ENG T6 FOUR MILE FD E-368 10/1		SHANTI LEASURE		3	N	FRENCH SPIKE 0600	FRENCH SPIKE 1800
ENG T6 RED, WHITE & BLUE E-372		DEREK GOOSSEN		3	N	FRENCH SPIKE 0600	FRENCH SPIKE 1800
DOZ T2V TEHAMA E-556 10/5		RANDY STRIEFF		4	N	FRENCH SPIKE 0600	FRENCH SPIKE 1800
DOZ E-559 10/5		DUANE HAASE		2	N	FRENCH SPIKE 0600	FRENCH SPIKE 1800
DOZ T2 SPENCER E-111 10/1		MIKE SPENCER		2	N	FRENCH SPIKE 0600	FRENCH SPIKE 1800
DOZ T2 JB LOGGING E-115 10/1		KRISTI WILDER		2	N	FRENCH SPIKE 0600	FRENCH SPIKE 1800
DOZ T2 DOBSON E-119 10/2		VERN MCCKINNEY		2	N	FRENCH SPIKE 0600	FRENCH SPIKE 1800
7. Control Operations							
Construct and improve existing roads and contingency line along Ralston Ridge from the Lynchburg Hill break to Little Crater break.							
8. Special Instructions							
All Division Supervisors need to download information to the Sit Unit for all completed line and proposed line.							
Noxious weeds are marked by orange "noxious weed" flagging. Minimize or avoid activities in these areas.							
Sensitive areas are marked with pink/black checkerboard flagging. Minimize ground disturbing activities in these areas.							
* Indicates a 24 hour resource 0600-0600							
9. Division/Group Communications Summary							
Function	Frequency - RX	Frequency - TX	Tone	System	Channel	System	Channel
Command	166.6125	168.4000	136.5	NIFC C4	1		
Tactical Div/Group	168.2375	168.2375		R5 T6	12		
Logistics							
Air to Ground	169.1500	169.1500		A/G CMD	13		
Prepared by (Resource Unit Leader) G. Thompson / J. Switzler / E. Mayte (t)			Approved by (Planning Section Chief) D. Cooper / R. Leuck (t) / J. Schillinger (t)			Date Prepared 09/25/14	Time Prepared 1444

DEMOB as of 9/26

NO SHOW  
OXBOW  
OXBOW

<b>Division Assignment List</b>		1. Branch <b>WEST CONTINGENCY</b>		2. Division/Group <b>MOSQUITO</b>			
3. Incident Name <b>KING - ZONE 1</b>		4. Operational Period 09/26/14 Friday Day Shift 0600 - 1800					
5. Operations Personnel							
Operations Chief	LES CURTIS; STEVE BURNS (t)		Division/Group Supervisor		CHRISTOPHER L TATE		
Contingency Ops Chief	JOHN TRUETT; KYLE SMITH (t)		Air Attack Supervisor				
Branch Director	DON FORSTYH		Safety Officer		M.HAMEL;S. RYBERG; C.JORDAN (t)		
6. Resources Assigned this Period							
Strike Team/Task Force/ Resource Designator	Leader	Num of Pers.	Trans. Y/N	Drop Off PT./Time	Pick Up PT./Time		
CHIPPER A CUT ABOVE E-578 10/5		1	N	FRENCH SPIKE 0600	FRENCH SPIKE 0600		
CHIPPER T1 VALLEY TIM E-799 10/6		2	N	FRENCH SPIKE 0600	FRENCH SPIKE 0600		
HEQB O-840 10/6	CLINTON HUFFMAN	1	N	FRENCH SPIKE 0600	FRENCH SPIKE 0600		
HEQB O-245 9/30	ALMA LEITHEAD	1	N	FRENCH SPIKE 0600	FRENCH SPIKE 0600		
HEQB O-242 10/1	BRANDON WOODWARD	1	N	FRENCH SPIKE 0600	FRENCH SPIKE 0600		
FALM O-865 10/4		2	N	FRENCH SPIKE 0600	FRENCH SPIKE 0600		
FALM O-868 10/4	GREG BURNS	2	N	FRENCH SPIKE 0600	FRENCH SPIKE 0600		
FELB O-844 10/4	ROBERT W KRAMER	1	N	FRENCH SPIKE 0600	FRENCH SPIKE 0600		
FELB O-983 10/6	RAY CHAVEZ	1	N	FRENCH SPIKE 0600	FRENCH SPIKE 0600		
FELB O-851 10/5	JASON MURIEEN	1	N	FRENCH SPIKE 0600	FRENCH SPIKE 0600		
SOF2 O-965 10/7	TOM RAW	1	N	FRENCH SPIKE 0600	FRENCH SPIKE 0600		
FEMP O-1088 9/30	MATTHEW MENARD	1	N	FRENCH SPIKE 0600	FRENCH SPIKE 0600		
FEMT O-970 10/6	TODD ADAMS	1	N	FRENCH SPIKE 0600	FRENCH SPIKE 0600		
FEMP O-758 10/4	MATTHEW LUCAS	1	N	FRENCH SPIKE 0600	FRENCH SPIKE 0600		
FEMT O-764 10/5	SCOTT HARLAN	1	N	FRENCH SPIKE 0600	FRENCH SPIKE 0600		
Chipper 800							
Chipper 801							
7. Control Operations							
Construct and improve existing roads and contingency line along Ralston Ridge from the Lynchburg Hill break to Little Crater break.							
8. Special Instructions							
All Division Supervisors need to download information to the Sit Unit for all completed line and proposed line.							
Noxious weeds are marked by orange "noxious weed" flagging. Minimize or avoid activities in these areas.							
Sensitive areas are marked with pink/black checkerboard flagging. Minimize ground disturbing activities in these areas.							
* Indicates a 24 hour resource 0600-0600							
9. Division/Group Communications Summary							
Function	Frequency - RX	Frequency - TX	Tone	System	Channel	System	Channel
Command	166.6125	168.4000	136.5	NIFC C4	1		
Tactical Div/Group	168.2375	168.2375		R5 T6	12		
Logistics							
Air to Ground	169.1500	169.1500		A/G CMD	13		
Prepared by (Resource Unit Leader) G. Thompson / J. Switzler / E. Mayte (t)		Approved by (Planning Section Chief) D. Cooper / R. Leuck (t) / J. Schillinger (t)		Date Prepared 09/25/14		Time Prepared 1444	



<b>Division Assignment List</b>		1. Branch <b>WEST CONTINGENCY</b>		2. Division/Group <b>RALSTON</b>			
3. Incident Name <b>KING - ZONE 1</b>		4. Operational Period 09/26/14 Friday Day Shift 0600 - 1800					
5. Operations Personnel							
Operations Chief	LES CURTIS; STEVE BURNS (t)		Division/Group Supervisor		DAVID CARNEY		
Contingency Ops Chief	JOHN TRUETT; KYLE SMITH (t)		Air Attack Supervisor				
Branch Director	DON FORSTYH		Safety Officer		M HAMEL; S. RYBERG; C. JORDAN (t)		
6. Resources Assigned this Period							
Strike Team/Task Force/ Resource Designator	Leader	Num of Pers.	Trans. Y/N	Drop Off PT./Time	Pick Up PT./Time		
CRW T2IA KICC INTERAGENCY C-230	MARK RAGAN	20	N	FRENCH SPIKE 0600	FRENCH SPIKE 1800		
CRW T2IA VEGAS VALLEY C-225 9/28	ERIC ELLISON	18	N	FRENCH SPIKE 0600	FRENCH SPIKE 1800		
CRW T2IA GRAYBACK 3A C-226 10/1	STEVEN DERRY	19	N	FRENCH SPIKE 0600	FRENCH SPIKE 1800		
CRW T2 MOJAVE C-240 10/6	NATHAN LEATHERMAN	17	N	FRENCH SPIKE 0600	FRENCH SPIKE 1800		
CRW T2 SCORPIONS 6 C-242 10/6	ROBERT J NEVAREZ	22	N	FRENCH SPIKE 0600	FRENCH SPIKE 1800		
CRW T2 OC 25 C-191 10/4	MICHAEL SCHEU	17	N	FRENCH SPIKE 0600	FRENCH SPIKE 1800		
CRW T2 DESCANSO 5 C-203 9/30	CINDY PETRICH	20	N	FRENCH SPIKE 0600	FRENCH SPIKE 1800		
ENG T3 82 E-547 10/5	SHAWN BUTTERBACH	5	N	FRENCH SPIKE 0600	FRENCH SPIKE 1800		
DOZ T2 BOB MURRAY E-107 10/1	BOB MURRAY	4	N	FRENCH SPIKE 0600	FRENCH SPIKE 1800		
DOZ T2 NORTHSTATE E-122 10/1	MIKE BRASK	3	N	FRENCH SPIKE 0600	FRENCH SPIKE 1800		
CHIP T3 TREEMASTER E-585 10/5	CODY MYERS	1	N	FRENCH SPIKE 0600	FRENCH SPIKE 1800		
CHIP T2 DPL5 ABRAHAM E-798 10/7	MIKE JONES	1	N	FRENCH SPIKE 0600	FRENCH SPIKE 1800		
CHIP T2 CTS VENTURES E-586 10/6	KALVIN CYRUS	1	N	FRENCH SPIKE 0600	FRENCH SPIKE 1800		
WT EL DORADO INC E-804 10/6	RICHARD MENDOZA	1	N	FRENCH SPIKE 0600	FRENCH SPIKE 1800		
EXCA T1V BEN'S TRUCK E-859 10/8	CURT SAVE	2	N	FRENCH SPIKE 0600	FRENCH SPIKE 1800		
FALM UNDERDOG TIMBER O-866 10/4		2	N	FRENCH SPIKE 0600	FRENCH SPIKE 1800		
FALM UNDERDOG TIMBER O-867 10/4		2	N	FRENCH SPIKE 0600	FRENCH SPIKE 1800		
FALM JUSTIN ROLLS O-875 10/5	JUSTIN ROLLS	2	N	FRENCH SPIKE 0600	FRENCH SPIKE 1800		
TFLD O-790 10/5	TERESA CARREON	1	N	FRENCH SPIKE 0600	FRENCH SPIKE 1800		
TFLD O-784 10/5	RITA CLIPPERTON	1	N	FRENCH SPIKE 0600	FRENCH SPIKE 1800		
7. Control Operations							
Construct and improve existing roads and line along Ralston Ridge from DP 109 to Little Crater intersection.							
8. Special Instructions							
All Division Supervisors need to download information to the Sit Unit for all completed line and proposed line.							
Noxious weeds are marked by orange "noxious weed" flagging. Minimize or avoid activities in these areas.							
Sensitive areas are marked with pink/black checkerboard flagging. Minimize ground disturbing activities in these areas.							
* Indicates a 24 hour resource 0600-0600							
9. Division/Group Communications Summary							
Function	Frequency - RX	Frequency - TX	Tone	System	Channel	System	Channel
Command	166.6125	168.4000	136.5	NIFC C4	1		
Tactical Div/Group	168.2375	168.2375		R5 T6	12		
Logistics							
Air to Ground	169.1500	169.1500		A/G CMD	13		
Prepared by (Resource Unit Leader)		Approved by (Planning Section Chief)			Date Prepared		Time Prepared
G. Thompson / J. Switzler / E. Mayte (t)		D. Cooper / R. Leuck (t) / J. Schillinger (t)			09/25/14		1444

DE 14 03  
→  
REHAB



<b>Division Assignment List</b>			1. Branch <b>WEST CONTINGENCY</b>			2. Division/Group <b>OXBOW</b>		
3. Incident Name <b>KING - ZONE 1</b>			4. Operational Period 09/26/14 Friday Day Shift 0600 - 1800					
5. Operations Personnel								
Operations Chief		LES CURTIS; STEVE BURNS (t)			Division/Group Supervisor		THOMAS BROWNING	
Contingency Ops Chief		JOHN TRUETT; KYLE SMITH (t)			Air Attack Supervisor			
Branch Director		DON FORSTYH			Safety Officer		M.HAMEL; S. RYBERG; C.JORDAN (t)	
6. Resources Assigned this Period								
Strike Team/Task Force/ Resource Designator		Leader		Num of Pers.	Trans. Y/N	Drop Off PT./Time		Pick Up PT./Time
CRW T2 GRAYBACK F C-205 10/5		RYAN WATKINS		20	N	FRENCH SPIKE 0600		FRENCH SPIKE 1800
CRW T2IA KICC INT. C-229 10/7		FRED G GILMORE		20	N	FRENCH SPIKE 0600		FRENCH SPIKE 1800
CRW T2 DIAMOND FIRE C-204 10/5		WES WICKMAN		20	N	FRENCH SPIKE 0600		FRENCH SPIKE 1800
ENG T3 E372 E-643 10/5		GUY WILSON		19	N	FRENCH SPIKE 0600		FRENCH SPIKE 1800
<del>DOZ T2 GRAHAM E-42 9/28</del> → H		JEFF GRAHAM		2	N	FRENCH SPIKE 0600		FRENCH SPIKE 1800
DOZ T2 BIG EDS CRANE E-210 9/29		RICK ROGER		3	N	FRENCH SPIKE 0600		FRENCH SPIKE 1800
DOZ T2 FORTNER E E-561 10/5		TRAVIS FORTNER		4	N	FRENCH SPIKE 0600		FRENCH SPIKE 1800
DOZER T2 DUDLEYS E-558 10/4		TIM LAMKIN		2	N	FRENCH SPIKE 0600		FRENCH SPIKE 1800
DOZ T2V MOORE EXC. E-572 10/5		SONNY MOORE		3	N	FRENCH SPIKE 0600		FRENCH SPIKE 1800
CHIP T2 - A CUT ABOVE E-579 10/4				1	N	FRENCH SPIKE 0600		FRENCH SPIKE 1800
CHIP PACIFIC COAST CON E-791 10/6				2	N	FRENCH SPIKE 0600		FRENCH SPIKE 1800
CHIP T3 001 C&R REF E-800 10/8		→ mosquito		2	N	FRENCH SPIKE 0600		FRENCH SPIKE 1800
CHIP T3 C&R REF #2 E-801 10/8		DILLON NEWMANN		2	N	FRENCH SPIKE 0600		FRENCH SPIKE 1800
CHIP AA HIGH CLIMBERS E-583 10/5		CURTIS KING		2	N	FRENCH SPIKE 0600		FRENCH SPIKE 1800
<del>MAST T1 BOOM MOUNT E-860 10/8</del> IB		TIM BORDGES		2	N	FRENCH SPIKE 0600		FRENCH SPIKE 1800
MAST T2 GRAHAM E-861 10/8		CLAYTON GRAHAM		2	N	FRENCH SPIKE 0600		FRENCH SPIKE 1800
FEMP O-1088 9/30		MATTHEW MENARD		1	N	FRENCH SPIKE 0600		FRENCH SPIKE 1800
FEMP O-970 10/6		TODD ADAMS		1	N	FRENCH SPIKE 0600		FRENCH SPIKE 1800
FEMP O-758 10/4		MATTHEW LUCAS		1	N	FRENCH SPIKE 0600		FRENCH SPIKE 1800
FEMP O-764 10/5		SCOTT HARLAN		1	N	FRENCH SPIKE 0600		FRENCH SPIKE 1800
7. Control Operations								
<p style="text-align: center;">C-227 C-228</p> Construct and improve existing roads and line along Ralston Ridge from Lynchburg Hill break to the Rubicon River.								
8. Special Instructions								
All Division Supervisors need to download information to the Sit Unit for all completed line and proposed line.  Noxious weeds are marked by orange "noxious weed" flagging. Minimize or avoid activities in these areas. Sensitive areas are marked with pink/black checkerboard flagging. Minimize ground disturbing activities in these areas.								
* Indicates a 24 hour resource 0600-0600								
9. Division/Group Communications Summary								
Function	Frequency - RX	Frequency - TX	Tone	System	Channel	System	Channel	
Command	166.6125	168.4000	136.5	NIFC C4	1			
Tactical Div/Group	168.2375	168.2375		R5 T6	12			
Logistics								
Air to Ground	169.1500	169.1500		A/G CMD	13			
Prepared by (Resource Unit Leader)			Approved by (Planning Section Chief)			Date Prepared		Time Prepared
G. Thompson / J. Switzler / E. Mayte (t)			D Cooper / R Leuck (t) / J Schillinger (t)			09/25/14		1444

<b>Division Assignment List</b>		1. Branch <b>REHAB REPAIR</b>		2. Division/Group			
3. Incident Name <b>KING - ZONE 1</b>		4. Operational Period 09/26/14 Friday Day Shift 0600 - 1800					
5. Operations Personnel							
Operations Chief	LES CURTIS; STEVE BURNS (t)		Division/Group Supervisor	M. SWEANY; T. GONZALES; J. KERLEY			
Contingency Ops Chief	JOHN TRUETT; KYLE SMITH (t)		Air Attack Supervisor				
Branch Director	RUSSELL COPP		Safety Officer	M. HAMEL; S. RYBERG; C. JORDAN (t)			
6. Resources Assigned this Period							
Strike Team/Task Force/ Resource Designator	Leader	Num of Pers.	Trans. Y/N	Drop Off PT./Time	Pick Up PT./Time		
ARCH O-465 9/30	AMBER LUTSKO	1	N	FRENCH SPIKE 0600	FRENCH SPIKE 1800		
READ O-335 9/28	AMY REID	1	N	FRENCH SPIKE 0600	FRENCH SPIKE 1800		
TESP O-332 9/28	BLAKE ENGELHARDT	1	N	FRENCH SPIKE 0600	FRENCH SPIKE 1800		
READ O-3160 9/25	CAROL FIELDS	1	N	FRENCH SPIKE 0600	FRENCH SPIKE 1800		
PIO O-3211 10/3	CATHY BOUNDS	1	N	FRENCH SPIKE 0600	FRENCH SPIKE 1800		
ARCH O-920 10/5	CHELSIE BROKENSHERE	1	N	FRENCH SPIKE 0600	FRENCH SPIKE 1800		
READ O-933 10/6	COURTNEY ROWE	1	N	FRENCH SPIKE 0600	FRENCH SPIKE 1800		
BIOL O-326 9/30	DAN TEATER	1	N	FRENCH SPIKE 0600	FRENCH SPIKE 1800		
ARCH O-931 10/5	DEVIN SNYDER	1	N	FRENCH SPIKE 0600	FRENCH SPIKE 1800		
ARCH O-329 9/28	DORIT BUCKLEY	1	N	FRENCH SPIKE 0600	FRENCH SPIKE 1800		
ARCH O-930 10/6	EMILY MAE LONG	1	N	FRENCH SPIKE 0600	FRENCH SPIKE 1800		
ARCH O-3121	LEE STEWART	1	N	FRENCH SPIKE 0600	FRENCH SPIKE 1800		
READ O-3224 10/6	JASON JIMENEZ	1	N	FRENCH SPIKE 0600	FRENCH SPIKE 1800		
ARCH O-466 9/30	JESSE KRAUTKRAMER,	1	N	FRENCH SPIKE 0600	FRENCH SPIKE 1800		
ARCH O-328 9/28	JORDAN SERIN	1	N	FRENCH SPIKE 0600	FRENCH SPIKE 1800		
READ O-3212	JOSH SJOSTROM	1	N	FRENCH SPIKE 0600	FRENCH SPIKE 1800		
FF2 O-684 10/2	KYLE JOHNSON	1	N	FRENCH SPIKE 0600	FRENCH SPIKE 1800		
ARCH O-3044 10/7	LINN GASSAWAY	1	N	FRENCH SPIKE 0600	FRENCH SPIKE 1800		
TESP O-921 10/6	MARY SULLIVAN	1	N	FRENCH SPIKE 0600	FRENCH SPIKE 1800		
READ O-681 10/1	MATT BROWN	1	N	FRENCH SPIKE 0600	FRENCH SPIKE 1800		
7. Control Operations							
Develop, coordinate overall incident suppression repair and future rehab activities. Coordinate with READs.							
8. Special Instructions							
All Division Supervisors need to download information to the Sit Unit for all completed line and proposed line.							
Noxious weeds are marked by orange "noxious weed" flagging. Minimize or avoid activities in these areas.							
Sensitive areas are marked with pink/black checkerboard flagging. Minimize ground disturbing activities in these areas.							
* Indicates a 24 hour resource 0600-0600							
9. Division/Group Communications Summary							
Function	Frequency - RX	Frequency - TX	Tone	System	Channel	System	Channel
Command	166.6125	168.4000	136.5	NIFC C4	1		
Tactical Div/Group	167.1125	167.1125		R5 T5	11		
Logistics							
Air to Ground	169.1500	169.1500		A/G CMD	13		
Prepared by (Resource Unit Leader)		Approved by (Planning Section Chief)		Date Prepared		Time Prepared	
G. Thompson / J. Switzler / E. Mayte (t)		D.Cooper / R. Leuck (t) / J. Schillinger(t)		09/25/14		2122	

<b>Division Assignment List</b>	1. Branch <b>REHAB REPAIR</b>	2. Division/Group
---------------------------------	----------------------------------	-------------------

3. Incident Name <b>KING - ZONE 1</b>	4. Operational Period <b>09/26/14 Friday Day Shift 0600 - 1800</b>
--	---

5. Operations Personnel

Operations Chief	LES CURTIS; STEVE BURNS (t)	Division/Group Supervisor	M. SWEANY; T. GONZALES; J. KERLEY
Contingency Ops Chief	JOHN TRUETT; KYLE SMITH (t)	Air Attack Supervisor	
Branch Director	RUSSELL COPP	Safety Officer	M. HAMEL; S. RYBERG; C. JORDAN (t)

6. Resources Assigned this Period

Strike Team/Task Force/ Resource Designator	Leader	Num of Pers.	Trans. Y/N	Drop Off PT./Time	Pick Up PT./Time
TESP O-945 9/29	MATTHEW BROWNLEE	1	N	FRENCH SPIKE 0600	FRENCH SPIKE 1800
ARCH O-989 10/2	NOLAN SMITH (t)	1	N	FRENCH SPIKE 0600	FRENCH SPIKE 1800
READ O-932 10/8	RICK MONK	1	N	FRENCH SPIKE 0600	FRENCH SPIKE 1800
READ O-1007	ROY BRIDGEMAN	1	N	FRENCH SPIKE 0600	FRENCH SPIKE 1800
ARCH O-929	TOM JONES	1	N	FRENCH SPIKE 0600	FRENCH SPIKE 1800
THSP O-334	VINCE PACIFIC	1	N	FRENCH SPIKE 0600	FRENCH SPIKE 1800
ARCH O-943	WILLIAM BARFUSS	1	N	FRENCH SPIKE 0600	FRENCH SPIKE 1800
READ O-3161	HARRY MCQUILLEN	1	N	FRENCH SPIKE 0600	FRENCH SPIKE 1800
THSP O-335	ERIC NICITA	1	N	FRENCH SPIKE 0600	FRENCH SPIKE 1800
READ	DYLAN MCCOY	1	N	FRENCH SPIKE 0600	FRENCH SPIKE 1800
READ O-327 9/28	KATHERINE KLEMIC	1	N	FRENCH SPIKE 0600	FRENCH SPIKE 1800
ARCH O-330 9/29	KATIE WOODHOUSE	1	N	FRENCH SPIKE 0600	FRENCH SPIKE 1800
READ	NICK JARVIS	1	N	FRENCH SPIKE 0600	FRENCH SPIKE 1800
ARCH O-3243	GERRIT FENENGA	1	N	FRENCH SPIKE 0600	FRENCH SPIKE 1800
Exca E-859					
D02 E207 *12HR					
EXCA E-3011 from Zone 2 "G & O contractor"					

7. Control Operations  
Develop and coordinate overall incident suppression repair and future rehab activities. Coordinate with READs.

8. Special Instructions  
All Division Supervisors need to download information to the Sit Unit for all completed line and proposed line.  
Identify resources to respond for initial attack. Noxious weeds are marked by orange "noxious weed" flagging. Minimize or avoid activities in these areas.  
Sensitive areas are marked with pink/black checkerboard flagging. Minimize ground disturbing activities in these areas.  
\* Indicates a 24 hour resource 0600-0600

9. Division/Group Communications Summary

Function	Frequency - RX	Frequency - TX	Tone	System	Channel	System	Channel
Command	166.6125	168.4000	136.5	NIFC C4	1		
Tactical Div/Group	167.1125	167.1125		R5 T5	11		
Logistics							
Air to Ground	169.1500	169.1500		A/G CMD	13		

Prepared by (Resource Unit Leader) G. Thompson / J. Switzler / E. Mayte (t)	Approved by (Planning Section Chief) D.Cooper / R. Leuck (t) / J. Schillinger(t)	Date Prepared 09/25/14	Time Prepared 2157
--	---	---------------------------	-----------------------

<b>Division Assignment List</b>	1. Branch <b>REHAB REPAIR</b>	2. Division/Group
---------------------------------	----------------------------------	-------------------

3. Incident Name <b>KING - ZONE 1</b>	4. Operational Period <b>09/26/14 Friday Day Shift 0600 - 1800</b>
--	---

**5. Operations Personnel**

Operations Chief	LES CURTIS; STEVE BURNS (t)	Division/Group Supervisor	M. SWEANY; T. GONZALES; J. KERLEY
Contingency Ops Chief	JOHN TRUETT; KYLE SMITH (t)	Air Attack Supervisor	
Branch Director	RUSSELL COPP	Safety Officer	M. HAMEL; S. RYBERG; C. JORDAN (t)

**6. Resources Assigned this Period**

Strike Team/Task Force/ Resource Designator	Leader	Num of Pers.	Trans. Y/N	Drop Off PT./Time	Pick Up PT./Time
TESP O-945 9/29	MATTHEW BROWNLEE	1	N	FRENCH SPIKE 0600	FRENCH SPIKE 1800
ARCH O-989 10/2	NOLAN SMITH (t)	1	N	FRENCH SPIKE 0600	FRENCH SPIKE 1800
READ O-932 10/8	RICK MONK	1	N	FRENCH SPIKE 0600	FRENCH SPIKE 1800
READ O-1007	ROY BRIDGEMAN	1	N	FRENCH SPIKE 0600	FRENCH SPIKE 1800
ARCH O-929	TOM JONES	1	N	FRENCH SPIKE 0600	FRENCH SPIKE 1800
THSP O-334	VINCE PACIFIC	1	N	FRENCH SPIKE 0600	FRENCH SPIKE 1800
ARCH O-943	WILLIAM BARFUSS	1	N	FRENCH SPIKE 0600	FRENCH SPIKE 1800
READ O-3161	HARRY MCQUILLEN	1	N	FRENCH SPIKE 0600	FRENCH SPIKE 1800
THSP O-335	ERIC NICITA	1	N	FRENCH SPIKE 0600	FRENCH SPIKE 1800
READ	DYLAN MCCOY	1	N	FRENCH SPIKE 0600	FRENCH SPIKE 1800
READ O-327 9/28	KATHERINE KLEMIC	1	N	FRENCH SPIKE 0600	FRENCH SPIKE 1800
ARCH O-330 9/29	KATIE WOODHOUSE	1	N	FRENCH SPIKE 0600	FRENCH SPIKE 1800
READ	NICK JARVIS	1	N	FRENCH SPIKE 0600	FRENCH SPIKE 1800
ARCH O-3243	GERRIT FENENGA	1	N	FRENCH SPIKE 0600	FRENCH SPIKE 1800

**7. Control Operations**  
Develop and coordinate overall incident suppression repair and future rehab activities. Coordinate with READs.

**8. Special Instructions**  
All Division Supervisors need to download information to the Sit Unit for all completed line and proposed line.  
  
Noxious weeds are marked by orange "noxious weed" flagging. Minimize or avoid activities in these areas.  
Sensitive areas are marked with pink/black checkerboard flagging. Minimize ground disturbing activities in these areas.  
  
\* Indicates a 24 hour resource 0600-0600

**9. Division/Group Communications Summary**

Function	Frequency - RX	Frequency - TX	Tone	System	Channel	System	Channel
Command	166.6125	168.4000	136.5	NIFC C4	1		
Tactical Div/Group	167.1125	167.1125		R5 T5	11		
Logistics							
Air to Ground	169.1500	169.1500		A/G CMD	13		

Prepared by (Resource Unit Leader) G. Thompson / J. Switzler / E. Mayte (t)	Approved by (Planning Section Chief) D.Cooper / R. Leuck (t) / J. Schillinger(t)	Date Prepared 09/25/14	Time Prepared 2157
--	---	---------------------------	-----------------------



# AIR OPERATIONS SUMMARY

OPERATIONAL PERIOD DATE: DAY SHIFT DATE: 09/26/2014 START: 0700 END: 2000

(Expanded Form for Large Operations)

<b>1. INCIDENT NAME:</b> King	<b>2. PREPARED BY:</b> John Keesee <span style="float: right;">AK</span>	<b>3. Prepared</b> 09/25/14 1930 hrs
<b>4. REMARKS (Safety Notes, Hazards, Air Operations Special Equipment, etc.):</b> SUNRISE: 0654 SUNSET : 1855 STEEP SMOKEY CONDITIONS, OTHER FIRES , OTHER AIRCRAFT COULD FLY IN OUR AREA **Avoid aerial application of retardant or foam within 300' of waterways, bodies of water. If retardant is dropped within these areas, notify AOBDD with Lat & Long, est. of gallons, and a map.		
<b>TRACK RETARDANT DROP LOCATIONS</b> Placerville Helibase at Placerville airport. FAA Tower in place. Freq. 119.100 Blue Canyon Helibase 39 16.49 120 42.56 Foresthill helispot 39 01.11 120 48.78 Incident aircraft will support initial attack within and adjacent to the TFR.		

6. PERSONNEL	Phone	FREQUENCIES	AM	FM	8. FIXED-WING # Avail / Type/ Make-Model / FAA N# / Base(s)
AODB: John Keesee (zone 1)	805-551-6422	AIR/AIR FW:	118.6250	166.6750	Air Tactical: AA 17
AODB: Frank Podesta (zone 2)	209-419-4408	AIR/AIR RW:	120.5750 135.7250		AA 112 H507
ASGS: Craig Dado (zone 1)	530-518-6688	A/G Command:		169.1500	Lead planes:
ASGS: Jon Chin (zone 2)	760-250-6230	A/G Tactical:		167.9500	Airtankers:
HLCO: Lane Caldwell	530-310-2211	DECK: PVF	163.100		On order
HLCO: Fred Burris	805-340-0408	Blue Canyon	168.350		Other: Camino Dispatch 530-647-5220
ATGS: Jason Withrow	530-206-6955	COMMAND:	TX	RX	
ATGS: Todd White	530-263-5621	AIR GUARD:	168.625	Tone Tx 110.9	
HEBM: Travis Taylor (T) PVF	208-241-0399	TOWER:	119.100		
HEBM: Dave Ito	530-391-6583	Placerville			
Blue Canyon Helibase	601-540-6528				
HEBM: Brad Bernardy					
Cobra: Stan Kubota	530-949-9466				

**9. HELICOPTERS (Use Additional Sheets As Necessary)**

FAA N#	TY	MAKE/MODEL	BASE	AVAIL	START	REMARKS	FAA N#	TY	MAKE/MODEL	BASE	AVAIL	START	REMARKS
301	3	BELL 206	PVF	0800	0700	Recon/Helco	408	2	Bell 205	GOO	0800	0700	Medevac/Hoist
54E	3	AS 350	PVF	0800	0700	Recon/Helco	510	2	Bell 210	Blue Cyn	0800	0700	Bucket/Shuttle
67H	3	Bell 206	PVF	0800	0700	Recon/Helco	2WM	1	K-Max	Blue Cyn	0800	0700	Bucket
7AC	3	Bell 407	Foresthill	0800	0700	IR/Mapping/Recon	43T	1	S-61	Blue Cyn	0800	0700	Bucket
84H	3	Bell 407	Blue Cyn	0800	0700	Recon/Helco	HT 734	1	Skycrane	Blue Cyn	0800	0700	Tanked
5DY	2	Bell 205	PVF	0800	0700	Proficiency rappel	HT 743	1	Skycrane	Blue Cyn	0800	0700	Tanked
534	2	Bell 205	PVF	0800	0700	Bucket/Shuttle	HT 715	1	Skycrane	Blue Cyn	0800	0700	Tanked
516	2	Bell 212	PVF	0800	0700	Bucket/Shuttle	3CK	1	S-61	PVF	0800	0700	Bucket
538	2	Bell 205	PVF	0800	0700	Bucket/Shuttle	HT 781	1	Skycrane	PVF	0800	0700	Tanked
104	2	Bell 205	PVF	0800	0700	Bucket/Shuttle/Hoist	HT 783	1	Skycrane	PVF	0800	0700	Tanked
							HT 746	1	Skycrane	PVF	0800	0700	Tanked



**King Fire**  
**SAFETY MESSAGE**  
**September 26, 2014**  
**DAY OPERATIONAL PERIOD**

**MAJOR HAZARDS**

Road Conditions  
Fatigue and Health

Vehicle Operation  
Spike camp Wildlife

**HAZARD MITIGATION**

**Vehicle Operations and Road Conditions:** Driving is one of the greatest hazards on this fire. Keep your speeds down and drive defensively. Be alert for potential muddy and slick road surfaces. Avoid parking on soft surfaces. Stay off secondary roads in wet conditions. Increase following distances on slick road surfaces. Send a scout to evaluate roads and work area prior to personnel engagement.

**Fatigue and Health:** Pace yourself. Think about what you are going to do before you do it. Check the health and welfare of your people often. Make sure they get plenty of rest, and ensure their aches and pains are taken care of. Preventative maintenance does prevent injuries. Ensure people are protecting themselves from the weather.

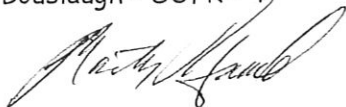
**Situational Awareness:** Sometimes we tend to let our guard down when working on the same fire for a while. The same hazards that existed yesterday may not be the same today. Check your communications before starting your work assignment. Situational awareness must be maintained throughout the work shift. Work safely and keep your head in the game.

**Spike Camp Wildlife:** It is the responsibility of everyone at the spike camps to help maintain the camp. The unmaintained garbage and trash at the campground will attract bears and other critters that we don't want. Once the animals get a taste of the food in the garbage they will not leave.

Be certain that you can satisfy LCES for every operation. Maintain good  
SITUATIONAL AWARENESS at all times. Work safe.

***Drive Safe!!!!***

Mani Bouslaugh - SOFR - T



**King Incident- CA-ENF-023461 INCIDENT SAFETY ANALYSIS 215a**

8. Location	9. Hazard	6. Control or Abatement Action (Engineering, Administrative, PPE, Avoidance, Education, etc)
ALL	Snag Hazards	<ul style="list-style-type: none"> <li>• Follow Hazard Tree Safety Guidelines (IRPG).</li> <li>• Limit number of personnel around snags and their exposure time; fallers must be qualified for trees being fallen.</li> <li>• Be especially alert around snags during wind events.</li> <li>• Check overhead for dead branches in sleeping areas.</li> <li>• Maintain Situational Awareness.</li> </ul>
ALL	Aircraft Operations	<ul style="list-style-type: none"> <li>• Keep personnel out of drop zones.</li> <li>• Use air-to-ground freq. to communicate with aircraft.</li> <li>• Use clear, concise statements when directing aircraft. Use clock directions from pilot's perspective.</li> </ul>
ALL	Direct Attack/Night Operations	<ul style="list-style-type: none"> <li>• Do not engage in direct line tactics in areas where snags have not been mitigated for night operations.</li> <li>• Snag areas in day time before engaging personnel.</li> <li>• Snag roads where nighttime travel is necessary.</li> <li>• Ensure medical protocols are followed.</li> <li>• Have medivac sites pre-identified/established.</li> <li>• Ensure good communications exist and tested.</li> </ul>
ALL	Driving Hazards	<ul style="list-style-type: none"> <li>• Practice defensive driving at all times.</li> <li>• Adhere To 30 mph speed limit on forest roads</li> <li>• Drive with headlights on.</li> <li>• Be alert for wildlife and livestock on roads at all times.</li> <li>• Slow down on washboard surfaces.</li> <li>• Avoid gravel berms on the sides of roadways.</li> <li>• Increase following distances on dusty roads. Slow down when you meet opposing traffic.</li> <li>• Maintain Situational Awareness.</li> </ul>
ALL	Severe Fire Behavior	<ul style="list-style-type: none"> <li>• Review "Severe Fire Behavior Potential" (IRPG ).</li> <li>• Monitor current weather conditions and forecasts. Make sure all personnel receive thorough briefings every shift.</li> <li>• Be observant for formation and passage of pyro-cumulous cells over the fire area and alert all personnel.</li> <li>• Maintain adequate escape routes and safety zones. Advise all personnel if these are compromised or changed. Set trigger points when appropriate.</li> <li>• Adhere to 10 Std Orders, mitigate 18 situations.</li> <li>• Maintain Situational Awareness.</li> </ul>
ALL	Working around Dozers	<ul style="list-style-type: none"> <li>• Maintain safe separation distance of personnel from dozers, especially downhill.</li> <li>• Ensure dozers are supervised by qualified DOZB when required or is appropriate for the job.</li> </ul>
ALL	Mines	<ul style="list-style-type: none"> <li>• Identify and avoid mining areas</li> <li>• Notify others of mining hazards and flag</li> <li>• Be aware of vertical vent shafts, indicators may be slight indentations in terrain</li> <li>• Watch for and keep out of any horizontal adits or shafts that may be located into the side of a ridge or mountain</li> </ul>
ALL	Work/Rest and Fatigue	<ul style="list-style-type: none"> <li>• Be alert for signs of fatigue and take breaks as necessary.</li> <li>• Maintain 2:1 work/rest ratio.</li> <li>• Monitor incoming resources for level of fatigue.</li> </ul>
ALL	Hydration	<ul style="list-style-type: none"> <li>• Encourage drinking water before, during and after shifts, up to 1.5 gal. during shifts.</li> <li>• Be alert for signs of heat stress in yourself and others.</li> </ul>

*Marty [Signature]*

## King Incident- CA-ENF-023461 INCIDENT SAFETY ANALYSIS 215a

ALL	Line Construction	<ul style="list-style-type: none"> <li>• Conduct thorough briefing for all personnel involved (inside rear cover IRPG).</li> <li>• Ensure LCES in place prior to engagement (IRPG).</li> <li>• Establish adequate safety zones (IRPG).</li> <li>• Use Downhill Line Checklist (IRPG).</li> <li>• Follow "Look Up, Look Down, Look Around" procedures (IRPG).</li> <li>• Utilize Risk Management Process (IRPG).</li> </ul>
ALL	Burning Operations	<ul style="list-style-type: none"> <li>• Conduct thorough briefing for all personnel involved (inside rear cover IRPG).</li> <li>• All personnel to be fully qualified for their assignments. Trainees must have qualified trainers.</li> <li>• Utilize Risk Mgmt. Process (IRPG) for implementing plan.</li> <li>• Required PPE to be worn by all personnel involved.</li> <li>• LCES must be established prior to implementing burning operations (IRPG).</li> </ul>
ALL	Structure Protection & HazMat Issues	<ul style="list-style-type: none"> <li>• Conduct thorough briefing for all personnel involved (inside rear cover IRPG).</li> <li>• Utilize Structure Assessment Checklist (IRPG p.14).</li> <li>• Follow structure Protection Guidelines (IRPG p. 16).</li> </ul>
ALL	Foot Travel	<ul style="list-style-type: none"> <li>• When walking through steep, rocky, and possibly wet terrain, watch footing and maintain proper spacing.</li> <li>• Watch for over-head hazards.</li> <li>• Treat "hot spots" on your feet before they become blisters.</li> <li>• Maintain downhill tool placement.</li> <li>• Refer to F.S. Health and Safety Code sections 18.1, 18.2, 18.3.</li> </ul>
ALL	Tree Felling	<ul style="list-style-type: none"> <li>• Conduct thorough briefing for all personnel involved (inside rear cover IRPG).</li> <li>• Establish traffic control as necessary.</li> <li>• Perform tree evaluation, use IRPG page 22. Use Look-Up, Down, All Around Process. IRPG page 3.</li> <li>• Use all required PPE.</li> <li>• Minimize exposure to personnel.</li> </ul>
Zone 1	Spike Camps	<ul style="list-style-type: none"> <li>• Ensure camps are clean of trash to avoid attracting wildlife</li> <li>• Keep sleeping areas are clear of snags and other tripping hazards</li> <li>• Have hand sanitizers and body cleaning products to prevent illness</li> <li>• Have a GPS spike locations in the incident 204 and with the Situation Unit</li> <li>• Have night contact/communications plans in place</li> </ul>
ALL	Wildlife & Livestock	<ul style="list-style-type: none"> <li>• Watch out for wildlife &amp; livestock inside fire area and along roadways.</li> <li>• Clean up all debris and trash during each operational period and dispose of in receptacles</li> <li>• Do not throw food from lunches out on the fireline</li> </ul>
ALL	Vehicle Operations in Inclement Weather	<ul style="list-style-type: none"> <li>• Be alert for potential muddy and slick road surfaces</li> <li>• Avoid parking on soft shoulders along roads</li> <li>• Stay off secondary roads in wet conditions</li> <li>• Increase following distance on slick road surfaces</li> <li>• Send a scout to evaluate roads and work area prior to personnel engagement</li> <li>• Reduce your speed, in camp and on roads, to maintain control of your vehicle</li> </ul>
Zone 1	Marijuana Grow Sites	<ul style="list-style-type: none"> <li>• Be alert for signs such as, irrigation drip lines, chemicals, herbicides and fertilizers, trip lines or booby traps</li> <li>• Leave the route you entered</li> <li>• Once clear of the area, notify Law Enforcement, Division and Operations</li> <li>• Do not approach individuals in sites</li> </ul>

*Marty [Signature]*

INCIDENT RADIO COMMUNICATIONS PLAN		Incident Name		BK RADIO GROUP		Operational Period Date/Time			
		KING, CA-ENF-023461 - ZONE 1		GROUP 14		9/26/14 DAY			
Ch #	Function	Channel Name/Trunked Radio System Talkgroup	Assignment	RX Freq N or W	RX Tone/NAC	TX Freq N or W	Tx Tone/NAC	Mode A, D or M	Remarks
1	COMMAND	NIFC C4	ZONE 1 CMD	166.6125 N	136.5	168.4000 N	136.5	A	Little Bald Mtn. / Duncon L.O.
2	COMMAND	NIFC C11	ZONE 1 CMD	170.6875 N	136.5	166.5750 N	136.5	A	Bunker Hill L.O.
3	COMMAND	NIFC C59	ZONE 1 CMD	164.8375 N	136.5	170.0500 N	136.5	A	Mt. Mildred
4	COMMAND	NIFC C61	ZONE 1 CMD	164.8625 N	136.5	170.3875 N	136.5	A	Robbs Peak
5	TACTICAL	NIFC T1	DIV 1B & 1U	168.0500 N		168.0500 N		A	
6	TACTICAL	NIFC T10	DIV 1D & 1M	168.5000 N		168.5000 N		A	
7	TACTICAL	NIFC T5	DIV 1F & 1P	166.7250 N		166.7250 N		A	
8	TACTICAL	NIFC T6	DIV 1H & 1Z	166.7750 N		166.7750 N		A	
9	TACTICAL	NIFC T7	DIV 1L & 1R	168.2500 N		168.2500 N		A	
10	TACTICAL	R5 T4	DIV 1W & 1T	166.5500 N		166.5500 N		A	
11	TACTICAL	R5 T5	DIV 1Y & 1K	167.1125 N		167.1125 N		A	Rehab / Repair / Tact. Res. Cord.
12	TACTICAL	R5 T6	Contingency Branch	168.2375 N		168.2375 N		A	West Contingency & Roads
13	AIR TO GROUND	A/G CMD	ALL DIVISIONS	169.1500 N		169.1500 N		A	A/G COMMAND
14	AIR TO GROUND	A/G TAC	ALL DIVISIONS	167.9500 N		167.9500 N		A	A/G TACTICAL
15	MEDICAL	CALCORD	ALL DIVISIONS	156.0750 N		156.0750 N	156.7	A	MEDICAL COORDINATION
16	EMERGENCY ONLY	Air Guard	ALL DIVISIONS	168.6250 N		168.6250 N	110.9	A	AIR GUARD - EMERGENCY
17								A	
18								A	
19								A	
20	EMERGENCY ONLY	Air Guard	ALL DIVISIONS	168.6250 N		168.6250 N	110.9	A	AIR GUARD - EMERGENCY

Prepared By (Communications Unit) *[Signature]*  
TIM MAGUIRE, COM1 (I)

Incident Location: Foresthill, CA  
County: Placer State: CA Latitude 39°1.17' N, Longitude 120° 49.77' W

The convention calls for frequency lists to show four digits after the decimal place, followed by either an "N" or a "W", depending on whether the frequency is narrow or wide band. Mode refers to either "A" or "D" indicating analog or digital (e.g. Project 25) or "M" indicating mixed mode. All channels are shown as if programmed in a control station, mobile or portable radio. Repeater and base stations must be programmed with the Rx and Tx reversed.

ICS 205 Excel - Draft 031207

NFES 1330

WOLFE  
CO'S

# MEDICAL PLAN

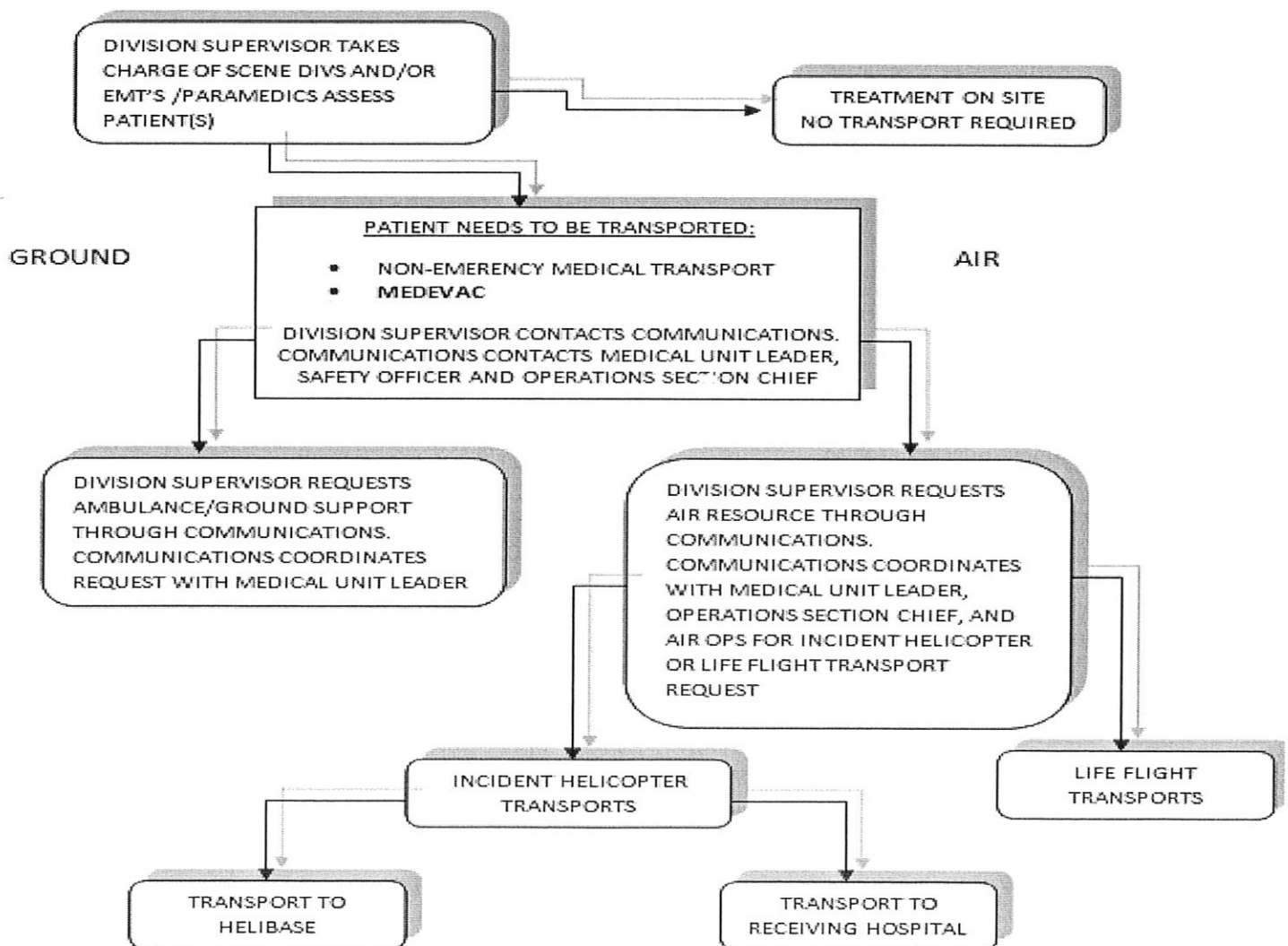
<b>1. Incident/Project Name</b>		<b>2. Operational Period</b>			
<b>King Fire - Zone 1 (North)</b>		Date/Time <b>9/26/2014 0600-1800</b>			
<b>2. Aid Station</b>					
Name	Complete Address	Phone/EMS Freq.	Advanced Life Support (ALS) Yes                  No		
King ICP Zone 1 Frontline Medical	Foresthill Old Mill Site 23850 Foresthill Rd., Foresthill, CA 95631		XX		
Sunset Spike Camp Frontline Medical	Union Valley Reservoir - East side 14 mi. north of Hwy 50 on Ice House Road		XX		
<b>3. Ambulance Services</b>					
Name	Complete Address	Phone/EMS Freq	Advanced Life Support (ALS) Yes                  No		
Eldorado County Emergency Medical Services Medic 248	Eldorado County Fire Station 17 6426 Pony Express Trail, Pollock Pines, CA	911 or 530-647-5220	XX		
Foresthill Fire Department Medic 89 (at French Meadows)	Foresthill FPD FS 88 5981 Gold St. Foresthill, CA	911 or 530-886-5375	XX		
El Dorado County Emergency Medical Services Medic 289	Georgetown FPD Station 65 10561 Sand Mountain Rd., Georgetown, CA	911 or 530-647-5220	XX		
AMR Ambulance Medic 290	Div. F DP 109	AMR or 916 563-0666	XX		
AMR Ambulance Medic 291	Zone 1 ICP	AMR or 916 563-0666	XX		
<b>4. Air Ambulance Services</b>					
Name	Phone	Type of Aircraft & Capability			
CAL FIRE H-104 Placerville, CA (Daytime Only)	911 or 530-647-5220	Bell 205++ Hoist, No NVG, BLS			
Kern County (KRN) H-408 Grass Valley, CA	911 or 530-647-5220	Bell 205++ Hoist, NVG, ALS			
CHP H20 or H24 Auburn, CA	911 or 916-861-1299	Eurocopter B3 Hoist, ALS, No NVG			
CALSTAR 3 Auburn, CA	911 or 530-887-0569	BO 105LS/C-30			
CAL STAR 6 South Lake Tahoe, CA	911 or 530-887-2338	BO 105LS/C-30			
<b>5. Hospitals</b>					
Name Complete Address	GPS Datum - NAD 83 Degrees Decimal Minutes DD° MM.MMM' N - Lat DD° MM.MMM' W - Long	Travel Time Air    Gnd	Phone	Helipad Yes   No	Level of Care Facility
Marshal Medical Center 1100 Marshall Way, Placerville, CA 95667	Lat: N/A	1 Hr	(530) 622-1441	X	Level III Trauma Center
	Long:				
	VHF: N/A				
Sutter Auburn Faith Hosp. 11815 Education St. Auburn, CA, 95602	Lat: N/A	30 Min	(530) 888-4500	X	
	Long:				
	VHF: N/A				
Sutter Roseville Medical Center 1 Medical Plaza Dr, Roseville, CA 95661	Lat: 38 45.58	25 Min    45 Min	(916) 781-1200	X    □	Level II Trauma Center
	Long: 121 14.52				
	VHF:				
UC Davis Medical Center 2315 Stockton Ave. Sacramento, CA 95817	Lat: 38 33.17	25 Min    1 Hr	(916) 734-2363	X    □	Level I Trauma Center Burn Center
	Long: 121 27.21				
	VHF:				
Barton Memorial Hospital 2170 South Ave. South Lake Tahoe, CA 96158	Lat: 38 54.40	30 Min    2.5 Hr	(530) 541-3420	X    □	
	Long: 119 59.48				
	VHF:				
Renown Regional Medical Center 1155 Mill St Reno, NV	Lat: 39 31 32	45 Min    2 Hr	(775) 982-4100	X    □	Level II Trauma Center Burn Center
	Long: 119 47 44				
	VHF:				
<b>6. Prepared By (Medical Unit Leader)</b>					
<b>7. Date/Time</b>		<b>8. Reviewed By (Safety Officer)</b>		<b>9. Date/Time</b>	
Robert Russell MEDL Newton Ong MEDLt		Marty Hamel SOF		09/25/2014 2000	

When an injury occurs, initiate care with available resources at scene and notify DIVS.

The DIVS shall coordinate the incident and direct necessary actions. The following steps shall be taken to mitigate the incident:

1. Determine the nature of the emergency.
2. If the emergency is a medical injury/illness, determine if the injury/illness is life threatening.
3. If the injury is life threatening, then clear designated frequency for emergency traffic.
4. Identify the on-scene point of contact by position.
5. Ensure that the Medical Unit Leader is contacted immediately.
6. Identify number injured, patient assessment(s) and location (geographic and/or GPS coordinates).
7. Identify on-scene medical personnel by position and last name (i.e. EMT Jones).
8. Identify preferred method of patient transport.
9. Determine any additional resources or equipment needed.

The Evacuation Plan should be continually evaluated, and contingencies developed in the event the first plan is not effective.



Medical Incident Report					
FOR ALL MEDICAL EMERGENCIES: IDENTIFY ON SCENE INCIDENT COMMANDER BY NAME AND POSITION AND ANNOUNCE "MEDICAL EMERGENCY" TO INITIATE RESPONSE FROM IMT COMMUNICATIONS/DISPATCH.					
<b>Use items one through nine to communicate situation to communications/dispatch.</b>					
<b>1. CONTACT COMMUNICATIONS/DISPATCH</b> <i>Ex: "Communications, Div. Alpha. Stand-by for Priority Medical Incident Report." (If life threatening request designated frequency be cleared for emergency traffic.)</i>					
<b>2. INCIDENT STATUS:</b> <i>Provide incident summary and command structure.</i>					
Nature of Injury/Illness			<i>Describe the injury (Ex: Broken leg with bleeding)</i>		
Incident Name			<i>Geographic Name + "Medical" (Ex: Trout Meadow Medical)</i>		
Incident Commander			<i>Name of IC</i>		
Patient Care			<i>Name of Care Provider (Ex: EMT Smith)</i>		
<b>3. INITIAL PATIENT ASSESSMENT:</b> <i>Complete this section for each patient. This is only a brief, initial assessment. Provide additional patient info after completing this 9 Line Report.</i>					
Number of Patients:	Male / Female	Age:	Weight:		
Conscious? <input type="checkbox"/> YES <input type="checkbox"/> <b>NO = MEDEVAC!</b>					
Breathing? <input type="checkbox"/> YES <input type="checkbox"/> <b>NO = MEDEVAC!</b>					
Mechanism of Injury: <i>What caused the injury?</i>					
Lat/Long (Datum WGS84) <i>Ex: N 40° 42.45' x W 123° 03.24'</i>					
<b>4. SEVERITY OF EMERGENCY, TRANSPORT PRIORITY</b>					
SEVERITY			TRANSPORT PRIORITY		
<input type="checkbox"/> <b>URGENT-RED</b> Life threatening injury or illness. <i>Ex: Unconscious, difficulty breathing, bleeding severely, 2° – 3° burns more than 4 palm sizes, heat stroke, disoriented.</i>			Ambulance or MEDEVAC helicopter. Evacuation need is <b>IMMEDIATE.</b>		
<input type="checkbox"/> <b>PRIORITY-YELLOW</b> Serious Injury or illness. <i>Ex: Significant trauma, not able to walk, 2° – 3° burns not more than 1-2 palm sizes.</i>			Ambulance or consider air transport if at remote location. Evacuation may be <b>DELAYED.</b>		
<input type="checkbox"/> <b>ROUTINE-GREEN</b> Not a life threatening injury or illness. <i>Ex: Sprains, strains, minor heat-related illness.</i>			Non-Emergency. Evacuation considered <b>Routine of Convenience.</b>		
<b>5. TRANSPORT PLAN:</b>					
<b>Air Transport:</b> (Agency Aircraft Preferred)					
<input type="checkbox"/> Helispot		<input type="checkbox"/> Short-haul/Hoist		<input type="checkbox"/> Life Flight <input type="checkbox"/> Other	
<b>Ground Transport:</b> <i>Click here to enter text.</i>					
<input type="checkbox"/> Self-Extract		<input type="checkbox"/> Carry-Out		<input type="checkbox"/> Ambulance <input type="checkbox"/> Other	
<b>6. ADDITIONAL RESOURCE/EQUIPMENT NEEDS:</b>					
<input type="checkbox"/> Paramedic/EMT(s)		<input type="checkbox"/> Crew(s)		<input type="checkbox"/> SKED/Backboard/C-Collar	
<input type="checkbox"/> Burn Sheet(s)		<input type="checkbox"/> Oxygen		<input type="checkbox"/> Trauma Bag	
<input type="checkbox"/> Medication(s)		<input type="checkbox"/> IV/Fluid(s)		<input type="checkbox"/> Cardiac Monitor/AED	
<input type="checkbox"/> Other (i.e. splints, rope rescue, wheeled litter)					
<b>7. COMMUNICATIONS:</b>					
Function	Channel Name/Number	Receive (Rx)	Tone/NAC *	Transmit (Tx)	Tone/NAC *
<i>Ex: Command</i>	<i>Forest Rpt, Ch. 2</i>	<i>168.3250</i>	<i>110.9</i>	<i>171.4325</i>	<i>110.9</i>
COMMAND					
AIR-TO-GRND					
TACTICAL					
*(NAC for digital radio system)					
<b>8. EVACUATION LOCATION:</b>					
Lat/Long (Datum WGS84) <i>EX: N 40 42.45' x W 123 03.24'</i>					
Patient's ETA to Evacuation Location:					
<b>Considerations:</b> <i>If primary options fail, what actions can be implemented in conjunction with primary evacuation method? Be thinking ahead...</i>				<b>REMEMBER:</b> Confirm ETA's of resources ordered Act according to your level of training Be Alert. Keep Calm. Think Clearly. Act Decisively.	



Division - As Assigned		Area Location Capability	
Branch X, DIV 1B 12 Hour (day)	EMS Responders & Capability:	FEMP Nick Brandow, FEMT Ryan Souder	
	Equipment Available on Scene:	ALS/BLS supplies	
	Medical Emergency Channel:	Calcord 156.0750 Tone 6 (156.7) tx/rx	
	ETA for Ambulance to Scene:		
	Air:		
	Ground:	45 min	
	Approved Helispot:	None identified	
	Lat:		
	Long:		
Branch X, DIV 1D 12 Hour (day)	Area Location Capability		
	EMS Responders & Capability:	FEMP Jacob Snow, FEMT Willie Kron	
	Equipment Available on Scene:	ALS/BLS supplies	
	Medical Emergency Channel:	Calcord 156.0750 Tone 6 (156.7) tx/rx	
	ETA for Ambulance to Scene:		
	Air:		
	Ground:	30 min	
	Approved Helispot:	None identified	
	Lat:		
Long:			
Branch X, DIV 1F 12 Hour (day)	Area Location Capability		
	EMS Responders & Capability:	FEMP Nick Gabbord, FEMT Mitch Carney	
	Equipment Available on Scene:	ALS/BLS supplies	
	Medical Emergency Channel:	Calcord 156.0750 Tone 6 (156.7) tx/rx	
	ETA for Ambulance to Scene:		
	Air:		
	Ground:	30 min	
	Approved Helispot:	None identified	
	Lat:		
Long:			
Branch XII, DIV 1H 12 Hour (day)	Area Location Capability		
	EMS Responders & Capability:	FEMP Ronald Cutting, FEMT Bryan Esser	
	Equipment Available on Scene:	ALS/BLS supplies	
	Medical Emergency Channel:	Calcord 156.0750 Tone 6 (156.7) tx/rx	
	ETA for Ambulance to Scene:		
	Air:		
	Ground:	30 min	
	Approved Helispot:	None identified	
	Lat:		
Long:			
Branch XII, DIV 1L 12 Hour (day)	Area Location Capability		
	EMS Responders & Capability:	FEMP Eduardo Stary, FEMP Sergio Zavala	
	Equipment Available on Scene:	ALS/BLS supplies	
	Medical Emergency Channel:	Calcord 156.0750 Tone 6 (156.7) tx/rx	
	ETA for Ambulance to Scene:		
	Air:		
	Ground:	30 min	
	Approved Helispot:	None identified	
	Lat:		
Long:			

Area Location Capability		
Branch XVI, DIV 1U 12 Hour (day)	EMS Responders & Capability:	FEMP Tim Pratt, FEMT Steven McGary
	Equipment Available on Scene:	ALS/BLS supplies
	Medical Emergency Channel:	Calcord 156.0750 Tone 6 (156.7) tx/rx
	ETA for Ambulance to Scene:	
	Air:	
	Ground:	45 min
	Approved Helispot:	None identified
	Lat:	
	Long:	
Area Location Capability		
Branch XVI, DIV 1W 12 Hour (day)	EMS Responders & Capability:	FEMP Dan Nunez, FEMT Travis Moore
	Equipment Available on Scene:	ALS/BLS supplies
	Medical Emergency Channel:	Calcord 156.0750 Tone 6 (156.7) tx/rx
	ETA for Ambulance to Scene:	
	Air:	
	Ground:	45 min
	Approved Helispot:	None identified
	Lat:	
	Long:	
Area Location Capability		
Branch XVI, DIV 1Y 12 hour (day)	EMS Responders & Capability:	FEMP Steve Wallace, FEMT Cody Haas
	Equipment Available on Scene:	ALS/BLS supplies
	Medical Emergency Channel:	Calcord 156.0750 Tone 6 (156.7) tx/rx
	ETA for Ambulance to Scene:	
	Air:	
	Ground:	45 min
	Approved Helispot:	None identified
	Lat:	
	Long:	
Area Location Capability		
Branch XVI, DIV 1Z 12 hour (day)	EMS Responders & Capability:	FEMP Leo Granados, FEMT Eric Connors
	Equipment Available on Scene:	ALS/BLS supplies
	Medical Emergency Channel:	Calcord 156.0750 Tone 6 (156.7) tx/rx
	ETA for Ambulance to Scene:	
	Air:	
	Ground:	30 min
	Approved Helispot:	None identified
	Lat:	
	Long:	
Area Location Capability		
West Contingency  American Mosquito Oxbow Ralston  12 Hour (day)	EMS Responders & Capability:	FEMP Matt Menard, FEMT Todd Adams FEMP Matt Lucas, FEMT Scott Harlan
	Equipment Available on Scene:	ALS/BLS supplies
	Medical Emergency Channel:	Calcord 156.0750 Tone 6 (156.7) tx/rx
	ETA for Ambulance to Scene:	
	Air:	
	Ground:	45 min
	Approved Helispot:	None identified
	Lat:	
	Long:	

	<b>Area Location Capability</b>	
French Meadows Spike Camp 16 Hour (Day)	EMS Responders & Capability:	FEMP Matt Cobb
	Equipment Available on Scene:	ALS/BLS supplies
	Medical Emergency Channel:	Calcord 156.0750 Tone 6 (156.7) tx/rx
	ETA for Ambulance to Scene:	
	Air:	
	Ground:	30 min
	Approved Helispot:	None identified
	Lat: Long:	
	<b>Area Location Capability</b>	
	EMS Responders & Capability:	
	Equipment Available on Scene:	ALS/BLS supplies
	Medical Emergency Channel:	Calcord 156.0750 Tone 6 (156.7) tx/rx
	ETA for Ambulance to Scene:	
	Air:	
	Ground:	
	Approved Helispot:	None identified
	Lat: Long:	
	<b>Area Location Capability</b>	
	EMS Responders & Capability:	
	Equipment Available on Scene:	ALS/BLS supplies
	Medical Emergency Channel:	Calcord 156.0750 Tone 6 (156.7) tx/rx
	ETA for Ambulance to Scene:	
	Air:	
	Ground:	
	Approved Helispot:	None identified
	Lat: Long:	
	<b>Area Location Capability</b>	
	EMS Responders & Capability:	
	Equipment Available on Scene:	ALS/BLS supplies
	Medical Emergency Channel:	Calcord 156.0750 Tone 6 (156.7) tx/rx
	ETA for Ambulance to Scene:	
	Air:	
	Ground:	
	Approved Helispot:	None identified
	Lat: Long:	

The Following Resources Need to See  
 Finance - Federal Personnel Time  
 September 26, 2014, Day Shift

C-07	Teresa Riesenhuber	E-535	S/T 6632C ENG 37
C-25	Audry French	E-538	SNF ENG 313
C-30	Northern Utah Regulars	E-600	Reno Fire Dept – Engine 21
C-39	Red Rock	E-602	NV-EFKX
C-89	Sawtooth	E-606	Engine 1667
C-93	Redding Hot Shots	E-607	Engine 1668
C-96	Utah County Crew 2	Jeff Ashford	
C-143	Northern AZ	O-21	Michael Carr
C-144	Kaddo Nation	O-52	Cathy Barr
E-146	SHF Dozer 29	O-168	Gary Curcio
C-171	Gila Regulars 5	O-231	Bryan Brazzeal
C-191	OC25	O-252	Ryan Anderson
C-227	Florida State #1	O-261	Burr & Bullock
C-240	Mojave Greens	O-384	Joe Cook
C-245	Pine Ridge	O-452	Rob Boozeman
E-133	Fisher River Valley Fire	O-512	Michael Cherry
E-375	ENG T6 694E-527	O-521	Jeff Goyings
E-537	Engine Strike Team	O-463	Jerry Westfall
E-144	Plumas Dozer #1	O-564	Anthony Torres
E-146	SHF Dozer 29	O-621	Charles Sam
E-161.4	MNF ENG T3-333	O-643	Jerry Westfall
E-361	Archuleta	O-663	Novak, Mark
E-369	Longmont Fire	O-710	Kate Morris
E-374	CPS ENG 62	O-722	Mitch Burgard
E-527	E-T3 365	O-859	McShane, Terry
E-528	ENF Engine 33	O-885	Kurt Gainer
E E-535	S/T 6632C ENG 37-534		
E-536	S/T 1663		

The Following Resources Need to See  
 Finance - Federal Equipment Time  
 September 26, 2014, Day Shift

E-42	Graham General
E-785	Quick Response

09/26/2014

TENTATIVE RELEASE

ENF KING CA-ENF-023461

**OVERHEAD**

O-1092	0600	(LOFR)	CHRISTIANSEN, DONN
O-233	0800	(DIVS)	SAWYER, BRAD S
O-224	1300	(SOF2)	BRYANT, BILL A
O-52	1400	(AREP)	BARR, CATHERINE
O-376	1600	(PIO1)	HORNER JR, JACK LEO

**CREWS**

C-250	0700	(HC2)	CRW T2IA SLIDE MOUNTAIN
C-81	0800	(HCS1)	CRW1 S/T 9111G
C-233	0800	(HC1)	CRW T1 C12
C-243	0800	(HC2)	CRW T2IA SHOBAN #1
C-251	0800	(HC2)	CRW T2IA 6-1 OLD CAJON
C-145	0900	(HC1)	CRW T1 TRUCKEE IHC

**EQUIPMENT**

E-474	0800	(CHIP)	CHIPPER T3 BEAR MOUNT
E-581	0800	(CHIP)	KINCAID LOGGING CO
E-582	0800	(CHIP)	KINCAID LOGGING CO

09/27/2014

TENTATIVE RELEASE

ENF KING CA-ENF-023461

**OVERHEAD**

O-461	0800	(LTAN)	NOBLE, CAROLINE
O-691	0800	(HECM)	CAPEHART, CLINTON W
O-692	0800	(HECM)	EVANS, ANDRE
O-722	0800	(SOPL)	BURGARD, MITCHELL RYAN
O-213	1800	(FBAN)	REED, BRADFORD JAMES
O-293.8	2000	(PIOF)	EIDAM, MICHELLE

**CREWS**

C-8	0830	(HC1)	CRW T1 CEDAR CITY IHC
-----	------	-------	-----------------------



## Human Resource Message King Fire

The thought for the day is **communication**. Effective communication helps us better understand a person or situation and enables us to resolve differences, build trust and respect, and create environments where ideas and problem solving can flourish. As simple as communication may seem, much of what we try to communicate to others—and what others try to communicate to us—can be misunderstood, which can lead to conflict and frustration between the parties. Effective communication is not lecturing, the key component is listening to each other.



“It sounds so trite but in relationships, you have to communicate”—Peter Krause

If you have issues, report them to your supervisor. If you need additional help, contact the Human Resources Specialist Office located on Main Street (next to Documentation).

Office Number (530) 367-8899  
Marilyn Loughrey (925) 588-6711  
Tom Nichols (916) 878-8165

25 September 2014

# Incident Trainee / Trainer Data Worksheet

PLEASE PRINT LEGIBLY!

## A: Trainee Data

Trainee Name: \_\_\_\_\_ Check One:  Male  Female  
Trainee Position: \_\_\_\_\_ Order Number (E, O, C, A) \_\_\_\_--\_\_\_\_\_  
State Abr. \_\_\_\_ + 3 Letter Designator \_\_\_\_\_ Agency Type:  Federal  State  Local  
 USFS  BLM  BIA  FWS  DOD  NWS  NPS Date Assigned: \_\_\_\_--\_\_\_\_--\_\_\_\_\_  
Ordered as a trainee for the incident?  Yes  No Trainee Cell Number: \_\_\_\_\_  
Ordered as a US Forest Service PRIORITY trainee  Yes  No  OFPM  IFPM?

**Person's name and title that is responsible for tracking your qualifications:  
(Where do you want the packet mailed to?)**

Name: \_\_\_\_\_ Title: \_\_\_\_\_ Home Unit: \_\_\_\_\_  
Agency Address: \_\_\_\_\_ City: \_\_\_\_\_  
State: \_\_\_\_\_ Zip: \_\_\_\_\_ Phone Number: ( ) \_\_\_\_\_--\_\_\_\_\_

## B. Trainee Prerequisites

YES NO

- |  |                       |                       |
|--|-----------------------|-----------------------|
| 1. Possesses valid Red Card or agency certification card?    | <input type="radio"/> | <input type="radio"/> |
| 2. Trainee has a proper agency initiated position task book? | <input type="radio"/> | <input type="radio"/> |
| 3. Trainee has an <b>incident supplied</b> task book?        | <input type="radio"/> | <input type="radio"/> |

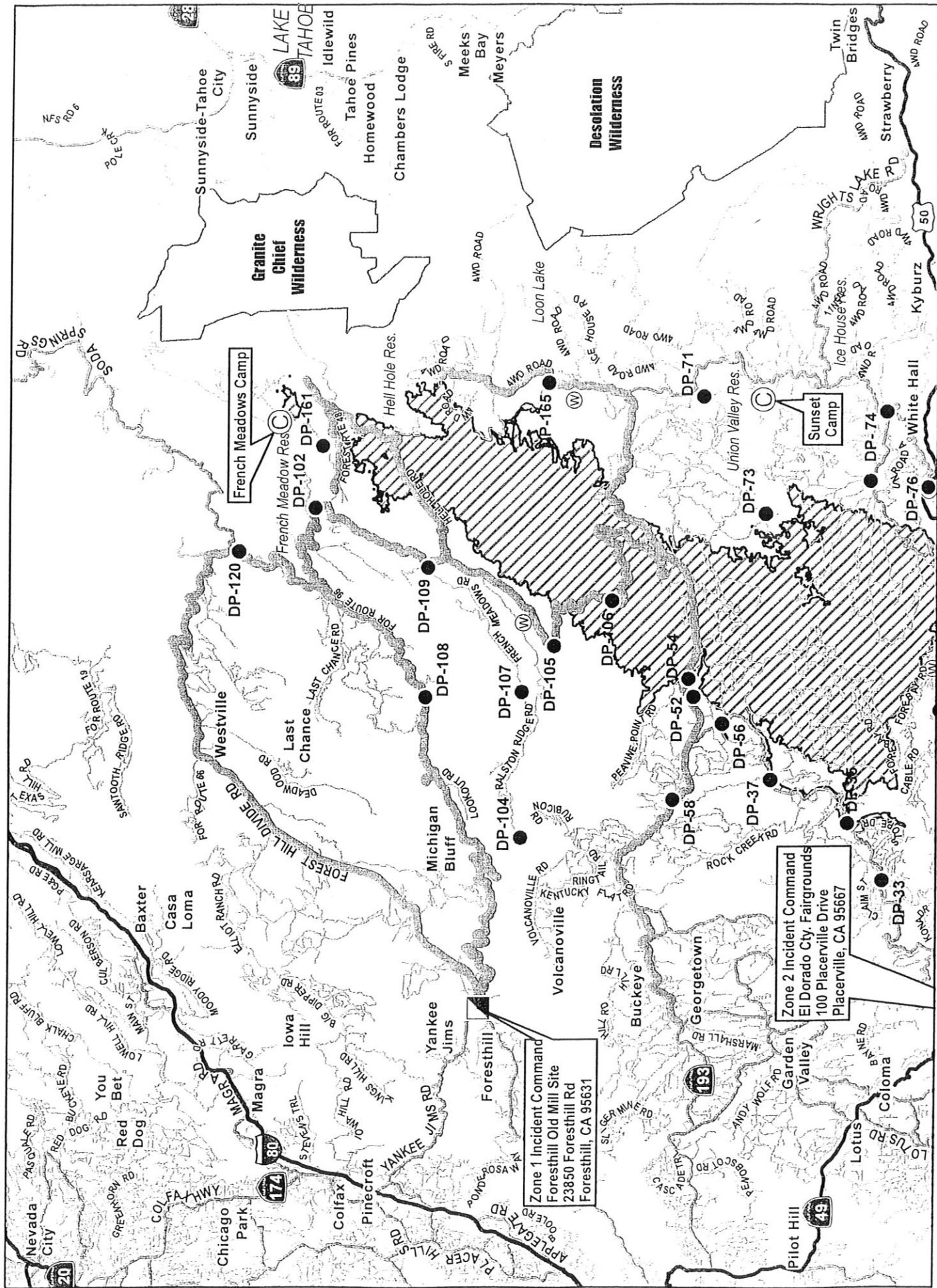
## C. Trainer/Evaluator Data (All fields are required to be filled in)

Trainer/Evaluator Name: \_\_\_\_\_ Position: \_\_\_\_\_  
Home Unit: \_\_\_\_\_ Order Number (E, O, C, A) \_\_\_\_--\_\_\_\_\_  
Work Address: \_\_\_\_\_ City: \_\_\_\_\_ State: \_\_\_\_\_  
Zip Code: \_\_\_\_\_ Phone Number: ( ) \_\_\_\_\_--\_\_\_\_\_

## D. Trainee Goals (items in the position task book to be evaluated on this incident)

- \_\_\_\_\_
- \_\_\_\_\_
- \_\_\_\_\_






**TRANSPORTATION MAP**  
 King Incident CA-ENF-023461  
 September 24, 2014

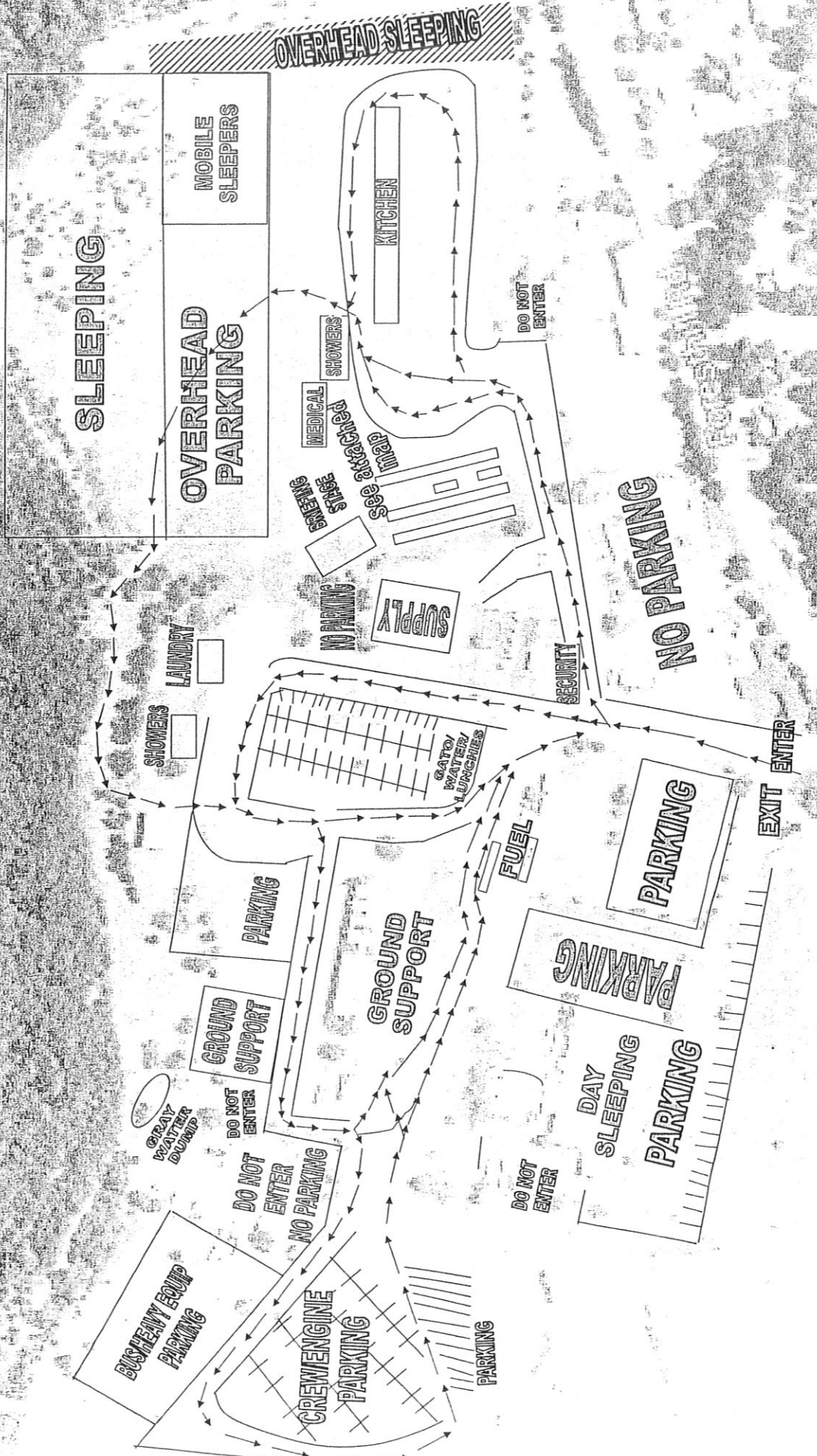
Major Highways    
 Highways    
 Major Roads    
 Camp    
 Drop Point    
 Water Source 

Zone 1 Incident Command  
 Foresthill Old Mill Site  
 23850 Foresthill Rd  
 Foresthill, CA 95631

Zone 2 Incident Command  
 El Dorado Cty. Fairgrounds  
 100 Placerville Drive  
 Placerville, CA 95667

French Meadows Camp  
 French Meadow Res.

Sunset Camp





<b>UNIT LOG</b>	1. Incident Name	2. Date Prepared	3. Time Prepared
4. Unit Name/Designators	5. Unit Leader (Name and Position)		6. Operational Period
7. Personnel Roster Assigned			
Name	ICS Position	Home Base	
8. Activity Log			
Time	Major Events		
9. Prepared by (Name and Position)			