

Corrected

KING INCIDENT

Incident Action Plan

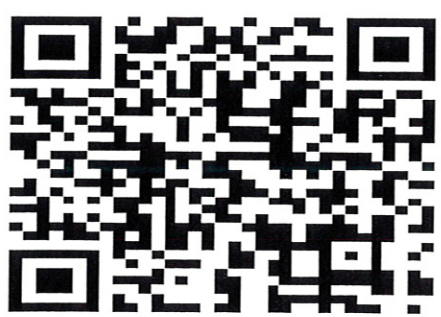
CA-ENF-023461

P5JEE9 (0503)

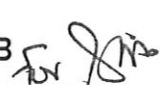
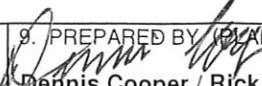
Operational Period

DAY SHIFT 9/27/14

0600 - 1800



NOV

INCIDENT OBJECTIVES	1. INCIDENT NAME	2. DATE PREPARED	3. TIME PREPARED
	KING (Zone 1)	9/26/14	2000
4. OPERATIONAL PERIOD (DATE/TIME) <p style="text-align: center;">DAY SHIFT 9/27/14 0600 - 1800</p>			
5. GENERAL CONTROL OBJECTIVES FOR THE INCIDENT Management Objectives: Provide for safety of responders and the public Establish and maintain positive relationships with cooperating agencies and the public Provide timely and accurate incident information Protect economic and watershed values with safe and aggressive firefighting efforts Keep costs commensurate with values at risk Continue with suppression repair as per the approved Suppression Repair Plan. Control Objectives: Keep the fire: North of Forebay Road and Highway 50 east of Pollock Pines East of Duncan Creek and the Middle Fork of the American River West of Ice House Road South of the Middle Fork of the American River			
6. WEATHER FORCAST FOR OPERATIONAL PERIOD <p style="text-align: center;">See Attached</p>			
7. GENERAL/SAFETY MESSAGE <p style="text-align: center;">See Attached</p>			
8. ATTACHMENTS (X IF ATTACHED)			
<input checked="" type="checkbox"/>	202	<input checked="" type="checkbox"/> SAFETY MESSAGE / LCES	<input checked="" type="checkbox"/> TRANSPORTATION MAP
<input checked="" type="checkbox"/>	203	<input checked="" type="checkbox"/> WEATHER	<input checked="" type="checkbox"/> INCIDENT MAP
<input checked="" type="checkbox"/>	204	<input checked="" type="checkbox"/> AIR OPERATIONS SUMMARY	<input checked="" type="checkbox"/> FIRE BEHAVIOR
<input checked="" type="checkbox"/>	205	<input checked="" type="checkbox"/> HUMAN RESOURCE	<input checked="" type="checkbox"/> TRAINING
<input checked="" type="checkbox"/>	206	<input checked="" type="checkbox"/> ICP / CAMP MAP	<input checked="" type="checkbox"/> FINANCE
<input checked="" type="checkbox"/>	214	<input checked="" type="checkbox"/> FIRE WEATHER	<input checked="" type="checkbox"/> DEMOB 
ICS 202	9. PREPARED BY (PLANNING SECTION CHIEF)  Dennis Cooper / Rick Leuck (t) / Jason Schillinger (t)		10. APPROVED BY (INCIDENT COMMANDER) (Zone 1) (Zone 2) Jim Giachino / Kevin Smith

ORGANIZATION ASSIGNMENT LIST		
1. Incident Name: KING (ZONE 1)		
2. Date: 9/25/14	3. Time: 2100	
4. Operational Period: DAY SHIFT September 27, 2014 0600 - 1800		
Position	Name	
5. Incident Commander and Command Staff		
Incident Commander	Jim Giachino / Steve Millert (t)	
Deputy	Carlton Joseph	
Safety Officer	Marty Hamel / Steve Ryberg / Charlotte Jordan (t)	
Information Officer	Steve Kliest / Mark Savage (t)	
Liaison Officer	R. Alpert / R. Graham / W. McGrew / J. Jones	
6. Agency Representative		
Eldorado NF	Laurence Crabtree	
Eldorado NF Agency Admin Rep	John Exline	
Tahoe NF	Tom Quinn	
Tahoe NF Agency Admin Rep	Victor Lyon	
Cal OES	Bill Bondshu	
CAL FIRE Nevada-Yuba-Placer Unit	Randy Smith	
IARR Eastern Area	Jeffery Briggs	
IARR Northeastern Region	Robert Heartlove	
IARR Southern Region	Tom Barnes / Ed Bratcher / David Berens	
IARR Southwestern Region	Carlos Nosie / Louie Sandoval	
CAL TRANS	Dave Wood	
PG&E	Pam Purdee	
California Highway Patrol	Chris Sahagun	
Placer County Sheriff	Kevin Borden	
7. Planning Section		
Plans Chief	Dennis Cooper / Rick Leuck (t) / Jason Schillinger (t)	
Resources Unit	R. Ashby / J. Switzler / J. Wilson / E. Matye (t)	
Situation Unit	T. Morelock / M. McHargue / P. Kaiser	
Human Resources	Marilyn Loughrey / Tom Nichols	
READ	Courtney Rowe	
Fire Behavior	Shelly Crook / Denny O'Neil / Duane Weis	
Meteorologist	Jason Clapp	
GISS	Brad Weisshaupt / Eric Shreve (t)	
CTSP	Jim Youngblood / Chris Crowder (t)	
TNSP	Jim Mitchell / Seneca Smith / Bill Reynolds	
DEMOB	Dan Baggao / Jim Cooley	
8. Logistics Section		
Logistics Chief	H. Crane / D. Haston / K. Kumpe (t)	
Supply Unit	Michael Bradford	
Facilities Unit	Jim Eckroth / Wally Grogan	
Ground Support Unit	John Badaracco	
Medical Unit	Robert Russell / Newton Ong (t)	
Food Unit	Dennis Durham	
Receiving/Distribution	Joe McMahon	
Communications Unit	Greg Ely / Tim Maguire (t)	
Ordering Manager	Sharon Porter	
9. Operations Section		
Ops Chief	Les Curtis / Steve Burns (t)	
Deputy Ops	Joe Reyes	
Planning Ops	Don Smith / Mike Sandwick	
Contingency Ops	John Truett / Kyle Smith (t)	
a. Branch X		
Branch Director	Dana D'Andrea / Jeb Pronto (t)	
Division	1B	David Buchanan / James White (t)
Division	1D	Bryan Brazzeal / Cory Johnson (t)
Division	1F	Jason Lambirth / Max Twombly
b. Branch XII		
Branch Director	Kelly Martin	
Division	1H	Erick Stahlin / Patrick Medina (t)
Division	1K	Unstaffed
Division	1L	Carl Klug / Ron Gregor (t)
c. Branch XIV		
Branch Director	Unstaffed	
Division	1M	Unstaffed
Division	1P	Unstaffed
d. Branch XVI		
Branch Director	Sean Johnson / Corey Rose (t)	
Division	1R	Unstaffed
Division	1T	Unstaffed
Division	1U	Aaron Riise
Division	1W	Chris Vero / Johnny Villa (t)
Division	1Y	Michael Cherry / David Soldavini (t)
Division	1Z	Justin Hanely / Shannon Myers (t)
f. Contingency Group		
Branch Director	Don Forsyth	
Group	American	Deano Esades / Jeff Goyings (t)
Group	Mosquito	Christopher Tate
Group	Ralston	David Carney
Group	Soda Springs	TBD
Group	Oxbow	Thomas Browning
g. Rehab / Repair Branch		
Branch	Russell Copp / Dan Bryant	
Group	Charles Alluisi / Mark Darragh / Joel Kerley	
h. Tactical Resource Coordinator		
Group	Unstaffed	
i. Air Operations		
Air Operations Branch Director	John Keesee	
Air Support Supervisor	Craig Dado	
Helicopter Coordinator	Lane Caldwell / John Chin	
Heli Base Manager	Brad Bernardy	
10. Finance/Administration Section		
Finance/Admin. Chief	Teresa Fork / Peter Byrners	
Cost Appro.	Kenny Lucien	
Time Unit	Janice Brown	
Procurement Unit	Wendy Whiteman	
Compensation/Claims Unit	Elaine Downing	
Cost Unit	Roger Siemens	
Personnel Time Recorder	Debra Luna (t)	
Prepared by (Resource Unit Leader)	Eric Matye (t) <i>EM</i>	



ZONE 1 FIRE WEATHER FORECAST



FORECAST NO: 22
PREDICTION FOR: Saturday Day SHIFT

INCIDENT NAME: King Fire
UNIT: Eldorado National Forest

SHIFT DATE: 27 September 2014

SIGNED: *Jason Clapp*

TIME AND DATE
FORECAST ISSUED: 2100 / 26 September 2014

Jason Clapp
Incident Meteorologist

WEATHER TODAY: *****Shower/Thunderstorm Threat...Cool Morning*****

WEATHER: Cloudy with light to moderate showers and isolated embedded t-storms today. Westerly winds today with cool temperatures. Possible Rain/snow mix just at 7500 ft with a snow dusting over 8000 ft last night into this morning.

TEMPERATURES: 45-53 **Trend: Down 5 – 8**
RELATIVE HUMIDITY: 50-60% **Trend: Up 10 – 15%**

20 FT WINDS:

RIDGETOP – Morning winds E 4-8 mph through 1000, shifting NNW throughout day of 5-8 mph with afternoon gusts 15 mph.

SLOPE/VALLEY – Downcanyon 3-7 mph and shift WNW 4-6 with gusts 10 mph around 1100.

LAL: 2. **STABILITY/INVERSION:** Weak inversions breaking in deep canyons by 1000.

WEATHER DISCUSSION: The main low pressure area moves into NV today with continued showers/t-storms as moisture wraps around from the E - NE. Saturday could see an additional 0.50 inch. The slow moving Low still hangs around to the east-southeast of the fire into Sunday with a threat of more showers and some thunderstorm activity. Warming and drying trend next week.

WEATHER FOR SATURDAY NIGHT: Mostly cloudy with showers and a few thunderstorms.

Low temperatures: Higher Elevations 38-41...Lower Elevations 42-45.

Max RH: Ridges 70-90%... Valleys 90-100%.

20FT Winds:

Ridge – NW 5-9 with gusts to 15 mph after 0200.

Slope/valley – Transition to downslope 3-6 mph. Downcanyon wind gusts 5-9 mph after 0200.

OUTLOOK FOR SUNDAY: Partly to mostly cloudy with a chance of showers and afternoon thunderstorms. High temps: 56-63. Min RH: 40-50%. Ridge winds: NNW-NNE winds from 5-8 with afternoon gusts 15 mph. Valley/Slope winds: Downslope 4-7 mph shifting upslope/upcanyon 6-10 mph late morning.

Weather Planning Matrix



Weather Observations



FIRE BEHAVIOR FORECAST

FORECAST NUMBER: #23	TYPE OF FIRE: Wildfire
FIRE NAME: King Fire	OPERATIONAL PERIOD: Saturday 9/27/2013 Day Shift
DATE ISSUED: September 26, 2014	TIME ISSUED: 2100
UNIT: Eldorado & Tahoe NF, CA State	SIGNED: Shelly Crook - FBAN

INPUTS

WEATHER SUMMARY

(Refer to Weather Forecast for details) DAY: Mostly cloudy/overcast. 70% chance of thunderstorms with rain. Max Temp: 45-55°. Min RH: 50-60%. Ridgetop winds – E 3-6 mph in the AM to mid-day becoming W/NW 5-7 with gusts to 15 mph in the afternoon. Slope/Valley Winds – Upslope 2-4 mph becoming W/NW 4-6 mph with gusts to 10 mph in the afternoon.

FUELS

Predominantly mature mixed conifer with heavy shrub loading. Fuel loadings are generally heavy. Representative Fuel Models 9, 10, TU5, TL8, TL9. Live fuels moistures are dry; however the dead fuels have moistened up as a result of the rain from yesterday. Large fire history: Star Fire 2001, Ralston Fire 2007, Government and Westville 2008, American Fire 2013. Minimum fine dead fuel moisture: 10-12%, 1000 hr FMC: 10%, 10 hr FMC: 10-12%, Live fuel moisture: 55-65%.

OUTPUTS - FIRE BEHAVIOR

DAY SHIFT:

Thresholds for Active Fire Behavior in the King Fire area (Eldorado NF PocketCard):

* 20ft Winds (over 5 mph), *RH (under 22%), *Temperature (over 84°) and *1000hr FMC (under 9%).

➤ Forecasted Indices (Bald Mt RAWS, FM-G) ERC: 46 (up 19) BI: 35 (up 35)

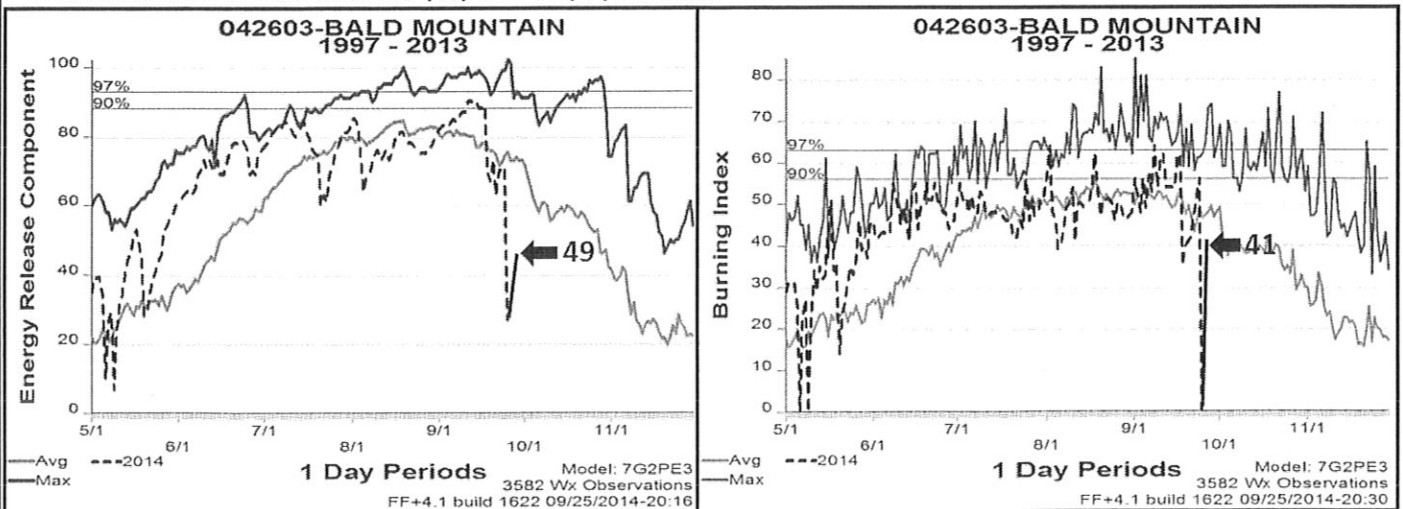
Maximum Fire Behavior Potential (head fire upslope): Rate of Spread: 1-3 chains/hour (1-3 feet/minute),

Flame Length: 0-2 ft. Probability of Ignition: 20%. Maximum spotting distance of 500 feet.

GENERAL for the Entire Zone 1 Fire Area: In the past 48 hours the entire fire area has received ½ to 1 inch of rain.

As a result, expect today's fire behavior potential to be minimal, predominately smoldering heavy fuels within the interior with no perimeter spread across the entire North Zone. Heads up for snags and stump holes as the mopup efforts move further into the interior. The heavy fuels will continue to hold heat for several days to several weeks.

Bald Mountain Forecasted ERC (49) and BI (41) for 9/27:



FEEDBACK: Collect WX obs hourly and turn in to FBAN or IMET at end of shift. Please include fire behavior observations.

AIR OPERATIONS

Cloudy/rainy conditions may limit operations. Plan accordingly. Sunrise at 0654. Sunset at 1853.

SAFETY

- You have all done a great job but it is still too early to pat yourself on the back. Stay frosty!
- Chance of thunderstorms with precipitation, have a preparedness plan ready before you need it.
- "Eagles come in all shapes and sizes, but you will recognize them chiefly by their attitudes." Charles Prestwich Scott

Division Assignment List		1. Branch X		2. Division/Group 1 B			
3. Incident Name KING - ZONE 1		4. Operational Period 09/27/14 Saturday Day Shift 0600 - 1800					
5. Operations Personnel							
Operations Chief	LES CURTIS; STEVE BURNS (t)		Division/Group Supervisor		D. BUCHANAN; J. WHITE (t)		
Contingency Ops Chief	JOHN TRUETT; KYLE SMITH (t)		Air Attack Supervisor				
Branch Director	DANA D'ANDREA; JEB PRONTO (t)		Safety Officer		M.HAMEL;S. RYBERG; C.JORDAN (t)		
6. Resources Assigned this Period							
Strike Team/Task Force/ Resource Designator	Leader	Num of Pers.	Trans. Y/N	Drop Off PT./Time	Pick Up PT./Time		
CRW T1 UKONOM IHC C-92 9/28	KEITH SMITH	19	N	SUNSET SPIKE 0600	SUNSET SPIKE 1800		
CRW T1 FLATHEAD IHC C-247 10/6	TYLER ANDERSON	21	N	SUNSET SPIKE 0600	SUNSET SPIKE 1800		
CRW T1 SMITH RIVER IHC C-258 10/9	TIM MEMMER	21	N	SUNSET SPIKE 0600	SUNSET SPIKE 1800		
CRW T2IA MS MSS#1 C-13 10/1	JOE MILES	20	N	SUNSET SPIKE 0600	SUNSET SPIKE 1800		
CRW T2 MQ FRANCO 13137 C-45 9/30	FRANCIS FRANCO	20	N	SUNSET SPIKE 0600	SUNSET SPIKE 1800		
CRW T2 DIAMOND C-40 10/1	LARRY ECKLEMAN	20	N	SUNSET SPIKE 0600	SUNSET SPIKE 1800		
ENG S/T PNF 3660C E-87 9/29	RICH SIMON	27	N	SUNSET SPIKE 0600	SUNSET SPIKE 1800		
TF ENF KING #6				SUNSET SPIKE 0600	SUNSET SPIKE 1800		
TFLD O-794 10/4	CLAY STEPHENS	1	N	SUNSET SPIKE 0600	SUNSET SPIKE 1800		
ENG T6 PACIFIC OASIS E-343 9/30	STEVEN MILLER	3	N	SUNSET SPIKE 0600	SUNSET SPIKE 1800		
ENG T6 FAIRVIEW E-337 9/30	DAN MORGAN	3	N	SUNSET SPIKE 0600	SUNSET SPIKE 1800		
ENG T6 FIRESTORM E-341 9/30	KEN NEWITT	3	N	SUNSET SPIKE 0600	SUNSET SPIKE 1800		
ENG T6 FIRESTORM E-336 9/30	JOSHUA BRADLEY	3	N	SUNSET SPIKE 0600	SUNSET SPIKE 1800		
ENG T6 GH RANCH, E-354 9/30	JEFFREY DAVIS	3	N	SUNSET SPIKE 0600	SUNSET SPIKE 1800		
7. Control Operations							
Construct line to Rubicon River to secure fire edge. Fall snags and chip material from North Pine Road to the Rubicon River. Mop up to the degree necessary to make the likelihood of fire escape very low; based on experience, terrain, fuel types, and fuel conditions.							
8. Special Instructions							
<ul style="list-style-type: none"> a. Day and Night travel to line via Foresthill Rd. Return via Mosquito Ridge Rd. b. All Division Supervisors need to download information to the Sit Unit for all completed line and proposed line. c. Noxious weeds are marked by orange "noxious weed" flagging. Minimize or avoid activities in these areas. d. Sensitive areas are marked with pink/black checkerboard flagging. Minimize ground disturbing activities in these areas. e. Backhaul Trash and unneeded equipment. 							
9. Division/Group Communications Summary							
Function	Frequency - RX	Frequency - TX	Tone	System	Channel	System	Channel
Command	166.6125	168.4000	136.5	NIFC C4	1		
Tactical Div/Group	168.2500	168.2500		NIFC T7	9		
Logistics							
Air to Ground	169.1500	169.1500		A/G CMD	13		
Prepared by (Resource Unit Leader) J. Switzler; E. Mayte (t); A.Uehara(t)		Approved by (Planning Section Chief) D. Cooper; R. Leuck (t); J. Schillinger (t)		Date Prepared 09/26/14		Time Prepared 1340	

Division Assignment List			1. Branch X		2. Division/Group 1 B		
3. Incident Name KING - ZONE 1			4. Operational Period 09/27/14 Saturday Day Shift 0600 - 1800				
5. Operations Personnel							
Operations Chief		LES CURTIS; STEVE BURNS (t)		Division/Group Supervisor		D. BUCHANAN; J. WHITE (t)	
Contingency Ops Chief		JOHN TRUETT; KYLE SMITH (t)		Air Attack Supervisor			
Branch Director		DANA D'ANDREA; JEB PRONTO (t)		Safety Officer		M HAMEL; S. RYBERG; C. JORDAN (t)	
6. Resources Assigned this Period							
Strike Team/Task Force/ Resource Designator		Leader		Num of Pers.	Trans. Y/N	Drop Off PT./Time	Pick Up PT./Time
T/F ENF KING #5						SUNSET SPIKE 0600	SUNSET SPIKE 1800
STEN O-661 10/2		JILL VUGTEVEEN		1	N	SUNSET SPIKE 0600	SUNSET SPIKE 1800
TFLD O-660 10/3		RYAN SANCHEY		1	N	SUNSET SPIKE 0600	SUNSET SPIKE 1800
TFLD O-711 10/3		CHET JENSEN (t)		1	N	SUNSET SPIKE 0600	SUNSET SPIKE 1800
ENG T6 UWF E-486 9/29		RYAN TAYLOR		3	N	SUNSET SPIKE 0600	SUNSET SPIKE 1800
ENG T6 E-344 10/1		COLTON MCCARTHY		3	N	SUNSET SPIKE 0600	SUNSET SPIKE 1800
ENG T6 PACIFIC OASIS E-342 9/30		KENT SMITH		3	N	SUNSET SPIKE 0600	SUNSET SPIKE 1800
ENG T6 E-356 9/30		BILL MACAULEY		3	N	SUNSET SPIKE 0600	SUNSET SPIKE 1800
ENG T6 FIRESTORM E-339 9/30		RON SARTAIN		3	N	SUNSET SPIKE 0600	SUNSET SPIKE 1800
DOZ T2 EARTH MOVIN E-101* 10/1		THORNTON, JOHN		4	N	SUNSET SPIKE 0600	SUNSET SPIKE 1800
DOZ T2 YTS E-197* 9/29		RICHARD JAUGCH		2	N	SUNSET SPIKE 0600	SUNSET SPIKE 1800
DOZ T2 LENAHN'S WTER E-212* 9/29		JOHN MONTZ		2	N	SUNSET SPIKE 0600	SUNSET SPIKE 1800
DOZ T2 B. INGRAM CON E-554 10/5		BRUCE INGRAM		3	N	SUNSET SPIKE 0600	SUNSET SPIKE 1800
DOZ T2 BRAD INGRAM #10 E-555 10/5		JESSE GRIEVE		3	N	SUNSET SPIKE 0600	SUNSET SPIKE 1800
DOZ T2 GREENOUS E-565 10/5		NICK DROGOSKY		3	N	SUNSET SPIKE 0600	SUNSET SPIKE 1800
DOZ T2 DADCO CONST E-568 10/5		DOUGLAS MAGALIA		3	N	SUNSET SPIKE 0600	SUNSET SPIKE 1800
7. Control Operations							
Construct line to Rubicon River to secure fire edge. Fall snags and chip material from North Pine Road to the Rubicon River. Mop up to the degree necessary to make the likelihood of fire escape very low; based on experience, terrain, fuel types, and fuel conditions.							
8. Special Instructions							
<ul style="list-style-type: none"> a. Day and Night travel to line via Foresthill Rd. Return via Mosquito Ridge Rd. b. All Division Supervisors need to download information to the Sit Unit for all completed line and proposed line. c. Noxious weeds are marked by orange "noxious weed" flagging. Minimize or avoid activities in these areas. d. Sensitive areas are marked with pink/black checkerboard flagging. Minimize ground disturbing activities in these areas. e. Backhaul trash and unneeded equipment. 							
9. Division/Group Communications Summary							
Function	Frequency - RX	Frequency - TX	Tone	System	Channel	System	Channel
Command	166.6125	168.4000	136.5	NIFC C4	1		
Tactical Div/Group	168.2500	168.2500		NIFC T7	9		
Logistics							
Air to Ground	169.1500	169.1500		A/G CMD	13		
Prepared by (Resource Unit Leader) J. Switzler ; E. Mayte (t); A. Uehara (t)			Approved by (Planning Section Chief) D. Cooper; R. Leuck (t); J. Schillinger (t)		Date Prepared 09/26/14		Time Prepared 1340

Division Assignment List			1. Branch X		2. Division/Group 1 B		
3. Incident Name KING - ZONE 1			4. Operational Period 09/27/14 Saturday Day Shift 0600 - 1800				
5. Operations Personnel							
Operations Chief		LES CURTIS; STEVE BURNS (t)		Division/Group Supervisor		D. BUCHANAN ; J. WHITE (t)	
Contingency Ops Chief		JOHN TRUETT; KYLE SMITH (t)		Air Attack Supervisor			
Branch Director		DANA D'ANDREA; JEB PRONTO (t)		Safety Officer		M.HAMEL;S.RYBERG;C.JORDAN (t)	
6. Resources Assigned this Period							
Strike Team/Task Force/ Resource Designator		Leader		Num of Pers.	Trans. Y/N	Drop Off PT./Time	Pick Up PT./Time
WT T1 C&H VETERAN E-252* 9/29		JAMES CALDWELL		2	N	SUNSET SPIKE 0600	SUNSET SPIKE 1800
WT T1 WATER BY CAR E-259 9/30		JOHN CARMODY		1	N	SUNSET SPIKE 0600	SUNSET SPIKE 1800
WT T1 PRO DUMP E-278 9/29		CARLOS FURTADO		2	N	SUNSET SPIKE 0600	SUNSET SPIKE 1800
CHIP - ROBINSON E-434 10/2		STEVE ARROWOOD		2	N	SUNSET SPIKE 0600	SUNSET SPIKE 1800
FELB T1 003 E-445 10/5		COCTER BLAKESLEE		1	N	SUNSET SPIKE 0600	SUNSET SPIKE 1800
FELB T1 E-446 10/4				2	N	SUNSET SPIKE 0600	SUNSET SPIKE 1800
FELB T1 NR004 HD E-447 10/5		KEVIN SMITH		2	N	SUNSET SPIKE 0600	SUNSET SPIKE 1800
MAST BOOM MOUNTED E-860 10/8		TIM BORGES		2	N	SUNSET SPIKE 0600	SUNSET SPIKE 1800
MAST T2 GRAHAM E-861 10/8		CLAYTON GRAHAM		2	N	SUNSET SPIKE 0600	SUNSET SPIKE 1800
FALM O-602 A&F ENT 10/1				2	N	SUNSET SPIKE 0600	SUNSET SPIKE 1800
FALM O-603 TREE MASTER 10/1				2	N	SUNSET SPIKE 0600	SUNSET SPIKE 1800
FALM O-604 PRO PLUS 10/2				2	N	SUNSET SPIKE 0600	SUNSET SPIKE 1800
FALM O-605 CTS VENTURES INC 10/1				2	N	SUNSET SPIKE 0600	SUNSET SPIKE 1800
FALM O-606 INC -NZF- 10/1		GREG LORENZO		2	N	SUNSET SPIKE 0600	SUNSET SPIKE 1800
FALM O-883 10/5		RICHARD LOERZ		2	N	SUNSET SPIKE 0600	SUNSET SPIKE 1800
FALM O-876 LONE PINE CUTG 10/2				1	N	SUNSET SPIKE 0600	SUNSET SPIKE 1800
FELB O-609 10/02		ROBERT HENSLEY		1	N	SUNSET SPIKE 0600	SUNSET SPIKE 1800
FELB O-860 9/27		DAMON NELSON		1	N	SUNSET SPIKE 0600	SUNSET SPIKE 1800
FELB O-844 10/4		ROBERT KRAMER		1	N	SUNSET SPIKE 0600	SUNSET SPIKE 1800
FELB O-859 10/1		TERRY MCSHANE		1	N	SUNSET SPIKE 0600	SUNSET SPIKE 1800
7. Control Operations							
Construct line to Rubicon River to secure fire edge. Fall snags and chip material from North Pine Road to the Rubicon River. Mop up to the degree necessary to make the likelihood of fire escape very low; based on experience, terrain, fuel types, and fuel conditions.							
8. Special Instructions							
<ul style="list-style-type: none"> a. Day and Night travel to line via Foresthill Rd. Return via Mosquito Ridge Rd. b. All Division Supervisors need to download information to the Sit Unit for all completed line and proposed line. c. Noxious weeds are marked by orange "noxious weed" flagging. Minimize or avoid activities in these areas. d. Sensitive areas are marked with pink/black checkerboard flagging. Minimize ground disturbing activities in these areas. e. Backhaul trash and unneeded equipment. 							
9. Division/Group Communications Summary							
Function	Frequency - RX	Frequency - TX	Tone	System	Channel	System	Channel
Command	166.6125	168.4000	136.5	NIFC C4	1		
Tactical Div/Group	168.2500	168.2500		NIFC T7	9		
Logistics							
Air to Ground	169.1500	169.1500		A/G CMD	13		
Prepared by (Resource Unit Leader) J. Switzler; E. Mayte (t); A.Uehara(t)		Approved by (Planning Section Chief) D. Cooper; R. Leuck (t); J. Schillinger (t)			Date Prepared 09/26/14		Time Prepared 1340

Division Assignment List	1. Branch X	2. Division/Group 1 B
---------------------------------	-----------------------	---------------------------------

3. Incident Name KING - ZONE 1	4. Operational Period 09/27/14 Saturday Day Shift 0600 - 1800
--	--

5. Operations Personnel			
Operations Chief	LES CURTIS; STEVE BURNS (t)	Division/Group Supervisor	D. BUCHANAN; J. WHITE (t)
Contingency Ops Chief	JOHN TRUETT; KYLE SMITH (t)	Air Attack Supervisor	
Branch Director	DANA D'ANDREA; JEB PRONTO (t)	Safety Officer	M.HAMEL; S.RYBERG; C.JORDAN (t)

6. Resources Assigned this Period					
Strike Team/Task Force/ Resource Designator	Leader	Num of Pers.	Trans. Y/N	Drop Off PT./Time	Pick Up PT./Time
HEQB O-256 9/28	GORDON MEYER	1	N	SUNSET SPIKE 0600	SUNSET SPIKE 1800
HEQB O-826 10/5	BRENTWOOD REID	1	N	SUNSET SPIKE 0600	SUNSET SPIKE 1800
HEQB O-828 10/4	NATTHAN D BAXTER	1	N	SUNSET SPIKE 0600	SUNSET SPIKE 1800
HEQB O-833 10/5	JOSHUA WILLIAMS	1	N	SUNSET SPIKE 0600	SUNSET SPIKE 1800
HEQB O-834 10/6	DANIEL WILLIAMS	1	N	SUNSET SPIKE 0600	SUNSET SPIKE 1800
HEQB O-837 10/5	JAMES DICKINSON	1	N	SUNSET SPIKE 0600	SUNSET SPIKE 1800
HEQB O-838 10/7	TERRON GEE	1	N	SUNSET SPIKE 0600	SUNSET SPIKE 1800
HEQB O-839 10/6	MIKE KOHNERT	1	N	SUNSET SPIKE 0600	SUNSET SPIKE 1800
TFLD O-793 10/5	BENNETT CHILDS	1	N	SUNSET SPIKE 0600	SUNSET SPIKE 1800
SOF2 O-699 10/2	PEDRO VILLA	1	N	SUNSET SPIKE 0600	SUNSET SPIKE 1800
SOFR (t) O-40 9/29	JOHN MARTINEZ	1	N	SUNSET SPIKE 0600	SUNSET SPIKE 1800
FEMP O-428 10/1	NICK BRANDOW	1	N	SUNSET SPIKE 0600	SUNSET SPIKE 1800
FEMT O-432 10/1	RYAN SOUDER	1	N	SUNSET SPIKE 0600	SUNSET SPIKE 1800
FOBS O-455 10/1	MICHAEL R CONNOLLY	1	N	SUNSET SPIKE 0600	SUNSET SPIKE 1800
FOBS (t) O-1086 10/2	RYAN A LOBRE	1	N	SUNSET SPIKE 0600	SUNSET SPIKE 1800

7. Control Operations
Construct line to Rubicon River to secure fire edge. Fall snags and chip material from North Pine Road to the Rubicon River. Mop up to the degree necessary to make the likelihood of fire escape very low; based on experience, terrain, fuel types, and fuel conditions.

- 8. Special Instructions**
- a. Day and Night travel to line via Foresthill Rd. Return via Mosquito Ridge Rd.
 - b. All Division Supervisors need to download information to the Sit Unit for all completed line and proposed line.
 - c. Noxious weeds are marked by orange "noxious weed" flagging. Minimize or avoid activities in these areas.
 - d. Sensitive areas are marked with pink/black checkerboard flagging. Minimize ground disturbing activities in these areas.
 - e. Backhaul trash and unneeded equipment.

9. Division/Group Communications Summary							
Function	Frequency - RX	Frequency - TX	Tone	System	Channel	System	Channel
Command	166.6125	168.4000	136.5	NIFC C4	1		
Tactical Div/Group	168.2500	168.2500		NIFC T7	9		
Logistics							
Air to Ground	169.1500	169.1500		A/G CMD	13		

Prepared by (Resource Unit Leader) J. Switzler; E. Mayte (t); A.Uehara (t)	Approved by (Planning Section Chief) D. Cooper; R. Leuck (t); J. Schillinger (t)	Date Prepared 09/26/14	Time Prepared 1339
---	---	---------------------------	-----------------------

Division Assignment List		1. Branch X		2. Division/Group 1D			
3. Incident Name KING - ZONE 1		4. Operational Period 09/27/14 Saturday Day Shift 0600 - 1800					
5. Operations Personnel							
Operations Chief	LES CURTIS; STEVE BURNS (t)		Division/Group Supervisor	BRYAN BRAZZEAL; CORY JOHNSON (t)			
Contingency Ops Chief	JOHN TRUETT; KYLE SMITH (t)		Air Attack Supervisor				
Branch Director	DANA D'ANDREA; JEB PRONTO (t)		Safety Officer	M.HAMEL;S.RYBERG;C JORDAN (t)			
6. Resources Assigned this Period							
Strike Team/Task Force/ Resource Designator	Leader	Num of Pers.	Trans. Y/N	Drop Off PT./Time	Pick Up PT./Time		
CRW T1 AMERICAN RIVER IHC C-87 9/27	ADAM LEYBA	20	N	SUNSET SPIKE 0600	SUNSET SPIKE 1800		
CRW T2IA PACIFIC OASIS C-26 9/28	KEN WILSON	16	N	SUNSET SPIKE 0600	SUNSET SPIKE 1800		
CRW T2IA UTAH CNTY #2 C-96 9/27	ANDREW SIEBACH	18	N	SUNSET SPIKE 0600	SUNSET SPIKE 1800		
CRW T2IA NAVAJO SCTS 1 C-101 9/30	TERRY TSO	20	N	SUNSET SPIKE 0600	SUNSET SPIKE 1800		
CRW T2IA NAVAJO SCTS 2 C-4 9/30	ALTON JOHN	20	N	SUNSET SPIKE 0600	SUNSET SPIKE 1800		
CRW T2IA NORTHERN UTAH C-130 9/29	JOSH HAEN	20	N	SUNSET SPIKE 0600	SUNSET SPIKE 1800		
CRW T2 DIAMOND FIRE C-208 10/5	BILLY SMITH	20	N	SUNSET SPIKE 0600	SUNSET SPIKE 1800		
CRW T2 PACIFIC OASIS C-46 9/30	WESLEY DODDS	20	N	SUNSET SPIKE 0600	SUNSET SPIKE 1800		
DOZ T2 AMADOR MECH E-196 9/30	MERVIN VICINI	2	N	SUNSET SPIKE 0600	SUNSET SPIKE 1800		
DOZ T2 BEN'S TRUCK & EQ. E-100 9/30	DAVID LAWRENCE	2	N	SUNSET SPIKE 0600	SUNSET SPIKE 1800		
DOZ T2 BEN'S TRUCK & EQ. E-103 9/30	BUTCH SMITH	4	N	SUNSET SPIKE 0600	SUNSET SPIKE 1800		
HEQB O-262 9/30	TERRY WARLICK	1	N	SUNSET SPIKE 0600	SUNSET SPIKE 1800		
HEQB O-842	JIMMY D MORRIS	1	N	SUNSET SPIKE 0600	SUNSET SPIKE 1800		
HEQB O-825 10/6	EDMOND D WILHITE	1	N	SUNSET SPIKE 0600	SUNSET SPIKE 1800		
HEQB (t) O-1029 10/2	RACHAEL HANSEN	1	N	SUNSET SPIKE 0600	SUNSET SPIKE 1800		
SOF2 O-699 10/2	PEDRO VILLA	1	N	SUNSET SPIKE 0600	SUNSET SPIKE 1800		
SOFR O-40 9/29	JOHN MARTINEZ	1	N	SUNSET SPIKE 0600	SUNSET SPIKE 1800		
FEMP O-1089 9/29	JACOB SNOW	1	N	SUNSET SPIKE 0600	SUNSET SPIKE 1800		
FEMT O-971 10/6	WILLIAM KRON	1	N	SUNSET SPIKE 0600	SUNSET SPIKE 1800		
7. Control Operations							
Widen and improve existing secondary lines from Ramsey Crossing to French House. Mop up to the degree necessary to make the likelihood of fire escape very low; based on experience, terrain, fuel types, and fuel conditions.							
8. Special Instructions							
<ul style="list-style-type: none"> a. Day and Night travel to line via Foresthil Rd. Return via Mosquito Ridge Rd. b. All Division Supervisors need to download information to the Sit Unit for all completed line and proposed line. c. Noxious weeds are marked by orange "noxious weed" flagging. Minimize or avoid activities in these areas. d. Sensitive areas are marked with pink/black checkerboard flagging. Minimize ground disturbing activities in these areas. e. Backhaul trash and unneeded equipment. 							
9. Division/Group Communications Summary							
Function	Frequency - RX	Frequency - TX	Tone	System	Channel	System	Channel
Command	166.6125	168.4000	136.5	NIFC C4	1		
Tactical Div/Group	168.5000	168.5000		NIFC T10	6		
Logistics							
Air to Ground	169.1500	169.1500		A/G CMD	13		
Prepared by (Resource Unit Leader) J. Switzler ; E. Mayte (t); A.Uehara (t)		Approved by (Planning Section Chief) D. Cooper; R. Leuck (t); J. Schillinger (t)		Date Prepared 09/26/14		Time Prepared 1339	

Division Assignment List	1. Branch X	2. Division/Group 1 F
Unit Name KING - ZONE 1	4. Operational Period 09/27/14 Saturday Day Shift 0600 - 1800	

Operations Personnel

Operations Chief	LES CURTIS; STEVE BURNS (t)	Division/Group Supervisor	JASON LAMBIRTH; MAX TWOMBLY
Contingency Ops Chief	JOHN TRUETT; KYLE SMITH (t)	Air Attack Supervisor	
Branch Director	DANA D'ANDREA; JEB PRONTO (t)	Safety Officer	M.HAMEL;S. RYBERG;C.JORDAN (t)

6. Resources Assigned this Period

Strike Team/Task Force/ Resource Designator	Leader	Num of Pers.	Trans. Y/N	Drop Off PT./Time	Pick Up PT./Time
CRW T2IA SAN CARLOS C-5 9/30	THOMAS PATTEN	18	N	SUNSET SPIKE 0600	SUNSET SPIKE 1800
CRW T2 GH RANCH C-42 9/30	LEONARD TOWNSEND	20	N	SUNSET SPIKE 0600	SUNSET SPIKE 1800
CRW T2 GH RANCH C-41 9/30	ALLEN BACON	20	N	SUNSET SPIKE 0600	SUNSET SPIKE 1800
CRW T2IA ALAMO RGLRS C-14 10/1	DARRELL EAVES	21	N	SUNSET SPIKE 0600	SUNSET SPIKE 1800
CRW T21A GILA REGULAR 5 C-171 10/4	FELIX VALDEZ	20	N	SUNSET SPIKE 0600	SUNSET SPIKE 1800
CRW T2IA CAC #4 C-16 9/30	RON E BROWN	20	N	SUNSET SPIKE 0600	SUNSET SPIKE 1800
CRW T2IA INTERTRIBAL #1 C-12 10/1	JACOB WISEHART	20	N	SUNSET SPIKE 0600	SUNSET SPIKE 1800
ENG S/T T3 1662C E-536 10/5	RICHARD MARTIN	27	N	SUNSET SPIKE 0600	SUNSET SPIKE 1800
ENG S/T 6632C E-535 10/5	ADOLPHO CASTRO	27	N	SUNSET SPIKE 0600	SUNSET SPIKE 1800
ENG S/T T3 3675C E-533 10/3	SEAN JOHNNY	27	N	SUNSET SPIKE 0600	SUNSET SPIKE 1800
ENG T/F KING #4				SUNSET SPIKE 0600	SUNSET SPIKE 1800
TFLD O-662	CORY CALNAN	1	N	SUNSET SPIKE 0600	SUNSET SPIKE 1800
STEN O-707 10/3	BEAU MACIAG (t)	1	N	SUNSET SPIKE 0600	SUNSET SPIKE 1800
ENG T6 CPS 62 E-374	RYAN MORGAN	3	N	SUNSET SPIKE 0600	SUNSET SPIKE 1800
ENG T6 TAHOE SAGE FIRE E-358	KEVIN STUDLEY	3	N	SUNSET SPIKE 0600	SUNSET SPIKE 1800
ENG T6 HIGH SIERRA E-338	JERRY VICE	3	N	SUNSET SPIKE 0600	SUNSET SPIKE 1800
ENG T6 HIGH SIERRA E-340	JACOB ROWSEY	3	N	SUNSET SPIKE 0600	SUNSET SPIKE 1800
ENG T6 333 BLY MT FIRE E-355	MARK GROVES	3	N	SUNSET SPIKE 0600	SUNSET SPIKE 1800

7. Control Operations

Widen and improve existing secondary line from French House to Anderson Dam. Construct direct line on Chipmunk Ridge from the 2 Road toward Hell Hole Reservoir. Mop up to the degree necessary to make the likelihood of fire escape very low; based on experience, terrain, fuel types, and fuel conditions.

8. Special Instructions

- a. Day and Night travel to line via Foresthill Rd. Return via Mosquito Ridge Rd.
- b. All Division Supervisors need to download information to the Sit Unit for all completed line and proposed line.
- c. Noxious weeds are marked by orange "noxious weed" flagging. Minimize or avoid activities in these areas.
- d. Sensitive areas are marked with pink/black checkerboard flagging. Minimize ground disturbing activities in these areas.
- e. Backhaul trash and unneeded equipment.

9. Division/Group Communications Summary

Function	Frequency - RX	Frequency - TX	Tone	System	Channel	System	Channel
Command	166.6125	168.4000	136.5	NIFC C4	1		
Tactical Div/Group	166.7250	166.7250		NIFC T5	7		
Logistics							
Air to Ground	169.1500	169.1500		A/G CMD	13		

Prepared by (Resource Unit Leader) J. Switzler ; E. Matye (t); A.Uehara (t)	Approved by (Planning Section Chief) D. Cooper; R. Leuck (t) ;J. Schillinger (t)	Date Prepared 09/26/14	Time Prepared 1339
--	---	---------------------------	-----------------------

Division Assignment List			1. Branch X		2. Division/Group 1 F		
3. Incident Name KING - ZONE 1			4. Operational Period 09/27/14 Saturday Day Shift 0600 - 1800				
5. Operations Personnel							
Operations Chief		LES CURTIS; STEVE BURNS (t)		Division/Group Supervisor		JASON LAMBIRTH; MAX TWOMBLY	
Contingency Ops Chief		JOHN TRUETT; KYLE SMITH (t)		Air Attack Supervisor			
Branch Director		DANA D'ANDREA; JEB PRONTO (t)		Safety Officer		M.HAMEL;S. RYBERG;C.JORDAN (t)	
6. Resources Assigned this Period							
Strike Team/Task Force/ Resource Designator		Leader		Num of Pers.	Trans. Y/N	Drop Off PT./Time	Pick Up PT./Time
ENG T/F KING #17						SUNSET SPIKE 0600	SUNSET SPIKE 1800
STEN O-897 10/6		MATT HODGE		1	N	SUNSET SPIKE 0600	SUNSET SPIKE 1800
ENG T3 E-640		JOHN JOHANSON		4	N	SUNSET SPIKE 0600	SUNSET SPIKE 1800
ENG T3 E-644		KYLE LEHMAN		4	N	SUNSET SPIKE 0600	SUNSET SPIKE 1800
ENG T3 E-645		LEO HOLLEY		6	N	SUNSET SPIKE 0600	SUNSET SPIKE 1800
ENG T3 E-662		KEVIN REESE		5	N	SUNSET SPIKE 0600	SUNSET SPIKE 1800
DOZER T2 E-574 10/5		TODD THOMAS		2	N	SUNSET SPIKE 0600	SUNSET SPIKE 1800
DOZ T2 E-576 10/5		RICK ANDERSON		2	N	SUNSET SPIKE 0600	SUNSET SPIKE 1800
DOZER T2 E-573 10/5		KEVIN CARTER		2	N	SUNSET SPIKE 0600	SUNSET SPIKE 1800
WT T2 TNF 22 E-34 9/28		CHRISTOPHER LOW		4	N	SUNSET SPIKE 0600	SUNSET SPIKE 1800
WT T2 E-924 10/8		SHAWN MITCHELL		2	N	SUNSET SPIKE 0600	SUNSET SPIKE 1800
WT T2 E-926 10/8		BILL CRAWFORD		2	N	SUNSET SPIKE 0600	SUNSET SPIKE 1800
CHIP E-580 10/5		TOM THOMAS		1	N	SUNSET SPIKE 0600	SUNSET SPIKE 1800
FALM O-869 10/5		RANDY SHAULIS		1	N	SUNSET SPIKE 0600	SUNSET SPIKE 1800
FALM O-881 10/5				2	N	SUNSET SPIKE 0600	SUNSET SPIKE 1800
FELB O-902		MIKE CARTER		1	N	SUNSET SPIKE 0600	SUNSET SPIKE 1800
FELB O-847 10/5		JOHN WALKER		1	N	SUNSET SPIKE 0600	SUNSET SPIKE 1800
<i>HEQB 0-821</i>		<i>Andrew Carr</i>					
<i>HEQB 0-841</i>		<i>Loren Bell</i>					
<i>HEQB 0-244</i>		<i>Andrew Valdez</i>					
7. Control Operations							
Widen and improve existing secondary line from French House to Anderson Dam. Construct direct line on Chipmunk Ridge from the 2 Road toward Hell Hole Reservoir. Mop up to the degree necessary to make the likelihood of fire escape very low; based on experience, terrain, fuel types, and fuel conditions.							
8. Special Instructions							
<p>a. Day and Night travel to line via Foresthill Rd. Return via Mosquito Ridge Rd.</p> <p>b. All Division Supervisors need to download information to the Sit Unit for all completed line and proposed line.</p> <p>c. Noxious weeds are marked by orange "noxious weed" flagging. Minimize or avoid activities in these areas.</p> <p>d. Sensitive areas are marked with pink/black checkerboard flagging. Minimize ground disturbing activities in these areas.</p> <p>e. Backhaul trash and unneeded equipment.</p>							
9. Division/Group Communications Summary							
Function	Frequency - RX	Frequency - TX	Tone	System	Channel	System	Channel
Command	166.6125	168.4000	136.5	NIFC C4	1		
Tactical Div/Group	166.7250	166.7250		NIFC T5	7		
Logistics							
Air to Ground	169.1500	169.1500		A/G CMD	13		
Prepared by (Resource Unit Leader) J Switzler ; E. Matye (t); A.Uehara (t)			Approved by (Planning Section Chief) D. Cooper; R. Leuck (t); J. Schillinger (t)		Date Prepared 09/26/14		Time Prepared 1941

Division Assignment List			1. Branch XII		2. Division/Group 1 H		
3. Incident Name KING - ZONE 1			4. Operational Period 09/27/14 Saturday Day Shift 0600 - 1800				
5. Operations Personnel							
Operations Chief		LES CURTIS; STEVE BURNS (t)		Division/Group Supervisor		E. STAHLIN; P. MEDINA (t)	
Contingency Ops Chief		JOHN TRUETT; KYLE SMITH (t)		Air Attack Supervisor			
Branch Director		KELLY MARTIN		Safety Officer		M. HAMEL;S.RYBERG; C.JORDAN (t)	
6. Resources Assigned this Period							
Strike Team/Task Force/ Resource Designator		Leader		Num of Pers.	Trans. Y/N	Drop Off PT./Time	Pick Up PT./Time
CRW T1 TRINITY IHC C-7 9/28		JUSTIN JEUDE		21	N	FRENCH SPIKE 0600	FRENCH SPIKE 1800
CRW T1 ELDORADO IHC C-85 9/30		WILLIAM K HARRIS		20	N	FRENCH SPIKE 0600	FRENCH SPIKE 1800
CRW T2IA HOPI 1 C-172 10/1		FREDDIE PANANA		21	N	FRENCH SPIKE 0600	FRENCH SPIKE 1800
CRW T2IA ANGORA PEAK C-173 10/3		JASON LA NIER		19	N	FRENCH SPIKE 0600	FRENCH SPIKE 1800
CREW T2IA SALYER C-174 10/5		JOSH EICHAMER		20	N	FRENCH SPIKE 0600	FRENCH SPIKE 1800
CRW T2IA CORONADO C-176 9/26		JORGE AMAYA		23	N	FRENCH SPIKE 0600	FRENCH SPIKE 1800
CRW T2IA BIG HORN 2 C-170 9/30		MICKEY PATRICK SIROIS		20	N	FRENCH SPIKE 0600	FRENCH SPIKE 1800
ENG S/T 1618C E-499 10/5		RENE VELASQUEZ		26	N	ICP 0600	ICP1800
KING T/F #16						ICP 0600	ICP 1800
TFLD O-792 10/4		KIRK HARRIS		1	N	ICP 0600	ICP 1800
TFLD (t) O-951 10/5		JAMIE JALVING		1	N	ICP 0600	ICP 1800
ENG T6 PAULA HOLTER E-333 9/30		PAULA HOLTER		3	N	ICP 0600	ICP 1800
ENG T6 PAULA HOLTER E-334 9/30		CHUCK NEWBERRY		3	N	ICP 0600	ICP 1800
ENG T6 PAULA HOLTER E-335 9/30		DON HOLTER		3	N	ICP 0600	ICP 1800
ENG T6 PLATTE CANYON E-381 10/2		CODY COX		3	N	ICP 0600	ICP 1800
ENG T4 HTF 413 E-484 9/30		JOHN STONELAKE		4	N	ICP 0600	ICP 1800
ENG T4 E2411 E-485 9/28		NICKOLAUS MINK		4	N	ICP 0600	ICP 1800
WT T2V NO STATE E-526 10/3		ALBERT EUCHTER		1	N	ICP 0600	ICP 1800
WT T1 SPECE INDUSTRIAL E-126* 9/30		STEVE ROOKS		4	N	ICP 0600	ICP 1800
7. Control Operations							
Mop up to the degree necessary to make the likelihood of fire escape very low; based on experience, terrain, fuel types, and fuel conditions.							
8. Special Instructions							
a. Day and Night travel to line via Foresthill Rd. Return via Mosquito Ridge Rd. b. All Division Supervisors need to download information to the Sit Unit for all completed line and proposed line. c. Noxious weeds are marked by orange "noxious weed" flagging. Minimize or avoid activities in these areas. d. Sensitive areas are marked with pink/black checkerboard flagging. Minimize ground disturbing activities in these areas.							
9. Division/Group Communications Summary							
Function	Frequency - RX	Frequency - TX	Tone	System	Channel	System	Channel
Command	166.6125	168.4000	136.5	NiFC C4	1		
Tactical Div/Group	166.7750	166.7750		NIFC T6	8		
Logistics							
Air to Ground	169.1500	169.1500		A/G CMD	13		
Prepared by (Resource Unit Leader) J. Switzler; E. Mayte (t); A.Uehara (t)			Approved by (Planning Section Chief) D. Cooper ; R. Leuck (t) ; J. Schillinger (t)		Date Prepared 09/26/14		Time Prepared 1338

Division Assignment List	1. Branch XII	2. Division/Group 1 H
---------------------------------	-------------------------	---------------------------------

3. Incident Name KING - ZONE 1	4. Operational Period 09/27/14 Saturday Day Shift 0600 - 1800
--	--

5. Operations Personnel

Operations Chief	LES CURTIS; STEVE BURNS (t)	Division/Group Supervisor	E. STAHLIN; P. MEDINA (t)
Contingency Ops Chief	JOHN TRUETT; KYLE SMITH (t)	Air Attack Supervisor	
Branch Director	KELLY MARTIN	Safety Officer	M.HAMEL; S.RYBERG; C.JORDAN (t)

6. Resources Assigned this Period

Strike Team/Task Force/ Resource Designator	Leader	Num of Pers.	Trans. Y/N	Drop Off PT./Time	Pick Up PT./Time
FALC RIDGE LOGGING O-873 10/5		4	N	ICP 0600	ICP 1800
FELM MNSUF O-857 10/1	HANS CASPERSON	1	N	ICP 0600	ICP 1800
FELM (t) O-959 10/5	BRIAN DIRKS	1	N	ICP 0600	ICP 1800
DIVS O-808 10/5	ERIC BADER	1	N	ICP 0600	ICP 1800
SOFR O-141 10/5	RICK CLARKE	1	N	ICP 0600	ICP 1800
SOFR (t) O-142 10/5	MANI BOUSLAUGH	1	N	ICP 0600	ICP 1800
FEMP O-762 10/4	RON CUTTING	1	N	ICP 0600	ICP 1800
FEMP O-765 10/5	BRYAN ESSER	1	N	ICP 0600	ICP 1800
FOBS O-118 9/30	TIM BRADLEY	1	N	ICP 0600	ICP 1800
FOBS O-454 9/30	ROBERT OLDS	1	N	ICP 0600	ICP 1800
<i>FALM O-871</i>	<i>Claybourne</i>				
<i>FALM O-880</i>	<i>A Team Tree</i>				
<i>FALM O-884</i>	<i>Sunneerland</i>				
<i>FELB O-897</i>	<i>Jack Rosebush</i>				

7. Control Operations

Mop up control lines from Chipmunk Ridge to Middle Meadow Campground. Mop up to the degree necessary to make the likelihood of fire escape very low; based on experience, terrain, fuel types, and fuel conditions.

8. Special Instructions

- a. Day and Night travel to line via Foresthill Rd. Return via Mosquito Ridge Rd.
- b. All Division Supervisors need to download information to the Sit Unit for all completed line and proposed line.
- c. Noxious weeds are marked by orange "noxious weed" flagging. Minimize or avoid activities in these areas.
- d. Sensitive areas are marked with pink/black checkerboard flagging. Minimize ground disturbing activities in these areas.

9. Division/Group Communications Summary

Function	Frequency - RX	Frequency - TX	Tone	System	Channel	System	Channel
Command	166.6125	168.4000	136.5	NIFC C4	1		
Tactical Div/Group	166.7750	166.7750		NIFC T6	8		
Logistics							
Air to Ground	169.1500	169.1500		A/G CMD	13		

Prepared by (Resource Unit Leader) J.Switzler ; E. Mayte (t); A. Uehara (t)	Approved by (Planning Section Chief) D. Cooper; R. Leuck (t); J. Schillinger (t)	Date Prepared 09/26/14	Time Prepared 1338
--	---	---------------------------	-----------------------

Division Assignment List		1. Branch XII		2. Division/Group 1 L			
3. Incident Name KING - ZONE 1		4. Operational Period 09/27/14 Saturday Day Shift 0600 - 1800					
5. Operations Personnel							
Operations Chief	LES CURTIS / STEVE BURNS (t)		Division/Group Supervisor	CARL KLUG; RON GREGOR (t)			
Contingency Ops Chief	JOHN TRUETT; KYLE SMITH (t)		Air Attack Supervisor				
Branch Director	KELLY MARTIN		Safety Officer	M.HAMEL;S. RYBERG;C.JORDAN (t)			
6. Resources Assigned this Period							
Strike Team/Task Force/ Resource Designator	Leader	Num of Pers.	Trans. Y/N	Drop Off PT./Time	Pick Up PT./Time		
CRW T2IA COBRAS 4 C-202 10/4	VINCE MONTES	22	N	ICP 0600	ICP 1800		
CRW T2IA FIRESTORM 1 C-211 10/2	RICK SANDIDGE	20	N	ICP 0600	ICP 1800		
CRW T1 RIO BRAVO IHC C-232 10/5	JAMES J ROCHA <i>DMOB</i>	21	N	ICP 0600	ICP 1800		
ENG S/T 5780C E-433 9/27	TODD RUFFNER	24	N	ICP 0600	ICP 1800		
ENG T/F ENF KING #2 E-9012	DAVID ZUARES	17	N	ICP 0600	ICP 1800		
TFLD O-696 9/15	DAVID ZUARES	1	N	ICP 0600	ICP 1800		
ENG T6 ID IFD E-352 10/1	DAVID BRIZEDINE	4	N	ICP 0600	ICP 1800		
ENG T6 LOS PINOS E-362 10/1	JASON RAMEY	3	N	ICP 0600	ICP 1800		
ENG T6 6112 E-379 10/2	CHRISTOPHER JONES	3	N	ICP 0600	ICP 1800		
ENG T6 LONGMONT E-369 10/2	JUAN SALOMON	3	N	ICP 0600	ICP 1800		
ENG T6 661 E-378 10/1	TRACY MILAKOVIC	3	N	ICP 0600	ICP 1800		
ENG T6 SO. ARKANSAS E-382 10/2	PAUL E OTTMER	3	N	ICP 0600	ICP 1800		
WT T1 SILVER STATE E-141* 9/30		2	N	ICP 0600	ICP 1800		
WT T1 G&G FIRE SUPP E-131* 9/30	GREG WHIPPLE	4	N	ICP 0600	ICP 1800		
W/T SUP T1 E-133* 10/2	GEORGE NEILLS	2	N	ICP 0600	ICP 1800		
W/T PVT 49'ER E-520 10/4	BOB MERG	1	N	ICP 0600	ICP 1800		
WT T2 TMU 4 E-255 9/29	SPENCER GRISCOM	2	N	ICP 0600	ICP 1800		
STEN O-893 10/5	GILBERT BARRIER	1	N	ICP 0600	ICP 1800		
DIVS O-811 10/5	LINCOLN PETERS	1	N	ICP 0600	ICP 1800		
SOFR O-141 10/5	RICK W CLARKE	1	N	ICP 0600	ICP 1800		
7. Control Operations							
Mop up to the degree necessary to make the likelihood of fire escape very low; based on experience, terrain, fuel types, and fuel conditions.							
8. Special Instructions							
<ul style="list-style-type: none"> a. Day and Night travel to line via Foresthill Rd. Return via Mosquito Ridge Rd. b. All Division Supervisors need to download information to the Sit Unit for all completed line and proposed line. c. Noxious weeds are marked by orange "noxious weed" flagging. Minimize or avoid activities in these areas. d. Sensitive areas are marked with pink/black checkerboard flagging. Minimize ground disturbing activities in these areas. 							
9. Division/Group Communications Summary							
Function	Frequency - RX	Frequency - TX	Tone	System	Channel	System	Channel
Command	166.6125	168.4000	136.5	NIFC C4	1		
Tactical Div/Group	168.2500	168.2500		NIFC T7	9		
Logistics							
Air to Ground	169.1500	169.1500		A/G CMD	13		
Prepared by (Resource Unit Leader) J.Switzler; Eric Mayte (t); A.Uehara (t)		Approved by (Planning Section Chief) D. Cooper; R. Leuck (t) ; J. Schillinger (t)		Date Prepared 09/26/14		Time Prepared 1337	

Division Assignment List		1. Branch XII		2. Division/Group 1 L			
3. Incident Name KING - ZONE 1		4. Operational Period 09/27/14 Saturday Day Shift 0600 - 1800					
5. Operations Personnel							
Operations Chief	LES CURTIS / STEVE BURNS (t)	Division/Group Supervisor	CARL KLUG; RON GREGOR (t)				
Contingency Ops Chief	JOHN TRUETT; KYLE SMITH (t)	Air Attack Supervisor					
Branch Director	KELLY MARTIN	Safety Officer	M.HAMEL;S. RYBERG;C.JORDAN (t)				
6. Resources Assigned this Period							
Strike Team/Task Force/ Resource Designator	Leader	Num of Pers.	Trans. Y/N	Drop Off PT./Time	Pick Up PT./Time		
SOFR (t) O-142 9/28	MANI BOUSLAUGH	1	N	ICP 0600	ICP 1800		
FEMP O-975 9/30	EDUARDO STARY	1	N	ICP 0600	ICP 1800		
FEMP O-973 9/30	SERGIO ZAVALA	1	N	ICP 0600	ICP 1800		
WT T1 SILVER STATE E-141* 9/30		2	N	ICP 0600	ICP 1800		
WT T1 G&G FIRE SUPP E-131* 9/30	GREG WHIPPLE	4	N	ICP 0600	ICP 1800		
W/T SUP T1 E-133* 10/2	GEORGE NEILLS	2	N	ICP 0600	ICP 1800		
W/T PVT 49'ER E-520 10/4	BOB MERG	1	N	ICP 0600	ICP 1800		
WT T2 TMU 4 E-255 9/29	SPENCER GRISCOM	2	N	ICP 0600	ICP 1800		
STEN O-893 10/5	GILBERT BARRIER	1	N	ICP 0600	ICP 1800		
CRW T2 PALOMAR C-252 10/7	RUSTY SEXTON	19	N	ICP 0600	ICP 1800		
SOFR O-141 9/28	RICK CLARKE	1	N	ICP 0600	ICP 1800		
SOFR (t) O-142 9/28	MANI BOUSLAUGH	1	N	ICP 0600	ICP 1800		
FEMP O-975 9/30	EDUARDO STARY	1	N	ICP 0600	ICP 1800		
FEMP O-973 9/30	SERGIO ZAVALA	1	N	ICP 0600	ICP 1800		
7. Control Operations							
Mop up to the degree necessary to make the likelihood of fire escape very low; based on experience, terrain, fuel types, and fuel conditions.							
8. Special Instructions							
a. Day and Night travel to line via Foresthill Rd. Return via Mosquito Ridge Rd. b. All Division Supervisors need to download information to the Sit Unit for all completed line and proposed line. c. Noxious weeds are marked by orange "noxious weed" flagging. Minimize or avoid activities in these areas. d. Sensitive areas are marked with pink/black checkerboard flagging. Minimize ground disturbing activities in these areas.							
9. Division/Group Communications Summary							
Function	Frequency - RX	Frequency - TX	Tone	System	Channel	System	Channel
Command	166.6125	168.4000	136.5	NIFC C4	1		
Tactical Div/Group	168.2500	168.2500		NIFC T7	9		
Logistics							
Air to Ground	169.1500	169.1500		A/G CMD	13		
Prepared by (Resource Unit Leader) J.Switzler; Eric Mayte (t); A.Uehara (t)		Approved by (Planning Section Chief) D. Cooper; R. Leuck (t) ; J. Schillinger (t)		Date Prepared 09/26/14		Time Prepared 1950	

Division Assignment List	1. Branch	2. Division/Group
	XVI	1 U

3. Incident Name KING - ZONE 1	4. Operational Period 09/27/14 Saturday Day Shift 0600 - 1800
--	--

5. Operations Personnel			
Operations Chief	LES CURTIS; STEVE BURNS (t)	Division/Group Supervisor	AARON RIISE
Contingency Ops Chief	JOHN TRUETT; KYLE SMITH (t)	Air Attack Supervisor	
Branch Director	SEAN JOHNSON; COREY ROSE (t)	Safety Officer	M.HAMEL;S. RYBERG; C.JORDAN (t)

6. Resources Assigned this Period						
Strike Team/Task Force/ Resource Designator	Leader	Num of Pers.	Trans. Y/N	Drop Off PT./Time	Pick Up PT./Time	
CRW T1 MAD RIVER IHC C-159 10/5	CHARLES HAIR	19	N	SUNSET SPIKE 0600	SUNSET SPIKE 1800	
CRW T1 HELENA IHC C-246 9/30	FRED THOMPSON	20	N	SUNSET SPIKE 0600	SUNSET SPIKE 1800	
CRW T2IA ACOMA #1 C-131 9/30	ANDREW HENRY	20	N	SUNSET SPIKE 0600	SUNSET SPIKE 1800	
CRW T2IA CADDO NATION C-144 10/4	GERALD MASON	20	N	SUNSET SPIKE 0600	SUNSET SPIKE 1800	
CRW T2IA N. ARIZONA C-143 9/28	CHRISTOPHER BROOKS	19	N	SUNSET SPIKE 0600	SUNSET SPIKE 1800	
CRW HEAPS PEAK HELITAK	BRENT OHLWILER	18	N	SUNSET SPIKE 0600	SUNSET SPIKE 1800	
CRW CHESTER HELITAK	TYLER WILLIAM	6	N	SUNSET SPIKE 0600	SUNSET SPIKE 1800	
ENG T6 681 E-366 10/1	TODD LIKE	3	N	SUNSET SPIKE 0600	SUNSET SPIKE 1800	
DOZ T2 GEORGE WURLITZER E-560	GEORGE WURLITZER	2	N	SUNSET SPIKE 0600	SUNSET SPIKE 1800	
DOZ T2V 88570 E-566 9/29	MARK BASHAM	2	N	SUNSET SPIKE 0600	SUNSET SPIKE 1800	
DOZER T2 NEESE CONST E-575 10/5	DAVID NEESE	2	N	SUNSET SPIKE 0600	SUNSET SPIKE 1800	
DOZ T2 WARNER E-564 10/6	DAN WARNER	2	N	SUNSET SPIKE 0600	SUNSET SPIKE 1800	
FALM COLD CREEK SVC O-874 10/3		3	N	SUNSET SPIKE 0600	SUNSET SPIKE 1800	
FALM O-881 10/5	RICHARD MAY	2	N	SUNSET SPIKE 0600	SUNSET SPIKE 1800	
HEQB O-824 10/6	SAMUEL PFAHLER	1	N	SUNSET SPIKE 0600	SUNSET SPIKE 1800	
HEQB O-259 10/1	CHRIS COLT	1	N	SUNSET SPIKE 0600	SUNSET SPIKE 1800	
SOFR O-3234 10/8	GALE GIRE	1	N	SUNSET SPIKE 0600	SUNSET SPIKE 1800	
FEMP O-976 9/29	TIM PRATT	1	N	SUNSET SPIKE 0600	SUNSET SPIKE 1800	
FEMT O-972 10/6	CHARLES MCGARY	1	N	SUNSET SPIKE 0600	SUNSET SPIKE 1800	

7. Control Operations

Construct line, improve indirect line, and complete hose lays. Mop up to the degree necessary to make the likelihood of fire escape very low; based on experience, terrain, fuel types, and fuel conditions.

8. Special Instructions

a. Day and Night travel to line via Foresthill Rd. Return via Mosquito Ridge Rd.
b. All Division Supervisors need to download information to the Sit Unit for all completed line and proposed line.
c. Noxious weeds are marked by orange "noxious weed" flagging. Minimize or avoid activities in these areas.
d. Sensitive areas are marked with pink/black checkerboard flagging. Minimize ground disturbing activities in these areas.

9. Division/Group Communications Summary							
Function	Frequency - RX	Frequency - TX	Tone	System	Channel	System	Channel
Command	166.6125	168.4000	136.5	NIFC C4	1		
Tactical Div/Group	168.0500	168.0500		NIFC T1	5		
Logistics							
Air to Ground	169.1500	169.1500		A/G CMD	13		
Prepared by (Resource Unit Leader) J. Switzler; E. Mayte (t); A. Uehara (t)		Approved by (Planning Section Chief) D. Cooper ; R. Leuck (t) ; J. Schillinger (t)		Date Prepared 09/26/14		Time Prepared 1336	

Division Assignment List			1. Branch XVI		2. Division/Group 1 W		
3. Incident Name KING - ZONE 1			4. Operational Period 09/27/14 Saturday Day Shift 0600 - 1800				
5. Operations Personnel							
Operations Chief		LES CURTIS; STEVE BURNS (t)		Division/Group Supervisor		CHRIS VERO; JOHNNY VILLA(t)	
Contingency Ops Chief		JOHN TRUETT; KYLE SMITH (t)		Air Attack Supervisor			
Branch Director		SEAN JOHNSON; COREY ROSE (t)		Safety Officer		M.HAMEL;S.RYBERG; C. JORDAN (t)	
6. Resources Assigned this Period							
Strike Team/Task Force/ Resource Designator		Leader		Num of Pers.	Trans. Y/N	Drop Off PT./Time	Pick Up PT./Time
CRW T2IA RED ROCK C-39 9/28		BRANDON JOHNSON		20	N	SUNSET SPIKE 0600	SUNSET SPIKE 1800
CRW T2IA PIMA #1 C-175 9/29		MARIO DIA		19	N	SUNSET SPIKE 0600	SUNSET SPIKE 1800
ENG S/T 1663 C E-819 10/7		PETER STEPHENSON		27	N	SUNSET SPIKE 0600	SUNSET SPIKE 1800
ENG S/T 6617C E-534 10/5		JOSHUA BOEHM		27	N	SUNSET SPIKE 0600	SUNSET SPIKE 1800
ENG S/T T3 5605 C E-538 10/3		VICTOR LEFOR		27	N	SUNSET SPIKE 0600	SUNSET SPIKE 1800
T/F ENF KING #3 E-9021						SUNSET SPIKE 0600	SUNSET SPIKE 1800
TFLD O-339 9/30		BRIAN MULHOLLEN		1	N	SUNSET SPIKE 0600	SUNSET SPIKE 1800
ENG T6 E-380 10/1		DREW MAXWELL		2	N	SUNSET SPIKE 0600	SUNSET SPIKE 1800
ENG6 CO MVP E-360 10/1		DANIEL DYER		3	N	SUNSET SPIKE 0600	SUNSET SPIKE 1800
ENG T6 #3629 E-376 10/1		TRAVIS MOORE		3	N	SUNSET SPIKE 0600	SUNSET SPIKE 1800
ENG T6 ARF #671 E-365 10/2		NICHOLAS FETSCH		3	N	SUNSET SPIKE 0600	SUNSET SPIKE 1800
ENG T6 CO-WRF E-373 10/1		TODD KING		4	N	SUNSET SPIKE 0600	SUNSET SPIKE 1800
ENG T6 #603 E-371 10/2		MICHAEL OTTOSEN		5	N	SUNSET SPIKE 0600	SUNSET SPIKE 1800
ENG T6 # 631 E-377 10/1		WILLIAM HALL		3	N	SUNSET SPIKE 0600	SUNSET SPIKE 1800
ENG T6 ARCHULETA CNTY E-361		CHRISTINA MARQUART		3	N	SUNSET SPIKE 0600	SUNSET SPIKE 1800
ENG T3 44 E-634 10/4		DYLAN PREWITT		5	N	SUNSET SPIKE 0600	SUNSET SPIKE 1800
WT T1 ARBOR TREE E-263 9/29		LU ESTRADA		2	N	SUNSET SPIKE 0600	SUNSET SPIKE 1800
WT T1 TACTICAL E-139 10/2		ROBERT THORP		4	N	SUNSET SPIKE 0600	SUNSET SPIKE 1800
DOZ T2 KISER CONST E-562 10/5		KYLE KISER		2	N	SUNSET SPIKE 0600	SUNSET SPIKE 1800
TFLD O-791 10/5		ROB THIBAUT		1	N	SUNSET SPIKE 0600	SUNSET SPIKE 1800
7. Control Operation							
Add complete hose line placement. Mop up to the degree necessary to make the likelihood of fire escape very low; based on experience, terrain, fuel types, and fuel conditions.							
8. Special Instructions							
<p>a. Day and Night travel to line via Foresthill Rd. Return via Mosquito Ridge Rd.</p> <p>b. All Division Supervisors need to download information to the Sit Unit for all completed line and proposed line.</p> <p>c. Noxious weeds are marked by orange "noxious weed" flagging. Minimize or avoid activities in these areas.</p> <p>d. Sensitive areas are marked with pink/black checkerboard flagging. Minimize ground disturbing activities in these areas.</p>							
9. Division/Group Communications Summary							
Function	Frequency - RX	Frequency - TX	Tone	System	Channel	System	Channel
Command	166.6125	168.4000	136.5	NIFC C4	1		
Tactical Div/Group	166.5500	166.5500		R5 T4	10		
Logistics							
Air to Ground	169.1500	169.1500		A3 CMD	13		
Prepared by (Resource Unit Leader) J.Switzler / E. Mayte (t);A.Uehara (t)			Approved by (Planning Section Chief) D. Cooper / R. Leuck (t) / J. Schillinger (t)			Date Prepared 09/26/14	Time Prepared 1336

Division Assignment List		1. Branch XVI		2. Division/Group 1Y			
3. Incident Name KING - ZONE 1		4. Operational Period 09/27/14 Saturday Day Shift 0600 - 1800					
5. Operations Personnel							
Operations Chief	LES CURTIS; STEVE BURNS (t)		Division/Group Supervisor	M. CHERRY; D. SOLDAVINI (t)			
Contingency Ops Chief	JOHN TRUETT; KYLE SMITH (t)		Air Attack Supervisor				
Branch Director	SEAN JOHNSON; COREY ROSE(t)		Safety Officer	M HAMEL; S. RYBERG; C. JORDAN (t)			
6. Resources Assigned this Period							
Strike Team/Task Force/ Resource Designator	Leader	Num of Pers.	Trans. Y/N	Drop Off PT./Time	Pick Up PT./Time		
CRW T2 BEAR JAW C-9 9/30	JD OTTMAN	20	N	SUNSET SPIKE 0600	SUNSET SPIKE 1800		
CRW T2IA AOICC INTER C-10 9/30	TIM DEATON	20	N	SUNSET SPIKE 0600	SUNSET SPIKE 1800		
CRW T1 SAWTOOTH IHC C-89 9/27	MICHAEL KRUPSKI	20	N	SUNSET SPIKE 0600	SUNSET SPIKE 1800		
CRW T2 OC 19 C-194 9/30	JAMES BOLLINGER	20	N	SUNSET SPIKE 0600	SUNSET SPIKE 1800		
ENG T3 E11 E-618 9/30	RYDER JONES	5	N	SUNSET SPIKE 0600	SUNSET SPIKE 1800		
DOZ T2 SHF 79 E-112 9/30	JASON SHURRAH	3	N	SUNSET SPIKE 0600	SUNSET SPIKE 1800		
DOZ2 T2 (CA-PNF) E-144 9/29	SCOTT SIBBALD	3	N	SUNSET SPIKE 0600	SUNSET SPIKE 1800		
DOZ2 T2 (CA-PNF) E-145 9/29	ANDREW SHEPHERD	2	N	SUNSET SPIKE 0600	SUNSET SPIKE 1800		
DOZ T2 CASHF 29 E-146 9/29	DAVID BROWN	2	N	SUNSET SPIKE 0600	SUNSET SPIKE 1800		
WT T2 49ER E-3 9/28	BOB ALVAREZ	2	N	SUNSET SPIKE 0600	SUNSET SPIKE 1800		
WT T3 AWB INC E-13 9/28	DAB BRADY	1	N	SUNSET SPIKE 0600	SUNSET SPIKE 1800		
WT T1 TACTICAL E-128 9/30	ALAN WEST	2	N	SUNSET SPIKE 0600	SUNSET SPIKE 1800		
WT T1 E-258 9/29	RICHARD YOST	2	N	SUNSET SPIKE 0600	SUNSET SPIKE 1800		
CHIPPER T3 FIRESTORM E-438 10/3	GIDEON MACOMBER	2	N	SUNSET SPIKE 0600	SUNSET SPIKE 1800		
CHIPPER TIMOTHY BURKE E-439 10/2	TIM BURKE	1	N	SUNSET SPIKE 0600	SUNSET SPIKE 1800		
CHIPPER T3 SKYLINE TREE E-471 10/3		2	N	SUNSET SPIKE 0600	SUNSET SPIKE 1800		
CHIPPER T3 DIAMOND E-472 10/2		10	N	SUNSET SPIKE 0600	SUNSET SPIKE 1800		
FALM O-882 10/5		3	N	SUNSET SPIKE 0600	SUNSET SPIKE 1800		
STEN O-895 10/2	JESS REGISTER	1	N	SUNSET SPIKE 0600	SUNSET SPIKE 1800		
HEQB O-241 9/30	TRAVIS ORANGE	1	N	SUNSET SPIKE 0600	SUNSET SPIKE 1800		
7. Control Operations							
Widen and improve existing secondary lines. Mop up to the degree necessary to make the likelihood of fire escape very low; based on experience, terrain, fuel types, and fuel conditions.							
8. Special Instructions							
<p>a. Day and Night travel to line via Foresthill Rd. Return via Mosquito Ridge Rd.</p> <p>b. All Division Supervisors need to download information to the Sit Unit for all completed line and proposed line.</p> <p>c. Noxious weeds are marked by orange "noxious weed" flagging. Minimize or avoid activities in these areas.</p> <p>d. Sensitive areas are marked with pink/black checkerboard flagging. Minimize ground disturbing activities in these areas.</p>							
9. Division/Group Communications Summary							
Function	Frequency - RX	Frequency - TX	Tone	System	Channel	System	Channel
Command	166.6125	168.4000	136.5	NIFC C4	1		
Tactical Div/Group	167.1125	167.1125		R5 T5	11		
Logistics							
Air to Ground	169.1500	169.1500		A/G CMD	13		
Prepared by (Resource Unit Leader) J. Switzler ; E. Mayte (t); A. Uehara (t)		Approved by (Planning Section Chief) D. Cooper; R. Leuck (t); J. Schillinger (t)		Date Prepared 09/26/14		Time Prepared 1335	

Division Assignment List	1. Branch	2. Division/Group
	XVI	1 Z

3. Incident Name KING - ZONE 1	4. Operational Period 09/27/14 Saturday Day Shift 0600 - 1800
--	--

5. Operations Personnel			
Operations Chief	LES CURTIS; STEVE BURNS (t)	Division/Group Supervisor	JUSTIN HANELY; SHANNON MYERS (t)
Contingency Ops Chief	JOHN TRUETT; KYLE SMITH (t)	Air Attack Supervisor	
Branch Director	SEAN JOHNSON; COREY ROSE (t)	Safety Officer	M.HAMEL;S.RYBERG; C.JORDAN (t)

6. Resources Assigned this Period						
Strike Team/Task Force/ Resource Designator	Leader	Num of Pers.	Trans. Y/N	Drop Off PT./Time	Pick Up PT./Time	
CRW T2IA PINE RIDGE C-245 10/1	EDWARD ONE STAR	21	N	SUNSET SPIKE 0600	SUNSET SPIKE 1800	
CRW T1 TAMALPAIS C-238 10/5	TIMOTHY WALSH	14	N	SUNSET SPIKE 0600	SUNSET SPIKE 1800	
CRW T2IA MONTEREY C-254 10/6	KEVIN POYNER	19	N	SUNSET SPIKE 0600	SUNSET SPIKE 1800	
ENG T3 ENF 63 E-393 9/27	MICHAEL LOEFFLER	5	N	SUNSET SPIKE 0600	SUNSET SPIKE 1800	
ENG T3 72 E-550 10/5	DAVID MOLTER	5	N	SUNSET SPIKE 0600	SUNSET SPIKE 1800	
DOZ T2 NORTHSTATE E-110* 10/1	GIFFORD TALMADGE	2	N	SUNSET SPIKE 0600	SUNSET SPIKE 1800	
DOZ T2 NORTHSTATE E-120* 10/1	GEORGE POE	2	N	SUNSET SPIKE 0600	SUNSET SPIKE 1800	
W/T T2 E-923 10/9		2	N	SUNSET SPIKE 0600	SUNSET SPIKE 1800	
HEQB O-820 10/6	MICHAEL KING	1	N	SUNSET SPIKE 0600	SUNSET SPIKE 1800	
HEQB(t) O-806 10/5	JOHN WYNN	1	N	SUNSET SPIKE 0600	SUNSET SPIKE 1800	
SOFR O-785 10/5	STEVEN COUNTS	1	N	SUNSET SPIKE 0600	SUNSET SPIKE 1800	
FEMP O-974 9/30	LEO GRANADOS	1	N	SUNSET SPIKE 0600	SUNSET SPIKE 1800	
FEMT O-969	ERIC CONNORS	1	N	SUNSET SPIKE 0600	SUNSET SPIKE 1800	

7. Control Operations

Complete indirect line off of Heartless Mountain. Mop up to the degree necessary to make the likelihood of fire escape very low; based on experience, terrain, fuel types, and fuel conditions.

- 8. Special Instructions**
- a. Day and Night travel to line via Foresthill Rd. Return via Mosquito Ridge Rd.
 - b. All Division Supervisors need to download information to the Sit Unit for all completed line and proposed line.
 - c. Noxious weeds are marked by orange "noxious weed" flagging. Minimize or avoid activities in these areas.
 - d. Sensitive areas are marked with pink/black checkerboard flagging. Minimize ground disturbing activities in these areas.

9. Division/Group Communications Summary							
Function	Frequency - RX	Frequency - TX	Tone	System	Channel	System	Channel
Command	166.6125	168.4000	136.5	NIFC C4	1		
Tactical Div/Group	166.7750	166.7750		NIFC T6	8		
Logistics							
Air to Ground	169.1500	169.1500		A/G CMD	13		
Prepared by (Resource Unit Leader) J.Switzler; E. Mayte (t); A. Uehara (t)		Approved by (Planning Section Chief) D. Cooper ; R. Leuck (t); J. Schillinger (t)		Date Prepared 09/26/14		Time Prepared 1335	

Division Assignment List		1. Branch CONTINGENCY		2. Division/Group AMERICAN			
3. Incident Name KING - ZONE 1		4. Operational Period 09/27/14 Saturday Day Shift 0600 - 1800					
5. Operations Personnel							
Operations Chief	LES CURTIS; STEVE BURNS (t)		Division/Group Supervisor		DEANO ESADES / JEFF GOYINGS (t)		
Contingency Ops Chief	JOHN TRUETT; KYLE SMITH (t)		Air Attack Supervisor				
Branch Director	DON FORSYTH		Safety Officer		M.HAMEL; S.RYBERG; C.JORDAN (t)		
6. Resources Assigned this Period							
Strike Team/Task Force/ Resource Designator		Leader	Num of Pers.	Trans. Y/N	Drop Off PT./Time	Pick Up PT./Time	
CRW T2 PACIFIC OASIS C-195 10/5		SYDNEY KENNEDY	20	N	FRENCH SPIKE 0600	FRENCH SPIKE 1800	
CRW T2 GRAYBACK C-206 9/29		ANTONIO MENDOZA	20	N	FRENCH SPIKE 0600	FRENCH SPIKE 1800	
CRW T2 GRAYBACK C-207 9/29		LEVI BELLGRAPH	20	N	FRENCH SPIKE 0600	FRENCH SPIKE 1800	
CRW T2 BLACK EAGLES 5 C-198 10/5		DANIEL AREGUIN	22	N	FRENCH SPIKE 0600	FRENCH SPIKE 1800	
ENG S/T 2 T3 E-498 9/27		MARK RHODES	20	N	FRENCH SPIKE 0600	FRENCH SPIKE 1800	
CHIP T2 PACIFIC OASIS E-792 10/7			2	N	FRENCH SPIKE 0600	FRENCH SPIKE 1800	
CHIP T1 3B'S FORESTRY E-794 9/28			2	N	FRENCH SPIKE 0600	FRENCH SPIKE 1800	
CHIP T1 JO INTER #1 E-796 10/6			2	N	FRENCH SPIKE 0600	FRENCH SPIKE 1800	
CHIP T3 JO INTER DPL2 E-797 10/6			2	N	FRENCH SPIKE 0600	FRENCH SPIKE 1800	
CHIPPER T1 JO INTER #2 E-795 9/29			2	N	FRENCH SPIKE 0600	FRENCH SPIKE 1800	
TFLD O-889 10/1		JEFF DUPRAS	1	N	FRENCH SPIKE 0600	FRENCH SPIKE 1800	
TFLD O-788 10/1		JOE JOHNSTON	1	N	FRENCH SPIKE 0600	FRENCH SPIKE 1800	
SOF2 O-965 10/7		TOM RAW	1	N	FRENCH SPIKE 0600	FRENCH SPIKE 1800	
SOF2 O-963 10/7		RICHARD LUDKE	1	N	FRENCH SPIKE 0600	FRENCH SPIKE 1800	
FEMP O-1088 9/30		MATTHEW MENARD	1	N	FRENCH SPIKE 0600	FRENCH SPIKE 1800	
FEMP O-970 10/6		TODD ADAMS	1	N	FRENCH SPIKE 0600	FRENCH SPIKE 1800	
FEMP O-758 10/4		MATTHEW LUCAS	1	N	FRENCH SPIKE 0600	FRENCH SPIKE 1800	
FEMP O-764 10/5		SCOTT HARLAN	1	N	FRENCH SPIKE 0600	FRENCH SPIKE 1800	
7. Control Operations							
Brush, chip, improve roads and trail systems for contingency lines along Ralston Ridge from DP 109 to DP 161.							
8. Special Instructions							
<p>a. Day and Night travel to line via Foresthill Rd. Return via Mosquito Ridge Rd.</p> <p>b. All Division Supervisors need to download information to the Sit Unit for all completed line and proposed line.</p> <p>c. Noxious weeds are marked by orange "noxious weed" flagging. Minimize or avoid activities in these areas.</p> <p>d. Sensitive areas are marked with pink/black checkerboard flagging. Minimize ground disturbing activities in these areas.</p>							
9. Division/Group Communications Summary							
Function	Frequency - RX	Frequency - TX	Tone	System	Channel	System	Channel
Command	166.6125	168.4000	136.5	NIFC C4	1		
Tactical Div/Group	168.2375	168.2375		R5 T6	12		
Logistics							
Air to Ground	169.1500	169.1500		A/G CMD	13		
Prepared by (Resource Unit Leader)		Approved by (Planning Section Chief)		Date Prepared		Time Prepared	
G. Thompson; J. Switzler; E. Mayte (t)		D. Cooper; R. Leuck (t); J. Schillinger (t)		09/26/14		1335	

Division Assignment List		1. Branch CONTINGENCY BRANCH		2. Division/Group MOSQUITO			
3. Incident Name KING - ZONE 1		4. Operational Period 09/27/14 Saturday Day Shift 0600 - 1800					
5. Operations Personnel							
Operations Chief	LES CURTIS; STEVE BURNS (t)		Division/Group Supervisor		CHRISTOPHER L TATE		
Contingency Ops Chief	JOHN TRUETT; KYLE SMITH (t)		Air Attack Supervisor				
Branch Director	DON FORSTYH		Safety Officer		M.HAMEL;S. RYBERG; C.JORDAN (t)		
6. Resources Assigned this Period							
Strike Team/Task Force/ Resource Designator	Leader	Num of Pers.	Trans. Y/N	Drop Off PT./Time	Pick Up PT./Time		
CRW T2 OC 52 C-190 10/5	DONALD BOWEN	23	N	FRENCH SPIKE 0600	FRENCH SPIKE 1800		
CRW T2 OC 21 C-193 10/7	BRIAN HICKS	21	N	FRENCH SPIKE 0600	FRENCH SPIKE 1800		
CRW T2 BIG HORN C-239 10/6	CHRISTOPHER DEANDA	22	N	FRENCH SPIKE 0600	FRENCH SPIKE 1800		
CRW T2 BLACK EAGLES 3 C-196 9/27	NIGEL ALLEN	18	N	FRENCH SPIKE 0600	FRENCH SPIKE 1800		
CRW T2 MQ FRANCO C-43 9/30	FRANCO FLORENCO	20	N	FRENCH SPIKE 0600	FRENCH SPIKE 1800		
TF ENF KING #1				FRENCH SPIKE 0600	FRENCH SPIKE 1800		
TFLD O-659 10/2	JIM GRAY	1	N	FRENCH SPIKE 0600	FRENCH SPIKE 1800		
ENG T6 PAGOSA FPD E-363	JOHN GILBERT	3	N	FRENCH SPIKE 0600	FRENCH SPIKE 1800		
ENG T6 ARF 654 E-364 10/1	LANDON SMITH	3	N	FRENCH SPIKE 0600	FRENCH SPIKE 1800		
ENG T6 36 E-367 10/1	WILLIAM EASTMAN	3	N	FRENCH SPIKE 0600	FRENCH SPIKE 1800		
ENG T6 FOUR MILE FD E-368 10/1	SHANTI LEASURE	3	N	FRENCH SPIKE 0600	FRENCH SPIKE 1800		
ENG T6 RED/WHITE/BLUE E-372 10/1	DEREK GOOSSEN	3	N	FRENCH SPIKE 0600	FRENCH SPIKE 1800		
DOZ T2V TEHAMA E-556 10/5	RANDY STRIEFF	4	N	FRENCH SPIKE 0600	FRENCH SPIKE 1800		
DOZ E-559 10/5	DUANE HAASE	2	N	FRENCH SPIKE 0600	FRENCH SPIKE 1800		
CHIP T3 C&R REFOREST. E-800 10/8		2	N	FRENCH SPIKE 0600	FRENCH SPIKE 1800		
CHIP T3 C&R REFOREST. #2 E-801 10/8	DILLON NEWMANN	2	N	FRENCH SPIKE 0600	FRENCH SPIKE 1800		
CHIP T2 A CUT ABOVE E-578 10/5		1	N	FRENCH SPIKE 0600	FRENCH SPIKE 1800		
CHIP T1 VALLEY TIMBER E-799 10/6		2	N	FRENCH SPIKE 0600	FRENCH SPIKE 1800		
7. Control Operations							
Brush, chip, improve roads and trail systems for contingency lines along Ralston Ridge from the Lynchburg Hill break to Little Crater break.							
8. Special Instructions							
<ul style="list-style-type: none"> a. Day and Night travel to line via Foresthill Rd. Return via Mosquito Ridge Rd. b. All Division Supervisors need to download information to the Sit Unit for all completed line and proposed line. c. Noxious weeds are marked by orange "noxious weed" flagging. Minimize or avoid activities in these areas. d. Sensitive areas are marked with pink/black checkerboard flagging. Minimize ground disturbing activities in these areas. 							
9. Division/Group Communications Summary							
Function	Frequency - RX	Frequency - TX	Tone	System	Channel	System	Channel
Command	166.6125	168.4000	136.5	NIFC C4	1		
Tactical Div/Group	168.2375	168.2375		R5 T6	12		
Logistics							
Air to Ground	169.1500	169.1500		A/G CMD	13		
Prepared by (Resource Unit Leader) G. Thompson; J. Switzler; E. Mayte (t)		Approved by (Planning Section Chief) D. Cooper; R. Leuck (t); J. Schillinger (t)		Date Prepared 09/26/14		Time Prepared 1335	

Division Assignment List			1. Branch CONTINGENCY		2. Division/Group MOSQUITO		
3. Incident Name KING - ZONE 1			4. Operational Period 09/27/14 Saturday Day Shift 0600 - 1800				
5. Operations Personnel							
Operations Chief		LES CURTIS; STEVE BURNS (t)		Division/Group Supervisor		CHRISTOPHER L TATE	
Contingency Ops Chief		JOHN TRUETT; KYLE SMITH (t)		Air Attack Supervisor			
Branch Director		DON FORSTYH		Safety Officer		M.HAMEL;S. RYBERG; C.JORDAN (t)	
6. Resources Assigned this Period							
Strike Team/Task Force/ Resource Designator		Leader		Num of Pers.	Trans. Y/N	Drop Off PT./Time	Pick Up PT./Time
HEQB O-840 10/6		CLINTON HUFFMAN		1	N	FRENCH SPIKE 0600	FRENCH SPIKE 1800
HEQB O-245 9/30		ALMA LEITHEAD		1	N	FRENCH SPIKE 0600	FRENCH SPIKE 1800
HEQB O-242 10/1		BRANDON WOODWARD		1	N	FRENCH SPIKE 0600	FRENCH SPIKE 1800
FALM O-865 10/4				2	N	FRENCH SPIKE 0600	FRENCH SPIKE 1800
FALM O-868 10/4		GREG BURNS		2	N	FRENCH SPIKE 0600	FRENCH SPIKE 1800
FELB O-844 10/4		ROBERT W KRAMER		1	N	FRENCH SPIKE 0600	FRENCH SPIKE 1800
FELB O-983 10/6		RAY CHAVEZ		1	N	FRENCH SPIKE 0600	FRENCH SPIKE 1800
FELB O-851 10/5		JASON MURIEEN		1	N	FRENCH SPIKE 0600	FRENCH SPIKE 1800
SOF2 O-965 10/7		TOM RAW		1	N	FRENCH SPIKE 0600	FRENCH SPIKE 1800
SOFR O-963 10/7		RICHARD LUDKE		1	N	FRENCH SPIKE 0600	FRENCH SPIKE 1800
FEMP O-1088 9/30		MATTHEW MENARD		1	N	FRENCH SPIKE 0600	FRENCH SPIKE 1800
FEMT O-970 10/6		TODD ADAMS		1	N	FRENCH SPIKE 0600	FRENCH SPIKE 1800
FEMP O-758 10/4		MATTHEW LUCAS		1	N	FRENCH SPIKE 0600	FRENCH SPIKE 1800
FEMT O-764 10/5		SCOTT HARLAN		1	N	FRENCH SPIKE 0600	FRENCH SPIKE 1800
7. Control Operations							
Construct and improve existing roads and contingency line along Ralston Ridge from the Lynchburg Hill break to Little Crater break.							
8. Special Instructions							
Mop up to the degree necessary to make the likelihood of fire escape very low; based on experience, terrain, fuel types, and fuel conditions.							
a. Day and Night travel to line via Foresthill Rd. Return via Mosquito Ridge Rd.							
b. All Division Supervisors need to download information to the Sit Unit for all completed line and proposed line.							
c. Noxious weeds are marked by orange "noxious weed" flagging. Minimize or avoid activities in these areas.							
d. Sensitive areas are marked with pink/black checkerboard flagging. Minimize ground disturbing activities in these areas.							
9. Division/Group Communications Summary							
Function	Frequency - RX	Frequency - TX	Tone	System	Channel	System	Channel
Command	166.6125	168.4000	136.5	NIFC C4	1		
Tactical Div/Group	168.2375	168.2375		R5 T6	12		
Logistics							
Air to Ground	169.1500	169.1500		A/G CMD	13		
Prepared by (Resource Unit Leader) G. Thompson; J. Switzler; E. Mayte (t)			Approved by (Planning Section Chief) D. Cooper; R. Leuck (t); J. Schillinger (t)		Date Prepared 09/26/14		Time Prepared 1335

Division Assignment List		1. Branch CONTINGENCY		2. Division/Group OXBOW			
3. Incident Name KING - ZONE 1		4. Operational Period 09/27/14 Saturday Day Shift 0600 - 1800					
5. Operations Personnel							
Operations Chief	LES CURTIS; STEVE BURNS (t)		Division/Group Supervisor	THOMAS BROWNING			
Contingency Ops Chief	JOHN TRUETT; KYLE SMITH (t)		Air Attack Supervisor				
Branch Director	DON FORSTYH		Safety Officer	M.HAMEL;S. RYBERG; C.JORDAN (t)			
6. Resources Assigned this Period							
Strike Team/Task Force/ Resource Designator	Leader	Num of Pers.	Trans. Y/N	Drop Off PT./Time	Pick Up PT./Time		
CRW T2 DIAMOND FIRE C-204 10/5	WES WICKMAN	20	N	FRENCH SPIKE 0600	FRENCH SPIKE 1800		
CRW T2 GRAYBACK F C-205 10/5	RYAN WATKINS	20	N	FRENCH SPIKE 0600	FRENCH SPIKE 1800		
CRW T2IA FL ST #1 C-227 10/7	CHARLES KOON	20	N	FRENCH SPIKE 0600	FRENCH SPIKE 1800		
CRW T2IA FL ST #3 C-228 10/7	DAVID THURSTON	20	N	FRENCH SPIKE 0600	FRENCH SPIKE 1800		
CRW T2IA KICC INT. C-229 10/7	FRED G GILMORE	20	N	FRENCH SPIKE 0600	FRENCH SPIKE 1800		
ENG T3 E372 E-643 10/5	GUY WILSON	19	N	FRENCH SPIKE 0600	FRENCH SPIKE 1800		
DOZER T2 DUDLEYS E-558 10/4	TIM LAMKIN	2	N	FRENCH SPIKE 0600	FRENCH SPIKE 1800		
DOZ T2V MOORE EXC. E-572 10/5	SONNY MOORE	3	N	FRENCH SPIKE 0600	FRENCH SPIKE 1800		
CHIP T2 - A CUT ABOVE E-579 10/4		1	N	FRENCH SPIKE 0600	FRENCH SPIKE 1800		
SOFR O-965 10/7	TOM RAW	1	N	FRENCH SPIKE 0600	FRENCH SPIKE 1800		
SOFR O-963 10/7	RICHARD LUDKE	1	N	FRENCH SPIKE 0600	FRENCH SPIKE 1800		
FEMP O-1088 9/30	MATTHEW MENARD	1	N	FRENCH SPIKE 0600	FRENCH SPIKE 1800		
FEMT O-970 10/6	TODD ADAMS	1	N	FRENCH SPIKE 0600	FRENCH SPIKE 1800		
FEMP O-758 10/4	MATTHEW LUCAS	1	N	FRENCH SPIKE 0600	FRENCH SPIKE 1800		
FEMT O-764 10/5	SCOTT HARLAN	1	N	FRENCH SPIKE 0600	FRENCH SPIKE 1800		
<i>FELB O-983</i>	<i>Ray Chavez</i>			<i>E-580 CHIP T1</i>			
<i>FALM O-865</i>				<i>E-583 CHIP T1</i>	<i>AA High Climbers</i>		
<i>FALM O-866</i>	<i>Gary Balmain</i>				<i>Devon King</i>		
<i>FALM O-867</i>							
<i>FALM O-868</i>	<i>Greg Burns</i>						
7. Control Operations							
Brush, chip, improve roads and trail systems for contingency lines along Ralston Ridge from Lynchburg Hill break to the Rubicon River.							
8. Special Instructions							
<p>a. Day and Night travel to line via Foresthill Rd. Return via Mosquito Ridge Rd.</p> <p>b. All Division Supervisors need to download information to the Sit Unit for all completed line and proposed line.</p> <p>c. Noxious weeds are marked by orange "noxious weed" flagging. Minimize or avoid activities in these areas.</p> <p>d. Sensitive areas are marked with pink/black checkerboard flagging. Minimize ground disturbing activities in these areas.</p>							
9. Division/Group Communications Summary							
Function	Frequency - RX	Frequency - TX	Tone	System	Channel	System	Channel
Command	166.6125	168.4000	136.5	NIFC C4	1		
Tactical Div/Group	168.2375	168.2375		R5 T6	12		
Logistics							
Air to Ground	169.1500	169.1500		A/G CMD	13		
Prepared by (Resource Unit Leader) G. Thompson; J. Switzler; E. Mayte (t)		Approved by (Planning Section Chief) D. Cooper; R. Leuck (t); J. Schillinger (t)		Date Prepared 09/26/14		Time Prepared 1335	

Division Assignment List		1. Branch CONTINGENCY		2. Division/Group RALSTON			
3. Incident Name KING - ZONE 1		4. Operational Period 09/27/14 Saturday Day Shift 0600 - 1800					
5. Operations Personnel							
Operations Chief	LES CURTIS; STEVE BURNS (t)		Division/Group Supervisor	DAVID CARNEY			
Contingency Ops Chief	JOHN TRUETT; KYLE SMITH (t)		Air Attack Supervisor				
Branch Director	DON FORSTYH		Safety Officer	M HAMEL; S. RYBERG; C. JORDAN (t)			
6. Resources Assigned this Period							
Strike Team/Task Force/ Resource Designator	Leader	Num of Pers.	Trans. Y/N	Drop Off PT./Time	Pick Up PT./Time		
CRW T2IA KICC INTERAGENCY C-230 10/7	MARK RAGAN	20	N	FRENCH SPIKE 0600	FRENCH SPIKE 1800		
CRW T2IA VEGAS VALLEY C-225 9/28	ERIC ELLISON	18	N	FRENCH SPIKE 0600	FRENCH SPIKE 1800		
CRW T2IA GRAYBACK 3A C-226 10/1	STEVEN DERRY	19	N	FRENCH SPIKE 0600	FRENCH SPIKE 1800		
CRW T2 MOJAVE C-240 10/6	NATHAN LEATHERMAN	17	N	FRENCH SPIKE 0600	FRENCH SPIKE 1800		
CRW T2 SCORPIONS 6 C-242 10/6	ROBERT J NEVAREZ	22	N	FRENCH SPIKE 0600	FRENCH SPIKE 1800		
CRW T2 OC 25 C-191 10/4	MICHAEL SCHEU	17	N	FRENCH SPIKE 0600	FRENCH SPIKE 1800		
CRW T2 DESCANSO 5 C-203 9/30	CINDY PETRICH	20	N	FRENCH SPIKE 0600	FRENCH SPIKE 1800		
ENG T3 82 E-547 10/5	SHAWN BUTTERBACH	5	N	FRENCH SPIKE 0600	FRENCH SPIKE 1800		
DOZ T2 BOB MURRAY E-107 10/1	BOB MURRAY <i>Unassigned</i>	4	N	FRENCH SPIKE 0600	FRENCH SPIKE 1800		
DOZ T2 NORTHSTATE E-122 10/1	MIKE BRASK <i>Unassigned</i>	3	N	FRENCH SPIKE 0600	FRENCH SPIKE 1800		
CHIP T3 TREEMASTER E-585 10/5	CODY MYERS	1	N	FRENCH SPIKE 0600	FRENCH SPIKE 1800		
CHIP T2 DPL5 ABRAHAM E-798 10/7	MIKE JONES	1	N	FRENCH SPIKE 0600	FRENCH SPIKE 1800		
CHIP T2 CTS VENTURES E-586 10/6	KALVIN CYRUS	1	N	FRENCH SPIKE 0600	FRENCH SPIKE 1800		
FALM UNDERDOG TIMBER O-866 10/4	GARY BALMAIN <i>Oxbow</i>	2	N	FRENCH SPIKE 0600	FRENCH SPIKE 1800		
FALM UNDERDOG TIMBER O-867 10/4	<i>Oxbow</i>	2	N	FRENCH SPIKE 0600	FRENCH SPIKE 1800		
FALM JUSTIN ROLLS O-875 10/5	JUSTIN ROLLS	2	N	FRENCH SPIKE 0600	FRENCH SPIKE 1800		
TFLD O-790 10/5	TERESA CARREON	1	N	FRENCH SPIKE 0600	FRENCH SPIKE 1800		
TFLD O-784 10/5	RITA CLIPPERTON	1	N	FRENCH SPIKE 0600	FRENCH SPIKE 1800		
DIVS O-780 10/4	AARON UTTERBACK	1	N	FRENCH SPIKE 0600	FRENCH SPIKE 1800		
SOFR O-965 10/7	TOM RAW	1	N	FRENCH SPIKE 0600	FRENCH SPIKE 1800		
7. Control Operations							
Brush, chip, improve roads and trail systems for contingency lines along Ralston Ridge from DP 109 to Little Crater Intersection.							
8. Special Instructions							
<p>a. Day and Night travel to line via Foresthill Rd. Return via Mosquito Ridge Rd.</p> <p>b. All Division Supervisors need to download information to the Sit Unit for all completed line and proposed line.</p> <p>c. Noxious weeds are marked by orange "noxious weed" flagging. Minimize or avoid activities in these areas.</p> <p>d. Sensitive areas are marked with pink/black checkerboard flagging. Minimize ground disturbing activities in these areas.</p>							
9. Division/Group Communications Summary							
Function	Frequency - RX	Frequency - TX	Tone	System	Channel	System	Channel
Command	166.6125	168.4000	136.5	NIFC C4	1		
Tactical Div/Group	168.2375	168.2375		R5 T6	12		
Logistics							
Air to Ground	169.1500	169.1500		A/G CMD	13		
Prepared by (Resource Unit Leader) G. Thompson; J. Switzler; E. Mayte (t)		Approved by (Planning Section Chief) D. Cooper; R. Leuck (t); J. Schillinger (t)		Date Prepared 09/26/14		Time Prepared 1334	

Division Assignment List			1. Branch REHAB REPAIR		2. Division/Group			
3. Incident Name KING - ZONE 1			4. Operational Period 09/27/14 Saturday Day Shift 0600 - 1800					
5. Operations Personnel								
Operations Chief		BRAD WASHA			Division/Group Supervisor			C. ALLUISI; M. DARRAGH; J. KERLEY
Contingency Ops Chief					Air Attack Supervisor			
Branch Director		RUSSELL COPP			Safety Officer		M. HAMEL; S. RYBERG; C. JORDAN (t)	
6. Resources Assigned this Period								
Strike Team/Task Force/ Resource Designator		Leader		Num of Pers.	Trans. Y/N	Drop Off PT./Time	Pick Up PT./Time	
DOZ T2 BIG EDS CRANE E-210 9/29		RICK ROGER		3	N	ICP 0700	ICP 1800	
DOZ T2 FORTNER EXC E-561 10/5		TRAVIS FORTNER		2	N	ICP 0700	ICP 1800	
DOZ T2 AAA EQUIP E-207 9/29		BRENDON SIMUNACI		2	N	ICP 0700	ICP 1800	
DOZ T2V ROEN #N01 E-567 10/5		CLAY BOSCHI		2	N	ICP 0700	ICP 1800	
DOZ T2 GRAHAM E-42 9/28		JEFF GRAHAM		2	N	ICP 0700	ICP 1800	
EXC T1V BEN'S TRUCK E-859 10/8				2	N	ICP 0700	ICP 1800	
EXC - G & O E-3011 10/4				1	N	ICP 0700	ICP 1800	
READ O-465 9/30		AMBER LUTSKO		1	N	ICP 0700	ICP 1800	
READ O-332 9/28		BLAKE ENGELHARDT		1	N	ICP 0700	ICP 1800	
READ O-920 10/5		CHELSIE BROKENSHIRE		1	N	ICP 0700	ICP 1800	
READ O-933 10/6		COURTNEY ROWE		1	N	ICP 0700	ICP 1800	
READ O-326 9/30		DAN TEATER		1	N	ICP 0700	ICP 1800	
READ O-931 10/5		DEVIN SNYDER		1	N	ICP 0700	ICP 1800	
READ O-930 10/6		EMILY LONG		1	N	ICP 0700	ICP 1800	
READ O-684 10/2		KYLE JOHNSON		1	N	ICP 0700	ICP 1800	
READ O-921 10/6		MARY SULLIVAN		1	N	ICP 0700	ICP 1800	
READ O-945 9/29		MATTHEW BROWNLEE		1	N	ICP 0700	ICP 1800	
READ O-333 9/29		NICK JARVIS		1	N	ICP 0700	ICP 1800	
READ (t) O-989 10/2		NOLAN W SMITH		1	N	ICP 0700	ICP 1800	
READ O-932 10/8		RICHARD MONK		1	N	ICP 0700	ICP 1800	
7. Control Operations								
Develop, coordinate overall incident suppression repair and future rehab activities. Coordinate with READs. Mop up to the degree necessary to make the likelihood of fire escape very low; based on experience, terrain, fuel types, and fuel conditions.								
8. Special Instructions								
<ul style="list-style-type: none"> a. Day and Night travel to line via Foresthill Rd. Return via Mosquito Ridge Rd. b. All Division Supervisors need to download information to the Sit Unit for all completed line and proposed line. c. Noxious weeds are marked by orange "noxious weed" flagging. Minimize or avoid activities in these areas. d. Sensitive areas are marked with pink/black checkerboard flagging. Minimize ground disturbing activities in these areas. 								
9. Division/Group Communications Summary								
Function	Frequency - RX	Frequency - TX	Tone	System	Channel	System	Channel	
Command	166.6125	168.4000	136.5	NIFC C4	1			
Tactical Div/Group	167.1125	167.1125		R5 T5	11			
Logistics								
Air to Ground	169.1500	169.1500		A/G CMD	13			
Prepared by (Resource Unit Leader) J. Switzler; E. Mayte (t); A.Uehara(t)			Approved by (Planning Section Chief) D.Cooper; R. Leuck (t); J. Schillinger(t)			Date Prepared 09/26/14	Time Prepared 1907	

AIR OPERATIONS SUMMARY

OPERATIONAL PERIOD DATE: DAY SHIFT DATE: 09/27/2014 START: 0700 END: 2000

(Expanded Form for Large Operations)

1. INCIDENT NAME: King	2. PREPARED BY: John Keesee AK	3. Prepared 09/26/14 1930 hrs
4. REMARKS (Safety Notes, Hazards, Air Operations Special Equipment, etc.): SUNRISE: 0655 SUNSET : 1854 STEEP SMOKEY CONDITIONS, OTHER FIRES , OTHER AIRCRAFT COULD FLY IN OUR AREA **Avoid aerial application of retardant or foam within 300' of waterways, bodies of water. If retardant is dropped within these areas, notify AOB/D with Lat & Long, est. of gallons, and a map.		
5. TFR: 4/0029 Altitude : 10,500' MSL Freq. 118.6250 See TFR map		

6. PERSONNEL	Phone	FREQUENCIES	AM	FM
AOBD: John Keesee (zone 1)	805-551-6422	AIR/AIR FW:	118.6250	166.6750
AOBD: Frank Podesta (zone 2)	209-419-4408	AIR/AIR RW:	120.5750 135.7250	
ASGS: Craig Dado (zone 1)	530-518-6688	A/G Command:		169.1500
ASGS: Jon Chin (zone 2)	760-250-6230	A/G Tactical:		167.9500
HLCO: Lane Caldwell	530-310-2211	DECK: PVF	163.100	
HLCO: Fred Burris	805-340-0408	Blue Canyon	168.350	
ATGS: Jason Withrow	530-206-6955	COMMAND:	TX	RX
ATGS: Todd White	530-263-5621	AIR GUARD:	168.625	Tone Tx 110.9
HEBM: Travis Taylor (T) PVF	208-241-0399	TOWER:		
HEBM: Dave Ito PVF	530-391-6583	Placerville		
Blue Canyon Helibase	601-540-6528			
HEBM: Brad Bernardy				
Cobra: Stan Kubota	530-949-9466		119.100	

8. FIXED-WING # Avail / Type/ Make-Model / FAA N# / Base(s)												
TY	MAKE/MODEL	BASE	AVAIL	START	REMARKS	FAA N#	TY	MAKE/MODEL	BASE	AVAIL	START	REMARKS
	Air Tactical:											
	AA 17											
	AA 112											
	H507											
	Lead planes:											
	Airtankers:											
	On order											
	Other:											
	Carmino Dispatch											
	530-647-5220											

9. HELICOPTERS (Use Additional Sheets As Necessary)													
FAA N#	TY	MAKE/MODEL	BASE	AVAIL	START	REMARKS	FAA N#	TY	MAKE/MODEL	BASE	AVAIL	START	REMARKS
301	3	BELL 206B3	PVF	0800	0700	Recon/Helco	HT 783	1	Skycrane	PVF	0800	0700	Tanked
67H	3	Bell 206L4	PVF	0800	0700	Recon/Helco	HT 746	1	Skycrane	PVF	0800	0700	Tanked
84H	3	Bell 407	Blue Cyn	0800	0700	Recon/Helco	2WM	1	K-Max	Blue Cyn	0800	0700	Bucket
7AC	3	Bell 407	Foresthill	0800	0700	IR/Mapping/Recon	HT 715	1	Skycrane	Blue Cyn	0800	0700	Tanked
510	2	Bell 210	Blue Cyn	0800	0700	Bucket/Shuttle	HT 734	1	Skycrane	Blue Cyn	0800	0700	Tanked
5DY	2	Bell 205	PVF	0800	0700	Bucket/Shuttle	HT 743	1	Skycrane	Blue Cyn	0800	0700	Tanked
534	2	Bell 205	PVF	0800	0700	Bucket/Shuttle							
516	2	Bell 212	PVF	0800	0700	Bucket/Shuttle							
538	2	Bell 205	PVF	0800	0700	Bucket/Shuttle							
104	2	Bell 205	PVF	0800	0700	Bucket/Shuttle/Hoist							
408	2	Bell 205	GOO	0800	0700	Medevac/Hoist							

KING SAFETY MESSAGE

Day Shift 09-27-2014

RHABDOMYOLYSIS

Rhabdomyolysis (often called rabdo) is a medical condition resulting from the breakdown of damaged muscle tissue. Due to prolonged physical exertion, wildland firefighters are at increased risk for Rhabdomyolysis. If not recognized and treated early, Rhabdomyolysis can cause permanent disability and may be fatal.

- Muscle aches or pains out of proportion for the amount of exercise done
- Muscle cramping
- Tea-colored or cola-colored urine

DISCUSS WITH YOUR FIREFIGHTERS THE SIGNS AND SYMPTOMS OF RHABDOMYOLYSIS IN YOUR DAILY BRIEFING!



18. TAKING A NAP NEAR THE FIRELINE

Driving Tips!

Provide for extra time to allow for slower speeds

Actively watch for wildlife and domestic livestock

Have two qualified drivers per vehicle to provide for relief

Use spotters when backing

Honk horn to alert personnel when backing

Always use headlights

When should you wash your hands?

- BEFORE, DURING, AND AFTER PREPARING FOOD
 - BEFORE EATING FOOD
- BEFORE AND AFTER CARING FOR SOMEONE WHO IS SICK
 - BEFORE AND AFTER TREATING A CUT OR WOUND
 - AFTER USING THE TOILET
- AFTER BLOWING YOUR NOSE, COUGHING, OR SNEEZING
 - AFTER TOUCHING GARBAGE

King Incident- CA-ENF-023461 INCIDENT SAFETY ANALYSIS 215a

ALL	Line Construction	<ul style="list-style-type: none"> • Conduct thorough briefing for all personnel involved (inside rear cover IRPG). • Ensure LCES in place prior to engagement (IRPG). • Establish adequate safety zones (IRPG). • Use Downhill Line Checklist (IRPG). • Follow "Look Up, Look Down, Look Around" procedures (IRPG). • Utilize Risk Management Process (IRPG).
ALL	Burning Operations	<ul style="list-style-type: none"> • Conduct thorough briefing for all personnel involved (inside rear cover IRPG). • All personnel to be fully qualified for their assignments. Trainees must have qualified trainers. • Utilize Risk Mgmt. Process (IRPG) for implementing plan. • Required PPE to be worn by all personnel involved. • LCES must be established prior to implementing burning operations (IRPG).
ALL	Structure Protection & HazMat Issues	<ul style="list-style-type: none"> • Conduct thorough briefing for all personnel involved (inside rear cover IRPG). • Utilize Structure Assessment Checklist (IRPG p.14). • Follow structure Protection Guidelines (IRPG p. 16).
ALL	Foot Travel	<ul style="list-style-type: none"> • When walking through steep, rocky, and possibly wet terrain, watch footing and maintain proper spacing. • Watch for over-head hazards. • Treat "hot spots" on your feet before they become blisters. • Maintain downhill tool placement. • Refer to F.S. Health and Safety Code sections 18.1, 18.2, 18.3.
ALL	Tree Felling	<ul style="list-style-type: none"> • Conduct thorough briefing for all personnel involved (inside rear cover IRPG). • Establish traffic control as necessary. • Perform tree evaluation, use IRPG page 22. Use Look-Up, Down, All Around Process. IRPG page 3. • Use all required PPE. • Minimize exposure to personnel.
Zone 1	Spike Camps	<ul style="list-style-type: none"> • Ensure camps are clean of trash to avoid attracting wildlife • Keep sleeping areas are clear of snags and other tripping hazards • Have hand sanitizers and body cleaning products to prevent illness • Have a GPS spike locations in the incident 204 and with the Situation Unit • Have night contact/communications plans in place
ALL	Wildlife & Livestock	<ul style="list-style-type: none"> • Watch out for wildlife & livestock inside fire area and along roadways. • Clean up all debris and trash during each operational period and dispose of in receptacles • Do not throw food from lunches out on the fireline
ALL	Vehicle Operations in Inclement Weather	<ul style="list-style-type: none"> • Be alert for potential muddy and slick road surfaces • Avoid parking on soft shoulders along roads • Stay off secondary roads in wet conditions • Increase following distance on slick road surfaces • Send a scout to evaluate roads and work area prior to personnel engagement • Reduce your speed, in camp and on roads, to maintain control of your vehicle
Zone 1	Marijuana Grow Sites	<ul style="list-style-type: none"> • Be alert for signs such as, irrigation drip lines, chemicals, herbicides and fertilizers, trip lines or booby traps • Leave the route you entered • Once clear of the area, notify Law Enforcement, Division and Operations • Do not approach individuals in sites

King Incident- CA-ENF-023461 INCIDENT SAFETY ANALYSIS 215a

8. Location	9. Hazard	6. Control or Abatement Action (Engineering, Administrative, PPE, Avoidance, Education, etc)
ALL	Snag Hazards	<ul style="list-style-type: none"> • Follow Hazard Tree Safety Guidelines (IRPG). • Limit number of personnel around snags and their exposure time; fallers must be qualified for trees being fallen. • Be especially alert around snags during wind events. • Check overhead for dead branches in sleeping areas. • Maintain Situational Awareness.
ALL	Aircraft Operations	<ul style="list-style-type: none"> • Keep personnel out of drop zones. • Use air-to-ground freq. to communicate with aircraft. • Use clear, concise statements when directing aircraft. Use clock directions from pilot's perspective.
ALL	Direct Attack/Night Operations	<ul style="list-style-type: none"> • Do not engage in direct line tactics in areas where snags have not been mitigated for night operations. • Snag areas in day time before engaging personnel. • Snag roads where nighttime travel is necessary. • Ensure medical protocols are followed. • Have medivac sites pre-identified/established. • Ensure good communications exist and tested.
ALL	Driving Hazards	<ul style="list-style-type: none"> • Practice defensive driving at all times. • Adhere To 30 mph speed limit on forest roads • Drive with headlights on. • Be alert for wildlife and livestock on roads at all times. • Slow down on washboard surfaces. • Avoid gravel berms on the sides of roadways. • Increase following distances on dusty roads. Slow down when you meet opposing traffic. • Maintain Situational Awareness.
ALL	Severe Fire Behavior	<ul style="list-style-type: none"> • Review "Severe Fire Behavior Potential" (IRPG). • Monitor current weather conditions and forecasts. Make sure all personnel receive thorough briefings every shift. • Be observant for formation and passage of pyro-cumulous cells over the fire area and alert all personnel. • Maintain adequate escape routes and safety zones. Advise all personnel if these are compromised or changed. Set trigger points when appropriate. • Adhere to 10 Std Orders, mitigate 18 situations. • Maintain Situational Awareness.
ALL	Working around Dozers	<ul style="list-style-type: none"> • Maintain safe separation distance of personnel from dozers, especially downhill. • Ensure dozers are supervised by qualified DOZB when required or is appropriate for the job.
ALL	Mines	<ul style="list-style-type: none"> • Identify and avoid mining areas • Notify others of mining hazards and flag • Be aware of vertical vent shafts, indicators may be slight indentations in terrain • Watch for and keep out of any horizontal adits or shafts that may be located into the side of a ridge or mountain
ALL	Work/Rest and Fatigue	<ul style="list-style-type: none"> • Be alert for signs of fatigue and take breaks as necessary. • Maintain 2:1 work/rest ratio. • Monitor incoming resources for level of fatigue.
ALL	Hydration	<ul style="list-style-type: none"> • Encourage drinking water before, during and after shifts, up to 1.5 gal. during shifts. • Be alert for signs of heat stress in yourself and others.

INCIDENT RADIO COMMUNICATIONS PLAN		Incident Name		BK RADIO GROUP		Operational Period Date/Time		
COMMUNICATIONS PLAN		KING, CA-ENF-023461 - ZONE 1		GROUP 14		9/27/14 DAY		
Ch #	Function	Channel Name/Trunked Radio System Talkgroup	Assignment	RX Freq	N or W	RX Tone/NAC	Mode A, D or M	Remarks
1	COMMAND	NIFC C4	ZONE 1 CMD	166.6125 N		136.5	A	Little Bald Mtn. / Duncon L.O.
2	COMMAND	NIFC C11	ZONE 1 CMD	170.6875 N		136.5	A	Bunker Hill L.O.
3	COMMAND	NICF C59	ZONE 1 CMD	164.8375 N		136.5	A	Mt. Mildred
4	COMMAND	NIFC C61	ZONE 1 CMD	164.8625 N		136.5	A	Robbs Peak
5	TACTICAL	NIFC T1	DIV 1U & 1R	168.0500 N			A	
6	TACTICAL	NIFC T10	DIV 1D & 1M	168.5000 N			A	
7	TACTICAL	NIFC T5	DIV 1F & 1P	166.7250 N			A	
8	TACTICAL	NIFC T6	DIV 1H & 1Z	166.7750 N			A	
9	TACTICAL	NIFC T7	DIV 1L & 1B	168.2500 N			A	
10	TACTICAL	R5 T4	DIV 1W & 1T	166.5500 N			A	
11	TACTICAL	R5 T5	DIV 1Y & 1K	167.1125 N			A	Rehab / Repair
12	TACTICAL	R5 T6	Contingency Branch	168.2375 N			A	Contingency & Roads
13	AIR TO GROUND	A/G CMD	ALL DIVISIONS	169.1500 N			A	A/G COMMAND
14	AIR TO GROUND	A/G TAC	ALL DIVISIONS	167.9500 N			A	A/G TACTICAL
15	MEDICAL	CALCORD	ALL DIVISIONS	156.0750 N		156.7	A	MEDICAL COORDINATION
16	EMERGENCY ONLY	Air Guard	ALL DIVISIONS	168.6250 N		110.9	A	AIR GUARD - EMERGENCY
17							A	
18							A	
19							A	
20	EMERGENCY ONLY	Air Guard	ALL DIVISIONS	168.6250 N		110.9	A	AIR GUARD - EMERGENCY

Prepared By (Communications Unit) *[Signature]*
 Incident Location: Foresthill, CA
 County: Placer State: CA Latitude 39°1.17' N, Longitude 120° 49.77' W
 TIM MAGUIRE, COM1 (I)

The convention calls for frequency lists to show four digits after the decimal place, followed by either an "N" or a "W", depending on whether the frequency is narrow or wide band. Mode refers to either "A" or "M" indicating analog or digital (e.g. Project 25) or "M" indicating mixed mode. All channels are shown as if programmed in a control station, mobile or portable radio. Repeater and base stations must be programmed with the Rx and Tx reversed.

INCIDENT RADIO COMMUNICATIONS PLAN		Incident Name KING, CA-ENF-023461 - ZONE 2			BK RADIO GROUP GROUP 15			Operational Period Date/Time 9/27/14 0700 hrs. - 9/28/14 0700 hrs.	
Ch #	Function	Channel Name/Trunked Radio System Talkgroup	Assignment	RX Freq N or W	RX Tone/MAC	TX Freq N or W	TX Toner/MAC	Mode A, D or M	Remarks
1	COMMAND	NIFC C5	ZONE 2 ALL DIV	167.1000 N	146.2	169.7500 N	146.2	A	TONE 5 - BALD MT. - LINKED
2	COMMAND	NIFC C12	ZONE 2 ALL DIV	173.0375 N	146.2	167.3250 N	146.2	A	TONE 5 - BIG MT. - LINKED
3	COMMAND	NIFC C37	ZONE 2 ALL DIV	172.5500 N	146.2	162.1875 N	146.2	A	TONE 5 - UNION HILL- LINKED
4	COMMAND	NIFC C60	ZONE 2 ALL DIV	167.0625 N	146.2	173.0250 N	146.2	A	TONE 5 - ROBBS PK - LINKED
5	COMMAND	NIFC C58	ZONE 2 ICP	164.1375 N	146.2	169.6500 N	146.2	A	TONE 5 - ICP USED ONLY
6	TACTICAL	VFIRE 24	DIV BB/T	154.2725 N	156.7	154.2725 N	156.7	A	
7	TACTICAL	VFIRE 25	DIV A/U	154.2875 N	156.7	154.2875 N	156.7	A	
8	TACTICAL	VFIRE 26	DIV D/E	154.3025 N	156.7	154.3025 N	156.7	A	
9	TACTICAL	VTAC 11	DIV W	151.1375 N	156.7	151.1375 N	156.7	A	
10	TACTICAL	VTAC 12	DIV G/Y	154.4525 N	156.7	154.4525 N	156.7	A	
11	TACTICAL	VTAC 13	SUPPRESSION REPAIR	158.7375 N	156.7	158.7375 N	156.7	A	
12	TACTICAL	VTAC 14	ROAD GROUP	159.4725 N	156.7	159.4725 N	156.7	A	A/G COMMAND
13	AIR TO GROUND	A/G CMD	ALL DIVISIONS	169.1500 N		169.1500 N		A	A/G TACTICAL
14	AIR TO GROUND	A/G TAC	ALL DIVISIONS	167.9500 N		167.9500 N		A	MEDICAL COORDINATION
15	MEDICAL	CALCORD	ALL DIVISIONS	156.0750 N		156.0750 N	156.7	A	AIR GUARD - EMERGENCY
16	EMERGENCY ONLY	GUARD	ALL DIVISIONS	168.6250 N		168.6250 N	110.9	A	
17								A	
18								A	
19								A	
20	EMERGENCY ONLY	GUARD	ALL DIVISIONS	168.6250 N		168.6250 N	110.9	A	AIR GUARD - EMERGENCY

Prepared By (Communications Unit)
Ken Parker, COMML

Incident Location: Placerville, CA
County: El Dorado State: CA

Latitude Longitude
N W

The convention calls for frequency lists to show four digits after the decimal place, followed by either an "N" or a "W", depending on whether the frequency is narrow or wide band. Mode refers to either "A" or "D" indicating analog or digital (e.g. Project 25) or "M" indicating mixed mode. All channels are shown as if programmed in a control station, mobile or portable radio. Repeater and base stations must be programmed with the Rx and Tx reversed.

MEDICAL PLAN

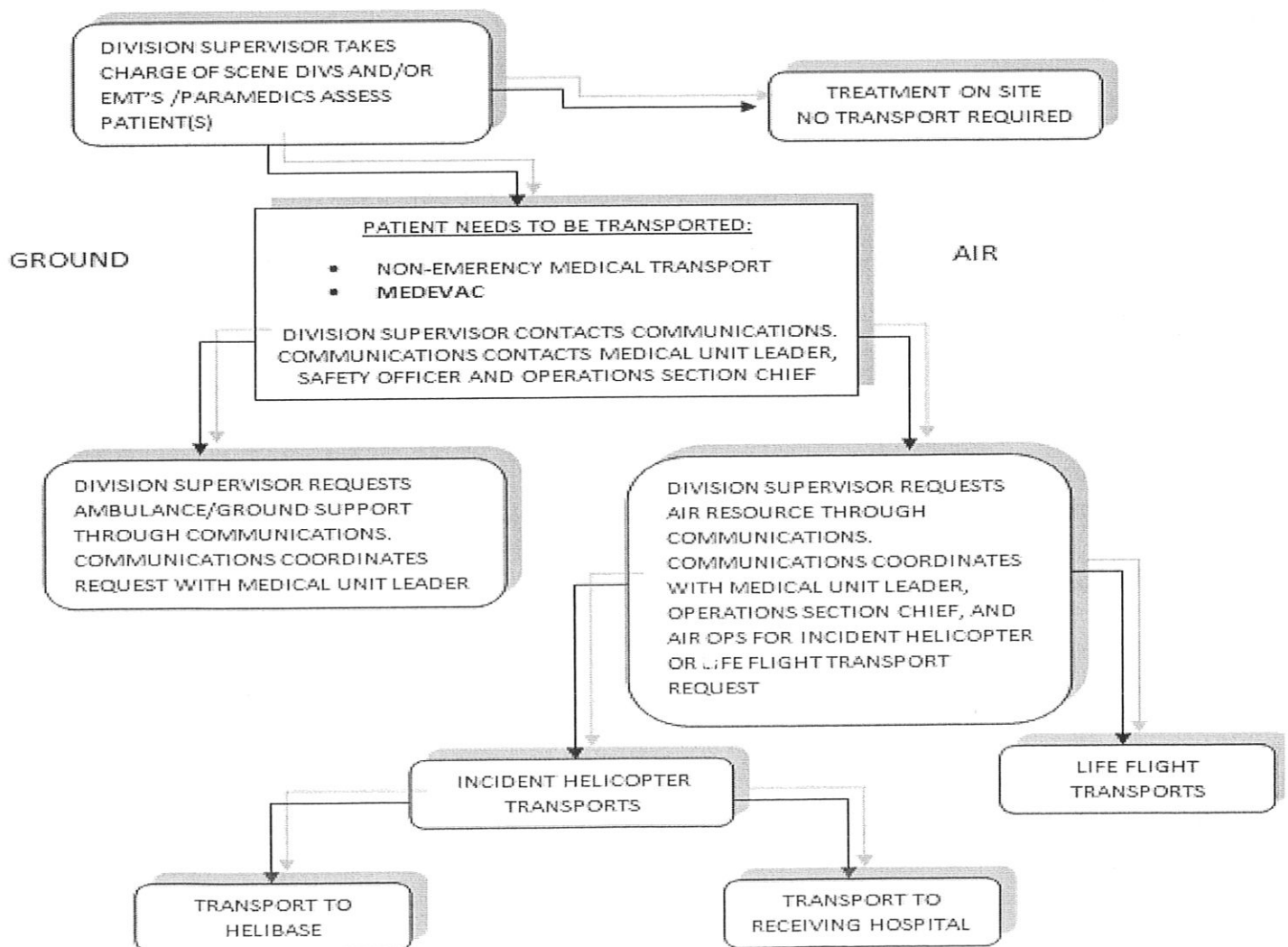
1. Incident/Project Name				2. Operational Period			
King Fire - Zone 1 (North)				Date/Time 9/27/2014 0600-1800			
2. Aid Station							
Name	Complete Address	Phone/EMS Freq.	Advanced Life Support (ALS) Yes No				
King ICP Zone 1 Frontline Medical	Foresthill Old Mill Site 23850 Foresthill Rd., Foresthill, CA 95631		XX				
Sunset Spike Camp Frontline Medical	Union Valley Reservoir - East side 14 mi. north of Hwy 50 on Ice House Road		XX				
3. Ambulance Services							
Name	Complete Address	Phone/EMS Freq	Advanced Life Support (ALS) Yes No				
Eldorado County Emergency Medical Services Medic 248 (Z2)	Eldorado County Fire Station 17 6426 Pony Express Trail, Pollock Pines, CA	911 or 530-647-5220	XX				
Foresthill Fire Department Medic 89 (French Meadows) (Z1)	Foresthill FPD FS 88 5981 Gold St. Foresthill, CA	911 or 530-886-5375	XX				
El Dorado County Emergency Medical Services Medic 289 (Z2)	Georgetown FPD Station 65 10561 Sand Mountain Rd., Georgetown, CA	911 or 530-647-5220	XX				
AMR Ambulance Medic 290 (Z1)	Div. F DP 109	AMR or 916 563-0666	XX				
AMR Ambulance Medic 291 (Z1)	Zone 1 ICP	AMR or 916 563-0666	XX				
4. Air Ambulance Services							
Name	Phone	Type of Aircraft & Capability					
CAL FIRE H-104 Placerville, CA (Daytime Only)	911 or 530-647-5220	Bell 205++ Hoist, No NVG, BLS					
Kern County (KRN) H-408 Grass Valley, CA	911 or 530-647-5220	Bell 205++ Hoist, NVG, ALS					
CHP H20 or H24 Auburn, CA	911 or 916-861-1299	Eurocopter B3 Hoist, ALS, No NVG					
CALSTAR 3 Auburn, CA	911 or 530-887-0569	BO 105LS/C-30					
CAL STAR 6 South Lake Tahoe, CA	911 or 530-887-2338	BO 105LS/C-30					
5. Hospitals							
Name Complete Address	GPS Datum - NAD 83 Degrees Decimal Minutes DD° MM.MMM' N - Lat DD° MM.MMM' W - Long	Travel Time Air Gnd	Phone	Helipad Yes No	Level of Care Facility		
Marshal Medical Center 1100 Marshall Way, Placerville, CA 95667	Lat: N/A	1 Hr	(530) 622-1441	X	Level III Trauma Center		
	Long:						
	VHF: N/A						
Sutter Auburn Faith Hosp. 11815 Education St. Auburn, CA, 95602	Lat: N/A	30 Min	(530) 888-4500	X			
	Long:						
	VHF: N/A						
Sutter Roseville Medical Center 1 Medical Plaza Dr, Roseville, CA 95661	Lat: 38 45.58	25 Min 45 Min	(916) 781-1200	X <input type="checkbox"/>	Level II Trauma Center		
	Long: 121 14.52						
	VHF:						
UC Davis Medical Center 2315 Stockton Ave. Sacramento, CA 95817	Lat: 38 33.17	25 Min 1 Hr	(916) 734-2363	X <input type="checkbox"/>	Level I Trauma Center Burn Center		
	Long: 121 27.21						
	VHF:						
Barton Memorial Hospital 2170 South Ave. South Lake Tahoe, CA 96158	Lat: 38 54.40	30 Min 2.5 Hr	(530) 541-3420	X <input type="checkbox"/>			
	Long: 119 59.48						
	VHF:						
Renown Regional Medical Center 1155 Mill St Reno, NV	Lat: 39 31 32	45 Min 2 Hr	(775) 982-4100	X <input type="checkbox"/>	Level II Trauma Center Burn Center		
	Long: 119 47 44						
	VHF:						
6. Prepared By (Medical Unit Leader)							
Robert Russell MEDL Newton Ong MEDLt <i>Asst</i>		7. Date/Time 09/26/2014 2000		8. Reviewed By (Safety Officer) Marty Hamel SOF 1 <i>Marty Hamel</i>		9. Date/Time 09/26/2014 2000	

When an injury occurs, initiate care with available resources at scene and notify DIVS.

The DIVS shall coordinate the incident and direct necessary actions. The following steps shall be taken to mitigate the incident:

1. Determine the nature of the emergency.
2. If the emergency is a medical injury/illness, determine if the injury/illness is life threatening.
3. If the injury is life threatening, then clear designated frequency for emergency traffic.
4. Identify the on-scene point of contact by position.
5. Ensure that the Medical Unit Leader is contacted immediately.
6. Identify number injured, patient assessment(s) and location (geographic and/or GPS coordinates).
7. Identify on-scene medical personnel by position and last name (i.e. EMT Jones).
8. Identify preferred method of patient transport.
9. Determine any additional resources or equipment needed.

The Evacuation Plan should be continually evaluated, and contingencies developed in the event the first plan is not effective.



Medical Incident Report					
FOR ALL MEDICAL EMERGENCIES: IDENTIFY ON SCENE INCIDENT COMMANDER BY NAME AND POSITION AND ANNOUNCE "MEDICAL EMERGENCY" TO INITIATE RESPONSE FROM IMT COMMUNICATIONS/DISPATCH.					
Use items one through nine to communicate situation to communications/dispatch.					
1. CONTACT COMMUNICATIONS/DISPATCH Ex: "Communications, Div. Alpha. Stand-by for Priority Medical Incident Report." (If life threatening request designated frequency be cleared for emergency traffic.)					
2. INCIDENT STATUS: Provide incident summary and command structure.					
Nature of Injury/Illness			Describe the injury (Ex: Broken leg with bleeding)		
Incident Name			Geographic Name + "Medical" (Ex: Trout Meadow Medical)		
Incident Commander			Name of IC		
Patient Care			Name of Care Provider (Ex: EMT Smith)		
3. INITIAL PATIENT ASSESSMENT: Complete this section for each patient. This is only a brief, initial assessment. Provide additional patient info after completing this 9 Line Report.					
Number of Patients:	Male / Female	Age:	Weight:		
Conscious? <input type="checkbox"/> YES <input type="checkbox"/> NO = MEDEVAC!					
Breathing? <input type="checkbox"/> YES <input type="checkbox"/> NO = MEDEVAC!					
Mechanism of Injury: What caused the injury?					
Lat/Long (Datum WGS84) Ex: N 40° 42.45' x W 123° 03.24'					
4. SEVERITY OF EMERGENCY, TRANSPORT PRIORITY					
SEVERITY			TRANSPORT PRIORITY		
<input type="checkbox"/> URGENT-RED Life threatening injury or illness. Ex: Unconscious, difficulty breathing, bleeding severely, 2 ^o - 3 ^o burns more than 4 palm sizes, heat stroke, disoriented.			Ambulance or MEDEVAC helicopter. Evacuation need is IMMEDIATE.		
<input type="checkbox"/> PRIORITY-YELLOW Serious Injury or illness. Ex: Significant trauma, not able to walk, 2 ^o - 3 ^o burns not more than 1-2 palm sizes.			Ambulance or consider air transport if at remote location. Evacuation may be DELAYED.		
<input type="checkbox"/> ROUTINE-GREEN Not a life threatening injury or illness. Ex: Sprains, strains, minor heat-related illness.			Non-Emergency. Evacuation considered Routine of Convenience.		
5. TRANSPORT PLAN:					
Air Transport: (Agency Aircraft Preferred)					
<input type="checkbox"/> Helispot		<input type="checkbox"/> Short-haul/Hoist		<input type="checkbox"/> Life Flight	<input type="checkbox"/> Other
Ground Transport: Click here to enter text.					
<input type="checkbox"/> Self-Extract		<input type="checkbox"/> Carry-Out		<input type="checkbox"/> Ambulance	<input type="checkbox"/> Other
6. ADDITIONAL RESOURCE/EQUIPMENT NEEDS:					
<input type="checkbox"/> Paramedic/EMT(s)		<input type="checkbox"/> Crew(s)		<input type="checkbox"/> SKED/Backboard/C-Collar	
<input type="checkbox"/> Burn Sheet(s)		<input type="checkbox"/> Oxygen		<input type="checkbox"/> Trauma Bag	
<input type="checkbox"/> Medication(s)		<input type="checkbox"/> IV/Fluid(s)		<input type="checkbox"/> Cardiac Monitor/AED	
<input type="checkbox"/> Other (i.e. splints, rope rescue, wheeled litter)					
7. COMMUNICATIONS:					
Function	Channel Name/Number	Receive (Rx)	Tone/NAC *	Transmit (Tx)	Tone/NAC *
Ex: Command	Forest Rpt, Ch. 2	168.3250	110.9	171.4325	110.9
COMMAND					
AIR-TO-GRND					
TACTICAL					
*(NAC for digital radio system)					
8. EVACUATION LOCATION:					
Lat/Long (Datum WGS84) EX: N 40 42.45' x W 123 03.24'					
Patient's ETA to Evacuation Location:					
Considerations: If primary options fail, what actions can be implemented in conjunction with primary evacuation method? Be thinking ahead...				REMEMBER: Confirm ETA's of resources ordered Act according to your level of training Be Alert. Keep Calm. Think Clearly. Act Decisively.	

Division - As Assigned		Area Location Capability	
Branch X, DIV 1B 12 Hour (day)	EMS Responders & Capability:	FEMP Nick Brandow, FEMT Ryan Souder	
	Equipment Available on Scene:	ALS/BLS supplies	
	Medical Emergency Channel:	Calcord 156.0750 Tone 6 (156.7) tx/rx	
	ETA for Ambulance to Scene:		
	Air:		
	Ground:	45 min	
	Approved Helispot:	None identified	
	Lat:		
	Long:		
Division - As Assigned		Area Location Capability	
Branch X, DIV 1D 12 Hour (day)	EMS Responders & Capability:	FEMP Jacob Snow, FEMT Willie Kron	
	Equipment Available on Scene:	ALS/BLS supplies	
	Medical Emergency Channel:	Calcord 156.0750 Tone 6 (156.7) tx/rx	
	ETA for Ambulance to Scene:		
	Air:		
	Ground:	30 min	
	Approved Helispot:	None identified	
	Lat:		
	Long:		
Division - As Assigned		Area Location Capability	
Branch X, DIV 1F 12 Hour (day)	EMS Responders & Capability:	FEMP Nick Gabbord, FEMT Mitch Carney	
	Equipment Available on Scene:	ALS/BLS supplies	
	Medical Emergency Channel:	Calcord 156.0750 Tone 6 (156.7) tx/rx	
	ETA for Ambulance to Scene:		
	Air:		
	Ground:	30 min	
	Approved Helispot:	None identified	
	Lat:		
	Long:		
Division - As Assigned		Area Location Capability	
Branch XII, DIV 1H 12 Hour (day)	EMS Responders & Capability:	FEMP Ronald Cutting, FEMT Bryan Esser	
	Equipment Available on Scene:	ALS/BLS supplies	
	Medical Emergency Channel:	Calcord 156.0750 Tone 6 (156.7) tx/rx	
	ETA for Ambulance to Scene:		
	Air:		
	Ground:	30 min	
	Approved Helispot:	None identified	
	Lat:		
	Long:		
Division - As Assigned		Area Location Capability	
Branch XII, DIV 1L 12 Hour (day)	EMS Responders & Capability:	FEMP Eduardo Stary, FEMP Sergio Zavala	
	Equipment Available on Scene:	ALS/BLS supplies	
	Medical Emergency Channel:	Calcord 156.0750 Tone 6 (156.7) tx/rx	
	ETA for Ambulance to Scene:		
	Air:		
	Ground:	30 min	
	Approved Helispot:	None identified	
	Lat:		
	Long:		

Area Location Capability		
Branch XVI, DIV 1U 12 Hour (day)	EMS Responders & Capability:	FEMP Tim Pratt, FEMT Steven McGary
	Equipment Available on Scene:	ALS/BLS supplies
	Medical Emergency Channel:	Calcord 156.0750 Tone 6 (156.7) tx/rx
	ETA for Ambulance to Scene:	
	Air:	
	Ground:	45 min
	Approved Helispot:	None identified
	Lat:	
	Long:	
Area Location Capability		
Branch XVI, DIV 1W 12 Hour (day)	EMS Responders & Capability:	FEMP Dan Nunez, FEMT Travis Moore
	Equipment Available on Scene:	ALS/BLS supplies
	Medical Emergency Channel:	Calcord 156.0750 Tone 6 (156.7) tx/rx
	ETA for Ambulance to Scene:	
	Air:	
	Ground:	45 min
	Approved Helispot:	None identified
	Lat:	
	Long:	
Area Location Capability		
Branch XVI, DIV 1Y 12 hour (day)	EMS Responders & Capability:	FEMP Steve Wallace, FEMT Cody Haas
	Equipment Available on Scene:	ALS/BLS supplies
	Medical Emergency Channel:	Calcord 156.0750 Tone 6 (156.7) tx/rx
	ETA for Ambulance to Scene:	
	Air:	
	Ground:	45 min
	Approved Helispot:	None identified
	Lat:	
	Long:	
Area Location Capability		
Branch XVI, DIV 1Z 12 hour (day)	EMS Responders & Capability:	FEMP Leo Granados, FEMT Eric Connors
	Equipment Available on Scene:	ALS/BLS supplies
	Medical Emergency Channel:	Calcord 156.0750 Tone 6 (156.7) tx/rx
	ETA for Ambulance to Scene:	
	Air:	
	Ground:	30 min
	Approved Helispot:	None identified
	Lat:	
	Long:	
Area Location Capability		
Contingency American Mosquito Oxbow Ralston 12 Hour (day)	EMS Responders & Capability:	FEMP Matt Menard, FEMT Todd Adams FEMP Matt Lucas, FEMT Scott Harlan
	Equipment Available on Scene:	ALS/BLS supplies
	Medical Emergency Channel:	Calcord 156.0750 Tone 6 (156.7) tx/rx
	ETA for Ambulance to Scene:	
	Air:	
	Ground:	45 min
	Approved Helispot:	None identified
	Lat:	
	Long:	

	Area Location Capability	
French Meadows Spike Camp 16 Hour (Day)	EMS Responders & Capability:	FEMP Matt Cobb
	Equipment Available on Scene:	ALS/BLS supplies
	Medical Emergency Channel:	Calcord 156.0750 Tone 6 (156.7) tx/rx
	ETA for Ambulance to Scene:	
	Air:	
	Ground:	30 min
	Approved Helispot:	None identified
	Lat:	
	Long:	
	Area Location Capability	
	EMS Responders & Capability:	
	Equipment Available on Scene:	ALS/BLS supplies
	Medical Emergency Channel:	Calcord 156.0750 Tone 6 (156.7) tx/rx
	ETA for Ambulance to Scene:	
	Air:	
	Ground:	
	Approved Helispot:	None identified
	Lat:	
	Long:	
	Area Location Capability	
	EMS Responders & Capability:	
	Equipment Available on Scene:	ALS/BLS supplies
	Medical Emergency Channel:	Calcord 156.0750 Tone 6 (156.7) tx/rx
	ETA for Ambulance to Scene:	
	Air:	
	Ground:	
	Approved Helispot:	None identified
	Lat:	
	Long:	
	Area Location Capability	
	EMS Responders & Capability:	
	Equipment Available on Scene:	ALS/BLS supplies
	Medical Emergency Channel:	Calcord 156.0750 Tone 6 (156.7) tx/rx
	ETA for Ambulance to Scene:	
	Air:	
	Ground:	
	Approved Helispot:	None identified
	Lat:	
	Long:	

The Following Resources Need to See
 Finance - Federal Personnel Time
 September 27, 2014, Day Shift

C-07	Teresa Riesenhuber	E-607	Engine 1668
C-25	Audry French	O-21	Michael Carr
C-30	Northern Utah Regulars	O-52	Cathy Barr
C-39	Red Rock	O-252	Ryan Anderson
C-89	Sawtooth	O-261	Burr & Bullock
C-93	Redding Hot Shots	O-384	Joe Cook
C-143	Northern AZ	O-452	Rob Boozeman
C-144	Kaddo Nation	O-512	Michael Cherry
E-146	SHF Dozer 29	O-521	Jeff Goyings
C-171	Gila Regulars 5	E-534.5	3630
C-197	Cobra's 3	O-564	Anthony Torres
E-133	Fisher River Valley Fire	O-621	Charles Sam
E-375	ENG T6 694E-527	O-643	Jerry Westfall
E-537	Engine Strike Team	O-663	Novak, Mark
E-144	Plumas Dozer #1	O-710	Kate Morris
E-146	SHF Dozer 29	O-722	Mitch Burgard
E-161.4	MNF ENG T3-333	O-759	Travis Medina
O-264	L. Mayfield	O-768	Nick Martino
E-374	CPS ENG 62	O-784	Rita Clipperton
E-527	E-T3 365	O-792	Kirk Harris
E-528	ENF Engine 33	O-793	Childs Bennett
E-536	Richard Martin	O-804	Hartmot
E-548	LNF Eng 15	O-822	Terrell Drew
E-535	S/T 6632C ENG 37	O-838	Terron Gee
E-538	SNF ENG 313	O-851	Courtney Wallace
E-602	NV-EFKX	O-885	Kurt Gainer
E-606	Engine 1667		

The Following Resources Need to See
 Finance - Federal Equipment Time
 September 27, 2014, Day Shift

E-42	Graham General
E-785	Quick Response



Human Resource Message American Fire

Platinum Rule

Treat others as they would like to be treated.



**Your attitude affects those around you.
If you want a better environment,
start with yourself.**

I am the inferior of any man whose rights I trample underfoot.
-- Horace Greeley

If you have issues, report them to your supervisor. If you need additional help, contact the Human Resources Specialist Office located on Main Street (next to Documentation).

Office Number (530) 367-8899
Marilyn Loughrey (925) 588-6711
Tom Nichols (916) 878-8165

26 September 2014

Incident Trainee / Trainer Data Worksheet

PLEASE PRINT LEGIBLY!

A: Trainee Data

Trainee Name: _____ Check One: Male Female
Trainee Position: _____ Order Number (E, O, C, A) ____--_____
State Abr. ____ + 3 Letter Designator _____ Agency Type: Federal State Local
 USFS BLM BIA FWS DOD NWS NPS Date Assigned: ____--____--_____
Ordered as a trainee for the incident? Yes No Trainee Cell Number: _____
Ordered as a US Forest Service PRIORITY trainee Yes No FPM IFPM?

**Person's name and title that is responsible for tracking your qualifications:
(Where do you want the packet mailed to?)**

Name: _____ Title: _____ Home Unit: _____
Agency Address: _____ City: _____
State: _____ Zip: _____ Phone Number: () _____--_____

B. Trainee Prerequisites

	YES	NO
1. Possesses valid Red Card or agency certification card?	<input type="radio"/>	<input type="radio"/>
2. Trainee has a proper agency initiated position task book?	<input type="radio"/>	<input type="radio"/>
3. Trainee has an incident supplied task book?	<input type="radio"/>	<input type="radio"/>

C. Trainer/Evaluator Data (All fields are required to be filled in)

Trainer/Evaluator Name: _____ Position: _____
Home Unit: _____ Order Number (E, O, C, A) ____--_____
Work Address: _____ City: _____ State: _____
Zip Code: _____ Phone Number: () _____--_____

D. Trainee Goals (items in the position task book to be evaluated on this incident)

- _____
- _____
- _____

09/27/2014

TENTATIVE RELEASE

ENF KING CA-ENF-023461

OVERHEAD

O-228	0600	(DIVS)	MASON, CHRIS
O-234	0600	(DIVS)	RASNER, NATE
O-435	0600	(EMTB)	SEBOK, BENJAMIN
O-817	0600	(DIVS)	KOSKI, ANDY
O-831	0600	(HEQB)	CHING, JACOB
O-461	0800	(LTAN)	NOBLE, CAROLINE
O-722	0800	(SOPL)	BURGARD, MITCHELL RYAN
O-638	1800	(PIOF)	RIVERA, REYNALDO L
O-743	1800	(OSC1)	SMITH, KYLE L

CREWS

C-8	0830	(HC1)	CRW T1 CEDAR CITY IHC
-----	------	-------	-----------------------

EQUIPMENT

E-138	0600	(WTT1)	WT T1 TACTICAL
E-142	0600	(WTT1)	WT T1 TACTICAL
E-669	0600	(ES3)	ENG S/T T3 5031C
E-670	0600	(ES6)	ENGINE T/F - XFR 5019
E-672	0600	(ES3)	ENG S/T T3 2143C
E-3041	0600	(WTT1)	WT T1 TACTICAL
E-111	0800	(DOZ2)	DOZ T2 SPENCER
E-115	0800	(DOZ2)	DOZ T2 JB LOGGING
E-119	0800	(DOZ2)	DOZ T2 DOBSON
E-210	0800	(DOZ2)	DOZ T2 BIG EDS CRANE

09/28/2014

TENTATIVE RELEASE

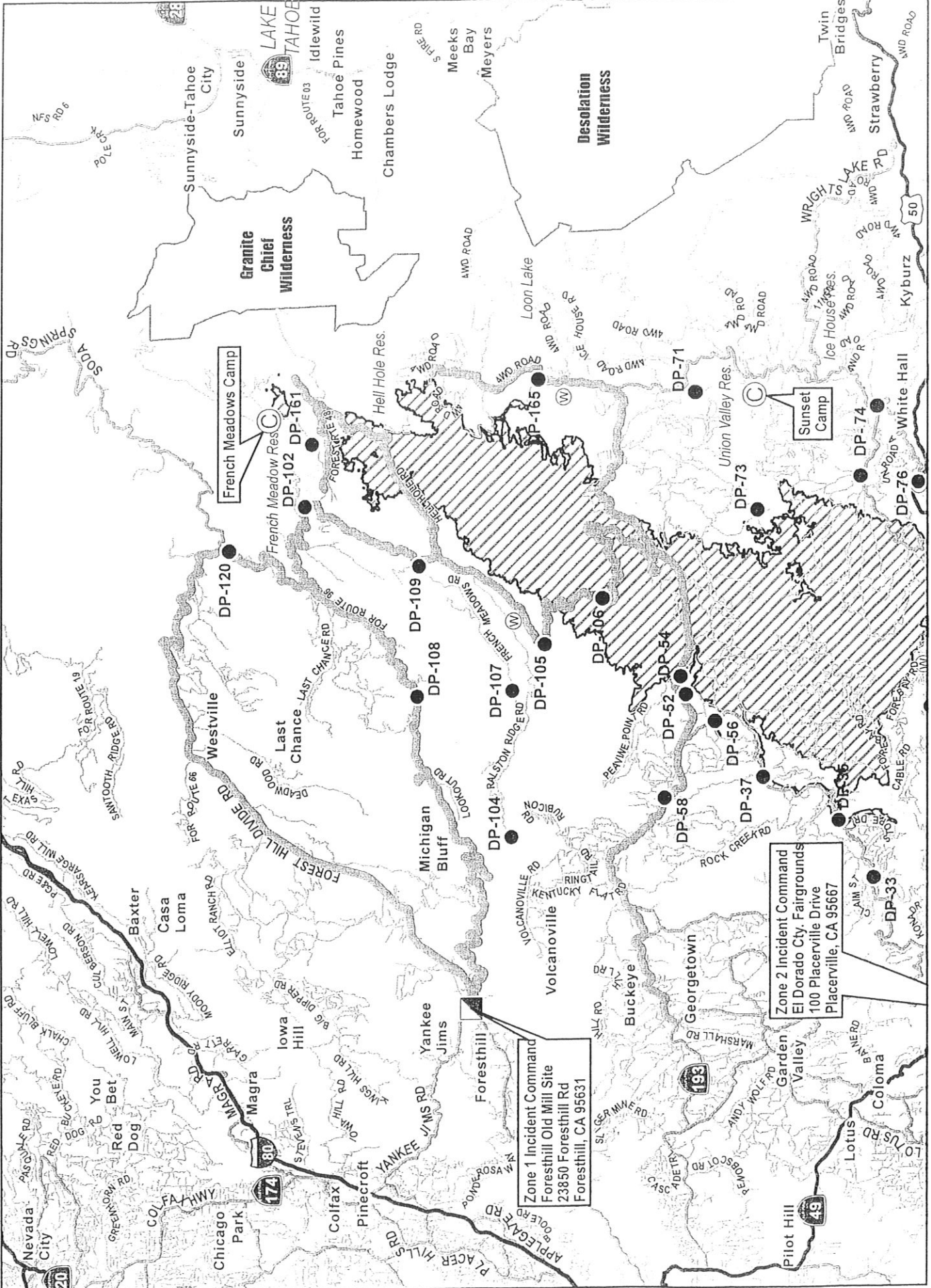
ENF KING CA-ENF-023461

OVERHEAD

O-736	0600	(EMTF)	GALVAN, CYRUS
O-227	0800	(DIVS)	KLUG, CARL M
O-26	0900	(THSP)	DOROSH, CHERYL
O-51	1000	(PIOF)	LABOA, JANE H
O-3199	1800	(PIOF)	FOXWORTHY, ROBERT G

CREWS

C-96	0700	(HC2)	CRW T2IA UTAH CNTY #2
C-176	0700	(HC2)	CRW T2IA CORONADO
C-7	0800	(HC1)	CRW T1 TRINITY IHC
C-89	0800	(HC1)	CRW T1 SAWTOOTH IHC
C-149	0800	(HC1)	CRW T1 LONE PEAK IHC
C-87	0900	(HC1)	CRW T1 AMERICAN RIVER IHC
C-196	0900	(HC2)	CRW T2 BLACK EAGLES 3
C-197	0930	(HC2)	CRW T2 COBRAS 3
C-24	1000	(HC2)	CRW T2IA FIRESTORM WFS



TRANSPORTATION MAP

King Incident CA-ENF-023461
September 24, 2014

Zone 2 Incident Command
El Dorado City, Fairgrounds
100 Placerville Drive
Placerville, CA 95667

Zone 1 Incident Command
Foresthill Old Mill Site
23850 Foresthill Rd
Foresthill, CA 95631

- Major Highways
- Highways
- Major Roads
- Minor Roads
- Zone 1 access routes
- Camp
- Drop Point
- Water Source
- Water Source
- King Fire Polygon

