

# **KING INCIDENT**

## **Incident Action Plan**

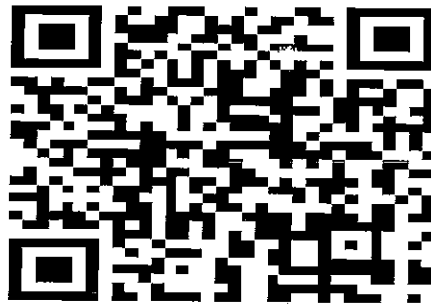
**CA-ENF-023461**

**P5JEE9 (0503)**

### **Operational Period**

**NIGHT SHIFT 9/27/14 – 9/28/14**

**1800 - 0600**





INCIDENT OBJECTIVES	1. INCIDENT NAME	2. DATE PREPARED	3. TIME PREPARED
	KING (Zone 1)	9/27/14	0800
<b>4. OPERATIONAL PERIOD (DATE/TIME)</b> <p style="text-align: center;"><b>NIGHT SHIFT      9/27/14 – 9/28/14      1800 - 0600</b></p>			
<b>5. GENERAL CONTROL OBJECTIVES FOR THE INCIDENT</b>  <b>Management Objectives:</b>  <b>Provide for safety of responders and the public</b> <b>Establish and maintain positive relationships with cooperating agencies and the public</b> <b>Provide timely and accurate incident information</b> <b>Protect economic and watershed values with safe and aggressive firefighting efforts</b> <b>Keep costs commensurate with values at risk</b> <b>Continue with suppression repair as per the approved Suppression Repair Plan.</b>  <b>Control Objectives:</b>  <b>Keep the fire:</b>  <b>North of Forebay Road and Highway 50 east of Pollock Pines</b> <b>East of Duncan Creek and the Middle Fork of the American River</b> <b>West of Ice House Road</b> <b>South of the Middle Fork of the American River</b>			
<b>6. WEATHER FORCAST FOR OPERATIONAL PERIOD</b>  <p style="text-align: center;"><b>See Attached</b></p>			
<b>7. GENERAL/SAFETY MESSAGE</b>  <p style="text-align: center;"><b>See Attached</b></p>			
<b>8. ATTACHMENTS ( X IF ATTACHED)</b>			
<input checked="" type="checkbox"/> 202	<input checked="" type="checkbox"/> SAFETY MESSAGE / LCES	<input checked="" type="checkbox"/> TRANSPORTATION MAP	
<input checked="" type="checkbox"/> 203	<input checked="" type="checkbox"/> WEATHER	<input checked="" type="checkbox"/> INCIDENT MAP	
<input checked="" type="checkbox"/> 204	<input type="checkbox"/> AIR OPERATIONS SUMMARY	<input checked="" type="checkbox"/> FIRE BEHAVIOR	
<input checked="" type="checkbox"/> 205	<input checked="" type="checkbox"/> HUMAN RESOURCE	<input checked="" type="checkbox"/> TRAINING	
<input checked="" type="checkbox"/> 206	<input checked="" type="checkbox"/> ICP / CAMP MAP	<input checked="" type="checkbox"/> FINANCE	
<input checked="" type="checkbox"/> 214	<input checked="" type="checkbox"/> FIRE WEATHER	<input checked="" type="checkbox"/> DEMOB	
ICS 202	<b>9. PREPARED BY (PLANNING SECTION CHIEF)</b> Dennis Cooper / Rick Leuck (t) / Jason Schillinger (t)	<b>10. APPROVED BY (INCIDENT COMMANDER)</b> (Zone 1)                      (Zone 2) <b>Jim Giachino / Kevin Smith</b> <i>Kevin Joseph for:</i>	

*Dennis Cooper* ASG 2

ORGANIZATION ASSIGNMENT LIST		
1. Incident Name: <b>KING (ZONE 1)</b>		
2. Date: 9/27/14	3. Time: 0800	
4. Operational Period <b>Night Shift: September 27 - 28, 2014 1800 - 0600</b>		
<b>Position</b>	<b>Name</b>	
5. Incident Commander and Command Staff		
Incident Commander	Jim Giachino / Steve Millert (t)	
Deputy	Carlton Joseph	
Safety Officer	M. Hamel / S. Ryberg / C. Jordan (t)	
Information Officer	Steve Kliest / Mark Savage (t)	
Liaison Officer	R. Alpert / R. Graham / W. McGrew / J. Jones	
6. Agency Representative		
Eldorado NF	Laurence Crabtree	
Eldorado Agency Admin Rep	John Exline	
Tahoe NF	Tom Quinn	
Tahoe Agency Admin Rep	Victor Lyon	
Cal OES	Bill Bondshu	
CAL FIRE Nevada-Yuba-Placer	Randy Smith	
IARR Eastern Region	Jeffrey Briggs	
IARR Northeastern Region	Robert Heartlove	
IARR Southern Region	T. Barnes / E. Bratcher / D. Berens	
IARR Southwestern Region	Carlos Nosie / Louie Sandoval	
CAL TRANS	Dave Wood	
PG&E	Pam Purdee	
California Highway Patrol	Chris Sahagun	
Placer County Sheriff	Kevin Borden	
7. Planning Section		
Plans Chief	Dennis Cooper/ Rick Leuk (t)/ Jason Schillinger (t)	
Resources Unit	R. Ashby / J. Switzler / J. Wilson / E. Matye (t)	
Situation Unit	T. Morelock / M. McHargue / P. Kaiser	
Human Resources	Marilyn Loughrey / Tom Nichols	
READ	Courtney Rowe	
Fire Behavior	Shelly Crook / Denny O'Neil / Duane Weis	
Meteorologist	Jason Clapp	
GISS	Brad Weisshaupt / Eric Shreve (t)	
CTSP	Jim Youngblood / Chris Crowder (t)	
TNSP	Bill Reynolds	
DEMOB	Dan Baggao / Jim Cooley	
8. Logistics Section		
Logistics Chief	H. Crane / D. Haston / K. Kumpe (t)	
Supply Unit	Michael Bradford	
Facilities Unit	Jim Eckroth / Wally Grogan	
Ground Support Unit	John Badaracco	
Medical Unit	Robert Russell / Newton Ong (t)	
Food Unit	Dennis Durham	
Receiving/Distribution	Joe McMahon	
Communications Unit	Greg Ely / Tim Maguire (t)	
Ordering Manager	Sharon Porter	
9. Operations Section		
Ops Chief	Brad Washa	
Planning Ops	Don Smith / Mike Sandwick	
a. Branch X		
Branch Director	Larry Sears	
Division	1B/1D/1F	Matthew Madariaga / Ty Van Keuren (t)
b. Branch XII		
Branch Director	John Flores	
Division	1H/1K/1L	Ben Rupert / Bill Morris (t)
c. Branch XIV		
Branch Director	Unstaffed	
Division	1M/1P	Unstaffed
Division		
d. Branch XVI		
Branch Director	Rodney Collins / Quincy Chung (t)	
Division	1R/1T/1U/1W	Gene Neely
Division	1Y/1Z	Wilson Branch
e.		
Branch Director		
Division/Group		
Division/Group		
f.		
Branch Director		
Division/Group		
Division/Group		
g. Air Operations		
Air Operations Branch Director	John Keesee	
Air Support Supervisor	Craig Dado	
Helicopter Coordinator	Lane Caldwell / John Chin	
Heli Base Manager	Brady Bernard	
10. Finance/Administration Section		
Finance/Admin. Chief	Teresa Fork / Peter Bymers	
Cost Appro.	Kenny Lucien	
Time Unit	Janice Brown (t)	
Procurement Unit	Wendy Whiteman	
Compensation/Claims Unit	Elaine Downing	
Cost Unit	Roger Siemers	
Personnel Time Recorder	Debra Luna (t)	
Prepared by (Resource Unit Leader) Eric Matye (t)		





## ZONE 1 FIRE WEATHER FORECAST



**FORECAST NO:** 23  
**PREDICTION FOR:** Saturday Night SHIFT

**INCIDENT NAME:** King Fire  
**UNIT:** Eldorado National Forest

**SHIFT DATE:** 27/28 Sep 2014

**SIGNED:** *Jason Clapp*

**TIME AND DATE**  
**FORECAST ISSUED:** 1200 / 27 September 2014

Jason Clapp  
**Incident Meteorologist**

### WEATHER TONIGHT:

**WEATHER:** Mostly cloudy with lingering showers of up to 0.20 of an inch. Areas of fog.

**TEMPERATURES:** Above 6000ft – 36-39... Below 6000ft – 39-43  
**RELATIVE HUMIDITY:** 80-100%

### **20 FT WINDS:**

**RIDGETOP -** NNW 4-8 with gusts 15 mph shifting NE after 2100 with 7-10 and gusts to 15-20.  
**SLOPE/VALLEY -** Downslope 2-5 mph. Then downcanyon 4-8 mph after 2400.

**LAL:** 1.

**STABILITY/INVERSION:** Weak inversion setting up after 2200.

**WEATHER DISCUSSION:** Lingering showers may hang around tonight into Sunday as the low pressure still hangs out in NV, bringing wrap-around moisture over area. Warming and drying next week with NE winds Tuesday night into Thursday.

**WEATHER FOR SUNDAY:** The Low pressure hangs out in NV leaving the potential for some lingering light showers. High temps: 56-61. Min RH: 60-65%. Ridge winds: NW 5-8 G15mph, shifting more westerly in afternoon. Valley/Slope winds: Downslope 2-5 mph shifting upslope/upcanyon 5-9 mph by late morning

### Weather Planning Matrix



### Weather Observations



# ZONE 1: KING FIRE NORTH - FIRE BEHAVIOR FORECAST

<b>FORECAST NUMBER: #24</b>	<b>TYPE OF FIRE: Wildfire</b>
<b>FIRE NAME: King Fire (ZONE 1, NORTH)</b>	<b>OPERATIONAL PERIOD: Saturday 9/27/14 Night Shift</b>
<b>DATE ISSUED: September 27, 2014</b>	<b>TIME ISSUED: 1200</b>
<b>UNIT: Eldorado &amp; Tahoe NF, CA State</b>	<b>SIGNED:  Shelly Crook- FBAN</b>

## INPUTS

### WEATHER SUMMARY (Refer to Weather Forecast for details)

**NIGHT:** Mostly cloudy, lingering showers and areas of fog. Min Temp: 34-44°. Max RH: 80-100%.  
Ridge top winds –Easterly 7-10 with gusts to 15 mph. Slope/Valley Winds – Down canyon 5-9 mph after 2400 hours.

## FUELS

Predominantly mature mixed conifer with heavy shrub loading. Fuel loadings are generally heavy. Representative Fuel Models 9, 10, TU5, TL8, TL9. Live fuels moistures are dry; however the dead fuels have moistened up as a result of the rain from yesterday. Large fire history: Star Fire 2001, Falston Fire 2007, Government and Westville 2008, American Fire 2013.  
**Minimum fine dead fuel moisture: 10-12%, 1000 hr FMC: 10%, 10 hr FMC: 10-12%, Live fuel moisture: 55-65%.**

## OUTPUTS - FIRE BEHAVIOR

### DAY SHIFT:

**Thresholds for Active Fire Behavior in the King Fire area (Eldorado NF PocketCard):**

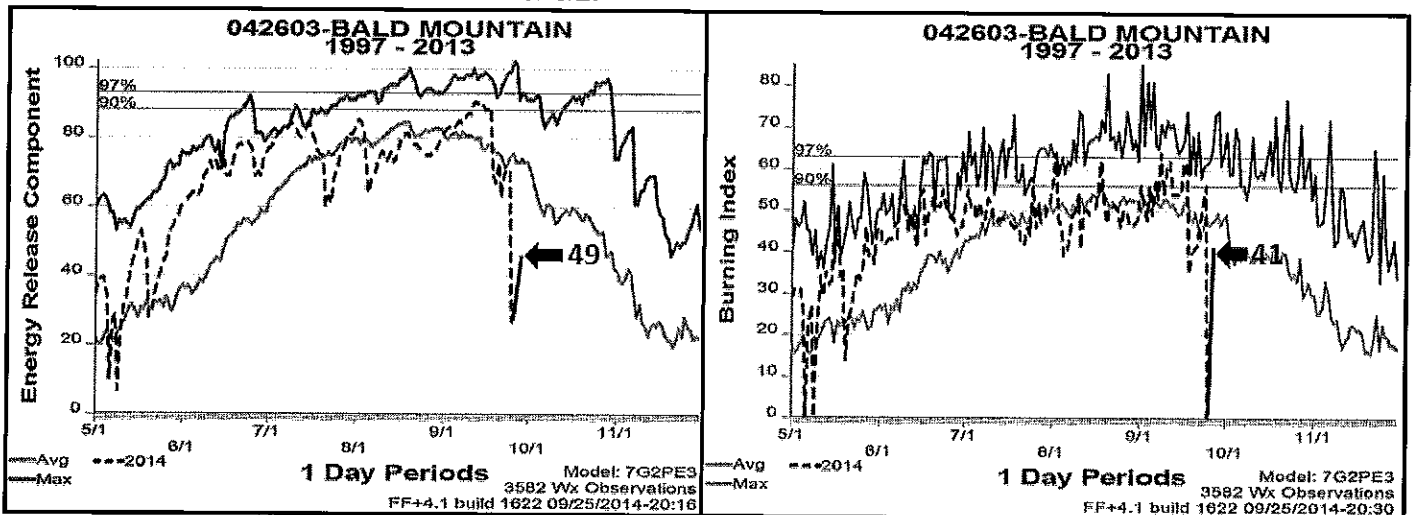
\* 20ft Winds (over 5 mph), \*RH (under 22%), \*Temperature (over 84°) and \*1000hr FMC (under 9%).

➤ **Forecasted Indices (Bald Mt RAWs, FM-G) ERC: 49 (up 5) BI: 41 (up 13)**

**Maximum Fire Behavior Potential (head fire upslope): Rate of Spread: 0-1 chains/hour (1 foot/minute),  
Flame Length: 0-2 ft. Probability of Ignition: 20%. Maximum spotting distance of 500 feet.**

**GENERAL for the Entire Zone 1 Fire Area:** In the past 3 days the entire fire area has received over 1 inch of rain with the RH ranging from 50% mid-day with 90-100% recovery at night. As a result, expect today's fire behavior potential to be minimal, predominately smoldering heavy fuels within the interior with no perimeter spread across the entire North Zone. Heads up for snags and stump holes as the mopup efforts move further into the interior. The heavy fuels will continue to hold heat for several days to several weeks.

### Bald Mountain Forecasted ERC and BI for 9/27



**FEEDBACK:** Collect WX observations hourly and turn in to FBAN or IMET at end of shift. Please include fire behavior observations

**AIR OPERATIONS:** No issues anticipated. Sunset at 18:53 / Sunrise at 06:55

## SAFETY

- Fire weakened green trees and snags are out there, be sure to look up before you look down.
- As the mop-up efforts progress to the interior of the fire, the threat of falling snags increases.
- *"Any fact facing us is not as important as our attitude toward it, for that determines our success or failure." - Norman Vincent Peale*



<b>Division Assignment List</b>		1. Branch <b>XII</b>		2. Division/Group <b>H / K / L</b>	
3. Incident Name <b>KING - ZONE 1</b>		4. Operational Period <b>09/27/14 Saturday Night Shift 1800 - 0600</b>			
5. <b>Operations Personnel</b>					
Operations Chief	<b>BRAD WASHA</b>		Division/Group Supervisor	<b>BEN RUPERT; BILL MORRIS (t)</b>	
Operations Chief			Air Attack Supervisor		
Branch Director	<b>JOHN FLORES</b>		Safety Officer	<b>M. HAMEL; S. RYBERG; C. JORDAN (t)</b>	
6. <b>Resources Assigned this Period</b>					
Strike Team/Task Force/ Resource Designator	Leader	Num of Pers.	Trans. Y/N	Drop Off PT./Time	Pick Up PT./Time
T/F T3 KING #14				ICP 1800	ICP 0600
TFLD O-787 10/5	HEATHER FISHER	1	N	ICP 1800	ICP 0600
ENG T3 MISSOULA E-608 10/5	JEFF GROLL	3	N	ICP 1800	ICP 0600
ENG T3 14 E-619 10/5	KEN HUTTEMLIA	3	N	ICP 1800	ICP 0600
ENG T3 1347 E-661 9/25	CHAD HULLBARD	4	N	ICP 1800	ICP 0600
ENG T3 365 E-527 10/3	BERNIE QUINNONEZ	6	N	ICP 1800	ICP 0600
ENG T3 ENF 63 E-393 9/27	MICHAEL LOEFFLER	5	N	ICP 1800	ICP 0600
S/T ENF KING #9				ICP 1800	ICP 0600
TFLD O-888 10/5	NATE HALLAM	1	N	ICP 1800	ICP 0600
ENG T3 15 E-548 10/5	DEAN DEHART	5	N	ICP 1800	ICP 0600
ENG T3 UTAH COUNTY E-603 10/5	JARED CULBERTSON	5	N	ICP 1800	ICP 0600
ENGINE - T3 - 35 E-546 10/5	WADE JONES	5	N	ICP 1800	ICP 0600
ENG T3 322 E-621 10/5	OLLE SMITH	5	N	ICP 1800	ICP 0600
ENG T3 TMU E42 E-266 9/30	BRIAN ETHERIDGE	5	N	ICP 1800	ICP 0600
ENG T3 33 E-549 10/5	BRYAN LANNING	5	N	ICP 1800	ICP 0600
SOFR O-964 9/28	DOUGLAS WELBOURN	1	N	ICP 1800	ICP 0600
FEMP O-759 10/4	TRAVIS MEDINA	1	N	ICP 1800	ICP 0600
FEMT O-768 10/4	NICHOLAS MARTINO	1	N	ICP 1800	ICP 0600

**7. Control Operations**

Patrol and mop up to the degree necessary to make the likelihood of fire escape very low; based on experience, terrain, fuel types, and fuel conditions.

**8. Special Instructions**

- a. Day and Night travel to line via Foresthill Rd. Return via Mosquito Ridge Rd.
- b. All Division Supervisors need to download information to the Sit Unit for all completed line and proposed line.
- c. Noxious weeds are marked by orange "noxious weed" flagging. Minimize or avoid activities in these areas.
- d. Sensitive areas are marked with pink/black checkerboard flagging. Minimize ground disturbing activities in these areas.
- e. Backhaul trash and unneeded equipment.

9. <b>Division/Group Communications Summary</b>							
Function	Frequency - RX	Frequency - TX	Tone	System	Channel	System	Channel
Command	166.6125	168.4000	136.5	NIFC C4	1		
Tactical Div/Group	166.7750	166.7750		NIFC T6	8		
Logistics							
Air to Ground	169.1500	169.1500		A/G CMD	13		
Prepared by (Resource Unit Leader) J. Wilson; E Mayte (t); A. Uehara (t)		Approved by (Planning Section Chief) D. Cooper; R. Leuck (t); J. Schillinger (t)		Date Prepared 09/27/14		Time Prepared 0917	









# SAFETY MESSAGE

KING FIRE CA-ENF-023461

Night Shift 09/27-28/2014 1800-0600

## **ROADS – Potential for:**

\*\*\*\*Slippery roads

\*\*\*\*Fog

\*\*\*\*Rocks and debris on roads

\*\*\*\*Do not travel dirt roads without first getting approval from Division and/or Safety.

**Drive all roads with extra precaution.**

**SNAGS AND HAZARD TREES– BEFORE STARTING:** Are you parking your vehicle in a safe spot? Wear your hard hat & follow Hazard Tree Safety Guidelines (IRPG page 22). All firefighters need to be cleared from area when tree falling is taking place.

### **ROADSIDE OPERATIONS**

Exit vehicle from the passenger side and avoid exiting from traffic side if possible. Utilize "Look-First" Situational Awareness while loading and unloading vehicle. Assign a single person to unload equipment from traffic side of vehicle and instruct him/her to face traffic flow. Emphasize the need for extreme caution and to look both ways when walking between or in front of parked vehicles toward active traffic lanes. **Many fatalities to responders at roadside incidents have resulted from inattention or casual attitudes.**

**STRESS THE CRITICAL IMPORTANCE OF SITUATIONAL AWARENESS TO ALL CREW MEMBERS!**

### **MOP UP**

- Be sure areas are snagged prior to inserting crews for mop up.
- Stump holes are very dangerous, you can get major burns and/or ankle and leg injuries. Inspect the area to be worked, when stump holes are identified please flag and make known.
- When using hose lays be sure the hose lay does not become a tripping hazards.
- Use adequate personnel when deploying and/or moving hose lays so that muscles are not strained.
- Chock your engines/crew buggies when parking.
- Pace the work load, give adequate breaks.
- Report all injuries, insignificant injuries can develop into issues later on.

Safety Officers: Marty Hamel & Steve Ryberg

## INCIDENT SAFETY ANALYSIS 215a

KING INCIDENT (ZONE 1) CA-ENF-023461 - Saturday, September 27, 2014

8. Location	9. Hazard	6. Control or Abatement Action (Engineering, Administrative, PPE, Avoidance, Education, etc)
ALL	Snag Hazards	<ul style="list-style-type: none"> <li>• Follow Hazard Tree Safety Guidelines (IRPG p. 22).</li> <li>• Limit number of personnel around snags and their exposure time; fallers must be qualified for trees being fallen.</li> <li>• Be especially alert around snags during wind events.</li> <li>• Check overhead for dead branches in sleeping areas.</li> <li>• Maintain Situational Awareness.</li> </ul>
ALL	Aircraft Operations	<ul style="list-style-type: none"> <li>• Keep personnel out of drop zones.</li> <li>• Use air-to-ground freq. to communicate with aircraft.</li> <li>• Use clear, concise statements when directing aircraft. Use clock directions from pilot's perspective.</li> </ul>
ALL	Direct Attack/Night Operations	<ul style="list-style-type: none"> <li>• Snag areas in day time before engaging personnel.</li> <li>• Mitigate snags in areas of fire where direct line tactics are used.</li> <li>• Do not work in areas at night where snags have not been identified and mitigated.</li> <li>• No snag falling at night.</li> <li>• Snag roads where nighttime travel is necessary.</li> <li>• Ensure medical protocols are followed.</li> <li>• Have medivac sites pre-identified/established.</li> <li>• Ensure good communications exist and tested.</li> </ul>
Zone 1	MopUp/Repair work	<ul style="list-style-type: none"> <li>• Always wear appropriate PPE</li> <li>• Maintain safe separation distance of personnel from dozers, especially downhill.</li> <li>• Evaluate ground and trees in work area before beginning work</li> <li>• Use caution on ground adjacent to stump holes</li> <li>• Mop Up to the degree necessary to make the likelihood of fire escape very low</li> </ul>
ALL	Driving Hazards	<ul style="list-style-type: none"> <li>• Practice defensive driving at all times.</li> <li>• Adhere To 30 mph speed limit on forest roads</li> <li>• Drive with headlights on.</li> <li>• Be alert for wildlife and livestock on roads at all times.</li> <li>• Slow down on washboard surfaces.</li> <li>• Avoid gravel berms on the sides of roadways.</li> <li>• Increase following distances on dusty roads. Slow down when you meet opposing traffic.</li> <li>• Maintain Situational Awareness.</li> </ul>
ALL	Severe Fire Behavior	<ul style="list-style-type: none"> <li>• Review "Severe Fire Behavior Potential" (IRPG p.68).</li> <li>• Monitor current weather conditions and forecasts. Make sure all personnel receive thorough briefings every shift.</li> <li>• Be observant for formation and passage of pyro-cumulous cells over the fire area and alert all personnel.</li> <li>• Maintain adequate escape routes and safety zones. Advise all personnel if these are compromised or changed. Set trigger points when appropriate.</li> <li>• Adhere to 10 Std Orders, mitigate 18 situations.</li> <li>• Maintain Situational Awareness.</li> </ul>
ALL	Working around Dozers	<ul style="list-style-type: none"> <li>• Maintain safe separation distance of personnel from dozers, especially downhill.</li> <li>• Ensure dozers are supervised by qualified DOZB when required or when assignment necessitates.</li> </ul>

## INCIDENT SAFETY ANALYSIS 215a

ALL	Mines	<ul style="list-style-type: none"> <li>• Identify and avoid mining areas</li> <li>• Notify others of mining hazards and flag</li> <li>• Be aware of vertical vent shafts, indicators may be slight indentations in terrain</li> <li>• Watch for and keep out of any horizontal adits or shafts that may be located into the side of a ridge or mountain</li> </ul>
ALL	Work/Rest and Fatigue	<ul style="list-style-type: none"> <li>• Be alert for signs of fatigue and take breaks as necessary.</li> <li>• Maintain 2:1 work/rest ratio.</li> <li>• Monitor incoming resources for level of fatigue.</li> </ul>
ALL	Hydration	<ul style="list-style-type: none"> <li>• Encourage drinking water before, during and after shifts, up to 1.5 gal. during shifts.</li> <li>• Be alert for signs of heat stress in yourself and others.</li> </ul> <p>Do not hydrate with energy type drinks</p>
ALL	Line Construction	<ul style="list-style-type: none"> <li>• Conduct thorough briefing for all personnel involved (inside rear cover IRPG).</li> <li>• Ensure LCES in place prior to engagement (IRPG p. 9).</li> <li>• Establish adequate safety zones (IRPG p.8).</li> <li>• Use Downhill Line Checklist (IRPG p. 9).</li> <li>• Follow "Look Up, Look Down, Look Around" procedures (IRPG p. 3-4).</li> <li>• Utilize Risk Management Process (IRPG p.1).</li> </ul>
ALL	Burning Operations	<ul style="list-style-type: none"> <li>• Conduct thorough briefing for all personnel involved (inside rear cover IRPG).</li> <li>• All personnel to be fully qualified for their assignments. Trainees must have qualified trainers.</li> <li>• Utilize Risk Mgmt. Process (IRPG p. 1) for implementing plan.</li> <li>• Required PPE to be worn by all personnel involved.</li> <li>• LCES must be established prior to implementing burning operations (IRPG p. 7).</li> </ul>
ALL	Structure Protection & HazMat Issues	<ul style="list-style-type: none"> <li>• Conduct thorough briefing for all personnel involved (inside rear cover IRPG).</li> <li>• Utilize Structure Assessment Checklist (IRPG p.14)</li> <li>• Follow structure Protection Guidelines (IRPG p. 16)</li> </ul>
ALL	Foot Travel	<ul style="list-style-type: none"> <li>• When walking through steep, rocky, and possibly wet terrain, watch footing and maintain proper spacing.</li> <li>• Watch for over-head hazards.</li> <li>• Treat "hot spots" on your feet before they become blisters.</li> <li>• Maintain downhill tool placement.</li> </ul>
Zone 1	Spike Camps	<ul style="list-style-type: none"> <li>• Ensure camps are clean of trash to avoid attracting wildlife</li> <li>• Keep sleeping areas are clear of snags and other tripping hazards</li> <li>• Have hand sanitizers and body cleaning products to prevent illness</li> <li>• Have a GPS spike locations in the incident 204 and with the Situation Unit</li> <li>• Have night contact/communications plans in place</li> </ul>
ALL	Wildlife & Livestock	<ul style="list-style-type: none"> <li>• Watch out for wildlife &amp; livestock inside fire area and along roadways.</li> <li>• Clean up all debris and trash during each operational period and dispose of in receptacles</li> <li>• Do not throw food from lunches out on the fireline</li> </ul>
Zone:1	Marijuana Grow Site	<ul style="list-style-type: none"> <li>• Be alert for signs such as, irrigation drip lines, chemicals, herbicides and fertilizers, trip wires or booby traps</li> <li>• Leave the route you entered</li> <li>• Once clear of the area, notify Law Enforcement, Division and Operations</li> <li>• Do not approach individual in sites</li> </ul>

INCIDENT RADIO COMMUNICATIONS PLAN		Incident Name KING, CA-ENF-023461 - ZONE 1				BK RADIO GROUP GROUP 14		Operational Period Date/Time 9/27/14 NIGHT	
Ch #	Function	Channel Name/Trunked Radio System Talkgroup	Assignment	RX Freq N or W	RX Tone/NAC	TX Freq N or W	TX Tone/NAC	Mode A, D or M	Remarks
1	COMMAND	NIFC C4	ZONE 1 CMD	166.6125 N	136.5	168.4000 N	136.5	A	Little Bald Mtn. / Duncon L.O.
2	COMMAND	NIFC C11	ZONE 1 CMD	170.6875 N	136.5	166.5750 N	136.5	A	Bunker Hill L.O.
3	COMMAND	NIFC C59	ZONE 1 CMD	164.8375 N	136.5	170.0500 N	136.5	A	Mt. Mildred
4	COMMAND	NIFC C61	ZONE 1 CMD	164.8625 N	136.5	170.3875 N	136.5	A	Robbs Peak
5	TACTICAL	NIFC T1	DIV 1R/1T/1U/1W	168.0500 N		168.0500 N		A	
6	TACTICAL	NIFC T10	DIV 1M/1P	168.5000 N		168.5000 N		A	
7	TACTICAL	NIFC T5	Unassigned	166.7250 N		166.7250 N		A	
8	TACTICAL	NIFC T6	DIV 1H/1K/1L	166.7750 N		166.7750 N		A	
9	TACTICAL	NIFC T7	DIV 1B/1D/1F	168.2500 N		168.2500 N		A	
10	TACTICAL	R5 T4	Unassigned	166.5500 N		166.5500 N		A	
11	TACTICAL	R5 T5	DIV 1Y & 1Z	167.1125 N		167.1125 N		A	Rehab / Repair
12	TACTICAL	R5 T6	Contingency Branch	168.2375 N		168.2375 N		A	Contingency & Roads
13	AIR TO GROUND	A/G CMD	ALL DIVISIONS	169.1500 N		169.1500 N		A	A/G COMMAND
14	AIR TO GROUND	A/G TAC	ALL DIVISIONS	167.9500 N		167.9500 N		A	A/G TACTICAL
15	MEDICAL	CALCORD	ALL DIVISIONS	156.0750 N		156.0750 N	156.7	A	MEDICAL COORDINATION
16	EMERGENCY ONLY	Air Guard	ALL DIVISIONS	168.6250 N		168.6250 N	110.9	A	AIR GUARD - EMERGENCY
17								A	
18								A	
19								A	
20	EMERGENCY ONLY	Air Guard	ALL DIVISIONS	168.6250 N		168.6250 N	110.9	A	AIR GUARD - EMERGENCY

Prepared By (Communications Unit)

TIM MAGUIRE, COM1 (t)



Incident Location: Foresthill, CA

County: Placer State: CA Latitude 39°1.17' N, Longitude 120° 49.77' W

The convention calls for frequency lists to show four digits after the decimal place, followed by either an "N" or a "W", depending on whether the frequency is narrow or wide band. Mode refers to either "A" or "D" indicating analog or digital (e.g. Project 25) or "M" indicating mixed mode. All channels are shown as if programmed in a control station, mobile or portable radio. Repeater and base stations must be programmed with the Rx and Tx reversed.

**INCIDENT RADIO COMMUNICATIONS PLAN**

Incident Name: **KING, CA-ENF-023461 - ZONE 2**

BK RADIO GROUP: **GROUP 15**

Operational Period/Date/Time: **9/27/14 0700 hrs. - 9/28/14 0700 hrs.**

Ch #	Function	Channel Name/Trunked Radio System/Talkgroup	Assignment	RX Freq N or W	RX Tone/NAC	TX Freq N or W	TX Tone/NAC	Mode A, D or M	Remarks
1	COMMAND	NIFC C5	ZONE 2 ALL DIV	167.1000 N	146.2	169.7500 N	146.2	A	TONE 5 - BALD MT. - LINKED
2	COMMAND	NIFC C12	ZONE 2 ALL DIV	173.0375 N	146.2	167.3250 N	146.2	A	TONE 5 - BIG MT. - LINKED
3	COMMAND	NIFC C37	ZONE 2 ALL DIV	172.5500 N	146.2	162.1875 N	146.2	A	TONE 5 - UNION HILL - LINKED
4	COMMAND	NIFC C60	ZONE 2 ALL DIV	167.0825 N	146.2	173.0250 N	146.2	A	TONE 5 - ROBBS PK - LINKED
5	COMMAND	NIFC C56	ZONE 2 ICP	164.1375 N	146.2	169.9500 N	146.2	A	TONE 5 - ICP USED ONLY
6	TACTICAL	VFIRE 24	DIV BB/T	154.2725 N	156.7	154.2725 N	156.7	A	
7	TACTICAL	VFIRE 25	DIV A/U	154.2875 N	156.7	154.2875 N	156.7	A	
8	TACTICAL	VFIRE 26	DIV D/E	154.3025 N	156.7	154.3025 N	156.7	A	
9	TACTICAL	VTAC 11	DIV W	151.1375 N	156.7	151.1375 N	156.7	A	
10	TACTICAL	VTAC 12	DIV G/Y	154.4525 N	156.7	154.4525 N	156.7	A	
11	TACTICAL	VTAC 13	SUPPRESSION REPAIR	158.7375 N	156.7	158.7375 N	156.7	A	
12	TACTICAL	VTAC 14	ROAD GROUP	159.4725 N	156.7	159.4725 N	156.7	A	
13	AIR TO GROUND	AVG OMD	ALL DIVISIONS	169.1500 N		169.1500 N		A	AVG COMMAND
14	AIR TO GROUND	AVG TAC	ALL DIVISIONS	167.9500 N		167.9500 N		A	AVG TACTICAL
15	MEDICAL	CALCORD	ALL DIVISIONS	156.0750 N		156.0750 N	156.7	A	MEDICAL COORDINATION
16	EMERGENCY ONLY	GUARD	ALL DIVISIONS	168.6250 N		168.6250 N	110.9	A	AIR GUARD - EMERGENCY
17								A	
18								A	
19								A	
20	EMERGENCY ONLY	GUARD	ALL DIVISIONS	168.6250 N		168.6250 N	110.9	A	AIR GUARD - EMERGENCY

Prepared By (Communications Unit): *Ken Parker, COMML*

Incident Location: **Placerville, CA**

County: **El Dorado** State: **CA** Latitude Longitude **N W**

The convention calls for frequency lists to show four digits after the decimal place, followed by either an "N" or a "W", depending on whether the frequency is narrow or wide band. Mode refers to either "A" or "D" indicating analog or digital (e.g. Project 25) or "M" indicating mixed mode. All channels are shown as if programmed in a control station, mobile or portable radio. Repeater and base stations must be programmed with the Rx and Tx reversed.



# MEDICAL PLAN

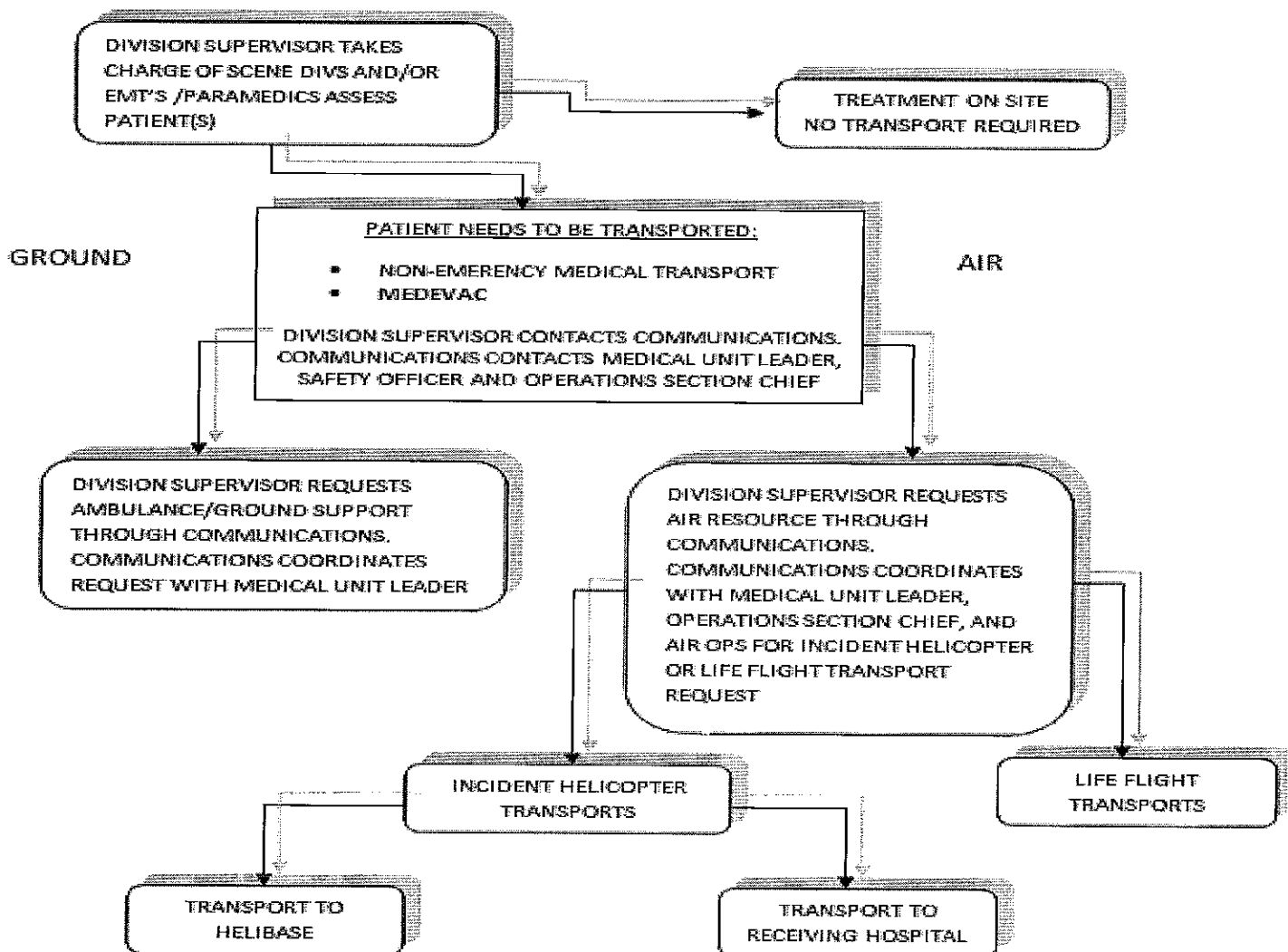
<b>1. Incident/Project Name</b>		<b>2. Operational Period</b>			
King Fire - Zone 1 (North)		Date/Time <b>9/27/2014 1800 - 0600</b>			
<b>2. Aid Station</b>					
Name	Complete Address	Phone/EMS Freq.	Advanced Life Support (ALS)		
			Yes	No	
King ICP Zone 1 Frontline Medical	Foresthill Old Mill Site 23850 Foresthill Rd., Foresthill, CA 95631		XX		
Sunset Spike Camp Frontline Medical	Union Valley Reservoir - East side 14 mi. north of Hwy 50 on Ice House Road		XX		
<b>3. Ambulance Services</b>					
Name	Complete Address	Phone/EMS Freq	Advanced Life Support (ALS)		
			Yes	No	
Eldorado County EMS (Z2) Medic 248	Eldorado County Fire Station 17 6426 Pony Express Trail, Pollock Pines, CA	911 or 530-647-5220	XX		
Foresthill Fire Department (Z1) Medic 89 (French Meadows)	Foresthill FPD FS 88 5981 Gold St. Foresthill, CA	911 or 530-886-5375	XX		
Georgetown FPD (Z2) Medic 61	Georgetown FPD Station 61 6281 Main St, Georgetown, CA 95634	911 or 530-647-5220	XX		
AMR Ambulance (Z1) Medic 290	DP 109	916 563-0666	XX		
AMR Ambulance (Z1) Medic 291	Zone 1 ICP	916 563-0666	XX		
Ebbetts Pass Fire District (Z1) Medic 431	Sunset Spike Camp	209 985-5244	XX		
<b>4. Air Ambulance Services</b>					
Name	Phone	Type of Aircraft & Capability			
CAL FIRE H-104 Placerville, CA (Daytime Only)	911 or 530-647-5220	Bell 205++ Hoist, No NVG, BLS			
Kern County (KRN) H-408 Grass Valley, CA	911 or 530-647-5220	Bell 205++ Hoist, NVG, ALS			
CHP H20 or H24 Auburn, CA	911 or 916-861-1299	Eurocopter B3 Hoist, ALS, No NVG			
CALSTAR 3 Auburn, CA	911 or 530-887-0569	BO 105LS/C-30			
CAL STAR 6 South Lake Tahoe, CA	911 or 530-887-2338	BO 105LS/C-30			
<b>5. Hospitals</b>					
Name Complete Address	GPS Datum - NAD 83 Degrees Decimal Minutes DD° MM.MMM' N - Lat DD° MM.MMM' W - Long	Travel Time Air Gnd	Phone	Helipad Yes No	Level of Care Facility
Marshal Medical Center 1100 Marshall Way, Placerville, CA 95667	Lat: N/A Long: VHF: N/A	1 Hr	(530) 622-1441	X	Level III Trauma Center
Sutter Auburn Faith Hosp. 11815 Education St. Auburn, CA, 95602	Lat: N/A Long: VHF: N/A	30 Min	(530) 888-4500	X	
Sutter Roseville Medical Ctr 1 Medical Plaza Dr, Roseville, CA 95661	Lat: 38 45.58 Long: 121 14.52 VHF:	25 Min 45 Min	(916) 781-1800	X <input type="checkbox"/>	Level II Trauma Center
UC Davis Medical Center 2315 Stockton Ave. Sacramento, CA 95817	Lat: 38 33.17 Long: 121 27.21 VHF:	25 Min 1 Hr	(916) 703-6576	X <input type="checkbox"/>	Level I Trauma Center Burn Center
Barton Memorial Hospital 2170 South Ave. South Lake Tahoe, CA 96158	Lat: 38 54.40 Long: 119 59.48 VHF:	30 Min 2.5 Hr	(530) 541-3420	X <input type="checkbox"/>	
Renown Regional Medical Center 1155 Mill St Reno, NV	Lat: 39 31 32 Long: 119 47 44 VHF:	45 Min 2 Hr	(775) 982-4100	X <input type="checkbox"/>	Level II Trauma Center Burn Center
<b>6. Prepared By</b> (Medical Unit Leader)					
<b>7. Date/Time</b>		<b>8. Reviewed By</b> (Safety Officer)		<b>9. Date/Time</b>	
Robert Russel MEDL Newton Ong MEDL-T		Steve Byberg-SOF I		09/27/2014 1200	

When an injury occurs, initiate care with available resources at scene and notify DIVS.

The DIVS shall coordinate the incident and direct necessary actions. The following steps shall be taken to mitigate the incident:

1. Determine the nature of the emergency.
2. If the emergency is a medical injury/illness, determine if the injury/illness is life threatening.
3. If the injury is life threatening, then clear designated frequency for emergency traffic.
4. Identify the on-scene point of contact by position.
5. Ensure that the Medical Unit Leader is contacted immediately.
6. Identify number injured, patient assessment(s) and location (geographic and/or GPS coordinates).
7. Identify on-scene medical personnel by position and last name (i.e. EMT Jones).
8. Identify preferred method of patient transport.
9. Determine any additional resources or equipment needed.

The Evacuation Plan should be continually evaluated, and contingencies developed in the event the first plan is not effective.



## Medical Incident Report

**FOR ALL MEDICAL EMERGENCIES: IDENTIFY ON SCENE INCIDENT COMMANDER BY NAME AND POSITION AND ANNOUNCE "MEDICAL EMERGENCY" TO INITIATE RESPONSE FROM IMT COMMUNICATIONS/DISPATCH.**

**Use items one through nine to communicate situation to communications/dispatch.**

**1. CONTACT COMMUNICATIONS/DISPATCH**

*Ex: "Communications, Div. Alpha. Stand-by for Priority Medical Incident Report." (If life threatening request designated frequency be cleared for emergency traffic.)*

**2. INCIDENT STATUS:** Provide incident summary and command structure.

<b>Nature of Injury/Illness</b>		<i>Describe the injury (Ex: Broken leg with bleeding)</i>
Incident Name		<i>Geographic Name + "Medical" (Ex: Trout Meadow Medical)</i>
Incident Commander		<i>Name of IC</i>
Patient Care		<i>Name of Care Provider (Ex: EMT Smith)</i>

**3. INITIAL PATIENT ASSESSMENT:** Complete this section for each patient. This is only a brief, initial assessment. Provide additional patient info after completing this 9 Line Report.

Number of Patients:	Male / Female	Age:	Weight:
Conscious? <input type="checkbox"/> YES <input type="checkbox"/> <b>NO = MEDEVAC!</b>			
Breathing? <input type="checkbox"/> YES <input type="checkbox"/> <b>NO = MEDEVAC!</b>			
Mechanism of Injury: <i>What caused the injury?</i>			
Lat/Long (Datum WGS84) <i>Ex: N 40° 42.45' x W 123° 03.24'</i>			

**4. SEVERITY OF EMERGENCY, TRANSPORT PRIORITY**

SEVERITY	TRANSPORT PRIORITY
<input type="checkbox"/> <b>URGENT-RED Life threatening injury or illness.</b> <i>Ex: Unconscious, difficulty breathing, bleeding severely, 2° - 3° burns more than 4 palm sizes, heat stroke, disoriented.</i>	Ambulance or MEDEVAC helicopter. Evacuation need is <b>IMMEDIATE.</b>
<input type="checkbox"/> <b>PRIORITY-YELLOW Serious Injury or illness.</b> <i>Ex: Significant trauma, not able to walk, 2° - 3° burns not more than 1-2 palm sizes.</i>	Ambulance or consider air transport if at remote location. Evacuation may be <b>DELAYED.</b>
<input type="checkbox"/> <b>ROUTINE-GREEN</b> Not a life threatening injury or illness. <i>Ex: Sprains, strains, minor heat-related illness.</i>	Non-Emergency. Evacuation considered <b>Routine of Convenience.</b>

**5. TRANSPORT PLAN:**

**Air Transport:** (Agency Aircraft Preferred)

<input type="checkbox"/> Helispot	<input type="checkbox"/> Short-haul/Hoist	<input type="checkbox"/> Life Flight	<input type="checkbox"/> Other
<b>Ground Transport:</b> Click here to enter text.			
<input type="checkbox"/> Self-Extract	<input type="checkbox"/> Carry-Out	<input type="checkbox"/> Ambulance	<input type="checkbox"/> Other

**6. ADDITIONAL RESOURCE/EQUIPMENT NEEDS:**

<input type="checkbox"/> Paramedic/EMT(s)	<input type="checkbox"/> Crew(s)	<input type="checkbox"/> SKED/Backboard/C-Collar
<input type="checkbox"/> Burn Sheet(s)	<input type="checkbox"/> Oxygen	<input type="checkbox"/> Trauma Bag
<input type="checkbox"/> Medication(s)	<input type="checkbox"/> IV/Fluid(s)	<input type="checkbox"/> Cardiac Monitor/AED
<input type="checkbox"/> Other (i.e. splints, rope rescue, wheeled litter)		

**7. COMMUNICATIONS:**

Function	Channel Name/Number	Receive (Rx)	Tone/NAC *	Transmit (Tx)	Tone/NAC *
<i>Ex: Command</i>	<i>Forest Rpt, Ch. 2</i>	<i>168.3250</i>	<i>110.9</i>	<i>171.4325</i>	<i>110.9</i>
COMMAND					
AIR-TO-GRND					
TACTICAL					

\*(NAC for digital radio system)

**8. EVACUATION LOCATION:**

Lat/Long (Datum WGS84) <i>EX: N 40 42.45' x W 123 03.24'</i>	
Patient's ETA to Evacuation Location:	

**Considerations:** If primary options fail, what actions can be implemented in conjunction with primary evacuation method? Be thinking ahead...

**REMEMBER:** Confirm ETA's of resources ordered  
Act according to your level of training  
Be Alert. Keep Calm. Think Clearly. Act Decisively.

Division - As Assigned	Area Location Capability	
Branch X, DIV 1B, 1D 12 Hour (night)	EMS Responders & Capability:	FEMP Kevin Berkery, FEMT Don McLaughlin
	Equipment Available on Scene:	ALS/BLS supplies
	Medical Emergency Channel:	Calcord 156.0750 Tone 6 (156.7) tx/rx
	ETA for Ambulance to Scene:	
	Air:	
	Ground:	45 min
	Approved Helispot:	None Identified
	Lat: Long:	
Branch X, DIV 1H, 1L 12 Hour (night)	Area Location Capability	
	EMS Responders & Capability:	FEMP Travis Medina, FEMT Nick Martino
	Equipment Available on Scene:	ALS/BLS supplies
	Medical Emergency Channel:	Calcord 156.0750 Tone 6 (156.7) tx/rx
	ETA for Ambulance to Scene:	
	Air:	
	Ground:	30 min.
	Approved Helispot:	None identified
Lat: Long:		
Branch XVI, DIV 1Y, 1Z 12 Hour (night)	Area Location Capability	
	EMS Responders & Capability:	FEMP Chad Meketarian, FEMT Sean Tierney
	Equipment Available on Scene:	ALS/BLS supplies
	Medical Emergency Channel:	Calcord 156.0750 Tone 6 (156.7) tx/rx
	ETA for Ambulance to Scene:	
	Air:	
	Ground:	30 min
	Approved Helispot:	None identified
Lat: Long:		
	Area Location Capability	
	EMS Responders & Capability:	
	Equipment Available on Scene:	ALS/BLS supplies
	Medical Emergency Channel:	Calcord 156.0750 Tone 6 (156.7) tx/rx
	ETA for Ambulance to Scene:	
	Air:	
	Ground:	1 Hr
	Approved Helispot:	None identified
Lat: Long:		
	Area Location Capability	
	EMS Responders & Capability:	
	Equipment Available on Scene:	ALS/BLS supplies
	Medical Emergency Channel:	Calcord 156.0750 Tone 6 (156.7) tx/rx
	ETA for Ambulance to Scene:	
	Air:	
	Ground:	1 Hr
	Approved Helispot:	None identified
Lat: Long:		



## **Human Resource Message King Fire**

### **Platinum Rule**

**Treat others as they would like to be treated.**



**Your attitude affects those around you.  
If you want a better environment,  
start with yourself.**

I am the inferior of any man whose rights I trample underfoot.  
-- Horace Greeley

If you have issues, report them to your supervisor. If you need additional help, contact the Human Resources Specialist Office located on Main Street (next to Documentation).

Office Number (530) 367-8899  
Marilyn Loughrey (925) 588-6711  
Tom Nichols (916) 878-8165

27 September 2014

# Incident Trainee / Trainer Data Worksheet

PLEASE PRINT LEGIBLY!

## A: Trainee Data

Trainee Name: \_\_\_\_\_ Check One:  Male  Female  
Trainee Position: \_\_\_\_\_ Order Number (E, O, C, A) \_\_\_\_--\_\_\_\_\_  
State Abr. \_\_\_\_ + 3 Letter Designator \_\_\_\_\_ Agency Type:  Federal  State  Local  
 USFS  BLM  BIA  FWS  DOD  NWS  NPS Date Assigned: \_\_\_\_--\_\_\_\_--\_\_\_\_\_  
Ordered as a trainee for the incident?  Yes  No Trainee Cell Number: \_\_\_\_\_  
Ordered as a US Forest Service PRIORITY trainee  Yes  No  OFPM  IFPM?

**Person's name and title that is responsible for tracking your qualifications:  
(Where do you want the packet mailed to?)**

Name: \_\_\_\_\_ Title: \_\_\_\_\_ Home Unit: \_\_\_\_\_  
Agency Address: \_\_\_\_\_ City: \_\_\_\_\_  
State: \_\_\_\_\_ Zip: \_\_\_\_\_ Phone Number: ( ) \_\_\_\_\_--\_\_\_\_\_

## B. Trainee Prerequisites

YES NO

- |  |                       |                       |
|--|-----------------------|-----------------------|
| 1. Possesses valid Red Card or agency certification card?    | <input type="radio"/> | <input type="radio"/> |
| 2. Trainee has a proper agency initiated position task book? | <input type="radio"/> | <input type="radio"/> |
| 3. Trainee has an <b>incident supplied</b> task book?        | <input type="radio"/> | <input type="radio"/> |

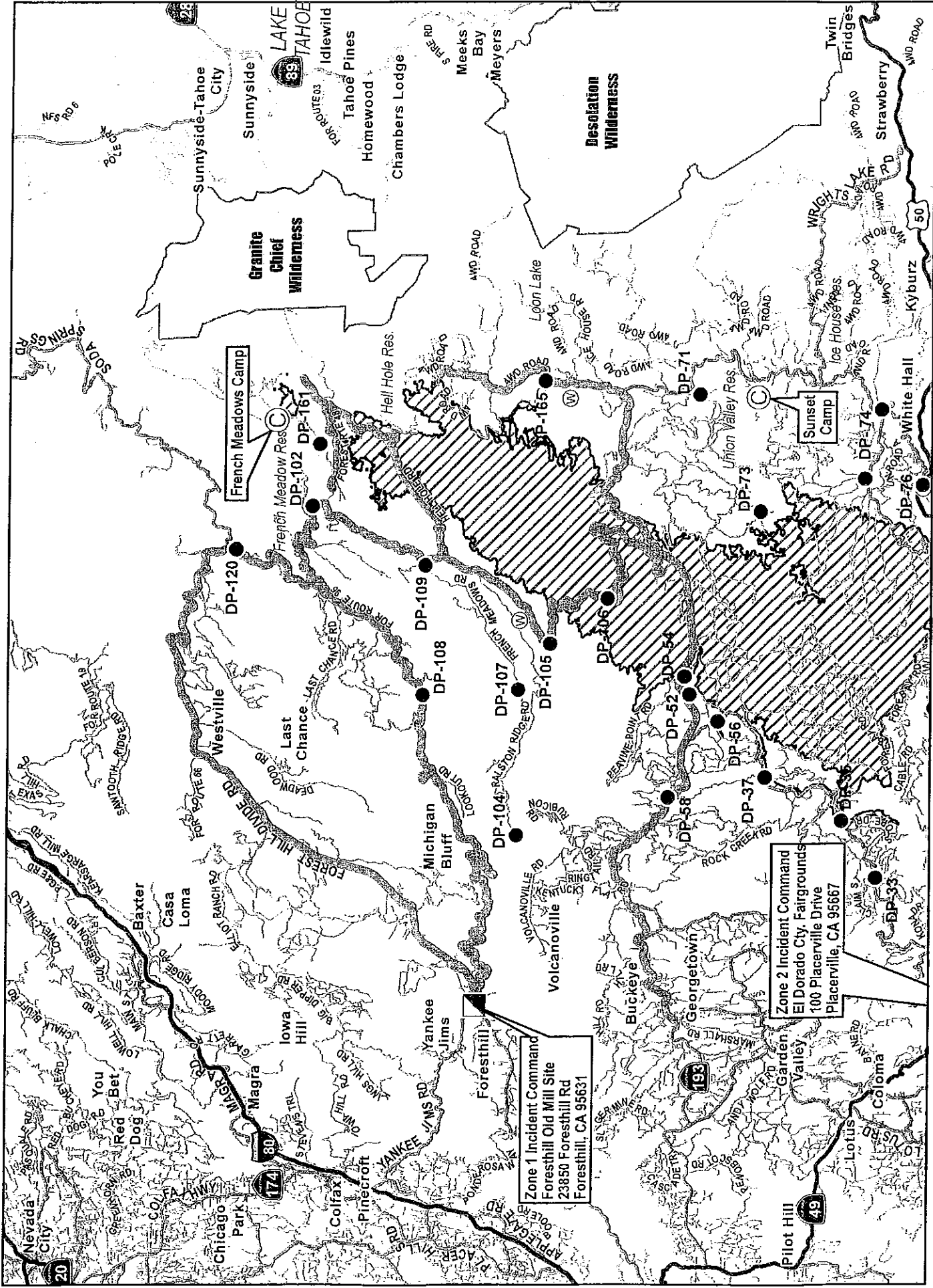
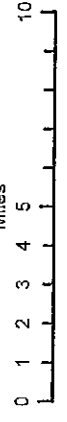
## C. Trainer/Evaluator Data (All fields are required to be filled in)

Trainer/Evaluator Name: \_\_\_\_\_ Position: \_\_\_\_\_  
Home Unit: \_\_\_\_\_ Order Number (E, O, C, A) \_\_\_\_--\_\_\_\_\_  
Work Address: \_\_\_\_\_ City: \_\_\_\_\_ State: \_\_\_\_\_  
Zip Code: \_\_\_\_\_ Phone Number: ( ) \_\_\_\_\_--\_\_\_\_\_

## D. Trainee Goals (items in the position task book to be evaluated on this incident)

1. \_\_\_\_\_
2. \_\_\_\_\_
3. \_\_\_\_\_





# TRANSPORTATION MAP

King Incident CA-ENF-023461

September 24, 2014

- Major Highways
- Highways
- Major Roads
- Minor Roads
- Zone 1 access routes
- Zone 2 access routes
- Camp
- Drop Point
- Water Source
- King Fire Pictan

Zone 1 Incident Command  
 Foresthill Old Mill Site  
 23850 Foresthill Rd  
 Foresthill, CA 95631

Zone 2 Incident Command  
 El Dorado City Fairgrounds  
 100 Placerville Drive  
 Placerville, CA 95667





