

CORRECTED

KING INCIDENT

Incident Action Plan

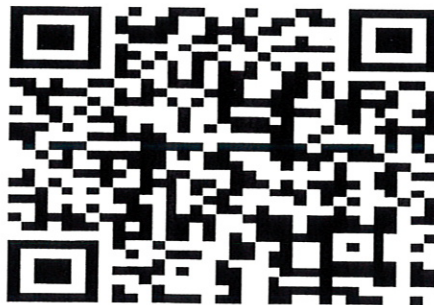
CA-ENF-023461

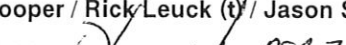
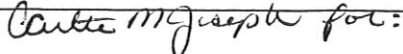
P5JEE9 (0503)

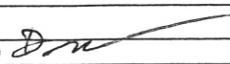
Operational Period

DAY SHIFT 9/28/14

0600 - 1800



INCIDENT OBJECTIVES	1. INCIDENT NAME	2. DATE PREPARED	3. TIME PREPARED
	KING (Zone 1)	9/27/14	2000
4. OPERATIONAL PERIOD (DATE/TIME) <p style="text-align: center;">DAY SHIFT 9/28/14 0600 - 1800</p>			
5. GENERAL CONTROL OBJECTIVES FOR THE INCIDENT Management Objectives: Provide for safety of responders and the public Establish and maintain positive relationships with cooperating agencies and the public Provide timely and accurate incident information Protect economic and watershed values with safe and aggressive firefighting efforts Keep costs commensurate with values at risk Continue with suppression repair as per the approved Suppression Repair Plan. Control Objectives: Keep the fire: North of Forebay Road and Highway 50 east of Pollock Pines East of Duncan Creek and the Middle Fork of the American River West of Ice House Road South of the Middle Fork of the American River			
6. WEATHER FORECAST FOR OPERATIONAL PERIOD <p style="text-align: center;">See Attached</p>			
7. GENERAL/SAFETY MESSAGE <p style="text-align: center;">See Attached</p>			
8. ATTACHMENTS (X IF ATTACHED)			
<input checked="" type="checkbox"/> 202	<input checked="" type="checkbox"/> SAFETY MESSAGE / LCES	<input checked="" type="checkbox"/> TRANSPORTATION MAP	
<input checked="" type="checkbox"/> 203	<input checked="" type="checkbox"/> WEATHER	<input checked="" type="checkbox"/> INCIDENT MAP	
<input checked="" type="checkbox"/> 204	<input checked="" type="checkbox"/> AIR OPERATIONS SUMMARY	<input checked="" type="checkbox"/> FIRE BEHAVIOR	
<input checked="" type="checkbox"/> 205	<input checked="" type="checkbox"/> HUMAN RESOURCE	<input checked="" type="checkbox"/> TRAINING	
<input checked="" type="checkbox"/> 206	<input checked="" type="checkbox"/> ICP / CAMP MAP	<input type="checkbox"/> FINANCE	
<input checked="" type="checkbox"/> 214	<input checked="" type="checkbox"/> FIRE WEATHER	<input checked="" type="checkbox"/> SUPPRESSION REPAIR PLAN	
ICS 202	9. PREPARED BY (PLANNING SECTION CHIEF) Dennis Cooper / Rick Leuck (t) / Jason Schillinger (t) 	10. APPROVED BY (INCIDNET COMMANDER) (Zone 1) (Zone 2) Jim Giachino / Kevin Smith 	

ORGANIZATION ASSIGNMENT LIST		
1. Incident Name: KING (ZONE 1)		
2. Date: 9/27/14	3. Time: 1800	
4. Operational Period: DAY SHIFT September 28, 2014 0600 - 1800		
Position	Name	
5. Incident Commander and Command Staff		
Incident Commander	Jim Giachino / Steve Millert (t)	
Deputy	Carlton Joseph	
Safety Officer	Marty Hamel / Steve Ryberg / Charlotte Jordan (t)	
Information Officer	Steve Kliest / Mark Savage (t)	
Liaison Officer	R. Alpert / R. Graham / W. McGrew / J. Jones	
6. Agency Representative		
Eldorado NF	Laurence Crabtree	
Eldorado NF Agency Admin Rep	John Exline	
Tahoe NF	Tom Quinn	
Tahoe NF Agency Admin Rep	Victor Lyon	
Cal OES	Bill Bondshu	
CAL FIRE Nevada-Yuba-Placer Unit	Randy Smith	
IARR Eastern Area	Jeffery Briggs	
IARR Northeastern Region	Robert Heartlove	
IARR Southern Region	Tom Barnes / Ed Bratcher / David Berens	
IARR Southwestern Region	Carlos Nosie / Louie Sandoval	
CAL TRANS	Dave Wood	
PG&E	Pam Purdee	
California Highway Patrol	Chris Sahagun	
Placer County Sheriff	Kevin Borden	
7. Planning Section		
Plans Chief	Dennis Cooper / Rick Leuck (t) / Jason Schillinger (t)	
Resources Unit	R. Ashby / J. Switzler / J. Wilson / E. Matye (t)	
Situation Unit	T. Morelock / M. McHargue / P. Kaiser	
Human Resources	Marilyn Loughrey / Tom Nichols	
READ	Courtney Rowe	
Fire Behavior	Shelly Crook / Denny O'Neil / Duane Weis	
Meteorologist	Jason Clapp	
GISS	Brad Weisshaupt / Eric Shreve (t)	
CTSP	Jim Youngblood / Chris Crowder (t)	
TNSP	Bill Reynolds	
DEMOB	Dan Baggao / Jim Cooley	
8. Logistics Section		
Logistics Chief	H. Crane / D. Haston / K. Kumpe (t)	
Supply Unit	Michael Bradford	
Facilities Unit	Jim Eckroth / Wally Grogan	
Ground Support Unit	John Badaracco	
Medical Unit	Robert Russell / Newton Ong (t)	
Food Unit	Dennis Durham	
Receiving/Distribution	Joe McMahon	
Communications Unit	Greg Ely / Tim Maguire (t)	
Ordering Manager	Sharon Porter	
9. Operations Section		
Ops Chief	Les Curtis / Steve Burns (t)	
Deputy Ops		
Planning Ops	Don Smith / Mike Sandwick	
Contingency Ops		
a. Branch X		
Branch Director	Dana D'Andrea / Jeb Pronto (t)	
Division	1B	David Buchanan / James White (t)
Division	1D	Bryan Brazzeal / Cory Johnson (t)
Division	1F	Jason Lambirth / Max Twombly
b. Branch XII		
Branch Director	Kelly Martin	
Division	1H	Erick Stahlin / Patrick Medina (t)
Division	1K	Unstaffed
Division	1L	Lincoln Peters / Ron Gregor (t)
c. Branch XIV		
Branch Director	Unstaffed	
Division	1M	Unstaffed
Division	1P	Unstaffed
d. Branch XVI		
Branch Director	Sean Johnson / Corey Rose (t)	
Division	1R	Unstaffed
Division	1T	Unstaffed
Division	1U	Aaron Riise
Division	1W	Chris Vero
Division	1Y	Kim Olson / David Soldavini (t)
Division	1Z	Justin Hanely / Shannon Myers (t)
f. Contingency Group		
Branch Director	Don Forsyth / Matt Conklin	
Group	American	Deano Esades / Jeff Goyings (t)
Group	Mosquito	Christopher Tate
Group	Ralston	David Carney
Group	Soda Springs	TBD
Group	Oxbow	Thomas Browning
g. Rehab / Repair Branch		
Branch	Russell Copp / Dan Bryant / Rainey Chung (t)	
Group	Charles Alluisi / Mark Darragh / Joel Kerley / Brooks Baker	
h. Tactical Resource Coordinator		
Group	Unstaffed	
i. Air Operations		
Air Operations Branch Director	John Keesee	
Air Support Supervisor	Craig Dado	
Helicopter Coordinator	Lane Caldwell / John Chin	
Heli Base Manager	Brad Bernardy	
10. Finance/Administration Section		
Finance/Admin. Chief	Teresa Fork / Peter Byrners	
Cost Appro.	Kenny Lucien	
Time Unit	Janice Brown	
Procurement Unit	Wendy Whiteman	
Compensation/Claims Unit	Elaine Downing	
Cost Unit	Roger Siemers	
Personnel Time Recorder	Debra Luna (t)	
Prepared by (Resource Unit Leader)	Eric Matye (t) 	



ZONE 1 FIRE WEATHER FORECAST



FORECAST NO: 24
PREDICTION FOR: Sunday Day SHIFT

INCIDENT NAME: King Fire
UNIT: Eldorado National Forest

SHIFT DATE: 28 September 2014

SIGNED: *Jason Clapp*

TIME AND DATE
FORECAST ISSUED: 2100 / 27 September 2014

Jason Clapp
Incident Meteorologist

WEATHER TODAY:

*****Showers Again and isolated Thunderstorms*****

WEATHER: Mostly cloudy with generally light showers with occasional heavier showers/thunderstorms beginning late morning with general amounts less than 0.25 and 0.40 under heavier storms. Westerly winds today and slightly warmer.

TEMPERATURES: 50-57 **Trend: Up 6 – 10**
RELATIVE HUMIDITY: 50-55% **Trend: Down 5%**

20 FT WINDS:

RIDGETOP – Morning winds NE 4-8 mph through 1000, shifting NNW throughout day of 5-8 mph with afternoon gusts 15 mph.

SLOPE/VALLEY – Downcanyon 3-7 mph and shift WNW 4-6 with gusts 10 mph around 1100.

LAL: 2. **STABILITY/INVERSION:** Weak inversions breaking in deep canyons by 1000.

WEATHER DISCUSSION: The slow moving Low still hangs around to the east of the fire today with a threat of more showers and some isolated thunderstorm activity. Warming and drying trend next week with drying NE winds Wednesday into Friday.

WEATHER FOR SUNDAY NIGHT: Mostly cloudy becoming partly cloudy as the shower potential finally draws to a close.

Low temperatures: Higher Elevations 36-40...Lower Elevations 39-43.

Max RH: Ridges 80-90%... Valleys 90-100%.

20FT Winds:

Ridge – NE 5-9 mph with gusts to 15 mph after 0200.

Slope/valley – Transition to downslope 3-6 mph. Downcanyon wind gusts 5-9 mph after 0200.

OUTLOOK FOR MONDAY: Partly cloudy. High temps: 60-66. Min RH: 40-50%. Ridge winds: NW winds from 5-8 with afternoon gusts 15 mph. Valley/Slope winds: Downslope 3-6 mph shifting upslope/upcanyon 5-9 mph late morning.

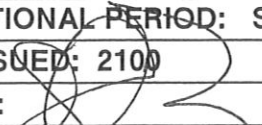
Weather Planning Matrix



Weather Observations



ZONE 1: KING FIRE NORTH - FIRE BEHAVIOR FORECAST

FORECAST NUMBER: #25	TYPE OF FIRE: Wildfire
FIRE NAME: King Fire	OPERATIONAL PERIOD: Sunday 9/28/2013 Day Shift
DATE ISSUED: September 27, 2014	TIME ISSUED: 2100
UNIT: Eldorado & Tahoe NF, CA State	SIGNED:  Shelly Crook - FBAN

INPUTS

WEATHER SUMMARY

(Refer to Weather Forecast for details) DAY: Mostly cloudy/overcast. 70% chance of thunderstorms with rain. Max Temp: 45-55°. Min RH: 50-60%. Ridgetop winds – E 3-6 mph in the AM to mid-day becoming W/NW 5-7 with gusts to 15 mph in the afternoon. Slope/Valley Winds – Upslope 2-4 mph becoming W/NW 4-6 mph with gusts to 10 mph in the afternoon.

FUELS

Predominantly mature mixed conifer with heavy shrub loading. Fuel loadings are generally heavy. Representative Fuel Models 9, 10, TU5, TL8, TL9. Live fuels moistures are dry; however the dead fuels have moistened up as a result of the rain from yesterday. Large fire history: Star Fire 2001, Ralston Fire 2007, Government and Westville 2008, American Fire 2013. Minimum fine dead fuel moisture: 10-12%, 1000 hr FMC: 10%, 10 hr FMC: 10-12%, Live fuel moisture: 55-65%.

OUTPUTS - FIRE BEHAVIOR

DAY SHIFT:

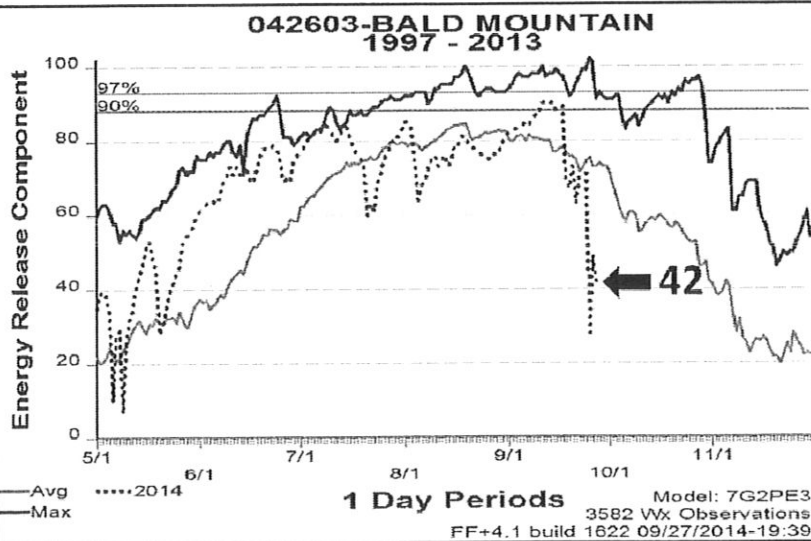
Thresholds for Active Fire Behavior in the King Fire area (Eldorado NF PocketCard):

* 20ft Winds (over 5 mph), *RH (under 22%), *Temperature (over 84°) and *1000hr FMC (under 9%).

Forecasted Indices (Bald Mt RAWs, FM-G) ERC: 41 (down 1) BI: 32 (up 4)

Maximum Fire Behavior Potential (head fire upslope): Rate of Spread: 1-3 chains/hour (1-3 feet/minute), Flame Length: 0-2 ft. Probability of Ignition: 20%. Maximum spotting distance of 500 ft.

Bald Mountain Actual ERC for 9/27



GENERAL for the Entire Zone 1 Fire Area:

In the past 3 days the entire fire area has received 1-2 inches of rain. As a result, expect today's fire behavior potential to be minimal, predominately smoldering heavy fuels within the interior with no perimeter spread across the entire North Zone. Heads up for snags and stump holes as the mopup efforts move further into the interior.

The heavy fuels will continue to hold heat for several days to several weeks. It is critical to ensure that entire fire perimeter, regardless of the type of containment line in place, is adequately mopped up. As we transition back into warm and dry conditions, any available fuel adjacent in close proximity to smoldering heavy fuels could pose a threat to the containment lines.

FEEDBACK: Collect WX obs hourly and turn in to FBAN or IMET at end of shift. Please include fire behavior observations.

AIR OPERATIONS

Cloudy/rainy conditions may limit operations. Plan accordingly. Sunrise at 0655. Sunset at 1851.

SAFETY

- Fire weakened green trees and snags are out there, be sure to look up before you look down.
- As the mop-up efforts progress to the interior of the fire, the threat of falling snags increases.
- "Money can't buy you happiness, but it does bring you a more pleasant form of misery." – Unknown

Division Assignment List	1. Branch X	2. Division/Group 1 B
---------------------------------	-----------------------	---------------------------------

3. Incident Name KING - ZONE 1	4. Operational Period 09/28/14 Sunday Day Shift 0600 - 1800
--	--

5. Operations Personnel

Operations Chief	LES CURTIS; STEVE BURNS (t)	Division/Group Supervisor	D. BUCHANAN; J. WHITE (t)
Contingency Ops Chief		Air Attack Supervisor	
Branch Director	DANA D'ANDREA; JEB PRONTO (t)	Safety Officer	M HAMEL; S. RYBERG; C. JORDAN (t)

6. Resources Assigned this Period

Strike Team/Task Force/ Resource Designator	Leader	Num of Pers.	Trans. Y/N	Drop Off PT./Time	Pick Up PT./Time
CRW T1 UKONOM IHC C-92 9/28	KEITH SMITH	19	N	SUNSET SPIKE 0800	SUNSET SPIKE 1800
CRW T1 SMITH RIVER IHC C-258 10/9	TIM MEMMER	21	N	SUNSET SPIKE 0800	SUNSET SPIKE 1800
T/F ENF KING #5				SUNSET SPIKE 0800	SUNSET SPIKE 1800
STEN O-661 10/2	JILL VUGTEVEEN	1	N	SUNSET SPIKE 0800	SUNSET SPIKE 1800
TFLD O-660 10/3	RYAN SANCHEY	1	N	SUNSET SPIKE 0800	SUNSET SPIKE 1800
TFLD O-711 10/3	CHET JENSEN (t)	1	N	SUNSET SPIKE 0800	SUNSET SPIKE 1800
ENG T6 UWF E-486 9/29	RYAN TAYLOR	3	N	SUNSET SPIKE 0800	SUNSET SPIKE 1800
ENG T6 E-344 10/1	COLTON MCCARTHY	3	N	SUNSET SPIKE 0800	SUNSET SPIKE 1800
ENG T6 PACIFIC OASIS E-342 9/30	KENT SMITH	3	N	SUNSET SPIKE 0800	SUNSET SPIKE 1800
ENG T6 E-356 9/30	BILL MACAULEY	3	N	SUNSET SPIKE 0800	SUNSET SPIKE 1800
ENG T6 FIRESTORM E-339 9/30	RON SARTAIN	3	N	SUNSET SPIKE 0800	SUNSET SPIKE 1800
DOZ T2 B. INGRAM CON E-554 10/5	BRUCE INGRAM	3	N	SUNSET SPIKE 0800	SUNSET SPIKE 1800
DOZ T2 BRAD INGRAM #10 E-555 10/5	JESSE GRIEVE	3	N	SUNSET SPIKE 0800	SUNSET SPIKE 1800
DOZ T2 DADCO CONST E-568 10/5	DOUGLAS MAGALIA	3	N	SUNSET SPIKE 0800	SUNSET SPIKE 1800
WT T1 WATER BY C E-259 9/30	JOHN CARMODY	1	N	SUNSET SPIKE 0800	SUNSET SPIKE 1800
FELB T1 E-445 10/5		2	N	SUNSET SPIKE 0800	SUNSET SPIKE 1800
FELB T1 E-446 10/4	CHARLES THOMSEN	2	N	SUNSET SPIKE 0800	SUNSET SPIKE 1800
FELB E-447 10/5	KEVIN SMITH	2	N	SUNSET SPIKE 0800	SUNSET SPIKE 1800
MAST T1 E-860 10/8	TIM BORGES	2	N	SUNSET SPIKE 0800	SUNSET SPIKE 1800
MAST T2 E-861 10/8	CLAYTON GRAHAM	2	N	SUNSET SPIKE 0800	SUNSET SPIKE 1800

7. Control Operations

Construct line to Rubicon River to secure fire edge. Fall snags and pile material for chipping from North Fire Rd. to the Rubicon River. Patrol and mop up to the degree necessary to make the likelihood of fire escape very low; based on experience, terrain, fuel types, and fuel conditions. Pull hose and equipment, return to supply. GPS all equipment being left on the line. Rehab per the Suppression Repair Plan. Coordinate with Zone 2, Division G.

8. Special Instructions

- a. Day and Night travel to line via Foresthill Rd. Return via Mosquito Ridge Rd.
- b. All Division Supervisors need to download information to the Sit Unit for all completed line and proposed line.
- c. Noxious weeds are marked by orange "noxious weed" flagging. Minimize or avoid activities in these areas.
- d. Sensitive areas are marked with pink/black checkerboard flagging. Minimize ground disturbing activities in these areas.
- e. Backhaul trash and equipment.

9. Division/Group Communications Summary

Function	Frequency - RX	Frequency - TX	Tone	System	Channel	System	Channel
Command	166.6125	168.4000	136.5	NIFC C4	1		
Tactical Div/Group	168.2500	168.2500		NIFC T7	9		
Logistics							
Air to Ground	169.1500	169.1500		A/G CMD	13		

Prepared by (Resource Unit Leader) J. Switzler ; E. Mayte (t); A. Uehara (t)	Approved by (Planning Section Chief) D. Cooper; R. Leuck (t); J. Schillinger (t)	Date Prepared 09/27/14	Time Prepared 1939
---	---	---------------------------	-----------------------

Division Assignment List	1. Branch X	2. Division/Group 1 B
---------------------------------	-----------------------	---------------------------------

3. Incident Name KING - ZONE 1	4. Operational Period 09/28/14 Sunday Day Shift 0600 - 1800
--	---

5. Operations Personnel

Operations Chief	LES CURTIS; STEVE BURNS (t)	Division/Group Supervisor	D. BUCHANAN ; J. WHITE (t)
Contingency Ops Chief		Air Attack Supervisor	
Branch Director	DANA D'ANDREA; JEB PRONTO (t)	Safety Officer	M.HAMEL; S.RYBERG; C.JORDAN (t)

6. Resources Assigned this Period

Strike Team/Task Force/ Resource Designator	Leader	Num of Pers.	Trans. Y/N	Drop Off PT./Time	Pick Up PT./Time
FALM O-883 10/5	RICHARD LOERZ	2	N	SUNSET SPIKE 0800	SUNSET SPIKE 1800
FALM O-876 10/2		1	N	SUNSET SPIKE 0800	SUNSET SPIKE 1800
FELB O-860 9/27	DAMON T NELSON	1	N	SUNSET SPIKE 0800	SUNSET SPIKE 1800
HEQB O-256 9/28	GORDON MEYER	1	N	SUNSET SPIKE 0800	SUNSET SPIKE 1800
SOF2 O-699 10/2	PEDRO VILLA	1	N	SUNSET SPIKE 0800	SUNSET SPIKE 1800
SOFR (t) O-40 9/29	JOHN MARTINEZ	1	N	SUNSET SPIKE 0800	SUNSET SPIKE 1800
FEMT O-757 10/4	MATT HECKMANN	1	N	SUNSET SPIKE 0800	SUNSET SPIKE 1800
FEMT O-756 10/4	JOHN P BICONDOVA	1	N	SUNSET SPIKE 0800	SUNSET SPIKE 1800
FOBS O-455 10/1	MICHAEL R CONNOLLY	1	N	SUNSET SPIKE 0800	SUNSET SPIKE 1800
FOBS (t) O-1086 10/2	RYAN A LOBRE	1	N	SUNSET SPIKE 0800	SUNSET SPIKE 1800
<i>CRW T2 Diamond C-40 10/1 Larry Ecklmen</i>		<i>20</i>	<i>N</i>		
<i>SKD2 E-910 10/9</i>					
<i>SKD2 E-911 10/8</i>					
<i>SKD2 E-912 A&F 10/8</i>					
<i>LOWB Elliott E-3 10/8</i>					
<i>HEQB O-833 10/5 Josh Williams</i>					
<i>HEQB O-837 10/5 James Dickerson (From Rehab/Repair)</i>					
<i>TFLD O-794 10/4 Clay Stephens</i>					

7. Control Operations
 Construct line to Rubicon River to secure fire edge. Fall snags and pile material for chipping from North Fire Rd. to the Rubicon River. Patrol and mop up to the degree necessary to make the likelihood of fire escape very low; based on experience, terrain, fuel types, and fuel conditions. Pull hose and equipment, return to supply. GPS all equipment being left on the line. Rehab per the Suppression Repair Guidelines. Coordinate with Zone 2, Division G.

- 8. Special Instructions**
- a. Day and Night travel to line via Foresthill Rd. Return via Mosquito Ridge Rd.
 - b. All Division Supervisors need to download information to the Sit Unit for all completed line and proposed line.
 - c. Noxious weeds are marked by orange "noxious weed" flagging. Minimize or avoid activities in these areas.
 - d. Sensitive areas are marked with pink/black checkerboard flagging. Minimize ground disturbing activities in these areas.
 - e. Backhaul trash and equipment.

9. Division/Group Communications Summary

Function	Frequency - RX	Frequency - TX	Tone	System	Channel	System	Channel
Command	166.6125	168.4000	136.5	NIFC C4	1		
Tactical Div/Group	168.2500	168.2500		NIFC T7	9		
Logistics							
Air to Ground	169.1500	169.1500		A/G CMD	13		

Prepared by (Resource Unit Leader) J. Switzler; E. Mayte (t); A.Uehara(t)	Approved by (Planning Section Chief) D. Cooper; R. Leuck (t); J. Schillinger (t)	Date Prepared 09/27/14	Time Prepared 1939
--	---	---------------------------	-----------------------

Final PSC 2

Division Assignment List		1. Branch X		2. Division/Group 1 D			
3. Incident Name KING - ZONE 1		4. Operational Period 09/28/14 Sunday Day Shift 0600 - 1800					
5. Operations Personnel							
Operations Chief	LES CURTIS; STEVE BURNS (t)		Division/Group Supervisor	BRYAN BRAZZEAL; CORY JOHNSON (t)			
Contingency Ops Chief			Air Attack Supervisor				
Branch Director	DANA D'ANDREA; JEB PRONTO (t)		Safety Officer	M.HAMEL;S.RYBERG;C JORDAN (t)			
6. Resources Assigned this Period							
Strike Team/Task Force/ Resource Designator	Leader	Num of Pers.	Trans. Y/N	Drop Off PT./Time	Pick Up PT./Time		
CRW T2IA PACIFIC OASIS C-26 9/28	KEN WILSON	16	N	SUNSET SPIKE 0600	SUNSET SPIKE 1800		
CRW T2IA NAVAJO SCTS 1 C-101 9/30	TERRY TSO	20	N	SUNSET SPIKE 0600	SUNSET SPIKE 1800		
CRW T2IA NAVAJO SCTS 2 C-4 9/30	ALTON JOHN	20	N	SUNSET SPIKE 0600	SUNSET SPIKE 1800		
CRW T2 PACIFIC OASIS C-46 9/30	WESLEY DODDS	20	N	SUNSET SPIKE 0600	SUNSET SPIKE 1800		
FALM TREE MASTER O-603 10/1		2	N	SUNSET SPIKE 0600	SUNSET SPIKE 1800		
FALM PRO PLUS O-604 10/2		2	N	SUNSET SPIKE 0600	SUNSET SPIKE 1800		
FALM CTS VENTURE INC. O-605 10/1		2	N	SUNSET SPIKE 0600	SUNSET SPIKE 1800		
FALM NORTH ZONE O-606		1	N	SUNSET SPIKE 0600	SUNSET SPIKE 1800		
FALB O-844 10/4	ROBERT W KRAMER	1	N	SUNSET SPIKE 0600	SUNSET SPIKE 1800		
FALB O-859 10/1	TERRY MCSHANE	1	N	SUNSET SPIKE 0600	SUNSET SPIKE 1800		
SOF2 O-699 10/2	PEDRO VILLA	1	N	SUNSET SPIKE 0600	SUNSET SPIKE 1800		
SOFR (t) O-40 9/29	JOHN MARTINEZ	1	N	SUNSET SPIKE 0600	SUNSET SPIKE 1800		
FEMP O-1089 9/29	JACOB SNOW	1	N	SUNSET SPIKE 0600	SUNSET SPIKE 1800		
FEMT O-971 10/6	WILLIAM KRON	1	N	SUNSET SPIKE 0600	SUNSET SPIKE 1800		
FOBS O-451 10/2	RICHARD RATCLIFF	1	N	SUNSET SPIKE 0600	SUNSET SPIKE 1800		
FOBS O-453 10/2	JEFFREY BOSTWICK	1	N	SUNSET SPIKE 0600	SUNSET SPIKE 1800		
<i>CRW T2 MQ Franco C-44 10/1</i>				<i>ICP</i>	<i>ICP</i>		
7. Control Operations							
Widen and improve existing secondary lines from Ramsey Crossing to French House. Patrol and mop up to the degree necessary to make the likelihood of fire escape very low; based on experience, terrain, fuel types, and fuel conditions. Pull hose and equipment, return to supply. GPS all equipment being left on the line. Rehab per the Suppression Repair Plan.							
8. Special Instructions							
<ul style="list-style-type: none"> a. Day and Night travel to line via Foresthill Rd. Return via Mosquito Ridge Rd. b. All Division Supervisors need to download information to the Sit Unit for all completed line and proposed line. c. Noxious weeds are marked by orange "noxious weed" flagging. Minimize or avoid activities in these areas. d. Sensitive areas are marked with pink/black checkerboard flagging. Minimize ground disturbing activities in these areas. e. Backhaul trash and equipment. 							
9. Division/Group Communications Summary							
Function	Frequency - RX	Frequency - TX	Tone	System	Channel	System	Channel
Command	166.6125	168.4000	136.5	NIFC C4	1		
Tactical Div/Group	168.5000	168.5000		NIFC T10	6		
Logistics							
Air to Ground	169.1500	169.1500		A/G CMD	13		
Prepared by (Resource Unit Leader) J. Switzler ; E. Mayte (t); A.Uehara (t)			Approved by (Planning Section Chief) D. Cooper; R. Leuck (t); J. Schillinger (t)		Date Prepared 09/27/14		Time Prepared 1940

Division Assignment List		1. Branch X	2. Division/Group 1 F			
3. Incident Name KING - ZONE 1		4. Operational Period 09/28/14 Sunday Day Shift 0600 - 1800				
5. Operations Personnel						
Operations Chief	LES CURTIS; STEVE BURNS (t)		Division/Group Supervisor	JASON LAMBIRTH; MAX TWOMBLY		
Contingency Ops Chief			Air Attack Supervisor			
Branch Director	DANA D'ANDREA; JEB PRONTO (t)		Safety Officer	M.HAMEL; S. RYBERG; C.JORDAN (t)		
6. Resources Assigned this Period						
Strike Team/Task Force/ Resource Designator	Leader	Num of Pers.	Trans. Y/N	Drop Off PT./Time	Pick Up PT./Time	
CRW T2IA SAN CARLOS C-5 9/30	THOMAS PATTEN	18	N	SUNSET SPIKE 0800	SUNSET SPIKE 1800	
CRW T2 GH RANCH C-42 9/30	LEONARD TOWNSEND	20	N	SUNSET SPIKE 0800	SUNSET SPIKE 1800	
CRW T2 GH RANCH C-41 9/30	ALLEN BACON	20	N	SUNSET SPIKE 0800	SUNSET SPIKE 1800	
CRW T2IA ALAMO RGLRS C-14 10/1	DARRELL EAVES	21	N	SUNSET SPIKE 0800	SUNSET SPIKE 1800	
CRW T2IA INTERTRIBAL #1 C-12 10/1	JACOB WISEHART	20	N	SUNSET SPIKE 0800	SUNSET SPIKE 1800	
ENG S/T 6632C E-535 10/5	ADOLPHO CASTRO	27	N	SUNSET SPIKE 0800	SUNSET SPIKE 1800	
ENG S/T T3 3675C E-533 10/3	SEAN JOHNNY	27	N	SUNSET SPIKE 0800	SUNSET SPIKE 1800	
ENG T/F KING #4				SUNSET SPIKE 0800	SUNSET SPIKE 1800	
TFLD O-662	CORY CALNAN	1	N	SUNSET SPIKE 0800	SUNSET SPIKE 1800	
STEN O-707 10/3	BEAU MACIAG (t)	1	N	SUNSET SPIKE 0800	SUNSET SPIKE 1800	
ENG T6 CPS 62 E-374	RYAN MORGAN	3	N	SUNSET SPIKE 0800	SUNSET SPIKE 1800	
ENG T6 TAHOE SAGE FIRE E-358	KEVIN STUDLEY	3	N	SUNSET SPIKE 0800	SUNSET SPIKE 1800	
ENG T6 HIGH SIERRA E-338	JERRY VICE <i>Tony Arce</i>	3	N	SUNSET SPIKE 0800	SUNSET SPIKE 1800	
ENG T6 HIGH SIERRA E-340	JACOB ROWSEY	3	N	SUNSET SPIKE 0800	SUNSET SPIKE 1800	
ENG T6 333 BLY MT FIRE E-355	MARK GROVES	3	N	SUNSET SPIKE 0800	SUNSET SPIKE 1800	
				<i>ICP</i>	<i>ICP</i>	

7. Control Operations

Widen and improve existing secondary line from French House to Anderson Dam. Construct line from Chipmunk Ridge from the 2 Rd. toward Hell Hole Reservoir. Patrol and mop up to the degree necessary to make the likelihood of fire escape very low; based on experience, terrain, fuel types, and fuel conditions. Pull hose and equipment, return to supply. GPS all equipment being left on the line. Rehab per the approved Suppression Repair Plan.

8. Special Instructions

- a. Day and Night travel to line via Foresthill Rd. Return via Mosquito Ridge Rd.
- b. All Division Supervisors need to download information to the Sit Unit for all completed line and proposed line.
- c. Noxious weeds are marked by orange "noxious weed" flagging. Minimize or avoid activities in these areas.
- d. Sensitive areas are marked with pink/black checkerboard flagging. Minimize ground disturbing activities in these areas.
- e. Backhaul trash and equipment.

9. Division/Group Communications Summary							
Function	Frequency - RX	Frequency - TX	Tone	System	Channel	System	Channel
Command	166.6125	168.4000	136.5	NIFC C4	1		
Tactical Div/Group	166.7250	166.7250		NIFC T5	7		
Logistics							
Air to Ground	169.1500	169.1500		A/G CMD	13		
Prepared by (Resource Unit Leader) J. Switzler ; E. Matye (t); A.Uehara (t)		Approved by (Planning Section Chief) D. Cooper; R. Leuck (t) ;J. Schillinger (t)			Date Prepared 09/27/14		Time Prepared 1653

Final POC 2

Division Assignment List		1. Branch X		2. Division/Group 1 F			
3. Incident Name KING - ZONE 1		4. Operational Period 09/28/14 Sunday Day Shift 0600 - 1800					
5. Operations Personnel							
Operations Chief	LES CURTIS; STEVE BURNS (t)		Division/Group Supervisor		JASON LAMBIRTH; MAX TWOMBLY		
Contingency Ops Chief			Air Attack Supervisor				
Branch Director	DANA D'ANDREA; JEB PRONTO (t)		Safety Officer		M.HAMEL;S. RYBERG;C.JORDAN (t)		
6. Resources Assigned this Period							
Strike Team/Task Force/ Resource Designator	Leader	Num of Pers.	Trans. Y/N	Drop Off PT./Time	Pick Up PT./Time		
WT T2 TNF 22 E-34 9/28	CHRISTOPHER LOW	4	N	SUNSET SPIKE 0800	SUNSET SPIKE 1800		
WT T2 E-924 10/8	SHAWN MITCHELL	2	N	SUNSET SPIKE 0800	SUNSET SPIKE 1800		
WT T2 E-926 10/8	BILL CRAWFORD	2	N	SUNSET SPIKE 0800	SUNSET SPIKE 1800		
CHIP E-580 10/5	TOM THOMAS	1	N	SUNSET SPIKE 0800	SUNSET SPIKE 1800		
FALM O-869 10/5	RANDY SHAULIS	1	N	SUNSET SPIKE 0800	SUNSET SPIKE 1800		
FALM O-881 10/5		2	N	SUNSET SPIKE 0800	SUNSET SPIKE 1800		
FELB O-856 10/7	CHASE MANESS	1	N	SUNSET SPIKE 0800	SUNSET SPIKE 1800		
FELB (t) O-902	MIKE CARTER	1	N	SUNSET SPIKE 0800	SUNSET SPIKE 1800		
FELB O-847 10/5	JOHN WALKER	1	N	SUNSET SPIKE 0800	SUNSET SPIKE 1800		
HEQB O-821 10/5	ANDREW CARR	1	N	SUNSET SPIKE 0800	SUNSET SPIKE 1800		
HEBQ O-841 10/5	LOREN BELL	1	N	SUNSET SPIKE 0800	SUNSET SPIKE 1800		
HEBQ O-244 9/30	ANDREW VALDEZ	1	N	SUNSET SPIKE 0800	SUNSET SPIKE 1800		
HEBQ O-262 9/30	TERRY WARLICK	1	N	SUNSET SPIKE 0800	SUNSET SPIKE 1800		
HEBQ (t) O-1029 10/2	RACHAEL HANSEN	1	N	SUNSET SPIKE 0800	SUNSET SPIKE 1800		
SOFR O-700 10/9	DONALD HOWARD FOCO	1	N	SUNSET SPIKE 0800	SUNSET SPIKE 1800		
FEMP O-677 9/29	NICK GABBARD	1	N	SUNSET SPIKE 0800	SUNSET SPIKE 1800		
FEMT O-429 10/1	MITCH CARNEY	1	N	SUNSET SPIKE 0800	SUNSET SPIKE 1800		
FOBS O-303 9/29	AMANDA SHOAF	1	N	SUNSET SPIKE 0800	SUNSET SPIKE 1800		
FOBS (t) O-1119 10/9	RICHARD J MORRIS (t)	1	N	SUNSET SPIKE 0800	SUNSET SPIKE 1800		
FOBS O-1120 10/10	ROBERT BERTOLINA	1	N	SUNSET SPIKE 0800	SUNSET SPIKE 1800		
7. Control Operations <i>DOZ T2 E-576 Rick Anderson Fisk Tree</i> Widen and improve existing secondary line from French House to Anderson Dam. Construct line from Chipmunk Ridge from the 2 Rd. toward Hell Hole Reservoir. Patrol and mop up to the degree necessary to make the likelihood of fire escape very low; based on experience, terrain, fuel types, and fuel conditions. Pull hose and equipment, return to supply. GPS all equipment being left on the line. Rehab per the approved Suppression Repair Plan. <i>DOZ T2 E-577 Fisk Tree Rick Anderson</i>							
8. Special Instructions <i>ENG S/T 1662C E-536</i> a. Day and Night travel to line via Foresthill Rd. Return via Mosquito Ridge Rd. b. All Division Supervisors need to download information to the Sit Unit for all completed line and proposed line. c. Noxious weeds are marked by orange "noxious weed" flagging. Minimize or avoid activities in these areas. d. Sensitive areas are marked with pink/black checkerboard flagging. Minimize ground disturbing activities in these areas. e. Backhaul trash and equipment.							
9. Division/Group Communications Summary							
Function	Frequency - RX	Frequency - TX	Tone	System	Channel	System	Channel
Command	166.6125	168.4000	136.5	NIFC C4	1		
Tactical Div/Group	166.7250	166.7250		NIFC T5	7		
Logistics							
Air to Ground	169.1500	169.1500		A/G CMD	13		
Prepared by (Resource Unit Leader) J Switzler ; E. Matye (t); A.Uehara (t)		Approved by (Planning Section Chief) D. Cooper; R. Leuck (t); J. Schillinger (t)		Date Prepared 09/27/14		Time Prepared 1653	

Division Assignment List			1. Branch XII		2. Division/Group 1 H			
3. Incident Name KING - ZONE 1			4. Operational Period 09/28/14 Sunday Day Shift 0600 - 1800					
5. Operations Personnel								
Operations Chief		LES CURTIS; STEVE BURNS (t)			Division/Group Supervisor			E. STAHLIN; P. MEDINA (t)
Contingency Ops Chief					Air Attack Supervisor			
Branch Director		KELLY MARTIN			Safety Officer		M. HAMEL; S. RYBERG; C. JORDAN (t)	
6. Resources Assigned this Period								
Strike Team/Task Force/ Resource Designator		Leader		Num of Pers.	Trans. Y/N	Drop Off PT./Time	Pick Up PT./Time	
CRW T2IA ANGORA PEAK C-173 10/3		JASON LA NIER		19	N	FRENCH SPIKE 0600	FRENCH SPIKE 1800	
CRW T2IA NORTHERN UTAH C-130 9/29		JOSH HAEN		20	N	FRENCH SPIKE 0600	FRENCH SPIKE 1800	
CRW T2IA GUNNISON C-177 9/29		NICHOLAS S OSTROM		19	N	FRENCH SPIKE 0600	FRENCH SPIKE 1800	
ENGINE - T3 - 371 - Z#4298 E-741		GRAHM RICE		26	N	FRENCH SPIKE 0600	FRENCH SPIKE 1800	
KING T/F #16						ICP 0600	ICP 1800	
TFLD O-792 10/4		KIRK HARRIS		1	N	ICP 0600	ICP 1800	
TFLD (t) O-951 10/5		JAMIE JALVING		1	N	ICP 0600	ICP 1800	
ENG T6 PAULA HOLTER E-333 9/30		PAULA HOLTER		3	N	ICP 0600	ICP 1800	
ENG T6 PAULA HOLTER E-334 9/30		CHUCK NEWBERRY		3	N	ICP 0600	ICP 1800	
ENG T6 PAULA HOLTER E-335 9/30		DON HOLTER		3	N	ICP 0600	ICP 1800	
ENG T6 PLATTE CANYON E-381 10/2		CODY COX		3	N	ICP 0600	ICP 1800	
ENG T4 HTF 413 E-484 9/30		JOHN STONELAKE		4	N	ICP 0600	ICP 1800	
ENG T4 E2411 E-485 9/28		NICKOLAUS MINK		4	N	ICP 0600	ICP 1800	
WT T2V NO STATE E-526 10/3		ALBERT EUCHTER		1	N	ICP 0600	ICP 1800	
WT T1 SPECE INDUSTRIAL E-126 9/30		STEVE ROOKS		4	N	ICP 0600	ICP 1800	
WT T1 TACTICAL E-3041				1	N	ICP 0600	ICP 1800	
TFLD (t) O-857 10/1		HANS CASPERSON		1	N	ICP 0600	ICP 1800	
TFLD O-808 10/5		ERIC BADER		1	N	ICP 0600	ICP 1800	
SOFR O-141 10/5		RICK CLARK		1	N	ICP 0600	ICP 1800	
SOFR (t) O-142 10/5		MANI BOUSLAUGH		1	N	ICP 0600	ICP 1800	
7. Control Operations								
Patrol and mop up to the degree necessary to make the likelihood of fire escape very low; based on experience, terrain, fuel types, and fuel conditions. Pull hose and equipment, return to supply. GPS all equipment being left on the line. Rehab per the Suppression Repair Plan.								
8. Special Instructions								
a. Day and Night travel to line via Foresthill Rd. Return via Mosquito Ridge Rd. b. All Division Supervisors need to download information to the Sit Unit for all completed line and proposed line. c. Noxious weeds are marked by orange "noxious weed" flagging. Minimize or avoid activities in these areas. d. Sensitive areas are marked with pink/black checkerboard flagging. Minimize ground disturbing activities in these areas. e. Backhaul trash and equipment.								
9. Division/Group Communications Summary								
Function	Frequency - RX	Frequency - TX	Tone	System	Channel	System	Channel	
Command	166.6125	168.4000	136.5	NIFC C4	1			
Tactical Div/Group	166.7750	166.7750		NIFC T6	8			
Logistics								
Air to Ground	169.1500	169.1500		A/G CMD	13			
Prepared by (Resource Unit Leader) J. Switzler; E. Mayte (t); A. Uehara (t)			Approved by (Planning Section Chief) D. Cooper; R. Leuck (t); J. Schillinger (t)			Date Prepared 09/27/14	Time Prepared 1653	

Division Assignment List	1. Branch	XVI	2. Division/Group	1 U
	3. Incident Name	KING - ZONE 1		
		4. Operational Period	09/28/14 Sunday Day Shift 0600 - 1800	

5. Operations Personnel			
Operations Chief	LES CURTIS; STEVE BURNS (t)	Division/Group Supervisor	AARON RIISE
Contingency Ops Chief		Air Attack Supervisor	
Branch Director	SEAN JOHNSON; COREY ROSE (t)	Safety Officer	M.HAMEL; S. RYBERG; C.JORDAN (t)

6. Resources Assigned this Period						
Strike Team/Task Force/ Resource Designator	Leader	Num of Pers.	Trans. Y/N	Drop Off PT./Time	Pick Up PT./Time	
CRW T1 MAD RIVER IHC C-159 10/5	CHARLES HAIR	19	N	SUNSET SPIKE 0600	SUNSET SPIKE 1800	
CRW T1 HELENA IHC C-246 9/30	FRED THOMPSON	20	N	SUNSET SPIKE 0600	SUNSET SPIKE 1800	
CRW T2IA ACOMA #1 C-131 9/30	ANDREW HENRY	20	N	SUNSET SPIKE 0600	SUNSET SPIKE 1800	
CRW T2IA CADDONATION C-144 10/4	GERALD MASON	20	N	SUNSET SPIKE 0600	SUNSET SPIKE 1800	
CRW T2IA N. ARIZONA C-143 9/28	CHRISTOPHER BROOKS	19	N	SUNSET SPIKE 0600	SUNSET SPIKE 1800	
CRW T2IA BIA EASTERN C-11 10/1	CHRISTOPHER NATSEWAY	20	N	SUNSET SPIKE 0600	SUNSET SPIKE 1800	
CRW T2IA MDS #3 C-15 9/30	PAUL SHANNON WOLFE	20	N	SUNSET SPIKE 0600	SUNSET SPIKE 1800	
CRW HEAPS PEAK HELITAK	BRENT OHLWILER	18	N	SUNSET SPIKE 0600	SUNSET SPIKE 1800	
CRW CHESTER HELITAK	TYLER WILLIAM	6	N	SUNSET SPIKE 0600	SUNSET SPIKE 1800	
CRW T2IA FOLSOM LAKE C-137 10/1	MATT LYNDE	19	N	SUNSET SPIKE 0600	SUNSET SPIKE 1800	
ENG T6 681 E-366 10/1	TODD LIKE	3	N	SUNSET SPIKE 0600	SUNSET SPIKE 1800	
DOZ T2 GEORGE WURLITZER E-560	GEORGE WURLITZER	2	N	SUNSET SPIKE 0600	SUNSET SPIKE 1800	
DOZ T2 WARNER E-564 10/6	DAN WARNER	2	N	SUNSET SPIKE 0600	SUNSET SPIKE 1800	
FALM COLD CREEK SVC O-874 10/3		3	N	SUNSET SPIKE 0600	SUNSET SPIKE 1800	
HEQB O-824 10/6	SAMUEL PFAHLER	1	N	SUNSET SPIKE 0600	SUNSET SPIKE 1800	
HEQB O-259 10/1	CHRIS COLT	1	N	SUNSET SPIKE 0600	SUNSET SPIKE 1800	
SOFR O-3234 10/8	GALE S GIRE	1	N	SUNSET SPIKE 0600	SUNSET SPIKE 1800	
FEMP O-976 9/29	TIM PRATT	1	N	SUNSET SPIKE 0600	SUNSET SPIKE 1800	
FEMT O-972 10/6	CHARLES MCGARY	1	N	SUNSET SPIKE 0600	SUNSET SPIKE 1800	

7. Control Operations
 Patrol and mop up to the degree necessary to make the likelihood of fire escape very low; based on experience, terrain, fuel types, and fuel conditions. Pull hose and equipment, return to supply. GPS all equipment being left on the line. Rehab per the Suppression Repair Plan.

- 8. Special Instructions**
- a. Day and Night travel to line via Foresthill Rd. Return via Mosquito Ridge Rd.
 - b. All Division Supervisors need to download information to the Sit Unit for all completed line and proposed line.
 - c. Noxious weeds are marked by orange "noxious weed" flagging. Minimize or avoid activities in these areas.
 - d. Sensitive areas are marked with pink/black checkerboard flagging. Minimize ground disturbing activities in these areas.
 - e. Backhaul trash and equipment.

9. Division/Group Communications Summary							
Function	Frequency - RX	Frequency - TX	Tone	System	Channel	System	Channel
Command	166.6125	168.4000	136.5	NIFC C4	1		
Tactical Div/Group	168.0500	168.0500		NIFC T1	5		
Logistics							
Air to Ground	169.1500	169.1500		A/G CMD	13		
Prepared by (Resource Unit Leader) J. Switzler; E. Mayte (t); A. Uehara (t)		Approved by (Planning Section Chief) D. Cooper ; R. Leuck (t) ; J. Schillinger (t)		Date Prepared 09/27/14		Time Prepared 1652	

Division Assignment List			1. Branch XVI		2. Division/Group 1 W		
3. Incident Name KING - ZONE 1			4. Operational Period 09/28/14 Sunday Day Shift 0600 - 1800				
5. Operations Personnel							
Operations Chief	LES CURTIS; STEVE BURNS (t)		Division/Group Supervisor		CHRIS VERO <i>Villa(t)</i>		
Contingency Ops Chief			Air Attack Supervisor				
Branch Director	SEAN JOHNSON; COREY ROSE (t)		Safety Officer		M.HAMEL; S.RYBERG; C. JORDAN (t)		
6. Resources Assigned this Period							
Strike Team/Task Force/ Resource Designator	Leader	Num of Pers.	Trans. Y/N	Drop Off PT./Time	Pick Up PT./Time		
CRW T2IA CAC #4 C-16 9/30 <i>To Rehab</i>	FON E BROWN	20	N	SUNSET SPIKE 0600	SUNSET SPIKE 1800		
CRW T2IA OHS #3 C-17 9/30	JEFFREY G TUCKER	20	N	SUNSET SPIKE 0600	SUNSET SPIKE 1800		
CRW T2IA RED ROCK C-39 9/28	BRANDON JOHNSON	20	N	SUNSET SPIKE 0600	SUNSET SPIKE 1800		
CRW T2IA PIMA #1 C-175 9/29	MARIO DIA	19	N	SUNSET SPIKE 0600	SUNSET SPIKE 1800		
ENG S/T 1663 C E-819 10/7	PETER STEPHENSON	27	N	SUNSET SPIKE 0600	SUNSET SPIKE 1800		
ENG S/T T3 5605 C E-538 10/3	VICTOR LEFOR	27	N	SUNSET SPIKE 0600	SUNSET SPIKE 1800		
T/F ENF KING #3 E-9021				SUNSET SPIKE 0600	SUNSET SPIKE 1800		
TFLD O-339 9/30	BRIAN MULHOLLEN	1	N	SUNSET SPIKE 0600	SUNSET SPIKE 1800		
ENG T6 E-380 10/1	DREW MAXWELL	2	N	SUNSET SPIKE 0600	SUNSET SPIKE 1800		
ENG6 CO MVP E-360 10/1	DANIEL DYER	3	N	SUNSET SPIKE 0600	SUNSET SPIKE 1800		
ENG T6 #3629 E-376 10/1	TRAVIS MOORE	3	N	SUNSET SPIKE 0600	SUNSET SPIKE 1800		
ENG T6 ARF #671 E-365 10/2	NICHOLAS FETSCH	3	N	SUNSET SPIKE 0600	SUNSET SPIKE 1800		
ENG T6 CO-WRF E-373 10/1	TODD KING	4	N	SUNSET SPIKE 0600	SUNSET SPIKE 1800		
ENG T6 #603 E-371 10/2	MICHAEL OTTOSEN	5	N	SUNSET SPIKE 0600	SUNSET SPIKE 1800		
ENG T6 # 631 E-377 10/1	WILLIAM HALL	3	N	SUNSET SPIKE 0600	SUNSET SPIKE 1800		
ENG T6 ARCHULETA CNTY E-361	CHRISTINA MARQUART	3	N	SUNSET SPIKE 0600	SUNSET SPIKE 1800		
WT T1 TACTICAL E-139 10/2	ROBERT THORP	4	N	SUNSET SPIKE 0600	SUNSET SPIKE 1800		
TFLD O-791 10/5	ROB THIBAUT	1	N	SUNSET SPIKE 0600	SUNSET SPIKE 1800		
FALM O-870 10/4	JAMES MORGAN	2	N	SUNSET SPIKE 0600	SUNSET SPIKE 1800		
FALB O-851 10/5	WALLACE COURTENAY	1	N	SUNSET SPIKE 0600	SUNSET SPIKE 1800		
7. Control Operation							
Patrol and mop up to the degree necessary to make the likelihood of fire escape very low; based on experience, terrain, fuel types, and fuel conditions. Pull hose and equipment, return to supply. GPS all equipment being left on the line. Rehab per the approved Suppression Repair Plan.							
8. Special Instructions							
a. Day and Night travel to line via Foresthill Rd. Return via Mosquito Ridge Rd. b. All Division Supervisors need to download information to the Sit Unit for all completed line and proposed line. c. Noxious weeds are marked by orange "noxious weed" flagging. Minimize or avoid activities in these areas. d. Sensitive areas are marked with pink/black checkerboard flagging. Minimize ground disturbing activities in these areas. e. Backhaul trash and equipment.							
9. Division/Group Communications Summary							
Function	Frequency - RX	Frequency - TX	Tone	System	Channel	System Channel	
Command	166.6125	168.4000	136.5	NIFC C4	1		
Tactical Div/Group	166.5500	166.5500		R5 T4	10		
Logistics							
Air to Ground	169.1500	169.1500		A/G CMD	13		
Prepared by (Resource Unit Leader) J.Switzler; E. Mayte (t); A.Uehara (t)		Approved by (Planning Section Chief) D. Cooper; R. Leuck (t); J. Schillinger (t)			Date Prepared 09/27/14	Time Prepared 1652	

Division Assignment List			1. Branch XVI		2. Division/Group 1 Y		
3. Incident Name KING - ZONE 1			4. Operational Period 09/28/14 Sunday Day Shift 0600 - 1800				
5. Operations Personnel							
Operations Chief		LES CURTIS; STEVE BURNS (t)		Division/Group Supervisor		K. OLSON; D. SOLDAVINI (t)	
Contingency Ops Chief				Air Attack Supervisor			
Branch Director		SEAN JOHNSON; COREY ROSE(t)		Safety Officer		M HAMEL; S. RYBERG; C. JORDAN (t)	
6. Resources Assigned this Period							
Strike Team/Task Force/ Resource Designator		Leader		Num of Pers.	Trans. Y/N	Drop Off PT./Time	Pick Up PT./Time
CRW T2 BEAR JAW C-9 9/30		JD OTTMAN		20	N	SUNSET SPIKE 0600	SUNSET SPIKE 1800
CRW T2IA AOICC INTER C-10 9/30		TIM DEATON		20	N	SUNSET SPIKE 0600	SUNSET SPIKE 1800
CRW T1 SAWTOOTH IHC C-89 9/27		MICHAEL KRUPSKI		20	N	SUNSET SPIKE 0600	SUNSET SPIKE 1800
CRW T2 OC 19 C-194 9/30		JAMES BOLLINGER		20	N	SUNSET SPIKE 0600	SUNSET SPIKE 1800
ENG T6 4562 E-359 10/1		CHRISTOPHER MOORE		3	N	SUNSET SPIKE 0600	SUNSET SPIKE 1800
ENG T6 654 E-364 10/1		LANDON WAIN SMITH		3	N	SUNSET SPIKE 0600	SUNSET SPIKE 1800
DOZ T2 SHF 79 E-112 9/30		JASON SHURRAH		3	N	SUNSET SPIKE 0600	SUNSET SPIKE 1800
DOZ2 T2 (CA-PNF) E-144 9/29		SCOTT SIBBALD		3	N	SUNSET SPIKE 0600	SUNSET SPIKE 1800
DOZ2 T2 (CA-PNF) E-145 9/29		ANDREW SHEPHERD		2	N	SUNSET SPIKE 0600	SUNSET SPIKE 1800
DOZ T2 CASHF 29 E-146 9/29		DAVID BROWN		2	N	SUNSET SPIKE 0600	SUNSET SPIKE 1800
WT T2 49ER E-3 9/28		BOB ALVAREZ		2	N	SUNSET SPIKE 0600	SUNSET SPIKE 1800
WT T3 AWB INC E-13 9/28		DAB BRADY		1	N	SUNSET SPIKE 0600	SUNSET SPIKE 1800
WT T1 TACTICAL E-128 9/30		ALAN WEST		2	N	SUNSET SPIKE 0600	SUNSET SPIKE 1800
CHIPPER T3 FIRESTORM E-438 10/3		GIDEON MACOMBER		2	N	SUNSET SPIKE 0600	SUNSET SPIKE 1800
CHIPPER TIMOTHY BURKE E-439 10/2		TIM BURKE		1	N	SUNSET SPIKE 0600	SUNSET SPIKE 1800
CHIPPER T3 SKYLINE TREE E-471 10/3				2	N	SUNSET SPIKE 0600	SUNSET SPIKE 1800
CHIPPER T3 DIAMOND E-472 10/2				10	N	SUNSET SPIKE 0600	SUNSET SPIKE 1800
FALM O-882 10/5				3	N	SUNSET SPIKE 0600	SUNSET SPIKE 1800
STEN O-895 10/2		JESS REGISTER		1	N	SUNSET SPIKE 0600	SUNSET SPIKE 1800
HEQB O-241 9/29		TRAVIS ORANGE		1	N	SUNSET SPIKE 0600	SUNSET SPIKE 1800
7. Control Operations							
Patrol and mop up to the degree necessary to make the likelihood of fire escape very low; based on experience, terrain, fuel types, and fuel conditions. Pull hose and equipment, return to supply. GPS all equipment being left on the line. Rehab per the approved Suppression Repair Plan.							
8. Special Instructions							
<p>a. Day and Night travel to line via Foresthill Rd. Return via Mosquito Ridge Rd.</p> <p>b. All Division Supervisors need to download information to the Sit Unit for all completed line and proposed line.</p> <p>c. Noxious weeds are marked by orange "noxious weed" flagging. Minimize or avoid activities in these areas.</p> <p>d. Sensitive areas are marked with pink/black checkerboard flagging. Minimize ground disturbing activities in these areas.</p> <p>e. Backhaul trash and equipment.</p>							
9. Division/Group Communications Summary							
Function	Frequency - RX	Frequency - TX	Tone	System	Channel	System	Channel
Command	166.6125	168.4000	136.5	NIFC C4	1		
Tactical Div/Group	167.1125	167.1125		R5 T5	11		
Logistics							
Air to Ground	169.1500	169.1500		A/G CMD	13		
Prepared by (Resource Unit Leader) J. Switzler ; E. Mayte (t); A. Uehara (t)			Approved by (Planning Section Chief) D. Cooper; R. Leuck (t); J. Schillinger (t)			Date Prepared 09/27/14	Time Prepared 1652

Division Assignment List	1. Branch CONTINGENCY	2. Division/Group RALSTON
---------------------------------	---------------------------------	-------------------------------------

3. Incident Name KING - ZONE 1	4. Operational Period 09/28/14 Sunday Day Shift 0600 - 1800
--	--

5. Operations Personnel

Operations Chief	LES CURTIS; STEVE BURNS (t)	Division/Group Supervisor	DAVID CARNEY
Contingency Ops Chief		Air Attack Supervisor	
Branch Director	DON FORSYTH; MATT CONKLIN	Safety Officer	M HAMEL; S. RYBERG; C. JORDAN (t)

6. Resources Assigned this Period

Strike Team/Task Force/ Resource Designator	Leader	Num of Pers.	Trans. Y/N	Drop Off PT./Time	Pick Up PT./Time
CRW T2IA KICC INTERAGENCY C-230 10/7	MARK RAGAN	20	N	FRENCH SPIKE 0600	FRENCH SPIKE 1800
CRW T2IA GRAYBACK 3A C-226 10/1	STEVEN DERRY	19	N	FRENCH SPIKE 0600	FRENCH SPIKE 1800
CRW T2 SCORPIONS 6 C-242 10/6	ROBERT J NEVAREZ	22	N	FRENCH SPIKE 0600	FRENCH SPIKE 1800
CRW T2 OC 25 C-191 10/4	MICHAEL SCHEU	17	N	FRENCH SPIKE 0600	FRENCH SPIKE 1800
CHIP T3 TREEMASTER E-585 10/5	CODY MYERS	1	N	FRENCH SPIKE 0600	FRENCH SPIKE 1800
CHIP T2 #2 ABRAHAM E-793 10/7		1	N	FRENCH SPIKE 0600	FRENCH SPIKE 1800
CHIP T2 DPL5 ABRAHAM E-798 10/7	MIKE JONES	1	N	FRENCH SPIKE 0600	FRENCH SPIKE 1800
CHIP T2 CTS VENTURES E-586 10/6	KALVIN CYRUS	1	N	FRENCH SPIKE 0600	FRENCH SPIKE 1800
FALM JUSTIN ROLLS O-875 10/5	JUSTIN ROLLS	2	N	FRENCH SPIKE 0600	FRENCH SPIKE 1800
TFLD O-790 10/5	TERESA CARREON	1	N	FRENCH SPIKE 0600	FRENCH SPIKE 1800
TFLD O-784 10/5	RITA CLIPPERTON	1	N	FRENCH SPIKE 0600	FRENCH SPIKE 1800
SOFR O-965 10/7	TOM RAW	1	N	FRENCH SPIKE 0600	FRENCH SPIKE 1800
FEMP O-758 10/4	MATTHEW LUCAS	1	N	FRENCH SPIKE 0600	FRENCH SPIKE 1800
FEMT O-764 10/5	SCOTT HARLAN	1	N	FRENCH SPIKE 0600	FRENCH SPIKE 1800

7. Control Operations

Chip, cut material and improve roads and trail systems for contingency lines along Ralston Ridge from DP 109 to Little Crater Intersection.

8. Special Instructions

- a. Day and Night travel to line via Foresthill Rd. Return via Mosquito Ridge Rd.
- b. All Division Supervisors need to download information to the Sit Unit for all completed line and proposed line.
- c. Noxious weeds are marked by orange "noxious weed" flagging. Minimize or avoid activities in these areas.
- d. Sensitive areas are marked with pink/black checkerboard flagging. Minimize ground disturbing activities in these areas.
- e. Backhaul trash and equipment.

9. Division/Group Communications Summary

Function	Frequency - RX	Frequency - TX	Tone	System	Channel	System	Channel
Command	166.6125	168.4000	136.5	NIFC C4	1		
Tactical Div/Group	168.2375	168.2375		R5 T6	12		
Logistics							
Air to Ground	169.1500	169.1500		A/G CMD	13		

Prepared by (Resource Unit Leader) G. Thompson; J. Switzler; E. Mayte (t)	Approved by (Planning Section Chief) D. Cooper; R. Leuck (t); J. Schillinger (t)	Date Prepared 09/27/14	Time Prepared 1652
--	---	---------------------------	-----------------------

Division Assignment List	1. Branch CONTINGENCY	2. Division/Group OXBOW
---------------------------------	---------------------------------	-----------------------------------

3. Incident Name KING - ZONE 1	4. Operational Period 09/28/14 Sunday Day Shift 0600 - 1800
--	---

5. Operations Personnel

Operations Chief	LES CURTIS; STEVE BURNS (t)	Division/Group Supervisor	THOMAS BROWNING
Contingency Ops Chief		Air Attack Supervisor	
Branch Director	DON FORSYTH; MATT CONKLIN	Safety Officer	M.HAMEL; S. RYBERG; C.JORDAN (t)

6. Resources Assigned this Period

Strike Team/Task Force/ Resource Designator	Leader	Num of Pers.	Trans. Y/N	Drop Off PT./Time	Pick Up PT./Time
CRW T2IA FL ST #1 C-227 10/7	CHARLES KOON	20	N	FRENCH SPIKE 0600	FRENCH SPIKE 1800
CRW T2IA FL ST #3 C-228 10/7	DAVID THURSTON	20	N	FRENCH SPIKE 0600	FRENCH SPIKE 1800
CRW T2IA KICC INT. C-229 10/7	FRED G GILMORE	20	N	FRENCH SPIKE 0600	FRENCH SPIKE 1800
CHIP T1 HIGH CLIMBERS E-583 10/5	CURTIS KING	2	N	FRENCH SPIKE 0600	FRENCH SPIKE 1800
CHIP T2 - A CUT ABOVE E-579 10/4		1	N	FRENCH SPIKE 0600	FRENCH SPIKE 1800
FELB UNDERDOG TIMBER O-867 10/4	CRAIG MORGAN	2	N	FRENCH SPIKE 0600	FRENCH SPIKE 1800
FELB UNDERDOG TIMBER O-868 10/4	GREG BURNS	2	N	FRENCH SPIKE 0600	FRENCH SPIKE 1800
FELB O-983 10/6	RAY CHAVEZ	1	N	FRENCH SPIKE 0600	FRENCH SPIKE 1800
FELB UNDERDOG TIMBER O-865 10/4	RICHARD BROWN	2	N	FRENCH SPIKE 0600	FRENCH SPIKE 1800
FELB UNDERDOG TIMBER O-866 10/4	GARY BALMAIN	2	N	FRENCH SPIKE 0600	FRENCH SPIKE 1800
SOFR O-965 10/7	TOM RAW	1	N	FRENCH SPIKE 0600	FRENCH SPIKE 1800
FEMP O-758 10/4	MATTHEW LUCAS	1	N	FRENCH SPIKE 0600	FRENCH SPIKE 1800
FEMT O-764 10/5	SCOTT HARLAN	1	N	FRENCH SPIKE 0600	FRENCH SPIKE 1800
<i>CHIP E-580</i>					

7. Control Operations

Chip, cut material and improve roads and trail systems for contingency lines along Ralston Ridge from Lynchburg Hill break to the Rubicon River.

8. Special Instructions

- a. Day and Night travel to line via Foresthill Rd. Return via Mosquito Ridge Rd.
- b. All Division Supervisors need to download information to the Sit Unit for all completed line and proposed line.
- c. Noxious weeds are marked by orange "noxious weed" flagging. Minimize or avoid activities in these areas.
- d. Sensitive areas are marked with pink/black checkerboard flagging. Minimize ground disturbing activities in these areas.
- e. Backhaul trash and equipment.

9. Division/Group Communications Summary

Function	Frequency - RX	Frequency - TX	Tone	System	Channel	System	Channel
Command	166.6125	168.4000	136.5	NIFC C4	1		
Tactical Div/Group	168.2375	168.2375		R5 T6	12		
Logistics							
Air to Ground	169.1500	169.1500		A/G CMD	13		

Prepared by (Resource Unit Leader) G. Thompson; J. Switzler; E. Mayte (t)	Approved by (Planning Section Chief) D. Cooper; R. Leuck (t); J. Schillinger (t)	Date Prepared 09/27/14	Time Prepared 1652
--	---	---------------------------	-----------------------

Division Assignment List	1. Branch REHAB REPAIR	2. Division/Group
---------------------------------	----------------------------------	-------------------

3. Incident Name KING - ZONE 1	4. Operational Period 09/28/14 Sunday Day Shift 0600 - 1800
--	--

5. Operations Personnel

Operations Chief	BRAD WASHA	Division/Group Supervisor	C ALLUISI; M DARRAGH; J KERLEY; B BAKER
Contingency Ops Chief		Air Attack Supervisor	
Branch Director	RUSSELL COPP; DAN BRYANT	Safety Officer	M. HAMEL; S. RYBERG; C. JORDAN (t)

6. *Quincy Chang(t)* Resources Assigned this Period

Strike Team/Task Force/ Resource Designator	Leader	Num of Pers.	Trans. Y/N	Drop Off PT./Time	Pick Up PT./Time
CRW T2IA NMZUA #2 C-99 10/1	CHAD NASTACIO	20	N	ICP 0700	ICP 1800
CRW T21A GILA REG. 5 C-171 10/4	FELIX VALDEZ	20	N	ICP 0700	ICP 1800
CRW T2IA SALYER C-174 10/5	JOSH EICHAMER	20	N	ICP 0700	ICP 1800
CRW T2IA COBRAS 4 C-202 10/4	VINCE MONTES	22	N	ICP 0700	ICP 1800
CRW T2IA MONTEREY C-254 10/6	KEVIN W POYNER	19	N	ICP 0700	ICP 1800
CRW T2 DIAMOND FIRE C-204 10/5	WES WICKMAN	20	N	ICP 0700	ICP 1800
CRW T2 DIAMOND FIRE C-208 10/5	BILLY SMITH	20	N	ICP 0700	ICP 1800
DOZ T2 NEESE 6GN02 E-575 10/5	DAVID NEESE	2	N	ICP 0700	ICP 1800
DOZ T2 BEN'S TRUCK E-103 9/30	BUTCH SMITH	2	N	ICP 0700	ICP 1800
DOZ T2 TOM'S EARTH E-101 10/1	JOHN THORNTON	2	N	ICP 0700	ICP 1800
DOZ T2 BEN'S TRUCK E-100 9/30	DAVID LAWRENCE	2	N	ICP 0700	ICP 1800
DOZ T2V TEHAMA M00876 E-556 10/5	RANDY STRIEFF	2	N	ICP 0700	ICP 1800
DOZ T2 - C0 E-559 10/5	DUANE HAASE	2	N	ICP 0700	ICP 1800
DOZ T2 DUDLEYS E-558 10/4	TIM LAMKIN	2	N	ICP 0700	ICP 1800
DOZ T2V MOORE EXC E-572 10/5	SONNY MOORE	2	N	ICP 0700	ICP 1800
DOZ T2V 88570 E-566 9/29	MARK BASHAM	2	N	ICP 0700	ICP 1800
DOZ T2 BIG EDS CRANE E-210 9/29	RICK ROGER	3	N	ICP 0700	ICP 1800
DOZ T2 FORTNER EXC E-561 10/5	TRAVIS FORTNER	2	N	ICP 0700	ICP 1800
DOZ T2 AAA EQUIP E-207 9/29	BRENDON SIMUNACI	2	N	ICP 0700	ICP 1800
DOZ T2V ROEN #N01 E-567 10/5	CLAY BOSCHI	2	N	ICP 0700	ICP 1800

7. Control Operations

Develop, coordinate overall incident suppression repair and future rehab activities per the Suppression Repair Plan. Coordinate with READs.

8. Special Instructions

- a. Day and Night travel to line via Foresthill Rd. Return via Mosquito Ridge Rd.
- b. All Division Supervisors need to download information to the Sit Unit for all completed line and proposed line.
- c. Noxious weeds are marked by orange "noxious weed" flagging. Minimize or avoid activities in these areas.
- d. Sensitive areas are marked with pink/black checkerboard flagging. Minimize ground disturbing activities in these areas.

9. Division/Group Communications Summary

Function	Frequency - RX	Frequency - TX	Tone	System	Channel	System	Channel
Command	166.6125	168.4000	136.5	NIFC C4	1		
Tactical Div/Group	167.1125	167.1125		R5 T5	11		
Logistics							
Air to Ground	169.1500	169.1500		A/G CMD	13		

Prepared by (Resource Unit Leader) J. Switzler; E. Mayte (t); A.Uehara(t)	Approved by (Planning Section Chief) D.Cooper; R. Leuck (t); J. Schillinger(t)	Date Prepared 09/27/14	Time Prepared 2002
--	---	---------------------------	-----------------------

Final
J. Switzler

Division Assignment List	1. Branch REHAB REPAIR	2. Division/Group
	3. Incident Name KING - ZONE 1	

4. Operational Period 09/28/14 Sunday Day Shift 0600 - 1800	
--	--

5. Operations Personnel

Operations Chief	BRAD WASHA	Division/Group Supervisor	C ALLUISI; M DARRAGH; J KERLEY; B BAKER
Contingency Ops Chief		Air Attack Supervisor	
Branch Director	RUSSELL COPP; DAN BRYANT	Safety Officer	M. HAMEL; S. RYBERG; C. JORDAN (t)

6. Resources Assigned this Period

Quincy Chung (t)

Strike Team/Task Force/ Resource Designator	Leader	Num of Pers.	Trans. Y/N	Drop Off PT./Time	Pick Up PT./Time
DOZ T2 GRAHAM E-42 9/28	JEFF GRAHAM	2	N	ICP 0700	ICP 1800
EXC G & O E-3011 10/4		1	N	ICP 0700	ICP 1800
EXC T1V BEN'S TRUCK E-859 10/8		2	N	ICP 0700	ICP 1800
DIVS O-810 10/5	TOMAS C GONZALEZ	1	N	ICP 0700	ICP 1800
HEQB O-242 10/1	BRANDON WOODWARD	1	N	ICP 0700	ICP 1800
HEQB O-261 10/1	DARIC BURR	1	N	ICP 0700	ICP 1800
HEQB O-840 10/6	CLINTON S HUFFMAN	1	N	ICP 0700	ICP 1800
HEQB O-826 10/5	BRENTWOOD REID	1	N	ICP 0700	ICP 1800
HEQB O-834 10/6	JAMES DANIEL WILLIAMS	1	N	ICP 0700	ICP 1800
HEQB O-833	JOSHUA WILLIAMS	1	N	ICP 0700	ICP 1800
HEQB O-838 10/7	TERRON D GEE	1	N	ICP 0700	ICP 1800
HEQB O-837 10/5 <i>To "1B"</i>	JAMES DICKINSON	1	N	ICP 0700	ICP 1800
HEQB O-839 10/6	MIKE KUHNERT	1	N	ICP 0700	ICP 1800
HEQB O-825 10/6	EDMOND D WILHITE	1	N	ICP 0700	ICP 1800
HEQB O-842	JIMMY D MORRIS	1	N	ICP 0700	ICP 1800
HEQB O-828 10/4	NATTHAN D BAXTER	1	N	ICP 0700	ICP 1800
READ O-332 9/28	BLAKE M ENGELHARDT	1	N	ICP 0700	ICP 1800
READ O-920 10/5	CHELSIE BROKENSHERE	1	N	ICP 0700	ICP 1800
READ O-933 10/6	COURTNEY ROWE	1	N	ICP 0700	ICP 1800
READ O-326 9/30	DAN TEATER	1	N	ICP 0700	ICP 1800

7. Control Operations

Develop and coordinate overall incident suppression repair and future rehab activities per the Suppression Repair Plan. Coordinate with READS.

8. Special Instructions

- a. Day and Night travel to line via Foresthill Rd. Return via Mosquito Ridge Rd.
- b. All Division Supervisors need to download information to the Sit Unit for a!! completed line and proposed line.
- c. Noxious weeds are marked by orange "noxious weed" flagging. Minimize or avoid activities in these areas.
- d. Sensitive areas are marked with pink/black checkerboard flagging. Minimize ground disturbing activities in these areas.

9. Division/Group Communications Summary

Function	Frequency - RX	Frequency - TX	Tone	System	Channel	System	Channel
Command	166.6125	168.4000	136.5	NIFC C4	1		
Tactical Div/Group	167.1125	167.1125		R5 T5	11		
Logistics							
Air to Ground	169.1500	169.1500		A/G CMD	13		

Prepared by (Resource Unit Leader) J. Switzler; E. Mayte (t); A.Uehara(t)	Approved by (Planning Section Chief) D.Cooper; R. Leuck (t); J. Schillinger(t)	Date Prepared 09/27/14	Time Prepared 1934
--	---	---------------------------	-----------------------

Division Assignment List	1. Branch REHAB REPAIR	2. Division/Group
---------------------------------	----------------------------------	-------------------

3. Incident Name KING - ZONE 1	4. Operational Period 09/28/14 Sunday Day Shift 0600 - 1800
--	--

5. Operations Personnel

Operations Chief	BRAD WASHA	Division/Group Supervisor	C ALLUISI; M DARRAGH; J KERLEY; B BAKER
Contingency Ops Chief		Air Attack Supervisor	
Branch Director	RUSSELL COPP; DAN BRYANT	Safety Officer	M. HAMEL; S. RYBERG; C. JORDAN (t)

6. Resources Assigned this Period

Strike Team/Task Force/ Resource Designator	Leader	Num of Pers.	Trans. Y/N	Drop Off PT./Time	Pick Up PT./Time
READ O-931 10/5	DEVIN SNYDER	1	N	ICP 0700	ICP 1800
READ O-930 10/6	EMILY LONG	1	N	ICP 0700	ICP 1800
READ O-684 10/2	KYLE JOHNSON	1	N	ICP 0700	ICP 1800
READ O-921 10/6	MARY SULLIVAN	1	N	ICP 0700	ICP 1800
READ O-945 9/29	MATTHEW BROWNLEE	1	N	ICP 0700	ICP 1800
READ (t) O-989 10/2	NOLAN W SMITH	1	N	ICP 0700	ICP 1800
READ O-932 10/8	RICHARD MONK	1	N	ICP 0700	ICP 1800
READ O-3322 10/9	DYLAN T MCCOY	1	N	ICP 0700	ICP 1800
READ O-943 10/6	WILLIAM BARFUSS	1	N	ICP 0700	ICP 1800
READ O-1007	ROY BRIDGEMAN	1	N	ICP 0700	ICP 1800
READ O-929 10/6	THOMAS JONES	1	N	ICP 0700	ICP 1800
SOFR O-963 10/7	RICHARD LUDKE	1	N	ICP 0700	ICP 1800
FEMP O-1088 9/30	MATTHEW MENARD	1	N	ICP 0700	ICP 1800
FEMT O-970 10/6	TODD W ADAMS	1	N	ICP 0700	ICP 1800
<i>CRW T21A CAC#4 C-16</i>	<i>Ron Brown</i>	<i>20</i>		<i>From "W"</i>	

7. Control Operations

Develop, coordinate overall incident suppression repair and future rehab activities per the Suppression Repair Plan. Coordinate with READs.

8. Special Instructions

- a. Day and Night travel to line via Foresthill Rd. Return via Mosquito Ridge Rd.
- b. All Division Supervisors need to download information to the Sit Unit for all completed line and proposed line.
- c. Noxious weeds are marked by orange "noxious weed" flagging. Minimize or avoid activities in these areas.
- d. Sensitive areas are marked with pink/black checkerboard flagging. Minimize ground disturbing activities in these areas.

9. Division/Group Communications Summary

Function	Frequency - RX	Frequency - TX	Tone	System	Channel	System	Channel
Command	166.6125	168.4000	136.5	NIFC C4	1		
Tactical Div/Group	167.1125	167.1125		R5 T5	11		
Logistics							
Air to Ground	169.1500	169.1500		A/G CMD	13		

Prepared by (Resource Unit Leader) J. Switzler; E. Mayte (t); A.Uehara(t)	Approved by (Planning Section Chief) D.Cooper; R. Leuck (t); J. Schillinger(t)	Date Prepared 09/27/14	Time Prepared 1934
--	---	---------------------------	-----------------------

AIR OPERATIONS SUMMARY

(Expanded Form for Large Operations)

OPERATIONAL PERIOD DATE: DAY SHIFT DATE: 09/28/2014

START: 0700 END: 2000

1. INCIDENT NAME: King	2. PREPARED BY: John Keesee <i>JK</i>	3. Prepared 09/27/14 1930 hrs
4. REMARKS (Safety Notes, Hazards, Air Operations Special Equipment, etc.): SUNRISE: 0656 SUNSET : 1852 STEEP SMOKEY CONDITIONS, OTHER FIRES, OTHER AIRCRAFT COULD FLY IN OUR AREA **Avoid aerial application of retardant or foam within 300' of waterways, bodies of water. If retardant is dropped within these areas, notify AOB with Lat & Long, est. of gallons, and a map.		
Placerville Helibase at Placerville airport. FAA Tower in place. Freq. 119.100 Blue Canyon Helibase 39 16.49 120 42.56 Foresthill helispot 39 01.11 120 48.78 Incident aircraft will support initial attack within and adjacent to the TFR.		
TRACK RETARDANT DROP LOCATIONS		
5. TFR: 4/0029 Altitude : 10,500' MSL Freq. 118.6250 See TFR map		

6. PERSONNEL		FREQUENCIES	AM	FM
AODB: John Keesee (zone 1)	805-551-6422	AIR/AIR FW:	118.6250	166.6750
AODB: Frank Podesta (zone 2)	209-419-4408	AIR/AIR RW:	120.5750 135.7250	
ASGS: Craig Dado (zone 1)	530-518-6688	A/G Command:		169.1500
ASGS: Jon Chin (zone 2)	760-250-6230	A/G Tactical:		167.9500
HLCO: Fred Burris	805-340-0408	DECK: PVF	163.100	
ATGS: Jason Withrow	530-206-6955	Blue Canyon	168.350	
ATGS: Todd White	530-263-5621	COMMAND:	TX	RX
HEBM: Travis Taylor (T) PVF	208-241-0399	AIR GUARD:	168.625	Tone Tx 110.9
HEBM: Dave Ito PVF	530-391-6583	TOWER:		Placerville
Blue Canyon Helibase	601-540-6528			
HEBM: Brad Bernardy				
Cobra: Stan Kubota	530-949-9466		119.100	

8. FIXED-WING # Avail / Type/ Make-Model / FAA N# / Base(s)												
TY	MAKE/MODEL	BASE	AVAIL	START	REMARKS	FAA N#	TY	MAKE/MODEL	BASE	AVAIL	START	REMARKS
3	BELL 206B3	PVF	0800	0700	Recon/Helco	HT 783	1	Skycrane	PVF	0800	0700	Tanked
3	Bell 206L4	PVF	0800	0700	Recon/Helco	HT 746	1	Skycrane	PVF	0800	0700	Tanked
3	Bell 407	Blue Cyn	0800	0700	Recon/Helco	HT 734	1	Skycrane	Blue Cyn	0800	0700	Tanked
3	Bell 407	Foresthill	0800	0700	IR/Mapping/Recon	HT 715	1	Skycrane	Blue Cyn	0800	0700	Tanked
2	Bell 210	Blue Cyn	0800	0700	Bucket/Shuttle							
2	Bell 205	PVF	0800	0700	Bucket/Shuttle							
2	Bell 205	PVF	0800	0700	Bucket/Shuttle							
2	Bell 212	PVF	0800	0700	Bucket/Shuttle							
2	Bell 205	PVF	0800	0700	Bucket/Shuttle							
2	Bell 205	GOO	0800	0700	Medevac/Hoist							
2	Cobra	PVF	0800	0700	Air Attack/Helco							

9. HELICOPTERS (Use Additional Sheets As Necessary)

MAJOR HAZARDS

DRIVING FATIGUE COMPLACENCY HYPOTHERMIA

DRIVING: We are faced with long commutes to and from our divisions. Expect the unexpected! The best defense is to drive slow and stay in your lane. You could encounter rocks, animals or opposing traffic. Fire engines, crew hauls and other vehicles need to slow and drive for existing conditions. Remember, mountain roads are extremely dangerous when wet. **Hydroplaning can occur at any speed** and happens when your tires do not have direct contact with the road surface. Use extreme caution and be a defensive driver. Clean and inspect all vehicles prior to work.

******Mosquito Ridge Road Drivers******

There will be repair work between the 14 and 16 mile marker on Mosquito Ridge Road.

Fatigue/ Complacency: About this time on a fire the accident frequency rate increases. This is the 15th day of the King Fire. Long shifts and hard work are accumulating and fatigue may be a factor. Take breaks when needed to manage fatigue. Pay close attention to the "two to one" work ratio.

Complacency also increases the risk for accidents. The most common reason for this is the firefighter throws her/his mind into neutral and doesn't think about the work they are doing. So with that, keep your mind engaged and attentive to the task. Continually ask yourself if you are doing the job safely. Working in the same areas, long-term mop up procedures and long drives all add to complacency. Keep an eye on your fellow firefighters too. If you see them doing something that is unsafe, YOU need to say something immediately and stop the unsafe act.

Complacency: a feeling of quiet pleasure or security, often while unaware of some potential danger, defect, or the like; self-satisfaction or smug satisfaction with an existing situation, condition, etc.

Mop Up:

Be sure areas are snagged prior to inserting crews for mop up.

-Stump holes are very dangerous; you can get major burns and/or ankle and leg injuries. Inspect the area to be worked, when stump holes are identified please flag and make known.

Report all injuries, insignificant injuries can develop into issues later on.

Hypothermia: Risk of hypothermia increases in colder temperatures. Stay dry and warm up in vehicles when the temps drop. Be sure to dry wet clothes and sleeping materials at the first opportunity.

SAFETY IS NO ACCIDENT

INCIDENT SAFETY ANALYSIS 215a

KING INCIDENT (ZONE 1) CA-ENF-023461 - Sunday, September 28, 2014

8. Location	9. Hazard	6. Control or Abatement Action (Engineering, Administrative, PPE, Avoidance, Education, etc)
ALL	Snag Hazards	<ul style="list-style-type: none"> • Follow Hazard Tree Safety Guidelines (IRPG p. 22). • Limit number of personnel around snags and their exposure time; fallers must be qualified for trees being fallen. • Be especially alert around snags during wind events. • Check overhead for dead branches in sleeping areas. • Maintain Situational Awareness.
ALL	Aircraft Operations	<ul style="list-style-type: none"> • Keep personnel out of drop zones. • Use air-to-ground freq. to communicate with aircraft. • Use clear, concise statements when directing aircraft. Use clock directions from pilot's perspective.
ALL	Direct Attack/Night Operations	<ul style="list-style-type: none"> • Snag areas in day time before engaging personnel. • Mitigate snags in areas of fire where direct line tactics are used. • Do not work in areas at night where snags have not been identified and mitigated. • No snag falling at night. • Snag roads where nighttime travel is necessary. • Ensure medical protocols are followed. • Have medivac sites pre-identified/established. • Ensure good communications exist and tested.
Zone 1	MopUp/Repair work	<ul style="list-style-type: none"> • Always wear appropriate PPE • Maintain safe separation distance of personnel from dozers, especially downhill. • Evaluate ground and trees in work area before beginning work • Use caution on ground adjacent to stump holes • Mop Up to the degree necessary to make the likelihood of fire escape very low
ALL	Driving Hazards	<ul style="list-style-type: none"> • Practice defensive driving at all times. • Adhere To 30 mph speed limit on forest roads • Drive with headlights on. • Be alert for wildlife and livestock on roads at all times. • Slow down on washboard surfaces. • Avoid gravel berms on the sides of roadways. • Increase following distances on dusty roads. Slow down when you meet opposing traffic. • Maintain Situational Awareness.
ALL	Severe Fire Behavior	<ul style="list-style-type: none"> • Review "Severe Fire Behavior Potential" (IRPG p.68). • Monitor current weather conditions and forecasts. Make sure all personnel receive thorough briefings every shift. • Be observant for formation and passage of pyro-cumulous cells over the fire area and alert all personnel. • Maintain adequate escape routes and safety zones. Advise all personnel if these are compromised or changed. Set trigger points when appropriate. • Adhere to 10 Std Orders, mitigate 18 situations. • Maintain Situational Awareness.
ALL	Working around Dozers	<ul style="list-style-type: none"> • Maintain safe separation distance of personnel from dozers, especially downhill. • Ensure dozers are supervised by qualified DOZB when required or when assignment necessitates.

INCIDENT SAFETY ANALYSIS 215a

ALL	Mines	<ul style="list-style-type: none"> • Identify and avoid mining areas • Notify others of mining hazards and flag • Be aware of vertical vent shafts, indicators may be slight indentations in terrain • Watch for and keep out of any horizontal adits or shafts that may be located into the side of a ridge or mountain
ALL	Work/Rest and Fatigue	<ul style="list-style-type: none"> • Be alert for signs of fatigue and take breaks as necessary. • Maintain 2:1 work/rest ratio. • Monitor incoming resources for level of fatigue.
ALL	Hydration	<ul style="list-style-type: none"> • Encourage drinking water before, during and after shifts, up to 1.5 gal. during shifts. • Be alert for signs of heat stress in yourself and others. <p>Do not hydrate with energy type drinks</p>
ALL	Line Construction	<ul style="list-style-type: none"> • Conduct thorough briefing for all personnel involved (inside rear cover IRPG). • Ensure LCES in place prior to engagement (IRPG p. 9). • Establish adequate safety zones (IRPG p.8). • Use Downhill Line Checklist (IRPG p. 9). • Follow "Look Up, Look Down, Look Around" procedures (IRPG p. 3-4). • Utilize Risk Management Process (IRPG p.1).
ALL	Burning Operations	<ul style="list-style-type: none"> • Conduct thorough briefing for all personnel involved (inside rear cover IRPG). • All personnel to be fully qualified for their assignments. Trainees must have qualified trainers. • Utilize Risk Mgmt. Process (IRPG p. 1) for implementing plan. • Required PPE to be worn by all personnel involved. • LCES must be established prior to implementing burning operations (IRPG p. 7).
ALL	Structure Protection & HazMat Issues	<ul style="list-style-type: none"> • Conduct thorough briefing for all personnel involved (inside rear cover IRPG). • Utilize Structure Assessment Checklist (IRPG p.14). • Follow structure Protection Guidelines (IRPG p. 16).
ALL	Foot Travel	<ul style="list-style-type: none"> • When walking through steep, rocky, and possibly wet terrain, watch footing and maintain proper spacing. • Watch for over-head hazards. • Treat "hot spots" on your feet before they become blisters. • Maintain downhill tool placement.
Zone 1	Spike Camps	<ul style="list-style-type: none"> • Ensure camps are clean of trash to avoid attracting wildlife • Keep sleeping areas are clear of snags and other tripping hazards • Have hand sanitizers and body cleaning products to prevent illness • Have a GPS spike locations in the incident 204 and with the Situation Unit • Have night contact/communications plans in place
ALL	Wildlife & Livestock	<ul style="list-style-type: none"> • Watch out for wildlife & livestock inside fire area and along roadways. • Clean up all debris and trash during each operational period and dispose of in receptacles • Do not throw food from lunches out on the fireline
Zone 1	Marijuana Grow Site	<ul style="list-style-type: none"> • Be alert for signs such as, irrigation drip lines, chemicals, herbicides and fertilizers, trip wires or booby traps • Leave the route you entered • Once clear of the area, notify Law Enforcement, Division and Operations • Do not approach individual in sites

INCIDENT RADIO COMMUNICATIONS PLAN		Incident Name KING, CA-ENF-023461 - ZONE 1				BK RADIO GROUP GROUP 14				Operational Period Date/Time 9/28/14 0600HRS - 0600HRS	
Ch #	Function	Channel Name/Trunked Radio System Talkgroup	Assignment	RX Freq N or W	RX Tone/NAC	TX Freq N or W	Tx Tone/NAC	Mode A, D or M	Remarks		
1	COMMAND	NIFC C4	ZONE 1 CMD	166.6125 N	136.5	168.4000 N	136.5	A	Little Bald Mtn. / Duncon L.O.		
2	COMMAND	NIFC C11	ZONE 1 CMD	170.6875 N	136.5	166.5750 N	136.5	A	Bunker Hill L.O.		
3	COMMAND	NIFC C59	ZONE 1 CMD	164.8375 N	136.5	170.0500 N	136.5	A	Mt. Mildred		
4	COMMAND	NIFC C61	ZONE 1 CMD	164.8625 N	136.5	170.3875 N	136.5	A	Robbs Peak		
5	TACTICAL	NIFC T1	DIV 1U & 1R	168.0500 N		168.0500 N		A			
6	TACTICAL	NIFC T10	DIV 1D & 1M	168.5000 N		168.5000 N		A			
7	TACTICAL	NIFC T5	DIV 1F & 1Z	166.7250 N		166.7250 N		A			
8	TACTICAL	NIFC T6	DIV 1H & 1P	166.7750 N		166.7750 N		A			
9	TACTICAL	NIFC T7	DIV 1L & 1B	168.2500 N		168.2500 N		A			
10	TACTICAL	R5 T4	DIV 1W & 1T	166.5500 N		166.5500 N		A			
11	TACTICAL	R5 T5	DIV 1Y & 1K	167.1125 N		167.1125 N		A	Rehab / Repair		
12	TACTICAL	R5 T6	Contingency Branch	168.2375 N		168.2375 N		A	Contingency & Roads		
13	AIR TO GROUND	A/G CMD	ALL DIVISIONS	169.1500 N		169.1500 N		A	A/G COMMAND		
14	AIR TO GROUND	A/G TAC	ALL DIVISIONS	167.9500 N		167.9500 N		A	A/G TACTICAL		
15	MEDICAL	CALCORD	ALL DIVISIONS	156.0750 N		156.0750 N	156.7	A	MEDICAL COORDINATION		
16	EMERGENCY ONLY	Air Guard	ALL DIVISIONS	168.6250 N		168.6250 N	110.9	A	AIR GUARD - EMERGENCY		
17								A			
18								A			
19								A			
20	EMERGENCY ONLY	Air Guard	ALL DIVISIONS	168.6250 N		168.6250 N	110.9	A	AIR GUARD - EMERGENCY		

Prepared By (Communications Unit)
TIM MAGUIRE, COML (I)

Incident Location: Foresthill, CA
County: Placer State: CA Latitude 39°1.17' N, Longitude 120° 49.77' W

The convention calls for frequency lists to show four digits after the decimal place, followed by either an "N" or a "W", depending on whether the frequency is narrow or wide band. Mode refers to either "A" or "D" indicating analog or digital (e.g. Project 25) or "M" indicating mixed mode. All channels are shown as if programmed in a control station, mobile or portable radio. Repeater and base stations must be programmed with the Rx and Tx reversed.

INCIDENT RADIO COMMUNICATIONS PLAN		Incident Name		BK RADIO GROUP		Operational Period Date/Time					
COMMUNICATIONS PLAN		KING, CA-ENF-023461 - ZONE 2		GROUP 15		9/28/14 0700 hrs. - 9/29/14 0700 hrs.					
Ch #	Function	Channel Name/Trunked Radio System Talkgroup	Assignment	RX Freq	N or W	RX Tone/NAC	TX Freq	N or W	TX Tone/NAC	Mode A, D or M	Remarks
1	COMMAND	NIFC C5	ZONE 2 ALL DIV	167.1000 N		146.2	169.7500 N		146.2	A	TONE 5 - BALD MT. - LINKED
2	COMMAND	NIFC C12	ZONE 2 ALL DIV	173.0375 N		146.2	167.3250 N		146.2	A	TONE 5 - BIG MT. - LINKED
3	COMMAND	NIFC C37	ZONE 2 ALL DIV	172.5500 N		146.2	162.1875 N		146.2	A	TONE 5 - UNION HILL - LINKED
4	COMMAND	NIFC C60	ZONE 2 ALL DIV	167.0625 N		146.2	173.0250 N		146.2	A	TONE 5 - ROBBS PK - LINKED
5	COMMAND	NIFC C58	ZONE 2 ICP	164.1375 N		146.2	169.6500 N		146.2	A	TONE 5 - ICP USED ONLY
6	TACTICAL	VFIRE 24	DIV A/BB/D	154.2725 N		156.7	154.2725 N		156.7	A	
7	TACTICAL	VFIRE 25	DIV E/G	154.2875 N		156.7	154.2875 N		156.7	A	
8	TACTICAL	VFIRE 26	DIV U/T	154.3025 N		156.7	154.3025 N		156.7	A	
9	TACTICAL	VTAC 11	DIV W/Y	151.1375 N		156.7	151.1375 N		156.7	A	
10	TACTICAL	VTAC 12	UNASSIGNED	154.4525 N		156.7	154.4525 N		156.7	A	UNASSIGNED
11	TACTICAL	VTAC 13	SUPPRESSION REPAIR	158.7375 N		156.7	158.7375 N		156.7	A	
12	TACTICAL	VTAC 14	ROAD GROUP	159.4725 N		156.7	159.4725 N		156.7	A	
13	AIR TO GROUND	A/G CMD	ALL DIVISIONS	169.1500 N			169.1500 N			A	A/G COMMAND
14	AIR TO GROUND	A/G TAC	ALL DIVISIONS	167.9500 N			167.9500 N			A	A/G TACTICAL
15	MEDICAL	CALCORD	ALL DIVISIONS	156.0750 N			156.0750 N		156.7	A	MEDICAL COORDINATION
16	EMERGENCY ONLY	GUARD	ALL DIVISIONS	168.6250 N			168.6250 N		110.9	A	AIR GUARD - EMERGENCY
17										A	
18										A	
19										A	
20	EMERGENCY ONLY	GUARD	ALL DIVISIONS	168.6250 N			168.6250 N		110.9	A	AIR GUARD - EMERGENCY

Incident Location: Placerville, CA

County: El Dorado State: CA Latitude Longitude W

Prepared By (Communications Unit)

Ken Parker, COM1 *[Signature]*

The convention calls for frequency lists to show four digits after the decimal place, followed by either an "N" or a "W", depending on whether the frequency is narrow or wide band. Mode refers to either "A" or "D" indicating analog or digital (e.g. Project 25) or "M" indicating mixed mode. All channels are shown as if programmed in a control station, mobile or portable radio. Repeater and base stations must be programmed with the Rx and Tx reversed.

MEDICAL PLAN

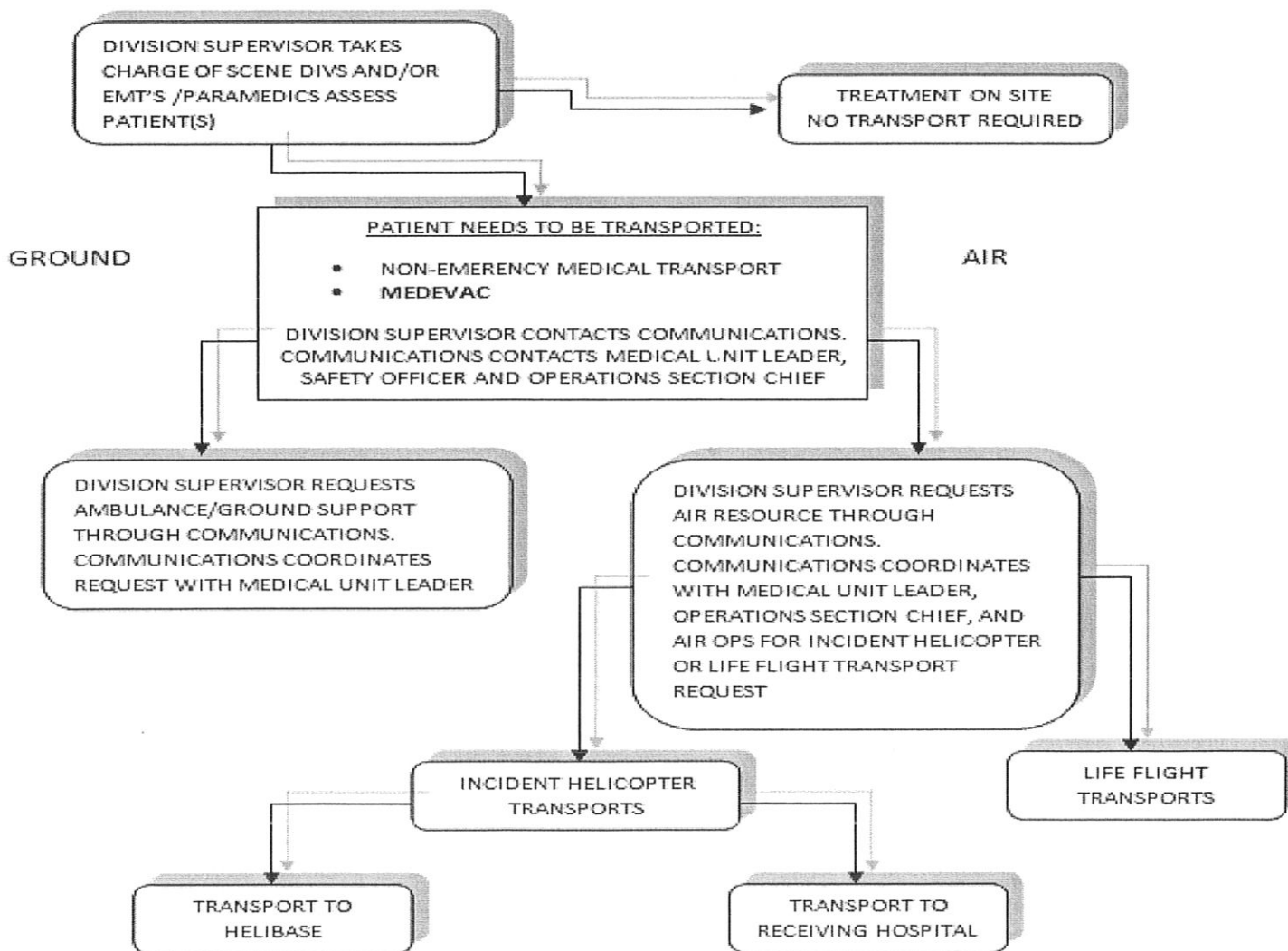
1. Incident/Project Name		2. Operational Period			
King Fire - Zone 1 (North)		Date/Time 9/28/2014 0600 - 1800			
3. First Aid Stations					
Name	Complete Address	Phone/EMS Freq.	Advanced Life Support (ALS) Yes No		
King ICP Zone 1 Frontline Medical	Foresthill Old Mill Site 23850 Foresthill Rd., Foresthill, CA 95631		XX		
Sunset Spike Camp Frontline Medical	Union Valley Reservoir - East side 14 mi. north of Hwy 50 on Ice House Road		XX		
French Meadow Spike Camp	French Meadow Reservoir - SE side		XX		
4. Ambulance Services					
Name	Complete Address	Phone/EMS Freq	Advanced Life Support (ALS) Yes No		
Eldorado County Emergency Medical Services Medic 248 (Z2)	Eldorado County Fire Station 17 6426 Pony Express Trail, Pollock Pines, CA	911 or 530-647-5220	XX		
Foresthill Fire Department Medic 89 (French Meadows) (Z1)	Foresthill FPD FS 88 5981 Gold St. Foresthill, CA	911 or 530-886-5375	XX		
El Dorado County Emergency Medical Services Medic 289 (Z2)	Georgetown FPD Station 65 10561 Sand Mountain Rd., Georgetown, CA	911 or 530-647-5220	XX		
AMR Ambulance Medic 290 (Z1)	Div. F DP 109	916 563-0666	XX		
AMR Ambulance Medic 291 (Z1)	Zone 1 ICP	916 563-0666	XX		
Ebbetts Pass Fire District Medic 431 (Z1)	Sunset Spike Camp	209 768-1671	XX		
5. Air Ambulance Services					
Name	Phone	Type of Aircraft & Capability			
Kern County (KRN) H-408 Grass Valley, CA	911 or 530-647-5220	Bell 205++ Hoist, NVG, ALS			
CHP H20 or H24 Auburn, CA	911 or 916-861-1299	Eurocopter B3 Hoist, ALS, No NVG			
CALSTAR 3 Auburn, CA	911 or 530-887-0569	BO 105LS/C-30			
CAL STAR 6 South Lake Tahoe, CA	911 or 530-887-2338	BO 105LS/C-30			
6. Hospitals					
Name Complete Address	GPS Datum - NAD 83 Degrees Decimal Minutes DD° MM.MMM' N - Lat DD° MM.MMM' W - Long	Travel Time Air Gnd	Phone	Helipad Yes No	Level of Care Facility
Marshal Medical Center 1100 Marshall Way, Placerville, CA 95667	Lat: N/A	1 Hr	(530) 622-1441	X	Level III Trauma Center
	Long:				
	VHF: N/A				
Sutter Auburn Faith Hosp. 11815 Education St. Auburn, CA, 95602	Lat: N/A	30 Min	(530) 888-4500	X	
	Long:				
	VHF: N/A				
Sutter Roseville Medical Ctr 1 Medical Plaza Dr, Roseville, CA 95661	Lat: 38 45.58	25 Min 45 Min	(916) 781-1200	X <input type="checkbox"/>	Level II Trauma Center
	Long: 121 14.52				
	VHF:				
UC Davis Medical Center 2315 Stockton Ave. Sacramento, CA 95817	Lat: 38 33.17	25 Min 1 Hr	(916) 734-2363	X <input type="checkbox"/>	Level I Trauma Center Burn Center
	Long: 121 27.21				
	VHF:				
Barton Memorial Hospital 2170 South Ave. South Lake Tahoe, CA 96158	Lat: 38 54.40	30 Min 2.5 Hr	(530) 541-3420	X <input type="checkbox"/>	
	Long: 119 59.48				
	VHF:				
Renown Regional Medical Center 1155 Mill St Reno, NV	Lat: 39 31 32	45 Min 2 Hr	(775) 982-4100	X <input type="checkbox"/>	Level II Trauma Center Burn Center
	Long: 119 47 44				
	VHF:				
7. Prepared By (Medical Unit Leader)					
Robert Russell MEDL Newton Ong MEDLt		8. Date/Time 09/27/2014 2000		9. Reviewed By (Safety Officer) Marty Hamel SOF 1	
				10. Date/Time 09/27/2014 2000	

When an injury occurs, initiate care with available resources at scene and notify DIVS.

The DIVS shall coordinate the incident and direct necessary actions. The following steps shall be taken to mitigate the incident:

1. Determine the nature of the emergency.
2. If the emergency is a medical injury/illness, determine if the injury/illness is life threatening.
3. If the injury is life threatening, then clear designated frequency for emergency traffic.
4. Identify the on-scene point of contact by position.
5. Ensure that the Medical Unit Leader is contacted immediately.
6. Identify number injured, patient assessment(s) and location (geographic and/or GPS coordinates).
7. Identify on-scene medical personnel by position and last name (i.e. EMT Jones).
8. Identify preferred method of patient transport.
9. Determine any additional resources or equipment needed.

The Evacuation Plan should be continually evaluated, and contingencies developed in the event the first plan is not effective.



Medical Incident Report					
FOR ALL MEDICAL EMERGENCIES: IDENTIFY ON SCENE INCIDENT COMMANDER BY NAME AND POSITION AND ANNOUNCE "MEDICAL EMERGENCY" TO INITIATE RESPONSE FROM IMT COMMUNICATIONS/DISPATCH.					
Use items 1 - 9 to communicate situation to communications/dispatch.					
1. CONTACT COMMUNICATIONS/DISPATCH <i>Ex: "Communications, Div. Alpha. Stand-by for Priority Medical Incident Report." (If life threatening request designated frequency be cleared for emergency traffic.)</i>					
2. INCIDENT STATUS: <i>Provide incident summary and command structure.</i>					
Nature of Injury/Illness			<i>Describe the injury (Ex: Broken leg with bleeding)</i>		
Incident Name			<i>Geographic Name + "Medical" (Ex: Trout Meadow Medical)</i>		
Incident Commander			<i>Name of IC</i>		
Patient Care			<i>Name of Care Provider (Ex: EMT Smith)</i>		
3. INITIAL PATIENT ASSESSMENT: <i>Complete this section for each patient. This is only a brief, initial assessment. Provide additional patient info after completing this 9 Line Report.</i>					
Number of Patients:	Male / Female	Age:	Weight:		
Conscious? <input type="checkbox"/> YES <input type="checkbox"/> NO = MEDEVAC!					
Breathing? <input type="checkbox"/> YES <input type="checkbox"/> NO = MEDEVAC!					
Mechanism of Injury: <i>What caused the injury?</i>					
Lat/Long (Datum WGS84) <i>Ex: N 40° 42.45' x W 123° 03.24'</i>					
4. SEVERITY OF EMERGENCY, TRANSPORT PRIORITY					
SEVERITY			TRANSPORT PRIORITY		
<input type="checkbox"/> URGENT-RED Life threatening injury or illness. <i>Ex: Unconscious, difficulty breathing, bleeding severely, 2^o - 3^o burns more than 4 palm sizes, heat stroke, disoriented.</i>			Ambulance or MEDEVAC helicopter. Evacuation need is IMMEDIATE.		
<input type="checkbox"/> PRIORITY-YELLOW Serious Injury or illness. <i>Ex: Significant trauma, not able to walk, 2^o - 3^o burns not more than 1-2 palm sizes.</i>			Ambulance or consider air transport if at remote location. Evacuation may be DELAYED.		
<input type="checkbox"/> ROUTINE-GREEN Not a life threatening injury or illness. <i>Ex: Sprains, strains, minor heat-related illness.</i>			Non-Emergency. Evacuation considered Routine of Convenience.		
5. TRANSPORT PLAN:					
Air Transport: (Agency Aircraft Preferred)					
<input type="checkbox"/> Helispot		<input type="checkbox"/> Short-haul/Hoist		<input type="checkbox"/> Life Flight	
<input type="checkbox"/> Other					
Ground Transport: <i>Click here to enter text.</i>					
<input type="checkbox"/> Self-Extract		<input type="checkbox"/> Carry-Out		<input type="checkbox"/> Ambulance	
<input type="checkbox"/> Other					
6. ADDITIONAL RESOURCE/EQUIPMENT NEEDS:					
<input type="checkbox"/> Paramedic/EMT(s)		<input type="checkbox"/> Crew(s)		<input type="checkbox"/> SKED/Backboard/C-Collar	
<input type="checkbox"/> Burn Sheet(s)		<input type="checkbox"/> Oxygen		<input type="checkbox"/> Trauma Bag	
<input type="checkbox"/> Medication(s)		<input type="checkbox"/> IV/Fluid(s)		<input type="checkbox"/> Cardiac Monitor/AED	
<input type="checkbox"/> Other (i.e. splints, rope rescue, wheeled litter)					
7. COMMUNICATIONS:					
Function	Channel Name/Number	Receive (Rx)	Tone/NAC *	Transmit (Tx)	Tone/NAC *
<i>Ex: Command</i>	<i>Forest Rpt, Ch. 2</i>	<i>168.3250</i>	<i>110.9</i>	<i>171.4325</i>	<i>110.9</i>
COMMAND					
AIR-TO-GRND					
TACTICAL					
*(NAC for digital radio system)					
8. EVACUATION LOCATION:					
Lat/Long (Datum WGS84) <i>EX: N 40 42.45' x W 123 03.24'</i>					
Patient's ETA to Evacuation Location:					
Considerations: <i>If primary options fail, what actions can be implemented in conjunction with primary evacuation method? Be thinking ahead...</i>			REMEMBER: Confirm ETA's of resources ordered Act according to your level of training Be Alert. Keep Calm. Think Clearly. Act Decisively.		

Division - As Assigned	Area Location Capability	
Branch X, DIV 1B 12 Hour (day)	EMS Responders & Capability:	FEMP Matt Heckman, FEMT John Bicondova
	Equipment Available on Scene:	ALS/BLS supplies
	Medical Emergency Channel:	Calcord 156.0750 Tone 6 (156.7) tx/rx
	ETA for Ambulance to Scene:	
	Air:	
	Ground:	45 min
	Approved Helispot:	None identified
	Lat:	
	Long:	
Branch X, DIV 1D 12 Hour (day)	Area Location Capability	
	EMS Responders & Capability:	FEMP Jacob Snow, FEMT Willie Kron
	Equipment Available on Scene:	ALS/BLS supplies
	Medical Emergency Channel:	Calcord 156.0750 Tone 6 (156.7) tx/rx
	ETA for Ambulance to Scene:	
	Air:	
	Ground:	30 min
	Approved Helispot:	None identified
	Long:	
Branch X, DIV 1F 12 Hour (day)	Area Location Capability	
	EMS Responders & Capability:	FEMP Nick Gabbord, FEMT Mitch Carney
	Equipment Available on Scene:	ALS/BLS supplies
	Medical Emergency Channel:	Calcord 156.0750 Tone 6 (156.7) tx/rx
	ETA for Ambulance to Scene:	
	Air:	
	Ground:	30 min
	Approved Helispot:	None identified
	Long:	
Branch XII, DIV 1H 12 Hour (day)	Area Location Capability	
	EMS Responders & Capability:	FEMP Ronald Cutting, FEMT Bryan Esser
	Equipment Available on Scene:	ALS/BLS supplies
	Medical Emergency Channel:	Calcord 156.0750 Tone 6 (156.7) tx/rx
	ETA for Ambulance to Scene:	
	Air:	
	Ground:	30 min
	Approved Helispot:	None identified
	Long:	
Branch XII, DIV 1L 12 Hour (day)	Area Location Capability	
	EMS Responders & Capability:	FEMP Eduardo Stary, FEMP Sergio Zavala
	Equipment Available on Scene:	ALS/BLS supplies
	Medical Emergency Channel:	Calcord 156.0750 Tone 6 (156.7) tx/rx
	ETA for Ambulance to Scene:	
	Air:	
	Ground:	30 min
	Approved Helispot:	None identified
	Long:	

MEDICAL PLAN

Area Location Capability		
Branch XVI, DIV 1U 12 Hour (day)	EMS Responders & Capability:	FEMP Tim Pratt, FEMT Steven McGary
	Equipment Available on Scene:	ALS/BLS supplies
	Medical Emergency Channel:	Calcord 156.0750 Tone 6 (156.7) tx/rx
	ETA for Ambulance to Scene:	
	Air:	
	Ground:	45 min
	Approved Helispot:	None identified
	Lat:	
	Long:	
Area Location Capability		
Branch XVI, DIV 1W 12 Hour (day)	EMS Responders & Capability:	FEMP Dan Nunez, FEMT Travis Moore
	Equipment Available on Scene:	ALS/BLS supplies
	Medical Emergency Channel:	Calcord 156.0750 Tone 6 (156.7) tx/rx
	ETA for Ambulance to Scene:	
	Air:	
	Ground:	45 min
	Approved Helispot:	None identified
	Lat:	
	Long:	
Area Location Capability		
Branch XVI, DIV 1Y 12 hour (day)	EMS Responders & Capability:	FEMP Steve Wallace, FEMT Cody Haas
	Equipment Available on Scene:	ALS/BLS supplies
	Medical Emergency Channel:	Calcord 156.0750 Tone 6 (156.7) tx/rx
	ETA for Ambulance to Scene:	
	Air:	
	Ground:	45 min
	Approved Helispot:	None identified
	Lat:	
	Long:	
Area Location Capability		
Branch XVI, DIV 1Z 12 hour (day)	EMS Responders & Capability:	FEMP Leo Granados, FEMT Eric Connors
	Equipment Available on Scene:	ALS/BLS supplies
	Medical Emergency Channel:	Calcord 156.0750 Tone 6 (156.7) tx/rx
	ETA for Ambulance to Scene:	
	Air:	
	Ground:	30 min
	Approved Helispot:	None identified
	Lat:	
	Long:	
Area Location Capability		
Repair / Rehab Branch	EMS Responders & Capability:	FEMP Matt Menard, FEMT Todd Adams
	Equipment Available on Scene:	ALS/BLS supplies
	Medical Emergency Channel:	Calcord 156.0750 Tone 6 (156.7) tx/rx
	ETA for Ambulance to Scene:	
	Air:	
	Ground:	45 min
	Approved Helispot:	None identified
	Lat:	
	Long:	

Area Location Capability		
Contingency American Mosquito Oxbow Ralston 12 Hour (day)	EMS Responders & Capability:	FEMP Matt Lucas, FEMT Scott Harlan
	Equipment Available on Scene:	ALS/BLS supplies
	Medical Emergency Channel:	Calcord 156.0750 Tone 6 (156.7) tx/rx
	ETA for Ambulance to Scene:	
	Air:	
	Ground:	30 min
	Approved Helispot:	None identified
	Lat:	
	Long:	
Area Location Capability		
French Meadows Spike Camp 16 Hour (Day)	EMS Responders & Capability:	FEMP Matt Cobb
	Equipment Available on Scene:	ALS/BLS supplies
	Medical Emergency Channel:	Calcord 156.0750 Tone 6 (156.7) tx/rx
	ETA for Ambulance to Scene:	
	Air:	
	Ground:	
	Approved Helispot:	None identified
	Lat:	
	Long:	
Area Location Capability		
	EMS Responders & Capability:	
	Equipment Available on Scene:	ALS/BLS supplies
	Medical Emergency Channel:	Calcord 156.0750 Tone 6 (156.7) tx/rx
	ETA for Ambulance to Scene:	
	Air:	
	Ground:	
	Approved Helispot:	None identified
	Lat:	
	Long:	
Area Location Capability		
	EMS Responders & Capability:	
	Equipment Available on Scene:	ALS/BLS supplies
	Medical Emergency Channel:	Calcord 156.0750 Tone 6 (156.7) tx/rx
	ETA for Ambulance to Scene:	
	Air:	
	Ground:	
	Approved Helispot:	None identified
	Lat:	
	Long:	

Suppression Damage Repair Guidelines from the Suppression Repair Plan

No covering direct fireline with green vegetation will occur without IC/OPS approval

**Take the time to read the full Suppression Damage Plan;
Copies are available from READ's, at the morning briefing, and in the Clerical Trailers.**

Objectives - The objective of the fire suppression repair plan is to place areas disturbed by fire suppression activities into a condition that will not negatively affect natural and cultural resources and will not contribute to excessive erosion and sedimentation on the landscape. This is to be done in a manner which does not compromise public and firefighter safety.

- Reduce the potential for soil erosion and sedimentation
- Reduce the visual impacts of fire line as well other suppression activities when feasible
- Repair roads and drainage structures to a functioning condition
- Protect natural and cultural resources from additional potential damage

Critical Guidelines

Sensitive Sites are marked with pink and black checkerboard flagging. Noxious weeds sites are flagged in orange with noxious weed print. Other sensitive site flagging might be present on private lands (orange and white stripe with special treatment area print).

Trash and un-needed flagging will be back-hauled. Please leave safety flagging in place.

On Firelines, waterbars should be installed as described below, fire line covered with slash, and entrances blocked.

Dozer Line

Fire line Gradient (% slope)	Distance Between Waterbars ^(A) (feet)
0 to 10	250
10 to 20	100
21 to 40	75
41 to 60 ^(B)	50 ^(B)

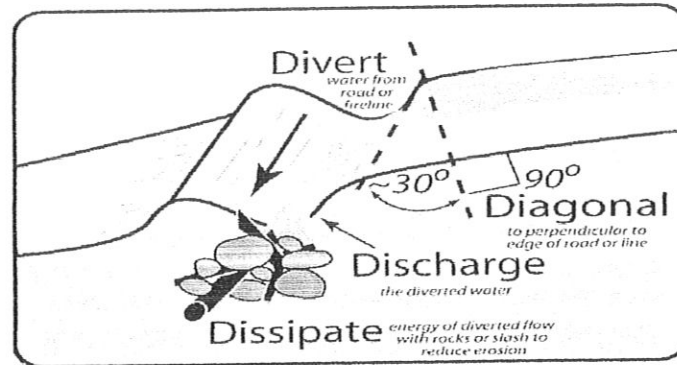
Hand Line

Fire line Gradient (% slope)	Distance Between Waterbars ^(A) (feet)
0 to 5	no waterbars needed
6 to 15	200
16 to 30	100
31 to 50	75
51 to 60	50 ^(B)
>60	None ^(B)

(A) These are guidelines and are not intended to restrict the implementation of more or less water bars if the need or lack of need is justified.

(B) Firefighter safety should be taken into account; if slopes are too steep for safe implementation then waterbars should not be constructed, if sensitive resources are not present.

- **DEPTH AND WIDTH:** Waterbars need to be cut into surface, do not simply push up soil.
 - Waterbar depths for **dozer lines** should be at least 6 inches; total height from bottom of ditch to the top of the waterbar should average at least 18 inches and not exceed 24 inches.
 - Waterbar depths for **hand lines** should be at least 4 inches; total height from bottom of ditch to top of waterbar should average at least 8 inches and not exceed 12 inches.



Helispots, Safety Zone, Spike Camp, and Staging Areas: These fire suppression activity areas should be repaired to standards similar to fire line repair. Waterbars place where appropriate, cleared vegetative material used for soil cover, and concentrations of slash remediated.

Watercourses: Remove deposited soil from streams, watercourses, swales, or draws back to the original contour. Remove only as much as feasible without further damage to the watercourse. Restore bank channels at fire line crossings back to the shape seen adjacent to the crossing. Pull perched soil from drainage edges and spread it evenly across the fire line.

- Do not remove large woody debris which was in the channel prior to the fire, bucked limbs and logs in watercourses from fire suppression activities should be removed from the watercourse.
- Where fire lines are constructed within 100 feet of intermittent and perennial streams, use certified weed free straw, wood strands, or slash to increase soil cover and prevent sediment from entering the stream channel.

Water Drafting Sites: Water sources developed as a water draft site are to be restored to a condition resembling pre fire use. Remove any dams, dikes, or other impoundments that were created for fire suppression activities.

Concentrations of Slash: Concentrations of slash created by fire suppression activities along roadways, developed recreation areas, and among structures should be chipped and spread across the cleared area. Chip piles should not exceed 6 inches in depth. Where appropriate, concentrations of slash can be lopped and scattered, not to exceed 18 inches in height.

OTHER SUPPRESSION DAMAGE REPAIR NEEDS:

- Repair fences, gates, and cattle guards so that they are functional. These repairs must be related to suppression fire activities. Current damage should be rust free.
- Hazard trees should be felled if they pose a safety threat to the general public. Hazard trees to be felled will be identified and marked by a Division Group Supervisor or Felling Boss.

Ask a READ for the list of site specific repair needs for your Division. Please ask questions, we are here to help you get the work done. Ask a READ in the field or come by the READ trailer.

Thank you for all your hard work and professionalism.

Human Resource Message

Demob

Many of us will be demobing soon. Whether you are traveling by plane, bus or fire engine, have a safe trip home or to your next assignment. No matter how many times you've been through it, the demob process can be stressful. Remember that you are not the only one feeling anxious, stressed and tired. You can assist the folks in demob by helping the process go as smoothly as possible by being PREPARED and PATIENT.

-Patience and fortitude conquer all things. Ralph Waldo Emerson.



If you have issues, report them to your supervisor. If you need additional help, contact the Human Resources Specialist Office located on Main Street (next to Documentation).

Office Number (530) 367-8899
Marilyn Loughrey (925) 588-6711
Tom Nichols (916) 878-8165

09/28/2014

TENTATIVE RELEASE

ENF KING CA-ENF-023461

OVERHEAD

O-250	0600	(HEQB)	LAWSON JR, LOGAN
O-251	0600	(HEQB)	HALL, TYLER RAND
O-258	0600	(HEQB)	ZALEWSKI, NATHANIEL
O-260	0600	(HEQB)	RUTTER, STEPHEN
O-291	0600	(DIVS)	BEDKE, JEFFREY
O-428	0600	(EMTB)	BRANDOW, NICK
O-432	0600	(FEMT)	SOUDER, RYAN
O-724	0600	(DIVS)	ALLEN, BRANDON
O-736	0600	(EMTF)	GALVAN, CYRUS
O-805	0600	(DIVS)	CLAY, ALLEN J
O-831	0600	(HEQB)	CHING, JACOB
O-900	0600	(STEN)	VEALE, JON
O-951	0600	(TFLD)	JALVING, JAMIE
O-1072	0600	(TFLD)	THOMPSON, TRAVIS
O-3222	0600	(STEN)	GOODIAN, KEN
O-227	0800	(DIVS)	KLUG, CARL M
O-517	0830	(HEQB)	HERREN, CURTIS D
O-518	0830	(HEQB)	WATERS, CHARLES RICH
O-26	0900	(THSP)	DOROSH, CHERYL
O-51	1000	(PIOF)	LABOA, JANE H
O-903	1200	(LOFR)	IMT - JONES, JEFF
O-946	1400	(OSC1)	REYES, JOSEPH
O-964	1400	(SOFR)	WELBOURN, DOUGLAS RANKIN
O-966	1600	(SOFR)	TOVAR, RALPH
O-3199	1800	(PIOF)	FOXWORTHY, ROBERT G

09/28/2014

TENTATIVE RELEASE

ENF KING CA-ENF-023461

CREWS

C-21	0600	(HC2)	CRW T2IA TANANA
C-38	0600	(HC2)	CRW T2IA ZEPHYR
C-44	0600	(HC2)	CRW T2 MQ FRANCO 136
C-48	0600	(HC1)	CRW T1 ELK MT IHC
C-197	0600	(HC2)	CRW T2 COBRAS 3
C-96	0700	(HC2)	CRW T2IA UTAH CNTY #2
C-7	0800	(HC1)	CRW T1 TRINITY IHC
C-89	0800	(HC1)	CRW T1 SAWTOOTH IHC
C-87	0900	(HC1)	CRW T1 AMERICAN RIVER IHC
C-196	0900	(HC2)	CRW T2 BLACK EAGLES 3
C-24	1000	(HC2)	CRW T2IA FIRESTORM WFS
C-176	0700	(HC2)	CRW T2IA CORONADO
C-149	0800	(HC1)	CRW T1 LONE PEAK IHC

09/28/2014

TENTATIVE RELEASE

ENF KING CA-ENF-023461

EQUIPMENT

E-126	0600	(WTT1)	WT T1 SPECE INDUSTRIAL
E-131	0600	(WTT1)	WT T1 G&G FIRE SUPP
E-133	0600	(WTT1)	WT SUP T1
E-137	0600	(WTT1)	WT T1 WASATCH SMOKIES
E-141	0600	(WTT1)	WT T1 TACTICAL
E-161	0600	(ES3)	ENG S/T MNF 3645C
E-197	0600	(DOZ2)	DOZ T2 YTS
E-212	0600	(DOZ2)	DOZ T2 LENAHN'S WATER
E-252	0600	(WTT1)	WT T1 C&H VETERAN ENT
E-253	0600	(WTT1)	WT T1 ALL AGENCY CONTR
E-278	0600	(WTT1)	WT T1 PRO DUMP
E-370	0600	(ENG6)	ENG T6 E607
E-497	0600	(ES3)	ENG T3 STRIKE TEAM
E-549	0600	(ENG3)	ENG T3 33
E-563	0600	(DOZ2)	DOZER T2 GREENOUS LLC R004
E-570	0600	(DOZ2)	DOZ T2 HAYS EQUIP
E-571	0600	(DOZ2)	DOZ T2 HAYS EQUIP
E-575	0730	(DOZ2)	DOZER T2 NEESE CONST 6GN02
E-605	0600	(ENG3)	ENGINE - T3 - PARK CITY FD - E
E-606	0600	(ENG3)	ENG T3 1667
E-607	0600	(ENG3)	ENG T3 1668
E-623	0600	(ENG3)	ENG T3 352
E-624	0600	(ENG3)	ENG T3 72
E-638	0600	(ENG3)	ENG T3 426
E-642	0600	(ENG3)	ENG T3 321

09/28/2014

TENTATIVE RELEASE

ENF KING CA-ENF-023461

E-653	0600	(ENG4)	ENG T4 6411
E-654	0600	(ENG6)	ENG T6 641
E-655	0600	(ENG6)	ENG T6 21
E-656	0600	(ENG4)	ENG T4 3441
E-658	0600	(ENG4)	ENG T4 3442
E-659	0600	(ENG4)	ENG T4 1421
E-660	0600	(ENG6)	ENG T6 641
E-924	0600	(WTS2)	TENDER, WATERSUPPORT - T2V - R
E-926	0600	(WTS2)	TENDER, WATERSUPPORT - T2V - B
E-207	0700	(DOZ2)	DOZ T2 AAA EQUIP
E-567	0700	(DOZ2)	DOZ T2V PAUL ROEN #N01
E-107	0730	(DOZ2)	DOZ T2 BOB MURRAY
E-569	0730	(DOZ2)	DOZER T2V BASQO

Incident Trainee / Trainer Data Worksheet

PLEASE PRINT LEGIBLY!

A: Trainee Data

Trainee Name: _____ Check One: Male Female
Trainee Position: _____ Order Number (E, O, C, A) ____--_____
State Abr. ____ + 3 Letter Designator _____ Agency Type: Federal State Local
 USFS BLM BIA FWS DOD NWS NPS Date Assigned: ____--____--_____
Ordered as a trainee for the incident? Yes No Trainee Cell Number: _____
Ordered as a US Forest Service PRIORITY trainee Yes No OFPM IFPM?

**Person's name and title that is responsible for tracking your qualifications:
(Where do you want the packet mailed to?)**

Name: _____ Title: _____ Home Unit: _____
Agency Address: _____ City: _____
State: _____ Zip: _____ Phone Number: () _____--_____

B. Trainee Prerequisites

YES NO

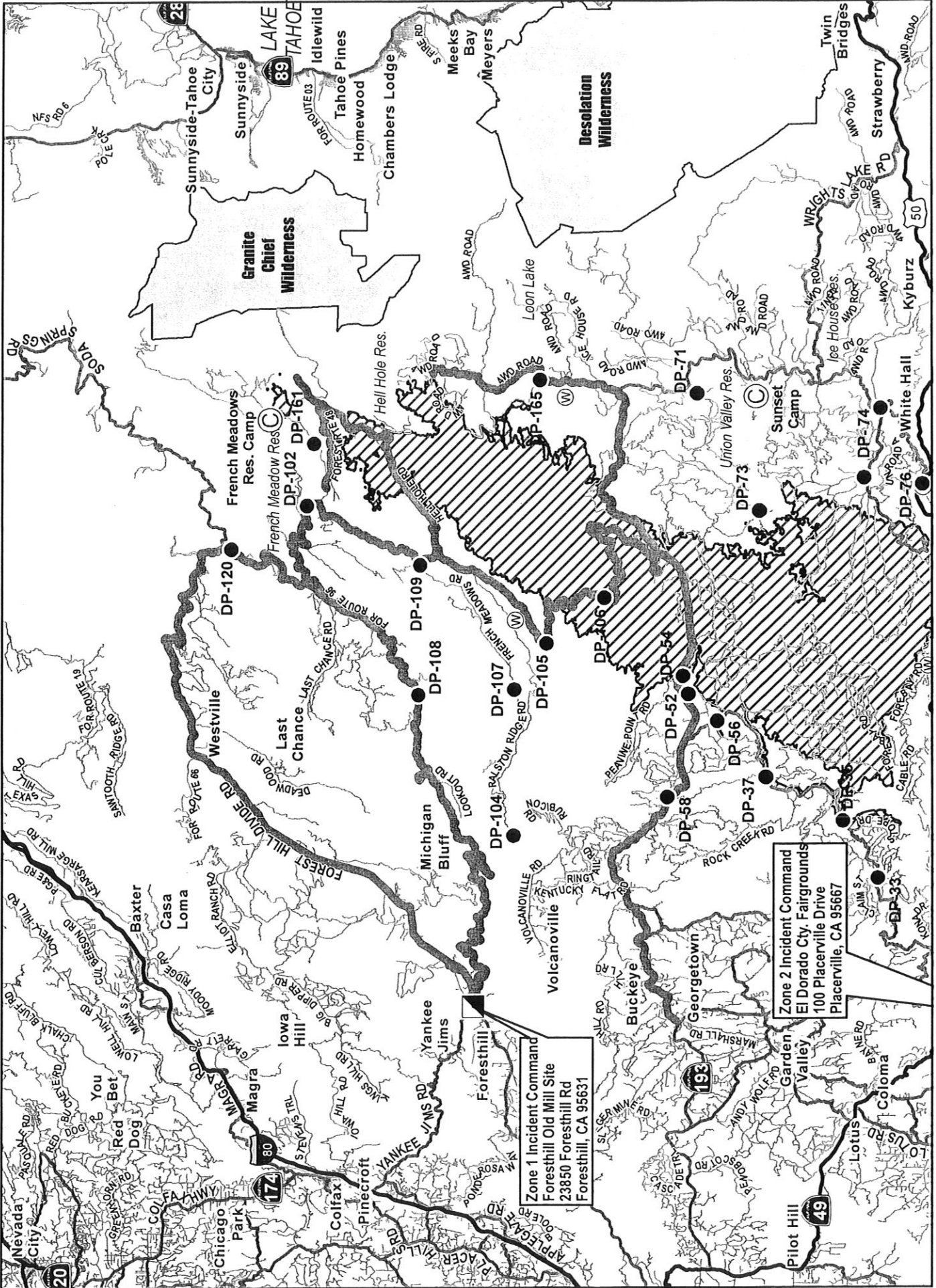
- | | | |
|--|-----------------------|-----------------------|
| 1. Possesses valid Red Card or agency certification card? | <input type="radio"/> | <input type="radio"/> |
| 2. Trainee has a proper agency initiated position task book? | <input type="radio"/> | <input type="radio"/> |
| 3. Trainee has an incident supplied task book? | <input type="radio"/> | <input type="radio"/> |

C. Trainer/Evaluator Data (All fields are required to be filled in)

Trainer/Evaluator Name: _____ Position: _____
Home Unit: _____ Order Number (E, O, C, A) ____--_____
Work Address: _____ City: _____ State: _____
Zip Code: _____ Phone Number: () _____--_____

D. Trainee Goals (items in the position task book to be evaluated on this incident)

- _____
- _____
- _____



TRANSPORTATION MAP
 King Incident CA-ENF-023461
 September 24, 2014

- Major Highways
- Highways
- Major Roads
- Zone 1 access routes
- Zone 2 access routes
- Camp
- Drop Point
- Water Source

Zone 1 Incident Command
 Foresthill Old Mill Site
 23850 Foresthill Rd
 Foresthill, CA 95631

Zone 2 Incident Command
 El Dorado Cty. Fairgrounds
 100 Placerville Drive
 Placerville, CA 95667

SLEEPING
OVERHEAD PARKING
MOBILE SLEEPERS

OVERHEAD SLEEPING

KITCHEN

MEDICAL SHOWERS

SNEEZE SHOTS

See attached

NO PARKING

SUPPLY

DO NOT ENTER

NO PARKING

SECURITY

SHOWERS
LAUNDRY

GATO WATER LUNCHES

FUEL

EXIT ENTER

PARKING

PARKING

GROUND SUPPORT

PARKING

GROUND SUPPORT

DAY SLEEPING PARKING

GRAY WATER DUMP

DO NOT ENTER

DO NOT ENTER

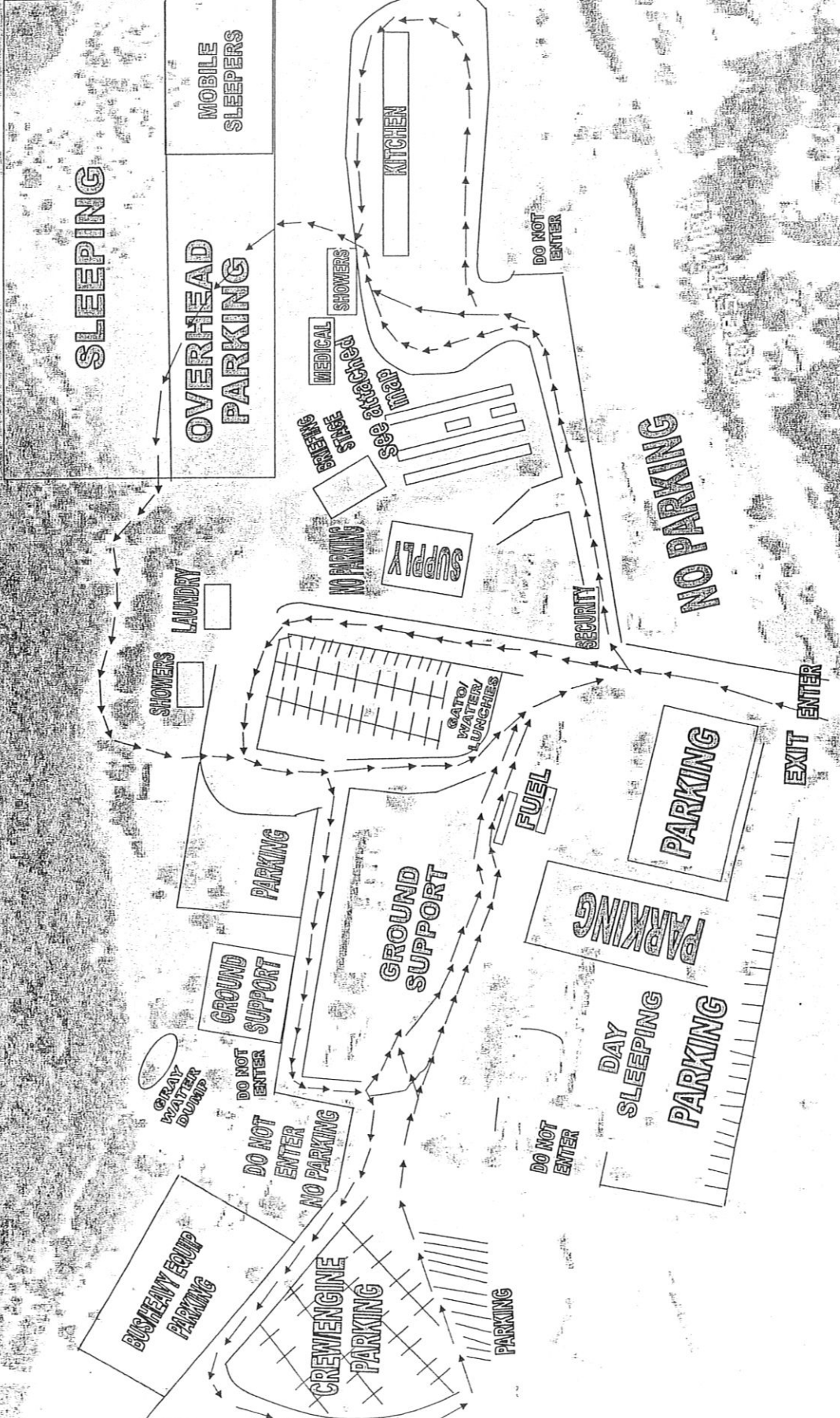
DO NOT ENTER

NO PARKING

BUSHEAVY EQUIP PARKING

CREWENGINE PARKING

PARKING



TIME	MAJOR EVENTS
9. Prepared by (Name and Position)	

