

# **BEAVER FIRE**

## **Incident Action Plan**

**August 17<sup>TH</sup>, 2014**  
**0600 - 2000**

### **HYDRATION**

- Pre-hydrate, Re-Hydrate!
- Dehydration is preventable
- Brief your Crews with info from your IAP

### **WORKING AROUND HEAVY EQUIPMENT**



- Maintain Safe Distances From Equipment
- Stay 100' in front and 50' Behind the Equipment
- If in Timber, Increase These Distances 2.5 Times

### **DRIVING AND PUBLIC ON ROADWAY**

- Reduce Driving Speeds to Allow For Reaction Time Lag
- Watch for Wildlife on Roads!
- Expect the Unexpected Around Every Curve
- Slow Down for Pedestrians!
- Expect an increase of Heavy Equipment Moving Within the Fire Area

### **KEEP A HIGH LEVEL OF SITUATIONAL AWARENESS**

Beaver Fire: CA-KNF-005497 P5H93T (0505)  
Klamath National Forest  
Northern California Incident Management Team 1

INCIDENT OBJECTIVES	1. Incident Name	2. Date	3. Time									
	Beaver	08/16/2014	2000									
<b>4. Operational Period</b> August 17, 2014 DAY SHIFT												
<b>INCIDENT OBJECTIVES</b> <ol style="list-style-type: none"> <li>1) Ensure firefighter and public safety in all incident activities. Adhere to all safety standards and implement appropriate risk analysis.</li> <li>2) Protect values at risk to include watershed, Late Successional Reserve, cultural resources, private timber lands and recreation sites.</li> <li>3) Initiate suppression repair in accordance with established plans.</li> <li>4) Keep the fire               <ol style="list-style-type: none"> <li>(a) North of Highway 96</li> <li>(b) East of Horse Creek Drainage</li> <li>(c) West of Empire Creek Drainage</li> <li>(d) South of Beaver/Dead Cow Creek Canyon and Condrey Mountain.</li> </ol> </li> </ol> <b>MANAGEMENT OBJECTIVE</b> <ol style="list-style-type: none"> <li>1) Coordinate with Forest to maintain timely and accurate communications with communities, county officials and stakeholders.</li> <li>2) Effectively manage incident costs by planning strategies and tactics toward a high probability of success.</li> </ol>												
<b>6. Weather Forecast for Period</b> <ul style="list-style-type: none"> <li>• See attached weather forecast.</li> </ul>												
<b>7. General Safety Message</b> <ul style="list-style-type: none"> <li>• See attached safety messages.</li> </ul>												
<b>8. Attachments (mark if attached)</b>												
<table border="0" style="width: 100%;"> <tr> <td><input checked="" type="checkbox"/> Organization List - ICS 203</td> <td><input checked="" type="checkbox"/> Medical Plan - ICS 206</td> <td><input checked="" type="checkbox"/> Weather</td> </tr> <tr> <td><input checked="" type="checkbox"/> Div. Assignment Lists - ICS 204</td> <td><input checked="" type="checkbox"/> Incident Map</td> <td><input checked="" type="checkbox"/> ICS215a</td> </tr> <tr> <td><input checked="" type="checkbox"/> Communications Plan - ICS 205</td> <td><input checked="" type="checkbox"/> ICS 220</td> <td><input type="checkbox"/> Rehab Considerations</td> </tr> </table>				<input checked="" type="checkbox"/> Organization List - ICS 203	<input checked="" type="checkbox"/> Medical Plan - ICS 206	<input checked="" type="checkbox"/> Weather	<input checked="" type="checkbox"/> Div. Assignment Lists - ICS 204	<input checked="" type="checkbox"/> Incident Map	<input checked="" type="checkbox"/> ICS215a	<input checked="" type="checkbox"/> Communications Plan - ICS 205	<input checked="" type="checkbox"/> ICS 220	<input type="checkbox"/> Rehab Considerations
<input checked="" type="checkbox"/> Organization List - ICS 203	<input checked="" type="checkbox"/> Medical Plan - ICS 206	<input checked="" type="checkbox"/> Weather										
<input checked="" type="checkbox"/> Div. Assignment Lists - ICS 204	<input checked="" type="checkbox"/> Incident Map	<input checked="" type="checkbox"/> ICS215a										
<input checked="" type="checkbox"/> Communications Plan - ICS 205	<input checked="" type="checkbox"/> ICS 220	<input type="checkbox"/> Rehab Considerations										
<b>9. Prepared by (Planning Section Chief)</b> Valery Lambeth 		<b>10. Approved by (Incident Commander)</b> Mike Minton 										

<b>ORGANIZATION ASSIGNMENT LIST</b>		Ordering	Ron Pierce (t)
1. Incident Name <b>Beaver</b>		Facilities Unit	Frank DelCarlo, Jeff Huhtala, Ricky Crowther (t)
2. Date August 16, 2014	3. Time 2130	Ground Support Unit	Harry Zabel
4. Operational Period <b>Day Shift August 17, 2014</b>		Communications Unit	Phil Shafer, Rick Cartoscelli
Position	Name	Medical Unit	Ken Earle, Ryan Reginato (t)
5. Incident Commander and Staff		Receiving & Distribution	Fred Johnson
Incident Commander	Mike Minton, Rick Young (t)	Security Manager	
Deputy		Food Unit	Jay Westlake
Safety Officer	Michele Tanzi, Jeff Barnhart, Bob Kafka	9. Operations Section	
Information Officer	Jim Mackenson	Operations	Steve Burns, Kurt Lindstrand (t)
Liaison Officer	Kent Swartzlander	Planning Ops	Alec Lane
Human Resources	Diane Simpson, Debra Packard (t)	a. Division/Groups	
6. Agency Representative		<b>Branch I</b>	Mario Marquez, Mike Reed (t)
Agency Administrator	Patty Grantham	Division/Group C	Jeremy Human, Doug Berg (t)
Agency Admin Rep	Lance Noxon	Division/Group E	Brett Loomis,
Fruitgrowers Timber	Terry Salvestro	Division/Group J	Brandon Woodward, Mark Patino, Mark Ploski (t)
Michigan Cal	Chris Chase	Division/Group K / L	Randy Jennings, Todd Nightingale (t)
County OES	Ron Quigley	Division/Group Repair	Shawn Burt, Michael Drayton (t)
Siskiyou Co. Sheriff	Corporal Weed	b. Division/Groups	
Cal Trans	Ryan Gomes	<b>Branch II</b>	Jay Lusher
Cal Fire	Steve Curley	Division/Group A / W	Jesse Knox, Kevin Halleran (t)
IARR Region 9	Lauren Miles, Mitch Bouchonville	Division/Group P	Don Fregulia, Bryce Thomas, Jordon McKnight (T)
IARR AK	Lisa Burns, Cheryl Vanderhorn	Division/Group Q / T	Mark Vardanega, Heather Munn(t)
IARR Southern Region	Tom Barnes	Division/Group U / V	Bryron Hart
CAL OES	Ishmael Messer	Division/Group Staging	Jonathan Merager
7. Planning Section		Division/Group	
Chief	Valery Lambeth, Walter Herzog (t)	Division/Group	
Deputy	Dave Sinclear	c. Air Operations Branch	
Resources / Documentation / Demob Units	Gary Deboi, LouAnn Charbonnier, Rita Mustafia, Melissa Hennessey	Air Operations Branch Director	
Situation Unit	Alan Taylor, Tim Ritchey (t)	Air Attack Supervisor	Curtis Coots / Rico Gonzalez (t)
Training	Seneca Smith	Air Support Supervisor	Glenn Dietz
CTSP	George Steel	Helicopter Coordinator	
GIS	Matt Dickenson, Kyle Felker	Air Tanker Coordinator	
FBAN	John Wood	10. Finance Section	
IMET	Andy Haner, Tim Sedlock (t)	Chief	Rachel Corkill
8. Logistics Section		Time Unit	Maggie Prochazka
Chief	Mike Jellison, Brett Shurr	Cost Unit	Kenny Lucien
Deputy	Ken Kumpe	Compensation/Claims Unit	Debbie McIntosh
Supply Unit	Richard Sheets	Procurement	Karrie Linn
		Prepared by (Resource Unit Leader)	
		L. Charbonnier	



# INCIDENT Weather Forecast



FORECAST NO: 26

NAME OF FIRE: Beaver Fire

PREDICTION FOR: Sunday DAY Shift

UNIT: Klamath National Forest

SHIFT DATE: August 17, 2014

SIGNED: Andy Haner/Tim Sedlock

TIME AND DATE

Incident Meteorologists

FORECAST ISSUED: 08/16/2014 at 2000 PDT

## **\*\*Fire Weather Watch for Thunderstorms Monday Afternoon/Evening\*\***

**WEATHER DISCUSSION:** Poor to Fair relative humidity recoveries expected Sunday morning. Very warm and dry low-level conditions will continue into early next week. A bit more moisture in the mid-levels combined with instability will provide a small threat for showers and thunderstorms Sunday afternoon and evening, with a somewhat greater threat on Monday afternoon and evening.

## **WEATHER FORECAST: \*\*Poor early morning roadway visibility once again\*\***

**Sunday: \*\*Thunderstorms imply strong gusty and erratic winds\*\***

**Weather:** Mostly sunny in the morning...partly cloudy in the afternoon. A slight chance of showers and thunderstorms (mainly dry) in the afternoon.

**High Temperature...** 93-98 canyon bottom, 80-87 mid-upper slopes (Little change from Saturday)

**Min RH.....** 15-22% canyon bottoms, 23-31% high elevations (Little change from Saturday)

**20-FOOT WINDS:**

**Canyons.....** Light morning winds, becoming upslope/upcanyon 5-8 mph in the afternoon.

**Ridgetop.....** Southeast winds up to 5 mph through the morning, becoming north-northwest 5-10 mph with gusts to 16 mph late in the afternoon.

**CWR (>=0.10")....**5%

**LAL...2** (Isolated Dry Lightning)

**Haines Index....3** (Very Low)

**Sunday Night: \*\*Thunderstorms imply strong gusty and erratic winds\*\***

**Weather:** Considerable cloudiness through late evening...then becoming partly cloudy. A slight chance of evening showers and thunderstorms.

**Low Temperature...** 55-60

**Max RH.....** Poor to Fair recovery...45-60%

**20-FOOT WINDS:**

**Canyons.....**North-northwest 5-10 mph in the evening, becoming light downslope/downcanyon.

**Ridgetop.....**North-northwest 6-10 mph in the evening, decreasing to 2-4 mph overnight.

**CWR (>=0.10")....**5%

**LAL...2** (Isolated Dry Lightning)

**Haines Index....3** (Very Low)

**Outlook for Monday: Fire Weather Watch \*\*Thunderstorms imply strong gusty and erratic winds\*\***

**Weather:** Partly cloudy. A chance of showers/thunderstorms (mix wet/dry) in the afternoon/evening.

**High Temperature...** 92-97 canyon bottom, 80-87 mid-upper slopes (Little change from Saturday)

**Min RH.....** 15-20% canyon bottoms, 23-31% high elevations (No change from Saturday)

**20-FOOT WINDS:**

**Canyons.....** Light morning winds, becoming upslope/upcanyon 4-7 mph in the afternoon.

**Ridgetop.....** Light and variable morning winds becoming northerly 5-10 mph with gusts to 16 mph late in the afternoon.

**CWR (>=0.10")....**10%

**LAL...3** (Scattered Lightning)

**Haines Index....3** (Very Low)

**EXTENDED OUTLOOK for Tuesday - Thursday: \*\*Thunderstorms imply strong gusty/erratic winds\*\***

Warm conditions forecast through the middle of the week ahead. Instability and residual moisture may provide a small threat for showers and thunderstorms again Tuesday afternoon and evening.

**.Tuesday thru Thursday...**Mostly clear...except partly cloudy in the afternoons and early evenings. A slight chance of showers and thunderstorms Tuesday afternoon and evening. Lows 55-60. Highs 90-95 canyon bottom, 77-84 mid-upper slopes. Min RH 15-25% canyon bottoms, 24-32% ridges. Light and variable overnight and morning winds, becoming northwest 8-12 mph in the afternoons and evenings with gusts to 20 to 25 mph Tuesday PM.

## FIRE BEHAVIOR FORECAST

<b>FORECAST NUMBER:</b> 30	<b>TYPE OF FIRE:</b> Wildland Fire
<b>FIRE NAME:</b> Beaver	<b>OPERATIONAL PERIOD:</b> 8/17 0600 to 2000
<b>DATE ISSUED:</b> 8/16/14	<b>TIME ISSUED:</b> 2000
<b>UNIT:</b> Klamath N.F.	<b>SIGNED:</b> /s/ John Wood FBAN

### INPUTS

**WEATHER SUMMARY:** Poor to fair relative humidity recoveries expected Sunday morning. Very warm and dry low-level conditions will continue into early next week. A bit more moisture in the mid-levels combined with instability will provide a small threat for showers and thunderstorms Sunday/Monday afternoon and evening. Maximum temperatures canyon bottoms 93-98 degrees, mid-upper slopes 80-87 degrees. Minimum relative humidity canyon bottoms 15-22 percent, canyon bottoms 23-31 percent. Winds: Valleys, light morning winds becoming upslope/up canyon 5 to 8 mph in the afternoon. Ridge winds, Southeast up to 5 mph morning, becoming North-Northwest 5-10 mph with gusts to 16 mph.

**Haines: 3      ERC- 62**

### OUTPUTS

**GENERAL:** Fuels have recovered from the precipitation on Wednesday and fire behavior has responded accordingly. Smoke from other incidents in the area, the Happy Camp Complex and the July Complex, will affect the fire activity by providing a minor shading effect and slightly moderating fire behavior. Drought stressed critically dry fuels, in general are about six weeks ahead of normal. Fire activity should reach peak burning conditions around 1500 and remain there until approximately 2100. Rates of spread in timber fuels up to 10-15 ch/hr and 6 foot flame lengths where wind and slope align. Rates of spread in brush/grass up to 24 ch/hr with flame lengths 4-6 ft. These fuels will need a combination of wind and slope to spread at the higher forecast levels. Anticipate spread rates on average to range from 1-5 ch/hr.

#### **SPECIFIC:**

Fuel moisture: **1hr 3-6% 1000 hr 7% Live 78%** Prob. of ign. **60-90%** Spot distance up to **.3 of a mile.**

**Branch I:** A main concern should be potential spots fires in Buckhorn drainage from rollouts or lofted embers from fire activity. Also, a concern is the remaining open line in Doggett Creek in Division K/L. This area is close to the point of ignition and has shown low fire behavior with slow rates of spread. Canopy cover and elevation have helped minimize fire spread in the Doggett Creek area. Drying fuels have led to an increase in activity with torching and spotting moving the fire. Activity will remain elevated with rates of spread around 2 ch/hr.

**Branch II:** Fire activity increased in Fish Trap Creek as the fire backed down toward the containment lines. Heavy fuels will continue to consume and burn down. The interior islands in the upper reaches of Fish Trap Creek will continue to show activity as the interior islands consume. Spotting should be a consideration as interior islands consume torching has potential to loft embers although the distance to green fuel should be greater than the predicted spotting distance.

**Initial Attack:** New starts below 3000 feet will initiate and spread quickly in light fuels. Above 3000 feet heavier fuels will not spread as rapidly but will generate intensity as they spread. Above 5800 feet fire spread will be slowed with higher fuel moistures and large open areas with discontinuous fuels. Torching and group torching will be possible with new starts and spotting should be a concern when this occurs. If thunderstorms are in the area, outflow winds could cause a sudden increase in fire behavior and very rapid rates of spread.

### AIR OPERATIONS

Smoke may impact visibility in the morning and hamper air operations. Air should clear out late morning but may move back in in the early afternoon as smoke from the Happy Camp Complex filters in

### Safety Message

Plan for tomorrow and review thunderstorm safety with your crews. Understand and explain the 30/30 rule and decide which Hazard controls will fit your situation and have a contingency.

<b>DIVISION ASSIGNMENT LIST</b>			1. Branch <b>I</b>		2. Division/Group <b>C</b>		
3. Incident Name <b>Beaver</b>			4. Operational Period <b>DAY OPERATIONS</b> Date: <b>8/17/14</b> Time: <b>0600-2000</b>				
5. Operations Personnel							
Operations Chief		Steve Burns/Kurt Lindstrand (t)		Division/Group Supervisor		Jeremy Human (8/24) Doug Berg (t) (8/17)	
Branch Director		Mario Marquez/Mike Reed (t)		Air Support		Glenn Dietz	
6. Resources Assigned this Period							
Strike Team/Task Force/ Resource Designator		Leader	Last Shift	Number Persons	Trans. Needed	Drop Off PT./Time	Pick Up PT./Time
HC2 Upper Tanana 1 (C-78)		Shane Sam	8/26	20	N	DP 84 / 0700	1900
WT2 Darrah Logging (E-29)			8/29	1	N	DP 84 / 0700	1900
WT2 Johnson Trucking (E-3)		Matt Johnson	8/24	1	N	DP 84 / 0700	1900
ENG6 CCD 3665 (E-202)		Sean Cardinal	8/21	3	N	DP 84 / 0700	1900
TFLD (O-162)		Joshua Williams	8/17	1	N	DP 84 / 0700	1900
SOF2 (O-302)		Jaymes Smith	8/25	1	N	DP 84 / 0700	1900
FEMP (O-303)(Division A/W also)		Steven Gray	8/25	1	N	DP 84 / 0700	1900
FEMT (O-226) (Division A/W also)		Tony Garcia	8/18	1	N	DP 84 / 0700	1900
FEMT (O-365) (Division A/W also)		Keith Albrecht	8/22	1	N	DP 84 / 0700	1900
7. Control Operations							
<ul style="list-style-type: none"> <li>Hold and mop up existing containment lines.</li> <li>Mop up 150'.</li> </ul>							
8. Special Instructions							
<ul style="list-style-type: none"> <li>Backhaul trash and excess hose.</li> <li>Avoid cutting hazard trees that are blazed and painted as property line trees if possible.</li> </ul>							
9. Division/Group Communication Summary							
Function	Frequency	System	Channel	Function	Frequency	System	Channel
Command	RX 166.6125 TX 168.4000	NIFC C4	1 Tone 4 (136.5)	Alt. Command	RX 168.1750 TX 171.5250	BLACK T1	14 Tone 1 (110.9)
Tactical Division/Group	RX 168.0500N TX 168.0500N	NIFC T-1	4 Tone 4 (136.5)	Air to Ground	RX 165.4125 TX 165.4125	A/G CMD	12
				Air to Ground	RX 169.6375 TX 169.6375	A/G TAC	13
Prepared by (Resource Unit Leader) <b>L. Charbonnier</b>			Approved by (Planning Section Chief) <i>Walter J. Hyman</i>			Date <b>8/16/2014</b>	Time <b>22:15</b>

DIVISION ASSIGNMENT LIST		1. Branch <b>I</b>		2. Division/Group <b>E</b>			
3. Incident Name <b>Beaver</b>		4. Operational Period <b>DAY OPERATIONS</b> Date: 8/17/14 Time: 0600-2000					
5. Operations Personnel							
Operations Chief	Steve Burns/Kurt Lindstrand (t)		Division/Group Supervisor	Brett Loomis			
Branch Director	Mario Marquez, Mike Reed (t)		Air Support	Glenn Dietz			
6. Resources Assigned this Period							
Strike Team/Task Force/ Resource Designator	Leader	Last Shift	Number Persons	Trans. Needed	Drop Off PT./Time	Pick Up PT./Time	
HC1 Eldorado 1 (C-71)	Will Harris	8/21	21	N	DP 84 / 0700	1900	
HC1 Selawik 2 (C-82)	Clark Ingram	8/26	20	N	DP 84 / 0700	1900	
HC1 Springville IHC	Joaquin Medna	8/27	20	N	DP 84 / 0700	1900	
HC1 Elk Mountain IHC (C-72)	Cheveyo Munk	8/20	19	N	DP 84 / 0700	1900	
HC2IA BIA EOA (C-20)	Scotty Kapepassah	8/20	20	N	DP 84 / 0700	1900	
ENG T3 CA-PNF 325 (E-244)	James Lico	8/29	5	N	DP 84 / 0700	1900	
ENG3 MNF 333 (E-353)	Stephanie Gleason	8/26	5	N	DP 84 / 0700	1900	
ENG6 Bohica Brothers 61 (E-335)	David Campbell	8/26	3	N	DP 84 / 0700	1900	
ENG6 Leeds Brush 151 (E-207)	Steven Lewis	8/21	2	N	DP 84 / 0700	1900	
WT2 Hurlimann (E-30)	Zane Palmerson	8/25	1	N	DP 84 / 0700	1900	
WT2 Darrah (E-51)		8/29	1	N	DP 84 / 0700	1900	
WT2 Cattlelack 713 (E-3)	David Patrick	8/21	1	N	DP 84 / 0700	1900	
FALM (O-105)	Dale Lee / Bill Meadows	8/17	2	N	DP 84 / 0700	1900	
FALM (O-288)	Brian Vigle / Jason Ables	8/25	2	N	DP 84 / 0700	1900	
SOFR (O-134)	William Cirone	8/23	1	N	DP 84 / 0700	1900	
FEMP (O-47)	Matt Miller	8/22	1	N	DP 84 / 0700	1900	
FEMT (O-52)	Jared McElhannon	8/22	1	N	DP 84 / 0700	1900	
READ (O-212)	Rick Mowery	8/21	1	N	DP 84 / 0700	1900	
7. Control Operations <ul style="list-style-type: none"> <li>Hold and mop up existing containment lines.</li> <li>Mop up 150'</li> </ul>							
8. Special Instructions <ul style="list-style-type: none"> <li>Back haul trash and excess hose</li> <li>Avoid cutting hazard trees that are blazed and painted as property line trees if possible.</li> </ul>							
9. Division/Group Communication Summary							
Function	Frequency	System	Channel	Function	Frequency	System	Channel
Command	RX 166.6125 TX 168.4000	NIFC C4	1 Tone 4 (136.5)	Alt. Command	RX 168.1750 TX 171.5250	BLACK T1	14 Tone 1 (110.9)
Tactical Division/Group	RX 166.7250N TX 166.7250N	NIFC T-5	6 Tone 4 (136.5)	Air to Ground	RX 165.4125 TX 165.4125	A/G CMD	12
				Air to Ground	RX 169.6375 TX 169.6375	A/G TAC	13
Prepared by (Resource Unit Leader) L. Charbonnier		Approved by (Planning Section Chief) <i>Walter J. King</i>			Date 8/16/2014		Time 23:05

<b>DIVISION ASSIGNMENT LIST</b>			1. Branch <b>I</b>		2. Division/Group <b>J</b>			
3. Incident Name <b>Beaver</b>			4. Operational Period <b>DAY OPERATIONS</b> Date: 8/17/14 Time: 0600-2000					
5. Operations Personnel								
Operations Chief		Steve Burns/Kurt Lindstrand (t)		Division/Group Supervisor		Brandon Woodward (8/17) Mark Ploski (t) (8/17), Mark Patino		
Branch Director		Mario Marquez, Mike Reed (t)		Air Support		Glenn Dietz		
6. Resources Assigned this Period								
Strike Team/Task Force/ Resource Designator		Leader		Last Shift	Number Persons	Trans. Needed	Drop Off PT./Time	Pick Up PT./Time
HC2IA MDS 2 (C-26)		Paul Shannon		8/19	20	N	DP 55 / 0700	1900
HC2IA Intertribal #1 (C-84)		Jacob Wisehart		8/27	20	N	DP 55 / 0700	1900
HC2 Delta #2 (C-44)		Zachary Jacobson		8/23	20	N	DP 55 / 0700	1900
ST 3660C PNF (E-156)		Rich Simon / Rich Lucius (t)		8/19	27	N	DP 55 / 0700	1900
WT2 Darrah (E-49)		Stan Cargo		8/16	1	N	DP 55 / 0700	1900
FALM (O-104)		Ken Oysert		8/18	2	N	DP 55 / 0700	1900
FALM (O-287)		Rick Mee		8/25	2	N	DP 55 / 0700	1900
FELB (O-319)		James Rust		8/27	1	N	DP 55 / 0700	1900
FEMP (O-225)		Mike Coley		8/17	1	N	DP 55 / 0700	1900
FEMT (O-229)		Charles Brown		8/17	1	N	DP 55 / 0700	1800
SOFR		Mike Alforque		8/26	1	N	DP 55 / 0700	1900
7. Control Operations								
<ul style="list-style-type: none"> <li>Hold and mop up existing containment lines.</li> <li>Mop up 150'.</li> </ul>								
8. Special Instructions								
<ul style="list-style-type: none"> <li>Backhaul trash and excess hose.</li> <li>Avoid cutting hazard trees that are blazed and painted as property line trees if possible.</li> </ul>								
9. Division/Group Communication Summary								
Function		Frequency		System		Channel		
Command		RX 166.6125 TX 168.4000		NIFC C4		1 Tone 4 (136.5)		
Alt. Command		RX 168.1750 TX 171.5250		BLACK T1		14 Tone 1 (110.9)		
Tactical Division/Group		RX 167.1125N TX 167.1125N		FS R5 T5		10 Tone 4 (136.5)		
						Air to Ground		
						Air to Ground		
						RX 169.6375 TX 169.6375		
						A/G TAC		
						13		
Prepared by (Resource Unit Leader) <b>L. Charbonnier</b>				Approved by (Planning Section Chief) <i>Walter J. Henry</i>				
				Date		Time		
				8/16/2014		23:03		



DIVISION ASSIGNMENT LIST			1. Branch <b>I</b>		2. Division/Group <b>K / L</b>		
3. Incident Name <b>Beaver</b>			4. Operational Period <b>DAY OPERATIONS</b> Date: 8/17/14 Time: 0600-2000				
5. Operations Personnel							
Operations Chief		Steve Burns/Kurt Lindstrand (t)		Division/Group Supervisor		Randy Jennings Todd Nightingale (t)	
Branch Director		Mario Marquez, Mike Reed (t)		Air Support		Glenn Dietz	
6. Resources Assigned this Period							
Strike Team/Task Force/ Resource Designator	Leader	Last Shift	Number Persons	Trans. Needed	Drop Off PT./Time	Pick Up PT./Time	
HC1 Kern Valley IHC (C-24)	Leif Mathiesen	8/19	23	N	DP 46 / 0700	1900	
HC1 American River (C-16)	Adam Leyba	8/18	20	N	DP 46 / 0700	1900	
HC1 Bear Divide IHC (C-31)	Brian Anderson	8/19	20	N	DP 46 / 0700	1900	
HC2 St. Michael (C-79)	Aloysius Otten	8/26	20				
TF ENF1 (E-180)	Michael Loeffler / Stephen Clifford (t)	8/20	25	N	DP 46 / 0700	1900	
ENG3 PNF 930 (E-181)	Bob Travis	8/20	7	N	DP 46 / 0700	1900	
ENG3 NM 316 (E-9)	Donald Valdez	8/30	3	N	DP 46 / 0700	1900	
ENG6 Mt. Adam 322 (E-147)	Don Holter	9/1	3	N	DP 46 / 0700	1900	
ENG6 Mt. Adam 324 (E-148)	Ed Chico	8/29	3	N	DP 46 / 0700	1900	
ENG6 Fairview 8 (E-205)	Grover Allrer	8/21	3	N	DP 46 / 0700	1900	
ENG6 Timberline (E-337)	Dylan Howard	8/26	3	N	DP 46 / 0700	1900	
DO22 w/LOWB CLT (E-128)	Joe Lopez	8/19	1	N	DP 46 / 0700	1900	
DO22 w/LOWB CLT (E-127)	Brett Jones	8/18	1	N	DP 46 / 0700	1900	
WT2 Darrah (E-122)	Dave Kaundart	8/18	1	N	DP 46 / 0700	1900	
TFLD (O-194)	Ed Willy	8/20	1	N	DP 46 / 0700	1900	
Skidgen (E-138)	Scott Hadeen	8/19	1	N	DP 46 / 0700	1900	
FEMP (O-48)	Ben Signor	8/21	1	N	DP 46 / 0700	1800	
FEMT (O-51)	Kain Packwood	8/22	1	N	DP 46 / 0700	1900	
SOFR (O-135)	Shannon Bowman	8/19	1	N	DP 46 / 0700	1900	
7. Control Operations <ul style="list-style-type: none"> <li>Construct direct fireline in Doggett Creek drainage.</li> <li>Hold and mop up existing fireline.</li> </ul>							
8. Special Instructions: <ul style="list-style-type: none"> <li>Avoid cutting hazard trees that are blazed and painted as property line trees if possible.</li> </ul>							
9. Division/Group Communication Summary							
Function	Frequency	System	Channel	Function	Frequency	System	Channel
Command	RX 166.6125 TX 168.4000	NIFC C4	1 Tone 4 (136.5)	Alt. Command	RX 168.1750 TX 171.5250	BLACK T1	14 Tone 1 (110.9)
Tactical Division/Group	RX 166.7750 TX 166.7750	NIFC TAC 6	7 Tone 4 (136.5)	Air to Ground	RX 165.4125 TX 165.4125	A/G CMD	12
				Air to Ground	RX 169.6375 TX 169.6375	A/G TAC	13
Prepared by (Resource Unit Leader) L. Charbonnier			Approved by (Planning Section Chief) <i>Walter J. Gray</i>			Date 8/16/2014	Time 22:08

DIVISION ASSIGNMENT LIST		1. Branch <b>II</b>		2. Division/Group <b>A / W</b>			
3. Incident Name <b>Beaver</b>		4. Operational Period <b>DAY OPERATIONS</b> Date: 08/17/2014 Time: 0600-2000					
5. Operations Personnel							
Operations Chief	Steve Burns / Kurt Lindstrand (t)		Division/Group Supervisor	Jesse Knox / Kevin Halleran (t)			
Branch Director	Jay Lusher		Air Support	Glenn Dietz			
6. Resources Assigned this Period							
Strike Team/Task Force/ Resource Designator	Leader	Last Shift	Number Persons	Trans. Needed	Drop Off PT./Time	Pick Up PT./Time	
HC2IA New Jersey 1 (C-28)	Trevor Raynor	8/19	20	N	DP 90 / 0700	1900	
HC2 Mtn. Village (C-81)	Johnny Kokrine	8/27	20	N	DP 90 / 0700	1900	
HC2 PNF OC 19 (C-25)	Zac Stockdale	8/17	20	N	DP 90 / 0700	1900	
ST 6611C (E-329)	Josh Richardson	8/26	26	N	DP 90 / 0700	1900	
WT1 Cattlelack 131 (E-284)	Eric Head	8/29	1	N	DP 90 / 0700	1900	
WT2 Cattlelack 897 (E-4)	James Goldie	8/29	1	N	DP 90 / 0700	1900	
WT1 Allied Water (E-5)	Hank Boudreau	8/19	1	N	DP 90 / 0700	1900	
DO22 w/LOWB Bens (E-92)	Dwayne Haggatt	8/18	2	N	DP 90 / 0700	1900	
DO22 w/LOWB N Rivers (E-199)	Robert Bartneck	8/26	1	N	DP 90 / 0700	1900	
HEQB (O-257)	James Ballard	8/27	1	N	DP 90 / 0700	1900	
HEQB (O-258)	Terrance Corely	8/27	1	N	DP 90 / 0700	1900	
TFLD (O-89)	Paul Varnedoe	8/19	1	N	DP 90 / 0700	1900	
FOBS Group	Peter Briant/Steve Siebert (t)/ Kurt Pindel/Wesley Duncan/ Bob Hoard/Jeremy Kolaks(t)		6	N	DP 90 / 0700	1900	
READ	Rick Mowery		1	N	DP 90 / 0700	1900	
FEMP (O-303)	Steven Gray	8/26	1	N	DP 90 / 0700	1900	
FEMT (O-226)	Tony Garcia	8/18	1	N	DP 90 / 0700	1900	
FEMT (O-365)	Keith Albrecht		1	N	DP 90 / 0700	1900	
SOF2 (O-20)	James Brigance	8/17	1	N	DP 90 / 0700	1900	
SOF2 (O-19)	Steven Davis	8/17	1	N	DP 90 / 0700	1900	
7. Control Operations <ul style="list-style-type: none"> <li>Hold and mop up existing lines.</li> <li>Mop up 150'</li> </ul>							
8. Special Instructions <ul style="list-style-type: none"> <li>Backhaul trash and excess hose. Begin suppression repair.</li> <li>Avoid cutting hazard trees that are blazed as property line trees if possible.</li> </ul>							
9. Division/Group Communication Summary							
Function	Frequency	System	Channel	Function	Frequency	System	Channel
Command	RX 166.6125 TX 168.4000	CMD 4	1 Tone 4 (136.5)	Alt Command	RX 168.1750 TX 171.5250	BLACK T1	14 Tone 1 (110.9)
Tactical Division/Group	RX 168.6000N TX 168.6000N	NIFC T-3	5 Tone 4 (136.5)	Air to Ground	RX 165.4125 TX 165.4125	A/G CMD	12
				Air to Ground	RX 169.6375 TX 169.6375	A/G TAC	13
Prepared by (Resource Unit Leader) Rita Mustatia		Approved by (Planning Section Chief) <i>Walter J. Hrynyk</i>			Date 8/16/2014		Time 22:48

<b>DIVISION ASSIGNMENT LIST</b>			1. Branch <b>II</b>		2. Division/Group <b>P</b>		
3. Incident Name <b>Beaver</b>			4. Operational Period <b>DAY OPERATIONS</b> Date: <b>8/17/14</b> Time: <b>0600-2000</b>				
5. Operations Personnel							
Operations Chief		Steve Burns / Kurt Lindstrand (t)			Division/Group Supervisor	Don Fregulia / Bryce Thomas / Jordan McKnight (t)	
Branch Director		Jay Lusher			Air Support	Glenn Dietz	
6. Resources Assigned this Period							
Strike Team/Task Force/ Resource Designator		Leader	Last Shift	Number Persons	Trans. Needed	Drop Off PT./Time	Pick Up PT./Time
HC1 Pioneer Peak (C-1)		Matt Jones	8/28	22	N	DP 24 / 0700	1900
HC2IA Southern Plains (C-86)		Kerwin Williams	8/28	20	N	DP 24 / 0700	1900
ENG6 Oasis 2 (E-145)		Pete Hawley	8/19	3	N	DP 24 / 0700	1900
ENG6 Oasis 1 (E-146)		Kent Smithart	8/19	3	N	DP 24 / 0700	1900
ENG6 BR225 (E-150)		Mark Brinneman	8/20	3	N	DP 24 / 0700	1900
ENG6 CIF 671 (E-336)		Alexander Arguelle	8/26	4	N	DP 24 / 0700	1900
WT2 Darrah (E-123)		Tammy Andrews	8/17	1	N	DP 24 / 0700	1900
FEMP (O-293)		Tom O'Malley	8/25	1	N	DP 24 / 0700	1900
FEMP (O-99)		Scott Hamilton	8/18	1	N	DP 24 / 0700	1900
SOF2		Jamie Rittenhouse	8/26	1	N	DP 24 / 0700	1900
7. Control Operations							
<ul style="list-style-type: none"> <li>Hold and mop up existing lines.</li> <li>Mop up 150'</li> </ul>							
8. Special Instructions							
<ul style="list-style-type: none"> <li>Backhaul trash and excess hose. Begin suppression repair.</li> <li>Avoid cutting hazard trees that are blazed as property line trees if possible.</li> </ul>							
9. Division/Group Communication Summary							
Function	Frequency	System	Channel	Function	Frequency	System	Channel
Command	RX 166.6125 TX 168.4000	CMD 4	1 Tone 4 (136.5)	Alt. Command	RX 168.1750 TX 171.5250	BLACK T1	14 Tone 1 (110.9)
Tactical Division/Group	RX 168.6000N TX 168.6000N	NIFC T-3	5 Tone 4 (136.5)	Air to Ground	RX 165.4125 TX 165.4125	A/G CMD	12
				Air to Ground	RX 169.6375 TX 169.6375	A/G TAC	13
Prepared by (Resource Unit Leader)			Approved by (Planning Section Chief)			Date	Time
Rita Mustatia			<i>Walter J. Hays</i>			8/16/2014	22:48

<b>DIVISION ASSIGNMENT LIST</b>			1. Branch <b>II</b>		2. Division/Group <b>Q / T</b>		
3. Incident Name <b>Beaver</b>			4. Operational Period <b>DAY OPERATIONS</b> Date: 8/17/14 Time: 0600-2000				
5. Operations Personnel							
Operations Chief		Steve Burns / Kurt Lindstrand (t)		Division/Group Supervisor		Mark Vardanega, Heather Munn (t)	
Branch Director		Jay Lusher		Air Support		Glenn Dietz	
6. Resources Assigned this Period							
Strike Team/Task Force/ Resource Designator	Leader	Last Shift	Number Persons	Trans. Needed	Drop Off PT./Time	Pick Up PT./Time	
HC2IA West Virginia 1 (C-27)	Tim Casto	8/19	20	N	DP 24 / 0700	1900	
HC2 Fort Yukon 1 (C-42)	Donald Carroll	8/23	18	N	DP 24 / 0700	1900	
HC2IA AOICC (C-85)	Terry Beatty, R.L. Self (t)	8/28	20	N	DP 24 / 0700	1900	
ENG6 Santa Clara Br32 (E-206)	Gabe Runolfson	8/21	2	N	DP 24 / 0700	1900	
ENG6 CB Fire 362 (E-334)	Brett Bower	8/26	3	N	DP 24 / 0700	1900	
ENG3 PNF 16			5	N	DP 24 / 0700	1900	
ENG6 Mt. Adams (E-149)			3	N	DP 24 / 0700	1900	
WT2 Peters 2 (E-120)	Jesse Morton	8/20	1	N	DP 24 / 0700	1900	
SKG CLT (E-251)	Steve Lassen	8/21	1	N	DP 24 / 0700	1900	
TFLD (O-164)	John Martinez	8/20	1	N	DP 24 / 0700	1900	
HEQB (O-259)	James Gregory	8/28	1	N	DP 24 / 0700	1900	
Excavator	TBD		1	N	DP 24 / 0700	1900	
FEMP (O-201)	Brian Jones	8/21	1	N	DP 24 / 0700	1900	
FEMT (O-100)	Jeremy Bileaudeaux	8/18	1	N	DP 24 / 0700	1900	
SOFR	Tom Donahoe	8/19	1	N	DP 24 / 0700	1900	
7. Control Operations							
<ul style="list-style-type: none"> <li>Hold and mop up existing lines.</li> <li>Mop up 150'</li> </ul>							
8. Special Instructions							
<ul style="list-style-type: none"> <li>Backhaul trash and excess hose. Begin suppression repair.</li> <li>Avoid cutting hazard trees that are blazed as property line trees if possible.</li> </ul>							
9. Division/Group Communication Summary							
Function	Frequency	System	Channel	Function	Frequency	System	Channel
CMD	RX 166.6125 TX 168.4000	CMD 4	1 Tone 4 (136.5)	Alt CMD	RX 168.1750 TX 171.5250	BLACK T1	14 Tone 1 (110.9)
Tactical Division/Group	RX 166.7250 TX 166.7250	NIFC TAC 5	6 Tone 4 (136.5)	Air to Ground	RX 165.4125 TX 165.4125	A/G CMD	12
				Air to Ground	RX 169.6375 TX 169.6375	A/G TAC	13
Prepared by (Resource Unit Leader)			Approved by (Planning Section Chief)			Date	Time
Rita Mustatia			<i>Walter J. Grayson</i>			8/16/2014	22:54

<b>DIVISION ASSIGNMENT LIST</b>			1. Branch <b>II</b>		2. Division/Group <b>U / V</b>		
3. Incident Name <b>Beaver</b>			4. Operational Period <b>DAY OPERATIONS</b> Date: 8/17/14 Time: 0600-2000				
5. Operations Personnel							
Operations Chief		Steve Burns / Kurt Lindstrand (t)		Division/Group Supervisor		Byron Hart	
Branch Director		Jay Lusher		Air Support		Glenn Dietz	
6. Resources Assigned this Period							
Strike Team/Task Force/ Resource Designator	Leader	Last Shift	Number Persons	Trans. Needed	Drop Off PT./Time	Pick Up PT./Time	
HC21A GFP 15A (C-67)	Jason Campbell	8/18	20	N	DP 8 / 0700	1900	
ENG6 UT-SWS-663 (E-203)	Paul Christensen	8/21	2	N	DP 8 / 0700	1900	
ENG6 UT-SWS-664 (E-204)	Spencer Rollo	8/21	2	N	DP 8 / 0700	1900	
WT2 Shasta Brown (E-48)	Mike Brown	8/29	1	N	DP 8 / 0700	1900	
SOFR (O-139)	Kim Lemke	8/23	1	N	DP 8 / 0700	1900	
FEMP (O-310)	David Morrissey	8/19	1	N	DP 8 / 0700	1900	
FEMT (O-304)	Matt Maumoynier	8/17	1	N	DP 8 / 0700	1900	
FEMP (O-312)	Adam Hacking	8/18	1	N	DP 8 / 0700	1900	
7. Control Operations							
<ul style="list-style-type: none"> <li>Hold and mop up existing completed lines.</li> <li>Mop up 150'</li> </ul>							
8. Special Instructions							
<ul style="list-style-type: none"> <li>Backhaul trash and excess hose.</li> <li>Avoid cutting hazard trees that are blazed as property line trees if possible.</li> </ul>							
9. Division/Group Communication Summary							
Function	Frequency	System	Channel	Function	Frequency	System	Channel
Command	RX 166.6125 TX 168.4000	NIFC C4	1 Tone 4 (136.5)	Alt. Command	RX 168.1750 TX 171.5250	BLACK T1	14 Tone 1 (110.9)
Tactical Division/Group	RX 167.1125N TX 167.1125N	FS R5 T5	10 Tone 4 (136.5)	Air to Ground	RX 165.4125 TX 165.4125	A/G CMD	12
				Air to Ground	RX 169.6375 TX 169.6375	A/G TAC	13
Prepared by (Resource Unit Leader) Rita Mustatia			Approved by (Planning Section Chief) <i>Walter J. Hefey</i>			Date 8/16/2014	Time 22:57

<b>DIVISION ASSIGNMENT LIST</b>			1. Branch		2. Division/Group <b>Repair Group</b>		
3. Incident Name <b>Beaver</b>			4. Operational Period <b>DAY OPERATIONS</b> Date: 8/17/14 Time: 0600-2000				
5. Operations Personnel							
Operations Chief		Steve Burns/ Kurt Lindstrand (t)		Division/Group Supervisor		Shawn Burt (8/24) Michael Drayton (t) 8/17	
Branch Director				Air Support		Glenn Dietz	
6. Resources Assigned this Period							
Strike Team/Task Force/ Resource Designator		Leader	Last Shift	Number Persons	Trans. Needed	Drop Off PT./Time	Pick Up PT./Time
DO22 w/LOWB Humphery (E-93)		Ronald Humphery	8/19	1	N	DP 54 / 0700	1900
DO22 w/LOWB Carlson (E-87)		Jeff Reusze	8/16	1	N	DP 54 / 0700	1900
DO22 w/LOWB Bens (E-196)		Kieth Flash	8/20	2	N	DP 54 / 0700	1900
DO21 w/LOWB Industrial (E-131)		Steve Hagstrom	8/19	2	N	DP 54 / 0700	1900
DO22 w/LOWB Striff (E-201)		Randy Striff	8/26	4	N	DP 54 / 0700	1800
DO22 w/LOWB Bens (E-91)		Anthony Arnold	8/19	1	N	DP 54 / 0700	1900
DO22 w/LOWB Peters (E-200)			8/26	2	N	DP 54 / 0700	1900
DO22 w/LOWB North State (E-133)		Kevin Son	8/19	3	N	DP 54 / 0700	1900
WT2 Cattlelack (E-124)		Bob Buck	8/26	2	N	DP 54 / 0700	1900
HEQB (O-254)		Clayton Swanger	8/17	1	N	DP 54 / 0700	1900
HEQB (O-63)		Tommy Strother (t)	8/17	1	N	DP 54 / 0700	1900
HEQB (O-59)		Fed Privett	8/18	1	N	DP 54 / 0700	1900
HEQB (O-67)		Andy Heisey (t)	8/19	1	N	DP 54 / 0700	1900
HEQB (O-62)		Derrick Miller (t)	8/18	1	N	DP 54 / 0700	1900
HEQB (O-191)		Woodrow Cox	8/17	1	N	DP 54 / 0700	1900
HEQB (O-60)		Jacob Royse	8/19	1	N	DP 54 / 0700	1900
HEQB (O-189)		Levy Rentz	8/18	1	N	DP 54 / 0700	1900
READ (O-213)		Craig Wilson	8/22	1	N	DP 54 / 0700	1900
7. Control Operations • Support repair efforts in all divisions.							
8. Special Instructions							
9. Division/Group Communication Summary							
Function	Frequency	System	Channel	Function	Frequency	System	Channel
Command	RX 166.6125 TX 168.4000	NIFC C4	1 Tone 4 (136.5)	Alt. Command	RX 168.1750 TX 171.5250	BLACK T1	14 Tone 1 (110.9)
Tactical Division/Group	RX 166.5500 TX 166.5500	FS R5 T4	9 Tone 4 (136.5)	Air to Ground	RX 165.4125 TX 165.4125	A/G CMD	12
				Air to Ground	RX 169.6375 TX 169.6375	A/G TAC	13
Prepared by (Resource Unit Leader) Rita Mustatia			Approved by (Planning Section Chief) <i>Walter J. King</i>			Date 8/16/2014	Time 22:58

<b>DIVISION ASSIGNMENT LIST</b>			1. Branch		2. Division/Group <b>Staging</b>		
3. Incident Name <b>Beaver</b>			4. Operational Period <b>DAY OPERATIONS</b> Date: 8/17/14 Time: 0600-2000				
5. Operations Personnel							
Operations Chief		Steve Burns/Kurt Lindstrand			Staging Area Manager	Jonathan Merager	
Branch Director		Jay Lusher			Air Support	Glenn Dietz	
6. Resources Assigned this Period							
Strike Team/Task Force/ Resource Designator		Leader	Last Shift	Number Persons	Trans. Needed	Drop Off PT./Time	Pick Up PT./Time
DOZ1 w/LOWB Bens (E-195)		Robert Burt	8/20	2	N	River Staging / 0700	1900
DOZ1 w/LOWB McCullough (E-132)		Clay Hicks	8/18	2	N	River Staging / 0700	1900
DOZ2 w/LOWB GT Logging (E-85)		Gary Tickner	8/17	2	N	River Staging / 0700	1900
Happy Camp Medic 21 (E-39)		Douglas Goodwin	8/19	2	N	River Staging / 0700	1900
7. Control Operations <ul style="list-style-type: none"> <li>Support Divisions as requested</li> </ul>							
8. Special Instructions							
9. Division/Group Communication Summary							
Function	Frequency	System	Channel	Function	Frequency	System	Channel
CMD	RX 166.6125 TX 168.4000	NIFC C4	1 Tone 4 (136.5)	Alt CMD	RX 168.1750 TX 171.5250	BLACK T1	14 Tone 1 (110.9)
Tactical Division/Group	RX 168.2500 TX 168.2500	NIFC TAC 7	8 Tone 4 (136.5)	Air to Ground	RX 165.4125 TX 165.4125	A/G CMD	12
				Air to Ground	RX 169.6375 TX 169.6375	A/G TAC	13
Prepared by (Resource Unit Leader) Rita Mustatia			Approved by (Planning Section Chief) <i>Walter J. Hey</i>			Date 8/16/2014	Time 23:00

# AIR OPERATIONS SUMMARY

Prepared By: Glenn Dietz

Prepared Date: 8/16/2014

Prepared Time: 2000

<b>1. INCIDENT NAME: Beaver</b> CA-KNF-5497		<b>2. OPS PERIOD DATE:</b> 8/17/2014	<b>START TIME:</b> 0800	<b>END TIME:</b> 2100	<b>SUNRISE:</b> 0620	<b>SUNSET:</b> 2008
<b>3. REMARKS (Safety Notes, Hazards, Air Operations, Special Equipment, etc.):</b> Watch for wires in river canyons. Beware of rapidly changing VFR conditions due to smoke. Avoid dipping at the confluence of the Klamath river and Horse creek below bridge. Practice good communication and airspace deconfliction when operating near fence or other incidents.			<b>4. READY ALERT AIRCRAFT</b> MEDEVAC: H-408KC (Scott Valley) Guard-826 (Weed) I.A.: H-610WW, H-7HE			<b>5. TFR #:</b> 4/4479 42°00.000' N x 123°39.900' W 42°00.000' N x 122°41.500' W 41°48.000' N x 122°41.500' W 41°36.150' N x 123°12.450' W 41°36.150' N x 123°31.616' W Ceiling: 10,000' MSL

6. PERSONNEL	NAME	PHONE #	7. FREQUENCIES	AM	FM	8. FIXED-WING- Type/ Make-Model/ N#/ Base
AOBD	TBA		AIR/ AIR TFR	119.625		AIRTANKERS- Ordered by ATGS
ASGS	Glenn Dietz	530-227-0017	AIR/ AIR RW	126.5750		LEAD PLANES- Ordered by ATGS
ASGS	Curtis Coats	530-598-4142	AIR/ AIR RW- FF		162.2250	AA-85L Beaver
ATGS (T)	Rico Gonzales					AA-6PJ July Complex AA-112 July Complex
HLCO			A/G Command		165.4125	AA-05 KNF/Relief
HEB2	Mike Yearwood	530-375-7071	A/G Tactical		169.6375	AA-17 KNF/Relief
HEB2(T)			COMMAND			Plan
Hilt Helibase			DECK			Yreka ECC Aircraft Dispatcher 530-841-4600
Air Ops (ICP)			TOLC			OTHER FW AIRCRAFT-
		41°59.793' N x 122°37.437' W			163.1000	
		530-496-1523			163.1000	

## 9. HELICOPTERS (Use Additional Sheets as Necessary)

FAA N#	T	MAKE/ MODEL	BASE	AVAIL	START	REMARKS	FAA N#	T	MAKE/ MODEL	BASE	AVAIL	START	REMARKS
137BH	Y	S70 Firehawk	Hilt	0800			Other Equipment Assigned						
610WW	2	Bell 210	Hilt	0800			E-357		Water Tender	Hilt			
N7HE	3	Astar B3	Hilt	0800			E-358		Water Tender	Hilt			
							E-356		Comm Trailer	Hilt			
							S-92		Helowell	Dry Lake Site			North of DP-50
							E-267	1	Water Tender	Helowell			
							E-269	1	Water Tender	Helowell			

<b>10. TASK/ MISSION/ ASSIGNMENT (Type/ function includes: Air Tactical, Retardant, Recon, Personnel Transport, Bucket Operations, SAR, etc.)</b>						
<b>TYPE/FUNCTION</b>		<b>NAME OF PERSONNEL OR CARGO (If applicable)</b>		<b>MISSION START</b>	<b>FLY FROM</b>	<b>FLY TO</b>
Water Dropping		or instructions for tactical aircraft		As Needed		
Recon				As Needed		
Airspace Coordination		For R/VW aircraft traffic to and from Hilt Helibase and the Beaver fire, notify Air Attack/other aircraft when crossing Shaft check-in on the assigned air Frequency.		As Needed		
				SHAFT CHECKPOINT	41°55.845' N 122°41.215' W	



10. TASK/MISSION/ASSIGNMENT (Type/ function includes: Air Tactical, Retardant, Recon, Personnel Transport, Bucket Operations, SAR, etc.

TYPE/FUNCTION

NAME OF PERSONNEL OR CARGO (If applicable)  
or instructions for tactical aircraft

MISSION START

FLY FROM

FLY TO

**INCIDENT RADIO COMMUNICATIONS PLAN**

Incident Name: **BEAVER FIRE CA-KNF-005497** Date/Time Prepared: **08/16/14 2000** Operational Period Date/Time: **DAY SHIFT 08-17-14**

Only frequencies listed on this 205 are authorized for use on this incident. Hand programmers accept all responsibility for the use of unauthorized frequencies.

Ch #	Function	Channel Name	Assignment	RX Freq N or W	RX Tone	TX Freq N or W	TX Tone	Mode	Remarks
1	NIFC CMD 4	CMD 4	ALL DIVISIONS	166.6125N		168.4000N	T4, 136.5	A	
2	NIFC CMD 11	CMD 11	ALL DIVISIONS	170.6875N		166.575N	T4, 136.5	A	
3	NIFC CMD 41	CMD 41	ALL DIVISIONS	169.3875N		166.6000N	T4, 136.5	A	
4	TACTICAL	NIFC T-1	DIVISION C	168.0500N		168.0500N	T4, 136.5	A	
5	TACTICAL	NIFC T-3	DIVISIONS A/W & P	168.6000N		168.6000N	T4, 136.5	A	
6	TACTICAL	NIFC T-5	DIVISIONS E & Q/T	166.7250N		166.7250N	T4, 136.5	A	
7	TACTICAL	NIFC T-6	DIVISIONS K/L	166.7750N		166.7750N	T4, 136.5	A	
8	TACTICAL	NIFC T-7	STAGING	168.2500N		168.2500N	T4, 136.5	A	
9	TACTICAL	FS R5 T4	REPAIR	166.5500N		166.5500N	T4, 136.5	A	
10	TACTICAL	FS R5 T5	DIVISIONS J & U/V	167.1125N		167.1125N	T4, 136.5	A	
11	TACTICAL	FS R5 T6	AVAILABLE	168.2375N		168.2375N	T4, 136.5	A	
12	A/G COMMAND	A/G CMD	ALL DIVISIONS	165.4125N		165.4125N		A	AIR TO GROUND COMMAND
13	A/G TACTICAL	A/G TAC	ALL DIVISIONS	169.6375N		169.6375N		A	AIR TO GROUND TACTICAL
14	ALT COMMAND	BLACK T1	ALL DIVISIONS	168.1750N		171.5250N	T1, 110.9	A	USE IF NIFC COMMAND NETS FAIL
15	CALCORD	CALCORD	MED HELO CONTACT	156.0750N		156.0750N	T6, 156.7	A	
16	URGENT AIR CONTACT	AIRGUARD	ALL DIVISIONS	168.6250N		168.6250N	T1, 110.9	A	USE ONLY FOR URGENT AIRCRAFT CONTACT IF HAND PROGRAMMING USE TONE 1

Prepared by

Incident Location

Phil Shafer, COM1 NorCal IMT 1  
Rick Cartoccelli, COM1



**INCIDENT RADIO COMMUNICATIONS PLAN**

Incident Name

**Initial Attack CA-KNF-005497**

Date/Time Prepared

08/16/14 2000

Operational Period Date/Time

ANY 08-17-14

Only frequencies listed on this 205 are authorized for use on this incident.

Hand programmers accept all responsibility for the use of unauthorized frequencies.

Ch #	Function	Channel Name	Assignment	RX Freq N or W	RX Tone	TX Freq N or W	TX Tone	Mode	Remarks
1	BLACK	BLK T1	INITIAL ATTACK	168.1750N		171.5250N	T1, 110.9	A	T1 MASE PK
2	BLACK	BLK T2	INITIAL ATTACK	168.1750N		171.5250N	T2, 123.0	A	T2 LAKE MT
3	BLACK	BLK T10	INITIAL ATTACK	168.1750N		171.5250N	T10, 107.2	A	T10 COLLINS BALDY
4	ORANGE	ORANGET2	INITIAL ATTACK	168.7750N		170.5750N	T2, 123.0	A	T2 LAKE MT
5	ORANGE	ORANGET4	INITIAL ATTACK	168.7750N		170.5750N	T4, 136.5	A	T4 UKONOM
6	ORANGE	ORANGET11	INITIAL ATTACK	168.7750N		170.5750N	T11, 114.8	A	T11 SLATER
7	TACTICAL	NIFC T 2	INITIAL ATTACK	168.2000N		168.2000N		A	
8	TACTICAL	R5 T 4	INITIAL ATTACK	166.5500N		166.5500N		A	
9	KNF AG P	KNF AG43	INITIAL ATTACK	167.6000N		167.6000N		A	
10	SISKIYOU LOCAL	SKULOCAL	INITIAL ATTACK	151.3250N		159.3600N	T1, 110.9	A	
11	SISKIYOU TAC1	SKU T 1	INITIAL ATTACK	151.1450N		151.1450N	T16, 192.8	A	
12	SISKIYOU AG1	SKU AG 1	INITIAL ATTACK	151.2200N		151.2200N		A	
13	KNF FOR RPT	KNF RPT2	ALTERNATE COMMAND	164.1750N		164.9750N	T2, 123.0	A	USE IF NIFC COMMAND NETS FAIL
14	KNF FOR RPT	KNFRPT10	ALTERNATE COMMAND	164.1750N		164.9750N	T10, 107.2	A	USE IF NIFC COMMAND NETS FAIL
15	CALCORD	CALCORD	MED HELO CONTACT	156.0750N		156.0750N	T6, 156.7	A	
16	URGENT AIR CONTACT	AIRGUARD	ALL DIVISIONS	168.6250N		168.6250N	T1, 110.9	A	USE ONLY FOR URGENT AIRCRAFT CONTACT IF HAND PROGRAMMING USE TONE 1

Prepared by

Incident Location

Phil Shafer, COM1 NorCal IMT 1

Rick Cartoscelli, COM1



S 205 - 2007H

MODE A - ANOLOG, D - DIGITAL



Today's discussion is from the  
First Aid / Health Category.

## HYDRATION

Dehydration is the result of the body trying to regulate its temperature naturally through sweating. Studies conducted on wildland firefighters indicate that during fire suppression activities firefighters need to drink a minimum of 1 quart of fluid each hour of work.

- Maintaining body fluids is essential for sweating. You must hydrate before, during, and after work.
- Before work you should take extra fluids to prepare for the heat. Drink 1 or 2 cups of water, juice, or a sport drink before work.
- While working drink at least 1 quart of fluid per hour. Drink as much as you can during the lunch break. Water is your greatest need during work in the heat.
- Hyponatremia (abnormally low concentration of sodium in the blood) as a result of excessive water intake a potentially life-threatening complication. Hyponatremia can be prevented when rehydration is enhanced by fluids containing sodium and potassium, or when foods with these electrolytes are consumed along with the fluid.
- After work it is important to continue drinking to replace fluid losses. Thirst always underestimates fluid needs, so you should drink more than you think you need.
- Unacclimatized workers lose more salt in the heat so they need to pay particular attention to salt replacement. Don't overdo salt intake; too much salt impairs temperature regulation. Excessive salt can cause stomach distress, fatigue, and other problems.
- You can assess your hydration by observing the volume, color, and concentration of your urine. Low volumes of dark, concentrated urine, or painful urination indicate a serious need for rehydration. Other signs of dehydration include a rapid heart rate, weakness, excessive fatigue, and dizziness.
- Rapid loss of several pounds of body weight is a certain sign of dehydration. Rehydrate before returning to work; continuing to work in a dehydrated state can lead to serious consequences, including heat stroke, muscle breakdown, and kidney failure.

References:

-Interagency Standards for Fire and Fire Aviation Operations

-Fitness and Work Capacity--Second Edition

- Wildland Firefighter Health and Safety: Recommendations of the April 1999 Conference. Death from Hyponatremia as a Result of Acute Water Intoxication in an Army Basic Trainee, T. Garigan and D. Ristedt

---

**Have an idea? Have feedback? Share it.**

**ONLINE | MAIL: 6 Minutes For Safety Task Group • 3833 S. Development Ave • Boise, ID 83705 | FAX: 208-387-5250**

**6 Minutes Home**

**INCIDENT RISK ANALYSIS**  
**Beaver Fire**  
**(ICS 215A) August 17<sup>th</sup>, 2014 Day Shift 0600-2000**

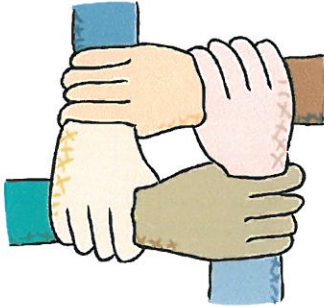
DIV	HAZARDOUS ACTIONS / CONDITIONS	MITIGATIONS / WARNINGS / REMEDIES
ALL	<b>Transfer of Command</b>	<ul style="list-style-type: none"> <li>• Make sure instructions are given and understood.</li> <li>• Establish leadership and stay within Span of Control.</li> </ul>
ALL	<b>Medical Emergencies</b>	<ul style="list-style-type: none"> <li>• Review and understand Medical Plan in IAP.</li> <li>• Base all operational activities on these three questions               <ul style="list-style-type: none"> <li>○ What are we going to do if someone gets hurt?</li> <li>○ How will we get them out of here?</li> <li>○ How long will it take to get them to a hospital?</li> </ul> </li> <li>• If the answers are insufficient, stop, reassess and consider alternate strategies and tactics!</li> <li>• <b>Review and brief your crews using page 2 in the IRPG.</b></li> </ul>
ALL	<b>Communications</b>	<ul style="list-style-type: none"> <li>• Ensure you have received the most current communications plan, and your radios have been cloned to it before heading out to your work area.</li> <li>• TEST your radio before you leave camp to ensure you have comms, and then TEST again when you arrive at your work area.</li> <li>• Use human repeaters in areas with sketchy comms.</li> <li>• <b>Refer to the 5 communication responsibilities listed on page ix in the 2014 IRPG</b></li> </ul>
ALL	<b>Driving Hazards</b>	<ul style="list-style-type: none"> <li>• <b>Wildlife is abundant in both the camp and fire area.</b></li> <li>• Roads within the burned areas have MANY hazards. Scout prior to committing travel through these areas. Mitigate if capable OR close road entirely until hazards have been mitigated.</li> <li>• Washboard conditions are common on most of the native surface roads. Maintain adequate following distances. <b>Reduce speed in Developed Areas.</b> Be watchful of local traffic.</li> <li>• Drive defensively! Expect the unexpected around every curve.</li> <li>• Drive with your headlights on. Look before backing and use backers.</li> <li>• Maintain driving situational awareness.</li> <li>• <b>SEAT BELTS ON...LIGHTS ON...BEFORE wheels turn!</b></li> <li>• <b>Reduce driving speeds to allow for reaction time lag.</b></li> <li>• On dusty/smoky roads, don't follow too closely behind traffic. Allow time for dust/smoke to clear.</li> <li>• Establish one-way traffic or coordinate traffic flow if necessary.</li> <li>• Drive Defensively! <b>Expect the unexpected around every curve.</b></li> <li>• Don't drive when fatigued. Adhere to agency driving regulations and guidelines.</li> <li>• Pedestrians could be anywhere, Keep speeds down</li> </ul>
ALL	<b>Fire Behavior</b>	<ul style="list-style-type: none"> <li>• High rates of spread (ROS) when aligned with wind &amp; topography.</li> <li>• <b>Ensure a solid anchor point and flank.</b></li> <li>• <b>Use experienced LOOKOUTS under these conditions.</b></li> <li>• Monitor weather conditions. Be aware of visual indicators (clouds, WX obs., cold front passage)</li> <li>• Maintain adequate escape routes and safety zones. Set trigger points when appropriate. Communicate any changes.</li> <li>• <b>Spotting Potential still exists....."Eyes to the green"</b></li> </ul>
ALL	<b>Aircraft Operations</b>	<ul style="list-style-type: none"> <li>• Ensure resources are clear of "Target Area" during bucket or retardant use.</li> <li>• Use air-to-ground frequency to communicate with aircraft.</li> <li>• Use clear, concise statements when directing aircraft. Use clock directions from pilot's perspective and mirror flashes.</li> <li>• Consider risk vs gain</li> <li>• Ensure use of trained personnel when involved with longline operations.</li> <li>• Keep non-essential personnel away from dip sites (natural and/or man made)</li> <li>• Ensure personnel receive a passenger briefing prior to flight.</li> </ul>
ALL	<b>Heavy Equipment/Dozers</b>	<ul style="list-style-type: none"> <li>• Stay 100' in front and 50' behind the equipment. Maintain safe working distances.</li> <li>• If working in Timber increase these distances to 2.5 times the canopy height.</li> <li>• Make eye contact with operator and ensure all implements have been grounded before approaching equipment.</li> <li>• Only the operator is authorized on the equipment.</li> <li>• Avoid working below equipment</li> <li>• Operators utilize appropriate PPE and equipment safety mechanisms.</li> <li>• Utilize observer or spotter.</li> <li>• Ensure the use of communication with operator (radio, hand signals).</li> <li>• Refer to and brief your crews using page 80 in the 2014 IRPG for further precautions for working around heavy equipment.</li> </ul>
ALL	<b>Mop Up</b>	<ul style="list-style-type: none"> <li>• Conduct thorough briefing for all personnel (inside the rear cover of IRPG)</li> <li>• Use all required PPE, including eye protection</li> <li>• Maintain proper spacing and overhead clearance</li> <li>• Be alert for danger trees, stump holes, and ash pits</li> <li>• Minimize exposure to smoke and rotate personnel into clean air when practical</li> <li>• Evaluate unburned islands and increase situational awareness</li> </ul>

**INCIDENT RISK ANALYSIS**  
**Beaver Fire**  
**(ICS 215A) August 17<sup>th</sup>, 2014 Day Shift 0600-2000**

ALL	<b>Danger Trees &amp; Procedural Felling Operations</b>	<ul style="list-style-type: none"> <li>• Identify, communicate and flag all high-risk DANGER TREES.</li> <li>• Keep personnel out of the high-risk areas until the hazards have been removed</li> <li>• Establish Lookouts when engaged in falling operations.</li> <li>• Scout work area for overhead hazards to ensure safe work areas.</li> <li>• <b>Mitigate using qualified personnel only.</b></li> <li>• Re-assess the need to eliminate the hazard by felling if it is feasible to keep personnel away</li> <li>• If unable to mitigate hazard, <b>Flag Off area, communicate the location &amp; keep personnel away.</b></li> <li>• Review and brief your crews using pages 22, 23 &amp; 79 in 2014 IRPG</li> </ul>	
ALL	<b>Hydration &amp; Heat Illness</b>	<ul style="list-style-type: none"> <li>• <b>Pre-hydrate, Re-hydrate! Dehydration is preventable.....Drink a <u>minimum</u> of 250ml/hour; (¼ of canteen)</b></li> <li>• Drink water &amp; Electrolyte drinks before, during, and after shifts. (2 waters to 1 sports drink).</li> <li>• <b>Do NOT mix with water</b> or dilute electrolyte drink. It must be consumed as is for the body to absorb properly.</li> <li>• <b>Low volumes of dark, concentrated urine or painful urination indicate a serious need for rehydration, &amp; medical attention.</b></li> <li>• Ensure your crews take an adequate water/electrolyte supply out to assignment and order more as needed. Take frequent snack breaks to keep blood sugar levels up.</li> <li>• Pace work to avoid heat injuries</li> <li>• Heat exhaustion is characterized by: Weakness, Extreme Fatigue, Nausea, Dizziness &amp; Headaches, clammy skin, persistent muscle cramps, decreased urine output. <ul style="list-style-type: none"> <li>○ <b>Cool patient as quickly as possible!</b></li> <li>○ Move patient to a cooler location and provide cold water and sports drink.</li> <li>○ Actively reduce core temperature through evaporation by fanning patient.</li> <li>○ Cover head and neck with wet cloth, increase air movement.</li> <li>○ Heat exhaustion is characterized by: Weakness, Extreme Fatigue, Nausea, Dizziness Headaches, clammy skin, persistent muscle cramps, decreased urine output.</li> <li>○ Remove Patient from fireline and seek medical attention.</li> </ul> </li> <li>• <b><u>Mental confusion may develop</u> This is a serious trigger point for the potential onset of Heat Stroke.</b></li> <li>• Refer to Medical Plan for additional <b>EMS care and Evacuation</b></li> </ul>	
ALL	<b>Biting, Stinging Insects (Rattle Snakes, Scorpions, Bees, Mosquitoes, Ticks, etc)</b>	<ul style="list-style-type: none"> <li>• If allergic to bee stings, let your DIVS &amp; EMT's know.</li> <li>• Leave the snakes alone!</li> <li>• Shake out boots and or sleeping bags prior to use</li> <li>• Use bug spray to minimize mosquito bites.</li> <li>• Check yourself daily for tick bites.</li> </ul>	
ALL	<b>Complacency and Fatigue</b>	<ul style="list-style-type: none"> <li>• Don't let your operations fall into the "routine" category.</li> <li>• Maintain situational awareness in all activities.</li> <li>• Be alert for signs of fatigue and take breaks as necessary</li> <li>• Maintain 2:1 work/rest ratio</li> <li>• Monitor incoming resources for level of fatigue</li> </ul>	
INCIDENT NAME <b>Beaver Fire</b>  ICS 215a		DATE PREPARED: <p style="text-align: center;"><b>August 16, 2014</b></p>	OPERATIONAL PERIOD <b>Day Shift</b> <b>8/17/2014, 0600-2000</b> Prepared by: Tanzi, Barnhart, Kafka
		TIME PREPARED: <b>1800 HOURS</b>	



## Human Resource Message



### Thought for the Day

Exercise TOLERANCE. Pledge to respect

people whose abilities, beliefs, culture, race, sexual

identity or other characteristics are different from

your own.

Diane Simpson, HRSP  
530-496-1540

Debra Packard, HRSP(t)

# MEDICAL PLAN (ICS 206 WF)

1. Incident/Project Name			2. Operational Period					
<b>Beaver</b>			Date/Time: <b>08/17/2014 – Day Shift</b>					
<b>3. Ambulance Services</b>								
Name	Location	Phone & EMS Frequency	Advanced Life Support (ALS)					
			Yes	No				
Happy Camp Medic 21	Klamath River Community	NIFC C4		X				
<b>4. Air Ambulance Services</b>								
Name	Phone	Type of Aircraft & Capability						
Mercy Flights	911	BO-105, ALS Night Ops						
REACH Helicopter	911	Bell 407, ALS						
PHI Redding	911	EC-135, ALS						
CHP	911	Hoist Capabilities						
H-408, Kern Co.	Day - (530) 468-1264, Scott Valley Helibase Night - (530) 842-3380, YICC	Bell UH1H, 24 hr ALS, Night Ops, Hoist Capabilities						
<b>5. Hospitals</b>								
Name & Level	GPS Datum – WGS 84 Degrees Decimal Minutes		Travel Time		Phone	Helipad		Address
	Lat:	Long:	Air	Gnd		Yes	No	
Fairchild Medical Center Level 4 Trauma Center	N41 43.198	W122 38.76	15 min.	30 min.	(530) 841-6292	X		444 Bruce St. Yreka, CA 96097
	Long:	W122 38.76						
	VHF:							
Mercy Medical Center Mt. Shasta Level 3 Trauma Center	N41 15.48	W122 16.15	45 min.	1 hr.	(530) 926-6111	X		914 Pine St. Mt. Shasta, CA 96067
	Long:	W122 16.15						
	VHF:							
Rogue Valley Medical Center Level 3 Trauma Center	N42 19.08	W122 49.91	15 min.	55 min.	(541) 789-7100	X		2825 Barnett Rd, Medford, OR 97504
	Long:	W122 49.91						
	VHF:							
U.C. Davis Medical Center Level 1 Trauma/Burn Center	N38 33.14	W121 27.26	1 hr. 45 min.	4 hr. 45 min.	(916) 734-2011	X		2315 Stockton Blvd. Sacramento, CA
	Long:	W121 27.26						
	VHF:							
<b>6. Division / Crew Pre-plan Update and discuss with assigned resources daily</b>								
<b>Crew EMTs &amp; Equipment</b>								
<b>Fireline EMTs &amp; Location Adv. Life Support?</b>								
<b>Air Hoist site: Lat: / Long:</b>								
<b>Helispot: Lat: / Long:</b>								
<b>Alternate no-fly plan:</b>								
<b>7. Remote Aid Stations</b>								
<b>Frontline Medical</b> Quarry Base Camp N41 49.39 W122 58.34	Point of Contact:		Tammy Allison, Landline (530) 496-1536 or Cell (530) 643-2020					
	EMS Responders & Capability:		Advanced Life Support / Flight Medic					
	Equipment Available on Site:		Medical Supplies					
	Ambulance ETA :		Air – 20 min.      Ground – 60 min.					
<b>Medical Unit</b> Incident Command Post N41 49.20 W122 58.09	Point of Contact:		MEDL(t) Ryan Reginato, Cell (530) 925-1309					
	EMS Responders & Capability:		Basic Life Support					
	Equipment Available on Site:		Medical Supplies					
	Ambulance ETA :		Air – 20 min.      Ground – 60 min.					
<b>8. Prepared By (Medical Unit Leader)</b>			<b>9. Date/Time</b>		<b>10. Reviewed By (Safety Officer)</b>		<b>11. Date/Time</b>	
Ryan Reginato MEDL(t) 			08/16/14 2000		Michele Tanzi		08/16/14 2000	



# MEDICAL PLAN (ICS 206 WF)

## Medical Incident Report

Use items one through nine to communicate situation to communications/dispatch.

### 1. CONTACT COMMUNICATIONS, DECLARE: "MEDICAL EMERGENCY" OR "NON-EMERGENCY MEDICAL TRANSPORT"

Ex: "Communications, Div. Alpha. Stand-by for a medical emergency on Div. Alpha" (If life threatening request designated frequency be cleared for emergency traffic.)

### 2. INCIDENT STATUS: Provide incident summary and command structure.

- **Nature of Injury/Illness** Describe the injury (Ex: Broken leg with bleeding) \_\_\_\_\_
- **Incident Name** Geographic Name + "Medical" (Ex: Trout Meadow Medical) \_\_\_\_\_
- **Incident Commander** Name of IC \_\_\_\_\_
- **Patient Care** Name of Care Provider (Ex: EMT Smith) \_\_\_\_\_

### 3. INITIAL PATIENT ASSESSMENT: Complete this section for each pt. This is only a brief, initial assessment. Provide additional pt. info after completing this report.

- **Number of Patients:** \_\_\_\_\_ - **Male / Female:** \_\_\_\_\_ - **Age:** \_\_\_\_\_ - **Weight:** \_\_\_\_\_
- **Conscious?**  YES  NO = MEDEVAC! - **Breathing?**  YES  NO = MEDEVAC!
- **Mechanism of Injury** What caused the injury? \_\_\_\_\_
- **Location, Lat/Long** (Datum WGS84) Ex: N 40° 42.45' x W 123° 03.24' \_\_\_\_\_

### 4. SEVERITY OF EMERGENCY, TRANSPORT PRIORITY

SEVERITY	TRANSPORT PRIORITY
<input type="checkbox"/> <b>URGENT-RED Life threatening injury or illness.</b> Ex: Unconscious, difficulty breathing, bleeding severely, 2° – 3° burns more than 4 palm sizes, heat stroke, disoriented.	Ambulance or MEDEVAC helicopter. Evacuation need is <b>IMMEDIATE.</b>
<input type="checkbox"/> <b>PRIORITY-YELLOW Serious Injury or illness.</b> Ex: Significant trauma, not able to walk, 2° – 3° burns not more than 1-2 palm sizes.	Ambulance or consider air transport if at remote location. Evacuation may be <b>DELAYED.</b>
<input type="checkbox"/> <b>ROUTINE-GREEN</b> Not a life threatening injury or illness. Ex: Sprains, strains, minor heat-related illness.	Non-Emergency. Evacuation considered <b>Routine of Convenience.</b>

### 5. TRANSPORT PLAN:

**Air Transport:** (Agency Aircraft Preferred)

- Helispot                       Short-haul/Hoist                       Life Flight                       Other

**Ground Transport:**

- Self-Extract                       Carry-Out                       Ambulance                       Other

### 6. ADDITIONAL RESOURCE/EQUIPMENT NEEDS:

- Paramedic/EMT(s)     SKED/Backboard/C-Collar     Crew(s)                       Burn Supplies                       Oxygen
- Trauma Bag                       Medication(s)                       IV/Fluid(s)                       Cardiac Monitor/AED
- Other (i.e. splints, rope rescue, wheeled litter)

### 7. COMMUNICATIONS:

- Run Medical Emergency on COMMAND
- Coordinate with air ambulance on CALCORD Tone 6

### 8. EVACUATION LOCATION:

- **Lat/Long** (Datum WGS84) EX: N 40 42.45' x W 123 03.24' \_\_\_\_\_
- **Patient's ETA to Evacuation Location:** \_\_\_\_\_
- **Helispot/Extraction Size and Hazards:** \_\_\_\_\_

### 9. CONTINGENCY: If primary options fail, what actions can be implemented in conjunction with primary evacuation method? Be thinking ahead...

\_\_\_\_\_

\_\_\_\_\_

**REMEMBER:** -Confirm ETA's of resources ordered                      -Act according to your level of training  
- If air or ground ambulance is DELAYED: Package and transport patient to rendezvous with incoming Ambulance.  
Re-route EMS helicopter to rendezvous point as appropriate.

## The 5-D System for Effective Waterbars

When locating and building waterbars, place them the right **distance** apart, at a **diagonal** to the fireline, so that they **divert**, then **discharge**, then **dissipate** the energy of the flowing water. Be sure to make them deep enough so they'll be durable, and that soil does **not block** the water bar outlet.

### Recommended spacing for waterbars on firelines.

Fireline slope %	Maximum Distance Apart (feet)
1-5	200
6-20	125
21-40	60
41-60	40
>60	25

*Waterbars should be at least 2 pulaski widths (4-6 inches) wide and 12-24 inches high for handlines.*

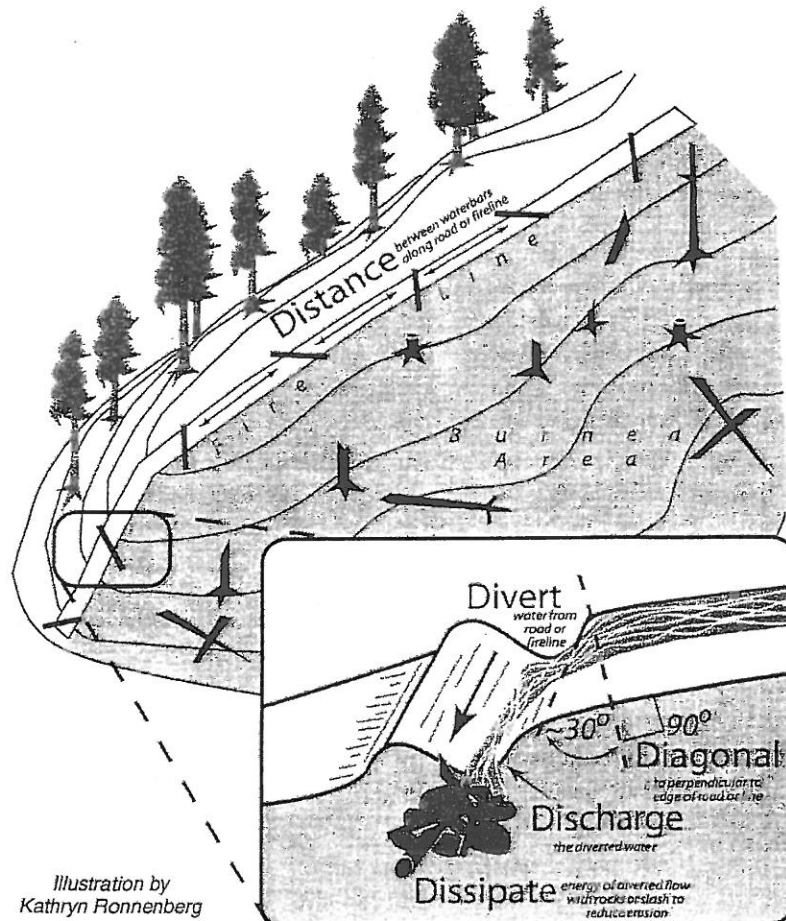


Illustration by  
Kathryn Ronnenberg



# SOCIAL MEDIA

Northern California IMT 1 reminds all personal to think before you post those photos and/or videos taken on this incident. Remember that all of our Agencies have policies in place regarding the taking and/or posting of photos or videos on any media site such as Facebook, YouTube, Flickr, etc. Such activities can easily result in serious, unintended consequences.

If you have photos or video that you would like to share, please bring them by the PIO desk located at the ICP

## Nor Cal #1

### Expectations for Operational Periods and Shift Length

- The expectations of the I.C. and the team are that all operational resources will proceed directly to their shift assignments at the conclusion of the operational briefing / division break-out. Individuals attending the briefing should attend dressed fire-ready (nomex pants and boots).
- ICS 204 Division Assignment Lists will display anticipated shift duration. The assigned Division Supervisor has the authority to modify these time frames as the situation dictates.
- A minimum of 1 meal break should be taken each day when the fire situation permits. When meals are not recorded, rationale is needed on the CTR. Non fireline assigned resources should plan for a 30 minute break every 6 hours when the situation permits. Command and General Staff will manage workloads to allow for breaks when appropriate.
- Individuals shall only drive if they have had at least 8 consecutive hours off duty before beginning a shift. *Example: if it becomes essential to work until 2300 hours, the individual should not return to duty before 0700 the following day.* Exceptions to this policy should only be to accomplish immediate and critical suppression objectives or critical firefighter / public safety missions as approved by the I.C.
- The Incident Management Organization is committed to a “zero tolerance” policy against inappropriate behavior during incident operations. We expect an attitude of mutual respect for all incident personnel and the public we serve. Any form of harassment, discriminatory practices, or disrespectful behavior will not be tolerated and will be dealt with appropriately. Illegal drug use or other illegal activities will not be tolerated and will be turned over to local law enforcement authorities. Alcohol is strictly prohibited from the fire camp and all other incident locations. Violation of these standards of conduct can result in prompt dismissal from the incident. Individuals who are aware of any inappropriate behavior of incident personnel should tell their supervisor or contact the Human Resource Specialist.

Date & Time Order was placed:		Order #	Location & Time for Delivery (DIV,LZ,DP,Lat Long)		Mode of delivery
		(DIVS+#)			(Driven/Helo/DIVS to Pick up)
			Lat:		
			Long:		
Order received in Communications by (Name):					Time:
Order shipped to line by (Name): (Send this sheet to the line with the order)					Time:
#	Item				
1	<b>1,000 Foot Hose Lay includes the following: Amount _____</b>				
	10, 100'x1½" Rolls Hose; 10, 100'x1" Rolls Hose; 10, 1½" Gated Wyes; 10, 1½" to 1" reducers; 10, 1" nozzles				
2	<b>2,000 Foot Hose Lay includes the following: Amount _____</b>				
	20, 100'x1½" Rolls Hose; 20, 100'x1" Rolls Hose; 20, 1½" Gated Wyes; 20, 1½" to 1" reducers; 20, 1" nozzles				
3	<b>3,000 Foot Hose Lay includes the following: Amount _____</b>				
	30, 100'x1½" Rolls Hose; 30, 100'x1" Rolls Hose; 30, 1½" Gated Wyes; 30, 1½" to 1" reducers; 30, 1" nozzles				
#	Item	Amount	#	Item	Amount
4	Hose (50') garden, 3/4"		30	Gas Unleaded (Gallons)	
5	Hose (100'), 1"		31	Oil 2 cycle, (Pints)	
6	Hose (100'), 1½"		32	Bar Oil (Qts)	
7	Nozzle, Garden, 3/4"		33	Drip Torch ea	
8	Nozzle, Forester, 1"		34	Drip torch mix 3.5:1.5 (gallon)	
9	Nozzle, KK Type, 1"		35	Fusees (Boxes or cases)???	
10	Nozzle, KK Type, 1½"		36	Flare Gun Rounds (12/BX)	
11	Wye, Gated, 3/4"		37	Cartridge #6 purple (box)	
12	Wye, Gated, 1"		38	Batteries "AA" PKGs(24/PKG)/BX	
13	Wye, Gated, 1½"		39	Ribbon, Flagging (Specify Color)*	
14	Inline-Tee, 1x1x3/4"		40	Water, Cubies	
15	Inline-Tee, 1x1x1"		41	Water, Bottled, Cases	
16	Inline-Tee (1½" X 1")		42	Gatorade	
17	Reducer, 1" X 3/4"		43	MRE's (12/BX)	
18	Reducer, 1½" X 1"		44	Heavy Mill Plastic	
19	Increaser, 3/4" X 1"		45	Washcloth, waterless, cleansing	
20	Increaser, 1" X 1½"		46	Wrap, Structure 54"x300'	
21	Foam 5 gal		47	Sprinkler Kit	
22	Foam 4 oz (For Backpack Pump)		48	Mark 3 Pump	
23	Backpack Pump		49	Mark 3 Pump Kit- w/10 gal mixed fuel	
24	Pumpkin (Gallons?)		50	Chainsaw Kit	
25	Porta-Tank (Gallons?)		51	Mop-Up Kit, 3-Wand	
26	Shovel		52	Pump Kit, Lightweight, 2 Cycle	
27	Pulaski		53	Gas, Raw and 2 qts 2-cycle oil, ea	
28	Combi Tool		54	Lightweight Pump Kit-Cache w/5gal fuel	
29	McCloud		55	Gas, raw (gal) and 1 qt 2-cycle oil, ea.	
Notes:			Notes:		



