

BEAVER FIRE

Incident Action Plan

Wednesday, August 20TH, 2014

0600 - 2000

HEAVY EQUIPMENT/DOZERS & CHIPPERS

- Avoid Working Below Equipment on Slopes
- Make Eye Contact with Operator and Ensure all Implements have been Grounded before Approaching Equipment
- Conduct Safety Briefing and Review JHA prior to Chipper Operations
- Refer to Page 80 in the IRPG for further Precautions

MEDICAL EMERGENCIES

- Review and understand the medical plan in the IAP
- Base all operational activities on these three questions:
 - What are we going to do if someone gets hurt?
 - How will we get them out of here?
 - How long will it take to get them to a hospital?

DRIVING AND PUBLIC ON ROADWAY

- Reduce Driving Speeds to Allow For Reaction Time Lag
- Watch for Wildlife on Roads! There have been four vehicle vs deer accidents on this fire already!
- Expect the Unexpected Around Every Curve
- Slow Down for Pedestrians!

KEEP A HIGH LEVEL OF SITUATIONAL AWARENESS

Beaver Fire: CA-KNF-005497 P5H93T (0505)

Klamath National Forest

Northern California Incident Management Team 1

INCIDENT OBJECTIVES	1. Incident Name Beaver	2. Date 08/19/2014	3. Time 1900
----------------------------	---------------------------------------	----------------------------------	----------------------------

4. Operational Period
August 20, 2014 DAY SHIFT

OPERATIONAL OBJECTIVES

- 1) Ensure firefighter and public safety in all incident activities. Adhere to all safety standards and implement appropriate risk analysis.
- 2) Protect values at risk to include watershed, Late Successional Reserve, cultural resources, private timber lands and recreation sites.
- 3) Implement suppression repair in accordance with established plans.
- 4) Keep the Beaver Fire within existing containment lines.

MANAGEMENT OBJECTIVE

- 1) Coordinate with Forest to maintain timely and accurate communications with communities, county officials and stakeholders.
- 2) Effectively manage incident costs by planning strategies and tactics toward a high probability of success.

6. Weather Forecast for Period


- See attached weather forecast.

7. General Safety Message

- See attached safety messages.

8. Attachments (mark if attached)		
<input checked="" type="checkbox"/> Organization List - ICS 203	<input checked="" type="checkbox"/> Medical Plan - ICS 206	<input checked="" type="checkbox"/> Weather
<input checked="" type="checkbox"/> Div. Assignment Lists - ICS 204	<input checked="" type="checkbox"/> Incident Map	<input checked="" type="checkbox"/> ICS215a
<input checked="" type="checkbox"/> Communications Plan - ICS 205	<input checked="" type="checkbox"/> ICS 220	<input type="checkbox"/> Rehab Considerations

9. Prepared by (Planning Section Chief)
Valery Lambeth 

10. Approved by (Incident Commander)
Mike Minton 

ORGANIZATION ASSIGNMENT LIST		Facilities Unit	Frank DelCarlo, Jeff Huhtala, Ricky Crowther (t)
1. Incident Name Beaver		Ground Support Unit	Harry Zabel
2. Date August 19, 2014	3. Time 1900	Communications Unit	Phil Shafer, Rick Cartoscelli
4. Operational Period Day Shift August 20, 2014		Medical Unit	Ken Earle, Ryan Reginato (t)
Position	Name	Receiving & Distribution	Fred Johnson
5. Incident Commander and Staff		Security Manager	Chris Spivey
Incident Commander	Mike Minton, Rick Young (t)	Food Unit	Jay Westlake
Deputy		9. Operations Section	
Safety Officer	Michele Tanzi, Jeff Barnhart, Bob Kafka	Operations	Steve Burns
Information Officer	Jim Mackenson, Kathy Hardy	Planning Ops	Alec Lane, Dustan Mueller (t)
Liaison Officer	Kent Swartzlander	a. Division/Groups	
Human Resources	Diane Simpson, Shawn Holden (t)	Branch I	Kurt Lindstrand
6. Agency Representative		Division/Group C	Jeremy Human
Agency Administrator	Patty Grantham	Division/Group E	Brett Loomis
Agency Admin Rep	Lance Noxen	Division/Group J	Mark Patino
Fruitgrowers Timber	Terry Salvestro	Division/Group K / L	Randy Jennings
Michigan Cal	Chris Chase	Division/Group Repair	Shawn Burt, Clayton Swanger (t)
IARR AK	Dave Whitman, Gary Mullen	b. Division/Groups	
IARR Southern Region	John Nichols, Jeff Owenby (t)	Branch II	Jay Lusher
Resource Advisor	Erin Rentz	Division/Group A / W	Jesse Knox, Kevin Haloran
		Division/Group P	Don Fregulia
		Division/Group Q / T	Mark Vardanega
		Division/Group U / V	Byron Hart
		Division/Group	
		Division/Group	
		Division/Group	
7. Planning Section		c. Air Operations Branch	
Chief	Valery Lambeth, Walter Herzog (t)	Air Operations Branch Director	
Deputy	Dave Sinclear	Air Attack Supervisor	Curtis Coots / Rico Gonzalez (t)
Resources / Documentation / Demob Units	Gary Deboi, LouAnn Charbonnier, Rita Mustatia	Air Support Supervisor	Glenn Dietz
Situation Unit	Alan Taylor, Tim Ritchey (t)	Helicopter Coordinator	
Training	Seneca Smith	Air Tanker Coordinator	
CTSP	George Steel, Justin LeMay (t)	10. Finance Section	
GIS	Matt Dickenson, Kyle Felker, Jim Gonzalez, Elizabeth Hale	Chief	Rachel Corkill
FBAN	John Wood	Time Unit	Maggie Prochazka
IMET	Tim Sedlock	Cost Unit	Kenny Lucien
8. Logistics Section		Compensation/Claims Unit	Debbie McIntosh
Chief	Mike Jellison, Brett Shurr	Procurement	Karrie Linn
Deputy	Ken Kumpe		
Supply Unit	Richard Sheets	Prepared by (Resource Unit Leader) L. Charbonnier	
Ordering	Ron Pierce (t)		



INCIDENT Weather Forecast



FORECAST NO: 29

NAME OF FIRE: Beaver Fire

PREDICTION FOR: Wednesday DAY Shift

UNIT: Klamath National Forest

SHIFT DATE: August 20, 2014

SIGNED: *Tim Sedlock*

TIME AND DATE

Incident Meteorologist

FORECAST ISSUED: 08/19/2014 at 2000 PDT

WEATHER DISCUSSION: Fair to Good relative humidity recoveries expected Wednesday morning. A stable air mass will promote more seasonal afternoon temperatures with continued very dry afternoon conditions Wednesday and Thursday. Gusty afternoon and evening northwest winds are forecast.

WEATHER FORECAST:

Wednesday: ****Poor early morning roadway visibility possible once again****

Weather: Mostly sunny.

High Temperature... 86-91 canyon bottom, 72-78 mid-upper slopes (3-5 degrees cooler than Tuesday)

Min RH..... 22-27% canyon bottoms, 30-40% high elevations (Little change from Tuesday)

20-FOOT WINDS:

Canyons..... Light morning winds, becoming upslope/upcanyon 7-12 mph in the afternoon.

Ridgetop..... Northerly light morning winds becoming north-northwest 8-14 mph with gusts to 20 to mph late in the afternoon.

CWR (>=0.10")....0%

LAL...1 (No Lightning)

Haines Index....4 (Low)

Wednesday Night:

Weather: Mostly clear.

Low Temperature... 50-55

Max RH..... Fair recovery... 55-65%

20-FOOT WINDS:

Canyons..... North-northwest 6-12 mph in the evening, becoming light downslope/downcanyon after midnight.

Ridgetop..... North-northwest 10-14 mph in the evening with gusts to 20 mph, decreasing to 4-6 mph overnight becoming northeast.

CWR (>=0.10")....0%

LAL...1 (No Lightning)

Haines Index....4 (Low)

Outlook for Thursday:

Weather: Mostly sunny.

High Temperature... 86-91 canyon bottom, 72-78 mid-upper slopes (No change from Wednesday)

Min RH..... 10-15% canyon bottoms, 20-25% high elevations (Several percent drier than Wednesday)

20-FOOT WINDS:

Canyons..... Light morning winds, becoming upslope/upcanyon 5-8 mph in the afternoon.

Ridgetop..... Light northeast morning winds becoming north-northwest 6-10 mph with gusts to 18 mph late in the afternoon.

CWR (>=0.10")....0%

LAL...1 (No Lightning)

Haines Index....4 (Low)

EXTENDED OUTLOOK for Friday - Sunday:

A stable air mass will keep daytime temperatures near normal for Friday with a brief warming trend on Saturday and Sunday. The air mass will remain quite dry Friday through Sunday.

.Friday through Sunday... Mostly Clear. Lows 51-56. Highs 86-91 canyon bottom, 74-81 mid-upper slopes. Min RH 10-16% canyon bottoms, 17-24% ridges. Light and variable overnight and morning winds, becoming north-northwest 6-10 mph in the afternoons and evenings.

FIRE BEHAVIOR FORECAST

FORECAST NUMBER: 33

TYPE OF FIRE: Wildland Fire

FIRE NAME: Beaver

OPERATIONAL PERIOD: 8/20 0600 to 2000

DATE ISSUED: 8/19/14

TIME ISSUED: 2000

UNIT: Klamath N.F.

SIGNED: /s/ John Wood FBAN

INPUTS

WEATHER SUMMARY: Fair to good relative humidity recoveries expected Wednesday morning. A stable air mass will promote more seasonal afternoon temperatures with continued very dry afternoon conditions Wednesday and Thursday. Gusty afternoon and evening Northwest winds are forecast. Maximum temperatures canyon bottoms 86-91 degrees, mid-upper slopes 72-78 degrees. Minimum relative humidity canyon bottoms 22-27 percent, canyon bottoms 30-40 percent. Winds: Valleys, light morning winds becoming upslope/up canyon 7 to 12 mph in the afternoon. Ridge winds, light northerly winds becoming North-Northwest 8-14 mph with gusts 20 mph.

Haines: 3

ERC- 62

OUTPUTS

GENERAL: As weather conditions tone down with a return to seasonal conditions, smoke from nearby incidents will work together to dial back expected fire behavior a few points. Areas exposed to the wind will not see a decrease. Fuels remain drought stressed and we remain about six weeks ahead of normal conditions, especially live fuel moistures. Fire activity has been reaching peak burning conditions around 1500 and remaining there until approximately 2100. Rates of spread in timber fuels up to 10-15 ch/hr and 6 foot flame lengths where wind and slope align. Rates of spread in brush/grass up to 22 ch/hr with flame lengths 4-6 ft. These fuels will need a combination of wind and slope to spread at the higher forecast levels. Anticipate spread rates on average to range from 1-5 ch/hr.

SPECIFIC:

Fuel moisture: **1hr 4-7%** **1000 hr 7%** **Live 78%** Prob. of ign. **43-66%** Spot distance up to **.3 of a mile**.

Branch I: The upper end of Doggett Creek in Division K/L should be a focus area. Drying fuels have led to an increase in activity with potential torching and spotting having potential to spread the fire. Activity will persist in the Division as heavies continue to consume with potential rates of spread around 2 ch/hr.

Branch II: Following the recent activity in Fish Trap Creek, this will remain an area to watch. Activity in the island should start slowing as available fuels are consumed. Minimal fire activity expected in the rest of the Branch.

Initial Attack: Although weather conditions are returning to more seasonally normal temperature and relative humidity the critically dry fuels in combination with gusty winds could lead to moderate to high rates of spread when combined with topography. Below 3500 feet, light fuels will initiate quickly and challenge direct attack. Above 3500 feet, timber fuels models will develop fire behavior that will require mechanical support for successful attack. Conditions above 5800 feet will be favorable to suppression action with slightly higher fuel moistures and unburnable open areas but fire will still burn with intensity.

AIR OPERATIONS

There may be a slight impact to visibility in the morning but should not hamper air operations. Air should clear out late morning but may move back in in the early afternoon as smoke from the Happy Camp Complex filters in.

Safety Message

Take note of potential hazards and Look up, Look down and Look around. Thunderstorms are in the forecast, look to know if one is headed your way. Stump holes have been burning for a few days, avoid burns and look down, Know what's going on around you, look around.

DIVISION ASSIGNMENT LIST			1. Branch I		2. Division/Group E			
3. Incident Name Beaver			4. Operational Period DAY OPERATIONS Date: 8/20/14 Time: 0600-2000					
5. Operations Personnel								
Operations Chief		Steve Burns			Division/Group Supervisor		Brett Loomis	
Branch Director		Kurt Lindstrand			Air Support		Glenn Dietz	
6. Resources Assigned this Period								
Strike Team/Task Force/ Resource Designator		Leader		Last Shift	Number Persons	Trans. Needed	Drop Off PT./Time	Pick Up PT./Time
HC1 Eldorado 1 (C-71)		Will Harris		8/21	21	N	DP 84 / 0700	1900
HC1 Elk Mountain IHC (C-72)		Cheveyo Munk		8/20	19	N	DP 84 / 0700	1900
ENG T3 CA-PNF 325 (E-244)		James Lico		8/29	5	N	DP 84 / 0700	1900
ENG3 MNF 333 (E-353)		Stephanie Gleason		8/25	5	N	DP 84 / 0700	1900
ENG6 Bohica Brothers 61 (E-335)		David Campbell		8/26	3	N	DP 84 / 0700	1900
ENG6 Leeds Brush 151 (E-207)		Steven Lewis		8/21	2	N	DP 84 / 0700	1900
WT2 Darrah (E-51)		Wayne Williams		8/29	1	N	DP 84 / 0700	1900
WT2 Cattlelack 713 (E-3)		David Patrick		8/25	1	N	DP 84 / 0700	1900
FALM (O-287)		Rick Mee		8/25	2	N	DP 84 / 0700	1900
FELB (O-319)		James Rust		8/27	1	N	DP 84 / 0700	1900
FOBS (O-152)		Pete Briant		8/20	1	N	DP 84 / 0700	1900
FOBS (O-141)		Steve Siebert		8/20	1	N	DP 84 / 0700	1900
FEMP (O-47)		Matt Miller		8/22	1	N	DP 84 / 0700	1900
FEMT (O-52)		Jared McElhannon		8/22	1	N	DP 84 / 0700	1900
SOFR (O-134)		William Cirone		8/23	1	N	DP 84 / 0700	1900
7. Control Operations								
<ul style="list-style-type: none"> Mop up 300 feet where safe to do so. 								
8. Special Instructions								
<ul style="list-style-type: none"> Continue fireline repair. Backhaul trash and excess equipment. Avoid cutting hazard trees that are blazed and painted as property line trees if possible. Be prepared for initial attack. 								
9. Division/Group Communication Summary								
Function	Frequency	System	Channel	Function	Frequency	System	Channel	
Command	RX 166.6125 TX 168.4000	NIFC C4	1 Tone 4 (136.5)	Air to Ground	RX 165.4125 TX 165.4125	A/G CMD	12	
Tactical Division/Group	RX 166.7250N TX 166.7250N	NIFC T-5	6 Tone 4 (136.5)					
Prepared by (Resource Unit Leader) L. Charbonnier			Approved by (Planning Section Chief) <i>Walter J. Hogg</i>			Date 8/19/2014	Time 21:12	

DIVISION ASSIGNMENT LIST			1. Branch I		2. Division/Group K / L page 1 of 2		
3. Incident Name Beaver			4. Operational Period DAY OPERATIONS				
			Date: 8/20/14		Time: 0600-2000		
5. Operations Personnel							
Operations Chief		Steve Burns		Division/Group Supervisor		Randy Jennings	
Branch Director		Kurt Lindstrand		Air Support		Glenn Dietz	
6. Resources Assigned this Period							
Strike Team/Task Force/ Resource Designator	Leader	Last Shift	Number Persons	Trans. Needed	Drop Off PT./Time	Pick Up PT./Time	
HC1 Springville IHC (C-80)	Joaquin Medna	8/27	20	N	DP 46 / 0700	1900	
HC1 Pioneer Peak (C-1)	Matt Jones	8/28	22	N	DP 46 / 0700	1900	
HC2IA Yukon (C-14)	Lamuel Black	8/30	22	N	DP 46 / 0700	1900	
HC2IA ASI (C-3)	Jason Sare	8/30	20	N	DP 46 / 0700	1900	
HC2 Upper Tanana 1 (C-78)	Shane Sam	8/26	20	N	DP 46 / 0700	1900	
HC2 St. Michael (C-79)	Aloysius Otten	8/26	20	N	DP 46 / 0700	1900	
S/T ENG 1658C (E-328)	Peter Stephenson	8/27	27	N	DP 46 / 0700	1900	
TF ENF1 (E-180)	Michael Loeffler / Stephen Clifford (t)	8/20	25	N	DP 46 / 0700	1900	
ENG3 PNF 930 (E-181)	Bob Travis	8/20	7	N	DP 46 / 0700	1900	
ENG3 NM 316 (E-9)	Mike Martinez	8/30	3	N	DP 46 / 0700	1900	
ENG3 NM 516 (E-10)	Donald Valdez	8/30	3	N	DP 46 / 0700	1900	
ENG6 Mt. Adam 322 (E-147)	Don Holter	9/1	3	N	DP 46 / 0700	1900	
ENG6 Mt. Adam 324 (E-148)	Chuck Newberry	8/30	3	N	DP 46 / 0700	1900	
ENG6 Fairview 8 (E-205)	Grover Allrer	8/21	3	N	DP 46 / 0700	1900	
ENG6 Timberline (E-337)	Dylan Howard	8/26	3	N	DP 46 / 0700	1900	
DOZ2 w/LOWB CLT (E-127)	Brett Jones	8/18	1	N	DP 46 / 0700	1900	
Skidgen (E-138)	Scott Hadeen	8/19	1	N	DP 46 / 0700	1900	
7. Control Operations							
<ul style="list-style-type: none"> Hold and mop up existing fireline. Mop up 300' 							
8. Special Instructions:							
<ul style="list-style-type: none"> Backhaul trash and excess hose. Avoid cutting hazard trees that are blazed as property line trees if possible. Be prepared for initial attack. 							
9. Division/Group Communication Summary							
Function	Frequency	System	Channel	Function	Frequency	System	Channel
Command	RX 166.6125 TX 168.4000	NIFC C4	1 Tone 4 (136.5)	Air to Ground	RX 165.4125 TX 165.4125	A/G CMD	12
Tactical Division/Group	RX 166.7750 TX 166.7750	NIFC TAC 6	7 Tone 4 (136.5)				
Prepared by (Resource Unit Leader) L. Charbonnier		Approved by (Planning Section Chief) <i>Walter J. Fypp</i>			Date 8/19/2014		Time 21:15

DIVISION ASSIGNMENT LIST	1. Branch I	2. Division/Group K / L page 2 of 2
---------------------------------	-----------------------	---

3. Incident Name Beaver	4. Operational Period DAY OPERATIONS Date: 8/20/14 Time: 0600-2000
-----------------------------------	---

5. Operations Personnel			
Operations Chief	Steve Burns	Division/Group Supervisor	Randy Jennings
Branch Director	Kurt Lindstrand	Air Support	Glenn Dietz

6. Resources Assigned this Period							
-----------------------------------	--	--	--	--	--	--	--

Strike Team/Task Force/ Resource Designator	Leader	Last Shift	Number Persons	Trans. Needed	Drop Off PT./Time	Pick Up PT./Time
WT2 Darrah (E-122)	Kevin Ricky	9/1	1	N	DP 46 / 0700	1900
WT Cattaneo 9 (E-248)	Kelly Kennemore	8/21	1	N	DP 46 / 0700	1900
WT2 Darrah Logging (E-29)	David Orr	9/1	1	N	DP 46 / 0700	1900
HEQB	Ken Kumpe		1	N	DP 46 / 0700	1900
READ (O-352)	Brady Dodd		1	N	DP 46 / 0700	1900
FOBS (O-297)	Bob Hoard		1	N	DP 46 / 0700	1900
FOBS (O-296)	Jeremy Kolaks		1	N	DP 46 / 0700	1900
FEMP (O-48)	Ben Signor	8/21	1	N	DP 46 / 0700	1900
FEMT (O-51)	Kain Packwood	8/22	1	N	DP 46 / 0700	1900
FEMP (O-383)	Fabian Uresti	9/2	1	N	DP 46 / 0700	1900
SOFR (O-135)	Shannon Bowman	8/26	1	N	DP 46 / 0700	1900

7. Control Operations <ul style="list-style-type: none"> • Hold and mop up existing fireline. • Mop up 300'

8. Special Instructions: <ul style="list-style-type: none"> • Backhaul trash and excess hose. • Avoid cutting hazard trees that are blazed as property line trees if possible. • Be prepared for initial attack.

9. Division/Group Communication Summary							
---	--	--	--	--	--	--	--

Function	Frequency	System	Channel	Function	Frequency	System	Channel
Command	RX 166.6125 TX 168.4000	NIFC C4	1 Tone 4 (136.5)	Air to Ground	RX 165.4125 TX 165.4125	A/G CMD	12
Tactical Division/Group	RX 166.7750 TX 166.7750	NIFC TAC 6	7 Tone 4 (136.5)				

Prepared by (Resource Unit Leader) L. Charbonnier	Approved by (Planning Section Chief) <i>Walter J. Fryer</i>	Date 8/19/2014	Time 21:15
---	--	--------------------------	----------------------

DIVISION ASSIGNMENT LIST			1. Branch II		2. Division/Group A / W			
3. Incident Name Beaver			4. Operational Period DAY OPERATIONS Date: 08/20/2014 Time: 0600-2000					
5. Operations Personnel								
Operations Chief		Steve Burns		Division/Group Supervisor		Jesse Knox, Kevin Halorhan (t)		
Branch Director		Jay Lusher		Air Support		Glenn Dietz		
6. Resources Assigned this Period								
Strike Team/Task Force/ Resource Designator		Leader		Last Shift	Number Persons	Trans. Needed	Drop Off PT./Time	Pick Up PT./Time
ST 6611C (E-329)		Josh Richardson		8/26	26	N	DP 90 / 0700	1900
WT1 Cattlelack 131 (E-284)		Eric Head		8/29	1	N	DP 90 / 0700	1900
DOZ2 w/LOWB Bens (E-92)		Kurt Sales		8/30	2	N	DP 90 / 0700	1900
DOZ2 w/LOWB N Rivers (E-199)		Robert Bartneck		8/26	1	N	DP 90 / 0700	1900
CHIP w/Truck (O-380 O-381)		John Morgan / Joseph Jones		8/30	2	N	DP 90 / 0700	1900
HEQB (O-258)		Terrance Corely		8/27	1	N	DP 90 / 0700	1900
FEMT (O-370)		Kevin Lenihan		9/01	1	N	DP 90 / 0700	1900
FEMT (O-365)		Keith Albrecht		8/23	1	N	DP 90 / 0700	1900
SOF2 (O-302)		Steve Davis		8/24	1	N	DP 90 / 0700	1900
7. Control Operations								
<ul style="list-style-type: none"> Patrol 								
8. Special Instructions								
<ul style="list-style-type: none"> Continue suppression repair. Backhaul trash and excess hose. Avoid cutting hazard trees that are blazed as property line trees if possible. Be prepared for initial attack. 								
9. Division/Group Communication Summary								
Function	Frequency	System	Channel	Function	Frequency	System	Channel	
Command	RX 166.6125 TX 168.4000	CMD 4	1 Tone 4 (136.5)	Air to Ground	RX 165.4125 TX 165.4125	A/G CMD	12	
Tactical Division/Group	RX 168.6000N TX 168.6000N	NIFC T-3	5 Tone 4 (136.5)					
Prepared by (Resource Unit Leader) Rita Mustatia			Approved by (Planning Section Chief) <i>Walter J. Flynn</i>			Date 8/19/2014	Time 21:11	

DIVISION ASSIGNMENT LIST		1. Branch II		2. Division/Group P			
3. Incident Name Beaver		4. Operational Period DAY OPERATIONS Date: 8/20/14 Time: 0600-2000					
5. Operations Personnel							
Operations Chief	Steve Burns		Division/Group Supervisor		Don Fregulia		
Branch Director	Jay Lusher		Air Support		Glenn Dietz		
6. Resources Assigned this Period							
Strike Team/Task Force/ Resource Designator	Leader	Last Shift	Number Persons	Trans. Needed	Drop Off PT./Time	Pick Up PT./Time	
ENG6 BR225 (E-150)	Mark Brinneman	8/20	3	N	DP 24 / 0700	1900	
ENG6 CIF 671 (E-336)	Alexander Arguelle	8/27	4	N	DP 24 / 0700	1900	
DOZ2 w/LOWB CLT (E-128)	Joe Lopez	8/19	1	N	DP 24 / 0700	1900	
CHIP Seb's Tree Service (E-379)	Jason Grampa	8/30	1	N	DP 24 / 0700	1900	
FEMP (O-293)	Tom O'Malley	8/25	1	N	DP 24 / 0700	1900	
FEMT (O-372)	Dustin Richards	9/01	1	N	DP 24 / 0700	1900	
SOF2 (O-136)	Jamie Rittenhouse	8/23	1	N	DP 24 / 0700	1900	
7. Control Operations							
<ul style="list-style-type: none"> Patrol 							
8. Special Instructions							
<ul style="list-style-type: none"> Backhaul trash and excess hose. Continue suppression repair. Avoid cutting hazard trees that are blazed as property line trees if possible. Prepare for initial attack. 							
9. Division/Group Communication Summary							
Function	Frequency	System	Channel	Function	Frequency	System	Channel
Command	RX 166.6125 TX 168.4000	CMD 4	1 Tone 4 (136.5)	Air to Ground	RX 165.4125 TX 165.4125	A/G CMD	12
Tactical Division/Group	RX 168.6000N TX 168.6000N	NIFC T-3	5 Tone 4 (136.5)				
Prepared by (Resource Unit Leader)		Approved by (Planning Section Chief)			Date		Time
Rita Mustatia		<i>Walter J. Hyatt</i>			8/19/2014		21:20

DIVISION ASSIGNMENT LIST		1. Branch II		2. Division/Group Q / T			
3. Incident Name Beaver		4. Operational Period DAY OPERATIONS Date: 8/20/14 Time: 0600-2000					
5. Operations Personnel							
Operations Chief	Steve Burns		Division/Group Supervisor	Mark Vardanega			
Branch Director	Jay Lusher		Air Support	Glenn Dietz			
6. Resources Assigned this Period							
Strike Team/Task Force/ Resource Designator	Leader	Last Shift	Number Persons	Trans. Needed	Drop Off PT./Time	Pick Up PT./Time	
HC2IA Arkansas AOICC (C-85)	Terry Beatty, R.L. Self (t)	8/28	20	N	DP 18 / 0700	1900	
ENG6 Santa Clara Br32 (E-206)	Gabe Runolfson	8/21	2	N	DP 18 / 0700	1900	
WT2 Peters 2 (E-120)	Jesse Morton	8/22	1	N	DP 18 / 0700	1900	
EXC Carlson's Spider (E-378)	Curt Carlson	8/31	1	N	DP 18 / 0700	1900	
TFLD (O-164)	John Martinez	8/20	1	N	DP 18 / 0700	1900	
HEQB (O-259)	James Gregory	8/28	1	N	DP 18 / 0700	1900	
EXC N Rivers (E-372)	Tim Beck	8/31	1	N	DP 18 / 0700	1900	
FEMP (O-201)	Brian Jones	8/21	1	N	DP 18 / 0700	1900	
FEMP (O-245)	Orland Ramirez	8/25	1	N	DP 18 / 0700	1900	
READ (O-208)	Zac Rodriquez	8/30	1	N	DP 18 / 0700	1900	
SOFR (O-138)	Tom Donahoe	8/26	1	N	DP 18 / 0700	1900	
7. Control Operations							
<ul style="list-style-type: none"> Patrol 							
8. Special Instructions							
<ul style="list-style-type: none"> Backhaul trash and excess hose. Continue suppression repair. Avoid cutting hazard trees that are blazed as property line trees if possible. Be prepared for initial attack. 							
9. Division/Group Communication Summary							
Function	Frequency	System	Channel	Function	Frequency	System	Channel
CMD	RX 166.6125 TX 168.4000	CMD 4	1 Tone 4 (136.5)	Air to Ground	RX 165.4125 TX 165.4125	A/G CMD	12
Tactical Division/Group	RX 166.7250 TX 166.7250	NIFC TAC 5	6 Tone 4 (136.5)				
Prepared by (Resource Unit Leader) Rita Mustatia		Approved by (Planning Section Chief) <i>Walter J. Agony</i>			Date 8/19/2014	Time 21:32	


DIVISION ASSIGNMENT LIST		1. Branch II		2. Division/Group U / V			
3. Incident Name Beaver		4. Operational Period DAY OPERATIONS Date: 8/20/14 Time: 0600-2000					
5. Operations Personnel							
Operations Chief	Steve Burns		Division/Group Supervisor	Byron Hart			
Branch Director	Jay Lusher		Air Support	Glenn Dietz			
6. Resources Assigned this Period							
Strike Team/Task Force/ Resource Designator	Leader	Last Shift	Number Persons	Trans. Needed	Drop Off PT./Time	Pick Up PT./Time	
ENG6 UT-SWS-663 (E-203)	Paul Christensen	8/21	2	N	DP 8 / 0700	1900	
ENG6 UT-SWS-664 (E-204)	Spencer Rollo	8/21	2	N	DP 8 / 0700	1900	
DOZ2 w/LOWB Bens (E-196)	Bill Scarbrough	9/01	2	N	DP 8 / 0700	1900	
HEQB (O-375)	Casey Lovell	8/31	1	N	DP 8 / 0700	1900	
SOFR (O-139)	Kim Lemke	8/23	1	N	DP 8 / 0700	1900	
FEMT (O-371)	Jeff Roe	9/01	1	N	DP 8 / 0700	1900	
FEMP (O-312)	Adam Hacking	8/25	1	N	DP 8 / 0700	1900	
READ (O-213)	Craig Wilson	8/22	1	N	DP 8 / 0700	1900	
7. Control Operations							
<ul style="list-style-type: none"> Patrol 							
8. Special Instructions							
<ul style="list-style-type: none"> Backhaul trash and excess hose. Continue fireline suppression repair. Avoid cutting hazard trees that are blazed as property line trees if possible. Be prepared for initial attack. 							
9. Division/Group Communication Summary							
Function	Frequency	System	Channel	Function	Frequency	System	Channel
Command	RX 166.6125 TX 168.4000	NIFC C4	1 Tone 4 (136.5)	Air to Ground	RX 165.4125 TX 165.4125	A/G CMD	12
Tactical Division/Group	RX 167.1125N TX 167.1125N	FS R5 T5	10 Tone 4 (136.5)				
Prepared by (Resource Unit Leader) Rita Mustatia		Approved by (Planning Section Chief) <i>Walter J. Hyman</i>			Date 8/19/2014	Time 21:12	

DIVISION ASSIGNMENT LIST		1. Branch		2. Division/Group Repair Group			
3. Incident Name Beaver		4. Operational Period Date: 8/20/14		DAY OPERATIONS Time: 0600-2000			
5. Operations Personnel							
Operations Chief		Steve Burns		Division/Group Supervisor		Shawn Burt (8/24), Clayton Swanger (8/23)	
Branch Director				Air Support		Glenn Dietz	
6. Resources Assigned this Period							
Strike Team/Task Force/ Resource Designator	Leader	Last Shift	Number Persons	Trans. Needed	Drop Off PT./Time	Pick Up PT./Time	
DOZ2 w/LOWB Striff (E-201)	Randy Striff	8/26	4	N	DP 54 / 0700	1800	
DOZ2 w/LOWB Bens (E-91)	Boise Laurence	8/29	1	N	DP 54 / 0700	1900	
DOZ2 w/LOWB North State (E-133)	Tom Helsley	8/27	3	N	DP 54 / 0700	1900	
WT2 Cattlelack (E-124)	Bob Buck	8/26	2	N	DP 54 / 0700	1900	
DOZ1 w/LOWB Bens (E-195)	Robert Burt	9/1	2	N	DP 54 / 0700	1900	
DOZ1 w/LOWB McCullough (E-132)	Clay Hicks	9/1	2	N	DP 54 / 0700	1900	
DOZ2 Ben's (E-134)	Martin Braun	8/31	1	N	DP 54 / 0700	1900	
HEQB (O-257)	James Ballard	8/27	1	N	DP 54 / 0700	1900	
HEQB (O-292)	Lucas Birch	8/26	1	N	DP 54 / 0700	1900	
HEQB (O-360)	Byron James Haire	8/31	1	N	DP 54 / 0700	1900	
EXC Peters (E-373)	Mike Peters	8/29	1	N	DP 54 / 0700	1900	
EXC Brown's(E-374)	Gary Baugh	8/30	1	N	DP 54 / 0700	1900	
EXC Brown Const (E-375)	Joaquin Durazo	8/30	1	N	DP 54 / 0700	1900	
EXC Darrah (E-383)	Keith Darrah	8/31	1	N	DP 54 / 0700	1900	
7. Control Operations							
<ul style="list-style-type: none"> Support repair efforts in all divisions. 							
8. Special Instructions							
9. Division/Group Communication Summary							
Function	Frequency	System	Channel	Function	Frequency	System	Channel
Command	RX 166.6125 TX 168.4000	NIFC C4	1 Tone 4 (136.5)	Air to Ground	RX 165.4125 TX 165.4125	A/G CMD	12
Tactical Division/Group	RX 166.5500 TX 166.5500	FS R5 T4	9 Tone 4 (136.5)				
Prepared by (Resource Unit Leader) Rita Mustatia			Approved by (Planning Section Chief) <i>Walter J. Hyman</i>			Date 8/19/2014	Time 20:27

INCIDENT RADIO COMMUNICATIONS PLAN			Incident Name BEAVER FIRE CA-KNF-005497			Date/Time Prepared 08/19/14 2000	Operational Period Date/Time DAY SHIFT 08/20/14		
Only frequencies listed on this 205 are authorized for use on this incident.			Hand programmers accept all responsibility for the use of unauthorized frequencies.						
Ch #	Function	Channel Name	Assignment	RX Freq N or W	RX Tone	TX Freq N or W	TX Tone	Mode	Remarks
1	NIFC CMD 4	CMD 4	ALL DIVISIONS	166.6125N		168.4000N	T4, 136.5	A	
2	NIFC CMD 11	CMD 11	ALL DIVISIONS	170.6875N		166.575N	T4, 136.5	A	
3	NIFC CMD 41	CMD 41	ALL DIVISIONS	169.3875N		166.6000N	T4, 136.5	A	
4	TACTICAL	NIFC T-1	DIVISION C	168.0500N		168.0500N	T4, 136.5	A	
5	TACTICAL	NIFC T-3	DIVISIONS AW & P	168.6000N		168.6000N	T4, 136.5	A	
6	TACTICAL	NIFC T-5	DIVISIONS E & Q/T	166.7250N		166.7250N	T4, 136.5	A	
7	TACTICAL	NIFC T-6	DIVISIONS K/L	166.7750N		166.7750N	T4, 136.5	A	
8	TACTICAL	NIFC T-7	AVAILABLE	168.2500N		168.2500N	T4, 136.5	A	
9	TACTICAL	FS R5 T4	REPAIR	166.5500N		166.5500N	T4, 136.5	A	
10	TACTICAL	FS R5 T5	DIVISIONS J & UV	167.1125N		167.1125N	T4, 136.5	A	
11	TACTICAL	FS R5 T6	AVAILABLE	168.2375N		168.2375N	T4, 136.5	A	
12	AIR TO GROUND	A/G CMD	ALL DIVISIONS	165.4125N		165.4125N		A	BEAVER AIR TO GROUND
13	No Longer Available	A/G TAC	NO ONE	169.6375N		169.6375N		A	NOT AUTHORIZED FOR USE
14	ALT COMMAND	BLACK T1	ALL DIVISIONS	168.1750N		171.5250N	T1, 110.9	A	USE IF NIFC COMMAND NETS FAIL
15	CALCORD	CALCORD	MED HELO CONTACT	156.0750N		156.0750N	T6, 156.7	A	
16	URGENT AIR CONTACT	AIRGUARD	ALL DIVISIONS	168.6250N		168.6250N	T1, 110.9	A	USE ONLY FOR URGENT AIRCRAFT CONTACT IF HAND PROGRAMMING USE TONE 1

Prepared by

Phil Shafer, COML NorCal IMT 1
 Rick Cartoscelli, COML



INCIDENT RADIO COMMUNICATIONS PLAN

Incident Name

Initial Attack CA-KNF-005497

Date/Time Prepared

08/19/14 2000

Operational Period Date/Time

ANY 08-20-14

Only frequencies listed on this 205 are authorized for use on this incident.

Hand programmers accept all responsibility for the use of unauthorized frequencies.

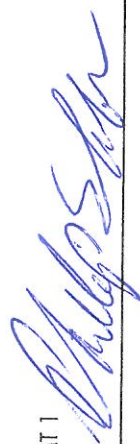
Ch #	Function	Channel Name	Assignment	RX Freq N or W	RX Tone	TX Freq N or W	TX Tone	Mode	Remarks
1	BLACK	BLK T1	INITIAL ATTACK	168.1750N		171.5250N	T1, 110.9	A	T1 MASE PK
2	BLACK	BLK T2	INITIAL ATTACK	168.1750N		171.5250N	T2, 123.0	A	T2 LAKE MT
3	BLACK	BLK T10	INITIAL ATTACK	168.1750N		171.5250N	T10, 107.2	A	T10 COLLINS BALDY
4	ORANGE	ORANGET2	INITIAL ATTACK	168.7750N		170.5750N	T2, 123.0	A	T2 LAKE MT
5	ORANGE	ORANGET4	INITIAL ATTACK	168.7750N		170.5750N	T4, 136.5	A	T4 UKONOM
6	ORANGE	ORANGE11	INITIAL ATTACK	168.7750N		170.5750N	T11, 114.8	A	T11 SLATER
7	TACTICAL	NIFC T 2	INITIAL ATTACK	168.2000N		168.2000N		A	
8	TACTICAL	R5 T 4	INITIAL ATTACK	166.5500N		166.5500N		A	
9	KNF AG P	KNF AG43	INITIAL ATTACK	167.6000N		167.6000N		A	
10	SISKIYOU LOCAL	SKULOCAL	INITIAL ATTACK	151.3250N		159.3600N	T1, 110.9	A	
11	SISKIYOU TAC1	SKU T 1	INITIAL ATTACK	151.1450N		151.1450N	T16, 192.8	A	
12	SISKIYOU A/G1	SKU AG 1	INITIAL ATTACK	151.2200N		151.2200N		A	
13	KNF FOR RPT	KNF RPT2	ALTERNATE COMMAND	164.1750N		164.9750N	T2, 123.0	A	USE IF NIFC COMMAND NETS FAIL
14	KNF FOR RPT	KNFRPT10	ALTERNATE COMMAND	164.1750N		164.9750N	T10, 107.2	A	USE IF NIFC COMMAND NETS FAIL
15	CALCORD	CALCORD	MED HELO CONTACT	156.0750N		156.0750N	T6, 156.7	A	
16	URGENT AIR CONTACT	AIRGUARD	ALL DIVISIONS	168.6250N		168.6250N	T1, 110.9	A	USE ONLY FOR URGENT AIRCRAFT CONTACT IF HAND PROGRAMMING USE TONE 1

Prepared by

Incident Location

Phil Shafer, COML NorCal IMT 1

Rick Cartocelli, COML



BEAVER FIRE PHONE LIST

As of 08/17/2014

Incident Commander & Staff			
	ICP NUMBERS	QUARRY NUMBERS	FAX
Incident Commander			
Deputy Incident Commander			
Safety/Comp			
Information	530-331-0737		
Liaison Officer			
Operations			
Ops Chief	530-496-1506		
Air Ops.	530-496-1523		
Helibase			
Planning			
Plans Chief	530-496-1523		
Resource / Situation Unit	530-496-1519		
Documentation / Check In	530-496-1520		530-496-1505
Demob	530-496-1504		530-496-1505
IMET			
Fire Behavior Analyst			
Computer Techs			
F/Ban			
Training Specialist	530-496-1525		
Logistics			
Logistics Chief	530-496-1521		530-496-1508
Supply / R & D	530-496-1538	530-496-1537	
Ordering	530-496-1507 / 1508 / 1522		530-496-1508
Facilities	530-496-1512	530-496-1531	
Ground Support / Repair	530- 496-1529	530-496-1528	
Communications	530-496-1502		
Medical Unit	530-496-1527		
Security	307-399-7316		
Food Unit		530-496-1531	
Finance			
Finance Section	530-496-1517	530-496-1526	
Finance Section			
HRSP	530-496-1540		

AIR OPERATIONS SUMMARY

Prepared By: Glenn Dietz

Prepared Date: 8/19/2014

Prepared Time: 2000

1. INCIDENT NAME: Beaver CA-KNF-5497	2. OPS PERIOD DATE: 8/20/2014	START TIME: 0800	END TIME: 2100	SUNRISE: 0623	SUNSET: 2003
3. REMARKS (Safety Notes, Hazards, Air Operations, Special Equipment, etc.): Watch for wires in river canyons. Beware of rapidly changing VFR conditions due to smoke. Avoid dipping at the confluence of the Klamath river and Horse creek below bridge. Practice good communication and airspace deconfliction when operating near fence or other incidents.					
4. READY ALERT AIRCRAFT MEDEVAC: H-408KC (Scott Valley) Guard-820 (Weed) I.A.: H-610WW, H-7HE					
5. TFR #: 4/4519 42°00.000' N x 123°39.900' W 42°00.000' N x 122°41.500' W 41°48.000' N x 122°41.500' W 41°36.150' N x 123°00.000' W 41°36.150' N x 123°31.616' W Ceiling: 10,000' MSL					

6. PERSONNEL		NAME	PHONE #	7. FREQUENCIES	AM	FM	8. FIXED-WING- Type/ Make-Model/ N#/ Base
AOBD				AIR/ AIR TFR	119.625		AIRTANKERS- Ordered by ATGS
ASGS		Glenn Dietz	530-227-0017	AIR/ AIR RW	126.5750		LEAD PLANES- Ordered by ATGS
ATGS		Curtis Coots	530-524-5818	AIR/ AIR RW- FF		162.2250	AA-85L Beaver AA-507 Happy Camp AA-17V Happy Camp AA-112 July Complex
HLCO				Air to Ground		165.4125	
HEB2		Mike Yearwood	530-375-7071	COMMAND	rx	Plan	Yreka ECC Aircraft Dispatcher 530-841-4600
HEB2(T)					tx		OTHER FW AIRCRAFT-
Hilt Helibase			41°59.793' N x 122°37.437' W	DECK		163.1000	
Air Ops (ICP)			530-496-1523	TOLC		163.1000	

9. HELICOPTERS (Use Additional Sheets as Necessary)

FAA N#	T	MAKE/ MODEL	BASE	AVAIL	START	REMARKS	FAA N#	T	MAKE/ MODEL	BASE	AVAIL	START	REMARKS
610WW	2	Bell 210	Hilt	0830					July Complex				
N7HE	3	Astar B3	Hilt	0830					Other Equipment Assigned				
							E-358		Water Tender	Hilt			
							E-356		Comm Trailer	Hilt			
							S-92		Helowell	Dry Lake Site			North of DP-50
							E-267	1	Water Tender	Helowell			
7BH	1	S-70	Hilt	0830		KNF I.A.	E-269	1	Water Tender	Helowell			
							E-357		Water Tender	Helowell			

10. TASK/ MISSION/ ASSIGNMENT (Type/ function includes: Air Tactical, Retardant, Recon, Personnel Transport, Bucket Operations, SAR, etc.)	NAME OF PERSONNEL OR CARGO (if applicable) or instructions for tactical aircraft	MISSION START	FLY FROM	FLY TO
Water Dropping		As Needed		
Recon		As Needed		
Airspace Coordination	For aircraft traffic within two miles of, or intent to cross, TFR fence make notification on the assigned TFR air to air AM Frequency.			
		TFR Fence:	123°06.000' W	

MEDICAL PLAN (ICS 206 WF)

Medical Incident Report

Use items one through nine to communicate situation to communications/dispatch.

1. CONTACT COMMUNICATIONS, DECLARE: "MEDICAL EMERGENCY" OR "NON-EMERGENCY MEDICAL TRANSPORT"

Ex: "Communications, Div. Alpha. Stand-by for a medical emergency on Div. Alpha" (If life threatening request designated frequency be cleared for emergency traffic.)

2. INCIDENT STATUS: *Provide incident summary and command structure.*

- **Nature of Injury/Illness** *Describe the injury (Ex: Broken leg with bleeding)* _____
- **Incident Name** *Geographic Name + "Medical" (Ex: Trout Meadow Medical)* _____
- **Incident Commander** *Name of IC* _____
- **Patient Care** *Name of Care Provider (Ex: EMT Smith)* _____

3. INITIAL PATIENT ASSESSMENT: *Complete this section for each pt. This is only a brief, initial assessment. Provide additional pt. info after completing this report*

- **Number of Patients:** _____ - **Male / Female:** _____ - **Age:** _____ - **Weight:** _____
- **Conscious?** YES NO = MEDEVAC! - **Breathing?** YES NO = MEDEVAC!
- **Mechanism of Injury** *What caused the injury?* _____
- **Location, Lat/Long** (Datum WGS84) *Ex: N 40° 42.45' x W 123° 03.24'* _____

4. SEVERITY OF EMERGENCY, TRANSPORT PRIORITY

SEVERITY	TRANSPORT PRIORITY
<input type="checkbox"/> URGENT-RED <i>Life threatening injury or illness.</i> <i>Ex: Unconscious, difficulty breathing, bleeding severely, 2° – 3° burns more than 4 palm sizes, heat stroke, disoriented.</i>	Ambulance or MEDEVAC helicopter. Evacuation need is IMMEDIATE.
<input type="checkbox"/> PRIORITY-YELLOW <i>Serious Injury or illness.</i> <i>Ex: Significant trauma, not able to walk, 2° – 3° burns not more than 1-2 palm sizes.</i>	Ambulance or consider air transport if at remote location. Evacuation may be DELAYED.
<input type="checkbox"/> ROUTINE-GREEN <i>Not a life threatening injury or illness. Ex: Sprains, strains, minor heat-related illness.</i>	Non-Emergency. Evacuation considered Routine of Convenience.

5. TRANSPORT PLAN:

Air Transport: (Agency Aircraft Preferred)

- Helispot Short-haul/Hoist Life Flight Other

Ground Transport:

- Self-Extract Carry-Out Ambulance Other

6. ADDITIONAL RESOURCE/EQUIPMENT NEEDS:

- Paramedic/EMT(s) SKED/Backboard/C-Collar Crew(s) Burn Supplies Oxygen
 Trauma Bag Medication(s) IV/Fluid(s) Cardiac Monitor/AED
 Other (i.e. splints, rope rescue, wheeled litter)

7. COMMUNICATIONS:

- Run Medical Emergency on COMMAND
- Coordinate with air ambulance on CALCORD Tone 6

8. EVACUATION LOCATION:

- **Lat/Long** (Datum WGS84) *EX: N 40 42.45' x W 123 03.24'* _____
- **Patient's ETA to Evacuation Location:** _____
- **Helispot/Extraction Size and Hazards:** _____

9. CONTINGENCY: *If primary options fail, what actions can be implemented in conjunction with primary evacuation method? Be thinking ahead...*

REMEMBER: -Confirm ETA's of resources ordered -Act according to your level of training
 - If air or ground ambulance is DELAYED: Package and transport patient to rendezvous with incoming Ambulance.
 Re-route EMS helicopter to rendezvous point as appropriate.

MEDICAL PLAN (ICS 206 WF)

1. Incident/Project Name Beaver	2. Operational Period Date/Time: 08/20/2014 – Day Shift
---	--

3. Ambulance Services				
Name	Location	Phone & EMS Frequency	Advanced Life Support (ALS) Yes No	
Happy Camp Medic 21	Division P at DP-24	NIFC C4		X
Hoopa Medic 83	Klamath River Community	NIFC C4	X	

4. Air Ambulance Services		
Name	Phone	Type of Aircraft & Capability
Mercy Flights	(530) 842-3515	BO-105, ALS Night Ops
REACH Helicopter	(530) 842-3515	Bell 407, ALS
PHI, Redding	(530) 842-3515	EC-135, ALS
CHP	(530) 842-3515	Hoist Capabilities
H-408, Kern Co.	(530) 842-3515	Bell UH1H, 24 hr ALS, Night Ops, Hoist Capabilities

5. Hospitals								
Name & Level	GPS Datum – WGS 84 Degrees Decimal Minutes		Travel Time		Phone	Helipad		Address
			Air	Gnd		Yes	No	
Fairchild Medical Center Level 4 Trauma Center	Lat: N41 43.198	W122 38.76	15 min.	30 min.	(530) 841-6292	X		444 Bruce St. Yreka, CA 96097
Mercy Medical Center Mt. Shasta Level 3 Trauma Center	Lat: N41 15.48	W122 16.15	45 min.	1 hr.	(530) 926-6111	X		914 Pine St. Mt. Shasta, CA 96067
Rogue Valley Medical Center Level 3 Trauma Center	Lat: N42 19.08	W122 49.91	15 min.	55 min.	(541) 789-7100	X		2825 Barnett Rd, Medford, OR 97504
U.C. Davis Medical Center Level 1 Trauma/Burn Center	Lat: N38 33.14	W121 27.26	1 hr. 45 min.	4 hr. 45 min.	(916) 734-2011	X		2315 Stockton Blvd. Sacramento, CA

6. Division / Crew Pre-plan Update and discuss with assigned resources daily

Crew EMTs & Equipment	
Fireline EMTs & Location Adv. Life Support?	
Air Hoist site: Lat: / Long:	
Helispot: Lat: / Long:	
Alternate no-fly plan:	

7. Remote Aid Stations									
Frontline Medical Quarry Base Camp N41 49.39 W122 58.34	<table border="1" style="width: 100%; border-collapse: collapse;"> <tr> <td style="width: 50%; padding: 5px;">Point of Contact:</td> <td style="padding: 5px;">Tim Irwin, Landline (530) 496-1536 or Cell (928) 239-0153</td> </tr> <tr> <td style="padding: 5px;">EMS Responders & Capability:</td> <td style="padding: 5px;">Advanced Life Support / Flight Medic</td> </tr> <tr> <td style="padding: 5px;">Equipment Available on Site:</td> <td style="padding: 5px;">Medical Supplies</td> </tr> <tr> <td style="padding: 5px;">Ambulance ETA :</td> <td style="padding: 5px;">Air – 20 min. Ground – 60 min.</td> </tr> </table>	Point of Contact:	Tim Irwin, Landline (530) 496-1536 or Cell (928) 239-0153	EMS Responders & Capability:	Advanced Life Support / Flight Medic	Equipment Available on Site:	Medical Supplies	Ambulance ETA :	Air – 20 min. Ground – 60 min.
Point of Contact:	Tim Irwin, Landline (530) 496-1536 or Cell (928) 239-0153								
EMS Responders & Capability:	Advanced Life Support / Flight Medic								
Equipment Available on Site:	Medical Supplies								
Ambulance ETA :	Air – 20 min. Ground – 60 min.								
Medical Unit Incident Command Post N41 49.20 W122 58.09	<table border="1" style="width: 100%; border-collapse: collapse;"> <tr> <td style="width: 50%; padding: 5px;">Point of Contact:</td> <td style="padding: 5px;">MEDL(t) Ryan Reginato, Cell (530) 925-1309</td> </tr> <tr> <td style="padding: 5px;">EMS Responders & Capability:</td> <td style="padding: 5px;">Basic Life Support</td> </tr> <tr> <td style="padding: 5px;">Equipment Available on Site:</td> <td style="padding: 5px;">Medical Supplies</td> </tr> <tr> <td style="padding: 5px;">Ambulance ETA :</td> <td style="padding: 5px;">Air – 20 min. Ground – 60 min.</td> </tr> </table>	Point of Contact:	MEDL(t) Ryan Reginato, Cell (530) 925-1309	EMS Responders & Capability:	Basic Life Support	Equipment Available on Site:	Medical Supplies	Ambulance ETA :	Air – 20 min. Ground – 60 min.
Point of Contact:	MEDL(t) Ryan Reginato, Cell (530) 925-1309								
EMS Responders & Capability:	Basic Life Support								
Equipment Available on Site:	Medical Supplies								
Ambulance ETA :	Air – 20 min. Ground – 60 min.								

8. Prepared By (Medical Unit Leader) Ryan Reginato MEDL(t) 	9. Date/Time 08/19/14 2000	10. Reviewed By (Safety Officer) Michele Tanzi 	11. Date/Time 08/19/14 2000
--	-------------------------------	---	--------------------------------

INCIDENT RISK ANALYSIS
Beaver Fire
(ICS 215A) August 20th, 2014 Day Shift 0600-2000

DIV	HAZARDOUS ACTIONS / CONDITIONS	MITIGATIONS / WARNINGS / REMEDIES
ALL	Medical Emergencies	<ul style="list-style-type: none"> • Review and understand Medical Plan in IAP. • Base all operational activities on these three questions <ul style="list-style-type: none"> ○ What are we going to do if someone gets hurt? ○ How will we get them out of here? ○ How long will it take to get them to a hospital? • If the answers are insufficient, stop, reassess and consider alternate strategies and tactics! • Review and brief your crews using page 2 in the IRPG.
ALL	Communications	<ul style="list-style-type: none"> • Ensure you have received the most current communications plan, and your radios have been cloned to it before heading out to your work area. • TEST your radio before you leave camp to ensure you have comms, and then TEST again when you arrive at your work area. • Use human repeaters in areas with sketchy comms. • Refer to the 5 communication responsibilities listed on page ix in the 2014 IRPG
ALL	Driving Hazards	<ul style="list-style-type: none"> • Wildlife is abundant in both the camp and fire area. • Roads within the burned areas have MANY hazards. Scout prior to committing travel through these areas. Mitigate if capable OR close road entirely until hazards have been mitigated. • Washboard conditions are common on most of the native surface roads. Maintain adequate following distances. Reduce speed in Developed Areas. Be watchful of local traffic. • Drive defensively! Expect the unexpected around every curve. • Drive with your headlights on. Look before backing and use backers. • Maintain driving situational awareness. • SEAT BELTS ON...LIGHTS ON...BEFORE wheels turn! • Reduce driving speeds to allow for reaction time lag. • On dusty/smoky roads, don't follow too closely behind traffic. Allow time for dust/smoke to clear. • Establish one-way traffic or coordinate traffic flow if necessary. • Don't drive when fatigued. Adhere to agency driving regulations and guidelines. • Pedestrians could be anywhere, Keep speeds down
ALL	Fire Behavior	<ul style="list-style-type: none"> • High rates of spread (ROS) when aligned with wind & topography. • Ensure a solid anchor point and flank. • Use experienced LOOKOUTS under these conditions. • Monitor weather conditions. Be aware of visual indicators (clouds, WX obs., cold front passage) • Maintain adequate escape routes and safety zones. Set trigger points when appropriate. Communicate any changes. • Spotting Potential still exists....."Eyes to the green"
ALL	Aircraft Operations	<ul style="list-style-type: none"> • Ensure resources are clear of "Target Area" during bucket or retardant use. • Use air-to-ground frequency to communicate with aircraft. • Use clear, concise statements when directing aircraft. Use clock directions from pilot's perspective and mirror flashes. • Consider risk vs gain • Ensure use of trained personnel when involved with longline operations. • Keep non-essential personnel away from dip sites (natural and/or man made) • Ensure personnel receive a passenger briefing prior to flight.
ALL	Heavy Equipment/Dozers And Chippers	<ul style="list-style-type: none"> • Stay 100' in front and 50' behind the equipment. Maintain safe working distances. • If working in Timber increase these distances to 2.5 times the canopy height. • Make eye contact with operator and ensure all implements have been grounded before approaching equipment. • Only the operator is authorized on the equipment. • Avoid working below equipment • Operators utilize appropriate PPE and equipment safety mechanisms. • Utilize observer or spotter. • Ensure the use of communication with operator (radio, hand signals). • Refer to and brief your crews using page 80 in the 2014 IRPG for further precautions for working around heavy equipment. • When working with chippers, conduct a thorough safety briefing and review the Chipper JHA prior to operations
ALL	Mop Up	<ul style="list-style-type: none"> • Conduct thorough briefing for all personnel (inside the rear cover of IRPG) • Use all required PPE, including eye protection • Maintain proper spacing and overhead clearance • Be alert for danger trees, stump holes, and ash pits • Minimize exposure to smoke and rotate personnel into clean air when practical • Evaluate unburned islands and increase situational awareness

INCIDENT RISK ANALYSIS
Beaver Fire
(ICS 215A) August 20th, 2014 Day Shift 0600-2000

ALL	Danger Trees & Procedural Felling Operations	<ul style="list-style-type: none"> • Identify, communicate and flag all high-risk DANGER TREES. • Keep personnel out of the high-risk areas until the hazards have been removed • Establish Lookouts when engaged in falling operations. • Scout work area for overhead hazards to ensure safe work areas. • Mitigate using qualified personnel only. • Re-assess the need to eliminate the hazard by felling if it is feasible to keep personnel away • If unable to mitigate hazard, Flag Off area, communicate the location & keep personnel away. • Review and brief your crews using pages 22, 23 & 79 in 2014 IRPG 	
ALL	Hydration & Heat Illness	<ul style="list-style-type: none"> • Pre-hydrate, Re-hydrate! Dehydration is preventable.....Drink a <u>minimum</u> of 250ml/hour; (¼ of canteen) • Drink water & Electrolyte drinks before, during, and after shifts. (2 waters to 1 sports drink). • Do NOT mix with water or dilute electrolyte drink. It must be consumed as is for the body to absorb properly. • Low volumes of dark, concentrated urine or painful urination indicate a serious need for rehydration, & medical attention. • Ensure your crews take an adequate water/electrolyte supply out to assignment and order more as needed. Take frequent snack breaks to keep blood sugar levels up. • Pace work to avoid heat injuries • Heat exhaustion is characterized by: Weakness, Extreme Fatigue, Nausea, Dizziness & Headaches, clammy skin, persistent muscle cramps, decreased urine output. <ul style="list-style-type: none"> ○ Cool patient as quickly as possible! ○ Move patient to a cooler location and provide cold water and sports drink. ○ Actively reduce core temperature through evaporation by fanning patient. ○ Cover head and neck with wet cloth, increase air movement. ○ Heat exhaustion is characterized by: Weakness, Extreme Fatigue, Nausea, Dizziness Headaches, clammy skin, persistent muscle cramps, decreased urine output. ○ Remove Patient from fireline and seek medical attention. • Mental confusion may develop. This is a serious trigger point for the potential onset of Heat Stroke. • Refer to Medical Plan for additional EMS care and Evacuation 	
ALL	Biting, Stinging Insects (Rattle Snakes, Scorpions, Bees, Mosquitoes, Ticks, etc)	<ul style="list-style-type: none"> • If allergic to bee stings, let your DIVS & EMT's know. • Leave the snakes alone! • Shake out boots and or sleeping bags prior to use • Use bug spray to minimize mosquito bites. • Check yourself daily for tick bites. 	
ALL	Complacency and Fatigue	<ul style="list-style-type: none"> • Don't let your operations fall into the "routine" category. • Maintain situational awareness in all activities. • Be alert for signs of fatigue and take breaks as necessary • Maintain 2:1 work/rest ratio • Monitor incoming resources for level of fatigue 	
INCIDENT NAME Beaver Fire ICS 215a		DATE PREPARED: <p style="text-align: center;">August 19, 2014</p>	OPERATIONAL PERIOD Day Shift 8/20/2014, 0600-2000 Prepared by: Tanzi, Barnhart, Kafka
		TIME PREPARED: 2000 HOURS	



DRIVING SAFETY

Vehicles/Roads Category

Driving is one of the most hazardous things we do because we literally perform the task hundreds of times in the course of our daily lives we tend to take it for granted. Based on recent accident trends, vehicle accidents are the source of more deaths and serious injuries to wildland firefighters than any other single cause.

- To be a safe driver you have to *want* to be one. Take a good hard look at your driving habits. Are you training yourself to do the right things the right way, like fastening your seat belt, checking your mirrors, and maintaining safe following distances?
- Inattentiveness is a major contributing factor in motor vehicle accidents within the wildland firefighting community. Since the average adult attention span is 15-20 minutes we must develop techniques that allow us to refocus our attention on our driving.
- Many things can lure our attention away from our driving such as: fatigue, eating and drinking, reading directions and maps, writing, cell phone and radio use, conversation within the vehicle and music.
 - ✓ Drive only when you are well rested and alert and avoid driving during the hours of 10:00 PM and 6:00 AM. Take a 10 to 15 minute break after every 2 hours.
 - ✓ Practice situational awareness; be aware of what is happening in front, behind, and on both sides of your vehicle.
 - ✓ Never drive when taking medications that make you drowsy.
 - ✓ Delegate navigation and communication to a passenger or pull over.
 - ✓ By constantly moving your vision, checking mirrors and distant road conditions, you can avoid highway hypnosis and daydreaming.
 - ✓ Avoid eating or drinking while driving.
 - ✓ When talking with passengers, keep your eyes on the road and both hands on the steering wheel. Avoid serious or argumentative conversations.
 - ✓ Do not be in a hurry, be patient.
- Safe driving starts with a safe vehicle. Something as simple as under-inflated tires can have serious consequences. Before operating any vehicle, do a walk-around to look for potential problems, make sure the lights and blinkers work, and adjust your seat and mirrors. If it is the first time you have driven the vehicle, make yourself aware of where everything is.

Additional Resources: Video: Firefighter Remember This Series - [Firefighter: Remember This - Engine Rollover: Why This Accident Started Months Ago](#)

Have an idea? Have feedback? Share it.

[EMAIL](#) | [Facebook](#) | MAIL: 6 Minutes for Safety Subcommittee • 3833 S. Development Ave • Boise, ID 83705 | FAX: 208-387-5250

TRAINEES!!!

Beaver Trainees and Trainers:

Unless you are otherwise notified, all open training assignments on this incident must be “closed out” with the TNSP by Thursday @ 1200!

In order to receive formal credit for your training assignment from this incident– you must close out with the Training Specialist before you Demob

If you still have time left and stay with this incident after our team leaves, check out with us at the Type 2 complexity level and you may continue to work as a trainee at a lower complexity level (Type 3). If you are re-assigned to another incident, close your training package with us and you may continue as a trainee for that incident, once checking in with their Training Specialist.

Bring the following to the close out:

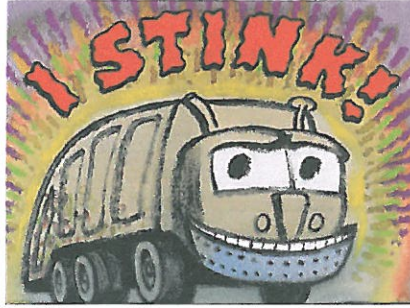
- **Individual Performance Evaluation – completed by trainer**
- **Position Taskbook - filled out by trainer**

Extra forms are available at the Training Shop

Thank you-
Seneca Smith – TNSP
Brian Lamphiear – TNSP (t)



Human Resource Message



THE LAW OF THE GARBAGE TRUCK:

One day I hopped in a taxi and we took off for the airport. We were driving in the right lane, when suddenly a car jumped out of a parking space right in front of us! My taxi driver slammed on his breaks, skidded, and missed the other car by just inches! The driver of the other car whipped his head around and started yelling at us. My taxi driver just smiled and waved at the guy.

And I mean he was really friendly!

So I asked, why did you do that? This guy almost ruined your car and sent us to the hospital! This is when my taxi driver taught me what I now call, "The law of the Garbage Truck." He explained that many people are like garbage trucks. They run around full of garbage (frustration, anger, and disappointment, etc.). As their garbage piles up they need a place to dump, and at times it ends up on you!

Don't take it personally. Just smile, wave, wish them well, and move on. Don't take their garbage and spread it to other people at work, home, or on the streets. The bottom line is that successful people do not let garbage trucks take over their day.

Life is 10% what you make it and 90% how you take it!

HRSP Diane Simpson

HRSP (T) Shawn Holden

(530) 496-1540

Beaver Fire 08/20/14 Day-Shift

The 5-D System for Effective Waterbars

When locating and building waterbars, place them the right **distance** apart, at a **diagonal** to the fireline, so that they **divert**, then **discharge**, then **dissipate** the energy of the flowing water. Be sure to make them deep enough so they'll be durable, and that soil does **not block** the water bar outlet.

Recommended spacing for waterbars on firelines.

Fireline slope %	Maximum Distance Apart (feet)
1-5	200
6-20	125
21-40	60
41-60	40
>60	25

Waterbars should be at least 2 pulaski widths wide and 12-24 inches high.

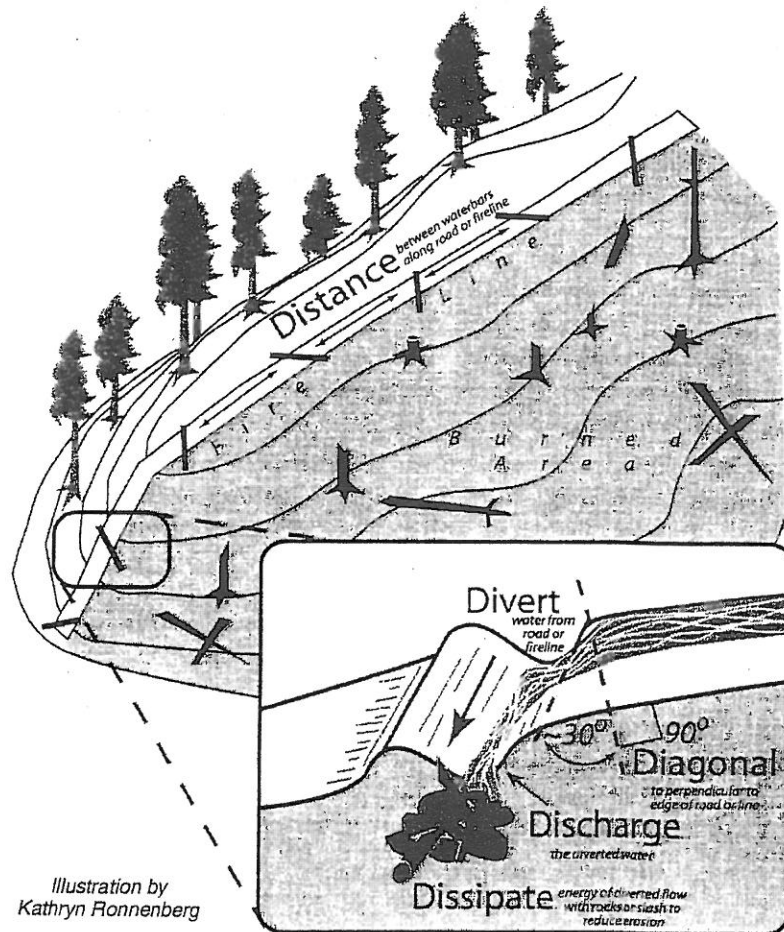


Illustration by
Kathryn Ronnenberg

Nor Cal #1

Expectations for Operational Periods and Shift Length

- The expectations of the I.C. and the team are that all operational resources will proceed directly to their shift assignments at the conclusion of the operational briefing / division break-out. Individuals attending the briefing should attend dressed fire-ready (nomex pants and boots).
- ICS 204 Division Assignment Lists will display anticipated shift duration. The assigned Division Supervisor has the authority to modify these time frames as the situation dictates.
- A minimum of 1 meal break should be taken each day when the fire situation permits. When meals are not recorded, rationale is needed on the CTR. Non fireline assigned resources should plan for a 30 minute break every 6 hours when the situation permits. Command and General Staff will manage workloads to allow for breaks when appropriate.
- Individuals shall only drive if they have had at least 8 consecutive hours off duty before beginning a shift. *Example: if it becomes essential to work until 2300 hours, the individual should not return to duty before 0700 the following day.* Exceptions to this policy should only be to accomplish immediate and critical suppression objectives or critical firefighter / public safety missions as approved by the I.C.
- The Incident Management Organization is committed to a “zero tolerance” policy against inappropriate behavior during incident operations. We expect an attitude of mutual respect for all incident personnel and the public we serve. Any form of harassment, discriminatory practices, or disrespectful behavior will not be tolerated and will be dealt with appropriately. Illegal drug use or other illegal activities will not be tolerated and will be turned over to local law enforcement authorities. Alcohol is strictly prohibited from the fire camp and all other incident locations. Violation of these standards of conduct can result in prompt dismissal from the incident. Individuals who are aware of any inappropriate behavior of incident personnel should tell their supervisor or contact the Human Resource Specialist.

Date & Time Order was placed:		Order #	Location & Time for Delivery (DIV,LZ,DP,Lat Long)		Mode of delivery
		(DIVS+#)			(Driven/Helo/DIVS to Pick up)
			Lat:		
			Long:		
Order received in Communications by (Name):					Time:
Order shipped to line by (Name): (Send this sheet to the line with the order)					Time:
#	Item				
1	1,000 Foot Hose Lay includes the following: Amount _____				
	10, 100'x1½" Rolls Hose; 10, 100'x1" Rolls Hose; 10, 1½" Gated Wyes; 10, 1½" to 1" reducers; 10, 1" nozzles				
2	2,000 Foot Hose Lay includes the following: Amount _____				
	20, 100'x1½" Rolls Hose; 20, 100'x1" Rolls Hose; 20, 1½" Gated Wyes; 20, 1½" to 1" reducers; 20, 1" nozzles				
3	3,000 Foot Hose Lay includes the following: Amount _____				
	30, 100'x1½" Rolls Hose; 30, 100'x1" Rolls Hose; 30, 1½" Gated Wyes; 30, 1½" to 1" reducers; 30, 1" nozzles				
#	Item	Amount	#	Item	Amount
4	Hose (50') garden, 3/4"		30	Gas Unleaded (Gallons)	
5	Hose (100'), 1"		31	Oil 2 cycle, (Pints)	
6	Hose (100'), 1½"		32	Bar Oil (Qts)	
7	Nozzle, Garden, 3/4"		33	Drip Torch ea	
8	Nozzle, Forester, 1"		34	Drip torch mix 3.5:1.5 (gallon)	
9	Nozzle, KK Type, 1"		35	Fusees (Boxes or cases)???	
10	Nozzle, KK Type, 1½"		36	Flare Gun Rounds (12/BX)	
11	Wye, Gated, 3/4"		37	Cartridge #6 purple (box)	
12	Wye, Gated, 1"		38	Batteries "AA" PKGs(24/PKG)/BX	
13	Wye, Gated, 1½"		39	Ribbon, Flagging (Specify Color)*	
14	Inline-Tee, 1x1x3/4"		40	Water, Cubies	
15	Inline-Tee, 1x1x1"		41	Water, Bottled, Cases	
16	Inline-Tee (1½" X 1")		42	Gatorade	
17	Reducer, 1" X 3/4"		43	MRE's (12/BX)	
18	Reducer, 1½" X 1"		44	Heavy Mill Plastic	
19	Increaser, 3/4" X 1"		45	Washcloth, waterless, cleansing	
20	Increaser, 1" X 1½"		46	Wrap, Structure 54"x300'	
21	Foam 5 gal		47	Sprinkler Kit	
22	Foam 4 oz (For Backpack Pump)		48	Mark 3 Pump	
23	Backpack Pump		49	Mark 3 Pump Kit- w/10 gal mixed fuel	
24	Pumpkin (Gallons?)		50	Chainsaw Kit	
25	Porta-Tank (Gallons?)		51	Mop-Up Kit, 3-Wand	
26	Shovel		52	Pump Kit, Lightweight, 2 Cycle	
27	Pulaski		53	Gas, Raw and 2 qts 2-cycle oil, ea	
28	Combi Tool		54	Lightweight Pump Kit-Cache w/5gal fuel	
29	McCloud		55	Gas, raw (gal) and 1 qt 2-cycle oil, ea.	
Notes:			Notes:		

