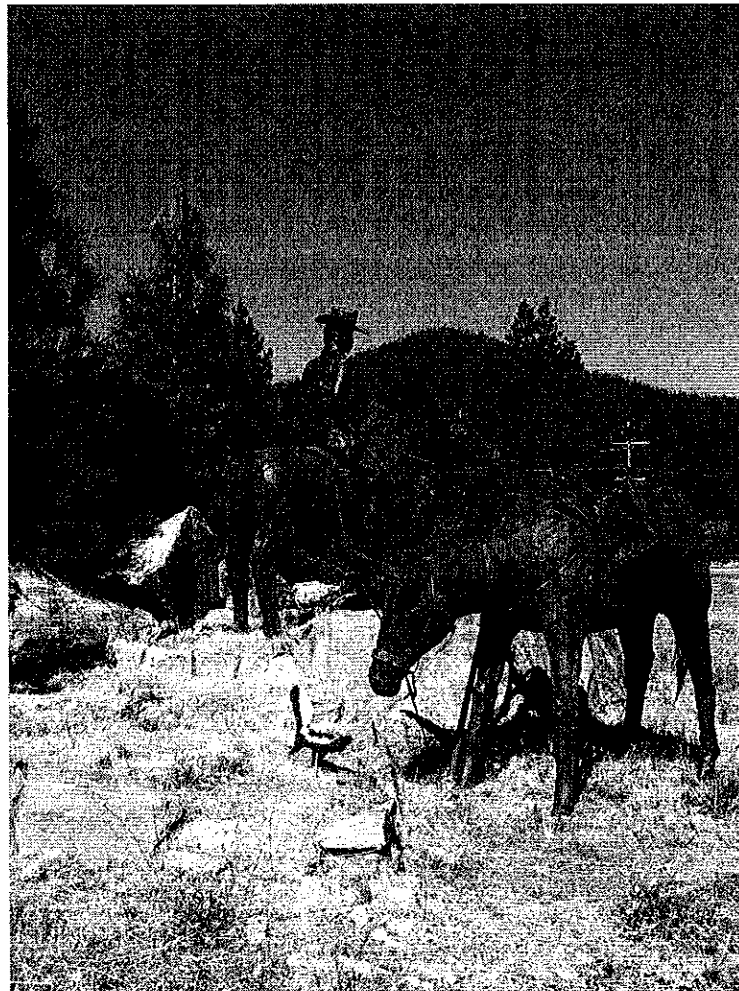


# SALMON RIVER COMPLEX

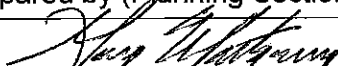
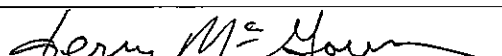


**SATURDAY**

**AUGUST 17, 2013**

**DAY 0600 - 2200**  
**NIGHT 2200 - 0600**

**CA KNF 005561**

<b>INCIDENT OBJECTIVES</b>	1. Incident Name		2. Date Prepared	3. Time Prepared	
ICS 202	<b>Salmon River Complex</b>		<b>08/16/2013</b>	<b>2000</b>	
4. Operational Period					
<b>Friday August 17, 2013</b>		<b>DAY SHIFT 0600-2200</b>	<b>NIGHT SHIFT 2200-0600</b>		
5. General Control Objectives for the Incident (include alternatives)					
<b>MANAGEMENT OBJECTIVES</b>					
<ul style="list-style-type: none"> <li>• Provide for safety of incident personnel and the public.</li> <li>• Provide for protection of private lands and infrastructure within the Salmon River corridor and adjacent communities.</li> <li>• Provide accurate and effective fire information to the public, residents and cooperators.</li> <li>• Minimize impacts to natural and cultural resources by utilizing Resource Advisors.</li> </ul>					
<b>OPERATIONAL OBJECTIVES</b>					
<ul style="list-style-type: none"> <li>• Keep fire North of North Fork Salmon River from Robinson Flat to Forks of the Salmon.</li> <li>• Keep fire South of the North Fork Salmon River from Lost Lake to Mule Bridge.</li> <li>• Keep fire East of Yellow Jacket Ridge north towards Morehouse Meadows.</li> <li>• Keep fire West of Mule Bridge and the 41N37 Road.</li> <li>• Provide initial attack for new fire starts on the Salmon/Scott River Ranger District north of North Fork Salmon River and within the District boundary.</li> </ul>					
6. General Weather					
WEATHER SUMMARY: Northwest winds will be new for the fire. Watch for them to begin to affect the fire this afternoon behind the weather system that moved through yesterday. Temperatures will trend a bit warmer with humidity trending slightly lower. RH recovery tonight will be notably less than last night with only marginal recovery.					
7. Resource Protection Guidelines					
<ul style="list-style-type: none"> <li>• Follow national policy for retardant avoidance.</li> <li>• Apply fire as needed to maintain even backing down slope so the fire is not susceptible to long uphill runs.</li> <li>• Map and document all areas where burn out was implemented.</li> <li>• Back haul all trash to Idlewild.</li> <li>• Ensure screens and foot valves are used when drafting.</li> <li>• Ensure appropriate approvals are in place for use of helicopters and mechanized equipment for fire related work in the wilderness.</li> <li>• Utilize resource advisors as needed to manage sensitive resource locations.</li> </ul>					
8. Attachments					
x	Organization List-ICS 203	x	Air Ops Plan ICS-220	x	Fire Weather Forecast
x	Division Assignment List-ICS 204	x	Incident Map	x	Fire Behavior Forecast
x	Communications Plan-ICS 205	x	Transportation Maps		Human Res./Training Message
x	Medical Plan-ICS 206	x	Safety Messages	x	Phone List
9. Prepared by (Planning Section Chief)			10. Approved by (Incident Commander)		
					

ICS Form 203 ORGANIZATION ASSIGNMENT LIST		1. INCIDENT NAME Salmon River Complex	2. DATE PREPARED 8 / 16 / 2013	3. TIME PREPARED 2000
5. INCIDENT COMMAND STAFF		4. OPERATIONAL PERIOD (DATE/TIME) 8 / 17 / 13 Day 0600-2200 Night 2200-0600		
Position	Name	9. OPERATIONS SECTION		
INCIDENT COMMANDER	Jerry McGowan / Joe Reyes (t)	CHIEF	Ron Bollier	
DEPUTY	Mike Dietrich	PLANNING OPS	Steve Parr	
SAFETY OFFICER	Doug McKelvey (t)			
INFORMATION OFFICER	Paul Gibbs (t)			
LIAISON OFFICER	Dennis Orbus / Jim Carrol (t)			
6. AGENCY REPRESENTATIVES		a. BRANCH I		
AGENCY	NAME	BRANCH DIR	Chris Childers / Mike Alarid (t)	
KNF Agency Admin /Rep	Patty Grantham / Dave Hays	DIVISION	A	Frank Pingiczer /Al Goughnour(t)
Siskiyou Co.OES	Ron Quigley	DIVISION	B	Dan Lindley
CAL FIRE	Ron Bravo	DIVISION	E	Miranda Stewart
CDCR	Dan Belleci	DIVISION	M	Chad Cook
Salmon River Fire	Jim Bennett	DIVISION		
CHP	Tim Lawson / Janelle Bautista	DIVISION		
		b. BRANCH III		
Siskiyou Co. Sheriff	Jim Betts	BRANCH DIRECTOR	Linda Szczepanik	
Crew IARR (VA)	Willie Adams / Jim Smalls (t)	DIVISION	T	Bill Steers, Kris Schroeder (t)
Crew IARR (AR#2)	Larry Kile / Dan Belanger (t)	DIVISION	S	Thomas Smith / Matt Petersen (t)
7. PLANNING SECTION		DIVISION	VW/ Z	Ben Banister / Chuck Frank
CHIEF	Christie Neill / Gary Montgomery	GROUP		
CHIEF		GROUP		
RESOURCES UNIT	Fountain / Escalera / French (t)	GROUP	ROADS	Dan McGrew
SITUATION UNIT	Yanagisawa / Pina / Johndreau (t)	GROUP		
DOCUMENTATION UNIT	Jennifer Hinckley			
DEMOBILIZATION UNIT	Sarah Gallup			
CTSP	Jonathan Wilson	c. NIGHT		
TNSP	Aaron Olmos (t)	NIGHT OPS	Kathy Kirkpatrick	
FBAN	Ben Newburn / Duane Franklin	BRANCH DIRECTOR	John Flores	
IMET	Ryan Walbrun / Shad Keen (t)	DIVISION	NIGHT WEST	David Cornelssen
GISS	Roberts / Klein / Hans / Gonzales		NIGHT EAST	Roach, Tetter (t)
READ	Justin Robbins/Kelby Whitherspoon (t)			
8. LOGISTICS SECTION		d. AIR OPERATIONS BRANCH		
CHIEF	Dan Turner	AIR OPERATIONS BR. DIR.	Jason Nava	
CHIEF	Jim Hogg	AIR TACTICAL GROUP SUP	Russ Gripp / Curtis Stanley	
a. SUPPORT BRANCH		AIR SUPPORT GROUP SUP	Lisa Cardoza	
SECURITY		HELICOPTER COORDINATOR		
SUPPLY UNIT	Travis Ruff			
FACILITIES UNIT	Gardner / Sablan / Hunt			
GROUND SUPPORT UNIT	Dave Trussell / Merle Drucker			
b. SERVICE BRANCH		10. FINANCE/ADMINISTRATION SECTION		
COMMUNICATIONS UNIT	Scott LaRue	CHIEF	Rene White	
COMMUNICATIONS MANG	Blake Lister	CHIEF		
FOOD UNIT	Chuck House	TIME UNIT	Teresa Reniff / Kathy O'Hara	
RECEIVING	Frances / Alicea / Prior / Stonger	PERSONAL TIME	Hildenbrand / Madrid / Singleton (t)	
ORDERING	Burch / Shiller / Cayo (t)	COMPENSATION/CLAIMS UNIT	Lisa Dow (t)	
MEDICAL UNIT	Matt Lipson / Jim Gray (t)	COST UNIT	Roger Siemers / Robert Taylor (t)	
EQUIPMENT MANAGER	McGrew / Bollock / Schwemer	EQUIPMENT TIME	McKelvy / Ullrey	
PREPARED BY (RESOURCES UNIT) Melody Fountain		PROCUREMENT	Katie Pasini (t)	



# Fire Weather Forecast



**FORECAST NO:** 12

**NAME OF FIRE:** Salmon River Complex

**PREDICTION FOR:** 0600 Sat-0600 Sun

**UNIT:** Klamath NF

**SHIFT DATE:** Sat Aug 17, 2013

**SIGNED:** *[Handwritten signatures]* (T)

**TIME AND DATE**

**Incident Meteorologist**

**FORECAST ISSUED:** 2100 8/16/13

**WEATHER DISCUSSION:** Some smoke will continue this morning under an inversion with good humidity recoveries over the fire landscape. The inversion will weaken or break by 11 am. **Northwest winds will begin to affect the fire this afternoon** behind the weak weather system that moved through yesterday. Temperatures will trend a bit warmer with humidities trending slightly lower. Smoke coverage and thickness will continue to be relatively light as north winds will keep neighboring fires' smoke south of the Salmon Complex. Northwest winds are expected to affect the upper portions of the fire this afternoon while winds are channeled generally from west to east in the lower elevations along Sawyer's Bar Road and the river valley. Humidity recoveries will trend lower tonight at the ridges as dry northeast winds begin to affect upper portions of the fire.

**Weather Forecast for Saturday:** Some smoke stuck under an inversion until about 11 am. Partly cloudy skies with fair weather cumulus in the afternoon.

**TEMPERATURES:** High 72-80 above 3500 feet and 86-89 along Sawyers Bar Road.

**HUMIDITY:** Humidities will trend down some from yesterday, with afternoon minimum humidities 22-26% at lower elevations below 3000 feet and 25-35% above 4500 feet.

**20 FT WINDS:**

**RIDGETOP** – Northwest 5-10...strongest after 12 pm with gusts 15-20 mph Div B, E, M, S and T

**SLOPE/VALLEY** – Light east through 10 am then upcanyon/westerly 3-5 mph, increasing to 5-10 mph with gusts to 18 mph 2pm-8pm.

**HAINES INDEX:** 3 **LAL:** 1 **CWR:** 0%

**STABILITY/INVERSION:** Inversion through 11 am.

**Saturday Night:** Some smoke under the inversion...mostly clear above 4000 feet.

**TEMPERATURES:** Overnight lows 55-60.

**HUMIDITY:** Humidity 35-45% at 6 pm Div B and T along Tanner Ridge...rising to 55% overnight. The highest recoveries are expected along Sawyer's Bar road, reaching 75% by morning.

**20 FT WINDS:**

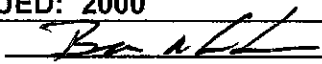
**RIDGETOP** – North 5 to 10 mph through 9 pm then Northeast 3-5 mph overnight.

**SLOPE/VALLEY** – West winds 4 to 8 mph through 9 pm then east winds 2-5 mph overnight.

**LAL:** 1 **CWR:** 0%

**Extended Forecast:** A significant warming and drying trend will occur on Sunday. Humidities will trend lower by about 10 percent on Sunday afternoon. Winds will shift from a northwest to a northeast direction across the ridges, and overnight recoveries will lower to around 45% by Monday morning. Smoke coverage and thickness should continue to be relatively low because smoke from nearby fires will be pushed to the south of the Salmon River Complex.

## FIRE BEHAVIOR FORECAST

FORECAST NUMBER: 14	TYPE OF FIRE: Wildland Fire
FIRE NAME: Salmon River Complex	OPERATIONAL PERIOD: 8/17 0600-0600
DATE ISSUED: 8/16	TIME ISSUED: 2000
UNIT: Klamath NF	SIGNED:  Ben Newburn

### INPUTS

**WEATHER SUMMARY:** Northwest winds will be new for the fire. Watch for them to begin to affect the fire this afternoon behind the weather system that moved through yesterday. Temperatures will trend a bit warmer with humidities trending slightly lower. RH recovery tonight will be notably less than last night with only marginal recovery.

### OUTPUTS

**GENERAL:** This will be the first time the fire has been subjected to a wind from a northerly direction so new locations on the fire will be exposed to wind and may present some potential for fire behavior and spread that we have not seen before. The daily afternoon winds along the river will be present again today even with the northerly flow. With a trend to even drier weather fuel moistures will be down with a fine fuel moisture of 4% possible and a P(ig) of 75%. Fuels will readily consume in the dry weather and remaining heat sources will not remain hidden. Keep an eye on unburned islands that will support increased fire behavior and may surprise you in areas where fire has not been active for the last several shifts.

#### **SPECIFIC:**

**Branch I:** The fire will continue to back down to the Sawyers Bar Road in Division Alpha with slow rates of spread and some isolated torching supported by locations with heavy surface fuel loading. Rolling material is likely to spread fire downhill faster resulting in some short pushes back up hill but it will not be a threat to the line other than the potential for rolling material to cross the roadway. Activity in areas that have recently seen burnout operations or have experienced fire over the past several days will continue to hold heat in large diameter fuels and in sheltered locations.

**Branch III:** The northerly flow on the ridges will help keep the lines north of Tanners Peak in check by pushing fire back off the ridge into the black. On the Tanner Line fire will continue to back into the eastside of Jackass Gulch with the occasional single tree torching and roll out causing the potential for an uphill push. The northerly flow will test the higher elevations along the Tanner Line where it is oriented east/west and some unburned fuel remains. Jackass Gulch is in alignment with the northerly wind and this will help spread fire down the drainage. Watch for downhill spread to connect with the drainage bottom where spotting may be possible with the predicted winds.

**Night Branch:** With the dry conditions forecasted the potential for poor humidity recovery resulting in continued burning conditions well into the evening exists. When combined with adverse wind conditions this could mean holding problems for lines that are vulnerable to a east-northeast wind. Locations that haven't burned down or seen mop-up activities are going to have a heightened threat of compromising the containment lines. In particular, the ridgetops will be the most likely locations to be subjected to this and extra care should be taken.

**Portable RAWs in Div B Rx: 171.5000 Tx: 172.4000 Tx Tone: 156.7 Key Up Code: 5553**

### AIR OPERATIONS

Expect clearer air this afternoon with the change in wind patterns. The inversion will lift by 1100 leaving a light haze. Gusty winds will make flying conditions rougher than recent days.

### SAFETY

Rolling material and gravity hazards present a constant danger, especially in areas visited by fire or in work areas down slope from the fire and in chutes. Post lookouts when working in these areas. Communicate hazards that are identified. Watch for the potential for rolling material to ignite fuel below you or to lead to short runs back uphill.





<b>Division Assignment List</b>	1. Branch <b>I</b>	2. Division/Group <b>E</b>
---------------------------------	-----------------------	-------------------------------

3. Incident Name <b>SALMON RIVER COMPLEX</b>	4. Operational Period <b>08/17/13 Saturday Day Shift 0600 - 2200</b>
---	---

**5. Operations Personnel**

Operations Chief	RON BOLLIER	Division/Group/Supervisor	MIRANDA STUART
Operations Chief	STEVE PARR	Air Attack Supervisor	RUSS GRIPP
Branch Director	CHRIS CHILDERS; MIKE ALARID (t)	Safety Officer	DOUG MCKELVEY(t)

**6. Resources Assigned this Period**

Strike Team/Task Force/ Resource Designator	Leader	Num of Pers.	Trans. Y/N	Drop Off PT./Time	Pick Up PT./Time
BIA EASTERN OK T2IA C-24 8/18	ALAN PRATT	19	N	DP1/0600	IDLEWILD/1800
FS TRIBAL #1 T2IA C-25 8/18	RUPERT NOWLIN	20	N	DP1/0600	IDLEWILD/1800
MS MSS #1 T2IA C-26 8/18	MICHAEL BURKS	20	N	DP1/0600	IDLEWILD/1800
ENG3 S/T 5650C E-33 8/17	SHANE SANTOS	27	N	DP1/0600	IDLEWILD/1800
WTT2 KLAMATH RIVER 3430 E-7 8/29	BILL SCHMIDT	2	N	DP1/0600	IDLEWILD/1800
WTT1 SCOTT VALLEY 1537 E-11 8/27	PAT COSTELLO	2	N	DP1/0600	IDLEWILD/1800
FALC NZ FALLERS #4 O-242 8/19	FERRINI / LORENZO	2	N	DP1/0600	IDLEWILD/1800
TFLD O-128 8/18	DANIEL HUISJEN	1	N	DP1/0600	IDLEWILD/1800
TFLD (t) O-197 8/19	ROBERT WESOLOWSKI	1	N	DP1/0600	IDLEWILD/1800
FEMP O-211 8/19	NICHOLAS AGOSTINI	1	N	DP1/0600	IDLEWILD/1800
FEMT O-208 8/19	JESSE BARNES	1	N	DP1/0600	IDLEWILD/1800
SOFR O-117 8/19	WILLIAM CIRONE	1	N	DP1/0600	IDLEWILD/1800

**7. Control Operations**  
 Hold and Patrol the Div B/E break to the Div E/M break. Mop up fireline to prevent the threat of spot fires over the line. Check and mopup spot fire at DP8.

**8. Special Instructions**  
 GPS all handlines and turn into Situation Unit  
**Inventory hose and GPS pump locations.**

**9. Division/Group Communications Summary**

Function	Frequency - RX	Frequency - TX	Tone	System	Channel	System	Channel
Command	166.3000N	170.5000N	136.5	NIFC C43	3		
Tactical	154.4525 N	154.4525 N	156.7	VTAC 12	7		
Logistics							
Air to Ground	166.5625 N	166.5625 N		A / G PRI	13		

Prepared by (Resource Unit Leader) Melody Fountain	Approved by (Planning Section Chief) <i>[Signature]</i> <b>Final</b>	Date Prepared 08/16/13	Time Prepared 0814
---	--	---------------------------	-----------------------

7



<b>Division Assignment List</b>	1. Branch <b>I</b>	2. Division/Group <b>M</b>
---------------------------------	-----------------------	-------------------------------

3. Incident Name <b>SALMON RIVER COMPLEX</b>	4. Operational Period <b>08/17/13 Saturday Day Shift 0600 - 2200</b>
---	---

**5. Operations Personnel**

Operations Chief	<b>RON BOLLIER</b>	Division/Group Supervisor	<b>CHAD COOK</b>
Operations Chief	<b>STEVE PARR</b>	Air Attack Supervisor	<b>RUSS GRIPP</b>
Branch Director	<b>CHRIS CHILDERS; MIKE ALARID (t)</b>	Safety Officer	<b>DOUG MCKELVEY(t)</b>

**6. Resources Assigned this Period**

Strike Team/Task Force/ Resource Designator	Leader	Num of Pers.	Trans. Y/N	Drop Off PT./Time	Pick Up PT./Time
BRECKENRIDGE IHC C-27 8/17	ADAM SANDERS	19	N	DIV M/S	IDLEWILD/1800
AOICC #3 T2IA C-22 8/18	JUSTIN ROSE	20	N	DIV M/S	IDLEWILD/1800
ENG3 CO-WESCOTT 512 E-194 8/27	BRENDEN HOGLUND	4	N	DIV M/S	IDLEWILD/1800
TFLD O-246 8/21	DANNY MCCABE	1	N	DIV M/S	IDLEWILD/1800
FEMP O-212 8/19	ROBERT TELLAM	1	N	DIV M/S	IDLEWILD/1800
FEMT O-209 8/19	NATHAN MENTH	1	N	DIV M/S	IDLEWILD/1800
SOFR O-172 8/20	DERRICK HECKMAN	1	N	DIV M/S	IDLEWILD/1800
SOFR (t) O-198 8/20	MICHAEL TYRRELL	1	N	DIV M/S	IDLEWILD/1800

**7. Control Operations**

Mop up 50 feet in, patrol and hold fireline so fire does not spread to the North.

**8. Special Instructions**

**Inventory hose and GPS pump locations.**

**9. Division/Group Communications Summary**

Function	Frequency - RX	Frequency - TX	Tone	System	Channel	System	Channel
Command	166.3000N	170.5000N	136.5	NIFC C43	3		
Tactical	158.7375 N	158.7375 N	156.7	VTAC 13	8		
Logistics							
Air to Ground	166.5625 N	166.5625 N		A / G PRI	13		

Prepared by (Resource Unit Leader) <b>Melody Fountain</b>	Approved by (Planning Section Chief) <i>[Signature]</i> <b>Final</b>	Date Prepared <b>08/16/13</b>	Time Prepared <b>0813</b>
--	--	----------------------------------	------------------------------

<b>Division Assignment List</b>	1. Branch <b>III</b>	2. Division/Group <b>S</b>
---------------------------------	-------------------------	-------------------------------

3. Incident Name <b>SALMON RIVER COMPLEX</b>	4. Operational Period <b>08/17/13 Saturday Day Shift 0600 - 2200</b>
---	---

**5. Operations Personnel**

Operations Chief	<b>RON BOLLIER</b>	Division/Group Supervisor	<b>THOMAS SMITH; MATT PETERSEN (t)</b>
Operations Chief	<b>STEVE PARR;</b>	Air Attack Supervisor	<b>RUSSELL GRIPP</b>
Branch Director	<b>LINDA SZCZEPANIK</b>	Safety Officer	<b>DOUG MCKELVEY(t)</b>

**6. Resources Assigned this Period**

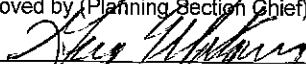
Strike Team/Task Force/ Resource Designator	Leader	Num of Pers.	Trans. Y/N	Drop Off PT./Time	Pick Up PT./Time
FEATHER RIVER IHC C-16 8/17	ROBERT DANIELS	20	N	DP13/0600	IDLEWILD/1800
VICC # 2 T2IA C-28 8/21	STEVEN HUBNER	21	N	DP13/0600	IDLEWILD/1800
ENG3 S/T 4601C E-135 8/20	WESTON / HEITZKE (t)	27	N	DP13/0600	IDLEWILD/1800
WTS2 CATTLELACK E-161 8/21	JOHN SEMPLE	1	N	DP13/0600	IDLEWILD/1800
DOZ2 BERRYHILL # 713 E-73 8/18	ERIC DURDEN	2	N	DP13/0600	IDLEWILD/1800
HEQB O-249 8/21	RYAN SOUTHWICK	1	N	DP13/0600	IDLEWILD/1800
FELB O-35 8/16	MARK GIBBONS	1	N	DP13/0600	IDLEWILD/1800
FELB O-66 8/17	CHAD PLUMMER	1	N	DP13/0600	IDLEWILD/1800
FALC PRO PLUS FALLERS O-243 8/20	WOODMAN / HOLLOWAY	2	N	DP13/0600	IDLEWILD/1800
FALC PRO PLUS FALLERS O-244 8/20	PORTER / CAMPBELL	2	N	DP13/0600	IDLEWILD/1800
FALC SHAULIS O-245 8/20	SHAULIS / VAUGHAN	2	N	DP13/0600	IDLEWILD/1800
TFLD O-260 8/22	CHAD COOK	1	N	DP13/0600	IDLEWILD/1800
TFLD (t) O-262 8/22	RANDAL FRISBEE	1	N	DP13/0600	IDLEWILD/1800
FEMP O-213 8/19	BRYAN MATHENA	1	N	DP13/0600	IDLEWILD/1800
FEMT O-210 8/19	JONATHAN PITTS	1	N	DP13/0600	IDLEWILD/1800
SOFR O-25 8/17	JONATHAN LEE	1	N	DP13/0600	IDLEWILD/1800

**7. Control Operations**  
 Patrol, hold and mop up previous days burn out. Improve handline as needed ahead of planned burn outs. Scout opportunities for direct line construction along the fires edge.

**8. Special Instructions**  
 GPS all Handlines and turn into situation unit.  
**Inventory hose and GPS pump locations.**

**9. Division/Group Communications Summary**

Function	Frequency - RX	Frequency - TX	Tone	System	Channel	System	Channel
Command	166.6125 N	168.4000 N	136.5	NIFC C4	1		
Tactical	166.7750 N	166.7750 N	136.5	NIFC T-6	5		
Logistics							
Air to Ground	166.5625 N	166.5625 N		A / G PRI	13		

Prepared by (Resource Unit Leader) <b>Melody Fountain</b>	Approved by (Planning Section Chief) 	Date Prepared <b>08/16/13</b>	Time Prepared <b>0813</b>
--	---	----------------------------------	------------------------------

<b>Division Assignment List</b>	1. Branch <p style="text-align: center; font-size: 1.2em;"><b>III</b></p>	2. Division/Group <p style="text-align: center; font-size: 1.2em;"><b>T</b></p>
---------------------------------	--	--

3. Incident Name <b>SALMON RIVER COMPLEX</b>	4. Operational Period <b>08/17/13 Saturday Day Shift 0600 - 2200</b>
---	---

5. Operations Personnel			
Operations Chief	RON BOLLIER	Division/Group Supervisor	BILL STEERS; KRIS SCHROEDER (t)
Operations Chief	STEVE PARR	Air Attack Supervisor	RUSS GRIPP
Branch Director	LINDA SZCZEPANIK	Safety Officer	DOUG MCKELVEY(t)

6. Resources Assigned this Period						
Strike Team/Task Force/ Resource Designator	Leader	Num of Pers.	Trans. Y/N	Drop Off PT./Time	Pick Up PT./Time	
KLAMATH IHC C-44 8/17	JOHNNY CLEM	20	N	DP13/1000	IDLEWILD/0200	
MENDOCINO IHC C-46 8/28	JON TISHNER	20	N	DP13/0600	IDLEWILD/1800	
ELK MTN IHC C-47	CHEVEYO MUNK	20	N	DP13/0600	IDLEWILD/1800	
ENG3 YNP 31 E-70 8/18	AARON LUDWIG	5	N	DP13/0600	IDLEWILD/1800	
PACK STRING # 1	ELLEN ANDREWS	2	N	DP13/0600	IDLEWILD/1800	
PACK STRING # 2	MARK HENDRICKSON	2	N	DP13/0600	IDLEWILD/1800	
FEMP O-214 8/19	DOUG SNAWDER	1	N	DP13/0600	IDLEWILD/1800	
FEMT O-207 8/19	MATT ANDERSON	1	N	DP13/0600	IDLEWILD/1800	
SOFR O-116 8/17	RENEE KUEHNER	1	N	DP13/0600	IDLEWILD/1800	
SOFR (t) O-237 8/19	TERRY WILLIAMSON	1	N	DP13/0600	IDLEWILD/1800	
UNI-ENGINE - KLUMP - 8/25	2 KLUMP PUMPS		N	DP13/0600	IDLEWILD/1800	

**7. Control Operations**

Patrol, hold and mopup previous days burn out to prevent the threat of spot fires over the Tanner line. Patrol all spot fires and threats to the line from previous days.

**8. Special Instructions**

GPS all handlines and turn into Situation Unit.  
**Inventory hose and GPS pump locations.**

9. Division/Group Communications Summary							
Function	Frequency - RX	Frequency - TX	Tone	System	Channel	System	Channel
Command	166.6125 N	168.4000 N	136.5	NIFC C4	1		
Tactical	166.7250 N	166.7250 N	136.5	NIFC T-5	4		
Logistics							
Air to Ground	166.5625 N	166.5625 N		A / G PRI	13		

Prepared by (Resource Unit Leader) Melody Fountain	Approved by (Planning Section Chief) 	Date Prepared 08/16/13	Time Prepared 0813
---	--	---------------------------	-----------------------

<b>Division Assignment List</b>	1. Branch <b>III</b>	2. Division/Group <b>V/VWIZ</b>
---------------------------------	-------------------------	------------------------------------

3. Incident Name <b>SALMON RIVER COMPLEX</b>	4. Operational Period <b>08/17/13 Saturday Day Shift 0600 - 2200</b>
---	---

**5. Operations Personnel**

Operations Chief	RON BOLLIER	Division/Group Supervisor	BEN BANISTER; CHUCK FRANK
Operations Chief	STEVE PARR	Air Attack Supervisor	RUSS GRIPP
Branch Director	LINDA SZCZEPANIK	Safety Officer	DOUG MCKELVEY(t)

**6. Resources Assigned this Period**

Strike Team/Task Force/ Resource Designator	Leader	Num of Pers.	Trans. Y/N	Drop Off PT./Time	Pick Up PT./Time
ENG3 S/T PNF 3660C E-41 8/18	COTTINGHAM / HAWE (t)	25	N	DP5/0600	IDLEWILD/1800
ENG3 4-83 E-155 8/23	BRIAN P BLANCHARD	6	N	DP5/0600	IDLEWILD/1800
WTS2 CATTLELACK E-77 8/24	BOB BUCK	1	N	DP5/0600	IDLEWILD/1800
CHIP3 FIRESTORM 2 E-81 8/18	DAVE WILLS	2	N	DP5/0600	IDLEWILD/1800
TFLD O-126 8/18	BRIAN DELASANTOS	1	N	DP5/0600	IDLEWILD/1800
TFLD (t) O-241 8/19	JOSH SCHMALENBERGER	1	N	DP5/0600	IDLEWILD/1800
FOBS (t) O-234 8/20	ZEKE JONES	1	N	DP5/0600	IDLEWILD/1800
FOBS O-235 8/20	ARON KORMUT	1	N	DP5/0600	IDLEWILD/1800
STPS O-190 8/19	RANGER DORN	1	N	DP5/0600	IDLEWILD/1800
SOFR O-80.47 8/17	JOE PASTORE	1	N	DP5/0600	IDLEWILD/1800

**7. Control Operations**

Patrol Sawyers Bar 01 Road to Sawyers Bar for threats of fire crossing the road to the south. Help Div T with holding operations. Continue prep work around structures and run sprinklers in Sawyers Bar and Idlewild 3 times each day. Keep water sources filled.

**8. Special Instructions**

**Inventory hose and GPS pump locations.**

**9. Division/Group Communications Summary**

Function	Frequency - RX	Frequency - TX	Tone	System	Channel	System	Channel
Command	166.6125 N	168.4000 N	136.5	NIFC C4	1		
Tactical	151.1375 N	151.1375 N	156.7	VTAC 11	6		
Logistics							
Air to Ground	166.5625 N	166.5625 N		A / G PRI	13		

Prepared by (Resource Unit Leader) <b>Melody Fountain</b>	Approved by (Planning Section Chief)  <b>Final</b>	Date Prepared <b>08/16/13</b>	Time Prepared <b>0813</b>
--	--	----------------------------------	------------------------------

<b>Division Assignment List</b>	1. Branch <b>NIGHT</b>	2. Division/Group <b>NIGHT WEST</b>
---------------------------------	---------------------------	--

3. Incident Name <b>SALMON RIVER COMPLEX</b>	4. Operational Period <b>08/17/13 Saturday Night Shift 1800 - 0600</b>
---	---

**5. Operations Personnel**

Operations Chief	<b>KATHY KIRKPATRICK</b>	Division	<b>DAVID CORNELSSEN</b>
Operations Chief		Division	
Branch Director	<b>JOHN FLORES</b>	Safety Officer	<b>DOUG MCKELVEY(t)</b>

**6. Resources Assigned this Period**

Strike Team/Task Force/ Resource Designator	Leader	Num of Pers.	Trans. Y/N	Drop Off PT./Time	Pick Up PT./Time
ENG3 S/T 4648C E-185 8/26	LEE SANDS	27	N	WHITE GULCH / 1800	IDLEWILD / 0600
SALMON T/F #1 TFLD O-59 8/17	JOHN STEBNER	1	N	WHITE GULCH / 1800	IDLEWILD / 0600
ENG6 - E611 E-187 8/21	AARON SALAZAR	5	N	WHITE GULCH / 1800	IDLEWILD / 0600
ENG6 - E5261 E-190 8/21	RICARDO KINDELAY	3	N	WHITE GULCH / 1800	IDLEWILD / 0600
ENG6 - E5264 E-192 8/21	PETER PAXSON	3	N	WHITE GULCH / 1800	IDLEWILD / 0600
WTT2 KLAMATH RIVER 3430 E-7 8/28	BILL SCHMIDT	2	N	WHITE GULCH / 1800	IDLEWILD / 0600
SOF2 O-221 8/20	JAMES CHARD	1	N	WHITE GULCH / 1800	IDLEWILD / 0600

**7. Control Operations**


Be prepared to initiate protection of Sawyers Bar community if it becomes threatened. Continue burnout operations in Div T if possible. Patrol and hold Div A/B/E.

**8. Special Instructions**

Engine Strike Teams and Task Force to support both divisions.  
Ensure that all resources are on the appropriate Night Branch Tactical.  
**Inventory hose and GPS pump locations.**

**9. Division/Group Communications Summary**

Function	Frequency - RX	Frequency - TX	Tone	System	Channel	System	Channel
Command	166.6125 N	168.4000 N	136.5	NIFC C4	1		
Tactical West	154.4525 N	154.4525 N	156.7	VTAC 12	7		
Air to Ground	166.5625 N	166.5625 N		A / G PRI	13		

Prepared by (Resource Unit Leader) <b>Melody Fountain</b>	Approved by (Planning Section Chief) 	Date Prepared <b>08/16/13</b>	Time Prepared <b>2002</b>
--	---	----------------------------------	------------------------------

<b>Division Assignment List</b>	1. Branch <b>NIGHT</b>	2. Division/Group <b>NIGHT EAST</b>
---------------------------------	---------------------------	--

3. Incident Name <b>SALMON RIVER COMPLEX</b>	4. Operational Period <b>08/17/13 Saturday Night Shift 1800 - 0600</b>
---	---

**5 Operations Personnel**

Operations Chief	KATHY KIRKPATRICK	Division	TOM ROACH; STEVE TETTER (t)
Operations Chief		Division	
Branch Director	JOHN FLORES	Safety Officer	DOUG MCKELVEY(t)

**6 Resources Assigned this Period**

Strike Team/Task Force/ Resource Designator	Leader	Num of Pers.	Trans. Y/N	Drop Off PT./Time	Pick Up PT./Time
UKONOM IHC C-45 8/19	KIETH SMITH	20	N	WHITE GULCH / 1800	IDLEWILD / 0600
SALMON T/F #2 TFLD O-125	ERIK ACKER	1	N	WHITE GULCH / 1800	IDLEWILD / 0600
ENG3 - 3130 E-188 8/20	JAMIE JALVING	5	N	WHITE GULCH / 1800	IDLEWILD / 0600
ENG6 - E522 E-184 8/21	CHAD LORTA	3	N	WHITE GULCH / 1800	IDLEWILD / 0600
ENG6 - E552 E-189 8/21	LEO HOLLEY	3	N	WHITE GULCH / 1800	IDLEWILD / 0600
WTT1 SCOTT VALLEY 1537 E-11 8/27	BENNY AUSTIN	1	N	WHITE GULCH / 1800	IDLEWILD / 0600
SOF2 O-26 8/16	MARIO MARQUEZ	1	N	WHITE GULCH / 1800	IDLEWILD / 0600

**7. Control Operations**

Be prepared to initiate protection of Sawyers Bar community if it becomes threatened. Continue burnout operations in Div T if possible. Patrol and hold Div A/B/E.

**8. Special Instructions**

Engine Strike team and Task Force to support both divisions.  
Ensure that all resources are on the appropriate Night Branch Tactical.  
**Inventory hose and GPS pump locations.**

**9. Division/Group Communications Summary**

Function	Frequency - RX	Frequency - TX	Tone	System	Channel	System	Channel
Command	166.6125 N	168.4000 N	136.5	NIFC C4	1		
Tactical East	166.7250 N	166.7250 N	136.5	NIFC T-5	4		
Air to Ground	166.5625 N	166.5625 N		A / G PRI	13		

Prepared by (Resource Unit Leader) Melody Fountain	Approved by (Planning Section Chief) 	Date Prepared 08/16/13	Time Prepared 2002
---	--	---------------------------	-----------------------

<b>Division Assignment List</b>	1. Branch	2. Division/Group <b>Road Group</b>
---------------------------------	-----------	--

3. Incident Name <b>SALMON RIVER COMPLEX</b>	4. Operational Period <b>08/17/13 Saturday Day Shift 0600 - 2200</b>
---	---

**5. Operations Personnel**

Operations Chief	RON BOLLIER	Leader	DAN MCGREW
Operations Chief	STEVE PARR	Air Attack Supervisor	RUSS GRIPP
Branch Director	CHRIS CHILDERS; MIKE ALARID (t)	Safety Officer	DOUG MCKELVEY(t)

**6. Resources Assigned this Period**

Strike Team/Task Force/ Resource Designator	Leader	Num of Pers.	Trans. Y/N	Drop Off PT./Time	Pick Up PT./Time
WTS2 HARRIS # 784 E-79 8/17	BOB ASHWORTH	1	N	White Gulch/0600	Idlewild/1800
WTS2 ALLIED WATER E-76 8/23	GARY KEUPMAN	1	N	White Gulch/0600	Idlewild/1800
WTS2 BERRYHILL E-162 8/22	GLEN HALL	1	N	White Gulch/0600	Idlewild/1800
WTS2 BRYANT E-163 8/22	EARL BRYANT	1	N	White Gulch/0600	Idlewild/1800
WTS2 DARRAH #949 E-164 8/22	GARY QUINONES	1	N	White Gulch/0600	Idlewild/1800
WTS2 DARRAH #113 E-165 8/22	WAYNE VIRAG	1	N	White Gulch/0600	Idlewild/1800
WTS2 DARRAH #950 E-166 8/22	KEITH DARRAH	1	N	White Gulch/0600	Idlewild/1800
WTS2 DARRAH #598 E-167 8/22	TAMMY QUINONES	1	N	White Gulch/0600	Idlewild/1800
WTS2 DARRAH #597 E-168 8/22	STAN CARGO	1	N	White Gulch/0600	Idlewild/1800
GRADER JOHNSON E-58 8/17	JOHNATON FERREIRA	2	N	White Gulch/0600	Idlewild/1800

**7. Control Operations**

Work with Ground Support to continue road work on 40N51 Road on Yellow Jacket Ridge from the 1C01 Road (01 Road) to Olsen Meadows. Support Divisions with water if required.

**8. Special Instructions**

**9. Division/Group Communications Summary**

Function	Frequency - RX	Frequency - TX	Tone	System	Channel	System	Channel
Command	166.6125 N	168.4000 N	136.5	NIFC C4	1		
Tactical							
Logistics							
Air to Ground	166.5625 N	166.5625 N		A / G PRI	13		

Prepared by (Resource Unit Leader) <b>Melody Fountain</b>	Approved by (Planning Section Chief) 	Date Prepared <b>08/16/13</b>	Time Prepared <b>0813</b>
--	--	----------------------------------	------------------------------

# AIR OPERATIONS SUMMARY

PREPARED BY: Jason Nava

PREPARED DATE/TIME: 8/16/13 2000

1. INCIDENT NAME: Salmon River Complex

2. OPERATIONAL PERIOD DATE: 8/17/13 DAY START TIME: 0700 END TIME: 2100 SUNRISE: 0627 SUNSET: 2003

3. REMARKS (Safety Notes, Hazards, Air Operations Special Equipment, etc.):

*Visibility use caution see and avoid Identify known flight routes in and out of Helibase  
Be aware of rapidly changing smoke conditions  
Be aware of fixed wing, use IP's identified and communicated by ATGS  
Reference hazard map  
TFR Frequency 120.0250*

4. MEDEVAC A/C:

527, 503

IA 510

5. TFR: COVERING BUTLER FIRE AND SALMON RIVER COMPLEX

TFR#3/9102

Altitude: 11,000= MSL

Frequency: 120.0250 RX/TX

6. PERSONNEL	Phone	7. FREQUENCIES		AM	FM	8. FIXED-WING	# Avail / Type/ Make-Model / FAA N# / Base(s)
		AIR/AIR FW:	AIR/AIR RW:				
AOBD: Jason Nava	949-812-8755	AIR/AIR FW:		120.0250	169.2000	Airtankers	Order as needed
ASGS: Lisa Cardoza	949-616-4226	AIR/AIR RW:		134.625			
ASGS	951-333-7458						
ATGS: Russ Gripp	530-598-4172	AIR/GROUND PRIMARY			166.5625	Leadplanes	Order as needed
ATGS: Curtis Stanley	530-598-4191	AIR/GROUND SECONDARY		FIRING	169.1250	Base FAX #:	
HEB1: Bill Lampert	530-598-4128	COMMAND		NIFC C4	Tx Tone 136.5	ATGS Aircraft	AA507, AA05, AA17V,
HEB (t) Joel Torres	530-598-9323			Rx 166.6125	Tx 168.4000		AA69J
HLCO: Phil Hawkins	530-604-8644	DECK FREQ:		163.100	163.100		
Yreka	530-842-3380	TOLC FREQ:				Other	E-195 Yreka crash rescue

## 9. HELICOPTERS (Use Additional Sheets As Necessary)

FAA N#	TY	MAKE/MODEL	BASE	AVAIL	START	REMARKS	FAA N#	TY	MAKE/MODEL	BASE	AVAIL	START	REMARKS
503	3	Bell 407	Scott V	0700	0730								
527	2	Bell 212HP	Scott V	0700	0730								
HLCO507	2	Bell 209 Cobra	Scott V	0700	0730								
H502	2	Bell 205	Scott V	0700	0730								
HT746	1	Crane	Scott V	0700	0730								
HT715	1	Crane	Scott V	0700	0730								
H510	2	Bell 212	Scott V	0700	0730	Forest IA							



# AIR OPERATIONS SUMMARY

Prepared By:

Prepared Date: 8/15/2013

Prepared Time: 21:30

<b>1. INCIDENT NAME:</b> Butler	<b>2. OPS PERIOD DATE:</b> 8/17/2013	<b>START TIME:</b> 0900	<b>END TIME:</b> 2100	<b>SUNRISE:</b> 0625	<b>SUNSET:</b> 2013
<b>3. REMARKS (Safety Notes, Hazards, Air Operations, Special Equipment, etc.):</b> Watch for wires in the Salmon river canyon. Beware of rapidly changing VFR conditions due to smoke. Stay ready for PSD operations. Avoid no-fly zone over Klamath and Salmon river confluence unless unsafe.					
			<b>4. READY ALERT AIRCRAFT</b> MEDEVAC- 4LA I.A. - 512 Frequency: 120.0250		

6. PERSONNEL NAME		PHONE #	7. FREQUENCIES		AM	FM	8. FIXED-WING- Type/ Make-Model/ N#/ Base	
AOBD			AIR/ AIR FW		120.0250		AIRTANKERS - Order as needed	
ASGS		208-661-6619	AIR/ AIR RW		132.2750		LEAD PLANES- Order as needed	
ATGS		530-295-7273	AIR/ AIR RW- FF			163.1500	ATGS AIRCRAFT- AA1176Z AA690FD	
ATGS (T)								
ATGS		559-310-9430	AIR/ GROUND		Command	171.5375		
ATGS(T)		406-853-5746			Tactical	171.1375		
HEB1		601-540-6528	COMMAND	rx		168.0750	H507 Cobra Shared resource between Butler and	
HEB1 (T)				tx		170.4250	Salmon Fires	
Helibase		530-625-4617	DECK			163.100		
		530-625-4620	TOLC			163.100		
Air Ops Desk		877-353-6938	AERIAL FIRING			167.9000	OTHER FW AIRCRAFT-	

**9. HELICOPTERS (Use Additional Sheets as Necessary)**

FAA N#	T	MAKE/ MODEL	BASE	AVAIL	START	REMARKS	FAA N#	T	MAKE/ MODEL	BASE	AVAIL	START	REMARKS
192CH	1	BV107	Hoopa	0800							0800		
HT 701	1	S61	Hoopa	0800									
512	2	Bell 205A1++	Hoopa	0800									
514	2	Bell 212HP	Hoopa	0800									
517	2	Bell 212HP	Hoopa	0800									
507	2	Bell 209	Scott Valley	0800		Shared							
4LA	3	Bell	Hoopa	0800									

10. TASK/MISSION/ ASSIGNMENT (Type/ function includes: Air Tactical, Retardant, Recon, Personnel Transport, Bucket Operations, SAR, etc.)		MISSION START	FLY FROM	FLY TO
TYPE/FUNCTION	NAME OF PERSONNEL OR CARGO (if applicable) or instructions for tactical aircraft	As Needed		
Water Dropping		As Needed		
Recon		As Needed		
Firing, PSD		As Needed		
Cargo		As Needed		

# **S A F E T Y   M E S S A G E**

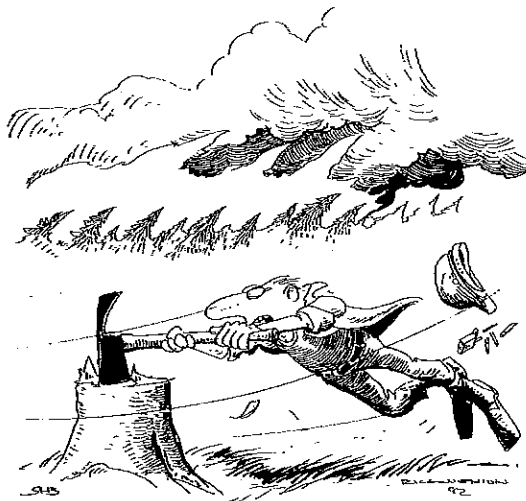
## **Salmon Creek Complex**

08/17/13 Day Shift

**“MAINTAIN SITUATIONAL AWARENESS THROUGHOUT SHIFT!”**

- **This fire isn't done yet. KEEP YOUR HEAD IN THE GAME.**
- **Confirm that you have positive communications – utilize cell phones, satellite phones, and human repeaters if necessary.**
- **Every individual should receive a thorough briefing.....inside rear cover, IRPG.**
- **Follow “Look up, look down, look around” procedures - IRPG pages 2-3.**
- **Drive defensively.....expect the unexpected around every curve. Stop, look and listen at all railroad crossings.**

### **Watch Out Situation of the Day**



#### **Transition Safety:**

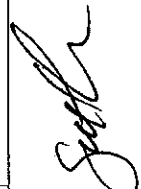
- Who's the IC?
- Who do I work for?
- Who works for me?
- What is the plan?
- Where is my assignment?
- How do I communicate with my supervisor, my crew, and adjoining forces?

15. WIND INCREASES AND/OR CHANGES  
DIRECTION

Prepared by: Doug McKelvey Safety Officer SOF2 08/16/13

INCIDENT RADIO COMMUNICATIONS PLAN		Incident Name		Date/Time Prepared		Operational Period Date/Time			
SALMON RIVER COMPLEX CA-KNF 005561		SALMON RIVER COMPLEX CA-KNF 005561		08/16/13 1930 HRS.		DAY & NIGHT SHIFT 08/17/13			
Only frequencies listed on this 205 are authorized for use on this incident.				Hand programmers accept all responsibility for the use of unauthorized frequencies.					
Ch #	Function	Channel Name	Assignment	RX Freq N or W	RX Tone	TX Freq N or W	TX Tone	Mode	Remarks
1	COMMAND	NIFC C4	BRANCH III	166.6125 N	Tone 4 136.5	168.4000 N	Tone 4 136.5	A	"SALMON COMMUNICATIONS" EDDY GULCH LOOKOUT (LINKED TO C-11 & C-43)
2	COMMAND	NIFC C11	ICP / SCOTT VALLEY HELIBASE	170.6875 N	Tone 4 136.5	166.5750 N	Tone 4 136.5	A	"SALMON COMMUNICATIONS" ETNA MOUNTAIN (LINKED TO C-4 & C-43)
3	COMMAND	NIFC C43	BRANCH I	166.3000 N	Tone 4 136.5	170.5000 N	Tone 4 136.5	A	"SALMON COMMUNICATIONS" BLUE RIDGE LOOKOUT (LINKED TO C-4 & C-11)
4	TACTICAL	NIFC T-5	DIVISION T (NIGHT EAST)	166.7250 N	Tone 4 136.5	166.7250 N	Tone 4 136.5	A	
5	TACTICAL	NIFC T-6	DIVISION S	166.7750 N	Tone 4 136.5	166.7750 N	Tone 4 136.5	A	
6	TACTICAL	VTAC 11	DIVISION A & V / W / Z	151.1375 N		151.1375 N	Tone 6 156.7	A	
7	TACTICAL	VTAC 12	DIVISION E / B (NIGHT WEST)	154.4525 N		154.4525 N	Tone 6 156.7	A	
8	TACTICAL	VTAC 13	DIVISION M	158.7375 N		158.7375 N	Tone 6 156.7	A	
9	COMMAND	BTLRCMD3	BUTLER FIRE COMMAND	168.0750 N	Tone 3 131.8	170.4250 N	Tone 3 131.8	A	ORLEANS MTN
10	KNF DISPATCH	KNF NET	BACK UP COMMAND	164.1750 N		164.9750 N	Tone 6 156.7	A	"YREKA" EDDY GULCH COMM SITE
11	KNF COMMAND	SALMON	IA FIRE COMMAND	171.5000 N		172.4000 N	Tone 6 156.7	A	"YREKA" EDDY GULCH COMM SITE
12	TACTICAL	NIFC T-2	IA TACTICAL	168.2000 N		168.2000 N		A	INITIAL ACTION TACTICAL
13	AIR TO GROUND	A/G PRI	ALL DIVISIONS	166.5625 N		166.5625 N		A	PRIMARY
14	AIR TO GROUND	A/G SEC	ALL DIVISIONS	169.1250 N		169.1250 N		A	SECONDARY / FIRING A/G
15	TACTICAL	CALCORD	MEDICAL TACTICAL	156.0750 N		156.0750 N	Tone 6 156.7	A	
16	URGENT AIR CONTACT	AIRGUARD	ALL DIVISIONS	168.6250 N		168.6250 N	Tone 1 110.9	A	USE ONLY FOR URGENT AIRCRAFT CONTACT

Prepared by



Scott La Rue, COML CIIMT #1

Etina, CA

LAT: N41 27.433 LONG: W122 52.105

# SALMON RIVER COMPLEX CAMP PHONE LIST

		SALMON RIVER COMPLEX *ICP*
INCIDENT COMMANDER	530-467-1539	
SAFETY OFFICER	530-467-1523	
INFORMATION OFFICER	530-467-1516	530-467-1517 530-467-1518
LIAISON	530-467-1520	
ORDERING	530-467-1513	(FAX)530-467-1515
SUPPLY UNIT	530-467-1514	
COMPUTER TECH	530-467-1503	
TRAINING SPECIALIST	(CELL) 707-498-1761	
FINANCE SECTION CHIEF	530-467-1529	
PROCUREMENT	530-467-1527	
OPERATIONS	530-467-1521	
AIR OPERATIONS	530-467-1522	
RESOURCE	530-467-1543	530-467-1534
CHECK IN	530-467-1533	
DEMOB	530-467-1535	(FAX) 530-467-1510
TIME	530-467-1506 *PERSONNEL*	530-467-1507 *EQUIPMENT* (FAX) 530-467-1508*BOTH*
FBAN	(CELL) 530-467-0024	
MEDICAL	530-467-1532	(CELL) 949-812-8695
PLANNING CHIEF	530-467-1509	
HUMAN RESOURCES	530-467-1524	
COMMUNICATION	530-467-1512 (RADO)	530-467-1511 (COML)
COPY TRAILER		(FAX) 530-467-1536
FACILITIES	530-467-1530	
DOCUMENTATION/FIRE BEHAVIOR/IMET		530-467-1525 (FAX) 530-467-1525
GROUND SUPPORT	530-467-1531	
		<b>WHITE GULCH CAMP PHONE LIST</b>
LOGISTICS	530-462-1502	530-462-1503 (FAX) 530-462-1504
COMMUNICATION TECH	530-462-1501	
GROUND SUPPORT	530-462-1510	
SUPPLY UNIT	530-462-1505	530-462-1512 530-462-1513
TRANSPORTATION	530-462-1511	
IF THERE ARE ANY CHANGES OR CORRECTIONS PLEASE CONTACT THE WHITE GULCH COMMUNICATIONS UNIT.		

<b>MEDICAL PLAN</b> 206 ICS	1. INCIDENT NAME <b>Salmon River Complex</b>	2. DATE PREPARED August 16, 2013	3. TIME PREPARED 1800	4. OPERATIONAL PERIOD August 17-18 2013 0600-2200/2200-0600
--------------------------------	---	-------------------------------------	--------------------------	---

5. INCIDENT MEDICAL AID STATIONS				
MEDICAL AID STATIONS	LOCATION	PARAMEDICS		
		YES	NO	
Frontline Medical Trailer	Whites Gulch Base, Sawyers Bar CA	X		
Etna ICP	Etna, CA	X		

6. TRANSPORTATION				
A. AMBULANCE SERVICES				
NAME	LOCATION	PHONE	PARAMEDICS	
			YES	NO
Etna Ambulance	Etna, CA	530-842-3515 YICC	X	
Salmon River VFD	Sawyers Bar, CA	530-842-3515 YICC		X

B. INCIDENT AMBULANCES				
NAME	LOCATION	PARAMEDICS		
		YES	NO	
Medic 75 Mt. Shasta Ambulance	Placed by Safety	X		
Arcata 4 Ambulance (Butler Fire)	Forks of the Salmon (Requested through Butler Fire Communications)	X		

C. MEDIVAC SERVICES					
NAME	LOCATION	PHONE	Hoist	ALS	BLS
CHP copter H14	Redding, CA	530-842-3515 YICC	X	X	
Cal Fire H102	Neeland, CA	530-842-3515 YICC	X		X

7. HOSPITALS								
NAME	ADDRESS	TRAVEL TIME		PHONE	HELIPAD		BURN CTR	
		AIR	GRND		YES	NO	YES	NO
Fairchild Medical CTR N 41 43.13 x W 122 38.69	444 Bruce Street Yreka, CA	30 min	1.5 hours	530-841-6259	x			X
Mercy Medical CTR N 40 35.12 x W 122 23.83	2175 Rosaline Ave Redding, CA Level 2 Trauma Center	1	3.5	530-225-6000	x			X
UC Davis Medical CTR N 38 33.3 x W 121 27.3	2015 Stocton Ave. Sacramento, CA	2	8	916-734-3790	X		X	

**8. MEDICAL EMERGENCY PROCEDURES**

**LINE MEDICAL EMERGENCY:**

- Crew Supervisor to contact Division Supervisor/Operations with patient complaint/condition and location.  
 Division Supervisor/Operations contacts communications:
- Division Supervisor/Operations to use "injury or incident communication protocol" on next page
  - Division Supervisor/Operations will run medical emergency on command channel
  - Communications contacts Medical Unit Leader on Command channel or (949)812-8695
  - Medical Unit Leader will:
    1. Have communications dispatch ground/air transport resources
    2. Notify receiving hospital of injury status.
    3. Develop primary and contingency transport plan
    4. Notify Safety, Logistics and Operations
    5. Contact YICC for notification of emergency. (530)842-3515

**CAMP MEDICAL EMERGENCY:**

- Notify Communications of camp emergency  
 Communications contacts Medical Unit Leader (949)812-8695 with patient complaint/condition and location.
- Medical Unit contacts:
    - Safety
    - Logistics
    - Operations
  - Medical Unit Leader will:
    1. Have communications dispatch ground/air transport resources
    2. Notify receiving hospital of injury status.
    3. Develop primary and contingency transport plan

206 ICS	9. PREPARED BY: (Medical Unit Leader)	10. REVIEWED BY: (Safety Officer)
	Matthew Lipson MEDL / Jim Gray MEDL (T)	Jennifer Boyd SOP1

# Injury or Incident Communications Protocol

DECLARE:            Medical Emergency    or   Non-emergency Medical transport

Best transport method: Ambulance    Helicopter    Vehicle

Patient Stable or Unstable? \_\_\_\_\_

Location \_\_\_\_\_

Situation \_\_\_\_\_

Any special equipment required \_\_\_\_\_

Number of injured \_\_\_\_\_    Type of injuries \_\_\_\_\_

Closest pick up point (DP, Helispot) \_\_\_\_\_

LOC \_\_\_\_\_    Resp. \_\_\_\_\_    Pulse \_\_\_\_\_    BP \_\_\_\_\_    Weight \_\_\_\_\_

Injury \_\_\_\_\_

Medical History/Allergies \_\_\_\_\_

## Air Transportation Triage

	Ground or Air Ambulance to Hosp.	Transport to Med Unit
<b>Mechanism</b>	Hit by a falling tree or large branch Fall of 10' or more Insect bite with shortness of breath Signs of heat stroke (hot, dry, disoriented) Burn Injury greater than 1% body area	Minor dehydration Cut or laceration with bleeding controlled Minor bites and Stings Minor burns
<b>Area Injured</b>	Significant Blunt or Penetrating Trauma to Head, Neck, Chest, Abdomen or pelvis Any Arm or Leg fracture above the Joint	Minor blunt trauma Minor penetrating trauma Extremity sprains and strains Simple fracture below elbow or knee
<b>Symptoms</b>	Disoriented Chest Pain or Shortness of Breath Weak or absent radial pulse Pale, cold and sweating	Alert and oriented No shortness of breath Good pulses

## Day/Night approved Medivac Sites

H-1	Forks of Salmon	N 41 15.60 x W 123 19.66
H-2	Sawyers Bar	N 41 17.84 x W 123 07.82
H-3	Idlewild Camp	N 41 19.61 x W 123 03.78

### If air or ground ambulance is DELAYED:

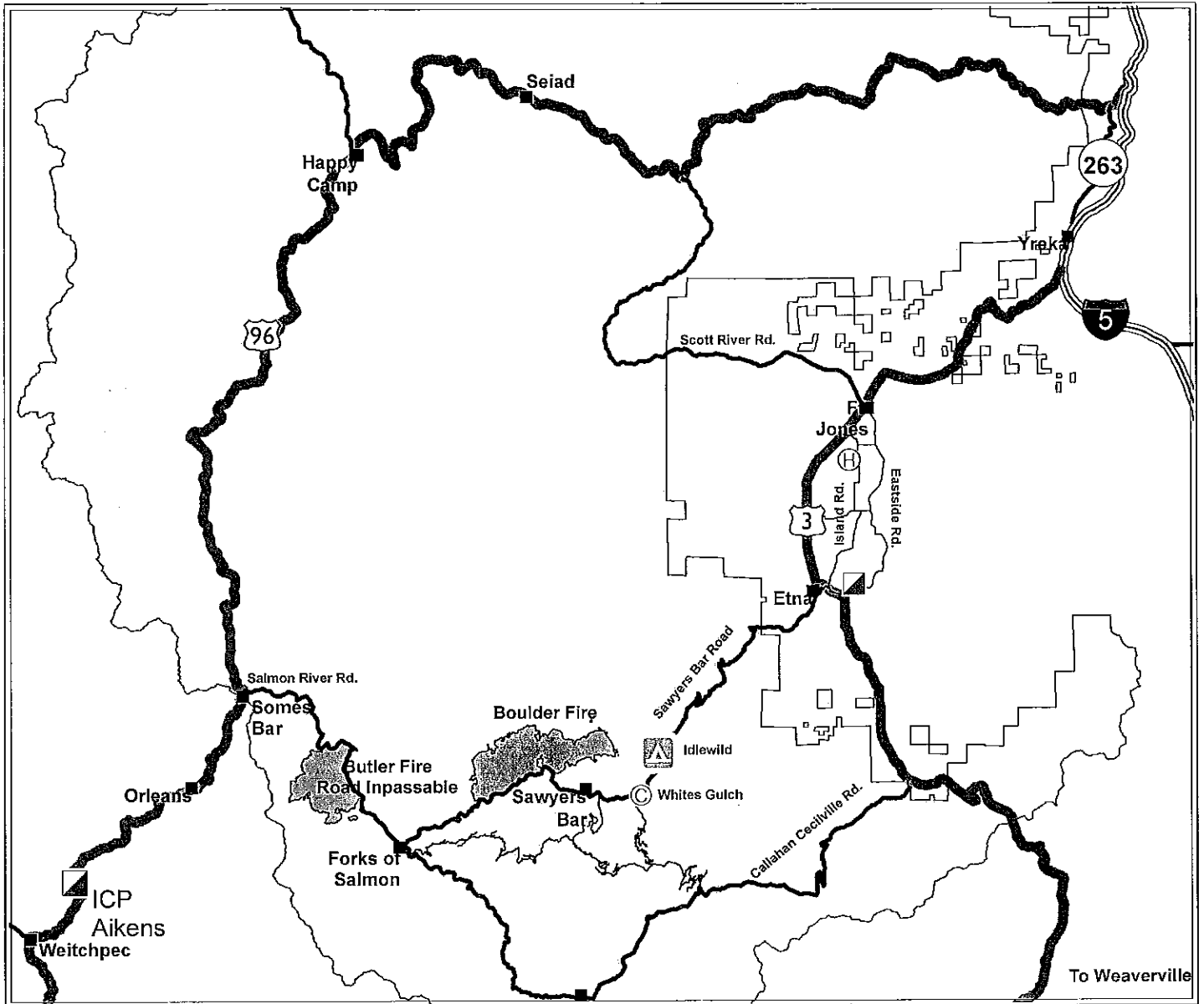
Package and transport patient to rendezvous with Ambulance. Re-route EMS helicopter to rendezvous point as appropriate.

### If Declaring an "Incident within the Incident"

The closest DIVS will respond to manage the incident. They are responsible for giving an accurate size up, ensuring scene safety, setting priorities and initiating an appropriate response. The closest Safety Officer and Line EMS will respond to the scene to assist the Branch Director or DIVS. Secure site and begin initial investigation when situation is stabilized.



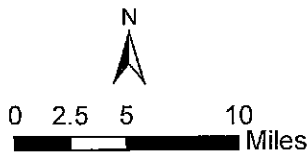
# Salmon River Complex Fire Transportation Map



Driving Distances

	Yreka	Fort Jones	Etna	Sawyer's Bar	Happy Camp	Somes Bar	
Yreka			17	35	58	71	109
Fort Jones	17		12	38	61	100	
Etna	35	12		25	73	112	
Sawyer's Bar	58	38	25		98	136	
Happy Camp	71	61	73	98		38	
Somes Bar	109	100	112	136	38		

\* Distances assume Salmon River Road is Inpassible



- ICP
- Scott Valley Helibase
- White's Gulch
- Towns
- Fire
- KNF Boundary

