

SALMON RIVER COMPLEX

CA-KNF-005561

P5HS98

FRIDAY

August 23, 2013



Day 0700-1900

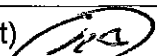
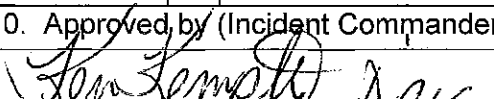
Night 1900-0700

0700 Briefing at White's Gulch

1400 C & G at Etna ICP – Meeting Tent

1900 Night Briefing at White's Gulch

1800 Planning Meeting at Etna ICP

INCIDENT OBJECTIVES	1. Incident Name	2. Date Prepared	3. Time Prepared		
ICS 202	Salmon River Complex	08/22/2013	2100		
4. Operational Period					
Friday August 23, 2013		DAY SHIFT 0700-1900	NIGHT SHIFT 1900-0700		
5. General Control Objectives for the Incident (include alternatives)					
CORE VALUE					
<ul style="list-style-type: none"> • Firefighter and Public safety is our core value. All identified hazards will be mitigated or avoided. 					
MANAGEMENT OBJECTIVES					
<ul style="list-style-type: none"> • Provide for safety of incident personnel and the public. • Provide for protection of private lands and infrastructure within the Salmon River corridor and adjacent communities. • Provide accurate and effective fire information to the public, residents and cooperators. • Minimize impacts to natural and cultural resources by utilizing Resource Advisors. 					
OPERATIONAL OBJECTIVES					
<ul style="list-style-type: none"> • Keep fire North of North Fork Salmon River from Robinson Flat to Forks of the Salmon. • Keep fire South of the North Fork Salmon River from Lost Lake to Mule Bridge. • Keep fire East of Yellow Jacket Ridge North towards Morehouse Meadows. • Keep fire West of Mule Bridge and the 41N37 Road. • Provide initial attack for new fire starts on the Salmon/Scott River Ranger District as identified on the IAP Map. 					
6. General Weather					
See Attached Weather.					
7. Resource Protection Guidelines					
<ul style="list-style-type: none"> • Follow national policy for retardant avoidance. • Apply fire as needed to maintain even backing down slope so the fire is not susceptible to long uphill runs. • Map and document all areas where burn out was implemented. • Back haul all trash to Idlewild. • Ensure screens and foot valves are used when drafting. • Ensure appropriate approvals are in place for use of helicopters and mechanized equipment for fire related work in the wilderness. • Utilize resource advisors as needed to manage sensitive resource locations. 					
8. Attachments					
x	Organization List-ICS 203	x	Air Ops Plan ICS-220	x	Fire Weather Forecast
x	Division Assignment List-ICS 204	x	Incident Map	x	Fire Behavior Forecast
x	Communications Plan-ICS 205	x	Transportation Maps	x	Human Res./Training Message
x	Medical Plan-ICS 206	x	Safety Messages	x	Demob List
9. Prepared by (Planning Section Chief)			10. Approved by (Incident Commander)		
Ken Bates PSC2 (t) 			 DPIC		

ICS Form 203 ORGANIZATION ASSIGNMENT LIST		1. INCIDENT NAME Salmon River Complex	2. DATE PREPARED 8 / 22 / 2013	3. TIME PREPARED 2100
5. INCIDENT COMMAND STAFF		4. OPERATIONAL PERIOD (DATE/TIME) 8 / 23 / 13 Day 0700-1900 Night 1900-0700		
Position	Name	9. OPERATIONS SECTION		
INCIDENT COMMANDER	Michael Wakoski / Ken Kempter	CHIEF	Lee Rickard / Jim Topoleski (t)	
INCIDENT COMMANDER	Mike Sandwick (t)	PLANNING OPS	John Forster / Freddie Espinoza (t)	
SAFETY OFFICER	Doug Elliot / Kevin Southerland			
INFORMATION OFFICER	Marc Peebles/Ralph Gonzales			
LIAISON OFFICER				
HUMAN RESOURCES	Jan Cawthon / Crystal Johnson(T)			
6. AGENCY REPRESENTATIVES		a. BRANCH I		
AGENCY	NAME	BRANCH DIR	A/B/E/M/S	Jeff Wenger
KNF Agency Admin /Rep	Patty Grantham / Dave Hays	DIVISION		
Siskiyou Co.OES	Ron Quigley	DIVISION	T	
Siskiyou Co. Sheriff	Jim Betts	DIVISION		
CHP	Tim Lawson / Janelle Bautista	DIVISION	V / W / Z	Andy Verdugo / Terry Eller (t)
Salmon River Fire	Jim Bennett	DIVISION		
		GROUP	Repair	Tim McHargue
		GROUP		
7. PLANNING SECTION		b. BRANCH III		
CHIEF	Ken Bates (t)	BRANCH DIRECTOR		
CHIEF		DIVISION		
RESOURCES UNIT	Eric Leverenz / Jesse Schultz (t)	DIVISION		
SITUATION UNIT	Mike Bilheimer (t) / Steve Briggs(t)	DIVISION		
DOCUMENTATION UNIT	Korry Belmontez	GROUP		
DEMOBILIZATION UNIT	Mike Lewis	GROUP		
CTSP	Chuck Vertrees	GROUP		
TNSP	Scott Tenery (t)	GROUP		
FBAN	Dan Felix / Duane Franklin	GROUP		
IMET	Ryan Walbrun	c. NIGHT		
GISS	Dave Collins / Ed Lamas	NIGHT OPS	Gerry Brewster / Jacob Gipson (t)	
READ	Justin Robbins/Kelby Whitherspoon (t)	BRANCH DIRECTOR		
8. LOGISTICS SECTION		DIVISION	NIGHT	Tom Roach / Steve Tetter (t)
CHIEF	Jack Van Lear			
CHIEF	John Chappell			
a. SUPPORT BRANCH		d. AIR OPERATIONS BRANCH		
SECURITY	Ryan Willbond	AIR OPERATIONS BR. DIR.	Dustan Mueller (t)	
FACILITIES UNIT	Neil Graf	AIR TACTICAL GROUP SUP	Carl Piper / Rico Gonzales (t) / Stan Kubota	
GROUND SUPPORT UNIT	Dan Froelich / Kevin Palm (t)	AIR SUPPORT GROUP SUP	Sean Cox / Steve Beall / Brad Bernardy	
b. SERVICE BRANCH		HELICOPTER COORDINATOR	Dave Phillips	
COMMUNICATIONS UNIT	Steve Weston / Mike Horst (t)	10. FINANCE/ADMINISTRATION SECTION		
COMMUNICATIONS MANG		CHIEF	Rich Tobin	
FOOD UNIT	Korry Belmontez / Prawitt Hess (t)	CHIEF		
RECEIVING		TIME UNIT	Debbie Parlin	
ORDERING	Steve Hurdle / David Reynolds	PERSONAL TIME	Deb Hobbs	
MEDICAL UNIT	David Sween (t) / Baryic Hunter (t)	COMPENSATION/CLAIMS UNIT	Janna Masi	
EQUIPMENT MANAGER	Margo Erickson	COST UNIT	Vera Westmoland	
PREPARED BY (RESOURCES UNIT)		EQUIPMENT TIME	Steve Greene	
Eric Leverenz		PROCUREMENT		



Fire Weather Forecast




FORECAST NO: 18

NAME OF FIRE: Salmon River Complex

PREDICTION FOR: 0700 Fri-0700 Sat

UNIT: Klamath NF

SHIFT DATE: Fri Aug 23, 2013

SIGNED: 

TIME AND DATE

Incident Meteorologist

FORECAST ISSUED: 2100 8/22/13

WEATHER DISCUSSION: A return to more seasonable weather across the fire area and northern California as a dry southwest wind pattern will develop behind yesterday's system. The weather will be mild with highs only in the 70s higher elevations and 80s along Sawyers Bar Road. Winds will be light from the west...strongest during the afternoon hours. Humidity values will take until early afternoon to dry out and values will not be extremely dry. The inversion should be weak today but will likely get stronger over the weekend as high pressure builds and smoke from fires to our west settles in the Salmon River drainage. For those working in Jackass Gulch winds should generally be favorable upslope and light with afternoon humidity values from 30-38%.

Weather Forecast for Friday: Smoke under the inversion this morning otherwise partly cloudy.

TEMPERATURES: Highs 69-77 above 4000 feet. 81-88 Along Sawyers Bar Road.

HUMIDITY: Trending much drier with afternoon minimum humidities 22-28% at lower elevations below 3000 feet and 29-39% above 3500 feet.

20 FT WINDS:

RIDGETOP – Southwest 5-10 mph with afternoon gusts 15 mph.

SLOPE/VALLEY – East 2-5 mph through 10 am then upcanyon/westerly 3-6 mph, increasing to 6-10 mph with gusts to 14-18 mph after 3 pm.

HAINES INDEX: 3 **LAL:** 1 **CWR:** 0%

STABILITY/INVERSION: Weak inversion lifting by midday.

Friday Night:

TEMPERATURES: Overnight lows 47-56.

HUMIDITY: 30-40% at 6 pm then 60% by 10 pm and 80% overnight.

20 FT WINDS:

RIDGETOP – Southwest 5 to 10 mph then light overnight.

SLOPE/VALLEY – West winds 5 to 10 mph through 9 pm then East winds 3-6 mph overnight.

LAL: 1 **CWR:** 0%

Extended Forecast: A return to more typical dry southwest flow will continue through the weekend. Seasonal late summer weather is forecast with afternoon highs in the upper 70s ridges to near 90 along Sawyers Bar Road. Diurnal winds along the Salmon River...strongest afternoon and early evening hours. Ridge winds out of the Southwest with afternoon gusts 15-20 mph highest ridgelines above 5000 feet. Afternoon humidities 25-35% with good night time recovery above 70%.

FIRE BEHAVIOR FORECAST

FORECAST NUMBER: 20	TYPE OF FIRE: Wildland Fire
FIRE NAME: Salmon River Complex	OPERATIONAL PERIOD: 8/23-24 0700-0700
DATE ISSUED: 8/22	TIME ISSUED: 1900
UNIT: Klamath NF	SIGNED: <i>Isl Daniel J. Felix</i> Dan Felix - FBAN

INPUTS

WEATHER SUMMARY: Weather pattern is changing to a Southwest flow, bringing near normal temps 75-85, humidity in the 30s, slope driven winds, 5-10 on the ridges.

OUTPUTS

GENERAL: Not all areas of the fire received moisture. The areas that did not receive rain will have slightly increased activity than yesterday. The Tanner Peak area will have decreased activity in the morning. After a few hours of drying, smaller fuels could be available to carry fire again. Larger fuels will continue to burn and readily consume.

New IAs: Numerous strikes were recorded surrounding the fire area, several fires have been identified. Expect slow spread in the early stages of fires that have received rain. Fuels are readily available once they are rain free for a couple of days.

SPECIFIC:

Branch I: Interior large fuels are completely consuming and the chance of rolling materials is diminishing. Stump holes will hold heat for days.

Branch III: The fire on west side of Jackass creek will continue to back down the drainage. Larger fuel will continue to burn and consume. Spread rate will be slowed slightly in the morning but increase later in the day with more torching. In the higher elevations around Tanners Peak and north of H-4 fire activity will continue to creep and smolder with an occasional flare-up and short runs as it finds favorable fuels, but it will have a difficult time making a concerted push to containment lines.

Night Branch: Activity will lessen into the evening with the increased humidity. The threat for rolling material will also decrease as the heavies are consumed.

Portable RAWS in Div B Rx: 171.5000 Tx: 172.4000 Tx Tone: 156.7 Key Up Code: 5553

AIR OPERATIONS

The inversion will weaken around noon with a residual haze in the afternoon. Expect enough visibility to fly. Conditions will still be varying and will need re-evaluation throughout the shift. Moderate wind speeds will be present on the ridges and near thunder storms.

SAFETY

Changing weather pattern will begin drying out the fuels. Under the canopy the surface fuels did not receive enough rain in most areas to be affected. Be aware of your particular area's situation and gauge your actions accordingly. Expect increased fire behavior in the afternoon.

Division Assignment List	1. Branch	2. Division/Group A/B/E/M/S
---------------------------------	-----------	---------------------------------------

3. Incident Name SALMON RIVER COMPLEX	4. Operational Period 08/23/13 Friday Day Shift 0700 - 1900
---	---

5. Operations Personnel

Operations Chief	RICKARD, L; TOPOLESKI, J (T)	Division/Group Supervisor	WENGER, JEFF
Operations Chief		AOBD	MUELLER, DUSTAN (T)
Branch Director		Safety Officer	ELLIOTT, D.; SOUTHERLAND, K.; (T)

6. Resources Assigned this Period

Strike Team/Task Force/ Resource Designator	Leader	Num of Pers.	Trans. Y/N	Drop Off PT./Time	Pick Up PT./Time
TFLD (t) O-328 8/31	MATTHEW WATSON	1	N	DP3/0700	IDLEWILD/1900
TALLAC CREW T2IA C- 68 9/3	AARON GROVE	18	N	DP3/0700	IDLEWILD/1900
ENG CA - LNP - 83 E-204 8/30	DREW MICKOLAY	5	N	DP3/0700	IDLEWILD/1900
ENG3 CO-WESCOTT 512 E-194 8/27	BRENDEN HOGLUND	4	N	DP3/0700	IDLEWILD/1900
ENG3 CA-SHF - 53 E-203 8/30	ADRIAN VILLA	5	N	DP3/0700	IDLEWILD/1900
WTT2 KLAMATH RIVER 3430 E-7	BILL SCHMIDT	2	N	DP3/0700	IDLEWILD/1900
SOFR O-173 8/19	JOE FOWLER	1	N	DP3/0700	IDLEWILD/1900
FEMT O-338 8/31	ADAM VOLLMER	1	N	DP3/0700	IDLEWILD/1900
FEMP O-339 9/1	KEVIN MEINEKE	1	N	DP3/0700	IDLEWILD/1900
FEMP O-333	CHRISTOPHER HARRISON	1	N	DP3/0700	IDLEWILD/1900
FEMT O-334	LORENZO ROCHA	1	N	DP3/0700	IDLEWILD/1900

7. Control Operations


Continue to Patrol and mopup 100 feet in. Pull excess hose and backhaul.

8. Special Instructions

Provide resources for IA when necessary.

9. Division/Group Communications Summary

Function	Frequency - RX	Frequency - TX	Tone	System	Channel	System	Channel
Command	166.3000N	170.5000N	136.5	NIFC C43	3		
Tactical	151.1375 N	151.1375 N	156.7	VTAC 11	6		
Logistics							
Air to Ground	166.5625 N	166.5625 N		A / G PRI	13		

Prepared by (Resource Unit Leader) Eric Leverenz RESL	Approved by (Planning Section Chief) Ken Bates PSC2 (T) 	Date Prepared 08/22/13	Time Prepared 1557
---	---	----------------------------------	------------------------------

AIR OPERATIONS SUMMARY PREPARED BY: Dustan Mueller

PREPARED DATE/TIME: 8/22/13 1900

1. INCIDENT NAME: Forks Complex and Salmon Fire
 2. OPERATIONAL PERIOD DATE: 8/23/13 START TIME:0600 END TIME:2200 SUNRISE: 0632 SUNSET: 2002

3. REMARKS (Safety Notes, Hazards, Air Operations Special Equipment, etc.):
 Use Butler A/G on any new incidents west of Salmon River and south of the North Fork of the Salmon River within the TFR.
 Use Salmon A/G on any new incidents east of salmon river and north of North Fork of the Salmon within the TFR.
 Watch for wires in the Salmon river canyon.
 Beware of rapidly changing VFR conditions due to smoke.
 Stay ready for PSD operations.
 Avoid no-fly zone over Orleans unless unsafe starting 8/20/13.

4. MEDEVAC A/C:
 H-503
 I.A A/C: H-517

5. TFR: 3/9102
 Altitude: 11,000' MSL
 Center point: 41 20.35 N
 123 15.10 W
 Frequency: 120.0250

6. PERSONNEL	Phone	7. FREQUENCIES	AM	FM	8. FIXED-WING	# Avail / Type/ Make-Model / FAA N# / Base(s)
AOBD Trainee: Dustan Mueller	877-353-6938 530-260-1278	TFR A/A	120.0250		Airtankers	Airtankers available upon request of Air Attack.
ATGS: Carl Piper Trainee: Rico Gonzalez ATGS: Stan Kubota	530-295-7273 530-605-6376	AIR/ AIR RW	132.2750		Leadplanes	Lead/ASM's available upon request of Air Attack
ASGS: Sean Cox ASGS: Steve Beall ASGS: Brad Bernardy	530-409-2363 530-598-6755 601-540-6528	AIR/ AIR FW Air Tactics		163.1500	Base FAX #:	
HEBM: Bill Lampert HEBM T: Joel Torres HLCO: Dave Phillips	530-598-4128 530-598-9323 209-770-0904	AIR/ GROUND Butler Command: Butler Tactical: Salmon A/G		171.5375 171.1375 166.5625	ATGS Aircraft	AA-1176Z AA-507
Scott Valley Helibase:	530-468-1294 530-468-5495	COMMAND Rx: Tx:		168.0750 170.4250 t-3 163.100	Other	
Helibase Fax:	530-468-2118	DECK				
Air Ops Desk ICP:	877-353-6938	Aerial Firing		169.4000		

9. HELICOPTERS (Use Additional Sheets as Necessary)

FAA N#	TY	MAKE/MODEL	BASE	AVAIL	START	REMARKS	FAA N#	TY	MAKE/MODEL	BASE	AVAIL	START	REMARKS
HT-715	1	S-64	Scott Vly	0700	0800	Tank/H2O	H-517	2	Bell 212HP	Scott Vly	0700	0800	Cargo/Bucket/Pax
HT-746	1	S-64	Scott Vly	0700	0800	Tank/H2O	H-502	2	Bell 205	Scott Vly	0700	0800	Cargo/Bucket/Pax Rappel
H-514	2	Bell 212HP	Scott Vly	0700	0800	Cargo/Bucket/Pax	H-503	3	Bell 407	Scott Vly	0700	0800	PSD.Recon

10. TASK/MISSION/ASSIGNMENT (Type/Function includes: Air Tactical, Retardant, Recon, Personnel Transport, Water Dropping, S&R, etc.)				
TYPE/FUNCTION	NAME OF PERSONNEL OR CARGO (if applic) OR INSTRUCTIONS FOR TACTICAL AIRCRAFT	MISSION START	FLY FROM	FLY TO
(1)Bucket Support (2)PSD	As needed through Air Attack or HLCO As requested through Operations and Operations	TBA TBA	Scott Vly Wooley H-10 Butler	Butler Fire Butler Fire
(3)Repeater Move (4)Reconnaissance	Etna Mountain 41 24.03 X 122 57.02 As visibility allows. Operations. As visibility allows.	TBA 1600	Wooley H-10 Wooley H-10	Etna Mtn Butler Fire
(5) Some Mtn Klump Pump Removal	Remove Klump Pump and install 3000 gal tank	TBA	Wooley H-10 Butler	Somes Sling
(6) Troop Shuttle	Move 22 people from Blue Sling to H-7	0830	Blue Sling on Salmon Fire	H-7 on Salmon Fire
(7) Retardant Recon	2 person Recon of Salmon Fire for Retardant drops	1000	Scott Vly	Salmon Fire
	**** For Medevac purposes refer to the IAP****			
	**** There will be one aerial supervisor within the TFR. Please use the Call sign Forks Air Attack or Forks Helco on either Forks Command A/G or Salmon A/G			
	*****All requests for logistical and tactical support must go through Air Attack if they over the fire****			

SALMON RIVER INCIDENT SAFETY MESSAGE

08/23-24/2013

0700-1900 Day 1900-0700 Night

MAJOR HAZARDS:

- DRIVING TO LINE AND ON INCIDENT ROADS
- STEEP TERRAIN
- HAZARD TREES/SNAGS

Fire Order of the Day - Give clear instructions and be sure they are understood

- **Driving:** Be aware of what is going on around you. Defensive driving is essential. Opposing traffic may drift into your lane from around blind curves. Drive with headlights on in daylight; use chock blocks; keep windshields clean; look before backing; and use a backer whenever you have one available. Don't drive when you're fatigued. Adhere to all of your agency's driving regulations and guidelines. Increase your following distance on dusty roads and SLOW DOWN when you meet opposing traffic, encounter washboard surfaces or pass personnel working near the road.
- **Hazard Trees/Snags:** Clearly identify and mark avoidance areas before committing resources. Refer to IRPG p. 20 for Hazard Tree/Snag Safety Guidelines.
- **Steep Terrain:** Sure footing is critical to prevent ankle and knee injuries. Take a slow pace, make sure of each step and maintain your spacing.
- **Roll Out:** Watch out for roll out crossing the line and other rolling material while working on the line.

If an injury or illness occurs,
activate the
"INCIDENT WITHIN AN INCIDENT"
protocol early to ensure appropriate
resources can initiate care and
transport as soon as possible!

This emergency procedure is located in
Section 8 of the ICS-206.

Look Up, Look Down, Look Around

***Look Up:** Check the sky for any weather changes such as building or approaching thunderstorms, wind shifts or increasing in speed. Watch for air operations and water drops. Look for snags.

***Look Down:** Watch your footing. Keep an eye out for snakes, bee nests and observe fine fuels on the ground.

* **Look Around** Check fuel loading in the area, general terrain, current fire behavior and ladder fuels. Keep an eye on fellow firefighters for signs of heat stress and smoke inhalation.

Safety Officer: Doug Elliott SOF2 Kevin Southerland, SOF2 (T)



TAKING A NAP NEAR THE FIRELINE

Fireline Safety Category

Firefighting is often exhausting work and firefighters can find themselves needing to sleep while on the fireline. Before pausing to rest, firefighters must weigh the following considerations:

- Are lookouts posted? Discuss who that lookout can be. Can the lookout on the knob across the draw watch over you or does it need to be your partner on the fireline alternating rest times?
- Is the area free of hazards? (Falling snags or rolling materials) Discuss what you need to do to create a safe resting area.
- Are you still within agency work and rest guidelines? Review what these guidelines are.
- Does your crew need a break? Have they been pushed too hard? Talk about situations where you need to simply take yourself and/or your crew off the fire for uninterrupted rest.
- To reduce risks:
 - Keep lookouts posted; rotate lookouts.
 - Communicate crew conditions and status to supervisor or chain-of-command contact. Have firefighters discuss ways that they find to rest on the fireline and suggestions for methods to alternate shifts for more effective firefighting.

References:
Interagency Standards for Fire and Fire Aviation Operations
Incident Response Pocket Guide

Have an idea? Have feedback? Share it.

ONLINE | MAIL: 6 Minutes For Safety Subcommittee • 3833 S. Development Ave • Boise, ID 83705 | FAX: 208-387-5250

6 Minutes Home

INCIDENT RISK ANALYSIS (ICS 215a)


DIV	HAZARDOUS ACTIONS / CONDITIONS	MITIGATIONS / WARNINGS / REMEDIES
County Road 1C01	DRIVING HAZARDS	<ul style="list-style-type: none"> • West end of 40N51 road is a long down hill grade. Conserve brakes and go slow to avoid brake fade. • 1C01 is a narrow windy road with two way traffic and is closed to the public, but open to residents & Butler Fire traffic. • Watch for open range cattle on roads, especially at night. • Be especially mindful at shift change. • Limit traffic to only those that must travel down it. • Drive defensively! Expect the unexpected around every curve. Rocks! • Drive with headlights on; use chock blocks, keep windshields clean; look before backing; and use backers whenever available. • Don't drive when fatigued. Adhere to agency driving SOPs.
ALL	MINES AND ADITS	<ul style="list-style-type: none"> • Abandoned mines are scattered throughout country the fire is in. • They can contain un-used explosives and other hazardous materials • If discovered, flag area and communicate location up through chain
ALL	FATIGUE	<ul style="list-style-type: none"> • Be alert for signs of fatigue and take breaks as necessary. 2:1 work/rest. • Monitor incoming resources for level of fatigue.
ALL	SNAG HAZARDS	<ul style="list-style-type: none"> • Follow Hazard Tree Safety Guidelines (IRPG p.20). • Limit number of personnel around snags and their exposure time; fallers must be qualified for trees being fallen. • Be especially alert around snags during wind events. • Check for hazard trees & "widow-makers" in sleeping areas prior to occupancy. • All personal must be a minimum of 2 ½ tree lengths away from falling ops.
ALL	STEEP SLOPES	<ul style="list-style-type: none"> • Watch for large rolling rocks • Watch your footing and take your time. • Consider slope and travel time in your LCES plan • Burning rolling material can ignite fuels below. • Post lookouts for rocks and fire.
ALL	FIRE BEHAVIOR	<ul style="list-style-type: none"> • Review "Severe Fire Behavior Potential" (IRPG p.78). • Monitor current weather conditions and forecasts. Make sure all personnel receive thorough briefings every shift. • Maintain adequate escape routes and safety zones. Advise all personnel if these are compromised or changed. Set trigger points when appropriate. • Adhere to 10 Std Orders, mitigate 18 situations. • Maintain Situational Awareness.
ALL	HYDRATION	<ul style="list-style-type: none"> • Its never too early to begin hydrating • Drinking water before, during and after shifts, up to 1.5 gal. per shift. • Be alert for signs of heat stress in yourself and others.
A / Z / W	STRUCTURE PROTECTION & HAZMAT ISSUES	<ul style="list-style-type: none"> • Conduct thorough briefing for all personnel (inside rear cover IRPG). • Wildland Urban Interface Firefighting (IRPG p.10) • Utilize Structure Triage Checklist (IRPG p.12). • Follow Structure Protection Tactics (IRPG p. 14).
T	LINE CONSTRUCTION	<ul style="list-style-type: none"> • Conduct thorough briefing for all personnel (inside rear cover IRPG). • Ensure LCES in place prior to engagement (IRPG p. 6). • Establish adequate safety zones (IRPG p.7). • Follow "Look Up, Look Down, Look Around" procedures (IRPG p. 2-3). • Utilize Risk Management Process (IRPG p.1).
ALL & Camp	Rattle Snakes	<ul style="list-style-type: none"> • This is rattle snake country. • Step on logs and rocks, not over them • Check out stumps or logs before sitting down. • Do not step or put your hands where you cannot see.
ALL	POISON OAK	<ul style="list-style-type: none"> • Poison Oak all over the line and camp • Learn to identify it and avoid • Wash hands often to avoid contact spread to rest of body. • Check with Medical for both preventative and treatment courses. • Exchange exposed PPE at supply for clean set.
Salmon River Complex ICS 215a	DATE/TIME PREPARED: August 22, 2013 1830hrs	OPERATIONAL PERIOD Day and Night Shift 08/23-24/13 Prepared by Doug Elliott and Kevin Southerland

INCIDENT RADIO COMMUNICATIONS PLAN		Incident Name SALMON RIVER COMPLEX		Date/Time Prepared 8/22/13 1844	Operational Period Date/Time 8/23/13 0700-1900 (DAY) 1900-0700 (NIGHT)	
---	--	--	--	---	--	--

Zn Ch	Function	Channel Name/Talkgroup	Assignment	RX Freq	RX Tone/NAC	TX Freq	TX Tone/NAC	Dev	Pwr	Mode A, D, M	Remarks
Zn15 Ch1	COMMAND	NIFC C4	BRANCH III	166.6125	Tone 4 136.5	168.4000	Tone 4 136.5	N	L	A	EDDY GULCH L/O (LINKED TO C11 & C43)
Zn15 Ch2	COMMAND	NIFC C11	ICP/SCOTT VALLY HELIBASE	170.6875	Tone 4 136.5	166.5750	Tone 4 136.5	N	L	A	ETNA MTN (LINKED TO C4 & C43)
Zn15 Ch3	COMMAND	NIFC C43	BRANCH I	166.3000	Tone 4 136.5	170.5000	Tone 4 136.5	N	L	A	BLUE RIDGE L/O (LINKED TO C4 & C11)
Zn15 Ch4	TACTICAL	NIFC T-5	DIVISION T	166.7250	Tone 4 136.5	SIMPLEX	Tone 4 136.5	N	L	A	
Zn15 Ch5	TACTICAL	NIFC T-6	DIV V/W/Z	166.7750	Tone 4 136.5	SIMPLEX	Tone 4 136.5	N	L	A	
Zn15 Ch6	TACTICAL	VTAC11	DIV A/B/E/M/S	151.1375	CSQ	SIMPLEX	Tone 6 156.7	N	L	A	
Zn15 Ch7	TACTICAL	VTAC12	UNASSIGNED	154.4525	CSQ	SIMPLEX	Tone 6 156.7	N	L	A	
Zn15 Ch8	TACTICAL	VTAC13	REPAIR GRP / NIGHT ALL DIV	158.7375	CSQ	SIMPLEX	Tone 6 156.7	N	L	A	
Zn15 Ch9	COMMAND	BLTRCMD3	BUTLER FIRE COMMAND	168.0750	Tone 3 131.8	170.4250	Tone 3 131.8	N	L	A	ORLEANS MTN
Zn15 Ch10	KNF DISPATCH	KNF NET	BACKUP COMMAND	164.1750	CSQ	164.9750	Tone 6 156.7	N	H	A	"YREKA" EDDY GULCH
Zn15 Ch11	KNF COMMAND	SALMON	IA COMMAND	171.5000	CSQ	172.4000	Tone 6 156.7	N	H	A	"YREKA" EDDY GULCH
Zn15 Ch12	TACTICAL	NIFC T-2	IA TACTICAL	168.2000	CSQ	SIMPLEX	CSQ	N	L	A	I/A TACTICAL
Zn15 Ch13	AIR TO GROUND	A/G PRI	ALL DIVISIONS	166.5625	CSQ	SIMPLEX	CSQ	N	L	A	
Zn15 Ch14	KNF COMMAND	RIVER	IA COMMAND	172.2500	CSQ	171.5500	Tone 7 167.9	N	H	A	"YREKA" SCOTT VALLEY
Zn15 Ch15	TACTICAL	CALCORD	MEDICAL TAC	156.0750	CSQ	SIMPLEX	Tone 6 156.7	N	L	A	AS NEEDED FOR MEDIVAC
Zn15 Ch16	AIR GUARD	AIR GUARD	ALL DIVISIONS	168.6250	CSQ	SIMPLEX	Tone 1 110.9	N	L	A	

Prepared By: (Communications Unit Leader) *[Signature]*
 Incident Location: KLAMATH NATIONAL FOREST - ETNA CA
 Latitude N41 27.433 Longitude N122 52.105
 MIKE HORST - COM1-T (CELL: 661-645-4254) / STEVE WESTON - COM1 (CELL: 213-999-2540) Cnty: SISKIYOU

The convention calls for frequency lists to show four digits after the decimal place followed by either an "N" or a "W" depending on whether the frequency is narrow or wide band. Mode refers to either "A" or "D" indicating analog or digital (e.g. Project 25) or "M" indicating mixed mode. All channels are shown as if programmed in a control station, mobile or portable radio. Repeater and base stations must be programmed with the Rx and Tx reversed.

MEDICAL PLAN 206 ICS		1. INCIDENT NAME Salmon River Complex		2. DATE PREPARED August 22, 2013		3. TIME PREPARED 1800		4. OPERATIONAL PERIOD August 23-24, 2013 0700-1900 1900-0700			
5. INCIDENT MEDICAL AID STATIONS											
MEDICAL AID STATIONS		LOCATION					PARAMEDICS				
							YES		NO		
Frontline Medical Trailer		Whites Gulch Base, Sawyers Bar CA					X				
Etna ICP		Etna, CA					X				
6. TRANSPORTATION											
A. AMBULANCE SERVICES											
NAME		LOCATION			PHONE		PARAMEDICS				
							YES		NO		
Etna Ambulance		Etna, CA			530-842-3515 YICC		X				
Salmon River VFD		Sawyers Bar, CA			530-842-3515 YICC				X		
B. INCIDENT AMBULANCES											
NAME		LOCATION					PARAMEDICS				
							YES		NO		
Medic 75 Mt. Shasta Ambulance		Placed by Safety					X				
Arcata 4 Ambulance (Butler Fire)		Forks of the Salmon (Requested through Butler Fire Communications)					X				
C. MEDIVAC SERVICES											
NAME		LOCATION			PHONE		Hoist	ALS	BLS		
Helicopters 527 & 503		Helibase			Contact Helibase on Command				X		
CHP copter H14		Redding, CA			530-842-3515 YICC		X	X			
Cal Fire H102		Neeland, CA			530-842-3515 YICC		X		X		
Helicopter 820		Redding Airport, CA			530-842-3515 YICC		X	X			
7. HOSPITALS											
NAME		ADDRESS		TRAVEL TIME		PHONE		HELIPAD		BURN CTR	
				AIR GRND				YES NO		YES NO	
Fairchild Medical CTR N 41 43.13 x W 122 38.69		444 Bruce Street Yreka, CA		30 min 1.5 hours		530-841-6259 MICN 530-842-4121 business		X			
Mercy Medical CTR N 40 35.12 x W 122 23.83		2175 Rosaline Ave Redding, CA Level 2 Trauma Center		1 3.5		530-225-7214 MICN 530-225-7201 business		X		X	
UC Davis Medical CTR N 38 33.3 x W 121 27.3		2015 Stocton Ave. Sacramento, CA		2 8		916-734-3636 BURNs 916-734-3790 business		X		X	
8. MEDICAL EMERGENCY PROCEDURES											
LINE MEDICAL EMERGENCY:											
Crew Supervisor to contact Division Supervisor/Operations with patient complaint/condition and location.											
Division Supervisor/Operations contacts communications:											
<ul style="list-style-type: none"> • Division Supervisor/Operations to use "injury or incident communication protocol" on next page • Division Supervisor/Operations will run medical emergency on command channel • Communications contacts Medical Unit Leader on Command channel or (714) 334-4966 • Medical Unit Leader will: <ul style="list-style-type: none"> 1. Have communications dispatch ground/air transport resources 2. Notify receiving hospital of injury status. 3. Develop primary and contingency transport plan 4. Notify Safety, Logistics and Operations 5. Contact YICC for notification of emergency. (530)842-3515 											
CAMP MEDICAL EMERGENCY:											
Notify Communications of camp emergency											
Communications contacts Medical Unit Leader (714) 334-4966 with patient complaint/condition and location.											
<ul style="list-style-type: none"> • Medical Unit contacts: <ul style="list-style-type: none"> • Safety • Logistics • Operations • Medical Unit Leader will: <ul style="list-style-type: none"> 1. Have communications dispatch ground/air transport resources 2. Notify receiving hospital of injury status. 3. Develop primary and contingency transport plan 											
206 ICS		9. PREPARED BY: (Medical Unit Leader) Dave Sween, MEDL (t)				10. REVIEWED BY: (Safety Officer) Doug Elliot, SOFR 					

Human Resource Message

Conduct Expectations

Each individual on this incident is expected to be ready and able to perform their assigned duties effectively and safely. Each individual has a right to expect a safe work environment. To insure each individual is protected and provided a safe environment, there is zero tolerance for conduct that affects your readiness, effectiveness and safety.

Fire suppression efforts can only be accomplished by accessing the skills and abilities of a wide variety of people. An attitude of mutual respect and appropriate behavior is essential for all personnel. Remember, you are responsible for your conduct and behavior.

The public expects our best efforts; they see us as professionals in what we say and do. Let's continue to show them we are!



A slipping gear could let your M203 grenade launcher fire when you least expect it. That would make you quite unpopular in what's left of your unit.

Jan Cawthon
Human Resource Specialist
909-553-2829

Kristel Johnson
Human Resource Specialist Trainee
909-553-2776



CODE OF CONDUCT INCIDENT PERSONNEL

Each individual on this incident is responsible for:

- Being *ready and able* to perform their assigned duties effectively
- Conducting themselves in a manner that treats people with dignity, equity, courtesy, and respect
- Abiding by agency ethics and conduct regulations
- Reporting any harassment or other inappropriate behavior

Each individual on this incident has the right to:

- Work in an environment characterized by safe work practices
- Work in a fair and harassment free environment
- Say "No" to unwelcome advances or requests for favors
- File complaints or grievances through appropriate avenues

There is zero tolerance for inappropriate behavior while assigned to the incident, including

- Illegal drug use
- Alcohol use
- Unsafe work practices and activities
- Discrimination
- Sexual harassment
- Fighting, threatening and abusive behaviors
- Other violations of USDA and Forest Service standards of conduct

Each firefighter is expected to be physically and mentally prepared to perform emergency duties at any time.

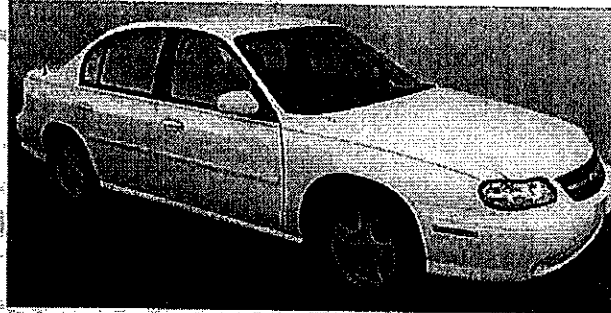
Failure to adhere to the Code of Conduct could result in dismissal from the incident, with notification to your home unit.

The public expects our best efforts; they see us as professionals in what we say and do. Let's continue to show them we are!

Siskiyou County Sheriff's Department
Missing Person
AT RISK



Not Actual Vehicle- Similar vehicle photo
2000 Chevy Malibu CA LICENSE PLATE: 4TVS244



MISSING: SALLY ANN NOLAN

AGE: 78 YRS

HT: 5'03"

WT: 170 LBS

HAIR: BROWN-SHORT EYES: BLUE

SALLY was last seen on Monday, August 19th, 2013 at Approximately 3 pm. She was reportedly wearing white pants and a multi-colored blouse.

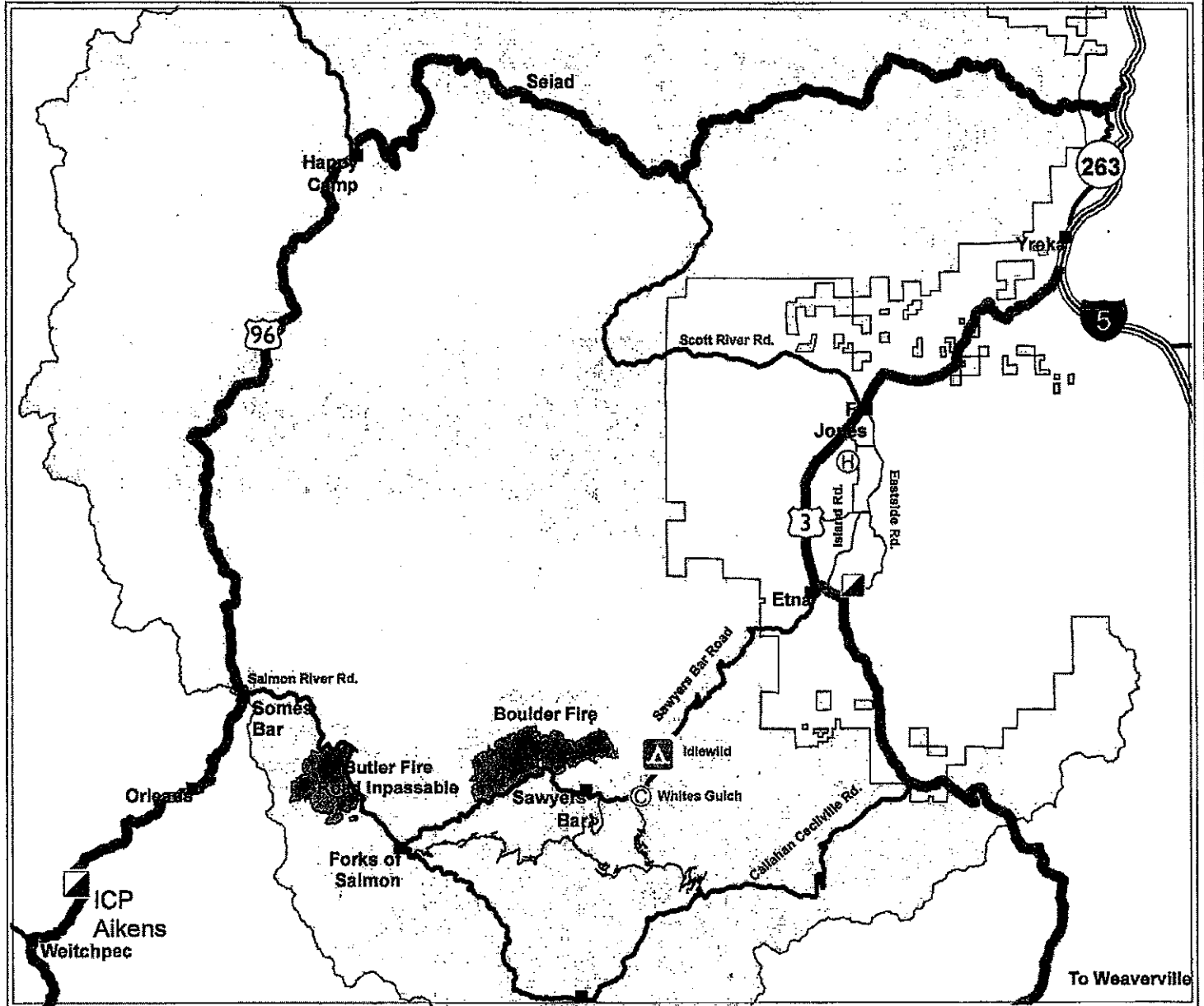
SALLY was last seen leaving the Lumgreycreek area off HWY 96. SALLY was driving a white 2000 Chevy Malibu with CA license plate 4TVS244.

****SISKIYOU COUNTY SHERIFF'S DEPARTMENT HAS ISSUED A STATE WIDE SILVER ALERT****

If located or any information regarding her whereabouts, please contact the Siskiyou County Sheriff's Office at: 530-841-2900.



Salmon River Complex Fire Transportation Map

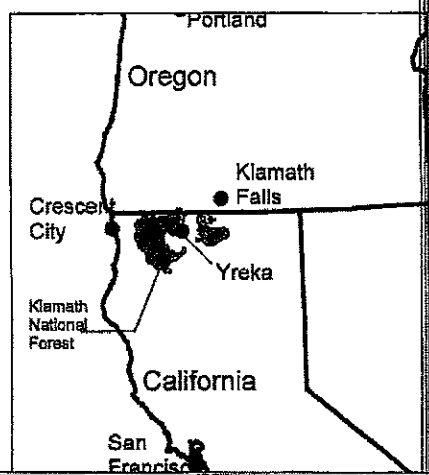
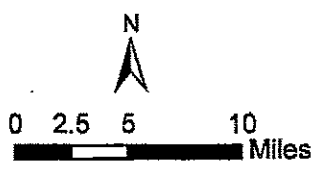


Driving Distances

	Yreka	Fort Jones	Etna	Sawyer's Bar	Happy Camp	Somes Bar
Yreka		17	35	58	71	109
Fort Jones	17		12	38	61	100
Etna	35	12		25	73	112
Sawyer's Bar	58	38	25		98	136
Happy Camp	71	61	73	98		38
Somes Bar	109	100	112	136	38	

* Distances assume Salmon River Road is Inpassible

- ICP
- Scott Valley Helibase
- White's Gulch
- Towns
- cal_oregon
- Fire
- KNF Boundary



08/23/2013

FRIDAY

TENTATIVE RELEASE

SALMON RIVER COMPLEX CA-KNF-005561

OVERHEAD

O-325	0600	(PIO2)	ZWIERZCHOWSKI, JOSEPH DANIEL
O-59	0800	(HMGB)	STEBNER, JOHN
O-321	0800	(DIVS)	STUART, MIRANDA

SATURDAY

08/24/2013

TENTATIVE RELEASE

SALMON RIVER COMPLEX CA-KNF-005561

OVERHEAD

O-173	0600	(SOFR)	FOWLER, JOE
O-77	0800	(RCDM)	ALICEA, DAVID
O-227	0800	(INCM)	REGAN, RON
O-283	0800	(READ)	ROBBINS, JUSTIN R
O-292	0800	(DIVS)	PETERSEN, MATTHEW JAMES

EQUIPMENT

E-155	1000	(ENG3)	ENG3 4-83
--------------	-------------	---------------	------------------

SUNDAY

08/25/2013

TENTATIVE RELEASE

SALMON RIVER COMPLEX CA-KNF-005561

OVERHEAD

O-98	0600	(COMT)	STEINMAN, CURTIS
O-102	0600	(RADO)	DUBE, JEFFREY
O-89	0800	(PIOF)	BRIGGS, ELAYN
O-293	0800	(EQTR)	MCKELVY, DEBORAH

