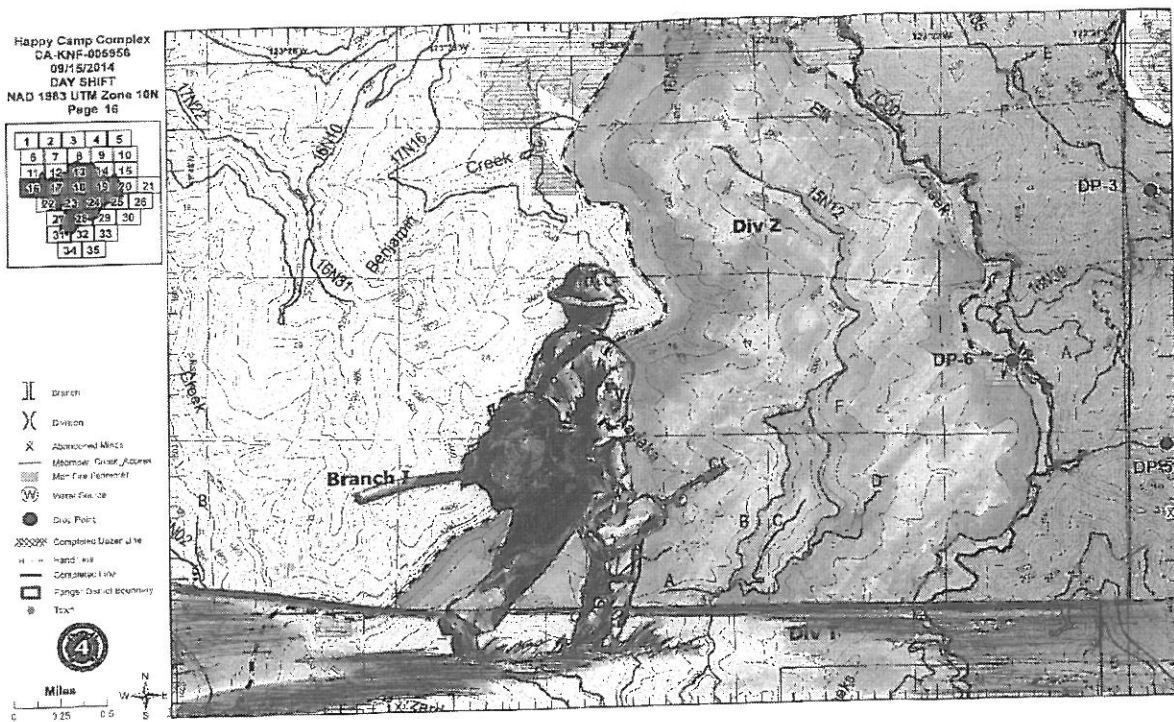


INCIDENT ACTION PLAN

HAPPY CAMP COMPLEX

CA-KNF-005956

P5JB1F-0505



Artwork by FF Sue McCulloch - SRF

OPERATIONAL PERIOD

Thursday, September 25, 2014
DAY SHIFT 0600 – 1800 HRS.

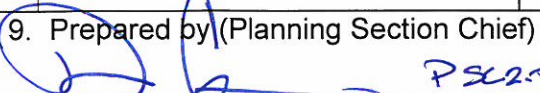
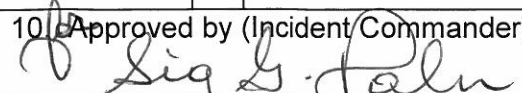
QR codes for maps



IAP



AIR OPS


INCIDENT OBJECTIVES	1. Incident Name	2. Date Prepared	3. Time Prepared		
ICS 202	Happy Camp Complex	9/24/2014	2200		
4. Operational Period					
Thursday, September 25, 2014		DAY SHIFT 0600 - 1800 Hours			
5. General Control Objectives for the Incident (include alternatives)					
<p>MANAGEMENT OBJECTIVES:</p> <ul style="list-style-type: none"> - Provide for the safety of all responders and the public by utilizing nationally recognized risk management principles. - Maintain and enhance community and stakeholder relationships through accurate and timely dissemination of incident information, community and stakeholder meetings. - Minimize damage to natural and cultural resources by using Resource Advisors and Cultural Resource Specialists. - Protect and minimize fire effects to residential structures, communities, infrastructure, private property and timber lands. - Support and coordinate initial attack within the Temporary Flight Restriction (TFR). - Manage costs commensurate with values at risk. - Assess and implement suppression repair. <p>CONTROL OBJECTIVES:</p> <p>Hold fire within existing containment lines and keep fire:</p> <ul style="list-style-type: none"> - South of the O'Neil Ridge west to Seiad Creek - East of Independence Creek - West of Scott River and Baldy Lookout South to Scott Bar Mountains - North of the line East from the North Fork Camp through Anthony Milne Camp to Man Eaten Lake 					
6. General Weather					
<ul style="list-style-type: none"> - <u>Weather Forecast for Thursday</u>: Numerous showers in the morning, becoming scattered in the afternoon. - <u>Weather Forecast for Thursday Night</u>: Cloudy with a chance of showers. 					
7. General Safety Message					
<ul style="list-style-type: none"> - Use caution while driving on all roads. 					
8. Resource Protection Guidelines					
<ul style="list-style-type: none"> - Use MIST to preserve wilderness characteristics. - Avoid aerial retardant within 300 feet of wet areas and in areas with threatened, endangered, proposed, candidate or sensitive species. - Use screens on all drafting equipment. - Track and map daily, all tactical burning operations and turn into DIVS/ SIT unit. 					
9. Attachments					
x	Organization List-ICS 203	x	Air Ops Plan ICS-220	x	Fire Weather Forecast
x	Division Assignment List-ICS 204	x	Incident Map	x	Fire Behavior Forecast
x	Communications Plan-ICS 205	x	Transportation Maps	x	Human Res./Training Message
x	Medical Plan-ICS 206	x	Safety Messages	x	Phone List
9. Prepared by (Planning Section Chief)			10. Approved by (Incident Commander)		
 <i>PSC 2.5</i>			 <i>Sig G. Palm</i>		



Happy Camp Complex Weather Forecast



FORECAST NO: 44
PREDICTION FOR: Day/Night Shift
SHIFT DATE: Thursday Sept 25, 2014
TIME AND DATE
FORECAST ISSUED: 2030 hrs. Sept 24, 2014

NAME OF FIRE: Happy Camp Complex
UNIT: CA-KNE
SIGNED: 
 David Shallenberger IMET(t)
 Rick Davis IMET

Weather Discussion: The broad upper trough and associated surface cold front will continue to slowly push inland today and through the area. Expect showers during the day today, becoming more scattered by the afternoon. Rainfall amounts will be less as the system begins to wind down and move off to the east. Temperatures will be cooler for the next couple days along with higher relative humidity values. Another 0.25" of rainfall can be expected today with a storm total of 1 to 3 inches over the entire area.

Weather Forecast For Today (Thursday):

Sunrise: 0702

Weather: Numerous showers in the morning, becoming scattered in the afternoon.
Max Temperatures: Canyons (1,200 ft) 66-71 °F, Ridges (7,000 ft) 60-65 °F
Min Humidity: Canyons (1,200 ft) 45-55%, Ridges (7,000 ft) 70-90%
Winds (20 foot):
 Lower Slope/Canyons – West Southwest 10-14 mph gusts to 20 mph.
 Upper Slope/Ridgetop – West Southwest 10-14 mph gusts to 25 mph.
Haines Index (High Level, afternoon): 3 (stability=2; moisture=1)
Stability/Inversion: Moderate instability. Weak radiation inversion. Mixing height 9,000 feet MSL.
Smoke Transport: Southwest around 14 mph.

Weather Forecast For Tonight (Thursday Night):

Sunset: 1903

Weather: Cloudy with a chance of showers.
Min Temperatures: 40-50 F.
Max Humidity: Canyons (1,200 ft) 90-100%, Ridges (7,000 ft) 80-90%
Winds (20 foot):
 Lower Slope/Canyons – West Southwest 4-8 mph.
 Upper Slope/Ridgetop – West 8-12 mph gusts to 20 mph.
Haines Index (High Level, evening): 3 (stability=2; moisture=1)
Stability/Inversion: Moderate evening instability. Weak radiation inversion. No thermal belt.
Smoke Transport: West Southwest at 8-12 mph.


Outlook For Friday 9/26: Mostly cloudy with a chance of showers. Moderate instability. Max Temps 60-70°
 Min RH: 30-40%. Max RH: 70-80%. Ridge Wind: North Northwest 6-10 mph gust up to 18 mph. Haines 3 (stability: 2, moisture: 1).

Extended Forecast:

	<u>Max T</u>	<u>Min RH</u>	<u>Max RH</u>	<u>Ridge Winds</u>	<u>Wx</u>
SAT 9/27:	65-75°	30-45%	65-80%	NNE 4-8 Gust 15 mph	Sunny, Weak Instability
SUN 9/28:	70-80°	30-45%	60-75%	NW 4-8 Gust 15 mph	Sunny, Weak Instability

Incident RAWS (freq. 163.350): Johnson HG (DTMF 0004) W of Div O; Scott River LO (DTMF 0047) Div R

FIRE BEHAVIOR FORECAST

FORECAST NUMBER: 52	TYPE OF FIRE: Wildland Fire
FIRE NAME: Happy Camp Complex	OPERATIONAL PERIOD: 9/25/2014-9/26/2014
DATE / TIME ISSUED: 9/24/2014 2000	Day and Night
UNIT: Klamath NF	SIGNED:  Drew Smith FBAN / CALIFORNIA TEAM 4

INPUTS

WEATHER SUMMARY: Daytime: Rain and becoming scattered in the afternoon. Temps: around 60°-71° depending on elevation.

RH: Lower elevations = around 45% Higher elevations = around 80%. Winds (20 foot) = West to Southwest 4- 14 mph with gusts to 20 at the ridgelines. Strong winds are prevalent today...

Nighttime: Cloudy with a chance of showers ... Temps: around 53°.

RH: = around 90% - 100% Winds (20 foot) = West to Southwest 10- 14 mph with gusts to 25 at the ridgelines. Strong winds are prevalent tonight...

ERC= 22 Today...

Haines = 3

GENERAL:

The fire is burning in grass, shrub and intermix timber. Fuel specifics are Ceanothus, Manzanita, Mixed Pine, Cedar and Douglas Fir. Live Fuel Moisture = Timber 125% Shrub 80% (old growth).

The fire to date has been primarily topography driven. The predominant factor of fire spread has been consistently surface fire spread backing, flanking transitioning to headfire alignment. Occasional torching has developed with isolated crownfire runs with slope alignment..

Routine Rates of spread: headfire = 3-8ch/hr with backing 1-3 ch/hr.

When critical fire weather and fine fuel variables are met anticipate 25-40 ch/hr with headfire with crown involvement.

SPECIFIC:

ALL: Due to excellent handline construction and mop-up standards no progression anticipated. Interior smoldering will continue. Areas with no direct line construction limited to non existent fire spread...Moistures of extinctions will be met.

AIR OPERATIONS

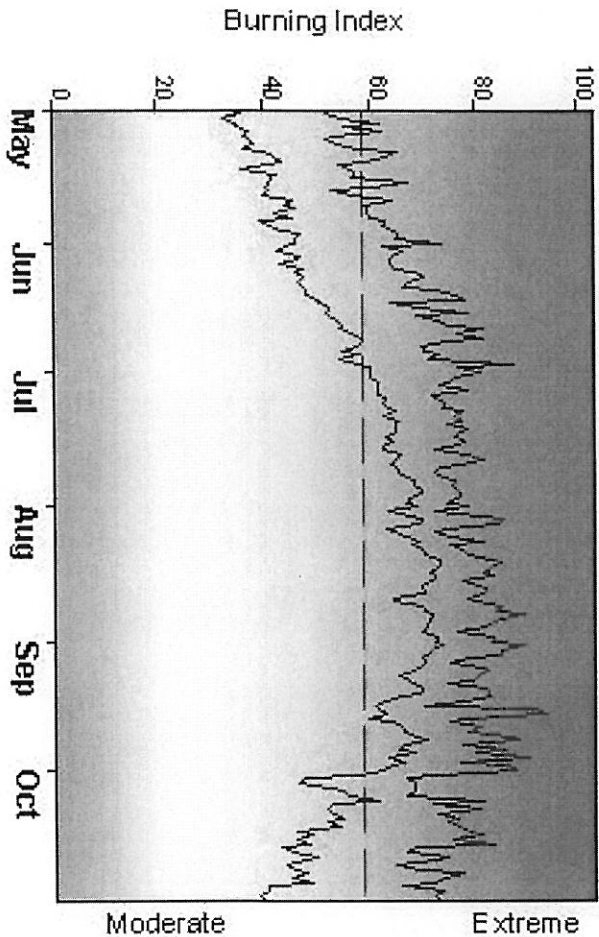
Will be limited due to rain and high winds.

SAFETY

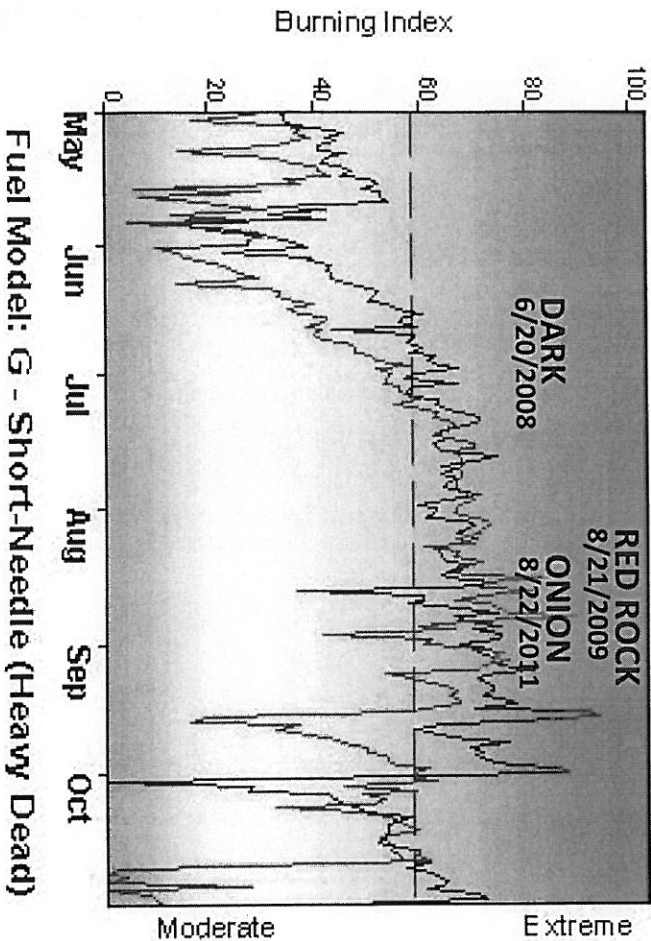
Moving water and debris flow may materialize.
Stay on high ground..

FIRE DANGER -- West Side KNF

Maximum, Average, and 43th Percentile, based on 12 years data

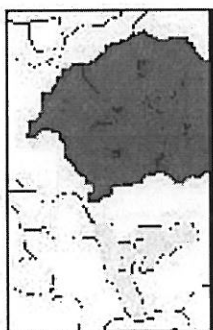


Years to Remember: 2008 2010

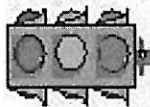


Fire Danger Area:

- ◆ 200, 202, 204, 208
- ◆ CA280 & CA281
- ◆ See below
- * Meets NWCG VUX Station Standards



Fire Danger Interpretation:



EXTREME -- Use extreme caution
 (Caution) -- Watch for change
 Moderate -- Lower Potential, but always be aware

Maximum -- Highest Burning Index by day
 for 2000 - 2011

Average -- show's peak fire season over 12 years (2204 observations)
 43th Percentile -- Only 43% of the 2204 days from 2000 - 2011
 had an Burning Index below 58

Local Thresholds - Watch out: Combinations

of any of these factors can greatly increase fire behavior:
 20+ Wind Speed over 4 mph, RH less than 40%,
 Temperature over 75, 1000-Hour Fuel Moisture less than 13

Remember what Fire Danger tells you:

- ☛ Burning Index gives day-to-day fluctuations calculated from 2 pm temperature, humidity, wind, daily temperature & rh ranges, and precip duration.
- ☛ Wind is part of BI calculation.
- ☛ Watch local conditions and variations across the landscape -- Fuel, Weather, Topography.
- ☛ Listen to weather forecasts -- especially WIND.

Past Experience:

Large fires (>50ac) occur more frequently when BI exceed 58. Fires 50 acres and larger can readily increase in complexity
 Multiple lightning ignitions can overwhelm suppression resources. 2008 was an active fire year. 2010 was quiet.

Sawyers Bar, Somes Bar, Slater Butte, Blue Ridge, Oak Knoll, Slater Butte, Collins Baldy, Quartz Hill, Callahan #2, and Dutch-Indy RAWWS data was used.

Responsible Agency: Klamath National Forest

FF+4.1 Beta 1/1/08/2012-13:37 (F:\KNF_period of record_v25jun12)

Design by NWCG Fire Danger Working Team

AIR OPERATIONS SUMMARY

PREPARED BY: Kerry Koskela *KKK*

PREPARED DATE/TIME: 09/24/14 1800

1. INCIDENT NAME: Happy Camp Complex / July Complex
 2. OPERATIONAL PERIOD DATE: 09/25/14 START TIME: 0600 END TIME: 1800 SUNRISE:0701 SUNSET:1906

NOTE: AIRCRAFT CAN BE SHARED BETWEEN COMPLEXES

3. REMARKS (Safety Notes, Hazards, Air Operations Special Equipment, etc)
 Low wires and cables. MTR's & MCA's near fire area.
 Happy Camp Airport open to public.

4. MEDEVAC A/C: 503 Litter Capable
 5. TFR: 4/3892 Polygon 11,000' MSL Frequency: 119.6250

6. PERSONNEL	Phone	7. FREQUENCIES	AM	FM	8. FIXED-WING	# Avail / Type/ Make-Model / FAA N# / Base(s)
AOBD: Kerry Koskela (Happy Camp) AOBD: Duane Sidebottom (July)	559-359-2122 530-598-4917	AIR/AIR TFR	119.6250	Air tactics 166.8500	Airtankers Lead Planes HLCO ATGS Aircraft	AA- 17V Dick Stillha, Eric Haskins (t)
ASGS: Ty Miller	907-460-7530	AIR/AIR RW:	133.7250		Misc: KNF IA A/G	167.6000 Primary 166.8750 Secondary
ATGS: Dick Stillha	702-592-9215 530-604-2861	AIR/GRD: Tactical AIR/GRD: Command		166.6750 169.1500		
Scott Valley HB HEB1: Scott HB Lee Stewart	530-468-1294 775-220-6364	Happy Camp COMMAND 1	Tx: 167.9625 Tone 107.2 Rx: 173.0625 Tone 107.2			
Happy Camp Helibase HEB2: Jim Gould	530-493-1779 707-327-7554	July Command	Rx: 173.0875 Tx 168.6875 T2 Rx: 163.5750 Tx 169.7250 T2			Aircraft desk: 530-841-4603 Fax 842-6953 ATGS COOR Weed 530-938-0170
HLCO: Bill Lampert		Medical AIR/GRD CALCORD	Rx: 156.0750 tone 6 156.7 Tx: 156.0750 tone 6 156.7			

9. HELICOPTERS (Use Additional Sheets As Necessary)

CALL SIGN	TY	MAKE/MODEL	BASE	AVAIL	START	REMARKS	CALL SIGN	TY	MAKE/MODEL	BASE	AVAIL	START	REMARKS
16K A-266	3	Bell 206 L3	Scott	0730	0800	Recon HLCO, July	6MW A-256	1	K-Max	Scott	0800	0730	Bucket, Happy
H-503 A-10	3	Bell 407	Happy	0730	0700	PSD I/A, Happy	6BH A-148	1	Firehawk	Scott	0800	0730	Bucket, Happy
H-502 A-191	2	Bell 205	Scott	0800	0730	I/A with crew, Happy							

MISSIONS

Happy Camp Complex – Safety Message

INCIDENT: #CA-KNF-005956

DATE: 09.25.2014

TIME: 0600 – 1800

Driving & Fatigue

- Fatigue can cause you to mentally stray from the driving task.
- Speed matters! The faster you are traveling, the faster you get in trouble. It only takes a second of distraction to lose control of our vehicle.
- Recognize when you are too tired to drive! Don't tough it out! You put yourself and your passengers at risk.
- Slow down, take breaks, and talk to your passengers. If possible, keep an alert passenger in the front seat next to you. Know your limits.

Leadership is all about Character

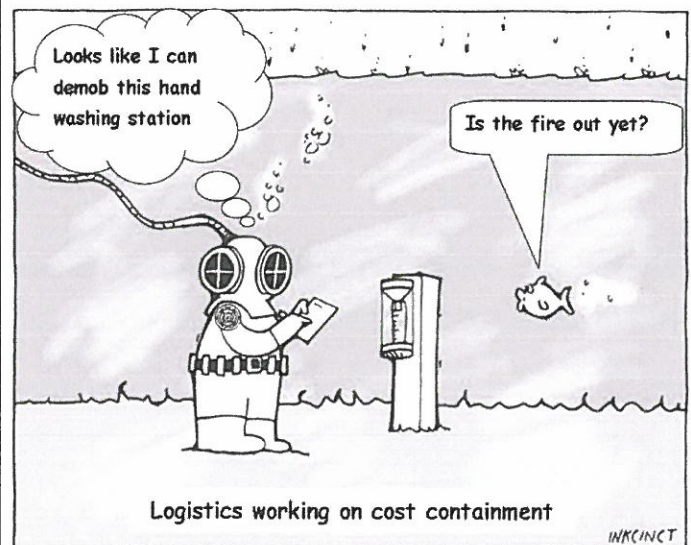
Fire leaders set the example by exhibiting strong character. Character is based on values. It is the combination of actions and words that others appraise to determine if the leader can be trusted to do the right thing.

As leaders we set the example and take steps to build our character continually by:

- Knowing our values, reviewing them frequently, and looking for areas of improvement.
- Admitting when we are wrong.
- Taking time to reflect on our actions.
- Finding role models and asking them to be a mentor.
- Studying leaders and leadership, learning from their successes and mistakes.




Don't let the weather distract you!



Stay focused on the day's mission.



INCIDENT RISK ANALYSIS (ICS 215a)

FIRE	HAZARDOUS ACTIONS / CONDITIONS	MITIGATIONS / WARNINGS / REMEDIES
ALL	Severe Weather/Rain	<ul style="list-style-type: none"> • If driving on incident roads, ensure communications exist with Happy Camp Communications. • Minimize unnecessary driving on incident roads. • When driving on incident roads, use caution in stream crossing areas. • Use caution in the "Narrows Area" on the Scott River Road. • Watch out for debris flows on roadways where the soil has become unstable due to the fire. • Ensure tents are secured; minimize excess gear in tents to prevent things from getting wet. Stay as dry as possible. • Use large designated tents as areas to seek refuge from the rain.
ALL	Camp Crud	<ul style="list-style-type: none"> • See the Medical Unit at the onset of signs/symptoms. • Take vitamins, drink lots of water and juice. • Eat balanced meals. • Get as much rest as possible. • Use hand sanitizers, and take precautions when using "common use" areas.
F, T, O, K/R, M/N	Traffic and Driving	<ul style="list-style-type: none"> • Don't trust other drivers; always expect the unexpected from them. • Use caution on area roads. The roads are very narrow with steep drop-offs. • Use caution while driving on all incident roads. Non fire personnel speeds on Highway 96 are often faster than we normally drive. • Avoid driving thru the "Narrows Area" on the Scott River Road. • Watch out for deer on all roads, especially during the dawn and dusk hours. • Drive defensively! Expect the unexpected around every curve. • Drive with headlights on; use chock blocks, keep windshields clean; look before backing; and use backers whenever available.
ALL	Hazard / Danger Trees	<ul style="list-style-type: none"> • Follow Hazard Tree Safety Guidelines (IRPG p.22). • Limit number of personnel around danger trees and their exposure time; fallers must be qualified for the trees being felled. • Be especially alert around snags during wind events. Large green trees can also be dangerous. • Avoidance may be the best mitigation for risk
ALL	Complacency	<ul style="list-style-type: none"> • Stay mentally engaged on the task at hand. • Give clear briefings. Address complacency in your daily AAR. • Clearly identify the day's mission and purpose. • Use the "Buddy System" and watch out for each other. If you see something unsafe, say something. • Ask yourself: "Are you doing the job safely, the way you were trained?" • Look for a "new" or "fresh" approach for repetitive assignments.
ALL	Rolling Materials	<ul style="list-style-type: none"> • Be alert for materials rolling onto the roads. • Face your danger. • Don't park near stream crossings. • Assess parking areas. • Maintain Communications.
ALL	Fatigue	<ul style="list-style-type: none"> • Be alert for signs of fatigue and take breaks as necessary. • Maintain 2:1 work/rest ratio. • Monitor incoming resources for level of fatigue. • Allow for extended rest periods if needed.
INCIDENT NAME: <h1 style="margin: 0;">Happy Camp Complex</h1>		<div style="display: flex; justify-content: space-between; align-items: center;"> <div style="text-align: center;"> <p>Operational Period: 0600-1800</p> <h1 style="margin: 0;">September 25, 2014</h1> </div> <div style="text-align: center;">  </div> </div>

MEDICAL PLAN ICS 206	1. INCIDENT NAME HAPPY CAMP COMPLEX	2. DATE PREPARED September 24, 2014	3. TIME PREPARED 1900	4. OPERATIONAL PERIOD September 25, 2014 0600-1800							
5. INCIDENT MEDICAL AID STATIONS											
MEDICAL AID STATIONS		LOCATION			PARAMEDICS						
					YES	NO					
Frontline Medical		Fort Jones Base Camp			X						
6. TRANSPORTATION											
A. AIR AMBULANCES											
NAME		LOCATION		PHONE		PARAMEDICS					
						YES NO					
Mercy Flights (Until 2400, No Hoist)		Medford, Oregon		(541) 858-2600 EXT.1		X					
CHP H-14 (NVG, Hoist)		Redding, California		(530) 842-3515, (530) 841-4600		X					
Air Med 43 (No Hoist)		Redding, California		(800) 597-9571		X					
B. GROUND AMBULANCES & REM TEAMS											
NAME		LOCATION			PARAMEDICS						
					YES	NO					
Hoopa Ambulance/ Fort Jones		Staged at Fort Jones Base			X						
7. HOSPITALS											
NAME		ADDRESS		TRAVEL TIME		PHONE		HELIPAD		BURN CTR	
				AIR	GRND			YES	NO	YES	NO
Fairchild Medical CTR		444 Bruce Street Yreka, CA N 41 43.13 x W 122 38.69		10 min	45 min	530-841-6292 530-841-6259		X			X
Mercy Medical CTR Level 2 Trauma		2175 Rosaline Ave Redding, CA N 40 35.12 x W 122 23.83		1 hr	3 hr	530-225-7200 530-225-6000		X			X
UC Davis Medical CTR Level 1 Trauma		2015 Stockton Ave. Sacramento, CA N 38 33.3 x W 121 27.3		2 hr	8 hr	916-734-3790 ER 916-734-3636 BURN		X		X	
8. MEDICAL EMERGENCY PROCEDURES											
LINE MEDICAL EMERGENCY:											
Crew Supervisor contact Division Supervisor/Operations with patient complaint, condition and location.											
Division Supervisor/Operations contacts Communication:											
<ul style="list-style-type: none"> Division Supervisor/Operations to use "injury or incident communication protocol" on next page Division Supervisor/Operations will run medical emergency on command channel Communications will contact the Medical Unit Leader on Command channel or LOGs Net Medical Unit Leader will: <ol style="list-style-type: none"> Have communications dispatch ground/air transport resources Notify receiving hospital of injury status. Develop primary and contingency transport plan Notify Safety, Logistics and Operations Contact Communications for notification of emergency. (530) 468-1530 											
CAMP MEDICAL EMERGENCY:											
Contact Communications with patient complaint/condition and location, via LOGs Net or (530) 468-1530											
<ul style="list-style-type: none"> Medical Unit contacts: <ul style="list-style-type: none"> Safety Logistics Operations Medical Unit Leader will: <ol style="list-style-type: none"> Contact Communications to dispatch ground/air transport resources Notify receiving hospital of injury status Develop primary and contingency transport plan 											
ICS 206		9. PREPARED BY: (Medical Unit Leader) Eric Williams, MEDL ; John VanMannekes MEDL Doug Stuart, MEDL-T				10. REVIEWED BY: (Safety Officer) Dan Snow, SOF1					

Injury or Incident Communications Protocol

DECLARE: Medical Emergency or Non-emergency Medical transport

Best transport method: (circle) Ambulance Helicopter Vehicle

Location: (Div. & Lat / Long) _____

GPS Format: WGS84 Degrees, Decimal, Minutes

Situation _____

Any special equipment required _____

Number of injured _____ Type of injuries _____

Closest pick up point (DP, Helispot) _____

Level of consciousness _____ Resp. _____ Pulse _____ BP _____ Weight _____
 (alert & oriented x 1-4)

Injury _____ Agency (No Names) _____

Medical History/Allergies _____

Air Transportation Triage

	Ground or Air Ambulance to Hosp.	Transport to Med Unit
Mechanism	Hit by a falling tree or large branch Fall of 10' or more Insect bite with shortness of breath Signs of heat stroke (hot, dry, disoriented) Burn Injury greater than 1% body area	Minor dehydration Cut or laceration with bleeding controlled Minor bites and Stings Minor burns
Area Injured	Significant Blunt or Penetrating Trauma to Head, Neck, Chest, Abdomen or pelvis Any Arm or Leg fracture above the Joint	Minor blunt trauma Minor penetrating trauma Extremity sprains and strains Simple fracture below elbow or knee
Symptoms	Disoriented Chest Pain <u>or</u> Shortness of Breath Weak or absent radial pulse Pale, cold and sweating	Alert and oriented No shortness of breath Good pulses

If air or ground ambulance is DELAYED:

Package and transport patient to rendezvous with ambulance. Re-route EMS helicopter to rendezvous point as appropriate.

If Declaring an "Incident within the Incident"

The closest DIVS will respond to manage the incident. They are responsible for giving an accurate size up, ensuring scene safety, setting priorities and initiating an appropriate response.
 The closest Safety Officer and Line EMS will respond to the scene to assist the Branch Director or DIVS. Secure site and begin initial investigation when situation is stabilized.

ICS 205 INCIDENT RADIO COMMUNICATIONS PLAN		Incident Name Happy Camp Complex		Date/Time Prepared 09/24/14 @ 1600		Operational Period Date/Time 09/25-26,2014 0600-0600					
Zn Ch	Function	Channel Name/Trunked Talkgroup	Assignment	RX Freq	RX Tone/NAC	TX Freq	Tx Tone/NAC	Dev	Pwr	Mode A, D, M	Remarks
Zn15 Ch1	COMMAND	CMD 1	ALL DIVISIONS	173.0625	Tone 10 107.2	167.9625	Tone 10 107.2	N	L	A	Anderson Peak (Linked)(NIFC C-43)
Zn15 Ch2	COMMAND	CMD 2	ALL DIVISIONS	168.7000	Tone 10 107.2	170.9750	Tone 10 107.2	N	L	A	Baldy Mtn (Linked)(NIFC C-1)
Zn15 Ch3	COMMAND	CMD 3	ALL DIVISIONS	169.5375	Tone 10 107.2	164.7125	Tone 10 107.2	N	L	A	Lake Mtn LO (Linked)(NIFC C-8)
Zn15 Ch4	COMMAND	CMD 4	ALL DIVISIONS	172.5500	Tone 10 107.2	163.8250	Tone 10 107.2	N	L	A	Boulder Pk (Linked)(NIFC C-35)
Zn15 Ch5	COMMAND	CMD 5	ALL DIVISIONS	163.5750	Tone 10 107.2	169.7250	Tone 10 107.2	N	L	A	Merrill Mt (linked) C36
Zn15 Ch6	TACTICAL	NIFC T-3	DIV.M / N	168.6000	Tone 10 107.2	SIMPLEX	Tone 10 107.2	N	L	A	
Zn15 Ch7	TACTICAL	NIFC T-5	UNASSIGN	166.7250	Tone 10 107.2	SIMPLEX	Tone 10 107.2	N	L	A	
Zn15 Ch8	TACTICAL	NIFC T-6	DIV. K / R , Y / Z / A	166.7750	Tone 10 107.2	SIMPLEX	Tone 10 107.2	N	L	A	NIGHT DIV. K / R
Zn15 Ch9	TACTICAL	NIFC T-7	UNASSIGN	168.2500	Tone 10 107.2	SIMPLEX	Tone 10 107.2	N	L	A	
Zn15 Ch10	TACTICAL	R5 TAC4	DIV. I	166.5500	Tone 10 107.2	SIMPLEX	Tone 10 107.2	N	L	A	
Zn15 Ch11	TACTICAL	R5 TAC5	UNASSIGN	167.1125	Tone 10 107.2	SIMPLEX	Tone 10 107.2	N	L	A	
Zn15 Ch12	TACTICAL	R5 TAC6	DIV. F / T / O	168.2375	Tone 10 107.2	SIMPLEX	Tone 10 107.2	N	L	A	
Zn15 Ch13	AIR TO GROUND	A/G-TAC	ALL DIVISIONS	166.6750	CSQ	SIMPLEX	NONE	N	L	A	
Zn15 Ch14	AIR TO GROUND	A/G-CMD	ALL DIVISIONS	169.1500	CSQ	SIMPLEX	NONE	N	L	A	
Zn15 Ch15	MEDICAL TAC	CALCORD	ALL DIVISIONS	156.0750	CSQ	SIMPLEX	Tone 6 156.7	N	H	A	AS NEEDED FOR MEDIVAC
Zn15 Ch16	AIR GUARD	AIR GUARD	ALL DIVISIONS	168.6250	CSQ	SIMPLEX	Tone 1 110.9	N	L	A	
Prepared By (Communications Unit Leader) Sal Bonilla / Brian Diemer, COML				Incident Location: KLAMATH NATIONAL FOREST - HAPPY CAMP, CA Cnty: SISKIYOU				Latitude		Longitude	

Sal Bonilla

Communications Unit (530) 468-1530

FIRING TACTICAL 167.150 RX&TX



HAPPY CAMP COMPLEX

ASSIGNMENT	NUMBER
INCIDENT COMMANDER	530-468-1517
OPS / AIR OPS / SAFETY	530-468-1519
INFORMATION	530-468-1510
LIASON	530-468-1520
FBAN / IMET / FIRE BEHAVIOR	530-468-1516
PLAN SECTION CHIEF	530-468-1504
CHECK-IN / DEMOB	530-468-1501
CHECK-IN / DEMOB FAX	530-468-1502
SUPPLY UNIT LEADER	530-468-1511
ORDERING	530-468-1512
ORDERING FAX	530-468-1513
COML / INCM	530-468-1530
COMMUNICATION (RADO)	530-468-1529
FINANCE FUEL	530-468-1506
FINANCE FUEL	530-468-1507
FINANCE FAX	530-468-1508
EQUIPMENT FAX	530-468-1509
TRANSPORTATION (BASE CAMP)	530-468-1525
R & D (BASE CAMP)	530-468-1523
R & D FAX (BASE CAMP)	530-468-1524
MEDICAL (BASE CAMP)	530-468-1526

9/24/14 4:51 PM

STANDARD OPERATING PROCEDURES—FINANCE SECTION

“How to Earn an Honest Day’s Pay for an Honest Day’s Work”

16 HOURS IS NOT A GUARANTEE – IT IS HOURS WORKED!!

WORK REST CYCLE

IT IS NATIONAL DIRECTION TO MEET a 2 TO 1 WORK/REST RATIO (1 hour of sleep/rest for every 2 hours of work). Every effort shall be made to manage work hours so you don’t exceed the maximum of 16 hrs. Work hours exceeding 16 hrs shall be approved by your supervisor in advance, and a justification/mitigation form completed for review by Section Chief & approved by IC. It is each person’s responsibility to comply with this direction to manage for fatigue and safety.

OPERATIONAL SHIFTS

Pay status for assigned overhead and crews on the fireline will not start prior to the posted briefing time and will terminate on arrival back in camp (except for debriefing—additional hours may be accrued by those required to attend debriefing). Supervisors will be allowed ½ hour prior to briefing and after return to camp to ready crew and equipment.

DUTY STATUS

Division/Group supervisors and Unit Leaders are responsible for establishing on and off duty status. The objective is a 2 to 1 work/rest ratio. Personnel will normally work, travel, and/or be placed on ORDERED standby 8 to 16 hours per day and be off duty 8 hours or more (breaks count towards 8 hrs). Off duty time will be in a non-pay status. Each federal employee is guaranteed **at least 8 hours** of pay status each 24-hour period (midnight to midnight) unless it is the first or last day of an assignment or stated otherwise in a contract or agreement.

PERSONNEL/EQUIPMENT TIME REPORTING

Personnel time will be reported to the Time Unit and daily once they are signed by the next level supervisor. Local Government Resources hired under CFAA or Local Agreement w/Forest are also required to submit a Crew Time Report daily. OES resources will be monitored by OES Agency Rep (if assigned) for 2/1 Work Rest compliance. Situations entitling you to HAZARD PAY are to be noted in remarks (i.e HP=Uncontrolled Fireline, hovering hookups, low level flights, etc.)

Private Contracted Equipment time must be tracked on a Shift Ticket daily.

Supervisor’s - If you are responsible for daily tracking of equipment or personnel, please ensure you understand the agreement, and follow the rules provided in this document. Do not sign documents for resources you did not manage unless you have knowledge of their assignment hours.

MEAL AND OTHER WORK BREAKS

Compensable meal periods are the exception, not the rule (5 CFR 551.411 © and 29 CFR 785.19(a)). **Until the fire is controlled**, personnel on the fireline MAY BE compensated for meal periods if all of the following conditions are met: 1) The fire is not controlled and 2) The Operations Section Chief makes a decision that it is critical to the effort of controlling the fire that personnel remain at their post of duty and continue to work as they eat, and 3) The compensable meal break is approved by the supervisor at the next level and documented on CTR. For personnel in support positions, and fireline personnel **after control** of a fire, a meal period of at least 30 minutes must be ordered and taken for each work shift of eight hours or more. In those situations where personnel cannot be relieved from work and must remain at a post of duty, a meal period may be counted as time worked, which will be compensable. **If breaks are NOT able to be taken, CTR should have a statement in remarks explaining the situation. Kitchen closes at 2200 so dinner break is to be shown unless justified as to why you weren’t able to eat dinner.**

**NOAH'S SECOND BIG DAY AT HAPPY
CAMP COMPLEX**

Rain Day 2 Schedule of Activities

Thursday, September 25

Briefing Tent at Base Camp

1000 Movie: "McClintock"

1300 Bingo Tournament

1400 Movie: "The Alamo"

1600 Bingo Tournament

1900 All Incident Talent

Show (Sign Up at the Event)

BROUGHT TO YOU BY CIIMT4 INFORMATION



Happy Camp Complex
 CA-KNF-005956
 09/15/2014
 DAY SHIFT
 NAD 1983 UTM Zone 10N
 Page 8

1	2	3	4	5	
6	7	8	9	10	
11	12	13	14	15	
16	17	18	19	20	21
22	23	24	25	26	
27	28	29	30		
31	32	33			
34	35				



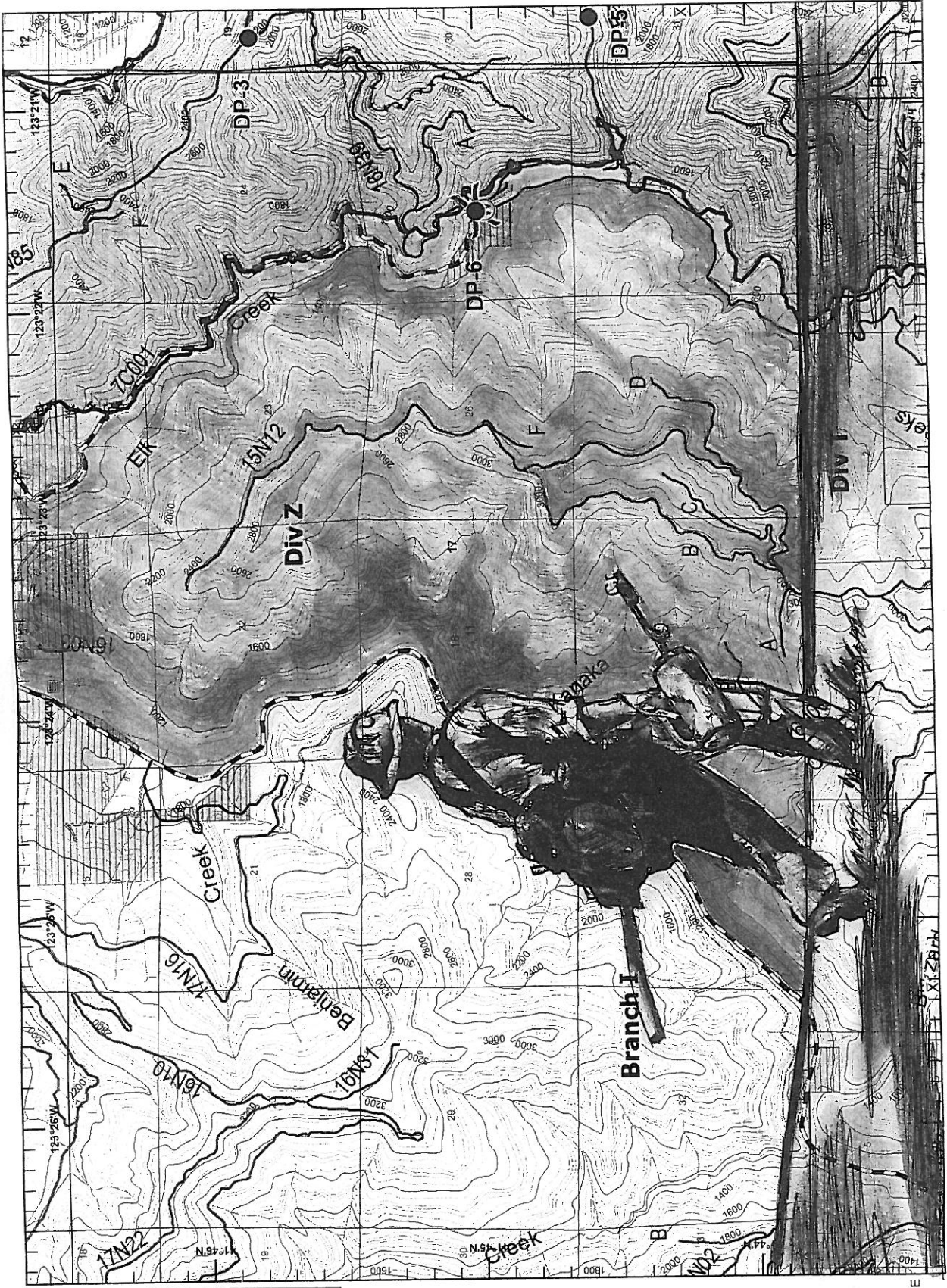
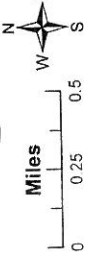
- II Branch
- () Division
- X Abandoned Mines
- Member_Creek_Access
- Man Fire Perimeter
- Dip Site
- Drop Point
- R · R Road as Completed Line
- Completed Dozer Line
- H · H Hand Line
- Completed Line
- Ranger District Boundary
- Town



Happy Camp Complex
 CA-KNF-005956
 09/15/2014
 DAY SHIFT
 NAD 1983 UTM Zone 10N
 Page 16

1	2	3	4	5
6	7	8	9	10
11	12	13	14	15
16	17	18	19	20
21	22	23	24	25
26	27	28	29	30
31	32	33	34	35

- Branch
- Division
- Abandoned Mines
- Member_Creek_Access
- Man Fire Perimeter
- Water Source
- Drop Point
- Completed Dozer Line
- H - H Hand Line
- Completed Line
- Ranger District Boundary
- Town



TENTATIVE DEMOB

9/25/2014

O-729	0630	(SEC2)	PETHTEL, CRAIG
O-758	0630	(COMP)	NICHOLSON, TRACY
O-986	0630	(CTSP)	TOEPFER, JOSHUA
O-597	0700	(HRSP)	SEAGO, ALAN
O-736	0700	(SEC1)	MASON, CHRISTOPHER
O-734	0700	(SEC1)	HOUK, WES
O-864	0700	(DMOB)	PETTIT, JODY
O-768	0730	(ORDM)	WELLS, JENNIFER
O-776	0730	(SEC1)	TACBAS, DANIEL
O-2263	0730	(RADO)	MICHEL, YVONNE D
O-692	0800	(SEC1)	HARDY, CHARLIE
O-851	0800	(SEC2)	HERNANDEZ, ISRAEL
O-952	0800	(RADO)	FLAIM, ROBERT
O-790	0900	(EQTR)	FORD, CHRISTOPHER
O-780	1200	(HECM)	LE QUIEU, MARC ANDRE

LAST WORK DAY

9/25/2014

CREWS	CC	C-187	CRW CAMP UKIAH 3
OVERHEAD	SEC2	O-791	LAVY, CRAIG NELSON
	SEC2	O-792	CARTER, KATHLENE K
	SEC2	O-793	KELLEY, HOLLY
	TIME	O-794	BROWER, JEFFREY L
	PTRC	O-795	AMES, LAWRENCE

9/26/2014

CREWS	HC1	C-183	CRW1 LASSEN IHC
	CC	C-185	CRW CAMP FORTUNA 4
OVERHEAD	ABRO	O-645	LAWSON, CHAD
	FELB	O-803	SCHROEDER, KRIS
	FELB	O-807	MOTA, RAMON
	SEC1	O-806	CARY, JASON R
	SCKN	O-865	MIKULOVSKY, STACEY

Fort Jones Base Camp Facilities Map

9/17/14 1230

DAY SLEEPING
OVERHEAD
SLEEPING

CREW SLEEPING AREA

ENGINE-BUGGY
PARKING

Laundry

Showers

Medical
Comp/Claims
Medical Trlr

OVERHEAD PARKING

Food Tent

Showers

Fuel

To Fort Jones ->

Briefing
Area

TRNG
SPEC

OPS
MTG
TENT

Gate
Security

dumpster

Scott River Rd

CREW SLEEPING AREA

one way

one way

Entrance

Lunches
Water/Ice

Supply

Saw Repair

Exit

one way

one way

SLEEPING AREA
PARKING

Vehicle
Repair

Communication

Facilities

Human
Resources

Ground
Support

Weed Wash

Staged
Resources
Sleeping

Staging

CREW SLEEPING AREA

Vehicle
Inspection

to vehicle repair & inspection



Fence

