

# Happy Camp Complex

## Incident Action Plan



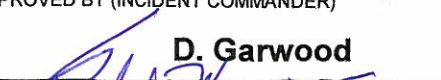
*"Adapt...Improvise...and Overcome"*

**CA-KNF-005956**

**P5JB1F-0505**

**8-15-15**

**0600-0600**

<b>INCIDENT OBJECTIVES</b>  <b>ICS 202</b>	1. INCIDENT NAME <b>Happy Camp Complex</b>	2. DATE PREPARED <b>8/14/2014</b>	3. TIME PREPARED <b>22:40</b>
4. OPERATIONAL PERIOD (DATE/TIME) <p style="text-align: center;"><b>8/15/14 06:00 - 06:00</b></p>			
5. GENERAL CONTROL OBJECTIVES FOR THE INCIDENT (INCLUDE ALTERNATIVES)			
<b>MANAGEMENT OBJECTIVES:</b>			
<b>1. Fight fire with emphasis on firefighter and public safety.</b>			
<b>2. Minimize suppression caused damage to natural and cultural resources.</b>			
<b>3. Keep costs commensurate with values at risk.</b>			
<b>CONTROL OBJECTIVES:</b>			
<b>Given the firefighting resources available:</b>			
<b>1. Defend structures from fire</b>			
<b>2. Exercise full suppression of fires with the highest spread potential.</b>			
6. WEATHER FORECAST FOR OPERATIONAL PERIOD <b>SEE ATTACHED FORECAST</b>			
7. GENERAL / SAFETY MESSAGE <b>SEE ATTACHED MESSAGE</b>			
8. ATTACHMENTS (CHECK IF ATTACHED)			
<input checked="" type="checkbox"/> ORGANIZATION LIST (ICS 203) <input checked="" type="checkbox"/> MEDICAL PLAN (ICS 206) <input checked="" type="checkbox"/> SAFETY MESSAGE			
<input checked="" type="checkbox"/> DIVISION ASSIGNMENT LISTS (ICS 204) <input checked="" type="checkbox"/> INCIDENT MAP <input checked="" type="checkbox"/> AIR OPERATIONS SUMMARY (ICS220)			
<input checked="" type="checkbox"/> COMMUNICATIONS PLAN (ICS 205) <input checked="" type="checkbox"/> TRAFFIC PLAN <input type="checkbox"/>			
<b>ICS 202</b>	9. PREPARED BY (PLANNING SECTION CHIEF) <b>S. Abbott</b>		10. APPROVED BY (INCIDENT COMMANDER)  <b>D. Garwood</b>

ORGANIZATION ASSIGNMENT LIST ICS-203		1. INCIDENT NAME	2. DATE PREPARED	3. TIME PREPARED
		<b>Happy Camp Complex</b>	<b>8/14/2014</b>	<b>22:40</b>
POSITION NAME		OPERATIONAL PERIOD (DATE/TIME)		
5.		<b>8/15/2014 06:00 - 06:00</b>		
INCIDENT COMMANDER <b>Garwood</b>		<b>OPERATIONS SECTION</b>		
DEPUTY <b>Kelly</b>		CHIEF	<b>Conklin / Koontz(t)</b>	
SAFETY OFFICER <b>Tompkins / Bates (t)</b>		PLANNING OPS	<b>Davis / Tucker (t)</b>	
INFORMATION OFFICER <b>Wilkins / Poole / Briebescas</b>		BRANCH 1		
LIAISON OFFICER <b>Lavogue</b>				
6.				
AGENCY	NAME	DIVISION / GROUP	<b>A Evans / Christenson (t)</b>	
<b>CalFire</b>	<b>P. Anzo</b>	DIVISION / GROUP	<b>G Marinelli / Schuette (t)</b>	
<b>Pacific Power</b>	<b>R. Harris</b>	DIVISION / GROUP	<b>L Jacobson / Toll</b>	
<b>Happy Camp FD</b>	<b>T. Mopas</b>	DIVISION / GROUP	<b>Q M. Fowlkes</b>	
<b>KNF Div 3</b>	<b>T. Walters</b>	DIVISION / GROUP	<b>T Rupert / O'Connor (t)</b>	
<b>EACC-IARR</b>	<b>M. Bouchonville</b>	BRANCH 2		
<b>Karuk</b>	<b>H. Tripp</b>			
<b>NFFE</b>	<b>B. McDonald</b>			
7. <b>PLANNING SECTION</b>		DIVISION / GROUP	<b>W Reyes / Miller</b>	
CHIEF	<b>S. Abbott</b>	DIVISION / GROUP	<b>Z</b>	
DEPUTY		CONTINGENCY	<b>W McDivitt</b>	
RESOURCES UNIT	<b>Dinkel / Knorr / Kershaw</b>			
SITUATION UNIT	<b>Bailey / Vanwig</b>			
DOCUMENTATION UNIT				
DEMOBILIZATION UNIT	<b>Hauducoeur (t)</b>	BRANCH DIRECTOR		
DPRO		DEPUTY		
GISS	<b>Murillo / Hall / Saldivar (t)</b>	DIVISION / GROUP		
	<b>Hutchinson (t)</b>	DIVISION / GROUP		
FBAN	<b>Gonzales</b>	DIVISION / GROUP		
IMET	<b>Leach</b>	DIVISION / GROUP		
8. <b>LOGISTICS SECTION</b>		DIVISION / GROUP		
CHIEF	<b>Sweetman</b>	<b>AIR OPERATIONS BRANCH</b>		
DEPUTY		AIR OPERATIONS BR. DIR.	<b>Visser / Oberacker</b>	
a. <b>SUPPORT BRANCH</b>		AIR ATTACK SUPERVISOR		
SUPPLY UNIT	<b>Tiss / Whitney (t)</b>	AIR SUPPOPT SUPERVISOR	<b>Young</b>	
FACILITIES UNIT	<b>King / Curley (t)</b>	HELICOPTER COORDINATOR		
GROUND SUPPORT UNIT	<b>Haley / Noordman</b>	AIR TANKER COORDINATOR		
Base Camp	<b>Chen</b>	<b>FINANCE SECTION</b>		
b. <b>SERVICE BRANCH</b>		CHIEF	<b>Bauman</b>	
DIRECTOR		DEPUTY		
		TIME UNIT	<b>Schlumpf</b>	
COMMUNICATIONS UNIT	<b>Larkin / Green</b>	PROCUREMENT UNIT		
MEDICAL UNIT	<b>Serrano / G. Fowlkes</b>	COMPENSATION/CLAIMS UNIT	<b>S. Parsons</b>	
FOOD UNIT	<b>Waite</b>	COST UNIT	<b>K. Parsons</b>	
<b>ICS 203</b>	PREPARED BY (RESOURCES UNIT)	<b>Dinkel / Knorr / Kershaw</b>		





# Happy Camp Complex Weather Forecast



FORECAST NO: 2 D  
 PREDICTION FOR: Friday Day Shift  
 SHIFT DATE: August 15, 2014  
 FORECAST ISSUED: 1900 August 14, 2014

NAME OF FIRE: Happy Camp Complex  
 UNIT: KNF / SoCal 2  
 Incident Meteorologist: Ryan Leach

**WEATHER DISCUSSION:** Friday will be very similar to Thursday, only warmer and drier. Valley inversions will remain most of the day trapping smoke with visibility improving around 1600 PDT. Overnight humidity recoveries will be good, though thermal belts are strengthening each night. Northeast ridge winds in the morning will turn northwest in the early afternoon.

**WEATHER FORECAST TODAY (FRIDAY DAY SHIFT):**

**WEATHER:** Mostly sunny, smoke trapped in valleys.  
**MAX TEMPERATURES:** Valleys (1,200 ft) 90 – 95 F, Ridges (4,000 ft) 80 – 85 F  
**MIN HUMIDITY:** Valleys (1,200 ft) 20 – 25%, Ridges (4,000 ft) 22 – 27%  
**WINDS (EYE LEVEL):** Valleys – up slope / up valley 2 – 4 mph gusts 6 – 8 mph  
 Ridges – NW 6 – 8 mph gusts 10 – 15 mph  
**LAL:** 1 **CWR:** 0% **HAINES:** 2  
**STABILITY / INVERSION:** Ridges unstable, valley remains stable and until 1600.  
**SMOKE TRANSPORT:** NW 10 mph

**WEATHER FORECAST FRIDAY NIGHT:**

**WEATHER:** Mostly clear, smoky.  
**MIN TEMPERATURES:** Valleys (1,200 ft) 55 – 60 F, Ridges (4,000 ft) 50 – 55 F  
**MAX HUMIDITY:** Valleys (1,200 ft) 75 – 85%F, Ridges (4,000 ft) 55 – 65%  
**WINDS (EYE LEVEL):** Valleys – down slope / down valley 0 – 3 mph  
 Ridges – NE 4 – 7 mph gusts 10 – 15 mph

**OUTLOOK FOR SATURDAY:** Sunny and smoky. Max Temps: 90 to 95. Min RH: 20-25%. Ridge Wind: NW 6 – 8 mph gusts 10 – 15 mph. LAL 1. CWR 0%. Haines 2.


**THREE DAY EXTENDED (SUNDAY – TUESDAY 1,200 FT)**

	<u>Max T</u>	<u>Min RH</u>	<u>Max RH</u>	<u>Ridge Winds, Afternoon</u>	<u>LAL</u>	<u>WX</u>
SUN	93 – 97	20%	60%	NW 8 G 15 mph	1	SMK
MON	95 – 100	17%	55%	NW 8 G 15 mph	1	SMK
TUE	93 – 97	20%	60%	NW 8 G 15 mph	1	SMK

<b>Observations from Thursday Afternoon:</b>					
	<u>Max Temp</u>	<u>Min RH</u>	<u>Wind Dir</u>	<u>Wind Spd</u>	
KNF92 (1,161 ft)	89	30%	WNW	2 mph gust 10	
Dutch – Indy (2,281 ft)	86	31%	W - NW	6 mph gust 13	
Slater Butte (4,621 ft)	78	36 %	W - NW	8 mph gust 17	



# FIRE BEHAVIOR FORECAST

<b>FORECAST NUMBER: 002</b>	<b>TYPE OF FIRE: Wildfire</b>
<b>FIRE NAME: Happy Camp Complex</b>	<b>OPERATIONAL PERIOD: 8/15-16/14 0600-0600</b>
<b>DATE ISSUED: 8/14/14</b>	<b>TIME ISSUED: 2000 hrs</b>
<b>UNIT: Klamath National Forest</b>	<b>SIGNED: Richard Gonzales, FBAN</b> 

## INPUTS

### WEATHER SUMMARY:

#### See Weather Forecast for specific information

Sky: Mostly Sunny...smoke trapped in valleys ... Temps near 82° ...RH around 25%...

Winds (eye level)...Valley: down slope/down valley 2-4 mph...Ridge: NW 6-8 mph...w/ gust up to 10-15 mph...

LAL 1... Haines 2...

Inversion lifting approximately 1600 hrs

## OUTPUTS

### FIRE BEHAVIOR

#### GENERAL:

The Fires main influence has been fuel and topography dominated. They are primary being driven by dead and down fuels. Fuels burning consist of Grass, Shrubs and Heavy Down (FM 1, 4, 10). Large dense stands of mixed Conifer are dominant throughout. Live Fuel Moisture is estimated at 90%. 1000 hr fuels are @ 8%. Headfire has displayed ROS @ 7-12 chains/hr with flame lengths of 4-8 feet. Single/group tree torching has occurred. There has not been any sustained crown fire spread thus far. Heavy fuels are holding large amounts of heat.

ERC is predicted @ 66 today (up 2).....Local threshold for large growth: 20' winds over 4 mph, RH less than 40%, Temps over 75\*, 1000 hr FM less than 13% (refer to Pocket Card in IAP).

Scattered Tree Mortality is under 5%.

Probability of Ignition (shaded) will be 50% into receptive fuels for the better part of the operational period.

## SPECIFIC

#### All Divisions:

The Fires will continue to display a low to moderate surface fire intensity with the possibility of single/group torching when inversion lifts and ventilation occurs. The forecasted weather will thread to a period of warmer temperatures and lower humidity...which have dried fuels even further from the previous days. Lighter fuels (1 hr and 10 hr) will continue to lose moisture and burn more readily. Heavy fuels will continue to hold heat until extinguished or consumed. Roll-out of burning material remains high and has led to the growth of the Fires. The potential for single tree torching will remain a threat due to surface fire that has dried aerial fuels. Increased fire activity will occur late afternoon as solar heating and lifting of inversion becomes a factor. The Fires will have the ability to make uphill runs as slope and winds become into alignment. Be particularly cautious on South, Southwest and Southeast slopes coupled with a southerly wind component. Direct attack along flanks with hose lines and hand crews are favorable. We could see spotting distance of up to ¼ mile at the ridges.

### AIR OPERATIONS:

Air support may be limited due to Inversion or diversion to new initial attack fire.

## SAFETY

- Identify your vulnerability on an advancing fire front when working hotspots
- Consider the potential for re-burning of available fuels
- Look for an increase in fire activity when winds shift in your division
- Evaluate the Fire's potential for upslope runs
- **STOP...Stop Think Observe and Predict**



# Fuels and Fire Behavior Advisory

## Northern California

August 6, 2014



**Subject:** Long term drought conditions along with hot and dry weather have led to critically low live and dead fuel moistures. Weather and fuels conditions are contributing to very active to extreme fire behavior in Northern California.

**Discussion:** The extremely dry and warm conditions of April through July combined with the extreme to exceptional drought conditions have led to critically low live and dead fuel moistures. Numerous large fires experienced extreme fire behavior and rapid growth during the first 4 days of August. Areas receiving precipitation on August 4<sup>th</sup> and 5<sup>th</sup> are expected to rebound quickly to extreme conditions.

**Difference from normal conditions:** Live and dead fuel moistures are approximately 6 weeks ahead of normal and typical of early to mid-September. Extreme to exceptional drought, the highest levels on the Drought Monitor system now cover nearly the entire North state. Live fuel moistures never reached typical seasonal maximums and are approaching or have already reached critical levels. All timelag classes of dead fuels are at moisture levels that allow for easy ignition and rapid spread.

### Concerns to Firefighters:

- **Expect fires to ignite easier and spread faster due to low live and dead fuel moistures.** Recent fires have shown almost complete consumption of large dead fuels. **Expect higher probability of ignition and increased spotting** due to increased amount of receptive and available surface and aerial fuels.
- **Current Energy Release Component (ERC) values are reaching maximum seasonal values or setting record highs** for almost all Predictive Service Areas (PSA). ERC is a good indicator of seasonal drying trends. **Anticipate increased spread rates and active night time burning.**
- Anticipate higher resistance to control in all fuel types. **When critical fire weather conditions exist expect very active to extreme fire behavior.**

### Mitigation Measures:

- Firefighters should acknowledge and prepare for fire growth and fire behavior that may exceed anything they have experienced before due to the extreme drought. **Normal strategies and tactics may need to be adjusted to account for the drought factor. Suppression actions need to be based on good anchor points, lookouts, communications, escape routes, and safety zones.**
- Local and incoming fire personnel need to be aware that fire behavior is exceeding normal expectations for this time of the year. **Local briefings need to highlight specific fire environment conditions including local weather forecasts, Pocket Cards, ERC's, live and dead fuel moistures, and special fuel conditions such as mortality, Sudden Oak Death and frost killed brush, etc.**
- Base all actions on current and expected behavior of the fire. **Augment initial attack resources as incident activity dictates.**
- Review the most current Northern California 7-day Significant Fire Potential along with Daily, Monthly and Seasonal Outlooks at: Predictive Services Outlooks & Fire Potential

**Area of Concern:** The area of concern is all of Northern California. A map showing the areas of concern described in this advisory can be found at: National Fuels & Fire Behavior Advisories





1. BRANCH		2. DIVISION/GROUP <b>A</b>		<b>DIVISION ASSIGNMENT LIST ICS 204</b>			
3. INCIDENT NAME <b>Happy Camp Complex</b>			4. OPERATIONAL PERIOD <b>8/15/2014 06:00 - 06:00</b>				
5. OPERATIONS PERSONNEL							
OPERATIONS CHIEF <b>Conklin / Koontz(t)</b>			DIVISION/GROUP SUPERVISOR <b>Evans / Christenson (t)</b>				
BRANCH DIRECTOR _____			AIR ATTACK SUPERVISOR _____				
6. RESOURCES ASSIGNED THIS PERIOD							
STRIKE TEAM/TASK FORCE/ RESOURCE DESIGNATOR	LEADER	NUMBER PERSONS	TRANS. NEEDED	DROP OFF POINT / TIME	PICK UP POINT / TIME		
<b>CRW Pilot Station</b>	<b>Myers</b>	<b>20</b>	<b>8/27</b>				
<b>Karuk #1</b>	<b>Medford</b>	<b>20</b>	<b>8/27</b>				
<b>Koyukuk</b>	<b>Huntington</b>	<b>20</b>	<b>8/23</b>				
<b>Kaltag</b>	<b>Edwin</b>	<b>20</b>	<b>8/23</b>				
<b>Sierra E-9</b>	<b>Rowsey</b>	<b>3</b>	<b>8/14</b>				
<b>Rapid City E-31</b>	<b>Lange</b>	<b>4</b>	<b>8/16</b>				
<b>Firestorm E9905</b>	<b>Maples</b>	<b>3</b>	<b>8/28</b>				
<b>Dozer Fire B</b>	<b>Engels</b>	<b>1</b>	<b>8/28</b>				
<b>WT SHF 16</b>	<b>Wahlberg</b>	<b>1</b>	<b>8/28</b>				
<b>WT INF 31</b>	<b>Argueta</b>	<b>2</b>					
7. CONTROL OPERATIONS Establish control lines either direct or indirect.							
8. SPECIAL INSTRUCTIONS <b>***Do not use non metered hydrants***</b>							
9. DIVISION/GROUP COMMUNICATIONS SUMMARY							
FUNCTION	FREQ.	SYSTEM	CHAN	FUNCTION	FREQ.	SYSTEM	CHAN
COMMAND							
DIV./GROUP TACTICAL				AIR to GROUND			
PREPARED BY (RESOURCE UNIT LDR.) <b>Dinkel / Knorr / Kershaw</b>			APPROVED BY (PLANNING SECT. CH.) <b>Abbott</b>		DATE <b>08/14/14</b>	TIME <b>22:40</b>	

INCIDENT RADIO COMMUNICATIONS PLAN		Incident Name Happy Camp Complex			Date/Time Prepared 08/14/2014 2000 hrs		Operational Period Date/Time 08/15/2014-08/16/2014 0600-0600 (24 HR)				
Ch #	Function	Channel Name	Assignment	RX Freq	N or W	RX Toner/NAC	TX Freq	N or W	Tx Toner/NAC	Mode Analog	Remarks
1	Command	CMD 1	All Divisions	173.0625		Tone 10 (107.2)	167.9625		Tone 10 (107.2)	A	Slater Butte
2	Command	CMD 2	All Divisions	168.7000		Tone 10 (107.2)	170.9750		Tone 10 (107.2)	A	Baldy Mtn
3	Command	CMD 3	All Divisions	169.5375		Tone 10 (107.2)	164.7125		Tone 10 (107.2)	A	Lake Mtn
4	BACK UP NET	ORNG RPT	All Divisions	168.7750			170.5750		Tone 11 (114.8)	A	Tone 2, 4, 11
5	Tactical	NIFC T-5	DIV A	166.7250		Tone 10 (107.2)	166.7250		Tone 10 (107.2)	A	
6	Tactical	NIFC T-6	DIV G	166.7750		Tone 10 (107.2)	166.7750		Tone 10 (107.2)	A	
7	Tactical	NIFC T-7	DIV L	168.2500		Tone 10 (107.2)	168.2500		Tone 10 (107.2)	A	
8	Tactical	NIFC T-1	DIV W	168.0500		Tone 10 (107.2)	168.0500		Tone 10 (107.2)	A	
9	Tactical	NIFC T-3	DIV Z	168.6000		Tone 10 (107.2)	168.6000		Tone 10 (107.2)	A	
10	Air to Ground	A/G-TAC	All Divisions	166.6750			166.6750			A	
11	Air to Ground	A/G-CMD	Overhead	169.1500			169.1500			A	
12	Tactical	R5 TAC 4	Unassigned	166.5500		Tone 10 (107.2)	166.5500		Tone 10 (107.2)	A	
13	Tactical	R5 TAC 5	DIV T	167.1125		Tone 10 (107.2)	167.1125		Tone 10 (107.2)	A	
14	Tactical	R5 TAC 6	DIV Q	168.2375		Tone 10 (107.2)	168.2375		Tone 10 (107.2)	A	
15	EMS TAC	CALCORD	All Divisions	156.0750			156.0750		Tone 6 (156.7)	A	Medical A/G
16/20	AIR GUARD	GUARD	All Divisions	168.6250			168.6250		Tone 1 (110.9)	A	Emergency Only

5. Prepared by (Communications Unit)

Chris Perry COMML(t) COMMUNICATIONS 530 493-1507

Incident Location  
County

State Latitude Longitude

N Longitude W





<b>INCIDENT RADIO COMMUNICATIONS PLAN</b>		Incident Name <b>Happy Camp Complex</b>		Date/Time Prepared <b>08/14/2014 2000 hrs</b>	Operational Period Date/Time <b>08/15/2014-08/16/2014 0600-0600 (24 HR)</b>	
---	--	--	--	--	--	--

Ch #	Function	Channel Name	Assignment	RX Freq	N or W	RX Tone/NAC	TX Freq	N or W	Tx Tone/NAC	Mode Analog	Remarks
1	Command	CMD 1	All Divisions	173.0625		Tone 10 (107.2)	167.9625		Tone 10 (107.2)	A	Slater Butte
2	Command	CMD 2	All Divisions	168.7000		Tone 10 (107.2)	170.9750		Tone 10 (107.2)	A	Baldy Mtn
3	Command	CMD 3	All Divisions	169.5375		Tone 10 (107.2)	164.7125		Tone 10 (107.2)	A	Lake Mtn
4	BACK UP NET	ORNG RPT	All Divisions	168.7750			170.5750		Tone 11 (114.8)	A	Tone 2, 4, 11
5	Tactical	NIFC T-5	DIV A	166.7250		Tone 10 (107.2)	166.7250		Tone 10 (107.2)	A	
6	Tactical	NIFC T-6	DIV G	166.7750		Tone 10 (107.2)	166.7750		Tone 10 (107.2)	A	
7	Tactical	NIFC T-7	DIV L	168.2500		Tone 10 (107.2)	168.2500		Tone 10 (107.2)	A	
8	Tactical	NIFC T-1	DIV W	168.0500		Tone 10 (107.2)	168.0500		Tone 10 (107.2)	A	
9	Tactical	NIFC T-3	DIV Z	168.6000		Tone 10 (107.2)	168.6000		Tone 10 (107.2)	A	
10	Air to Ground	A/G-TAC	All Divisions	166.6750			166.6750			A	
11	Air to Ground	A/G-CMD	Overhead	169.1500			169.1500			A	
12	Tactical	R5 TAC 4	Unassigned	166.5500		Tone 10 (107.2)	166.5500		Tone 10 (107.2)	A	
13	Tactical	R5 TAC 5	DIV T	167.1125		Tone 10 (107.2)	167.1125		Tone 10 (107.2)	A	
14	Tactical	R5 TAC 6	DIV Q	168.2375		Tone 10 (107.2)	168.2375		Tone 10 (107.2)	A	
15	EMS TAC	CALCORD	All Divisions	156.0750			156.0750		Tone 6 (156.7)	A	Medical A/G
16/20	AIR GUARD	GUARD	All Divisions	168.6250			168.6250		Tone 1 (110.9)	A	Emergency Only

5. Prepared by (Communications Unit)  
 Chris Perry COML(t) COMMUNICATIONS 530 493-1507

Incident Location  
 County State Latitude Longitude  
 W

1. BRANCH		2. DIVISION/GROUP <b>G</b>		<b>DIVISION ASSIGNMENT LIST ICS 204</b>			
3. INCIDENT NAME <b>Happy Camp Complex</b>			4. OPERATIONAL PERIOD <b>8/15/2014 06:00 - 06:00</b>				
5. OPERATIONS PERSONNEL							
OPERATIONS CHIEF <b>Conklin / Koontz(t)</b>			DIVISION/GROUP SUPERVISOR <b>Marinelli / Schuette (t)</b>				
BRANCH DIRECTOR _____			AIR ATTACK SUPERVISOR _____				
6. RESOURCES ASSIGNED THIS PERIOD							
STRIKE TEAM/TASK FORCE/ RESOURCE DESIGNATOR	LEADER	NUMBER PERSONS	TRANS. NEEDED	DROP OFF POINT / TIME	PICK UP POINT / TIME		
<b>Los Padres IHC</b>	<b>Molacek</b>	<b>20</b>					
<b>CRW MNF OC22</b>	<b>Diaz</b>	<b>22</b>					
<b>CRW MNF OC50</b>	<b>Henio</b>	<b>22</b>					
<b>CRW Happy Camp 2</b>		<b>20</b>					
<b>Smokejumper</b>	<b>Hoalkson</b>	<b>10</b>					
<b>Smokejumper</b>	<b>Freeman</b>	<b>8</b>					
<b>ENG SRF E-321</b>	<b>Stokesberry</b>	<b>5</b>					
<b>ENG SNF E-31</b>	<b>Plumber</b>	<b>5</b>					
<b>ENG KNF E-27</b>	<b>Harris</b>	<b>5</b>					
7. CONTROL OPERATIONS							
Establish control lines either indirect or direct.							
Secure slopover							
8. SPECIAL INSTRUCTIONS							
***Do not use non metered hydrants***							
9. DIVISION/GROUP COMMUNICATIONS SUMMARY							
FUNCTION	FREQ.	SYSTEM	CHAN.	FUNCTION	FREQ.	SYSTEM	CHAN.
COMMAND				LOCAL			
				REPEAT			
DIV./GROUP TACTICAL				AIR to GROUND			
PREPARED BY (RESOURCE UNIT LDR.) <b>Dinkel / Knorr / Kershaw</b>			APPROVED BY (PLANNING SECT. CH.) <b>Abbott</b>		DATE <b>08/14/14</b>	TIME <b>22:40</b>	



INCIDENT RADIO COMMUNICATIONS PLAN		Incident Name Happy Camp Complex		Date/Time Prepared 08/14/2014 2000 hrs		Operational Period Date/Time 08/15/2014-08/16/2014 0600-0600 (24 HR)					
Ch #	Function	Channel Name	Assignment	RX Freq	N or W	RX Tone/NAC	TX Freq	N or W	TX Tone/NAC	Mode Analog	Remarks
1	Command	CMD 1	All Divisions	173.0625		Tone 10 (107.2)	167.9625		Tone 10 (107.2)	A	Slater Butte
2	Command	CMD 2	All Divisions	168.7000		Tone 10 (107.2)	170.9750		Tone 10 (107.2)	A	Baldy Mtn
3	Command	CMD 3	All Divisions	169.5375		Tone 10 (107.2)	164.7125		Tone 10 (107.2)	A	Lake Mtn
4	BACK UP NET	ORNG RPT	All Divisions	168.7750			170.5750		Tone 11 (114.8)	A	Tone 2, 4, 11
5	Tactical	NIFC T-5	DIV A	166.7250		Tone 10 (107.2)	166.7250		Tone 10 (107.2)	A	
6	Tactical	NIFC T-6	DIV G	166.7750		Tone 10 (107.2)	166.7750		Tone 10 (107.2)	A	
7	Tactical	NIFC T-7	DIV L	168.2500		Tone 10 (107.2)	168.2500		Tone 10 (107.2)	A	
8	Tactical	NIFC T-1	DIV W	168.0500		Tone 10 (107.2)	168.0500		Tone 10 (107.2)	A	
9	Tactical	NIFC T-3	DIV Z	168.6000		Tone 10 (107.2)	168.6000		Tone 10 (107.2)	A	
10	Air to Ground	A/G-TAC	All Divisions	166.6750			166.6750			A	
11	Air to Ground	A/G-CMD	Overhead	169.1500			169.1500			A	
12	Tactical	R5 TAC 4	Unassigned	166.5500		Tone 10 (107.2)	166.5500		Tone 10 (107.2)	A	
13	Tactical	R5 TAC 5	DIV T	167.1125		Tone 10 (107.2)	167.1125		Tone 10 (107.2)	A	
14	Tactical	R5 TAC 6	DIV Q	168.2375		Tone 10 (107.2)	168.2375		Tone 10 (107.2)	A	
15	EMS TAC	CALCORD	All Divisions	156.0750			156.0750		Tone 6 (156.7)	A	Medical A/G
16/20	AIR GUARD	GUARD	All Divisions	168.6250			168.6250		Tone 1 (110.9)	A	Emergency Only

5. Prepared by (Communications Unit)

Chris Perry COML(t) COMMUNICATIONS 530 493-1507

Incident Location  
County

State

Latitude

N Longitude

W

1. BRANCH	2. DIVISION/GROUP <b>G (Con't)</b>	<b>DIVISION ASSIGNMENT LIST ICS 204</b>
-----------	---------------------------------------	---

3. INCIDENT NAME <b>Happy Camp Complex</b>	4. OPERATIONAL PERIOD <b>8/15/2014 06:00 - 06:00</b>
---	---

5. OPERATIONS PERSONNEL	
OPERATIONS CHIEF <b>Conklin / Koontz(t)</b>	DIVISION/GROUP SUPERVISOR <b>Marinelli / Schuette (t)</b>
BRANCH DIRECTOR _____	AIR ATTACK SUPERVISOR _____

6. RESOURCES ASSIGNED THIS PERIOD					
STRIKE TEAM/TASK FORCE/ RESOURCE DESIGNATOR	LEADER	NUMBER PERSONS	TRANS. NEEDED	DROP OFF POINT / TIME	PICK UP POINT / TIME
<b>ENG BDF E-338</b>		<b>5</b>			
<b>ENG NDC BR-61</b>	<b>Snyder</b>	<b>5</b>			
<b>ENG KNF E-326</b>	<b>Cortes</b>	<b>3</b>			
<b>ENG BLM E-831</b>	<b>Sonova</b>	<b>4</b>			
<b>ENG HIA E9542</b>		<b>3</b>			
<b>ENG Firestrom 9909</b>	<b>Howard</b>	<b>3</b>			
<b>Dozer Lepage E-66</b>	<b>Hill</b>	<b>2</b>			
<b>Patrol 37</b>		<b>1</b>			
<b>Prevention 24</b>		<b>1</b>			
<b>WT SHF 56</b>	<b>Devine</b>	<b>2</b>			

7. CONTROL OPERATIONS  
 Establish control lines either indirect or direct.  
 Secure slopover

8. SPECIAL INSTRUCTIONS  
 \*\*\*Do not use non metered hydrants\*\*\*

9. DIVISION/GROUP COMMUNICATIONS SUMMARY							
FUNCTION	FREQ.	SYSTEM	CHAN.	FUNCTION	FREQ.	SYSTEM	CHAN.
COMMAND				LOCAL			
				REPEAT			
DIV /GROUP TACTICAL				AIR to GROUND			
PREPARED BY (RESOURCE UNIT LDR.) <b>Dinkel / Knorr / Kershaw</b>				APPROVED BY (PLANNING SECT. CH.) <b>Abbott</b>		DATE <b>08/14/14</b>	TIME <b>22:40</b>

INCIDENT RADIO COMMUNICATIONS PLAN		Incident Name Happy Camp Complex			Date/Time Prepared 08/14/2014 2000 hrs	Operational Period Date/Time 08/15/2014-08/16/2014 0600-0600 (24 HR)			
Ch #	Function	Channel Name	Assignment	RX Freq N or W	RX Tone/NAC (107.2)	TX Freq N or W	Tx Tone/NAC (107.2)	Mode Analog	Remarks
1	Command	CMD 1	All Divisions	173.0625	Tone 10 (107.2)	167.9625	Tone 10 (107.2)	A	Slater Butte
2	Command	CMD 2	All Divisions	168.7000	Tone 10 (107.2)	170.9750	Tone 10 (107.2)	A	Baldy Mtn
3	Command	CMD 3	All Divisions	169.5375	Tone 10 (107.2)	164.7125	Tone 10 (107.2)	A	Lake Mtn
4	BACK UP NET	ORNG RPT	All Divisions	168.7750		170.5750	Tone 11 (114.8)	A	Tone 2, 4, 11
5	Tactical	NIFC T-5	DIV A	166.7250	Tone 10 (107.2)	166.7250	Tone 10 (107.2)	A	
6	Tactical	NIFC T-6	DIV G	166.7750	Tone 10 (107.2)	166.7750	Tone 10 (107.2)	A	
7	Tactical	NIFC T-7	DIV L	168.2500	Tone 10 (107.2)	168.2500	Tone 10 (107.2)	A	
8	Tactical	NIFC T-1	DIV W	168.0500	Tone 10 (107.2)	168.0500	Tone 10 (107.2)	A	
9	Tactical	NIFC T-3	DIV Z	168.6000	Tone 10 (107.2)	168.6000	Tone 10 (107.2)	A	
10	Air to Ground	A/G-TAC	All Divisions	166.6750		166.6750		A	
11	Air to Ground	A/G-CMD	Overhead	169.1500		169.1500		A	
12	Tactical	R5 TAC 4	Unassigned	166.5500	Tone 10 (107.2)	166.5500	Tone 10 (107.2)	A	
13	Tactical	R5 TAC 5	DIV T	167.1125	Tone 10 (107.2)	167.1125	Tone 10 (107.2)	A	
14	Tactical	R5 TAC 6	DIV Q	168.2375	Tone 10 (107.2)	168.2375	Tone 10 (107.2)	A	
15	EMS TAC	CALCORD	All Divisions	156.0750		156.0750	Tone 6 (156.7)	A	Medical A/G
16/20	AIR GUARD	GUARD	All Divisions	168.6250		168.6250	Tone 1 (110.9)	A	Emergency Only

5. Prepared by (Communications Unit)

Chris Perry COML(t) COMMUNICATIONS 530 493-1507

Incident Location

County

State

Latitude

N Longitude

W

1. BRANCH		2. DIVISION/GROUP <b>G (Con't)</b>		<b>DIVISION ASSIGNMENT LIST ICS 204</b>			
3. INCIDENT NAME <b>Happy Camp Complex</b>			4. OPERATIONAL PERIOD <b>8/15/2014 06:00 - 06:00</b>				
5. OPERATIONS PERSONNEL							
OPERATIONS CHIEF <b>Conklin / Koontz(t)</b>			DIVISION/GROUP SUPERVISOR <b>Marinelli / Schuette (t)</b>				
BRANCH DIRECTOR _____			AIR ATTACK SUPERVISOR _____				
6. RESOURCES ASSIGNED THIS PERIOD							
STRIKE TEAM/TASK FORCE/ RESOURCE DESIGNATOR	LEADER	NUMBER PERSONS	TRANS. NEEDED	DROP OFF POINT / TIME	PICK UP POINT / TIME		
<b>WT KNF 21</b>	<b>Franklin</b>	<b>1</b>					
<b>WT LPF 5</b>	<b>Ramirez</b>	<b>2</b>					
<b>WT Enterprise E-33</b>	<b>Tellechea</b>	<b>1</b>					
<b>WT Cold Springs E-38</b>	<b>Grzybowski</b>	<b>1</b>					
<b>TFLD</b>	<b>Middleton</b>	<b>1</b>					
<b>SOFR</b>	<b>Mott</b>	<b>1</b>					
<b>SOFR (t)</b>	<b>Pingiezer</b>	<b>1</b>					
<b>FEMP</b>	<b>Lachapelle</b>	<b>1</b>					
<b>FEMP</b>	<b>Bezemer</b>	<b>1</b>					
7. CONTROL OPERATIONS							
Establish control lines either indirect or direct.							
Secure slopover							
8. SPECIAL INSTRUCTIONS							
***Do not use non metered hydrants***							
9. DIVISION/GROUP COMMUNICATIONS SUMMARY							
FUNCTION	FREQ.	SYSTEM	CHAN.	FUNCTION	FREQ.	SYSTEM	CHAN.
COMMAND				LOCAL			
				REPEAT			
DIV./GROUP TACTICAL				AIR to GROUND			
PREPARED BY (RESOURCE UNIT LDR.) <b>Dinkel / Knorr / Kershaw</b>			APPROVED BY (PLANNING SECT. CH.) <b>Abbott</b>		DATE 08/14/14	TIME <b>22:40</b>	

INCIDENT RADIO COMMUNICATIONS PLAN		Incident Name Happy Camp Complex		Date/Time Prepared 08/14/2014 2000 hrs	Operational Period Date/Time 08/15/2014-08/16/2014 0600-0600 (24 HR)						
Ch #	Function	Channel Name	Assignment	RX Freq	N or W	RX Tone/NAC	TX Freq	N or W	Tx Tone/NAC	Mode Analog	Remarks
1	Command	CMD 1	All Divisions	173.0625		Tone 10 (107.2)	167.9625		Tone 10 (107.2)	A	Slater Butte
2	Command	CMD 2	All Divisions	168.7000		Tone 10 (107.2)	170.9750		Tone 10 (107.2)	A	Baldy Mtn
3	Command	CMD 3	All Divisions	169.5375		Tone 10 (107.2)	164.7125		Tone 10 (107.2)	A	Lake Mtn
4	BACK UP NET	ORNG RPT	All Divisions	168.7750			170.5750		Tone 11 (114.8)	A	Tone 2, 4, 11
5	Tactical	NIFC T-5	DIV A	166.7250		Tone 10 (107.2)	166.7250		Tone 10 (107.2)	A	
6	Tactical	NIFC T-6	DIV G	166.7750		Tone 10 (107.2)	166.7750		Tone 10 (107.2)	A	
7	Tactical	NIFC T-7	DIV L	168.2500		Tone 10 (107.2)	168.2500		Tone 10 (107.2)	A	
8	Tactical	NIFC T-1	DIV W	168.0500		Tone 10 (107.2)	168.0500		Tone 10 (107.2)	A	
9	Tactical	NIFC T-3	DIV Z	168.6000		Tone 10 (107.2)	168.6000		Tone 10 (107.2)	A	
10	Air to Ground	A/G-TAC	All Divisions	166.6750			166.6750			A	
11	Air to Ground	A/G-CMD	Overhead	169.1500			169.1500			A	
12	Tactical	R5 TAC 4	Unassigned	166.5500		Tone 10 (107.2)	166.5500		Tone 10 (107.2)	A	
13	Tactical	R5 TAC 5	DIV T	167.1125		Tone 10 (107.2)	167.1125		Tone 10 (107.2)	A	
14	Tactical	R5 TAC 6	DIV Q	168.2375		Tone 10 (107.2)	168.2375		Tone 10 (107.2)	A	
15	EMS TAC	CALCORD	All Divisions	156.0750			156.0750		Tone 6 (156.7)	A	Medical A/G
16/20	AIR GUARD	GUARD	All Divisions	168.6250			168.6250		Tone 1 (110.9)	A	Emergency Only

5. Prepared by (Communications Unit)

Chris Perry COML(t) COMMUNICATIONS 530 493-1507

Incident Location  
County

State

Latitude

N Longitude

W





<b>INCIDENT RADIO COMMUNICATIONS PLAN</b>		Incident Name <b>Happy Camp Complex</b>		Date/Time Prepared 08/14/2014 2000 hrs	Operational Period Date/Time 08/15/2014-08/16/2014 0600-0600 (24 HR)
---	--	--	--	--	--

Ch #	Function	Channel Name	Assignment	RX Freq	N or W	RX Tone/NAC	TX Freq	N or W	TX Tone/NAC	Mode Analog	Remarks
1	Command	CMD 1	All Divisions	173.0625		Tone 10 (107.2)	167.9625		Tone 10 (107.2)	A	Slater Butte
2	Command	CMD 2	All Divisions	168.7000		Tone 10 (107.2)	170.9750		Tone 10 (107.2)	A	Baldy Mtn
3	Command	CMD 3	All Divisions	169.5375		Tone 10 (107.2)	164.7125		Tone 10 (107.2)	A	Lake Mtn
4	BACK UP NET	ORNG RPT	All Divisions	168.7750			170.5750		Tone 11 (114.8)	A	Tone 2, 4, 11
5	Tactical	NIFC T-5	DIV A	166.7250		Tone 10 (107.2)	166.7250		Tone 10 (107.2)	A	
6	Tactical	NIFC T-6	DIV G	166.7750		Tone 10 (107.2)	166.7750		Tone 10 (107.2)	A	
7	Tactical	NIFC T-7	DIV L	168.2500		Tone 10 (107.2)	168.2500		Tone 10 (107.2)	A	
8	Tactical	NIFC T-1	DIV W	168.0500		Tone 10 (107.2)	168.0500		Tone 10 (107.2)	A	
9	Tactical	NIFC T-3	DIV Z	168.6000		Tone 10 (107.2)	168.6000		Tone 10 (107.2)	A	
10	Air to Ground	A/G-TAC	All Divisions	166.6750			166.6750			A	
11	Air to Ground	A/G-CMD	Overhead	169.1500			169.1500			A	
12	Tactical	R5 TAC 4	Unassigned	166.5500		Tone 10 (107.2)	166.5500		Tone 10 (107.2)	A	
13	Tactical	R5 TAC 5	DIV T	167.1125		Tone 10 (107.2)	167.1125		Tone 10 (107.2)	A	
14	Tactical	R5 TAC 6	DIV Q	168.2375		Tone 10 (107.2)	168.2375		Tone 10 (107.2)	A	
15	EMS TAC	CALCORD	All Divisions	156.0750			156.0750		Tone 6 (156.7)	A	Medical A/G
16/20	AIR GUARD	GUARD	All Divisions	168.6250			168.6250		Tone 1 (110.9)	A	Emergency Only

5. Prepared by (Communications Unit)  
 Chris Perry COML(t) COMMUNICATIONS 530 493-1507  
 Incident Location  
 County State Latitude Longitude  
 W

1. BRANCH		2. DIVISION/GROUP <b>Q</b>		<b>DIVISION ASSIGNMENT LIST ICS 204</b>			
3. INCIDENT NAME <b>Happy Camp Complex</b>			4. OPERATIONAL PERIOD <b>8/15/2014 06:00 - 06:00</b>				
5. OPERATIONS PERSONNEL							
OPERATIONS CHIEF <b>Conklin / Koontz(t)</b>		DIVISION/GROUP SUPERVISOR <b>M. Fowlkes</b>					
BRANCH DIRECTOR _____		AIR ATTACK SUPERVISOR _____					
6. RESOURCES ASSIGNED THIS PERIOD							
STRIKE TEAM/TASK FORCE/ RESOURCE DESIGNATOR	LEADER	NUMBER PERSONS	TRANS. NEEDED	DROP OFF POINT / TIME	PICK UP POINT / TIME		
<b>CRW IPF 6</b>	<b>Eokel</b>	<b>20</b>	<b>8/14</b>				
<b>CRW Folsom Lake</b>	<b>Lynde</b>	<b>20</b>	<b>8/17</b>				
<b>ENG STF E-14</b>	<b>Ambrose</b>	<b>3</b>	<b>8/14</b>				
<b>ENG CNF E-348</b>	<b>Karling</b>	<b>5</b>					
<b>ENG SNF E-31</b>	<b>Plumer</b>	<b>5</b>					
<b>ENG MDF E-46</b>	<b>Simpson</b>	<b>5</b>					
<b>ENG MDF E-54</b>	<b>Kingwell</b>	<b>5</b>					
<b>ENG Woods Fire E-27</b>	<b>Felix</b>	<b>4</b>					
<b>ENG Bohica E-31</b>	<b>Breglia</b>	<b>3</b>					
<b>WT Shumas</b>	<b>Shults</b>	<b>1</b>					
7. CONTROL OPERATIONS Hold and improve line where possible.							
8. SPECIAL INSTRUCTIONS ***Do not use non metered hydrants***							
9. DIVISION/GROUP COMMUNICATIONS SUMMARY							
FUNCTION	FREQ.	SYSTEM	CHAN.	FUNCTION	FREQ.	SYSTEM	CHAN.
COMMAND		VHF		LOCAL REPEAT			
DIV./GROUP TACTICAL				AIR to GROUND			
PREPARED BY (RESOURCE UNIT LDR.) <b>Dinkel / Knorr / Kershaw</b>			APPROVED BY (PLANNING SECT. CH.) <b>Abbott</b>		DATE <b>08/14/14</b>	TIME <b>22:40</b>	

INCIDENT RADIO COMMUNICATIONS PLAN		Incident Name Happy Camp Complex		Date/Time Prepared 08/14/2014 2000 hrs		Operational Period Date/Time 08/15/2014-08/16/2014 0600-0600 (24 HR)			
Ch #	Function	Channel Name	Assignment	RX Freq N or W	RX Tone/NAC (107.2)	TX Freq N or W	Tx Tone/NAC (107.2)	Mode Analog	Remarks
1	Command	CMD 1	All Divisions	173.0625	Tone 10 (107.2)	167.9625	Tone 10 (107.2)	A	Slater Butte
2	Command	CMD 2	All Divisions	168.7000	Tone 10 (107.2)	170.9750	Tone 10 (107.2)	A	Baldy Mtn
3	Command	CMD 3	All Divisions	169.5375	Tone 10 (107.2)	164.7125	Tone 10 (107.2)	A	Lake Mtn
4	BACK UP NET	ORNG RPT	All Divisions	168.7750		170.5750	Tone 11 (114.8)	A	Tone 2, 4, 11
5	Tactical	NIFC T-5	DIV A	166.7250	Tone 10 (107.2)	166.7250	Tone 10 (107.2)	A	
6	Tactical	NIFC T-6	DIV G	166.7750	Tone 10 (107.2)	166.7750	Tone 10 (107.2)	A	
7	Tactical	NIFC T-7	DIV L	168.2500	Tone 10 (107.2)	168.2500	Tone 10 (107.2)	A	
8	Tactical	NIFC T-1	DIV W	168.0500	Tone 10 (107.2)	168.0500	Tone 10 (107.2)	A	
9	Tactical	NIFC T-3	DIV Z	168.6000	Tone 10 (107.2)	168.6000	Tone 10 (107.2)	A	
10	Air to Ground	A/G-TAC	All Divisions	166.6750		166.6750		A	
11	Air to Ground	A/G-CMD	Overhead	169.1500		169.1500		A	
12	Tactical	R5 TAC 4	Unassigned	166.5500	Tone 10 (107.2)	166.5500	Tone 10 (107.2)	A	
13	Tactical	R5 TAC 5	DIV T	167.1125	Tone 10 (107.2)	167.1125	Tone 10 (107.2)	A	
14	Tactical	R5 TAC 6	DIV Q	168.2375	Tone 10 (107.2)	168.2375	Tone 10 (107.2)	A	
15	EMS TAC	CALCORD	All Divisions	156.0750		156.0750	Tone 6 (156.7)	A	Medical A/G
16/20	AIR GUARD	GUARD	All Divisions	168.6250		168.6250	Tone 1 (110.9)	A	Emergency Only

5. Prepared by (Communications Unit)

Chris Perry COML(t) COMMUNICATIONS 530 493-1507

Incident Location  
County

State

Latitude

N Longitude

W





<b>INCIDENT RADIO COMMUNICATIONS PLAN</b>		Incident Name <b>Happy Camp Complex</b>		Date/Time Prepared <b>08/14/2014 2000 hrs</b>	Operational Period Date/Time <b>08/15/2014-08/16/2014 0600-0600 (24 HR)</b>	
---	--	--	--	--	--	--

Ch #	Function	Channel Name	Assignment	RX Freq	N or W	RX Tone/NAC	TX Freq	N or W	Tx Tone/NAC	Mode Analog	Remarks
1	Command	CMD 1	All Divisions	173.0625		Tone 10 (107.2)	167.9625		Tone 10 (107.2)	A	Slater Butte
2	Command	CMD 2	All Divisions	168.7000		Tone 10 (107.2)	170.9750		Tone 10 (107.2)	A	Baldy Mtn
3	Command	CMD 3	All Divisions	169.5375		Tone 10 (107.2)	164.7125		Tone 10 (107.2)	A	Lake Mtn
4	BACK UP NET	ORNG RPT	All Divisions	168.7750			170.5750		Tone 11 (114.8)	A	Tone 2, 4, 11
5	Tactical	NIFC T-5	DIV A	166.7250		Tone 10 (107.2)	166.7250		Tone 10 (107.2)	A	
6	Tactical	NIFC T-6	DIV G	166.7750		Tone 10 (107.2)	166.7750		Tone 10 (107.2)	A	
7	Tactical	NIFC T-7	DIV L	168.2500		Tone 10 (107.2)	168.2500		Tone 10 (107.2)	A	
8	Tactical	NIFC T-1	DIV W	168.0500		Tone 10 (107.2)	168.0500		Tone 10 (107.2)	A	
9	Tactical	NIFC T-3	DIV Z	168.6000		Tone 10 (107.2)	168.6000		Tone 10 (107.2)	A	
10	Air to Ground	A/G-TAC	All Divisions	166.6750			166.6750			A	
11	Air to Ground	A/G-CMD	Overhead	169.1500			169.1500			A	
12	Tactical	R5 TAC 4	Unassigned	166.5500		Tone 10 (107.2)	166.5500		Tone 10 (107.2)	A	
13	Tactical	R5 TAC 5	DIV T	167.1125		Tone 10 (107.2)	167.1125		Tone 10 (107.2)	A	
14	Tactical	R5 TAC 6	DIV Q	168.2375		Tone 10 (107.2)	168.2375		Tone 10 (107.2)	A	
15	EMS TAC	CALCORD	All Divisions	156.0750			156.0750		Tone 6 (156.7)	A	Medical A/G
16/20	AIR GUARD	GUARD	All Divisions	168.6250			168.6250		Tone 1 (110.9)	A	Emergency Only

5. Prepared by (Communications Unit)  
 Chris Perry COML(t) COMMUNICATIONS 530 493-1507  
 Incident Location  
 County State Latitude Longitude  
 W

1. BRANCH		2. DIVISION/GROUP <b>T</b>		<b>DIVISION ASSIGNMENT LIST ICS 204</b>			
3. INCIDENT NAME <b>Happy Camp Complex</b>			4. OPERATIONAL PERIOD <b>8/15/2014 06:00 - 06:00</b>				
5. OPERATIONS PERSONNEL							
OPERATIONS CHIEF <b>Conklin / Koontz(t)</b>			DIVISION/GROUP SUPERVISOR <b>Rupert / O'Connor (t)</b>				
BRANCH DIRECTOR _____			AIR ATTACK SUPERVISOR _____				
6. RESOURCES ASSIGNED THIS PERIOD							
STRIKE TEAM/TASK FORCE/ RESOURCE DESIGNATOR	LEADER	NUMBER PERSONS	TRANS. NEEDED	DROP OFF POINT / TIME	PICK UP POINT / TIME		
<b>Klamath IHC</b>	<b>Clem</b>	<b>20</b>					
<b>CRW Silver State</b>	<b>Kelly</b>	<b>22</b>					
<b>CREW PAS - 2</b>	<b>Skipper</b>	<b>22</b>					
<b>ENG KNF E-326</b>	<b>Cortes</b>	<b>5</b>					
<b>ENG STF E-14</b>	<b>Ambrose</b>	<b>5</b>					
<b>ENG NPS E-51</b>	<b>Smith</b>						
<b>ENG BIA E-9542</b>	<b>Smith</b>	<b>5</b>					
<b>ENG LPF Patrol 37</b>	<b>Clift</b>	<b>5</b>					
<b>ENG High Seirra E-9</b>	<b>Rowsey</b>	<b>5</b>					
<b>HEQB</b>	<b>Gallager</b>						
7. CONTROL OPERATIONS							
Assess need for structure defense along Elk Creek and Curley Jack.							
Hold and improve line where necessary.							
Scout for possible contingency line.							
8. SPECIAL INSTRUCTIONS							
***Do not use non metered hydrants***							
9. DIVISION/GROUP COMMUNICATIONS SUMMARY							
FUNCTION	FREQ.	SYSTEM	CHAN.	FUNCTION	FREQ.	SYSTEM	CHAN.
COMMAND		VHF		LOCAL REPEAT			
DIV./GROUP TACTICAL				AIR to GROUND			
PREPARED BY (RESOURCE UNIT LDR.) <b>Dinkel / Knorr / Kershaw</b>			APPROVED BY (PLANNING SECT. CH.) <b>Abbott</b>		DATE 08/14/14	TIME <b>22:40</b>	

INCIDENT RADIO COMMUNICATIONS PLAN		Incident Name <b>Happy Camp Complex</b>			Date/Time Prepared 08/14/2014 2000 hrs	Operational Period Date/Time 08/15/2014-08/16/2014 0600-0600 (24 HR)					
Ch #	Function	Channel Name	Assignment	RX Freq	N or W	RX Tone/NAC	TX Freq	N or W	Tx Tone/NAC	Mode Analog	Remarks
1	Command	CMD 1	All Divisions	173.0625		Tone 10 (107.2)	167.9625		Tone 10 (107.2)	A	Slater Butte
2	Command	CMD 2	All Divisions	168.7000		Tone 10 (107.2)	170.9750		Tone 10 (107.2)	A	Baldy Mtn
3	Command	CMD 3	All Divisions	169.5375		Tone 10 (107.2)	164.7125		Tone 10 (107.2)	A	Lake Mtn
4	BACK UP NET	ORNG RPT	All Divisions	168.7750			170.5750		Tone 11 (114.8)	A	Tone 2, 4, 11
5	Tactical	NIFC T-5	DIV A	166.7250		Tone 10 (107.2)	166.7250		Tone 10 (107.2)	A	
6	Tactical	NIFC T-6	DIV G	166.7750		Tone 10 (107.2)	166.7750		Tone 10 (107.2)	A	
7	Tactical	NIFC T-7	DIV L	168.2500		Tone 10 (107.2)	168.2500		Tone 10 (107.2)	A	
8	Tactical	NIFC T-1	DIV W	168.0500		Tone 10 (107.2)	168.0500		Tone 10 (107.2)	A	
9	Tactical	NIFC T-3	DIV Z	168.6000		Tone 10 (107.2)	168.6000		Tone 10 (107.2)	A	
10	Air to Ground	A/G-TAC	All Divisions	166.6750			166.6750			A	
11	Air to Ground	A/G-CMD	Overhead	169.1500			169.1500			A	
12	Tactical	R5 TAC 4	Unassigned	166.5500		Tone 10 (107.2)	166.5500		Tone 10 (107.2)	A	
13	Tactical	R5 TAC 5	DIV T	167.1125		Tone 10 (107.2)	167.1125		Tone 10 (107.2)	A	
14	Tactical	R5 TAC 6	DIV Q	168.2375		Tone 10 (107.2)	168.2375		Tone 10 (107.2)	A	
15	EMS TAC	CALCORD	All Divisions	156.0750			156.0750		Tone 6 (156.7)	A	Medical A/G
16/20	AIR GUARD	GUARD	All Divisions	168.6250			168.6250		Tone 1 (110.9)	A	Emergency Only

5. Prepared by (Communications Unit)

Chris Perry COM1(t) COMMUNICATIONS 530 493-1507

Incident Location  
County

State

Latitude

N Longitude

W



1. BRANCH	2. DIVISION/GROUP <b>T</b>	<b>DIVISION ASSIGNMENT LIST ICS 204</b>
-----------	-------------------------------	---

3. INCIDENT NAME <b>Happy Camp Complex</b>	4. OPERATIONAL PERIOD <b>8/15/2014 06:00 - 06:00</b>
---	---

5. OPERATIONS PERSONNEL	
OPERATIONS CHIEF <b>Conklin / Koontz(t)</b>	DIVISION/GROUP SUPERVISOR <b>Rupert / O'Connor (t)</b>
BRANCH DIRECTOR _____	AIR ATTACK SUPERVISOR _____

6. RESOURCES ASSIGNED THIS PERIOD					
STRIKE TEAM/TASK FORCE/ RESOURCE DESIGNATOR	LEADER	NUMBER PERSONS	TRANS. NEEDED	DROP OFF POINT / TIME	PICK UP POINT / TIME
<b>Dozer Atlas Peak E-63</b>		<b>2</b>			
<b>Dozer Keys E-30</b>		<b>2</b>			
<b>WT SRF 15</b>	<b>Escobar</b>	<b>2</b>			
<b>WT MNF 39</b>	<b>Scott</b>	<b>2</b>			
<b>FALM ABC</b>	<b>Croker / Miller</b>	<b>2</b>	<b>8/25</b>		
<b>SOFR (t)</b>	<b>R. Kelley</b>	<b>1</b>			
<b>FOBS</b>	<b>Engbring</b>	<b>1</b>	<b>8/18</b>		
<b>FOBS</b>	<b>Harris (t)</b>	<b>1</b>			
<b>FEMP</b>	<b>Weiss</b>	<b>1</b>	<b>8/25</b>		
<b>FEMT</b>	<b>Brashear</b>	<b>1</b>	<b>8/26</b>		

7. CONTROL OPERATIONS

Assess need for structure defense along Elk Creek and Curley Jack.

Hold and improve line where necessary.

Scout for possible contingency line.

8. SPECIAL INSTRUCTIONS

\*\*\*Do not use non metered hydrants\*\*\*

9. DIVISION/GROUP COMMUNICATIONS SUMMARY							
FUNCTION	FREQ.	SYSTEM	CHAN.	FUNCTION	FREQ.	SYSTEM	CHAN.
COMMAND		VHF		LOCAL REPEAT			
DIV./GROUP TACTICAL				AIR to GROUND			
PREPARED BY (RESOURCE UNIT LDR.) <b>Dinkel / Knorr / Kershaw</b>				APPROVED BY (PLANNING SECT. CH.) <b>Abbott</b>		DATE 08/14/14	TIME <b>22:40</b>

INCIDENT RADIO COMMUNICATIONS PLAN		Incident Name Happy Camp Complex		Date/Time Prepared 08/14/2014 2000 hrs	Operational Period Date/Time 08/15/2014-08/16/2014 0600-0600 (24 HR)						
Ch #	Function	Channel Name	Assignment	RX Freq	N or W	RX Tone/NAC	TX Freq	N or W	TX Tone/NAC	Mode Analog	Remarks
1	Command	CMD 1	All Divisions	173.0625		Tone 10 (107.2)	167.9625		Tone 10 (107.2)	A	Slater Butte
2	Command	CMD 2	All Divisions	168.7000		Tone 10 (107.2)	170.9750		Tone 10 (107.2)	A	Baldy Mtn
3	Command	CMD 3	All Divisions	169.5375		Tone 10 (107.2)	164.7125		Tone 10 (107.2)	A	Lake Mtn
4	BACK UP NET	ORNG RPT	All Divisions	168.7750			170.5750		Tone 11 (114.8)	A	Tone 2, 4, 11
5	Tactical	NIFC T-5	DIV A	166.7250		Tone 10 (107.2)	166.7250		Tone 10 (107.2)	A	
6	Tactical	NIFC T-6	DIV G	166.7750		Tone 10 (107.2)	166.7750		Tone 10 (107.2)	A	
7	Tactical	NIFC T-7	DIV L	168.2500		Tone 10 (107.2)	168.2500		Tone 10 (107.2)	A	
8	Tactical	NIFC T-1	DIV W	168.0500		Tone 10 (107.2)	168.0500		Tone 10 (107.2)	A	
9	Tactical	NIFC T-3	DIV Z	168.6000		Tone 10 (107.2)	168.6000		Tone 10 (107.2)	A	
10	Air to Ground	A/G-TAC	All Divisions	166.6750			166.6750			A	
11	Air to Ground	A/G-CMD	Overhead	169.1500			169.1500			A	
12	Tactical	R5 TAC 4	Unassigned	166.5500		Tone 10 (107.2)	166.5500		Tone 10 (107.2)	A	
13	Tactical	R5 TAC 5	DIV T	167.1125		Tone 10 (107.2)	167.1125		Tone 10 (107.2)	A	
14	Tactical	R5 TAC 6	DIV Q	168.2375		Tone 10 (107.2)	168.2375		Tone 10 (107.2)	A	
15	EMS TAC	CALCORD	All Divisions	156.0750			156.0750		Tone 6 (156.7)	A	Medical A/G
16/20	AIR GUARD	GUARD	All Divisions	168.6250			168.6250		Tone 1 (110.9)	A	Emergency Only

5. Prepared by (Communications Unit)  
Chris Perry COML(t) COMMUNICATIONS 530 493-1507

Incident Location  
County State Latitude Longitude  
W

1. BRANCH		2. DIVISION/GROUP <b>W</b>		<b>DIVISION ASSIGNMENT LIST ICS 204</b>			
3. INCIDENT NAME <b>Happy Camp Complex</b>			4. OPERATIONAL PERIOD <b>8/15/2014 06:00 - 06:00</b>				
5. OPERATIONS PERSONNEL							
OPERATIONS CHIEF <b>Conklin / Koontz(t)</b>		DIVISION/GROUP SUPERVISOR <b>Reyes / Miller</b>					
BRANCH DIRECTOR _____		AIR ATTACK SUPERVISOR _____					
6. RESOURCES ASSIGNED THIS PERIOD							
STRIKE TEAM/TASK FORCE/ RESOURCE DESIGNATOR	LEADER	NUMBER PERSONS	TRANS. NEEDED	DROP OFF POINT / TIME	PICK UP POINT / TIME		
<b>Vandenberg IHC</b>	<b>Hendricks</b>	<b>18</b>					
<b>CREW PA 2</b>							
<b>Smokejumper 52</b>		<b>8</b>					
<b>ST 3675C</b>	<b>Mata</b>	<b>27</b>					
<b>ENG SRF E-23</b>		<b>5</b>					
<b>ENG FWS E-8460</b>	<b>Togiai</b>	<b>3</b>					
<b>ENG Brush 10</b>	<b>Hardy</b>	<b>4</b>					
<b>ENG Westcott E-512</b>	<b>Hoglund</b>	<b>4</b>					
<b>Dozer Warner E-29</b>	<b>Allen</b>	<b>2</b>					
<b>WT TT Const. E-32</b>	<b>Wilson</b>	<b>1</b>					
7. CONTROL OPERATIONS Establish control lines indirect or direct.							
8. SPECIAL INSTRUCTIONS ***Do not use non metered hydrants***							
9. DIVISION/GROUP COMMUNICATIONS SUMMARY							
FUNCTION	FREQ.	SYSTEM	CHAN.	FUNCTION	FREQ.	SYSTEM	CHAN.
COMMAND		VHF		LOCAL REPEAT			
DIV./GROUP TACTICAL				AIR to GROUND			
PREPARED BY (RESOURCE UNIT LDR.) <b>Dinkel / Knorr / Kershaw</b>			APPROVED BY (PLANNING SECT. CH.) <b>Abbott</b>		DATE <b>08/14/14</b>	TIME <b>22:40</b>	

INCIDENT RADIO COMMUNICATIONS PLAN		Incident Name Happy Camp Complex			Date/Time Prepared 08/14/2014 2000 hrs	Operational Period Date/Time 08/15/2014-08/16/2014 0600-0600 (24 HR)					
Ch #	Function	Channel Name	Assignment	RX Freq	N or W	RX Tone/NAC	TX Freq	N or W	Tx Tone/NAC	Mode Analog	Remarks
1	Command	CMD 1	All Divisions	173.0625		Tone 10 (107.2)	167.9625		Tone 10 (107.2)	A	Slater Butte
2	Command	CMD 2	All Divisions	168.7000		Tone 10 (107.2)	170.9750		Tone 10 (107.2)	A	Baldy Mtn
3	Command	CMD 3	All Divisions	169.5375		Tone 10 (107.2)	164.7125		Tone 10 (107.2)	A	Lake Mtn
4	BACK UP NET	ORNG RPT	All Divisions	168.7750			170.5750		Tone 11 (114.8)	A	Tone 2, 4, 11
5	Tactical	NIFC T-5	DIV A	166.7250		Tone 10 (107.2)	166.7250		Tone 10 (107.2)	A	
6	Tactical	NIFC T-6	DIV G	166.7750		Tone 10 (107.2)	166.7750		Tone 10 (107.2)	A	
7	Tactical	NIFC T-7	DIV L	168.2500		Tone 10 (107.2)	168.2500		Tone 10 (107.2)	A	
8	Tactical	NIFC T-1	DIV W	168.0500		Tone 10 (107.2)	168.0500		Tone 10 (107.2)	A	
9	Tactical	NIFC T-3	DIV Z	168.6000		Tone 10 (107.2)	168.6000		Tone 10 (107.2)	A	
10	Air to Ground	A/G-TAC	All Divisions	166.6750			166.6750			A	
11	Air to Ground	A/G-CMD	Overhead	169.1500			169.1500			A	
12	Tactical	R5 TAC 4	Unassigned	166.5500		Tone 10 (107.2)	166.5500		Tone 10 (107.2)	A	
13	Tactical	R5 TAC 5	DIV T	167.1125		Tone 10 (107.2)	167.1125		Tone 10 (107.2)	A	
14	Tactical	R5 TAC 6	DIV Q	168.2375		Tone 10 (107.2)	168.2375		Tone 10 (107.2)	A	
15	EMS TAC	CALCORD	All Divisions	156.0750			156.0750		Tone 6 (156.7)	A	Medical A/G
16/20	AIR GUARD	GUARD	All Divisions	168.6250			168.6250		Tone 1 (110.9)	A	Emergency Only

5. Prepared by (Communications Unit)  
 Chris Perry COML(t) COMMUNICATIONS 530 493-1507  
 Incident Location  
 County State Latitude Longitude  
 W





INCIDENT RADIO COMMUNICATIONS PLAN		Incident Name Happy Camp Complex			Date/Time Prepared 08/14/2014 2000 hrs	Operational Period Date/Time 08/15/2014-08/16/2014 0600-0600 (24 HR)					
Ch #	Function	Channel Name	Assignment	RX Freq	N or W	RX Tone/NAC	TX Freq	N or W	Tx Tone/NAC	Mode Analog	Remarks
1	Command	CMD 1	All Divisions	173.0625		Tone 10 (107.2)	167.9625		Tone 10 (107.2)	A	Slater Butte
2	Command	CMD 2	All Divisions	168.7000		Tone 10 (107.2)	170.9750		Tone 10 (107.2)	A	Baldy Mtn
3	Command	CMD 3	All Divisions	169.5375		Tone 10 (107.2)	164.7125		Tone 10 (107.2)	A	Lake Mtn
4	BACK UP NET	ORNG RPT	All Divisions	168.7750			170.5750		Tone 11 (114.8)	A	Tone 2, 4, 11
5	Tactical	NIFC T-5	DIV A	166.7250		Tone 10 (107.2)	166.7250		Tone 10 (107.2)	A	
6	Tactical	NIFC T-6	DIV G	166.7750		Tone 10 (107.2)	166.7750		Tone 10 (107.2)	A	
7	Tactical	NIFC T-7	DIV L	168.2500		Tone 10 (107.2)	168.2500		Tone 10 (107.2)	A	
8	Tactical	NIFC T-1	DIV W	168.0500		Tone 10 (107.2)	168.0500		Tone 10 (107.2)	A	
9	Tactical	NIFC T-3	DIV Z	168.6000		Tone 10 (107.2)	168.6000		Tone 10 (107.2)	A	
10	Air to Ground	A/G-TAC	All Divisions	166.6750			166.6750			A	
11	Air to Ground	A/G-CMD	Overhead	169.1500			169.1500			A	
12	Tactical	R5 TAC 4	Unassigned	166.5500		Tone 10 (107.2)	166.5500		Tone 10 (107.2)	A	
13	Tactical	R5 TAC 5	DIV T	167.1125		Tone 10 (107.2)	167.1125		Tone 10 (107.2)	A	
14	Tactical	R5 TAC 6	DIV Q	168.2375		Tone 10 (107.2)	168.2375		Tone 10 (107.2)	A	
15	EMS TAC	CALCORD	All Divisions	156.0750			156.0750		Tone 6 (156.7)	A	Medical A/G
16/20	AIR GUARD	GUARD	All Divisions	168.6250			168.6250		Tone 1 (110.9)	A	Emergency Only

5. Prepared by (Communications Unit) Chris Perry COM1(t) COMMUNICATIONS 530 493-1507

Incident Location County State Latitude Longitude W



INCIDENT RADIO COMMUNICATIONS PLAN		Incident Name Happy Camp Complex			Date/Time Prepared 08/14/2014 2000 hrs	Operational Period Date/Time 08/15/2014-08/16/2014 0600-0600 (24 HR)					
Ch #	Function	Channel Name	Assignment	RX Freq	N or W	RX Tone/NAC	TX Freq	N or W	Tx Tone/NAC	Mode Analog	Remarks
1	Command	CMD 1	All Divisions	173.0625		Tone 10 (107.2)	167.9625		Tone 10 (107.2)	A	Slater Butte
2	Command	CMD 2	All Divisions	168.7000		Tone 10 (107.2)	170.9750		Tone 10 (107.2)	A	Baldy Mtn
3	Command	CMD 3	All Divisions	169.5375		Tone 10 (107.2)	164.7125		Tone 10 (107.2)	A	Lake Mtn
4	BACK UP NET	ORNG RPT	All Divisions	168.7750			170.5750		Tone 11 (114.8)	A	Tone 2, 4, 11
5	Tactical	NIFC T-5	DIV A	166.7250		Tone 10 (107.2)	166.7250		Tone 10 (107.2)	A	
6	Tactical	NIFC T-6	DIV G	166.7750		Tone 10 (107.2)	166.7750		Tone 10 (107.2)	A	
7	Tactical	NIFC T-7	DIV L	168.2500		Tone 10 (107.2)	168.2500		Tone 10 (107.2)	A	
8	Tactical	NIFC T-1	DIV W	168.0500		Tone 10 (107.2)	168.0500		Tone 10 (107.2)	A	
9	Tactical	NIFC T-3	DIV Z	168.6000		Tone 10 (107.2)	168.6000		Tone 10 (107.2)	A	
10	Air to Ground	A/G-TAC	All Divisions	166.6750			166.6750			A	
11	Air to Ground	A/G-CMD	Overhead	169.1500			169.1500			A	
12	Tactical	R5 TAC 4	Unassigned	166.5500		Tone 10 (107.2)	166.5500		Tone 10 (107.2)	A	
13	Tactical	R5 TAC 5	DIV T	167.1125		Tone 10 (107.2)	167.1125		Tone 10 (107.2)	A	
14	Tactical	R5 TAC 6	DIV Q	168.2375		Tone 10 (107.2)	168.2375		Tone 10 (107.2)	A	
15	EMS TAC	CALCORD	All Divisions	156.0750			156.0750		Tone 6 (156.7)	A	Medical A/G
16/20	AIR GUARD	GUARD	All Divisions	168.6250			168.6250		Tone 1 (110.9)	A	Emergency Only

5. Prepared by (Communications Unit)  
Chris Perry COML(t) COMMUNICATIONS 530 493-1507





<b>INCIDENT RADIO COMMUNICATIONS PLAN</b>		Incident Name <b>Happy Camp Complex</b>		Date/Time Prepared 08/14/2014 2000 hrs	Operational Period Date/Time 08/15/2014-08/16/2014 0600-0600 (24 HR)
---	--	--	--	--	--

Ch #	Function	Channel Name	Assignment	RX Freq	N or W	RX Tone/NAC	TX Freq	N or W	Tx Tone/NAC	Mode Analog	Remarks
1	Command	CMD 1	All Divisions	173.0625		Tone 10 (107.2)	167.9625		Tone 10 (107.2)	A	Slater Butte
2	Command	CMD 2	All Divisions	168.7000		Tone 10 (107.2)	170.9750		Tone 10 (107.2)	A	Baldy Mtn
3	Command	CMD 3	All Divisions	169.5375		Tone 10 (107.2)	164.7125		Tone 10 (107.2)	A	Lake Mtn
4	BACK UP NET	ORNG RPT	All Divisions	168.7750			170.5750		Tone 11 (114.8)	A	Tone 2, 4, 11
5	Tactical	NIFC T-5	DIV A	166.7250		Tone 10 (107.2)	166.7250		Tone 10 (107.2)	A	
6	Tactical	NIFC T-6	DIV G	166.7750		Tone 10 (107.2)	166.7750		Tone 10 (107.2)	A	
7	Tactical	NIFC T-7	DIV L	168.2500		Tone 10 (107.2)	168.2500		Tone 10 (107.2)	A	
8	Tactical	NIFC T-1	DIV W	168.0500		Tone 10 (107.2)	168.0500		Tone 10 (107.2)	A	
9	Tactical	NIFC T-3	DIV Z	168.6000		Tone 10 (107.2)	168.6000		Tone 10 (107.2)	A	
10	Air to Ground	A/G-TAC	All Divisions	166.6750			166.6750			A	
11	Air to Ground	A/G-CMD	Overhead	169.1500			169.1500			A	
12	Tactical	R5 TAC 4	Unassigned	166.5500		Tone 10 (107.2)	166.5500		Tone 10 (107.2)	A	
13	Tactical	R5 TAC 5	DIV T	167.1125		Tone 10 (107.2)	167.1125		Tone 10 (107.2)	A	
14	Tactical	R5 TAC 6	DIV Q	168.2375		Tone 10 (107.2)	168.2375		Tone 10 (107.2)	A	
15	EMS TAC	CALCORD	All Divisions	156.0750			156.0750		Tone 6 (156.7)	A	Medical A/G
16/20	AIR GUARD	GUARD	All Divisions	168.6250			168.6250		Tone 1 (110.9)	A	Emergency Only

5. Prepared by (Communications Unit)  
Chris Perry COML(t) COMMUNICATIONS 530 493-1507

1. BRANCH	2. DIVISION/GROUP <b>NIGHT</b>	<b>DIVISION ASSIGNMENT LIST ICS 204</b>
-----------	-----------------------------------	---

3. INCIDENT NAME <b>Happy Camp Complex</b>	4. OPERATIONAL PERIOD <b>8/15/2014 06:00 - 06:00</b>
---	---

5. OPERATIONS PERSONNEL	
OPERATIONS CHIEF <b>Bogens / Espinoza(t)</b>	DIVISION/GROUP SUPERVISOR _____
BRANCH DIRECTOR _____	AIR ATTACK SUPERVISOR _____

6. RESOURCES ASSIGNED THIS PERIOD					
STRIKE TEAM/TASK FORCE/ RESOURCE DESIGNATOR	LEADER	NUMBER PERSONS	TRANS. NEEDED	DROP OFF POINT / TIME	PICK UP POINT / TIME
<b>ENG SHF E-311</b>	<b>Cruz</b>	<b>5</b>			
<b>ENG MED E-596</b>	<b>Cratchley</b>	<b>3</b>			
<b>ENG MIC E-1690</b>	<b>Fukuda</b>	<b>2</b>			
<b>ENG Firestorm E-9901</b>	<b>Wells</b>	<b>5</b>			
<b>ENG Firestorm E-9903</b>	<b>Maasen</b>	<b>3</b>			

7. CONTROL OPERATIONS <b>Patrol</b>
--

8. SPECIAL INSTRUCTIONS <b>***Do not use non metered hydrants***</b>
---

9. DIVISION/GROUP COMMUNICATIONS SUMMARY							
FUNCTION	FREQ.	SYSTEM	CHAN.	FUNCTION	FREQ.	SYSTEM	CHAN.
COMMAND		VHF		LOCAL REPEAT			
DIV./GROUP TACTICAL				AIR to GROUND			

PREPARED BY (RESOURCE UNIT LDR.) <b>Dinkel / Knorr / Kershaw</b>	APPROVED BY (PLANNING SECT. CH.) <b>Abbott</b>	DATE 08/14/14	TIME <b>22:40</b>
---	---	------------------	----------------------

INCIDENT RADIO COMMUNICATIONS PLAN		Incident Name Happy Camp Complex		Date/Time Prepared 08/14/2014 2000 hrs		Operational Period Date/Time 08/15/2014-08/16/2014 0600-0600 (24 HR)			
Ch #	Function	Channel Name	Assignment	RX Freq N or W	RX Tone/NAC (107.2)	TX Freq N or W	Tx Tone/NAC (107.2)	Mode Analog	Remarks
1	Command	CMD 1	All Divisions	173.0625	Tone 10 (107.2)	167.9625	Tone 10 (107.2)	A	Slater Butte
2	Command	CMD 2	All Divisions	168.7000	Tone 10 (107.2)	170.9750	Tone 10 (107.2)	A	Baldy Mtn
3	Command	CMD 3	All Divisions	169.5375	Tone 10 (107.2)	164.7125	Tone 10 (107.2)	A	Lake Mtn
4	BACK UP NET	ORNG RPT	All Divisions	168.7750		170.5750	Tone 11 (114.8)	A	Tone 2, 4, 11
5	Tactical	NIFC T-5	DIV A	166.7250	Tone 10 (107.2)	166.7250	Tone 10 (107.2)	A	
6	Tactical	NIFC T-6	DIV G	166.7750	Tone 10 (107.2)	166.7750	Tone 10 (107.2)	A	
7	Tactical	NIFC T-7	DIV L	168.2500	Tone 10 (107.2)	168.2500	Tone 10 (107.2)	A	
8	Tactical	NIFC T-1	DIV W	168.0500	Tone 10 (107.2)	168.0500	Tone 10 (107.2)	A	
9	Tactical	NIFC T-3	DIV Z	168.6000	Tone 10 (107.2)	168.6000	Tone 10 (107.2)	A	
10	Air to Ground	A/G-TAC	All Divisions	166.6750		166.6750		A	
11	Air to Ground	A/G-CMD	Overhead	169.1500		169.1500		A	
12	Tactical	R5 TAC 4	Unassigned	166.5500	Tone 10 (107.2)	166.5500	Tone 10 (107.2)	A	
13	Tactical	R5 TAC 5	DIV T	167.1125	Tone 10 (107.2)	167.1125	Tone 10 (107.2)	A	
14	Tactical	R5 TAC 6	DIV Q	168.2375	Tone 10 (107.2)	168.2375	Tone 10 (107.2)	A	
15	EMS TAC	CALCORD	All Divisions	156.0750		156.0750	Tone 6 (156.7)	A	Medical A/G
16/20	AIR GUARD	GUARD	All Divisions	168.6250		168.6250	Tone 1 (110.9)	A	Emergency Only

5. Prepared by (Communications Unit)

Chris Perry COML(t) COMMUNICATIONS 530 493-1507

Incident Location  
County

State

Latitude

N Longitude

W

# AIR OPERATIONS SUMMARY

PREPARED BY: Ted Visser

PREPARED DATE/TIME: 08/14/14 2100

1. INCIDENT NAME: Happy Camp Comp. 2. OPERATIONAL PERIOD DATE: 08/15/14 START TIME: 0700 END TIME: 2000 SUNRISE:0620 SUNSET:2016

3. REMARKS (Safety Notes, Hazards, Air Operations Special Equipment, etc.)

Thunderstorms, erratic winds. Low wires and cables  
 Numerous aircraft in confined areas. Military training routes near fire area.  
 Flight following procedures at Cave Junction: Aircraft will contact (call sign) "Medford Interagency" when transitioning from Helibase through OR-MIC airspace on 168.6500 Tone 110.9. Aircraft are to remain on the OR-MIC frequency until over the Siskiyou Crest. At the Crest, aircraft are to contact Happy Camp Complex Air Attack for hand off. If ATGS is not present contact will be made on YICC Forest Net, RX 164.1750, Tx 164.9750 Tone 114.8

4. MEDEVAC A/C: 408  
 I/A A/C: H-503  
 503 litter capable

5. TFR: 4/4021  
 Radius: NA NM  
 Altitude: 8000 MSL  
 42.00.00 X123.39.54  
 42.00.00 X123.11.38  
 41.36.9 X123.31.37  
 41.36.9 X 123.12.27

6. PERSONNEL	Phone	7. FREQUENCIES	AM	FM	8. FIXED-WING	# Avail / Type/ Make-Model / FAA N# / Base(s)
AOBD: Ted Visser	619-981-2409	AIR/AIR FW:	133.7250		Airtankers	Available through Yreka Dispatch
ATGS: Darroll Abeyta		AIR/AIR RW:		162.2250	Leadplanes	Available through Yreka Dispatch
ASGS: Galen Young	575-574-8720	AIR/GRD: Tac AIR/GRD: Cmd		166.6750 169.1500	ATBase FAX #:	
AOBD: Dep. JoAnn Overacker	949-648-9859	COMMAND:			ATGS Aircraft	AA- N119AB Abeyta
HEBM: Bjorn Burgeson HEB2	530-310-3549	COMMAND 1			AAB:	Weed
		DECK FREQ:				
		TOLC FREQ: Medical A/G: CALCORD				
			Rx: 167.9625 Tone 107.2 Tx: 173.0625 Tone 107.2			
			Rx: 156.0750 Tone 156.7			

## 9. HELICOPTERS (Use Additional Sheets As Necessary)

FAA N#	TY	MAKE/MODEL	BASE	AVAIL	START	REMARKS	FAA N#	TY	MAKE/MODEL	BASE	AVAIL	START	REMARKS
H-503	3	Bell 407	Happy Camp	0900	0830								
H-510	2	Bell 205	Cave Jct	0900	0830								
H-516	2	Bell 205	Cave Jct	0900	0830								
H-534	2	Bell 205++	Cave Jct	0900	0830								
184CH	1	KV107+	Cave Jct	0900	0830	Bucket							
HT-783	1	S-64	Cave Jct	0900	0830	Tanked							
HT-746	1	S-64	Cave Jct	0900	0830	Tanked							



<b>MEDICAL PLAN</b>	1. Incident Name <b>HAPPY CAMP</b>	2. Date Prepared <b>8/14/14</b>	3. Time Prepared <b>0600</b>	4. Operational Period <b>8/15/14 0600 - 0600</b>		
<b>5. Incident Medical Aid Station</b>						
Medical Aid Stations		Location		Paramedics Yes No		
MEDICAL UNIT TRAILER		HAPPY CAMP INCIDENT BASE 530-493-1506		X		
<b>6. Transportation</b>						
<b>A. Ambulance Services</b>						
Name	Address	Phone	Paramedics Yes No			
ARCATA AMBULANCE	ICP	Communications	X			
HAPPY CAMP VOL. AMBULANCE	ETNA, CA	911 or 530-598-1549	X			
<b>B. Air Ambulances</b>						
Name	Location	Phone	Paramedics Yes No			
MERCY FLIGHTS (Daylight only)	Medford, OR	Order via Yreka	X			
KERN COUNTY 408 (NVG & Hoist)	Scott Valley Helibase	530-842-3380	X			
CHP H14 (NVG & HOIST)	Redding, CA Airport	530-842-3380		X		
CA NATIONAL GAURD (NVG & Hoist)	Redding, CA Airport – Blackhawk	530-842-3380	X			
<b>7. Hospitals</b>						
Name	Address	Travel Time (min) Air Ground	Phone	Helipad Yes No	Burn Center Yes No	Trauma Center Level No
FAIRCHILD MED CENTER	444 BRUCE ST, YREKA, CA N41 43.13 x W122 38.69	20 min 1.5hr	530-842-4121 530-841-6259	X		X
MERCY MED CENTER MT SHASTA	914 PINE ST, MT SHASTA, CA N 41 15.48 x W 122 16.15	45 min 2.5 hrs	530-926-6111	X		X L3
ROGUE VALLEY MED CENTER	2825 Barnett Rd., Medford, OR N 42 19.08 x W 122 49.91	30 min 2.5 hrs	530-225-6000	X		X L2
UC DAVIS MED CENTER	2315 Stockton Blvd., SAC, CA N 38 33.3 x W 121 27.3	2hr 7.0hr	916-734-3636 916-734-3790	X	X	L1
<b>8. Medical Emergency Procedures</b>						
<b>LINE EMERGENCY:</b> Crew Supervisor to contact DIVS with patient complaint/condition and location. 1) DIVS Contacts: <ul style="list-style-type: none"> <li>Line EMT (If Assigned)</li> <li>Communications Unit</li> <li>Operations / Branch</li> </ul> 2) On scene EMT, DIVS, or MEDL decides mode of transportation 3) Communications Unit contacts: <ul style="list-style-type: none"> <li>Medical Unit</li> <li>Transport Dispatch</li> <li>Safety</li> <li>Helibase, if Air Ambulance in bound</li> </ul> 4) Operations will manage medical emergency with input from Medical Unit 5) If a MedEvac is needed be sure to <ul style="list-style-type: none"> <li>Know the lat. and long. of the closest helispot</li> </ul>		<b>CAMP EMERGENCY:</b> Contact Medical Unit with patient complaint/condition and location. Medical staff will respond to stabilize incident: Medical Unit Contacts: <ul style="list-style-type: none"> <li>Communications</li> <li>Safety</li> <li>Logistics</li> <li>Operations</li> <li>Crew Supervisor</li> </ul>		<b>Pt. Assessment:</b> <ul style="list-style-type: none"> <li>Mental Status</li> <li>Blood Pressure</li> <li>Pulse</li> <li>Skin Condition</li> <li>Respirations</li> <li>Crew Name and Location</li> </ul> <b>WARNING SIGNS OF HEAT ILLNESS INCLUDES THE FOLLOWING:</b> <ul style="list-style-type: none"> <li>An extremely high body temperature (&gt;103°F)</li> <li>Red, hot and dry skin</li> <li>Rapid, irregular and strong pulse</li> <li>Throbbing headache</li> <li>Dizziness, Nausea and Confusion</li> <li>Unconsciousness</li> </ul> <b>HOW TO TREAT HEAT EMERGENCIES ON THE LINE:</b> <ul style="list-style-type: none"> <li>Notify Crew Supervisor.</li> <li>Move the patient to the shade or provide shade for them.</li> <li>Externally cool the patient.</li> <li>Fan the patient after wetting with water.</li> <li>If conscious and coherent, allow to slowly drink water and electrolyte sports drink in 3:1 ratio.</li> </ul>		
9. Prepared by (Medical Unit Leader) Jason Serrano / Gina Fowlkes 		10. Reviewed by (Safety Officer) Paul Tomkins / John Bates 			ICS 206	





## ***Health & Safety Message***

<b>Incident:</b> Happy Camp Complex CA-KNF-005956	<b>Date/Op Period:</b> Day/Night 8/15/14 0600-0600
--	---

### **Hazards & Risks**

***Steep Terrain and Rolling Stuff!*** : With very steep terrain in all Divisions comes rolling rocks, logs, and humans. Watch your footing and avoid working below other personnel and equipment working above you. Stagger yourselves as you hike up and down the fireline and watch your spacing.

***Snag Hazards:*** Fire weakened timber and falling snags are found in all Divisions. Reference pg. 22 of the 2014 IRPG for considerations and mitigation measures. Apply sound risk management when considering tree felling and establish safe work areas.

***Vehicle Operations:*** Respect the local traffic laws and use extra caution when driving along forest roads in your areas of operation. Establish a traffic flow plan in areas that require it. Use emergency lighting as needed, especially when working along public roadways.

***Emergency Medical:*** Review and brief the medical treatment and evacuation plan on the ICS 206 Medical Plan. The Happy Camp area has extended response and transport times for EMS so get medical responders going early on.

### **NO SLEEPING IN AND AROUND YOUR VEHICLES!**

*Sleep in designated sleeping area ONLY.*

<b>Prepared By:</b> Paul Tompkins SOFR2	<b>Approved:</b> Dave Kelly, Deputy IC
---	--

**L.** Lookouts **C.** Communications **E.** Escape Routes **S.** Safety Zones

**BE MINDFUL**



## Incident within an Incident Action Plan

### When the scope or complexity of the emergency exceeds division resource needs

This plan is designed to identify the initial actions that should be taken by the first arriving personnel on a serious accident. This person may be a single resource, engine boss, or a crew boss. Accidents or incidents within an incident happen rapidly and require sound, calm initial decisions to handle the problem, while still focusing on the main incident. The following checklist provides some key thoughts and actions.

The first arriving person to any accident should notify their Division Supervisor, or the Div Sup assigned to that location.

#### **Advise of the critical information needed:**

- Accident scene safety assessment and advise incoming personnel
- Number of injuries and their severity
- Special equipment needs (extrication, low/high angle rescue, fire protection or suppression)
- Assist the injured as necessary without endangering yourself or other personnel
- Do not move trauma victims unless their safety is in jeopardy
- Utilize PINK pages of the Incident Response Pocket Guide (IRPG) for patient assessment/medical procedures

#### **Remain aware of surroundings and delegate personnel to monitor the main fire**

The **Division Supervisor** will assume command of the accident/incident scene upon arrival. The following list outlines the general duties and tasks that should be completed on most accidents/incidents.

1. Delegate division oversight to another Division Supervisor or other qualified person.
2. Request a clear frequency from Comm and consider switching to designated Emergency Tactical (Incident Comm will notify the MEDL who will initiate the medical plan for injuries)
3. Order/delegate resources appropriate for the accident/incident (crew EMT's, Line EMT's or Line Medics, rescue equipment, patient transport needs, manpower)
4. Notify Operations Section Chief and Safety Officer on all accidents/incidents.
5. Begin to document the event accurately and completely. Use ICS form 201 if the event is large or complex.
6. Protect the scene for Investigators

Reference the full Incident Medical Emergency Plan for additional



## Incident within an Incident Action Plan

### Position Assignment Supportive Actions

#### Division Supervisor

- See items 1-6 on page one
- If unable to access accident/incident location, delegate command to a closer qualified resource

#### Medical Unit Leader

- Respond to Comm Unit as soon as possible
- Coordinate with Division Supervisor to ensure proper resources are rapidly ordered
- Assign a MEDL to the scene and other positions to support the response as needed
- Monitor condition updates of patient(s) and coordinate response with Operations

#### Communications Unit Leader

- Maintain clear radio traffic and monitor communications to support response
- Recommend appropriate security and investigative process
- Assess the need for critical Incident Stress Response

#### Safety Officer

- Provide for Safety personnel on scene as needed
- Recommend appropriate security and investigative process
- Assess the need for critical Incident Stress Response

#### Air Attack Supervisor

- Obtain coordinates of the emergency location
- Coordinate air-medical response
- Assist and support the designated Point of Contact with communications and coordination of the emergency response as necessary

#### IC, Command & General Staff

- Manage the emergency and direct specific responsibilities to individual positions to provide an appropriate response
- Notify the host unit and host dispatch center of the size-up information
- Constantly monitor and assess the appropriate response and adapt direction as needed
- Submit all documentation pertaining to the emergency to the Plans Chief

Reference the full Incident Medical Emergency Plan for additional

# Trainee/Trainer Data Worksheet

PLEASE PRINT CLEARLY!

## A. Trainee Data

Trainee Name: \_\_\_\_\_ Cell Phone # (\_\_\_\_) \_\_\_\_\_

Trainee Position: \_\_\_\_\_ Order Number (example: O-16) \_\_\_\_\_

Agency Designator (example: CA-LPF) \_\_\_\_\_ Agency Type: \_\_\_ Federal \_\_\_ State \_\_\_ Local Govt.

If Federal, check one of the following: \_\_\_ USFS \_\_\_ BLM \_\_\_ BIA \_\_\_ FWS \_\_\_ DOD \_\_\_ NWS \_\_\_ NPS

Ordered as a Trainee for the incident? \_\_\_ Yes \_\_\_ No / Ordered as a USFS PRIORITY Trainee? \_\_\_ Yes \_\_\_ No

Date Assigned: \_\_\_\_\_ Incident Release Date: \_\_\_\_\_

*Person's name and title that is responsible for tracking your qualifications: (Where do you want this mailed to?)*

Name: \_\_\_\_\_ Title: \_\_\_\_\_

Agency: \_\_\_\_\_

Agency Address: \_\_\_\_\_ City \_\_\_\_\_

State: \_\_\_\_\_ Zip: \_\_\_\_\_ Phone Number: (\_\_\_\_) \_\_\_\_\_

## B. Trainee Prerequisites

1. Valid Red Card or agency certification card? (**Show to Training Specialist**) \_\_\_ Yes \_\_\_ No
2. Trainee has current Position Taskbook issued by home unit? \_\_\_ Yes \_\_\_ No
3. Trainee has incident issued Position Taskbook with concurrence by home unit? \_\_\_ Yes \_\_\_ No

## C. Trainer/Evaluator Data

Trainer/Evaluator Name: \_\_\_\_\_ Position: \_\_\_\_\_

Agency: \_\_\_\_\_ Cell Phone # (\_\_\_\_) \_\_\_\_\_

Address: \_\_\_\_\_ City: \_\_\_\_\_

State: \_\_\_\_\_ Zip Code: \_\_\_\_\_ Alternate Phone # (\_\_\_\_) \_\_\_\_\_

Order # (example: O-16) \_\_\_\_\_ Incident Release Date: \_\_\_\_\_

## D. Training Goals - (3 core tasks or objectives in your taskbook to be evaluated on this incident)

1. \_\_\_\_\_

2. \_\_\_\_\_

3. \_\_\_\_\_



## **STRESS REMINDERS**

- **Take action, don't ignore your stress**
- **Stay in touch with team members and communicate**
- **Talk and share feelings**
- **Replenish, rest, get some down time**

**Stress is normal and everyone has it.**

**PRACTICE RANDOM ACTS OF KINDNESS!  
IT WILL MAKE ANOTHER PERSON'S DAY!  
IT WILL MAKE YOUR DAY!**

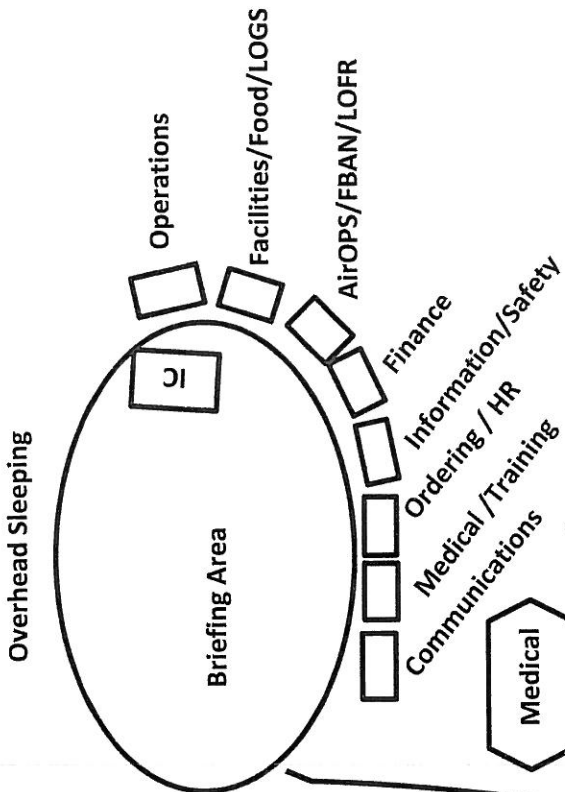
Incident Human Resource Specialist: Kathy Kreyns-here to serve you

Location: HRSP Trailer 909-731-1771 Cell



Ground Support

HWY 96



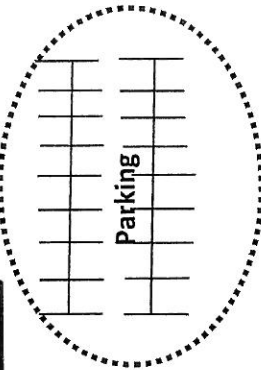
COPY Trailer

PLANS, RESL,  
SITL, Check-in

Supply

REFER  
Lunches

Kitchen  
0500 - 1000  
1700 - 2200



Sleep Trailer

Crew sleeping & additional  
parking

Shower Unit  
0500 - 2300  
1200 - 1400 closed

# Happy Camp Complex Base Camp Map

8/13/2014

"Map not to Scale"

