

# **HAPPY CAMP COMPLEX**

**CA-KNF-005956**

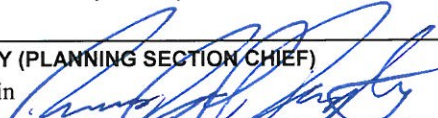
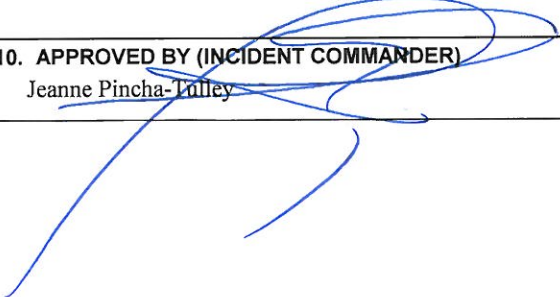
**P5JB1F-0505**

**DAY/NIGHT SHIFT**

**AUGUST 30, 2014 0600-1800**

**AUGUST 30-31, 2014 1800-0600**



<b>INCIDENT OBJECTIVES</b>	<b>1. INCIDENT NAME</b> <b>Happy Camp Complex</b>	<b>2. DATE</b> <b>8/30/2014</b>	<b>3. TIME</b> <b>2000</b>									
<b>4. OPERATIONAL PERIOD (DATE/TIME)</b> <b>August 30-31, 2014 DAY/NIGHT 0600-1800/1800-0600</b>												
<p><b>5. GENERAL CONTROL OBJECTIVES FOR THE INCIDENT (INCLUDE ALTERNATIVES)</b></p> <p>Firefighter and public safety is our core value. All identified hazards will be mitigated or avoided.</p> <p><b>MANAGEMENT OBJECTIVES:</b></p> <p>Manage costs commensurate with values at risk.</p> <p>Minimize damage to natural and cultural resources caused by fire suppression activities.</p> <p>Maintain the current communication strategy to inform the public, cooperators, and key stakeholders on current fire status and planned actions.</p> <p><b>CONTROL OBJECTIVES:</b></p> <p>Use MIST to minimize impacts to wilderness characteristics.</p> <p>Provide structure defense resources for the communities of Elk Creek, Curly Jack, Happy Camp, Fort Goff, China Grade, Thompson Creek, Seiad, Hamburg, and Scott Bar. Provide support for protecting private property and infrastructure.</p> <p>Manage and coordinate all new fires within Zone 1 and Zone 2 as defined by the TFR.</p> <p>Manage all fires under a full suppression strategy.</p>												
<p><b>6. WEATHER FORECAST FOR OPERATIONAL PERIOD</b></p> <p>The area will be in a post cold front airmass with slightly cooler temperatures and higher humidity values across the fire landscape. However gusty northwest winds are still forecast during the afternoon hours...especially over the exposed ridges. The cooler air aloft may weaken the inversion and allow for some better mixing.</p>												
<p><b>7. GENERAL SAFETY MESSAGE</b></p> <p>Be aware of the cognitive effects of smoke exposure both at Base Camp and on the fireline.</p>												
<p><b>8. Attachments</b> <input checked="" type="checkbox"/> if attached</p> <table border="0"> <tr> <td><input checked="" type="checkbox"/> Organization List (ICS 203)</td> <td><input checked="" type="checkbox"/> Medical Plan (ICS 206)</td> <td><input checked="" type="checkbox"/> Weather Forecast</td> </tr> <tr> <td><input checked="" type="checkbox"/> Assignment List (ICS 204)</td> <td><input checked="" type="checkbox"/> Incident Map</td> <td><input checked="" type="checkbox"/> Base Camp Map</td> </tr> <tr> <td><input checked="" type="checkbox"/> Communications Plan (ICS 205)</td> <td><input checked="" type="checkbox"/> Fire Behavior Forecast</td> <td><input checked="" type="checkbox"/> Air Operations Summary (ICS 220)</td> </tr> </table>				<input checked="" type="checkbox"/> Organization List (ICS 203)	<input checked="" type="checkbox"/> Medical Plan (ICS 206)	<input checked="" type="checkbox"/> Weather Forecast	<input checked="" type="checkbox"/> Assignment List (ICS 204)	<input checked="" type="checkbox"/> Incident Map	<input checked="" type="checkbox"/> Base Camp Map	<input checked="" type="checkbox"/> Communications Plan (ICS 205)	<input checked="" type="checkbox"/> Fire Behavior Forecast	<input checked="" type="checkbox"/> Air Operations Summary (ICS 220)
<input checked="" type="checkbox"/> Organization List (ICS 203)	<input checked="" type="checkbox"/> Medical Plan (ICS 206)	<input checked="" type="checkbox"/> Weather Forecast										
<input checked="" type="checkbox"/> Assignment List (ICS 204)	<input checked="" type="checkbox"/> Incident Map	<input checked="" type="checkbox"/> Base Camp Map										
<input checked="" type="checkbox"/> Communications Plan (ICS 205)	<input checked="" type="checkbox"/> Fire Behavior Forecast	<input checked="" type="checkbox"/> Air Operations Summary (ICS 220)										
<p><b>9. PREPARED BY (PLANNING SECTION CHIEF)</b> Gordon P Martin </p>	<p><b>10. APPROVED BY (INCIDENT COMMANDER)</b> Jeanne Pincha-Lalley </p>											

ORGANIZATION ASSIGNMENT LIST		9. Operations Section	
1. Incident Name HAPPY CAMP COMPLEX ZONE 1 DAY		Day	RICKARD, WILLIAM; HAYES, TALBOT M (t)
2. Date Prepared 08/29/14		Night	
3. Time Prepared 2100		<b>a. Zone I - Branch I</b>	
4. Operational Period 08/30/14 Saturday Day Shift 0600 - 1800		Branch I Director- Day	CARL SCHWOPE
Position	Name	Deputy	
<b>5. Incident Commander and Staff</b>		Division A/C	MATHEW J MADARIAGA
Incident Commander	MICHAEL WAKOSKI, DAN FELIX (t)	Division D/F	BRUCE MILLER; JOHN OWINGS(t)
Deputy	KENNETH KEMPTER	Division H	A. VERDUGO, S. CHUMLEY(t)
Safety Officer	DOUG ELLIOT; J. CHAMBERLIN (t)	Division IA	CLINT GOULD
Information Officer	MARC PEEBLES; RALPH H GONZALES	Staging	DENNIS SPEAR
Liaison Officer	BRIAN RAMSEY	<b>b. Zone I - Branch III</b>	
<b>6. Agency Representative</b>		Branch III Director- Day	MARTIN ADELL
Agency	Name	Division I	BRAD SAWYER
HAPPY CAMP DISTRICT	TOM MUTZ	Division O/Q	THAD MARCOE
KARUK	BILL TRIPP	Division T/Z	M. TOPOLESKI; S. COUNTS(t)
HAPPY CAMP FD	JEFF MOPAS	Structure Group	JOE FREELAND
KNF DIV3	WALTERS, TERRY		
EACC-IARR	MITCH BOUCHONVILLE		
<b>7. Planning Section</b>		<b>c. Division/Groups</b>	
Chief	DENA SICKELS	Branch Director	
Resources Unit	S. BRIGGS, L. BABNEW; J. PETERSON (t)	Deputy	
Situation Unit	MICHAEL BILHEIMER; C. FRY(t)	Division	
Documentation Unit	KIMBERLY KNOBLE; REX CRABTREE	Division	
Demobilization Unit	MICHAEL LEWIS	Division	
Fire Behavior Analyst	JIM HARRIS	Group	
Human Resource Specialist	JAN M CAWTHON		
Training Specialist	WILLIAM R REYNOLDS	<b>d. Air Operations Branch</b>	
GIS Specialist	ED LAMAS, EVAN CONKLIN, RICH MURRILO,	Air Operations Branch Director	HANK REIMER
Computer Specialist	CHARLES VERTREES; DAVID VUONG(T)	Helibase Manager(Cave)	KIRBY COOK
IMET	JEFF TONKIN	Air Attack Supervisor	
READ		Air Support Supervisor(Cave)	KENT WEDIN
LTAN	ERIN NONAN-WRIGHT	Helicopter Coordinator	
<b>8. Logistics Section</b>		Air Tanker Coordinator	
Chief	JACK VAN LEAR; DAN FROELICH (t);	<b>10. Finance Section</b>	
Supply Unit	BILL CREWS	Chief	RICHARD TOBIN
Facilities Unit	NEIL GRAF	Deputy	
Ground Support Unit	KEVIN PALM	Time Unit	STEVE GREEN; JESSICA ESTRADA; ERIC SCHLUMPF.
Communications Unit	MICHAEL HORST	Procurement Unit	
Medical Unit	ROBERT HERMAN; DAVID SWEEN; GENA FOWLKES	Compensation/Claims Unit	JANNA MASI, CHRISTY CAMACHO
Security Unit	BRIAN WILLBOND	Cost Unit	VERA WESTMOLAND
Food Unit	KORRY BELMONTEZ	Prepared by (Resource Unit Leader)	
Base Support (THOMAS)	CHICO 23; FORTUNA 3, SAC 2; UKIPA 3	S. BRIGGS	

ORGANIZATION ASSIGNMENT LIST		9. Operations Section	
1. Incident Name <b>HAPPY CAMP COMPLEX ZONE 1 NIGHT</b>		Day	
2. Date Prepared 08/29/14		Night	
3. Time Prepared 2100		D. A. MOORE; J. HINSON	
4. Operational Period 08/30/14 Saturday Night Shift 1800 - 0600		a. Branch I - Division/Groups	
Position		Branch Director	
Name		Deputy	
5. Incident Commander and Staff		Division/Group A/C	
Incident Commander MICHAEL WAKOSKI, DAN FELIX (t)		UNSTAFFED	
Deputy KENNETH KEMPTER		Division/Group D/F	
Safety Officer DOUG ELLIOT; J. CHAMBERLIN (t)		E. WITTE; R. PICAZO(t)	
Information Officer MARC PEEBLES; RALPH H GONZALES		Division/Group H	
Liaison Officer BRIAN RAMSEY		T. GARNER	
6. Agency Representative		Division/Group I	
Agency		UNSTAFFED	
Name		Division/Group O/Q	
HAPPY CAMP DISTRICT TOM MUTZ		JASON ESCANDEL	
KARUK BILL TRIPP		b. Branch I - Division/Groups	
HAPPY CAMP FD TOM MOPAS		Branch Director	
KNF DIV3 TERRY WALTERS		Deputy	
EACC-IARR MITCH BOUCHONVILLE,		Division T/Z	
7. Planning Section		S. UNDERWOOD	
Chief DENA SICKELS		Division/Group	
Resources Unit S. BRIGGS; L. BABNEW; J. PETERSON(t)		Division/Group	
Situation Unit M. BILHEIMER; C. FRY(t)		Division/Group	
Documentation Unit REX CRABTREE		Division/Group	
Demobilization Unit MIKE LEWIS		Division/Group	
Fire Behavior Analyst JIM HARRIS		Division/Group	
Human Resource Specialist JAN M CAWTHON		Division/Group HAPPY CAMP STAGING	
Training Specialist WILLIAM R REYNOLDS		c. Branch III - Division/Groups	
GIS Specialist ED LAMAS, EVAN CONKLIN, R. MURRILO		Branch Director	
Computer Specialist CHUCK VERTREES; DAVID VUONG(T)		Deputy	
JMET JEFF TONKIN		Division/Group	
READ RAMONA BUTZ		Division/Group	
LTAN ERIN NONAN-WRIGHT		Division/Group	
8. Logistics Section		d. Air Operations Branch	
Chief JACK VAN LEAR; DAN FROELICH (t)		Air Operations Branch Director	
Supply Unit BILL CREWS		Helibase Manager	
Facilities Unit NEIL GRAF		Air Attack Supervisor	
Ground Support Unit KEVIN PALM		Air Support Supervisor	
Communications Unit MICHAEL HORST		Helicopter Coordinator	
Medical Unit ROBERT HERMAN; DAVID SWEEN; GENA FOWLKES		Air Tanker Coordinator	
Security Unit BRIAN WILLBOND		9. Finance Section	
Food Unit KORRY BELMONTEZ		Chief	
CCC AREP (Thomas) CHICO 23, FORTUNA 3, SAC 2, UKIPA 3		RICH TOBIN	
		Deputy	
		Time Unit	
		STEVE GREEN; JESSICA ESTRADA; ERIC SCHLUMPF,	
		Procurement Unit	
		Compensation/Claims Unit	
		JANNA MASI, CHRISTY CAMACHO	
		Cost Unit	
		VERA WESTMOLAND	
		Prepared by (Resource Unit Leader)	
		STEVE BRIGGS	

<b>ICS Form 203 ORGANIZATION ASSIGNMENT LIST</b>		1. INCIDENT NAME <b>HAPPY CAMP COMPLEX ZONE 2</b>	2. DATE PREPARED <b>08/29/2014</b>	3. TIME PREPARED <b>2000</b>
<b>5. INCIDENT COMMAND STAFF</b>		<b>4. OPERATIONAL PERIOD (DATE/TIME)</b> <b>08/30-31/2014 0600-1800, 1800-0600</b>		
<b>Position</b>	<b>Name</b>	<b>9. OPERATIONS SECTION</b>		
INCIDENT COMMANDER	JEANNE PINCHA-TULLEY	DAY OPS	BRUCE CARLISLE	
DEPUTY	MARK VONTILLOW	NIGHT OPS	JOHN TRUETT/JAMES TOMASELLI(t)	
SAFETY OFFICER	BOB MOORE	PLANNING OPS	RICH HERRERA/PAT RUSSELL(t)	
INFORMATION OFFICER	MIKE LINDBERY/JAY NICHOLS(t)	<b>DAY OPERATIONS</b>		
LIAISON OFFICER	TOM EFIRD			
HRSP	JANINE SUMMY			
<b>6. AGENCY REPRESENTATIVES</b>				
<b>AGENCY</b>	<b>NAME</b>	DIVISION/GROUP	J	TOLL/ZIEGLER(t)/POWNING
SALMON/SCOTT RIVER RD	GARY ASBRIDGE	DIVISION/GROUP	L	JOHN WAGNER
CAL FIRE AGENCY REP	DARIN QUIGLEY/LUKE KENDALL	DIVISION/GROUP	M	PAT REBELLO
		DIVISION/GROUP	N	DAVIS/RICE(t)
		DIVISION/GROUP	SCOTT RIVER GRP	KEVIN WEGENER
		DIVISION/GROUP	DOZER GRP	BOB MEYERS
		DIVISION/GROUP	96 HWY/IA GRP	TOM STUKEY
			STAGING	JOHN NICKEY
<b>7. PLANNING SECTION</b>		<b>NIGHT OPERATIONS</b>		
CHIEF	GORDON MARTIN	DIVISION/GROUP	SCOTT RIVER GRP	MARC WALBURN
DEPUTY		DIVISION/GROUP	96 HWY/IA GRP	REED/PESATA
RESOURCES UNIT	FERGUSON/WEBSTER/DENNETT (t)/MEYERS (t)			
SITUATION UNIT	STEVE FORMAN/CHRIS WIKEEN			
DOCUMENTATION UNIT				
DEMOBILIZATION UNIT	IRMA CONTRERAS			
READ	RAMONA BUTZ			
TNSP	GREG KURTZ/J. VILLA(t)			
FBAN	DENNIS BURNS			
GISS	TAYLOR/STUMP(t)/MISHLER(t)			
CTSP	LANE/SINGLETON(t)/SHELTON(t)			
IMET	RYAN WALBRUN			
<b>8. LOGISTICS SECTION</b>		<b>10. AIR OPERATIONS BRANCH</b>		
CHIEF	BRETT SHURR	AIR OPERATIONS BR. DIR.	BILLY MONAHAN	
DEPUTY	BRIAN GADDIS	AIR TACTICAL GROUP SUP.	KELVIN MCELFIN	
<b>A. SUPPORT BRANCH</b>		AIR SUPPORT GROUP SUP.		
SECURITY	ROY CAMERON	HELICOPTER COORDINATOR		
SUPPLY UNIT	MARTIN HERNANDEZ	AIR TANKER/FIXED WING CRD.		
FACILITIES UNIT	MATT HASKINS	<b>11. FINANCE</b>		
GROUND SUPPORT	JOHN SILVA/BARRY CLARK	CHIEF	DENNIS STEVENS	
<b>B. SERVICE BRANCH</b>		DEPUTY		
COMMUNICATIONS UNIT	KEVIN HARPER/JEFF TONG	TIME UNIT	JENNIFER WHITE/JESSICA PRINCE(t)	
MEDICAL UNIT	SCOTT MCKENNEY/MIKE HAZLETT	PROCUREMENT UNIT	PJ VILHAUER	
FOOD UNIT	ADAM TAT	COMPENSATION/CLAIMS UNIT	HEIDI BARAJAS	
BASE CAMP MANAGER		PERSONNEL TIME		
		COST UNIT		
Prepared By (Resources Unit) JEFF FERGUSON				



# Happy Camp Complex Weather Forecast



FORECAST NO: 17 D/N  
 PREDICTION FOR: Saturday Day/Night Shift  
 SHIFT DATE: August 30, 2014  
 FORECAST ISSUED: 1900 August 29, 2014

NAME OF FIRE: Happy Camp Complex  
 UNIT: KNF  
 Incident Meteorologist: Ryan Walbrun

*Ryan Walbrun*

**WEATHER DISCUSSION:** The area will be in a post cold front airmass with slightly cooler temperatures and higher humidity values across the fire landscape. However gusty northwest winds are still forecast during the afternoon hours...especially over the exposed ridges. The cooler air aloft may weaken the inversion and allow for some better mixing. The peak burn window should be smaller and after sunset much cooler temperatures and higher humidity will return for Saturday Night into Sunday morning.

**WEATHER FORECAST FOR TODAY (SATURDAY DAY SHIFT):**

**WEATHER:** Partly cloudy with heavy smoke Zone 2....good mixing after 1400.  
**MAX TEMPERATURES: With Smoke:** Valleys (1,200 ft) 77 – 82 F, Ridges (4,000 ft) 69 – 76 F  
**No Smoke:** Valleys (1,200 ft) 82 – 86 F, Ridges (4,000 ft) 73 – 81 F  
**MIN HUMIDITY: With Smoke:** Valleys (1,200 ft) 28 – 34%, Ridges (4,000 ft) 32 – 40%  
**No Smoke:** Valleys (1,200 ft) 22 – 29%, Ridges (4,000 ft) 28 – 38%  
**WINDS (EYE LEVEL):**  
 Lower Slopes / Drainages – Northwest or Up slope /up canyon 3 – 5 mph  
 with afternoon gusts 8-11 mph.  
 Ridges – Northwest 4 – 7 mph until 1200 PDT...then increasing 6 to 10 mph  
 With frequent gusts 15-18 mph thru 2000 PDT.  
**LAL: 1 CWR: 0% HAINES: 4-5** (mid level calculation)  
**STABILITY / INVERSION:** Inversion should break by 1300-1400.  
**SMOKE TRANSPORT:** Northwest 10-15 mph.

**WEATHER FORECAST FOR TONIGHT (SATURDAY NIGHT SHIFT):**

**WEATHER:** Areas of smoke Zone 2 otherwise mostly clear Zone 1.  
**MIN TEMPERATURES:** Cooler with lows 49 – 54 F  
**MAX HUMIDITY:** Valleys (1,200 ft) 80 – 85%F, Ridges (4,000 ft) 70 – 80%  
**WINDS (EYE LEVEL):** Valleys – West or Downslope / down valley 1 – 3 mph after 10 pm  
 Ridges – West Northwest 5 – 8 mph...Gusts to 12 mph...diminishing by 9 pm.  
**LAL: 1 CWR: 0% HAINES: 3**  
**STABILITY / INVERSION:** Weak to moderate inversion overnight.  
**SMOKE TRANSPORT:** Northwest 6-12 mph.

**OUTLOOK FOR SUNDAY (4500 FT):** Mostly sunny. Patchy smoke. Warmer and drier. Max Temps: 78 to 82. Min RH: 25 - 35%. Ridge Wind: North 3 – 6 mph gusts 10 mph. LAL 1. CWR 0%. Haines 4.

**THREE DAY EXTENDED DAYTIME (MONDAY – WEDNESDAY 4500 FT)**

	<u>Max T</u>	<u>Min RH</u>	<u>Max RH</u>	<u>Ridge Winds</u>	<u>LAL</u>	<u>WX</u>
MON	81 – 85	25%	60%	N/NE 3 - 6 G 10 mph	1	SMK
TUE	82 – 87	20%	50%	N/NE 4 - 6 G 10 mph	1	SMK
WED	81– 85	25%	60%	N/NW 3 – 6 G 12mph	1	SMK

## FIRE BEHAVIOR FORECAST

FORECAST NO. 26

PREDICTION FOR: 8/30/14 24hr.

NAME OF FIRE: Happy Camp

UNIT: CA-KNF 5956

SIGNED: /s/ Dennis Burns

DATE & TIME ISSUED: 08/29 2200 hr

FIRE BEHAVIOR ANALYST

---

### WEATHER SUMMARY: Gusty NW Winds

Winds: Day, Ridges NW 8-12mph, Night: Downslope/down valley 3-5mph.

Min. RH: 28-38%      Max. RH 80-90%

Temperatures: Day 75-85.      Night: 50-60

**LAL 1 Haines 3 ERC @90<sup>th</sup> percentile 1000hr fuels 8%**

### **FIRE BEHAVIOR FORECAST**

#### **GENERAL FIRE BEHAVIOR:**

Our fire will remain Fuels and topography driven. At present primary fire spread is from spot fires caused by rolling material and torching. East west aligned drainages have a high potential for sustained runs once the inversion breaks. Falling snags and rolling material will challenge containment lines and will increase the potential for fire spread over barriers that would normally hold the fire.

Expect rapid acceleration of fire behavior when the inversion lifts. The fire will go from smoldering and creeping to torching as soon as the sun hits the fuels.

Fire will remain active into the night until the RH recovers to 40%.

#### **SPECIFIC:**

##### **Frying Pan**

- Div. H&J fire progression will continue to the east, fire is established across Grider Creek. Fire should stay in a backing alignment.
- Div. O&I fire progression will continue as flanking fire to the east. With the NW winds keep a heads up for spot fires over the line
- West end of the fire no forward progression expected. Interior fuels will continue to burn out

##### **Faulkstein**

- Expect active backing fire in the areas where the fire has breached Walker Ridge Div J.
- East west drainages north of Rancheria Crk. have high potential for sustained runs.
- South end of the fire will continue to hold on the PCT ridge. Spots from torching with the NW wind will challenge containment.
- Div. M&L Mainly backing and flanking fire, rollout will continue to challenge containment

**Air Operations:** Poor visibility has a high potential to limit air operations.

---

#### **SAFETY:**

**As the inversion lifts, expect a rapid increase of fire behavior.**

**Steep country means rolling material, watch for spot fires below you!**

# Safety Message

August 30, 2014

## Hazards we face:

- Bear's in Spike Camps and Base camps
- Travel home
- Smoke
- Dehydration/fatigue
- Changing Weather Conditions

## Some possible mitigations could include:

- Clean up your lunch spots & Spikes. Do not keep food in your tents- this will keep Bear encounters to a minimum
- Homeward bound shortly?...You've made it this far...Don't let your guard down now!
- Changing weather conditions
- **Wildfire Smoke Inhalation**
  - Breathing smoke from wildland fires presents both short-term and long-term respiratory and cardio vascular hazards.
  - Carbon monoxide is the most obvious gas in smoke and may cause headaches, nausea and fatigue.
  - Other gases such as benzene cause respiratory irritation.
  - Particulates in smoke also cause respiratory irritation.
  - The combination of these irritants poses immediate safety consequences for firefighters. Reducing exposure to smoke will increase your ability to think clearly and act decisively.
- -The best way to reduce exposure to particulates and CO is to minimize exposure.
- When possible get in clean air.
- Follow mop-up guidelines and do not exceed them unless there is a critical need.
- Fatigue, even though a by-product of smoke inhalation, can also be caused by dehydration - Keep pushing those fluids.
- Fire weather conditions may moderate today with cooler temps, stay on guard and in you're A-game.



10. Attempting frontal assault on fire.





<b>Division Assignment List</b>		1. Branch <b>ZONE 1 BRANCH 1</b>		2. Division/Group <b>D / F (1 of 2)</b>			
3. Incident Name <b>HAPPY CAMP COMPLEX</b>		4. Operational Period 08/30/14 Saturday Day Shift 0600 - 1800					
<b>5. Operations Personnel</b>							
Operations Chief	WILLIAM RICKARD; TALBOT M HAYES(t)		Division/Group Supervisor	MARK GERWE; JOHN OWINGS(t)			
Operations Chief	JACOB GIPSON; JIM TOPOLESKI(t)		Air Attack Supervisor				
Branch Director	CARL SCHWOPE		Safety Officer	DOUG ELLIOT; J. CHAMBERLIN(t)			
<b>6. Resources Assigned this Period</b>							
Strike Team/Task Force/ Resource Designator	Leader	Num of Pers.	Trans. Y/N	Drop Off PT./Time	Pick Up PT./Time		
CREW - T1 - SIERRA IHC C-120 9/5	AL ROBY	19	N	0700	1800		
CREW - T2IA - BLACK EAGLES 2 C-50 8/30	GUSTAVO SANTYO-GALLEGOS	20	N	0700	1800		
CREW - T2 - OC 24 C-124 9/2	SHAUN HERMOSILLO	16	N	0700	1800		
CREW - T2 - CMNI-36 C-127 9/5	TYLER VANORMER	20	N	0700	1800		
CREW -T2IA- LOLO #1 C-132 9/5	JOHN MATATARE	20	N	0700	1800		
ENG S/T - T3 - 3660C E-351 9/11	STEVE GONZALES	27	N	0700	1800		
ENG - T3 - RAPID CITY E-162 8/30	JOSH LANGE	4	N	0700	1800		
ENG- T6- CB FIRE TECH E-194 9/1	BRETT BOWER	4	N	0700	1800		
* HAPPY CAMP TASK FORCE #7*	TODD JINKINS	27	N	0700	1800		
*TFLD A 9.2	JOSHUA HUTCHINSON(t)		N	0700	1800		
*ENG T3 ASF ENG 374 E-292 9/6	SHANE BACA		N	0700	1800		
*ENG T3 CNF551 E-294 9/6	ERIC EGE		N	0700	1800		
*ENG T3 MISSOULA ENG 132 E-295 9/6	DICK WEAR		N	0700	1800		
*WT T2 WHITE LOGGING E-264	TOM WHITE		N	0700	1800		
WT T2 PRO DUMP E-191 8/31	MICHAEL WILLIAMS	1	N	0700	1800		
HEQB O-439 9/7	GORDON MEYER	1	N	0700	1800		
FEMP O-264 9/1	STEVEN WALLACE	1	N	0700	1800		
FEMP O-460 9/8	PAUL SALVESTRIN	1	N	0700	1800		
SOFR O-312 8/30	KEVIN LA BELLA	1	N	0700	1800		
TFLD O-451 9/9	KEITH WOLFERMAN	1	N	0700	1800		
7. Control Operations: *All personnel must review Hazard Tree Safety IRPG pg. 22 during division breakouts and tail gate briefings. Mop-up according to special instructions. Tactical ignition as directed and approved by OBD and OSC. When firing, head fire should be considered only when life or property are threatened. All divisions refer to M.A.P.s. (Management Action Points) Mop up to the degree necessary to make the likelihood of escape very low; based on experience, terrain, fuel types and fuel conditions, and current and predicted weather conditions. Back haul trash and equipment as needed.							
8. Special Instructions Do not use non metered hydrants. Ensure all crews have been briefed prior to traveling to their work assignment about the naturally occurring asbestos job hazard analysis. SOFR will notify DIVS when entering Division and exiting. FOBS and READ will notify DIVS when entering Division and exiting.							
<b>9. Division/Group Communications Summary</b>							
Function	Frequency - RX	Frequency - TX	Tone	System	Channel	System	Channel
Command	173.0625	167.9625	RX 107.2/TX 107.2	NIFC	1	CMD 1	
Tactical Div/Group	168.6000	168.6000	RX 107.2/TX 107.2	NIFC	6	NIFC T-3	
Logistics							
Air to Ground	166.6750	166.6750	CSQ / NONE	NIFC	13	A/G-TAC	
Prepared by (Resource Unit Leader) S BRIGGS / L BABNEW / J PETERSON(t)		Approved by (Planning Section Chief) DENA SICKELS		Date Prepared 08/29/14		Time Prepared 2100	



<b>Division Assignment List</b>		1. Branch <b>ZONE 1 BRANCH I</b>		2. Division/Group <b>H (1 of 2)</b>			
3. Incident Name <b>HAPPY CAMP COMPLEX</b>		4. Operational Period 08/30/14 Saturday Day Shift 0600 - 1800					
<b>5. Operations Personnel</b>							
Operations Chief	WILLIAM RICKARD; TALBOT M HAYES(t)		Division/Group Supervisor	ANDY VERDUJO; STEVE CHUMLEY(t)			
Operations Chief	JACOB GIPSON; JIM TOPOLESKI(t)		Air Attack Supervisor				
Branch Director	CARL SCHWOPE		Safety Officer	DOUG ELLIOT; J. CHAMBERLIN(t)			
<b>6. Resources Assigned this Period</b>							
Strike Team/Task Force/ Resource Designator	Leader	Num of Pers.	Trans. Y/N	Drop Off PT./Time	Pick Up PT./Time		
CREW - T1 - BOISE IHC C-89 8/31	DEON BERNER	20	N	0700	1800		
CREW - T1 - SAWTOOTH IHC C-109 9/4	MICHAEL KRUPSKI	22	N	0700	1800		
CREW - T1 - MODOC IHC C-70 8/31	WILLIE ALMAND	20	N	0700	1800		
CREW - T1 - FEATHER RIVER IHC C-97 9/2	ROBERT DANIELS	20	N	0700	1800		
CREW - T1 - AUGUSTA HOTSHOTS   C-142 9/7	TED DOCEV	20	N	0700	1800		
CREW - T2 - MILLER TIMBER #15 C-100 9/3	LUIS AYALA	20	N	0700	1800		
CREW - T2 - MILLER TIMBER C-101 9/2	MIKE CAPANNA	20	N	0700	1800		
CREW - T2 - BLACK EAGLES - 6 C-126 8/30	DEREK HARBOUR	21	N	0700	1800		
CREW - T2 - PACIFIC OASIS C-113 9/6	BENJAMIN DODDS	20	N	0700	1800		
HAPPY CAMP S/T #2	J. GOYINGS; J. THORNOCK(t)	25	N	0700	1800		
*ENG - T3 - 55 E-82 8/29	JASON BUNKER		N	0700	1800		
*ENG - T3 KNF- E326 E-163 8/30	BRANDON CORTES		N	0700	1800		
*ENG - T3 - KNF 27 E-72 9/12	HARRIS STONER		N	0700	1800		
*ENG - T3 - SHF - 32 E-185 8/30	CHRIS GRAHAM		N	0700	1800		
DZ - T2 - CARSON'S CONST. E-144 8/29	MIKE REUZE	2	N	0700	1800		
DZ - T2 - INGRAM D6 E-175 10/15	RYAN GRABLE	2	N	0700	1800		
DZ-T1- DARRAH LOGGING E-226 10/11	ALAN MULKEY	1	N	0700	1800		
DZ-T2 - BROWN CONST. E-254 8/31	GARY CARTWRIGHT	1	N	0700	1800		
ZEBBS TREE SERVICE E-245 9/4	RENEE STAFF	2	N	0700	1800		
WTS - T2 - YREKA OUTLANDS E-263 9/2	ALLAN WILLIAMS	1	N	0700	1800		
7. Control Operations: *All personnel must review Hazard Tree Safety IRPG pg. 22 during division breakouts and tail gate briefings. Prepare line for holding along the D/F to F/H break. Tactical ignitions as directed and approved by OBD and OSC. When firing, head fire should be considered only when life or property are threatened. All divisions refer to M.A.P.s. (Management Action Points) Mop up to the degree necessary to make the likelihood of escape very low; based on experience, terrain, fuel types and fuel conditions, and current and predicted weather conditions.							
8. Special Instructions Do not use non metered hydrants Ensure all crews have been briefed prior to traveling to their work assignment about the naturally occurring asbestos job hazard analysis. SOFR will notify DIVS when entering Division and exiting. FOBS and READ will notify DIVS when entering Division and exiting.							
<b>9. Division/Group Communications Summary</b>							
Function	Frequency - RX	Frequency - TX	Tone	System	Channel	System	Channel
Command	173.0625	167.9625	RX 107.2/TX 107.2	NIFC	1	CMD 1	
Tactical Div/Group	166.5500	166.5500	RX 107.2/TX 107.2	NIFC	10	R5 TAC4	
Logistics							
Air to Ground	166.6750	166.6750	CSQ / NONE	NIFC	13	A/G-TAC	
Prepared by (Resource Unit Leader) S BRIGGS / L BABNEW / J PETERSON(t)		Approved by (Planning Section Chief) DENA SICKELS		Date Prepared 08/29/14		Time Prepared 2100	

<b>Division Assignment List</b>		1. Branch <b>ZONE 1 BRANCH I</b>		2. Division/Group <b>H (2 of 2)</b>			
3. Incident Name <b>HAPPY CAMP COMPLEX</b>		4. Operational Period 08/30/14 Saturday Day Shift 0600 - 1800					
<b>5. Operations Personnel</b>							
Operations Chief	WILLIAM RICKARD; TALBOT M HAYES(t)		Division/Group Supervisor	ANDY VERDUGO; STEVE CHUMLEY(t)			
Operations Chief	JACOB GIPSON; JIM TOPOLESKI(t)		Air Attack Supervisor				
Branch Director	CARL SCHWOPE		Safety Officer	DOUG ELLIOT; J. CHAMBERLIN(t)			
<b>6. Resources Assigned this Period</b>							
Strike Team/Task Force/ Resource Designator	Leader	Num of Pers.	Trans. Y/N	Drop Off PT./Time	Pick Up PT./Time		
WTT - T2 - DARRAH E-104 9/1	WAYNE WILLIAMS	1	N	0700	1800		
HEQB O-333 9/4	TIM WILSON	1	N	0700	1800		
HEQB O-440 9/8	JON STONELAKE	1	N	0700	1800		
STCR O-366 9/5	DAVID SOLDAVINI	1	N	0700	1800		
FELB O-313 9/2	BRIAN SEE	1	N	0700	1800		
MODULE-FALLER-NORTH ZONE O-387 9/3	BRANTON/PARKER	2	N	0700	1800		
FOBS O-249 9/3	ISAAC KARVAS	1	N	0700	1800		
FOBS O-362 8/30	KEVIN OSBORNE	1	N	0700	1800		
FEMP O-459 9/8	KEVIN WHITE	1	N	0700	1800		
FEMP O-489 9/11	DAN COYLE	1	N	0700	1800		
FEMT O-269 9/1	JASON DRESSEL	1	N	0700	1800		
FEMP O-490 9/10	DALE WILLIAMS	1	N	0700	1800		
READ O-471 9/9	EAMON ENGBER	1	N	0700	1800		
ARCH O-285 9/2	ROBERT DELOS GRATE JR	1	N	0700	1800		
SOFR O-310 9/3	JEFFERY A HENDERSON	1	N	0700	1800		
7. Control Operations: <b>*All personnel must review Hazard Tree Safety IRPG pg. 22 during division breakouts and tail gate briefings.</b> Prepare line for holding along the D/F to F/H break. Tactical ignitions as directed and approved by OBD and OSC. When firing, head fire should be considered only when life or property are threatened. All divisions refer to M.A.P.s. (Management Action Points) Mop up to the degree necessary to make the likelihood of escape very low; based on experience, terrain, fuel types and fuel conditions, and current and predicted weather conditions.							
8. Special Instructions Do not use non metered hydrants Ensure all crews have been briefed prior to traveling to their work assignment about the naturally occurring asbestos job hazard analysis. SOFR will notify DIVS when entering Division and exiting. FOBS and READ will notify DIVS when entering Division and exiting.							
<b>9. Division/Group Communications Summary</b>							
Function	Frequency - RX	Frequency - TX	Tone	System	Channel	System	Channel
Command	173.0625	167.9625	RX 107.2/TX 107.2	NIFC	1	CMD 1	
Tactical Div/Group	166.5500	166.5500	RX 107.2/TX 107.2	NIFC	10	R5 TAC4	
Logistics							
Air to Ground	166.6750	166.6750	CSQ / NONE	NIFC	13	A/G-TAC	
Prepared by (Resource Unit Leader) S BRIGGS / L BABNEW / J PETERSON(t)		Approved by (Planning Section Chief) DENA SICKELS		Date Prepared 08/29/14		Time Prepared 2100	









<b>Division Assignment List</b>	1. Branch <b>ZONE 1 BRANCH III</b>	2. Division/Group <b>O / Q</b>
---------------------------------	---------------------------------------	-----------------------------------

3. Incident Name <b>HAPPY CAMP COMPLEX</b>	4. Operational Period <b>03/30/14 Saturday Day Shift 0600 - 1800</b>
---	---

<b>5 Operations Personnel</b>			
Operations Chief	WILLIAM RICKARD; TALBOT M HAYES(t)	Division/Group Supervisor	THAD MARCOE
Operations Chief	JACOB GIPSON; JIM TOPOLESKI(t)	Air Attack Supervisor	
Branch Director	MARTIN ADELL	Safety Officer	DOUG ELLIOT; J. CHAMBERLIN(t)

<b>6 Resources Assigned this Period</b>						
Strike Team/Task Force/ Resource Designator	Leader	Num of Pers.	Trans. Y/N	Drop Off PT./Time	Pick Up PT./Time	
CREW - T2IA - HAPPY CAMP CREW C-103 9/2	DAMON MCCARTNEY	22	N	0700	1800	
ENG - T3 - RANCHERIA 2 E-249 9/2	DANNY Y MANNING	5	N	0700	1800	
ENG - T3 - 3639 E-248 9/3	MICHAEL MEDINA	4	N	0700	1800	
WTS - T2 - HARRIS EMS E-268 9/2	ELDON CALDWELL	2	N	0700	1800	
FALLER MOD O-502 9/11	DOUG MCKELLAR	2	N	0700	1800	
FEMP O-280 9/1	JORDAN RUSSELL	1	N	0700	1800	
FEMT O-302 8/31	JOHN DALEY	1	N	0700	1800	
SOFR O-401 9/9	WILLIAM SCHUCKERT	1	N	0700	1800	

7. Control Operations: \*All personnel must review Hazard Tree Safety IRPG pg. 22 during division breakouts and tail gate briefings. Monitor and patrol.  
 Monitor fire progression into Elk Creek.  
 Construct line along Titus Ridge.  
 When firing, head fire should be considered only when life or property are threatened.  
 All divisions refer to M.A.P.s. (Management Action Points)  
 Mop up to the degree necessary to make the likelihood of escape very low; based on experience, terrain, fuel types and fuel conditions, and current and predicted weather conditions.

8. Special Instructions  
 Do not use non metered hydrants  
 Ensure all crews have been briefed prior to traveling to their work assignment about the naturally occurring asbestos job hazard analysis.  
 SOFR will notify DIVS when entering Division and exiting.  
 FOBS and READ will notify DIVS when entering Division and exiting.

<b>9. Division/Group Communications Summary</b>							
Function	Frequency - RX	Frequency - TX	Tone	System	Channel	System	Channel
Command	173.0625	167.9625	RX 107.2/TX 107.2	NIFC	1	CMD 1	
Tactical Div/Group	168.2375	168.2375	RX 107.2/TX 107.2	NIFC	12	R5 TAC6	
Logistics							
Air to Ground	166.6750	166.6750	CSQ / NONE	NIFC	13	AVG-TAC	

Prepared by (Resource Unit Leader) S BRIGGS / L BABNEW / J PETERSON(t)	Approved by (Planning Section Chief) DENA SICKELS	Date Prepared 08/29/14	Time Prepared 2100
---	--	---------------------------	-----------------------

<b>Division Assignment List</b>		1. Branch <b>ZONE 1 BRANCH III</b>	2. Division/Group <b>T/Z</b>				
3. Incident Name <b>HAPPY CAMP COMPLEX</b>		4. Operational Period 08/30/14 Saturday Day Shift 0600 - 1800					
5. <b>Operations Personnel</b>							
Operations Chief		WILLIAM RICKARD; TALBOT M HAYES (t)		Division/Group Supervisor		MATT TOPOLESKI; STEVEN COUNTS(t)	
Planning Operations Chief		JACOB GIPSON; JIM TOPOLESKI (t)		Air Attack Supervisor			
Branch Director		MARTIN ADELL		Safety Officer		DOUG ELLIOT, J. CHAMBERLIN(t)	
6. <b>Resources Assigned this Period</b>							
Strike Team/Task Force/ Resource Designator		Leader		Num of Pers.	Trans. Y/N	Drop Off PT./Time	Pick Up PT./Time
CREW - T2 - BIG HORN C-79 9/1		DAN LAMM		23	N	0700	1800
ENG S/T - T3 - 1659 C E-60 9/3		THIBAUT, ROB		27	N	0700	1800
ENG - T6 - LAP ENGINE 7362 E-300 9/5		DAKOTA O'BRIEN		4	N	0700	1800
WTS2 ANGELO CATTANEO E-189		MATT MEIER		1	N	0700	1800
WTS2 ANGELO CATTANEO E-190		RICARDO RUBY		1	N	0700	1800
FALM O-2097 9/12		DUSTIN BROWN		2	N	0700	1800
FALM O-2098 9/12		MARTY MILLER		2	N	0700	1800
FEMP O-95 8/30		JOHN VAIL		1	N	0700	1800
FEMP O-96 8/30		TOM DEBELLIS		1	N	0700	1800
SOFR O-189 9/1		DOUGLAS WELBOURN		1	N	0700	1800
7. Control Operations: *All personnel must review Hazard Tree Safety IRPG pg. 22 during division breakouts and tail gate briefings. Monitor fire progression into Elk Creek. Mop up and patrol. When firing, head fire should be considered only when life or property are threatened. All divisions refer to M.A.P.s. (Management Action Points) Mop up to the degree necessary to make the likelihood of escape very low; based on experience, terrain, fuel types and fuel conditions, and current and predicted weather conditions. Back haul equipment and trash as needed.							
8. Special Instructions Do not use non metered hydrants. Ensure all crews have been briefed prior to traveling to their work assignment about the naturally occurring asbestos job hazard analysis  SOFR will notify DIVS when entering DIVISION and exiting FOBS and READ will notify DIVS when entering DIVISION and exiting							
9. <b>Division/Group Communications Summary</b>							
Function	Frequency - RX	Frequency - TX	Tone	System	Channel	System	Channel
Command	173.0625	167.9625	RX 107.2/TX 107.2	NIFC	1	CMD 1	
Tactical Div/Group	168.2500	168.2500	RX 107.2/TX 107.2	NIFC	9	NIFC T-7	
Logistics							
Air to Ground	166.6750	166.6750	CSQ / NONE	NIFC	13	A/G-TAC	
Prepared by (Resource Unit Leader) S BRIGGS/ L BABNEW/ J PETERSON (t)		Approved by (Planning Section Chief) DENA SICKELS			Date Prepared 08/29/14	Time Prepared 2100	

<b>Division Assignment List</b>		1. Branch <b>ZONE 1 BRANCH III</b>	2. Division/Group <b>STRUCTURE GROUP</b>				
3. Incident Name <b>HAPPY CAMP COMPLEX</b>		4. Operational Period 08/30/14 Saturday Day Shift 0600 - 1800					
<b>5. Operations Personnel</b>							
Operations Chief	WILLIAM RICKARD; TALBOT M HAYES(t)	Division/Group Supervisor	JOE FREELAND				
Operations Chief	JACOB GIPSON; JIM TOPOLESKI(t)	Air Attack Supervisor					
Branch Director	MARTIN ADELL	Safety Officer	DOUG ELLIOT; J. CHAMBERLIN(t)				
<b>6. Resources Assigned this Period</b>							
Strike Team/Task Force/ Resource Designator	Leader	Num of Pers.	Trans. Y/N	Drop Off PT./Time	Pick Up PT./Time		
STPS O-173.24 9/3	PETE LAWRENCE	1	N	0700	1800		
STEN O-408 9/4	ROBERT A GROSS	1	N	0700	1800		
STEN O-409 9/6	RON PLUMMER	1	N	0700	1800		
FOBS O-142 8/30	SONYA FEASTER	1	N	0700	1800		
FOBS (t) O-250 9/1	NATHAN PERRINE (t)	1	N	0700	1800		
FOBS (t) O-251 9/1	JOHN HECKER JR (t)	1	N	0700	1800		
7. Control Operations: *All personnel must review Hazard Tree Safety IRPG pg. 22 during division breakouts and tail gate briefings. Prep structures within Zone 1 that are within the fire area. When firing, head fire should be considered only when life or property are threatened. All divisions refer to M.A.P.s. (Management Action Points) Mop up to the degree necessary to make the likelihood of escape very low; based on experience, terrain, fuel types and fuel conditions, and current and predicted weather conditions.							
8. Special Instructions Do not use non metered hydrants Ensure all crews have been briefed prior to traveling to their work assignment about the naturally occurring asbestos job hazard analysis. SOFR will notify DIVS when entering Division and exiting. FOBS and READ will notify DIVS when entering Division and exiting.							
<b>9. Division/Group Communications Summary</b>							
Function	Frequency - RX	Frequency - TX	Tone	System	Channel	System	Channel
Command	173.0625	167.9625	RX 107.2/TX 107.2	NIFC	1	CMD 1	
Tactical Div/Group	166.5500	166.5500	RX 107.2/TX 107.2	NIFC	10	R5 TAC4	
Logistics							
Air to Ground	166.6750	166.6750	CSQ / NONE	NIFC	13	A/G-TAC	
Prepared by (Resource Unit Leader) S BRIGGS / L BABNEW / J PETERSON(t)			Approved by (Planning Section Chief) DENA SICKELS		Date Prepared 08/29/14	Time Prepared 2100	

<b>Division Assignment List</b>	1. Branch <b>ZONE 1</b>	2. Division/Group <b>A/C</b>
3. Incident Name <b>HAPPY CAMP COMPLEX NIGHT SHIFT</b>	4. Operational Period 08/30/14 Saturday Night Shift 1800 - 0600	

5. Operations Personnel			
Operations Chief	DERRICK MOORE; JEFFERY HINSON(t)	Division/Group Supervisor	UNSTAFFED
Operations Chief	JACOB GIPSON; JIM TOPOLESKI(t)	Air Attack Supervisor	
Branch Director		Safety Officer	DOUG ELLIOT; J. CHAMBERLIN(t)

6. Resources Assigned this Period						
Strike Team/Task Force/ Resource Designator	Leader	Num of Pers.	Trans. Y/N	Drop Off PT./Time	Pick Up PT./Time	
UNSTAFFED						

7. Control Operations: \*All personnel must review Hazard Tree Safety IRPG pg. 22 during division breakouts and tail gate briefings.  
 Hold and secure all fire North of Klamath River.  
 Remove and back haul trash and equipment as needed.  
 When firing, head fire should be considered only when life or property are threatened.  
 All divisions refer to M.A.P.s. (Management Action Points)  
 Mop up to the degree necessary to make the likelihood of escape very low; based on experience, terrain, fuel types and fuel conditions, and current and predicted weather conditions.

8. Special Instructions  
 Do not use non metered hydrants  
 Ensure all crews have been briefed prior to traveling to their work assignment about the naturally occurring asbestos job hazard analysis.  
 SOFR will notify DIVS when entering Division and exiting.  
 FOBS and READ will notify DIVS when entering Division and exiting.

9. Division/Group Communications Summary							
Function	Frequency - RX	Frequency - TX	Tone	System	Channel	System	Channel
Command	173.0625	167.9625	RX 107.2/TX 107.2	NIFC	1	CMD 1	
Tactical Div/Group	166.7750	166.7750	RX 107.2/TX 107.2	NIFC	8	NIFC T-6	
Logistics							
Air to Ground	166.6750	166.6750	CSQ / NONE	NIFC	13	A/G-TAC	

Prepared by (Resource Unit Leader) S BRIGGS / L BABNEW / J PETERSON(t)	Approved by (Planning Section Chief) DENA SICKELS	Date Prepared 08/29/14	Time Prepared 2100
---	--	---------------------------	-----------------------

<b>Division Assignment List</b>	1. Branch <b>ZONE 1</b>	2. Division/Group <b>D / F</b>
---------------------------------	----------------------------	-----------------------------------

3. Incident Name <b>HAPPY CAMP COMPLEX NIGHT SHIFT</b>	4. Operational Period 08/30/14 Saturday Night Shift 1800 - 0600
---	--

5. Operations Personnel			
Operations Chief	DERRICK MOORE; JEFFERY HINSON(t)	Division/Group Supervisor	B. WITTE; R. PICAZO(t)
Operations Chief	JACOB GIPSON; JIM TOPOLESKI(t)	Air Attack Supervisor	
Branch Director		Safety Officer	DOUG ELLIOT; J. CHAMBERLIN(t)

6. Resources Assigned this Period						
Strike Team/Task Force/ Resource Designator	Leader	Num of Pers.	Trans. Y/N	Drop Off PT./Time	Pick Up PT./Time	
CREW - T1 - INYO IHC C-106 9/1	GLEN TINGLEY	20	N	1900	0600	
CREW - T1 - LAGUNA IHC C-107 9/2	JAMES HUSTON	21	N	1900	0600	
CREW - T1 - SHASTA LAKE IHC C-121 9/5	DONOVAN LEE	21	N	1900	0600	
CREW - T1 - CHENA IHC C-108 9/5	ODED SHALOM	20	N	1900	0600	
ENG - T3 - SHF - 62 E-187 8/30	ELIZABETH YOUNGER	5	N	1900	0600	
ENG - T3 - MNF 36 E-188 8/30	BRAD TOVAR	5	N	1900	0600	
WTS - T2 - WILMORE E-192 8/31	KALEN SOUZA	1	N	1900	0600	
FEMT O-99 8/30	MATT HECKMANN	1	N	1900	0600	
SOFR O-438 9/5	TIMOTHY OLIVERIUS	1	N	1900	0600	

7. Control Operations: \*All personnel must review Hazard Tree Safety IRPG pg. 22 during division breakouts and tail gate briefings.  
 Continue securing fireline within division.  
 Support division H as operations allow. All divisions refer to M.A.P.s. (Management Action Points)  
 When firing, head fire should be considered only when life or property are threatened.  
 Mop up to the degree necessary to make the likelihood of escape very low; based on experience, terrain, fuel types and fuel conditions, and current and predicted weather conditions.

8. Special Instructions  
 Do not use non metered hydrants  
 Ensure all crews have been briefed prior to traveling to their work assignment about the naturally occurring asbestos job hazard analysis.  
 Safety Officers to be shared in all divisions.  
 SOFR will notify DIVS when entering Division and exiting.  
 FOBS and READ will notify DIVS when entering Division and exiting.

9. Division/Group Communications Summary

Function	Frequency - RX	Frequency - TX	Tone	System	Channel	System	Channel
Command	173.0625	167.9625	RX 107.2/TX 107.2	NIFC	1	CMD 1	
Tactical Div/Group	168.6000	168.6000	RX 107.2/TX 107.2	NIFC	6	NIFC T-3	
Logistics							
Air to Ground	166.6750	166.6750	CSQ / NONE	NIFC	13	A/G-TAC	
Prepared by (Resource Unit Leader) S BRIGGS / L BABNEW / J PETERSON(t)		Approved by (Planning Section Chief) DENA SICKELS			Date Prepared 08/29/14		Time Prepared 2100

<b>Division Assignment List</b>		1. Branch <b>ZONE 1</b>		2. Division/Group <b>H</b>			
3. Incident Name <b>HAPPY CAMP COMPLEX NIGHT SHIFT</b>		4. Operational Period 08/30/14 Saturday Night Shift 1800 - 0600					
5. <b>Operations Personnel</b>							
Operations Chief	DERRICK MOORE; JEFFERY HINSON(t)		Division/Group Supervisor	TERRY GARNER			
Operations Chief	JACOB GIPSON; JIM TOPOLESKI(t)		Air Attack Supervisor				
Branch Director			Safety Officer	DOUG ELLIOT; J. CHAMBERLIN(t)			
6. <b>Resources Assigned this Period</b>							
Strike Team/Task Force/ Resource Designator	Leader	Num of Pers.	Trans. Y/N	Drop Off PT./Time	Pick Up PT./Time		
<b>HAPPY CAMP TF #5</b>	PETER GLOVER	15	N	1900	0600		
*ENG - T3 - CARSON CITY #3335 E-291 9/5	NATHAN WENDEL		N	1900	0600		
*ENG - T3 - STOX ENGINE 173 E-293 9/5	JASON SPELTZ		N	1900	0600		
*ENG- T6- STOREY CO. PATROL 72 E-296 9/5	NICK REVELLE		N	1900	0600		
*ENG - T6 - CNF ENGINE 533 E-297 9/3	MICHAEL W GUSTAFSON		N	1900	0600		
<b>HAPPY CAMP TF #6</b>	JOHN FOLEY	15	N	1900	0600		
*ENG - T3 - CAMINOS FIRE E-164 8/30	JOHN ROADS		N	1900	0600		
ENG - T6 - WID - ENG 2616 E-298 9/6	TERAH MALSAM		N	1900	0600		
*ENG - T6 - CCD 3636 E-299 9/6	MARK LAMONT		N	1900	0600		
*ENG - T6 - KNF 51 (MONTANA) E-301 9/6	TODD E MURRAY		N	1900	0600		
*WTS - T2- DOLCINI DAIRY E-267 9/2	ROBERT DOLCINI		N	1900	0600		
FEMT O-100 8/30	NICHOLAS DELIA	1	N	1900	0600		
FEMT O-394 9/1	JEFF ROE	1	N	1900	0600		
FEMP O-491 9/11	CHRIS MARSON	1	N	1900	0600		
7. Control Operations: *All personnel must review Hazard Tree Safety IRPG pg. 22 during division breakouts and tail gate briefings. When firing, head fire should be considered only when life or property are threatened. (All divisions refer to M.A.P.s. (Management Action Points) Mop up to the degree necessary to make the likelihood of escape very low; based on experience, terrain, fuel types and fuel conditions, and current and predicted weather conditions.							
8. Special Instructions Do not use non metered hydrants Ensure all crews have been briefed prior to traveling to their work assignment about the naturally occurring asbestos job hazard analysis. SOFR will notify DIVS when entering Division and exiting. FOBS and READ will notify DIVS when entering Division and exiting.							
9. <b>Division/Group Communications Summary</b>							
Function	Frequency - RX	Frequency - TX	Tone	System	Channel	System	Channel
Command	173.0625	167.9625	RX 107.2/TX 107.2	NIFC	1	CMD 1	
Tactical Div/Group	166.7750	166.7750	RX 107.2/TX 107.2	NIFC	8	NIFC T-6	
Logistics							
Air to Ground	166.6750	166.6750	CSQ / NONE	NIFC	13	A/G-TAC	
Prepared by (Resource Unit Leader) S BRIGGS / L BABNEW / J PETERSON(t)		Approved by (Planning Section Chief) DENA SICKELS		Date Prepared 08/29/14		Time Prepared 2100	

<b>Division Assignment List</b>	1. Branch <p style="text-align: center;"><b>ZONE 1</b></p>	2. Division/Group <p style="text-align: center;"><b>T / Z</b></p>
---------------------------------	---	--

3. Incident Name <b>HAPPY CAMP COMPLEX NIGHT SHIFT</b>	4. Operational Period <p style="text-align: center;">08/30/14    Saturday    Night Shift 1800 - 0600</p>
---	---

5. Operations Personnel			
Operations Chief	DERRICK MOORE; JEFFERY HINSON(t)	Division/Group Supervisor	STEVE UNDERWOOD
Operations Chief	JACOB GIPSON; JIM TOPOLESKI(t)	Air Attack Supervisor	
Branch Director		Safety Officer	DOUG ELLIOT; J. CHAMBERLINE(t)

6. Resources Assigned this Period						
Strike Team/Task Force/ Resource Designator	Leader	Num of Pers.	Trans. Y/N	Drop Off PT./Time	Pick Up PT./Time	
CREW -T2IA - PATRICK ENVIRON. C-30 8/30	WESTON SMITH	20	N	1900	0600	
ENG - T6 - DFPC LYONS E-125 8/30	ANDREW TRIOLO	3	N	1900	0600	
ENG - T3 - SHF - 371 E-186 8/30	JONATHON MANN	5	N	1900	0600	
FEMP O-305 8/30	JOHNNY RIEKE	3	N	1900	0600	
FEMT O-282 8/30	JOSH M BENNETT-SNOW	1	N	1900	0600	

7. Control Operations: **\*All personnel must review Hazard Tree Safety IRPG pg. 22 during division breakouts and tail gate briefings.**  
 Keep fire within current control lines.  
 Support other divisions as operations allow.  
 When firing, head fire should be considered only when life or property are threatened.  
 All divisions refer to M.A.P.s. (Management Action Points)  
 Mop up to the degree necessary to make the likelihood of escape very low; based on experience, terrain, fuel types and fuel conditions, and current and predicted weather conditions.

8. Special Instructions  
 Do not use non metered hydrants  
**Ensure all crews have been briefed prior to traveling to their work assignment about the naturally occurring asbestos job hazard analysis.**  
 Safety Officer will be shared in all divisions.  
 SOFR will notify DIVS when entering Division and exiting.  
 FOBS and READ will notify DIVS when entering Division and exiting.

9. Division/Group Communications Summary							
Function	Frequency - RX	Frequency - TX	Tone	System	Channel	System	Channel
Command	173.0625	167.9625	RX 107.2/TX 107.2	NIFC	1	CMD 1	
Tactical Div/Group	168.2500	168.2500	RX 107.2/TX 107.2	NIFC	9	NIFC T-7	
Logistics							
Air to Ground	166.6750	166.6750	CSQ / NONE	NIFC	13	A/G-TAC	

Prepared by (Resource Unit Leader) S BRIGGS / L BABNEW / J PETERSON(t)	Approved by (Planning Section Chief) DENA SICKELS	Date Prepared 08/29/14	Time Prepared 2100
---	--	---------------------------	-----------------------

<b>DIVISION ASSIGNMENT LIST</b>				1. Branch <b>Zone 2 Branch II</b>		2. Division/Group <b>L</b>	
3. Incident Name <b>Happy Camp Complex</b>				4. Operational Period Date: 08/30/14 Time: 0600-1800			
5. Operations Personnel							
Operations Chief		<b>Bruce Carlisle</b>		Division/Group Supervisor		<b>John Wagner</b>	
Branch Director		<b>Larry Wright</b>		Safety		<b>Jim Wolf</b>	
6. Resources Assigned This Period							
Strike Team/Task Force/ Resource Designator		Leader	Number Persons	Trans Needed	Drop Off PT/Time	Pick Up PT/Time	
Crew – T1 – Klamath IHC C-2013 9/11		Johnny Clem	20	N	Zone 2 ICP/0600	Zone 2 ICP/1800	
Crew – T1 – Lewis & Clark IHC C-131 9/6		Matet Holmstrom	19	N	Zone 2 ICP/0600	Zone 2 ICP/1800	
Crew – T1 – Mill Creek IHC C-2008		John Ellison	21	N	Zone 2 ICP/0600	Zone 2 ICP/1800	
Crew – T1 – Dalton IHC C-2011 9/11		Steve Robles	18	N	Zone 2 ICP/0600	Zone 2 ICP/1800	
Crew – T1 – Horseshoe Meadow C-2012 9/11		Joe Gonzales	19	N	Zone 2 ICP/0600	Zone 2 ICP/1800	
Eng – T3 – TNF 71 E-205 8/30		Jesse Green	5	N	Zone 2 ICP/0600	Zone 2 ICP/1800	
WT – T2 –TNF 12 E-345 9/9		Andrew Zwolinski	2	N	Zone 2 ICP/0600	Zone 2 ICP/1800	
FOBS O-2030 9/9		Patrick Healy	1	N	Zone 2 ICP/0600	Zone 2 ICP/1800	
FOBS O-341 9/2		James Savage	1	N	Zone 2 ICP/0600	Zone 2 ICP/1800	
READ O-232 9/3		Michael Welker	1	N	Zone 2 ICP/0600	Zone 2 ICP/1800	
ARCH O-2049		Ryan Brown	1	N	Zone 2 ICP/0600	Zone 2 ICP/1800	
FEMP O-281 8/31		Anthony Balbiani	1	N	Zone 2 ICP/0600	Zone 2 ICP/1800	
FEMT O-232 8/31		Matthew Turner	1	N	Zone 2 ICP/0600	Zone 2 ICP/1800	
7. Control Operations							
Continue to prep Scott River Road from Swanson Gulch south toward Bridge Flat. Scout for opportunities for engagement. Construct line as opportunity presents while maintaining LCES and mitigating hazards.							
8. Special Instructions							
9. Division/Group Communication Summary							
Function	Frequency	System	Channel	Function	Frequency	System	Channel
Command	<b>RX172.5500 TX163.8250</b>	<b>CMD 4 Tone 10</b>	<b>4</b>				
Tactical	<b>168.6000</b>	<b>NIFC T-3 Tone 10</b>	<b>6</b>	Air to Ground	<b>166.6750</b>	<b>A/G</b>	<b>13</b>
Prepared By (Resource Unit Leader)			Approved By (Planning Sect. Ch.)		Date		Time
<b>A. Webster RESL</b>			<b>Gordon Martin</b>		<b>08/29/14</b>		<b>2000</b>



<b>DIVISION ASSIGNMENT LIST</b>			1. Branch <b>Zone 2 Branch II</b>		2. Division/Group <b>J</b>		
3. Incident Name <b>Happy Camp Complex</b>			4. Operational Period Date: 08/30/14 Time: 0600-1800				
5. Operations Personnel							
Operations Chief		<b>Bruce Carlisle</b>		Division/Group Supervisor		<b>Toll/Powning/ Ziegler (t)</b>	
Branch Director		<b>Larry Wright</b>		Safety		<b>Dave Molter</b>	
6. Resources Assigned This Period							
Strike Team/Task Force/ Resource Designator		Leader	Number Persons	Trans Needed	Drop Off PT/Time	Pick Up PT/Time	
Crew – T1 – Salmon River C-2006 9/9		Bill Robinson	20	N	Horse Camp/0700	Horse Camp/1900	
Crew – T1 – Redding Jumpers C-139 9/8		Felipe Marquez	19	N	Horse Camp/0700	Horse Camp/1900	
Crew – T1 – Roosevelt IHC C-110 9/5		Larry Money	20	N	Horse Camp/0700	Horse Camp/1900	
Crew – T1 – Ukonom IHC C-137 9/7		Keith Smith	19	N	Horse Camp/0700	Horse Camp/1900	
WT – T2 – KNF21 E-108 9/11		Dennis Franklin	1	N	Horse Camp/0700	Horse Camp/1900	
Chipper E-290 10/21		Jacob Behrens	1	N	Horse Camp/0700	Horse Camp/1900	
FOBS O-2023 9/8		Steve Ross	1	N	Horse Camp/0700	Horse Camp/1900	
FOBS O-2029 9/8		Steven Dean	1	N	Horse Camp/0700	Horse Camp/1900	
FEMP O-359 9/3		Eric Schroth	1	N	Horse Camp/0700	Horse Camp/1900	
7. Control Operations							
Continue to prep Scott River Road from Highway 96 south toward Swanson Gulch. Scout for opportunities for engagement. Construct line as opportunity presents while maintaining LCES and mitigating hazards.							
8. Special Instructions							
9. Division/Group Communication Summary							
Function	Frequency	System	Channel	Function	Frequency	System	Channel
Command	RX 169.5375 TX 164.7125	CMD 3 Tone 10	3				
Tactical	167.1125	R5 TAC 5 Tone 10	11	Air to Ground	166.6750	A/G	13
Prepared By (Resource Unit Leader)			Approved By (Planning Sect. Ch.)		Date		Time
A. Webster RESL			Gordon Martin		08/29/14		2000

DIVISION ASSIGNMENT LIST		1. Branch <b>Zone 2 Branch II</b>		2. Division/Group <b>M</b>			
3. Incident Name <b>Happy Camp Complex</b>		4. Operational Period Date: 08/30/2014 Time: 0600-1800					
5. Operations Personnel							
Operations Chief	<b>Bruce Carlisle</b>	Division/Group Supervisor		<b>Pat Rebello</b>			
Branch Director	<b>Larry Wright</b>	Safety		<b>Gearhardt/Pingiezer(t)</b>			
6. Resources Assigned This Period							
Strike Team/Task Force/ Resource Designator	Leader	Number Persons	Trans Needed	Drop Off PT/Time	Pick Up PT/Time		
Crew – T1 – Plumas IHC C-123 9/1	Jack Sevelson	19	N	Zone 2 ICP/0600	Zone 2 ICP/1800		
Crew – T1 – Lassen IHC C-138 9/7	Kyle Betty	18	N	Zone 2 ICP/0600	Zone 2 ICP/1800		
Crew – T1 – Groveland IHC C-136 8/31	Patrick Laeng	18	N	Zone 2 ICP/0600	Zone 2 ICP/1800		
Crew – T1 – American River IHC C-144 9/10	Adam Leyba	19	N	Zone 2 ICP/0600	Zone 2 ICP/1800		
Eng S/T– T3 – 3676C E-2087 9/11	Mike Carter	27	N	Zone 2 ICP/0600	Zone 2 ICP/1800		
Eng – T3 – MDF 65 E-2102 9/12	Bernie Guthrie	5	N	Zone 2 ICP/0600	Zone 2 ICP/1800		
WT– T2 – SRF 245 E-346 9/9	Jeremy Lewis	2	N	Zone 2 ICP/0600	Zone 2 ICP/1800		
WT– T2 – ENF 5 E-347 9/10	Jecobie Waters	2	N	Zone 2 ICP/0600	Zone 2 ICP/1800		
FALM – Pro Plus O-337 9/3	Campbell/Porter	2	N	Zone 2 ICP/0600	Zone 2 ICP/1800		
FOBS O-414 9/2	Timothy Epp	1	N	Zone 2 ICP/0600	Zone 2 ICP/1800		
FOBS O-413 9/2	Kay Kudo	1	N	Zone 2 ICP/0600	Zone 2 ICP/1800		
FEMP O-458 8/25	Mark Fitzgerald	1	N	Zone 2 ICP/0600	Zone 2 ICP/1800		
REM 2 O-2047	John Irvine	4	N	Zone 2 ICP/0600	Zone 2 ICP/1800		
7. Control Operations							
Scout for opportunities for engagement. Construct line as opportunity presents while maintaining LCES and mitigating hazards.							
8. Special Instructions							
9. Division/Group Communication Summary							
Function	Frequency	System	Channel	Function	Frequency	System	Channel
Command	<b>RX 172.5500 TX 163.8250</b>	<b>CMD 4 Tone 10</b>	<b>4</b>				
Tactical	<b>166.7250</b>	<b>NIFC T-5 Tone 10</b>	<b>7</b>	Air to Ground	<b>166.6750</b>	<b>A/G</b>	<b>13</b>
Prepared By (Resource Unit Leader) <b>C. Dennett RESL</b>		Approved By (Planning Sect. Ch.) <b>Gordon Martin</b>		Date <b>08/29/2014</b>		Time <b>2000</b>	

<b>DIVISION ASSIGNMENT LIST</b>			1. Branch <b>Zone 2 Branch II</b>		2. Division/Group <b>N</b>		
3. Incident Name <b>Happy Camp Complex</b>			4. Operational Period Date: 08/30/14 Time: 0600-1800				
5. Operations Personnel							
Operations Chief		<b>Bruce Carlisle</b>		Division/Group Supervisor		<b>Don Davis/Grahm Rice</b>	
Branch Director		<b>Larry Wright</b>		Safety		<b>Pedro Martinez</b>	
6. Resources Assigned This Period							
Strike Team/Task Force/ Resource Designator		Leader	Number Persons	Trans Needed	Drop Off PT/Time	Pick Up PT/Time	
Crew – T1 – Redding IHC C-2009 9/1		Dan Malia	20	N	Coyote	Coyote	
Crew – T1 – Truckee IHC C-2007 9/4		Bobby Hubby	20	N	Coyote	Coyote	
Crew – T2IA – Alaska R10 C-91 9/4		Daniel Osborne	20	N	Coyote	Coyote	
Crew – T2IA – Flathead C-133 9/5		Brett Pargman	20	N	Coyote	Coyote	
Pack String – E-2081 9/10		Ken Smith	1	N	Coyote	Coyote	
Pack String – E-2082 9/11		Dan Menne	1	N	Coyote	Coyote	
READ O-344 9/5		John Reese	1	N	Coyote	Coyote	
READ O-345 9/5		Jason Wright	1	N	Coyote	Coyote	
FEMP O-265 9/1		Todd LaSieur	1	N	Coyote	Coyote	
FEMT O-270 9/1		David Mazaika	1	N	Coyote	Coyote	
7. Control Operations  Construct line from Paradise Lake northeast toward Stud Horse Spring.							
8. Special Instructions							
9. Division/Group Communication Summary							
Function	Frequency	System	Channel	Function	Frequency	System	Channel
Command	RX172.5500 TX163.8250	CMD 4 Tone 10	4				
Tactical	168.0500	NIFC T1 Tone 10	5	Air to Ground	166.6750	A/G	13
Prepared By (Resource Unit Leader)		Approved By (Planning Sect. Ch.)		Date		Time	
<b>A. Webster RESL</b>		<b>Gordon Martin</b>		<b>08/29/14</b>		<b>2000</b>	

DIVISION ASSIGNMENT LIST				1. Branch <b>Zone 2 Branch II</b>		2. Division/Group <b>SCOTT RIVER</b>	
3. Incident Name <b>Happy Camp Complex</b>				4. Operational Period Date: 08/30/2014 Time: 0600-1800			
5. Operations Personnel							
Operations Chief		<b>Bruce Carlisle</b>		Division/Group Supervisor		<b>Kevin Wegener</b> Page 1 of 2	
Branch Director		<b>Larry Wright</b>		Safety		<b>Mike Long</b>	
6. Resources Assigned This Period							
Strike Team/Task Force/ Resource Designator		Leader	Number Persons	Trans Needed	Drop Off PT/Time	Pick Up PT/Time	
Crew – T2IA – Mescalero C-92 9/6		John Cenante	19	N	Zone 2 ICP/0600	Zone 2 ICP/1800	
Crew – T2IA – Patrick 13A C-2003 9/4		Randy Teel	20	N	Zone 2 ICP/0600	Zone 2 ICP/1800	
Crew – T2IA – Navajo Scouts #2 C-2002 9/5		Delbert Damon	21	N	Zone 2 ICP/0600	Zone 2 ICP/1800	
Crew – T2 – Cobras #3 C-77 9/1		Alan Wippert	23	N	Zone 2 ICP/0600	Zone 2 ICP/1800	
Crew – T2 – Aztecs C-111 9/4		Angel Acosta	20	N	Zone 2 ICP/0600	Zone 2 ICP/1800	
Eng – T3 – KNF E76 E-283 9/4		Chris Hansen	5	N	Zone 2 ICP/0600	Zone 2 ICP/1800	
Eng – T3 – KNF E77 E-284 9/3		Matt Strom	5	N	Zone 2 ICP/0600	Zone 2 ICP/1800	
Eng – T3 – INF E32 E-251 9/3		Troy Maguire	5	N	Zone 2 ICP/0600	Zone 2 ICP/1800	
Eng – T3 – GE Forestry E1 E-216 8/31		Hugo Chaparro	3	N	Zone 2 ICP/0600	Zone 2 ICP/1800	
Eng – T6 – Pacific Coast E76 E-215 8/31		Tommy Starts	3	N	Zone 2 ICP/0600	Zone 2 ICP/1800	
DZ – T2 – Mike Peters E-252 9/2		Jerry Slades	2	N	Zone 2 ICP/0600	Zone 2 ICP/1800	
WT – T2 – Venuto WT257 E-46 8/29		Howard Venuto	1	N	Zone 2 ICP/0600	Zone 2 ICP/1800	
WT – T2 – WT66 E-344 9/9		Andy Klein	2	N	Zone 2 ICP/0600	Zone 2 ICP/1800	
Skidgine – Let 'Er Buck E-311 9/6		Steve Lassn	2	N	Zone 2 ICP/0600	Zone 2 ICP/1800	
Chipper – Firestorm E-289 9/4		James Barbaria	2	N	Zone 2 ICP/0600	Zone 2 ICP/1800	
Chipper – Zeb's E-245 9/4		Doug Staff	2	N	Zone 2 ICP/0600	Zone 2 ICP/1800	
FALM – North Zone O-385 9/3		Nealy/Burt	2	N	Zone 2 ICP/0600	Zone 2 ICP/1800	
FALM – North Zone O-386 9/3		Meadows/Lee	2	N	Zone 2 ICP/0600	Zone 2 ICP/1800	
7. Control Operations							
Continue to prep structures and provide structure defense in the communities of Seiad, Hamburg, and Scott Bar from DP14 to DP10. Work with READs for all proposed line construction.							
8. Special Instructions							
9. Division/Group Communication Summary							
Function	Frequency	System	Channel	Function	Frequency	System	Channel
Command	<b>RX 172.5500 TX 163.8250</b>	<b>CMD 4 Tone 10</b>	<b>4</b>				
Tactical	<b>168.2500</b>	<b>NIFC T-7 Tone 10</b>	<b>9</b>	Air to Ground	<b>166.6750</b>	<b>A/G</b>	<b>13</b>
Prepared By (Resource Unit Leader) <b>C. Dennett RESL</b>		Approved By (Planning Sect. Ch.) <b>Gordon Martin</b>		Date <b>08/29/2014</b>		Time <b>2000</b>	

DIVISION ASSIGNMENT LIST		1. Branch <b>Zone 2 Branch II</b>		2. Division/Group <b>SCOTT RIVER</b>			
3. Incident Name <b>Happy Camp Complex</b>		4. Operational Period Date: 08/30/2014 Time: 0600-1800					
5. Operations Personnel							
Operations Chief	<b>Bruce Carlisle</b>	Division/Group Supervisor		<b>Kevin Wegener</b>	<b>Page 2 of 2</b>		
Branch Director	<b>Larry Wright</b>	Safety		<b>Mike Long</b>			
6. Resources Assigned This Period							
Strike Team/Task Force/ Resource Designator	Leader	Number Persons	Trans Needed	Drop Off PT/Time	Pick Up PT/Time		
TFLD O-239 9/3	Jason Danen	1	N	Zone 2 ICP/0600	Zone 2 ICP/1800		
TFLD O-327 9/3	Steve Markason	1	N	Zone 2 ICP/0600	Zone 2 ICP/1800		
TFLD (t) O-121 9/2	Jesse Parry	1	N	Zone 2 ICP/0600	Zone 2 ICP/1800		
FELB O-314 9/2	John Ward	1	N	Zone 2 ICP/0600	Zone 2 ICP/1800		
READ O-470 9/9	Terra Perkins	1	N	Zone 2 ICP/0600	Zone 2 ICP/1800		
ARCH O-2048	Patty Hubley	1	N	Zone 2 ICP/0600	Zone 2 ICP/1800		
FEMT O-268 9/1	Jeremy Slocum	1	N	Zone 2 ICP/0600	Zone 2 ICP/1800		
FEMP O-267 9/1	Jason Barker	1	N	Zone 2 ICP/0600	Zone 2 ICP/1800		
7. Control Operations							
Continue to prep structures and provide structure defense in the communities of Seiad, Hamburg, and Scott Bar from DP14 to DP10. Work with READs for all proposed line construction.							
8. Special Instructions							
9. Division/Group Communication Summary							
Function	Frequency	System	Channel	Function	Frequency	System	Channel
Command	<b>RX 172.5500 TX 163.8250</b>	<b>CMD 4 Tone 10</b>	<b>4</b>				
Tactical	<b>168.2500</b>	<b>NIFC T-7 Tone 10</b>	<b>9</b>	Air to Ground	<b>166.6750</b>	<b>A/G</b>	<b>13</b>
Prepared By (Resource Unit Leader) <b>C. Dennett RESL</b>		Approved By (Planning Sect. Ch.) <b>Gordon Martin</b>		Date <b>08/29/2014</b>		Time <b>2000</b>	

<b>DIVISION ASSIGNMENT LIST</b>		1. Branch <b>Zone 2 Branch II</b>		2. Division/Group <b>DOZER</b>			
3. Incident Name <b>Happy Camp Complex</b>		4. Operational Period Date: 08/30/2014                      Time: 0600-1800					
5. Operations Personnel							
Operations Chief	<b>Bruce Carlisle</b>		Division/Group Supervisor	<b>Bob Meyers</b>			
Branch Director	<b>Larry Wright</b>		Safety	<b>Harvey Carr</b>			
6. Resources Assigned This Period							
Strike Team/Task Force/ Resource Designator	Leader	Number Persons	Trans Needed	Drop Off PT/Time	Pick Up PT/Time		
DZ- T2 – Ken's E-255 10/19	Alan Mulkey	1	N	Zone 2 ICP/0600	Zone 2 ICP/1800		
DZ- T2 – Johnson E-145 8/29	Tim Johnson	1	N	Zone 2 ICP/0600	Zone 2 ICP/1800		
DZ- T2 – North State E-177 9/8	Gifford Tollmudge	1	N	Zone 2 ICP/0600	Zone 2 ICP/1800		
DZ – T2 – MNF 3 E-2083 9/11	Rodney Carlton	2	N	Zone 2 ICP/0600	Zone 2 ICP/1800		
DZ – T2 – MDF 4 E-2084 9/10	Perry St John	2	N	Zone 2 ICP/0600	Zone 2 ICP/1800		
HEQB O-332 9/4	Tim Bray	1	N	Zone 2 ICP/0600	Zone 2 ICP/1800		
7. Control Operations							
Scout for opportunities for engagement. Construct line as opportunity presents while maintaining LCES and mitigating hazards.							
8. Special Instructions							
9. Division/Group Communication Summary							
Function	Frequency	System	Channel	Function	Frequency	System	Channel
Command	<b>RX 172.5500 TX 163.8250</b>	<b>CMD 4 Tone 10</b>	<b>4</b>				
Tactical	<b>166.7750</b>	<b>NIFC T-6 Tone 10</b>	<b>8</b>	Air to Ground	<b>166.6750</b>	<b>A/G</b>	<b>13</b>
Prepared By (Resource Unit Leader) <b>A. Webster RESL</b>		Approved By (Planning Sect. Ch.) <b>Gordon Martin</b>		Date <b>08/29/14</b>		Time <b>2000</b>	

DIVISION ASSIGNMENT LIST		1. Branch <b>Zone 2 Branch II</b>		2. Division/Group <b>96 HWY/IA</b>			
3. Incident Name <b>Happy Camp Complex</b>		4. Operational Period Date: 08/30/14 Time: 0600-1800					
5. Operations Personnel							
Operations Chief	<b>Bruce Carlisle</b>	Division/Group Supervisor		<b>Tom Stukey</b>	<b>Page 1 of 2</b>		
Branch Director	<b>Larry Wright</b>	Safety		<b>David North/Bobby Hubby (t)</b>			
6. Resources Assigned This Period							
Strike Team/Task Force/ Resource Designator	Leader	Number Persons	Trans Needed	Drop Off PT/Time	Pick Up PT/Time		
Crew – T2IA – Salyer C-143 9/9	Dale Mendes	20	N	Zone 2 ICP/0600	Zone 2 ICP/1800		
Crew – T2IA – Zephyr C-2004 9/2	Mat Fogarty	19	N	Zone 2 ICP/0600	Zone 2 ICP/1800		
Crew – T2IA – Hoopa #1 C-80 8/31	Nels Nelson	20	N	Zone 2 ICP/0600	Zone 2 ICP/1800		
Crew – T2IA – Firestorm #4 C-140 9/8	James Ramirez	20	N	Zone 2 ICP/0600	Zone 2 ICP/1800		
Crew – T2IA – Firestorm #5 C-141 9/9	Stan Hankins	20	N	Zone 2 ICP/0600	Zone 2 ICP/1800		
Crew – T2IA – Black Eagles 1 C-125 8/30	Casperson/Aguilar(t)	20	N	Zone 2 ICP/0600	Zone 2 ICP/1800		
Crew – T2 – Inyo 4 C-112 9/4	Andrew Auld	20	N	Zone 2 ICP/0600	Zone 2 ICP/1800		
Crew – T2 – 3B's C-114 9/6	Krishan Kochar	20	N	Zone 2 ICP/0600	Zone 2 ICP/1800		
Eng S/T – T3 – 4660C E-250 9/10	Matt Mullins	27	N	Zone 2 ICP/0600	Zone 2 ICP/1800		
<b>Happy Camp S/T #1</b>	James Jones	18	N	Zone 2 ICP/0600	Zone 2 ICP/1800		
*Eng – T6 – 863 Umatilla E-213 8/31	Paul Basye		N	Zone 2 ICP/0600	Zone 2 ICP/1800		
*Eng – T6 – 002 – Rogue Valley E-212 8/31	Stuart Johnson		N	Zone 2 ICP/0600	Zone 2 ICP/1800		
*Eng – T6 – Grand Ronde Tribe E-211 8/31	Jeremy Ojua		N	Zone 2 ICP/0600	Zone 2 ICP/1800		
*Eng – T6 – Grand Rond Tribe E-210 8/31	Clift Gabe		N	Zone 2 ICP/0600	Zone 2 ICP/1800		
*Eng – T6 – Deschutes 652 E-209 8/31	Jared Nelson		N	Zone 2 ICP/0600	Zone 2 ICP/1800		
<b>Happy Camp TF #4</b>	Erza Butterfield	19	N	Zone 2 ICP/0600	Zone 2 ICP/1800		
*Eng – T6 – Interior Brush 1 E-132 8/30	Chase Strand		N	Zone 2 ICP/0600	Zone 2 ICP/1800		
*Eng – T6 – Deschutes 640 E-208 8/31	Zebbron Watts		N	Zone 2 ICP/0600	Zone 2 ICP/1800		
*Eng – T3 – Castle Mt. E-202 8/31	Jill Benton		N	Zone 2 ICP/0600	Zone 2 ICP/1800		
*Eng – T6 – Pacific Forest 74 E-214 8/31	Kevin Roberts		N	Zone 2 ICP/0600	Zone 2 ICP/1800		
*Eng – T6 – Firestorm 9905 E-75	Ken Maples		N	Zone 2 ICP/0600	Zone 2 ICP/1800		
*WT – T2 – WT4 E-349 9/12	Ted Kline		N	Zone 2 ICP/0600	Zone 2 ICP/1800		
*WT – T2 – WT3 E-348 9/11	Mike Kendrick		N	Zone 2 ICP/0600	Zone 2 ICP/1800		
7. Control Operations Continue to prep structures and provide structure defense in the communities of Seiad, Hamburg, and Scott Bar. Coordinate initial attack. Respond to newly reported fires. Ensure all crews are briefed prior to travelling and engaging.							
8. Special Instructions							
9. Division/Group Communication Summary							
Function	Frequency	System	Channel	Function	Frequency	System	Channel
Command	<b>RX172.5500 TX163.8250</b>	<b>CMD 4 Tone 10</b>	<b>4</b>				
Tactical	<b>168.0500</b>	<b>NIFC Tac 1 Tone 10</b>	<b>5</b>	Air to Ground	<b>166.6750</b>	<b>A/G</b>	<b>13</b>
Prepared By (Resource Unit Leader) <b>A. Webster RESL</b>		Approved By (Planning Sect. Ch.) <b>Gordon Martin</b>		Date <b>08/29/14</b>		Time <b>2000</b>	





<b>DIVISION ASSIGNMENT LIST</b>		1. Branch <b>Zone 2</b>		2. Division/Group <b>ZONE 2 STAGING</b>			
3. Incident Name <b>Happy Camp Complex Zone 2</b>		4. Operational Period Date: 08/30/2014                      Time: 0600-1800					
5. Operations Personnel							
Operations Chief	<b>Bruce Carlisle</b>		Division/Group Supervisor	<b>John Nickey</b>			
Branch Director			Safety				
6. Resources Assigned This Period							
Strike Team/Task Force/ Resource Designator	Leader	Number Persons	Trans Needed	Drop Off PT/Time	Pick Up PT/Time		
Eng – T3 – E351 E-2106 9/12	Jon Maxwell	5	N	Zone 2 Base Camp/0600	Zone 2 Base Camp/1800		
Eng – T3 – Bohica E31 E-2105 9/12	David Breglia	3	N	Zone 2 Base Camp/0600	Zone 2 Base Camp/1800		
Eng – T3 – Rocky Mt E-2116 9/5	Fred Fleischman	4	N	Zone 2 Base Camp/0600	Zone 2 Base Camp/1800		
DZ – T2 – North Rivers E-2069 9/9	Jesse Downey	2	N	Zone 2 Base Camp/0600	Zone 2 Base Camp/1800		
DZ – T2 – Walt Moody #9747 E-2070 9/9	Walt Moody	1	N	Zone 2 Base Camp/0600	Zone 2 Base Camp/1800		
FALM – Miller Wood O-168 8/29	Hertler/Wyle	2	N	Zone 2 Base Camp/0600	Zone 2 Base Camp/1800		
FALC – O-171 8/30	Roy Shane	1	N	Zone 2 Base Camp/0600	Zone 2 Base Camp/1800		
DIVS O-480 9/7	Mark Johnson	1	N	Zone 2 Base Camp/0600	Zone 2 Base Camp/1800		
TFLD O-2108 9/3	Richard Morris	1	N	Zone 2 Base Camp/0600	Zone 2 Base Camp/1800		
7. Control Operations							
Stage at Zone 2 Base Camp. Maintain readiness and communications with overhead resources.							
8. Special Instructions							
9. Division/Group Communication Summary							
Function	Frequency	System	Channel	Function	Frequency	System	Channel
Command	<b>RX 172.5500 TX 163.8250</b>	<b>CMD 4 Tone 10</b>	<b>4</b>				
Tactical	<b>166.7250</b>	<b>NIFC Tac 5 Tone 10</b>	<b>7</b>	Air to Ground	<b>166.6750</b>	<b>A/G</b>	<b>13</b>
Prepared By (Resource Unit Leader)		Approved By (Planning Sect. Ch.)		Date		Time	
<b>A. Webster RESL</b>		<b>Gordon Martin</b>		<b>08/29/14</b>		<b>2000</b>	

<b>DIVISION ASSIGNMENT LIST</b>			1. Branch <b>Zone 2 Branch II</b>		2. Division/Group <b>SCOTT RIVER</b>		
3. Incident Name <b>Happy Camp Complex Night Shift</b>			4. Operational Period Date: 08/30-31/14 Time: 1800-0600				
5. Operations Personnel							
Operations Chief		<b>J.Truett/J. Tomaselli (t)</b>		Division/Group Supervisor		<b>Marc Walburn</b>	
Branch Director				Safety		<b>Tom Plymale</b>	
6. Resources Assigned This Period							
Strike Team/Task Force/ Resource Designator		Leader	Number Persons	Trans Needed	Drop Off PT/Time		Pick Up PT/Time
CREW – T1 – Chief Mtn C-2010 9/6		Lyle St Goddard	21	N	Zone 2 ICP/1800		Zone 2 ICP/0600
ENG - S/T – T3 – 4600C E-2086 9/10		Phil Weston	27	N	Zone 2 ICP/1800		Zone 2 ICP/0600
ENG - S/T – T3 – 4640C E-2089 9/8		Neal Robison	27	N	Zone 2 ICP/1800		Zone 2 ICP/0600
ENG – T3 – Firestorm 9901 E-2104		Jess Wills	3	N	Zone 2 ICP/1800		Zone 2 ICP/0600
ENG – T3 – Firestorm 9907 E-2113 9/12		Dan Kelleher	3	N	Zone 2 ICP/1800		Zone 2 ICP/0600
ENG – T6 – High Sierra E-2108 9/12		Jerry Vice	3	N	Zone 2 ICP/1800		Zone 2 ICP/0600
ENG – T6 – E9 E-2112 9/12		Jacob Rowsey	3	N	Zone 2 ICP/1800		Zone 2 ICP/0600
FEMP O-462 9/9		Marciano Duran	1	N	Zone 2 ICP/1800		Zone 2 ICP/0600
FEMP O-461		Brad Setterlund	1	N	Zone 2 ICP/1800		Zone 2 ICP/0600
7. Control Operations							
Patrol and monitor fire conditions. Engage in perimeter fire suppression or structure defense as necessary.							
8. Special Instructions							
9. Division/Group Communication Summary							
Function	Frequency	System	Channel	Function	Frequency	System	Channel
Command	RX169.5375 TX164.7125	CMD 3 Tone 10	3				
Tactical	168.2500	NIFC TAC7 Tone 10	9	Air to Ground	166.6750	A/G	13
Prepared By (Resource Unit Leader)			Approved By (Planning Sect. Ch.)			Date	Time
<b>A. Webster RESL</b>			<b>Gordon Martin</b>			<b>08/29/14</b>	<b>2000</b>

<b>DIVISION ASSIGNMENT LIST</b>			1. Branch <b>Zone 2 Branch II</b>		2. Division/Group <b>96 HWY</b>		
3. Incident Name <b>Happy Camp Complex Night Shift</b>			4. Operational Period Date: 08/30-31/14 Time: 1800-0600				
5. Operations Personnel							
Operations Chief		<b>J.Truett/J. Tomaselli (t)</b>		Division/Group Supervisor		<b>Stephen Reed/Una Pesata</b>	
Branch Director				Safety		<b>Tom Plymale</b>	
6. Resources Assigned This Period							
Strike Team/Task Force/ Resource Designator		Leader	Number Persons	Trans Needed	Drop Off PT/Time	Pick Up PT/Time	
ENG - S/T - 6631C E2085 9/11		Green/Canning (t)	27	N	Zone 2 ICP/1800	Zone 2 ICP/0600	
ENG - T3 - IAR-09 E-2111 9/11		William Leflet	4	N	Zone 2 ICP/1800	Zone 2 ICP/0600	
ENG - T3 - 9533 E-2117 9/12		Aaron Williams	5	N	Zone 2 ICP/1800	Zone 2 ICP/0600	
ENG - T6 - Firestorm 9904 E-2109 9/12		Joshua Bradley	4	N	Zone 2 ICP/1800	Zone 2 ICP/0600	
ENG - T6 - Firestorm 9906 E-2110 9/11		Aaron Wines	3	N	Zone 2 ICP/1800	Zone 2 ICP/0600	
ENG - T6 - Firestorm 9909 E-2114 9/12		Ronald Sartain	3	N	Zone 2 ICP/1800	Zone 2 ICP/0600	
7. Control Operations							
Patrol structures along Highway 96. Monitor fire progress on Grider Ridge between DP 17 and DP 4.							
8. Special Instructions							
Use frequencies for Div H.							
9. Division/Group Communication Summary							
Function	Frequency	System	Channel	Function	Frequency	System	Channel
Command	RX 169.5375 TX 164.7125	CMD 3 Tone 10	1				
Tactical	166.5500	R5 TAC 4 Tone 10	10	Air to Ground	166.6750	A/G	13
Prepared By (Resource Unit Leader)			Approved By (Planning Sect. Ch.)		Date	Time	
A. Webster RESL			Gordon Martin		08/29/14	2000	

# AIR OPERATIONS SUMMARY

PREPARED BY: Billy Monahan

PREPARED DATE/TIME: 08/29/14

1. INCIDENT NAME: Happy Camp Complex  
 2. OPERATIONAL PERIOD DATE: 08/30/14 START TIME: 0700 END TIME: 1930 SUNRISE:0634 SUNSET:1956

3. REMARKS (Safety Notes, Hazards, Air Operations Special Equipment, etc.)  
 Thunderstorms, erratic winds. Low wires and cables  
 Numerous aircraft in confined areas. MTR's & MOA's near fire area.  
 Flight following procedures at Cave Helibase will be done with Cave Tower, 125.725  
 Track all retardant usage, location & gallons.  
 Helispots; H-1 41 38.84 123 13.423 H-41 37.756 123 12.460  
 Expect some Type 3 Missions Supporting Happy Camp Fire from July HB (Recons,IR)  
 Note: Cave Helibase at Illinois Valley airport now has a Temporary Tower, "Cave Tower" 125.725

4. MEDEVAC A/C:  
 408 (NVG, ALS, Hoist) @ Scott Valley,  
 503 litter capable at Happy  
 510 litter capable at Cave

5. TFR: 4/6671  
 Radius: See dimensions below  
 Altitude: \_10,000'\_ \_MSL  
 42 00.00 X 123 35.00  
 42 00.00 X 123 00.00  
 41 36.09 X 123 35.00  
 41 36.09 X 123 00.00  
 Frequency: 119.625

6. PERSONNEL	Phone	7. FREQUENCIES	AM	FM	8. FIXED-WING	# Avail / Type/ Make-Model / FAA N# / Base(s)
AOBD: Billy Monahan	661-221-1322	AIR/AIR FW:		162.2250	Airtankers	
ATGS: Val Linch	661 487-2636	AIR/AIR RW: TFR-Victor	133.7250 119.6250		Leadplanes	
ASGS: Kelvin McElfish	916-204-1012	AIR/GRD: Tac AIR/GRD: Cmd		166.6750 169.1500		
ASGS: (Cave) Kent Wedin	575 538-1075	COMMAND 1		Rx: 167.9625 Tone 107.2 Tx: 173.0625 Tone 107.2	ATGS Aircraft	AA- 17V Val Linch AA- 06 Walter Bunt 507 - Cobra/ Weed
HEB1: (Cave) Kirby Cook HEB1 (t) Curtis Ritzman	541 592-2034 Hard line					
HEB2: (Happy) Jim Gould HEB2(t) Brad Idol	530 493-1779 Happy Hard line	July Complex TFR	118.1250			
Cave Helibase	541 592-2034	Medical AIR/GRD CALCORD	Rx:156.7 Tx:156.7	156.0750 Tone 6		

## 9. HELICOPTERS (Use Additional Sheets As Necessary)

FAA N#	TY	MAKE/MODEL	BASE	AVAIL	START	REMARKS	FAA N#	TY	MAKE/MODEL	BASE	AVAIL	START	REMARKS
H-503	3	Bell 407	Happy Camp	0730	0700	I/A with crew	184CH	1	Columbia 107	Cave	0800	0730	Bucket
911CV	3	Astar	Cave	0800	0730		HT-783	1	S-64	Cave	0800	0730	Tanked
H-510	2	Bell 205	Cave	0800	0730		HT-746	1	S-64	Cave	0800	0730	Tanked
H-516	2	Bell 212	Cave	0800	0730	I/A with crew	HT-743	1	S-64	Cave	0800	0730	Tanked
H-522	2	Bell 205	Cave	0800	0730		699RH	1	K-Max	Happy	0730	0700	Bucket


10. TASK/MISSION/ASSIGNMENT (Type/Function includes: Air Tactical, Retardant, Recon, Personnel Transport, Water Dropping, S&R, etc.)

TYPE/FUNCTION	NAME OF PERSONNEL OR CARGO (if applic) OR INSTRUCTIONS FOR TACTICAL AIRCRAFT	MISSION START	FLY FROM	FLY TO
Bucket drops per request	Division Sup. To request and coordinate. Also Air Assets to record where their drops were and amount of Water/Retardant used.			
Recon Flights	To be approved by OPS or AOBD			
Cargo / Sling	Per Request from Div Sups, all sling loads / crew shuttles			
Helowell	Norcross Helowell 7000 gallons 41 38.817 123 18.622 Water Tender E266			
	DIPSITES			
	Blue Granite 41 33.960 x 123 18.600			
	Indian 41 53.743N x 123 24.373W			
	Thompson 41 52.589N x 123 19.192W			
	Nine Six 41 51.651N x 123 18.447W			
	Ranch 41 52.435N x 123 25.053W			
	Russel 41 52.24N x 123 24.52W			
	Elk 41 46.88N x 123 23.657W			
	Wire 41 48.43N x 123 21.75W			
	Ukonom Lake 41 34.818N x 123 .402			
	Seiad MRB 41 50.035 x 123 11.708			

INCIDENT RADIO COMMUNICATIONS PLAN		Incident Name		Date/Time Prepared		Operational Period Date/Time					
Happy Camp Complex		Happy Camp Complex		8/29/2014 @ 2000		8/30/14 to 8/31/14					
Zn Ch	Function	Channel Name/Trunked Talkgroup	Assignment	RX Freq	RX Tone/NAC	TX Freq	TX Tone/NAC	Dev	Pwr	Mode A, D, M	Remarks
Zn15 Ch1	COMMAND	CMD 1	ALL DIVISIONS	173.0625	Tone 10 107.2	167.9625	Tone 10 107.2	N	L	A	ALL CMD'S LINKED TOGETHER
Zn15 Ch2	COMMAND	CMD 2	ALL DIVISIONS	168.7000	Tone 10 107.2	170.9750	Tone 10 107.2	N	L	A	ALL CMD'S LINKED TOGETHER
Zn15 Ch3	COMMAND	CMD 3	ALL DIVISIONS	169.5375	Tone 10 107.2	164.7125	Tone 10 107.2	N	L	A	ALL CMD'S LINKED TOGETHER
Zn15 Ch4	COMMAND	CMD 4	ALL DIVISIONS	172.5500	Tone 10 107.2	163.8250	Tone 10 107.2	N	L	A	ALL CMD'S LINKED TOGETHER
Zn15 Ch5	TACTICAL	NIFC T-1	DIV N & 96 HWY/IA	168.0500	Tone 10 107.2	SIMPLEX	Tone 10 107.2	N	L	A	
Zn15 Ch6	TACTICAL	NIFC T-3	DIV L & DIV D/F	168.6000	Tone 10 107.2	SIMPLEX	Tone 10 107.2	N	L	A	NIGHT DIV D/F
Zn15 Ch7	TACTICAL	NIFC T-5	DIV M & STAGING GRP	166.7250	Tone 10 107.2	SIMPLEX	Tone 10 107.2	N	L	A	
Zn15 Ch8	TACTICAL	NIFC T-6	DIV A/C & DOZER GRP	166.7750	Tone 10 107.2	SIMPLEX	Tone 10 107.2	N	L	A	NIGHT DIV H
Zn15 Ch9	TACTICAL	NIFC T-7	DIV T/Z, DIV I & SCOTT RIVER GRP	168.2500	Tone 10 107.2	SIMPLEX	Tone 10 107.2	N	L	A	NIGHT DIV T/Z
Zn15 Ch10	TACTICAL	R5 TAC4	DIV H & STRUCTURE GROUP	166.5500	Tone 10 107.2	SIMPLEX	Tone 10 107.2	N	L	A	NIGHT STRUCTURE GRP
Zn15 Ch11	TACTICAL	R5 TAC5	DIV J	167.1125	Tone 10 107.2	SIMPLEX	Tone 10 107.2	N	L	A	NIGHT DIV J
Zn15 Ch12	TACTICAL	R5 TAC6	DIV O/Q	168.2375	Tone 10 107.2	SIMPLEX	Tone 10 107.2	N	L	A	NIGHT DIV O/Q
Zn15 Ch13	AIR TO GROUND	A/G-TAC	ALL DIVISIONS	166.6750	CSQ	SIMPLEX	NONE	N	L	A	
Zn15 Ch14	AIR TO GROUND	A/G-CMD	OVERHEAD	169.1500	CSQ	SIMPLEX	NONE	N	L	A	
Zn15 Ch15	MEDICAL TAC	CALCORD	ALL DIVISIONS	156.0750	CSQ	SIMPLEX	Tone 6 156.7	N	H	A	AS NEEDED FOR MEDIVAC
Zn15 Ch16	AIR GUARD	AIR GUARD	ALL DIVISIONS	168.6250	CSQ	SIMPLEX	Tone 1 110.9	N	L	A	
Prepared By (Communications Unit Leader)											
MIKE HORST - COM1 (661) 645-4254 / KEVIN HARPER COM1(661) 330-0209											
Incident Location: KLAMATH NATIONAL FOREST - HAPPY CAMP, CA											
Cntry: SISKIYOU Latitude Longitude											

1-CPH

<b>MEDICAL PLAN</b>	1. INCIDENT NAME <b>Happy Camp Complex</b>	2. DATE PREPARED 8/29/14	3. TIME PREPARED 1800	4. OPERATIONAL PERIOD 8/30-31/2014 0600-0600				
<b>5. INCIDENT MEDICAL AID STATIONS</b>								
MEDICAL AID STATIONS	LOCATION			PARAMEDIC YES NO				
Medical Unit	Zone 1 Happy Camp, Zone 2 Fort Jones and Horse Creek Camps			X				
Frontline Medical	Zone 1 Happy Camp, Zone 2 Fort Jones and Horse Creek Camps			X				
<b>TRANSPORTATION</b>								
<b>A. Air Ambulances</b>								
NAME	ADDRESS	PHONE	PARAMEDIC YES NO					
Mercy Flights (Until 2400, No Hoist)	Medford, Oregon	(530) 842-3515	X					
Kern County 408 (NVG, Hoist)	Scott Valley Helibase	(530) 842-3515	X					
CHP H-14 (NVG, Hoist)	Redding Airport	(530) 842-3515		X				
<b>B. Ground Ambulances</b>								
Arcata Ambulance	Happy Camp Zone 1	Communications	X					
Hoopaa Ambulance	Happy Camp Zone 2	Communications	X					
<b>7. HOSPITALS</b>								
NAME	ADDRESS	TRAVEL TIME		PHONE	HELIPAD		BURN CENTER	
		AIR	GRND		YES	NO	YES	NO
Fairchild MC	444 Bruce St. Yreka, CA. N. 41 43.13 W 122 38.69	20m	1 hr	(530) 841-6292	X			X
Mercy MC (Level 3 Trauma)	914 Pine St. Mt. Shasta, CA. N. 40 34.14 W. 122 23.97	45m	2.0 hr	(530) 926-9360	X			X
Rogue Valley MC (Level 2 Trauma)	2825 Barnett Rd. Medford, OR. N. 42 19.092 W. 122 49.833	30m	1.5 hr	(541) 789-7100	X			X
Providence Medford MC Level 2 Trauma	1111 Crater Lake Ave. Medford OR N 42 20.330 W 122 51.766	30m	1.5 hr	(541) 732-6440	X			X
UC Davis Med Center Level 1 Trauma	2315 Stockton Blvd. Sacramento, CA N. 38 33.3 W. 121 27.3	2hr	6.0 hr	(916) 734-3636 Burn Center (916) 734-3790 ER	X		X	
<b>8. MEDICAL EMERGENCY PROCEDURES</b>								
<p><b>In the event of a medical emergency, provide the following information to your DIVS or Happy Camp Communications on Command Net.</b></p> <ol style="list-style-type: none"> <li>1. Declare the nature of the emergency. <ol style="list-style-type: none"> <li>a. Medical injury/illness?</li> <li>b. Is injury/illness life threatening?</li> </ol> </li> <li>2. If life threatening, then request that the designated frequency be cleared for emergency traffic.</li> <li>3. Identify the on-scene Point of Contact (POC) by resource and last name (i.e POC is TFLD Smith).</li> <li>4. Identify nature of incident, number injured, patient assessment(s) and location (geographic and GPS coordinates).</li> <li>5. Identify on-scene medical personnel by position and name (i.e EMT Jones).</li> <li>6. Identify preferred method of patient transport.</li> <li>7. Request any additional resources and/or equipment needed</li> <li>8. Document all information received and transmitted on the radio or phone.</li> <li>9. Identify any changes in the on-scene POC or medical personnel as they occur.</li> </ol>					<p style="text-align: center;"><b><u>INJURY REPORTING PROCEDURES</u></b></p> <p>Nature Of Injury _____ # of Patients _____</p> <p>Transportation Needed: Air _____ REM _____ Ground _____</p> <p>Lat _____ Long _____</p> <p>Elevation _____ Estimated Air Temp _____</p> <p>Specific Hazards In Area to Aircraft _____</p> <p>Patient Unit ID _____</p> <p style="text-align: center;">(REMINDER: DO NOT GIVE PT NAME OVER RADIO)</p> <p>Are Medical Personnel With Patient: Yes _____ No _____</p> <p>Age _____ Sex: Male _____ Female _____</p> <p><b>ALL EMERGENCIES---Secure the area and identify witnesses for later investigation. Keep an accurate log of events.</b></p> <p><b><u>Zone 1 Medical Unit Leader (916) 591-8802, Office (530) 493-1506</u></b> <b><u>Zone 2 Medical Unit Leader (916) 215-2732</u></b></p>			
<b>ICS 206 8-78</b>	9. PREPARED BY (MEDICAL UNIT LEADER) <b>Scott McKenney, Mike Hazlett MEDL</b>			10. REVIEWED BY (SAFETY OFFICER) <b>Bob Moore, SOF1</b>				

Medical Information	TOPIC: <b>GETTING HELP DURING A MEDICAL EMERGENCY</b>		
Incident Aid Stations & Medical Teams Assignments for August 30, 2014			
Name	Location	Paramedic Yes No	
Happy Camp (Front Line Medical)	Zone 1 Happy Camp (Camp)	X	
Horse Creek Camp (Front Line Medical)	Zone 2 Horse Creek Camp	X	
Fort Jones Camp (Front Line Medical)	Zone 2 Fort Jones Camp	X	
Arcata Ambulance	Staged at Happy Camp	X	
Happy Camp Ambulance	Staged at Horse Creek Camp	X	
Hoopa Ambulance	Staged at Fort Jones Camp	X	
<b>Div. D / F</b> FEMP Wallace & Salvestrin	In Division Moved as Directed by Div or Safety	X	
<b>Div. H</b> FEMP White, Coyle, Dressel, Williams	In Division Moved as Directed by Div or Safety	X	
<b>Div. O/Q</b> FEMP Russell, FEMT Daley	In Division Moved as Directed by Div or Safety	X	
<b>Div. T/Z</b> FEMP Vail, Debellis	In Division Moved as Directed by Div or Safety	X	
<b>Div. J</b> FEMP Schroth	In Division Moved as Directed by Div or Safety	X	
<b>Div. L</b> FEMP Balbiani, FEMT Turner	In Division Moved as Directed by Div or Safety	X	
<b>Div. M</b> FEMP Fitzgerald	In Division Moved as Directed by Div or Safety	X	
<b>Div. N</b> FEMP LaSieur, FEMT Mazaika	In Division Moved as Directed by Div or Safety	X	
<b>Scott River Rd Group</b> FEMT Slocum, FEMP Barker	As Directed by Group Sup or Safety	X	
NIGHT SHIFT			
<b>Div D/F</b> FEMT Heckmann	In Division Moved as Directed by Div or Safety		X
<b>Div H</b> FEMT Delia, Roe	In Division Moved as Directed by Div or Safety		X
<b>Div O/Q</b> FEMT Richards	In Division Moved as Directed by Div or Safety		X
<b>Div T/Z</b> FEMP Rieke, FEMT Bennett-Snow	In Division Moved as Directed by Div or Safety	X	
<b>Structure Group</b> FEMP Duran, FEMP TBN	As Directed by Group Sup or Safety	X	

**Medical Pre-Incident Planning:**

- Identify EMTs and Equipment imbedded in suppression recourses.
- Review the Incident or Forest Emergency reporting procedures
- Review the Incident's assigned Medical resources and their location. (note radio call sign)
- Assure that all assigned supervisors have reviewed and understand the Medical Plan. (if none is available develop a quick plan before engaging)

**Arriving at work site:**

- Assess access and egress for medical ground units.
- Assure that all resources can clearly articulate their location. (update as they move)
- GPS potential Drop Points or Landing Zones.
- Note weather changes and check on availability of air resources.
- Pre-Position medical supplies

**During Response to a Medical Emergency:**

- Contact Communications and declare a **MEDICAL EMERGENCY!!**
- Identify the Unit needing help and their location
- Insure that LCES are maintained.
- Obtain patient info and severity.
- Develop a resource list
  - Initial care
  - Sustained care
  - Extrication/evacuation
- Report the Emergency and request anticipated resources needs
- Put two plans in place and start both plans clearly identifying the primary and backup plan to resources assigned.

**During the Evacuation (every 15 min.)**

- Reassess the treatment and the patient response (Are they getting better?) Do you have the right level of care?
- Assess the evacuation plans progress and adjust as needed.
- Assure that additional personnel are available for relief.
- Up-date Comm/Disp of the progress of the rescue.



## Human Resource Message August 30, 2014

### **Work and Fatigue in Wildland Firefighting effects your physical and emotional state!**

Wildland Firefighting is arduous work, performed for long shifts in difficult environmental conditions. The work can be dangerous due to the fire and working conditions. Heat, smoke, rolling rocks, falling snags, and other hazards threaten the worker. Fatigue can impair performance and decision making, increasing the risk of injury. Prolonged exposure to fatigue, stress, smoke, and poor nutrition has the potential to increase the incidence of upper respiratory illness, but also mental lapses.

The stress response is necessary to prepare an athlete, firefighter or soldier for a maximal effort in a physical challenge, but it can be unhealthy if it occurs too often in the wrong setting.

**Fatigue**—A sense of tiredness, either mental or physical, brought on by stress (lack of sleep, physical work, nutritional inadequacies, or mental stresses). Fatigue following work or sleep deprivation is a normal state and can be reversed with adequate recovery or rest.

**Accumulated (Chronic) Fatigue**—Fatigue from which normal rest does not produce recovery. Accumulated fatigue is often caused by extended periods of stress with inadequate recovery periods, resulting in decreased productivity, compromised immune function, and reduced alertness.

Fatigued workers perform poorly and behave carelessly, tolerate greater errors, and become inattentive. They display decreased motivation, increased irritability and depression, and low morale. Accumulated fatigue is more persistent, producing a wider array of effects on performance, health, and morale than ordinary fatigue. Accumulated fatigue requires longer recovery periods than ordinary fatigue.

**Correct Nutrition, Hydration and Rest are good coping mechanisms for stress and fatigue. Make use of your down time and rest per the work/rest guidelines.**

## Your Mental Health Matters!



In times of great stress or adversity, it's always best to keep bush, to plow your anger and your energy into something positive.

-Lee lococa

Jan Cawthon, Zone 1 Human Resource Specialist,  
909-553-2829

Janine Summy, Zone 2 Human Resource Specialist,  
509-429-1206

# **ZONE 2 TRAINING SPECIALIST MESSAGE**

- ❖ **A TNSP WILL BE AVAILABLE FOR TRAINEE REGISTRATION DAILY AT ZONE 2 BASE CAMP FROM 0530-0730 AND FROM 1900-2100.**
- ❖ **A TNSP WILL BE AVAILABLE FOR ZONE 2 TRAINEE REGISTRATION AT HORSE CAMP ON SATURDAY AUGUST 30<sup>TH</sup> FROM 0600-0800.**
- ❖ **A TNSP WILL BE AVAILABLE AT THE ZONE 2 ICP FROM 0800-2130 DAILY.**
- ❖ **ALL ZONE 2 TRAINEES MUST CLOSE OUT THEIR TRAINING PACKAGE AT THE ZONE 2 ICP.**

## Resource Guidelines for Fire Suppression

### 1. Heavy Equipment and Machine Fire Lines

- Avoid using heavy equipment on slopes > 35%. If machine line is absolutely necessary on slopes > 35%, use an excavator and/or feller buncher – not a dozer.
- Do not build machine line within 300 feet of live streams – use hand line within 300 feet of streams.
- An excavator and/or feller buncher are the preferred pieces of heavy equipment if machine line is necessary – dozers are not preferred.
- Limit the depth and width of machine lines to that necessary to stop fire spread. Smaller is better than bigger.
- After use, recontour all machine lines, seed and fertilize with appropriate seed mixes, cover the recontoured lines with abundant slash; and mulch with weed free straw where prescribed.

### 2. Hand Lines

- Size and location consistent with Minimum Impact Suppression Tactics.
- Avoid using stream bottoms as improved or constructed control points. If needed, consult with the resource advisor to minimize impacts to streams.
- Tactical ignition of riparian areas is preferred over digging hand line in riparian areas or across streams.
- After use, recontour all hand line within 300 feet of streams and throw slash on the recontoured line. If possible, recontour all hand line regardless of location. At a minimum, waterbar all hand line outside of 300 feet using Forest specifications.

### 3. Retardants, Foams, and Surfactants

- Do not apply retardant within 300 feet of water bodies.
- Notify Forest dispatch immediately in the event of an accidental retardant application to water bodies
- Do not pump directly from streams if chemical products are to be injected into the system. If chemicals are used, pump from a fold-a-tank located at least 300 feet from water.
- Do not back flush pumps and charged hoses into streams and lakes.

### 4. Fuel Spills

- Store fuels at least 300 feet from water bodies.
- Apply spill prevention and containment measures on all pumps.
- Develop a HAZMAT Plan for all refueling/fuel storage areas. Have HAZMAT materials and trained personnel at these locations at all times.

### 5. Camp, Helibase, Helispot & Medivac Locations

- Helispot & pre-positioned medivac locations must be pre-authorized by Resource Advisor.
- Avoid locating camps and helibases within 300 feet of water bodies. If no other options exist, camps and helibases can be located within 300 feet of water bodies on a case-by-case basis if approved by the resource advisor.
- Use portable toilets at camps whenever possible. Latrines can be used temporarily or for small camps and will be located at least 300 feet from water sources.
- Spike camp locations, along with numbers of people staged & duration of use, must be pre-authorized by Resource Advisor.

### 6. Water Drafting and Helicopter Dipping

- Intakes on all pumps must be screened with mesh less than or equal to a 3/36<sup>th</sup> inch pore size.
- Install spill containment devices on all pumps.

- In non-emergency situations, do not dip from streams unless authorized by the resource advisor. Pump water into heli-wells or other portable tanks instead of dipping from streams. Dipping from lakes and ponds may be OK if authorized by the Resource Advisor.
- Helicopter dipping should be done only after chemical injection systems have been removed, disconnected, or rinsed clean.
- Make sure that all intake structures are clean and dry of mud and vegetation before placing them into water bodies.

#### **7. Noxious Weeds and Aquatic Nuisance Species**

- All vehicles mobilizing onto the fire and demobilizing from the fire must go through the weed wash station.
- Locate helibases in weed-free areas. If flowering weeds are present at helibases, they should be mowed and removed to an area where they cannot attach to gear.
- Inspect helicopter cargo nets to ensure that they are free of seeds and plant debris.
- Brush all seeds and plant debris off of your line gear before exiting the fire.
- Before placing it in water, ensure that all firefighting equipment (i.e. helicopter buckets, screens on pump intakes, hoses, etc) is clean of all dirt and plant debris, and dry.

#### **8. Snags**

- When snagging roadsides, retain the larger snags that are leaning away from the road.
- Do not cut down cambium-peeled trees.
- When possible, roll logs out of road/fireline instead of bucking.

#### **9. Brushing and Fuel Breaks**

- Maintain as many green trees and variety of size classes as possible – try to leave the brushed area as visually appealing as possible.
- Flush cut all stumps. Dispose of the cookies where they are not visible from the road or trail.
- When possible, roll logs out of roads whole instead of bucking.
- If chipping occurs, spray the chips across as wide an area as possible. Do not create beds of chips deeper than a couple of inches.

NO PARKING

NO PARKING

PARKING



# FORT JONES ICP

PARKING



NO PARKING

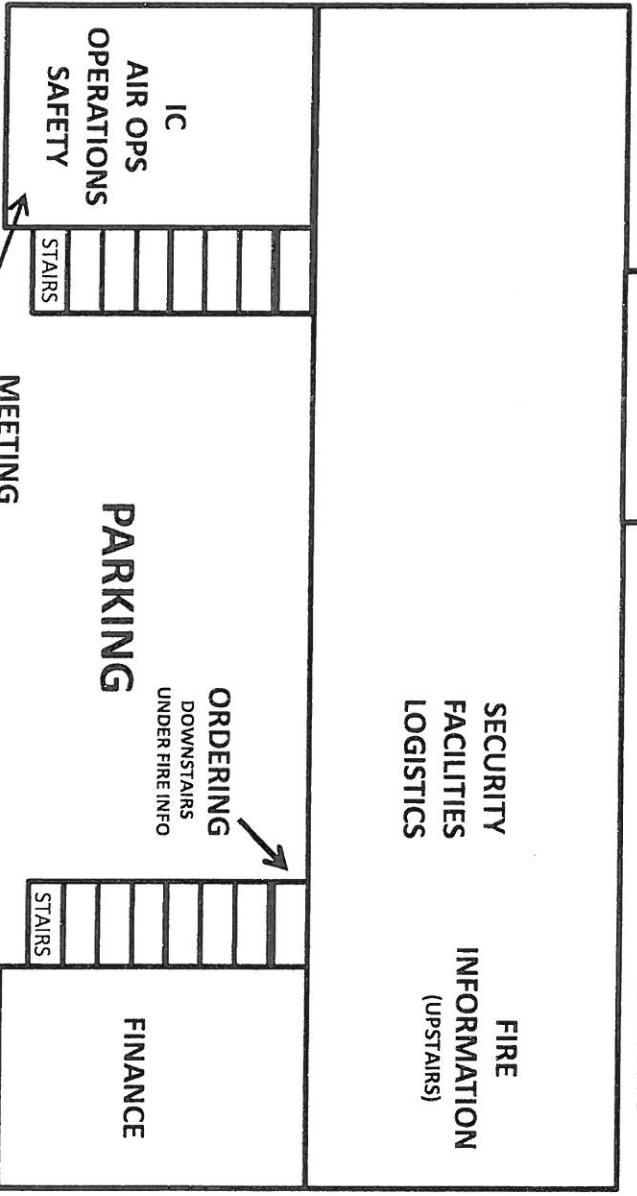
PARKING



PARKING

SECURITY  
FACILITIES  
LOGISTICS

FIRE  
INFORMATION  
(UPSTAIRS)



PARKING



PARKING



TRAINING



SIT

CHECK IN  
DEMOB  
PLANS

PARKING



PARKING



NO PARKING  
0800-1800  
4 SPACES



EXIT



COMM



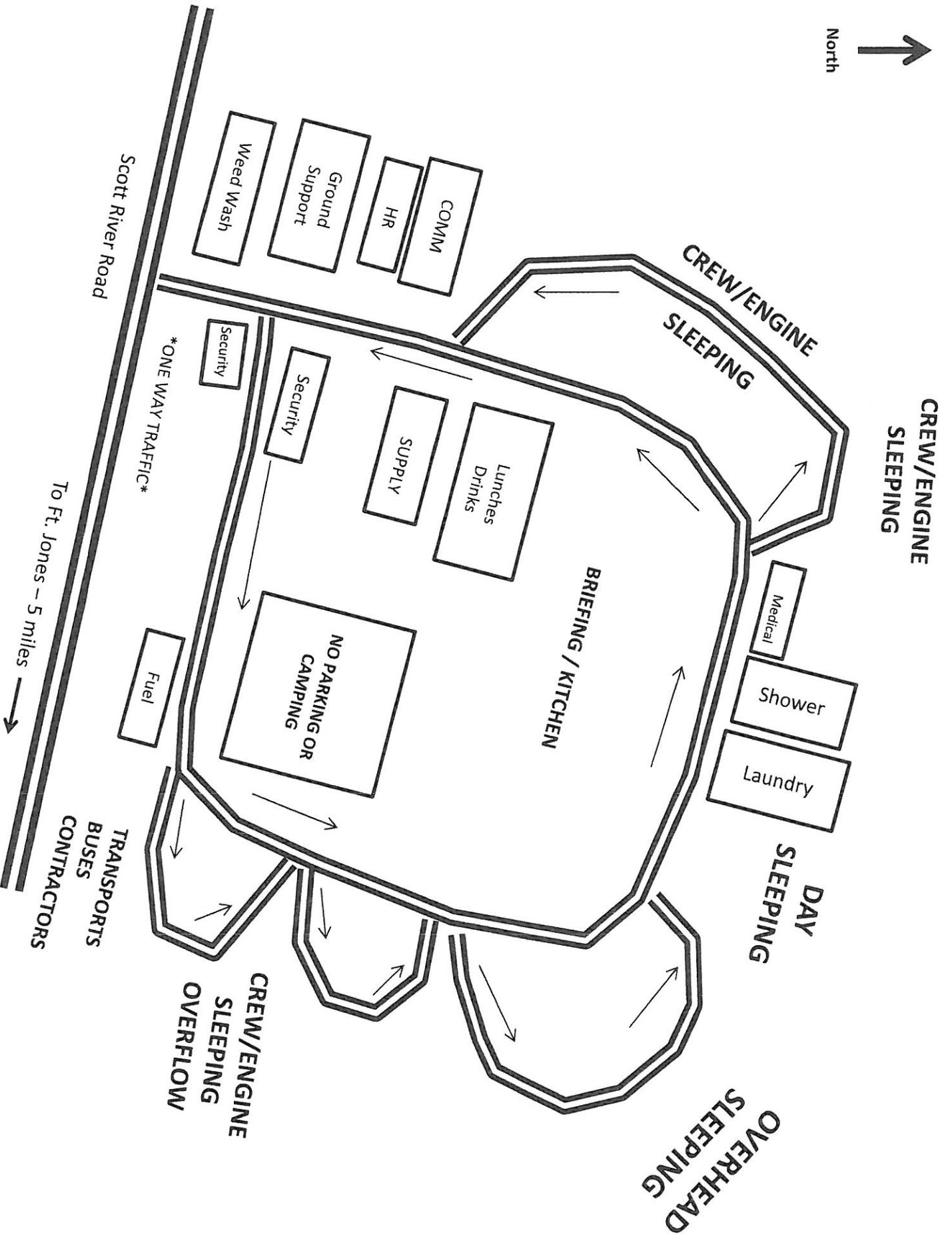
ENTER

HIGHWAY 3

NO PARKING

NO PARKING

NO PARKING



Scott River Road

\*ONE WAY TRAFFIC\*

To Ft. Jones - 5 miles

TRANSPORTS  
BUSES  
CONTRACTORS

CREW/ENGINE  
SLEEPING  
OVERFLOW

OVERHEAD  
SLEEPING

DAY  
SLEEPING

CREW/ENGINE  
SLEEPING

CREW/ENGINE  
SLEEPING

BRIEFING / KITCHEN

Medical

Shower

Laundry

SUPPLY

Lunches  
Drinks

NO PARKING OR  
CAMPING

Fuel

Security

Security

COMM

HR

Ground  
Support

Weed Wash



