

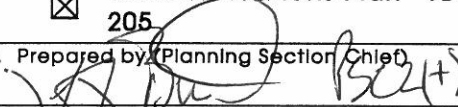
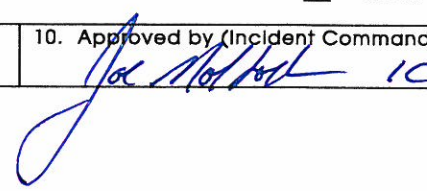
Incident Action Plan

Modoc July Complex
CA-MDF-000344 P5H6WX

Gulch Fire
CA-MDF-000357 P5EK5U



NIGHT SHIFT
07/04/14 – 07/05/14
1800 - 0600

INCIDENT OBJECTIVES	1. Incident Name Modoc July Complex Gulch Fire	2. Date 7/4/2014	3. Time 14:58									
4. Operational Period <p style="text-align: center;">07/04/2014 - 07/05/2014 1800 - 0600</p>												
5. General Control Objectives for the Incident (Include alternatives) MANAGEMENT OBJECTIVES <ul style="list-style-type: none"> • Provide for the safety of public and firefighters through the application of the risk management process. • Minimize Impacts to natural and cultural resources. • Actively communicate with public, stakeholders, and Forest concerning Incident Impacts. • Manage Incident in cost effective ways. OPERATIONAL OBJECTIVES <ul style="list-style-type: none"> • Minimize fire size employing strategies and tactics driven by probabilities of success. • Provide Initial attack response within identified boundaries and provide support for new ignitions. 												
6. Weather Forecast for Period <p style="text-align: center;">See attached forecast</p>												
7. General Safety Message <p style="text-align: center;">See attached safety message</p>												
8. Attachments (mark if attached) <table border="0" style="width: 100%;"> <tr> <td><input checked="" type="checkbox"/> Organization List - ICS 203</td> <td><input checked="" type="checkbox"/> Medical Plan - ICS 206</td> <td><input checked="" type="checkbox"/> Weather</td> </tr> <tr> <td><input checked="" type="checkbox"/> Div. Assignment Lists - ICS 204</td> <td><input checked="" type="checkbox"/> Incident Map</td> <td><input checked="" type="checkbox"/> Safety Message</td> </tr> <tr> <td><input checked="" type="checkbox"/> Communications Plan - ICS 205</td> <td><input type="checkbox"/> Traffic Plan</td> <td><input checked="" type="checkbox"/> LCES Worksheet</td> </tr> </table>				<input checked="" type="checkbox"/> Organization List - ICS 203	<input checked="" type="checkbox"/> Medical Plan - ICS 206	<input checked="" type="checkbox"/> Weather	<input checked="" type="checkbox"/> Div. Assignment Lists - ICS 204	<input checked="" type="checkbox"/> Incident Map	<input checked="" type="checkbox"/> Safety Message	<input checked="" type="checkbox"/> Communications Plan - ICS 205	<input type="checkbox"/> Traffic Plan	<input checked="" type="checkbox"/> LCES Worksheet
<input checked="" type="checkbox"/> Organization List - ICS 203	<input checked="" type="checkbox"/> Medical Plan - ICS 206	<input checked="" type="checkbox"/> Weather										
<input checked="" type="checkbox"/> Div. Assignment Lists - ICS 204	<input checked="" type="checkbox"/> Incident Map	<input checked="" type="checkbox"/> Safety Message										
<input checked="" type="checkbox"/> Communications Plan - ICS 205	<input type="checkbox"/> Traffic Plan	<input checked="" type="checkbox"/> LCES Worksheet										
9. Prepared by (Planning Section Chief) 		10. Approved by (Incident Commander) 										

ORGANIZATION ASSIGNMENT LIST		9. Operations Section	
1. Incident Name Modoc July Complex CA-MDF-000344		Day Ops Chief	Dan George / Scott Lucas (t)
		Night Ops Chief	Dale Shippelhoue
2. Date 7/4/2014	3. Time 15:02	Planning Ops	Daren Dalrymple / Eric Petterson (t)
4. Operational Period 07/04/14 – 07/05/14 1800 - 0600		a. Branch I – Division/Groups	
		Branch	
Position		Division/Group	A/G/L/Q/IA Unstaffed
Name		Division/Group	D Steve Raymer / David Molter (t)
5. Incident Commander and Command Staff		Division/Group	T/W Heather McRae / Phil Weston (t)
Incident Commander	Joe Molhoek	Division/Group	Z Tom Browning / Heather Munn (t)
Deputy IC / Liason	Tim Fike	Division/Group	
Safety Officer	T. O'Connell / S. Davis / Shelby Charley / James Cortwright (t)	Division/Group	
Information Officer	Adrienne Freeman / Laurie Pearson		
		b. Branch II – Division/Groups	
		Branch	
6. Agency Representative		Division/Group	
Agency	Name	Division/Group	
Agency Admin	Amanda McAdams	Division/Group	
Agency Admin Rep		Division/Group	
Agency Admin Rep		Division/Group	
Lead Resource Advisor	Mary Flores	Division/Group	
County Sheriff	Mike Poindexter	c. Branch III – Division/Groups	
CHP		Branch	
PG&E		Division/Group	
Cal Trans		Division/Group	
Cal Fire	Scott Packwood	Division/Group	
		Division/Group	
		Division/Group	
7. Planning Section		d. Air Operations Branch	
Chief	Pat Farrell	Air Operations Branch Director	Dennis Kuster
Deputy	Jeff Buscher (t)	Air Support Group Supervisor	Staci Dickson
Resources Unit	Duane Miller (t) / Roberta Lim (t)	Air Tactical Group Supervisor	Jason Withrow
Situation Unit	M. Brown / Keith Flood (t)	Helitack Base Manager	Jim Gould / Ray Wilson (t)
Documentation Unit			
Demobilization Unit			
Fire Behavior Unit	Ken Larson	10. Finance Section	
Incident Meteorologist		Chief	Beth Lopez
Technical Specialist	Shane Neal	Personnel Time Unit	Penny Portlock
Training Specialist	Brad Smith	Equipment Time Unit	Juanita Cortez
GISS	Melanie Kerr / Kevin Roehrs / Mark Grupe	Cost Unit	Rich Anderson
HRSP		Compensation / Claim Unit	Tina Kennedy
Status Check-In	Mike Velazquez	IBA	
8. Logistics Section			
Chief	Jack Costello		
Deputy	Aaron Lowe		
Supply Unit	Tracey Valentine	Prepared By: Duane Miller RESL (t)	
Facilities Unit	Ric Crowther / Robin Davis		
Ground Support Unit	John Fell		
Communications Unit	Don Stoner / Jim Lewis / Dan Pearson		
Medical Unit	Patrick Young		
Food Unit	Rebecca Baker		

Spot Forecast for MODOC JULY COMPLEX Fires

National Weather Service Medford

844 AM PDT Fri Jul 4 2014

IF CONDITIONS BECOME UNREPRESENTATIVE,
CONTACT THE NATIONAL WEATHER SERVICE.

FORECAST IS BASED ON REQUEST TIME OF 0829 PDT ON JULY 04.
IF CONDITIONS BECOME UNREPRESENTATIVE...CONTACT THE NATIONAL WEATHER
SERVICE.

...RED FLAG WARNING REMAINS IN EFFECT FROM NOON TO 10 PM PDT
FRIDAY FOR COMBINATION OF STRONG WINDS AND LOW RELATIVE
HUMIDITIES FOR FIRE WEATHER ZONES 284 AND 285...

.DISCUSSION...A DRY UPPER LEVEL TROUGH PASSAGE TODAY WILL BRING
STRONG AND GUSTY WINDS COMBINED WITH LOW RELATIVE HUMIDITIES FOR
THE WILDFIRE SITE THIS AFTERNOON INTO THIS EVENING. SOUTH WINDS
THIS MORNING WILL SHIFT TO THE SOUTHWEST THIS AFTERNOON BEFORE
EASING LATE EVENING. RECENT LIGHTNING FIRE STARTS AND THE
POSSIBILITY OF NEW ONES RAISE A SIGNIFICANT CONCERN FOR RAPID
FIRE SPREAD. DRY WEATHER WILL CONTINUE THROUGH EARLY NEXT WEEK
WITH A STRONG HIGH PRESSURE RIDGE DEVELOPING OVER THE REGION. THIS
WILL BRING ANOTHER HEAT WAVE SUNDAY THROUGH TUESDAY. THERE IS ALSO
A SLIGHT CHANCE OF THUNDERSTORMS FOR NORTHERN CALIFORNIA AND EAST
OF THE CASCADES TUESDAY AND AGAIN ON WEDNESDAY.

.TONIGHT...DALTON FIRE, NORTHERN & DOBIE FIRES, JANES FIRE

SKY/WEATHER.....MOSTLY CLEAR.
MIN TEMPERATURE.....AROUND 53.
MAX HUMIDITY.....43 PERCENT.
EYE LEVEL WINDS.....SOUTHWEST WINDS 8-12 MPH IN THE EVENING WITH
GUSTS TO 20 MPH DECREASING TO 3-6 MPH BY LATE
EVENING, THEN LIGHT AND VARIABLE OVERNIGHT.
MIXING HEIGHT.....7000 FT AGL DECREASING TO 500 FT AGL BY LATE
EVENING.
MIXING WINDS.....SOUTHWEST 15-25 MPH.
CWR.....0 PERCENT.
LAL.....1.
WIND (20 FT).....SOUTHWEST 10-15 MPH WITH GUSTS TO 25 MPH IN THE
EVENING, THEN DECREASING TO 5 MPH OVERNIGHT.

.TONIGHT...GULCH FIRE

SKY/WEATHER.....MOSTLY CLEAR.
MIN TEMPERATURE.....AROUND 53-60.
MAX HUMIDITY.....38-45 PERCENT.
EYE LEVEL WINDS.....SOUTH TO SOUTHWEST WINDS 6 TO 9 MPH IN THE
EVENING WITH GUSTS TO 15 MPH...DECREASING TO
1 TO 4 MPH LATE IN THE EVENING AND OVERNIGHT.
MIXING HEIGHT.....5000-7000 FT AGL DECREASING TO 500 FT AGL AROUND
SUNSET.
MIXING WINDS.....SOUTHWEST AROUND 20 MPH DECREASING TO
8 TO 15 MPH AFTER SUNSET.
CWR.....0 PERCENT.
LAL.....1.
WIND (20 FT).....SOUTHWEST WINDS 12 TO 20 MPH WITH GUSTS TO
AROUND 30 MPH IN THE EVENING BECOMING SOUTH
3 TO 8 MPH LATE IN THE EVENING AND OVERNIGHT.

.TONIGHT...HORSE FIRE

SKY/WEATHER.....MOSTLY CLEAR.

MIN TEMPERATURE.....AROUND 58.

MAX HUMIDITY.....25-30 PERCENT.

EYE LEVEL WINDS.....SOUTHWEST WINDS 6-10 MPH WITH GUSTS UP TO 15 MPH
IN

THE EVENING...BECOMING SOUTHWEST 2-4 MPH

OVERNIGHT.

MIXING HEIGHT.....AROUND 6000 FT AGL IN THE EVENING...DECREASING TO
AROUND 500 FT AGL.

MIXING WINDS.....SOUTHWEST AROUND 8 MPH.

CWR.....0 PERCENT.

LAL.....1.

WIND (20 FT).....SOUTHWEST WINDS 15-20 MPH WITH GUSTS UP TO 30 MPH
IN THE EVENING...DECREASING TO 5-10 MPH AFTER SUNSET.

FIRE BEHAVIOR FORECAST

FORECAST NUMBER: 3	TYPE OF FIRE: Wildland Fire
FIRE NAME: Modoc July Complex	OPERATIONAL PERIOD: 1800-0600 07/04-05/2014
DATE ISSUED: July 04, 2014	TIME ISSUED: 1100
UNIT: Modoc National Forest	SIGNED: <i>Is/ Ken Larson FBAN</i>

WEATHER SUMMARY: See attached Spot Weather Forecasts

Weather: clear
Min Temp: 53-60°
Max RH: 38-45% Except Horse Fire Area will be 25-30% Max
Eye Level Winds: SW 8-12 mph gusts to 15-20 in the evening becoming light overnight
20' Winds: SW 10-20 mph gusts to 25-30 in the evening becoming S to variable 3-10 overnight

FIRE BEHAVIOR

General Fire Behavior for the Modoc July Complex:

Grass/Sagebrush fuel type: evening potential worst case fire behavior will be a rate of spread to 125-200 chains/hour with a flame length of 12-16 feet. Spotting distance to 0.6 mile, probability of ignition 90-100%.

After 2200 conditions should moderate with a potential rate of spread 10-12 chains/hour with a flame length to 4 feet. Pockets of bitterbrush may exhibit greater flame lengths. Probability of ignition will drop to 30-40%. Short range spotting is possible especially if junipers torch out.

Timber Fuel Type: evening potential worst case rate of spread to 40 chains/hour with flame length to 7 feet. Spotting distance to 0.6 mile, probability of ignition 70-80%.

After 2200 rate of spread will drop to 4 chains/hour with flame length to 2 feet. Probability of Ignition will drop to around 50%

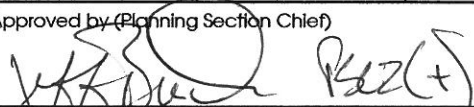
AIR OPERATIONS:

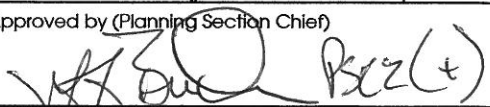
Smoke should not hamper air operations in the early evening.

07/04 Sunset: 20:40 07/05 Sunrise: 05:36

SAFETY

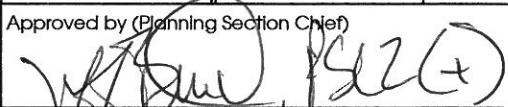
Winds are anticipated to remain gusty until well after dark. Rapid rates of spread can be anticipated if fire escapes control lines. Keep heads up for spots especially if tree torching occurs. Gusty winds can transport embers a considerable distance.

DIVISION ASSIGNMENT LIST			1. Branch		2. Division/Group A/G/L/Q		
3. Incident Name Modoc July Complex			4. Operational Period NIGHT OPERATIONS				
			Date: 07/04/2014 - 07/05/2014		Time: 1800 - 0600		
5. Operations Personnel							
Operations Chief		Dale Shippelhoute		Division/Group Supervisor			
Branch Director				Air Operations		Dennis Kuster	
6. Resources Assigned this Period							
Strike Team/Task Force/ Resource Designator		Leader	Last Shift	Number Persons	Trans. Needed	Drop Off PT./Time	Pick Up PT./Time
Unstaffed							
7. Control Operations							
8. Special Instructions							
9. Division/Group Communication Summary							
Function	Frequency	System	Channel	Function	Frequency	System	Channel
Command	RX 173.7875 TX 162.4875	Forest Admin Net	2 Tone 5, 7, 8	Alternate Command	RX 168.7500 TX 170.1750	Forest RPTR	1 Tone 2, 7
Tactical Division/Group	RX 168.0500 TX 168.0500	NIFC TAC 1	3	Air to Ground	RX 165.000 TX 165.000	A/G CMD	8
Prepared by (Resource Unit Leader) Duane Miller (t)			Approved by (Planning Section Chief)  RZZ(+)			Date 7/4/2014	Time 15:10

DIVISION ASSIGNMENT LIST				1. Branch		2. Division/Group D	
3. Incident Name Modoc July Complex				4. Operational Period NIGHT OPERATIONS Date: 07/04/2014 - 07/05/2014 Time: 1800 - 0600			
5. Operations Personnel							
Operations Chief		Dale Shippelhoute		Division/Group Supervisor		Steve Raymer / David Molter (t)	
Branch Director				Air Operations		Dennis Kuster	
6. Resources Assigned this Period							
Strike Team/Task Force/ Resource Designator	Leader	Last Shift	Number Persons	Trans. Needed	Drop Off PT./Time	Pick Up PT./Time	
ENG6 Mt. Adams 324 (E-19)	Charles Newberry	7/16	3	N	Lake Fire / 1900	0600	
ENG6 Mt. Adams 322 (E-20)	Dan Holter	7/16	3	N	Lake Fire / 1900	0600	
ENG6 Pacific Oasis 17 (E-17)	Marie Hoover	7/16	3	N	Lake Fire / 1900	0600	
7. Control Operations <ul style="list-style-type: none"> Patrol and Mop-up along existing containment lines. Support Initial Attack as needed. 							
8. Special Instructions							
9. Division/Group Communication Summary							
Function	Frequency	System	Channel	Function	Frequency	System	Channel
Command	RX 173.7875 TX 162.4875	Forest Admin Net	2 Tone 5, 7, 8	Alternate Command	RX 168.7500 TX 170.1750	Forest RPTR	1 Tone 2, 7
Tactical Division/Group	RX 168.6000 TX 168.6000	NIFC TAC 3	5	Air to Ground	RX 165.000 TX 165.000	A/G CMD	8
Prepared by (Resource Unit Leader)			Approved by (Planning Section Chief)			Date	Time
Duane Miller (t)						7/4/2014	15:10

DIVISION ASSIGNMENT LIST		1. Branch		2. Division/Group T			
3. Incident Name Gulch Fire		4. Operational Period NIGHT OPERATIONS Date: 07/04/2014 - 07/05/2014 Time: 1800 - 0600					
5. Operations Personnel							
Operations Chief	Dale Shippelhoute		Division/Group Supervisor		Heather McRae / Phil Weston (†)		
Branch Director			Air Operations		Dennis Kuster		
6. Resources Assigned this Period							
Strike Team/Task Force/ Resource Designator	Leader	Last Shift	Number Persons	Trans. Needed	Drop Off PT./Time	Pick Up PT./Time	
HC1 Devils Garden 2 (C-19)	Pete Coates	7/17	17	N	On Division	0600	
HC1 Devils Garden 3 (C-20)	Casey Cohen	7/17	15	N	On Division	0600	
7. Control Operations <ul style="list-style-type: none"> Patrol and Mop-up along existing containment lines. Support Initial Attack as needed. 							
8. Special Instructions							
9. Division/Group Communication Summary							
Function	Frequency	System	Channel	Function	Frequency	System	Channel
Command	RX 173.7875 TX 162.4875	Forest Admin Net	2 Tone 5, 7, 8	Alternate Command	RX 168.7500 TX 170.1750	Forest RPTR	1 Tone 2, 7
Tactical Division/Group	RX 168.6000 TX 168.6000	NIFC TAC 3	5	Air to Ground	RX 165.000 TX 165.000	A/G CMD	8
Prepared by (Resource Unit Leader) Duane Miller (†)		Approved by (Planning Section Chief) <i>[Signature]</i> Kuz (†)			Date 7/4/2014	Time 15:10	

DIVISION ASSIGNMENT LIST			1. Branch		2. Division/Group W		
3. Incident Name Gulch Fire			4. Operational Period NIGHT OPERATIONS Date: 07/04/2014 – 07/05/2014 Time: 1800 - 0600				
5. Operations Personnel							
Operations Chief		Dale Shippelhoute		Division/Group Supervisor		Tom Browning / Heather Munn (†)	
Branch Director				Air Operations		Dennis Kuster	
6. Resources Assigned this Period							
Strike Team/Task Force/ Resource Designator		Leader		Last Shift	Number Persons	Trans. Needed	Pick Up PT./Time
HC1 Intermountain 4 (C-17)		Brian Luetke		7/17	17	N	0600
ST9244C (E-16)		Merrick Fields		7/17	21	N	0600
DOZ2 w/LOWB 2442 (E-1)		Bryan Nunes		7/17	2	N	0600
7. Control Operations <ul style="list-style-type: none"> Patrol and Mop-up along existing containment lines. Support Initial Attack as needed. 							
8. Special Instructions							
9. Division/Group Communication Summary							
Function	Frequency	System	Channel	Function	Frequency	System	Channel
Command	RX 173.7875 TX 162.4875	Forest Admin Net	2 Tone 5, 7, 8	Alternate Command	RX 168.7500 TX 170.1750	Forest RPTR	1 Tone 2, 7
Tactical Division/Group	RX 168.6000 TX 168.6000	NIFC TAC 3	5	Air to Ground	RX 165.000 TX 165.000	A/G CMD	8
Prepared by (Resource Unit Leader) Duane Miller (†)			Approved by (Planning Section Chief) 			Date 7/4/2014	Time 15:11

DIVISION ASSIGNMENT LIST		1. Branch		2. Division/Group Z			
3. Incident Name Gulch Fire		4. Operational Period NIGHT OPERATIONS Date: 07/04/2014 – 07/05/2014 Time: 1800 - 0600					
5. Operations Personnel							
Operations Chief		Dale Shippelhoue		Division/Group Supervisor		Larry Turman	
Branch Director				Air Operations		Dennis Kuster	
6. Resources Assigned this Period							
Strike Team/Task Force/ Resource Designator	Leader	Last Shift	Number Persons	Trans. Needed	Drop Off PT./Time	Pick Up PT./Time	
ST9127G (C-18)		7/17	33	N	On Division	0600	
ST9120C (E-17)	Tim Devos	7/17	21	N	On Division	0600	
DOZ2 w/LOWB 2241		7/17	2	N	On Division	0600	
DOZ2 w/LOWB 2242		7/17	2	N	On Division	0600	
7. Control Operations <ul style="list-style-type: none"> Patrol and Mop-up along existing containment lines. Support Initial Attack as needed. 							
8. Special Instructions							
9. Division/Group Communication Summary							
Function	Frequency	System	Channel	Function	Frequency	System	Channel
Command	RX 173.7875 TX 162.4875	Forest Admin Net	2 Tone 5, 7, 8	Alternate Command	RX 168.7500 TX 170.1750	Forest RPTR	1 Tone 2, 7
Tactical Division/Group	RX 168.6000 TX 168.6000	NIFC TAC 3	5	Air to Ground	RX 165.000 TX 165.000	A/G CMD	8
Prepared by (Resource Unit Leader) Duane Miller (t)			Approved by (Planning Section Chief) 		Date 7/4/2014		Time 15:15

Lookouts
Communications
Escape Routes
Safety Zones

Modoc July Complex

Operation Period: 07/04-05/2014 Night Shift

SAFETY MESSAGE

Planning for Safety

- Working in high-risk environments requires effective planning to protect personnel from the hazards they may face.
- You should have tactical, safety and communication plans which work in concert with one another.
- Each plan should include primary, alternate, contingency, and emergency components which are known by all personnel.
- Changing from your primary plan should be a red flag that your safety may become compromised.

MAJOR HAZARDS AND RISKS

RED FLAG WARNINGS FATIGUE SPOT FIRES	DRIVING HAZARDS DEHYDRATION DRY FUELS	HEAVY EQUIPMENT HAZARD TREES RATTLESNAKES
--	---	---

Be sure all elements of your safety plan are in place prior to engagement

Decision Points

Establish Decision Point(s) when potential exists for your fire situation to degrade.

Insure that your situation awareness includes monitoring factors that relate to the Decision Point(s) you set.

Have a planned response in place.

Do not ignore a Decision Point that has been hit.

Risk Management

- Keep risks commensurate with the benefit.
- Utilize the Risk Management Process found on page 1 of the IRPG.
- Recognize that no injury is worth the ground you are working.
- Everyone is entitled to a round trip ticket. Bring them home healthy.

INCIDENT RISK ANALYSIS
Modoc July Complex
(ICS 215A) Night Shift

DIV	HAZARDOUS ACTIONS / CONDITIONS	MITIGATIONS / WARNINGS / REMEDIES	
ALL	RED FLAG WARNING	<ul style="list-style-type: none"> • Take frequent weather observations. • Watch for changing weather conditions. • Anticipate increases/changes in fire behavior. • Maintain LCES. 	
ALL	HAZARD TREES	<ul style="list-style-type: none"> • Follow Hazard Tree Safety Guidelines (IRPG p. 22). • Limit number of personnel around snags and their exposure time; fallers must be qualified for trees being fallen. • Be especially alert around snags during wind events or changing wind direction. • Maintain Situational Awareness. 	
ALL	DRIVING HAZARDS	<ul style="list-style-type: none"> • Narrow dusty roads exist. • Establish one way traffic or coordinate traffic flow if necessary. • Drive defensively! Expect the unexpected around every curve. • Drive with headlights on; use chock blocks, keep windshields clean; look before backing; and use backers whenever available. • Don't drive when fatigued. Adhere to agency driving regulations and guidelines. • Watch for increased traffic during holiday period. 	
ALL	HYDRATION	<ul style="list-style-type: none"> • Drinking water before, during and after shifts, up to 1.5 gal. per shift. • Be alert for signs of heat illness in yourself and others. • Drink 2 to 1 water to sports drinks. 	
ALL	FATIGUE	<ul style="list-style-type: none"> • Be alert for signs of fatigue and take breaks as necessary. • Maintain 2:1 work/rest ratio. • Monitor incoming resources for level of fatigue. 	
ALL	ENVIRONMENTAL HAZARDS	<ul style="list-style-type: none"> • Be alert for snakes, watch footing and hand placement around rocks. • Check yourself for ticks. Watch for biting or stinging insects. • Be alert for bears, cougars, and other wildlife. 	
ALL	DRY FUEL CONDITIONS	<ul style="list-style-type: none"> • Establish and maintain LCES. • Anticipate intense burning and rapid rates of spread. • Watch for spot fires. • Allow a for adequate escape times based on burning conditions. 	
ALL	SPOT FIRES	<ul style="list-style-type: none"> • Size up prior to engagement. • Watch for multiple spots. • Ensure LCES is in place. • Maintain Situational Awareness at all times. 	
DIV T W, Z	HIGH VOLTAGE POWER LINES	<ul style="list-style-type: none"> • Smoke can conduct electricity; stay 150' clear of lines and towers in heavy smoke. • Do not operate heavy equipment under power lines. • Do not park under power lines. • Watch for fallen power lines, stay 200' away, notify your supervisor • Follow power line safety guide in the IRPG page 24 	
DIV D T, W, Z	LINE CONSTRUCTION	<ul style="list-style-type: none"> • Conduct thorough briefing for all personnel (inside rear cover IRPG). • Ensure LCES in place prior to engagement (IRPG p. 7). • Adhere to 10 Std. Orders, mitigate 18 Situations. • Establish adequate safety zones (IRPG p.8) and escape routes. • Utilize Risk Management Process (IRPG p.1). 	
DIV D T, W, Z	MOP UP	<ul style="list-style-type: none"> • Conduct thorough briefing for all personnel (inside rear cover IRPG). • Use all required PPE, including eye protection. • Maintain proper spacing and overhead clearance. • Be alert for stump holes and root cavities. • Minimize exposure to smoke, and rotate personnel into clean air when practical. • Evaluate unburned islands/increase situational awareness. 	
INCIDENT NAME: Modoc July Complex / Gulch Fire ICS 215a		DATE PREPARED: <p style="text-align: center;">July 4, 2014</p>	OPERATIONAL PERIOD Night Shift 07/04-05/2014 1800-0600 Prepared by S. Davis
		TIME PREPARED: 1000 HOURS	

INCIDENT RADIO COMMUNICATIONS PLAN		1. Incident Name	2. Date/ Time Prepared	3. Operational Period Date/Time		
		Modoc July Complex	07/04/2014 1300	07/04-05/2014 18:00 - 08:00		
4. Basic Radio Channel Utilization						
Channel	Function	Frequency	Tone	Mode	Assignment	Remarks
1	FOREST RPTTR	RX 168.7500 TX 170.1750		N	ALT CMD	Tone 2 (123.0) Tone 7 (167.9)
2	FOREST ADM NET	RX 173.7875 TX 162.4875		N	CMD	Tone 5 (146.2) Tone 7 (167.9) Tone 8 (103.5)
3	NIFC TAC 1	RX 168.0500 TX 168.0500		N	DIVs A/G/L/Q	
4	NIFC TAC 2	RX 168.2000 TX 168.2000		N	I/A	
5	NIFC TAC 3	RX 168.6000 TX 168.6000		N	DIVs D/T/W/Z	
6	R5 TAC 4	RX 166.5500 TX 166.5500		N		
7	R5 TAC 5	RX 167.1125 TX 167.1125		N		
8	AGG CMD	RX 165.0000 TX 165.0000		N	All DIVS	Air to Ground Command
9	AGG TAC	RX 168.5375 TX 168.5375		N	All DIVS	Air to Ground TAC
10	CH 10	RX TX		N		
11	CH 11	RX TX		N		
12	CH 12	RX TX		N		
13	R5 Pri A/G	RX 167.6000 TX 167.6000		N		
14	R5 Sec A/G	RX 166.8750 TX 166.8750		N		
15	CALCORD	RX 156.0750 TX 156.0750	6.0	N	Medical	Tone 6 (156.7)
16	AirGuard	RX 168.6250 TX 168.6250	1.0	N	EMERGENCY	Tone 1 (110.9)

5. Prepared by (Communications Unit)
D Stoner

MEDICAL PLAN	1. INCIDENT NAME MODOC JULY COMPLEX	2. DATE PREPARED 7/04/2014	3. TIME PREPARED 1800 Hrs	4. OPERATIONAL PERIOD 07/04/14 – 07/05/14 1800 - 0600				
	5. INCIDENT MEDICAL AID STATIONS							
MEDICAL AID STATIONS		LOCATION		PARAMEDICS				
Medical Unit		ICP		YES	NO	X		
6. TRANSPORTATION								
A. AIR RESOURCES								
NAME		ADDRESS		PHONE	PARAMEDICS			
					YES	NO		
Emergency Air Lift (Non-Hoist)		1180 Airport Way. North Bend, Or. 94756		MICC 530-233-8880	RN/ Medic			
Mountain Life Support (Non-Hoist)		710 Ash St Susanville, Ca. 96130		MICC 530-233-8880	RN/			
REACH- (Non-Hoist) NVG Capable		3775 Flight Ave. Redding, Ca. 96003		MICC 530-233-8880	RN/ Medic			
PHI Air Medical –(Non-Hoist) NVG Capable		1524 East St. Redding , Ca 96003		MICC 530-233-8880	RN/ Medic			
CDF 202 – Hoist Capable, No night Ops.		Bieber		MICC 530-233-8880			No	
B. INCIDENT AMBULANCES								
NAME		LOCATION		PARAMEDICS				
				YES	NO			
Modoc County Ambulance		Incident Base		X				
Lake County Ambulance, (Div. L Incidents)		Lakeview Or		X				
7. HOSPITALS								
NAME	ADDRESS	TRAVEL TIME		PHONE	HELIPAD		BURN CENTER	
		AIR	GRND		YES	NO	YES	NO
Modoc Medical Center	228 W. McDowell, Alturas, Ca N 41 28.8 / W 120 22.6	25 M	10 M	530-233-5131	X			X
Lake Dist. Hospital	700 South J Street. Lakeview, Or.	20 M	2.5 H	541-947-2114	X			X
Mercy Medical Center Level 2 Trauma	2175 Rosaline Ave. Redding, Ca N 40 34.13 / W 122 23.67	50 M	2.5 H	530-225-7201	X			X
Shasta Reg. Medical Center	1100 Butte St. Redding, Ca N 40 58.53 / W 122 38.69	50 M	2.5 H	530-244-5400	X			X
UC Davis Medical Ctr. Level 1 Trauma	2315 Stockton Blvd. Sacramento, Ca. N 38 33.17 / W 121 27.05	1.5H	4.5 H	916-734-3636	X		X	
8. MEDICAL EMERGENCY PROCEDURES								
IN-CAMP CARE			LINE EMERGENCIES					
<ul style="list-style-type: none"> Minor Injuries or illnesses 			<ul style="list-style-type: none"> Start of shift: notify your DIVS of EMT's and equipment you have available for response if needed. 					
<ul style="list-style-type: none"> Unit Open 0600 hrs to 2200 hrs 			<ul style="list-style-type: none"> Contact Communications and declare a medical emergency on command 					
<ul style="list-style-type: none"> Moderate to Severe Injuries or Illnesses Contact Communications directly Med Unit staffed after hours for Emergencies 			<ul style="list-style-type: none"> Closest DIVS or designee responds to incident Closest SOFR/EMT's respond to assist w/care Use attached Injury or Incident Comm. Protocol If ambulance (ground or air) delayed designate rendezvous site and move towards it Secure scene for investigation—keep a log 					
9. PREPARED BY (MEDICAL UNIT LEADER)		10. REVIEWED BY (SAFETY OFFICER)						
ICS 206 8-78 P. Young MEDL(t)		S. Davis SOF1						

Injury or Incident Communications Protocol

Location _____

Situation _____

Any special equipment required _____

Number of injured _____ Type of injuries _____

Immediate transport required: Yes No Best method: Ambulance Helicopter Vehicle

Closest pick up point (DP, Helispot) _____

LOC _____ Resp. _____ Pulse _____ BP _____ Weight _____

Injury _____

Medical History/Allergies _____

Air Transportation Triage

Contact EMS Helicopters on CALCORD

	Air Ambulance	Ground Transport to Med Unit
Mechanism	Struck by tree Fall of 10' or more Snake bite with pain and swelling Insect bite with shortness of breath Signs of heat stroke (hot, dry, disoriented) Burn Injury greater than 1% body area	Minor dehydration Cut or laceration with bleeding controlled Minor bites and Stings Minor burns
Area Injured	Significant Blunt or Penetrating Trauma to: Head, Neck, Chest, Abdomen or pelvis Any Arm or Leg fracture	Minor blunt trauma Minor penetrating trauma Extremity sprains and strains
Symptoms	Disoriented Chest Pain or Shortness of Breath Weak or absent radial pulse Pale, cold and sweating	Alert and oriented No shortness of breath Good pulses

Medivac Sites

Identify potential medivac sites. Obtain Lat./Long. and give information to the medical unit

If air or ground ambulance is DELAYED:

Package and transport patient to rendezvous with Incident Ambulance. Re-route EMS helicopter to rendezvous point or Medivac site as appropriate.

If Declaring an "Incident within the Incident"

The closest DIVS will respond to manage the incident. They are responsible for giving an accurate size up, ensuring scene safety, setting priorities and initiating an appropriate response.

The closest Safety Officer and Line EMS will respond to the scene to assist the DIVS. Secure site and begin initial investigation when situation is stabilized.

INCIDENT COMMAND POST

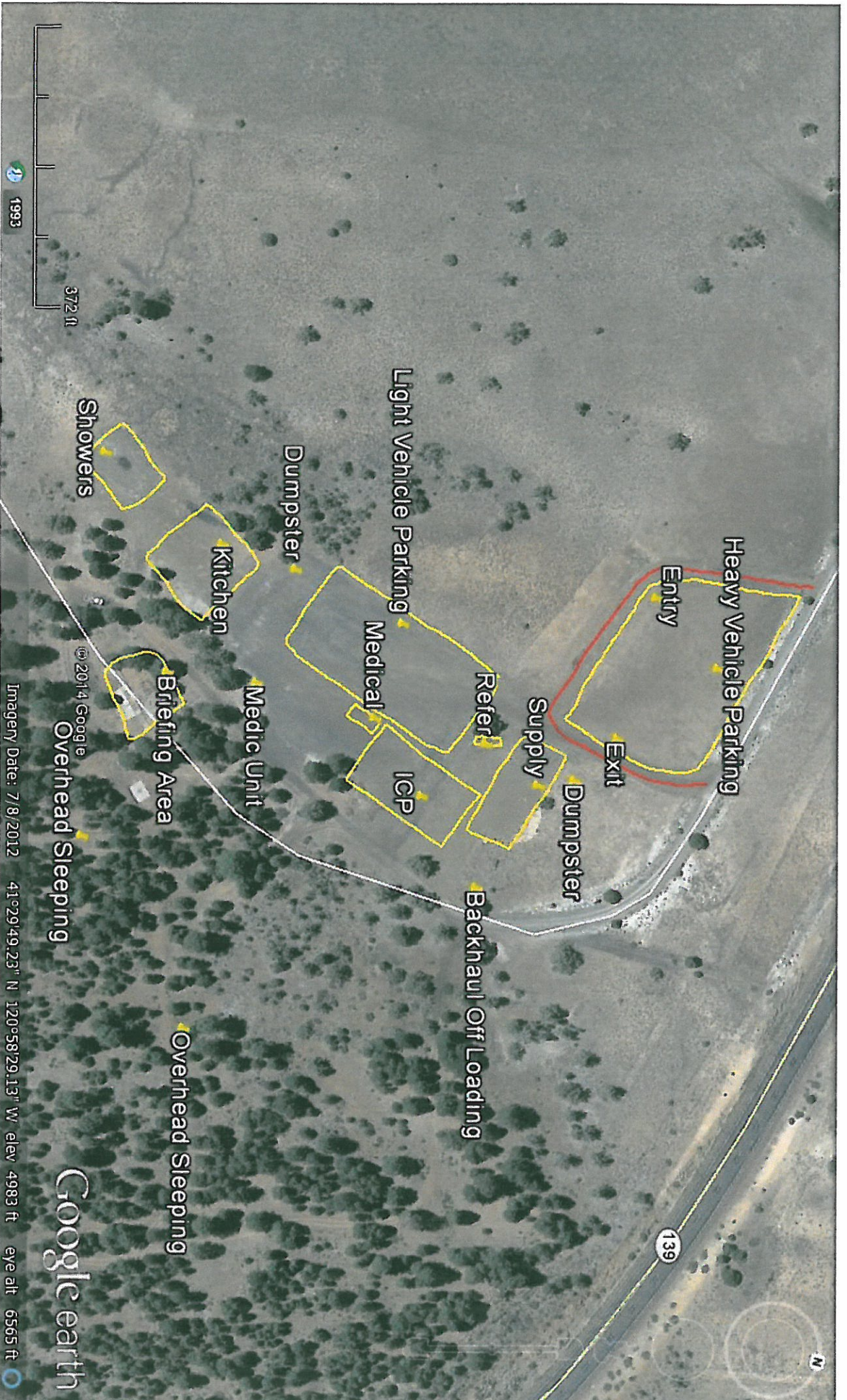


108.1 ft
1993

© 2014 Google
Imagery Date: 7/8/2012 41°29'49.17" N 120°58'27.23" W elev: 4985 ft eye alt: 5441 ft

Google earth

BASE CAMP



UNIT LOG		1. Incident Name	2. Date Prepared	3. Time Prepared
4. Unit Name / Designators		5. Unit Leader (Name and Position)		6. Operational Period
7. Personnel Roster Assigned				
Name	ICS Position		Home Base	
8. Activity Log				
Time	Major Events			
9. Prepared by (Name and Position)				

