

# **Incident Action Plan**

Daves Fire

CA-MNF-0834

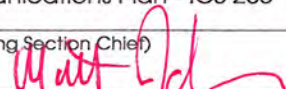
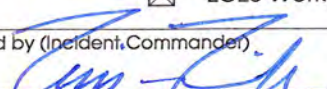
P5HKC8



**NIGHT SHIFT**

June 15<sup>th</sup> to June 16<sup>th</sup>, 2013

1800 - 0600

INCIDENT OBJECTIVES	1. Incident Name <b>DAVES</b>	2. Date 6/15/2013	3. Time 11:16
4. Operational Period 06 /15 to 6/16/2013 1800 - 0600			
5. General Control Objectives for the Incident (include alternatives)  <b>MANAGEMENT OBJECTIVES</b> <ul style="list-style-type: none"> <li>• <b>Ensure firefighter and public safety in all incident activities. Adhere to all safety standards and implement appropriate risk analysis</b></li> <li>• <b>Protect values at risk to include watershed, cultural resources, private timber lands and recreation sites</b></li> <li>• <b>Coordinate with Forest to maintain timely and accurate communications with communities, county officials and Forest visitors.</b></li> <li>• <b>Effectively manage incident costs by planning strategies and tactics toward a high probability of success.</b></li> </ul> <b>OPERATIONAL OBJECTIVES</b> <ul style="list-style-type: none"> <li>• <b>Keep the fire within existing containment lines</b></li> <li>• <b>Provide for initial attack under TFR north of Grindstone Creek</b></li> </ul>			
6. Weather Forecast for Period  <b>See attached forecast</b>			
7. General Safety Message  <b>See attached safety message</b>			
8. Attachments (mark if attached)			
<input checked="" type="checkbox"/> Organization List - ICS 203 <input checked="" type="checkbox"/> Medical Plan - ICS 206 <input checked="" type="checkbox"/> Weather <input checked="" type="checkbox"/> Div. Assignment Lists - ICS 204 <input type="checkbox"/> Incident Map <input checked="" type="checkbox"/> Safety Message <input checked="" type="checkbox"/> Communications Plan - ICS 205 <input checked="" type="checkbox"/> Traffic Plan <input checked="" type="checkbox"/> LCES Worksheet			
9. Prepared by (Planning Section Chief) Matt Johnson 		10. Approved by (Incident Commander) Tim Fike 	



ORGANIZATION ASSIGNMENT LIST		9. Operations Section	
1. Incident Name <b>DAVES</b>		Day Ops Chief	Frank Davis / Dale Shippelhoue(t)
		Night Ops Chief	Daren Dalrymple
2. Date 6/15/2013	3. Time 12:53	Planning Ops	Dan George / Eric Petterson (t)
4. Operational Period 06/15 to 6/16/2013 1800 - 0600		a. Branch I – Division/Groups	
		Branch	
Position	Name	Division/Group	A / Z Bernard Spielman
5. Incident Commander and Command Staff		Division/Group	
Incident Commander	Tim Fike	Division/Group	
Deputy IC		Division/Group	
Safety Officer	Terry O'Connell / Steve Davis	Division/Group	
Information Officer	Adrienne Freeman		
		b. Branch II – Division/Groups	
		Branch	
6. Agency Representative		Division/Group	
Agency	Name	Division/Group	
Agency Admin	Sherry Tune / Eduardo Olmedo (t)	Division/Group	
Agency Admin Rep		Division/Group	
Agency Admin Rep		Division/Group	
USFS LE	Mike Casey	Division/Group	
Lead Resource Advisor	Chad Atwood	c. Branch III – Division/Groups	
Resource Advisor	Gary Urdahl	Branch	
Cal Fire	Dave Russell	Division/Group	
CDC	Jeff Rickert	Division/Group	
		Division/Group	
		Division/Group	
		Division/Group	
		Division/Group	
7. Planning Section		d. Air Operations Branch	
Chief	Matt Johnson	Air Operations Branch Director	Dennis Kuster
Deputy		Air Support Group Supervisor	Staci Dickson
Resources Unit	John Owen / Duane Miller(t)	Air Tactical Group Supervisor	Jason Withrow
Situation Unit	Charlotte Jordan(t) / Matt Brown(t)	Helitack Base Manager	
Documentation Unit			
Demobilization Unit	Laura Backlund		
Fire Behavior Unit	Ken Larson	10. Finance Section	
Incident Meteorologist		Chief	Beth Lopez
Technical Specialist	John Miller	Personnel Time Unit	Penny Portlock
Training Specialist	Brad Smith	Equipment Time Unit	Juanita Cortez
GISS	M. Kerr / K. Roehrs	Cost Unit	Rich Anderson / S. Rapphahn(t)
HRSP	Barbara Leach	Compensation / Claim Unit	
Status Check-In	Duane Miller	IBA	Anna Dillard
8. Logistics Section			
Chief	Jane Arteaga / Mike Heckendorn		
Deputy			
Supply Unit		Prepared By: John Owen - RESL	
Facilities Unit	Ric Crowther		
Ground Support Unit	John Fell		
Communications Unit	Jim Lewis / Don Stoner		
Medical Unit	Aaron Lowe / Patrick Young(t)		
Food Unit	Kevin Browning		





Powerhouse Fire, June 5, 2013  
Angeles N.F., Photo by Jeff Brooks

# Fuels and Fire Behavior Advisory California\*



June 10, 2013

**Subject:** Low live and dead fuel moistures, along with persistent drought have created the potential for active to extreme fire behavior in many parts of the state.

**Discussion:** All of California is experiencing drought conditions. Effects of lower than normal live and dead fuel moistures and observed fire behavior for 2013 are the focus of this advisory.

**Difference From Normal Conditions:** Drought conditions ranging from abnormally dry to severe exist across California. The drought is expected to persist or intensify. The entire state is deficient in rainfall and snow pack, resulting in fuels that are 4-8 weeks ahead of normal drying/curing rates.

### **Concerns to Firefighters:**

- Energy Release Component (ERC) at numerous weather stations set record highs already this year and running well above normal in most cases. Expect increased fire intensity and spread rates in these areas. Early season extreme fire behavior has been observed in both light and heavy fuels. **Anticipate increased spread rates, spotting, and active night time burning.**
- The combination of persistent drought and record-low rainfall and snowpack amounts has led to very low live and dead fuel moistures. Low 1000-hour fuel moistures have been evidenced by complete consumption of dead fuels on several recent fires. Live fuel moistures have already reached critical levels in many areas especially in Southern California. **Expect fires to ignite easier and spread faster. Anticipate higher resistance to control in all fuel types.**
- Excessively dry fuels and receptive fuel beds are resulting in fire behavior that is not deterred by what firefighters would consider normal barriers. **Be mindful of what you use as a barrier or safety zone.**
- Fires are burning actively even under conditions of high relative humidity. Already this year, California has experienced large fire activity and multiple team deployments. California will likely experience an extended fire season. It is important to be mindful of and manage fatigue for all resources. **Everyone, every day, returns home safely.**

### **Mitigation Measures:**

- Local and inbound fire personnel need to be aware that fire behavior across the state is exceeding normal expectations for this time of the year. **Local briefings need to be thorough and highlight specific fire environment conditions. These include but are not limited to local weather forecasts, Pocket Cards, ERC's, live and dead fuel moistures, and special fuel conditions such as mortality, Sudden Oak Death and frost killed brush, etc.**
- Suppression actions need to be based on good anchor points, escape routes, and safety zones. **Remember LCES. Experienced lookouts are essential under these conditions.**
- **Base all actions on current and expected behavior of the fire.** Augment initial attack resources as incident activity dictates.
- Review the most current Northern and Southern California 7-day Significant Fire Potential along with Daily, Monthly and Seasonal Outlooks at: <http://www.predictiveservices.nifc.gov/outlooks/outlooks.htm>

**\*Area of Concern:** The area of concern is the State of California with the exception of 3 Northern California Predictive Service Areas: North Coast, Northeastern, and Eastside. A map showing the areas of concern described in this advisory can be found at: [National Fuel Advisories](#)

**Issued: June 10, 2013** (Note this advisory will be in effect for 14 days and will be reviewed/updated at that time.)



## Spot Forecast for Dave's Fire

National Weather Service Sacramento  
1103 AM PDT Sat Jun 15 2013

IF CONDITIONS BECOME UNREPRESENTATIVE,  
CONTACT THE NATIONAL WEATHER SERVICE.

SPOT FORECAST FOR DAVE S...MNF-NORCAL TEAM 2  
NATIONAL WEATHER SERVICE SACRAMENTO CA  
1103 AM PDT SAT JUN 15 2013

FORECAST IS BASED ON REQUEST TIME OF 1021 PDT ON JUNE 15.  
IF CONDITIONS BECOME UNREPRESENTATIVE...CONTACT THE NATIONAL WEATHER  
SERVICE.

### .DISCUSSION...

LARGE LOW PRESSURE WILL CONTINUE OFF THE PACIFIC NORTHWEST COAST WITH  
DRY SOUTHWESTERLY FLOW ALOFT OVER THE FIRE AREA. HUMDIITY WILL CONTINUE TO  
BE VERY LOW WITH SLIGHT COOLING SUNDAY. WINDS WILL GENERALLY BE  
TERRAIN DRIVEN DURING THE DAY BECOMING MORE WESTERLY AT NIGHT.

### .TONIGHT...

SKY/WEATHER.....CLEAR.  
MIN TEMPERATURE.....54-59.  
MAX HUMIDITY.....41-46 PERCENT.  
WIND (20 FT).....  
    SLOPE/VALLEY.....NORTHWEST UP TO 5 MPH.  
    RIDGETOP.....WEST 5 TO 10 MPH. LOCAL GUSTS TO 13 MPH.  
CWR.....10 PERCENT.  
LAL.....1.  
MIXING HEIGHT.....DECREASING TO 200-500 FT AGL AFTER DARK.  
MIXING WINDS.....WEST 6 MPH.

### .SUNDAY...

SKY/WEATHER.....SUNNY.  
MAX TEMPERATURE.....75-80.  
MIN HUMIDITY.....16-22 PERCENT.  
WIND (20 FT).....  
    SLOPE/VALLEY.....NORTHWEST WINDS UP TO 5 MPH SHIFTING TO THE  
                                  SOUTHEAST UP TO 6 MPH IN THE AFTERNOON.  
    RIDGETOP.....WEST 5 TO 10 MPH.  
CWR.....0 PERCENT.  
LAL.....1.  
MIXING HEIGHT.....INCREASING TO 8500-9000 FT AGL IN THE AFTERNOON.  
MIXING WINDS.....WEST 6 MPH.

FORECASTER...PCH  
REQUESTED BY...KEN LARSON FBAN  
REASON FOR REQUEST...WILDFIRE

## FIRE BEHAVIOR FORECAST

FORECAST NUMBER: 4	TYPE OF FIRE: Wildland Fire
FIRE NAME: Daves	OPERATIONAL PERIOD: 1800-0600 06/15-16/2013
DATE ISSUED: June 15, 2013	TIME ISSUED: 1200
UNIT: Mendocino NF, Grindstone RD	SIGNED: <i>Isl Ken Larson FBAN</i>

**WEATHER SUMMARY:** See attached Spot Weather Forecast

Weather: clear  
Min Temp: 54-59°  
Max RH: 41-46%  
Slope Winds (20'): NW to 5 mph  
Ridgetop Winds: W 5-10 mph, local gusts to 13

### FIRE BEHAVIOR

**General Fire Behavior for the Daves Fire:**

Anticipate minimal fire activity tonight.

Worst case potential fire behavior will be a ROS to 2-4 chains/hour with flame lengths up to 3 feet in the knob cone pine fuel type. Probability of ignition during the night will decrease to 30-40 %. Short range spotting is still possible due to poor relative humidity recovery.

In the brush (chamise) fuels on the west side of Browns Canyon a potential rate of spread to 6 chains/hour with flame lengths of 2 feet could occur should the fire cross the drainage.

### AIR OPERATIONS

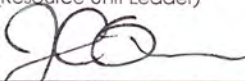
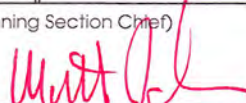
Smoke should not hamper air operations.

06/15 Sunset: 20:40    06/16 Sunrise: 05:41

### SAFETY

Mop-up hazards include falling snags or trees (especially green oaks), hot stump holes, rolling materials such as dislodged rocks or logs on steep slopes, displaced fauna (bees, snakes, etc.) Wear all PPE necessary for the task at hand.



DIVISION ASSIGNMENT LIST			1. Branch		2. Division/Group <b>A / Z</b>		
3. Incident Name <b>DAVES</b>			4. Operational Period Date: <b>06/15 to 6/16/2013</b>		NIGHT OPERATIONS Time: <b>1800 - 0600</b>		
5. Operations Personnel							
Operations Chief		Frank Davis / D. Shippelhoue(t)		Division/Group Supervisor		Bernard Spielman	
Branch Director				Air Attack Supervisor		Jason Withrow	
6. Resources Assigned this Period							
Strike Team/Task Force/ Resource Designator	Leader	Last Shift	Number Persons	Trans. Needed	Drop Off PT./Time	Pick Up PT./Time	
ST 9241G (C-8)	Dan Stenger	6/28	32	N	DP1 / 1900	0600	
ST 9258G (C-10)	Pete Bymers	6/28	36	N	DP1 / 1900	0600	
ST 9252G (C-9)	Felix Berbena	6/28	33	N	DP1 / 1900	0600	
PNF 3660C (E-18)	James Lico/Jennifer Wells(t)	6/27	27	N	DP1 / 1900	0600	
WT1 Ben's WT52 (E-58)	Larry Manry	6/28	1	N	DP1 / 1900	0600	
WT1 Ben's WT27 (E-57)	Boyd Barentine	6/28	1	N	DP1 / 1900	0600	
EMTP (O-137)	Erik Schroth	6/29	1	N	DP1 / 1900	0600	
EMTB (O-141)	Craig Sloan	6/29	1	N	DP1 / 1900	0600	
7. Control Operations							
<ul style="list-style-type: none"> <li>Continue mop-up where appropriate</li> </ul>							
8. Special Instructions							
<ul style="list-style-type: none"> <li>No water tender or engines are to fill from any hydrants in Paskenta</li> <li>Cal Fire Gulf Strike Team working 24 hour shifts</li> </ul>							
9. Division/Group Communication Summary							
Function	Frequency	System	Channel	Function	Frequency	System	Channel
Command	168.6000 Rx 168.2500 Tx	Daves Fire CMD	<b>8</b> Tone 3	Command Alternate	169.1750 Rx 169.9750 Tx	MNF Fire South	<b>2</b> Tone 9
Tactical Division/Group	168.2375 Rx 168.2375 Tx	Tac 6	<b>4</b> Tone 3	Air to Ground	169.1500 Rx 169.1500 Tx		<b>6</b>
Prepared by (Resource Unit Leader)			Approved by (Planning Section Chief)			Date	Time
J. Owen 			M. Johnson 			6/15/2013	11:33

INCIDENT RADIO COMMUNICATIONS PLAN		1. Incident Name Daves		2. Date/ Time Prepared 6/14/2013 11:30		3. Operational Period Date/Time 06/15/2013 18:00 to 06:00 06/16/2013 NIGHT	
4. Basic Radio Channel Utilization							
Mode: W=Wideband Analog, N=Narrowband Analog, D=Digital, M=Mixed							
Channel	Function	Frequency	Tone	Mode	Assignment	Remarks	
1	MNF Fire Net North	169.1750 169.9750	3.0	N	All Divisions	Tone 3 (131.8) North	
2	MNF Fire Net South	169.1750 169.9750	9.0	N	All Divisions	Tone 9 (100.0) South	
3	TAC 5	166.5500 166.5500	3.0	N		Tone 3 (131.8)	
4	TAC 6	168.2375 168.2375	3.0	N	Div A/Z	Tone 3 (131.8)	
5	TAC 4	167.1125 167.1125	3.0	N		Tone 3 (131.8)	
6	Air to Ground	169.1500 169.1500		N	All Divisions		
7							
8	Daves Fire CMD RPTR	168.6000 168.2500	3.0 3.0	N	All Divisions	Tone 3 (131.8) NIFC CMD RPTR 3 Primary	
9	NIFC CMD RPTR 12	173.0375 167.3250	3.0 3.0	N	All Divisions	Tone 3(131.8)	
10							
11							
12	TAC 1	168.0500 168.0500		N	Initial Attack	Tone 3 (131.8)	
13	TAC 2	168.2000 168.2000		N		Tone 3 (131.8)	
14	TAC 3	168.3000 168.3000		N		Tone 3 (131.8)	
15	Calcord	156.0750 156.0750	6.0	N	All Divisions	Tone 6 (156.7)	
16	Air Guard	168.6250 168.6250	1.0	N	All Divisions	Tone1 (110.9)	
5. Prepared by (Communications Unit) Jim Lewis COML							



<b>MEDICAL PLAN</b>		1. INCIDENT NAME: DAVES		2. DATE PREPARED: 06/15/2013		3. TIME PREPARED: 1100		4. OPERATIONAL PERIOD DAY 06/15 1800-0600					
<b>5. INCIDENT MEDICAL AID STATIONS</b>													
MEDICAL AID STATIONS				LOCATION				PARAMEDICS					
Medical Unit				ICP (530) 400-0880				Yes		No			
Frontline Medical				Base Camp				X					
<b>6. TRANSPORTATION</b>													
<b>A. Ambulance Services</b>													
NAME			LOCATION			PHONE			PARAMEDICS				
									Yes		No		
<b>B. AIR AMBULANCE</b>													
NAME			LOCATION			PHONE			PARAMEDICS				
Enloe Flight			Chico			911			X				
CHP (Hoist) – Daytime only			Redding			911			X				
Reach			Lakeport			911			X				
<b>7. HOSPITALS</b>													
NAME		ADDRESS		TRAVEL TIME		PHONE		TRAUMA		HELIPAD		BURN CENTER	
				AIR GRND				Yes No		YES NO		YES NO	
Enloe Medical Center		1530 Esplanade Chico N39 44.5 X W 121 51.1		32 min 2 Hr		530-895-9107		X		T3			
Glenn Medical Center		1133 W Sycamore St Willow N39 31.2 X W 122 12.4		25 Min 2 Hr		530-934-1800				X T3			
UC Davis Burn Center		2315 Stockton, Sacramento CA 38 33.30 x 121 27.40		55 min 3.5 Hr		916-734-3636		X		T2		X	
<b>8. MEDICAL EMERGENCY PROCEDURES</b>													
<b>LINE EMERGENCY:</b>				<b>CAMP EMERGENCY:</b>				<b>PT. ASSESSMENT:</b>					
<p>Crew Supervisor to contact DIVS with patient complaint/condition and location.</p> <p>1) DIVS contacts:</p> <ul style="list-style-type: none"> <li>Line EMT (If assigned)</li> <li>Communications Unit</li> <li>Operations / Branch</li> </ul> <p>2) On scene EMT, DIVS or Medical Unit Leader decides mode of transportation required.</p> <p>3) Communications Unit contacts:</p> <ul style="list-style-type: none"> <li>Medical Unit</li> <li>Transport Dispatch</li> <li>Safety</li> </ul> <p>4) Operations and Medical Unit will manage medical emergency with Communications</p> <p>If a Medical/Medivac is needed be sure to provide the lat. and long. of the nearest helispot or nearest evacuation location.</p>				<p>Contact Communications with patient complaint/condition and location. Medical Staff will respond to stabilize patient:</p> <p>1) Communications contacts:</p> <ul style="list-style-type: none"> <li>Safety</li> <li>Logistics</li> <li>Operations</li> <li>Crew Supervisor</li> </ul> <p><b><u>TRIAGE CONSIDERATIONS (S.T.A.R.T)</u></b></p> <p>Respirations: Over 30/ Under 12 = <b>Immediate</b></p> <p>Capillary Refill Over 2 seconds = <b>Immediate</b></p> <p>Mental Status Disoriented = <b>Immediate</b></p> <p>Immediate = Air Evacuation if possible</p>				<ul style="list-style-type: none"> <li>Mental status</li> <li>B.P.</li> <li>Pulse</li> <li>Skin signs</li> <li>Respirations</li> <li>Crew name and location.</li> </ul> <p><b>WARNING SIGNS OF HEAT ILLNESS INCLUDES THE FOLLOWING:</b></p> <ul style="list-style-type: none"> <li>An extremely high body temperature (above 103°F).</li> <li>Red, hot and dry skin (no sweating).</li> <li>Rapid, irregular strong pulse</li> <li>Throbbing headache</li> <li>Dizziness, nausea and confusion</li> <li>Unconsciousness</li> </ul> <p><b>HOW TO TREAT HEAT EMERGENCIES IN THE FIELD:</b></p> <ul style="list-style-type: none"> <li>Move the patient to the shade or provide shade for them</li> <li>Externally cool the patient.</li> <li>Fan them after getting them wet.</li> </ul> <p>Drink water constantly through the day. Consider an electrolyte sports drink/powder - 2/1 ratio.</p>					
9. PREPARED BY (MEDICAL UNIT LEADER) Aaron Lowe MEDL Patrick Young MEDL-T						10. REVIEWED BY (SAFETY OFFICER) Steve Davis SOF2							



**Lookouts**  
**Communications**  
**Escape Routes**  
**Safety Zones**

## Daves Incident

Operation Period: 06/15-16/2013 Night Shift

# SAFETY MESSAGE

## Mop Up is Hazardous Work!

- Injury and accidents are common during the mop up phase.
- Gather situational awareness in your work area and communicate it.
- Reduce risk by identifying and mitigating hazards.
- Stay focused on task, don't let the routine nature of the assignment allow your mind to wander resulting in a loss of situational awareness.
- Take frequent breaks, stay hydrated, and manage fatigue.

### MAJOR HAZARDS AND RISKS

STEEP TERRAIN FATIGUE ASH PITS	ROLLING MATERIAL RATTLESNAKES DEHYDRATION	HEAVY EQUIPMENT SNAGS COMPLACENCY
--------------------------------------	---	---

*Be sure all elements of your safety plan are in place prior to engagement*

### Look Up, Look Down, Look Around During Mop Up

\***Look Up:** Check the sky for any weather changes such as building or approaching thunderstorms, wind shifts or increasing in speed. Watch for air operations and water drops. Look for snags and the potential for rolling material.

\***Look Down:** Watch your footing. Keep an eye out for snakes, bee's nests, Stump holes, and ash pits.

\* **Look Around** Check for flagging identifying hazards in the area, and general terrain features. Keep an eye on fellow firefighters for signs of heat stress and fatigue.

### Watch for Over Confidence During Mop Up

\***Driving:** As you become more familiar with the road systems, we tend to increase speeds. Please be aware of this and keep speeds down, watch for people and vehicles along the roads, and drive defensively.

\***PPE:** Please recognize that in low stress situations like mop up, it is easy to over-look the importance of wearing the appropriate PPE include eye protection.

\***Work Area:** Familiarity with your work area can result in a lowering of awareness, especially as conditions change.

Nor Cal Team 2 Safety Officers Terry O'Connell, Steve Davis



# INCIDENT RISK ANALYSIS

**Daves**

**(ICS 215A) Night Shift**

DIV	HAZARDOUS ACTIONS / CONDITIONS	MITIGATIONS / WARNINGS / REMEDIES
ALL	<b>HAZARD TREES/SNAGS</b>	<ul style="list-style-type: none"> <li>• Follow Hazard Tree Safety Guidelines (IRPG p. 20).</li> <li>• Limit number of personnel around snags and their exposure time; fallers must be qualified for trees being fallen.</li> <li>• Be especially alert around snags during wind events or changing wind direction.</li> <li>• Maintain Situational Awareness.</li> </ul>
ALL	<b>DRIVING HAZARDS</b>	<ul style="list-style-type: none"> <li>• Narrow dusty roads exist.</li> <li>• Establish one way traffic or coordinate traffic flow if necessary.</li> <li>• Drive defensively! Expect the unexpected around every curve.</li> <li>• Drive with headlights on; use chock blocks, keep windshields clean; look before backing; and use backers whenever available.</li> <li>• Don't drive when fatigued. Adhere to agency driving regulations and guidelines.</li> <li>• Free ranging cattle (M-4 road).</li> </ul>
ALL	<b>HYDRATION</b>	<ul style="list-style-type: none"> <li>• Drinking water before, during and after shifts, up to 1.5 gal. per shift.</li> <li>• Be alert for signs of heat illness in yourself and others.</li> <li>• Drink 2 to 1 water to sports drinks.</li> </ul>
ALL CAMP	<b>POISONOUS SNAKES, INSECTS</b>	<ul style="list-style-type: none"> <li>• Snakes in base camp/sleeping area.</li> <li>• Securely close tents.</li> <li>• Watch your footing.</li> <li>• Identify, avoid, and get treatment for any bites or stings.</li> <li>• Use caution (for bees, wasps, etc.) when drinking from opened cans.</li> </ul>
ALL	<b>STEEP TERRAIN ROLLING MATERIAL</b>	<ul style="list-style-type: none"> <li>• Watch your footing; take your time.</li> <li>• Ensure adequate spacing between crewmembers.</li> <li>• Post lookouts to warn of rolling debris.</li> </ul>
DIV D, M	<b>HEAVY EQUIPMENT/DOZERS</b>	<ul style="list-style-type: none"> <li>• Utilize appropriate PPE and equipment safety mechanisms.</li> <li>• Maintain safe working distances.</li> <li>• Utilize observer or spotter.</li> <li>• Ensure the use of effective communication (radio, hand signals).</li> <li>• Identify hazards.</li> <li>• Avoid moving parts.</li> </ul>
ALL	<b>MOP UP</b>	<ul style="list-style-type: none"> <li>• Conduct thorough briefing for all personnel (inside rear cover IRPG).</li> <li>• Use all required PPE, including eye protection.</li> <li>• Maintain proper spacing and overhead clearance.</li> <li>• Be alert for stump holes and root cavities.</li> <li>• Minimize exposure to smoke, and rotate personnel into clean air when practical.</li> <li>• Evaluate unburned islands/Increase situational awareness.</li> </ul>
ALL	<b>DRY FUEL CONDITIONS</b>	<ul style="list-style-type: none"> <li>• Establish and maintain LCES.</li> <li>• Anticipate intense burning and rapid rates of spread.</li> <li>• Watch for spot fires.</li> <li>• Allow a for adequate escape times based on burning conditions.</li> </ul>
CAMP	<b>DRINKING WATER</b>	<ul style="list-style-type: none"> <li>• Do not drink from any domestic water source in the community of Paskenta.</li> </ul>
INCIDENT NAME: <b>Daves</b>  ICS 215a		DATE PREPARED: <p style="text-align: center;"><b>June 15, 2013</b></p> TIME PREPARED: <b>0930 HOURS</b>
		OPERATIONAL PERIOD <b>Night Shift 06/15/13</b> <b>1800-0600</b> Prepared by S. Davis T O'Connell



# AIR OPERATIONS SUMMARY

Prepared By: Dennis Kuster

Prepared Date: 6/14/2013

Prepared Time: 21:30

<b>1. INCIDENT NAME:</b> Daves	<b>2. OPS PERIOD DATE:</b> 6/15/2014	<b>START TIME:</b> 0700	<b>END TIME:</b> 2100	<b>SUNRISE:</b> 0539	<b>SUNSET:</b> 2043
<b>3. REMARKS (Safety Notes, Hazards, Air Operations, Special Equipment, etc.):</b>					
4. READY ALERT AIRCRAFT MEDEVAC- 506 I.A. - 506		5. TFR #: Radius 7.5 NM Diameter 10,000' MSL Center Point: 39° 45.00 122° 41.20			

6. PERSONNEL NAME	PHONE #	7. FREQUENCIES	AM	FM	8. FIXED-WING- Type/ Make-Model/ N#/ Base
AOBD Dennis Kuster	209-352-0855	AIR/ AIR FW	123.1750		AIRTANKERS - None Assigned
ASGS Staci Dickson	530-277-5153	AIR/ AIR RW- FF		169.200	LEAD PLANES- Order thru MNF
ATGS Jason Withrow	530-206-6955	AIR/ GROUND		169.150	ATGS AIRCRAFT- Over Fire at 0900 669J
ATGS		COMMAND	Receive	173.0375 T3	
HLCO			Transmit	167.3250 T3	
HEB2 Kyle Tolosano	530-605-7334	DECK		163.100	
HEB1		TOLC			
Helibase Phone FAX					
<b>OTHER FW AIRCRAFT-</b>					

## 9. HELICOPTERS (Use Additional Sheets as Necessary)

FAA N#	T Y	MAKE/ MODEL	BASE	AVAIL	START	REMARKS	FAA N#	T Y	MAKE/ MODEL	BASE	AVAIL	START	REMARKS
506	2	Bell 210	Daves	0900									
73U	1	S61	Daves	0900									

10. TASK/ MISSION/ ASSIGNMENT (Type/ function includes: Air Tactical, Retardant, Recon, Personnel Transport, Bucket Operations, SAR, etc.)	NAME OF PERSONNEL OR CARGO (if applicable) or instructions for tactical aircraft	MISSION START	FLY FROM	FLY TO
Water Dropping		As Needed		
Recon		As Needed		
Sling in Klump Pumps when Requested.				





**DAVES FIRE**  
**CAMNF-000834**  
**Transportation Map**  
**June 15, 2013**

**Estimated Acres: 226**

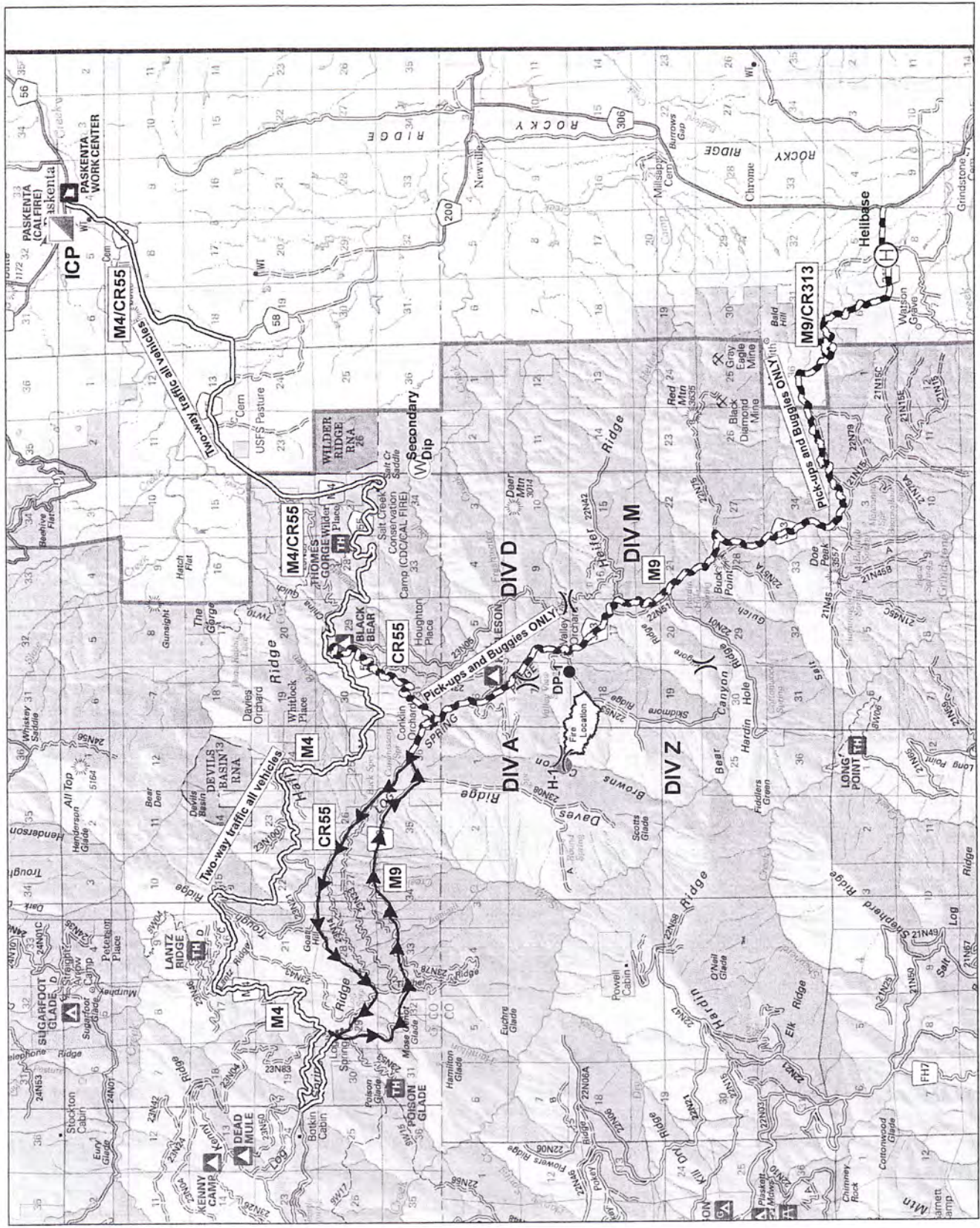
- One-way Traffic EASTBOUND
- One-way Traffic WESTBOUND
- Pick-up Trucks and Buggies Only
- Two-way Traffic, All Vehicles

- Division
- Fire Perimeter
- Drop Point
- Helibase
- Helispot
- Incident Command Post
- Water Source

NorCal Interagency Incident Management Team

0 1 Mile





## ***TRAINING SPECIALIST MESSAGE***

**Trainees who have not previously started documentation of their assignment with the TNSP should do so ASAP!**

**All open training assignments on the Daves Incident must be “closed out” with the TNSP by 2130 Hrs. on Sunday June 16th**

***In order to receive documented credit for your training assignment – you must close out with the Training Specialist before you Demob!!***

**BEAT THE RUSH!**

**If as much work as possible has been completed in the position task book, Trainees may close their assignment with the TNSP prior to the demob process**

***The TNSP is located in the ICP adjacent to the Information Desk.***

***Brad Smith - TNSP***  
***6/15/13***





