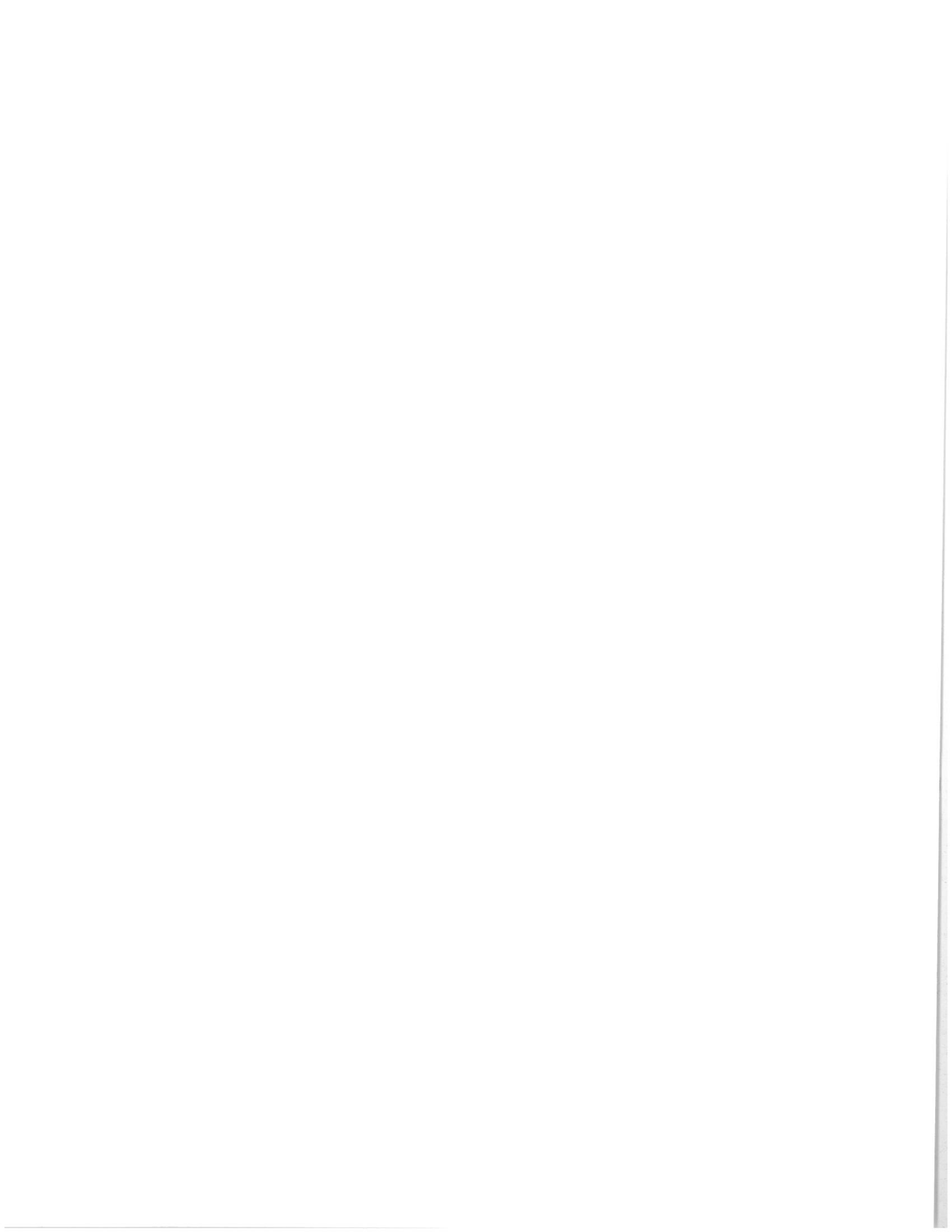


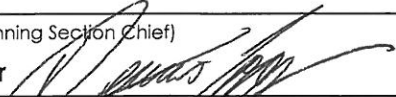

CORRAL COMPLEX

CA-SRF-001494
P5HU49

Aug 23, 2013
Day Shift 0600 - 2000

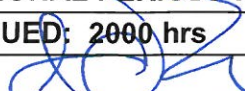




INCIDENT OBJECTIVES	1. Incident Name Corral Complex	2. Date Prepared 8-22-13	3. Time Prepared 1600
4. Operational Period 8-23-13 0600 to 2000			
5. General Control Objectives for the Incident (include alternatives) Incident Objectives: <ul style="list-style-type: none"> • Provide for firefighter and public safety in all incident operations. • Protect property and infrastructure. Control fire closest to communities. • Keep stakeholders, the public, and cooperators informed of fire status. • Keep costs commensurate with identifies values at risk. • Protect cultural and natural resources. • Protect wilderness values and utilize MIST in the Trinity Alps Wilderness. • Protect the Hoopa Valley community at risk listed in the Federal Register. • Protect the Denato Trail which is listed in the Federal Register of National Historic Places. Control Objectives: <ul style="list-style-type: none"> • Keep the fire: <ul style="list-style-type: none"> ▪ North of Hwy 299 ▪ East of the Hwy 96 and Hoopa Valley Indian Reservation ▪ South of the Siskiyou / Trinity County Line ▪ West of the New River 			
6. Weather Forecast for Period See Attached Weather Forecast			
7. General Safety Message See Attached Safety Message			
8. Attachments (mark if attached)			
<input checked="" type="checkbox"/> Incident Objectives – ICS 202	<input checked="" type="checkbox"/> Division Assignment List – ICS 204	<input checked="" type="checkbox"/> Medical Plan - ICS 206	
<input checked="" type="checkbox"/> Organization List - ICS 203	<input checked="" type="checkbox"/> Safety Message	<input checked="" type="checkbox"/> Human Resource Message	
<input checked="" type="checkbox"/> Fire Weather Forecast	<input type="checkbox"/> Incident Safety Analysis – ICS 215A	<input checked="" type="checkbox"/> Transportation Map	
<input checked="" type="checkbox"/> Fire Behavior Forecast	<input checked="" type="checkbox"/> Air Ops Summary – ICS 220	<input type="checkbox"/> Incident Map	
<input type="checkbox"/> Pocket Card	<input checked="" type="checkbox"/> Communications Plan - ICS 205	<input checked="" type="checkbox"/> Unit Log – ICS 214	
9. Prepared by (Planning Section Chief)		10. Approved by (Incident Commander)	
Dennis Cooper 		Carlton Joseph ICT1 	

ICS Form 203 ORGANIZATION ASSIGNMENT LIST		1. INCIDENT NAME CORRAL FIRE	2. DATE PREPARED 8/22/13	3. TIME PREPARED 1800																				
5. INCIDENT COMMAND STAFF		4. OPERATIONAL PERIOD (DATE/TIME) 8-23-13 0600 to 2000																						
<table border="1"> <thead> <tr> <th>Position</th> <th>Name</th> </tr> </thead> <tbody> <tr><td>INCIDENT COMMANDER</td><td>Carlton Joseph/Rod Mendes</td></tr> <tr><td>DEPUTY</td><td>Jim Giachino/Ranger Dorn (t)</td></tr> <tr><td>SAFETY OFFICER</td><td>Marty Hamel/Brian Savage</td></tr> <tr><td>INFORMATION OFFICER</td><td>Mark Savage/Paula Martinez/Steve Kliest</td></tr> <tr><td>LIAISON OFFICER</td><td>Rick Alpert</td></tr> <tr><td>HRSP</td><td>Mike Baines</td></tr> </tbody> </table>		Position	Name	INCIDENT COMMANDER	Carlton Joseph/Rod Mendes	DEPUTY	Jim Giachino/Ranger Dorn (t)	SAFETY OFFICER	Marty Hamel/Brian Savage	INFORMATION OFFICER	Mark Savage/Paula Martinez/Steve Kliest	LIAISON OFFICER	Rick Alpert	HRSP	Mike Baines	9. OPERATIONS SECTION								
Position	Name																							
INCIDENT COMMANDER	Carlton Joseph/Rod Mendes																							
DEPUTY	Jim Giachino/Ranger Dorn (t)																							
SAFETY OFFICER	Marty Hamel/Brian Savage																							
INFORMATION OFFICER	Mark Savage/Paula Martinez/Steve Kliest																							
LIAISON OFFICER	Rick Alpert																							
HRSP	Mike Baines																							
6. AGENCY REPRESENTATIVES		CHIEF K. Gurrola/S. Marouk (t)																						
<table border="1"> <thead> <tr> <th>AGENCY</th> <th>NAME</th> </tr> </thead> <tbody> <tr><td>SRF</td><td>Nolan Colegrove</td></tr> <tr><td>SRF-Fire</td><td>Rick Young</td></tr> <tr><td>Hoopa AREP</td><td>Darin Jarnaghan</td></tr> <tr><td>R3 IARR</td><td>Orlando Carroll</td></tr> <tr><td>BIA</td><td>Joshua Simmons</td></tr> <tr><td>Res. Cultural Adv.</td><td>Aaron Pole/Antone Aubrey</td></tr> <tr><td>NFFE</td><td>John McRae/Roberta Coragliotti</td></tr> <tr><td>Shasta Trinity AAREP</td><td>Tina Lynsky</td></tr> <tr><td>CCC AREP</td><td>John Button</td></tr> </tbody> </table>		AGENCY	NAME	SRF	Nolan Colegrove	SRF-Fire	Rick Young	Hoopa AREP	Darin Jarnaghan	R3 IARR	Orlando Carroll	BIA	Joshua Simmons	Res. Cultural Adv.	Aaron Pole/Antone Aubrey	NFFE	John McRae/Roberta Coragliotti	Shasta Trinity AAREP	Tina Lynsky	CCC AREP	John Button	PLANNING OPS D. Smith/N. Washington (t)		
AGENCY	NAME																							
SRF	Nolan Colegrove																							
SRF-Fire	Rick Young																							
Hoopa AREP	Darin Jarnaghan																							
R3 IARR	Orlando Carroll																							
BIA	Joshua Simmons																							
Res. Cultural Adv.	Aaron Pole/Antone Aubrey																							
NFFE	John McRae/Roberta Coragliotti																							
Shasta Trinity AAREP	Tina Lynsky																							
CCC AREP	John Button																							
7. PLANNING SECTION		DEPUTY OPS L. Curtis																						
CHIEF D. Cooper/R. Leuck(t)/J. Schillinger(t)		CONTINGENCY OPS S. Ryberg																						
DEPUTY		a. BRANCH I																						
RESOURCES UNIT J. Switzler/ G. Thompson		BRANCH DIR																						
SITUATION UNIT M. McHargue/T. Morelock/ K. VanWig (t)		DIVISION F West/Brashears (t)																						
DOCUMENTATION UNIT L. Ellickson		DIVISION H Rose/Brown (t)																						
DEMOBILIZATION UNIT R. Ashby		DIVISION L Jacobson/Halleran (t)																						
CTSP J. Youngblood		DIVISION M Harris																						
TNSP B. Tattersfield/B. Reynolds/J. Mitchell t)		DIVISION HEAVY EQUIP Glover																						
FBAN S. Crook		b. BRANCH V																						
IMET J. Wallmann/ R. Leach (t)		BRANCH DIRECTOR D. Forsyth																						
GISS B. Weisshaupt/M. Schug		DEPUTY																						
GISS D. Benitez/ S. Kennedy		DIVISION A Boe																						
READ R. Butz		DIVISION X Vollhaber																						
8. LOGISTICS SECTION		DIVISION W Dugger																						
CHIEF H. Crane		DIVISION R unstaffed																						
DEPUTY T. Martinez		DIVISION P unstaffed																						
a. SUPPORT BRANCH		c. BRANCH																						
SECURITY H. Naigus		BRANCH DIRECTOR																						
SUPPLY UNIT J. McMahon		DEPUTY																						
FACILITIES UNIT W. Grogan/ J. Eckroth		DIVISION/GROUP Contingency Olson/Lucas (t)																						
GROUND SUPPORT UNIT D. Hill		DIVISION/GROUP READ																						
b. SERVICE BRANCH		DIVISION/GROUP																						
COMMUNICATIONS UNIT R. Gonzales		DIVISION/GROUP																						
RECEIVING A. Krueger		d. AIR OPERATIONS BRANCH																						
ORDERING S. Porter		AIR OPERATIONS BR. DIR. J. Keesee																						
MEDICAL UNIT R. Russell		AIR TACTICAL GROUP SUP. C. Stanley																						
FOOD UNIT B. Ungari		AIR SUPPORT GROUP SUP. C. Dado/T. Gilbreth (t)																						
PREPARED BY (RESOURCES UNIT)		HELICOPTER COORDINATOR																						
		AIR TANKER/FIXED WING CRD.																						
		10. FINANCE/ADMINISTRATION SECTION																						
		CHIEF T. Fork																						
		DEPUTY																						
		TIME UNIT J. Brown/M. Prochazka																						
		PROCUREMENT UNIT																						
		COMPENSATION/CLAIMS UNIT A. Carlson																						
		COST UNIT R. Siemers/V. Kobilis (t)																						
		EQTR A. Hoyer																						

FIRE BEHAVIOR FORECAST

FORECAST NUMBER: #9	TYPE OF FIRE: Wildfire
FIRE NAME: CORRAL COMPLEX	OPERATIONAL PERIOD: August 23, 2013 0600-0600
DATE ISSUED: August 22, 2013	TIME ISSUED: 2000 hrs
UNIT: Six Rivers NF	SIGNED:  Shelly Crook FBAN

INPUTS

WEATHER SUMMARY

(Refer to Weather Forecast for details) DAY: Mostly cloudy and smoky. 35% chance of afternoon thunderstorms. Max Temp: 76-80°. Min RH: 37-41%. Slope/Valley – Upslope 3-5 mph, Ridges – West to 5-7 mph.
NIGHT: Partly cloudy. Min Temp: 56-60° Max RH: 85-90% Winds: SW 2-5 mph becoming light down slope / down valley.

FUELS

Fire is burning within the boundaries of the Megram Fire (1999) and Back Bone Fire (2009). Fuels consist of abundant heavy dead and down, snags and shrubs (Ceanothus/Snow Brush). Mature timber on the west flank. Live FMC lower on S/SE/W aspects. Live and dead fuel moistures noticeably higher in the drainages below 4000ft elevation. Minimum fine fuel moisture: 4-10%, 1000 hour FMC: 8-10%, Live fuel moisture: 120%. Persistent drought conditions.

OUTPUTS - FIRE BEHAVIOR

➤ Forecasted Indices (Big Hill RAWs) ERC: ? (55) BI: ? (45) (No Forecast Available)

Thresholds for Active Fire Behavior in the Corral Complex area:

20ft Winds > 7 mph. RH < 31%. Temperature > 82°. 1000hr FMC < 13%. BI > 50. ERC > 47.

GENERAL: Yesterdays fire behavior was fairly low as a result of the mostly cloudy skies and higher RH's.

Expect today's the fire behavior to be similar to yesterday's with mostly backing fire, occasional torching, short range spotting and some rollout on the steep slopes. Low probability of rapid spread is possible under the influence of outflow winds from any passing thunderstorms.

DIV F & H (W Flank, Tish Tang Ridge area) – Expect fire to continue to spread west and back off the ridge to the north and south of the South Fork Tish Tang Ck. Fire spread will likely slow as fire back further off the slope, into the canyon. Roll out may result in short up slope runs. T-Storms could intensity fire activity.

DIV L (NW Flank, Tish Tang Point area) – Expect continued spread to the NW towards and around Tish Tang Point. Pay very close attention to the spot fires in the bottom of Tish Tang Ck, although not likely, there is a potential for this fire make a rapid upslope run towards the nob road/DP-2 area, especially under the influence of gusty afternoon winds or from a from a passing T-storm.

DIV M (N Flank, Trinity GS area) – Expect limited spread in the Bret Ck/Bret Hole area.

DIV P (NE Flank, north of H2) – Limited fire spread north along the west side of the crest with backing, roll out and occasional short runs on the east side.

DIV R (E/SE Flank, Grizzly Camp area) – Potential for moderate spread to the south along the ridge between Horse Linto and East Fork Horse Linto Creeks. Low to moderate fire activity above 4000ft elev, with mostly surface spread, isolated torching, roll out and occasional up slope runs. Expect the fire to continue to spill over the crest to the east resulting in roll out and occasional upslope runs.

DIV W / X / A (Horse Linto Ck area) – Fire is established in Horse Linto Ck. Pay close attention, there is a potential of the fire making a rapid run upslope to the ridge top to the south, especially under the influence of the peak afternoon westerly winds or if T-storms passes over the fire.

**Maximum Fire Behavior (head fire upslope): Rate of Spread: 8-12 chains/hour (15 ft/min),
Flame Length: 3-7 ft. Probability of Ignition: 55%. Maximum spotting distance of 1000 feet.**

AIR OPERATIONS

Possible limitation to aviation activity due to smoke and morning inversion. Plan accordingly.

SAFETY

- As the fire behavior wanes, don't let your guard down, focus on the mission and your crews attitude.
- Pay special attention to changing and increasing fire behavior especially in the Tish Tang Creek drainage.
- "The only way to discover the limits of the possible is to go beyond them into the impossible." Anonymous

Division Assignment List	1. Branch I	2. Division/Group F
---------------------------------	-----------------------	-------------------------------

3. Incident Name CORRAL COMPLEX	4. Operational Period 08/23/13 Friday DAY Shift 0600 - 2000
---	---

5. Operations Personnel			
Operations Chief	KEITH GURROLA; SAM MAROUK (t)	Division/Group Supervisor	JEFF WEST; CHRIS BRASHEARS (t)
Operations Chief		Air Attack Supervisor	
Branch Director	KELLY MARTIN	Safety Officer	MARTIN HAMEL; BRIAN SAVAGE

6. Resources Assigned this Period						
Strike Team/Task Force/ Resource Designator	Leader	Num of Pers.	Trans. Y/N	Drop Off PT./Time	Pick Up PT./Time	
HC2 OHIO #2 C-14 8/30	CHRISTOPHER A MORRIS	20	N	0600	2000	
HC2 FOLSOM LAKE C-60 9/5	MATT LYNDE	20	N	0600	2000	
DOZ1 KENS E-82 8/28	TOM FUNES	1	N	0600	2000	
WT1 C&J SUPPORT E-178	SEE CHECK IN	1	n	0600	2000	
DOZ3 TEHAMA E-80 8/24	BRUCE FIELDS	2	N	0600	2000	
SLSH AMMON E-63 8/30	ERICK AMMON	1	N	0600	2000	
MASTICATOR E-115 ? see check in	DON WOOD	1	N	0600	2000	
EXCA KEN'S INC. #1 E-99 8/31	MATT SKELTON	1	N	0600	2000	
HEQB O-164 8/31	JARED HAMMATT	1	N	0600	2000	
HEQB O-57 8/26	JAMES RUST	1	N	0600	2000	
FELB O-172 9/3	RON BOOKER	1	N	0600	2000	
FALLER MODULE 0-99	CURTIS KING	1	N	0600	2000	
SOFR O-192 8/29	JOHN KELSO	1	N	0600	2000	
SOFR O-159 9/2	CHRISTOPHER OBRIEN	1	N	0600	2000	
FEMP O-138 8/29	MARK BURBANK	1	N	0600	2000	
FEMP O-140 8/29	LARRY MERSEREAU	1	N	0600	2000	

7. Control Operations

Snag and plumb indirect line from A/F Div break to H/F Div break. Coordinate with Branch Director for defensive firing operations as necessary.

8. Special Instructions

All resources report to the wash station upon arrival and demobilization.

9. Division/Group Communications Summary							
Function	Frequency - RX	Frequency - TX	Tone	System	Channel	System	Channel
Command	168.7000	170.9750	11	NIFC	1		
Tactical Div/Group	166.7750	166.7750	11 (114.8)	NIFC	6		
Logistics							
Air to Ground	167.0625	167.0625		NIFC	11		

Prepared by (Resource Unit Leader) Gary Thompson	Approved by (Planning Section Chief)	Date Prepared 08/22/13	Time Prepared 0708
---	--------------------------------------	---------------------------	-----------------------

Division Assignment List		1. Branch I	2. Division/Group L		
3. Incident Name CORRAL COMPLEX		4. Operational Period 08/23/13 Friday DAY Shift 0600 - 2000			
5. Operations Personnel					
Operations Chief	KEITH GURROLA; SAM MAROUK (t)	Division/Group	KYLE JACOBSON; K.HALLERAN (t)		
Operations Chief		Air Attack Supervisor			
Branch Director	KELLY MARTIN	Safety Officer	MARTIN HAMEL; BRIAN SAVAGE		
6. Resources Assigned this Period					
Strike Team/Task Force/ Resource Designator	Leader	Num of Pers.	Trans. Y/N	Drop Off PT./Time	Pick Up PT./Time
HC1 SMITH RIVER IHC C-9 8/25	TIM MEMMER	21	N	DIV H/L BREAK/0800	2000
HC1 TRINITY IHC C-15 8/26	JUSTIN JEUDE	19	N	DIV H/L BREAK/0800	2000
HC1 PLUMAS IHC C-25 8/30	JACK SEVELSON	20	N	DIV H/L BREAK/0800	2000
HC2 BECKWORTH C-57 9/2	SETH ODELL	20	N	DIV H/L BREAK/0800	2000
TF CORRAL #1	SCOTT BENEDICT		N	DIV H/L BREAK/0800	2000
ENG6 NORTHWEST 036 E-163 9/3	SCOTT BENEDICT	3	N	DIV H/L BREAK/0800	2000
ENG6 NORTHWEST 037 E-164 9/3	KEITH REED	3	N	DIV H/L BREAK/0800	2000
ENG6 NORTHWEST 038 E-165 9/3	CASEY BROWN	3	N	DIV H/L BREAK/0800	2000
ENG6 NORTHWEST 039 E-166 9/3	MATT COX	3	N	DIV H/L BREAK/0800	2000
ENG6 MARK TWAIN 671 E-185 9/4	AMY DUFF	3	N	DIV H/L BREAK/0800	2000
WTS1 WT #3 VIN#11776 E-136 9/3	GARRY HARRIS	1	N	DIV H/L BREAK/0800	2000
TF CORRAL #2	ROBERT BERNEY		N	DIV H/L BREAK/0800	2000
ENG3 ENGINE - 9532 E-162 9/3	LYLE BLAINE MCKINNON	5	N	DIV H/L BREAK/0800	2000
ENG6 CIBOLA E-176 9/4	MICHAEL P WILLIAMS	3	N	DIV H/L BREAK/0800	2000
ENG6 DOUBLE D E-177 9/4	DUANE DEARBORN	3	N	DIV H/L BREAK/0800	2000
ENG6 RED LAKE E-186 9/4	PATRICK NORQUAY	0	N	DIV H/L BREAK/0800	2000
WTS1 WATER TENDER E-139 9/3	VICTOR KNIGHT	1	N	DIV H/L BREAK/0800	2000

7. Control Operations

Construct indirect dozer line using mechanized equipment from DP-4 to DP-2 along Bearhole road. Coordinate with Branch Director for defensive firing operations as necessary.

8. Special Instructions

All resources report to the wash station upon arrival and demobilization.

9. Division/Group Communications Summary							
Function	Frequency - RX	Frequency - TX	Tone	System	Channel	System	Channel
Command	168.7000	170.9750	11	NIFC	1		
Tactical Div/Group	168.2500	168.2500	11 (114.8)	NIFC	7		
Logistics							
Air to Ground	167.0625	167.0625		NIFC	11		
Prepared by (Resource Unit Leader) Gary Thompson		Approved by (Planning Section Chief) <i>Shuck PSC2 (t)</i>			Date Prepared 08/22/13	Time Prepared 0708	

Division Assignment List		1. Branch I	2. Division/Group L			
3. Incident Name CORRAL COMPLEX		4. Operational Period 08/23/13 Friday DAY Shift 0600 - 2000				
5. Operations Personnel						
Operations Chief	KEITH GURROLA; SAM MAROUK (t)		Division/Group Supervisor	KYLE JACOBSON; K. HALLERAN (t)		
Operations Chief			Air Attack Supervisor			
Branch Director	KELLY MARTIN		Safety Officer	MARTIN HAMEL; BRIAN SAVAGE		
6. Resources Assigned this Period						
Strike Team/Task Force/ Resource Designator	Leader	Num of Pers.	Trans. Y/N	Drop Off PT./Time	Pick Up PT./Time	
ES3 ENGINE S/T 2140C E-167 9/5	ED LYNCH	20	N	DIV H/L BREAK/0800	2000	
ENG3 ENGINE - T3 - 663 E-167.3	STEVE J WHITE	0	N	DIV H/L BREAK/0800	2000	
ENG3 ENGINE - T3 - 616 E-167.4	JIM LANDIS	0	N	DIV H/L BREAK/0800	2000	
ENG3 ENGINE - T3 - 611 E-167.5	COLIN JACKSON	0	N	DIV H/L BREAK/0800	2000	
ENG3 ENGINE - T3 - 604 E-167.6	CHARLIE CASANUOVO	0	N	DIV H/L BREAK/0800	2000	
ENG3 ENGINE - T3 - 658 E-167.7	BRIAN SMITH	0	N	DIV H/L BREAK/0800	2000	
FALC FALLING MODULE O-97 8/30	RICHARD BROWN	2	N	DIV H/L BREAK/0800	2000	
FALC FALLING MODULE O-98 8/30	JAMES GIBSON	2	N	DIV H/L BREAK/0800	2000	
FALC O-149 8/30	RUSSELL A NEWMAN	1	N	DIV H/L BREAK/0800	2000	
FALC O-180 8/23	RANDALL BELL	1	N	DIV H/L BREAK/0800	2000	
FALC O-295 9/3	RUBEN CHUCKLUCK	1	N	DIV H/L BREAK/0800	2000	
FALC A&F ENTERPRISES, O-92 8/24	ALLAN HOPKINS	2	N	DIV H/L BREAK/0800	2000	
FELB O-151 8/31	RICHARD GAUBATZ	1	N	DIV H/L BREAK/0800	2000	
FELB O-375 9/4	MICHAEL BILDEAUX (t)	1	N	DIV H/L BREAK/0800	2000	
FEMP O-44 8/28	JEREMY R BLACKSHERE	1	N	DIV H/L BREAK/0800	2000	
FEMT O-309 9/3	DEAN BONFIGLI	1	N	DIV H/L BREAK/0800	2000	
SOF2 O-260 8/25	STEPHEN FEMMEL	1	N	DIV H/L BREAK/0800	2000	
SOFR O-262 8/23	BRANDON RAMIREZ (t)	1	N	DIV H/L BREAK/0800	2000	
7. Control Operations						

Construct indirect dozer line using mechanized equipment from DP-4 to DP-2 along Bearhole road. Coordinate with Branch Director for defensive firing operations as necessary.

8. Special Instructions

All resources report to the wash station upon arrival and demobilization.

9. Division/Group Communications Summary							
Function	Frequency - RX	Frequency - TX	Tone	System	Channel	System	Channel
Command	168.7000	170.9750	11	NIFC	1		
Tactical Div/Group	168.2500	168.2500	11 (114.8)	NIFC	7		
Logistics							
Air to Ground	167.0625	167.0625		NIFC	11		
Prepared by (Resource Unit Leader) Gary Thompson		Approved by (Planning Section Chief) <i>Chuck PSC 2(t)</i>			Date Prepared 08/22/13	Time Prepared 0708	

Division Assignment List	1. Branch I	2. Division/Group HEAVY EQUIPMENT GP
---------------------------------	-----------------------	--

3. Incident Name CORRAL COMPLEX	4. Operational Period 08/23/13 Friday DAY Shift 0600 - 2000
---	---

5. Operations Personnel

Operations Chief	KEITH GURROLA; SAM MAROUK (t)	Division/Group	PETER GLOVER
Operations Chief		Air Attack Supervisor	
Branch Director	KELLY MARTIN	Safety Officer	MARTIN HAMEL; BRIAN SAVAGE

6. Resources Assigned this Period

Strike Team/Task Force/ Resource Designator	Leader	Num of Pers.	Trans. Y/N	Drop Off PT./Time	Pick Up PT./Time
DOZ1 HOOPA TRIBE E-83 8/31	WENDAL WHITE	1	N	DIV H/L BREAK/0800	2000
DOZ1 BROWN E-81 8/30	ROGER BROWN	1	N	DIV H/L BREAK/0800	2000
DOZ1 HOOPA TRIBE E-79 8/30	WALLY MORTON	1	N	DIV H/L BREAK/0800	2000
DOZ2 HOOPA TRIBE E-78 8/30	LARRY JOHNSON	1	N	DIV H/L BREAK/0800	2000
DOZ2 HOOPA TRIBE E-77 8/30	JOHN MARSHALL	1	N	DIV H/L BREAK/0800	2000
EXCA HOOPA TRIBE E-105 8/31	GARY DEMPEWOLF	1	N	DIV H/L BREAK/0800	2000
EXCA KENS INC. #2 E-100 8/31	CHRIS FUNES	1	N	DIV H/L BREAK/0800	2000
EXCA OILERS E-65 8/30	JAMES WHITE	1	N	DIV H/L BREAK/0800	2000
EXCA BEN SALE #1 E-64	BUTCH SMITH	1	N	DIV H/L BREAK/0800	2000
FEL1 WOOD RIVER TI E-68 9/2	RAY DRISCOLL	1	N	DIV H/L BREAK/0800	2000
FEL2 HOLT LOGGING E-67 9/1	MELENDREZ	1	N	DIV H/L BREAK/0800	2000
FEL1 INTERMOUNTAIN E-73 9/3	KEVIN SMITH	1	N	DIV H/L BREAK/0800	2000
FEL1 JOHNSON LOGGING E-66 8/30	JIM JOHNSON	1	N	DIV H/L BREAK/0800	2000
SKG4 WATERWAGONS E-141 9/4	LANCE LEEK	2	N	DIV H/L BREAK/0800	2000
SKG1 OUTBACK WILDFIRE E-140 9/4	DAN CHANCLER	1	N	DIV H/L BREAK/0800	2000
SLSH MCKELLAR TREE E-62 8/30	DOUG MCKELLAR	1	N	DIV H/L BREAK/0800	2000
SLSH G AND O BODY SHOP E-61 8/30	SCOTT WEAVER	1	N	DIV H/L BREAK/0800	2000
SLSH DIVERSIFIED E-60 8/30	KELLY HOLT	1	N	DIV H/L BREAK/0800	2000
LOWB 6 RIVERS CONST E-156 9/3	DARRYL MAYBREE	1	N	DIV H/L BREAK/0800	2000
LOWB STAN LEACH TIMBER E-200 9/4	STAN LEACH	1	N	DIV H/L BREAK/0800	2000

7. Control Operations

Coordinate with Div H and L for mechanized equipment needs.

8. Special Instructions

9. Division/Group Communications Summary

Function	Frequency - RX	Frequency - TX	Tone	System	Channel	System	Channel
Command	168.7000	170.9750	11	NIFC	1		
Tactical							
Logistics							
Air to Ground	167.0625	167.0625		NIFC	11		

Prepared by (Resource Unit Leader) Gary Thompson	Approved by (Planning Section Chief) <i>[Signature]</i> PSC 2 (T)	Date Prepared 08/22/13	Time Prepared 1324
---	--	---------------------------	-----------------------

Division Assignment List	1. Branch V	2. Division/Group W
---------------------------------	-----------------------	-------------------------------

3. Incident Name CORRAL COMPLEX	4. Operational Period 08/23/13 Friday DAY Shift 0600 - 2000
---	---

5. Operations Personnel			
Operations Chief	KEITH GURROLA; SAM MAROUK (t)	Division/Group Supervisor	ELLIOTT DUGGAR
Operations Chief		Air Attack Supervisor	
Branch Director	DON FORSYTH	Safety Officer	MARTIN HAMEL; BRIAN SAVAGE

6. Resources Assigned this Period					
Strike Team/Task Force/ Resource Designator	Leader	Num of Pers.	Trans. Y/N	Drop Off PT./Time	Pick Up PT./Time
TFLD O-193 8/29	JASON THIVENER	1	N	GROVES SPIKE 0600	GROVES SPIKE 0600
CC CCC SHASTA 21 C-18 8/14	NICK JOHNSON	17	N	GROVES SPIKE 0600	GROVES SPIKE 0600
HC2 OC 25 C-56 9/2	DON BOWEN	20	N	GROVES SPIKE 0600	GROVES SPIKE 0600
ENG6 BLACKDUCK 719 E-178 9/4	CHRIS COLLISON	3	N	GROVES SPIKE 0600	GROVES SPIKE 0600
FALC MODULE O-94 8/30	FRANK MANQUEROS	2	N	GROVES SPIKE 0600	GROVES SPIKE 0600
FALC MODULE O-256 8/31	ADAM MILLER	2	N	GROVES SPIKE 0600	GROVES SPIKE 0600
FALC O-185 8/31	KODY COX	1	N	GROVES SPIKE 0600	GROVES SPIKE 0600
FALC O-367 9/4	MICHEAL MOEN	1	N	GROVES SPIKE 0600	GROVES SPIKE 0600
FALC O-368 9/4	ROBERT FREEMAN	1	N	GROVES SPIKE 0600	GROVES SPIKE 0600
FELB O-331 8/27	JOSHUA C SHROYER	1	N	GROVES SPIKE 0600	GROVES SPIKE 0600
SOFR O-158 9/2	DONALD R BERGSTRAND	1	N	GROVES SPIKE 0600	GROVES SPIKE 0600
SOFR O-160 9/3	JIMMIE L DIXON	1	N	GROVES SPIKE 0600	GROVES SPIKE 0600
FEMP O-133 8/30	JEFF SHELTON	1	N	GROVES SPIKE 0600	GROVES SPIKE 0600
FEMP O-134 8/30	ERNEST MIRANDA	1	N	GROVES SPIKE 0600	GROVES SPIKE 0600

7. Control Operations

Snag indirect line from DP-1 down 7N26 road.

8. Special Instructions

All resources report to the wash station upon arrival and demobilization.
SOFR will be out 24hrs as lookouts.

9. Division/Group Communications Summary							
Function	Frequency - RX	Frequency - TX	Tone	System	Channel	System	Channel
Command	168.7000	170.9750	11	NIFC	1		
Tactical Div/Group	154.2725	154.2725	6 (156.7)	NIFC	13		
Logistics							
Air to Ground	167.0625	167.0625		NIFC	11		

Prepared by (Resource Unit Leader) Gary Thompson	Approved by (Planning Section Chief) <i>[Signature]</i>	Date Prepared 08/22/13	Time Prepared 0708
---	--	---------------------------	-----------------------

Division Assignment List			1. Branch V		2. Division/Group X		
3. Incident Name CORRAL COMPLEX			4. Operational Period 08/23/13 Friday DAY Shift 0600 - 2000				
5. Operations Personnel							
Operations Chief		KEITH GURROLA; SAM MAROUK (t)		Division/Group		GREG VOLLHABER	
Operations Chief				Air Attack Supervisor			
Branch Director		DON FORSYTH		Safety Officer		MARTIN HAMEL; BRIAN SAVAGE	
6. Resources Assigned this Period							
Strike Team/Task Force/ Resource Designator		Leader		Num of Pers.	Trans. Y/N	Drop Off PT./Time	Pick Up PT./Time
HC2 ZUNI C-24 8/23		CARMEN GOSEYUN		19	N	GROVESSPIKE/0600	GROVES SPIKE/ 2000
CC FORTUNA 22 C-38 8/30		NOLAN REYNOLDS		17	N	GROVESSPIKE/0600	GROVES SPIKE/ 2000
ENG3 BLUE LAKE 8533 E-188 9/4		GREG PERRY		5	N	GROVESSPIKE/0600	GROVES SPIKE/ 2000
CHIP RON ADKINS CO. E-107 8/31		RON ADKINS		1	N	GROVESSPIKE/0600	GROVES SPIKE/ 2000
CHIP ZEB'S TREE 2542 E-108 9/1		SHAW STOCKE		2	N	GROVESSPIKE/0600	GROVES SPIKE/ 2000
WTS2TELLECHEA E-111 9/1		RUBEN TELLECHEA		1	N	GROVESSPIKE/0600	GROVES SPIKE/ 2000
WTS1 B & G E-144 9/3		MIKE STOOPS		1	N	GROVESSPIKE/0600	GROVES SPIKE/ 2000
FEL1 WARNER E-72 9/4		ZAN CLARE		1	N	GROVESSPIKE/0600	GROVES SPIKE/ 2000
FEL1 TIM RANGELAND E-70 9/2		CLAY WEAVER		1	N	GROVESSPIKE/0600	GROVES SPIKE/ 2000
FEL1 TIM RANGELAND E-71 9/2		RANDY RAMSEY		1	N	GROVESSPIKE/0600	GROVES SPIKE/ 2000
VOLCANO CREEK FALLERS E-52 8/24		SCOTT OLIVER		2	N	GROVESSPIKE/0600	GROVES SPIKE/ 2000
SLSH DIVERSIFIED E-132 9/3		RALPH SCHATTNEBURG		1	N	GROVESSPIKE/0600	GROVES SPIKE/ 2000
ES3 XAL - 2003C E-168 9/5		GARRETT CONTRERAS		22	N	GROVESSPIKE/0600	GROVES SPIKE/ 2000
ENG3 ACF - 330 E-168.3 9/5		HAVERHILL		4	N	GROVESSPIKE/0600	GROVES SPIKE/ 2000
ENG3 PRK - 345 E-168.4 9/5		SMITH		4	N	GROVESSPIKE/0600	GROVES SPIKE/ 2000
ENG3 FRE - 352 E-168.5 9/5		RHODES		4	N	GROVESSPIKE/0600	GROVES SPIKE/ 2000
ENG3 BER - 305 E-168.6 9/5		GREEN		4	N	GROVESSPIKE/0600	GROVES SPIKE/ 2000
ENG3 HAY - 303 E-168.7 9/5		HOBBS		4	N	GROVESSPIKE/0600	GROVES SPIKE/ 2000
7. Control Operations							
Snag and brush using mechanized equipment on the 7N10 road from DP-1 to DP-5 coordinate with branch director for defensive firing operations as necessary.							
8. Special Instructions							
All resources report to the wash station upon arrival and demobilization.							
9. Division/Group Communications Summary							
Function	Frequency - RX	Frequency - TX	Tone	System	Channel	System	Channel
Command	168.7000	170.9750	11	NIFC	1		
Tactical	168.2375	168.2375	11 (114.8)	NIFC	10		
Logistics							
Air to Ground	167.0625	167.0625		NIFC	11		
Prepared by (Resource Unit Leader) Gary Thompson			Approved by (Planning Section Chief) <i>[Signature]</i> OSC2 (t)		Date Prepared 08/22/13	Time Prepared 0708	

AIR OPERATIONS SUMMARY

PREPARED BY: John Keesee *JK*

PREPARED DATE/TIME: 8/22/2013 2100hr

1. INCIDENT NAME: Corral Complex

OPERATIONAL PERIOD DATE: 8/23/13 START TIME: 0600 END TIME: 2030 SUNRISE:0632 SUNSET:2002

3. REMARKS (Safety Notes, Hazards, Air Operations Special Equipment, etc.): Wire rich environment. Get Thorough Briefing. Study Flight Hazard Map

All Lat and Long locations are to be in Degrees Decimal Minutes when possible

Mobile Retardant Base located at Willow Creek Helibase

Willow Creek Helibase N 40 57.036 W 123 38.164

Discreet A/G for Aerial Ignition only. 166.9125

4. MEDEVAC A/C:
NG Hoist Ship 820,
NVGs/ Paramedic

Frequency:
CALCORD 156.0750
Tone 6

5. TFR: *New TFR*
Altitude: 11,000 MSL

TFR# 3/5070
Contact Freq. 132.3500

6. PERSONNEL	Phone	7. FREQUENCIES	AM	FM	8. FIXED-WING	# Avail / Type/ Make-Model / FAA N# / Base(s)
AOBD: John Keesee	805-551-6422	AIR/AIR FW:		166.6000	Air tankers	Request if needed
ATGS: Curt Stanley	530-598-4191	AIR/AIR RW:	132.3500		Lead planes	Rohnerville ATB 707-725-4572
ATGS: Joel Lane	559-310-9430				Base FAX #:	Redding ATB 530-226-2745
ATGS: Skyler Dalton(T)	435-590-2235				ATGS Aircraft	N848CE N690FD
ASGS: Craig Dado	530-518-6688	AIR/GROUND:		167.0625		
ASGS(T): Lee Kessler	218-244-1765	Aerial Ignition		166.9125		
ASGS(T): Todd Gilbreth	619-548-3729	COMMAND:				
HLCO:		COMMAND RPT	Rx: 168.7000			
HEB1: Don Nicholas	218-360-1816	Tone 11 (114.8)	TX: 170.9750			
HEB1(T): Matt Lingenfelter	805-705-8621	DECK FREQ:		168.3500		
DECK: Jameson Collins O-117	707-362-7031	TOLC FREQ:				

9. HELICOPTERS (Use Additional Sheets As Necessary)

FAA N#	TY	MAKE/MODEL	BASE	AVAIL	START	REMARKS	FAA N#	TY	MAKE/MODEL	BASE	AVAIL	START	REMARKS
22EA	3	Bell 206B3	Willow	0800	0830	Mapping/ IR							
62HP	3	Bell 206L4 A-7	Willow	0800	0830	PSD							
6BL	2	S-58T A-68	Willow	0800	0830								
CFIRX	1	S-61N A-8	Willow	0800	0830								
HT 702	1	SH3H A-6	Willow	0800	0830								

SAFETY MESSAGE

Corral Complex CA-SRF-001494

Day Shift 08/23/2013 0600-2000

MAJOR HAZARDS:

- POTENTIAL FOR EXTREME FIRE BEHAVIOR.
- SNAGS AND HAZARD TREES.
- NUMEROUS DRIVING HAZARDS.
- WILDLIFE IN AREA.

EXTREME FIRE BEHAVIOR – Review “Severe Fire Behavior Potential” (IRPG page 78). Monitor current weather conditions and listen for radio updates from IMet. Weather conditions that can affect fire behavior can change quickly. Maintain LCES and continually re-evaluate. Assure that all personnel have good communications. **MAINTAIN SITUATIONAL AWARENESS!**

DRIVING – Please maintain safe speeds at all times. Drive like your life depends on it, because it does. No one should be in a hurry to get to anywhere in a vehicle. Have your headlight on and **WEAR YOUR SEAT BELTS!**

SNAGS AND HAZARD TREES– Snags are one of the biggest hazards here at this incident. If you see a hazard tree, flag it and communicate the info so the hazard is mitigated. Check the area for hazard trees when you park your vehicle, set up your tent and take a break within your division. Wear your hard hat & follow Hazard Tree Safety Guidelines (IRPG page 20).

HEADS UP FOR WILDLIFE- Mountain lion, elk, bobcat, and timber rattlesnakes. The timber rattlers are very dark in color, **don't mess with them- you are a long way from anti-venom.**



17.TERRAIN AND FUELS MAKE ESCAPE TO SAFETY ZONES DIFFICULT

TREE FELLING SAFETY:

- Conduct thorough briefing for all personnel involved (inside rear cover IRPG).
- Establish traffic control as necessary.
- Perform tree evaluation, use IRPG page 20.
- Use Look-Up, Down, All Around Process. IRPG page 2.
- Use all required PPE.

Minimize exposure to personnel.

and


SEE IT, SAY IT!

Safety Officers: Brian Savage & Marty Hamel

Brian Savage

Incident Radio Communications Plan		1. Incident Name		CORRAL COMPLEX		2. Date / Time Prepared		3. Operational Period Date / Time	
						8/22/13 2000 hrs		8/23-24/13 0600-0600 hrs (24 hrs)	

Chann	Function	Channel Name	4. Basic Radio Channel Utilization		Tone	Mode	Assignment	Remarks
			Frequency	Mode				
1	COMMAND	NIFC C-1	RX:	168.7000	T-11 (114.8)	A	ALL DIVISIONS	Trinity Summit
			TX:	170.9750	T-11 (114.8)			
2	COMMAND	NIFC C-8	RX:	169.5375	T-11 (114.8)	A	ALL DIVISIONS	Ironside Mountain
			TX:	164.7125	T-11 (114.8)			
3	COMMAND	NIFC C-35	RX:	165.0000	T-11 (114.8)	A	ALL DIVISIONS	Brush Mountain
			TX:	172.5875	T-11 (114.8)			
4	SRF ADMIN NET	SRF ADM	RX:	168.1250		A	ALL DIVISIONS	Lone Pine Ridge
			TX:	170.4750	T-3 (131.8)			
5	TACTICAL	NIFC T-5	RX:	166.7250	T-11 (114.8)	A	DIV "A"	
			TX:	166.7250	T-11 (114.8)			
6	TACTICAL	NIFC T-6	RX:	166.7750	T-11 (114.8)	A	DIV "F"	
			TX:	166.7750	T-11 (114.8)			
7	TACTICAL	NIFC T-7	RX:	168.2500	T-11 (114.8)	A	DIV "L"	
			TX:	168.2500	T-11 (114.8)			
8	TACTICAL	R5 TAC 4	RX:	166.5500	T-11 (114.8)	A	DIV's "M, P"	
			TX:	166.5500	T-11 (114.8)			
9	TACTICAL	R5 TAC 5	RX:	167.1125	T-11 (114.8)	A	DIV "R" and Contingency Grp	
			TX:	167.1125	T-11 (114.8)			
10	TACTICAL	R5 TAC 6	RX:	168.2375	T-11 (114.8)	A	DIV "X"	
			TX:	168.2375	T-11 (114.8)			
11	AIR to GROUND	A/G PRI	RX:	167.0625		A	ALL DIVISIONS	Primary Use
			TX:	167.0625				
12	AIR to GROUND	A/G SEC	RX:	166.9125		A	ALL DIVISIONS	Aerial Ignition Op's
			TX:	166.9125				
13	TACTICAL	VFIRE 24	RX:	154.2725	T-6 (156.7)	A	DIV "W"	
			TX:	154.2725	T-6 (156.7)			
14	TACTICAL	VFIRE 26	RX:	154.3025	T-6 (156.7)	A	DIV "H"	
			TX:	154.3025	T-6 (156.7)			
15	TACTICAL	CALCORD	RX:	156.0750		A	ALL DIVISIONS	
			TX:	156.0750	T-6 (156.7)			
16/20	AIRGUARD	GUARD	RX:	168.6250		A	ALL DIVISIONS	
			TX:	168.6250	T-1 (110.9)			

5. Prepared by (Communications Unit) 

Richard Gonzales, COML 805-340-4717

Corral Communication Unit: 530-629-2376

ICS 205

NFES 1330

MEDICAL PLAN	1. INCIDENT NAME Corral	2. DATE PREPARED 8/22/2013	3. TIME PREPARED 1800	4. OPERATIONAL PERIOD Day 8/23/2013
---------------------	-----------------------------------	--------------------------------------	---------------------------------	---

5. INCIDENT MEDICAL AID STATIONS			
MEDICAL AID STATIONS	LOCATION		PARAMEDICS
			YES NO
Corral ICP	Medical Unit -Veterans Park Willow Creek, CA		XX

6. TRANSPORTATION					
NAME	ADDRESS	Flight Time to Incident	PHONE	PARAMEDICS	
				YES	NO
CA-Air National Guard (ANG) H-820 (HOIST)	Redding, CA	40 Min	707-726-1266	XX	
Cal Fire H-102 (DAY HOIST ONLY)	Kneeland, CA	25 Min	707-726-1266		XX
CHP H-13 (HOIST)	Redding, CA	40 Min	911 or 707-726-1268	XX	
REACH 5	Redding, CA	40 Min	911 or 707-726-1268	XX	
PHI Air Medical	Redding, CA	40 Min	911 or 707-726-1268	XX	

Ground Ambulance			
Hoopla Ambulance Unit 83	Corral ICP-Willow Creek, CA		XX
Corral Rescue Group (Technical Rescue-REM)	Corral ICP-Willow Creek, CA		XX

7. HOSPITALS								
NAME	ADDRESS	TRAVEL TIME		PHONE	HELIPAD		BURN CENTER	
		AIR	GRND		YES	NO	YES	NO
St Joseph Hospital	2700 Dolbeer St. Eureka, CA 95501	25 Min	1 Hr.	707-269-4250	XX			XX
Mercy Medical Center (Level II Trauma Center)	2175 Rosaline St. Redding, CA 96001	40 Min.	2 Hr.	530-225-7200	XX			XX
UC Davis (Level I T/C Burn Center)	2315 Stockton Bl. Sacramento, CA 95817	1.5 Hr.	3.5 hr.	916-734-3636	XX		XX	
Willow Creek Community Health Center (Clinic)	Willow Creek, CA	N/A	5 min.	530-629-3111	N/A			N/A
Mad River Community Hospital (Clinic)	Willow Creek, CA	N/A	5 Min	530-629-3116	N/A			N/A

8. MEDICAL EMERGENCY PROCEDURES	
<p>When an injury occurs, initiate care with available resources at scene and notify DIVS. The DIVS shall coordinate the incident and direct necessary actions. The following steps shall be taken to mitigate the incident:</p> <ol style="list-style-type: none"> Determine the nature of the emergency. If the emergency is a medical injury/illness, determine if the injury/illness is life threatening. If the injury is life threatening, then clear designated frequency for emergency traffic. Identify the on-scene point of contact by position. Ensure that the Medical Unit Leader is contacted immediately. Identify number injured, patient assessment(s) and location (geographic and/or GPS coordinates). Identify on-scene medical personnel by position and last name (i.e. EMT Jones). Identify preferred method of patient transport. Determine any additional resources or equipment needed. <p>The Evacuation Plan should be continually evaluated, and contingencies developed in the event the first plan is not effective.</p>	<p style="text-align: center;"><u>PATIENT INFORMATION</u></p> <p>√</p> <p><input type="checkbox"/> Patient # _____ of _____ Patients</p> <p><input type="checkbox"/> Medevac-Immediate Evacuation is Critical</p> <p><input type="checkbox"/> Non- Emergency Medical Transport-Non Urgent Need for Ground Based or Helicopter Transport.</p> <p><input type="checkbox"/> Location _____ (Geographic Location Example: Spike Camp, Drop Point, Helispot, 2 Miles North of Forest Rd 030 on the 2N22 Road, etc.)</p> <p>Lat _____ Long _____ (Datum NAD 83) Example N 0°00.000' x W 0° 0.00'</p> <p><input type="checkbox"/> Age _____ Sex _____ Weight _____</p> <p><input type="checkbox"/> Severity: Minor _____ Delayed _____ Immediate _____</p> <p><input type="checkbox"/> Chief Complaint _____</p> <p><input type="checkbox"/> Any additional resources required _____ (Paramedics, Crews, SKEDs, Immobilization Devices, etc.)</p> <p>**See IRPG pages 41-48 for Triage , Treatment, and Transport Guidance</p>

ICS-206	9. PREPARED BY (MEDICAL UNIT LEADER) Robert Russell MEDL <i>[Signature]</i>	10. REVIEWED BY (SAFETY OFFICER) Marty Hamel SOF1 <i>[Signature]</i>
----------------	---	--

MEDICAL TRANSPORTATION CHECKLIST

DATE / / MEDEVAC INCIDENT NUMBER

1. COMMAND/CONTROL

INCIDENT NAME <small>(Geographic Name + 'Medical')</small>			
POC/IC NAME:	The individual that is the Primary Point of Contact (POC) or IC for the Incident	MEDIC IN CHARGE :	The individual that is overseeing medical care at the scene.

2. PATIENT ASSESSMENT

PATIENT # __ of __	AGE:	SEX :	WEIGHT:
	INJURIES/ILLNESS:		
	RESPIRATION:	PULSE:	CONSCIOUS: YES/NO

PATIENT SEVERITY: SEVERE MODERATE MILD NONE

FOR MULTY CASUALTY:	IMMEDIATE:	DELAYED:	MINOR:
---------------------	------------	----------	--------

3. PATIENT LOCATION :

Datum NAD 83 *Example: N 0° 00.00' x W 0° 00.00'*

LAT/LONG:

GEOGRAPHIC LOCATION
(i.e. DP 1, H-2, ICP, Camp, Road, etc.)

4. MEDICAL TRANSPORT NEEDED

MEDEVAC

IMMEDIATE EVACUATION IS CRITICAL; URGENT NEED FOR ADVANCED LIFE SUPPORT GROUND OR HELICOPTER TRANSPORT
(Unstable patient that has a life threatening injury or illness)
 ** Medevac is an incident within an incident, one on scene point of contact needs to take charge.**

NON-EMERGENCY MEDICAL TRANSPORT

EVACUATION IS NOT CRITICAL; NON-URGENT NEED FOR GROUND OR HELICOPTER TRANSPORT
(Typically utilized for stable, non-life threatening emergencies.)

5. ADDITIONAL RESOURCES AND EQUIPMENT (Check as applicable)

<input type="radio"/> TRAUMA KIT	<input type="radio"/> PARAMEDICS
<input type="radio"/> SPINAL IMMOBILIZATION DEVICE(S)	<input type="radio"/> PERSONNEL <small>(Crews/Helitak Modules/etc for Manpower)</small>
<input type="radio"/> OXYGEN	<input type="radio"/> LITTER or <input type="radio"/> WHEELED LITTER
<input type="radio"/> IV/FLUIDS	<input type="radio"/> TECHNICAL RESCUE or <input type="radio"/> EXTRICATION
<input type="radio"/> ALS MEDICATIONS <small>(eg. EPI, Benadryl, etc.)</small>	<input type="radio"/> OTHER:

ETA(s) on Scene:

6. COMMUNICATIONS:

FREQUENCY/NAME/FUNCTION <small>(eg, Air/Grnd)</small>	RECIEVE(Rx)	TRANSMIT (Tx)
AIR/AIR VHF-AM FREQUENCY		
If aerial supervision available, Call Sign:		

MEDICAL TRANSPORTATION CHECKLIST

7. LOGISTICAL TRANSPORT (evacuation method is situational dependent and is based on risk mgmt: terrain, road access, day/night, weather, visibility, distance to helispot or road, etc.)

EXTRACTION	RESOURCE(S) (Check as needed)
<input type="radio"/> SELF EXTRACT WITH DRIVER	<input type="radio"/> GROUND TRANSPORT
<input type="radio"/> CURRENTLY AT ROAD	<input type="radio"/> ADVANCED LIFE SUPPORT GROUND TRANSPORT
<input type="radio"/> CARRY OUT TO ROAD	<input type="radio"/> INCIDENT ASSIGNED HELICOPTER TRNSPORT
<input type="radio"/> CARRY OUT TO HELISPOT <small>(Identified, Constructed, Dust Abated)</small>	<input type="radio"/> ADVANCED LIFE SUPPORT HELICOPTER TRANS. <small>(Life Flight, PHI, Reach, Fire Dept. etc)</small>
<input type="radio"/> HOIST/ SHORT -HAUL	<input type="radio"/> HOIST/SHORT HAUL EQUIPPED HELICOPTER
<input type="radio"/> OTHER:	<input type="radio"/> NIGHT VISION (NVG) EQUIPPED HELICOPTER

ETA(s) on Scene/Notes:

UNIT:	DISPATCH TIME:	ARRIVAL TIME:	AT PATIENT TIME:
ETD: (Scene to Medical Facility)	TRANSPORT TIME:	AT FACILITY:	VIA: <small>(ALS/BLS/Air/ Ground Support)</small>

RECEIVING FACILITY:

8. PATIENT LZ/EVAC LOCATION (Pick-Up Location):

DATUM NAD 83	<i>Example: N 0° 00.00' x W 0° 00.00'</i>
LAT/LONG:	
If applicable, Hazards and Safety Notes at LZ for air evacuation	

9. CONTINGENCY PLANNING (Considerations: If primary options fail, what actions can be implemented in conjunction with primary evacuation method?) Consider PACE Primary , Alternative, Contingency and Emergency plans in the event the current plan is no longer effective.

NOTES:

Medical Evacuation

This plan is designed to identify and outline the steps necessary to safely and effectively evacuate an injured firefighter from the Corral Complex and deliver that firefighter to an appropriate medical facility in both daytime and nighttime settings.

Once notification of a medical emergency, and the Division Supervisor and/or EMT's make the decision that a medical evacuation is required, Incident Management Team components will work together to accomplish the evacuation. The highest qualified medical personnel on scene shall assume control of patient care. The Division Supervisor shall manage the response; coordinate communications with incident communication unit and medical unit, and air to ground communications. The Division Supervisor may delegate communications to appropriate resources as needed to facilitate the operation.

Ground Medical Evacuation

If the injured firefighter is *WITHIN* reasonable hiking distance from a road and is determined to have a condition that *WILL NOT* be aggravated by driving him/her out, then an incident vehicle shall be utilized to evacuate the injured firefighter from the scene either to the ICP Medical Unit or to a rendezvous point. Patient transport/destination decision shall lie with the DIVS in consultation with the highest level (i.e. EMT/Paramedic) medical care provider on scene.

All requests for Air Ambulances will be processed through Corral Medical Unit and Cal Fire Fortuna Dispatch (9-1-1). The following ground ambulance providers and locations for ground ambulance coverage for this incident location:

Agency	Base Location	Provider Level	Drive Time to ICP
Hoopa Ambulance (Incident)	As Assigned	Paramedic	Variable
Hoopa Ambulance	Willow Creek, CA	Paramedic	5 Minutes
Hoopa Ambulance	Hoopa, CA	Paramedic	30 Minutes

Air Medical Evacuation

If the injured firefighter is *NOT WITHIN* reasonable hiking distance to a road and/or determined to have a condition could be worsened by driving him/her out, the following aircraft shall be launched based on the closest available resource to extract the injured party. The Division Supervisor will coordinate a hand carry out of the injured firefighter to the extraction site. The rescue helicopter will evacuate the firefighter to an appropriate location based on medical necessity to rendezvous with ground ambulance, air ambulance, or hospital. All requests for Rescue Aircraft will go through USFS Fortuna Dispatch. Rescue aircraft and locations for this incident are:

Medical Evacuation

Hoist/Extraction Helicopters:

Agency	Hoist Capabilities	Medical Capabilities	Base Location	Estimated Flight Time
CA-ANG (Air Guard)H-820	Hoist	ALS	Redding, CA	40 Minutes
Cal Fire 102	Day Hoist	BLS	Kneeland, CA	25 minutes
CHP H-13	Day/Night Hoist	ALS	Redding, CA	40 minutes
Military Resources	Day/Night Hoist	BLS / ALS	Multiple	45+ minutes
Assigned incident aviation resources as available	None	BLS/ALS	Corral Helibase	5 Minutes

All requests for Air Ambulances will be processed through Fortuna Dispatch. If the injured firefighter requires air ambulance transportation to a hospital, the following helicopters shall be considered:

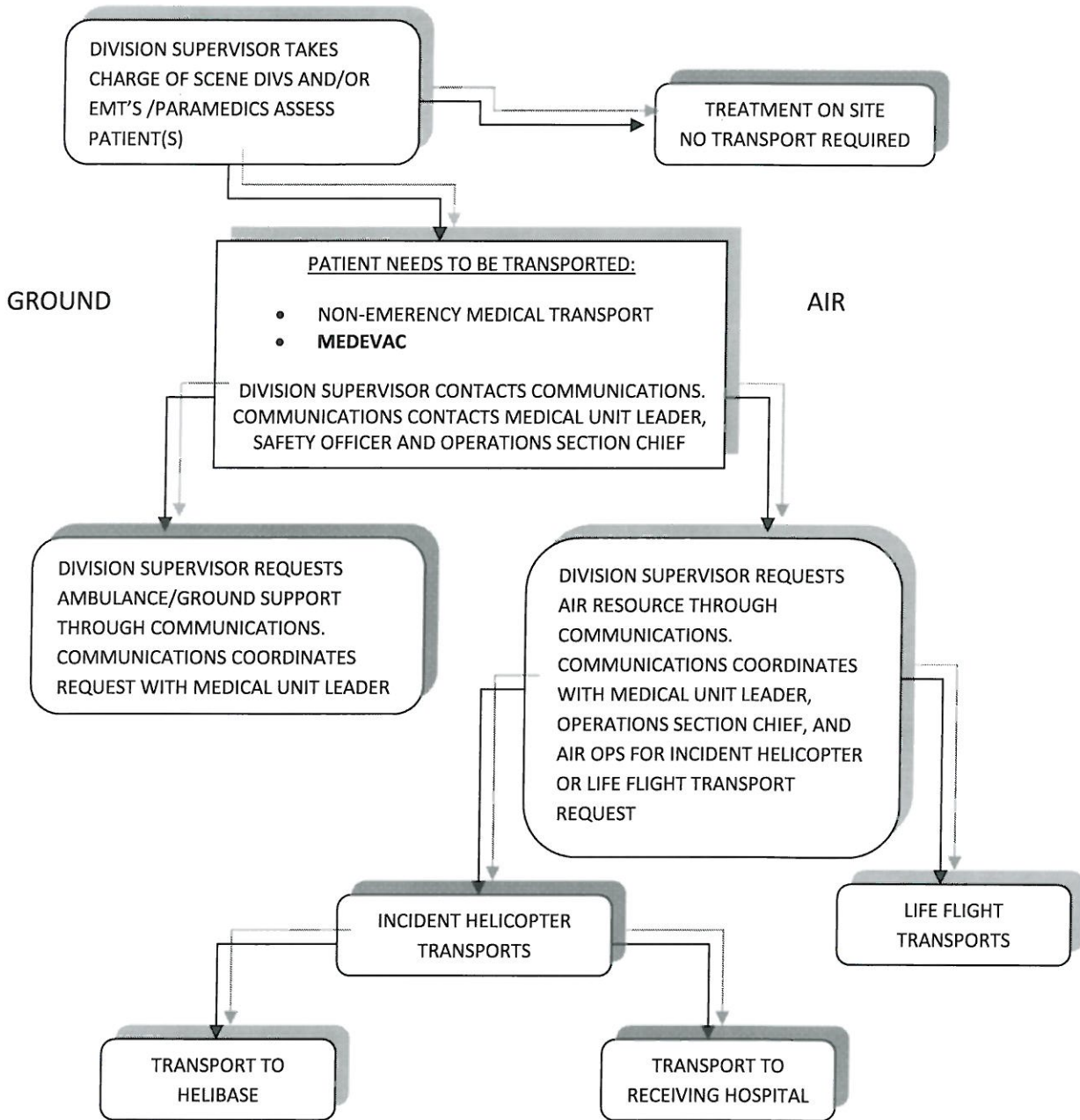
Agency	Base Location	Flight time to Incident
Reach 5	Redding, CA	40 Minutes
PHI Air Medical	Redding, CA	40 Minutes

Once airborne, the helicopters will have an estimated flight time to each of the following facilities:

Facility	Specialty Care				Location	Helipad	Fight Time from Incident
	Trauma	SRC	Stroke	Burn			
Mercy Medical Center	Level II Trauma Center	XX	XX		Redding, CA	XX	40 Minutes
UC Davis Medical Center	Level I Trauma Center	XX	XX	XX	Sacramento, CA	XX	1.5 Hours

- Take charge of the scene and size up the situation.
- Ensure scene safety and identify the incident Point of Contact (POC)
- Identify the nature of the incident and number of persons involved.
- Coordinate the EMT/Paramedic response to the injury/illness.
- Identify Number of people involved and their medical condition (Triage) See IRPG pages 41-48
- Identify Medical treatment and transportation needs (**non emergency medical transport or Emergency Medevac**)
- Identify Location and (Lat/Long coordinates) of site
- Coordinate the request for transportation and/or other resources through Communications
- Identify special needs, i.e. Law Enforcement, Extrication, Heavy Rescue, and Haz-Mat response
- Coordinate with the Safety Officer and/or Law enforcement to preserve the scene for accident investigation
- Contingency planning with alternatives shall continuously take place in the event that the preferred plan becomes ineffective.

Medical Evacuation



THE FOLLOWING RESOURCES NEED TO SEE FINANCE:

C-32 RAMAH #1

C-34 RIO GRANDE REGULARS

C-35 ZUNI #1

E-188 ENGINE 8838

E-134 ALL CLEAN WATER

E-139 V&P SERVICES

KEN'S WATER TENDER

R. BROWN CONSTRUCTION

O-28 TOM SCHAFER

O-16 KELLY CAGLE

O-101 DON NICHOLAS

O-107 KEN MASTEN

O-119 ERIC CARLSON

O-129 R. MENDES

O-149 RUSSELL NEWMAN

O-259 JESSE IRWIN O-267 MARTIN LEE

O-264 ANTONE AUBREY

O-319 CAROL FIELDS

Incident Trainee / Trainer Data Worksheet

PLEASE PRINT LEGIBLY!

A: Trainee Data

Trainee Name: _____ Check One: Male Female
 Trainee Position: _____ Order Number (E, O, C, A) ____--_____
 State Abr. ____ + 3 Letter Designator _____ Agency Type: Federal State Local
 USFS BLM BIA FWS DOD NWS NPS Date Assigned: ____--____--_____
 Ordered as a Trainee for the incident? Yes No Ordered as a PRIORITY trainee? Yes No

**Person's name and title that is responsible for tracking your qualifications:
 (Where do you want the packet mailed to?)**

Name: _____ Title: _____ Home Unit: _____
 Agency Address: _____ City: _____
 State: _____ Zip: _____ Phone Number: () _____--_____

B. Trainee Prerequisites

YES	NO
<input type="radio"/>	<input type="radio"/>
<input type="radio"/>	<input type="radio"/>
<input type="radio"/>	<input type="radio"/>

1. Possesses valid Red Card or agency certification card?
2. Trainee has a proper agency initiated position task book?
3. Trainee has an **incident issued** task book?

C. Trainer/Evaluator Data (All fields are required to be filled in)

Trainer/Evaluator Name: _____ Position: _____
 Home Unit: _____ Order Number (E, O, C, A) ____--_____
 Work Address: _____ City: _____ State: _____
 Zip Code: _____ Phone Number: () _____--_____

D. Trainee Goals (items in the position task book to be evaluated on this incident)

1. _____
2. _____
3. _____

Training Paperwork Completion Instructions

Incident Trainee Data Worksheet (TNSP-1)

1. **Block A** Trainee Data, Fill out completely by trainee. Personal Information plus information on the person responsible for one's agency training, training records, or initiates position task books, etc.
2. **Block B** Trainee fills out completely.
3. **Block C** Trainer/Evaluator fills out completely
4. **Block D** Trainee and Trainer/Evaluator reaches an agreement on what specific tasks **(from the position task book)** the trainee will be able to accomplish this incident. There can be any number of tasks listed.

Incident Trainee Exit Review (TNSP-4)

1. Completed by trainee to express the quality of training experience obtained on the incident.

Incident Personnel Performance Rating (ICS-225)

1. **Personal Information (Top Area)**
 - a. Filled out by trainee
2. **Rating Factors (Check Boxes)**
 - a. Filled out by trainers/evaluators
 - b. Be sure us use guidelines listed above boxes
3. **Remarks (Narrative)**
 - a. Most important area of the form
 - b. Should refer to goals agreed upon on the worksheet (how well or if improvement or experience is needed). Our training is performance based.
 - c. Should include a closing statement indicating that 1) the trainee should be considered for qualification or 2) the trainee needs additional assignments to develop knowledge or complete missing tasks.
4. **Signatures (Bottom)**
 - a. Evaluation is finalized by signatures of both the trainee and trainer/evaluator.

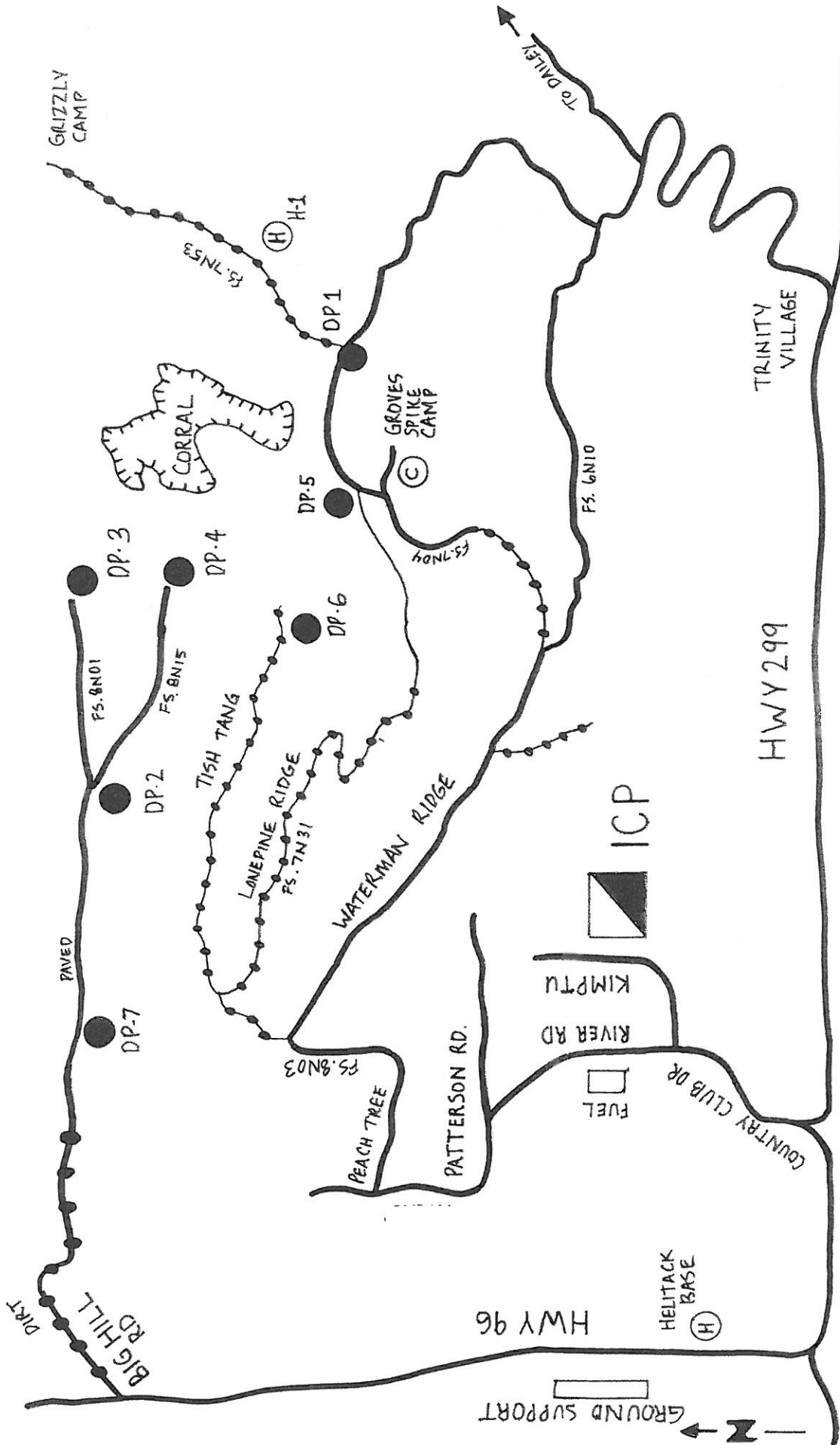
CORRAL COMPLEX HUMAN RESOURCE MESSAGE



A person's attitude is like music coming from them. You can make a conscious decision to make your song an uplifting, joyful song that people will look forward to hearing again the next time you meet.

If I can assist you, in any way, please do not hesitate to contact me.

**Your Human Resource Specialist,
Mike Baines
724-678-6147**



Transportation Map
 Not to Scale
 Created August 18, 2013
 DPRO (T) deAvila

CORRAL COMPLEX HARDLINE PHONES

I.C. / Liaison	(530) 629-2143
Safety/ Medical	(530) 629-2109
PIO	(530) 629-2149
Operations/Air Ops	(530) 629-2058
Communications	(530) 629-2376
Resources/ Demob	(925) 519-6309
Resources	(530) 629-2156 Fax
Ordering	(925) 407-7004
Ordering	(925) 817-9929
Ordering	(530) 629-3828 Fax
Finance	(530) 629-2307
Finance Fax	(530) 629-2387
Ground Support	(925) 407-6355
Ground Transportation	(925) 817-0826

