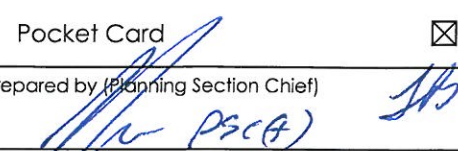
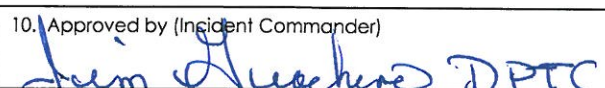


CORRAL COMPLEX

CA-SRF-001494
P5HU49

Aug 27, 2013
Day Shift 0600 - 2000



INCIDENT OBJECTIVES	1. Incident Name Corral Complex	2. Date Prepared 8-26-13	3. Time Prepared 1600
4. Operational Period <p style="text-align: center;">8-27-13 0600 to 2000</p>			
5. General Control Objectives for the Incident (include alternatives) Incident Objectives: <ul style="list-style-type: none"> • Provide for firefighter and public safety in all incident operations. • Protect property and infrastructure. Control fire closest to communities. • Keep stakeholders, the public, and cooperators informed of fire status. • Keep costs commensurate with identified values at risk. • Protect cultural and natural resources. • Protect wilderness values and utilize MIST in the Trinity Alps Wilderness. • Protect the Hoopa Valley Indian Reservation Community at Risk listed in the Federal Register. • Protect Communities at Risk including Willow Creek, Salyer, Hawkins Bar, Burnt Ranch, Trinity Village and Denny. • Protect the De-No-To Trail as listed in the Federal Register of National Historic Places. Control Objectives: <ul style="list-style-type: none"> • Keep the fire: <ul style="list-style-type: none"> ▪ North of Hwy 299 ▪ East of the Hwy 96 ▪ South of the Siskiyou / Trinity County Line ▪ West of the New River 			
6. Weather Forecast for Period See Attached Weather Forecast			
7. General Safety Message See Attached Safety Message			
8. Attachments (mark if attached)			
<input checked="" type="checkbox"/> Incident Objectives – ICS 202	<input checked="" type="checkbox"/> Division Assignment List – ICS 204	<input checked="" type="checkbox"/> Medical Plan - ICS 206	
<input checked="" type="checkbox"/> Organization List - ICS 203	<input checked="" type="checkbox"/> Safety Message	<input checked="" type="checkbox"/> Human Resource Message	
<input checked="" type="checkbox"/> Fire Weather Forecast	<input type="checkbox"/> Incident Safety Analysis – ICS 215A	<input checked="" type="checkbox"/> Transportation Map	
<input checked="" type="checkbox"/> Fire Behavior Forecast	<input checked="" type="checkbox"/> Air Ops Summary – ICS 220	<input type="checkbox"/> Incident Map	
<input type="checkbox"/> Pocket Card	<input checked="" type="checkbox"/> Communications Plan - ICS 205	<input checked="" type="checkbox"/> Unit Log – ICS 214	
9. Prepared by (Planning Section Chief) 		10. Approved by (Incident Commander) 	

**ICS Form 203
ORGANIZATION ASSIGNMENT LIST**

1. INCIDENT NAME CORRAL FIRE	2. DATE PREPARED 8/26/13	3. TIME PREPARED 1800
----------------------------------------	------------------------------------	---------------------------------

5. INCIDENT COMMAND STAFF

Position	Name
INCIDENT COMMANDER	Carlton Joseph/ Rod Mendes
DEPUTY	Jim Giachino/ Ranger Dorn (t)
SAFETY OFFICER	Marty Hamel/ Brian Savage
INFORMATION OFFICER	Steve Kliest /Allie Hostler
LIAISON OFFICER	Rick Alpert
HRSP	Mike Baines

4. OPERATIONAL PERIOD (DATE/TIME)

8-27-13 0600 to 2000

9. OPERATIONS SECTION

CHIEF	Keith Gurrola/ Sam Marouk (t)
PLANNING OPS	Don Smith/Fred Burris (t)
CONTINGENCY OPS	Steve Ryberg
a. BRANCH I	Scott Hall/Michael Milkovich(t)
DIVISION	F Jeff West/ Jim Snow
DIVISION	H Corey Rose/ Raldon Brown (t)/ Pete Davis (t)
DIVISION	L Kyle Jacobson/Kevin Halleran (t)
DIVISION	M Peter Harris
DIVISION	
b. BRANCH V	Don Forsyth
DIVISION	A Jonathan Boe
DIVISION	X Peter Glover
DIVISION	W Steven Swaney
DIVISION	P unstaffed
DIVISION	R John Toomey/Jack Froggatt
DIVISION	
c. BRANCH VII	Larry Wright
DIVISION	SS Daniel Morford
DIVISION	VV James Crabtree
DIVISION	
DIVISION	
DIVISION	
DIVISION	

6. AGENCY REPRESENTATIVES

AGENCY	NAME
SRF AARP	Nolan Colegrove
SRF-Fire	Rick Young
Hoopa AARP	Darin Jarnaghan
BIA	Joshua Simmons
Res. Cultural Adv.	Aaron Pole/ Antone Aubrey
NFFE	John McRae/ Roberta Coragliotti
Shasta Trinity AARP	Tina Lynsky
CCC	John Button

c. BRANCH

DIVISION/GROUP	Contingency	Kim Olson/ Jeff Lucas (t)
DIVISION/GROUP	READ	Ramona Butz
DIVISION/GROUP	Corral Rescue Group	James Johnson
DIVISION/GROUP	Lone Pine Cont. Group	Doug McCoun
DIVISION/GROUP	Corral Staging	Nathan Armstrong

7. PLANNING SECTION

CHIEF	Tim Baal
DEPUTY	D. Cooper/ R. Leuck(t) J. Schillinger (t)
RESOURCES UNIT	J. Switzler/ G. Thompson
SITUATION UNIT	M. McHargue/ T. Morelock
DOCUMENTATION UNIT	Lorne Ellickson
DEMOBILIZATION UNIT	Robert Ashby
CTSP	Jim Youngblood
TNSP	Bill Reynolds/James Mitchell t)
FBAN	Mike Beasley
IMET	Jim Wallmann/ Ryan Leach (t)
GISS	Brad Weisshaupt/Mark Schug
GISS	David Benitez/ Steve Kennedy

d. AIR OPERATIONS BRANCH

AIR OPERATIONS BR. DIR.	John Keesee
AIR TACTICAL GROUP SUP.	Curtis Stanley
AIR SUPPORT GROUP SUP.	Craig Dado/ Todd Gilbreth (t)
HELICOPTER COORDINATOR	
AIR TANKER/FIXED WING CRD.	

8. LOGISTICS SECTION

CHIEF	Hern Crane
DEPUTY	
a. SUPPORT BRANCH	
SECURITY	Heather Naigus
SUPPLY UNIT	Joe McMahan
FACILITIES UNIT	Wally Grogan/ Jim Eckroth
GROUND SUPPORT UNIT	Don Hill
b. SERVICE BRANCH	
COMMUNICATIONS UNIT	Matthew Nilsen
RECEIVING	Aric Krueger
ORDERING	Sharon Porter
MEDICAL UNIT	Robert Russell
FOOD UNIT	Bruce Ungari

10. FINANCE/ADMINISTRATION SECTION

CHIEF	Theresa Fork
DEPUTY	
TIME UNIT	Janice Brown/ Maggie Prochazka
PROCUREMENT UNIT	Katie Pasini
COMPENSATION/CLAIMS UNIT	AnnMarie Carlson
COST UNIT	Roger Siemers/ Vanessa Kobilis (t)
EQTR	Annette Hoyer

PREPARED BY (RESOURCES UNIT)

Jaehi Switzer



INCIDENT Weather Forecast



FORECAST NO: 12
PREDICTION FOR: Tuesday
SHIFT DATE: 08/27/2013 0600-2000
TIME AND DATE
FORECAST ISSUED: 08/26/2013 1900

NAME OF FIRE: Corral Complex
SHIFT Day **UNIT:** CA-SRF
SIGNED: Ryan Leach (T)/Jim Wallmann
Incident Meteorologist

WEATHER DISCUSSION: The warming and drying trend continues with ridge top winds from the northwest and west during the day and southeast during the night. The marine layer will weaken and become more shallow allowing stronger thermal belts to develop. Expect erratic humidity near 4,000 feet today and 3,500 feet Wednesday. Up the New River Valley and in the vicinity of Branch VII, the winds in Quinby creek drainage will turn down valley around 1600 – 1800.

WEATHER FORECAST (TODAY):

WEATHER: Areas of smoke. Mostly clear and warmer, drier air moves into higher elevations.

HAINES INDEX: 4

LAL: 1

CHC RAIN: 0%

MAX TEMP:	Elev. 3500 ft: 79 – 83 F	Elev 6000 ft: 69 – 73 F	New River Area: 87 – 91 F
MIN RH:	Elev. 3500 ft: 23 – 28 %	Elev 6000 ft: 25 – 30 %	New River Area: 18 – 22 %

WINDS: *Slope:* Upslope / up-valley 3 – 4 mph. New River valley, up-valley 4 -6 gust 12 mph. Early downslope winds 3 -5 mph in Quinby Creek drainage after 1600.

(EYE LEVEL) *Ridges:* West to northwest 5 - 7 gust 12 mph.

TRANSPORT WIND: Southwest to west 12 - 14 mph.

VISIBILITY: 2-3 miles becoming 4-5 miles after 1200

STABILITY: Mixing heights around 7,000 ft with inversion break between 1200 and 1300.

FORECAST (TONIGHT):

WEATHER: Areas of smoke. Mostly Clear.

MIN TEMPERATURES: 56 – 60 F

RH: Max RH 65 – 70 % below 3,500 feet, variable above 3,500 feet with early morning minimum 35 – 40 %

WIND: *Slope:* Downslope / down valley 1 – 3 mph.

(eye level) *Ridges:* South to Southeast 3 – 5 mph.

OUTLOOK FOR WEDNESDAY:

WEATHER: Areas of smoke. Mostly clear.

MAX TEMP:	Elev. 3500 ft: 81 – 84 F	Elev 6000 ft: 72 – 75 F	New River Area: 89 – 93 F
MIN RH:	Elev. 3500 ft: 20 – 25 %	Elev 6000 ft: 23 – 28 %	New River Area: 17 – 21 %

WINDS: *Slope:* Upslope / up-valley 3 – 4 mph. New River valley, up-valley 5-7 gust 14 mph. Early downslope winds 3 -5 mph in Quinby Creek drainage after 1600.

(EYE LEVEL) *Ridges:* West to northwest 5 – 7 gust 10 mph.

OBSERVATIONS MONDAY:

Big Hill RAWS (9 mi WNW – 3570 ft): Temp: MAX: 74. RH: MIN: 41%. Winds (20ft): WSW 5 - 8 gusts 15 mph.

Brush Mtn. RAWS (13 mi SW – 3941 ft): Temp: MAX: 73. RH: MIN: 41%. Winds (20ft): WSW 4 - 6 gusts 18 mph.

IRAWS 4- Trinity GS (6145 ft): Temp: MAX: 60. RH MIN: 62%. Winds (eye level): WNW 3-4 gusts 10 mph.

IRAWS 16 – Grand Slam (2428 ft): Temp: MAX: 84. RH MIN: 30%. Winds (eye): SSW 2-4 gusts 15 mph.

Incident RAWS Data --- SCAN Code with Smart Phone

Big Hill RAWS – Div F/H/L

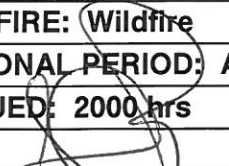
IRAWS 4 (Trinity GS) Div L/M/P/R

Brush Mountain RAWS – Div A/F/X

IRAWS 16 (Grand Slam) – Div W/X



FIRE BEHAVIOR FORECAST

FORECAST NUMBER: #13	TYPE OF FIRE: Wildfire
FIRE NAME: CORRAL COMPLEX	OPERATIONAL PERIOD: August 27, 2013 0600-0600
DATE ISSUED: August 26, 2013	TIME ISSUED: 2000 hrs
UNIT: Six Rivers NF	SIGNED:  Shelly Crook FBAN

INPUTS

WEATHER SUMMARY

(Refer to Weather Forecast for details) DAY: Mostly clear. Max Temp: 76-79°. Min RH: 26-30%.

Slope/Valley – Upslope 3-4 mph, Ridges – West/Northwest 5-7 mph with gusts to 12 mph.

NIGHT: Mostly clear. Min Temp: 56-60° Max RH: 35-45% Winds: SSE 3-5 mph ridges, gusts to 8 mph on ridges.

FUELS

Fire is burning within the boundaries of the Megram Fire (1999) and Back Bone Fire (2009). Fuels consist of abundant heavy dead and down, snags and shrubs (Ceanothus/Snow Brush). Mature timber on the west flank. Live FMC lower on S/SE/W aspects. Live and dead fuel moistures noticeably higher in the drainages below 4000ft elevation.

Minimum fine fuel moisture: 4-10%, 1000 hour FMC: 8-10%, Live fuel moisture: 120%.

OUTPUTS - FIRE BEHAVIOR

➤ Forecasted Indices (Big Hill RAWs) ERC: 53 (Up 3) BI: 48 (Down 5)

Thresholds for Active Fire Behavior in the Corral Complex area:

20ft Winds > 7 mph. RH < 31%. Temperature > 82°. 1000hr FMC < 13%. BI > 50. ERC > 47.

GENERAL: Yesterdays fire spread was fairly low with the minimum RH remaining above 40% across most of the fire area. Today's fire behavior will be slightly higher as the fuels dry out for a second day after the recent rain. Potential for low to moderate spread rates and fire behavior across the higher elevations and east of the crest. Fire Behavior at the lower elevations and west of the crest will be generally low. Night time fire behavior will be higher than daytime as the marine air compresses, especially above 4000 ft elevation.

DIV F & H (W Flank, Tish Tang Ridge area) – Expect the fire to spread rather slow to the west and back off the ridge to the north and south of the South Fork Tish Tang Ck. Roll out may result in short up slope runs.

DIV L (NW Flank, Tish Tang Point area) – Expect low spread to the NW towards and around Tish Tang Point. The herculean suppression efforts on the spot fire in the bottom of Tish Tang Ck should keep that fire in check. Slight chance of the fire making a rapid upslope run towards the Knob road/DP-2 area, more likely during the night if the marine layer compresses below 3500 ft resulting in lower RH's.

DIV M & P (NE Flank, Trinity GS/H-2 area) – As a result of the superb suppression efforts the fire perimeter has held in place for a few days, miniscule spread potential today. Spot fire east of the crest is not showing IR heat, but don't bet on that, keep a close eye for this area for signs of heat in the heavies. Potential for upslope runs to the ridge top.

DIV R & W (E/SE Flank, South of Grizzly Camp) – Expect low to moderate fire behavior potential, but only if/when the RH drops below 40%. Generally low spread rates with occasional torching, roll out and isolated short range up slope runs. Moderate fire potential in Quimby Creek with continue to spread upslope, downslope and laterally if the RH drops below 40%, especially with the afternoon gusty winds.

DIV X & A (Horse Linto Ck area) – Fire is established in Horse Linto Ck. There is a potential of the fire making a rapid run upslope to the ridge top to the south, but only if the inversion breaks and relative humidity drops below 40%.

**Maximum Fire Behavior (head fire upslope): Rate of Spread: 3-5 chains/hour (5 ft/min),
Flame Length: 2-4 ft. Probability of Ignition: 30%. Maximum spotting distance of 1000 feet.**

AIR OPERATIONS

Potential for a mild inversion in the morning breaking around 1200. Plan accordingly.

SAFETY

- Pay special attention to changing and increasing fire behavior as the day progresses.
- Maintain focus. Rushing can result in losing sight of the bigger picture.
- "Everyone thinks of changing the world, but no one thinks of changing himself." – Tolstoy

Division Assignment List	1. Branch I	2. Division/Group F
---------------------------------	-----------------------	-------------------------------

3. Incident Name CORRAL COMPLEX	4. Operational Period 08/27/13 Tuesday DAY Shift 0600 - 2000
-------------------------------------------	------------------------------------------------------------------------

5. Operations Personnel			
Operations Chief	KEITH GURROLA; SAM MAROUK (t)	Division/Group Supervisor	JEFFREY WEST; JAMES SNOW
Operations Chief		Air Attack Supervisor	
Branch Director	SCOTT HALL; M. MILKOVICH (t)	Safety Officer	MARTIN HAMEL; BRIAN SAVAGE

6. Resources Assigned this Period						
Strike Team/Task Force/ Resource Designator	Leader	Num of Pers.	Trans. Y/N	Drop Off PT./Time	Pick Up PT./Time	
HC2 OHIO #2 C-14 8/30	CHRISTOPHER A MORRIS	20	N	BOX SPIKE 0600	2000	
HC2 FOLSOM LAKE C-60 9/5	MATT LYNDE	20	N	BOX SPIKE 0600	2000	
HC2 HEART LAKE C-100 8/31	TENNYSON, GREG	18	N	BOX SPIKE 0600	2000	
CORRAL S/T #4 E-275 9/8	MARK SACHARA	1	N	BOX SPIKE 0600	2000	
ENG3 HEBER 1104 E-274 9/8	TONY CANTARELLA	4	N	BOX SPIKE 0600	2000	
ENG3 PONDEROSA 813 E-275 9/8	DON G WEAVER	4	N	BOX SPIKE 0600	2000	
ENG3 ENGINE 814 E-276 9/8	CARLOS VALADEZ	3	N	BOX SPIKE 0600	2000	
ENG3 SUMMITT 332 E-277 9/8	RICHARD JAMISON	3	N	BOX SPIKE 0600	2000	
ENG3 GOLDEN VAL 116 E-278 9/8	KEVIN GIFFORD	3	N	BOX SPIKE 0600	2000	
ENG3 ENGINE 1543 E-279 9/8	ROBERT PENA	3	N	BOX SPIKE 0600	2000	
CORRAL S/T #5	JEFF VANCE	1	N	BOX SPIKE 0600	2000	
STEN O-560	BRADFORD TOVAR (t)	1	N	BOX SPIKE 0600	2000	
ENG6 E-177 9/4	DUANE DEARBORN	3	N	BOX SPIKE 0600	2000	
ENG6 RED LAKE E-186 9/4	PATRICK NORQUAY	3	N	BOX SPIKE 0600	2000	
ENG6 NORTH PACIFIC E-263 9/1	JOE DAVID	3	N	BOX SPIKE 0600	2000	
ENG6 ENGINE 823 E-269 9/8	CHRIS ANTHIS	3	N	BOX SPIKE 0600	2000	
DOZ1 BROWN E-81 8/30	ROGER BROWN	1	N	BOX SPIKE 0600	2000	
SLSH AMMON E-63 8/30	ERICK AMMON	1	N	BOX SPIKE 0600	2000	
DOZ3 TEHAMA E-80 9/6	BRUCE FIELDS	1	N	BOX SPIKE 0600	2000	
EXCA KEN'S INC. #1 E-99 8/31	MATT SKELTON	1	N	BOX SPIKE 0600	2000	

7. Control Operations

Snag and complete plumbing indirect line from Branch I/V break to Division F/H break.

8. Special Instructions

All resources report to the wash station upon arrival and demobilization.

9. Division/Group Communications Summary							
Function	Frequency - RX	Frequency - TX	Tone	System	Channel	System	Channel
Command	168.7000	170.9750	11 (114.8) TX/RX	NIFC	1		
Tactical Div/Group	166.7750	166.7750	11 (114.8) TX/RX	NIFC	6		
Logistics							
Air to Ground	167.0625	167.0625		A/G PRI	11		

Prepared by (Resource Unit Leader) Gary Thompson	Approved by (Planning Section Chief) 	Date Prepared 08/26/13	Time Prepared 1327
-----------------------------------------------------	-----------------------------------------------------------------------------------------------------------------------------	---------------------------	-----------------------

Division Assignment List	1. Branch I	2. Division/Group H
---------------------------------	-----------------------	-------------------------------

3. Incident Name CORRAL COMPLEX	4. Operational Period 08/27/13 Tuesday DAY Shift 0600 - 2000
-------------------------------------------	------------------------------------------------------------------------

5. Operations Personnel

Operations Chief	KEITH GURROLA; SAM MAROUK (t)	Division/Group Supervisor	C.ROSE; R. BROWN (t) P.DAVIS (t)
Operations Chief		Air Attack Supervisor	
Branch Director	SCOTT HALL; M. MILKOVICH (t)	Safety Officer	MARTIN HAMEL; BRIAN SAVAGE

6. Resources Assigned this Period

Strike Team/Task Force/ Resource Designator	Leader	Num of Pers.	Trans. Y/N	Drop Off PT./Time	Pick Up PT./Time
HC2 ZUNI #3 T2IA C-59 8/27	RONALD JOHNSON	20	N	DIV H/L BREAK 0600	2000
CORRAL S/T #7	DEBBIE WALLS	1	N	DIV H/L BREAK 0800	2000
ENG6 ASP FIRE #1 E-259 9/8	JEFFREY HARRISON	3	N	DIV H/L BREAK 0800	2000
ENG6 ASI # 008 E-260 9/2	JESUS TORRES	3	N	DIV H/L BREAK 0800	2000
DOZ1 HOOPA TRIBE E-79 8/30	WALLY MORTON	1	N	DIV H/L BREAK 0800	2000
DOZ1 HOOPA TRIBE E-83 8/31	WENDAL WHITE	1	N	DIV H/L BREAK 0800	2000
DOZ2 HOOPA TRIBE E-77 8/30	JOHN MARSHALL	1	N	DIV H/L BREAK 0800	2000
DOZ2 HOOPA TRIBE E-78 8/30	LARRY JOHNSON	1	N	DIV H/L BREAK 0800	2000
EXCA HOOPA TRIBE E-105 8/31	GARY DEMPEWOLF	1	N	DIV H/L BREAK 0800	2000
EXCA BEN SALE #1 E-64 9/2	BUTCH SMITH	1	N	DIV H/L BREAK 0800	2000
SKG4 WATERWAGONS E-141 9/4	LANCE LEEK	2	N	DIV H/L BREAK 0800	2000
SLSH MCKELLAR TREE E-62 8/30	DOUG MCKELLAR	1	N	DIV H/L BREAK 0800	2000
SLSH DIVERSIFIED E-60 8/30	KELLY HOLT	1	N	DIV H/L BREAK 0800	2000
WTT2 5193 E-246 9/7	PATRICK MILLS	2	N	DIV H/L BREAK 0800	2000
TFLD O-72 8/29	JEFFREY DAVIDS	1	N	DIV H/L BREAK 0800	2000
TFLD O-391 9/4	BRYAN ROSENOW	1	N	DIV H/L BREAK 0800	2000
FALC MODULE O-299 9/4	JAMES GOODMAN	2	N	DIV H/L BREAK 0800	2000
FALC SPARR TREE O-91 8/30	JIM MILLER	2	N	DIV H/L BREAK 0800	2000
FALC MODULE O-255 8/31	MATT MILLER	2	N	DIV H/L BREAK 0800	2000
FALA O-369 9/4	RICHARD LOERZEL	1	N	DIV H/L BREAK 0800	2000

7. Control Operations

Snag and plumb indirect line from Division H/L break to Division H/F break. Construct contingency line on Long Ridge.

8. Special Instructions

All resources report to the wash station upon arrival and demobilization.

9. Division/Group Communications Summary

Function	Frequency - RX	Frequency - TX	Tone	System	Channel	System	Channel
Command	168.7000	170.9750	11 (114.8) TX/RX	NIFC	1		
Tactical Div/Group	154.3025	154.3025	6 (156.7) TX/RX	VFIRE 26	14		
Logistics							
Air to Ground	167.0625	167.0625		A/G PRI	11		

Prepared by (Resource Unit Leader) Gary Thompson	Approved by (Planning Section Chief) <i>[Signature]</i>	Date Prepared 08/26/13	Time Prepared 1327
------------------------------------------------------------	------------------------------------------------------------	----------------------------------	------------------------------

Division Assignment List		1. Branch I	2. Division/Group L			
3. Incident Name CORRAL COMPLEX		4. Operational Period 08/27/13 Tuesday DAY Shift 0600 - 2000				
5. Operations Personnel						
Operations Chief	KEITH GURROLA; SAM MAROUK (t)		Division/Group Supervisor	KYLE JACOBSON; K.HALLERAN (t)		
Operations Chief			Air Attack Supervisor			
Branch Director	SCOTT HALL; M. MILKOVICH (t)		Safety Officer	MARTIN HAMEL; BRIAN SAVAGE		
6. Resources Assigned this Period						
Strike Team/Task Force/ Resource Designator	Leader	Num of Pers.	Trans. Y/N	Drop Off PT./Time	Pick Up PT./Time	
HC2 BECKWORTH C-57 9/2	SETH ODELL	20	N	DIV H/L BREAK 0600	2000	
HC2 ASI ARDEN SOLUTIONS C-10 8/21	REMINGTON KATON	20	N	DIV H/L BREAK 0600	2000	
HC2 MOSQUEDA #2 C-72 9/2	GONZALO ROSAS	20	N	DIV H/L BREAK 0600	2000	
HC2 MOSQUEDA C-70 9/7	JOSE MOSQUEDA	20	N	DIV H/L BREAK 0600	2000	
ES3 ENGINE S/T 2140C E-167 9/5	ED LYNCH	20	N	DIV H/L BREAK 0600	2000	
TF CORRAL #1		1	N	DIV H/L BREAK 0600	2000	
ENG6 NORTHWEST 036 E-163 9/3	SCOTT BENEDICT	3	N	DIV H/L BREAK 0600	2000	
ENG6 NORTHWEST 037 E-164 9/3	KEITH REED	3	N	DIV H/L BREAK 0600	2000	
ENG6 NORTHWEST 038 E-165 9/3	CASEY BROWN	3	N	DIV H/L BREAK 0600	2000	
ENG6 NORTHWEST 039 E-166 9/3	MATT COX	3	N	DIV H/L BREAK 0600	2000	
ENG6 MARK TWAIN 671 E-185 9/4	AMY DUFF	3	N	DIV H/L BREAK 0600	2000	
WTS1 WT #3 VIN#11776 E-136 9/3	GARRY HARRIS	1	N	DIV H/L BREAK 0600	2000	
TF CORRAL #2	ROBERT BERNEY	1	N	DIV H/L BREAK 0600	2000	
ENG3 ENGINE - 9532 E-162 9/3	LYLE BLAINE MCKINNON	5	N	DIV H/L BREAK 0600	2000	
ENG6 CIBOLA E-176 9/4	MICHAEL P WILLIAMS	3	N	DIV H/L BREAK 0600	2000	
SKG1 OUTBACK WILDFIRE E-140 9/4	DAN CHANCLER	1	N	DIV H/L BREAK 0600	2000	
FALC FALLING MODULE O-97 8/30	RICHARD BROWN	2	N	DIV H/L BREAK 0600	2000	
FALC FALLING MODULE O-98 8/30	JAMES GIBSON	2	N	DIV H/L BREAK 0600	2000	
FALC O-149 8/30	RUSSELL A NEWMAN	1	N	DIV H/L BREAK 0600	2000	

7. Control Operations

Prep control line for firing operations. Utilize water handling resources to keep tanks and pumpkins full.

8. Special Instructions

All resources report to the wash station upon arrival and demobilization.

9. Division/Group Communications Summary							
Function	Frequency - RX	Frequency - TX	Tone	System	Channel	System	Channel
Command	168.7000	170.9750	11 (114.8) TX/RX	NIFC	1		
Tactical Div/Group	168.2500	168.2500	11 (114.8) TX/RX	NIFC	7		
Logistics							
Air to Ground	167.0625	167.0625		A/G PRI	11		
Prepared by (Resource Unit Leader) Gary Thompson		Approved by (Planning Section Chief)		Date Prepared 08/26/13		Time Prepared 1327	

Division Assignment List	1. Branch V	2. Division/Group A
---------------------------------	-----------------------	-------------------------------

3. Incident Name CORRAL COMPLEX	4. Operational Period 08/27/13 Tuesday DAY Shift 0600 - 2000
-------------------------------------------	------------------------------------------------------------------------

5. Operations Personnel

Operations Chief	KEITH GURROLA; SAM MAROUK (t)	Division/Group Supervisor	JONATHAN BOE
Operations Chief		Air Attack Supervisor	
Branch Director	DON FORSYTH	Safety Officer	MARTIN HAMEL; BRIAN SAVAGE

6. Resources Assigned this Period

Strike Team/Task Force/ Resource Designator	Leader	Num of Pers.	Trans. Y/N	Drop Off PT./Time	Pick Up PT./Time
HC2 MODOC C-39 9/1	WILLIE ALMAND	20	N	0600	2000
ENG3 BLUE LAKE 8838 E-188 9/4	GREG PERRY	5	N	0600	2000
ENG3 CORRAL S/T #3 E-254 9/7	JEFF POLACEK	21	N	0600	2000
ENG6 GREY WOLF 013 E-261 9/2	TRESKIN DAVID	3	N	0600	2000
ENG6 BRUSH 150 E-271 9/7	WILLIAM ROWE	4	N	0600	2000
FEL1 JOHNSON LOGGING E-66 8/30	JIM JOHNSON	1	N	0600	2000
FEL1 WOOD RIVER TI E-68 9/2	RAY DRISCOLL	1	N	0600	2000
SKG1 TIGER INC 001 E-210 9/7	MICKEY MUMA	2	N	0600	2000
FALC FALLER MODULE O-179 8/30	JUSTIN CECIL	2	N	0600	2000
FEL1 INTERMOUNTAIN E-73 9/3	KEVIN SMITH	1	N	0600	2000
FEL2 HOLT LOGGING E-67 9/1	S.MLENDREZ	1	N	0600	2000
HEQB O-167 9/3	B.BONENBERGER	1	N	0600	2000
SOFR O-20 8/28	JERRY WHEELESS	1	N	0600	2000
FEMP O-43 8/28	ELANEY KARABETSOS	1	N	0600	2000
FEMT O-3 8/28	ROYCE HUDSON	1	N	0600	2000

7. Control Operations

Improve indirect line from Division A/X break to Division A/F break. Plumb portions of line appropriate for water handling equipment.

8. Special Instructions

All resources report to the wash station upon arrival and demobilization. SOFR Don Bergstrand and Jim Dixon will be out 24hrs as lookouts.

9. Division/Group Communications Summary

Function	Frequency - RX	Frequency - TX	Tone	System	Channel	System	Channel
Command	168.7000	170.9750	11 (114.8) TX/RX	NIFC	1		
Tactical Div/Group	166.7250	166.7250	11 (114.8) TX/RX	NIFC	5		
Logistics							
Air to Ground	167.0625	167.0625		A/G PRI	11		

Prepared by (Resource Unit Leader) Gary Thompson <i>GThompson</i>	Approved by (Planning Section Chief) <i>[Signature]</i>	Date Prepared 08/26/13	Time Prepared 1327
----------------------------------------------------------------------	------------------------------------------------------------	---------------------------	-----------------------

Division Assignment List	1. Branch V	2. Division/Group X
---------------------------------	-----------------------	-------------------------------

3. Incident Name CORRAL COMPLEX	4. Operational Period 08/27/13 Tuesday DAY Shift 0600 - 2000
-------------------------------------------	------------------------------------------------------------------------

5. Operations Personnel

Operations Chief	KEITH GURROLA; SAM MAROUK (t)	Division/Group Supervisor	PETER GLOVER
Operations Chief		Air Attack Supervisor	
Branch Director	DON FORSYTH	Safety Officer	MARTIN HAMEL; BRIAN SAVAGE

6. Resources Assigned this Period

Strike Team/Task Force/ Resource Designator	Leader	Num of Pers.	Trans. Y/N	Drop Off PT./Time	Pick Up PT./Time
HC2 FORTUNA 22 C-68 9/3	LARRY CROFUTT	17	N	GROVES SPIKE 0600	GROVES SPIKE 2000
ES3 XAL - 2003C E-168 9/5	GARRETT CONTRERAS	22	N	GROVES SPIKE 0600	GROVES SPIKE 2000
CHIP RON ADKINS CO. E-107 8/31	RON ADKINS	1	N	GROVES SPIKE 0600	GROVES SPIKE 2000
CHIP ZEB'S TREE 2542 E-108 9/1	SHAW STOCKE	2	N	GROVES SPIKE 0600	GROVES SPIKE 2000
WTS2 TELLECHEA E-111 9/1	RUBEN TELLECHEA	1	N	GROVES SPIKE 0600	GROVES SPIKE 2000
WTS1 B & G E-144 9/3	MIKE STOOBS	1	N	GROVES SPIKE 0600	GROVES SPIKE 2000
FEL1 TIM RANGELAND E-70 9/2	CLAY WEAVER	1	N	GROVES SPIKE 0600	GROVES SPIKE 2000
FEL1 TIM RANGELAND E-71 9/2	RANDY RAMSEY	1	N	GROVES SPIKE 0600	GROVES SPIKE 2000
FALC VOLCANO CREEK E-52 8/24	SCOTT OLIVER	2	N	GROVES SPIKE 0600	GROVES SPIKE 2000
FALC O-152 9/8	THEODORE SCHWARTZ	1	N	GROVES SPIKE 0600	GROVES SPIKE 2000
TFLD O-452 9/6	DAN O'CONNOR (t)	1	N	GROVES SPIKE 0600	GROVES SPIKE 2000
HEQB O-153 8/26	WALTER M WILLIAMS	1	N	GROVES SPIKE 0600	GROVES SPIKE 2000
FEMP O-133 8/30	JEFF SHELTON	1	N	GROVES SPIKE 0600	GROVES SPIKE 2000
FEMP O-134 8/30	MIRANDA, ERNEST	1	N	GROVES SPIKE 0600	GROVES SPIKE 2000
SOFR O-222 9/1	KEVIN MORRIS	1	N	GROVES SPIKE 0600	GROVES SPIKE 2000
SOFR O-221 9/1	DAVE SARGENTI	1	N	GROVES SPIKE 0600	GROVES SPIKE 2000

7. Control Operations

Prep 7N10 Road; plumb line and install water handling equipment.

8. Special Instructions

All resources report to the wash station upon arrival and demobilization.
SOFR Don Bergstrand and Jim Dixon will be out 24hrs as lookouts.

9. Division/Group Communications Summary

Function	Frequency - RX	Frequency - TX	Tone	System	Channel	System	Channel
Command	168.7000	170.9750	11 (114.8) TX/RX	NIFC	1		
Tactical w/Group	168.2375	168.2375	11 (114.8) TX/RX	R5	10		
Logistics							
Air to Ground	167.0625	167.0625		A/G PRI	11		

Prepared by (Resource Unit Leader) Gary Thompson	Approved by (Planning Section Chief) 	Date Prepared 08/26/13	Time Prepared 1327
-----------------------------------------------------	-----------------------------------------------------------------------------------------------------------------------------	---------------------------	-----------------------

Division Assignment List	1. Branch V	2. Division/Group W
---------------------------------	-----------------------	-------------------------------

3. Incident Name CORRAL COMPLEX	4. Operational Period 08/27/13 Tuesday DAY Shift 0600 - 2000
------------------------------------	-----------------------------------------------------------------

5. Operations Personnel

Operations Chief	KEITH GURROLA; SAM MAROUK (t)	Division/Group Supervisor	STEVEN SWANEY
Operations Chief		Air Attack Supervisor	
Branch Director	DON FORSYTH	Safety Officer	MARTIN HAMEL; BRIAN SAVAGE

6. Resources Assigned this Period

Strike Team/Task Force/ Resource Designator	Leader	Num of Pers.	Trans. Y/N	Drop Off PT./Time	Pick Up PT./Time
HC2 SHASTA 21 C-69 9/1	NICK JOHNSON	17	N	GROVES SPIKE 0600	GROVES SPIKE 2000
HC2 OC 25 C-56 9/2	DON BOWEN	20	N	GROVES SPIKE 0600	GROVES SPIKE 2000
CORRAL S/T #6	RONALD PEVNY	1	N	GROVES SPIKE 0600	GROVES SPIKE 2000
STEN	DAVID SOLDAVINI (t)	1	N	GROVES SPIKE 0600	GROVES SPIKE 2000
ENG6 BLACKDUCK 719 E-178 9/4	CHRIS COLLISON	3	N	GROVES SPIKE 0600	GROVES SPIKE 2000
ENG6 SQUAD 751 E-253 9/7	BRUCE HANSEN	2	N	GROVES SPIKE 0600	GROVES SPIKE 2000
ENG6 BRUSH 196 E-268 9/7	DOUG L CORRIE	4	N	GROVES SPIKE 0600	GROVES SPIKE 2000
ENG6 BRUSH 503 E-270 9/7	ANDREW C MILLER	3	N	GROVES SPIKE 0600	GROVES SPIKE 2000
EXCA OILERS E-65 8/30	JAMES WHITE	1	N	GROVES SPIKE 0600	GROVES SPIKE 2000
EXCA KENS INC. #2 E-100 8/31	CHRIS FUNES	1	N	GROVES SPIKE 0600	GROVES SPIKE 2000
SLSH DIVERSIFIED 1568 E-132 9/3	DAVID ZALESNY	1	N	GROVES SPIKE 0600	GROVES SPIKE 2000
SLSH ALL TERRAIN E-133 9/5	RICK BORELLO	2	N	GROVES SPIKE 0600	GROVES SPIKE 2000
DOZ2 PETERS E-75 8/27	ROB JACKSON	1	N	GROVES SPIKE 0600	GROVES SPIKE 2000
DOZ2 OUTBACK E-76 9/7	HAROLD MILLER	1	N	GROVES SPIKE 0600	GROVES SPIKE 2000
FEL1 WARNER ENT. E-72 9/4	ZANE CLARE	1	N	GROVES SPIKE 0600	GROVES SPIKE 2000
FALC O-94 8/30	FRANK MANQUEROS	2	N	GROVES SPIKE 0600	GROVES SPIKE 2000
FALC MODULE O-256 8/31	ADAM MILLER	2	N	GROVES SPIKE 0600	GROVES SPIKE 2000
MISC FIRE USE MODULE O-193 8/29	JOSEPH CROWE	7	N	GROVES SPIKE 0600	GROVES SPIKE 2000
FALC O-185 8/31	KODY COX	1	N	GROVES SPIKE 0600	GROVES SPIKE 2000
FELB O-331 8/27	JOSHUA SHROYER	1	N	GROVES SPIKE 0600	GROVES SPIKE 2000

7. Control Operations

Snag and prep line from DP-1 to Onion Saddle. Plumb line as appropriate from Division X/W break to Division W/R break.

8. Special Instructions

All resources report to the wash station upon arrival and demobilization. SOFR Don Bergstrand and Jim Dixon will be out 24hrs as lookouts.

9. Division/Group Communications Summary

Function	Frequency - RX	Frequency - TX	Tone	System	Channel	System	Channel
Command	168.7000	170.9750	11 (114.8) TX/RX	NIFC	1		
Tactical Div/Group	154.2725	154.2725	6 (156.7) TX/RX	VFIRE 24	13		
Logistics							
Air to Ground	167.0625	167.0625		A/G PRI	11		

Prepared by (Resource Unit Leader) Gary Thompson <i>[Signature]</i>	Approved by (Planning Section Chief) <i>[Signature]</i>	Date Prepared 08/26/13	Time Prepared 1327
------------------------------------------------------------------------	------------------------------------------------------------	---------------------------	-----------------------

Division Assignment List	1. Branch VII	2. Division/Group SS
---------------------------------	-------------------------	--------------------------------

3. Incident Name CORRAL COMPLEX	4. Operational Period 08/27/13 Tuesday DAY Shift 0600 - 2000
-------------------------------------------	------------------------------------------------------------------------

5. Operations Personnel

Operations Chief	KEITH GURROLA; SAM MAROUK (t)	Division/Group Supervisor	DANIEL L MORFORD
Operations Chief		Air Attack Supervisor	
Branch Director	LARRY WRIGHT	Safety Officer	MARTIN HAMEL; BRIAN SAVAGE

6. Resources Assigned this Period

Strike Team/Task Force/ Resource Designator	Leader	Num of Pers.	Trans. Y/N	Drop Off PT./Time	Pick Up PT./Time
HC2 ALASKA #1 C-92 9/8	MATTHEW DURFEY	20	N	ICP 0600	DENNY SPIKE 2000
HC2 OHIO #3 C-93 9/8	JEFFREY G TUCKER	20	N	ICP 0600	DENNY SPIKE 2000
CORRAL #8	JON HANDRICK	1	N	ICP 0600	DENNY SPIKE 2000
ENG3 UPPER PINE 62 E-189 9/6	JOSH SCHMIDT	3	N	ICP 0600	DENNY SPIKE 2000
ENG6 MQ FRANCO E-262 9/1	ROLAND CRUME	1	N	ICP 0600	DENNY SPIKE 2000
ENG6 BEAR MOUNTIAN E-319 9/6	GREG HAMPTON	3	N	ICP 0600	DENNY SPIKE 2000
ENG6 COOPER 17 E-320 9/1	MIKE THOMPSON	3	N	ICP 0600	DENNY SPIKE 2000
ENG6 FIRST STRIKE 19 E-321 9/7	DENNIS BOORN	3	N	ICP 0600	DENNY SPIKE 2000
CORRAL # 9	ELLIOTT PHILLIP	1	N	ICP 0600	DENNY SPIKE 2000
ENG3 PALOMINAS 1931 E-309 9/9	ALLEN HERSHEY	4	N	ICP 0600	DENNY SPIKE 2000
ENG3 NORTHWEST 804 E-310 9/9	LARRY BEAR	4	N	ICP 0600	DENNY SPIKE 2000
ENG3 MARICOPA 575 E-311 9/9	ROBERT V RUSSO	4	N	ICP 0600	DENNY SPIKE 2000
ENG3 TUBAC 1027 E-312 9/9	JOHN CONGER	5	N	ICP 0600	DENNY SPIKE 2000
ENG6 RINCON VAL 292 E-313 9/9	BRANDY BAUGUS	4	N	ICP 0600	DENNY SPIKE 2000
DOZ2 KENS INC #2 E-213 9/4	MATT SKELTON	2	N	ICP 0600	DENNY SPIKE 2000
SPAC SHF PACK STRING #1 E-14 8/26	ERIC CORDTZ	2	N	ICP 0600	DENNY SPIKE 2000
SKIDGEN E-218		1	N	ICP 0600	DENNY SPIKE 2000
SKIDGEN E-220		1	N	ICP 0600	DENNY SPIKE 2000
FALC MODULE, ALPINE O-513 9/9	DENNIS WITHERS	2	N	ICP 0600	DENNY SPIKE 2000
SOFR O-159 9/2	CHRISTOPHER S OBRIEN	1	N	ICP 0600	DENNY SPIKE 2000

7. Control Operations

Complete handline adjacent to Denny community; develop structure defense plan for hose and dozer line adjacent to Denny and surrounding structures.

8. Special Instructions

All resources report to the wash station upon arrival and demobilization.

9. Division/Group Communications Summary

Function	Frequency - RX	Frequency - TX	Tone	System	Channel	System	Channel
Command	168.7000	170.9750	11 (114.8) TX/RX	NIFC	1		
Tactical Div/Group	167.1125	167.1125	11 (114.8) TX/RX	R5	9		
Logistics							
Air to Ground	167.0625	167.0625		A/G PRI	11		

Prepared by (Resource Unit Leader) <i>[Signature]</i>	Approved by (Planning Section Chief) <i>[Signature]</i>	Date Prepared 08/26/13	Time Prepared 1327
----------------------------------------------------------	------------------------------------------------------------	----------------------------------	------------------------------

AIR OPERATIONS SUMMARY

PREPARED BY: John Keesee /K

PREPARED DATE/TIME: 8/26/2013 2100hr

1. INCIDENT NAME: Corral Complex	OPERATIONAL PERIOD DATE: 8/27/13 START TIME: 0600 END TIME: 2030 SUNRISE:0636 SUNSET:1956	
3. REMARKS (Safety Notes, Hazards, Air Operations Special Equipment, etc.): Wire rich environment. Get Thorough Briefing. Study Flight Hazard Map Mobile Retardant Base located at Willow Creek Helibase Willow Creek Helibase N 40 57.036 W 123 38.164 **Discreet A/G for Aerial Ignition only. 166.9125**	4. MEDEVAC A/C: NG Hoist Ship 820, NVGs/ Paramedic Frequency: CALCORD 156.0750 Tone 6	5. TFR: Altitude: 11,000 MSL TFR# 3/5070 Contact Freq. 132.3500
	8. FIXED-WING # Avail / Type/ Make-Model / FAA N# / Base(s)	
6. PERSONNEL	7. FREQUENCIES	FM
AODB: John Keesee Phone: 805-551-6422	AIR/AIR FW:	166.6000
ATGS: Curt Stanley ATGS: Billy Gardunio(T) ATGS: George Sheppard	AIR/AIR RW:	132.3500
ASGS: Craig Dado ASGS(T): Lee Kessler ASGS(T): Todd Gilbreth	AIR/GROUND:	167.0625
HILCO:	Aerial Ignition	166.9125
HEB1: Don Nicholas HEB1(T): Matt Lingenfelter	COMMAND:	
DECK: David Molter	COMMAND RPT Tone 11 (114.8)	Rx: 168.7000 TX: 170.9750
	DECK FREQ:	168.3500
	TOLC FREQ:	

9. HELICOPTERS (Use Additional Sheets As Necessary)

FAA N#	TY	MAKE/MODEL	BASE	AVAIL	START	REMARKS	FAA N#	TY	MAKE/MODEL	BASE	AVAIL	START	REMARKS
22EA	3	Bell 206B3 A-13	Willow	0800	0830	Mapping/IR	6MW	1	K-MAX A-88	Willow	0800	0830	
62HP	3	Bell 206L4 A-7	Willow	0800	0830	PSD	HT 746	1	S-64 A-95	Willow	0800	0830	
6BL	2	S-58T A-68	Willow	0800	0830		HT 715	1	S-54 A-96	Willow	0800	0830	
205SJ	2	Bell 205 A-89	Willow	0800	0830								
HT 701	1	SH3H A-85	Willow	0800	0830								
HT 702	1	SH3H A-6	Willow	0800	0830								
CFIRX	1	C-61N A-8	Willow	0800	0830								

SAFETY MESSAGE

Everyone ===== Committed and Involved with Safety

Conduct a Safety Briefing for Every Firefighter on the line.

What is the Risk ?

What is the Benefit ?

HAZARDS - RISKS - MITIGATION IDENTIFIED

Transportation: *Narrow winding mountain roads with steep drop-offs, limited turnouts, and no shoulders = a real "Potential" for a vehicle accident and/or injury.*

Mitigation: Drive defensively with SLOW speeds, lights on and be courteous. Smaller vehicles always yield to larger ones. Heavy equipment is being transported. Always expect a vehicle around every corner. Don't be in a hurry. Some Local schools are starting back up today. Watch for buses and Children. School zone speed limits are 25mph.

Heavy equipment operations: Masticators, dozers, excavators will be working in several areas.

Mitigation: Use qualified supervision and keep other personnel at a safe distance. Post road guards if needed.

Snags: They are numerous and throughout the entire incident area.

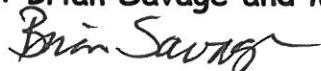
Mitigation: Maintain your situational awareness. Look up, look down and look around. If you see a snag or hazard tree, flag it and communicate the info so it can be mitigated.

POSSIBLE FIRING OPERATIONS:

Mitigation:

- Ensure Lookouts are posted.
- Communications are established with both firing & holding teams.
- Escape Routes & Safety Zones are established - Known to all.

Safety Officers: Brian Savage and Marty Hamel



MEDICAL PLAN	1. INCIDENT NAME Corral	2. DATE PREPARED 8/26/2013	3. TIME PREPARED 1800	4. OPERATIONAL PERIOD Day 8/27/2013
---------------------	-----------------------------------	--------------------------------------	---------------------------------	-----------------------------------------------

5. INCIDENT MEDICAL AID STATIONS			
MEDICAL AID STATIONS	LOCATION		PARAMEDICS
			YES NO
Corral ICP	Medical Unit -Veterans Park Willow Creek, CA		XX

6. TRANSPORTATION					
NAME	ADDRESS	Flight Time to Incident	PHONE	PARAMEDICS	
				YES	NO
CA-Air National Guard (ANG) H-820 (HOIST)	Redding, CA	40 Min	707-726-1266	XX	
Cal Fire H-102 (DAY HOIST ONLY)	Kneeland, CA	25 Min	707-726-1266		XX
CHP H-13 (HOIST)	Redding, CA	40 Min	911 or 707-726-1268	XX	
REACH 5	Redding, CA	40 Min	911 or 707-726-1268	XX	
PHI Air Medical	Redding, CA	40 Min	911 or 707-726-1268	XX	
Ground Ambulance					
Hoopla Ambulance Unit 83	Corral ICP-Willow Creek, CA			XX	
Corral Rescue Group (Technical Rescue-REM)	Corral ICP-Willow Creek, CA			XX	

7. HOSPITALS								
NAME	ADDRESS	TRAVEL TIME		PHONE	HELIPAD		BURN CENTER	
		AIR	GRND		YES	NO	YES	NO
St Joseph Hospital	2700 Dolbeer St. Eureka, CA 95501	25 Min	1 Hr.	707-269-4250	XX			XX
Mercy Medical Center (Level II Trauma Center)	2175 Rosaline St. Redding, CA 96001	40 Min.	2 Hr.	530-225-7200	XX			XX
UC Davis (Level I T/C Burn Center)	2315 Stockton Bl. Sacramento, CA 95817	1.5 Hr.	3.5 hr.	916-734-3636	XX		XX	
Willow Creek Community Health Center (Clinic)	Willow Creek, CA	N/A	5 min.	530-629-3111	N/A			N/A
Mad River Community Hospital (Clinic)	Willow Creek, CA	N/A	5 Min	530-629-3116	N/A			N/A

8. MEDICAL EMERGENCY PROCEDURES	
<p>When an injury occurs, initiate care with available resources at scene and notify DIVS. The DIVS shall coordinate the incident and direct necessary actions. The following steps shall be taken to mitigate the incident:</p> <ol style="list-style-type: none"> Determine the nature of the emergency. If the emergency is a medical injury/illness, determine if the injury/illness is life threatening. If the injury is life threatening, then clear designated frequency for emergency traffic. Identify the on-scene point of contact by position. Ensure that the Medical Unit Leader is contacted immediately. Identify number injured, patient assessment(s) and location (geographic and/or GPS coordinates). Identify on-scene medical personnel by position and last name (i.e. EMT Jones). Identify preferred method of patient transport. Determine any additional resources or equipment needed. <p>The Evacuation Plan should be continually evaluated, and contingencies developed in the event the first plan is not effective.</p>	<p style="text-align: center;"><u>PATIENT INFORMATION</u></p> <p>√</p> <p><input type="checkbox"/> Patient # _____ of _____ Patients</p> <p><input type="checkbox"/> Medevac-Immediate Evacuation is Critical</p> <p><input type="checkbox"/> Non- Emergency Medical Transport-Non Urgent Need for Ground Based or Helicopter Transport.</p> <p><input type="checkbox"/> Location _____ (Geographic Location Example: Spike Camp, Drop Point, Helispot, 2 Miles North of Forest Rd 030 on the 2N22 Road, etc.)</p> <p>Lat _____ Long _____ (Datum NAD 83) Example N 0°00.000' x W 0° 0.00'</p> <p><input type="checkbox"/> Age _____ Sex _____ Weight _____</p> <p><input type="checkbox"/> Severity: Minor _____ Delayed _____ Immediate _____</p> <p><input type="checkbox"/> Chief Complaint _____</p> <p><input type="checkbox"/> Any additional resources required _____ (Paramedics, Crews, SKEDs, Immobilization Devices, etc.)</p> <p>**See IRPG pages 41-48 for Triage , Treatment, and Transport Guidance</p>

ICS-206	9. PREPARED BY (MEDICAL UNIT LEADER) Robert Russell MEDL <i>[Signature]</i>	10. REVIEWED BY (SAFETY OFFICER) Marty Hamel SOF18 <i>[Signature]</i>
----------------	--------------------------------------------------------------------------------	--------------------------------------------------------------------------

Medical Evacuation

This plan is designed to identify and outline the steps necessary to safely and effectively evacuate an injured firefighter from the Corral Complex and deliver that firefighter to an appropriate medical facility in both daytime and nighttime settings.

Once notification of a medical emergency, and the Division Supervisor and/or EMT's make the decision that a medical evacuation is required, Incident Management Team components will work together to accomplish the evacuation. The highest qualified medical personnel on scene shall assume control of patient care. The Division Supervisor shall manage the response; coordinate communications with incident communication unit and medical unit, and air to ground communications. The Division Supervisor may delegate communications to appropriate resources as needed to facilitate the operation.

Ground Medical Evacuation

If the injured firefighter is *WITHIN* reasonable hiking distance from a road and is determined to have a condition that *WILL NOT* be aggravated by driving him/her out, then an incident vehicle shall be utilized to evacuate the injured firefighter from the scene either to the ICP Medical Unit or to a rendezvous point. Patient transport/destination decision shall lie with the DIVS in consultation with the highest level (i.e. EMT/Paramedic) medical care provider on scene.

All requests for Air Ambulances will be processed through Corral Medical Unit and Cal Fire Fortuna Dispatch (9-1-1). The following ground ambulance providers and locations for ground ambulance coverage for this incident location:

Agency	Base Location	Provider Level	Drive Time to ICP
Hoopa Ambulance (Incident)	As Assigned	Paramedic	Variable
Hoopa Ambulance	Willow Creek, CA	Paramedic	5 Minutes
Hoopa Ambulance	Hoopa, CA	Paramedic	30 Minutes

Air Medical Evacuation

If the injured firefighter is *NOT WITHIN* reasonable hiking distance to a road and/or determined to have a condition could be worsened by driving him/her out, the following aircraft shall be launched based on the closest available resource to extract the injured party. The Division Supervisor will coordinate a hand carry out of the injured firefighter to the extraction site. The rescue helicopter will evacuate the firefighter to an appropriate location based on medical necessity to rendezvous with ground ambulance, air ambulance, or hospital. All requests for Rescue Aircraft will go through USFS Fortuna Dispatch. Rescue aircraft and locations for this incident are:

Hoist/Extraction Helicopters:

Medical Evacuation

Agency	Hoist Capabilities	Medical Capabilities	Base Location	Estimated Flight Time
CA-ANG (Air Guard)H-820	Hoist	ALS	Redding, CA	40 Minutes
Cal Fire 102	Day Hoist	BLS	Kneeland, CA	25 minutes
CHP H-13	Day/Night Hoist	ALS	Redding, CA	40 minutes
Military Resources	Day/Night Hoist	BLS / ALS	Multiple	45+ minutes
Assigned incident aviation resources as available	None	BLS/ALS	Corral Helibase	5 Minutes

All requests for Air Ambulances will be processed through Fortuna Dispatch. If the injured firefighter requires air ambulance transportation to a hospital, the following helicopters shall be considered:

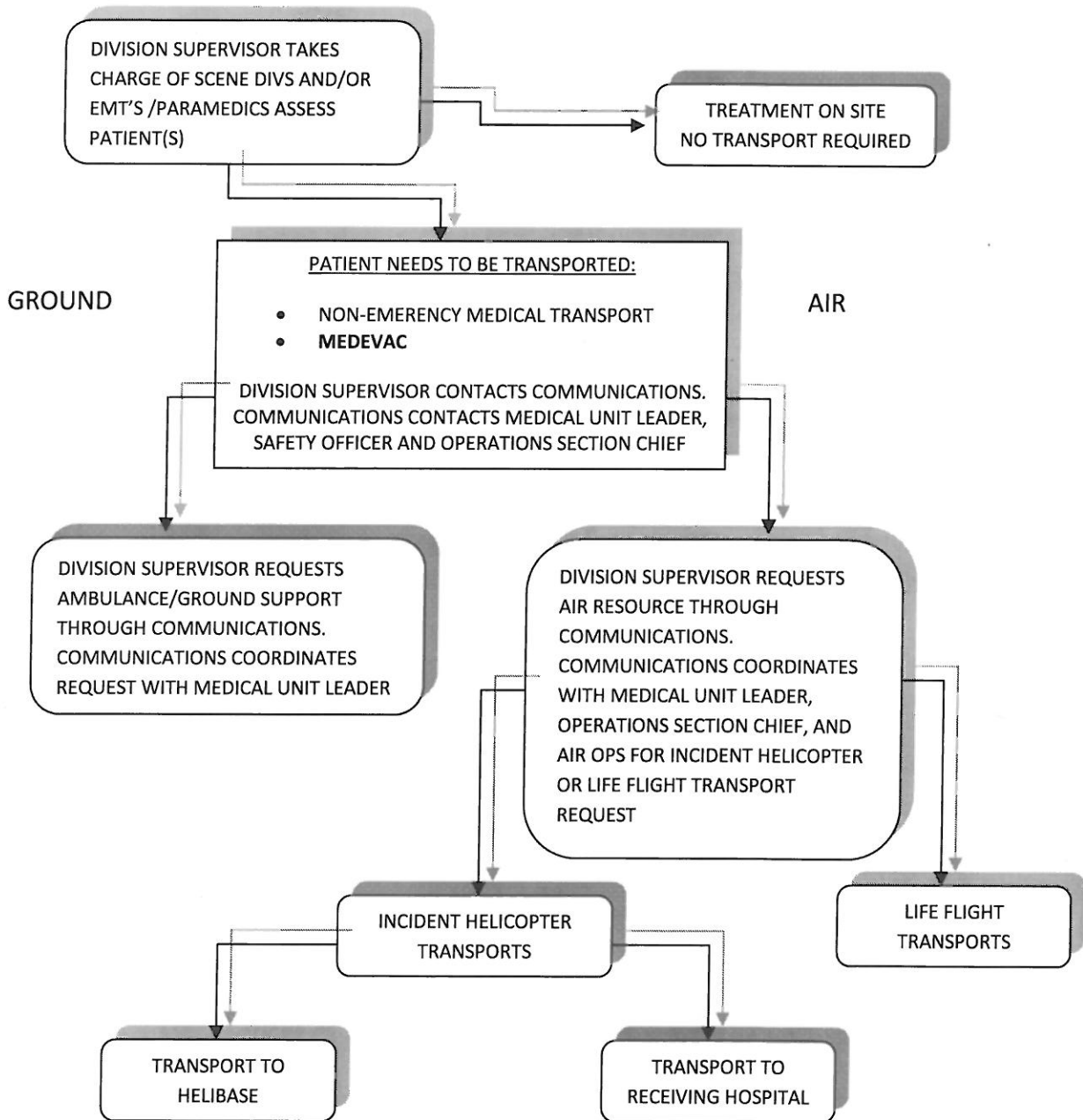
Agency	Base Location	Flight time to Incident
Reach 5	Redding, CA	40 Minutes
PHI Air Medical	Redding, CA	40 Minutes

Once airborne, the helicopters will have an estimated flight time to each of the following facilities:

Facility	Specialty Care				Location	Helipad	Fight Time from Incident
	Trauma	SRC	Stroke	Burn			
Mercy Medical Center	Level II Trauma Center	XX	XX		Redding, CA	XX	40 Minutes
UC Davis Medical Center	Level I Trauma Center	XX	XX	XX	Sacramento, CA	XX	1.5 Hours

- Take charge of the scene and size up the situation.
- Ensure scene safety and identify the incident Point of Contact (POC)
- Identify the nature of the incident and number of persons involved.
- Coordinate the EMT/Paramedic response to the injury/illness.
- Identify Number of people involved and their medical condition (Triage) See IRPG pages 41-48
- Identify Medical treatment and transportation needs (**non emergency medical transport or Emergency Medevac**)
- Identify Location and (Lat/Long coordinates) of site
- Coordinate the request for transportation and/or other resources through Communications
- Identify special needs, i.e. Law Enforcement, Extrication, Heavy Rescue, and Haz-Mat response
- Coordinate with the Safety Officer and/or Law enforcement to preserve the scene for accident investigation
- Contingency planning with alternatives shall continuously take place in the event that the preferred plan becomes ineffective.

Medical Evacuation



MEDICAL TRANSPORTATION CHECKLIST

DATE / / MEDEVAC INCIDENT NUMBER _____

1. COMMAND/CONTROL

INCIDENT NAME (Geographic Name + 'Medical')			
POC/IC NAME:	The individual that is the Primary Point of Contact (POC) or IC for the Incident	MEDIC IN CHARGE :	The individual that is overseeing medical care at the scene.

2. PATIENT ASSESSMENT

PATIENT #__ of __	AGE:	SEX :	WEIGHT:
	INJURIES/ILLNESS:		
	RESPIRATION:	PULSE:	CONSCIOUS: YES/NO
PATIENT SEVERITY: <input type="radio"/> SEVERE <input type="radio"/> MODERATE <input type="radio"/> MILD <input type="radio"/> NONE			
FOR MULTY CASUALTY: IMMEDIATE: DELAYED: MINOR:			

3. PATIENT LOCATION :

Datum NAD 83	Example: N 0° 00.00' x W 0° 00.00'
LAT/LONG:	
GEOGRAPHIC LOCATION (i.e. DP 1, H-2, ICP, Camp, Road, etc.)	

4. MEDICAL TRANSPORT NEEDED

MEDEVAC	IMMEDIATE EVACUATION IS CRITICAL; URGENT NEED FOR ADVANCED LIFE SUPPORT GROUND OR HELICOPTER TRANSPORT (Unstable patient that has a life threatening injury or illness) ** Medevac is an incident within an incident, one on scene point of contact needs to take charge.**
NON-EMERGENCY MEDICAL TRANSPORT	EVACUATION IS NOT CRITICAL; NON-URGENT NEED FOR GROUND OR HELICOPTER TRANSPORT (Typically utilized for stable, non-life threatening emergencies.)

5. ADDITIONAL RESOURCES AND EQUIPMENT (Check as applicable)

<input type="radio"/> TRAUMA KIT	<input type="radio"/> PARAMEDICS
<input type="radio"/> SPINAL IMMOBILIZATION DEVICE(S)	<input type="radio"/> PERSONNEL (Crews/Helitak Modules/etc for Manpower)
<input type="radio"/> OXYGEN	<input type="radio"/> LITTER or <input type="radio"/> WHEELED LITTER
<input type="radio"/> IV/FLUIDS	<input type="radio"/> TECHNICAL RESCUE or <input type="radio"/> EXTRICATION
<input type="radio"/> ALS MEDICATIONS (eg. Epi, Benadryl, etc.)	<input type="radio"/> OTHER:

ETA(s) on Scene:

6. COMMUNICATIONS:

FREQUENCY/NAME/FUNCTION (eg, Air/Grnd)	RECIEVE(Rx)	TRANSMIT (Tx)
AIR/AIR VHF-AM FREQUENCY		
If aerial supervision available, Call Sign:		

MEDICAL TRANSPORTATION CHECKLIST

7. LOGISTICAL TRANSPORT (evacuation method is situational dependent and is based on risk mgmt: terrain, road access, day/night, weather, visibility, distance to helispot or road, etc.)

EXTRACTION	RESOURCE(S) (Check as needed)
<input type="radio"/> SELF EXTRACT WITH DRIVER	<input type="radio"/> GROUND TRANSPORT
<input type="radio"/> CURRENTLY AT ROAD	<input type="radio"/> ADVANCED LIFE SUPPORT GROUND TRANSPORT
<input type="radio"/> CARRY OUT TO ROAD	<input type="radio"/> INCIDENT ASSIGNED HELICOPTER TRNSPORT
<input type="radio"/> CARRY OUT TO HELISPOT <small>(Identified, Constructed, Dust Abated)</small>	<input type="radio"/> ADVANCED LIFE SUPPORT HELICOPTER TRANS. <small>(Life Flight, PHI, Reach, Fire Dept. etc)</small>
<input type="radio"/> HOIST/ SHORT -HAUL	<input type="radio"/> HOIST/SHORT HAUL EQUIPPED HELICOPTER
<input type="radio"/> OTHER:	<input type="radio"/> NIGHT VISION (NVG) EQUIPPED HELICOPTER

ETA(s) on Scene/Notes:

UNIT:	DISPATCH TIME:	ARRIVAL TIME:	AT PATIENT TIME:
ETD: (Scene to Medical Facility)	TRANSPORT TIME:	AT FACILITY:	VIA: <small>(ALS/BLS/Air/ Ground Support)</small>

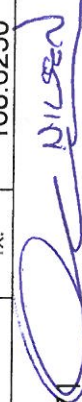
RECEIVING FACILITY:

8. PATIENT LZ/EVAC LOCATION (Pick-Up Location):

DATUM NAD 83	<i>Example: N 0° 00.00' x W 0° 00.00'</i>
LAT/LONG:	
If applicable, Hazards and Safety Notes at LZ for air evacuation	

9. CONTINGENCY PLANNING (Considerations: If primary options fail, what actions can be implemented in conjunction with primary evacuation method?) Consider PACE Primary , Alternative, Contingency and Emergency plans in the event the current plan is no longer effective.

NOTES:

Incident Radio Communications Plan		1. Incident Name		CORRAL COMPLEX		2. Date / Time Prepared		3. Operational Period Date / Time	
						8/26/13 1900 hrs		8/27-28/13 0600-0600 hrs (24 hrs)	
4. Basic Radio Channel Utilization									
Mode: W = Wideband Analog, N = Narrowband, D = Digital, M = Mixed									
Chann	Function	Channel Name	Frequency	Tone	Mode	Assignment	Remarks		
1	COMMAND	NIFC C-1	RX: 168.7000 TX: 170.9750	T-11 (114.8) T-11 (114.8)	A	ALL DIVISIONS All Commands Linked	Trinity Summit		
2	COMMAND	NIFC C-8	RX: 169.5375 TX: 164.7125	T-11 (114.8) T-11 (114.8)	A	ALL DIVISIONS All Commands Linked	Ironside Mountain		
3	COMMAND	NIFC C-35	RX: 165.0000 TX: 172.5875	T-11 (114.8) T-11 (114.8)	A	ALL DIVISIONS All Commands Linked	Brush Mountain		
4	SRF ADMIN NET	SRF ADM	RX: 168.1250 TX: 170.4750	T-3 (131.8)	A	BACK UP ONLY	Lone Pine Ridge		
5	TACTICAL	NIFC T-5	RX: 166.7250 TX: 166.7250	T-11 (114.8) T-11 (114.8)	A	Div. "A"			
6	TACTICAL	NIFC T-6	RX: 166.7750 TX: 166.7750	T-11 (114.8) T-11 (114.8)	A	Div. "F"			
7	TACTICAL	NIFC T-7	RX: 168.2500 TX: 168.2500	T-11 (114.8) T-11 (114.8)	A	Div. "L" Div. "V V"			
8	TACTICAL	R5 TAC 4	RX: 166.5500 TX: 166.5500	T-11 (114.8) T-11 (114.8)	A	Div. "M" Div. "P/R"			
9	TACTICAL	R5 TAC 5	RX: 167.1125 TX: 167.1125	T-11 (114.8) T-11 (114.8)	A	Div. "SS" All Contingency Grps			
10	TACTICAL	R5 TAC 6	RX: 168.2375 TX: 168.2375	T-11 (114.8) T-11 (114.8)	A	Div. "X"			
11	AIR to GROUND	A/G PRI	RX: 167.0625 TX: 167.0625		A	ALL DIVISIONS	Primary Use		
12	AIR to GROUND	A/G SEC	RX: 166.9125 TX: 166.9125		A	ALL DIVISIONS	Aerial Ignition Op's		
13	TACTICAL	VFIRE 24	RX: 154.2725 TX: 154.2725	T-6 (156.7) T-6 (156.7)	A	Div. "W"			
14	TACTICAL	VFIRE 26	RX: 154.3025 TX: 154.3025	T-6 (156.7) T-6 (156.7)	A	Div. "H" Div. "OO"			
15	TACTICAL	CALCORD	RX: 156.0750 TX: 156.0750	T-6 (156.7)	A	ALL DIVISIONS	For Medical Emergency Use Only		
16/20	AIRGUARD	GUARD	RX: 168.6250 TX: 168.6250	T-1 (110.9)	A	ALL DIVISIONS	For Emergencies Only		
5. Prepared by (Communications Unit)									
Matt Nilsen, COML 619-301-5471 									
Corral Communication Unit: 530-629-2376									
NOTE: All Commands are linked. Last clone is from 8-22-2013									

CORRAL COMPLEX

Human Resource Message



**Control your timber or you could end up
in an uncomfortable position!**

**You may find that you don't have as
much bark as those around you.**

**So wooden it just be nice if we all treed
each other with respect?**

**Human Resource Specialist – Mike Baines
724-678-6147**

Incident Trainee / Trainer Data Worksheet

PLEASE PRINT LEGIBLY!

A: Trainee Data

Trainee Name: _____ Check One: Male Female
 Trainee Position: _____ Order Number (E, O, C, A) ____--_____
 State Abr. ____ + 3 Letter Designator _____ Agency Type: Federal State Local
 USFS BLM BIA FWS DOD NWS NPS Date Assigned: ____--____--_____
 Ordered as a Trainee for the incident? Yes No Ordered as a PRIORITY trainee? Yes No

**Person's name and title that is responsible for tracking your qualifications:
 (Where do you want the packet mailed to?)**

Name: _____ Title: _____ Home Unit: _____
 Agency Address: _____ City: _____
 State: _____ Zip: _____ Phone Number: () _____--_____

B. Trainee Prerequisites

YES NO

- | | | |
|--------------------------------------------------------------|-----------------------|-----------------------|
| 1. Possesses valid Red Card or agency certification card? | <input type="radio"/> | <input type="radio"/> |
| 2. Trainee has a proper agency initiated position task book? | <input type="radio"/> | <input type="radio"/> |
| 3. Trainee has an incident issued task book? | <input type="radio"/> | <input type="radio"/> |

C. Trainer/Evaluator Data (All fields are required to be filled in)

Trainer/Evaluator Name: _____ Position: _____
 Home Unit: _____ Order Number (E, O, C, A) ____--_____
 Work Address: _____ City: _____ State: _____
 Zip Code: _____ Phone Number: () _____--_____

D. Trainee Goals (items in the position task book to be evaluated on this incident)

1. _____
2. _____
3. _____

Training Paperwork Completion Instructions

Incident Trainee Data Worksheet (TNSP-1)

1. **Block A** Trainee Data, Fill out completely by trainee. Personal Information plus information on the person responsible for one's agency training, training records, or initiates position task books, etc.
2. **Block B** Trainee fills out completely.
3. **Block C** Trainer/Evaluator fills out completely
4. **Block D** Trainee and Trainer/Evaluator reaches an agreement on what specific tasks **(from the position task book)** the trainee will be able to accomplish this incident. There can be any number of tasks listed.

Incident Trainee Exit Review (TNSP-4)

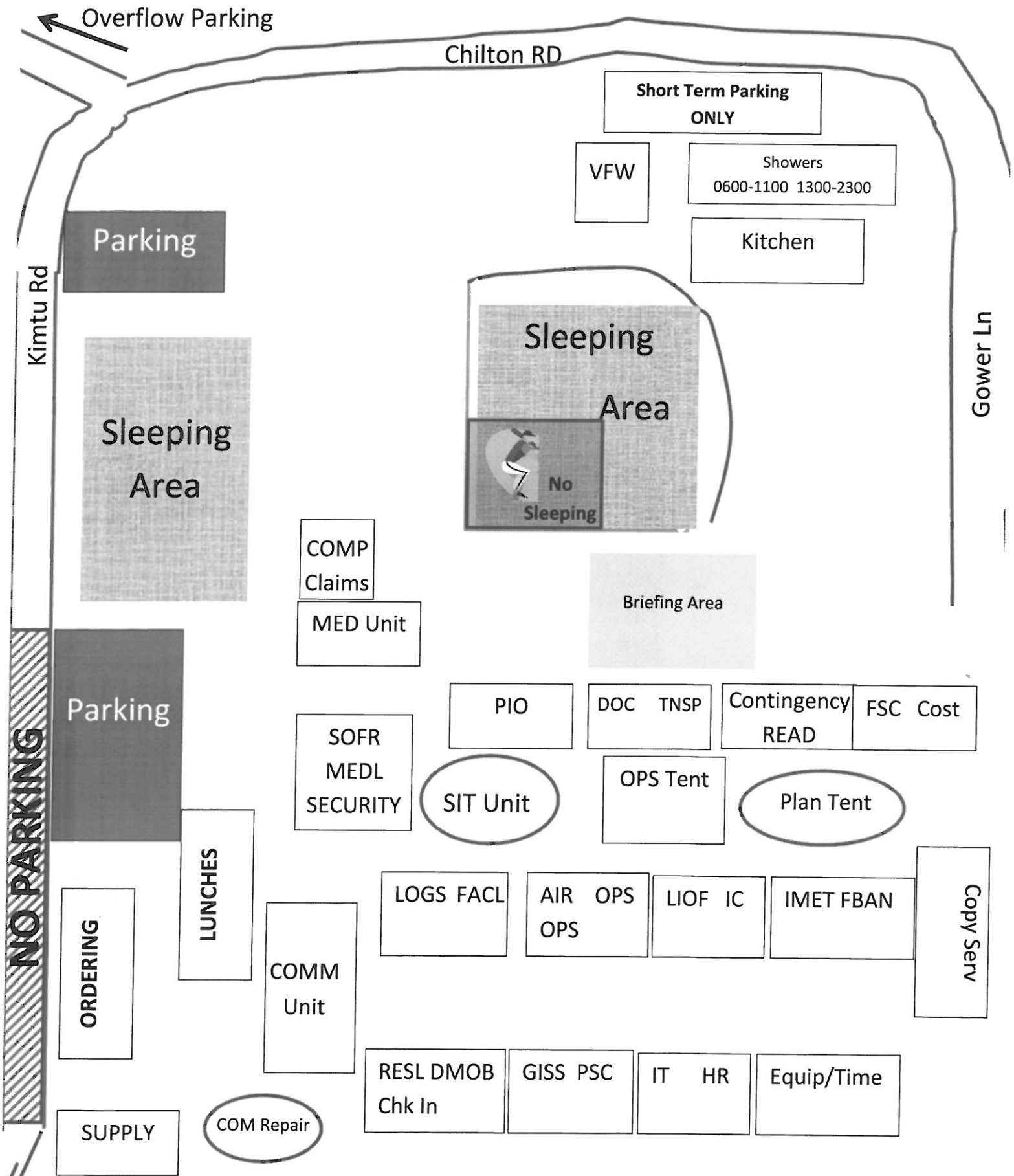
1. Completed by trainee to express the quality of training experience obtained on the incident.

Incident Personnel Performance Rating (ICS-225)

1. **Personal Information (Top Area)**
 - a. Filled out by trainee
2. **Rating Factors (Check Boxes)**
 - a. Filled out by trainers/evaluators
 - b. Be sure us use guidelines listed above boxes
3. **Remarks (Narrative)**
 - a. Most important area of the form
 - b. Should refer to goals agreed upon on the worksheet (how well or if improvement or experience is needed). Our training is performance based.
 - c. Should include a closing statement indicating that 1) the trainee should be considered for qualification or 2) the trainee needs additional assignments to develop knowledge or complete missing tasks.
4. **Signatures (Bottom)**
 - a. Evaluation is finalized by signatures of both the trainee and trainer/evaluator.

Corral Incident Base Camp Map

8/26/13 Not to scale



Overflow Parking

Chilton RD

Short Term Parking ONLY

VFW

Showers
0600-1100 1300-2300

Kitchen

Parking

Kimtu Rd

Sleeping Area

Sleeping Area

No Sleeping

Gower Ln

COMP Claims

Briefing Area

MED Unit

Parking

PIO

DOC TNSP

Contingency READ

FSC Cost

SOFR MEDL SECURITY

SIT Unit

OPS Tent

Plan Tent

NO PARKING

ORDERING

LUNCHES

COMM Unit

LOGS FACL

AIR OPS
OPS

LIOF IC

IMET FBAN

Copy Serv

SUPPLY

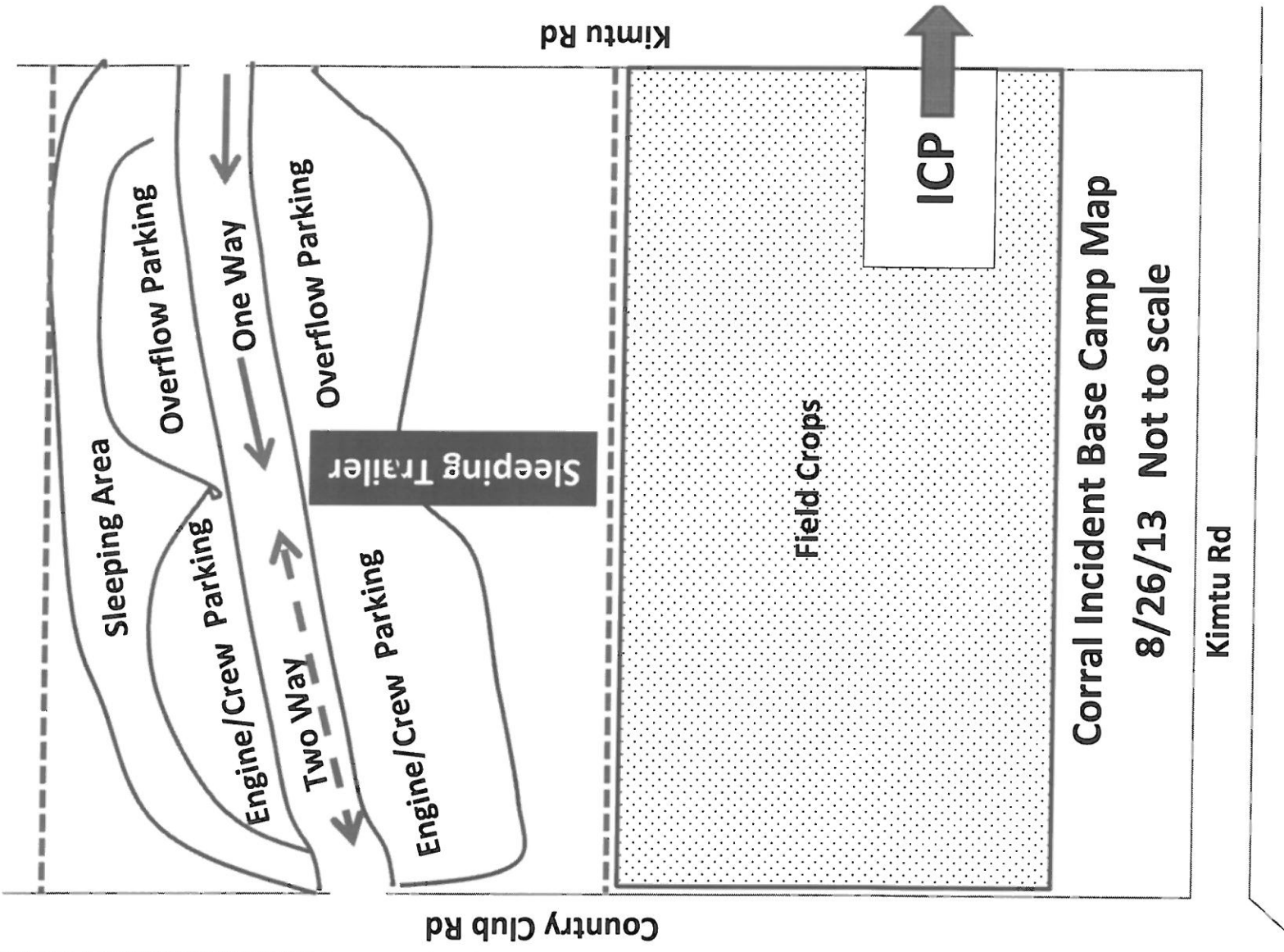
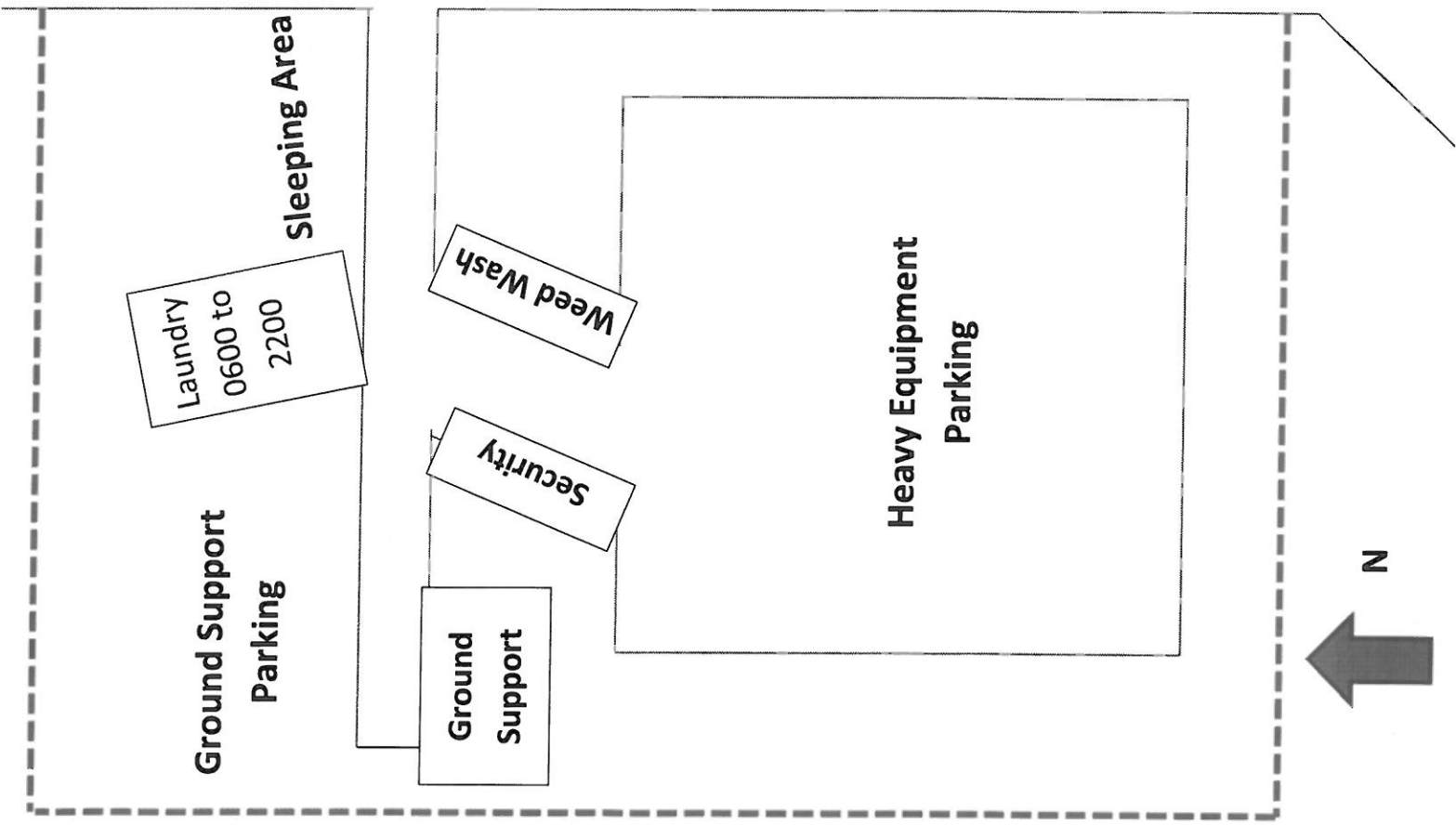
COM Repair

RESL DMOB
Chk In

GISS PSC

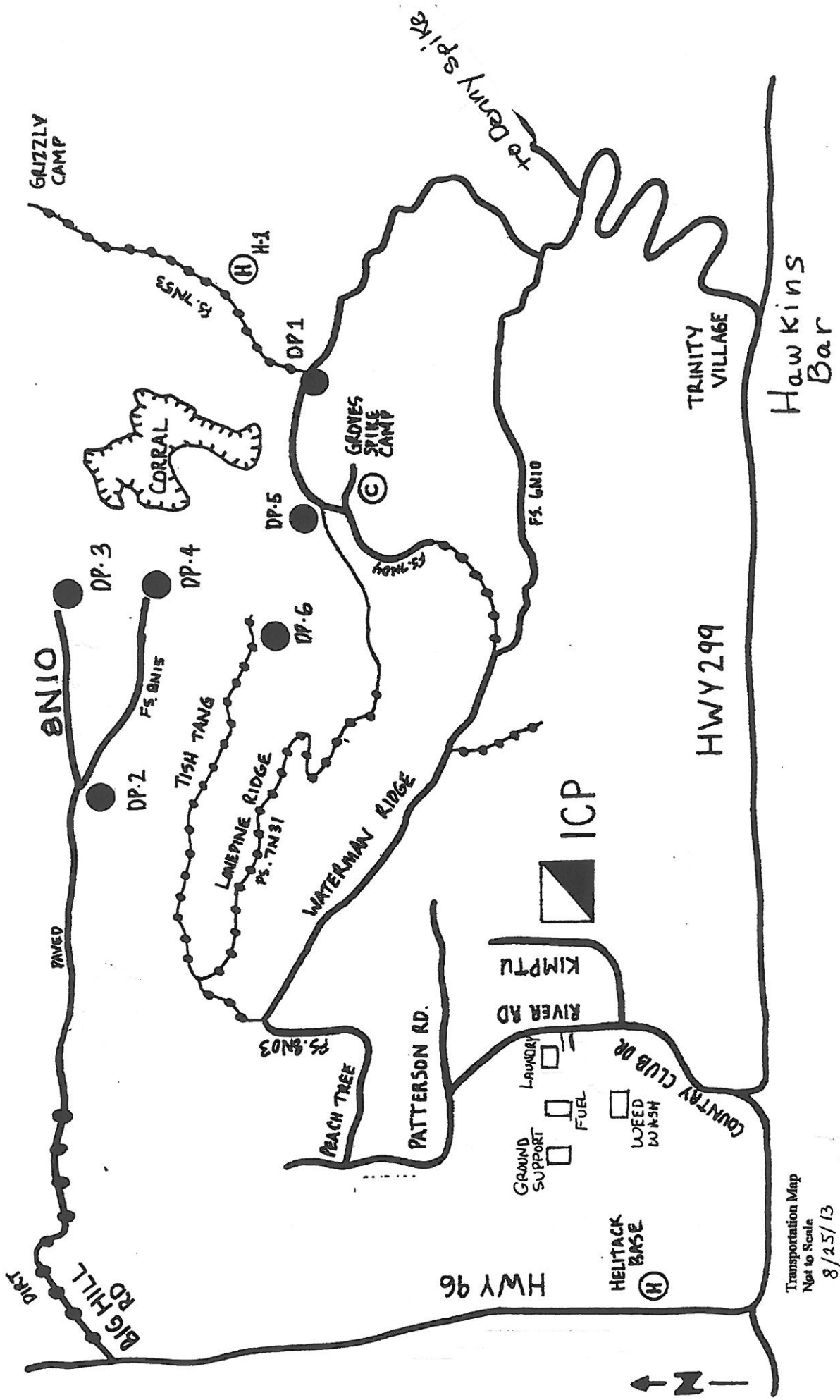
IT HR

Equip/Time



CORRAL COMPLEX HARDLINE PHONES

I.C. / Liaison	(530) 629-2143
Safety/ Medical	(530) 629-2109
PIO	(530) 629-2149
Operations/Air Ops	(530) 629-2058
Communications	(530) 629-2376
Resources/ Demob	(925) 519-6309
Resources	(530) 629-2156 Fax
Ordering	(925) 407-7004
Ordering	(925) 817-9929
Ordering	(530) 629-3828 Fax
Finance	(530) 629-2307
Finance Fax	(530) 629-2387
Ground Support	(925) 407-6355
Ground Transportation	(925) 817-0826



Transportation Map
 Not to Scale
 8/25/13

