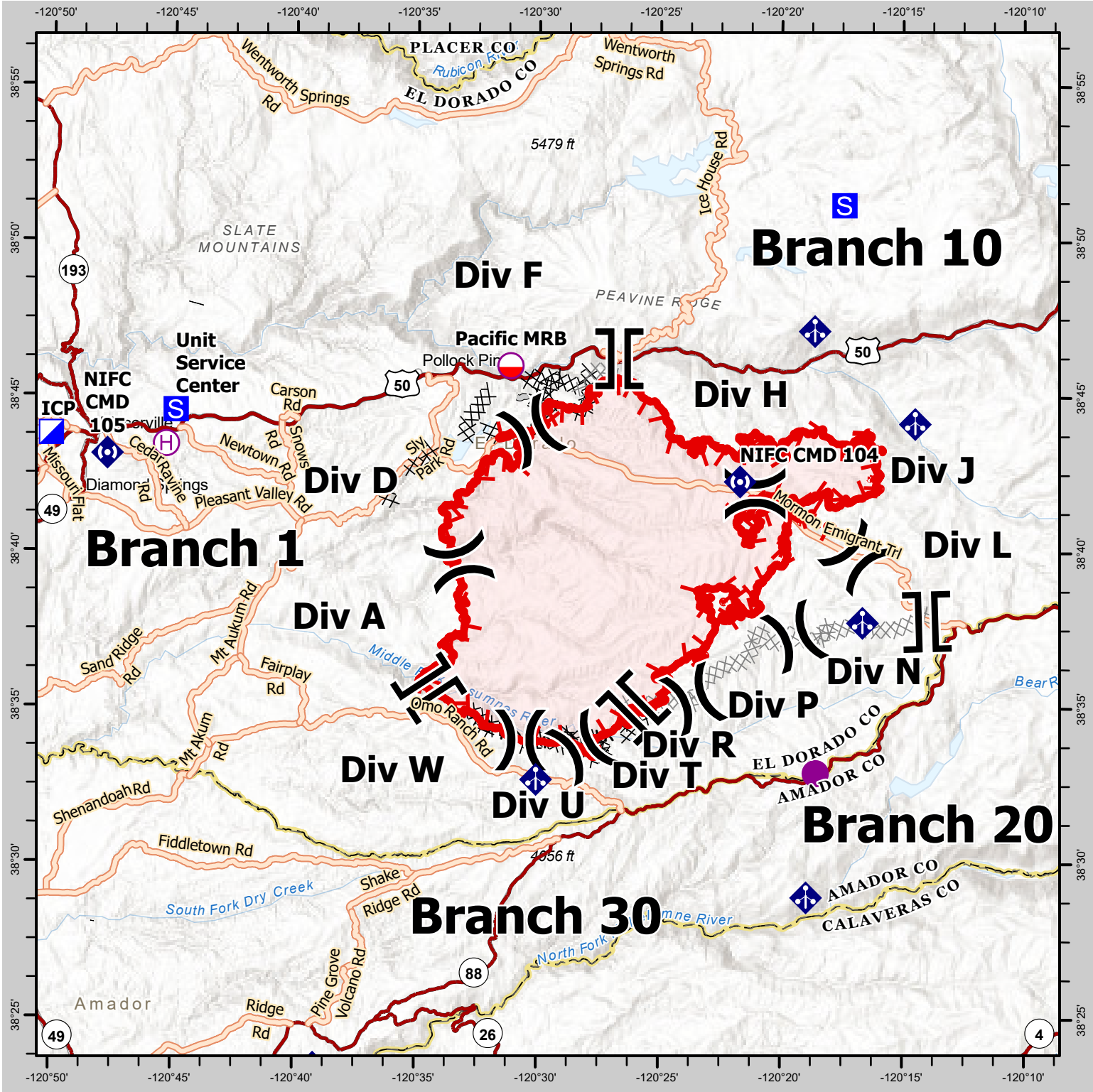




CALDOR INCIDENT BRIEFING MAP

CA ENF 24030 - 8/21/2021



0 2.5 5 10 15 Miles

- Uncontrolled Fire Edge
- Contained Line
- Helibase
- Helispot

- County Boundary
- Completed Dozer Line
- Drop Point
- Dip Site
-) Division Break
-] Branch Break

- Fire Point
- Mobile Weather Unit
- Spot Fire
- Restricted Water Source
- Mobile Ret. Base
- Repeater

CAL FIRE - INCIDENT MANAGEMENT TEAM 6
Established 1994

IMT 6 GISS
8/20/2021
2112 Hours
NAD 83 Teale Albers

DISCLAIMER:
The displayed incident data is approximate and should only be used for informational purposes. The information contained in this document is for informational purposes only and is not necessarily accurate for mapping, surveying, or engineering activities.