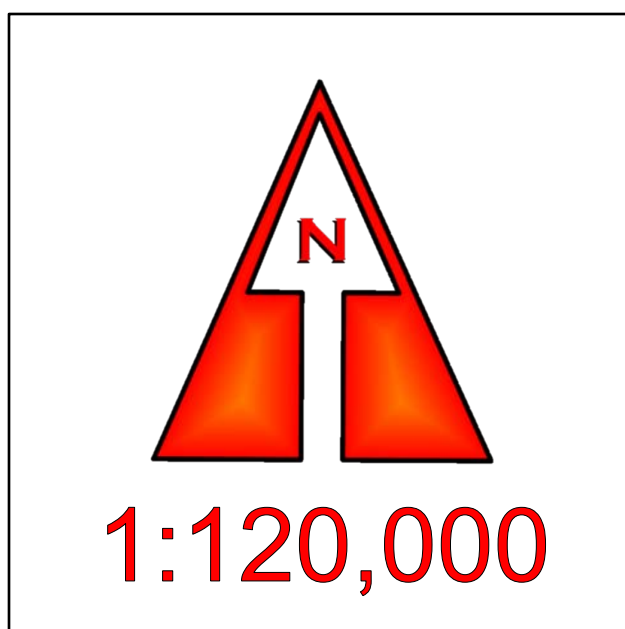
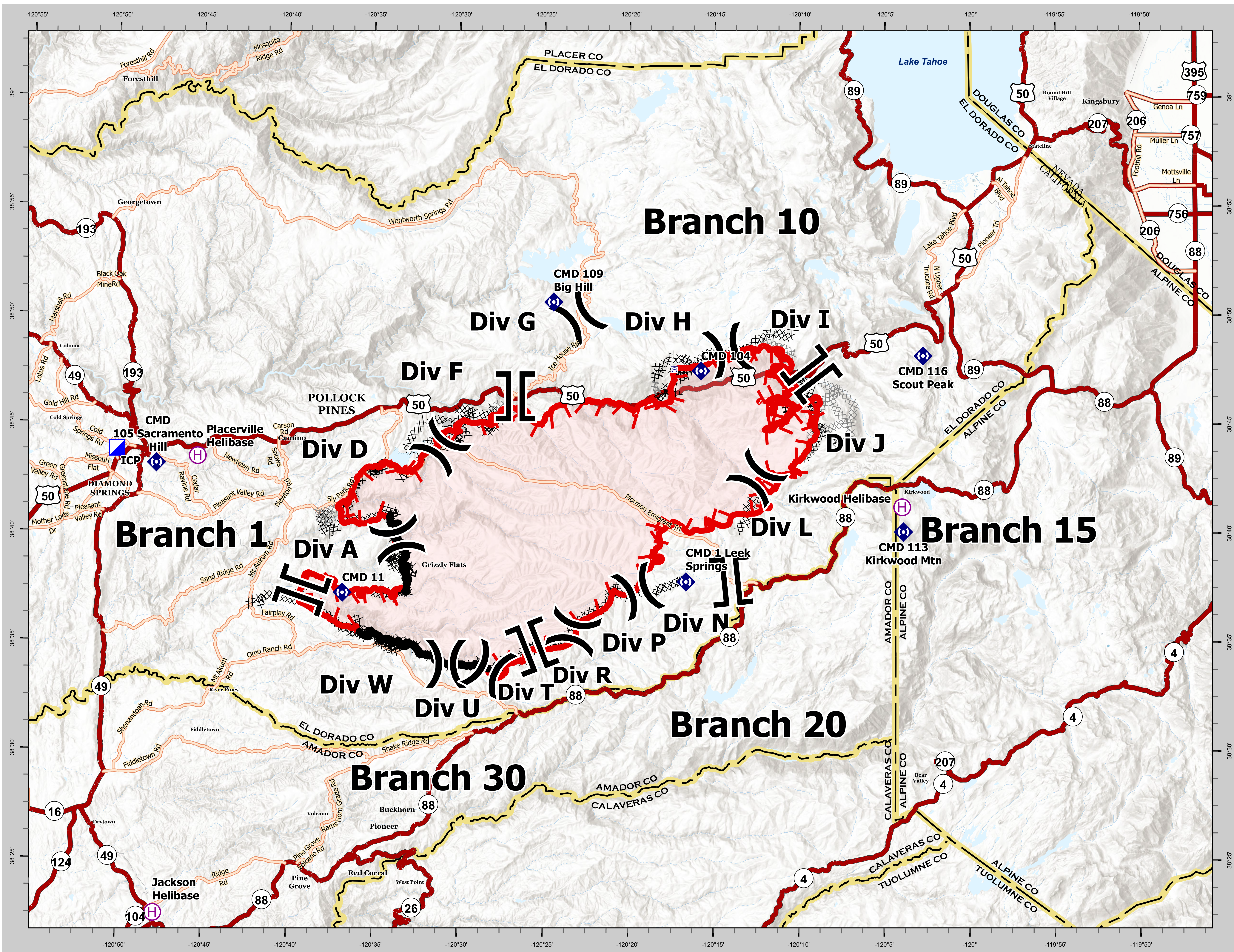


CALDOR INCIDENT BRIEFING MAP

CA ENF 024030 8/27/2021



- || Branch Break
-) Division Break
- ⊕ Helibase
- Ⓜ Incident Command Post
- Ⓜ Repeater
- Ⓜ Completed Dozer Line
- Ⓜ Planned Dozer Line
- Ⓜ Completed Fuel Break
- Ⓜ Completed Hand Line
- Ⓜ Completed Road as Line
- Ⓜ Planned Hand Line
- Ⓜ Access or Improved Road
- Ⓜ Fire Edge
- Ⓜ Contained Line
- Ⓜ Fire Perimeter
- Ⓜ State Boundary
- Ⓜ County Boundary

CAL FIRE - INCIDENT MANAGEMENT TEAM 6
Established 1994

IMT 6 GISS
8/26/2021
2331 Hours
NAD 83 Teale Albers

DISCLAIMER: The displayed incident data is approximate and should only be used for informational purposes. The information contained in supporting base layers was generated from GIS data maintained by different sources and agencies and is not necessarily accurate to mapping, surveying, or engineering standards.