



# PILOT MAP

## Caldor Incident

### CA ENF 024030

### 8/28/2021

- Transmission Lines
- Highways
- Major Roads
- Aerial Hazard
- Check Point
- Dip Site
- Mobile Retardant Base
- Helibase
- Division Break
- Branch Break
- Incident Command Post
- Staging Area
- Mobile Weather Unit
- Repeater
- Water Source
- Initial Points
- Completed Dozer Line
- Completed Fuel Break
- Completed Hand Line
- Completed Road as Line
- Planned Dozer Line
- Planned Hand Line
- Access or Improved Road
- Fire Edge
- Contained Line
- Wildfire Daily Fire Perimeter
- Hydrology
- Aviation Routes
- Temporary Flight Restriction

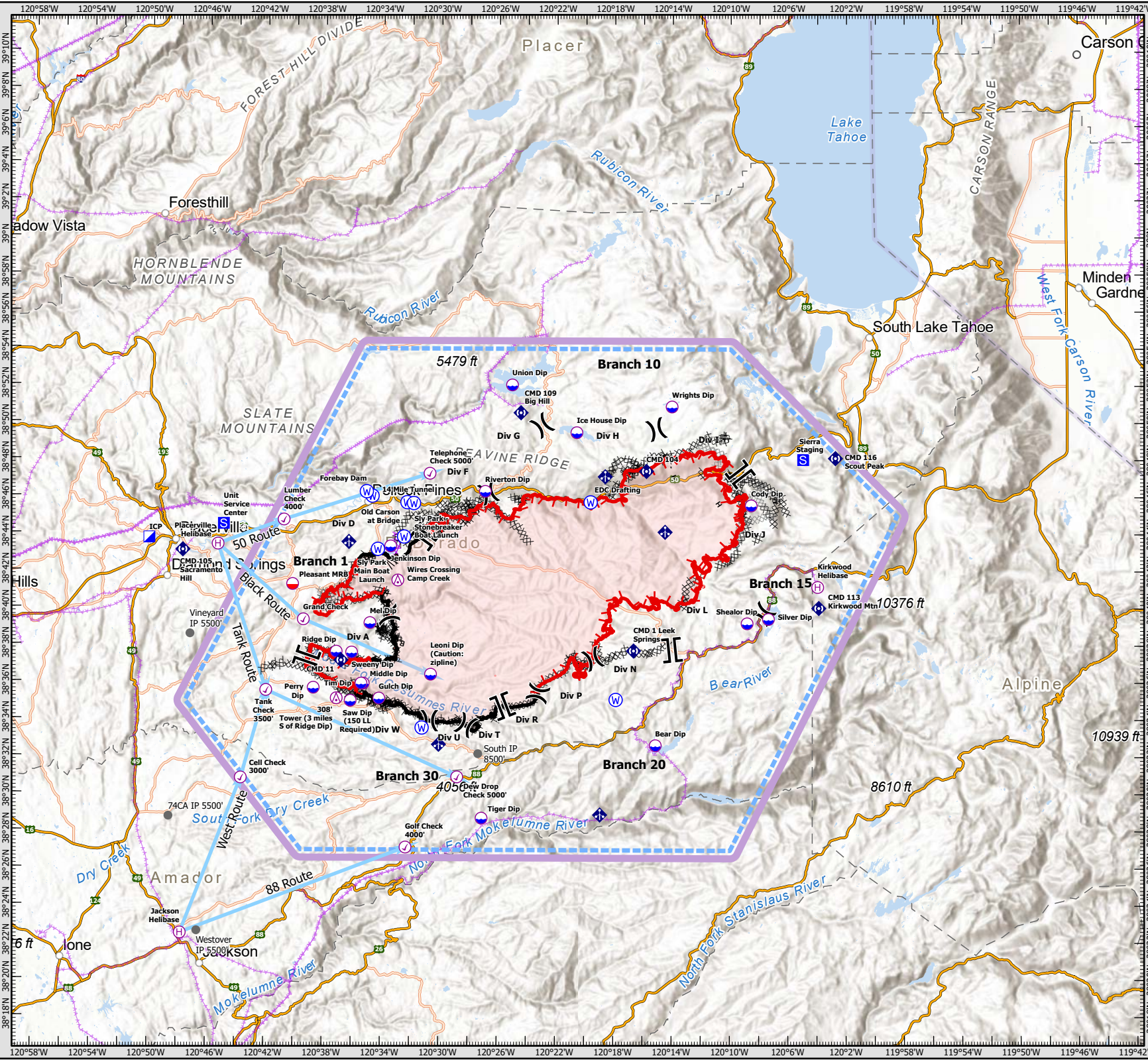
Miles

0    1/4    1/2

Datum: NAD 83    1:500,000

DISCLAIMER:  
The displayed incident data is approximate and should only be used for informational purposes. The information contained in supporting base layers was generated from GIS data maintained by different sources and agencies and is not necessarily accurate to mapping, surveying, or engineering standards.

IMT 6 GIS  
8/27/2021  
9:36 PM



Point Type	Name	Latitude	Longitude
Aerial Hazard	308' Tower (3 miles S of Ridge Dip)	38° 35.160' N	120° 37.101' W
Aerial Hazard	Wires Crossing Camp Creek	38° 41.523' N	120° 32.906' W
Mobile Retardant Base	Pleasant MRB	38° 41.299' N	120° 40.155' W
Check Point	Golf Check 4000'	38° 27.143' N	120° 32.309' W
Check Point	Cell Check 3000'	38° 30.860' N	120° 43.661' W
Check Point	Tank Check 3500'	38° 35.583' N	120° 41.954' W
Check Point	Lumber Check 4000'	38° 44.770' N	120° 40.771' W
Check Point	Telephone Check 5000'	38° 47.282' N	120° 30.725' W
Check Point	Dew Drop Check 5000'	38° 30.936' N	120° 28.782' W
Check Point	Grand Check	38° 39.400' N	120° 39.400' W
Dip Site	Saw Dip (150 LL Required)	38° 35.030' N	120° 36.141' W
Dip Site	Leoni Dip (Caution: zipline)	38° 36.458' N	120° 30.618' W
Dip Site	Bear Dip	38° 32.655' N	120° 15.136' W
Dip Site	Silver Dip	38° 39.465' N	120° 07.363' W
Dip Site	Ridge Dip	38° 37.670' N	120° 37.121' W
Dip Site	Jenkinson Dip	38° 43.357' N	120° 33.411' W
Dip Site	Riverton Dip	38° 46.320' N	120° 26.901' W
Dip Site	Union Dip	38° 52.060' N	120° 25.061' W
Dip Site	Ice House Dip	38° 49.500' N	120° 20.601' W
Dip Site	Wrights Dip	38° 50.900' N	120° 14.031' W
Dip Site	Cody Dip	38° 45.580' N	120° 08.561' W
Dip Site	Mel Dip	38° 39.220' N	120° 34.811' W
Dip Site	Tiger Dip	38° 28.720' N	120° 27.091' W
Dip Site	Middle Dip	38° 35.960' N	120° 35.251' W
Dip Site	Tim Dip	38° 35.960' N	120° 35.401' W
Dip Site	Gulch Dip	38° 35.160' N	120° 34.171' W
Dip Site	Perry Dip	38° 35.720' N	120° 38.691' W
Dip Site	Sweeny Dip	38° 37.630' N	120° 36.061' W
Dip Site	Shealor Dip	38° 39.230' N	120° 08.831' W
Helibase	Placerville Helibase	38° 43.445' N	120° 45.312' W
Helibase	Kirkwood Helibase	38° 41.190' N	120° 03.971' W
Helibase	Jackson Helibase	38° 22.487' N	120° 47.766' W
Repeater	CMD 1 Leek Springs	38° 37.750' N	120° 16.651' W
Repeater	CMD 105 Sacramento Hill	38° 43.122' N	120° 47.734' W
Repeater	CMD 104	38° 47.424' N	120° 15.788' W
Repeater	CMD 109 Big Hill	38° 50.564' N	120° 24.459' W
Repeater	CMD 11	38° 37.204' N	120° 36.791' W
Repeater	CMD 113 Kirkwood Mtn	38° 40.058' N	120° 03.894' W
Repeater	CMD 116 Scout Peak	38° 48.132' N	120° 02.752' W
Initial Point	Vineyard IP 5500'	38° 38.600' N	120° 47.201' W
Initial Point	74CA IP 5500'	38° 28.770' N	120° 48.611' W
Initial Point	Westover IP 5500'	38° 22.610' N	120° 46.631' W
Initial Point	South IP 8500'	38° 32.190' N	120° 27.341' W