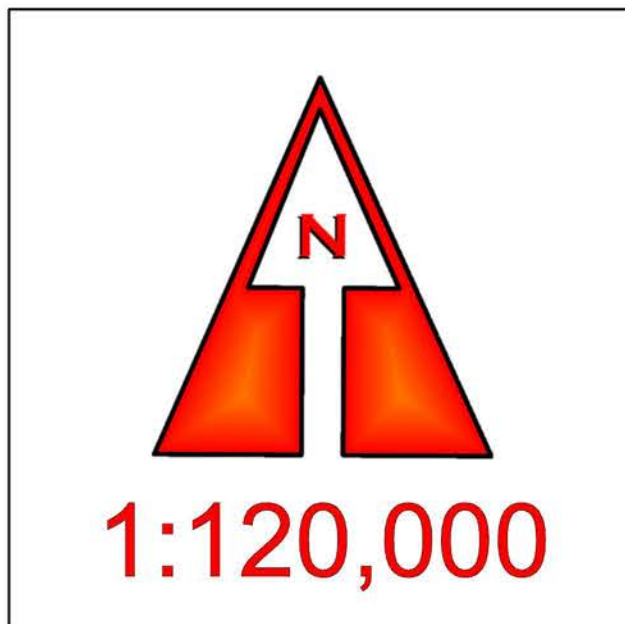
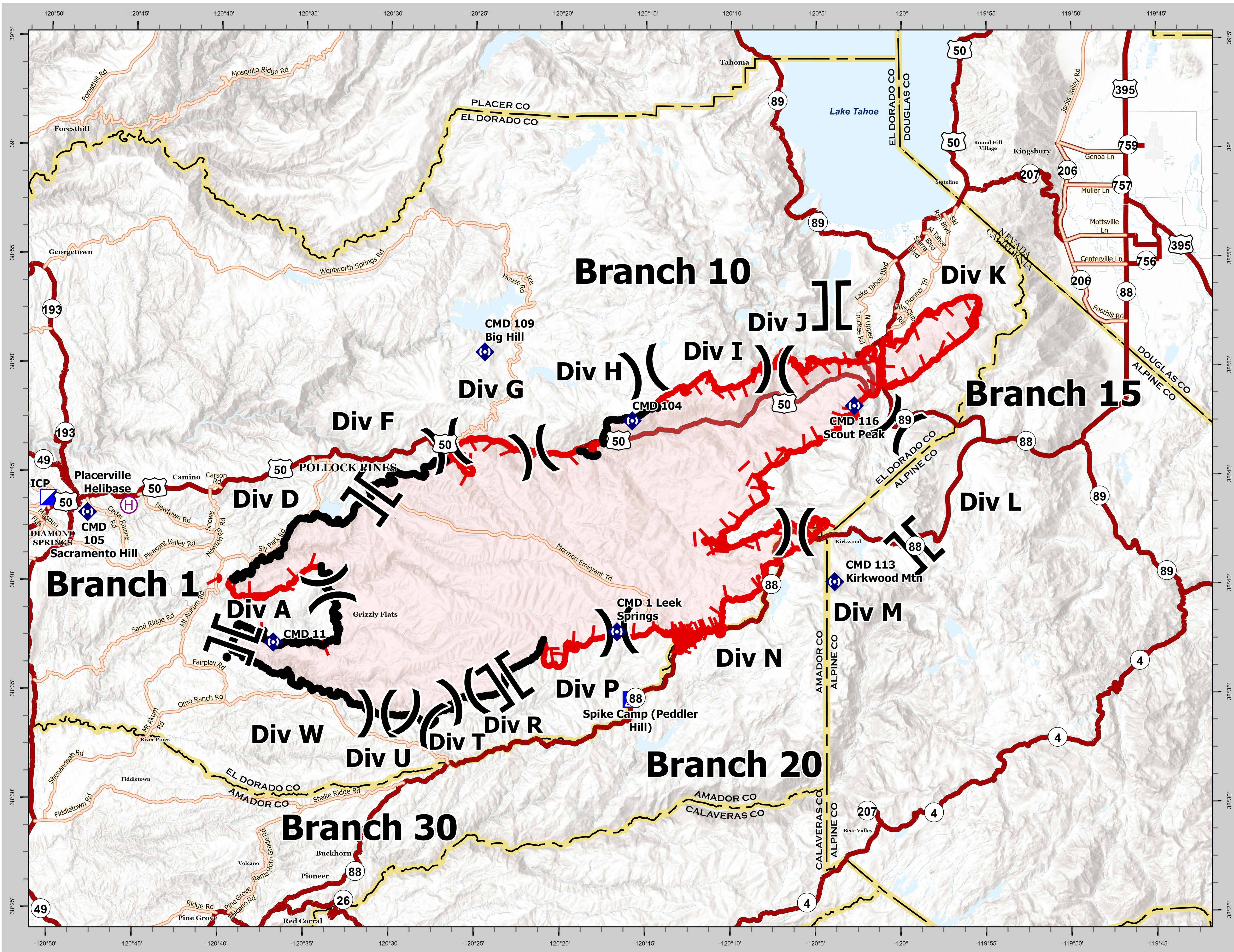


# CALDOR INCIDENT BRIEFING MAP

## CA ENF 024030 9/1/2021



- || Branch Break
- ) Division Break
- (H) Helibase
- Incident Command Post
- ▲ Camp
- ◆ Repeater
- ⊥ Fire Edge
- ▬ Contained Line
- ▭ Fire Perimeter
- - - State Boundary
- ▭ County Boundary

**CAL FIRE - INCIDENT MANAGEMENT TEAM 6**  
*Established 1994*



IMT 6 GISS  
8/31/2021  
2121 Hours  
NAD 83 Teale Albers

DISCLAIMER: The displayed incident data is approximate and should only be used for informational purposes. The information contained in supporting base layers was generated from GIS data maintained by different sources and agencies and is not necessarily accurate to mapping, surveying, or engineering standards.