

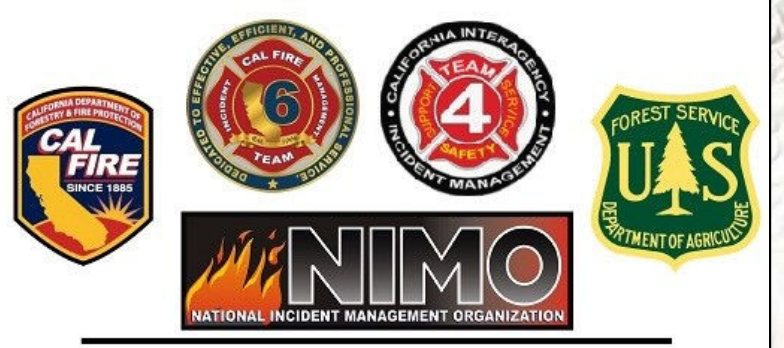
0 1/4 2/4 5 Miles

1:95,000

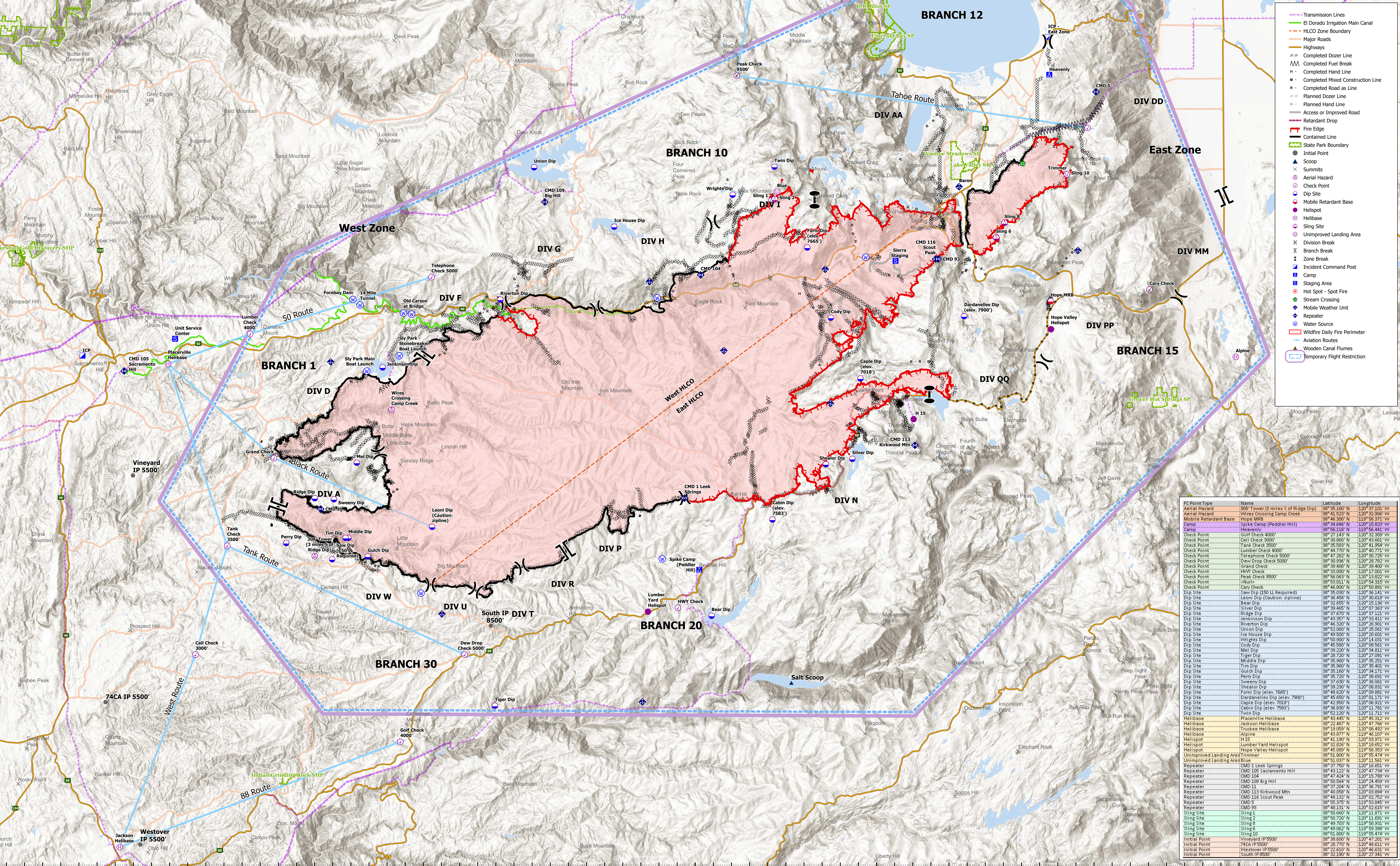
Datum: NAD 83

DISCLAIMER: The following information is approximate and should only be used for informational purposes. The information contained in this map was generated from GIS data maintained by different sources and agencies and is not necessarily accurate to mapping, surveying, or engineering standards.

MT 6-016
05/2021
2159 Hours



AIR OPS MAP
CALDOR INCIDENT
West Zone
CA ENF 024030
9/6/2021



- Transmission Lines
- El Dorado Irrigation Main Canal
- HLCO Zone Boundary
- Major Roads
- Highways
- Completed Dozer Line
- Completed Fuel Break
- Completed Hand Line
- Completed Mixed Construction Line
- Completed Road as Line
- Planned Dozer Line
- Planned Hand Line
- Access or Improved Road
- Retardant Drop
- Fire Edge
- Contained Line
- State Park Boundary
- Initial Point
- Summit
- Aerial Hazard
- Check Point
- Dip Site
- Mobile Retardant Base
- Helibase
- Slingsite
- Unimproved Landing Area
- Division Break
- Branch Break
- Zone Break
- Incident Command Post
- Camp
- Staging Area
- Hot Spot - Spot Fire
- Stream Crossing
- Mobile Weather Unit
- Repeater
- Water Source
- Wildfire Daily Fire Perimeter
- Aviation Routes
- Wooden Canal Flumes
- Temporary Flight Restriction

FC Point Type	Name	Latitude	Longitude
Aerial Hazard	308 Tower (3 miles S of Ridge Dip)	38° 36' 160"	120° 37' 101"
Aerial Hazard	Wires Crossing Camp Creek	38° 41' 523"	120° 32' 306"
Mobile Retardant Base	Wagon Mtn	38° 45' 333"	120° 36' 372"
Camp	Spike Camp (Peddler Hill)	38° 34' 644"	120° 15' 823"
Camp	Heavenly	38° 56' 118"	119° 56' 441"
Check Point	Scout Check 4000'	38° 27' 143"	120° 32' 309"
Check Point	Cell Check 3000'	38° 30' 660"	120° 43' 661"
Check Point	Tank Check 3500'	38° 35' 583"	120° 41' 964"
Check Point	Lumber Check 4000'	38° 44' 770"	120° 40' 721"
Check Point	Telephone Check 5000'	38° 47' 362"	120° 30' 725"
Check Point	Dew Drop Check 5000'	38° 30' 936"	120° 26' 782"
Check Point	Scand Check	38° 30' 800"	120° 36' 400"
Check Point	HWY Check	38° 33' 000"	120° 17' 001"
Check Point	Peak Check 9500'	38° 35' 063"	120° 15' 822"
Check Point	Paulin	38° 53' 811"	119° 54' 315"
Check Point	Cary Check	38° 46' 800"	119° 59' 891"
Dip Site	Scout Dip (LL Required)	38° 25' 000"	120° 36' 141"
Dip Site	Leah Dip (Caution: zipline)	38° 36' 458"	120° 39' 613"
Dip Site	Bear Dip	38° 33' 695"	120° 15' 136"
Dip Site	Silver Dip	38° 36' 458"	120° 07' 383"
Dip Site	Ridge Dip	38° 37' 670"	120° 37' 121"
Dip Site	Jenkinson Dip	38° 43' 357"	120° 33' 411"
Dip Site	Riverton Dip	38° 46' 330"	120° 26' 302"
Dip Site	Union Dip	38° 53' 060"	120° 25' 061"
Dip Site	Ice House Dip	38° 49' 500"	120° 20' 601"
Dip Site	Wrights Dip	38° 46' 330"	120° 14' 083"
Dip Site	Cody Dip	38° 43' 980"	120° 08' 561"
Dip Site	Mel Dip	38° 39' 220"	120° 34' 811"
Dip Site	Middle Dip	38° 36' 720"	120° 34' 171"
Dip Site	Tim Dip	38° 36' 360"	120° 35' 401"
Dip Site	Scand Dip	38° 36' 160"	120° 34' 171"
Dip Site	Perry Dip	38° 36' 720"	120° 38' 691"
Dip Site	Heavenly Dip	38° 56' 630"	120° 36' 061"
Dip Site	Scand Dip	38° 36' 280"	120° 08' 561"
Dip Site	Formi Dip (elev. 7665')	38° 46' 620"	120° 09' 881"
Dip Site	Dardanelles Dip (elev. 7500')	38° 45' 250"	120° 01' 121"
Dip Site	Scand Dip (elev. 7018')	38° 42' 960"	120° 06' 921"
Dip Site	Cabin Dip (elev. 7583')	38° 36' 890"	120° 11' 781"
Dip Site	Scand Dip	38° 42' 120"	120° 01' 121"
Helibase	Placerville Helibase	38° 43' 445"	120° 45' 512"
Helibase	Jackson Helibase	38° 22' 487"	120° 47' 766"
Helibase	Alpine	38° 45' 050"	120° 35' 492"
Helibase	Alpine	38° 43' 877"	119° 46' 107"
Helibase	H15	38° 41' 130"	120° 03' 971"
Helibase	Lumber Yard Helibase	38° 45' 250"	120° 01' 121"
Helibase	Hope Valley Helibase	38° 45' 088"	119° 56' 383"
Unimproved Landing Area	Trimmer	38° 51' 800"	119° 55' 474"
Unimproved Landing Area	Scand	38° 41' 057"	120° 11' 361"
Repeater	CMD 1 Leek Springs	38° 37' 750"	120° 16' 651"
Repeater	CMD 105 Sacramento Hill	38° 43' 120"	120° 47' 734"
Repeater	CMD 104	38° 43' 424"	120° 15' 781"
Repeater	CMD 109 Big Hill	38° 50' 564"	120° 24' 455"
Repeater	CMD 104	38° 40' 268"	120° 03' 791"
Repeater	CMD 118 Kirkwood Mtn	38° 40' 050"	120° 03' 884"
Repeater	CMD 116 Scout Peak	38° 48' 132"	120° 02' 752"
Repeater	CMD 98	38° 45' 376"	119° 53' 845"
Repeater	CMD 98	38° 48' 131"	120° 02' 615"
Slingsite	Slingsite	38° 50' 660"	120° 11' 871"
Slingsite	Slingsite	38° 45' 750"	120° 11' 591"
Slingsite	Slingsite	38° 45' 705"	119° 58' 981"
Slingsite	Slingsite	38° 49' 062"	119° 59' 386"
Slingsite	Slingsite	38° 43' 800"	119° 55' 474"
Initial Point	Vineyard IP 5500'	38° 38' 600"	120° 47' 201"
Initial Point	74CA IP 5500'	38° 26' 770"	120° 48' 611"
Initial Point	Westover IP 5500'	38° 43' 610"	120° 46' 681"
Initial Point	South IP 8500'	38° 22' 150"	120° 27' 341"