

BRANCH 1

DIV D

DIV A

DIV W

DIV U

DIV T

DIV R

DIV P

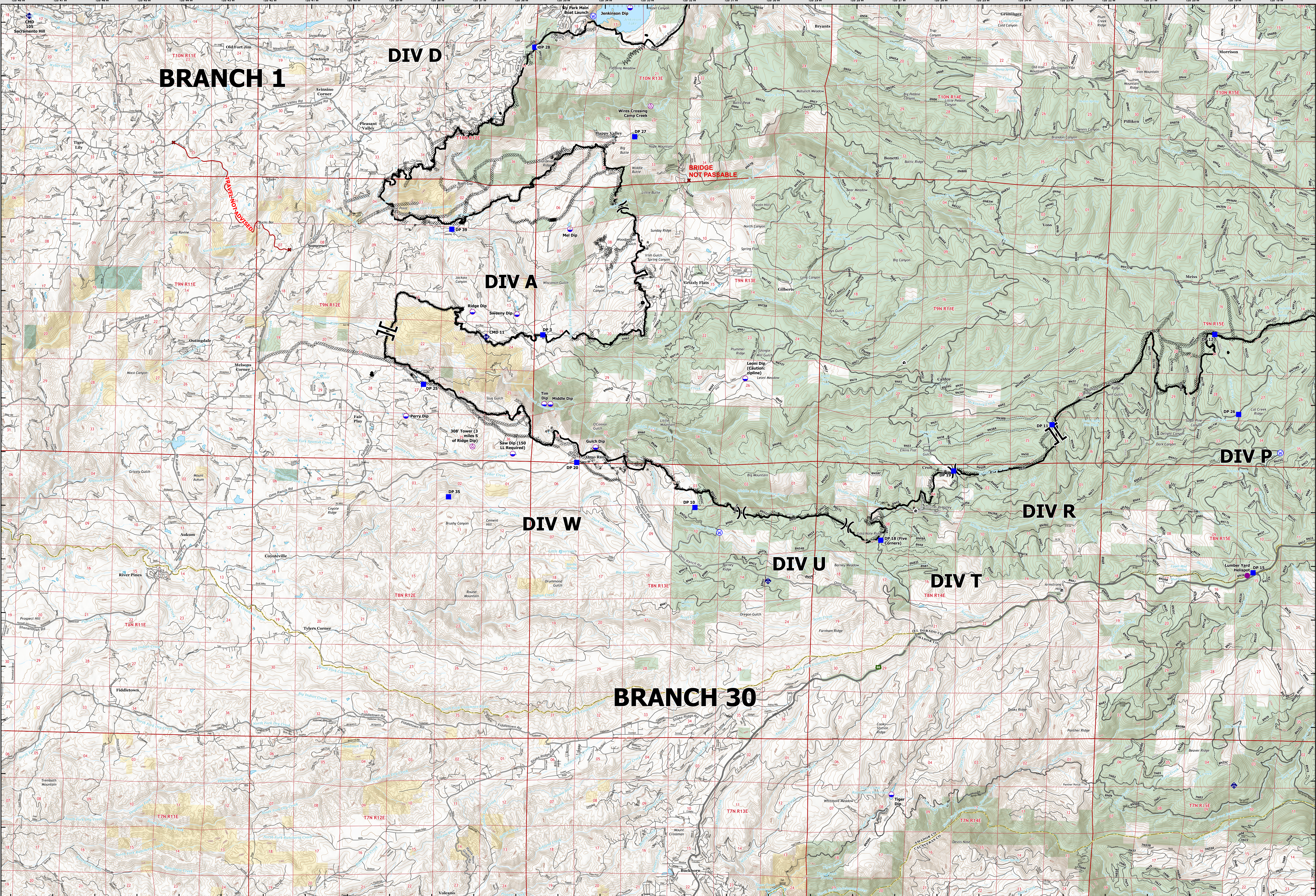
BRANCH 30

RAVE NOT PASSED

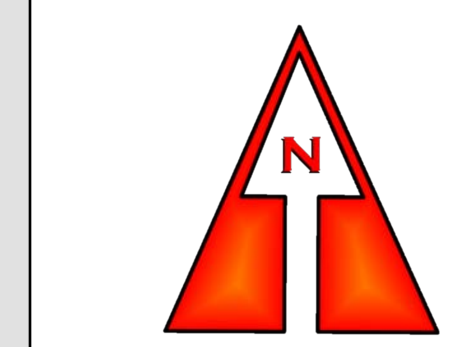
BRIDGE NOT PASSABLE

308' Tower (3 miles S of Ridge Dip)

Saw Dip (150 LL Required)

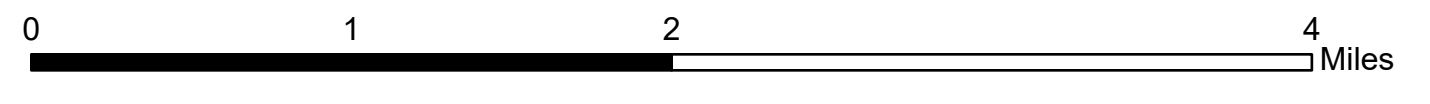


OPS MAP
BRANCH 30
CALDOR INCIDENT
WEST ZONE
CA ENF 024030
September 6, 2021



1:38,000

Datum: NAD 83



OPERATIONS MAP BRANCH 30 Caldor Incident West Zone CA ENF 024030 September 6, 2021

- Historic Structures
- ✘ DO NOT TRAVEL
- Bucks Bar Rail
- Aerial Hazard
- Dip Site
- Heliport
- Helibase
- X Division Break
- II Branch Break
- Drop Point
- Mobile Weather Unit
- Repeater
- Water Source
- Helibase
- Completed Dozer Line
- M Completed Fuel Break
- H Completed Hand Line
- Completed Road as Line
- Planned Dozer Line
- Access or Improved Road
- Contained Line
- Bureau of Land Management
- Bureau of Reclamation
- Local Government
- Non-Profit Conservancies and Trusts
- Other Federal Lands
- Other State Lands
- USDA Forest Service
- USFS Wilderness



DISCLAIMER: The displayed incident data is approximate and should only be used for informational purposes. The information contained in supporting base layers was generated from GIS data maintained by different sources and agencies and is not necessarily accurate to mapping, surveying, or engineering standards.

INT 6 GIS
8/25/2021
2143 Hours

OPS MAP
BRANCH 30
CALDOR INCIDENT
WEST ZONE
CA ENF 024030
September 6, 2021