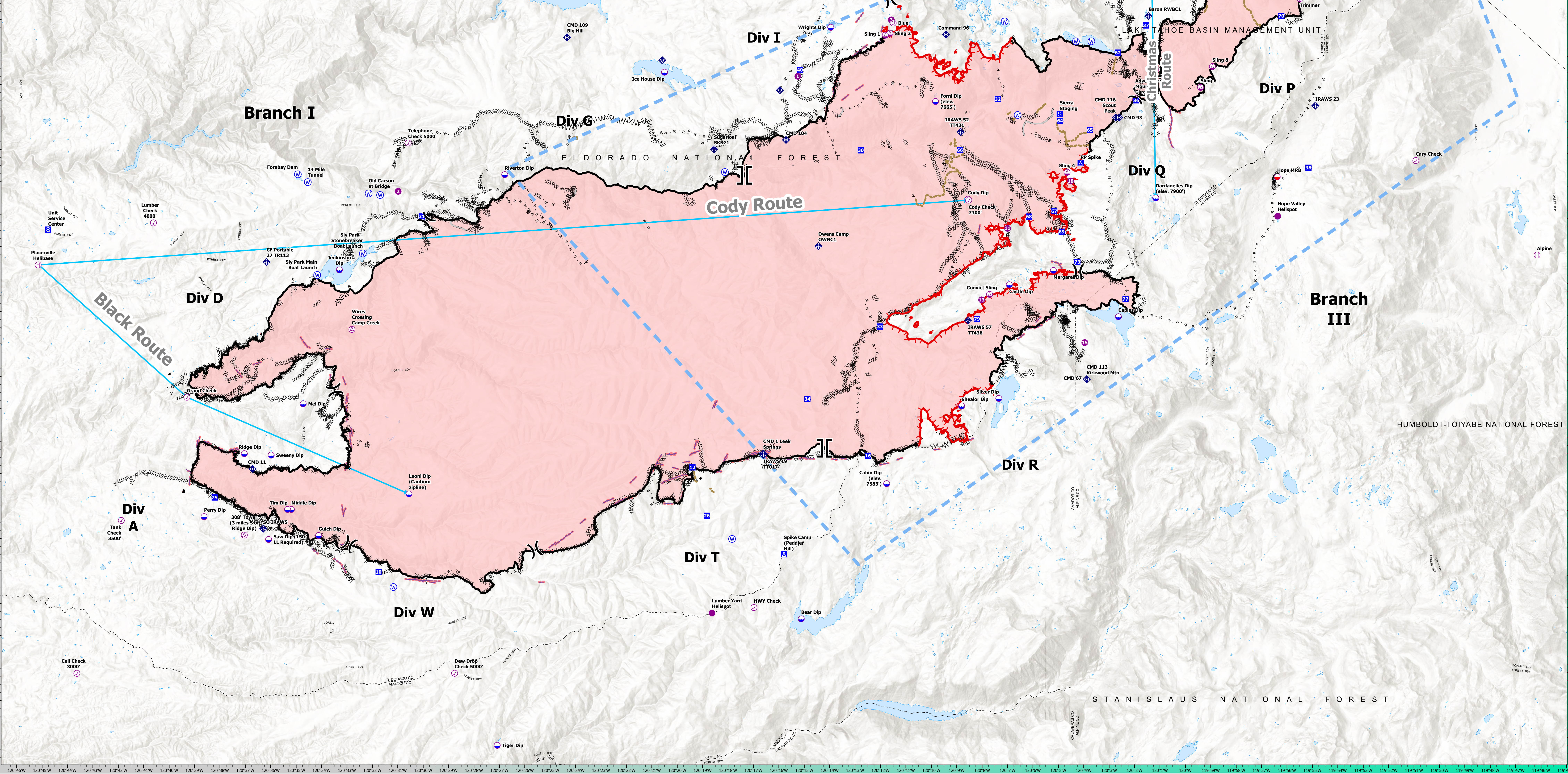


IC Point Type	Label	Latitude WGS84	Longitude WGS84	IC Point Type	Label	Latitude WGS84	Longitude WGS84
Aerial Hazard	300' Tower (3 miles S of Ridge Dip)	38° 41.223' N	120° 31.270' W	Division Break	Div 0/1	38° 41.223' N	120° 31.270' W
Check Point	300' Tower (3 miles S of Ridge Dip)	38° 41.223' N	120° 31.270' W	Drop Point	Div 0/1	38° 41.223' N	120° 31.270' W
Dip Site	300' Tower (3 miles S of Ridge Dip)	38° 41.223' N	120° 31.270' W	Mobile Retardant Base	Div 0/1	38° 41.223' N	120° 31.270' W
Helibase	300' Tower (3 miles S of Ridge Dip)	38° 41.223' N	120° 31.270' W	Helibase	Div 0/1	38° 41.223' N	120° 31.270' W
Helispot	300' Tower (3 miles S of Ridge Dip)	38° 41.223' N	120° 31.270' W	Helispot	Div 0/1	38° 41.223' N	120° 31.270' W
Sling Site	300' Tower (3 miles S of Ridge Dip)	38° 41.223' N	120° 31.270' W	Sling Site	Div 0/1	38° 41.223' N	120° 31.270' W
Unimproved Landing Area	300' Tower (3 miles S of Ridge Dip)	38° 41.223' N	120° 31.270' W	Unimproved Landing Area	Div 0/1	38° 41.223' N	120° 31.270' W
Division Break	Div 0/1	38° 41.223' N	120° 31.270' W	Division Break	Div 0/1	38° 41.223' N	120° 31.270' W




# AIR OPERATIONS

## Caldor

### CA-ENF-24030

09/19/21



U.S. DEPARTMENT OF AGRICULTURE

CALIFORNIA FIRE INCIDENT MANAGEMENT TEAM 12

"Adapt, Improve, and Overcome"

Caldor

CA-ENF-24030

# AIR OPS

09/19/21

0 1.25 2.5 5 Miles

1:15,000 NAD83 UTM 11N

Prepared by CRIMT12 9/19/2021 09:03